

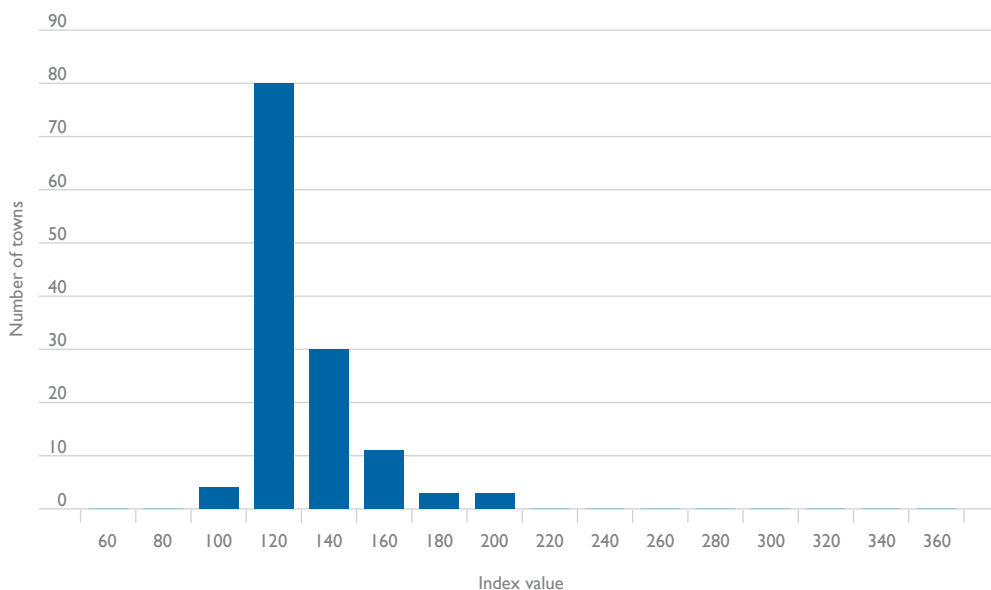
APPENDIX E

Other retail items

The grocery index

Figure E.1 is the distribution of town-based index values for the grocery index. It is provided for comparative purposes. The distribution is strongly clustered around a large number of towns in the 100 to 120 bracket and skewed to the right.

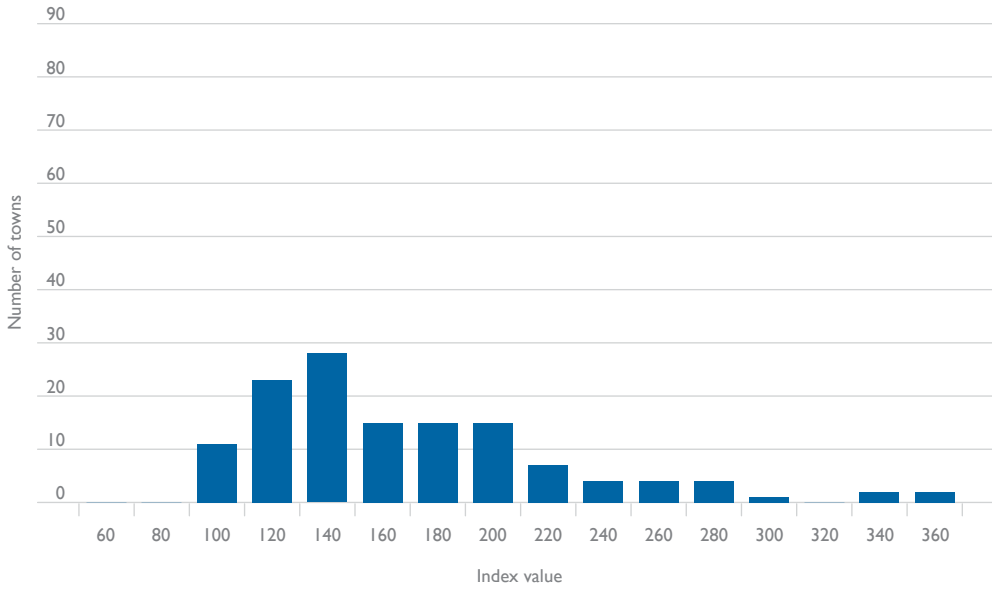
Figure E.1 Grocery index – distribution



Source: BITRE spatial price database.

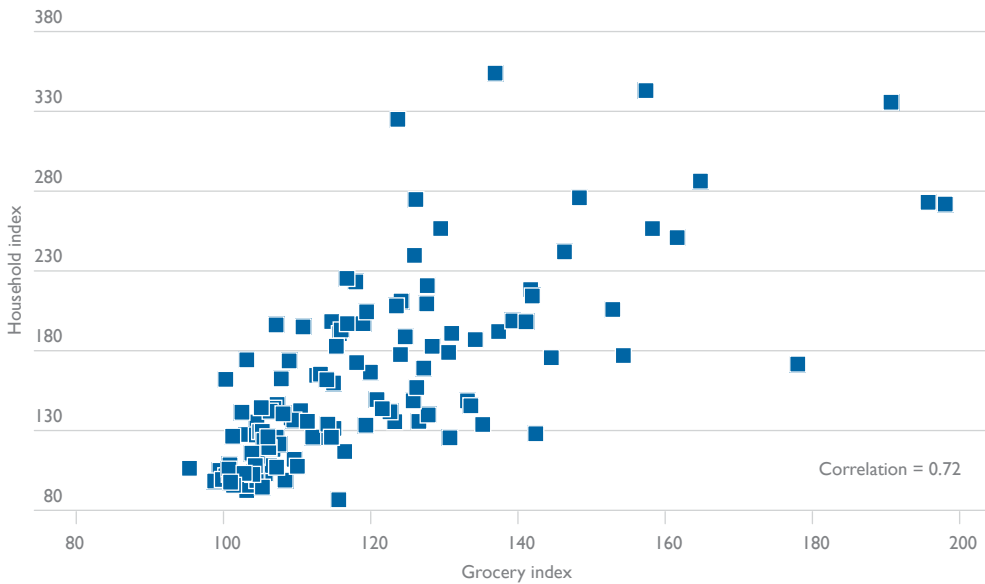
Household items

Figure E.2 The household items index – distribution



Source: BITRE spatial price database.

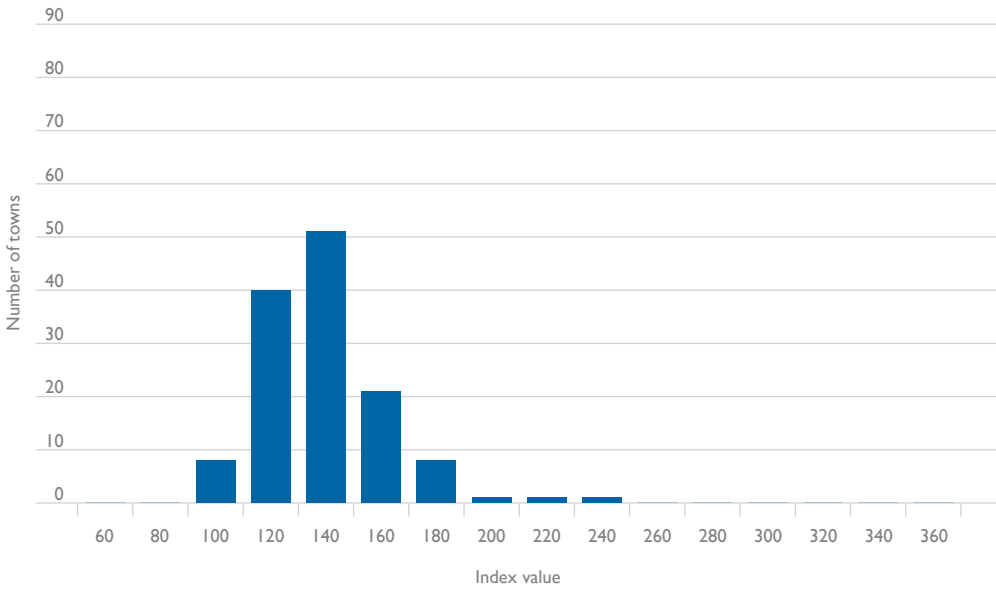
Figure E.3 The household items index and the grocery index



Source: BITRE spatial price database.

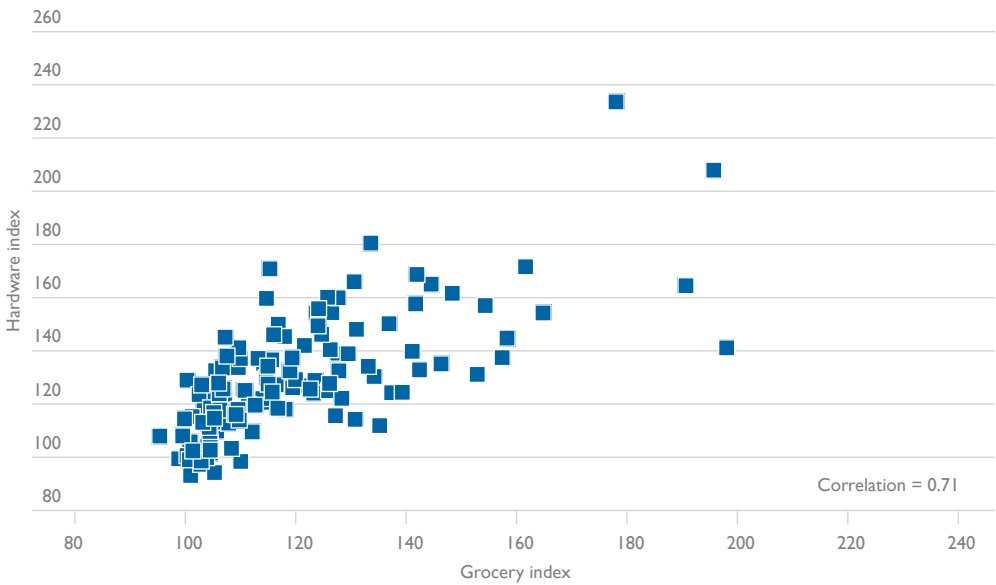
Hardware

Figure E.4 The hardware index – distribution



Source: BITRE spatial price database.

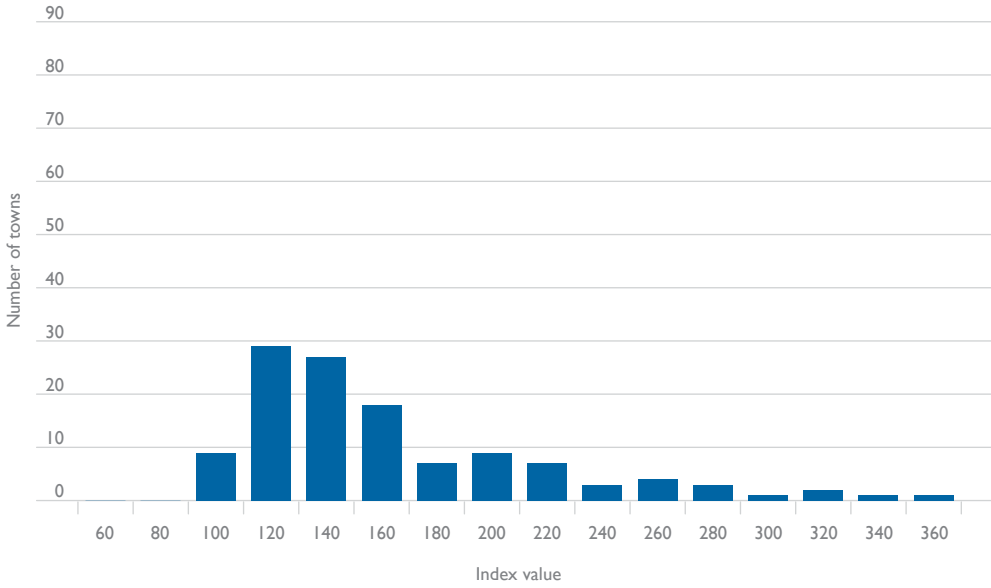
Figure E.5 The hardware index and the grocery index



Source: BITRE spatial price database.

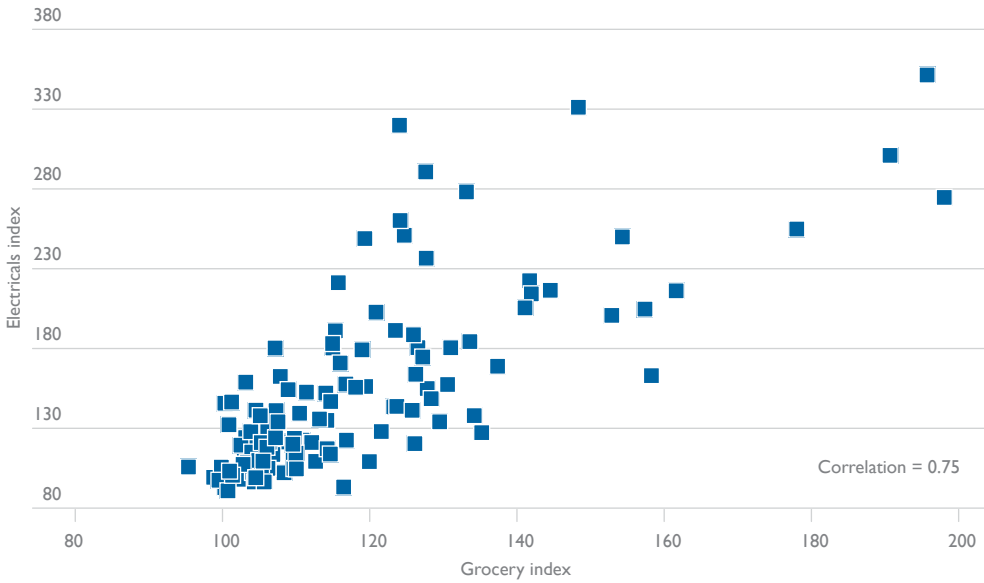
Electrical goods

Figure E.6 The electrical goods index and the grocery index



Source: BITRE spatial price database.

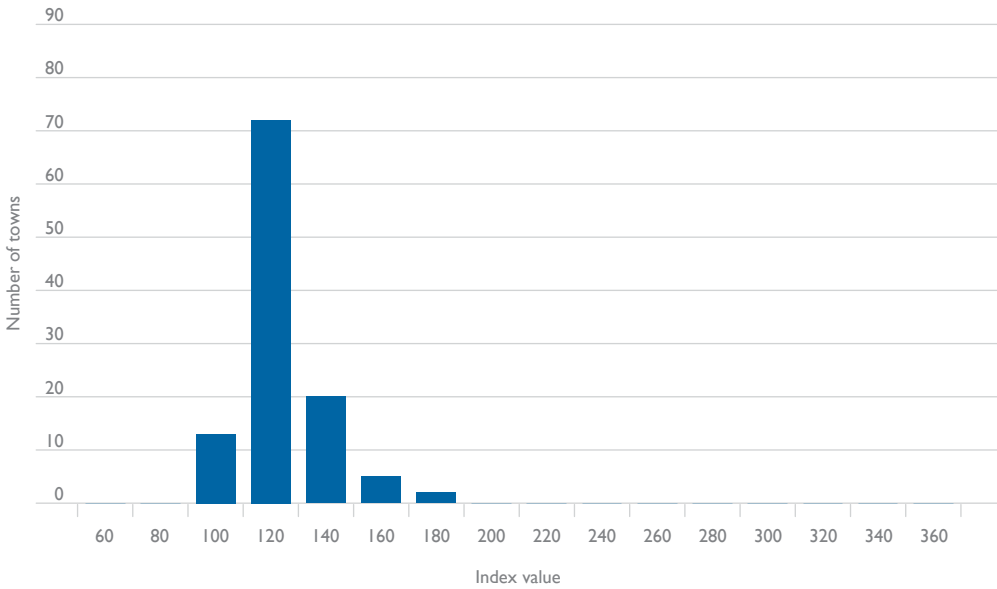
Figure E.7 The electrical goods index – distribution



Source: BITRE spatial price database.

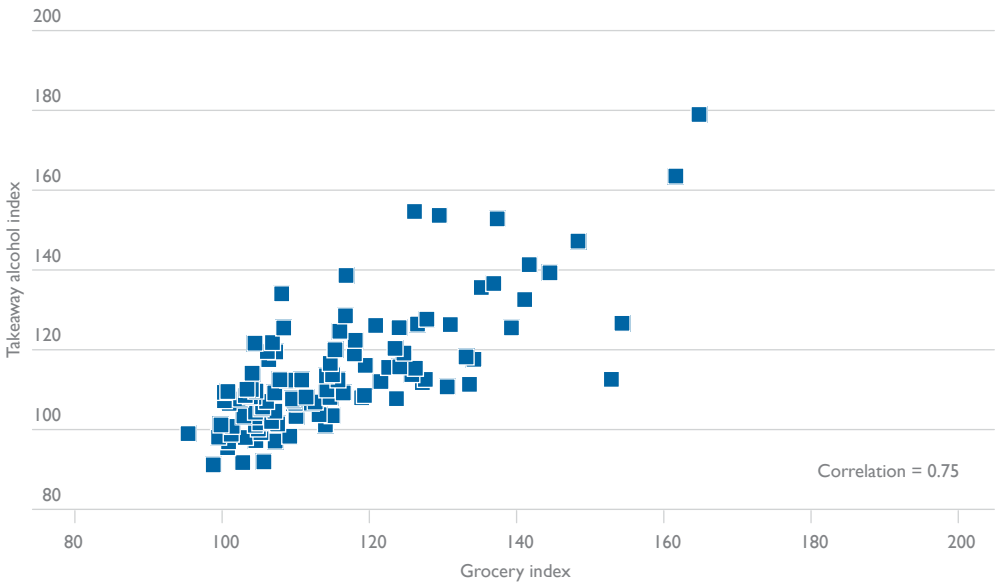
Takeaway alcohol

Figure E.8 Takeaway alcohol index – distribution



Source: BITRE spatial price database.

Figure E.9 Takeaway alcohol index and the grocery index

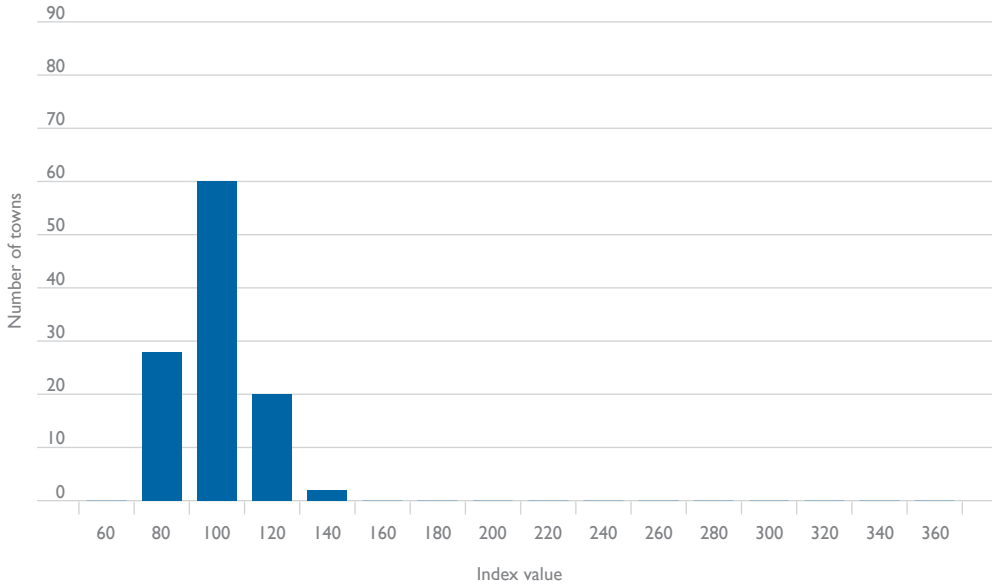


Source: BITRE spatial price database.

Services

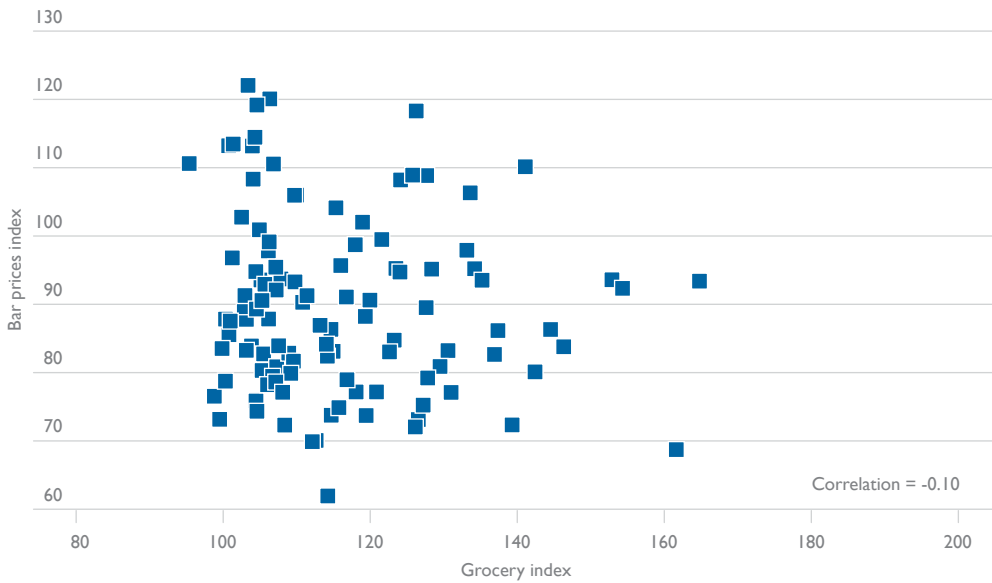
Alcohol: Bar prices

Figure E.10 Bar prices index – distribution



Source: BITRE spatial price database.

Figure E.11 Bar prices index and grocery index

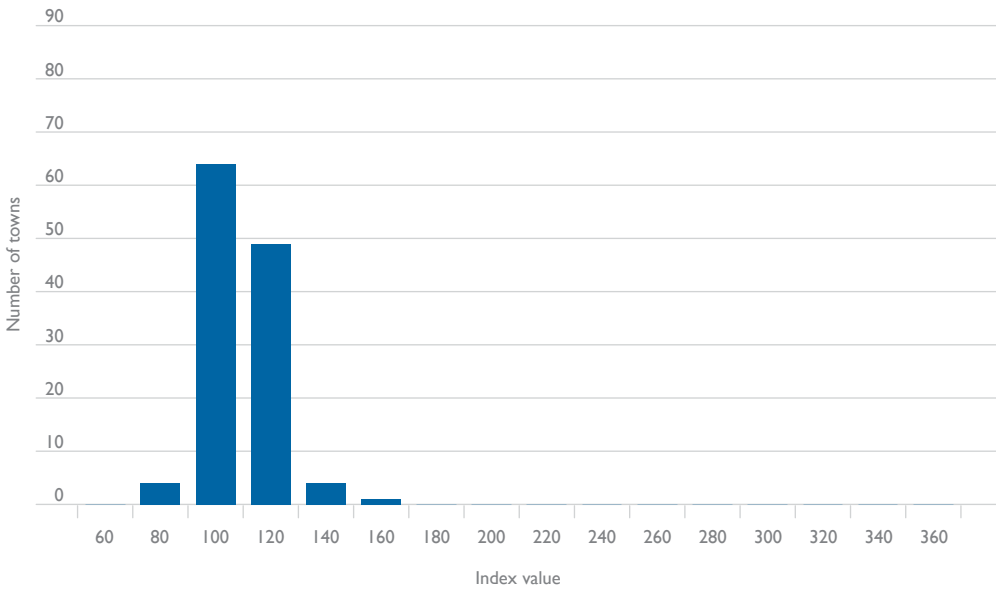


Source: BITRE spatial price database.

Local services

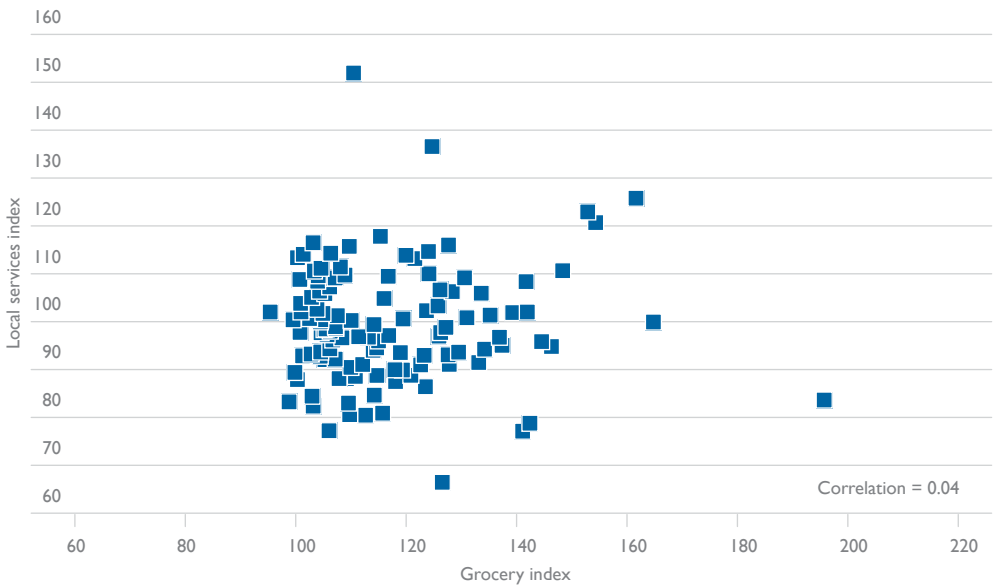
The local services category includes childcare, meals outside the home such as restaurant and takeaway food, dry cleaning, crash repairs and vehicle servicing, haircuts, whitegoods repair, vet charges, gardening services, fees associated with sport clubs (such as golf and bowls), gym membership, video hire and movie ticket prices.

Figure E.12 Local services index – distribution



Source: BITRE spatial price database.

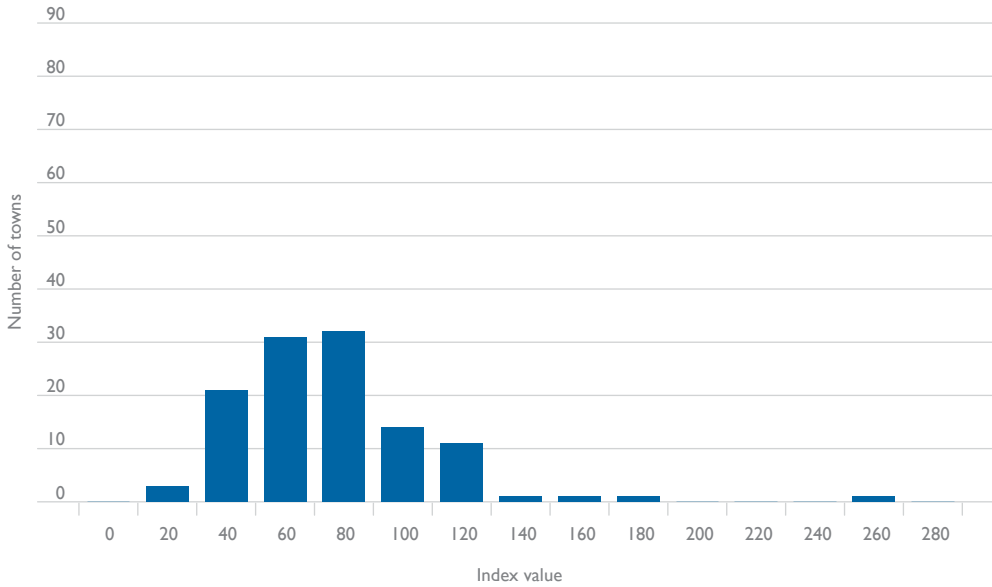
Figure E.13 Local services index and the groceries index



Source: BITRE spatial price database.

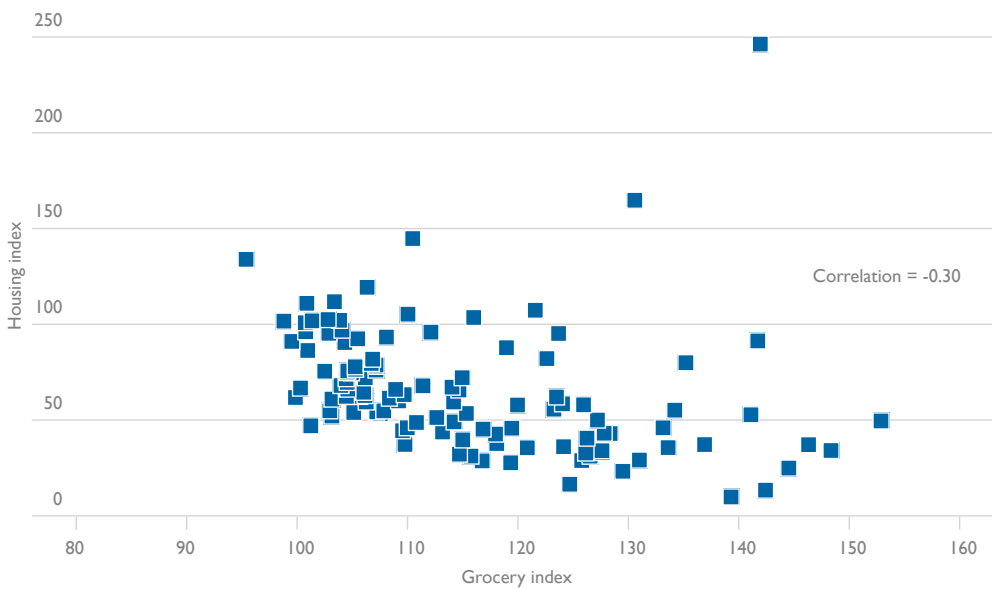
Housing

Figure E.14 Housing index – distribution



Source: BITRE spatial price database.

Figure E.15 Housing index and the grocery index



Source: BITRE spatial price database.