



Australian Government

Department of Infrastructure and Regional Development

Bureau of Infrastructure, Transport and Regional Economics

STATISTICAL REPORT



Aviation

Domestic aviation activity
2016

© Commonwealth of Australia 2017

ISSN: 1832 - 1968

Ownership of intellectual property rights in this publication

Unless otherwise noted, copyright (and any other intellectual property rights, if any) in this publication is owned by the Commonwealth of Australia (referred to below as the Commonwealth).

Disclaimer

The material contained in this publication is made available on the understanding that the Commonwealth is not providing professional advice, and that users exercise their own skill and care with respect to its use, and seek independent advice if necessary.

The Commonwealth makes no representations or warranties as to the contents or accuracy of the information contained in this publication. To the extent permitted by law, the Commonwealth disclaims liability to any person or organisation in respect of anything done, or omitted to be done, in reliance upon information contained in this publication.

Creative Commons licence

With the exception of (a) the Coat of Arms; and (b) the Department of Infrastructure's photos and graphics, copyright in this publication is licensed under a Creative Commons Attribution 3.0 Australia Licence.

Creative Commons Attribution 3.0 Australia Licence is a standard form licence agreement that allows you to copy, communicate and adapt this publication provided that you attribute the work to the Commonwealth and abide by the other licence terms. A summary of the licence terms is available from <http://creativecommons.org/licenses/by/3.0/au/deed.en>. The full licence terms are available from <http://creativecommons.org/licenses/by/3.0/au/legalcode>.

Use of the Coat of Arms

The Department of the Prime Minister and Cabinet sets the terms under which the Coat of Arms is used. Please refer to the Department's Commonwealth Coat of Arms and Government branding web page <http://www.dpmc.gov.au/guidelines/index.cfm#brand> and, in particular, the Guidelines on the use of the Commonwealth Coat of Arms publication.

An appropriate citation for this report is:

Bureau of Infrastructure, Transport and Regional Economics (BITRE), 2016, Domestic aviation activity, Statistical Report, BITRE, Canberra ACT.

Contact us

This publication is available in PDF format. All other rights are reserved, including in relation to any Departmental logos or trade marks which may exist. For enquiries regarding the licence and any use of this publication, please contact:

Bureau of Infrastructure, Transport and Regional Economics (BITRE)
Department of Infrastructure and Transport
GPO Box 501, Canberra ACT 2601, Australia
Telephone: (international) +61 2 6274 7210
Fax: (international) +61 2 6274 7727
Email: bitre@infrastructure.gov.au
Website: www.bitre.gov.au

Inquiries

Should you require additional information about the statistics contained in this publication:

Nebojsa Pavlovic

Telephone (02) 6274 6817 or Facsimile (02) 6274 7727

Electronic mail: AVSTATS@infrastructure.gov.au

Nebojsa.Pavlovic@infrastructure.gov.au

Web site: <http://www.bitre.gov.au/statistics/aviation/domestic.aspx>

FOREWORD

This report provides an overview of domestic (including charter) commercial aviation activity in Australia for the year ending December 2016.

The data cover revenue passengers carried by Australian-registered operators of scheduled regular public transport services over Australian flight stages and fixed-wing charter operators. These estimates include passengers carried between domestic airports on international flights operated by these carriers. The passengers carried refer to traffic on board by stages.

Estimates of passengers and aircraft movements for charter aviation are included in this publication, where BITRE confidentiality standards are met.

Individual routes shown are restricted to those with an average exceeding 8 000 passengers per month where two or more airlines operate in competition. For the year ending December 2016 there were 66 such routes.

Information on both the total network and the Regular Public Transport (RPT) network for the year ending December 2016 is presented on page 2.

Detailed information on the 66 individual routes can be found in the RPT summary pages 3–10 of this publication.

The top ten airports in terms of RPT passenger movements are shown on page 11.

Data on domestic RPT cargo movements at the top five cargo airports are provided on page 12. The table includes cargo carried on passenger flights operated by the Qantas group (including Jetstar), Virgin Australia, Air North and Skippers as well as the cargo carried by dedicated freighter aircraft operated by Qantas Freight, Toll Priority and Virgin Australia Cargo.

The long-term trends for the top twenty competitive RPT routes are presented graphically on pages 13–22.

Domestic RPT passenger movements at the top 50 regional airports are presented on page 23.

Tables providing estimates of domestic charter aviation activity are shown on page 24. BITRE confidentiality standards restrict publication of detailed airport-level estimates for any Australian airport, with the exception of Perth Airport.

A list of definitions can be found on page 25.

This report was prepared by the Aviation Statistics Section of the Bureau of Infrastructure, Transport and Regional Economics with data provided by airlines.

Estimates are included where data were not available and data presented in this publication may contain revisions to previously published data.

Where figures have been rounded, discrepancies may occur between sums of component items and totals, and in percentage changes which are derived from figures prior to rounding.

CONTENTS

Highlights	1
RPT network	2
Top competitive routes	3
Top ten airports – passenger movements	11
Top five airports – cargo movements	12
Top twenty routes	13
1. Melbourne – Sydney	13
2. Brisbane – Sydney	13
3. Brisbane – Melbourne	14
4. Gold Coast – Sydney	14
5. Adelaide – Melbourne	15
6. Melbourne – Perth	15
7. Gold Coast – Melbourne	16
8. Adelaide – Sydney	16
9. Perth – Sydney	17
10. Hobart – Melbourne	17
11. Brisbane – Cairns	18
12. Cairns – Sydney	18
13. Canberra – Melbourne	19
14. Brisbane – Perth	19
15. Brisbane – Townsville	20
16. Canberra – Sydney	20
17. Launceston – Melbourne	21
18. Adelaide – Brisbane	21
19. Cairns – Melbourne	22
20. Brisbane – Mackay	22
Top fifty regional airports	23
Domestic charter activity	24
Definitions	25

This page is intentionally left blank.

HIGHLIGHTS

There were 61.34 million passengers carried on Australian domestic commercial aviation (including charter operations) in the year ending December 2016, an increase of 2.0 per cent compared with the year ending December 2015. In the year ending December 2016 there were 683 610 aircraft trips, a decrease of 0.3 per cent compared to the previous year.

58.93 million passengers were carried on RPT flights in the year ending December 2016, an increase of 2.5 compared with the year ending December 2015.

RPT revenue passenger kilometres (RPKs) performed were 69.33 billion in the year, up 2.2 per cent on the year ending December 2015.

Capacity, measured by available seat kilometres (ASKs), increased 0.4 per cent compared with the year ending December 2015, to a total of 89.06 billion.

With RPT passenger traffic increasing at a faster rate than capacity, the industry wide load factor (RPKs/ASKs) increased from 76.5 per cent in the year ending December 2015 to 77.8 per cent in the year ending December 2016. Load factors on individual routes increased on 35 of the 62 RPT routes for which data is available in both years.

In the year ending December 2016, Melbourne – Sydney remained Australia's busiest RPT route with 8.90 million passengers, an increase of 3.4 per cent compared with the year ending December 2015. It was followed by Brisbane – Sydney with 4.66 million passengers (up 4.1 per cent) and Brisbane – Melbourne with 3.49 million passengers (up 4.2 per cent).

The greatest percentage increase in RPT passenger numbers, compared to the year ending December 2015, was on the Hamilton Island – Sydney route (up 16.0 per cent). There were large increases on a number of other routes, including Ayers Rock (Uluru) – Sydney (up 15.5 per cent), Brisbane – Hamilton Island (up 13.1 per cent), Hobart – Sydney (up 12.9 per cent) and Sunshine Coast – Sydney (up 12.0 per cent).

RPT routes with traffic decreases in the year ending December 2016, compared with the year ending December 2015, included Brisbane – Gladstone (down 18.3 per cent), Karratha – Perth (down 18.1 per cent), Brisbane – Moranbah (down 15.4 per cent) and Perth – Port Hedland (down 13.1 per cent).

In the year ending December 2016, Sydney remained Australia's busiest domestic airport with 26.93 million passenger movements, followed by Melbourne with 24.78 million passenger movements and Brisbane with 17.08 million passenger movements.

Total cargo movements at Australian airports on domestic RPT flights were 435.7 thousand tonnes in the year ending December 2016, an increase of 20.5 per cent compared to the year ending December 2015.

In the year ending December 2016, the number of domestic aviation passengers travelling through regional airports was 24.04 million, 1.3 per cent higher than for the year ending December 2015. Out of the top 50 regional airports, the strongest growth was at Wellcamp airport (up 71.7 per cent on year ending December 2015), while the largest decrease was at Roma airport (down 41.1 per cent on year ending December 2015).

Fixed-wing charter operators carried 2.41 million passengers in the year ending December 2016, a decrease of 8.1 per cent compared with the year ending December 2015. Perth airport accounted for 38.8 per cent of all charter passengers in Australia.

TOTAL NETWORK

Summary of annual commercial aviation activity

	YE Dec 2015	YE Dec 2016	% Change
Total passengers carried (millions)	60.13	61.34	2.0
Aircraft trips (000s)	685.7	683.6	-0.3

Note: Regular Public Transport and charter aviation activity
Helicopter, joyflights and sightseeing charter flights not included.

RPT NETWORK

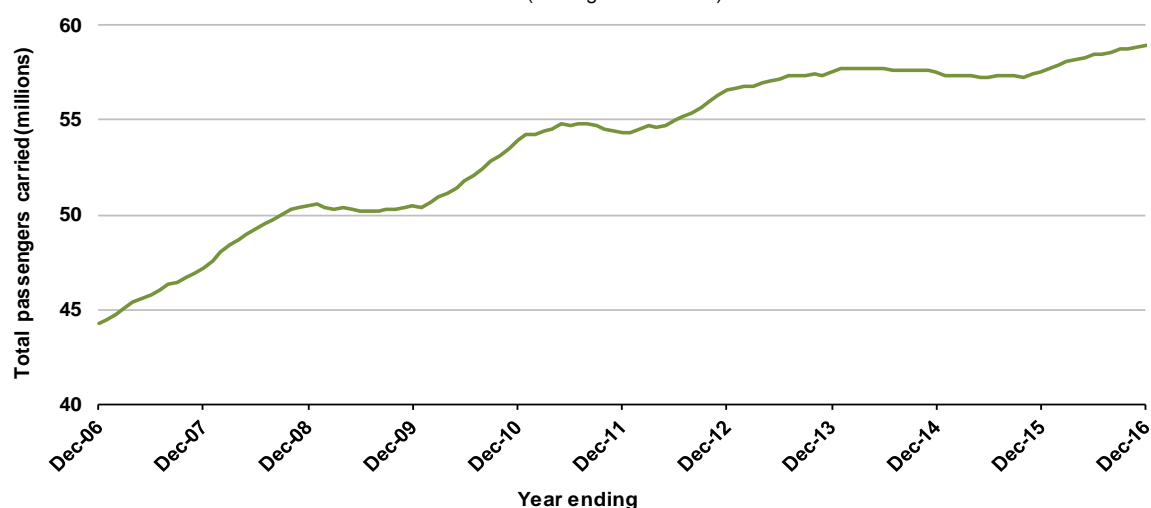
Summary of annual RPT activity

	YE Dec 2015	YE Dec 2016	% Change
Total passengers carried (millions)	57.51	58.93	2.5
Revenue passenger kilometres (billions)	67.85	69.33	2.2
Available seats (millions)	76.83	77.30	0.6
Available seat kilometres (billions)	88.67	89.06	0.4
Load factor %	76.5	77.8	1.3 *
Aircraft trips (000s)	634.5	638.8	0.7

* percentage point difference

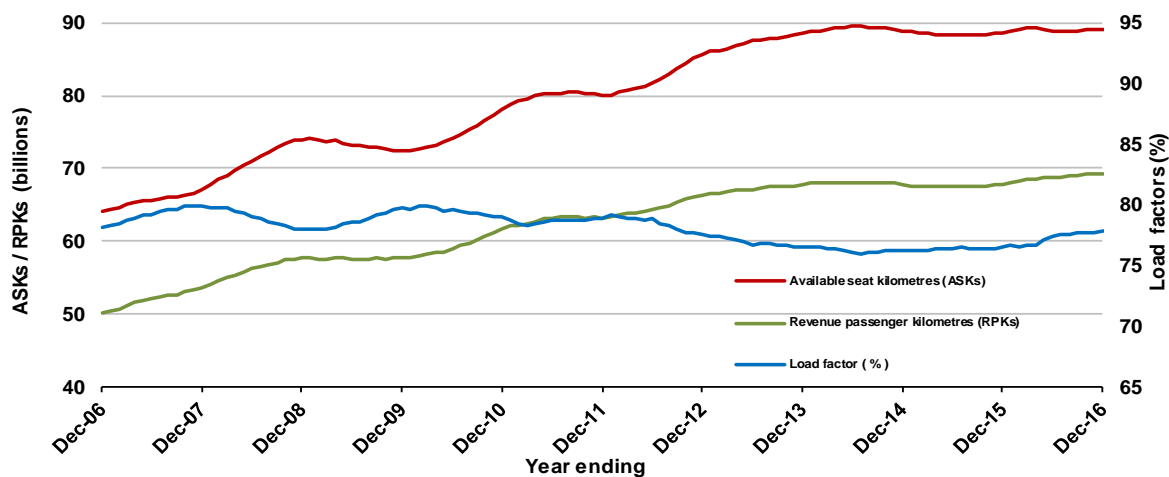
Domestic RPT passenger traffic

(moving annual totals)



RPT Network utilisation

(moving annual totals)



TOP COMPETITIVE ROUTES

Table 1: Passengers carried (000s) — annual activity

	City-Pair	YE Dec 2015	YE Dec 2016	% Change
1	Melbourne - Sydney	8 613.4	8 904.6	3.4
2	Brisbane - Sydney	4 475.9	4 658.1	4.1
3	Brisbane - Melbourne	3 353.8	3 493.3	4.2
4	Gold Coast - Sydney	2 618.5	2 704.4	3.3
5	Adelaide - Melbourne	2 311.0	2 393.6	3.6
6	Melbourne - Perth	2 138.9	2 072.8	-3.1
7	Gold Coast - Melbourne	1 812.3	1 966.1	8.5
8	Adelaide - Sydney	1 831.5	1 872.0	2.2
9	Perth - Sydney	1 761.0	1 753.7	-0.4
10	Hobart - Melbourne	1 493.3	1 555.5	4.2
11	Brisbane - Cairns	1 306.4	1 346.9	3.1
12	Cairns - Sydney	1 032.8	1 115.3	8.0
13	Canberra - Melbourne	984.2	1 026.1	4.3
14	Brisbane - Perth	1 007.8	984.1	-2.4
15	Brisbane - Townsville	965.3	976.6	1.2
16	Canberra - Sydney	947.1	959.4	1.3
17	Launceston - Melbourne	880.9	918.0	4.2
18	Adelaide - Brisbane	792.8	830.3	4.7
19	Cairns - Melbourne	770.6	823.4	6.9
20	Brisbane - Mackay	695.6	678.5	-2.5
21	Adelaide - Perth	611.0	617.1	1.0
22	Hobart - Sydney	546.3	616.6	12.9
23	Brisbane - Canberra	558.2	576.1	3.2
24	Brisbane - Newcastle	543.7	574.0	5.6
25	Brisbane - Rockhampton	587.8	563.8	-4.1
26	Sunshine Coast - Sydney	481.8	539.8	12.0
27	Karratha - Perth	599.4	490.6	-18.1
28	Melbourne - Newcastle	443.0	449.5	1.5
29	Melbourne - Sunshine Coast	406.0	441.8	8.8
30	Brisbane - Darwin	396.2	407.7	2.9
31	Ballina - Sydney	358.4	385.2	7.5
32	Perth - Port Hedland	390.2	339.1	-13.1
33	Coffs Harbour - Sydney	335.1	339.0	1.2
34	Brisbane - Gladstone	405.2	331.0	-18.3
35	Darwin - Sydney	319.8	318.8	-0.3
36	Newman - Perth	330.3	307.6	-6.9
37	Darwin - Melbourne	279.5	301.0	7.7
38	Broome - Perth	302.9	297.4	-1.8
39	Launceston - Sydney	287.7	288.6	0.3
40	Hamilton Island - Sydney	229.1	265.8	16.0
41	Kalgoorlie - Perth	220.5	231.7	5.1
42	Brisbane - Proserpine	238.5	227.9	-4.5
43	Albury - Sydney	217.0	225.1	3.8
44	Adelaide - Gold Coast	219.4	221.5	1.0
45	Brisbane - Hobart	198.2	205.8	3.8
46	Melbourne - Mildura	196.9	205.7	4.5
47	Brisbane - Emerald	212.4	198.9	-6.4
48	Port Macquarie - Sydney	185.3	193.4	4.4
49	Sydney - Wagga Wagga	184.2	188.4	2.3
50	Dubbo - Sydney	187.0	188.2	0.6

(continued)

Table 1: (continued): Passengers carried (000s) — annual activity

	City-Pair	YE Dec 2015	YE Dec 2016	% Change
51	Darwin - Perth	184.6	184.4	-0.1
52	Ayers Rock - Sydney	159.4	184.1	15.5
53	Adelaide - Port Lincoln	185.8	178.9	-3.7
54	Sydney - Tamworth	95.4	175.1	NA (a)
55	Adelaide - Canberra	170.0	174.0	2.4
56	Brisbane - Bundaberg	158.7	172.7	8.8
57	Sydney - Townsville	166.8	158.4	-5.0
58	Brisbane - Hamilton Island	131.8	149.1	13.1
59	Cairns - Townsville	71.5	139.2	NA (b)
60	Armidale - Sydney	124.5	127.7	2.5
61	Adelaide - Alice Springs	93.7	120.7	NA (c)
62	Brisbane - Mount Isa	129.1	119.7	-7.3
63	Brisbane - Moranbah	138.8	117.4	-15.4
64	Geraldton - Perth	117.5	117.2	-0.2
65	Alice Springs - Darwin	100.4	116.4	NA (d)
66	Hamilton Island - Melbourne	104.7	110.3	5.3
	Total domestic network	57 506.4	58 927.7	2.5

(a) Sydney - Tamworth route included from June 2015, prior data not shown.

(b) Cairns - Townsville route included from July 2015, prior data not shown.

(c) Adelaide - Alice Springs route included from April 2015, prior data not shown.

(d) Alice Springs - Darwin route included from April 2015, prior data not shown.

Table 2: Available seats (000s) — annual activity

	City-Pair	YE Dec 2015	YE Dec 2016	% Change
1	Melbourne - Sydney	10 588.9	10 652.1	0.6
2	Brisbane - Sydney	5 602.5	5 706.0	1.8
3	Brisbane - Melbourne	4 333.3	4 343.0	0.2
4	Gold Coast - Sydney	3 133.9	3 143.3	0.3
5	Adelaide - Melbourne	2 965.6	3 029.0	2.1
6	Melbourne - Perth	2 762.6	2 562.9	-7.2
7	Gold Coast - Melbourne	2 169.8	2 365.1	9.0
8	Adelaide - Sydney	2 339.5	2 317.1	-1.0
9	Perth - Sydney	2 240.7	2 160.5	-3.6
10	Hobart - Melbourne	1 860.0	1 960.9	5.4
11	Brisbane - Cairns	1 575.7	1 629.3	3.4
12	Cairns - Sydney	1 235.6	1 333.7	7.9
13	Canberra - Melbourne	1 380.5	1 484.4	7.5
14	Brisbane - Perth	1 246.4	1 229.4	-1.4
15	Brisbane - Townsville	1 340.7	1 313.8	-2.0
16	Canberra - Sydney	1 365.3	1 362.1	-0.2
17	Launceston - Melbourne	1 169.7	1 159.9	-0.8
18	Adelaide - Brisbane	1 049.7	1 108.5	5.6
19	Cairns - Melbourne	919.4	986.8	7.3
20	Brisbane - Mackay	999.1	913.5	-8.6
21	Adelaide - Perth	809.5	864.3	6.8
22	Hobart - Sydney	663.4	749.0	12.9
23	Brisbane - Canberra	750.1	794.6	5.9
24	Brisbane - Newcastle	697.3	766.4	9.9
25	Brisbane - Rockhampton	817.4	772.5	-5.5
26	Sunshine Coast - Sydney	581.1	658.0	13.2
27	Karratha - Perth	1 068.1	846.8	-20.7
28	Melbourne - Newcastle	553.7	567.4	2.5
29	Melbourne - Sunshine Coast	474.4	520.8	9.8
30	Brisbane - Darwin	512.2	519.0	1.3
31	Ballina - Sydney	439.3	471.6	7.3
32	Perth - Port Hedland	725.1	614.4	-15.3
33	Coffs Harbour - Sydney	444.3	451.2	1.5
34	Brisbane - Gladstone	711.5	567.2	-20.3
35	Darwin - Sydney	427.0	440.0	3.0
36	Newman - Perth	638.9	610.8	-4.4
37	Darwin - Melbourne	354.3	379.0	7.0
38	Broome - Perth	419.2	409.3	-2.3
39	Launceston - Sydney	360.4	346.9	-3.8
40	Hamilton Island - Sydney	283.7	334.3	17.8
41	Kalgoorlie - Perth	405.9	394.6	-2.8
42	Brisbane - Proserpine	304.1	268.9	-11.6
43	Albury - Sydney	335.5	345.2	2.9
44	Adelaide - Gold Coast	280.9	280.3	-0.2
45	Brisbane - Hobart	240.6	244.2	1.5
46	Melbourne - Mildura	303.4	317.0	4.5
47	Brisbane - Emerald	394.1	369.5	-6.2
48	Port Macquarie - Sydney	267.8	267.7	0.0
49	Sydney - Wagga Wagga	289.7	294.2	1.6
50	Dubbo - Sydney	293.3	292.8	-0.2

(continued)

Table 2: (continued): Available seats (000s) — annual activity

	City-Pair	YE Dec 2015	YE Dec 2016	% Change
51	Darwin - Perth	271.3	266.3	-1.8
52	Ayers Rock - Sydney	207.8	232.7	12.0
53	Adelaide - Port Lincoln	298.0	290.2	-2.6
54	Sydney - Tamworth	152.8	279.3	NA (a)
55	Adelaide - Canberra	250.1	255.7	2.2
56	Brisbane - Bundaberg	246.5	238.7	-3.2
57	Sydney - Townsville	213.8	211.7	-1.0
58	Brisbane - Hamilton Island	165.1	189.9	15.1
59	Cairns - Townsville	150.9	293.9	NA (b)
60	Armidale - Sydney	204.7	195.5	-4.5
61	Adelaide - Alice Springs	134.3	180.6	NA (c)
62	Brisbane - Mount Isa	259.1	232.6	-10.3
63	Brisbane - Moranbah	303.3	269.4	-11.2
64	Geraldton - Perth	215.0	239.2	11.3
65	Alice Springs - Darwin	170.9	213.8	NA (d)
66	Hamilton Island - Melbourne	135.9	146.5	7.8
	Total domestic network	76 828.4	77 295.9	0.6

(a) Sydney - Tamworth route included from June 2015, prior data not shown.

(b) Cairns - Townsville route included from July 2015, prior data not shown.

(c) Adelaide - Alice Springs route included from April 2015, prior data not shown.

(d) Alice Springs - Darwin route included from April 2015, prior data not shown.

Table 3: Load factors (%) — annual activity

	City-Pair	YE Dec 2015	YE Dec 2016	% Change
1	Melbourne - Sydney	81.3	83.6	2.3
2	Brisbane - Sydney	79.9	81.6	1.7
3	Brisbane - Melbourne	77.4	80.4	3.0
4	Gold Coast - Sydney	83.6	86.0	2.5
5	Adelaide - Melbourne	77.9	79.0	1.1
6	Melbourne - Perth	77.4	80.9	3.5
7	Gold Coast - Melbourne	83.5	83.1	-0.4
8	Adelaide - Sydney	78.3	80.8	2.5
9	Perth - Sydney	78.6	81.2	2.6
10	Hobart - Melbourne	80.3	79.3	-1.0
11	Brisbane - Cairns	82.9	82.7	-0.2
12	Cairns - Sydney	83.6	83.6	0.0
13	Canberra - Melbourne	71.3	69.1	-2.2
14	Brisbane - Perth	80.9	80.0	-0.8
15	Brisbane - Townsville	72.0	74.3	2.3
16	Canberra - Sydney	69.4	70.4	1.1
17	Launceston - Melbourne	75.3	79.1	3.8
18	Adelaide - Brisbane	75.5	74.9	-0.6
19	Cairns - Melbourne	83.8	83.4	-0.4
20	Brisbane - Mackay	69.6	74.3	4.6
21	Adelaide - Perth	75.5	71.4	-4.1
22	Hobart - Sydney	82.4	82.3	0.0
23	Brisbane - Canberra	74.4	72.5	-1.9
24	Brisbane - Newcastle	78.0	74.9	-3.1
25	Brisbane - Rockhampton	71.9	73.0	1.1
26	Sunshine Coast - Sydney	82.9	82.0	-0.9
27	Karratha - Perth	56.1	57.9	1.8
28	Melbourne - Newcastle	80.0	79.2	-0.8
29	Melbourne - Sunshine Coast	85.6	84.8	-0.8
30	Brisbane - Darwin	77.4	78.6	1.2
31	Ballina - Sydney	81.6	81.7	0.1
32	Perth - Port Hedland	53.8	55.2	1.4
33	Coffs Harbour - Sydney	75.4	75.1	-0.3
34	Brisbane - Gladstone	56.9	58.4	1.4
35	Darwin - Sydney	74.9	72.5	-2.4
36	Newman - Perth	51.7	50.4	-1.3
37	Darwin - Melbourne	78.9	79.4	0.5
38	Broome - Perth	72.3	72.7	0.4
39	Launceston - Sydney	79.8	83.2	3.4
40	Hamilton Island - Sydney	80.8	79.5	-1.3
41	Kalgoorlie - Perth	54.3	58.7	4.4
42	Brisbane - Proserpine	78.4	84.7	6.3
43	Albury - Sydney	64.7	65.2	0.6
44	Adelaide - Gold Coast	78.1	79.0	0.9
45	Brisbane - Hobart	82.4	84.3	1.9
46	Melbourne - Mildura	64.9	64.9	0.0
47	Brisbane - Emerald	53.9	53.8	-0.1
48	Port Macquarie - Sydney	69.2	72.2	3.1
49	Sydney - Wagga Wagga	63.6	64.0	0.4
50	Dubbo - Sydney	63.8	64.3	0.5

(continued)

Table 3: (continued): Load factors (%) — annual activity

	City-Pair	YE Dec 2015	YE Dec 2016	% Change
51	Darwin - Perth	68.0	69.2	1.2
52	Ayers Rock - Sydney	76.7	79.1	2.4
53	Adelaide - Port Lincoln	62.3	61.6	-0.7
54	Sydney - Tamworth	62.4	62.7	NA (a)
55	Adelaide - Canberra	68.0	68.1	0.1
56	Brisbane - Bundaberg	64.4	72.4	8.0
57	Sydney - Townsville	78.0	74.8	-3.2
58	Brisbane - Hamilton Island	79.9	78.5	-1.4
59	Cairns - Townsville	47.4	47.4	NA (b)
60	Armidale - Sydney	60.8	65.3	4.5
61	Adelaide - Alice Springs	69.8	66.8	NA (c)
62	Brisbane - Mount Isa	49.8	51.5	1.7
63	Brisbane - Moranbah	45.8	43.6	-2.2
64	Geraldton - Perth	54.6	49.0	-5.7
65	Alice Springs - Darwin	58.7	54.4	NA (d)
66	Hamilton Island - Melbourne	77.0	75.3	-1.7
	Total domestic network	76.5	77.8	1.3

(a) Sydney - Tamworth route included from June 2015, prior data not shown.

(b) Cairns - Townsville route included from July 2015, prior data not shown.

(c) Adelaide - Alice Springs route included from April 2015, prior data not shown.

(d) Alice Springs - Darwin route included from April 2015, prior data not shown.

Table 4: Aircraft trips ^(a) — annual activity

	City-Pair	YE Dec 2015	YE Dec 2016	% Change
1	Melbourne - Sydney	60 072	59 269	-1.3
2	Brisbane - Sydney	35 415	35 396	-0.1
3	Brisbane - Melbourne	26 100	25 933	-0.6
4	Gold Coast - Sydney	18 134	18 379	1.4
5	Adelaide - Melbourne	19 083	19 322	1.3
6	Melbourne - Perth	12 235	11 581	-5.3
7	Gold Coast - Melbourne	11 647	12 666	8.7
8	Adelaide - Sydney	14 304	14 114	-1.3
9	Perth - Sydney	9 148	9 154	0.1
10	Hobart - Melbourne	11 765	12 286	4.4
11	Brisbane - Cairns	9 942	10 173	2.3
12	Cairns - Sydney	7 220	7 665	6.2
13	Canberra - Melbourne	10 588	10 812	2.1
14	Brisbane - Perth	5 667	5 772	1.9
15	Brisbane - Townsville	9 103	8 967	-1.5
16	Canberra - Sydney	17 833	17 079	-4.2
17	Launceston - Melbourne	8 911	8 866	-0.5
18	Adelaide - Brisbane	6 622	6 784	2.4
19	Cairns - Melbourne	4 929	5 232	6.1
20	Brisbane - Mackay	7 908	7 670	-3.0
21	Adelaide - Perth	5 707	5 675	-0.6
22	Hobart - Sydney	4 050	4 714	16.4
23	Brisbane - Canberra	5 986	5 925	-1.0
24	Brisbane - Newcastle	5 806	6 328	9.0
25	Brisbane - Rockhampton	9 716	9 351	-3.8
26	Sunshine Coast - Sydney	3 267	3 955	21.1
27	Karratha - Perth	7 768	7 035	-9.4
28	Melbourne - Newcastle	3 141	3 202	1.9
29	Melbourne - Sunshine Coast	2 664	2 936	10.2
30	Brisbane - Darwin	3 032	3 162	4.3
31	Ballina - Sydney	3 020	3 194	5.8
32	Perth - Port Hedland	4 819	4 614	-4.3
33	Coffs Harbour - Sydney	5 324	5 309	-0.3
34	Brisbane - Gladstone	8 300	7 196	-13.3
35	Darwin - Sydney	2 572	2 620	1.9
36	Newman - Perth	4 407	4 374	-0.7
37	Darwin - Melbourne	2 077	2 169	4.4
38	Broome - Perth	3 199	3 352	4.8
39	Launceston - Sydney	2 082	2 003	-3.8
40	Hamilton Island - Sydney	1 618	2 005	23.9
41	Kalgoorlie - Perth	3 353	3 420	2.0
42	Brisbane - Proserpine	1 942	1 578	-18.7
43	Albury - Sydney	6 009	6 273	4.4
44	Adelaide - Gold Coast	1 590	1 589	-0.1
45	Brisbane - Hobart	1 417	1 427	0.7
46	Melbourne - Mildura	4 749	4 874	2.6
47	Brisbane - Emerald	5 489	4 976	-9.3
48	Port Macquarie - Sydney	4 623	4 607	-0.3
49	Sydney - Wagga Wagga	5 638	5 654	0.3
50	Dubbo - Sydney	6 382	6 398	0.3

(continued)

Table 4: (continued): Aircraft trips ^(a)— annual activity

	City-Pair	YE Dec 2015	YE Dec 2016	% Change
51	Darwin - Perth	1 689	1 655	-2.0
52	Ayers Rock - Sydney	1 385	1 395	0.7
53	Adelaide - Port Lincoln	7 314	7 444	1.8
54	Sydney - Tamworth	2 482	4 491	NA (b)
55	Adelaide - Canberra	1 798	1 719	-4.4
56	Brisbane - Bundaberg	4 004	3 901	-2.6
57	Sydney - Townsville	1 368	1 385	1.2
58	Brisbane - Hamilton Island	1 212	1 481	22.2
59	Cairns - Townsville	2 556	4 966	NA (c)
60	Armidale - Sydney	4 826	4 589	-4.9
61	Adelaide - Alice Springs	863	1 143	NA (d)
62	Brisbane - Mount Isa	1 935	1 881	-2.8
63	Brisbane - Moranbah	4 294	3 771	-12.2
64	Geraldton - Perth	3 224	2 464	-23.6
65	Alice Springs - Darwin	1 378	1 733	NA (e)
66	Hamilton Island - Melbourne	778	853	9.6
	Total domestic network	634 496	638 798	0.7

(a) Includes RPT Cargo flights.

(b) Sydney - Tamworth route included from June 2015, prior data not shown.

(c) Cairns - Townsville route included from July 2015, prior data not shown.

(d) Adelaide - Alice Springs route included from April 2015, prior data not shown.

(e) Alice Springs - Darwin route included from April 2015, prior data not shown.

TOP TEN AIRPORTS – PASSENGER MOVEMENTS

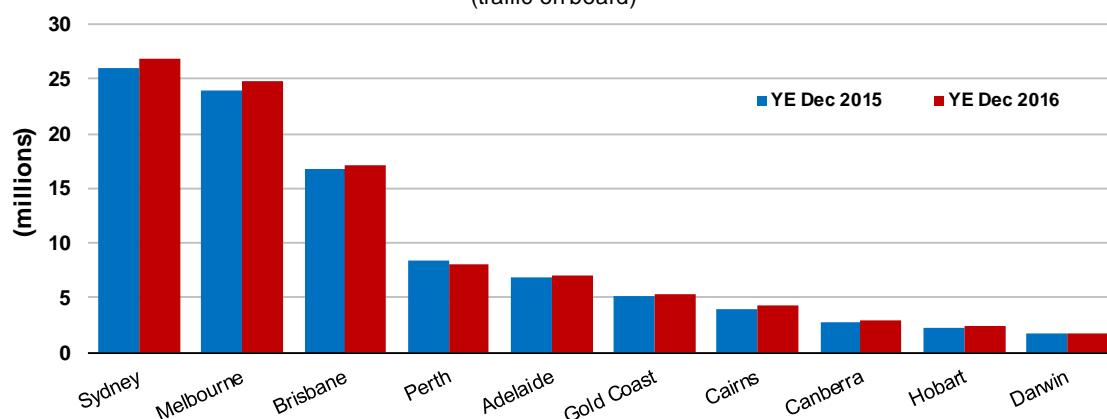
Table 5: Top ten airports, RPT passenger movements (000s) — annual activity

Airport	YE Dec 2015	YE Dec 2016	% Change	% of Total
1 Sydney	25 952.0	26 926.7	3.8	22.6
2 Melbourne	24 022.1	24 779.5	3.2	20.9
3 Brisbane	16 801.1	17 080.8	1.7	14.6
4 Perth	8 402.0	8 128.2	-3.3	7.3
5 Adelaide	6 801.0	6 997.1	2.9	5.9
6 Gold Coast	5 084.4	5 327.0	4.8	4.4
7 Cairns	4 017.0	4 243.4	5.6	3.5
8 Canberra	2 797.4	2 870.0	2.6	2.4
9 Hobart	2 238.6	2 378.1	6.2	1.9
10 Darwin	1 769.3	1 803.4	1.9	1.5
Total top ten airports	97 884.9	100 534.3	2.7	85.1
Total domestic network	115 012.9	117 855.5	2.5	100.0

Note: Airport passenger movement numbers are the sum of passenger arrivals and departures at each airport.

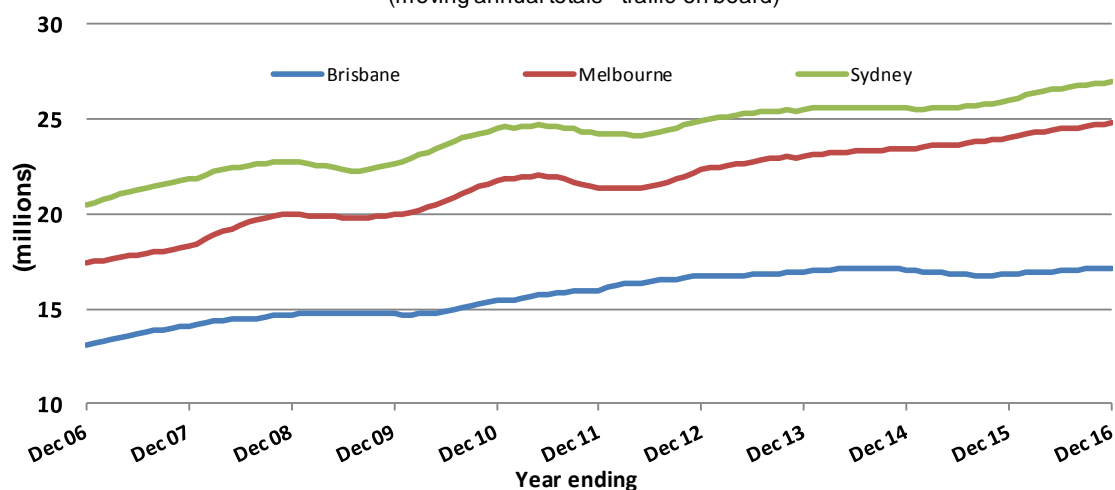
Top ten airports, RPT passenger movements

(traffic on board)



Top three airports, domestic passenger movements

(moving annual totals - traffic on board)



TOP FIVE AIRPORTS – CARGO MOVEMENTS

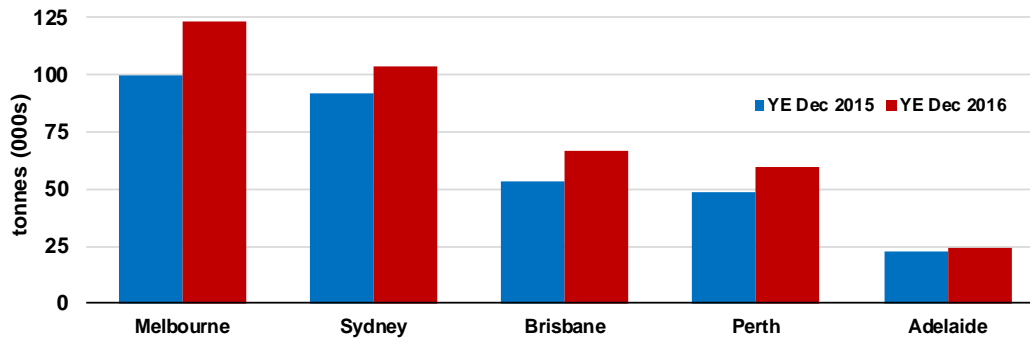
Table 6: Top five airports, domestic RPT cargo movements (000s tonnes) - annual activity

Airport	YE Dec 2015	YE Dec 2016	% Change	% of Total
1 Melbourne	99.7	123.7	24.0	28.4
2 Sydney	91.8	104.0	13.3	23.9
3 Brisbane	53.2	66.9	25.8	15.3
4 Perth	48.5	59.8	23.5	13.7
5 Adelaide	22.6	24.4	8.0	5.6
Total top five airports	315.8	378.9	20.0	87.0
Total domestic network	361.5	435.7	20.5	100.0

Note: Airport cargo tonnes are the sum of cargo tonnes on arrivals and departures at each airport.

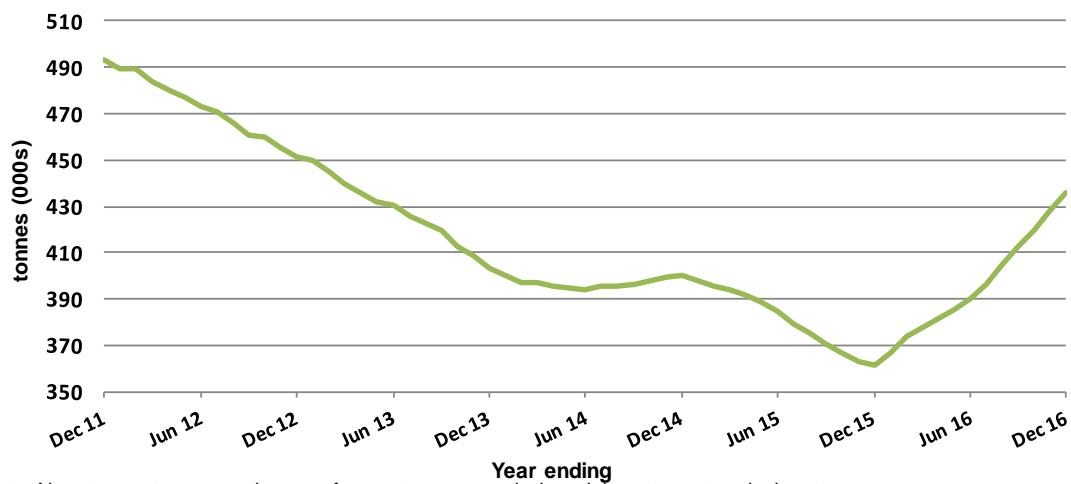
Top five airports, cargo movements

(Domestic cargo traffic - traffic on board)



Total domestic network - cargo movements

(moving annual totals - traffic on board)



Note: Airport cargo tonnes are the sum of cargo tonnes on arrivals and departures at each airport.

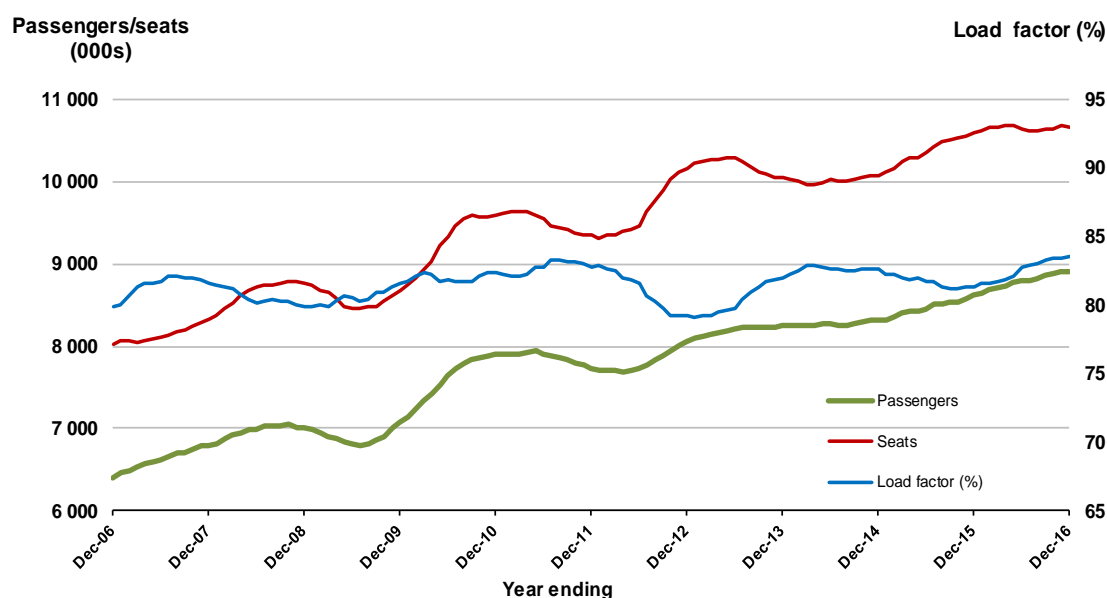
TOP TWENTY ROUTES

1. Melbourne - Sydney

Moving annual data

	YE Dec 2015	YE Dec 2016	% Change
Passengers carried (000s)	8 613.4	8 904.6	3.4
Seats (000s)	10 588.9	10 652.1	0.6
Load factor %	81.3	83.6	2.3 *
Aircraft trips	60 072	59 269	-1.3

* percentage point difference

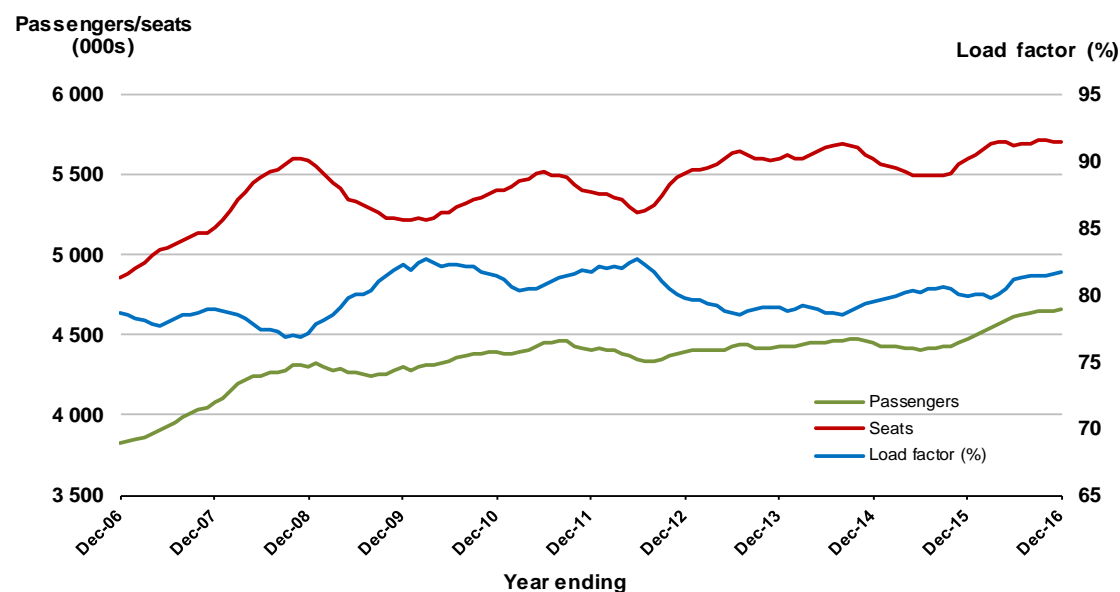


2. Brisbane - Sydney

Moving annual data

	YE Dec 2015	YE Dec 2016	% Change
Passengers carried (000s)	4 475.9	4 658.1	4.1
Seats (000s)	5 602.5	5 706.0	1.8
Load factor %	79.9	81.6	1.7 *
Aircraft trips	35 415	35 396	-0.1

* percentage point difference

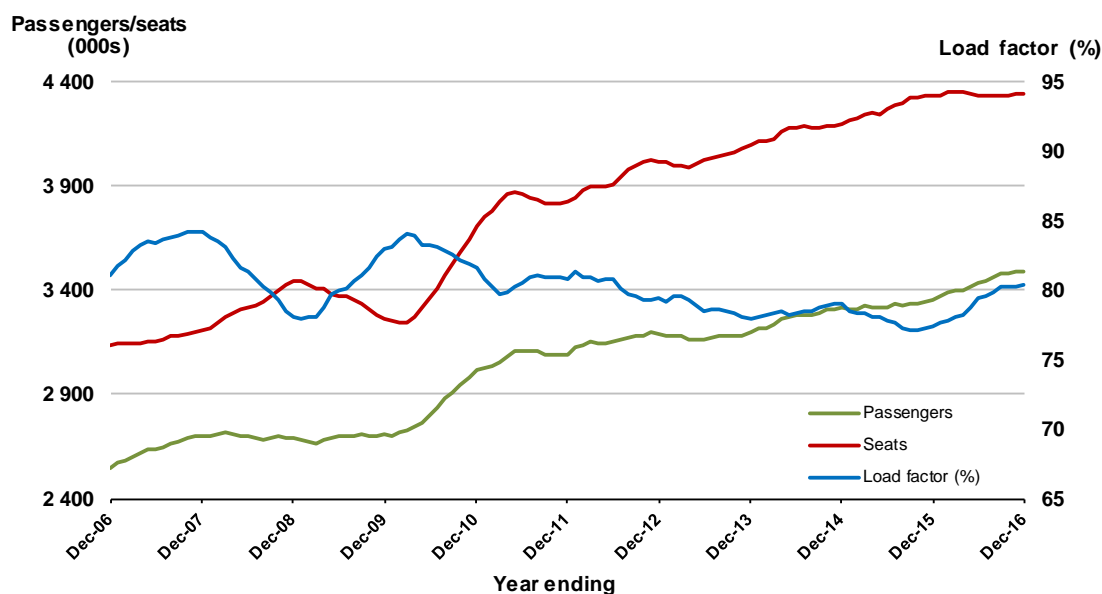


3. Brisbane - Melbourne

Moving annual data

	YE Dec 2015	YE Dec 2016	% Change
Passengers carried (000s)	3 353.8	3 493.3	4.2
Seats (000s)	4 333.3	4 343.0	0.2
Load factor %	77.4	80.4	3.0*
Aircraft trips	26 100	25 933	-0.6

* percentage point difference

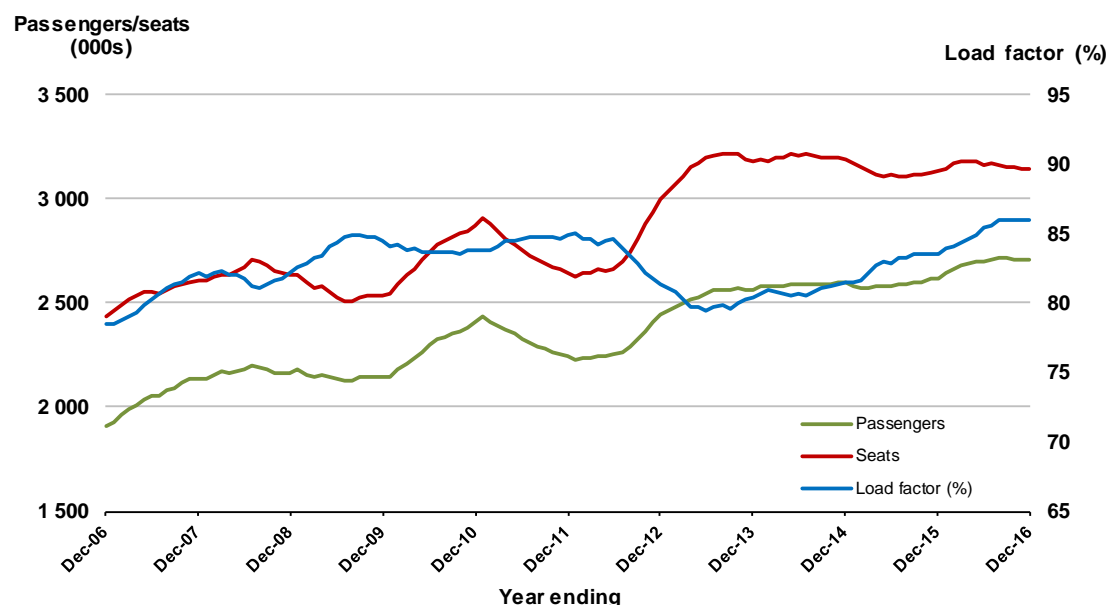


4. Gold Coast - Sydney

Moving annual data

	YE Dec 2015	YE Dec 2016	% Change
Passengers carried (000s)	2 618.5	2 704.4	3.3
Seats (000s)	3 133.9	3 143.3	0.3
Load factor %	83.6	86.0	2.5*
Aircraft trips	18 134	18 379	1.4

* percentage point difference

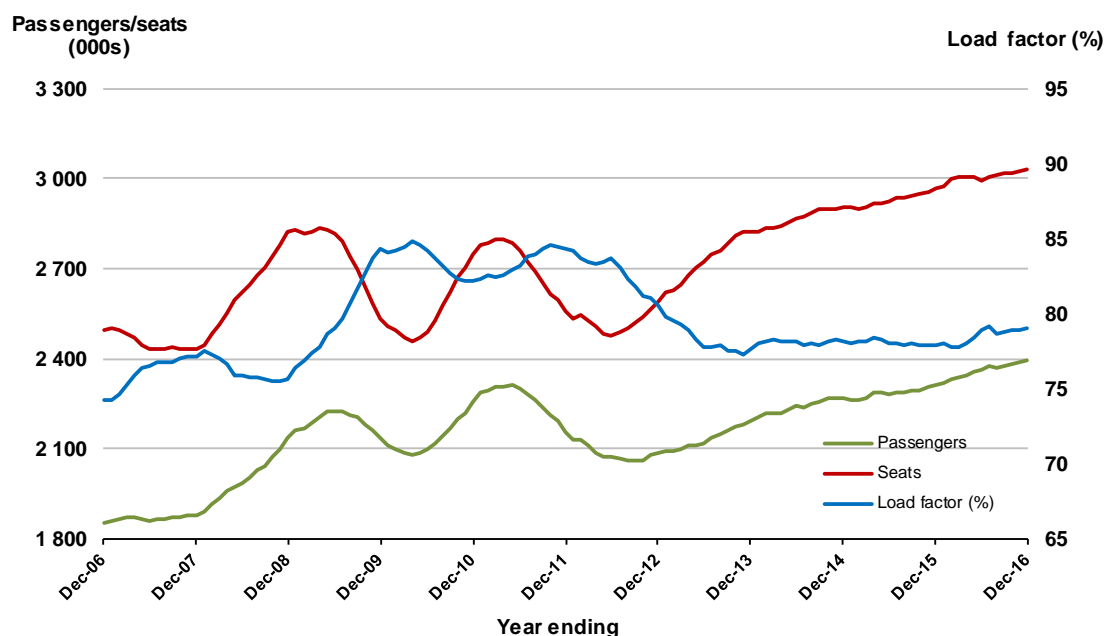


5. Adelaide - Melbourne

Moving annual data

	YE Dec 2015	YE Dec 2016	% Change
Passengers carried (000s)	2 311.0	2 393.6	3.6
Seats (000s)	2 965.6	3 029.0	2.1
Load factor %	77.9	79.0	1.1 *
Aircraft trips	19 083	19 322	1.3

* percentage point difference

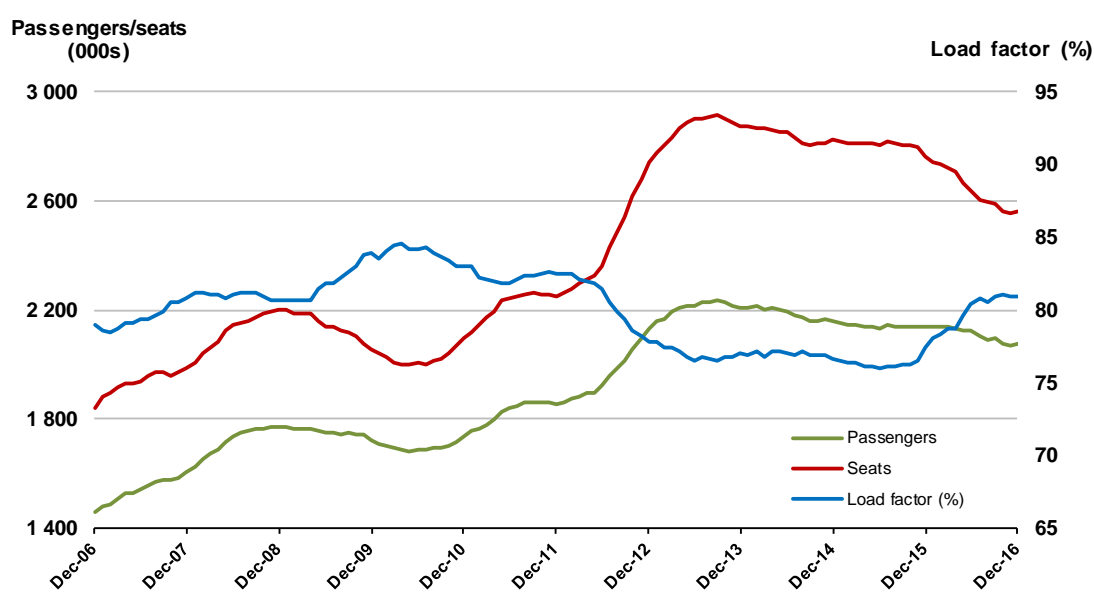


6. Melbourne - Perth

Moving annual data

	YE Dec 2015	YE Dec 2016	% Change
Passengers carried (000s)	2 138.9	2 072.8	-3.1
Seats (000s)	2 762.6	2 562.9	-7.2
Load factor %	77.4	80.9	3.5 *
Aircraft trips	12 235	11 581	-5.3

* percentage point difference

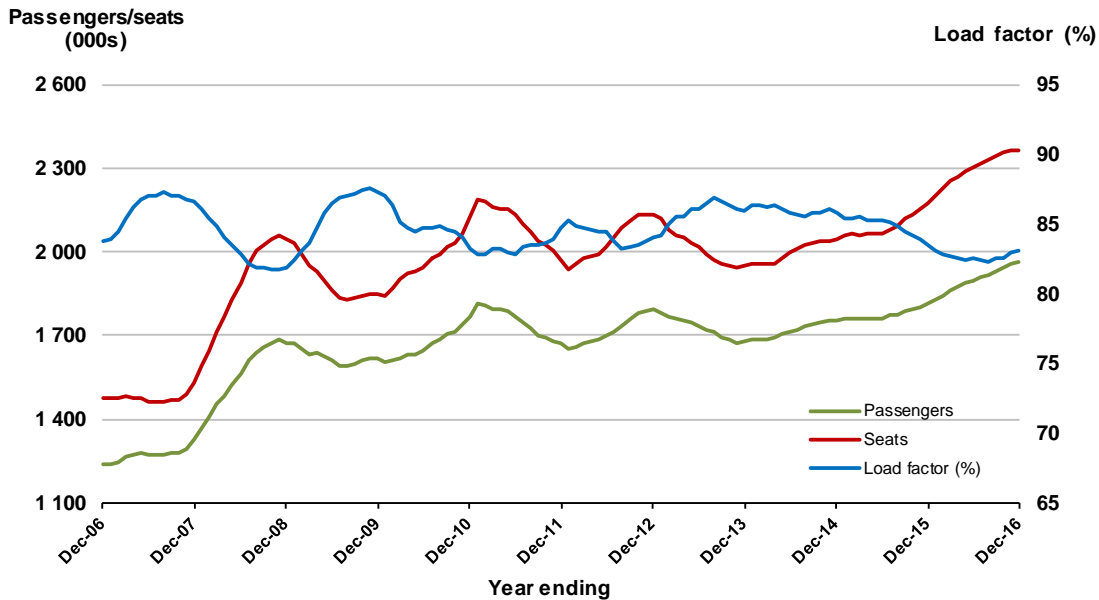


7. Gold Coast - Melbourne

Moving annual data

	YE Dec 2015	YE Dec 2016	% Change
Passengers carried (000s)	1 812.3	1 966.1	8.5
Seats (000s)	2 169.8	2 365.1	9.0
Load factor %	83.5	83.1	-0.4*
Aircraft trips	11 647	12 666	8.7

* percentage point difference

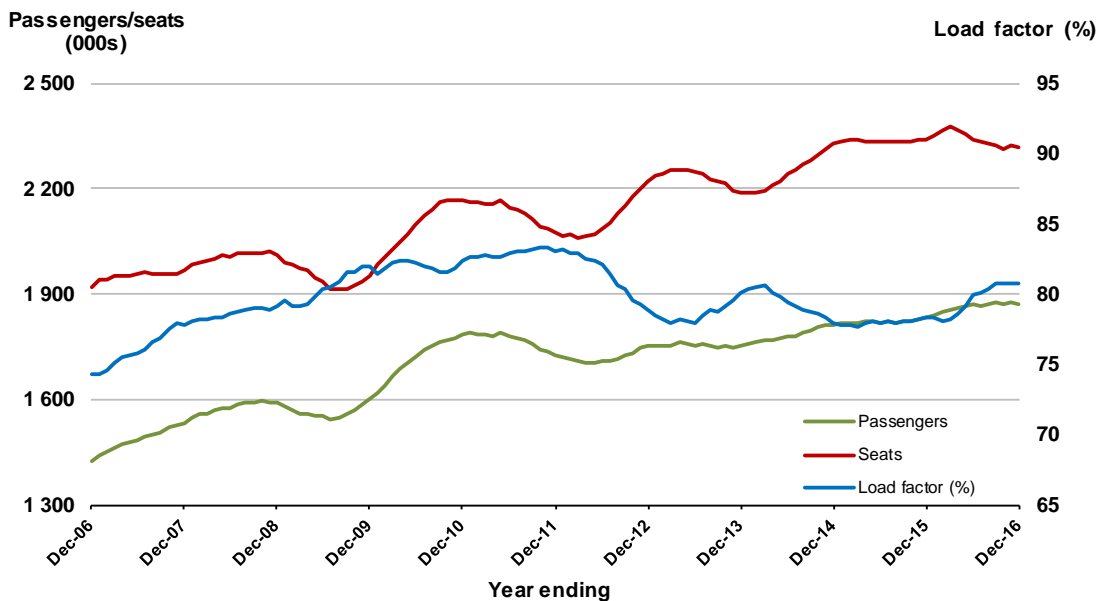


8. Adelaide - Sydney

Moving annual data

	YE Dec 2015	YE Dec 2016	% Change
Passengers carried (000s)	1 831.5	1 872.0	2.2
Seats (000s)	2 339.5	2 317.1	-1.0
Load factor %	78.3	80.8	2.5*
Aircraft trips	14 304	14 114	-1.3

* percentage point difference

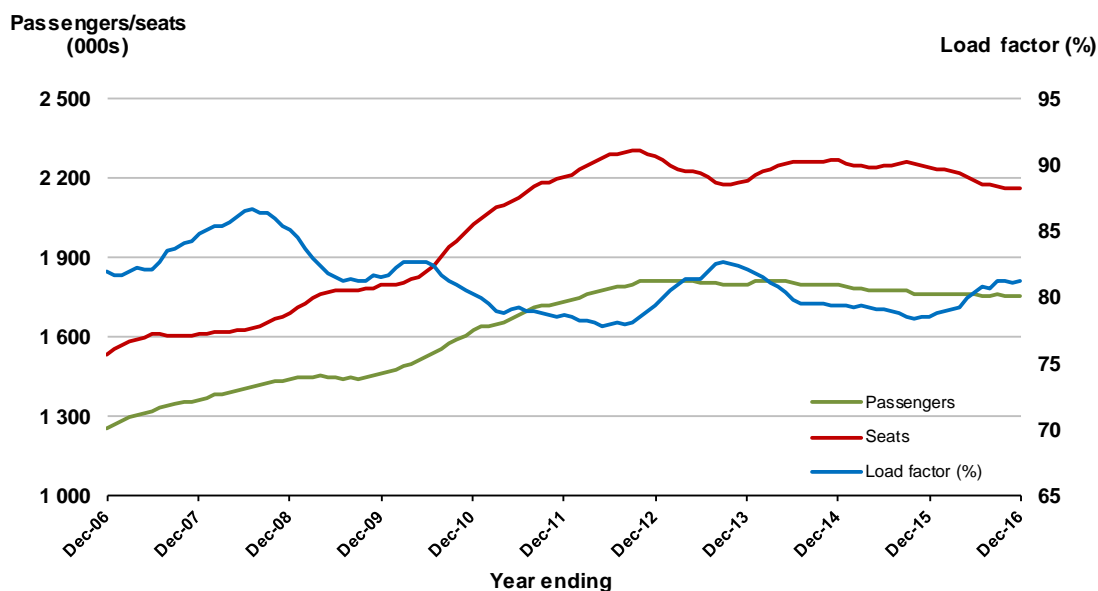


9. Perth - Sydney

Moving annual data

	YE Dec 2015	YE Dec 2016	% Change
Passengers carried (000s)	1 761.0	1 753.7	-0.4
Seats (000s)	2 240.7	2 160.5	-3.6
Load factor %	78.6	81.2	2.6 *
Aircraft trips	9 148	9 154	0.1

* percentage point difference

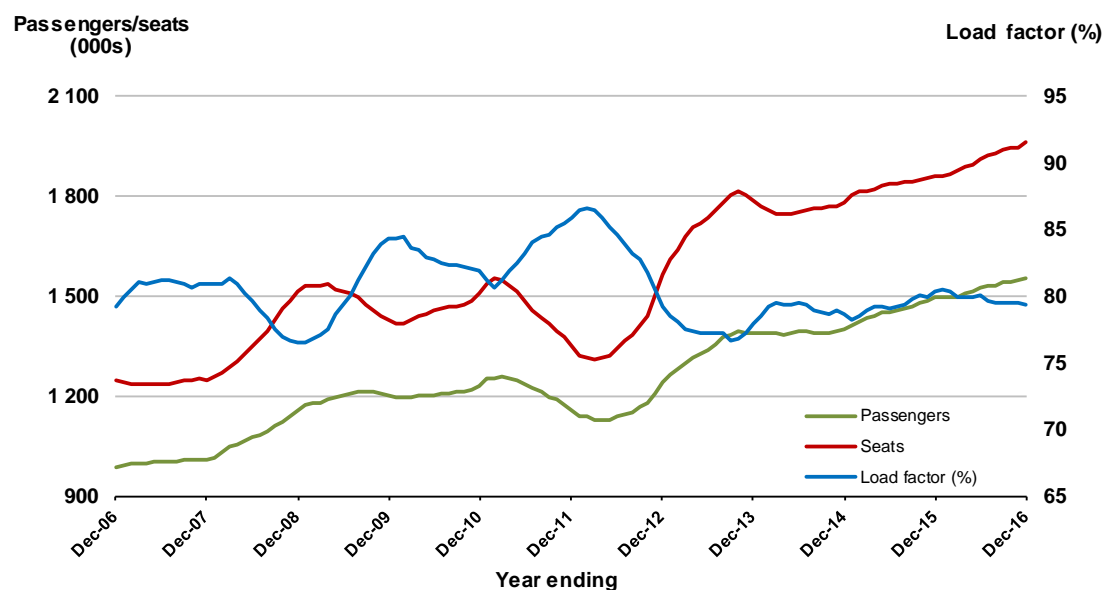


10. Hobart - Melbourne

Moving annual data

	YE Dec 2015	YE Dec 2016	% Change
Passengers carried (000s)	1 493.3	1 555.5	4.2
Seats (000s)	1 860.0	1 960.9	5.4
Load factor %	80.3	79.3	-1.0 *
Aircraft trips	11 765	12 286	4.4

* percentage point difference

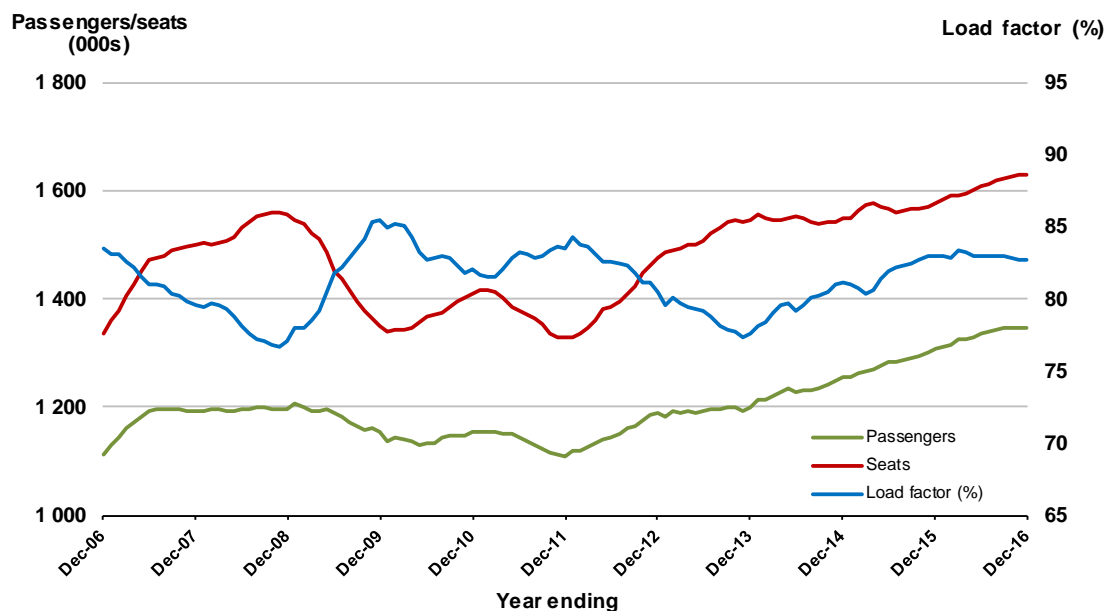


11. Brisbane - Cairns

Moving annual data

	YE Dec 2015	YE Dec 2016	% Change
Passengers carried (000s)	1 306.4	1 346.9	3.1
Seats (000s)	1 575.7	1 629.3	3.4
Load factor %	82.9	82.7	-0.2*
Aircraft trips	9 942	10 173	2.3

* percentage point difference

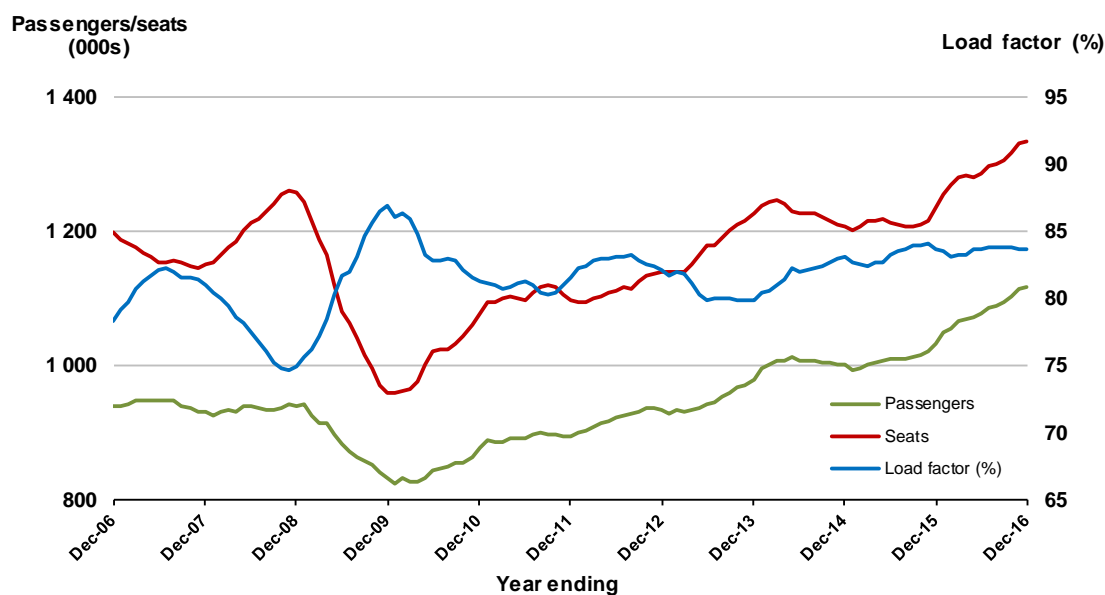


12. Cairns - Sydney

Moving annual data

	YE Dec 2015	YE Dec 2016	% Change
Passengers carried (000s)	1 032.8	1 115.3	8.0
Seats (000s)	1 235.6	1 333.7	7.9
Load factor %	83.6	83.6	0.0*
Aircraft trips	7 220	7 665	6.2

* percentage point difference

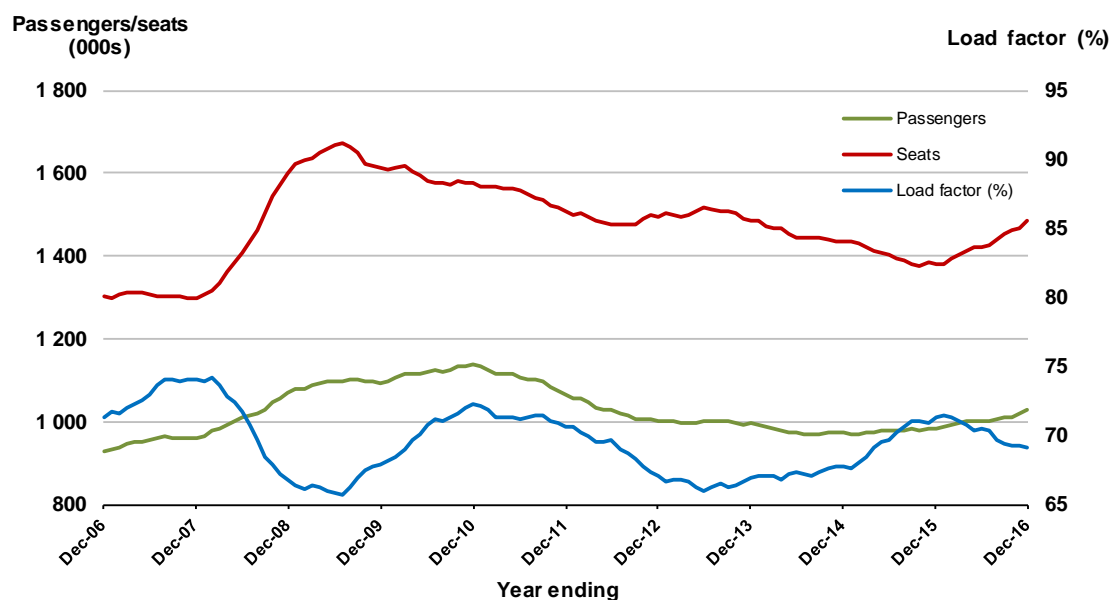


13. Canberra - Melbourne

Moving annual data

	YE Dec 2015	YE Dec 2016	% Change
Passengers carried (000s)	984.2	1 026.1	4.3
Seats (000s)	1 380.5	1 484.4	7.5
Load factor %	71.3	69.1	-2.2 *
Aircraft trips	10 588	10 812	2.1

* percentage point difference

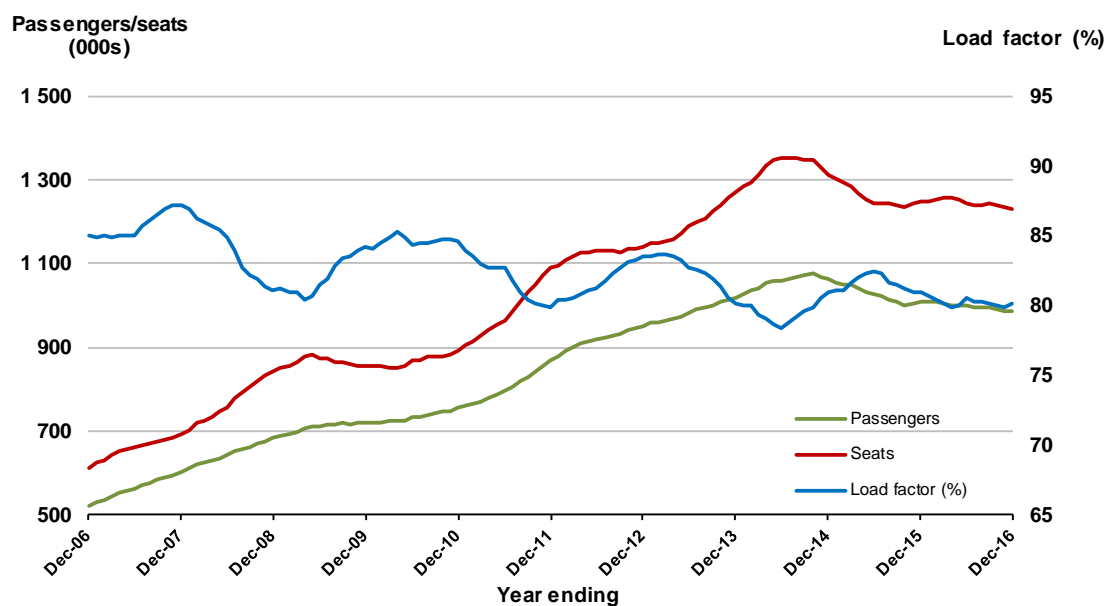


14. Brisbane - Perth

Moving annual data

	YE Dec 2015	YE Dec 2016	% Change
Passengers carried (000s)	1 007.8	984.1	-2.4
Seats (000s)	1 246.4	1 229.4	-1.4
Load factor %	80.9	80.0	-0.8 *
Aircraft trips	5 667	5 772	1.9

* percentage point difference

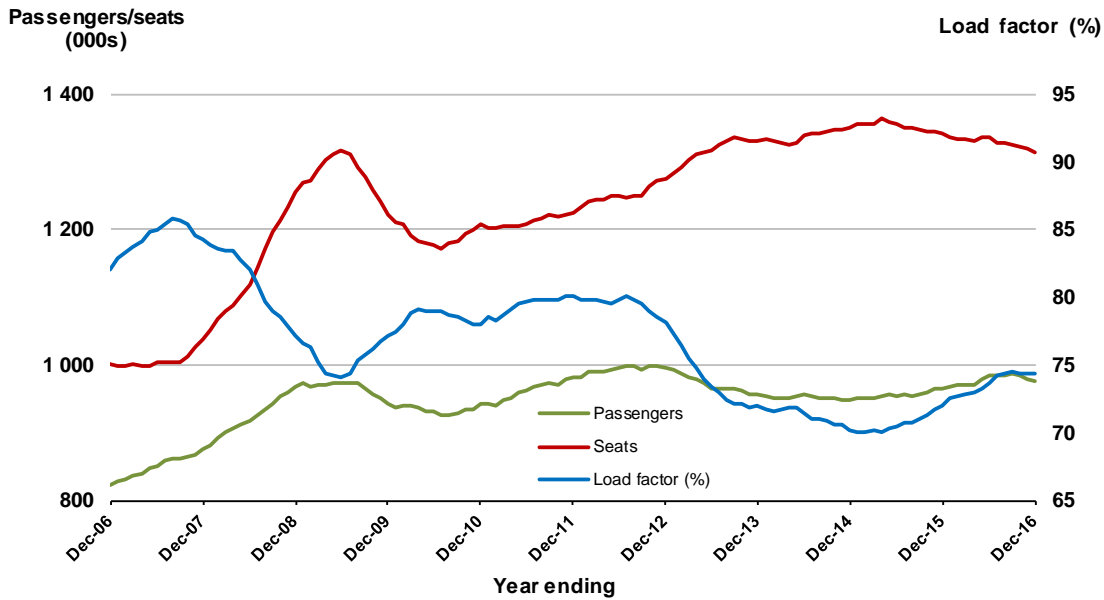


15. Brisbane - Townsville

Moving annual data

	YE Dec 2015	YE Dec 2016	% Change
Passengers carried (000s)	965.3	976.6	1.2
Seats (000s)	1 340.7	1 313.8	-2.0
Load factor %	72.0	74.3	2.3 *
Aircraft trips	9 103	8 967	-1.5

* percentage point difference

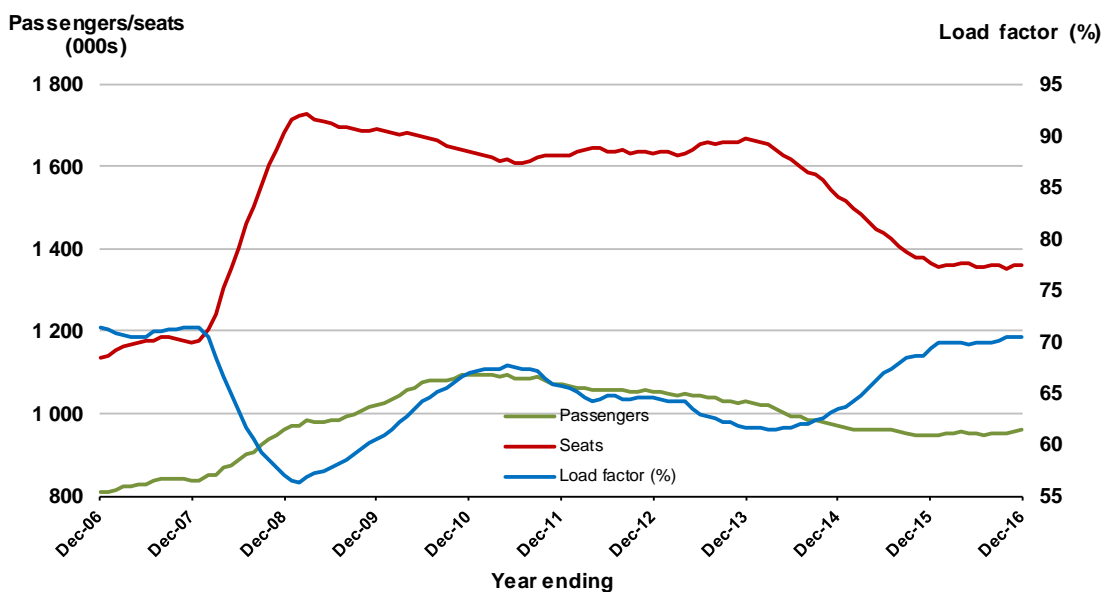


16. Canberra - Sydney

Moving annual data

	YE Dec 2015	YE Dec 2016	% Change
Passengers carried (000s)	947.1	959.4	1.3
Seats (000s)	1 365.3	1 362.1	-0.2
Load factor %	69.4	70.4	1.1 *
Aircraft trips	17 833	17 079	-4.2

* percentage point difference

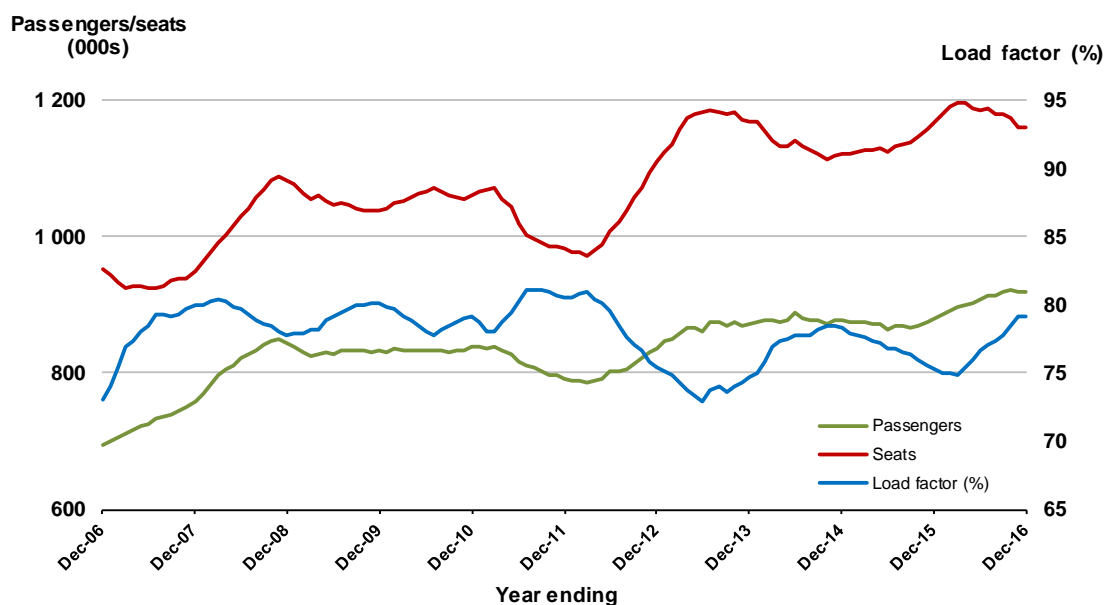


17. Launceston - Melbourne

Moving annual data

	YE Dec 2015	YE Dec 2016	% Change
Passengers carried (000s)	880.9	918.0	4.2
Seats (000s)	1 169.7	1 159.9	-0.8
Load factor %	75.3	79.1	3.8 *
Aircraft trips	8 911	8 866	-0.5

* percentage point difference

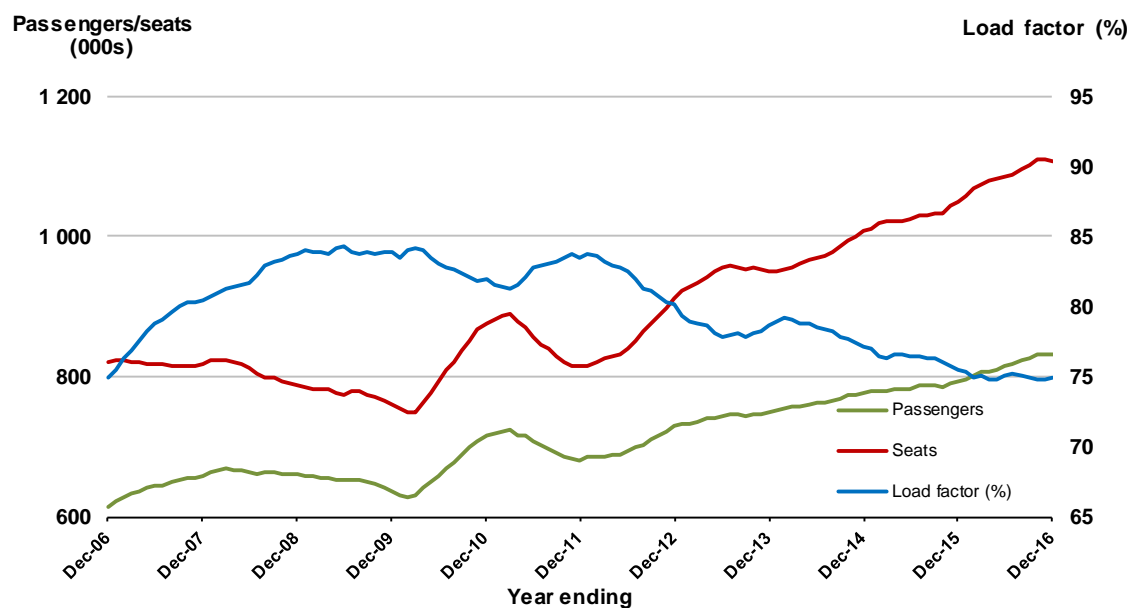


18. Adelaide - Brisbane

Moving annual data

	YE Dec 2015	YE Dec 2016	% Change
Passengers carried (000s)	792.8	830.3	4.7
Seats (000s)	1 049.7	1 108.5	5.6
Load factor %	75.5	74.9	-0.6
Aircraft trips	6 622	6 784	2.4

* percentage point difference

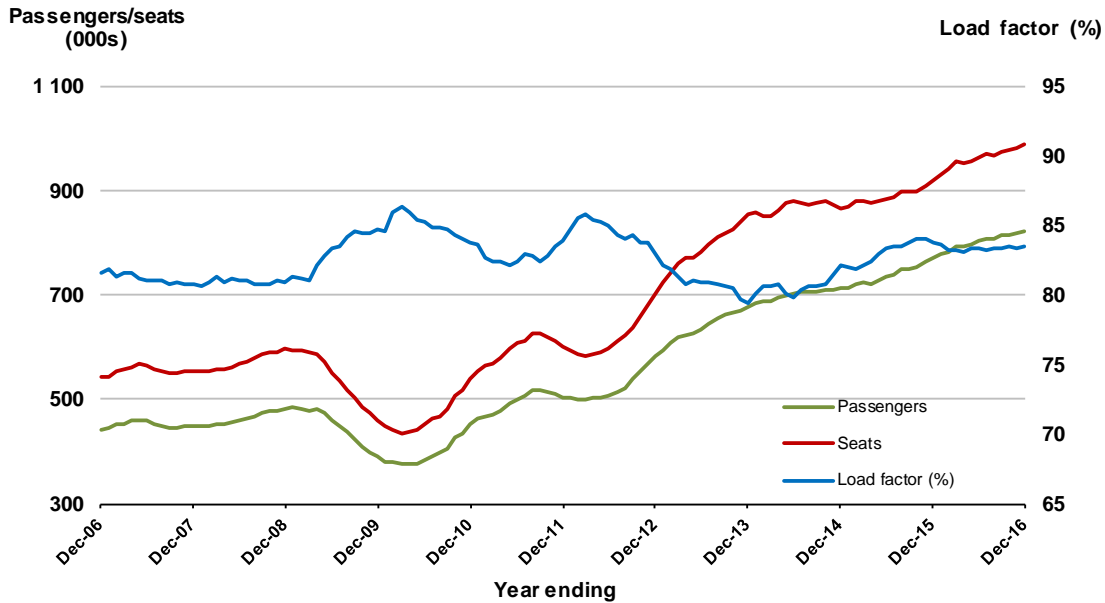


19. Cairns - Melbourne

Moving annual data

	YE Dec 2015	YE Dec 2016	% Change
Passengers carried (000s)	770.6	823.4	6.9
Seats (000s)	919.4	986.8	7.3
Load factor %	83.8	83.4	-0.4*
Aircraft trips	4 929	5 232	6.1

* percentage point difference

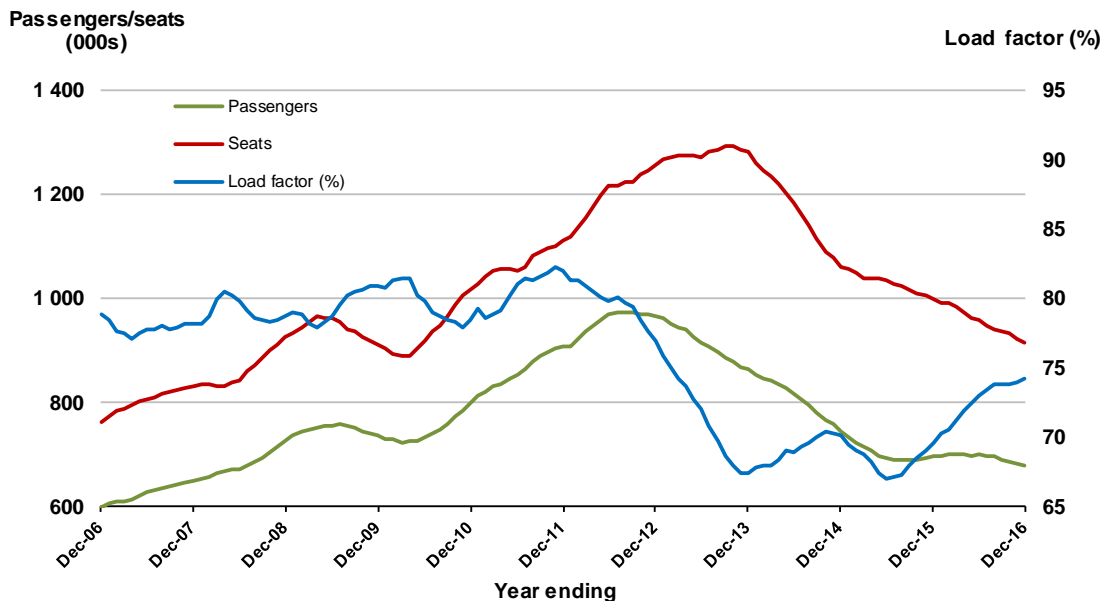


20. Brisbane - Mackay

Moving annual data

	YE Dec 2015	YE Dec 2016	% Change
Passengers carried (000s)	695.6	678.5	-2.5
Seats (000s)	999.1	913.5	-8.6
Load factor %	69.6	74.3	4.6*
Aircraft trips	7 908	7 670	-3.0

* percentage point difference



TOP FIFTY REGIONAL AIRPORTS

Table 6: Top fifty regional airports (000s) — passenger movements, annual

Airport	YE Dec 2015	YE Dec 2016	% Change
1 Cairns	4 017.0	4 243.4	5.6
2 Hobart	2 238.6	2 378.1	6.2
3 Darwin	1 769.3	1 803.4	1.9
4 Townsville	1 544.2	1 535.0	-0.6
5 Launceston	1 287.7	1 332.4	3.5
6 Williamstown	1 157.8	1 203.7	4.0
7 Mackay	907.1	790.0	-12.9
8 Alice Springs	593.5	612.2	3.1
9 Rockhampton	620.6	584.7	-5.8
10 Hamilton Island	486.9	550.0	13.0
11 Karratha	607.6	494.9	-18.5
12 Ballina	454.6	480.9	5.8
13 Coffs Harbour	356.7	395.2	10.8
14 Broome	389.9	374.8	-3.9
15 Ayers Rock	316.8	359.4	13.5
16 Port Hedland	418.9	356.4	-14.9
17 Proserpine	319.1	342.8	7.4
18 Gladstone	409.8	331.7	-19.1
19 Newman	331.2	309.4	-6.6
20 Albury	241.9	254.4	5.2
21 Mildura	238.9	246.5	3.2
22 Kalgoorlie	228.9	240.2	4.9
23 Port Macquarie	219.3	226.3	3.2
24 Wagga Wagga	210.3	215.0	2.2
25 Dubbo	198.1	205.7	3.8
26 Emerald	212.6	199.3	-6.3
27 Mount Isa	202.1	188.3	-6.8
28 Port Lincoln	185.8	179.0	-3.7
29 Tamworth	158.2	178.6	12.9
30 Bundaberg	159.0	173.1	8.9
31 Hervey Bay	163.8	170.3	4.0
32 Paraburdoo	167.1	164.2	-1.7
33 Devonport	144.4	147.8	2.4
34 Armidale	125.7	129.3	2.9
35 Wellcamp	70.3	120.7	71.7
36 Moranbah	138.8	117.7	-15.2
37 Geraldton	119.2	117.5	-1.4
38 Kununurra	103.1	107.4	4.2
39 Thursday Island	91.6	100.3	9.5
40 Roma	149.1	87.8	-41.1
41 Learmonth	85.5	84.6	-1.0
42 Gove	71.1	81.6	14.9
43 Weipa	71.6	77.9	8.8
44 Mount Gambier	77.6	76.1	-2.0
45 Griffith	67.3	69.4	3.1
46 Merimbula	60.5	63.2	4.5
47 Whyalla	66.9	62.8	-6.1
48 Burnie	63.5	60.2	-5.2
49 Narrandera	45.8	54.9	19.9
50 Albany	53.6	54.6	2.0
Total top 50 regional airports	22 418.9	22 733.2	1.4
Total regional airports	23 729.1	24 038.5	1.3
Total domestic network	115 012.9	117 855.5	2.5

Note: Airport passenger movement numbers are the sum of passenger arrivals and departures at each airport.

DOMESTIC CHARTER ACTIVITY

Table 7: Charter passengers carried and aircraft trips - annual activity

	YE Dec 2015	YE Dec 2016	% Change
Total domestic charter passengers	2 626 735	2 414 833	-8.1
Total domestic charter aircraft trips	51 247	44 812	-12.6

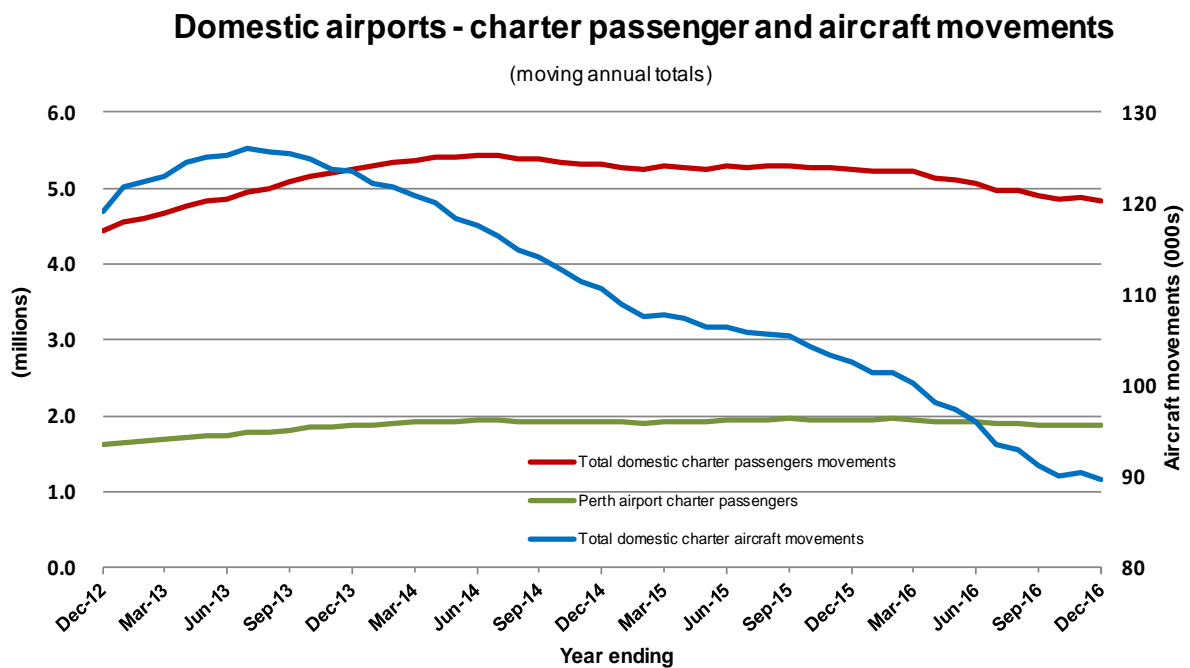
Note: Helicopter, joyflights and sightseeing charter flights not included.

Table 8: Domestic airports - charter activity - annual activity

	YE Dec 2015	YE Dec 2016	% Change
Total domestic charter passenger movements	5 253 470	4 829 666	-8.1
Total domestic charter aircraft movements	102 494	89 624	-12.6
Perth airport charter passenger movements	1 954 611	1 874 008	-4.1
Perth airport charter aircraft movements	33 857	31 547	-6.8

Note: Helicopter, joyflights and sightseeing charter flights not included.

Charter passenger and aircraft movement numbers are the sum of arrivals and departures at each airport.



Note: data prior July 2011 not available

DEFINITIONS

Aircraft Trips	The number of flight stages. A return flight counts as two aircraft trips.
Airport Movements	Airport movements (passenger and cargo) are measured once on arrival and once on departure. Each domestic trip generates two movements at airports. For example, a trip from Melbourne to Sydney will be counted twice, as a passenger departure at Melbourne and as a passenger arrival at Sydney. At the national level, the sum of all domestic airport traffic will therefore be equal to twice the number of trips undertaken.
Available Seat Kilometres (ASKs)	Calculated by multiplying the number of seats available on each flight stage, by the distance in kilometres between the ports. The distances used are Great Circle Distances.
City-Pair	The ports shown make up the city-pair route. Passenger movements shown for a city pair reflect total traffic in both directions.
Flight Stage	The operation of an aircraft from take-off to landing.
Load Factor	The total revenue passenger kilometres performed as a percentage of the total available seat kilometres.
Passengers Carried	Revenue passengers carried.
Regular Public Transport Services (RPT)	All air service operations in which aircraft are available for the transport of members of public and are conducted in accordance with fixed schedules. It does not include charter or other non-scheduled operations.
Revenue Passengers	All passengers paying any fare. Frequent flyer redemption travellers are regarded as revenue passengers.
Revenue Passenger Kilometres (RPKs)	Calculated by multiplying the number of revenue passengers travelling on each flight stage, by the distance in kilometres between the ports. The distances used are Great Circle Distances.
Traffic on board by stages	The total of all traffic (revenue passengers) on each flight stage between two directly connected airports.
..	Data not included
NA	Not applicable