



Australian Government

Department of Infrastructure and Regional Development

Bureau of Infrastructure, Transport and Regional Economics

STATISTICAL REPORT



Aviation

Domestic aviation activity
Annual 2015

© Commonwealth of Australia 2016

ISSN: 1832 - 1968

Ownership of intellectual property rights in this publication

Unless otherwise noted, copyright (and any other intellectual property rights, if any) in this publication is owned by the Commonwealth of Australia (referred to below as the Commonwealth).

Disclaimer

The material contained in this publication is made available on the understanding that the Commonwealth is not providing professional advice, and that users exercise their own skill and care with respect to its use, and seek independent advice if necessary.

The Commonwealth makes no representations or warranties as to the contents or accuracy of the information contained in this publication. To the extent permitted by law, the Commonwealth disclaims liability to any person or organisation in respect of anything done, or omitted to be done, in reliance upon information contained in this publication.

Creative Commons licence

With the exception of (a) the Coat of Arms; and (b) the Department of Infrastructure's photos and graphics, copyright in this publication is licensed under a Creative Commons Attribution 3.0 Australia Licence.

Creative Commons Attribution 3.0 Australia Licence is a standard form licence agreement that allows you to copy, communicate and adapt this publication provided that you attribute the work to the Commonwealth and abide by the other licence terms. A summary of the licence terms is available from <http://creativecommons.org/licenses/by/3.0/au/deed.en>. The full licence terms are available from <http://creativecommons.org/licenses/by/3.0/au/legalcode>.

Use of the Coat of Arms

The Department of the Prime Minister and Cabinet sets the terms under which the Coat of Arms is used. Please refer to the Department's Commonwealth Coat of Arms and Government branding web page <http://www.dpmc.gov.au/guidelines/index.cfm#brand> and, in particular, the Guidelines on the use of the Commonwealth Coat of Arms publication.

An appropriate citation for this report is:

Bureau of Infrastructure, Transport and Regional Economics (BITRE), 2016, Domestic aviation activity, Statistical Report, BITRE, Canberra ACT.

Contact us

This publication is available in PDF format. All other rights are reserved, including in relation to any Departmental logos or trade marks which may exist. For enquiries regarding the licence and any use of this publication, please contact:

Bureau of Infrastructure, Transport and Regional Economics (BITRE)
Department of Infrastructure and Transport
GPO Box 501, Canberra ACT 2601, Australia
Telephone: (international) +61 2 6274 7210
Fax: (international) +61 2 6274 7727
Email: bitre@infrastructure.gov.au
Website: www.bitre.gov.au

Inquiries

Should you require additional information about the statistics contained in this publication:

Nebojsa Pavlovic

Telephone (02) 6274 6817 or Facsimile (02) 6274 7727

Electronic mail: AVSTATS@infrastructure.gov.au

Nebojsa.Pavlovic@infrastructure.gov.au

Web site: <http://www.bitre.gov.au/statistics/aviation/domestic.aspx>

FOREWORD

This report provides an overview of domestic (including charter) commercial aviation activity in Australia for the year ending December 2015.

The data cover revenue passengers carried by Australian-registered operators of scheduled regular public transport services over Australian flight stages and fixed-wing charter operators. These estimates include passengers carried between domestic airports on international flights operated by these carriers. The passengers carried refer to traffic on board by stages.

Estimates of passengers and aircraft movements for charter aviation are included in this publication, where BITRE confidentiality standards are met.

Individual routes shown are restricted to those with an average exceeding 8 000 passengers per month where two or more airlines operate in competition. For the year ending December 2015 there were 66 such routes: 61 routes met these criteria for all 24 months while five routes did so for a period shorter than two years.

Information on the total network for the year ending December 2015 and on the Regular Public Transport (RPT) network for the year ending December 2015 is presented on page 2.

Detailed information on the 66 individual routes can be found in the RPT summary pages 3–10 of this publication.

The top ten airports in terms of RPT passenger movements are shown on page 11.

BITRE have identified inaccuracies in domestic RPT cargo data reported by airlines. These inaccuracies have an impact on published tables usually presented on page 12. The publication of domestic cargo statistics has been suspended from July 2015. BITRE is working with airlines to resolve this matter as quickly as possible so that cargo data reporting can resume.

The long-term trends for the top twenty competitive RPT routes are presented graphically on pages 13–22.

Domestic RPT passenger movements at the top 50 regional airports are presented on page 23.

Tables providing estimates of domestic charter aviation activity are shown on page 24. BITRE confidentiality standards restrict publication of detailed airport-level estimates for any Australian airport, with the exception of Perth Airport.

A list of definitions can be found on page 25.

This report was prepared by the Aviation Statistics Section of the Bureau of Infrastructure, Transport and Regional Economics with data provided by airlines.

Estimates are included where data were not available and data presented in this publication may contain revisions to previously published data.

Where figures have been rounded, discrepancies may occur between sums of component items and totals, and in percentage changes which are derived from figures prior to rounding.

CONTENTS

Highlights	1
RPT network	2
Top competitive routes	3
Top ten airports – passenger movements.....	11
Top five airports – cargo movements	12
Top twenty routes	13
1. Melbourne – Sydney	13
2. Brisbane – Sydney	13
3. Brisbane – Melbourne	14
4. Gold Coast – Sydney	14
5. Adelaide – Melbourne	15
6. Melbourne – Perth	15
7. Adelaide – Sydney	16
8. Gold Coast – Melbourne	16
9. Perth – Sydney	17
10. Hobart – Melbourne	17
11. Brisbane – Cairns	18
12. Cairns – Sydney.....	18
13. Brisbane – Perth	19
14. Canberra – Melbourne	19
15. Brisbane – Townsville	20
16. Canberra – Sydney	20
17. Launceston – Melbourne.....	21
18. Adelaide – Brisbane.....	21
19. Cairns – Melbourne.....	22
20. Brisbane – Mackay	22
Top fifty regional airports	23
Domestic charter activity	24
Definitions	25

This page is intentionally left blank.

HIGHLIGHTS

There were 60.12 million passengers carried on Australian domestic commercial aviation (including charter operations) for the year ending December 2015, a decrease of 0.1 per cent compared with the year ending December 2014. For the year ending December 2015 there were 686 150 aircraft trips, a decrease of 0.5 per cent compared to the previous year.

57.49 million passengers were carried on RPT flights in the year ending December 2015, virtually unchanged from the year ending December 2014.

RPT revenue passenger kilometres (RPKs) performed were 67.85 billion for the year, virtually unchanged compared to the year ending December 2014. Capacity, measured by available seat kilometres (ASKs), decreased 0.3 per cent compared with the year ending December 2014, to a total of 88.67 billion.

The industry wide load factor (RPKs/ASKs) increased from 76.3 per cent for the year ending December 2014 to 76.5 per cent for the year ending December 2015. Load factors on individual routes increased on 33 of the 61 RPT routes for which data is available in both years.

For the year ending December 2015, Melbourne – Sydney remained Australia's busiest RPT route with 8.61 million passengers, an increase of 3.6 per cent compared with the year ending December 2014. It was followed by Brisbane – Sydney with 4.48 million passengers (up 0.6 per cent) and Brisbane – Melbourne with 3.35 million passengers (up 1.1 per cent).

The greatest percentage increase in RPT passenger numbers, compared to the year ending December 2014, was on the Ballina – Sydney route (up 11.9 per cent). There were large increases on a number of other routes, including Ayers Rock (Uluru) – Sydney (up 10.3 per cent), Hamilton Island – Sydney (up 9.2 per cent) and Cairns – Melbourne (up 8.3 per cent).

RPT routes with traffic decreases in the year ending December 2015, compared with the year ending December 2014, included Perth – Port Hedland (down 20.1 per cent), Brisbane – Moranbah (down 19.6 per cent), Brisbane – Emerald (down 14.7 per cent), Brisbane – Mount Isa (down 13.6 per cent) and Karratha – Perth (down 12.4 per cent).

For the year ending December 2015, Sydney remained Australia's busiest domestic airport with 25.95 million passenger movements, followed by Melbourne with 24.02 million passenger movements and Brisbane with 16.80 million passenger movements.

For the year ending December 2015, the number of domestic aviation passengers travelling through regional airports was 23.70 million, 2.5 per cent lower than for the year ending December 2014. Out of the top 50 regional airports, the strongest fall compared to the year ending December 2014, was at Roma airport, down 40.5 per cent, while the strongest growth was at Proserpine airport, up 20.7 per cent.

Fixed-wing charter operators carried 2.63 million passengers for the year ending December 2015, a decrease of 1.3 per cent on the year ending December 2014. More than one-third of all charter passengers in Australia took flights either to or from Perth Airport.

TOTAL NETWORK

Summary of annual commercial aviation activity

	YE Dec 2014	YE Dec 2015	% Change
Total passengers carried (millions)	60.18	60.12	-0.1
Aircraft trips (000s)	689.4	686.2	-0.5

Note: Regular Public Transport and charter aviation activity
Helicopter, joyflights and sightseeing charter flights not included.

RPT NETWORK

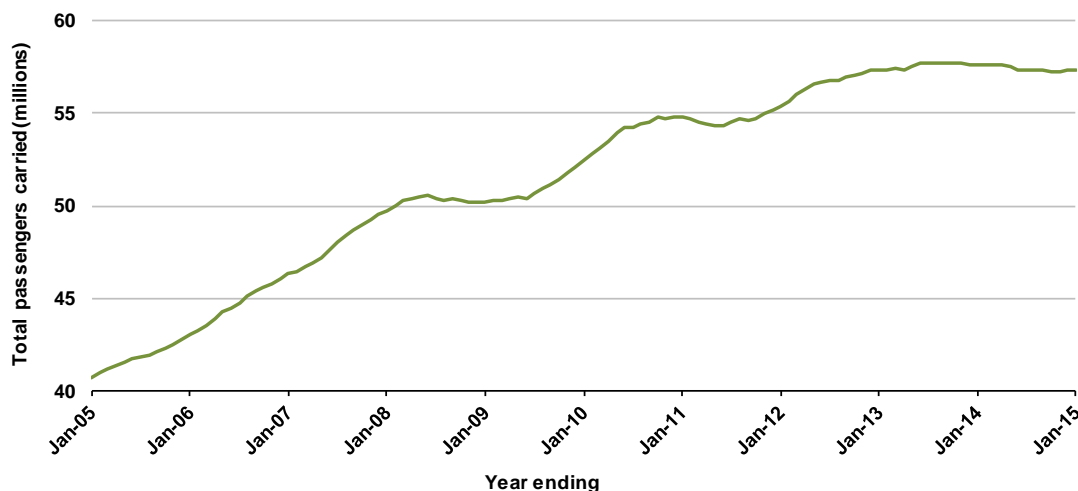
Summary of annual RPT activity

	YE Dec 2014	YE Dec 2015	% Change
Total passengers carried (millions)	57.51	57.49	0.0
Revenue passenger kilometres (billions)	67.86	67.85	0.0
Available seats (millions)	77.03	76.83	-0.3
Available seat kilometres (billions)	88.95	88.67	-0.3
Load factor %	76.3	76.5	0.2 *
Aircraft trips (000s)	634.0	634.6	0.1

* percentage point difference

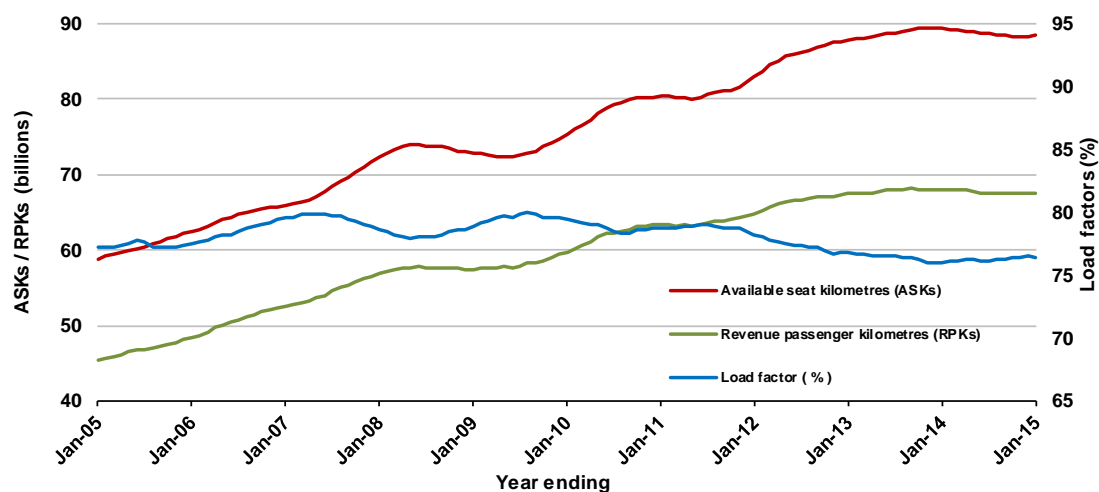
Domestic RPT passenger traffic

(moving annual totals)



RPT Network utilisation

(moving annual totals)



TOP COMPETITIVE ROUTES

Table 1: Passengers carried (000s) — annual activity

	City-Pair	YE Dec 2014	YE Dec 2015	% Change
1	Melbourne - Sydney	8 316.9	8 613.4	3.6
2	Brisbane - Sydney	4 448.1	4 476.2	0.6
3	Brisbane - Melbourne	3 317.1	3 353.8	1.1
4	Gold Coast - Sydney	2 595.2	2 618.3	0.9
5	Adelaide - Melbourne	2 272.0	2 311.0	1.7
6	Melbourne - Perth	2 160.7	2 138.9	-1.0
7	Adelaide - Sydney	1 813.0	1 831.5	1.0
8	Gold Coast - Melbourne	1 754.0	1 812.3	3.3
9	Perth - Sydney	1 798.9	1 760.9	-2.1
10	Hobart - Melbourne	1 400.1	1 493.6	6.7
11	Brisbane - Cairns	1 256.1	1 307.0	4.0
12	Cairns - Sydney	1 000.9	1 032.6	3.2
13	Brisbane - Perth	1 062.0	1 007.8	-5.1
14	Canberra - Melbourne	972.3	984.2	1.2
15	Brisbane - Townsville	948.2	965.3	1.8
16	Canberra - Sydney	968.2	946.8	-2.2
17	Launceston - Melbourne	878.3	880.5	0.3
18	Adelaide - Brisbane	776.7	792.8	2.1
19	Cairns - Melbourne	711.8	770.6	8.3
20	Brisbane - Mackay	746.4	696.4	-6.7
21	Adelaide - Perth	616.4	611.0	-0.9
22	Karratha - Perth	685.2	600.2	-12.4
23	Brisbane - Rockhampton	612.6	587.8	-4.0
24	Brisbane - Canberra	560.2	558.2	-0.3
25	Hobart - Sydney	536.4	546.3	1.9
26	Brisbane - Newcastle	570.3	543.7	-4.7
27	Sunshine Coast - Sydney	464.1	481.8	3.8
28	Melbourne - Newcastle	434.9	443.0	1.9
29	Melbourne - Sunshine Coast	397.6	406.0	2.1
30	Brisbane - Gladstone	456.4	405.2	-11.2
31	Brisbane - Darwin	391.5	396.2	1.2
32	Perth - Port Hedland	488.7	390.2	-20.1
33	Ballina - Sydney	320.3	358.4	11.9
34	Coffs Harbour - Sydney	344.4	335.0	-2.7
35	Newman - Perth	369.0	330.3	-10.5
36	Darwin - Sydney	327.3	319.8	-2.3
37	Broome - Perth	300.3	302.9	0.8
38	Launceston - Sydney	295.7	287.7	-2.7
39	Darwin - Melbourne	285.5	279.3	-2.2
40	Brisbane - Proserpine	233.2	238.5	2.3
41	Hamilton Island - Sydney	209.9	229.1	9.2
42	Kalgoorlie - Perth	216.9	220.5	1.7
43	Adelaide - Gold Coast	215.3	219.4	1.9
44	Albury - Sydney	225.4	217.0	-3.7
45	Brisbane - Emerald	249.1	212.4	-14.7
46	Brisbane - Hobart	190.5	198.2	4.1
47	Melbourne - Mildura	196.1	196.9	0.4
48	Dubbo - Sydney	196.7	187.0	-4.9
49	Adelaide - Port Lincoln	190.8	185.8	-2.6
50	Port Macquarie - Sydney	187.8	185.3	-1.3

(continued)

Table 1: (continued): Passengers carried (000s) — annual activity

	City-Pair	YE Dec 2014	YE Dec 2015	% Change
51	Darwin - Perth	181.0	184.6	2.0
52	Sydney - Wagga Wagga	185.6	184.2	-0.7
53	Adelaide - Canberra	176.3	170.0	-3.6
54	Sydney - Townsville	173.9	166.8	-4.1
55	Ayers Rock - Sydney	144.5	159.4	10.3
56	Brisbane - Moranbah	172.6	138.8	-19.6
57	Brisbane - Hamilton Island	140.9	131.8	-6.4
58	Brisbane - Mount Isa	149.5	129.1	-13.6
59	Armidale - Sydney	85.3	124.5	NA (a)
60	Brisbane - Bundaberg	122.4	123.1	0.6
61	Geraldton - Perth	127.4	117.5	-7.8
62	Hamilton Island - Melbourne	117.2	104.7	-10.7
63	Alice Springs - Darwin	..	100.3	NA (b)
64	Sydney - Tamworth	..	95.4	NA (c)
65	Adelaide - Alice Springs	..	93.7	NA (d)
66	Cairns - Townsville	..	71.5	NA (e)
	Total domestic network	57 514.2	57 493.4	0.0

(a) Armidale - Sydney route included from May 2014, prior data not shown.

(b) Alice Springs - Darwin route included from April 2015, prior data not shown.

(c) Sydney - Tamworth route included from June 2015, prior data not shown.

(d) Adelaide - Alice Springs route included from April 2015, prior data not shown.

(e) Cairns - Townsville route included from July 2015, prior data not shown.

Table 2: Available seats (000s) — annual activity

	City-Pair	YE Dec 2014	YE Dec 2015	% Change
1	Melbourne - Sydney	10 069.8	10 588.9	5.2
2	Brisbane - Sydney	5 593.5	5 603.1	0.2
3	Brisbane - Melbourne	4 200.8	4 333.3	3.2
4	Gold Coast - Sydney	3 185.7	3 133.7	-1.6
5	Adelaide - Melbourne	2 907.8	2 965.6	2.0
6	Melbourne - Perth	2 821.7	2 762.6	-2.1
7	Adelaide - Sydney	2 326.0	2 339.5	0.6
8	Gold Coast - Melbourne	2 046.2	2 169.8	6.0
9	Perth - Sydney	2 267.5	2 240.6	-1.2
10	Hobart - Melbourne	1 779.5	1 860.2	4.5
11	Brisbane - Cairns	1 548.1	1 576.8	1.8
12	Cairns - Sydney	1 205.6	1 235.4	2.5
13	Brisbane - Perth	1 312.0	1 246.4	-5.0
14	Canberra - Melbourne	1 435.8	1 380.5	-3.9
15	Brisbane - Townsville	1 350.3	1 340.7	-0.7
16	Canberra - Sydney	1 526.2	1 365.4	-10.5
17	Launceston - Melbourne	1 121.0	1 169.3	4.3
18	Adelaide - Brisbane	1 006.7	1 049.7	4.3
19	Cairns - Melbourne	866.4	919.4	6.1
20	Brisbane - Mackay	1 066.3	1 000.9	-6.1
21	Adelaide - Perth	769.5	809.5	5.2
22	Karratha - Perth	1 164.9	1 068.8	-8.2
23	Brisbane - Rockhampton	887.1	817.4	-7.9
24	Brisbane - Canberra	763.0	750.1	-1.7
25	Hobart - Sydney	659.5	663.4	0.6
26	Brisbane - Newcastle	735.8	697.3	-5.2
27	Sunshine Coast - Sydney	562.5	581.1	3.3
28	Melbourne - Newcastle	552.5	553.7	0.2
29	Melbourne - Sunshine Coast	486.5	474.2	-2.5
30	Brisbane - Gladstone	314.9	291.4	-7.4
31	Brisbane - Darwin	554.0	512.2	-7.5
32	Perth - Port Hedland	782.0	724.8	-7.3
33	Ballina - Sydney	413.0	439.3	6.4
34	Coffs Harbour - Sydney	454.7	444.1	-2.3
35	Newman - Perth	698.5	639.0	-8.5
36	Darwin - Sydney	454.6	427.0	-6.1
37	Broome - Perth	446.2	419.2	-6.1
38	Launceston - Sydney	381.0	360.4	-5.4
39	Darwin - Melbourne	356.0	360.1	1.1
40	Brisbane - Proserpine	304.1	304.1	0.0
41	Hamilton Island - Sydney	267.7	283.7	6.0
42	Kalgoorlie - Perth	396.2	405.8	2.4
43	Adelaide - Gold Coast	277.1	280.9	1.4
44	Albury - Sydney	338.4	335.5	-0.8
45	Brisbane - Emerald	412.1	393.9	-4.4
46	Brisbane - Hobart	242.8	240.6	-0.9
47	Melbourne - Mildura	292.7	303.4	3.6
48	Dubbo - Sydney	301.7	293.3	-2.8
49	Adelaide - Port Lincoln	326.4	298.0	-8.7
50	Port Macquarie - Sydney	266.3	267.8	0.6

(continued)

Table 2: (continued): Available seats (000s) — annual activity

	City-Pair	YE Dec 2014	YE Dec 2015	% Change
51	Darwin - Perth	245.1	271.3	10.7
52	Sydney - Wagga Wagga	278.4	289.7	4.1
53	Adelaide - Canberra	269.9	250.1	-7.3
54	Sydney - Townsville	220.4	213.8	-3.0
55	Ayers Rock - Sydney	190.8	207.8	8.9
56	Brisbane - Moranbah	357.7	303.3	-15.2
57	Brisbane - Hamilton Island	182.9	165.1	-9.8
58	Brisbane - Mount Isa	277.8	259.1	-6.7
59	Armidale - Sydney	140.3	204.7	NA (a)
60	Brisbane - Bundaberg	189.0	186.2	-1.5
61	Geraldton - Perth	210.9	215.0	1.9
62	Hamilton Island - Melbourne	158.1	135.9	-14.0
63	Alice Springs - Darwin	..	170.8	NA (b)
64	Sydney - Tamworth	..	152.8	NA (c)
65	Adelaide - Alice Springs	..	134.3	NA (d)
66	Cairns - Townsville	..	150.9	NA (e)
	Total domestic network	77 034.0	76 830.4	-0.3

(a) Armidale - Sydney route included from May 2014, prior data not shown.

(b) Alice Springs - Darwin route included from April 2015, prior data not shown.

(c) Sydney - Tamworth route included from June 2015, prior data not shown.

(d) Adelaide - Alice Springs route included from April 2015, prior data not shown.

(e) Cairns - Townsville route included from July 2015, prior data not shown.

Table 3: Load factors (%) — annual activity

	City-Pair	YE Dec 2014	YE Dec 2015	% Change
1	Melbourne - Sydney	82.6	81.3	-1.2
2	Brisbane - Sydney	79.5	79.9	0.4
3	Brisbane - Melbourne	79.0	77.4	-1.6
4	Gold Coast - Sydney	81.4	83.6	2.1
5	Adelaide - Melbourne	78.1	77.9	-0.2
6	Melbourne - Perth	76.6	77.4	0.8
7	Adelaide - Sydney	77.9	78.3	0.3
8	Gold Coast - Melbourne	85.7	83.5	-2.2
9	Perth - Sydney	79.3	78.6	-0.7
10	Hobart - Melbourne	78.7	80.3	1.6
11	Brisbane - Cairns	81.2	82.9	1.7
12	Cairns - Sydney	83.0	83.6	0.6
13	Brisbane - Perth	80.9	80.9	-0.1
14	Canberra - Melbourne	67.7	71.3	3.6
15	Brisbane - Townsville	70.2	72.0	1.8
16	Canberra - Sydney	63.5	69.4	5.9
17	Launceston - Melbourne	78.3	75.3	-3.0
18	Adelaide - Brisbane	77.2	75.5	-1.6
19	Cairns - Melbourne	81.9	83.8	1.9
20	Brisbane - Mackay	70.0	69.6	-0.4
21	Adelaide - Perth	80.1	75.5	-4.6
22	Karratha - Perth	58.8	56.2	-2.7
23	Brisbane - Rockhampton	69.1	71.9	2.9
24	Brisbane - Canberra	73.4	74.4	1.0
25	Hobart - Sydney	81.3	82.4	1.0
26	Brisbane - Newcastle	77.5	78.0	0.5
27	Sunshine Coast - Sydney	82.5	82.9	0.4
28	Melbourne - Newcastle	78.7	80.0	1.3
29	Melbourne - Sunshine Coast	81.7	85.6	3.9
30	Brisbane - Gladstone	61.6	56.4	-5.3
31	Brisbane - Darwin	70.7	77.4	6.7
32	Perth - Port Hedland	62.5	53.8	-8.7
33	Ballina - Sydney	76.2	78.8	2.6
34	Coffs Harbour - Sydney	75.8	75.4	-0.3
35	Newman - Perth	52.8	51.7	-1.1
36	Darwin - Sydney	72.0	74.9	2.9
37	Broome - Perth	67.3	72.3	4.9
38	Launceston - Sydney	77.6	79.8	2.2
39	Darwin - Melbourne	80.2	77.6	-2.6
40	Brisbane - Proserpine	76.7	78.4	1.7
41	Hamilton Island - Sydney	78.4	80.8	2.4
42	Kalgoorlie - Perth	54.7	54.3	-0.4
43	Adelaide - Gold Coast	77.7	78.1	0.4
44	Albury - Sydney	66.6	64.7	-2.0
45	Brisbane - Emerald	60.4	53.9	-6.5
46	Brisbane - Hobart	78.5	82.4	3.9
47	Melbourne - Mildura	67.0	64.9	-2.1
48	Dubbo - Sydney	65.2	63.8	-1.4
49	Adelaide - Port Lincoln	58.5	62.3	3.9
50	Port Macquarie - Sydney	70.6	69.2	-1.3

(continued)

Table 3: (continued): Load factors (%) — annual activity

	City-Pair	YE Dec 2014	YE Dec 2015	% Change
51	Darwin - Perth	73.8	68.0	-5.8
52	Sydney - Wagga Wagga	66.7	63.6	-3.0
53	Adelaide - Canberra	65.3	68.0	2.7
54	Sydney - Townsville	78.9	78.0	-0.9
55	Ayers Rock - Sydney	75.7	76.7	1.0
56	Brisbane - Moranbah	48.2	45.8	-2.5
57	Brisbane - Hamilton Island	77.0	79.9	2.8
58	Brisbane - Mount Isa	53.8	49.8	-4.0
59	Armidale - Sydney	60.8	60.8	NA (a)
60	Brisbane - Bundaberg	64.7	66.1	2.1
61	Geraldton - Perth	60.4	54.6	-9.6
62	Hamilton Island - Melbourne	74.2	77.0	3.9
63	Alice Springs - Darwin	..	58.7	NA (b)
64	Sydney - Tamworth	..	62.4	NA (c)
65	Adelaide - Alice Springs	..	69.8	NA (d)
66	Cairns - Townsville	..	47.4	NA (e)
	Total domestic network	76.3	76.5	0.2

(a) Armidale - Sydney route included from May 2014, prior data not shown.

(b) Alice Springs - Darwin route included from April 2015, prior data not shown.

(c) Sydney - Tamworth route included from June 2015, prior data not shown.

(d) Adelaide - Alice Springs route included from April 2015, prior data not shown.

(e) Cairns - Townsville route included from July 2015, prior data not shown.

Table 4: Aircraft trips ^(a) — annual activity

	City-Pair	YE Dec 2014	YE Dec 2015	% Change
1	Melbourne - Sydney	55 996	60 072	7.3
2	Brisbane - Sydney	33 320	35 422	6.3
3	Brisbane - Melbourne	25 132	26 100	3.9
4	Gold Coast - Sydney	18 450	18 133	-1.7
5	Adelaide - Melbourne	18 950	19 084	0.7
6	Melbourne - Perth	12 478	12 235	-1.9
7	Adelaide - Sydney	14 054	14 304	1.8
8	Gold Coast - Melbourne	11 072	11 647	5.2
9	Perth - Sydney	8 933	9 147	2.4
10	Hobart - Melbourne	11 105	11 763	5.9
11	Brisbane - Cairns	9 761	9 959	2.0
12	Cairns - Sydney	6 765	7 219	6.7
13	Brisbane - Perth	5 472	5 667	3.6
14	Canberra - Melbourne	10 892	10 588	-2.8
15	Brisbane - Townsville	8 891	9 103	2.4
16	Canberra - Sydney	18 940	17 836	-5.8
17	Launceston - Melbourne	9 210	8 909	-3.3
18	Adelaide - Brisbane	6 366	6 622	4.0
19	Cairns - Melbourne	4 644	4 929	6.1
20	Brisbane - Mackay	8 082	7 926	-1.9
21	Adelaide - Perth	5 475	5 707	4.2
22	Karratha - Perth	8 051	7 775	-3.4
23	Brisbane - Rockhampton	10 032	9 716	-3.1
24	Brisbane - Canberra	6 140	5 986	-2.5
25	Hobart - Sydney	4 026	4 050	0.6
26	Brisbane - Newcastle	5 984	5 806	-3.0
27	Sunshine Coast - Sydney	3 167	3 267	3.2
28	Melbourne - Newcastle	3 150	3 141	-0.3
29	Melbourne - Sunshine Coast	2 726	2 663	-2.3
30	Brisbane - Gladstone	8 948	8 300	-7.2
31	Brisbane - Darwin	2 869	3 032	5.7
32	Perth - Port Hedland	5 074	4 820	-5.0
33	Ballina - Sydney	2 900	3 020	4.1
34	Coffs Harbour - Sydney	5 353	5 322	-0.6
35	Newman - Perth	4 524	4 408	-2.6
36	Darwin - Sydney	2 729	2 572	-5.8
37	Broome - Perth	3 335	3 199	-4.1
38	Launceston - Sydney	2 157	2 082	-3.5
39	Darwin - Melbourne	2 124	2 109	-0.7
40	Brisbane - Proserpine	1 930	1 942	0.6
41	Hamilton Island - Sydney	1 517	1 618	6.7
42	Kalgoorlie - Perth	3 353	3 353	0.0
43	Adelaide - Gold Coast	1 570	1 590	1.3
44	Albury - Sydney	6 405	6 009	-6.2
45	Brisbane - Emerald	5 745	5 486	-4.5
46	Brisbane - Hobart	1 420	1 417	-0.2
47	Melbourne - Mildura	4 750	4 749	0.0
48	Dubbo - Sydney	6 384	6 382	0.0
49	Adelaide - Port Lincoln	7 049	7 314	3.8
50	Port Macquarie - Sydney	4 659	4 623	-0.8

(continued)

Table 4: (continued): Aircraft trips ^(a)— annual activity

	City-Pair	YE Dec 2014	YE Dec 2015	% Change
51	Darwin - Perth	1 526	1 689	10.7
52	Sydney - Wagga Wagga	5 644	5 638	-0.1
53	Adelaide - Canberra	2 120	1 798	-15.2
54	Sydney - Townsville	1 340	1 368	2.1
55	Ayers Rock - Sydney	1 296	1 385	6.9
56	Brisbane - Moranbah	5 103	4 294	-15.9
57	Brisbane - Hamilton Island	1 088	1 212	11.4
58	Brisbane - Mount Isa	1 857	1 895	2.0
59	Armidale - Sydney	3 293	4 826	NA (b)
60	Brisbane - Bundaberg	2 848	3 089	8.5
61	Geraldton - Perth	3 537	3 224	-8.8
62	Hamilton Island - Melbourne	889	778	-12.5
63	Alice Springs - Darwin	..	1 353	NA (c)
64	Sydney - Tamworth	..	2 482	NA (d)
65	Adelaide - Alice Springs	..	863	NA (e)
66	Cairns - Townsville	..	2 556	NA (f)
	Total domestic network	633 961	634 593	0.1

(a) Includes RPT Cargo flights.

(b) Armidale - Sydney route included from May 2014, prior data not shown.

(c) Alice Springs - Darwin route included from April 2015, prior data not shown.

(d) Sydney - Tamworth route included from June 2015, prior data not shown.

(e) Adelaide - Alice Springs route included from April 2015, prior data not shown.

(f) Cairns - Townsville route included from July 2015, prior data not shown.

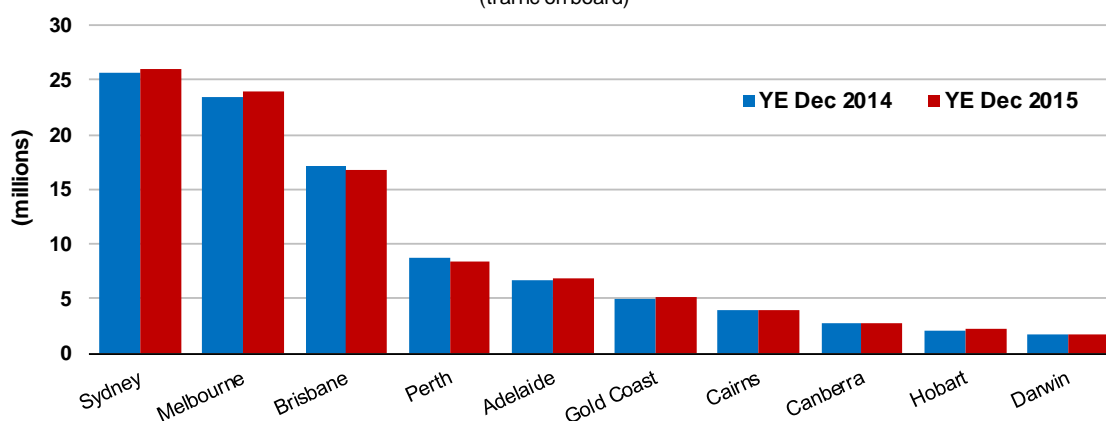
TOP TEN AIRPORTS – PASSENGER MOVEMENTS

Table 5: Top ten airports, RPT passenger movements (000s) — annual activity

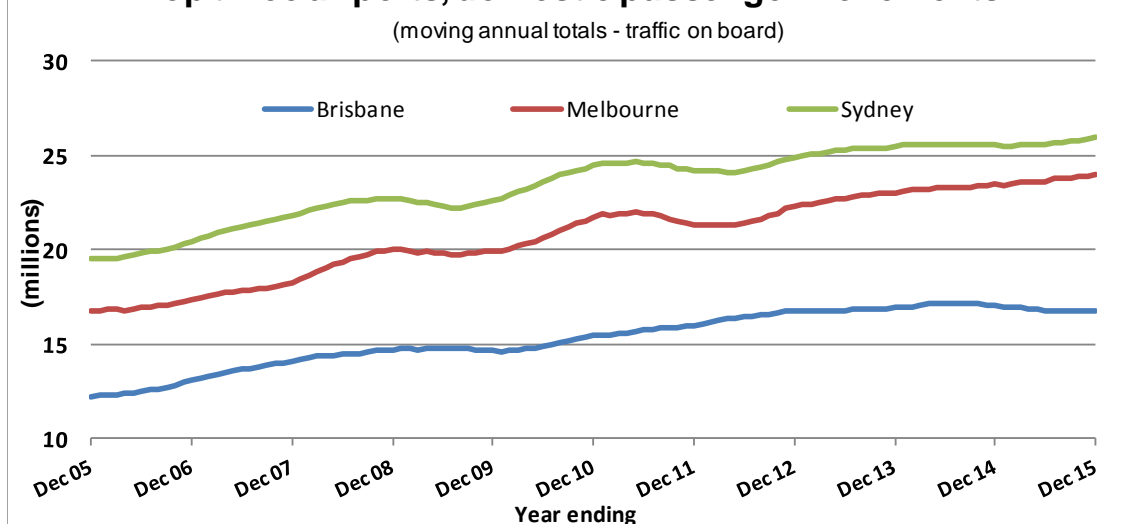
Airport	YE Dec 2014	YE Dec 2015	% Change	% of Total
1 Sydney	25 570.8	25 951.8	1.5	22.6
2 Melbourne	23 459.5	24 021.9	2.4	20.9
3 Brisbane	17 058.3	16 801.2	-1.5	14.6
4 Perth	8 759.2	8 401.6	-4.1	7.3
5 Adelaide	6 733.2	6 801.2	1.0	5.9
6 Gold Coast	4 962.9	5 084.4	2.4	4.4
7 Cairns	3 897.6	4 016.7	3.1	3.5
8 Canberra	2 812.9	2 796.8	-0.6	2.4
9 Hobart	2 128.0	2 238.5	5.2	1.9
10 Darwin	1 780.4	1 763.4	-1.0	1.5
Total top ten airports	97 162.8	97 877.5	0.7	85.1
Total domestic network	115 028.4	114 986.8	0.0	100.0

Note: Airport passenger movement numbers are the sum of passenger arrivals and departures at each airport.

Top ten airports, RPT passenger movements (traffic on board)



Top three airports, domestic passenger movements (moving annual totals - traffic on board)



BITRE have identified inaccuracies in domestic cargo statistics provided by airlines. Publication of these statistics has been suspended (from July 2015) until this matter is resolved.

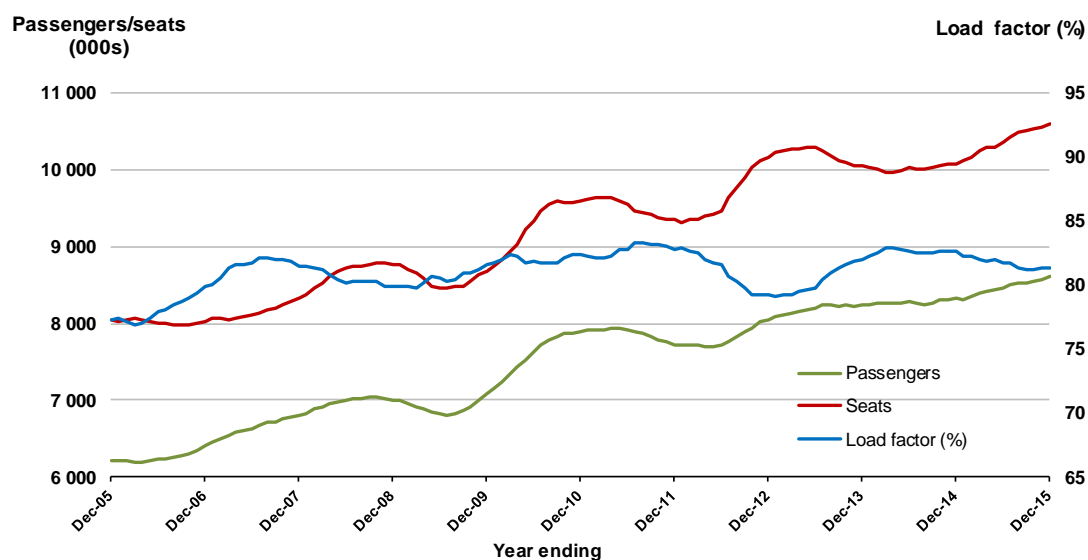
TOP TWENTY ROUTES

1. Melbourne - Sydney

Moving annual data

	YE Dec 2014	YE Dec 2015	% Change
Passengers carried (000s)	8 316.9	8 613.4	3.6
Seats (000s)	10 069.8	10 588.9	5.2
Load factor %	82.6	81.3	-1.2 *
Aircraft trips	55 996	60 072	7.3

* percentage point difference

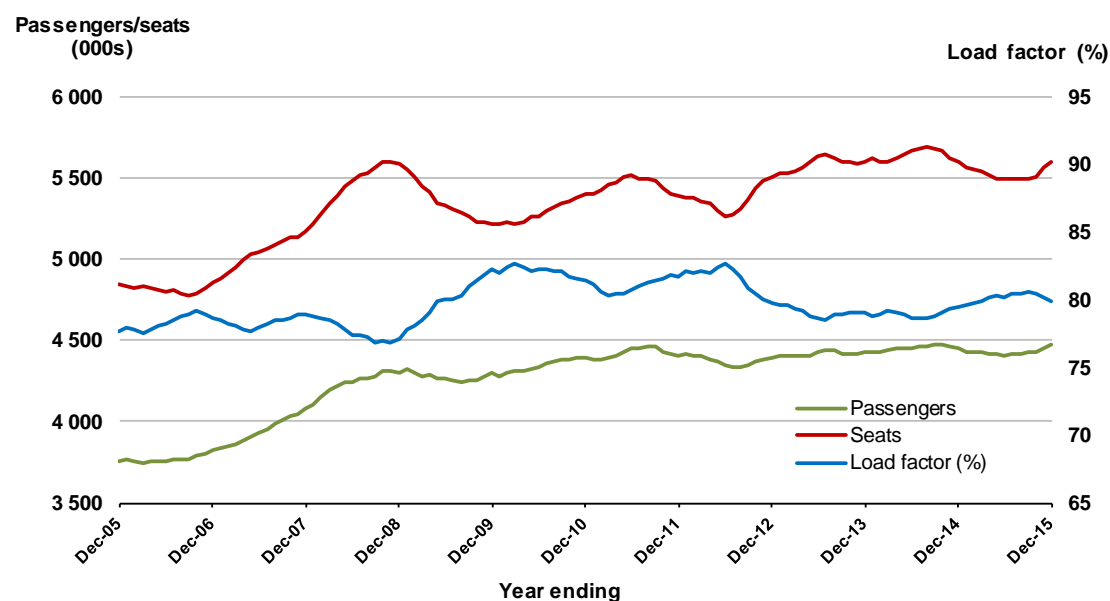


2. Brisbane - Sydney

Moving annual data

	YE Dec 2014	YE Dec 2015	% Change
Passengers carried (000s)	4 448.1	4 476.2	0.6
Seats (000s)	5 593.5	5 603.1	0.2
Load factor %	79.5	79.9	0.4 *
Aircraft trips	33 320	35 422	6.3

* percentage point difference

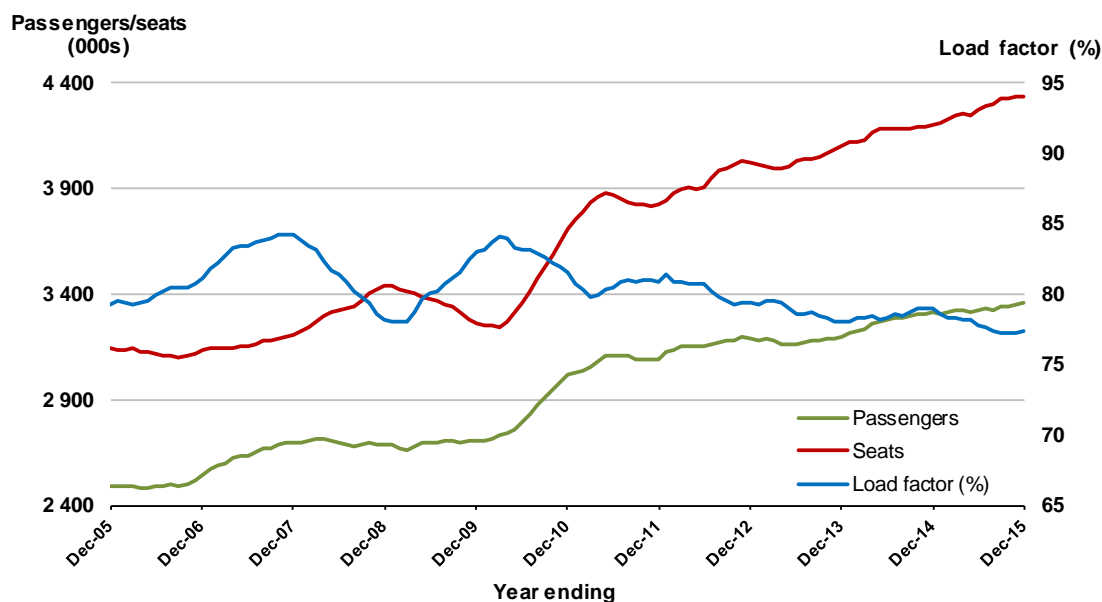


3. Brisbane - Melbourne

Moving annual data

	YE Dec 2014	YE Dec 2015	% Change
Passengers carried (000s)	3 317.1	3 353.8	1.1
Seats (000s)	4 200.8	4 333.3	3.2
Load factor %	79.0	77.4	-1.6*
Aircraft trips	25 132	26 100	3.9

* percentage point difference

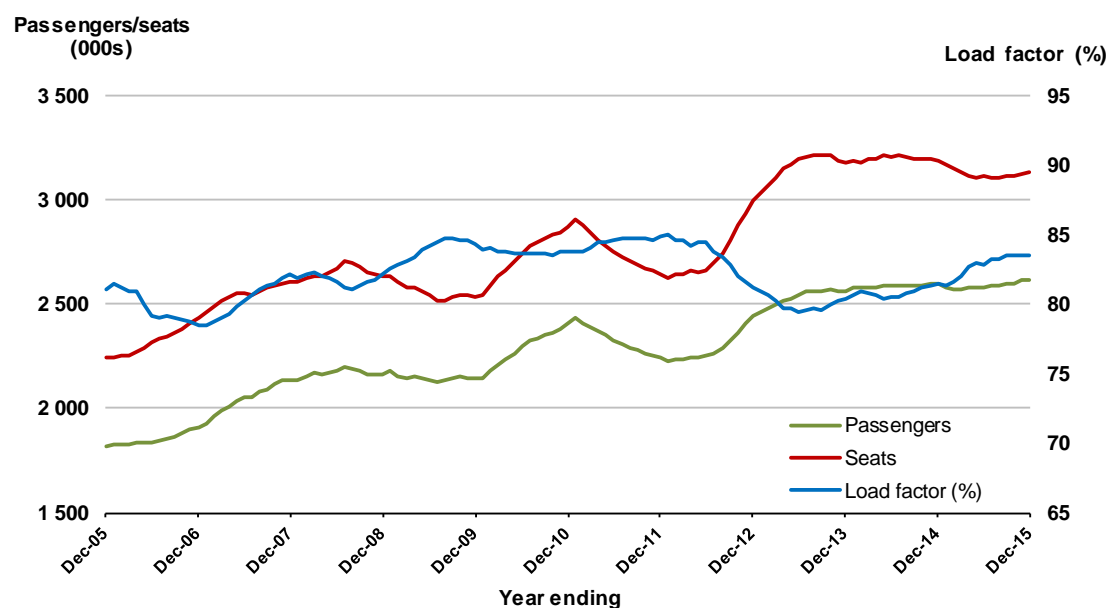


4. Gold Coast - Sydney

Moving annual data

	YE Dec 2014	YE Dec 2015	% Change
Passengers carried (000s)	2 595.2	2 618.3	0.9
Seats (000s)	3 185.7	3 133.7	-1.6*
Load factor %	81.4	83.6	2.1*
Aircraft trips	18 450	18 133	-1.7

* percentage point difference

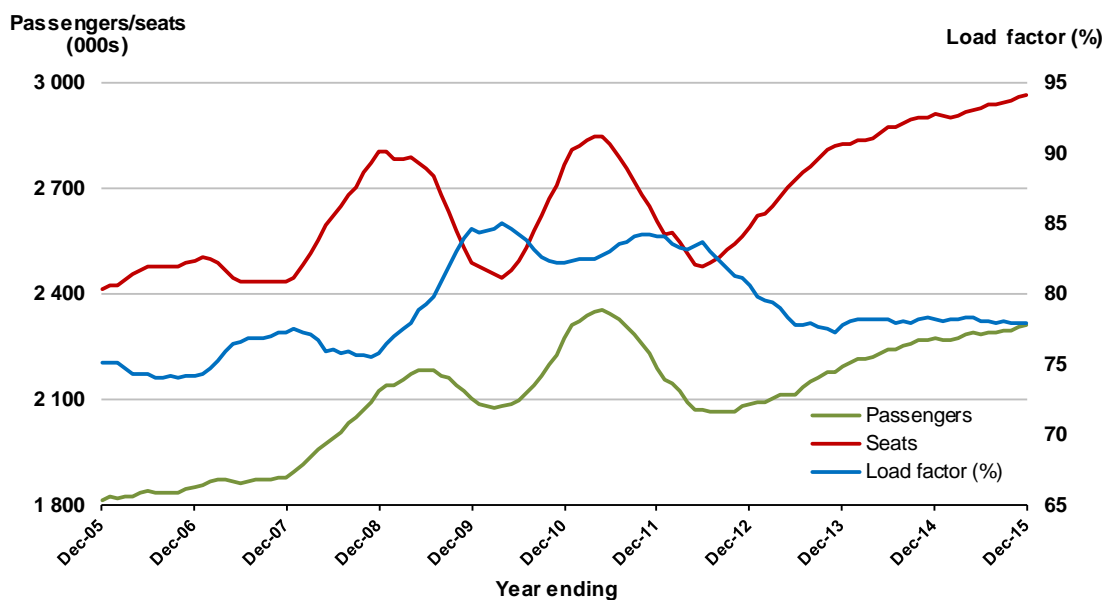


5. Adelaide - Melbourne

Moving annual data

	YE Dec 2014	YE Dec 2015	% Change
Passengers carried (000s)	2 272.0	2 311.0	1.7
Seats (000s)	2 907.8	2 965.6	2.0
Load factor %	78.1	77.9	-0.2 *
Aircraft trips	18 950	19 084	0.7

* percentage point difference

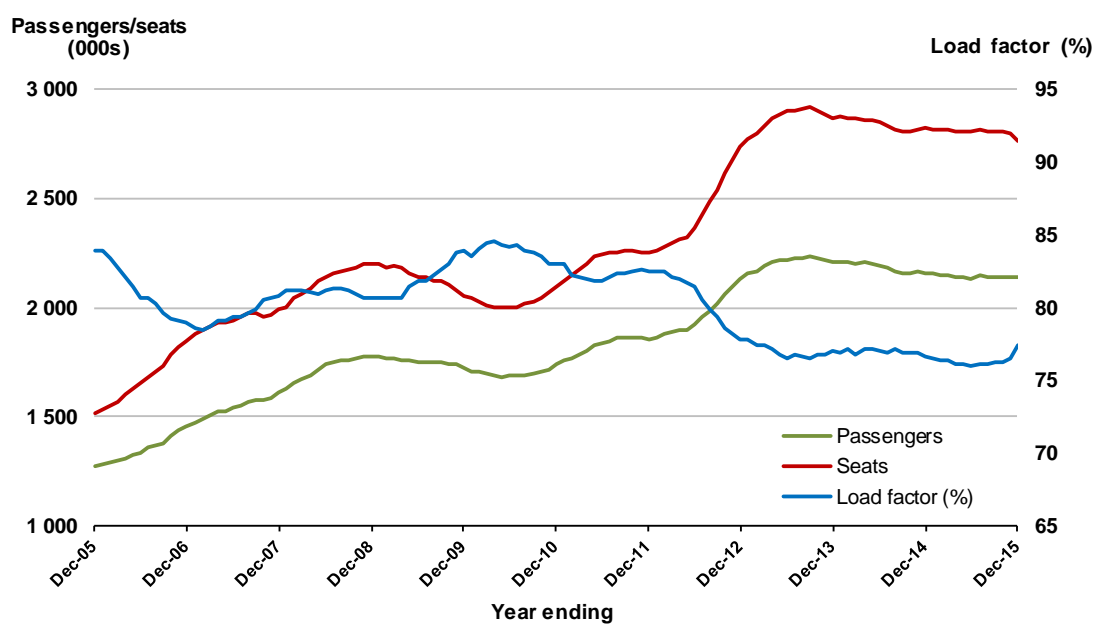


6. Melbourne - Perth

Moving annual data

	YE Dec 2014	YE Dec 2015	% Change
Passengers carried (000s)	2 160.7	2 138.9	-1.0
Seats (000s)	2 821.7	2 762.6	-2.1 *
Load factor %	76.6	77.4	0.8 *
Aircraft trips	12 478	12 235	-1.9

* percentage point difference

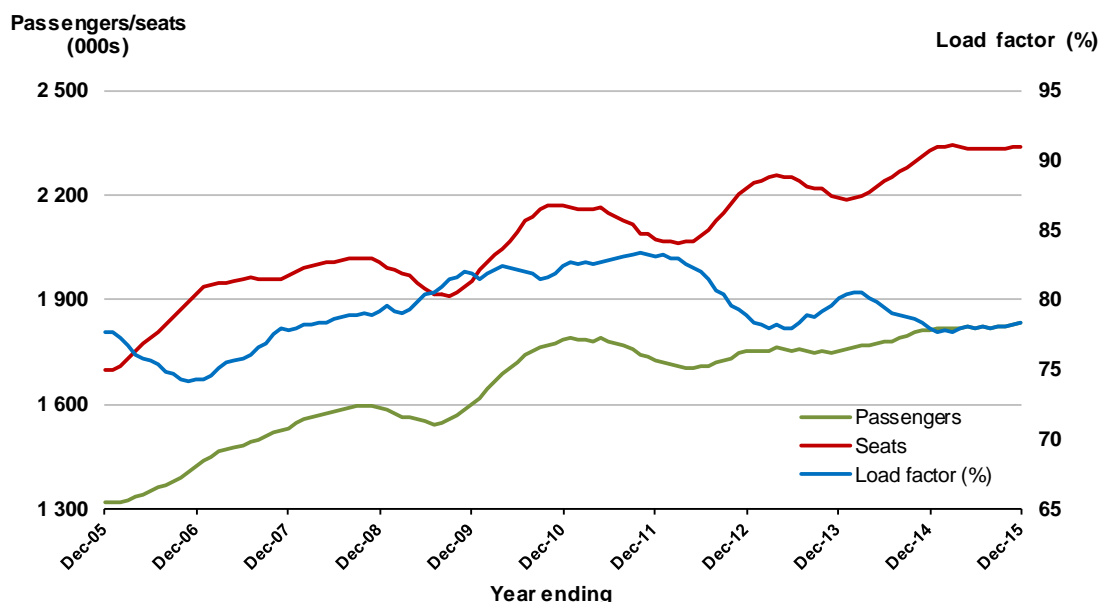


7. Adelaide - Sydney

Moving annual data

	YE Dec 2014	YE Dec 2015	% Change
Passengers carried (000s)	1 813.0	1 831.5	1.0
Seats (000s)	2 326.0	2 339.5	0.6
Load factor %	77.9	78.3	0.3*
Aircraft trips	14 054	14 304	1.8

* percentage point difference

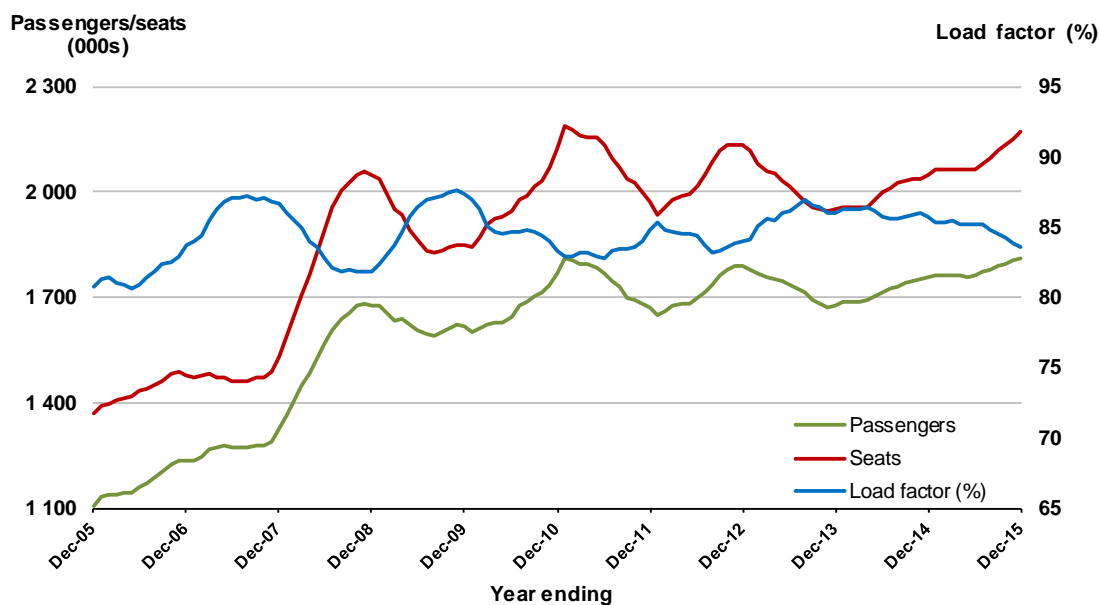


8. Gold Coast - Melbourne

Moving annual data

	YE Dec 2014	YE Dec 2015	% Change
Passengers carried (000s)	1 754.0	1 812.3	3.3
Seats (000s)	2 046.2	2 169.8	6.0
Load factor %	85.7	83.5	-2.2*
Aircraft trips	11 072	11 647	5.2

* percentage point difference

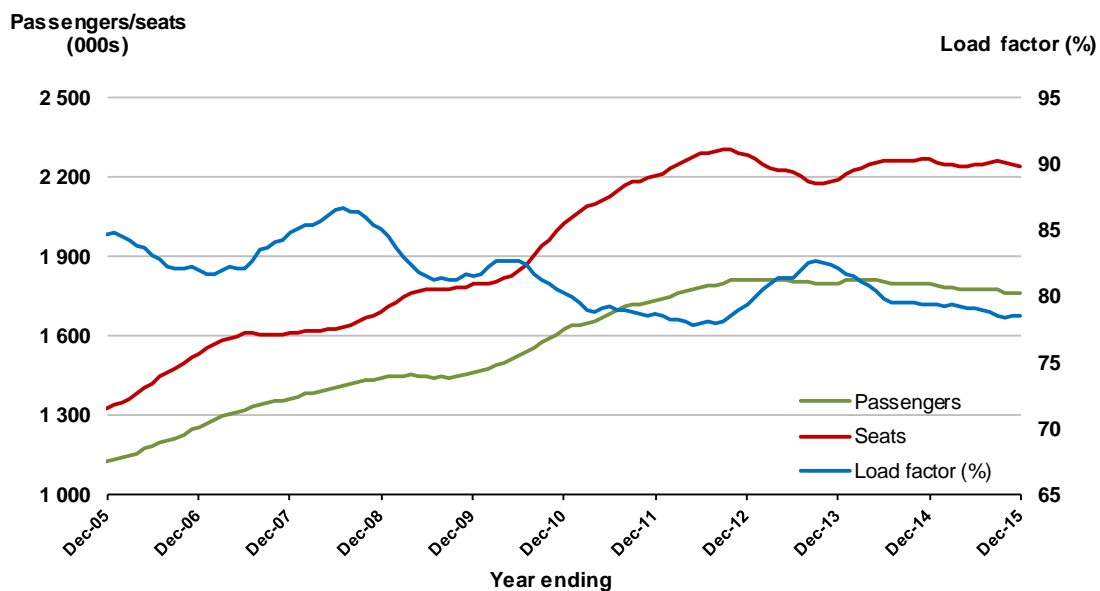


9. Perth - Sydney

Moving annual data

	YE Dec 2014	YE Dec 2015	% Change
Passengers carried (000s)	1 798.9	1 760.9	-2.1
Seats (000s)	2 267.5	2 240.6	-1.2
Load factor %	79.3	78.6	-0.7 *
Aircraft trips	8 933	9 147	2.4

* percentage point difference

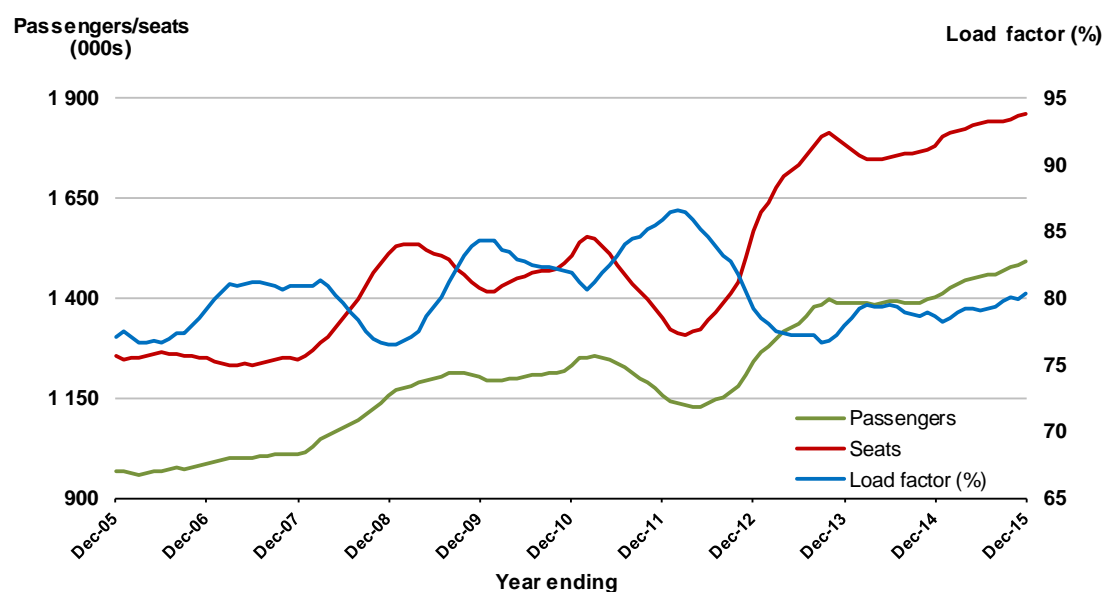


10. Hobart - Melbourne

Moving annual data

	YE Dec 2014	YE Dec 2015	% Change
Passengers carried (000s)	1 400.1	1 493.6	6.7
Seats (000s)	1 779.5	1 860.2	4.5 *
Load factor %	78.7	80.3	1.6 *
Aircraft trips	11 105	11 763	5.9

* percentage point difference

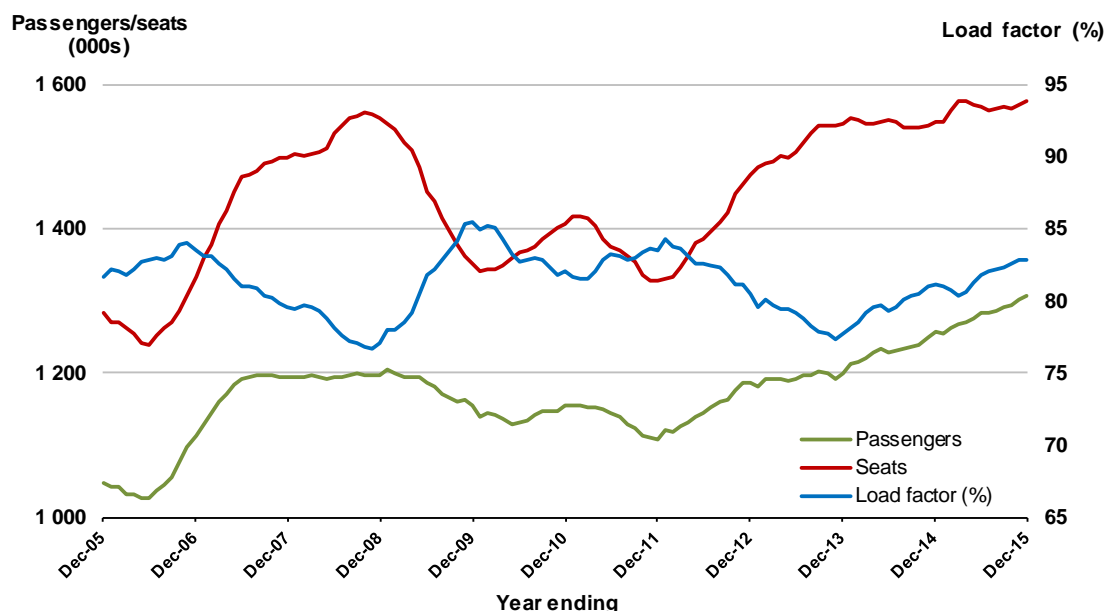


11. Brisbane - Cairns

Moving annual data

	YE Dec 2014	YE Dec 2015	% Change
Passengers carried (000s)	1 256.1	1 307.0	4.0
Seats (000s)	1 548.1	1 576.8	1.8
Load factor %	81.2	82.9	1.7*
Aircraft trips	9 761	9 959	2.0

* percentage point difference

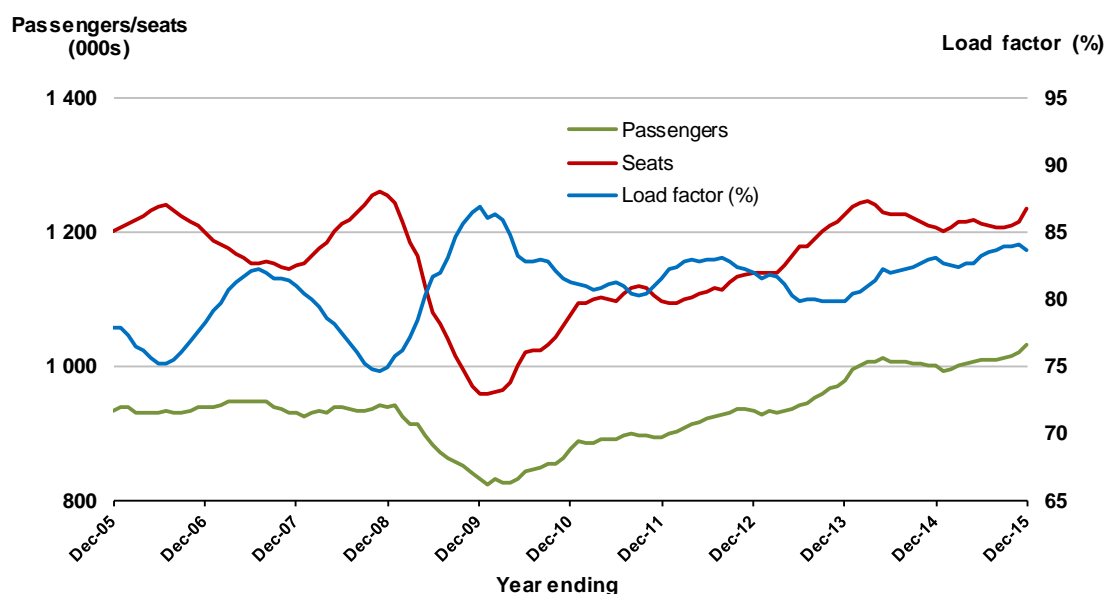


12. Cairns - Sydney

Moving annual data

	YE Dec 2014	YE Dec 2015	% Change
Passengers carried (000s)	1 000.9	1 032.6	3.2
Seats (000s)	1 205.6	1 235.4	2.5
Load factor %	83.0	83.6	0.6*
Aircraft trips	6 765	7 219	6.7

* percentage point difference

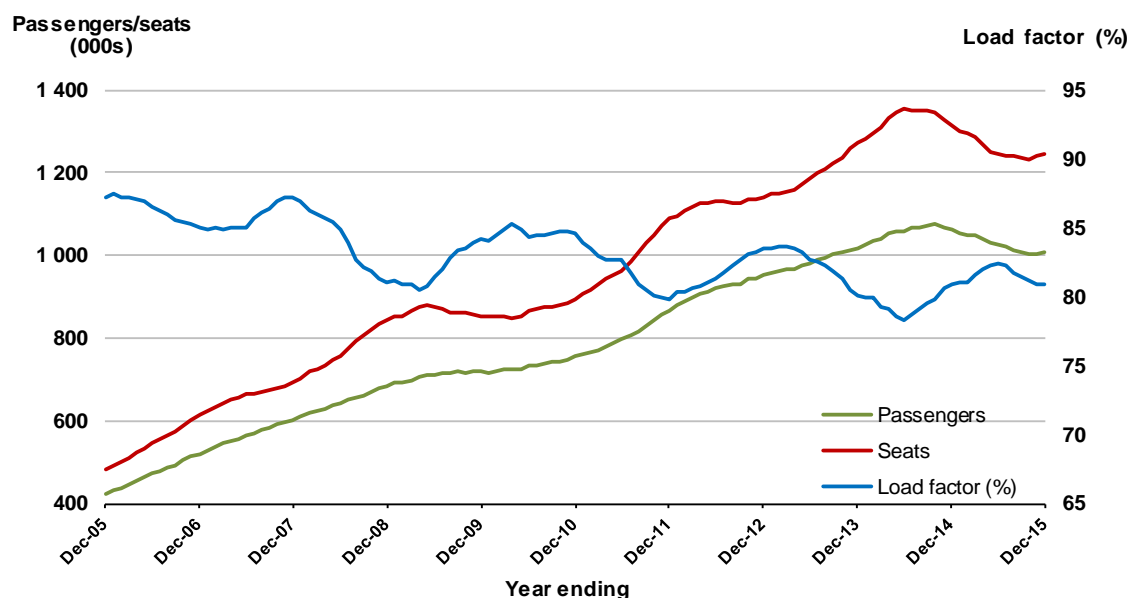


13. Brisbane - Perth

Moving annual data

	YE Dec 2014	YE Dec 2015	% Change
Passengers carried (000s)	1 062.0	1 007.8	-5.1
Seats (000s)	1 312.0	1 246.4	-5.0
Load factor %	80.9	80.9	-0.1*
Aircraft trips	5 472	5 667	3.6

* percentage point difference

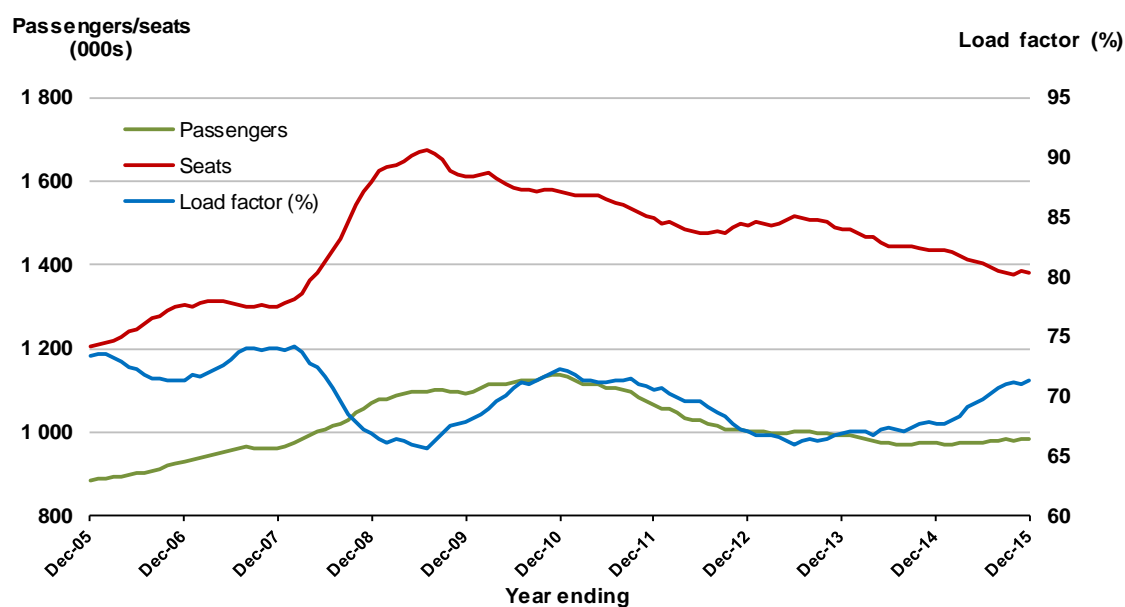


14. Canberra - Melbourne

Moving annual data

	YE Dec 2014	YE Dec 2015	% Change
Passengers carried (000s)	972.3	984.2	1.2
Seats (000s)	1 435.8	1 380.5	-3.9
Load factor %	67.7	71.3	3.6*
Aircraft trips	10 892	10 588	-2.8

* percentage point difference

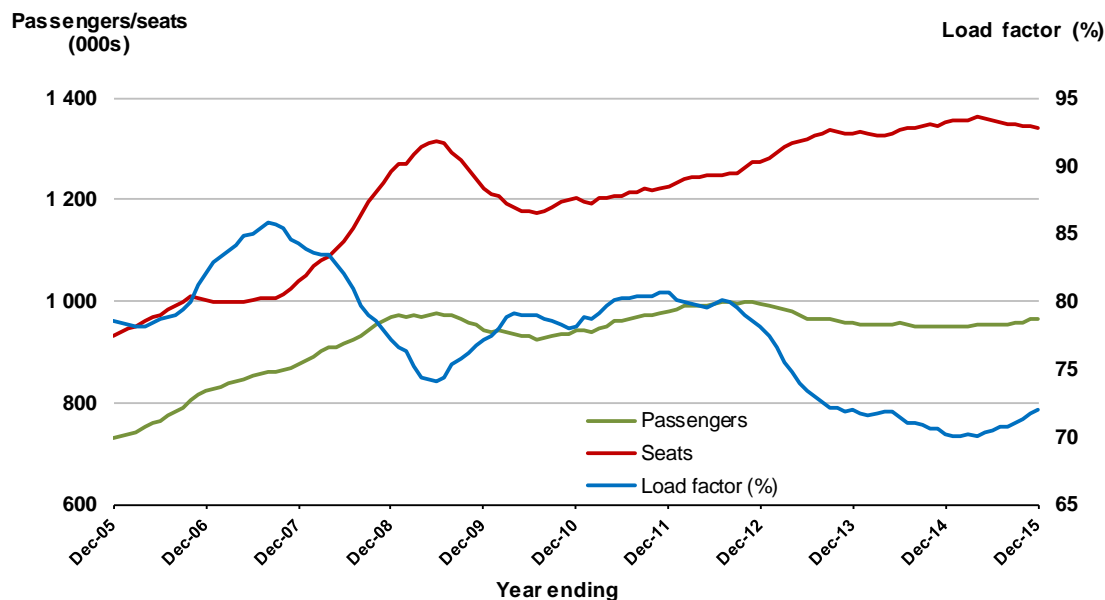


15. Brisbane - Townsville

Moving annual data

	YE Dec 2014	YE Dec 2015	% Change
Passengers carried (000s)	948.2	965.3	1.8
Seats (000s)	1 350.3	1 340.7	-0.7
Load factor %	70.2	72.0	1.8*
Aircraft trips	8 891	9 103	2.4

* percentage point difference

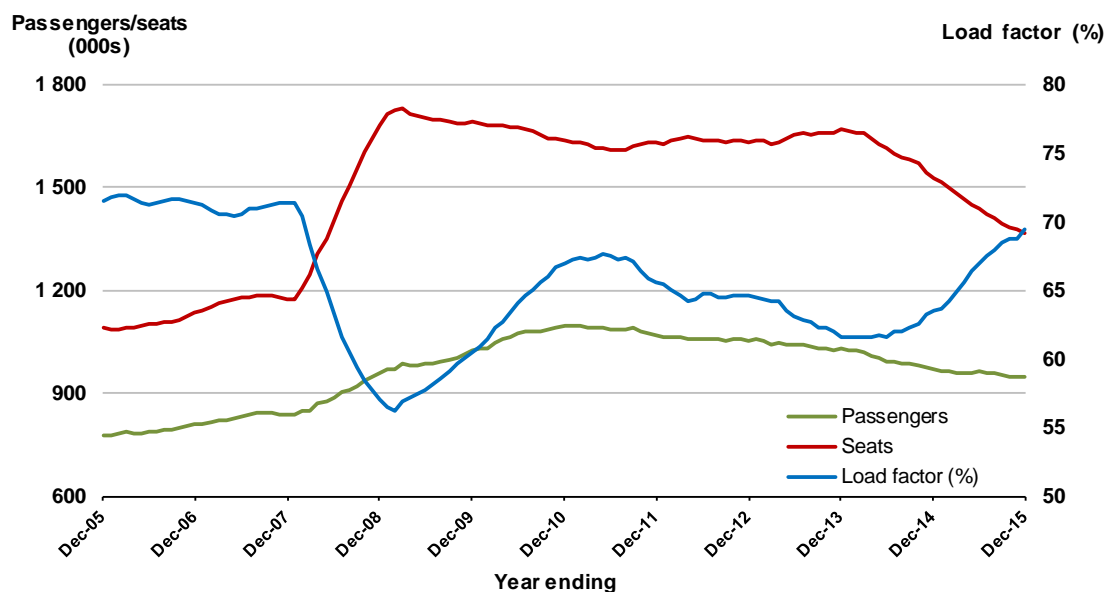


16. Canberra - Sydney

Moving annual data

	YE Dec 2014	YE Dec 2015	% Change
Passengers carried (000s)	968.2	946.8	-2.2
Seats (000s)	1 526.2	1 365.4	-10.5
Load factor %	63.5	69.4	5.9*
Aircraft trips	18 940	17 836	-5.8

* percentage point difference

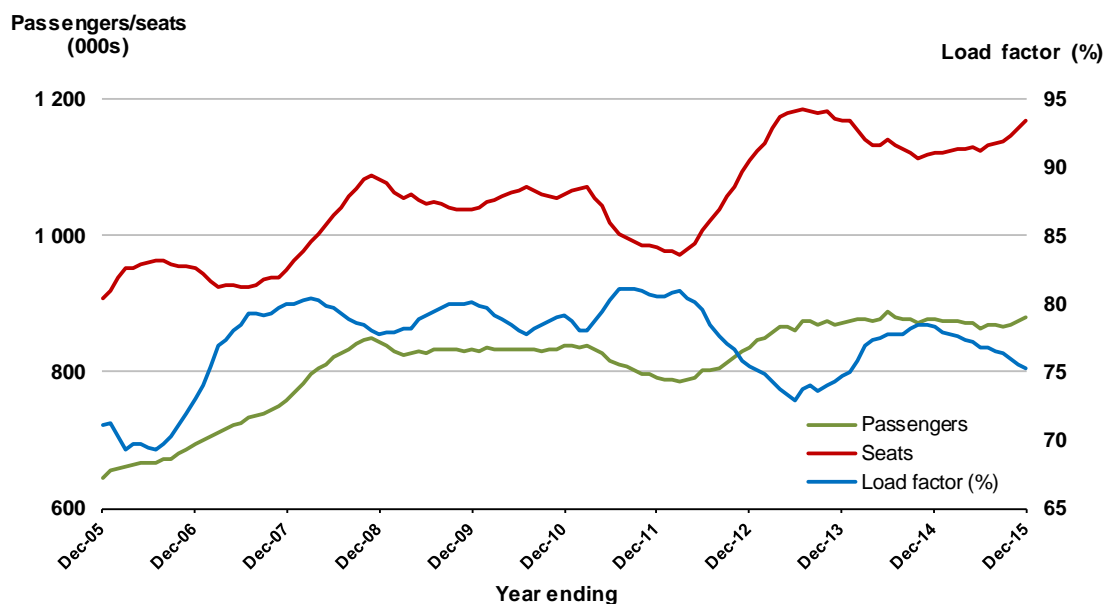


17. Launceston - Melbourne

Moving annual data

	YE Dec 2014	YE Dec 2015	% Change
Passengers carried (000s)	878.3	880.5	0.3
Seats (000s)	1 121.0	1 169.3	4.3
Load factor %	78.3	75.3	-3.0 *
Aircraft trips	9 210	8 909	-3.3

* percentage point difference

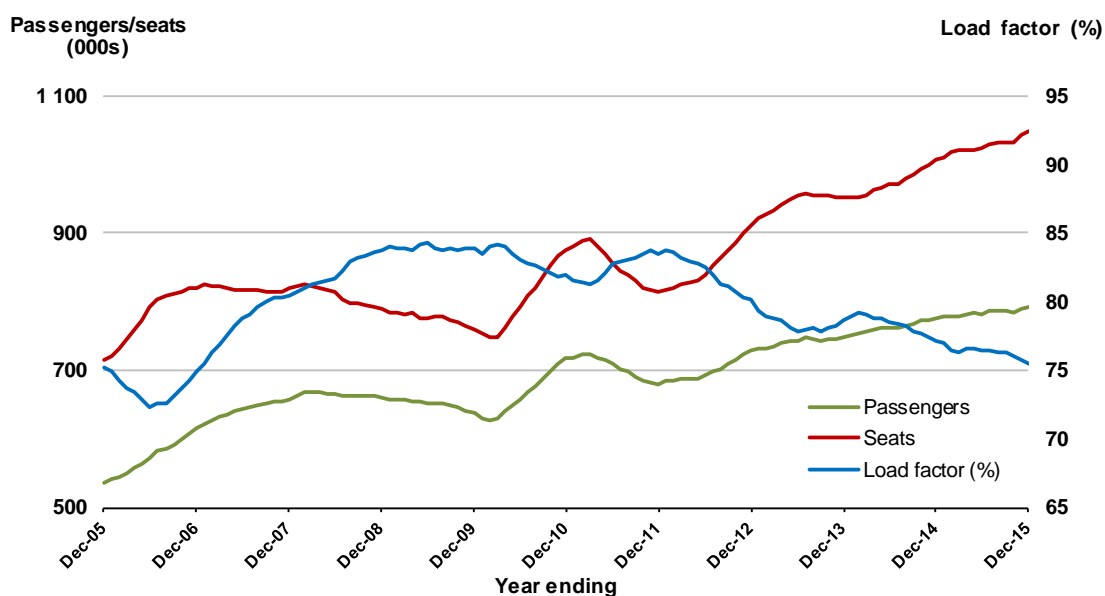


18. Adelaide - Brisbane

Moving annual data

	YE Dec 2014	YE Dec 2015	% Change
Passengers carried (000s)	776.7	792.8	2.1
Seats (000s)	1 006.7	1 049.7	4.3
Load factor %	77.2	75.5	-1.6 *
Aircraft trips	6 366	6 622	4.0

* percentage point difference

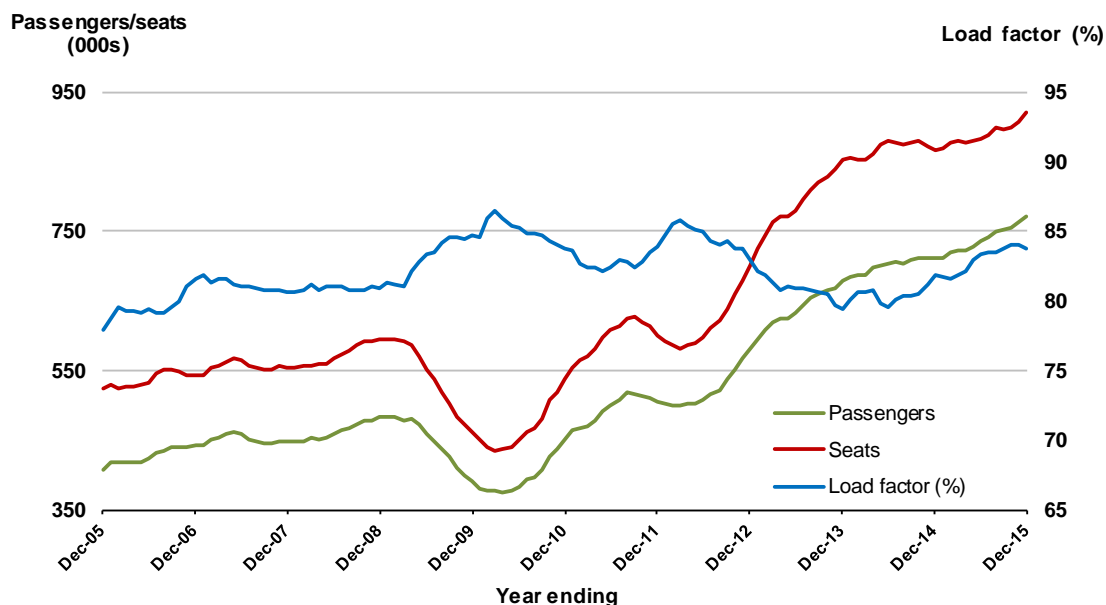


19. Cairns - Melbourne

Moving annual data

	YE Dec 2014	YE Dec 2015	% Change
Passengers carried (000s)	711.8	770.6	8.3
Seats (000s)	866.4	919.4	6.1
Load factor %	81.9	83.8	1.9 *
Aircraft trips	4 644	4 929	6.1

* percentage point difference

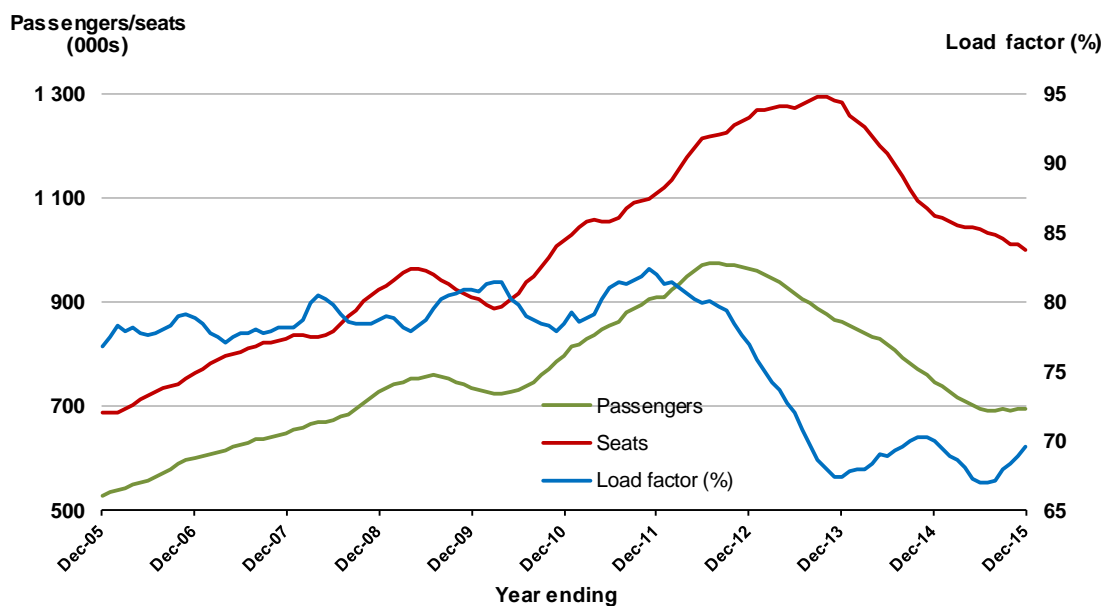


20. Brisbane - Mackay

Moving annual data

	YE Dec 2014	YE Dec 2015	% Change
Passengers carried (000s)	746.4	696.4	-6.7
Seats (000s)	1 066.3	1 000.9	-6.1
Load factor %	70.0	69.6	-0.4 *
Aircraft trips	8 082	7 926	-1.9

* percentage point difference



TOP FIFTY REGIONAL AIRPORTS

Table 7: Top fifty regional airports (000s) — passenger movements, annual

Airport	YE Dec 2014	YE Dec 2015	% Change
1 Cairns	3 897.6	4 016.7	3.1
2 Hobart	2 128.0	2 238.5	5.2
3 Darwin	1 780.4	1 763.4	-1.0
4 Townsville	1 553.3	1 544.2	-0.6
5 Launceston	1 289.7	1 286.0	-0.3
6 Williamtown	1 181.0	1 157.9	-2.0
7 Mackay	1 029.4	907.1	-11.9
8 Rockhampton	682.1	620.6	-9.0
9 Karratha	710.4	607.6	-14.5
10 Alice Springs	621.1	593.5	-4.4
11 Hamilton Island	486.5	486.9	0.1
12 Ballina	414.4	454.6	9.7
13 Port Hedland	521.0	418.9	-19.6
14 Gladstone	491.5	409.8	-16.6
15 Broome	400.9	389.9	-2.7
16 Coffs Harbour	361.4	356.5	-1.3
17 Newman	370.9	331.2	-10.7
18 Proserpine	264.3	319.1	20.7
19 Ayers Rock	275.3	316.8	15.1
20 Albury	250.0	241.9	-3.3
21 Mildura	239.3	238.9	-0.2
22 Kalgoorlie	231.8	228.9	-1.2
23 Port Macquarie	231.6	219.3	-5.3
24 Emerald	249.4	212.6	-14.8
25 Wagga Wagga	211.8	210.3	-0.7
26 Mount Isa	238.9	202.1	-15.4
27 Dubbo	211.7	198.1	-6.4
28 Port Lincoln	190.8	185.8	-2.6
29 Paraburdoo	193.3	167.1	-13.5
30 Hervey Bay	158.4	163.8	3.4
31 Bundaberg	158.8	159.0	0.1
32 Tamworth	156.4	158.2	1.1
33 Roma	250.6	149.1	-40.5
34 Devonport	135.8	144.4	6.3
35 Moranbah	174.4	138.8	-20.4
36 Armidale	123.5	125.7	1.7
37 Geraldton	130.5	119.2	-8.7
38 Kununurra	112.1	103.1	-8.0
39 Thursday Island	86.3	91.6	6.1
40 Learmonth	88.2	85.5	-3.1
41 Mount Gambier	77.5	77.6	0.2
42 Weipa	67.2	71.6	6.5
43 Gove	94.6	71.1	-24.9
44 Wellcamp	6.0	70.3	NA (a)
45 Griffith	67.9	67.3	-0.9
46 Whyalla	60.9	66.9	9.8
47 Olympic Dam	76.6	63.9	-16.6
48 Burnie	63.3	63.1	-0.3
49 Merimbula	57.5	60.5	5.3
50 Broken Hill	57.6	55.1	-4.3
Total top 50 regional airports	22 912.0	22 430.0	-2.1
Total regional airports	24 319.2	23 704.6	-2.5
Total domestic network	115 028.4	114 986.8	0.0

Note: Airport passenger movement numbers are the sum of passenger arrivals and departures at each airport.

(a) RPT service commenced from November 2014.

DOMESTIC CHARTER ACTIVITY

Table 8: Charter passengers carried and aircraft trips - annual activity

	YE Dec 2014	YE Dec 2015	% Change
Total domestic charter passengers	2 661 587	2 626 355	-1.3
Total domestic charter aircraft trips	55 392	51 557	-6.9

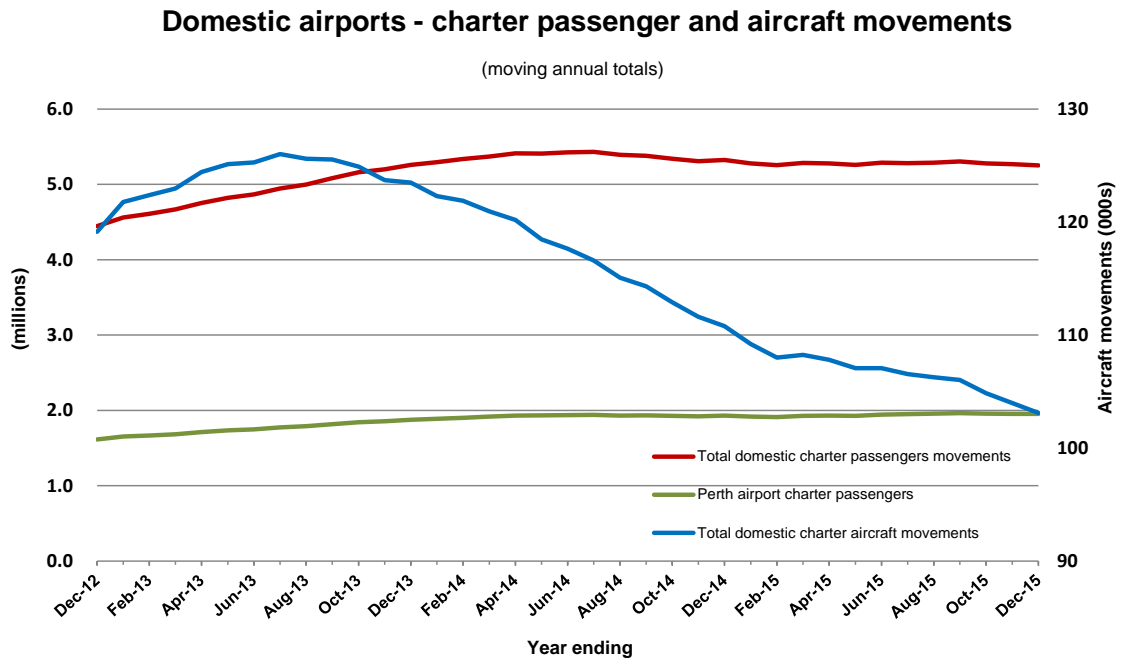
Note: Helicopter, joyflights and sightseeing charter flights not included.

Table 9: Domestic airports - charter activity - annual activity

	YE Dec 2014	YE Dec 2015	% Change
Total domestic charter passenger movements	5 323 174	5 252 710	-1.3
Total domestic charter aircraft movements	110 784	103 114	-6.9
Perth airport charter passenger movements	1 930 550	1 954 611	1.2
Perth airport charter aircraft movements	37 009	33 958	-8.2

Note: Helicopter, joyflights and sightseeing charter flights not included.

Charter passenger and aircraft movement numbers are the sum of arrivals and departures at each airport.



Note: data prior July 2011 not available

DEFINITIONS

Aircraft Trips	The number of flight stages. A return flight counts as two aircraft trips.
Airport Movements	Airport movements (passenger and cargo) are measured once on arrival and once on departure. Each domestic trip generates two movements at airports. For example, a trip from Melbourne to Sydney will be counted twice, as a passenger departure at Melbourne and as a passenger arrival at Sydney. At the national level, the sum of all domestic airport traffic will therefore be equal to twice the number of trips undertaken.
Available Seat Kilometres (ASKs)	Calculated by multiplying the number of seats available on each flight stage, by the distance in kilometres between the ports. The distances used are Great Circle Distances.
City-Pair	The ports shown make up the city-pair route. Passenger movements shown for a city pair reflect total traffic in both directions.
Flight Stage	The operation of an aircraft from take-off to landing.
Load Factor	The total revenue passenger kilometres performed as a percentage of the total available seat kilometres.
Passengers Carried	Revenue passengers carried.
Regular Public Transport Services (RPT)	All air service operations in which aircraft are available for the transport of members of public and are conducted in accordance with fixed schedules. It does not include charter or other non-scheduled operations.
Revenue Passengers	All passengers paying any fare. Frequent flyer redemption travellers are regarded as revenue passengers.
Revenue Passenger Kilometres (RPKs)	Calculated by multiplying the number of revenue passengers travelling on each flight stage, by the distance in kilometres between the ports. The distances used are Great Circle Distances.
Traffic on board by stages	The total of all traffic (revenue passengers) on each flight stage between two directly connected airports.
..	Data not included
NA	Not applicable