



Australian Government

Department of Infrastructure and Regional Development

Bureau of Infrastructure, Transport and Regional Economics

STATISTICAL REPORT



Aviation

Domestic aviation activity
Annual 2013

© Commonwealth of Australia 2014

ISSN: 1832 - 1968

Ownership of intellectual property rights in this publication

Unless otherwise noted, copyright (and any other intellectual property rights, if any) in this publication is owned by the Commonwealth of Australia (referred to below as the Commonwealth).

Disclaimer

The material contained in this publication is made available on the understanding that the Commonwealth is not providing professional advice, and that users exercise their own skill and care with respect to its use, and seek independent advice if necessary.

The Commonwealth makes no representations or warranties as to the contents or accuracy of the information contained in this publication. To the extent permitted by law, the Commonwealth disclaims liability to any person or organisation in respect of anything done, or omitted to be done, in reliance upon information contained in this publication.

Creative Commons licence

With the exception of (a) the Coat of Arms; and (b) the Department of Infrastructure's photos and graphics, copyright in this publication is licensed under a Creative Commons Attribution 3.0 Australia Licence.

Creative Commons Attribution 3.0 Australia Licence is a standard form licence agreement that allows you to copy, communicate and adapt this publication provided that you attribute the work to the Commonwealth and abide by the other licence terms. A summary of the licence terms is available from <http://creativecommons.org/licenses/by/3.0/au/deed.en>. The full licence terms are available from <http://creativecommons.org/licenses/by/3.0/au/legalcode>.

Use of the Coat of Arms

The Department of the Prime Minister and Cabinet sets the terms under which the Coat of Arms is used. Please refer to the Department's Commonwealth Coat of Arms and Government branding web page <http://www.dpmc.gov.au/guidelines/index.cfm#brand> and, in particular, the Guidelines on the use of the Commonwealth Coat of Arms publication.

An appropriate citation for this report is:

Bureau of Infrastructure, Transport and Regional Economics (BITRE), 2014, Domestic airline activity, Statistical Report, BITRE, Canberra ACT.

Contact us

This publication is available in PDF format. All other rights are reserved, including in relation to any Departmental logos or trade marks which may exist. For enquiries regarding the licence and any use of this publication, please contact:

Bureau of Infrastructure, Transport and Regional Economics (BITRE)
Department of Infrastructure and Transport
GPO Box 501, Canberra ACT 2601, Australia
Telephone: (international) +61 2 6274 7210
Fax: (international) +61 2 6274 6855
Email: bitre@infrastructure.gov.au
Website: www.bitre.gov.au

Inquiries

Should you require additional information about the statistics contained in this publication:

Nebojsa Pavlovic

Telephone (02) 6274 6817 or Facsimile (02) 6274 7727

Electronic mail: AVSTATS@infrastructure.gov.au

Nebojsa.Pavlovic@infrastructure.gov.au

Web site: <http://www.bitre.gov.au/statistics/aviation/domestic.aspx>

FOREWORD

This report provides an overview of domestic (including charter) commercial aviation activity in Australia for the year ending December 2013.

The data cover revenue passengers carried by Australian-registered operators of scheduled regular public transport services over Australian flight stages and fixed-wing charter operators. These estimates include passengers carried between domestic airports on international flights operated by these carriers. The passengers carried refer to traffic on board by stages.

Estimates of passengers and aircraft movements for charter aviation are included in this publication, where BITRE confidentiality standards are met.

Individual routes shown are restricted to those with an average exceeding 8 000 passengers per month where two or more airlines operate in competition. For the year ending December 2013 there were 64 such routes: 58 routes met these criteria for all twelve months of the year while six routes did so for a period shorter than one year.

Information on the total network for the year ending December 2013 and on the Regular Public Transport (RPT) network for the year ending December 2013 is presented on page 2.

Detailed information on the 64 individual routes can be found in the RPT summary pages 3–10 of this publication.

The top ten airports in terms of RPT passenger movements are shown on page 11.

Data on domestic RPT cargo movements at the top five cargo airports are provided on page 12. The table includes cargo carried on passenger flights operated by the Qantas group (including Jetstar), Virgin Australia, Air North, Skippers and Skytrans as well as the cargo carried by dedicated freighter aircraft operated by Qantas Freight and Toll Priority.

The long-term trends for the top twenty competitive RPT routes are presented graphically on pages 13–22.

Domestic RPT passenger movements at the top 50 regional airports are presented on pages 23.

Tables providing estimates of domestic charter aviation activity are shown on page 24. BITRE confidentiality standards restrict publication of detailed airport-level estimates for all Australian airports, with the exception of Perth Airport.

A list of definitions can be found on page 25.

This report was prepared by the Aviation Statistics Section of the Bureau of Infrastructure, Transport and Regional Economics with data provided by airlines.

Estimates are included where data were not available and data presented in this publication may contain revisions to previously published data.

Where figures have been rounded, discrepancies may occur between sums of component items and totals, and in percentage changes which are derived from figures prior to rounding.

CONTENTS

Highlights	1
RPT network	2
Top competitive routes	3
Top ten airports – passenger movements.....	11
Top five airports – cargo movements.....	12
Top twenty routes	13
1. Melbourne – Sydney	13
2. Brisbane – Sydney.....	13
3. Brisbane – Melbourne	14
4. Gold Coast – Sydney.....	14
5. Melbourne – Perth	15
6. Adelaide – Melbourne	15
7. Perth – Sydney	16
8. Adelaide – Sydney.....	16
9. Gold Coast – Melbourne	17
10. Hobart – Melbourne	17
11. Brisbane – Cairns	18
12. Canberra – Sydney.....	18
13. Brisbane – Perth	19
14. Canberra – Melbourne.....	19
15. Cairns – Sydney.....	20
16. Brisbane – Townsville	20
17. Launceston – Melbourne.....	21
18. Brisbane – Mackay	21
19. Adelaide – Brisbane.....	22
20. Karratha – Perth	22
Top fifty regional airports	23
Domestic charter activity.....	24
Definitions	25

This page is intentionally left blank.

HIGHLIGHTS

There were 60.11 million passengers carried on Australian domestic commercial aviation (including charter operations) for the year ending December 2013, an increase of 2.4 per cent on the year ending December 2012. For the year ending December 2013 there were 702 321 aircraft trips, an increase of 1.8 per cent compared to the previous year.

57.55 million passengers were carried on RPT flights in the year ending December 2013, an increase of 1.8 per cent on the year ending December 2012.

RPT revenue passenger kilometres (RPKs) performed were 67.74 billion for the year, up 2.0 per cent on the year ending December 2012. Capacity, measured by available seat kilometres (ASKs), increased 3.4 per cent compared with the year ending December 2012, to a total of 88.55 billion.

With RPT capacity increasing at a faster rate than passenger traffic, the industry wide load factor (RPKs/ASKs) decreased from 77.5 per cent for the year ending December 2012 to 76.5 per cent for the year ending December 2013. Seats utilisation on individual routes decreased on 42 of the 58 RPT routes for which data is available in both years.

For the year ending December 2013, Melbourne – Sydney remained Australia's busiest RPT route with 8.24 million passengers, an increase of 2.4 per cent compared with the year ending December 2012. It was followed by Brisbane – Sydney with 4.43 million passengers (up 0.8 per cent) and Brisbane – Melbourne with 3.20 million passengers (up 0.3 per cent).

The greatest percentage increase in RPT passenger numbers, compared to the year ending December 2012, was on the Launceston – Sydney route (up 22.4 per cent). There were large increases on a number of other routes, including Melbourne – Sunshine Coast (up 20.8 per cent), Newman – Perth (up 20.7 per cent), Cairns – Melbourne (up 16.5 per cent), Coffs Harbour – Sydney (up 14.9 per cent) and Brisbane – Gladstone (up 13.0 per cent).

RPT routes with traffic decreases in the year ending December 2013 compared with the year ending December 2012, included Ayers Rock (Uluru) – Sydney (down 14.1 per cent), Brisbane – Mackay (down 10.5 per cent), Kalgoorlie – Perth (down 9.9 per cent), Cairns – Townsville (down 9.1 per cent) and Perth – Port Hedland (down 8.2 per cent).

For the year ending December 2013, Sydney remained Australia's busiest domestic airport with 25.47 million passengers movements, followed by Melbourne with 23.05 million passenger movements and Brisbane with 16.94 million passenger movements.

For the year ending December 2013, the number of domestic aviation passengers travelling through regional airports was 24.81 million, 1.7 per cent higher than for the year ending December 2012. Out of the top 50 regional airports, the strongest growth was at Roma airport, up 60.9 per cent on the year ending December 2012, while the strongest fall was at Paraburdoo airport, down 22.9 per cent on the year ending December 2012.

Total cargo movements at Australian airports on domestic RPT flights were 415.3 thousand tonnes in the year ending December 2013, a decrease of 7.9 per cent compared to the previous year. For the year ending December 2013, Sydney was the busiest airport in terms of cargo movements (112.7 thousand tonnes, down 7.9 per cent compared to the year ending December 2012), followed by Melbourne (109.2 thousand tonnes, down 5.7 per cent) and Brisbane (64.5 thousand tonnes, down 9.6 per cent).

Fixed-wing charter operators carried 2.56 million passengers for the year ending December 2013. More than one third of all charter passengers in Australia took flights either to or from Perth Airport.

TOTAL NETWORK

Summary of annual commercial aviation activity

	YE Dec 2012	YE Dec 2013	% Change
Total passengers carried (millions)	58.73	60.11	2.4
Aircraft trips (000s)	690.0	702.3	1.8

Note: Regular Public Transport and charter aviation activity

Helicopter and leisure charter flights not included

RPT NETWORK

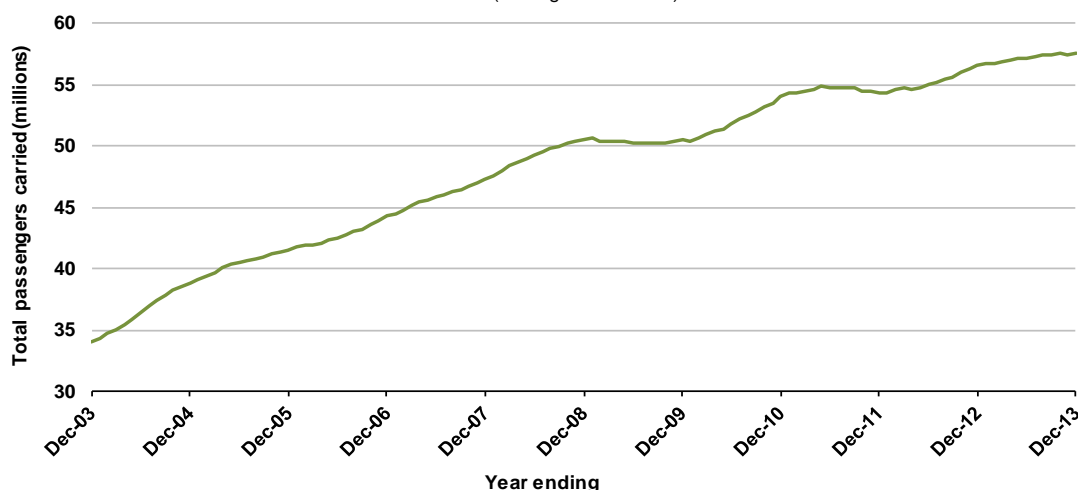
Summary of annual RPT activity

	YE Dec 2012	YE Dec 2013	% Change
Total passengers carried (millions)	56.54	57.55	1.8
Revenue passenger kilometres (billions)	66.39	67.74	2.0
Available seats (millions)	74.82	77.44	3.5
Available seat kilometres (billions)	85.66	88.55	3.4
Load factors %	77.5	76.5	-1.0 *
Aircraft trips (000s)	633.9	644.6	1.7

* percentage point difference

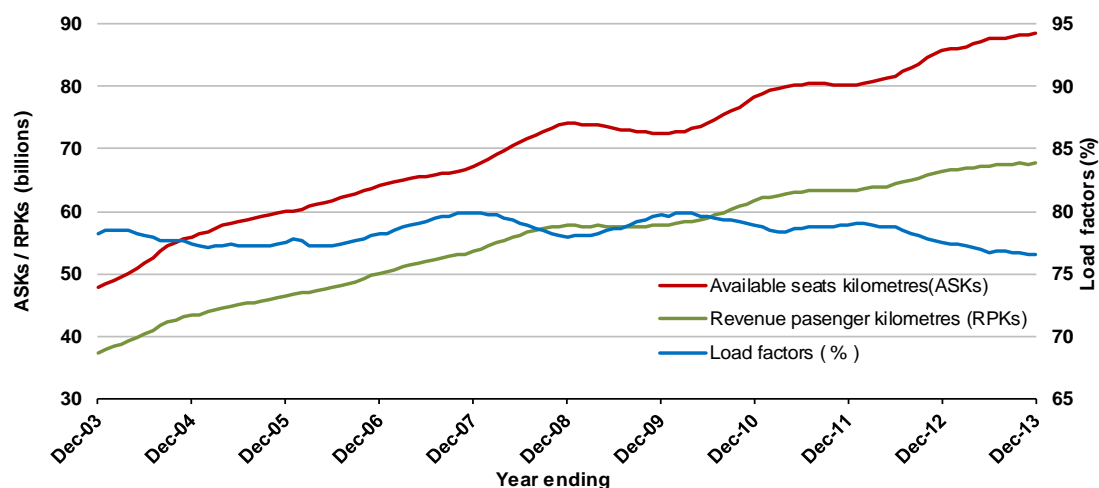
Domestic RPT passenger traffic

(moving annual totals)



RPT Network utilisation

(moving annual totals)



TOP COMPETITIVE ROUTES

Table 1: Passengers carried (000s) — annual activity

	City-Pair	YE Dec 2012	YE Dec 2013	% Change
1	Melbourne - Sydney	8 047.7	8 244.0	2.4
2	Brisbane - Sydney	4 390.7	4 425.1	0.8
3	Brisbane - Melbourne	3 189.6	3 198.8	0.3
4	Gold Coast - Sydney	2 440.6	2 559.1	4.9
5	Melbourne - Perth	2 130.7	2 209.7	3.7
6	Adelaide - Melbourne	2 085.2	2 195.1	5.3
7	Perth - Sydney	1 811.4	1 800.4	-0.6
8	Adelaide - Sydney	1 751.2	1 751.9	0.0
9	Gold Coast - Melbourne	1 790.7	1 675.4	-6.4
10	Hobart - Melbourne	1 239.1	1 388.8	12.1
11	Brisbane - Cairns	1 187.0	1 199.6	1.1
12	Canberra - Sydney	1 053.2	1 027.6	-2.4
13	Brisbane - Perth	951.5	1 017.7	7.0
14	Canberra - Melbourne	1 003.1	994.5	-0.9
15	Cairns - Sydney	933.9	978.6	4.8
16	Brisbane - Townsville	994.2	957.5	-3.7
17	Launceston - Melbourne	835.8	872.8	4.4
18	Brisbane - Mackay	964.9	863.5	-10.5
19	Adelaide - Brisbane	729.2	747.5	2.5
20	Karratha - Perth	762.5	722.1	-5.3
21	Cairns - Melbourne	581.7	677.6	16.5
22	Brisbane - Rockhampton	644.4	636.1	-1.3
23	Adelaide - Perth	621.7	624.3	0.4
24	Brisbane - Newcastle	591.8	583.7	-1.4
25	Brisbane - Canberra	605.4	583.0	-3.7
26	Hobart - Sydney	477.9	517.2	8.2
27	Brisbane - Gladstone	411.6	465.1	13.0
28	Sunshine Coast - Sydney	463.3	464.6	0.3
29	Perth - Port Hedland	494.4	454.1	-8.2
30	Newman - Perth	372.2	449.2	20.7
31	Melbourne - Newcastle	425.2	437.5	2.9
32	Melbourne - Sunshine Coast	324.6	392.2	20.8
33	Brisbane - Darwin	367.0	375.9	2.4
34	Coffs Harbour - Sydney	320.2	368.0	14.9
35	Darwin - Sydney	263.9	357.0	NA (a)
36	Broome - Perth	324.3	319.1	-1.6
37	Ballina - Sydney	280.7	315.8	12.5
38	Brisbane - Emerald	264.3	283.4	NA (b)
39	Darwin - Melbourne	283.2	276.8	-2.3
40	Launceston - Sydney	222.7	272.6	22.4
41	Albury - Sydney	247.3	234.6	-5.1
42	Brisbane - Proserpine	232.2	234.4	1.0
43	Kalgoorlie - Perth	241.0	217.1	-9.9
44	Adelaide - Gold Coast	181.6	205.1	12.9
45	Hamilton Island - Sydney	200.6	200.9	0.1
46	Melbourne - Mildura	200.4	199.0	-0.7
47	Port Macquarie - Sydney	197.9	191.5	-3.2
48	Adelaide - Port Lincoln	196.0	189.6	-3.2
49	Sydney - Townsville	189.6	182.9	-3.5
50	Dubbo - Sydney	174.3	182.4	4.7

(continued)

Table 1: (continued): Passengers carried (000s) — annual activity

	City-Pair	YE Dec 2012	YE Dec 2013	% Change
51	Sydney - Wagga Wagga	181.0	182.4	0.8
52	Adelaide - Canberra	174.9	182.2	4.1
53	Darwin - Perth	161.9	170.6	5.4
54	Brisbane - Mount Isa	59.9	169.3	NA (c)
55	Cairns - Townsville	179.8	163.4	-9.1
56	Brisbane - Hamilton Island	153.2	154.5	0.9
57	Ayers Rock - Sydney	153.5	131.9	-14.1
58	Geraldton - Perth	139.5	130.4	-6.6
59	Brisbane - Moranbah	..	125.9	NA (d)
60	Brisbane - Bundaberg	..	109.6	NA (e)
61	Alice Springs - Melbourne	..	98.4	NA (f)
62	Alice Springs - Sydney	..	91.4	NA (g)
63	Hamilton Island - Melbourne	..	52.8	NA (h)
64	Brisbane - Hobart	..	45.1	NA (i)
	Total domestic network	56 539.6	57 550.4	1.8

(a) Darwin - Sydney route included from May 2012, prior data not shown.

(b) Brisbane - Emerald route included from February 2012, prior data not shown.

(c) Brisbane - Mount Isa route included from September 2012, prior data not shown.

(d) Brisbane - Moranbah route included from May 2013, prior data not shown.

(e) Brisbane - Bundaberg route included from May 2013, prior data not shown.

(f) Alice Springs - Melbourne route included from May 2013, prior data not shown.

(g) Alice Springs - Sydney route included from June 2013, prior data not shown.

(h) Hamilton Island - Melbourne route included from August 2013, prior data not shown.

(i) Brisbane - Hobart route included from October 2013, prior data not shown.

Table 2: Available seats (000s) — annual activity

	City-Pair	YE Dec 2012	YE Dec 2013	% Change
1	Melbourne - Sydney	10 153.9	10 054.9	-1.0
2	Brisbane - Sydney	5 502.1	5 595.8	1.7
3	Brisbane - Melbourne	4 017.5	4 101.5	2.1
4	Gold Coast - Sydney	3 000.8	3 181.2	6.0
5	Melbourne - Perth	2 739.2	2 871.0	4.8
6	Adelaide - Melbourne	2 589.4	2 824.9	9.1
7	Perth - Sydney	2 283.6	2 193.4	-4.0
8	Adelaide - Sydney	2 220.3	2 188.8	-1.4
9	Gold Coast - Melbourne	2 130.8	1 948.3	-8.6
10	Hobart - Melbourne	1 565.6	1 783.3	13.9
11	Brisbane - Cairns	1 474.8	1 545.1	4.8
12	Canberra - Sydney	1 629.4	1 669.7	2.5
13	Brisbane - Perth	1 140.3	1 270.6	11.4
14	Canberra - Melbourne	1 495.1	1 486.3	-0.6
15	Cairns - Sydney	1 138.4	1 225.4	7.6
16	Brisbane - Townsville	1 273.1	1 330.1	4.5
17	Launceston - Melbourne	1 108.9	1 168.9	5.4
18	Brisbane - Mackay	1 254.5	1 281.3	2.1
19	Adelaide - Brisbane	910.2	950.8	4.5
20	Karratha - Perth	1 217.7	1 226.4	0.7
21	Cairns - Melbourne	701.0	853.0	21.7
22	Brisbane - Rockhampton	871.1	917.8	5.4
23	Adelaide - Perth	763.2	777.5	1.9
24	Brisbane - Newcastle	719.0	768.8	6.9
25	Brisbane - Canberra	827.7	832.6	0.6
26	Hobart - Sydney	599.2	650.6	8.6
27	Brisbane - Gladstone	278.5	326.0	17.1
28	Sunshine Coast - Sydney	566.3	568.8	0.5
29	Perth - Port Hedland	757.3	777.0	2.6
30	Newman - Perth	587.7	754.1	28.3
31	Melbourne - Newcastle	554.3	565.3	2.0
32	Melbourne - Sunshine Coast	375.3	477.9	27.3
33	Brisbane - Darwin	450.2	454.8	1.0
34	Coffs Harbour - Sydney	432.3	499.9	15.6
35	Darwin - Sydney	344.7	464.2	NA (a)
36	Broome - Perth	427.6	443.0	3.6
37	Ballina - Sydney	353.2	418.1	18.4
38	Brisbane - Emerald	422.6	505.8	NA (b)
39	Darwin - Melbourne	367.7	346.7	-5.7
40	Launceston - Sydney	292.2	374.1	28.0
41	Albury - Sydney	372.1	333.2	-10.5
42	Brisbane - Proserpine	285.5	309.5	8.4
43	Kalgoorlie - Perth	404.2	458.9	13.5
44	Adelaide - Gold Coast	222.7	259.9	16.7
45	Hamilton Island - Sydney	254.0	246.6	-2.9
46	Melbourne - Mildura	292.4	288.8	-1.2
47	Port Macquarie - Sydney	279.7	267.2	-4.5
48	Adelaide - Port Lincoln	331.3	326.5	-1.4
49	Sydney - Townsville	228.3	227.9	-0.2
50	Dubbo - Sydney	256.8	291.2	13.4

(continued)

Table 2: (continued): Available seats (000s) — annual activity

	City-Pair	YE Dec 2012	YE Dec 2013	% Change
51	Sydney - Wagga Wagga	271.5	278.6	2.6
52	Adelaide - Canberra	251.2	274.6	9.3
53	Darwin - Perth	226.2	223.9	-1.0
54	Brisbane - Mount Isa	92.1	279.1	NA (c)
55	Cairns - Townsville	304.5	302.4	-0.7
56	Brisbane - Hamilton Island	196.7	201.9	2.6
57	Ayers Rock - Sydney	202.2	172.7	-14.6
58	Geraldton - Perth	221.7	222.2	0.2
59	Brisbane - Moranbah	..	254.0	NA (d)
60	Brisbane - Bundaberg	..	147.0	NA (e)
61	Alice Springs - Melbourne	..	132.0	NA (f)
62	Alice Springs - Sydney	..	115.5	NA (g)
63	Hamilton Island - Melbourne	..	71.6	NA (h)
64	Brisbane - Hobart	..	55.4	NA (i)
	Total domestic network	74 816.4	77 442.0	3.5

(a) Darwin - Sydney route included from May 2012, prior data not shown.

(b) Brisbane - Emerald route included from February 2012, prior data not shown.

(c) Brisbane - Mount Isa route included from September 2012, prior data not shown.

(d) Brisbane - Moranbah route included from May 2013, prior data not shown.

(e) Brisbane - Bundaberg route included from May 2013, prior data not shown.

(f) Alice Springs - Melbourne route included from May 2013, prior data not shown.

(g) Alice Springs - Sydney route included from June 2013, prior data not shown.

(h) Hamilton Island - Melbourne route included from August 2013, prior data not shown.

(i) Brisbane - Hobart route included from October 2013, prior data not shown.

Table 3: Load factors (%) — annual activity

	City-Pair	YE Dec 2012	YE Dec 2013	% Change
1	Melbourne - Sydney	79.2	82.0	2.8
2	Brisbane - Sydney	79.8	79.1	-0.7
3	Brisbane - Melbourne	79.4	78.0	-1.4
4	Gold Coast - Sydney	81.2	80.4	-0.7
5	Melbourne - Perth	77.8	77.0	-0.8
6	Adelaide - Melbourne	80.5	77.7	-2.8
7	Perth - Sydney	79.3	82.1	2.8
8	Adelaide - Sydney	78.9	80.0	1.2
9	Gold Coast - Melbourne	84.0	86.0	2.0
10	Hobart - Melbourne	79.1	77.9	-1.3
11	Brisbane - Cairns	80.5	77.7	-2.8
12	Canberra - Sydney	64.6	61.6	-3.0
13	Brisbane - Perth	83.4	80.1	-3.4
14	Canberra - Melbourne	67.1	66.9	-0.2
15	Cairns - Sydney	81.9	79.9	-2.1
16	Brisbane - Townsville	78.1	72.0	-6.1
17	Launceston - Melbourne	75.4	74.7	-0.7
18	Brisbane - Mackay	76.9	67.4	-9.5
19	Adelaide - Brisbane	80.1	78.6	-1.5
20	Karratha - Perth	62.6	58.9	-3.7
21	Cairns - Melbourne	83.0	79.4	-3.5
22	Brisbane - Rockhampton	74.0	69.3	-4.7
23	Adelaide - Perth	81.5	80.3	-1.2
24	Brisbane - Newcastle	82.3	75.9	-6.4
25	Brisbane - Canberra	73.1	70.0	-3.1
26	Hobart - Sydney	79.8	79.5	-0.3
27	Brisbane - Gladstone	67.4	62.8	-4.7
28	Sunshine Coast - Sydney	81.8	81.7	-0.1
29	Perth - Port Hedland	65.3	58.4	-6.8
30	Newman - Perth	63.3	59.6	-3.8
31	Melbourne - Newcastle	76.7	77.4	0.7
32	Melbourne - Sunshine Coast	86.5	82.1	-4.4
33	Brisbane - Darwin	82.3	82.6	NA
34	Coffs Harbour - Sydney	74.1	73.6	-0.4
35	Darwin - Sydney	76.5	76.9	NA (a)
36	Broome - Perth	75.8	72.1	-3.8
37	Ballina - Sydney	79.5	75.5	-3.9
38	Brisbane - Emerald	62.6	56.0	NA (b)
39	Darwin - Melbourne	77.4	79.8	2.4
40	Launceston - Sydney	76.2	72.9	-3.3
41	Albury - Sydney	66.5	70.4	4.0
42	Brisbane - Proserpine	81.3	75.7	-5.6
43	Kalgoorlie - Perth	59.6	47.3	-12.3
44	Adelaide - Gold Coast	81.6	78.9	-2.6
45	Hamilton Island - Sydney	79.0	81.5	2.5
46	Melbourne - Mildura	68.5	68.9	0.4
47	Port Macquarie - Sydney	70.8	71.7	0.9
48	Adelaide - Port Lincoln	59.1	58.1	-1.1
49	Sydney - Townsville	83.0	80.3	-2.7
50	Dubbo - Sydney	67.9	62.7	-5.2

(continued)

Table 3: (continued): Load factors (%) — annual activity

	City-Pair	YE Dec 2012	YE Dec 2013	% Change
51	Sydney - Wagga Wagga	66.7	65.5	-1.2
52	Adelaide - Canberra	69.6	66.3	-3.3
53	Darwin - Perth	71.6	76.2	4.6
54	Brisbane - Mount Isa	65.1	60.7	NA (c)
55	Cairns - Townsville	59.0	54.1	-5.0
56	Brisbane - Hamilton Island	77.7	76.5	-1.2
57	Ayers Rock - Sydney	75.9	76.3	0.4
58	Geraldton - Perth	63.0	58.7	-4.3
59	Brisbane - Moranbah	..	49.6	NA (d)
60	Brisbane - Bundaberg	..	74.6	NA (e)
61	Alice Springs - Melbourne	..	74.5	NA (f)
62	Alice Springs - Sydney	..	79.1	NA (g)
63	Hamilton Island - Melbourne	..	73.7	NA (h)
64	Brisbane - Hobart	..	81.4	NA (i)
	Total domestic network	77.5	76.5	-1.0

(a) Darwin - Sydney route included from May 2012, prior data not shown.

(b) Brisbane - Emerald route included from February 2012, prior data not shown.

(c) Brisbane - Mount Isa route included from September 2012, prior data not shown.

(d) Brisbane - Moranbah route included from May 2013, prior data not shown.

(e) Brisbane - Bundaberg route included from May 2013, prior data not shown.

(f) Alice Springs - Melbourne route included from May 2013, prior data not shown.

(g) Alice Springs - Sydney route included from June 2013, prior data not shown.

(h) Hamilton Island - Melbourne route included from August 2013, prior data not shown.

(i) Brisbane - Hobart route included from October 2013, prior data not shown.

Table 4: Aircraft trips — annual activity

	City-Pair	YE Dec 2012	YE Dec 2013	% Change
1	Melbourne - Sydney	55 173	54 673	-0.9
2	Brisbane - Sydney	31 980	32 352	1.2
3	Brisbane - Melbourne	24 376	24 672	1.2
4	Gold Coast - Sydney	17 060	18 384	7.8
5	Melbourne - Perth	13 075	12 642	-3.3
6	Adelaide - Melbourne	17 590	18 598	5.7
7	Perth - Sydney	9 204	8 638	-6.1
8	Adelaide - Sydney	13 213	13 120	-0.7
9	Gold Coast - Melbourne	11 793	10 552	-10.5
10	Hobart - Melbourne	9 376	10 798	15.2
11	Brisbane - Cairns	9 813	9 925	1.1
12	Canberra - Sydney	18 664	19 309	3.5
13	Brisbane - Perth	5 302	5 655	6.7
14	Canberra - Melbourne	11 061	10 918	-1.3
15	Cairns - Sydney	6 357	6 786	6.7
16	Brisbane - Townsville	8 671	8 696	0.3
17	Launceston - Melbourne	8 476	9 263	9.3
18	Brisbane - Mackay	9 381	9 227	-1.6
19	Adelaide - Brisbane	5 802	5 905	1.8
20	Karratha - Perth	8 215	8 204	-0.1
21	Cairns - Melbourne	3 881	4 595	18.4
22	Brisbane - Rockhampton	9 714	10 216	5.2
23	Adelaide - Perth	5 334	5 383	0.9
24	Brisbane - Newcastle	5 871	6 199	5.6
25	Brisbane - Canberra	6 423	6 238	-2.9
26	Hobart - Sydney	3 901	4 037	3.5
27	Brisbane - Gladstone	7 857	8 785	11.8
28	Sunshine Coast - Sydney	3 228	3 198	-0.9
29	Perth - Port Hedland	5 215	5 308	1.8
30	Newman - Perth	4 078	4 946	21.3
31	Melbourne - Newcastle	3 171	3 218	1.5
32	Melbourne - Sunshine Coast	2 152	2 681	24.6
33	Brisbane - Darwin	2 257	2 272	0.7
34	Coffs Harbour - Sydney	4 831	5 442	12.6
35	Darwin - Sydney	1 918	2 672	NA (a)
36	Broome - Perth	3 432	3 528	2.8
37	Ballina - Sydney	2 673	2 874	7.5
38	Brisbane - Emerald	5 510	6 572	NA (b)
39	Darwin - Melbourne	1 974	2 020	2.3
40	Launceston - Sydney	1 743	2 177	24.9
41	Albury - Sydney	6 629	6 596	-0.5
42	Brisbane - Proserpine	1 863	1 911	2.6
43	Kalgoorlie - Perth	2 906	3 448	18.7
44	Adelaide - Gold Coast	1 453	1 582	8.9
45	Hamilton Island - Sydney	1 452	1 395	-3.9
46	Melbourne - Mildura	4 819	4 757	-1.3
47	Port Macquarie - Sydney	4 567	4 586	0.4
48	Adelaide - Port Lincoln	7 050	7 007	-0.6
49	Sydney - Townsville	1 448	1 397	-3.5
50	Dubbo - Sydney	6 398	6 380	-0.3

(continued)

Table 4: (continued): Aircraft trips — annual activity

	City-Pair	YE Dec 2012	YE Dec 2013	% Change
51	Sydney - Wagga Wagga	5 345	5 570	4.2
52	Adelaide - Canberra	1 888	2 213	17.2
53	Darwin - Perth	1 453	1 404	-3.4
54	Brisbane - Mount Isa	654	1 962	NA (c)
55	Cairns - Townsville	5 098	5 216	2.3
56	Brisbane - Hamilton Island	1 159	1 149	-0.9
57	Ayers Rock - Sydney	1 458	1 277	-12.4
58	Geraldton - Perth	3 444	3 597	4.4
59	Brisbane - Moranbah	..	3 607	NA (d)
60	Brisbane - Bundaberg	..	2 400	NA (e)
61	Alice Springs - Melbourne	..	831	NA (f)
62	Alice Springs - Sydney	..	700	NA (g)
63	Hamilton Island - Melbourne	..	404	NA (h)
64	Brisbane - Hobart	..	317	NA (i)
	Total domestic network	633 947	644 634	1.7

(a) Darwin - Sydney route included from May 2012, prior data not shown.

(b) Brisbane - Emerald route included from February 2012, prior data not shown.

(c) Brisbane - Mount Isa route included from September 2012, prior data not shown.

(d) Brisbane - Moranbah route included from May 2013, prior data not shown.

(e) Brisbane - Bundaberg route included from May 2013, prior data not shown.

(f) Alice Springs - Melbourne route included from May 2013, prior data not shown.

(g) Alice Springs - Sydney route included from June 2013, prior data not shown.

(h) Hamilton Island - Melbourne route included from August 2013, prior data not shown.

(i) Brisbane - Hobart route included from October 2013, prior data not shown.

TOP TEN AIRPORTS – PASSENGER MOVEMENTS

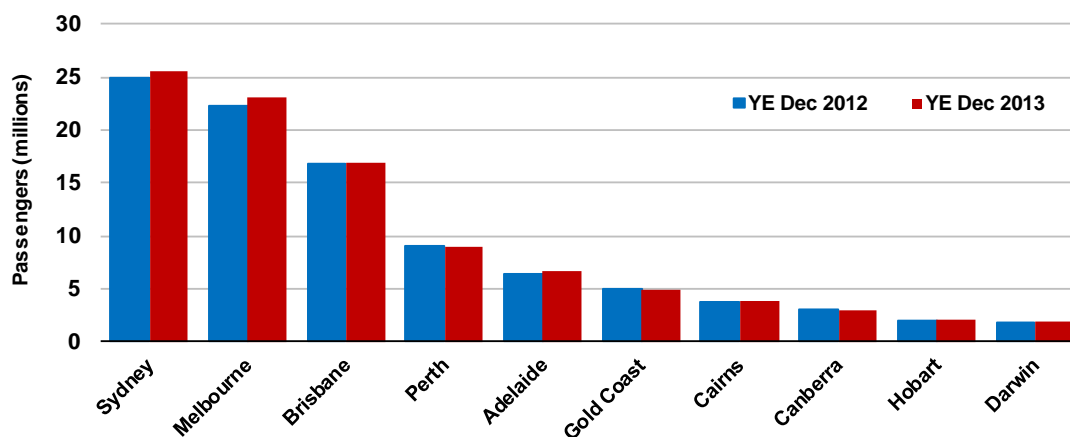
Table 5: Top ten airports, RPT passenger movements (000s) — annual activity

Airport	YE Dec 2012	YE Dec 2013	% Change	% of Total
1 Sydney	24 929.8	25 473.6	2.2	22.1
2 Melbourne	22 295.7	23 054.4	3.4	20.0
3 Brisbane	16 743.6	16 941.9	1.2	14.7
4 Perth	9 000.9	8 982.8	-0.2	7.8
5 Adelaide	6 450.0	6 588.0	2.1	5.7
6 Gold Coast	4 888.4	4 935.4	1.0	4.3
7 Cairns	3 652.0	3 810.5	4.3	3.3
8 Canberra	3 066.6	2 957.8	-3.5	2.6
9 Hobart	1 919.0	2 091.7	9.0	1.8
10 Darwin	1 803.3	1 823.2	1.1	1.6
Total top ten airports	94 749.4	96 659.3	2.0	84.0
Total domestic network	113 079.1	115 100.8	1.8	100.0

Note: Airport passenger movement numbers are the sum of passenger arrivals and departures at each airport.

Top ten airports, RPT passenger movements

(Domestic passenger traffic - traffic on board)

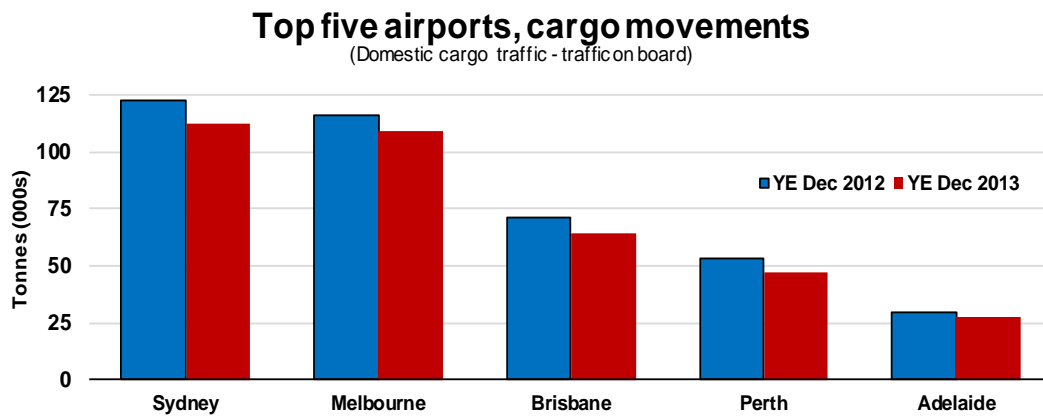


TOP FIVE AIRPORTS – CARGO MOVEMENTS

Table 6: Top five airports, domestic RPT cargo movements (000s tonnes) - annual activity

Airport	YE Dec 2012	YE Dec 2013	% Change	% of Total
1 Sydney	122.3	112.7	-7.9	27.1
2 Melbourne	115.9	109.2	-5.7	26.3
3 Brisbane	71.3	64.5	-9.6	15.5
4 Perth	53.2	47.2	-11.2	11.4
5 Adelaide	29.3	27.3	-6.8	6.6
Total top five airports	392.1	360.9	-7.9	86.9
Total domestic network	451.1	415.3	-7.9	100.0

Note: Airport cargo tonnes are the sum of cargo tonnes on arrivals and departures at each airport.



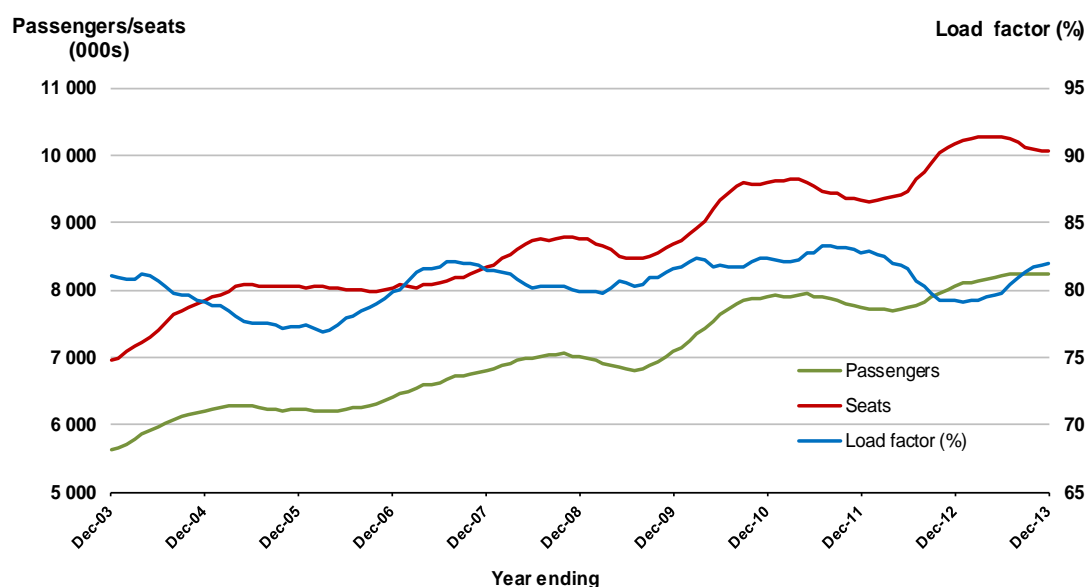
TOP TWENTY ROUTES

1. Melbourne - Sydney

Moving annual data

	YE Dec 2012	YE Dec 2013	% Change
Passengers carried (000s)	8 047.7	8 244.0	2.4
Seats (000s)	10 153.9	10 054.9	-1.0
Load factor %	79.2	82.0	2.8 *
Aircraft trips	55 173	54 673	-0.9

* percentage point difference

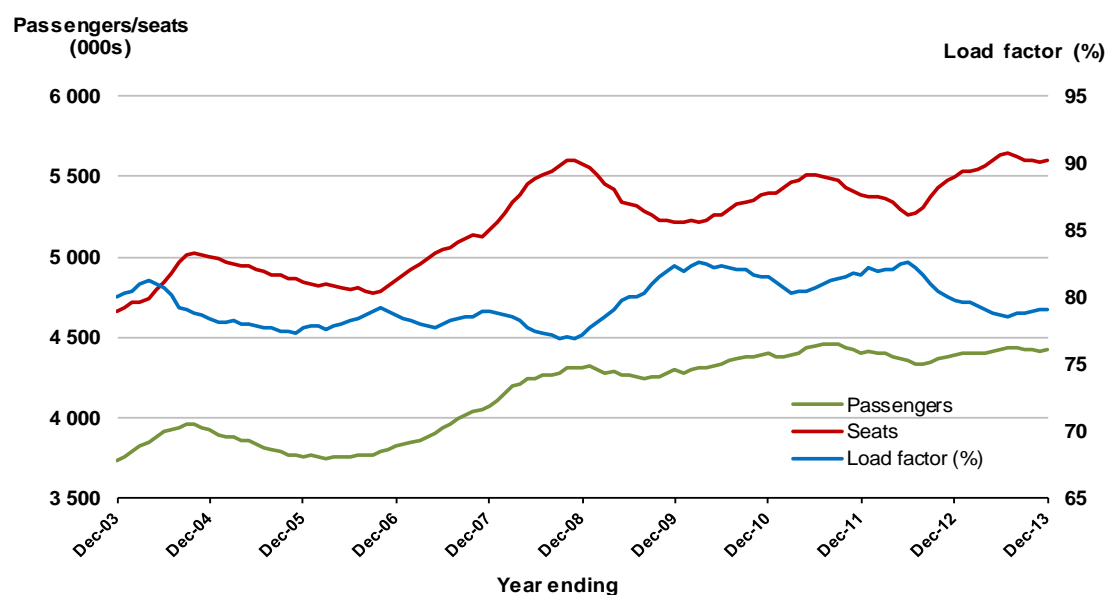


2. Brisbane - Sydney

Moving annual data

	YE Dec 2012	YE Dec 2013	% Change
Passengers carried (000s)	4 390.7	4 425.1	0.8
Seats (000s)	5 502.1	5 595.8	1.7
Load factor %	79.8	79.1	-0.7 *
Aircraft trips	31 980	32 352	1.2

* percentage point difference

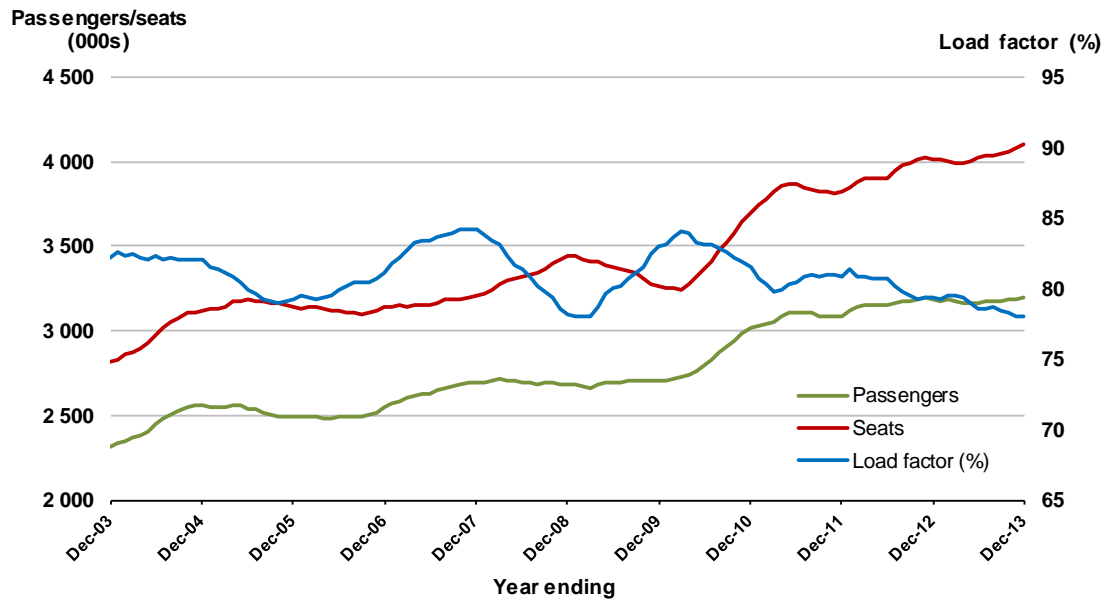


3. Brisbane - Melbourne

Moving annual data

	YE Dec 2012	YE Dec 2013	% Change
Passengers carried (000s)	3 189.6	3 198.8	0.3
Seats (000s)	4 017.5	4 101.5	2.1
Load factor %	79.4	78.0	-1.4 *
Aircraft trips	24 376	24 672	1.2

* percentage point difference

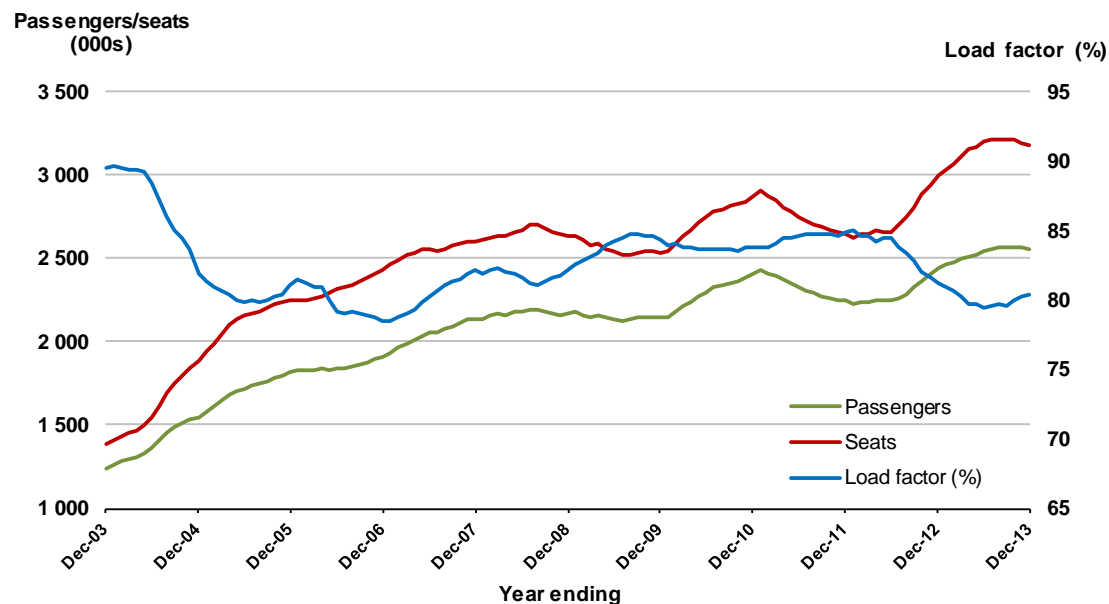


4. Gold Coast - Sydney

Moving annual data

	YE Dec 2012	YE Dec 2013	% Change
Passengers carried (000s)	2 440.6	2 559.1	4.9
Seats (000s)	3 000.8	3 181.2	6.0
Load factor %	81.2	80.4	-0.7 *
Aircraft trips	17 060	18 384	7.8

* percentage point difference

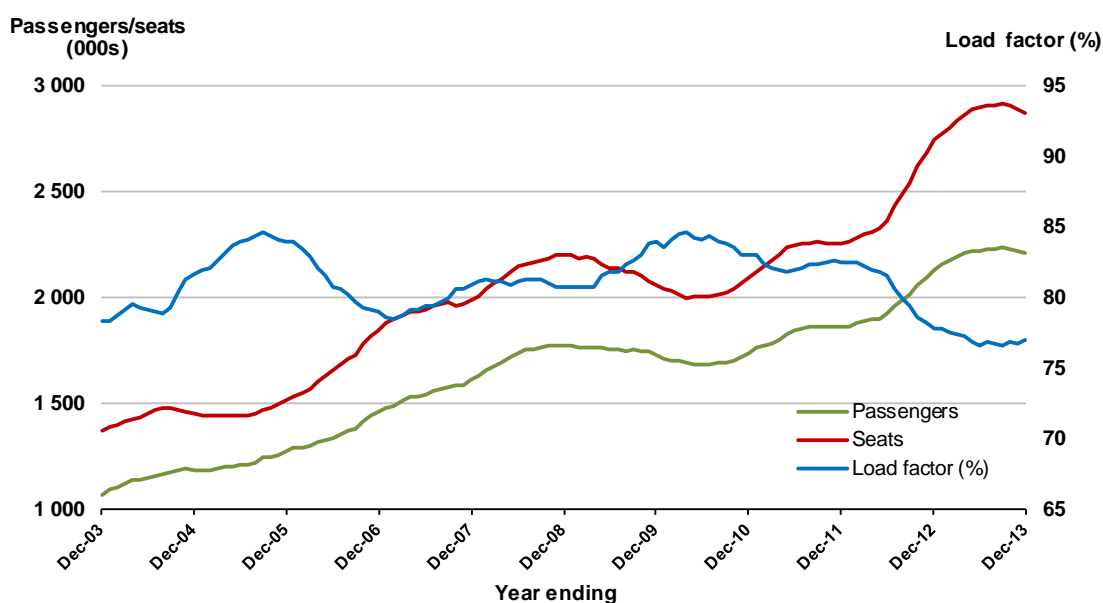


5. Melbourne - Perth

Moving annual data

	YE Dec 2012	YE Dec 2013	% Change
Passengers carried (000s)	2 130.7	2 209.7	3.7
Seats (000s)	2 739.2	2 871.0	4.8
Load factor %	77.8	77.0	-0.8 *
Aircraft trips	13 075	12 642	-3.3

* percentage point difference

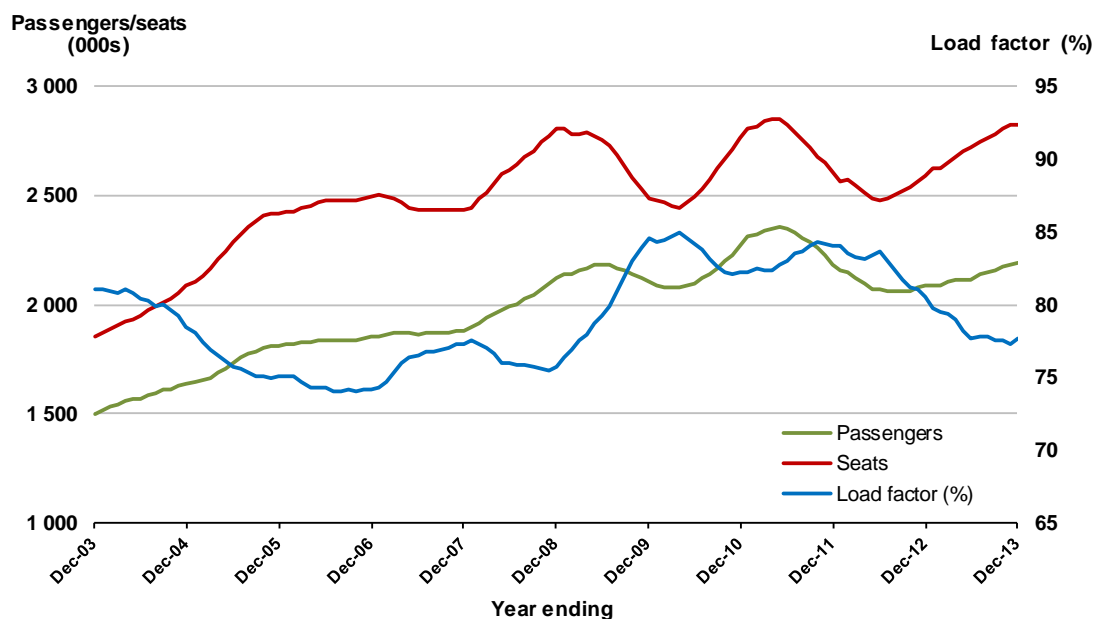


6. Adelaide - Melbourne

Moving annual data

	YE Dec 2012	YE Dec 2013	% Change
Passengers carried (000s)	2 085.2	2 195.1	5.3
Seats (000s)	2 589.4	2 824.9	9.1
Load factor %	80.5	77.7	-2.8 *
Aircraft trips	17 590	18 598	5.7

* percentage point difference

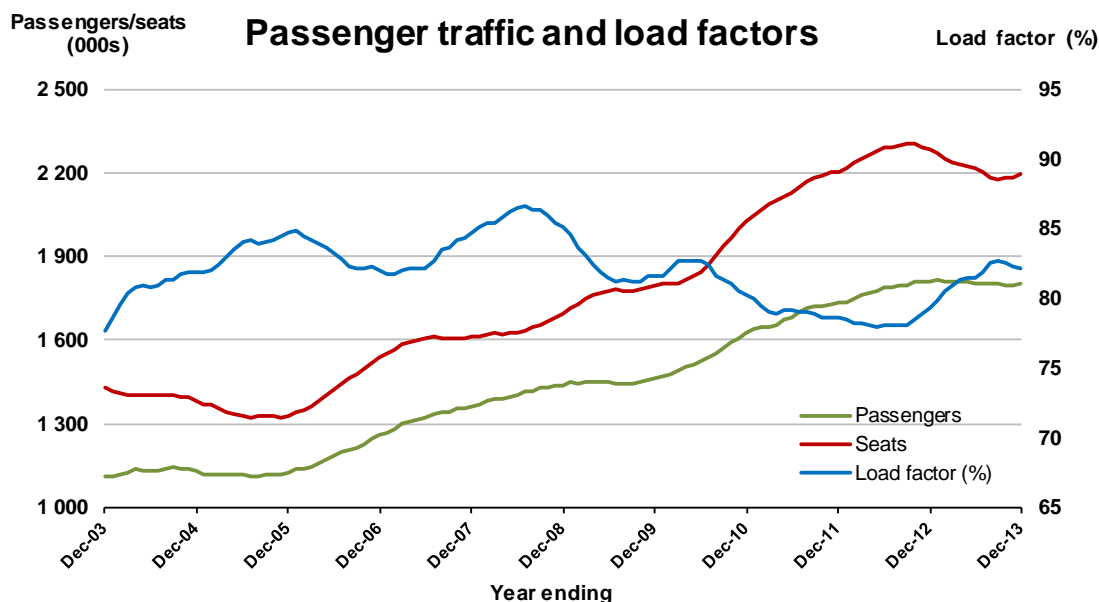


7. Perth - Sydney

Moving annual data

	YE Dec 2012	YE Dec 2013	% Change
Passengers carried (000s)	1 811.4	1 800.4	-0.6
Seats (000s)	2 283.6	2 193.4	-4.0
Load factor %	79.3	82.1	2.8*
Aircraft trips	9 204	8 638	-6.1

* percentage point difference

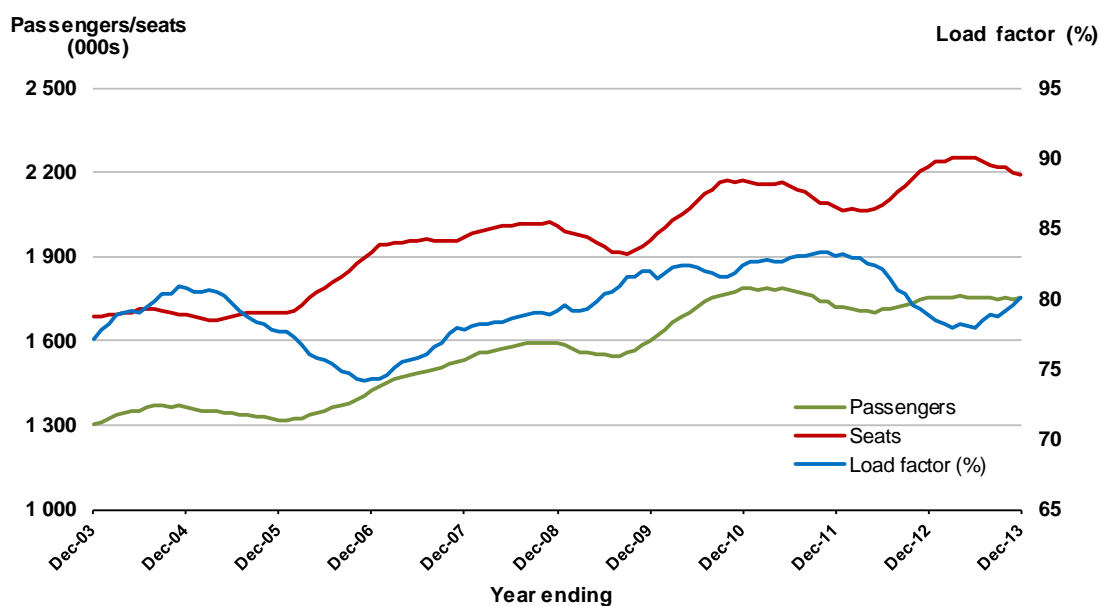


8. Adelaide - Sydney

Moving annual data

	YE Dec 2012	YE Dec 2013	% Change
Passengers carried (000s)	1 751.2	1 751.9	0.0
Seats (000s)	2 220.3	2 188.8	-1.4
Load factor %	78.9	80.0	1.2*
Aircraft trips	13 213	13 120	-0.7

* percentage point difference

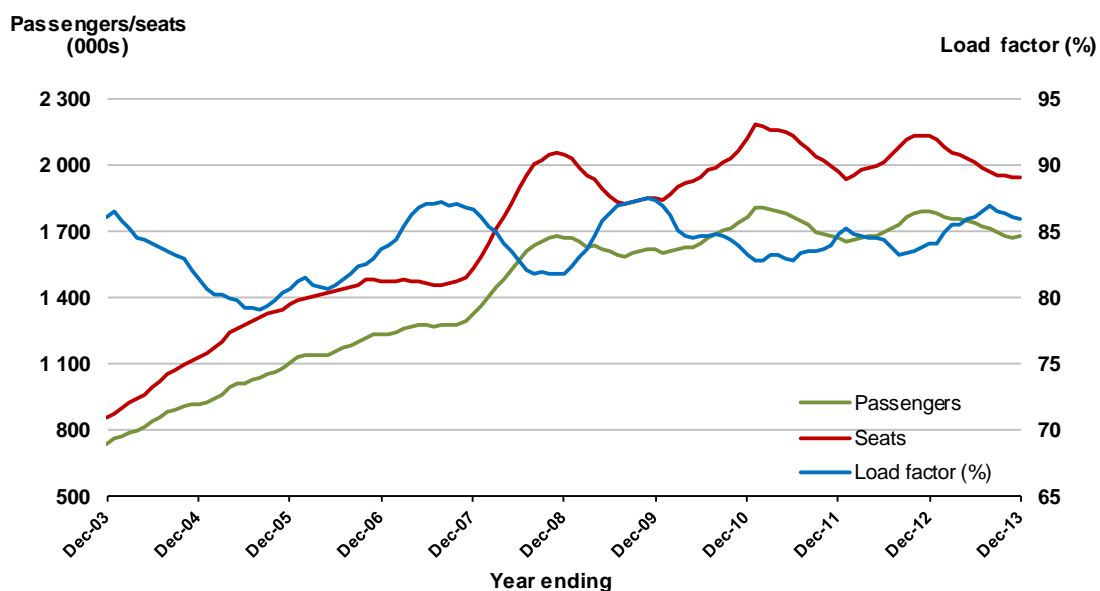


9. Gold Coast - Melbourne

Moving annual data

	YE Dec 2012	YE Dec 2013	% Change
Passengers carried (000s)	1 790.7	1 675.4	-6.4
Seats (000s)	2 130.8	1 948.3	-8.6
Load factor %	84.0	86.0	2.0 *
Aircraft trips	11 793	10 552	-10.5

* percentage point difference

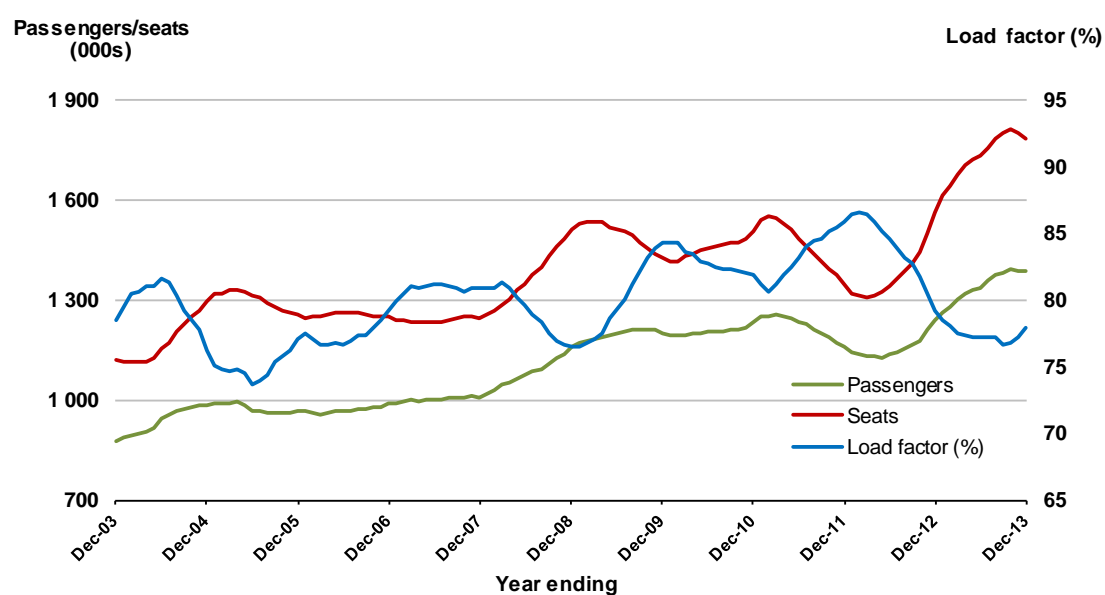


10. Hobart - Melbourne

Moving annual data

	YE Dec 2012	YE Dec 2013	% Change
Passengers carried (000s)	1 239.1	1 388.8	12.1
Seats (000s)	1 565.6	1 783.3	13.9
Load factor %	79.1	77.9	-1.3 *
Aircraft trips	9 376	10 798	15.2

* percentage point difference

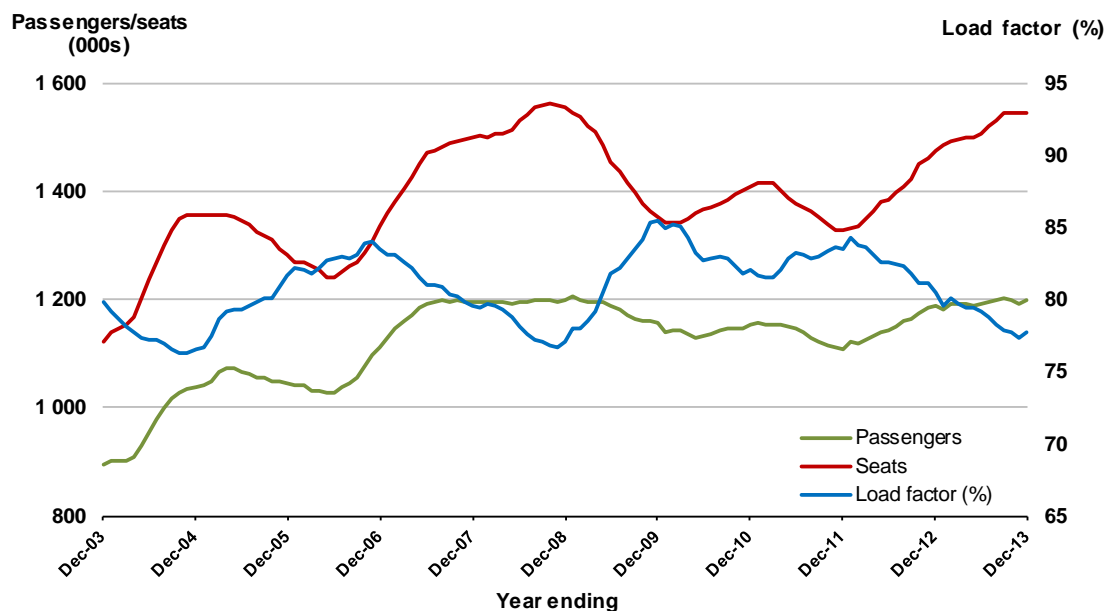


11. Brisbane - Cairns

Moving annual data

	YE Dec 2012	YE Dec 2013	% Change
Passengers carried (000s)	1 187.0	1 199.6	1.1
Seats (000s)	1 474.8	1 545.1	4.8
Load factor %	80.5	77.7	-2.8 *
Aircraft trips	9 813	9 925	1.1

* percentage point difference

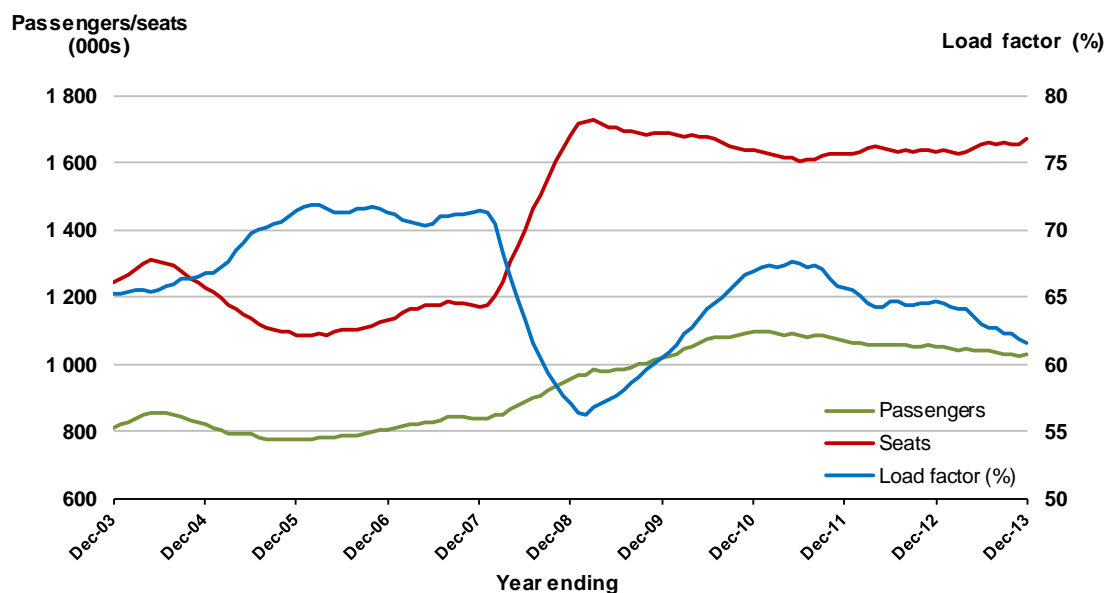


12. Canberra - Sydney

Moving annual data

	YE Dec 2012	YE Dec 2013	% Change
Passengers carried (000s)	1 053.2	1 027.6	-2.4
Seats (000s)	1 629.4	1 669.7	2.5
Load factor %	64.6	61.6	-3.0 *
Aircraft trips	18 664	19 309	3.5

* percentage point difference

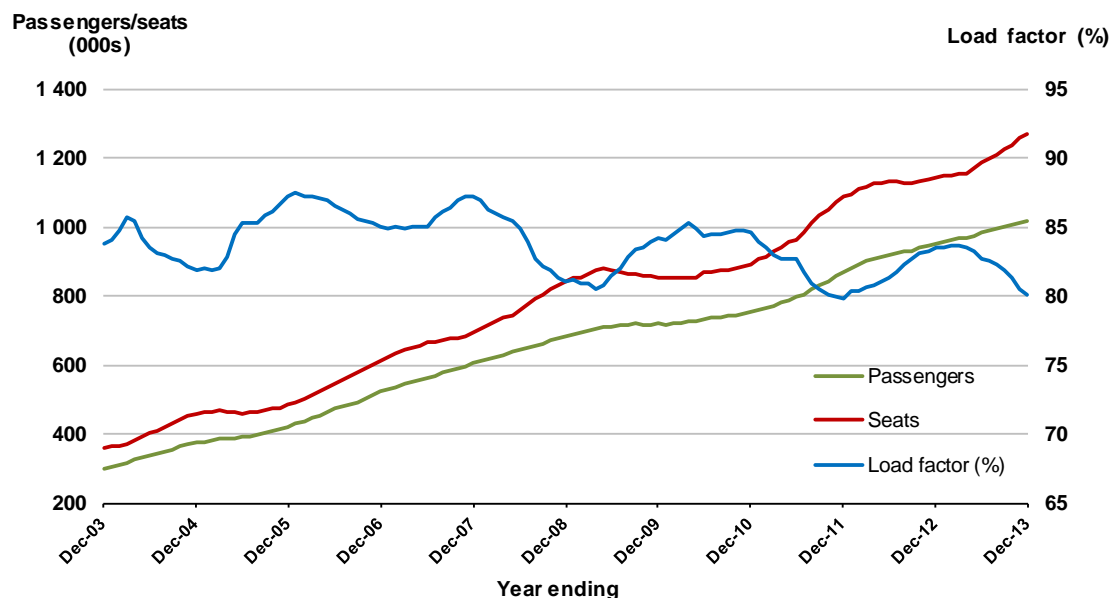


13. Brisbane - Perth

Moving annual data

	YE Dec 2012	YE Dec 2013	% Change
Passengers carried (000s)	951.5	1 017.7	7.0
Seats (000s)	1 140.3	1 270.6	11.4
Load factor %	83.4	80.1	-3.4 *
Aircraft trips	5 302	5 655	6.7

* percentage point difference

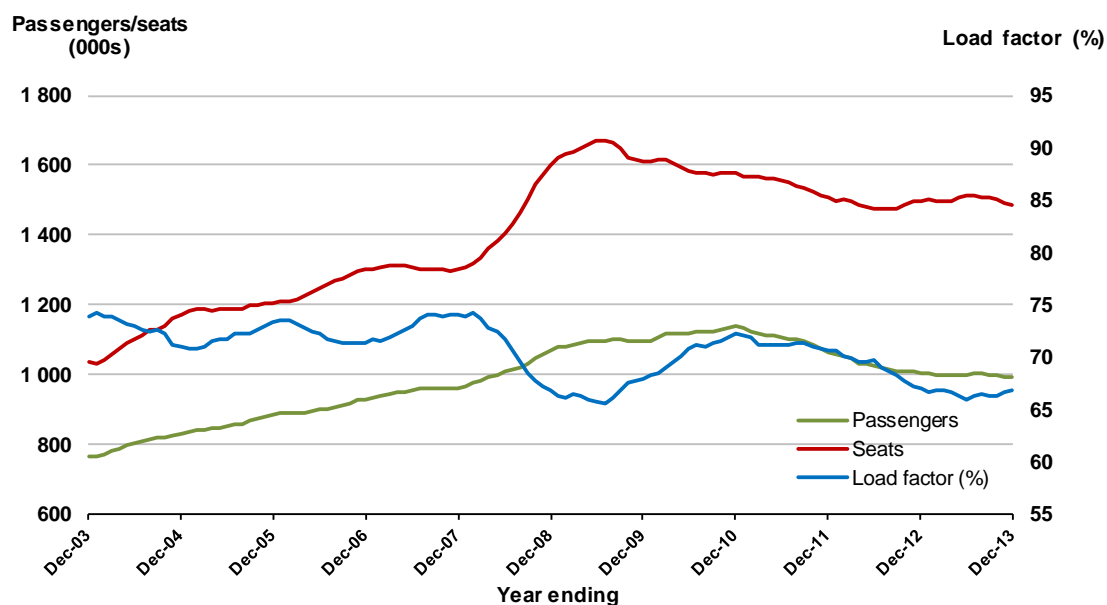


14. Canberra - Melbourne

Moving annual data

	YE Dec 2012	YE Dec 2013	% Change
Passengers carried (000s)	1 003.1	994.5	-0.9
Seats (000s)	1 495.1	1 486.3	-0.6
Load factor %	67.1	66.9	-0.2 *
Aircraft trips	11 061	10 918	-1.3

* percentage point difference

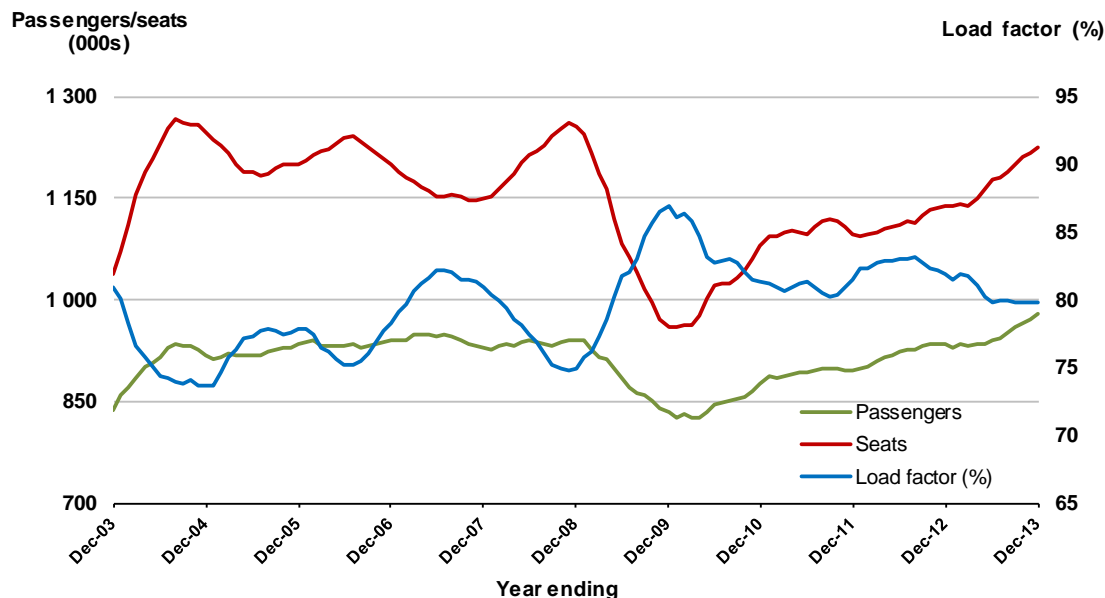


15. Cairns - Sydney

Moving annual data

	YE Dec 2012	YE Dec 2013	% Change
Passengers carried (000s)	933.9	978.6	4.8
Seats (000s)	1 138.4	1 225.4	7.6
Load factor %	81.9	79.9	-2.1 *
Aircraft trips	6 357	6 786	6.7

* percentage point difference

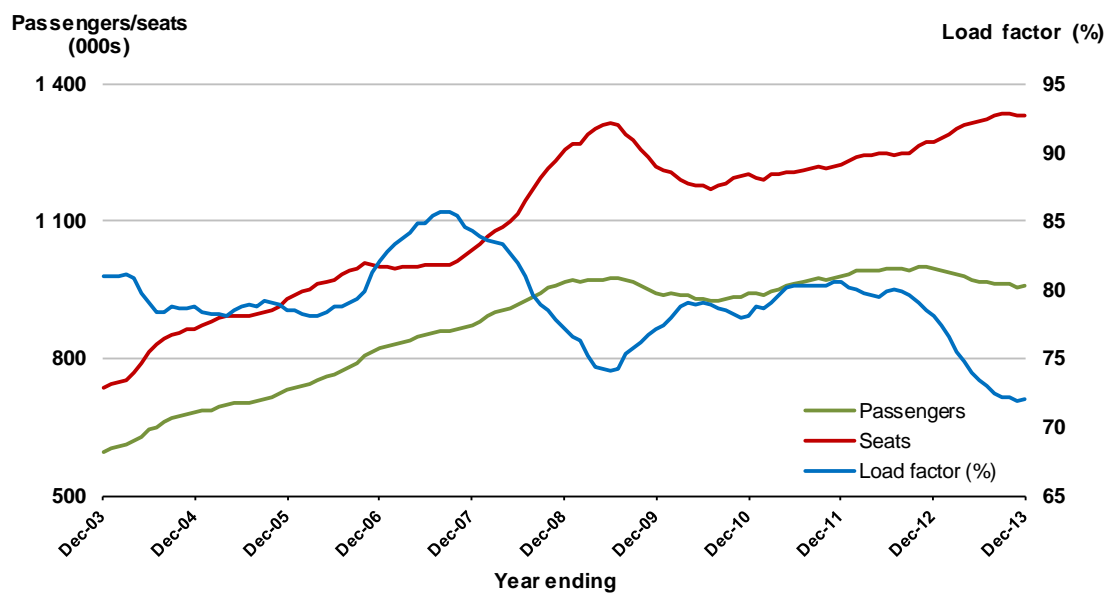


16. Brisbane - Townsville

Moving annual data

	YE Dec 2012	YE Dec 2013	% Change
Passengers carried (000s)	994.2	957.5	-3.7
Seats (000s)	1 273.1	1 330.1	4.5
Load factor %	78.1	72.0	-6.1 *
Aircraft trips	8 671	8 696	0.3

* percentage point difference

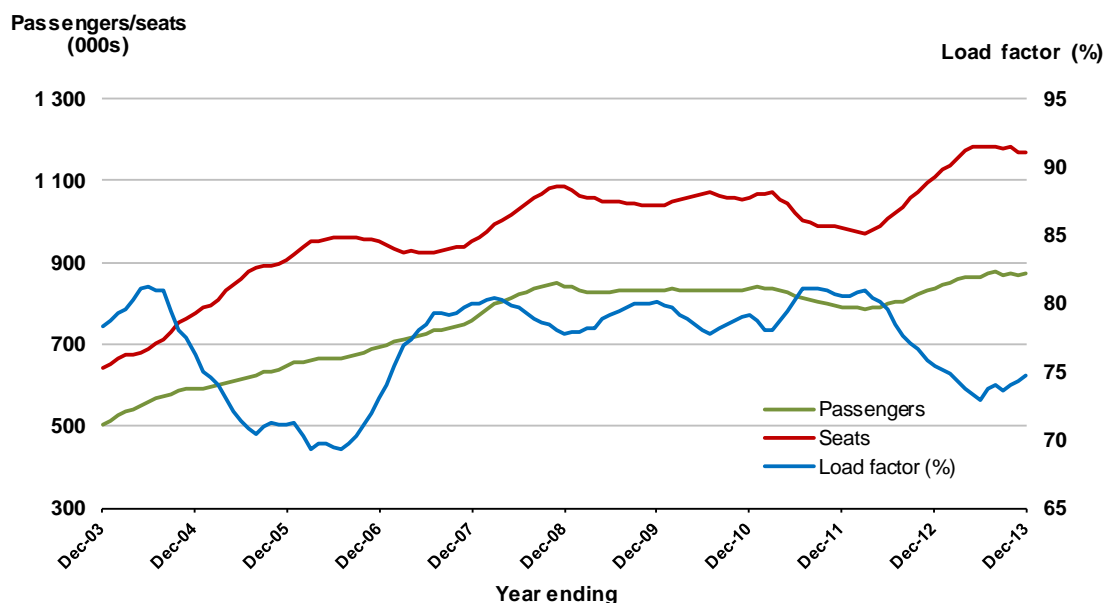


17. Launceston - Melbourne

Moving annual data

	YE Dec 2012	YE Dec 2013	% Change
Passengers carried (000s)	835.8	872.8	4.4
Seats (000s)	1 108.9	1 168.9	5.4
Load factor %	75.4	74.7	-0.7 *
Aircraft trips	8 476	9 263	9.3

* percentage point difference

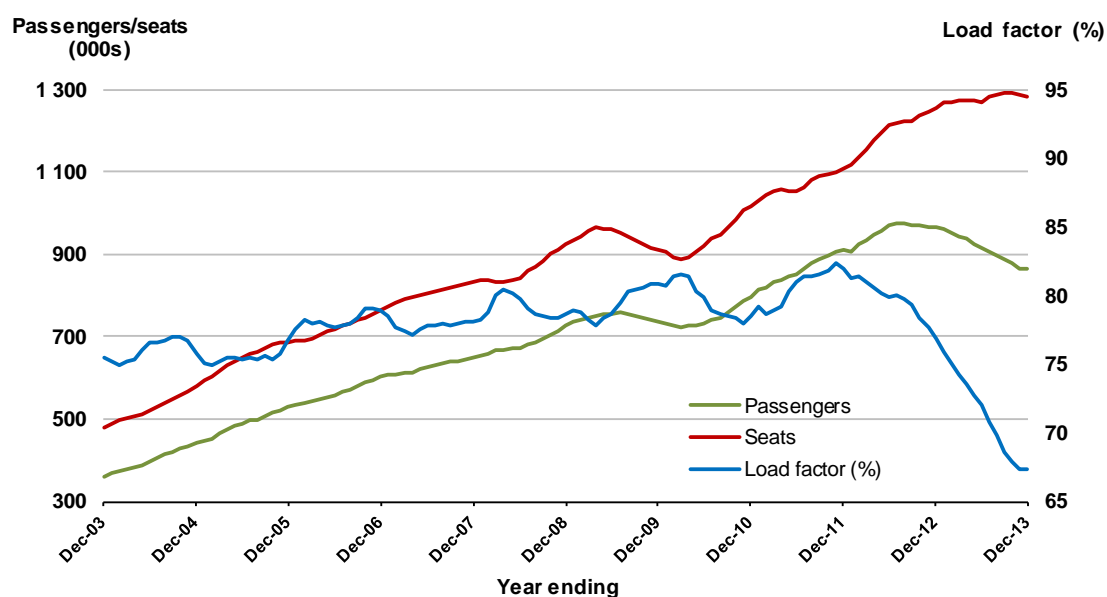


18. Brisbane - Mackay

Moving annual data

	YE Dec 2012	YE Dec 2013	% Change
Passengers carried (000s)	964.9	863.5	-10.5
Seats (000s)	1 254.5	1 281.3	2.1
Load factor %	76.9	67.4	-9.5 *
Aircraft trips	9 381	9 227	-1.6

* percentage point difference

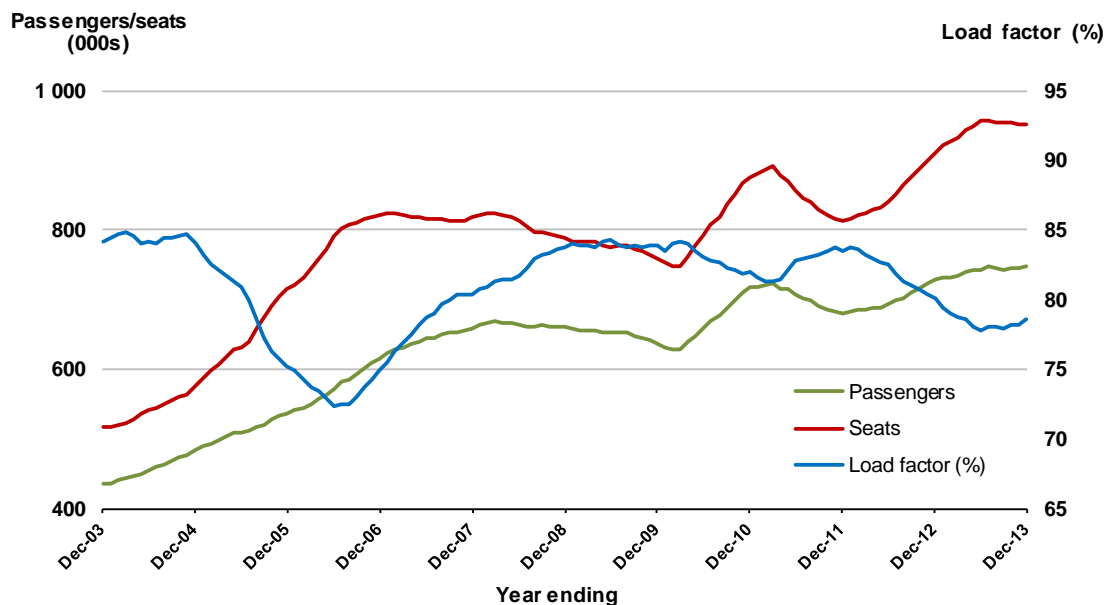


19. Adelaide - Brisbane

Moving annual data

	YE Dec 2012	YE Dec 2013	% Change
Passengers carried (000s)	729.2	747.5	2.5
Seats (000s)	910.2	950.8	4.5
Load factor %	80.1	78.6	-1.5*
Aircraft trips	5 802	5 905	1.8

* percentage point difference

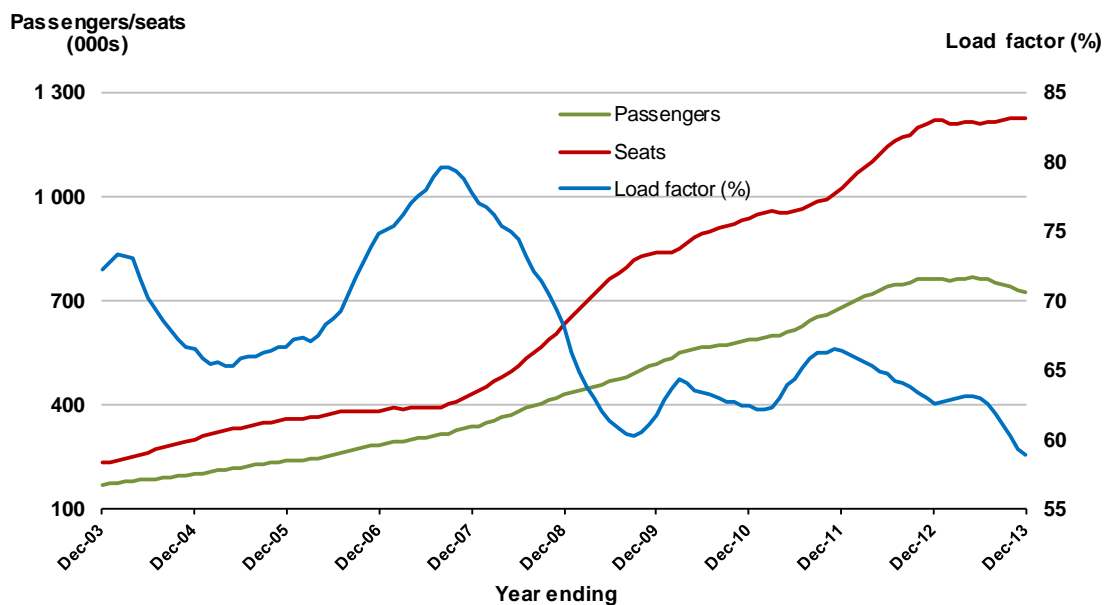


20. Karratha - Perth

Moving annual data

	YE Dec 2012	YE Dec 2013	% Change
Passengers carried (000s)	762.5	722.1	-5.3
Seats (000s)	1 217.7	1 226.4	0.7
Load factor %	62.6	58.9	-3.7*
Aircraft trips	8 215	8 204	-0.1

* percentage point difference



TOP FIFTY REGIONAL AIRPORTS

Table 7: Top fifty regional airports (000s) — passenger movements, annual

	Airport	YE Dec 2012	YE Dec 2013	% Change
1	Cairns	3 652.0	3 810.5	4.3
2	Hobart	1 919.0	2 091.7	9.0
3	Darwin	1 803.3	1 823.2	1.1
4	Townsville	1 677.9	1 619.0	-3.5
5	Launceston	1 172.5	1 257.9	7.3
6	Williamstown	1 204.3	1 221.6	1.4
7	Mackay	1 186.1	1 155.7	-2.6
8	Karratha	818.6	771.0	-5.8
9	Rockhampton	781.1	727.0	-6.9
10	Alice Springs	580.0	655.2	13.0
11	Gladstone	432.0	509.7	18.0
12	Port Hedland	538.8	489.4	-9.2
13	Hamilton Island	440.9	465.3	5.5
14	Newman	373.5	450.2	20.5
15	Broome	446.2	439.8	-1.4
16	Coffs Harbour	341.4	387.7	13.6
17	Ballina	346.7	382.7	10.4
18	Emerald	281.5	283.6	0.8
19	Mount Isa	269.3	267.2	-0.8
20	Albury	277.7	261.2	-5.9
21	Mildura	223.3	244.6	9.5
22	Kalgoorlie	267.1	242.0	-9.4
23	Proserpine	232.8	234.4	0.7
24	Ayers Rock	285.6	233.4	-18.3
25	Paraburdoo	301.2	232.3	-22.9
26	Port Macquarie	233.2	228.8	-1.9
27	Roma	139.1	223.7	60.9
28	Wagga Wagga	209.6	209.9	0.1
29	Dubbo	185.6	196.9	6.1
30	Port Lincoln	196.0	189.7	-3.2
31	Moranbah	133.9	174.9	30.6
32	Tamworth	159.0	158.8	-0.1
33	Bundaberg	124.9	154.0	23.3
34	Hervey Bay	151.7	151.1	-0.4
35	Geraldton	150.4	135.2	-10.1
36	Devonport	135.7	128.1	-5.6
37	Kununurra	118.9	115.5	-2.8
38	Gove	114.5	114.4	-0.1
39	Armidale	107.5	108.0	0.5
40	Thursday Island	94.7	92.3	-2.5
41	Learmonth	95.4	91.8	-3.8
42	Mount Gambier	86.9	80.7	-7.2
43	Olympic Dam	93.1	77.0	-17.2
44	Weipa	71.0	70.4	-0.8
45	Burnie	68.0	68.5	0.7
46	Whyalla	73.2	67.0	-8.5
47	Griffith	68.5	65.4	-4.6
48	Broken Hill	67.0	61.4	-8.3
49	Narrandera	58.2	59.1	1.6
50	Albany	59.0	58.9	-0.2
	Total regional airports	24 389.6	24 810.4	1.7
	Total domestic network	113 079.1	115 100.8	1.8

Note: Airport passenger movement numbers are the sum of passenger arrivals and departures at each airport.

DOMESTIC CHARTER ACTIVITY

Table 8: Domestic charter passengers carried and aircraft trips

	YE Dec 2012	YE Dec 2013	% Change
Total domestic charter passengers	2 190 213	2 560 914	16.9
Total domestic charter aircraft trips	56 102	57 687	2.8

Note: data prior July 2011 not available, helicopter and leisure charter flights not included.

Table 9: Domestic airports - charter passengers and aircraft movements

	YE Dec 2012	YE Dec 2013	% Change
Total domestic charter passenger movements	4 380 426	5 121 828	16.9
Total domestic charter aircraft movements	112 204	115 374	2.8
Perth airport charter passenger movements	1 582 541	1 835 980	16.0
Perth airport charter aircraft movements	39 041	38 829	-0.5

Note: data prior July 2011 not available, helicopter and leisure charter flights not included.

Charter passenger and aircraft movement numbers are the sum of arrivals and departures at each airport.

DEFINITIONS

Aircraft Trips	The number of flight stages. A return flight counts as two aircraft trips.
Airport Movements	Airport movements (passenger and cargo) are measured once on arrival and once on departure. Each domestic trip generates two movements at airports. For example, a trip from Melbourne to Sydney will be counted twice, as a passenger departure at Melbourne and as a passenger arrival at Sydney. At the national level, the sum of all domestic airport traffic will therefore be equal to twice the number of trips undertaken.
Available Seat Kilometres (ASKs)	Calculated by multiplying the number of seats available on each flight stage, by the distance in kilometres between the ports. The distances used are Great Circle Distances.
City-Pair	The ports shown make up the city-pair route. Passenger movements shown for a city pair reflect total traffic in both directions.
Flight Stage	The operation of an aircraft from take-off to landing.
Load Factor	The total revenue passenger kilometres performed as a percentage of the total available seat kilometres.
Passengers Carried	Revenue passengers carried.
Regular Public Transport Services (RPT)	All air service operations in which aircraft are available for the transport of members of public and are conducted in accordance with fixed schedules. It does not include charter or other non-scheduled operations.
Revenue Passengers	All passengers paying any fare. Frequent flyer redemption travellers are regarded as revenue passengers.
Revenue Passenger Kilometres (RPKs)	Calculated by multiplying the number of revenue passengers travelling on each flight stage, by the distance in kilometres between the ports. The distances used are Great Circle Distances.
Traffic on board by stages	The total of all traffic (revenue passengers) on each flight stage between two directly connected airports.
..	Data not included
NA	Not applicable