



**Australian Government**

**Department of Infrastructure and Regional Development**

Bureau of Infrastructure, Transport and Regional Economics

STATISTICAL REPORT



# Aviation

Domestic aviation activity

Annual 2012-13

© Commonwealth of Australia 2014

ISSN: 1832 - 1968

### **Ownership of intellectual property rights in this publication**

Unless otherwise noted, copyright (and any other intellectual property rights, if any) in this publication is owned by the Commonwealth of Australia (referred to below as the Commonwealth).

### **Disclaimer**

The material contained in this publication is made available on the understanding that the Commonwealth is not providing professional advice, and that users exercise their own skill and care with respect to its use, and seek independent advice if necessary.

The Commonwealth makes no representations or warranties as to the contents or accuracy of the information contained in this publication. To the extent permitted by law, the Commonwealth disclaims liability to any person or organisation in respect of anything done, or omitted to be done, in reliance upon information contained in this publication.

### **Creative Commons licence**

With the exception of (a) the Coat of Arms; and (b) the Department of Infrastructure's photos and graphics, copyright in this publication is licensed under a Creative Commons Attribution 3.0 Australia Licence.

Creative Commons Attribution 3.0 Australia Licence is a standard form licence agreement that allows you to copy, communicate and adapt this publication provided that you attribute the work to the Commonwealth and abide by the other licence terms. A summary of the licence terms is available from <http://creativecommons.org/licenses/by/3.0/au/deed.en>. The full licence terms are available from <http://creativecommons.org/licenses/by/3.0/au/legalcode>.

### **Use of the Coat of Arms**

The Department of the Prime Minister and Cabinet sets the terms under which the Coat of Arms is used. Please refer to the Department's Commonwealth Coat of Arms and Government branding web page <http://www.dpmc.gov.au/guidelines/index.cfm#brand> and, in particular, the Guidelines on the use of the Commonwealth Coat of Arms publication.

An appropriate citation for this report is:

Bureau of Infrastructure, Transport and Regional Economics (BITRE), 2014, Domestic airline activity, Statistical Report, BITRE, Canberra ACT.

### **Contact us**

This publication is available in PDF format. All other rights are reserved, including in relation to any Departmental logos or trade marks which may exist. For enquiries regarding the licence and any use of this publication, please contact:

Bureau of Infrastructure, Transport and Regional Economics (BITRE)  
Department of Infrastructure and Transport  
GPO Box 501, Canberra ACT 2601, Australia  
Telephone: (international) +61 2 6274 7210  
Fax: (international) +61 2 6274 6855  
Email: [bitre@infrastructure.gov.au](mailto:bitre@infrastructure.gov.au)  
Website: [www.bitre.gov.au](http://www.bitre.gov.au)

### **Inquiries**

Should you require additional information about the statistics contained in this publication:

Nebojsa Pavlovic

Telephone (02) 6274 6817 or Facsimile (02) 6274 7727

Electronic mail: [AVSTATS@infrastructure.gov.au](mailto:AVSTATS@infrastructure.gov.au)

[Nebojsa.Pavlovic@infrastructure.gov.au](mailto:Nebojsa.Pavlovic@infrastructure.gov.au)

Web site: <http://www.bitre.gov.au/statistics/aviation/domestic.aspx>

## FOREWORD

This report provides an overview of domestic (including charter) commercial aviation activity in Australia for the year ending June 2013.

The data cover revenue passengers carried by Australian-registered operators of scheduled regular public transport services over Australian flight stages and fixed-wing charter operators. These estimates include passengers carried between domestic airports on international flights operated by these carriers. The passengers carried refer to traffic on board by stages.

Estimates of passengers and aircraft movements for charter aviation are included in this publication, where BITRE confidentiality standards are met.

Individual routes shown are restricted to those with an average exceeding 8 000 passengers per month where two or more airlines operate in competition. For the year ending June 2013 there were 62 such routes: 57 routes met these criteria for all twelve months of the year while five routes did so for a period shorter than one year.

Information on the total network for the year ending June 2013 and on the Regular Public Transport (RPT) network for the year ending June 2013 is presented on page 2.

Detailed information on the 62 individual routes can be found in the RPT summary pages 3–10 of this publication.

The top ten airports in terms of RPT passenger movements are shown on page 11. Data on domestic RPT cargo movements at the top five cargo airports are provided on page 12. The table includes cargo carried on passenger flights operated by the Qantas group (including Jetstar), Virgin Australia, Air North, Skippers and Skytrans as well as the cargo carried by dedicated freighter aircraft operated by Qantas Freight and Toll Priority.

The long-term trends for the top twenty competitive RPT routes are presented graphically on pages 13–22.

Domestic RPT passenger movements at the top 50 regional airports are presented on pages 23.

Tables providing estimates of domestic charter aviation activity are shown on page 24. BITRE confidentiality standards restrict publication of detailed airport-level estimates for all Australian airports, with the exception of Perth Airport.

A list of definitions can be found on page 25.

This report was prepared by the Aviation Statistics Section of the Bureau of Infrastructure, Transport and Regional Economics with data provided by airlines.

Estimates are included where data were not available and data presented in this publication may contain revisions to previously published data.

Where figures have been rounded, discrepancies may occur between sums of component items and totals, and in percentage changes which are derived from figures prior to rounding.

# CONTENTS

<b>Highlights</b> .....	<b>1</b>
<b>RPT network</b> .....	<b>2</b>
<b>Top competitive routes</b> .....	<b>3</b>
<b>Top ten airports – passenger movements</b> .....	<b>11</b>
<b>Top five airports – cargo movements</b> .....	<b>12</b>
<b>Top twenty routes</b> .....	<b>13</b>
1. Melbourne – Sydney .....	13
2. Brisbane – Sydney .....	13
3. Brisbane – Melbourne .....	14
4. Gold Coast – Sydney .....	14
5. Melbourne – Perth .....	15
6. Adelaide – Melbourne .....	15
7. Perth – Sydney .....	16
8. Adelaide – Sydney .....	16
9. Gold Coast – Melbourne .....	17
10. Hobart – Melbourne .....	17
11. Brisbane – Cairns .....	18
12. Canberra – Sydney .....	18
13. Canberra – Melbourne .....	19
14. Brisbane – Perth .....	19
15. Brisbane – Townsville .....	20
16. Cairns – Sydney .....	20
17. Brisbane – Mackay .....	21
18. Launceston – Melbourne .....	21
19. Karratha – Perth .....	22
20. Adelaide – Brisbane .....	22
<b>Top fifty regional airports</b> .....	<b>23</b>
<b>Domestic charter activity</b> .....	<b>24</b>
<b>Definitions</b> .....	<b>25</b>

This page is intentionally left blank.

## HIGHLIGHTS

There were 59.50 million passengers carried on Australian domestic commercial aviation (including charter operations) for the year ending June 2013, an increase of 4.6 per cent on the year ending June 2012. For the year ending June 2013 there were 700 466 aircraft trips, an increase of 5.4 per cent compared to the previous year.

57.12 million passengers were carried on RPT flights in the year ending June 2013, an increase of 3.9 per cent on the year ending June 2012.

RPT revenue passenger kilometres (RPKs) performed were 67.19 billion for the year, up 4.4 per cent on the year ending June 2012. Capacity, measured by available seat kilometres (ASKs), increased 7.3 per cent compared with the year ending June 2012, to a total of 87.56 billion.

With RPT capacity increasing at a faster rate than passenger traffic, the industry wide load factor (RPKs/ASKs) decreased from 78.8 per cent for the year ending June 2012 to 76.7 per cent for the year ending June 2013. Seats utilisation on individual routes decreased on 38 of the 57 RPT routes for which data is available in both years.

For the year ending June 2013, Melbourne – Sydney remained Australia's busiest RPT route with 8.20 million passengers, an increase of 6.1 per cent compared with the year ending June 2012. It was followed by Brisbane – Sydney with 4.43 million passengers (up 1.7 per cent) and Brisbane – Melbourne with 3.16 million passengers (up 0.3 per cent).

The greatest percentage increase in RPT passenger numbers, compared to the year ending June 2012, was on the Newman – Perth route (up 46.4 per cent). There were large increases on a number of other routes, including Brisbane – Gladstone (up 26.4 per cent), Cairns – Melbourne (up 24.7 per cent), Hobart – Melbourne (up 17.6 per cent), Melbourne – Perth (up 15.2 per cent), Gold Coast – Sydney (up 12.9 per cent) and Launceston – Sydney (up 12.6 per cent).

RPT routes with traffic decreases in the year ending June 2013 compared with the year ending June 2012, included Cairns – Townsville (down 9.7 per cent), Brisbane – Canberra (down 8.4 per cent), Brisbane – Mackay (down 5.5 per cent) and Brisbane – Hamilton Island (down 5.1 per cent).

For the year ending June 2013, Sydney remained Australia's busiest domestic airport with 25.29 million passengers movements, followed by Melbourne with 22.71 million passenger movements and Brisbane with 16.79 million passenger movements.

For the year ending June 2013 the number of domestic aviation passengers travelling through regional airports was 24.59 million, 3.1 per cent higher than for the year ending June 2012. Out of the top 50 regional airports, the strongest growth was at Roma airport, up 64.7 per cent on the year ending June 2012, while the strongest fall was at Ayers Rock (Uluru) airport, down 14.2 per cent on the year ending June 2012.

Total cargo movements at Australian airports on domestic RPT flights were 430.2 thousand tonnes in the year ending June 2013, a decrease of 9.0 per cent compared to previous year. For the year ending June 2013, Sydney was the busiest airport in terms of cargo movements (118.2 thousand tonnes, down 7.8 per cent compared to the year ending June 2012), followed by Melbourne (112.9 thousand tonnes, down 4.7 per cent) and Brisbane (67.5 thousand tonnes, down 12.4 per cent).

Fixed-wing charter operators carried 2.37 million passengers for the year ending June 2013. More than one third of all charter passengers in Australia took flights either to or from Perth Airport.

## TOTAL NETWORK

### Summary of annual commercial aviation activity

	YE Jun 2012	YE Jun 2013	% Change
Total passengers carried (millions)	56.89	59.50	4.6
Aircraft trips (000s)	664.8	700.5	5.4

Note: Regular Public Transport and charter aviation activity

Helicopter and leisure charter flights not included

## RPT NETWORK

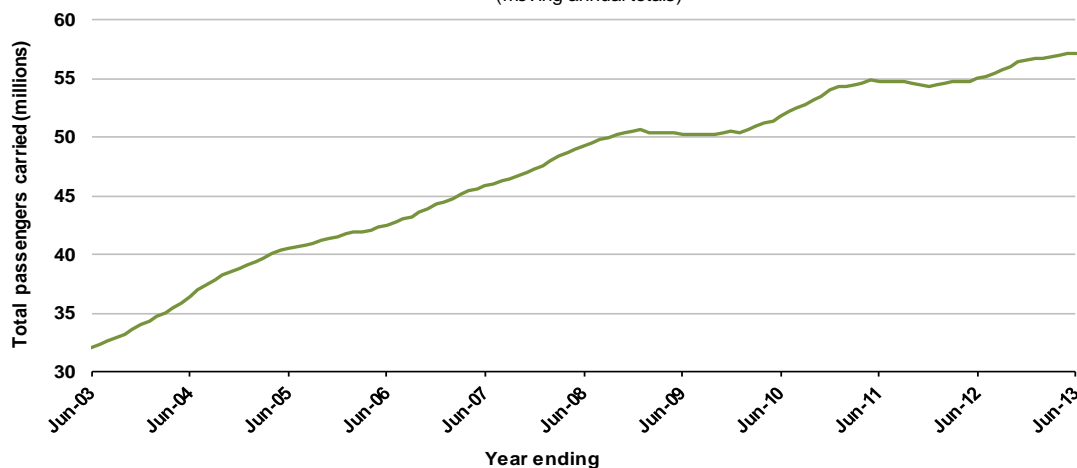
### Summary of annual RPT activity

	YE Jun 2012	YE Jun 2013	% Change
Total passengers carried (millions)	54.97	57.12	3.9
Revenue passenger kilometres (billions)	64.33	67.19	4.4
Available seats (millions)	71.10	76.69	7.9
Available seat kilometres (billions)	81.62	87.56	7.3
Load factors %	78.8	76.7	-2.1 *
Aircraft trips (000s)	615.7	642.0	4.3

\* percentage point difference

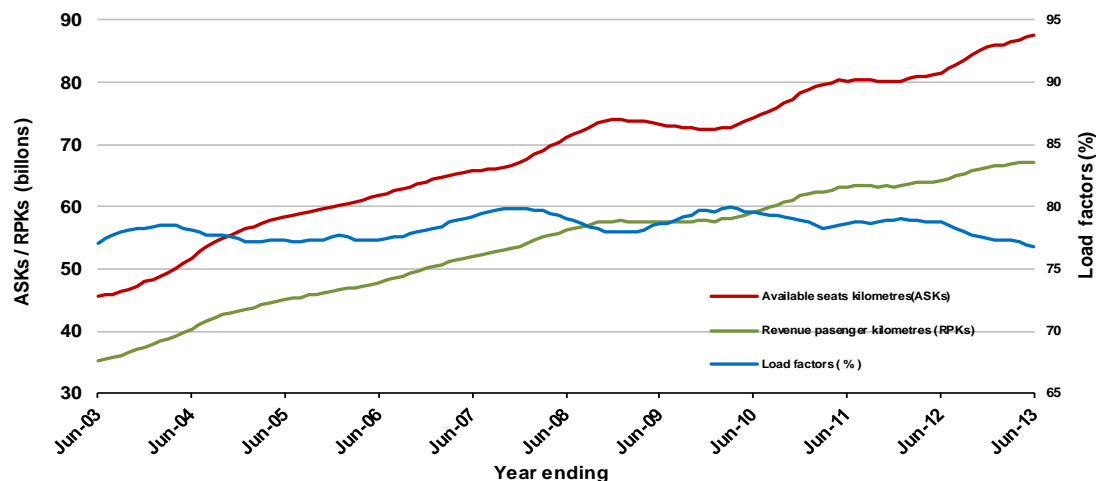
### Domestic RPT passenger traffic

(moving annual totals)



### RPT Network utilisation

(moving annual totals)





## TOP COMPETITIVE ROUTES

	City-Pair	YE Jun 2012	YE Jun 2013	% Change
1	Melbourne - Sydney	7 727.9	8 200.6	6.1
2	Brisbane - Sydney	4 352.7	4 426.2	1.7
3	Brisbane - Melbourne	3 152.2	3 162.5	0.3
4	Gold Coast - Sydney	2 251.3	2 541.9	12.9
5	Melbourne - Perth	1 924.0	2 216.5	15.2
6	Adelaide - Melbourne	2 071.0	2 114.8	2.1
7	Perth - Sydney	1 785.4	1 804.8	1.1
8	Adelaide - Sydney	1 709.6	1 753.6	2.6
9	Gold Coast - Melbourne	1 699.5	1 735.9	2.1
10	Hobart - Melbourne	1 137.3	1 337.2	17.6
11	Brisbane - Cairns	1 143.2	1 191.9	4.3
12	Canberra - Sydney	1 058.4	1 041.3	-1.6
13	Canberra - Melbourne	1 026.3	1 000.6	-2.5
14	Brisbane - Perth	918.7	981.4	6.8
15	Brisbane - Townsville	996.3	965.9	-3.0
16	Cairns - Sydney	922.6	941.1	2.0
17	Brisbane - Mackay	970.0	916.5	-5.5
18	Launceston - Melbourne	801.1	861.7	7.6
19	Karratha - Perth	739.4	763.0	3.2
20	Adelaide - Brisbane	693.6	743.8	7.2
21	Cairns - Melbourne	506.7	631.9	24.7
22	Adelaide - Perth	601.3	624.0	3.8
23	Brisbane - Rockhampton	656.8	623.9	-5.0
24	Brisbane - Canberra	639.7	585.9	-8.4
25	Brisbane - Newcastle	601.2	579.7	-3.6
26	Hobart - Sydney	464.9	494.9	6.4
27	Perth - Port Hedland	440.8	477.0	8.2
28	Sunshine Coast - Sydney	456.8	461.9	1.1
29	Brisbane - Gladstone	349.8	441.9	26.4
30	Newman - Perth	299.9	438.9	46.4
31	Melbourne - Newcastle	428.1	430.0	0.4
32	Brisbane - Darwin	370.3	364.8	-1.5
33	Darwin - Sydney	67.2	358.8	NA (a)
34	Melbourne - Sunshine Coast	333.2	338.8	1.7
35	Coffs Harbour - Sydney	313.0	338.2	8.0
36	Broome - Perth	313.6	322.4	2.8
37	Brisbane - Emerald	111.9	296.2	NA (b)
38	Ballina - Sydney	266.3	293.2	10.1
39	Darwin - Melbourne	289.8	284.1	-2.0
40	Launceston - Sydney	219.6	247.4	12.6
41	Albury - Sydney	248.2	240.8	-3.0
42	Brisbane - Proserpine	215.1	234.8	9.2
43	Kalgoorlie - Perth	240.1	233.9	-2.6
44	Hamilton Island - Sydney	191.4	201.2	5.1
45	Melbourne - Mildura	196.7	197.4	0.3

(continued)

**Table 1: (continued): Passengers carried (000s) — annual activity**

	<b>City-Pair</b>	<b>YE Jun 2012</b>	<b>YE Jun 2013</b>	<b>% Change</b>
46	Adelaide - Port Lincoln	193.6	195.9	1.2
47	Port Macquarie - Sydney	201.5	192.9	-4.2
48	Adelaide - Gold Coast	184.5	189.9	2.9
49	Sydney - Townsville	185.4	184.1	-0.7
50	Sydney - Wagga Wagga	180.7	179.3	-0.7
51	Adelaide - Canberra	182.4	178.2	-2.3
52	Dubbo - Sydney	175.2	172.5	-1.5
53	Cairns - Townsville	188.3	170.0	-9.7
54	Darwin - Perth	162.1	165.8	2.3
55	Brisbane - Hamilton Island	163.7	155.3	-5.1
56	Ayers Rock - Sydney	153.1	148.7	-2.9
57	Brisbane - Mount Isa	..	145.7	NA (c)
58	Geraldton - Perth	80.0	132.9	NA (d)
59	Brisbane - Moranbah	..	33.5	NA (e)
60	Brisbane - Bundaberg	..	26.8	NA (f)
61	Alice Springs - Melbourne	..	23.7	NA (g)
62	Alice Springs - Sydney	..	12.9	NA (h)
	<b>Total domestic network</b>	<b>54 972.8</b>	<b>57 124.8</b>	<b>3.9</b>

(a) Darwin - Sydney route included from May 2012, prior data not shown.

(b) Brisbane - Emerald route included from February 2012, prior data not shown.

(c) Brisbane - Mount Isa route included from September 2012, prior data not shown.

(d) Geraldton - Perth route included from December 2011, prior data not shown.

(e) Brisbane - Moranbah route included from May 2013, prior data not shown.

(f) Brisbane - Bundaberg route included from May 2013, prior data not shown.

(g) Alice Springs - Melbourne route included from May 2013, prior data not shown.

(h) Alice Springs - Sydney route included from June 2013, prior data not shown.

**Table 2: Available seats (000s) — annual activity**

	<b>City-Pair</b>	<b>YE Jun 2012</b>	<b>YE Jun 2013</b>	<b>% Change</b>
1	Melbourne - Sydney	9 466.4	10 280.5	8.6
2	Brisbane - Sydney	5 265.6	5 631.6	7.0
3	Brisbane - Melbourne	3 904.7	4 026.5	3.1
4	Gold Coast - Sydney	2 661.9	3 197.4	20.1
5	Melbourne - Perth	2 362.2	2 897.6	22.7
6	Adelaide - Melbourne	2 474.6	2 721.1	10.0
7	Perth - Sydney	2 288.3	2 216.0	-3.2
8	Adelaide - Sydney	2 084.3	2 249.0	7.9
9	Gold Coast - Melbourne	2 014.3	2 015.6	0.1
10	Hobart - Melbourne	1 343.6	1 733.1	29.0
11	Brisbane - Cairns	1 384.1	1 505.8	8.8
12	Canberra - Sydney	1 634.6	1 651.2	1.0
13	Canberra - Melbourne	1 473.5	1 515.9	2.9
14	Brisbane - Perth	1 130.5	1 186.9	5.0
15	Brisbane - Townsville	1 247.7	1 316.9	5.5
16	Cairns - Sydney	1 110.9	1 177.8	6.0
17	Brisbane - Mackay	1 215.1	1 271.6	4.6
18	Launceston - Melbourne	1 007.7	1 182.5	17.3
19	Karratha - Perth	1 141.6	1 211.2	6.1
20	Adelaide - Brisbane	840.1	955.8	13.8
21	Cairns - Melbourne	596.2	780.5	30.9
22	Adelaide - Perth	726.3	785.1	8.1
23	Brisbane - Rockhampton	839.3	879.7	4.8
24	Brisbane - Canberra	864.4	802.8	-7.1
25	Brisbane - Newcastle	715.5	741.0	3.6
26	Hobart - Sydney	559.3	639.1	14.3
27	Perth - Port Hedland	660.5	781.0	18.2
28	Sunshine Coast - Sydney	558.9	565.3	1.1
29	Brisbane - Gladstone	233.3	297.7	27.6
30	Newman - Perth	471.0	692.6	47.0
31	Melbourne - Newcastle	557.4	556.7	-0.1
32	Brisbane - Darwin	452.0	448.9	-0.7
33	Darwin - Sydney	81.4	477.8	NA (a)
34	Melbourne - Sunshine Coast	386.0	398.1	3.1
35	Coffs Harbour - Sydney	413.4	461.9	11.7
36	Broome - Perth	426.0	427.0	0.2
37	Brisbane - Emerald	168.3	510.0	NA (b)
38	Ballina - Sydney	327.3	388.2	18.6
39	Darwin - Melbourne	369.1	363.7	-1.5
40	Launceston - Sydney	276.9	334.9	20.9
41	Albury - Sydney	383.6	346.9	-9.6
42	Brisbane - Proserpine	263.2	301.7	14.6
43	Kalgoorlie - Perth	363.7	458.2	26.0
44	Hamilton Island - Sydney	253.2	244.3	-3.5
45	Melbourne - Mildura	291.5	289.1	-0.8

(continued)

**Table 2: (continued): Available seats (000s) — annual activity**

	City-Pair	YE Jun 2012	YE Jun 2013	% Change
46	Adelaide - Port Lincoln	334.4	325.8	-2.6
47	Port Macquarie - Sydney	291.1	275.0	-5.5
48	Adelaide - Gold Coast	220.4	239.1	8.5
49	Sydney - Townsville	217.6	228.1	4.8
50	Sydney - Wagga Wagga	275.1	275.5	0.1
51	Adelaide - Canberra	249.5	262.3	5.1
52	Dubbo - Sydney	256.5	269.2	5.0
53	Cairns - Townsville	313.2	296.9	-5.2
54	Darwin - Perth	231.8	223.7	-3.5
55	Brisbane - Hamilton Island	221.1	199.9	-9.6
56	Ayers Rock - Sydney	213.5	193.3	-9.4
57	Brisbane - Mount Isa	..	229.7	NA (c)
58	Geraldton - Perth	136.0	209.4	NA (d)
59	Brisbane - Moranbah	..	63.4	NA (e)
60	Brisbane - Bundaberg	..	35.6	NA (f)
61	Alice Springs - Melbourne	..	33.1	NA (g)
62	Alice Springs - Sydney	..	16.0	NA (h)
	<b>Total domestic network</b>	<b>71 104.6</b>	<b>76 693.1</b>	<b>7.9</b>

(a) Darwin - Sydney route included from May 2012, prior data not shown.

(b) Brisbane - Emerald route included from February 2012, prior data not shown.

(c) Brisbane - Mount Isa route included from September 2012, prior data not shown.

(d) Geraldton - Perth route included from December 2011, prior data not shown.

(e) Brisbane - Moranbah route included from May 2013, prior data not shown.

(f) Brisbane - Bundaberg route included from May 2013, prior data not shown.

(g) Alice Springs - Melbourne route included from May 2013, prior data not shown.

(h) Alice Springs - Sydney route included from June 2013, prior data not shown.

**Table 3: Load factors (%) — annual activity**

	<b>City-Pair</b>	<b>YE Jun 2012</b>	<b>YE Jun 2013</b>	<b>% Change</b>
1	Melbourne - Sydney	81.6	79.8	-1.8
2	Brisbane - Sydney	82.6	78.6	-4.0
3	Brisbane - Melbourne	80.7	78.5	-2.2
4	Gold Coast - Sydney	84.5	79.4	-5.1
5	Melbourne - Perth	81.4	76.5	-5.0
6	Adelaide - Melbourne	83.7	77.7	-6.0
7	Perth - Sydney	78.0	81.4	3.4
8	Adelaide - Sydney	82.0	78.0	-4.1
9	Gold Coast - Melbourne	84.4	86.1	1.8
10	Hobart - Melbourne	84.6	77.2	-7.5
11	Brisbane - Cairns	82.6	79.2	-3.4
12	Canberra - Sydney	64.8	63.1	-1.7
13	Canberra - Melbourne	69.7	66.0	-3.6
14	Brisbane - Perth	81.3	82.7	1.4
15	Brisbane - Townsville	79.8	73.3	-6.5
16	Cairns - Sydney	83.0	79.8	-3.2
17	Brisbane - Mackay	79.9	72.1	-7.8
18	Launceston - Melbourne	79.5	72.9	-6.6
19	Karratha - Perth	64.8	63.0	-1.8
20	Adelaide - Brisbane	82.6	77.8	-4.7
21	Cairns - Melbourne	85.0	81.0	-4.0
22	Adelaide - Perth	82.8	79.5	-3.3
23	Brisbane - Rockhampton	78.3	70.9	-7.4
24	Brisbane - Canberra	74.0	73.0	-1.0
25	Brisbane - Newcastle	84.0	78.2	-5.8
26	Hobart - Sydney	83.1	77.4	-5.7
27	Perth - Port Hedland	66.7	61.1	-5.7
28	Sunshine Coast - Sydney	81.7	81.7	0.0
29	Brisbane - Gladstone	68.7	62.1	-6.6
30	Newman - Perth	63.7	63.4	-0.3
31	Melbourne - Newcastle	76.8	77.2	0.5
32	Brisbane - Darwin	81.9	82.0	0.1
33	Darwin - Sydney	82.5	75.1	NA (a)
34	Melbourne - Sunshine Coast	86.3	85.1	-1.2
35	Coffs Harbour - Sydney	75.7	73.2	-2.5
36	Broome - Perth	73.6	75.5	1.9
37	Brisbane - Emerald	66.5	58.1	NA (b)
38	Ballina - Sydney	81.3	75.5	-5.8
39	Darwin - Melbourne	78.3	78.6	0.3
40	Launceston - Sydney	79.3	73.9	-5.5
41	Albury - Sydney	64.7	69.4	4.7
42	Brisbane - Proserpine	81.7	77.8	-3.9
43	Kalgoorlie - Perth	66.0	51.0	-15.0
44	Hamilton Island - Sydney	75.6	82.4	6.8
45	Melbourne - Mildura	67.5	68.3	0.8

(continued)

**Table 3: (continued): Load factors (%) — annual activity**

	<b>City-Pair</b>	<b>YE Jun 2012</b>	<b>YE Jun 2013</b>	<b>% Change</b>
46	Adelaide - Port Lincoln	57.9	60.1	2.3
47	Port Macquarie - Sydney	69.2	70.2	0.9
48	Adelaide - Gold Coast	83.7	79.4	-4.3
49	Sydney - Townsville	85.2	80.7	-4.5
50	Sydney - Wagga Wagga	65.7	65.1	-0.6
51	Adelaide - Canberra	73.1	67.9	-5.2
52	Dubbo - Sydney	68.3	64.1	-4.2
53	Cairns - Townsville	60.1	57.3	-2.9
54	Darwin - Perth	69.9	74.1	4.2
55	Brisbane - Hamilton Island	74.0	77.7	3.8
56	Ayers Rock - Sydney	71.7	76.9	5.2
57	Brisbane - Mount Isa	..	63.4	NA (c)
58	Geraldton - Perth	58.8	63.4	NA (d)
59	Brisbane - Moranbah	..	52.9	NA (e)
60	Brisbane - Bundaberg	..	75.4	NA (f)
61	Alice Springs - Melbourne	..	71.6	NA (g)
62	Alice Springs - Sydney	..	80.5	NA (h)
	<b>Total domestic network</b>	<b>78.8</b>	<b>76.7</b>	<b>-2.1</b>

(a) Darwin - Sydney route included from May 2012, prior data not shown.

(b) Brisbane - Emerald route included from February 2012, prior data not shown.

(c) Brisbane - Mount Isa route included from September 2012, prior data not shown.

(d) Geraldton - Perth route included from December 2011, prior data not shown.

(e) Brisbane - Moranbah route included from May 2013, prior data not shown.

(f) Brisbane - Bundaberg route included from May 2013, prior data not shown.

(g) Alice Springs - Melbourne route included from May 2013, prior data not shown.

(h) Alice Springs - Sydney route included from June 2013, prior data not shown.

**Table 4: Aircraft trips — annual activity**

	<b>City-Pair</b>	<b>YE Jun 2012</b>	<b>YE Jun 2013</b>	<b>% Change</b>
1	Melbourne - Sydney	50 342	53 672	6.6
2	Brisbane - Sydney	29 211	31 384	7.4
3	Brisbane - Melbourne	23 052	23 500	1.9
4	Gold Coast - Sydney	15 265	18 284	19.8
5	Melbourne - Perth	11 038	12 235	10.8
6	Adelaide - Melbourne	15 830	16 996	7.4
7	Perth - Sydney	9 381	8 831	-5.9
8	Adelaide - Sydney	12 233	12 978	6.1
9	Gold Coast - Melbourne	11 198	11 115	-0.7
10	Hobart - Melbourne	7 996	10 093	26.2
11	Brisbane - Cairns	8 722	9 257	6.1
12	Canberra - Sydney	17 996	18 751	4.2
13	Canberra - Melbourne	10 726	10 844	1.1
14	Brisbane - Perth	5 191	5 477	5.5
15	Brisbane - Townsville	8 105	8 173	0.8
16	Cairns - Sydney	6 147	6 442	4.8
17	Brisbane - Mackay	8 881	8 917	0.4
18	Launceston - Melbourne	7 380	8 370	13.4
19	Karratha - Perth	7 965	8 047	1.0
20	Adelaide - Brisbane	5 434	6 027	10.9
21	Cairns - Melbourne	3 293	4 248	29.0
22	Adelaide - Perth	4 844	4 951	2.2
23	Brisbane - Rockhampton	8 504	9 548	12.3
24	Brisbane - Canberra	6 711	6 157	-8.3
25	Brisbane - Newcastle	5 794	6 039	4.2
26	Hobart - Sydney	3 644	4 069	11.7
27	Perth - Port Hedland	4 550	5 372	18.1
28	Sunshine Coast - Sydney	3 213	3 204	-0.3
29	Brisbane - Gladstone	6 626	8 491	28.1
30	Newman - Perth	3 457	4 648	34.5
31	Melbourne - Newcastle	3 209	3 202	-0.2
32	Brisbane - Darwin	2 256	2 243	-0.6
33	Darwin - Sydney	437	2 640	NA (a)
34	Melbourne - Sunshine Coast	2 222	2 254	1.4
35	Coffs Harbour - Sydney	4 835	5 037	4.2
36	Broome - Perth	3 458	3 458	0.0
37	Brisbane - Emerald	2 299	6 474	NA (b)
38	Ballina - Sydney	2 918	2 749	-5.8
39	Darwin - Melbourne	1 968	2 019	2.6
40	Launceston - Sydney	1 619	1 933	19.4
41	Albury - Sydney	6 672	6 597	-1.1
42	Brisbane - Proserpine	1 603	1 924	20.0
43	Kalgoorlie - Perth	2 481	3 442	38.7
44	Hamilton Island - Sydney	1 458	1 390	-4.7
45	Melbourne - Mildura	4 873	4 765	-2.2

(continued)

**Table 4: (continued): Aircraft trips — annual activity**

	<b>City-Pair</b>	<b>YE Jun 2012</b>	<b>YE Jun 2013</b>	<b>% Change</b>
46	Adelaide - Port Lincoln	7 130	6 972	-2.2
47	Port Macquarie - Sydney	4 567	4 573	0.1
48	Adelaide - Gold Coast	1 430	1 519	6.2
49	Sydney - Townsville	1 298	1 314	1.2
50	Sydney - Wagga Wagga	5 514	5 367	-2.7
51	Adelaide - Canberra	1 854	2 080	12.2
52	Dubbo - Sydney	6 451	6 361	-1.4
53	Cairns - Townsville	4 897	4 944	1.0
54	Darwin - Perth	1 426	1 355	-5.0
55	Brisbane - Hamilton Island	1 313	1 146	-12.7
56	Ayers Rock - Sydney	1 455	1 435	-1.4
57	Brisbane - Mount Isa	..	1 547	NA (c)
58	Geraldton - Perth	2 027	3 383	NA (d)
59	Brisbane - Moranbah	..	896	NA (e)
60	Brisbane - Bundaberg	..	588	NA (f)
61	Alice Springs - Melbourne	..	192	NA (g)
62	Alice Springs - Sydney	..	93	NA (h)
	<b>Total domestic network</b>	<b>615 706</b>	<b>641 973</b>	<b>4.3</b>

(a) Darwin - Sydney route included from May 2012, prior data not shown.

(b) Brisbane - Emerald route included from February 2012, prior data not shown.

(c) Brisbane - Mount Isa route included from September 2012, prior data not shown.

(d) Geraldton - Perth route included from December 2011, prior data not shown.

(e) Brisbane - Moranbah route included from May 2013, prior data not shown.

(f) Brisbane - Bundaberg route included from May 2013, prior data not shown.

(g) Alice Springs - Melbourne route included from May 2013, prior data not shown.

(h) Alice Springs - Sydney route included from June 2013, prior data not shown.



## TOP TEN AIRPORTS – PASSENGER MOVEMENTS

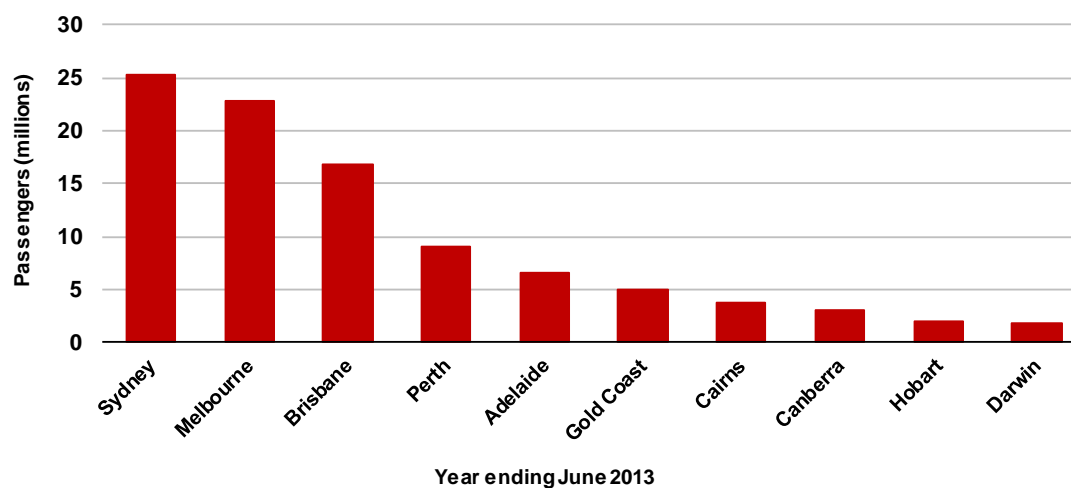
Table 5: Top ten airports, RPT passenger movements (000s) — annual activity

Airport	YE Jun 2012	YE Jun 2013	% Change	% of Total
1 Sydney	24 204.1	25 288.1	4.5	22.1
2 Melbourne	21 419.8	22 711.5	6.0	19.9
3 Brisbane	16 443.7	16 790.1	2.1	14.7
4 Perth	8 529.6	9 091.1	6.6	8.0
5 Adelaide	6 348.5	6 495.0	2.3	5.7
6 Gold Coast	4 620.0	4 956.0	7.3	4.3
7 Cairns	3 564.8	3 702.0	3.8	3.2
8 Canberra	3 159.0	3 015.5	-4.5	2.6
9 Hobart	1 814.6	2 026.6	11.7	1.8
10 Darwin	1 824.8	1 809.6	-0.8	1.6
<b>Total top ten airports</b>	<b>91 929.0</b>	<b>95 885.4</b>	<b>4.3</b>	<b>83.9</b>
<b>Total domestic network</b>	<b>109 945.6</b>	<b>114 249.6</b>	<b>3.9</b>	<b>100.0</b>

Note: Airport passenger movement numbers are the sum of passenger arrivals and departures at each airport.

### Top ten airports, RPT passenger movements

(Domestic and regional passenger traffic - traffic on board)



## TOP FIVE AIRPORTS – CARGO MOVEMENTS

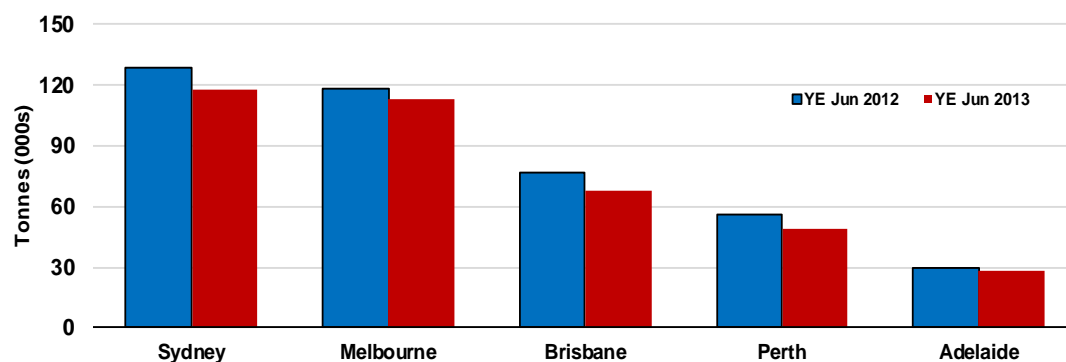
**Table 6: Top five airports, domestic RPT cargo movements (000s tonnes) - annual activity**

Airport	YE Jun 2012	YE Jun 2013	% Change	% of Total
1 Sydney	128.2	118.2	-7.8	27.5
2 Melbourne	118.5	112.9	-4.7	26.2
3 Brisbane	77.1	67.5	-12.4	15.7
4 Perth	55.6	49.4	-11.3	11.5
5 Adelaide	29.4	28.4	-3.5	6.6
<b>Total top five airports</b>	<b>408.7</b>	<b>376.3</b>	<b>-7.9</b>	<b>87.5</b>
<b>Total domestic network</b>	<b>472.9</b>	<b>430.2</b>	<b>-9.0</b>	<b>100.0</b>

Note: Airport cargo tonnes are the sum of cargo tonnes on arrivals and departures at each airport.

### Top five airports, cargo movements

(Domestic and regional cargo traffic - traffic on board)



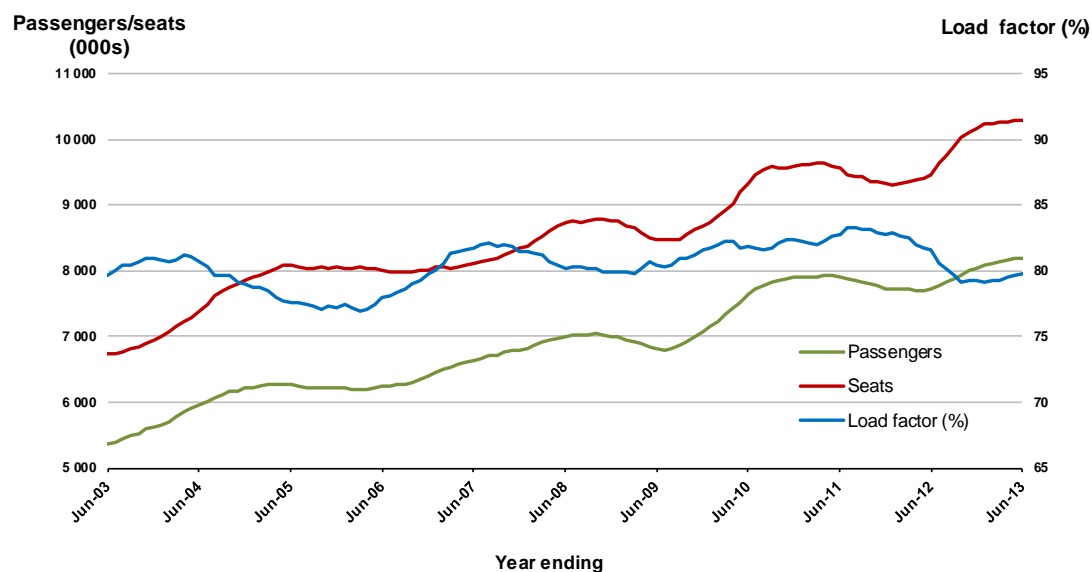
## TOP TWENTY ROUTES

### 1. Melbourne - Sydney

#### Moving annual data

	YE Jun 2012	YE Jun 2013	% Change
Passengers carried (000s)	7 727.9	8 200.6	6.1
Seats (000s)	9 466.4	10 280.5	8.6
Load factor %	81.6	79.8	-1.8 *
Aircraft trips	50 342	53 672	6.6

\* percentage point difference

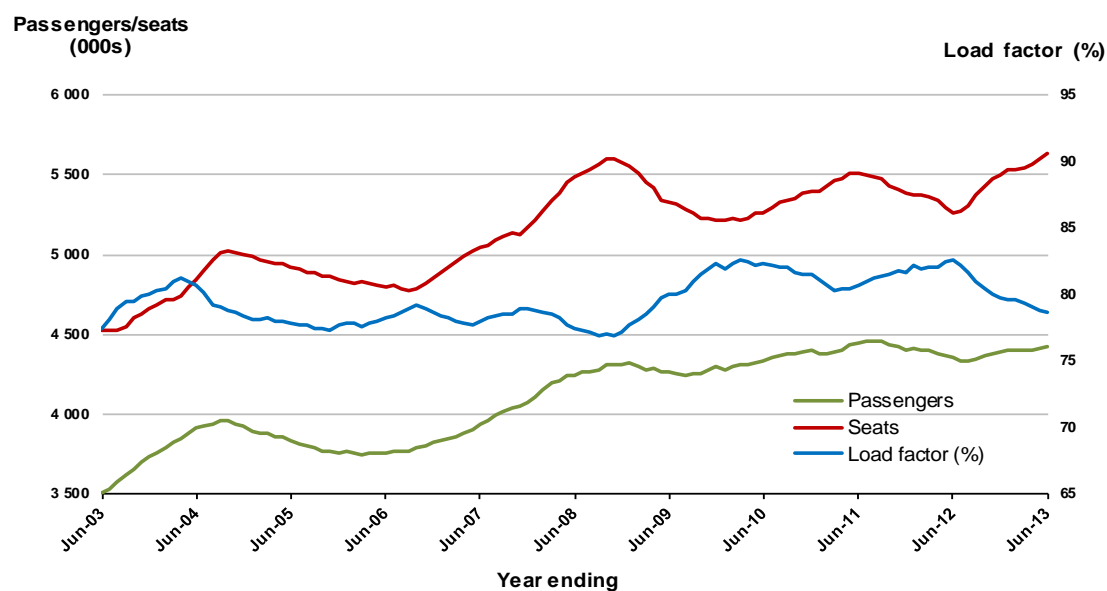


### 2. Brisbane - Sydney

#### Moving annual data

	YE Jun 2012	YE Jun 2013	% Change
Passengers carried (000s)	4 352.7	4 426.2	1.7
Seats (000s)	5 265.6	5 631.6	7.0
Load factor %	82.6	78.6	-4.0 *
Aircraft trips	29 211	31 384	7.4

\* percentage point difference



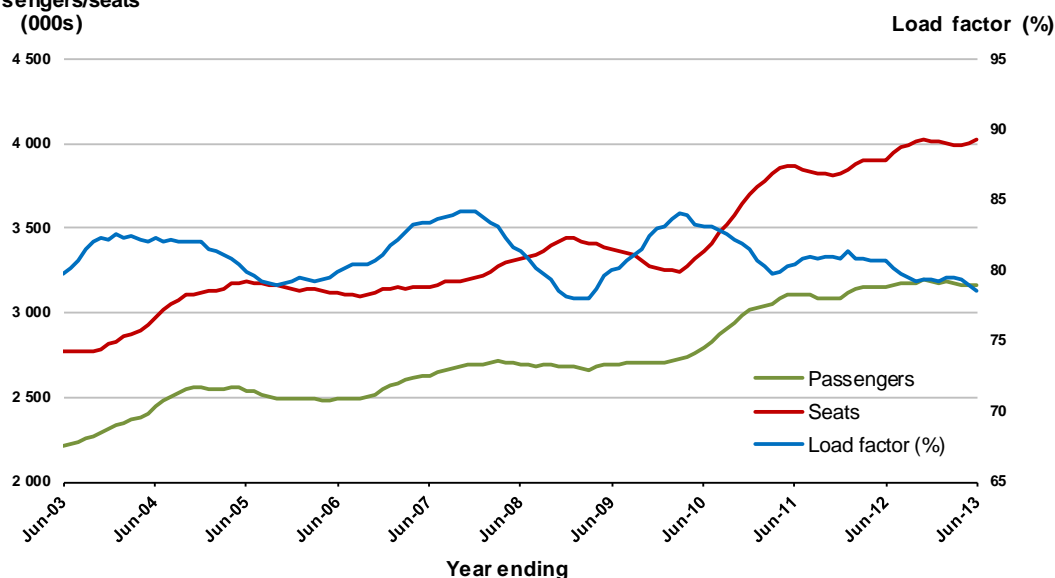
### 3. Brisbane - Melbourne

#### Moving annual data

	YE Jun 2012	YE Jun 2013	% Change
Passengers carried (000s)	3 152.2	3 162.5	0.3
Seats (000s)	3 904.7	4 026.5	3.1
Load factor %	80.7	78.5	-2.2 *
Aircraft trips	23 052	23 500	1.9

\* percentage point difference

#### Passengers/seats (000s)



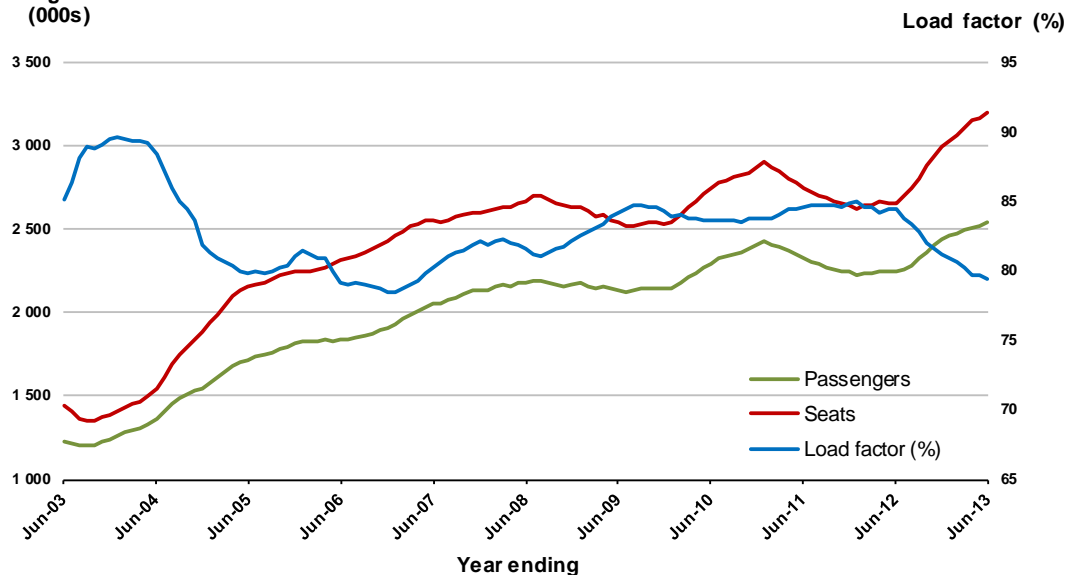
### 4. Gold Coast - Sydney

#### Moving annual data

	YE Jun 2012	YE Jun 2013	% Change
Passengers carried (000s)	2 251.3	2 541.9	12.9
Seats (000s)	2 661.9	3 197.4	20.1
Load factor %	84.5	79.4	-5.1 *
Aircraft trips	15 265	18 284	19.8

\* percentage point difference

#### Passengers/seats (000s)

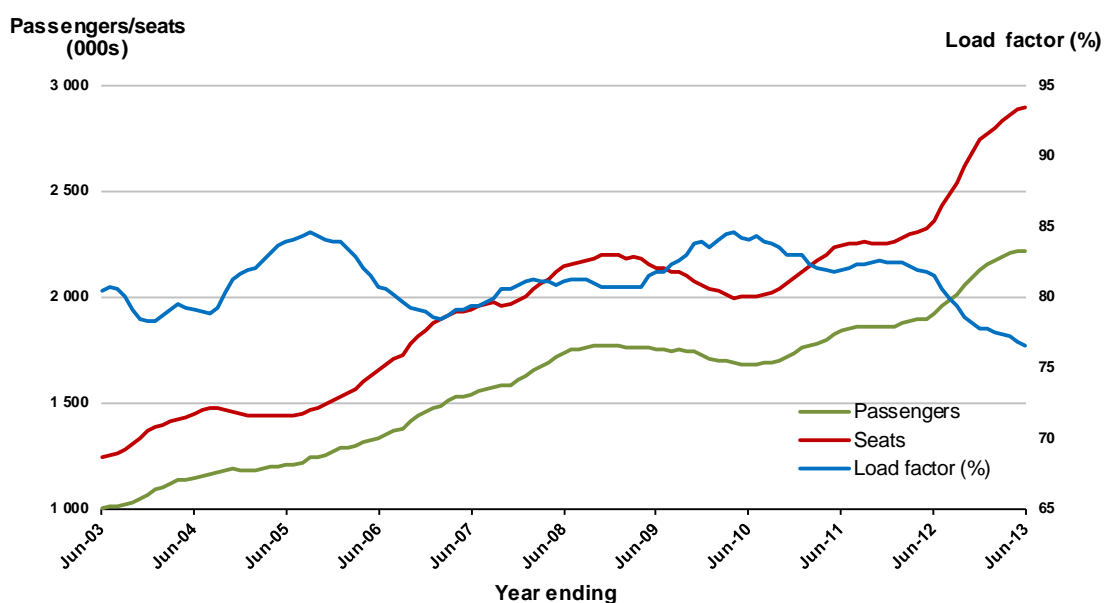


## 5. Melbourne - Perth

### Moving annual data

	YE Jun 2012	YE Jun 2013	% Change
Passengers carried (000s)	1 924.0	2 216.5	15.2
Seats (000s)	2 362.2	2 897.6	22.7
Load factor %	81.4	76.5	-5.0 *
Aircraft trips	11 038	12 235	10.8

\* percentage point difference

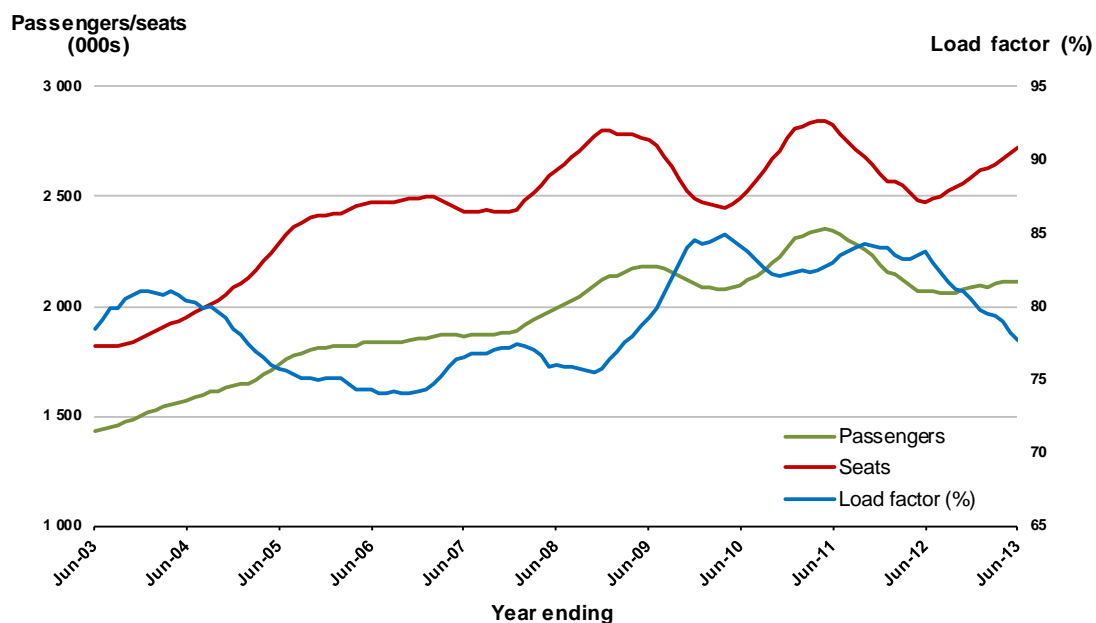


## 6. Adelaide - Melbourne

### Moving annual data

	YE Jun 2012	YE Jun 2013	% Change
Passengers carried (000s)	2 071.0	2 114.8	2.1
Seats (000s)	2 474.6	2 721.1	10.0
Load factor %	83.7	77.7	-6.0 *
Aircraft trips	15 830	16 996	7.4

\* percentage point difference

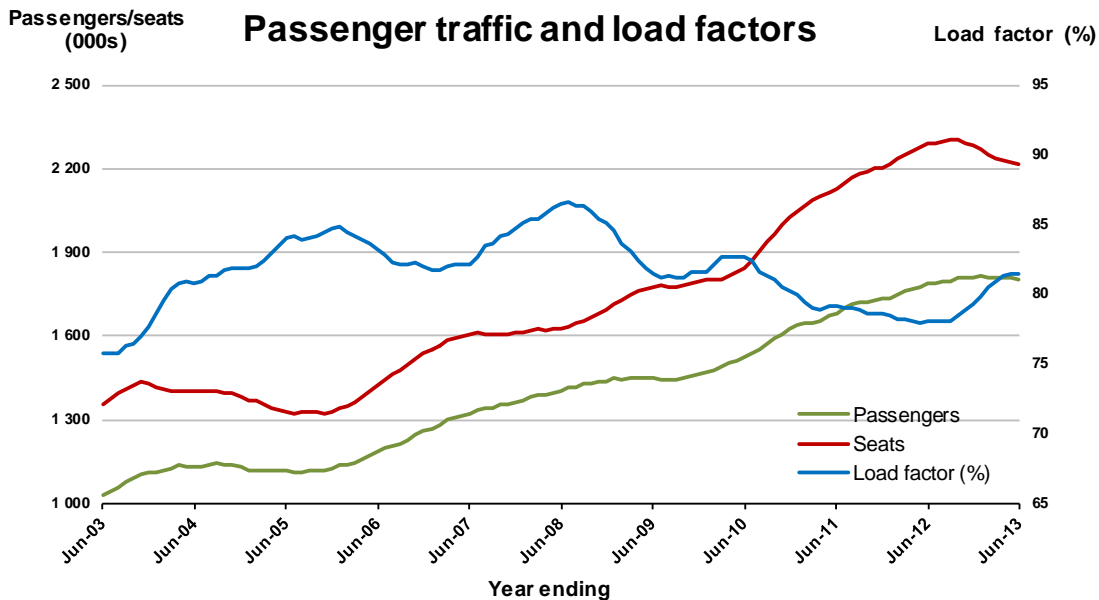


## 7. Perth - Sydney

### Moving annual data

	YE Jun 2012	YE Jun 2013	% Change
Passengers carried (000s)	1 785.4	1 804.8	1.1
Seats (000s)	2 288.3	2 216.0	-3.2
Load factor %	78.0	81.4	3.4 *
Aircraft trips	9 381	8 831	-5.9

\* percentage point difference

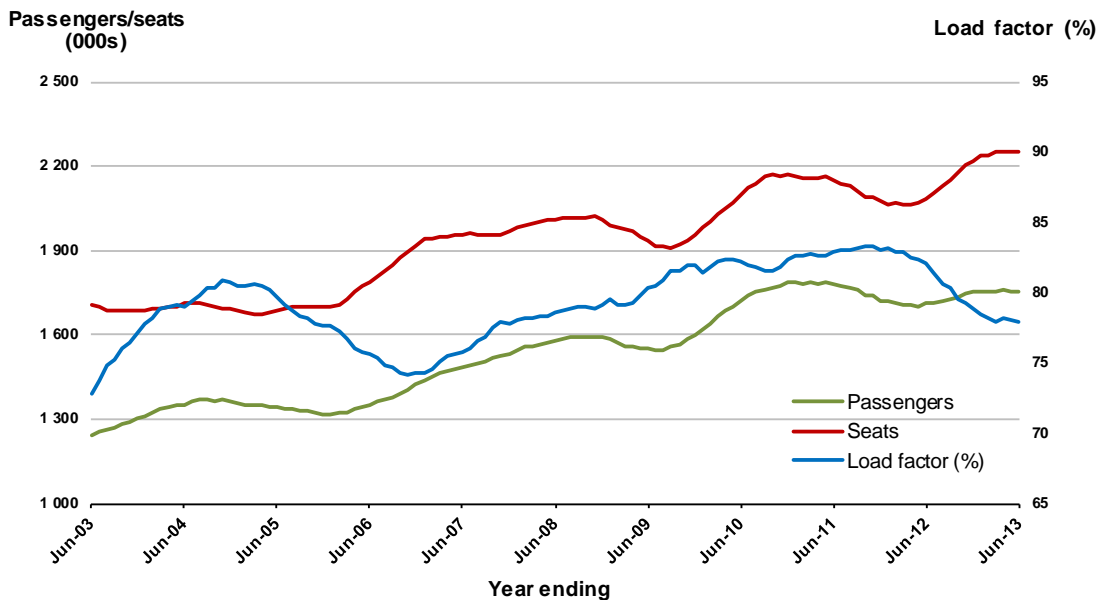


## 8. Adelaide - Sydney

### Moving annual data

	YE Jun 2012	YE Jun 2013	% Change
Passengers carried (000s)	1 709.6	1 753.6	2.6
Seats (000s)	2 084.3	2 249.0	7.9
Load factor %	82.0	78.0	-4.1 *
Aircraft trips	12 233	12 978	6.1

\* percentage point difference

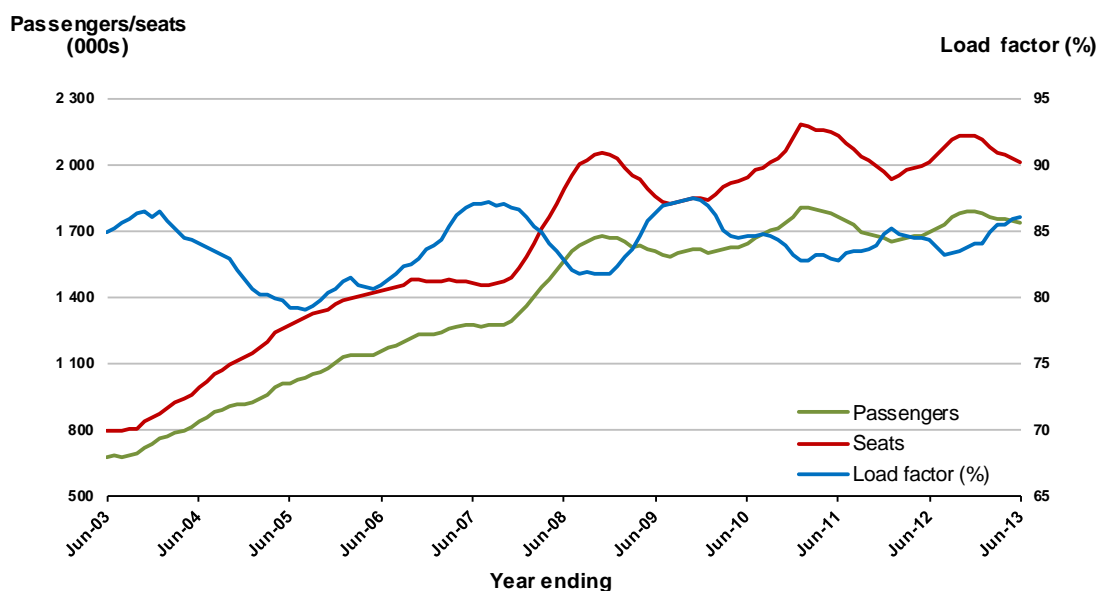


## 9. Gold Coast - Melbourne

### Moving annual data

	YE Jun 2012	YE Jun 2013	% Change
Passengers carried (000s)	1 699.5	1 735.9	2.1
Seats (000s)	2 014.3	2 015.6	0.1
Load factor %	84.4	86.1	1.8 *
Aircraft trips	11 198	11 115	-0.7

\* percentage point difference

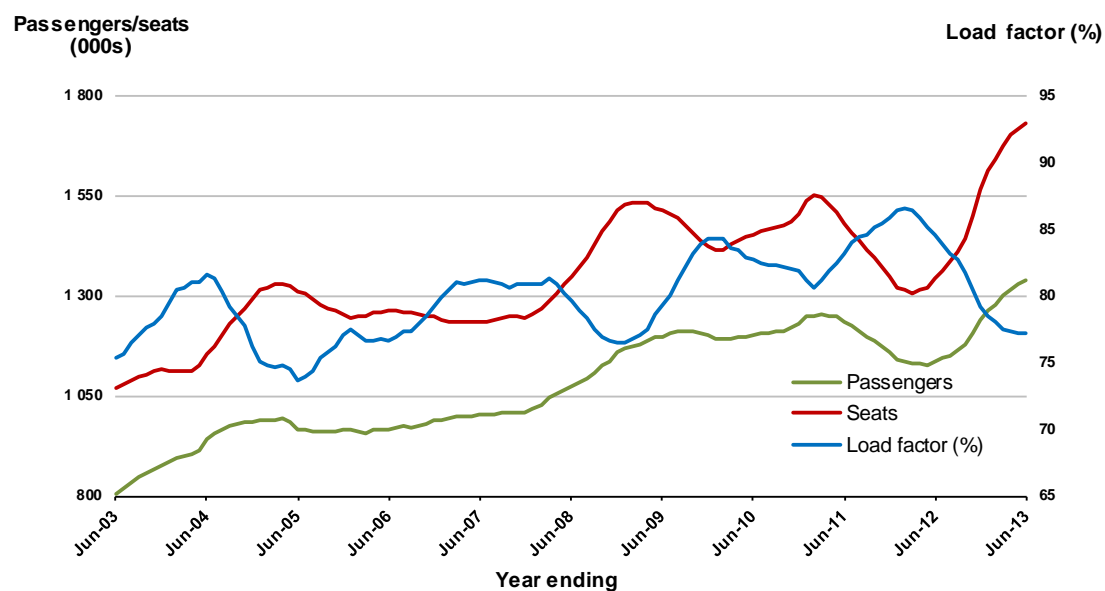


## 10. Hobart - Melbourne

### Moving annual data

	YE Jun 2012	YE Jun 2013	% Change
Passengers carried (000s)	1 137.3	1 337.2	17.6
Seats (000s)	1 343.6	1 733.1	29.0
Load factor %	84.6	77.2	-7.5 *
Aircraft trips	7 996	10 093	26.2

\* percentage point difference

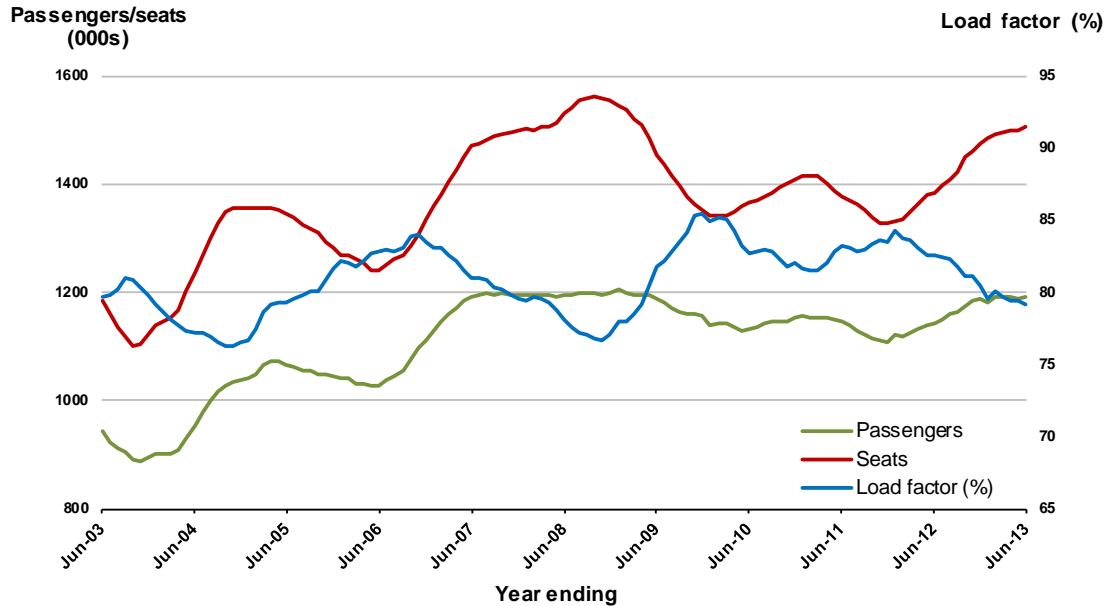


## 11. Brisbane - Cairns

### Moving annual data

	YE Jun 2012	YE Jun 2013	% Change
Passengers carried (000s)	1 143.2	1 191.9	4.3
Seats (000s)	1 384.1	1 505.8	8.8
Load factor %	82.6	79.2	-3.4 *
Aircraft trips	8 722	9 257	6.1

\* percentage point difference

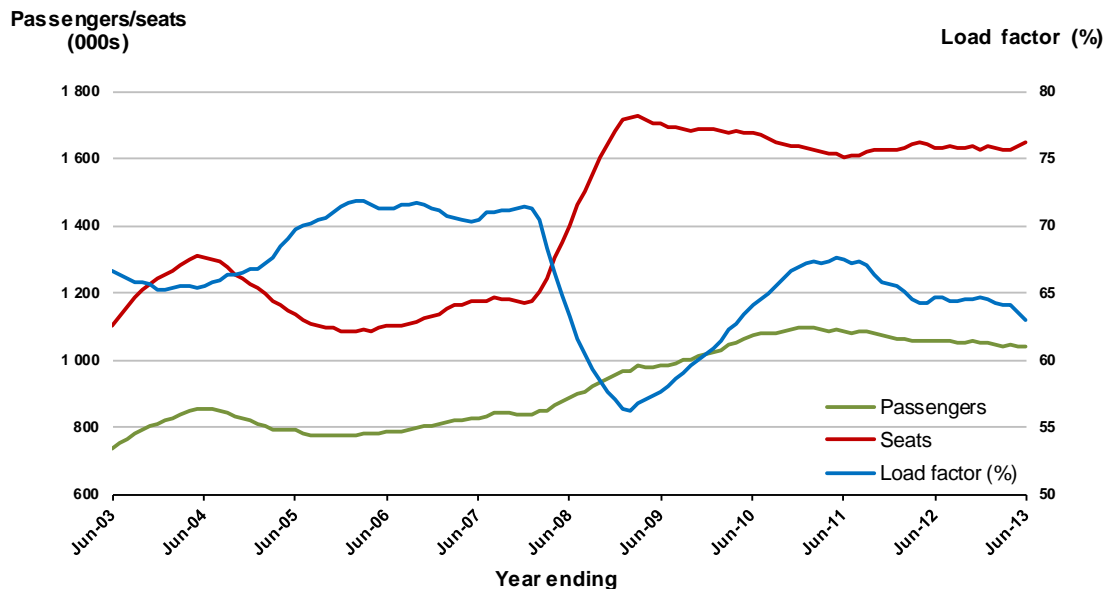


## 12. Canberra - Sydney

### Moving annual data

	YE Jun 2012	YE Jun 2013	% Change
Passengers carried (000s)	1 058.4	1 041.3	-1.6
Seats (000s)	1 634.6	1 651.2	1.0
Load factor %	64.8	63.1	-1.7 *
Aircraft trips	17 996	18 751	4.2

\* percentage point difference



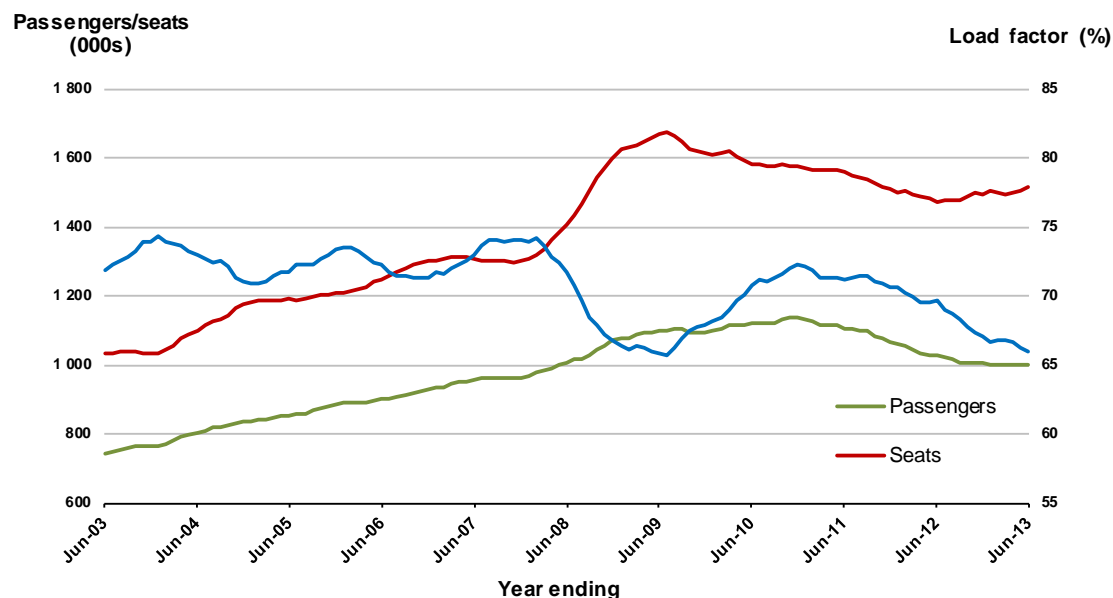


### 13. Canberra - Melbourne

#### Moving annual data

	YE Jun 2012	YE Jun 2013	% Change
Passengers carried (000s)	1 026.3	1 000.6	-2.5
Seats (000s)	1 473.5	1 515.9	2.9
Load factor %	69.7	66.0	-3.6 *
Aircraft trips	10 726	10 844	1.1

\* percentage point difference

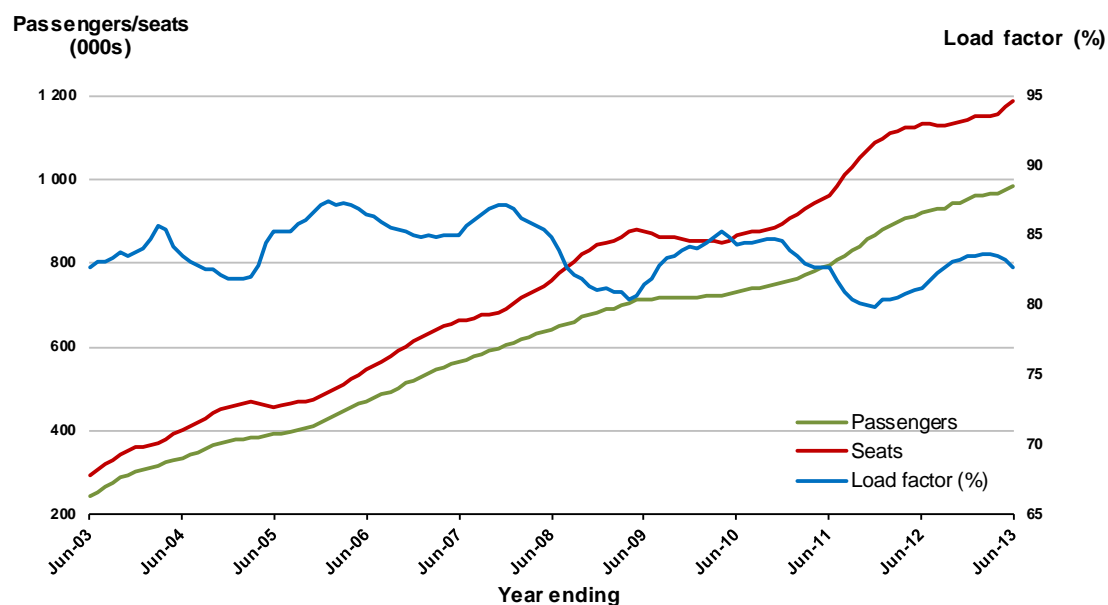


### 14. Brisbane - Perth

#### Moving annual data

	YE Jun 2012	YE Jun 2013	% Change
Passengers carried (000s)	918.7	981.4	6.8
Seats (000s)	1 130.5	1 186.9	5.0
Load factor %	81.3	82.7	1.4 *
Aircraft trips	5 191	5 477	5.5

\* percentage point difference

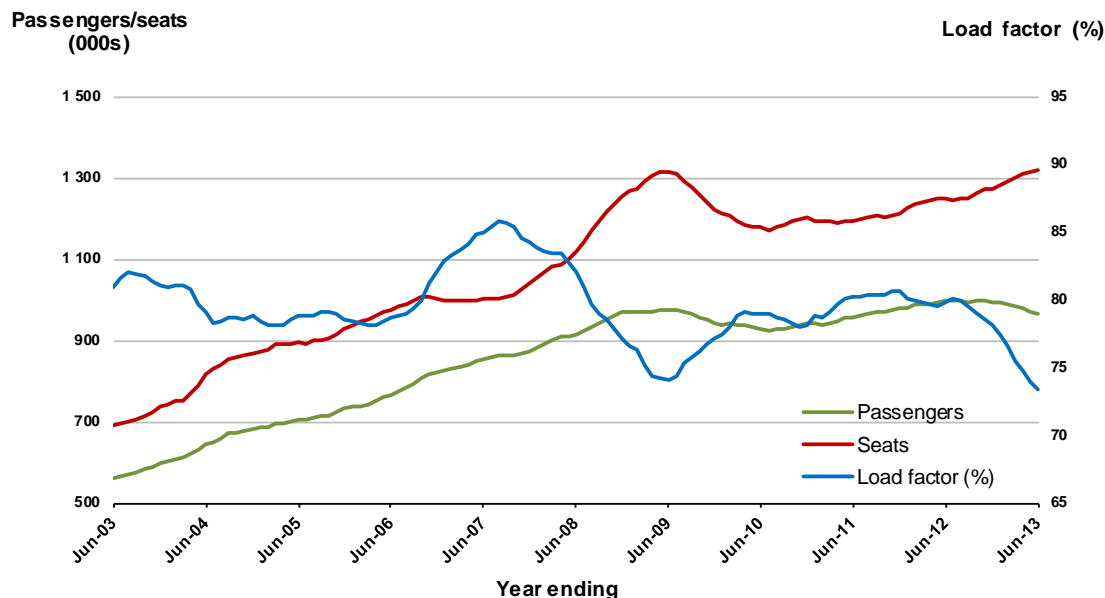


## 15. Brisbane - Townsville

### Moving annual data

	YE Jun 2012	YE Jun 2013	% Change
Passengers carried (000s)	996.3	965.9	-3.0
Seats (000s)	1 247.7	1 316.9	5.5
Load factor %	79.8	73.3	-6.5 *
Aircraft trips	8 105	8 173	0.8

\* percentage point difference

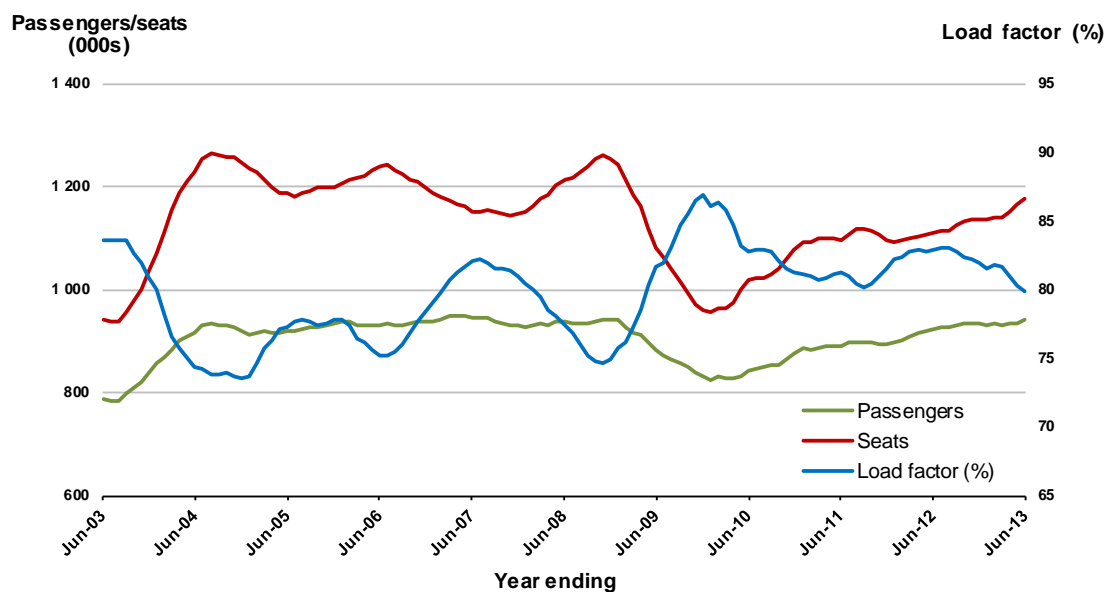


## 16. Cairns - Sydney

### Moving annual data

	YE Jun 2012	YE Jun 2013	% Change
Passengers carried (000s)	922.6	941.1	2.0
Seats (000s)	1 110.9	1 177.8	6.0
Load factor %	83.0	79.8	-3.2 *
Aircraft trips	6 147	6 442	4.8

\* percentage point difference

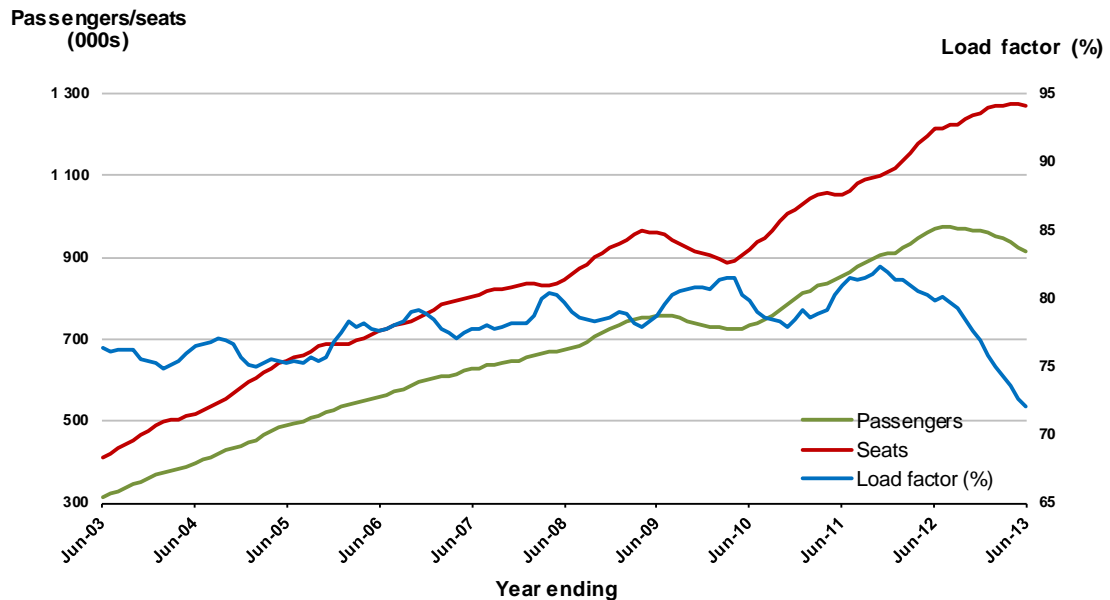


## 17. Brisbane - Mackay

### Moving annual data

	YE Jun 2012	YE Jun 2013	% Change
Passengers carried (000s)	970.0	916.5	-5.5
Seats (000s)	1 215.1	1 271.6	4.6
Load factor %	79.9	72.1	-7.8 *
Aircraft trips	8 881	8 917	0.4

\* percentage point difference



## 18. Launceston - Melbourne

### Moving annual data

	YE Jun 2012	YE Jun 2013	% Change
Passengers carried (000s)	801.1	861.7	7.6
Seats (000s)	1 007.7	1 182.5	17.3
Load factor %	79.5	72.9	-6.6 *
Aircraft trips	7 380	8 370	13.4

\* percentage point difference

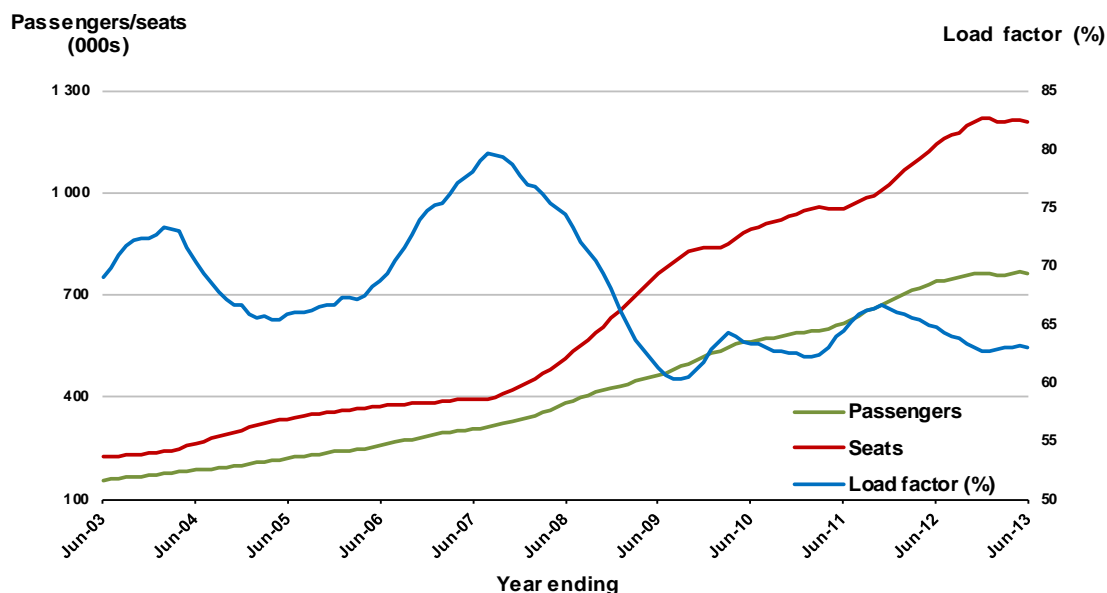


## 19. Karratha - Perth

### Moving annual data

	YE Jun 2012	YE Jun 2013	% Change
Passengers carried (000s)	739.4	763.0	3.2
Seats (000s)	1 141.6	1 211.2	6.1
Load factor %	64.8	63.0	-1.8*
Aircraft trips	7 965	8 047	1.0

\* percentage point difference

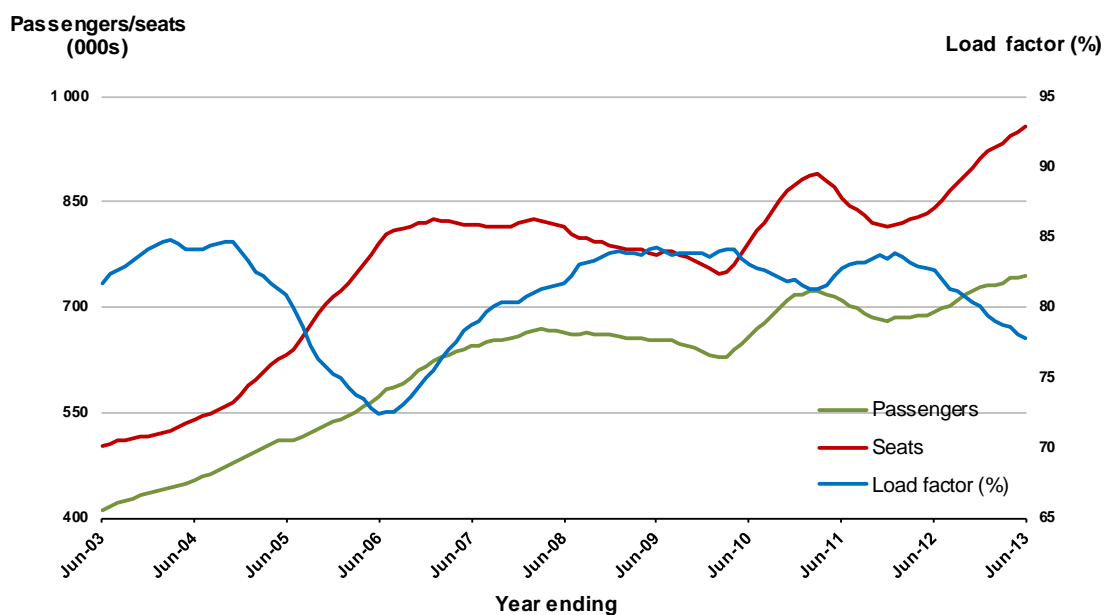


## 20. Adelaide - Brisbane

### Moving annual data

	YE Jun 2012	YE Jun 2013	% Change
Passengers carried (000s)	693.6	743.8	7.2
Seats (000s)	840.1	955.8	13.8
Load factor %	82.6	77.8	-4.7*
Aircraft trips	5 434	6 027	10.9

\* percentage point difference



## TOP FIFTY REGIONAL AIRPORTS

**Table 7: Top fifty regional airports (000s) — passenger movements, annual**

Airport	YE Jun 2012	YE Jun 2013	% Change
1 Cairns	3 564.8	3 702.0	3.8
2 Hobart	1 814.6	2 026.6	11.7
3 Darwin	1 824.8	1 809.6	-0.8
4 Townsville	1 691.8	1 635.9	-3.3
5 Launceston	1 130.3	1 223.5	8.2
6 Williamtown	1 208.0	1 195.9	-1.0
7 Mackay	1 191.3	1 171.7	-1.6
8 Karratha	799.9	816.0	2.0
9 Rockhampton	791.7	746.1	-5.8
10 Alice Springs	575.3	596.0	3.6
11 Port Hedland	480.2	517.9	7.8
12 Gladstone	370.3	471.4	27.3
13 Hamilton Island	453.3	446.7	-1.5
14 Broome	439.7	445.0	1.2
15 Newman	301.3	439.8	46.0
16 Ballina	326.3	359.9	10.3
17 Coffs Harbour	336.8	357.8	6.2
18 Emerald	235.9	296.5	25.7
19 Mount Isa	256.5	278.1	8.4
20 Albury	283.2	268.8	-5.1
21 Paraburdoo	295.1	266.1	-9.8
22 Kalgoorlie	266.6	259.1	-2.8
23 Ayers Rock	299.8	257.2	-14.2
24 Mildura	198.0	243.0	22.8
25 Proserpine	215.6	235.1	9.0
26 Port Macquarie	225.4	228.8	1.5
27 Wagga Wagga	208.3	208.0	-0.1
28 Port Lincoln	193.6	196.0	1.2
29 Dubbo	187.5	183.9	-1.9
30 Roma	108.8	179.1	64.7
31 Tamworth	158.3	155.1	-2.0
32 Hervey Bay	149.1	150.5	0.9
33 Moranbah	119.4	149.5	25.2
34 Geraldton	140.0	140.5	0.4
35 Bundaberg	125.4	134.4	7.2
36 Devonport	139.4	125.3	-10.1
37 Kununurra	118.1	118.0	-0.1
38 Gove	114.5	113.0	-1.4
39 Armidale	106.9	107.5	0.6
40 Thursday Island	99.1	93.4	-5.8
41 Learmonth	89.9	93.0	3.5
42 Olympic Dam	90.4	83.6	-7.6
43 Mount Gambier	89.2	83.0	-6.9
44 Whyalla	70.1	71.8	2.5
45 Weipa	72.3	68.5	-5.3
46 Burnie	69.1	67.1	-2.9
47 Broken Hill	64.4	65.4	1.5
48 Griffith	71.2	64.3	-9.8
49 Narrandera	58.6	59.0	0.7
50 Albany	59.7	58.4	-2.2
<b>Total regional airports</b>	<b>23 859.9</b>	<b>24 590.8</b>	<b>3.1</b>
<b>Total domestic network</b>	<b>109 945.6</b>	<b>114 249.6</b>	<b>3.9</b>

Note: Airport passenger movement numbers are the sum of passenger arrivals and departures at each airport.

## DOMESTIC CHARTER ACTIVITY

**Table 8: Charter passengers carried and aircraft trips - annual activity**

	YE Jun 2012	YE Jun 2013	%Change
Total domestic charter passengers	1 919 259	2 373 160	23.6
Total domestic charter aircraft trips	49 140	58 493	19.0

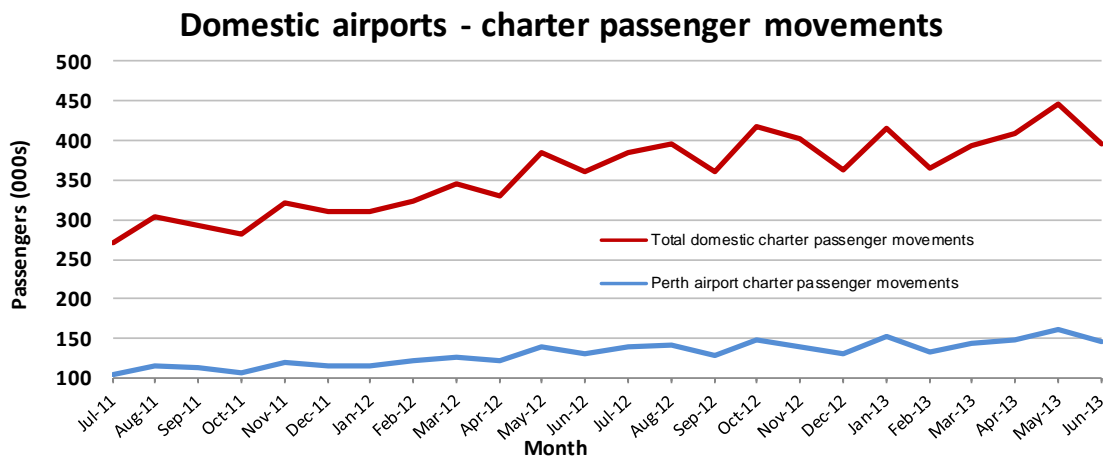
Note: Helicopter and leisure charter flights not included.

**Table 9: Domestic airports - charter activity - annual activity**

	YE Jun 2012	YE Jun 2013	%Change
Total domestic charter passenger movements	3 838 518	4 746 320	23.6
Total domestic charter aircraft movements	98 280	116 986	19.0
Perth airport charter passenger movements	1 427 525	1 712 719	20.0
Perth airport charter aircraft movements	35 116	40 340	14.9

Note: Helicopter and leisure charter flights not included.

Charter passenger and aircraft movement numbers are the sum of arrivals and departures at each airport.



Note: data prior July 2011 not available

## DEFINITIONS

Aircraft Trips	The number of flight stages. A return flight counts as two aircraft trips.
Airport Movements	Airport movements (passenger and cargo) are measured once on arrival and once on departure. Each domestic trip generates two movements at airports. For example, a trip from Melbourne to Sydney will be counted twice, as a passenger departure at Melbourne and as a passenger arrival at Sydney. At the national level, the sum of all domestic airport traffic will therefore be equal to twice the number of trips undertaken.
Available Seat Kilometres (ASKs)	Calculated by multiplying the number of seats available on each flight stage, by the distance in kilometres between the ports. The distances used are Great Circle Distances.
City-Pair	The ports shown make up the city-pair route. Passenger movements shown for a city pair reflect total traffic in both directions.
Flight Stage	The operation of an aircraft from take-off to landing.
Load Factor	The total revenue passenger kilometres performed as a percentage of the total available seat kilometres.
Passengers Carried	Revenue passengers carried.
Regular Public Transport Services (RPT)	All air service operations in which aircraft are available for the transport of members of public and are conducted in accordance with fixed schedules. It does not include charter or other non-scheduled operations.
Revenue Passengers	All passengers paying any fare. Frequent flyer redemption travellers are regarded as revenue passengers.
Revenue Passenger Kilometres (RPKs)	Calculated by multiplying the number of revenue passengers travelling on each flight stage, by the distance in kilometres between the ports. The distances used are Great Circle Distances.
Traffic on board by stages	The total of all traffic (revenue passengers) on each flight stage between two directly connected airports.
..	Data not included
NA	Not applicable