



**Australian Government**

**Department of Infrastructure, Transport,  
Regional Development, Communications and the Arts**

STATISTICAL REPORT

bitre  
Safety

**International road safety comparisons  
2022**

### **Ownership of intellectual property rights in this publication**

Unless otherwise noted, copyright (and any other intellectual property rights, if any) in this publication is owned by the Commonwealth of Australia (referred to below as the Commonwealth).

### **Disclaimer**

The material contained in this publication is made available on the understanding that the Commonwealth is not providing professional advice, and that users exercise their own skill and care with respect to its use, and seek independent advice if necessary.

The Commonwealth makes no representations or warranties as to the contents or accuracy of the information contained in this publication. To the extent permitted by law, the Commonwealth disclaims liability to any person or organisation in respect of anything done, or omitted to be done, in reliance upon information contained in this publication.

### **Creative Commons licence**

With the exception of (a) the Coat of Arms; and (b) the Department of Infrastructure's photos and graphics, copyright in this publication is licensed under a Creative Commons Attribution 3.0 Australia Licence.

Creative Commons Attribution 3.0 Australia Licence is a standard form licence agreement that allows you to copy, communicate and adapt this publication provided that you attribute the work to the Commonwealth and abide by the other licence terms. A summary of the licence terms is available from <http://creativecommons.org/licenses/by/3.0/au/deed.en>. The full licence terms are available from <http://creativecommons.org/licenses/by/3.0/au/legalcode>.

### **Use of the Coat of Arms**

The Department of the Prime Minister and Cabinet sets the terms under which the Coat of Arms is used. Please refer to the Department's Commonwealth Coat of Arms and Government branding web page <http://www.dpmc.gov.au/guidelines/index.cfm#brand> and, in particular, the Guidelines on the use of the Commonwealth Coat of Arms publication.

### **An appropriate citation for this report is:**

Bureau of Infrastructure and Transport Research Economics (BITRE), 2023, *International road safety comparisons 2022* BITRE, Canberra ACT.

### **Contact us**

This publication is available in PDF format. All other rights are reserved, including in relation to any Departmental logos or trade marks which may exist. For enquiries regarding the licence and any use of this publication, please contact:

Bureau of Infrastructure and Transport Research Economics (BITRE)  
Department of Infrastructure, Transport, Regional Development, Communications and the Arts  
GPO Box 501, Canberra ACT 2601, Australia  
Telephone: (international) +61 2 6274 7210  
Fax: (international) +61 2 6274 6855  
Email: [roadsafetystatistics@infrastructure.gov.au](mailto:roadsafetystatistics@infrastructure.gov.au)  
Website: [www.bitre.gov.au](http://www.bitre.gov.au)

Bureau of Infrastructure and Transport Research Economics

# **International road safety comparisons 2022**

Department of Infrastructure, Transport, Regional Development, Communications and the Arts  
Canberra, Australia

# At a glance

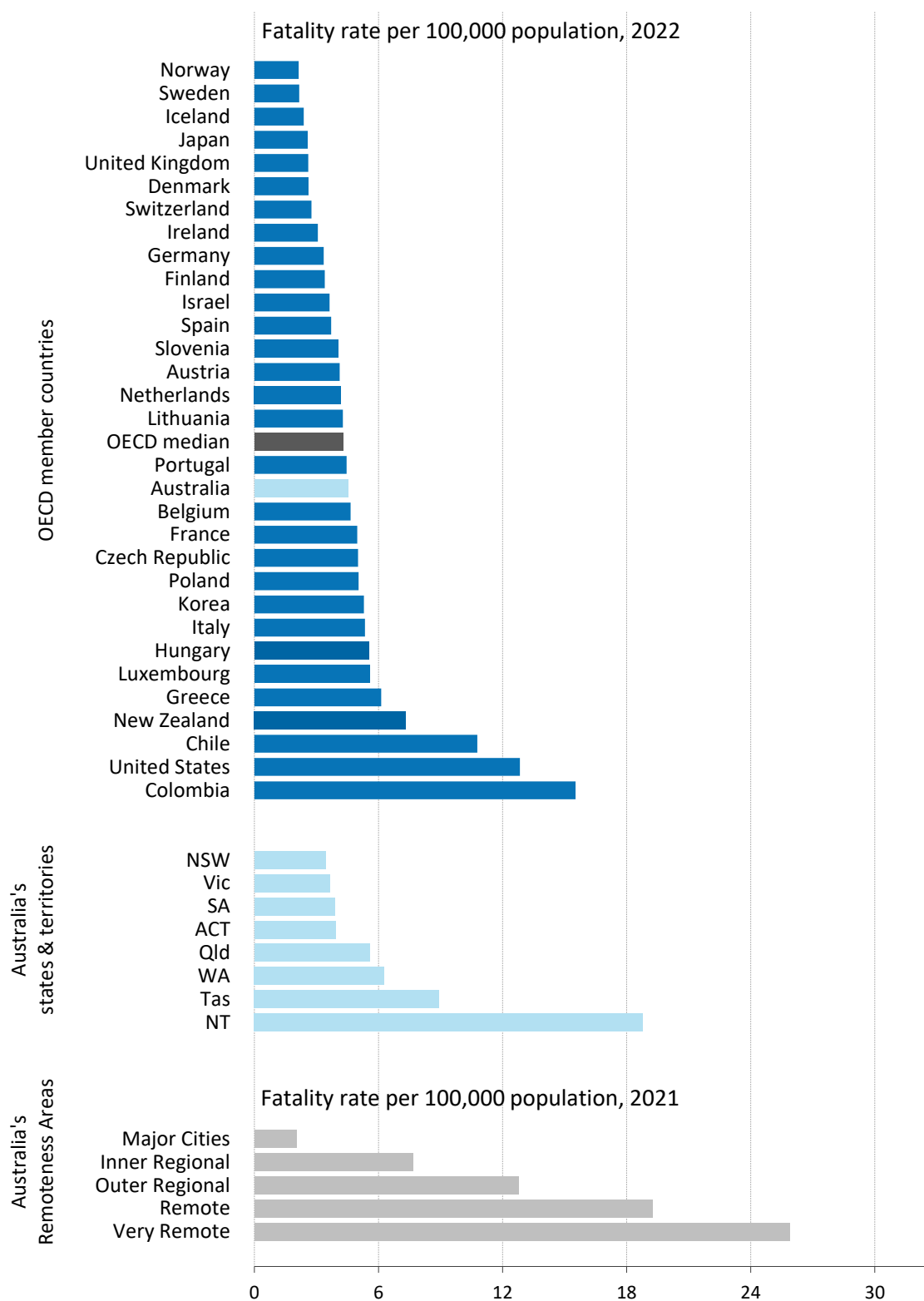
This report presents road deaths and road death rates for Organisation for Economic Co-operation and Development (OECD) nations and Australian states and territories. The rates allow for a comparison of Australia's road safety performance with that of other OECD nations by accounting for the differing levels of population, motorisation and distances travelled. The latest available international data is for 2022.

- In terms of the fatality rate per 100,000 population in 2022:  
Australia's rate of 4.54 was ranked 18<sup>th</sup> out of the 31 nations. The nations with the 3 lowest rates were Norway (2.14), Sweden (2.17) and Iceland (2.39) (Table 1.3).  
Between 2013 and 2022 Australia's fatality rate declined by 11.4 per cent. Over the same period, the OECD median rate declined by 20.8 per cent (Figure 1.2).
- In terms of the fatality rate per 10,000 registered vehicles in 2022:  
Australia's rate of 0.57 was ranked 13<sup>th</sup> out of the 24 nations with available data. The nations with the 3 lowest rates were Iceland (0.25), Norway (0.27), and Sweden (0.35) (Table 1.3).  
Between 2013 and 2022 Australia's fatality rate declined by 17.2 per cent. Over the same period, the OECD median rate declined by 25.6 per cent (Figure 1.4).
- In terms of the fatality rate per 100 million vehicle kilometres travelled (VKT) in 2022:  
Australia's rate of 0.49 was ranked 6<sup>th</sup> out of 11 nations with available data. The nations with the 3 lowest rates were, Norway (0.26), Sweden (0.28) and Finland (0.40) (Table 1.5).  
Between 2013 and 2022 Australia's fatality rate declined by 0.6 per cent. Over the same period, the OECD median rate declined by 8.1 per cent (Figure 1.6).

The 3 rates—population, vehicles-registered and VKT are affected by population demographics and motorisation levels within each country. They are however still highly correlated. Earlier editions of this report have included analyses of these topics.

In the past this publication has been released with an 18 month lag from the reference period. The latest edition, released in August 2022, referenced 2020 data. IRTAD data is largely up to date to 2022, and consequently this edition references 2022. There will be no 2021 publication.

**Figure 1.1 Fatality rate per 100,000 population – 31 OECD countries, Australian states and territories, 2022 and Australian Remoteness Areas †**



† Rates for Remoteness Area are for calendar 2021.

# Data sources

## International data

The International Road Traffic Accident Database (IRTAD 2023) is the main source of fatality and exposure data in this report. IRTAD is maintained by the Joint Transport Research Centre of the OECD and the International Transport Forum. Each year member nations supply IRTAD with their most recent data, which may include revisions to historical data. Further information on IRTAD is available at <https://www.itf-oecd.org/IRTAD>. In cases of particular countries where required data was not held by IRTAD, data was retrieved from the country's relevant government agency.

## Australian data

Australian road fatality data in this report are based on two Bureau of Infrastructure and Transport Research Economics (BITRE) databases: the Australian Road Deaths Database (ARDD) and the National Crash Database (NCD). In this report, the ARDD was used for 1990-2010 and 2022 data and the NCD was used for 2011-2021 data. There are minor data differences between the two databases due to the timing differences in data receipt and ongoing validation by data providers. ARDD data used in this report was current to September 2023.

ARDD data are available at [https://www.bitre.gov.au/statistics/safety/fatal\\_road\\_crash\\_database](https://www.bitre.gov.au/statistics/safety/fatal_road_crash_database).

# Acknowledgements

The Department of Infrastructure, Transport, Regional Development, Communications and the Arts acknowledges the provision of road crash data from the following agencies:

- Transport for New South Wales
- Department of Transport and Planning, Victoria
- Department of Transport and Main Roads, Queensland
- Department of Planning, Transport and Infrastructure, South Australia
- Main Roads Western Australia
- Western Australian Police
- Department of State Growth, Tasmania
- Department of Infrastructure, Planning and Logistics, Northern Territory
- Transport Canberra and City Services Directorate, Australian Capital Territory.

# Contents

At a glance .....iii

Data sources .....v

Acknowledgements .....v

**SECTION 1** Rates per population ..... 1

**SECTION 2** Rates per registered vehicle .....6

**SECTION 3** Rates per vehicle-kilometre-travelled ..... 11

References ..... 16

## Tables

<b>Table I.1</b>	Fatality rate per 100,000 population – 31 OECD countries and Australian states/territories, 2022 .....	2
<b>Table I.2</b>	Fatality rate per 100,000 population – OECD countries and Australian states/territories, 1990, 2000, 2010 and 2013 to 2022 .....	4
<b>Table I.3</b>	Fatality rate per 10,000 registered vehicles – 24 OECD countries and Australian states/territories, 2022.....	7
<b>Table I.4</b>	Fatality rate per 10,000 registered vehicles – OECD countries and Australian states/territories, 1990, 2000, 2010 and 2013 to 2022 .....	9
<b>Table I.5</b>	Fatality rate per 100 million vehicle kilometres travelled (VKT) – 11 OECD countries and Australian states/territories, 2022 .....	12
<b>Table I.6</b>	Fatality rate per 100 million vehicle kilometres travelled (VKT) – OECD countries and Australian states/territories, 1990, 2000, 2010 and 2013 to 2022.....	14

## Figures

<b>Figure I.1</b>	Fatality rate per 100,000 population – 31 OECD countries, Australian states/territories, 2022 and Australian Remoteness Areas .....	3
<b>Figure I.2</b>	Fatality rate per 100,000 population – OECD quartiles and Australia, 2013 to 2022 .....	5
<b>Figure I.3</b>	Fatality rate per 10,000 registered vehicles – 24 OECD countries and Australian states/territories, 2022.....	8
<b>Figure I.4</b>	Fatality rate per 10,000 registered vehicles – OECD quartiles and Australia, 2013 to 2022.....	10
<b>Figure I.5</b>	Fatality rate per 100 million vehicle kilometres travelled (VKT) – 11 OECD countries and Australian states/territories, 2022 .....	13
<b>Figure I.6</b>	Fatality rate per 100 million vehicle kilometres travelled (VKT) – OECD quartiles and Australia, 2013 to 2022.....	15



## Fatality rate per 100,000 population – OECD countries, 2022

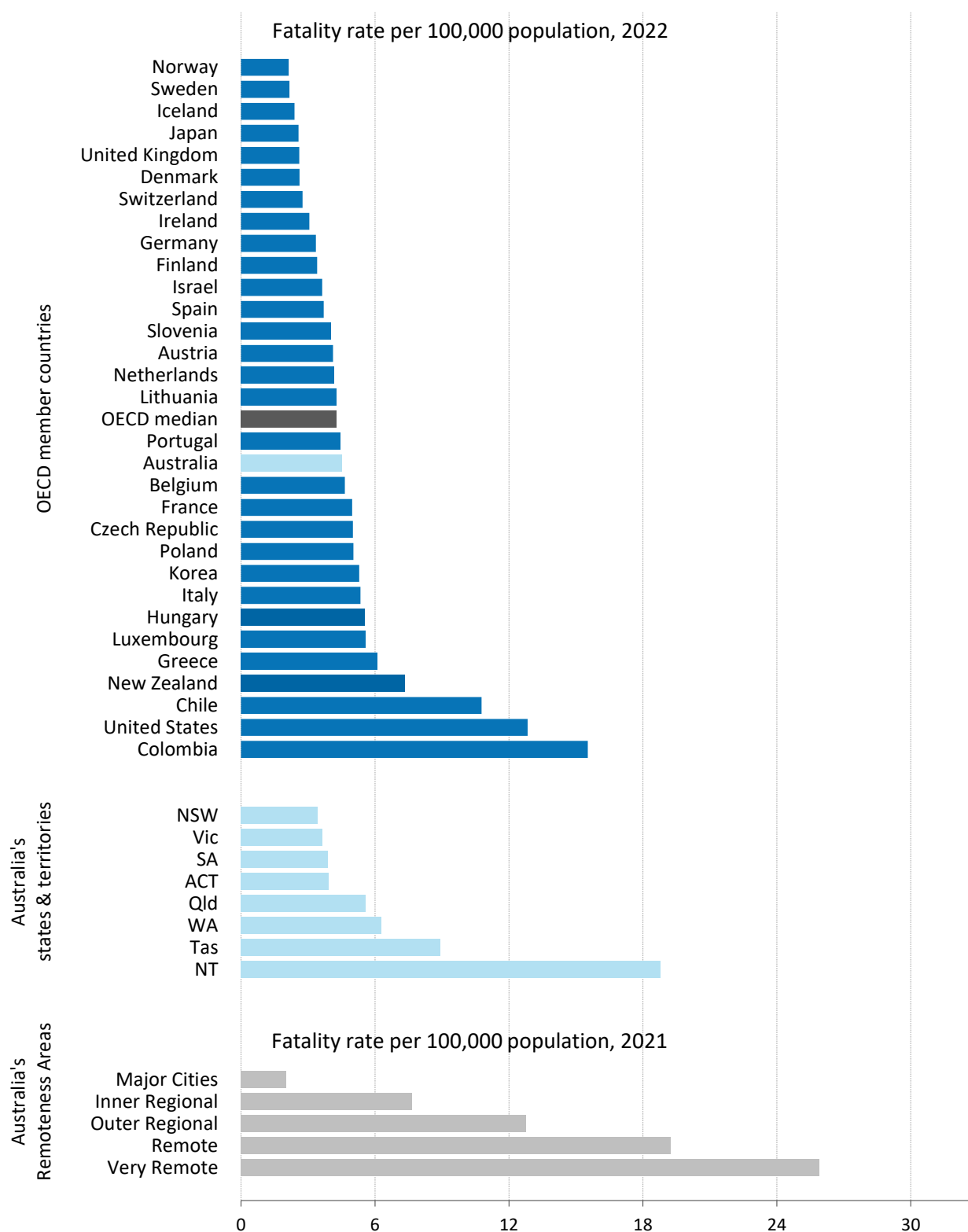
**Table I.1**      **Fatality rate per 100,000 population – 31 OECD countries and Australian states/territories, 2022**

<i>Nation</i>	<i>Road deaths</i>	<i>Population (000s)</i>	<i>Fatality rate per 100,000 population</i>
Norway	116	5,425	2.14
Sweden	227	10,442	2.17
Iceland	9	376	2.39
Japan	3,216	124,947	2.57
United Kingdom	1,749	66,971	2.61
Denmark	154	5,873	2.62
Switzerland	241	8,739	2.76
Ireland	155	5,060	3.06
Germany	2,788	83,237	3.35
Finland	189	5,548	3.41
Israel	351	9,662	3.63
Spain	1,759	47,433	3.71
Slovenia	85	2,107	4.03
Austria	370	8,979	4.12
Netherlands	737	17,591	4.19
Lithuania	120	2,806	4.28
<b>OECD median</b>			<b>4.28</b>
Portugal	462	10,352	4.46
<b>Australia</b>	<b>1,180</b>	<b>26,006</b>	<b>4.54</b>
Belgium	540	11,618	4.65
France	3,267	65,647	4.98
Czech Republic	527	10,517	5.01
Poland	1,896	37,654	5.04
Korea	2,735	51,628	5.30
Italy	3,159	59,030	5.35
Hungary	536	9,689	5.53
Luxembourg	36	645	5.58
Greece	641	10,460	6.13
New Zealand	375	5,118	7.33
Chile	2,137	19,829	10.78
United States	42,795	333,288	12.84
Colombia	8,030	51,683	15.54
NSW	281	8,166	3.44
Vic	240	6,626	3.63
SA	71	1,821	3.90
ACT	18	457	3.94
Qld	297	5,320	5.58
WA	175	2,789	6.27
Tas	51	571	8.93
NT	47	250	18.78

Sources

ABS 2022, IRTAD 2023, ARDD

**Figure I.1 Fatality rate per 100,000 population – 31 OECD countries  
Australian states and territories, 2022 and Australian  
Remoteness Areas<sup>†</sup>**



<sup>†</sup> Rates for Remoteness Area are for calendar 2021.

## OECD countries, 1990, 2000, 2010 and 2013 to 2022

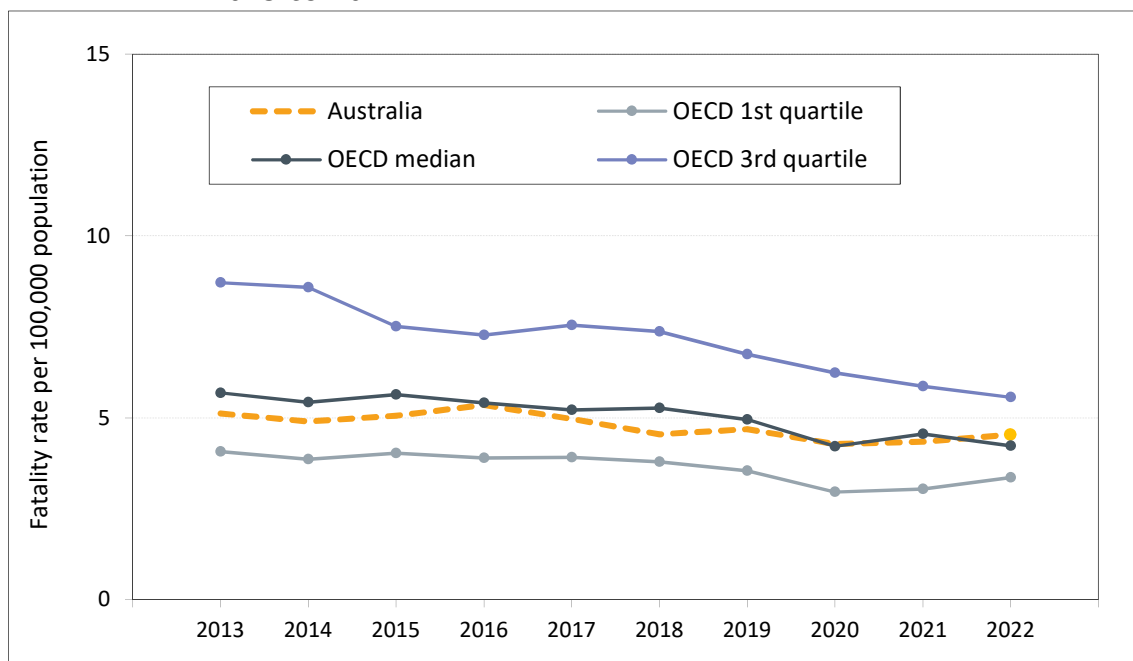
**Table 1.2**      **Fatality rate per 100,000 population – OECD countries and Australian states/territories, 1990, 2000, 2010 and 2013 to 2022**

<i>Nation</i>	<i>1990</i>	<i>2000</i>	<i>2010</i>	<i>2013</i>	<i>2014</i>	<i>2015</i>	<i>2016</i>	<i>2017</i>	<i>2018</i>	<i>2019</i>	<i>2020</i>	<i>2021</i>	<i>2022</i>
Norway	7.8	7.6	4.3	3.7	2.9	2.3	2.6	2.0	2.0	2.0	1.7	1.5	2.14
Sweden	9.1	6.7	2.8	2.7	2.8	2.7	2.7	2.5	3.2	2.2	2.0	2.0	2.17
Iceland	9.5	11.5	2.5	4.7	1.2	4.9	5.4	4.7	5.2	1.7	2.2	2.4	2.39
Japan	9.4	6.1	3.0	4.1	3.8	3.8	3.7	3.5	3.3	3.1	2.7	2.6	2.57
United Kingdom	13.9	8.3	4.2	2.8	2.9	2.8	2.8	2.8	2.8	2.7	2.3	2.4	2.61
Denmark	11.8	8.2	4.6	3.4	3.2	3.1	3.7	3.0	3.0	3.4	2.8	2.2	2.62
Switzerland	12.3	9.3	4.6	3.3	3.0	3.1	2.6	2.7	2.7	2.2	2.6	2.3	2.76
Ireland	23.3	14.4	5.3	4.1	4.1	3.5	3.9	3.2	2.8	2.9	3.0	2.7	3.06
Germany	13.6	11.0	4.7	4.1	4.2	4.3	3.9	3.9	4.0	3.7	3.3	3.1	3.35
Finland	10.0	9.1	4.5	4.8	4.2	4.9	4.7	4.3	4.3	3.8	4.0	4.1	3.41
Israel	8.7	7.9	4.9	3.8	3.9	4.2	4.4	4.2	3.6	3.9	3.3	3.9	3.63
Spain	9.2	6.8	3.2	3.6	3.6	3.6	3.9	3.9	3.9	3.7	2.9	3.2	3.71
Slovenia	25.9	15.8	6.7	6.1	5.2	5.8	6.3	5.0	4.4	4.9	3.8	5.4	4.03
Austria	20.4	12.2	6.6	5.4	5.1	5.6	5.0	4.7	4.6	4.7	3.9	4.1	4.12
Netherlands	19.8	13.7	6.4	2.8	2.8	3.1	3.1	3.1	3.5	3.4	3.0	2.9	4.19
Lithuania	29.3	20.0	8.9	8.7	9.1	8.2	6.5	6.7	6.2	6.7	6.3	5.3	4.28
Portugal	12.6	12.4	7.0	6.1	6.1	5.7	5.4	5.8	6.6	6.6	5.2	5.4	4.46
Australia	13.0	7.7	5.1	5.1	4.9	5.1	5.4	5.0	4.5	4.7	4.3	4.3	4.54
Belgium	18.7	17.5	6.4	6.9	6.7	6.8	5.9	5.4	5.3	5.6	4.3	4.5	4.65
France	13.7	9.5	6.1	5.1	5.3	5.4	5.4	5.3	5.0	5.0	3.9	4.5	4.98
Canada	19.3	16.4	10.2	5.5	5.2	5.3	5.2	5.1	5.2	4.7	4.6	4.6	-
Czech Republic	19.9	14.4	7.8	6.2	6.5	7.0	5.8	5.5	6.2	5.8	4.8	5.0	5.01
Poland	27.8	14.6	5.9	8.8	8.4	7.7	8.0	7.5	7.5	7.6	6.6	5.9	5.04
Korea	-	12.0	6.5	10.1	9.4	9.1	8.4	8.1	7.3	6.5	6.0	5.6	5.30
Italy	14.3	9.5	6.6	5.7	5.6	5.6	5.4	5.6	5.5	5.3	4.0	4.9	5.35
Hungary	23.4	11.7	7.4	6.0	6.3	6.5	6.2	6.4	6.5	6.2	4.7	5.6	5.53
Luxembourg	12.5	14.5	7.7	8.4	6.4	6.4	5.6	4.2	6.0	3.6	4.2	3.8	5.58
Greece	20.3	18.7	11.2	8.0	7.3	7.3	7.6	6.8	6.5	6.4	5.4	5.8	6.13
New Zealand	11.5	8.6	5.5	5.7	6.5	6.9	6.9	7.8	7.7	7.0	6.2	6.2	7.33
Chile	33.1	21.8	11.1	11.9	11.9	11.9	12.0	10.5	10.4	10.3	9.2	10.4	10.78
United States	21.4	12.0	8.6	10.4	10.3	11.1	11.7	11.5	11.3	11.1	11.8	12.9	12.84
Costa Rica	32.9	24.8	10.4	13.3	13.9	-	-	17.4	16.2	15.6	11.2	13.7	-
Colombia	29.2	18.3	9.7	12.7	13.3	13.8	14.8	13.7	13.7	13.3	10.8	14.2	15.54
NSW	15.5	9.1	6.3	4.5	4.1	4.6	4.9	5.0	4.4	4.4	3.5	3.4	3.44
Vic	15.2	8.5	5.3	4.2	4.2	4.2	4.7	4.1	3.3	4.1	3.2	3.3	3.62
SA	14.7	10.0	7.3	5.8	6.4	6.0	5.0	5.8	4.6	6.5	5.2	5.5	3.90
ACT	7.5	4.4	5.6	1.8	2.6	3.8	2.7	1.2	2.1	1.4	1.6	2.4	3.94
Qld	15.0	9.5	6.2	5.8	4.7	5.1	5.2	5.0	4.9	4.3	5.4	5.3	5.58
WA	14.9	11.4	8.1	6.5	7.2	6.3	7.7	6.2	6.1	6.2	5.7	6.0	6.27
Tas	14.4	9.9	8.5	6.8	6.4	6.4	7.0	6.1	6.0	5.3	6.8	6.2	8.93
NT	40.1	26.3	15.4	15.3	16.1	20.0	18.3	12.5	20.2	14.2	12.5	14.1	18.78

Sources

ABS 2023, IRTAD 2023, ARDD, NCD

**Figure I.2** Fatality rate per 100,000 population – OECD quartiles and Australia, 2013 to 2022



## **SECTION 2**

### **Rates per Registered Vehicle**

## Fatality rate per 10,000 registered vehicles – OECD countries, 2022

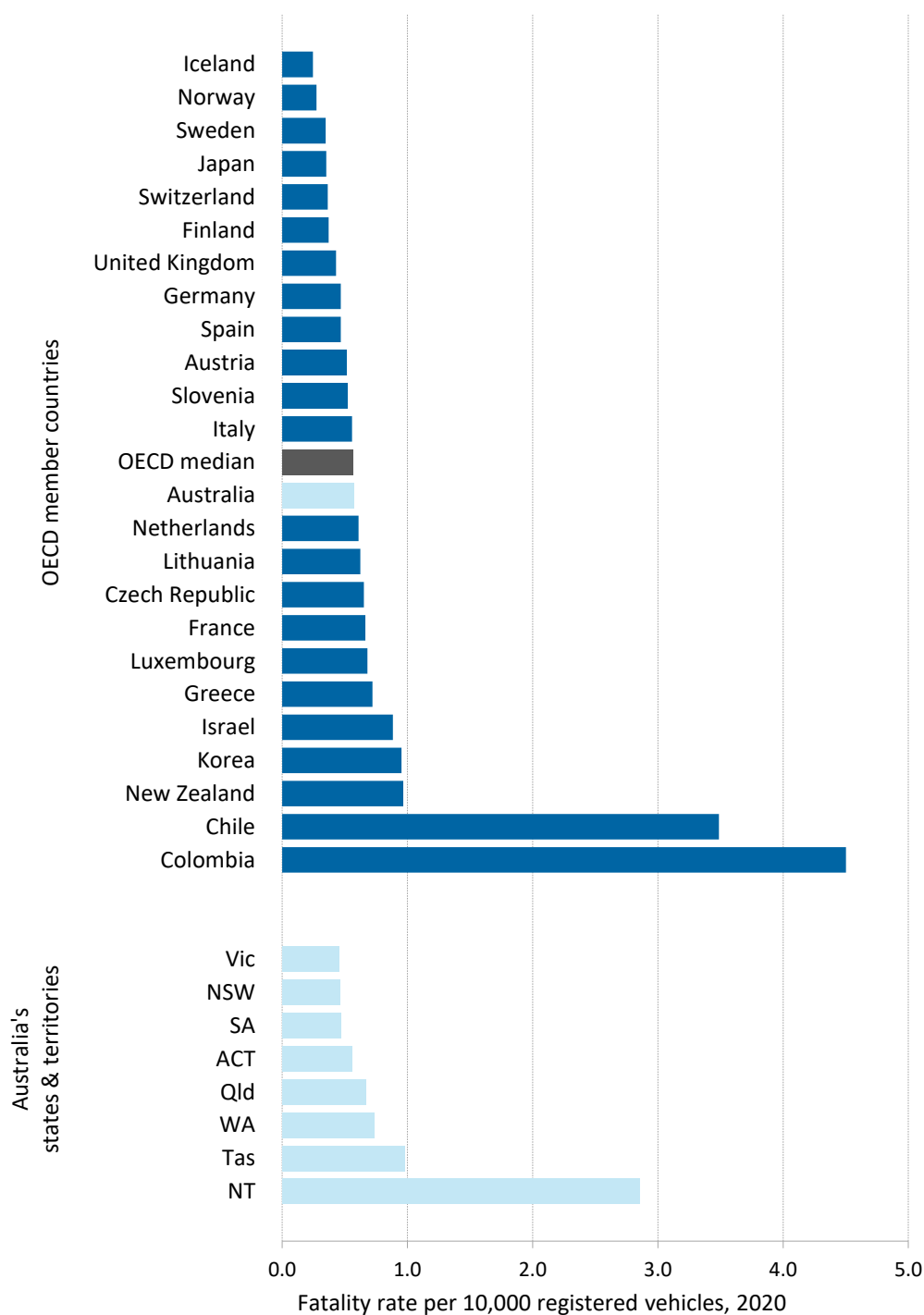
**Table 1.3**      **Fatality rate per 10,000 registered vehicles – 24 OECD countries and Australian states/territories, 2022**

<i>Nation</i>	<i>Road deaths</i>	<i>Total registered motor vehicles (000s)</i>	<i>Fatality rate per 10,000 registered vehicles</i>
Iceland	9	366	0.25
Norway	116	4,243	0.27
Sweden	227	6,551	0.35
Japan	3,216	91,356	0.35
Switzerland	241	6,626	0.36
Finland	189	5,084	0.37
United Kingdom	1,749	40,698	0.43
Germany	2,788	59,635	0.47
Spain	1,759	37,514	0.47
Austria	370	7,215	0.51
Slovenia	85	1,632	0.52
Italy	3,159	56,720	0.56
<b>OECD median</b>			<b>0.57</b>
Australia	1,180	20,687	0.57
Netherlands	737	12,073	0.61
Lithuania	120	1,920	0.63
Czech Republic	527	8,090	0.65
France	3,267	49,097	0.67
Luxembourg	36	528	0.68
Greece	641	8,883	0.72
Israel	351	3,974	0.88
Korea	2,735	28,730	0.95
New Zealand	375	3,880	0.97
Chile	2,137	6,127	3.49
Colombia	8,030	17,840	4.50
Vic	240	5,275	0.46
NSW	281	6,048	0.46
SA	71	1,521	0.47
ACT	18	324	0.56
Qld	297	4,464	0.67
WA	175	2,370	0.74
Tas	51	520	0.98
NT	47	165	2.86

Sources

BITRE 2023, IRTAD 2023 and ARDD

**Figure I.3 Fatality rate per 10,000 registered vehicles – 24 OECD countries and Australian states/territories, 2022**



## OECD countries, 1990, 2000, 2010 and 2013 to 2022

**Table 1.4**      **Fatality rate per 10,000 registered vehicles – OECD countries and Australian states/territories, 1990, 2000, 2010 and 2013 to 2022**

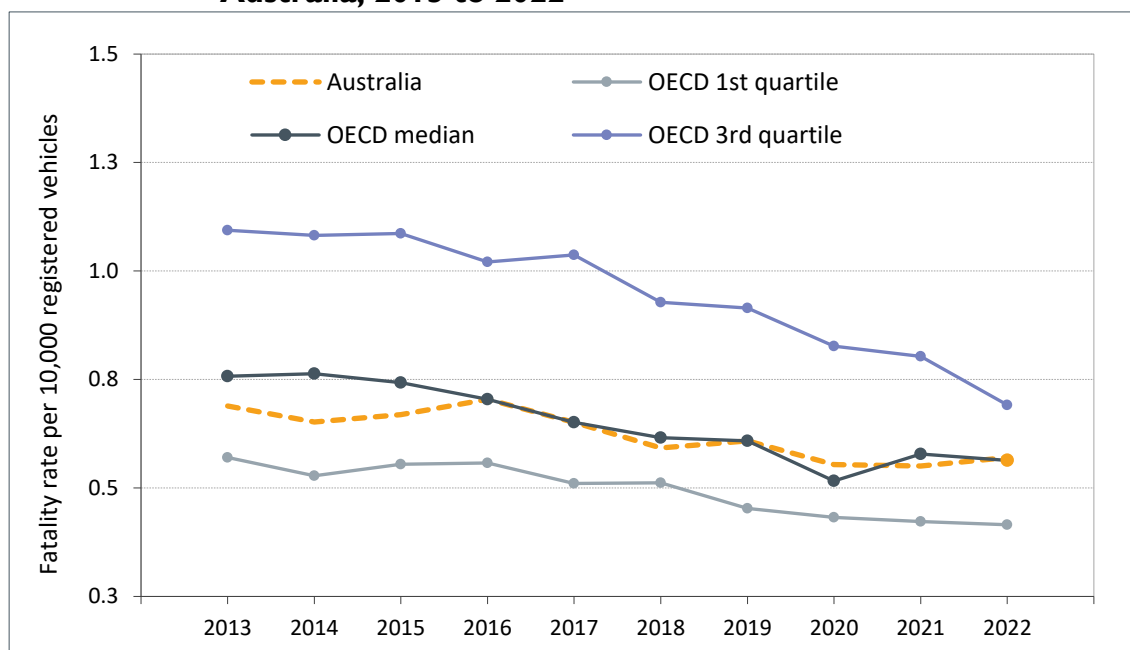
<i>Nation</i>	<i>1990</i>	<i>2000</i>	<i>2010</i>	<i>2013</i>	<i>2014</i>	<i>2015</i>	<i>2016</i>	<i>2017</i>	<i>2018</i>	<i>2019</i>	<i>2020</i>	<i>2021</i>	<i>2022</i>
Iceland	1.4	1.2	0.6	0.6	0.1	0.6	0.6	0.5	0.5	0.2	0.2	0.3	0.25
Norway	-	1.8	0.3	0.5	0.4	0.3	0.3	0.3	0.3	0.3	0.2	0.2	0.27
Sweden	1.7	1.2	0.5	0.4	0.5	0.4	0.4	0.4	0.5	0.3	0.3	0.3	0.35
Japan	2.2	1.2	0.6	0.6	0.5	0.5	0.5	0.5	0.5	0.4	0.4	0.4	0.35
Switzerland	5.1	2.2	0.7	0.5	0.4	0.4	0.4	0.4	0.4	0.3	0.4	0.3	0.36
Finland	1.9	1.2	0.6	0.6	0.5	0.6	0.6	0.5	0.5	0.4	0.4	0.4	0.37
United Kingdom	2.1	1.2	0.5	0.5	0.5	0.5	0.5	0.5	0.5	0.5	0.4	0.4	0.43
Germany	2.1	1.6	0.8	0.6	0.6	0.6	0.6	0.6	0.6	0.5	0.5	0.4	0.47
Spain	2.8	1.5	0.7	0.5	0.5	0.5	0.5	0.5	0.5	0.5	0.4	0.4	0.47
Austria	-	1.4	0.7	0.7	0.7	0.7	0.7	0.6	0.6	0.6	0.5	0.5	0.51
Slovenia	3.7	1.8	0.9	0.9	0.8	0.9	0.9	0.7	0.6	0.7	0.5	0.7	0.52
Italy	3.3	2.4	0.8	0.7	0.7	0.7	0.6	0.6	0.6	0.6	0.4	0.5	0.56
<b>Australia</b>	<b>4.5</b>	<b>2.5</b>	<b>0.9</b>	<b>0.7</b>	<b>0.7</b>	<b>0.7</b>	<b>0.7</b>	<b>0.7</b>	<b>0.6</b>	<b>0.6</b>	<b>0.6</b>	<b>0.6</b>	<b>0.57</b>
Netherlands	-	-	1.0	0.4	0.4	0.5	0.5	0.5	0.5	0.5	0.4	0.4	0.61
Lithuania	-	-	0.5	1.1	1.8	1.5	1.2	1.2	1.1	1.1	1.0	0.8	0.63
Czech Republic	2.9	2.0	-	1.0	1.1	1.1	0.9	0.8	0.9	0.8	0.7	0.7	0.65
France	3.6	2.3	0.9	0.7	0.7	0.7	0.7	0.7	0.7	0.7	0.5	0.6	0.67
Luxembourg	2.3	1.5	0.8	1.0	0.8	0.8	0.7	0.5	0.7	0.4	0.5	0.5	0.68
Ireland	-	3.1	1.3	0.8	0.8	0.6	0.7	0.6	0.5	0.5	0.5	-	-
Canada	-	-	-	0.8	0.8	0.8	0.8	0.8	0.8	0.7	0.7	0.7	-
Greece	3.3	3.2	1.3	1.1	1.0	1.0	1.0	0.9	0.8	0.8	0.7	0.7	0.72
Israel	2.3	1.6	1.0	1.1	1.1	1.2	1.2	1.1	0.9	1.0	0.8	0.9	0.88
Poland	3.3	1.8	1.2	1.3	1.2	1.1	1.1	1.0	0.9	0.9	0.8	0.7	-
Korea	4.1	2.8	1.5	2.3	2.1	1.9	1.7	1.6	1.4	1.2	1.1	1.0	0.95
New Zealand	12.7	5.0	1.4	0.8	0.9	0.9	0.9	1.0	1.0	0.9	0.8	0.8	0.97
United States	-	-	-	1.2	1.2	1.3	1.3	1.3	1.2	1.2	1.3	1.4	-
Costa Rica	-	10.6	6.3	3.6	3.6	-	-	3.8	3.4	3.2	2.2	2.7	-
Chile	2.4	1.9	1.3	5.0	4.7	4.6	4.5	3.8	3.6	3.5	3.3	3.4	3.49
Colombia	16.8	6.6	2.7	5.6	5.5	5.3	5.4	4.8	4.6	4.3	3.4	4.3	4.50
<b>Vic</b>	<b>1.6</b>	<b>0.9</b>	<b>0.7</b>	<b>0.6</b>	<b>0.6</b>	<b>0.6</b>	<b>0.6</b>	<b>0.5</b>	<b>0.4</b>	<b>0.5</b>	<b>0.4</b>	<b>0.4</b>	<b>0.46</b>
<b>NSW</b>	<b>2.1</b>	<b>1.2</b>	<b>0.7</b>	<b>0.7</b>	<b>0.6</b>	<b>0.7</b>	<b>0.7</b>	<b>0.7</b>	<b>0.6</b>	<b>0.6</b>	<b>0.5</b>	<b>0.5</b>	<b>0.46</b>
<b>SA</b>	<b>2.5</b>	<b>1.6</b>	<b>0.9</b>	<b>0.7</b>	<b>0.8</b>	<b>0.8</b>	<b>0.6</b>	<b>0.7</b>	<b>0.6</b>	<b>0.8</b>	<b>0.6</b>	<b>0.7</b>	<b>0.47</b>
<b>ACT</b>	<b>2.6</b>	<b>1.6</b>	<b>1.0</b>	<b>0.3</b>	<b>0.4</b>	<b>0.5</b>	<b>0.4</b>	<b>0.2</b>	<b>0.3</b>	<b>0.2</b>	<b>0.2</b>	<b>0.3</b>	<b>0.56</b>
<b>Qld</b>	<b>2.3</b>	<b>1.4</b>	<b>0.7</b>	<b>0.8</b>	<b>0.6</b>	<b>0.6</b>	<b>0.7</b>	<b>0.6</b>	<b>0.6</b>	<b>0.5</b>	<b>0.7</b>	<b>0.6</b>	<b>0.67</b>
<b>WA</b>	<b>1.9</b>	<b>1.6</b>	<b>1.0</b>	<b>0.8</b>	<b>0.8</b>	<b>0.7</b>	<b>0.9</b>	<b>0.7</b>	<b>0.7</b>	<b>0.7</b>	<b>0.7</b>	<b>0.7</b>	<b>0.74</b>
<b>Tas</b>	<b>2.4</b>	<b>1.3</b>	<b>0.8</b>	<b>0.8</b>	<b>0.7</b>	<b>0.7</b>	<b>0.8</b>	<b>0.7</b>	<b>0.7</b>	<b>0.6</b>	<b>0.8</b>	<b>0.7</b>	<b>0.98</b>
<b>NT</b>	<b>8.6</b>	<b>5.0</b>	<b>3.7</b>	<b>2.5</b>	<b>2.6</b>	<b>3.2</b>	<b>2.9</b>	<b>2.0</b>	<b>3.1</b>	<b>2.2</b>	<b>1.9</b>	<b>2.1</b>	<b>2.86</b>

Note      ABS vehicle registration data was not available for the year 2000. The average of 1999 and 2001 is used as an estimate for that year.

Sources      Bitre 2023, IRTAD 2023, ARDD, NCD



**Figure I.4** Fatality rate per 10,000 registered vehicles – OECD quartiles and Australia, 2013 to 2022



## **SECTION 3**

### **Rates per Vehicle-kilometre-travelled**

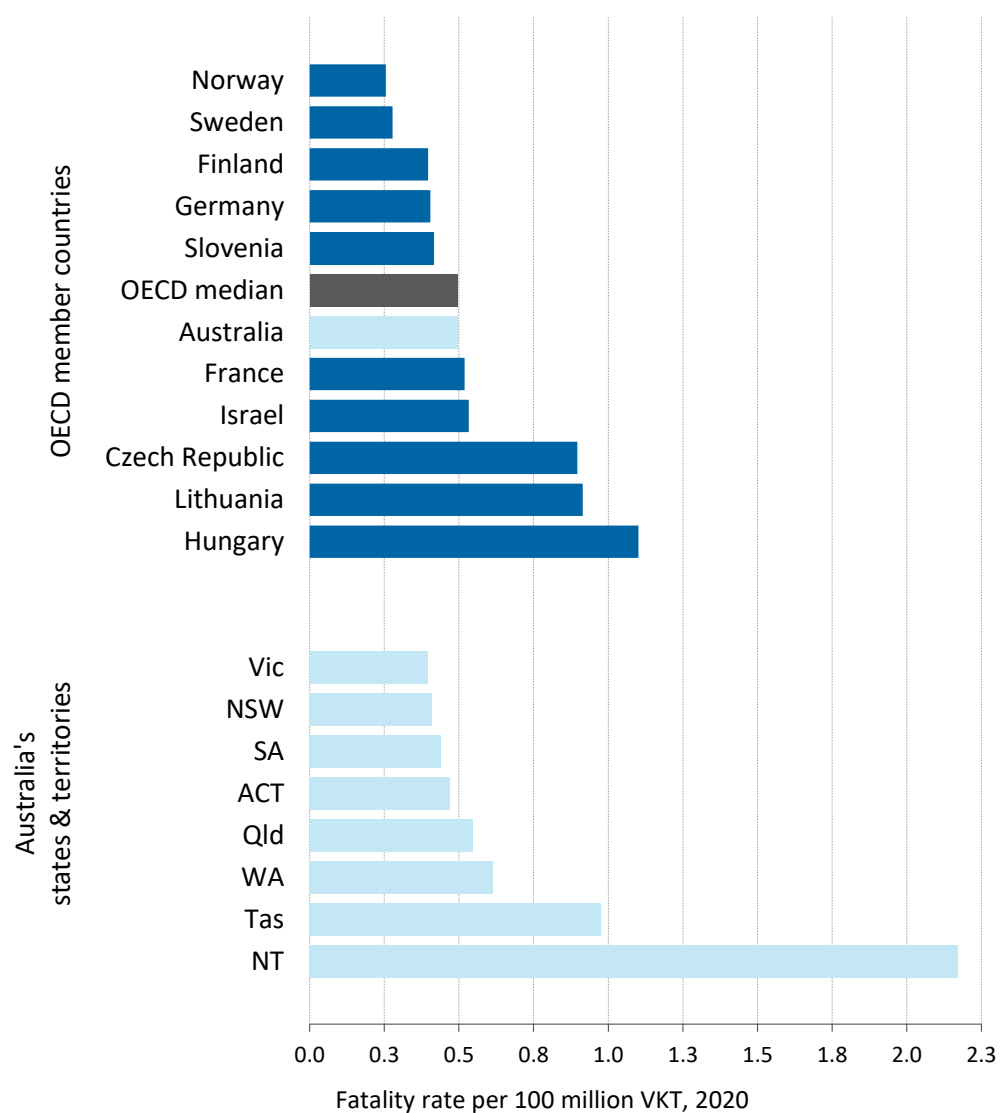
## Fatality rate per 100 million vehicle kilometres travelled (VKT) – OECD countries, 2022

**Table 1.5**      **Fatality rate per 100 million vehicle kilometres travelled (VKT)**  
**– 11 OECD countries and Australian states/territories, 2022**

<i>Nation</i>	<i>Road deaths</i>	<i>Total VKT (millions)</i>	<i>Fatality rate per 100 million VKT</i>
Norway	116	45,403	0.26
Sweden	227	81,872	0.28
Finland	189	47,695	0.40
Germany	2,788	690,000	0.40
Slovenia	85	20,507	0.41
Australia	1,188	240,011	0.49
<b>OECD median</b>			<b>0.49</b>
France	3,267	629,380	0.52
Israel	351	65,900	0.53
Czech Republic	527	58,818	0.90
Lithuania	120	13,114	0.92
Hungary	536	48,675	1.10
Vic	240	61,176	0.39
NSW	281	68,468	0.41
SA	71	16,164	0.44
ACT	18	3,826	0.47
Qld	297	54,504	0.54
WA	175	28,484	0.61
Tas	51	5,225	0.98
NT	47	2,164	2.17

Sources                      BITRE 2023a, IRTAD 2022, ARDD

**Figure I.5 Fatality rate per 100 million vehicle kilometres travelled (VKT)**  
**– 11 OECD countries and Australian states/territories, 2022**



## OECD countries, 1990, 2000, 2010 and 2013 to 2022

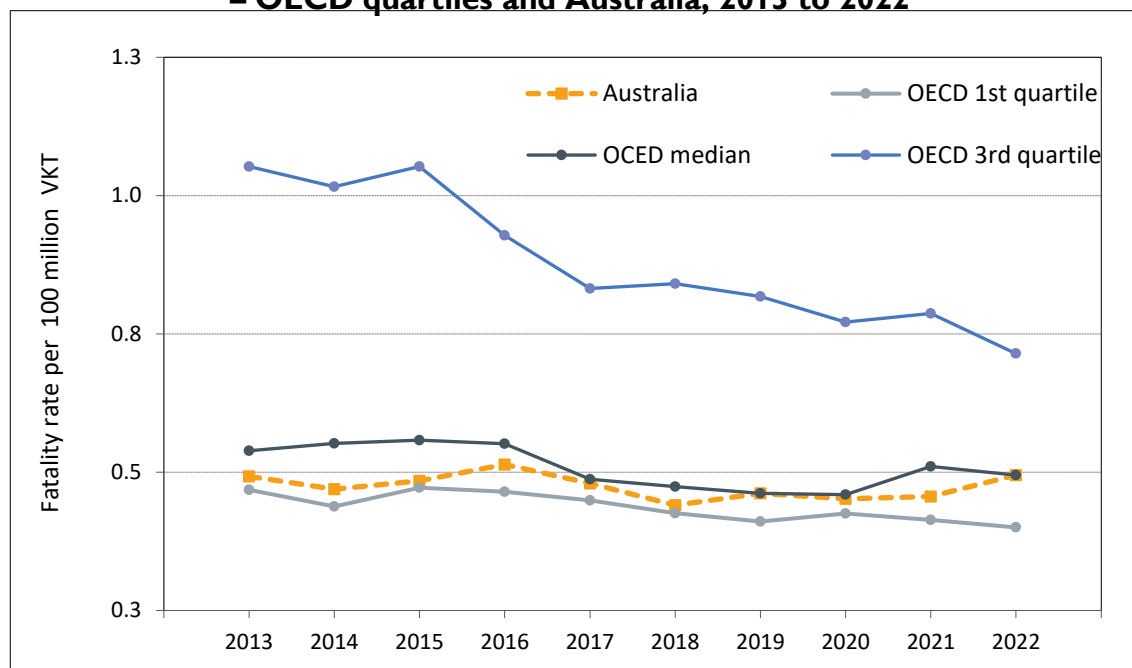
**Table 1.6**      **Fatality rate per 100 million vehicle kilometres travelled (VKT) – OECD countries and Australian states/territories, 1990, 2000, 2010 and 2013 to 2022**

<i>Nation</i>	<i>1990</i>	<i>2000</i>	<i>2010</i>	<i>2013</i>	<i>2014</i>	<i>2015</i>	<i>2016</i>	<i>2017</i>	<i>2018</i>	<i>2019</i>	<i>2020</i>	<i>2021</i>	<i>2022</i>
Norway	7.8	7.6	0.5	0.4	0.3	0.3	0.3	0.2	0.2	0.2	0.2	0.2	0.26
Sweden	9.1	6.7	0.3	0.3	0.3	0.3	0.3	0.3	0.4	0.3	0.3	0.3	0.28
Finland	13.0	7.7	0.5	0.5	0.4	0.5	0.5	0.5	0.5	0.4	0.5	0.5	0.40
Germany	10.0	9.1	0.5	0.5	0.5	0.5	0.4	0.4	0.4	0.4	0.4	0.4	0.40
Slovenia	25.9	15.8	0.8	0.7	0.6	0.7	0.7	0.5	0.4	0.5	0.5	0.6	0.41
Australia	13.7	9.5	0.6	0.5	0.5	0.5	0.5	0.5	0.4	0.5	0.5	0.5	0.49
France	19.8	13.7	0.7	0.5	0.6	0.6	0.6	0.5	0.5	0.5	0.5	0.5	0.52
Israel	8.7	7.9	0.8	0.6	0.6	0.6	0.7	0.6	0.5	0.6	0.6	0.6	0.53
Czech Republic	12.5	14.5	1.6	1.4	1.4	1.4	1.2	1.1	1.2	1.1	1.0	1.0	0.90
Lithuania	29.2	18.3	3.0	2.5	2.5	2.1	1.6	1.6	1.4	1.4	1.4	1.2	0.92
Hungary	23.4	11.7	2.0	1.7	1.7	1.7	1.5	1.5	1.4	1.3	1.1	1.2	1.10
Iceland	9.5	11.5	0.3	0.5	0.1	0.5	0.5	0.4	0.4	0.2	0.2	0.2	-
Denmark	12.3	9.3	0.6	0.4	0.4	0.3	0.4	0.3	0.3	0.4	0.3	0.2	-
Switzerland	13.9	8.3	0.5	0.4	0.4	0.4	0.3	0.3	0.3	0.3	0.4	0.3	-
Canada	14.3	9.5	0.7	0.6	0.5	0.5	0.5	0.5	0.5	0.4	0.5	0.4	-
Austria	20.4	12.2	0.8	0.6	0.6	0.6	0.5	0.5	0.5	0.5	0.5	0.5	-
Japan	11.8	8.2	0.8	0.7	0.6	0.7	0.6	0.6	0.6	0.5	0.5	0.5	-
New Zealand	21.4	12.0	0.9	0.6	0.7	0.7	0.7	0.8	0.8	0.7	0.7	0.7	-
Korea	33.1	21.8	1.9	1.8	1.6	1.5	1.4	1.3	1.2	1.0	0.9	0.8	-
United States	17.9	14.9	0.7	0.7	0.7	0.7	0.7	0.7	0.7	0.7	0.8	0.9	-
Poland	19.3	16.4	2.0	1.6	1.5	1.3	1.3	1.2	1.1	1.2	1.1	0.9	-
Ireland	13.6	11.0	0.5	0.5	0.4	0.4	0.4	0.3	0.3	0.3	0.4	-	-
Vic			0.5	0.4	0.4	0.4	0.4	0.4	0.3	0.4	0.3	0.4	0.39
NSW			0.6	0.5	0.4	0.5	0.5	0.5	0.4	0.5	0.4	0.4	0.41
SA			0.7	0.6	0.6	0.6	0.5	0.6	0.5	0.7	0.6	0.6	0.44
ACT			0.5	0.2	0.3	0.4	0.3	0.1	0.2	0.1	0.2	0.3	0.47
Qld			0.5	0.5	0.4	0.5	0.5	0.5	0.4	0.4	0.5	0.5	0.54
WA			0.8	0.6	0.7	0.6	0.7	0.6	0.6	0.6	0.6	0.6	0.61
Tas			0.6	0.7	0.6	0.6	0.7	0.6	0.6	0.5	0.7	0.7	0.98
NT			2.4	1.8	1.8	2.3	2.1	1.4	2.3	1.6	1.5	1.6	2.17

Sources

Bitre 2023a, IRTAD 2023, ARDD, NCD

**Figure I.6** Fatality rate per 100 million vehicle kilometres travelled (VKT)  
– OECD quartiles and Australia, 2013 to 2022



## References

- ABS 2023      Australian Bureau of Statistics, *National, state and territory population*, March 2023
- BITRE 2023      Bureau of Infrastructure and Transport Research Economics (BITRE) Road Vehicles, Australia, January 2023
- BITRE 2023a      Bureau of Infrastructure and Transport Research Economics (BITRE) unpublished VKT estimates, State and capital city vehicle kilometres travelled.
- IRTAD 2023      International Road Traffic Accident Database (IRTAD), (member site) <http://stats.oecd.org/>, accessed – October 2023.