



Australian Government

Department of Infrastructure, Transport,
Regional Development, Communications, Sport and the Arts

Road Safety International Comparisons–2023

September 2025



© Commonwealth of Australia 2025

ISSN: 1447-8218

Ownership of intellectual property rights in this publication

Unless otherwise noted, copyright (and any other intellectual property rights, if any) in this publication is owned by the Commonwealth of Australia (referred to below as the Commonwealth).

Disclaimer

The material contained in this publication is made available on the understanding that the Commonwealth is not providing professional advice, and that users exercise their own skill and care with respect to its use, and seek independent advice if necessary.

The Commonwealth makes no representations or warranties as to the contents or accuracy of the information contained in this publication. To the extent permitted by law, the Commonwealth disclaims liability to any person or organisation in respect of anything done, or omitted to be done, in reliance upon information contained in this publication.

Creative Commons licence



With the exception of (a) the Coat of Arms; (b) the Department of Infrastructure, Transport, Regional Development, Communications and the Arts photos and graphics; (c) content supplied by third parties; (d) content otherwise labelled; copyright in this publication is licensed under a Creative Commons BY Attribution 4.0 International Licence.

Use of the Coat of Arms

The Department of the Prime Minister and Cabinet (PM&C) sets the terms under which the Coat of Arms is used. Please refer to the [Commonwealth Coat of Arms Information and Guidelines | PM&C](#).

Contact us

This publication is available in PDF format. For enquiries regarding this publication, please contact:

Road Safety Data Hub

Bureau of Infrastructure and Transport Research Economics (BITRE)

Department of Infrastructure, Transport, Regional Development, Communications, Sport and the Arts

GPO Box 501, Canberra ACT 2601, Australia

Email: roadsafetystatistics@infrastructure.gov.au

Website: <https://datahub.roadsafety.gov.au>

Foreword

This report presents road deaths and road death rates for Organisation for Economic Co-operation and Development (OECD) nations and Australian states and territories.

The three rates are:

- annual deaths per 100,000 population
- annual deaths per 10,000 registered vehicles
- annual deaths per 100 million vehicle-kilometres-travelled

Use of these rates allows for comparison of Australia's road safety performance with that of other OECD nations by accounting for the differing levels of population, motorisation and estimated distances travelled.

The three rates are strongly correlated with each other. This implies that the rankings of the countries will be similar for each.

The latest international data is for 2023. The previous 10 years are also included for trend analysis, as well as historical data from 1990.

Table of Contents

Foreword	ii
Fatality rate per 100,000 population	1
Fatality rate per 10,000 registered vehicles	5
Fatality rate per vehicle-kilometre-travelled	9
Data sources	13
References	13

Fatality rate per 100,000 population

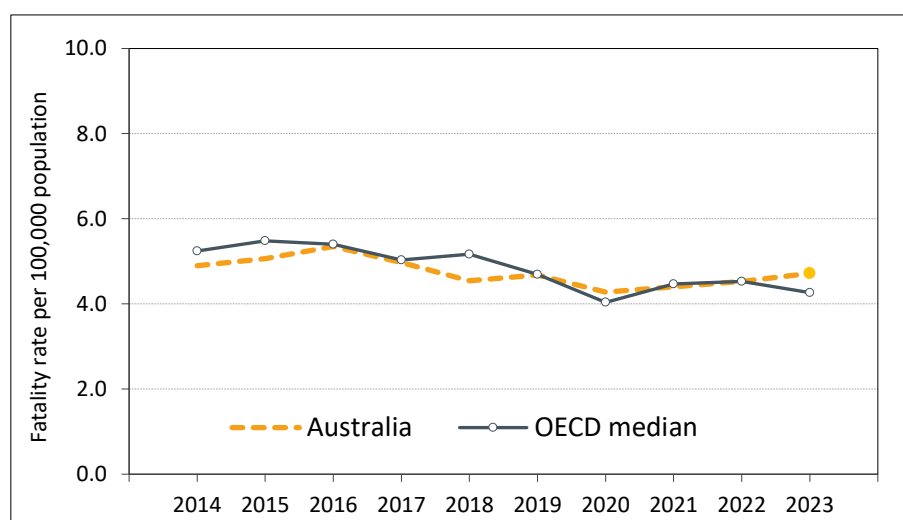
Australia's road death fatality rate of 4.72 was ranked 20th out of 34 nations. The nations with the three lowest rates were Norway (2.00), Iceland (2.06) and Sweden (2.18).

Countries with a lower fatality rate than the OECD median include the United Kingdom, Japan and Germany. Countries with a rate higher than the OECD median include Australia, France, Canada and the United States.

In 2023, Australia's fatality rate was 3.6% lower than 2014. Over the same period, the OECD median rate declined by 18.6%. In both cases, however, the trend has not been continuous.

Three of Australia's states and territories had rates below the OECD median (ACT, NSW and Victoria). The rates for the remaining five were above the OECD median.

Figure 1 - Fatality rate per 100,000 population - 10 years to 2023



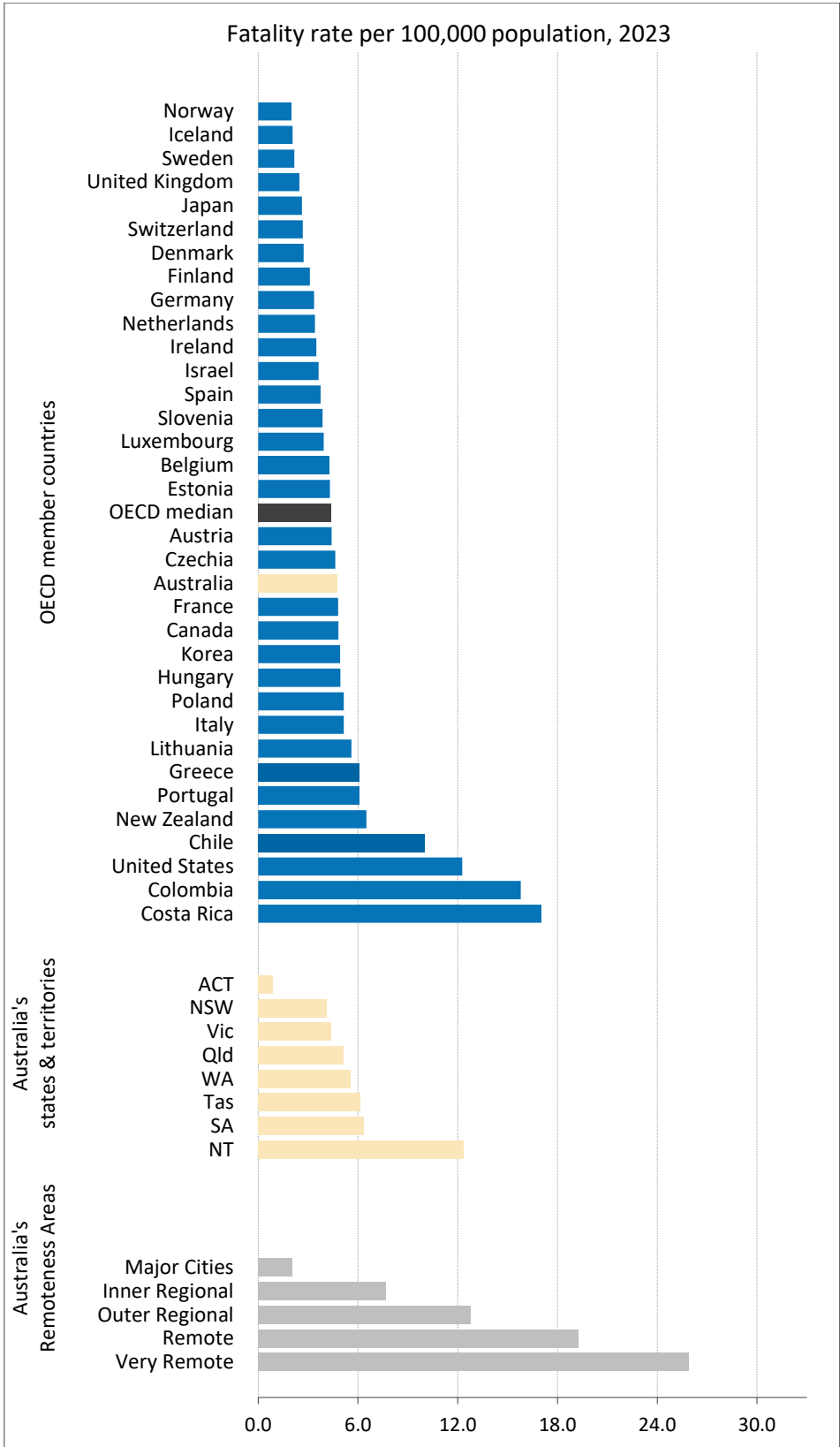
Sources . IRTAD 2025, ARDD 2025.

Table 1 - Fatality rate per 100,000 population - 34 OECD countries and Australian States and Territories, 2023

Nation	Road deaths	Population (000s)	Fatality rate per 100,000 population
Norway	110	5,489	2.00
Iceland	8	388	2.06
Sweden	229	10,522	2.18
United Kingdom	1,695	68,265	2.48
Japan	3,263	124,351	2.62
Switzerland	236	8,815	2.68
Denmark	162	5,933	2.73
Finland	173	5,564	3.11
Germany	2,839	84,359	3.37
Netherlands	608	17,811	3.41
Ireland	184	5,271	3.49
Israel	361	9,915	3.64
Spain	1,806	48,085	3.76
Slovenia	82	2,117	3.87
Luxembourg	26	661	3.93
Belgium	501	11,743	4.27
Estonia	59	1,366	4.32
OECD median			4.37
Austria	402	9,105	4.42
Czech Republic	502	10,828	4.64
Australia	1,258	26,653	4.72
France	3,167	65,926	4.80
Canada	1,936	40,083	4.83
Korea	2,551	51,713	4.93
Hungary	475	9,600	4.95
Poland	1,893	36,754	5.15
Italy	3,039	58,997	5.15
Lithuania	160	2,857	5.60
Greece	634	10,414	6.09
Portugal	642	10,517	6.10
New Zealand	341	5,245	6.50
Chile	1,997	19,961	10.00
United States	40,990	334,017	12.27
Colombia	8,246	52,216	15.79
Costa Rica	875	5,136	17.04
ACT	4	466	0.86
NSW	340	8,341	4.08
Vic	296	6,816	4.34
Qld	277	5,460	5.07
WA	158	2,884	5.48
Tas	35	574	6.10
SA	117	1,853	6.31
NT	31	253	12.25

Sources ABS 2024, IRTAD 2025, ARDD 2025.

Figure 2 - Fatality rate per 100,000 population - 34 OECD countries, Australian states and territories and Australian Remoteness Areas, 2023



Sources ABS 2024, IRTAD 2025, ARDD 2025.

Table 2 - Fatality rate per 100,000 population - OECD countries and Australian states and territories, 1990, 200, 2010 and 2014 to 2023

Nation	1990	2000	2010	2014	2015	2016	2017	2018	2019	2020	2021	2022	2023
Norway	7.8	7.6	4.3	2.9	2.3	2.6	2.0	2.0	2.0	1.7	1.5	2.1	2.00
Iceland	9.5	11.5	2.5	1.2	4.9	5.4	4.7	5.2	1.7	2.2	2.4	2.4	2.06
Sweden	9.1	6.7	2.8	2.8	2.7	2.7	2.5	3.2	2.2	2.0	2.0	2.2	2.18
United	13.9	8.3	4.2	2.9	2.8	2.8	2.8	2.8	2.7	2.3	2.4	2.6	2.48
Japan	9.4	6.1	3.0	3.8	3.8	3.7	3.5	3.3	3.1	2.7	2.6	2.6	2.62
Switzerland	12.3	9.3	4.6	3.0	3.1	2.6	2.7	2.7	2.2	2.6	2.3	2.8	2.68
Denmark	11.8	8.2	4.6	3.2	3.1	3.7	3.0	3.0	3.4	2.8	2.2	2.6	2.73
Finland	10.0	9.1	4.5	4.2	4.9	4.7	4.3	4.3	3.8	4.0	4.1	3.5	3.11
Germany	13.6	11.0	4.7	4.2	4.3	3.9	3.9	4.0	3.7	3.3	3.1	3.3	3.37
Netherlands	19.8	13.7	6.4	2.8	3.1	3.1	3.1	3.5	3.4	3.0	2.9	3.7	3.41
Ireland	23.3	14.4	5.3	4.1	3.5	3.9	3.2	2.8	2.9	2.9	2.7	3.0	3.49
Israel	8.7	7.9	4.9	3.9	4.2	4.4	4.2	3.6	3.9	3.3	3.9	3.6	3.64
Spain	9.2	6.8	3.2	3.6	3.6	3.9	3.9	3.9	3.7	2.9	3.2	3.7	3.76
Slovenia	25.9	15.8	6.7	5.2	5.8	6.3	5.0	4.4	4.9	3.8	5.4	4.0	3.87
Luxembourg	12.5	14.5	7.7	6.4	6.4	5.6	4.2	6.0	3.6	4.2	3.8	5.6	3.93
Belgium	18.7	17.5	6.4	6.7	6.8	5.9	5.4	5.3	5.6	4.3	4.5	4.6	4.27
Austria	20.4	12.2	6.6	5.1	5.6	5.0	4.7	4.6	4.7	3.9	4.1	4.1	4.42
Czech	19.9	14.4	7.8	6.5	7.0	5.8	5.5	6.2	5.8	4.8	5.1	5.0	4.64
Australia	13.0	7.7	5.1	4.9	5.1	5.3	5.0	4.5	4.7	4.3	4.4	4.5	4.72
France	13.7	9.5	6.1	5.3	5.4	5.4	5.3	5.0	5.0	3.9	4.5	5.0	4.80
Canada	19.3	16.4	10.2	5.2	5.3	5.2	5.1	5.2	4.7	4.6	4.6	5.0	4.83
Korea	-	12.0	6.5	9.4	9.1	8.4	8.1	7.3	6.5	6.0	5.6	5.3	4.93
Hungary	23.4	11.7	7.4	6.3	6.5	6.2	6.4	6.5	6.2	4.7	5.6	5.5	4.95
Poland	27.8	14.6	5.9	8.4	7.7	8.0	7.5	7.5	7.7	6.6	6.1	5.1	5.15
Italy	14.3	9.5	6.6	5.6	5.6	5.4	5.6	5.5	5.3	4.0	4.9	5.4	5.15
Lithuania	29.3	20.0	8.9	9.0	8.1	6.4	6.6	6.1	6.6	6.2	5.3	4.3	5.60
Greece	20.3	18.7	11.2	7.3	7.3	7.6	6.8	6.5	6.4	5.4	5.8	6.3	6.09
Portugal	12.6	12.4	7.0	6.1	5.7	5.4	5.8	6.6	6.6	5.2	5.4	6.0	6.10
New	11.5	8.6	5.5	6.5	6.9	6.9	7.8	7.7	7.0	6.2	6.2	7.3	6.50
Chile	33.1	21.8	11.1	11.9	11.9	12.0	10.5	10.4	10.3	9.2	10.4	10.8	10.0
United	21.4	12.0	8.6	10.3	11.1	11.7	11.5	11.3	11.1	11.8	13.0	12.8	12.2
Colombia	29.2	18.3	9.7	13.3	13.8	14.8	13.7	13.7	13.3	10.8	14.2	15.8	15.7
Costa Rica	32.9	24.8	10.4	13.9	-	-	17.4	16.2	15.6	11.2	13.7	16.4	17.0
ACT	15.5	9.1	6.3	2.6	3.8	2.5	1.2	2.1	1.4	1.6	2.4	3.9	0.86
NSW	15.2	8.5	5.3	4.1	4.6	4.9	5.0	4.4	4.4	3.5	3.4	3.4	4.08
Vic	14.7	10.0	7.3	4.2	4.2	4.7	4.1	3.3	4.1	3.2	3.5	3.6	4.34
Qld	7.5	4.4	5.6	4.7	5.1	5.2	5.0	4.9	4.3	5.4	5.3	5.5	5.07
WA	15.0	9.5	6.2	7.2	6.3	7.6	6.2	6.1	6.1	5.7	6.0	6.3	5.48
Tas	14.9	11.4	8.1	6.4	6.6	7.1	6.1	6.0	5.3	6.8	6.3	8.9	6.10
SA	14.4	9.9	8.5	6.4	6.0	5.0	5.8	4.6	6.5	5.2	5.5	3.9	6.31
NT	40.1	26.3	15.4	16.1	20.0	18.3	12.5	20.2	14.6	12.5	14.1	18.8	12.2

Sources ABS 2024, IRTAD 2025, ARDD 2025.

Fatality rate per 10,000 registered vehicles

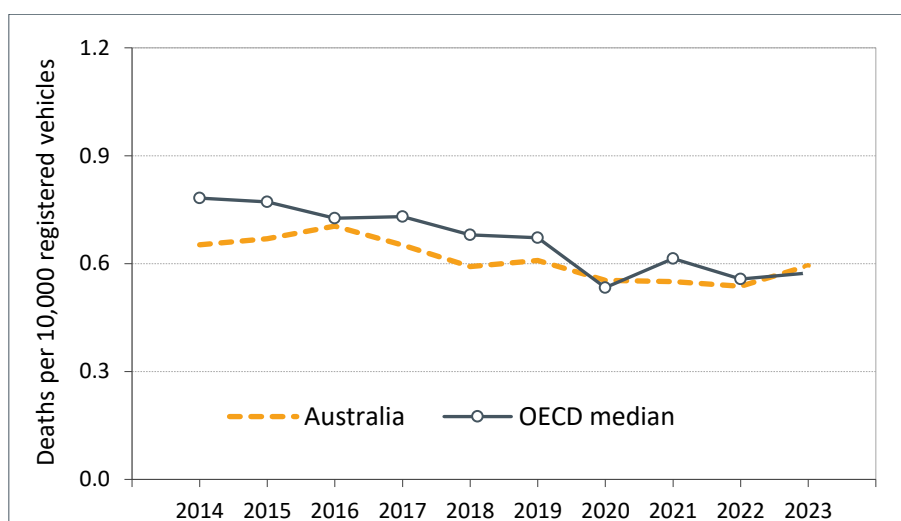
Australia's rate of 0.59 deaths per 10,000 registered vehicles was ranked 15th out of 27 nations with available data. The nations with the three lowest rates were Iceland (0.22), Norway (0.27) and Finland (0.34).

Countries with a lower fatality rate than the OECD median include Japan, United Kingdom and the Netherlands. Countries with a rate higher than the OECD median include Australia, France, Canada and the United States.

Between 2014 and 2023, Australia's fatality rate per 10,000 registered vehicles declined by 8.9%. Over the same period, the OECD median rate declined by 26.6%.

Three of Australia's states and territories had rates below the OECD median (ACT, Victoria and NSW). The rates for other jurisdictions were above the OECD median.

Figure 3 - Fatality rate per 10,000 registered vehicles - 10 years to 2023



Sources

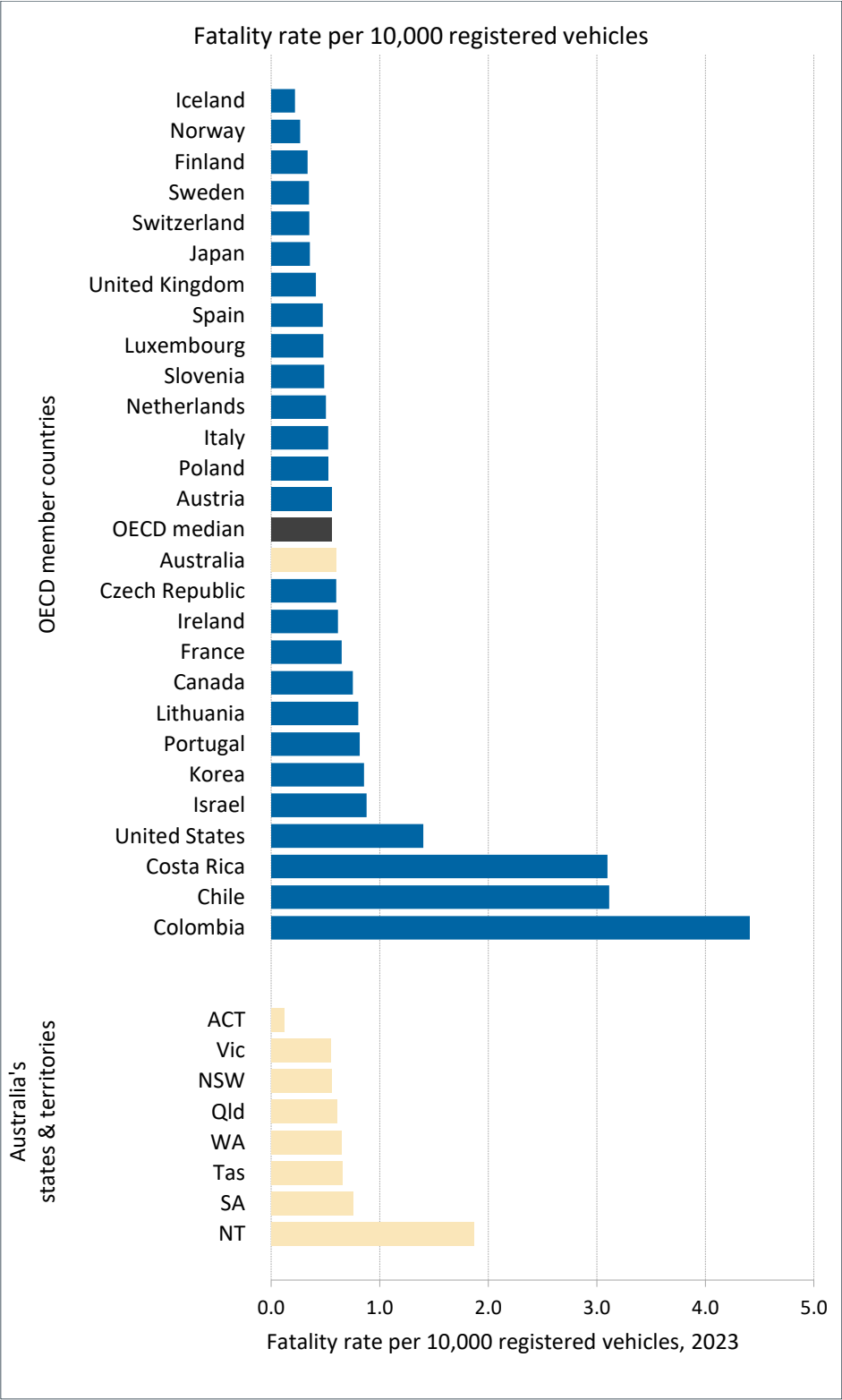
IRTAD 2025, ARDD 2025, BITRE 2024.

Table 3 - Fatality rate per 10,000 registered vehicles - 26 OECD countries and Australian states and territories, 2023

Nation	Road deaths	Registered vehicles (000s)	Fatality rate per 10,000 registered vehicles
Iceland	8	366	0.22
Norway	110	4,105	0.27
Finland	173	5,149	0.34
Sweden	229	6,563	0.35
Switzerland	236	6,715	0.35
Japan	3,263	91,568	0.36
United Kingdom	1,695	41,175	0.41
Spain	1,806	37,891	0.48
Luxembourg	26	539	0.48
Slovenia	82	1,677	0.49
Netherlands	608	12,032	0.51
Italy	3,039	57,824	0.53
Poland	1,893	35,915	0.53
OECD median			0.55
Austria	402	7,269	0.55
Australia	1,258	21,158	0.59
Czech Republic	502	8,376	0.60
Ireland	184	2,983	0.62
France	3,167	48,739	0.65
Canada	1,936	25,688	0.75
Lithuania	160	1,991	0.80
Portugal	642	7,875	0.82
Korea	2,551	29,792	0.86
Israel	361	4,101	0.88
United States	40,990	292,300	1.40
Costa Rica	875	2,825	3.10
Chile	1,997	6,409	3.12
ACT	4	331	0.12
NSW	296	5,384	0.55
Vic	340	6,155	0.55
Qld	277	4,597	0.60
WA	158	2,437	0.65
Tas	35	532	0.66
SA	117	1,555	0.75
NT	31	166	1.87

Sources IRTAD 2025, ARDD 2025, BITRE 2024.

Figure 4 - Fatality rate per 10,000 registered vehicles - 26 OECD countries and Australian states and territories, 2023



Sources IRTAD 2025, ARDD 2025, BITRE 2024.

Table 4 - Fatality rate per 10,000 registered vehicles - OECD countries and Australian states and territories, 1990, 2000, 2010 and 2014 to 2023

Nation	1990	2000	2010	2014	2015	2016	2017	2018	2019	2020	2021	2022	2023
Iceland	1.4	1.2	0.6	0.1	0.6	0.6	0.5	0.5	0.2	0.2	0.3	0.2	0.22
Norway	-	1.8	0.3	0.4	0.3	0.3	0.3	0.3	0.3	0.2	0.2	0.3	0.27
Finland	1.9	1.2	0.6	0.5	0.6	0.6	0.5	0.5	0.4	0.4	0.4	0.4	0.34
Sweden	1.7	1.2	0.5	0.5	0.4	0.4	0.4	0.5	0.3	0.3	0.3	0.3	0.35
Japan	2.2	1.2	0.6	0.5	0.5	0.5	0.5	0.5	0.4	0.4	0.4	0.4	0.36
Switzerland	5.1	2.2	0.7	0.5	0.4	0.4	0.4	0.4	0.4	0.3	0.4	0.3	0.36
United Kingdom	2.1	1.2	0.5	0.5	0.5	0.5	0.5	0.5	0.5	0.4	0.4	0.4	0.41
Denmark				0.6	0.6	0.7	0.6	0.5	0.6	0.5	0.4	0.4	0.47
Germany	2.1	1.6	0.8	0.6	0.6	0.6	0.6	0.6	0.5	0.5	0.4	0.5	0.47
Spain	2.8	1.5	0.7	0.5	0.5	0.5	0.5	0.5	0.5	0.4	0.4	0.5	0.48
Luxembourg	2.3	1.5	0.8	0.8	0.8	0.7	0.5	0.7	0.4	0.5	0.5	0.7	0.48
Slovenia	3.7	1.8	0.9	0.8	0.9	0.9	0.7	0.6	0.7	0.5	0.7	0.5	0.49
Netherlands	-	-	1.0	0.4	0.5	0.5	0.5	0.5	0.5	0.4	0.4	0.6	0.51
Italy	3.3	2.4	0.8	0.7	0.7	0.6	0.6	0.6	0.6	0.4	0.5	0.6	0.53
Poland	3.3	1.8	1.2	1.2	1.1	1.1	1.0	0.9	0.9	0.8	0.7	0.5	0.53
Austria	-	1.4	0.7	0.7	0.7	0.7	0.6	0.6	0.6	0.5	0.5	0.5	0.55
Australia	4.5	2.5	0.9	0.7	0.7	0.7	0.7	0.6	0.6	0.6	0.6	0.5	0.59
Czech Republic	2.9	2.0	-	1.1	1.1	0.9	0.8	0.9	0.8	0.7	0.7	0.7	0.60
Ireland	-	3.1	1.3	0.8	0.6	0.7	0.6	0.5	0.5	0.5	0.5	0.5	0.62
Belgium	-	-	-	1.1	1.1	0.9	0.8	0.8	0.8	0.7	0.7	0.7	0.63
France	3.6	2.3	0.9	0.7	0.8	0.7	0.7	0.7	0.7	0.5	0.6	0.7	0.65
Greece	3.3	3.2	1.3	0.8	0.8	0.9	0.8	0.7	0.7	0.6	0.6	0.6	0.70
Canada	-	-	-	0.8	0.8	0.8	0.8	0.8	0.7	0.7	0.7	0.8	0.75
Lithuania	-	-	0.5	1.8	1.5	1.2	1.2	1.1	1.1	1.0	0.8	0.6	0.80
Portugal	-	-	-	1.1	1.0	1.0	1.0	1.0	1.0	0.7	0.8	0.8	0.82
Korea	4.1	2.8	1.5	2.1	1.9	1.7	1.6	1.4	1.2	1.1	1.0	1.0	0.86
Israel	2.3	1.6	1.0	1.1	1.2	1.2	1.1	0.9	1.0	0.8	0.9	0.9	0.88
Hungary	-	-	-	1.7	1.7	1.5	1.5	1.4	1.3	1.0	1.1	1.1	0.93
United States	-	-	-	1.2	1.3	1.3	1.3	1.2	1.2	1.3	1.4	1.4	1.40
Costa Rica	-	10.6	6.3	3.6			3.8	3.4	3.2	2.2	2.7	3.1	3.10
Chile	2.4	1.9	1.3	4.7	4.6	4.5	3.8	3.6	3.5	3.3	3.4	3.5	3.12
Colombia	16.8	6.6	2.7	5.5	5.3	5.4	4.8	4.6	4.3	3.4	4.3	4.6	4.41
New Zealand	12.7	5.0	1.4	0.9	0.9	0.9	1.0	1.0	0.9	0.8	0.8	1.0	-
ACT	1.6	0.9	0.7	0.4	0.5	0.3	0.2	0.3	0.2	0.2	0.3	0.6	0.1
Vic	2.1	1.2	0.7	0.6	0.6	0.6	0.5	0.4	0.5	0.4	0.4	0.5	0.5
NSW	2.5	1.6	0.9	0.6	0.7	0.7	0.7	0.6	0.6	0.5	0.5	0.5	0.6
Qld	2.6	1.6	1.0	0.6	0.6	0.7	0.6	0.6	0.5	0.7	0.6	0.7	0.6
WA	2.3	1.4	0.7	0.8	0.7	0.9	0.7	0.7	0.7	0.7	0.7	0.7	0.6
Tas	1.9	1.6	1.0	0.7	0.8	0.8	0.7	0.7	0.6	0.8	0.7	1.0	0.7
SA	2.4	1.3	0.8	0.8	0.8	0.6	0.7	0.6	0.8	0.6	0.7	0.5	0.8
NT	8.6	5.0	3.7	2.6	3.2	2.9	2.0	3.1	2.2	1.9	2.1	2.9	1.9

Sources IRTAD 2025, ARDD 2025, BITRE 2024.

Fatality rate per vehicle-kilometre-travelled

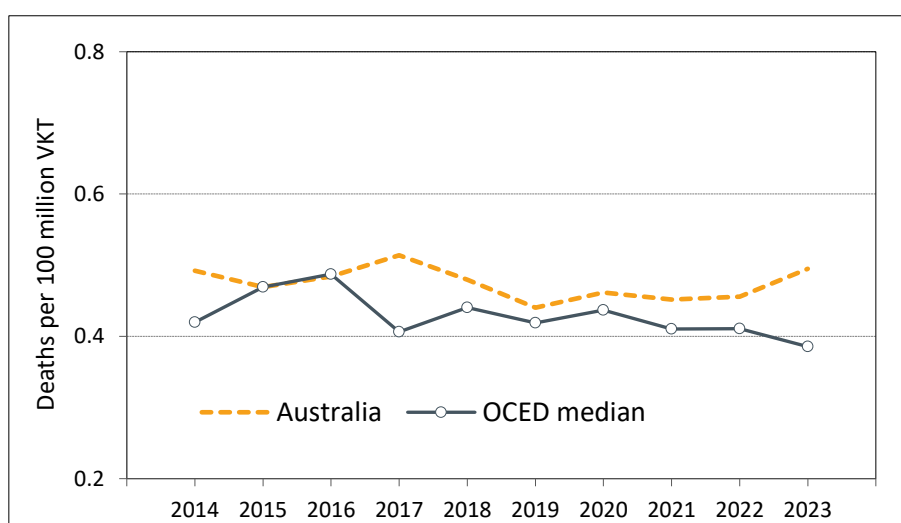
Australia's rate of 0.59 deaths per 100 million vehicle kilometres was ranked 10th out of 13 nations with available data. The nations with the three lowest rates were Iceland (0.20), Norway (0.24) and Sweden (0.28).

Countries with a lower fatality rate than the OECD median include Sweden, Denmark and Slovenia. Countries with a rate higher than the OECD median include Canada, Australia and France.

Between 2014 and 2023 Australia's fatality rate per 100 million vehicle kilometres declined by 0.6%. Over the same period, the OECD median rate declined by 8.1%.

One Australian jurisdiction had a rate per 100 million vehicle kilometres below the OECD median (ACT). The rates for the remaining jurisdictions were above the OECD median.

Figure 5 - Fatality rate per 100 million vehicle kilometres travelled - 10 years to 2023



Sources

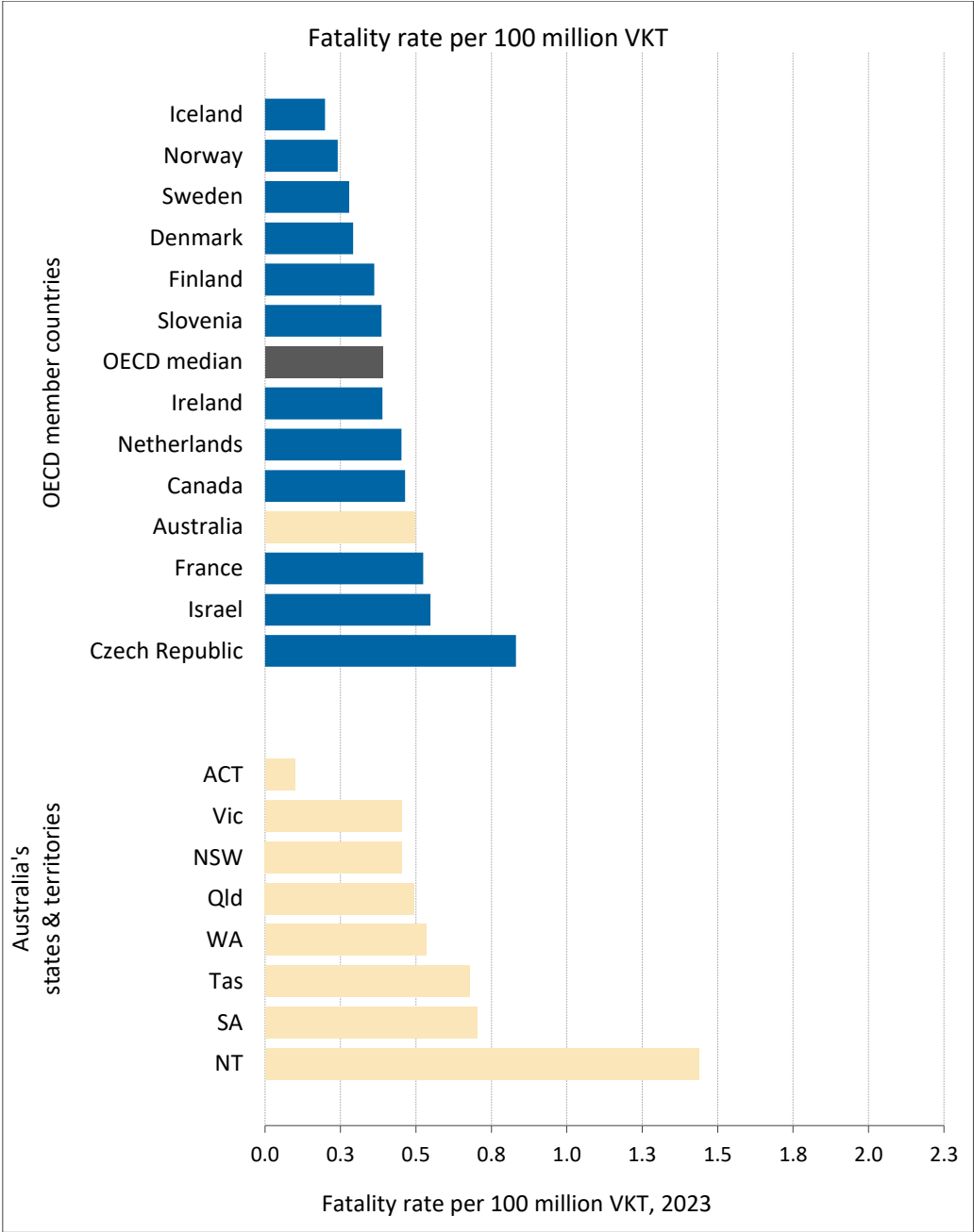
IRTAD 2025, ARDD 2025, BITRE 2024.

Table 5 - Fatality rate per 100 million vehicle kilometres travelled - OECD countries and Australian states and territories, 2023

Nation	Road deaths	VKT (millions)	Fatality rate per 10,000 registered vehicles
Iceland	8	4,032	0.20
Norway	110	45,699	0.24
Sweden	229	82,059	0.28
Denmark	162	55,591	0.29
Finland	173	47,755	0.36
Slovenia	82	21,269	0.39
OECD median			0.39
Ireland	184	47,296	0.39
Netherlands	608	134,636	0.45
Canada	1,936	417,000	0.46
Australia	1,258	253,963	0.50
France	3,167	604,354	0.52
Israel	361	65,876	0.55
Czech Republic	502	60,369	0.83
ACT	4	4,054	0.10
Vic	296	65,490	0.45
NSW	340	74,825	0.45
Qld	277	55,997	0.49
WA	158	29,617	0.53
Tas	35	5,160	0.68
SA	117	16,662	0.70
NT	31	2,157	1.44

Sources IRTAD 2025, ARDD 2025, BITRE 2024.

Figure 6 - Fatality rate per 100 million vehicle kilometres travelled - 13 OECD countries and Australian states and territories, 2023



Sources IRTAD 2025, ARDD 2025, BITRE 2024.

Table 6 - Fatality rate per 100 million vehicle kilometres travelled - OECD countries and Australian states and territories, 1990, 2000, 2010 and 2014 to 2023

Nation	1990	2000	2010	2014	2015	2016	2017	2018	2019	2020	2021	2022	2023
Iceland	7.8	7.6	0.5	0.1	0.5	0.5	0.4	0.4	0.2	0.2	0.2	0.2	0.20
Norway	9.1	6.7	0.3	0.3	0.3	0.3	0.2	0.2	0.2	0.2	0.2	0.3	0.24
Sweden	13.0	7.7	0.5	0.3	0.3	0.3	0.3	0.4	0.3	0.3	0.3	0.3	0.28
Denmark	10.0	9.1	0.5	0.4	0.3	0.4	0.3	0.3	0.4	0.3	0.2	0.3	0.29
Finland	25.9	15.8	0.8	0.4	0.5	0.5	0.5	0.5	0.4	0.5	0.5	0.4	0.36
Slovenia	13.7	9.5	0.6	0.6	0.7	0.7	0.5	0.4	0.5	0.5	0.6	0.4	0.39
Ireland	19.8	13.7	0.7	0.4	0.4	0.4	0.3	0.3	0.3	0.4	0.3	0.3	0.39
Netherlands	8.7	7.9	0.8	0.4	0.4	0.4	0.4	0.4	0.4	0.4	0.4	0.5	0.45
Canada	12.5	14.5	1.6	0.5	0.5	0.5	0.5	0.5	0.4	0.5	0.4	0.5	0.46
Australia	29.2	18.3	3.0	0.5	0.5	0.5	0.5	0.4	0.5	0.5	0.5	0.5	0.50
France	23.4	11.7	2.0	0.6	0.6	0.6	0.6	0.5	0.5	0.5	0.5	0.5	0.52
Israel	9.5	11.5	0.3	0.6	0.6	0.7	0.6	0.5	0.6	0.6	0.6	0.5	0.55
Czechia	12.3	9.3	0.6	1.4	1.4	1.2	1.1	1.2	1.1	1.0	1.0	0.9	0.83
Switzerland	13.6	11.0	0.5	0.4	0.4	0.3	0.3	0.3	0.3	0.4	0.3	0.4	-
Germany	20.4	12.2	0.8	0.5	0.5	0.4	0.4	0.4	0.4	0.4	0.4	0.4	-
Japan	21.4	12.0	0.9	0.6	0.7	0.6	0.6	0.6	0.5	0.5	0.5	0.5	-
Austria	13.9	8.3	0.5	0.6	0.6	0.5	0.5	0.5	0.5	0.5	0.5	0.5	-
Poland	19.3	16.4	2.0	1.5	1.3	1.3	1.2	1.2	1.2	1.1	0.9	0.7	-
New Zealand	17.9	14.9	0.7	0.7	0.7	0.7	0.8	0.8	0.7	0.7	0.7	0.8	-
Korea	33.1	21.8	1.9	1.6	1.5	1.4	1.3	1.2	1.0	0.9	0.8	0.8	-
United States	17.9	14.9	0.7	0.7	0.7	0.7	0.7	0.7	0.7	0.8	0.9	0.8	-
Hungary	11.8	8.2	0.8	1.7	1.6	1.5	1.4	1.4	1.3	1.1	1.2	1.1	-
Belgium	14.3	9.5	0.7	-	0.8	0.7	0.6	-	-	-	-	-	-
United Kingdom	-	0.7	0.4	0.4	-	-	-	-	-	-	-	-	-
ACT	1.0	0.6	0.5	0.3	0.4	0.3	0.1	0.2	0.1	0.2	0.3	0.5	0.10
Vic	1.2	0.8	0.5	0.4	0.4	0.4	0.4	0.3	0.4	0.3	0.4	0.4	0.45
NSW	1.5	1.0	0.6	0.4	0.5	0.5	0.5	0.4	0.5	0.4	0.4	0.4	0.45
Qld	1.4	0.8	0.5	0.4	0.5	0.5	0.5	0.4	0.4	0.5	0.5	0.5	0.49
WA	1.2	1.0	0.8	0.7	0.6	0.7	0.6	0.6	0.6	0.6	0.6	0.6	0.53
Tas	1.7	0.9	0.6	0.6	0.6	0.7	0.6	0.6	0.5	0.7	0.7	1.0	0.68
SA	1.7	1.1	0.7	0.6	0.6	0.5	0.6	0.5	0.7	0.6	0.6	0.4	0.70
NT	4.7	2.8	2.4	1.8	2.3	2.1	1.4	2.3	1.6	1.5	1.6	2.2	1.44

Sources IRTAD 2025, ARDD 2025, BITRE 2024.

Data sources

International data

The International Road Traffic Accident Database (IRTAD 2025) is the main source of fatality and exposure data in this report. IRTAD is maintained by the Joint Transport Research Centre of the OECD and the International Transport Forum. Each year member nations supply IRTAD with their most recent data, which may include revisions to historical data. Further information on IRTAD is available at <https://www.itf-oecd.org/IRTAD>. In cases of particular countries where required data was not held by IRTAD, available data was retrieved from the country's relevant government agency.

Australian data

Australian road fatality data in this report are based on the Australian Road Deaths Database (ARDD 2025). ARDD data is available at <https://datahub.roadsafety.gov.au/>. The data used in this report was current to January 2025.

Population data is sourced from the Australian Bureau of Statistics (ABS 2024). Vehicle registration data is sourced from BITRE Road Vehicles Australia (BITRE 2024a). Vehicle-kilometres-travelled (VKT) data is sourced from BITRE (BITRE 2024b).

References

ARDD 2025 Australian Road Deaths Database, Reference period January 2025

<https://datahub.roadsafety.gov.au/>

ABS 2024 Australian Bureau of Statistics National, state and territory population, Reference period June 2024

<https://www.abs.gov.au/statistics/people/population/national-state-and-territory-population/latest-release>

BITRE 2024a Road Vehicles Australia, January 2023

<https://www.bitre.gov.au/publications/2024/road-vehicles-australia-january-2023-re-issue>

BITRE 2024b Road vehicle VKT estimates December 2024 (unpublished).