



**Australian Government**

**Department of Infrastructure, Transport, Regional Development and Communications**

Bureau of Infrastructure and Transport Research Economics

STATISTICAL REPORT



# Aviation

International airline activity  
March 2021

© Commonwealth of Australia 2021

ISSN: 1324-5074

### **Ownership of intellectual property rights in this publication**

Unless otherwise noted, copyright (and any other intellectual property rights, if any) in this publication is owned by the Commonwealth of Australia (referred to below as the Commonwealth).

### **Disclaimer**

The material contained in this publication is made available on the understanding that the Commonwealth is not providing professional advice, and that users exercise their own skill and care with respect to its use, and seek independent advice if necessary.

The Commonwealth makes no representations or warranties as to the contents or accuracy of the information contained in this publication. To the extent permitted by law, the Commonwealth disclaims liability to any person or organization in respect of anything done, or omitted to be done, in reliance upon information contained in this publication.

### **Creative Commons licence**

With the exception of (a) the Coat of Arms; and (b) the Department of Infrastructure, Transport, Regional Development and Communications' photos and graphics, copyright in this publication is licensed under a Creative Commons Attribution 3.0 Australia Licence.

Creative Commons Attribution 3.0 Australia Licence is a standard form licence agreement that allows you to copy, communicate and adapt this publication provided that you attribute the work to the Commonwealth and abide by the other licence terms. A summary of the licence terms is available from <http://creativecommons.org/licences/by/3.0/au/deed.en>. The full licence terms are available from <http://creativecommons.org/licences/by/3.0/au/legalcode>.

### **Use of the Coat of Arms**

The Department of the Prime Minister and Cabinet sets the terms under which the Coat of Arms is used. Please refer to the Department's Commonwealth Coat of Arms and Government branding web page <http://www.dpmc.gov.au/guidelines/index.cfm#brand> and, in particular, the Guidelines on the use of the Commonwealth Coat of Arms publication.

An appropriate citation for this report is:

Bureau of Infrastructure and Transport Research Economics (BITRE), 2021, International airline activity, Statistical Report, BITRE, Canberra ACT.

### **Contact us**

This publication is available in PDF format. All other rights are reserved, including in relation to any Departmental logos or trademarks which may exist. For enquiries regarding the licence and any use of this publication, please contact:

Bureau of Infrastructure and Transport Research Economics (BITRE)  
Department of Infrastructure, Transport, Regional Development and Communications  
GPO Box 501, Canberra ACT 2601, Australia  
Telephone: (international) +61 2 6274 7210  
Fax: (international) +61 2 6274 6855  
Email: [bitre@infrastructure.gov.au](mailto:bitre@infrastructure.gov.au)  
Website: [www.bitre.gov.au](http://www.bitre.gov.au)

### **Inquiries**

Should you require additional information about the statistics contained in this publication:

Telephone (02) 6274 7790 or Facsimile (02) 6274 7727

Electronic mail: [AVSTATS@infrastructure.gov.au](mailto:AVSTATS@infrastructure.gov.au)

Web site: <http://www.bitre.gov.au/statistics/aviation/international.aspx>

# CONTENTS

---

Highlights for the Month .....	4-5
Detailed Monthly Tables	
1. Scheduled International Air Traffic to and from Australia.....	6-7
2. Scheduled Operator Market Shares and Growth .....	8-11
3. Airline Passenger Capacity and Utilisation to and from Australia by Operator ...	12-13
4. Australian International Airport Scheduled Traffic and Aircraft Movements .....	14-15
5. Scheduled International Passengers and Freight by City Pairs .....	16-21
6. International Airlines Own Stopover Revenue Passengers, Australian City Pairs ....	22
Year ended summary figures.....	23-24
Explanatory Notes .....	25-27
Data Issues and Notes on Airline Services .....	28

## HIGHLIGHTS – MARCH 2021

---

- Forty-five international airlines operated scheduled services to/from Australia during the month (includes five dedicated freight airlines but excludes airlines operating only via code share arrangements).
- International scheduled passenger traffic in March 2021 was 58 336 compared to 1.726 million in March 2020 – a decrease of 96.6 per cent. International air services this month have been severely impacted by travel restrictions due to the COVID-19 pandemic.
- The chart on the next page compares monthly passenger traffic for the year ended March 2021 with monthly passenger traffic for the year ended March 2020. Passenger traffic for the year ended March 2021 was 794 416 which is a 98.0 per cent decrease over the figure for the year ended March 2020.
- Total seats made available on international scheduled operations to/from Australia during March 2021 were 377 451 – a decrease of 87.1 per cent compared to March 2020. The overall seat utilisation percentage decreased from 61.1 per cent in March 2020 to 15.5 per cent in March 2021.
- In terms of passenger carriage, Singapore Airlines had the largest share of the market in March 2021 with 19.3 per cent of the total followed by Qatar Airways with 15.3 per cent, Air New Zealand with 14.5 per cent, Emirates with 8.9 per cent and China Southern Airlines with 5.7 per cent.
- The Qantas group – Qantas Airways, Jetstar and Jetstar Asia (0 per cent this month) accounted for 2.7 per cent of total passenger carriage in March 2021. The group's share in March 2020 was 27.9 per cent.
- Australian designated airlines (Qantas Airways, Jetstar and Virgin Australia (0 per cent this month)) also accounted for 2.7 per cent of total passenger carriage in March 2021. The Australian airline share was 35.3 per cent in March 2020.
- Low Cost Carrier (LCCs) Jetstar and Scoot Tigerair accounted for 0.7 per cent of total international passenger traffic to/from Australia in March 2021. The Low Cost Carriers' share in March 2020 was 14.1 per cent.
- International scheduled freight traffic in March 2021 decreased by 8.5 per cent over March 2020 to 73 604 tonnes. Inbound freight traffic increased by 3.2 per cent while outbound freight traffic decreased by 20.1 per cent compared to March 2020.

## Monthly traffic

	Total Mar-19	Total Mar-20	Inbound Mar-21	Outbound Mar-21	Total Mar-21	Growth compared to	
						Mar-20	Mar-19
Passengers Carried	3 285 273	1 725 729	27 939	30 397	58 336	-96.6%	-98.2%
Freight (tonnes)	98 986	80 450	41 349	32 254	73 604	-8.5%	-25.6%
Mail (tonnes)	3 134	2 399	1 204	795	1 998	-16.7%	-36.2%
Available Seats	4 477 902	2 929 083	170 522	206 929	377 451	-87.1%	-91.6%
Flights	17 095	11 480	1 780	1 777	3 557	-69.0%	-79.2%
Aircraft Movements	17 533	11 819	1 885	1 882	3 767	-68.1%	-78.5%

## Top ten airlines

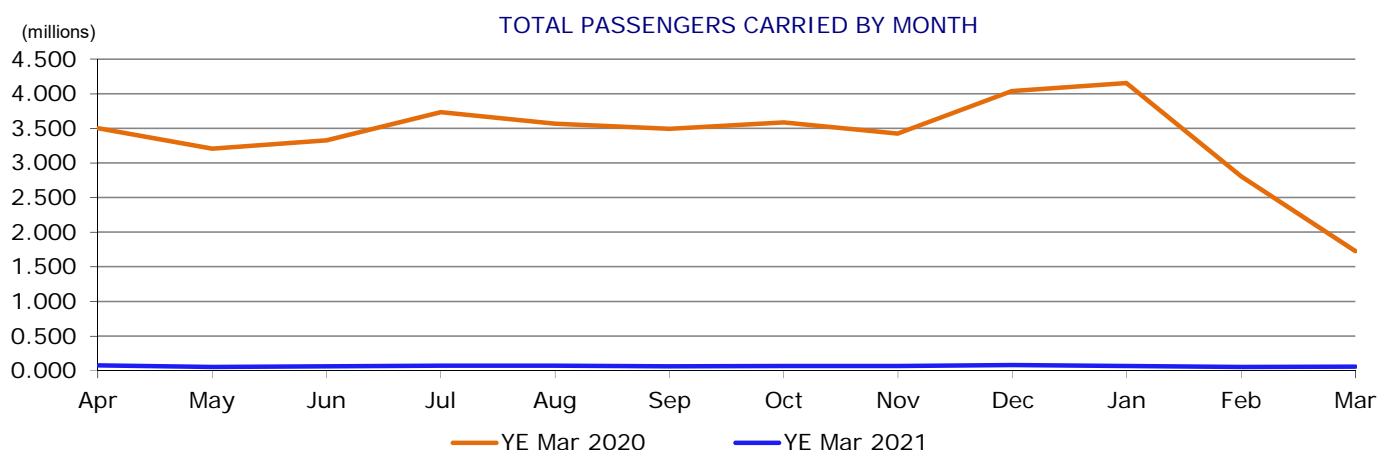
Share of passengers carried	Mar-20	Mar-21	Share of freight carried	Mar-20	Mar-21
Singapore Airlines	8.1%	19.3%	Singapore Airlines	16.0%	15.0%
Qatar Airways	5.0%	15.3%	Emirates	8.1%	9.5%
Air New Zealand	8.4%	14.5%	Qantas Airways	13.2%	9.3%
Emirates	8.2%	8.9%	Federal Express Corporation	5.9%	9.2%
China Southern Airlines	0.8%	5.7%	Qatar Airways	3.8%	7.9%
United Airlines	1.8%	3.9%	Kalitta Air	0.1%	4.6%
Etihad Airways	2.9%	2.6%	Malaysia Airlines	4.0%	4.2%
Air Niugini	0.4%	2.5%	Polar Air Cargo	0.8%	3.4%
SriLankan Airlines	0.6%	2.4%	United Airlines	1.7%	3.2%
Delta Air Lines	0.5%	2.4%	Tasman Cargo Airlines	1.8%	2.9%

## Top five city pairs

Passengers	Mar-21	% of Total	Freight (tonnes)	Mar-21	% of Total
Sydney Auckland	4 780	8.2%	Sydney Singapore	6 365	8.6%
Sydney Singapore	3 826	6.6%	Sydney Los Angeles	4 834	6.6%
Sydney Los Angeles	3 418	5.9%	Melbourne Singapore	4 575	6.2%
Sydney Doha	2 760	4.7%	Sydney Auckland	4 406	6.0%
Melbourne Auckland	2 722	4.7%	Sydney Hong Kong	2 873	3.9%

## Major International Airports

Passengers	Mar-21	% of Total	Freight (tonnes)	Mar-21	% of Total
Sydney	29 338	50.3%	Sydney	47 333	64.3%
Brisbane	10 463	17.9%	Melbourne	16 212	22.0%
Melbourne	9 951	17.1%	Brisbane	4 925	6.7%
Perth	5 692	9.8%	Perth	3 852	5.2%



**TABLE 1 SCHEDULED INTERNATIONAL AIR TRAFFIC TO AND FROM AUSTRALIA: March 2021**

Scheduled Operator	Country to/from	Inbound			Outbound		
		Passengers	Freight (tonnes)	Mail (tonnes)	Passengers	Freight (tonnes)	Mail (tonnes)
Air Caledonie International	New Caledonia	65	2.0	0.3	91	109.8	6.1
Air Canada	Canada	..	253.8	43.8	..	-	-
	New Zealand	..	..	..	..	409.8	50.3
Air Canada	ALL SERVICES	..	253.8	43.8	..	409.8	50.3
Air China	China	..	796.7	26.4	..	612.2	-
Air India	India	250	12.9	25.4	591	32.2	0.0
Air New Zealand	New Zealand	5 463	261.1	17.8	2 975	508.0	13.9
Air Niugini	Papua New Guinea	1 067	103.9	-	367	262.6	-
Air Vanuatu	Vanuatu	64	1.9	-	164	5.6	-
All Nippon Airways	Japan	474	396.6	7.9	352	389.4	-
American Airlines	USA	452	571.1	52.4	700	472.0	22.9
Asiana Airlines	Korea	112	30.6	-	261	36.0	-
Cathay Pacific Airways	Hong Kong (SAR)	103	945.7	116.0	290	841.6	-
China Airlines	Taiwan	221	818.9	68.1	289	672.5	1.5
China Eastern Airlines	China	271	864.0	1.1	1 083	751.1	-
China Southern Airlines	China	108	1 078.2	113.2	3 232	643.7	-
Delta Air Lines	USA	663	511.2	41.4	752	471.0	-
Emirates	Hong Kong (SAR)	..	..	..	..	826.8	-
	New Zealand	..	32.0	-	..	52.3	-
	Philippines	..	..	..	..	105.2	-
	Singapore	..	873.2	2.4	..	505.5	-
	Thailand	..	1.8	-	..	372.4	-
	United Arab Emirates	1 710	3 213.0	40.7	3 492	1 030.3	55.3
Emirates	ALL SERVICES	1 710	4 120.0	43.1	3 492	2 892.6	55.3
Etihad Airways	United Arab Emirates	721	631.4	14.9	772	825.5	76.0
Eva Air	Taiwan	..	417.1	-	..	489.7	-
Federal Express Corporation	China	..	..	..	..	2 327.3	-
	Hong Kong (SAR)	..	..	..	..	11.5	-
	New Zealand	..	88.5	-	..	..	..
	Singapore	..	1 211.2	-	..	267.0	-
	USA	..	2 842.8	-	..	7.3	-
Federal Express Corporation	ALL SERVICES	..	4 142.6	-	..	2 613.1	-
Fiji Airways	Fiji	233	313.8	0.1	199	173.1	12.9
Garuda Indonesia	Indonesia	719	453.9	57.7	478	223.4	-
Hainan Airlines	China	..	251.9	-	..	235.8	-
Hong Kong Airlines	Hong Kong (SAR)	..	310.3	-	..	222.8	-
Japan Airlines	Japan	321	210.8	94.0	341	358.4	4.1
Jetstar	New Zealand	314	-	-	48	-	-
Kalitta Air	Hong Kong (SAR)	..	-	-	..	269.7	-
	Singapore	..	253.1	-	..	1 001.3	-
	USA	..	1 855.8	-	..	-	-
Kalitta Air	ALL SERVICES	..	2 108.9	-	..	1 271.1	-
Korean Air	Korea	71	25.8	-	114	8.4	-
LATAM Airlines	Chile	..	7.1	-	..	..	..
Malaysia Airlines	Malaysia	368	1 502.4	23.1	392	1 189.3	-
	New Zealand	-	242.8	-	-	121.0	-
Malaysia Airlines	ALL SERVICES	368	1 745.2	23.1	392	1 310.2	-
Nauru Airlines	Nauru	48	7.9	-	133	97.1	-
	Solomon Islands	..	..	..	..	43.9	-
Nauru Airlines	ALL SERVICES	48	7.9	-	133	140.9	-
Philippine Airlines	Philippines	114	0.1	-	50	0.2	-
Polar Air Cargo	Guam	..	637.7	-	..	..	..
	Japan	..	946.5	-	..	636.4	8.9
	Korea	..	..	..	..	157.6	-
	New Zealand	..	..	..	..	128.5	-
Polar Air Cargo	ALL SERVICES	..	1 584.2	-	..	922.5	8.9
Qantas Airways	Brunei	..	..	..	..	118.7	-
	China	..	290.6	18.9	..	790.0	28.7
	Hong Kong (SAR)	..	966.6	40.6	..	692.5	35.0
	Japan	..	119.7	0.3	..	181.4	24.7
	New Zealand	696	473.4	-	497	518.2	70.8
	Singapore	..	151.1	-	..	114.5	6.6
	Thailand	..	41.1	-	..	152.9	11.0
	USA	..	2 134.7	17.3	..	126.1	43.7
Qantas Airways	ALL SERVICES	696	4 177.2	77.1	497	2 694.4	220.5
Qatar Airways	New Zealand	..	145.7	-	..	83.6	-
	Qatar	4 662	2 539.1	183.9	4 263	3 068.2	120.5
Qatar Airways	ALL SERVICES	4 662	2 684.8	183.9	4 263	3 151.8	120.5

**TABLE 1 SCHEDULED INTERNATIONAL AIR TRAFFIC TO AND FROM AUSTRALIA: March 2021**

Scheduled Operator	Country to/from	Inbound			Outbound		
		Passengers	Freight (tonnes)	Mail (tonnes)	Passengers	Freight (tonnes)	Mail (tonnes)
Royal Brunei Airlines	Brunei	..	83.7	0.2	8	150.4	-
Scoot Tigerair	Singapore	14	226.5	-	32	178.5	-
Singapore Airlines	New Zealand	..	361.3	-	..	753.6	18.9
	Singapore	6 559	5 880.9	54.9	4 723	4 023.7	15.7
Singapore Airlines	ALL SERVICES	6 559	6 242.2	54.9	4 723	4 777.3	34.6
Solomon Airlines	Solomon Islands	52	2.2	-	43	23.1	-
SriLankan Airlines	Singapore	..	52.3	-	..	149.6	-
	Sri Lanka	167	221.7	-	1 250	57.8	-
SriLankan Airlines	ALL SERVICES	167	274.0	-	1 250	207.5	-
Tasman Cargo Airlines	New Zealand	..	1 132.4	-	..	1 008.8	-
Thai Airways International	Thailand	134	180.0	12.9	237	208.3	-
United Airlines	New Zealand	..	20.7	-	..	9.7	5.9
	USA	1 138	1 099.3	123.1	1 133	1 235.1	157.9
United Airlines	ALL SERVICES	1 138	1 119.9	123.1	1 133	1 244.8	163.8
United Parcel Service	Korea	..	..	..	..	237.8	-
	Singapore	..	..	..	..	33.9	-
United Parcel Service	USA	..	1 704.5	-	..	..	..
	ALL SERVICES	..	1 704.5	-	..	271.7	-
Vietnam Airlines	Vietnam	283	362.7	2.0	357	328.5	3.2
Xiamen Airlines	China	302	179.6	3.0	688	104.2	-
<b>TOTAL</b>		<b>27 939</b>	<b>41 349.3</b>	<b>1 203.7</b>	<b>30 397</b>	<b>32 254.2</b>	<b>794.5</b>

Please refer to explanatory notes - paragraphs 3, 6 and 13 in particular.



**TABLE 2 SCHEDULED OPERATOR MARKET SHARES AND GROWTH: March**

Scheduled Operators	Country to/from	Total Passengers				Total Freight (tonnes)				Total Mail (tonnes)			
		2020	2021	(%) of TOTAL	(%) Change	2020	2021	(%) of TOTAL	(%) Change	2020	2021	(%) of TOTAL	(%) Change
Air Caledonie International	New Caledonia	4 718	156	0.3	-96.7	104.7	111.9	0.2	6.9	4.2	6.4	0.3	52.4
Air Canada	Canada	30 903	..	..	-100.0	584.9	253.8	0.3	-56.6	33.3	43.8	2.2	31.5
	New Zealand	..	..	..	..	..	409.8	0.6	..	..	50.3	2.5	..
Air Canada	ALL SERVICES	30 903	..	..	-100.0	584.9	663.6	0.9	13.5	33.3	94.1	4.7	182.5
Air Chathams (a)	New Zealand	179	..	..	-100.0	1.0	..	..	-100.0	-	..	..	..
Air China	China	2 727	..	..	-100.0	186.3	1 408.9	1.9	656.1	3.2	26.4	1.3	732.4
Air India	India	10 771	841	1.4	-92.2	278.7	45.0	0.1	-83.8	12.3	25.4	1.3	106.4
Air Mauritius (a)	Mauritius	2 554	..	..	-100.0	84.8	..	..	-100.0	0.2	..	..	-100.0
Air New Zealand	Cook Islands	1 156	..	..	-100.0	2.7	..	..	-100.0	0.0	..	..	-100.0
	New Zealand	144 031	8 438	14.5	-94.1	4 153.1	769.1	1.0	-81.5	192.2	31.8	1.6	-83.5
Air New Zealand	ALL SERVICES	145 187	8 438	14.5	-94.2	4 155.8	769.1	1.0	-81.5	192.3	31.8	1.6	-83.5
Air Niugini	Papua New Guinea	6 757	1 434	2.5	-78.8	287.8	366.6	0.5	27.4	-	-	-	..
Air Vanuatu	Vanuatu	4 588	228	0.4	-95.0	20.1	7.5	0.0	-62.7	4.7	-	-	-100.0
AirAsia X (a)	Malaysia	31 013	..	..	-100.0	808.0	..	..	-100.0	-	..	..	..
All Nippon Airways	Japan	9 541	826	1.4	-91.3	1 482.8	786.0	1.1	-47.0	3.7	7.9	0.4	114.7
American Airlines	USA	6 864	1 152	2.0	-83.2	148.9	1 043.1	1.4	600.3	13.3	75.3	3.8	468.1
Asiana Airlines	Korea	2 238	373	0.6	-83.3	83.0	66.6	0.1	-19.7	2.0	-	-	-100.0
Batik Air Indonesia (a)	Indonesia	1 596	..	..	-100.0	-	..	..	..	-	..	..	..
British Airways (a)	Singapore	2 775	..	..	-100.0	399.3	..	..	-100.0	-	..	..	..
	UK	8 245	..	..	-100.0	428.1	..	..	-100.0	14.6	..	..	-100.0
British Airways	ALL SERVICES	11 020	..	..	-100.0	827.4	..	..	-100.0	14.6	..	..	-100.0
Cathay Pacific Airways	Hong Kong (SAR)	33 172	393	0.7	-98.8	4 830.0	1 787.3	2.4	-63.0	80.0	116.0	5.8	45.0
Cebu Pacific Air (a)	Philippines	8 422	..	..	-100.0	229.0	..	..	-100.0	-	..	..	..
China Airlines	New Zealand	3 528	..	..	-100.0	163.5	..	..	-100.0	-	..	..	..
	Taiwan	15 139	510	0.9	-96.6	1 512.7	1 491.4	2.0	-1.4	74.6	69.6	3.5	-6.6
China Airlines	ALL SERVICES	18 667	510	0.9	-97.3	1 676.2	1 491.4	2.0	-11.0	74.6	69.6	3.5	-6.6
China Eastern Airlines	China	13 415	1 354	2.3	-89.9	1 783.0	1 615.1	2.2	-9.4	-	1.1	0.1	..
China Southern Airlines	China	14 344	3 340	5.7	-76.7	1 552.6	1 721.9	2.3	10.9	180.6	113.2	5.7	-37.3
Citilink Indonesia (a)	Indonesia	912	..	..	-100.0	7.3	..	..	-100.0	-	..	..	..
Delta Air Lines	USA	8 567	1 415	2.4	-83.5	447.2	982.3	1.3	119.7	11.7	41.4	2.1	254.7
Emirates	Hong Kong (SAR)	..	..	..	..	649.2	826.8	1.1	27.4	-	-	-	..
	New Zealand	8 617	..	..	-100.0	239.4	84.4	0.1	-64.8	-	-	-	..
	Philippines	..	..	..	..	..	105.2	0.1	..	-	-	-	..
	Singapore	4 368	..	..	-100.0	221.8	1 378.7	1.9	521.6	0.4	2.4	0.1	450.8
	Thailand	..	..	..	..	..	374.2	0.5	..	..	-	-	..
	United Arab Emirates	129 045	5 202	8.9	-96.0	5 419.9	4 243.2	5.8	-21.7	94.9	96.0	4.8	1.1
Emirates	ALL SERVICES	142 030	5 202	8.9	-96.3	6 530.4	7 012.6	9.5	7.4	95.4	98.4	4.9	3.2
Etihad Airways	United Arab Emirates	49 900	1 493	2.6	-97.0	1 809.7	1 456.9	2.0	-19.5	65.4	90.9	4.5	38.9
Eva Air	Taiwan	1 927	..	..	-100.0	367.5	906.8	1.2	146.7	1.4	-	-	-100.0
Federal Express Corporation	China	..	..	..	..	2 342.8	2 327.3	3.2	-0.7	-	-	-	..
	Hong Kong (SAR)	..	..	..	..	..	11.5	0.0	..	..	-	-	..



**TABLE 2 SCHEDULED OPERATOR MARKET SHARES AND GROWTH: March**

Scheduled Operators	Country to/from	Total Passengers				Total Freight (tonnes)				Total Mail (tonnes)			
		2020	2021	(%) of TOTAL	(%) Change	2020	2021	(%) of TOTAL	(%) Change	2020	2021	(%) of TOTAL	(%) Change
Federal Express Corporation	New Zealand	..	..	..	..	..	88.5	0.1	..	..	-	-	..
	Singapore	..	..	..	..	1 235.2	1 478.2	2.0	19.7	-	-	-	..
	USA	..	..	..	..	1 179.4	2 850.1	3.9	141.7	-	-	-	..
Federal Express Corporation	ALL SERVICES	..	..	..	..	4 757.4	6 755.6	9.2	42.0	-	-	-	..
Fiji Airways	Fiji	19 321	432	0.7	-97.8	466.0	486.9	0.7	4.5	4.0	13.0	0.7	223.2
Garuda Indonesia	Indonesia	25 486	1 197	2.1	-95.3	1 446.6	677.3	0.9	-53.2	31.5	57.7	2.9	83.2
Hainan Airlines	China	..	..	..	..	..	487.7	0.7	..	..	-	-	..
Hawaiian Airlines (a)	USA	10 870	..	..	-100.0	270.2	..	..	-100.0	-	..	..	..
Hong Kong Airlines (b)	Hong Kong (SAR)	..	..	..	..	..	533.1	0.7	..	..	-	-	..
Indonesia AirAsia (a)	Indonesia	12 392	..	..	-100.0	3.3	..	..	-100.0	-	..	..	..
Japan Airlines	Japan	9 312	662	1.1	-92.9	956.9	569.2	0.8	-40.5	97.0	98.0	4.9	1.1
Jetstar	Fiji	2 045	..	..	-100.0	1.8	..	..	-100.0	-	..	..	..
	Indonesia	70 395	..	..	-100.0	391.3	..	..	-100.0	2.1	..	..	-100.0
	Japan	20 024	..	..	-100.0	104.1	..	..	-100.0	8.9	..	..	-100.0
	Korea	898	..	..	-100.0	30.4	..	..	-100.0	0.1	..	..	-100.0
	New Zealand	40 373	362	0.6	-99.1	8.6	-	-	-100.0	-	-	-	..
	Singapore	193	..	..	-100.0	-	..	..	..	-	..	..	..
	Thailand	12 891	..	..	-100.0	283.2	..	..	-100.0	2.1	..	..	-100.0
	USA	2 581	..	..	-100.0	10.2	..	..	-100.0	0.2	..	..	-100.0
	Vietnam	9 149	..	..	-100.0	173.4	..	..	-100.0	-	..	..	..
Jetstar	ALL SERVICES	158 549	362	0.6	-99.8	1 003.0	-	-	-100.0	13.3	-	-	-100.0
Jetstar Asia (a)	Singapore	2 023	..	..	-100.0	1.5	..	..	-100.0	-	..	..	..
Kalitta Air (c)	Hong Kong (SAR)	..	..	..	..	..	269.7	0.4	..	..	-	-	..
	Singapore	..	..	..	..	..	1 254.4	1.7	..	..	-	-	..
	USA	..	..	..	..	74.3	1 855.8	2.5	>999.9	-	-	-	..
Kalitta Air	ALL SERVICES	..	..	..	..	74.3	3 380.0	4.6	>999.9	-	-	-	..
Korean Air	Korea	3 827	185	0.3	-95.2	148.4	34.2	0.0	-77.0	24.6	-	-	-100.0
LATAM Airlines	Chile	8 785	..	..	-100.0	160.3	7.1	0.0	-95.6	7.0	-	-	-100.0
	New Zealand	2 908	..	..	-100.0	185.2	..	..	-100.0	-	..	..	..
LATAM Airlines	ALL SERVICES	11 693	..	..	-100.0	345.5	7.1	0.0	-98.0	7.0	-	-	-100.0
Malaysia Airlines	Malaysia	47 868	760	1.3	-98.4	3 209.3	2 691.6	3.7	-16.1	25.5	23.1	1.2	-9.5
	New Zealand	..	-	-	..	..	363.8	0.5	..	..	-	-	..
Malaysia Airlines	ALL SERVICES	47 868	760	1.3	-98.4	3 209.3	3 055.4	4.2	-4.8	25.5	23.1	1.2	-9.5
Malindo Air (a)	Indonesia	8 129	..	..	-100.0	-	..	..	..	-	..	..	..
	Malaysia	3 232	..	..	-100.0	-	..	..	..	-	..	..	..
Malindo Air	ALL SERVICES	11 361	..	..	-100.0	-	..	..	..	-	..	..	..
Nauru Airlines	Nauru	757	181	0.3	-76.1	60.0	104.9	0.1	74.8	0.5	-	-	-100.0
	Solomon Islands	..	..	..	..	..	43.9	0.1	..	..	-	-	..
Nauru Airlines	ALL SERVICES	757	181	0.3	-76.1	60.0	148.8	0.2	147.8	0.5	-	-	-100.0
Pacific Air Express (a)	Papua New Guinea	..	..	..	..	60.6	..	..	-100.0	-	..	..	..
Philippine Airlines	Philippines	13 903	164	0.3	-98.8	343.5	0.2	0.0	-99.9	1.7	-	-	-100.0

**TABLE 2 SCHEDULED OPERATOR MARKET SHARES AND GROWTH: March**

Scheduled Operators	Country to/from	Total Passengers				Total Freight (tonnes)				Total Mail (tonnes)			
		2020	2021	(%) of TOTAL	(%) Change	2020	2021	(%) of TOTAL	(%) Change	2020	2021	(%) of TOTAL	(%) Change
Polar Air Cargo	Guam	..	..	..	..	..	637.7	0.9	..	..	-	-	..
	Japan	..	..	..	..	469.0	1 582.9	2.2	237.5	-	8.9	0.4	..
	Korea	..	..	..	..	123.4	157.6	0.2	27.7	-	-	-	..
	New Zealand	..	..	..	..	..	128.5	0.2	..	..	-	-	..
	Taiwan	..	..	..	..	70.5	..	..	-100.0	-	..	..	..
Polar Air Cargo	ALL SERVICES	..	..	..	..	663.0	2 506.7	3.4	278.1	-	8.9	0.4	..
Qantas Airways	Brunei	..	..	..	..	..	118.7	0.2	..	..	-	-	..
	Chile	9 007	..	..	-100.0	16.2	..	..	-100.0	1.3	..	..	-100.0
	China	..	..	..	..	977.9	1 080.6	1.5	10.5	21.4	47.6	2.4	122.8
	Fiji	2 560	..	..	-100.0	2.5	..	..	-100.0	0.7	..	..	-100.0
	Hong Kong (SAR)	14 248	..	..	-100.0	2 015.5	1 659.1	2.3	-17.7	85.7	75.5	3.8	-11.8
	Indonesia	16 983	..	..	-100.0	261.0	..	..	-100.0	1.6	..	..	-100.0
	Japan	28 059	..	..	-100.0	487.5	301.1	0.4	-38.2	108.6	25.0	1.3	-77.0
	Korea	..	..	..	..	91.7	-	-	-100.0	-	-	-	..
	New Caledonia	3 127	..	..	-100.0	1.3	..	..	-100.0	1.3	..	..	-100.0
	New Zealand	80 214	1 193	2.0	-98.5	1 767.9	991.6	1.3	-43.9	165.1	70.8	3.5	-57.1
	Papua New Guinea	4 855	..	..	-100.0	7.3	..	..	-100.0	2.5	..	..	-100.0
	Philippines	6 501	..	..	-100.0	147.8	..	..	-100.0	4.0	..	..	-100.0
	Singapore	39 274	..	..	-100.0	1 674.3	265.6	0.4	-84.1	136.2	6.6	0.3	-95.2
	South Africa	10 776	..	..	-100.0	178.6	..	..	-100.0	3.2	..	..	-100.0
	Taiwan	..	..	..	..	124.6	..	..	-100.0	-	..	..	..
	Thailand	8 335	..	..	-100.0	359.1	194.0	0.3	-46.0	18.9	11.0	0.5	-41.9
	UK	19 635	..	..	-100.0	189.8	..	..	-100.0	76.7	..	..	-100.0
	USA	77 566	..	..	-100.0	2 316.2	2 260.8	3.1	-2.4	272.0	61.0	3.1	-77.6
Qantas Airways	ALL SERVICES	321 140	1 193	2.0	-99.6	10 619.0	6 871.6	9.3	-35.3	899.0	297.6	14.9	-66.9
Qatar Airways	New Zealand	..	..	..	..	..	229.3	0.3	..	..	-	-	..
	Qatar	86 798	8 925	15.3	-89.7	3 058.4	5 607.3	7.6	83.3	134.7	304.4	15.2	125.9
Qatar Airways	ALL SERVICES	86 798	8 925	15.3	-89.7	3 058.4	5 836.6	7.9	90.8	134.7	304.4	15.2	125.9
Royal Brunei Airlines	Brunei	5 355	8	0.0	-99.9	378.0	234.0	0.3	-38.1	0.1	0.2	0.0	174.7
Samoa Airways (a)	Western Samoa	1 287	..	..	-100.0	5.6	..	..	-100.0	-	..	..	..
Scoot Tigerair	Singapore	26 584	46	0.1	-99.8	176.0	405.1	0.6	130.2	-	-	-	..
Silk Air (a)	Singapore	5 290	..	..	-100.0	12.4	..	..	-100.0	-	..	..	..
Singapore Airlines	New Zealand	1 667	..	..	-100.0	671.2	1 114.9	1.5	66.1	-	18.9	0.9	..
	Singapore	138 668	11 282	19.3	-91.9	12 167.8	9 904.5	13.5	-18.6	167.1	70.7	3.5	-57.7
Singapore Airlines	ALL SERVICES	140 335	11 282	19.3	-92.0	12 839.0	11 019.4	15.0	-14.2	167.1	89.6	4.5	-46.4
Solomon Airlines	Solomon Islands	1 796	95	0.2	-94.7	25.8	25.3	0.0	-1.9	-	-	-	..
South African Airways (a)	South Africa	4 725	..	..	-100.0	139.5	..	..	-100.0	-	..	..	..
SriLankan Airlines	Singapore	..	..	..	..	..	201.9	0.3	..	..	-	-	..
	Sri Lanka	10 175	1 417	2.4	-86.1	408.8	279.5	0.4	-31.6	-	-	-	..
SriLankan Airlines	ALL SERVICES	10 175	1 417	2.4	-86.1	408.8	481.4	0.7	17.8	-	-	-	..
Tasman Cargo Airlines	New Zealand	..	..	..	..	1 471.5	2 141.2	2.9	45.5	-	-	-	..

**TABLE 2 SCHEDULED OPERATOR MARKET SHARES AND GROWTH: March**

Scheduled Operators	Country to/from	Total Passengers				Total Freight (tonnes)				Total Mail (tonnes)			
		2020	2021	(%) of TOTAL	(%) Change	2020	2021	(%) of TOTAL	(%) Change	2020	2021	(%) of TOTAL	(%) Change
Thai AirAsia X (a)	Thailand	3 068	..	..	-100.0	34.8	..	..	-100.0	-	..	..	..
Thai Airways International	Thailand	48 588	371	0.6	-99.2	2 382.0	388.2	0.5	-83.7	49.7	12.9	0.6	-74.1
United Airlines	New Zealand	..	..	..	..	..	30.4	0.0	..	..	5.9	0.3	..
	USA	30 670	2 271	3.9	-92.6	1 400.9	2 334.4	3.2	66.6	144.9	280.9	14.1	93.9
United Airlines	ALL SERVICES	30 670	2 271	3.9	-92.6	1 400.9	2 364.7	3.2	68.8	144.9	286.8	14.4	98.0
United Parcel Service	China	..	..	..	..	281.9	..	..	-100.0	-	..	..	..
	Korea	..	..	..	..	719.6	237.8	0.3	-66.9	-	-	-	..
	Singapore	..	..	..	..	262.0	33.9	0.0	-87.1	-	-	-	..
	USA	..	..	..	..	1 278.3	1 704.5	2.3	33.3	-	-	-	..
United Parcel Service	ALL SERVICES	..	..	..	..	2 541.8	1 976.2	2.7	-22.3	-	-	-	..
Vietnam Airlines	Vietnam	17 754	640	1.1	-96.4	1 104.0	691.2	0.9	-37.4	0.4	5.2	0.3	>999.9
Virgin Australia (a)	Fiji	11 024	..	..	-100.0	26.2	..	..	-100.0	-	..	..	..
	Hong Kong (SAR)	231	..	..	-100.0	13.7	..	..	-100.0	-	..	..	..
	Indonesia	14 737	..	..	-100.0	14.8	..	..	-100.0	-	..	..	..
	New Zealand	71 289	..	..	-100.0	55.5	..	..	-100.0	-	..	..	..
	Papua New Guinea	1 313	..	..	-100.0	7.5	..	..	-100.0	-	..	..	..
	Solomon Islands	549	..	..	-100.0	11.8	..	..	-100.0	-	..	..	..
	Tonga	1 003	..	..	-100.0	0.5	..	..	-100.0	-	..	..	..
	USA	26 259	..	..	-100.0	1 085.3	..	..	-100.0	-	..	..	..
	Vanuatu	1 805	..	..	-100.0	5.3	..	..	-100.0	-	..	..	..
	Western Samoa	1 289	..	..	-100.0	0.4	..	..	-100.0	-	..	..	..
Virgin Australia	ALL SERVICES	129 499	..	..	-100.0	1 221.0	..	..	-100.0	-	..	..	..
Xiamen Airlines	China	3 291	990	1.7	-69.9	534.4	283.8	0.4	-46.9	5.2	3.0	0.2	-42.0
<b>TOTAL</b>		<b>1 725 729</b>	<b>58 336</b>	<b>100.0</b>	<b>-96.6</b>	<b>80 449.5</b>	<b>73 603.5</b>	<b>100.0</b>	<b>-8.5</b>	<b>2 399.0</b>	<b>1 998.3</b>	<b>100.0</b>	<b>-16.7</b>

Please refer to explanatory notes - paragraphs 3, 6 and 13 in particular.

(a) Scheduled services suspended due to COVID-19 pandemic.

(b) Service recommenced June 2020.

(c) Scheduled services commenced March 2020.

**TABLE 3 AIRLINE PASSENGER CAPACITY AND UTILISATION TO AND FROM AUSTRALIA BY OPERATOR: March 2021**

Scheduled Operator	Service to/from	Inbound				Outbound			
		No. of Flights	Pax Carried	Seats Available	Seat Utilisation %	No. of Flights	Pax Carried	Seats Available	Seat Utilisation %
Air Caledonie International	New Caledonia	9	65	1 711	3.8	9	91	1 671	5.4
Air Canada	Canada	16	..	..	..	3	..	..	..
	New Zealand	-	..	..	..	15	..	..	..
Air Canada	ALL SERVICES	16	..	..	..	18	..	..	..
Air China	China	39	..	..	..	39	..	..	..
Air India	India	4	250	1 024	24.4	5	591	1 280	46.2
Air New Zealand	New Zealand	50	5 463	10 847	50.4	55	2 975	13 249	22.5
Air Niugini	Papua New Guinea	27	1 067	4 837	22.1	27	367	4 837	7.6
Air Vanuatu	Vanuatu	2	64	352	18.2	2	164	352	46.6
All Nippon Airways	Japan	26	474	5 040	9.4	26	352	5 040	7.0
American Airlines	USA	30	452	5 396	8.4	30	700	5 396	13.0
Asiana Airlines	Korea	4	112	1 224	9.2	4	261	1 224	21.3
Cathay Pacific Airways	Hong Kong (SAR)	31	103	2 338	4.4	29	290	2 338	12.4
China Airlines	Taiwan	64	221	2 142	10.3	62	289	2 142	13.5
China Eastern Airlines	China	41	271	2 826	9.6	41	1 083	2 826	38.3
China Southern Airlines	China	46	108	2 016	5.4	45	3 232	4 506	71.7
Delta Air Lines	USA	28	663	7 826	8.5	29	752	8 127	9.3
Emirates	New Zealand	9	..	..	..	9	..	..	..
	United Arab Emirates	137	1 710	12 428	13.8	140	3 492	16 344	21.4
Emirates	ALL SERVICES	146	1 710	12 428	13.8	149	3 492	16 344	21.4
Etihad Airways	United Arab Emirates	45	721	6 670	10.8	44	772	12 716	6.1
Eva Air	Taiwan	18	..	..	..	18	..	..	..
Federal Express Corporation (a)	China	-	..	..	..	58	..	..	..
	Hong Kong (SAR)	-	..	..	..	1	..	..	..
	Singapore	16	..	..	..	6	..	..	..
	USA	51	..	..	..	1	..	..	..
Federal Express Corporation	ALL SERVICES	67	..	..	..	66	..	..	..
Fiji Airways	Fiji	18	233	2 793	8.3	18	199	823	24.2
Garuda Indonesia	Indonesia	38	644	3 752	17.2	33	478	3 968	12.0
	USA	1	75	162	46.3	-	..	..	..
Garuda Indonesia	ALL SERVICES	39	719	3 914	18.4	33	478	3 968	12.0
Hainan Airlines	China	13	..	..	..	13	..	..	..
Hong Kong Airlines	Hong Kong (SAR)	18	..	..	..	17	..	..	..
Japan Airlines	Japan	27	321	2 458	13.1	25	341	2 252	15.1
Jetstar	New Zealand	3	314	558	56.3	3	48	558	8.6
Kalitta Air (a)	Singapore	3	..	..	..	4	..	..	..
	USA	35	..	..	..	34	..	..	..
Kalitta Air	ALL SERVICES	38	..	..	..	38	..	..	..
Korean Air	Korea	2	71	544	13.1	2	114	544	21.0
LATAM Airlines	Chile	3	..	..	..	-	..	..	..
Malaysia Airlines	Malaysia	83	368	2 900	12.7	82	392	4 060	9.7
	New Zealand	11	-	-	..	10	-	-	..
Malaysia Airlines	ALL SERVICES	94	368	2 900	12.7	92	392	4 060	9.7
Nauru Airlines	Nauru	11	48	256	18.8	13	133	384	34.6
Philippine Airlines	Philippines	3	114	504	22.6	2	50	336	14.9
Polar Air Cargo (a)	Guam	8	..	..	..	-	..	..	..

**TABLE 3 AIRLINE PASSENGER CAPACITY AND UTILISATION TO AND FROM AUSTRALIA BY OPERATOR: March 2021**

Scheduled Operator	Service to/from	Inbound				Outbound			
		No. of Flights	Pax Carried	Seats Available	Seat Utilisation %	No. of Flights	Pax Carried	Seats Available	Seat Utilisation %
Polar Air Cargo	Japan	25	..	..	..	23	..	..	..
	Korea	-	..	..	..	9	..	..	..
Polar Air Cargo	ALL SERVICES	33	..	..	..	32	..	..	..
Qantas Airways	China	20	..	..	..	20	..	..	..
	Hong Kong (SAR)	37	..	..	..	43	..	..	..
	Japan	9	..	..	..	9	..	..	..
	New Zealand	29	696	1 782	39.1	29	497	2 647	18.8
	Singapore	9	..	..	..	10	..	..	..
	Thailand	4	..	..	..	9	..	..	..
	USA	29	..	..	..	23	..	..	..
Qantas Airways	ALL SERVICES	137	696	1 782	39.1	143	497	2 647	18.8
Qatar Airways	New Zealand	13	..	..	..	14	..	..	..
	Qatar	145	4 662	24 996	18.7	144	4 263	33 744	12.6
Qatar Airways	ALL SERVICES	158	4 662	24 996	18.7	158	4 263	33 744	12.6
Royal Brunei Airlines	Brunei	9	..	..	..	9	8	1 524	0.5
Scoot Tigerair	Singapore	14	14	750	1.9	14	32	2 250	1.4
Singapore Airlines	New Zealand	9	..	..	..	9	..	..	..
	Singapore	260	6 559	39 634	16.5	260	4 723	49 433	9.6
Singapore Airlines	ALL SERVICES	269	6 559	39 634	16.5	269	4 723	49 433	9.6
Solomon Airlines	Solomon Islands	4	52	544	9.6	5	43	544	7.9
SriLankan Airlines	Sri Lanka	19	167	2 320	7.2	19	1 250	4 108	30.4
Tasman Cargo Airlines (a)	New Zealand	27	..	..	..	27	..	..	..
Thai Airways International	Thailand	10	134	1 740	7.7	10	237	1 740	13.6
United Airlines	New Zealand	1	..	..	..	1	..	..	..
	USA	84	1 138	13 184	8.6	84	1 133	13 194	8.6
United Airlines	ALL SERVICES	85	1 138	13 184	8.6	85	1 133	13 194	8.6
United Parcel Service (a)	Korea	-	..	..	..	22	..	..	..
	Singapore	-	..	..	..	4	..	..	..
	USA	26	..	..	..	-	..	..	..
United Parcel Service	ALL SERVICES	26	..	..	..	26	..	..	..
Vietnam Airlines	Vietnam	18	283	2 466	11.5	18	357	548	65.1
Xiamen Airlines	China	9	302	2 502	12.1	8	688	2 224	30.9
<b>TOTAL</b>		<b>1 780</b>	<b>27 939</b>	<b>170 522</b>	<b>16.4</b>	<b>1 777</b>	<b>30 397</b>	<b>206 929</b>	<b>14.7</b>

Please refer to explanatory notes - paragraphs 4, 5, and 7 in particular.

Seat Factors shown in this table:

Traffic shown in this table for China Airlines, Emirates, Qantas Airways and Singapore Airlines may differ from traffic shown in Tables 1 and 2 because of the inclusion in this table of total traffic into and ex Australia (for seat factor purposes) whereas Tables 1 and 2 include uplift/discharge traffic only. All other airlines report uplift/discharge traffic only. Currently, there are no other airlines operating via Australia, and therefore uplift/discharge traffic is the same as total traffic into and ex Australia for all other airlines.

Available seats have not been counted where passenger aircraft have been used to operate freight only services. However, this adjustment cannot be made for airlines that report monthly aggregates and that have operated a mix of passenger and freight only services using passenger aircraft. Some airlines have reported adjusted seats to take account of social distancing while others have reported fitted seats.

(a) Freight flights only.

**TABLE 4 SCHEDULED INTERNATIONAL AIRPORT TRAFFIC AND AIRCRAFT MOVEMENTS: March**

		Inbound			Outbound	Outbound			Total		(%) (%) of Change TOTAL
		2020	2021	(%) Change		2020	2021	(%) Change	2020	2021	
Adelaide	Passengers	23 735	2 124	-91.1	18 459	413	-97.8	42 194	2 537	-94.0	4.3
	Freight (Tonnes)	825	494	-40.1	1 017	468	-54.0	1 842	962	-47.8	1.3
	Aircraft Movements	138	37	-73.2	137	39	-71.5	275	76	-72.4	2.0
Avalon	Passengers	8 618	..	-100.0	5 437	..	-100.0	14 055	..	-100.0	..
	Freight (Tonnes)	135	..	-100.0	299	..	-100.0	434	..	-100.0	..
	Aircraft Movements	38	..	-100.0	39	..	-100.0	77	..	-100.0	..
Brisbane	Passengers	138 690	6 454	-95.3	125 177	4 009	-96.8	263 867	10 463	-96.0	17.9
	Freight (Tonnes)	3 583	2 085	-41.8	4 639	2 839	-38.8	8 222	4 925	-40.1	6.7
	Aircraft Movements	979	190	-80.6	974	189	-80.6	1 953	379	-80.6	10.1
Cairns	Passengers	10 976	171	-98.4	10 079	47	-99.5	21 055	218	-99.0	0.4
	Freight (Tonnes)	108	1	-99.4	105	107	2.4	213	108	-49.1	0.1
	Aircraft Movements	113	20	-82.3	111	25	-77.5	224	45	-79.9	1.2
Canberra	Passengers	1 471	137	-90.7	1 174	..	-100.0	2 645	137	-94.8	0.2
	Freight (Tonnes)	2	1	-70.8	4	..	-100.0	6	1	-91.1	0.0
	Aircraft Movements	43	1	-97.7	43	-	-100.0	86	1	-98.8	0.0
Darwin	Passengers	4 342	..	-100.0	2 910	..	-100.0	7 252	..	-100.0	..
	Freight (Tonnes)	13	1	-96.0	2	-	-100.0	14	1	-96.4	0.0
	Aircraft Movements	49	29	-40.8	50	29	-42.0	99	58	-41.4	1.5
Gold Coast	Passengers	20 412	..	-100.0	18 038	..	-100.0	38 450	..	-100.0	..
	Freight (Tonnes)	31	..	-100.0	107	..	-100.0	138	..	-100.0	..
	Aircraft Movements	140	..	-100.0	141	..	-100.0	281	..	-100.0	..
Melbourne	Passengers	244 268	1 798	-99.3	227 490	8 153	-96.4	471 758	9 951	-97.9	17.1
	Freight (Tonnes)	9 182	8 604	-6.3	11 015	7 608	-30.9	20 197	16 212	-19.7	22.0
	Aircraft Movements	1 466	412	-71.9	1 464	413	-71.8	2 930	825	-71.8	21.9
Norfolk Island	Passengers	84	..	-100.0	95	..	-100.0	179	..	-100.0	..
	Freight (Tonnes)	1	..	-100.0	-	..	..	1	..	-100.0	..
	Aircraft Movements	3	..	-100.0	3	..	-100.0	6	..	-100.0	..
Perth	Passengers	93 680	3 298	-96.5	84 820	2 394	-97.2	178 500	5 692	-96.8	9.8
	Freight (Tonnes)	2 956	1 964	-33.6	3 418	1 888	-44.8	6 374	3 852	-39.6	5.2
	Aircraft Movements	598	111	-81.4	600	112	-81.3	1 198	223	-81.4	5.9

**TABLE 4 SCHEDULED INTERNATIONAL AIRPORT TRAFFIC AND AIRCRAFT MOVEMENTS: March**

		Inbound			Outbound			Total			(%) of TOTAL
		2020	2021	(%) Change	2020	2021	(%) Change	2020	2021	(%) Change	
Port Hedland	Passengers	104	..	-100.0	109	..	-100.0	213	..	-100.0	..
	Freight (Tonnes)	-	..	..	-	..	..	-	..	..	..
	Aircraft Movements	2	..	-100.0	2	..	-100.0	4	..	-100.0	..
Sydney	Passengers	341 102	13 957	-95.9	344 459	15 381	-95.5	685 561	29 338	-95.7	50.3
	Freight (Tonnes)	23 219	28 182	21.4	19 551	19 151	-2.0	42 771	47 333	10.7	64.3
	Aircraft Movements	2 340	1 078	-53.9	2 336	1 068	-54.3	4 676	2 146	-54.1	57.0
Toowoomba Wellcamp	Passengers	..	..	..	..	-	..	..	-	..	0.0
	Freight (Tonnes)	19	19	0.1	220	191	-12.8	238	210	-11.8	0.3
	Aircraft Movements	5	7	40.0	5	7	40.0	10	14	40.0	0.4
TOTAL	Passengers	887 482	27 939	-96.9	838 247	30 397	-96.4	1 725 729	58 336	-96.6	100.0
	Freight (Tonnes)	40 073	41 349	3.2	40 377	32 254	-20.1	80 450	73 604	-8.5	100.0
	Aircraft Movements	5 914	1 885	-68.1	5 905	1 882	-68.1	11 819	3 767	-68.1	100.0



**TABLE 5 SCHEDULED INTERNATIONAL TRAFFIC BY CITY PAIRS: March**

Foreign Port	Australian Port	Passengers						Freight (tonnes)					
		2020			2021			2020			2021		
		Inbound	Outbound	Total	Inbound	Outbound	Total	Inbound	Outbound	Total	Inbound	Outbound	Total
Auckland	Adelaide	2 649	2 375	5 024	0	0	0	115.8	72.3	188.1	0.0	0.0	0.0
Denpasar		5 417	3 641	9 058	0	0	0	1.5	0.0	1.5	0.0	0.0	0.0
Doha		2 586	2 596	5 182	930	227	1 157	285.3	212.6	497.9	158.5	50.1	208.6
Dubai		3 961	4 098	8 059	0	0	0	150.3	159.4	309.7	0.0	0.0	0.0
Hong Kong		291	366	657	0	0	0	10.1	46.0	56.1	3.9	90.5	94.4
Kuala Lumpur		3 196	1 915	5 111	127	10	137	59.0	194.4	253.4	7.5	80.7	88.2
Singapore		5 635	3 468	9 103	1 067	176	1 243	203.2	332.3	535.5	324.0	246.8	570.8
<b>Total</b>	<b>Adelaide</b>	23 735	18 459	42 194	2 124	413	2 537	825.3	1 016.9	1 842.1	493.9	468.0	962.0
Abu Dhabi	Brisbane	3 139	4 057	7 196	0	0	0	147.5	99.3	246.7	0.0	0.0	0.0
Apia		662	518	1 180	0	0	0	0.1	0.1	0.2	0.0	0.0	0.0
Auckland		24 282	20 638	44 920	1 320	1 085	2 405	468.7	245.8	714.6	223.6	179.7	403.3
Bandar Seri Begawan		729	694	1 423	0	0	0	1.1	0.2	1.3	0.0	0.0	0.0
Bangkok		5 268	3 790	9 058	0	0	0	229.9	184.3	414.2	0.0	0.0	0.0
Christchurch		7 969	6 223	14 192	0	0	0	21.1	17.4	38.6	12.6	9.2	21.8
Denpasar		11 641	7 747	19 388	0	0	0	67.6	29.5	97.1	0.0	0.0	0.0
Doha		98	706	804	1 368	626	1 994	1.7	6.0	7.8	73.0	124.4	197.4
Dubai		10 549	11 825	22 374	768	572	1 340	296.5	516.5	813.0	249.7	187.4	437.2
Dunedin		1 073	916	1 989	0	0	0	0.0	0.0	0.0	0.0	0.0	0.0
Hong Kong		1 941	3 814	5 755	0	0	0	284.3	473.8	758.2	153.2	356.9	510.1
Honiara		1 399	926	2 325	52	43	95	2.1	35.5	37.6	2.2	67.0	69.2
Honolulu		1 922	1 996	3 918	0	0	0	19.1	44.6	63.6	0.0	0.0	0.0
Kuala Lumpur		2 542	1 292	3 834	0	0	0	119.1	144.5	263.6	0.0	0.0	0.0
Los Angeles		10 150	10 003	20 153	0	0	0	384.8	291.0	675.8	176.4	105.0	281.3
Manila		1 873	1 125	2 998	44	0	44	4.8	6.3	11.2	0.0	0.0	0.0
Medan		0	0	0	28	0	28	0.0	0.0	0.0	0.0	0.0	0.0
Munda		0	20	20	0	0	0	0.0	0.0	0.0	0.0	0.0	0.0
Nadi		4 480	3 761	8 241	75	107	182	13.8	13.0	26.8	5.9	2.0	7.8
Nauru		367	390	757	48	133	181	4.1	55.9	60.0	7.9	97.1	104.9
New Delhi		0	0	0	148	0	148	0.0	0.0	0.0	0.0	0.0	0.0
Noumea		1 188	1 371	2 559	0	0	0	0.2	5.0	5.2	0.0	0.0	0.0
Port Moresby		5 081	4 028	9 109	867	317	1 184	36.3	309.6	345.9	103.3	261.7	365.0
Port Vila		1 994	1 218	3 212	64	164	228	4.7	6.5	11.2	1.9	5.6	7.5
Queenstown		1 905	1 517	3 422	0	0	0	0.0	0.0	0.0	0.0	0.0	0.0
San Francisco		1 314	1 410	2 724	0	0	0	20.5	0.1	20.7	0.0	0.0	0.0
Seoul		511	630	1 141	0	0	0	9.5	71.0	80.4	0.0	0.0	0.0
Singapore		21 006	16 124	37 130	1 578	859	2 437	1 002.9	1 389.8	2 392.6	541.1	758.1	1 299.2
Taipei		2 545	4 606	7 151	94	103	197	289.2	546.8	836.0	465.5	537.3	1 002.8
Tokyo		3 626	3 939	7 565	0	0	0	88.3	82.8	171.1	68.9	148.2	217.2
Vancouver		4 865	6 026	10 891	0	0	0	64.3	62.5	126.7	0.0	0.0	0.0
Wellington		4 571	3 867	8 438	0	0	0	0.4	1.4	1.8	0.0	0.0	0.0
<b>Total</b>	<b>Brisbane</b>	138 690	125 177	263 867	6 454	4 009	10 463	3 582.7	4 639.3	8 222.0	2 085.2	2 839.5	4 924.7
Denpasar	Cairns	1 794	1 298	3 092	0	0	0	0.0	0.0	0.0	0.0	0.0	0.0
Hong Kong		0	0	0	0	0	0	32.4	79.3	111.8	0.0	82.2	82.2
Osaka		2 590	2 665	5 255	0	0	0	23.6	3.1	26.7	0.0	0.0	0.0
Port Moresby		1 855	1 340	3 195	171	47	218	9.2	5.3	14.5	0.6	0.9	1.5
Singapore		1 541	1 833	3 374	0	0	0	0.0	1.5	1.5	0.0	21.1	21.1
Tokyo		3 196	2 943	6 139	0	0	0	42.3	15.9	58.1	0.0	3.3	3.3

**TABLE 5 SCHEDULED INTERNATIONAL TRAFFIC BY CITY PAIRS: March**

Foreign Port	Australian Port	Passengers						Freight (tonnes)					
		2020			2021			2020			2021		
		Inbound	Outbound	Total	Inbound	Outbound	Total	Inbound	Outbound	Total	Inbound	Outbound	Total
<b>Total</b>	<b>Cairns</b>	10 976	10 079	21 055	171	47	218	107.5	105.0	212.5	0.6	107.5	108.1
Doha	Canberra	637	410	1 047	0	0	0	0.2	0.0	0.2	0.0	0.0	0.0
Singapore		834	764	1 598	137	0	137	1.5	3.9	5.4	0.5	0.0	0.5
<b>Total</b>	<b>Canberra</b>	1 471	1 174	2 645	137	0	137	1.7	3.9	5.7	0.5	0.0	0.5
Denpasar	Darwin	1 993	1 317	3 310	0	0	0	1.7	0.0	1.7	0.0	0.0	0.0
Hong Kong		0	0	0	0	0	0	0.0	0.0	0.0	0.5	0.0	0.5
London		0	3	3	0	0	0	0.0	0.0	0.0	0.0	0.0	0.0
Singapore		2 349	1 590	3 939	0	0	0	11.0	1.5	12.5	0.0	0.0	0.0
<b>Total</b>	<b>Darwin</b>	4 342	2 910	7 252	0	0	0	12.8	1.5	14.3	0.5	0.0	0.5
Auckland	Gold Coast	7 376	7 543	14 919	0	0	0	0.5	8.5	8.9	0.0	0.0	0.0
Christchurch		1 708	1 667	3 375	0	0	0	0.0	0.7	0.7	0.0	0.0	0.0
Kuala Lumpur		1 714	1 352	3 066	0	0	0	14.2	72.5	86.7	0.0	0.0	0.0
Queenstown		1 141	862	2 003	0	0	0	0.0	0.0	0.0	0.0	0.0	0.0
Seoul		412	352	764	0	0	0	0.0	7.7	7.7	0.0	0.0	0.0
Singapore		2 035	1 186	3 221	0	0	0	0.7	17.0	17.7	0.0	0.0	0.0
Tokyo		4 659	3 892	8 551	0	0	0	15.7	0.0	15.7	0.0	0.0	0.0
Wellington		1 367	1 184	2 551	0	0	0	0.0	0.1	0.1	0.0	0.0	0.0
<b>Total</b>	<b>Gold Coast</b>	20 412	18 038	38 450	0	0	0	31.1	106.6	137.6	0.0	0.0	0.0
Abu Dhabi	Melbourne	9 291	8 801	18 092	0	340	340	322.0	295.0	616.9	326.9	406.4	733.3
Auckland		33 176	29 300	62 476	1 794	928	2 722	1 003.9	960.9	1 964.9	423.6	581.4	1 005.0
Bandar Seri Begawan		1 916	2 016	3 932	0	8	8	114.9	261.8	376.7	83.7	150.4	234.0
Bangkok		14 599	10 038	24 637	0	0	0	614.3	585.8	1 200.1	41.1	74.7	115.9
Beijing		174	985	1 159	0	0	0	34.0	18.6	52.7	0.0	0.0	0.0
Chicago		0	0	0	0	0	0	173.8	0.0	173.8	245.5	0.0	245.5
Christchurch		12 538	9 676	22 214	0	0	0	26.4	36.9	63.3	19.4	43.2	62.6
Colombo		6 277	3 898	10 175	0	773	773	218.2	190.6	408.8	94.1	18.5	112.6
Denpasar		19 275	13 059	32 334	0	0	0	299.5	275.6	575.1	0.0	0.0	0.0
Doha		9 214	14 493	23 707	0	1 121	1 121	313.0	374.3	687.3	1 357.2	1 288.3	2 645.5
Dubai		19 474	18 424	37 898	0	1 200	1 200	649.4	1 039.7	1 689.1	730.7	412.8	1 143.5
Guangzhou		749	6 218	6 967	0	1 976	1 976	316.1	332.4	648.5	386.0	316.7	702.7
Ho Chi Minh City		7 620	5 545	13 165	0	220	220	286.1	301.9	588.1	96.0	87.4	183.4
Hong Kong		6 258	9 666	15 924	0	0	0	627.0	976.0	1 603.0	498.0	856.7	1 354.8
Honolulu		1 408	1 173	2 581	0	0	0	8.7	1.5	10.2	0.0	0.0	0.0
Jakarta		2 147	2 414	4 561	0	101	101	110.9	214.5	325.4	185.2	125.4	310.6
Kuala Lumpur		18 263	12 432	30 695	0	210	210	581.5	728.5	1 310.1	409.8	431.6	841.3
London		1 076	889	1 965	0	0	0	42.2	0.1	42.3	0.0	0.0	0.0
Los Angeles		13 924	14 123	28 047	0	0	0	235.0	335.3	570.2	355.9	140.6	496.5
Manila		5 189	2 979	8 168	0	0	0	96.1	243.4	339.5	0.0	105.2	105.2
Nadi		3 092	2 487	5 579	0	0	0	28.1	43.2	71.3	0.0	0.0	0.0
New Delhi		2 020	1 952	3 972	0	0	0	54.9	31.6	86.5	0.0	0.0	0.0
New York		0	0	0	0	0	0	103.9	0.0	103.9	58.8	0.0	58.8
Noumea		430	371	801	0	0	0	0.1	2.8	2.9	0.0	0.0	0.0
Phuket		2 469	1 615	4 084	0	0	0	65.0	10.8	75.7	0.0	0.0	0.0
Port Vila		400	377	777	0	0	0	0.1	0.0	0.1	0.0	0.0	0.0
Queenstown		6 213	4 544	10 757	0	0	0	0.0	0.0	0.0	0.0	0.0	0.0
San Francisco		2 996	3 623	6 619	0	0	0	91.4	95.7	187.0	0.0	0.0	0.0
Santiago		1 663	1 825	3 488	0	0	0	5.8	41.2	47.1	0.0	0.0	0.0

**TABLE 5 SCHEDULED INTERNATIONAL TRAFFIC BY CITY PAIRS: March**

Foreign Port	Australian Port	Passengers						Freight (tonnes)					
		2020			2021			2020			2021		
		Inbound	Outbound	Total	Inbound	Outbound	Total	Inbound	Outbound	Total	Inbound	Outbound	Total
Seoul	Melbourne	54	14	68	0	0	0	6.1	0.0	6.1	0.0	0.0	0.0
Shanghai		544	5 999	6 543	0	0	0	440.5	473.0	913.5	485.7	346.4	832.1
Singapore		34 316	26 638	60 954	4	1 188	1 192	1 927.1	2 754.7	4 681.8	2 600.3	1 975.2	4 575.5
Taipei		1 459	2 495	3 954	0	88	88	136.9	369.3	506.2	31.6	39.8	71.4
Tokyo		5 413	4 997	10 410	0	0	0	274.9	185.8	460.7	105.0	207.5	312.5
Vancouver		3 137	3 613	6 750	0	0	0	27.5	47.8	75.4	69.5	0.0	69.5
Wellington		6 055	5 436	11 491	0	0	0	2.8	3.9	6.7	0.0	0.0	0.0
Xiamen		57	812	869	0	0	0	78.4	82.1	160.4	0.0	0.0	0.0
<b>Total</b>	<b>Melbourne</b>	252 886	232 927	485 813	1 798	8 153	9 951	9 316.6	11 314.5	20 631.1	8 603.9	7 608.0	16 211.9
Auckland	Norfolk Island	84	95	179	0	0	0	1.0	0.0	1.0	0.0	0.0	0.0
<b>Total</b>	<b>Norfolk Island</b>	84	95	179	0	0	0	1.0	0.0	1.0	0.0	0.0	0.0
Auckland	Perth	7 755	6 507	14 262	0	61	61	414.2	213.2	627.3	0.0	4.3	4.3
Bangkok		5 142	3 566	8 708	0	0	0	345.5	141.3	486.8	0.0	0.0	0.0
Batam		0	0	0	30	111	141	0.0	0.0	0.0	0.0	0.0	0.0
Denpasar		21 341	13 517	34 858	0	0	0	16.8	40.4	57.2	0.0	0.0	0.0
Doha		7 036	11 581	18 617	1 057	836	1 893	252.9	548.3	801.2	328.3	615.1	943.4
Dubai		8 932	9 662	18 594	242	421	663	292.3	217.2	509.5	370.0	110.0	480.1
Hong Kong		1 105	2 509	3 614	0	0	0	193.8	315.3	509.1	0.0	0.0	0.0
Jakarta		1 205	947	2 152	233	106	339	0.9	25.1	26.0	10.6	4.3	15.0
Johannesburg		2 721	2 004	4 725	0	0	0	42.2	97.4	139.5	0.0	0.0	0.0
Kota Kinabalu		122	100	222	0	0	0	0.0	0.0	0.0	0.0	0.0	0.0
Kuala Lumpur		8 716	7 222	15 938	0	0	0	208.9	257.1	466.0	184.9	172.4	357.2
London		4 701	4 566	9 267	0	0	0	63.8	0.0	63.8	0.0	0.0	0.0
Mauritius		1 374	1 180	2 554	0	0	0	59.4	25.3	84.8	0.0	0.0	0.0
Medan		0	0	0	102	0	102	0.0	0.0	0.0	0.0	0.0	0.0
Singapore		21 961	19 262	41 223	1 634	859	2 493	957.8	1 236.3	2 194.0	1 070.0	982.4	2 052.3
Tokyo		1 569	2 197	3 766	0	0	0	107.6	301.4	408.9	0.0	0.0	0.0
<b>Total</b>	<b>Perth</b>	93 680	84 820	178 500	3 298	2 394	5 692	2 956.0	3 418.1	6 374.1	1 963.8	1 888.5	3 852.2
Denpasar	Port Hedland	104	109	213	0	0	0	0.0	0.0	0.0	0.0	0.0	0.0
<b>Total</b>	<b>Port Hedland</b>	104	109	213	0	0	0	0.0	0.0	0.0	0.0	0.0	0.0
Abu Dhabi	Sydney	11 099	13 513	24 612	721	432	1 153	447.7	498.3	946.0	304.5	419.1	723.6
Apia		797	599	1 396	0	0	0	0.0	5.8	5.8	0.0	0.0	0.0
Auckland		39 705	35 268	74 973	3 334	1 446	4 780	1 936.3	2 276.5	4 212.8	1 704.6	2 701.8	4 406.4
Bandar Seri Begawan		0	0	0	0	0	0	0.0	0.0	0.0	0.0	118.7	118.7
Bangkok		13 299	8 724	22 023	134	237	371	377.0	435.6	812.6	181.8	658.8	840.6
Batam		0	0	0	45	9	54	0.0	0.0	0.0	0.0	0.0	0.0
Beijing		272	1 296	1 568	0	0	0	57.4	76.2	133.7	0.0	0.0	0.0
Chicago		0	0	0	0	0	0	669.1	20.8	689.9	1 050.6	16.5	1 067.1
Chongqing		0	0	0	0	0	0	0.0	590.9	590.9	0.0	224.0	224.0
Christchurch		11 520	9 503	21 023	25	0	25	692.4	181.1	873.6	374.1	74.0	448.1
Cincinnati		0	0	0	0	0	0	0.0	0.0	0.0	310.1	0.0	310.1
Colombo		0	0	0	167	477	644	0.0	0.0	0.0	127.7	39.3	167.0
Dallas		5 302	6 957	12 259	0	0	0	114.4	15.7	130.0	109.5	0.0	109.5
Denpasar		18 691	13 359	32 050	0	0	0	383.6	233.3	616.9	0.0	0.0	0.0
Doha		14 830	22 611	37 441	1 307	1 453	2 760	519.8	544.3	1 064.1	622.1	990.3	1 612.4
Dubai		21 547	20 573	42 120	700	1 299	1 999	1 576.7	522.0	2 098.7	1 862.6	320.0	2 182.6
Guam		0	0	0	0	0	0	0.0	0.0	0.0	637.7	0.0	637.7

**TABLE 5 SCHEDULED INTERNATIONAL TRAFFIC BY CITY PAIRS: March**

Foreign Port	Australian Port	Passengers						Freight (tonnes)					
		2020			2021			2020			2021		
		Inbound	Outbound	Total	Inbound	Outbound	Total	Inbound	Outbound	Total	Inbound	Outbound	Total
Guangzhou	Sydney	1 003	6 374	7 377	108	1 256	1 364	631.6	2 614.7	3 246.4	216.5	2 333.7	2 550.2
Hangzhou		0	0	0	104	255	359	0.0	0.0	0.0	49.3	22.7	72.0
Hanoi		981	883	1 864	0	80	80	70.2	52.6	122.8	107.0	91.9	199.0
Ho Chi Minh City		7 180	4 694	11 874	283	57	340	338.5	228.0	566.5	159.7	149.1	308.8
Hong Kong		8 344	13 357	21 701	103	290	393	2 028.6	2 203.4	4 231.9	1 548.1	1 325.3	2 873.4
Honolulu		8 471	8 327	16 798	0	0	0	220.9	143.3	364.2	2 842.8	7.3	2 850.1
Houston		2 425	3 891	6 316	0	0	0	12.8	159.2	172.0	0.0	0.0	0.0
Jakarta		5 295	4 319	9 614	250	151	401	204.8	218.4	423.2	258.1	93.7	351.8
Johannesburg		6 123	4 653	10 776	0	0	0	163.4	15.2	178.6	0.0	0.0	0.0
Kuala Lumpur		13 999	9 248	23 247	241	172	413	1 034.1	603.3	1 637.4	900.2	504.6	1 404.9
London		7 205	9 440	16 645	0	0	0	404.3	107.4	511.8	0.0	0.0	0.0
Los Angeles		20 853	24 496	45 349	1 636	1 782	3 418	2 022.4	825.3	2 847.7	3 348.7	1 485.8	4 834.5
Louisville		0	0	0	0	0	0	1 278.3	0.0	1 278.3	1 704.5	0.0	1 704.5
Manila		10 884	6 776	17 660	70	50	120	228.7	141.0	369.7	0.1	0.2	0.2
Medan		0	0	0	31	0	31	0.0	0.0	0.0	0.0	0.0	0.0
Nadi		11 491	9 276	20 767	158	92	250	262.2	136.2	398.4	308.0	171.1	479.1
Nanjing		0	0	0	0	0	0	0.0	0.0	0.0	251.9	235.8	487.7
New Delhi		3 553	3 246	6 799	102	591	693	106.5	85.7	192.2	12.9	32.2	45.0
New York		608	491	1 099	0	0	0	253.1	7.4	260.5	207.6	2.3	209.9
Noumea		2 102	2 383	4 485	65	91	156	3.5	94.4	97.8	2.0	109.8	111.9
Osaka		1 281	1 434	2 715	0	0	0	65.0	55.0	120.0	0.0	0.0	0.0
Phuket		2 828	1 544	4 372	0	0	0	69.8	0.0	69.8	0.0	0.0	0.0
Port Moresby		343	278	621	29	3	32	0.8	2.0	2.7	0.0	0.0	0.0
Port Vila		1 323	1 081	2 404	0	0	0	0.2	13.9	14.1	0.0	0.0	0.0
Queenstown		10 693	7 715	18 408	0	0	0	0.0	0.0	0.0	0.0	0.0	0.0
Rarotonga		642	514	1 156	0	0	0	0.0	2.7	2.7	0.0	0.0	0.0
San Francisco		6 921	10 593	17 514	617	803	1 420	259.5	403.3	662.8	309.2	554.1	863.3
Santiago		7 356	6 948	14 304	0	0	0	45.2	84.2	129.4	7.1	0.0	7.1
Sapporo		1 025	630	1 655	0	0	0	0.0	0.0	0.0	0.0	0.0	0.0
Seoul		1 611	3 379	4 990	183	375	558	169.7	932.5	1 102.3	56.4	439.9	496.3
Shanghai		709	6 163	6 872	167	828	995	424.6	1 113.7	1 538.3	956.7	1 403.8	2 360.5
Shenzhen		0	0	0	0	0	0	0.0	0.6	0.6	935.3	477.1	1 412.4
Singapore		33 188	25 445	58 633	2 153	1 673	3 826	4 252.6	2 056.6	6 309.3	4 112.5	2 252.4	6 364.9
Suva		140	223	363	0	0	0	0.0	0.0	0.0	0.0	0.0	0.0
Taipei		1 739	4 222	5 961	127	98	225	258.4	474.9	733.3	739.0	585.0	1 324.0
Tokyo		8 593	12 287	20 880	795	693	1 488	1 275.0	964.0	2 239.0	1 499.7	1 206.5	2 706.2
Tongatapu		454	549	1 003	0	0	0	0.4	0.1	0.5	0.0	0.0	0.0
Vancouver		5 761	7 501	13 262	0	0	0	169.1	213.7	382.8	184.3	0.0	184.3
Wellington		8 658	7 532	16 190	0	0	0	2.5	12.1	14.6	0.0	0.0	0.0
Xiamen		258	2 164	2 422	302	688	990	188.1	185.9	374.0	179.6	104.2	283.8
<b>Total</b>	<b>Sydney</b>	341 102	344 459	685 561	13 957	15 381	29 338	23 219.3	19 551.5	42 770.8	28 182.0	19 151.3	47 333.3
Hong Kong	Toowoomba Wellcamp	0	0	0	0	0	0	18.9	219.5	238.4	18.9	153.4	172.3
Singapore		0	0	0	0	0	0	0.0	0.0	0.0	0.0	38.1	38.1
<b>Total</b>	<b>Toowoomba Wellcamp</b>	0	0	0	0	0	0	18.9	219.5	238.4	18.9	191.5	210.3
Abu Dhabi	Australia	23 529	26 371	49 900	721	772	1 493	917.1	892.6	1 809.7	631.4	825.5	1 456.9
Apia		1 459	1 117	2 576	0	0	0	0.1	5.9	6.0	0.0	0.0	0.0
Auckland		115 027	101 726	216 753	6 448	3 520	9 968	3 940.4	3 777.3	7 717.6	2 351.8	3 467.1	5 818.9

**TABLE 5 SCHEDULED INTERNATIONAL TRAFFIC BY CITY PAIRS: March**

Foreign Port	Australian Port	Passengers						Freight (tonnes)					
		2020			2021			2020			2021		
		Inbound	Outbound	Total	Inbound	Outbound	Total	Inbound	Outbound	Total	Inbound	Outbound	Total
Bandar Seri Begawan	Australia	2 645	2 710	5 355	0	8	8	116.0	262.1	378.0	83.7	269.1	352.7
Bangkok		38 308	26 118	64 426	134	237	371	1 566.8	1 346.9	2 913.7	222.9	733.5	956.4
Batam		0	0	0	75	120	195	0.0	0.0	0.0	0.0	0.0	0.0
Beijing		446	2 281	2 727	0	0	0	91.5	94.9	186.3	0.0	0.0	0.0
Chicago		0	0	0	0	0	0	843.0	20.8	863.8	1 296.0	16.5	1 312.5
Chongqing		0	0	0	0	0	0	0.0	590.9	590.9	0.0	224.0	224.0
Christchurch		33 735	27 069	60 804	25	0	25	740.0	236.2	976.1	406.2	126.3	532.5
Cincinnati		0	0	0	0	0	0	0.0	0.0	0.0	310.1	0.0	310.1
Colombo		6 277	3 898	10 175	167	1 250	1 417	218.2	190.6	408.8	221.7	57.8	279.5
Dallas		5 302	6 957	12 259	0	0	0	114.4	15.7	130.0	109.5	0.0	109.5
Denpasar		80 256	54 047	134 303	0	0	0	770.8	578.8	1 349.6	0.0	0.0	0.0
Doha		34 401	52 397	86 798	4 662	4 263	8 925	1 372.9	1 685.5	3 058.4	2 539.1	3 068.2	5 607.3
Dubai		64 463	64 582	129 045	1 710	3 492	5 202	2 965.2	2 454.7	5 419.9	3 213.0	1 030.3	4 243.2
Dunedin		1 073	916	1 989	0	0	0	0.0	0.0	0.0	0.0	0.0	0.0
Guam		0	0	0	0	0	0	0.0	0.0	0.0	637.7	0.0	637.7
Guangzhou		1 752	12 592	14 344	108	3 232	3 340	947.7	2 947.1	3 894.8	602.5	2 650.4	3 252.9
Hangzhou		0	0	0	104	255	359	0.0	0.0	0.0	49.3	22.7	72.0
Hanoi		981	883	1 864	0	80	80	70.2	52.6	122.8	107.0	91.9	199.0
Ho Chi Minh City		14 800	10 239	25 039	283	277	560	624.6	530.0	1 154.6	255.7	236.6	492.2
Hong Kong		17 939	29 712	47 651	103	290	393	3 195.1	4 313.3	7 508.4	2 222.6	2 865.0	5 087.6
Honiara		1 399	926	2 325	52	43	95	2.1	35.5	37.6	2.2	67.0	69.2
Honolulu		11 801	11 496	23 297	0	0	0	248.7	189.4	438.0	2 842.8	7.3	2 850.1
Houston		2 425	3 891	6 316	0	0	0	12.8	159.2	172.0	0.0	0.0	0.0
Jakarta		8 647	7 680	16 327	483	358	841	316.6	458.0	774.6	453.9	223.4	677.3
Johannesburg		8 844	6 657	15 501	0	0	0	205.5	112.6	318.1	0.0	0.0	0.0
Kota Kinabalu		122	100	222	0	0	0	0.0	0.0	0.0	0.0	0.0	0.0
Kuala Lumpur		48 430	33 461	81 891	368	392	760	2 016.9	2 000.4	4 017.2	1 502.4	1 189.3	2 691.6
London		12 982	14 898	27 880	0	0	0	510.4	107.5	617.9	0.0	0.0	0.0
Los Angeles		44 927	48 622	93 549	1 636	1 782	3 418	2 642.2	1 451.6	4 093.7	3 880.9	1 731.4	5 612.3
Louisville		0	0	0	0	0	0	1 278.3	0.0	1 278.3	1 704.5	0.0	1 704.5
Manila		17 946	10 880	28 826	114	50	164	329.6	390.7	720.3	0.1	105.4	105.5
Mauritius		1 374	1 180	2 554	0	0	0	59.4	25.3	84.8	0.0	0.0	0.0
Medan		0	0	0	161	0	161	0.0	0.0	0.0	0.0	0.0	0.0
Munda		0	20	20	0	0	0	0.0	0.0	0.0	0.0	0.0	0.0
Nadi		19 063	15 524	34 587	233	199	432	304.1	192.4	496.5	313.8	173.1	486.9
Nanjing		0	0	0	0	0	0	0.0	0.0	0.0	251.9	235.8	487.7
Nauru		367	390	757	48	133	181	4.1	55.9	60.0	7.9	97.1	104.9
New Delhi		5 573	5 198	10 771	250	591	841	161.4	117.3	278.7	12.9	32.2	45.0
New York		608	491	1 099	0	0	0	357.0	7.4	364.4	266.3	2.3	268.6
Noumea		3 720	4 125	7 845	65	91	156	3.7	102.3	106.0	2.0	109.8	111.9
Osaka		3 871	4 099	7 970	0	0	0	88.6	58.1	146.7	0.0	0.0	0.0
Phuket		5 297	3 159	8 456	0	0	0	134.7	10.8	145.5	0.0	0.0	0.0
Port Moresby		7 279	5 646	12 925	1 067	367	1 434	46.3	316.9	363.2	103.9	262.6	366.6
Port Vila		3 717	2 676	6 393	64	164	228	5.0	20.4	25.4	1.9	5.6	7.5
Queenstown		19 952	14 638	34 590	0	0	0	0.0	0.0	0.0	0.0	0.0	0.0
Rarotonga		642	514	1 156	0	0	0	0.0	2.7	2.7	0.0	0.0	0.0
San Francisco		11 231	15 626	26 857	617	803	1 420	371.4	499.1	870.5	309.2	554.1	863.3

**TABLE 5 SCHEDULED INTERNATIONAL TRAFFIC BY CITY PAIRS: March**

Foreign Port	Australian Port	Passengers						Freight (tonnes)					
		2020			2021			2020			2021		
		Inbound	Outbound	Total	Inbound	Outbound	Total	Inbound	Outbound	Total	Inbound	Outbound	Total
Santiago	Australia	9 019	8 773	17 792	0	0	0	51.0	125.5	176.5	7.1	0.0	7.1
Sapporo		1 025	630	1 655	0	0	0	0.0	0.0	0.0	0.0	0.0	0.0
Seoul		2 588	4 375	6 963	183	375	558	185.4	1 011.2	1 196.5	56.4	439.9	496.3
Shanghai		1 253	12 162	13 415	167	828	995	865.1	1 586.8	2 451.9	1 442.4	1 750.2	3 192.6
Shenzhen		0	0	0	0	0	0	0.0	0.6	0.6	935.3	477.1	1 412.4
Singapore		122 865	96 310	219 175	6 573	4 755	11 328	8 356.8	7 793.5	16 150.4	8 648.4	6 274.0	14 922.4
Suva		140	223	363	0	0	0	0.0	0.0	0.0	0.0	0.0	0.0
Taipei		5 743	11 323	17 066	221	289	510	684.5	1 390.9	2 075.4	1 236.1	1 162.2	2 398.3
Tokyo		27 056	30 255	57 311	795	693	1 488	1 803.8	1 549.7	3 353.5	1 673.6	1 565.5	3 239.2
Tongatapu		454	549	1 003	0	0	0	0.4	0.1	0.5	0.0	0.0	0.0
Vancouver		13 763	17 140	30 903	0	0	0	260.9	324.0	584.9	253.8	0.0	253.8
Wellington		20 651	18 019	38 670	0	0	0	5.7	17.5	23.2	0.0	0.0	0.0
Xiamen		315	2 976	3 291	302	688	990	266.5	268.0	534.4	179.6	104.2	283.8
<b>Total</b>	<b>Australia</b>	<b>887 482</b>	<b>838 247</b>	<b>1 725 729</b>	<b>27 939</b>	<b>30 397</b>	<b>58 336</b>	<b>40 072.8</b>	<b>40 376.7</b>	<b>80 449.5</b>	<b>41 349.3</b>	<b>32 254.2</b>	<b>73 603.5</b>

Please refer to explanatory notes - paragraphs 3 and 8 in particular.

**TABLE 6 INTERNATIONAL AIRLINES OWN STOPOVER REVENUE PASSENGERS,  
AUSTRALIAN CITY PAIRS: March 2021**

City Pair Route	Total Passengers
TOTAL	0

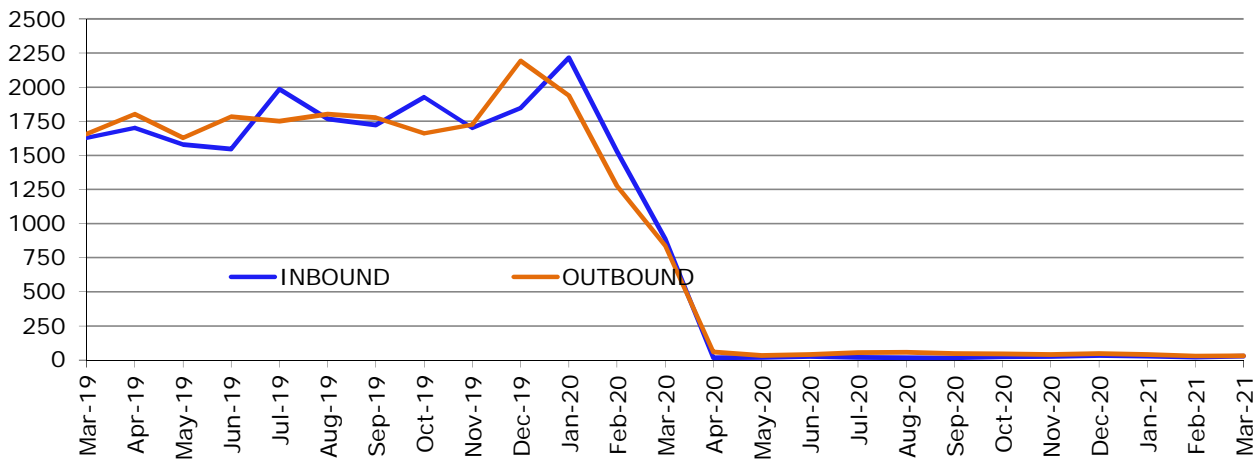
Notes:

1. Own Stopover Revenue Passengers: The aggregate of revenue passengers uplifted at one Australian airport and discharged (excluding transit passengers) at another Australian airport by the same foreign registered international airline on which they entered or left Australia.
2. City Pair Route represents the aggregation of passengers travelling in both directions.
3. This data is additional to the information presented in tables 1-5 which cover only those passengers travelling to/from overseas airports.

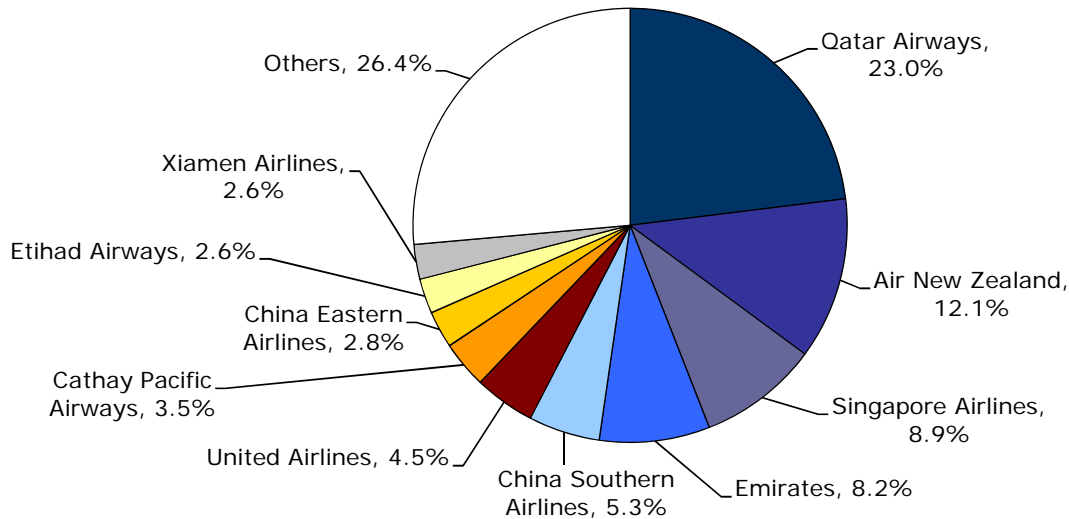


# YEAR ENDED MARCH 2021

**Chart I International Passengers Carried (thousands) - March 2019 to March 2021**



**Chart II International Passengers by Major Airlines - Year ended March 2021**



**Table I International Passengers by Uplift/Discharge City Pairs**

Foreign Port	Australian Port	Year ended March 2019	Year ended March 2020	Year ended March 2021	% of Total	% Change 2021/20
Doha	Sydney	472 454	522 120	66 366	8.4%	-87.3%
Auckland	Sydney	1 574 354	1 522 674	49 270	6.2%	-96.8%
Doha	Melbourne	291 997	317 876	43 897	5.5%	-86.2%
Guangzhou	Sydney	421 016	343 206	35 869	4.5%	-89.5%
Doha	Brisbane	0	804	31 827	4.0%	3858.6%
Doha	Perth	255 723	281 631	30 432	3.8%	-89.2%
San Francisco	Sydney	321 489	328 847	29 815	3.8%	-90.9%
Auckland	Brisbane	937 910	916 594	29 423	3.7%	-96.8%
Auckland	Melbourne	1 251 422	1 191 020	27 238	3.4%	-97.7%
Singapore	Sydney	1 503 470	1 488 085	26 274	3.3%	-98.2%
Top 10 City Pairs		7 029 835	6 912 857	370 411	46.6%	-94.6%
Other City Pairs		34 717 331	33 665 654	424 005	53.4%	-98.7%
ALL CITY PAIRS		41 747 166	40 578 511	794 416	100.0%	-98.0%

**Table II International Freight (tonnes) by Uplift/Discharge City Pairs**

Foreign Port	Australian Port	Year ended March 2019	Year ended March 2020	Year ended March 2021	% of Total	% Change 2021/20
Singapore	Sydney	70 699	73 637	71 826	8.4%	-2.5%
Auckland	Sydney	52 541	50 112	50 329	5.9%	0.4%
Los Angeles	Sydney	39 297	36 689	47 582	5.6%	29.7%
Hong Kong	Sydney	53 942	49 238	43 507	5.1%	-11.6%
Singapore	Melbourne	71 465	68 563	41 789	4.9%	-39.1%
Guangzhou	Sydney	26 843	33 655	37 103	4.3%	10.2%
Honolulu	Sydney	7 602	6 791	32 842	3.8%	383.6%
Shanghai	Sydney	17 939	21 597	30 286	3.5%	40.2%
Hong Kong	Melbourne	26 467	23 523	28 687	3.4%	22.0%
Doha	Melbourne	8 758	7 665	28 360	3.3%	270.0%
Top 10 City Pairs		375 552	371 470	412 310	48.2%	11.0%
Other City Pairs		787 838	708 659	443 055	51.8%	-37.5%
ALL CITY PAIRS		1 163 390	1 080 129	855 365	100.0%	-20.8%

**Table III International Passengers by Uplift/Discharge Country**

Country	Year ended March 2019	Year ended March 2020	Year ended March 2021	% of Total	% Change 2021/20
Qatar	1 182 987	1 294 374	180 418	22.7%	-86.1%
New Zealand	7 183 686	6 960 590	106 043	13.3%	-98.5%
United Arab Emirates	3 706 026	3 409 435	84 790	10.7%	-97.5%
China	3 638 457	3 011 077	84 738	10.7%	-97.2%
Singapore	5 673 432	5 668 259	79 284	10.0%	-98.6%
USA	3 269 395	3 203 730	55 063	6.9%	-98.3%
Hong Kong (SAR)	2 794 785	2 532 189	28 629	3.6%	-98.9%
Japan	1 462 352	1 504 546	19 343	2.4%	-98.7%
Sri Lanka	161 864	173 431	18 315	2.3%	-89.4%
India	173 454	180 937	17 886	2.3%	-90.1%
Top 10 Countries	29 246 438	27 938 568	674 509	84.9%	-97.6%
Other Countries	12 500 728	12 639 943	119 907	15.1%	-99.1%
ALL COUNTRIES	41 747 166	40 578 511	794 416	100.0%	-98.0%

**Table IV International Passenger Traffic through Australian International Airports**

Airport	Year ended March 2019	Year ended March 2020	Year ended March 2021	% of Total	% Change 2021/20
Sydney	16 798 820	16 025 164	427 999	53.9%	-97.3%
Melbourne	11 267 313	10 784 129	162 003	20.4%	-98.5%
Brisbane	6 161 134	6 203 155	115 264	14.5%	-98.1%
Perth	4 353 011	4 208 981	68 714	8.6%	-98.4%
Adelaide	1 035 755	1 093 494	17 049	2.1%	-98.4%
Cairns	656 117	594 316	2 773	0.3%	-99.5%
Gold Coast	995 258	908 822	284	0.0%	-100.0%
Canberra	89 539	79 626	255	0.0%	-99.7%
Darwin	225 160	248 774	75	0.0%	-100.0%
Avalon (a)	131 310	401 007	..	..	..
Sunshine Coast (b)	14 303	13 084	..	..	..
Norfolk Island (c)	..	1 878	..	..	..
Newcastle (d)	6 687	7 371	..	..	..
Port Hedland	8 597	8 710	..	..	..
Townsville (e)	4 162	..	..	..	..
ALL AIRPORTS	41 747 166	40 578 511	794 416	100.0%	-98.0%

(a) Scheduled passenger services commenced December 2018.

(b) Seasonal services only.

(c) Scheduled services recommenced September 2019.

(d) Scheduled services (seasonal) recommenced November 2018.

(e) Scheduled services ceased September 2018.

Operations at several airports have been suspended during COVID-19

# EXPLANATORY NOTES

---

## INTRODUCTION

1. This publication continues the series of monthly publications presenting provisional statistical information on the scheduled operations of international airlines operating into/out of Australia.
2. The figures in this publication were obtained from reports submitted by scheduled international carriers and are the best available at the time of publication.

## COVERAGE

3. These statistics show uplift/discharge data – These data detail, by direction, the revenue traffic between the actual points of uplift and discharge within each flight, aggregated for all flights within the period. It shows the movement of traffic between two airports not necessarily directly connected but within the same flight number. Typically, flight numbers change when an aircraft reaches its home country. This means that uplift/discharge data for the port in the operator's home country are likely to be overstated by traffic whose origin/destination point is beyond that port. For example, uplift/discharge traffic reported in this publication as Singapore could include traffic whose origin/destination is Europe.
4. These statistics cover revenue traffic carried by the operators of scheduled regular public international air transport services only and do not include charter traffic.
5. Flights with no revenue traffic uplifted from Australia or discharged in Australia are treated as positioning flights and are not included in this data collection. This mainly affects dedicated freighter flights where some flights outbound from Australia do not pick up freight in Australia.

## PRODUCTION AND INTERPRETATION

6. Tables 1 and 2 show the country of the relevant uplift or discharge port served by that airline. For example, traffic uplifted/discharged between Sydney and Singapore by British Airways would be shown as Singapore traffic in Tables 1 and 2.
7. Table 3 shows figures for the country of service (or route) for each airline and therefore may not equate to the data in Tables 1 and 2. For example, the British Airways UK service identified in Table 3 could include passengers uplifted or discharged in Singapore as well as the UK; these passengers would be shown individually under those countries in Tables 1 and 2. The difference in treatment of data between Tables 1 and 2 and Table 3 is necessary in order to work out a meaningful Seat Utilisation figure for Table 3.

Figures shown in Table 3 may include total traffic into and out of Australia for airlines that fly through Australia (also necessary in order to work out a meaningful Seat Utilisation figure). Therefore, figures in Table 3 may not equate to figures in Tables 1 and 2. For example, passengers carried by Qantas Airways from New Zealand via Australia to the UK will be included in Table 3 but will not be included in Tables 1 or 2 as these passengers were not uplifted/discharged in Australia.

8. Table 5 – shows uplift/discharge passenger and freight data for city pairs with “same flight number” international flight connections.

9. Where figures have been rounded, discrepancies may occur between sums of component items and totals, and in percentage changes which are derived from figures prior to rounding.
10. Published figures may be revised where figures missing at the time of publication are received or misreporting/miscalculation necessitates revisions.

## DEFINITIONS

11. The following definitions have been used in this publication:
  - (a) Aircraft Movement: A landing or a take off.
  - (b) Freight: The aggregate of all revenue freight uplifted or discharged in Australia.
  - (c) Inbound: Inbound to Australia/Australian international airport.
  - (d) Mail: The aggregate of all mail uplifted or discharged in Australia.
  - (e) Outbound: Outbound from Australia/Australian international airport.
  - (f) Revenue Passengers: please refer to paragraph 12.
  - (g) Seat Utilisation: The ratio of passengers carried to seats available, expressed as a percentage.
  - (h) Seats Available: Generally based on standard aircraft configuration, the aggregate of seats available on all flights operated over a particular service.
  - (i) Services: Scheduled flights over authorised routes which are listed according to the main ports involved.

## COMPARABILITY OF DATA OVER TIME

### 12. Revenue Passengers:

- For July 2000 and onwards: All passengers paying any fare (frequent flyer redemption passengers are regarded as revenue passengers). In most cases, Revenue Passengers will now include all passengers excluding Free Of Charge passengers and positioning crew.
- To December 1999: The aggregate of all passengers paying 25% or more of the standard air fare (as defined by ICAO at the time).
- January 2000 to June 2000: Transition period.

The Revenue Passenger definition change could result in approximately a three per cent increase in passenger numbers over a full period (month or year).

### 13. Country and City data – reporting of Uplift/Discharge data by Qantas Airways:

- Prior to January 2003: Uplift/Discharge within Qantas Airways' international network.
- For January 2003 and onwards: Uplift/Discharge within flight number – as per the standard definition.

For example, what was reported as Adelaide to London in January 2002 (no direct services between these two cities), would be reported in January 2003 as either Adelaide to Singapore or Melbourne/Sydney to London.

This change was introduced in order to make the data comparable across all airlines operating services to/from Australia.

The effect of this change – comparing data under the two methods of reporting:

- Country of Port data (Tables 1 & 2) – There will be a shift in traffic to countries such as Singapore and United Arab Emirates (from 2013) which are used as hubs and away from countries such as France, Germany and Italy which

previously received traffic channelled through hubs. The total volume of traffic is not affected.

- Country of Service data (Table 3) – no change, as the Uplift/Discharge definition is not applicable to classifying the country of service.
- Australian International Airports (Table 4) – there may be a shift of traffic to the major airports.
- City Pairs (Table 5) – There will be a shift in traffic to cities such as Singapore and Dubai (from 2013) which are used as hubs and away from cities such as Paris, Frankfurt and Rome which previously received traffic channelled through hubs. The total volume of traffic is not affected.
- Prior to the change, statistics reported for city pairs without “same flight number” international flight connections mainly reflected carriage on interconnecting international services by Qantas Airways. That traffic should have been interpreted as increasing the volume of traffic between the primary international ports rather than as an indicator of traffic volumes between ports without “same flight number” international flight connections. It should be noted however, that there was no double counting of traffic.

14. Country of Service classification by Qantas Airways:

- For July 2002 and onwards: based on the foreign country where same flight number services commence or cease – as per the standard definition. For example, Sydney-Denpasar-Singapore services would be classified as Country of Service = Singapore.
- Prior to July 2002: based on Qantas classification – this mainly affected Indonesia and Singapore Countries of Service. For example, Sydney-Denpasar-Singapore services were classified as Country of Service = Indonesia.

15. Airline data – Reporting of code share services:

Reporting of traffic split by airline code for code share arrangements was discontinued as of June 2000. For July 2000 and onwards, ALL traffic carried is reported under the operating airline regardless of code share arrangements.

Monthly airline market share figures for July 2001 onwards will be comparable with the same month in the previous year. However, these figures may not be comparable with monthly data prior to July 2000.

## SYMBOLS AND OTHER USAGE

- nil or zero
- .. not applicable

## DATA ISSUES

---

During the period impacted by the COVID-19 pandemic, airlines that normally would only operate scheduled air services could also operate charter air services and where charter air services are not clearly identified, they may be included in the data in this publication.

Seat utilisation:

Available seats have not been counted where passenger aircraft have been used to operate freight only services. However, this adjustment cannot be made for airlines that report monthly aggregates and that have operated a mix of passenger and freight only services using passenger aircraft.

Some airlines have reported adjusted seats to take account of social distancing while others have reported fitted seats.

## NOTES ON AIRLINE SERVICES

---

All scheduled passenger airlines have been impacted by international travel restrictions introduced in March 2020 due to the COVID-19 pandemic. The airlines below suspended services to and from Australia in March 2021:

Air Chathams,  
Air Mauritius,  
AirAsia X,  
Batik Air Indonesia,  
Beijing Capital Airlines,  
British Airways,  
Cebu Pacific Air,  
Citilink Indonesia,  
Donghai Airlines,  
Hawaiian Airlines,  
Indonesia AirAsia,  
Jetstar Asia,  
Malindo Air,  
Pacific Air Express,  
Samoa Airways,  
Sichuan Airlines,  
Silk Air,  
South African Airways,  
Thai AirAsia X,  
Tianjin Airlines,  
Virgin Australia.