



**Australian Government**

**Department of Infrastructure, Transport, Regional Development and Communications**

Bureau of Infrastructure and Transport Research Economics

STATISTICAL REPORT



# Aviation

International airline activity  
February 2021

© Commonwealth of Australia 2021

ISSN: 1324-5074

### **Ownership of intellectual property rights in this publication**

Unless otherwise noted, copyright (and any other intellectual property rights, if any) in this publication is owned by the Commonwealth of Australia (referred to below as the Commonwealth).

### **Disclaimer**

The material contained in this publication is made available on the understanding that the Commonwealth is not providing professional advice, and that users exercise their own skill and care with respect to its use, and seek independent advice if necessary.

The Commonwealth makes no representations or warranties as to the contents or accuracy of the information contained in this publication. To the extent permitted by law, the Commonwealth disclaims liability to any person or organization in respect of anything done, or omitted to be done, in reliance upon information contained in this publication.

### **Creative Commons licence**

With the exception of (a) the Coat of Arms; and (b) the Department of Infrastructure, Transport, Regional Development and Communications' photos and graphics, copyright in this publication is licensed under a Creative Commons Attribution 3.0 Australia Licence.

Creative Commons Attribution 3.0 Australia Licence is a standard form licence agreement that allows you to copy, communicate and adapt this publication provided that you attribute the work to the Commonwealth and abide by the other licence terms. A summary of the licence terms is available from <http://creativecommons.org/licences/by/3.0/au/deed.en>. The full licence terms are available from <http://creativecommons.org/licences/by/3.0/au/legalcode>.

### **Use of the Coat of Arms**

The Department of the Prime Minister and Cabinet sets the terms under which the Coat of Arms is used. Please refer to the Department's Commonwealth Coat of Arms and Government branding web page <http://www.dpmc.gov.au/guidelines/index.cfm#brand> and, in particular, the Guidelines on the use of the Commonwealth Coat of Arms publication.

An appropriate citation for this report is:

Bureau of Infrastructure and Transport Research Economics (BITRE), 2021, International airline activity, Statistical Report, BITRE, Canberra ACT.

### **Contact us**

This publication is available in PDF format. All other rights are reserved, including in relation to any Departmental logos or trademarks which may exist. For enquiries regarding the licence and any use of this publication, please contact:

Bureau of Infrastructure and Transport Research Economics (BITRE)  
Department of Infrastructure, Transport, Regional Development and Communications  
GPO Box 501, Canberra ACT 2601, Australia  
Telephone: (international) +61 2 6274 7210  
Fax: (international) +61 2 6274 6855  
Email: [bitre@infrastructure.gov.au](mailto:bitre@infrastructure.gov.au)  
Website: [www.bitre.gov.au](http://www.bitre.gov.au)

### **Inquiries**

Should you require additional information about the statistics contained in this publication:

Telephone (02) 6274 7790 or Facsimile (02) 6274 7727

Electronic mail: [AVSTATS@infrastructure.gov.au](mailto:AVSTATS@infrastructure.gov.au)

Web site: <http://www.bitre.gov.au/statistics/aviation/international.aspx>

# CONTENTS

---

Highlights for the Month .....	4-5
Detailed Monthly Tables	
1. Scheduled International Air Traffic to and from Australia.....	6-7
2. Scheduled Operator Market Shares and Growth .....	8-11
3. Airline Passenger Capacity and Utilisation to and from Australia by Operator ...	12-13
4. Australian International Airport Scheduled Traffic and Aircraft Movements .....	14-15
5. Scheduled International Passengers and Freight by City Pairs .....	16-21
6. International Airlines Own Stopover Revenue Passengers, Australian City Pairs ....	22
Year ended summary figures.....	23-24
Explanatory Notes .....	25-27
Data Issues and Notes on Airline Services .....	28

## HIGHLIGHTS – FEBRUARY 2021

---

- Forty-six international airlines operated scheduled services to/from Australia during the month (includes five dedicated freight airlines but excludes airlines operating only via code share arrangements).
- International scheduled passenger traffic in February 2021 was 51 613 compared to 2.805 million in February 2020 – a decrease of 98.2 per cent. International air services this month have been severely impacted by travel restrictions due to the COVID-19 pandemic.
- The chart on the next page compares monthly passenger traffic for the year ended February 2021 with monthly passenger traffic for the year ended February 2020. Passenger traffic for the year ended February 2021 was 2.462 million which is a 94.2 per cent decrease over the figure for the year ended February 2020.
- Total seats made available on international scheduled operations to/from Australia during February 2021 were 401 271 – a decrease of 90.0 per cent compared to February 2020. The overall seat utilisation percentage decreased from 72.4 per cent in February 2020 to 12.9 per cent in February 2021.
- In terms of passenger carriage, Singapore Airlines had the largest share of the market in February 2021 with 16.8 per cent of the total followed by Qatar Airways with 16.2 per cent, Air New Zealand with 13.8 per cent, Emirates with 8.6 per cent and China Southern Airlines with 5.8 per cent.
- The Qantas group – Qantas Airways, Jetstar and Jetstar Asia (0 per cent this month) accounted for 1.8 per cent of total passenger carriage in February 2021. The group's share in February 2020 was 28.2 per cent.
- Australian designated airlines (Qantas Airways, Jetstar and Virgin Australia (0 per cent this month)) also accounted for 1.8 per cent of total passenger carriage in February 2021. The Australian airline share was 34.9 per cent in February 2020.
- Low Cost Carrier (LCCs) Jetstar and Scoot Tigerair accounted for 1.5 per cent of total international passenger traffic to/from Australia in February 2021. The Low Cost Carriers' share in February 2020 was 16.4 per cent.
- International scheduled freight traffic in February 2021 decreased by 24.5 per cent over February 2020 to 62 507 tonnes. Inbound freight traffic decreased by 9.2 per cent and outbound freight traffic decreased by 36.7 per cent compared to February 2020.

## Monthly traffic

	Total Feb-19	Total Feb-20	Inbound Feb-21	Outbound Feb-21	Total Feb-21	Growth compared to	
						Feb-20	Feb-19
Passengers Carried	3 256 808	2 805 429	22 040	29 573	51 613	-98.2%	-98.4%
Freight (tonnes)	79 482	82 771	33 323	29 184	62 507	-24.5%	-21.4%
Mail (tonnes)	2 624	2 777	806	504	1 309	-52.9%	-50.1%
Available Seats	4 230 148	4 016 351	191 467	209 804	401 271	-90.0%	-90.5%
Flights	16 026	15 400	1 553	1 547	3 100	-79.9%	-80.7%
Aircraft Movements	16 409	15 726	1 669	1 663	3 332	-78.8%	-79.7%

## Top ten airlines

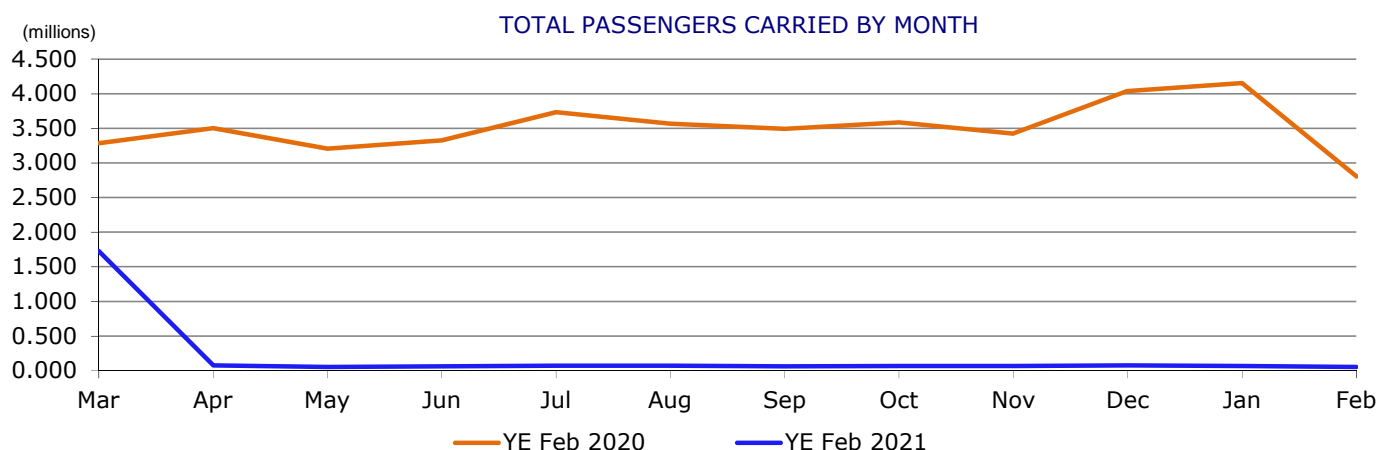
Share of passengers carried	Feb-20	Feb-21	Share of freight carried	Feb-20	Feb-21
Singapore Airlines	8.5%	16.8%	Singapore Airlines	16.0%	13.5%
Qatar Airways	3.6%	16.2%	Qatar Airways	4.0%	9.2%
Air New Zealand	7.9%	13.8%	Emirates	9.9%	8.9%
Emirates	6.8%	8.6%	Qantas Airways	11.2%	8.9%
China Southern Airlines	0.8%	5.8%	Federal Express Corporation	5.5%	8.0%
United Airlines	1.4%	4.2%	Cathay Pacific Airways	6.1%	6.6%
SriLankan Airlines	0.5%	3.6%	Kalitta Air	0.0%	4.7%
Etihad Airways	2.7%	3.0%	Malaysia Airlines	3.7%	4.4%
China Eastern Airlines	0.9%	2.5%	United Airlines	1.7%	3.8%
Air Niugini	0.3%	2.4%	Polar Air Cargo	0.6%	3.2%

## Top five city pairs

Passengers		Feb-21	% of Total	Freight (tonnes)		Feb-21	% of Total
Sydney	Auckland	3 467	6.7%	Sydney	Singapore	4 979	8.0%
Sydney	Singapore	2 884	5.6%	Sydney	Auckland	4 063	6.5%
Sydney	Los Angeles	2 704	5.2%	Sydney	Los Angeles	4 053	6.5%
Sydney	Doha	2 423	4.7%	Melbourne	Singapore	3 803	6.1%
Brisbane	Auckland	2 325	4.5%	Sydney	Hong Kong	3 041	4.9%

## Major International Airports

Passengers		Feb-21	% of Total	Freight (tonnes)		Feb-21	% of Total
Sydney		24 618	47.7%	Sydney		38 796	62.1%
Melbourne		11 241	21.8%	Melbourne		14 140	22.6%
Brisbane		8 730	16.9%	Brisbane		4 266	6.8%
Perth		4 358	8.4%	Perth		3 910	6.3%



**TABLE 1 SCHEDULED INTERNATIONAL AIR TRAFFIC TO AND FROM AUSTRALIA: February 2021**

Scheduled Operator	Country to/from	Inbound			Outbound		
		Passengers	Freight (tonnes)	Mail (tonnes)	Passengers	Freight (tonnes)	Mail (tonnes)
Air Caledonie International	New Caledonia	66	12.8	0.4	70	91.5	4.1
Air Canada	Canada	..	230.5	15.6	..	..	..
	New Zealand	..	..	..	..	275.4	54.1
Air Canada	ALL SERVICES	..	230.5	15.6	..	275.4	54.1
Air China	China	..	504.1	17.8	..	294.9	-
Air India	India	237	6.4	7.9	511	37.8	0.0
Air New Zealand	New Zealand	4 267	318.5	15.1	2 876	515.3	1.8
Air Niugini	Papua New Guinea	642	111.2	-	614	236.1	-
Air Vanuatu	Vanuatu	37	0.9	-	106	3.8	-
All Nippon Airways	Japan	443	312.9	7.3	327	212.7	-
American Airlines	USA	356	418.7	55.3	491	357.1	16.9
Asiana Airlines	Korea	117	31.6	-	400	35.2	-
Cathay Pacific Airways	Hong Kong (SAR)	446	1 899.5	74.9	633	2 083.1	-
	New Zealand	..	..	..	..	114.3	-
Cathay Pacific Airways	ALL SERVICES	446	1 899.5	74.9	633	2 197.4	-
China Airlines	New Zealand	..	76.8	-	..	43.0	-
	Taiwan	128	633.2	39.7	257	723.6	1.9
China Airlines	ALL SERVICES	128	710.0	39.7	257	766.6	1.9
China Eastern Airlines	China	180	554.8	20.8	1 115	375.9	-
China Southern Airlines	China	125	726.6	53.6	2 887	391.6	-
Delta Air Lines	USA	463	320.6	31.4	618	325.6	-
Emirates	Hong Kong (SAR)	..	..	..	..	603.8	-
	New Zealand	..	11.9	-	..	25.6	-
	Philippines	..	..	..	..	0.0	-
	Singapore	..	536.8	1.0	..	503.8	1.8
	Thailand	..	20.7	-	..	334.9	-
	United Arab Emirates	1 438	2 602.2	36.3	2 979	934.7	70.0
Emirates	ALL SERVICES	1 438	3 171.6	37.3	2 979	2 402.9	71.7
Etihad Airways	United Arab Emirates	759	471.4	20.9	781	746.3	60.4
Eva Air	Taiwan	..	248.9	-	..	357.9	-
Federal Express Corporation	China	..	..	..	..	1 850.9	-
	Hong Kong (SAR)	..	..	..	..	32.3	-
	New Zealand	..	90.8	-	..	..	..
	Singapore	..	825.7	-	..	86.1	-
	USA	..	2 132.6	-	..	..	..
Federal Express Corporation	ALL SERVICES	..	3 049.1	-	..	1 969.3	-
Fiji Airways	Fiji	185	214.7	0.1	205	150.3	8.7
Garuda Indonesia	Indonesia	397	319.7	40.6	651	271.5	-
	USA	72	-	-	..	..	..
Garuda Indonesia	ALL SERVICES	469	319.7	40.6	651	271.5	-
Hainan Airlines	China	..	96.5	-	..	39.4	-
Hong Kong Airlines	Hong Kong (SAR)	..	202.3	-	..	121.5	-
Japan Airlines	Japan	208	199.1	57.6	91	353.4	4.3
Jetstar	New Zealand	369	-	-	27	-	-
Kalitta Air	Hong Kong (SAR)	..	-	-	..	257.5	-
	Singapore	..	..	..	..	1 050.6	-
	USA	..	1 617.5	-	..	-	-
Kalitta Air	ALL SERVICES	..	1 617.5	-	..	1 308.2	-
Korean Air	Korea	57	15.4	-	145	8.1	-
LATAM Airlines	Chile	120	4.1	-	18	6.4	-
	New Zealand	..	..	..	-	4.7	-
LATAM Airlines	ALL SERVICES	120	4.1	-	18	11.0	-
Malaysia Airlines	Brunei	..	..	..	-	103.5	-
	Malaysia	314	1 164.2	17.2	277	1 140.0	0.7
	New Zealand	-	234.1	-	-	118.1	-
Malaysia Airlines	ALL SERVICES	314	1 398.2	17.2	277	1 361.6	0.7
Malindo Air	Malaysia	..	..	..	154	-	-
Nauru Airlines	Nauru	58	10.0	-	99	103.6	-
	Solomon Islands	..	..	..	..	29.6	-
Nauru Airlines	ALL SERVICES	58	10.0	-	99	133.2	-
Philippine Airlines	Philippines	121	0.4	-	81	-	-
Polar Air Cargo	Guam	..	520.9	-	..	..	..
	Japan	..	713.6	-	..	455.9	6.3
	Korea	..	..	..	..	184.8	-
	New Zealand	..	..	..	..	146.5	-
Polar Air Cargo	ALL SERVICES	..	1 234.5	-	..	787.2	6.3
Qantas Airways	China	..	257.7	-	..	620.1	-
	Hong Kong (SAR)	..	677.6	0.5	..	642.6	-

**TABLE 1 SCHEDULED INTERNATIONAL AIR TRAFFIC TO AND FROM AUSTRALIA: February 2021**

Scheduled Operator	Country to/from	Inbound			Outbound		
		Passengers	Freight (tonnes)	Mail (tonnes)	Passengers	Freight (tonnes)	Mail (tonnes)
Qantas Airways	Japan	..	110.1	-	..	26.7	-
	New Zealand	297	732.9	0.6	261	477.3	0.8
	Singapore	..	135.6	-	..	131.0	-
	Thailand	..	45.8	-	..	99.7	-
	USA	..	1 515.1	6.8	..	69.2	-
Qantas Airways	ALL SERVICES	297	3 474.8	7.9	261	2 066.6	0.8
Qatar Airways	New Zealand	..	216.3	-	..	97.0	-
	Qatar	3 846	2 281.2	138.9	4 531	3 187.1	63.2
Qatar Airways	ALL SERVICES	3 846	2 497.5	138.9	4 531	3 284.1	63.2
Royal Brunei Airlines	Brunei	4	54.2	0.1	18	151.2	-
Scoot Tigerair	Singapore	168	455.1	-	186	614.4	-
Singapore Airlines	New Zealand	..	204.2	-	..	385.9	12.0
	Singapore	4 431	4 139.7	35.1	4 233	3 681.3	11.6
Singapore Airlines	ALL SERVICES	4 431	4 343.9	35.1	4 233	4 067.2	23.6
Solomon Airlines	Solomon Islands	85	1.5	-	54	21.3	-
SriLankan Airlines	Singapore	..	37.2	-	..	90.7	-
	Sri Lanka	238	231.2	-	1 629	85.9	-
SriLankan Airlines	ALL SERVICES	238	268.4	-	1 629	176.6	-
Tasman Cargo Airlines	New Zealand	..	959.2	-	..	791.5	-
Thai Airways International	Thailand	90	114.8	5.9	212	176.7	-
United Airlines	New Zealand	-	214.4	-	-	121.2	51.0
	USA	1 026	899.1	102.5	1 165	1 109.8	134.0
	ALL SERVICES	1 026	1 113.4	102.5	1 165	1 231.1	185.0
United Parcel Service	Korea	..	..	..	..	226.9	-
	Singapore	..	..	..	..	47.9	-
	USA	..	1 446.6	-	..	..	..
United Parcel Service	ALL SERVICES	..	1 446.6	-	..	274.7	-
Vietnam Airlines	Vietnam	32	97.4	-	..	122.5	-
Xiamen Airlines	China	218	83.8	1.9	871	67.4	-
<b>TOTAL</b>		<b>22 040</b>	<b>33 323.1</b>	<b>805.8</b>	<b>29 573</b>	<b>29 183.9</b>	<b>503.6</b>

Please refer to explanatory notes - paragraphs 3, 6 and 13 in particular.

**TABLE 2 SCHEDULED OPERATOR MARKET SHARES AND GROWTH: February**

Scheduled Operators	Country to/from	Total Passengers				Total Freight (tonnes)				Total Mail (tonnes)			
		2020	2021	(%) of TOTAL	(%) Change	2020	2021	(%) of TOTAL	(%) Change	2020	2021	(%) of TOTAL	(%) Change
Air Caledonie International	New Caledonia	9 603	136	0.3	-98.6	74.5	104.3	0.2	40.1	9.3	4.5	0.3	-51.3
Air Canada	Canada	33 549	..	..	-100.0	558.4	230.5	0.4	-58.7	39.8	15.6	1.2	-60.9
	New Zealand	..	..	..	..	..	275.4	0.4	..	..	54.1	4.1	..
Air Canada	ALL SERVICES	33 549	..	..	-100.0	558.4	505.8	0.8	-9.4	39.8	69.6	5.3	75.0
Air Chathams (a)	New Zealand	259	..	..	-100.0	1.2	..	..	-100.0	-	..	..	..
Air China	China	3 779	..	..	-100.0	88.4	799.0	1.3	804.3	1.7	17.8	1.4	940.2
Air India	India	15 646	748	1.4	-95.2	369.2	44.2	0.1	-88.0	17.8	7.9	0.6	-55.5
Air Mauritius (a)	Mauritius	3 347	..	..	-100.0	116.9	..	..	-100.0	0.2	..	..	-100.0
Air New Zealand	Cook Islands	1 623	..	..	-100.0	4.7	..	..	-100.0	0.0	..	..	-100.0
	New Zealand	220 740	7 143	13.8	-96.8	4 979.4	833.7	1.3	-83.3	141.2	16.9	1.3	-88.1
Air New Zealand	ALL SERVICES	222 363	7 143	13.8	-96.8	4 984.1	833.7	1.3	-83.3	141.3	16.9	1.3	-88.1
Air Niugini	Papua New Guinea	9 376	1 256	2.4	-86.6	282.8	347.4	0.6	22.8	-	-	-	..
Air Vanuatu	Vanuatu	6 676	143	0.3	-97.9	30.5	4.7	0.0	-84.8	6.5	-	-	-100.0
AirAsia X (a)	Malaysia	63 959	..	..	-100.0	1 970.2	..	..	-100.0	-	..	..	..
All Nippon Airways	Japan	18 685	770	1.5	-95.9	1 084.8	525.6	0.8	-51.6	1.7	7.3	0.6	340.3
American Airlines	USA	13 348	847	1.6	-93.7	210.3	775.8	1.2	269.0	26.2	72.2	5.5	175.6
Asiana Airlines	Korea	16 643	517	1.0	-96.9	283.2	66.9	0.1	-76.4	18.5	-	-	-100.0
Batik Air Indonesia (a)	Indonesia	3 754	..	..	-100.0	-	..	..	..	-	..	..	..
Beijing Capital Airlines (a)	China	1 414	..	..	-100.0	23.8	..	..	-100.0	-	..	..	..
British Airways (a)	Singapore	5 466	..	..	-100.0	298.2	..	..	-100.0	-	..	..	..
	UK	8 461	..	..	-100.0	333.7	..	..	-100.0	15.8	..	..	-100.0
British Airways	ALL SERVICES	13 927	..	..	-100.0	631.9	..	..	-100.0	15.8	..	..	-100.0
Cathay Pacific Airways	Hong Kong (SAR)	91 766	1 079	2.1	-98.8	5 079.2	3 982.6	6.4	-21.6	125.4	74.9	5.7	-40.3
	New Zealand	..	..	..	..	..	114.3	0.2	..	..	-	-	..
Cathay Pacific Airways	ALL SERVICES	91 766	1 079	2.1	-98.8	5 079.2	4 096.9	6.6	-19.3	125.4	74.9	5.7	-40.3
Cebu Pacific Air (a)	Philippines	20 291	..	..	-100.0	393.6	..	..	-100.0	-	..	..	..
China Airlines	New Zealand	5 885	..	..	-100.0	333.5	119.8	0.2	-64.1	-	-	-	..
	Taiwan	31 764	385	0.7	-98.8	1 349.4	1 356.8	2.2	0.5	62.4	41.6	3.2	-33.3
China Airlines	ALL SERVICES	37 649	385	0.7	-99.0	1 682.9	1 476.6	2.4	-12.3	62.4	41.6	3.2	-33.3
China Eastern Airlines	China	25 594	1 295	2.5	-94.9	1 201.1	930.7	1.5	-22.5	-	20.8	1.6	..
China Southern Airlines	China	21 571	3 012	5.8	-86.0	842.0	1 118.2	1.8	32.8	82.1	53.6	4.1	-34.7
Citilink Indonesia (a)	Indonesia	3 921	..	..	-100.0	27.9	..	..	-100.0	-	..	..	..
Delta Air Lines	USA	13 881	1 081	2.1	-92.2	632.8	646.2	1.0	2.1	12.0	31.4	2.4	160.5
Emirates	Hong Kong (SAR)	..	..	..	..	493.2	603.8	1.0	22.4	-	-	-	..
	New Zealand	14 148	..	..	-100.0	385.4	37.5	0.1	-90.3	-	-	-	..
	Philippines	..	..	..	..	..	0.0	0.0	..	..	-	-	..
	Singapore	12 104	..	..	-100.0	311.3	1 040.6	1.7	234.3	0.3	2.8	0.2	702.3
	Thailand	..	..	..	..	..	355.6	0.6	..	..	-	-	..
	United Arab Emirates	163 384	4 417	8.6	-97.3	6 676.0	3 536.9	5.7	-47.0	102.2	106.3	8.1	4.1
	USA	..	..	..	..	345.7	..	..	-100.0	-	..	..	..
Emirates	ALL SERVICES	189 636	4 417	8.6	-97.7	8 211.6	5 574.5	8.9	-32.1	102.5	109.1	8.3	6.4



**TABLE 2 SCHEDULED OPERATOR MARKET SHARES AND GROWTH: February**

Scheduled Operators	Country to/from	Total Passengers				Total Freight (tonnes)				Total Mail (tonnes)			
		2020	2021	(%) of TOTAL	(%) Change	2020	2021	(%) of TOTAL	(%) Change	2020	2021	(%) of TOTAL	(%) Change
Etihad Airways	United Arab Emirates	75 367	1 540	3.0	-98.0	2 016.3	1 217.6	1.9	-39.6	93.7	81.4	6.2	-13.1
Eva Air	Taiwan	9 201	..	..	-100.0	374.0	606.8	1.0	62.2	2.6	-	-	-100.0
Federal Express Corporation	China	..	..	..	..	2 456.5	1 850.9	3.0	-24.7	-	-	-	..
	Hong Kong (SAR)	..	..	..	..	..	32.3	0.1	..	..	-	-	..
	New Zealand	..	..	..	..	..	90.8	0.1	..	..	-	-	..
	Singapore	..	..	..	..	983.0	911.8	1.5	-7.2	-	-	-	..
	USA	..	..	..	..	1 077.2	2 132.6	3.4	98.0	-	-	-	..
Federal Express Corporation	ALL SERVICES	..	..	..	..	4 516.8	5 018.4	8.0	11.1	-	-	-	..
Fiji Airways	Fiji	26 535	390	0.8	-98.5	545.9	365.0	0.6	-33.1	4.3	8.7	0.7	102.1
Garuda Indonesia	Indonesia	35 493	1 048	2.0	-97.0	1 348.2	591.1	0.9	-56.2	42.7	40.6	3.1	-4.9
	USA	..	72	0.1	..	..	-	-	..	..	-	-	..
Garuda Indonesia	ALL SERVICES	35 493	1 120	2.2	-96.8	1 348.2	591.1	0.9	-56.2	42.7	40.6	3.1	-4.9
Hainan Airlines	China	..	..	..	..	..	135.9	0.2	..	..	-	-	..
Hawaiian Airlines (a)	USA	13 170	..	..	-100.0	351.9	..	..	-100.0	-	..	..	..
Hong Kong Airlines	Hong Kong (SAR)	..	..	..	..	..	323.9	0.5	..	..	-	-	..
Indonesia AirAsia (a)	Indonesia	20 949	..	..	-100.0	5.2	..	..	-100.0	-	..	..	..
Japan Airlines	Japan	19 627	299	0.6	-98.5	747.0	552.5	0.9	-26.0	103.1	61.9	4.7	-39.9
Jetstar	Fiji	3 088	..	..	-100.0	1.9	..	..	-100.0	-	..	..	..
	Indonesia	112 587	..	..	-100.0	288.7	..	..	-100.0	2.1	..	..	-100.0
	Japan	43 139	..	..	-100.0	137.9	..	..	-100.0	11.8	..	..	-100.0
	Korea	5 477	..	..	-100.0	41.8	..	..	-100.0	0.1	..	..	-100.0
	New Zealand	64 577	396	0.8	-99.4	10.7	-	-	-100.0	-	-	-	..
	Singapore	557	..	..	-100.0	0.2	..	..	-100.0	-	..	..	..
	Thailand	23 440	..	..	-100.0	253.6	..	..	-100.0	2.7	..	..	-100.0
	USA	15 507	..	..	-100.0	55.2	..	..	-100.0	3.3	..	..	-100.0
	Vietnam	12 766	..	..	-100.0	144.9	..	..	-100.0	-	..	..	..
Jetstar	ALL SERVICES	281 138	396	0.8	-99.9	934.9	-	-	-100.0	20.1	-	-	-100.0
Jetstar Asia (a)	Singapore	5 000	..	..	-100.0	2.1	..	..	-100.0	-	..	..	..
Kalitta Air	Hong Kong (SAR)	..	..	..	..	..	257.5	0.4	..	..	-	-	..
	Singapore	..	..	..	..	..	1 050.6	1.7	..	..	-	-	..
	USA	..	..	..	..	..	1 617.5	2.6	..	..	-	-	..
Kalitta Air	ALL SERVICES	..	..	..	..	..	2 925.7	4.7	..	..	-	-	..
Korean Air	Korea	24 138	202	0.4	-99.2	570.6	23.5	0.0	-95.9	83.5	-	-	-100.0
LATAM Airlines	Chile	11 611	138	0.3	-98.8	252.8	10.5	0.0	-95.8	27.2	-	-	-100.0
	New Zealand	4 858	-	-	-100.0	114.3	4.7	0.0	-95.9	-	-	-	..
LATAM Airlines	ALL SERVICES	16 469	138	0.3	-99.2	367.0	15.2	0.0	-95.9	27.2	-	-	-100.0
Malaysia Airlines	Brunei	..	-	-	..	..	103.5	0.2	..	..	-	-	..
	Malaysia	87 865	591	1.1	-99.3	3 074.0	2 304.2	3.7	-25.0	28.3	18.0	1.4	-36.5
	New Zealand	..	-	-	..	..	352.1	0.6	..	..	-	-	..
Malaysia Airlines	ALL SERVICES	87 865	591	1.1	-99.3	3 074.0	2 759.9	4.4	-10.2	28.3	18.0	1.4	-36.5
Malindo Air	Indonesia	15 407	..	..	-100.0	-	-	-	..	-	-	-	..

**TABLE 2 SCHEDULED OPERATOR MARKET SHARES AND GROWTH: February**

Scheduled Operators	Country to/from	Total Passengers				Total Freight (tonnes)				Total Mail (tonnes)			
		2020	2021	(%) of TOTAL	(%) Change	2020	2021	(%) of TOTAL	(%) Change	2020	2021	(%) of TOTAL	(%) Change
Malindo Air	Malaysia	12 598	154	0.3	-98.8	-	-	-	..	-	-	-	..
Malindo Air	ALL SERVICES	28 005	154	0.3	-99.5	-	-	-	..	-	-	-	..
Nauru Airlines	Nauru	1 245	157	0.3	-87.4	54.2	113.5	0.2	109.3	1.1	-	-	-100.0
	Solomon Islands	..	..	..	..	..	29.6	0.0	..	..	-	-	..
Nauru Airlines	ALL SERVICES	1 245	157	0.3	-87.4	54.2	143.2	0.2	163.9	1.1	-	-	-100.0
Pacific Air Express (a)	Papua New Guinea	..	..	..	..	23.5	..	..	-100.0	-	..	..	..
Philippine Airlines	Philippines	27 124	202	0.4	-99.3	508.7	0.4	0.0	-99.9	7.3	-	-	-100.0
Polar Air Cargo	China	..	..	..	..	29.6	..	..	-100.0	-	..	..	..
	Guam	..	..	..	..	..	520.9	0.8	..	..	-	-	..
	Japan	..	..	..	..	395.8	1 169.5	1.9	195.5	-	6.3	0.5	..
	Korea	..	..	..	..	..	184.8	0.3	..	..	-	-	..
	New Zealand	..	..	..	..	..	146.5	0.2	..	..	-	-	..
	Taiwan	..	..	..	..	101.7	..	..	-100.0	-	..	..	..
Polar Air Cargo	ALL SERVICES	..	..	..	..	527.1	2 021.7	3.2	283.6	-	6.3	0.5	..
Qantas Airways	Chile	11 851	..	..	-100.0	32.4	..	..	-100.0	1.2	..	..	-100.0
	China	5 427	..	..	-100.0	514.4	877.8	1.4	70.7	82.9	-	-	-100.0
	Fiji	2 750	..	..	-100.0	0.1	..	..	-100.0	0.7	..	..	-100.0
	Hong Kong (SAR)	29 673	..	..	-100.0	1 410.3	1 320.2	2.1	-6.4	73.4	0.5	0.0	-99.4
	Indonesia	24 300	..	..	-100.0	317.0	..	..	-100.0	2.1	..	..	-100.0
	Japan	60 639	..	..	-100.0	569.3	136.8	0.2	-76.0	147.9	-	-	-100.0
	Malaysia	..	..	..	..	127.0	..	..	-100.0	-	..	..	..
	New Caledonia	5 564	..	..	-100.0	1.8	..	..	-100.0	1.6	..	..	-100.0
	New Zealand	128 948	558	1.1	-99.6	1 735.1	1 210.1	1.9	-30.3	213.6	1.4	0.1	-99.3
	Papua New Guinea	7 370	..	..	-100.0	9.0	..	..	-100.0	2.7	..	..	-100.0
	Philippines	10 699	..	..	-100.0	329.5	..	..	-100.0	6.8	..	..	-100.0
	Singapore	74 308	..	..	-100.0	1 757.9	266.6	0.4	-84.8	158.2	-	-	-100.0
	South Africa	11 576	..	..	-100.0	172.4	..	..	-100.0	4.0	..	..	-100.0
	Thailand	11 751	..	..	-100.0	304.6	145.5	0.2	-52.2	19.3	-	-	-100.0
	UK	18 693	..	..	-100.0	227.1	..	..	-100.0	56.9	..	..	-100.0
	USA	102 671	..	..	-100.0	1 732.6	1 584.3	2.5	-8.6	291.1	6.8	0.5	-97.7
Qantas Airways	ALL SERVICES	506 220	558	1.1	-99.9	9 240.7	5 541.4	8.9	-40.0	1 062.2	8.7	0.7	-99.2
Qatar Airways	New Zealand	..	..	..	..	..	313.3	0.5	..	..	-	-	..
	Qatar	100 275	8 377	16.2	-91.6	3 283.4	5 468.3	8.7	66.5	102.9	202.2	15.4	96.5
Qatar Airways	ALL SERVICES	100 275	8 377	16.2	-91.6	3 283.4	5 781.6	9.2	76.1	102.9	202.2	15.4	96.5
Royal Brunei Airlines	Brunei	12 254	22	0.0	-99.8	467.5	205.4	0.3	-56.1	0.0	0.1	0.0	165.6
Samoa Airways (a)	Western Samoa	2 113	..	..	-100.0	5.3	..	..	-100.0	-	..	..	..
Scoot Tigerair	Singapore	59 810	354	0.7	-99.4	206.0	1 069.5	1.7	419.3	-	-	-	..
Sichuan Airlines (a)	China	2 250	..	..	-100.0	47.4	..	..	-100.0	-	..	..	..
Silk Air (a)	Singapore	10 081	..	..	-100.0	17.6	..	..	-100.0	-	..	..	..
Singapore Airlines	New Zealand	2 427	..	..	-100.0	498.8	590.1	0.9	18.3	-	12.0	0.9	..
	Singapore	235 792	8 664	16.8	-96.3	12 724.1	7 820.9	12.5	-38.5	268.9	46.7	3.6	-82.6

**TABLE 2 SCHEDULED OPERATOR MARKET SHARES AND GROWTH: February**

Scheduled Operators	Country to/from	Total Passengers				Total Freight (tonnes)				Total Mail (tonnes)			
		2020	2021	(%) of TOTAL	(%) Change	2020	2021	(%) of TOTAL	(%) Change	2020	2021	(%) of TOTAL	(%) Change
Singapore Airlines	ALL SERVICES	238 219	8 664	16.8	-96.4	13 222.9	8 411.0	13.5	-36.4	268.9	58.7	4.5	-78.2
Solomon Airlines	Solomon Islands	2 398	139	0.3	-94.2	18.1	22.9	0.0	26.0	-	-	-	..
South African Airways (a)	South Africa	7 989	..	..	-100.0	252.3	..	..	-100.0	-	..	..	..
SriLankan Airlines	Singapore	..	..	..	..	..	127.9	0.2	..	..	-	-	..
	Sri Lanka	13 606	1 867	3.6	-86.3	564.3	317.1	0.5	-43.8	0.1	-	-	-100.0
SriLankan Airlines	ALL SERVICES	13 606	1 867	3.6	-86.3	564.3	445.0	0.7	-21.1	0.1	-	-	-100.0
Tasman Cargo Airlines	New Zealand	..	..	..	..	1 146.5	1 750.7	2.8	52.7	-	-	-	..
Thai AirAsia X (a)	Thailand	5 836	..	..	-100.0	12.3	..	..	-100.0	-	..	..	..
Thai Airways International	Thailand	68 897	302	0.6	-99.6	2 421.5	291.5	0.5	-88.0	57.3	5.9	0.4	-89.8
Tianjin Airlines (a)	China	161	..	..	-100.0	0.7	..	..	-100.0	-	..	..	..
United Airlines	New Zealand	..	-	-	..	..	335.6	0.5	..	..	51.0	3.9	..
	USA	40 398	2 191	4.2	-94.6	1 390.7	2 008.9	3.2	44.5	200.3	236.5	18.1	18.1
United Airlines	ALL SERVICES	40 398	2 191	4.2	-94.6	1 390.7	2 344.5	3.8	68.6	200.3	287.5	22.0	43.6
United Parcel Service	China	..	..	..	..	571.0	..	..	-100.0	-	..	..	..
	Korea	..	..	..	..	362.3	226.9	0.4	-37.4	-	-	-	..
	Singapore	..	..	..	..	194.3	47.9	0.1	-75.4	-	-	-	..
	USA	..	..	..	..	1 119.7	1 446.6	2.3	29.2	-	-	-	..
United Parcel Service	ALL SERVICES	..	..	..	..	2 247.4	1 721.3	2.8	-23.4	-	-	-	..
Vietnam Airlines	Vietnam	28 422	32	0.1	-99.9	1 402.2	219.9	0.4	-84.3	0.0	-	-	-100.0
Virgin Australia (a)	Fiji	15 382	..	..	-100.0	32.8	..	..	-100.0	-	..	..	..
	Hong Kong (SAR)	8 893	..	..	-100.0	485.4	..	..	-100.0	-	..	..	..
	Indonesia	20 828	..	..	-100.0	16.1	..	..	-100.0	-	..	..	..
	New Zealand	102 701	..	..	-100.0	70.4	..	..	-100.0	-	..	..	..
	Papua New Guinea	1 837	..	..	-100.0	5.0	..	..	-100.0	-	..	..	..
	Solomon Islands	853	..	..	-100.0	7.1	..	..	-100.0	-	..	..	..
	Tonga	1 653	..	..	-100.0	1.5	..	..	-100.0	-	..	..	..
	USA	35 158	..	..	-100.0	1 204.5	..	..	-100.0	-	..	..	..
	Vanuatu	2 853	..	..	-100.0	13.1	..	..	-100.0	-	..	..	..
	Western Samoa	1 932	..	..	-100.0	0.8	..	..	-100.0	-	..	..	..
Virgin Australia	ALL SERVICES	192 090	..	..	-100.0	1 836.7	..	..	-100.0	-	..	..	..
Xiamen Airlines	China	2 447	1 089	2.1	-55.5	239.0	151.2	0.2	-36.7	8.5	1.9	0.1	-77.7
<b>TOTAL</b>		<b>2 805 429</b>	<b>51 613</b>	<b>100.0</b>	<b>-98.2</b>	<b>82 771.2</b>	<b>62 507.0</b>	<b>100.0</b>	<b>-24.5</b>	<b>2 777.3</b>	<b>1 309.4</b>	<b>100.0</b>	<b>-52.9</b>

Please refer to explanatory notes - paragraphs 3, 6 and 13 in particular.

(a) Scheduled services suspended due to COVID-19 pandemic.

(b) Service recommenced June 2020.

(c) Scheduled services commenced March 2020.

**TABLE 3 AIRLINE PASSENGER CAPACITY AND UTILISATION TO AND FROM AUSTRALIA BY OPERATOR: February 2021**

Scheduled Operator	Service to/from	Inbound				Outbound			
		No. of Flights	Pax Carried	Seats Available	Seat Utilisation %	No. of Flights	Pax Carried	Seats Available	Seat Utilisation %
Air Caledonie International	New Caledonia	8	66	1 138	5.8	8	70	1 095	6.4
Air Canada	Canada	16	..	..	..	-	..	..	..
	New Zealand	-	..	..	..	16	..	..	..
Air Canada	ALL SERVICES	16	..	..	..	16	..	..	..
Air China	China	25	..	..	..	25	..	..	..
Air India	India	4	237	1 024	23.1	4	511	1 024	49.9
Air New Zealand	New Zealand	45	4 267	9 451	45.1	58	2 876	10 298	27.9
Air Niugini	Papua New Guinea	24	642	4 362	14.7	24	614	4 362	14.1
Air Vanuatu	Vanuatu	2	37	352	10.5	2	106	352	30.1
All Nippon Airways	Japan	24	443	4 320	10.3	24	327	4 800	6.8
American Airlines	USA	26	356	3 976	9.0	26	491	3 976	12.3
Asiana Airlines	Korea	4	117	1 224	9.6	4	400	1 224	32.7
Cathay Pacific Airways	Hong Kong (SAR)	74	446	16 096	2.8	73	633	16 268	3.9
China Airlines	New Zealand	7	..	..	..	7	..	..	..
	Taiwan	53	128	2 142	6.0	53	257	2 142	12.0
China Airlines	ALL SERVICES	60	128	2 142	6.0	60	257	2 142	12.0
China Eastern Airlines	China	33	180	2 512	7.2	32	1 115	2 512	44.4
China Southern Airlines	China	42	125	3 012	4.2	38	2 887	4 008	72.0
Delta Air Lines	USA	20	463	5 719	8.1	19	618	5 719	10.8
Emirates	New Zealand	4	..	..	..	3	..	..	..
	United Arab Emirates	114	1 438	13 496	10.7	112	2 979	14 922	20.0
Emirates	ALL SERVICES	118	1 438	13 496	10.7	115	2 979	14 922	20.0
Etihad Airways	United Arab Emirates	39	759	8 404	9.0	38	781	11 817	6.6
Eva Air	Taiwan	12	..	..	..	12	..	..	..
Federal Express Corporation (a)	China	-	..	..	..	42	..	..	..
	Hong Kong (SAR)	-	..	..	..	3	..	..	..
	Singapore	10	..	..	..	3	..	..	..
	USA	38	..	..	..	-	..	..	..
Federal Express Corporation	ALL SERVICES	48	..	..	..	48	..	..	..
Fiji Airways	Fiji	17	185	2 106	8.8	17	205	850	24.1
Garuda Indonesia	Indonesia	26	397	3 769	10.5	24	651	4 271	15.2
	USA	1	72	162	44.4	-	..	..	..
Garuda Indonesia	ALL SERVICES	27	469	3 931	11.9	24	651	4 271	15.2
Hainan Airlines	China	5	..	..	..	4	..	..	..
Hong Kong Airlines	Hong Kong (SAR)	12	..	..	..	11	..	..	..
Japan Airlines	Japan	24	208	1 488	14.0	25	91	1 674	5.4
Jetstar	New Zealand	4	369	738	50.0	4	27	744	3.6
Kalitta Air (a)	USA	30	..	..	..	30	..	..	..
Korean Air	Korea	2	57	544	10.5	2	145	544	26.7
LATAM Airlines	Chile	3	120	247	48.6	1	18	188	9.6
Malaysia Airlines	Malaysia	64	314	2 320	13.5	65	277	2 873	9.6
	New Zealand	8	-	-	..	8	-	-	..
Malaysia Airlines	ALL SERVICES	72	314	2 320	13.5	73	277	2 873	9.6
Malindo Air	Malaysia	-	..	..	..	1	154	180	85.6
Nauru Airlines	Nauru	12	58	256	22.7	12	99	256	38.7
Philippine Airlines	Philippines	3	121	504	24.0	2	81	336	24.1

**TABLE 3 AIRLINE PASSENGER CAPACITY AND UTILISATION TO AND FROM AUSTRALIA BY OPERATOR: February 2021**

Scheduled Operator	Service to/from	Inbound				Outbound			
		No. of Flights	Pax Carried	Seats Available	Seat Utilisation %	No. of Flights	Pax Carried	Seats Available	Seat Utilisation %
Polar Air Cargo (a)	Guam	8	..	..	..	-	..	..	..
	Japan	24	..	..	..	24	..	..	..
	Korea	-	..	..	..	8	..	..	..
Polar Air Cargo	ALL SERVICES	32	..	..	..	32	..	..	..
Qantas Airways	China	21	..	..	..	22	..	..	..
	Hong Kong (SAR)	30	..	..	..	33	..	..	..
	Japan	8	..	..	..	8	..	..	..
	New Zealand	27	297	1 188	25.0	27	261	1 782	14.6
	Singapore	10	..	..	..	9	..	..	..
	Thailand	4	..	..	..	7	..	..	..
	USA	24	..	..	..	19	..	..	..
Qantas Airways	ALL SERVICES	124	297	1 188	25.0	125	261	1 782	14.6
Qatar Airways	New Zealand	12	..	..	..	12	..	..	..
	Qatar	131	3 846	30 432	12.6	129	4 531	35 854	12.6
Qatar Airways	ALL SERVICES	143	3 846	30 432	12.6	141	4 531	35 854	12.6
Royal Brunei Airlines	Brunei	8	4	762	0.5	8	18	1 270	1.4
Scoot Tigerair	Singapore	29	168	3 375	5.0	29	186	8 625	2.2
Singapore Airlines	New Zealand	4	..	..	..	5	..	..	..
	Singapore	205	4 431	45 050	9.8	204	4 233	45 050	9.4
Singapore Airlines	ALL SERVICES	209	4 431	45 050	9.8	209	4 233	45 050	9.4
Solomon Airlines	Solomon Islands	5	85	680	12.5	5	54	680	7.9
SriLankan Airlines	Sri Lanka	22	238	5 510	4.3	21	1 629	5 274	30.9
Tasman Cargo Airlines (a)	New Zealand	25	..	..	..	25	..	..	..
Thai Airways International	Thailand	3	90	348	25.9	3	212	348	60.9
United Airlines	New Zealand	11	-	-	..	11	-	-	..
	USA	71	1 026	12 262	8.4	72	1 165	12 262	9.5
United Airlines	ALL SERVICES	82	1 026	12 262	8.4	83	1 165	12 262	9.5
United Parcel Service (a)	Korea	-	..	..	..	18	..	..	..
	Singapore	-	..	..	..	3	..	..	..
	USA	23	..	..	..	-	..	..	..
United Parcel Service	ALL SERVICES	23	..	..	..	21	..	..	..
Vietnam Airlines	Vietnam	5	32	274	11.7	5	..	..	..
Xiamen Airlines	China	8	218	2 224	9.8	8	871	2 224	39.2
<b>TOTAL</b>		<b>1 553</b>	<b>22 040</b>	<b>191 467</b>	<b>11.5</b>	<b>1 547</b>	<b>29 573</b>	<b>209 804</b>	<b>14.1</b>

Please refer to explanatory notes - paragraphs 4, 5, and 7 in particular.

Seat Factors shown in this table:

Traffic shown in this table for China Airlines, Emirates, Qantas Airways and Singapore Airlines may differ from traffic shown in Tables 1 and 2 because of the inclusion in this table of total traffic into and ex Australia (for seat factor purposes) whereas Tables 1 and 2 include uplift/discharge traffic only. All other airlines report uplift/discharge traffic only. Currently, there are no other airlines operating via Australia, and therefore uplift/discharge traffic is the same as total traffic into and ex Australia for all other airlines.

Available seats have not been counted where passenger aircraft have been used to operate freight only services. However, this adjustment cannot be made for airlines that report monthly aggregates and that have operated a mix of passenger and freight only services using passenger aircraft.

Some airlines have reported adjusted seats to take account of social distancing while others have reported fitted seats.

(a) Freight flights only.

**TABLE 4 SCHEDULED INTERNATIONAL AIRPORT TRAFFIC AND AIRCRAFT MOVEMENTS: February**

		Inbound			Outbound			Total			(%) (%) of TOTAL
		2020	2021	(%) Change	2020	2021	(%) Change	2020	2021	Change	
Adelaide	Passengers	41 150	1 919	-95.3	30 615	459	-98.5	71 765	2 378	-96.7	4.6
	Freight (Tonnes)	985	401	-59.2	1 401	516	-63.1	2 386	918	-61.5	1.5
	Aircraft Movements	201	34	-83.1	200	35	-82.5	401	69	-82.8	2.1
Avalon	Passengers	18 682	..	-100.0	10 551	..	-100.0	29 233	..	-100.0	..
	Freight (Tonnes)	268	..	-100.0	712	..	-100.0	980	..	-100.0	..
	Aircraft Movements	76	..	-100.0	76	..	-100.0	152	..	-100.0	..
Brisbane	Passengers	223 875	4 586	-98.0	197 282	4 144	-97.9	421 157	8 730	-97.9	16.9
	Freight (Tonnes)	3 850	1 772	-54.0	5 572	2 494	-55.2	9 422	4 266	-54.7	6.8
	Aircraft Movements	1 324	168	-87.3	1 328	170	-87.2	2 652	338	-87.3	10.1
Cairns	Passengers	24 070	184	-99.2	19 120	104	-99.5	43 190	288	-99.3	0.6
	Freight (Tonnes)	107	0	-99.7	26	123	376.1	133	123	-7.6	0.2
	Aircraft Movements	145	20	-86.2	145	24	-83.4	290	44	-84.8	1.3
Canberra	Passengers	2 265	..	-100.0	2 279	..	-100.0	4 544	..	-100.0	..
	Freight (Tonnes)	2	..	-100.0	6	..	-100.0	8	..	-100.0	..
	Aircraft Movements	58	..	-100.0	58	..	-100.0	116	..	-100.0	..
Darwin	Passengers	8 685	..	-100.0	5 674	..	-100.0	14 359	..	-100.0	..
	Freight (Tonnes)	15	0	-98.7	5	0	-99.3	20	0	-98.9	0.0
	Aircraft Movements	74	19	-74.3	73	19	-74.0	147	38	-74.1	1.1
Gold Coast	Passengers	36 789	..	-100.0	32 871	..	-100.0	69 660	..	-100.0	..
	Freight (Tonnes)	59	..	-100.0	64	..	-100.0	123	..	-100.0	..
	Aircraft Movements	205	..	-100.0	207	..	-100.0	412	..	-100.0	..
Hobart	Passengers	..	..	..	..	..	..	..	..	..	..
	Freight (Tonnes)	..	-	..	..	108	..	..	108	..	0.2
	Aircraft Movements	..	4	..	..	4	..	..	8	..	0.2
Melbourne	Passengers	408 642	3 119	-99.2	334 254	8 122	-97.6	742 896	11 241	-98.5	21.8
	Freight (Tonnes)	8 302	6 757	-18.6	13 014	7 383	-43.3	21 316	14 140	-33.7	22.6
	Aircraft Movements	1 899	368	-80.6	1 904	363	-80.9	3 803	731	-80.8	21.9
Newcastle	Passengers	625	..	-100.0	479	..	-100.0	1 104	..	-100.0	..
	Freight (Tonnes)	-	..	..	-	..	..	-	..	..	..
	Aircraft Movements	5	..	-100.0	5	..	-100.0	10	..	-100.0	..

**TABLE 4 SCHEDULED INTERNATIONAL AIRPORT TRAFFIC AND AIRCRAFT MOVEMENTS: February**

		Inbound			Outbound			Total			(%) of TOTAL
		2020	2021	(%) Change	2020	2021	(%) Change	2020	2021	(%) Change	
Norfolk Island	Passengers	121	..	-100.0	138	..	-100.0	259	..	-100.0	..
	Freight (Tonnes)	1	..	-100.0	-	..	..	1	..	-100.0	..
	Aircraft Movements	4	..	-100.0	4	..	-100.0	8	..	-100.0	..
Perth	Passengers	169 482	2 249	-98.7	135 267	2 109	-98.4	304 749	4 358	-98.6	8.4
	Freight (Tonnes)	3 179	1 809	-43.1	4 456	2 101	-52.9	7 635	3 910	-48.8	6.3
	Aircraft Movements	875	105	-88.0	875	105	-88.0	1 750	210	-88.0	6.3
Port Hedland	Passengers	326	..	-100.0	194	..	-100.0	520	..	-100.0	..
	Freight (Tonnes)	-	..	..	-	..	..	-	..	..	..
	Aircraft Movements	4	..	-100.0	4	..	-100.0	8	..	-100.0	..
Sydney	Passengers	595 097	9 983	-98.3	506 896	14 635	-97.1	1 101 993	24 618	-97.8	47.7
	Freight (Tonnes)	19 924	22 583	13.3	20 694	16 213	-21.7	40 617	38 796	-4.5	62.1
	Aircraft Movements	2 986	944	-68.4	2 983	936	-68.6	5 969	1 880	-68.5	56.4
Toowoomba Wellcamp	Passengers	..	..	..	..	-	..	..	-	..	0.0
	Freight (Tonnes)	7	-	-100.0	122	247	101.7	129	247	91.1	0.4
	Aircraft Movements	4	7	75.0	4	7	75.0	8	14	75.0	0.4
TOTAL	Passengers	1 529 809	22 040	-98.6	1 275 620	29 573	-97.7	2 805 429	51 613	-98.2	100.0
	Freight (Tonnes)	36 700	33 323	-9.2	46 071	29 184	-36.7	82 771	62 507	-24.5	100.0
	Aircraft Movements	7 860	1 669	-78.8	7 866	1 663	-78.9	15 726	3 332	-78.8	100.0

**TABLE 5 SCHEDULED INTERNATIONAL TRAFFIC BY CITY PAIRS: February**

Foreign Port	Australian Port	Passengers						Freight (tonnes)					
		2020			2021			2020			2021		
		Inbound	Outbound	Total	Inbound	Outbound	Total	Inbound	Outbound	Total	Inbound	Outbound	Total
Auckland	Adelaide	3 047	3 416	6 463	0	0	0	83.2	66.7	150.0	0.0	0.0	0.0
Denpasar		8 299	7 406	15 705	0	0	0	1.9	0.0	1.9	0.0	0.0	0.0
Doha		4 943	3 640	8 583	879	293	1 172	378.4	405.0	783.3	150.4	122.7	273.1
Dubai		7 244	4 409	11 653	0	0	0	217.0	168.3	385.3	0.0	0.0	0.0
Guangzhou		1 041	657	1 698	0	0	0	2.3	35.3	37.6	0.0	0.0	0.0
Hong Kong		2 502	1 728	4 230	0	0	0	64.1	163.2	227.3	17.1	100.9	118.0
Kuala Lumpur		6 097	3 852	9 949	127	2	129	56.5	222.2	278.7	11.6	82.5	94.1
Singapore		7 977	5 507	13 484	913	164	1 077	181.7	340.5	522.2	222.3	210.4	432.7
<b>Total</b>	<b>Adelaide</b>	41 150	30 615	71 765	1 919	459	2 378	985.1	1 401.1	2 386.2	401.4	516.5	917.9
Abu Dhabi	Brisbane	6 018	4 345	10 363	0	0	0	113.2	119.6	232.7	0.0	0.0	0.0
Apia		1 051	918	1 969	0	0	0	1.0	0.9	1.9	0.0	0.0	0.0
Auckland		30 758	33 601	64 359	1 348	977	2 325	578.8	380.5	959.3	297.2	157.9	455.1
Bandar Seri Begawan		1 632	1 397	3 029	0	0	0	1.1	0.0	1.1	0.0	0.0	0.0
Bangkok		7 719	5 459	13 178	0	0	0	182.0	192.1	374.1	0.0	0.0	0.0
Christchurch		11 488	11 020	22 508	0	0	0	143.2	30.9	174.2	0.0	0.0	0.0
Denpasar		14 513	14 421	28 934	0	0	0	49.6	3.1	52.7	0.0	0.0	0.0
Doha		0	0	0	852	578	1 430	0.0	0.0	0.0	90.8	119.2	210.0
Dubai		16 537	12 916	29 453	498	555	1 053	412.3	689.3	1 101.7	231.7	234.8	466.5
Dunedin		1 587	1 516	3 103	0	0	0	0.0	0.0	0.0	0.0	0.0	0.0
Guangzhou		839	677	1 516	0	0	0	7.6	56.1	63.7	0.0	0.0	0.0
Hong Kong		9 267	7 169	16 436	19	25	44	380.5	728.3	1 108.8	147.5	250.3	397.9
Honiara		1 669	1 478	3 147	85	54	139	4.2	21.0	25.3	1.5	50.9	52.5
Honolulu		2 415	2 370	4 785	0	0	0	38.8	36.8	75.6	0.0	0.0	0.0
Kuala Lumpur		4 608	2 570	7 178	0	154	154	141.0	100.7	241.6	0.0	0.0	0.0
Los Angeles		13 912	12 640	26 552	0	0	0	432.1	329.7	761.8	103.1	54.7	157.8
Manila		3 044	2 401	5 445	40	0	40	5.6	7.8	13.3	0.0	0.0	0.0
Munda		0	104	104	0	0	0	0.0	0.0	0.0	0.0	0.0	0.0
Nadi		5 466	5 751	11 217	53	122	175	14.0	18.4	32.3	4.2	10.9	15.1
Nauru		627	618	1 245	58	99	157	3.9	50.3	54.2	10.0	103.6	113.5
New Delhi		0	0	0	144	0	144	0.0	0.0	0.0	0.0	0.0	0.0
Noumea		2 570	3 424	5 994	0	0	0	0.3	6.8	7.1	0.0	0.0	0.0
Port Moresby		6 406	6 435	12 841	458	510	968	26.4	267.7	294.2	110.9	235.7	346.6
Port Vila		2 217	2 549	4 766	37	106	143	7.8	18.8	26.6	0.9	3.8	4.7
Queenstown		2 597	2 820	5 417	0	0	0	0.0	0.0	0.0	0.0	0.0	0.0
San Francisco		1 341	1 129	2 470	0	0	0	8.9	0.0	9.0	0.0	0.0	0.0
Seoul		5 336	4 529	9 865	0	0	0	58.4	229.5	287.9	0.0	0.0	0.0
Shanghai		1 379	1 504	2 883	0	0	0	8.5	48.8	57.3	0.0	0.0	0.0
Singapore		38 127	26 792	64 919	950	873	1 823	880.3	1 521.5	2 401.7	450.4	757.5	1 208.0
Taipei		10 261	8 307	18 568	44	91	135	191.0	494.0	685.0	266.7	426.8	693.4
Tokyo		7 643	7 087	14 730	0	0	0	87.3	154.9	242.2	56.9	87.7	144.6
Vancouver		6 274	5 004	11 278	0	0	0	71.5	63.8	135.2	0.0	0.0	0.0
Wellington		6 574	6 331	12 905	0	0	0	0.9	0.5	1.3	0.0	0.0	0.0
<b>Total</b>	<b>Brisbane</b>	223 875	197 282	421 157	4 586	4 144	8 730	3 850.2	5 571.6	9 421.9	1 771.8	2 493.9	4 265.7
Denpasar	Cairns	2 475	2 581	5 056	0	0	0	0.0	0.0	0.0	0.0	0.0	0.0
Hong Kong		0	0	0	0	0	0	0.0	3.6	3.6	0.0	94.1	94.1
Osaka		7 154	4 929	12 083	0	0	0	22.2	6.9	29.1	0.0	0.0	0.0
Port Moresby		2 524	2 090	4 614	184	104	288	13.2	6.3	19.5	0.3	0.5	0.8



**TABLE 5 SCHEDULED INTERNATIONAL TRAFFIC BY CITY PAIRS: February**

Foreign Port	Australian Port	Passengers						Freight (tonnes)					
		2020			2021			2020			2021		
		Inbound	Outbound	Total	Inbound	Outbound	Total	Inbound	Outbound	Total	Inbound	Outbound	Total
Singapore	Cairns	3 133	2 996	6 129	0	0	0	0.0	0.7	0.7	0.0	26.8	26.8
Tokyo		8 784	6 524	15 308	0	0	0	72.1	8.4	80.4	0.0	1.4	1.4
<b>Total</b>	<b>Cairns</b>	24 070	19 120	43 190	184	104	288	107.5	25.8	133.3	0.3	122.8	123.1
Doha	Canberra	892	679	1 571	0	0	0	0.6	0.0	0.6	0.0	0.0	0.0
Singapore		1 373	1 600	2 973	0	0	0	1.5	6.1	7.5	0.0	0.0	0.0
<b>Total</b>	<b>Canberra</b>	2 265	2 279	4 544	0	0	0	2.1	6.1	8.2	0.0	0.0	0.0
Denpasar	Darwin	3 018	2 389	5 407	0	0	0	0.8	0.0	0.8	0.0	0.0	0.0
Hong Kong		0	0	0	0	0	0	0.0	0.0	0.0	0.2	0.0	0.2
Singapore		5 667	3 285	8 952	0	0	0	13.8	5.3	19.1	0.0	0.0	0.0
<b>Total</b>	<b>Darwin</b>	8 685	5 674	14 359	0	0	0	14.6	5.3	19.9	0.2	0.0	0.2
Auckland	Gold Coast	10 800	11 624	22 424	0	0	0	2.6	5.0	7.7	0.0	0.0	0.0
Christchurch		3 052	2 932	5 984	0	0	0	1.1	0.0	1.1	0.0	0.0	0.0
Kuala Lumpur		4 537	2 666	7 203	0	0	0	26.8	49.4	76.2	0.0	0.0	0.0
Queenstown		1 484	1 807	3 291	0	0	0	0.0	0.0	0.0	0.0	0.0	0.0
Seoul		2 598	2 119	4 717	0	0	0	0.8	0.0	0.8	0.0	0.0	0.0
Singapore		3 974	2 423	6 397	0	0	0	2.0	9.3	11.2	0.0	0.0	0.0
Tokyo		8 370	7 295	15 665	0	0	0	25.7	0.0	25.7	0.0	0.0	0.0
Wellington		1 974	2 005	3 979	0	0	0	0.0	0.0	0.0	0.0	0.0	0.0
<b>Total</b>	<b>Gold Coast</b>	36 789	32 871	69 660	0	0	0	58.9	63.8	122.7	0.0	0.0	0.0
Hong Kong	Hobart	0	0	0	0	0	0	0.0	0.0	0.0	0.0	107.5	107.5
<b>Total</b>	<b>Hobart</b>	0	0	0	0	0	0	0.0	0.0	0.0	0.0	107.5	107.5
Abu Dhabi	Melbourne	16 273	11 751	28 024	245	353	598	321.9	425.2	747.1	237.4	377.3	614.7
Auckland		46 245	47 846	94 091	1 488	791	2 279	858.7	1 128.9	1 987.6	321.8	464.8	786.6
Bandar Seri Begawan		5 828	3 397	9 225	4	18	22	132.6	333.7	466.4	54.2	151.2	205.4
Bangkok		20 519	17 382	37 901	0	0	0	603.9	696.5	1 300.4	45.8	74.6	120.4
Beijing		744	918	1 662	0	0	0	1.2	15.0	16.2	0.0	0.0	0.0
Chengdu		318	391	709	0	0	0	6.9	8.0	14.8	0.0	0.0	0.0
Chicago		0	0	0	0	0	0	60.2	0.0	60.2	172.6	0.0	172.6
Christchurch		16 612	17 320	33 932	0	0	0	70.0	51.1	121.1	11.9	25.6	37.5
Colombo		7 867	5 739	13 606	85	1 003	1 088	253.8	310.5	564.3	87.3	17.9	105.2
Denpasar		25 807	22 918	48 725	0	0	0	256.3	319.4	575.6	0.0	0.0	0.0
Doha		13 538	12 340	25 878	402	1 526	1 928	197.8	394.4	592.2	1 143.7	1 413.2	2 557.0
Dubai		27 167	18 174	45 341	177	1 201	1 378	776.5	1 443.4	2 219.8	479.3	309.3	788.6
Guangzhou		4 460	3 985	8 445	46	1 577	1 623	123.0	254.9	378.0	435.7	234.4	670.1
Guiyang		363	656	1 019	0	0	0	8.8	12.7	21.5	0.0	0.0	0.0
Ho Chi Minh City		12 313	6 974	19 287	0	0	0	379.1	390.2	769.2	24.8	36.3	61.1
Hong Kong		22 853	16 666	39 519	77	171	248	517.7	1 000.9	1 518.6	739.0	1 255.1	1 994.0
Honolulu		3 461	2 987	6 448	0	0	0	8.4	2.6	11.0	0.0	0.0	0.0
Jakarta		3 647	2 554	6 201	48	123	171	63.5	293.5	357.0	111.4	116.4	227.8
Kuala Lumpur		37 709	22 687	60 396	69	142	211	751.8	1 460.0	2 211.9	377.4	493.3	870.7
London		952	892	1 844	0	0	0	45.9	0.1	46.0	0.0	0.0	0.0
Los Angeles		21 826	19 109	40 935	0	0	0	277.4	474.5	751.9	158.9	12.0	170.9
Manila		10 333	7 214	17 547	0	0	0	92.5	340.7	433.2	0.0	0.0	0.0
Nadi		4 024	3 838	7 862	0	0	0	30.2	16.1	46.3	0.0	0.0	0.0
New Delhi		3 276	2 849	6 125	0	0	0	63.9	47.8	111.7	0.0	0.0	0.0
New York		0	0	0	0	0	0	29.5	0.0	29.5	37.1	0.0	37.1
Noumea		861	1 295	2 156	0	0	0	0.8	5.6	6.4	0.0	0.0	0.0

**TABLE 5 SCHEDULED INTERNATIONAL TRAFFIC BY CITY PAIRS: February**

Foreign Port	Australian Port	Passengers						Freight (tonnes)					
		2020			2021			2020			2021		
		Inbound	Outbound	Total	Inbound	Outbound	Total	Inbound	Outbound	Total	Inbound	Outbound	Total
Phuket	Melbourne	4 874	3 870	8 744	0	0	0	47.1	10.9	58.0	0.0	0.0	0.0
Port Vila		336	259	595	0	0	0	0.0	3.0	3.0	0.0	0.0	0.0
Qingdao		237	201	438	0	0	0	0.3	14.3	14.6	0.0	0.0	0.0
Queenstown		8 188	8 135	16 323	0	0	0	0.0	0.0	0.0	0.0	0.0	0.0
San Francisco		5 419	5 163	10 582	0	0	0	117.0	132.2	249.2	0.0	0.0	0.0
Santiago		2 224	2 178	4 402	0	0	0	5.1	64.6	69.6	0.0	0.0	0.0
Seoul		264	35	299	0	0	0	18.5	0.0	18.5	0.0	0.0	0.0
Shanghai		5 425	5 899	11 324	0	0	0	133.2	324.7	457.9	271.1	172.1	443.3
Singapore		62 364	41 738	104 102	458	1 158	1 616	1 967.0	3 086.2	5 053.1	1 824.7	1 978.7	3 803.4
Taipei		4 223	3 538	7 761	20	59	79	70.7	293.9	364.6	21.8	18.2	40.0
Tokyo		13 231	11 814	25 045	0	0	0	244.3	307.9	552.2	141.2	232.5	373.7
Vancouver		4 237	3 563	7 800	0	0	0	8.7	55.7	64.4	60.0	0.0	60.0
Wellington		9 306	8 530	17 836	0	0	0	26.4	7.2	33.6	0.0	0.0	0.0
<b>Total</b>	<b>Melbourne</b>	427 324	344 805	772 129	3 119	8 122	11 241	8 570.5	13 726.1	22 296.6	6 757.2	7 382.9	14 140.1
Auckland	Newcastle	625	479	1 104	0	0	0	0.0	0.0	0.0	0.0	0.0	0.0
<b>Total</b>	<b>Newcastle</b>	625	479	1 104	0	0	0	0.0	0.0	0.0	0.0	0.0	0.0
Auckland	Norfolk Island	121	138	259	0	0	0	1.2	0.0	1.2	0.0	0.0	0.0
<b>Total</b>	<b>Norfolk Island</b>	121	138	259	0	0	0	1.2	0.0	1.2	0.0	0.0	0.0
Auckland	Perth	8 990	8 852	17 842	0	0	0	537.0	181.9	718.9	0.0	0.0	0.0
Bangkok		7 252	5 250	12 502	0	0	0	229.6	197.6	427.3	0.0	0.0	0.0
Butte		0	0	0	35	0	35	0.0	0.0	0.0	0.0	0.0	0.0
Denpasar		31 572	29 368	60 940	0	0	0	26.6	14.5	41.1	0.0	0.0	0.0
Doha		11 729	10 677	22 406	808	616	1 424	220.5	585.4	805.9	287.6	516.2	803.7
Dubai		12 565	11 056	23 621	293	602	895	307.1	444.5	751.6	355.7	106.8	462.5
Guangzhou		638	686	1 324	0	0	0	0.6	16.6	17.2	0.0	0.0	0.0
Hong Kong		6 657	5 732	12 389	83	56	139	238.2	529.6	767.8	201.4	369.0	570.4
Jakarta		2 362	1 763	4 125	144	103	247	1.4	1.3	2.8	17.8	7.3	25.2
Johannesburg		4 559	3 430	7 989	0	0	0	78.9	173.4	252.3	0.0	0.0	0.0
Kota Kinabalu		519	347	866	0	0	0	0.0	0.0	0.0	0.0	0.0	0.0
Kuala Lumpur		21 966	14 160	36 126	0	0	0	269.3	317.0	586.3	132.4	79.2	211.6
London		5 040	3 488	8 528	0	0	0	51.8	0.0	51.8	0.0	0.0	0.0
Mauritius		1 919	1 428	3 347	0	0	0	69.1	47.9	116.9	0.0	0.0	0.0
Singapore		49 533	35 308	84 841	886	732	1 618	1 073.0	1 724.1	2 797.1	814.2	1 022.5	1 836.7
Tokyo		4 181	3 722	7 903	0	0	0	76.0	222.0	298.1	0.0	0.0	0.0
<b>Total</b>	<b>Perth</b>	169 482	135 267	304 749	2 249	2 109	4 358	3 179.3	4 455.8	7 635.1	1 809.1	2 100.9	3 910.0
Denpasar	Port Hedland	326	194	520	0	0	0	0.0	0.0	0.0	0.0	0.0	0.0
<b>Total</b>	<b>Port Hedland</b>	326	194	520	0	0	0	0.0	0.0	0.0	0.0	0.0	0.0
Abu Dhabi	Sydney	21 677	15 303	36 980	514	428	942	387.0	649.4	1 036.4	233.9	369.0	603.0
Apia		1 069	1 007	2 076	0	0	0	0.7	3.6	4.3	0.0	0.0	0.0
Auckland		60 910	61 995	122 905	2 097	1 370	3 467	2 020.4	2 257.0	4 277.4	1 819.1	2 243.8	4 062.9
Bandar Seri Begawan		0	0	0	0	0	0	0.0	0.0	0.0	0.0	103.5	103.5
Bangkok		16 417	13 602	30 019	90	212	302	369.5	434.9	804.4	135.5	536.7	672.3
Beijing		1 729	1 985	3 714	0	0	0	35.4	50.7	86.2	0.0	0.0	0.0
Butte		0	0	0	37	0	37	0.0	0.0	0.0	0.0	0.0	0.0
Chengdu		255	118	373	0	0	0	3.6	8.1	11.7	0.0	0.0	0.0
Chicago		0	0	0	0	0	0	800.2	2.5	802.7	864.3	10.5	874.8
Chongqing		221	301	522	0	0	0	5.2	192.3	197.5	0.0	109.7	109.7

**TABLE 5 SCHEDULED INTERNATIONAL TRAFFIC BY CITY PAIRS: February**

Foreign Port	Australian Port	Passengers						Freight (tonnes)					
		2020			2021			2020			2021		
		Inbound	Outbound	Total	Inbound	Outbound	Total	Inbound	Outbound	Total	Inbound	Outbound	Total
Christchurch	Sydney	16 935	17 469	34 404	0	26	26	528.7	277.3	806.0	608.9	223.5	832.4
Cincinnati		0	0	0	0	0	0	0.0	0.0	0.0	296.0	0.0	296.0
Colombo		0	0	0	153	626	779	0.0	0.0	0.0	143.9	68.0	211.8
Dallas		7 741	8 474	16 215	0	0	0	61.4	14.7	76.1	35.1	0.0	35.1
Denpasar		25 150	22 191	47 341	0	0	0	320.5	205.7	526.1	0.0	0.0	0.0
Doha		21 942	19 895	41 837	905	1 518	2 423	437.1	664.2	1 101.3	608.7	1 015.8	1 624.5
Dubai		30 771	22 545	53 316	470	621	1 091	1 296.4	921.3	2 217.7	1 535.4	283.9	1 819.3
Guam		0	0	0	0	0	0	0.0	0.0	0.0	520.9	0.0	520.9
Guangzhou		4 627	3 660	8 287	79	1 310	1 389	135.8	2 666.3	2 802.1	203.7	1 939.3	2 143.0
Hangzhou		97	129	226	90	476	566	0.0	0.0	0.0	21.6	16.7	38.3
Hanoi		2 938	1 968	4 906	0	0	0	155.7	120.3	276.0	37.0	49.6	86.6
Ho Chi Minh City		10 792	6 203	16 995	32	0	32	363.7	138.1	501.8	35.6	36.7	72.2
Hong Kong		33 782	23 976	57 758	267	381	648	1 350.0	2 362.8	3 712.9	1 674.3	1 366.7	3 041.1
Honolulu		12 708	10 911	23 619	0	0	0	165.6	196.0	361.6	2 132.6	0.0	2 132.6
Houston		4 851	4 946	9 797	0	0	0	12.7	178.5	191.2	0.0	0.0	0.0
Jakarta		8 832	5 453	14 285	205	425	630	171.0	274.0	445.0	190.5	147.7	338.2
Johannesburg		5 905	5 671	11 576	0	0	0	158.0	14.4	172.4	0.0	0.0	0.0
Kuala Lumpur		25 365	17 339	42 704	118	133	251	1 066.3	710.3	1 776.6	642.7	485.1	1 127.8
Kunming		137	163	300	0	0	0	0.0	6.5	6.5	0.0	0.0	0.0
London		8 329	8 453	16 782	0	0	0	396.0	67.1	463.1	0.0	0.0	0.0
Los Angeles		36 855	31 914	68 769	1 226	1 478	2 704	1 861.3	1 067.7	2 929.1	2 757.0	1 296.5	4 053.5
Louisville		0	0	0	0	0	0	1 119.7	0.0	1 119.7	1 446.6	0.0	1 446.6
Luzon Island		0	0	0	0	0	0	0.0	115.8	115.8	0.0	0.0	0.0
Manila		20 273	14 849	35 122	81	81	162	296.6	373.0	669.5	0.4	0.0	0.4
Nadi		14 729	13 373	28 102	132	83	215	298.8	203.2	502.0	210.5	139.4	349.9
Nanjing		177	100	277	0	0	0	0.0	0.0	0.0	96.5	39.4	135.9
New Delhi		5 021	4 500	9 521	93	511	604	128.1	129.5	257.6	6.4	37.8	44.2
New York		1 326	1 044	2 370	0	0	0	198.5	5.1	203.5	94.9	0.0	94.9
Noumea		2 825	4 192	7 017	66	70	136	4.1	58.7	62.8	12.8	91.5	104.3
Osaka		4 423	3 259	7 682	0	0	0	55.8	56.9	112.7	0.0	0.0	0.0
Phuket		4 012	3 568	7 580	0	0	0	25.6	2.3	27.8	0.0	0.0	0.0
Port Moresby		520	608	1 128	0	0	0	1.9	4.8	6.7	0.0	0.0	0.0
Port Vila		2 154	2 014	4 168	0	0	0	1.1	12.9	14.0	0.0	0.0	0.0
Qingdao		515	461	976	0	0	0	0.0	9.2	9.2	0.0	0.0	0.0
Queenstown		14 056	14 110	28 166	0	0	0	0.0	0.4	0.4	0.0	0.0	0.0
Rarotonga		754	869	1 623	0	0	0	0.0	4.7	4.7	0.0	0.0	0.0
San Francisco		10 656	10 935	21 591	619	796	1 415	200.9	287.4	488.3	251.9	488.1	740.0
Santiago		9 601	9 459	19 060	120	18	138	83.0	132.6	215.6	4.1	6.4	10.5
Sapporo		2 682	2 270	4 952	0	0	0	10.1	0.0	10.1	0.0	0.0	0.0
Seoul		17 299	14 078	31 377	174	545	719	185.9	764.9	950.9	47.0	455.0	502.1
Shanghai		6 710	7 331	14 041	90	639	729	178.0	1 404.2	1 582.2	841.4	961.9	1 803.3
Shenzhen		187	114	301	0	0	0	0.0	0.0	0.0	269.8	99.2	369.0
Singapore		65 707	45 614	111 321	1 392	1 492	2 884	3 639.6	2 042.3	5 681.9	2 818.4	2 160.2	4 978.7
Suva		286	288	574	0	0	0	0.0	0.0	0.0	0.0	0.0	0.0
Taipei		7 659	6 977	14 636	64	107	171	203.0	572.5	775.5	593.6	636.6	1 230.2
Tianjin		0	34	34	0	0	0	0.0	0.0	0.0	0.0	0.0	0.0
Tokyo		20 194	18 528	38 722	651	418	1 069	907.5	676.8	1 584.4	1 137.5	727.0	1 864.5

**TABLE 5 SCHEDULED INTERNATIONAL TRAFFIC BY CITY PAIRS: February**

Foreign Port	Australian Port	Passengers						Freight (tonnes)					
		2020			2021			2020			2021		
		Inbound	Outbound	Total	Inbound	Outbound	Total	Inbound	Outbound	Total	Inbound	Outbound	Total
Tongatapu	Sydney	836	817	1 653	0	0	0	1.0	0.5	1.5	0.0	0.0	0.0
Vancouver		7 804	6 667	14 471	0	0	0	171.0	187.8	358.8	170.4	0.0	170.4
Wellington		13 036	14 212	27 248	0	0	0	10.4	25.1	35.4	0.0	0.0	0.0
Xiamen		1 620	827	2 447	218	871	1 089	100.3	138.7	239.0	83.8	67.4	151.2
Zhengzhou		0	127	127	0	0	0	0.0	0.7	0.7	0.0	0.0	0.0
<b>Total</b>	<b>Sydney</b>	595 097	506 896	1 101 993	9 983	14 635	24 618	19 923.5	20 693.6	40 617.1	22 583.0	16 212.6	38 795.6
Hong Kong	Toowoomba Wellcamp	0	0	0	0	0	0	6.8	122.3	129.1	0.0	197.1	197.1
Singapore		0	0	0	0	0	0	0.0	0.0	0.0	0.0	49.6	49.6
<b>Total</b>	<b>Toowoomba Wellcamp</b>	0	0	0	0	0	0	6.8	122.3	129.1	0.0	246.7	246.7
Abu Dhabi	Australia	43 968	31 399	75 367	759	781	1 540	822.0	1 194.2	2 016.3	471.4	746.3	1 217.6
Apia		2 120	1 925	4 045	0	0	0	1.7	4.5	6.1	0.0	0.0	0.0
Auckland		161 496	167 951	329 447	4 933	3 138	8 071	4 082.0	4 020.1	8 102.0	2 438.1	2 866.6	5 304.7
Bandar Seri Begawan		7 460	4 794	12 254	4	18	22	133.8	333.7	467.5	54.2	254.7	308.9
Bangkok		51 907	41 693	93 600	90	212	302	1 385.0	1 521.1	2 906.1	181.3	611.3	792.7
Beijing		2 473	2 903	5 376	0	0	0	36.6	65.7	102.3	0.0	0.0	0.0
Butte		0	0	0	72	0	72	0.0	0.0	0.0	0.0	0.0	0.0
Chengdu		573	509	1 082	0	0	0	10.5	16.0	26.5	0.0	0.0	0.0
Chicago		0	0	0	0	0	0	860.4	2.5	862.9	1 036.9	10.5	1 047.4
Chongqing		221	301	522	0	0	0	5.2	192.3	197.5	0.0	109.7	109.7
Christchurch		48 087	48 741	96 828	0	26	26	743.0	359.4	1 102.4	620.8	249.1	869.9
Cincinnati		0	0	0	0	0	0	0.0	0.0	0.0	296.0	0.0	296.0
Colombo		7 867	5 739	13 606	238	1 629	1 867	253.8	310.5	564.3	231.2	85.9	317.1
Dallas		7 741	8 474	16 215	0	0	0	61.4	14.7	76.1	35.1	0.0	35.1
Denpasar		111 160	101 468	212 628	0	0	0	655.7	542.6	1 198.3	0.0	0.0	0.0
Doha		53 044	47 231	100 275	3 846	4 531	8 377	1 234.4	2 049.0	3 283.4	2 281.2	3 187.1	5 468.3
Dubai		94 284	69 100	163 384	1 438	2 979	4 417	3 009.3	3 666.8	6 676.0	2 602.2	934.7	3 536.9
Dunedin		1 587	1 516	3 103	0	0	0	0.0	0.0	0.0	0.0	0.0	0.0
Guam		0	0	0	0	0	0	0.0	0.0	0.0	520.9	0.0	520.9
Guangzhou		11 605	9 665	21 270	125	2 887	3 012	269.3	3 029.2	3 298.5	639.3	2 173.7	2 813.1
Guiyang		363	656	1 019	0	0	0	8.8	12.7	21.5	0.0	0.0	0.0
Hangzhou		97	129	226	90	476	566	0.0	0.0	0.0	21.6	16.7	38.3
Hanoi		2 938	1 968	4 906	0	0	0	155.7	120.3	276.0	37.0	49.6	86.6
Ho Chi Minh City		23 105	13 177	36 282	32	0	32	742.8	528.3	1 271.1	60.4	73.0	133.3
Hong Kong		75 061	55 271	130 332	446	633	1 079	2 557.3	4 910.7	7 468.1	2 779.5	3 740.9	6 520.3
Honiara		1 669	1 478	3 147	85	54	139	4.2	21.0	25.3	1.5	50.9	52.5
Honolulu		18 584	16 268	34 852	0	0	0	212.9	235.4	448.2	2 132.6	0.0	2 132.6
Houston		4 851	4 946	9 797	0	0	0	12.7	178.5	191.2	0.0	0.0	0.0
Jakarta		14 841	9 770	24 611	397	651	1 048	236.0	568.8	804.8	319.7	271.5	591.1
Johannesburg		10 464	9 101	19 565	0	0	0	236.9	187.9	424.7	0.0	0.0	0.0
Kota Kinabalu		519	347	866	0	0	0	0.0	0.0	0.0	0.0	0.0	0.0
Kuala Lumpur		100 282	63 274	163 556	314	431	745	2 311.6	2 859.6	5 171.2	1 164.2	1 140.0	2 304.2
Kunming		137	163	300	0	0	0	0.0	6.5	6.5	0.0	0.0	0.0
London		14 321	12 833	27 154	0	0	0	493.7	67.1	560.8	0.0	0.0	0.0
Los Angeles		72 593	63 663	136 256	1 226	1 478	2 704	2 570.8	1 871.9	4 442.8	3 018.9	1 363.2	4 382.1
Louisville		0	0	0	0	0	0	1 119.7	0.0	1 119.7	1 446.6	0.0	1 446.6
Luzon Island		0	0	0	0	0	0	0.0	115.8	115.8	0.0	0.0	0.0
Manila		33 650	24 464	58 114	121	81	202	394.6	721.4	1 116.0	0.4	0.0	0.4

**TABLE 5 SCHEDULED INTERNATIONAL TRAFFIC BY CITY PAIRS: February**

Foreign Port	Australian Port	Passengers						Freight (tonnes)					
		2020			2021			2020			2021		
		Inbound	Outbound	Total	Inbound	Outbound	Total	Inbound	Outbound	Total	Inbound	Outbound	Total
Mauritius	Australia	1 919	1 428	3 347	0	0	0	69.1	47.9	116.9	0.0	0.0	0.0
Munda		0	104	104	0	0	0	0.0	0.0	0.0	0.0	0.0	0.0
Nadi		24 219	22 962	47 181	185	205	390	343.0	237.7	580.7	214.7	150.3	365.0
Nanjing		177	100	277	0	0	0	0.0	0.0	0.0	96.5	39.4	135.9
Nauru		627	618	1 245	58	99	157	3.9	50.3	54.2	10.0	103.6	113.5
New Delhi		8 297	7 349	15 646	237	511	748	192.0	177.3	369.2	6.4	37.8	44.2
New York		1 326	1 044	2 370	0	0	0	228.0	5.1	233.1	132.0	0.0	132.0
Noumea		6 256	8 911	15 167	66	70	136	5.2	71.1	76.3	12.8	91.5	104.3
Osaka		11 577	8 188	19 765	0	0	0	78.0	63.8	141.8	0.0	0.0	0.0
Phuket		8 886	7 438	16 324	0	0	0	72.7	13.2	85.9	0.0	0.0	0.0
Port Moresby		9 450	9 133	18 583	642	614	1 256	41.5	278.8	320.3	111.2	236.1	347.4
Port Vila		4 707	4 822	9 529	37	106	143	9.0	34.7	43.6	0.9	3.8	4.7
Qingdao		752	662	1 414	0	0	0	0.3	23.5	23.8	0.0	0.0	0.0
Queenstown		26 325	26 872	53 197	0	0	0	0.0	0.4	0.4	0.0	0.0	0.0
Rarotonga		754	869	1 623	0	0	0	0.0	4.7	4.7	0.0	0.0	0.0
San Francisco		17 416	17 227	34 643	619	796	1 415	326.9	419.6	746.5	251.9	488.1	740.0
Santiago		11 825	11 637	23 462	120	18	138	88.1	197.1	285.2	4.1	6.4	10.5
Sapporo		2 682	2 270	4 952	0	0	0	10.1	0.0	10.1	0.0	0.0	0.0
Seoul		25 497	20 761	46 258	174	545	719	263.5	994.4	1 257.9	47.0	455.0	502.1
Shanghai		13 514	14 734	28 248	90	639	729	319.8	1 777.7	2 097.5	1 112.5	1 134.1	2 246.6
Shenzhen		187	114	301	0	0	0	0.0	0.0	0.0	269.8	99.2	369.0
Singapore		237 855	165 263	403 118	4 599	4 419	9 018	7 758.8	8 735.8	16 494.6	6 130.1	6 205.7	12 335.8
Suva		286	288	574	0	0	0	0.0	0.0	0.0	0.0	0.0	0.0
Taipei		22 143	18 822	40 965	128	257	385	464.7	1 360.4	1 825.1	882.1	1 081.5	1 963.6
Tianjin		0	34	34	0	0	0	0.0	0.0	0.0	0.0	0.0	0.0
Tokyo		62 403	54 970	117 373	651	418	1 069	1 412.8	1 370.1	2 783.0	1 335.6	1 048.7	2 384.3
Tongatapu		836	817	1 653	0	0	0	1.0	0.5	1.5	0.0	0.0	0.0
Vancouver		18 315	15 234	33 549	0	0	0	251.2	307.2	558.4	230.5	0.0	230.5
Wellington		30 890	31 078	61 968	0	0	0	37.6	32.7	70.4	0.0	0.0	0.0
Xiamen		1 620	827	2 447	218	871	1 089	100.3	138.7	239.0	83.8	67.4	151.2
Zhengzhou		0	127	127	0	0	0	0.0	0.7	0.7	0.0	0.0	0.0
<b>Total</b>	<b>Australia</b>	<b>1 529 809</b>	<b>1 275 620</b>	<b>2 805 429</b>	<b>22 040</b>	<b>29 573</b>	<b>51 613</b>	<b>36 699.7</b>	<b>46 071.5</b>	<b>82 771.2</b>	<b>33 323.1</b>	<b>29 183.9</b>	<b>62 507.0</b>

Please refer to explanatory notes - paragraphs 3 and 8 in particular.

**TABLE 6 INTERNATIONAL AIRLINES OWN STOPOVER REVENUE PASSENGERS,  
AUSTRALIAN CITY PAIRS: February 2021**

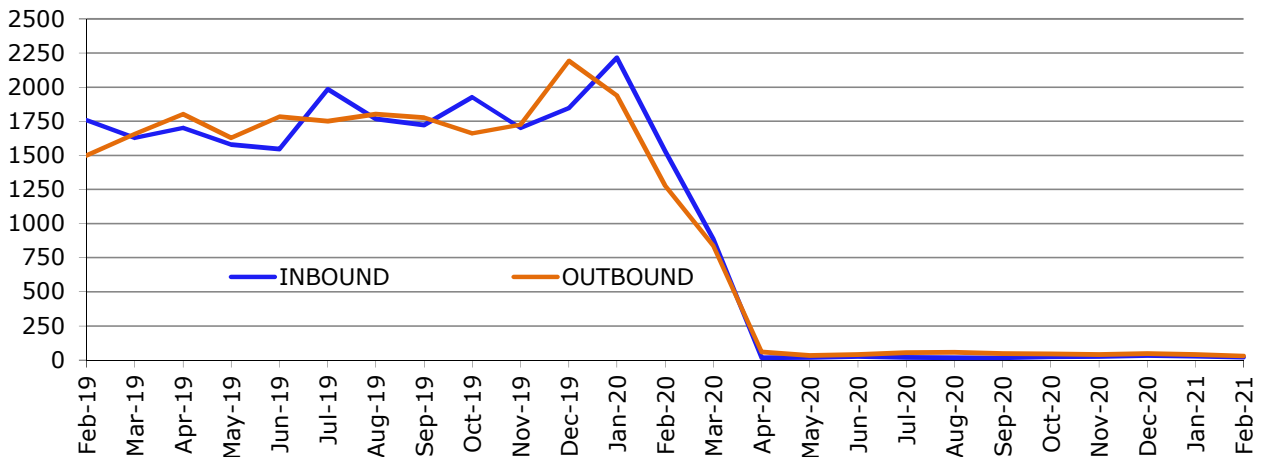
City Pair Route	Total Passengers
TOTAL	0

Notes:

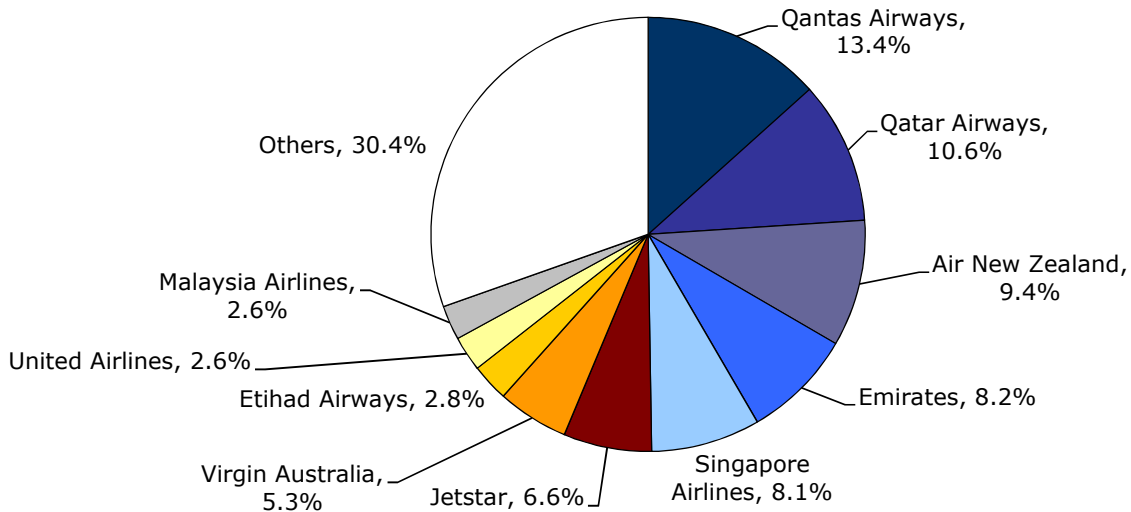
1. Own Stopover Revenue Passengers: The aggregate of revenue passengers uplifted at one Australian airport and discharged (excluding transit passengers) at another Australian airport by the same foreign registered international airline on which they entered or left Australia.
2. City Pair Route represents the aggregation of passengers travelling in both directions.
3. This data is additional to the information presented in tables 1-5 which cover only those passengers travelling to/from overseas airports.

# YEAR ENDED FEBRUARY 2021

**Chart I International Passengers Carried (thousands) - February 2019 to February 2021**



**Chart II International Passengers by Major Airlines - Year ended February 2021**



**Table I International Passengers by Uplift/Discharge City Pairs**

Foreign Port	Australian Port	Year ended February 2019	Year ended February 2020	Year ended February 2021	% of Total	% Change 2021/20
Auckland	Sydney	1 571 708	1 590 899	119 463	4.9%	-92.5%
Doha	Sydney	472 871	521 142	101 047	4.1%	-80.6%
Auckland	Melbourne	1 256 308	1 243 131	86 992	3.5%	-93.0%
Singapore	Sydney	1 512 648	1 546 293	81 081	3.3%	-94.8%
Singapore	Melbourne	1 588 292	1 609 972	73 589	3.0%	-95.4%
Auckland	Brisbane	941 986	951 371	71 938	2.9%	-92.4%
Doha	Melbourne	291 737	316 468	66 483	2.7%	-79.0%
Dubai	Sydney	826 288	762 844	64 720	2.6%	-91.5%
Los Angeles	Sydney	868 302	910 978	64 401	2.6%	-92.9%
Singapore	Perth	1 122 616	1 139 538	56 081	2.3%	-95.1%
Top 10 City Pairs		10 452 756	10 592 636	785 795	31.9%	-92.6%
Other City Pairs		31 379 416	31 545 419	1 676 014	68.1%	-94.7%
ALL CITY PAIRS		41 832 172	42 138 055	2 461 809	100.0%	-94.2%

**Table II International Freight (tonnes) by Uplift/Discharge City Pairs**

Foreign Port	Australian Port	Year ended February 2019	Year ended February 2020	Year ended February 2021	% of Total	% Change 2021/20
Singapore	Sydney	69 593	73 841	71 770	8.3%	-2.8%
Auckland	Sydney	53 059	50 460	50 135	5.8%	-0.6%
Los Angeles	Sydney	38 934	37 257	45 677	5.3%	22.6%
Hong Kong	Sydney	54 022	49 015	44 865	5.2%	-8.5%
Singapore	Melbourne	70 947	70 462	41 895	4.9%	-40.5%
Guangzhou	Sydney	26 755	32 652	37 799	4.4%	15.8%
Honolulu	Sydney	7 650	7 081	30 356	3.5%	328.7%
Shanghai	Sydney	17 909	21 923	29 464	3.4%	34.4%
Hong Kong	Melbourne	25 871	24 660	28 935	3.4%	17.3%
Dubai	Sydney	29 510	26 217	27 191	3.2%	3.7%
Top 10 City Pairs		394 250	393 568	408 088	47.3%	3.7%
Other City Pairs		769 241	705 098	454 122	52.7%	-35.6%
ALL CITY PAIRS		1 163 491	1 098 666	862 211	100.0%	-21.5%

**Table III International Passengers by Uplift/Discharge Country**

Country	Year ended February 2019	Year ended February 2020	Year ended February 2021	% of Total	% Change 2021/20
New Zealand	7 190 700	7 244 414	448 856	18.2%	-93.8%
Singapore	5 681 100	5 892 322	287 131	11.7%	-95.1%
Qatar	1 183 578	1 293 520	258 291	10.5%	-80.0%
United Arab Emirates	3 747 205	3 473 811	257 040	10.4%	-92.6%
USA	3 255 872	3 304 030	213 674	8.7%	-93.5%
Indonesia	3 185 140	3 468 768	164 944	6.7%	-95.2%
China	3 655 264	3 258 471	112 831	4.6%	-96.5%
Malaysia	2 302 566	2 404 258	99 090	4.0%	-95.9%
Japan	1 468 019	1 571 672	84 791	3.4%	-94.6%
Thailand	1 563 989	1 390 927	80 115	3.3%	-94.2%
Top 10 Countries	33 233 433	33 302 193	2 006 763	81.5%	-94.0%
Other Countries	8 598 739	8 835 862	455 046	18.5%	-94.9%
ALL COUNTRIES	41 832 172	42 138 055	2 461 809	100.0%	-94.2%

**Table IV International Passenger Traffic through Australian International Airports**

Airport	Year ended February 2019	Year ended February 2020	Year ended February 2021	% of Total	% Change 2021/20
Sydney	16 839 453	16 668 152	1 084 222	44.0%	-93.5%
Melbourne	11 291 404	11 198 188	623 810	25.3%	-94.4%
Brisbane	6 169 746	6 417 973	368 668	15.0%	-94.3%
Perth	4 371 319	4 363 682	241 522	9.8%	-94.5%
Adelaide	1 034 410	1 130 138	56 706	2.3%	-95.0%
Gold Coast	1 009 764	944 159	38 734	1.6%	-95.9%
Cairns	660 839	627 922	23 610	1.0%	-96.2%
Avalon (a)	101 581	416 681	14 055	0.6%	-96.6%
Darwin	225 650	256 856	7 327	0.3%	-97.1%
Canberra	91 167	83 065	2 763	0.1%	-96.7%
Port Hedland	8 588	9 085	213	0.0%	-97.7%
Norfolk Island (b)	..	1 699	179	0.0%	-89.5%
Sunshine Coast (c)	14 303	13 084	..	..	..
Newcastle (d)	6 687	7 371	..	..	..
Townsville (e)	7 261	..	..	..	..
ALL AIRPORTS	41 832 172	42 138 055	2 461 809	100.0%	-94.2%

(a) Scheduled passenger services commenced December 2018.

(b) Scheduled services recommenced September 2019.

(c) Seasonal services only.

(d) Scheduled services (seasonal) recommenced November 2018.

(e) Scheduled services ceased September 2018.

Operations at several airports have been suspended during COVID-19



# EXPLANATORY NOTES

---

## INTRODUCTION

1. This publication continues the series of monthly publications presenting provisional statistical information on the scheduled operations of international airlines operating into/out of Australia.
2. The figures in this publication were obtained from reports submitted by scheduled international carriers and are the best available at the time of publication.

## COVERAGE

3. These statistics show uplift/discharge data – These data detail, by direction, the revenue traffic between the actual points of uplift and discharge within each flight, aggregated for all flights within the period. It shows the movement of traffic between two airports not necessarily directly connected but within the same flight number. Typically, flight numbers change when an aircraft reaches its home country. This means that uplift/discharge data for the port in the operator's home country are likely to be overstated by traffic whose origin/destination point is beyond that port. For example, uplift/discharge traffic reported in this publication as Singapore could include traffic whose origin/destination is Europe.
4. These statistics cover revenue traffic carried by the operators of scheduled regular public international air transport services only and do not include charter traffic.
5. Flights with no revenue traffic uplifted from Australia or discharged in Australia are treated as positioning flights and are not included in this data collection. This mainly affects dedicated freighter flights where some flights outbound from Australia do not pick up freight in Australia.

## PRODUCTION AND INTERPRETATION

6. Tables 1 and 2 show the country of the relevant uplift or discharge port served by that airline. For example, traffic uplifted/discharged between Sydney and Singapore by British Airways would be shown as Singapore traffic in Tables 1 and 2.
7. Table 3 shows figures for the country of service (or route) for each airline and therefore may not equate to the data in Tables 1 and 2. For example, the British Airways UK service identified in Table 3 could include passengers uplifted or discharged in Singapore as well as the UK; these passengers would be shown individually under those countries in Tables 1 and 2. The difference in treatment of data between Tables 1 and 2 and Table 3 is necessary in order to work out a meaningful Seat Utilisation figure for Table 3.

Figures shown in Table 3 may include total traffic into and out of Australia for airlines that fly through Australia (also necessary in order to work out a meaningful Seat Utilisation figure). Therefore, figures in Table 3 may not equate to figures in Tables 1 and 2. For example, passengers carried by Qantas Airways from New Zealand via Australia to the UK will be included in Table 3 but will not be included in Tables 1 or 2 as these passengers were not uplifted/discharged in Australia.

8. Table 5 – shows uplift/discharge passenger and freight data for city pairs with “same flight number” international flight connections.

9. Where figures have been rounded, discrepancies may occur between sums of component items and totals, and in percentage changes which are derived from figures prior to rounding.
10. Published figures may be revised where figures missing at the time of publication are received or misreporting/miscalculation necessitates revisions.

## DEFINITIONS

11. The following definitions have been used in this publication:
  - (a) Aircraft Movement: A landing or a take off.
  - (b) Freight: The aggregate of all revenue freight uplifted or discharged in Australia.
  - (c) Inbound: Inbound to Australia/Australian international airport.
  - (d) Mail: The aggregate of all mail uplifted or discharged in Australia.
  - (e) Outbound: Outbound from Australia/Australian international airport.
  - (f) Revenue Passengers: please refer to paragraph 12.
  - (g) Seat Utilisation: The ratio of passengers carried to seats available, expressed as a percentage.
  - (h) Seats Available: Generally based on standard aircraft configuration, the aggregate of seats available on all flights operated over a particular service.
  - (i) Services: Scheduled flights over authorised routes which are listed according to the main ports involved.

## COMPARABILITY OF DATA OVER TIME

12. Revenue Passengers:
  - For July 2000 and onwards: All passengers paying any fare (frequent flyer redemption passengers are regarded as revenue passengers). In most cases, Revenue Passengers will now include all passengers excluding Free Of Charge passengers and positioning crew.
  - To December 1999: The aggregate of all passengers paying 25% or more of the standard air fare (as defined by ICAO at the time).
  - January 2000 to June 2000: Transition period.

The Revenue Passenger definition change could result in approximately a three per cent increase in passenger numbers over a full period (month or year).

13. Country and City data – reporting of Uplift/Discharge data by Qantas Airways:
  - Prior to January 2003: Uplift/Discharge within Qantas Airways' international network.
  - For January 2003 and onwards: Uplift/Discharge within flight number – as per the standard definition.

For example, what was reported as Adelaide to London in January 2002 (no direct services between these two cities), would be reported in January 2003 as either Adelaide to Singapore or Melbourne/Sydney to London.

This change was introduced in order to make the data comparable across all airlines operating services to/from Australia.

The effect of this change – comparing data under the two methods of reporting:

- Country of Port data (Tables 1 & 2) – There will be a shift in traffic to countries such as Singapore and United Arab Emirates (from 2013) which are used as hubs and away from countries such as France, Germany and Italy which

previously received traffic channelled through hubs. The total volume of traffic is not affected.

- Country of Service data (Table 3) – no change, as the Uplift/Discharge definition is not applicable to classifying the country of service.
- Australian International Airports (Table 4) – there may be a shift of traffic to the major airports.
- City Pairs (Table 5) – There will be a shift in traffic to cities such as Singapore and Dubai (from 2013) which are used as hubs and away from cities such as Paris, Frankfurt and Rome which previously received traffic channelled through hubs. The total volume of traffic is not affected.
- Prior to the change, statistics reported for city pairs without “same flight number” international flight connections mainly reflected carriage on interconnecting international services by Qantas Airways. That traffic should have been interpreted as increasing the volume of traffic between the primary international ports rather than as an indicator of traffic volumes between ports without “same flight number” international flight connections. It should be noted however, that there was no double counting of traffic.

14. Country of Service classification by Qantas Airways:

- For July 2002 and onwards: based on the foreign country where same flight number services commence or cease – as per the standard definition. For example, Sydney-Denpasar-Singapore services would be classified as Country of Service = Singapore.
- Prior to July 2002: based on Qantas classification – this mainly affected Indonesia and Singapore Countries of Service. For example, Sydney-Denpasar-Singapore services were classified as Country of Service = Indonesia.

15. Airline data – Reporting of code share services:

Reporting of traffic split by airline code for code share arrangements was discontinued as of June 2000. For July 2000 and onwards, ALL traffic carried is reported under the operating airline regardless of code share arrangements.

Monthly airline market share figures for July 2001 onwards will be comparable with the same month in the previous year. However, these figures may not be comparable with monthly data prior to July 2000.

## SYMBOLS AND OTHER USAGE

- nil or zero
- .. not applicable

## DATA ISSUES

---

During the period impacted by the COVID-19 pandemic, airlines that normally would only operate scheduled air services could also operate charter air services and where charter air services are not clearly identified, they may be included in the data in this publication.

Seat utilisation:

Available seats have not been counted where passenger aircraft have been used to operate freight only services. However, this adjustment cannot be made for airlines that report monthly aggregates and that have operated a mix of passenger and freight only services using passenger aircraft.

Some airlines have reported adjusted seats to take account of social distancing while others have reported fitted seats.

## NOTES ON AIRLINE SERVICES

---

All scheduled passenger airlines have been impacted by international travel restrictions introduced in March 2020 due to the COVID-19 pandemic. The airlines below suspended services to and from Australia in February 2021:

Air Chathams,  
Air Mauritius,  
AirAsia X,  
Batik Air Indonesia,  
Beijing Capital Airlines,  
British Airways,  
Cebu Pacific Air,  
Citilink Indonesia,  
Donghai Airlines,  
Hawaiian Airlines,  
Indonesia AirAsia,  
Jetstar Asia,  
Pacific Air Express,  
Samoa Airways,  
Sichuan Airlines,  
Silk Air,  
South African Airways,  
Thai AirAsia X,  
Tianjin Airlines,  
Virgin Australia.