



Australian Government

Department of Infrastructure, Transport, Regional Development and Communications

Bureau of Infrastructure and Transport Research Economics

STATISTICAL REPORT



Aviation

International airline activity
January 2021

© Commonwealth of Australia 2021

ISSN: 1324-5074

Ownership of intellectual property rights in this publication

Unless otherwise noted, copyright (and any other intellectual property rights, if any) in this publication is owned by the Commonwealth of Australia (referred to below as the Commonwealth).

Disclaimer

The material contained in this publication is made available on the understanding that the Commonwealth is not providing professional advice, and that users exercise their own skill and care with respect to its use, and seek independent advice if necessary.

The Commonwealth makes no representations or warranties as to the contents or accuracy of the information contained in this publication. To the extent permitted by law, the Commonwealth disclaims liability to any person or organization in respect of anything done, or omitted to be done, in reliance upon information contained in this publication.

Creative Commons licence

With the exception of (a) the Coat of Arms; and (b) the Department of Infrastructure, Transport, Regional Development and Communications' photos and graphics, copyright in this publication is licensed under a Creative Commons Attribution 3.0 Australia Licence.

Creative Commons Attribution 3.0 Australia Licence is a standard form licence agreement that allows you to copy, communicate and adapt this publication provided that you attribute the work to the Commonwealth and abide by the other licence terms. A summary of the licence terms is available from <http://creativecommons.org/licences/by/3.0/au/deed.en>. The full licence terms are available from <http://creativecommons.org/licences/by/3.0/au/legalcode>.

Use of the Coat of Arms

The Department of the Prime Minister and Cabinet sets the terms under which the Coat of Arms is used. Please refer to the Department's Commonwealth Coat of Arms and Government branding web page <http://www.dpmc.gov.au/guidelines/index.cfm#brand> and, in particular, the Guidelines on the use of the Commonwealth Coat of Arms publication.

An appropriate citation for this report is:

Bureau of Infrastructure and Transport Research Economics (BITRE), 2021, International airline activity, Statistical Report, BITRE, Canberra ACT.

Contact us

This publication is available in PDF format. All other rights are reserved, including in relation to any Departmental logos or trademarks which may exist. For enquiries regarding the licence and any use of this publication, please contact:

Bureau of Infrastructure and Transport Research Economics (BITRE)
Department of Infrastructure, Transport, Regional Development and Communications
GPO Box 501, Canberra ACT 2601, Australia
Telephone: (international) +61 2 6274 7210
Fax: (international) +61 2 6274 6855
Email: bitre@infrastructure.gov.au
Website: www.bitre.gov.au

Inquiries

Should you require additional information about the statistics contained in this publication:

Telephone (02) 6274 7790 or Facsimile (02) 6274 7727

Electronic mail: AVSTATS@infrastructure.gov.au

Web site: <http://www.bitre.gov.au/statistics/aviation/international.aspx>

CONTENTS

Highlights for the Month	4-5
Detailed Monthly Tables	
1. Scheduled International Air Traffic to and from Australia.....	6-7
2. Scheduled Operator Market Shares and Growth	8-11
3. Airline Passenger Capacity and Utilisation to and from Australia by Operator ...	12-13
4. Australian International Airport Scheduled Traffic and Aircraft Movements	14-15
5. Scheduled International Passengers and Freight by City Pairs	16-21
6. International Airlines Own Stopover Revenue Passengers, Australian City Pairs	22
Year ended summary figures.....	23-24
Explanatory Notes	25-27
Data Issues and Notes on Airline Services	28

HIGHLIGHTS – JANUARY 2021

- Forty-seven international airlines operated scheduled services to/from Australia during the month (includes five dedicated freight airlines but excludes airlines operating only via code share arrangements).
- International scheduled passenger traffic in January 2021 was 67 472 compared to 4.154 million in January 2020 – a decrease of 98.4 per cent. International air services this month have been severely impacted by travel restrictions due to the COVID-19 pandemic.
- The chart on the next page compares monthly passenger traffic for the year ended January 2021 with monthly passenger traffic for the year ended January 2020. Passenger traffic for the year ended January 2021 was 5.216 million which is a 87.8 per cent decrease over the figure for the year ended January 2020.
- Total seats made available on international scheduled operations to/from Australia during January 2021 were 477 378 – a decrease of 90.6 per cent compared to January 2020. The overall seat utilisation percentage decreased from 83.6 per cent in January 2020 to 14.1 per cent in January 2021.
- In terms of passenger carriage, Qatar Airways and Singapore Airlines had the largest share of the market in January 2021 both with 14.1 per cent of the total followed by Air New Zealand with 12.7 per cent, Emirates with 9.0 per cent and China Southern Airlines with 6.1 per cent.
- The Qantas group – Qantas Airways, Jetstar and Jetstar Asia (0 per cent this month) accounted for 1.6 per cent of total passenger carriage in January 2021. The group's share in January 2020 was 25.4 per cent.
- Australian designated airlines (Qantas Airways, Jetstar and Virgin Australia (0 per cent this month)) also accounted for 1.6 per cent of total passenger carriage in January 2021. The Australian airline share was 31.9 per cent in January 2020.
- Low Cost Carrier (LCCs) Jetstar and Scoot Tigerair accounted for 1.7 per cent of total international passenger traffic to/from Australia in January 2021. The Low Cost Carriers' share in January 2020 was 15.6 per cent.
- International scheduled freight traffic in January 2021 decreased by 14.4 per cent over January 2020 to 72 548 tonnes. Inbound freight traffic decreased by 7.1 per cent and outbound freight traffic decreased by 20.5 per cent compared to January 2020.

Monthly traffic

	Total Jan-19	Total Jan-20	Inbound Jan-21	Outbound Jan-21	Total Jan-21	Growth compared to	
						Jan-20	Jan-19
Passengers Carried	4 073 072	4 154 051	27 823	39 649	67 472	-98.4%	-98.3%
Freight (tonnes)	92 197	84 788	35 612	36 937	72 548	-14.4%	-21.3%
Mail (tonnes)	2 958	3 032	1 178	514	1 692	-44.2%	-42.8%
Available Seats	4 985 750	5 101 647	234 848	242 530	477 378	-90.6%	-90.4%
Flights	18 843	19 359	1 776	1 777	3 553	-81.6%	-81.1%
Aircraft Movements	19 275	19 733	1 932	1 933	3 865	-80.4%	-79.9%

Top ten airlines

Share of passengers carried	Jan-20	Jan-21	Share of freight carried	Jan-20	Jan-21
Qatar Airways	2.9%	14.1%	Singapore Airlines	15.3%	13.6%
Singapore Airlines	7.7%	14.1%	Federal Express Corporation	4.0%	9.9%
Air New Zealand	6.5%	12.7%	Cathay Pacific Airways	6.5%	8.8%
Emirates	6.8%	9.0%	Qantas Airways	10.6%	8.5%
China Southern Airlines	3.9%	6.1%	Qatar Airways	3.6%	7.4%
Etihad Airways	2.3%	4.3%	Emirates	8.0%	6.7%
United Airlines	1.5%	4.2%	Kalitta Air	0.0%	3.7%
SriLankan Airlines	0.4%	3.9%	China Southern Airlines	4.3%	3.6%
Cathay Pacific Airways	4.3%	3.4%	United Airlines	1.5%	3.5%
China Eastern Airlines	2.2%	3.2%	China Airlines	1.9%	3.4%

Top five city pairs

Passengers		Jan-21	% of Total	Freight (tonnes)		Jan-21	% of Total
Sydney	Auckland	3 959	5.9%	Sydney	Singapore	6 376	8.8%
Sydney	Los Angeles	3 369	5.0%	Melbourne	Singapore	4 610	6.4%
Melbourne	Auckland	3 156	4.7%	Sydney	Hong Kong	4 137	5.7%
Sydney	Singapore	2 709	4.0%	Sydney	Los Angeles	3 802	5.2%
Brisbane	Auckland	2 502	3.7%	Sydney	Guangzhou	3 558	4.9%

Major International Airports

Passengers		Jan-21	% of Total	Freight (tonnes)		Jan-21	% of Total
Sydney		31 716	47.0%	Sydney		45 627	62.9%
Melbourne		17 093	25.3%	Melbourne		17 117	23.6%
Brisbane		9 943	14.7%	Brisbane		4 176	5.8%
Perth		5 685	8.4%	Perth		3 948	5.4%

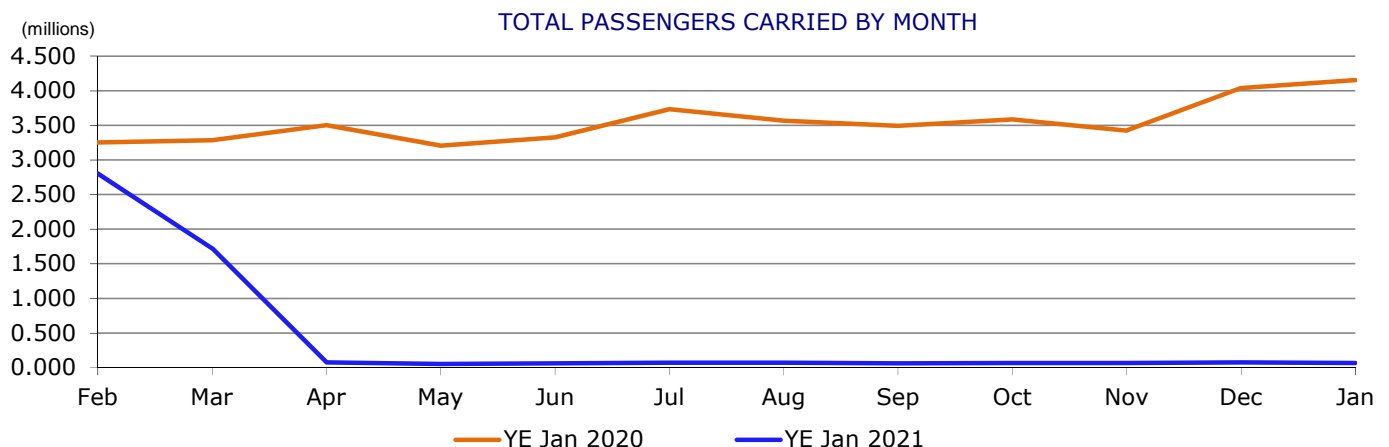


TABLE 1 SCHEDULED INTERNATIONAL AIR TRAFFIC TO AND FROM AUSTRALIA: January 2021

Scheduled Operator	Country to/from	Inbound			Outbound		
		Passengers	Freight (tonnes)	Mail (tonnes)	Passengers	Freight (tonnes)	Mail (tonnes)
Air Caledonie International	New Caledonia	74	10.7	0.8	55	90.4	4.7
Air Canada	Canada	..	163.8	37.7
	New Zealand	313.7	58.8
Air Canada	ALL SERVICES	..	163.8	37.7	..	313.7	58.8
Air China	China	..	785.1	22.2	..	759.0	-
Air India	India	316	8.2	44.4	601	22.6	-
Air New Zealand	New Zealand	4 996	461.2	30.3	3 558	544.0	-
Air Niugini	Papua New Guinea	916	103.3	-	818	201.9	-
Air Vanuatu	Vanuatu	51	1.2	-	219	3.5	-
All Nippon Airways	Japan	521	419.2	3.2	340	468.5	-
American Airlines	USA	404	356.7	68.6	631	287.4	9.8
Asiana Airlines	Korea	142	34.6	-	616	56.8	-
Beijing Capital Airlines	China	..	80.2	-	..	68.8	-
Cathay Pacific Airways	Hong Kong (SAR)	1 134	2 506.9	83.0	1 165	3 881.1	-
China Airlines	New Zealand	..	9.8	-	..	41.0	-
	Taiwan	208	667.6	65.6	660	1 712.5	1.9
China Airlines	ALL SERVICES	208	677.4	65.6	660	1 753.5	1.9
China Eastern Airlines	China	154	617.7	27.6	1 985	804.8	-
China Southern Airlines	China	216	1 496.7	136.9	3 867	1 128.2	-
Delta Air Lines	USA	649	190.6	53.1	734	270.4	-
Emirates	Hong Kong (SAR)	688.9	-
	New Zealand	..	31.3	0.3	..	26.6	-
	Singapore	..	367.8	2.3	..	438.9	4.6
	Thailand	208.4	-
	United Arab Emirates	1 565	2 098.2	106.8	4 536	1 001.0	65.1
Emirates	ALL SERVICES	1 565	2 497.2	109.5	4 536	2 363.7	69.6
Etihad Airways	United Arab Emirates	1 465	467.1	18.5	1 427	942.2	67.2
Eva Air	Taiwan	..	312.8	-	..	473.9	-
Federal Express Corporation	China	2 960.5	-
	Hong Kong (SAR)	20.8	-
	New Zealand	..	123.4	-
	Singapore	..	1 311.2	-	..	391.3	-
	USA	..	2 383.3	-
Federal Express Corporation	ALL SERVICES	..	3 818.0	-	..	3 372.6	-
Fiji Airways	Fiji	343	212.9	0.1	343	139.5	11.8
Garuda Indonesia	Indonesia	380	215.8	36.7	560	231.6	-
Hainan Airlines	China	..	207.5	-	..	257.0	-
Hong Kong Airlines	Hong Kong (SAR)	..	264.3	-	..	218.7	-
Japan Airlines	Japan	323	222.4	108.6	220	281.2	8.3
Jetstar	New Zealand	443	-	-	14	-	-
Kalitta Air	Hong Kong (SAR)	..	-	-	..	238.2	-
	Singapore	882.1	-
	USA	..	1 569.8	-	..	-	-
Kalitta Air	ALL SERVICES	..	1 569.8	-	..	1 120.3	-
Korean Air	Korea	25	9.4	-	84	1.7	-
LATAM Airlines	Chile	26	7.9	-
Malaysia Airlines	Malaysia	428	1 109.3	16.0	756	1 173.6	-
Malindo Air	Malaysia	167	-	-
Nauru Airlines	Nauru	86	8.5	-	114	83.8	-
	Solomon Islands	24.6	-
Nauru Airlines	ALL SERVICES	86	8.5	-	114	108.5	-
Philippine Airlines	Philippines	89	0.7	-	115	-	-
Polar Air Cargo	Guam	..	510.6	-
	Japan	..	718.0	-	..	315.9	7.6
	Korea	189.4	-
	New Zealand	89.8	-
Polar Air Cargo	ALL SERVICES	..	1 228.6	-	..	595.1	7.6
Qantas Airways	China	..	357.9	-	..	1 200.4	-
	Hong Kong (SAR)	..	826.9	0.8	..	682.1	-
	Japan	..	69.1	0.3	..	27.0	0.0
	New Zealand	430	570.1	0.7	176	404.0	2.0
	Singapore	..	121.8	-	..	144.1	-
	Thailand	..	19.8	-	..	260.5	-
	USA	..	1 426.1	5.8	..	56.9	-
	Vietnam	24.9	-
Qantas Airways	ALL SERVICES	430	3 391.8	7.5	176	2 799.9	2.0
Qatar Airways	New Zealand	..	326.7	-	..	60.4	0.5
	Qatar	4 697	2 138.8	134.2	4 684	2 816.7	49.1

TABLE 1 SCHEDULED INTERNATIONAL AIR TRAFFIC TO AND FROM AUSTRALIA: January 2021

Scheduled Operator	Country to/from	Inbound			Outbound		
		Passengers	Freight (tonnes)	Mail (tonnes)	Passengers	Freight (tonnes)	Mail (tonnes)
Qatar Airways	USA	160	-	-
Qatar Airways	ALL SERVICES	4 857	2 465.5	134.2	4 684	2 877.2	49.6
Royal Brunei Airlines	Brunei	24	58.2	0.1	32	150.1	-
Scoot Tigerair	Singapore	391	695.8	-	328	967.9	-
Singapore Airlines	New Zealand	..	294.3	-	..	583.4	8.3
	Singapore	5 081	4 557.9	38.6	4 432	4 426.9	10.0
Singapore Airlines	ALL SERVICES	5 081	4 852.2	38.6	4 432	5 010.4	18.3
Solomon Airlines	Solomon Islands	75	3.2	-	87	20.3	-
SriLankan Airlines	Singapore	..	37.2	-	..	83.9	-
	Sri Lanka	407	149.6	-	2 229	65.6	-
SriLankan Airlines	ALL SERVICES	407	186.8	-	2 229	149.5	-
Tasman Cargo Airlines	New Zealand	..	959.2	-	..	791.5	-
Thai Airways International	Thailand	94	67.0	6.9	299	99.7	-
United Airlines	New Zealand	-	129.8	32.0	-	77.8	52.7
	USA	1 161	1 058.9	92.9	1 697	1 290.4	147.1
United Airlines	ALL SERVICES	1 161	1 188.7	124.9	1 697	1 368.2	199.8
United Parcel Service	Korea	246.4	-
	Singapore	119.3	-
	USA	..	1 328.6	-
United Parcel Service	ALL SERVICES	..	1 328.6	-	..	365.8	-
Vietnam Airlines	Vietnam	123	231.1	0.6	349	281.1	4.4
Xiamen Airlines	China	226	118.0	3.1	1 751	120.6	-
TOTAL		27 823	35 611.8	1 178.5	39 649	36 936.7	513.8

Please refer to explanatory notes - paragraphs 3, 6 and 13 in particular.

TABLE 2 SCHEDULED OPERATOR MARKET SHARES AND GROWTH: January

Scheduled Operators	Country to/from	Total Passengers				Total Freight (tonnes)				Total Mail (tonnes)			
		2020	2021	(%) of TOTAL	(%) Change	2020	2021	(%) of TOTAL	(%) Change	2020	2021	(%) of TOTAL	(%) Change
Air Caledonie International	New Caledonia	14 987	129	0.2	-99.1	74.3	101.2	0.1	36.2	8.0	5.5	0.3	-31.6
Air Canada	Canada	36 549	-100.0	709.4	163.8	0.2	-76.9	19.3	37.7	2.2	95.6
	New Zealand	313.7	0.4	58.8	3.5	..
Air Canada	ALL SERVICES	36 549	-100.0	709.4	477.5	0.7	-32.7	19.3	96.5	5.7	400.9
Air Chathams (a)	New Zealand	385	-100.0	0.5	-100.0	-
Air China	China	37 564	-100.0	753.6	1 544.1	2.1	104.9	68.8	22.2	1.3	-67.8
Air India	India	16 297	917	1.4	-94.4	301.0	30.8	0.0	-89.8	16.7	44.4	2.6	165.9
Air Mauritius (a)	Mauritius	6 238	-100.0	66.7	-100.0	0.2	-100.0
Air New Zealand	Cook Islands	2 627	-100.0	1.6	-100.0	0.2	-100.0
	New Zealand	267 535	8 554	12.7	-96.8	4 266.5	1 005.3	1.4	-76.4	136.1	30.3	1.8	-77.8
Air New Zealand	ALL SERVICES	270 162	8 554	12.7	-96.8	4 268.1	1 005.3	1.4	-76.4	136.3	30.3	1.8	-77.8
Air Niugini	Papua New Guinea	13 316	1 734	2.6	-87.0	364.6	305.3	0.4	-16.3	-	-	-	..
Air Vanuatu	Vanuatu	15 117	270	0.4	-98.2	31.9	4.7	0.0	-85.2	6.1	-	-	-100.0
AirAsia X (a)	Malaysia	118 274	-100.0	1 586.9	-100.0	-
All Nippon Airways	Japan	20 749	861	1.3	-95.9	722.2	887.7	1.2	22.9	2.0	3.2	0.2	57.6
American Airlines	USA	15 602	1 035	1.5	-93.4	208.5	644.2	0.9	209.0	25.3	78.4	4.6	210.0
Asiana Airlines	Korea	24 482	758	1.1	-96.9	210.4	91.5	0.1	-56.5	14.4	-	-	-100.0
Batik Air Indonesia (a)	Indonesia	7 501	-100.0	-	-
Beijing Capital Airlines	China	10 077	-100.0	322.7	149.1	0.2	-53.8	-	-	-	..
British Airways (a)	Singapore	6 536	-100.0	219.9	-100.0	-
	UK	10 073	-100.0	282.9	-100.0	15.1	-100.0
British Airways	ALL SERVICES	16 609	-100.0	502.8	-100.0	15.1	-100.0
Cathay Pacific Airways	Hong Kong (SAR)	178 469	2 299	3.4	-98.7	5 552.7	6 387.9	8.8	15.0	169.4	83.0	4.9	-51.0
Cebu Pacific Air (a)	Philippines	25 540	-100.0	480.6	-100.0	-
China Airlines	New Zealand	10 896	-100.0	260.4	50.8	0.1	-80.5	-	-	-	..
	Taiwan	46 864	868	1.3	-98.1	1 340.0	2 380.1	3.3	77.6	102.7	67.5	4.0	-34.3
China Airlines	ALL SERVICES	57 760	868	1.3	-98.5	1 600.4	2 431.0	3.4	51.9	102.7	67.5	4.0	-34.3
China Eastern Airlines	China	90 337	2 139	3.2	-97.6	2 895.7	1 422.5	2.0	-50.9	55.5	27.6	1.6	-50.2
China Southern Airlines	China	160 902	4 083	6.1	-97.5	3 651.2	2 624.9	3.6	-28.1	117.3	136.9	8.1	16.6
Citilink Indonesia (a)	Indonesia	9 358	-100.0	97.3	-100.0	-
Delta Air Lines	USA	15 883	1 383	2.0	-91.3	447.7	461.1	0.6	3.0	11.5	53.1	3.1	362.4
Donghai Airlines (a)	China	867	-100.0	2.4	-100.0	-
Emirates	Hong Kong (SAR)	70.7	688.9	0.9	873.8	-	-	-	..
	New Zealand	20 864	-100.0	232.8	57.9	0.1	-75.1	-	0.3	0.0	..
	Singapore	21 589	-100.0	239.2	806.6	1.1	237.3	0.4	6.9	0.4	>999.9
	Thailand	208.4	0.3	-	-	..
	United Arab Emirates	237 978	6 101	9.0	-97.4	6 019.1	3 099.2	4.3	-48.5	111.5	171.9	10.2	54.2
	USA	253.3	-100.0	-
Emirates	ALL SERVICES	280 431	6 101	9.0	-97.8	6 815.1	4 861.0	6.7	-28.7	111.9	179.1	10.6	60.1
Ethiad Airways	United Arab Emirates	95 076	2 892	4.3	-97.0	1 901.3	1 409.2	1.9	-25.9	67.1	85.7	5.1	27.8
Eva Air	Taiwan	17 630	-100.0	440.5	786.7	1.1	78.6	2.3	-	-	-100.0

TABLE 2 SCHEDULED OPERATOR MARKET SHARES AND GROWTH: January

Scheduled Operators	Country to/from	Total Passengers				Total Freight (tonnes)				Total Mail (tonnes)			
		2020	2021	(%) of TOTAL	(%) Change	2020	2021	(%) of TOTAL	(%) Change	2020	2021	(%) of TOTAL	(%) Change
Federal Express Corporation	China	1 330.5	2 960.5	4.1	122.5	-	-	-	..
	Hong Kong (SAR)	20.8	0.0	-	-	..
	New Zealand	123.4	0.2	-	-	..
	Singapore	1 047.8	1 702.6	2.3	62.5	-	-	-	..
	USA	1 012.6	2 383.3	3.3	135.4	-	-	-	..
Federal Express Corporation	ALL SERVICES	3 390.9	7 190.6	9.9	112.1	-	-	-	..
Fiji Airways	Fiji	48 159	686	1.0	-98.6	398.2	352.5	0.5	-11.5	4.4	11.9	0.7	167.7
Garuda Indonesia	Indonesia	55 525	940	1.4	-98.3	1 387.9	447.3	0.6	-67.8	64.3	36.7	2.2	-43.0
Hainan Airlines	China	18 974	-100.0	472.8	464.5	0.6	-1.7	-	-	-	..
Hawaiian Airlines (a)	USA	20 630	-100.0	305.9	-100.0	-
Hong Kong Airlines (b)	Hong Kong (SAR)	483.0	0.7	-	-	..
Indonesia AirAsia (a)	Indonesia	27 920	-100.0	6.4	-100.0	-
Japan Airlines	Japan	21 719	543	0.8	-97.5	748.3	503.6	0.7	-32.7	87.4	116.9	6.9	33.6
Jetstar	Fiji	7 720	-100.0	1.2	-100.0	-
	Indonesia	138 415	-100.0	304.2	-100.0	1.8	-100.0
	Japan	46 464	-100.0	91.4	-100.0	9.7	-100.0
	Korea	7 267	-100.0	7.9	-100.0	-
	New Zealand	89 334	457	0.7	-99.5	9.3	-	-	-100.0	-	-	-	..
	Singapore	851	-100.0	0.1	-100.0	-
	Thailand	26 029	-100.0	235.2	-100.0	3.0	-100.0
	USA	16 093	-100.0	44.8	-100.0	3.2	-100.0
	Vietnam	16 342	-100.0	228.9	-100.0	-
Jetstar	ALL SERVICES	348 515	457	0.7	-99.9	923.1	-	-	-100.0	17.8	-	-	-100.0
Jetstar Asia (a)	Singapore	8 272	-100.0	2.7	-100.0	-
Kalitta Air (c)	Hong Kong (SAR)	238.2	0.3	-	-	..
	Singapore	882.1	1.2	-	-	..
	USA	1 569.8	2.2	-	-	..
Kalitta Air	ALL SERVICES	2 690.1	3.7	-	-	..
Korean Air	Korea	35 075	109	0.2	-99.7	463.6	11.1	0.0	-97.6	86.4	-	-	-100.0
LATAM Airlines	Chile	11 169	26	0.0	-99.8	317.6	7.9	0.0	-97.5	42.2	-	-	-100.0
	New Zealand	4 461	-100.0	82.7	-100.0	-
LATAM Airlines	ALL SERVICES	15 630	26	0.0	-99.8	400.3	7.9	0.0	-98.0	42.2	-	-	-100.0
Malaysia Airlines	Malaysia	108 399	1 184	1.8	-98.9	3 183.9	2 282.9	3.1	-28.3	27.1	16.0	0.9	-41.2
Malindo Air	Indonesia	15 713	-100.0	-	-	-	..	-	-	-	..
	Malaysia	17 240	167	0.2	-99.0	-	-	-	..	-	-	-	..
Malindo Air	ALL SERVICES	32 953	167	0.2	-99.5	-	-	-	..	-	-	-	..
Nauru Airlines	Nauru	1 143	200	0.3	-82.5	90.3	92.4	0.1	2.3	1.3	-	-	-100.0
	Solomon Islands	198	-100.0	1.2	24.6	0.0	>999.9	-	-	-	..
Nauru Airlines	ALL SERVICES	1 341	200	0.3	-85.1	91.5	117.0	0.2	27.9	1.3	-	-	-100.0
Pacific Air Express (a)	Papua New Guinea	27.3	-100.0	-
Philippine Airlines	Philippines	37 517	204	0.3	-99.5	544.2	0.7	0.0	-99.9	0.9	-	-	-100.0

TABLE 2 SCHEDULED OPERATOR MARKET SHARES AND GROWTH: January

Scheduled Operators	Country to/from	Total Passengers				Total Freight (tonnes)				Total Mail (tonnes)			
		2020	2021	(%) of TOTAL	(%) Change	2020	2021	(%) of TOTAL	(%) Change	2020	2021	(%) of TOTAL	(%) Change
Polar Air Cargo	China	59.7	-100.0	-
	Guam	510.6	0.7	-	-	..
	Japan	413.8	1 033.9	1.4	149.8	-	7.6	0.5	..
	Korea	189.4	0.3	-	-	..
	New Zealand	89.8	0.1	-	-	..
	Taiwan	40.6	-100.0	-
	USA	196.0	-100.0	-
Polar Air Cargo	ALL SERVICES	710.2	1 823.7	2.5	156.8	-	7.6	0.5	..
Qantas Airways	Canada	8 447	-100.0	51.5	-100.0	0.0	-100.0
	Chile	16 430	-100.0	58.0	-100.0	1.6	-100.0
	China	22 935	-100.0	499.9	1 558.4	2.1	211.7	58.4	-	-	-100.0
	Fiji	5 865	-100.0	0.7	-100.0	0.9	-100.0
	Hong Kong (SAR)	57 278	-100.0	1 687.2	1 509.0	2.1	-10.6	73.3	0.8	0.0	-99.0
	Indonesia	31 163	-100.0	276.9	-100.0	1.9	-100.0
	Japan	67 292	-100.0	417.0	96.1	0.1	-76.9	113.5	0.3	0.0	-99.8
	Malaysia	127.5	-100.0	-
	New Caledonia	7 024	-100.0	1.5	-100.0	2.9	-100.0
	New Zealand	178 498	606	0.9	-99.7	1 653.2	974.1	1.3	-41.1	212.8	2.7	0.2	-98.7
	Papua New Guinea	7 445	-100.0	6.8	-100.0	3.5	-100.0
	Philippines	11 674	-100.0	146.6	-100.0	6.5	-100.0
	Singapore	96 907	-100.0	1 908.4	266.0	0.4	-86.1	165.4	-	-	-100.0
	South Africa	14 700	-100.0	141.5	-100.0	4.2	-100.0
	Thailand	14 375	-100.0	209.8	280.3	0.4	33.6	19.8	-	-	-100.0
	UK	23 360	-100.0	203.8	-100.0	64.3	-100.0
	USA	135 156	-100.0	1 583.4	1 483.0	2.0	-6.3	292.5	5.8	0.3	-98.0
	Vietnam	24.9	0.0	-	-	..
Qantas Airways	ALL SERVICES	698 549	606	0.9	-99.9	8 973.6	6 191.7	8.5	-31.0	1 021.3	9.5	0.6	-99.1
Qatar Airways	New Zealand	387.1	0.5	0.5	0.0	..
	Qatar	119 535	9 381	13.9	-92.2	3 018.7	4 955.6	6.8	64.2	69.7	183.3	10.8	163.1
	USA	..	160	0.2	-	-	-	-	..
Qatar Airways	ALL SERVICES	119 535	9 541	14.1	-92.0	3 018.7	5 342.7	7.4	77.0	69.7	183.8	10.9	163.8
Royal Brunei Airlines	Brunei	17 285	56	0.1	-99.7	437.5	208.3	0.3	-52.4	0.0	0.1	0.0	436.0
Samoa Airways (a)	Western Samoa	3 877	-100.0	2.6	-100.0	-
Scoot Tigerair	Singapore	102 139	719	1.1	-99.3	306.7	1 663.7	2.3	442.5	-	-	-	..
Sichuan Airlines (a)	China	10 530	-100.0	233.2	-100.0	-
Silk Air (a)	Singapore	16 540	-100.0	22.0	-100.0	-
Singapore Airlines	New Zealand	3 305	-100.0	549.4	877.7	1.2	59.8	-	8.3	0.5	..
	Singapore	317 881	9 513	14.1	-97.0	12 428.7	8 984.8	12.4	-27.7	342.0	48.5	2.9	-85.8
Singapore Airlines	ALL SERVICES	321 186	9 513	14.1	-97.0	12 978.1	9 862.5	13.6	-24.0	342.0	56.9	3.4	-83.4
Solomon Airlines	Solomon Islands	3 265	162	0.2	-95.0	27.1	23.5	0.0	-13.2	-	-	-	..
South African Airways (a)	South Africa	12 798	-100.0	262.0	-100.0	-

TABLE 2 SCHEDULED OPERATOR MARKET SHARES AND GROWTH: January

Scheduled Operators	Country to/from	Total Passengers				Total Freight (tonnes)				Total Mail (tonnes)			
		2020	2021	(%) of TOTAL	(%) Change	2020	2021	(%) of TOTAL	(%) Change	2020	2021	(%) of TOTAL	(%) Change
SriLankan Airlines	Singapore	121.1	0.2	-	-	..
	Sri Lanka	16 091	2 636	3.9	-83.6	583.1	215.1	0.3	-63.1	-	-	-	..
SriLankan Airlines	ALL SERVICES	16 091	2 636	3.9	-83.6	583.1	336.3	0.5	-42.3	-	-	-	..
Tasman Cargo Airlines	New Zealand	920.9	1 750.7	2.4	90.1	-	-	-	..
Thai AirAsia X (a)	Thailand	7 216	-100.0	10.8	-100.0	-
Thai Airways International	Thailand	81 484	393	0.6	-99.5	2 464.7	166.7	0.2	-93.2	42.2	6.9	0.4	-83.7
Tianjin Airlines (a)	China	8 926	-100.0	267.6	-100.0	18.1	-100.0
United Airlines	New Zealand	..	-	-	207.6	0.3	84.7	5.0	..
	USA	60 939	2 858	4.2	-95.3	1 270.6	2 349.3	3.2	84.9	230.5	240.0	14.2	4.1
United Airlines	ALL SERVICES	60 939	2 858	4.2	-95.3	1 270.6	2 556.9	3.5	101.2	230.5	324.7	19.2	40.8
United Parcel Service	China	231.9	-100.0	-
	Korea	57.9	246.4	0.3	325.6	-	-	-	..
	Singapore	233.3	119.3	0.2	-48.9	-	-	-	..
	USA	1 052.9	1 328.6	1.8	26.2	-	-	-	..
United Parcel Service	ALL SERVICES	1 576.0	1 694.3	2.3	7.5	-	-	-	..
Vietnam Airlines	Vietnam	37 547	472	0.7	-98.7	1 346.0	512.2	0.7	-61.9	4.6	5.0	0.3	9.6
Virgin Australia (a)	Fiji	23 762	-100.0	45.8	-100.0	-
	Hong Kong (SAR)	25 348	-100.0	941.2	-100.0	-
	Indonesia	27 318	-100.0	15.8	-100.0	-
	New Zealand	139 125	-100.0	70.6	-100.0	-
	Papua New Guinea	2 011	-100.0	4.4	-100.0	-
	Solomon Islands	1 206	-100.0	9.8	-100.0	-
	Tonga	2 585	-100.0	1.7	-100.0	-
	USA	47 763	-100.0	1 080.7	-100.0	-
	Vanuatu	5 173	-100.0	7.8	-100.0	-
	Western Samoa	3 588	-100.0	0.7	-100.0	-
Virgin Australia	ALL SERVICES	277 879	-100.0	2 178.6	-100.0	-
Xiamen Airlines	China	21 474	1 977	2.9	-90.8	843.1	238.6	0.3	-71.7	21.5	3.1	0.2	-85.6
TOTAL		4 154 051	67 472	100.0	-98.4	84 788.5	72 548.5	100.0	-14.4	3 031.5	1 692.2	100.0	-44.2

Please refer to explanatory notes - paragraphs 3, 6 and 13 in particular.

(a) Scheduled services suspended due to COVID-19 pandemic.

(b) Service recommenced June 2020.

(c) Scheduled services commenced March 2020.

TABLE 3 AIRLINE PASSENGER CAPACITY AND UTILISATION TO AND FROM AUSTRALIA BY OPERATOR: January 2021

Scheduled Operator	Service to/from	Inbound				Outbound			
		No. of Flights	Pax Carried	Seats Available	Seat Utilisation %	No. of Flights	Pax Carried	Seats Available	Seat Utilisation %
Air Caledonie International	New Caledonia	4	74	1 153	6.4	4	55	1 139	4.8
Air Canada	Canada	16	-
	New Zealand	-	14
Air Canada	ALL SERVICES	16	14
Air China	China	37	37
Air India	India	5	316	1 280	24.7	5	601	1 280	47.0
Air New Zealand	New Zealand	64	4 996	13 437	37.2	75	3 558	14 753	24.1
Air Niugini	Papua New Guinea	25	916	4 721	19.4	25	818	4 700	17.4
Air Vanuatu	Vanuatu	2	51	352	14.5	2	219	352	62.2
All Nippon Airways	Japan	25	521	4 800	10.9	24	340	4 800	7.1
American Airlines	USA	27	404	4 260	9.5	27	631	4 544	13.9
Asiana Airlines	Korea	5	142	1 530	9.3	5	616	1 530	40.3
Beijing Capital Airlines	China	3	3
Cathay Pacific Airways	Hong Kong (SAR)	112	1 134	24 176	4.7	111	1 165	24 068	4.8
China Airlines	New Zealand	12	12
	Taiwan	73	208	2 757	7.5	73	660	2 754	24.0
China Airlines	ALL SERVICES	85	208	2 757	7.5	85	660	2 754	24.0
China Eastern Airlines	China	37	154	2 198	7.0	37	1 985	2 826	70.2
China Southern Airlines	China	63	216	4 512	4.8	63	3 867	4 512	85.7
Delta Air Lines	USA	23	649	6 622	9.8	25	734	7 224	10.2
Emirates	New Zealand	4	3
	United Arab Emirates	99	1 565	11 008	14.2	100	4 536	13 922	32.6
Emirates	ALL SERVICES	103	1 565	11 008	14.2	103	4 536	13 922	32.6
Etihad Airways	United Arab Emirates	48	1 465	13 818	10.6	47	1 427	13 420	10.6
Eva Air	Taiwan	13	13
Federal Express Corporation (a)	China	-	52
	Hong Kong (SAR)	-	2
	Singapore	18	7
	USA	46	-
Federal Express Corporation	ALL SERVICES	64	61
Fiji Airways	Fiji	19	343	3 028	11.3	18	343	1 936	17.7
Garuda Indonesia	Indonesia	17	380	3 840	9.9	20	560	4 415	12.7
Hainan Airlines	China	12	12
Hong Kong Airlines	Hong Kong (SAR)	16	16
Japan Airlines	Japan	30	323	2 046	15.8	30	220	2 418	9.1
Jetstar	New Zealand	6	443	1 116	39.7	6	14	1 110	1.3
Kalitta Air (a)	USA	34	33
Korean Air	Korea	2	25	544	4.6	2	84	544	15.4
LATAM Airlines	Chile	3	26	303	8.6	-
Malaysia Airlines	Malaysia	63	428	3 480	12.3	62	756	3 190	23.7
Malindo Air	Malaysia	-	1	167	180	92.8
Nauru Airlines	Nauru	11	86	384	22.4	11	114	384	29.7
Philippine Airlines	Philippines	3	89	504	17.7	2	115	336	34.2
Polar Air Cargo (a)	Guam	8	-
	Japan	25	24
	Korea	-	8

TABLE 3 AIRLINE PASSENGER CAPACITY AND UTILISATION TO AND FROM AUSTRALIA BY OPERATOR: January 2021

Scheduled Operator	Service to/from	Inbound				Outbound			
		No. of Flights	Pax Carried	Seats Available	Seat Utilisation %	No. of Flights	Pax Carried	Seats Available	Seat Utilisation %
Polar Air Cargo	ALL SERVICES	33	32
Qantas Airways	China	31	31
	Hong Kong (SAR)	31	32
	Japan	8	9
	New Zealand	30	430	2 372	18.1	30	176	2 367	7.4
	Singapore	9	10
	Thailand	3	7
	USA	20	21
Qantas Airways	ALL SERVICES	132	430	2 372	18.1	140	176	2 367	7.4
Qatar Airways	New Zealand	13	11
	Qatar	139	4 857	39 258	12.4	133	4 684	39 252	11.9
Qatar Airways	ALL SERVICES	152	4 857	39 258	12.4	144	4 684	39 252	11.9
Royal Brunei Airlines	Brunei	9	24	1 778	1.3	9	32	2 032	1.6
Scoot Tigerair	Singapore	47	391	6 375	6.1	46	328	11 533	2.8
Singapore Airlines	New Zealand	8	8
	Singapore	228	5 081	49 306	10.3	229	4 432	48 750	9.1
Singapore Airlines	ALL SERVICES	236	5 081	49 306	10.3	237	4 432	48 750	9.1
Solomon Airlines	Solomon Islands	5	75	544	13.8	5	87	680	12.8
SriLankan Airlines	Sri Lanka	21	407	5 220	7.8	21	2 229	5 274	42.3
Tasman Cargo Airlines (a)	New Zealand	25	25
Thai Airways International	Thailand	4	94	1 017	9.2	4	299	696	43.0
United Airlines	New Zealand	9	-	-	..	9	-	-	..
	USA	80	1 161	13 511	8.6	80	1 697	12 740	13.3
United Airlines	ALL SERVICES	89	1 161	13 511	8.6	89	1 697	12 740	13.3
United Parcel Service (a)	Korea	-	20
	Singapore	-	4
	USA	24	-
United Parcel Service	ALL SERVICES	24	24
Vietnam Airlines	Vietnam	13	123	1 096	11.2	13	349	367	95.1
Xiamen Airlines	China	9	226	2 502	9.0	9	1 751	2 502	70.0
TOTAL		1 776	27 823	234 848	11.8	1 777	39 649	242 530	16.3

Please refer to explanatory notes - paragraphs 4, 5, and 7 in particular.

Seat Factors shown in this table:

Traffic shown in this table for China Airlines, Emirates, Qantas Airways and Singapore Airlines may differ from traffic shown in Tables 1 and 2 because of the inclusion in this table of total traffic into and ex Australia (for seat factor purposes) whereas Tables 1 and 2 include uplift/discharge traffic only. All other airlines report uplift/discharge traffic only. Currently, there are no other airlines operating via Australia, and therefore uplift/discharge traffic is the same as total traffic into and ex Australia for all other airlines.

Available seats have not been counted where passenger aircraft have been used to operate freight only services. However, this adjustment cannot be made for airlines that report monthly aggregates and that have operated a mix of passenger and freight only services using passenger aircraft.

Some airlines have reported adjusted seats to take account of social distancing while others have reported fitted seats.

(a) Freight flights only.

TABLE 4 SCHEDULED INTERNATIONAL AIRPORT TRAFFIC AND AIRCRAFT MOVEMENTS: January

		Inbound			Outbound	Outbound			Total		
		2020	2021	(%) Change		2020	2021	(%) Change	2020	2021	(%) Change
Adelaide	Passengers	63 966	2 115	-96.7	53 541	526	-99.0	117 507	2 641	-97.8	3.9
	Freight (Tonnes)	904	348	-61.5	1 440	457	-68.3	2 344	805	-65.7	1.1
	Aircraft Movements	278	40	-85.6	281	38	-86.5	559	78	-86.0	2.0
Avalon	Passengers	20 504	..	-100.0	18 751	..	-100.0	39 255	..	-100.0	..
	Freight (Tonnes)	288	..	-100.0	575	..	-100.0	864	..	-100.0	..
	Aircraft Movements	69	..	-100.0	69	..	-100.0	138	..	-100.0	..
Brisbane	Passengers	333 471	4 659	-98.6	283 668	5 284	-98.1	617 139	9 943	-98.4	14.7
	Freight (Tonnes)	3 835	1 863	-51.4	5 592	2 312	-58.6	9 427	4 176	-55.7	5.8
	Aircraft Movements	1 628	174	-89.3	1 627	179	-89.0	3 255	353	-89.2	9.1
Cairns	Passengers	28 638	267	-99.1	24 465	127	-99.5	53 103	394	-99.3	0.6
	Freight (Tonnes)	76	1	-98.8	240	87	-63.6	316	88	-72.1	0.1
	Aircraft Movements	169	19	-88.8	168	23	-86.3	337	42	-87.5	1.1
Canberra	Passengers	2 617	..	-100.0	3 087	..	-100.0	5 704	..	-100.0	..
	Freight (Tonnes)	3	..	-100.0	4	..	-100.0	8	..	-100.0	..
	Aircraft Movements	62	..	-100.0	62	..	-100.0	124	..	-100.0	..
Darwin	Passengers	15 026	..	-100.0	10 712	..	-100.0	25 738	..	-100.0	..
	Freight (Tonnes)	23	0	-99.9	6	-	-100.0	30	0	-99.9	0.0
	Aircraft Movements	103	25	-75.7	103	25	-75.7	206	50	-75.7	1.3
Gold Coast	Passengers	52 235	..	-100.0	47 115	..	-100.0	99 350	..	-100.0	..
	Freight (Tonnes)	65	..	-100.0	21	..	-100.0	86	..	-100.0	..
	Aircraft Movements	260	..	-100.0	258	..	-100.0	518	..	-100.0	..
Hobart	Passengers
	Freight (Tonnes)	..	-	432	432	..	0.6
	Aircraft Movements	..	13	13	26	..	0.7
Melbourne	Passengers	581 276	6 753	-98.8	514 803	10 340	-98.0	1 096 079	17 093	-98.4	25.3
	Freight (Tonnes)	9 162	6 997	-23.6	16 478	10 120	-38.6	25 640	17 117	-33.2	23.6
	Aircraft Movements	2 454	437	-82.2	2 454	435	-82.3	4 908	872	-82.2	22.6
Newcastle	Passengers	1 665	..	-100.0	1 425	..	-100.0	3 090	..	-100.0	..
	Freight (Tonnes)	-	-	-
	Aircraft Movements	13	..	-100.0	13	..	-100.0	26	..	-100.0	..
Norfolk Island	Passengers	179	..	-100.0	206	..	-100.0	385	..	-100.0	..
	Freight (Tonnes)	1	..	-100.0	-	1	..	-100.0	..
	Aircraft Movements	5	..	-100.0	5	..	-100.0	10	..	-100.0	..

TABLE 4 SCHEDULED INTERNATIONAL AIRPORT TRAFFIC AND AIRCRAFT MOVEMENTS: January

		Inbound			Outbound			Total			(%) of TOTAL
		2020	2021	(%) Change	2020	2021	(%) Change	2020	2021	(%) Change	
Perth	Passengers	238 157	2 997	-98.7	204 575	2 688	-98.7	442 732	5 685	-98.7	8.4
	Freight (Tonnes)	3 084	1 737	-43.7	4 512	2 211	-51.0	7 596	3 948	-48.0	5.4
	Aircraft Movements	1 045	112	-89.3	1 044	115	-89.0	2 089	227	-89.1	5.9
Port Hedland	Passengers	543	..	-100.0	395	..	-100.0	938	..	-100.0	..
	Freight (Tonnes)	-	-	-
	Aircraft Movements	4	..	-100.0	4	..	-100.0	8	..	-100.0	..
Sydney	Passengers	877 231	11 032	-98.7	775 800	20 684	-97.3	1 653 031	31 716	-98.1	47.0
	Freight (Tonnes)	20 884	24 654	18.1	17 538	20 973	19.6	38 422	45 627	18.8	62.9
	Aircraft Movements	3 776	1 103	-70.8	3 771	1 096	-70.9	7 547	2 199	-70.9	56.9
Toowoomba Wellcamp	Passengers	-	-	..	0.0
	Freight (Tonnes)	21	11	-47.0	36	344	868.5	56	355	529.1	0.5
	Aircraft Movements	4	9	125.0	4	9	125.0	8	18	125.0	0.5
TOTAL	Passengers	2 215 508	27 823	-98.7	1 938 543	39 649	-98.0	4 154 051	67 472	-98.4	100.0
	Freight (Tonnes)	38 346	35 612	-7.1	46 442	36 937	-20.5	84 788	72 548	-14.4	100.0
	Aircraft Movements	9 870	1 932	-80.4	9 863	1 933	-80.4	19 733	3 865	-80.4	100.0

TABLE 5 SCHEDULED INTERNATIONAL TRAFFIC BY CITY PAIRS: January

Foreign Port	Australian Port	Passengers						Freight (tonnes)					
		2020			2021			2020			2021		
		Inbound	Outbound	Total	Inbound	Outbound	Total	Inbound	Outbound	Total	Inbound	Outbound	Total
Auckland	Adelaide	4 741	4 782	9 523	0	0	0	45.2	74.7	119.9	0.0	0.0	0.0
Denpasar		10 716	8 903	19 619	0	0	0	1.4	0.0	1.4	0.0	0.0	0.0
Doha		7 990	6 044	14 034	1 036	307	1 343	263.6	390.6	654.2	148.8	37.0	185.7
Dubai		8 456	7 371	15 827	0	0	0	179.8	205.5	385.3	0.0	0.0	0.0
Guangzhou		5 178	4 544	9 722	0	0	0	80.8	74.0	154.8	0.0	0.0	0.0
Hong Kong		6 122	4 855	10 977	0	0	0	97.0	197.9	294.9	16.8	162.1	179.0
Kuala Lumpur		6 755	5 557	12 312	145	10	155	57.9	218.2	276.1	9.6	18.0	27.6
Los Angeles		0	0	0	13	0	13	0.0	0.0	0.0	0.0	0.0	0.0
Singapore		14 008	11 485	25 493	921	209	1 130	178.2	278.9	457.1	172.5	239.9	412.4
Total	Adelaide	63 966	53 541	117 507	2 115	526	2 641	903.7	1 439.9	2 343.6	347.7	457.0	804.7
Abu Dhabi	Brisbane	8 862	7 081	15 943	0	0	0	101.7	89.9	191.6	0.0	0.0	0.0
Apia		1 855	1 013	2 868	0	0	0	0.7	0.1	0.8	0.0	0.0	0.0
Auckland		45 421	42 747	88 168	1 435	1 067	2 502	361.1	549.1	910.2	476.6	152.7	629.3
Bandar Seri Begawan		2 222	1 948	4 170	0	0	0	0.8	0.3	1.0	0.0	0.0	0.0
Bangkok		8 758	7 745	16 503	0	0	0	170.1	151.6	321.7	0.0	0.0	0.0
Christchurch		15 617	14 012	29 629	0	0	0	19.0	22.5	41.5	0.0	0.0	0.0
Denpasar		18 091	15 648	33 739	0	0	0	65.8	2.7	68.5	0.0	0.0	0.0
Doha		0	0	0	813	697	1 510	0.0	0.0	0.0	132.0	91.1	223.2
Dubai		29 224	20 883	50 107	358	900	1 258	312.3	769.1	1 081.4	155.6	189.1	344.7
Dunedin		2 378	2 111	4 489	0	0	0	0.0	0.0	0.0	0.0	0.0	0.0
Espiritu Santo		334	256	590	0	0	0	0.0	0.3	0.3	0.0	0.0	0.0
Guangzhou		11 356	10 096	21 452	0	0	0	243.3	217.9	461.2	0.0	0.0	0.0
Ho Chi Minh City		0	0	0	0	0	0	0.0	0.0	0.0	0.0	24.9	24.9
Hong Kong		19 757	15 010	34 767	92	79	171	478.2	760.1	1 238.3	201.0	239.2	440.1
Honiara		2 401	2 169	4 570	75	87	162	2.2	36.0	38.1	3.2	44.9	48.2
Honolulu		3 121	2 883	6 004	0	0	0	19.6	44.3	63.9	0.0	0.0	0.0
Kuala Lumpur		5 292	4 213	9 505	0	167	167	113.0	121.2	234.3	0.0	0.0	0.0
Los Angeles		20 747	17 578	38 325	0	0	0	308.5	281.5	590.0	0.0	46.7	46.7
Manila		3 297	2 867	6 164	2	0	2	2.8	7.3	10.1	0.0	0.0	0.0
Munda		0	99	99	0	0	0	0.0	0.0	0.0	0.0	0.0	0.0
Nadi		9 824	8 049	17 873	40	106	146	10.9	23.6	34.4	1.7	0.4	2.1
Nauru		707	436	1 143	86	114	200	5.6	84.7	90.3	8.5	83.8	92.4
New Delhi		0	0	0	223	0	223	0.0	0.0	0.0	0.0	0.0	0.0
Noumea		3 956	3 754	7 710	0	0	0	0.4	9.4	9.8	0.0	0.0	0.0
Port Moresby		7 263	7 955	15 218	649	691	1 340	38.1	235.3	273.4	102.4	201.4	303.8
Port Vila		4 785	3 606	8 391	51	219	270	6.3	13.0	19.3	1.2	3.5	4.7
Queenstown		4 771	4 082	8 853	0	0	0	0.0	0.0	0.0	0.0	0.0	0.0
Seoul		7 954	5 931	13 885	0	0	0	63.6	198.9	262.5	0.0	0.0	0.0
Shanghai		6 551	5 100	11 651	0	0	0	126.0	105.3	231.3	0.0	0.0	0.0
Shenzhen		1 523	1 505	3 028	0	0	0	104.6	4.8	109.4	0.0	0.0	0.0
Singapore		48 048	40 335	88 383	756	903	1 659	864.1	1 335.1	2 199.2	429.8	633.4	1 063.2
Taipei		16 254	13 373	29 627	79	254	333	282.6	365.5	648.1	319.9	564.4	884.3
Tokyo		8 261	7 703	15 964	0	0	0	76.1	56.1	132.2	31.0	37.0	68.1
Vancouver		6 780	5 886	12 666	0	0	0	57.6	104.5	162.1	0.0	0.0	0.0
Wellington		8 061	7 594	15 655	0	0	0	0.4	1.6	2.0	0.0	0.0	0.0
Total	Brisbane	333 471	283 668	617 139	4 659	5 284	9 943	3 835.4	5 591.7	9 427.1	1 863.1	2 312.5	4 175.5
Denpasar	Cairns	2 973	2 796	5 769	0	0	0	0.0	0.0	0.0	0.0	0.0	0.0
Hong Kong		0	0	0	0	0	0	0.0	64.1	64.1	0.0	71.1	71.1
Osaka		7 183	5 530	12 713	0	0	0	3.1	11.6	14.7	0.0	0.0	0.0

TABLE 5 SCHEDULED INTERNATIONAL TRAFFIC BY CITY PAIRS: January

Foreign Port	Australian Port	Passengers						Freight (tonnes)					
		2020			2021			2020			2021		
		Inbound	Outbound	Total	Inbound	Outbound	Total	Inbound	Outbound	Total	Inbound	Outbound	Total
Port Moresby	Cairns	3 089	3 035	6 124	267	127	394	15.8	109.4	125.2	0.9	0.6	1.5
Shenzhen		2 026	1 446	3 472	0	0	0	10.5	48.5	59.0	0.0	0.0	0.0
Singapore		4 457	4 268	8 725	0	0	0	0.0	0.0	0.0	0.0	12.6	12.6
Tokyo		8 910	7 390	16 300	0	0	0	46.2	6.3	52.5	0.0	2.9	2.9
Total	Cairns	28 638	24 465	53 103	267	127	394	75.7	239.9	315.6	0.9	87.2	88.1
Doha	Canberra	963	621	1 584	0	0	0	0.0	0.0	0.0	0.0	0.0	0.0
Singapore		1 654	2 466	4 120	0	0	0	3.1	4.5	7.6	0.0	0.0	0.0
Total	Canberra	2 617	3 087	5 704	0	0	0	3.1	4.5	7.6	0.0	0.0	0.0
Denpasar	Darwin	5 227	3 557	8 784	0	0	0	2.6	0.0	2.6	0.0	0.0	0.0
Hong Kong		0	0	0	0	0	0	0.0	0.0	0.0	0.0	0.0	0.0
Shenzhen		556	311	867	0	0	0	0.0	2.4	2.4	0.0	0.0	0.0
Singapore		9 243	6 844	16 087	0	0	0	20.7	4.0	24.7	0.0	0.0	0.0
Total	Darwin	15 026	10 712	25 738	0	0	0	23.3	6.4	29.7	0.0	0.0	0.0
Auckland	Gold Coast	16 360	16 214	32 574	0	0	0	3.5	4.6	8.1	0.0	0.0	0.0
Christchurch		3 894	3 520	7 414	0	0	0	0.3	0.1	0.4	0.0	0.0	0.0
Kuala Lumpur		9 744	7 117	16 861	0	0	0	37.3	5.2	42.5	0.0	0.0	0.0
Queenstown		1 757	1 902	3 659	0	0	0	0.0	0.0	0.0	0.0	0.0	0.0
Seoul		3 648	2 843	6 491	0	0	0	0.0	0.0	0.0	0.0	0.0	0.0
Singapore		5 223	4 221	9 444	0	0	0	0.9	10.8	11.7	0.0	0.0	0.0
Tokyo		8 878	8 410	17 288	0	0	0	23.3	0.0	23.3	0.0	0.0	0.0
Wellington		2 731	2 888	5 619	0	0	0	0.0	0.0	0.0	0.0	0.0	0.0
Total	Gold Coast	52 235	47 115	99 350	0	0	0	65.4	20.7	86.1	0.0	0.0	0.0
Hong Kong	Hobart	0	0	0	0	0	0	0.0	0.0	0.0	0.0	432.0	432.0
Total	Hobart	0	0	0	0	0	0	0.0	0.0	0.0	0.0	432.0	432.0
Abu Dhabi	Melbourne	18 820	16 074	34 894	935	662	1 597	266.0	412.8	678.8	245.7	505.2	750.9
Auckland		63 859	61 744	125 603	2 052	1 104	3 156	792.1	1 119.3	1 911.4	461.0	623.2	1 084.2
Bandar Seri Begawan		6 979	6 136	13 115	24	32	56	134.7	301.7	436.5	58.2	150.1	208.3
Bangkok		22 547	20 854	43 401	0	0	0	507.7	959.2	1 466.9	19.8	31.1	50.8
Beijing		7 625	7 073	14 698	0	0	0	23.2	149.8	172.9	0.0	0.0	0.0
Changsha		283	463	746	0	0	0	0.0	0.0	0.0	0.0	0.0	0.0
Chengdu		2 015	1 678	3 693	0	0	0	44.9	42.0	86.8	0.0	0.0	0.0
Chicago		0	0	0	0	0	0	40.0	0.0	40.0	216.9	0.0	216.9
Chongqing		2 745	2 288	5 033	0	0	0	84.2	84.1	168.4	0.0	0.0	0.0
Christchurch		21 379	20 714	42 093	0	0	0	56.9	47.1	104.0	31.3	26.6	57.9
Colombo		8 376	7 715	16 091	197	1 484	1 681	246.5	336.6	583.1	61.5	29.4	90.9
Denpasar		36 127	30 287	66 414	0	0	0	273.1	345.6	618.7	0.0	0.0	0.0
Doha		15 300	14 074	29 374	1 038	1 347	2 385	153.3	439.0	592.4	951.6	1 359.2	2 310.8
Dubai		32 413	26 865	59 278	413	1 320	1 733	565.5	1 342.7	1 908.3	462.9	327.7	790.6
Guangzhou		27 525	23 906	51 431	96	1 762	1 858	462.5	750.4	1 212.9	425.8	521.9	947.7
Guiyang		1 510	1 325	2 835	0	0	0	27.7	31.4	59.0	0.0	0.0	0.0
Haikou		2 011	1 571	3 582	0	0	0	67.6	43.0	110.5	0.0	0.0	0.0
Hangzhou		1 437	1 248	2 685	0	0	0	72.6	0.1	72.7	0.0	0.0	0.0
Ho Chi Minh City		12 292	11 795	24 087	0	0	0	370.2	407.4	777.6	56.6	89.6	146.2
Hong Kong		42 680	34 463	77 143	337	282	619	669.4	1 381.3	2 050.7	872.7	2 266.2	3 139.0
Honolulu		3 622	3 303	6 925	0	0	0	76.0	1.4	77.4	0.2	0.0	0.2
Jakarta		3 940	3 743	7 683	96	215	311	49.2	279.6	328.8	65.4	76.0	141.4
Kuala Lumpur		40 468	36 694	77 162	141	539	680	645.1	1 476.8	2 121.9	324.4	538.9	863.3
London		1 202	1 170	2 372	0	0	0	50.1	0.2	50.3	0.0	0.0	0.0
Los Angeles		30 388	26 826	57 214	147	0	147	225.8	546.3	772.1	116.6	199.6	316.1

TABLE 5 SCHEDULED INTERNATIONAL TRAFFIC BY CITY PAIRS: January

Foreign Port	Australian Port	Passengers						Freight (tonnes)					
		2020			2021			2020			2021		
		Inbound	Outbound	Total	Inbound	Outbound	Total	Inbound	Outbound	Total	Inbound	Outbound	Total
Manila	Melbourne	13 535	11 457	24 992	31	33	64	77.5	444.5	522.0	0.0	0.0	0.0
Nadi		7 655	6 562	14 217	15	66	81	27.6	25.1	52.7	1.2	1.5	2.7
New Delhi		3 109	3 057	6 166	0	0	0	41.9	64.0	105.8	0.0	0.0	0.0
New York		0	0	0	0	0	0	30.6	0.0	30.6	29.5	0.0	29.5
Noumea		1 866	1 567	3 433	0	0	0	0.0	5.5	5.6	0.0	0.0	0.0
Phuket		5 289	4 780	10 069	0	0	0	29.5	9.7	39.2	0.0	0.0	0.0
Port Vila		1 847	1 257	3 104	0	0	0	0.3	3.1	3.3	0.0	0.0	0.0
Qingdao		2 466	2 272	4 738	0	0	0	137.9	43.2	181.0	0.0	0.0	0.0
Queenstown		11 914	11 600	23 514	0	0	0	0.1	0.1	0.2	0.0	0.0	0.0
San Francisco		6 662	5 597	12 259	0	0	0	72.9	89.8	162.8	0.0	0.0	0.0
Santiago		2 388	2 155	4 543	0	0	0	7.3	73.3	80.6	0.0	0.0	0.0
Sapporo		0	0	0	0	0	0	5.5	0.0	5.5	0.0	0.0	0.0
Seoul		151	47	198	0	0	0	5.7	0.0	5.7	0.0	0.0	0.0
Shanghai		17 437	14 156	31 593	0	0	0	482.5	972.1	1 454.5	404.9	463.3	868.2
Shenzhen		3 056	2 408	5 464	0	0	0	144.9	96.6	241.5	0.0	0.0	0.0
Singapore		80 960	69 314	150 274	1 167	1 301	2 468	2 003.6	3 742.6	5 746.2	2 009.5	2 600.2	4 609.7
Taipei		5 208	4 834	10 042	64	193	257	89.6	346.4	435.9	27.5	92.7	120.2
Tokyo		14 028	13 260	27 288	0	0	0	245.0	376.0	621.0	118.7	217.4	336.1
Vancouver		4 472	3 948	8 420	0	0	0	17.6	71.8	89.4	35.4	0.0	35.4
Wellington		11 103	10 149	21 252	0	0	0	16.7	5.1	21.7	0.0	0.0	0.0
Xiamen		3 091	3 125	6 216	0	0	0	109.9	186.5	296.4	0.0	0.0	0.0
Total	Melbourne	601 780	533 554	1 135 334	6 753	10 340	17 093	9 450.5	17 053.1	26 503.6	6 997.4	10 119.6	17 117.0
Auckland	Newcastle	1 665	1 425	3 090	0	0	0	0.0	0.0	0.0	0.0	0.0	0.0
Total	Newcastle	1 665	1 425	3 090	0	0	0	0.0	0.0	0.0	0.0	0.0	0.0
Auckland	Norfolk Island	179	206	385	0	0	0	0.5	0.0	0.5	0.0	0.0	0.0
Total	Norfolk Island	179	206	385	0	0	0	0.5	0.0	0.5	0.0	0.0	0.0
Auckland	Perth	9 757	9 678	19 435	0	0	0	443.2	143.0	586.3	0.0	0.0	0.0
Bangkok		8 024	7 440	15 464	0	0	0	217.1	145.0	362.0	0.0	0.0	0.0
Denpasar		44 981	38 027	83 008	0	0	0	64.1	49.2	113.3	0.0	0.0	0.0
Doha		14 941	12 957	27 898	907	773	1 680	195.7	573.4	769.0	271.1	453.9	725.0
Dubai		20 904	17 600	38 504	449	798	1 247	309.5	439.3	748.8	226.9	114.8	341.7
Guangzhou		5 046	4 622	9 668	0	0	0	86.4	146.5	232.9	0.0	0.0	0.0
Hong Kong		13 022	10 752	23 774	127	125	252	317.9	649.0	966.9	232.3	371.5	603.7
Jakarta		2 489	2 300	4 789	135	105	240	1.9	0.9	2.9	53.5	3.9	57.5
Johannesburg		7 172	5 626	12 798	0	0	0	53.2	208.8	262.0	0.0	0.0	0.0
Kota Kinabalu		448	436	884	0	0	0	0.0	0.5	0.5	0.0	0.0	0.0
Kuala Lumpur		33 276	26 406	59 682	0	0	0	225.8	216.1	441.9	74.5	102.9	177.4
London		5 587	4 469	10 056	0	0	0	52.9	0.0	52.9	0.0	0.0	0.0
Mauritius		3 171	3 067	6 238	0	0	0	36.5	30.2	66.7	0.0	0.0	0.0
Singapore		64 926	56 975	121 901	1 379	887	2 266	989.5	1 706.6	2 696.1	878.7	1 164.2	2 042.9
Tokyo		4 413	4 220	8 633	0	0	0	90.0	203.9	293.8	0.0	0.0	0.0
Total	Perth	238 157	204 575	442 732	2 997	2 688	5 685	3 083.7	4 512.4	7 596.2	1 737.1	2 211.1	3 948.2
Denpasar	Port Hedland	543	395	938	0	0	0	0.0	0.0	0.0	0.0	0.0	0.0
Total	Port Hedland	543	395	938	0	0	0	0.0	0.0	0.0	0.0	0.0	0.0
Abu Dhabi	Sydney	24 693	19 546	44 239	530	765	1 295	343.5	687.4	1 030.9	221.3	437.0	658.3
Apia		2 662	1 935	4 597	0	0	0	0.3	2.2	2.5	0.0	0.0	0.0
Auckland		79 691	76 048	155 739	2 382	1 577	3 959	1 459.1	2 193.4	3 652.5	1 488.2	2 029.6	3 517.7
Bangkok		18 547	17 062	35 609	94	299	393	365.5	336.8	702.3	67.0	537.5	604.6
Beijing		15 311	14 167	29 478	0	0	0	256.3	395.3	651.6	0.0	0.0	0.0

TABLE 5 SCHEDULED INTERNATIONAL TRAFFIC BY CITY PAIRS: January

Foreign Port	Australian Port	Passengers						Freight (tonnes)					
		2020			2021			2020			2021		
		Inbound	Outbound	Total	Inbound	Outbound	Total	Inbound	Outbound	Total	Inbound	Outbound	Total
Changsha	Sydney	2 049	1 699	3 748	0	0	0	62.8	18.7	81.5	0.0	0.0	0.0
Chengdu		2 786	2 699	5 485	0	0	0	64.1	45.7	109.8	0.0	0.0	0.0
Chicago		0	0	0	0	0	0	708.5	0.0	708.5	705.7	3.3	708.9
Chongqing		2 212	1 790	4 002	0	0	0	44.1	117.6	161.7	0.0	230.0	230.0
Christchurch		24 283	22 930	47 213	0	0	0	447.5	210.9	658.4	448.7	100.4	549.0
Cincinnati		0	0	0	0	0	0	0.0	0.0	0.0	302.7	0.0	302.7
Colombo		0	0	0	210	745	955	0.0	0.0	0.0	88.1	36.2	124.3
Dallas		8 919	10 563	19 482	0	0	0	116.5	18.5	134.9	59.7	0.0	59.7
Denpasar		33 854	29 606	63 460	0	0	0	318.0	278.0	595.9	0.0	0.0	0.0
Doha		24 273	22 372	46 645	903	1 560	2 463	406.1	597.0	1 003.1	635.3	875.6	1 510.9
Dubai		41 032	33 230	74 262	345	1 518	1 863	988.2	907.1	1 895.3	1 252.8	369.4	1 622.2
Fuzhou		2 762	2 784	5 546	0	0	0	83.3	97.8	181.1	0.0	0.0	0.0
Guam		0	0	0	0	0	0	0.0	0.0	0.0	510.6	0.0	510.6
Guangzhou		29 491	27 363	56 854	120	2 105	2 225	662.1	1 922.5	2 584.6	397.3	3 160.4	3 557.7
Haikou		2 252	2 146	4 398	0	0	0	84.1	28.2	112.3	0.0	0.0	0.0
Hangzhou		1 750	1 475	3 225	133	1 102	1 235	31.8	7.0	38.8	14.5	31.0	45.6
Hanoi		3 034	3 048	6 082	0	0	0	130.6	140.9	271.4	55.9	68.5	124.5
Ho Chi Minh City		12 205	11 515	23 720	123	349	472	373.5	152.5	526.0	118.5	123.0	241.6
Hong Kong		64 011	50 423	114 434	578	679	1 257	1 970.2	1 610.3	3 580.5	2 264.1	1 872.8	4 136.9
Honolulu		18 845	16 912	35 757	0	0	0	303.0	149.3	452.3	2 460.7	9.5	2 470.2
Houston		6 708	6 078	12 786	0	0	0	17.5	125.9	143.3	0.0	0.0	0.0
Jakarta		10 079	8 631	18 710	149	240	389	104.2	252.2	356.3	96.8	151.7	248.4
Johannesburg		7 404	7 296	14 700	0	0	0	127.8	13.8	141.5	0.0	0.0	0.0
Kota Kinabalu		0	0	0	0	0	0	0.0	0.0	0.0	0.0	57.0	57.0
Kuala Lumpur		36 334	31 173	67 507	142	207	349	998.8	782.4	1 781.2	700.8	456.8	1 157.6
Kunming		2 486	2 124	4 610	0	0	0	0.8	44.2	45.0	0.0	0.0	0.0
London		10 299	10 706	21 005	0	0	0	335.7	47.8	383.5	0.0	0.0	0.0
Los Angeles		48 892	42 452	91 344	1 437	1 932	3 369	1 688.7	997.6	2 686.3	2 615.7	1 186.4	3 802.1
Louisville		0	0	0	0	0	0	1 052.9	0.0	1 052.9	1 328.6	0.0	1 328.6
Manila		23 260	20 315	43 575	56	82	138	330.6	308.6	639.2	0.7	0.0	0.7
Nadi		28 983	23 856	52 839	288	171	459	173.9	185.0	358.9	210.0	137.7	347.7
Nanjing		1 903	1 720	3 623	0	0	0	40.4	8.0	48.4	207.5	257.0	464.5
New Delhi		5 201	4 930	10 131	93	601	694	94.8	100.3	195.1	8.2	22.6	30.8
New York		1 658	1 329	2 987	0	0	0	160.4	12.7	173.1	175.0	0.0	175.0
Noumea		6 028	4 840	10 868	74	55	129	2.2	58.2	60.4	10.7	90.4	101.2
Osaka		5 226	4 634	9 860	0	0	0	31.4	45.4	76.8	0.0	0.0	0.0
Phuket		4 124	3 934	8 058	0	0	0	23.3	5.1	28.4	0.0	0.0	0.0
Port Moresby		649	781	1 430	0	0	0	0.9	3.7	4.6	0.0	0.0	0.0
Port Vila		4 722	3 483	8 205	0	0	0	0.6	16.3	16.9	0.0	0.0	0.0
Qingdao		2 684	2 655	5 339	0	0	0	112.0	29.7	141.7	0.0	0.0	0.0
Queenstown		19 108	18 451	37 559	0	0	0	0.1	0.0	0.1	0.0	0.0	0.0
Rarotonga		1 412	1 215	2 627	0	0	0	0.0	1.6	1.6	0.0	0.0	0.0
San Francisco		15 119	13 864	28 983	777	1 130	1 907	152.3	215.9	368.2	302.8	459.7	762.5
Santiago		11 836	11 220	23 056	26	0	26	151.0	144.0	294.9	7.9	0.0	7.9
Sapporo		2 542	2 299	4 841	0	0	0	15.5	3.5	19.0	0.0	0.0	0.0
Seoul		25 397	20 853	46 250	167	700	867	170.0	301.5	471.5	44.0	494.3	538.4
Shanghai		23 061	19 746	42 807	21	883	904	547.5	930.3	1 477.8	995.2	1 763.5	2 758.6
Shenzhen		3 591	2 720	6 311	0	0	0	119.4	9.4	128.8	1 099.9	751.7	1 851.7
Singapore		79 916	66 372	146 288	1 249	1 460	2 709	3 609.0	1 656.9	5 265.9	3 601.2	2 774.8	6 376.0

TABLE 5 SCHEDULED INTERNATIONAL TRAFFIC BY CITY PAIRS: January

Foreign Port	Australian Port	Passengers						Freight (tonnes)					
		2020			2021			2020			2021		
		Inbound	Outbound	Total	Inbound	Outbound	Total	Inbound	Outbound	Total	Inbound	Outbound	Total
Suva	Sydney	305	272	577	0	0	0	0.0	0.0	0.0	0.0	0.0	0.0
Taipei		13 831	10 994	24 825	65	213	278	269.3	467.8	737.1	633.0	1 529.4	2 162.4
Tianjin		454	374	828	0	0	0	52.5	20.9	73.5	0.0	0.0	0.0
Tokyo		22 211	21 126	43 337	844	560	1 404	885.5	268.4	1 153.9	1 279.0	835.3	2 114.2
Tongatapu		1 339	1 246	2 585	0	0	0	0.9	0.8	1.7	0.0	0.0	0.0
Vancouver		12 439	11 471	23 910	0	0	0	178.9	330.5	509.4	128.4	0.0	128.4
Wellington		16 061	16 876	32 937	0	0	0	6.5	22.7	29.2	0.0	0.0	0.0
Wuhan		1 312	1 339	2 651	0	0	0	31.0	0.0	31.0	0.0	0.0	0.0
Xiamen		3 804	3 223	7 027	226	1 751	1 977	165.1	127.8	293.0	118.0	120.6	238.6
Xi'an		485	530	1 015	0	0	0	0.0	70.5	70.5	0.0	0.0	0.0
Zhengzhou		1 706	1 359	3 065	0	0	0	14.0	11.7	25.7	0.0	0.0	0.0
Total	Sydney	877 231	775 800	1 653 031	11 032	20 684	31 716	20 884.1	17 538.0	38 422.1	24 654.5	20 973.0	45 627.5
Hong Kong	Toowoomba Wellcamp	0	0	0	0	0	0	20.9	35.5	56.5	11.1	314.9	326.0
Singapore		0	0	0	0	0	0	0.0	0.0	0.0	0.0	29.4	29.4
Total	Toowoomba Wellcamp	0	0	0	0	0	0	20.9	35.5	56.5	11.1	344.3	355.4
Abu Dhabi	Australia	52 375	42 701	95 076	1 465	1 427	2 892	711.3	1 190.0	1 901.3	467.1	942.2	1 409.2
Apia		4 517	2 948	7 465	0	0	0	1.0	2.3	3.3	0.0	0.0	0.0
Auckland		221 673	212 844	434 517	5 869	3 748	9 617	3 104.8	4 084.1	7 188.9	2 425.8	2 805.4	5 231.2
Bandar Seri Begawan		9 201	8 084	17 285	24	32	56	135.5	302.0	437.5	58.2	150.1	208.3
Bangkok		57 876	53 101	110 977	94	299	393	1 260.3	1 592.6	2 852.9	86.8	568.6	655.4
Beijing		22 936	21 240	44 176	0	0	0	279.4	545.1	824.5	0.0	0.0	0.0
Changsha		2 332	2 162	4 494	0	0	0	62.8	18.7	81.5	0.0	0.0	0.0
Chengdu		4 801	4 377	9 178	0	0	0	108.9	87.7	196.6	0.0	0.0	0.0
Chicago		0	0	0	0	0	0	748.5	0.0	748.5	922.5	3.3	925.8
Chongqing		4 957	4 078	9 035	0	0	0	128.3	201.8	330.1	0.0	230.0	230.0
Christchurch		65 173	61 176	126 349	0	0	0	523.7	280.5	804.2	479.9	127.0	606.9
Cincinnati		0	0	0	0	0	0	0.0	0.0	0.0	302.7	0.0	302.7
Colombo		8 376	7 715	16 091	407	2 229	2 636	246.5	336.6	583.1	149.6	65.6	215.1
Dallas		8 919	10 563	19 482	0	0	0	116.5	18.5	134.9	59.7	0.0	59.7
Denpasar		152 512	129 219	281 731	0	0	0	725.0	675.5	1 400.5	0.0	0.0	0.0
Doha		63 467	56 068	119 535	4 697	4 684	9 381	1 018.7	2 000.0	3 018.7	2 138.8	2 816.7	4 955.6
Dubai		132 029	105 949	237 978	1 565	4 536	6 101	2 355.3	3 663.8	6 019.1	2 098.2	1 001.0	3 099.2
Dunedin		2 378	2 111	4 489	0	0	0	0.0	0.0	0.0	0.0	0.0	0.0
Espiritu Santo		334	256	590	0	0	0	0.0	0.3	0.3	0.0	0.0	0.0
Fuzhou		2 762	2 784	5 546	0	0	0	83.3	97.8	181.1	0.0	0.0	0.0
Guam		0	0	0	0	0	0	0.0	0.0	0.0	510.6	0.0	510.6
Guangzhou		78 596	70 531	149 127	216	3 867	4 083	1 535.1	3 111.3	4 646.4	823.0	3 682.3	4 505.4
Guiyang		1 510	1 325	2 835	0	0	0	27.7	31.4	59.0	0.0	0.0	0.0
Haikou		4 263	3 717	7 980	0	0	0	151.6	71.2	222.9	0.0	0.0	0.0
Hangzhou		3 187	2 723	5 910	133	1 102	1 235	104.3	7.1	111.5	14.5	31.0	45.6
Hanoi		3 034	3 048	6 082	0	0	0	130.6	140.9	271.4	55.9	68.5	124.5
Ho Chi Minh City		24 497	23 310	47 807	123	349	472	743.7	559.8	1 303.6	175.1	237.5	412.7
Hong Kong		145 592	115 503	261 095	1 134	1 165	2 299	3 553.6	4 698.3	8 251.9	3 598.1	5 729.7	9 327.8
Honiara		2 401	2 169	4 570	75	87	162	2.2	36.0	38.1	3.2	44.9	48.2
Honolulu		25 588	23 098	48 686	0	0	0	398.6	195.0	593.6	2 460.9	9.5	2 470.5
Houston		6 708	6 078	12 786	0	0	0	17.5	125.9	143.3	0.0	0.0	0.0
Jakarta		16 508	14 674	31 182	380	560	940	155.3	532.7	688.0	215.8	231.6	447.3
Johannesburg		14 576	12 922	27 498	0	0	0	181.0	222.6	403.5	0.0	0.0	0.0
Kota Kinabalu		448	436	884	0	0	0	0.0	0.5	0.5	0.0	57.0	57.0

TABLE 5 SCHEDULED INTERNATIONAL TRAFFIC BY CITY PAIRS: January

Foreign Port	Australian Port	Passengers						Freight (tonnes)					
		2020			2021			2020			2021		
		Inbound	Outbound	Total	Inbound	Outbound	Total	Inbound	Outbound	Total	Inbound	Outbound	Total
Kuala Lumpur	Australia	131 869	111 160	243 029	428	923	1 351	2 077.8	2 819.9	4 897.8	1 109.3	1 116.6	2 225.9
Kunming		2 486	2 124	4 610	0	0	0	0.8	44.2	45.0	0.0	0.0	0.0
London		17 088	16 345	33 433	0	0	0	438.7	48.0	486.7	0.0	0.0	0.0
Los Angeles		100 027	86 856	186 883	1 597	1 932	3 529	2 222.9	1 825.4	4 048.4	2 732.3	1 432.6	4 164.9
Louisville		0	0	0	0	0	0	1 052.9	0.0	1 052.9	1 328.6	0.0	1 328.6
Manila		40 092	34 639	74 731	89	115	204	410.9	760.4	1 171.4	0.7	0.0	0.7
Mauritius		3 171	3 067	6 238	0	0	0	36.5	30.2	66.7	0.0	0.0	0.0
Munda		0	99	99	0	0	0	0.0	0.0	0.0	0.0	0.0	0.0
Nadi		46 462	38 467	84 929	343	343	686	212.4	233.6	446.0	212.9	139.5	352.5
Nanjing		1 903	1 720	3 623	0	0	0	40.4	8.0	48.4	207.5	257.0	464.5
Nauru		707	436	1 143	86	114	200	5.6	84.7	90.3	8.5	83.8	92.4
New Delhi		8 310	7 987	16 297	316	601	917	136.7	164.3	301.0	8.2	22.6	30.8
New York		1 658	1 329	2 987	0	0	0	191.0	12.7	203.7	204.6	0.0	204.6
Noumea		11 850	10 161	22 011	74	55	129	2.6	73.1	75.8	10.7	90.4	101.2
Osaka		12 409	10 164	22 573	0	0	0	34.5	57.0	91.5	0.0	0.0	0.0
Phuket		9 413	8 714	18 127	0	0	0	52.7	14.9	67.6	0.0	0.0	0.0
Port Moresby		11 001	11 771	22 772	916	818	1 734	54.8	348.4	403.2	103.3	201.9	305.3
Port Vila		11 354	8 346	19 700	51	219	270	7.1	32.4	39.5	1.2	3.5	4.7
Qingdao		5 150	4 927	10 077	0	0	0	249.8	72.8	322.7	0.0	0.0	0.0
Queenstown		37 550	36 035	73 585	0	0	0	0.1	0.1	0.3	0.0	0.0	0.0
Rarotonga		1 412	1 215	2 627	0	0	0	0.0	1.6	1.6	0.0	0.0	0.0
San Francisco		21 781	19 461	41 242	777	1 130	1 907	225.2	305.7	531.0	302.8	459.7	762.5
Santiago		14 224	13 375	27 599	26	0	26	158.3	217.2	375.5	7.9	0.0	7.9
Sapporo		2 542	2 299	4 841	0	0	0	21.0	3.5	24.5	0.0	0.0	0.0
Seoul		37 150	29 674	66 824	167	700	867	239.3	500.5	739.8	44.0	494.3	538.4
Shanghai		47 049	39 002	86 051	21	883	904	1 155.9	2 007.7	3 163.7	1 400.1	2 226.7	3 626.8
Shenzhen		10 752	8 390	19 142	0	0	0	379.4	161.7	541.2	1 099.9	751.7	1 851.7
Singapore		308 435	262 280	570 715	5 472	4 760	10 232	7 669.2	8 739.4	16 408.6	7 091.8	7 454.5	14 546.2
Suva		305	272	577	0	0	0	0.0	0.0	0.0	0.0	0.0	0.0
Taipei		35 293	29 201	64 494	208	660	868	641.5	1 179.7	1 821.1	980.4	2 186.5	3 166.8
Tianjin		454	374	828	0	0	0	52.5	20.9	73.5	0.0	0.0	0.0
Tokyo		66 701	62 109	128 810	844	560	1 404	1 366.1	910.7	2 276.8	1 428.7	1 092.6	2 521.3
Tongatapu		1 339	1 246	2 585	0	0	0	0.9	0.8	1.7	0.0	0.0	0.0
Vancouver		23 691	21 305	44 996	0	0	0	254.1	506.7	760.9	163.8	0.0	163.8
Wellington		37 956	37 507	75 463	0	0	0	23.6	29.4	52.9	0.0	0.0	0.0
Wuhan		1 312	1 339	2 651	0	0	0	31.0	0.0	31.0	0.0	0.0	0.0
Xiamen		6 895	6 348	13 243	226	1 751	1 977	275.1	314.3	589.4	118.0	120.6	238.6
Xi'an		485	530	1 015	0	0	0	0.0	70.5	70.5	0.0	0.0	0.0
Zhengzhou		1 706	1 359	3 065	0	0	0	14.0	11.7	25.7	0.0	0.0	0.0
Total	Australia	2 215 508	1 938 543	4 154 051	27 823	39 649	67 472	38 346.4	46 442.0	84 788.5	35 611.8	36 936.7	72 548.5

Please refer to explanatory notes - paragraphs 3 and 8 in particular.

**TABLE 6 INTERNATIONAL AIRLINES OWN STOPOVER REVENUE PASSENGERS,
AUSTRALIAN CITY PAIRS: January 2021**

City Pair Route	Total Passengers
TOTAL	0

Notes:

1. Own Stopover Revenue Passengers: The aggregate of revenue passengers uplifted at one Australian airport and discharged (excluding transit passengers) at another Australian airport by the same foreign registered international airline on which they entered or left Australia.
2. City Pair Route represents the aggregation of passengers travelling in both directions.
3. This data is additional to the information presented in tables 1-5 which cover only those passengers travelling to/from overseas airports.

YEAR ENDED JANUARY 2021

Chart I International Passengers Carried (thousands) - January 2019 to January 2021

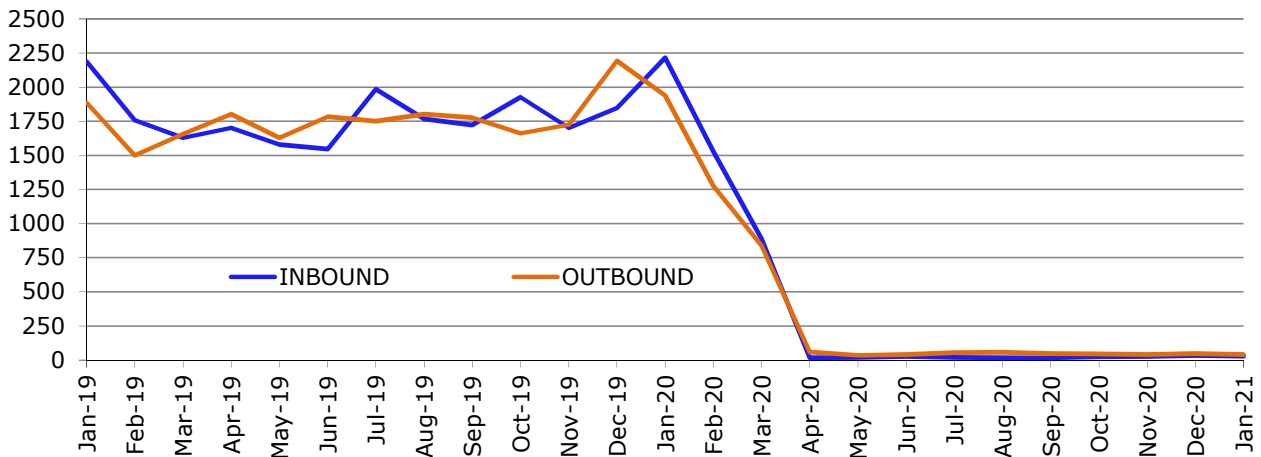


Chart II International Passengers by Major Airlines - Year ended January 2021

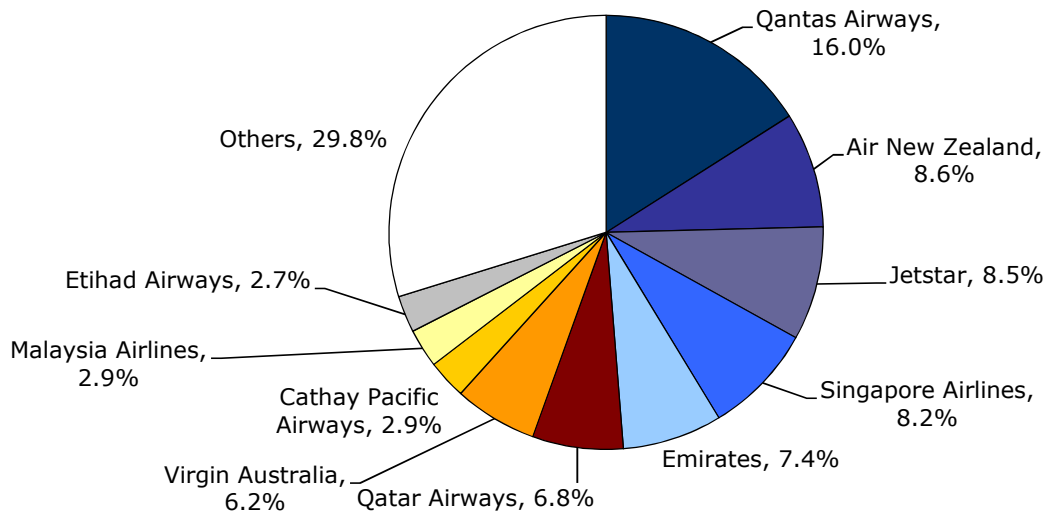


Table I International Passengers by Uplift/Discharge City Pairs

Foreign Port	Australian Port	Year ended January 2019	Year ended January 2020	Year ended January 2021	% of Total	% Change 2021/20
Auckland	Sydney	1 569 064	1 597 351	238 901	4.6%	-85.0%
Singapore	Sydney	1 513 765	1 549 707	189 518	3.6%	-87.8%
Auckland	Melbourne	1 256 664	1 251 794	178 804	3.4%	-85.7%
Singapore	Melbourne	1 573 943	1 629 901	176 075	3.4%	-89.2%
Doha	Sydney	467 219	515 222	140 461	2.7%	-72.7%
Singapore	Perth	1 122 013	1 145 192	139 304	2.7%	-87.8%
Auckland	Brisbane	945 219	956 340	133 972	2.6%	-86.0%
Los Angeles	Sydney	862 805	910 332	130 466	2.5%	-85.7%
Dubai	Sydney	824 270	762 664	116 945	2.2%	-84.7%
Singapore	Brisbane	863 357	970 074	111 463	2.1%	-88.5%
Top 10 City Pairs		10 998 319	11 288 577	1 555 909	29.8%	-86.2%
Other City Pairs		30 764 665	31 300 857	3 659 716	70.2%	-88.3%
ALL CITY PAIRS		41 762 984	42 589 434	5 215 625	100.0%	-87.8%

Table II International Freight (tonnes) by Uplift/Discharge City Pairs

Foreign Port	Australian Port	Year ended January 2019	Year ended January 2020	Year ended January 2021	% of Total	% Change 2021/20
Singapore	Sydney	69 423	72 954	72 473	8.2%	-0.7%
Auckland	Sydney	53 255	50 889	50 350	5.7%	-1.1%
Hong Kong	Sydney	54 246	48 505	45 537	5.2%	-6.1%
Los Angeles	Sydney	38 787	37 215	44 553	5.0%	19.7%
Singapore	Melbourne	71 433	70 104	43 145	4.9%	-38.5%
Guangzhou	Sydney	26 545	31 426	38 458	4.4%	22.4%
Shanghai	Sydney	17 915	21 474	29 243	3.3%	36.2%
Honolulu	Sydney	7 658	7 282	28 585	3.2%	292.5%
Hong Kong	Melbourne	26 150	25 003	28 460	3.2%	13.8%
Dubai	Sydney	29 131	26 947	27 589	3.1%	2.4%
Top 10 City Pairs		394 543	391 799	408 393	46.3%	4.2%
Other City Pairs		773 155	703 577	474 082	53.7%	-32.6%
ALL CITY PAIRS		1 167 698	1 095 377	882 475	100.0%	-19.4%

Table III International Passengers by Uplift/Discharge Country

Country	Year ended January 2019	Year ended January 2020	Year ended January 2021	% of Total	% Change 2021/20
New Zealand	7 180 475	7 270 640	985 302	18.9%	-86.4%
Singapore	5 661 714	5 929 418	681 231	13.1%	-88.5%
United Arab Emirates	3 767 961	3 475 640	489 834	9.4%	-85.9%
USA	3 246 610	3 301 542	443 616	8.5%	-86.6%
Indonesia	3 178 604	3 450 554	401 135	7.7%	-88.4%
Qatar	1 175 244	1 278 177	350 189	6.7%	-72.6%
Malaysia	2 295 267	2 420 505	262 767	5.0%	-89.1%
Japan	1 468 482	1 557 022	225 812	4.3%	-85.5%
Hong Kong (SAR)	2 795 277	2 816 989	205 140	3.9%	-92.7%
Thailand	1 579 818	1 393 040	189 737	3.6%	-86.4%
Top 10 Countries	32 349 452	32 893 527	4 234 763	81.2%	-87.1%
Other Countries	9 413 532	9 695 907	980 862	18.8%	-89.9%
ALL COUNTRIES	41 762 984	42 589 434	5 215 625	100.0%	-87.8%

Table IV International Passenger Traffic through Australian International Airports

Airport	Year ended January 2019	Year ended January 2020	Year ended January 2021	% of Total	% Change 2021/20
Sydney	16 832 553	16 887 071	2 161 597	41.4%	-87.2%
Melbourne	11 273 247	11 344 636	1 355 465	26.0%	-88.1%
Brisbane	6 153 123	6 456 769	781 095	15.0%	-87.9%
Perth	4 367 100	4 383 851	541 913	10.4%	-87.6%
Adelaide	1 027 853	1 138 623	126 093	2.4%	-88.9%
Gold Coast	1 017 756	944 722	108 394	2.1%	-88.5%
Cairns	662 657	641 342	66 512	1.3%	-89.6%
Avalon (a)	69 956	419 073	43 288	0.8%	-89.7%
Darwin	226 043	258 387	21 686	0.4%	-91.6%
Canberra	92 665	84 038	7 307	0.1%	-91.3%
Newcastle (b)	5 593	7 361	1 104	0.0%	-85.0%
Port Hedland	8 554	9 037	733	0.0%	-91.9%
Norfolk Island (c)	..	1 440	438	0.0%	-69.6%
Sunshine Coast (d)	14 303	13 084
Townsville (e)	11 581
ALL AIRPORTS	41 762 984	42 589 434	5 215 625	100.0%	-87.8%

(a) Scheduled passenger services commenced December 2018.

(b) Scheduled services (seasonal) recommenced November 2018.

(c) Scheduled services recommenced September 2019.

(d) Seasonal services only.

(e) Scheduled services ceased September 2018.

EXPLANATORY NOTES

INTRODUCTION

1. This publication continues the series of monthly publications presenting provisional statistical information on the scheduled operations of international airlines operating into/out of Australia.
2. The figures in this publication were obtained from reports submitted by scheduled international carriers and are the best available at the time of publication.

COVERAGE

3. These statistics show uplift/discharge data – These data detail, by direction, the revenue traffic between the actual points of uplift and discharge within each flight, aggregated for all flights within the period. It shows the movement of traffic between two airports not necessarily directly connected but within the same flight number. Typically, flight numbers change when an aircraft reaches its home country. This means that uplift/discharge data for the port in the operator's home country are likely to be overstated by traffic whose origin/destination point is beyond that port. For example, uplift/discharge traffic reported in this publication as Singapore could include traffic whose origin/destination is Europe.
4. These statistics cover revenue traffic carried by the operators of scheduled regular public international air transport services only and do not include charter traffic.
5. Flights with no revenue traffic uplifted from Australia or discharged in Australia are treated as positioning flights and are not included in this data collection. This mainly affects dedicated freighter flights where some flights outbound from Australia do not pick up freight in Australia.

PRODUCTION AND INTERPRETATION

6. Tables 1 and 2 show the country of the relevant uplift or discharge port served by that airline. For example, traffic uplifted/discharged between Sydney and Singapore by British Airways would be shown as Singapore traffic in Tables 1 and 2.
7. Table 3 shows figures for the country of service (or route) for each airline and therefore may not equate to the data in Tables 1 and 2. For example, the British Airways UK service identified in Table 3 could include passengers uplifted or discharged in Singapore as well as the UK; these passengers would be shown individually under those countries in Tables 1 and 2. The difference in treatment of data between Tables 1 and 2 and Table 3 is necessary in order to work out a meaningful Seat Utilisation figure for Table 3.

Figures shown in Table 3 may include total traffic into and out of Australia for airlines that fly through Australia (also necessary in order to work out a meaningful Seat Utilisation figure). Therefore, figures in Table 3 may not equate to figures in Tables 1 and 2. For example, passengers carried by Qantas Airways from New Zealand via Australia to the UK will be included in Table 3 but will not be included in Tables 1 or 2 as these passengers were not uplifted/discharged in Australia.

8. Table 5 – shows uplift/discharge passenger and freight data for city pairs with “same flight number” international flight connections.

9. Where figures have been rounded, discrepancies may occur between sums of component items and totals, and in percentage changes which are derived from figures prior to rounding.
10. Published figures may be revised where figures missing at the time of publication are received or misreporting/miscalculation necessitates revisions.

DEFINITIONS

11. The following definitions have been used in this publication:
 - (a) Aircraft Movement: A landing or a take off.
 - (b) Freight: The aggregate of all revenue freight uplifted or discharged in Australia.
 - (c) Inbound: Inbound to Australia/Australian international airport.
 - (d) Mail: The aggregate of all mail uplifted or discharged in Australia.
 - (e) Outbound: Outbound from Australia/Australian international airport.
 - (f) Revenue Passengers: please refer to paragraph 12.
 - (g) Seat Utilisation: The ratio of passengers carried to seats available, expressed as a percentage.
 - (h) Seats Available: Generally based on standard aircraft configuration, the aggregate of seats available on all flights operated over a particular service.
 - (i) Services: Scheduled flights over authorised routes which are listed according to the main ports involved.

COMPARABILITY OF DATA OVER TIME

12. Revenue Passengers:
 - For July 2000 and onwards: All passengers paying any fare (frequent flyer redemption passengers are regarded as revenue passengers). In most cases, Revenue Passengers will now include all passengers excluding Free Of Charge passengers and positioning crew.
 - To December 1999: The aggregate of all passengers paying 25% or more of the standard air fare (as defined by ICAO at the time).
 - January 2000 to June 2000: Transition period.

The Revenue Passenger definition change could result in approximately a three per cent increase in passenger numbers over a full period (month or year).

13. Country and City data – reporting of Uplift/Discharge data by Qantas Airways:
 - Prior to January 2003: Uplift/Discharge within Qantas Airways' international network.
 - For January 2003 and onwards: Uplift/Discharge within flight number – as per the standard definition.

For example, what was reported as Adelaide to London in January 2002 (no direct services between these two cities), would be reported in January 2003 as either Adelaide to Singapore or Melbourne/Sydney to London.

This change was introduced in order to make the data comparable across all airlines operating services to/from Australia.

The effect of this change – comparing data under the two methods of reporting:

- Country of Port data (Tables 1 & 2) – There will be a shift in traffic to countries such as Singapore and United Arab Emirates (from 2013) which are used as hubs and away from countries such as France, Germany and Italy which

previously received traffic channelled through hubs. The total volume of traffic is not affected.

- Country of Service data (Table 3) – no change, as the Uplift/Discharge definition is not applicable to classifying the country of service.
- Australian International Airports (Table 4) – there may be a shift of traffic to the major airports.
- City Pairs (Table 5) – There will be a shift in traffic to cities such as Singapore and Dubai (from 2013) which are used as hubs and away from cities such as Paris, Frankfurt and Rome which previously received traffic channelled through hubs. The total volume of traffic is not affected.
- Prior to the change, statistics reported for city pairs without “same flight number” international flight connections mainly reflected carriage on interconnecting international services by Qantas Airways. That traffic should have been interpreted as increasing the volume of traffic between the primary international ports rather than as an indicator of traffic volumes between ports without “same flight number” international flight connections. It should be noted however, that there was no double counting of traffic.

14. Country of Service classification by Qantas Airways:

- For July 2002 and onwards: based on the foreign country where same flight number services commence or cease – as per the standard definition. For example, Sydney-Denpasar-Singapore services would be classified as Country of Service = Singapore.
- Prior to July 2002: based on Qantas classification – this mainly affected Indonesia and Singapore Countries of Service. For example, Sydney-Denpasar-Singapore services were classified as Country of Service = Indonesia.

15. Airline data – Reporting of code share services:

Reporting of traffic split by airline code for code share arrangements was discontinued as of June 2000. For July 2000 and onwards, ALL traffic carried is reported under the operating airline regardless of code share arrangements.

Monthly airline market share figures for July 2001 onwards will be comparable with the same month in the previous year. However, these figures may not be comparable with monthly data prior to July 2000.

SYMBOLS AND OTHER USAGE

- nil or zero
- .. not applicable

DATA ISSUES

During the period impacted by the COVID-19 pandemic, airlines that normally would only operate scheduled air services could also operate charter air services and where charter air services are not clearly identified, they may be included in the data in this publication.

Seat utilisation:

Available seats have not been counted where passenger aircraft have been used to operate freight only services. However, this adjustment cannot be made for airlines that report monthly aggregates and that have operated a mix of passenger and freight only services using passenger aircraft.

Some airlines have reported adjusted seats to take account of social distancing while others have reported fitted seats.

NOTES ON AIRLINE SERVICES

All scheduled passenger airlines have been impacted by international travel restrictions introduced in March 2020 due to the COVID-19 pandemic. The airlines below suspended services to and from Australia in January 2021:

Air Chathams,
Air Mauritius,
AirAsia X,
Batik Air Indonesia,
British Airways,
Cebu Pacific Air,
Citilink Indonesia,
Donghai Airlines,
Hawaiian Airlines,
Indonesia AirAsia,
Jetstar Asia,
Pacific Air Express,
Samoa Airways,
Sichuan Airlines,
Silk Air,
South African Airways,
Thai AirAsia X,
Tianjin Airlines,
Virgin Australia.