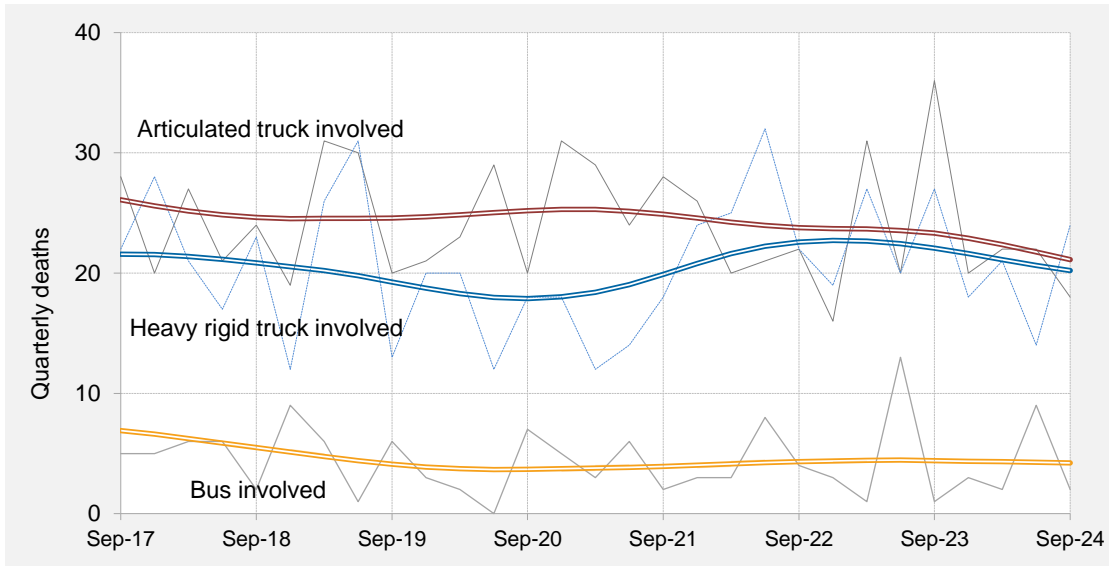




## Road deaths in crashes involving heavy vehicles - quarterly bulletin, Jul-Sep 2024

### Quarterly counts of deaths in crashes involving heavy vehicles, Australia, with trends



#### Key features

- During the 12 months to the end of September 2024, 154 people died in crashes involving heavy trucks<sup>a</sup>. There were 82 deaths in crashes involving articulated trucks and 77 deaths in crashes involving heavy rigid trucks.
- Fatalities in crashes involving heavy trucks:
  - decreased by 17.6% when compared with the corresponding 12-month period one year earlier;
  - decreased by an average of 9.5% per year over the three years to September 2024.
- Fatalities in crashes involving articulated trucks:
  - decreased by 20.4% when compared with the corresponding period one year earlier;
  - decreased by 4.0% per year over the three years to September 2024.
- Fatalities in crashes involving heavy rigid trucks:
  - decreased by 17.2% when compared with the corresponding period one year earlier;
  - decreased by an average of 13.5% per year over the three years to September 2024.
- During the 12 months to September 2024, 16 people died in crashes involving buses. Fatalities in crashes involving buses:
  - decreased by 11.1% when compared with the corresponding period one year earlier;
  - decreased by an average of 5.7% per year over the three years to September 2024.

<sup>a</sup> Figures sum to more than the total because some crashes involved more than one type of heavy vehicle.

## ANNUAL TRENDS

**Table 1 Deaths**

	<i>Articulated truck involved</i>	<i>Heavy rigid truck involved</i>	<i>Any heavy truck involved<sup>a</sup></i>	<i>Bus involved</i>	<i>All road crash deaths<sup>b</sup></i>
<b>12 Months ended</b>					
<i>September 2015</i>	104	81	183	16	1,187
<i>September 2016</i>	111	88	194	30	1,272
<i>September 2017</i>	118	84	190	32	1,224
<i>September 2018</i>	92	89	171	19	1,199
<i>September 2019</i>	100	82	180	22	1,164
<i>September 2020</i>	93	70	160	12	1,091
<i>September 2021</i>	112	62	170	16	1,131
<i>September 2022</i>	89	103	188	18	1,186
<i>September 2023</i>	103	93	187	18	1,220
<i>September 2024</i>	82	77	154	16	1,283
<i>Change last 12 months (%)</i>	-20.4	-17.2	-17.6	-11.1	5.2
<i>Ave. trend change p.a.(%)</i>					
<i>- for last 10 years</i>	-2.1	-0.2	-1.2	-4.5	0.0
<i>- for last 3 years</i>	-4.0	-13.5	-9.5	-5.7	4.0

**Table 2 Fatal crashes**

	<i>Articulated truck involved</i>	<i>Heavy rigid truck involved</i>	<i>Any heavy truck involved<sup>a</sup></i>	<i>Bus involved</i>	<i>All fatal road crashes<sup>c</sup></i>
<b>12 Months ended</b>					
<i>September 2015</i>	90	72	160	12	1,085
<i>September 2016</i>	98	76	171	27	1,177
<i>September 2017</i>	101	80	171	28	1,132
<i>September 2018</i>	83	79	154	18	1,111
<i>September 2019</i>	92	73	163	18	1,081
<i>September 2020</i>	79	66	142	11	988
<i>September 2021</i>	100	58	154	16	1,048
<i>September 2022</i>	79	94	169	18	1,112
<i>September 2023</i>	83	85	162	9	1,122
<i>September 2024</i>	69	74	138	14	1,168
<i>Change last 12 months (%)</i>	-16.9	-12.9	-14.8	55.6	4.1
<i>Ave. trend change p.a.(%)</i>					
<i>- for last 10 years</i>	-2.6	0.5	-1.1	-5.5	0.0
<i>- for last 3 years</i>	-6.5	-11.3	-9.6	-11.8	2.5

a Figures sum to more than the total because some crashes involved more than one type of heavy vehicle.

b All deaths, whether or not crash involved a heavy vehicle.

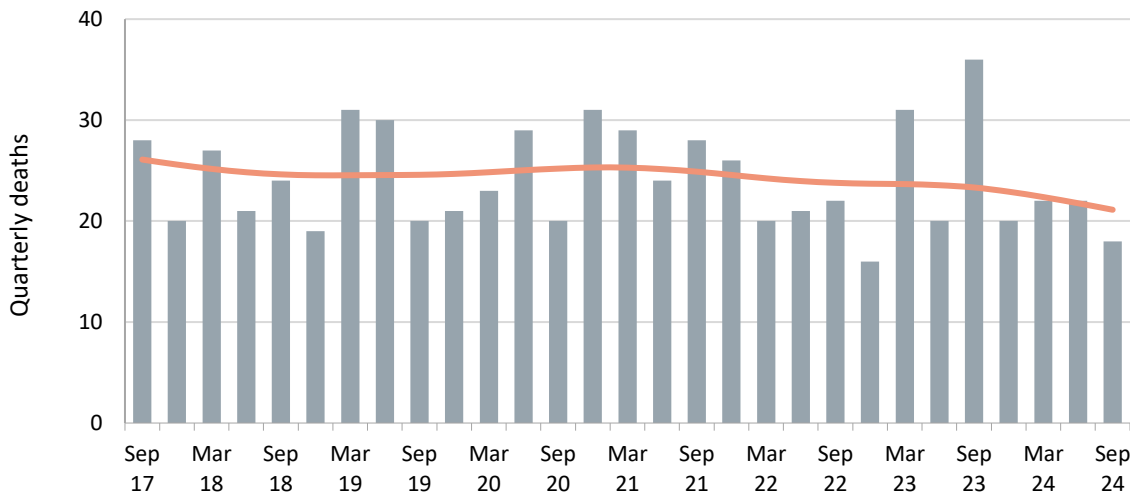
c All fatal road crashes, whether or not involving a heavy vehicle.

## ARTICULATED TRUCK INVOLVEMENT

**Table 3** Quarterly counts of deaths in crashes involving articulated trucks

	NSW	Vic	Qld	SA	WA	Tas	NT	ACT	Australia
<b>Quarter ended</b>									
December-21	7	6	8	4	0	0	1	0	26
March-22	6	2	9	0	1	0	2	0	20
June-22	5	2	9	1	4	0	0	0	21
September-22	3	9	6	0	2	0	2	0	22
December-22	5	4	5	0	2	0	0	0	16
March-23	11	6	8	1	2	2	1	0	31
June-23	4	10	3	0	2	1	0	0	20
September-23	10	6	13	1	0	0	6	0	36
December-23	6	12	1	0	1	0	0	0	20
March-24	13	3	6	0	0	0	0	0	22
June-24	8	3	7	3	1	0	0	0	22
September-24	6	1	8	0	1	2	0	0	18

**Figure 1** Quarterly counts of deaths in crashes involving articulated trucks, with trend



**Table 4** Annual counts of deaths in crashes involving articulated trucks

	NSW	Vic	Qld	SA	WA	Tas	NT	ACT	Australia
<b>12 Months ended</b>									
September 2020	29	22	23	10	6	3	0	0	93
September 2021	22	19	46	7	14	3	1	0	112
September 2022	21	19	32	5	7	0	5	0	89
September 2023	30	26	29	2	6	3	7	0	103
September 2024	33	19	22	3	3	2	0	0	82
Change last 12 months (%)	10.0	-26.9	-24.1	50.0	-50.0	-33.3	-100.0	0.0	-20.4
Ave. trend change p.a.(%) - for last 3 years <sup>a</sup>	25.4	0.0	-17.1	-22.5	-34.5	-	-	-	-4.0

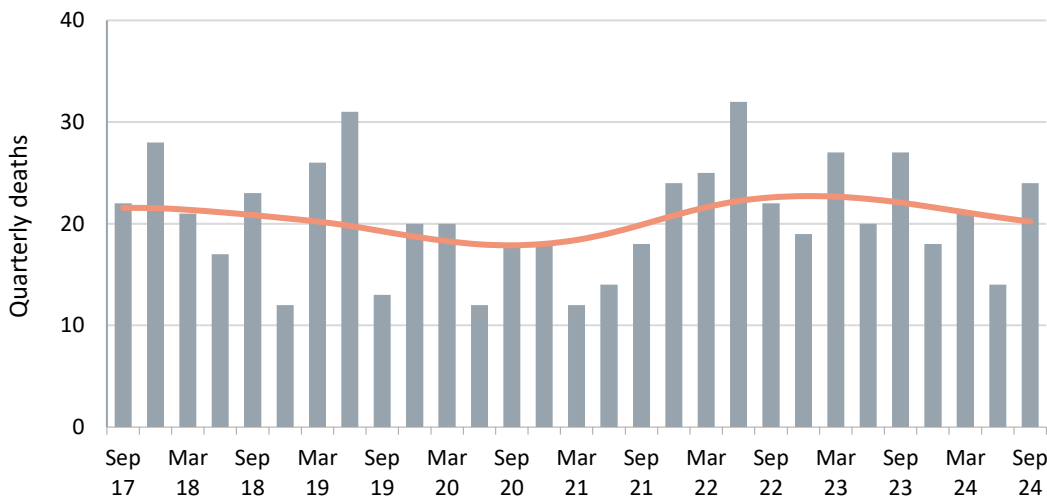
a Average annual percentage change based on the exponential trend for the last three 12-month periods.

## HEAVY RIGID TRUCK INVOLVEMENT

**Table 5** Quarterly counts of deaths in crashes involving heavy rigid trucks

	NSW	Vic	Qld	SA	WA	Tas	NT	ACT	Australia
<b>Quarter ended</b>									
December-21	12	8	2	0	2	0	0	0	24
March-22	9	4	7	1	2	2	0	0	25
June-22	7	8	5	1	9	2	0	0	32
September-22	2	5	7	0	6	1	1	0	22
December-22	3	2	5	0	6	3	0	0	19
March-23	4	7	10	0	4	2	0	0	27
June-23	3	5	8	0	3	1	0	0	20
September-23	10	4	7	1	4	0	1	0	27
December-23	8	3	1	0	6	0	0	0	18
March-24	6	4	2	0	9	0	0	0	21
June-24	6	1	3	0	2	1	1	0	14
September-24	1	6	6	0	4	4	3	0	24

**Figure 2** Quarterly counts of deaths in crashes involving heavy rigid trucks, with trend



**Table 6** Annual counts of deaths in crashes involving heavy rigid trucks

	NSW	Vic	Qld	SA	WA	Tas	NT	ACT	Australia
<b>12 Months ended</b>									
September 2020	27	15	12	6	9	1	0	0	70
September 2021	22	13	10	4	9	3	1	0	62
September 2022	30	25	21	2	19	5	1	0	103
September 2023	20	18	30	1	17	6	1	0	93
September 2024	21	14	12	0	21	5	4	0	77
Change last 12 months (%)	5.0	-22.2	-60.0	-100.0	23.5	-16.7	300.0	0.0	-17.2
Ave. trend change p.a.(%)	-16.3	-25.2	-24.4	-	5.1	0.0	100.0	-	-13.5
- for last 3 years <sup>a</sup>									

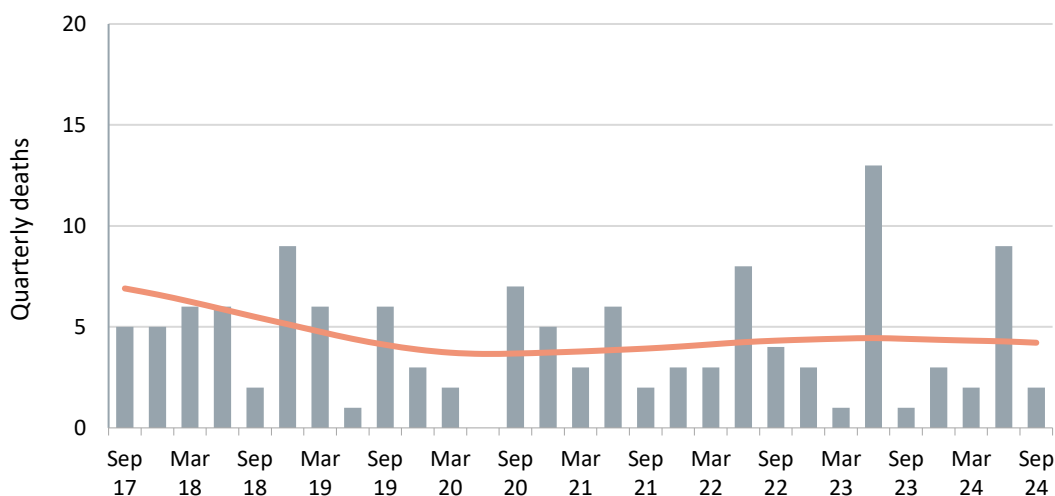
a Average annual percentage change based on the exponential trend for the last three 12-month periods.

## BUS INVOLVEMENT

**Table 7** Quarterly counts of deaths in crashes involving buses

	NSW	Vic	Qld	SA	WA	Tas	NT	ACT	Australia
<b>Quarter ended</b>									
December-21	1	0	0	0	1	0	1	0	3
March-22	2	0	1	0	0	0	0	0	3
June-22	3	1	2	0	1	0	1	0	8
September-22	2	0	1	0	1	0	0	0	4
December-22	2	0	0	0	0	0	1	0	3
March-23	1	0	0	0	0	0	0	0	1
June-23	12	0	1	0	0	0	0	0	13
September-23	1	0	0	0	0	0	0	0	1
December-23	1	0	2	0	0	0	0	0	3
March-24	1	0	1	0	0	0	0	0	2
June-24	2	0	5	0	2	0	0	0	9
September-24	1	0	0	0	1	0	0	0	2

**Figure 3** Quarterly counts of deaths in crashes involving buses, with trend



**Table 8** Annual counts of deaths in crashes involving buses

	NSW	Vic	Qld	SA	WA	Tas	NT	ACT	Australia
<b>12 Months ended</b>									
September 2020	6	0	2	1	0	3	0	0	12
September 2021	3	2	4	4	3	0	0	0	16
September 2022	8	1	4	0	3	0	2	0	18
September 2023	16	0	1	0	0	0	1	0	18
September 2024	5	0	8	0	3	0	0	0	16
Change last 12 months (%)	-68.8	0.0	700.0	0.0	-	0.0	-100.0	0.0	-11.1
Ave. trend change p.a.(%)	-20.9	-	41.4	-	-	-	-	-	-5.7
- for last 3 years <sup>a</sup>									

a Average annual percentage change based on the exponential trend for the last three 12-month periods.

## APPENDIX

<b>Glossary</b>	<p><u>Note.</u> The following definitions are general explanations only. The precise definitions vary across the organisations that provide the source data. These differences may result in minor inconsistencies between jurisdictions for some variables.</p>
<b>Articulated truck</b>	A motor vehicle primarily for load carrying, consisting of a prime mover that has no significant load carrying area but with a turntable device which can be linked to one or more trailers.
<b>Heavy rigid truck</b>	A motor vehicle of GVM greater than 4.5 tonnes constructed with a load carrying area. Includes a rigid truck with a tow bar, draw bar or other non-articulated coupling on the rear of the vehicle.
<b>Gross Vehicle Mass (GVM)</b>	Tare weight (i.e. unladen weight) of the motor vehicle plus its maximum carrying capacity excluding trailers.
<b>Bus</b>	A motor vehicle constructed for the carriage of passengers which has at least 10 seats, including the driver's seat.
<b>Crash</b>	Any apparently unpremeditated event reported to police, or other relevant authority, and resulting in death, injury or property damage attributable to the movement of a road vehicle on a public road.
<b>Road death or Fatality</b>	A person who dies within 30 days of a crash as a result of injuries received in that crash.
<b>Fatal crash</b>	A crash for which there is at least one death.
<b>Preliminary data</b>	Data for recent months are preliminary and subject to revision.
<b>Estimation of three year trends</b>	In this bulletin, the figures for the 'Average annual per cent change over 3 years' are calculated by fitting an exponential trend line to the last three data points. The Excel function LOGEST performs the fit. The resulting trend line represents a constant annual percent change over the period. (Note: when fitted to a series containing small numbers, this may not be a reliable indicator of a stable trend.)
<b>Smooth trend lines</b>	Whittaker-Henderson smoothers with a value of 80 for the smoothing parameter. The application R (package pracma) is used.
<b>Data sources</b>	<p>The data presented here are obtained from the following sources:</p> <ul style="list-style-type: none"><li>• Transport for New South Wales;</li><li>• Department of Transport, Victoria;</li><li>• Queensland Department of Transport and Main Roads;</li><li>• Department of Planning, Transport and Infrastructure South Australia;</li><li>• Western Australian Police;</li><li>• Department of State Growth, Tasmania;</li><li>• Department of Transport, Northern Territory;</li><li>• Transport Canberra and City Services Directorate, Australian Capital Territory;</li></ul> <p>An online version of the database used to produce this bulletin is available from: &lt; <a href="http://www.bitre.gov.au/statistics/safety/fatal_road_crash_database.aspx">http://www.bitre.gov.au/statistics/safety/fatal_road_crash_database.aspx</a> &gt;</p>
<b>Inquiries</b>	<p>For further information about data in this bulletin, contact:</p> <p>Bureau of Infrastructure and Transport Research Economics (BITRE) Email: <a href="mailto:roadsafetystatistics@infrastructure.gov.au">roadsafetystatistics@infrastructure.gov.au</a> BITRE Reference: 2024-1212 Road deaths from recent months are preliminary and subject to revision.</p>

© Copyright. Creative Commons 3.0