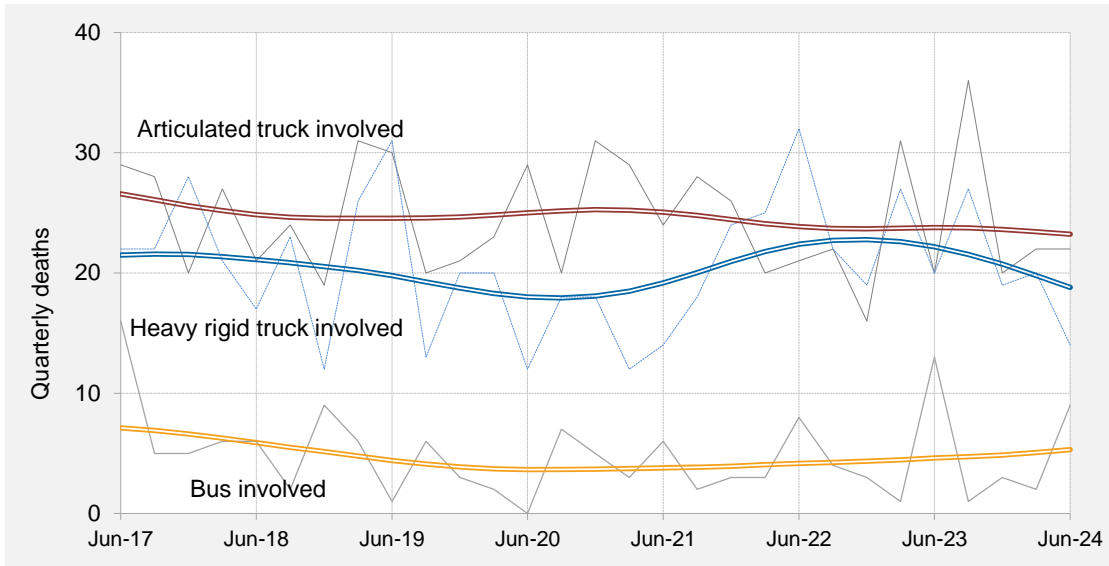




## Road deaths in crashes involving heavy vehicles - quarterly bulletin, Apr-Jun 2024

### Quarterly counts of deaths in crashes involving heavy vehicles, Australia, with trends



#### Key features

- During the 12 months to the end of June 2024, 176 people died in crashes involving heavy trucks<sup>a</sup>. There were 100 deaths in crashes involving articulated trucks and 80 deaths in crashes involving heavy rigid trucks.
- Fatalities in crashes involving heavy trucks:
  - increased by 5.4% when compared with the corresponding 12-month period one year earlier;
  - decreased by an average of 3.8% per year over the three years to June 2024.
- Fatalities in crashes involving articulated trucks:
  - increased by 12.4% when compared with the corresponding period one year earlier;
  - increased by 2.6% per year over the three years to June 2024.
- Fatalities in crashes involving heavy rigid trucks:
  - decreased by 9.1% when compared with the corresponding period one year earlier;
  - decreased by an average of 10.1% per year over the three years to June 2024.
- During the 12 months to June 2024, 15 people died in crashes involving buses. Fatalities in crashes involving buses:
  - decreased by 28.6% when compared with the corresponding period one year earlier;
  - decreased by an average of 3.2% per year over the three years to June 2024.

<sup>a</sup> Figures sum to more than the total because some crashes involved more than one type of heavy vehicle.

## ANNUAL TRENDS

**Table 1 Deaths**

	<i>Articulated truck involved</i>	<i>Heavy rigid truck involved</i>	<i>Any heavy truck involved<sup>a</sup></i>	<i>Bus involved</i>	<i>All road crash deaths<sup>b</sup></i>
<b>12 Months ended</b>					
<i>June 2015</i>	107	87	192	20	1,170
<i>June 2016</i>	111	80	186	25	1,260
<i>June 2017</i>	114	80	185	35	1,225
<i>June 2018</i>	96	88	174	22	1,214
<i>June 2019</i>	104	92	192	18	1,196
<i>June 2020</i>	93	65	156	11	1,090
<i>June 2021</i>	104	62	162	21	1,136
<i>June 2022</i>	95	99	190	16	1,167
<i>June 2023</i>	89	88	167	21	1,172
<i>June 2024</i>	100	80	176	15	1,311
<i>Change last 12 months (%)</i>	12.4	-9.1	5.4	-28.6	11.9
<i>Ave. trend change p.a.(%)</i>					
<i>- for last 10 years</i>	-1.8	-0.3	-1.1	-4.9	0.0
<i>- for last 3 years</i>	2.6	-10.1	-3.8	-3.2	6.0

**Table 2 Fatal crashes**

	<i>Articulated truck involved</i>	<i>Heavy rigid truck involved</i>	<i>Any heavy truck involved<sup>a</sup></i>	<i>Bus involved</i>	<i>All fatal road crashes<sup>c</sup></i>
<b>12 Months ended</b>					
<i>June 2015</i>	90	77	165	16	1,060
<i>June 2016</i>	96	69	162	22	1,158
<i>June 2017</i>	99	77	169	30	1,144
<i>June 2018</i>	88	80	159	21	1,125
<i>June 2019</i>	93	80	170	15	1,103
<i>June 2020</i>	80	61	139	10	995
<i>June 2021</i>	95	58	149	20	1,060
<i>June 2022</i>	82	89	167	16	1,078
<i>June 2023</i>	76	80	149	12	1,081
<i>June 2024</i>	80	78	154	13	1,201
<i>Change last 12 months (%)</i>	5.3	-2.5	3.4	8.3	11.1
<i>Ave. trend change p.a.(%)</i>					
<i>- for last 10 years</i>	-2.1	0.4	-1.0	-5.8	0.0
<i>- for last 3 years</i>	-1.2	-6.4	-4.0	-9.9	5.6

a Figures sum to more than the total because some crashes involved more than one type of heavy vehicle.

b All deaths, whether or not crash involved a heavy vehicle.

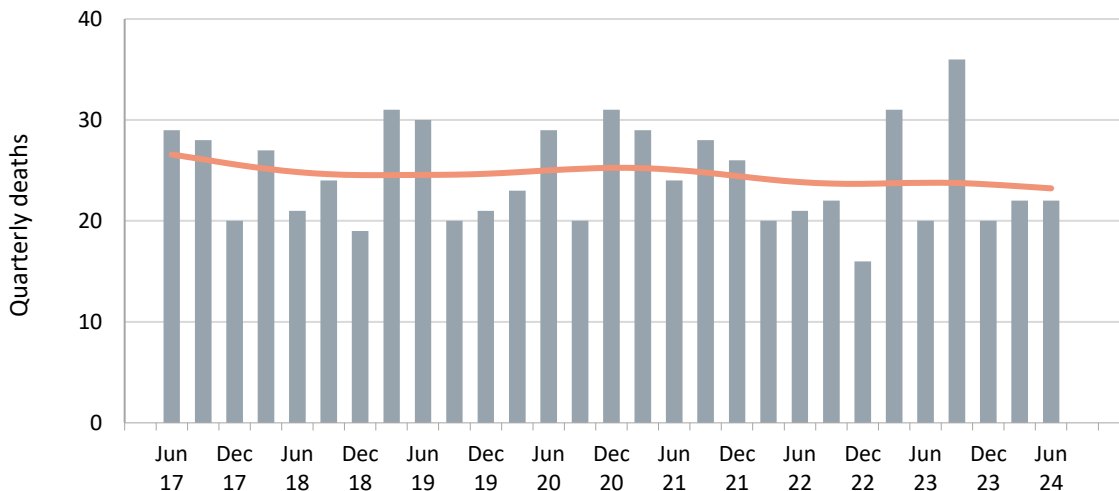
c All fatal road crashes, whether or not involving a heavy vehicle.

## ARTICULATED TRUCK INVOLVEMENT

**Table 3** Quarterly counts of deaths in crashes involving articulated trucks

	NSW	Vic	Qld	SA	WA	Tas	NT	ACT	Australia
<b>Quarter ended</b>									
September-21	9	5	10	1	1	2	0	0	28
December-21	7	6	8	4	0	0	1	0	26
March-22	6	2	9	0	1	0	2	0	20
June-22	5	2	9	1	4	0	0	0	21
September-22	3	9	6	0	2	0	2	0	22
December-22	5	4	5	0	2	0	0	0	16
March-23	11	6	8	1	2	2	1	0	31
June-23	4	10	3	0	2	1	0	0	20
September-23	10	6	13	1	0	0	6	0	36
December-23	6	12	1	0	1	0	0	0	20
March-24	13	3	6	0	0	0	0	0	22
June-24	8	3	7	3	1	0	0	0	22

**Figure 1** Quarterly counts of deaths in crashes involving articulated trucks, with trend



**Table 4** Annual counts of deaths in crashes involving articulated trucks

	NSW	Vic	Qld	SA	WA	Tas	NT	ACT	Australia
<b>12 Months ended</b>									
June 2020	26	24	23	11	4	4	0	1	93
June 2021	22	14	43	7	16	1	1	0	104
June 2022	27	15	36	6	6	2	3	0	95
June 2023	23	29	22	1	8	3	3	0	89
June 2024	37	24	27	4	2	0	6	0	100
Change last 12 months (%)	60.9	-17.2	22.7	300.0	-75.0	-100.0	100.0	0.0	12.4
Ave. trend change p.a.(%)	17.1	26.5	-13.4	-18.4	-42.3	-	41.4	-	2.6
- for last 3 years <sup>a</sup>									

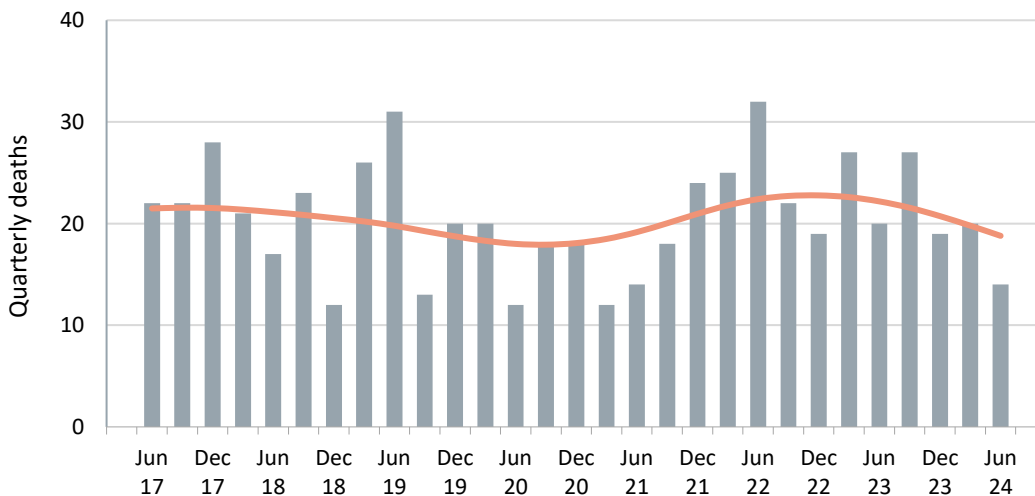
a Average annual percentage change based on the exponential trend for the last three 12-month periods.

## HEAVY RIGID TRUCK INVOLVEMENT

**Table 5** Quarterly counts of deaths in crashes involving heavy rigid trucks

	NSW	Vic	Qld	SA	WA	Tas	NT	ACT	Australia
<b>Quarter ended</b>									
September-21	4	3	3	3	4	1	0	0	18
December-21	12	8	2	0	2	0	0	0	24
March-22	9	4	7	1	2	2	0	0	25
June-22	7	8	5	1	9	2	0	0	32
September-22	2	5	7	0	6	1	1	0	22
December-22	3	2	5	0	6	3	0	0	19
March-23	4	7	10	0	4	2	0	0	27
June-23	3	5	8	0	3	1	0	0	20
September-23	10	4	7	1	4	0	1	0	27
December-23	9	3	1	0	6	0	0	0	19
March-24	6	4	2	0	8	0	0	0	20
June-24	6	1	3	0	2	1	1	0	14

**Figure 2** Quarterly counts of deaths in crashes involving heavy rigid trucks, with trend



**Table 6** Annual counts of deaths in crashes involving heavy rigid trucks

	NSW	Vic	Qld	SA	WA	Tas	NT	ACT	Australia
<b>12 Months ended</b>									
June 2020	23	16	13	4	8	0	1	0	65
June 2021	24	12	9	5	8	3	1	0	62
June 2022	32	23	17	5	17	5	0	0	99
June 2023	12	19	30	0	19	7	1	0	88
June 2024	31	12	13	1	20	1	2	0	80
Change last 12 months (%)	158.3	-36.8	-56.7	-	5.3	-85.7	100.0	0.0	-9.1
Ave. trend change p.a.(%)	-1.6	-27.8	-12.6	-	8.5	-55.3	-	-	-10.1
- for last 3 years <sup>a</sup>									

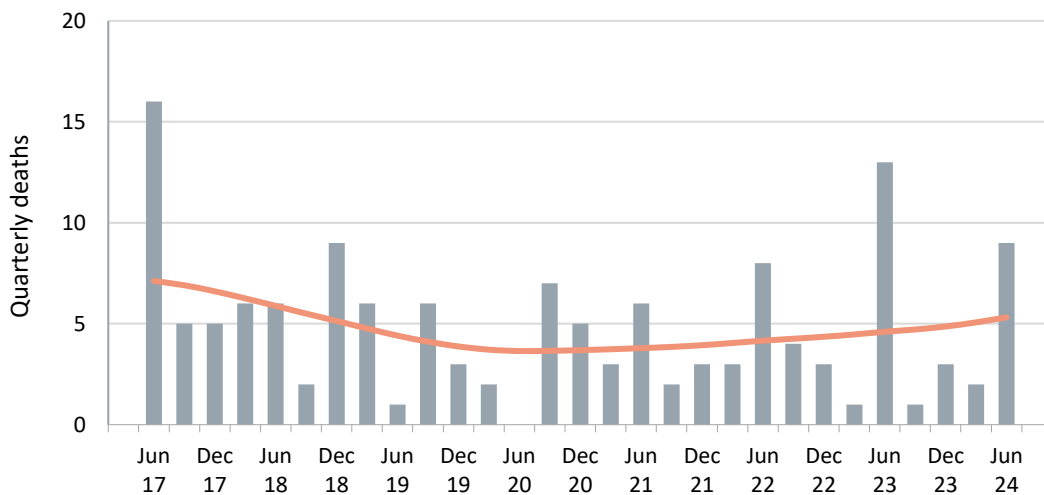
a Average annual percentage change based on the exponential trend for the last three 12-month periods.

## BUS INVOLVEMENT

**Table 7** Quarterly counts of deaths in crashes involving buses

	NSW	Vic	Qld	SA	WA	Tas	NT	ACT	Australia
<b>Quarter ended</b>									
September-21	0	0	0	0	2	0	0	0	2
December-21	1	0	0	0	1	0	1	0	3
March-22	2	0	1	0	0	0	0	0	3
June-22	3	1	2	0	1	0	1	0	8
September-22	2	0	1	0	1	0	0	0	4
December-22	2	0	0	0	0	0	1	0	3
March-23	1	0	0	0	0	0	0	0	1
June-23	12	0	1	0	0	0	0	0	13
September-23	1	0	0	0	0	0	0	0	1
December-23	1	0	2	0	0	0	0	0	3
March-24	1	0	1	0	0	0	0	0	2
June-24	2	0	5	0	2	0	0	0	9

**Figure 3** Quarterly counts of deaths in crashes involving buses, with trend



**Table 8** Annual counts of deaths in crashes involving buses

	NSW	Vic	Qld	SA	WA	Tas	NT	ACT	Australia
<b>12 Months ended</b>									
June 2020	5	1	0	1	3	1	0	0	11
June 2021	6	2	6	4	1	2	0	0	21
June 2022	6	1	3	0	4	0	2	0	16
June 2023	17	0	2	0	1	0	1	0	21
June 2024	5	0	8	0	2	0	0	0	15
Change last 12 months (%)	-70.6	0.0	300.0	0.0	100.0	0.0	-100.0	0.0	-28.6
Ave. trend change p.a.(%)	-8.7	-	63.3	-	-29.3	-	-	-	-3.2
- for last 3 years <sup>a</sup>									

a Average annual percentage change based on the exponential trend for the last three 12-month periods.

## APPENDIX

<b>Glossary</b>	<p><u>Note.</u> The following definitions are general explanations only. The precise definitions vary across the organisations that provide the source data. These differences may result in minor inconsistencies between jurisdictions for some variables.</p>
<b>Articulated truck</b>	A motor vehicle primarily for load carrying, consisting of a prime mover that has no significant load carrying area but with a turntable device which can be linked to one or more trailers.
<b>Heavy rigid truck</b>	A motor vehicle of GVM greater than 4.5 tonnes constructed with a load carrying area. Includes a rigid truck with a tow bar, draw bar or other non-articulated coupling on the rear of the vehicle.
<b>Gross Vehicle Mass (GVM)</b>	Tare weight (i.e. unladen weight) of the motor vehicle plus its maximum carrying capacity excluding trailers.
<b>Bus</b>	A motor vehicle constructed for the carriage of passengers which has at least 10 seats, including the driver's seat.
<b>Crash</b>	Any apparently unpremeditated event reported to police, or other relevant authority, and resulting in death, injury or property damage attributable to the movement of a road vehicle on a public road.
<b>Road death or Fatality</b>	A person who dies within 30 days of a crash as a result of injuries received in that crash.
<b>Fatal crash</b>	A crash for which there is at least one death.
<b>Preliminary data</b>	Data for recent months are preliminary and subject to revision.
<b>Estimation of three year trends</b>	In this bulletin, the figures for the 'Average annual per cent change over 3 years' are calculated by fitting an exponential trend line to the last three data points. The Excel function LOGEST performs the fit. The resulting trend line represents a constant annual percent change over the period. (Note: when fitted to a series containing small numbers, this may not be a reliable indicator of a stable trend.)
<b>Smooth trend lines</b>	Whittaker-Henderson smoothers with a value of 80 for the smoothing parameter. The application R (package pracma) is used.
<b>Data sources</b>	<p>The data presented here are obtained from the following sources:</p> <ul style="list-style-type: none"><li>• Transport for New South Wales;</li><li>• Department of Transport, Victoria;</li><li>• Queensland Department of Transport and Main Roads;</li><li>• Department of Planning, Transport and Infrastructure South Australia;</li><li>• Western Australian Police;</li><li>• Department of State Growth, Tasmania;</li><li>• Department of Transport, Northern Territory;</li><li>• Transport Canberra and City Services Directorate, Australian Capital Territory;</li></ul> <p>An online version of the database used to produce this bulletin is available from: &lt; <a href="http://www.bitre.gov.au/statistics/safety/fatal_road_crash_database.aspx">http://www.bitre.gov.au/statistics/safety/fatal_road_crash_database.aspx</a> &gt;</p>
<b>Inquiries</b>	<p>For further information about data in this bulletin, contact:</p> <p>Bureau of Infrastructure and Transport Research Economics (BITRE) Email: <a href="mailto:roadsafetystatistics@infrastructure.gov.au">roadsafetystatistics@infrastructure.gov.au</a></p> <p>Road deaths from recent months are preliminary and subject to revision.</p>

© Copyright. Creative Commons 3.0