



Australian Government

**Department of Infrastructure, Transport,
Regional Development, Communications and the Arts**
Bureau of Infrastructure and Transport Research Economics

STATISTICAL REPORT



bitre

Aviation

**Domestic aviation activity
September 2022**

© Commonwealth of Australia 2022

ISSN: 1832 - 1968

Ownership of intellectual property rights in this publication

Unless otherwise noted, copyright (and any other intellectual property rights, if any) in this publication is owned by the Commonwealth of Australia (referred to below as the Commonwealth).

Disclaimer

The material contained in this publication is made available on the understanding that the Commonwealth is not providing professional advice, and that users exercise their own skill and care with respect to its use, and seek independent advice if necessary.

The Commonwealth makes no representations or warranties as to the contents or accuracy of the information contained in this publication. To the extent permitted by law, the Commonwealth disclaims liability to any person or organisation in respect of anything done, or omitted to be done, in reliance upon information contained in this publication.

Creative Commons licence

With the exception of (a) the Coat of Arms; and (b) the Department of Infrastructure, Transport, Regional Development, Communications and the Arts' photos and graphics, copyright in this publication is licensed under a Creative Commons Attribution 3.0 Australia Licence.

Creative Commons Attribution 3.0 Australia Licence is a standard form licence agreement that allows you to copy, communicate and adapt this publication provided that you attribute the work to the Commonwealth and abide by the other licence terms. A summary of the licence terms is available from <http://creativecommons.org/licenses/by/3.0/au/deed.en>.

The full licence terms are available from <http://creativecommons.org/licenses/by/3.0/au/legalcode>.

Use of the Coat of Arms

The Department of the Prime Minister and Cabinet sets the terms under which the Coat of Arms is used. Please refer to the Department's Commonwealth Coat of Arms and Government branding web page <http://www.dpmc.gov.au/guidelines/index.cfm#brand> and, in particular, the Guidelines on the use of the Commonwealth Coat of Arms publication.

An appropriate citation for this report is:

Bureau of Infrastructure and Transport Research Economics (BITRE), 2022, Domestic aviation activity, Statistical Report, BITRE, Canberra ACT.

Contact us

This publication is available in PDF format. All other rights are reserved, including in relation to any Departmental logos or trade marks which may exist. For enquiries regarding the licence and any use of this publication, please contact:

Bureau of Infrastructure and Transport Research Economics (BITRE)
Department of Infrastructure, Transport, Regional Development, Communications and the Arts
GPO Box 501, Canberra ACT 2601, Australia
Telephone: (international) +61 2 6274 7210
Fax: (international) +61 2 6274 6855
Email: bitre@infrastructure.gov.au
Website: www.bitre.gov.au

Inquiries

Should you require additional information about the statistics contained in this publication:

Marko Rodic

Telephone (02) 6274 6859 or Facsimile

Electronic mail: AVSTATS@infrastructure.gov.au

Marko.Rodic2@infrastructure.gov.au

Web site: <http://www.bitre.gov.au/statistics/aviation/domestic.aspx>

FOREWORD

This report provides an overview of domestic (including charter) commercial aviation activity in Australia for the month of September 2022.

The data cover revenue passengers carried by Australian-registered operators of scheduled regular public transport services over Australian flight stages and fixed-wing charter operators. These estimates include passengers carried between domestic airports on international flights operated by these carriers. The passengers carried refer to traffic on board by stages.

Estimates of passengers and aircraft movements for charter aviation are included in this publication, where BITRE confidentiality standards are met.

Individual routes shown are restricted to those exceeding 8 000 passengers per month where two or more airlines operate in competition. However, from November 2021 the major airlines (Qantas Group, Virgin Australia and Rex Airlines) have agreed to publication of the top 35 routes based on pre-COVID activity (December 2019) whether or not they currently meet the above criteria. With these approvals, there were 60 routes published for the month of September 2022 compared to 29 published in September 2021.

Information on the total network for the month of September 2022 and on the Regular Public Transport (RPT) network for the month of September 2022 is presented on page 2, with estimates for the year ended September 2022 presented on page 3.

Detailed information on individual routes can be found in the RPT summary pages 4-13 of this publication.

The top ten airports in terms of RPT passenger movements are shown on page 14.

Data on domestic RPT cargo movements at the top five cargo airports are provided on page 15. The table includes cargo carried on passenger flights operated by the Qantas group (including Jetstar), Virgin Australia, Air North and Skippers as well as the cargo carried by dedicated freighter aircraft operated by Qantas Freight and Toll.

The long-term trends for the top ten competitive RPT routes are presented graphically on pages 16-25.

Domestic RPT passenger movements at regional airports are shown on pages 26-27.

Tables providing estimates of domestic charter aviation activity are shown on page 28. BITRE confidentiality standards restrict publication of detailed estimates for individual Australian airports, with the exception of Perth Airport.

A list of definitions can be found on page 29.

This report was prepared by the Aviation Statistics Section of the Bureau of Infrastructure and Transport Research Economics with data provided by airlines.

Estimates are included where data were not available and data presented in this publication may contain revisions to previously published data.

Where figures have been rounded, discrepancies may occur between sums of component items and totals, and in percentage changes which are derived from figures prior to rounding.

CONTENTS

| | |
|--|-----------|
| Highlights | 1 |
| Total network..... | 2 |
| RPT network | 2 |
| Top competitive routes..... | 4 |
| Top ten airports – passenger movements..... | 14 |
| Top five airports – cargo movements..... | 15 |
| Top ten routes | 16 |
| 1. Melbourne – Sydney | 16 |
| 2. Brisbane – Sydney..... | 17 |
| 3. Brisbane – Melbourne | 18 |
| 4. Gold Coast – Melbourne..... | 19 |
| 5. Gold Coast – Sydney | 20 |
| 6. Adelaide – Melbourne | 21 |
| 7. Melbourne – Perth | 22 |
| 8. Adelaide – Sydney | 23 |
| 9. Perth – Sydney | 24 |
| 10. Brisbane – Cairns | 25 |
| Top fifty regional airports | 26 |
| Domestic charter activity..... | 28 |
| Definitions | 29 |

This page is intentionally left blank.

HIGHLIGHTS

The domestic aviation industry continued to recover in September 2022. Revenue passenger numbers were 368.1 per cent higher than September 2021 levels but still 10.1 per cent below pre-COVID September 2019.

There were 4.99 million passengers carried on Australian domestic commercial aviation (including charter operations) in September 2022, compared to 1.30 million in September 2021 and 5.42 million in pre-COVID September 2019.

For the month of September 2022, there were 48,033 aircraft trips, compared to 20,699 in September 2021 and 53,416 in pre-COVID September 2019.

4.67 million passengers were carried on RPT flights in September 2022, compared to 997,837 reported in September 2021 and 5.19 million reported in pre-COVID September 2019.

For the year ending September 2022 there were 41.2 million RPT passengers, an increase of 82.2 per cent on the year ending September 2021 and a decrease of 32.6 per cent on the year ending September 2019.

RPT revenue passenger kilometres (RPKs) performed were 5.67 billion for the month, compared with 1.28 billion in September 2021.

Capacity, measured by available seat kilometres (ASKs), increased to 6.61 billion in September 2022 compared to 2.32 billion in September 2021.

The industry wide load factor (RPKs/ASKs) increased from 54.9 per cent in September 2021 to 85.7 per cent in September 2022. The highest load factor (93.6 per cent) was recorded on the Gold Coast - Melbourne route while the lowest load factor (54.0 per cent) was recorded on the Armidale - Sydney route.

For the month of September 2022, Melbourne – Sydney was Australia's busiest RPT route with 618,298 passengers, followed by Brisbane – Sydney with 339,791 passengers and Brisbane – Melbourne with 256,263 passengers.

Sydney was Australia's busiest domestic airport with 1.95 million passenger movements in September 2022, followed by Melbourne with 1.89 million passenger movements and Brisbane with 1.34 million passenger movements.

Total cargo movements at Australian airports on domestic RPT flights were 27,613 tonnes in September 2022, a decrease of 25.0 per cent compared with September 2021.

In September 2022, there were 2.04 million domestic passenger movements through regional airports, compared to 0.99 million in September 2021 and 2.14 million in pre-COVID September 2019. Most regional airports for which data is available for publishing recorded large increases in September 2022 compared to September 2021.

Fixed-wing charter operators carried 319,837 passengers in September 2022, compared to 300,298 in September 2021 and 226,095 in pre-COVID September 2019.

Perth Airport accounted for 36.1 per cent of all charter passengers in Australia.

TOTAL NETWORK

Summary of monthly commercial aviation activity

| | Sep 2021 | Sep 2022 | % Change |
|-------------------------------------|----------|----------|----------|
| Total passengers carried (millions) | 1.30 | 4.99 | 284.4 |
| Aircraft trips (000s) | 26.2 | 53.7 | 105.2 |

Note: Regular Public Transport and charter aviation activity
Helicopter, joy flights and sightseeing charter flights not included.

RPT NETWORK

Summary of monthly RPT activity

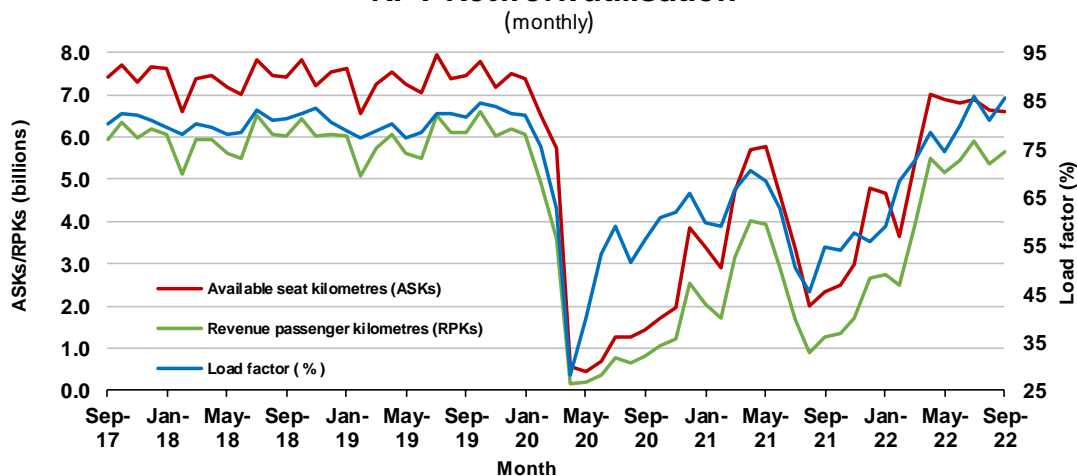
| | Sep 2021 | Sep 2022 | % Change |
|---|----------|----------|----------|
| Total passengers carried (millions) | 1.00 | 4.67 | 368.1 |
| Revenue passenger kilometres (billions) | 1.28 | 5.67 | 344.3 |
| Available seats (millions) | 1.83 | 5.61 | 205.7 |
| Available seat kilometres (billions) | 2.32 | 6.61 | 184.4 |
| Load factor % | 54.9 | 85.7 | 30.8 * |
| Aircraft trips (000s) | 20.7 | 48.0 | 132.1 |

* percentage point difference

Domestic RPT passenger traffic



RPT Network utilisation



TOTAL NETWORK

Summary of annual commercial aviation activity

| | YE Sep 2021 | YE Sep 2022 | % Change |
|-------------------------------------|-------------|-------------|----------|
| Total passengers carried (millions) | 26.03 | 44.70 | 71.7 |
| Aircraft trips (000s) | 413.9 | 563.5 | 36.2 |

Note: Regular Public Transport and charter aviation activity
Helicopter, joy flights and sightseeing charter flights not included.

RPT NETWORK

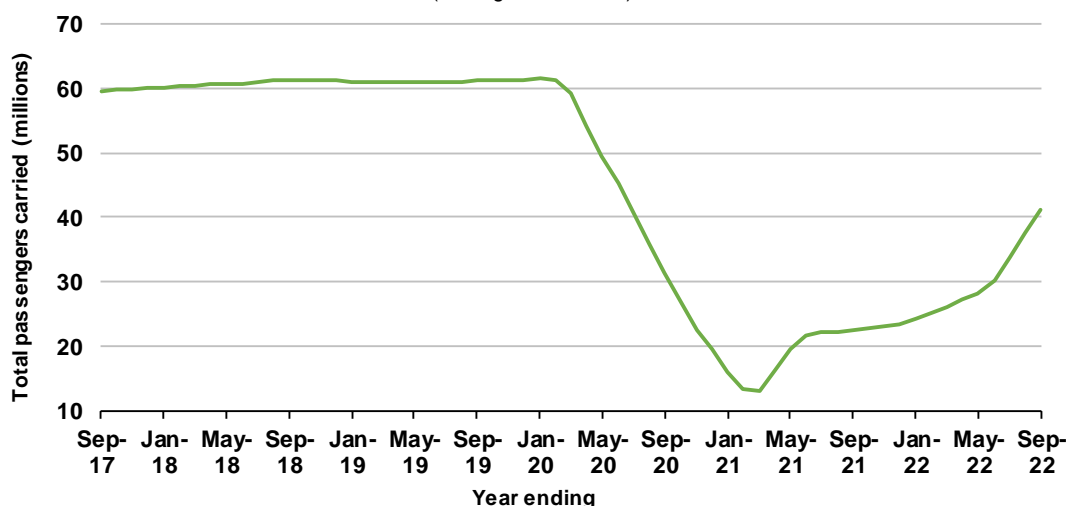
Summary of annual RPT activity

| | YE Sep 2021 | YE Sep 2022 | % Change |
|---|-------------|-------------|----------|
| Total passengers carried (millions) | 22.62 | 41.21 | 82.2 |
| Revenue passenger kilometres (billions) | 26.43 | 47.97 | 81.5 |
| Available seats (millions) | 36.80 | 57.20 | 55.4 |
| Available seat kilometres (billions) | 42.31 | 64.86 | 53.3 |
| Load factor % | 62.5 | 74.0 | 11.5 * |
| Aircraft trips (000s) | 348.8 | 498.2 | 42.8 |

* percentage point difference

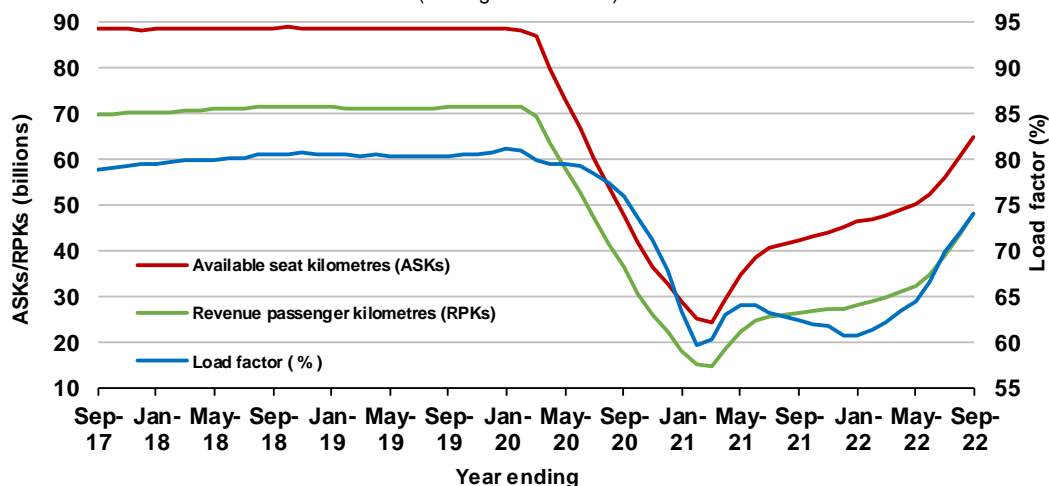
Domestic RPT passenger traffic

(moving annual totals)



RPT Network utilisation

(moving annual totals)



TOP COMPETITIVE ROUTES

Table 1: Passengers carried (000s) — annual activity

| | City-Pair | YE Sep 2021 | YE Sep 2022 | % Change |
|----|----------------------------|-------------|-------------|----------|
| 1 | Melbourne - Sydney | 1 698.6 | 5 409.9 | 218.5 |
| 2 | Brisbane - Sydney | 1 135.5 | 2 686.1 | 136.6 |
| 3 | Brisbane - Melbourne | 813.6 | 2 140.5 | 163.1 |
| 4 | Gold Coast - Melbourne | .. | 1 787.1 | NA |
| 5 | Gold Coast - Sydney | .. | 1 732.4 | NA |
| 6 | Adelaide - Melbourne | 595.8 | 1 516.7 | 154.6 |
| 7 | Brisbane - Cairns | 972.0 | 1 109.3 | 14.1 |
| 8 | Adelaide - Sydney | 597.2 | 1 079.4 | 80.8 |
| 9 | Melbourne - Perth | 304.9 | 886.7 | 190.8 |
| 10 | Hobart - Melbourne | 471.4 | 815.1 | 72.9 |
| 11 | Brisbane - Townsville | 668.2 | 782.0 | 17.0 |
| 12 | Perth - Sydney | 335.3 | 734.3 | 119.0 |
| 13 | Canberra - Melbourne | 236.4 | 676.5 | 186.2 |
| 14 | Cairns - Melbourne | 308.3 | 645.3 | 109.3 |
| 15 | Brisbane - Mackay | 514.3 | 644.8 | 25.4 |
| 16 | Adelaide - Brisbane | 432.8 | 623.0 | 43.9 |
| 17 | Cairns - Sydney | 308.3 | 604.3 | 96.0 |
| 18 | Melbourne - Sunshine Coast | .. | 577.6 | NA |
| 19 | Brisbane - Perth | 276.5 | 555.8 | 101.0 |
| 20 | Sunshine Coast - Sydney | .. | 512.7 | NA |
| 21 | Launceston - Melbourne | 313.8 | 508.4 | 62.0 |
| 22 | Ballina - Sydney | 427.8 | 499.5 | 16.7 |
| 23 | Hobart - Sydney | 280.9 | 490.0 | 74.5 |
| 24 | Karratha - Perth | 395.9 | 476.4 | 20.3 |
| 25 | Brisbane - Canberra | 355.2 | 456.0 | 28.4 |
| 26 | Perth - Port Hedland | 322.0 | 433.9 | 34.8 |
| 27 | Canberra - Sydney | .. | 420.3 | NA |
| 28 | Brisbane - Rockhampton | 346.9 | 418.8 | 20.7 |
| 29 | Adelaide - Perth | 253.2 | 401.4 | 58.5 |
| 30 | Broome - Perth | 361.9 | 379.8 | 5.0 |
| 31 | Brisbane - Newcastle | 249.8 | 338.1 | 35.3 |
| 32 | Newman - Perth | 292.7 | 335.0 | 14.4 |
| 33 | Melbourne - Newcastle | 137.5 | 325.2 | 136.5 |
| 34 | Brisbane - Darwin | 259.6 | 314.9 | 21.3 |
| 35 | Brisbane - Proserpine | 227.3 | 299.1 | 31.6 |
| 36 | Brisbane - Hobart | 213.3 | 298.3 | 39.9 |
| 37 | Darwin - Sydney | .. | 294.1 | NA |
| 38 | Kalgoorlie - Perth | 238.6 | 292.2 | 22.5 |
| 39 | Darwin - Melbourne | .. | 254.5 | NA |
| 40 | Launceston - Sydney | .. | 211.6 | NA |
| 41 | Brisbane - Hamilton Island | 196.4 | 197.0 | 0.3 |
| 42 | Adelaide - Gold Coast | 134.8 | 192.2 | 42.6 |
| 43 | Coffs Harbour - Sydney | .. | 185.1 | NA |
| 44 | Brisbane - Gladstone | 134.1 | 179.2 | 33.6 |
| 45 | Brisbane - Launceston | 115.6 | 176.5 | 52.8 |
| 46 | Hamilton Island - Sydney | .. | 170.7 | NA |
| 47 | Adelaide - Port Lincoln | 129.3 | 162.4 | 25.6 |
| 48 | Cairns - Gold Coast | .. | 160.9 | NA |
| 49 | Brisbane - Emerald | 129.4 | 149.8 | 15.8 |
| 50 | Darwin - Perth | 125.3 | 141.7 | 13.1 |

continued

Table 1: (continued) Passengers carried (000s) — annual activity

| | City-Pair | YE Sep 2021 | YE Sep 2022 | % Change |
|----|-------------------------------|--------------------|--------------------|-----------------|
| 51 | Brisbane - Mount Isa | 106.2 | 128.7 | 21.2 |
| 52 | Albury - Sydney | .. | 123.9 | NA |
| 53 | Dubbo - Sydney | .. | 121.9 | NA |
| 54 | Adelaide - Canberra | .. | 118.0 | NA |
| 55 | Melbourne - Mildura | .. | 115.5 | NA |
| 56 | Port Macquarie - Sydney | .. | 114.6 | NA |
| 57 | Sydney - Wagga Wagga | .. | 110.8 | NA |
| 58 | Canberra - Gold Coast | .. | 107.0 | NA |
| 59 | Adelaide - Alice Springs | .. | 91.0 | NA |
| 60 | Armidale - Sydney | .. | 77.1 | NA |
| | Total domestic network | 22 622.6 | 41 213.3 | 82.2 |

.. Data not available for release.

Table 2: Passengers carried (000s) — monthly activity

| | City-Pair | Sep 2021 | Sep 2022 | % Change |
|----|----------------------------|-----------------|-----------------|-----------------|
| 1 | Melbourne - Sydney | 4.8 | 618.3 | 12653.7 |
| 2 | Brisbane - Sydney | 5.1 | 339.8 | 6528.8 |
| 3 | Brisbane - Melbourne | 4.3 | 256.3 | 5904.3 |
| 4 | Gold Coast - Melbourne | .. | 197.0 | NA |
| 5 | Gold Coast - Sydney | .. | 195.8 | NA |
| 6 | Adelaide - Melbourne | 2.9 | 175.4 | 5921.6 |
| 7 | Melbourne - Perth | 4.5 | 153.0 | 3294.5 |
| 8 | Adelaide - Sydney | 1.2 | 124.3 | 10034.1 |
| 9 | Perth - Sydney | 1.1 | 118.5 | 10941.0 |
| 10 | Brisbane - Cairns | 92.0 | 109.2 | 18.7 |
| 11 | Hobart - Melbourne | 2.2 | 88.0 | 3907.2 |
| 12 | Cairns - Melbourne | 0.7 | 84.6 | 11230.3 |
| 13 | Brisbane - Perth | 7.8 | 82.4 | 962.0 |
| 14 | Canberra - Melbourne | 0.6 | 80.5 | 12402.5 |
| 15 | Cairns - Sydney | 0.4 | 77.9 | 21004.6 |
| 16 | Brisbane - Townsville | 58.8 | 77.1 | 31.0 |
| 17 | Adelaide - Brisbane | 30.2 | 67.2 | 122.8 |
| 18 | Brisbane - Mackay | 45.4 | 65.2 | 43.6 |
| 19 | Melbourne - Sunshine Coast | .. | 65.0 | NA |
| 20 | Sunshine Coast - Sydney | .. | 64.6 | NA |
| 21 | Brisbane - Canberra | 1.2 | 57.5 | 4785.6 |
| 22 | Hobart - Sydney | 0.5 | 56.3 | 12188.2 |
| 23 | Launceston - Melbourne | 1.0 | 55.7 | 5257.4 |
| 24 | Adelaide - Perth | 34.8 | 52.8 | 51.7 |
| 25 | Canberra - Sydney | .. | 51.1 | NA |
| 26 | Karratha - Perth | 41.1 | 45.8 | 11.5 |
| 27 | Ballina - Sydney | 2.3 | 41.1 | 1711.4 |
| 28 | Brisbane - Newcastle | 0.7 | 40.9 | 5836.3 |
| 29 | Perth - Port Hedland | 34.6 | 40.6 | 17.4 |
| 30 | Broome - Perth | 41.9 | 38.9 | -7.2 |
| 31 | Brisbane - Rockhampton | 28.6 | 37.8 | 32.3 |
| 32 | Darwin - Sydney | .. | 34.5 | NA |
| 33 | Melbourne - Newcastle | 0.4 | 32.1 | 7622.1 |
| 34 | Newman - Perth | 28.1 | 31.7 | 12.9 |
| 35 | Brisbane - Darwin | 24.1 | 29.4 | 22.0 |
| 36 | Kalgoorlie - Perth | 24.2 | 27.7 | 14.5 |
| 37 | Brisbane - Proserpine | 22.8 | 26.2 | 15.0 |
| 38 | Darwin - Melbourne | .. | 25.0 | NA |
| 39 | Brisbane - Hobart | 23.3 | 23.1 | -0.7 |
| 40 | Launceston - Sydney | .. | 21.9 | NA |
| 41 | Hamilton Island - Sydney | .. | 21.1 | NA |
| 42 | Coffs Harbour - Sydney | .. | 19.4 | NA |
| 43 | Cairns - Gold Coast | .. | 17.9 | NA |
| 44 | Darwin - Perth | 21.1 | 17.6 | -16.6 |
| 45 | Brisbane - Gladstone | 10.6 | 17.3 | 63.5 |
| 46 | Adelaide - Gold Coast | 7.5 | 16.7 | 122.3 |
| 47 | Brisbane - Hamilton Island | 19.7 | 16.1 | -18.3 |
| 48 | Adelaide - Canberra | .. | 15.5 | NA |
| 49 | Brisbane - Emerald | 11.9 | 15.3 | 28.6 |
| 50 | Adelaide - Port Lincoln | 11.6 | 15.2 | 31.5 |

continued

Table 2: (continued) Passengers carried (000s) — monthly activity

| | City-Pair | Sep 2021 | Sep 2022 | % Change |
|----|-------------------------------|-----------------|-----------------|-----------------|
| 51 | Albury - Sydney | .. | 15.2 | NA |
| 52 | Dubbo - Sydney | .. | 14.3 | NA |
| 53 | Port Macquarie - Sydney | .. | 13.8 | NA |
| 54 | Canberra - Gold Coast | .. | 13.8 | NA |
| 55 | Brisbane - Launceston | 12.8 | 13.6 | 5.9 |
| 56 | Melbourne - Mildura | .. | 12.9 | NA |
| 57 | Sydney - Wagga Wagga | .. | 12.9 | NA |
| 58 | Brisbane - Mount Isa | 9.2 | 12.9 | 40.1 |
| 59 | Adelaide - Alice Springs | .. | 9.9 | NA |
| 60 | Armidale - Sydney | .. | 8.7 | NA |
| | Total domestic network | 997.8 | 4 670.4 | 368.1 |

.. Data not available for release.

Table 3: Available seats (000s) — monthly activity

| | City-Pair | Sep 2021 | Sep 2022 | % Change |
|----|----------------------------|----------|----------|----------|
| 1 | Melbourne - Sydney | 26.7 | 710.6 | 2563.3 |
| 2 | Brisbane - Sydney | 19.9 | 388.9 | 1856.1 |
| 3 | Brisbane - Melbourne | 13.6 | 282.8 | 1976.3 |
| 4 | Gold Coast - Melbourne | .. | 210.4 | NA |
| 5 | Gold Coast - Sydney | .. | 212.4 | NA |
| 6 | Adelaide - Melbourne | 13.7 | 215.6 | 1477.7 |
| 7 | Melbourne - Perth | 18.2 | 173.0 | 850.1 |
| 8 | Adelaide - Sydney | 13.6 | 136.5 | 906.9 |
| 9 | Perth - Sydney | 17.5 | 131.7 | 652.2 |
| 10 | Brisbane - Cairns | 124.7 | 119.0 | -4.6 |
| 11 | Hobart - Melbourne | 15.5 | 102.1 | 560.4 |
| 12 | Cairns - Melbourne | 9.9 | 91.9 | 831.1 |
| 13 | Brisbane - Perth | 16.6 | 92.2 | 455.9 |
| 14 | Canberra - Melbourne | 10.2 | 104.6 | 928.2 |
| 15 | Cairns - Sydney | 10.1 | 85.0 | 745.4 |
| 16 | Brisbane - Townsville | 88.8 | 90.2 | 1.6 |
| 17 | Adelaide - Brisbane | 51.0 | 77.1 | 51.3 |
| 18 | Brisbane - Mackay | 71.1 | 81.3 | 14.2 |
| 19 | Melbourne - Sunshine Coast | .. | 72.1 | NA |
| 20 | Sunshine Coast - Sydney | .. | 78.3 | NA |
| 21 | Brisbane - Canberra | 8.6 | 71.9 | 737.5 |
| 22 | Hobart - Sydney | 10.4 | 66.0 | 536.9 |
| 23 | Launceston - Melbourne | 10.1 | 70.1 | 595.1 |
| 24 | Adelaide - Perth | 53.2 | 61.8 | 16.2 |
| 25 | Canberra - Sydney | .. | 71.2 | NA |
| 26 | Karratha - Perth | 62.0 | 58.3 | -5.9 |
| 27 | Ballina - Sydney | 7.7 | 47.0 | 513.7 |
| 28 | Brisbane - Newcastle | 7.5 | 54.8 | 629.5 |
| 29 | Perth - Port Hedland | 54.9 | 52.3 | -4.6 |
| 30 | Broome - Perth | 59.1 | 49.1 | -16.9 |
| 31 | Brisbane - Rockhampton | 40.4 | 42.4 | 5.0 |
| 32 | Darwin - Sydney | .. | 42.0 | NA |
| 33 | Melbourne - Newcastle | 11.7 | 37.5 | 221.5 |
| 34 | Newman - Perth | 58.2 | 51.4 | -11.7 |
| 35 | Brisbane - Darwin | 39.8 | 33.8 | -15.1 |
| 36 | Kalgoorlie - Perth | 37.3 | 38.0 | 1.9 |
| 37 | Brisbane - Proserpine | 30.5 | 30.4 | -0.3 |
| 38 | Darwin - Melbourne | .. | 28.7 | NA |
| 39 | Brisbane - Hobart | 35.1 | 26.4 | -24.8 |
| 40 | Launceston - Sydney | .. | 24.6 | NA |
| 41 | Hamilton Island - Sydney | .. | 27.6 | NA |
| 42 | Coffs Harbour - Sydney | .. | 24.4 | NA |
| 43 | Cairns - Gold Coast | .. | 20.0 | NA |
| 44 | Darwin - Perth | 34.3 | 21.1 | -38.5 |
| 45 | Brisbane - Gladstone | 19.4 | 24.6 | 26.9 |
| 46 | Adelaide - Gold Coast | 15.6 | 18.5 | 18.8 |
| 47 | Brisbane - Hamilton Island | 25.7 | 20.2 | -21.5 |
| 48 | Adelaide - Canberra | .. | 19.1 | NA |
| 49 | Brisbane - Emerald | 19.1 | 22.6 | 18.4 |
| 50 | Adelaide - Port Lincoln | 14.0 | 22.9 | 63.4 |

continued

Table 3: (continued) Available seats (000s) — monthly activity

| | City-Pair | Sep 2021 | Sep 2022 | % Change |
|----|-------------------------------|-----------------|-----------------|-----------------|
| 51 | Albury - Sydney | .. | 21.0 | NA |
| 52 | Dubbo - Sydney | .. | 23.9 | NA |
| 53 | Port Macquarie - Sydney | .. | 20.8 | NA |
| 54 | Canberra - Gold Coast | .. | 15.6 | NA |
| 55 | Brisbane - Launceston | 17.3 | 16.1 | -6.6 |
| 56 | Melbourne - Mildura | .. | 18.1 | NA |
| 57 | Sydney - Wagga Wagga | .. | 19.3 | NA |
| 58 | Brisbane - Mount Isa | 17.2 | 18.3 | 6.6 |
| 59 | Adelaide - Alice Springs | .. | 12.8 | NA |
| 60 | Armidale - Sydney | .. | 16.1 | NA |
| | Total domestic network | 1 833.8 | 5 605.4 | 205.7 |

.. Data not available for release.

Table 4: Load factors (%) — monthly activity

| | City-Pair | Sep 2021 | Sep 2022 | % Point diff |
|----|----------------------------|-----------------|-----------------|---------------------|
| 1 | Melbourne - Sydney | 18.2 | 87.0 | 68.8 |
| 2 | Brisbane - Sydney | 25.8 | 87.4 | 61.6 |
| 3 | Brisbane - Melbourne | 31.3 | 90.6 | 59.3 |
| 4 | Gold Coast - Melbourne | .. | 93.6 | NA |
| 5 | Gold Coast - Sydney | .. | 92.2 | NA |
| 6 | Adelaide - Melbourne | 21.3 | 81.3 | 60.0 |
| 7 | Melbourne - Perth | 24.7 | 88.4 | 63.7 |
| 8 | Adelaide - Sydney | 9.1 | 91.1 | 82.0 |
| 9 | Perth - Sydney | 6.1 | 90.0 | 83.9 |
| 10 | Brisbane - Cairns | 73.8 | 91.8 | 18.0 |
| 11 | Hobart - Melbourne | 14.2 | 86.3 | 72.1 |
| 12 | Cairns - Melbourne | 7.6 | 92.1 | 84.5 |
| 13 | Brisbane - Perth | 46.8 | 89.3 | 42.5 |
| 14 | Canberra - Melbourne | 6.3 | 77.0 | 70.7 |
| 15 | Cairns - Sydney | 3.7 | 91.6 | 87.9 |
| 16 | Brisbane - Townsville | 66.3 | 85.5 | 19.2 |
| 17 | Adelaide - Brisbane | 59.2 | 87.1 | 27.9 |
| 18 | Brisbane - Mackay | 63.8 | 80.2 | 16.4 |
| 19 | Melbourne - Sunshine Coast | .. | 90.1 | NA |
| 20 | Sunshine Coast - Sydney | .. | 82.5 | NA |
| 21 | Brisbane - Canberra | 13.7 | 80.0 | 66.3 |
| 22 | Hobart - Sydney | 4.4 | 85.2 | 80.8 |
| 23 | Launceston - Melbourne | 10.3 | 79.4 | 69.1 |
| 24 | Adelaide - Perth | 65.5 | 85.5 | 20.0 |
| 25 | Canberra - Sydney | .. | 71.8 | NA |
| 26 | Karratha - Perth | 66.3 | 78.5 | 12.2 |
| 27 | Ballina - Sydney | 29.7 | 87.5 | 57.8 |
| 28 | Brisbane - Newcastle | 9.2 | 74.6 | 65.4 |
| 29 | Perth - Port Hedland | 63.0 | 77.5 | 14.5 |
| 30 | Broome - Perth | 70.9 | 79.2 | 8.3 |
| 31 | Brisbane - Rockhampton | 70.7 | 89.1 | 18.4 |
| 32 | Darwin - Sydney | .. | 82.2 | NA |
| 33 | Melbourne - Newcastle | 3.6 | 85.7 | 82.1 |
| 34 | Newman - Perth | 48.3 | 61.7 | 13.4 |
| 35 | Brisbane - Darwin | 60.5 | 87.0 | 26.5 |
| 36 | Kalgoorlie - Perth | 64.9 | 73.0 | 8.1 |
| 37 | Brisbane - Proserpine | 74.6 | 86.1 | 11.5 |
| 38 | Darwin - Melbourne | .. | 87.2 | NA |
| 39 | Brisbane - Hobart | 66.2 | 87.5 | 21.3 |
| 40 | Launceston - Sydney | .. | 89.0 | NA |
| 41 | Hamilton Island - Sydney | .. | 76.4 | NA |
| 42 | Coffs Harbour - Sydney | .. | 79.5 | NA |
| 43 | Cairns - Gold Coast | .. | 89.5 | NA |
| 44 | Darwin - Perth | 61.5 | 83.4 | 21.9 |
| 45 | Brisbane - Gladstone | 54.8 | 70.6 | 15.8 |
| 46 | Adelaide - Gold Coast | 48.2 | 90.2 | 42.0 |
| 47 | Brisbane - Hamilton Island | 76.5 | 79.7 | 3.2 |
| 48 | Adelaide - Canberra | .. | 80.9 | NA |
| 49 | Brisbane - Emerald | 62.4 | 67.7 | 5.3 |
| 50 | Adelaide - Port Lincoln | 82.6 | 66.5 | -16.1 |

continued

Table 4: (continued) Load factors (%) — monthly activity

| | City-Pair | Sep 2021 | Sep 2022 | % Point diff |
|----|-------------------------------|-----------------|-----------------|---------------------|
| 51 | Albury - Sydney | .. | 72.4 | NA |
| 52 | Dubbo - Sydney | .. | 60.0 | NA |
| 53 | Port Macquarie - Sydney | .. | 66.6 | NA |
| 54 | Canberra - Gold Coast | .. | 88.5 | NA |
| 55 | Brisbane - Launceston | 74.1 | 84.0 | 9.9 |
| 56 | Melbourne - Mildura | .. | 71.3 | NA |
| 57 | Sydney - Wagga Wagga | .. | 66.7 | NA |
| 58 | Brisbane - Mount Isa | 53.5 | 70.3 | 16.8 |
| 59 | Adelaide - Alice Springs | .. | 77.0 | NA |
| 60 | Armidale - Sydney | .. | 54.0 | NA |
| | Total domestic network | 54.9 | 85.7 | 30.8 |

.. Data not available for release.

Table 5: Aircraft trips ^(a) — monthly activity

| | City-Pair | Sep 2021 | Sep 2022 | % Change |
|----|----------------------------|----------|----------|----------|
| 1 | Melbourne - Sydney | 426 | 4 052 | 851.2 |
| 2 | Brisbane - Sydney | 367 | 2 387 | 550.4 |
| 3 | Brisbane - Melbourne | 216 | 1 748 | 709.3 |
| 4 | Gold Coast - Melbourne | .. | 1 195 | NA |
| 5 | Gold Coast - Sydney | .. | 1 241 | NA |
| 6 | Adelaide - Melbourne | 186 | 1 326 | 612.9 |
| 7 | Melbourne - Perth | 198 | 949 | 379.3 |
| 8 | Adelaide - Sydney | 132 | 843 | 538.6 |
| 9 | Perth - Sydney | 117 | 689 | 488.9 |
| 10 | Brisbane - Cairns | 798 | 752 | -5.8 |
| 11 | Hobart - Melbourne | 89 | 631 | 609.0 |
| 12 | Cairns - Melbourne | 55 | 486 | 783.6 |
| 13 | Brisbane - Perth | 96 | 530 | 452.1 |
| 14 | Canberra - Melbourne | 78 | 745 | 855.1 |
| 15 | Cairns - Sydney | 57 | 434 | 661.4 |
| 16 | Brisbane - Townsville | 542 | 611 | 12.7 |
| 17 | Adelaide - Brisbane | 314 | 458 | 45.9 |
| 18 | Brisbane - Mackay | 482 | 566 | 17.4 |
| 19 | Melbourne - Sunshine Coast | .. | 424 | NA |
| 20 | Sunshine Coast - Sydney | .. | 429 | NA |
| 21 | Brisbane - Canberra | 68 | 522 | 667.6 |
| 22 | Hobart - Sydney | 58 | 407 | 601.7 |
| 23 | Launceston - Melbourne | 190 | 580 | 205.3 |
| 24 | Adelaide - Perth | 338 | 358 | 5.9 |
| 25 | Canberra - Sydney | .. | 1 191 | NA |
| 26 | Karratha - Perth | 380 | 388 | 2.1 |
| 27 | Ballina - Sydney | 66 | 351 | 431.8 |
| 28 | Brisbane - Newcastle | 46 | 503 | 993.5 |
| 29 | Perth - Port Hedland | 380 | 346 | -8.9 |
| 30 | Broome - Perth | 350 | 328 | -6.3 |
| 31 | Brisbane - Rockhampton | 406 | 470 | 15.8 |
| 32 | Darwin - Sydney | .. | 207 | NA |
| 33 | Melbourne - Newcastle | 65 | 243 | 273.8 |
| 34 | Newman - Perth | 355 | 328 | -7.6 |
| 35 | Brisbane - Darwin | 229 | 237 | 3.5 |
| 36 | Kalgoorlie - Perth | 272 | 276 | 1.5 |
| 37 | Brisbane - Proserpine | 188 | 188 | 0.0 |
| 38 | Darwin - Melbourne | .. | 162 | NA |
| 39 | Brisbane - Hobart | 198 | 158 | -20.2 |
| 40 | Launceston - Sydney | .. | 148 | NA |
| 41 | Hamilton Island - Sydney | .. | 157 | NA |
| 42 | Coffs Harbour - Sydney | .. | 466 | NA |
| 43 | Cairns - Gold Coast | .. | 107 | NA |
| 44 | Darwin - Perth | 210 | 120 | -42.9 |
| 45 | Brisbane - Gladstone | 254 | 307 | 20.9 |
| 46 | Adelaide - Gold Coast | 90 | 104 | 15.6 |
| 47 | Brisbane - Hamilton Island | 147 | 116 | -21.1 |
| 48 | Adelaide - Canberra | .. | 172 | NA |
| 49 | Brisbane - Emerald | 286 | 329 | 15.0 |
| 50 | Adelaide - Port Lincoln | 394 | 569 | 44.4 |

continued

Table 5: (continued) Aircraft trips — monthly activity

| | City-Pair | Sep 2021 | Sep 2022 | % Change |
|----|--------------------------|-----------------|-----------------|-----------------|
| 51 | Albury - Sydney | .. | 425 | NA |
| 52 | Dubbo - Sydney | .. | 465 | NA |
| 53 | Port Macquarie - Sydney | .. | 390 | NA |
| 54 | Canberra - Gold Coast | .. | 94 | NA |
| 55 | Brisbane - Launceston | 96 | 92 | -4.2 |
| 56 | Melbourne - Mildura | .. | 432 | NA |
| 57 | Sydney - Wagga Wagga | .. | 404 | NA |
| 58 | Brisbane - Mount Isa | 161 | 172 | 6.8 |
| 59 | Adelaide - Alice Springs | .. | 154 | NA |
| 60 | Armidale - Sydney | .. | 324 | NA |
| | Total domestic network | 20 699 | 48 033 | 132.1 |

.. Data not available for release.

TOP TEN AIRPORTS – PASSENGER MOVEMENTS

Table 6: Top ten airports, RPT passenger movements (000s) - monthly activity

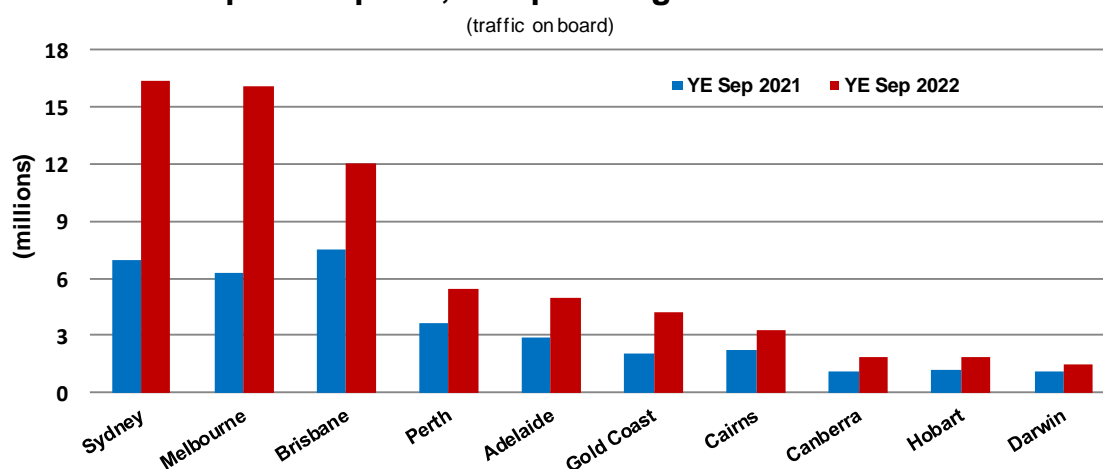
| Airport | Sep 2021 | Sep 2022 | % Change | % of Total |
|-------------------------------|----------------|----------------|--------------|--------------|
| 1 Sydney | 22.7 | 1 952.7 | 8516.8 | 20.9 |
| 2 Melbourne | 30.9 | 1 893.4 | 6017.7 | 20.3 |
| 3 Brisbane | 442.4 | 1 342.7 | 203.5 | 14.4 |
| 4 Perth | 310.4 | 687.7 | 121.5 | 7.4 |
| 5 Adelaide | 160.5 | 549.1 | 242.1 | 5.9 |
| 6 Gold Coast | 25.0 | 459.9 | 1739.6 | 4.9 |
| 7 Cairns | 160.4 | 363.1 | 126.3 | 3.9 |
| 8 Canberra | 3.5 | 233.8 | 6588.2 | 2.5 |
| 9 Hobart | 49.6 | 185.9 | 274.8 | 2.0 |
| 10 Darwin | 97.1 | 157.6 | 62.2 | 1.7 |
| Total top ten airports | 1 302.6 | 7 825.8 | 500.8 | 83.8 |
| Total domestic network | 1 995.7 | 9 340.9 | 368.1 | 100.0 |

Table 7: Top ten airports, RPT passenger movements (000s) - annual activity

| Airport | YE Sep 2021 | YE Sep 2022 | % Change | % of Total |
|-------------------------------|-----------------|-----------------|-------------|--------------|
| 1 Sydney | 6 922.6 | 16 386.0 | 136.7 | 19.9 |
| 2 Melbourne | 6 284.1 | 16 079.2 | 155.9 | 19.5 |
| 3 Brisbane | 7 551.1 | 12 071.0 | 59.9 | 14.6 |
| 4 Perth | 3 646.1 | 5 460.8 | 49.8 | 6.6 |
| 5 Adelaide | 2 866.9 | 4 991.2 | 74.1 | 6.1 |
| 6 Gold Coast | 2 028.5 | 4 166.3 | 105.4 | 5.1 |
| 7 Cairns | 2 193.8 | 3 229.7 | 47.2 | 3.9 |
| 8 Canberra | 1 080.2 | 1 897.7 | 75.7 | 2.3 |
| 9 Hobart | 1 187.9 | 1 894.8 | 59.5 | 2.3 |
| 10 Darwin | 1 067.3 | 1 485.4 | 39.2 | 1.8 |
| Total top ten airports | 34 828.5 | 67 662.2 | 94.3 | 82.1 |
| Total domestic network | 45 245.1 | 82 426.6 | 82.2 | 100.0 |

Note: Airport passenger movement numbers are the sum of passenger arrivals and departures at each airport.

Top ten airports, RPT passenger movements



TOP FIVE AIRPORTS – CARGO MOVEMENTS

Table 8: Top five airports, domestic RPT cargo movements (000s tonnes) - monthly activity

| Airport | Sep 2021 | Sep 2022 | % Change | % of Total |
|--------------------------------|-------------|-------------|--------------|--------------|
| 1 Melbourne | 9.6 | 7.6 | -21.6 | 27.4 |
| 2 Sydney | 8.7 | 6.4 | -25.6 | 23.3 |
| 3 Brisbane | 5.8 | 4.5 | -22.6 | 16.3 |
| 4 Perth | 3.6 | 2.9 | -18.5 | 10.5 |
| 5 Adelaide | 2.3 | 1.5 | -33.9 | 5.6 |
| Total top five airports | 30.0 | 22.9 | -23.5 | 83.1 |
| Total domestic network | 36.8 | 27.6 | -25.0 | 100.0 |

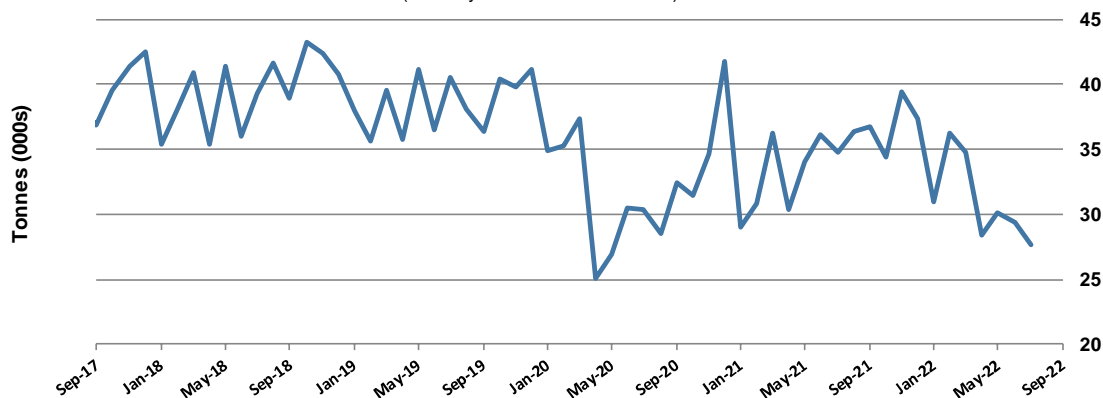
Table 9: Top five airports, domestic RPT cargo movements (000s tonnes) - annual activity

| Airport | YE Sep 2021 | YE Sep 2022 | % Change | % of Total |
|--------------------------------|--------------|--------------|-------------|--------------|
| 1 Melbourne | 104.3 | 99.9 | -4.2 | 25.8 |
| 2 Sydney | 94.6 | 89.3 | -5.6 | 23.0 |
| 3 Brisbane | 67.7 | 64.9 | -4.1 | 16.8 |
| 4 Perth | 38.4 | 35.1 | -8.7 | 9.1 |
| 5 Adelaide | 24.8 | 24.5 | -1.4 | 6.3 |
| Total top five airports | 329.8 | 313.7 | -4.9 | 81.0 |
| Total domestic network | 412.3 | 387.2 | -6.1 | 100.0 |

Note: Airport cargo tonnes are the sum of cargo tonnes on arrivals and departures at each airport.

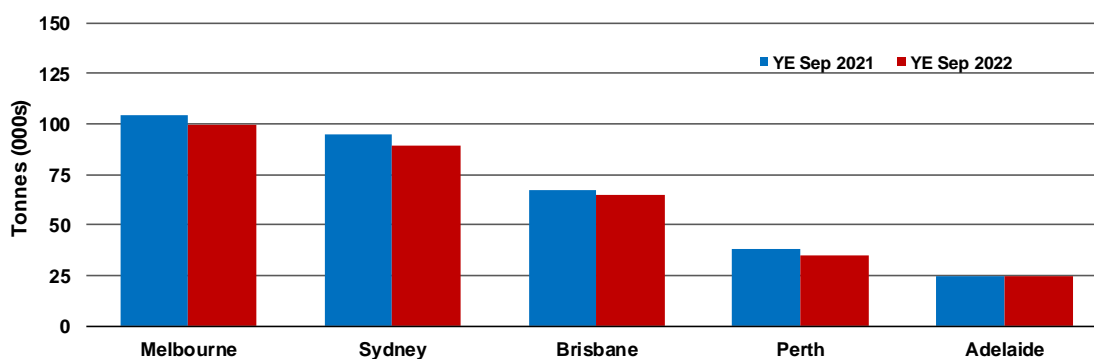
Total domestic network - cargo movement

(monthly totals - traffic on board)



Top five airports, cargo movements

(Domestic cargo traffic - traffic on board)



TOP TEN ROUTES

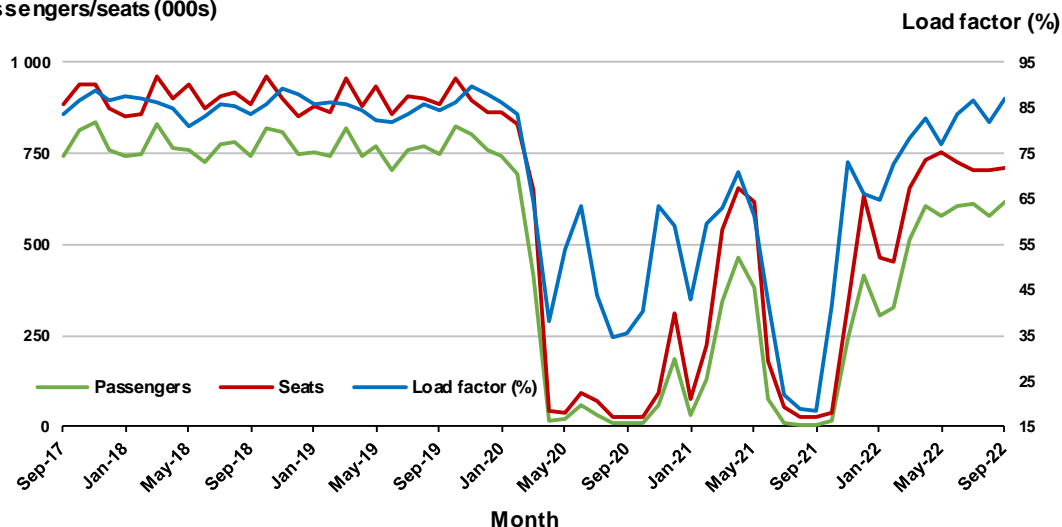
1. Melbourne - Sydney

Monthly data

| | Sep 2021 | Sep 2022 | % Change |
|---------------------------|----------|----------|----------|
| Passengers carried (000s) | 4.8 | 618.3 | 12 653.7 |
| Seats (000s) | 26.7 | 710.6 | 2 563.3 |
| Load factor % | 18.2 | 87.0 | 68.8 * |
| Aircraft trips | 426 | 4 052 | 851.2 |

* percentage point difference

Passengers/seats (000s)

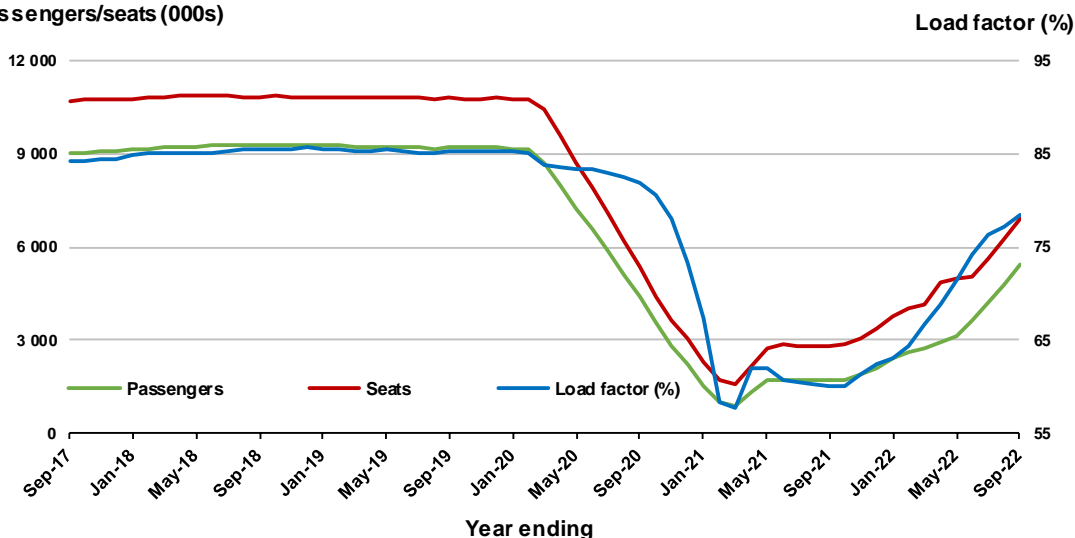


Moving annual data

| | YE Sep 2021 | YE Sep 2022 | % Change |
|---------------------------|-------------|-------------|----------|
| Passengers carried (000s) | 1 698.6 | 5 409.9 | 218.5 |
| Seats (000s) | 2 823.6 | 6 929.7 | 145.4 |
| Load factor % | 60.2 | 78.4 | 18.2 * |
| Aircraft trips | 18 297 | 40 841 | 123.2 |

* percentage point difference

Passengers/seats (000s)

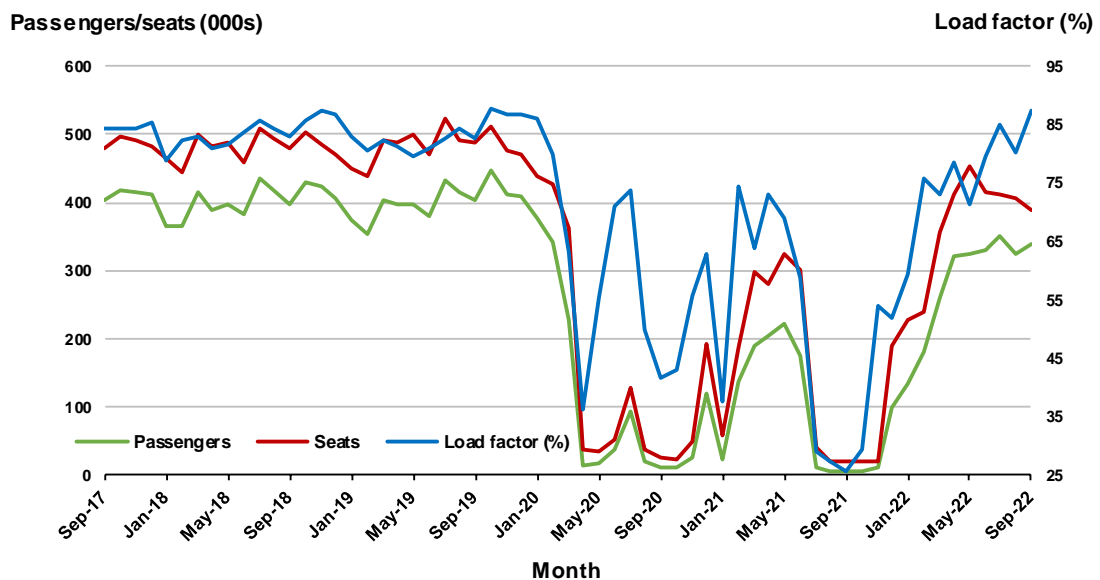


2. Brisbane - Sydney

Monthly data

| | Sep 2021 | Sep 2022 | % Change |
|---------------------------|----------|----------|----------|
| Passengers carried (000s) | 5.1 | 339.8 | 6 528.8 |
| Seats (000s) | 19.9 | 388.9 | 1 856.1 |
| Load factor % | 25.8 | 87.4 | 61.6 * |
| Aircraft trips | 367 | 2 387 | 550.4 |

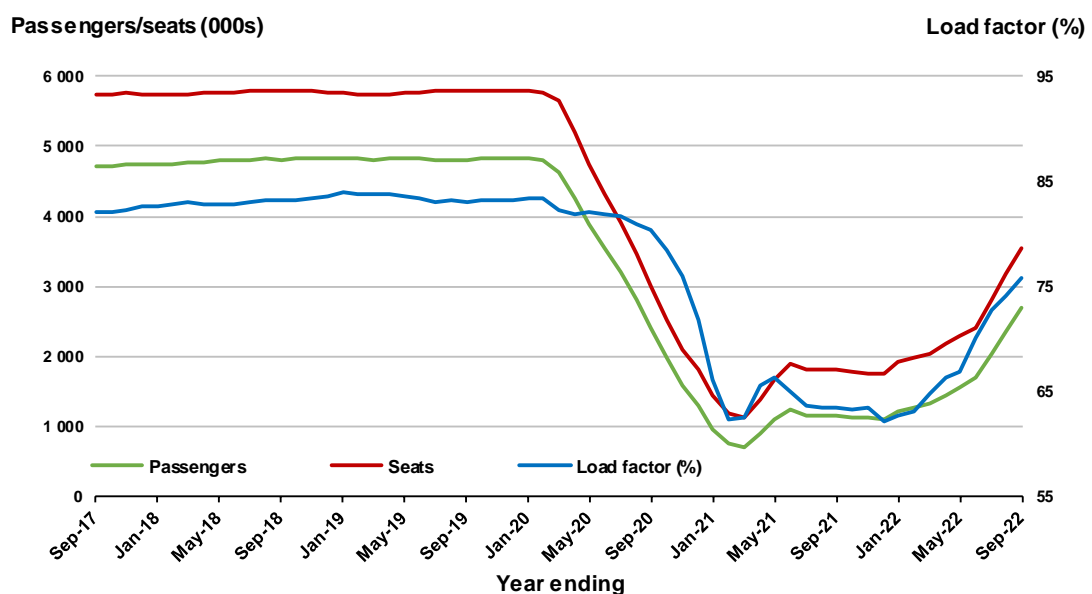
* percentage point difference



Moving annual data

| | YE Sep 2021 | YE Sep 2022 | % Change |
|---------------------------|-------------|-------------|----------|
| Passengers carried (000s) | 1 135.5 | 2 686.1 | 136.6 |
| Seats (000s) | 1 791.4 | 3 546.7 | 98.0 |
| Load factor % | 63.4 | 75.7 | 12.4 * |
| Aircraft trips | 12 392 | 22 402 | 80.8 |

* percentage point difference

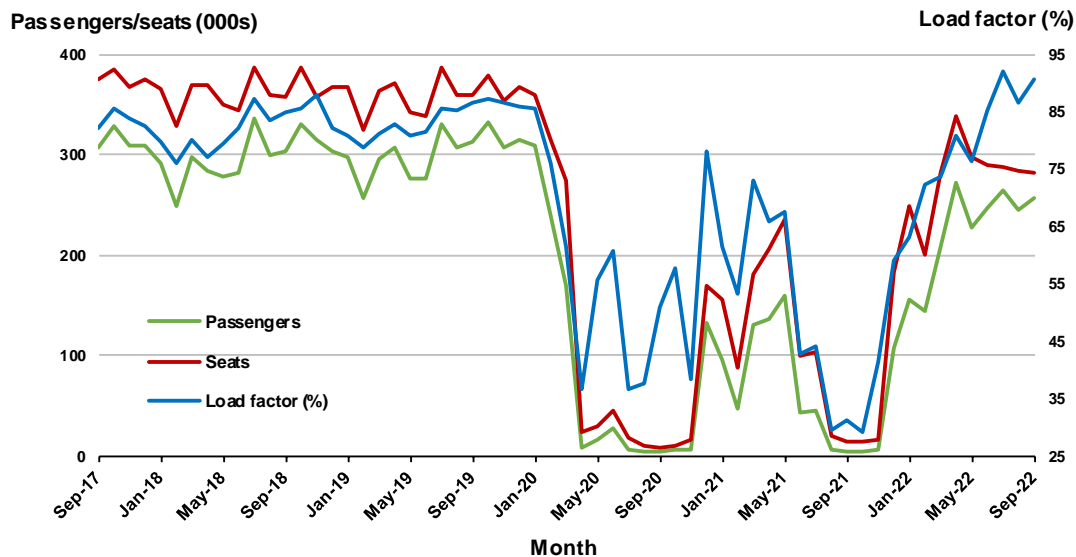


3. Brisbane - Melbourne

Monthly data

| | Sep 2021 | Sep 2022 | % Change |
|---------------------------|----------|----------|----------|
| Passengers carried (000s) | 4.3 | 256.3 | 5 904.3 |
| Seats (000s) | 13.6 | 282.8 | 1 976.3 |
| Load factor % | 31.3 | 90.6 | 59.3 * |
| Aircraft trips | 216 | 1 748 | 709.3 |

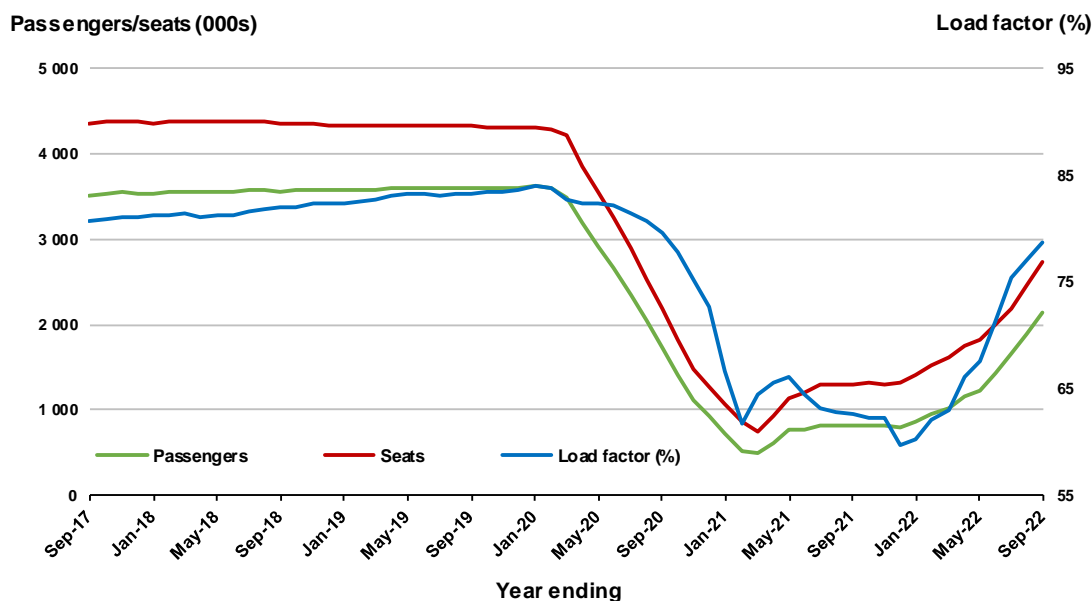
* percentage point difference



Moving annual data

| | YE Sep 2021 | YE Sep 2022 | % Change |
|---------------------------|-------------|-------------|----------|
| Passengers carried (000s) | 813.6 | 2 140.5 | 163.1 |
| Seats (000s) | 1 301.3 | 2 722.1 | 109.2 |
| Load factor % | 62.5 | 78.6 | 16.1 * |
| Aircraft trips | 8 823 | 16 971 | 92.3 |

* percentage point difference



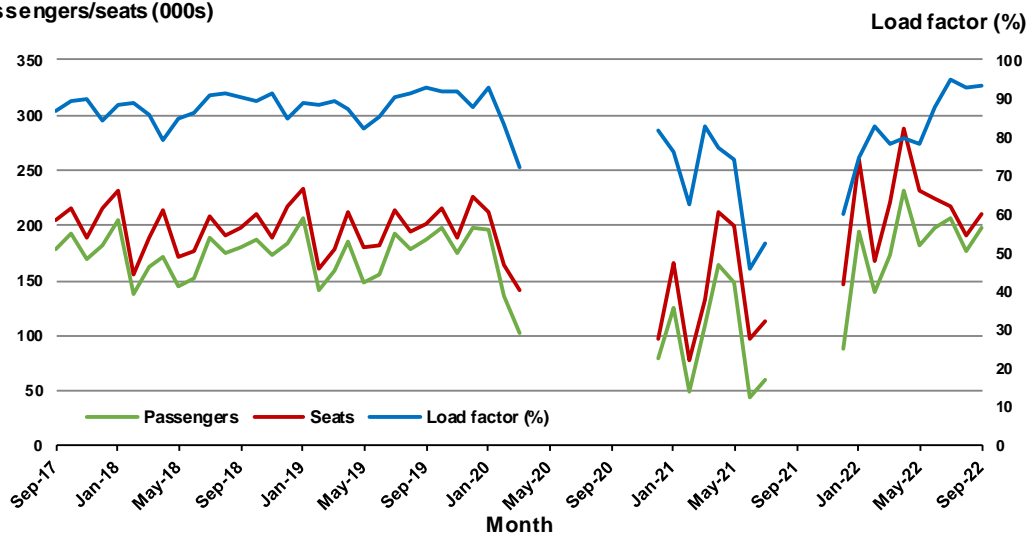
4. Gold Coast - Melbourne

Monthly data

| | Sep 2021 | Sep 2022 | % Change |
|---------------------------|----------|----------|----------|
| Passengers carried (000s) | .. | 197.0 | NA |
| Seats (000s) | .. | 210.4 | NA |
| Load factor % | .. | 93.6 | NA |
| Aircraft trips | .. | 1 195 | NA |

.. Data not available for release

Passengers/seats (000s)



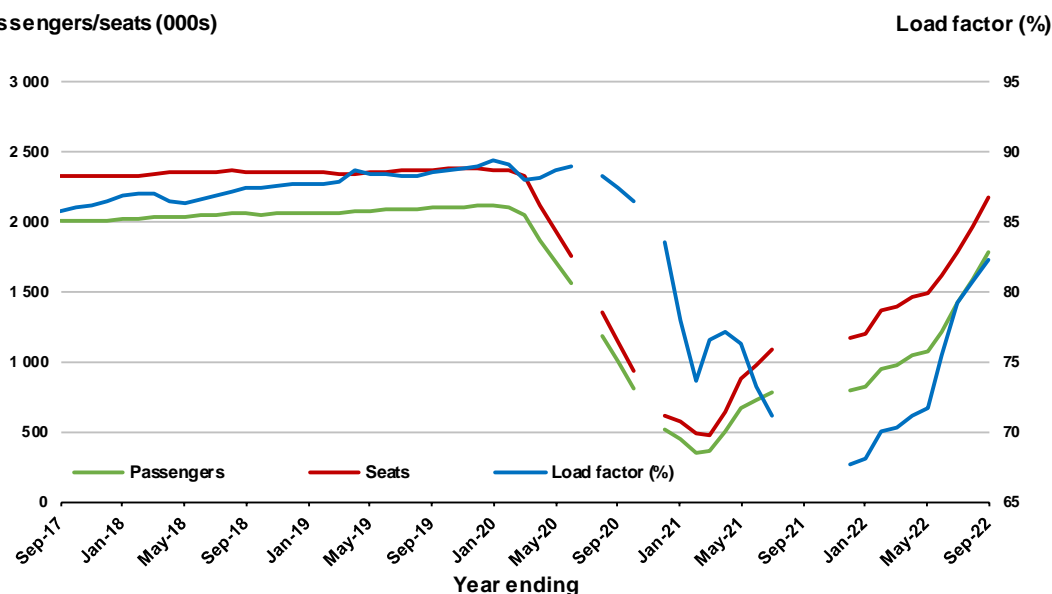
(a) April to November 2020 and August to November 2021 data not available for release

Moving annual data

| | YE Sep 2021 | YE Sep 2022 | % Change |
|---------------------------|-------------|-------------|----------|
| Passengers carried (000s) | .. | 1 787.1 | NA |
| Seats (000s) | .. | 2 172.4 | NA |
| Load factor % | .. | 82.3 | NA |
| Aircraft trips | .. | 11 897 | NA |

.. Data not available for release

Passengers/seats (000s)



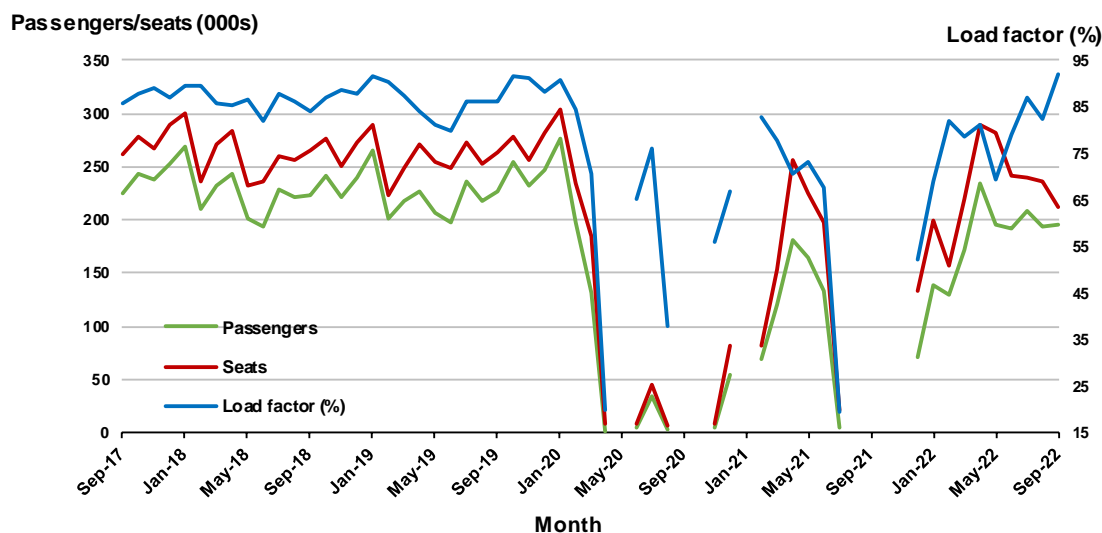
(a) July and November 2020 and August to November 2021 data not available for release.

5. Gold Coast - Sydney

Monthly data

| | Sep 2021 | Sep 2022 | % Change |
|---------------------------|----------|----------|----------|
| Passengers carried (000s) | .. | 195.8 | NA |
| Seats (000s) | .. | 212.4 | NA |
| Load factor % | .. | 92.2 | NA |
| Aircraft trips | .. | 1 241 | NA |

.. Data not available for release

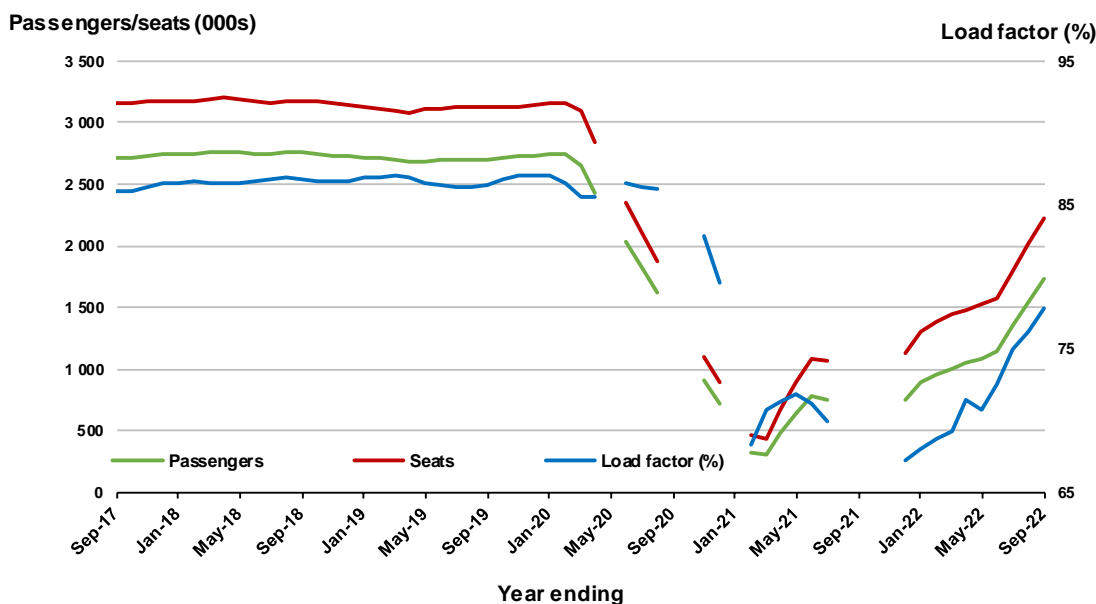


(a) May, September and October 2020 and January and August to November 2021 data not available for release

Moving annual data

| | YE Sep 2021 | YE Sep 2022 | % Change |
|---------------------------|-------------|-------------|----------|
| Passengers carried (000s) | .. | 1 732.4 | NA |
| Seats (000s) | .. | 2 225.3 | NA |
| Load factor % | .. | 77.9 | NA |
| Aircraft trips | .. | 12 927 | NA |

.. Data not available for release



(a) May, September and October 2020 and January and August to November 2021 data not available for release

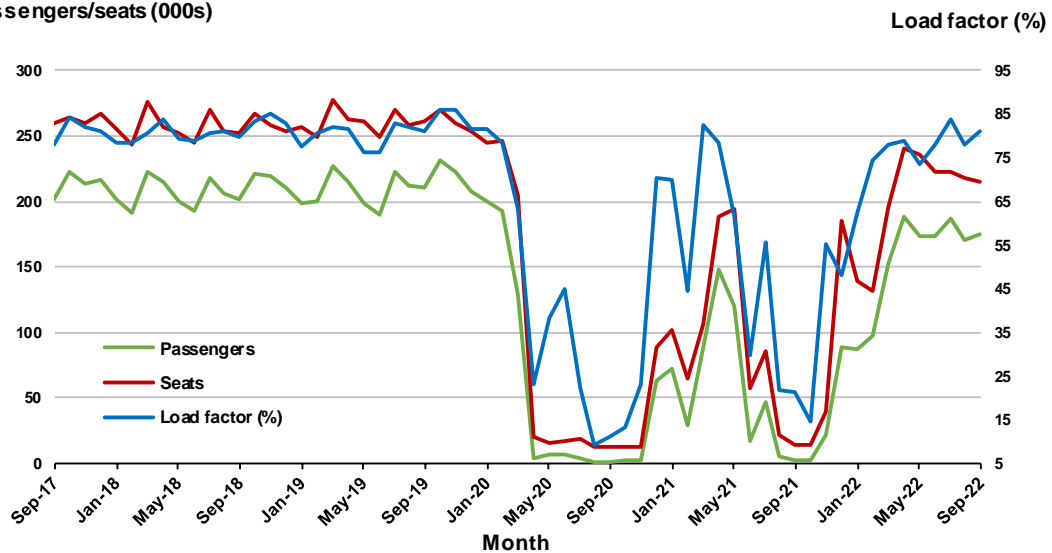
6. Adelaide - Melbourne

Monthly data

| | Sep 2021 | Sep 2022 | % Change |
|---------------------------|----------|----------|----------|
| Passengers carried (000s) | 2.9 | 175.4 | 5921.6 |
| Seats (000s) | 13.7 | 215.6 | 1477.7 |
| Load factor % | 21.3 | 81.3 | 60.0 * |
| Aircraft trips | 186 | 1 326 | 612.9 |

* percentage point difference

Passengers/seats (000s)

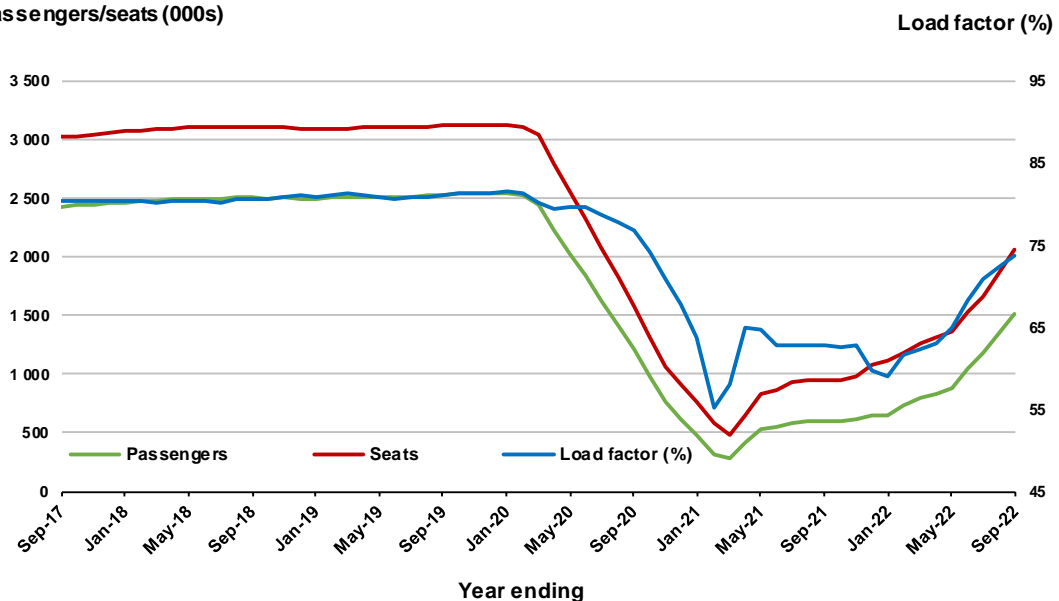


Moving annual data

| | YE Sep 2021 | YE Sep 2022 | % Change |
|---------------------------|-------------|-------------|----------|
| Passengers carried (000s) | 595.8 | 1 516.7 | 154.6 |
| Seats (000s) | 949.1 | 2 060.6 | 117.1 |
| Load factor % | 62.8 | 73.6 | 10.8 * |
| Aircraft trips | 6 496 | 12 779 | 96.7 |

* percentage point difference

Passengers/seats (000s)



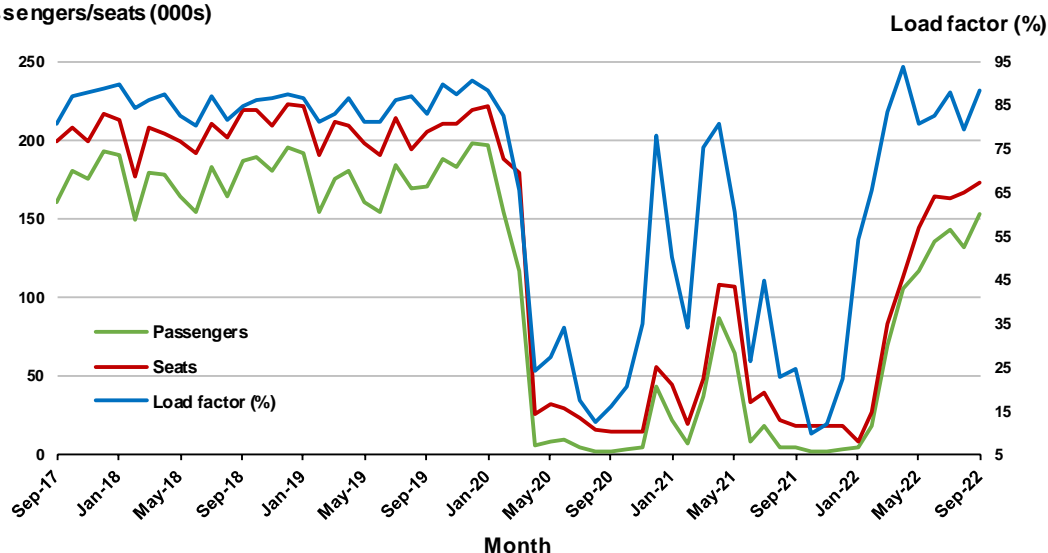
7. Melbourne - Perth

Monthly data

| | Sep 2021 | Sep 2022 | % Change |
|---------------------------|----------|----------|----------|
| Passengers carried (000s) | 4.5 | 153.0 | 3294.5 |
| Seats (000s) | 18.2 | 173.0 | 850.1 |
| Load factor % | 24.7 | 88.4 | 63.7 * |
| Aircraft trips | 198 | 949 | 379.3 |

* percentage point difference

Passengers/seats (000s)

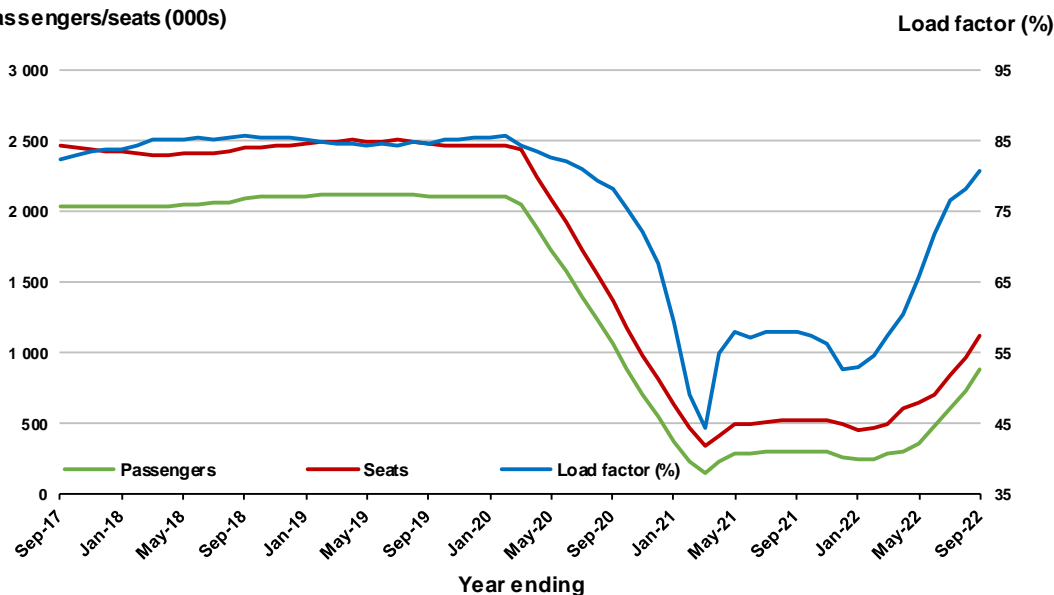


Moving annual data

| | YE Sep 2021 | YE Sep 2022 | % Change |
|---------------------------|-------------|-------------|----------|
| Passengers carried (000s) | 304.9 | 886.7 | 190.8 |
| Seats (000s) | 525.5 | 1 116.7 | 112.5 |
| Load factor % | 58.0 | 80.7 | 22.7 * |
| Aircraft trips | 3 848 | 6 668 | 73.3 |

* percentage point difference

Passengers/seats (000s)

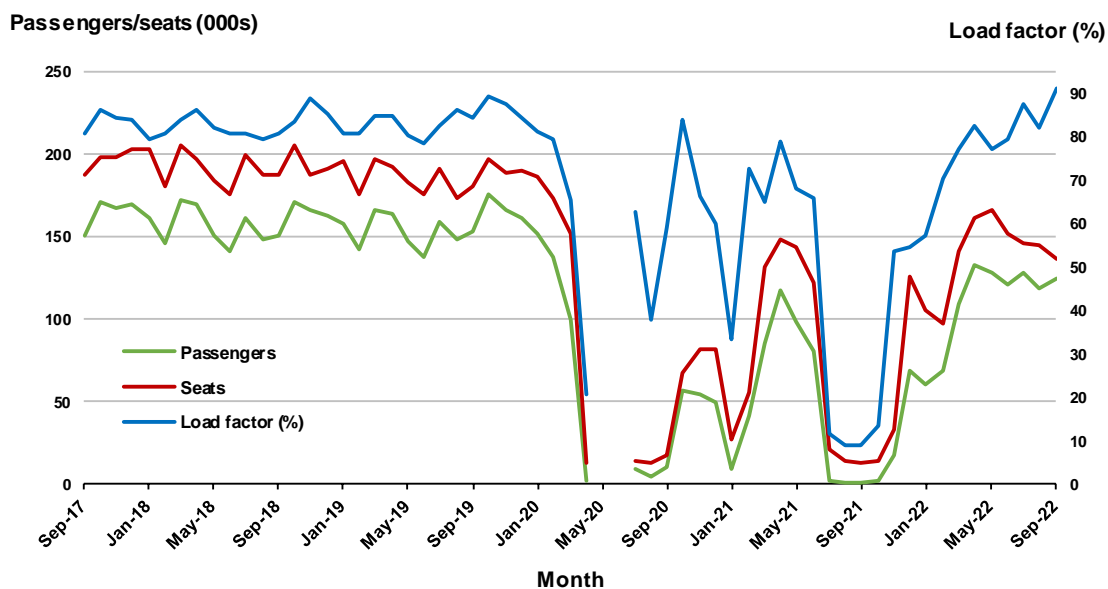


8. Adelaide - Sydney

Monthly data

| | Sep 2021 | Sep 2022 | % Change |
|---------------------------|----------|----------|----------|
| Passengers carried (000s) | 1.2 | 124.3 | 10034.1 |
| Seats (000s) | 13.6 | 136.5 | 906.9 |
| Load factor % | 9.1 | 91.1 | 82.0 * |
| Aircraft trips | 132 | 843 | 538.6 |

* percentage point difference

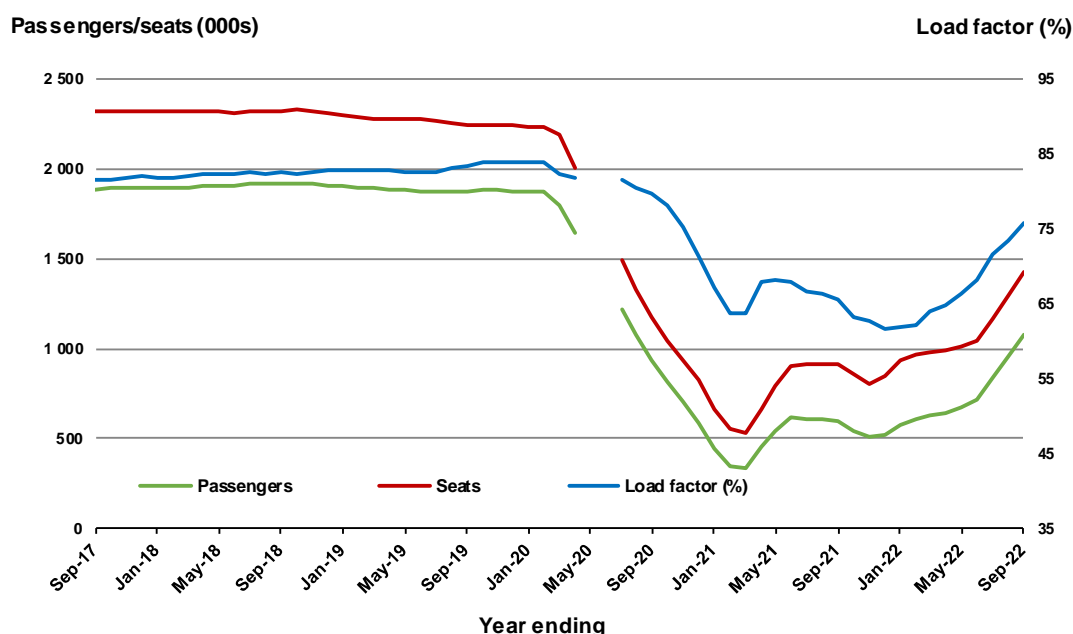


(a) May and June 2020 data not available for release.

Moving annual data

| | YE Sep 2021 | YE Sep 2022 | % Change |
|---------------------------|-------------|-------------|----------|
| Passengers carried (000s) | 597.2 | 1 079.4 | 80.8 |
| Seats (000s) | 910.9 | 1 423.3 | 56.3 |
| Load factor % | 65.6 | 75.8 | 10.3 * |
| Aircraft trips | 5 685 | 8 796 | 54.7 |

* percentage point difference



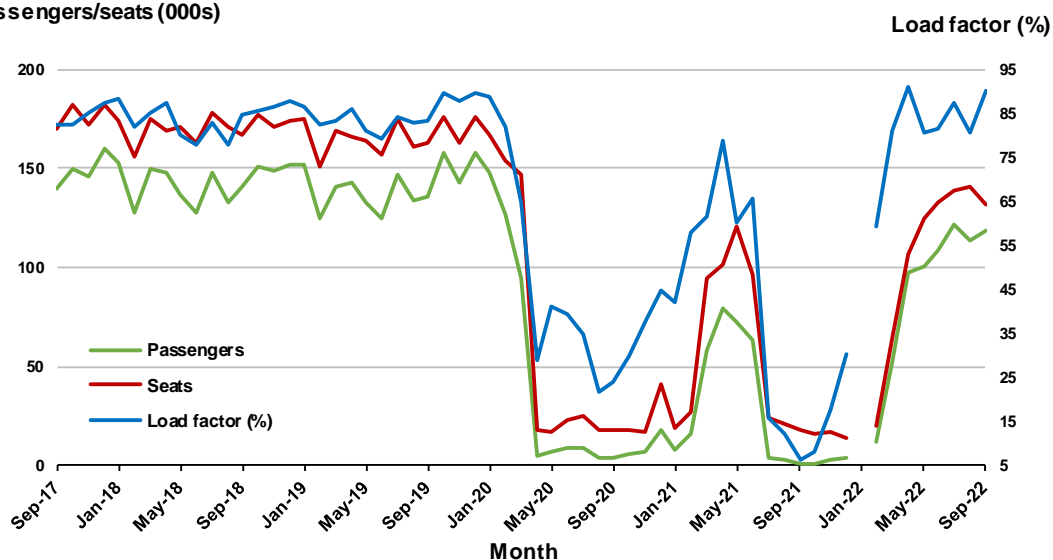
9. Perth - Sydney ^(a)

Monthly data

| | Sep 2021 | Sep 2022 | % Change |
|---------------------------|----------|----------|----------|
| Passengers carried (000s) | 1.1 | 118.5 | 10941.0 |
| Seats (000s) | 17.5 | 131.7 | 652.2 |
| Load factor % | 6.1 | 90.0 | 83.9 * |
| Aircraft trips | 117 | 689 | 488.9 |

* percentage point difference

Passengers/seats (000s)



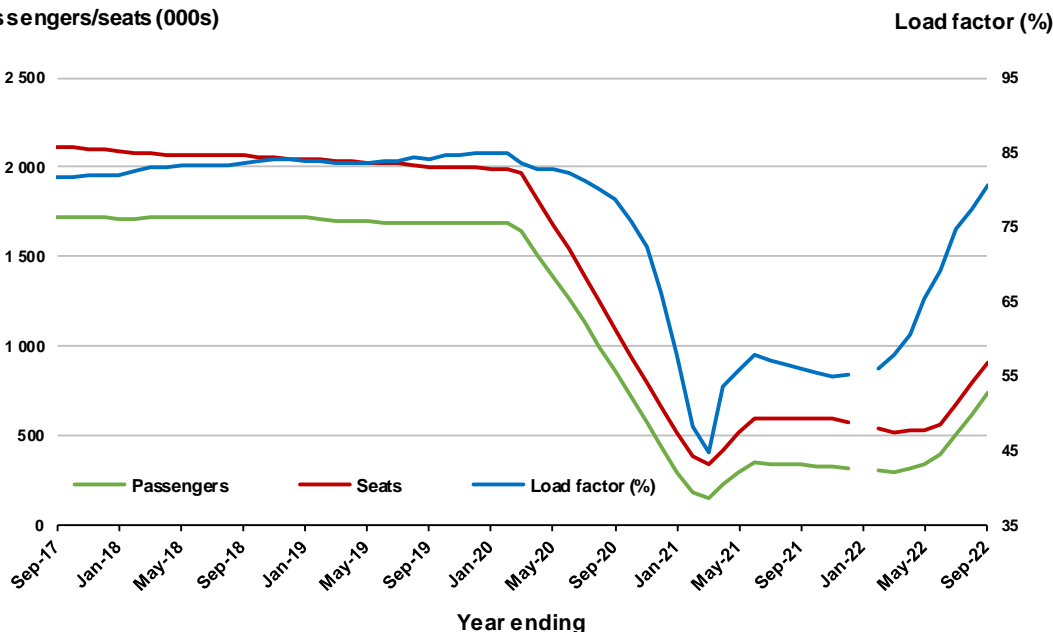
(a) January 2022 data not available for release.

Moving annual data

| | YE Sep 2021 | YE Sep 2022 | % Change |
|---------------------------|-------------|-------------|----------|
| Passengers carried (000s) | 335.3 | 734.3 | 119.0 |
| Seats (000s) | 598.5 | 910.5 | 52.1 |
| Load factor % | 56.0 | 80.7 | 24.6 * |
| Aircraft trips | 3 173 | 4 833 | 52.3 |

* percentage point difference

Passengers/seats (000s)



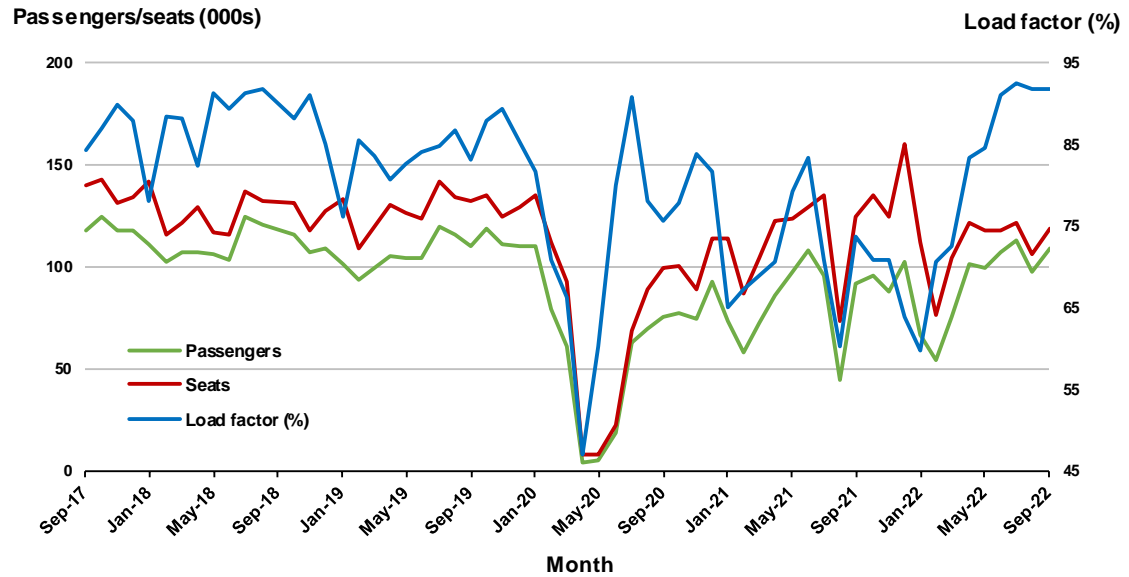
(a) January 2022 moving annual totals are not available for release.

10. Brisbane - Cairns

Monthly data

| | Sep 2021 | Sep 2022 | % Change |
|---------------------------|----------|----------|----------|
| Passengers carried (000s) | 92.0 | 109.2 | 18.7 |
| Seats (000s) | 124.7 | 119.0 | -4.6 |
| Load factor % | 73.8 | 91.8 | 18.0 * |
| Aircraft trips | 798 | 752 | -5.8 |

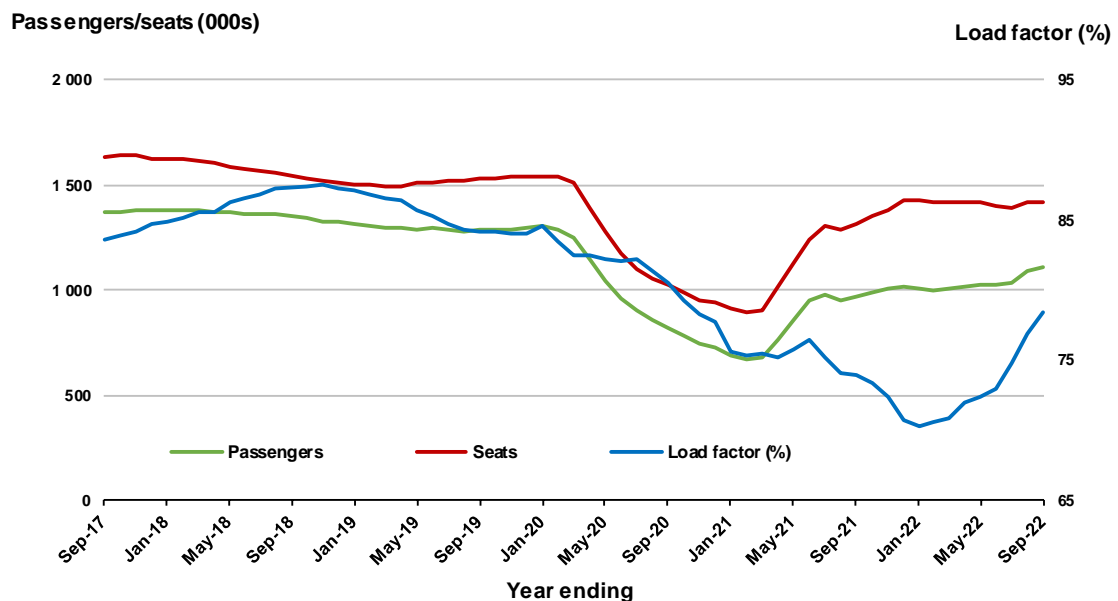
* percentage point difference



Moving annual data

| | YE Sep 2021 | YE Sep 2022 | % Change |
|---------------------------|-------------|-------------|----------|
| Passengers carried (000s) | 972.0 | 1 109.3 | 14.1 |
| Seats (000s) | 1 314.7 | 1 415.8 | 7.7 |
| Load factor % | 73.9 | 78.4 | 4.4 * |
| Aircraft trips | 8 451 | 9 137 | 8.1 |

* percentage point difference



TOP FIFTY REGIONAL AIRPORTS

Table 10: Top fifty regional airports (000s) — passenger movements, monthly

| Airport | Sep 2021 | Sep 2022 | % Change |
|---------------------------------------|----------------|----------------|--------------|
| 1 Cairns | 160.4 | 363.1 | 126.3 |
| 2 Hobart | 49.6 | 185.9 | 274.8 |
| 3 Darwin | 97.1 | 157.6 | 62.2 |
| 4 Townsville | 90.2 | 146.0 | 61.8 |
| 5 Newcastle | 1.4 | 93.1 | 6 392.7 |
| 6 Launceston | 19.5 | 92.5 | 375.5 |
| 7 Mackay | 55.7 | 77.2 | 38.5 |
| 8 Ballina | 2.9 | 50.0 | 1 648.9 |
| 9 Broome | 45.4 | 47.0 | 3.5 |
| 10 Karratha | 41.2 | 46.0 | 11.5 |
| 11 Hamilton Island | 19.8 | 45.4 | 129.1 |
| 12 Proserpine | 23.2 | 42.7 | 84.2 |
| 13 Rockhampton | 32.1 | 42.0 | 31.1 |
| 14 Port Hedland | 34.7 | 40.6 | 16.9 |
| 15 Alice Springs | 19.2 | 36.0 | 87.0 |
| 16 Newman | 28.1 | 31.8 | 13.5 |
| 17 Kalgoorlie | 24.2 | 27.7 | 14.5 |
| 18 Ayers Rock | 3.5 | 24.3 | 597.5 |
| 19 Coffs Harbour | 0.6 | 24.1 | 3 880.8 |
| 20 Mount Isa | 16.4 | 20.6 | 25.4 |
| 21 Albury | 0.3 | 20.5 | 6 745.2 |
| 22 Paraburdoo | 18.2 | 20.2 | 10.9 |
| 23 Dubbo | 1.4 | 17.7 | 1 125.8 |
| 24 Gladstone | 10.6 | 17.3 | 63.5 |
| 25 Mildura | 1.5 | 17.2 | 1 045.2 |
| 26 Wagga Wagga | 0.5 | 16.9 | 3 573.8 |
| 27 Emerald | 12.7 | 16.1 | 26.6 |
| 28 Port Macquarie | 0.2 | 15.4 | 7 805.1 |
| 29 Port Lincoln | 11.6 | 15.3 | 32.0 |
| 30 Tamworth | 0.3 | 12.9 | 4 441.8 |
| 31 Kununurra | 11.8 | 12.5 | 6.2 |
| 32 Hervey Bay | 2.2 | 12.0 | 434.9 |
| 33 Devonport | 0.2 | 10.5 | 5 000.5 |
| 34 Thursday Island | 9.2 | 10.2 | 10.7 |
| 35 Learmonth | 9.1 | 9.8 | 7.9 |
| 36 Armidale | 0.5 | 9.2 | 1 773.5 |
| 37 Moranbah | 7.5 | 9.1 | 20.2 |
| 38 Orange | 0.3 | 8.9 | 2 538.9 |
| 39 Bundaberg | 4.5 | 8.2 | 82.2 |
| 40 Gove | 4.9 | 8.0 | 61.9 |
| 41 Olympic Dam | 8.6 | 7.8 | - 9.6 |
| 42 Weipa | 7.0 | 7.4 | 6.5 |
| 43 Mount Gambier | 2.9 | 7.0 | 139.6 |
| 44 Burnie | 1.1 | 6.7 | 505.6 |
| 45 Geraldton | 7.2 | 6.7 | - 6.1 |
| 46 Merimbula | 0.2 | 6.5 | 3 149.3 |
| 47 Griffith | 0.3 | 6.4 | 2 026.8 |
| 48 Broken Hill | 0.5 | 5.7 | 1 041.0 |
| 49 Whyalla | 4.2 | 5.7 | 36.0 |
| 50 Albany | 4.3 | 5.1 | 17.2 |
| Total top 50 regional airports | 909.1 | 1 926.4 | 111.9 |
| Total regional airports | 993.1 | 2 039.5 | 105.4 |
| Total domestic network | 1 995.7 | 9 340.9 | 368.1 |

Note: Airport passenger movement numbers are the sum of passenger arrivals and departures at each airport. Regional airports are defined as airports which are, according to Australian Statistical Geography Standard (ASGS), not based in Major Cities.

Table 11: Top fifty regional airports (000s) — passenger movements, annual

| Airport | YE Sep 2021 | YE Sep 2022 | % Change |
|---------------------------------------|-----------------|-----------------|-------------|
| 1 Cairns | 2 229.4 | 3 229.7 | 44.9 |
| 2 Hobart | 1 187.9 | 1 894.8 | 59.5 |
| 3 Darwin | 1 067.3 | 1 485.4 | 39.2 |
| 4 Townsville | 1 050.5 | 1 402.1 | 33.5 |
| 5 Launceston | 594.9 | 954.7 | 60.5 |
| 6 Newcastle | 486.3 | 816.9 | 68.0 |
| 7 Mackay | 617.5 | 768.9 | 24.5 |
| 8 Ballina | 507.8 | 661.1 | 30.2 |
| 9 Karratha | 397.6 | 479.0 | 20.5 |
| 10 Rockhampton | 382.7 | 460.1 | 20.2 |
| 11 Broome | 396.3 | 447.6 | 12.9 |
| 12 Hamilton Island | 315.0 | 440.2 | 39.8 |
| 13 Proserpine | 284.8 | 437.8 | 53.7 |
| 14 Port Hedland | 323.2 | 435.3 | 34.7 |
| 15 Newman | 293.7 | 337.0 | 14.7 |
| 16 Alice Springs | 278.7 | 308.2 | 10.6 |
| 17 Kalgoorlie | 239.0 | 292.6 | 22.4 |
| 18 Coffs Harbour | 124.9 | 246.8 | 97.6 |
| 19 Mount Isa | 182.0 | 212.7 | 16.9 |
| 20 Paraburdoo | 188.8 | 205.3 | 8.7 |
| 21 Gladstone | 134.8 | 179.6 | 33.2 |
| 22 Albury | 73.4 | 168.1 | 128.9 |
| 23 Port Lincoln | 129.3 | 162.6 | 25.7 |
| 24 Emerald | 135.1 | 159.8 | 18.3 |
| 25 Dubbo | 103.3 | 155.6 | 50.7 |
| 26 Ayers Rock | 78.8 | 153.1 | 94.4 |
| 27 Mildura | 68.9 | 145.9 | 111.9 |
| 28 Wagga Wagga | 67.8 | 136.9 | 102.0 |
| 29 Port Macquarie | 64.1 | 131.7 | 105.6 |
| 30 Kununurra | 99.8 | 119.8 | 20.1 |
| 31 Tamworth | 56.4 | 108.0 | 91.5 |
| 32 Hervey Bay | 45.8 | 103.7 | 126.2 |
| 33 Learmonth | 90.5 | 97.2 | 7.4 |
| 34 Thursday Island | 88.8 | 97.0 | 9.3 |
| 35 Bundaberg | 65.9 | 95.6 | 45.1 |
| 36 Moranbah | 67.0 | 94.5 | 41.0 |
| 37 Olympic Dam | 74.5 | 89.5 | 20.0 |
| 38 Weipa | 70.3 | 82.5 | 17.3 |
| 39 Armidale | 39.9 | 82.2 | 106.0 |
| 40 Geraldton | 66.5 | 81.9 | 23.0 |
| 41 Gove | 57.0 | 74.3 | 30.4 |
| 42 Orange | 38.8 | 73.9 | 90.3 |
| 43 Devonport | 40.9 | 69.9 | 71.1 |
| 44 Mount Gambier | 32.7 | 64.6 | 97.4 |
| 45 Cloncurry | 41.5 | 58.9 | 41.8 |
| 46 Burnie | 24.0 | 57.2 | 138.1 |
| 47 Griffith | 24.7 | 57.2 | 131.7 |
| 48 Albany | 45.2 | 53.4 | 18.2 |
| 49 Whyalla | 42.5 | 53.3 | 25.3 |
| 50 Roma | 45.8 | 52.5 | 14.5 |
| Total top 50 regional airports | 13 162.2 | 18 576.3 | 41.1 |
| Total regional airports | 14 122.5 | 19 782.1 | 40.1 |
| Total domestic network | 45 245.1 | 82 426.6 | 82.2 |

Note: Airport passenger movement numbers are the sum of passenger arrivals and departures at each airport. Regional airports are defined as airports which are, according to Australian Statistical Geography Standard (ASGS), not based in Major Cities.

DOMESTIC CHARTER ACTIVITY

Table 12: Charter passengers carried and aircraft trips - monthly activity

| | Sep 2021 | Sep 2022 | % Change |
|---------------------------------------|----------|----------|----------|
| Total domestic charter passengers | 300 298 | 319 837 | 6.5 |
| Total domestic charter aircraft trips | 5 470 | 5 657 | 3.4 |

Note: Helicopter, joyflights and sightseeing charter flights not included.

Table 13: Charter passengers carried and aircraft trips - annual activity

| | YE Sep 2021 | YE Sep 2022 | % Change |
|---------------------------------------|-------------|-------------|----------|
| Total domestic charter passengers | 3 404 282 | 3 486 001 | 2.4 |
| Total domestic charter aircraft trips | 65 057 | 65 285 | 0.4 |

Note: Helicopter, joyflights and sightseeing charter flights not included.

Table 14: Domestic airports - charter activity - monthly

| | Sep 2021 | Sep 2022 | % Change |
|--|----------|----------|----------|
| Total domestic charter passenger movements | 600 596 | 639 674 | 6.5 |
| Total domestic charter aircraft movements | 10 940 | 11 314 | 3.4 |
| Perth airport charter passenger movements | 229 230 | 230 950 | 0.8 |
| Perth airport charter aircraft movements | 3 816 | 3 681 | -3.5 |

Note: Helicopter, joyflights and sightseeing charter flights not included.

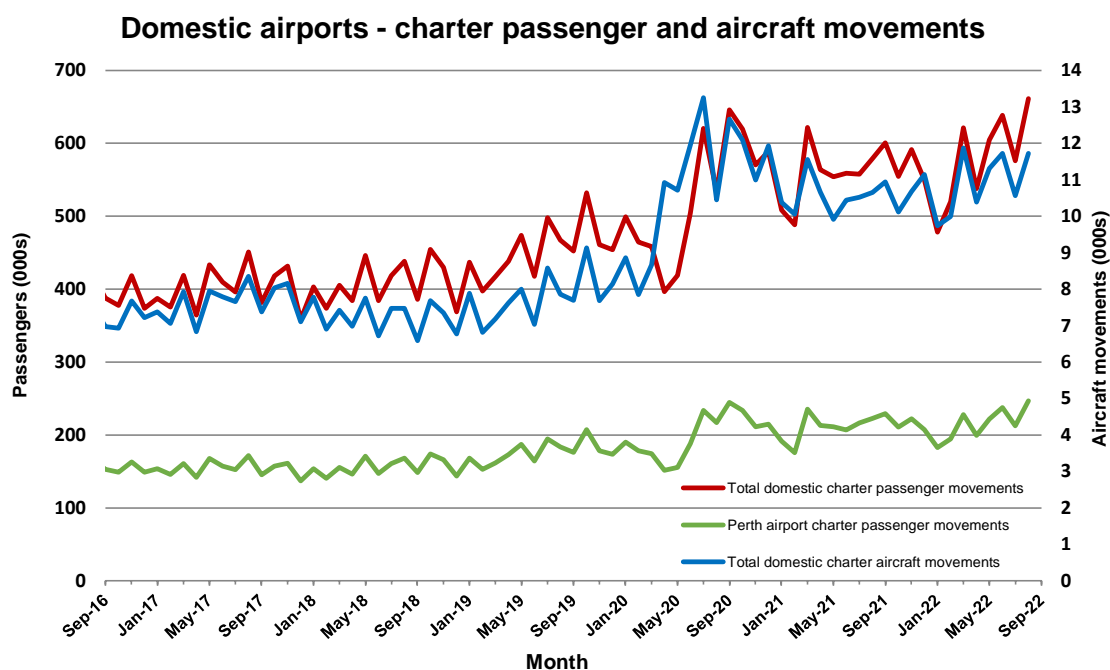
Charter passenger and aircraft movement numbers are the sum of arrivals and departures at each airport.

Table 15: Domestic airports - charter activity - annual

| | YE Sep 2021 | YE Sep 2022 | % Change |
|--|-------------|-------------|----------|
| Total domestic charter passenger movements | 6 808 564 | 6 972 002 | 2.4 |
| Total domestic charter aircraft movements | 130 114 | 130 570 | 0.4 |
| Perth airport charter passenger movements | 2 576 574 | 2 594 871 | 0.7 |
| Perth airport charter aircraft movements | 43 784 | 44 347 | 1.3 |

Note: Helicopter, joyflights and sightseeing charter flights not included.

Charter passenger and aircraft movement numbers are the sum of arrivals and departures at each airport.



DEFINITIONS

| | |
|---|--|
| Aircraft Trips | The number of flight stages. A return flight counts as two aircraft trips. |
| Airport Movements | Airport movements (passenger and cargo) are measured once on arrival and once on departure. Each domestic trip generates two movements at airports. For example, a trip from Melbourne to Sydney will be counted twice, as a departure at Melbourne and as an arrival at Sydney. At the national level, the sum of all domestic airport traffic will therefore be equal to twice the number of trips undertaken. |
| Available Seat Kilometres (ASKs) | Calculated by multiplying the number of seats available on each flight stage, by the distance in kilometres between the ports. The distances used are Great Circle Distances. |
| City-Pair | The ports shown make up the city-pair route. Passenger movements shown for a city pair reflect total traffic in both directions. |
| Flight Stage | The operation of an aircraft from take-off to landing. |
| Load Factor | The total revenue passenger kilometres performed as a percentage of the total available seat kilometres. |
| Passengers Carried | Revenue passengers carried. |
| Regular Public Transport Services (RPT) | All air service operations in which aircraft are available for the transport of members of the public and are conducted in accordance with fixed schedules. It does not include charter or other non-scheduled operations. |
| Revenue Passengers | All passengers paying any fare. Frequent flyer redemption travellers are regarded as revenue passengers. |
| Revenue Passenger Kilometres (RPKs) | Calculated by multiplying the number of revenue passengers travelling on each flight stage, by the distance in kilometres between the ports. The distances used are Great Circle Distances. |
| Traffic on board by stages | The total of all traffic (revenue passengers) on each flight stage between two directly connected airports. |
| .. | Not available for confidentiality or other reasons. |
| NA | Not applicable. |