



Australian Government

Department of Infrastructure, Transport,
Regional Development, Communications, Sport and the Arts

Bureau of Infrastructure and Transport Research Economics
STATISTICAL REPORT



Aviation

Domestic aviation activity
October 2025

The Department of Infrastructure, Transport, Regional Development, Communications, Sport and the Arts acknowledges the Traditional Custodians of Country of the land on which we work and live.

We recognise and respect the continuing connections to land, waters and communities.

We pay our respects to them and their cultures and to their Elders both past and present and to all Aboriginal and Torres Strait Islander people.

© Commonwealth of Australia 2025

ISSN: 1832 – 1968

BITRE Reference: 2025-145

Ownership of intellectual property rights in this publication

Unless otherwise noted, copyright (and any other intellectual property rights, if any) in this publication is owned by the Commonwealth of Australia (referred to below as the Commonwealth).

Disclaimer

The material contained in this publication is made available on the understanding that the Commonwealth is not providing professional advice, and that users exercise their own skill and care with respect to its use, and seek independent advice if necessary.

The Commonwealth makes no representations or warranties as to the contents or accuracy of the information contained in this publication. To the extent permitted by law, the Commonwealth disclaims liability to any person or organisation in respect of anything done, or omitted to be done, in reliance upon information contained in this publication.

Creative Commons licence

With the exception of (a) the Coat of Arms; and (b) the Department of Infrastructure, Transport, Regional Development, Communications, Sport and the Arts' photos and graphics, copyright in this publication is licensed under a Creative Commons Attribution 3.0 Australia Licence.

Creative Commons Attribution 3.0 Australia Licence is a standard form licence agreement that allows you to copy, communicate and adapt this publication provided that you attribute the work to the Commonwealth and abide by the other licence terms. A summary of the licence terms is available from <http://creativecommons.org/licenses/by/3.0/au/deed.en>.

The full licence terms are available from <http://creativecommons.org/licenses/by/3.0/au/legalcode>.

Use of the Coat of Arms

The Department of the Prime Minister and Cabinet sets the terms under which the Coat of Arms is used. Please refer to the Department's Commonwealth Coat of Arms and Government branding web page <http://www.dpmc.gov.au/guidelines/index.cfm#brand> and, in particular, the Guidelines on the use of the Commonwealth Coat of Arms publication.

An appropriate citation for this report is:

Bureau of Infrastructure and Transport Research Economics (BITRE), 2025, Domestic aviation activity, Statistical Report, BITRE, Canberra ACT.

Contact us

This publication is available in PDF format. All other rights are reserved, including in relation to any Departmental logos or trademarks which may exist. For enquiries regarding the licence and any use of this publication, please contact:

Bureau of Infrastructure and Transport Research Economics (BITRE)
Department of Infrastructure, Transport, Regional Development, Communications, Sport and the Arts
GPO Box 501, Canberra ACT 2601, Australia

Email: avstats@infrastructure.gov.au

Website: www.bitre.gov.au

Inquiries: Marko.Rodic2@infrastructure.gov.au (02) 6136 7995

FOREWORD

This report provides an overview of domestic (including charter) commercial aviation activity in Australia for the month of October 2025.

The data covers revenue passengers carried by Australian-registered operators of scheduled Regular Public Transport (RPT) services over Australian flight stages and fixed-wing charter operators. These estimates include passengers carried between domestic airports on international flights operated by these carriers. The passengers carried refer to traffic on board by stages.

Estimates of passengers and aircraft movements for charter aviation are included in this publication, where BITRE confidentiality standards are met.

Individual routes shown are restricted to those with an average exceeding 8,000 passengers per month over the previous six months where two or more airlines operate in competition.

Information on the total network for the month of October 2025 and on the RPT network for the month of October 2025 is presented on page 2, with estimates for the year ended October 2025 presented on page 3.

Detailed information on individual routes can be found in the RPT summary pages 4-13 of this publication. For the month of October 2025, there are 62 individual routes published.

The top ten airports in terms of RPT passenger movements are shown on page 14.

Data on domestic RPT cargo movements at the top five cargo airports are provided on page 15. The table includes cargo carried on passenger flights operated by the Qantas group (including Jetstar), Virgin Australia, Air North and Skippers as well as the cargo carried by dedicated freighter aircraft operated by Qantas Freight and Team Global Express (formerly Toll).

The long-term trends for the top ten competitive RPT routes are presented graphically on pages 16-25.

Domestic RPT passenger movements at regional airports are shown on pages 26-27.

Tables providing estimates of domestic charter aviation activity are shown on page 28. BITRE confidentiality standards restrict publication of detailed estimates for individual Australian airports, with the exception of Perth Airport.

A list of definitions can be found on page 29.

This report was prepared by the Aviation Statistics Section of the Bureau of Infrastructure and Transport Research Economics with data provided by airlines.

Estimates are included where data were not available and data presented in this publication may contain revisions to previously published data.

Where figures have been rounded, discrepancies may occur between sums of component items and totals, and in percentage changes which are derived from figures prior to rounding.

CONTENTS

Highlights	1
Total network.....	2
RPT network	3
Top competitive routes.....	4
Top ten airports – passenger movements.....	14
Top five airports – cargo movements.....	15
Top ten routes	16
1. Melbourne – Sydney	16
2. Brisbane – Sydney.....	17
3. Brisbane – Melbourne	18
4. Gold Coast – Sydney	19
5. Adelaide – Melbourne	20
6. Gold Coast – Melbourne	21
7. Melbourne – Perth	22
8. Adelaide – Sydney	23
9. Perth – Sydney	24
10. Hobart – Melbourne	25
Top fifty regional airports	26
Domestic charter activity.....	28
Definitions	29

This page is intentionally left blank.

HIGHLIGHTS

There were 5.97 million passengers carried on Australian domestic commercial aviation (including charter operations) in October 2025, compared with 5.76 million in October 2024 (up 3.5%). This is also an increase of 0.9% on pre-COVID October 2019 passenger numbers (5.91 million).

5.57 million passengers were carried on Regular Public Transport (RPT) flights in October 2025 (excluding charter operations), an increase of 3.7% compared to October 2024.

For the month of October 2025, there were 52.8 thousand RPT aircraft trips, virtually no change compared to October 2024.

For the year ending October 2025, there were 60.13 million RPT passengers, an increase of 1.8% on the year ending October 2024.

RPT revenue passenger kilometres (RPKs) performed were 6.77 billion for the month, compared with 6.46 billion in October 2024 (up 4.7%).

Capacity, measured by available seat kilometres (ASKs), increased to 7.90 billion in October 2025 compared to 7.47 billion in October 2024 (up 5.9%).

The industry wide load factor (RPKs/ASKs) decreased from 86.6% in October 2024 to 85.6% in October 2025. The highest load factor (94.6%) was recorded on the Adelaide – Gold Coast route while the lowest load factor (49.3%) was recorded on the Brisbane – Moranbah route.

For the month of October 2025, Melbourne – Sydney was Australia's busiest RPT route with 741.6 thousand passengers, followed by Brisbane – Sydney with 415.6 thousand passengers and Brisbane – Melbourne with 336.4 thousand passengers.

Sydney was Australia's busiest domestic airport with 2.35 million passenger movements in October 2025, followed by Melbourne with 2.24 million passenger movements and Brisbane with 1.64 million passenger movements.

Total cargo movements at Australian airports on domestic RPT flights were 27.3 thousand tonnes in October 2025, a decrease of 4.9% compared with October 2024.

In October 2025, there were 2.34 million domestic passenger movements through regional airports, an increase of 3.9% from October 2024. Out of the top 50 regional airports, the strongest increase was recorded at Devonport Airport (up 22.9% on October 2024), while the largest decrease was recorded at Paraburdoo Airport (down 20.7% on October 2024).

Fixed-wing charter operators carried 393.7 thousand passengers in October 2025, an increase of 0.6% compared with October 2024. Perth Airport accounted for 35.8% of all charter passengers in Australia.

TOTAL NETWORK

Summary of monthly commercial aviation activity

	Oct 2024	Oct 2025	% Change
Total passengers carried (millions)	5.76	5.97	3.5
Aircraft trips (000s)	59.4	59.5	0.2

Note: Regular Public Transport and charter aviation activity

Helicopter, joy flights and sightseeing charter flights not included.

RPT NETWORK

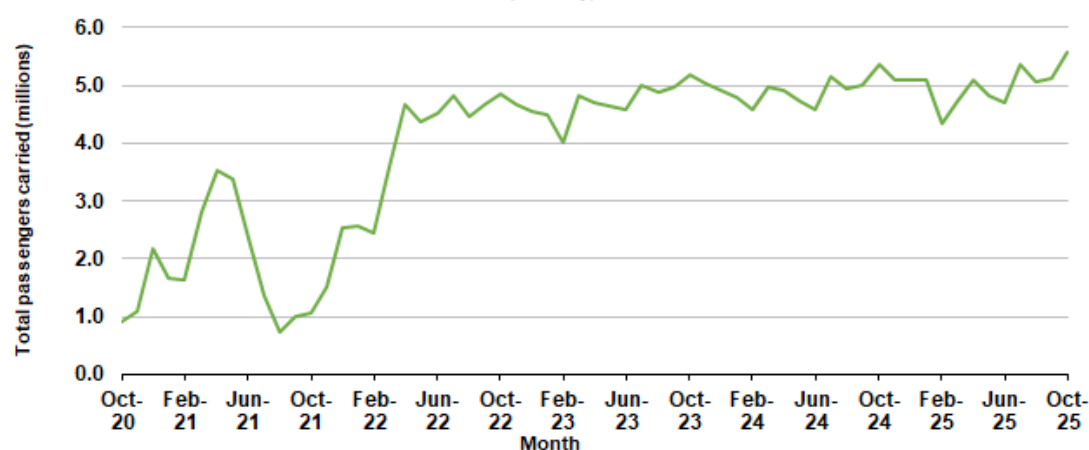
Summary of monthly RPT activity

	Oct 2024	Oct 2025	% Change
Total passengers carried (millions)	5.37	5.57	3.7
Revenue passenger kilometres (billions)	6.46	6.77	4.7
Available seats (millions)	6.36	6.68	5.0
Available seat kilometres (billions)	7.47	7.90	5.9
Load factor %	86.6	85.6	-1.0 *
Aircraft trips (000s)	52.8	52.8	0.0

* percentage point difference

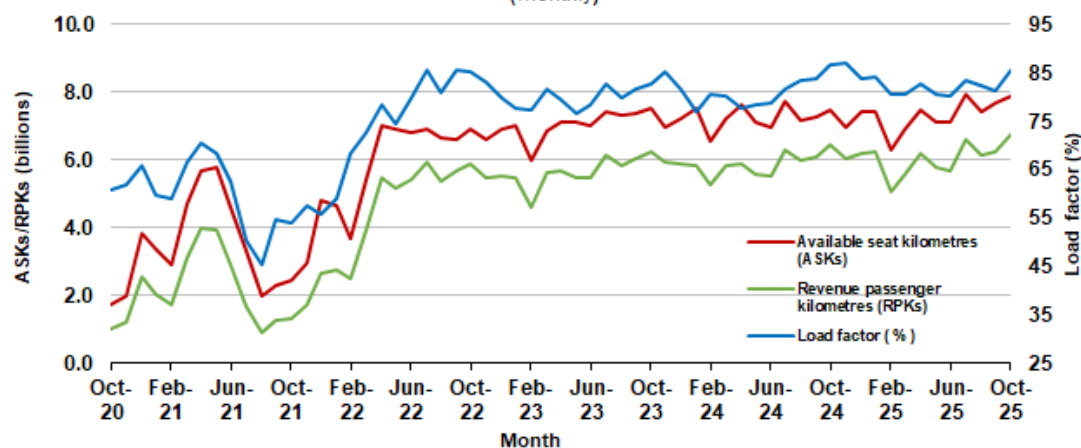
Domestic RPT passenger traffic

(monthly)



RPT Network utilisation

(monthly)



TOTAL NETWORK

Summary of annual commercial aviation activity

	YE Oct 2024	YE Oct 2025	% Change
Total passengers carried (millions)	63.39	64.42	1.6
Aircraft trips (000s)	690.2	674.8	-2.2

Note: Regular Public Transport and charter aviation activity
Helicopter, joy flights and sightseeing charter flights not included.

RPT NETWORK

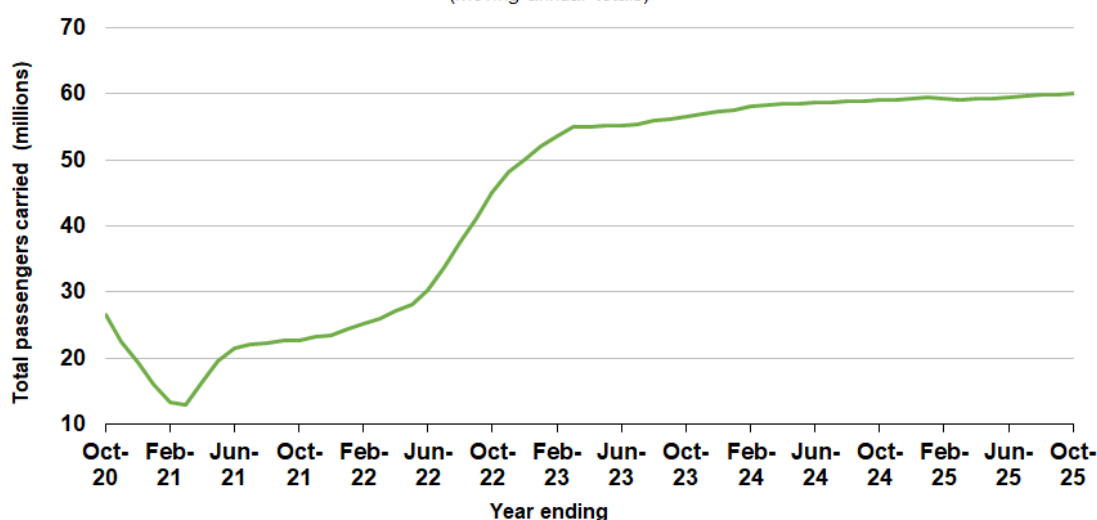
Summary of annual RPT activity

	YE Oct 2024	YE Oct 2025	% Change
Total passengers carried (millions)	59.05	60.13	1.8
Revenue passenger kilometres (billions)	70.58	72.59	2.9
Available seats (millions)	74.61	74.24	-0.5
Available seat kilometres (billions)	86.90	87.73	1.0
Load factor %	81.2	82.7	1.5 *
Aircraft trips (000s)	616.4	601.4	-2.4

* percentage point difference

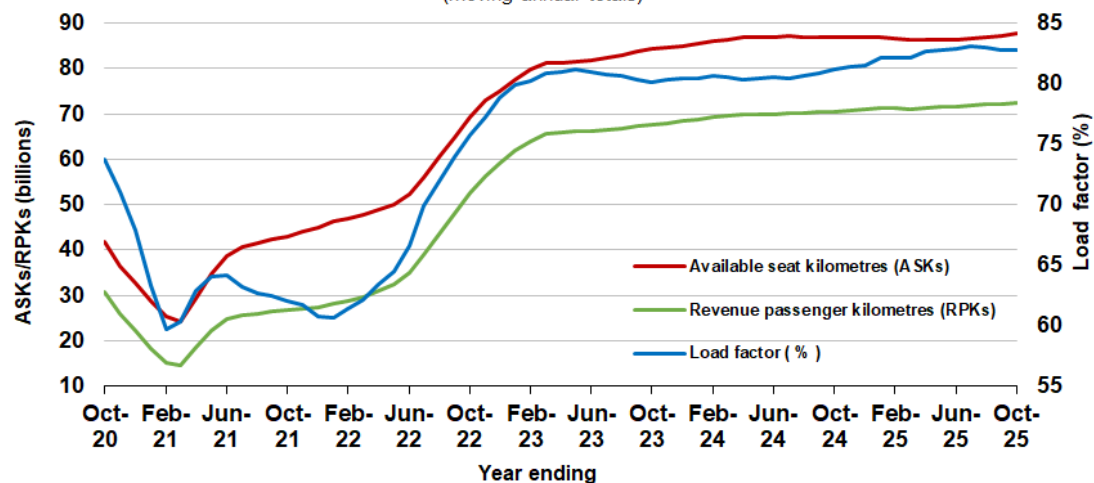
Domestic RPT passenger traffic

(moving annual totals)



RPT Network utilisation

(moving annual totals)



TOP COMPETITIVE ROUTES

Table 1: Passengers carried (000s) — annual activity

	City-Pair	YE Oct 2024	YE Oct 2025	% Change
1	Melbourne - Sydney	8 009.4	8 121.2	1.4
2	Brisbane - Sydney	4 346.6	4 366.9	0.5
3	Brisbane - Melbourne	3 462.0	3 598.8	4.0
4	Gold Coast - Sydney	2 549.1	2 500.9	-1.9
5	Adelaide - Melbourne	2 328.8	2 358.4	1.3
6	Gold Coast - Melbourne	2 187.5	2 122.3	-3.0
7	Melbourne - Perth	2 024.5	2 090.5	3.3
8	Adelaide - Sydney	1 863.5	1 894.0	1.6
9	Perth - Sydney	1 625.5	1 739.8	7.0
10	Hobart - Melbourne	1 367.6	1 447.6	5.8
11	Brisbane - Cairns	1 298.4	1 309.1	0.8
12	Brisbane - Perth	1 071.0	1 142.6	6.7
13	Canberra - Melbourne	1 017.8	985.7	-3.2
14	Brisbane - Townsville	925.0	979.3	5.9
15	Cairns - Sydney	909.7	927.0	1.9
16	Launceston - Melbourne	864.9	887.3	2.6
17	Cairns - Melbourne	808.7	881.6	9.0
18	Adelaide - Brisbane	872.4	871.4	-0.1
19	Hobart - Sydney	787.2	826.2	4.9
20	Brisbane - Mackay	757.4	806.4	6.5
21	Sunshine Coast - Sydney	771.7	796.5	3.2
22	Melbourne - Sunshine Coast	747.8	756.2	1.1
23	Adelaide - Perth	696.0	716.2	2.9
24	Karratha - Perth	601.0	672.4	11.9
25	Brisbane - Canberra	630.3	654.5	3.8
26	Canberra - Sydney	636.5	615.1	-3.4
27	Brisbane - Rockhampton	568.8	607.7	6.8
28	Brisbane - Newcastle	508.4	524.7	3.2
29	Perth - Port Hedland	475.3	481.2	1.2
30	Ballina - Sydney	516.2	478.6	-7.3
31	Melbourne - Newcastle	454.5	469.5	3.3
32	Newman - Perth	389.1	438.9	12.8
33	Kalgoorlie - Perth	367.7	386.4	5.1
34	Broome - Perth	354.7	373.5	5.3
35	Brisbane - Darwin	321.7	360.3	12.0
36	Launceston - Sydney	342.1	350.7	2.5
37	Brisbane - Hobart	301.1	320.7	6.5
38	Darwin - Melbourne	282.4	295.4	4.6
39	Brisbane - Proserpine	276.6	290.2	4.9
40	Adelaide - Gold Coast	274.8	279.9	1.9
41	Hamilton Island - Sydney	245.9	256.7	4.4
42	Brisbane - Gladstone	223.0	219.2	-1.7
43	Coffs Harbour - Sydney	207.4	199.2	-4.0
44	Adelaide - Canberra	183.3	196.2	7.1
45	Darwin - Perth	180.9	194.0	7.2
46	Brisbane - Emerald	186.6	188.9	1.2
47	Canberra - Gold Coast	185.4	177.2	-4.4
48	Dubbo - Sydney	174.9	171.9	-1.7
49	Adelaide - Port Lincoln	171.1	165.9	-3.0
50	Sydney - Wagga Wagga	159.4	165.7	3.9

continued

Table 1: (continued) Passengers carried (000s) — annual activity

	City-Pair	YE Oct 2024	YE Oct 2025	% Change
51	Port Macquarie - Sydney	165.8	165.0	-0.5
52	Brisbane - Hamilton Island	161.5	163.6	1.3
53	Albury - Sydney	163.0	154.2	-5.4
54	Brisbane - Launceston	149.5	152.4	2.0
55	Brisbane - Mount Isa	147.4	150.9	2.4
56	Melbourne - Mildura	163.9	150.8	-8.0
57	Devonport - Melbourne	124.3	143.5	15.5
58	Brisbane - Bundaberg	139.6	140.3	0.5
59	Geraldton - Perth	111.3	121.1	8.8
60	Ayers Rock - Melbourne	103.1	111.8	8.4
61	Adelaide - Alice Springs	108.2	103.9	-4.0
62	Brisbane - Moranbah	112.3	102.4	-8.9
Total domestic network		59 049.7	60 127.3	1.8

Table 2: Passengers carried (000s) — monthly activity

	City-Pair	Oct 2024	Oct 2025	% Change
1	Melbourne - Sydney	732.0	741.6	1.3
2	Brisbane - Sydney	404.2	415.6	2.8
3	Brisbane - Melbourne	322.1	336.4	4.4
4	Gold Coast - Sydney	230.3	237.8	3.2
5	Adelaide - Melbourne	206.2	215.7	4.6
6	Gold Coast - Melbourne	192.2	199.6	3.9
7	Melbourne - Perth	184.4	194.7	5.6
8	Adelaide - Sydney	179.3	178.7	-0.3
9	Perth - Sydney	153.0	162.5	6.3
10	Hobart - Melbourne	113.9	121.2	6.4
11	Brisbane - Cairns	118.9	119.7	0.7
12	Brisbane - Perth	102.8	106.4	3.5
13	Brisbane - Townsville	84.7	95.6	12.8
14	Canberra - Melbourne	88.6	91.2	2.9
15	Cairns - Sydney	87.2	87.8	0.6
16	Cairns - Melbourne	79.0	84.6	7.1
17	Adelaide - Brisbane	77.1	81.9	6.2
18	Brisbane - Mackay	67.4	79.6	18.1
19	Launceston - Melbourne	71.0	76.9	8.3
20	Melbourne - Sunshine Coast	58.6	71.6	22.2
21	Sunshine Coast - Sydney	71.5	71.5	0.1
22	Hobart - Sydney	74.0	70.2	-5.2
23	Adelaide - Perth	64.1	67.3	5.0
24	Karratha - Perth	56.4	64.5	14.3
25	Brisbane - Canberra	57.7	61.0	5.7
26	Canberra - Sydney	58.6	56.0	-4.4
27	Brisbane - Rockhampton	56.0	55.9	-0.2
28	Brisbane - Newcastle	47.3	48.8	3.1
29	Perth - Port Hedland	44.5	44.3	-0.4
30	Melbourne - Newcastle	42.5	43.0	1.0
31	Ballina - Sydney	49.2	41.6	-15.4
32	Newman - Perth	39.5	40.2	1.6
33	Kalgoorlie - Perth	35.6	38.9	9.5
34	Broome - Perth	32.3	36.7	13.4
35	Launceston - Sydney	29.8	31.3	5.0
36	Brisbane - Darwin	28.1	29.8	6.2
37	Brisbane - Hobart	26.6	28.4	6.7
38	Hamilton Island - Sydney	24.7	25.7	3.9
39	Brisbane - Proserpine	26.3	25.5	-3.0
40	Adelaide - Gold Coast	24.8	23.9	-3.6
41	Darwin - Melbourne	27.5	23.8	-13.7
42	Brisbane - Gladstone	20.1	20.3	1.2
43	Adelaide - Canberra	17.9	18.5	3.3
44	Coffs Harbour - Sydney	18.3	17.7	-3.3
45	Darwin - Perth	15.4	17.1	10.7
46	Brisbane - Emerald	17.4	16.9	-2.6
47	Dubbo - Sydney	15.9	16.6	4.3
48	Canberra - Gold Coast	15.2	16.4	8.1
49	Brisbane - Hamilton Island	15.8	16.3	2.9
50	Sydney - Wagga Wagga	15.3	15.9	3.5

continued

Table 2: (continued) Passengers carried (000s) — monthly activity

	City-Pair	Oct 2024	Oct 2025	% Change
51	Port Macquarie - Sydney	14.7	15.1	2.8
52	Adelaide - Port Lincoln	15.0	14.8	-1.5
53	Albury - Sydney	14.0	14.3	2.6
54	Devonport - Melbourne	11.1	13.6	22.9
55	Brisbane - Launceston	12.9	13.6	4.9
56	Brisbane - Mount Isa	14.0	13.5	-3.5
57	Melbourne - Mildura	12.8	13.2	3.0
58	Brisbane - Bundaberg	12.9	13.1	1.8
59	Geraldton - Perth	11.0	11.1	0.8
60	Ayers Rock - Melbourne	11.3	9.9	-12.6
61	Adelaide - Alice Springs	9.0	9.1	0.8
62	Brisbane - Moranbah	10.1	8.4	-17.0
Total domestic network		5 372.8	5 573.0	3.7

Table 3: Available seats (000s) — monthly activity

	City-Pair	Oct 2024	Oct 2025	% Change
1	Melbourne - Sydney	825.7	864.8	4.7
2	Brisbane - Sydney	443.8	474.3	6.9
3	Brisbane - Melbourne	359.2	384.9	7.2
4	Gold Coast - Sydney	248.0	257.1	3.7
5	Adelaide - Melbourne	228.1	248.6	8.9
6	Gold Coast - Melbourne	204.0	216.3	6.1
7	Melbourne - Perth	206.1	213.2	3.5
8	Adelaide - Sydney	200.7	206.7	3.0
9	Perth - Sydney	167.5	178.6	6.6
10	Hobart - Melbourne	131.6	138.4	5.2
11	Brisbane - Cairns	128.8	133.3	3.5
12	Brisbane - Perth	113.9	117.4	3.1
13	Brisbane - Townsville	98.5	114.7	16.4
14	Canberra - Melbourne	110.1	113.9	3.5
15	Cairns - Sydney	95.3	97.1	1.8
16	Cairns - Melbourne	85.4	96.0	12.4
17	Adelaide - Brisbane	83.3	92.1	10.6
18	Brisbane - Mackay	78.1	98.2	25.7
19	Launceston - Melbourne	82.6	88.7	7.4
20	Melbourne - Sunshine Coast	63.8	77.4	21.4
21	Sunshine Coast - Sydney	78.9	80.0	1.4
22	Hobart - Sydney	85.6	80.5	-5.9
23	Adelaide - Perth	73.0	74.7	2.4
24	Karratha - Perth	80.6	88.7	10.1
25	Brisbane - Canberra	71.1	77.7	9.3
26	Canberra - Sydney	91.7	86.7	-5.4
27	Brisbane - Rockhampton	66.6	64.3	-3.4
28	Brisbane - Newcastle	53.2	56.9	7.0
29	Perth - Port Hedland	64.0	67.9	6.1
30	Melbourne - Newcastle	47.2	48.9	3.4
31	Ballina - Sydney	54.2	47.1	-13.1
32	Newman - Perth	58.5	62.9	7.4
33	Kalgoorlie - Perth	59.5	63.0	6.0
34	Broome - Perth	41.8	45.3	8.5
35	Launceston - Sydney	32.1	34.5	7.4
36	Brisbane - Darwin	32.2	35.9	11.6
37	Brisbane - Hobart	29.1	32.0	10.0
38	Hamilton Island - Sydney	27.6	28.2	2.0
39	Brisbane - Proserpine	28.1	27.0	-4.0
40	Adelaide - Gold Coast	26.6	25.2	-5.0
41	Darwin - Melbourne	33.2	29.1	-12.4
42	Brisbane - Gladstone	29.3	28.7	-2.2
43	Adelaide - Canberra	23.6	24.4	3.1
44	Coffs Harbour - Sydney	23.1	22.9	-1.0
45	Darwin - Perth	21.1	24.9	18.1
46	Brisbane - Emerald	26.9	25.9	-3.6
47	Dubbo - Sydney	25.5	23.7	-6.7
48	Canberra - Gold Coast	16.8	17.5	4.0
49	Brisbane - Hamilton Island	18.0	17.6	-2.1
50	Sydney - Wagga Wagga	23.0	21.2	-7.8

continued

Table 3: (continued) Available seats (000s) — monthly activity

	City-Pair	Oct 2024	Oct 2025	% Change
51	Port Macquarie - Sydney	20.7	20.2	-2.8
52	Adelaide - Port Lincoln	23.4	24.4	4.2
53	Albury - Sydney	19.1	18.3	-4.1
54	Devonport - Melbourne	14.4	18.5	27.9
55	Brisbane - Launceston	14.6	14.9	1.7
56	Brisbane - Mount Isa	20.2	22.5	11.2
57	Melbourne - Mildura	16.6	18.6	12.1
58	Brisbane - Bundaberg	19.3	18.3	-5.1
59	Geraldton - Perth	19.7	19.7	0.1
60	Ayers Rock - Melbourne	14.3	11.6	-19.0
61	Adelaide - Alice Springs	13.4	12.5	-6.9
62	Brisbane - Moranbah	17.9	17.1	-4.5
Total domestic network		6 359.5	6 676.4	5.0

Table 4: Load factors (%) — monthly activity

	City-Pair	Oct 2024	Oct 2025	% Point diff
1	Melbourne - Sydney	88.7	85.8	-2.9
2	Brisbane - Sydney	91.1	87.6	-3.5
3	Brisbane - Melbourne	89.7	87.4	-2.3
4	Gold Coast - Sydney	92.9	92.5	-0.4
5	Adelaide - Melbourne	90.4	86.8	-3.6
6	Gold Coast - Melbourne	94.2	92.3	-1.9
7	Melbourne - Perth	89.5	91.3	1.8
8	Adelaide - Sydney	89.3	86.5	-2.8
9	Perth - Sydney	91.3	91.0	-0.3
10	Hobart - Melbourne	86.5	87.6	1.1
11	Brisbane - Cairns	92.3	89.8	-2.5
12	Brisbane - Perth	90.2	90.6	0.4
13	Brisbane - Townsville	85.9	83.3	-2.6
14	Canberra - Melbourne	80.5	80.0	-0.5
15	Cairns - Sydney	91.5	90.4	-1.1
16	Cairns - Melbourne	92.6	88.2	-4.4
17	Adelaide - Brisbane	92.6	88.9	-3.7
18	Brisbane - Mackay	86.3	81.1	-5.2
19	Launceston - Melbourne	86.0	86.7	0.7
20	Melbourne - Sunshine Coast	91.9	92.4	0.5
21	Sunshine Coast - Sydney	90.6	89.4	-1.2
22	Hobart - Sydney	86.4	87.1	0.7
23	Adelaide - Perth	87.8	90.0	2.2
24	Karratha - Perth	70.0	72.7	2.7
25	Brisbane - Canberra	81.2	78.5	-2.7
26	Canberra - Sydney	63.9	64.6	0.7
27	Brisbane - Rockhampton	84.2	87.0	2.8
28	Brisbane - Newcastle	89.0	85.8	-3.2
29	Perth - Port Hedland	69.5	65.3	-4.2
30	Melbourne - Newcastle	90.1	88.0	-2.1
31	Ballina - Sydney	90.7	88.2	-2.5
32	Newman - Perth	67.5	63.9	-3.6
33	Kalgoorlie - Perth	59.8	61.8	2.0
34	Broome - Perth	77.4	80.9	3.5
35	Launceston - Sydney	92.6	90.6	-2.0
36	Brisbane - Darwin	87.3	83.0	-4.3
37	Brisbane - Hobart	91.3	88.6	-2.7
38	Hamilton Island - Sydney	89.4	91.1	1.7
39	Brisbane - Proserpine	93.6	94.6	1.0
40	Adelaide - Gold Coast	93.2	94.6	1.4
41	Darwin - Melbourne	82.8	81.7	-1.1
42	Brisbane - Gladstone	68.5	70.9	2.4
43	Adelaide - Canberra	75.7	75.8	0.1
44	Coffs Harbour - Sydney	78.9	77.1	-1.8
45	Darwin - Perth	73.0	68.4	-4.6
46	Brisbane - Emerald	64.6	65.3	0.7
47	Dubbo - Sydney	62.5	69.9	7.4
48	Canberra - Gold Coast	90.3	93.9	3.6
49	Brisbane - Hamilton Island	88.0	92.5	4.5
50	Sydney - Wagga Wagga	66.7	74.8	8.1

continued

Table 4: (continued) Load factors (%) — monthly activity

	City-Pair	Oct 2024	Oct 2025	% Point diff
51	Port Macquarie - Sydney	70.7	74.7	4.0
52	Adelaide - Port Lincoln	64.3	60.8	-3.5
53	Albury - Sydney	73.1	78.2	5.1
54	Devonport - Melbourne	76.7	73.8	-2.9
55	Brisbane - Launceston	88.3	91.0	2.7
56	Brisbane - Mount Isa	69.2	60.1	-9.1
57	Melbourne - Mildura	77.5	71.2	-6.3
58	Brisbane - Bundaberg	66.7	71.5	4.8
59	Geraldton - Perth	55.7	56.1	0.4
60	Ayers Rock - Melbourne	79.0	85.2	6.2
61	Adelaide - Alice Springs	67.3	72.9	5.6
62	Brisbane - Moranbah	56.7	49.3	-7.4
	Total domestic network	86.6	85.6	-1.0

Table 5: Aircraft trips ^(a) — monthly activity

	City-Pair	Oct 2024	Oct 2025	% Change
1	Melbourne - Sydney	4 776	4 880	2.2
2	Brisbane - Sydney	2 672	2 779	4.0
3	Brisbane - Melbourne	2 173	2 303	6.0
4	Gold Coast - Sydney	1 405	1 438	2.3
5	Adelaide - Melbourne	1 373	1 479	7.7
6	Gold Coast - Melbourne	1 104	1 152	4.3
7	Melbourne - Perth	1 130	1 166	3.2
8	Adelaide - Sydney	1 182	1 188	0.5
9	Perth - Sydney	881	935	6.1
10	Hobart - Melbourne	752	798	6.1
11	Brisbane - Cairns	877	963	9.8
12	Brisbane - Perth	656	664	1.2
13	Brisbane - Townsville	779	827	6.2
14	Canberra - Melbourne	717	737	2.8
15	Cairns - Sydney	514	511	-0.6
16	Cairns - Melbourne	444	489	10.1
17	Adelaide - Brisbane	655	701	7.0
18	Brisbane - Mackay	689	670	-2.8
19	Launceston - Melbourne	632	695	10.0
20	Melbourne - Sunshine Coast	343	406	18.4
21	Sunshine Coast - Sydney	440	439	-0.2
22	Hobart - Sydney	482	458	-5.0
23	Adelaide - Perth	407	416	2.2
24	Karratha - Perth	482	534	10.8
25	Brisbane - Canberra	574	648	12.9
26	Canberra - Sydney	1 335	1 296	-2.9
27	Brisbane - Rockhampton	710	702	-1.1
28	Brisbane - Newcastle	446	467	4.7
29	Perth - Port Hedland	398	426	7.0
30	Melbourne - Newcastle	310	316	1.9
31	Ballina - Sydney	364	297	-18.4
32	Newman - Perth	363	378	4.1
33	Kalgoorlie - Perth	403	433	7.4
34	Broome - Perth	275	283	2.9
35	Launceston - Sydney	194	216	11.3
36	Brisbane - Darwin	213	200	-6.1
37	Brisbane - Hobart	178	187	5.1
38	Hamilton Island - Sydney	156	158	1.3
39	Brisbane - Proserpine	172	160	-7.0
40	Adelaide - Gold Coast	136	126	-7.4
41	Darwin - Melbourne	181	159	-12.2
42	Brisbane - Gladstone	338	333	-1.5
43	Adelaide - Canberra	219	227	3.7
44	Coffs Harbour - Sydney	406	365	-10.1
45	Darwin - Perth	120	142	18.3
46	Brisbane - Emerald	356	335	-5.9
47	Dubbo - Sydney	487	449	-7.8
48	Canberra - Gold Coast	94	96	2.1
49	Brisbane - Hamilton Island	128	126	-1.6
50	Sydney - Wagga Wagga	407	380	-6.6

continued

Table 5: (continued) Aircraft trips ^(a) — monthly activity

	City-Pair	Oct 2024	Oct 2025	% Change
51	Port Macquarie - Sydney	345	351	1.7
52	Adelaide - Port Lincoln	568	491	-13.6
53	Albury - Sydney	358	331	-7.5
54	Devonport - Melbourne	322	301	-6.5
55	Brisbane - Launceston	82	80	-2.4
56	Brisbane - Mount Isa	192	188	-2.1
57	Melbourne - Mildura	399	364	-8.8
58	Brisbane - Bundaberg	315	303	-3.8
59	Geraldton - Perth	213	216	1.4
60	Ayers Rock - Melbourne	80	64	-20.0
61	Adelaide - Alice Springs	162	138	-14.8
62	Brisbane - Moranbah	238	226	-5.0
Total domestic network		52 832	52 812	0.0

(a) Includes RPT cargo flights.

TOP TEN AIRPORTS – PASSENGER MOVEMENTS

Table 6: Top ten airports, RPT passenger movements (000s) - monthly activity

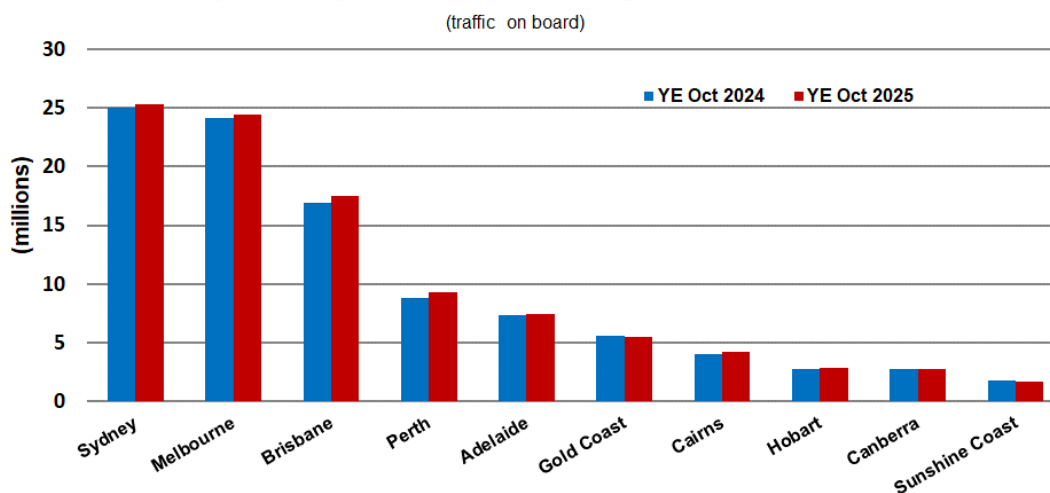
Airport	Oct 2024	Oct 2025	% Change	% of Total
1 Sydney	2 313.9	2 351.0	1.6	21.1
2 Melbourne	2 153.0	2 242.2	4.1	20.1
3 Brisbane	1 571.3	1 637.9	4.2	14.7
4 Perth	822.9	872.7	6.1	7.8
5 Adelaide	676.0	696.7	3.1	6.3
6 Gold Coast	492.0	516.0	4.9	4.6
7 Cairns	379.7	392.0	3.2	3.5
8 Canberra	250.5	257.2	2.7	2.3
9 Hobart	235.0	244.8	4.2	2.2
10 Townsville	149.0	155.8	4.6	1.4
Total top ten airports	9 043.2	9 366.3	3.6	84.0
Total domestic network	10 745.7	11 146.1	3.7	100.0

Table 7: Top ten airports, RPT passenger movements (000s) - annual activity

Airport	YE Oct 2024	YE Oct 2025	% Change	% of Total
1 Sydney	25 015.6	25 329.9	1.3	21.1
2 Melbourne	24 112.5	24 424.4	1.3	20.3
3 Brisbane	16 960.8	17 491.9	3.1	14.5
4 Perth	8 814.0	9 291.4	5.4	7.7
5 Adelaide	7 344.5	7 480.4	1.9	6.2
6 Gold Coast	5 595.3	5 450.4	-2.6	4.5
7 Cairns	4 048.9	4 173.9	3.1	3.5
8 Hobart	2 702.6	2 836.3	4.9	2.4
9 Canberra	2 796.2	2 776.8	-0.7	2.3
10 Sunshine Coast	1 744.7	1 677.8	-3.8	1.4
Total top ten airports	99 135.0	100 933.1	1.8	83.9
Total domestic network	118 099.4	120 254.7	1.8	100.0

Note: Airport passenger movement numbers are the sum of passenger arrivals and departures at each airport.

Top ten airports, RPT passenger movements



TOP FIVE AIRPORTS – CARGO MOVEMENTS

Table 8: Top five airports, domestic RPT cargo movements (000s tonnes) - monthly activity

Airport	Oct 2024	Oct 2025	% Change	% of Total
1 Melbourne	7.8	7.7	-1.8	28.2
2 Sydney	6.0	5.7	-5.4	20.9
3 Brisbane	5.0	4.9	-2.8	17.9
4 Perth	3.4	3.2	-6.0	11.6
5 Adelaide	1.6	1.5	-7.2	5.4
Total top five airports	23.8	22.9	-3.9	84.0
Total domestic network	28.7	27.3	-4.9	100.0

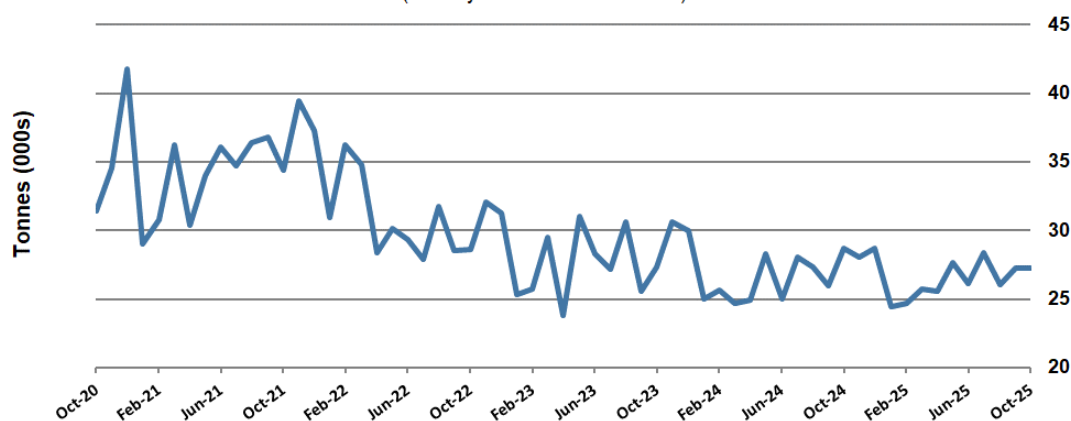
Table 9: Top five airports, domestic RPT cargo movements (000s tonnes) - annual activity

Airport	YE Oct 2024	YE Oct 2025	% Change	% of Total
1 Melbourne	88.1	88.4	0.4	27.7
2 Sydney	70.0	67.4	-3.6	21.1
3 Brisbane	59.2	56.8	-3.9	17.8
4 Perth	36.1	36.0	-0.2	11.3
5 Adelaide	18.5	16.7	-9.9	5.2
Total top five airports	271.8	265.5	-2.3	83.0
Total domestic network	324.2	319.8	-1.3	100.0

Note: Airport cargo tonnes are the sum of cargo tonnes on arrivals and departures at each airport.

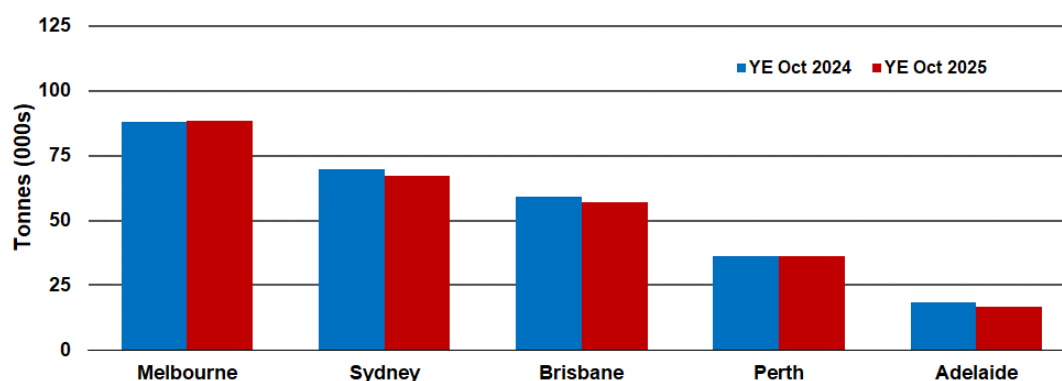
Total domestic network - cargo movement

(monthly totals - traffic on board)



Top five airports, cargo movements

(Domestic cargo traffic - traffic on board)



Note: Airport cargo tonnes are the sum of cargo tonnes on arrivals and departures at each airport.

TOP TEN ROUTES

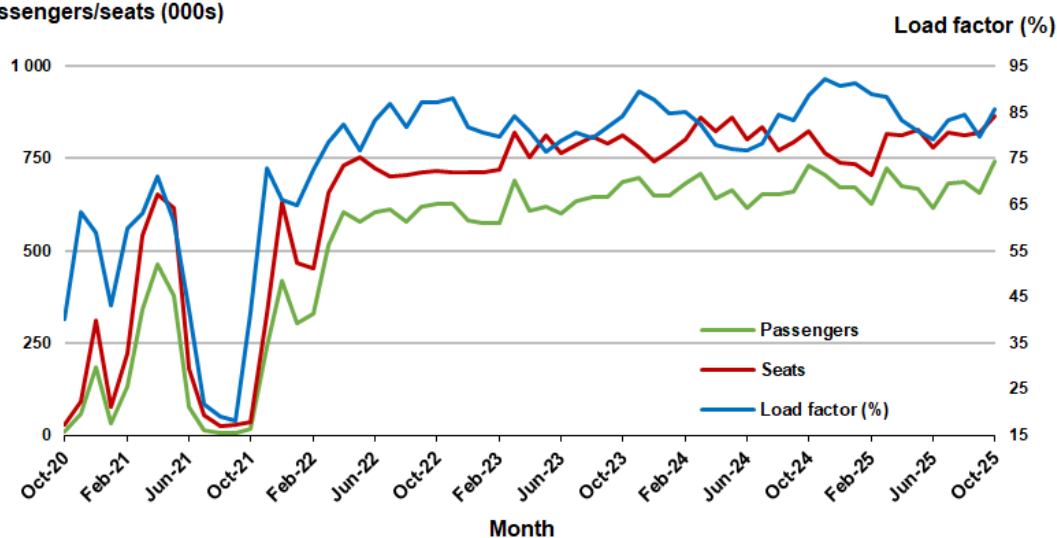
1. Melbourne - Sydney

Monthly data

	Oct 2024	Oct 2025	% Change
Passengers carried (000s)	732.0	741.6	1.3
Seats (000s)	825.7	864.8	4.7
Load factor %	88.7	85.8	-2.9 *
Aircraft trips	4 776	4 880	2.2

* percentage point difference

Passengers/seats (000s)

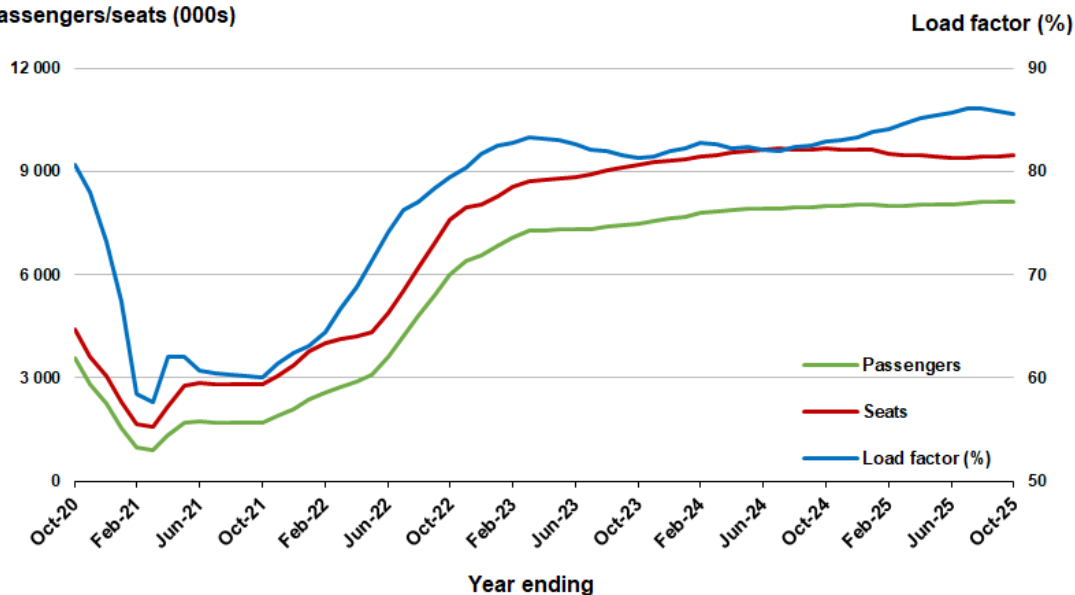


Moving annual data

	YE Oct 2024	YE Oct 2025	% Change
Passengers carried (000s)	8 009.4	8 121.2	1.4
Seats (000s)	9 666.6	9 493.5	-1.8
Load factor %	82.9	85.6	2.7 *
Aircraft trips	55 903	54 263	-2.9

* percentage point difference

Passengers/seats (000s)

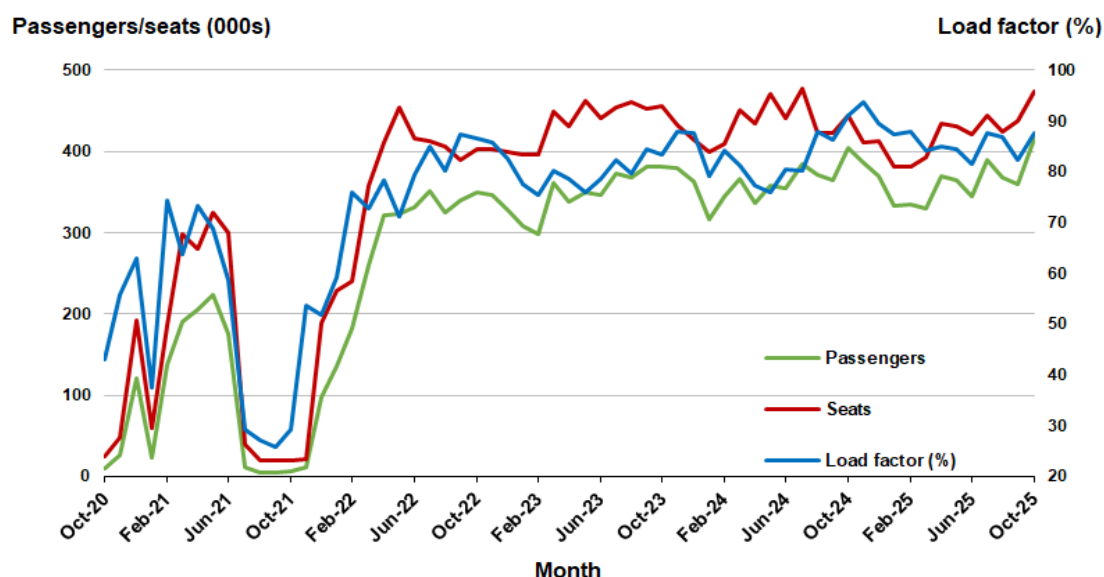


2. Brisbane - Sydney

Monthly data

	Oct 2024	Oct 2025	% Change
Passengers carried (000s)	404.2	415.6	2.8
Seats (000s)	443.8	474.3	6.9
Load factor %	91.1	87.6	-3.5 *
Aircraft trips	2 672	2 779	4.0

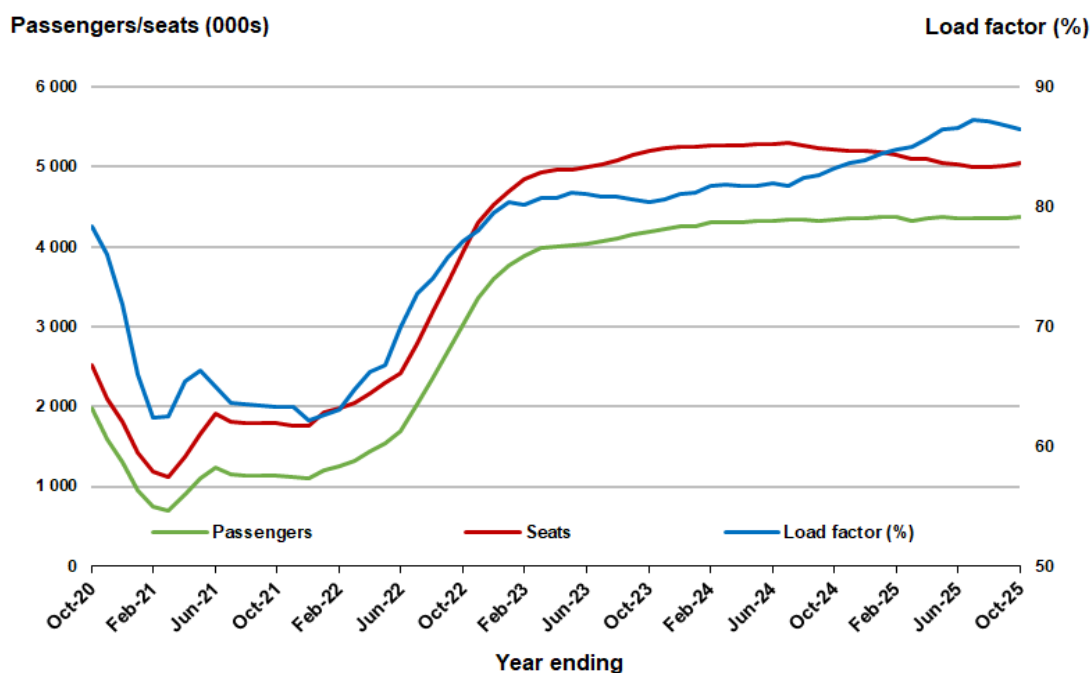
* percentage point difference



Moving annual data

	YE Oct 2024	YE Oct 2025	% Change
Passengers carried (000s)	4 346.6	4 366.9	0.5
Seats (000s)	5 221.6	5 048.5	-3.3
Load factor %	83.2	86.5	3.3 *
Aircraft trips	31 813	30 099	-5.4

* percentage point difference

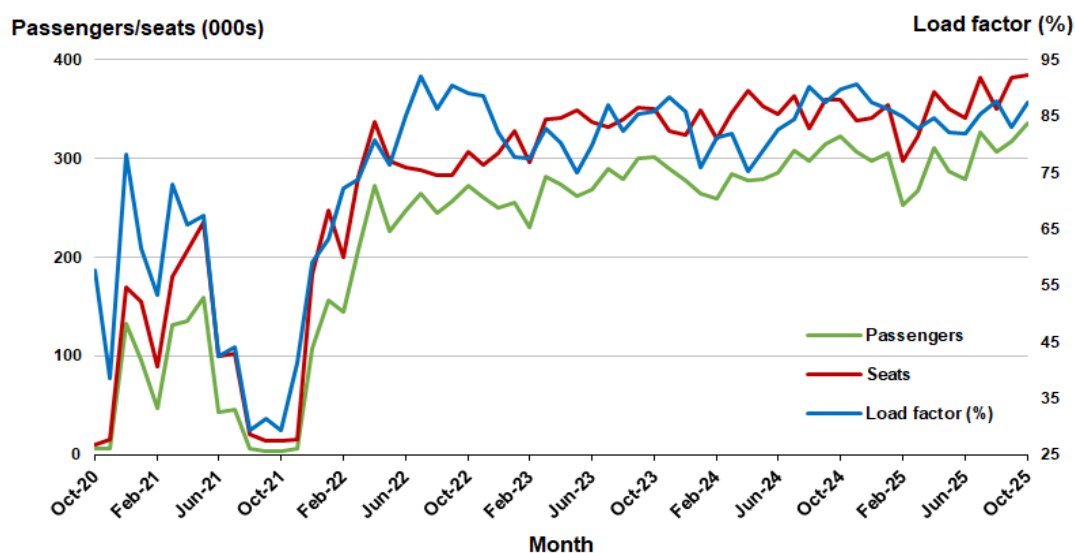


3. Brisbane - Melbourne

Monthly data

	Oct 2024	Oct 2025	% Change
Passengers carried (000s)	322.1	336.4	4.4
Seats (000s)	359.2	384.9	7.2
Load factor %	89.7	87.4	-2.3 *
Aircraft trips	2 173	2 303	6.0

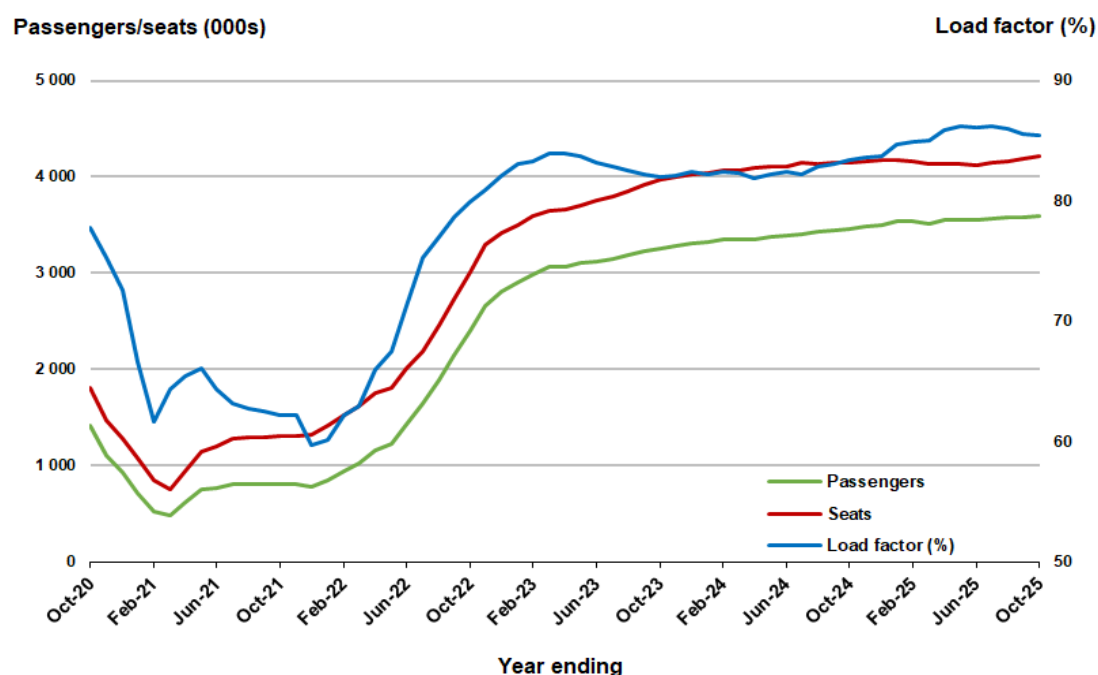
* percentage point difference



Moving annual data

	YE Oct 2024	YE Oct 2025	% Change
Passengers carried (000s)	3 462.0	3 598.8	4.0
Seats (000s)	4 150.3	4 213.4	1.5
Load factor %	83.4	85.4	2.0 *
Aircraft trips	24 863	25 447	2.3

* percentage point difference



4. Gold Coast - Sydney ^(a)

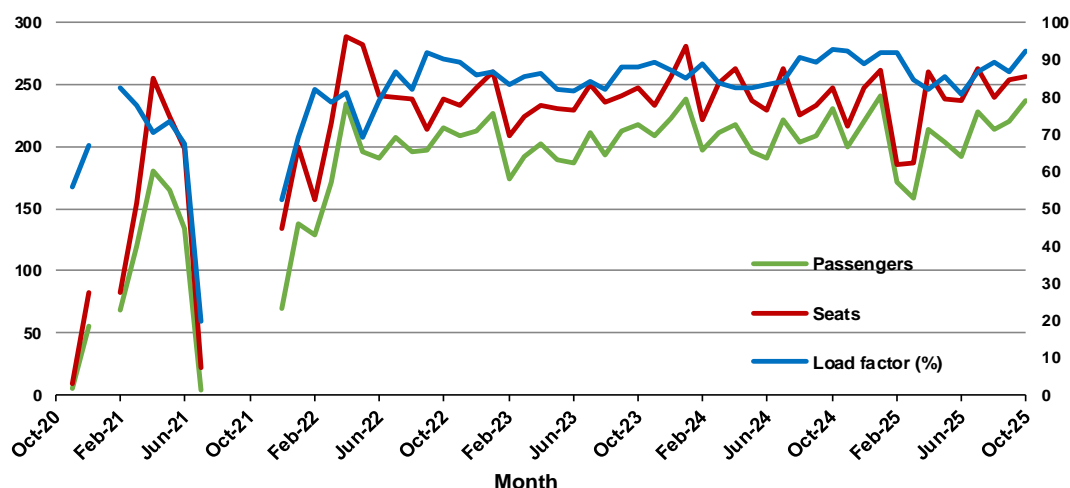
Monthly data

	Oct 2024	Oct 2025	% Change
Passengers carried (000s)	230.3	237.8	3.2
Seats (000s)	248.0	257.1	3.7
Load factor %	92.9	92.5	-0.4 *
Aircraft trips	1 405	1 438	2.3

* percentage point difference

Passengers/seats (000s)

Load factor (%)



(a) October 2020 and January and August to November 2021 data not available for release.

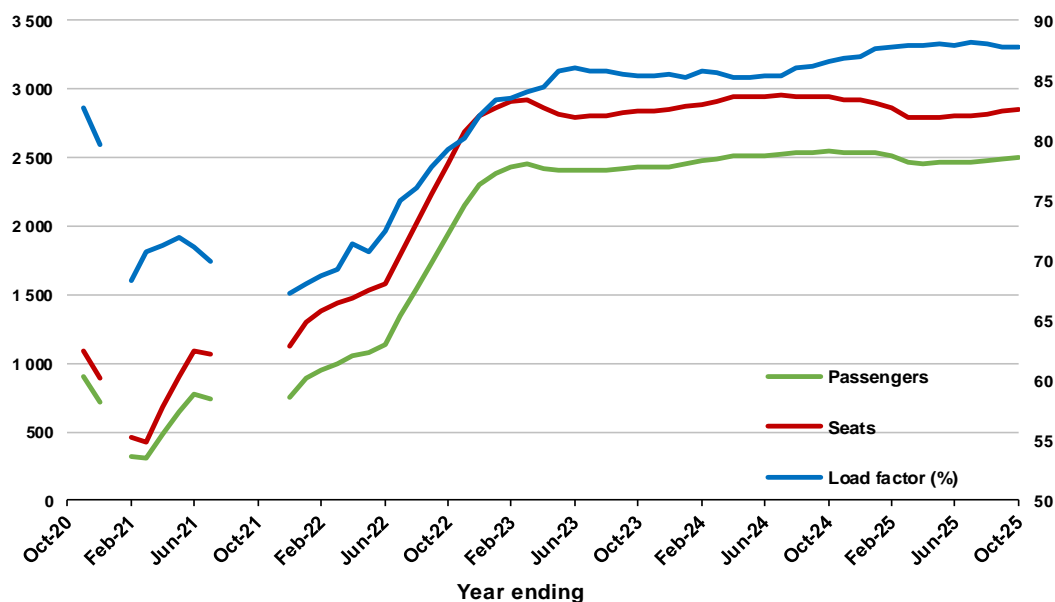
Moving annual data

	YE Oct 2024	YE Oct 2025	% Change
Passengers carried (000s)	2 549.1	2 500.9	-1.9
Seats (000s)	2 943.9	2 847.5	-3.3
Load factor %	86.6	87.8	1.2 *
Aircraft trips	16 601	16 174	-2.6

* percentage point difference

Passengers/seats (000s)

Load factor (%)



(a) October 2020 and January and August to November 2021 moving annual totals not available for release.

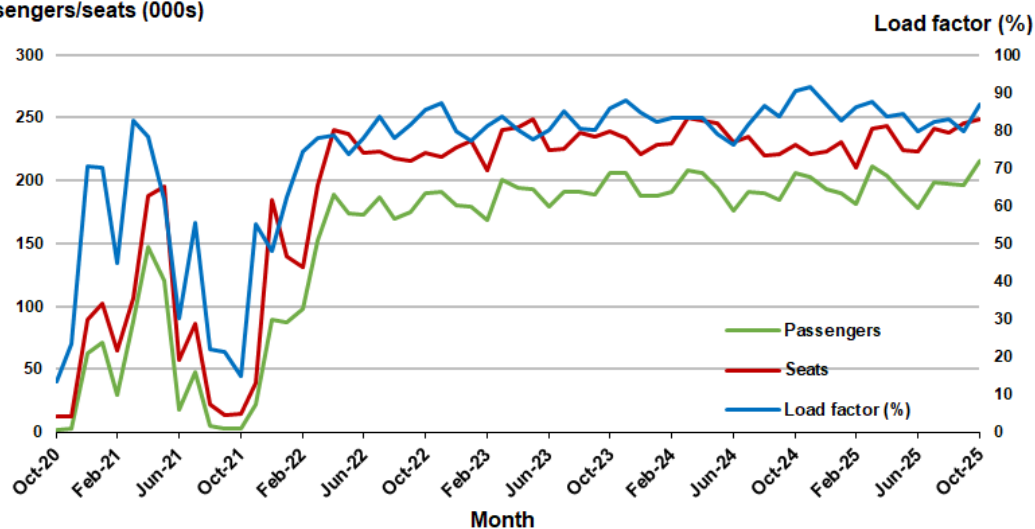
5. Adelaide - Melbourne

Monthly data

	Oct 2024	Oct 2025	% Change
Passengers carried (000s)	206.2	215.7	4.6
Seats (000s)	228.1	248.6	8.9
Load factor %	90.4	86.8	-3.6 *
Aircraft trips	1 373	1 479	7.7

* percentage point difference

Passengers/seats (000s)

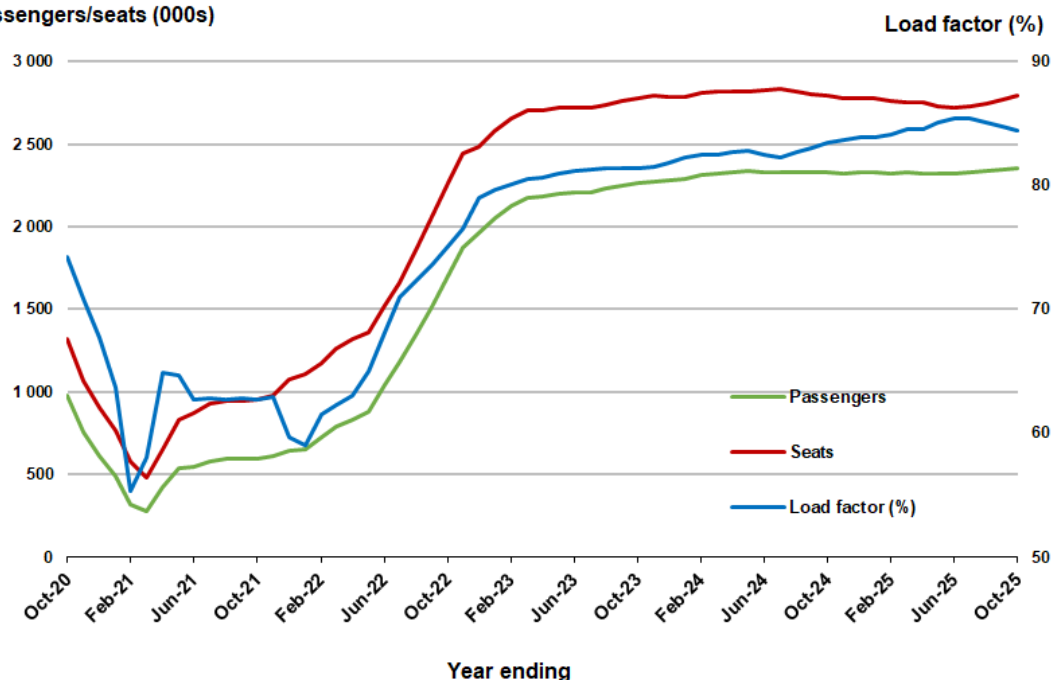


Moving annual data

	YE Oct 2024	YE Oct 2025	% Change
Passengers carried (000s)	2 328.8	2 358.4	1.3
Seats (000s)	2 792.1	2 791.5	0.0
Load factor %	83.4	84.5	1.1 *
Aircraft trips	16 929	16 531	-2.4

* percentage point difference

Passengers/seats (000s)



6. Gold Coast - Melbourne ^(a)

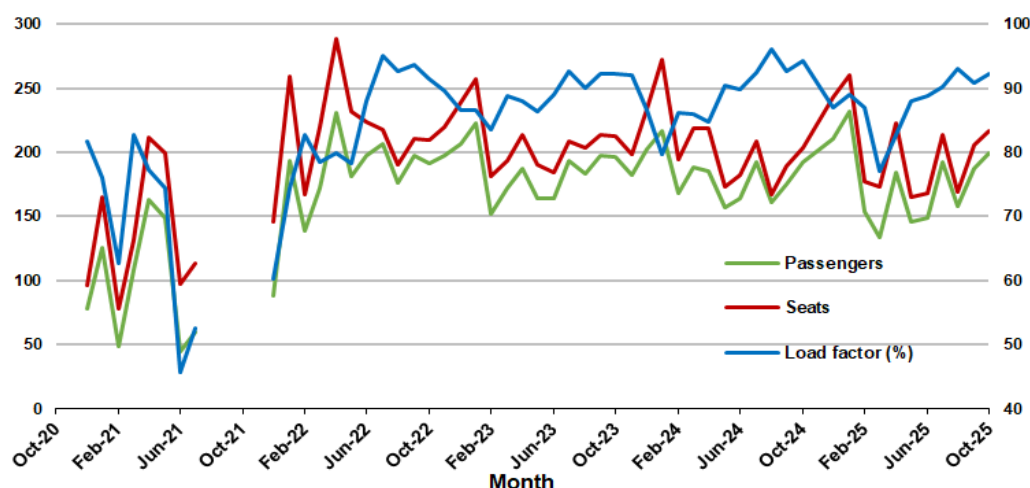
Monthly data

	Oct 2024	Oct 2025	% Change
Passengers carried (000s)	192.2	199.6	3.9
Seats (000s)	204.0	216.3	6.1
Load factor %	94.2	92.3	-1.9 *
Aircraft trips	1 104	1 152	4.3

* percentage point difference

Passengers/seats (000s)

Load factor (%)



(a) October to November 2020 and August to November 2021 data not available for release.

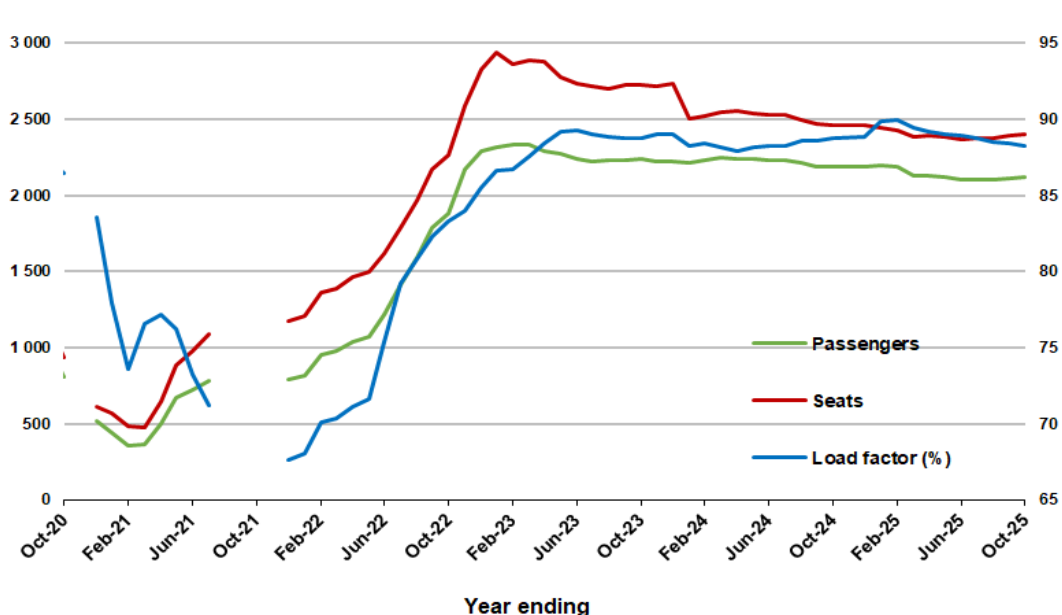
Moving annual data

	YE Oct 2024	YE Oct 2025	% Change
Passengers carried (000s)	2 187.5	2 122.3	-3.0
Seats (000s)	2 463.9	2 404.3	-2.4
Load factor %	88.8	88.3	-0.5 *
Aircraft trips	13 436	12 967	-3.5

* percentage point difference

Passengers/seats (000s)

Load factor (%)



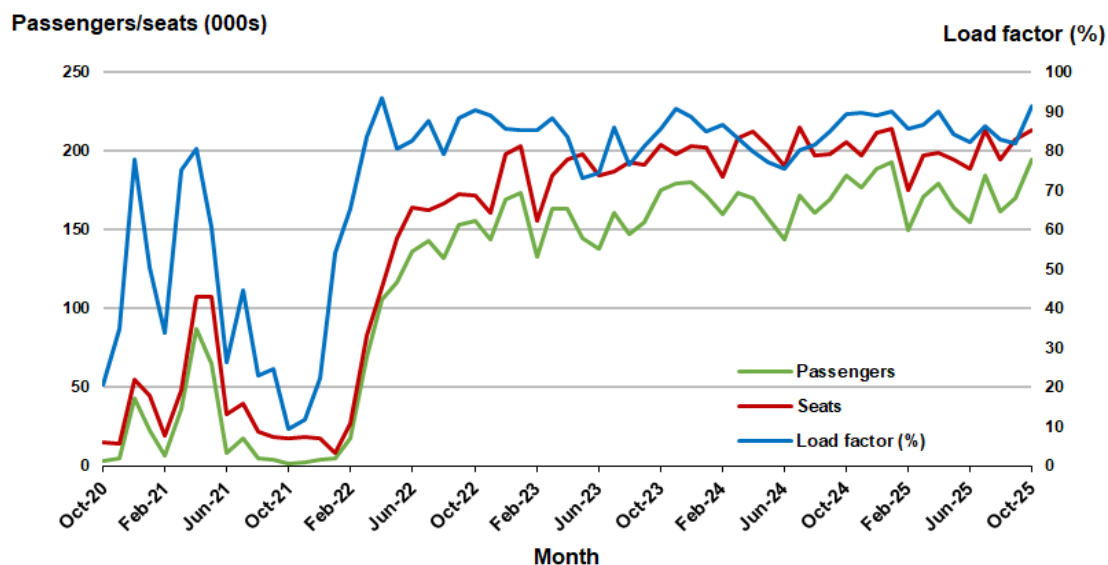
(a) November 2020 and August to November 2021 moving annuals are not available for release.

7. Melbourne - Perth

Monthly data

	Oct 2024	Oct 2025	% Change
Passengers carried (000s)	184.4	194.7	5.6
Seats (000s)	206.1	213.2	3.5
Load factor %	89.5	91.3	1.8 *
Aircraft trips	1 130	1 166	3.2

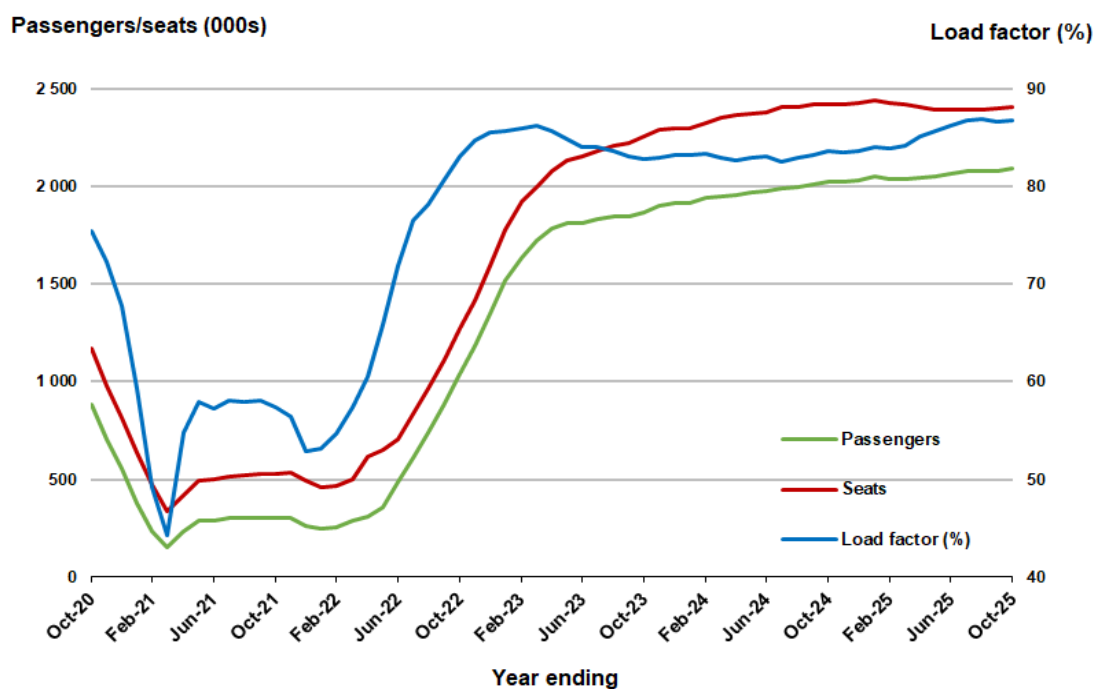
* percentage point difference



Moving annual data

	YE Oct 2024	YE Oct 2025	% Change
Passengers carried (000s)	2 024.5	2 090.5	3.3
Seats (000s)	2 420.4	2 408.5	-0.5
Load factor %	83.6	86.8	3.2 *
Aircraft trips	13 412	13 481	0.5

* percentage point difference



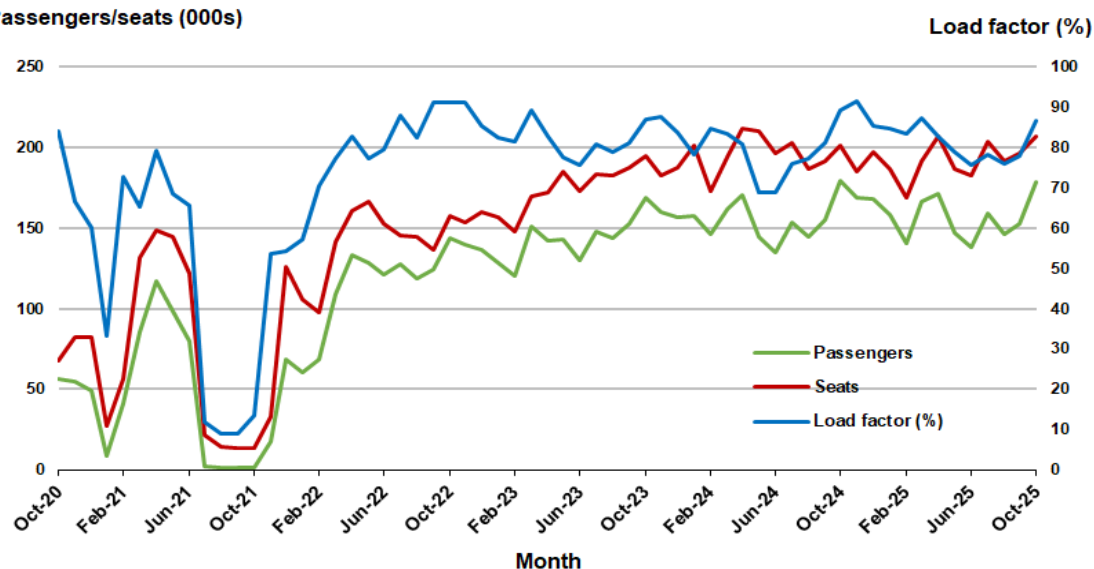
8. Adelaide - Sydney

Monthly data

	Oct 2024	Oct 2025	% Change
Passengers carried (000s)	179.3	178.7	-0.3
Seats (000s)	200.7	206.7	3.0
Load factor %	89.3	86.5	-2.8 *
Aircraft trips	1 182	1 188	0.5

* percentage point difference

Passengers/seats (000s)

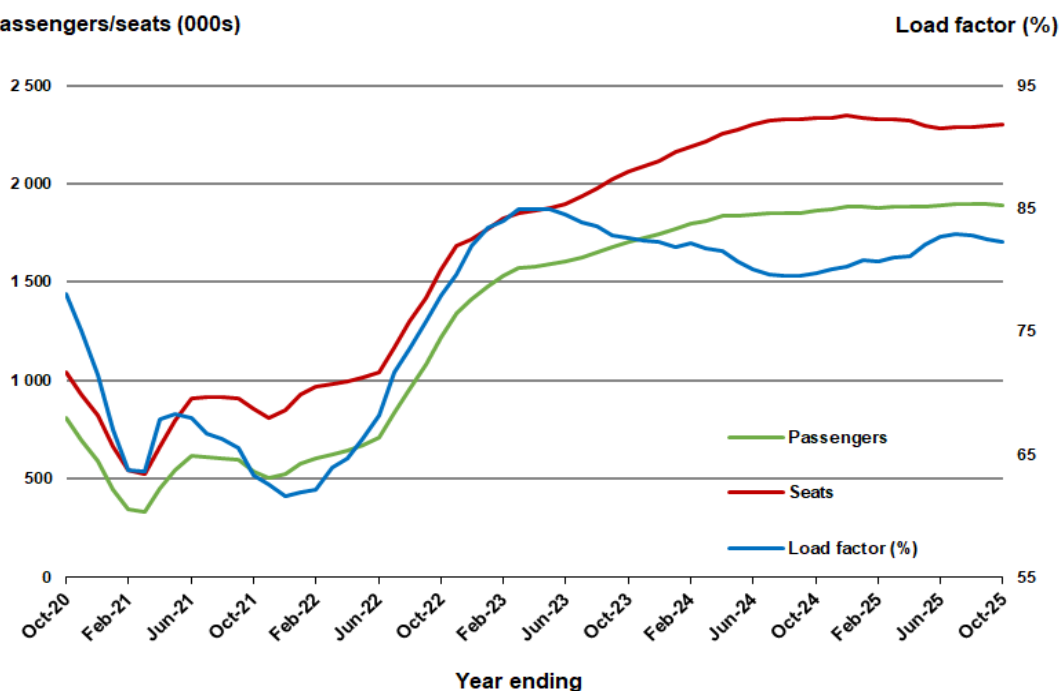


Moving annual data

	YE Oct 2024	YE Oct 2025	% Change
Passengers carried (000s)	1 863.5	1 894.0	1.6
Seats (000s)	2 335.8	2 302.2	-1.4
Load factor %	79.8	82.3	2.5 *
Aircraft trips	14 090	13 476	-4.4

* percentage point difference

Passengers/seats (000s)



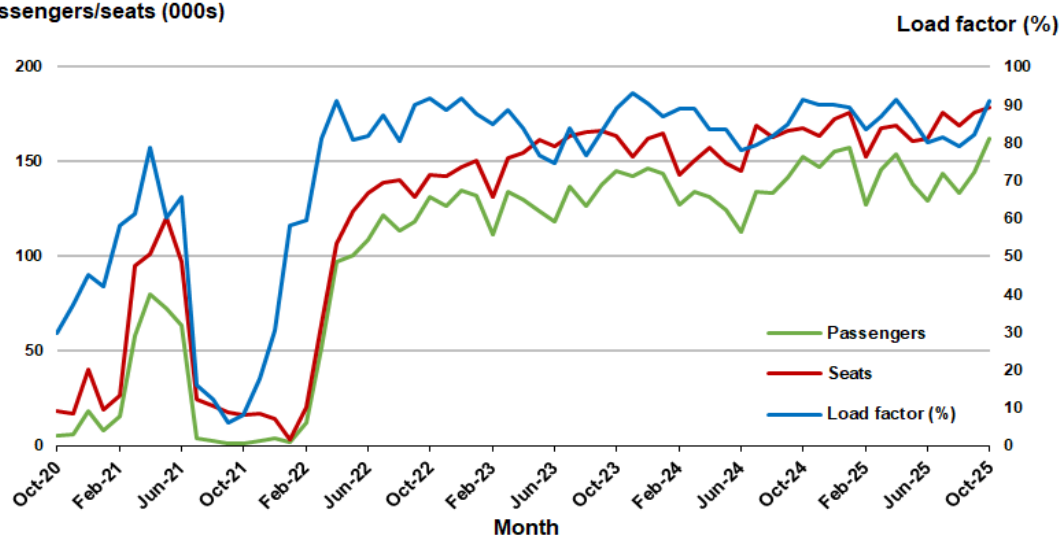
9. Perth - Sydney

Monthly data

	Oct 2024	Oct 2025	% Change
Passengers carried (000s)	153.0	162.5	6.3
Seats (000s)	167.5	178.6	6.6
Load factor %	91.3	91.0	-0.3 *
Aircraft trips	881	935	6.1

* percentage point difference

Passengers/seats (000s)

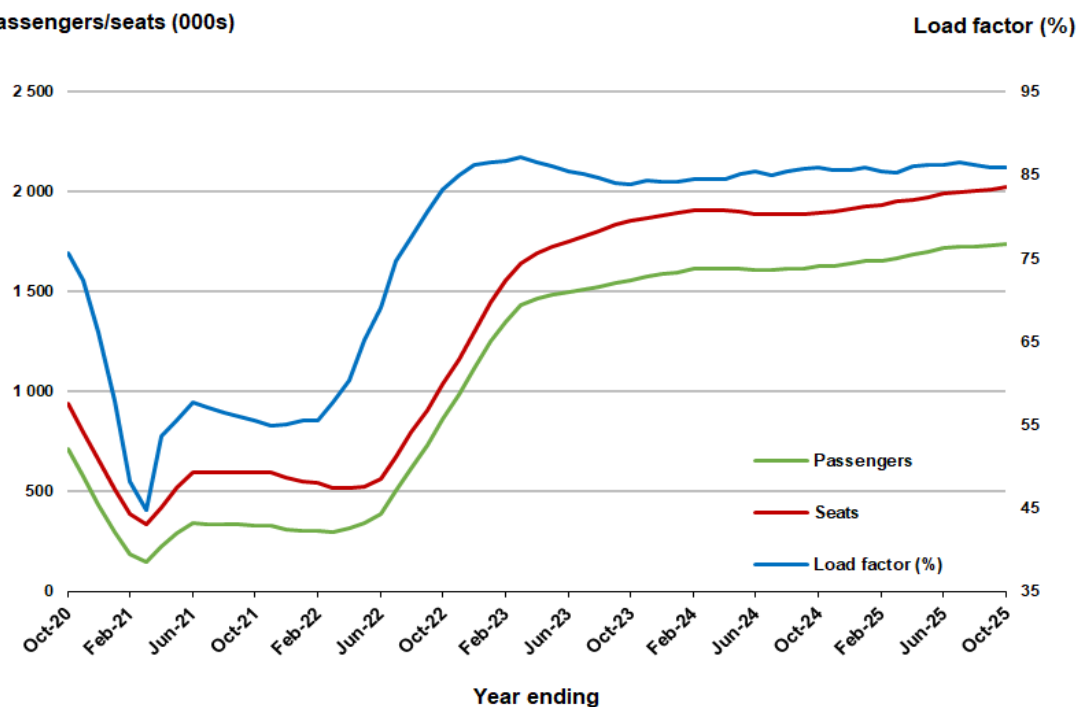


Moving annual data

	YE Oct 2024	YE Oct 2025	% Change
Passengers carried (000s)	1 625.5	1 739.8	7.0
Seats (000s)	1 891.9	2 024.2	7.0
Load factor %	85.9	85.9	0.0 *
Aircraft trips	9 985	10 784	8.0

* percentage point difference

Passengers/seats (000s)

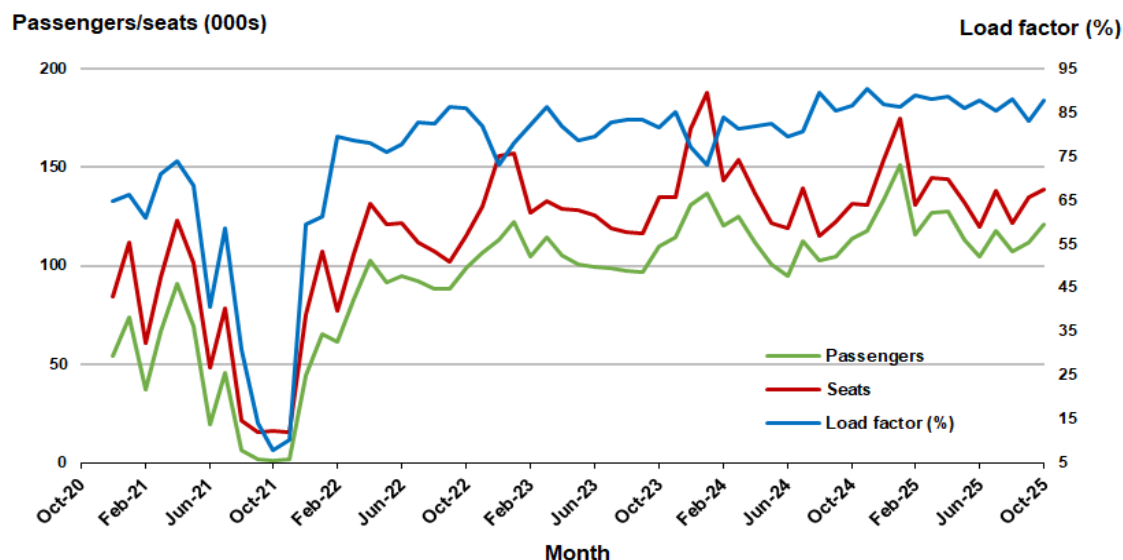


10. Hobart - Melbourne ^(a)

Monthly data

	Oct 2024	Oct 2025	% Change
Passengers carried (000s)	113.9	121.2	6.4
Seats (000s)	131.6	138.4	5.2
Load factor %	86.5	87.6	1.1 *
Aircraft trips	752	798	6.1

* percentage point difference

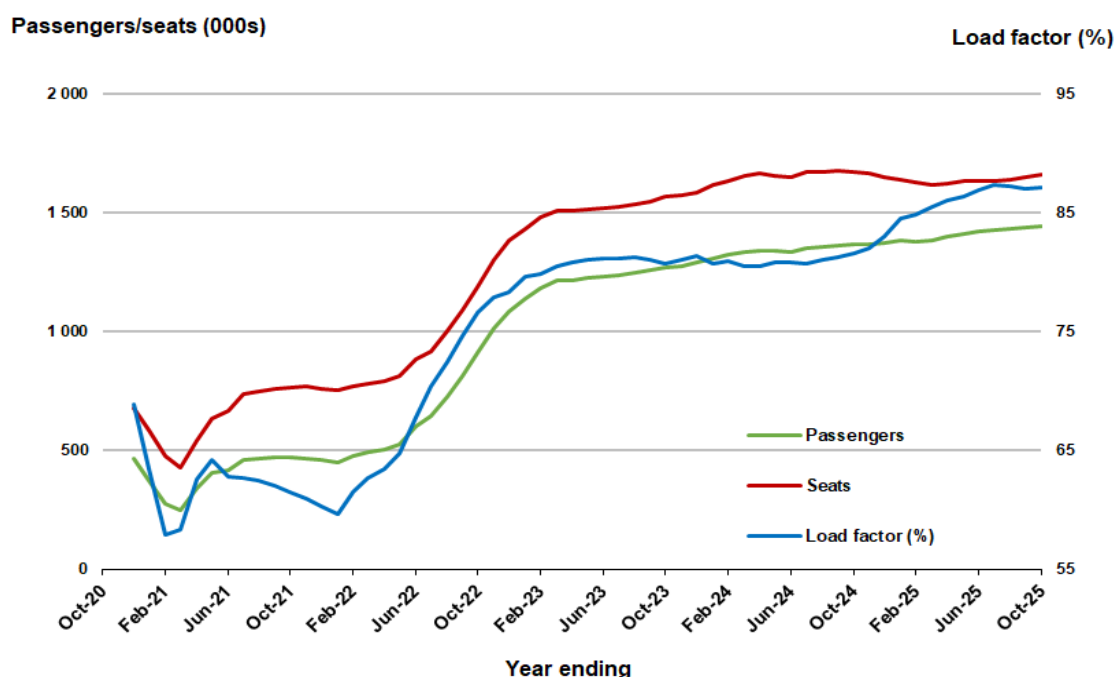


(a) October to November 2020 data not available for release.

Moving annual data

	YE Oct 2024	YE Oct 2025	% Change
Passengers carried (000s)	1 367.6	1 447.6	5.8
Seats (000s)	1 674.4	1 660.9	-0.8
Load factor %	81.7	87.2	5.5 *
Aircraft trips	9 977	9 583	-3.9

* percentage point difference



(a) October to November 2020 moving annual totals are not available for release

TOP FIFTY REGIONAL AIRPORTS

Table 10: Top fifty regional airports (000s) — passenger movements, monthly

Airport	Oct 2024	Oct 2025	% Change
1 Cairns	379.7	392.0	3.2
2 Hobart	235.0	244.8	4.2
3 Townsville	149.0	155.8	4.6
4 Darwin	141.0	148.3	5.2
5 Launceston	119.3	128.3	7.5
6 Newcastle	110.1	116.8	6.0
7 Mackay	78.6	89.4	13.8
8 Karratha	57.6	65.9	14.4
9 Rockhampton	60.3	59.5	-1.2
10 Ballina	59.0	52.4	-11.2
11 Proserpine	49.0	50.6	3.2
12 Hamilton Island	47.1	48.8	3.7
13 Port Hedland	45.5	45.6	0.2
14 Broome	38.0	42.6	12.2
15 Newman	39.7	40.2	1.0
16 Kalgoorlie	35.6	38.9	9.5
17 Alice Springs	31.6	34.6	9.5
18 Ayers Rock	32.8	34.5	5.0
19 Coffs Harbour	20.3	23.7	16.5
20 Wagga Wagga	19.9	21.0	5.4
21 Albury	20.4	21.0	3.0
22 Paraburdoo	26.3	20.9	-20.7
23 Mount Isa	22.2	20.9	-5.8
24 Gladstone	20.1	20.3	1.2
25 Dubbo	19.3	20.1	4.1
26 Hervey Bay	17.8	19.7	10.8
27 Emerald	18.3	17.9	-2.3
28 Port Macquarie	16.9	17.8	4.9
29 Mildura	16.9	16.5	-2.3
30 Port Lincoln	15.0	14.9	-1.1
31 Tamworth	14.3	14.0	-2.3
32 Devonport	11.1	13.6	22.9
33 Bundaberg	12.9	13.1	1.4
34 Orange	10.1	12.0	19.1
35 Geraldton	11.5	11.8	2.0
36 Kununurra	11.2	11.2	0.6
37 Armidale	9.5	10.5	10.6
38 Thursday Island	10.2	10.1	-0.6
39 Weipa	8.3	9.3	11.2
40 Busselton	8.3	9.2	10.7
41 Learmonth	9.8	9.1	-6.9
42 Olympic Dam	8.1	8.6	6.6
43 Moranbah	10.1	8.4	-17.0
44 Gove	8.6	7.7	-10.0
45 Burnie	7.3	7.6	5.1
46 Griffith	6.9	7.0	1.9
47 Norfolk Island	6.9	6.9	0.4
48 Merimbula	6.0	6.9	13.7
49 Mount Gambier	6.1	6.8	12.0
50 Albany	6.1	5.9	-3.2
Total top 50 regional airport	2 125.8	2 213.5	4.1
Total regional airports	2 254.8	2 343.5	3.9
Total domestic network	10 745.7	11 146.1	3.7

Note: Airport passenger movement numbers are the sum of passenger arrivals and departures at each airport.

Regional airports are defined as airports which are, according to Australian Statistical Geography Standard (ASGS), not based in Major Cities.

Table 11: Top fifty regional airports (000s) — passenger movements, annual

Airport	Oct 2024	Oct 2025	% Change
1 Cairns	4 048.9	4 173.9	3.1
2 Hobart	2 702.6	2 836.3	4.9
3 Townsville	1 590.5	1 665.6	4.7
4 Darwin	1 668.5	1 660.2	-0.5
5 Launceston	1 426.2	1 452.1	1.8
6 Newcastle	1 203.6	1 202.3	-0.1
7 Mackay	907.8	921.6	1.5
8 Karratha	612.7	687.5	12.2
9 Rockhampton	653.4	646.6	-1.0
10 Ballina	621.6	590.6	-5.0
11 Proserpine	505.5	537.1	6.2
12 Port Hedland	487.4	495.5	1.7
13 Hamilton Island	489.4	494.9	1.1
14 Broome	438.4	454.7	3.7
15 Newman	390.1	439.8	12.8
16 Kalgoorlie	368.4	387.0	5.0
17 Alice Springs	371.5	363.6	-2.1
18 Ayers Rock	305.6	352.6	15.4
19 Paraburdoo	251.6	259.9	3.3
20 Coffs Harbour	274.3	259.0	-5.6
21 Mount Isa	238.4	234.1	-1.8
22 Albury	262.9	222.1	-15.5
23 Gladstone	236.2	219.4	-7.1
24 Wagga Wagga	206.0	217.9	5.8
25 Hervey Bay	175.3	213.7	21.9
26 Dubbo	210.1	208.0	-1.0
27 Emerald	198.1	200.0	1.0
28 Port Macquarie	213.2	192.0	-9.9
29 Mildura	216.3	186.8	-13.6
30 Port Lincoln	171.1	166.0	-3.0
31 Tamworth	166.2	159.8	-3.8
32 Bundaberg	124.4	143.8	15.6
33 Kununurra	140.7	140.8	0.1
34 Devonport	156.7	140.4	-10.4
35 Geraldton	117.3	128.4	9.5
36 Thursday Island	113.6	119.1	4.9
37 Orange	110.4	118.1	7.0
38 Learmonth	104.5	111.9	7.1
39 Moranbah	104.0	103.6	-0.4
40 Armidale	112.4	102.5	-8.8
41 Olympic Dam	102.7	102.5	-0.3
42 Weipa	91.3	98.5	7.8
43 Busselton	81.2	97.0	19.4
44 Gove	94.8	85.1	-10.2
45 Burnie	78.7	81.3	3.2
46 Griffith	68.3	76.8	12.6
47 Mount Gambier	71.9	72.2	0.4
48 Norfolk Island	69.4	70.8	2.1
49 Merimbula	70.4	69.8	-0.8
50 Albany	66.8	66.4	3.6
Total top 50 regional airport	23 491.3	24 029.6	2.3
Total regional airports	24 929.2	25 471.2	2.2
Total domestic network	118 099.4	120 254.7	1.8

Note: Airport passenger movement numbers are the sum of passenger arrivals and departures at each airport. Regional airports are defined as airports which are, according to Australian Statistical Geography Standard (ASGS), not based in Major Cities.

DOMESTIC CHARTER ACTIVITY

Table 12: Charter passengers carried and aircraft trips - monthly activity (000s)

	Oct 2024	Oct 2025	% Change
Total domestic charter passengers	391.5	393.7	0.6
Total domestic charter aircraft trips	6.6	6.7	2.3

Note: Helicopter, joyflights and sightseeing charter flights not included.

Table 13: Charter passengers carried and aircraft trips - annual activity (000s)

	YE Oct 2024	YE Oct 2025	% Change
Total domestic charter passengers	4 341.9	4 293.1	-1.1
Total domestic charter aircraft trips	73.8	73.4	-0.6

Note: Helicopter, joyflights and sightseeing charter flights not included.

Table 14: Domestic airports - charter activity - monthly (000s)

	Oct 2024	Oct 2025	% Change
Total domestic charter passenger movements	782.9	787.4	0.6
Total domestic charter aircraft movements	13.1	13.4	2.3
Perth airport charter passenger movements	280.6	281.9	0.4
Perth airport charter aircraft movements	4.1	4.0	-1.1

Note: Helicopter, joyflights and sightseeing charter flights not included.

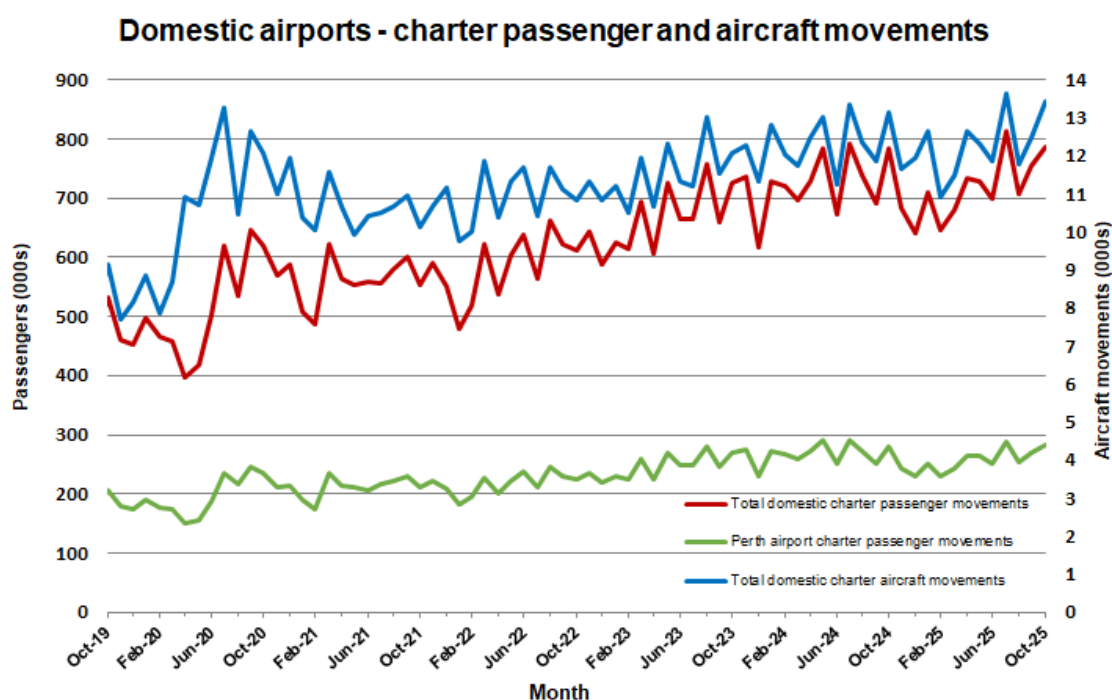
Charter passenger and aircraft movement numbers are the sum of arrivals and departures at each airport.

Table 15: Domestic airports - charter activity - annual (000s)

	YE Oct 2024	YE Oct 2025	% Change
Total domestic charter passenger movements	8 683.8	8 586.3	-1.1
Total domestic charter aircraft movements	147.7	146.8	-0.6
Perth airport charter passenger movements	3 209.3	3 071.1	-4.3
Perth airport charter aircraft movements	48.3	44.6	-7.6

Note: Helicopter, joyflights and sightseeing charter flights not included.

Charter passenger and aircraft movement numbers are the sum of arrivals and departures at each airport.



DEFINITIONS

Aircraft Trips	The number of flight stages. A return flight counts as two aircraft trips.
Airport Movements	Airport movements (passenger and cargo) are measured once on arrival and once on departure. Each domestic trip generates two movements at airports. For example, a trip from Melbourne to Sydney will be counted twice, as a departure at Melbourne and as an arrival at Sydney. At the national level, the sum of all domestic airport traffic will therefore be equal to twice the number of trips undertaken.
Available Seat Kilometres (ASKs)	Calculated by multiplying the number of seats available on each flight stage, by the distance in kilometres between the ports. The distances used are Great Circle Distances.
City-Pair	The ports shown make up the city-pair route. Passenger movements shown for a city pair reflect total traffic in both directions.
Flight Stage	The operation of an aircraft from take-off to landing.
Load Factor	The total revenue passenger kilometres performed as a percentage of the total available seat kilometres.
Passengers Carried	Revenue passengers carried.
Regular Public Transport Services (RPT)	All air service operations in which aircraft are available for the transport of members of the public and are conducted in accordance with fixed schedules. It does not include charter or other non-scheduled operations.
Revenue Passengers	All passengers paying any fare. Frequent flyer redemption travellers are regarded as revenue passengers.
Revenue Passenger Kilometres (RPKs)	Calculated by multiplying the number of revenue passengers travelling on each flight stage, by the distance in kilometres between the ports. The distances used are Great Circle Distances.
Traffic on board by stages (TOB)	The total of all traffic (revenue passengers) on each flight stage between two directly connected airports.
..	Not available for confidentiality or other reasons.
NA	Not applicable.