



**Australian Government**

**Department of Infrastructure, Transport,  
Regional Development, Communications and the Arts**  
Bureau of Infrastructure and Transport Research Economics

## STATISTICAL REPORT



bitre

**Aviation**

**Domestic aviation activity  
October 2023**

The Department of Infrastructure, Transport, Regional Development, Communications and the Arts acknowledges the Traditional Custodians of Country of the land on which we work and live.

We recognise and respect the continuing connections to land, waters and communities.

We pay our respects to them and their cultures and to their Elders both past and present and to all Aboriginal and Torres Strait Islander people.

---

© Commonwealth of Australia 2023

ISSN: 1832 - 1968

### **Ownership of intellectual property rights in this publication**

Unless otherwise noted, copyright (and any other intellectual property rights, if any) in this publication is owned by the Commonwealth of Australia (referred to below as the Commonwealth).

### **Disclaimer**

The material contained in this publication is made available on the understanding that the Commonwealth is not providing professional advice, and that users exercise their own skill and care with respect to its use, and seek independent advice if necessary.

The Commonwealth makes no representations or warranties as to the contents or accuracy of the information contained in this publication. To the extent permitted by law, the Commonwealth disclaims liability to any person or organisation in respect of anything done, or omitted to be done, in reliance upon information contained in this publication.

### **Creative Commons licence**

With the exception of (a) the Coat of Arms; and (b) the Department of Infrastructure, Transport, Regional Development, Communications and the Arts' photos and graphics, copyright in this publication is licensed under a Creative Commons Attribution 3.0 Australia Licence.

Creative Commons Attribution 3.0 Australia Licence is a standard form licence agreement that allows you to copy, communicate and adapt this publication provided that you attribute the work to the Commonwealth and abide by the other licence terms. A summary of the licence terms is available from <http://creativecommons.org/licenses/by/3.0/au/deed.en>.

The full licence terms are available from <http://creativecommons.org/licenses/by/3.0/au/legalcode>.

### **Use of the Coat of Arms**

The Department of the Prime Minister and Cabinet sets the terms under which the Coat of Arms is used. Please refer to the Department's Commonwealth Coat of Arms and Government branding web page <http://www.dpmc.gov.au/guidelines/index.cfm#brand> and, in particular, the Guidelines on the use of the Commonwealth Coat of Arms publication.

An appropriate citation for this report is:

Bureau of Infrastructure and Transport Research Economics (BITRE), 2023, Domestic aviation activity, Statistical Report, BITRE, Canberra ACT.

### **Contact us**

This publication is available in PDF format. All other rights are reserved, including in relation to any Departmental logos or trade marks which may exist. For enquiries regarding the licence and any use of this publication, please contact:

Bureau of Infrastructure and Transport Research Economics (BITRE)  
Department of Infrastructure, Transport, Regional Development, Communications and the Arts  
GPO Box 501, Canberra ACT 2601, Australia  
Telephone: (international) +61 2 6274 7210  
Email: [bitre@infrastructure.gov.au](mailto:bitre@infrastructure.gov.au)  
Website: [www.bitre.gov.au](http://www.bitre.gov.au)

### **Inquiries**

[Nebojsa.Pavlovic@infrastructure.gov.au](mailto:Nebojsa.Pavlovic@infrastructure.gov.au) (02) 6274 6817

## FOREWORD

This report provides an overview of domestic (including charter) commercial aviation activity in Australia for the month of October 2023.

The data covers revenue passengers carried by Australian-registered operators of scheduled regular public transport services over Australian flight stages and fixed-wing charter operators. These estimates include passengers carried between domestic airports on international flights operated by these carriers. The passengers carried refer to traffic on board by stages.

Estimates of passengers and aircraft movements for charter aviation are included in this publication, where BITRE confidentiality standards are met.

Individual routes shown are restricted to those with an average exceeding 8,000 passengers per month over the previous six months where two or more airlines operate in competition. However, for the period from November 2021 through to December 2022, the major airlines (Qantas Group, Virgin Australia and Rex Airlines) agreed to publication of the top 35 routes based on pre-COVID activity (December 2019) whether or not they were meeting the above criteria. From January 2023, the passenger load and dual competition requirements were reinstated due to the continued recovery of passenger numbers.

Bonza Aviation has been reporting monthly data since May 2023 and Nexus Airlines since October 2023.

Information on the total network for the month of October 2023 and on the Regular Public Transport (RPT) network for the month of October 2023 is presented on page 2, with estimates for the year ended October 2023 presented on page 3.

Detailed information on individual routes can be found in the RPT summary pages 4-13 of this publication. For the month of October 2023, there are 63 individual routes published.

The top ten airports in terms of RPT passenger movements are shown on page 14.

Data on domestic RPT cargo movements at the top five cargo airports are provided on page 15. The table includes cargo carried on passenger flights operated by the Qantas group (including Jetstar), Virgin Australia, Air North and Skippers as well as the cargo carried by dedicated freighter aircraft operated by Qantas Freight and Toll.

The long-term trends for the top ten competitive RPT routes are presented graphically on pages 16-25.

Domestic RPT passenger movements at regional airports are shown on pages 26-27.

Tables providing estimates of domestic charter aviation activity are shown on page 28. BITRE confidentiality standards restrict publication of detailed estimates for individual Australian airports, with the exception of Perth Airport.

A list of definitions can be found on page 29.

This report was prepared by the Aviation Statistics Section of the Bureau of Infrastructure and Transport Research Economics with data provided by airlines.

Estimates are included where data were not available and data presented in this publication may contain revisions to previously published data.

Where figures have been rounded, discrepancies may occur between sums of component items and totals, and in percentage changes which are derived from figures prior to rounding.

# CONTENTS

<b>Highlights .....</b>	<b>1</b>
<b>Total network.....</b>	<b>2</b>
<b>RPT network .....</b>	<b>2</b>
<b>Top competitive routes.....</b>	<b>4</b>
<b>Top ten airports – passenger movements.....</b>	<b>14</b>
<b>Top five airports – cargo movements.....</b>	<b>15</b>
<b>Top ten routes .....</b>	<b>16</b>
1. Melbourne – Sydney .....	16
2. Brisbane – Sydney.....	17
3. Brisbane – Melbourne .....	18
4. Gold Coast – Sydney .....	19
5. Adelaide – Melbourne .....	20
6. Gold Coast - Melbourne .....	21
7. Melbourne – Perth .....	22
8. Adelaide – Sydney .....	23
9. Perth – Sydney .....	24
10. Brisbane – Cairns .....	25
<b>Top fifty regional airports .....</b>	<b>26</b>
<b>Domestic charter activity.....</b>	<b>28</b>
<b>Definitions .....</b>	<b>29</b>

This page is intentionally left blank.

## HIGHLIGHTS

There were 5.55 million passengers carried on Australian domestic commercial aviation (including charter operations) in October 2023, an increase of 7.7 per cent on October 2022.

5.19 million passengers were carried on RPT flights in October 2023, an increase of 7.0 per cent compared to October 2022.

For the month of October 2023, there were 53,011 RPT aircraft trips, up 8.3 per cent compared to October 2022.

For the year ending October 2023 there were 56.56 million RPT passengers, an increase of 25.6 per cent on the year ending October 2022.

RPT revenue passenger kilometres (RPKs) performed were 6.23 billion for the month, compared with 5.88 billion in October 2022 (up 6.0 per cent).

Capacity, measured by available seat kilometres (ASKs), increased to 7.55 billion in October 2023 compared to 6.89 billion in October 2022 (up 9.5 per cent).

The industry wide load factor (RPKs/ASKs) decreased from 85.3 per cent in October 2022 to 82.6 per cent in October 2023. The highest load factor (92.2 per cent) was recorded on the Gold Coast - Melbourne route while the lowest load factor (57.0 per cent) was recorded on the Newman – Perth route.

For the month of October 2023, Melbourne – Sydney was Australia's busiest RPT route with 686,806 passengers, followed by Brisbane – Sydney with 380,511 passengers and Brisbane – Melbourne with 301,115 passengers.

Sydney was Australia's busiest domestic airport with 2.19 million passenger movements in October 2023, followed by Melbourne with 2.12 million passenger movements and Brisbane with 1.47 million passenger movements.

Total cargo movements at Australian airports on domestic RPT flights were 27,319 tonnes in October 2023, a decrease of 4.6 per cent compared with October 2022.

In October 2023, there were 2.21 million domestic passenger movements through regional airports, compared to 2.08 million in October 2022, an increase of 6.0 per cent. Out of the top 50 regional airports, the strongest increase was recorded at Toowoomba Wellcamp Airport (up 146.0 per cent on October 2022), while the largest decrease was recorded at Mount Gambier Airport (down 7.8 per cent on October 2022).

Fixed-wing charter operators carried 363,351 passengers in October 2023, an increase of 19.1 per cent compared with October 2022. Perth Airport accounted for 37.0 per cent of all charter passengers in Australia.

## TOTAL NETWORK

### Summary of monthly commercial aviation activity

	Oct 2022	Oct 2023	% Change
Total passengers carried (millions)	5.16	5.55	7.7
Aircraft trips (000s)	54.4	59.1	8.6

Note: Regular Public Transport and charter aviation activity  
Helicopter, joy flights and sightseeing charter flights not included.

## RPT NETWORK

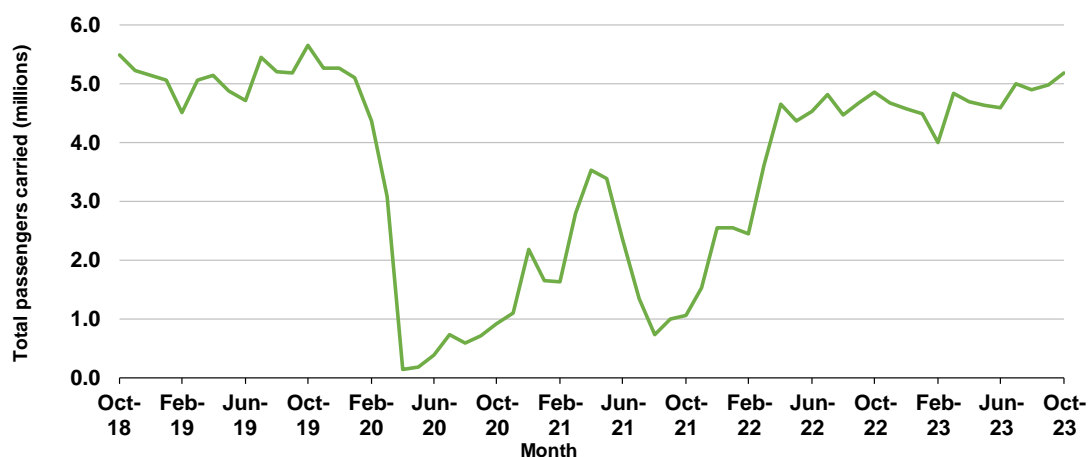
### Summary of monthly RPT activity

	Oct 2022	Oct 2023	% Change
Total passengers carried (millions)	4.85	5.19	7.0
Revenue passenger kilometres (billions)	5.88	6.23	6.0
Available seats (millions)	5.83	6.43	10.3
Available seat kilometres (billions)	6.89	7.55	9.5
Load factor %	85.3	82.6	-2.7 *
Aircraft trips (000s)	48.9	53.0	8.3

\* percentage point difference

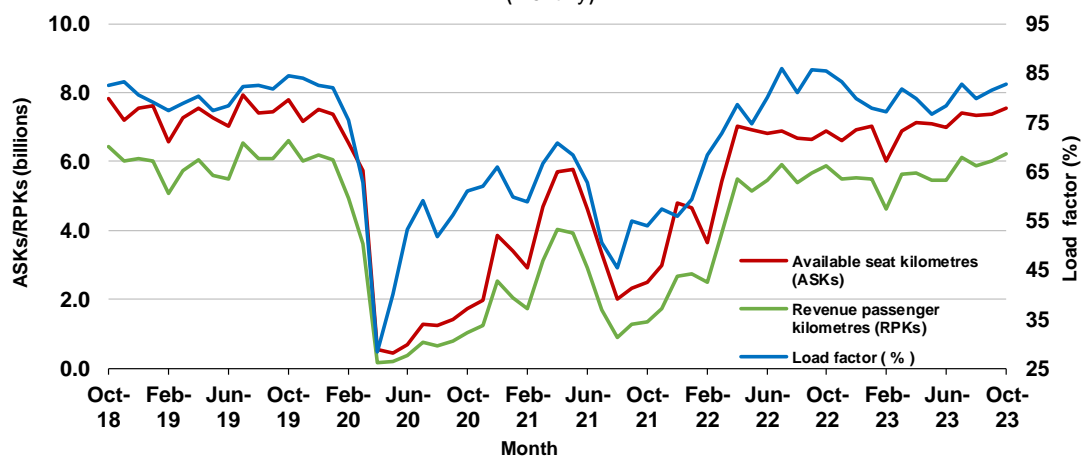
### Domestic RPT passenger traffic

(monthly)



### RPT Network utilisation

(monthly)





## TOTAL NETWORK

### Summary of annual commercial aviation activity

	YE Oct 2022	YE Oct 2023	% Change
Total passengers carried (millions)	48.54	60.54	24.7
Aircraft trips (000s)	591.4	678.5	14.7

Note: Regular Public Transport and charter aviation activity  
Helicopter, joy flights and sightseeing charter flights not included.

## RPT NETWORK

### Summary of annual RPT activity

	YE Oct 2022	YE Oct 2023	% Change
Total passengers carried (millions)	45.04	56.56	25.6
Revenue passenger kilometres (billions)	52.54	67.60	28.7
Available seats (millions)	61.16	72.56	18.7
Available seat kilometres (billions)	69.32	84.34	21.7
Load factor %	75.8	80.1	4.4 *
Aircraft trips (000s)	526.0	609.5	15.9

\* percentage point difference

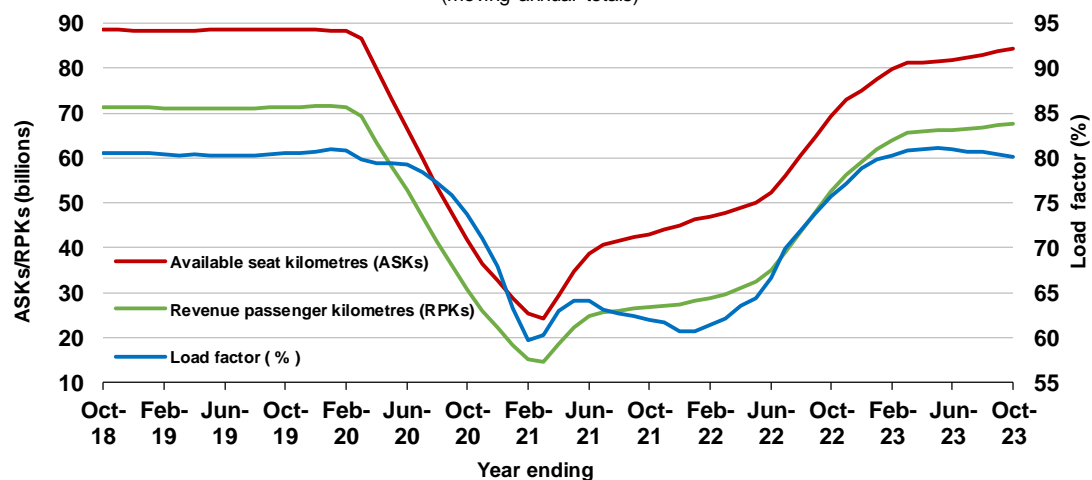
### Domestic RPT passenger traffic

(moving annual totals)



### RPT Network utilisation

(moving annual totals)



## TOP COMPETITIVE ROUTES

**Table 1: Passengers carried (000s) — annual activity**

	City-Pair	YE Oct 2022	YE Oct 2023	% Change
1	Melbourne - Sydney	6,020.4	7,484.7	24.3
2	Brisbane - Sydney	3,029.3	4,182.1	38.1
3	Brisbane - Melbourne	2,409.2	3,255.3	35.1
4	Gold Coast - Sydney	1,946.2	2,426.9	24.7
5	Adelaide - Melbourne	1,704.1	2,261.6	32.7
6	Gold Coast - Melbourne	1,885.9	2,233.7	18.4
7	Melbourne - Perth	1,040.6	1,868.9	79.6
8	Adelaide - Sydney	1,220.9	1,703.2	39.5
9	Perth - Sydney	864.6	1,559.3	80.3
10	Hobart - Melbourne	912.6	1,269.1	39.1
11	Brisbane - Cairns	1,124.3	1,240.7	10.4
12	Brisbane - Perth	629.8	1,000.6	58.9
13	Canberra - Melbourne	762.8	985.1	29.2
14	Cairns - Sydney	693.9	891.8	28.5
15	Brisbane - Townsville	801.0	869.1	8.5
16	Cairns - Melbourne	725.0	806.8	11.3
17	Adelaide - Brisbane	664.2	800.1	20.5
18	Launceston - Melbourne	573.6	797.4	39.0
19	Sunshine Coast - Sydney	580.2	747.7	28.9
20	Brisbane - Mackay	666.0	732.4	10.0
21	Hobart - Sydney	549.7	727.4	32.3
22	Melbourne - Sunshine Coast	642.4	679.4	5.8
23	Adelaide - Perth	421.2	640.6	52.1
24	Brisbane - Canberra	512.4	630.2	23.0
25	Canberra - Sydney	471.8	594.2	25.9
26	Ballina - Sydney	539.6	540.1	0.1
27	Karratha - Perth	482.5	537.6	11.4
28	Brisbane - Rockhampton	428.3	504.1	17.7
29	Brisbane - Newcastle	381.8	496.7	30.1
30	Perth - Port Hedland	440.9	480.0	8.9
31	Melbourne - Newcastle	358.0	413.0	15.4
32	Newman - Perth	338.0	371.4	9.9
33	Broome - Perth	371.5	364.5	-1.9
34	Kalgoorlie - Perth	294.4	352.5	19.7
35	Brisbane - Darwin	320.7	323.8	1.0
36	Launceston - Sydney	235.8	317.9	34.8
37	Brisbane - Hobart	299.8	293.5	-2.1
38	Darwin - Melbourne	277.2	285.8	3.1
39	Brisbane - Proserpine	300.4	272.4	-9.3
40	Adelaide - Gold Coast	205.4	258.5	25.8
41	Hamilton Island - Sydney	195.6	247.5	26.6
42	Coffs Harbour - Sydney	202.9	216.0	6.5
43	Brisbane - Gladstone	185.4	210.9	13.8
44	Adelaide - Canberra	133.2	194.0	45.7
45	Adelaide - Darwin	..	188.9	NA
46	Brisbane - Emerald	153.5	182.8	19.1
47	Adelaide - Port Lincoln	165.4	174.8	5.7
48	Dubbo - Sydney	134.5	174.5	29.8
49	Canberra - Gold Coast	122.1	173.1	41.8
50	Darwin - Perth	136.8	169.9	24.2

continued

**Table 1: (continued) Passengers carried (000s) — annual activity**

	<b>City-Pair</b>	<b>YE Oct 2022</b>	<b>YE Oct 2023</b>	<b>% Change</b>
51	Port Macquarie - Sydney	128.5	165.1	28.4
52	Albury - Sydney	137.4	164.7	19.9
53	Brisbane - Hamilton Island	189.6	162.7	-14.2
54	Melbourne - Mildura	128.8	162.2	26.0
55	Adelaide - Cairns	..	159.2	NA
56	Brisbane - Launceston	176.3	154.7	-12.2
57	Sydney - Wagga Wagga	122.7	154.1	25.6
58	Brisbane - Mount Isa	132.0	143.5	8.7
59	Devonport - Melbourne	..	120.9	NA
60	Adelaide - Alice Springs	92.3	114.8	24.4
61	Brisbane - Moranbah	96.1	108.9	13.3
62	Armidale - Sydney	85.4	105.9	24.0
63	Brisbane - Bundaberg	..	99.5	NA
<b>Total domestic network</b>		<b>45,038.4</b>	<b>56,557.0</b>	<b>25.6</b>

.. Data not available for release.

**Table 2: Passengers carried (000s) — monthly activity**

	<b>City-Pair</b>	<b>Oct 2022</b>	<b>Oct 2023</b>	<b>% Change</b>
1	Melbourne - Sydney	625.9	686.8	9.7
2	Brisbane - Sydney	349.1	380.5	9.0
3	Brisbane - Melbourne	273.0	301.1	10.3
4	Gold Coast - Sydney	215.4	218.5	1.5
5	Adelaide - Melbourne	189.5	205.5	8.4
6	Gold Coast - Melbourne	191.8	196.3	2.4
7	Melbourne - Perth	155.6	175.0	12.4
8	Adelaide - Sydney	143.3	168.6	17.6
9	Perth - Sydney	131.6	145.4	10.5
10	Brisbane - Cairns	110.3	112.7	2.2
11	Hobart - Melbourne	98.7	109.9	11.3
12	Canberra - Melbourne	87.5	92.3	5.5
13	Brisbane - Perth	84.7	90.8	7.2
14	Cairns - Sydney	90.3	86.5	-4.2
15	Cairns - Melbourne	80.5	85.5	6.3
16	Adelaide - Brisbane	77.4	76.2	-1.5
17	Brisbane - Townsville	74.3	75.9	2.2
18	Sunshine Coast - Sydney	67.8	72.0	6.3
19	Launceston - Melbourne	66.0	72.0	9.0
20	Hobart - Sydney	60.2	67.7	12.5
21	Brisbane - Mackay	65.9	65.3	-0.9
22	Melbourne - Sunshine Coast	65.2	63.1	-3.2
23	Adelaide - Perth	57.0	60.4	5.9
24	Brisbane - Canberra	57.6	55.5	-3.7
25	Canberra - Sydney	52.2	53.8	3.1
26	Karratha - Perth	46.3	49.2	6.3
27	Ballina - Sydney	46.4	47.0	1.4
28	Brisbane - Rockhampton	38.9	45.8	17.7
29	Brisbane - Newcastle	44.6	45.4	1.8
30	Perth - Port Hedland	41.4	43.1	4.1
31	Melbourne - Newcastle	34.1	38.3	12.3
32	Broome - Perth	35.4	36.6	3.5
33	Kalgoorlie - Perth	27.4	33.7	23.0
34	Newman - Perth	30.5	31.9	4.8
35	Brisbane - Darwin	28.6	28.3	-0.9
36	Launceston - Sydney	24.7	27.9	13.2
37	Darwin - Melbourne	25.0	26.1	4.7
38	Adelaide - Gold Coast	22.0	25.9	17.8
39	Brisbane - Proserpine	27.1	24.8	-8.4
40	Brisbane - Hobart	25.1	22.4	-10.8
41	Hamilton Island - Sydney	24.8	22.1	-11.0
42	Brisbane - Gladstone	17.2	20.1	16.4
43	Coffs Harbour - Sydney	19.2	19.1	-0.4
44	Adelaide - Canberra	16.0	18.2	13.9
45	Adelaide - Darwin	..	17.1	NA
46	Brisbane - Emerald	15.0	16.4	9.7
47	Dubbo - Sydney	13.9	16.2	16.7
48	Brisbane - Hamilton Island	16.8	15.9	-5.0
49	Adelaide - Cairns	15.3	15.7	3.0
50	Melbourne - Mildura	14.4	15.6	7.9

continued

**Table 2: (continued) Passengers carried (000s) — monthly activity**

	<b>City-Pair</b>	<b>Oct 2022</b>	<b>Oct 2023</b>	<b>% Change</b>
51	Canberra - Gold Coast	15.3	15.2	-0.7
52	Adelaide - Port Lincoln	15.9	15.0	-5.6
53	Darwin - Perth	15.9	14.9	-6.5
54	Port Macquarie - Sydney	14.4	14.7	2.2
55	Albury - Sydney	14.2	14.3	0.8
56	Sydney - Wagga Wagga	12.7	14.0	10.0
57	Brisbane - Mount Isa	12.5	12.5	-0.1
58	Brisbane - Bundaberg	..	12.0	NA
59	Brisbane - Launceston	15.3	12.0	-21.7
60	Devonport - Melbourne	..	10.5	NA
61	Adelaide - Alice Springs	9.3	9.9	6.4
62	Brisbane - Moranbah	9.1	9.5	4.5
63	Armidale - Sydney	8.9	9.2	2.8
<b>Total domestic network</b>		<b>4,851.3</b>	<b>5,188.6</b>	<b>7.0</b>

.. Data not available for release.

**Table 3: Available seats (000s) — monthly activity**

	<b>City-Pair</b>	<b>Oct 2022</b>	<b>Oct 2023</b>	<b>% Change</b>
1	Melbourne - Sydney	717.3	814.5	13.6
2	Brisbane - Sydney	402.9	456.5	13.3
3	Brisbane - Melbourne	306.4	350.8	14.5
4	Gold Coast - Sydney	238.3	247.4	3.8
5	Adelaide - Melbourne	222.0	239.6	7.9
6	Gold Coast - Melbourne	209.7	212.8	1.5
7	Melbourne - Perth	172.0	204.4	18.8
8	Adelaide - Sydney	157.3	194.2	23.4
9	Perth - Sydney	143.4	163.4	13.9
10	Brisbane - Cairns	120.2	127.9	6.4
11	Hobart - Melbourne	114.8	134.7	17.2
12	Canberra - Melbourne	108.4	124.8	15.1
13	Brisbane - Perth	93.7	103.2	10.1
14	Cairns - Sydney	100.0	98.5	-1.5
15	Cairns - Melbourne	90.9	95.1	4.5
16	Adelaide - Brisbane	87.6	86.1	-1.7
17	Brisbane - Townsville	95.5	93.2	-2.4
18	Sunshine Coast - Sydney	84.4	86.4	2.3
19	Launceston - Melbourne	82.8	90.6	9.5
20	Hobart - Sydney	69.5	85.6	23.1
21	Brisbane - Mackay	85.9	81.9	-4.6
22	Melbourne - Sunshine Coast	72.9	69.7	-4.3
23	Adelaide - Perth	63.7	69.6	9.3
24	Brisbane - Canberra	71.7	73.9	3.2
25	Canberra - Sydney	73.0	83.9	14.9
26	Karratha - Perth	57.8	68.8	19.0
27	Ballina - Sydney	53.5	54.8	2.5
28	Brisbane - Rockhampton	45.5	56.0	23.0
29	Brisbane - Newcastle	59.2	59.1	-0.1
30	Perth - Port Hedland	51.2	62.1	21.4
31	Melbourne - Newcastle	39.2	47.2	20.3
32	Broome - Perth	44.9	44.3	-1.3
33	Kalgoorlie - Perth	36.6	50.9	39.2
34	Newman - Perth	50.9	56.0	10.1
35	Brisbane - Darwin	34.8	37.8	8.7
36	Launceston - Sydney	28.4	33.4	17.5
37	Darwin - Melbourne	30.6	36.7	19.8
38	Adelaide - Gold Coast	24.2	28.4	17.1
39	Brisbane - Proserpine	31.7	28.4	-10.5
40	Brisbane - Hobart	29.4	26.2	-10.9
41	Hamilton Island - Sydney	31.5	28.4	-9.8
42	Brisbane - Gladstone	25.2	30.7	21.9
43	Coffs Harbour - Sydney	24.1	23.0	-4.4
44	Adelaide - Canberra	19.5	27.4	40.6
45	Adelaide - Darwin	..	22.6	NA
46	Brisbane - Emerald	22.4	23.2	3.3
47	Dubbo - Sydney	23.6	24.2	2.3
48	Brisbane - Hamilton Island	22.6	21.7	-3.8
49	Adelaide - Cairns	17.0	19.3	13.3
50	Melbourne - Mildura	18.2	20.6	12.8

continued

**Table 3: (continued) Available seats (000s) — monthly activity**

	<b>City-Pair</b>	<b>Oct 2022</b>	<b>Oct 2023</b>	<b>% Change</b>
51	Canberra - Gold Coast	18.1	17.3	-4.1
52	Adelaide - Port Lincoln	23.3	22.5	-3.7
53	Darwin - Perth	18.9	22.2	17.4
54	Port Macquarie - Sydney	21.3	21.5	0.9
55	Albury - Sydney	20.6	19.8	-3.5
56	Sydney - Wagga Wagga	18.6	21.0	13.1
57	Brisbane - Mount Isa	18.0	20.4	13.1
58	Brisbane - Bundaberg	..	17.6	NA
59	Brisbane - Launceston	17.3	14.2	-18.1
60	Devonport - Melbourne	..	13.8	NA
61	Adelaide - Alice Springs	13.0	14.5	10.9
62	Brisbane - Moranbah	18.0	16.3	-9.7
63	Armidale - Sydney	16.4	15.4	-5.7
<b>Total domestic network</b>		<b>5,833.4</b>	<b>6,433.2</b>	<b>10.3</b>

.. Data not available for release.

**Table 4: Load factors (%) — monthly activity**

	<b>City-Pair</b>	<b>Oct 2022</b>	<b>Oct 2023</b>	<b>% Point diff</b>
1	Melbourne - Sydney	87.3	84.3	-3.0
2	Brisbane - Sydney	86.6	83.4	-3.2
3	Brisbane - Melbourne	89.1	85.8	-3.3
4	Gold Coast - Sydney	90.4	88.3	-2.1
5	Adelaide - Melbourne	85.4	85.8	0.4
6	Gold Coast - Melbourne	91.4	92.2	0.8
7	Melbourne - Perth	90.5	85.6	-4.9
8	Adelaide - Sydney	91.1	86.8	-4.3
9	Perth - Sydney	91.8	89.0	-2.8
10	Brisbane - Cairns	91.7	88.1	-3.6
11	Hobart - Melbourne	85.9	81.6	-4.3
12	Canberra - Melbourne	80.7	74.0	-6.7
13	Brisbane - Perth	90.5	88.0	-2.5
14	Cairns - Sydney	90.3	87.7	-2.6
15	Cairns - Melbourne	88.5	90.0	1.5
16	Adelaide - Brisbane	88.4	88.6	0.2
17	Brisbane - Townsville	77.8	81.5	3.7
18	Sunshine Coast - Sydney	80.3	83.4	3.1
19	Launceston - Melbourne	79.7	79.4	-0.3
20	Hobart - Sydney	86.5	79.1	-7.4
21	Brisbane - Mackay	76.7	79.7	3.0
22	Melbourne - Sunshine Coast	89.4	90.4	1.0
23	Adelaide - Perth	89.5	86.8	-2.7
24	Brisbane - Canberra	80.4	75.1	-5.3
25	Canberra - Sydney	71.6	64.2	-7.4
26	Karratha - Perth	80.1	71.5	-8.6
27	Ballina - Sydney	86.6	85.7	-0.9
28	Brisbane - Rockhampton	85.4	81.7	-3.7
29	Brisbane - Newcastle	75.4	76.7	1.3
30	Perth - Port Hedland	80.8	69.3	-11.5
31	Melbourne - Newcastle	87.0	81.2	-5.8
32	Broome - Perth	78.9	82.7	3.8
33	Kalgoorlie - Perth	74.7	66.1	-8.6
34	Newman - Perth	59.9	57.0	-2.9
35	Brisbane - Darwin	82.1	74.9	-7.2
36	Launceston - Sydney	86.8	83.6	-3.2
37	Darwin - Melbourne	81.5	71.2	-10.3
38	Adelaide - Gold Coast	90.9	91.5	0.6
39	Brisbane - Proserpine	85.5	87.4	1.9
40	Brisbane - Hobart	85.4	85.6	0.2
41	Hamilton Island - Sydney	78.9	77.8	-1.1
42	Brisbane - Gladstone	68.5	65.5	-3.0
43	Coffs Harbour - Sydney	79.5	82.8	3.3
44	Adelaide - Canberra	82.2	66.6	-15.6
45	Adelaide - Darwin	..	75.6	NA
46	Brisbane - Emerald	66.8	70.9	4.1
47	Dubbo - Sydney	58.7	67.0	8.3
48	Brisbane - Hamilton Island	74.3	73.3	-1.0
49	Adelaide - Cairns	89.7	81.5	-8.2
50	Melbourne - Mildura	79.1	75.7	-3.4

continued



**Table 4: (continued) Load factors (%) — monthly activity**

	<b>City-Pair</b>	<b>Oct 2022</b>	<b>Oct 2023</b>	<b>% Point diff</b>
51	Canberra - Gold Coast	84.9	87.9	3.0
52	Adelaide - Port Lincoln	68.2	66.7	-1.5
53	Darwin - Perth	84.1	67.0	-17.1
54	Port Macquarie - Sydney	67.8	68.7	0.9
55	Albury - Sydney	68.9	72.0	3.1
56	Sydney - Wagga Wagga	68.5	66.6	-1.9
57	Brisbane - Mount Isa	69.6	61.4	-8.2
58	Brisbane - Bundaberg	..	68.3	NA
59	Brisbane - Launceston	88.7	84.8	-3.9
60	Devonport - Melbourne	..	75.9	NA
61	Adelaide - Alice Springs	71.4	68.5	-2.9
62	Brisbane - Moranbah	50.4	58.4	8.0
63	Armidale - Sydney	54.6	59.5	4.9
<b>Total domestic network</b>		<b>85.3</b>	<b>82.6</b>	<b>-2.7</b>

.. Data not available for release.

**Table 5: Aircraft trips <sup>(a)</sup> — monthly activity**

	<b>City-Pair</b>	<b>Oct 2022</b>	<b>Oct 2023</b>	<b>% Change</b>
1	Melbourne - Sydney	4,083	4,680	14.6
2	Brisbane - Sydney	2,457	2,776	13.0
3	Brisbane - Melbourne	1,867	2,116	13.3
4	Gold Coast - Sydney	1,384	1,426	3.0
5	Adelaide - Melbourne	1,358	1,507	11.0
6	Gold Coast - Melbourne	1,185	1,143	-3.5
7	Melbourne - Perth	940	1,117	18.8
8	Adelaide - Sydney	955	1,178	23.4
9	Perth - Sydney	746	832	11.5
10	Brisbane - Cairns	768	890	15.9
11	Hobart - Melbourne	698	798	14.3
12	Canberra - Melbourne	768	901	17.3
13	Brisbane - Perth	536	599	11.8
14	Cairns - Sydney	504	502	-0.4
15	Cairns - Melbourne	476	471	-1.1
16	Adelaide - Brisbane	519	700	34.9
17	Brisbane - Townsville	642	703	9.5
18	Sunshine Coast - Sydney	464	483	4.1
19	Launceston - Melbourne	660	762	15.5
20	Hobart - Sydney	428	520	21.5
21	Brisbane - Mackay	598	626	4.7
22	Melbourne - Sunshine Coast	420	372	-11.4
23	Adelaide - Perth	367	394	7.4
24	Brisbane - Canberra	534	604	13.1
25	Canberra - Sydney	1,197	1,304	8.9
26	Karratha - Perth	382	414	8.4
27	Ballina - Sydney	385	382	-0.8
28	Brisbane - Rockhampton	508	679	33.7
29	Brisbane - Newcastle	525	534	1.7
30	Perth - Port Hedland	349	390	11.7
31	Melbourne - Newcastle	251	306	21.9
32	Broome - Perth	286	275	-3.8
33	Kalgoorlie - Perth	266	338	27.1
34	Newman - Perth	328	351	7.0
35	Brisbane - Darwin	238	245	2.9
36	Launceston - Sydney	171	208	21.6
37	Darwin - Melbourne	174	215	23.6
38	Adelaide - Gold Coast	136	150	10.3
39	Brisbane - Proserpine	196	194	-1.0
40	Brisbane - Hobart	175	176	0.6
41	Hamilton Island - Sydney	179	161	-10.1
42	Brisbane - Gladstone	311	378	21.5
43	Coffs Harbour - Sydney	457	401	-12.3
44	Adelaide - Canberra	174	250	43.7
45	Adelaide - Darwin	..	179	NA
46	Brisbane - Emerald	326	346	6.1
47	Dubbo - Sydney	451	447	-0.9
48	Brisbane - Hamilton Island	130	127	-2.3
49	Adelaide - Cairns	94	114	21.3
50	Melbourne - Mildura	434	423	-2.5

continued

**Table 5: (continued) Aircraft trips <sup>(a)</sup> — monthly activity**

	<b>City-Pair</b>	<b>Oct 2022</b>	<b>Oct 2023</b>	<b>% Change</b>
51	Canberra - Gold Coast	104	98	-5.8
52	Adelaide - Port Lincoln	585	548	-6.3
53	Darwin - Perth	108	131	21.3
54	Port Macquarie - Sydney	393	375	-4.6
55	Albury - Sydney	407	373	-8.4
56	Sydney - Wagga Wagga	382	383	0.3
57	Brisbane - Mount Isa	170	172	1.2
58	Brisbane - Bundaberg	..	286	NA
59	Brisbane - Launceston	98	82	-16.3
60	Devonport - Melbourne	..	301	NA
61	Adelaide - Alice Springs	154	172	11.7
62	Brisbane - Moranbah	239	216	-9.6
63	Armidale - Sydney	311	267	-14.1
<b>Total domestic network</b>		<b>48,945</b>	<b>53,011</b>	<b>8.3</b>

(a) Includes RPT cargo flights.

.. Data not available for release.

## TOP TEN AIRPORTS – PASSENGER MOVEMENTS

**Table 6: Top ten airports, RPT passenger movements (000s) - monthly activity**

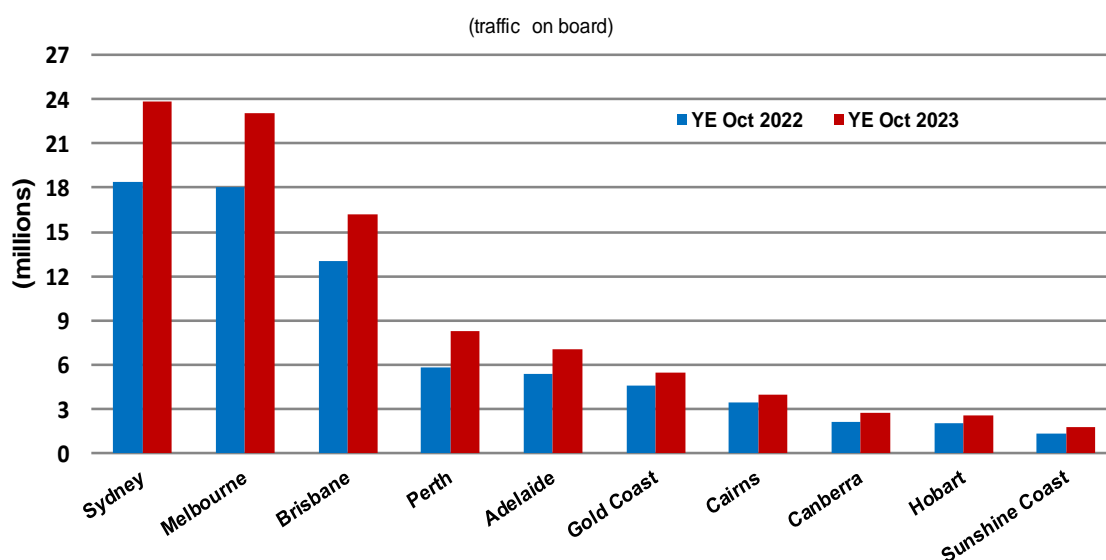
Airport	Oct 2022	Oct 2023	% Change	% of Total
1 Sydney	2,052.9	2,189.0	6.6	21.1
2 Melbourne	1,956.4	2,118.0	8.3	20.4
3 Brisbane	1,393.2	1,468.3	5.4	14.1
4 Perth	704.9	767.5	8.9	7.4
5 Adelaide	605.2	658.8	8.9	6.3
6 Gold Coast	478.1	487.3	1.9	4.7
7 Cairns	370.2	381.5	3.0	3.7
8 Canberra	245.0	248.5	1.4	2.4
9 Hobart	206.9	224.8	8.7	2.2
10 Sunshine Coast	138.9	172.4	24.1	1.7
<b>Total top ten airports</b>	<b>8,151.7</b>	<b>8,716.0</b>	<b>6.9</b>	<b>84.0</b>
<b>Total domestic network</b>	<b>9,702.7</b>	<b>10,377.3</b>	<b>7.0</b>	<b>100.0</b>

**Table 7: Top ten airports, RPT passenger movements (000s) - annual activity**

Airport	YE Oct 2022	YE Oct 2023	% Change	% of Total
1 Sydney	18,406.4	23,844.1	29.5	21.1
2 Melbourne	18,003.5	23,037.1	28.0	20.4
3 Brisbane	13,009.8	16,177.3	24.3	14.3
4 Perth	5,852.5	8,280.9	41.5	7.3
5 Adelaide	5,410.7	7,019.0	29.7	6.2
6 Gold Coast	4,625.1	5,449.0	17.8	4.8
7 Cairns	3,437.2	3,973.0	15.6	3.5
8 Canberra	2,137.1	2,740.0	28.2	2.4
9 Hobart	2,048.0	2,539.6	24.0	2.2
10 Sunshine Coast	1,310.1	1,764.5	34.7	1.6
<b>Total top ten airports</b>	<b>74,240.5</b>	<b>94,824.5</b>	<b>27.7</b>	<b>83.8</b>
<b>Total domestic network</b>	<b>90,076.7</b>	<b>113,114.0</b>	<b>25.6</b>	<b>100.0</b>

Note: Airport passenger movement numbers are the sum of passenger arrivals and departures at each airport.

### Top ten airports, RPT passenger movements



## TOP FIVE AIRPORTS – CARGO MOVEMENTS

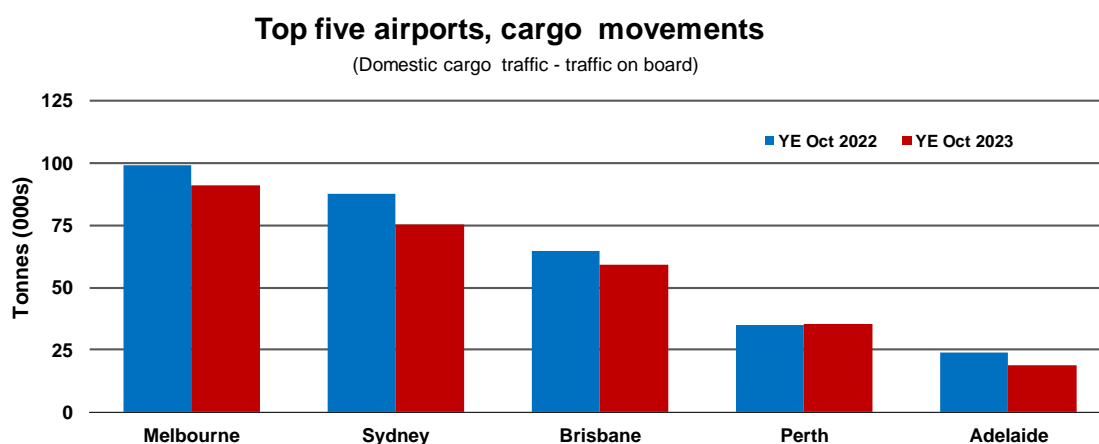
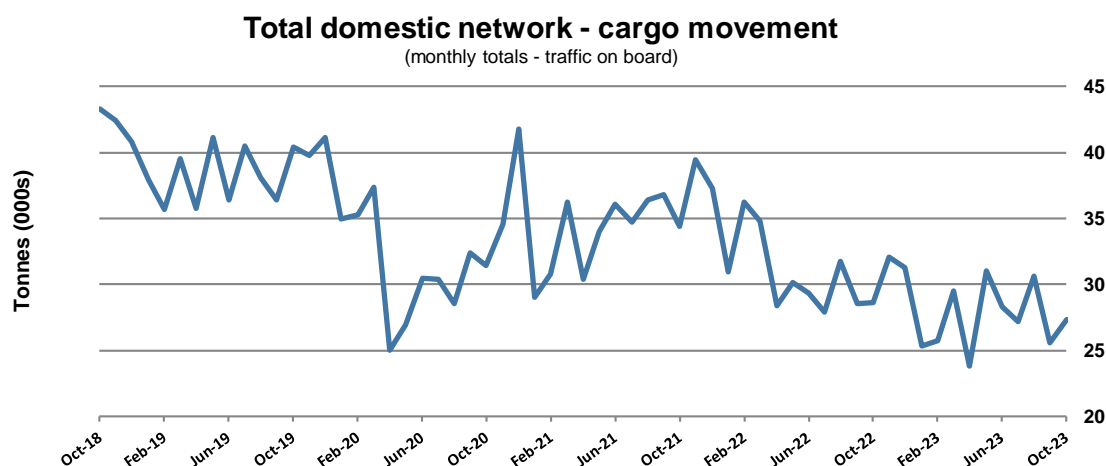
**Table 8: Top five airports, domestic RPT cargo movements (000s tonnes) - monthly activity**

Airport	Oct 2022	Oct 2023	% Change	% of Total
1 Melbourne	7.9	7.5	-5.1	27.4
2 Sydney	6.6	6.2	-7.2	22.6
3 Brisbane	4.8	4.8	0.0	17.7
4 Perth	2.9	2.8	-1.9	10.3
5 Adelaide	1.5	1.4	-6.5	5.3
<b>Total top five airports</b>	<b>23.8</b>	<b>22.8</b>	<b>-4.4</b>	<b>83.3</b>
<b>Total domestic network</b>	<b>28.6</b>	<b>27.3</b>	<b>-4.6</b>	<b>100.0</b>

**Table 9: Top five airports, domestic RPT cargo movements (000s tonnes) - annual activity**

Airport	YE Oct 2022	YE Oct 2023	% Change	% of Total
1 Melbourne	99.2	90.9	-8.4	26.9
2 Sydney	87.7	75.4	-14.0	22.3
3 Brisbane	64.8	59.2	-8.6	17.5
4 Perth	34.8	35.3	1.3	10.4
5 Adelaide	23.8	18.7	-21.4	5.5
<b>Total top five airports</b>	<b>310.3</b>	<b>279.6</b>	<b>-9.9</b>	<b>82.8</b>
<b>Total domestic network</b>	<b>383.5</b>	<b>337.7</b>	<b>-11.9</b>	<b>100.0</b>

Note: Airport cargo tonnes are the sum of cargo tonnes on arrivals and departures at each airport.



Note: Airport cargo tonnes are the sum of cargo tonnes on arrivals and departures at each airport.

## TOP TEN ROUTES

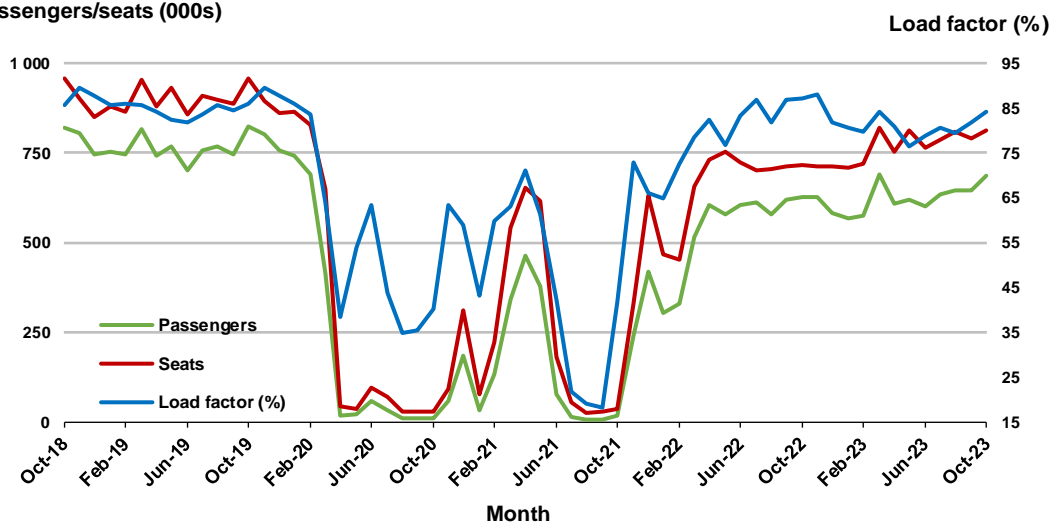
### 1. Melbourne - Sydney

#### Monthly data

	Oct 2022	Oct 2023	% Change
Passengers carried (000s)	625.9	686.8	9.7
Seats (000s)	717.3	814.5	13.6
Load factor %	87.3	84.3	-3.0 *
Aircraft trips	4,083	4,680	14.6

\* percentage point difference

#### Passengers/seats (000s)

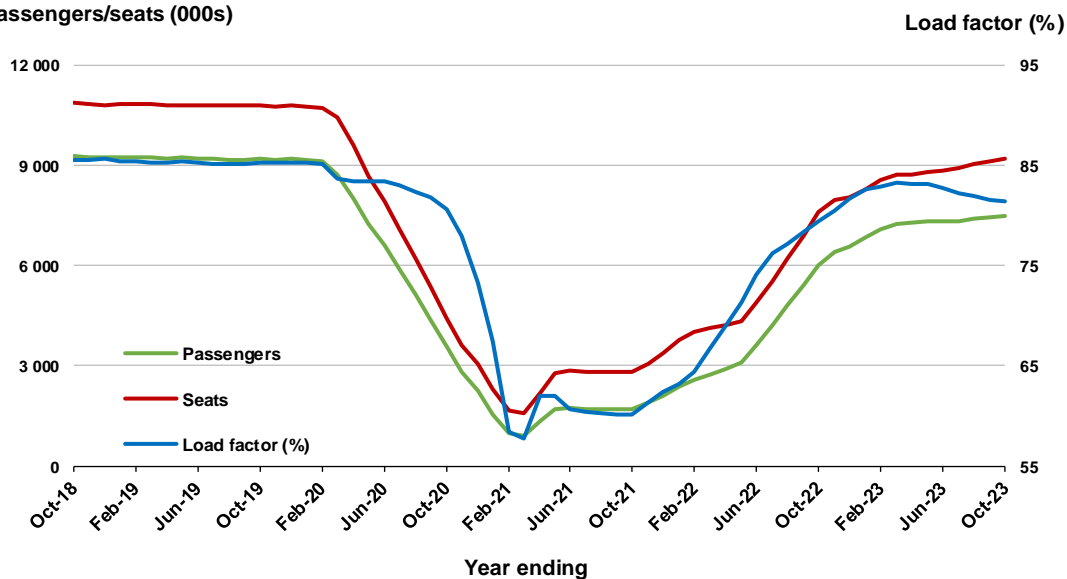


#### Moving annual data

	YE Oct 2022	YE Oct 2023	% Change
Passengers carried (000s)	6,020.4	7,484.7	24.3
Seats (000s)	7,583.3	9,203.0	21.4
Load factor %	79.4	81.3	1.9 *
Aircraft trips	44,465	53,196	19.6

\* percentage point difference

#### Passengers/seats (000s)

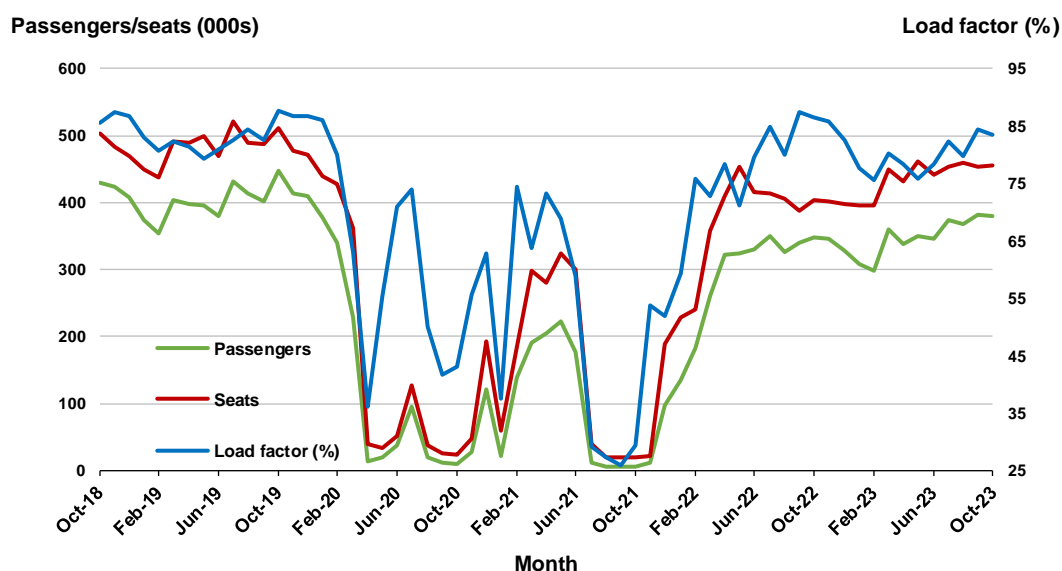


## 2. Brisbane - Sydney

### Monthly data

	Oct 2022	Oct 2023	% Change
Passengers carried (000s)	349.1	380.5	9.0
Seats (000s)	402.9	456.5	13.3
Load factor %	86.6	83.4	-3.2 *
Aircraft trips	2,457	2,776	13.0

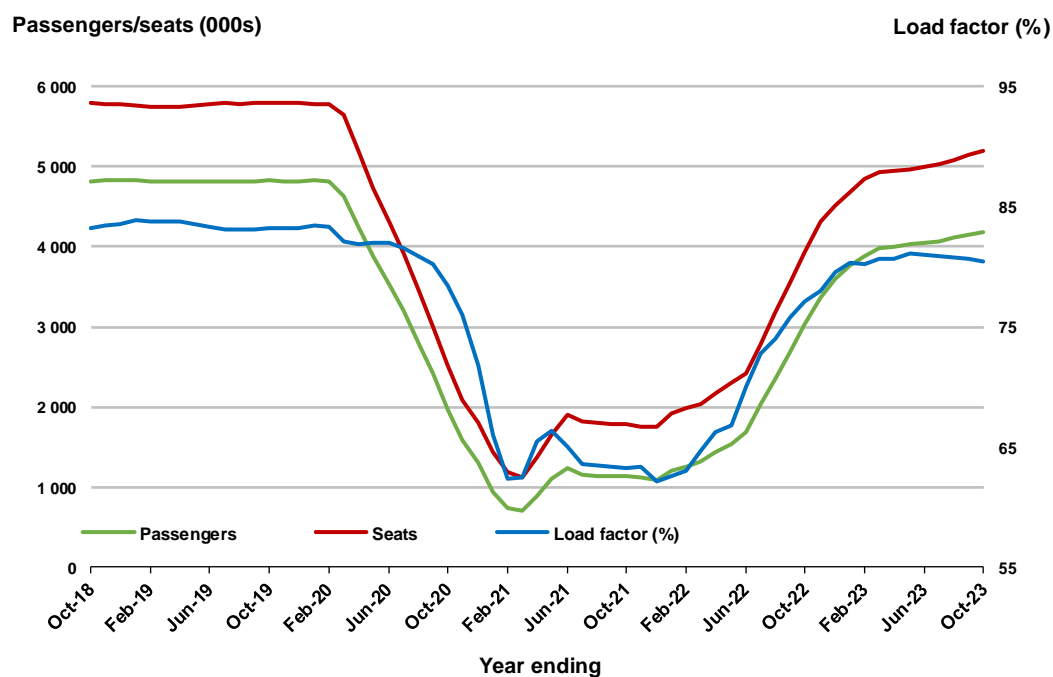
\* percentage point difference



### Moving annual data

	YE Oct 2022	YE Oct 2023	% Change
Passengers carried (000s)	3,029.3	4,182.1	38.1
Seats (000s)	3,929.3	5,201.2	32.4
Load factor %	77.1	80.4	3.3 *
Aircraft trips	24,549	31,929	30.1

\* percentage point difference

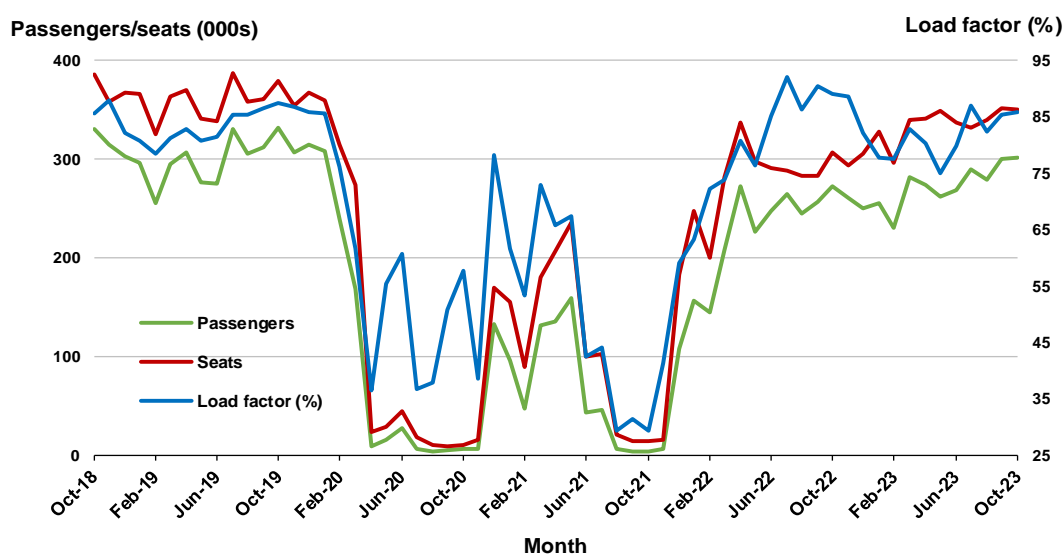


### 3. Brisbane - Melbourne

#### Monthly data

	Oct 2022	Oct 2023	% Change
Passengers carried (000s)	273.0	301.1	10.3
Seats (000s)	306.4	350.8	14.5
Load factor %	89.1	85.8	-3.3 *
Aircraft trips	1,867	2,116	13.3

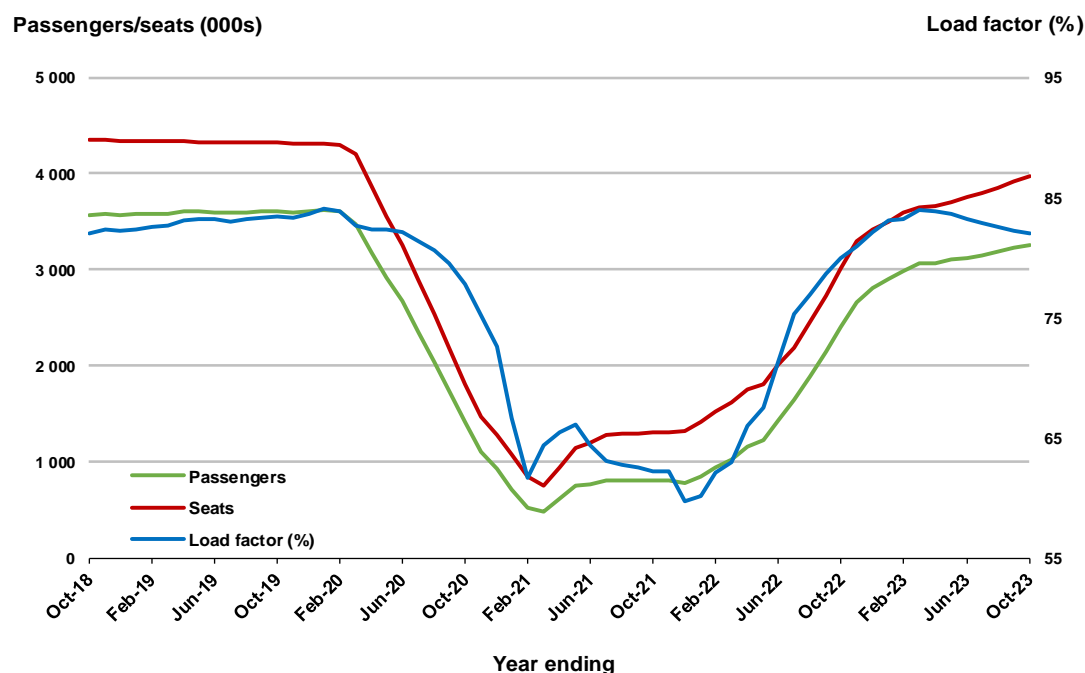
\* percentage point difference



#### Moving annual data

	YE Oct 2022	YE Oct 2023	% Change
Passengers carried (000s)	2,409.2	3,255.3	35.1
Seats (000s)	3,014.0	3,967.7	31.6
Load factor %	79.9	82.0	2.1 *
Aircraft trips	18,627	24,118	29.5

\* percentage point difference





## 4. Gold Coast - Sydney <sup>(a)</sup>

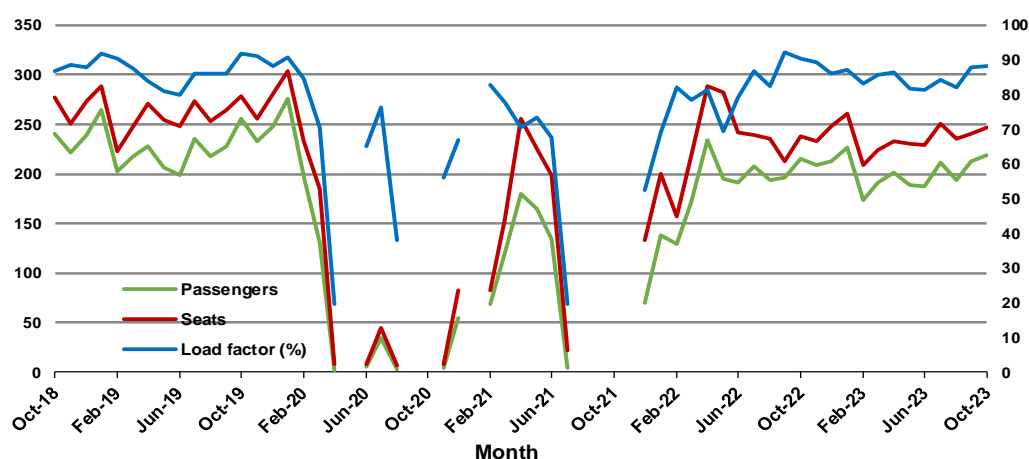
### Monthly data

	Oct 2022	Oct 2023	% Change
Passengers carried (000s)	215.4	218.5	1.5
Seats (000s)	238.3	247.4	3.8
Load factor %	90.4	88.3	-2.1 *
Aircraft trips	1,384	1,426	3.0

\* percentage point difference

### Passengers/seats (000s)

### Load factor (%)



(a) May, September and October 2020 and January and August to November 2021 data not available for release.

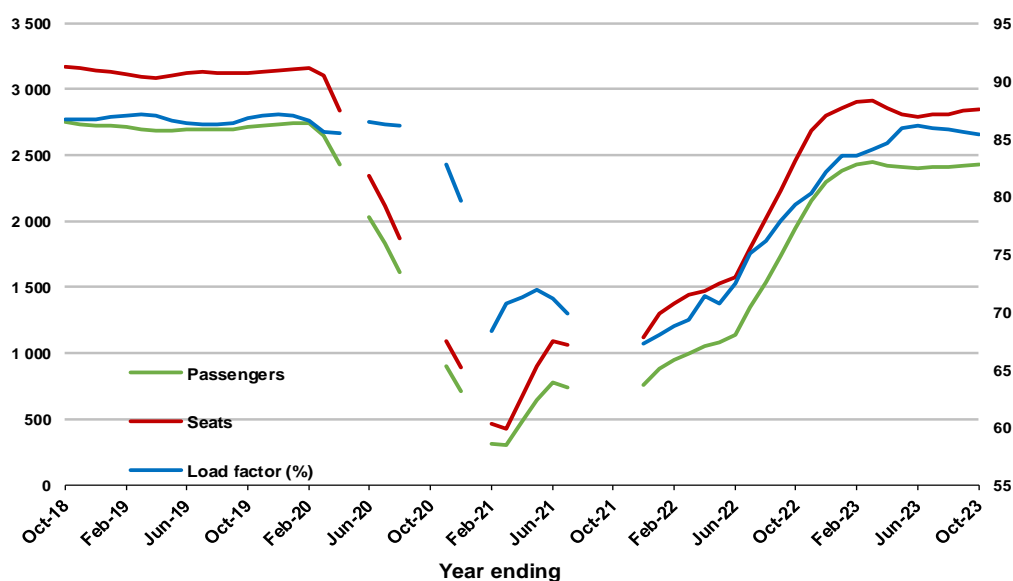
### Moving annual data

	YE Oct 2022	YE Oct 2023	% Change
Passengers carried (000s)	1,946.2	2,426.9	24.7
Seats (000s)	2,455.4	2,842.6	15.8
Load factor %	79.3	85.4	6.1 *
Aircraft trips	14,235	16,376	15.0

\* percentage point difference

### Passengers/seats (000s)

### Load factor (%)



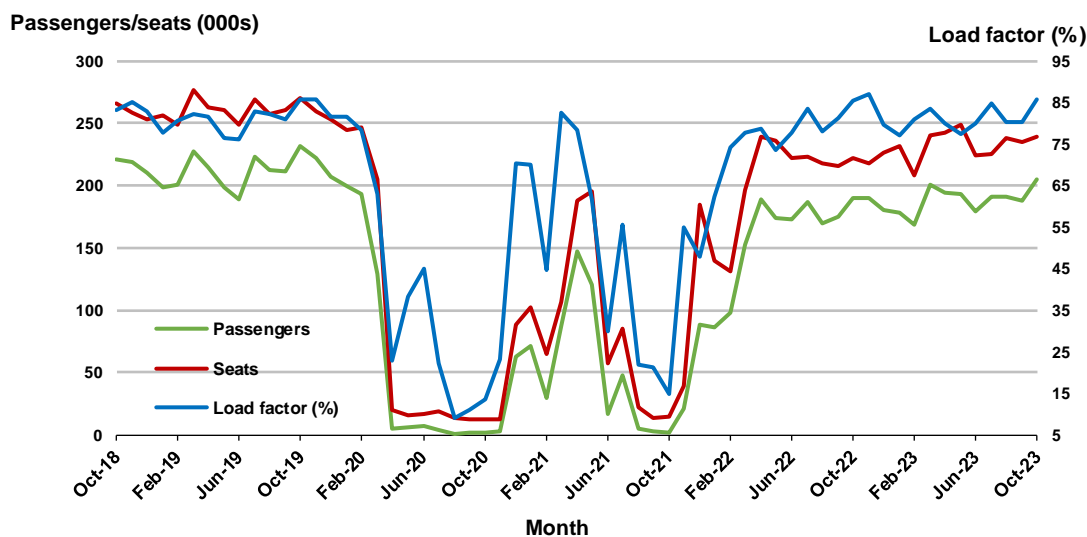
(a) May, September and October 2020 and January and August to November 2021 moving annual totals not available for release.

## 5. Adelaide - Melbourne <sup>(a)</sup>

### Monthly data

	Oct 2022	Oct 2023	% Change
Passengers carried (000s)	189.5	205.5	8.4
Seats (000s)	222.0	239.6	7.9
Load factor %	85.4	85.8	0.4 *
Aircraft trips	1,358	1,507	11.0

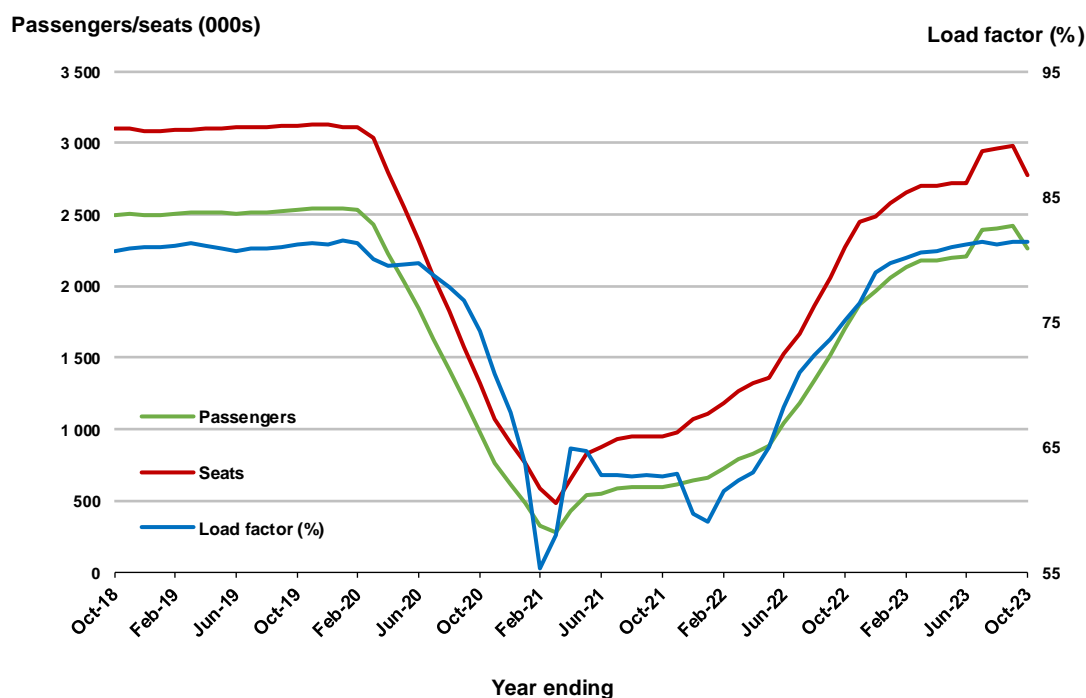
\* percentage point difference



### Moving annual data

	YE Oct 2022	YE Oct 2023	% Change
Passengers carried (000s)	1,704.1	2,261.6	32.7
Seats (000s)	2,267.9	2,778.4	22.5
Load factor %	75.1	81.4	6.3 *
Aircraft trips	13,960	17,072	22.3

\* percentage point difference



## 6. Gold Coast - Melbourne <sup>(a)</sup>

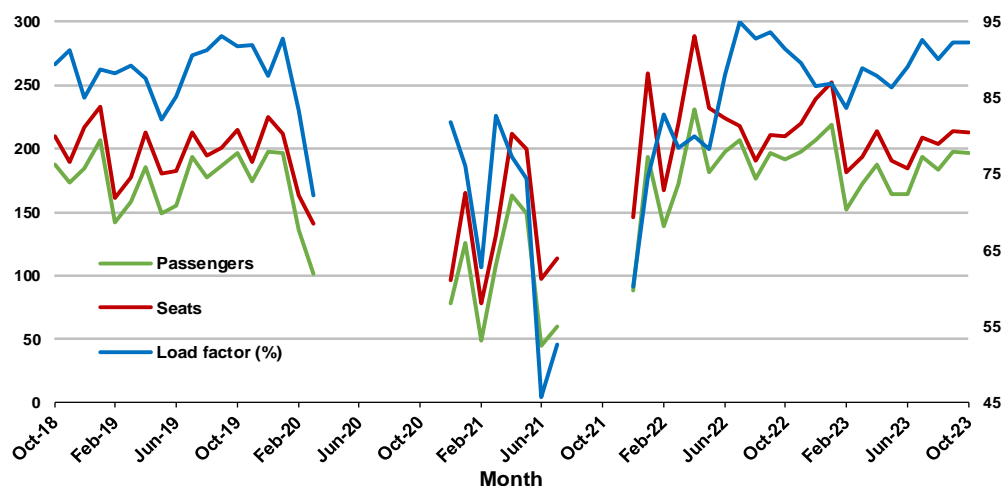
### Monthly data

	Oct 2022	Oct 2023	% Change
Passengers carried (000s)	191.8	196.3	2.4
Seats (000s)	209.7	212.8	1.5
Load factor %	91.4	92.2	0.8 *
Aircraft trips	1,185	1,143	- 3.5

\* percentage point difference

### Passengers/seats (000s)

### Load factor (%)



(a) April to November 2020 and August to November 2021 moving annuals are not available for release.

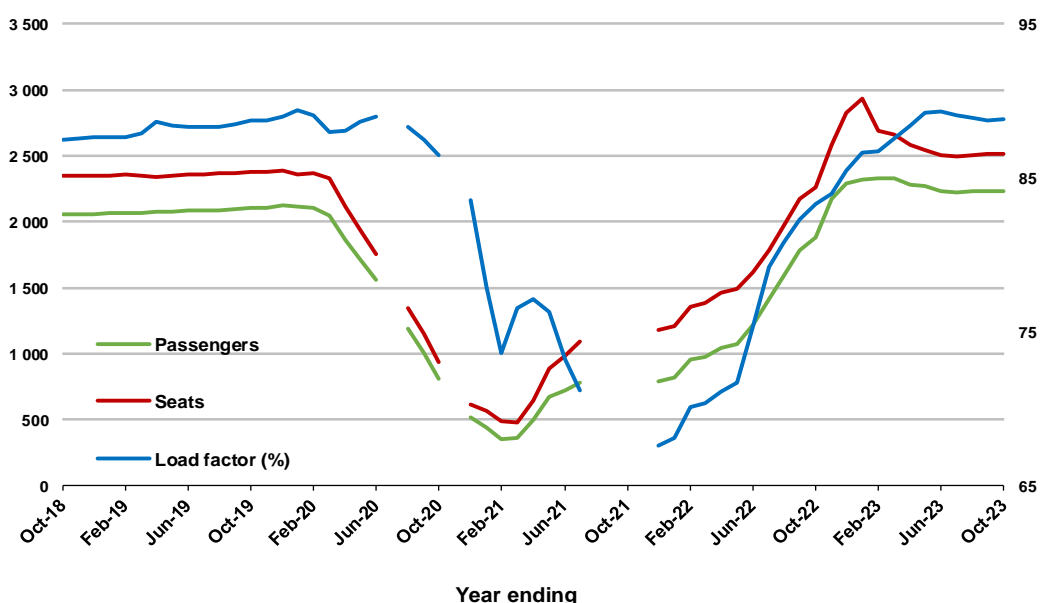
### Moving annual data

	YE Oct 2022	YE Oct 2023	% Change
Passengers carried (000s)	1,885.9	2,233.7	18.4
Seats (000s)	2,263.6	2,514.4	11.1
Load factor %	83.3	88.8	5.5 *
Aircraft trips	12,433	13,614	9.5

\* percentage point difference

### Passengers/seats (000s)

### Load factor (%)



(a) July and November 2020 and August to November 2021 moving annuals are not available for release.

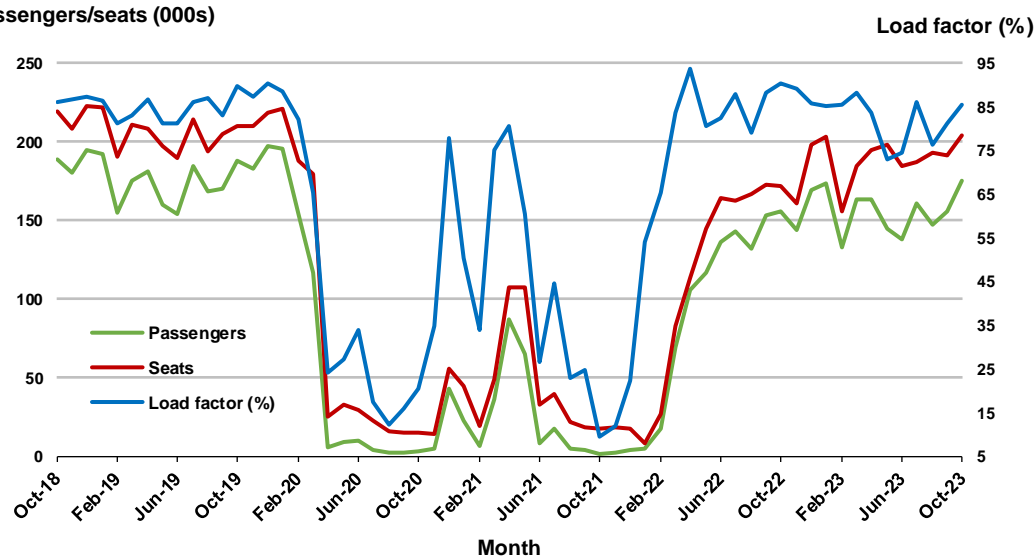
## 7. Melbourne - Perth

### Monthly data

	Oct 2022	Oct 2023	% Change
Passengers carried (000s)	155.6	175.0	12.4
Seats (000s)	172.0	204.4	18.8
Load factor %	90.5	85.6	-4.9 *
Aircraft trips	940	1,117	18.8

\* percentage point difference

### Passengers/seats (000s)

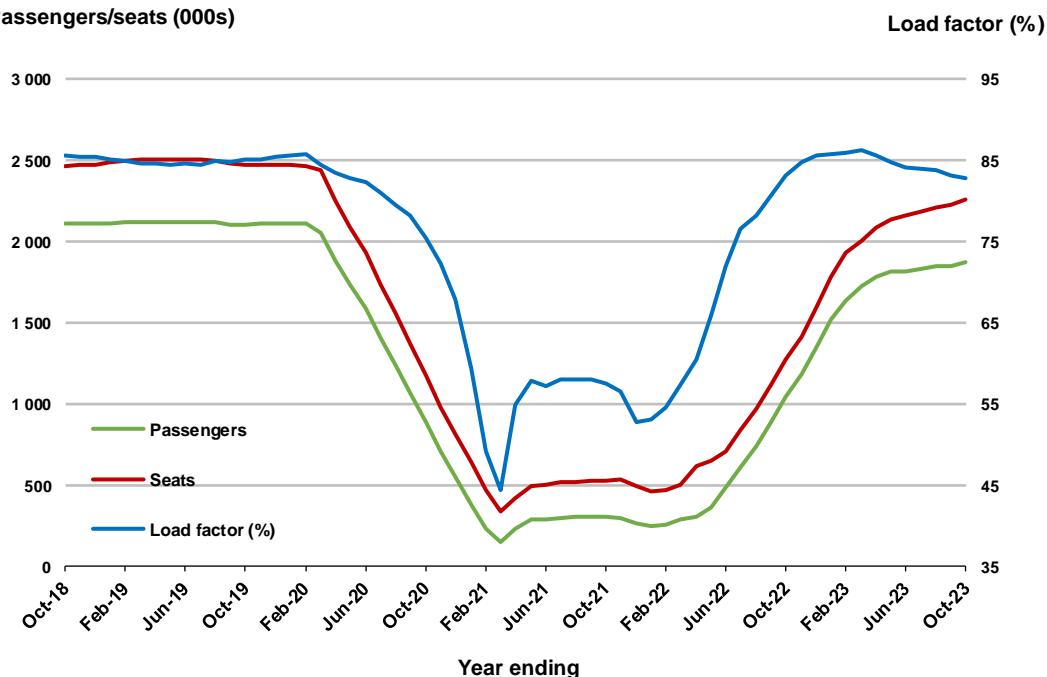


### Moving annual data

	YE Oct 2022	YE Oct 2023	% Change
Passengers carried (000s)	1,040.6	1,868.9	79.6
Seats (000s)	1,270.5	2,257.8	77.7
Load factor %	83.1	82.8	-0.3 *
Aircraft trips	7,425	12,581	69.4

\* percentage point difference

### Passengers/seats (000s)



## 8. Adelaide - Sydney <sup>(a)</sup>

### Monthly data

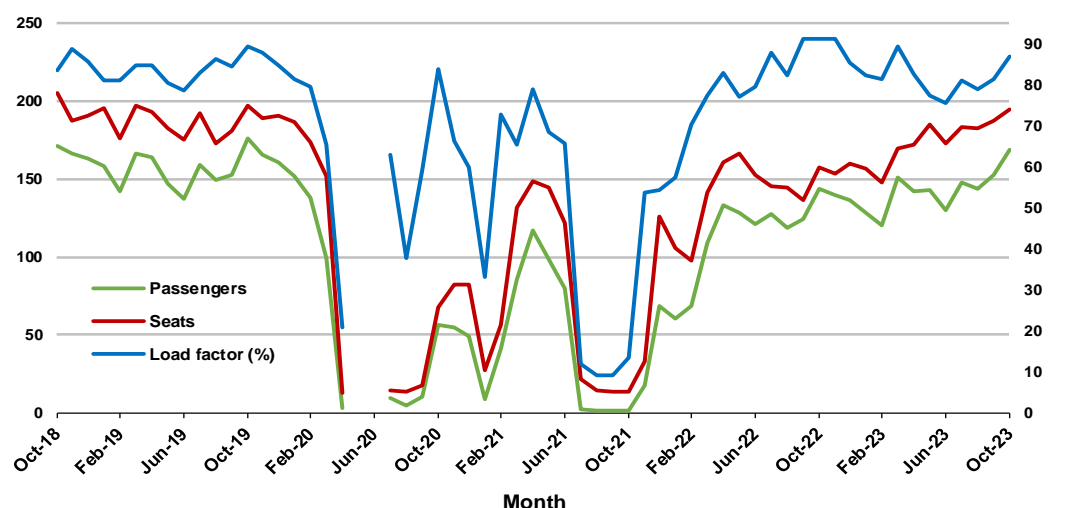
	Oct 2022	Oct 2023	% Change
Passengers carried (000s)	143.3	168.6	17.6
Seats (000s)	157.3	194.2	23.4
Load factor %	91.1	86.8	-4.3 *
Aircraft trips	955	1,178	23.4

.. Data not available for release.

\* percentage point difference

### Passengers/seats (000s)

### Load factor (%)



(a) May and June 2020 data not available for release.

### Moving annual data

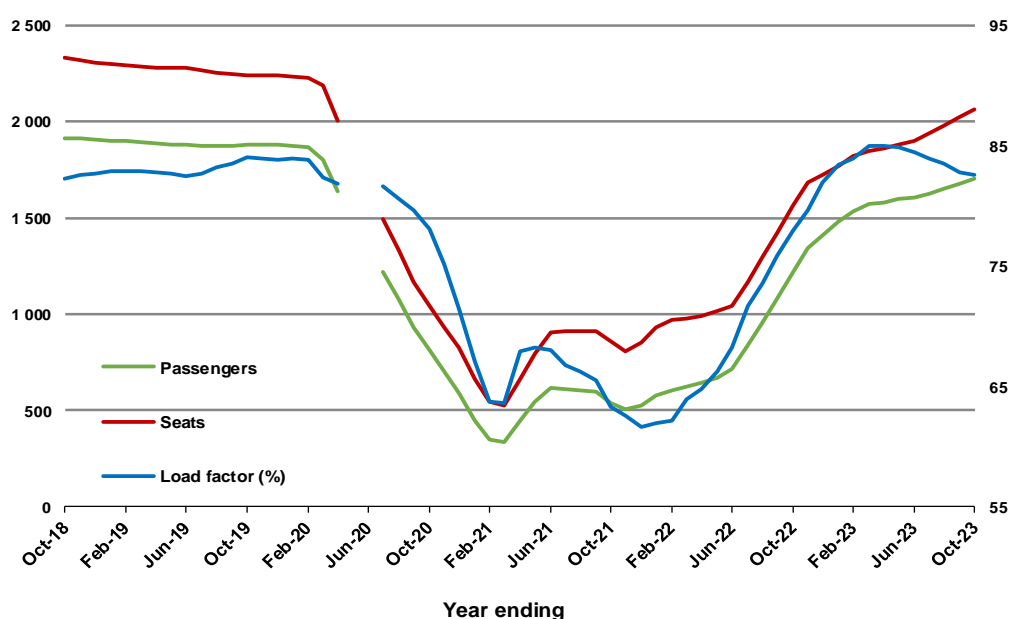
	YE Oct 2022	YE Oct 2023	% Change
Passengers carried (000s)	1,220.9	1,703.2	39.5
Seats (000s)	1,566.7	2,062.9	31.7
Load factor %	77.9	82.6	4.6 *
Aircraft trips	9,626	12,559	30.5

.. Data not available for release.

\* percentage point difference

### Passengers/seats (000s)

### Load factor (%)



(a) May and June 2020 moving annual totals are not available for release.

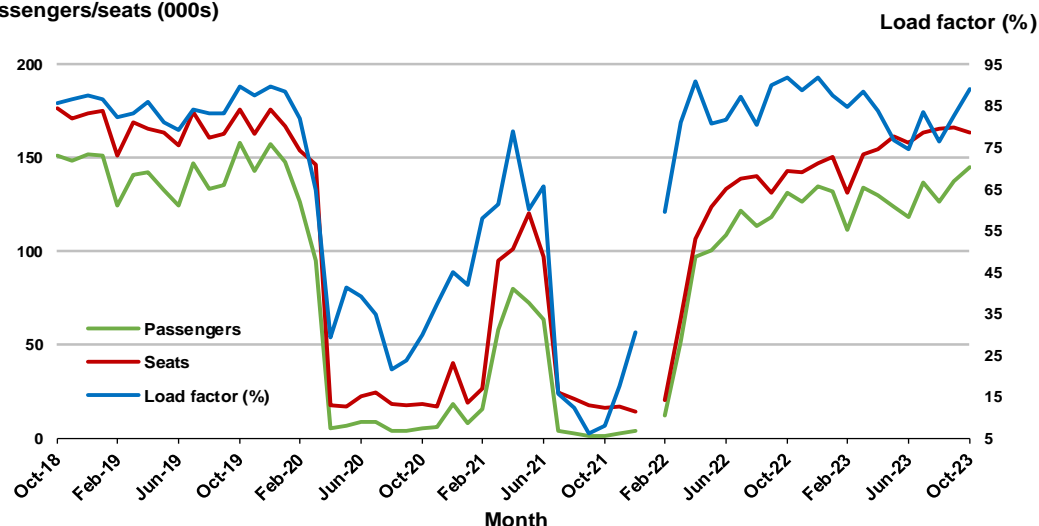
## 9. Perth - Sydney <sup>(a)</sup>

### Monthly data

	Oct 2022	Oct 2023	% Change
Passengers carried (000s)	131.6	145.4	10.5
Seats (000s)	143.4	163.4	13.9
Load factor %	91.8	89.0	-2.8 *
Aircraft trips	746	832	11.5

\* percentage point difference

### Passengers/seats (000s)



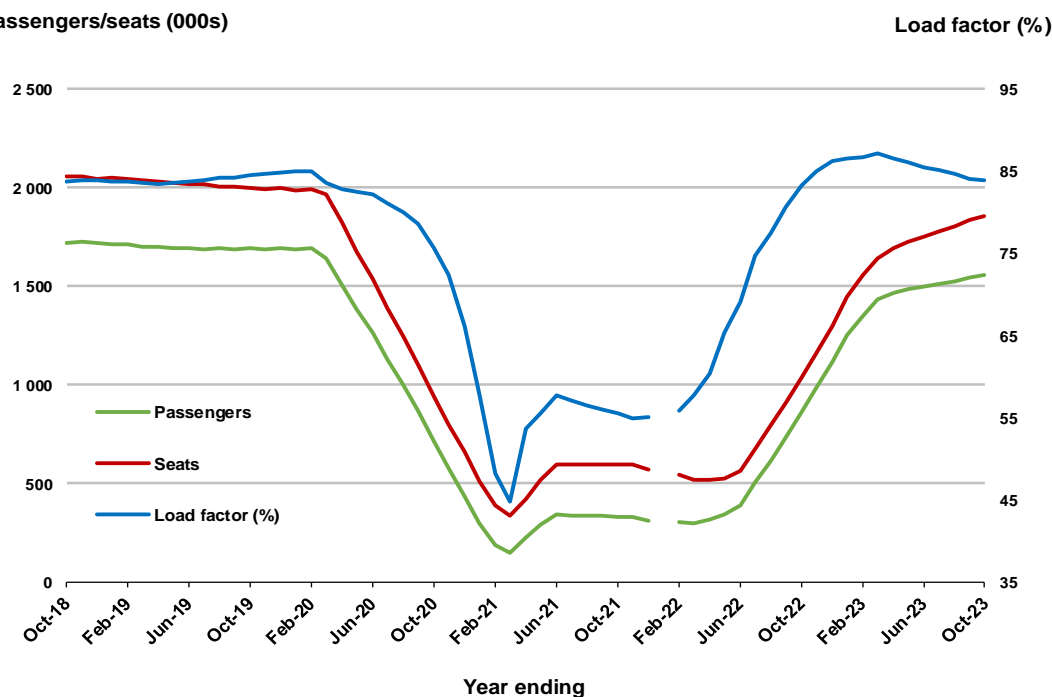
(a) January 2022 data not available for release.

### Moving annual data

	YE Oct 2022	YE Oct 2023	% Change
Passengers carried (000s)	864.6	1,559.3	80.3
Seats (000s)	1,037.9	1,857.9	79.0
Load factor %	83.3	83.9	0.6 *
Aircraft trips	5,486	9,618	75.3

\* percentage point difference

### Passengers/seats (000s)



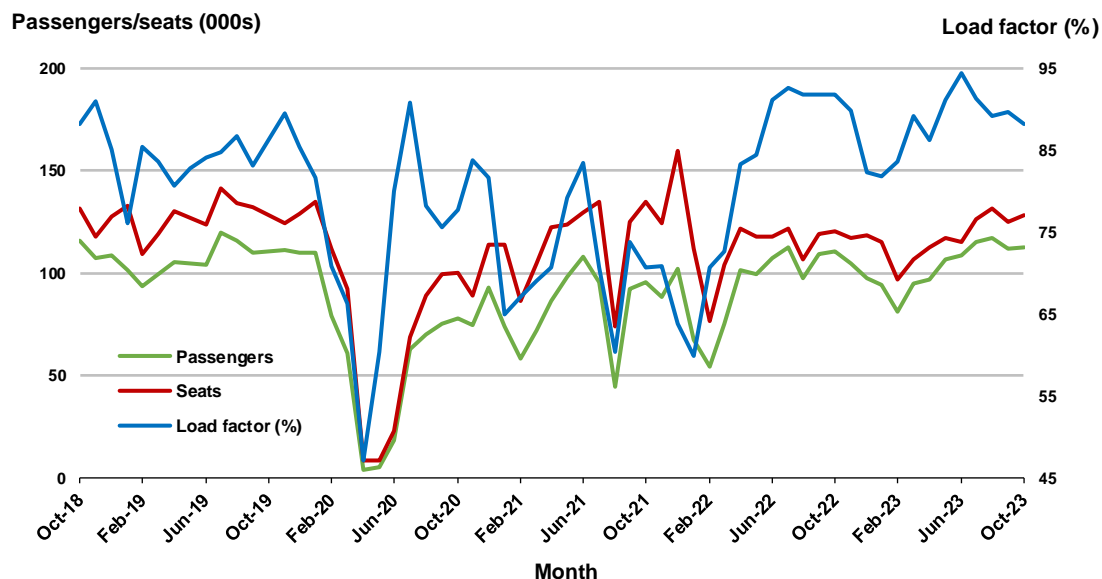
(a) January 2022 moving annual totals are not available for release.

## 10. Brisbane - Cairns

### Monthly data

	Oct 2022	Oct 2023	% Change
Passengers carried (000s)	110.3	112.7	2.2
Seats (000s)	120.2	127.9	6.4
Load factor %	91.7	88.1	-3.6 *
Aircraft trips	768	890	15.9

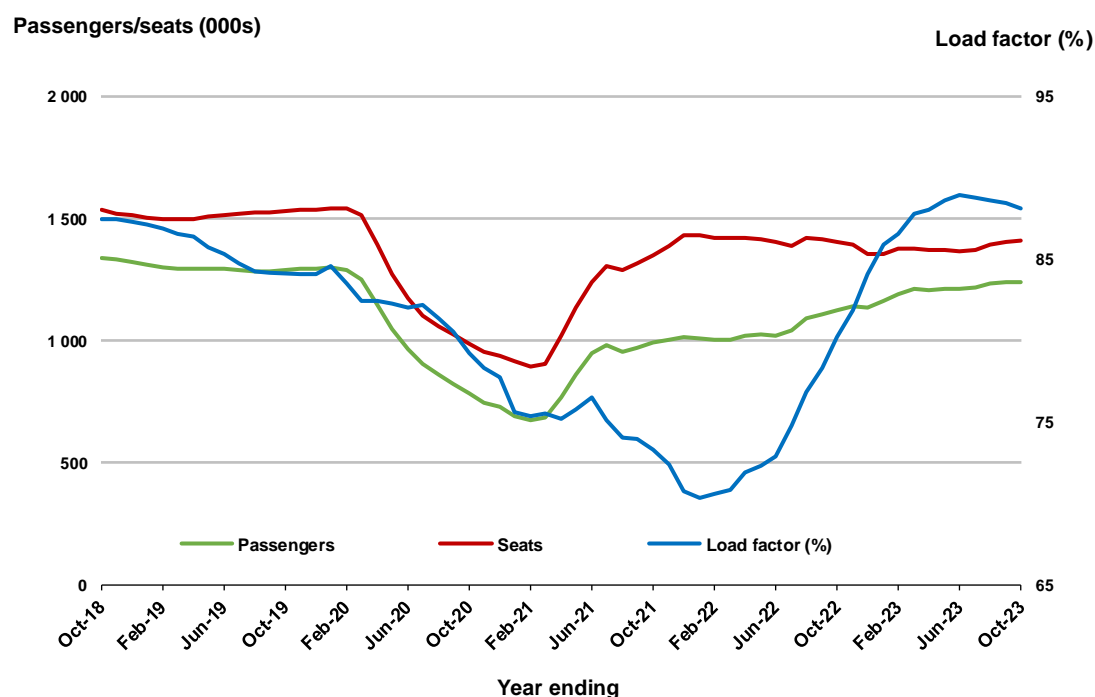
\* percentage point difference



### Moving annual data

	YE Oct 2022	YE Oct 2023	% Change
Passengers carried (000s)	1,124.3	1,240.7	10.4
Seats (000s)	1,401.2	1,408.2	0.5
Load factor %	80.2	88.1	7.9 *
Aircraft trips	9,072	9,543	5.2

\* percentage point difference



## TOP FIFTY REGIONAL AIRPORTS

**Table 10: Top fifty regional airports (000s) — passenger movements, monthly**

Airport	Oct 2022	Oct 2023	% Change
1 Cairns	370.2	381.5	3.0
2 Hobart	206.9	224.8	8.7
3 Townsville	144.0	146.6	1.8
4 Darwin	149.8	141.1	-5.8
5 Launceston	108.3	119.3	10.2
6 Newcastle	98.4	108.8	10.6
7 Mackay	77.6	81.0	4.3
8 Rockhampton	43.0	57.0	32.6
9 Ballina	55.0	55.7	1.2
10 Karratha	46.3	49.9	7.7
11 Proserpine	41.9	46.5	10.9
12 Hamilton Island	49.5	46.0	-6.9
13 Port Hedland	41.4	43.9	6.1
14 Broome	40.2	41.1	2.0
15 Kalgoorlie	27.4	33.7	23.0
16 Newman	30.5	31.9	4.8
17 Alice Springs	32.4	30.6	-5.6
18 Ayers Rock	25.1	26.8	6.9
19 Coffs Harbour	24.3	24.0	-1.4
20 Albury	19.5	23.1	18.4
21 Paraburdoo	18.9	22.6	20.1
22 Gladstone	17.2	21.7	26.1
23 Mildura	18.7	20.8	11.3
24 Port Macquarie	16.2	20.7	27.6
25 Mount Isa	19.9	20.0	0.6
26 Dubbo	17.0	19.4	14.2
27 Wagga Wagga	17.2	18.2	5.9
28 Emerald	16.0	17.6	10.0
29 Tamworth	13.1	15.4	17.4
30 Bundaberg	8.7	15.0	73.4
31 Port Lincoln	15.9	15.0	-5.6
32 Hervey Bay	10.4	13.0	25.1
33 Kununurra	10.5	11.5	9.9
34 Devonport	10.5	10.5	-0.5
35 Thursday Island	9.1	10.0	9.5
36 Orange	8.9	9.8	11.0
37 Armidale	9.7	9.6	-0.2
38 Geraldton	7.3	9.5	30.0
39 Moranbah	9.1	9.5	4.5
40 Olympic Dam	8.0	9.0	12.2
41 Learmonth	8.6	8.9	4.0
42 Weipa	7.4	8.1	10.4
43 Gove	8.2	8.1	-1.4
44 Toowoomba Wellcamp	3.2	7.8	146.0
45 Burnie	7.4	7.3	-1.6
46 Norfolk Island	7.4	6.8	-7.4
47 Mount Gambier	7.0	6.5	-7.8
48 Griffith	6.9	6.4	-7.1
49 Merimbula	6.5	6.0	-7.1
50 Albany	5.2	5.8	10.6
<b>Total top 50 regional airport</b>	<b>1,961.5</b>	<b>2,083.9</b>	<b>6.2</b>
<b>Total regional airports</b>	<b>2,081.3</b>	<b>2,207.1</b>	<b>6.0</b>
<b>Total domestic network</b>	<b>9,702.7</b>	<b>10,377.3</b>	<b>7.0</b>

Note: Airport passenger movement numbers are the sum of passenger arrivals and departures at each airport.

Regional airports are defined as airports which are, according to Australian Statistical Geography Standard (ASGS), not based in Major Cities.



**Table 11: Top fifty regional airports (000s) — passenger movements, annual**

<b>Airport</b>	<b>YE Oct 2022</b>	<b>YE Oct 2023</b>	<b>% Change</b>
1 Cairns	3,437.2	3,973.0	15.6
2 Hobart	2,048.0	2,539.6	24.0
3 Townsville	1,460.8	1,673.7	14.6
4 Darwin	1,539.6	1,614.3	4.9
5 Launceston	1,039.2	1,329.9	28.0
6 Newcastle	910.7	1,137.2	24.9
7 Mackay	791.9	903.0	14.0
8 Ballina	707.8	644.7	-8.9
9 Rockhampton	470.0	614.0	30.6
10 Karratha	484.9	541.4	11.6
11 Hamilton Island	465.4	496.5	6.7
12 Proserpine	453.0	494.2	9.1
13 Port Hedland	442.2	483.7	9.4
14 Broome	440.8	436.2	-1.1
15 Newman	340.0	372.0	9.4
16 Kalgoorlie	295.9	353.0	19.3
17 Alice Springs	319.4	350.9	9.9
18 Coffs Harbour	269.5	284.9	5.7
19 Ayers Rock	174.8	259.5	48.4
20 Albury	186.8	249.6	33.6
21 Paraburdoo	206.8	238.3	15.2
22 Mount Isa	216.5	230.9	6.7
23 Mildura	163.1	220.8	35.4
24 Gladstone	185.6	220.7	18.9
25 Port Macquarie	147.3	211.2	43.4
26 Dubbo	170.3	209.1	22.8
27 Wagga Wagga	153.1	197.8	29.2
28 Emerald	163.5	193.5	18.4
29 Port Lincoln	165.5	174.8	5.6
30 Tamworth	120.4	164.1	36.3
31 Hervey Bay	111.6	142.1	27.3
32 Bundaberg	99.1	141.5	42.8
33 Kununurra	119.5	133.6	11.8
34 Devonport	80.3	121.1	50.8
35 Armidale	91.1	112.6	23.6
36 Moranbah	96.3	109.0	13.3
37 Thursday Island	96.8	105.8	9.3
38 Learmonth	95.6	104.6	9.4
39 Orange	82.2	103.9	26.4
40 Olympic Dam	88.9	103.0	15.9
41 Geraldton	81.7	89.9	10.0
42 Gove	77.9	87.5	12.4
43 Weipa	83.5	86.3	3.4
44 Burnie	63.6	83.1	30.7
45 Griffith	63.5	75.7	19.2
46 Mount Gambier	68.7	73.8	7.4
47 Merimbula	58.3	73.0	25.1
48 Norfolk Island	63.2	68.9	9.0
49 Toowoomba Wellcamp	47.8	67.7	41.6
50 Roma	52.5	62.5	19.1
<b>Total top 50 regional airport</b>	<b>19,592.2</b>	<b>22,758.1</b>	<b>16.2</b>
<b>Total regional airports</b>	<b>19,795.9</b>	<b>24,035.2</b>	<b>21.4</b>
<b>Total domestic network</b>	<b>90,076.7</b>	<b>113,114.0</b>	<b>25.6</b>

Note: Airport passenger movement numbers are the sum of passenger arrivals and departures at each airport. Regional airports are defined as airports which are, according to Australian Statistical Geography Standard (ASGS), not based in Major Cities.

## DOMESTIC CHARTER ACTIVITY

**Table 12: Charter passengers carried and aircraft trips - monthly activity**

	Oct 2022	Oct 2023	% Change
Total domestic charter passengers	305,195	363,351	19.1
Total domestic charter aircraft trips	5,419	6,042	11.5

Note: Helicopter, joyflights and sightseeing charter flights not included.

**Table 13: Charter passengers carried and aircraft trips - annual activity**

	YE Oct 2022	YE Oct 2023	% Change
Total domestic charter passengers	3,499,350	3,985,362	13.9
Total domestic charter aircraft trips	65,481	69,032	5.4

Note: Helicopter, joyflights and sightseeing charter flights not included.

**Table 14: Domestic airports - charter activity - monthly**

	Oct 2022	Oct 2023	% Change
Total domestic charter passenger movements	610,390	726,702	19.1
Total domestic charter aircraft movements	10,838	12,084	11.5
Perth airport charter passenger movements	225,599	268,871	19.2
Perth airport charter aircraft movements	3,563	4,064	14.1

Note: Helicopter, joyflights and sightseeing charter flights not included.

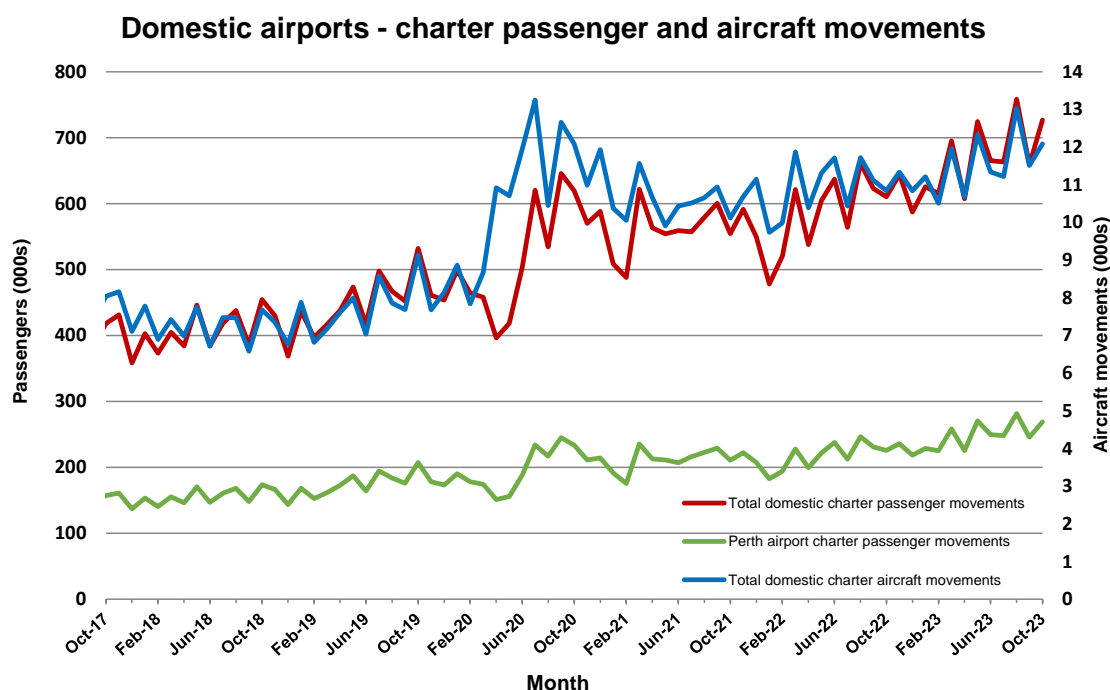
Charter passenger and aircraft movement numbers are the sum of arrivals and departures at each airport.

**Table 15: Domestic airports - charter activity - annual**

	YE Oct 2022	YE Oct 2023	% Change
Total domestic charter passenger movements	6,998,700	7,970,724	13.9
Total domestic charter aircraft movements	130,962	138,064	5.4
Perth airport charter passenger movements	2,609,614	2,956,757	13.3
Perth airport charter aircraft movements	44,382	46,610	5.0

Note: Helicopter, joyflights and sightseeing charter flights not included.

Charter passenger and aircraft movement numbers are the sum of arrivals and departures at each airport.



## DEFINITIONS

Aircraft Trips	The number of flight stages. A return flight counts as two aircraft trips.
Airport Movements	Airport movements (passenger and cargo) are measured once on arrival and once on departure. Each domestic trip generates two movements at airports. For example, a trip from Melbourne to Sydney will be counted twice, as a departure at Melbourne and as an arrival at Sydney. At the national level, the sum of all domestic airport traffic will therefore be equal to twice the number of trips undertaken.
Available Seat Kilometres (ASKs)	Calculated by multiplying the number of seats available on each flight stage, by the distance in kilometres between the ports. The distances used are Great Circle Distances.
City-Pair	The ports shown make up the city-pair route. Passenger movements shown for a city pair reflect total traffic in both directions.
Flight Stage	The operation of an aircraft from take-off to landing.
Load Factor	The total revenue passenger kilometres performed as a percentage of the total available seat kilometres.
Passengers Carried	Revenue passengers carried.
Regular Public Transport Services (RPT)	All air service operations in which aircraft are available for the transport of members of the public and are conducted in accordance with fixed schedules. It does not include charter or other non-scheduled operations.
Revenue Passengers	All passengers paying any fare. Frequent flyer redemption travellers are regarded as revenue passengers.
Revenue Passenger Kilometres (RPKs)	Calculated by multiplying the number of revenue passengers travelling on each flight stage, by the distance in kilometres between the ports. The distances used are Great Circle Distances.
Traffic on board by stages (TOB)	The total of all traffic (revenue passengers) on each flight stage between two directly connected airports.
..	Not available for confidentiality or other reasons.
NA	Not applicable.