



Australian Government

**Department of Infrastructure, Transport,
Regional Development, Communications and the Arts**
Bureau of Infrastructure and Transport Research Economics

STATISTICAL REPORT



bitre

Aviation

**Domestic aviation activity
October 2022**

© Commonwealth of Australia 2023

ISSN: 1832 - 1968

Ownership of intellectual property rights in this publication

Unless otherwise noted, copyright (and any other intellectual property rights, if any) in this publication is owned by the Commonwealth of Australia (referred to below as the Commonwealth).

Disclaimer

The material contained in this publication is made available on the understanding that the Commonwealth is not providing professional advice, and that users exercise their own skill and care with respect to its use, and seek independent advice if necessary.

The Commonwealth makes no representations or warranties as to the contents or accuracy of the information contained in this publication. To the extent permitted by law, the Commonwealth disclaims liability to any person or organisation in respect of anything done, or omitted to be done, in reliance upon information contained in this publication.

Creative Commons licence

With the exception of (a) the Coat of Arms; and (b) the Department of Infrastructure, Transport, Regional Development, Communications and the Arts' photos and graphics, copyright in this publication is licensed under a Creative Commons Attribution 3.0 Australia Licence.

Creative Commons Attribution 3.0 Australia Licence is a standard form licence agreement that allows you to copy, communicate and adapt this publication provided that you attribute the work to the Commonwealth and abide by the other licence terms. A summary of the licence terms is available from <http://creativecommons.org/licenses/by/3.0/au/deed.en>.

The full licence terms are available from <http://creativecommons.org/licenses/by/3.0/au/legalcode>.

Use of the Coat of Arms

The Department of the Prime Minister and Cabinet sets the terms under which the Coat of Arms is used. Please refer to the Department's Commonwealth Coat of Arms and Government branding web page <http://www.dpmc.gov.au/guidelines/index.cfm#brand> and, in particular, the Guidelines on the use of the Commonwealth Coat of Arms publication.

An appropriate citation for this report is:

Bureau of Infrastructure and Transport Research Economics (BITRE), 2023, Domestic aviation activity, Statistical Report, BITRE, Canberra ACT.

Contact us

This publication is available in PDF format. All other rights are reserved, including in relation to any Departmental logos or trade marks which may exist. For enquiries regarding the licence and any use of this publication, please contact:

Bureau of Infrastructure and Transport Research Economics (BITRE)
Department of Infrastructure, Transport, Regional Development, Communications and the Arts
GPO Box 501, Canberra ACT 2601, Australia
Telephone: (international) +61 2 6274 7210
Fax: (international) +61 2 6274 6855
Email: bitre@infrastructure.gov.au
Website: www.bitre.gov.au

Inquiries

Should you require additional information about the statistics contained in this publication:

Nebojsa Pavlovic

Telephone (02) 6274 6817

Electronic mail: AVSTATS@infrastructure.gov.au

Nebojsa.Pavlovic@infrastructure.gov.au

Web site: <http://www.bitre.gov.au/statistics/aviation/domestic.aspx>

FOREWORD

This report provides an overview of domestic (including charter) commercial aviation activity in Australia for the month of October 2022.

The data cover revenue passengers carried by Australian-registered operators of scheduled regular public transport services over Australian flight stages and fixed-wing charter operators. These estimates include passengers carried between domestic airports on international flights operated by these carriers. The passengers carried refer to traffic on board by stages.

Estimates of passengers and aircraft movements for charter aviation are included in this publication, where BITRE confidentiality standards are met.

Individual routes shown are restricted to those exceeding 8 000 passengers per month where two or more airlines operate in competition. However, from November 2021 the major airlines (Qantas Group, Virgin Australia and Rex Airlines) have agreed to publication of the top 35 routes based on pre-COVID activity (December 2019) whether or not they currently meet the above criteria. With these approvals, there were 60 routes published for the month of October 2022 compared to 28 published in October 2021.

Information on the total network for the month of October 2022 and on the Regular Public Transport (RPT) network for the month of October 2022 is presented on page 2, with estimates for the year ended October 2022 presented on page 3.

Detailed information on individual routes can be found in the RPT summary pages 4-13 of this publication.

The top ten airports in terms of RPT passenger movements are shown on page 14.

Data on domestic RPT cargo movements at the top five cargo airports are provided on page 15. The table includes cargo carried on passenger flights operated by the Qantas group (including Jetstar), Virgin Australia, Air North and Skippers as well as the cargo carried by dedicated freighter aircraft operated by Qantas Freight and Toll.

The long-term trends for the top ten competitive RPT routes are presented graphically on pages 16-25.

Domestic RPT passenger movements at regional airports are shown on pages 26-27.

Tables providing estimates of domestic charter aviation activity are shown on page 28. BITRE confidentiality standards restrict publication of detailed estimates for individual Australian airports, with the exception of Perth Airport.

A list of definitions can be found on page 29.

This report was prepared by the Aviation Statistics Section of the Bureau of Infrastructure and Transport Research Economics with data provided by airlines.

Estimates are included where data were not available and data presented in this publication may contain revisions to previously published data.

Where figures have been rounded, discrepancies may occur between sums of component items and totals, and in percentage changes which are derived from figures prior to rounding.

CONTENTS

Highlights	1
Total network.....	2
RPT network	2
Top competitive routes.....	4
Top ten airports – passenger movements.....	14
Top five airports – cargo movements.....	15
Top ten routes	16
1. Melbourne – Sydney	16
2. Brisbane – Sydney.....	17
3. Brisbane – Melbourne	18
4. Gold Coast – Sydney	19
5. Gold Coast – Melbourne	20
6. Adelaide – Melbourne	21
7. Melbourne – Perth	22
8. Adelaide – Sydney	23
9. Perth – Sydney	24
10. Brisbane – Cairns	25
Top fifty regional airports	26
Domestic charter activity.....	28
Definitions	29

This page is intentionally left blank.

HIGHLIGHTS

The domestic aviation industry continued to recover in October 2022. Revenue passenger numbers were 361.1 per cent higher than October 2021 levels but still 14.1 per cent below pre-COVID October 2019.

There were 5.17 million passengers carried on Australian domestic commercial aviation (including charter operations) in October 2022, compared to 1.33 million in October 2021 and 5.9 million in pre-COVID October 2019.

For the month of October 2022, there were 48,911 aircraft trips, compared to 21,366 in October 2021 and 56,113 in pre-COVID October 2019.

4.85 million passengers were carried on RPT flights in October 2022, compared to 1.05 million reported in October 2021 and 5.64 million reported in pre-COVID October 2019.

For the year ending October 2022 there were 45.0 million RPT passengers, an increase of 97.8 per cent on the year ending October 2021 and a decrease of 26.5 per cent on the year ending October 2019.

RPT revenue passenger kilometres (RPKs) performed were 5.88 billion for the month, compared with 1.34 billion in October 2021.

Capacity, measured by available seat kilometres (ASKs), increased to 6.89 billion in October 2022 compared to 2.48 billion in October 2021.

The industry wide load factor (RPKs/ASKs) increased from 54.0 per cent in October 2021 to 85.3 per cent in October 2022. The highest load factor (91.8 per cent) was recorded on the Perth - Sydney route while the lowest load factor (50.4 per cent) was recorded on the Brisbane - Moranbah route.

For the month of October 2022, Melbourne – Sydney was Australia's busiest RPT route with 625,907 passengers, followed by Brisbane – Sydney with 349,059 passengers and Brisbane – Melbourne with 273,035 passengers.

Sydney was Australia's busiest domestic airport with 2.05 million passenger movements in October 2022, followed by Melbourne with 1.96 million passenger movements and Brisbane with 1.39 million passenger movements.

Total cargo movements at Australian airports on domestic RPT flights were 28,622 tonnes in October 2022, a decrease of 16.8 per cent compared with October 2021.

In October 2022, there were 2.08 million domestic passenger movements through regional airports, compared to 1.02 million in October 2021 and 2.29 million in pre-COVID October 2019. Most regional airports for which data is available for publishing recorded large increases in October 2022 compared to October 2021.

Fixed-wing charter operators carried 314,886 passengers in October 2022, compared to 277,152 in October 2021 and 265,966 in pre-COVID October 2019. Perth Airport accounted for 33.7 per cent of all charter passengers in Australia.

TOTAL NETWORK

Summary of monthly commercial aviation activity

	Oct 2021	Oct 2022	% Change
Total passengers carried (millions)	1.33	5.17	288.6
Aircraft trips (000s)	26.4	54.5	106.1

Note: Regular Public Transport and charter aviation activity

Helicopter, joy flights and sightseeing charter flights not included.

RPT NETWORK

Summary of monthly RPT activity

	Oct 2021	Oct 2022	% Change
Total passengers carried (millions)	1.05	4.85	361.1
Revenue passenger kilometres (billions)	1.34	5.88	339.2
Available seats (millions)	1.96	5.83	197.3
Available seat kilometres (billions)	2.48	6.89	178.1
Load factor %	54.0	85.3	31.3 *
Aircraft trips (000s)	21.4	48.9	128.9

* percentage point difference

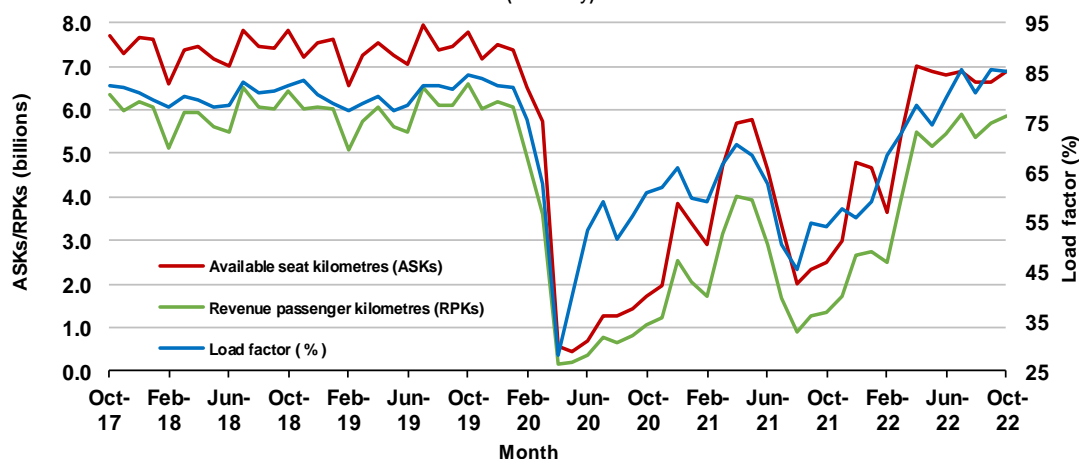
Domestic RPT passenger traffic

(monthly)



RPT Network utilisation

(monthly)



TOTAL NETWORK

Summary of annual commercial aviation activity

	YE Oct 2021	YE Oct 2022	% Change
Total passengers carried (millions)	26.14	48.55	85.8
Aircraft trips (000s)	416.1	591.7	42.2

Note: Regular Public Transport and charter aviation activity
Helicopter, joy flights and sightseeing charter flights not included.

RPT NETWORK

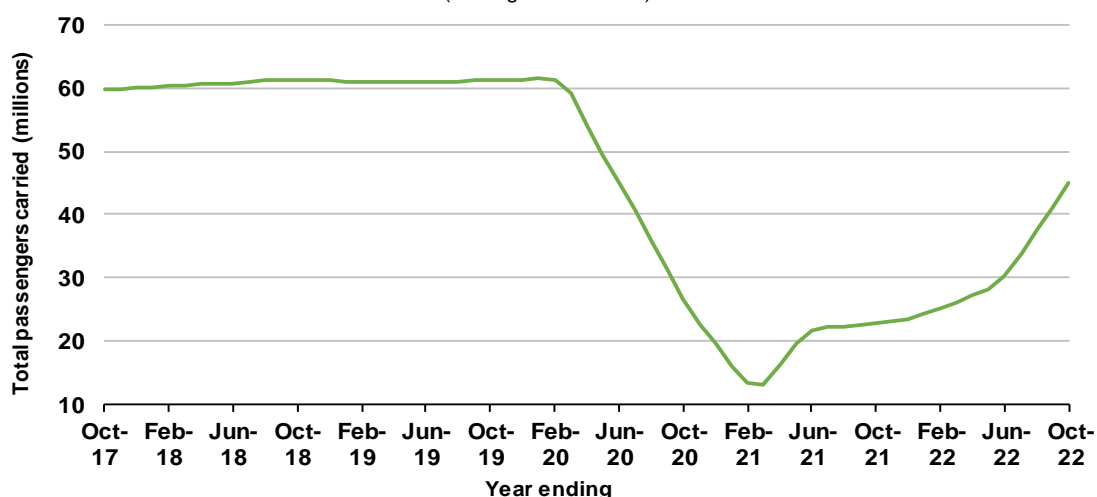
Summary of annual RPT activity

	YE Oct 2021	YE Oct 2022	% Change
Total passengers carried (millions)	22.77	45.03	97.8
Revenue passenger kilometres (billions)	26.73	52.53	96.5
Available seats (millions)	37.26	61.13	64.1
Available seat kilometres (billions)	43.08	69.31	60.9
Load factor %	62.0	75.8	13.7 *
Aircraft trips (000s)	352.0	525.9	49.4

* percentage point difference

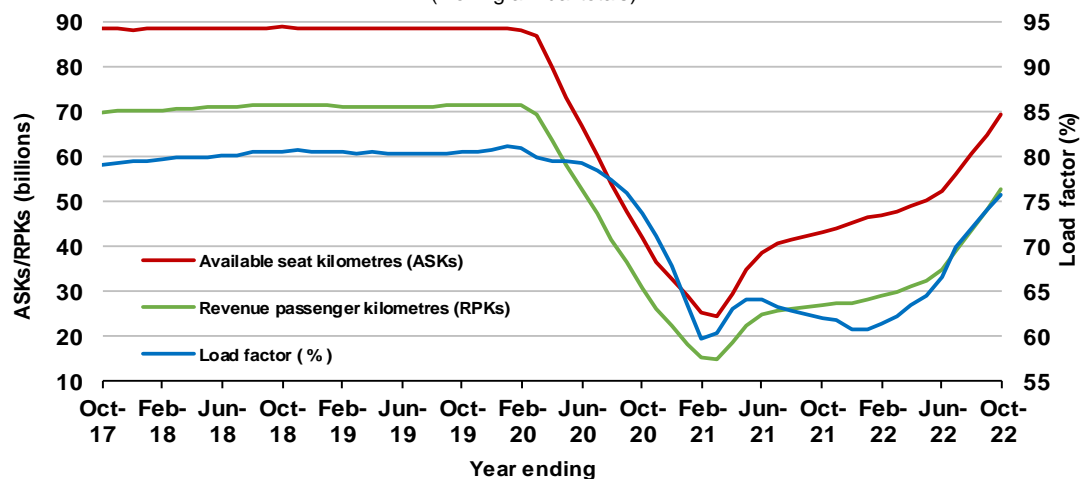
Domestic RPT passenger traffic

(moving annual totals)



RPT Network utilisation

(moving annual totals)



TOP COMPETITIVE ROUTES

Table 1: Passengers carried (000s) — annual activity

	City-Pair	YE Oct 2021	YE Oct 2022	%Change
1	Melbourne - Sydney	1 702.9	6 020.4	253.5
2	Brisbane - Sydney	1 131.0	3 029.2	167.8
3	Brisbane - Melbourne	811.8	2 409.2	196.8
4	Gold Coast - Sydney	..	1 946.2	NA
5	Gold Coast - Melbourne	..	1 885.9	NA
6	Adelaide - Melbourne	596.3	1 704.1	185.8
7	Adelaide - Sydney	542.4	1 220.9	125.1
8	Brisbane - Cairns	989.6	1 124.3	13.6
9	Melbourne - Perth	303.5	1 040.6	242.9
10	Hobart - Melbourne	471.9	912.6	93.4
11	Perth - Sydney	331.2	864.6	161.0
12	Brisbane - Townsville	676.1	801.0	18.5
13	Canberra - Melbourne	236.3	762.7	222.8
14	Cairns - Melbourne	309.1	725.0	134.5
15	Cairns - Sydney	247.5	693.9	180.4
16	Brisbane - Mackay	524.1	666.0	27.1
17	Adelaide - Brisbane	424.2	664.2	56.6
18	Melbourne - Sunshine Coast	..	642.4	NA
19	Brisbane - Perth	281.6	629.8	123.6
20	Sunshine Coast - Sydney	..	580.2	NA
21	Launceston - Melbourne	314.4	573.6	82.4
22	Hobart - Sydney	279.2	549.7	96.8
23	Ballina - Sydney	384.1	539.6	40.5
24	Brisbane - Canberra	335.4	512.4	52.8
25	Karratha - Perth	404.3	482.5	19.4
26	Canberra - Sydney	..	471.8	NA
27	Perth - Port Hedland	339.6	440.7	29.8
28	Brisbane - Rockhampton	352.7	428.3	21.4
29	Adelaide - Perth	287.1	421.2	46.7
30	Brisbane - Newcastle	249.9	381.8	52.8
31	Broome - Perth	370.6	371.5	0.2
32	Melbourne - Newcastle	138.9	358.0	157.7
33	Newman - Perth	307.4	338.0	9.9
34	Darwin - Sydney	..	325.4	NA
35	Brisbane - Darwin	263.2	320.7	21.8
36	Brisbane - Proserpine	232.3	300.4	29.3
37	Brisbane - Hobart	233.3	299.8	28.5
38	Kalgoorlie - Perth	244.7	295.5	20.8
39	Darwin - Melbourne	..	277.2	NA
40	Launceston - Sydney	..	235.8	NA
41	Adelaide - Gold Coast	133.9	205.4	53.5
42	Coffs Harbour - Sydney	..	202.9	NA
43	Hamilton Island - Sydney	..	195.6	NA
44	Brisbane - Hamilton Island	202.6	189.6	- 6.4
45	Brisbane - Gladstone	136.7	185.4	35.6
46	Brisbane - Launceston	129.0	176.3	36.6
47	Adelaide - Port Lincoln	133.1	165.4	24.2
48	Brisbane - Emerald	132.7	153.5	15.7
49	Albury - Sydney	..	137.4	NA
50	Darwin - Perth	145.0	136.8	- 5.7

continued

Table 1: (continued) Passengers carried (000s) — annual activity

	City-Pair	YE Oct 2021	YE Oct 2022	% Change
51	Dubbo - Sydney	..	134.5	NA
52	Adelaide - Canberra	..	133.2	NA
53	Brisbane - Mount Isa	106.8	132.0	23.6
54	Melbourne - Mildura	..	128.8	NA
55	Port Macquarie - Sydney	..	128.5	NA
56	Sydney - Wagga Wagga	..	122.7	NA
57	Canberra - Gold Coast	..	122.1	NA
58	Brisbane - Moranbah	..	96.1	NA
59	Adelaide - Alice Springs	89.4	92.3	3.2
60	Armidale - Sydney	..	85.4	NA
Total domestic network		22 765.2	45 027.0	97.8

.. Data not available for release.

Table 2: Passengers carried (000s) — monthly activity

	City-Pair	Oct 2021	Oct 2022	% Change
1	Melbourne - Sydney	15.4	625.9	3 964.3
2	Brisbane - Sydney	6.0	349.1	5 711.8
3	Brisbane - Melbourne	4.3	273.0	6 319.8
4	Gold Coast - Sydney	..	215.4	NA
5	Gold Coast - Melbourne	..	191.8	NA
6	Adelaide - Melbourne	2.2	189.5	8 598.9
7	Melbourne - Perth	1.7	155.6	8 962.6
8	Adelaide - Sydney	1.9	143.3	7 589.6
9	Perth - Sydney	1.3	131.6	9 912.9
10	Brisbane - Cairns	95.3	110.3	15.7
11	Hobart - Melbourne	1.3	98.7	7 510.3
12	Cairns - Sydney	0.6	90.3	15 625.1
13	Canberra - Melbourne	1.3	87.5	6 833.4
14	Brisbane - Perth	10.7	84.7	690.3
15	Cairns - Melbourne	0.8	80.5	10 169.0
16	Adelaide - Brisbane	36.2	77.4	114.0
17	Brisbane - Townsville	55.4	74.3	34.2
18	Sunshine Coast - Sydney	..	67.8	NA
19	Launceston - Melbourne	0.9	66.0	7 250.1
20	Brisbane - Mackay	44.7	65.9	47.3
21	Melbourne - Sunshine Coast	..	65.2	NA
22	Hobart - Sydney	0.5	60.2	11 103.4
23	Brisbane - Canberra	1.2	57.6	4 722.2
24	Adelaide - Perth	37.2	57.0	53.2
25	Canberra - Sydney	..	52.2	NA
26	Ballina - Sydney	6.2	46.4	649.6
27	Karratha - Perth	40.2	46.3	15.2
28	Brisbane - Newcastle	0.9	44.6	4 877.6
29	Perth - Port Hedland	34.6	41.4	19.6
30	Brisbane - Rockhampton	29.5	38.9	32.0
31	Broome - Perth	43.7	35.4	- 19.1
32	Melbourne - Newcastle	1.4	34.1	2 387.2
33	Darwin - Sydney	..	32.6	NA
34	Newman - Perth	27.5	30.5	11.0
35	Brisbane - Darwin	22.8	28.6	25.2
36	Kalgoorlie - Perth	24.1	27.4	13.7
37	Brisbane - Proserpine	25.8	27.1	5.0
38	Brisbane - Hobart	23.6	25.1	6.3
39	Darwin - Melbourne	..	25.0	NA
40	Hamilton Island - Sydney	..	24.8	NA
41	Launceston - Sydney	..	24.7	NA
42	Adelaide - Gold Coast	8.8	22.0	149.2
43	Coffs Harbour - Sydney	..	19.2	NA
44	Brisbane - Gladstone	11.1	17.2	55.1
45	Brisbane - Hamilton Island	24.2	16.8	- 30.7
46	Adelaide - Canberra	..	16.0	NA
47	Darwin - Perth	20.8	15.9	- 23.5
48	Adelaide - Port Lincoln	13.0	15.9	22.6
49	Canberra - Gold Coast	..	15.3	NA
50	Brisbane - Launceston	15.6	15.3	- 1.8

continued

Table 2: (continued) Passengers carried (000s) — monthly activity

	City-Pair	Oct 2021	Oct 2022	% Change
51	Brisbane - Emerald	11.4	15.0	31.8
52	Melbourne - Mildura	..	14.4	NA
53	Port Macquarie - Sydney	..	14.4	NA
54	Albury - Sydney	..	14.2	NA
55	Dubbo - Sydney	..	13.9	NA
56	Sydney - Wagga Wagga	..	12.7	NA
57	Brisbane - Mount Isa	9.2	12.5	35.9
58	Adelaide - Alice Springs	8.1	9.3	15.6
59	Brisbane - Moranbah	..	9.1	NA
60	Armidale - Sydney	..	8.9	NA
Total domestic network		1 052.1	4 850.8	361.1

.. Data not available for release.

Table 3: Available seats (000s) — monthly activity

	City-Pair	Oct 2021	Oct 2022	% Change
1	Melbourne - Sydney	37.0	717.3	1 836.2
2	Brisbane - Sydney	20.5	402.9	1 864.9
3	Brisbane - Melbourne	14.5	306.4	2 011.1
4	Gold Coast - Sydney	..	238.3	NA
5	Gold Coast - Melbourne	..	209.7	NA
6	Adelaide - Melbourne	14.7	222.0	1 406.1
7	Melbourne - Perth	17.8	172.0	866.3
8	Adelaide - Sydney	13.9	157.3	1 034.0
9	Perth - Sydney	16.0	143.4	794.1
10	Brisbane - Cairns	134.9	120.2	- 10.8
11	Hobart - Melbourne	16.4	114.8	599.4
12	Cairns - Sydney	11.8	100.0	747.7
13	Canberra - Melbourne	10.7	108.4	911.9
14	Brisbane - Perth	20.7	93.7	352.0
15	Cairns - Melbourne	11.8	90.9	669.0
16	Adelaide - Brisbane	64.3	87.6	36.2
17	Brisbane - Townsville	95.6	95.5	0.0
18	Sunshine Coast - Sydney	..	84.4	NA
19	Launceston - Melbourne	10.1	82.8	720.3
20	Brisbane - Mackay	75.7	85.9	13.5
21	Melbourne - Sunshine Coast	..	72.9	NA
22	Hobart - Sydney	10.9	69.5	536.5
23	Brisbane - Canberra	10.2	71.7	602.2
24	Adelaide - Perth	54.6	63.7	16.6
25	Canberra - Sydney	..	73.0	NA
26	Ballina - Sydney	10.4	53.5	413.4
27	Karratha - Perth	60.4	57.8	- 4.3
28	Brisbane - Newcastle	8.3	59.2	610.5
29	Perth - Port Hedland	53.5	51.2	- 4.2
30	Brisbane - Rockhampton	49.9	45.5	- 8.7
31	Broome - Perth	59.7	44.9	- 24.8
32	Melbourne - Newcastle	13.0	39.2	202.3
33	Darwin - Sydney	..	44.8	NA
34	Newman - Perth	55.6	50.9	- 8.5
35	Brisbane - Darwin	37.1	34.8	- 6.3
36	Kalgoorlie - Perth	36.9	36.6	- 0.7
37	Brisbane - Proserpine	37.6	31.7	- 15.6
38	Brisbane - Hobart	38.5	29.4	- 23.7
39	Darwin - Melbourne	..	30.6	NA
40	Hamilton Island - Sydney	..	31.5	NA
41	Launceston - Sydney	..	28.4	NA
42	Adelaide - Gold Coast	18.3	24.2	32.1
43	Coffs Harbour - Sydney	..	24.1	NA
44	Brisbane - Gladstone	21.2	25.2	18.9
45	Brisbane - Hamilton Island	32.5	22.6	- 30.5
46	Adelaide - Canberra	..	19.5	NA
47	Darwin - Perth	34.9	18.9	- 45.7
48	Adelaide - Port Lincoln	16.3	23.3	42.9
49	Canberra - Gold Coast	..	18.1	NA
50	Brisbane - Launceston	21.6	17.3	- 19.8

continued

Table 3: (continued) Available seats (000s) — monthly activity

	City-Pair	Oct 2021	Oct 2022	% Change
51	Brisbane - Emerald	20.9	22.4	7.2
52	Melbourne - Mildura	..	18.2	NA
53	Port Macquarie - Sydney	..	21.3	NA
54	Albury - Sydney	..	20.6	NA
55	Dubbo - Sydney	..	23.6	NA
56	Sydney - Wagga Wagga	..	18.6	NA
57	Brisbane - Mount Isa	18.9	18.0	- 4.3
58	Adelaide - Alice Springs	15.3	13.0	- 14.8
59	Brisbane - Moranbah	..	18.0	NA
60	Armidale - Sydney	..	16.4	NA
Total domestic network		1 962.1	5 832.7	197.3

.. Data not available for release.

Table 4: Load factors (%) — monthly activity

	City-Pair	Oct 2021	Oct 2022	% Point diff
1	Melbourne - Sydney	41.6	87.3	45.7
2	Brisbane - Sydney	29.3	86.6	57.3
3	Brisbane - Melbourne	29.3	89.1	59.8
4	Gold Coast - Sydney	..	90.4	NA
5	Gold Coast - Melbourne	..	91.4	NA
6	Adelaide - Melbourne	14.8	85.4	70.6
7	Melbourne - Perth	9.6	90.5	80.9
8	Adelaide - Sydney	13.4	91.1	77.7
9	Perth - Sydney	8.2	91.8	83.6
10	Brisbane - Cairns	70.7	91.7	21.0
11	Hobart - Melbourne	7.9	85.9	78.0
12	Cairns - Sydney	4.9	90.3	85.4
13	Canberra - Melbourne	11.8	80.7	68.9
14	Brisbane - Perth	51.7	90.5	38.8
15	Cairns - Melbourne	6.6	88.5	81.9
16	Adelaide - Brisbane	56.3	88.4	32.1
17	Brisbane - Townsville	57.9	77.8	19.9
18	Sunshine Coast - Sydney	..	80.3	NA
19	Launceston - Melbourne	8.9	79.7	70.8
20	Brisbane - Mackay	59.1	76.7	17.6
21	Melbourne - Sunshine Coast	..	89.4	NA
22	Hobart - Sydney	4.9	86.5	81.6
23	Brisbane - Canberra	11.7	80.4	68.7
24	Adelaide - Perth	68.1	89.5	21.4
25	Canberra - Sydney	..	71.6	NA
26	Ballina - Sydney	59.3	86.6	27.3
27	Karratha - Perth	66.5	80.1	13.6
28	Brisbane - Newcastle	10.8	75.4	64.6
29	Perth - Port Hedland	64.7	80.8	16.1
30	Brisbane - Rockhampton	59.1	85.4	26.3
31	Broome - Perth	73.3	78.9	5.6
32	Melbourne - Newcastle	10.6	87.0	76.4
33	Darwin - Sydney	..	72.8	NA
34	Newman - Perth	49.4	59.9	10.5
35	Brisbane - Darwin	61.5	82.1	20.6
36	Kalgoorlie - Perth	65.3	74.7	9.4
37	Brisbane - Proserpine	68.7	85.5	16.8
38	Brisbane - Hobart	61.4	85.4	24.0
39	Darwin - Melbourne	..	81.5	NA
40	Hamilton Island - Sydney	..	78.9	NA
41	Launceston - Sydney	..	86.8	NA
42	Adelaide - Gold Coast	48.2	90.9	42.7
43	Coffs Harbour - Sydney	..	79.5	NA
44	Brisbane - Gladstone	52.6	68.5	15.9
45	Brisbane - Hamilton Island	74.5	74.3	- 0.2
46	Adelaide - Canberra	..	82.2	NA
47	Darwin - Perth	59.7	84.1	24.4
48	Adelaide - Port Lincoln	79.4	68.2	- 11.2
49	Canberra - Gold Coast	..	84.9	NA
50	Brisbane - Launceston	72.4	88.7	16.3

continued

Table 4: (continued) Load factors (%) — monthly activity

	City-Pair	Oct 2021	Oct 2022	% Point diff
51	Brisbane - Emerald	54.4	66.8	12.4
52	Melbourne - Mildura	..	79.1	NA
53	Port Macquarie - Sydney	..	67.8	NA
54	Albury - Sydney	..	68.9	NA
55	Dubbo - Sydney	..	58.7	NA
56	Sydney - Wagga Wagga	..	68.5	NA
57	Brisbane - Mount Isa	49.0	69.6	20.6
58	Adelaide - Alice Springs	52.6	71.4	18.8
59	Brisbane - Moranbah	..	50.4	NA
60	Armidale - Sydney	..	54.6	NA
Total domestic network		54.0	85.3	31.3

.. Data not available for release.

Table 5: Aircraft trips ^(a) — monthly activity

	City-Pair	Oct 2021	Oct 2022	% Change
1	Melbourne - Sydney	459	4 083	789.5
2	Brisbane - Sydney	311	2 457	690.0
3	Brisbane - Melbourne	211	1 867	784.8
4	Gold Coast - Sydney	..	1 384	NA
5	Gold Coast - Melbourne	..	1 185	NA
6	Adelaide - Melbourne	177	1 358	667.2
7	Melbourne - Perth	183	940	413.7
8	Adelaide - Sydney	125	955	664.0
9	Perth - Sydney	93	746	702.2
10	Brisbane - Cairns	833	768	- 7.8
11	Hobart - Melbourne	108	698	546.3
12	Cairns - Sydney	66	504	663.6
13	Canberra - Melbourne	80	768	860.0
14	Brisbane - Perth	118	536	354.2
15	Cairns - Melbourne	66	476	621.2
16	Adelaide - Brisbane	386	519	34.5
17	Brisbane - Townsville	577	642	11.3
18	Sunshine Coast - Sydney	..	464	NA
19	Launceston - Melbourne	177	660	272.9
20	Brisbane - Mackay	490	598	22.0
21	Melbourne - Sunshine Coast	..	420	NA
22	Hobart - Sydney	62	428	590.3
23	Brisbane - Canberra	72	534	641.7
24	Adelaide - Perth	343	367	7.0
25	Canberra - Sydney	..	1 197	NA
26	Ballina - Sydney	101	385	281.2
27	Karratha - Perth	371	382	3.0
28	Brisbane - Newcastle	54	525	872.2
29	Perth - Port Hedland	374	349	- 6.7
30	Brisbane - Rockhampton	475	508	6.9
31	Broome - Perth	350	286	- 18.3
32	Melbourne - Newcastle	72	251	248.6
33	Darwin - Sydney	..	223	NA
34	Newman - Perth	341	328	- 3.8
35	Brisbane - Darwin	216	238	10.2
36	Kalgoorlie - Perth	267	266	- 0.4
37	Brisbane - Proserpine	254	196	- 22.8
38	Brisbane - Hobart	230	175	- 23.9
39	Darwin - Melbourne	..	174	NA
40	Hamilton Island - Sydney	..	179	NA
41	Launceston - Sydney	..	171	NA
42	Adelaide - Gold Coast	106	136	28.3
43	Coffs Harbour - Sydney	..	457	NA
44	Brisbane - Gladstone	278	311	11.9
45	Brisbane - Hamilton Island	186	130	- 30.1
46	Adelaide - Canberra	..	174	NA
47	Darwin - Perth	210	108	- 48.6
48	Adelaide - Port Lincoln	442	585	32.4
49	Canberra - Gold Coast	..	104	NA
50	Brisbane - Launceston	120	98	- 18.3

continued

Table 5: (continued) Aircraft trips ^(a) — monthly activity

	City-Pair	Oct 2021	Oct 2022	% Change
51	Brisbane - Emerald	305	326	6.9
52	Melbourne - Mildura	..	434	NA
53	Port Macquarie - Sydney	..	393	NA
54	Albury - Sydney	..	407	NA
55	Dubbo - Sydney	..	451	NA
56	Sydney - Wagga Wagga	..	382	NA
57	Brisbane - Mount Isa	178	170	- 4.5
58	Adelaide - Alice Springs	128	154	20.3
59	Brisbane - Moranbah	..	239	NA
60	Armidale - Sydney	..	311	NA
Total domestic network		21 366	48 911	128.9

(a) Includes RPT cargo flights.

.. Data not available for release.

TOP TEN AIRPORTS – PASSENGER MOVEMENTS

Table 6: Top ten airports, RPT passenger movements (000s) - monthly activity

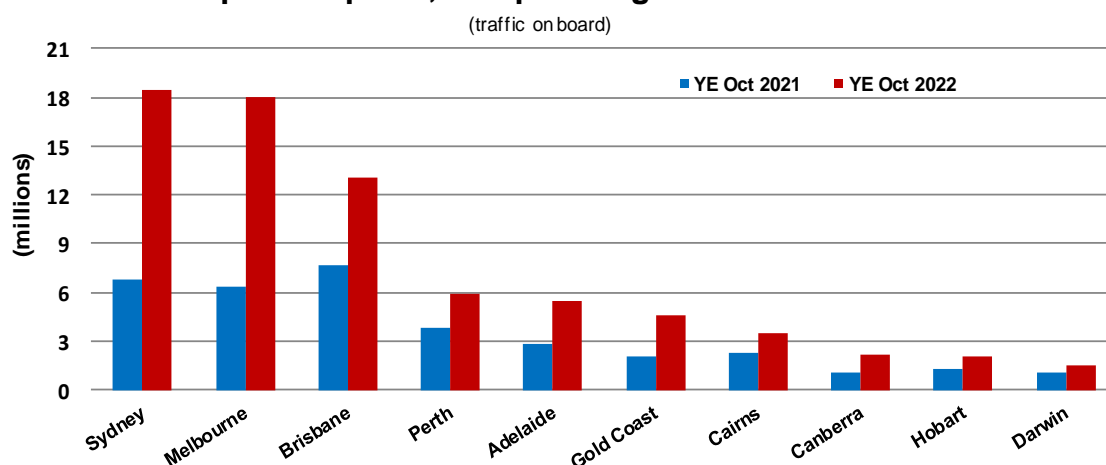
Airport	Oct 2021	Oct 2022	% Change	% of Total
1 Sydney	45.3	2 052.6	4 427.4	21.2
2 Melbourne	36.9	1 956.4	5 203.9	20.2
3 Brisbane	462.6	1 393.2	201.2	14.4
4 Perth	312.7	704.9	125.4	7.3
5 Adelaide	185.3	605.2	226.5	6.2
6 Gold Coast	25.9	478.1	1 743.5	4.9
7 Cairns	166.8	370.2	121.9	3.8
8 Canberra	4.6	245.0	5 274.9	2.5
9 Hobart	53.7	206.9	285.2	2.1
10 Darwin	95.6	149.8	56.7	1.5
Total top ten airports	1 389.5	8 162.3	487.4	84.1
Total domestic network	2 104.1	9 701.7	361.1	100.0

Table 7: Top ten airports, RPT passenger movements (000s) - annual activity

Airport	YE Oct 2021	YE Oct 2022	% Change	% of Total
1 Sydney	6 782.5	18 399.4	171.3	20.4
2 Melbourne	6 293.6	17 998.8	186.0	20.0
3 Brisbane	7 635.8	13 009.8	70.4	14.4
4 Perth	3 784.6	5 852.8	54.6	6.5
5 Adelaide	2 870.4	5 410.7	88.5	6.0
6 Gold Coast	2 023.0	4 618.3	128.3	5.1
7 Cairns	2 262.9	3 433.1	51.7	3.8
8 Canberra	1 039.6	2 137.1	105.6	2.4
9 Hobart	1 232.6	2 048.0	66.1	2.3
10 Darwin	1 097.9	1 539.6	40.2	1.7
Total top ten airports	35 022.8	74 447.6	112.6	82.7
Total domestic network	45 530.5	90 054.0	97.8	100.0

Note: Airport passenger movement numbers are the sum of passenger arrivals and departures at each airport.

Top ten airports, RPT passenger movements



TOP FIVE AIRPORTS – CARGO MOVEMENTS

Table 8: Top five airports, domestic RPT cargo movements (000s tonnes) - monthly activity

Airport	Oct 2021	Oct 2022	% Change	% of Total
1 Melbourne	9.0	7.9	-12.7	27.6
2 Sydney	8.3	6.6	-19.7	23.2
3 Brisbane	5.7	4.8	-14.8	16.9
4 Perth	3.1	2.9	-7.2	10.1
5 Adelaide	2.3	1.5	-31.8	5.4
Total top five airports	28.4	23.8	-16.1	83.1
Total domestic network	34.4	28.6	-16.8	100.0

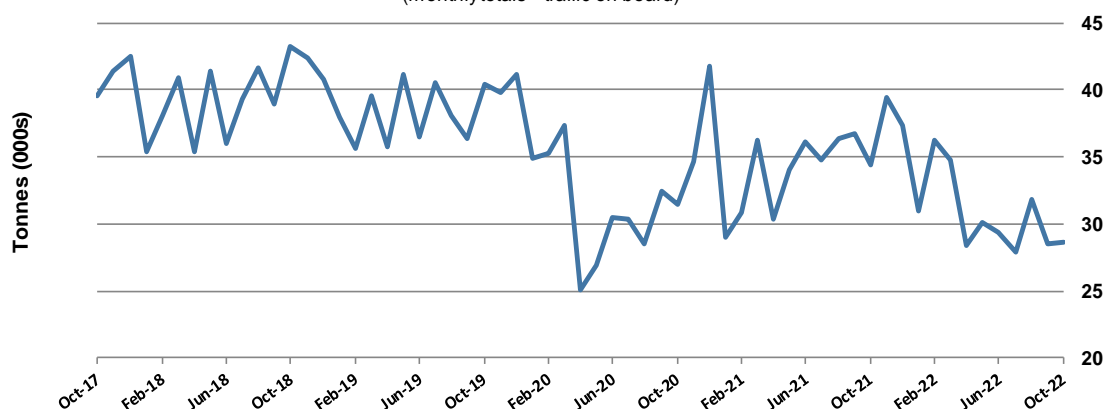
Table 9: Top five airports, domestic RPT cargo movements (000s tonnes) - annual activity

Airport	YE Oct 2021	YE Oct 2022	% Change	% of Total
1 Melbourne	105.6	99.2	-6.0	25.9
2 Sydney	95.6	87.7	-8.3	22.9
3 Brisbane	68.0	64.8	-4.8	16.9
4 Perth	39.0	34.8	-10.5	9.1
5 Adelaide	25.2	23.8	-5.5	6.2
Total top five airports	333.4	310.3	-6.9	80.9
Total domestic network	415.2	383.5	-7.6	100.0

Note: Airport cargo tonnes are the sum of cargo tonnes on arrivals and departures at each airport.

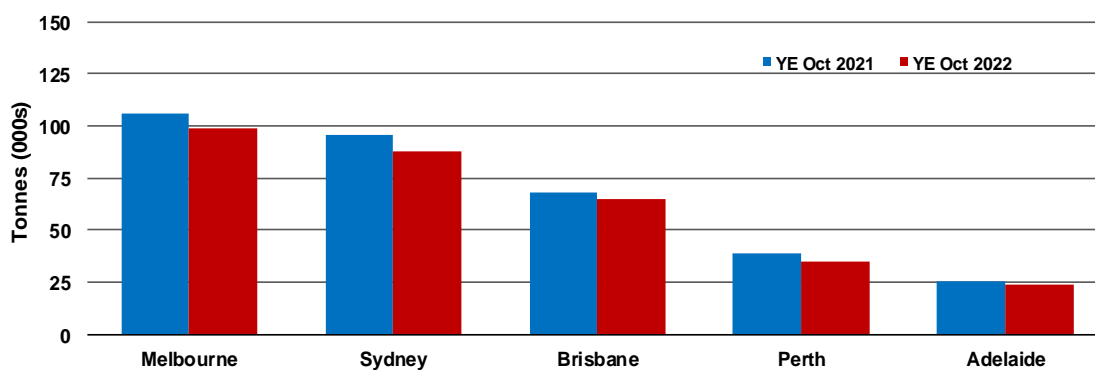
Total domestic network - cargo movement

(monthly totals - traffic on board)



Top five airports, cargo movements

(Domestic cargo traffic - traffic on board)



Note: Airport cargo tonnes are the sum of cargo tonnes on arrivals and departures at each airport.

TOP TEN ROUTES

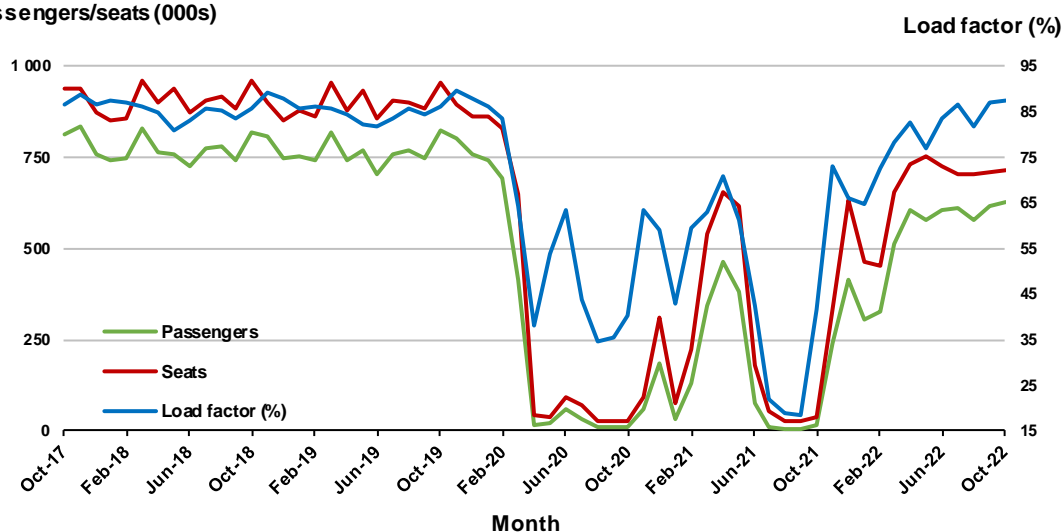
1. Melbourne - Sydney

Monthly data

	Oct 2021	Oct 2022	% Change
Passengers carried (000s)	15.4	625.9	3 964.3
Seats (000s)	37.0	717.3	1 836.2
Load factor %	41.6	87.3	45.7 *
Aircraft trips	459	4 083	789.5

* percentage point difference

Passengers/seats (000s)

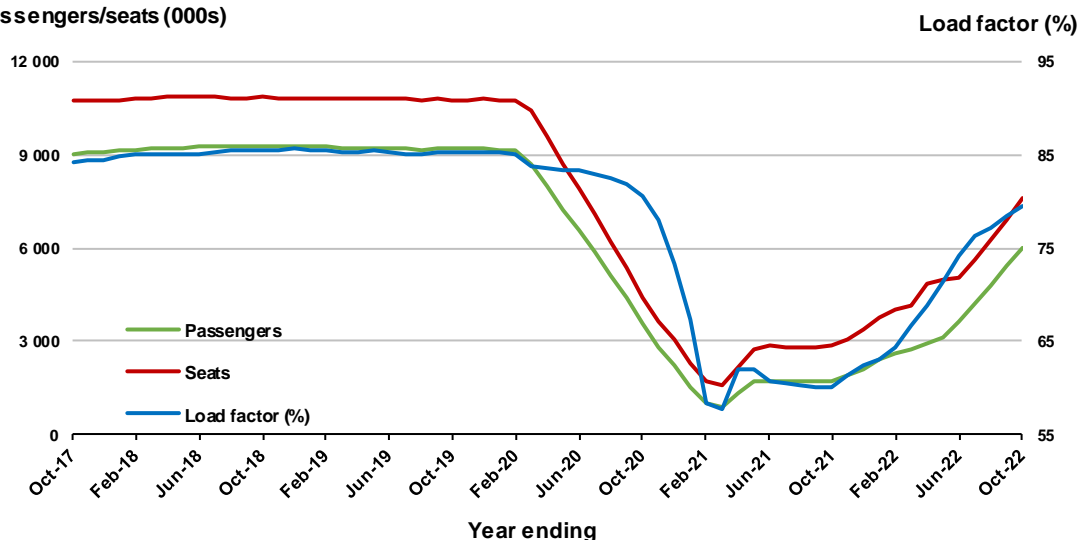


Moving annual data

	YE Oct 2021	YE Oct 2022	% Change
Passengers carried (000s)	1 702.9	6 020.4	253.5
Seats (000s)	2 833.0	7 620.3	169.0
Load factor %	60.1	79.4	19.3 *
Aircraft trips	18 392	44 465	141.8

* percentage point difference

Passengers/seats (000s)

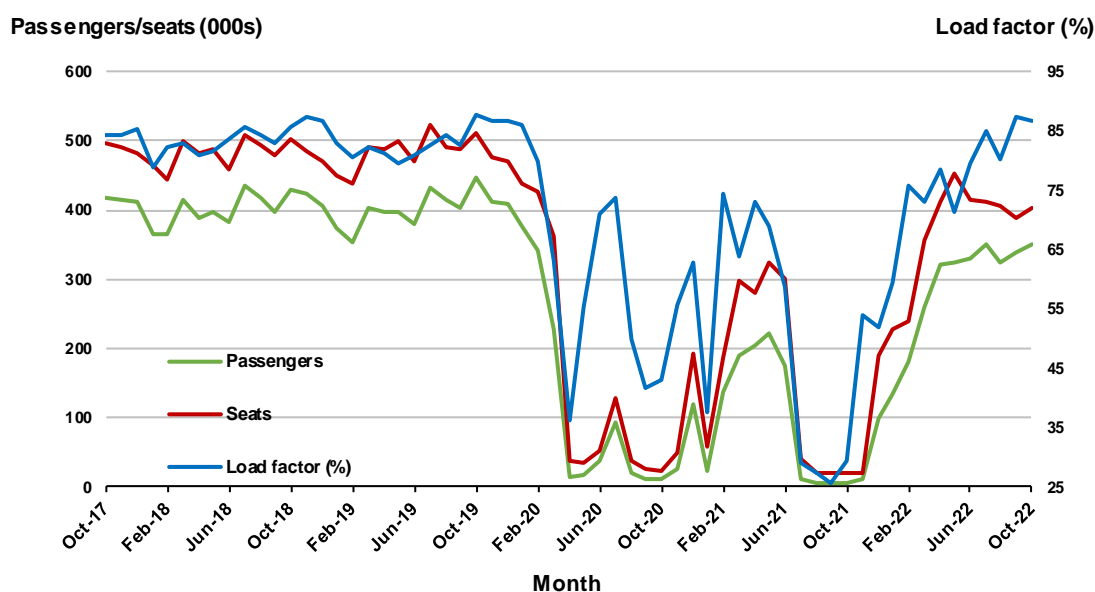


2. Brisbane - Sydney

Monthly data

	Oct 2021	Oct 2022	% Change
Passengers carried (000s)	6.0	349.1	5 711.8
Seats (000s)	20.5	402.9	1 864.9
Load factor %	29.3	86.6	57.3 *
Aircraft trips	311	2 457	690.0

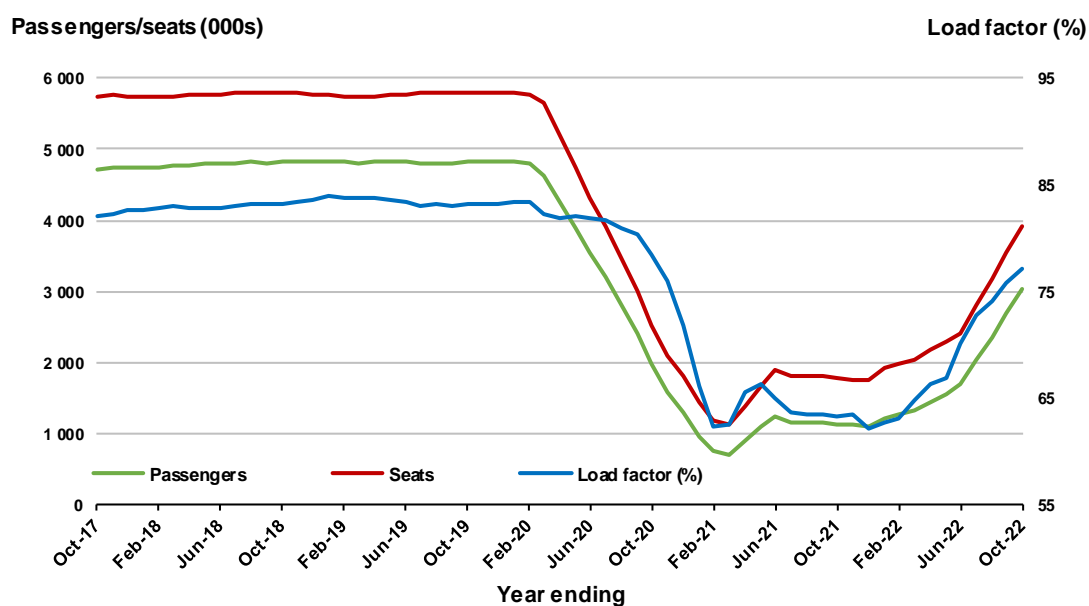
* percentage point difference



Moving annual data

	YE Oct 2021	YE Oct 2022	% Change
Passengers carried (000s)	1 131.0	3 029.2	167.8
Seats (000s)	1 787.7	3 929.1	119.8
Load factor %	63.3	77.1	13.8 *
Aircraft trips	12 392	24 548	98.1

* percentage point difference

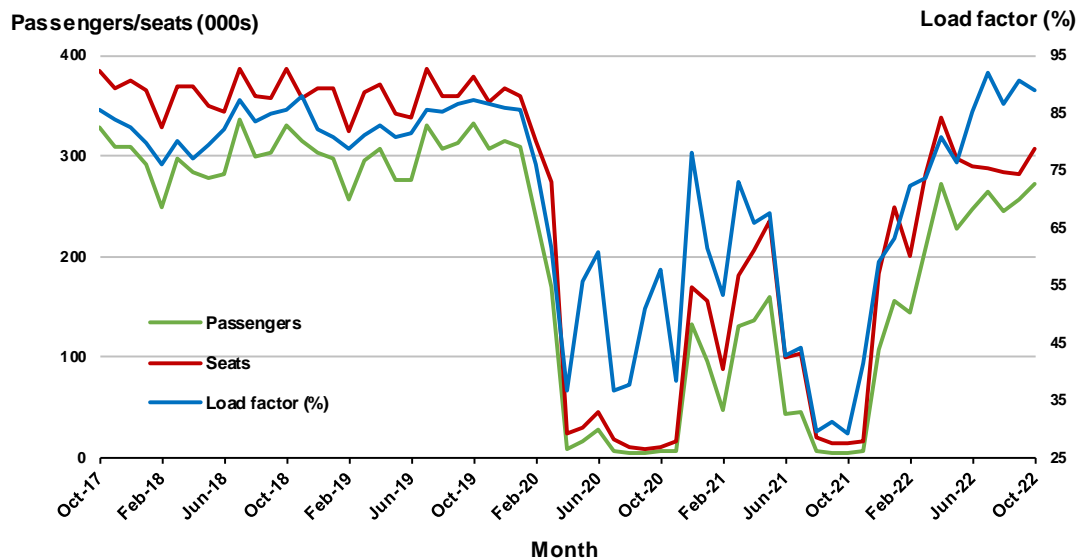


3. Brisbane - Melbourne

Monthly data

	Oct 2021	Oct 2022	% Change
Passengers carried (000s)	4.3	273.0	6 319.8
Seats (000s)	14.5	306.4	2 011.1
Load factor %	29.3	89.1	59.8 *
Aircraft trips	211	1 867	784.8

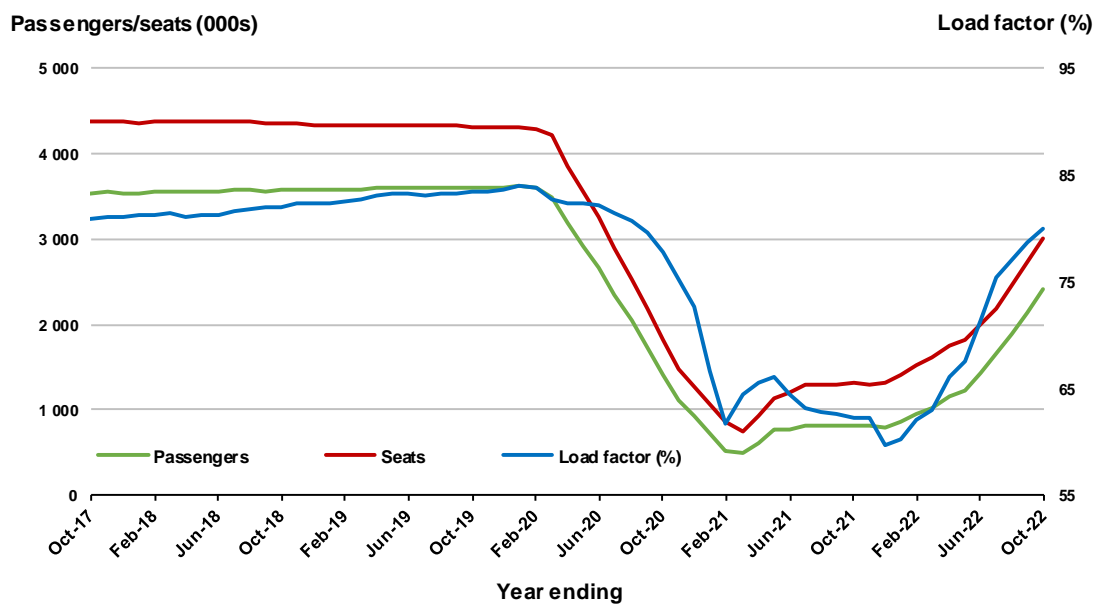
* percentage point difference



Moving annual data

	YE Oct 2021	YE Oct 2022	% Change
Passengers carried (000s)	811.8	2 409.2	196.8
Seats (000s)	1 305.3	3 014.0	130.9
Load factor %	62.2	79.9	17.7 *
Aircraft trips	8 860	18 627	110.2

* percentage point difference



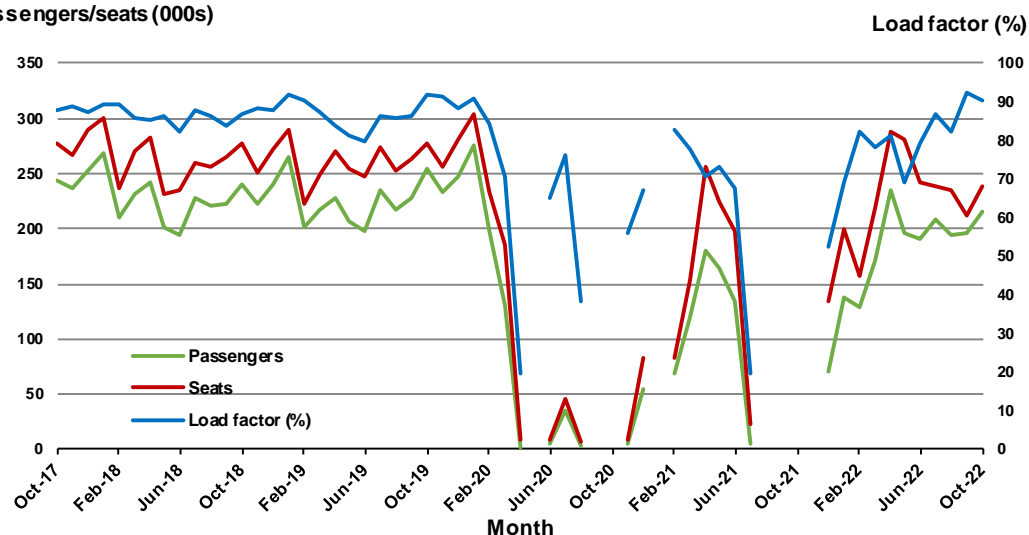
4. Gold Coast - Sydney ^(a)

Monthly data

	Oct 2021	Oct 2022	% Change
Passengers carried (000s)	..	215.4	NA
Seats (000s)	..	238.3	NA
Load factor %	..	90.4	NA
Aircraft trips	..	1 384	NA

.. Data not available for release

Passengers/seats (000s)



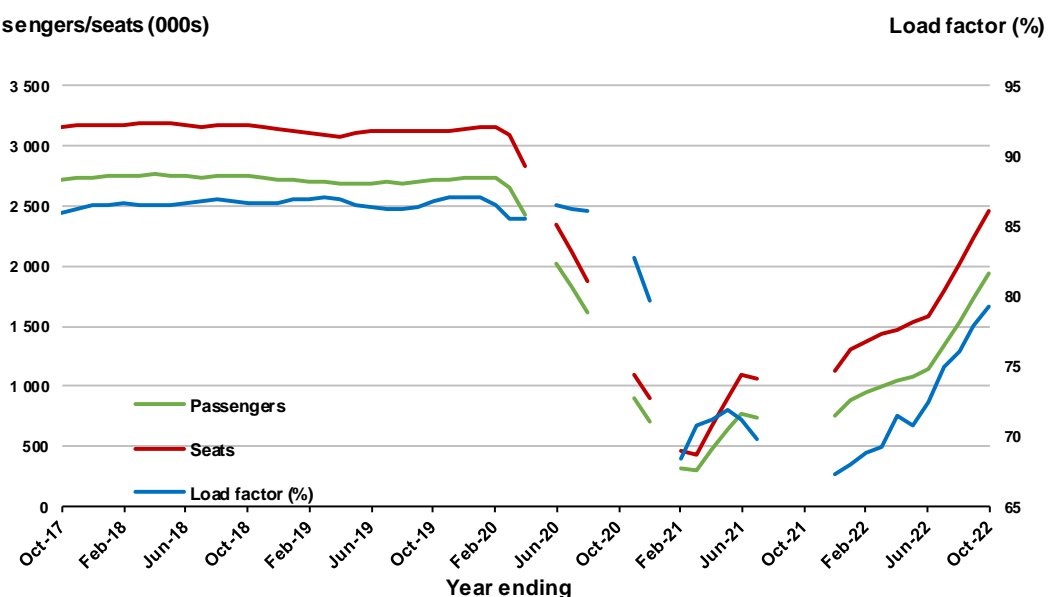
(a) May, September and October 2020 and January and August to November 2021 data not available for release.

Moving annual data

	YE Oct 2021	YE Oct 2022	% Change
Passengers carried (000s)	..	1 946.2	NA
Seats (000s)	..	2 455.4	NA
Load factor %	..	79.3	NA
Aircraft trips	..	14 235	NA

.. Data not available for release

Passengers/seats (000s)



(a) May, September and October 2020 and January and August to November 2021 moving annual totals not available for release.

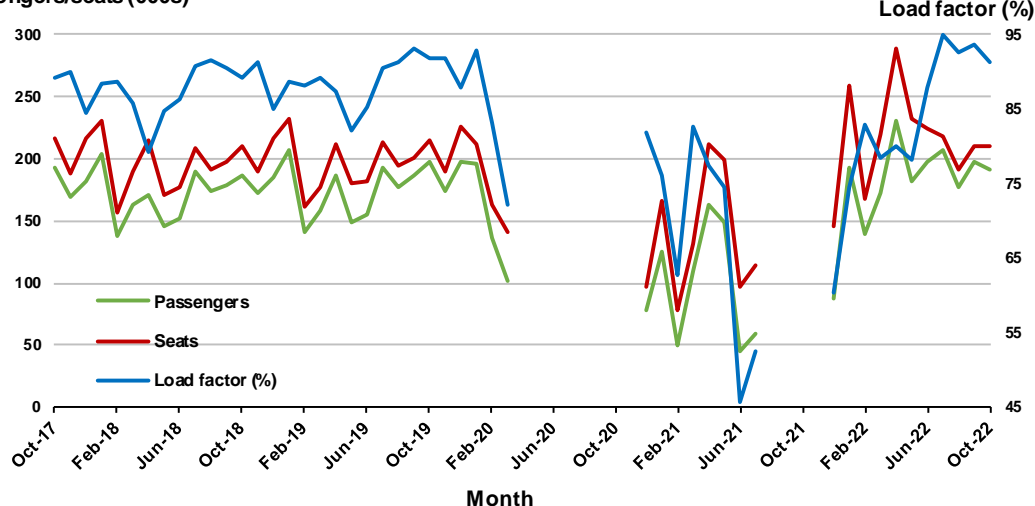
5. Gold Coast - Melbourne ^(a)

Monthly data

	Oct 2021	Oct 2022	% Change
Passengers carried (000s)	..	191.8	NA
Seats (000s)	..	209.7	NA
Load factor %	..	91.4	NA
Aircraft trips	..	1 185	NA

.. Data not available for release

Passengers/seats (000s)



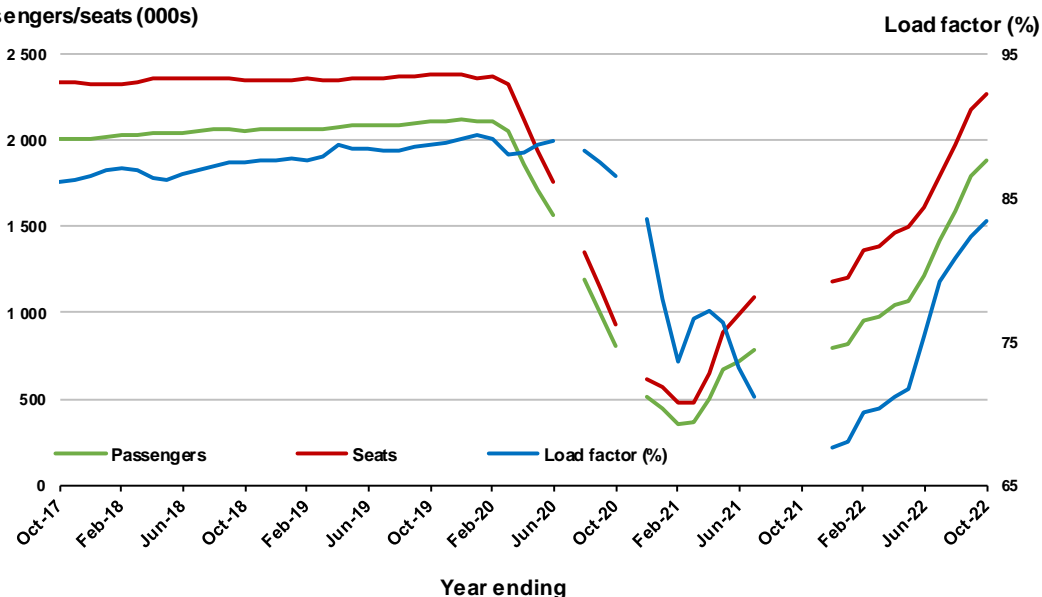
(a) April to November 2020 and August to November 2021 data not available for release.

Moving annual data

	YE Oct 2021	YE Oct 2022	% Change
Passengers carried (000s)	..	1 885.9	NA
Seats (000s)	..	2 263.6	NA
Load factor %	..	83.3	NA
Aircraft trips	..	12 433	NA

.. Data not available for release

Passengers/seats (000s)



(a) July and November 2020 and August to November 2021 moving annuals are not available for release.

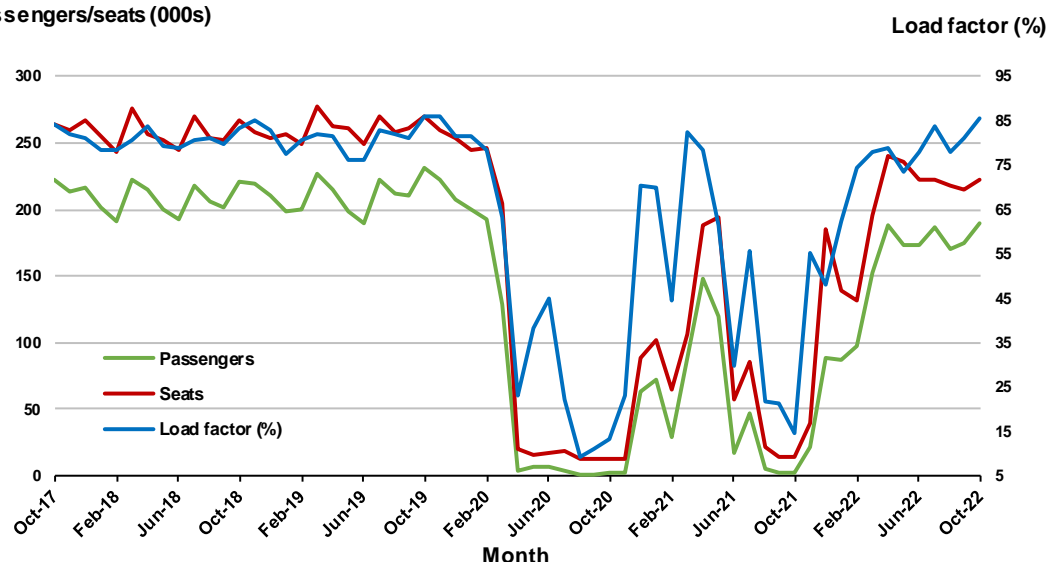
6. Adelaide - Melbourne

Monthly data

	Oct 2021	Oct 2022	% Change
Passengers carried (000s)	2.2	189.5	8 598.9
Seats (000s)	14.7	222.0	1 406.1
Load factor %	14.8	85.4	70.6 *
Aircraft trips	177	1 358	667.2

* percentage point difference

Passengers/seats (000s)

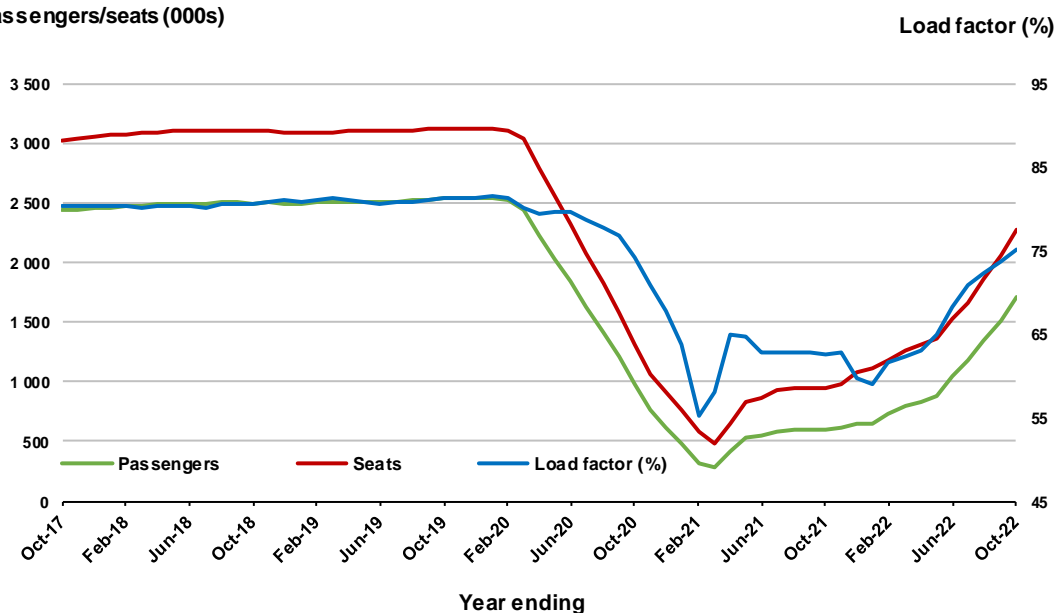


Moving annual data

	YE Oct 2021	YE Oct 2022	% Change
Passengers carried (000s)	596.3	1 704.1	185.8
Seats (000s)	951.5	2 267.9	138.4
Load factor %	62.7	75.1	12.5 *
Aircraft trips	6 506	13 960	114.6

* percentage point difference

Passengers/seats (000s)



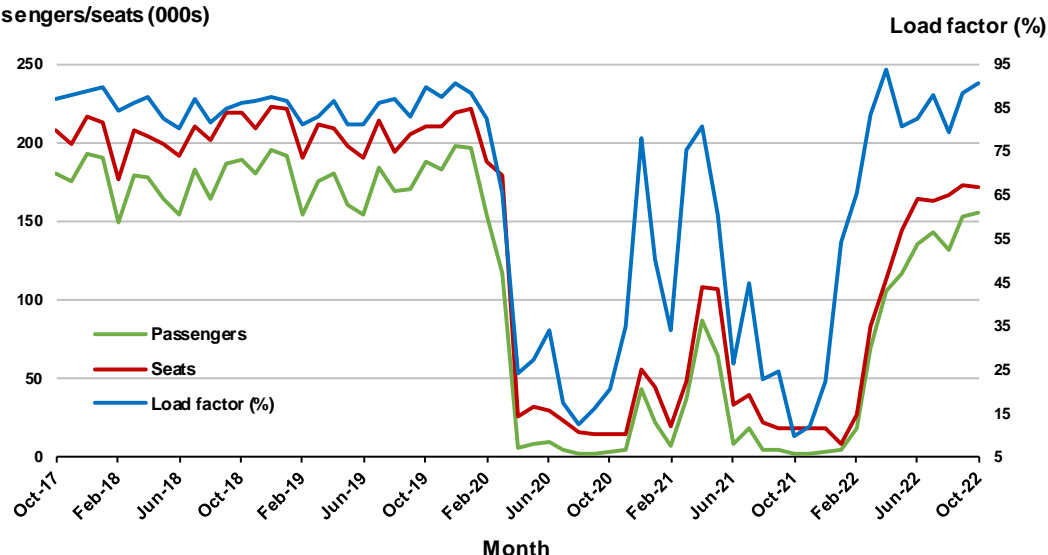
7. Melbourne - Perth

Monthly data

	Oct 2021	Oct 2022	% Change
Passengers carried (000s)	1.7	155.6	8 962.6
Seats (000s)	17.8	172.0	866.3
Load factor %	9.6	90.5	80.9 *
Aircraft trips	183	940	413.7

* percentage point difference

Passengers/seats (000s)

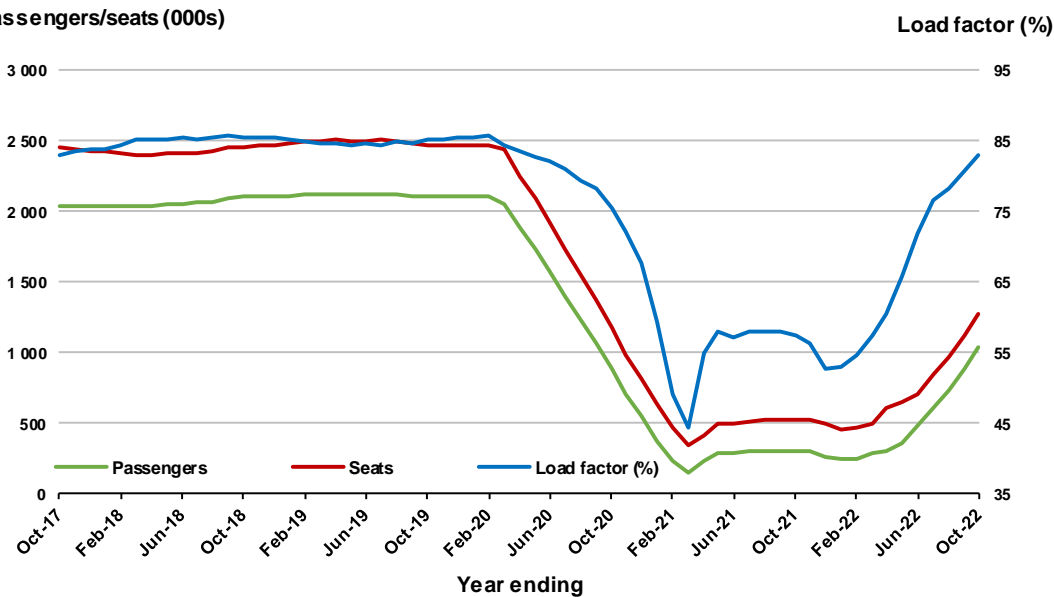


Moving annual data

	YE Oct 2021	YE Oct 2022	% Change
Passengers carried (000s)	303.5	1 040.6	242.9
Seats (000s)	528.3	1 270.5	140.5
Load factor %	57.4	83.1	25.6 *
Aircraft trips	3 885	7 425	91.1

* percentage point difference

Passengers/seats (000s)



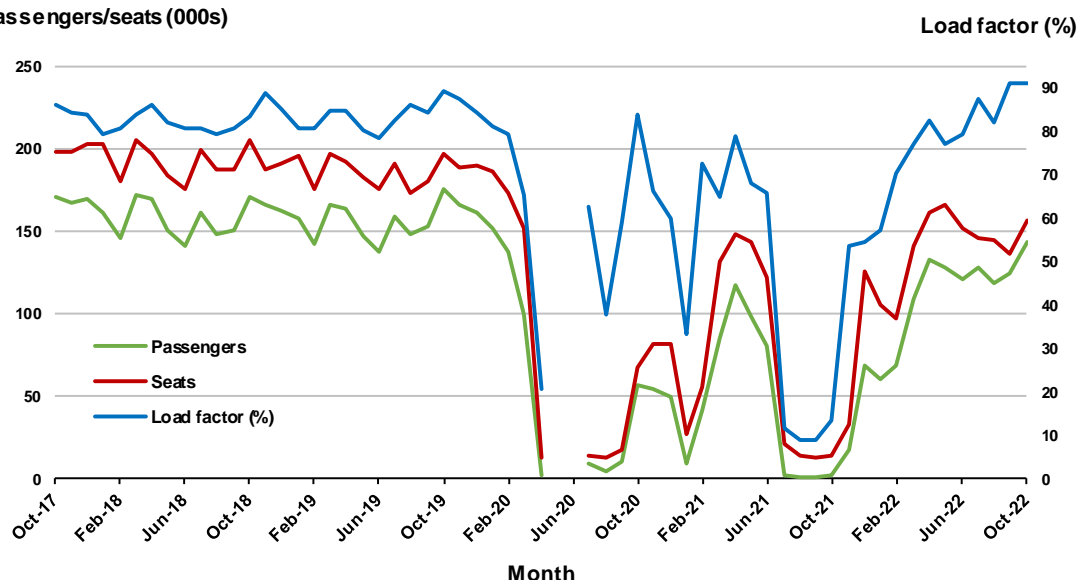
8. Adelaide - Sydney ^(a)

Monthly data

	Oct 2021	Oct 2022	% Change
Passengers carried (000s)	1.9	143.3	7 589.6
Seats (000s)	13.9	157.3	1 034.0
Load factor %	13.4	91.1	77.7 *
Aircraft trips	125	955	664.0

* percentage point difference

Passengers/seats (000s)



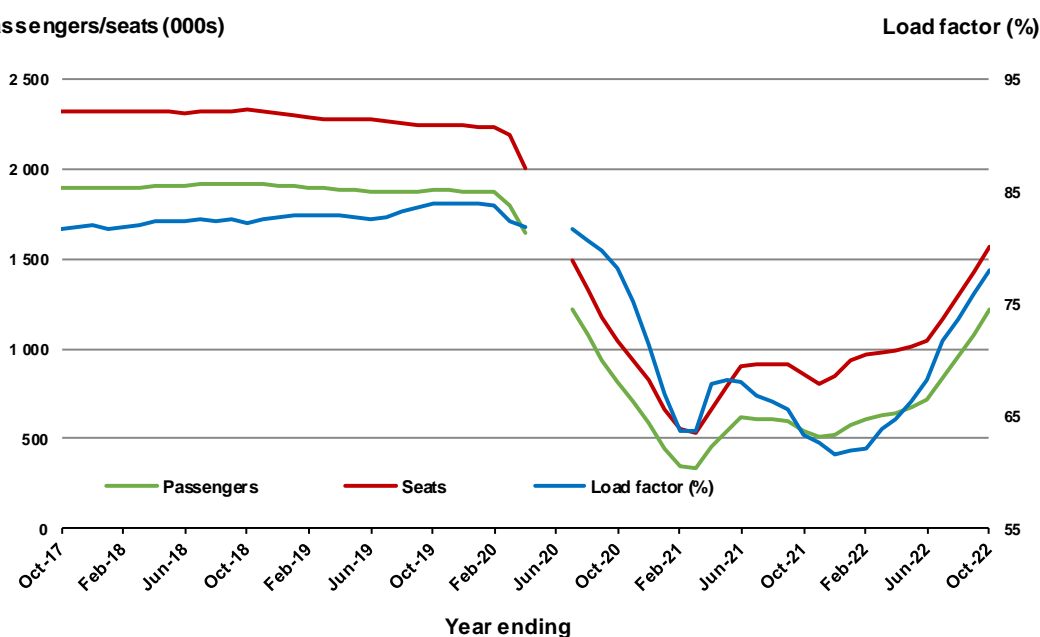
(a) May and June 2020 data not available for release.

Moving annual data

	YE Oct 2021	YE Oct 2022	% Change
Passengers carried (000s)	542.4	1 220.9	125.1
Seats (000s)	857.2	1 566.7	82.8
Load factor %	63.3	77.9	14.7 *
Aircraft trips	5 396	9 626	78.4

* percentage point difference

Passengers/seats (000s)



(a) May and June 2020 moving annual totals are not available for release.

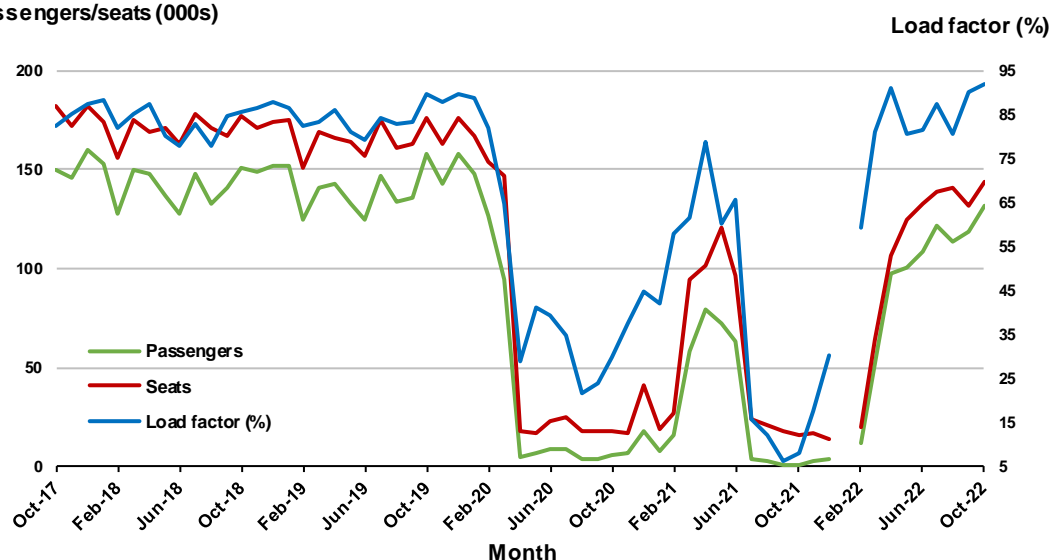
9. Perth - Sydney ^(a)

Monthly data

	Oct 2021	Oct 2022	% Change
Passengers carried (000s)	1.3	131.6	9 912.9
Seats (000s)	16.0	143.4	794.1
Load factor %	8.2	91.8	83.6 *
Aircraft trips	93	746	702.2

* percentage point difference

Passengers/seats (000s)



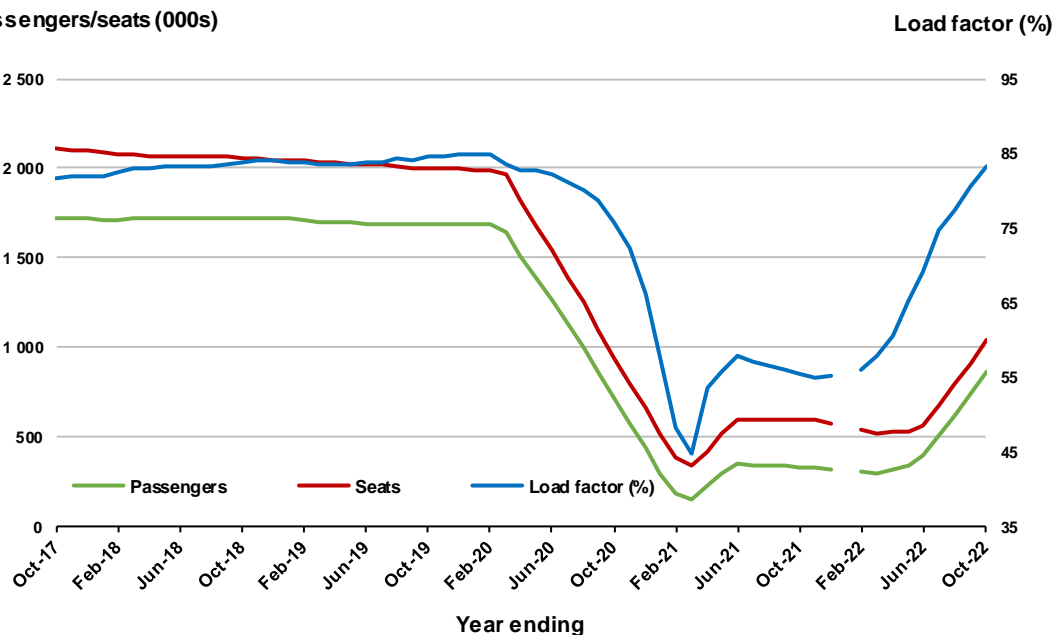
(a) January 2022 data not available for release.

Moving annual data

	YE Oct 2021	YE Oct 2022	% Change
Passengers carried (000s)	331.2	864.6	161.0
Seats (000s)	596.4	1 037.9	74.0
Load factor %	55.5	83.3	27.8 *
Aircraft trips	3 169	5 486	73.1

* percentage point difference

Passengers/seats (000s)



(a) January 2022 moving annual totals are not available for release.

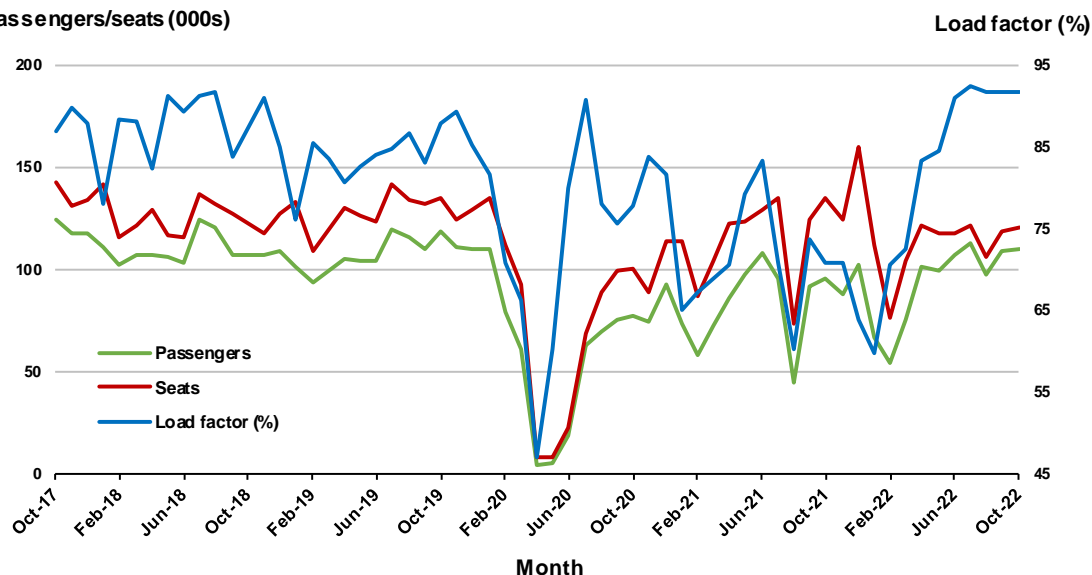
10. Brisbane - Cairns

Monthly data

	Oct 2021	Oct 2022	% Change
Passengers carried (000s)	95.3	110.3	15.7
Seats (000s)	134.9	120.2	-10.8
Load factor %	70.7	91.7	21.0 *
Aircraft trips	833	768	-7.8

* percentage point difference

Passengers/seats (000s)

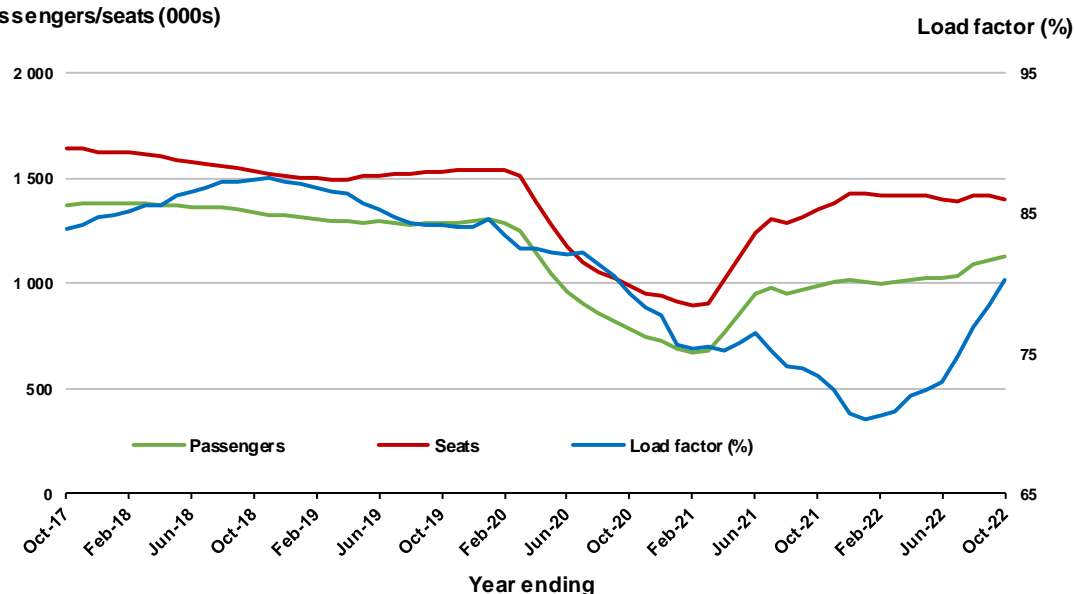


Moving annual data

	YE Oct 2021	YE Oct 2022	% Change
Passengers carried (000s)	989.6	1 124.3	13.6
Seats (000s)	1 349.7	1 401.2	3.8
Load factor %	73.3	80.2	6.9 *
Aircraft trips	8 547	9 072	6.1

* percentage point difference

Passengers/seats (000s)



TOP FIFTY REGIONAL AIRPORTS

Table 10: Top fifty regional airports (000s) — passenger movements, monthly

Airport	Oct 2021	Oct 2022	% Change
1 Cairns	166.8	370.2	121.9
2 Hobart	53.7	206.9	285.2
3 Darwin	95.6	149.8	56.7
4 Townsville	85.3	144.0	68.9
5 Launceston	23.8	108.3	355.3
6 Newcastle	2.9	98.3	3 316.9
7 Mackay	54.6	77.6	42.2
8 Ballina	8.0	54.9	588.8
9 Hamilton Island	24.3	49.5	103.7
10 Karratha	40.3	46.3	14.8
11 Rockhampton	33.1	43.0	30.0
12 Proserpine	26.7	41.9	57.0
13 Port Hedland	34.6	41.4	19.6
14 Broome	47.0	40.2	- 14.3
15 Alice Springs	21.2	32.4	52.6
16 Newman	27.5	30.5	11.0
17 Kalgoorlie	24.1	27.4	13.7
18 Ayers Rock	3.4	25.1	635.8
19 Coffs Harbour	1.6	24.3	1 387.0
20 Mount Isa	16.2	19.9	23.1
21 Albury	0.8	19.5	2 269.5
22 Paraburdoo	17.3	18.9	8.9
23 Mildura	1.4	18.7	1 269.0
24 Gladstone	11.2	17.2	54.4
25 Wagga Wagga	1.0	17.2	1 635.2
26 Dubbo	2.2	16.9	682.1
27 Port Macquarie	0.5	16.2	2 918.2
28 Emerald	12.2	16.0	30.4
29 Port Lincoln	13.0	15.9	22.6
30 Tamworth	0.7	13.1	1 833.5
31 Devonport	0.1	10.5	9 941.0
32 Kununurra	10.8	10.5	- 3.2
33 Hervey Bay	2.5	10.4	324.3
34 Armidale	0.8	9.7	1 173.9
35 Thursday Island	9.3	9.1	- 2.1
36 Moranbah	7.4	9.1	23.6
37 Orange	0.6	8.9	1 332.0
38 Bundaberg	5.2	8.7	67.6
39 Learmonth	10.1	8.6	- 15.3
40 Gove	4.7	8.2	76.9
41 Olympic Dam	8.6	8.0	- 6.8
42 Burnie	1.1	7.4	586.9
43 Weipa	6.4	7.4	15.3
44 Norfolk Island	3.2	7.4	132.0
45 Geraldton	7.1	7.3	2.6
46 Mount Gambier	2.9	7.0	142.3
47 Griffith	0.5	6.9	1 177.1
48 Merimbula	0.5	6.5	1 254.0
49 Broken Hill	0.6	5.6	856.3
50 Albany	4.5	5.2	15.7
Total top 50 regional airports	937.4	1 963.6	109.5
Total regional airports	1 022.2	2 080.6	103.5
Total domestic network	2 104.1	9 701.7	361.1

Note: Airport passenger movement numbers are the sum of passenger arrivals and departures at each airport.

Regional airports are defined as airports which are, according to Australian Statistical Geography

Standard (ASGS), not based in Major Cities.

Table 11: Top fifty regional airports (000s) — passenger movements, annual

Airport		YE Oct 2021	YE Oct 2022	% Change
1	Cairns	2 262.9	3 433.1	51.7
2	Hobart	1 232.6	2 048.0	66.1
3	Darwin	1 097.9	1 539.6	40.2
4	Townsville	1 068.0	1 460.8	36.8
5	Launceston	612.4	1 039.2	69.7
6	Newcastle	487.0	910.6	87.0
7	Mackay	630.8	791.9	25.5
8	Ballina	464.6	707.6	52.3
9	Karratha	406.1	484.9	19.4
10	Rockhampton	389.8	470.0	20.6
11	Hamilton Island	321.3	465.4	44.9
12	Proserpine	290.6	453.0	55.9
13	Port Hedland	340.8	442.2	29.8
14	Broome	407.2	440.8	8.3
15	Newman	308.4	340.0	10.3
16	Alice Springs	277.7	319.4	15.0
17	Kalgoorlie	245.1	295.9	20.7
18	Coffs Harbour	120.5	269.5	123.6
19	Mount Isa	184.0	216.5	17.7
20	Paraburdoo	192.3	206.8	7.5
21	Albury	72.1	186.8	159.3
22	Gladstone	137.4	185.6	35.1
23	Ayers Rock	79.7	174.8	119.2
24	Dubbo	99.5	170.2	71.0
25	Port Lincoln	133.1	165.5	24.3
26	Emerald	139.2	163.5	17.4
27	Mildura	69.3	163.1	135.3
28	Wagga Wagga	66.0	153.1	132.1
29	Port Macquarie	62.4	147.3	135.9
30	Tamworth	55.7	120.4	116.2
31	Kununurra	105.0	119.5	13.8
32	Hervey Bay	47.5	111.6	135.1
33	Bundaberg	68.7	99.1	44.2
34	Thursday Island	91.1	96.8	6.2
35	Moranbah	71.2	96.3	35.2
36	Learmonth	93.5	95.6	2.2
37	Armidale	39.0	91.1	133.9
38	Olympic Dam	78.8	88.9	12.8
39	Weipa	72.3	83.5	15.4
40	Orange	38.3	82.2	114.3
41	Geraldton	70.2	81.7	16.5
42	Devonport	41.0	80.3	96.1
43	Gove	56.3	77.9	38.4
44	Mount Gambier	34.3	68.7	100.2
45	Burnie	23.9	63.6	165.8
46	Griffith	24.1	63.5	163.8
47	Norfolk Island	49.1	63.2	28.6
48	Cloncurry	43.9	58.5	33.1
49	Merimbula	28.4	58.3	105.1
50	Whyalla	44.2	54.3	22.9
Total top 50 regional airports		13 375.2	19 600.1	46.5
Total regional airports		14 355.0	20 850.5	45.2
Total domestic network		45 530.5	90 054.0	97.8

Note: Airport passenger movement numbers are the sum of passenger arrivals and departures at each airport. Regional airports are defined as airports which are, according to Australian Statistical Geography Standard (ASGS), not based in Major Cities.

DOMESTIC CHARTER ACTIVITY

Table 12: Charter passengers carried and aircraft trips - monthly activity

	Oct 2021	Oct 2022	% Change
Total domestic charter passengers	277 152	314 886	13.6
Total domestic charter aircraft trips	5 057	5 552	9.8

Note: Helicopter, joyflights and sightseeing charter flights not included.

Table 13: Charter passengers carried and aircraft trips - annual activity

	YE Oct 2021	YE Oct 2022	% Change
Total domestic charter passengers	3 371 711	3 523 681	4.5
Total domestic charter aircraft trips	64 071	65 774	2.7

Note: Helicopter, joyflights and sightseeing charter flights not included.

Table 14: Domestic airports - charter activity - monthly

	Oct 2021	Oct 2022	% Change
Total domestic charter passenger movements	554 304	629 772	13.6
Total domestic charter aircraft movements	10 114	11 104	9.8
Perth airport charter passenger movements	210 945	212 322	0.7
Perth airport charter aircraft movements	3 530	3 575	1.3

Note: Helicopter, joyflights and sightseeing charter flights not included.

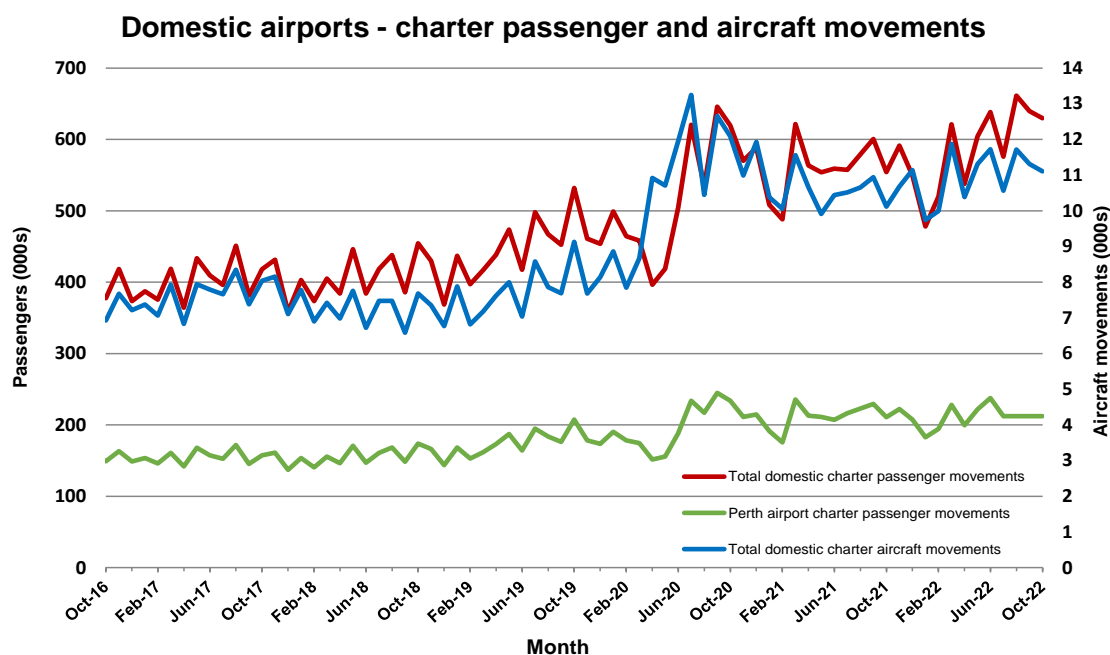
Charter passenger and aircraft movement numbers are the sum of arrivals and departures at each airport.

Table 15: Domestic airports - charter activity - annual

	YE Oct 2021	YE Oct 2022	% Change
Total domestic charter passenger movements	6 743 422	7 047 362	4.5
Total domestic charter aircraft movements	128 142	131 548	2.7
Perth airport charter passenger movements	2 537 959	2 543 010	0.2
Perth airport charter aircraft movements	43 214	43 950	1.7

Note: Helicopter, joyflights and sightseeing charter flights not included.

Charter passenger and aircraft movement numbers are the sum of arrivals and departures at each airport.



DEFINITIONS

Aircraft Trips	The number of flight stages. A return flight counts as two aircraft trips.
Airport Movements	Airport movements (passenger and cargo) are measured once on arrival and once on departure. Each domestic trip generates two movements at airports. For example, a trip from Melbourne to Sydney will be counted twice, as a departure at Melbourne and as an arrival at Sydney. At the national level, the sum of all domestic airport traffic will therefore be equal to twice the number of trips undertaken.
Available Seat Kilometres (ASKs)	Calculated by multiplying the number of seats available on each flight stage, by the distance in kilometres between the ports. The distances used are Great Circle Distances.
City-Pair	The ports shown make up the city-pair route. Passenger movements shown for a city pair reflect total traffic in both directions.
Flight Stage	The operation of an aircraft from take-off to landing.
Load Factor	The total revenue passenger kilometres performed as a percentage of the total available seat kilometres.
Passengers Carried	Revenue passengers carried.
Regular Public Transport Services (RPT)	All air service operations in which aircraft are available for the transport of members of the public and are conducted in accordance with fixed schedules. It does not include charter or other non-scheduled operations.
Revenue Passengers	All passengers paying any fare. Frequent flyer redemption travellers are regarded as revenue passengers.
Revenue Passenger Kilometres (RPKs)	Calculated by multiplying the number of revenue passengers travelling on each flight stage, by the distance in kilometres between the ports. The distances used are Great Circle Distances.
Traffic on board by stages	The total of all traffic (revenue passengers) on each flight stage between two directly connected airports.
..	Not available for confidentiality or other reasons.
NA	Not applicable.