



Australian Government

Department of Infrastructure, Transport, Regional Development and Communications

Bureau of Infrastructure and Transport Research Economics

STATISTICAL REPORT



Aviation

Domestic aviation activity

October 2021

© Commonwealth of Australia 2021

ISSN: 1832 - 1968

Ownership of intellectual property rights in this publication

Unless otherwise noted, copyright (and any other intellectual property rights, if any) in this publication is owned by the Commonwealth of Australia (referred to below as the Commonwealth).

Disclaimer

The material contained in this publication is made available on the understanding that the Commonwealth is not providing professional advice, and that users exercise their own skill and care with respect to its use, and seek independent advice if necessary.

The Commonwealth makes no representations or warranties as to the contents or accuracy of the information contained in this publication. To the extent permitted by law, the Commonwealth disclaims liability to any person or organisation in respect of anything done, or omitted to be done, in reliance upon information contained in this publication.

Creative Commons licence

With the exception of (a) the Coat of Arms; and (b) the Department of Infrastructure, Transport, Regional Development and Communications' photos and graphics, copyright in this publication is licensed under a Creative Commons Attribution 3.0 Australia Licence.

Creative Commons Attribution 3.0 Australia Licence is a standard form licence agreement that allows you to copy, communicate and adapt this publication provided that you attribute the work to the Commonwealth and abide by the other licence terms. A summary of the licence terms is available from <http://creativecommons.org/licenses/by/3.0/au/deed.en>.

The full licence terms are available from <http://creativecommons.org/licenses/by/3.0/au/legalcode>.

Use of the Coat of Arms

The Department of the Prime Minister and Cabinet sets the terms under which the Coat of Arms is used. Please refer to the Department's Commonwealth Coat of Arms and Government branding web page <http://www.dpmc.gov.au/guidelines/index.cfm#brand> and, in particular, the Guidelines on the use of the Commonwealth Coat of Arms publication.

An appropriate citation for this report is:

Bureau of Infrastructure and Transport Research Economics (BITRE), 2021, Domestic aviation activity, Statistical Report, BITRE, Canberra ACT.

Contact us

This publication is available in PDF format. All other rights are reserved, including in relation to any Departmental logos or trade marks which may exist. For enquiries regarding the licence and any use of this publication, please contact:

Bureau of Infrastructure and Transport Research Economics (BITRE)
Department of Infrastructure, Transport, Regional Development and Communications
GPO Box 501, Canberra ACT 2601, Australia
Telephone: (international) +61 2 6274 7210
Fax: (international) +61 2 6274 6855
Email: bitre@infrastructure.gov.au
Website: www.bitre.gov.au

Inquiries

Should you require additional information about the statistics contained in this publication:

Nebojsa Pavlovic

Telephone (02) 6274 6817 or Facsimile (02) 6274 7727

Electronic mail: AVSTATS@infrastructure.gov.au

Nebojsa.Pavlovic@infrastructure.gov.au

Web site: <http://www.bitre.gov.au/statistics/aviation/domestic.aspx>

FOREWORD

This report provides an overview of domestic (including charter) commercial aviation activity in Australia for the month of October 2021.

The data cover revenue passengers carried by Australian-registered operators of scheduled regular public transport services over Australian flight stages and fixed-wing charter operators. These estimates include passengers carried between domestic airports on international flights operated by these carriers. The passengers carried refer to traffic on board by stages.

Individual routes shown are restricted to those exceeding 8 000 passengers per month where two or more airlines operate in competition. For the month of October 2021, there were 28 such routes compared to 23 published in October 2020.

Information on the total network for the month of October 2021 and on the Regular Public Transport (RPT) network for the month of October 2021 is presented on page 2, with estimates for the year ended October 2021 presented on page 3.

Detailed information on individual routes can be found in the RPT summary pages 4-8 of this publication.

The top ten airports in terms of RPT passenger movements are shown on page 10.

Data on domestic RPT cargo movements at the top five cargo airports are provided on page 11. The table includes cargo carried on passenger flights operated by the Qantas group (including Jetstar), Virgin Australia, Air North, Rex Airlines and Skippers as well as the cargo carried by dedicated freighter aircraft operated by Qantas Freight and Toll Aviation.

The long-term trends for the top ten competitive RPT routes are presented graphically on pages 12-21.

Domestic RPT passenger movements at regional airports are presented on pages 22-23.

Tables providing estimates of domestic charter aviation activity are shown on page 24. BITRE confidentiality standards restrict publication of detailed estimates for individual Australian airports, with the exception of Perth Airport. For the month of October Alliance Airlines charter and RPT data have been estimated and included in this publication.

A list of definitions can be found on page 25.

This report was prepared by the Aviation Statistics Section of the Bureau of Infrastructure and Transport Research Economics with data provided by airlines.

Estimates are included where data were not available and data presented in this publication may contain revisions to previously published data.

Where figures have been rounded, discrepancies may occur between sums of component items and totals, and in percentage changes which are derived from figures prior to rounding.

CONTENTS

Highlights	1
Total network.....	2
RPT network	2
Top competitive routes.....	4
Top ten airports – passenger movements.....	10
Top five airports – cargo movements.....	11
Top ten routes	12
1. Brisbane – Cairns	12
2. Brisbane – Townsville	13
3. Brisbane – Mackay	14
4. Broome – Perth.....	15
5. Karratha – Perth.....	16
6. Adelaide – Perth	17
7. Adelaide – Brisbane.....	18
8. Perth – Port Hedland.....	19
9. Brisbane – Rockhampton.....	20
10. Newman – Perth	21
Top fifty regional airports	22
Domestic charter activity.....	24
Definitions	25

This page is intentionally left blank.

HIGHLIGHTS

COVID-19 and associated domestic travel restrictions continued to impact domestic aviation activity in October 2021. The number of revenue passengers was 81.4 per cent below the pre-COVID-19 level in October 2019.

There were 1.33 million passengers carried on Australian domestic commercial aviation (including charter operations) in October 2021, compared to 1.22 million in October 2020 and 5.91 million in October 2019.

For the month of October 2021, there were 26.4 thousand aircraft trips, compared to 24.2 thousand in October 2020 and 60.7 thousand in October 2019.

1.05 million passengers were carried on RPT flights in October 2021, compared to 0.91 million reported in October 2020 and 5.64 million reported in October 2019.

For the year ending October 2021 there were 22.74 million RPT passengers, a decrease of 14.7 per cent on the year ending October 2020 and a decrease of 62.9 per cent on the year ending October 2019.

RPT revenue passenger kilometres (RPKs) performed were 1.33 billion for the month, compared with 1.04 billion in October 2020.

Capacity, measured by available seat kilometres (ASKs), increased to 1.96 billion in October 2021 compared to 1.50 billion in October 2020.

The industry wide load factor (RPKs/ASKs) decreased from 60.9 per cent in October 2020 to 54.0 per cent in October 2021. The highest load factor (79.5 per cent) was recorded on the Adelaide – Cairns route while the lowest load factor (41.6 per cent) was recorded on the Melbourne – Sydney route.

In October 2021, most published routes recorded large increases in the number of passengers carried compared to October 2020.

For the month of October 2021, Brisbane – Cairns was Australia's busiest RPT route with 95.3 thousand passengers, followed by Brisbane – Townsville with 55.4 thousand passengers and Brisbane – Mackay with 44.7 thousand passengers.

Brisbane was Australia's busiest domestic airport with 459.5 thousand passenger movements in October 2021, followed by Perth with 312.7 thousand passenger movements and Adelaide with 185.3 thousand passenger movements.

Total cargo movements at Australian airports on domestic RPT flights were 34.4 thousand tonnes in October 2021, an increase of 9.3 per cent compared with October 2020.

In October 2021, there were 1.02 million domestic passenger movements through regional airports, compared to 0.79 million in October 2020 and 2.29 million in October 2019. Most regional airports for which data is available for publishing recorded large increases in October 2021 compared to October 2020.

Fixed-wing charter operators carried 277.2 thousand passengers in October 2021, a decrease of 10.5 per cent on October 2020. Perth Airport accounted for 38.1 per cent of all charter passengers in Australia.

TOTAL NETWORK

Summary of monthly commercial aviation activity

	Oct 2020	Oct 2021	% Change
Total passengers carried (millions)	1.22	1.33	8.8
Aircraft trips (000s)	24.2	26.4	8.9

Note: Regular Public Transport and charter aviation activity
Helicopter, joyflights and sightseeing charter flights not included.

RPT NETWORK

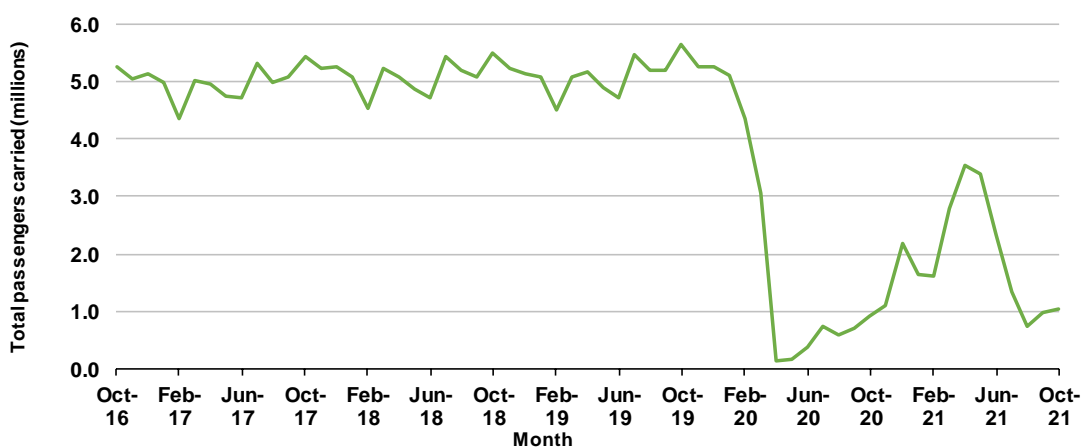
Summary of monthly RPT activity

	Oct 2020	Oct 2021	% Change
Total passengers carried (millions)	0.91	1.05	15.3
Revenue passenger kilometres (billions)	1.04	1.33	27.8
Available seats (millions)	1.50	1.96	30.5
Available seat kilometres (billions)	1.71	2.47	44.2
Load factor %	60.9	54.0	- 6.9 *
Aircraft trips (000s)	18.2	21.3	17.3

* percentage point difference

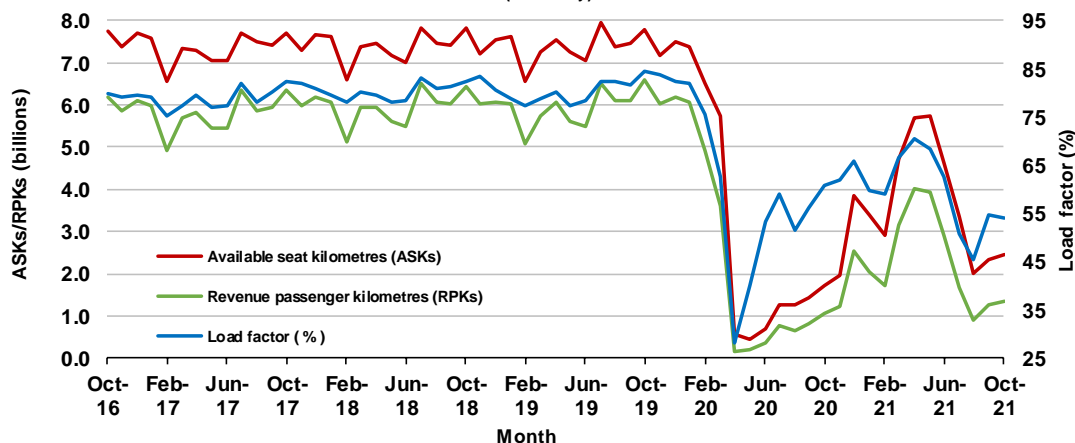
Domestic RPT passenger traffic

(monthly)



RPT Network utilisation

(monthly)



TOTAL NETWORK

Summary of annual commercial aviation activity

	YE Oct 2020	YE Oct 2021	% Change
Total passengers carried (millions)	29.71	26.12	-12.1
Aircraft trips (000s)	397.9	415.8	4.5

Note: Regular Public Transport and charter aviation activity
Helicopter, joyflights and sightseeing charter flights not included.

RPT NETWORK

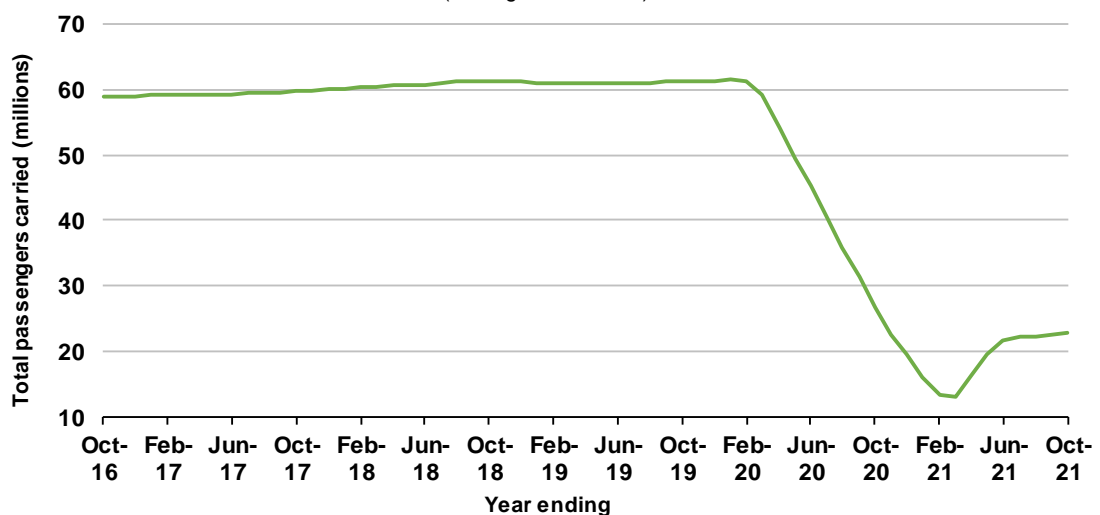
Summary of annual RPT activity

	YE Oct 2020	YE Oct 2021	% Change
Total passengers carried (millions)	26.68	22.74	-14.7
Revenue passenger kilometres (billions)	30.75	26.70	-13.2
Available seats (millions)	36.83	37.26	1.2
Available seat kilometres (billions)	41.71	43.02	3.1
Load factor %	73.7	62.1	-11.7 *
Aircraft trips (000s)	336.3	351.7	4.6

* percentage point difference

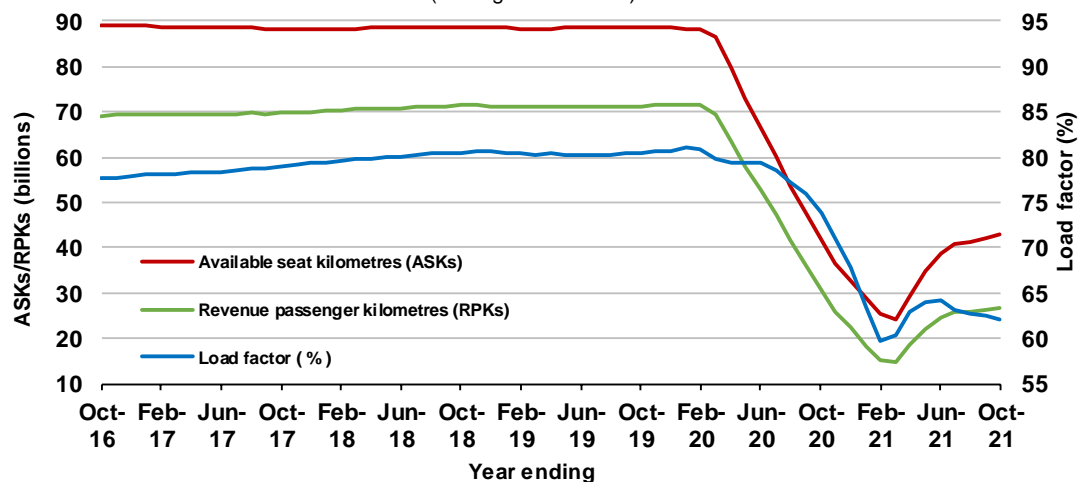
Domestic RPT passenger traffic

(moving annual totals)



RPT Network utilisation

(moving annual totals)



TOP COMPETITIVE ROUTES

Table 1: Passengers carried (000s) — annual activity

	City-Pair	YE Oct 2020	YE Oct 2021	% Change
1	Melbourne - Sydney	3 565.3	1 608.3	-54.9
2	Brisbane - Cairns	782.7	989.6	26.4
3	Brisbane - Townsville	571.1	676.1	18.4
4	Brisbane - Mackay	446.4	524.1	17.4
5	Adelaide - Brisbane	456.4	424.2	-7.1
6	Karratha - Perth	291.2	404.3	38.8
7	Broome - Perth	220.3	370.6	68.3
8	Brisbane - Rockhampton	289.6	352.7	21.8
9	Perth - Port Hedland	223.5	339.6	51.9
10	Newman - Perth	180.3	307.4	70.5
11	Adelaide - Perth	..	287.1	NA
12	Brisbane - Perth	..	281.6	NA
13	Brisbane - Darwin	176.7	263.2	49.0
14	Kalgoorlie - Perth	165.9	244.7	47.5
15	Brisbane - Hobart	..	233.3	NA
16	Brisbane - Proserpine	169.8	232.3	36.8
17	Brisbane - Hamilton Island	92.5	202.6	119.1
18	Adelaide - Darwin	..	146.5	NA
19	Darwin - Perth	..	145.0	NA
20	Brisbane - Gladstone	126.1	137.0	8.6
21	Adelaide - Gold Coast	105.2	133.9	27.2
22	Adelaide - Port Lincoln	104.3	133.1	27.6
23	Brisbane - Emerald	..	132.7	NA
24	Brisbane - Launceston	..	129.0	NA
25	Cairns - Townsville	..	115.2	NA
26	Brisbane - Mount Isa	..	106.8	NA
27	Adelaide - Cairns	..	96.6	NA
28	Adelaide - Alice Springs	54.2	89.4	65.0
29	Adelaide - Sydney	812.4	..	NA (a)
30	Ballina - Sydney	325.0	..	NA (a)
31	Brisbane - Canberra	292.3	..	NA (a)
32	Brisbane - Sydney	1 974.1	..	NA (a)
33	Adelaide - Canberra	85.8	..	NA (a)
	Total domestic network	26 675.6	22 744.1	-14.7

.. Data not available for release.

(a) City pairs published in October 2020, data not available for release in October 2021.

Table 2: Passengers carried (000s) — monthly activity

	City-Pair	Oct 2020	Oct 2021	% Change
1	Brisbane - Cairns	77.6	95.3	22.7
2	Brisbane - Townsville	47.4	55.4	16.7
3	Brisbane - Mackay	34.9	44.7	28.0
4	Broome - Perth	35.0	43.7	25.0
5	Karratha - Perth	31.8	40.2	26.4
6	Adelaide - Perth	..	37.2	NA
7	Adelaide - Brisbane	44.8	36.2	-19.4
8	Perth - Port Hedland	17.0	34.6	103.4
9	Brisbane - Rockhampton	23.7	29.5	24.2
10	Newman - Perth	12.7	27.5	115.3
11	Brisbane - Proserpine	20.8	25.8	23.9
12	Brisbane - Hamilton Island	18.0	24.2	34.6
13	Kalgoorlie - Perth	18.0	24.1	33.9
14	Brisbane - Hobart	..	23.6	NA
15	Brisbane - Darwin	19.2	22.8	18.9
16	Adelaide - Darwin	..	21.2	NA
17	Darwin - Perth	..	20.8	NA
18	Adelaide - Cairns	..	16.0	NA
19	Brisbane - Launceston	..	15.6	NA
20	Melbourne - Sydney	11.1	15.4	38.9
21	Adelaide - Port Lincoln	9.1	13.0	42.0
22	Brisbane - Emerald	..	11.4	NA
23	Brisbane - Gladstone	8.6	11.1	29.6
24	Cairns - Townsville	..	10.9	NA
25	Brisbane - Perth	..	10.7	NA
26	Brisbane - Mount Isa	..	9.2	NA
27	Adelaide - Gold Coast	9.7	8.8	-9.3
28	Adelaide - Alice Springs	9.4	8.1	-14.2
29	Adelaide - Sydney	56.7	..	NA (a)
30	Ballina - Sydney	49.9	..	NA (a)
31	Brisbane - Canberra	21.0	..	NA (a)
32	Brisbane - Sydney	10.4	..	NA (a)
33	Adelaide - Canberra	9.6	..	NA (a)
	Total domestic network	909.4	1 048.9	15.3

.. Data not available for release.

(a) City pairs published in October 2020, data not available for release in October 2021.

Table 3: Available seats (000s) — monthly activity

	City-Pair	Oct 2020	Oct 2021	% Change
1	Brisbane - Cairns	99.9	134.9	35.0
2	Brisbane - Townsville	65.9	95.6	44.9
3	Brisbane - Mackay	56.0	75.7	35.2
4	Broome - Perth	45.6	59.7	30.8
5	Karratha - Perth	60.1	60.4	0.6
6	Adelaide - Perth	..	54.6	NA
7	Adelaide - Brisbane	58.3	64.3	10.3
8	Perth - Port Hedland	36.3	53.5	47.1
9	Brisbane - Rockhampton	37.9	49.9	31.4
10	Newman - Perth	26.9	55.6	106.7
11	Brisbane - Proserpine	26.8	37.6	40.1
12	Brisbane - Hamilton Island	24.9	32.5	30.5
13	Kalgoorlie - Perth	34.5	36.9	6.9
14	Brisbane - Hobart	..	38.5	NA
15	Brisbane - Darwin	25.1	37.1	47.9
16	Adelaide - Darwin	..	30.6	NA
17	Darwin - Perth	..	34.9	NA
18	Adelaide - Cairns	..	20.2	NA
19	Brisbane - Launceston	..	21.6	NA
20	Melbourne - Sydney	27.7	37.0	33.9
21	Adelaide - Port Lincoln	11.0	16.3	48.5
22	Brisbane - Emerald	..	20.9	NA
23	Brisbane - Gladstone	18.7	21.2	13.1
24	Cairns - Townsville	..	18.7	NA
25	Brisbane - Perth	..	20.7	NA
26	Brisbane - Mount Isa	..	18.9	NA
27	Adelaide - Gold Coast	11.3	18.3	62.9
28	Adelaide - Alice Springs	15.1	15.3	1.1
29	Adelaide - Sydney	67.5	..	NA (a)
30	Ballina - Sydney	56.2	..	NA (a)
31	Brisbane - Canberra	28.0	..	NA (a)
32	Brisbane - Sydney	24.2	..	NA (a)
33	Adelaide - Canberra	15.0	..	NA (a)
	Total domestic network	1 503.8	1 962.1	30.5

.. Data not available for release.

(a) City pairs published in October 2020, data not available for release in October 2021.

Table 4: Load factors (%) — monthly activity

	City-Pair	Oct 2020	Oct 2021	% Point diff
1	Brisbane - Cairns	77.7	70.7	-7.0
2	Brisbane - Townsville	71.9	57.9	-14.0
3	Brisbane - Mackay	62.4	59.1	-3.3
4	Broome - Perth	76.7	73.3	-3.4
5	Karratha - Perth	52.9	66.5	13.6
6	Adelaide - Perth	..	68.1	NA
7	Adelaide - Brisbane	77.0	56.3	-20.7
8	Perth - Port Hedland	46.8	64.7	17.9
9	Brisbane - Rockhampton	62.5	59.1	-3.4
10	Newman - Perth	47.4	49.4	2.0
11	Brisbane - Proserpine	77.7	68.7	-9.0
12	Brisbane - Hamilton Island	72.2	74.5	2.3
13	Kalgoorlie - Perth	52.1	65.3	13.2
14	Brisbane - Hobart	..	61.4	NA
15	Brisbane - Darwin	76.5	61.5	-15.0
16	Adelaide - Darwin	..	69.3	NA
17	Darwin - Perth	..	59.7	NA
18	Adelaide - Cairns	..	79.5	NA
19	Brisbane - Launceston	..	72.4	NA
20	Melbourne - Sydney	40.1	41.6	1.5
21	Adelaide - Port Lincoln	83.1	79.4	-3.7
22	Brisbane - Emerald	..	54.4	NA
23	Brisbane - Gladstone	45.9	52.6	6.7
24	Cairns - Townsville	..	58.5	NA
25	Brisbane - Perth	..	51.7	NA
26	Brisbane - Mount Isa	..	49.0	NA
27	Adelaide - Gold Coast	86.6	48.2	-38.4
28	Adelaide - Alice Springs	62.0	52.6	-9.4
29	Adelaide - Sydney	83.9	..	NA (a)
30	Ballina - Sydney	88.8	..	NA (a)
31	Brisbane - Canberra	74.8	..	NA (a)
32	Brisbane - Sydney	43.1	..	NA (a)
33	Adelaide - Canberra	64.1	..	NA (a)
	Total domestic network	60.9	54.0	-6.9

.. Data not available for release.

(a) City pairs published in October 2020, data not available for release in October 2021.

Table 5: Aircraft trips ^(a) — monthly activity

	City-Pair	Oct 2020	Oct 2021	% Change
1	Brisbane - Cairns	737	833	13.0
2	Brisbane - Townsville	427	577	35.1
3	Brisbane - Mackay	392	490	25.0
4	Broome - Perth	294	350	19.0
5	Karratha - Perth	376	371	-1.3
6	Adelaide - Perth	..	343	NA
7	Adelaide - Brisbane	345	386	11.9
8	Perth - Port Hedland	240	374	55.8
9	Brisbane - Rockhampton	385	475	23.4
10	Newman - Perth	173	341	97.1
11	Brisbane - Proserpine	162	254	56.8
12	Brisbane - Hamilton Island	160	186	16.3
13	Kalgoorlie - Perth	238	267	12.2
14	Brisbane - Hobart	..	230	NA
15	Brisbane - Darwin	160	216	35.0
16	Adelaide - Darwin	..	171	NA
17	Darwin - Perth	..	210	NA
18	Adelaide - Cairns	..	128	NA
19	Brisbane - Launceston	..	120	NA
20	Melbourne - Sydney	364	459	26.1
21	Adelaide - Port Lincoln	293	442	50.9
22	Brisbane - Emerald	..	305	NA
23	Brisbane - Gladstone	243	278	14.4
24	Cairns - Townsville	..	297	NA
25	Brisbane - Perth	..	118	NA
26	Brisbane - Mount Isa	..	178	NA
27	Adelaide - Gold Coast	62	106	71.0
28	Adelaide - Alice Springs	129	128	-0.8
29	Adelaide - Sydney	414	..	NA (b)
30	Ballina - Sydney	434	..	NA (b)
31	Brisbane - Canberra	215	..	NA (b)
32	Brisbane - Sydney	311	..	NA (b)
33	Adelaide - Canberra	96	..	NA (b)
	Total domestic network	18 193	21 336	17.3

(a) Includes RPT cargo flights

(b) city pairs published in October 2020, data not available for release in October 2021.

.. Data not available for release.

This page is intentionally left blank.

TOP TEN AIRPORTS – PASSENGER MOVEMENTS

Table 6: Top ten airports, RPT passenger movements (000s) - monthly activity

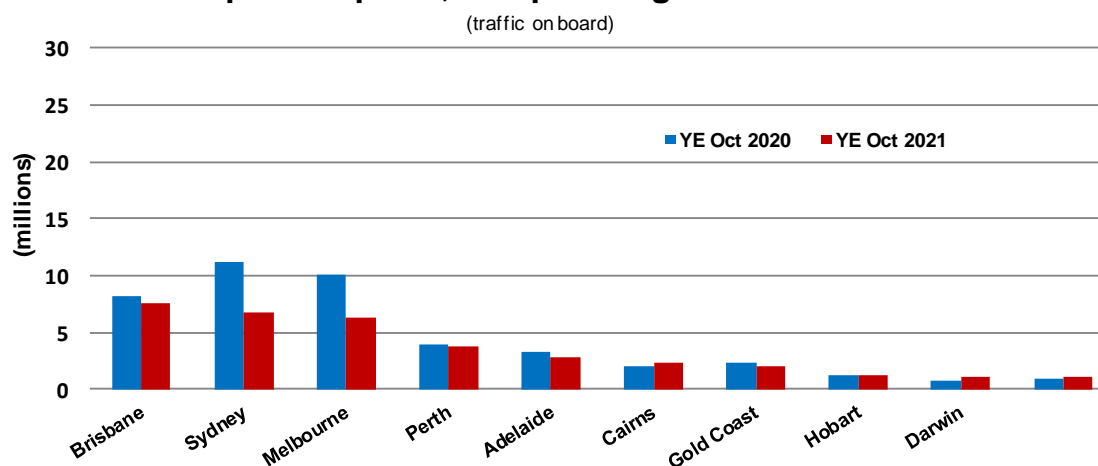
Airport	Oct 2020	Oct 2021	% Change	% of Total
1 Brisbane	377.9	459.5	21.6	21.9
2 Perth	174.3	312.7	79.4	14.9
3 Adelaide	181.9	185.3	1.9	8.8
4 Cairns	133.4	166.8	25.1	8.0
5 Darwin	65.0	95.6	47.1	4.6
6 Townsville	67.8	85.3	25.8	4.1
7 Mackay	41.3	54.6	32.3	2.6
8 Hobart	8.9	53.7	500.3	2.6
9 Broome	36.1	47.0	30.0	2.2
10 Sydney	185.5	45.3	-75.6	2.2
Total top ten airports	1 272.1	1 505.8	18.4	71.8
Total domestic network	1 818.7	2 097.8	15.3	100.0

Table 7: Top ten airports, RPT passenger movements (000s) - annual activity

Airport	YE Oct 2020	YE Oct 2021	% Change	% of Total
1 Brisbane	8 160.6	7 620.7	-6.6	16.8
2 Sydney	11 234.4	6 776.7	-39.7	14.9
3 Melbourne	10 137.7	6 293.6	-37.9	13.8
4 Perth	3 898.4	3 784.6	-2.9	8.3
5 Adelaide	3 249.1	2 870.4	-11.7	6.3
6 Cairns	1 959.8	2 262.9	15.5	5.0
7 Gold Coast	2 278.8	2 023.0	-11.2	4.4
8 Hobart	1 221.5	1 232.6	0.9	2.7
9 Darwin	762.1	1 097.9	44.1	2.4
10 Townsville	880.1	1 068.0	21.3	2.3
Total top ten airports	43 782.6	35 030.2	-20.0	77.0
Total domestic network	53 351.2	45 488.3	-14.7	100.0

Note: Airport passenger movement numbers are the sum of passenger arrivals and departures at each airport.

Top ten airports, RPT passenger movements



TOP FIVE AIRPORTS – CARGO MOVEMENTS

Table 8: Top five airports, domestic RPT cargo movements (000s tonnes) - monthly activity

Airport	Oct 2020	Oct 2021	% Change	% of Total
1 Melbourne	7.8	9.0	16.6	26.3
2 Sydney	7.3	8.3	13.7	24.1
3 Brisbane	5.3	5.6	6.9	16.4
4 Perth	2.5	3.1	21.6	9.0
5 Adelaide	1.9	2.3	17.3	6.6
Total top five airports	24.8	28.3	14.2	82.4
Total domestic network	31.5	34.4	9.3	100.0

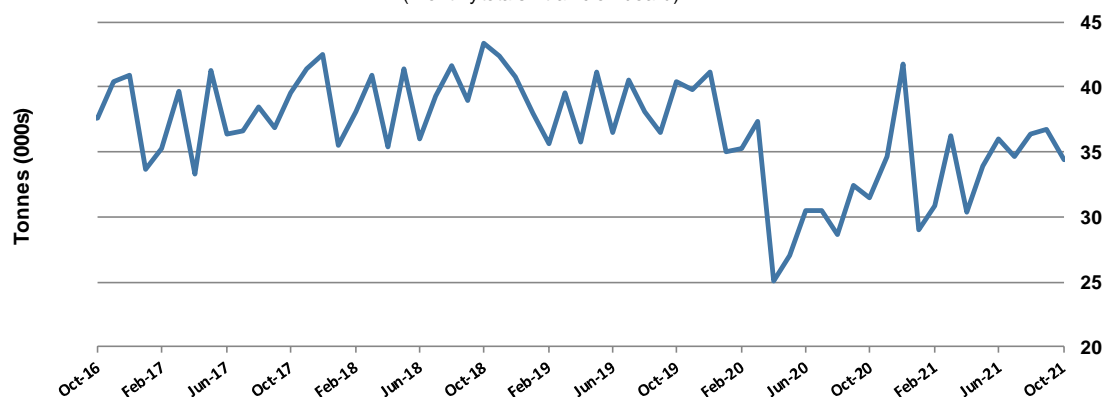
Table 9: Top five airports, domestic RPT cargo movements (000s tonnes) - annual activity

Airport	YE Oct 2020	YE Oct 2021	% Change	% of Total
1 Melbourne	102.5	105.6	3.0	25.4
2 Sydney	85.2	95.5	12.2	23.0
3 Brisbane	68.0	68.0	-0.1	16.4
4 Perth	42.1	39.0	-7.6	9.4
5 Adelaide	24.2	25.2	3.8	6.1
Total top five airports	322.1	333.2	3.5	80.3
Total domestic network	393.8	415.0	5.4	100.0

Note: Airport cargo tonnes are the sum of cargo tonnes on arrivals and departures at each airport.

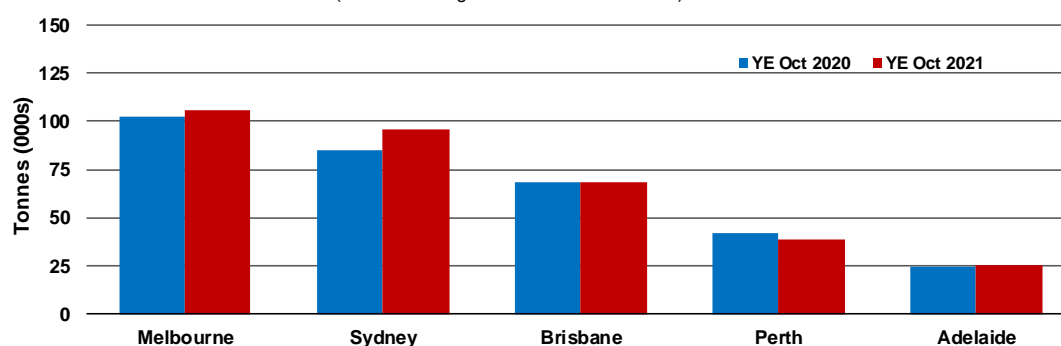
Total domestic network - cargo movement

(monthly totals - traffic on board)



Top five airports, cargo movements

(Domestic cargo traffic - traffic on board)



TOP TEN ROUTES

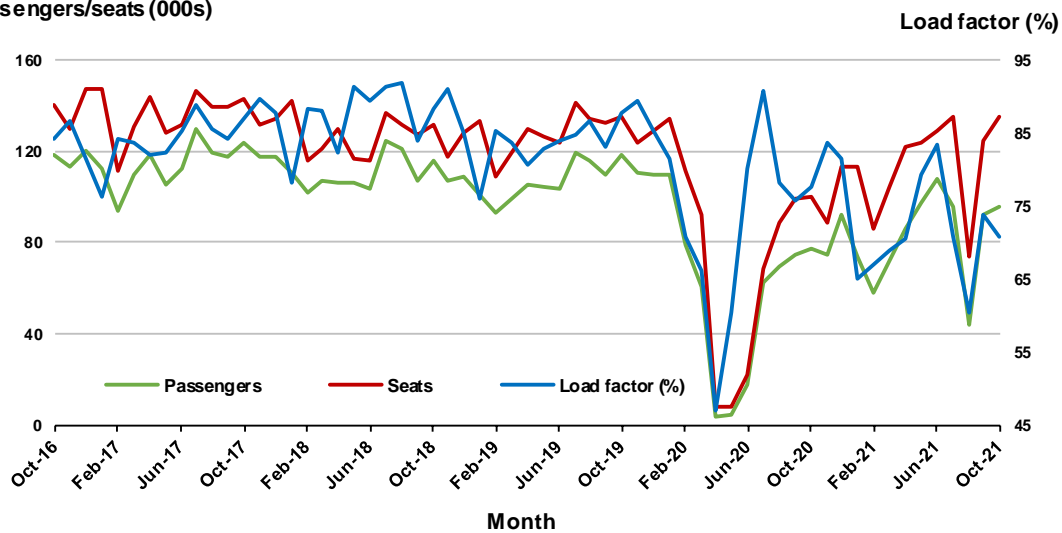
1. Brisbane - Cairns

Monthly data

	Oct 2020	Oct 2021	% Change
Passengers carried (000s)	77.6	95.3	22.7
Seats (000s)	99.9	134.9	35.0
Load factor %	77.7	70.7	-7.0 *
Aircraft trips	737	833	13.0

* percentage point difference

Passengers/seats (000s)

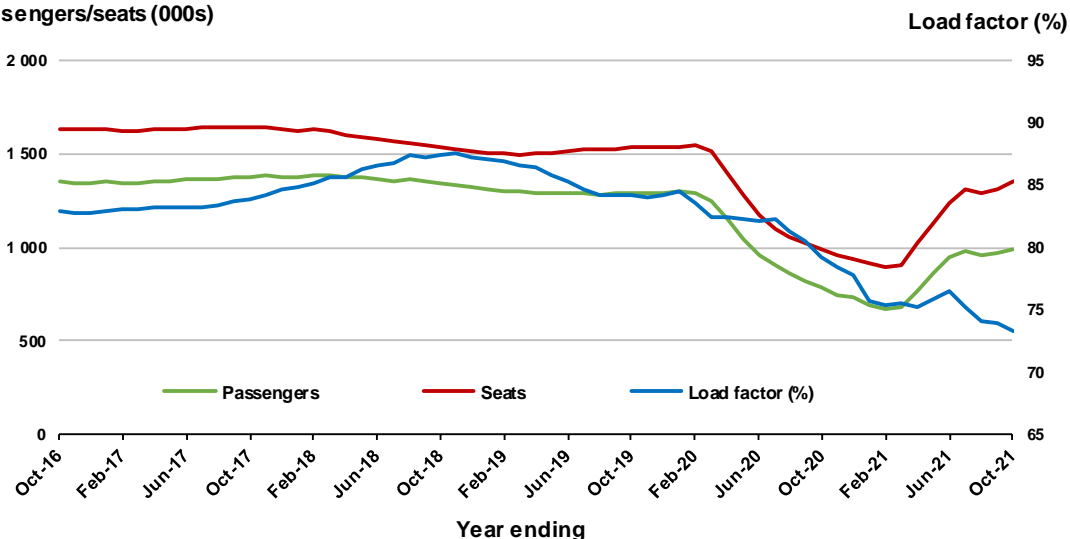


Moving annual data

	YE Oct 2020	YE Oct 2021	% Change
Passengers carried (000s)	782.7	989.6	26.4
Seats (000s)	987.6	1 349.7	36.7
Load factor %	79.3	73.3	-5.9 *
Aircraft trips	7 180	8 547	19.0

* percentage point difference

Passengers/seats (000s)

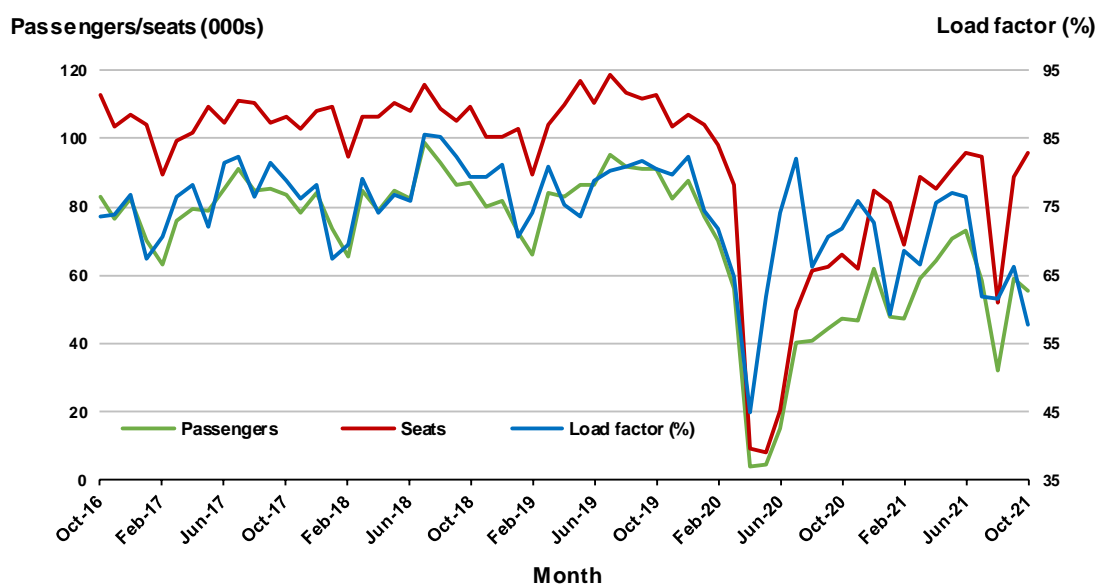


2. Brisbane - Townsville

Monthly data

	Oct 2020	Oct 2021	% Change
Passengers carried (000s)	47.4	55.4	16.7
Seats (000s)	65.9	95.6	44.9
Load factor %	71.9	57.9	-14.0 *
Aircraft trips	427	577	NA

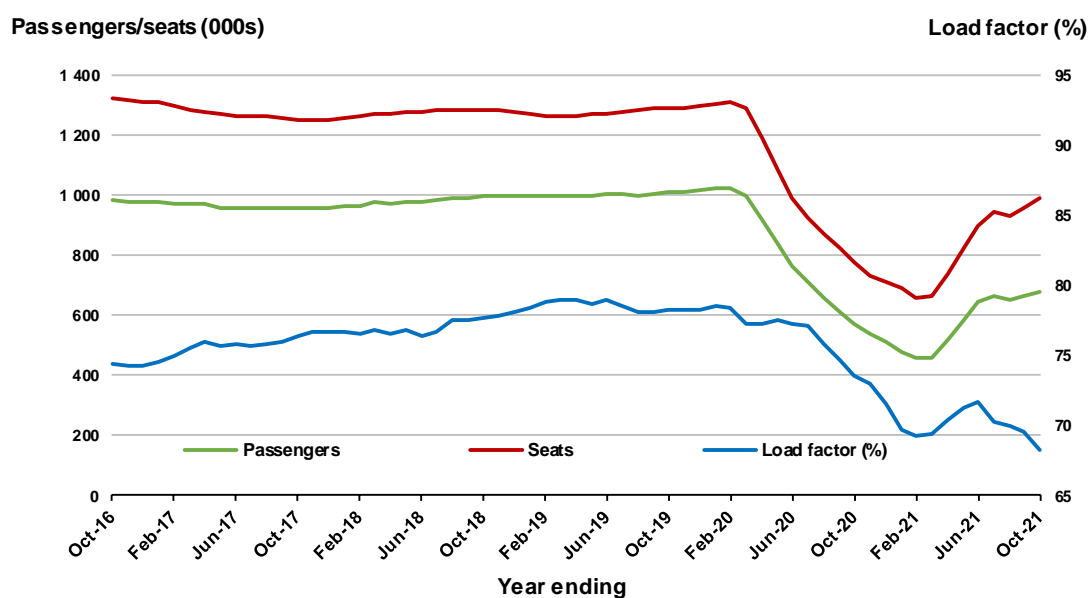
* percentage point difference



Moving annual data

	YE Oct 2020	YE Oct 2021	% Change
Passengers carried (000s)	571.1	676.1	18.4
Seats (000s)	776.0	989.4	27.5
Load factor %	73.6	68.3	-5.3 *
Aircraft trips	5 277	5 998	13.7

* percentage point difference

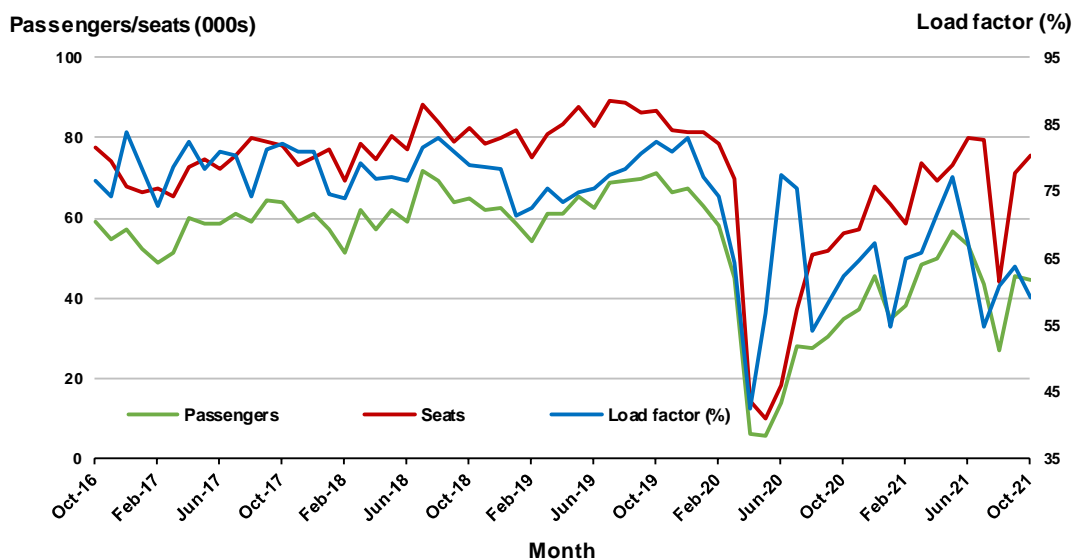


3. Brisbane - Mackay

Monthly data

	Oct 2020	Oct 2021	% Change
Passengers carried (000s)	34.9	44.7	28.0
Seats (000s)	56.0	75.7	35.2
Load factor %	62.4	59.1	-3.3 *
Aircraft trips	392	490	25.0

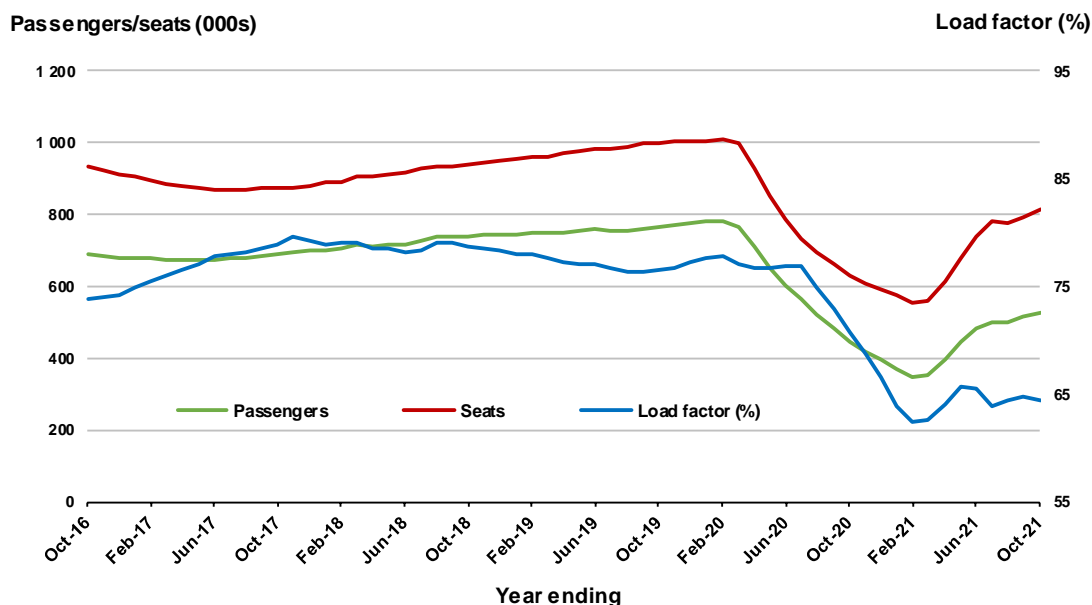
* percentage point difference



Moving annual data

	YE Oct 2020	YE Oct 2021	% Change
Passengers carried (000s)	446.4	524.1	17.4
Seats (000s)	631.6	813.7	28.8
Load factor %	70.7	64.4	-6.3 *
Aircraft trips	4 962	5 495	10.7

* percentage point difference



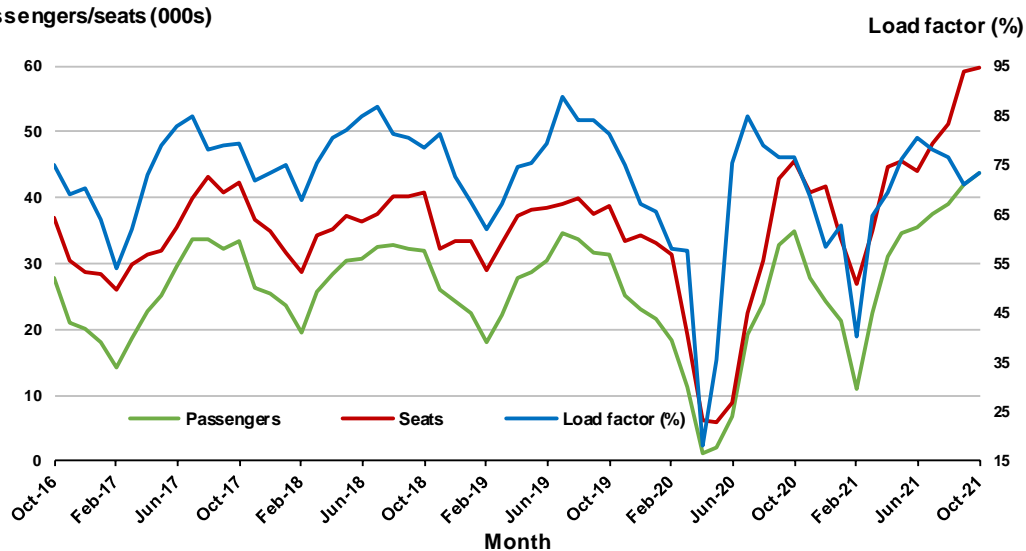
4. Broome - Perth

Monthly data

	Oct 2020	Oct 2021	% Change
Passengers carried (000s)	35.0	43.7	25.0
Seats (000s)	45.6	59.7	30.8
Load factor %	76.7	73.3	-3.4 *
Aircraft trips	294	350	19.0

* percentage point difference

Passengers/seats (000s)

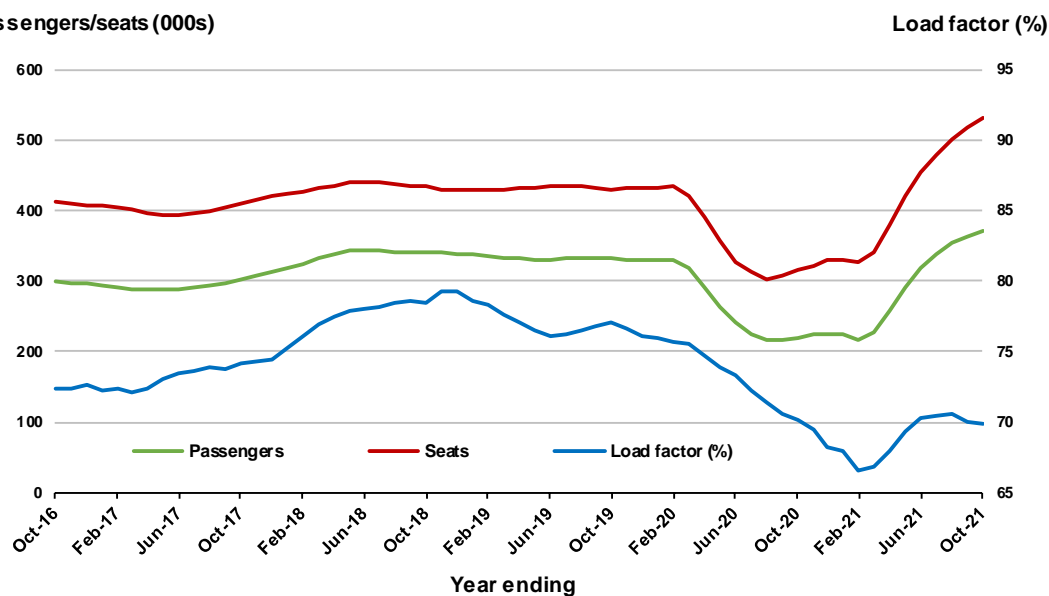


Moving annual data

	YE Oct 2020	YE Oct 2021	% Change
Passengers carried (000s)	220.3	370.6	68.3
Seats (000s)	314.2	530.7	68.9
Load factor %	70.1	69.8	-0.3 *
Aircraft trips	2 374	3 354	41.3

* percentage point difference

Passengers/seats (000s)



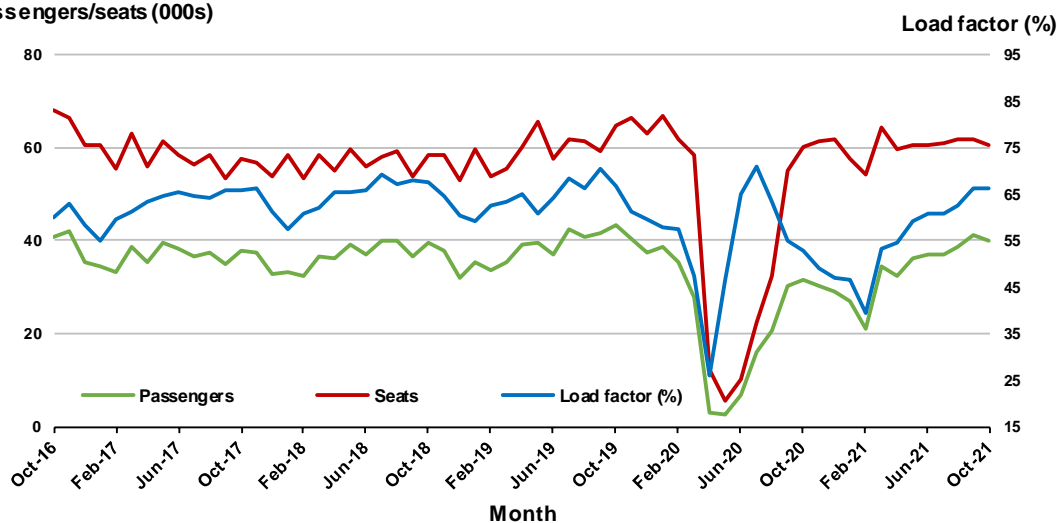
5. Karratha - Perth

Monthly data

	Oct 2020	Oct 2021	% Change
Passengers carried (000s)	31.8	40.2	26.4
Seats (000s)	60.1	60.4	0.6
Load factor %	52.9	66.5	13.6 *
Aircraft trips	376	371	-1.3

* percentage point difference

Passengers/seats (000s)

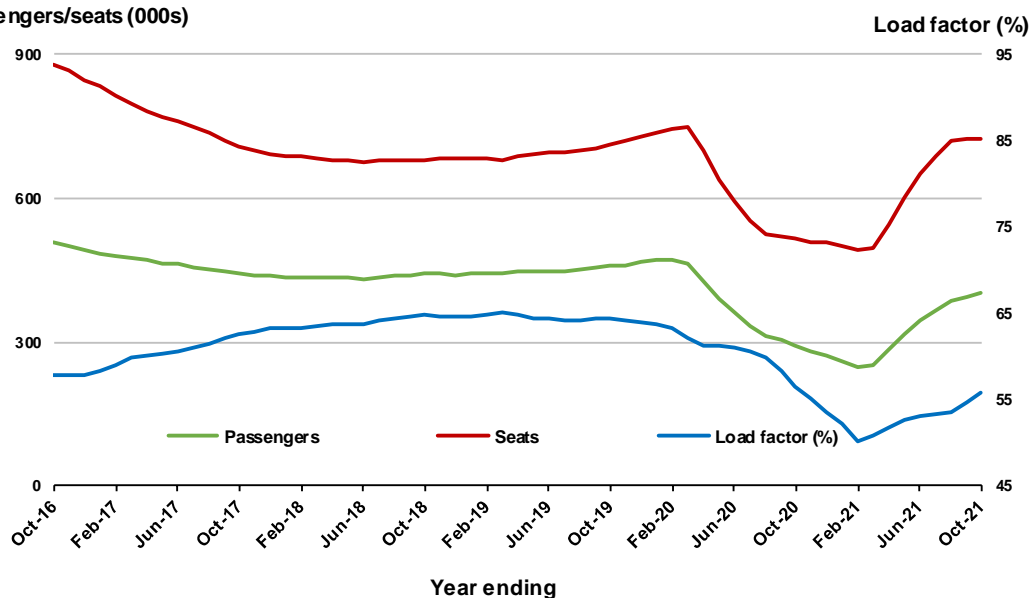


Moving annual data

	YE Oct 2020	YE Oct 2021	% Change
Passengers carried (000s)	291.2	404.3	38.8
Seats (000s)	514.9	725.7	41.0
Load factor %	56.5	55.7	-0.8 *
Aircraft trips	3 636	4 462	22.7

* percentage point difference

Passengers/seats (000s)



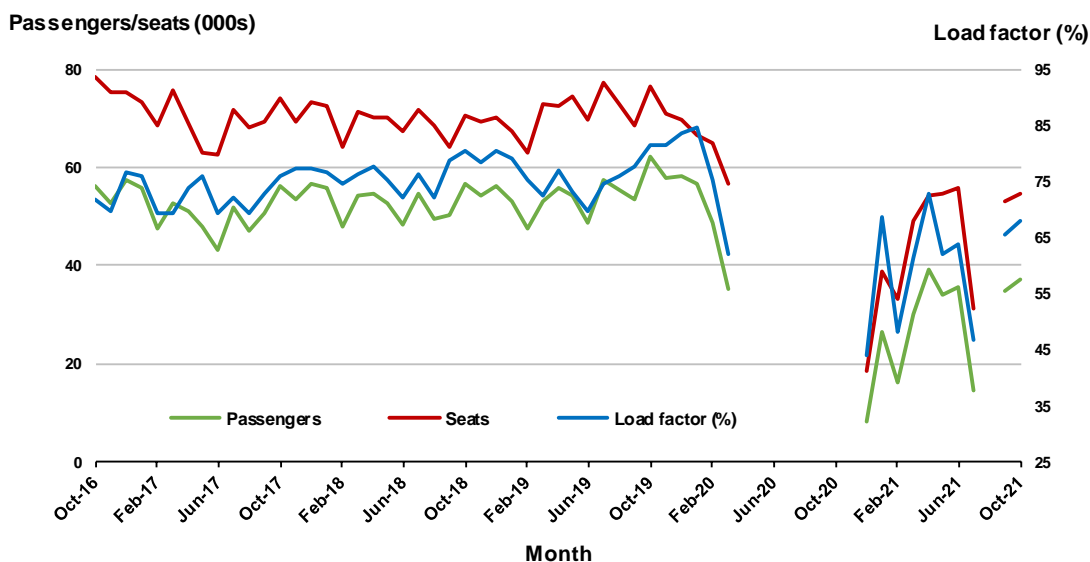
6. Adelaide - Perth

Monthly data

	Oct 2020	Oct 2021	% Change
Passengers carried (000s)	..	37.2	NA
Seats (000s)	..	54.6	NA
Load factor %	..	68.1	NA *
Aircraft trips	..	343	NA

* percentage point difference

.. data not available for release



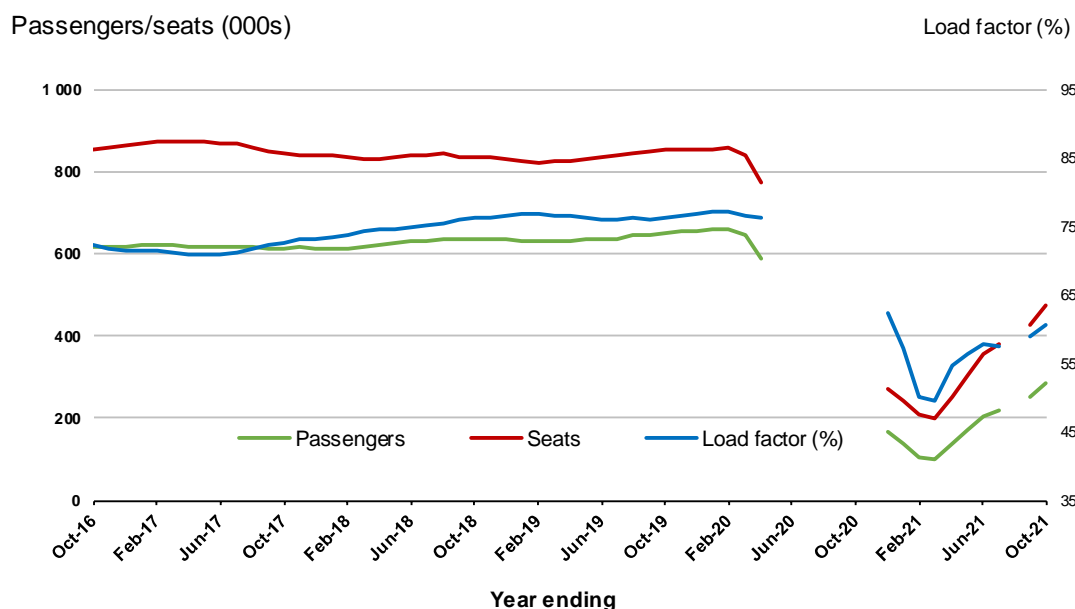
(a) May to November 2020 and August 2021 data not available for release

Moving annual data

	YE Oct 2020	YE Oct 2021	% Change
Passengers carried (000s)	..	287.1	NA
Seats (000s)	..	472.7	NA
Load factor %	..	60.7	NA *
Aircraft trips	..	3 113	NA

* percentage point difference

.. data not available for release



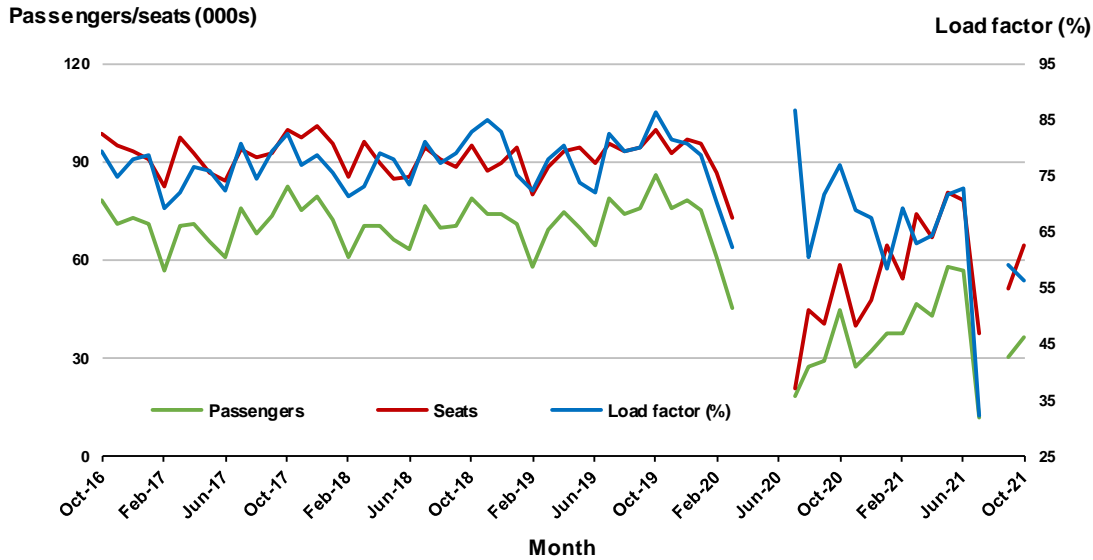
(a) May to November 2020 and August 2021 moving annual totals are not available for release

7. Adelaide - Brisbane

Monthly data

	Oct 2020	Oct 2021	% Change
Passengers carried (000s)	44.8	36.2	-19.4
Seats (000s)	58.3	64.3	10.3
Load factor %	77.0	56.3	-20.7 *
Aircraft trips	345	386	11.9

* percentage point difference

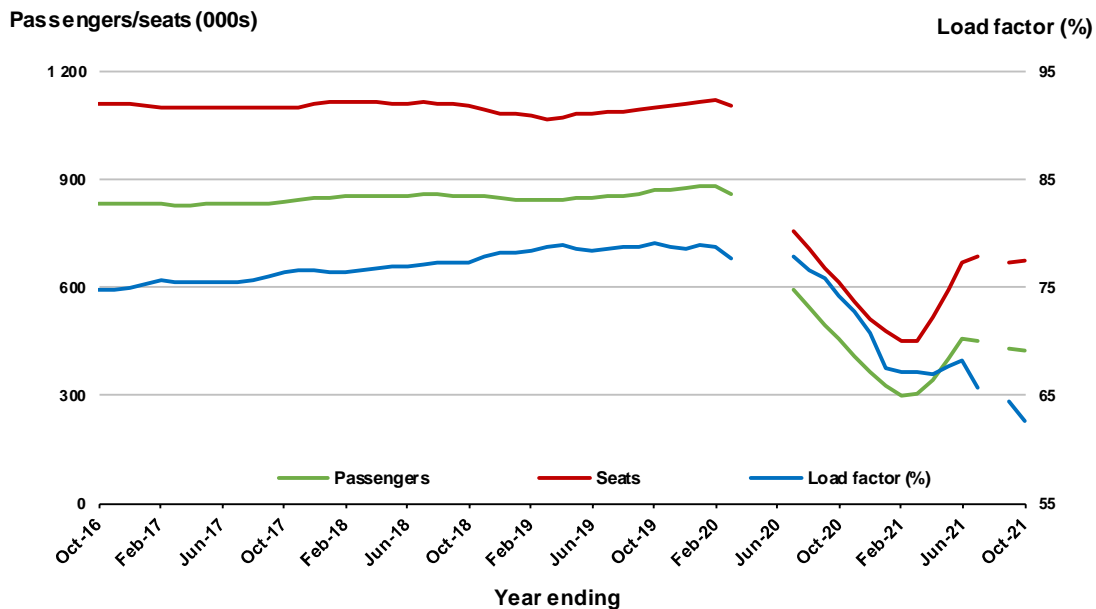


(a) April to June 2020 and August 2021 data not available for release

Moving annual data

	YE Oct 2020	YE Oct 2021	% Change
Passengers carried (000s)	456.4	424.2	-7.1
Seats (000s)	614.3	676.7	10.2
Load factor %	74.3	62.7	-11.6 *
Aircraft trips	3 631	4 124	13.6

* percentage point difference



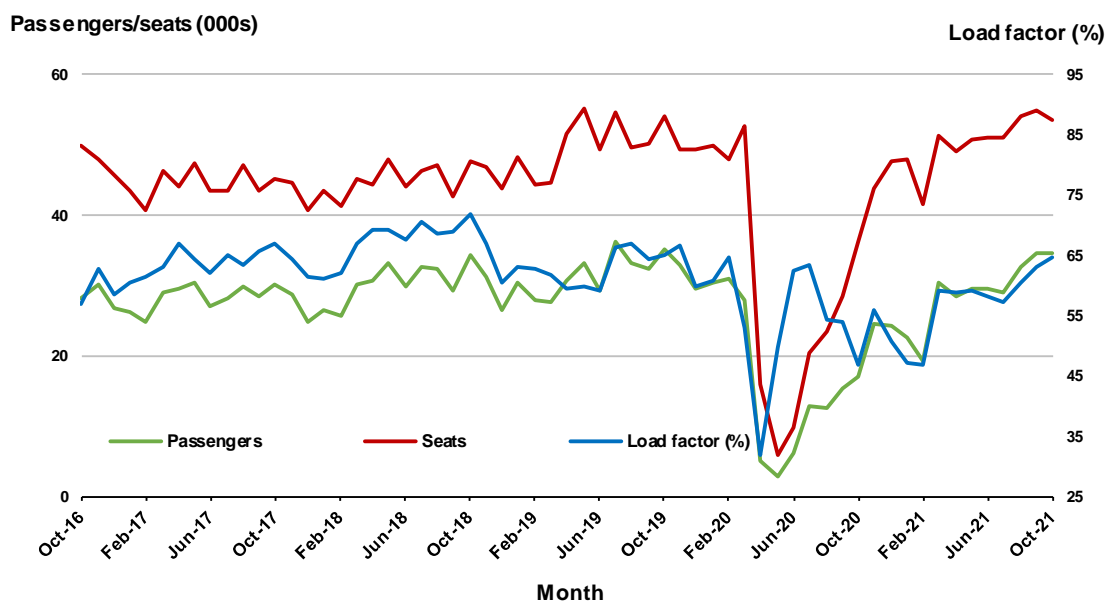
(a) April to June 2020 and August 2021 moving annual totals are not available for release

8. Perth - Port Hedland

Monthly data

	Oct 2020	Oct 2021	% Change
Passengers carried (000s)	17.0	34.6	103.4
Seats (000s)	36.3	53.5	47.1
Load factor %	46.8	64.7	17.9 *
Aircraft trips	240	374	55.8

* percentage point difference

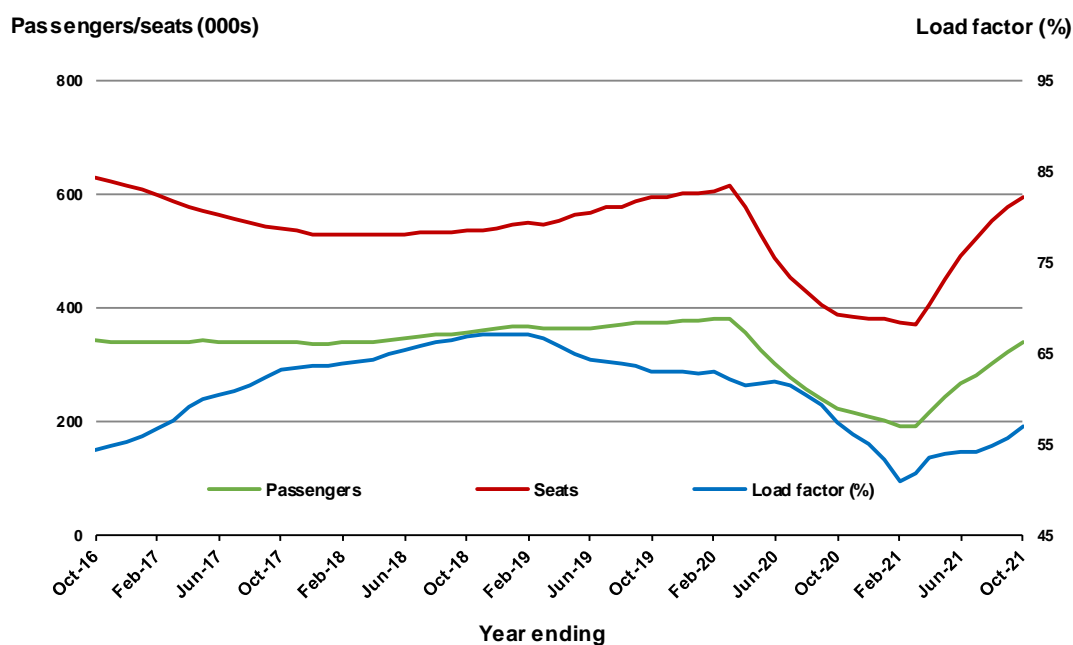


(a) April to June 2020 data not available for release

Moving annual data

	YE Oct 2020	YE Oct 2021	% Change
Passengers carried (000s)	223.5	339.6	51.9
Seats (000s)	389.0	596.0	53.2
Load factor %	57.5	57.0	-0.5 *
Aircraft trips	2 843	4 245	49.3

* percentage point difference



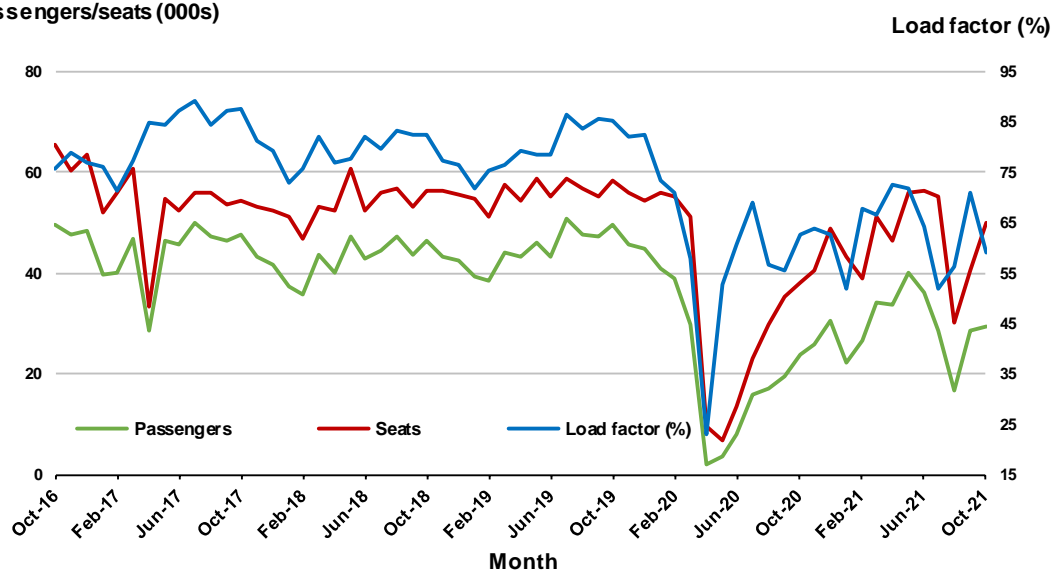
9. Brisbane - Rockhampton

Monthly data

	Oct 2020	Oct 2021	% Change
Passengers carried (000s)	23.7	29.5	NA
Seats (000s)	37.9	49.9	NA
Load factor %	62.5	59.1	NA *
Aircraft trips	385	475	NA

* percentage point difference

Passengers/seats (000s)

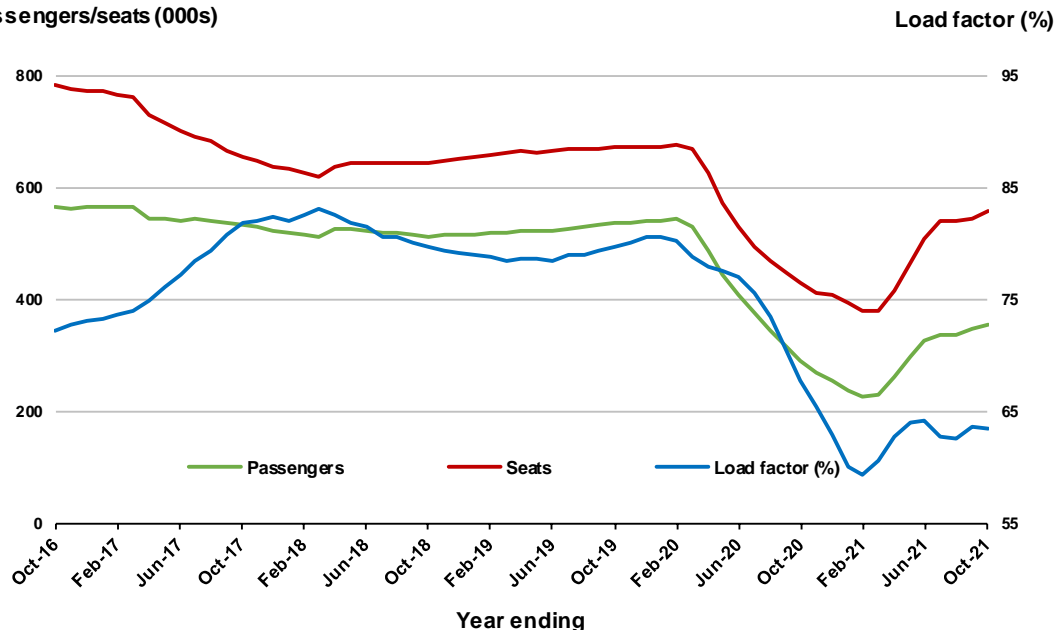


Moving annual data

	YE Oct 2020	YE Oct 2021	% Change
Passengers carried (000s)	289.6	352.7	NA
Seats (000s)	427.4	556.5	NA
Load factor %	67.8	63.4	NA *
Aircraft trips	4 794	5 520	NA

* percentage point difference

Passengers/seats (000s)

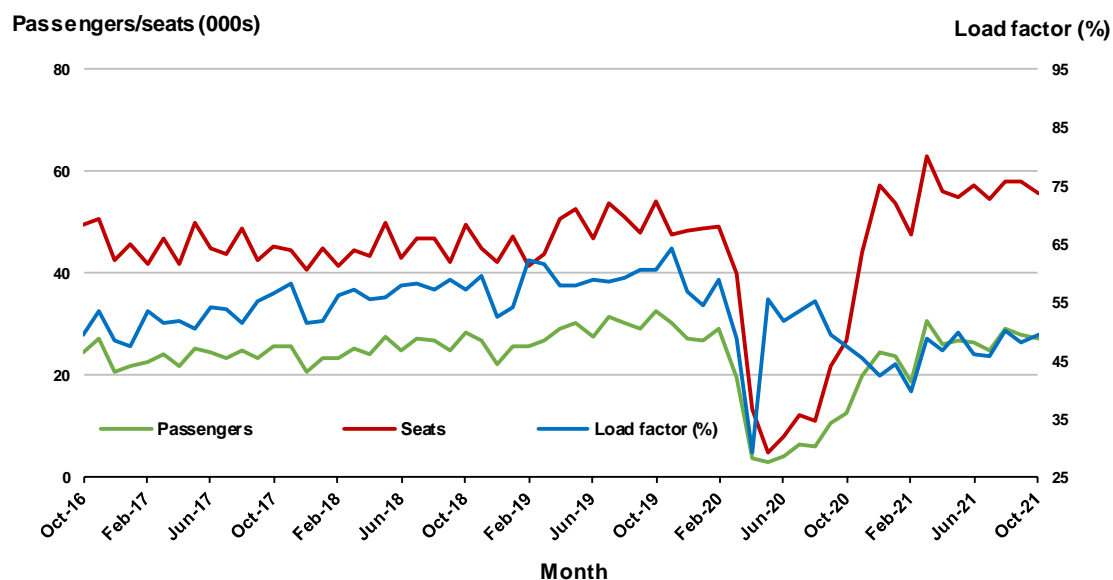


10. Newman - Perth

Monthly data

	Oct 2020	Oct 2021	% Change
Passengers carried (000s)	12.7	27.5	115.3
Seats (000s)	26.9	55.6	106.7
Load factor %	47.4	49.4	2.0 *
Aircraft trips	173	341	97.1

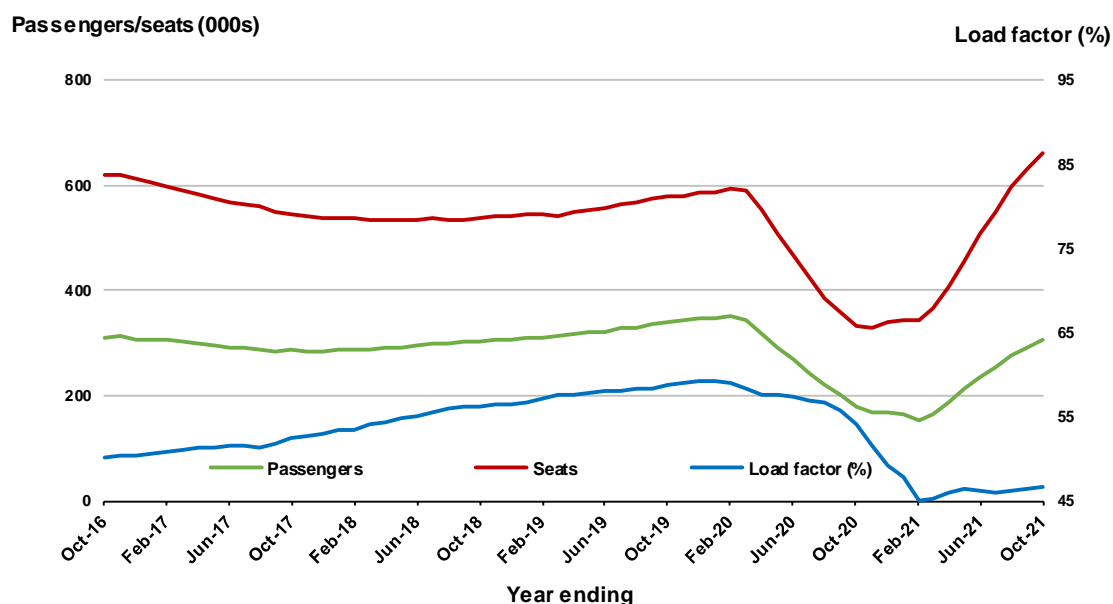
* percentage point difference



Moving annual data

	YE Oct 2020	YE Oct 2021	% Change
Passengers carried (000s)	180.3	307.4	70.5
Seats (000s)	332.6	660.5	98.6
Load factor %	54.2	46.5	-7.7 *
Aircraft trips	2 269	4 023	77.3

* percentage point difference



TOP FIFTY REGIONAL AIRPORTS

Table 10: Top fifty regional airports (000s) — passenger movements, monthly

Airport	Oct 2020	Oct 2021	% Change
1 Cairns	133.4	166.8	25.1
2 Darwin	65.0	95.6	47.1
3 Townsville	67.8	85.3	25.8
4 Mackay	41.3	54.6	32.3
5 Hobart	8.9	53.7	500.3
6 Broome	36.1	47.0	30.0
7 Karratha	31.8	40.3	26.9
8 Port Hedland	17.0	34.6	103.4
9 Rockhampton	26.0	33.1	27.3
10 Newman	12.7	27.5	115.3
11 Proserpine	20.8	26.7	28.2
12 Hamilton Island	18.0	24.3	35.0
13 Kalgoorlie	18.0	24.1	33.9
14 Launceston	6.3	23.8	277.1
15 Alice Springs	22.2	21.2	- 4.6
16 Paraburdoo	13.8	17.3	25.5
17 Mount Isa	14.2	16.2	13.7
18 Port Lincoln	9.1	13.0	42.0
19 Emerald	8.1	12.2	51.4
20 Gladstone	8.6	11.2	30.2
21 Kununurra	5.7	10.8	91.1
22 Learmonth	7.1	10.1	42.6
23 Thursday Island	7.0	9.3	33.5
24 Olympic Dam	4.4	8.6	97.0
25 Ballina	51.2	8.0	- 84.4
26 Moranbah	3.2	7.4	130.4
27 Geraldton	3.5	7.1	104.8
28 Weipa	4.4	6.4	45.9
29 Bundaberg	2.3	5.2	123.3
30 Cloncurry	2.3	4.7	106.6
31 Gove	5.3	4.7	- 12.8
32 Albany	3.4	4.5	32.4
33 Esperance	3.4	4.4	29.7
34 Roma	3.2	4.4	36.6
35 Whyalla	2.5	4.1	66.9
36 Groote Eylandt	1.9	4.1	114.8
37 Ayers Rock	2.4	3.4	41.3
38 Longreach	2.5	3.0	17.8
39 Mount Gambier	1.3	2.9	123.9
40 Newcastle	2.1	2.9	37.4
41 Christmas Island	2.1	2.5	22.3
42 Carnarvon	2.1	2.5	18.5
43 Hervey Bay	0.8	2.5	203.5
44 King Island	2.1	2.4	13.6
45 Toowoomba Wellcamp	2.0	2.2	8.6
46 Dubbo	5.9	2.2	- 63.7
47 Palm Island	2.4	2.0	- 16.9
48 Onslow	..	1.9	NA
49 Bamaga	1.1	1.9	69.9
50 Flinders Island	1.8	1.9	8.6
Total top 50 regional airports	718.5	966.1	34.5
Total regional airports	787.7	1 019.0	29.4
Total domestic network	1 818.7	2 097.8	15.3

Note: Airport passenger movement numbers are the sum of passenger arrivals and departures at each airport.

Regional airports are defined as airports which are, according to Australian Statistical Geography

Standard (ASGS), not based in Major Cities.

.. Data not available for release.

Table 11: Top fifty regional airports (000s) — passenger movements, annual

Airport	YE Oct 2020	YE Oct 2021	% Change
1 Cairns	1 959.8	2 262.9	15.5
2 Hobart	1 221.5	1 232.6	0.9
3 Darwin	762.1	1 097.9	44.1
4 Townsville	880.1	1 068.0	21.3
5 Mackay	506.9	630.8	24.4
6 Launceston	616.6	612.4	-0.7
7 Newcastle	505.5	486.8	-3.7
8 Ballina	379.9	464.6	22.3
9 Broome	242.2	407.2	68.1
10 Karratha	292.2	406.1	39.0
11 Rockhampton	309.8	389.8	25.9
12 Port Hedland	228.6	340.8	49.1
13 Hamilton Island	227.2	321.3	41.4
14 Newman	180.7	308.4	70.6
15 Proserpine	234.4	290.6	24.0
16 Alice Springs	241.3	277.7	15.1
17 Kalgoorlie	170.6	245.1	43.7
18 Paraburdoo	111.1	192.3	73.0
19 Mount Isa	155.6	184.0	18.3
20 Emerald	113.2	139.2	23.0
21 Gladstone	130.5	137.4	5.3
22 Port Lincoln	104.4	133.1	27.5
23 Coffs Harbour	171.2	120.5	-29.6
24 Kununurra	60.5	105.0	73.5
25 Dubbo	99.4	99.6	0.3
26 Learmonth	57.1	93.5	63.8
27 Thursday Island	61.5	91.1	48.2
28 Ayers Rock	146.9	79.7	-45.7
29 Olympic Dam	41.7	78.8	89.1
30 Weipa	44.8	72.3	61.4
31 Albury	98.1	72.1	-26.5
32 Moranbah	58.9	71.2	21.0
33 Geraldton	50.4	70.2	39.3
34 Mildura	98.2	69.3	-29.5
35 Bundaberg	71.9	68.7	-4.5
36 Wagga Wagga	85.7	66.0	-23.1
37 Port Macquarie	88.7	62.5	-29.6
38 Gove	54.5	56.3	3.2
39 Tamworth	78.8	55.7	-29.3
40 Hervey Bay	66.2	47.5	-28.3
41 Roma	47.9	47.0	-2.0
42 Albany	36.9	46.3	25.5
43 Whyalla	36.7	44.2	20.4
44 Cloncurry	33.3	43.9	32.1
45 King Island	30.6	43.8	43.2
46 Esperance	34.1	43.8	28.5
47 Devonport	58.4	41.0	-29.8
48 Armidale	52.1	39.0	-25.3
49 Orange	34.7	38.3	10.4
50 Groote Eylandt	17.9	36.8	105.4
Total top 50 regional airports	11 391.1	13 432.9	17.9
Total regional airports	12 295.5	14 334.0	16.6
Total domestic network	53 351.2	45 488.3	-14.7

Note: Airport passenger movement numbers are the sum of passenger arrivals and departures at each airport. Regional airports are defined as airports which are, according to Australian Statistical Geography Standard (ASGS), not based in Major Cities.

DOMESTIC CHARTER ACTIVITY

Table 12: Charter passengers carried and aircraft trips - monthly activity

	Oct 2020	Oct 2021	% Change
Total domestic charter passengers	309 723	277 152	-10.5
Total domestic charter aircraft trips	6 043	5 057	-16.3

Note: Helicopter, joyflights and sightseeing charter flights not included.

Table 13: Charter passengers carried and aircraft trips - annual activity

	YE Oct 2020	YE Oct 2021	% Change
Total domestic charter passengers	3 037 434	3 371 650	11.0
Total domestic charter aircraft trips	61 611	64 065	4.0

Note: Helicopter, joyflights and sightseeing charter flights not included.

Table 14: Domestic airports - charter activity - monthly

	Oct 2020	Oct 2021	% Change
Total domestic charter passenger movements	619 446	554 304	-10.5
Total domestic charter aircraft movements	12 086	10 114	-16.3
Perth airport charter passenger movements	233 827	210 945	-9.8
Perth airport charter aircraft movements	3 932	3 530	-10.2

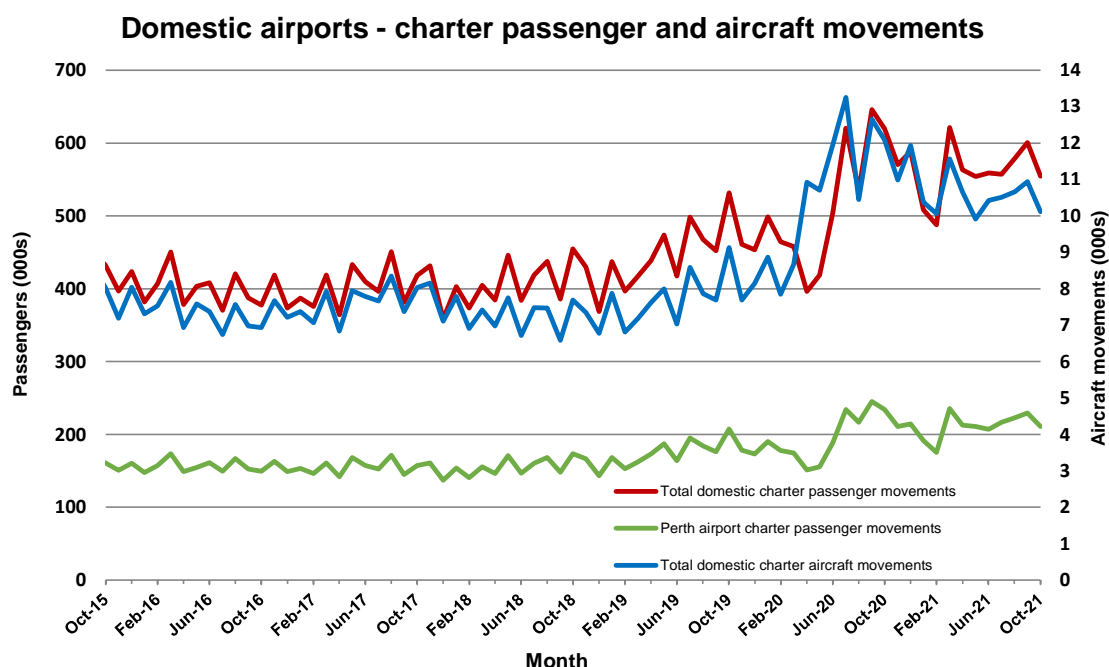
Note: Helicopter, joyflights and sightseeing charter flights not included.

Charter passenger and aircraft movement numbers are the sum of arrivals and departures at each airport.

Table 15: Domestic airports - charter activity - annual

	YE Oct 2020	YE Oct 2021	% Change
Total domestic charter passenger movements	6 074 868	6 743 300	11.0
Total domestic charter aircraft movements	123 222	128 130	4.0
Perth airport charter passenger movements	2 319 652	2 537 959	9.4
Perth airport charter aircraft movements	41 720	43 214	3.6

Note: Helicopter, joyflights and sightseeing charter flights not included.



DEFINITIONS

Aircraft Trips	The number of flight stages. A return flight counts as two aircraft trips.
Airport Movements	Airport movements (passenger and cargo) are measured once on arrival and once on departure. Each domestic trip generates two movements at airports. For example, a trip from Melbourne to Sydney will be counted twice, as a departure at Melbourne and as an arrival at Sydney. At the national level, the sum of all domestic airport traffic will therefore be equal to twice the number of trips undertaken.
Available Seat Kilometres (ASKs)	Calculated by multiplying the number of seats available on each flight stage, by the distance in kilometres between the ports. The distances used are Great Circle Distances.
City-Pair	The ports shown make up the city-pair route. Passenger movements shown for a city pair reflect total traffic in both directions.
Flight Stage	The operation of an aircraft from take-off to landing.
Load Factor	The total revenue passenger kilometres performed as a percentage of the total available seat kilometres.
Passengers Carried	Revenue passengers carried.
Regular Public Transport Services (RPT)	All air service operations in which aircraft are available for the transport of members of the public and are conducted in accordance with fixed schedules. It does not include charter or other non-scheduled operations.
Revenue Passengers	All passengers paying any fare. Frequent flyer redemption travellers are regarded as revenue passengers.
Revenue Passenger Kilometres (RPKs)	Calculated by multiplying the number of revenue passengers travelling on each flight stage, by the distance in kilometres between the ports. The distances used are Great Circle Distances.
Traffic on board by stages	The total of all traffic (revenue passengers) on each flight stage between two directly connected airports.
..	Not available for confidentiality or other reasons.
NA	Not applicable.