



Australian Government

Department of Infrastructure, Transport,
Regional Development, Communications, Sport and the Arts

Bureau of Infrastructure and Transport Research Economics
STATISTICAL REPORT



Aviation

**Domestic aviation activity
November 2025**

The Department of Infrastructure, Transport, Regional Development, Communications, Sport and the Arts acknowledges the Traditional Custodians of Country of the land on which we work and live.

We recognise and respect the continuing connections to land, waters and communities.

We pay our respects to them and their cultures and to their Elders both past and present and to all Aboriginal and Torres Strait Islander people.

© Commonwealth of Australia 2026

ISSN: 1832 – 1968

BITRE Reference: 2026-005

Ownership of intellectual property rights in this publication

Unless otherwise noted, copyright (and any other intellectual property rights, if any) in this publication is owned by the Commonwealth of Australia (referred to below as the Commonwealth).

Disclaimer

The material contained in this publication is made available on the understanding that the Commonwealth is not providing professional advice, and that users exercise their own skill and care with respect to its use, and seek independent advice if necessary.

The Commonwealth makes no representations or warranties as to the contents or accuracy of the information contained in this publication. To the extent permitted by law, the Commonwealth disclaims liability to any person or organisation in respect of anything done, or omitted to be done, in reliance upon information contained in this publication.

Creative Commons licence

With the exception of (a) the Coat of Arms; and (b) the Department of Infrastructure, Transport, Regional Development, Communications, Sport and the Arts' photos and graphics, copyright in this publication is licensed under a Creative Commons Attribution 3.0 Australia Licence.

Creative Commons Attribution 3.0 Australia Licence is a standard form licence agreement that allows you to copy, communicate and adapt this publication provided that you attribute the work to the Commonwealth and abide by the other licence terms. A summary of the licence terms is available from <http://creativecommons.org/licenses/by/3.0/au/deed.en>.

The full licence terms are available from <http://creativecommons.org/licenses/by/3.0/au/legalcode>.

Use of the Coat of Arms

The Department of the Prime Minister and Cabinet sets the terms under which the Coat of Arms is used. Please refer to the Department's Commonwealth Coat of Arms and Government branding web page <http://www.dpmc.gov.au/guidelines/index.cfm#brand> and, in particular, the Guidelines on the use of the Commonwealth Coat of Arms publication.

An appropriate citation for this report is:

Bureau of Infrastructure and Transport Research Economics (BITRE), 2025, Domestic aviation activity, Statistical Report, BITRE, Canberra ACT.

Contact us

This publication is available in PDF format. All other rights are reserved, including in relation to any Departmental logos or trademarks which may exist. For enquiries regarding the licence and any use of this publication, please contact:

Bureau of Infrastructure and Transport Research Economics (BITRE)
Department of Infrastructure, Transport, Regional Development, Communications, Sport and the Arts
GPO Box 501, Canberra ACT 2601, Australia

Email: avstats@infrastructure.gov.au

Website: www.bitre.gov.au

Inquiries: Marko.Rodic2@infrastructure.gov.au (02) 6136 7995

FOREWORD

This report provides an overview of domestic (including charter) commercial aviation activity in Australia for the month of November 2025.

The data covers revenue passengers carried by Australian-registered operators of scheduled Regular Public Transport (RPT) services over Australian flight stages and fixed-wing charter operators. These estimates include passengers carried between domestic airports on international flights operated by these carriers. The passengers carried refer to traffic on board by stages.

Estimates of passengers and aircraft movements for charter aviation are included in this publication, where BITRE confidentiality standards are met.

Individual routes shown are restricted to those with an average exceeding 8,000 passengers per month over the previous six months where two or more airlines operate in competition.

Information on the total network for the month of November 2025 and on the RPT network for the month of November 2025 is presented on page 2, with estimates for the year ended November 2025 presented on page 3.

Detailed information on individual routes can be found in the RPT summary pages 4-13 of this publication. For the month of November 2025, there are 62 individual routes published.

The top ten airports in terms of RPT passenger movements are shown on page 14.

Data on domestic RPT cargo movements at the top five cargo airports are provided on page 15. The table includes cargo carried on passenger flights operated by the Qantas group (including Jetstar), Virgin Australia, Air North and Skippers as well as the cargo carried by dedicated freighter aircraft operated by Qantas Freight and Team Global Express (formerly Toll).

The long-term trends for the top ten competitive RPT routes are presented graphically on pages 16-25.

Domestic RPT passenger movements at regional airports are shown on pages 26-27.

Tables providing estimates of domestic charter aviation activity are shown on page 28. BITRE confidentiality standards restrict publication of detailed estimates for individual Australian airports, with the exception of Perth Airport.

A list of definitions can be found on page 29.

This report was prepared by the Aviation Statistics Section of the Bureau of Infrastructure and Transport Research Economics with data provided by airlines.

Estimates are included where data were not available and data presented in this publication may contain revisions to previously published data.

Where figures have been rounded, discrepancies may occur between sums of component items and totals, and in percentage changes which are derived from figures prior to rounding.

CONTENTS

Highlights	1
Total network.....	2
RPT network	3
Top competitive routes.....	4
Top ten airports – passenger movements.....	14
Top five airports – cargo movements.....	15
Top ten routes	16
1. Melbourne – Sydney	16
2. Brisbane – Sydney.....	17
3. Brisbane – Melbourne	18
4. Adelaide – Melbourne	19
5. Gold Coast – Sydney	20
6. Gold Coast – Melbourne	21
7. Melbourne – Perth	22
8. Adelaide – Sydney	23
9. Perth – Sydney	24
10. Hobart – Melbourne	25
Top fifty regional airports	26
Domestic charter activity.....	28
Definitions	29

This page is intentionally left blank.

HIGHLIGHTS

There were 5.55 million passengers carried on Australian domestic commercial aviation (including charter operations) in November 2025, compared with 5.43 million in November 2024 (up 2.2%). This is also an increase of 1.2% on pre-COVID November 2019 passenger numbers (5.49 million).

5.20 million passengers were carried on Regular Public Transport (RPT) flights in November 2025 (excluding charter operations), an increase of 2.1% compared to November 2024.

For the month of November 2025, there were 49.5 thousand RPT aircraft trips, virtually no change compared to November 2024.

For the year ending November 2025, there were 60.24 million RPT passengers, an increase of 1.9% on the year ending November 2024.

RPT revenue passenger kilometres (RPKs) performed were 6.19 billion for the month, compared with 6.04 billion in November 2024 (up 2.4%).

Capacity, measured by available seat kilometres (ASKs), increased to 7.27 billion in November 2025 compared to 6.94 billion in November 2024 (up 4.7%).

The industry wide load factor (RPKs/ASKs) decreased from 87.0% in November 2024 to 85.2% in November 2025. The highest load factor (94.1%) was recorded on the Adelaide – Gold Coast route while the lowest load factor (51.2%) was recorded on the Brisbane – Moranbah route.

For the month of November 2025, Melbourne – Sydney was Australia's busiest RPT route with 703.8 thousand passengers, followed by Brisbane – Sydney with 388.5 thousand passengers and Brisbane – Melbourne with 319.1 thousand passengers.

Sydney was Australia's busiest domestic airport with 2.21 million passenger movements in November 2025, followed by Melbourne with 2.14 million passenger movements and Brisbane with 1.52 million passenger movements.

Total cargo movements at Australian airports on domestic RPT flights were 27.3 thousand tonnes in November 2025, a decrease of 2.7% compared with November 2024.

In November 2025, there were 2.12 million domestic passenger movements through regional airports, an increase of 1.3% from November 2024. Out of the top 50 regional airports, the strongest increase was recorded at Devonport Airport (up 24.0% on November 2024), while the largest decrease was recorded at Paraburdoo Airport (down 22.8% on November 2024).

Fixed-wing charter operators carried 353.4 thousand passengers in November 2025, an increase of 3.4% compared with November 2024. Perth Airport accounted for 35.7% of all charter passengers in Australia.

TOTAL NETWORK

Summary of monthly commercial aviation activity

	Nov 2024	Nov 2025	% Change
Total passengers carried (millions)	5.43	5.55	2.2
Aircraft trips (000s)	55.4	55.4	0.1

Note: Regular Public Transport and charter aviation activity
Helicopter, joy flights and sightseeing charter flights not included.

RPT NETWORK

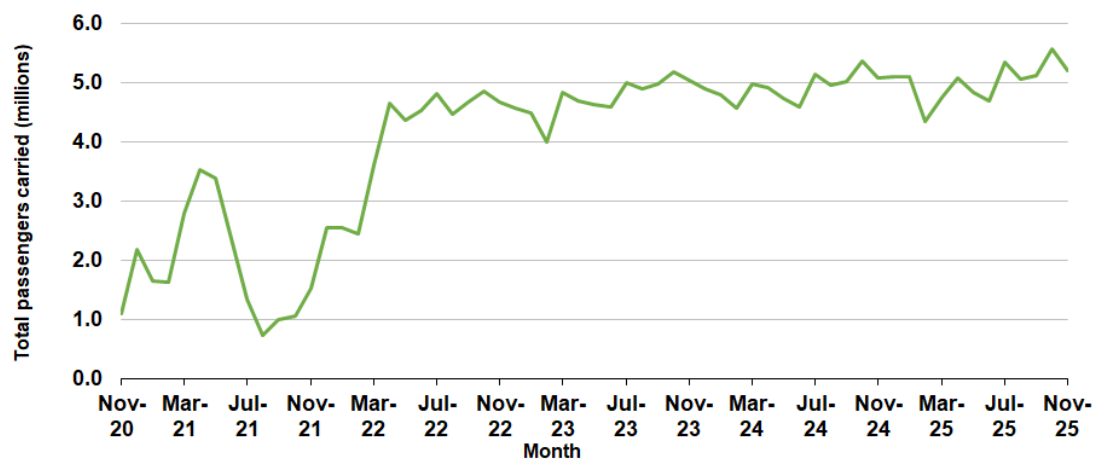
Summary of monthly RPT activity

	Nov 2024	Nov 2025	% Change
Total passengers carried (millions)	5.09	5.20	2.1
Revenue passenger kilometres (billions)	6.04	6.19	2.4
Available seats (millions)	5.94	6.22	4.6
Available seat kilometres (billions)	6.94	7.27	4.7
Load factor %	87.0	85.2	-1.8 *
Aircraft trips (000s)	49.5	49.5	0.0

* percentage point difference

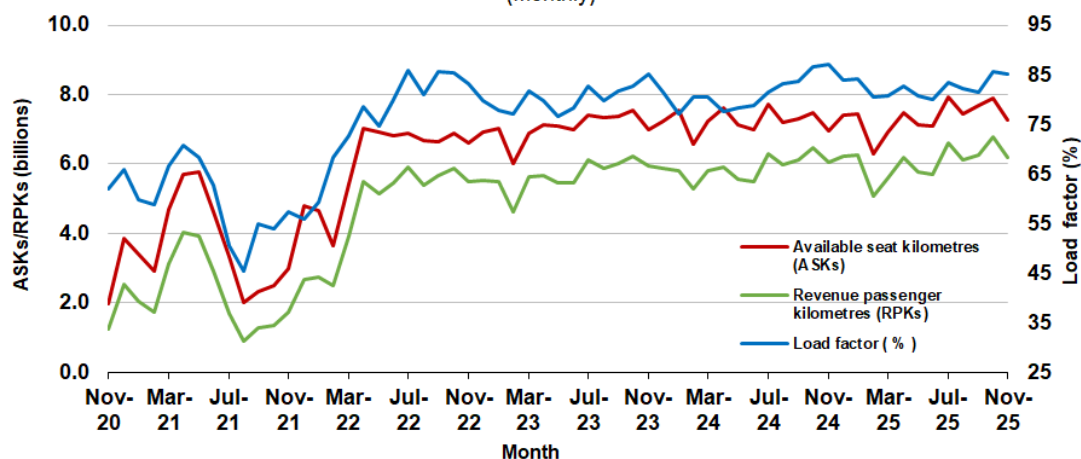
Domestic RPT passenger traffic

(monthly)



RPT Network utilisation

(monthly)



TOTAL NETWORK

Summary of annual commercial aviation activity

	YE Nov 2024	YE Nov 2025	% Change
Total passengers carried (millions)	63.41	64.54	1.8
Aircraft trips (000s)	688.2	675.1	-1.9

Note: Regular Public Transport and charter aviation activity
Helicopter, joy flights and sightseeing charter flights not included.

RPT NETWORK

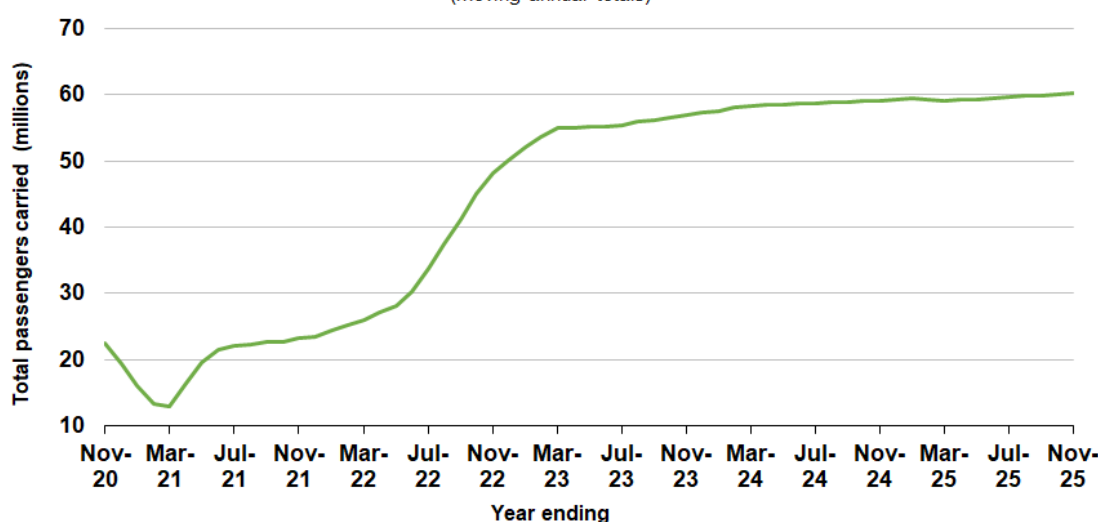
Summary of annual RPT activity

	YE Nov 2024	YE Nov 2025	% Change
Total passengers carried (millions)	59.10	60.24	1.9
Revenue passenger kilometres (billions)	70.68	72.74	2.9
Available seats (millions)	74.46	74.51	0.1
Available seat kilometres (billions)	86.87	88.05	1.4
Load factor %	81.4	82.6	1.2 *
Aircraft trips (000s)	614.7	601.6	-2.1

* percentage point difference

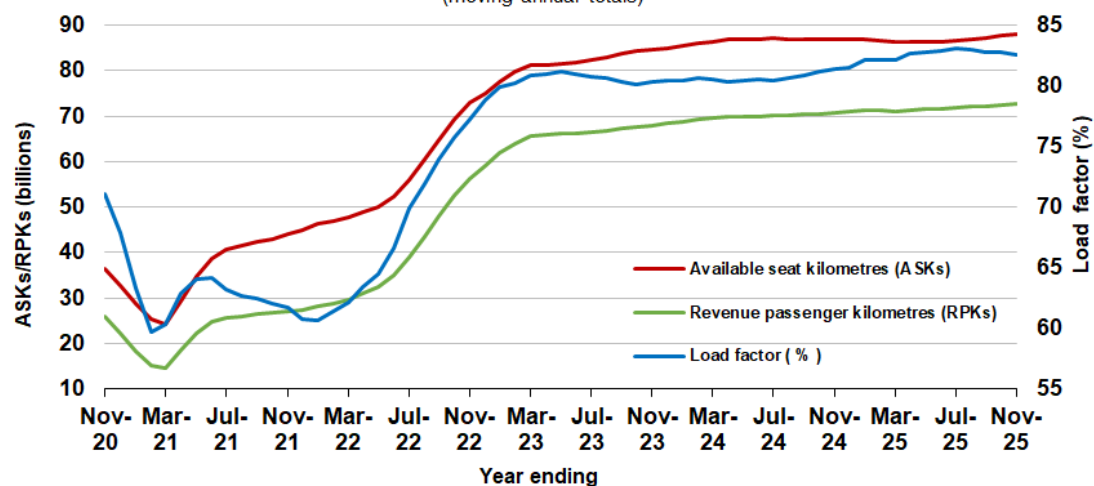
Domestic RPT passenger traffic

(moving annual totals)



RPT Network utilisation

(moving annual totals)



TOP COMPETITIVE ROUTES

Table 1: Passengers carried (000s) — annual activity

	City-Pair	YE Nov 2024	YE Nov 2025	% Change
1	Melbourne - Sydney	8 016.9	8 120.5	1.3
2	Brisbane - Sydney	4 353.1	4 369.2	0.4
3	Brisbane - Melbourne	3 479.4	3 610.7	3.8
4	Gold Coast - Sydney	2 540.5	2 514.2	-1.0
5	Adelaide - Melbourne	2 325.0	2 374.0	2.1
6	Gold Coast - Melbourne	2 179.7	2 138.7	-1.9
7	Melbourne - Perth	2 022.1	2 100.7	3.9
8	Adelaide - Sydney	1 872.4	1 896.7	1.3
9	Perth - Sydney	1 630.4	1 745.6	7.1
10	Hobart - Melbourne	1 370.8	1 453.0	6.0
11	Brisbane - Cairns	1 294.7	1 308.0	1.0
12	Brisbane - Perth	1 078.5	1 140.5	5.8
13	Brisbane - Townsville	933.9	983.6	5.3
14	Canberra - Melbourne	1 015.0	981.6	-3.3
15	Cairns - Sydney	905.2	928.7	2.6
16	Launceston - Melbourne	861.8	891.1	3.4
17	Cairns - Melbourne	809.2	883.0	9.1
18	Adelaide - Brisbane	872.3	872.4	0.0
19	Hobart - Sydney	795.9	828.2	4.1
20	Brisbane - Mackay	758.5	812.0	7.0
21	Sunshine Coast - Sydney	776.0	795.6	2.5
22	Melbourne - Sunshine Coast	744.8	759.1	1.9
23	Adelaide - Perth	695.5	718.2	3.3
24	Karratha - Perth	605.3	677.9	12.0
25	Brisbane - Canberra	633.7	654.5	3.3
26	Canberra - Sydney	639.0	611.7	-4.3
27	Brisbane - Rockhampton	576.4	606.5	5.2
28	Brisbane - Newcastle	509.5	525.0	3.0
29	Perth - Port Hedland	473.9	483.3	2.0
30	Ballina - Sydney	520.7	471.2	-9.5
31	Melbourne - Newcastle	456.1	468.8	2.8
32	Newman - Perth	391.7	440.4	12.4
33	Kalgoorlie - Perth	365.9	389.9	6.5
34	Broome - Perth	353.7	373.4	5.6
35	Brisbane - Darwin	324.6	359.8	10.8
36	Launceston - Sydney	339.1	352.8	4.0
37	Brisbane - Hobart	303.8	321.3	5.7
38	Brisbane - Proserpine	277.8	293.7	5.7
39	Darwin - Melbourne	287.2	292.7	1.9
40	Adelaide - Gold Coast	276.5	280.0	1.3
41	Hamilton Island - Sydney	245.1	253.8	3.5
42	Brisbane - Gladstone	223.3	218.5	-2.2
43	Coffs Harbour - Sydney	206.8	200.2	-3.2
44	Adelaide - Canberra	184.8	196.6	6.4
45	Darwin - Perth	181.6	193.0	6.3
46	Brisbane - Emerald	186.2	188.5	1.2
47	Canberra - Gold Coast	184.1	177.7	-3.5
48	Dubbo - Sydney	174.0	172.5	-0.9
49	Adelaide - Port Lincoln	170.1	167.0	-1.8
50	Brisbane - Hamilton Island	160.5	167.0	4.0

continued

Table 1: (continued) Passengers carried (000s) — annual activity

	City-Pair	YE Nov 2024	YE Nov 2025	% Change
51	Sydney - Wagga Wagga	159.6	166.9	4.6
52	Port Macquarie - Sydney	165.2	165.6	0.3
53	Albury - Sydney	162.1	155.0	-4.4
54	Brisbane - Launceston	150.9	152.4	1.0
55	Melbourne - Mildura	161.3	152.0	-5.8
56	Brisbane - Mount Isa	147.8	150.3	1.7
57	Devonport - Melbourne	124.6	146.1	17.2
58	Brisbane - Bundaberg	139.9	139.8	-0.1
59	Geraldton - Perth	112.4	121.3	7.9
60	Ayers Rock - Melbourne	106.1	111.5	5.1
61	Adelaide - Alice Springs	107.7	103.3	-4.1
62	Brisbane - Moranbah	111.7	101.0	-9.6
Total domestic network		59 097.0	60 235.6	1.9

Table 2: Passengers carried (000s) — monthly activity

	City-Pair	Nov 2024	Nov 2025	% Change
1	Melbourne - Sydney	704.5	703.8	-0.1
2	Brisbane - Sydney	386.2	388.5	0.6
3	Brisbane - Melbourne	307.2	319.1	3.9
4	Adelaide - Melbourne	202.3	217.9	7.7
5	Gold Coast - Sydney	200.1	213.4	6.7
6	Gold Coast - Melbourne	175.1	191.5	9.4
7	Melbourne - Perth	177.5	187.6	5.7
8	Adelaide - Sydney	168.5	171.1	1.6
9	Perth - Sydney	147.2	153.1	4.0
10	Hobart - Melbourne	117.8	123.2	4.6
11	Brisbane - Cairns	107.6	106.4	-1.1
12	Brisbane - Perth	98.7	96.6	-2.1
13	Canberra - Melbourne	91.4	87.4	-4.4
14	Brisbane - Townsville	79.3	83.6	5.5
15	Adelaide - Brisbane	78.7	79.7	1.3
16	Hobart - Sydney	72.4	74.4	2.7
17	Launceston - Melbourne	68.6	72.4	5.6
18	Cairns - Sydney	69.1	70.9	2.5
19	Brisbane - Mackay	65.2	70.8	8.5
20	Sunshine Coast - Sydney	71.0	70.0	-1.3
21	Melbourne - Sunshine Coast	65.9	68.8	4.5
22	Cairns - Melbourne	65.4	66.8	2.2
23	Adelaide - Perth	61.5	63.5	3.3
24	Brisbane - Canberra	59.6	59.5	-0.1
25	Canberra - Sydney	62.6	59.2	-5.4
26	Karratha - Perth	53.7	59.2	10.1
27	Brisbane - Rockhampton	52.8	51.6	-2.2
28	Brisbane - Newcastle	45.0	45.3	0.7
29	Perth - Port Hedland	40.5	42.7	5.4
30	Melbourne - Newcastle	41.1	40.4	-1.7
31	Ballina - Sydney	47.4	40.1	-15.5
32	Newman - Perth	35.4	36.8	4.1
33	Kalgoorlie - Perth	31.6	35.1	11.1
34	Launceston - Sydney	29.4	31.5	7.2
35	Broome - Perth	26.7	26.7	-0.1
36	Brisbane - Hobart	26.1	26.7	2.3
37	Brisbane - Proserpine	23.1	26.6	15.1
38	Brisbane - Darwin	23.7	23.1	-2.4
39	Adelaide - Gold Coast	22.9	23.0	0.2
40	Adelaide - Canberra	19.1	19.5	2.2
41	Brisbane - Gladstone	19.8	19.0	-3.8
42	Darwin - Melbourne	21.4	18.7	-12.5
43	Coffs Harbour - Sydney	17.3	18.3	5.6
44	Hamilton Island - Sydney	20.8	17.9	-13.9
45	Brisbane - Hamilton Island	14.2	17.5	23.9
46	Dubbo - Sydney	15.4	16.0	3.7
47	Brisbane - Emerald	16.0	15.6	-2.8
48	Port Macquarie - Sydney	14.8	15.4	4.2
49	Sydney - Wagga Wagga	13.9	15.1	9.2
50	Adelaide - Port Lincoln	13.8	14.9	7.7

continued

Table 2: (continued) Passengers carried (000s) — monthly activity

	City-Pair	Nov 2024	Nov 2025	% Change
51	Albury - Sydney	13.8	14.6	5.5
52	Canberra - Gold Coast	14.0	14.4	3.3
53	Melbourne - Mildura	12.7	13.8	9.1
54	Devonport - Melbourne	10.7	13.3	24.2
55	Brisbane - Launceston	13.1	13.0	-0.5
56	Darwin - Perth	13.6	12.6	-6.8
57	Brisbane - Mount Isa	13.1	12.5	-4.6
58	Brisbane - Bundaberg	12.0	11.5	-4.1
59	Geraldton - Perth	10.6	10.7	1.3
60	Ayers Rock - Melbourne	10.3	10.0	-2.5
61	Adelaide - Alice Springs	8.9	8.2	-7.4
62	Brisbane - Moranbah	9.4	8.0	-14.5
Total domestic network		5 089.7	5 198.2	2.1

Table 3: Available seats (000s) — monthly activity

	City-Pair	Nov 2024	Nov 2025	% Change
1	Melbourne - Sydney	763.2	790.2	3.5
2	Brisbane - Sydney	411.7	439.7	6.8
3	Brisbane - Melbourne	338.7	370.5	9.4
4	Adelaide - Melbourne	221.0	253.3	14.6
5	Gold Coast - Sydney	216.0	228.2	5.6
6	Gold Coast - Melbourne	188.7	208.5	10.5
7	Melbourne - Perth	197.6	209.9	6.2
8	Adelaide - Sydney	184.6	197.9	7.2
9	Perth - Sydney	163.6	174.3	6.6
10	Hobart - Melbourne	130.4	143.7	10.1
11	Brisbane - Cairns	115.6	117.2	1.4
12	Brisbane - Perth	113.2	111.8	-1.3
13	Canberra - Melbourne	107.8	105.5	-2.1
14	Brisbane - Townsville	94.7	104.4	10.2
15	Adelaide - Brisbane	87.1	91.5	5.0
16	Hobart - Sydney	83.5	88.8	6.4
17	Launceston - Melbourne	76.4	81.3	6.4
18	Cairns - Sydney	73.5	77.0	4.8
19	Brisbane - Mackay	75.3	88.8	17.8
20	Sunshine Coast - Sydney	79.8	77.8	-2.4
21	Melbourne - Sunshine Coast	72.8	75.0	3.0
22	Cairns - Melbourne	71.0	76.5	7.7
23	Adelaide - Perth	71.1	77.7	9.3
24	Brisbane - Canberra	71.8	75.9	5.6
25	Canberra - Sydney	85.0	80.2	-5.7
26	Karratha - Perth	72.9	81.3	11.5
27	Brisbane - Rockhampton	61.3	60.3	-1.7
28	Brisbane - Newcastle	50.5	52.5	3.9
29	Perth - Port Hedland	60.8	64.3	5.8
30	Melbourne - Newcastle	45.1	45.5	0.8
31	Ballina - Sydney	51.8	44.6	-13.9
32	Newman - Perth	53.8	57.7	7.1
33	Kalgoorlie - Perth	51.3	53.5	4.4
34	Launceston - Sydney	32.5	35.7	9.7
35	Broome - Perth	34.6	39.5	14.2
36	Brisbane - Hobart	29.0	29.8	2.9
37	Brisbane - Proserpine	25.6	28.5	11.2
38	Brisbane - Darwin	26.9	27.1	0.9
39	Adelaide - Gold Coast	24.8	24.4	-1.4
40	Adelaide - Canberra	23.6	26.0	10.4
41	Brisbane - Gladstone	27.9	27.3	-2.4
42	Darwin - Melbourne	27.0	22.4	-17.0
43	Coffs Harbour - Sydney	21.1	24.2	14.9
44	Hamilton Island - Sydney	24.8	20.2	-18.9
45	Brisbane - Hamilton Island	16.0	20.8	29.8
46	Dubbo - Sydney	23.6	23.0	-2.7
47	Brisbane - Emerald	24.4	24.4	-0.1
48	Port Macquarie - Sydney	20.6	21.0	1.8
49	Sydney - Wagga Wagga	20.6	20.8	0.6
50	Adelaide - Port Lincoln	20.7	23.2	12.0

continued

Table 3: (continued) Available seats (000s) — monthly activity

	City-Pair	Nov 2024	Nov 2025	% Change
51	Albury - Sydney	18.5	19.5	5.2
52	Canberra - Gold Coast	15.4	15.7	1.5
53	Melbourne - Mildura	16.6	19.8	19.7
54	Devonport - Melbourne	13.3	17.1	28.8
55	Brisbane - Launceston	14.5	14.6	0.7
56	Darwin - Perth	18.8	16.1	-14.1
57	Brisbane - Mount Isa	17.8	19.6	10.2
58	Brisbane - Bundaberg	18.1	16.9	-6.2
59	Geraldton - Perth	18.1	18.6	2.7
60	Ayers Rock - Melbourne	12.7	11.0	-12.9
61	Adelaide - Alice Springs	11.9	9.8	-17.3
62	Brisbane - Moranbah	16.2	15.6	-3.6
Total domestic network		5 942.0	6 216.7	4.6

Table 4: Load factors (%) — monthly activity

	City-Pair	Nov 2024	Nov 2025	% Point diff
1	Melbourne - Sydney	92.3	89.1	-3.2
2	Brisbane - Sydney	93.8	88.4	-5.4
3	Brisbane - Melbourne	90.7	86.1	-4.6
4	Adelaide - Melbourne	91.5	86.0	-5.5
5	Gold Coast - Sydney	92.6	93.5	0.9
6	Gold Coast - Melbourne	92.8	91.8	-1.0
7	Melbourne - Perth	89.8	89.4	-0.5
8	Adelaide - Sydney	91.3	86.5	-4.8
9	Perth - Sydney	90.0	87.8	-2.2
10	Hobart - Melbourne	90.3	85.8	-4.5
11	Brisbane - Cairns	93.1	90.8	-2.2
12	Brisbane - Perth	87.1	86.4	-0.7
13	Canberra - Melbourne	84.8	82.9	-2.0
14	Brisbane - Townsville	83.6	80.1	-3.6
15	Adelaide - Brisbane	90.4	87.1	-3.3
16	Hobart - Sydney	86.7	83.7	-3.0
17	Launceston - Melbourne	89.8	89.1	-0.7
18	Cairns - Sydney	94.1	92.1	-2.1
19	Brisbane - Mackay	86.6	79.7	-6.8
20	Sunshine Coast - Sydney	89.0	90.0	1.0
21	Melbourne - Sunshine Coast	90.5	91.8	1.3
22	Cairns - Melbourne	92.1	87.3	-4.8
23	Adelaide - Perth	86.4	81.7	-4.8
24	Brisbane - Canberra	83.0	78.4	-4.5
25	Canberra - Sydney	73.7	73.9	0.2
26	Karratha - Perth	73.7	72.8	-0.9
27	Brisbane - Rockhampton	86.1	85.6	-0.5
28	Brisbane - Newcastle	89.2	86.4	-2.8
29	Perth - Port Hedland	66.6	66.3	-0.3
30	Melbourne - Newcastle	91.1	88.8	-2.3
31	Ballina - Sydney	91.6	89.9	-1.6
32	Newman - Perth	65.7	63.9	-1.9
33	Kalgoorlie - Perth	61.6	65.5	4.0
34	Launceston - Sydney	90.3	88.3	-2.1
35	Broome - Perth	77.2	67.6	-9.6
36	Brisbane - Hobart	89.9	89.4	-0.4
37	Brisbane - Proserpine	90.1	93.3	3.2
38	Brisbane - Darwin	88.2	85.3	-2.9
39	Adelaide - Gold Coast	92.6	94.1	1.5
40	Adelaide - Canberra	81.1	75.1	-6.0
41	Brisbane - Gladstone	70.7	69.7	-1.0
42	Darwin - Melbourne	79.3	83.6	4.3
43	Coffs Harbour - Sydney	82.2	75.5	-6.7
44	Hamilton Island - Sydney	83.8	88.8	5.1
45	Brisbane - Hamilton Island	88.4	84.3	-4.0
46	Dubbo - Sydney	65.3	69.6	4.3
47	Brisbane - Emerald	65.8	64.0	-1.8
48	Port Macquarie - Sydney	71.6	73.3	1.7
49	Sydney - Wagga Wagga	67.1	72.9	5.8
50	Adelaide - Port Lincoln	66.9	64.3	-2.6

continued

Table 4: (continued) Load factors (%) — monthly activity

	City-Pair	Nov 2024	Nov 2025	% Point diff
51	Albury - Sydney	74.7	74.9	0.2
52	Canberra - Gold Coast	90.7	92.3	1.6
53	Melbourne - Mildura	76.4	69.7	-6.8
54	Devonport - Melbourne	80.6	77.8	-2.9
55	Brisbane - Launceston	90.0	88.9	-1.1
56	Darwin - Perth	72.3	78.3	6.1
57	Brisbane - Mount Isa	73.5	63.6	-9.9
58	Brisbane - Bundaberg	66.5	68.0	1.5
59	Geraldton - Perth	58.4	57.6	-0.8
60	Ayers Rock - Melbourne	81.0	90.7	9.7
61	Adelaide - Alice Springs	74.6	83.6	9.0
62	Brisbane - Moranbah	57.7	51.2	-6.5
	Total domestic network	87.0	85.2	-1.8

Table 5: Aircraft trips ^(a) — monthly activity

	City-Pair	Nov 2024	Nov 2025	% Change
1	Melbourne - Sydney	4 407	4 494	2.0
2	Brisbane - Sydney	2 495	2 629	5.4
3	Brisbane - Melbourne	2 020	2 244	11.1
4	Adelaide - Melbourne	1 309	1 504	14.9
5	Gold Coast - Sydney	1 238	1 288	4.0
6	Gold Coast - Melbourne	1 016	1 119	10.1
7	Melbourne - Perth	1 095	1 156	5.6
8	Adelaide - Sydney	1 100	1 145	4.1
9	Perth - Sydney	862	901	4.5
10	Hobart - Melbourne	737	799	8.4
11	Brisbane - Cairns	820	833	1.6
12	Brisbane - Perth	655	632	-3.5
13	Canberra - Melbourne	702	722	2.8
14	Brisbane - Townsville	734	773	5.3
15	Adelaide - Brisbane	679	755	11.2
16	Hobart - Sydney	465	476	2.4
17	Launceston - Melbourne	530	633	19.4
18	Cairns - Sydney	393	428	8.9
19	Brisbane - Mackay	607	724	19.3
20	Sunshine Coast - Sydney	444	432	-2.7
21	Melbourne - Sunshine Coast	374	409	9.4
22	Cairns - Melbourne	365	401	9.9
23	Adelaide - Perth	400	429	7.3
24	Brisbane - Canberra	569	589	3.5
25	Canberra - Sydney	1 343	1 257	-6.4
26	Karratha - Perth	447	486	8.7
27	Brisbane - Rockhampton	665	657	-1.2
28	Brisbane - Newcastle	423	438	3.5
29	Perth - Port Hedland	371	400	7.8
30	Melbourne - Newcastle	296	298	0.7
31	Ballina - Sydney	345	284	-17.7
32	Newman - Perth	332	348	4.8
33	Kalgoorlie - Perth	358	368	2.8
34	Launceston - Sydney	193	223	15.5
35	Broome - Perth	245	251	2.4
36	Brisbane - Hobart	184	187	1.6
37	Brisbane - Proserpine	158	155	-1.9
38	Brisbane - Darwin	152	151	-0.7
39	Adelaide - Gold Coast	122	134	9.8
40	Adelaide - Canberra	216	251	16.2
41	Brisbane - Gladstone	307	316	2.9
42	Darwin - Melbourne	152	124	-18.4
43	Coffs Harbour - Sydney	368	361	-1.9
44	Hamilton Island - Sydney	141	114	-19.1
45	Brisbane - Hamilton Island	115	130	13.0
46	Dubbo - Sydney	456	437	-4.2
47	Brisbane - Emerald	311	311	0.0
48	Port Macquarie - Sydney	361	362	0.3
49	Sydney - Wagga Wagga	379	374	-1.3
50	Adelaide - Port Lincoln	508	467	-8.1

continued

Table 5: (continued) Aircraft trips ^(a) — monthly activity

	City-Pair	Nov 2024	Nov 2025	% Change
51	Albury - Sydney	330	345	4.5
52	Canberra - Gold Coast	86	86	0.0
53	Melbourne - Mildura	390	372	-4.6
54	Devonport - Melbourne	292	280	-4.1
55	Brisbane - Launceston	80	80	0.0
56	Darwin - Perth	107	94	-12.1
57	Brisbane - Mount Isa	232	160	-31.0
58	Brisbane - Bundaberg	297	273	-8.1
59	Geraldton - Perth	202	200	-1.0
60	Ayers Rock - Melbourne	70	60	-14.3
61	Adelaide - Alice Springs	143	107	-25.2
62	Brisbane - Moranbah	216	206	-4.6
Total domestic network		49 541	49 543	0.0

(a) Includes RPT cargo flights.

TOP TEN AIRPORTS – PASSENGER MOVEMENTS

Table 6: Top ten airports, RPT passenger movements (000s) - monthly activity

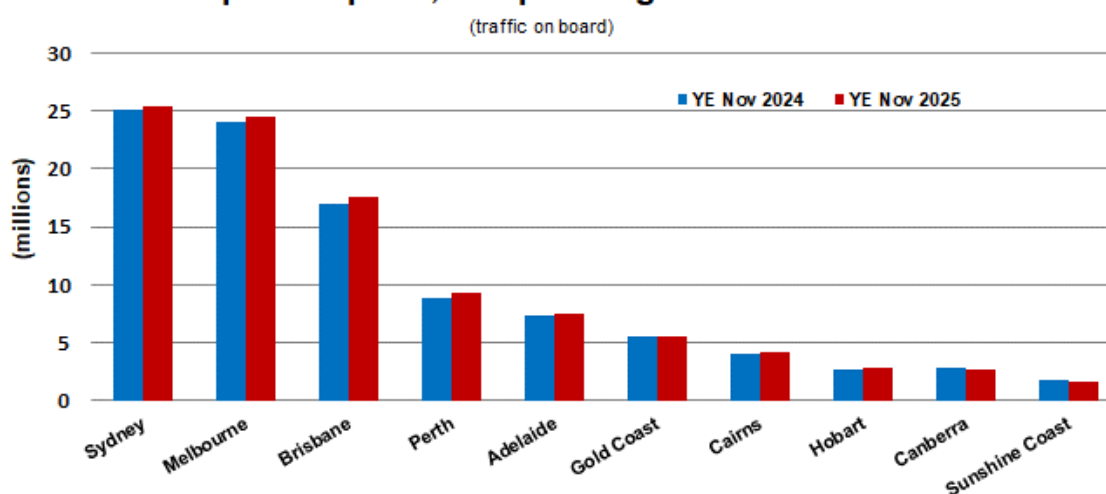
Airport	Nov 2024	Nov 2025	% Change	% of Total
1 Sydney	2 187.7	2 212.5	1.1	21.3
2 Melbourne	2 071.8	2 141.4	3.4	20.6
3 Brisbane	1 495.2	1 519.6	1.6	14.6
4 Perth	772.8	798.5	3.3	7.7
5 Adelaide	647.4	667.8	3.2	6.4
6 Gold Coast	436.5	467.8	7.2	4.5
7 Cairns	319.3	325.5	1.9	3.1
8 Canberra	261.0	254.3	-2.6	2.4
9 Hobart	238.1	247.6	4.0	2.4
10 Sunshine Coast	142.8	148.6	4.1	1.4
Total top ten airports	8 572.5	8 783.6	2.5	84.5
Total domestic network	10 179.4	10 396.4	2.1	100.0

Table 7: Top ten airports, RPT passenger movements (000s) - annual activity

Airport	YE Nov 2024	YE Nov 2025	% Change	% of Total
1 Sydney	25 053.6	25 354.6	1.2	21.0
2 Melbourne	24 102.2	24 494.1	1.6	20.3
3 Brisbane	17 021.2	17 516.2	2.9	14.5
4 Perth	8 832.4	9 317.1	5.5	7.7
5 Adelaide	7 353.4	7 500.8	2.0	6.2
6 Gold Coast	5 570.7	5 481.9	-1.6	4.6
7 Cairns	4 036.3	4 180.1	3.6	3.5
8 Hobart	2 716.2	2 845.8	4.8	2.4
9 Canberra	2 798.8	2 769.6	-1.0	2.3
10 Sunshine Coast	1 723.2	1 683.6	-2.3	1.4
Total top ten airports	99 207.9	101 143.8	2.0	84.0
Total domestic network	118 194.1	120 471.1	1.9	100.0

Note: Airport passenger movement numbers are the sum of passenger arrivals and departures at each airport.

Top ten airports, RPT passenger movements



TOP FIVE AIRPORTS – CARGO MOVEMENTS

Table 8: Top five airports, domestic RPT cargo movements (000s tonnes) - monthly activity

Airport	Nov 2024	Nov 2025	% Change	% of Total
1 Melbourne	7.7	7.7	0.8	28.2
2 Sydney	6.1	5.9	-3.8	21.6
3 Brisbane	4.9	4.9	-0.2	17.9
4 Perth	3.3	3.2	-2.7	11.7
5 Adelaide	1.6	1.4	-10.9	5.1
Total top five airports	23.5	23.1	-1.9	84.5
Total domestic network	28.1	27.3	-2.7	100.0

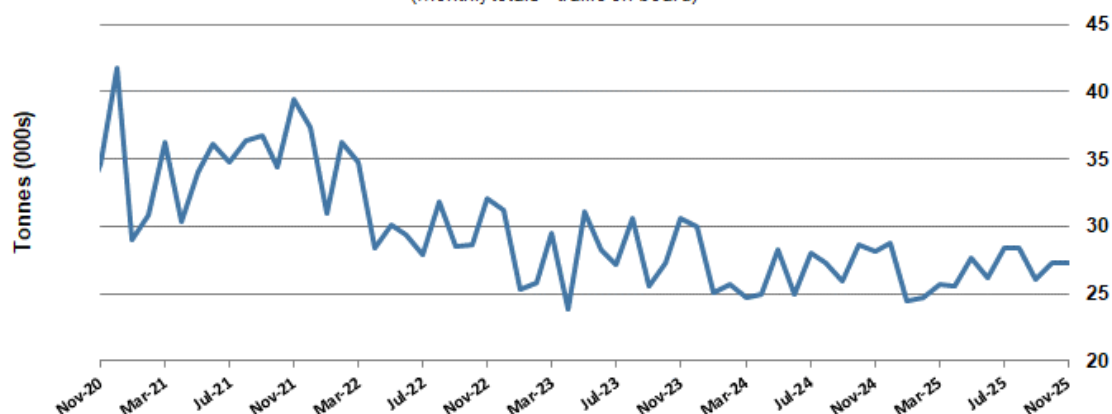
Table 9: Top five airports, domestic RPT cargo movements (000s tonnes) - annual activity

Airport	YE Nov 2024	YE Nov 2025	% Change	% of Total
1 Melbourne	87.4	88.5	1.3	27.7
2 Sydney	69.3	67.2	-3.0	21.0
3 Brisbane	58.4	56.9	-2.6	17.8
4 Perth	36.1	36.0	-0.3	11.3
5 Adelaide	18.2	16.5	-9.3	5.2
Total top five airports	269.3	265.1	-1.6	83.0
Total domestic network	321.6	319.2	-0.7	100.0

Note: Airport cargo tonnes are the sum of cargo tonnes on arrivals and departures at each airport.

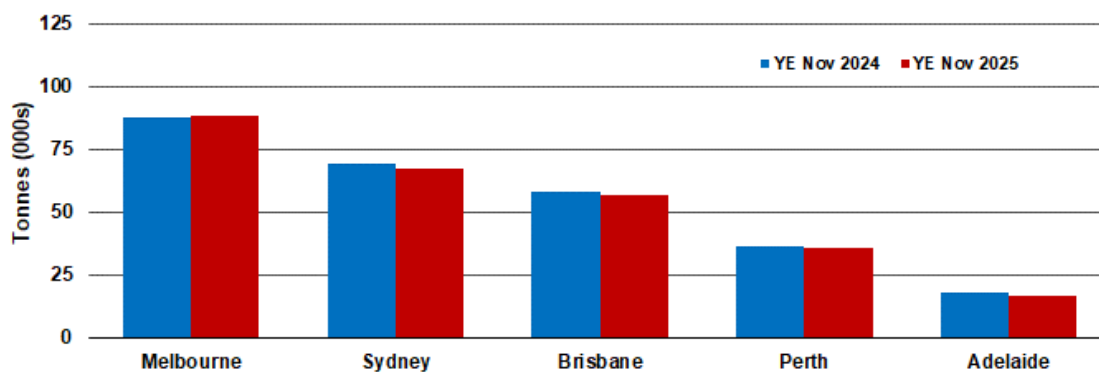
Total domestic network - cargo movement

(monthly totals - traffic on board)



Top five airports, cargo movements

(Domestic cargo traffic - traffic on board)



Note: Airport cargo tonnes are the sum of cargo tonnes on arrivals and departures at each airport.

TOP TEN ROUTES

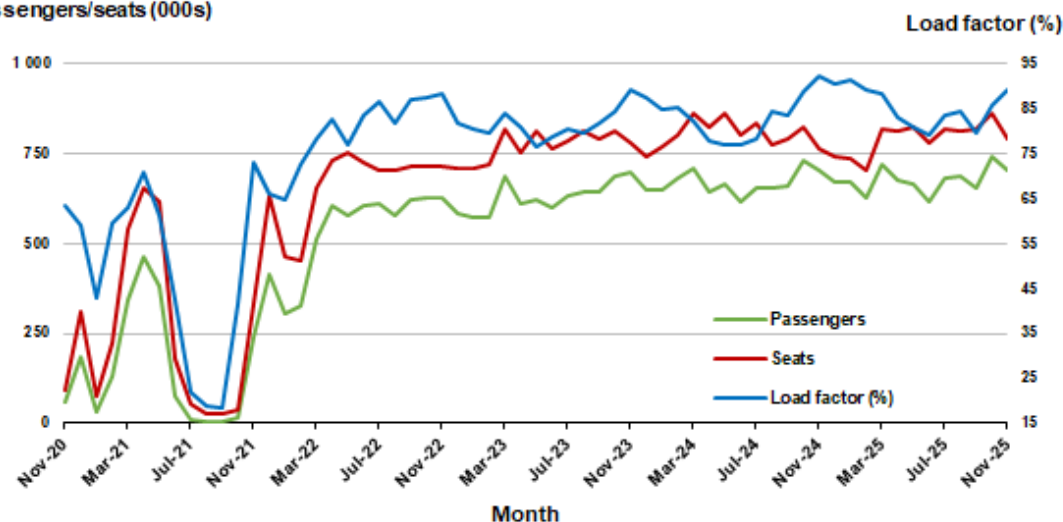
1. Melbourne - Sydney

Monthly data

	Nov 2024	Nov 2025	% Change
Passengers carried (000s)	704.5	703.8	-0.1
Seats (000s)	763.2	790.2	3.5
Load factor %	92.3	89.1	-3.2 *
Aircraft trips	4 407	4 494	2.0

* percentage point difference

Passengers/seats (000s)

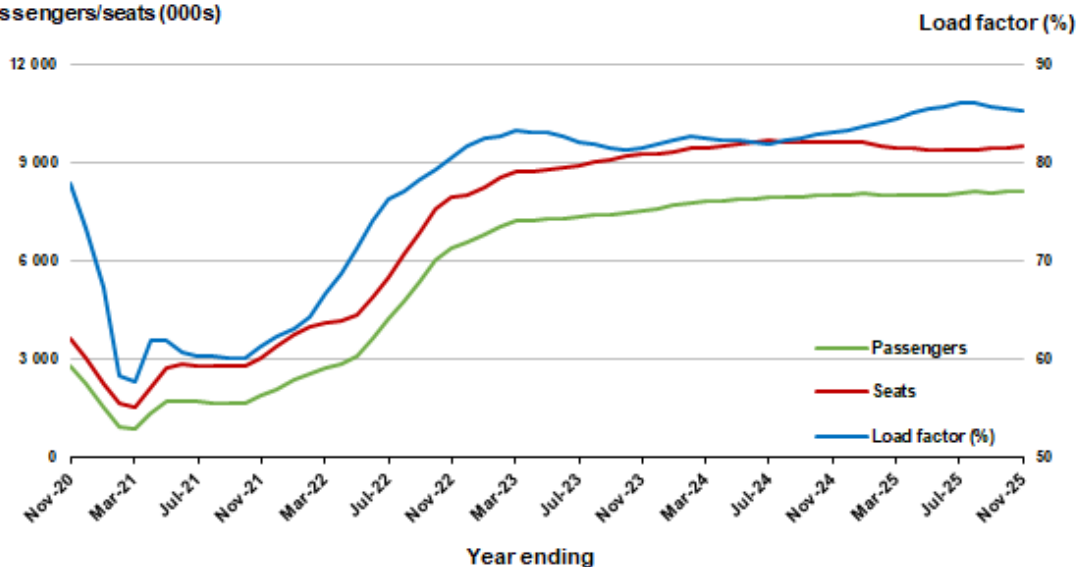


Moving annual data

	YE Nov 2024	YE Nov 2025	% Change
Passengers carried (000s)	8 016.9	8 120.5	1.3
Seats (000s)	9 650.3	9 520.5	-1.3
Load factor %	83.1	85.3	2.2 *
Aircraft trips	55 706	54 350	-2.4

* percentage point difference

Passengers/seats (000s)

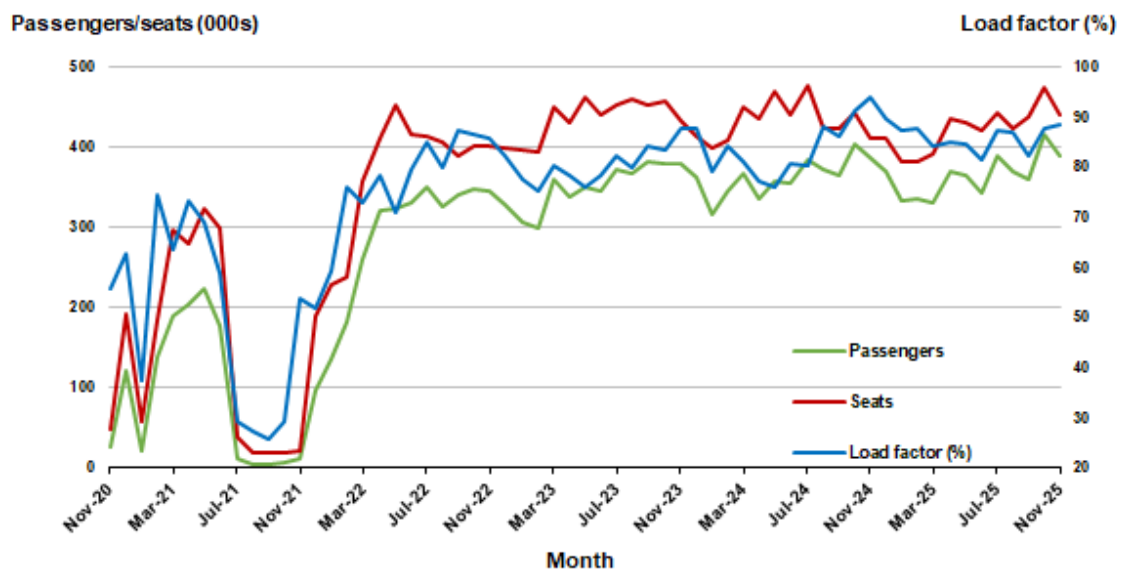


2. Brisbane - Sydney

Monthly data

	Nov 2024	Nov 2025	% Change
Passengers carried (000s)	386.2	388.5	0.6
Seats (000s)	411.7	439.7	6.8
Load factor %	93.8	88.4	-5.4 *
Aircraft trips	2 495	2 629	5.4

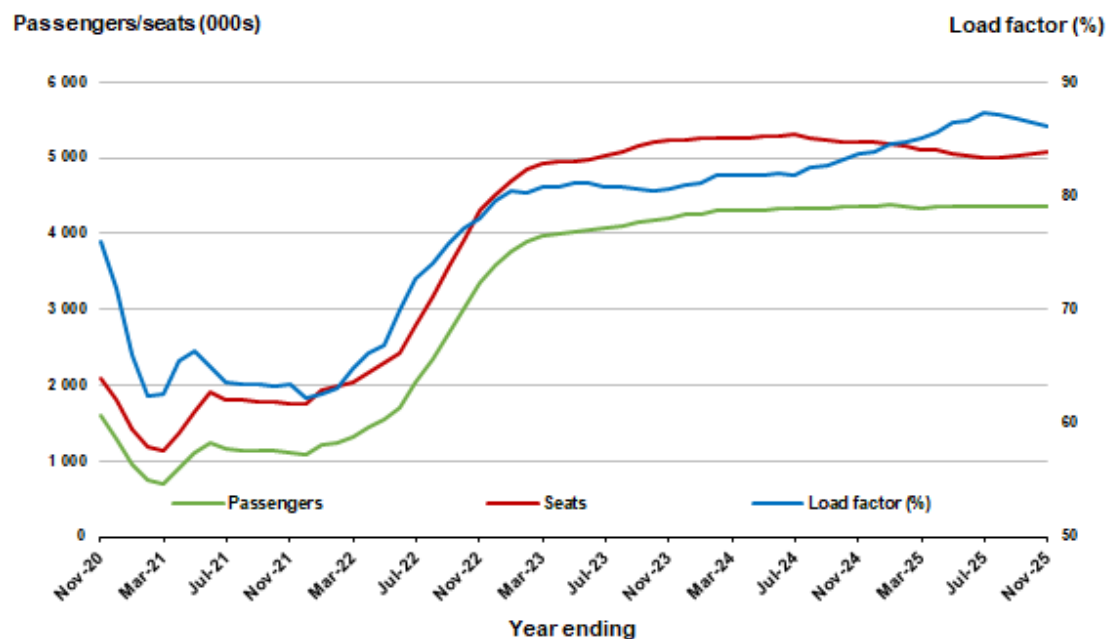
* percentage point difference



Moving annual data

	YE Nov 2024	YE Nov 2025	% Change
Passengers carried (000s)	4 353.1	4 369.2	0.4
Seats (000s)	5 201.0	5 076.5	-2.4
Load factor %	83.7	86.1	2.4 *
Aircraft trips	31 619	30 233	-4.4

* percentage point difference

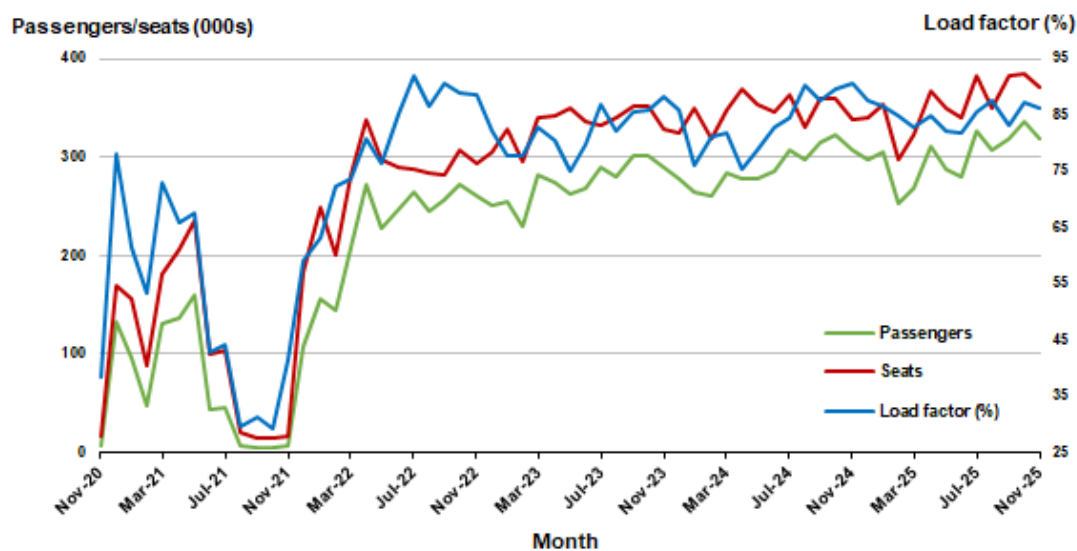


3. Brisbane - Melbourne

Monthly data

	Nov 2024	Nov 2025	% Change
Passengers carried (000s)	307.2	319.1	3.9
Seats (000s)	338.7	370.5	9.4
Load factor %	90.7	86.1	-4.6 *
Aircraft trips	2 020	2 244	11.1

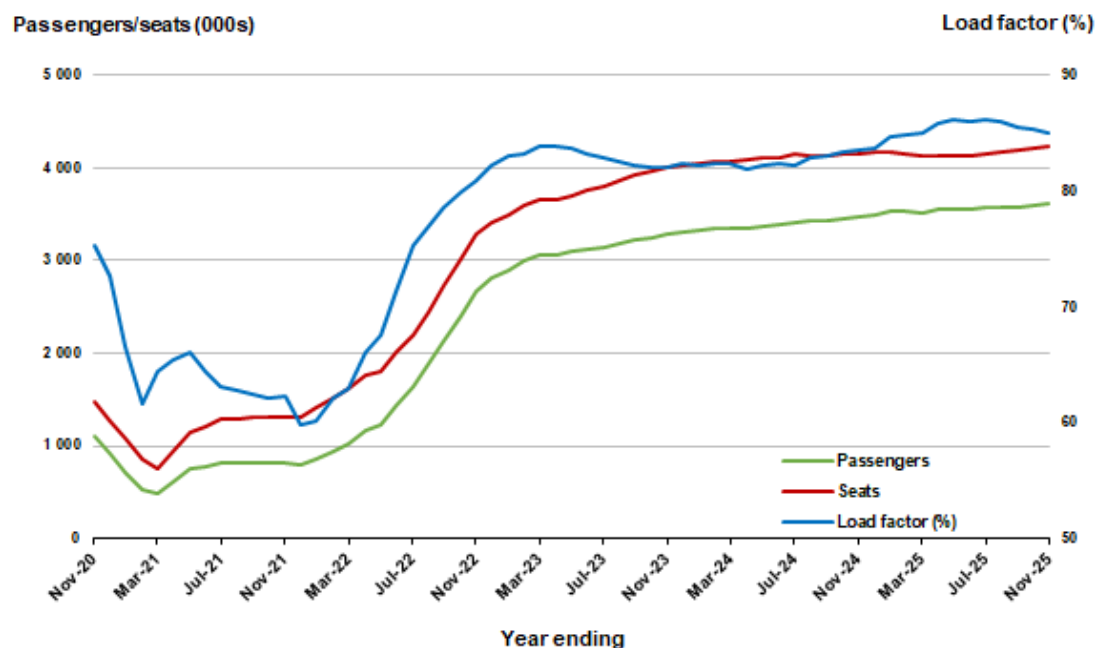
* percentage point difference



Moving annual data

	YE Nov 2024	YE Nov 2025	% Change
Passengers carried (000s)	3 479.4	3 610.7	3.8
Seats (000s)	4 160.6	4 245.1	2.0
Load factor %	83.6	85.1	1.4 *
Aircraft trips	24 893	25 671	3.1

* percentage point difference



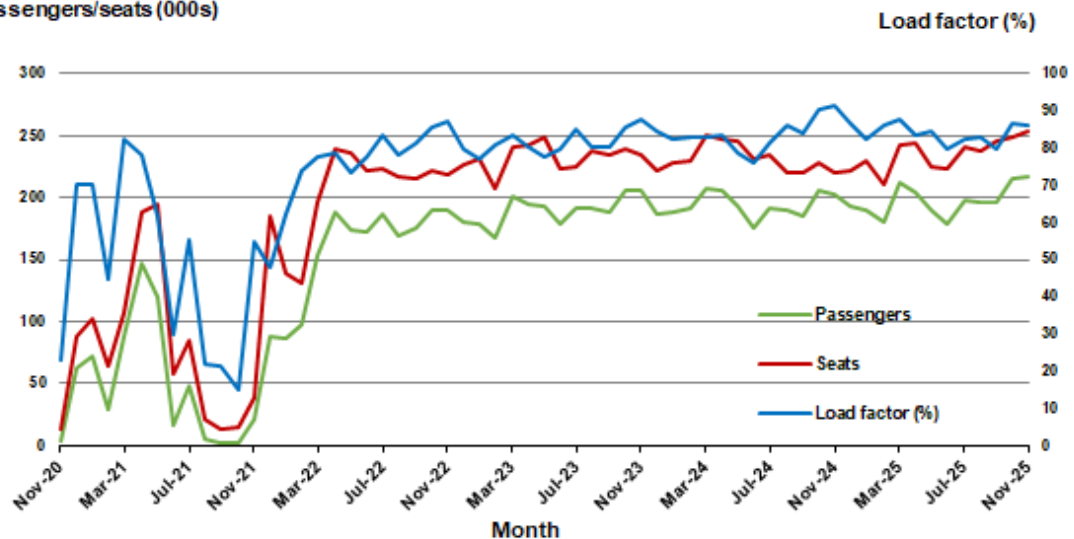
4. Adelaide - Melbourne

Monthly data

	Nov 2024	Nov 2025	% Change
Passengers carried (000s)	202.3	217.9	7.7
Seats (000s)	221.0	253.3	14.6
Load factor %	91.5	86.0	-5.5 *
Aircraft trips	1 309	1 504	14.9

* percentage point difference

Passengers/seats (000s)

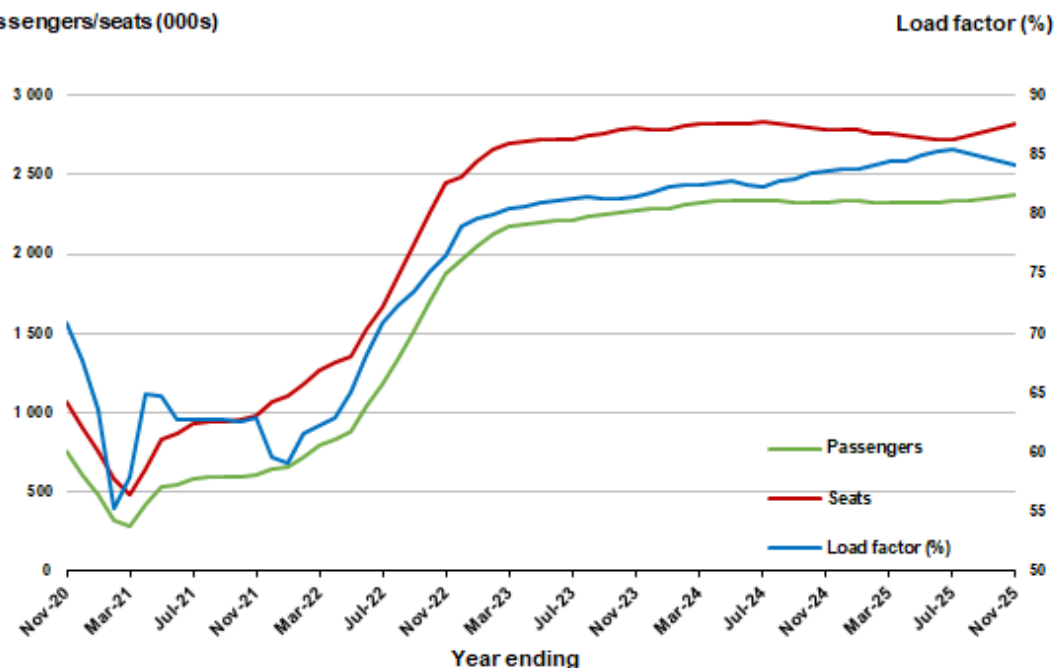


Moving annual data

	YE Nov 2024	YE Nov 2025	% Change
Passengers carried (000s)	2 325.0	2 374.0	2.1
Seats (000s)	2 778.7	2 823.8	1.6
Load factor %	83.7	84.1	0.4 *
Aircraft trips	16 795	16 726	-0.4

* percentage point difference

Passengers/seats (000s)

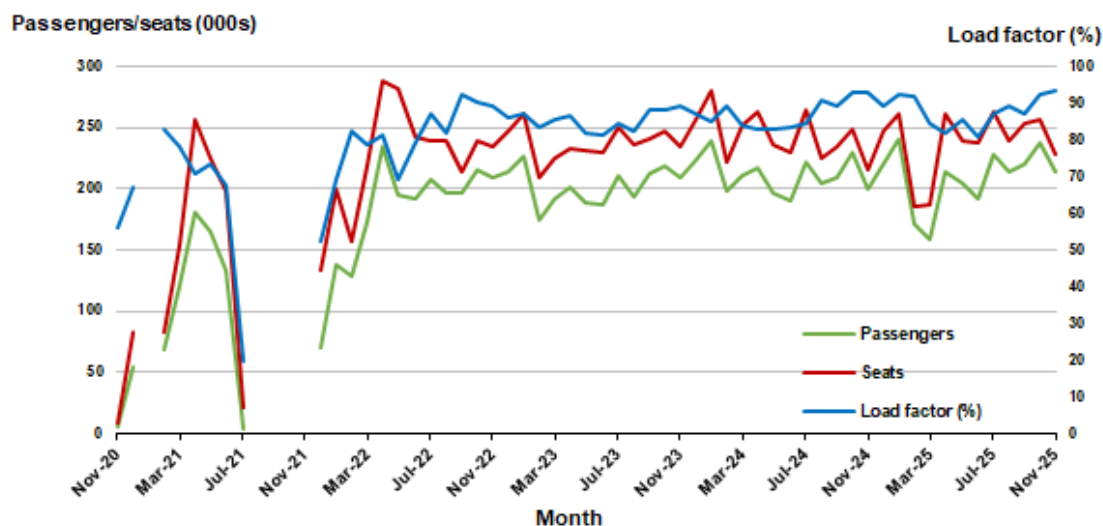


5. Gold Coast - Sydney^(a)

Monthly data

	Nov 2024	Nov 2025	% Change
Passengers carried (000s)	200.1	213.4	6.7
Seats (000s)	216.0	228.2	5.6
Load factor %	92.6	93.5	0.9 *
Aircraft trips	1 238	1 288	4.0

* percentage point difference

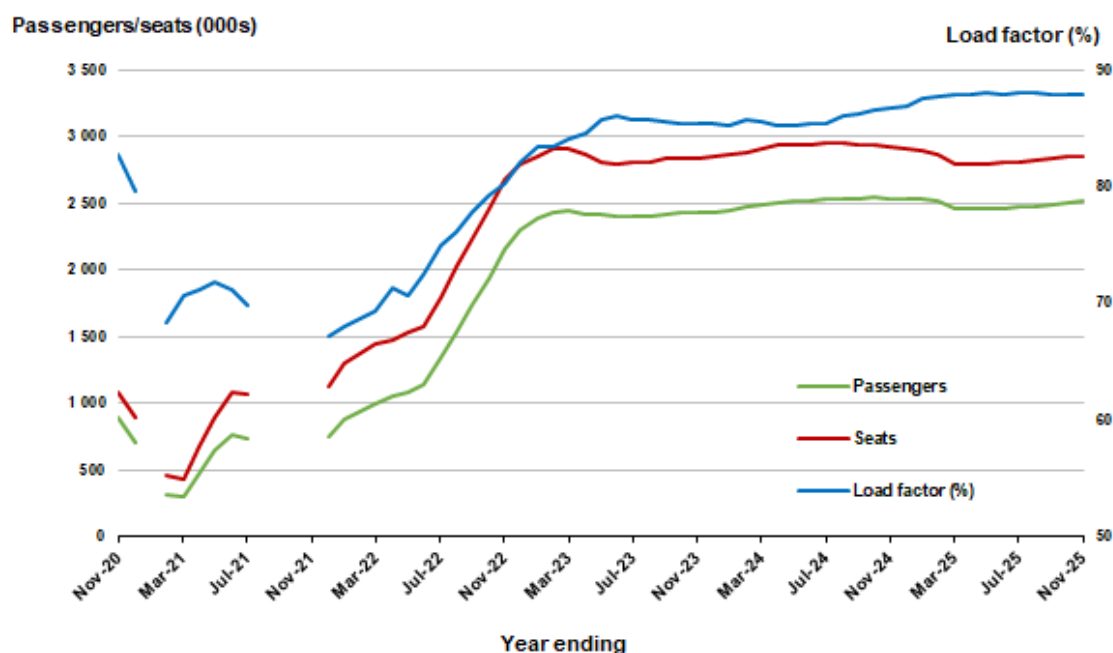


(a) January and August to November 2021 data not available for release.

Moving annual data

	YE Nov 2024	YE Nov 2025	% Change
Passengers carried (000s)	2 540.5	2 514.2	-1.0
Seats (000s)	2 926.3	2 859.7	-2.3
Load factor %	86.8	87.9	1.1 *
Aircraft trips	16 503	16 224	-1.7

* percentage point difference



(a) January and August to November 2021 moving annual totals not available for release.

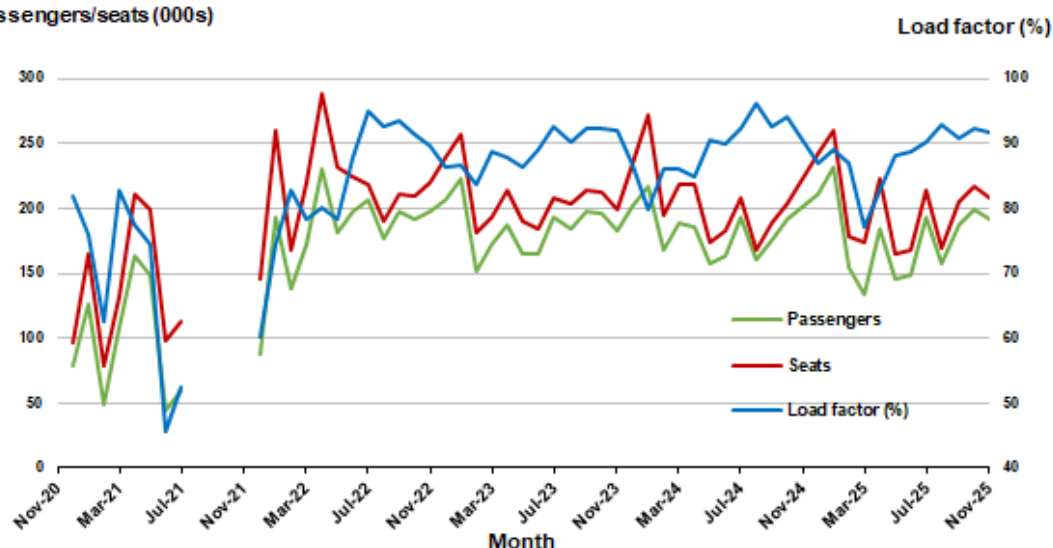
6. Gold Coast - Melbourne ^(a)

Monthly data

	Nov 2024	Nov 2025	% Change
Passengers carried (000s)	175.1	191.5	9.4
Seats (000s)	188.7	208.5	10.5
Load factor %	92.8	91.8	-1.0 *
Aircraft trips	1 016	1 119	10.1

* percentage point difference

Passengers/seats (000s)



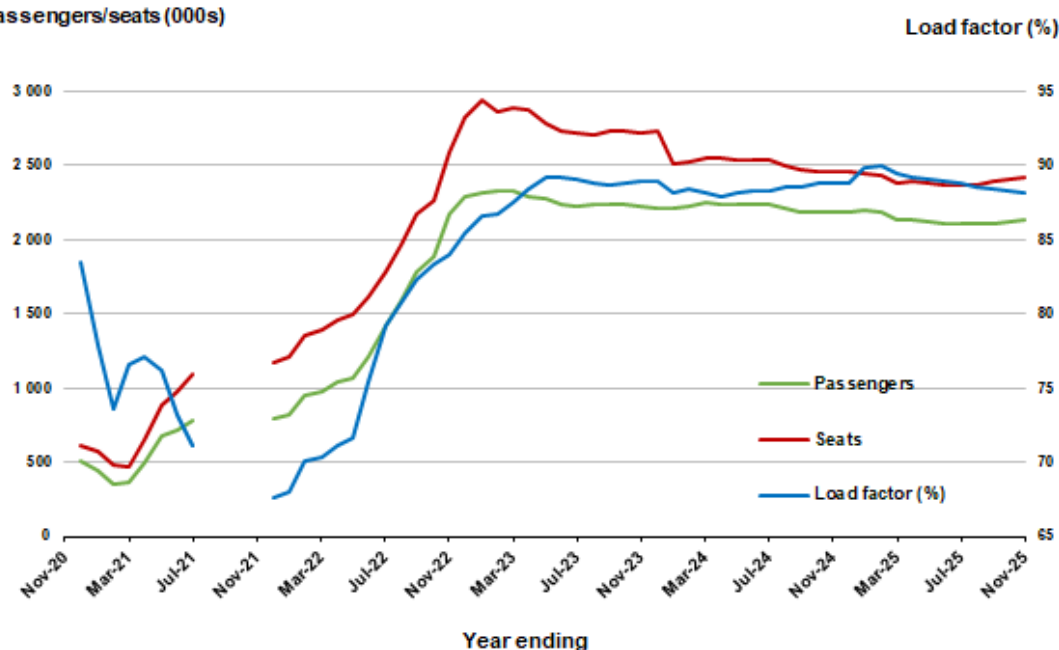
(a) November 2020 and August to November 2021 data not available for release.

Moving annual data

	YE Nov 2024	YE Nov 2025	% Change
Passengers carried (000s)	2 179.7	2 138.7	-1.9
Seats (000s)	2 453.8	2 424.2	-1.2
Load factor %	88.8	88.2	-0.6 *
Aircraft trips	13 369	13 070	-2.2

* percentage point difference

Passengers/seats (000s)



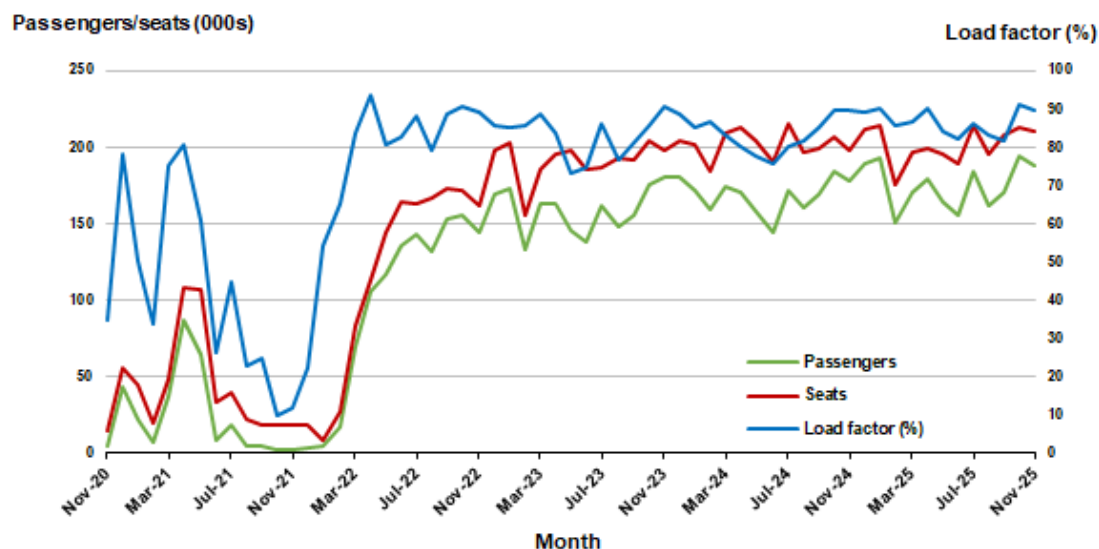
(a) November 2020 and August to November 2021 moving annuals are not available for release.

7. Melbourne - Perth

Monthly data

	Nov 2024	Nov 2025	% Change
Passengers carried (000s)	177.5	187.6	5.7
Seats (000s)	197.6	209.9	6.2
Load factor %	89.8	89.4	-0.5 *
Aircraft trips	1 095	1 156	5.6

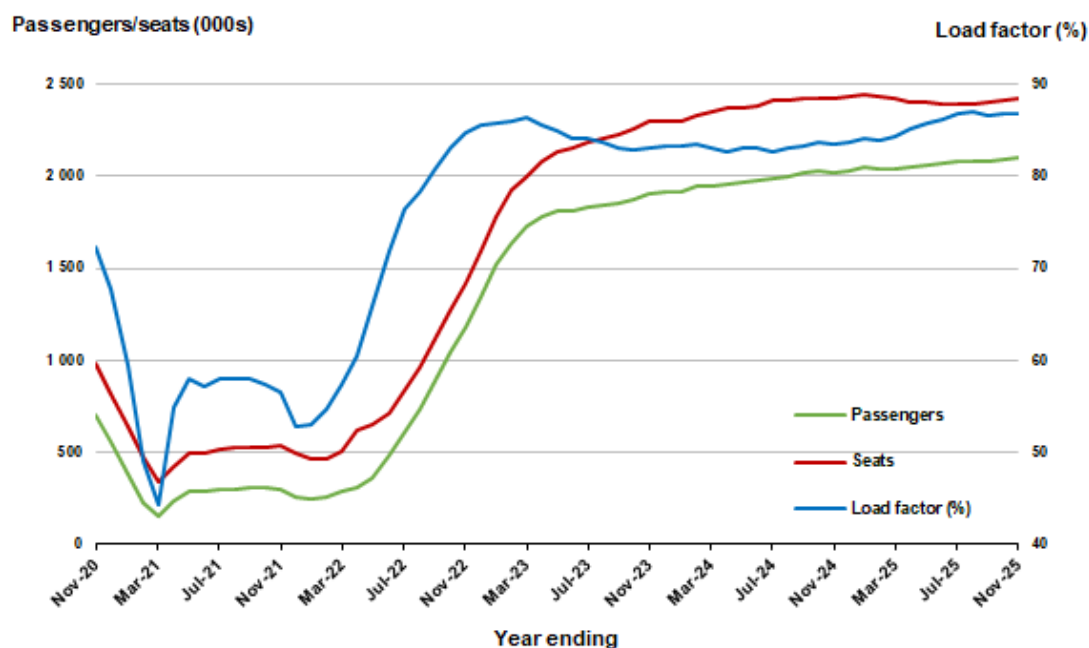
* percentage point difference



Moving annual data

	YE Nov 2024	YE Nov 2025	% Change
Passengers carried (000s)	2 022.1	2 100.7	3.9
Seats (000s)	2 420.0	2 420.8	0.0
Load factor %	83.6	86.8	3.2 *
Aircraft trips	13 389	13 542	1.1

* percentage point difference

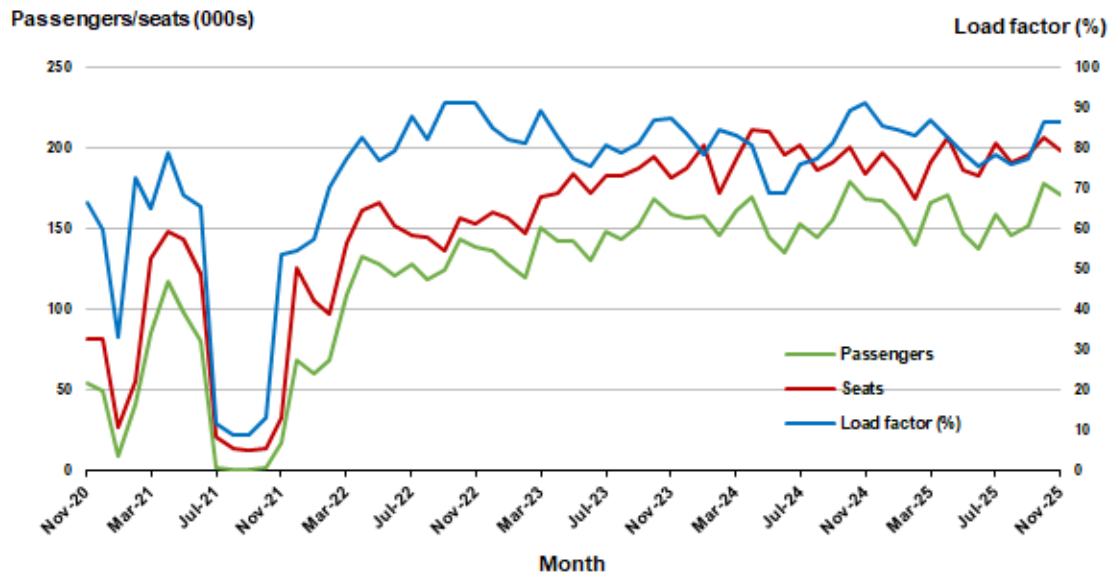


8. Adelaide - Sydney

Monthly data

	Nov 2024	Nov 2025	% Change
Passengers carried (000s)	168.5	171.1	1.6
Seats (000s)	184.6	197.9	7.2
Load factor %	91.3	86.5	-4.8 *
Aircraft trips	1 100	1 145	4.1

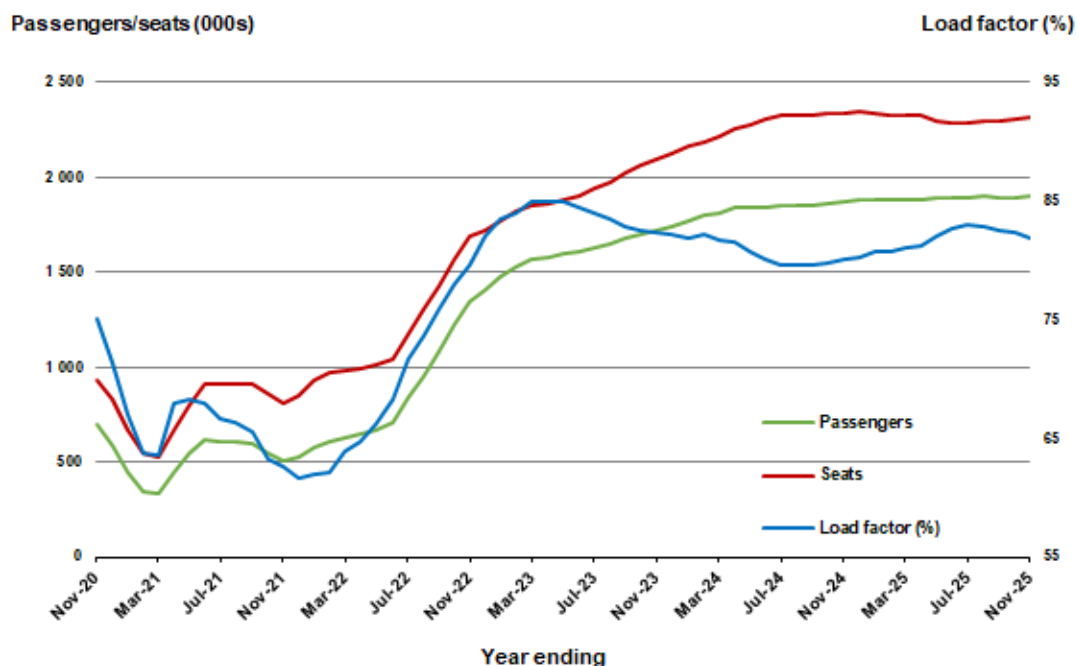
* percentage point difference



Moving annual data

	YE Nov 2024	YE Nov 2025	% Change
Passengers carried (000s)	1 872.4	1 896.7	1.3
Seats (000s)	2 338.2	2 315.6	-1.0
Load factor %	80.1	81.9	1.8 *
Aircraft trips	14 046	13 521	-3.7

* percentage point difference



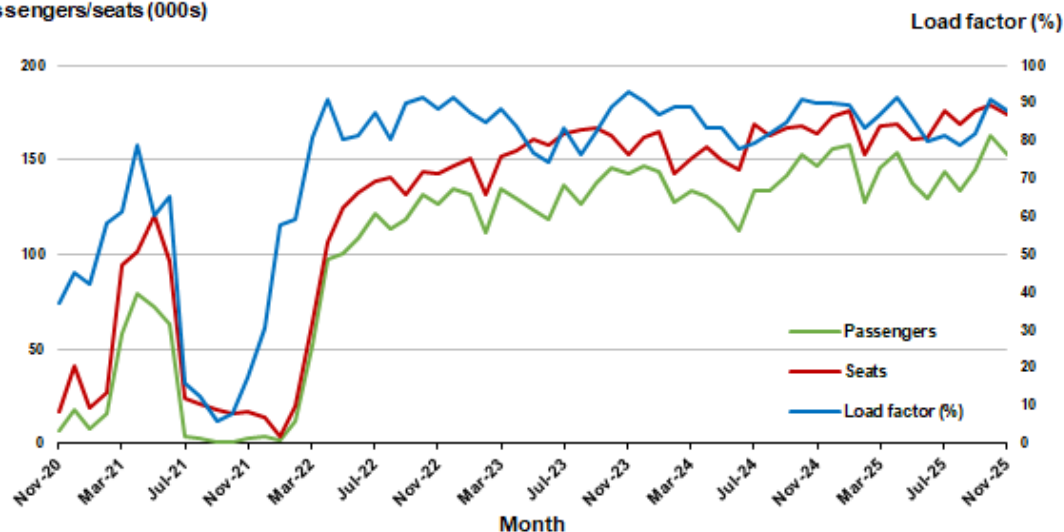
9. Perth - Sydney

Monthly data

	Nov 2024	Nov 2025	% Change
Passengers carried (000s)	147.2	153.1	4.0
Seats (000s)	163.6	174.3	6.6
Load factor %	90.0	87.8	-2.2 *
Aircraft trips	862	901	4.5

* percentage point difference

Passengers/seats (000s)

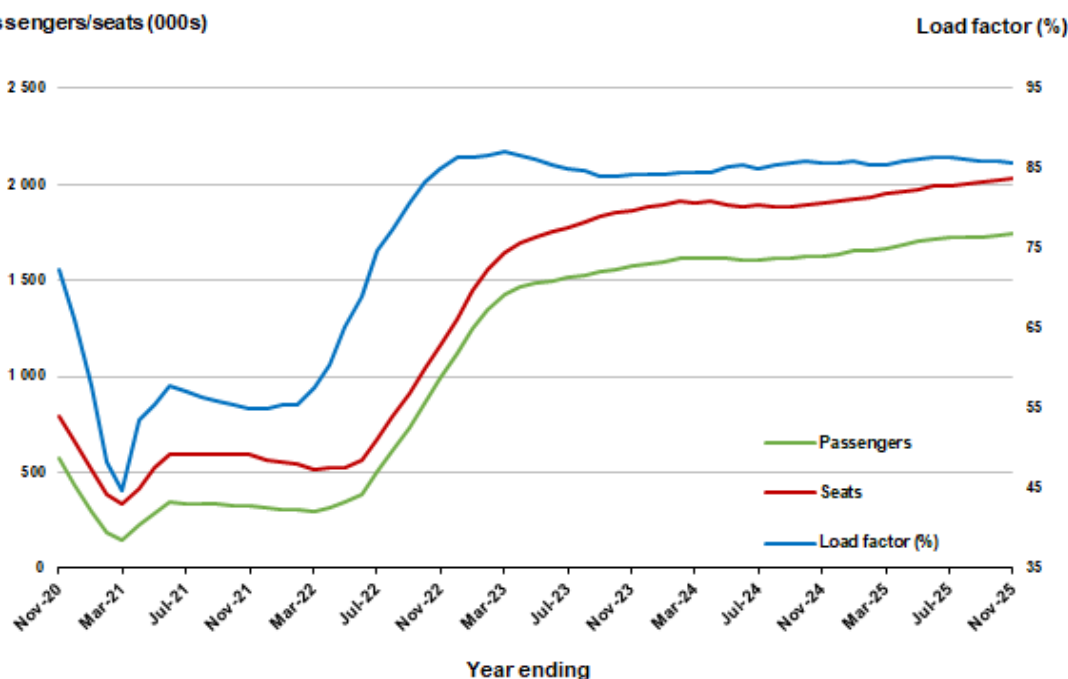


Moving annual data

	YE Nov 2024	YE Nov 2025	% Change
Passengers carried (000s)	1 630.4	1 745.6	7.1
Seats (000s)	1 902.7	2 035.0	6.9
Load factor %	85.7	85.8	0.1 *
Aircraft trips	10 038	10 823	7.8

* percentage point difference

Passengers/seats (000s)

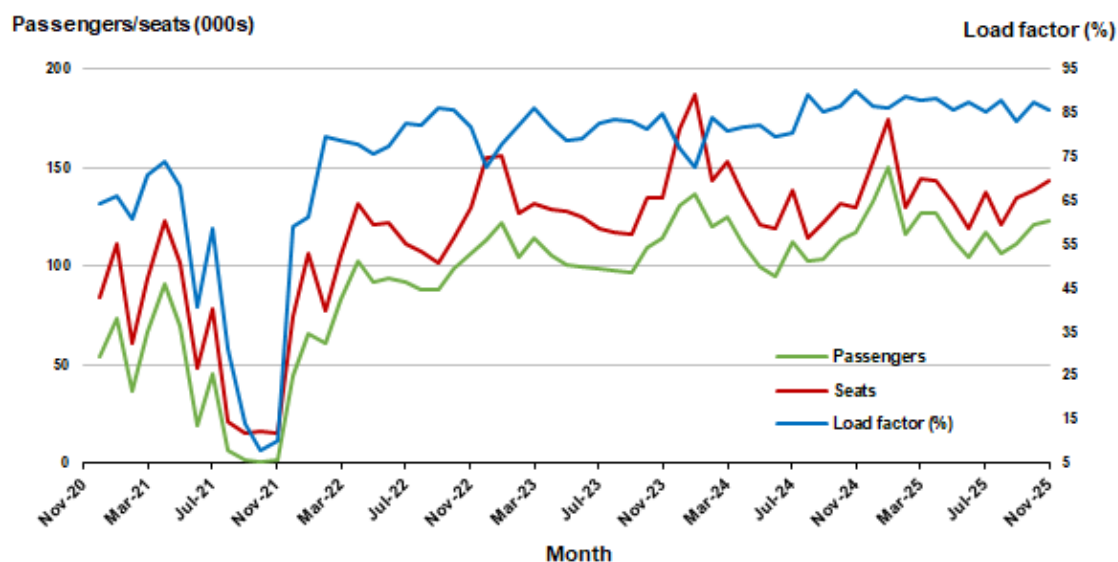


10. Hobart - Melbourne ^(a)

Monthly data

	Nov 2024	Nov 2025	% Change
Passengers carried (000s)	117.8	123.2	4.6
Seats (000s)	130.4	143.7	10.1
Load factor %	90.3	85.8	-4.5 *
Aircraft trips	737	799	8.4

* percentage point difference

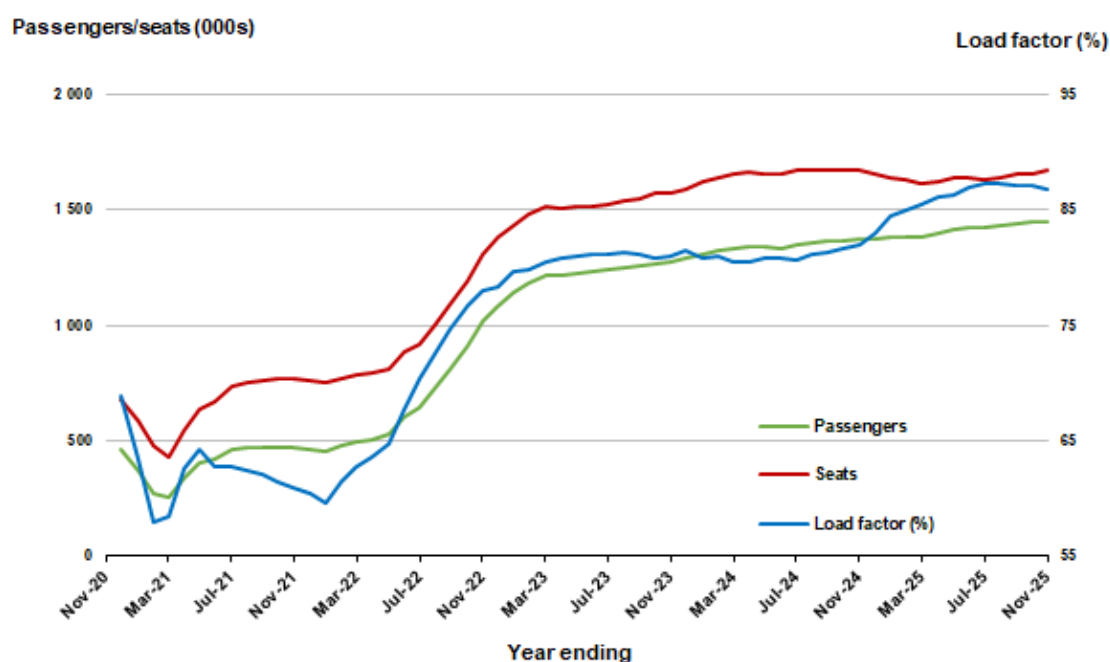


(a) November 2020 data not available for release.

Moving annual data

	YE Nov 2024	YE Nov 2025	% Change
Passengers carried (000s)	1 370.8	1 453.0	6.0
Seats (000s)	1 670.2	1 674.2	0.2
Load factor %	82.1	86.8	4.7 *
Aircraft trips	9 929	9 645	-2.9

* percentage point difference



(a) November 2020 moving annual totals are not available for release.

TOP FIFTY REGIONAL AIRPORTS

Table 10: Top fifty regional airports (000s) — passenger movements, monthly

Airport	Nov 2024	Nov 2025	% Change
1 Cairns	319.3	325.5	1.9
2 Hobart	238.1	247.6	4.0
3 Townsville	138.3	137.5	-0.5
4 Launceston	120.3	125.6	4.4
5 Darwin	119.7	114.3	-4.5
6 Newcastle	102.4	106.1	3.7
7 Mackay	75.9	79.5	4.7
8 Karratha	54.7	60.3	10.2
9 Rockhampton	56.5	54.9	-2.9
10 Proserpine	43.9	50.3	14.6
11 Ballina	57.5	50.1	-12.7
12 Port Hedland	41.3	43.6	5.5
13 Hamilton Island	42.1	42.0	-0.3
14 Newman	35.4	36.8	4.1
15 Kalgoorlie	31.6	35.1	11.1
16 Broome	30.3	30.4	0.1
17 Ayers Rock	29.0	29.0	0.0
18 Alice Springs	29.7	29.0	-2.2
19 Coffs Harbour	22.0	23.8	8.2
20 Albury	19.4	19.9	2.6
21 Wagga Wagga	17.9	19.7	10.2
22 Hervey Bay	17.1	19.5	13.8
23 Gladstone	19.8	19.0	-3.8
24 Dubbo	18.7	18.9	1.1
25 Paraburdoo	24.3	18.8	-22.8
26 Mount Isa	20.5	18.7	-8.5
27 Port Macquarie	17.0	17.6	4.0
28 Mildura	15.8	16.6	5.1
29 Emerald	17.0	16.5	-3.1
30 Port Lincoln	13.8	14.9	7.9
31 Tamworth	14.7	13.8	-5.8
32 Devonport	10.8	13.3	24.0
33 Orange	10.1	12.1	20.0
34 Bundaberg	12.1	11.5	-4.9
35 Geraldton	11.1	11.3	1.6
36 Armidale	9.9	10.7	8.2
37 Thursday Island	11.0	9.3	-16.2
38 Kununurra	9.9	9.1	-8.0
39 Weipa	7.7	8.5	10.1
40 Olympic Dam	8.2	8.3	1.5
41 Moranbah	9.4	8.0	-14.8
42 Busselton	8.1	7.8	-3.7
43 Gove	7.5	7.5	0.5
44 Burnie	7.2	7.5	4.1
45 Norfolk Island	7.0	6.9	-1.2
46 Learmonth	7.6	6.9	-9.5
47 Griffith	6.6	6.8	3.2
48 Mount Gambier	6.3	6.5	4.5
49 Merimbula	5.9	6.4	8.6
50 Albany	5.9	5.6	-5.5
Total top 50 regional airports	1 966.0	1 999.4	1.7
Total regional airports	2 090.8	2 118.7	1.3
Total domestic network	10 179.4	10 396.4	2.1

Note: Airport passenger movement numbers are the sum of passenger arrivals and departures at each airport.

Regional airports are defined as airports which are, according to Australian Statistical Geography

Standard (ASGS), not based in Major Cities.

Table 11: Top fifty regional airports (000s) — passenger movements, annual

Airport	Nov 2024	Nov 2025	% Change
1 Cairns	4 036.3	4 180.1	3.6
2 Hobart	2 716.2	2 845.8	4.8
3 Townsville	1 600.9	1 660.2	3.7
4 Darwin	1 667.5	1 659.5	-0.5
5 Launceston	1 422.0	1 457.3	2.5
6 Newcastle	1 201.2	1 205.8	0.4
7 Mackay	903.5	925.2	2.4
8 Karratha	617.3	693.1	12.3
9 Rockhampton	654.7	645.0	-1.5
10 Ballina	625.9	583.2	-6.8
11 Proserpine	507.5	543.5	7.1
12 Port Hedland	487.6	497.2	2.0
13 Hamilton Island	486.2	495.4	1.9
14 Broome	437.6	454.7	3.9
15 Newman	392.7	441.3	12.4
16 Kalgoorlie	366.6	390.5	6.5
17 Alice Springs	372.3	363.0	-2.5
18 Ayers Rock	313.1	352.6	12.6
19 Paraburdoo	250.9	261.7	4.3
20 Coffs Harbour	274.7	253.5	-7.7
21 Mount Isa	238.8	232.4	-2.7
22 Albury	258.6	222.5	-14.0
23 Gladstone	206.4	219.7	6.4
24 Wagga Wagga	235.1	218.6	-7.0
25 Hervey Bay	179.3	216.1	20.5
26 Dubbo	209.1	208.2	-0.5
27 Emerald	197.6	199.5	0.9
28 Port Macquarie	209.5	192.7	-8.0
29 Mildura	212.9	187.6	-11.8
30 Port Lincoln	170.1	167.1	-1.8
31 Tamworth	166.3	158.9	-4.4
32 Bundaberg	124.7	146.4	17.3
33 Kununurra	140.2	140.0	-0.1
34 Devonport	154.4	139.8	-9.5
35 Geraldton	118.6	128.6	8.4
36 Thursday Island	110.3	120.2	8.9
37 Orange	115.2	117.3	1.8
38 Learmonth	105.5	111.2	5.4
39 Moranbah	104.2	104.4	0.2
40 Armidale	102.0	102.6	0.6
41 Olympic Dam	111.9	101.1	-9.6
42 Weipa	91.7	99.2	8.2
43 Busselton	83.6	96.7	15.7
44 Gove	93.6	85.1	-9.1
45 Burnie	79.2	81.5	3.0
46 Griffith	69.0	77.0	11.6
47 Mount Gambier	71.5	72.5	1.4
48 Norfolk Island	69.3	71.3	3.0
49 Merimbula	70.8	69.7	-1.5
50 Albany	66.9	66.1	-3.6
Total top 50 regional airports	23 501.2	24 062.5	2.4
Total regional airports	24 940.4	25 495.8	2.2
Total domestic network	118 194.1	120 471.1	1.9

Note: Airport passenger movement numbers are the sum of passenger arrivals and departures at each airport. Regional airports are defined as airports which are, according to Australian Statistical Geography Standard (ASGS), not based in Major Cities.

DOMESTIC CHARTER ACTIVITY

Table 12: Charter passengers carried and aircraft trips - monthly activity (000s)

	Nov 2024	Nov 2025	% Change
Total domestic charter passengers	341.8	353.4	3.4
Total domestic charter aircraft trips	5.8	5.9	0.6

Note: Helicopter, joyflights and sightseeing charter flights not included.

Table 13: Charter passengers carried and aircraft trips - annual activity (000s)

	YE Nov 2024	YE Nov 2025	% Change
Total domestic charter passengers	4 315.5	4 305.1	-0.2
Total domestic charter aircraft trips	73.5	73.5	0.0

Note: Helicopter, joyflights and sightseeing charter flights not included.

Table 14: Domestic airports - charter activity - monthly (000s)

	Nov 2024	Nov 2025	% Change
Total domestic charter passenger movements	683.6	706.7	3.4
Total domestic charter aircraft movements	11.7	11.7	0.6
Perth airport charter passenger movements	244.2	252.0	3.2
Perth airport charter aircraft movements	3.6	3.6	0.3

Note: Helicopter, joyflights and sightseeing charter flights not included.

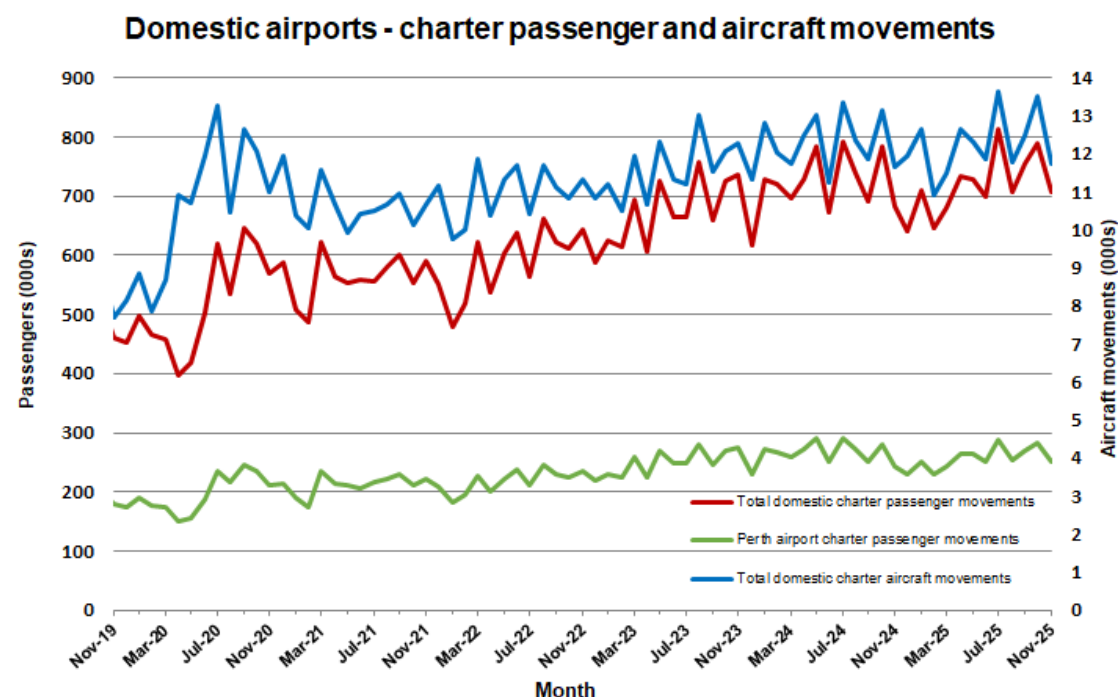
Charter passenger and aircraft movement numbers are the sum of arrivals and departures at each airport.

Table 15: Domestic airports - charter activity - annual (000s)

	YE Nov 2024	YE Nov 2025	% Change
Total domestic charter passenger movements	8 631.0	8 610.3	-0.2
Total domestic charter aircraft movements	147.0	147.0	0.0
Perth airport charter passenger movements	3 179.7	3 078.9	-3.2
Perth airport charter aircraft movements	47.7	44.6	-6.4

Note: Helicopter, joyflights and sightseeing charter flights not included.

Charter passenger and aircraft movement numbers are the sum of arrivals and departures at each airport.



DEFINITIONS

Aircraft Trips	The number of flight stages. A return flight counts as two aircraft trips.
Airport Movements	Airport movements (passenger and cargo) are measured once on arrival and once on departure. Each domestic trip generates two movements at airports. For example, a trip from Melbourne to Sydney will be counted twice, as a departure at Melbourne and as an arrival at Sydney. At the national level, the sum of all domestic airport traffic will therefore be equal to twice the number of trips undertaken.
Available Seat Kilometres (ASKs)	Calculated by multiplying the number of seats available on each flight stage, by the distance in kilometres between the ports. The distances used are Great Circle Distances.
City-Pair	The ports shown make up the city-pair route. Passenger movements shown for a city pair reflect total traffic in both directions.
Flight Stage	The operation of an aircraft from take-off to landing.
Load Factor	The total revenue passenger kilometres performed as a percentage of the total available seat kilometres.
Passengers Carried	Revenue passengers carried.
Regular Public Transport Services (RPT)	All air service operations in which aircraft are available for the transport of members of the public and are conducted in accordance with fixed schedules. It does not include charter or other non-scheduled operations.
Revenue Passengers	All passengers paying any fare. Frequent flyer redemption travellers are regarded as revenue passengers.
Revenue Passenger Kilometres (RPKs)	Calculated by multiplying the number of revenue passengers travelling on each flight stage, by the distance in kilometres between the ports. The distances used are Great Circle Distances.
Traffic on board by stages (TOB)	The total of all traffic (revenue passengers) on each flight stage between two directly connected airports.
..	Not available for confidentiality or other reasons.
NA	Not applicable.