



Australian Government

**Department of Infrastructure, Transport,
Regional Development, Communications and the Arts**
Bureau of Infrastructure and Transport Research Economics

STATISTICAL REPORT



bitre

Aviation

**Domestic aviation activity
November 2023**

The Department of Infrastructure, Transport, Regional Development, Communications and the Arts acknowledges the Traditional Custodians of Country of the land on which we work and live.

We recognise and respect the continuing connections to land, waters and communities.

We pay our respects to them and their cultures and to their Elders both past and present and to all Aboriginal and Torres Strait Islander people.

© Commonwealth of Australia 2024

ISSN: 1832 - 1968

Ownership of intellectual property rights in this publication

Unless otherwise noted, copyright (and any other intellectual property rights, if any) in this publication is owned by the Commonwealth of Australia (referred to below as the Commonwealth).

Disclaimer

The material contained in this publication is made available on the understanding that the Commonwealth is not providing professional advice, and that users exercise their own skill and care with respect to its use, and seek independent advice if necessary.

The Commonwealth makes no representations or warranties as to the contents or accuracy of the information contained in this publication. To the extent permitted by law, the Commonwealth disclaims liability to any person or organisation in respect of anything done, or omitted to be done, in reliance upon information contained in this publication.

Creative Commons licence

With the exception of (a) the Coat of Arms; and (b) the Department of Infrastructure, Transport, Regional Development, Communications and the Arts' photos and graphics, copyright in this publication is licensed under a Creative Commons Attribution 3.0 Australia Licence.

Creative Commons Attribution 3.0 Australia Licence is a standard form licence agreement that allows you to copy, communicate and adapt this publication provided that you attribute the work to the Commonwealth and abide by the other licence terms. A summary of the licence terms is available from <http://creativecommons.org/licenses/by/3.0/au/deed.en>.

The full licence terms are available from <http://creativecommons.org/licenses/by/3.0/au/legalcode>.

Use of the Coat of Arms

The Department of the Prime Minister and Cabinet sets the terms under which the Coat of Arms is used. Please refer to the Department's Commonwealth Coat of Arms and Government branding web page <http://www.dpmc.gov.au/guidelines/index.cfm#brand> and, in particular, the Guidelines on the use of the Commonwealth Coat of Arms publication.

An appropriate citation for this report is:

Bureau of Infrastructure and Transport Research Economics (BITRE), 2024, Domestic aviation activity, Statistical Report, BITRE, Canberra ACT.

Contact us

This publication is available in PDF format. All other rights are reserved, including in relation to any Departmental logos or trade marks which may exist. For enquiries regarding the licence and any use of this publication, please contact:

Bureau of Infrastructure and Transport Research Economics (BITRE)
Department of Infrastructure, Transport, Regional Development, Communications and the Arts
GPO Box 501, Canberra ACT 2601, Australia

Email: bitre@infrastructure.gov.au

Website: www.bitre.gov.au

Inquiries

Nebojsa.Pavlovic@infrastructure.gov.au (02) 6274 6817

FOREWORD

This report provides an overview of domestic (including charter) commercial aviation activity in Australia for the month of November 2023.

The data covers revenue passengers carried by Australian-registered operators of scheduled regular public transport services over Australian flight stages and fixed-wing charter operators. These estimates include passengers carried between domestic airports on international flights operated by these carriers. The passengers carried refer to traffic on board by stages.

Estimates of passengers and aircraft movements for charter aviation are included in this publication, where BITRE confidentiality standards are met.

Individual routes shown are restricted to those with an average exceeding 8,000 passengers per month over the previous six months where two or more airlines operate in competition. However, for the period from November 2021 through to December 2022, the major airlines (Qantas Group, Virgin Australia and Rex Airlines) agreed to publication of the top 35 routes based on pre-COVID activity (December 2019) whether or not they were meeting the above criteria. From January 2023, the passenger load and dual competition requirements were reinstated due to the continued recovery of passenger numbers.

Information on the total network for the month of November 2023 and on the Regular Public Transport (RPT) network for the month of November 2023 is presented on page 2, with estimates for the year ended November 2023 presented on page 3.

Detailed information on individual routes can be found in the RPT summary pages 4-13 of this publication. For the month of November 2023, there are 61 individual routes published.

The top ten airports in terms of RPT passenger movements are shown on page 14.

Data on domestic RPT cargo movements at the top five cargo airports are provided on page 15. The table includes cargo carried on passenger flights operated by the Qantas group (including Jetstar), Virgin Australia, Air North and Skippers as well as the cargo carried by dedicated freighter aircraft operated by Qantas Freight and Team Global Express (formerly Toll).

The long-term trends for the top ten competitive RPT routes are presented graphically on pages 16-25.

Domestic RPT passenger movements at regional airports are shown on pages 26-27.

Tables providing estimates of domestic charter aviation activity are shown on page 28. BITRE confidentiality standards restrict publication of detailed estimates for individual Australian airports, with the exception of Perth Airport.

A list of definitions can be found on page 29.

This report was prepared by the Aviation Statistics Section of the Bureau of Infrastructure and Transport Research Economics with data provided by airlines.

Estimates are included where data were not available and data presented in this publication may contain revisions to previously published data.

Where figures have been rounded, discrepancies may occur between sums of component items and totals, and in percentage changes which are derived from figures prior to rounding.

CONTENTS

Highlights	1
Total network.....	2
RPT network	2
Top competitive routes.....	4
Top ten airports – passenger movements.....	14
Top five airports – cargo movements.....	15
Top ten routes	16
1. Melbourne – Sydney	16
2. Brisbane – Sydney.....	17
3. Brisbane – Melbourne	18
4. Gold Coast – Sydney	19
5. Adelaide – Melbourne	20
6. Gold Coast - Melbourne	21
7. Melbourne – Perth	22
8. Adelaide – Sydney	23
9. Perth – Sydney	24
10. Hobart – Melbourne	25
Top fifty regional airports	26
Domestic charter activity.....	28
Definitions	29

This page is intentionally left blank.

HIGHLIGHTS

There were 5.41 million passengers carried on Australian domestic commercial aviation (including charter operations) in November 2023, an increase of 8.4 per cent on November 2022.

5.04 million passengers were carried on RPT flights in November 2023, an increase of 8.0 per cent compared to November 2022.

For the month of November 2023, there were 51,277 RPT aircraft trips, up 4.1 per cent compared to November 2022.

For the year ending November 2023 there were 56.93 million RPT passengers, an increase of 18.2 per cent on the year ending November 2022.

RPT revenue passenger kilometres (RPKs) performed were 5.94 billion for the month, compared with 5.48 billion in November 2022 (up 8.3 per cent).

Capacity, measured by available seat kilometres (ASKs), increased to 6.97 billion in November 2023 compared to 6.60 billion in November 2022 (up 5.7 per cent).

The industry wide load factor (RPKs/ASKs) increased from 83.1 per cent in November 2022 to 85.2 per cent in November 2023. The highest load factor (93.2 per cent) was recorded on the Perth - Sydney route while the lowest load factor (47.7 per cent) was recorded on the Geraldton – Perth route.

For the month of November 2023, Melbourne – Sydney was Australia's busiest RPT route with 696,915 passengers, followed by Brisbane – Sydney with 379,733 passengers and Brisbane – Melbourne with 289,819 passengers.

Sydney was Australia's busiest domestic airport with 2.15 million passenger movements in November 2023, followed by Melbourne with 2.08 million passenger movements and Brisbane with 1.43 million passenger movements.

Total cargo movements at Australian airports on domestic RPT flights were 30,648 tonnes in November 2023, a decrease of 4.4 per cent compared with November 2022.

In November 2023, there were 2.08 million domestic passenger movements through regional airports, compared to 1.95 million in November 2022, an increase of 6.5 per cent. Out of the top 50 regional airports, the strongest increase was recorded at Toowoomba Wellcamp Airport (up 120.2 per cent on November 2022), while the largest decrease was recorded at Ballina Airport (down 9.3 per cent on November 2022).

Fixed-wing charter operators carried 368,186 passengers in November 2023, an increase of 14.3 per cent compared with November 2022. Perth Airport accounted for 37.2 per cent of all charter passengers in Australia.

TOTAL NETWORK

Summary of monthly commercial aviation activity

	Nov 2022	Nov 2023	% Change
Total passengers carried (millions)	4.99	5.41	8.4
Aircraft trips (000s)	54.9	57.4	4.6

Note: Regular Public Transport and charter aviation activity
Helicopter, joy flights and sightseeing charter flights not included.

RPT NETWORK

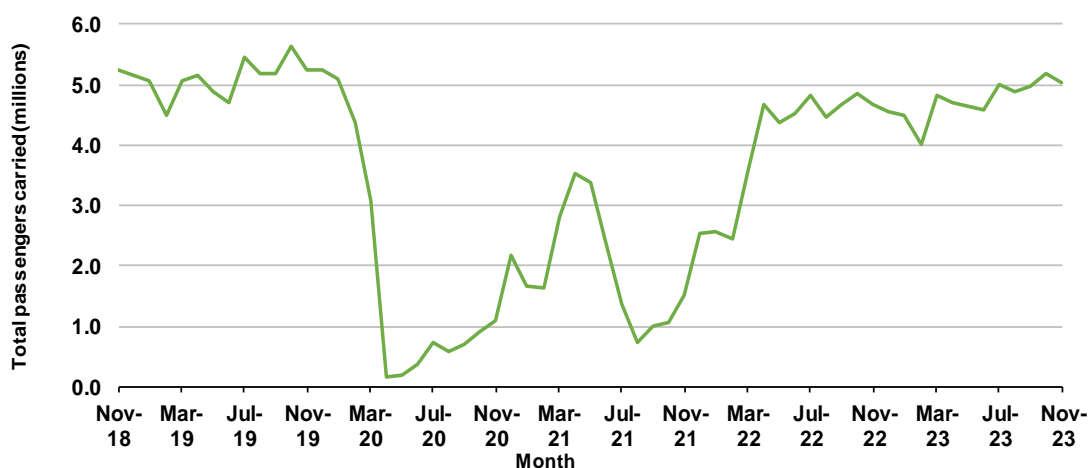
Summary of monthly RPT activity

	Nov 2022	Nov 2023	% Change
Total passengers carried (millions)	4.67	5.04	8.0
Revenue passenger kilometres (billions)	5.48	5.94	8.3
Available seats (millions)	5.72	6.09	6.6
Available seat kilometres (billions)	6.60	6.97	5.7
Load factor %	83.1	85.2	2.1 *
Aircraft trips (000s)	49.2	51.3	4.1

* percentage point difference

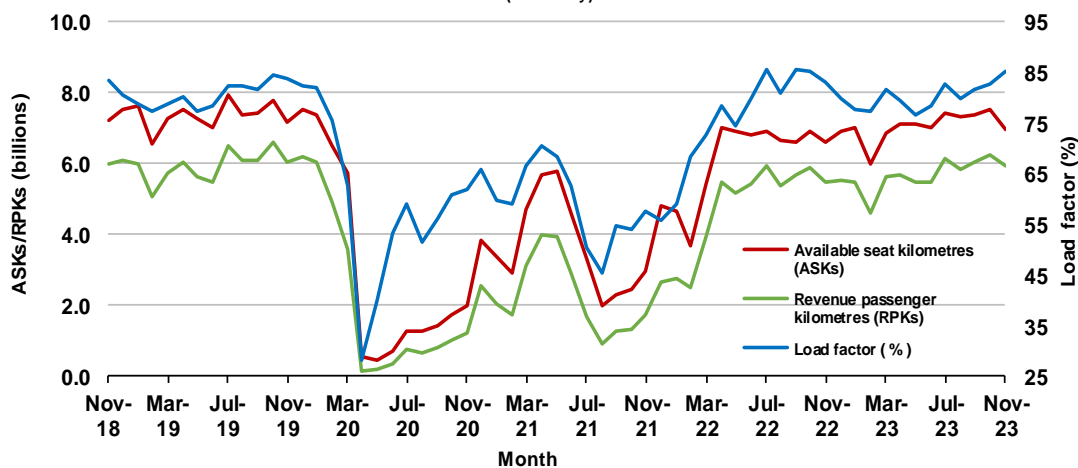
Domestic RPT passenger traffic

(monthly)



RPT Network utilisation

(monthly)



TOTAL NETWORK

Summary of annual commercial aviation activity

	YE Nov 2022	YE Nov 2023	% Change
Total passengers carried (millions)	51.71	60.96	17.9
Aircraft trips (000s)	614.1	681.0	10.9

Note: Regular Public Transport and charter aviation activity
Helicopter, joy flights and sightseeing charter flights not included.

RPT NETWORK

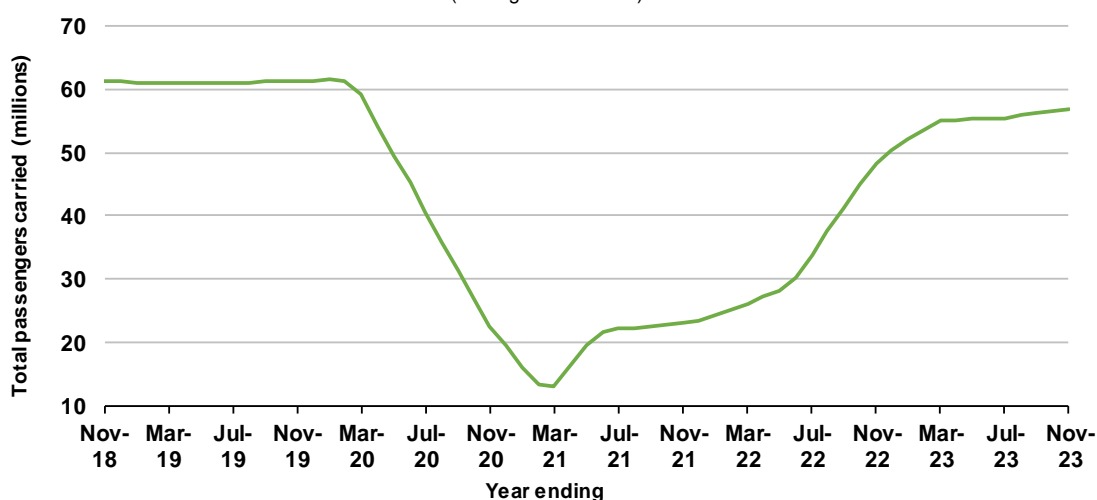
Summary of annual RPT activity

	YE Nov 2022	YE Nov 2023	% Change
Total passengers carried (millions)	48.18	56.93	18.2
Revenue passenger kilometres (billions)	56.31	68.06	20.9
Available seats (millions)	64.27	72.94	13.5
Available seat kilometres (billions)	72.94	84.72	16.2
Load factor %	77.2	80.3	3.1 *
Aircraft trips (000s)	548.3	611.5	11.5

* percentage point difference

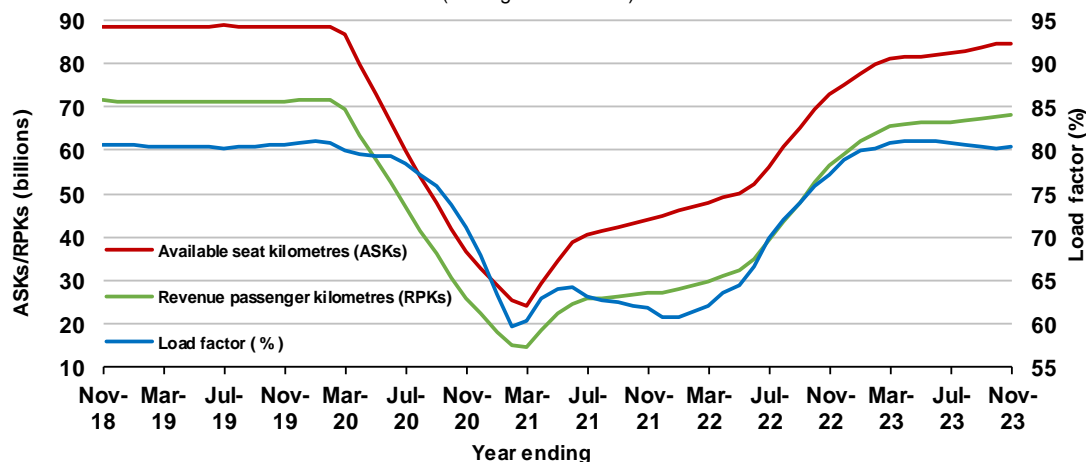
Domestic RPT passenger traffic

(moving annual totals)



RPT Network utilisation

(moving annual totals)



TOP COMPETITIVE ROUTES

Table 1: Passengers carried (000s) — annual activity

	City-Pair	YE Nov 2022	YE Nov 2023	%Change
1	Melbourne - Sydney	6,407.5	8,181.6	27.7
2	Brisbane - Sydney	3,363.6	4,215.8	25.3
3	Brisbane - Melbourne	2,663.6	3,284.3	23.3
4	Gold Coast - Sydney	2,152.4	2,635.6	22.5
5	Adelaide - Melbourne	1,873.2	2,277.2	21.6
6	Gold Coast - Melbourne	2,172.5	2,219.3	2.2
7	Melbourne - Perth	1,182.1	1,905.0	61.2
8	Adelaide - Sydney	1,342.5	1,723.4	28.4
9	Perth - Sydney	988.1	1,575.1	59.4
10	Hobart - Melbourne	1,017.4	1,277.3	25.5
11	Brisbane - Cairns	1,141.2	1,247.2	9.3
12	Brisbane - Perth	677.1	1,007.8	48.8
13	Canberra - Melbourne	824.1	990.8	20.2
14	Cairns - Sydney	764.7	965.4	26.3
15	Brisbane - Townsville	813.2	871.5	7.2
16	Cairns - Melbourne	782.6	813.0	3.9
17	Adelaide - Brisbane	686.8	809.5	17.9
18	Launceston - Melbourne	637.3	804.4	26.2
19	Sunshine Coast - Sydney	643.4	750.3	16.6
20	Brisbane - Mackay	686.5	730.7	6.4
21	Hobart - Sydney	611.0	728.8	19.3
22	Melbourne - Sunshine Coast	695.8	689.7	-0.9
23	Adelaide - Perth	436.0	649.0	48.8
24	Brisbane - Canberra	564.1	632.8	12.2
25	Canberra - Sydney	513.9	598.3	16.4
26	Karratha - Perth	488.5	540.4	10.6
27	Ballina - Sydney	529.1	535.3	1.2
28	Brisbane - Rockhampton	438.3	508.1	15.9
29	Brisbane - Newcastle	424.5	496.6	17.0
30	Perth - Port Hedland	445.4	479.5	7.6
31	Melbourne - Newcastle	377.6	416.9	10.4
32	Newman - Perth	340.7	371.3	9.0
33	Broome - Perth	368.2	364.1	-1.1
34	Kalgoorlie - Perth	298.2	357.3	19.8
35	Launceston - Sydney	259.1	326.4	26.0
36	Brisbane - Darwin	325.8	321.5	-1.3
37	Brisbane - Hobart	296.3	291.5	-1.6
38	Darwin - Melbourne	294.3	283.3	-3.7
39	Brisbane - Proserpine	296.7	271.8	-8.4
40	Hamilton Island - Sydney	217.9	269.2	23.5
41	Adelaide - Gold Coast	213.4	258.3	21.1
42	Coffs Harbour - Sydney	209.0	215.7	3.2
43	Brisbane - Gladstone	190.1	212.9	12.0
44	Adelaide - Canberra	147.0	194.7	32.5
45	Dubbo - Sydney	143.4	190.9	33.1
46	Brisbane - Emerald	156.6	183.9	17.4
47	Port Macquarie - Sydney	138.0	180.5	30.8
48	Adelaide - Port Lincoln	167.5	174.3	4.0
49	Canberra - Gold Coast	136.2	174.0	27.8
50	Darwin - Perth	140.3	170.6	21.6

continued

Table 1: (continued) Passengers carried (000s) — annual activity

	City-Pair	YE Nov 2022	YE Nov 2023	% Change
51	Sydney - Wagga Wagga	131.7	167.8	27.4
52	Albury - Sydney	146.6	165.3	12.7
53	Melbourne - Mildura	137.0	164.5	20.1
54	Brisbane - Hamilton Island	181.9	164.1	-9.8
55	Brisbane - Launceston	172.3	153.0	-11.2
56	Brisbane - Mount Isa	134.9	143.7	6.6
57	Devonport - Melbourne	90.2	121.2	34.4
58	Adelaide - Alice Springs	95.9	116.2	21.2
59	Brisbane - Bundaberg	..	111.2	NA
60	Brisbane - Moranbah	97.3	109.2	12.2
61	Geraldton - Perth	..	90.7	NA
	Total domestic network	48,184.2	56,932.4	18.2

.. Data not available for release.

Table 2: Passengers carried (000s) — monthly activity

	City-Pair	Nov 2022	Nov 2023	% Change
1	Melbourne - Sydney	628.5	696.9	10.9
2	Brisbane - Sydney	346.0	379.7	9.7
3	Brisbane - Melbourne	260.8	289.8	11.1
4	Gold Coast - Sydney	208.7	208.7	0.0
5	Adelaide - Melbourne	190.5	206.1	8.2
6	Gold Coast - Melbourne	197.3	182.9	-7.3
7	Melbourne - Perth	143.8	179.8	25.1
8	Adelaide - Sydney	139.4	159.6	14.5
9	Perth - Sydney	126.5	142.4	12.5
10	Hobart - Melbourne	106.5	114.6	7.6
11	Brisbane - Cairns	104.8	111.2	6.2
12	Canberra - Melbourne	88.5	94.1	6.4
13	Brisbane - Perth	84.0	91.2	8.5
14	Adelaide - Brisbane	69.5	78.8	13.5
15	Cairns - Sydney	71.6	73.6	2.7
16	Launceston - Melbourne	71.6	71.8	0.2
17	Brisbane - Townsville	71.6	70.4	-1.7
18	Sunshine Coast - Sydney	64.0	66.6	4.1
19	Cairns - Melbourne	58.7	64.9	10.6
20	Melbourne - Sunshine Coast	54.2	64.4	18.9
21	Brisbane - Mackay	65.9	64.1	-2.7
22	Hobart - Sydney	62.4	63.7	2.2
23	Adelaide - Perth	53.5	62.0	15.7
24	Canberra - Sydney	55.9	60.1	7.4
25	Brisbane - Canberra	53.8	56.3	4.7
26	Karratha - Perth	46.7	49.5	6.0
27	Brisbane - Rockhampton	41.2	45.2	9.9
28	Brisbane - Newcastle	44.0	43.9	-0.1
29	Ballina - Sydney	47.7	43.0	-9.9
30	Perth - Port Hedland	42.4	42.0	-1.1
31	Melbourne - Newcastle	35.7	39.6	11.0
32	Kalgoorlie - Perth	28.6	33.4	16.6
33	Newman - Perth	32.9	32.8	-0.4
34	Launceston - Sydney	23.8	32.3	35.8
35	Broome - Perth	28.0	27.7	-1.2
36	Brisbane - Hobart	25.3	23.3	-7.8
37	Brisbane - Proserpine	22.4	21.8	-2.7
38	Hamilton Island - Sydney	22.4	21.7	-3.2
39	Adelaide - Gold Coast	21.4	21.3	-0.8
40	Brisbane - Darwin	23.0	20.7	-10.0
41	Brisbane - Gladstone	17.4	19.4	11.3
42	Coffs Harbour - Sydney	18.3	18.0	-1.7
43	Adelaide - Canberra	16.9	17.6	4.3
44	Darwin - Melbourne	19.2	16.6	-13.5
45	Brisbane - Emerald	15.3	16.5	7.5
46	Dubbo - Sydney	14.4	16.3	13.4
47	Port Macquarie - Sydney	14.3	15.4	7.4
48	Canberra - Gold Coast	14.4	15.3	6.1
49	Melbourne - Mildura	12.9	15.2	18.2
50	Brisbane - Hamilton Island	13.7	15.1	10.5

continued

Table 2: (continued) Passengers carried (000s) — monthly activity

	City-Pair	Nov 2022	Nov 2023	% Change
51	Adelaide - Port Lincoln	15.3	14.8	-3.2
52	Albury - Sydney	14.2	14.7	3.8
53	Sydney - Wagga Wagga	13.6	13.6	-0.1
54	Darwin - Perth	12.3	12.9	5.1
55	Brisbane - Mount Isa	12.4	12.6	1.8
56	Brisbane - Bundaberg	..	11.7	NA
57	Brisbane - Launceston	13.4	11.7	-12.9
58	Devonport - Melbourne	10.1	10.4	2.8
59	Brisbane - Moranbah	9.7	10.0	2.6
60	Geraldton - Perth	..	9.5	NA
61	Adelaide - Alice Springs	8.0	9.4	17.9
	Total domestic network	4,667.0	5,042.4	8.0

.. Data not available for release.

Table 3: Available seats (000s) — monthly activity

	City-Pair	Nov 2022	Nov 2023	% Change
1	Melbourne - Sydney	712.9	779.5	9.3
2	Brisbane - Sydney	402.8	432.2	7.3
3	Brisbane - Melbourne	294.4	328.4	11.5
4	Gold Coast - Sydney	233.6	233.7	0.0
5	Adelaide - Melbourne	218.3	234.3	7.3
6	Gold Coast - Melbourne	220.1	198.8	-9.7
7	Melbourne - Perth	161.2	198.0	22.8
8	Adelaide - Sydney	153.2	182.2	18.9
9	Perth - Sydney	142.6	152.7	7.1
10	Hobart - Melbourne	130.1	134.6	3.5
11	Brisbane - Cairns	116.7	128.1	9.7
12	Canberra - Melbourne	110.7	119.6	8.1
13	Brisbane - Perth	98.5	99.7	1.2
14	Adelaide - Brisbane	82.2	95.0	15.5
15	Cairns - Sydney	81.8	81.7	-0.1
16	Launceston - Melbourne	83.6	85.3	2.0
17	Brisbane - Townsville	90.3	88.0	-2.5
18	Sunshine Coast - Sydney	79.2	78.6	-0.8
19	Cairns - Melbourne	65.4	70.2	7.3
20	Melbourne - Sunshine Coast	63.1	72.1	14.3
21	Brisbane - Mackay	92.7	80.8	-12.8
22	Hobart - Sydney	76.1	72.3	-5.1
23	Adelaide - Perth	59.7	69.9	17.0
24	Canberra - Sydney	74.1	80.8	9.1
25	Brisbane - Canberra	75.3	74.2	-1.5
26	Karratha - Perth	61.1	73.5	20.3
27	Brisbane - Rockhampton	55.6	57.6	3.5
28	Brisbane - Newcastle	61.6	52.0	-15.6
29	Ballina - Sydney	56.4	49.0	-13.1
30	Perth - Port Hedland	52.5	64.8	23.4
31	Melbourne - Newcastle	43.2	51.8	19.8
32	Kalgoorlie - Perth	39.0	56.4	44.6
33	Newman - Perth	49.9	55.6	11.3
34	Launceston - Sydney	27.2	37.2	36.6
35	Broome - Perth	34.2	36.3	6.2
36	Brisbane - Hobart	29.6	25.9	-12.5
37	Brisbane - Proserpine	27.0	24.5	-9.2
38	Hamilton Island - Sydney	28.1	28.8	2.4
39	Adelaide - Gold Coast	24.9	23.8	-4.7
40	Brisbane - Darwin	29.3	24.7	-15.7
41	Brisbane - Gladstone	25.4	29.6	16.5
42	Coffs Harbour - Sydney	24.1	21.3	-11.8
43	Adelaide - Canberra	22.5	23.2	3.1
44	Darwin - Melbourne	27.3	19.7	-28.1
45	Brisbane - Emerald	20.8	22.3	7.6
46	Dubbo - Sydney	23.3	24.4	4.9
47	Port Macquarie - Sydney	22.2	21.5	-3.3
48	Canberra - Gold Coast	16.7	18.0	7.8
49	Melbourne - Mildura	16.7	20.0	19.6
50	Brisbane - Hamilton Island	18.1	21.1	16.7

continued

Table 3: (continued) Available seats (000s) — monthly activity

	City-Pair	Nov 2022	Nov 2023	% Change
51	Adelaide - Port Lincoln	21.3	21.9	2.8
52	Albury - Sydney	22.3	20.2	-9.1
53	Sydney - Wagga Wagga	22.0	20.7	-5.7
54	Darwin - Perth	17.6	17.4	-0.9
55	Brisbane - Mount Isa	19.5	20.2	3.7
56	Brisbane - Bundaberg	..	18.4	NA
57	Brisbane - Launceston	15.9	13.7	-13.5
58	Devonport - Melbourne	14.6	14.4	-1.6
59	Brisbane - Moranbah	18.4	17.2	-6.3
60	Geraldton - Perth	..	19.9	NA
61	Adelaide - Alice Springs	12.6	12.8	1.8
	Total domestic network	5,718.1	6,093.3	6.6

.. Data not available for release.

Table 4: Load factors (%) — monthly activity

	City-Pair	Nov 2022	Nov 2023	% Point diff
1	Melbourne - Sydney	88.2	89.4	1.2
2	Brisbane - Sydney	85.9	87.9	2.0
3	Brisbane - Melbourne	88.6	88.3	-0.3
4	Gold Coast - Sydney	89.3	89.3	0.0
5	Adelaide - Melbourne	87.2	88.0	0.8
6	Gold Coast - Melbourne	89.6	92.0	2.4
7	Melbourne - Perth	89.2	90.8	1.6
8	Adelaide - Sydney	91.0	87.6	-3.4
9	Perth - Sydney	88.7	93.2	4.5
10	Hobart - Melbourne	81.9	85.1	3.2
11	Brisbane - Cairns	89.8	86.9	-2.9
12	Canberra - Melbourne	79.9	78.7	-1.2
13	Brisbane - Perth	85.3	91.5	6.2
14	Adelaide - Brisbane	84.6	83.0	-1.6
15	Cairns - Sydney	87.6	90.1	2.5
16	Launceston - Melbourne	77.5	84.1	6.6
17	Brisbane - Townsville	75.4	80.0	4.6
18	Sunshine Coast - Sydney	80.8	84.8	4.0
19	Cairns - Melbourne	89.7	92.4	2.7
20	Melbourne - Sunshine Coast	85.8	89.3	3.5
21	Brisbane - Mackay	71.0	79.3	8.3
22	Hobart - Sydney	81.9	88.2	6.3
23	Adelaide - Perth	89.7	88.7	-1.0
24	Canberra - Sydney	75.5	74.3	-1.2
25	Brisbane - Canberra	71.3	75.8	4.5
26	Karratha - Perth	76.4	67.3	-9.1
27	Brisbane - Rockhampton	74.0	78.6	4.6
28	Brisbane - Newcastle	71.4	84.6	13.2
29	Ballina - Sydney	84.6	87.7	3.1
30	Perth - Port Hedland	80.8	64.7	-16.1
31	Melbourne - Newcastle	82.5	76.4	-6.1
32	Kalgoorlie - Perth	73.4	59.2	-14.2
33	Newman - Perth	65.9	59.0	-6.9
34	Launceston - Sydney	87.5	87.0	-0.5
35	Broome - Perth	82.0	76.3	-5.7
36	Brisbane - Hobart	85.6	90.2	4.6
37	Brisbane - Proserpine	83.2	89.2	6.0
38	Hamilton Island - Sydney	79.6	75.2	-4.4
39	Adelaide - Gold Coast	86.0	89.5	3.5
40	Brisbane - Darwin	78.5	83.8	5.3
41	Brisbane - Gladstone	68.7	65.6	-3.1
42	Coffs Harbour - Sydney	75.8	84.5	8.7
43	Adelaide - Canberra	74.9	75.7	0.8
44	Darwin - Melbourne	70.2	84.4	14.2
45	Brisbane - Emerald	73.8	73.7	-0.1
46	Dubbo - Sydney	61.9	66.9	5.0
47	Port Macquarie - Sydney	64.5	71.6	7.1
48	Canberra - Gold Coast	86.1	84.8	-1.3
49	Melbourne - Mildura	76.9	75.9	-1.0
50	Brisbane - Hamilton Island	75.8	71.8	-4.0

continued

Table 4: (continued) Load factors (%) — monthly activity

	City-Pair	Nov 2022	Nov 2023	% Point diff
51	Adelaide - Port Lincoln	71.6	67.5	-4.1
52	Albury - Sydney	63.8	72.8	9.0
53	Sydney - Wagga Wagga	62.0	65.7	3.7
54	Darwin - Perth	69.8	74.0	4.2
55	Brisbane - Mount Isa	63.7	62.5	-1.2
56	Brisbane - Bundaberg	..	64.0	NA
57	Brisbane - Launceston	84.3	84.9	0.6
58	Devonport - Melbourne	69.1	72.1	3.0
59	Brisbane - Moranbah	52.8	57.8	5.0
60	Geraldton - Perth	..	47.7	NA
61	Adelaide - Alice Springs	63.6	73.7	10.1
	Total domestic network	83.1	85.2	2.1

.. Data not available for release.

Table 5: Aircraft trips ^(a) — monthly activity

	City-Pair	Nov 2022	Nov 2023	% Change
1	Melbourne - Sydney	4,124	4,604	11.6
2	Brisbane - Sydney	2,536	2,689	6.0
3	Brisbane - Melbourne	1,839	1,990	8.2
4	Gold Coast - Sydney	1,357	1,336	-1.5
5	Adelaide - Melbourne	1,353	1,443	6.7
6	Gold Coast - Melbourne	1,200	1,083	-9.8
7	Melbourne - Perth	918	1,118	21.8
8	Adelaide - Sydney	958	1,144	19.4
9	Perth - Sydney	763	809	6.0
10	Hobart - Melbourne	784	785	0.1
11	Brisbane - Cairns	779	825	5.9
12	Canberra - Melbourne	800	861	7.6
13	Brisbane - Perth	562	575	2.3
14	Adelaide - Brisbane	583	751	28.8
15	Cairns - Sydney	396	430	8.6
16	Launceston - Melbourne	741	737	-0.5
17	Brisbane - Townsville	649	679	4.6
18	Sunshine Coast - Sydney	492	438	-11.0
19	Cairns - Melbourne	335	368	9.9
20	Melbourne - Sunshine Coast	365	388	6.3
21	Brisbane - Mackay	617	706	14.4
22	Hobart - Sydney	462	466	0.9
23	Adelaide - Perth	348	401	15.2
24	Canberra - Sydney	1,218	1,297	6.5
25	Brisbane - Canberra	535	588	9.9
26	Karratha - Perth	386	434	12.4
27	Brisbane - Rockhampton	598	685	14.5
28	Brisbane - Newcastle	540	471	-12.8
29	Ballina - Sydney	416	343	-17.5
30	Perth - Port Hedland	348	393	12.9
31	Melbourne - Newcastle	273	323	18.3
32	Kalgoorlie - Perth	280	353	26.1
33	Newman - Perth	325	341	4.9
34	Launceston - Sydney	174	228	31.0
35	Broome - Perth	238	252	5.9
36	Brisbane - Hobart	181	175	-3.3
37	Brisbane - Proserpine	177	161	-9.0
38	Hamilton Island - Sydney	161	163	1.2
39	Adelaide - Gold Coast	140	119	-15.0
40	Brisbane - Darwin	241	179	-25.7
41	Brisbane - Gladstone	324	355	9.6
42	Coffs Harbour - Sydney	465	377	-18.9
43	Adelaide - Canberra	195	222	13.8
44	Darwin - Melbourne	155	138	-11.0
45	Brisbane - Emerald	315	338	7.3
46	Dubbo - Sydney	453	461	1.8
47	Port Macquarie - Sydney	412	375	-9.0
48	Canberra - Gold Coast	94	101	7.4
49	Melbourne - Mildura	404	417	3.2
50	Brisbane - Hamilton Island	107	121	13.1

continued

Table 5: (continued) Aircraft trips ^(a) — monthly activity

	City-Pair	Nov 2022	Nov 2023	% Change
51	Adelaide - Port Lincoln	524	540	3.1
52	Albury - Sydney	433	368	-15.0
53	Sydney - Wagga Wagga	437	377	-13.7
54	Darwin - Perth	101	102	1.0
55	Brisbane - Mount Isa	173	173	0.0
56	Brisbane - Bundaberg	..	300	NA
57	Brisbane - Launceston	88	78	-11.4
58	Devonport - Melbourne	325	315	-3.1
59	Brisbane - Moranbah	245	229	-6.5
60	Geraldton - Perth	..	200	NA
61	Adelaide - Alice Springs	154	156	1.3
	Total domestic network	49,240	51,277	4.1

(a) Includes RPT cargo flights.

.. Data not available for release.

TOP TEN AIRPORTS – PASSENGER MOVEMENTS

Table 6: Top ten airports, RPT passenger movements (000s) - monthly activity

Airport	Nov 2022	Nov 2023	% Change	% of Total
1 Sydney	2,002.7	2,149.6	7.3	21.3
2 Melbourne	1,895.6	2,082.1	9.8	20.6
3 Brisbane	1,337.4	1,434.8	7.3	14.2
4 Perth	674.0	754.4	11.9	7.5
5 Adelaide	579.2	638.5	10.2	6.3
6 Gold Coast	468.4	461.0	-1.6	4.6
7 Cairns	310.2	331.9	7.0	3.3
8 Canberra	246.0	258.4	5.0	2.6
9 Hobart	213.3	224.5	5.2	2.2
10 Sunshine Coast	124.0	164.3	32.5	1.6
Total top ten airports	7,850.8	8,499.5	8.3	84.3
Total domestic network	9,334.0	10,084.8	8.0	100.0

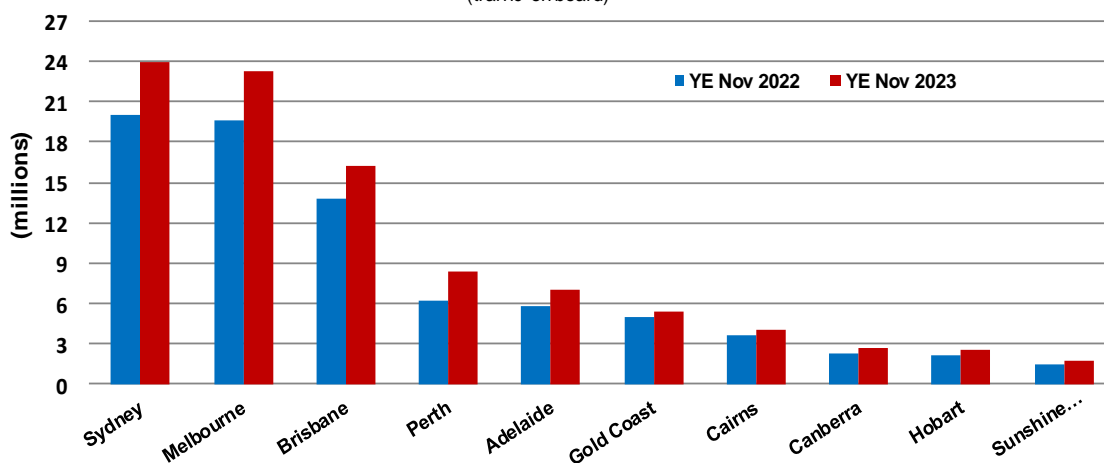
Table 7: Top ten airports, RPT passenger movements (000s) - annual activity

Airport	YE Nov 2022	YE Nov 2023	% Change	% of Total
1 Sydney	19,998.2	23,991.0	20.0	21.1
2 Melbourne	19,563.7	23,223.6	18.7	20.4
3 Brisbane	13,842.6	16,274.7	17.6	14.3
4 Perth	6,196.5	8,361.4	34.9	7.3
5 Adelaide	5,759.2	7,078.3	22.9	6.2
6 Gold Coast	5,058.1	5,441.6	7.6	4.8
7 Cairns	3,591.8	3,994.7	11.2	3.5
8 Canberra	2,334.9	2,752.4	17.9	2.4
9 Hobart	2,195.7	2,550.8	16.2	2.2
10 Sunshine Coast	1,427.0	1,804.8	26.5	1.6
Total top ten airports	79,967.7	95,473.2	19.4	83.8
Total domestic network	96,368.4	113,864.8	18.2	100.0

Note: Airport passenger movement numbers are the sum of passenger arrivals and departures at each airport.

Top ten airports, RPT passenger movements

(traffic on board)



TOP FIVE AIRPORTS – CARGO MOVEMENTS

Table 8: Top five airports, domestic RPT cargo movements (000s tonnes) - monthly activity

Airport	Nov 2022	Nov 2023	% Change	% of Total
1 Melbourne	8.7	8.3	-4.1	27.1
2 Sydney	7.2	6.8	-4.5	22.3
3 Brisbane	5.7	5.7	0.4	18.5
4 Perth	3.4	3.3	-1.9	10.8
5 Adelaide	1.9	1.9	-2.9	6.1
Total top five airports	26.8	26.0	-2.9	84.9
Total domestic network	32.1	30.6	-4.4	100.0

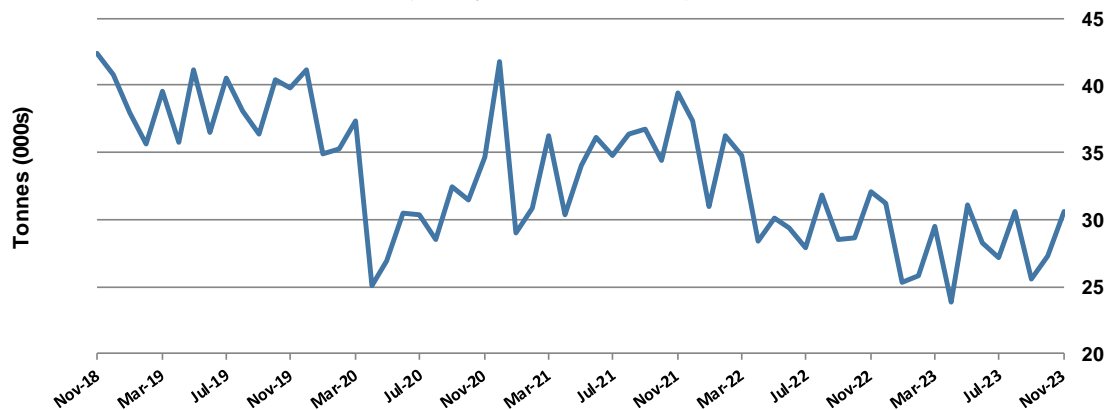
Table 9: Top five airports, domestic RPT cargo movements (000s tonnes) - annual activity

Airport	YE Nov 2022	YE Nov 2023	% Change	% of Total
1 Melbourne	97.7	90.6	-7.3	26.9
2 Sydney	85.1	75.1	-11.7	22.3
3 Brisbane	63.4	59.3	-6.6	17.6
4 Perth	35.0	35.2	0.6	10.5
5 Adelaide	23.0	18.6	-19.1	5.5
Total top five airports	304.2	278.8	-8.3	82.9
Total domestic network	376.1	336.3	-10.6	100.0

Note: Airport cargo tonnes are the sum of cargo tonnes on arrivals and departures at each airport.

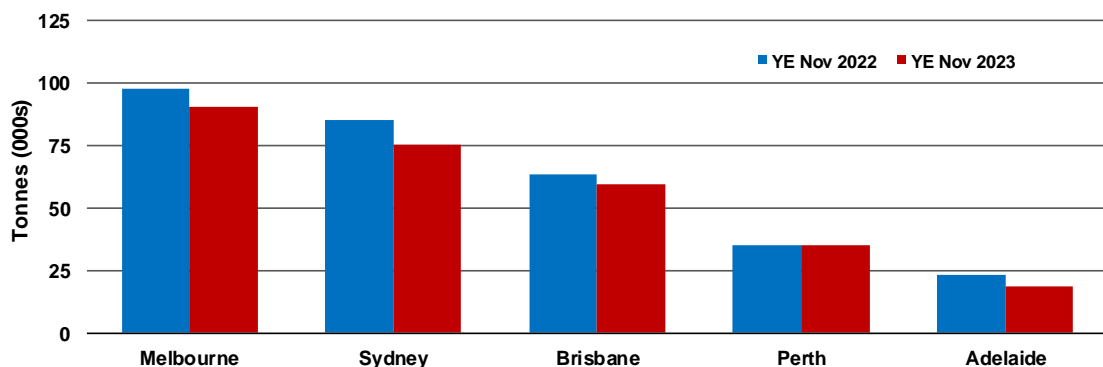
Total domestic network - cargo movement

(monthly totals - traffic on board)



Top five airports, cargo movements

(Domestic cargo traffic - traffic on board)



Note: Airport cargo tonnes are the sum of cargo tonnes on arrivals and departures at each airport.

TOP TEN ROUTES

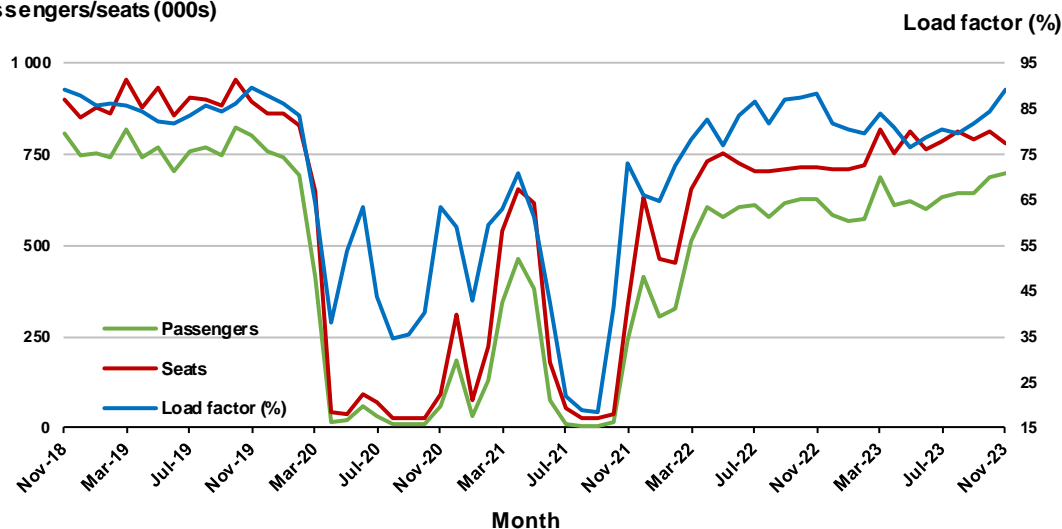
1. Melbourne - Sydney

Monthly data

	Nov 2022	Nov 2023	% Change
Passengers carried (000s)	628.5	696.9	10.9
Seats (000s)	712.9	779.5	9.3
Load factor %	88.2	89.4	1.2 *
Aircraft trips	4,124	4,604	11.6

* percentage point difference

Passengers/seats (000s)

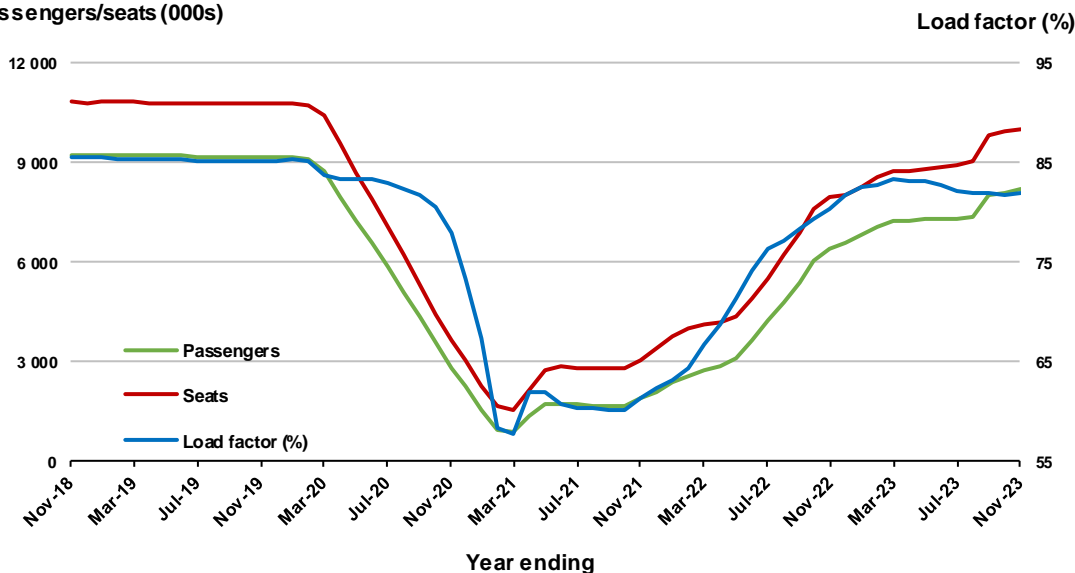


Moving annual data

	YE Nov 2022	YE Nov 2023	% Change
Passengers carried (000s)	6,407.5	8,181.6	27.7
Seats (000s)	7,965.1	9,982.5	25.3
Load factor %	80.5	82.0	1.5 *
Aircraft trips	46,507	57,800	24.3

* percentage point difference

Passengers/seats (000s)

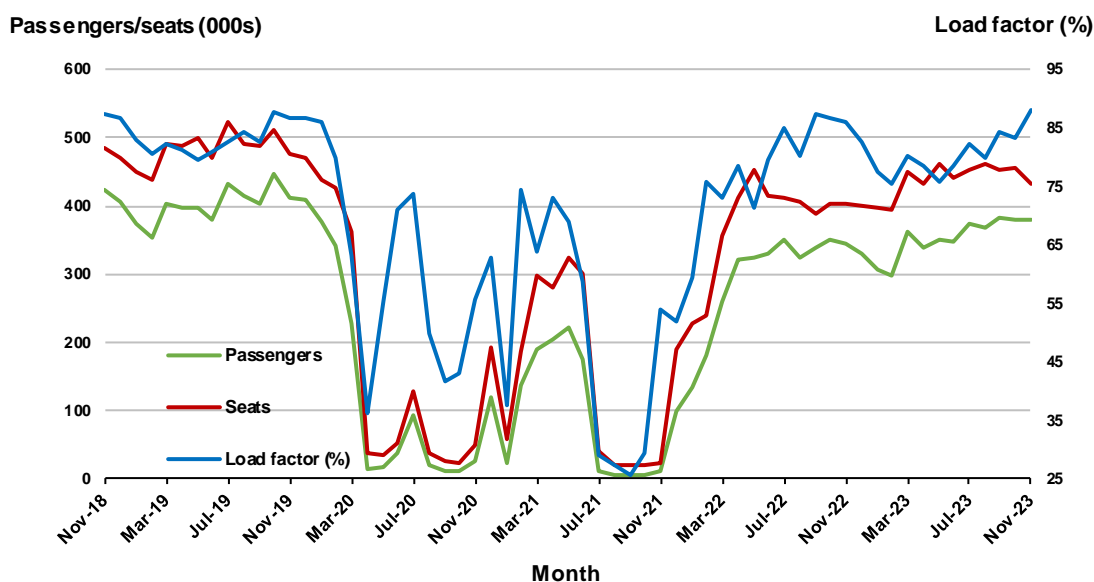


2. Brisbane - Sydney

Monthly data

	Nov 2022	Nov 2023	% Change
Passengers carried (000s)	346.0	379.7	9.7
Seats (000s)	402.8	432.2	7.3
Load factor %	85.9	87.9	2.0 *
Aircraft trips	2,536	2,689	6.0

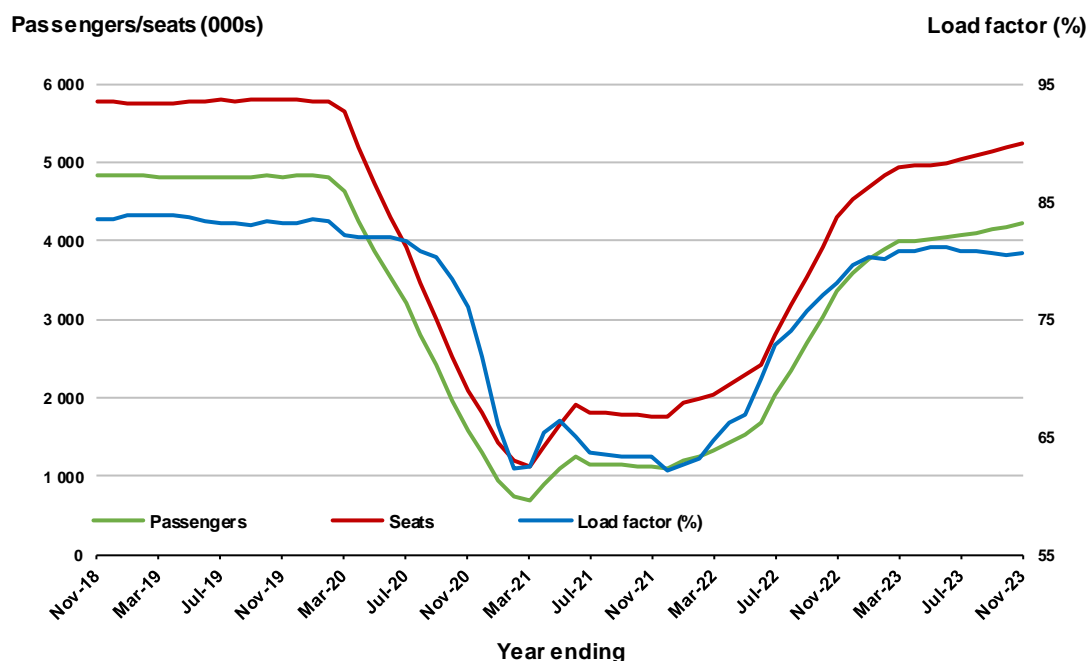
* percentage point difference



Moving annual data

	YE Nov 2022	YE Nov 2023	% Change
Passengers carried (000s)	3,363.6	4,215.8	25.3
Seats (000s)	4,310.3	5,230.6	21.4
Load factor %	78.0	80.6	2.6 *
Aircraft trips	26,731	32,082	20.0

* percentage point difference

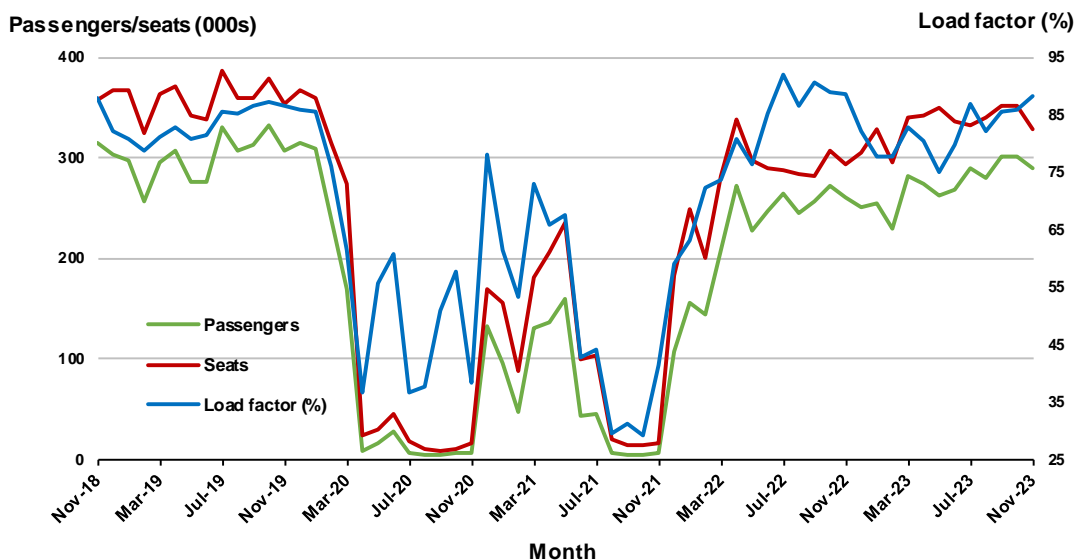


3. Brisbane - Melbourne

Monthly data

	Nov 2022	Nov 2023	% Change
Passengers carried (000s)	260.8	289.8	11.1
Seats (000s)	294.4	328.4	11.5
Load factor %	88.6	88.3	-0.3 *
Aircraft trips	1,839	1,990	8.2

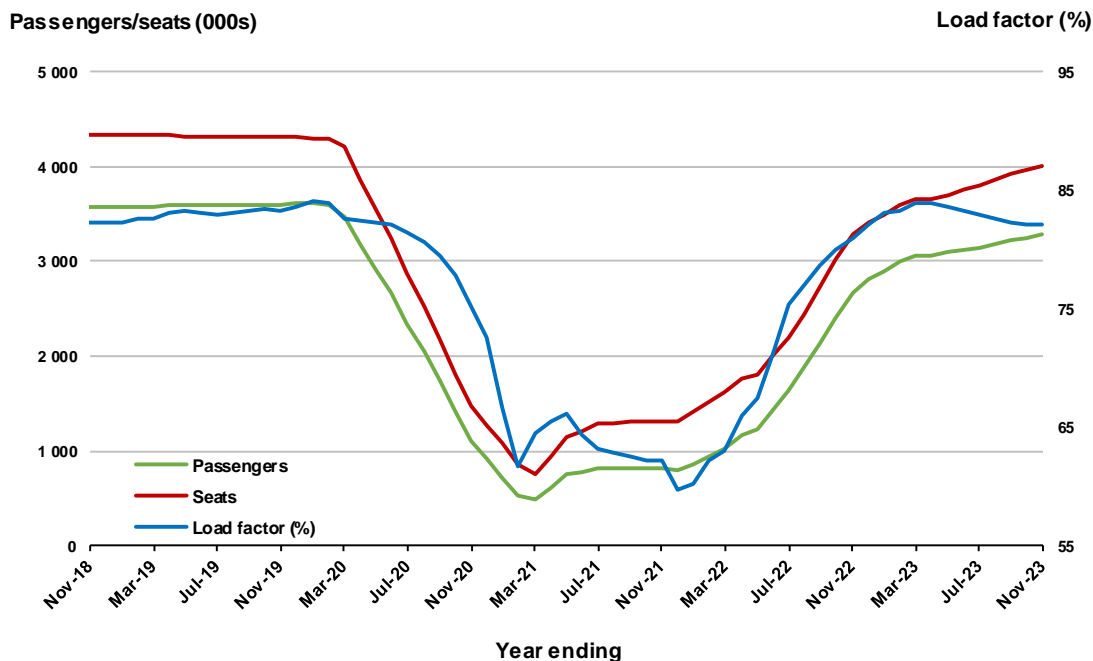
* percentage point difference



Moving annual data

	YE Nov 2022	YE Nov 2023	% Change
Passengers carried (000s)	2,663.6	3,284.3	23.3
Seats (000s)	3,292.9	4,001.7	21.5
Load factor %	80.9	82.1	1.2 *
Aircraft trips	20,226	24,269	20.0

* percentage point difference



4. Gold Coast - Sydney ^(a)

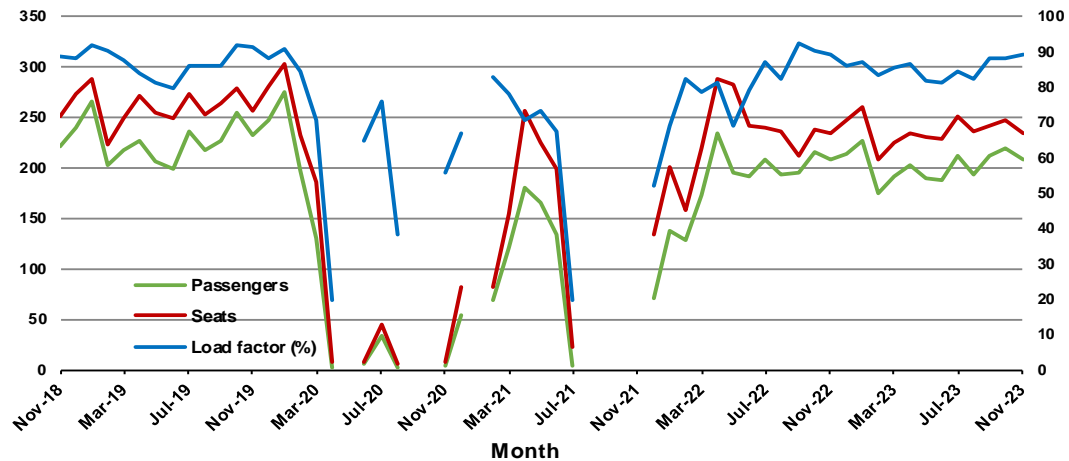
Monthly data

	Nov 2022	Nov 2023	% Change
Passengers carried (000s)	208.7	208.7	0.0
Seats (000s)	233.6	233.7	0.0
Load factor %	89.3	89.3	0.0 *
Aircraft trips	1,357	1,336	- 1.5

* percentage point difference

Passengers/seats (000s)

Load factor (%)



(a) May, September and October 2020 and January and August to November 2021 data not available for release.

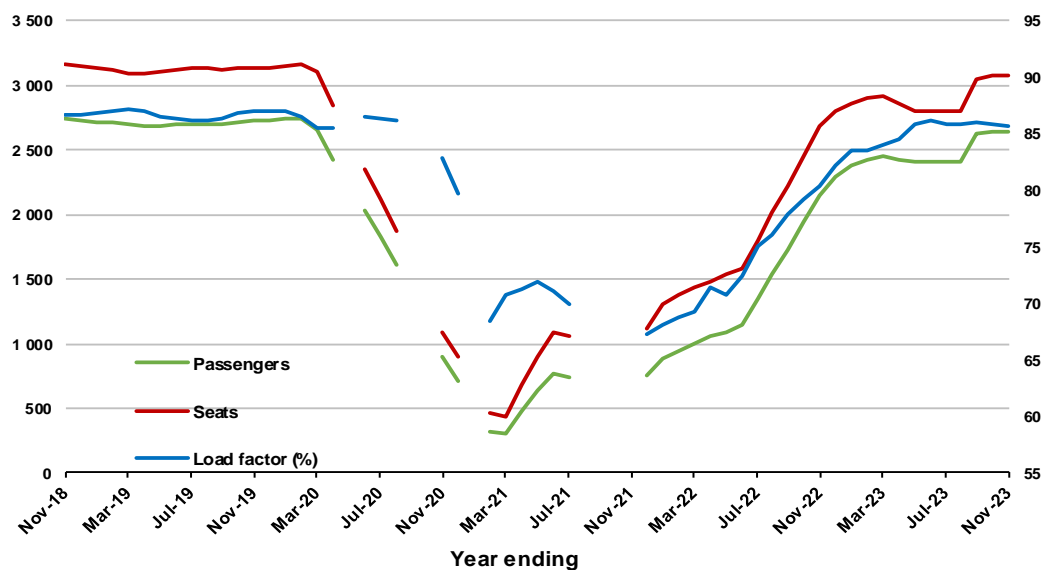
Moving annual data

	YE Nov 2022	YE Nov 2023	% Change
Passengers carried (000s)	2,152.4	2,635.6	22.5
Seats (000s)	2,680.9	3,076.3	14.7
Load factor %	80.3	85.7	5.4 *
Aircraft trips	15,513	17,712	14.2

* percentage point difference

Passengers/seats (000s)

Load factor (%)



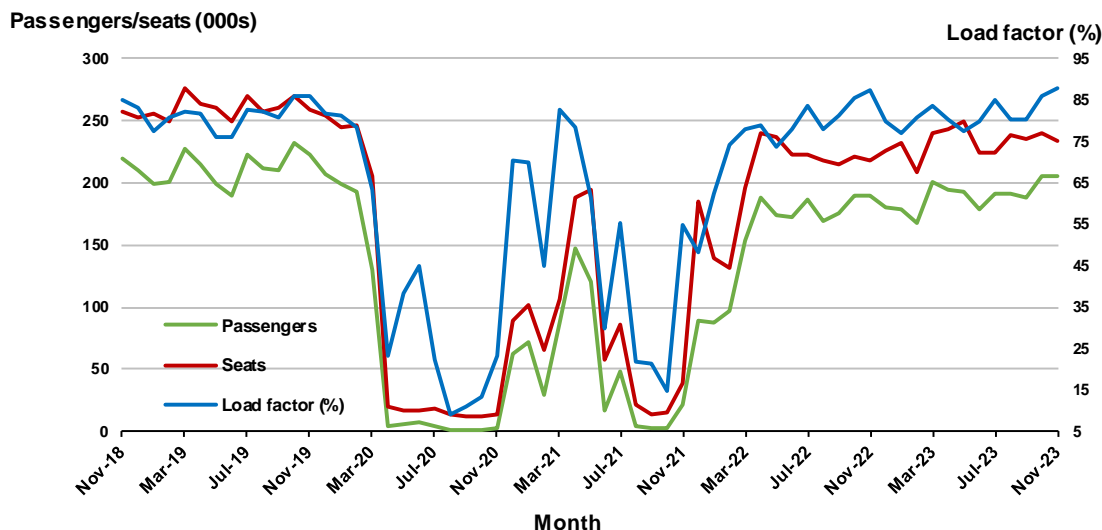
(a) May, September and October 2020 and January and August to November 2021 moving annual totals not available for release.

5. Adelaide - Melbourne

Monthly data

	Nov 2022	Nov 2023	% Change
Passengers carried (000s)	190.5	206.1	8.2
Seats (000s)	218.3	234.3	7.3
Load factor %	87.2	88.0	0.8 *
Aircraft trips	1,353	1,443	6.7

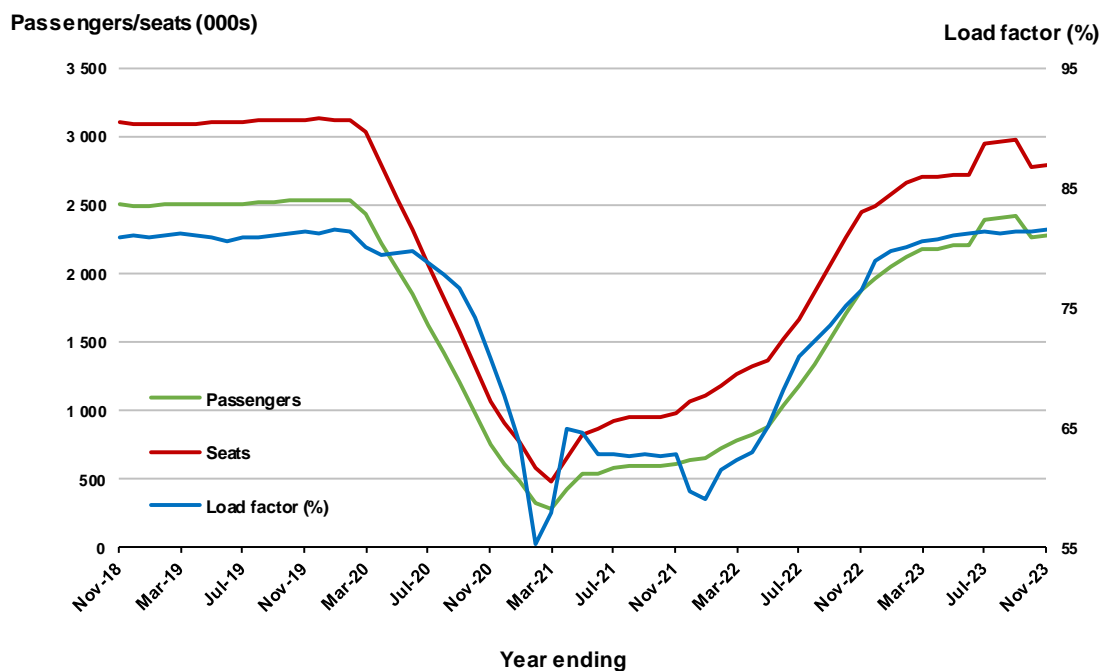
* percentage point difference



Moving annual data

	YE Nov 2022	YE Nov 2023	% Change
Passengers carried (000s)	1,873.2	2,277.2	21.6
Seats (000s)	2,447.3	2,794.4	14.2
Load factor %	76.5	81.5	4.9 *
Aircraft trips	14,992	17,162	14.5

* percentage point difference



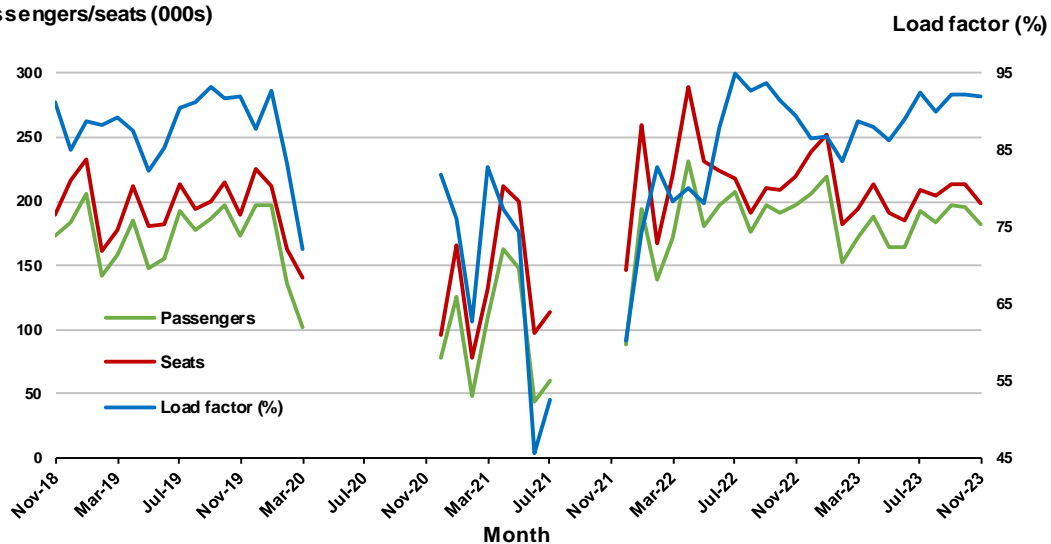
6. Gold Coast - Melbourne ^(a)

Monthly data

	Nov 2022	Nov 2023	% Change
Passengers carried (000s)	197.3	182.9	-7.3
Seats (000s)	220.1	198.8	-9.7
Load factor %	89.6	92.0	2.4 *
Aircraft trips	1,200	1,083	-9.8

* percentage point difference

Passengers/seats (000s)



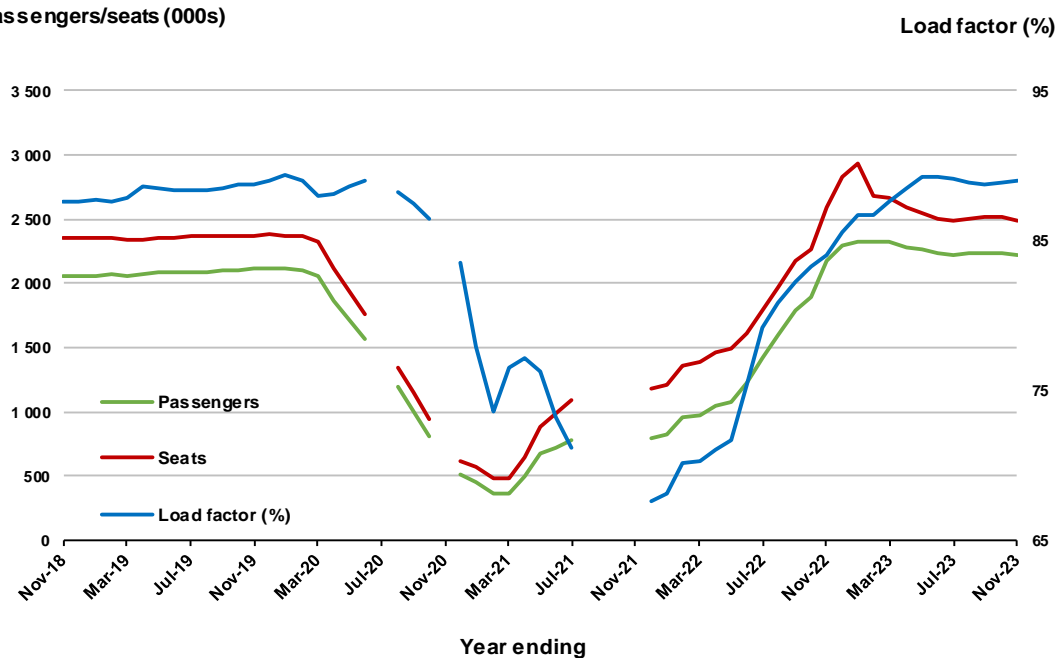
(a) April to November 2020 and August to November 2021 moving annuals are not available for release.

Moving annual data

	YE Nov 2022	YE Nov 2023	% Change
Passengers carried (000s)	2,172.5	2,219.3	2.2
Seats (000s)	2,586.9	2,493.1	-3.6
Load factor %	84.0	89.0	5.0 *
Aircraft trips	14,190	13,497	-4.9

* percentage point difference

Passengers/seats (000s)



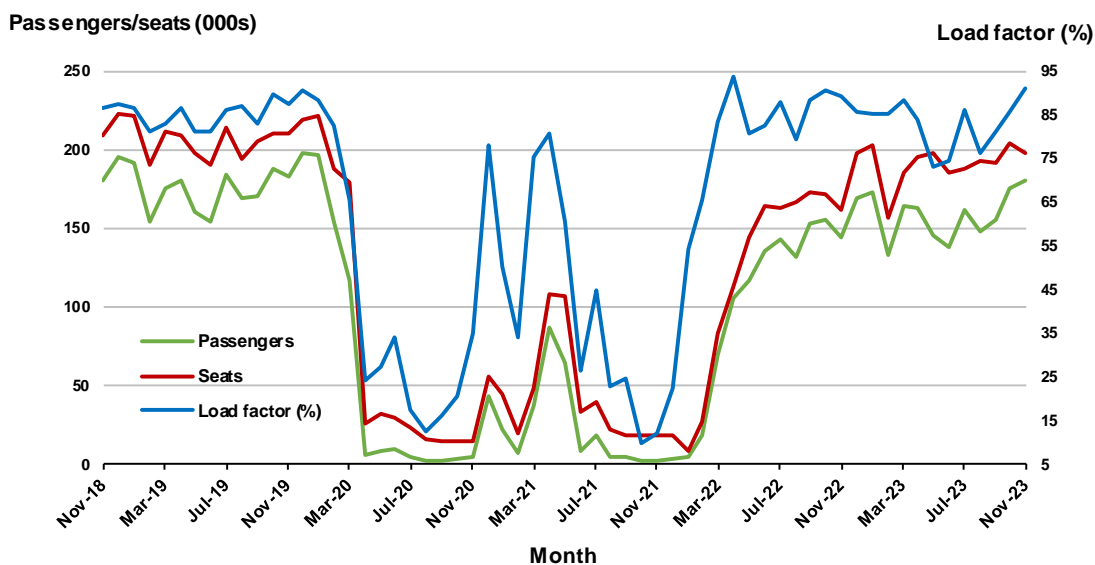
(a) July and November 2020 and August to November 2021 moving annuals are not available for release.

7. Melbourne - Perth

Monthly data

	Nov 2022	Nov 2023	% Change
Passengers carried (000s)	143.8	179.8	25.1
Seats (000s)	161.2	198.0	22.8
Load factor %	89.2	90.8	1.6 *
Aircraft trips	918	1,118	21.8

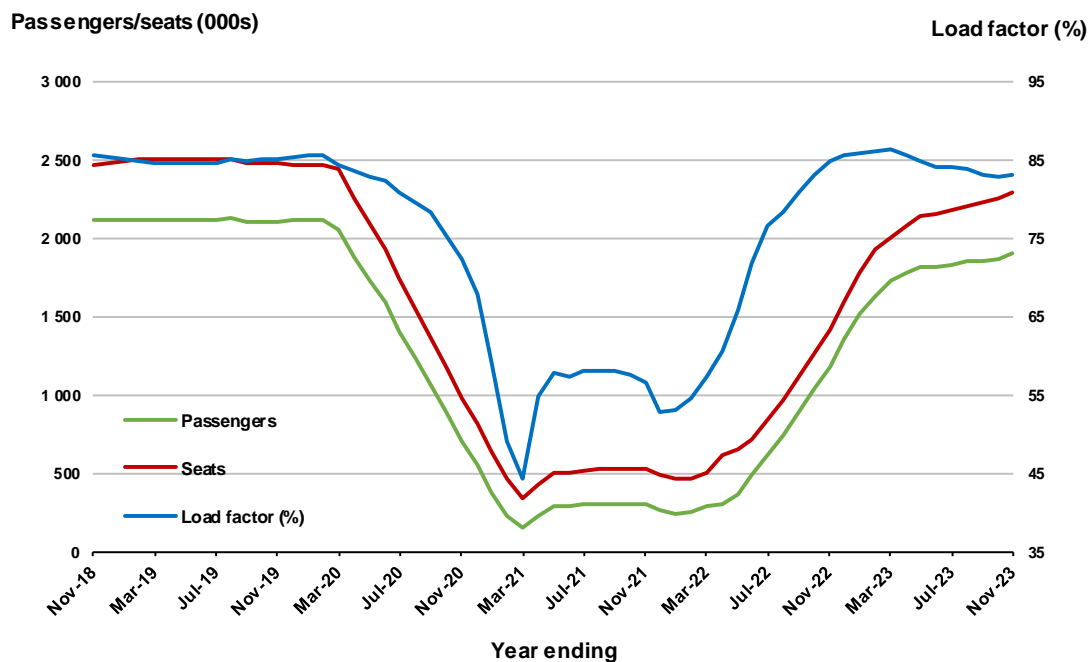
* percentage point difference



Moving annual data

	YE Nov 2022	YE Nov 2023	% Change
Passengers carried (000s)	1,182.1	1,905.0	61.2
Seats (000s)	1,413.9	2,294.5	62.3
Load factor %	84.7	83.0	-1.7 *
Aircraft trips	8,142	12,781	57.0

* percentage point difference



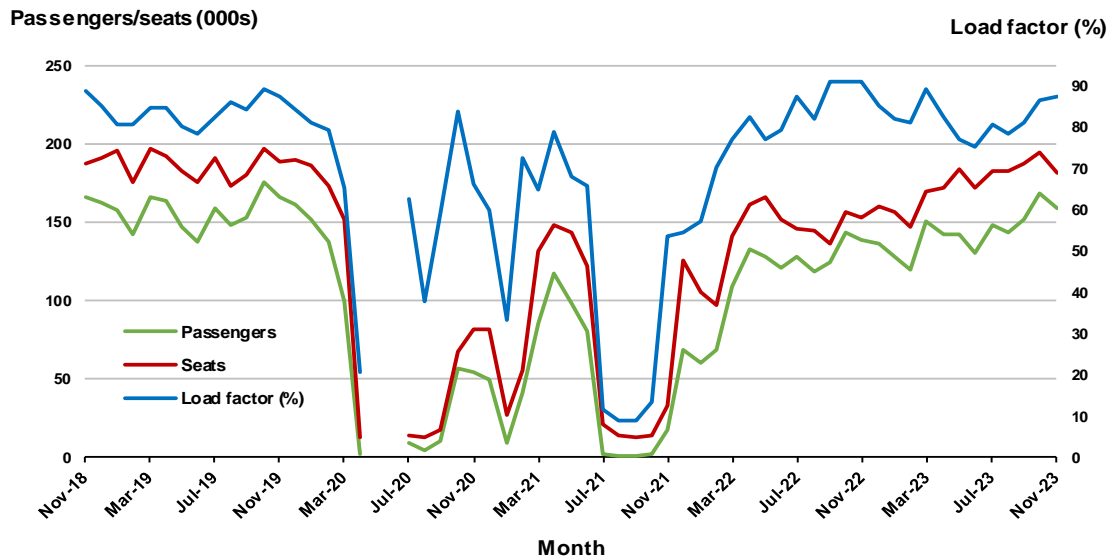
8. Adelaide - Sydney ^(a)

Monthly data

	Nov 2022	Nov 2023	% Change
Passengers carried (000s)	139.4	159.6	14.5
Seats (000s)	153.2	182.2	18.9
Load factor %	91.0	87.6	-3.4 *
Aircraft trips	958	1,144	19.4

.. Data not available for release.

* percentage point difference



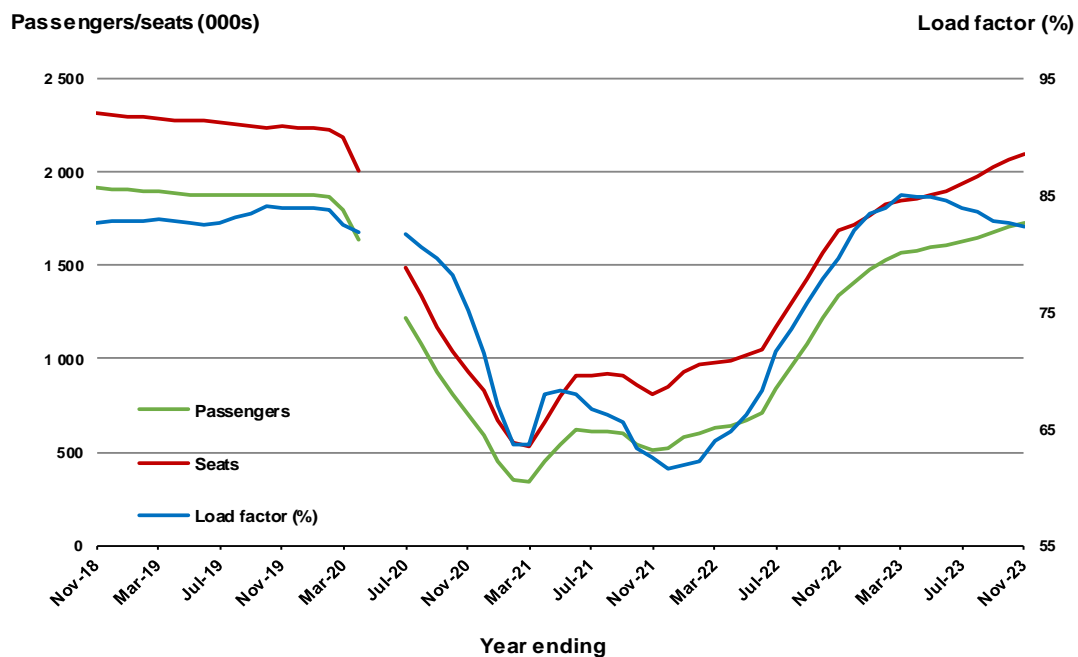
(a) May and June 2020 data not available for release.

Moving annual data

	YE Nov 2022	YE Nov 2023	% Change
Passengers carried (000s)	1,342.5	1,723.4	28.4
Seats (000s)	1,686.7	2,091.9	24.0
Load factor %	79.6	82.4	2.8 *
Aircraft trips	10,310	12,745	23.6

.. Data not available for release.

* percentage point difference



(a) May and June 2020 moving annual totals are not available for release.

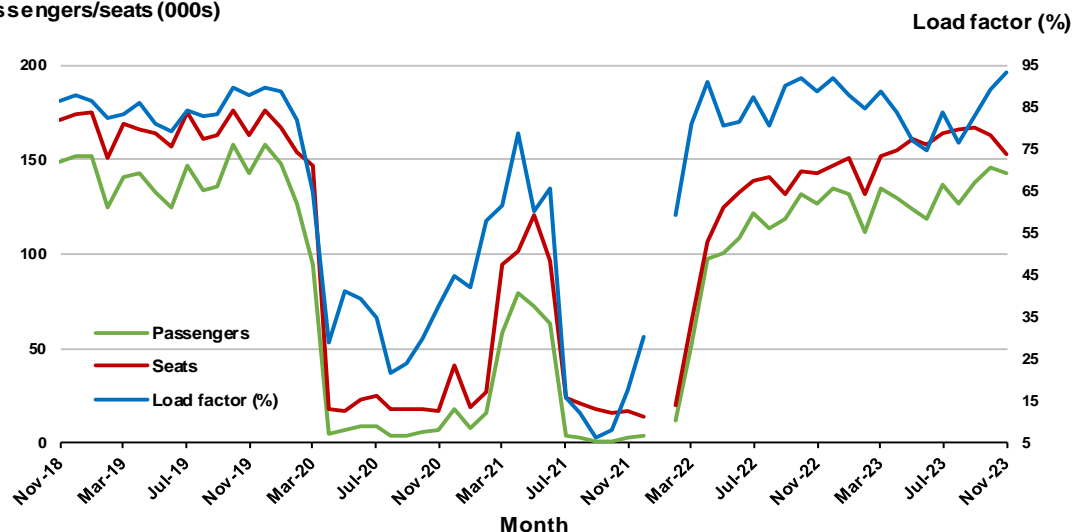
9. Perth - Sydney ^(a)

Monthly data

	Nov 2022	Nov 2023	% Change
Passengers carried (000s)	126.5	142.4	12.5
Seats (000s)	142.6	152.7	7.1
Load factor %	88.7	93.2	4.5 *
Aircraft trips	763	809	6.0

* percentage point difference

Passengers/seats (000s)



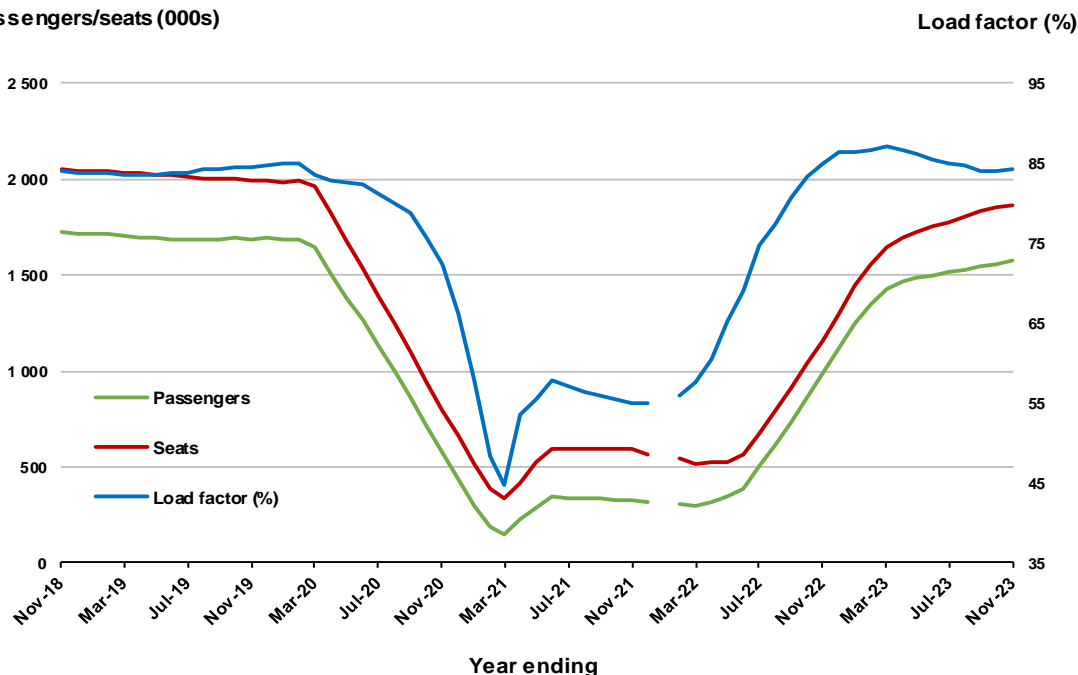
(a) January 2022 data not available for release.

Moving annual data

	YE Nov 2022	YE Nov 2023	% Change
Passengers carried (000s)	988.1	1,575.1	59.4
Seats (000s)	1,163.5	1,868.0	60.5
Load factor %	84.9	84.3	-0.6 *
Aircraft trips	6,118	9,664	58.0

* percentage point difference

Passengers/seats (000s)



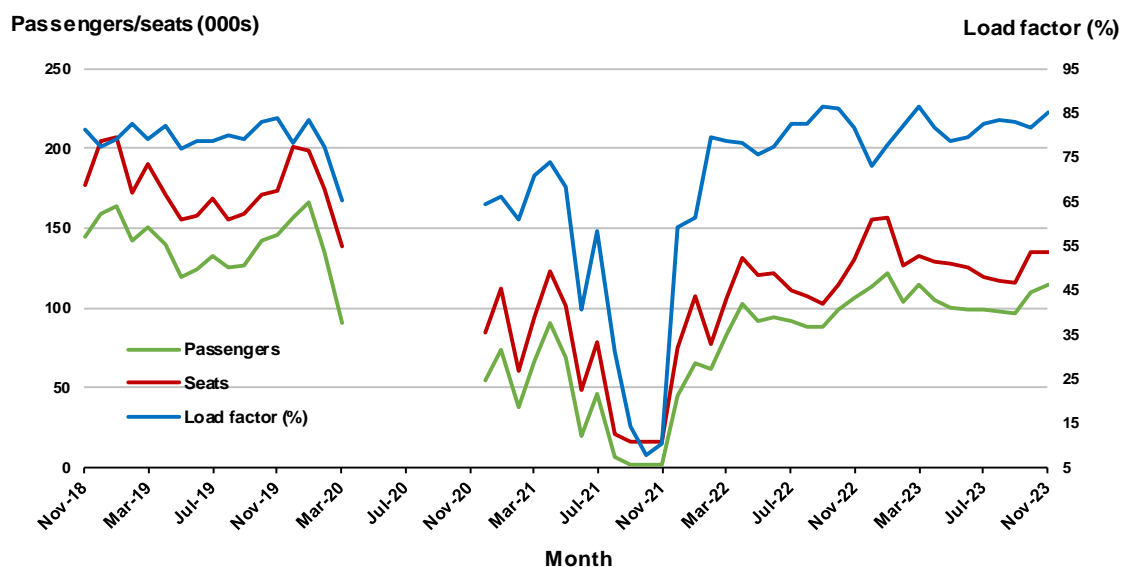
(a) January 2022 moving annual totals are not available for release.

10. Hobart - Melbourne ^(a)

Monthly data

	Nov 2022	Nov 2023	% Change
Passengers carried (000s)	106.5	114.6	7.6
Seats (000s)	130.1	134.6	3.5
Load factor %	81.9	85.1	3.2 *
Aircraft trips	784	785	0.1

* percentage point difference

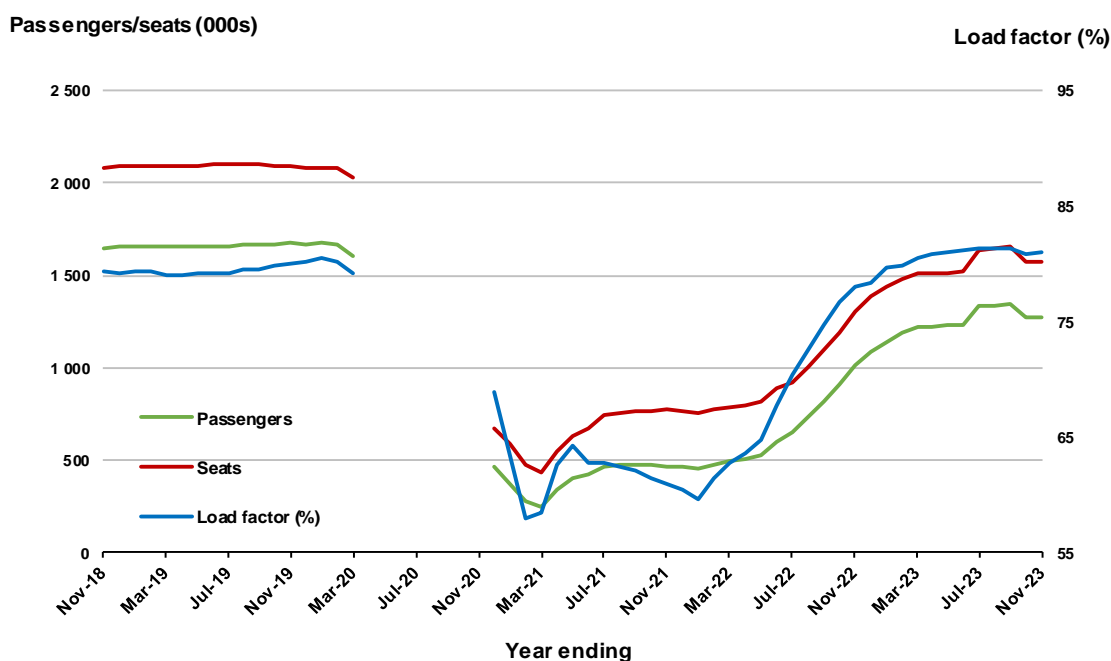


(a) April to November 2020 data not available for release.

Moving annual data

	YE Nov 2022	YE Nov 2023	% Change
Passengers carried (000s)	1,017.4	1,277.3	25.5
Seats (000s)	1,305.3	1,575.5	20.7
Load factor %	77.9	81.1	3.1 *
Aircraft trips	8,034	9,195	14.5

* percentage point difference



(a) April to November 2020 moving annual totals are not available for release.

TOP FIFTY REGIONAL AIRPORTS

Table 10: Top fifty regional airports (000s) — passenger movements, monthly

Airport	Nov 2022	Nov 2023	% Change
1 Cairns	310.2	331.9	7.0
2 Hobart	213.3	224.5	5.2
3 Townsville	130.7	139.3	6.6
4 Launceston	106.8	124.4	16.6
5 Darwin	118.4	109.3	-7.7
6 Newcastle	94.6	104.7	10.7
7 Mackay	77.1	80.2	4.0
8 Rockhampton	45.0	55.2	22.7
9 Ballina	58.7	53.2	-9.3
10 Karratha	46.7	50.1	7.4
11 Hamilton Island	43.5	43.3	-0.5
12 Port Hedland	42.4	43.1	1.5
13 Proserpine	35.1	41.8	19.1
14 Kalgoorlie	28.6	33.4	16.6
15 Newman	32.9	32.8	-0.5
16 Broome	30.6	31.1	1.7
17 Alice Springs	27.7	28.8	4.0
18 Paraburdoo	19.0	24.0	26.0
19 Albury	19.5	23.7	21.9
20 Coffs Harbour	24.0	22.7	-5.3
21 Ayers Rock	21.0	21.5	2.7
22 Gladstone	17.5	20.9	19.3
23 Port Macquarie	16.7	20.6	23.4
24 Mount Isa	20.3	20.1	-0.9
25 Dubbo	17.6	19.8	12.1
26 Mildura	17.4	19.3	10.5
27 Wagga Wagga	17.6	17.5	-0.6
28 Emerald	16.3	17.4	6.9
29 Port Lincoln	15.3	14.8	-3.0
30 Tamworth	12.8	14.6	13.8
31 Bundaberg	8.5	14.4	69.4
32 Hervey Bay	10.8	13.1	20.8
33 Kununurra	8.4	10.4	23.5
34 Devonport	10.1	10.4	3.0
35 Orange	9.3	10.1	8.5
36 Moranbah	9.7	10.0	2.6
37 Geraldton	7.0	9.8	40.2
38 Armidale	9.5	9.7	1.9
39 Thursday Island	8.2	9.4	14.6
40 Olympic Dam	8.7	8.9	2.5
41 Gove	7.8	8.7	10.7
42 Weipa	6.0	7.3	21.6
43 Burnie	7.3	6.7	-8.0
44 Mount Gambier	6.8	6.7	-2.5
45 Norfolk Island	6.6	6.6	0.5
46 Learmonth	6.6	6.5	-1.5
47 Toowoomba Wellcamp	2.9	6.4	120.2
48 Merimbula	6.5	6.0	-7.2
49 Busselton	4.4	5.8	31.1
50 Albany	5.5	5.8	5.2
Total top 50 regional airports	1,828.0	1,956.7	7.0
Total regional airports	1,952.7	2,079.7	6.5
Total domestic network	9,334.0	10,084.8	8.0

Note: Airport passenger movement numbers are the sum of passenger arrivals and departures at each airport. Regional airports are defined as airports which are, according to Australian Statistical Geography Standard (ASGS), not based in Major Cities.

Table 11: Top fifty regional airports (000s) — passenger movements, annual

Airport	YE Nov 2022	YE Nov 2023	% Change
1 Cairns	3,591.8	3,994.7	11.2
2 Hobart	2,195.7	2,550.8	16.2
3 Townsville	1,504.1	1,682.4	11.9
4 Darwin	1,594.9	1,605.2	0.6
5 Launceston	1,116.6	1,347.6	20.7
6 Newcastle	985.7	1,147.3	16.4
7 Mackay	813.3	906.1	11.4
8 Ballina	689.0	639.2	-7.2
9 Rockhampton	480.0	624.2	30.0
10 Karratha	490.8	544.8	11.0
11 Proserpine	461.0	500.9	8.7
12 Hamilton Island	487.5	496.3	1.8
13 Port Hedland	446.7	484.3	8.4
14 Broome	437.9	436.7	-0.3
15 Newman	342.6	371.8	8.6
16 Kalgoorlie	299.6	357.7	19.4
17 Alice Springs	334.5	352.0	5.2
18 Coffs Harbour	278.9	283.7	1.7
19 Ayers Rock	194.2	260.1	33.9
20 Albury	201.1	253.9	26.2
21 Paraburdoo	209.6	243.2	16.0
22 Mount Isa	220.1	230.7	4.8
23 Gladstone	190.4	224.1	17.7
24 Mildura	174.8	222.7	27.4
25 Port Macquarie	158.9	215.1	35.3
26 Dubbo	180.5	211.3	17.1
27 Wagga Wagga	165.7	197.7	19.3
28 Emerald	166.7	194.7	16.8
29 Port Lincoln	167.7	174.4	4.0
30 Tamworth	128.9	165.9	28.7
31 Bundaberg	101.8	147.4	44.7
32 Hervey Bay	119.7	144.4	20.6
33 Kununurra	120.8	135.6	12.3
34 Devonport	90.3	121.4	34.5
35 Armidale	96.9	112.8	16.4
36 Moranbah	97.4	109.3	12.2
37 Thursday Island	96.0	107.0	11.5
38 Orange	89.0	104.6	17.5
39 Learmonth	96.1	104.5	8.8
40 Olympic Dam	88.6	103.3	16.5
41 Geraldton	80.8	92.7	14.8
42 Gove	81.5	88.4	8.4
43 Weipa	82.9	87.6	5.6
44 Burnie	69.8	82.5	18.3
45 Griffith	68.0	74.6	9.6
46 Mount Gambier	71.6	73.6	2.9
47 Merimbula	61.9	72.5	17.1
48 Toowoomba Wellcamp	48.6	71.2	46.5
49 Norfolk Island	66.3	68.9	3.9
50 Roma	53.9	63.3	17.4
Total top 50 regional airports	20,391.1	22,884.9	12.2
Total regional airports	21,685.6	24,287.6	12.0
Total domestic network	96,368.4	113,864.8	18.2

Note: Airport passenger movement numbers are the sum of passenger arrivals and departures at each airport. Regional airports are defined as airports which are, according to Australian Statistical Geography Standard (ASGS), not based in Major Cities.

DOMESTIC CHARTER ACTIVITY

Table 12: Charter passengers carried and aircraft trips - monthly activity

	Nov 2022	Nov 2023	% Change
Total domestic charter passengers	322,003	368,186	14.3
Total domestic charter aircraft trips	5,668	6,145	8.4

Note: Helicopter, joyflights and sightseeing charter flights not included.

Table 13: Charter passengers carried and aircraft trips - annual activity

	YE Nov 2022	YE Nov 2023	% Change
Total domestic charter passengers	3,525,749	4,031,545	14.3
Total domestic charter aircraft trips	65,806	69,509	5.6

Note: Helicopter, joyflights and sightseeing charter flights not included.

Table 14: Domestic airports - charter activity - monthly

	Nov 2022	Nov 2023	% Change
Total domestic charter passenger movements	644,006	736,372	14.3
Total domestic charter aircraft movements	11,336	12,290	8.4
Perth airport charter passenger movements	236,019	273,866	16.0
Perth airport charter aircraft movements	3,700	4,155	12.3

Note: Helicopter, joyflights and sightseeing charter flights not included.

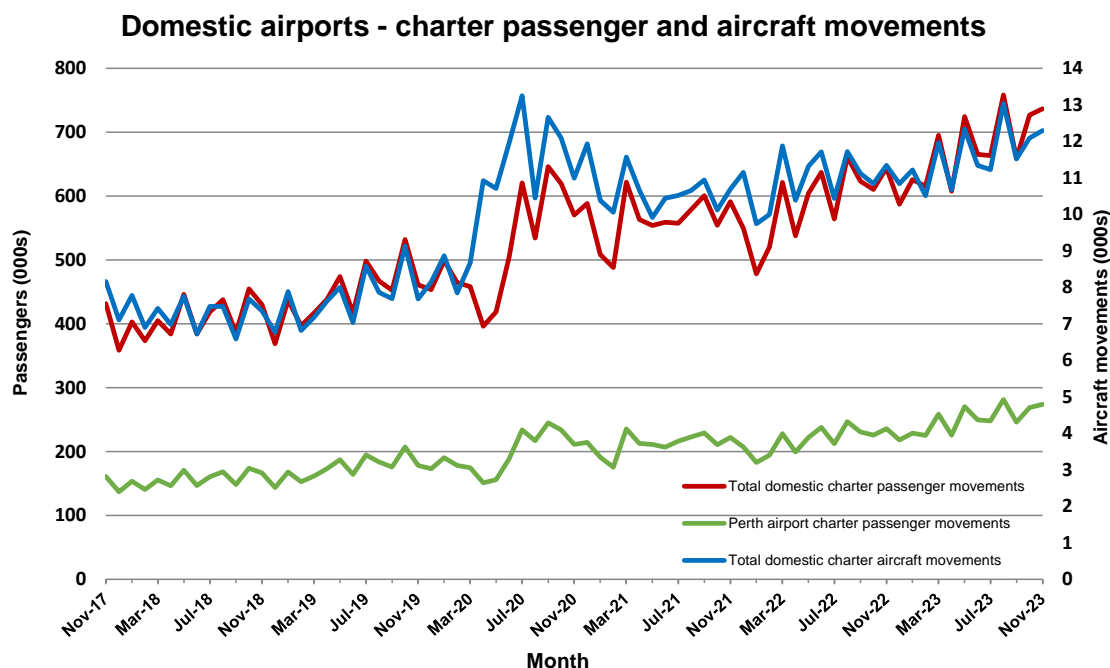
Charter passenger and aircraft movement numbers are the sum of arrivals and departures at each airport.

Table 15: Domestic airports - charter activity - annual

	YE Nov 2022	YE Nov 2023	% Change
Total domestic charter passenger movements	7,051,498	8,063,090	14.3
Total domestic charter aircraft movements	131,612	139,018	5.6
Perth airport charter passenger movements	2,594,960	2,994,604	15.4
Perth airport charter aircraft movements	44,349	47,065	6.1

Note: Helicopter, joyflights and sightseeing charter flights not included.

Charter passenger and aircraft movement numbers are the sum of arrivals and departures at each airport.



DEFINITIONS

Aircraft Trips	The number of flight stages. A return flight counts as two aircraft trips.
Airport Movements	Airport movements (passenger and cargo) are measured once on arrival and once on departure. Each domestic trip generates two movements at airports. For example, a trip from Melbourne to Sydney will be counted twice, as a departure at Melbourne and as an arrival at Sydney. At the national level, the sum of all domestic airport traffic will therefore be equal to twice the number of trips undertaken.
Available Seat Kilometres (ASKs)	Calculated by multiplying the number of seats available on each flight stage, by the distance in kilometres between the ports. The distances used are Great Circle Distances.
City-Pair	The ports shown make up the city-pair route. Passenger movements shown for a city pair reflect total traffic in both directions.
Flight Stage	The operation of an aircraft from take-off to landing.
Load Factor	The total revenue passenger kilometres performed as a percentage of the total available seat kilometres.
Passengers Carried	Revenue passengers carried.
Regular Public Transport Services (RPT)	All air service operations in which aircraft are available for the transport of members of the public and are conducted in accordance with fixed schedules. It does not include charter or other non-scheduled operations.
Revenue Passengers	All passengers paying any fare. Frequent flyer redemption travellers are regarded as revenue passengers.
Revenue Passenger Kilometres (RPKs)	Calculated by multiplying the number of revenue passengers travelling on each flight stage, by the distance in kilometres between the ports. The distances used are Great Circle Distances.
Traffic on board by stages (TOB)	The total of all traffic (revenue passengers) on each flight stage between two directly connected airports.
..	Not available for confidentiality or other reasons.
NA	Not applicable.