



Australian Government

Department of Infrastructure, Transport, Regional Development and Communications

Bureau of Infrastructure and Transport Research Economics

STATISTICAL REPORT



Aviation

Domestic aviation activity
November 2021

© Commonwealth of Australia 2022

ISSN: 1832 - 1968

Ownership of intellectual property rights in this publication

Unless otherwise noted, copyright (and any other intellectual property rights, if any) in this publication is owned by the Commonwealth of Australia (referred to below as the Commonwealth).

Disclaimer

The material contained in this publication is made available on the understanding that the Commonwealth is not providing professional advice, and that users exercise their own skill and care with respect to its use, and seek independent advice if necessary.

The Commonwealth makes no representations or warranties as to the contents or accuracy of the information contained in this publication. To the extent permitted by law, the Commonwealth disclaims liability to any person or organisation in respect of anything done, or omitted to be done, in reliance upon information contained in this publication.

Creative Commons licence

With the exception of (a) the Coat of Arms; and (b) the Department of Infrastructure, Transport, Regional Development and Communications' photos and graphics, copyright in this publication is licensed under a Creative Commons Attribution 3.0 Australia Licence.

Creative Commons Attribution 3.0 Australia Licence is a standard form licence agreement that allows you to copy, communicate and adapt this publication provided that you attribute the work to the Commonwealth and abide by the other licence terms. A summary of the licence terms is available from <http://creativecommons.org/licenses/by/3.0/au/deed.en>.

The full licence terms are available from <http://creativecommons.org/licenses/by/3.0/au/legalcode>.

Use of the Coat of Arms

The Department of the Prime Minister and Cabinet sets the terms under which the Coat of Arms is used. Please refer to the Department's Commonwealth Coat of Arms and Government branding web page <http://www.dpmc.gov.au/guidelines/index.cfm#brand> and, in particular, the Guidelines on the use of the Commonwealth Coat of Arms publication.

An appropriate citation for this report is:

Bureau of Infrastructure and Transport Research Economics (BITRE), 2022, Domestic aviation activity, Statistical Report, BITRE, Canberra ACT.

Contact us

This publication is available in PDF format. All other rights are reserved, including in relation to any Departmental logos or trade marks which may exist. For enquiries regarding the licence and any use of this publication, please contact:

Bureau of Infrastructure and Transport Research Economics (BITRE)
Department of Infrastructure, Transport, Regional Development and Communications
GPO Box 501, Canberra ACT 2601, Australia
Telephone: (international) +61 2 6274 7210
Fax: (international) +61 2 6274 6855
Email: bitre@infrastructure.gov.au
Website: www.bitre.gov.au

Inquiries

Should you require additional information about the statistics contained in this publication:

Nebojsa Pavlovic

Telephone (02) 6274 6817 or Facsimile (02) 6274 7727

Electronic mail: AVSTATS@infrastructure.gov.au

Nebojsa.Pavlovic@infrastructure.gov.au

Web site: <http://www.bitre.gov.au/statistics/aviation/domestic.aspx>

FOREWORD

This report provides an overview of domestic (including charter) commercial aviation activity in Australia for the month of November 2021.

The data cover revenue passengers carried by Australian-registered operators of scheduled regular public transport services over Australian flight stages and fixed-wing charter operators. These estimates include passengers carried between domestic airports on international flights operated by these carriers. The passengers carried refer to traffic on board by stages.

Individual routes shown are restricted to those exceeding 8 000 passengers per month where two or more airlines operate in competition. However, from November 2021 the major airlines (Qantas Group, Virgin Australia and Rex Airlines) have agreed to publication of the top 35 routes based on pre-COVID activity (December 2019) whether or not they currently meet the above criteria. With these approvals, there were 46 routes published for the month of November 2021 compared to 26 published in November 2020.

Information on the total network for the month of November 2021 and on the Regular Public Transport (RPT) network for the month of November 2021 is presented on page 2, with estimates for the year ended November 2021 presented on page 3.

Detailed information on individual routes can be found in the RPT summary pages 4-8 of this publication.

The top ten airports in terms of RPT passenger movements are shown on page 10.

Data on domestic RPT cargo movements at the top five cargo airports are provided on page 11. The table includes cargo carried on passenger flights operated by the Qantas Group (including Jetstar), Virgin Australia, Air North, Rex Airlines and Skippers as well as the cargo carried by dedicated freighter aircraft operated by Qantas Freight and Toll Aviation.

The long-term trends for the top ten competitive RPT routes are presented graphically on pages 12-21.

Domestic RPT passenger movements at regional airports are presented on pages 22-23.

Tables providing estimates of domestic charter aviation activity are shown on page 24. BITRE confidentiality standards restrict publication of detailed estimates for individual Australian airports, with the exception of Perth Airport. For the month of November Alliance Airlines charter and RPT data have been estimated and included in this publication.

A list of definitions can be found on page 25.

This report was prepared by the Aviation Statistics Section of the Bureau of Infrastructure and Transport Research Economics with data provided by airlines.

Estimates are included where data were not available and data presented in this publication may contain revisions to previously published data.

Where figures have been rounded, discrepancies may occur between sums of component items and totals, and in percentage changes which are derived from figures prior to rounding.

CONTENTS

Highlights	1
Total network.....	2
RPT network	2
Top competitive routes.....	4
Top ten airports – passenger movements.....	10
Top five airports – cargo movements.....	11
Top ten routes	12
1. Melbourne – Sydney	12
2. Brisbane – Cairns	13
3. Ballina – Sydney	14
4. Brisbane – Townsville	15
5. Adelaide – Brisbane.....	16
6. Brisbane – Mackay	17
7. Karratha – Perth.....	18
8. Adelaide – Perth	19
9. Perth – Port Hedland.....	20
10. Brisbane – Perth	21
Top fifty regional airports	22
Domestic charter activity.....	24
Definitions	25

This page is intentionally left blank.

HIGHLIGHTS

COVID-19 and associated domestic travel restrictions continued to impact domestic aviation activity in November 2021. The number of revenue passengers was 71.2 per cent below the pre-COVID-19 level in November 2019.

There were 1.81 million passengers carried on Australian domestic commercial aviation (including charter operations) in November 2021, compared to 1.39 million in November 2020 and 5.49 million in November 2019.

For the month of November 2021, there were 32.1 thousand aircraft trips, compared to 26.1 thousand in November 2020 and 56.5 thousand in November 2019.

1.52 million passengers were carried on RPT flights in November 2021, compared to 1.11 million reported in November 2020 and 5.26 million reported in November 2019.

For the year ending November 2021 there were 23.15 million RPT passengers, an increase of 2.8 per cent on the year ending November 2020 and a decrease of 62.2 per cent on the year ending November 2019.

RPT revenue passenger kilometres (RPKs) performed were 1.71 billion for the month, compared with 1.23 billion in November 2020.

Capacity, measured by available seat kilometres (ASKs), increased to 2.98 billion in November 2021 compared to 1.98 billion in November 2020.

The industry wide load factor (RPKs/ASKs) decreased from 62.0 per cent in November 2020 to 57.4 per cent in November 2021. The highest load factor (74.8 per cent) was recorded on the Ballina – Melbourne route while the lowest load factor (8.8 per cent) was recorded on the Cairns – Sydney route.

In November 2021, most published routes recorded large increases in the number of passengers carried compared to November 2020.

For the month of November 2021, Melbourne – Sydney was Australia's busiest RPT route with 241.3 thousand passengers, followed by Brisbane – Cairns with 87.9 thousand passengers and Ballina – Sydney with 58.2 thousand passengers.

Brisbane was Australia's busiest domestic airport with 501.4 thousand passenger movements in November 2021, followed by Sydney with 410.4 thousand passenger movements and Melbourne with 335.4 thousand passenger movements.

Total cargo movements at Australian airports on domestic RPT flights were 39.4 thousand tonnes in November 2021, an increase of 14.0 per cent compared with November 2020.

In November 2021, there were 1.12 million domestic passenger movements through regional airports, compared to 0.93 million in November 2020 and 2.11 million in November 2019. Most regional airports for which data is available for publishing recorded large increases in November 2021 compared to November 2020.

Fixed-wing charter operators carried 295.6 thousand passengers in November 2021, an increase of 3.7 per cent on November 2020. Perth Airport accounted for 37.6 per cent of all charter passengers in Australia.

TOTAL NETWORK

Summary of monthly commercial aviation activity

	Nov 2020	Nov 2021	% Change
Total passengers carried (millions)	1.39	1.81	30.1
Aircraft trips (000s)	26.1	32.1	22.8

Note: Regular Public Transport and charter aviation activity
Helicopter, joyflights and sightseeing charter flights not included.

RPT NETWORK

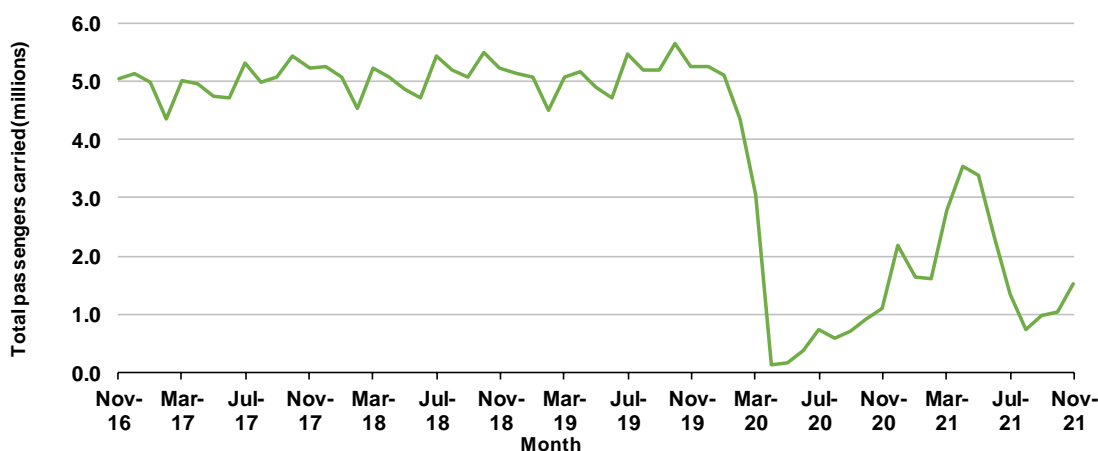
Summary of monthly RPT activity

	Nov 2020	Nov 2021	% Change
Total passengers carried (millions)	1.11	1.52	36.9
Revenue passenger kilometres (billions)	1.23	1.71	38.8
Available seats (millions)	1.80	2.60	44.1
Available seat kilometres (billions)	1.98	2.98	50.0
Load factor %	62.0	57.4	- 4.6
Aircraft trips (000s)	20.6	26.8	29.7

* percentage point difference

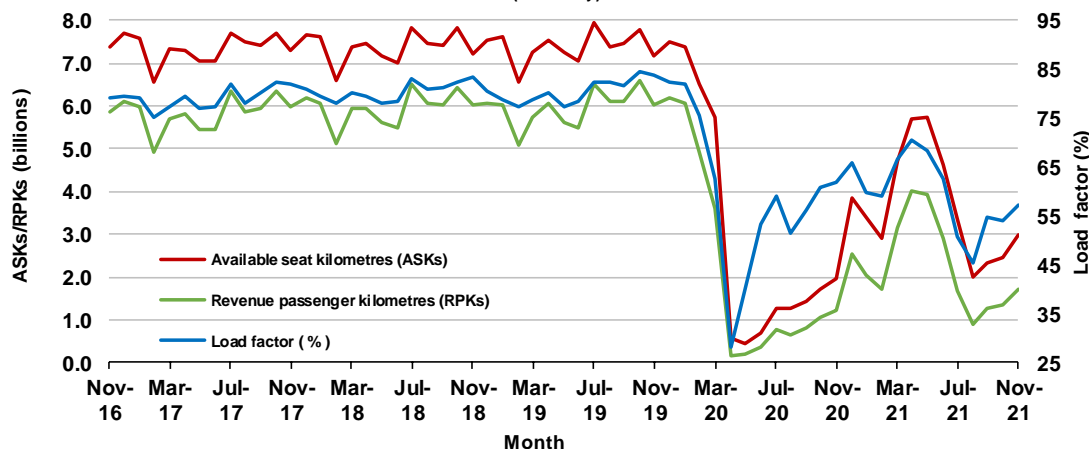
Domestic RPT passenger traffic

(monthly)



RPT Network utilisation

(monthly)



TOTAL NETWORK

Summary of annual commercial aviation activity

	YE Nov 2020	YE Nov 2021	% Change
Total passengers carried (millions)	25.62	26.53	3.6
Aircraft trips (000s)	367.6	421.8	14.7

Note: Regular Public Transport and charter aviation activity
Helicopter, joyflights and sightseeing charter flights not included.

RPT NETWORK

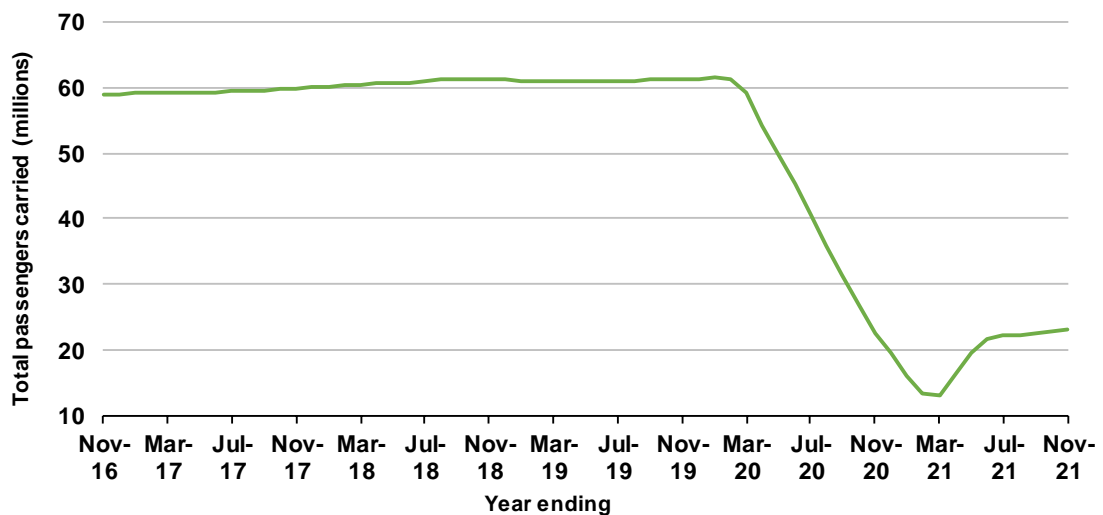
Summary of annual RPT activity

	YE Nov 2020	YE Nov 2021	% Change
Total passengers carried (millions)	22.53	23.15	2.8
Revenue passenger kilometres (billions)	25.96	27.17	4.7
Available seats (millions)	32.26	38.05	18.0
Available seat kilometres (billions)	36.51	44.01	20.5
Load factor %	71.1	61.7	-9.4 *
Aircraft trips (000s)	304.3	357.9	17.6

* percentage point difference

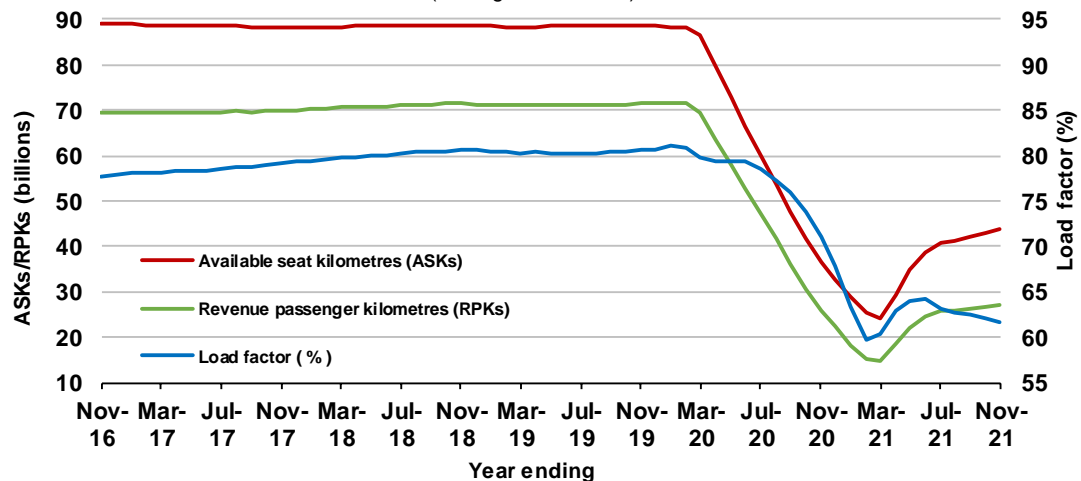
Domestic RPT passenger traffic

(moving annual totals)



RPT Network utilisation

(moving annual totals)



TOP COMPETITIVE ROUTES

	City-Pair	YE Nov 2020	YE Nov 2021	%Change
1	Melbourne - Sydney	2 823.6	1 885.9	-33.2
2	Brisbane - Sydney	1 587.6	1 115.9	-29.7
3	Brisbane - Cairns	746.3	1 003.1	34.4
4	Brisbane - Melbourne	1 111.0	812.0	-26.9
5	Brisbane - Townsville	535.7	685.0	27.9
6	Adelaide - Melbourne	758.7	614.8	-19.0
7	Brisbane - Mackay	417.4	532.3	27.5
8	Adelaide - Sydney	701.1	505.7	-27.9
9	Hobart - Melbourne	..	469.4	NA
10	Adelaide - Brisbane	408.4	443.5	8.6
11	Karratha - Perth	280.8	414.7	47.7
12	Ballina - Sydney	342.8	389.8	13.7
13	Broome - Perth	223.1	374.0	67.6
14	Brisbane - Rockhampton	269.6	358.1	32.8
15	Perth - Port Hedland	215.1	353.0	64.1
16	Perth - Sydney	577.1	327.8	-43.2
17	Adelaide - Perth	217.6	321.8	47.9
18	Newman - Perth	169.8	317.7	87.1
19	Launceston - Melbourne	..	313.2	NA
20	Cairns - Melbourne	204.5	310.2	51.7
21	Brisbane - Canberra	267.1	306.8	14.9
22	Melbourne - Perth	706.5	300.6	-57.5
23	Brisbane - Perth	347.9	299.6	-13.9
24	Brisbane - Darwin	168.4	263.7	56.6
25	Hobart - Sydney	281.3	258.9	-8.0
26	Canberra - Melbourne	340.3	257.4	-24.4
27	Kalgoorlie - Perth	160.5	251.1	56.4
28	Brisbane - Hobart	106.6	249.9	134.5
29	Cairns - Sydney	..	245.7	NA
30	Brisbane - Proserpine	167.3	238.6	42.6
31	Brisbane - Newcastle	209.8	231.5	10.4
32	Brisbane - Hamilton Island	99.7	205.1	105.8
33	Canberra - Sydney	..	157.0	NA
34	Melbourne - Newcastle	146.7	151.5	3.2
35	Darwin - Perth	..	150.3	NA
36	Adelaide - Gold Coast	95.3	140.7	47.6
37	Brisbane - Gladstone	114.4	139.9	22.2
38	Adelaide - Port Lincoln	..	139.0	NA
39	Brisbane - Launceston	..	138.0	NA
40	Brisbane - Emerald	..	135.7	NA
41	Brisbane - Mount Isa	90.5	107.6	18.9
42	Coffs Harbour - Sydney	125.1	105.3	-15.8
43	Adelaide - Cairns	..	104.5	NA
44	Brisbane - Moranbah	..	76.3	NA
45	Ballina - Melbourne	..	86.9	NA
46	Adelaide - Hobart	..	27.4	NA
47	Launceston - Sydney	118.4	..	NA (a)
48	Gold Coast - Sydney	904.1	..	NA (a)
	Total domestic network	22 525.1	23 152.6	2.8

.. Data not available for release.

(a) City pairs published in November 2020, data not available for release in November 2021.

Table 2: Passengers carried (000s) — monthly activity

	City-Pair	Nov 2020	Nov 2021	% Change
1	Melbourne - Sydney	58.4	241.3	313.2
2	Brisbane - Cairns	74.5	87.9	18.1
3	Ballina - Sydney	52.5	58.2	10.9
4	Brisbane - Townsville	47.0	55.8	18.8
5	Adelaide - Brisbane	27.5	46.9	70.2
6	Brisbane - Mackay	37.1	45.3	22.3
7	Karratha - Perth	30.2	40.7	34.5
8	Adelaide - Perth	4.0	38.7	867.9
9	Perth - Port Hedland	24.5	37.9	54.9
10	Brisbane - Perth	18.8	36.7	95.6
11	Broome - Perth	27.9	31.3	12.2
12	Brisbane - Rockhampton	25.7	31.1	21.1
13	Newman - Perth	20.0	30.3	51.4
14	Brisbane - Hobart	12.2	28.8	135.1
15	Canberra - Melbourne	6.0	27.1	351.2
16	Brisbane - Proserpine	19.7	26.1	32.0
17	Kalgoorlie - Perth	18.4	24.9	35.1
18	Adelaide - Melbourne	3.0	21.4	625.9
19	Brisbane - Hamilton Island	18.9	21.4	13.2
20	Ballina - Melbourne	..	18.4	NA
21	Brisbane - Darwin	17.4	17.9	2.7
22	Adelaide - Sydney	54.5	17.8	-67.3
23	Brisbane - Launceston	..	17.3	NA
24	Melbourne - Newcastle	3.5	16.0	362.1
25	Adelaide - Hobart	..	15.8	NA
26	Canberra - Sydney	..	13.8	NA
27	Adelaide - Gold Coast	6.7	13.5	102.5
28	Adelaide - Cairns	..	13.5	NA
29	Adelaide - Port Lincoln	..	13.1	NA
30	Brisbane - Gladstone	9.9	12.7	29.2
31	Brisbane - Emerald	..	12.2	NA
32	Coffs Harbour - Sydney	8.7	12.1	39.2
33	Brisbane - Sydney	26.8	11.7	-56.4
34	Brisbane - Mount Isa	8.7	9.6	9.5
35	Darwin - Perth	..	8.8	NA
36	Brisbane - Moranbah	..	8.5	NA
37	Brisbane - Melbourne	6.2	6.4	3.2
38	Perth - Sydney	6.4	3.0	-53.6
39	Melbourne - Perth	5.1	2.2	-56.2
40	Brisbane - Canberra	30.6	2.0	-93.5
41	Hobart - Melbourne	..	1.6	NA
42	Brisbane - Newcastle	19.7	1.3	-93.5
43	Hobart - Sydney	21.4	1.1	-95.0
44	Cairns - Melbourne	..	1.0	NA
45	Launceston - Melbourne	..	1.0	NA
46	Cairns - Sydney	..	0.9	NA
47	Launceston - Sydney	10.2	..	NA (a)
48	Gold Coast - Sydney	4.8	..	NA (a)
	Total domestic network	1 107.1	1 515.5	36.9

.. Data not available for release.

(a) Citypairs published in November 2020, data not available for release in November 2021.

Table 3: Available seats (000s) — monthly activity

	City-Pair	Nov 2020	Nov 2021	% Change
1	Melbourne - Sydney	92.1	331.1	259.5
2	Brisbane - Cairns	89.0	124.2	39.6
3	Ballina - Sydney	60.2	85.1	41.2
4	Brisbane - Townsville	61.9	95.4	54.2
5	Adelaide - Brisbane	40.0	72.0	79.9
6	Brisbane - Mackay	57.3	81.0	41.3
7	Karratha - Perth	61.5	62.7	1.9
8	Adelaide - Perth	11.9	57.5	384.8
9	Perth - Port Hedland	43.6	54.6	25.2
10	Brisbane - Perth	28.9	51.3	77.6
11	Broome - Perth	40.8	46.3	13.7
12	Brisbane - Rockhampton	40.4	55.5	37.5
13	Newman - Perth	44.1	57.0	29.5
14	Brisbane - Hobart	13.6	42.6	213.1
15	Canberra - Melbourne	13.1	46.2	251.7
16	Brisbane - Proserpine	23.9	36.9	54.6
17	Kalgoorlie - Perth	33.9	37.7	11.3
18	Adelaide - Melbourne	12.7	38.9	205.6
19	Brisbane - Hamilton Island	25.0	32.6	30.3
20	Ballina - Melbourne	..	24.7	NA
21	Brisbane - Darwin	24.2	30.9	27.6
22	Adelaide - Sydney	82.2	33.3	-59.5
23	Brisbane - Launceston	..	27.1	NA
24	Melbourne - Newcastle	5.5	27.3	398.2
25	Adelaide - Hobart	..	26.7	NA
26	Canberra - Sydney	..	25.8	NA
27	Adelaide - Gold Coast	9.8	20.6	110.4
28	Adelaide - Cairns	..	22.1	NA
29	Adelaide - Port Lincoln	..	19.4	NA
30	Brisbane - Gladstone	19.8	23.9	20.7
31	Brisbane - Emerald	..	21.9	NA
32	Coffs Harbour - Sydney	15.2	23.7	55.8
33	Brisbane - Sydney	48.1	21.7	-54.8
34	Brisbane - Mount Isa	19.3	19.5	1.0
35	Darwin - Perth	..	21.3	NA
36	Brisbane - Moranbah	..	18.7	NA
37	Brisbane - Melbourne	16.2	15.6	-3.6
38	Perth - Sydney	17.2	17.0	-1.3
39	Melbourne - Perth	14.7	18.8	28.2
40	Brisbane - Canberra	42.0	9.9	-76.4
41	Hobart - Melbourne	..	15.5	NA
42	Brisbane - Newcastle	25.3	7.1	-72.0
43	Hobart - Sydney	32.7	10.8	-67.1
44	Cairns - Melbourne	..	10.4	NA
45	Launceston - Melbourne	..	9.8	NA
46	Cairns - Sydney	..	10.1	NA
47	Launceston - Sydney	15.7	..	NA (a)
48	Gold Coast - Sydney	8.5	..	NA (a)
	Total domestic network	1 804.0	2 600.4	44.1

.. Data not available for release.

(a) City pairs published in November 2020, data not available for release in November 2021.

Table 4: Load factors (%) — monthly activity

	City-Pair	Nov 2020	Nov 2021	% Point diff
1	Melbourne - Sydney	63.4	72.9	9.5
2	Brisbane - Cairns	83.7	70.8	-12.9
3	Ballina - Sydney	87.2	68.4	-18.8
4	Brisbane - Townsville	75.9	58.5	-17.4
5	Adelaide - Brisbane	68.9	65.1	-3.8
6	Brisbane - Mackay	64.6	56.0	-8.6
7	Karratha - Perth	49.2	64.9	15.7
8	Adelaide - Perth	33.7	67.2	33.5
9	Perth - Port Hedland	56.0	69.3	13.3
10	Brisbane - Perth	65.0	71.6	6.6
11	Broome - Perth	68.5	67.6	-0.9
12	Brisbane - Rockhampton	63.7	56.1	-7.6
13	Newman - Perth	45.4	53.0	7.6
14	Brisbane - Hobart	90.0	67.6	-22.4
15	Canberra - Melbourne	45.8	58.7	12.9
16	Brisbane - Proserpine	82.8	70.7	-12.1
17	Kalgoorlie - Perth	54.4	66.0	11.6
18	Adelaide - Melbourne	23.2	55.0	31.8
19	Brisbane - Hamilton Island	75.5	65.5	-10.0
20	Ballina - Melbourne	..	74.8	NA
21	Brisbane - Darwin	71.8	57.8	-14.0
22	Adelaide - Sydney	66.4	53.6	-12.8
23	Brisbane - Launceston	..	63.9	NA
24	Melbourne - Newcastle	63.3	58.7	-4.6
25	Adelaide - Hobart	..	59.2	NA
26	Canberra - Sydney	..	53.6	NA
27	Adelaide - Gold Coast	68.2	65.7	-2.5
28	Adelaide - Cairns	..	61.2	NA
29	Adelaide - Port Lincoln	..	67.8	NA
30	Brisbane - Gladstone	49.6	53.2	3.6
31	Brisbane - Emerald	..	55.6	NA
32	Coffs Harbour - Sydney	57.3	51.2	-6.1
33	Brisbane - Sydney	55.7	53.8	-1.9
34	Brisbane - Mount Isa	45.2	49.0	3.8
35	Darwin - Perth	..	41.0	NA
36	Brisbane - Moranbah	..	45.6	NA
37	Brisbane - Melbourne	38.5	41.3	2.8
38	Perth - Sydney	37.4	17.6	-19.8
39	Melbourne - Perth	34.8	11.9	-22.9
40	Brisbane - Canberra	72.9	20.2	-52.7
41	Hobart - Melbourne	..	10.3	NA
42	Brisbane - Newcastle	77.7	18.1	-59.6
43	Hobart - Sydney	65.5	9.9	-55.6
44	Cairns - Melbourne	..	9.9	NA
45	Launceston - Melbourne	..	10.5	NA
46	Cairns - Sydney	..	8.8	NA
47	Launceston - Sydney	65.4	..	NA (a)
48	Gold Coast - Sydney	56.0	..	NA (a)
	Total domestic network	62.0	57.4	-4.6

.. Data not available for release.

(a) City pairs published in November 2020, data not available for release in November 2021.

Table 5: Aircraft trips ^(a) — monthly activity

	City-Pair	Nov 2020	Nov 2021	% Change
1	Melbourne - Sydney	729	2 082	185.6
2	Brisbane - Cairns	623	796	27.8
3	Ballina - Sydney	432	588	36.1
4	Brisbane - Townsville	400	579	44.8
5	Adelaide - Brisbane	247	438	77.3
6	Brisbane - Mackay	395	520	31.6
7	Karratha - Perth	363	388	6.9
8	Adelaide - Perth	102	360	252.9
9	Perth - Port Hedland	287	374	30.3
10	Brisbane - Perth	166	293	76.5
11	Broome - Perth	278	273	-1.8
12	Brisbane - Rockhampton	422	526	24.6
13	Newman - Perth	276	350	26.8
14	Brisbane - Hobart	74	279	277.0
15	Canberra - Melbourne	119	350	194.1
16	Brisbane - Proserpine	146	259	77.4
17	Kalgoorlie - Perth	249	268	7.6
18	Adelaide - Melbourne	168	321	91.1
19	Brisbane - Hamilton Island	144	186	29.2
20	Ballina - Melbourne	..	136	NA
21	Brisbane - Darwin	153	208	35.9
22	Adelaide - Sydney	517	274	-47.0
23	Brisbane - Launceston	..	160	NA
24	Melbourne - Newcastle	30	159	430.0
25	Adelaide - Hobart	..	183	NA
26	Canberra - Sydney	..	415	NA
27	Adelaide - Gold Coast	54	114	111.1
28	Adelaide - Cairns	..	136	NA
29	Adelaide - Port Lincoln	..	501	NA
30	Brisbane - Gladstone	258	291	12.8
31	Brisbane - Emerald	..	322	NA
32	Coffs Harbour - Sydney	213	318	49.3
33	Brisbane - Sydney	471	354	-24.8
34	Brisbane - Mount Isa	124	180	45.2
35	Darwin - Perth	..	132	NA
36	Brisbane - Moranbah	..	247	NA
37	Brisbane - Melbourne	220	240	9.1
38	Perth - Sydney	91	131	44.0
39	Melbourne - Perth	161	201	24.8
40	Brisbane - Canberra	303	68	-77.6
41	Hobart - Melbourne	..	98	NA
42	Brisbane - Newcastle	193	42	-78.2
43	Hobart - Sydney	197	60	-69.5
44	Cairns - Melbourne	..	58	NA
45	Launceston - Melbourne	..	186	NA
46	Cairns - Sydney	..	57	NA
47	Launceston - Sydney	86	..	NA (b)
48	Gold Coast - Sydney	77	..	NA (b)
	Total domestic network	20 642	26 768	29.7

.. Data not available for release.

(a) Includes RPT cargo flights

(b) City pairs published in November 2020, data not available for release in November 2021.

This page is intentionally left blank.

TOP TEN AIRPORTS – PASSENGER MOVEMENTS

Table 6: Top ten airports, RPT passenger movements (000s) - monthly activity

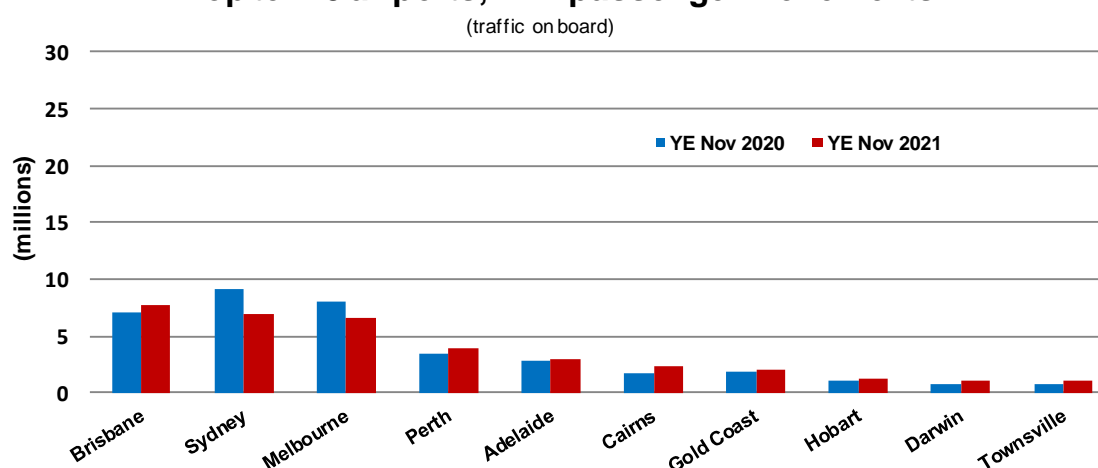
Airport	Nov 2020	Nov 2021	% Change	% of Total
1 Brisbane	442.0	501.4	13.4	16.5
2 Sydney	307.1	410.4	33.6	13.5
3 Melbourne	98.9	335.4	239.0	11.1
4 Perth	205.6	329.9	60.5	10.9
5 Adelaide	144.0	230.7	60.3	7.6
6 Cairns	124.7	155.6	24.7	5.1
7 Townsville	69.5	87.4	25.6	2.9
8 Ballina	56.4	76.8	36.2	2.5
9 Hobart	45.3	65.6	44.7	2.2
10 Darwin	64.3	63.2	-1.8	2.1
Total top ten airports	1 557.9	2 256.4	44.8	74.4
Total domestic network	2 214.2	3 031.1	36.9	100.0

Table 7: Top ten airports, RPT passenger movements (000s) - annual activity

Airport	YE Nov 2020	YE Nov 2021	% Change	% of Total
1 Brisbane	7 103.1	7 680.1	8.1	16.6
2 Sydney	9 157.2	6 879.9	-24.9	14.9
3 Melbourne	7 998.6	6 530.0	-18.4	14.1
4 Perth	3 401.0	3 908.9	14.9	8.4
5 Adelaide	2 750.3	2 957.1	7.5	6.4
6 Cairns	1 742.2	2 293.7	31.7	5.0
7 Gold Coast	1 854.2	2 022.0	9.1	4.4
8 Hobart	1 019.7	1 252.9	22.9	2.7
9 Darwin	702.0	1 096.8	56.2	2.4
10 Townsville	814.6	1 085.8	33.3	2.3
Total top ten airports	36 542.9	35 707.4	-2.3	77.1
Total domestic network	45 050.3	46 305.2	2.8	100.0

Note: Airport passenger movement numbers are the sum of passenger arrivals and departures at each airport.

Top ten45 airports, RPT passenger movements



TOP FIVE AIRPORTS – CARGO MOVEMENTS

Table 8: Top five airports, domestic RPT cargo movements (000s tonnes) - monthly activity

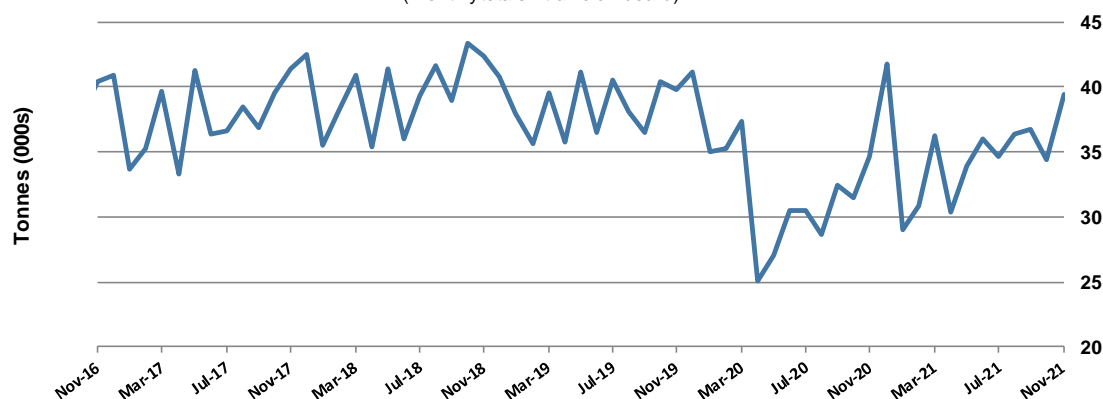
Airport	Nov 2020	Nov 2021	% Change	% of Total
1 Melbourne	8.5	10.2	20.9	25.9
2 Sydney	7.9	9.8	23.1	24.8
3 Brisbane	5.9	7.0	18.8	17.8
4 Perth	2.7	3.2	19.0	8.2
5 Adelaide	2.1	2.7	29.6	6.8
Total top five airports	27.1	32.9	21.5	83.5
Total domestic network	34.6	39.4	14.0	100.0

Table 9: Top five airports, domestic RPT cargo movements (000s tonnes) - annual activity

Airport	YE Nov 2020	YE Nov 2021	% Change	% of Total
1 Melbourne	100.6	107.4	6.8	25.6
2 Sydney	84.3	97.4	15.5	23.2
3 Brisbane	67.5	69.1	2.4	16.5
4 Perth	39.7	39.5	-0.5	9.4
5 Adelaide	23.9	25.8	7.8	6.1
Total top five airports	316.0	339.1	7.3	80.8
Total domestic network	388.6	419.8	8.0	100.0

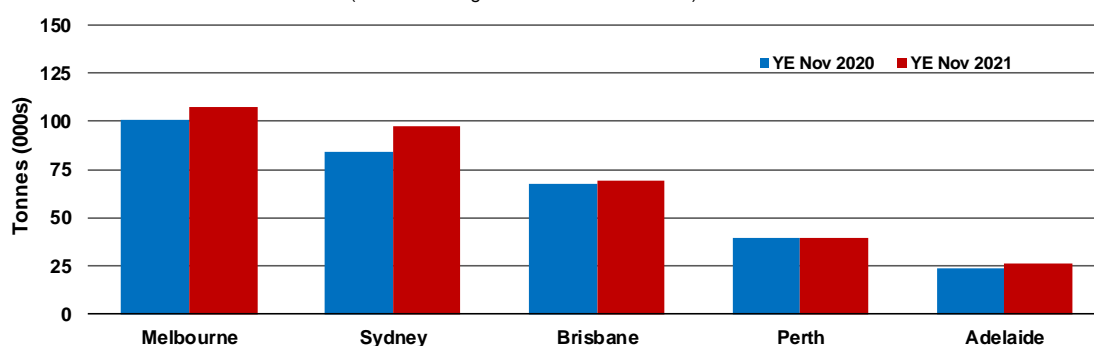
Note: Airport cargo tonnes are the sum of cargo tonnes on arrivals and departures at each airport.

Total domestic network - cargo movement
(monthly totals - traffic on board)



Top five airports, cargo movements

(Domestic cargo traffic - traffic on board)



TOP TEN ROUTES

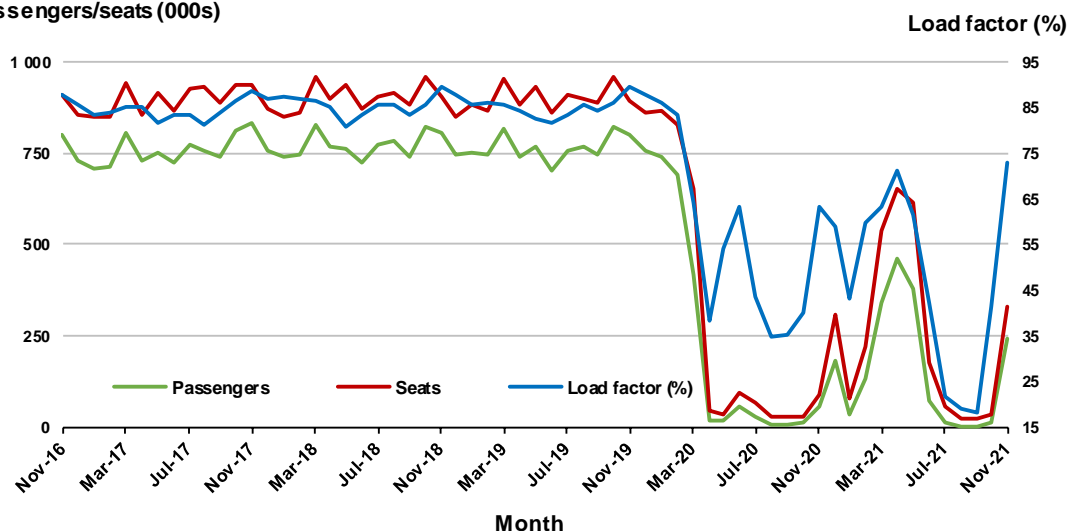
1. Melbourne - Sydney

Monthly data

	Nov 2020	Nov 2021	% Change
Passengers carried (000s)	58.4	241.3	313.2
Seats (000s)	92.1	331.1	259.5
Load factor %	63.4	72.9	9.5 *
Aircraft trips	729	2 082	185.6

* percentage point difference

Passengers/seats (000s)

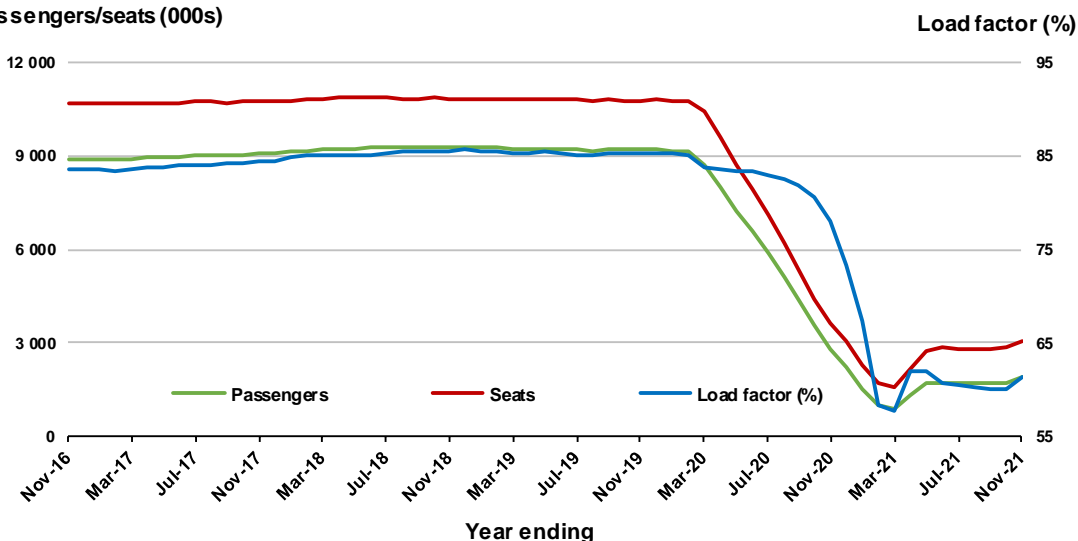


Moving annual data

	YE Nov 2020	YE Nov 2021	% Change
Passengers carried (000s)	2 823.6	1 885.9	-33.2
Seats (000s)	3 622.7	3 072.0	-15.2
Load factor %	78.0	61.4	-16.6 *
Aircraft trips	21 997	19 745	-10.2

* percentage point difference

Passengers/seats (000s)

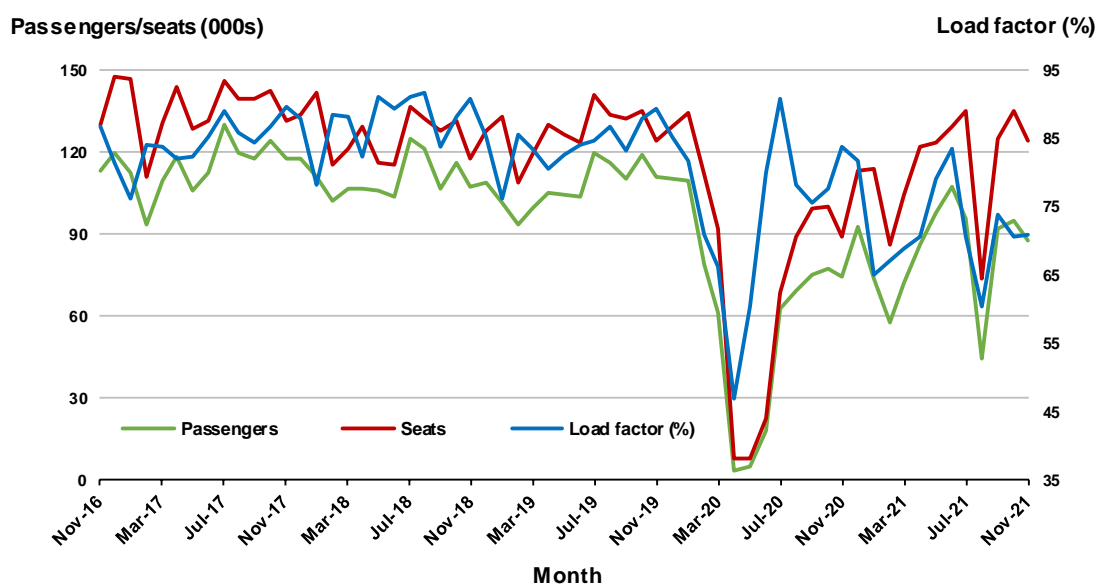


2. Brisbane - Cairns

Monthly data

	Nov 2020	Nov 2021	% Change
Passengers carried (000s)	74.5	87.9	18.1
Seats (000s)	89.0	124.2	39.6
Load factor %	83.7	70.8	-12.9 *
Aircraft trips	623	796	27.8

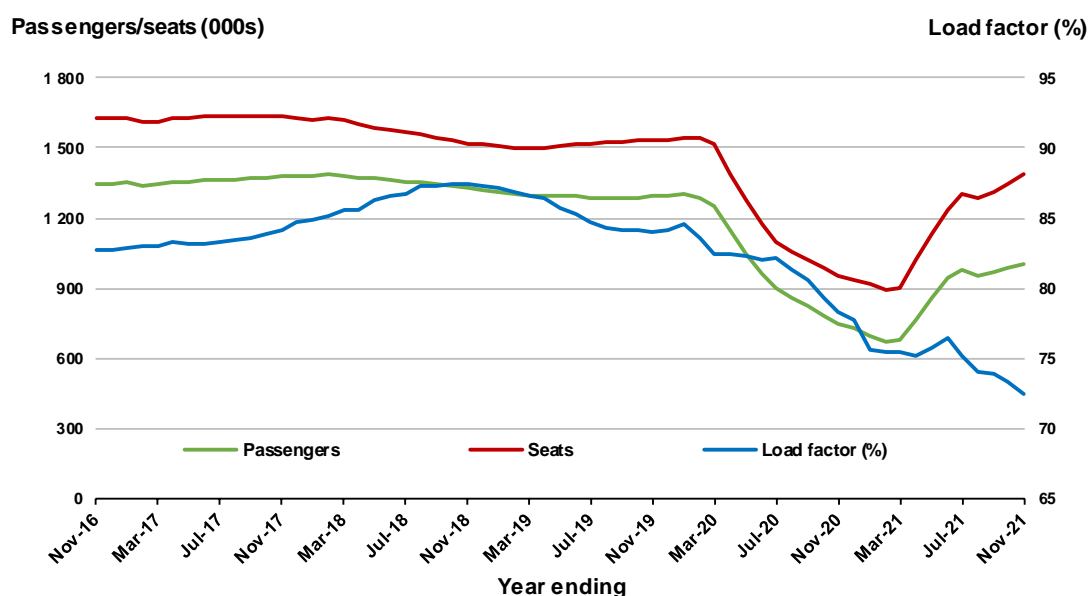
* percentage point difference



Moving annual data

	YE Nov 2020	YE Nov 2021	% Change
Passengers carried (000s)	746.3	1 003.1	34.4
Seats (000s)	952.6	1 385.0	45.4
Load factor %	78.3	72.4	-5.9 *
Aircraft trips	6 948	8 720	25.5

* percentage point difference

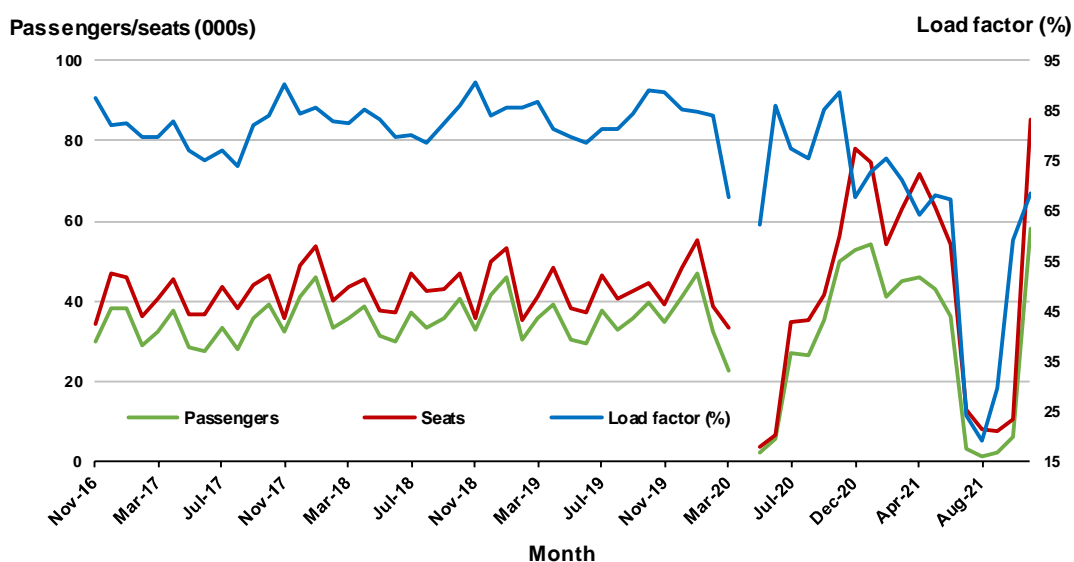


3. Ballina - Sydney ^(a)

Monthly data

	Nov 2020	Nov 2021	% Change
Passengers carried (000s)	52.5	58.2	10.9
Seats (000s)	60.2	85.1	41.2
Load factor %	87.2	68.4	-18.8 *
Aircraft trips	432	588	36.1

* percentage point difference

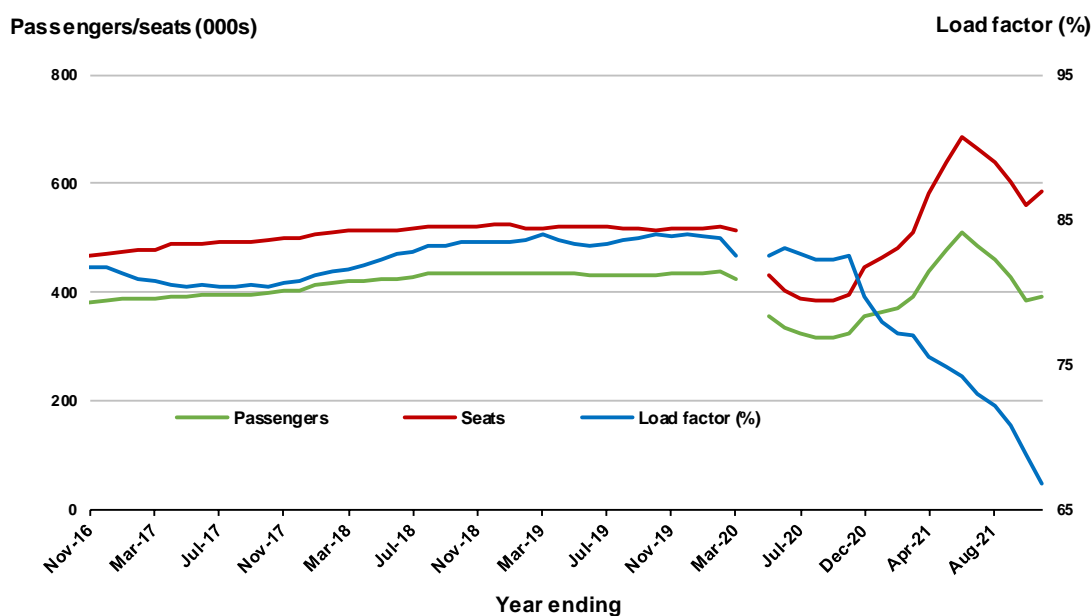


(a) April 2020 data not available for release

Moving annual data

	YE Nov 2020	YE Nov 2021	% Change
Passengers carried (000s)	342.8	389.8	13.7
Seats (000s)	415.2	583.6	40.6
Load factor %	82.6	66.8	-15.8 *
Aircraft trips	2 882	4 196	45.6

* percentage point difference



(a) April 2020 moving annual total is not available for release

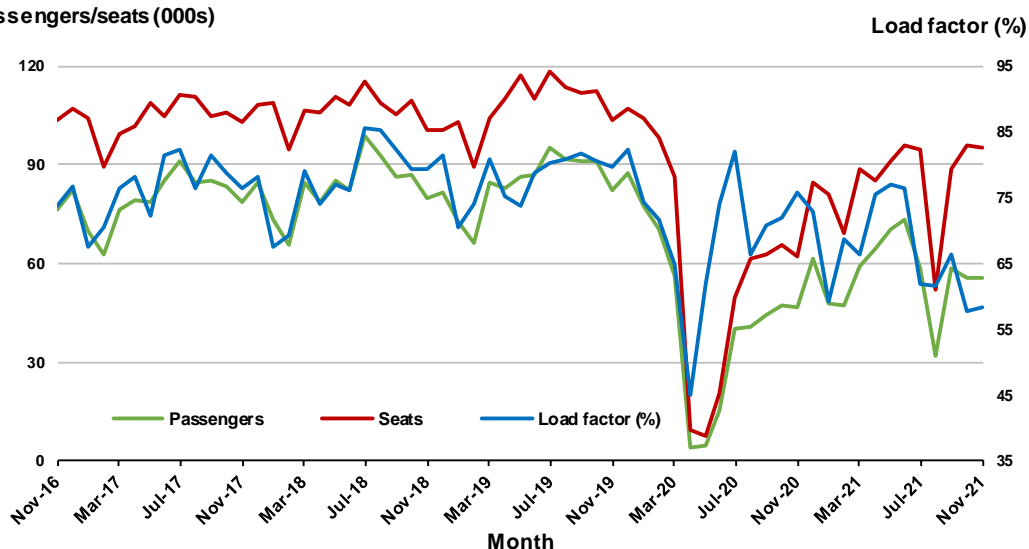
4. Brisbane - Townsville

Monthly data

	Nov 2020	Nov 2021	% Change
Passengers carried (000s)	47.0	55.8	18.8
Seats (000s)	61.9	95.4	54.2
Load factor %	75.9	58.5	-17.4 *
Aircraft trips	400	579	44.8

* percentage point difference

Passengers/seats (000s)

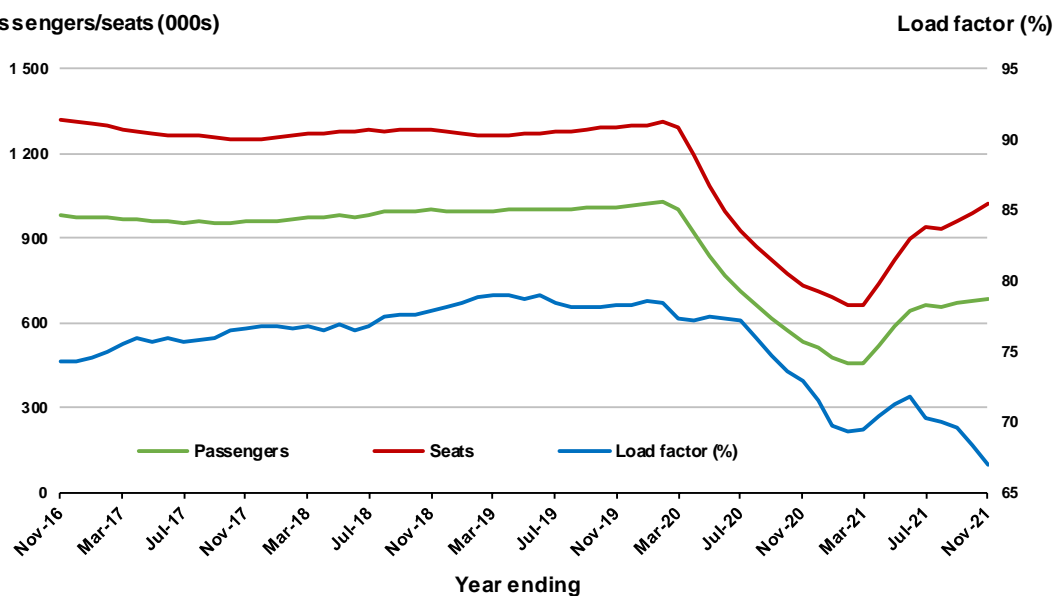


Moving annual data

	YE Nov 2020	YE Nov 2021	% Change
Passengers carried (000s)	535.7	685.0	27.9
Seats (000s)	734.2	1 022.9	39.3
Load factor %	73.0	67.0	-6.0 *
Aircraft trips	4 963	6 177	24.5

* percentage point difference

Passengers/seats (000s)

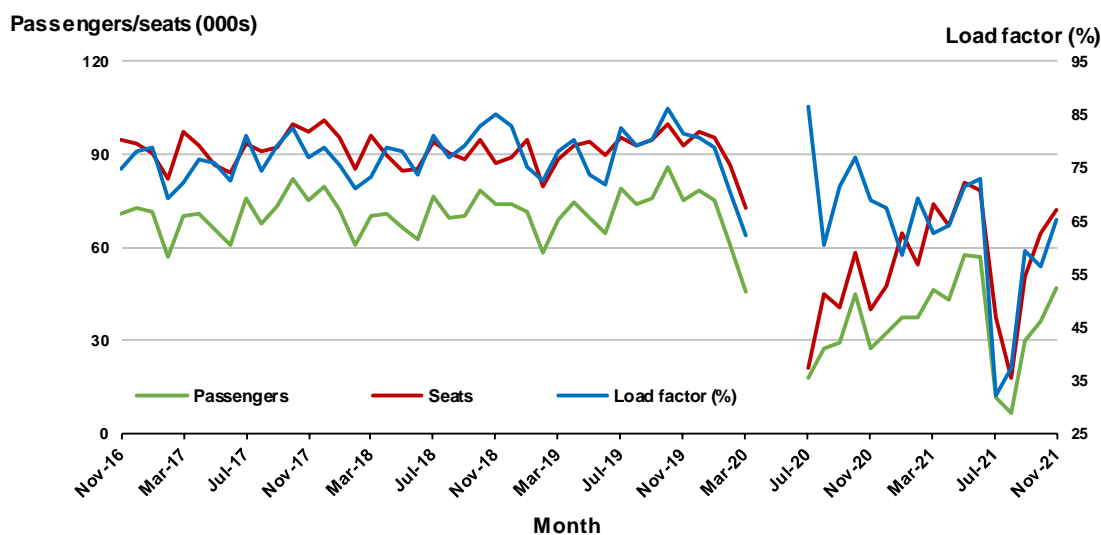


5. Adelaide- Brisbane ^(a)

Monthly data

	Nov 2020	Nov 2021	% Change
Passengers carried (000s)	27.5	46.9	70.2
Seats (000s)	40.0	72.0	79.9
Load factor %	68.9	65.1	-3.8 *
Aircraft trips	247	438	77.3

* percentage point difference

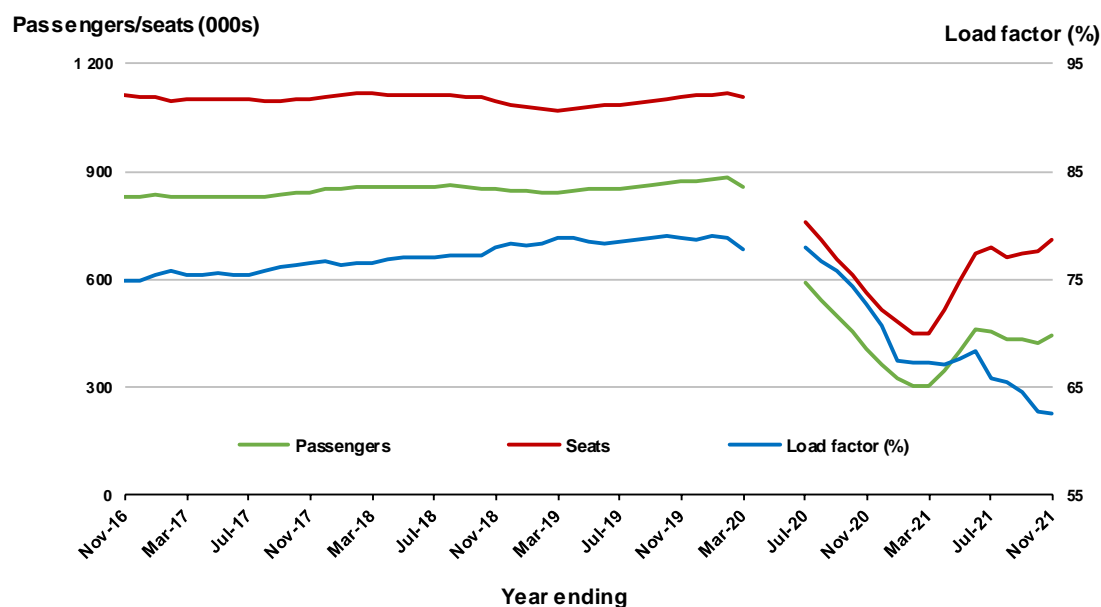


(a) April to June 2020 data not available for release

Moving annual data

	YE Nov 2020	YE Nov 2021	% Change
Passengers carried (000s)	408.4	443.5	8.6
Seats (000s)	561.7	708.7	26.2
Load factor %	72.7	62.6	-10.1 *
Aircraft trips	3 341	4 315	29.2

* percentage point difference



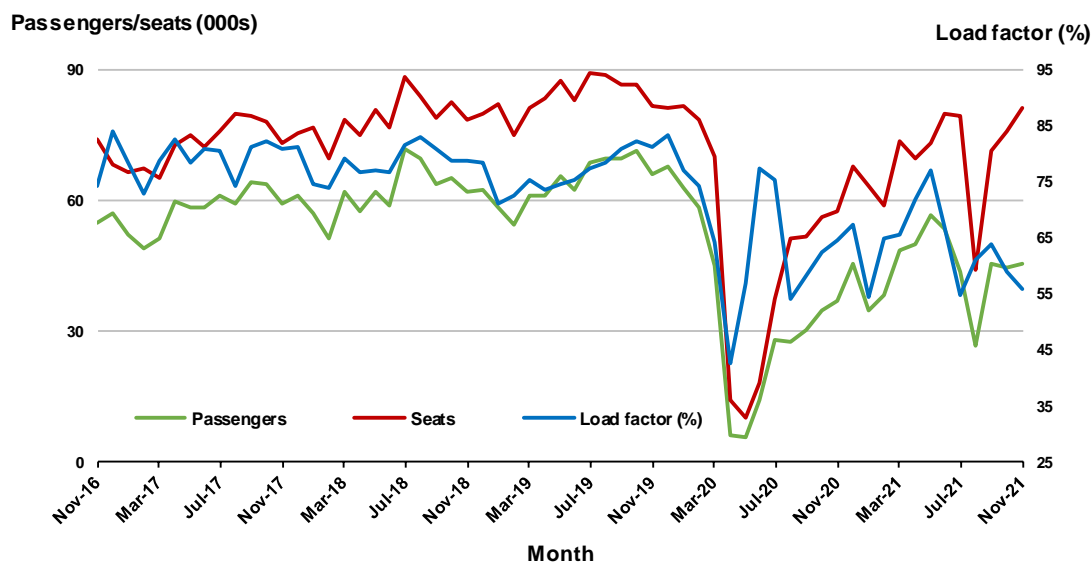
(a) April to June 2020 moving annual totals are not available for release

6. Brisbane - Mackay

Monthly data

	Nov 2020	Nov 2021	% Change
Passengers carried (000s)	37.1	45.3	22.3
Seats (000s)	57.3	81.0	41.3
Load factor %	64.6	56.0	-8.6 *
Aircraft trips	395	520	31.6

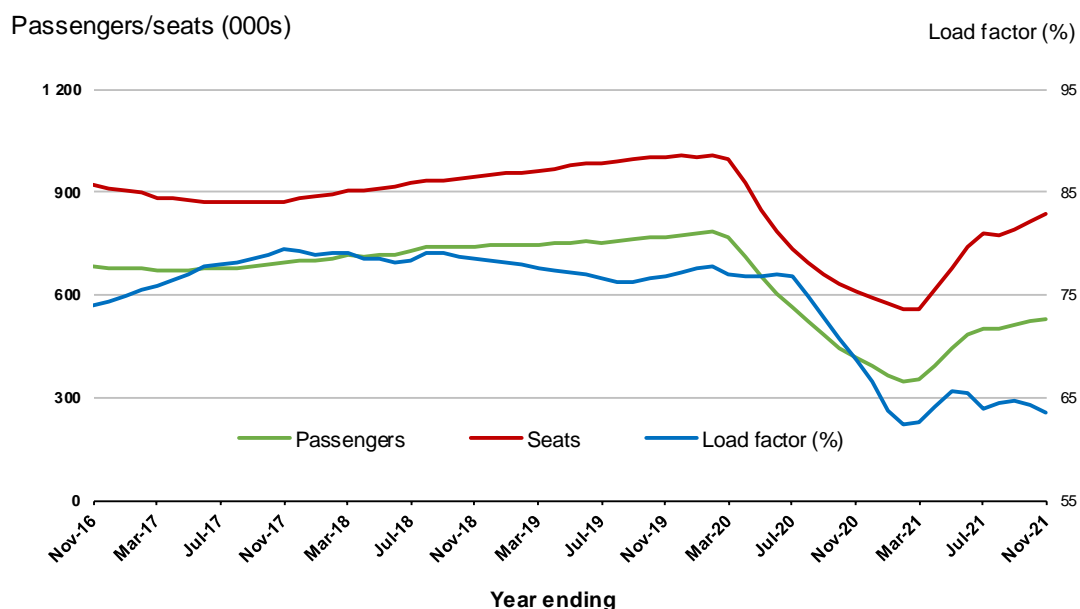
* percentage point difference



Moving annual data

	YE Nov 2020	YE Nov 2021	% Change
Passengers carried (000s)	417.4	532.3	NA
Seats (000s)	607.2	837.4	NA
Load factor %	68.7	63.6	NA *
Aircraft trips	4 720	5 620	NA

* percentage point difference

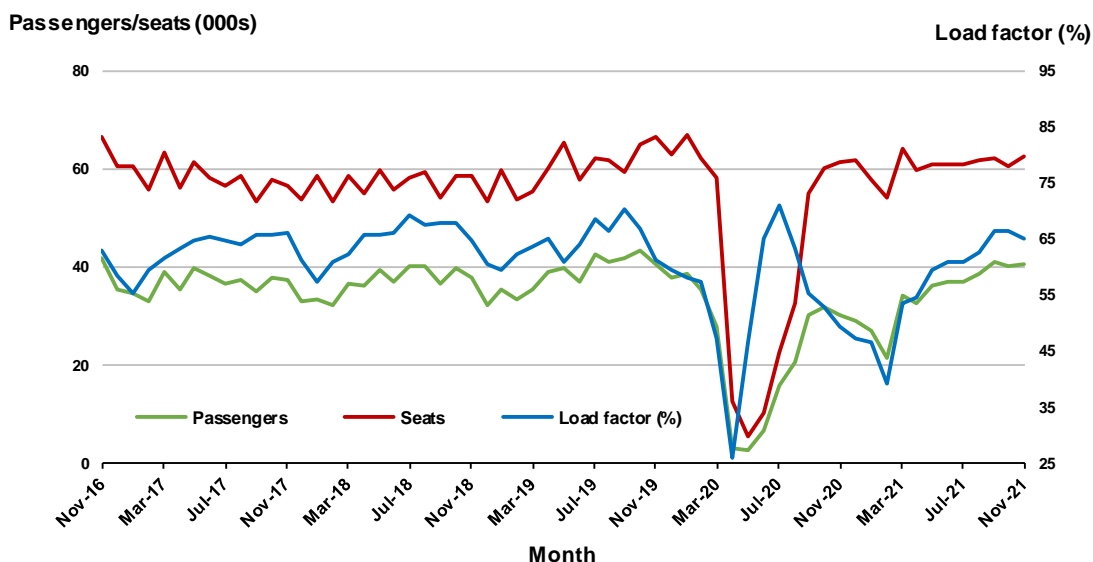


7. Karratha - Perth

Monthly data

	Nov 2020	Nov 2021	% Change
Passengers carried (000s)	30.2	40.7	34.5
Seats (000s)	61.5	62.7	1.9
Load factor %	49.2	64.9	15.7 *
Aircraft trips	363	388	6.9

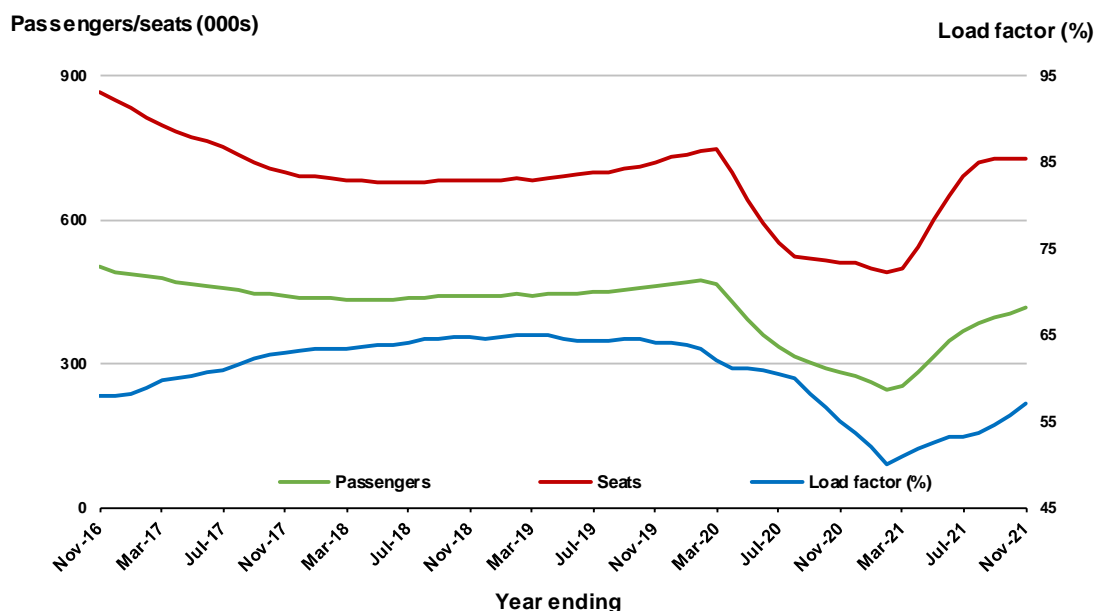
* percentage point difference



Moving annual data

	YE Nov 2020	YE Nov 2021	% Change
Passengers carried (000s)	280.8	414.7	47.7
Seats (000s)	510.0	726.9	42.5
Load factor %	55.1	57.0	2.0 *
Aircraft trips	3 511	4 487	27.8

* percentage point difference

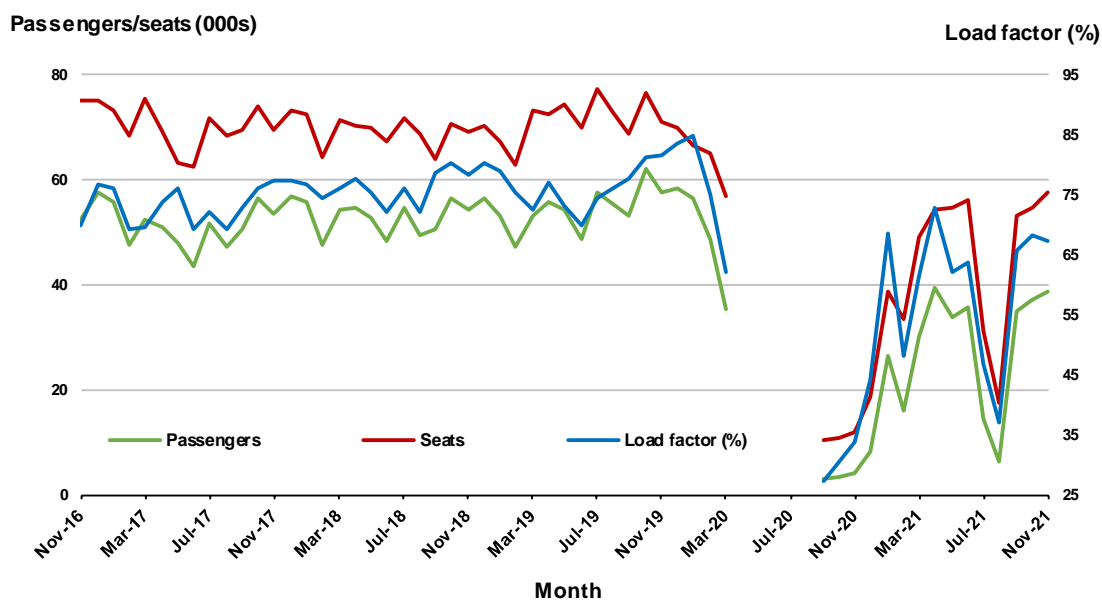


8. Adelaide - Perth ^(a)

Monthly data

	Nov 2020	Nov 2021	% Change
Passengers carried (000s)	4.0	38.7	867.9
Seats (000s)	11.9	57.5	384.8
Load factor %	33.7	67.2	33.5 *
Aircraft trips	102	360	252.9

* percentage point difference

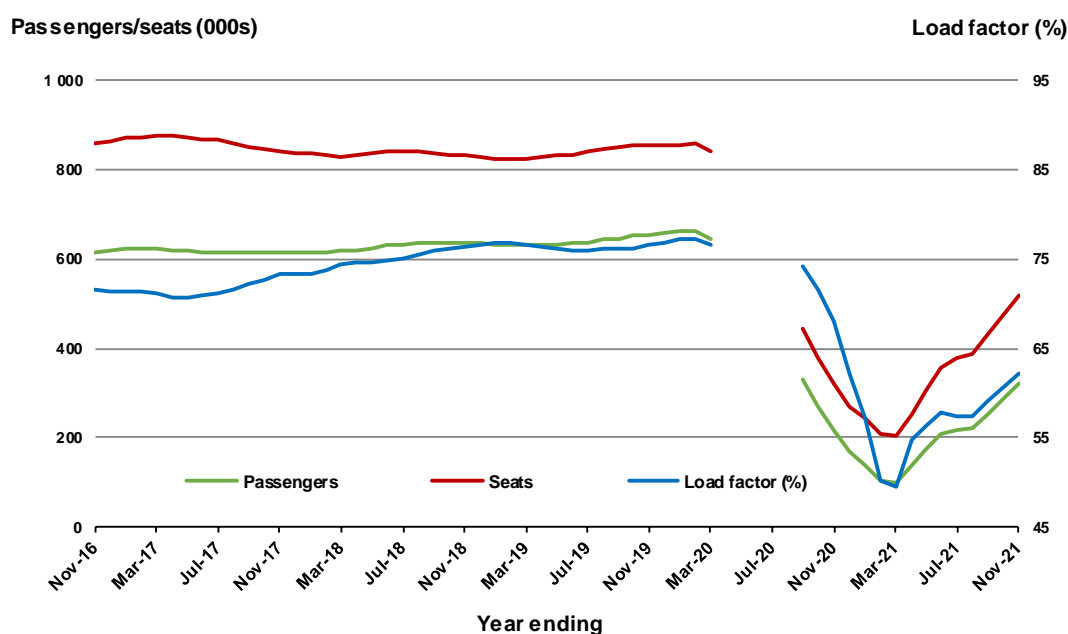


(a) April to August 2020 data not available for release

Moving annual data

	YE Nov 2020	YE Nov 2021	% Change
Passengers carried (000s)	217.6	321.8	47.9
Seats (000s)	320.1	518.3	61.9
Load factor %	68.0	62.1	-5.9 *
Aircraft trips	2 325	3 365	44.7

* percentage point difference



(a) April to August 2020 moving annual totals are not available for release

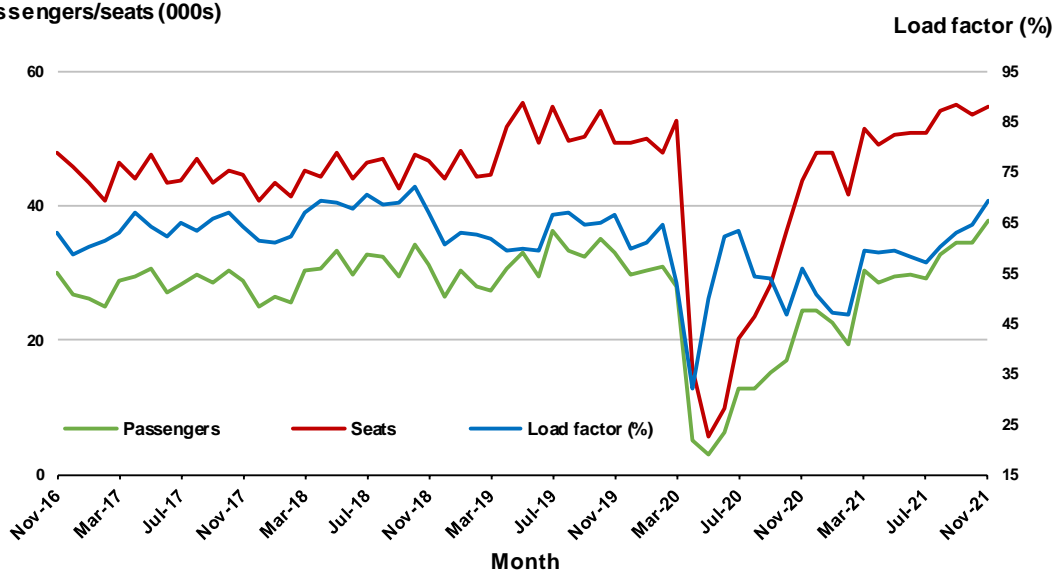
9. Perth - Port Hedland

Monthly data

	Nov 2020	Nov 2021	% Change
Passengers carried (000s)	24.5	37.9	NA
Seats (000s)	43.6	54.6	NA
Load factor %	56.0	69.3	NA *
Aircraft trips	287	374	NA

* percentage point difference

Passengers/seats (000s)

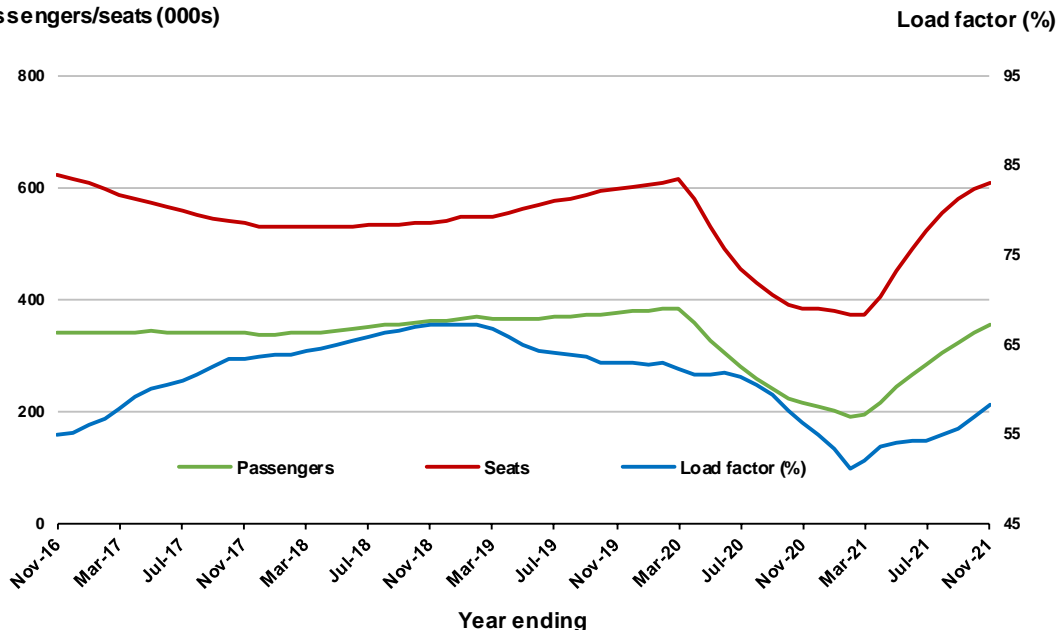


Moving annual data

	YE Nov 2020	YE Nov 2021	% Change
Passengers carried (000s)	215.1	353.0	NA
Seats (000s)	383.2	607.0	NA
Load factor %	56.1	58.2	NA *
Aircraft trips	2 756	4 332	NA

* percentage point difference

Passengers/seats (000s)

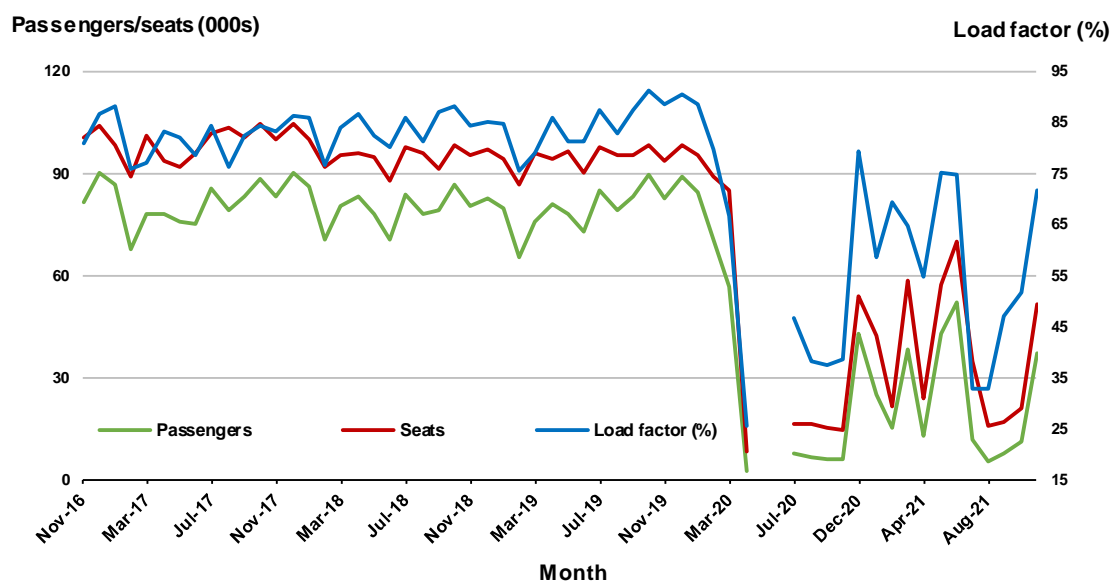


10. Brisbane - Perth^(a)

Monthly data

	Nov 2020	Nov 2021	% Change
Passengers carried (000s)	18.8	36.7	95.6
Seats (000s)	28.9	51.3	77.6
Load factor %	65.0	71.6	6.6 *
Aircraft trips	166	293	76.5

* percentage point difference

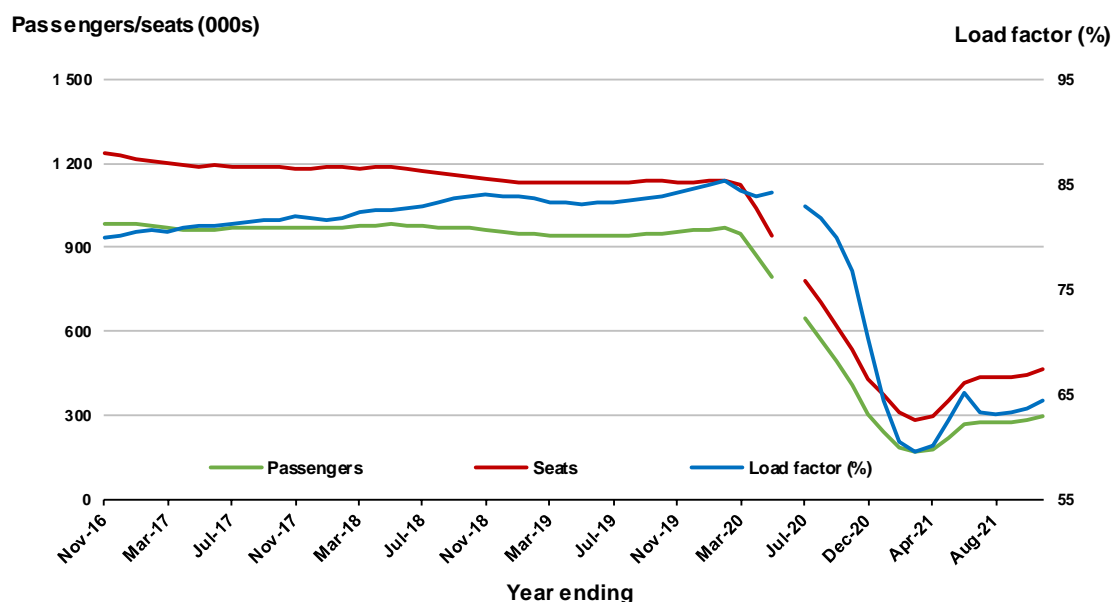


(a) May to June 2020 data not available for release

Moving annual data

	YE Nov 2020	YE Nov 2021	% Change
Passengers carried (000s)	347.9	299.6	-13.9
Seats (000s)	472.6	465.0	-1.6
Load factor %	73.6	64.4	-9.2 *
Aircraft trips	2 607	2 552	-2.1

* percentage point difference



(a) May to June 2020 moving annual totals are not available for release

TOP FIFTY REGIONAL AIRPORTS

Table 10: Top fifty regional airports (000s) — passenger movements, monthly

Airport	Nov 2020	Nov 2021	% Change
1 Cairns	124.7	155.6	24.7
2 Townsville	69.5	87.4	25.6
3 Ballina	56.4	76.8	36.2
4 Hobart	45.3	65.6	44.7
5 Darwin	64.3	63.2	- 1.8
6 Mackay	45.2	55.7	23.3
7 Karratha	30.3	40.8	34.8
8 Port Hedland	24.5	38.0	55.4
9 Rockhampton	28.5	35.0	22.8
10 Broome	29.4	33.5	14.1
11 Newman	20.0	30.4	52.0
12 Launceston	23.0	29.3	27.4
13 Proserpine	19.7	27.1	37.5
14 Kalgoorlie	18.4	24.9	35.1
15 Hamilton Island	18.9	21.4	13.4
16 Newcastle	30.5	18.2	- 40.2
17 Mount Isa	14.7	16.6	12.7
18 Paraburdoo	15.9	16.2	2.0
19 Coffs Harbour	9.2	14.6	59.1
20 Port Lincoln	7.3	13.1	80.7
21 Emerald	9.2	13.1	42.8
22 Gladstone	9.9	12.8	29.6
23 Alice Springs	19.9	12.6	- 36.5
24 Thursday Island	7.1	9.0	27.0
25 Olympic Dam	3.7	9.0	139.9
26 Moranbah	3.3	8.5	154.8
27 Geraldton	4.5	7.9	76.8
28 Dubbo	8.8	7.2	- 18.7
29 Kununurra	5.1	7.1	40.0
30 Weipa	4.4	6.6	48.3
31 Learmonth	5.9	6.2	5.2
32 Bundaberg	3.6	5.8	62.3
33 Mildura	2.6	5.7	115.0
34 Cloncurry	1.9	5.4	187.6
35 Albury	4.5	5.2	13.7
36 Wagga Wagga	4.6	5.0	9.0
37 Albany	3.6	4.9	37.4
38 Port Macquarie	4.0	4.9	20.1
39 Roma	3.6	4.6	29.5
40 Whyalla	2.1	4.6	119.3
41 Esperance	3.4	4.6	35.9
42 Tamworth	3.8	4.4	15.7
43 Groote Eylandt	1.6	4.2	155.2
44 Gove	4.7	4.2	- 11.4
45 Mount Gambier	1.3	4.0	214.7
46 Armidale	3.0	3.7	22.2
47 Merimbula	0.8	2.9	270.5
48 Hervey Bay	1.1	2.7	148.2
49 Carnarvon	1.8	2.6	47.0
50 Longreach	2.4	2.6	6.9
Total top 50 regional airports	831.8	1 045.2	25.6
Total regional airports	902.8	1 115.6	23.6
Total domestic network	2 214.2	3 031.1	36.9

Note: Airport passenger movement numbers are the sum of passenger arrivals and departures at each airport. Regional airports are defined as airports which are, according to Australian Statistical Geography Standard (ASGS), not based in Major Cities.

Table 11: Top fifty regional airports (000s) — passenger movements, annual

Airport	YE Nov 2020	YE Nov 2021	% Change
1 Cairns	1 742.2	2 293.7	31.7
2 Hobart	1 019.7	1 252.9	22.9
3 Darwin	702.0	1 096.8	56.2
4 Townsville	814.6	1 085.8	33.3
5 Mackay	477.0	641.3	34.5
6 Launceston	520.2	618.7	18.9
7 Ballina	391.3	485.0	23.9
8 Newcastle	424.0	474.5	11.9
9 Karratha	281.8	416.7	47.9
10 Broome	242.8	411.3	69.4
11 Rockhampton	289.7	396.4	36.8
12 Port Hedland	219.5	354.3	61.4
13 Hamilton Island	204.5	323.8	58.3
14 Newman	170.1	318.8	87.4
15 Proserpine	216.5	298.0	37.6
16 Alice Springs	219.7	270.4	23.1
17 Kalgoorlie	164.2	251.5	53.2
18 Paraburdoo	110.0	192.6	75.1
19 Mount Isa	149.7	185.8	24.1
20 Emerald	105.0	143.2	36.4
21 Gladstone	118.8	140.3	18.1
22 Port Lincoln	95.6	139.0	45.4
23 Coffs Harbour	146.4	125.9	-14.0
24 Kununurra	58.0	107.0	84.6
25 Dubbo	88.9	98.0	10.2
26 Learmonth	57.5	93.8	63.1
27 Thursday Island	60.5	93.0	53.9
28 Olympic Dam	39.4	84.0	113.4
29 Moranbah	52.5	76.4	45.4
30 Ayers Rock	115.0	75.8	-34.1
31 Weipa	43.2	74.5	72.3
32 Geraldton	45.6	73.6	61.4
33 Albury	79.7	72.7	-8.8
34 Mildura	79.2	72.3	-8.7
35 Bundaberg	62.6	71.0	13.4
36 Wagga Wagga	71.6	66.4	-7.2
37 Port Macquarie	74.6	63.3	-15.2
38 Tamworth	64.7	56.3	-13.0
39 Gove	51.8	55.7	7.5
40 Hervey Bay	53.5	49.1	-8.3
41 Roma	43.0	48.0	11.8
42 Albany	34.8	47.6	37.0
43 Cloncurry	31.2	47.5	52.1
44 Whyalla	31.4	46.7	48.6
45 Esperance	33.1	45.0	36.1
46 King Island	29.0	43.5	50.1
47 Devonport	46.1	40.8	-11.6
48 Armidale	42.8	39.6	-7.4
49 Groote Eylandt	17.2	39.4	129.6
50 Orange	29.1	38.6	32.9
Total top 50 regional airports	10 261.1	13 636.3	32.9
Total regional airports	11 087.2	14 546.8	31.2
Total domestic network	45 050.3	46 305.2	2.8

Note: Airport passenger movement numbers are the sum of passenger arrivals and departures at each airport. Regional airports are defined as airports which are, according to Australian Statistical Geography Standard (ASGS), not based in Major Cities.

DOMESTIC CHARTER ACTIVITY

Table 12: Charter passengers carried and aircraft trips - monthly activity

	Nov 2020	Nov 2021	% Change
Total domestic charter passengers	285 058	295 585	3.7
Total domestic charter aircraft trips	5 494	5 338	-2.8

Note: Helicopter, joyflights and sightseeing charter flights not included.

Table 13: Charter passengers carried and aircraft trips - annual activity

	YE Nov 2020	YE Nov 2021	% Change
Total domestic charter passengers	3 092 070	3 382 177	9.4
Total domestic charter aircraft trips	63 263	63 909	1.0

Note: Helicopter, joyflights and sightseeing charter flights not included.

Table 14: Domestic airports - charter activity - monthly

	Nov 2020	Nov 2021	% Change
Total domestic charter passenger movements	570 116	591 170	3.7
Total domestic charter aircraft movements	10 988	10 676	-2.8
Perth airport charter passenger movements	211 150	222 156	5.2
Perth airport charter aircraft movements	3 496	3 653	4.5

Note: Helicopter, joyflights and sightseeing charter flights not included.

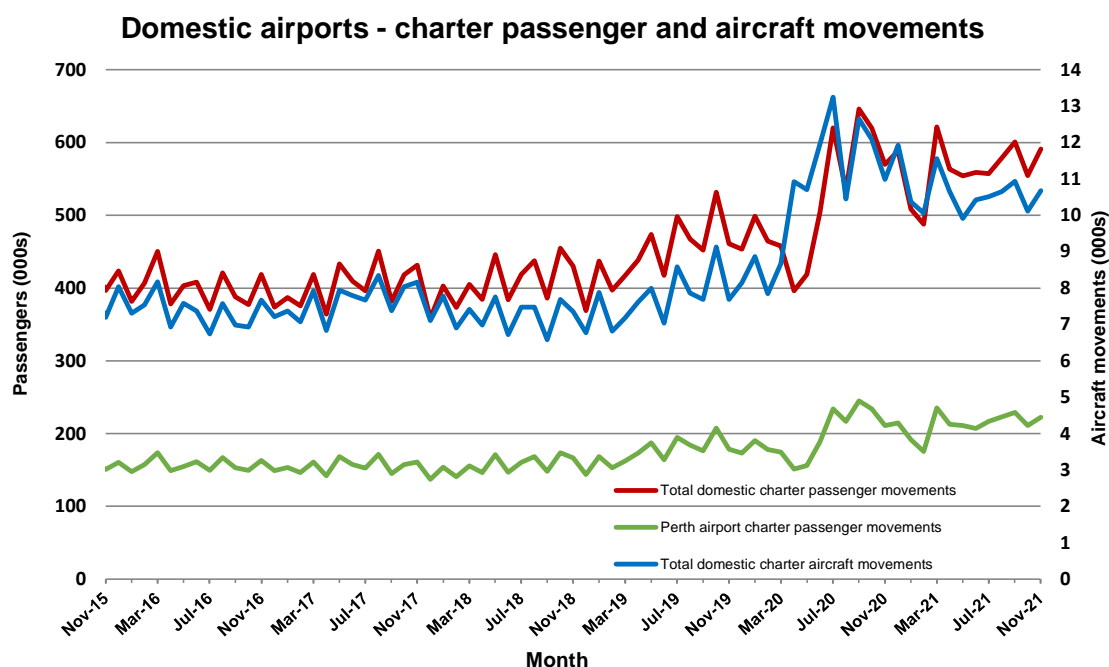
Charter passenger and aircraft movement numbers are the sum of arrivals and departures at each airport.

Table 15: Domestic airports - charter activity - annual

	YE Nov 2020	YE Nov 2021	% Change
Total domestic charter passenger movements	6 184 140	6 764 354	9.4
Total domestic charter aircraft movements	126 526	127 818	1.0
Perth airport charter passenger movements	2 352 561	2 548 965	8.3
Perth airport charter aircraft movements	42 479	43 371	2.1

Note: Helicopter, joyflights and sightseeing charter flights not included.

Charter passenger and aircraft movement numbers are the sum of arrivals and departures at each airport.



DEFINITIONS

Aircraft Trips	The number of flight stages. A return flight counts as two aircraft trips.
Airport Movements	Airport movements (passenger and cargo) are measured once on arrival and once on departure. Each domestic trip generates two movements at airports. For example, a trip from Melbourne to Sydney will be counted twice, as a departure at Melbourne and as an arrival at Sydney. At the national level, the sum of all domestic airport traffic will therefore be equal to twice the number of trips undertaken.
Available Seat Kilometres (ASKs)	Calculated by multiplying the number of seats available on each flight stage, by the distance in kilometres between the ports. The distances used are Great Circle Distances.
City-Pair	The ports shown make up the city-pair route. Passenger movements shown for a city pair reflect total traffic in both directions.
Flight Stage	The operation of an aircraft from take-off to landing.
Load Factor	The total revenue passenger kilometres performed as a percentage of the total available seat kilometres.
Passengers Carried	Revenue passengers carried.
Regular Public Transport Services (RPT)	All air service operations in which aircraft are available for the transport of members of the public and are conducted in accordance with fixed schedules. It does not include charter or other non-scheduled operations.
Revenue Passengers	All passengers paying any fare. Frequent flyer redemption travellers are regarded as revenue passengers.
Revenue Passenger Kilometres (RPKs)	Calculated by multiplying the number of revenue passengers travelling on each flight stage, by the distance in kilometres between the ports. The distances used are Great Circle Distances.
Traffic on board by stages	The total of all traffic (revenue passengers) on each flight stage between two directly connected airports.
..	Not available for confidentiality or other reasons.
NA	Not applicable.