



Australian Government

Department of Infrastructure, Transport,
Regional Development, Communications, Sport and the Arts

Bureau of Infrastructure and Transport Research Economics
STATISTICAL REPORT



Aviation

**Domestic aviation activity
May 2025**

The Department of Infrastructure, Transport, Regional Development, Communications, Sport and the Arts acknowledges the Traditional Custodians of Country of the land on which we work and live.

We recognise and respect the continuing connections to land, waters and communities.

We pay our respects to them and their cultures and to their Elders both past and present and to all Aboriginal and Torres Strait Islander people.

© Commonwealth of Australia 2025

ISSN: 1832 – 1968

BITRE Reference: 2025-080

Ownership of intellectual property rights in this publication

Unless otherwise noted, copyright (and any other intellectual property rights, if any) in this publication is owned by the Commonwealth of Australia (referred to below as the Commonwealth).

Disclaimer

The material contained in this publication is made available on the understanding that the Commonwealth is not providing professional advice, and that users exercise their own skill and care with respect to its use, and seek independent advice if necessary.

The Commonwealth makes no representations or warranties as to the contents or accuracy of the information contained in this publication. To the extent permitted by law, the Commonwealth disclaims liability to any person or organisation in respect of anything done, or omitted to be done, in reliance upon information contained in this publication.

Creative Commons licence

With the exception of (a) the Coat of Arms; and (b) the Department of Infrastructure, Transport, Regional Development, Communications, Sport and the Arts' photos and graphics, copyright in this publication is licensed under a Creative Commons Attribution 3.0 Australia Licence.

Creative Commons Attribution 3.0 Australia Licence is a standard form licence agreement that allows you to copy, communicate and adapt this publication provided that you attribute the work to the Commonwealth and abide by the other licence terms. A summary of the licence terms is available from <http://creativecommons.org/licenses/by/3.0/au/deed.en>.

The full licence terms are available from <http://creativecommons.org/licenses/by/3.0/au/legalcode>.

Use of the Coat of Arms

The Department of the Prime Minister and Cabinet sets the terms under which the Coat of Arms is used. Please refer to the Department's Commonwealth Coat of Arms and Government branding web page <http://www.dpmc.gov.au/guidelines/index.cfm#brand> and, in particular, the Guidelines on the use of the Commonwealth Coat of Arms publication.

An appropriate citation for this report is:

Bureau of Infrastructure and Transport Research Economics (BITRE), 2025, Domestic aviation activity, Statistical Report, BITRE, Canberra ACT.

Contact us

This publication is available in PDF format. All other rights are reserved, including in relation to any Departmental logos or trademarks which may exist. For enquiries regarding the licence and any use of this publication, please contact:

Bureau of Infrastructure and Transport Research Economics (BITRE)
Department of Infrastructure, Transport, Regional Development, Communications, Sport and the Arts
GPO Box 501, Canberra ACT 2601, Australia

Email: avstats@infrastructure.gov.au

Website: www.bitre.gov.au

Inquiries: Marko.Rodic2@infrastructure.gov.au (02) 6136 7995

FOREWORD

This report provides an overview of domestic (including charter) commercial aviation activity in Australia for the month of May 2025.

The data covers revenue passengers carried by Australian-registered operators of scheduled Regular Public Transport (RPT) services over Australian flight stages and fixed-wing charter operators. These estimates include passengers carried between domestic airports on international flights operated by these carriers. The passengers carried refer to traffic on board by stages.

Estimates of passengers and aircraft movements for charter aviation are included in this publication, where BITRE confidentiality standards are met.

Individual routes shown are restricted to those with an average exceeding 8,000 passengers per month over the previous six months where two or more airlines operate in competition.

Information on the total network for the month of May 2025 and on the RPT network for the month of May 2025 is presented on page 2, with estimates for the year ended May 2025 presented on page 3.

Detailed information on individual routes can be found in the RPT summary pages 4-13 of this publication. For the month of May 2025, there are 62 individual routes published.

The top ten airports in terms of RPT passenger movements are shown on page 14.

Data on domestic RPT cargo movements at the top five cargo airports are provided on page 15. The table includes cargo carried on passenger flights operated by the Qantas group (including Jetstar), Virgin Australia, Air North and Skippers as well as the cargo carried by dedicated freighter aircraft operated by Qantas Freight and Team Global Express (formerly Toll).

The long-term trends for the top ten competitive RPT routes are presented graphically on pages 16-25.

Domestic RPT passenger movements at regional airports are shown on pages 26-27.

Tables providing estimates of domestic charter aviation activity are shown on page 28. BITRE confidentiality standards restrict publication of detailed estimates for individual Australian airports, with the exception of Perth Airport.

A list of definitions can be found on page 29.

This report was prepared by the Aviation Statistics Section of the Bureau of Infrastructure and Transport Research Economics with data provided by airlines.

Estimates are included where data were not available and data presented in this publication may contain revisions to previously published data.

Where figures have been rounded, discrepancies may occur between sums of component items and totals, and in percentage changes which are derived from figures prior to rounding.

CONTENTS

Highlights	1
Total network.....	2
RPT network	2
Top competitive routes.....	4
Top ten airports – passenger movements.....	14
Top five airports – cargo movements.....	15
Top ten routes	16
1. Melbourne – Sydney	16
2. Brisbane – Sydney.....	17
3. Brisbane – Melbourne	18
4. Gold Coast – Sydney	19
5. Adelaide – Melbourne	20
6. Melbourne – Perth	21
7. Adelaide – Sydney	22
8. Gold Coast – Melbourne	23
9. Perth – Sydney	24
10. Hobart – Melbourne	25
Top fifty regional airports	26
Domestic charter activity	28
Definitions	29

This page is intentionally left blank.

HIGHLIGHTS

There were 5.20 million passengers carried on Australian domestic commercial aviation (including charter operations) in May 2025, compared with 5.13 million in May 2024 (up 1.4 per cent). This is also an increase of 1.6 per cent on pre-COVID May 2019 passenger numbers (5.12 million).

4.84 million passengers were carried on Regular Public Transport (RPT) flights in May 2025 (excluding charter operations), an increase of 2.0 per cent compared to May 2024.

For the month of May 2025, there were 50.8 thousand RPT aircraft trips, a decrease of 3.3 per cent on May 2024.

For the year ending May 2025 there were 59.40 million RPT passengers, an increase of 1.3 per cent on the year ending May 2024.

RPT revenue passenger kilometres (RPKs) performed were 5.76 billion for the month, compared with 5.57 billion in May 2024 (up 3.4 per cent).

Capacity, measured by available seat kilometres (ASKs), increased to 7.14 billion in May 2025 compared to 7.12 billion in May 2024 (up 0.3 per cent).

The industry wide load factor (RPKs/ASKs) increased from 78.3 per cent in May 2024 to 80.7 per cent in May 2025. The highest load factor (92.7 per cent) was recorded on the Brisbane – Launceston route while the lowest load factor (49.2 per cent) was recorded on the Brisbane – Moranbah route.

For the month of May 2025, Melbourne – Sydney was Australia's busiest RPT route with 667.5 thousand passengers, followed by Brisbane – Sydney with 364.2 thousand passengers and Brisbane – Melbourne with 287.7 thousand passengers.

Sydney was Australia's busiest domestic airport with 2.04 million passenger movements in May 2025, followed by Melbourne with 1.93 million passenger movements and Brisbane with 1.45 million passenger movements.

Total cargo movements at Australian airports on domestic RPT flights were 27.6 thousand tonnes in May 2025, a decrease of 2.3 per cent compared with May 2024.

In May 2025, there were 2.08 million domestic passenger movements through regional airports, an increase of 2.5 per cent from May 2024. Out of the top 50 regional airports, the strongest increase was recorded at Hervey Bay Airport (up 35.5 per cent on May 2024), while the largest decrease was recorded at Moranbah Airport (down 14.2 per cent on May 2024).

Fixed-wing charter operators carried 363.8 thousand passengers in May 2025, a decrease of 7.0 per cent compared with May 2024. Perth Airport accounted for 36.3 per cent of all charter passengers in Australia.

TOTAL NETWORK

Summary of monthly commercial aviation activity

	May 2024	May 2025	% Change
Total passengers carried (millions)	5.13	5.20	1.4
Aircraft trips (000s)	59.0	56.8	-3.7

Note: Regular Public Transport and charter aviation activity
Helicopter, joy flights and sightseeing charter flights not included.

RPT NETWORK

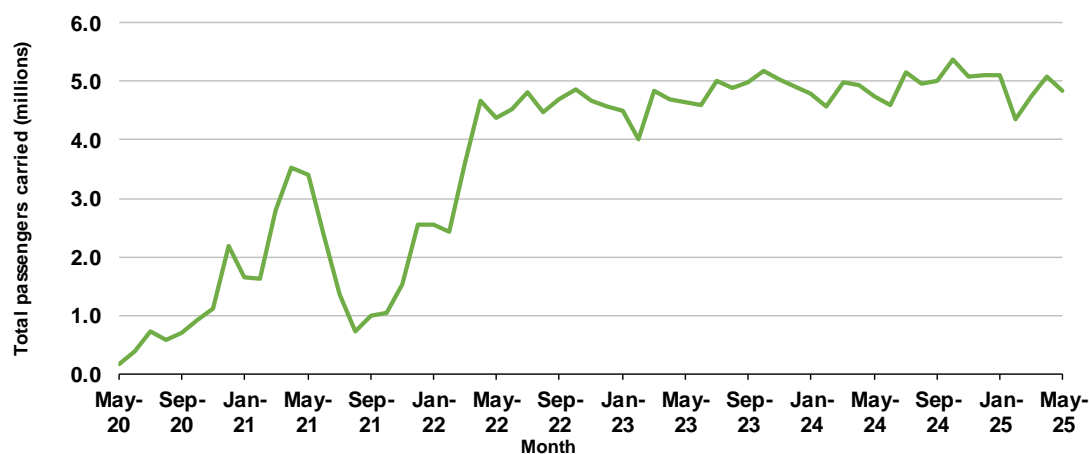
Summary of monthly RPT activity

	May 2024	May 2025	% Change
Total passengers carried (millions)	4.74	4.84	2.0
Revenue passenger kilometres (billions)	5.57	5.76	3.4
Available seats (millions)	6.23	6.15	-1.4
Available seat kilometres (billions)	7.12	7.14	0.3
Load factor %	78.3	80.7	2.4 *
Aircraft trips (000s)	52.5	50.8	-3.3

* percentage point difference

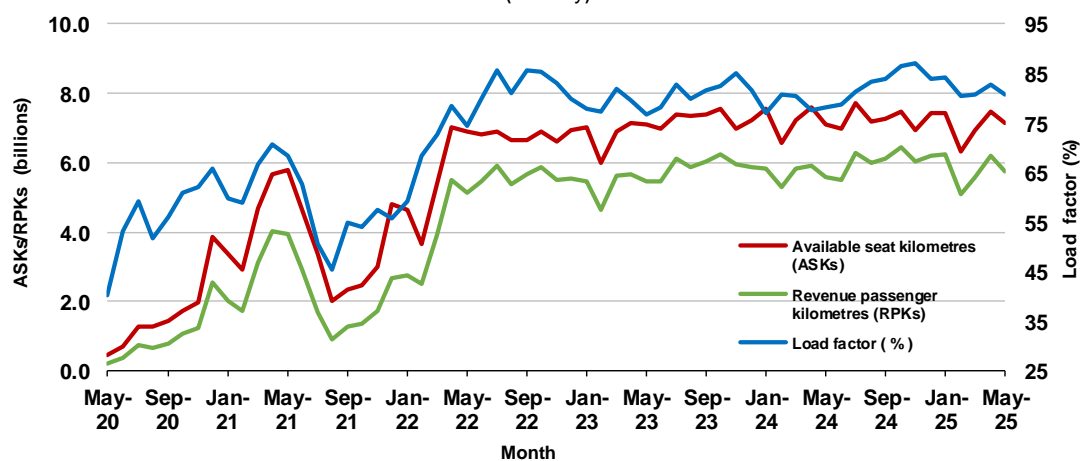
Domestic RPT passenger traffic

(monthly)



RPT Network utilisation

(monthly)



TOTAL NETWORK

Summary of annual commercial aviation activity

	YE May 2024	YE May 2025	% Change
Total passengers carried (millions)	62.86	63.65	1.3
Aircraft trips (000s)	691.0	675.2	-2.3

Note: Regular Public Transport and charter aviation activity
Helicopter, joy flights and sightseeing charter flights not included.

RPT NETWORK

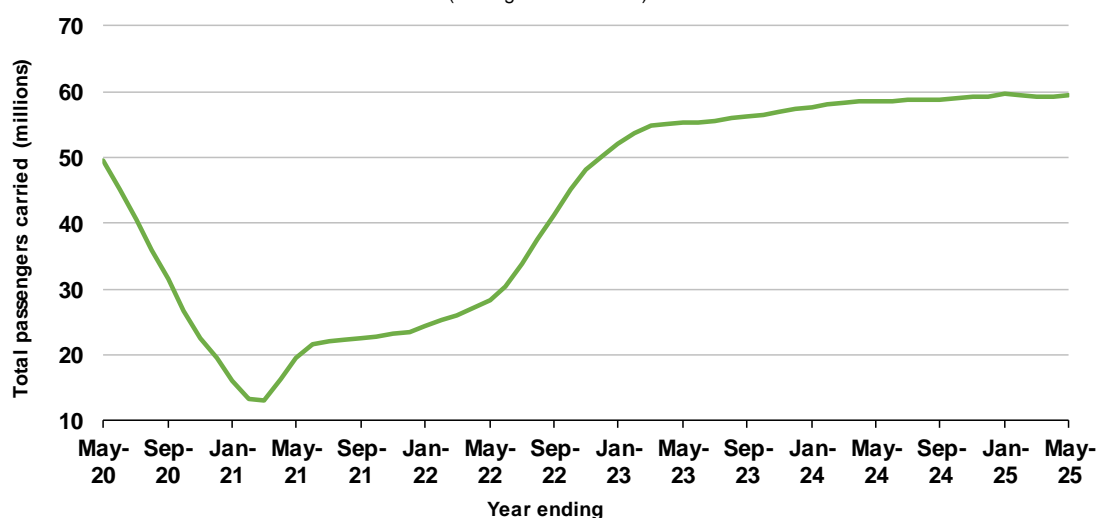
Summary of annual RPT activity

	YE May 2024	YE May 2025	% Change
Total passengers carried (millions)	58.62	59.40	1.3
Revenue passenger kilometres (billions)	69.94	71.48	2.2
Available seats (millions)	74.77	73.38	-1.9
Available seat kilometres (billions)	86.92	86.29	-0.7
Load factor %	80.5	82.8	2.4 *
Aircraft trips (000s)	618.5	603.4	-2.5

* percentage point difference

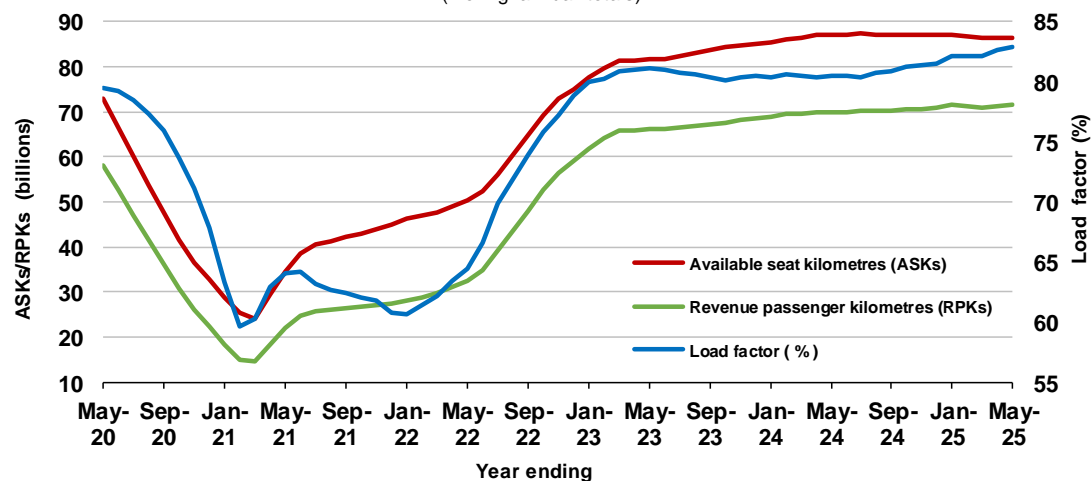
Domestic RPT passenger traffic

(moving annual totals)



RPT Network utilisation

(moving annual totals)



TOP COMPETITIVE ROUTES

Table 1: Passengers carried (000s) — annual activity

	City-Pair	YE May 2024	YE May 2025	% Change
1	Melbourne - Sydney	7 906.2	8 053.8	1.9
2	Brisbane - Sydney	4 316.8	4 369.8	1.2
3	Brisbane - Melbourne	3 373.2	3 559.7	5.5
4	Gold Coast - Sydney	2 514.7	2 464.9	-2.0
5	Adelaide - Melbourne	2 335.2	2 321.2	-0.6
6	Gold Coast - Melbourne	2 236.6	2 121.2	-5.2
7	Melbourne - Perth	1 970.9	2 054.9	4.3
8	Adelaide - Sydney	1 839.1	1 886.8	2.6
9	Perth - Sydney	1 615.7	1 701.4	5.3
10	Hobart - Melbourne	1 341.9	1 413.3	5.3
11	Brisbane - Cairns	1 266.4	1 312.4	3.6
12	Brisbane - Perth	1 029.2	1 120.4	8.9
13	Canberra - Melbourne	1 021.3	985.4	-3.5
14	Brisbane - Townsville	883.4	962.6	9.0
15	Cairns - Sydney	906.5	919.1	1.4
16	Adelaide - Brisbane	859.8	862.5	0.3
17	Launceston - Melbourne	853.9	860.4	0.8
18	Cairns - Melbourne	829.2	844.3	1.8
19	Hobart - Sydney	763.9	826.9	8.2
20	Brisbane - Mackay	733.9	777.3	5.9
21	Sunshine Coast - Sydney	774.6	775.5	0.1
22	Melbourne - Sunshine Coast	782.2	720.9	-7.8
23	Adelaide - Perth	671.0	710.9	5.9
24	Brisbane - Canberra	630.9	641.9	1.7
25	Karratha - Perth	568.7	635.6	11.8
26	Canberra - Sydney	617.5	632.2	2.4
27	Brisbane - Rockhampton	531.6	601.6	13.2
28	Brisbane - Newcastle	500.8	514.9	2.8
29	Ballina - Sydney	520.1	509.4	-2.1
30	Perth - Port Hedland	474.1	476.8	0.6
31	Melbourne - Newcastle	437.0	463.8	6.1
32	Newman - Perth	370.5	423.6	14.3
33	Kalgoorlie - Perth	364.0	370.5	1.8
34	Broome - Perth	362.8	361.4	-0.4
35	Launceston - Sydney	338.8	346.8	2.4
36	Brisbane - Darwin	312.0	342.6	9.8
37	Brisbane - Hobart	292.8	314.1	7.3
38	Darwin - Melbourne	285.1	293.2	2.8
39	Brisbane - Proserpine	271.2	285.9	5.4
40	Adelaide - Gold Coast	271.0	278.6	2.8
41	Hamilton Island - Sydney	242.7	251.1	3.5
42	Brisbane - Gladstone	219.3	221.7	1.1
43	Coffs Harbour - Sydney	209.7	206.8	-1.4
44	Adelaide - Canberra	189.3	190.8	0.8
45	Darwin - Perth	171.0	188.7	10.3
46	Brisbane - Emerald	185.2	187.6	1.3
47	Canberra - Gold Coast	183.3	174.6	-4.7
48	Dubbo - Sydney	179.0	171.0	-4.5
49	Adelaide - Port Lincoln	171.6	167.2	-2.6
50	Port Macquarie - Sydney	167.4	163.6	-2.2

continued

Table 1: (continued) Passengers carried (000s) — annual activity

	City-Pair	YE May 2024	YE May 2025	% Change
51	Sydney - Wagga Wagga	157.1	162.8	3.7
52	Brisbane - Hamilton Island	162.2	162.3	0.1
53	Albury - Sydney	165.8	158.1	-4.6
54	Brisbane - Launceston	147.0	156.1	6.2
55	Melbourne - Mildura	175.3	151.8	-13.4
56	Brisbane - Mount Isa	143.2	151.3	5.7
57	Brisbane - Bundaberg	135.0	140.8	4.3
58	Devonport - Melbourne	121.2	133.9	10.5
59	Geraldton - Perth	103.7	118.4	14.2
60	Ayers Rock - Melbourne	..	116.7	NA
61	Brisbane - Moranbah	111.3	108.3	-2.7
62	Adelaide - Alice Springs	115.6	105.2	-9.0
Total domestic network		58 620.5	59 402.6	1.3

.. Data not available for release.

Table 2: Passengers carried (000s) — monthly activity

	City-Pair	May 2024	May 2025	% Change
1	Melbourne - Sydney	664.7	667.5	0.4
2	Brisbane - Sydney	358.0	364.2	1.7
3	Brisbane - Melbourne	278.9	287.7	3.2
4	Gold Coast - Sydney	195.8	204.0	4.2
5	Adelaide - Melbourne	193.9	189.6	-2.2
6	Melbourne - Perth	157.7	164.3	4.2
7	Adelaide - Sydney	144.6	147.2	1.8
8	Gold Coast - Melbourne	156.9	145.8	-7.1
9	Perth - Sydney	124.9	138.0	10.5
10	Hobart - Melbourne	100.4	113.3	12.9
11	Brisbane - Cairns	117.4	110.2	-6.1
12	Brisbane - Perth	85.8	92.3	7.5
13	Brisbane - Townsville	81.1	85.2	5.1
14	Canberra - Melbourne	85.3	82.3	-3.6
15	Brisbane - Mackay	66.5	69.6	4.7
16	Launceston - Melbourne	66.6	69.2	3.9
17	Adelaide - Brisbane	68.0	68.9	1.3
18	Cairns - Sydney	67.7	68.7	1.5
19	Cairns - Melbourne	53.4	63.2	18.4
20	Sunshine Coast - Sydney	58.0	59.9	3.3
21	Hobart - Sydney	57.0	58.2	2.2
22	Karratha - Perth	52.7	58.2	10.4
23	Adelaide - Perth	54.2	56.8	4.9
24	Melbourne - Sunshine Coast	53.4	54.6	2.3
25	Brisbane - Rockhampton	53.8	53.9	0.2
26	Brisbane - Canberra	51.9	53.8	3.5
27	Canberra - Sydney	57.7	53.0	-8.1
28	Brisbane - Newcastle	42.7	44.4	3.9
29	Perth - Port Hedland	43.1	41.2	-4.4
30	Newman - Perth	33.9	37.5	10.5
31	Melbourne - Newcastle	35.9	35.4	-1.5
32	Broome - Perth	33.4	34.6	3.7
33	Ballina - Sydney	37.8	34.4	-9.1
34	Kalgoorlie - Perth	33.0	33.4	1.3
35	Brisbane - Darwin	27.3	32.5	18.7
36	Darwin - Melbourne	25.0	25.4	1.6
37	Launceston - Sydney	22.1	24.1	9.3
38	Adelaide - Gold Coast	20.8	23.4	12.9
39	Brisbane - Proserpine	20.3	23.2	14.3
40	Brisbane - Hobart	21.0	22.8	8.7
41	Brisbane - Gladstone	19.7	19.1	-2.8
42	Coffs Harbour - Sydney	17.9	17.6	-2.0
43	Hamilton Island - Sydney	15.5	16.4	5.8
44	Darwin - Perth	14.9	16.3	9.8
45	Adelaide - Canberra	15.2	16.2	6.4
46	Brisbane - Emerald	16.1	15.8	-1.8
47	Dubbo - Sydney	15.8	15.0	-5.3
48	Sydney - Wagga Wagga	14.6	14.9	2.2
49	Canberra - Gold Coast	14.9	14.0	-5.8
50	Adelaide - Port Lincoln	14.0	13.8	-1.3

continued

Table 2: (continued) Passengers carried (000s) — monthly activity

	City-Pair	May 2024	May 2025	% Change
51	Melbourne - Mildura	13.9	13.5	-2.8
52	Brisbane - Mount Isa	13.0	13.1	0.7
53	Albury - Sydney	14.8	12.9	-12.8
54	Port Macquarie - Sydney	15.0	12.9	-14.2
55	Devonport - Melbourne	10.5	12.7	21.2
56	Brisbane - Bundaberg	12.7	12.4	-2.5
57	Brisbane - Hamilton Island	11.6	11.6	-0.7
58	Geraldton - Perth	10.1	11.1	9.3
59	Brisbane - Launceston	9.4	10.2	8.6
60	Adelaide - Alice Springs	9.1	8.4	-7.6
61	Brisbane - Moranbah	9.6	8.3	-14.2
62	Ayers Rock - Melbourne	..	8.1	NA
Total domestic network		4 743.6	4 840.5	2.0

.. Data not available for release.

Table 3: Available seats (000s) — monthly activity

	City-Pair	May 2024	May 2025	% Change
1	Melbourne - Sydney	863.0	825.9	-4.3
2	Brisbane - Sydney	471.0	431.0	-8.5
3	Brisbane - Melbourne	353.5	350.1	-1.0
4	Gold Coast - Sydney	236.7	238.3	0.7
5	Adelaide - Melbourne	245.8	224.4	-8.7
6	Melbourne - Perth	203.7	195.1	-4.2
7	Adelaide - Sydney	209.9	186.6	-11.1
8	Gold Coast - Melbourne	173.5	165.5	-4.6
9	Perth - Sydney	149.6	160.8	7.5
10	Hobart - Melbourne	121.8	131.9	8.3
11	Brisbane - Cairns	140.6	130.7	-7.1
12	Brisbane - Perth	103.3	108.7	5.2
13	Brisbane - Townsville	93.0	102.7	10.4
14	Canberra - Melbourne	123.8	113.4	-8.4
15	Brisbane - Mackay	83.4	101.7	22.0
16	Launceston - Melbourne	78.5	79.9	1.8
17	Adelaide - Brisbane	93.8	82.7	-11.8
18	Cairns - Sydney	76.6	77.0	0.5
19	Cairns - Melbourne	59.1	73.9	24.9
20	Sunshine Coast - Sydney	70.2	72.7	3.6
21	Hobart - Sydney	75.1	68.4	-9.0
22	Karratha - Perth	78.8	82.4	4.6
23	Adelaide - Perth	70.4	72.3	2.8
24	Melbourne - Sunshine Coast	60.3	64.0	6.1
25	Brisbane - Rockhampton	70.1	68.3	-2.5
26	Brisbane - Canberra	74.4	74.1	-0.4
27	Canberra - Sydney	96.1	82.6	-14.1
28	Brisbane - Newcastle	52.1	52.3	0.4
29	Perth - Port Hedland	66.2	64.1	-3.1
30	Newman - Perth	56.8	60.0	5.6
31	Melbourne - Newcastle	44.9	44.6	-0.6
32	Broome - Perth	45.5	44.6	-1.9
33	Ballina - Sydney	45.1	39.2	-13.2
34	Kalgoorlie - Perth	58.2	62.2	7.0
35	Brisbane - Darwin	30.1	42.0	39.7
36	Darwin - Melbourne	29.8	33.5	12.4
37	Launceston - Sydney	26.2	26.7	2.0
38	Adelaide - Gold Coast	23.4	25.4	8.6
39	Brisbane - Proserpine	22.3	27.1	21.5
40	Brisbane - Hobart	25.0	25.9	3.7
41	Brisbane - Gladstone	28.8	27.5	-4.6
42	Coffs Harbour - Sydney	23.4	21.3	-8.8
43	Hamilton Island - Sydney	21.7	22.6	4.1
44	Darwin - Perth	20.3	21.7	6.7
45	Adelaide - Canberra	22.7	23.3	2.6
46	Brisbane - Emerald	24.4	25.7	5.3
47	Dubbo - Sydney	25.9	22.4	-13.4
48	Sydney - Wagga Wagga	23.0	20.6	-10.6
49	Canberra - Gold Coast	17.8	16.3	-8.6
50	Adelaide - Port Lincoln	23.8	23.4	-1.6

continued

Table 3: (continued) Available seats (000s) — monthly activity

	City-Pair	May 2024	May 2025	% Change
51	Melbourne - Mildura	17.5	18.1	3.4
52	Brisbane - Mount Isa	20.5	20.6	0.4
53	Albury - Sydney	20.9	17.6	-16.0
54	Port Macquarie - Sydney	20.8	17.2	-17.1
55	Devonport - Melbourne	14.5	17.9	23.7
56	Brisbane - Bundaberg	19.3	19.4	0.2
57	Brisbane - Hamilton Island	15.8	15.4	-2.2
58	Geraldton - Perth	20.8	18.9	-9.0
59	Brisbane - Launceston	10.2	11.0	7.9
60	Adelaide - Alice Springs	14.2	12.5	-12.2
61	Brisbane - Moranbah	17.5	16.8	-3.9
62	Ayers Rock - Melbourne	..	9.3	NA
Total domestic network		6 234.9	6 147.8	-1.4

.. Data not available for release.

Table 4: Load factors (%) — monthly activity

	City-Pair	May 2024	May 2025	% Point diff
1	Melbourne - Sydney	77.0	80.8	3.8
2	Brisbane - Sydney	76.0	84.5	8.5
3	Brisbane - Melbourne	78.9	82.2	3.3
4	Gold Coast - Sydney	82.7	85.6	2.9
5	Adelaide - Melbourne	78.9	84.5	5.6
6	Melbourne - Perth	77.4	84.2	6.8
7	Adelaide - Sydney	68.9	78.9	10.0
8	Gold Coast - Melbourne	90.4	88.1	-2.3
9	Perth - Sydney	83.5	85.8	2.3
10	Hobart - Melbourne	82.4	85.9	3.5
11	Brisbane - Cairns	83.5	84.3	0.8
12	Brisbane - Perth	83.0	84.9	1.9
13	Brisbane - Townsville	87.2	82.9	-4.3
14	Canberra - Melbourne	68.9	72.5	3.6
15	Brisbane - Mackay	79.7	68.4	-11.3
16	Launceston - Melbourne	84.8	86.5	1.7
17	Adelaide - Brisbane	72.5	83.3	10.8
18	Cairns - Sydney	88.4	89.3	0.9
19	Cairns - Melbourne	90.3	85.6	-4.7
20	Sunshine Coast - Sydney	82.7	82.5	-0.2
21	Hobart - Sydney	75.9	85.2	9.3
22	Karratha - Perth	66.8	70.6	3.8
23	Adelaide - Perth	77.1	78.6	1.5
24	Melbourne - Sunshine Coast	88.5	85.3	-3.2
25	Brisbane - Rockhampton	76.7	78.8	2.1
26	Brisbane - Canberra	69.9	72.6	2.7
27	Canberra - Sydney	60.0	64.2	4.2
28	Brisbane - Newcastle	82.0	84.8	2.8
29	Perth - Port Hedland	65.1	64.3	-0.8
30	Newman - Perth	59.7	62.5	2.8
31	Melbourne - Newcastle	79.9	79.2	-0.7
32	Broome - Perth	73.3	77.5	4.2
33	Ballina - Sydney	83.8	87.8	4.0
34	Kalgoorlie - Perth	55.7	53.7	-2.0
35	Brisbane - Darwin	90.9	77.2	-13.7
36	Darwin - Melbourne	83.9	75.9	-8.0
37	Launceston - Sydney	84.3	90.3	6.0
38	Adelaide - Gold Coast	88.8	92.2	3.4
39	Brisbane - Proserpine	91.0	85.6	-5.4
40	Brisbane - Hobart	84.1	88.2	4.1
41	Brisbane - Gladstone	68.2	69.4	1.2
42	Coffs Harbour - Sydney	76.7	82.4	5.7
43	Hamilton Island - Sydney	71.3	72.5	1.2
44	Darwin - Perth	73.1	75.2	2.1
45	Adelaide - Canberra	66.9	69.4	2.5
46	Brisbane - Emerald	66.0	61.5	-4.5
47	Dubbo - Sydney	60.9	66.6	5.7
48	Sydney - Wagga Wagga	63.4	72.5	9.1
49	Canberra - Gold Coast	83.6	86.2	2.6
50	Adelaide - Port Lincoln	58.8	59.0	0.2

continued

Table 4: (continued) Load factors (%) — monthly activity

	City-Pair	May 2024	May 2025	% Point diff
51	Melbourne - Mildura	79.1	74.4	-4.7
52	Brisbane - Mount Isa	63.5	63.6	0.1
53	Albury - Sydney	70.7	73.4	2.7
54	Port Macquarie - Sydney	72.1	74.6	2.5
55	Devonport - Melbourne	72.3	70.8	-1.5
56	Brisbane - Bundaberg	65.8	64.0	-1.8
57	Brisbane - Hamilton Island	73.7	74.9	1.2
58	Geraldton - Perth	47.8	58.4	10.6
59	Brisbane - Launceston	92.1	92.7	0.6
60	Adelaide - Alice Springs	64.2	67.5	3.3
61	Brisbane - Moranbah	55.1	49.2	-5.9
62	Ayers Rock - Melbourne	..	86.5	NA
Total domestic network		78.3	80.7	2.4

.. Data not available for release.

Table 5: Aircraft trips ^(a) — monthly activity

	City-Pair	May 2024	May 2025	% Change
1	Melbourne - Sydney	4 968	4 719	-5.0
2	Brisbane - Sydney	2 859	2 596	-9.2
3	Brisbane - Melbourne	2 153	2 140	-0.6
4	Gold Coast - Sydney	1 338	1 366	2.1
5	Adelaide - Melbourne	1 488	1 338	-10.1
6	Melbourne - Perth	1 120	1 112	-0.7
7	Adelaide - Sydney	1 255	1 099	-12.4
8	Gold Coast - Melbourne	938	890	-5.1
9	Perth - Sydney	799	866	8.4
10	Hobart - Melbourne	783	778	-0.6
11	Brisbane - Cairns	963	957	-0.6
12	Brisbane - Perth	603	619	2.7
13	Brisbane - Townsville	733	789	7.6
14	Canberra - Melbourne	832	722	-13.2
15	Brisbane - Mackay	621	706	13.7
16	Launceston - Melbourne	652	617	-5.4
17	Adelaide - Brisbane	707	643	-9.1
18	Cairns - Sydney	391	410	4.9
19	Cairns - Melbourne	310	379	22.3
20	Sunshine Coast - Sydney	391	405	3.6
21	Hobart - Sydney	428	421	-1.6
22	Karratha - Perth	469	491	4.7
23	Adelaide - Perth	397	397	0.0
24	Melbourne - Sunshine Coast	321	340	5.9
25	Brisbane - Rockhampton	755	694	-8.1
26	Brisbane - Canberra	589	606	2.9
27	Canberra - Sydney	1 323	1 282	-3.1
28	Brisbane - Newcastle	440	438	-0.5
29	Perth - Port Hedland	410	410	0.0
30	Newman - Perth	355	355	0.0
31	Melbourne - Newcastle	297	291	-2.0
32	Broome - Perth	288	282	-2.1
33	Ballina - Sydney	314	259	-17.5
34	Kalgoorlie - Perth	401	409	2.0
35	Brisbane - Darwin	215	235	9.3
36	Darwin - Melbourne	170	187	10.0
37	Launceston - Sydney	168	176	4.8
38	Adelaide - Gold Coast	116	124	6.9
39	Brisbane - Proserpine	140	168	20.0
40	Brisbane - Hobart	156	156	0.0
41	Brisbane - Gladstone	340	321	-5.6
42	Coffs Harbour - Sydney	417	378	-9.4
43	Hamilton Island - Sydney	123	128	4.1
44	Darwin - Perth	113	123	8.8
45	Adelaide - Canberra	206	215	4.4
46	Brisbane - Emerald	360	338	-6.1
47	Dubbo - Sydney	493	438	-11.2
48	Sydney - Wagga Wagga	417	377	-9.6
49	Canberra - Gold Coast	99	90	-9.1
50	Adelaide - Port Lincoln	579	483	-16.6

continued

Table 5: (continued) Aircraft trips ^(a) — monthly activity

	City-Pair	May 2024	May 2025	% Change
51	Melbourne - Mildura	410	360	-12.2
52	Brisbane - Mount Isa	179	192	7.3
53	Albury - Sydney	391	327	-16.4
54	Port Macquarie - Sydney	340	309	-9.1
55	Devonport - Melbourne	311	295	-5.1
56	Brisbane - Bundaberg	316	314	-0.6
57	Brisbane - Hamilton Island	114	124	8.8
58	Geraldton - Perth	217	211	-2.8
59	Brisbane - Launceston	60	62	3.3
60	Adelaide - Alice Springs	168	150	-10.7
61	Brisbane - Moranbah	233	223	-4.3
62	Ayers Rock - Melbourne	..	53	NA
Total domestic network		52 476	50 763	-3.3

(a) Includes RPT cargo flights.

.. Data not available for release.

TOP TEN AIRPORTS – PASSENGER MOVEMENTS

Table 6: Top ten airports, RPT passenger movements (000s) - monthly activity

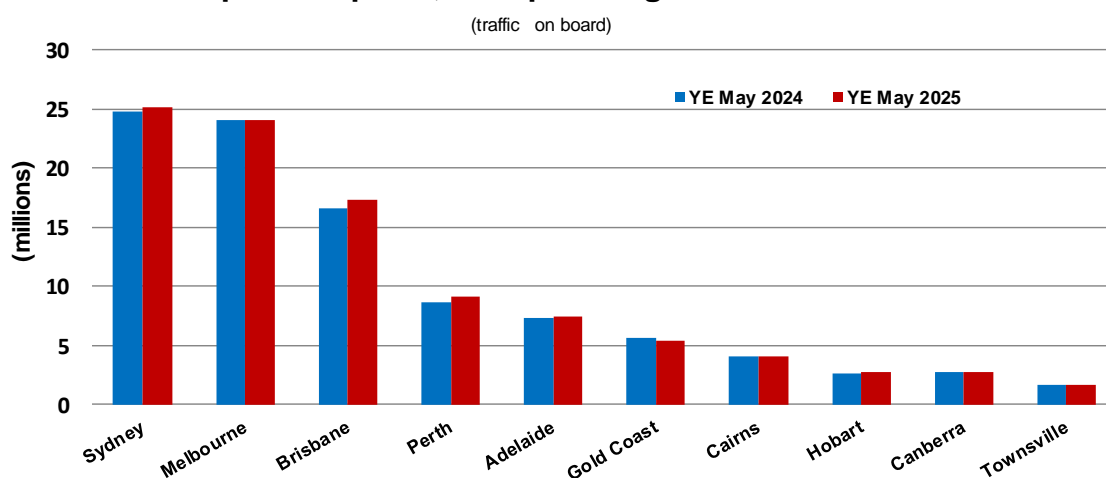
Airport	May 2024	May 2025	% Change	% of Total
1 Sydney	2 011.1	2 041.2	1.5	21.1
2 Melbourne	1 906.7	1 926.7	1.1	19.9
3 Brisbane	1 407.8	1 447.6	2.8	15.0
4 Perth	726.8	760.6	4.7	7.9
5 Adelaide	582.9	590.2	1.3	6.1
6 Gold Coast	417.5	412.0	-1.3	4.3
7 Cairns	321.2	328.0	2.1	3.4
8 Canberra	235.8	230.0	-2.5	2.4
9 Hobart	191.7	208.4	8.7	2.2
10 Darwin	136.5	143.0	4.7	1.5
Total top ten airports	7 937.9	8 087.7	1.9	83.5
Total domestic network	9 487.3	9 681.0	2.0	100.0

Table 7: Top ten airports, RPT passenger movements (000s) - annual activity

Airport	YE May 2024	YE May 2025	% Change	% of Total
1 Sydney	24 762.1	25 179.9	1.7	21.2
2 Melbourne	24 063.4	24 096.2	0.1	20.3
3 Brisbane	16 598.6	17 321.3	4.4	14.6
4 Perth	8 582.4	9 106.6	6.1	7.7
5 Adelaide	7 299.3	7 388.9	1.2	6.2
6 Gold Coast	5 615.3	5 388.4	-4.0	4.5
7 Cairns	4 053.5	4 119.6	1.6	3.5
8 Hobart	2 656.6	2 787.0	4.9	2.3
9 Canberra	2 798.6	2 767.2	-1.1	2.3
10 Townsville	1 687.0	1 658.2	-1.7	1.4
Total top ten airports	98 116.8	99 813.2	1.7	84.0
Total domestic network	117 241.0	118 805.2	1.3	100.0

Note: Airport passenger movement numbers are the sum of passenger arrivals and departures at each airport

Top ten airports, RPT passenger movements



TOP FIVE AIRPORTS – CARGO MOVEMENTS

Table 8: Top five airports, domestic RPT cargo movements (000s tonnes) - monthly activity

Airport	May 2024	May 2025	% Change	% of Total
1 Melbourne	7.8	7.6	-2.1	27.7
2 Sydney	5.9	5.7	-2.8	20.8
3 Brisbane	5.4	4.9	-8.1	17.9
4 Perth	3.1	3.1	-0.6	11.1
5 Adelaide	1.5	1.4	-9.3	4.9
Total top five airports	23.7	22.7	-3.9	82.3
Total domestic network	28.3	27.6	-2.3	100.0

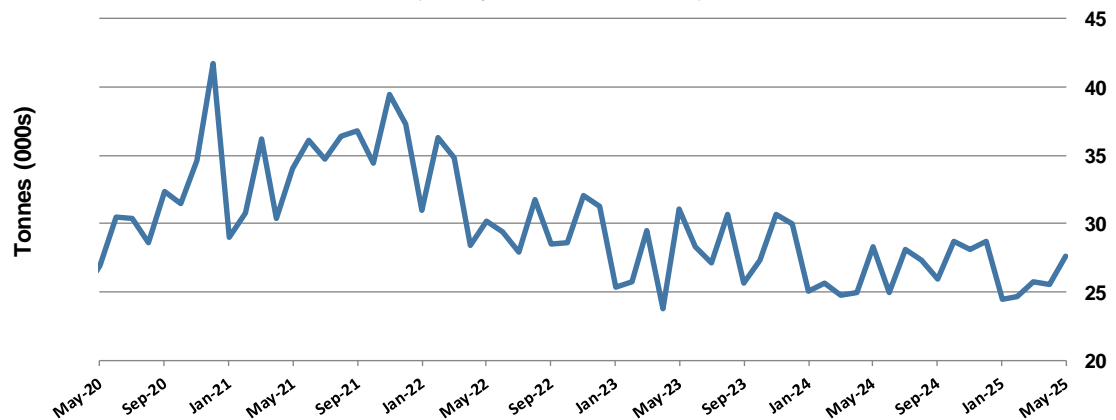
Table 9: Top five airports, domestic RPT cargo movements (000s tonnes) - annual activity

Airport	YE May 2024	YE May 2025	% Change	% of Total
1 Melbourne	88.8	87.8	-1.1	27.5
2 Sydney	72.7	67.6	-6.9	21.2
3 Brisbane	59.4	56.8	-4.4	17.8
4 Perth	35.1	36.2	3.1	11.3
5 Adelaide	18.5	17.3	-6.4	5.4
Total top five airports	274.6	265.8	-3.2	83.2
Total domestic network	328.2	319.7	-2.6	100.0

Note: Airport cargo tonnes are the sum of cargo tonnes on arrivals and departures at each airport.

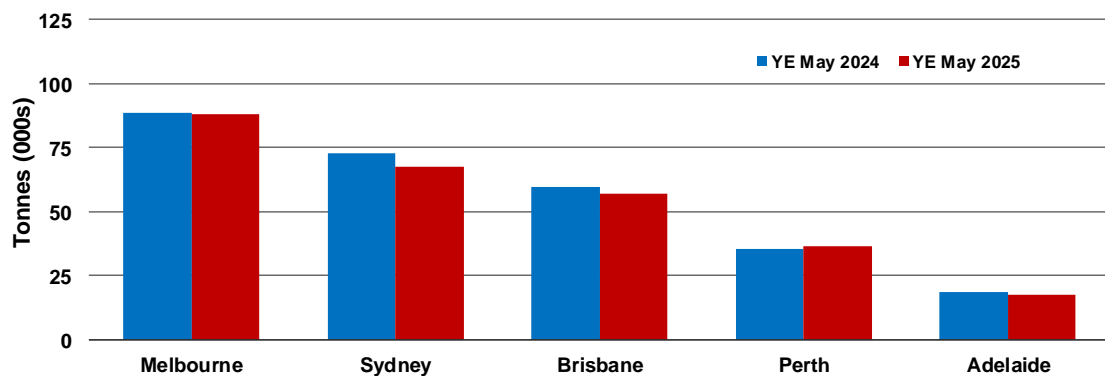
Total domestic network - cargo movement

(monthly totals - traffic on board)



Top five airports, cargo movements

(Domestic cargo traffic - traffic on board)



Note: Airport cargo tonnes are the sum of cargo tonnes on arrivals and departures at each airport.

TOP TEN ROUTES

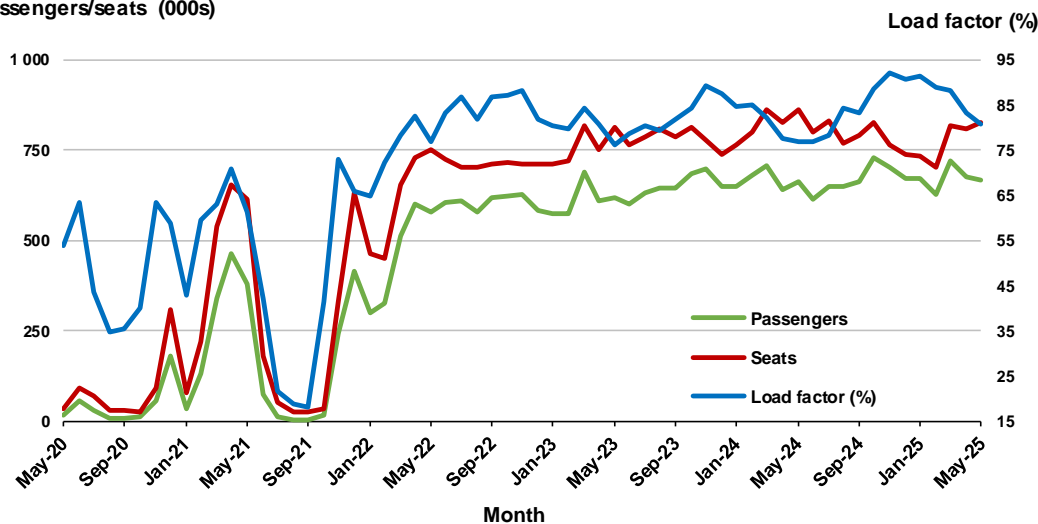
1. Melbourne - Sydney

Monthly data

	May 2024	May 2025	% Change
Passengers carried (000s)	664.7	667.5	0.4
Seats (000s)	863.0	825.9	-4.3
Load factor %	77.0	80.8	3.8 *
Aircraft trips	4 968	4 719	-5.0

* percentage point difference

Passengers/seats (000s)

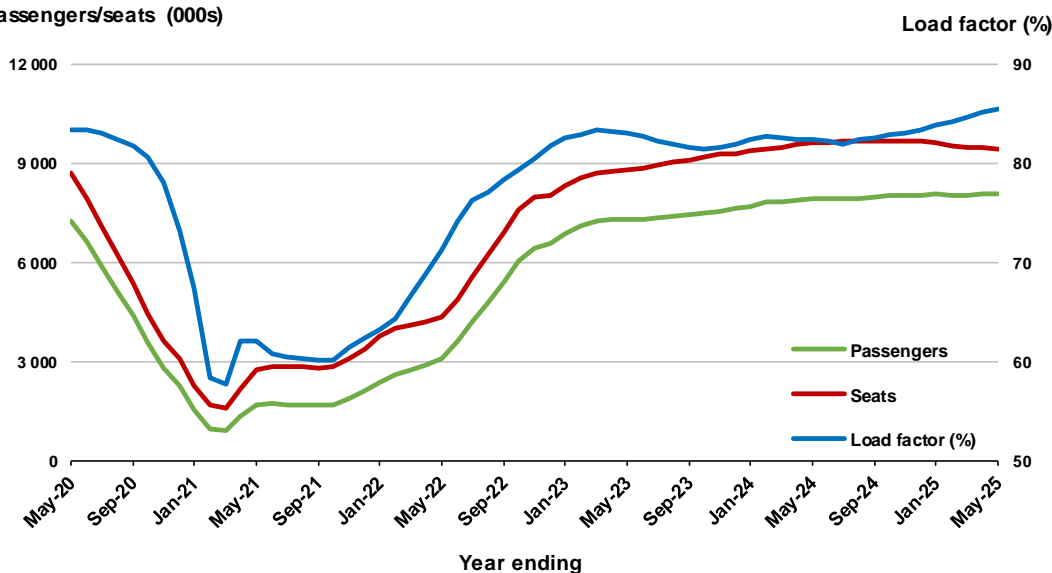


Moving annual data

	YE May 2024	YE May 2025	% Change
Passengers carried (000s)	7 906.2	8 053.8	1.9
Seats (000s)	9 604.6	9 423.2	-1.9
Load factor %	82.3	85.5	3.1 *
Aircraft trips	55 639	54 163	-2.7

* percentage point difference

Passengers/seats (000s)

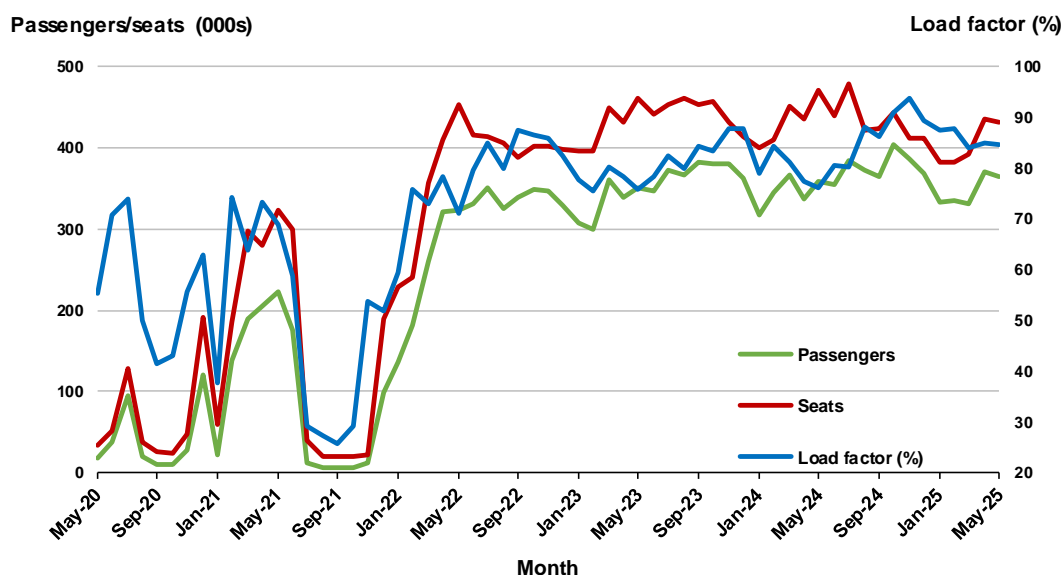


2. Brisbane - Sydney

Monthly data

	May 2024	May 2025	% Change
Passengers carried (000s)	358.0	364.2	1.7
Seats (000s)	471.0	431.0	-8.5
Load factor %	76.0	84.5	8.5 *
Aircraft trips	2 859	2 596	-9.2

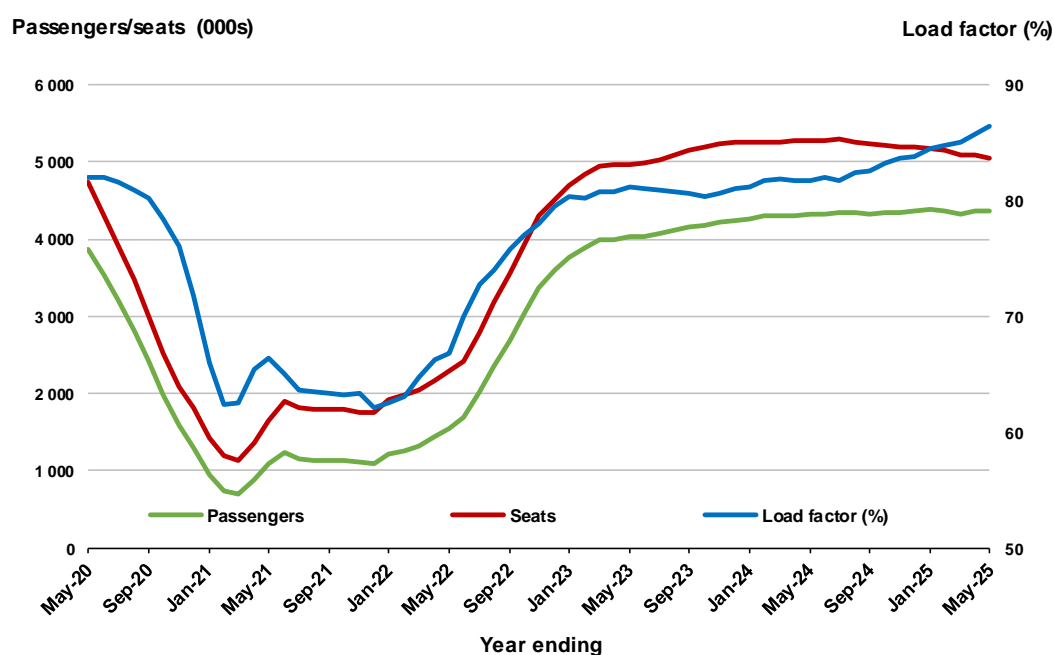
* percentage point difference



Moving annual data

	YE May 2024	YE May 2025	% Change
Passengers carried (000s)	4 316.8	4 369.8	1.2
Seats (000s)	5 278.7	5 054.0	-4.3
Load factor %	81.8	86.5	4.7 *
Aircraft trips	32 382	30 355	-6.3

* percentage point difference

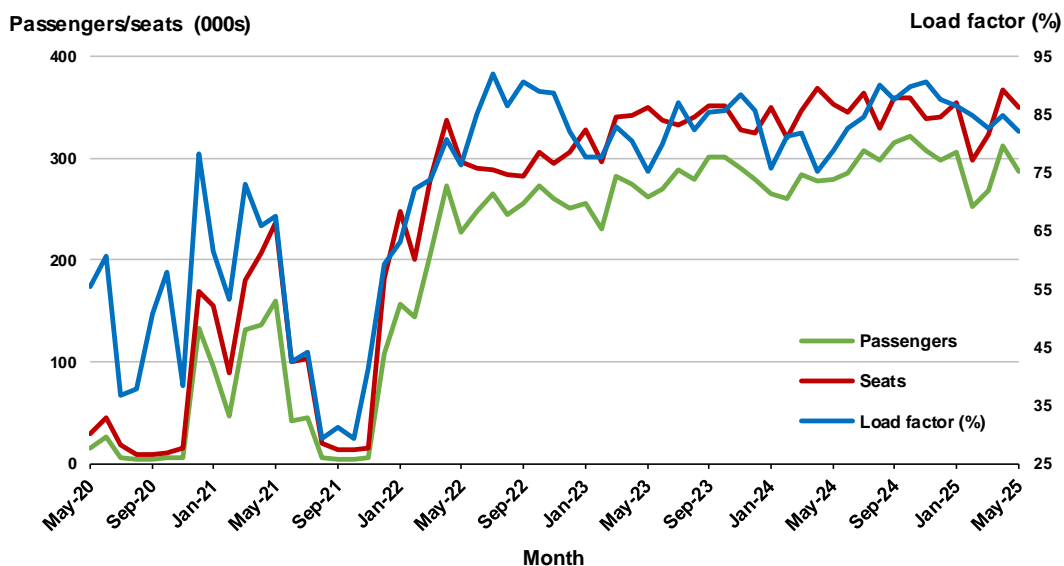


3. Brisbane - Melbourne

Monthly data

	May 2024	May 2025	% Change
Passengers carried (000s)	278.9	287.7	3.2
Seats (000s)	353.5	350.1	-1.0
Load factor %	78.9	82.2	3.3 *
Aircraft trips	2 153	2 140	-0.6

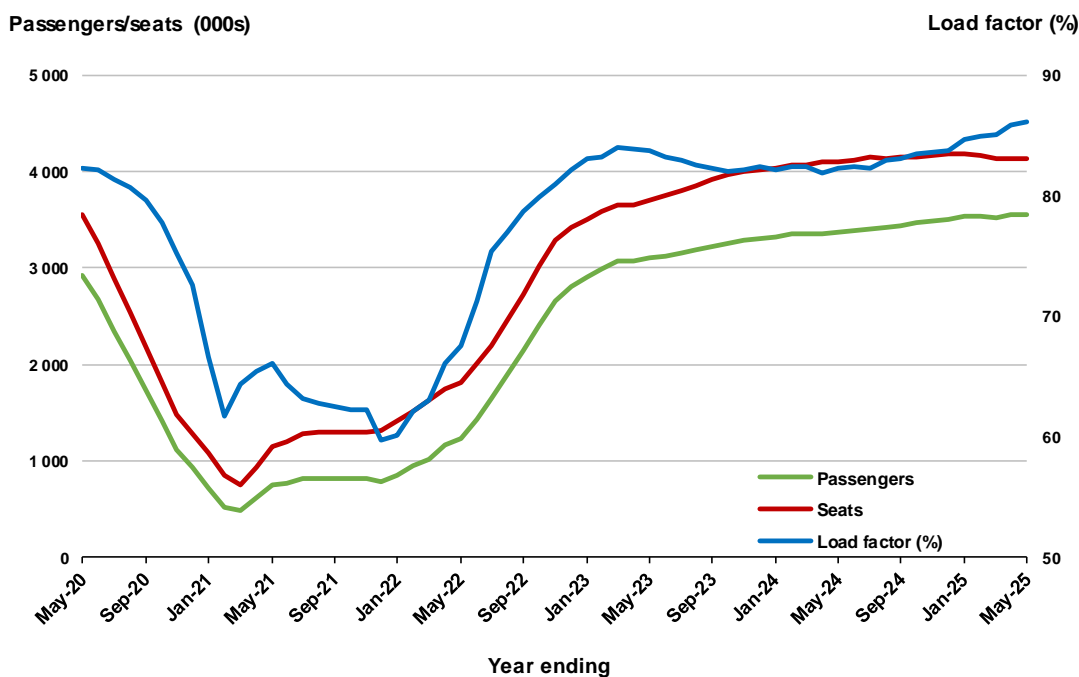
* percentage point difference



Moving annual data

	YE May 2024	YE May 2025	% Change
Passengers carried (000s)	3 373.2	3 559.7	5.5
Seats (000s)	4 103.0	4 131.5	0.7
Load factor %	82.2	86.2	3.9 *
Aircraft trips	24 706	24 808	0.4

* percentage point difference



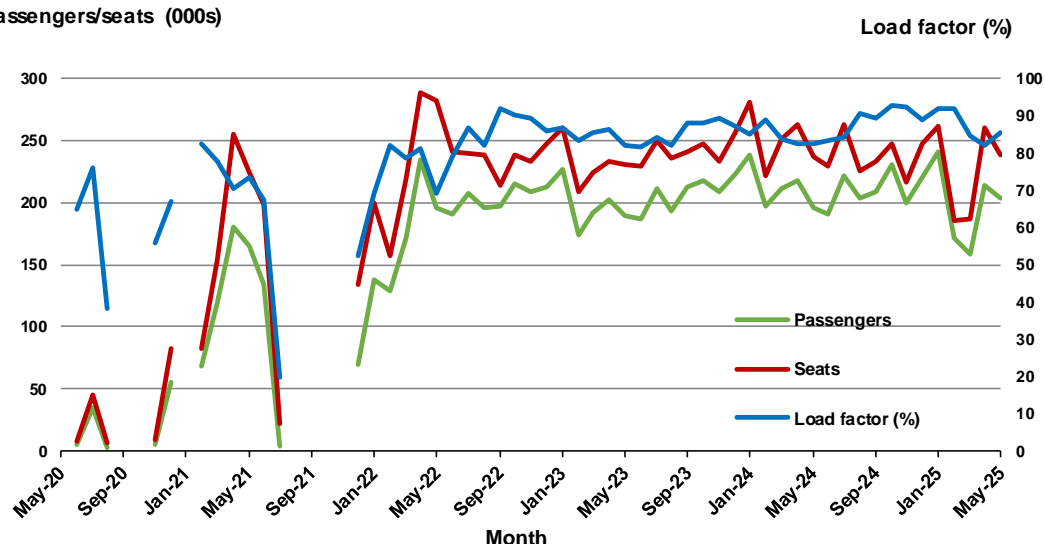
4. Gold Coast - Sydney ^(a)

Monthly data

	May 2024	May 2025	% Change
Passengers carried (000s)	195.8	204.0	4.2
Seats (000s)	236.7	238.3	0.7
Load factor %	82.7	85.6	2.9 *
Aircraft trips	1 338	1 366	2.1

* percentage point difference

Passengers/seats (000s)



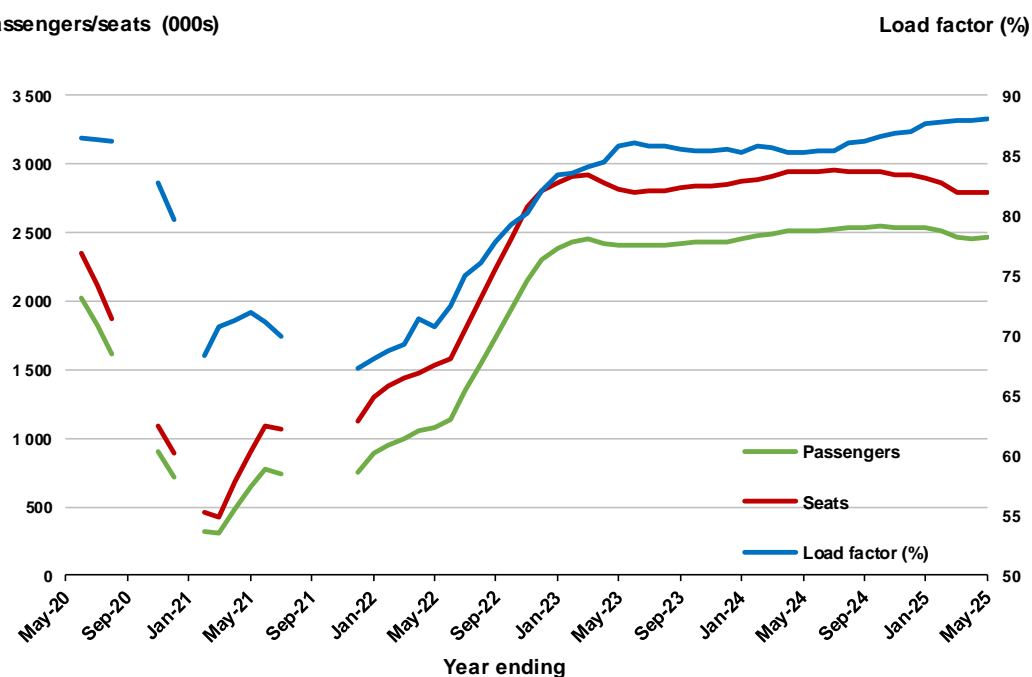
(a) May, September and October 2020 and January and August to November 2021 data not available for release.

Moving annual data

	YE May 2024	YE May 2025	% Change
Passengers carried (000s)	2 514.7	2 464.9	-2.0
Seats (000s)	2 947.5	2 797.4	-5.1
Load factor %	85.3	88.1	2.8 *
Aircraft trips	16 745	15 866	-5.2

* percentage point difference

Passengers/seats (000s)



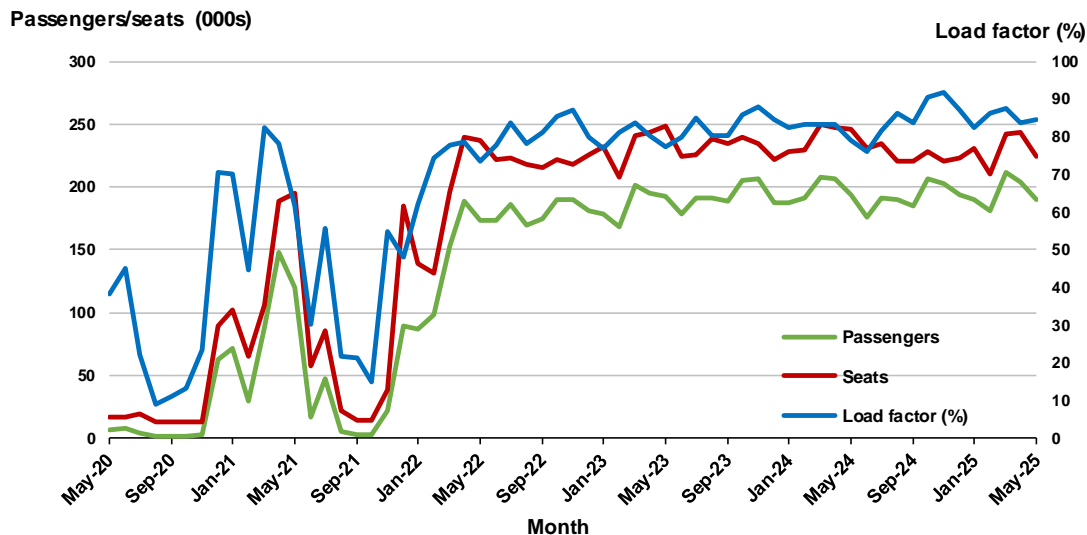
(a) May, September and October 2020 and January and August to November 2021 moving annual totals not available for release.

5. Adelaide - Melbourne

Monthly data

	May 2024	May 2025	% Change
Passengers carried (000s)	193.9	189.6	-2.2
Seats (000s)	245.8	224.4	-8.7
Load factor %	78.9	84.5	5.6 *
Aircraft trips	1 488	1 338	-10.1

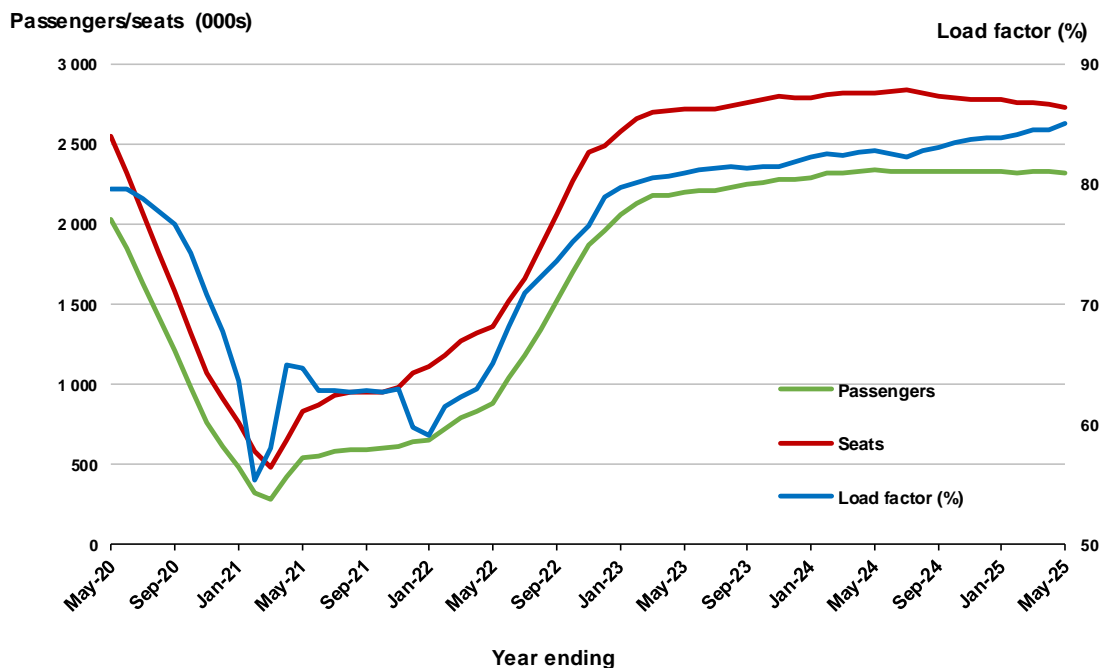
* percentage point difference



Moving annual data

	YE May 2024	YE May 2025	% Change
Passengers carried (000s)	2 335.2	2 321.2	-0.6
Seats (000s)	2 818.7	2 729.5	-3.2
Load factor %	82.8	85.0	2.2 *
Aircraft trips	17 215	16 294	-5.3

* percentage point difference



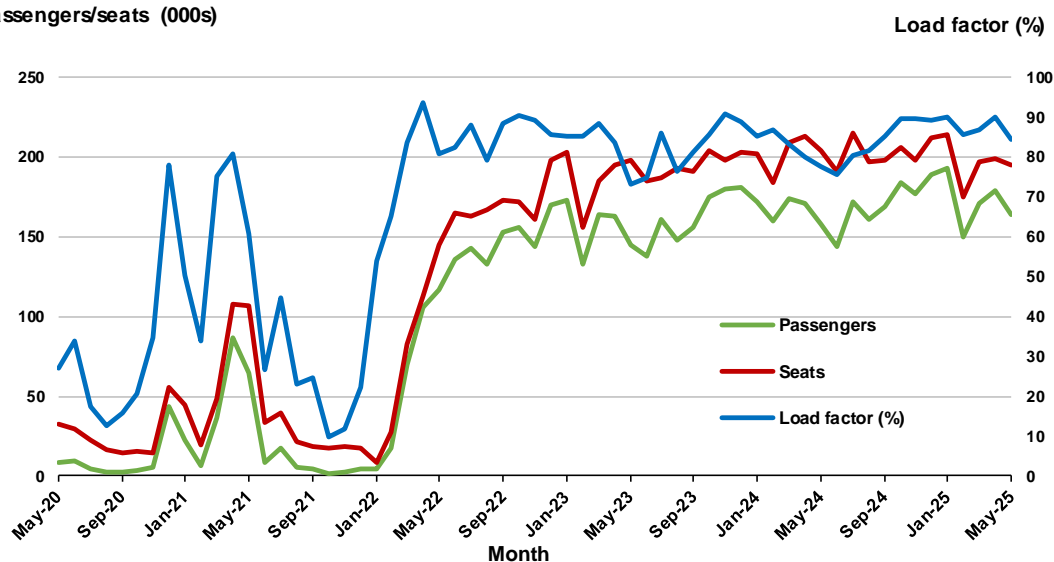
6. Melbourne - Perth

Monthly data

	May 2024	May 2025	% Change
Passengers carried (000s)	157.7	164.3	4.2
Seats (000s)	203.7	195.1	-4.2
Load factor %	77.4	84.2	6.8 *
Aircraft trips	1 120	1 112	-0.7

* percentage point difference

Passengers/seats (000s)

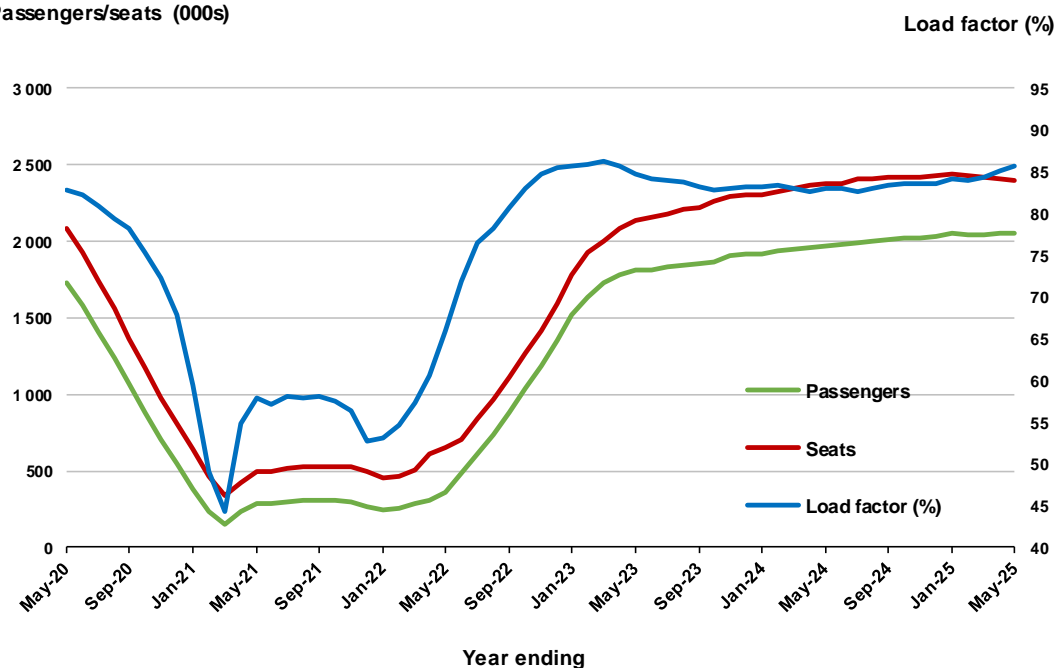


Moving annual data

	YE May 2024	YE May 2025	% Change
Passengers carried (000s)	1 970.9	2 054.9	4.3
Seats (000s)	2 374.3	2 397.6	1.0
Load factor %	83.0	85.7	2.7 *
Aircraft trips	13 202	13 283	0.6

* percentage point difference

Passengers/seats (000s)



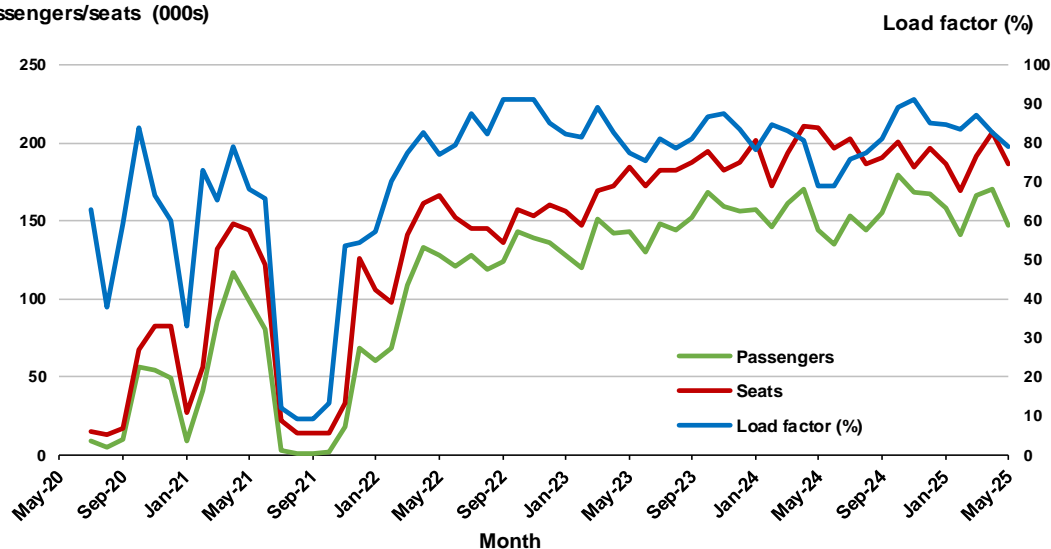
7. Adelaide - Sydney ^(a)

Monthly data

	May 2024	May 2025	% Change
Passengers carried (000s)	144.6	147.2	1.8
Seats (000s)	209.9	186.6	-11.1
Load factor %	68.9	78.9	10.0 *
Aircraft trips	1 255	1 099	-12.4

* percentage point difference

Passengers/seats (000s)



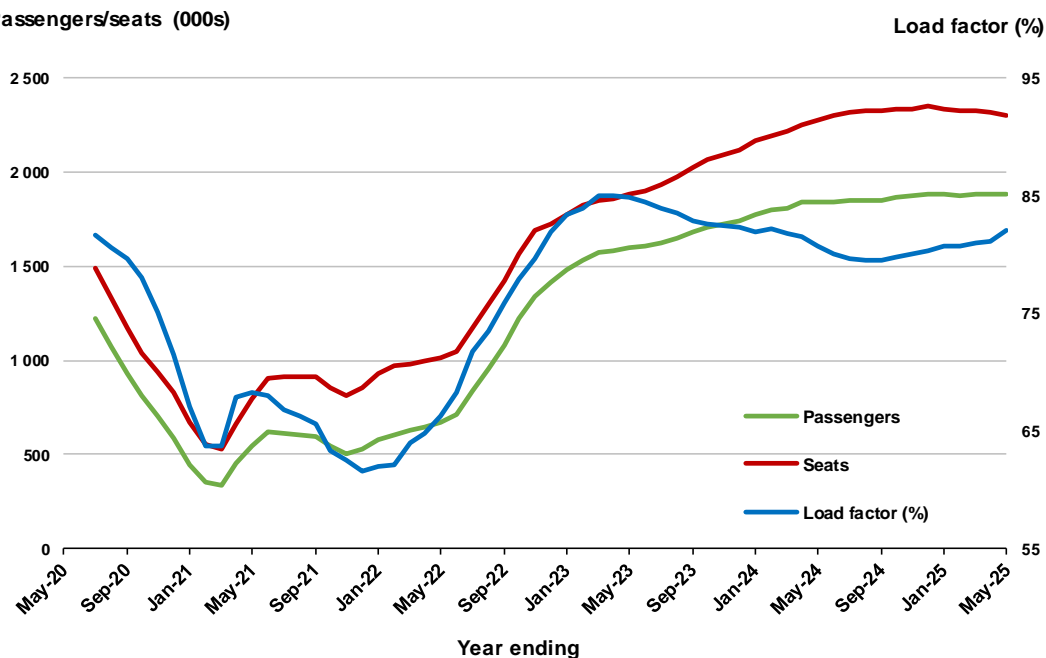
(a) May and June 2020 data not available for release.

Moving annual data

	YE May 2024	YE May 2025	% Change
Passengers carried (000s)	1 839.1	1 886.8	2.6
Seats (000s)	2 278.5	2 298.4	0.9
Load factor %	80.7	82.1	1.4 *
Aircraft trips	13 872	13 560	-2.2

* percentage point difference

Passengers/seats (000s)



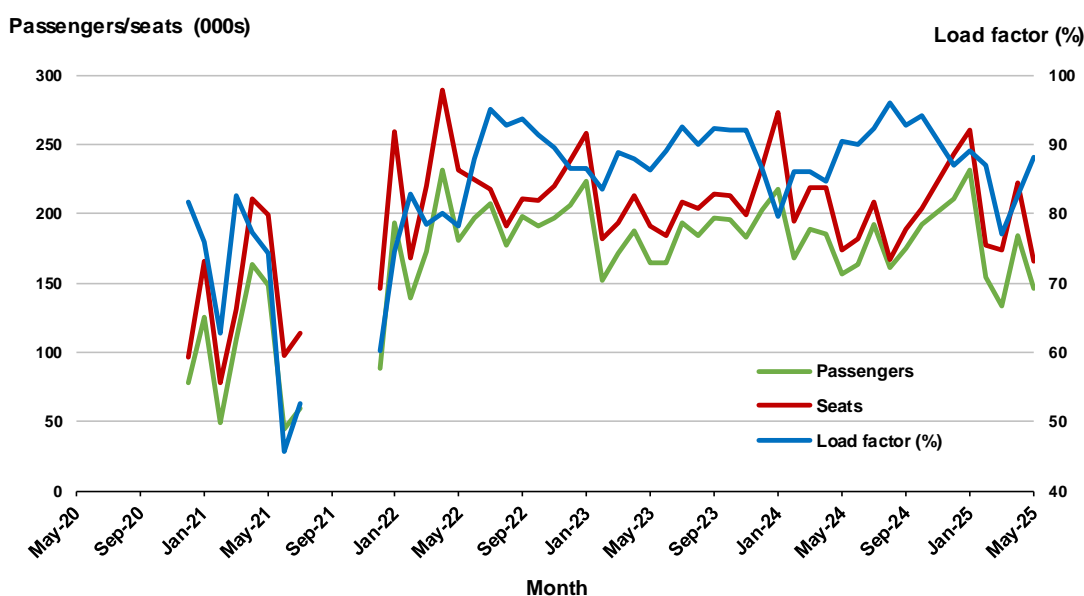
(a) May and June 2020 moving annual totals are not available for release.

8. Gold Coast - Melbourne ^(a)

Monthly data

	May 2024	May 2025	% Change
Passengers carried (000s)	156.9	145.8	-7.1
Seats (000s)	173.5	165.5	-4.6
Load factor %	90.4	88.1	-2.3 *
Aircraft trips	938	890	-5.1

* percentage point difference

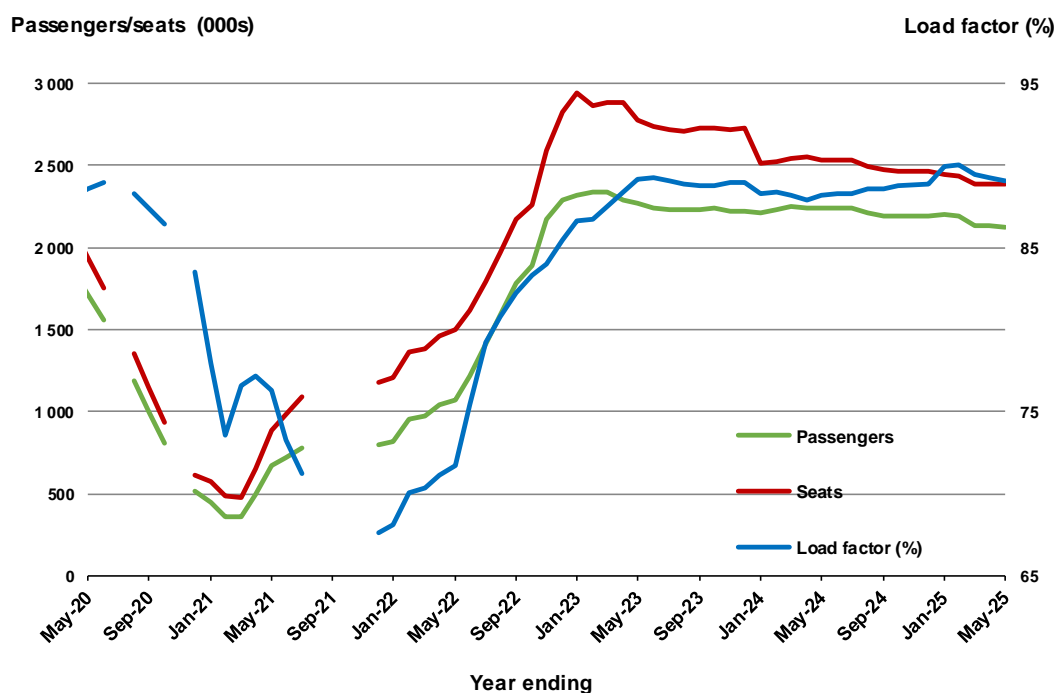


(a) May to November 2020 and August to November 2021 data not available for release.

Moving annual data

	YE May 2024	YE May 2025	% Change
Passengers carried (000s)	2 236.6	2 121.2	-5.2
Seats (000s)	2 535.8	2 382.2	-6.1
Load factor %	88.2	89.0	0.9 *
Aircraft trips	13 818	12 877	-6.8

* percentage point difference



(a) July and November 2020 and August to November 2021 moving annuals are not available for release.

9. Perth - Sydney

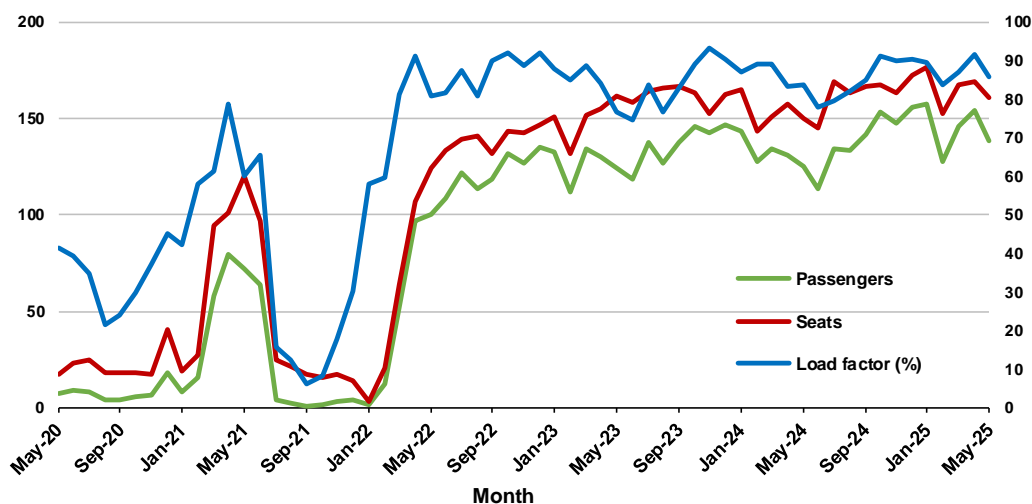
Monthly data

	May 2024	May 2025	% Change
Passengers carried (000s)	124.9	138.0	10.5
Seats (000s)	149.6	160.8	7.5
Load factor %	83.5	85.8	2.3 *
Aircraft trips	799	866	8.4

* percentage point difference

Passengers/seats (000s)

Load factor (%)



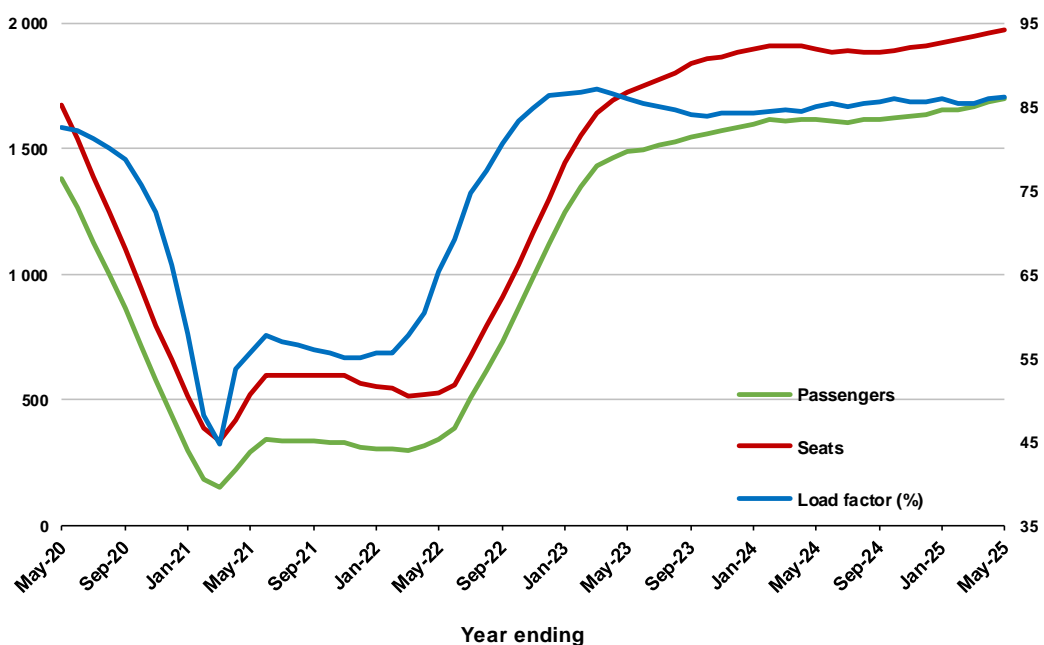
Moving annual data

	YE May 2024	YE May 2025	% Change
Passengers carried (000s)	1 615.7	1 701.4	5.3
Seats (000s)	1 898.3	1 973.6	4.0
Load factor %	85.1	86.2	1.1 *
Aircraft trips	9 860	10 463	6.1

* percentage point difference

Passengers/seats (000s)

Load factor (%)

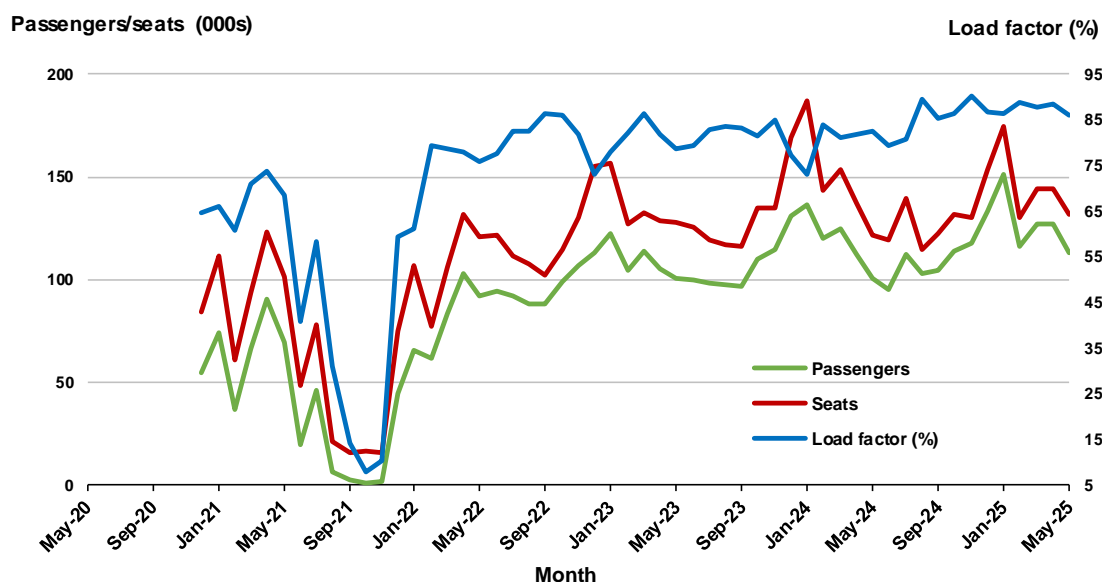


10. Hobart - Melbourne ^(a)

Monthly data

	May 2024	May 2025	% Change
Passengers carried (000s)	100.4	113.3	12.9
Seats (000s)	121.8	131.9	8.3
Load factor %	82.4	85.9	3.5 *
Aircraft trips	783	778	-0.6

* percentage point difference

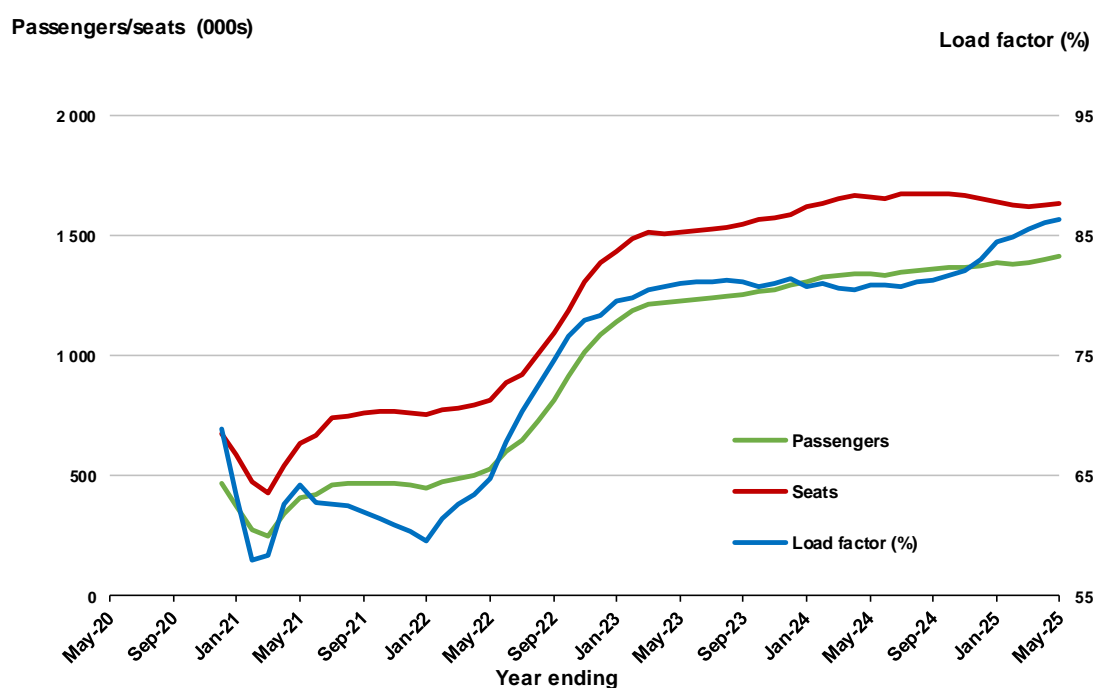


(a) May to November 2020 data not available for release.

Moving annual data

	YE May 2024	YE May 2025	% Change
Passengers carried (000s)	1 341.9	1 413.3	5.3
Seats (000s)	1 659.8	1 636.4	-1.4
Load factor %	80.8	86.4	5.5 *
Aircraft trips	9 775	9 549	-2.3

* percentage point difference



(a) May to November 2020 moving annual totals are not available for release.

TOP FIFTY REGIONAL AIRPORTS

Table 10: Top fifty regional airports (000s) — passenger movements, monthly

Airport	May 2024	May 2025	% Change
1 Cairns	321.2	328.0	2.1
2 Hobart	191.7	208.4	8.7
3 Darwin	136.5	143.0	4.7
4 Townsville	135.9	138.2	1.7
5 Launceston	99.6	104.8	5.3
6 Newcastle	97.1	94.6	-2.6
7 Mackay	77.8	79.5	2.2
8 Karratha	53.8	59.5	10.6
9 Rockhampton	57.7	57.2	-0.9
10 Port Hedland	44.0	42.5	-3.3
11 Proserpine	34.8	42.1	20.9
12 Broome	41.0	41.9	2.4
13 Ballina	44.2	41.6	-6.0
14 Newman	33.9	37.6	10.8
15 Kalgoorlie	33.2	33.4	0.9
16 Hamilton Island	32.8	33.0	0.6
17 Alice Springs	31.7	29.8	-6.0
18 Ayers Rock	22.7	28.1	23.7
19 Paraburdoo	25.8	23.0	-10.8
20 Coffs Harbour	22.2	22.8	2.7
21 Mount Isa	20.9	20.4	-2.3
22 Wagga Wagga	18.6	19.6	5.4
23 Gladstone	19.7	19.1	-2.8
24 Albury	20.2	18.7	-7.5
25 Dubbo	18.8	18.2	-3.5
26 Hervey Bay	12.9	17.5	35.5
27 Emerald	17.0	16.7	-1.8
28 Mildura	17.5	16.5	-5.9
29 Port Macquarie	17.1	14.9	-13.0
30 Kununurra	14.1	14.8	5.1
31 Port Lincoln	14.0	13.8	-1.3
32 Tamworth	14.0	13.5	-3.2
33 Devonport	10.5	12.7	21.5
34 Bundaberg	12.7	12.4	-2.4
35 Geraldton	10.7	11.8	9.9
36 Learmonth	11.1	11.5	4.2
37 Orange	10.3	10.7	4.2
38 Thursday Island	9.6	9.9	2.9
39 Armidale	9.6	9.6	-0.9
40 Weipa	8.2	9.1	11.9
41 Olympic Dam	9.1	8.8	-2.5
42 Moranbah	9.6	8.3	-14.2
43 Busseton	7.5	8.1	9.1
44 Gove	8.3	7.4	-11.5
45 Griffith	5.9	6.8	14.0
46 Mount Gambier	6.7	6.6	-1.5
47 Burnie	6.4	6.6	3.1
48 Albany	6.0	6.1	2.1
49 Merimbula	5.7	5.8	2.1
50 Roma	5.8	5.7	-0.7
Total top 50 regional airports	1 896.0	1 950.6	2.9
Total regional airports	2 024.7	2 075.8	2.5
Total domestic network	9 487.3	9 681.0	2.0

Note: Airport passenger movement numbers are the sum of passenger arrivals and departures at each airport.

Regional airports are defined as airports which are, according to Australian Statistical Geography

Standard (ASGS), not based in Major Cities.

Table 11: Top fifty regional airports (000s) — passenger movements, annual

	Airport	YE May 2024	YE May 2025	% Change
1	Cairns	4 053.5	4 119.6	1.6
2	Hobart	2 656.6	2 787.0	4.9
3	Townsville	1 687.0	1 658.2	-1.7
4	Darwin	1 600.0	1 622.6	1.4
5	Launceston	1 411.5	1 424.4	0.9
6	Newcastle	1 201.7	1 179.6	-1.8
7	Mackay	915.0	897.6	-1.9
8	Karratha	577.9	648.7	12.3
9	Rockhampton	660.0	642.2	-2.7
10	Ballina	623.2	614.2	-1.4
11	Proserpine	512.3	514.5	0.4
12	Hamilton Island	491.4	489.8	-0.3
13	Port Hedland	485.8	489.0	0.7
14	Broome	438.3	445.0	1.5
15	Newman	371.0	424.9	14.5
16	Kalgoorlie	364.5	371.1	1.8
17	Alice Springs	367.5	359.0	-2.3
18	Ayers Rock	276.2	344.0	24.5
19	Paraburdoo	262.4	277.2	5.7
20	Coffs Harbour	271.0	252.4	-6.9
21	Mount Isa	232.7	238.7	2.6
22	Albury	279.9	224.3	-19.9
23	Gladstone	241.0	221.8	-8.0
24	Wagga Wagga	201.8	212.0	5.0
25	Dubbo	214.9	205.3	-4.5
26	Hervey Bay	153.1	205.2	34.0
27	Emerald	196.5	198.7	1.1
28	Mildura	233.9	190.8	-18.4
29	Port Macquarie	231.3	189.4	-18.1
30	Port Lincoln	171.7	167.2	-2.6
31	Tamworth	175.7	160.4	-8.7
32	Bundaberg	166.2	141.0	-15.1
33	Kununurra	139.1	139.4	0.2
34	Devonport	121.4	134.1	10.5
35	Geraldton	108.5	125.0	15.2
36	Thursday Island	110.0	120.9	10.0
37	Orange	109.5	112.7	2.9
38	Learmonth	104.3	110.8	6.2
39	Moranbah	111.3	108.4	-2.7
40	Olympic Dam	104.0	101.3	-2.6
41	Armidale	108.6	100.9	-7.1
42	Weipa	90.3	95.3	5.6
43	Busselton	61.8	94.7	53.3
44	Gove	91.9	89.5	-2.6
45	Burnie	81.0	79.9	-1.3
46	Griffith	70.2	73.5	4.7
47	Mount Gambier	73.1	70.8	-3.1
48	Norfolk Island	69.9	70.2	0.4
49	Merimbula	70.6	67.8	-4.0
50	Albany	64.9	67.5	4.0
Total top 50 regional airports		23 415.6	23 678.5	1.1
Total regional airports		24 867.3	25 116.9	1.0
Total domestic network		117 241.0	118 805.2	1.3

Note: Airport passenger movement numbers are the sum of passenger arrivals and departures at each airport. Regional airports are defined as airports which are, according to Australian Statistical Geography Standard (ASGS), not based in Major Cities.

DOMESTIC CHARTER ACTIVITY

Table 12: Charter passengers carried and aircraft trips - monthly activity (000s)

	May 2024	May 2025	% Change
Total domestic charter passengers	391.3	363.8	-7.0
Total domestic charter aircraft trips	6.5	6.0	-7.1

Note: Helicopter, joyflights and sightseeing charter flights not included.

Table 13: Charter passengers carried and aircraft trips - annual activity (000s)

	YE May 2024	YE May 2025	% Change
Total domestic charter passengers	4 240.1	4 244.0	0.1
Total domestic charter aircraft trips	72.4	71.8	-0.8

Note: Helicopter, joyflights and sightseeing charter flights not included.

Table 14: Domestic airports - charter activity - monthly (000s)

	May 2024	May 2025	% Change
Total domestic charter passenger movements	782.6	727.6	-7.0
Total domestic charter aircraft movements	13.0	12.1	-7.1
Perth airport charter passenger movements	290.6	263.9	-9.2
Perth airport charter aircraft movements	4.2	3.8	-10.5

Note: Helicopter, joyflights and sightseeing charter flights not included.

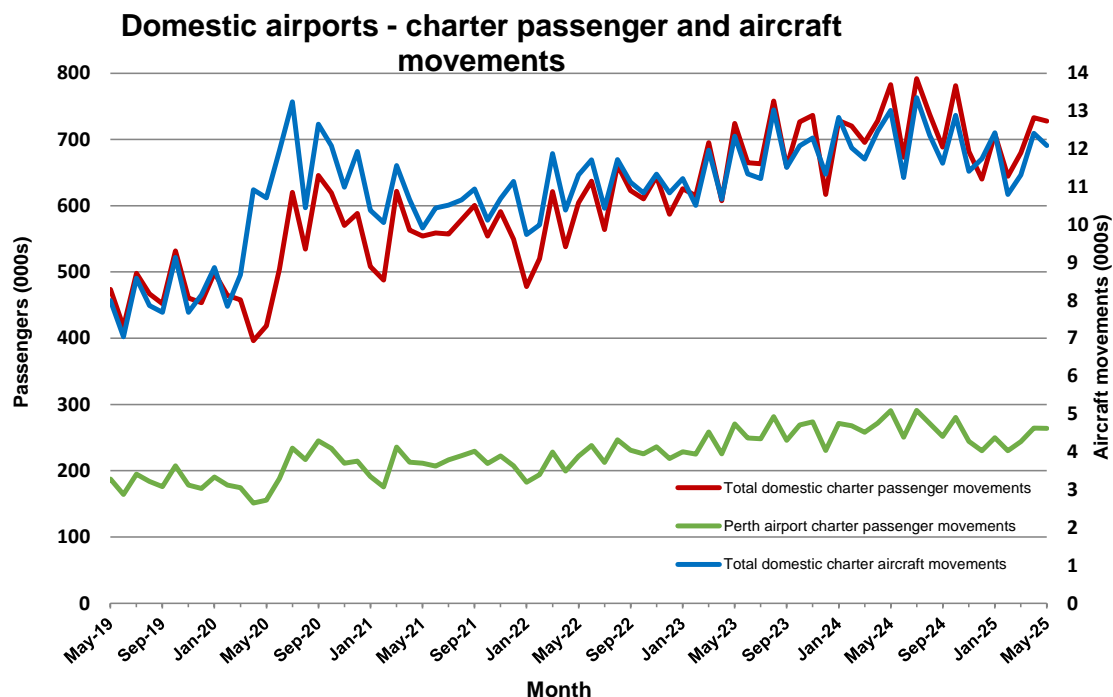
Charter passenger and aircraft movement numbers are the sum of arrivals and departures at each airport.

Table 15: Domestic airports - charter activity - annual (000s)

	YE May 2024	YE May 2025	% Change
Total domestic charter passenger movements	8 480.2	8 488.0	0.1
Total domestic charter aircraft movements	144.9	143.7	-0.8
Perth airport charter passenger movements	3 158.4	3 071.6	-2.7
Perth airport charter aircraft movements	48.6	45.2	-7.0

Note: Helicopter, joyflights and sightseeing charter flights not included.

Charter passenger and aircraft movement numbers are the sum of arrivals and departures at each airport.



DEFINITIONS

Aircraft Trips	The number of flight stages. A return flight counts as two aircraft trips.
Airport Movements	Airport movements (passenger and cargo) are measured once on arrival and once on departure. Each domestic trip generates two movements at airports. For example, a trip from Melbourne to Sydney will be counted twice, as a departure at Melbourne and as an arrival at Sydney. At the national level, the sum of all domestic airport traffic will therefore be equal to twice the number of trips undertaken.
Available Seat Kilometres (ASKs)	Calculated by multiplying the number of seats available on each flight stage, by the distance in kilometres between the ports. The distances used are Great Circle Distances.
City-Pair	The ports shown make up the city-pair route. Passenger movements shown for a city pair reflect total traffic in both directions.
Flight Stage	The operation of an aircraft from take-off to landing.
Load Factor	The total revenue passenger kilometres performed as a percentage of the total available seat kilometres.
Passengers Carried	Revenue passengers carried.
Regular Public Transport Services (RPT)	All air service operations in which aircraft are available for the transport of members of the public and are conducted in accordance with fixed schedules. It does not include charter or other non-scheduled operations.
Revenue Passengers	All passengers paying any fare. Frequent flyer redemption travellers are regarded as revenue passengers.
Revenue Passenger Kilometres (RPKs)	Calculated by multiplying the number of revenue passengers travelling on each flight stage, by the distance in kilometres between the ports. The distances used are Great Circle Distances.
Traffic on board by stages (TOB)	The total of all traffic (revenue passengers) on each flight stage between two directly connected airports.
..	Not available for confidentiality or other reasons.
NA	Not applicable.