



Australian Government

**Department of Infrastructure, Transport,
Regional Development, Communications, Sport and the Arts**

Bureau of Infrastructure and Transport Research Economics
STATISTICAL REPORT



Aviation

**Domestic aviation activity
March 2026**

The Department of Infrastructure, Transport, Regional Development, Communications, Sport and the Arts acknowledges the Traditional Custodians of country throughout Australia and their connections to land, sea and community.

We pay our respects to the Elders past and present and extend that respect to the Aboriginal and Torres Strait Islander people.

© Commonwealth of Australia 2026

ISSN: 1832 – 1968

BITRE Reference: 2026-053

Ownership of intellectual property rights in this publication

Unless otherwise noted, copyright (and any other intellectual property rights, if any) in this publication is owned by the Commonwealth of Australia (referred to below as the Commonwealth).

Disclaimer

The material contained in this publication is made available on the understanding that the Commonwealth is not providing professional advice, and that users exercise their own skill and care with respect to its use, and seek independent advice if necessary.

The Commonwealth makes no representations or warranties as to the contents or accuracy of the information contained in this publication. To the extent permitted by law, the Commonwealth disclaims liability to any person or organisation in respect of anything done, or omitted to be done, in reliance upon information contained in this publication.

Creative Commons licence

With the exception of (a) the Coat of Arms; and (b) the Department of Infrastructure, Transport, Regional Development, Communications, Sport and the Arts' photos and graphics, copyright in this publication is licensed under a Creative Commons Attribution 4.0 Australia Licence.

Creative Commons Attribution 4.0 Australia Licence is a standard form licence agreement that allows you to copy, communicate and adapt this publication provided that you attribute the work to the Commonwealth and abide by the other licence terms. A summary of the licence terms is available from <http://creativecommons.org/licenses/by/4.0/au/deed.en>.

The full licence terms are available from <http://creativecommons.org/licenses/by/4.0/au/legalcode.en>.

Use of the Coat of Arms

The Department of the Prime Minister and Cabinet (PM&C) sets the terms under which the Coat of Arms is used. Please refer to the [Commonwealth Coat of Arms Information and Guidelines | PM&C](#).

An appropriate citation for this report is:

Bureau of Infrastructure and Transport Research Economics (BITRE), 2026, Domestic aviation activity, Statistical Report, BITRE, Canberra ACT.

Contact us

This publication is available in PDF format. All other rights are reserved, including in relation to any Departmental logos or trademarks which may exist. For enquiries regarding the licence and any use of this publication, please contact:

Bureau of Infrastructure and Transport Research Economics (BITRE)
Department of Infrastructure, Transport, Regional Development, Communications, Sport and the Arts
GPO Box 501, Canberra ACT 2601, Australia

Email: avstats@infrastructure.gov.au

Website: www.bitre.gov.au

Enquiries: Marko.Rodic2@infrastructure.gov.au (02) 6136 7995

FOREWORD

This report provides an overview of domestic (including charter) commercial aviation activity in Australia for the month of March 2026.

The data covers revenue passengers carried by Australian-registered operators of scheduled Regular Public Transport (RPT) services over Australian flight stages and fixed-wing charter operators. These estimates include passengers carried between domestic airports on international flights operated by these carriers. The passengers carried refer to traffic on board by stages.

Estimates of passengers and aircraft movements for charter aviation are included in this publication, where BITRE confidentiality standards are met.

Individual routes shown are restricted to those with an average exceeding 8,000 passengers per month over the previous six months where two or more airlines operate in competition.

Information on the total network for the month of March 2026 and on the RPT network for the month of March 2026 is presented on page 2, with estimates for the year ended March 2026 presented on page 3.

Detailed information on individual routes can be found in the RPT summary pages 4-13 of this publication. For the month of March 2026, there are 62 individual routes published.

The top ten airports in terms of RPT passenger movements are shown on page 14.

Data on domestic RPT cargo movements at the top five cargo airports are provided on page 15. The table includes cargo carried on passenger flights operated by the Qantas group (including Jetstar), Virgin Australia, Airnorth and Skippers as well as the cargo carried by dedicated freighter aircraft operated by Qantas Freight and Team Global Express (formerly Toll).

The long-term trends for the top ten competitive RPT routes are presented graphically on pages 16-25.

Domestic RPT passenger movements at regional airports are shown on pages 26-27.

Tables providing estimates of domestic charter aviation activity are shown on page 28. BITRE confidentiality standards restrict publication of detailed estimates for individual Australian airports, with the exception of Perth Airport.

A list of definitions can be found on page 29.

This report was prepared by the Aviation Statistics Section of the Bureau of Infrastructure and Transport Research Economics with data provided by airlines.

Estimates are included where data were not available and data presented in this publication may contain revisions to previously published data.

Where figures have been rounded, discrepancies may occur between sums of component items and totals, and in percentage changes which are derived from figures prior to rounding.

CONTENTS

Highlights	1
Total network	2
RPT network	3
Top competitive routes	4
Top ten airports – passenger movements	14
Top five airports – cargo movements	15
Top ten routes	16
1. Melbourne – Sydney	16
2. Brisbane – Sydney.....	17
3. Brisbane – Melbourne	18
4. Adelaide – Melbourne	19
5. Gold Coast – Sydney	20
6. Gold Coast – Melbourne	21
7. Melbourne – Perth	22
8. Adelaide – Sydney	23
9. Perth – Sydney	24
10. Hobart – Melbourne	25
Top fifty regional airports	26
Domestic charter activity	28
Definitions	29

This page is intentionally left blank.

HIGHLIGHTS

There were 5.50 million passengers carried on Australian domestic commercial aviation (including charter operations) in March 2026, compared with 5.09 million in March 2025 (up 8.2%). This is also an increase of 4.4% on pre-COVID March 2019 passenger numbers (5.27 million).

5.11 million passengers were carried on Regular Public Transport (RPT) flights in March 2026 (excluding charter operations), an increase of 7.8% compared to March 2025.

For the month of March 2026, there were 51.6 thousand RPT aircraft trips, an increase of 5.1% on March 2025.

For the year ending March 2026, there were 60.78 million RPT passengers, an increase of 2.9% on the year ending March 2025.

RPT revenue passenger kilometres (RPKs) performed were 6.03 billion for the month, compared with 5.59 billion in March 2025 (up 7.8%).

Capacity, measured by available seat kilometres (ASKs), increased to 7.38 billion in March 2026 compared to 6.93 billion in March 2025 (up 6.5%).

The industry wide load factor (RPKs/ASKs) increased from 80.7% in March 2025 to 81.6% in March 2026. The highest load factor (90.6%) was recorded on the Adelaide – Gold Coast route while the lowest load factor (47.4%) was recorded on the Brisbane – Moranbah route.

For the month of March 2026, Melbourne – Sydney was Australia's busiest RPT route with 727.0 thousand passengers, followed by Brisbane – Sydney with 375.8 thousand passengers and Brisbane – Melbourne with 307.5 thousand passengers.

Sydney was Australia's busiest domestic airport with 2.18 million passenger movements in March 2026, followed by Melbourne with 2.12 million passenger movements and Brisbane with 1.47 million passenger movements.

Total cargo movements at Australian airports on domestic RPT flights were 27.7 thousand tonnes in March 2026, an increase of 7.6% compared with March 2025.

In March 2026, there were 2.08 million domestic passenger movements through regional airports, an increase of 5.1% from March 2025. Out of the top 50 regional airports, the strongest increase was recorded at Orange Airport (up 28.4% on March 2025), while the largest decrease was recorded at Learmonth Airport (down 25.1% on March 2025).

Fixed-wing charter operators carried 392.1 thousand passengers in March 2026, an increase of 13.9% compared with March 2025. Perth Airport accounted for 35.8% of all charter passengers in Australia.

TOTAL NETWORK

Summary of monthly commercial aviation activity

	Mar 2025	Mar 2026	% Change
Total passengers carried (millions)	5.09	5.50	8.2
Aircraft trips (000s)	54.9	58.1	5.9

Note: Regular Public Transport and charter aviation activity
Helicopter, joy flights and sightseeing charter flights not included.

RPT NETWORK

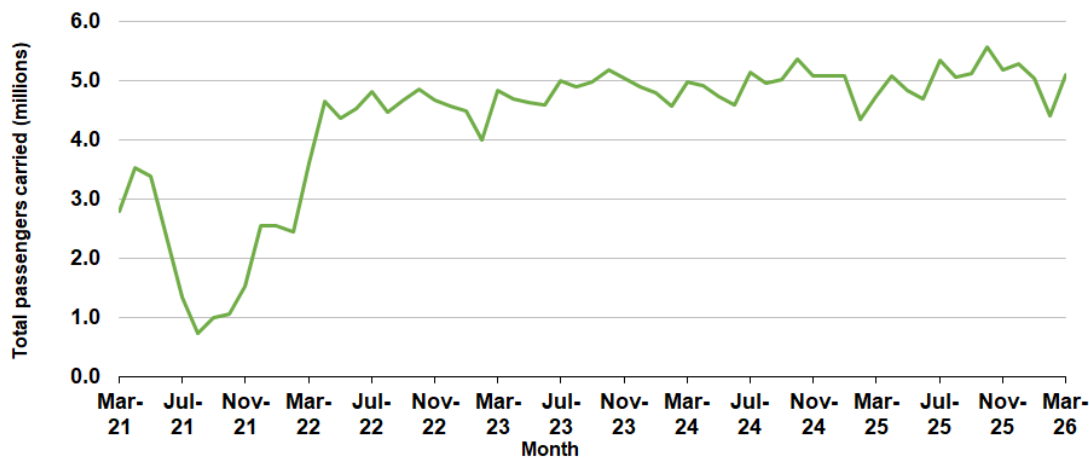
Summary of monthly RPT activity

	Mar 2025	Mar 2026	% Change
Total passengers carried (millions)	4.74	5.11	7.8
Revenue passenger kilometres (billions)	5.59	6.03	7.8
Available seats (millions)	5.96	6.37	6.8
Available seat kilometres (billions)	6.93	7.38	6.5
Load factor %	80.7	81.6	1.0 *
Aircraft trips (000s)	49.1	51.6	5.1

* percentage point difference

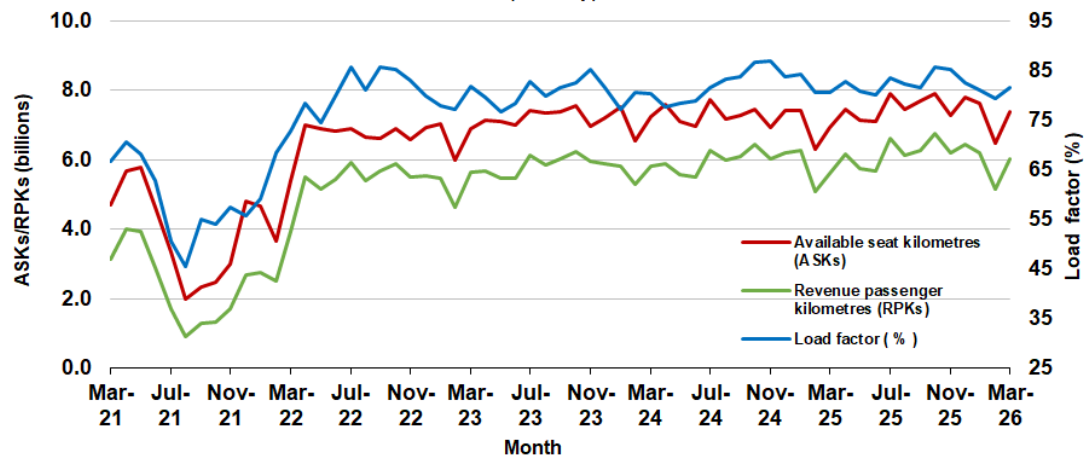
Domestic RPT passenger traffic

(monthly)



RPT Network utilisation

(monthly)



TOTAL NETWORK

Summary of annual commercial aviation activity

	YE Mar 2025	YE Mar 2026	% Change
Total passengers carried (millions)	63.37	65.26	3.0
Aircraft trips (000s)	678.5	681.8	0.5

Note: Regular Public Transport and charter aviation activity
Helicopter, joy flights and sightseeing charter flights not included.

RPT NETWORK

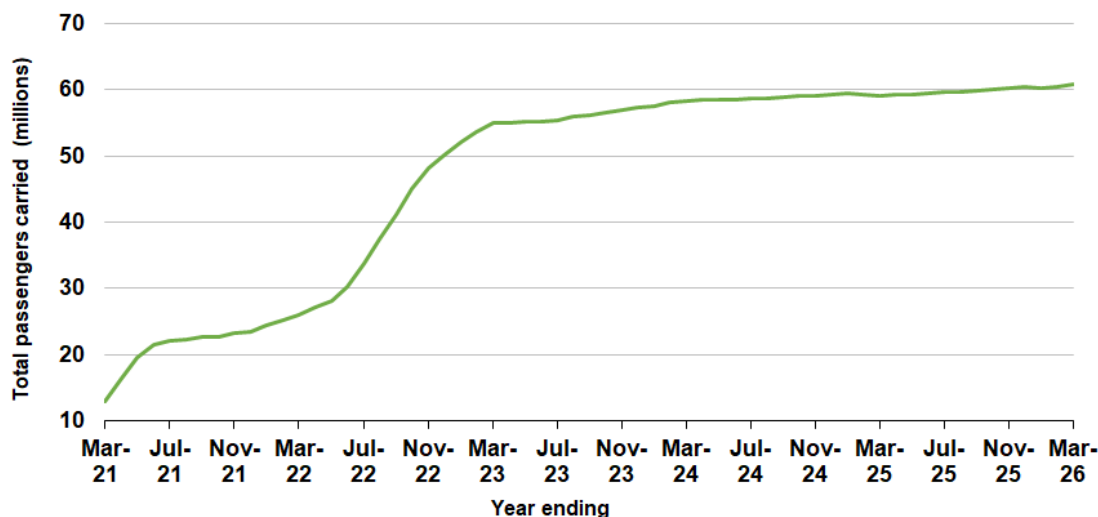
Summary of annual RPT activity

	YE Mar 2025	YE Mar 2026	% Change
Total passengers carried (millions)	59.09	60.78	2.9
Revenue passenger kilometres (billions)	70.97	73.36	3.4
Available seats (millions)	73.55	75.46	2.6
Available seat kilometres (billions)	86.35	89.22	3.3
Load factor %	82.2	82.2	0.0 *
Aircraft trips (000s)	605.4	605.6	0.0

* percentage point difference

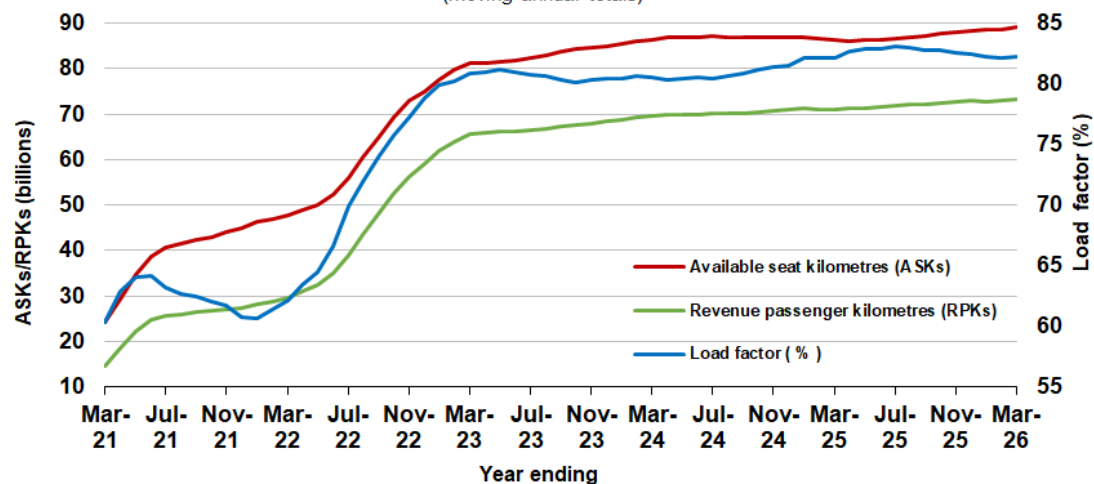
Domestic RPT passenger traffic

(moving annual totals)



RPT Network utilisation

(moving annual totals)



TOP COMPETITIVE ROUTES

Table 1: Passengers carried (000s) — annual activity

	City-Pair	YE Mar 2025	YE Mar 2026	% Change
1	Melbourne - Sydney	8 019.6	8 106.7	1.1
2	Brisbane - Sydney	4 329.7	4 421.7	2.1
3	Brisbane - Melbourne	3 516.8	3 698.1	5.2
4	Gold Coast - Sydney	2 460.6	2 596.2	5.5
5	Adelaide - Melbourne	2 327.6	2 401.7	3.2
6	Gold Coast - Melbourne	2 133.7	2 205.4	3.4
7	Melbourne - Perth	2 039.3	2 112.7	3.6
8	Adelaide - Sydney	1 883.8	1 901.8	1.0
9	Perth - Sydney	1 665.1	1 749.2	5.1
10	Hobart - Melbourne	1 385.0	1 465.2	5.8
11	Brisbane - Cairns	1 310.3	1 315.6	0.4
12	Brisbane - Perth	1 102.1	1 148.4	4.2
13	Brisbane - Townsville	951.7	1 008.8	6.0
14	Canberra - Melbourne	991.8	971.7	-2.0
15	Cairns - Sydney	916.6	917.8	0.1
16	Launceston - Melbourne	859.6	896.6	4.3
17	Adelaide - Brisbane	868.3	890.2	2.5
18	Cairns - Melbourne	824.5	862.9	4.7
19	Hobart - Sydney	825.9	842.3	2.0
20	Brisbane - Mackay	766.0	833.9	8.9
21	Sunshine Coast - Sydney	773.8	810.1	4.7
22	Melbourne - Sunshine Coast	727.8	767.3	5.4
23	Adelaide - Perth	703.5	728.3	3.5
24	Karratha - Perth	621.9	707.6	13.8
25	Brisbane - Canberra	637.6	662.5	3.9
26	Brisbane - Rockhampton	597.7	607.6	1.7
27	Canberra - Sydney	640.1	604.0	-5.6
28	Brisbane - Newcastle	510.4	532.1	4.2
29	Perth - Port Hedland	477.4	497.2	4.1
30	Melbourne - Newcastle	462.7	470.1	1.6
31	Ballina - Sydney	514.7	468.9	-8.9
32	Newman - Perth	416.0	445.9	7.2
33	Kalgoorlie - Perth	368.2	419.3	13.9
34	Broome - Perth	356.6	375.4	5.3
35	Brisbane - Darwin	328.6	361.4	10.0
36	Launceston - Sydney	343.7	356.8	3.8
37	Brisbane - Hobart	308.9	329.3	6.6
38	Brisbane - Proserpine	282.2	297.9	5.6
39	Darwin - Melbourne	292.4	290.5	-0.6
40	Adelaide - Gold Coast	277.5	283.5	2.2
41	Hamilton Island - Sydney	249.5	239.4	-4.1
42	Brisbane - Gladstone	223.6	217.5	-2.7
43	Coffs Harbour - Sydney	208.3	201.6	-3.2
44	Adelaide - Canberra	189.5	195.6	3.2
45	Brisbane - Emerald	187.5	189.3	1.0
46	Darwin - Perth	185.5	188.0	1.3
47	Canberra - Gold Coast	177.7	180.6	1.6
48	Dubbo - Sydney	172.1	177.5	3.1
49	Brisbane - Hamilton Island	161.1	177.0	9.9
50	Sydney - Wagga Wagga	162.3	170.6	5.1

continued

Table 1: (continued) Passengers carried (000s) — annual activity

	City-Pair	YE Mar 2025	YE Mar 2026	% Change
51	Port Macquarie - Sydney	165.8	169.3	2.1
52	Adelaide - Port Lincoln	168.7	168.2	-0.3
53	Albury - Sydney	160.1	158.1	-1.2
54	Brisbane - Launceston	156.2	155.2	-0.6
55	Melbourne - Mildura	154.5	151.4	-2.0
56	Brisbane - Mount Isa	150.5	151.4	0.6
57	Devonport - Melbourne	129.3	150.2	16.2
58	Brisbane - Bundaberg	141.5	141.0	-0.4
59	Geraldton - Perth	116.3	122.5	5.3
60	Ayers Rock - Melbourne	113.0	116.1	2.7
61	Adelaide - Alice Springs	105.6	103.4	-2.0
62	Brisbane - Moranbah	110.3	95.4	-13.5
	Total domestic network	59 094.0	60 781.7	2.9

Table 2: Passengers carried (000s) — monthly activity

	City-Pair	Mar 2025	Mar 2026	% Change
1	Melbourne - Sydney	723.0	727.0	0.6
2	Brisbane - Sydney	330.5	375.8	13.7
3	Brisbane - Melbourne	267.4	307.5	15.0
4	Adelaide - Melbourne	211.8	214.9	1.5
5	Gold Coast - Sydney	158.6	205.9	29.9
6	Gold Coast - Melbourne	133.6	185.7	39.0
7	Melbourne - Perth	170.8	183.5	7.5
8	Adelaide - Sydney	166.6	166.5	0.0
9	Perth - Sydney	145.8	151.9	4.2
10	Hobart - Melbourne	126.8	132.8	4.7
11	Brisbane - Perth	85.6	97.4	13.8
12	Brisbane - Cairns	87.3	97.2	11.4
13	Canberra - Melbourne	88.2	86.6	-1.8
14	Brisbane - Townsville	68.6	81.0	18.1
15	Launceston - Melbourne	79.2	80.5	1.7
16	Adelaide - Brisbane	67.8	80.0	18.1
17	Hobart - Sydney	73.9	75.1	1.6
18	Brisbane - Mackay	59.8	65.5	9.7
19	Sunshine Coast - Sydney	58.2	65.0	11.6
20	Adelaide - Perth	59.6	63.8	6.9
21	Cairns - Sydney	66.5	62.6	-5.9
22	Melbourne - Sunshine Coast	53.0	60.7	14.7
23	Karratha - Perth	53.8	60.2	11.9
24	Brisbane - Canberra	47.1	57.4	22.1
25	Canberra - Sydney	55.1	53.0	-3.9
26	Cairns - Melbourne	57.4	51.8	-9.7
27	Brisbane - Rockhampton	45.5	51.1	12.5
28	Brisbane - Newcastle	38.6	44.6	15.6
29	Perth - Port Hedland	39.2	42.8	9.0
30	Ballina - Sydney	34.1	41.1	20.5
31	Melbourne - Newcastle	41.0	40.9	-0.3
32	Kalgoorlie - Perth	30.9	39.5	27.8
33	Newman - Perth	37.3	38.4	3.2
34	Launceston - Sydney	34.0	31.3	-7.9
35	Brisbane - Hobart	25.2	28.7	13.9
36	Broome - Perth	24.4	24.4	0.0
37	Adelaide - Gold Coast	18.8	24.1	28.0
38	Brisbane - Proserpine	19.2	23.7	23.2
39	Brisbane - Darwin	21.9	23.2	5.6
40	Coffs Harbour - Sydney	16.2	18.7	15.3
41	Adelaide - Canberra	17.5	18.5	5.7
42	Brisbane - Gladstone	16.9	18.1	7.4
43	Darwin - Melbourne	18.3	17.2	-5.8
44	Dubbo - Sydney	14.8	16.9	13.8
45	Sydney - Wagga Wagga	14.5	16.0	9.9
46	Brisbane - Emerald	14.8	15.8	7.0
47	Port Macquarie - Sydney	14.3	15.6	8.9
48	Adelaide - Port Lincoln	15.1	15.4	2.0
49	Hamilton Island - Sydney	21.2	15.3	-28.0
50	Albury - Sydney	13.6	14.7	8.3

continued

Table 2: (continued) Passengers carried (000s) — monthly activity

	City-Pair	Mar 2025	Mar 2026	% Change
51	Brisbane - Hamilton Island	10.8	14.6	35.4
52	Canberra - Gold Coast	11.9	14.4	21.6
53	Brisbane - Launceston	11.4	13.6	19.4
54	Melbourne - Mildura	14.2	13.5	-5.2
55	Devonport - Melbourne	12.5	12.6	0.4
56	Brisbane - Bundaberg	10.8	12.3	13.7
57	Brisbane - Mount Isa	11.2	12.0	6.5
58	Darwin - Perth	13.4	11.9	-10.9
59	Geraldton - Perth	10.5	10.7	2.0
60	Ayers Rock - Melbourne	9.9	10.1	2.3
61	Adelaide - Alice Springs	8.4	8.2	-1.6
62	Brisbane - Moranbah	8.4	7.9	-6.2
	Total domestic network	4 743.4	5 111.8	7.8

Table 3: Available seats (000s) — monthly activity

	City-Pair	Mar 2025	Mar 2026	% Change
1	Melbourne - Sydney	817.5	829.6	1.5
2	Brisbane - Sydney	392.8	436.7	11.2
3	Brisbane - Melbourne	323.2	377.1	16.7
4	Adelaide - Melbourne	241.8	252.9	4.6
5	Gold Coast - Sydney	187.5	228.3	21.8
6	Gold Coast - Melbourne	173.3	208.2	20.1
7	Melbourne - Perth	197.1	213.4	8.3
8	Adelaide - Sydney	191.2	196.2	2.6
9	Perth - Sydney	167.7	173.1	3.3
10	Hobart - Melbourne	144.3	156.2	8.3
11	Brisbane - Perth	105.8	114.3	8.0
12	Brisbane - Cairns	106.8	118.5	11.0
13	Canberra - Melbourne	111.7	113.8	1.9
14	Brisbane - Townsville	91.9	110.7	20.4
15	Launceston - Melbourne	92.5	93.8	1.4
16	Adelaide - Brisbane	85.0	99.4	16.9
17	Hobart - Sydney	86.9	87.9	1.2
18	Brisbane - Mackay	83.4	94.3	13.0
19	Sunshine Coast - Sydney	72.9	74.8	2.5
20	Adelaide - Perth	74.9	79.4	6.1
21	Cairns - Sydney	75.2	76.1	1.2
22	Melbourne - Sunshine Coast	64.5	68.5	6.2
23	Karratha - Perth	77.2	87.0	12.7
24	Brisbane - Canberra	66.0	81.5	23.6
25	Canberra - Sydney	82.0	77.1	-5.9
26	Cairns - Melbourne	77.2	65.2	-15.6
27	Brisbane - Rockhampton	59.1	64.2	8.6
28	Brisbane - Newcastle	47.4	55.4	16.9
29	Perth - Port Hedland	63.0	69.4	10.2
30	Ballina - Sydney	40.7	46.7	14.8
31	Melbourne - Newcastle	46.8	48.8	4.1
32	Kalgoorlie - Perth	55.3	59.7	7.9
33	Newman - Perth	55.9	64.9	16.0
34	Launceston - Sydney	39.5	36.8	-6.9
35	Brisbane - Hobart	27.8	32.1	15.5
36	Broome - Perth	36.8	40.3	9.5
37	Adelaide - Gold Coast	22.6	26.6	17.6
38	Brisbane - Proserpine	22.4	26.7	19.1
39	Brisbane - Darwin	28.6	29.0	1.2
40	Coffs Harbour - Sydney	24.9	25.5	2.6
41	Adelaide - Canberra	23.8	26.8	12.3
42	Brisbane - Gladstone	27.5	27.9	1.5
43	Darwin - Melbourne	23.8	22.2	-6.7
44	Dubbo - Sydney	22.1	23.9	8.2
45	Sydney - Wagga Wagga	21.5	23.6	9.8
46	Brisbane - Emerald	23.2	26.1	12.5
47	Port Macquarie - Sydney	19.3	20.4	5.5
48	Adelaide - Port Lincoln	23.3	23.9	2.7
49	Hamilton Island - Sydney	28.3	18.6	-34.1
50	Albury - Sydney	17.8	20.0	12.7

continued

Table 3: (continued) Available seats (000s) — monthly activity

	City-Pair	Mar 2025	Mar 2026	% Change
51	Brisbane - Hamilton Island	14.0	19.1	35.9
52	Canberra - Gold Coast	14.1	16.2	15.0
53	Brisbane - Launceston	13.3	15.2	14.5
54	Melbourne - Mildura	18.8	21.0	11.7
55	Devonport - Melbourne	17.0	17.8	4.5
56	Brisbane - Bundaberg	17.0	19.0	11.9
57	Brisbane - Mount Isa	19.2	21.6	12.5
58	Darwin - Perth	20.2	17.5	-13.5
59	Geraldton - Perth	19.7	20.4	3.6
60	Ayers Rock - Melbourne	11.9	11.8	-1.5
61	Adelaide - Alice Springs	11.5	10.7	-7.0
62	Brisbane - Moranbah	14.6	16.7	14.3
	Total domestic network	5 961.2	6 365.9	6.8

Table 4: Load factors (%) — monthly activity

	City-Pair	Mar 2025	Mar 2026	% Point diff
1	Melbourne - Sydney	88.4	87.6	-0.8
2	Brisbane - Sydney	84.1	86.1	1.9
3	Brisbane - Melbourne	82.8	81.6	-1.2
4	Adelaide - Melbourne	87.6	85.0	-2.6
5	Gold Coast - Sydney	84.6	90.2	5.6
6	Gold Coast - Melbourne	77.1	89.2	12.1
7	Melbourne - Perth	86.7	86.0	-0.6
8	Adelaide - Sydney	87.1	84.8	-2.3
9	Perth - Sydney	87.0	87.7	0.8
10	Hobart - Melbourne	87.9	85.0	-2.9
11	Brisbane - Perth	80.8	85.2	4.4
12	Brisbane - Cairns	81.7	82.0	0.3
13	Canberra - Melbourne	79.0	76.2	-2.9
14	Brisbane - Townsville	74.6	73.2	-1.5
15	Launceston - Melbourne	85.7	85.9	0.2
16	Adelaide - Brisbane	79.7	80.5	0.8
17	Hobart - Sydney	85.1	85.5	0.3
18	Brisbane - Mackay	71.6	69.5	-2.1
19	Sunshine Coast - Sydney	79.8	86.9	7.1
20	Adelaide - Perth	79.7	80.3	0.6
21	Cairns - Sydney	88.4	82.3	-6.1
22	Melbourne - Sunshine Coast	82.1	88.7	6.6
23	Karratha - Perth	69.8	69.3	-0.5
24	Brisbane - Canberra	71.3	70.4	-0.9
25	Canberra - Sydney	67.3	68.7	1.5
26	Cairns - Melbourne	74.4	79.5	5.2
27	Brisbane - Rockhampton	76.9	79.7	2.7
28	Brisbane - Newcastle	81.5	80.6	-0.9
29	Perth - Port Hedland	62.3	61.6	-0.7
30	Ballina - Sydney	83.7	87.9	4.2
31	Melbourne - Newcastle	87.6	83.9	-3.7
32	Kalgoorlie - Perth	55.9	66.1	10.3
33	Newman - Perth	66.6	59.2	-7.4
34	Launceston - Sydney	85.9	85.0	-0.9
35	Brisbane - Hobart	90.6	89.3	-1.2
36	Broome - Perth	66.3	60.5	-5.8
37	Adelaide - Gold Coast	83.2	90.6	7.4
38	Brisbane - Proserpine	85.5	88.5	3.0
39	Brisbane - Darwin	76.6	80.0	3.3
40	Coffs Harbour - Sydney	65.2	73.3	8.1
41	Adelaide - Canberra	73.4	69.1	-4.3
42	Brisbane - Gladstone	61.3	64.9	3.6
43	Darwin - Melbourne	76.7	77.5	0.8
44	Dubbo - Sydney	67.2	70.7	3.5
45	Sydney - Wagga Wagga	67.4	67.5	0.1
46	Brisbane - Emerald	63.8	60.7	-3.1
47	Port Macquarie - Sydney	74.1	76.5	2.4
48	Adelaide - Port Lincoln	65.1	64.6	-0.5
49	Hamilton Island - Sydney	75.0	82.0	7.0
50	Albury - Sydney	76.6	73.6	-3.0

Table 4: (continued) Load factors (%) — monthly activity

	City-Pair	Mar 2025	Mar 2026	% Point diff
51	Brisbane - Hamilton Island	76.8	76.5	-0.3
52	Canberra - Gold Coast	84.2	89.1	4.8
53	Brisbane - Launceston	85.8	89.4	3.6
54	Melbourne - Mildura	75.7	64.2	-11.5
55	Devonport - Melbourne	73.5	70.6	-2.9
56	Brisbane - Bundaberg	63.8	64.8	1.0
57	Brisbane - Mount Isa	58.5	55.4	-3.1
58	Darwin - Perth	66.2	68.3	2.0
59	Geraldton - Perth	53.2	52.3	-0.8
60	Ayers Rock - Melbourne	83.1	86.3	3.2
61	Adelaide - Alice Springs	72.7	76.9	4.2
62	Brisbane - Moranbah	57.7	47.4	-10.3
	Total domestic network	80.7	81.6	1.0

Table 5: Aircraft trips ^(a) — monthly activity

	City-Pair	Mar 2025	Mar 2026	% Change
1	Melbourne - Sydney	4 696	4 743	1.0
2	Brisbane - Sydney	2 351	2 614	11.2
3	Brisbane - Melbourne	1 938	2 263	16.8
4	Adelaide - Melbourne	1 428	1 540	7.8
5	Gold Coast - Sydney	1 065	1 300	22.1
6	Gold Coast - Melbourne	935	1 140	21.9
7	Melbourne - Perth	1 110	1 177	6.0
8	Adelaide - Sydney	1 123	1 151	2.5
9	Perth - Sydney	895	941	5.1
10	Hobart - Melbourne	819	846	3.3
11	Brisbane - Perth	608	666	9.5
12	Brisbane - Cairns	754	833	10.5
13	Canberra - Melbourne	710	785	10.6
14	Brisbane - Townsville	716	791	10.5
15	Launceston - Melbourne	623	698	12.0
16	Adelaide - Brisbane	628	704	12.1
17	Hobart - Sydney	502	498	-0.8
18	Brisbane - Mackay	559	745	33.3
19	Sunshine Coast - Sydney	403	425	5.5
20	Adelaide - Perth	409	461	12.7
21	Cairns - Sydney	404	418	3.5
22	Melbourne - Sunshine Coast	339	378	11.5
23	Karratha - Perth	472	518	9.7
24	Brisbane - Canberra	533	620	16.3
25	Canberra - Sydney	1 320	1 233	-6.6
26	Cairns - Melbourne	410	340	-17.1
27	Brisbane - Rockhampton	635	706	11.2
28	Brisbane - Newcastle	399	461	15.5
29	Perth - Port Hedland	392	423	7.9
30	Ballina - Sydney	271	326	20.3
31	Melbourne - Newcastle	305	316	3.6
32	Kalgoorlie - Perth	372	408	9.7
33	Newman - Perth	337	393	16.6
34	Launceston - Sydney	232	214	-7.8
35	Brisbane - Hobart	174	208	19.5
36	Broome - Perth	254	266	4.7
37	Adelaide - Gold Coast	110	144	30.9
38	Brisbane - Proserpine	140	146	4.3
39	Brisbane - Darwin	161	168	4.3
40	Coffs Harbour - Sydney	287	384	33.8
41	Adelaide - Canberra	222	259	16.7
42	Brisbane - Gladstone	301	322	7.0
43	Darwin - Melbourne	136	125	-8.1
44	Dubbo - Sydney	419	432	3.1
45	Sydney - Wagga Wagga	390	416	6.7
46	Brisbane - Emerald	298	347	16.4
47	Port Macquarie - Sydney	320	329	2.8
48	Adelaide - Port Lincoln	483	467	-3.3
49	Hamilton Island - Sydney	160	108	-32.5
50	Albury - Sydney	321	355	10.6

continued

Table 5: (continued) Aircraft trips ^(a) — monthly activity

	City-Pair	Mar 2025	Mar 2026	% Change
51	Brisbane - Hamilton Island	98	118	20.4
52	Canberra - Gold Coast	78	89	14.1
53	Brisbane - Launceston	73	82	12.3
54	Melbourne - Mildura	363	393	8.3
55	Devonport - Melbourne	289	291	0.7
56	Brisbane - Bundaberg	276	312	13.0
57	Brisbane - Mount Isa	233	186	-20.2
58	Darwin - Perth	115	109	-5.2
59	Geraldton - Perth	208	210	1.0
60	Ayers Rock - Melbourne	66	64	-3.0
61	Adelaide - Alice Springs	138	130	-5.8
62	Brisbane - Moranbah	195	221	13.3
	Total domestic network	49 056	51 568	5.1

(a) Includes RPT cargo flights.

TOP TEN AIRPORTS – PASSENGER MOVEMENTS

Table 6: Top ten airports, RPT passenger movements (000s) - monthly activity

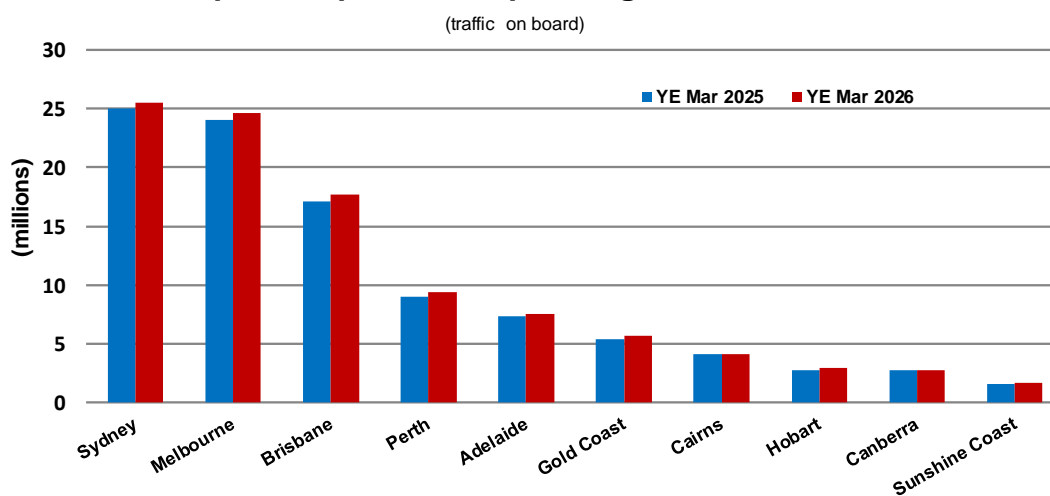
Airport	Mar 2025	Mar 2026	% Change	% of Total
1 Sydney	2 067.3	2 184.2	5.7	21.4
2 Melbourne	2 001.4	2 118.7	5.9	20.7
3 Brisbane	1 287.2	1 466.2	13.9	14.3
4 Perth	747.0	799.7	7.0	7.8
5 Adelaide	636.9	664.1	4.3	6.5
6 Gold Coast	343.4	456.1	32.8	4.5
7 Cairns	288.9	290.3	0.5	2.8
8 Hobart	248.3	266.0	7.1	2.6
9 Canberra	232.6	243.1	4.5	2.4
10 Launceston	134.1	134.8	0.6	1.3
Total top ten airports	7 987.0	8 623.2	8.0	84.3
Total domestic network	9 486.9	10 223.6	7.8	100.0

Table 7: Top ten airports, RPT passenger movements (000s) - annual activity

Airport	YE Mar 2025	YE Mar 2026	% Change	% of Total
1 Sydney	25 065.4	25 523.5	1.8	21.0
2 Melbourne	24 007.5	24 688.6	2.8	20.3
3 Brisbane	17 136.8	17 747.7	3.6	14.6
4 Perth	9 005.3	9 425.3	4.7	7.8
5 Adelaide	7 388.5	7 569.6	2.5	6.2
6 Gold Coast	5 416.5	5 640.6	4.1	4.6
7 Cairns	4 090.6	4 160.4	1.7	3.4
8 Hobart	2 756.2	2 903.0	5.3	2.4
9 Canberra	2 779.5	2 761.9	-0.6	2.3
10 Sunshine Coast	1 597.4	1 689.6	5.8	1.4
Total top ten airports	99 243.8	102 110.4	2.9	84.0
Total domestic network	118 188.0	121 563.4	2.9	100.0

Note: Airport passenger movement numbers are the sum of passenger arrivals and departures at each airport.

Top ten airports, RPT passenger movements



TOP FIVE AIRPORTS – CARGO MOVEMENTS

Table 8: Top five airports, domestic RPT cargo movements (000s tonnes) - monthly activity

Airport	Mar 2025	Mar 2026	% Change	% of Total
1 Melbourne	7.2	7.7	6.2	27.7
2 Sydney	5.5	6.0	8.9	21.8
3 Brisbane	4.4	4.9	12.1	17.7
4 Perth	2.8	2.9	2.8	10.5
5 Adelaide	1.3	1.6	18.8	5.7
Total top five airports	21.3	23.1	8.5	83.3
Total domestic network	25.7	27.7	7.6	100.0

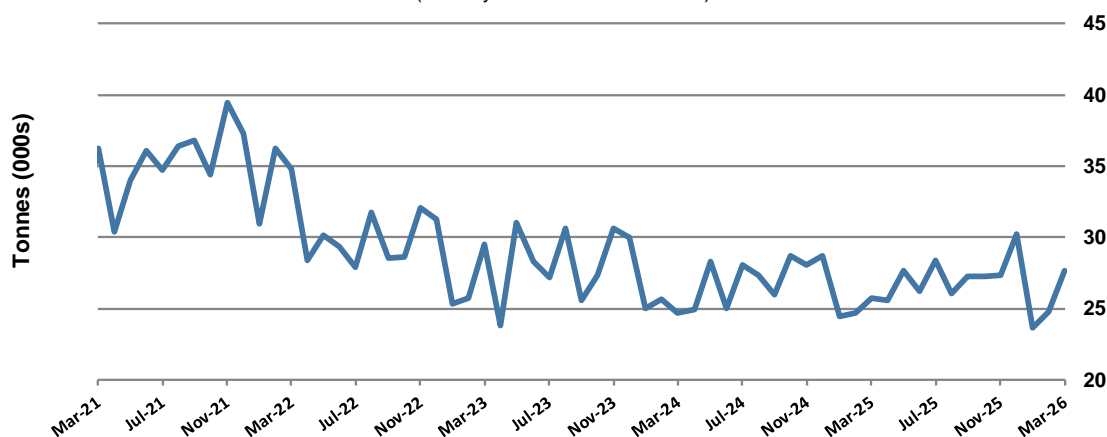
Table 9: Top five airports, domestic RPT cargo movements (000s tonnes) - annual activity

Airport	YE Mar 2025	YE Mar 2026	% Change	% of Total
1 Melbourne	87.8	89.5	1.9	27.8
2 Sydney	67.5	67.9	0.6	21.1
3 Brisbane	57.5	57.8	0.6	17.9
4 Perth	36.2	36.0	-0.5	11.2
5 Adelaide	17.5	16.9	-3.9	5.2
Total top five airports	266.5	268.1	0.6	83.3
Total domestic network	319.8	322.0	0.7	100.0

Note: Airport cargo tonnes are the sum of cargo tonnes on arrivals and departures at each airport.

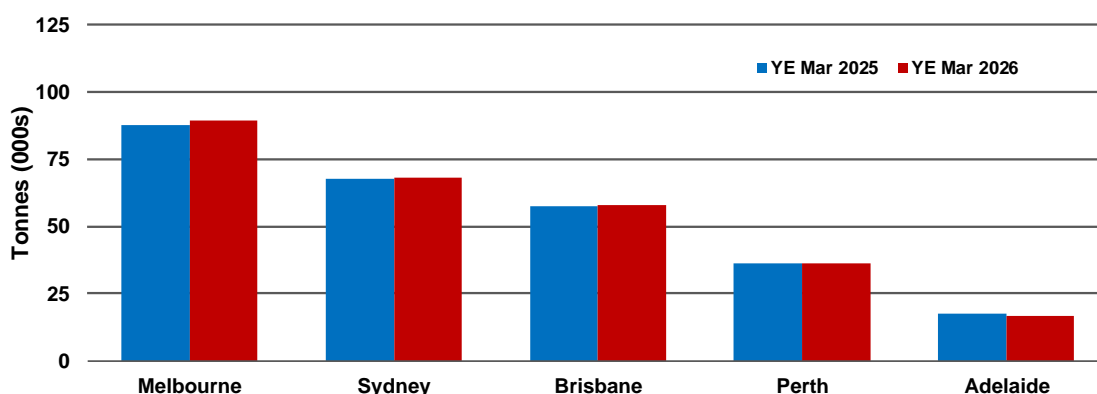
Total domestic network - cargo movement

(monthly totals - traffic on board)



Top five airports, cargo movements

(Domestic cargo traffic - traffic on board)



Note: Airport cargo tonnes are the sum of cargo tonnes on arrivals and departures at each airport.

TOP TEN ROUTES

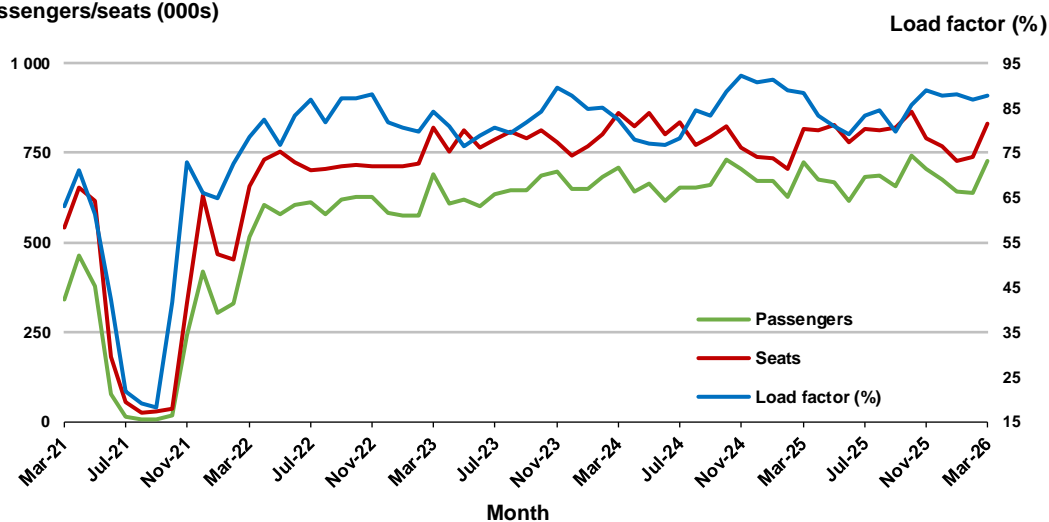
1. Melbourne - Sydney

Monthly data

	Mar 2025	Mar 2026	% Change
Passengers carried (000s)	723.0	727.0	0.6
Seats (000s)	817.5	829.6	1.5
Load factor %	88.4	87.6	-0.8 *
Aircraft trips	4 696	4 743	1.0

* percentage point difference

Passengers/seats (000s)

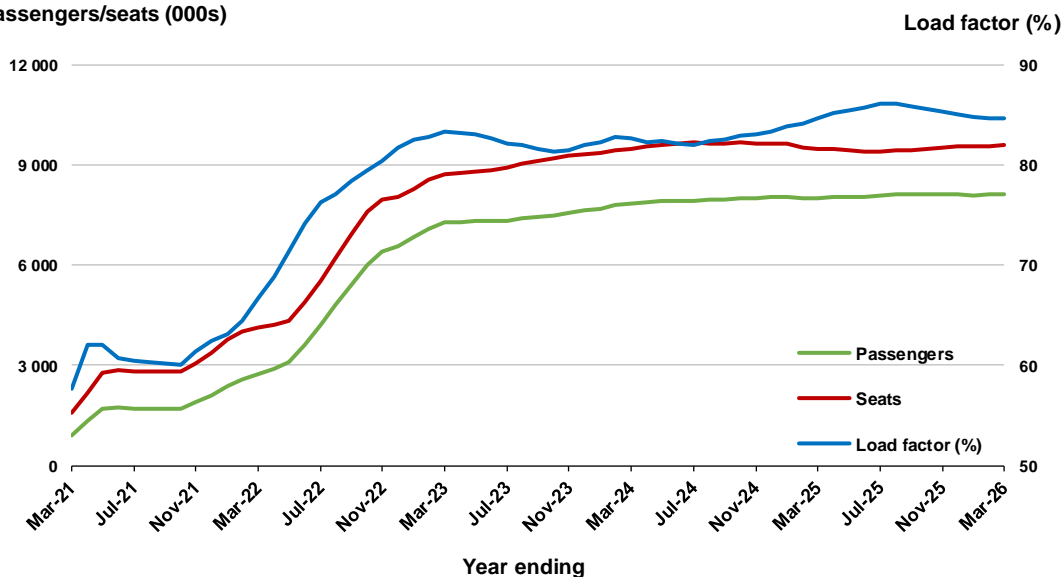


Moving annual data

	YE Mar 2025	YE Mar 2026	% Change
Passengers carried (000s)	8 019.6	8 106.7	1.1
Seats (000s)	9 477.2	9 585.3	1.1
Load factor %	84.6	84.6	0.0 *
Aircraft trips	54 525	54 685	0.3

* percentage point difference

Passengers/seats (000s)

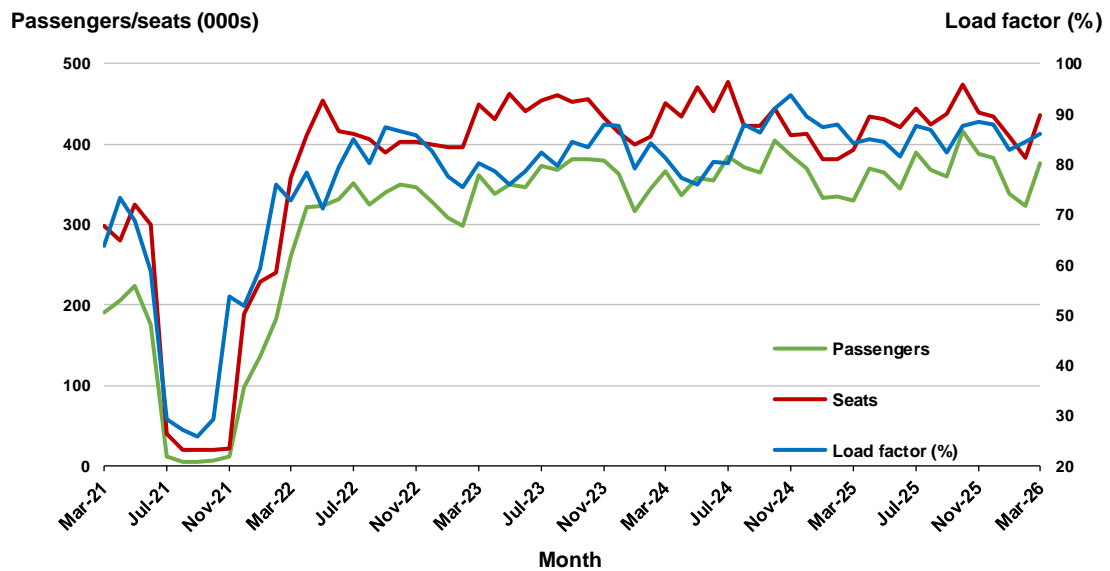


2. Brisbane - Sydney

Monthly data

	Mar 2025	Mar 2026	% Change
Passengers carried (000s)	330.5	375.8	13.7
Seats (000s)	392.8	436.7	11.2
Load factor %	84.1	86.1	1.9 *
Aircraft trips	2 351	2 614	11.2

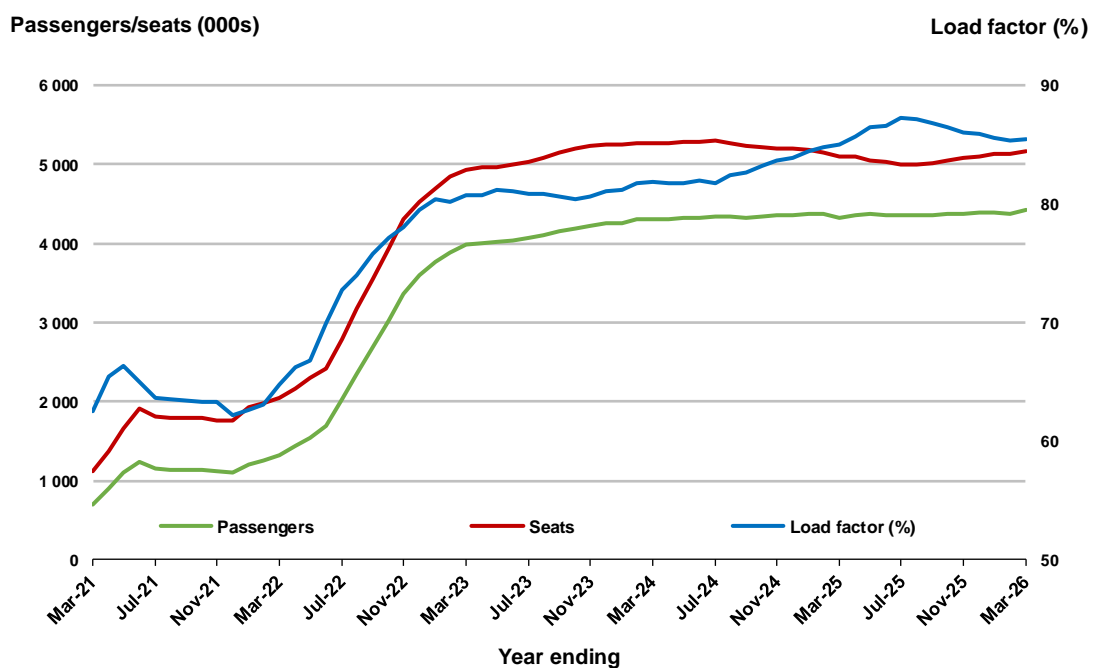
* percentage point difference



Moving annual data

	YE Mar 2025	YE Mar 2026	% Change
Passengers carried (000s)	4 329.7	4 421.7	2.1
Seats (000s)	5 093.7	5 172.3	1.5
Load factor %	85.0	85.5	0.5 *
Aircraft trips	30 681	30 752	0.2

* percentage point difference

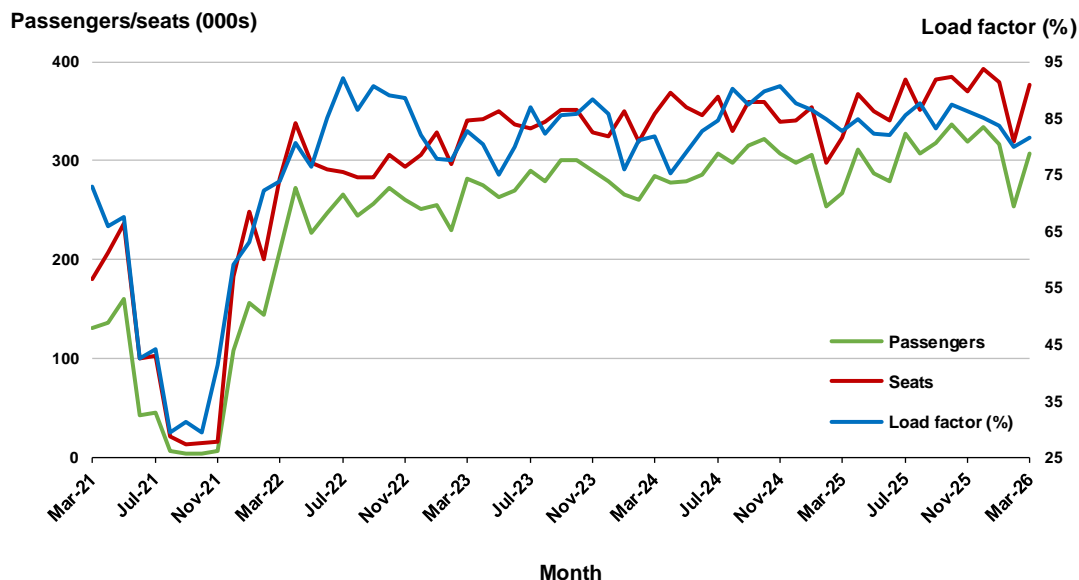


3. Brisbane - Melbourne

Monthly data

	Mar 2025	Mar 2026	% Change
Passengers carried (000s)	267.4	307.5	15.0
Seats (000s)	323.2	377.1	16.7
Load factor %	82.8	81.6	-1.2 *
Aircraft trips	1 938	2 263	16.8

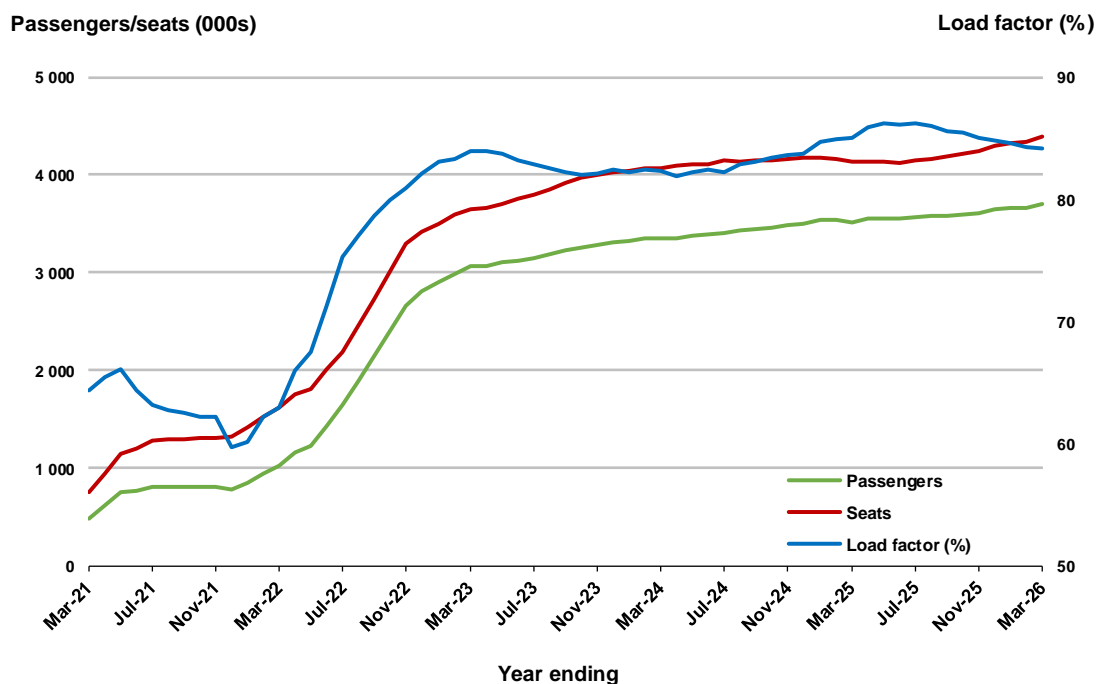
* percentage point difference



Moving annual data

	YE Mar 2025	YE Mar 2026	% Change
Passengers carried (000s)	3 516.8	3 698.1	5.2
Seats (000s)	4 136.5	4 395.7	6.3
Load factor %	85.0	84.1	-0.9 *
Aircraft trips	24 830	26 636	7.3

* percentage point difference



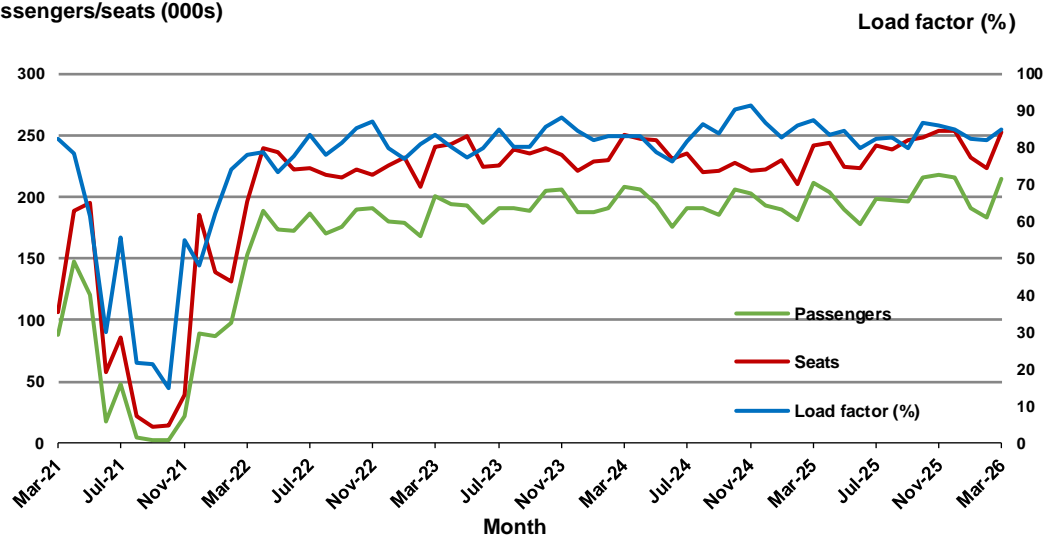
4. Adelaide - Melbourne

Monthly data

	Mar 2025	Mar 2026	% Change
Passengers carried (000s)	211.8	214.9	1.5
Seats (000s)	241.8	252.9	4.6
Load factor %	87.6	85.0	-2.6 *
Aircraft trips	1 428	1 540	7.8

* percentage point difference

Passengers/seats (000s)

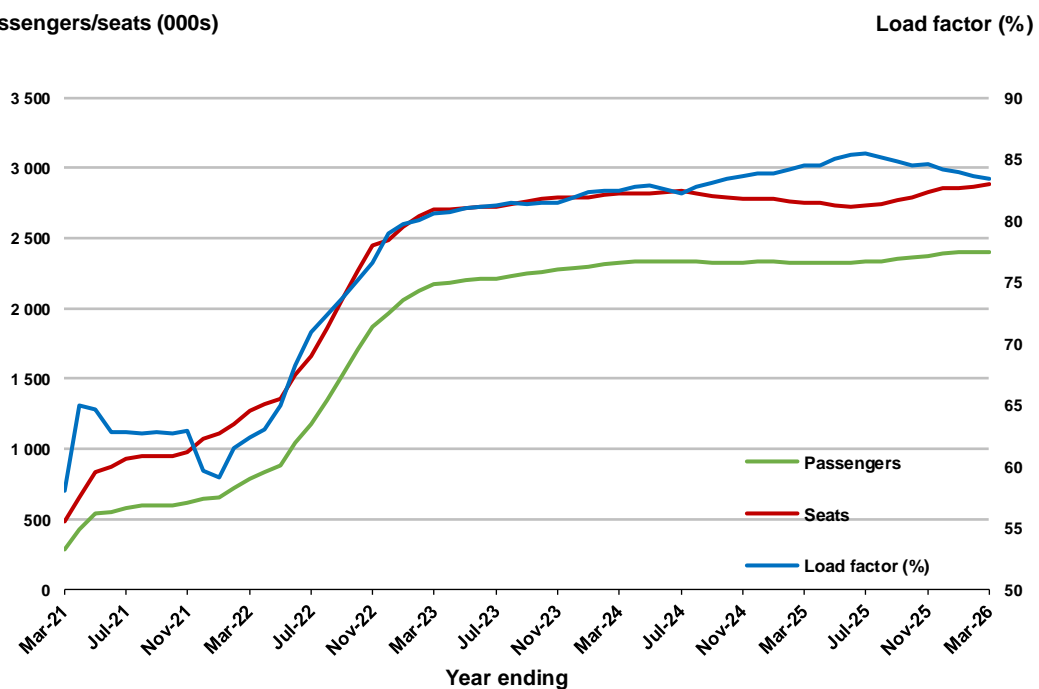


Moving annual data

	YE Mar 2025	YE Mar 2026	% Change
Passengers carried (000s)	2 327.6	2 401.7	3.2
Seats (000s)	2 754.4	2 880.4	4.6
Load factor %	84.5	83.4	-1.1 *
Aircraft trips	16 502	17 211	4.3

* percentage point difference

Passengers/seats (000s)

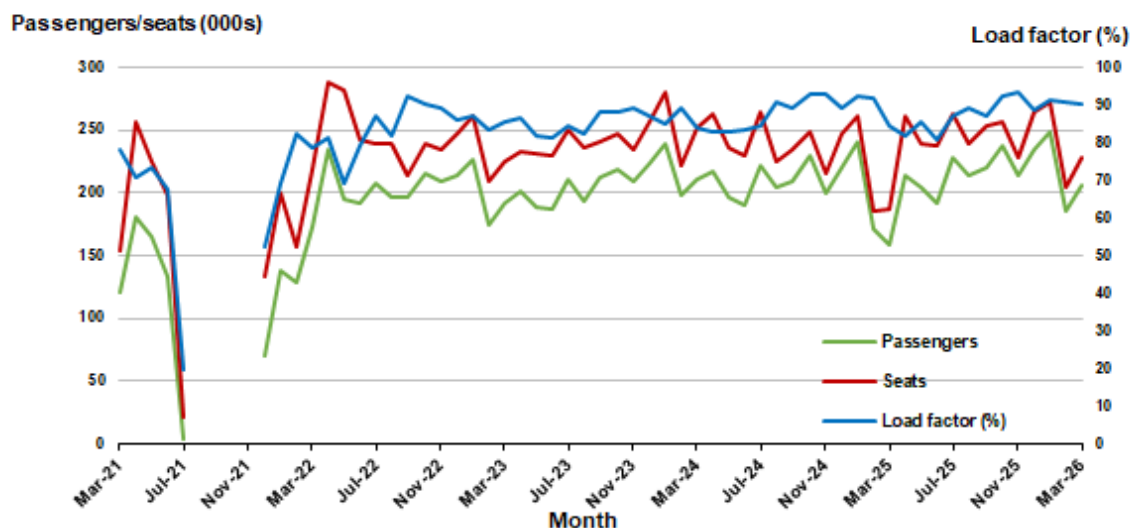


5. Gold Coast - Sydney ^(a)

Monthly data

	Mar 2025	Mar 2026	% Change
Passengers carried (000s)	158.6	205.9	29.9
Seats (000s)	187.5	228.3	21.8
Load factor %	84.6	90.2	5.6 *
Aircraft trips	1 065	1 300	22.1

* percentage point difference

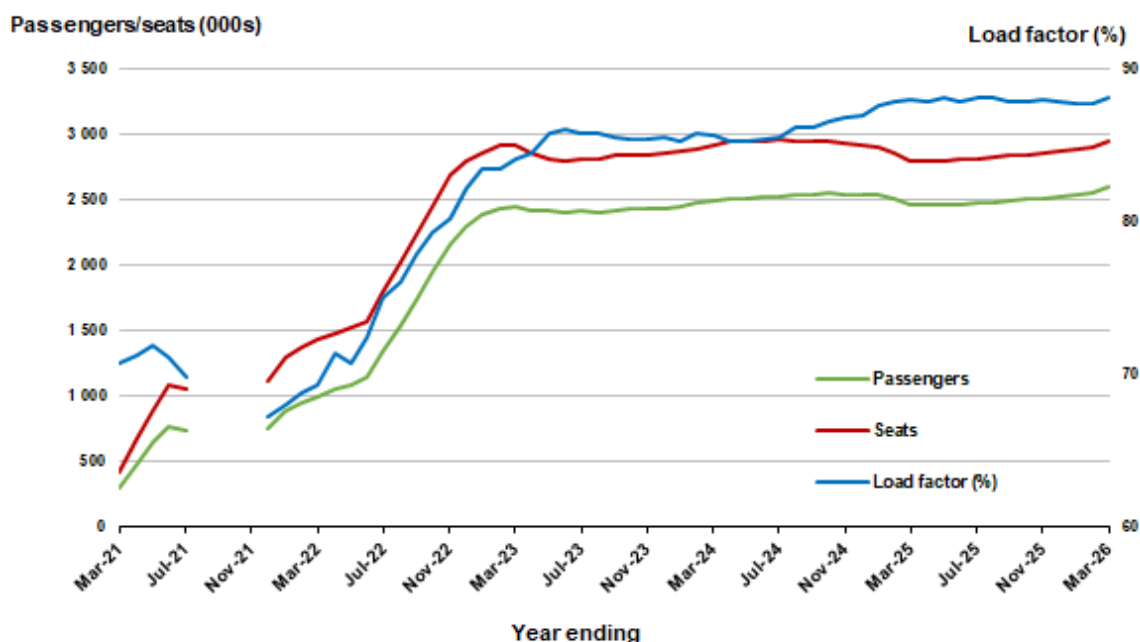


(a) August to November 2021 data not available for release

Moving annual data

	YE Mar 2025	YE Mar 2026	% Change
Passengers carried (000s)	2 133.7	2 205.4	3.4
Seats (000s)	2 386.1	2 467.4	3.4
Load factor %	89.4	89.4	0.0 *
Aircraft trips	12 931	13 341	3.2

* percentage point difference



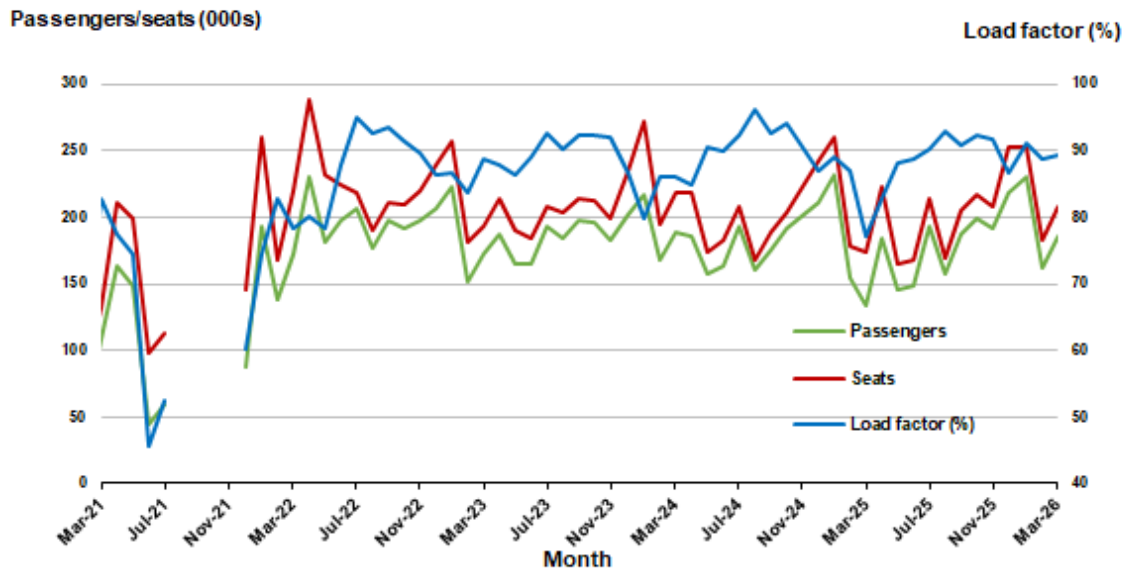
(a) August to November 2021 moving annuals are not available for release

6. Gold Coast - Melbourne ^(a)

Monthly data

	Mar 2025	Mar 2026	% Change
Passengers carried (000s)	133.6	185.7	39.0
Seats (000s)	173.3	208.2	20.1
Load factor %	77.1	89.2	12.1 *
Aircraft trips	935	1 140	21.9

* percentage point difference

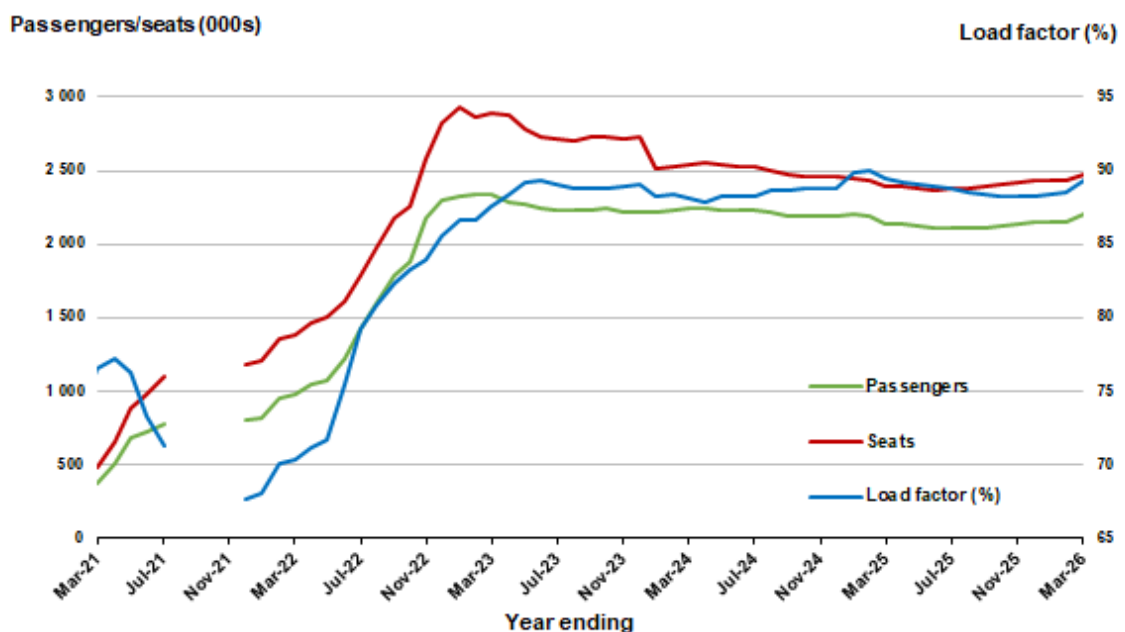


(a) August to November 2021 data not available for release.

Moving annual data

	YE Mar 2025	YE Mar 2026	% Change
Passengers carried (000s)	2 460.6	2 596.2	5.5
Seats (000s)	2 798.3	2 946.5	5.3
Load factor %	87.9	88.1	0.2 *
Aircraft trips	15 841	16 711	5.5

* percentage point difference



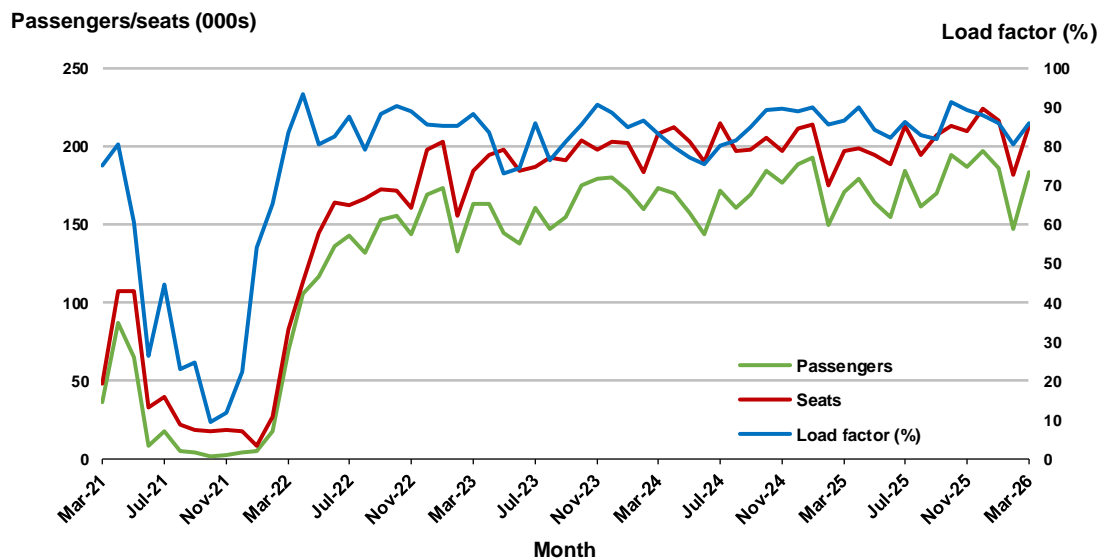
(a) August to November 2021 moving annual totals are not available for release.

7. Melbourne - Perth

Monthly data

	Mar 2025	Mar 2026	% Change
Passengers carried (000s)	170.8	183.5	7.5
Seats (000s)	197.1	213.4	8.3
Load factor %	86.7	86.0	-0.6 *
Aircraft trips	1 110	1 177	6.0

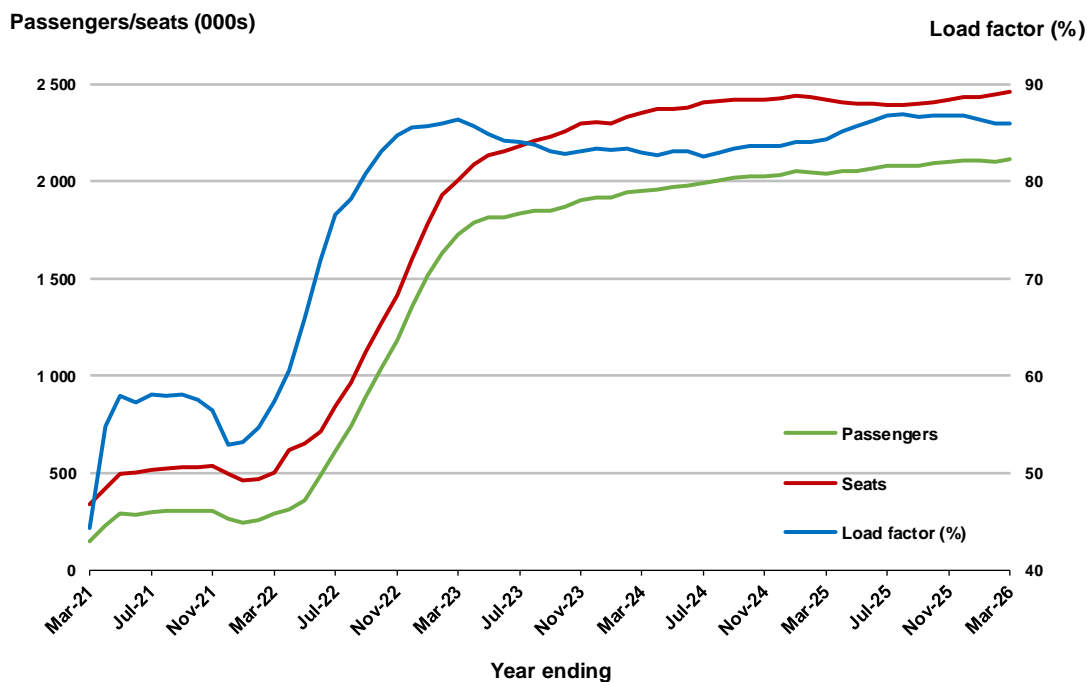
* percentage point difference



Moving annual data

	YE Mar 2025	YE Mar 2026	% Change
Passengers carried (000s)	2 039.3	2 112.7	3.6
Seats (000s)	2 420.2	2 459.2	1.6
Load factor %	84.3	85.9	1.6 *
Aircraft trips	13 311	13 746	3.3

* percentage point difference

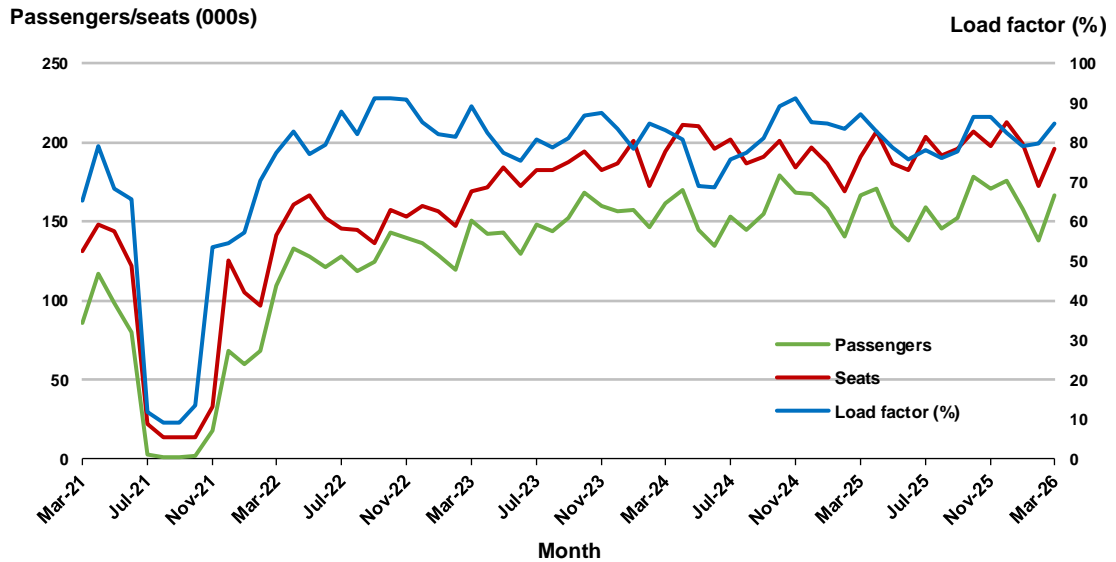


8. Adelaide - Sydney

Monthly data

	Mar 2025	Mar 2026	% Change
Passengers carried (000s)	166.6	166.5	0.0
Seats (000s)	191.2	196.2	2.6
Load factor %	87.1	84.8	-2.3 *
Aircraft trips	1 123	1 151	2.5

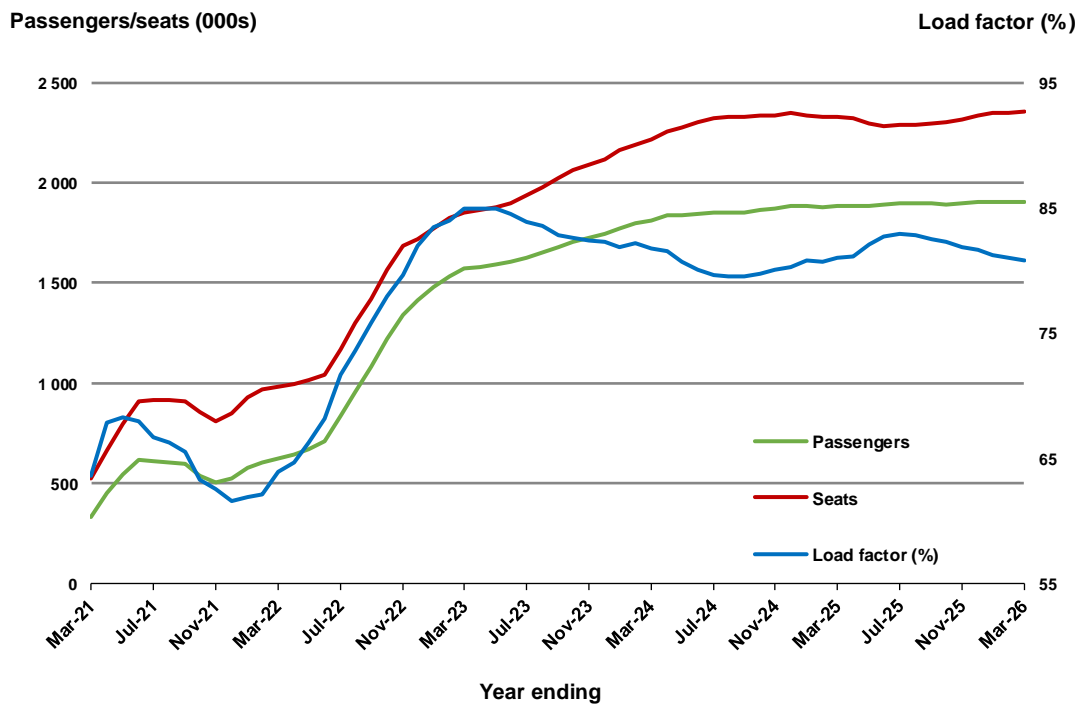
* percentage point difference



Moving annual data

	YE Mar 2025	YE Mar 2026	% Change
Passengers carried (000s)	1 883.8	1 901.8	1.0
Seats (000s)	2 326.3	2 353.9	1.2
Load factor %	81.0	80.8	-0.2 *
Aircraft trips	13 766	13 697	-0.5

* percentage point difference



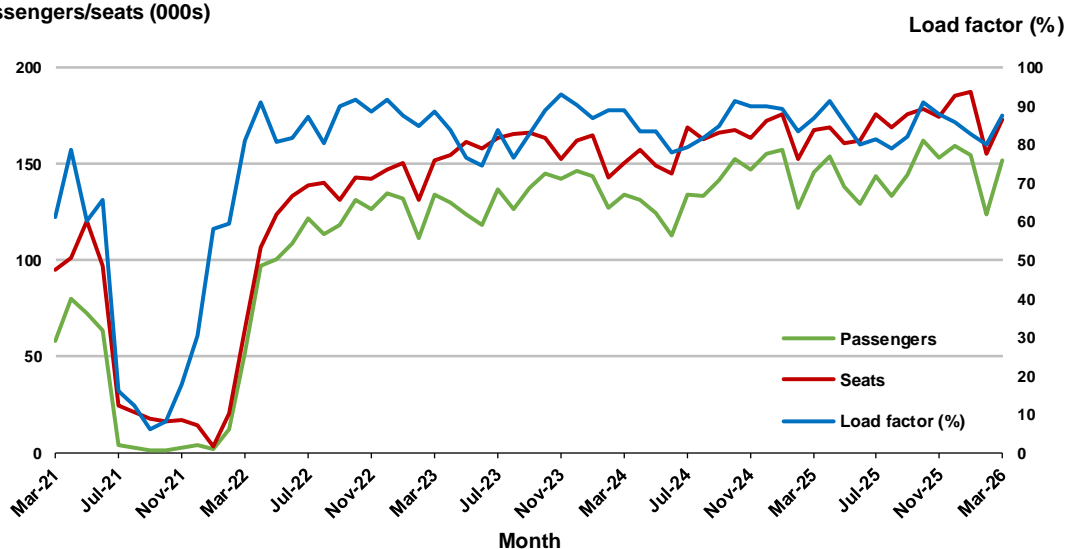
9. Perth - Sydney

Monthly data

	Mar 2025	Mar 2026	% Change
Passengers carried (000s)	145.8	151.9	4.2
Seats (000s)	167.7	173.1	3.3
Load factor %	87.0	87.7	0.8 *
Aircraft trips	895	941	5.1

* percentage point difference

Passengers/seats (000s)

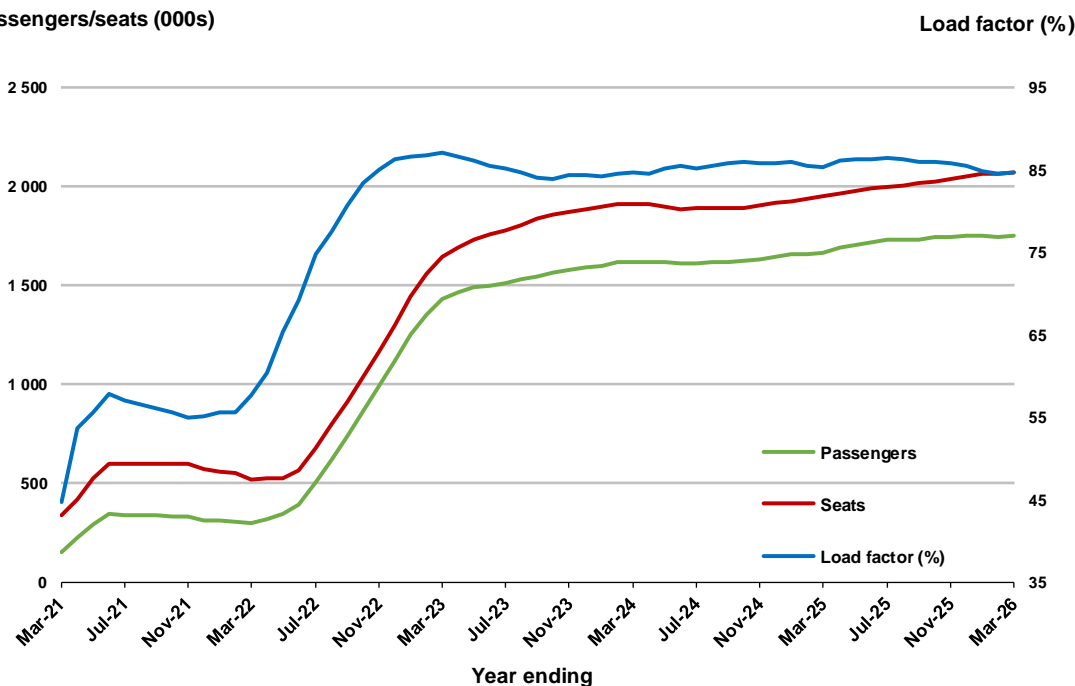


Moving annual data

	YE Mar 2025	YE Mar 2026	% Change
Passengers carried (000s)	1 665.1	1 749.2	5.1
Seats (000s)	1 950.7	2 066.8	6.0
Load factor %	85.4	84.6	-0.7 *
Aircraft trips	10 331	11 067	7.1

* percentage point difference

Passengers/seats (000s)

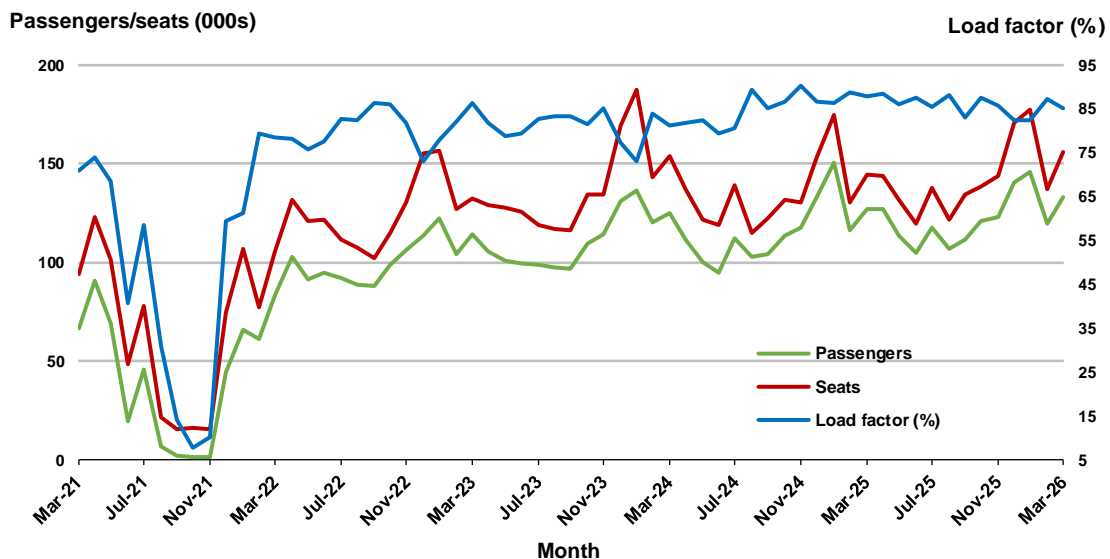


10. Hobart - Melbourne

Monthly data

	Mar 2025	Mar 2026	% Change
Passengers carried (000s)	126.8	132.8	4.7
Seats (000s)	144.3	156.2	8.3
Load factor %	87.9	85.0	-2.9 *
Aircraft trips	819	846	3.3

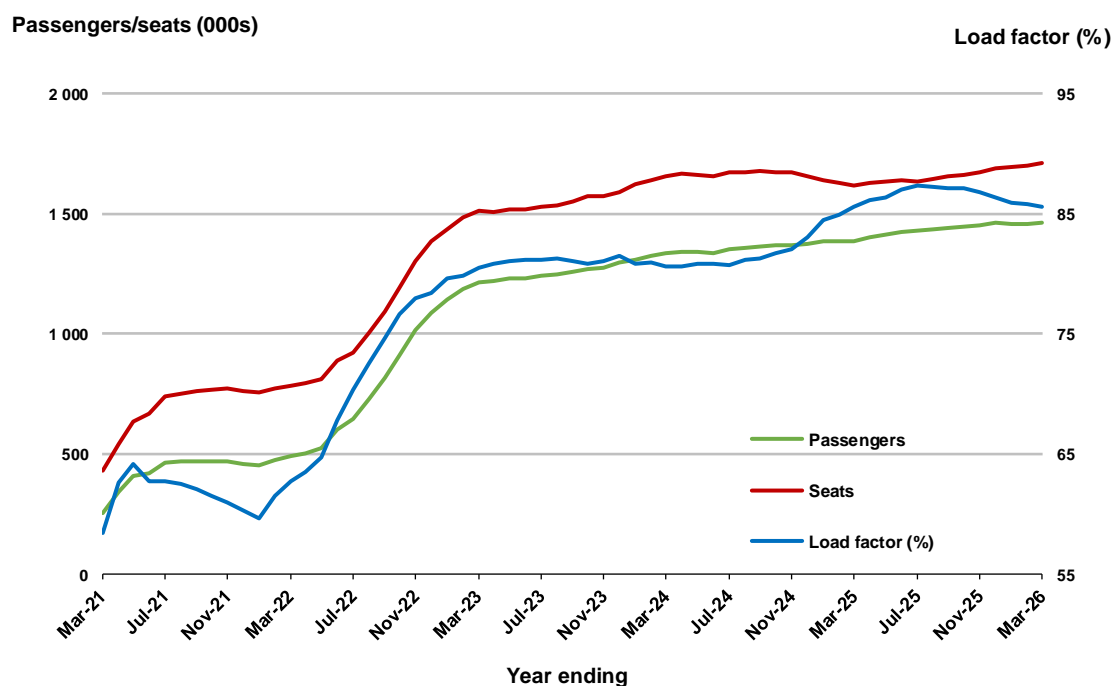
* percentage point difference



Moving annual data

	YE Mar 2025	YE Mar 2026	% Change
Passengers carried (000s)	1 385.0	1 465.2	5.8
Seats (000s)	1 619.3	1 712.5	5.8
Load factor %	85.5	85.6	0.0 *
Aircraft trips	9 574	9 785	2.2

* percentage point difference



TOP FIFTY REGIONAL AIRPORTS

Table 10: Top fifty regional airports (000s) — passenger movements, monthly

Airport	Mar 2025	Mar 2026	% Change
1 Cairns	288.9	290.3	0.5
2 Hobart	248.3	266.0	7.1
3 Launceston	134.1	134.8	0.6
4 Townsville	123.9	131.8	6.4
5 Newcastle	93.9	109.8	17.0
6 Darwin	111.0	108.6	-2.1
7 Mackay	69.5	74.1	6.7
8 Karratha	55.0	61.4	11.6
9 Rockhampton	48.5	54.4	12.0
10 Ballina	41.0	50.0	22.1
11 Proserpine	34.9	44.5	27.6
12 Port Hedland	40.2	43.7	8.6
13 Kalgoorlie	30.9	39.5	27.8
14 Newman	37.4	38.6	3.3
15 Hamilton Island	37.2	33.6	-9.7
16 Broome	28.0	28.0	0.1
17 Alice Springs	26.5	27.5	3.6
18 Ayers Rock	29.6	25.7	-13.1
19 Coffs Harbour	21.0	24.0	14.5
20 Dubbo	17.7	20.3	14.8
21 Wagga Wagga	18.5	19.9	7.3
22 Paraburdoo	21.8	19.6	-9.9
23 Hervey Bay	16.1	19.4	20.7
24 Albury	18.9	19.4	2.4
25 Mount Isa	18.3	19.0	3.5
26 Gladstone	16.9	18.1	7.4
27 Port Macquarie	16.2	18.0	10.7
28 Mildura	17.3	16.3	-5.8
29 Emerald	14.8	15.9	7.5
30 Port Lincoln	15.1	15.4	2.0
31 Tamworth	13.6	14.3	5.1
32 Orange	10.2	13.2	28.4
33 Devonport	12.6	12.6	0.0
34 Bundaberg	10.8	12.3	13.7
35 Geraldton	11.0	11.3	2.3
36 Armidale	8.4	10.1	20.6
37 Kununurra	9.0	9.2	2.9
38 Olympic Dam	8.8	9.1	3.8
39 Thursday Island	9.0	9.0	-0.9
40 Busselton	8.0	8.6	7.5
41 Weipa	8.0	8.3	3.8
42 Moranbah	8.4	7.9	-5.9
43 Burnie	7.0	7.6	7.7
44 Merimbula	5.8	6.5	11.3
45 Mount Gambier	6.4	6.4	1.4
46 Learmonth	8.6	6.4	-25.1
47 Gove	6.5	6.1	-5.5
48 Griffith	6.6	6.1	-7.5
49 Albany	5.9	6.0	2.2
50 Roma	4.4	5.6	28.0
Total top 50 regional airport	1 860.4	1 964.4	5.6
Total regional airports	1 982.0	2 083.8	5.1
Total domestic network	9 486.9	10 223.6	7.8

Note: Airport passenger movement numbers are the sum of passenger arrivals and departures at each airport.

Regional airports are defined as airports which are, according to Australian Statistical Geography Standard (ASGS), not based in Major Cities.

Table 11: Top fifty regional airports (000s) — passenger movements, annual

Airport	Mar 2025	Mar 2026	% Change
1 Cairns	4 090.6	4 160.4	1.7
2 Hobart	2 756.2	2 903.0	5.3
3 Townsville	1 640.5	1 653.3	0.8
4 Darwin	1 608.7	1 651.6	2.7
5 Launceston	1 427.1	1 468.7	2.9
6 Newcastle	1 185.9	1 244.8	5.0
7 Mackay	892.9	941.2	5.4
8 Karratha	634.6	723.1	14.0
9 Rockhampton	647.4	645.4	-0.3
10 Ballina	618.5	583.0	-5.7
11 Proserpine	507.1	567.7	12.0
12 Port Hedland	489.2	510.8	4.4
13 Hamilton Island	486.5	486.8	0.1
14 Broome	440.9	456.5	3.5
15 Newman	417.3	446.5	7.0
16 Kalgoorlie	368.8	419.8	13.8
17 Alice Springs	361.9	366.6	1.3
18 Ayers Rock	332.8	347.6	4.4
19 Paraburdoo	251.6	265.3	5.4
20 Coffs Harbour	281.0	239.0	-15.0
21 Mount Isa	239.4	233.4	-2.5
22 Albury	232.1	226.9	-2.2
23 Gladstone	197.1	225.2	14.2
24 Wagga Wagga	210.5	224.6	6.7
25 Hervey Bay	226.3	217.5	-3.9
26 Dubbo	206.4	213.6	3.5
27 Emerald	194.9	196.9	1.0
28 Port Macquarie	187.6	189.4	0.9
29 Mildura	197.1	186.0	-5.6
30 Port Lincoln	168.7	168.3	-0.2
31 Tamworth	163.4	157.0	-3.9
32 Bundaberg	129.5	150.4	16.1
33 Kununurra	144.3	141.1	-2.2
34 Devonport	138.9	138.8	0.0
35 Geraldton	122.6	130.3	6.3
36 Thursday Island	112.0	126.6	13.0
37 Orange	119.6	116.6	-2.5
38 Learmonth	101.0	110.3	9.2
39 Moranbah	109.5	106.4	-2.8
40 Armidale	101.9	103.8	1.9
41 Olympic Dam	94.0	100.8	7.2
42 Weipa	93.7	98.9	5.6
43 Busselton	110.4	95.6	-13.4
44 Gove	91.3	85.2	-6.7
45 Burnie	78.8	83.0	5.3
46 Griffith	72.2	76.1	5.4
47 Mount Gambier	67.5	74.0	9.6
48 Norfolk Island	71.3	72.9	2.3
49 Merimbula	67.6	66.1	-2.2
50 Albany	69.7	64.4	3.6
Total top 50 regional airport	23 558.8	24 261.3	3.0
Total regional airports	24 964.0	25 658.5	2.8
Total domestic network	118 188.0	121 563.4	2.9

Note: Airport passenger movement numbers are the sum of passenger arrivals and departures at each airport. Regional airports are defined as airports which are, according to Australian Statistical Geography Standard (ASGS), not based in Major Cities.

DOMESTIC CHARTER ACTIVITY

Table 12: Charter passengers carried and aircraft trips - monthly activity (000s)

	Mar 2025	Mar 2026	% Change
Total domestic charter passengers	344.2	392.1	13.9
Total domestic charter aircraft trips	5.8	6.6	12.8

Note: Helicopter, joyflights and sightseeing charter flights not included.

Table 13: Charter passengers carried and aircraft trips - annual activity (000s)

	YE Mar 2025	YE Mar 2026	% Change
Total domestic charter passengers	4 277.4	4 474.4	4.6
Total domestic charter aircraft trips	73.1	76.2	4.2

Note: Helicopter, joyflights and sightseeing charter flights not included.

Table 14: Domestic airports - charter activity - monthly (000s)

	Mar 2025	Mar 2026	% Change
Total domestic charter passenger movements	688.4	784.2	13.9
Total domestic charter aircraft movements	11.7	13.2	12.8
Perth airport charter passenger movements	243.9	280.6	15.0
Perth airport charter aircraft movements	3.5	4.0	14.7

Note: Helicopter, joyflights and sightseeing charter flights not included.

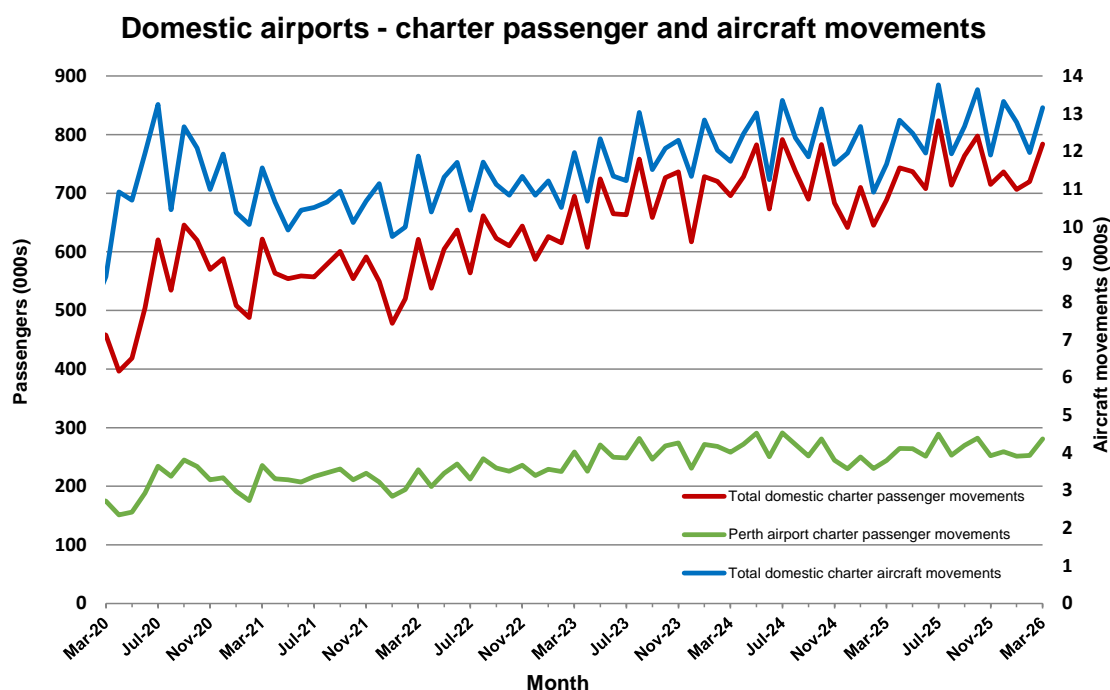
Charter passenger and aircraft movement numbers are the sum of arrivals and departures at each airport.

Table 15: Domestic airports - charter activity - annual (000s)

	YE Mar 2025	YE Mar 2026	% Change
Total domestic charter passenger movements	8 554.9	8 948.9	4.6
Total domestic charter aircraft movements	146.3	152.4	4.2
Perth airport charter passenger movements	3 105.7	3 168.0	2.0
Perth airport charter aircraft movements	45.9	45.9	-0.2

Note: Helicopter, joyflights and sightseeing charter flights not included.

Charter passenger and aircraft movement numbers are the sum of arrivals and departures at each airport.



DEFINITIONS

Aircraft Trips	The number of flight stages. A return flight counts as two aircraft trips.
Airport Movements	Airport movements (passenger and cargo) are measured once on arrival and once on departure. Each domestic trip generates two movements at airports. For example, a trip from Melbourne to Sydney will be counted twice, as a departure at Melbourne and as an arrival at Sydney. At the national level, the sum of all domestic airport traffic will therefore be equal to twice the number of trips undertaken.
Available Seat Kilometres (ASKs)	Calculated by multiplying the number of seats available on each flight stage, by the distance in kilometres between the ports. The distances used are Great Circle Distances.
City-Pair	The ports shown make up the city-pair route. Passenger movements shown for a city pair reflect total traffic in both directions.
Flight Stage	The operation of an aircraft from take-off to landing.
Load Factor	The total revenue passenger kilometres performed as a percentage of the total available seat kilometres.
Passengers Carried	Revenue passengers carried.
Regular Public Transport Services (RPT)	All air service operations in which aircraft are available for the transport of members of the public and are conducted in accordance with fixed schedules. It does not include charter or other non-scheduled operations.
Revenue Passengers	All passengers paying any fare. Frequent flyer redemption travellers are regarded as revenue passengers.
Revenue Passenger Kilometres (RPKs)	Calculated by multiplying the number of revenue passengers travelling on each flight stage, by the distance in kilometres between the ports. The distances used are Great Circle Distances.
Traffic on board by stages (TOB)	The total of all traffic (revenue passengers) on each flight stage between two directly connected airports.
..	Not available for confidentiality or other reasons.
NA	Not applicable.