



Australian Government

Department of Infrastructure, Transport, Regional Development and Communications

Bureau of Infrastructure, Transport and Regional Economics

STATISTICAL REPORT



Aviation

Domestic aviation activity
March 2020

© Commonwealth of Australia 2020

ISSN: 1832 - 1968

Ownership of intellectual property rights in this publication

Unless otherwise noted, copyright (and any other intellectual property rights, if any) in this publication is owned by the Commonwealth of Australia (referred to below as the Commonwealth).

Disclaimer

The material contained in this publication is made available on the understanding that the Commonwealth is not providing professional advice, and that users exercise their own skill and care with respect to its use, and seek independent advice if necessary.

The Commonwealth makes no representations or warranties as to the contents or accuracy of the information contained in this publication. To the extent permitted by law, the Commonwealth disclaims liability to any person or organisation in respect of anything done, or omitted to be done, in reliance upon information contained in this publication.

Creative Commons licence

With the exception of (a) the Coat of Arms; and (b) the Department of Infrastructure, Transport, Regional Development and Communications' photos and graphics, copyright in this publication is licensed under a Creative Commons Attribution 3.0 Australia Licence.

Creative Commons Attribution 3.0 Australia Licence is a standard form licence agreement that allows you to copy, communicate and adapt this publication provided that you attribute the work to the Commonwealth and abide by the other licence terms. A summary of the licence terms is available from <http://creativecommons.org/licenses/by/3.0/au/deed.en>.

The full licence terms are available from <http://creativecommons.org/licenses/by/3.0/au/legalcode>.

Use of the Coat of Arms

The Department of the Prime Minister and Cabinet sets the terms under which the Coat of Arms is used. Please refer to the Department's Commonwealth Coat of Arms and Government branding web page <http://www.dpmc.gov.au/guidelines/index.cfm#brand> and, in particular, the Guidelines on the use of the Commonwealth Coat of Arms publication.

An appropriate citation for this report is:

Bureau of Infrastructure, Transport and Regional Economics (BITRE), 2020, Domestic aviation activity, Statistical Report, BITRE, Canberra ACT.

Contact us

This publication is available in PDF format. All other rights are reserved, including in relation to any Departmental logos or trade marks which may exist. For enquiries regarding the licence and any use of this publication, please contact:

Bureau of Infrastructure, Transport and Regional Economics (BITRE)
Department of Infrastructure, Transport, Regional Development and Communications
GPO Box 501, Canberra ACT 2601, Australia
Telephone: (international) +61 2 6274 7210
Fax: (international) +61 2 6274 6855
Email: bitre@infrastructure.gov.au
Website: www.bitre.gov.au

Inquiries

Should you require additional information about the statistics contained in this publication:

Nebojsa Pavlovic

Telephone (02) 6274 6817 or Facsimile (02) 6274 7727

Electronic mail: AVSTATS@infrastructure.gov.au

Nebojsa.Pavlovic@infrastructure.gov.au

Web site: <http://www.bitre.gov.au/statistics/aviation/domestic.aspx>

FOREWORD

This report provides an overview of domestic (including charter) commercial aviation activity in Australia for the month of March 2020.

The data cover revenue passengers carried by Australian-registered operators of scheduled regular public transport services over Australian flight stages and fixed-wing charter operators. These estimates include passengers carried between domestic airports on international flights operated by these carriers. The passengers carried refer to traffic on board by stages.

Estimates of passengers and aircraft movements for charter aviation are included in this publication, where BITRE confidentiality standards are met.

Individual routes shown are restricted to those with an average exceeding 8 000 passengers per month over the previous six months where two or more airlines operate in competition. For the month of March 2020, there were 63 such routes.

Information on the total network for the month of March 2020 and on the Regular Public Transport (RPT) network for the month of March 2020 is presented on page 2, with estimates for the year ended March 2020 presented on page 3.

Detailed information on the 63 individual routes can be found in the RPT summary pages 4-13 of this publication.

The top ten airports in terms of RPT passenger movements are shown on page 14.

Data on domestic RPT cargo movements at the top five cargo airports are provided on page 15. The table includes cargo carried on passenger flights operated by the Qantas group (including Jetstar), Virgin Australia, Air North and Skippers as well as the cargo carried by dedicated freighter aircraft operated by Qantas Freight, Toll Aviation and Virgin Australia Cargo.

The long-term trends for the top ten competitive RPT routes are presented graphically on pages 16-25.

Domestic RPT passenger movements at the top 50 regional airports are presented on pages 26-27.

Tables providing estimates of domestic charter aviation activity are shown on page 28. BITRE confidentiality standards restrict publication of detailed estimates for individual Australian airports, with the exception of Perth Airport.

A list of definitions can be found on page 29.

This report was prepared by the Aviation Statistics Section of the Bureau of Infrastructure, Transport and Regional Economics with data provided by airlines.

Estimates are included where data were not available and data presented in this publication may contain revisions to previously published data.

Where figures have been rounded, discrepancies may occur between sums of component items and totals, and in percentage changes which are derived from figures prior to rounding.

CONTENTS

| | |
|--|-----------|
| Highlights | 1 |
| Total network..... | 2 |
| RPT network..... | 2 |
| Top competitive routes..... | 4 |
| Top ten airports – passenger movements..... | 14 |
| Top five airports – cargo movements..... | 15 |
| Top ten routes | 16 |
| 1. Melbourne – Sydney | 16 |
| 2. Brisbane – Sydney..... | 17 |
| 3. Brisbane – Melbourne..... | 18 |
| 4. Gold Coast – Sydney | 19 |
| 5. Adelaide – Melbourne | 20 |
| 6. Melbourne – Perth | 21 |
| 7. Gold Coast – Melbourne | 22 |
| 8. Adelaide – Sydney | 23 |
| 9. Perth – Sydney | 24 |
| 10. Hobart – Melbourne | 25 |
| Top fifty regional airports | 26 |
| Domestic charter activity..... | 28 |
| Definitions | 29 |

This page is intentionally left blank.

HIGHLIGHTS

Travel restrictions due to the COVID-19 outbreak resulted in the biggest disruptions in domestic air travel since September 1989 (pilots' strike).

There were 3.31 million passengers carried on Australian domestic commercial aviation (including charter operations) in March 2020, a decrease of 37.2 per cent on March 2019. For the month of March 2020, there were 47.6 thousand aircraft trips, a decrease of 16.9 per cent compared to March 2019.

3.07 million passengers were carried on RPT flights in March 2020, a decrease of 39.3 per cent on March 2019.

For the year ending March 2020 there were 59.26 million RPT passengers, a decrease of 2.7 per cent on the year ending March 2019.

RPT revenue passenger kilometres (RPKs) performed were 3.60 billion for the month, down 37.2 per cent compared with March 2019. Capacity, measured by available seat kilometres (ASKs), decreased by 21.1 per cent compared with March 2019 to a total of 5.73 billion.

The industry wide load factor (RPKs/ASKs) decreased from 78.7 per cent in March 2019 to 62.7 per cent in March 2020. Load factors decreased on all 62 individual RPT routes for which data is available for publishing in both years.

For the month of March 2020, Melbourne – Sydney remained Australia's busiest RPT route with 416.3 thousand passengers, a decrease of 49.0 per cent compared with March 2019. It was followed by Brisbane – Sydney with 228.4 thousand passengers (down 43.5 per cent) and Brisbane – Melbourne with 168.9 thousand passengers (down 42.8 per cent).

The greatest percentage decrease in RPT passenger numbers, compared to March 2019, was on the Ayers Rock – Sydney route (down 50.1 per cent). There were large decreases on a number of other routes, including Broome – Perth (down 49.6 per cent), Melbourne – Sydney (down 49.0 per cent) and Armidale – Sydney (down 47.5 per cent).

In March 2020, the Perth – Port Hedland route was the only route to record an increase in passenger numbers (up 1.5 per cent) compared with March 2019.

Sydney remained Australia's busiest domestic airport with 1.32 million passenger movements in March 2020 (down 43.3 per cent), followed by Melbourne with 1.25 million passenger movements (down 42.9 per cent) and Brisbane with 885.4 thousand passenger movements (down 37.9 per cent).

Total cargo movements at Australian airports on domestic RPT flights were 37.4 thousand tonnes in March 2020, a decrease of 5.4 per cent compared with March 2019.

In March 2020, there were 1.30 million domestic passenger movements through regional airports, 34.9 per cent less than in March 2019. Out of the top 50 regional airports, the largest decrease was at Alice Springs airport (down 50.2 per cent on March 2019). The only increases, compared with March 2019, were recorded at Paraburdoo airport (up 3.0 per cent) and Port Hedland airport (up 2.3 per cent).

Fixed-wing charter operators carried 241.5 thousand passengers in March 2020, an increase of 14.6 per cent on March 2019. Perth Airport accounted for 38.2 per cent of all charter passengers in Australia.

TOTAL NETWORK

Summary of monthly commercial aviation activity

| | Mar 2019 | Mar 2020 | % Change |
|-------------------------------------|----------|----------|----------|
| Total passengers carried (millions) | 5.27 | 3.31 | -37.2 |
| Aircraft trips (000s) | 57.3 | 47.6 | -16.9 |

Note: Regular Public Transport and charter aviation activity
Helicopter, joyflights and sightseeing charter flights not included.

RPT NETWORK

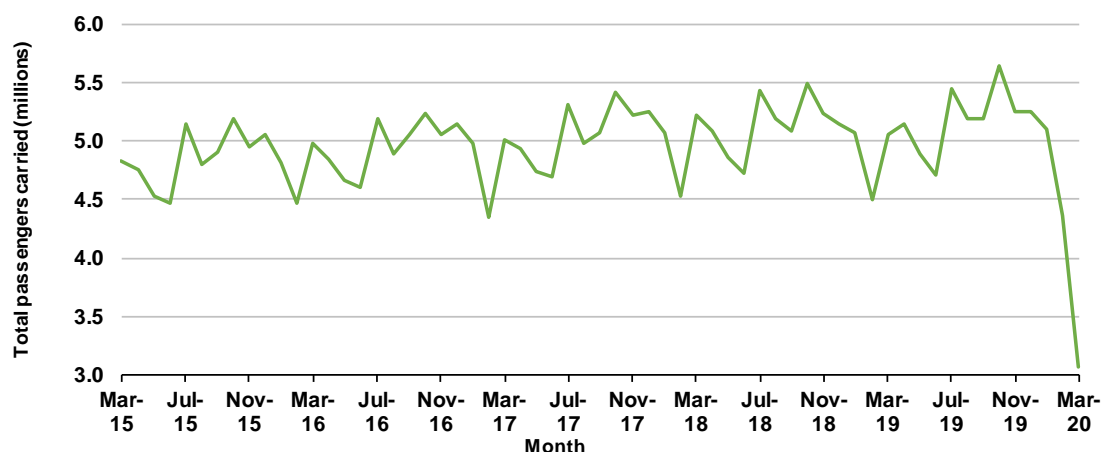
Summary of monthly RPT activity

| | Mar 2019 | Mar 2020 | % Change |
|---|----------|----------|----------|
| Total passengers carried (millions) | 5.06 | 3.07 | -39.3 |
| Revenue passenger kilometres (billions) | 5.72 | 3.60 | -37.2 |
| Available seats (millions) | 6.50 | 5.03 | -22.7 |
| Available seat kilometres (billions) | 7.27 | 5.73 | -21.1 |
| Load factor % | 78.7 | 62.7 | -16.0 * |
| Aircraft trips (000s) | 53.7 | 43.1 | -19.7 |

* percentage point difference

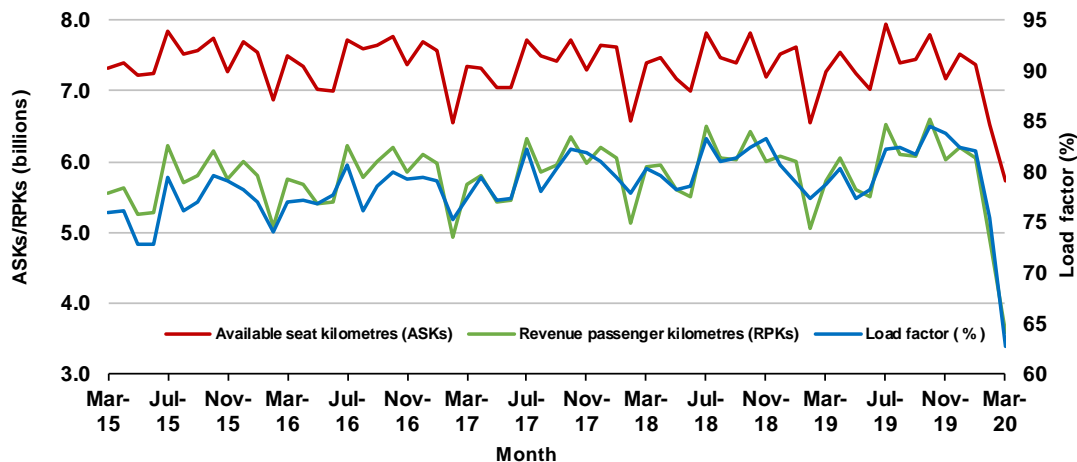
Domestic RPT passenger traffic

(monthly)



RPT Network utilisation

(monthly)



TOTAL NETWORK

Summary of annual commercial aviation activity

| | YE Mar 2019 | YE Mar 2020 | % Change |
|-------------------------------------|-------------|-------------|----------|
| Total passengers carried (millions) | 63.39 | 62.11 | -2.0 |
| Aircraft trips (000s) | 673.4 | 673.2 | 0.0 |

Note: Regular Public Transport and charter aviation activity
Helicopter, joyflights and sightseeing charter flights not included.

RPT NETWORK

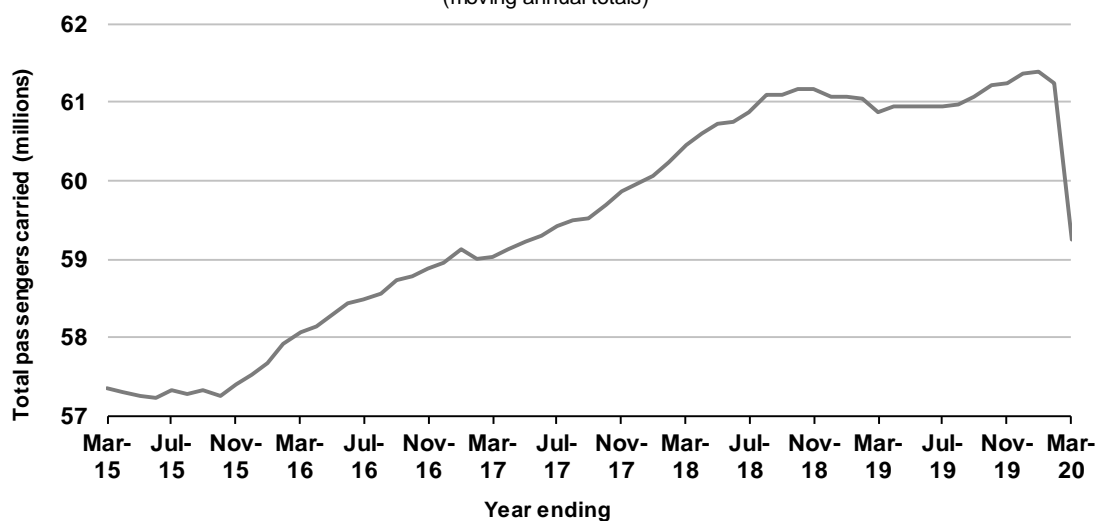
Summary of annual RPT activity

| | YE Mar 2019 | YE Mar 2020 | % Change |
|---|-------------|-------------|----------|
| Total passengers carried (millions) | 60.88 | 59.26 | -2.7 |
| Revenue passenger kilometres (billions) | 70.94 | 69.24 | -2.4 |
| Available seats (millions) | 77.20 | 76.00 | -1.6 |
| Available seat kilometres (billions) | 88.31 | 86.69 | -1.8 |
| Load factor % | 80.3 | 79.9 | -0.5 * |
| Aircraft trips (000s) | 629.4 | 623.8 | -0.9 |

* percentage point difference

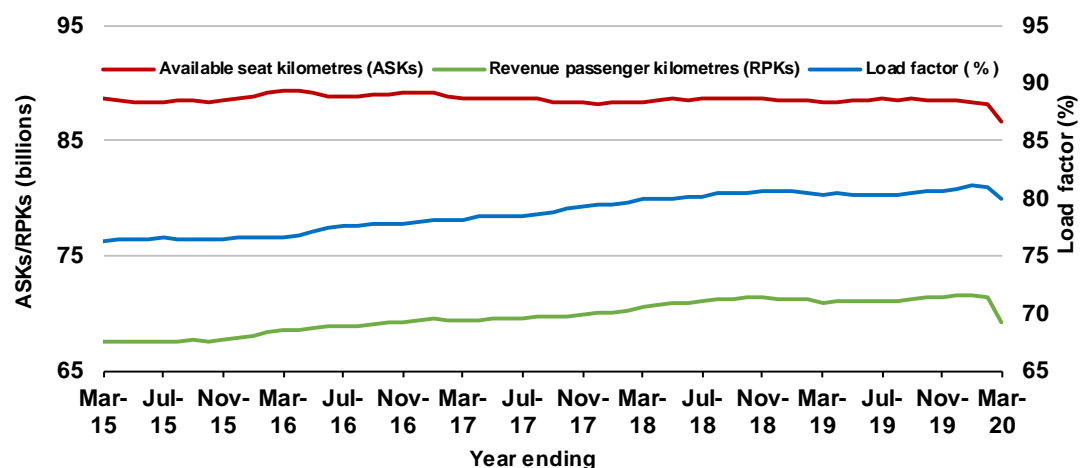
Domestic RPT passenger traffic

(moving annual totals)



RPT Network utilisation

(moving annual totals)



TOP COMPETITIVE ROUTES

Table 1: Passengers carried (000s) — annual activity

| | City-Pair | YE Mar 2019 | YE Mar 2020 | % Change |
|----|----------------------------|--------------------|--------------------|-----------------|
| 1 | Melbourne - Sydney | 9 235.9 | 8 719.1 | -5.6 |
| 2 | Brisbane - Sydney | 4 811.7 | 4 636.7 | -3.6 |
| 3 | Brisbane - Melbourne | 3 580.0 | 3 478.0 | -2.8 |
| 4 | Gold Coast - Sydney | 2 696.2 | 2 652.4 | -1.6 |
| 5 | Adelaide - Melbourne | 2 511.4 | 2 433.2 | -3.1 |
| 6 | Melbourne - Perth | 2 116.9 | 2 055.5 | -2.9 |
| 7 | Gold Coast - Melbourne | 2 062.4 | 2 050.5 | -0.6 |
| 8 | Adelaide - Sydney | 1 892.6 | 1 800.8 | -4.9 |
| 9 | Perth - Sydney | 1 702.9 | 1 644.8 | -3.4 |
| 10 | Hobart - Melbourne | 1 654.7 | 1 605.6 | -3.0 |
| 11 | Brisbane - Cairns | 1 294.4 | 1 248.7 | -3.5 |
| 12 | Canberra - Melbourne | 1 182.6 | 1 128.7 | -4.6 |
| 13 | Cairns - Sydney | 1 110.7 | 1 024.8 | -7.7 |
| 14 | Brisbane - Townsville | 995.3 | 999.1 | 0.4 |
| 15 | Brisbane - Perth | 941.1 | 951.9 | 1.1 |
| 16 | Launceston - Melbourne | 957.5 | 922.0 | -3.7 |
| 17 | Canberra - Sydney | 943.5 | 894.7 | -5.2 |
| 18 | Adelaide - Brisbane | 841.5 | 858.4 | 2.0 |
| 19 | Cairns - Melbourne | 852.2 | 814.3 | -4.4 |
| 20 | Brisbane - Mackay | 746.9 | 767.6 | 2.8 |
| 21 | Hobart - Sydney | 705.4 | 708.2 | 0.4 |
| 22 | Brisbane - Canberra | 643.0 | 647.8 | 0.7 |
| 23 | Adelaide - Perth | 630.7 | 644.1 | 2.1 |
| 24 | Sunshine Coast - Sydney | 629.9 | 633.7 | 0.6 |
| 25 | Brisbane - Newcastle | 586.1 | 587.9 | 0.3 |
| 26 | Melbourne - Sunshine Coast | 541.1 | 545.1 | 0.7 |
| 27 | Brisbane - Rockhampton | 518.5 | 527.5 | 1.8 |
| 28 | Karratha - Perth | 442.5 | 464.0 | 4.9 |
| 29 | Melbourne - Newcastle | 489.8 | 461.8 | -5.7 |
| 30 | Ballina - Sydney | 433.1 | 423.5 | -2.2 |
| 31 | Perth - Port Hedland | 365.7 | 381.9 | 4.4 |
| 32 | Brisbane - Darwin | 367.3 | 346.1 | -5.8 |
| 33 | Newman - Perth | 312.2 | 344.2 | 10.2 |
| 34 | Broome - Perth | 332.3 | 317.3 | -4.5 |
| 35 | Coffs Harbour - Sydney | 335.0 | 314.7 | -6.1 |
| 36 | Darwin - Melbourne | 306.2 | 305.2 | -0.3 |
| 37 | Darwin - Sydney | 307.4 | 304.5 | -0.9 |
| 38 | Launceston - Sydney | 286.9 | 276.6 | -3.6 |
| 39 | Kalgoorlie - Perth | 284.6 | 268.2 | -5.8 |
| 40 | Brisbane - Proserpine | 241.0 | 255.6 | 6.0 |
| 41 | Brisbane - Gladstone | 248.4 | 241.9 | -2.6 |
| 42 | Brisbane - Hobart | 235.1 | 237.6 | 1.0 |
| 43 | Melbourne - Mildura | 227.7 | 223.0 | -2.1 |
| 44 | Albury - Sydney | 227.5 | 219.8 | -3.4 |
| 45 | Hamilton Island - Sydney | 202.0 | 214.7 | 6.3 |
| 46 | Adelaide - Gold Coast | 217.6 | 209.8 | -3.6 |
| 47 | Brisbane - Emerald | 196.1 | 200.3 | 2.1 |
| 48 | Adelaide - Canberra | 194.8 | 188.5 | -3.2 |
| 49 | Port Macquarie - Sydney | 186.4 | 185.1 | -0.7 |
| 50 | Ayers Rock - Sydney | 190.6 | 183.3 | -3.9 |

continued

Table 1: (continued) Passengers carried (000s) — annual activity

| | City-Pair | YE Mar 2019 | YE Mar 2020 | % Change |
|----|-------------------------------|--------------------|--------------------|-----------------|
| 51 | Sydney - Wagga Wagga | 180.0 | 176.0 | -2.2 |
| 52 | Dubbo - Sydney | 187.4 | 175.8 | -6.2 |
| 53 | Adelaide - Port Lincoln | 168.1 | 171.1 | 1.8 |
| 54 | Sydney - Tamworth | 173.7 | 169.6 | -2.4 |
| 55 | Darwin - Perth | 186.8 | 169.3 | -9.4 |
| 56 | Sydney - Townsville | 170.6 | 167.5 | -1.8 |
| 57 | Brisbane - Bundaberg | 158.6 | 149.3 | -5.9 |
| 58 | Brisbane - Mount Isa | 131.2 | 142.4 | 8.6 |
| 59 | Adelaide - Alice Springs | 131.1 | 138.1 | 5.3 |
| 60 | Cairns - Townsville | 145.7 | 137.8 | -5.4 |
| 61 | Brisbane - Hamilton Island | 122.7 | 130.6 | 6.4 |
| 62 | Armidale - Sydney | 121.9 | 119.2 | -2.2 |
| 63 | Hamilton Island - Melbourne | .. | 33.8 | NA (a) |
| | Total domestic network | 60 875.5 | 59 256.3 | -2.7 |

(a) Hamilton Island - Melbourne route included from November 2019, prior data not shown.

Table 2: Passengers carried (000s) — monthly activity

| | City-Pair | Mar 2019 | Mar 2020 | % Change |
|----|----------------------------|-----------------|-----------------|-----------------|
| 1 | Melbourne - Sydney | 816.4 | 416.3 | -49.0 |
| 2 | Brisbane - Sydney | 404.5 | 228.4 | -43.5 |
| 3 | Brisbane - Melbourne | 295.3 | 168.9 | -42.8 |
| 4 | Gold Coast - Sydney | 217.5 | 130.8 | -39.9 |
| 5 | Adelaide - Melbourne | 227.4 | 129.4 | -43.1 |
| 6 | Melbourne - Perth | 175.4 | 117.2 | -33.2 |
| 7 | Gold Coast - Melbourne | 158.5 | 102.0 | -35.6 |
| 8 | Adelaide - Sydney | 166.6 | 99.2 | -40.5 |
| 9 | Perth - Sydney | 140.9 | 94.9 | -32.7 |
| 10 | Hobart - Melbourne | 150.7 | 90.5 | -40.0 |
| 11 | Brisbane - Cairns | 99.6 | 61.1 | -38.7 |
| 12 | Canberra - Melbourne | 106.6 | 57.9 | -45.7 |
| 13 | Brisbane - Perth | 75.7 | 56.7 | -25.1 |
| 14 | Brisbane - Townsville | 84.3 | 56.2 | -33.3 |
| 15 | Launceston - Melbourne | 86.7 | 51.2 | -40.9 |
| 16 | Adelaide - Brisbane | 69.0 | 45.5 | -34.2 |
| 17 | Brisbane - Mackay | 61.2 | 44.9 | -26.6 |
| 18 | Cairns - Sydney | 80.8 | 43.4 | -46.3 |
| 19 | Canberra - Sydney | 81.7 | 43.0 | -47.3 |
| 20 | Hobart - Sydney | 62.7 | 40.1 | -36.1 |
| 21 | Adelaide - Perth | 53.0 | 35.3 | -33.3 |
| 22 | Cairns - Melbourne | 51.5 | 33.1 | -35.6 |
| 23 | Brisbane - Canberra | 51.2 | 32.3 | -36.9 |
| 24 | Sunshine Coast - Sydney | 51.6 | 31.3 | -39.4 |
| 25 | Brisbane - Rockhampton | 43.9 | 29.6 | -32.6 |
| 26 | Brisbane - Newcastle | 50.5 | 29.5 | -41.5 |
| 27 | Melbourne - Sunshine Coast | 40.5 | 28.6 | -29.3 |
| 28 | Perth - Port Hedland | 27.5 | 27.9 | 1.5 |
| 29 | Karratha - Perth | 35.3 | 27.6 | -21.7 |
| 30 | Melbourne - Newcastle | 40.5 | 23.1 | -43.0 |
| 31 | Ballina - Sydney | 35.7 | 22.6 | -36.8 |
| 32 | Newman - Perth | 27.0 | 19.5 | -27.9 |
| 33 | Kalgoorlie - Perth | 23.1 | 16.9 | -26.8 |
| 34 | Darwin - Sydney | 19.5 | 16.6 | -14.8 |
| 35 | Launceston - Sydney | 26.9 | 16.6 | -38.4 |
| 36 | Coffs Harbour - Sydney | 28.1 | 16.4 | -41.7 |
| 37 | Brisbane - Darwin | 23.6 | 15.1 | -36.0 |
| 38 | Darwin - Melbourne | 21.4 | 14.8 | -30.9 |
| 39 | Brisbane - Hobart | 19.8 | 14.1 | -28.8 |
| 40 | Brisbane - Proserpine | 18.8 | 13.7 | -27.1 |
| 41 | Brisbane - Gladstone | 20.6 | 13.3 | -35.5 |
| 42 | Brisbane - Emerald | 16.3 | 13.1 | -20.1 |
| 43 | Melbourne - Mildura | 20.6 | 12.2 | -40.7 |
| 44 | Albury - Sydney | 19.3 | 12.1 | -37.2 |
| 45 | Hamilton Island - Sydney | 14.3 | 11.8 | -17.0 |
| 46 | Adelaide - Gold Coast | 17.1 | 11.6 | -32.0 |
| 47 | Adelaide - Port Lincoln | 15.5 | 11.2 | -27.7 |
| 48 | Broome - Perth | 22.1 | 11.1 | -49.6 |
| 49 | Port Macquarie - Sydney | 16.3 | 10.3 | -36.8 |
| 50 | Adelaide - Canberra | 17.8 | 10.1 | -43.1 |

continued

Table 2: (continued) Passengers carried (000s) — monthly activity

| | City-Pair | Mar 2019 | Mar 2020 | % Change |
|----|-------------------------------|-----------------|-----------------|-----------------|
| 51 | Dubbo - Sydney | 16.2 | 9.9 | -39.1 |
| 52 | Sydney - Wagga Wagga | 15.4 | 9.3 | -39.3 |
| 53 | Brisbane - Mount Isa | 10.7 | 9.1 | -15.2 |
| 54 | Sydney - Tamworth | 15.0 | 9.0 | -39.9 |
| 55 | Darwin - Perth | 13.0 | 8.9 | -31.4 |
| 56 | Ayers Rock - Sydney | 16.5 | 8.2 | -50.1 |
| 57 | Brisbane - Bundaberg | 12.9 | 8.2 | -36.2 |
| 58 | Cairns - Townsville | 12.1 | 8.0 | -34.0 |
| 59 | Adelaide - Alice Springs | 11.0 | 7.2 | -35.2 |
| 60 | Sydney - Townsville | 11.3 | 6.6 | -41.8 |
| 61 | Brisbane - Hamilton Island | 9.8 | 6.6 | -32.8 |
| 62 | Armidale - Sydney | 10.6 | 5.6 | -47.5 |
| 63 | Hamilton Island - Melbourne | .. | 3.7 | NA (a) |
| | Total domestic network | 5 062.6 | 3 071.2 | -39.3 |

(a) Hamilton Island - Melbourne route included from November 2019, prior data not shown.

Table 3: Available seats (000s) — monthly activity

| | City-Pair | Mar 2019 | Mar 2020 | % Change |
|----|----------------------------|-----------------|-----------------|-----------------|
| 1 | Melbourne - Sydney | 954.0 | 650.2 | -31.8 |
| 2 | Brisbane - Sydney | 491.6 | 362.0 | -26.4 |
| 3 | Brisbane - Melbourne | 363.9 | 274.1 | -24.7 |
| 4 | Gold Coast - Sydney | 248.6 | 185.2 | -25.5 |
| 5 | Adelaide - Melbourne | 277.0 | 205.1 | -25.9 |
| 6 | Melbourne - Perth | 211.2 | 179.5 | -15.0 |
| 7 | Gold Coast - Melbourne | 177.7 | 141.2 | -20.5 |
| 8 | Adelaide - Sydney | 196.7 | 152.0 | -22.8 |
| 9 | Perth - Sydney | 169.3 | 146.4 | -13.5 |
| 10 | Hobart - Melbourne | 190.4 | 138.6 | -27.2 |
| 11 | Brisbane - Cairns | 119.1 | 92.2 | -22.6 |
| 12 | Canberra - Melbourne | 151.0 | 118.8 | -21.4 |
| 13 | Brisbane - Perth | 96.0 | 85.0 | -11.5 |
| 14 | Brisbane - Townsville | 104.3 | 86.6 | -16.9 |
| 15 | Launceston - Melbourne | 110.9 | 76.0 | -31.4 |
| 16 | Adelaide - Brisbane | 88.4 | 72.9 | -17.5 |
| 17 | Brisbane - Mackay | 81.1 | 69.9 | -13.8 |
| 18 | Cairns - Sydney | 101.0 | 70.2 | -30.5 |
| 19 | Canberra - Sydney | 111.3 | 79.6 | -28.4 |
| 20 | Hobart - Sydney | 75.5 | 58.5 | -22.6 |
| 21 | Adelaide - Perth | 73.0 | 56.8 | -22.2 |
| 22 | Cairns - Melbourne | 65.5 | 48.5 | -25.9 |
| 23 | Brisbane - Canberra | 70.4 | 57.1 | -18.9 |
| 24 | Sunshine Coast - Sydney | 61.7 | 45.9 | -25.6 |
| 25 | Brisbane - Rockhampton | 57.5 | 51.2 | -11.0 |
| 26 | Brisbane - Newcastle | 69.7 | 50.8 | -27.1 |
| 27 | Melbourne - Sunshine Coast | 48.0 | 37.8 | -21.1 |
| 28 | Perth - Port Hedland | 44.6 | 52.6 | 17.9 |
| 29 | Karratha - Perth | 55.5 | 58.2 | 5.0 |
| 30 | Melbourne - Newcastle | 46.9 | 33.4 | -28.8 |
| 31 | Ballina - Sydney | 41.3 | 33.3 | -19.3 |
| 32 | Newman - Perth | 43.9 | 40.0 | -8.9 |
| 33 | Kalgoorlie - Perth | 43.3 | 36.6 | -15.4 |
| 34 | Darwin - Sydney | 29.8 | 26.8 | -10.2 |
| 35 | Launceston - Sydney | 31.8 | 22.7 | -28.5 |
| 36 | Coffs Harbour - Sydney | 38.0 | 28.5 | -25.0 |
| 37 | Brisbane - Darwin | 32.4 | 23.0 | -29.0 |
| 38 | Darwin - Melbourne | 28.9 | 22.1 | -23.6 |
| 39 | Brisbane - Hobart | 25.3 | 19.6 | -22.7 |
| 40 | Brisbane - Proserpine | 25.3 | 21.0 | -16.9 |
| 41 | Brisbane - Gladstone | 31.6 | 28.1 | -11.3 |
| 42 | Brisbane - Emerald | 25.2 | 22.9 | -9.4 |
| 43 | Melbourne - Mildura | 30.1 | 25.0 | -16.9 |
| 44 | Albury - Sydney | 29.0 | 23.1 | -20.5 |
| 45 | Hamilton Island - Sydney | 21.6 | 19.1 | -11.7 |
| 46 | Adelaide - Gold Coast | 21.5 | 16.3 | -24.0 |
| 47 | Adelaide - Port Lincoln | 25.4 | 19.2 | -24.2 |
| 48 | Broome - Perth | 33.0 | 19.3 | -41.5 |
| 49 | Port Macquarie - Sydney | 22.2 | 17.7 | -19.9 |
| 50 | Adelaide - Canberra | 24.7 | 20.3 | -17.9 |

continued

Table 3: (continued) Available seats (000s) — monthly activity

| | City-Pair | Mar 2019 | Mar 2020 | % Change |
|----|-------------------------------|-----------------|-----------------|-----------------|
| 51 | Dubbo - Sydney | 23.7 | 19.9 | -16.2 |
| 52 | Sydney - Wagga Wagga | 23.6 | 18.9 | -20.2 |
| 53 | Brisbane - Mount Isa | 15.7 | 14.8 | -5.8 |
| 54 | Sydney - Tamworth | 23.1 | 18.9 | -18.0 |
| 55 | Darwin - Perth | 21.4 | 18.5 | -13.3 |
| 56 | Ayers Rock - Sydney | 20.1 | 16.2 | -19.5 |
| 57 | Brisbane - Bundaberg | 19.5 | 15.8 | -19.0 |
| 58 | Cairns - Townsville | 21.0 | 19.5 | -7.3 |
| 59 | Adelaide - Alice Springs | 16.3 | 15.5 | -4.8 |
| 60 | Sydney - Townsville | 14.4 | 10.0 | -30.8 |
| 61 | Brisbane - Hamilton Island | 15.3 | 12.1 | -20.8 |
| 62 | Armidale - Sydney | 15.2 | 12.3 | -19.2 |
| 63 | Hamilton Island - Melbourne | .. | 6.6 | NA (a) |
| | Total domestic network | 6 500.7 | 5 028.3 | -22.7 |

(a) Hamilton Island - Melbourne route included from November 2019, prior data not shown.

Table 4: Load factors (%) — monthly activity

| | City-Pair | Mar 2019 | Mar 2020 | % Point diff |
|----|----------------------------|-----------------|-----------------|---------------------|
| 1 | Melbourne - Sydney | 85.6 | 64.1 | -21.5 |
| 2 | Brisbane - Sydney | 82.3 | 63.1 | -19.2 |
| 3 | Brisbane - Melbourne | 81.2 | 61.6 | -19.6 |
| 4 | Gold Coast - Sydney | 87.5 | 70.7 | -16.8 |
| 5 | Adelaide - Melbourne | 82.1 | 63.1 | -19.0 |
| 6 | Melbourne - Perth | 83.1 | 65.3 | -17.8 |
| 7 | Gold Coast - Melbourne | 89.2 | 72.2 | -17.0 |
| 8 | Adelaide - Sydney | 84.7 | 65.3 | -19.4 |
| 9 | Perth - Sydney | 83.2 | 64.8 | -18.4 |
| 10 | Hobart - Melbourne | 79.1 | 65.3 | -13.8 |
| 11 | Brisbane - Cairns | 83.6 | 66.2 | -17.4 |
| 12 | Canberra - Melbourne | 70.6 | 48.7 | -21.9 |
| 13 | Brisbane - Perth | 78.9 | 66.7 | -12.2 |
| 14 | Brisbane - Townsville | 81.0 | 64.9 | -16.1 |
| 15 | Launceston - Melbourne | 78.2 | 67.4 | -10.8 |
| 16 | Adelaide - Brisbane | 78.1 | 62.3 | -15.8 |
| 17 | Brisbane - Mackay | 75.4 | 64.2 | -11.2 |
| 18 | Cairns - Sydney | 80.0 | 61.8 | -18.2 |
| 19 | Canberra - Sydney | 73.4 | 54.0 | -19.4 |
| 20 | Hobart - Sydney | 83.1 | 68.6 | -14.5 |
| 21 | Adelaide - Perth | 72.6 | 62.1 | -10.5 |
| 22 | Cairns - Melbourne | 78.5 | 68.2 | -10.3 |
| 23 | Brisbane - Canberra | 72.8 | 56.6 | -16.2 |
| 24 | Sunshine Coast - Sydney | 83.6 | 68.1 | -15.5 |
| 25 | Brisbane - Rockhampton | 76.4 | 57.8 | -18.6 |
| 26 | Brisbane - Newcastle | 72.4 | 58.1 | -14.3 |
| 27 | Melbourne - Sunshine Coast | 84.3 | 75.6 | -8.7 |
| 28 | Perth - Port Hedland | 61.6 | 53.0 | -8.6 |
| 29 | Karratha - Perth | 63.5 | 47.4 | -16.1 |
| 30 | Melbourne - Newcastle | 86.5 | 69.2 | -17.3 |
| 31 | Ballina - Sydney | 86.6 | 67.7 | -18.9 |
| 32 | Newman - Perth | 61.5 | 48.7 | -12.8 |
| 33 | Kalgoorlie - Perth | 53.4 | 46.2 | -7.2 |
| 34 | Darwin - Sydney | 65.4 | 62.0 | -3.4 |
| 35 | Launceston - Sydney | 84.6 | 72.9 | -11.7 |
| 36 | Coffs Harbour - Sydney | 73.8 | 57.3 | -16.5 |
| 37 | Brisbane - Darwin | 72.9 | 65.7 | -7.2 |
| 38 | Darwin - Melbourne | 73.9 | 66.8 | -7.1 |
| 39 | Brisbane - Hobart | 78.4 | 72.2 | -6.2 |
| 40 | Brisbane - Proserpine | 74.1 | 65.1 | -9.0 |
| 41 | Brisbane - Gladstone | 65.1 | 47.3 | -17.8 |
| 42 | Brisbane - Emerald | 64.8 | 57.1 | -7.7 |
| 43 | Melbourne - Mildura | 68.5 | 49.0 | -19.5 |
| 44 | Albury - Sydney | 66.6 | 52.6 | -14.0 |
| 45 | Hamilton Island - Sydney | 65.9 | 62.0 | -3.9 |
| 46 | Adelaide - Gold Coast | 79.5 | 71.2 | -8.3 |
| 47 | Adelaide - Port Lincoln | 61.0 | 58.2 | -2.8 |
| 48 | Broome - Perth | 66.9 | 57.5 | -9.4 |
| 49 | Port Macquarie - Sydney | 73.8 | 58.2 | -15.6 |
| 50 | Adelaide - Canberra | 72.1 | 49.9 | -22.2 |

continued

Table 4: (continued) Load factors (%) — monthly activity

| | City-Pair | Mar 2019 | Mar 2020 | % Point diff |
|----|-------------------------------|-----------------|-----------------|---------------------|
| 51 | Dubbo - Sydney | 68.4 | 49.6 | -18.8 |
| 52 | Sydney - Wagga Wagga | 65.2 | 49.5 | -15.7 |
| 53 | Brisbane - Mount Isa | 68.6 | 61.4 | -7.2 |
| 54 | Sydney - Tamworth | 65.1 | 47.7 | -17.4 |
| 55 | Darwin - Perth | 60.9 | 48.2 | -12.7 |
| 56 | Ayers Rock - Sydney | 82.0 | 50.8 | -31.2 |
| 57 | Brisbane - Bundaberg | 66.2 | 52.1 | -14.1 |
| 58 | Cairns - Townsville | 57.5 | 40.9 | -16.6 |
| 59 | Adelaide - Alice Springs | 67.9 | 46.2 | -21.7 |
| 60 | Sydney - Townsville | 78.6 | 66.1 | -12.5 |
| 61 | Brisbane - Hamilton Island | 64.1 | 54.5 | -9.6 |
| 62 | Armidale - Sydney | 69.6 | 45.3 | -24.3 |
| 63 | Hamilton Island - Melbourne | .. | 55.6 | NA (a) |
| | Total domestic network | 78.7 | 62.7 | -16.0 |

(a) Hamilton Island - Melbourne route included from November 2019, prior data not shown.

Table 5: Aircraft trips ^(a) — monthly activity

| | City-Pair | Mar 2019 | Mar 2020 | % Change |
|----|----------------------------|-----------------|-----------------|-----------------|
| 1 | Melbourne - Sydney | 5 296 | 3 726 | -29.6 |
| 2 | Brisbane - Sydney | 3 008 | 2 252 | -25.1 |
| 3 | Brisbane - Melbourne | 2 133 | 1 663 | -22.0 |
| 4 | Gold Coast - Sydney | 1 408 | 1 066 | -24.3 |
| 5 | Adelaide - Melbourne | 1 678 | 1 291 | -23.1 |
| 6 | Melbourne - Perth | 1 065 | 899 | -15.6 |
| 7 | Gold Coast - Melbourne | 941 | 754 | -19.9 |
| 8 | Adelaide - Sydney | 1 192 | 902 | -24.3 |
| 9 | Perth - Sydney | 782 | 664 | -15.1 |
| 10 | Hobart - Melbourne | 1 024 | 772 | -24.6 |
| 11 | Brisbane - Cairns | 795 | 675 | -15.1 |
| 12 | Canberra - Melbourne | 952 | 764 | -19.7 |
| 13 | Brisbane - Perth | 520 | 464 | -10.8 |
| 14 | Brisbane - Townsville | 697 | 599 | -14.1 |
| 15 | Launceston - Melbourne | 821 | 618 | -24.7 |
| 16 | Adelaide - Brisbane | 539 | 422 | -21.7 |
| 17 | Brisbane - Mackay | 621 | 569 | -8.4 |
| 18 | Cairns - Sydney | 517 | 362 | -30.0 |
| 19 | Canberra - Sydney | 1 466 | 1 071 | -26.9 |
| 20 | Hobart - Sydney | 448 | 356 | -20.5 |
| 21 | Adelaide - Perth | 486 | 380 | -21.8 |
| 22 | Cairns - Melbourne | 332 | 253 | -23.8 |
| 23 | Brisbane - Canberra | 523 | 422 | -19.3 |
| 24 | Sunshine Coast - Sydney | 369 | 297 | -19.5 |
| 25 | Brisbane - Rockhampton | 677 | 557 | -17.7 |
| 26 | Brisbane - Newcastle | 492 | 376 | -23.6 |
| 27 | Melbourne - Sunshine Coast | 269 | 212 | -21.2 |
| 28 | Perth - Port Hedland | 345 | 394 | 14.2 |
| 29 | Karratha - Perth | 490 | 409 | -16.5 |
| 30 | Melbourne - Newcastle | 258 | 184 | -28.7 |
| 31 | Ballina - Sydney | 268 | 218 | -18.7 |
| 32 | Newman - Perth | 338 | 266 | -21.3 |
| 33 | Kalgoorlie - Perth | 338 | 309 | -8.6 |
| 34 | Darwin - Sydney | 174 | 146 | -16.1 |
| 35 | Launceston - Sydney | 176 | 126 | -28.4 |
| 36 | Coffs Harbour - Sydney | 399 | 357 | -10.5 |
| 37 | Brisbane - Darwin | 201 | 151 | -24.9 |
| 38 | Darwin - Melbourne | 163 | 126 | -22.7 |
| 39 | Brisbane - Hobart | 142 | 110 | -22.5 |
| 40 | Brisbane - Proserpine | 142 | 118 | -16.9 |
| 41 | Brisbane - Gladstone | 418 | 372 | -11.0 |
| 42 | Brisbane - Emerald | 375 | 349 | -6.9 |
| 43 | Melbourne - Mildura | 416 | 342 | -17.8 |
| 44 | Albury - Sydney | 537 | 435 | -19.0 |
| 45 | Hamilton Island - Sydney | 134 | 121 | -9.7 |
| 46 | Adelaide - Gold Coast | 121 | 91 | -24.8 |
| 47 | Adelaide - Port Lincoln | 656 | 500 | -23.8 |
| 48 | Broome - Perth | 283 | 172 | -39.2 |
| 49 | Port Macquarie - Sydney | 332 | 317 | -4.5 |
| 50 | Adelaide - Canberra | 150 | 123 | -18.0 |

continued

Table 5: (continued) Aircraft trips ^(a) — monthly activity

| | City-Pair | Mar 2019 | Mar 2020 | % Change |
|----|-------------------------------|-----------------|-----------------|-----------------|
| 51 | Dubbo - Sydney | 515 | 449 | -12.8 |
| 52 | Sydney - Wagga Wagga | 470 | 385 | -18.1 |
| 53 | Brisbane - Mount Isa | 124 | 122 | -1.6 |
| 54 | Sydney - Tamworth | 356 | 315 | -11.5 |
| 55 | Darwin - Perth | 124 | 108 | -12.9 |
| 56 | Ayers Rock - Sydney | 114 | 91 | -20.2 |
| 57 | Brisbane - Bundaberg | 304 | 253 | -16.8 |
| 58 | Cairns - Townsville | 314 | 320 | 1.9 |
| 59 | Adelaide - Alice Springs | 118 | 114 | -3.4 |
| 60 | Sydney - Townsville | 82 | 58 | -29.3 |
| 61 | Brisbane - Hamilton Island | 122 | 97 | -20.5 |
| 62 | Armidale - Sydney | 373 | 296 | -20.6 |
| 63 | Hamilton Island - Melbourne | .. | 38 | NA (b) |
| | Total domestic network | 53 666 | 43 075 | -19.7 |

(a) Includes RPT Cargo flights.

(b) Hamilton Island - Melbourne route included from November 2019, prior data not shown.

TOP TEN AIRPORTS – PASSENGER MOVEMENTS

Table 6: Top ten airports, RPT passenger movements (000s) - monthly activity

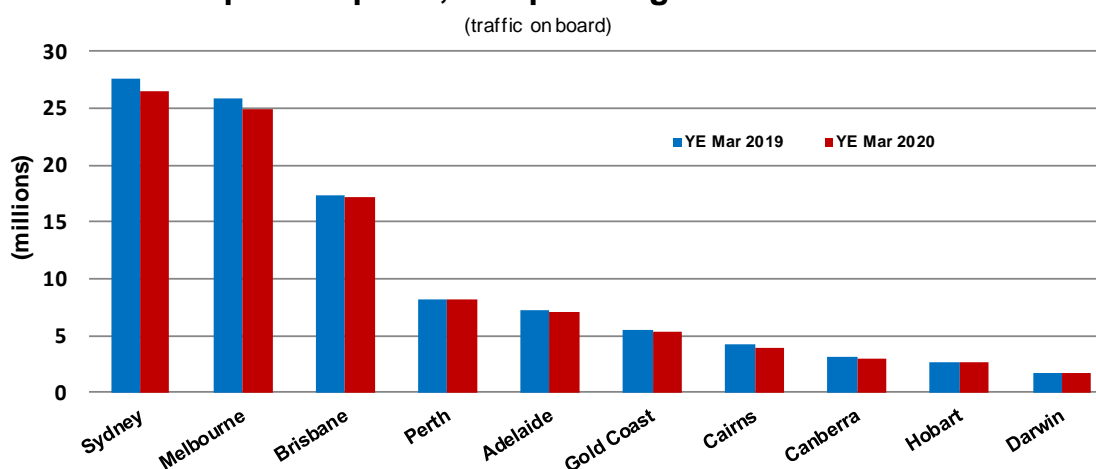
| Airport | Mar 2019 | Mar 2020 | % Change | % of Total |
|-------------------------------|-----------------|----------------|--------------|--------------|
| 1 Sydney | 2 336.1 | 1 323.8 | -43.3 | 21.6 |
| 2 Melbourne | 2 194.0 | 1 252.9 | -42.9 | 20.4 |
| 3 Brisbane | 1 425.0 | 885.4 | -37.9 | 14.4 |
| 4 Perth | 663.2 | 467.0 | -29.6 | 7.6 |
| 5 Adelaide | 632.7 | 386.7 | -38.9 | 6.3 |
| 6 Gold Coast | 427.9 | 265.9 | -37.9 | 4.3 |
| 7 Cairns | 300.7 | 181.8 | -39.5 | 3.0 |
| 8 Hobart | 244.0 | 153.0 | -37.3 | 2.5 |
| 9 Canberra | 270.7 | 151.8 | -43.9 | 2.5 |
| 10 Townsville | 130.4 | 87.4 | -33.0 | 1.4 |
| Total top ten airports | 8 624.7 | 5 155.6 | -40.2 | 83.9 |
| Total domestic network | 10 125.3 | 6 142.5 | -39.3 | 100.0 |

Table 7: Top ten airports, RPT passenger movements (000s) - annual activity

| Airport | YE Mar 2019 | YE Mar 2020 | % Change | % of Total |
|-------------------------------|------------------|------------------|-------------|--------------|
| 1 Sydney | 27 569.1 | 26 455.7 | -4.0 | 22.3 |
| 2 Melbourne | 25 886.1 | 24 935.6 | -3.7 | 21.0 |
| 3 Brisbane | 17 303.3 | 17 092.8 | -1.2 | 14.4 |
| 4 Perth | 8 207.2 | 8 113.4 | -1.1 | 6.8 |
| 5 Adelaide | 7 306.7 | 7 132.6 | -2.4 | 6.0 |
| 6 Gold Coast | 5 451.1 | 5 402.0 | -0.9 | 4.6 |
| 7 Cairns | 4 242.7 | 3 984.6 | -6.1 | 3.4 |
| 8 Canberra | 3 148.8 | 3 040.1 | -3.5 | 2.6 |
| 9 Hobart | 2 692.7 | 2 693.9 | 0.0 | 2.3 |
| 10 Darwin | 1 721.5 | 1 652.3 | -4.0 | 1.4 |
| Total top ten airports | 103 529.2 | 100 503.2 | -2.9 | 84.8 |
| Total domestic network | 121 751.0 | 118 512.7 | -2.7 | 100.0 |

Note: Airport passenger movement numbers are the sum of passenger arrivals and departures at each airport.

Top ten airports, RPT passenger movements



TOP FIVE AIRPORTS – CARGO MOVEMENTS

Table 8: Top five airports, domestic RPT cargo movements (000s tonnes) - monthly activity

| Airport | Mar 2019 | Mar 2020 | % Change | % of Total |
|--------------------------------|-------------|-------------|-------------|--------------|
| 1 Melbourne | 10.5 | 9.9 | -6.0 | 26.5 |
| 2 Sydney | 8.4 | 8.1 | -4.0 | 21.6 |
| 3 Brisbane | 6.3 | 6.1 | -2.4 | 16.3 |
| 4 Perth | 5.2 | 4.6 | -11.7 | 12.4 |
| 5 Adelaide | 2.4 | 2.4 | -0.1 | 6.3 |
| Total top five airports | 32.8 | 31.1 | -5.3 | 83.1 |
| Total domestic network | 39.5 | 37.4 | -5.4 | 100.0 |

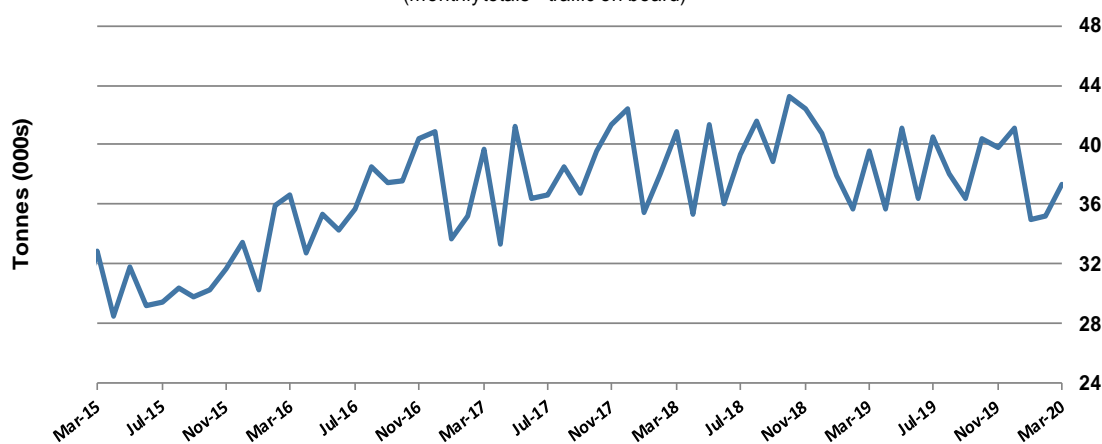
Table 9: Top five airports, domestic RPT cargo movements (000s tonnes) - annual activity

| Airport | YE Mar 2019 | YE Mar 2020 | % Change | % of Total |
|--------------------------------|--------------|--------------|-------------|--------------|
| 1 Melbourne | 130.4 | 120.0 | -8.0 | 26.2 |
| 2 Sydney | 105.6 | 99.1 | -6.1 | 21.7 |
| 3 Brisbane | 73.3 | 73.3 | -0.1 | 16.0 |
| 4 Perth | 66.1 | 60.2 | -8.9 | 13.2 |
| 5 Adelaide | 28.8 | 28.3 | -1.6 | 6.2 |
| Total top five airports | 404.1 | 380.8 | -5.8 | 83.3 |
| Total domestic network | 472.3 | 457.2 | -3.2 | 100.0 |

Note: Airport cargo tonnes are the sum of cargo tonnes on arrivals and departures at each airport.

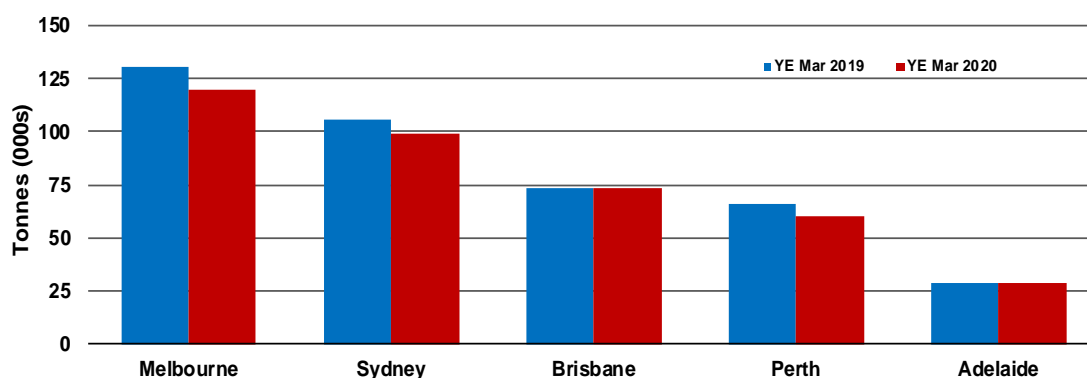
Total domestic network - cargo movement

(monthly totals - traffic on board)



Top five airports, cargo movements

(Domestic cargo traffic - traffic on board)



TOP TEN ROUTES

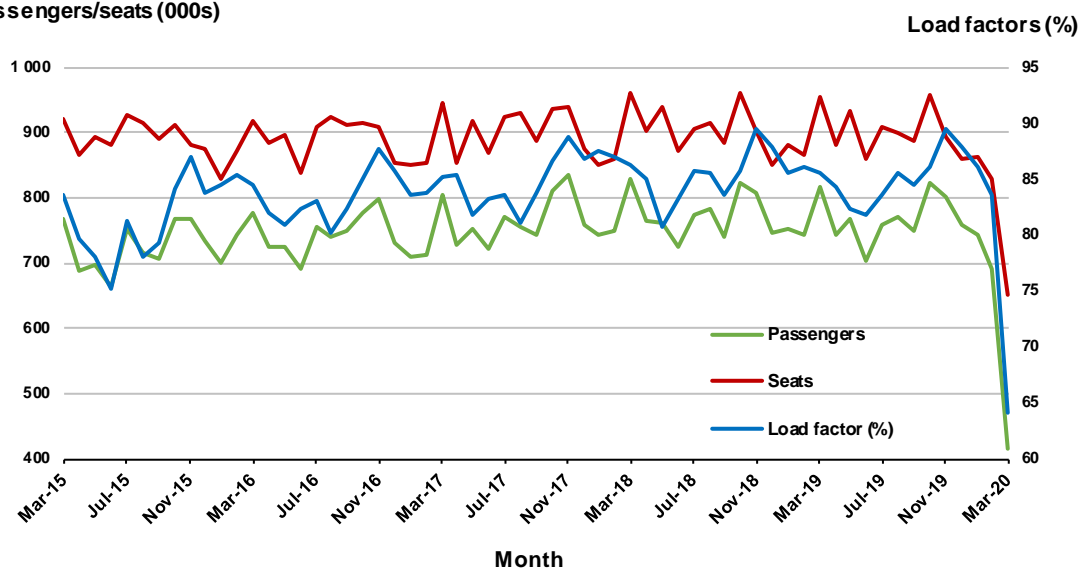
1. Melbourne - Sydney

Monthly data

| | Mar 2019 | Mar 2020 | % Change |
|---------------------------|----------|----------|----------|
| Passengers carried (000s) | 816.4 | 416.3 | -49.0 |
| Seats (000s) | 954.0 | 650.2 | -31.8 |
| Load factor % | 85.6 | 64.1 | -21.5 * |
| Aircraft trips | 5 296 | 3 726 | -29.6 |

* percentage point difference

Passengers/seats (000s)

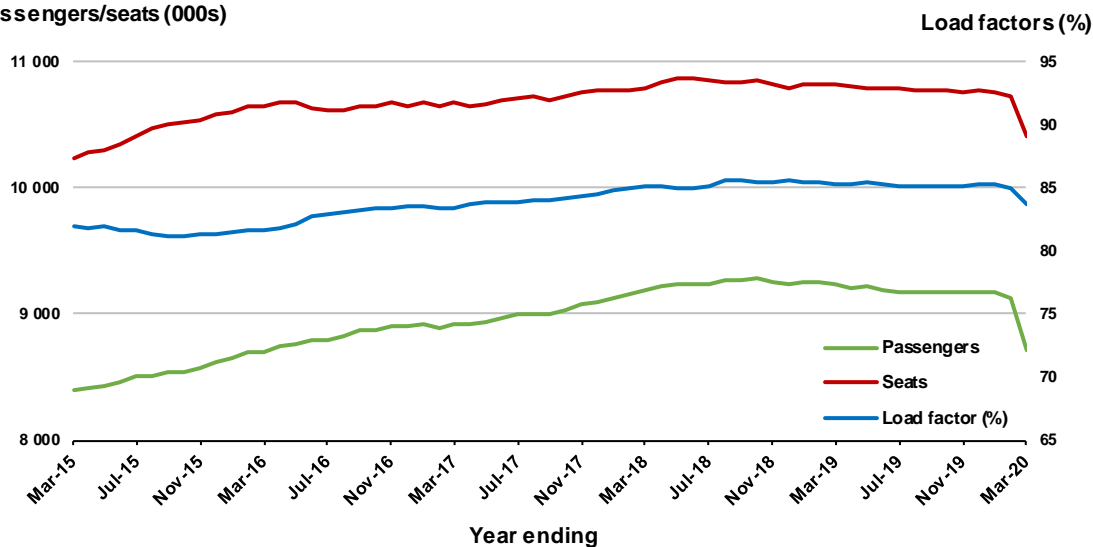


Moving annual data

| | YE Mar 2019 | YE Mar 2020 | % Change |
|---------------------------|-------------|-------------|----------|
| Passengers carried (000s) | 9 235.9 | 8 719.1 | -5.6 |
| Seats (000s) | 10 824.9 | 10 418.5 | -3.8 |
| Load factor % | 85.3 | 83.7 | -1.6 * |
| Aircraft trips | 60 103 | 58 658 | -2.4 |

* percentage point difference

Passengers/seats (000s)

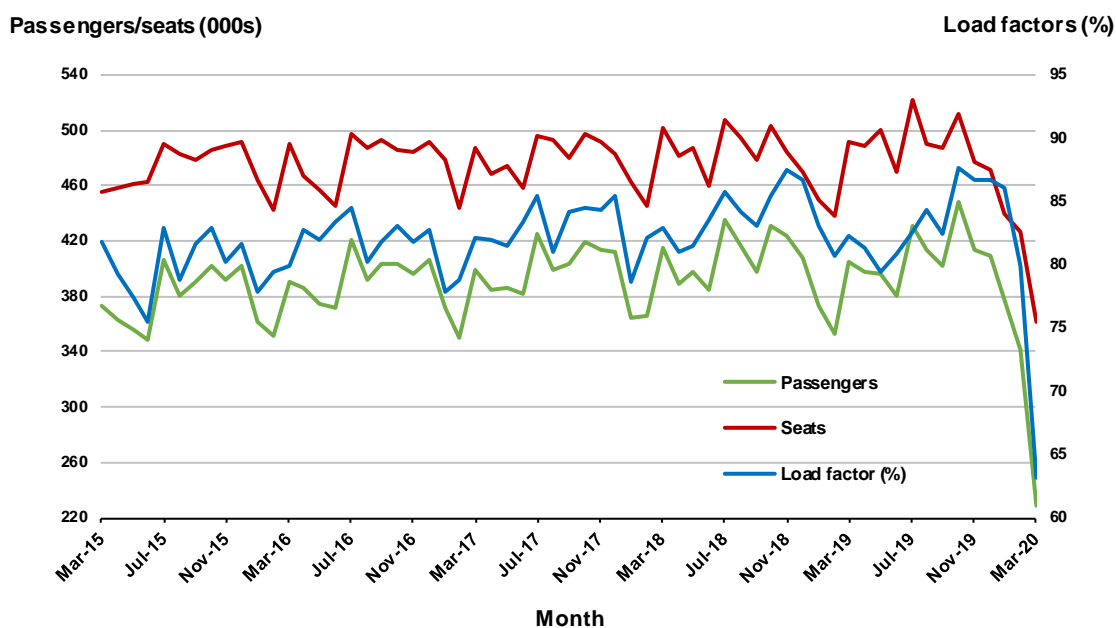


2. Brisbane - Sydney

Monthly data

| | Mar 2019 | Mar 2020 | % Change |
|---------------------------|----------|----------|----------|
| Passengers carried (000s) | 404.5 | 228.4 | -43.5 |
| Seats (000s) | 491.6 | 362.0 | -26.4 |
| Load factor % | 82.3 | 63.1 | -19.2 * |
| Aircraft trips | 3 008 | 2 252 | -25.1 |

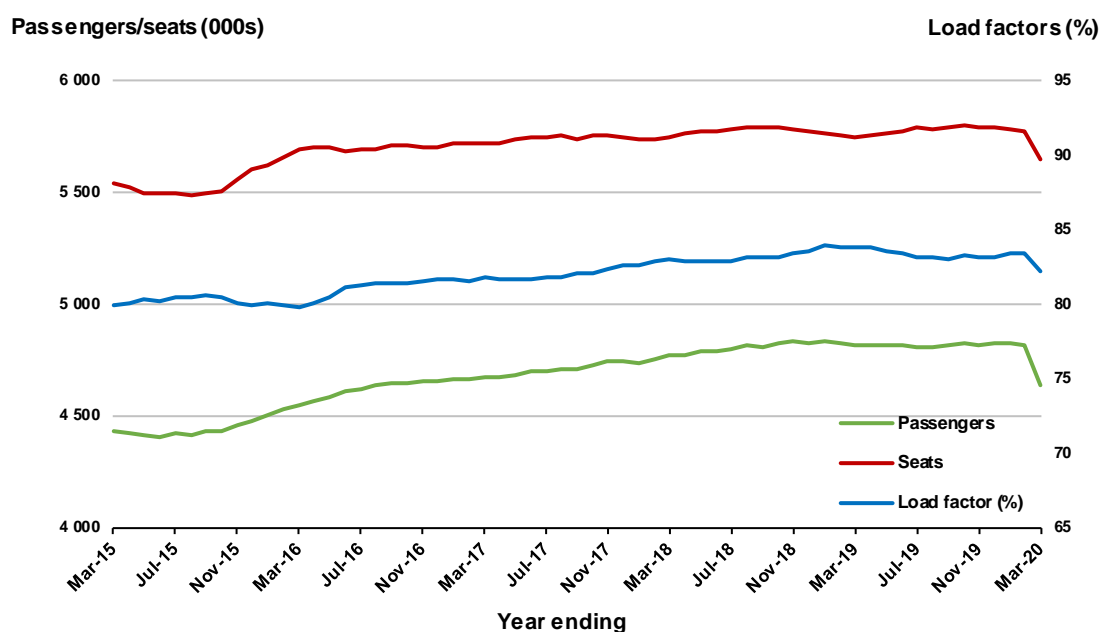
* percentage point difference



Moving annual data

| | YE Mar 2019 | YE Mar 2020 | % Change |
|---------------------------|-------------|-------------|----------|
| Passengers carried (000s) | 4 811.7 | 4 636.7 | -3.6 |
| Seats (000s) | 5 744.5 | 5 643.9 | -1.8 |
| Load factor % | 83.8 | 82.2 | -1.6 * |
| Aircraft trips | 34 950 | 34 410 | -1.5 |

* percentage point difference

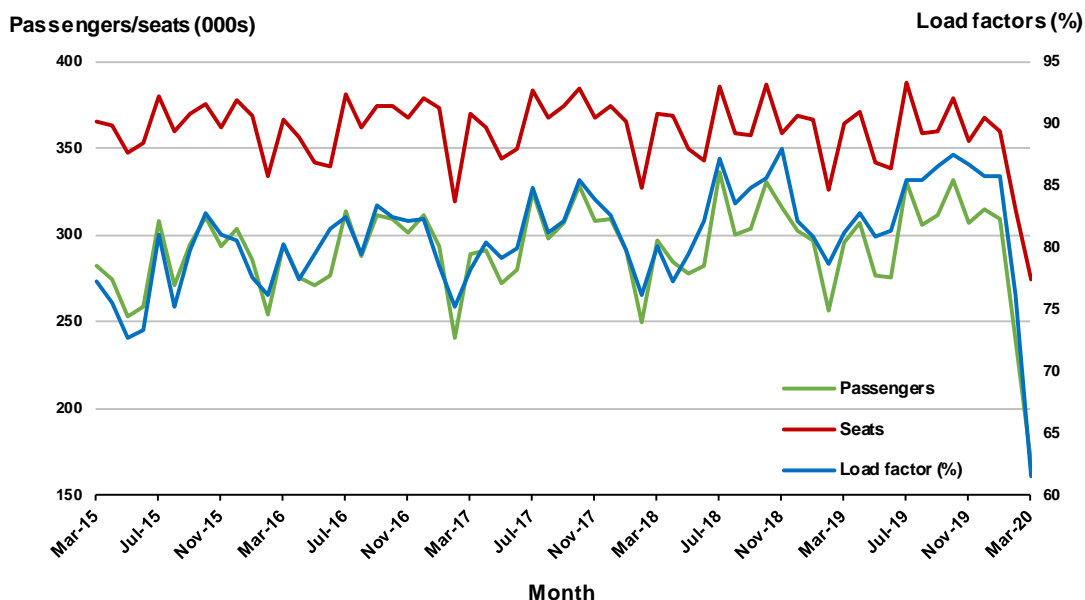


3. Brisbane - Melbourne

Monthly data

| | Mar 2019 | Mar 2020 | % Change |
|---------------------------|----------|----------|----------|
| Passengers carried (000s) | 295.3 | 168.9 | -42.8 |
| Seats (000s) | 363.9 | 274.1 | -24.7 |
| Load factor % | 81.2 | 61.6 | -19.6 * |
| Aircraft trips | 2 133 | 1 663 | -22.0 |

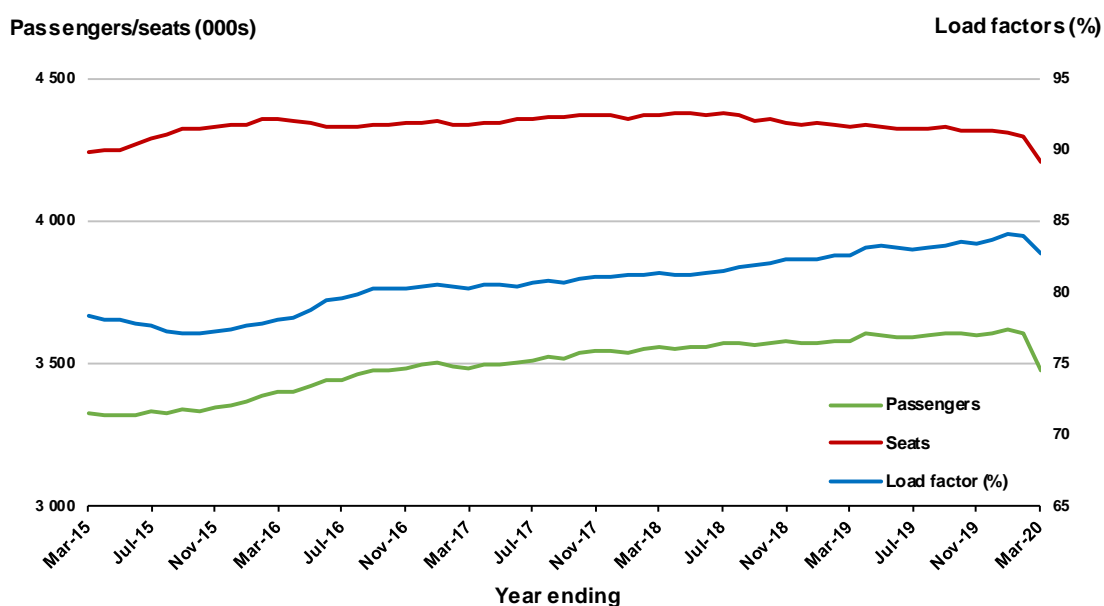
* percentage point difference



Moving annual data

| | YE Mar 2019 | YE Mar 2020 | % Change |
|---------------------------|-------------|-------------|----------|
| Passengers carried (000s) | 3 580.0 | 3 478.0 | -2.8 |
| Seats (000s) | 4 332.4 | 4 206.6 | -2.9 |
| Load factor % | 82.6 | 82.7 | 0.0 * |
| Aircraft trips | 25 542 | 24 801 | -2.9 |

* percentage point difference



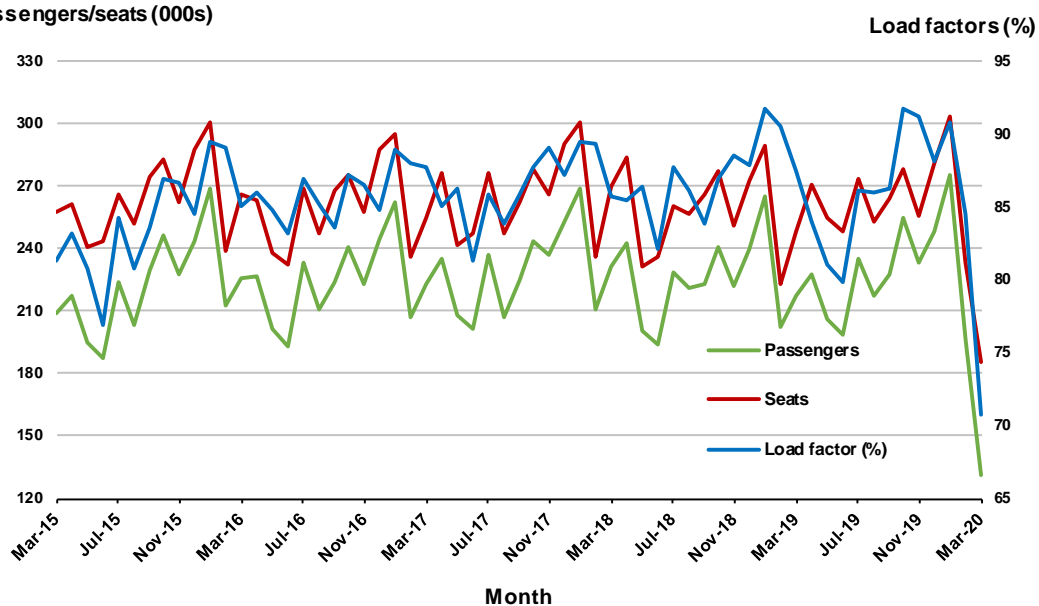
4. Gold Coast - Sydney

Monthly data

| | Mar 2019 | Mar 2020 | % Change |
|---------------------------|----------|----------|----------|
| Passengers carried (000s) | 217.5 | 130.8 | -39.9 |
| Seats (000s) | 248.6 | 185.2 | -25.5 |
| Load factor % | 87.5 | 70.7 | -16.8 * |
| Aircraft trips | 1 408 | 1 066 | -24.3 |

* percentage point difference

Passengers/seats (000s)

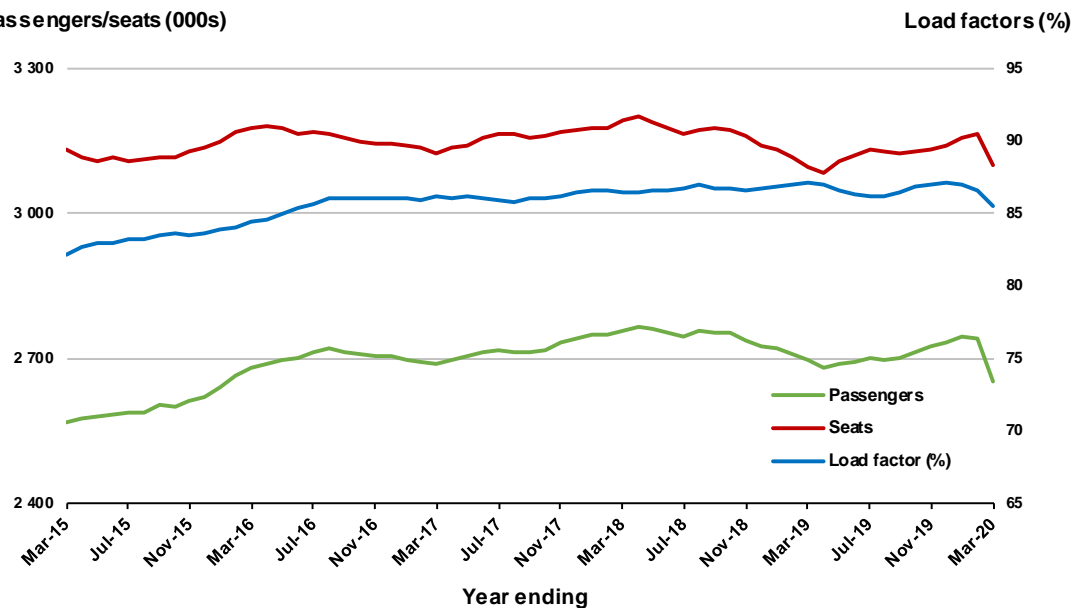


Moving annual data

| | YE Mar 2019 | YE Mar 2020 | % Change |
|---------------------------|-------------|-------------|----------|
| Passengers carried (000s) | 2 696.2 | 2 652.4 | -1.6 |
| Seats (000s) | 3 095.6 | 3 100.8 | 0.2 |
| Load factor % | 87.1 | 85.5 | -1.6 * |
| Aircraft trips | 17 589 | 17 784 | 1.1 |

* percentage point difference

Passengers/seats (000s)



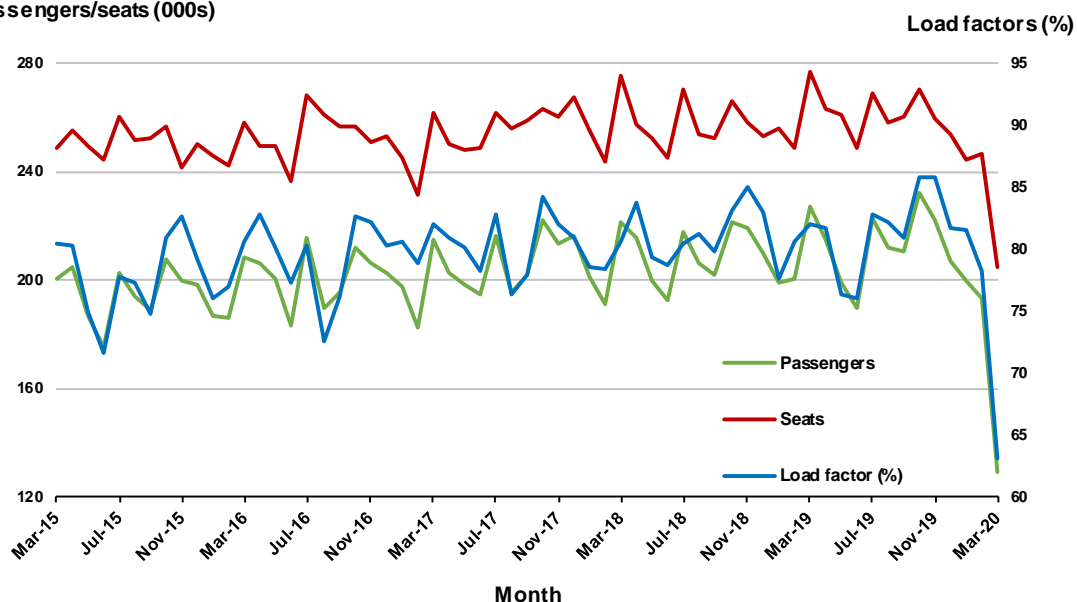
5. Adelaide - Melbourne

Monthly data

| | Mar 2019 | Mar 2020 | % Change |
|---------------------------|----------|----------|----------|
| Passengers carried (000s) | 227.4 | 129.4 | -43.1 |
| Seats (000s) | 277.0 | 205.1 | -25.9 |
| Load factor % | 82.1 | 63.1 | -19.0 * |
| Aircraft trips | 1 678 | 1 291 | -23.1 |

* percentage point difference

Passengers/seats (000s)

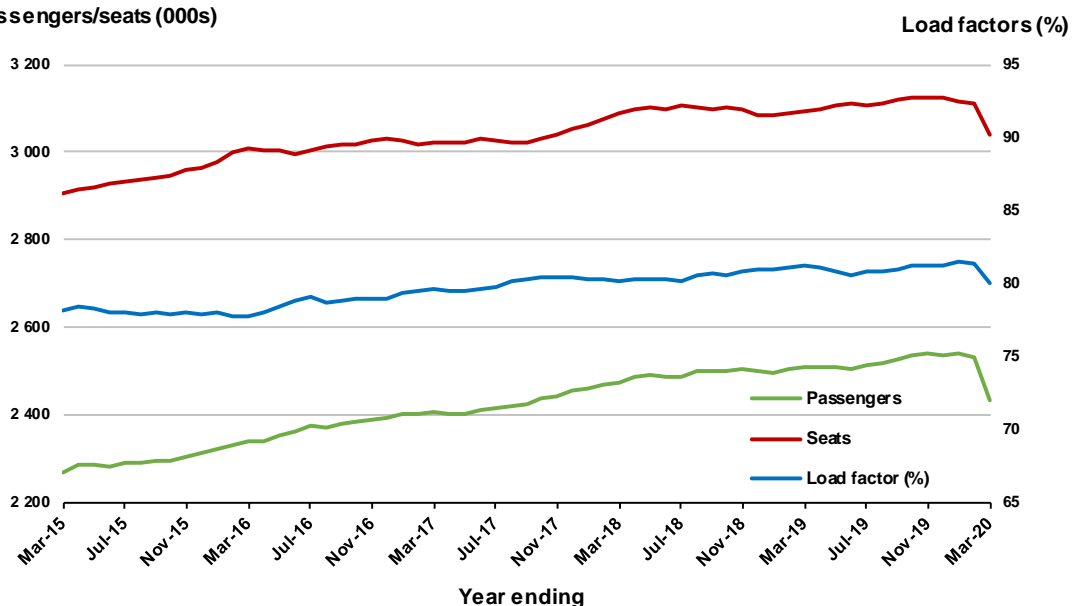


Moving annual data

| | YE Mar 2019 | YE Mar 2020 | % Change |
|---------------------------|-------------|-------------|----------|
| Passengers carried (000s) | 2 511.4 | 2 433.2 | -3.1 |
| Seats (000s) | 3 091.2 | 3 040.3 | -1.6 |
| Load factor % | 81.2 | 80.0 | -1.2 * |
| Aircraft trips | 18 987 | 18 553 | -2.3 |

* percentage point difference

Passengers/seats (000s)



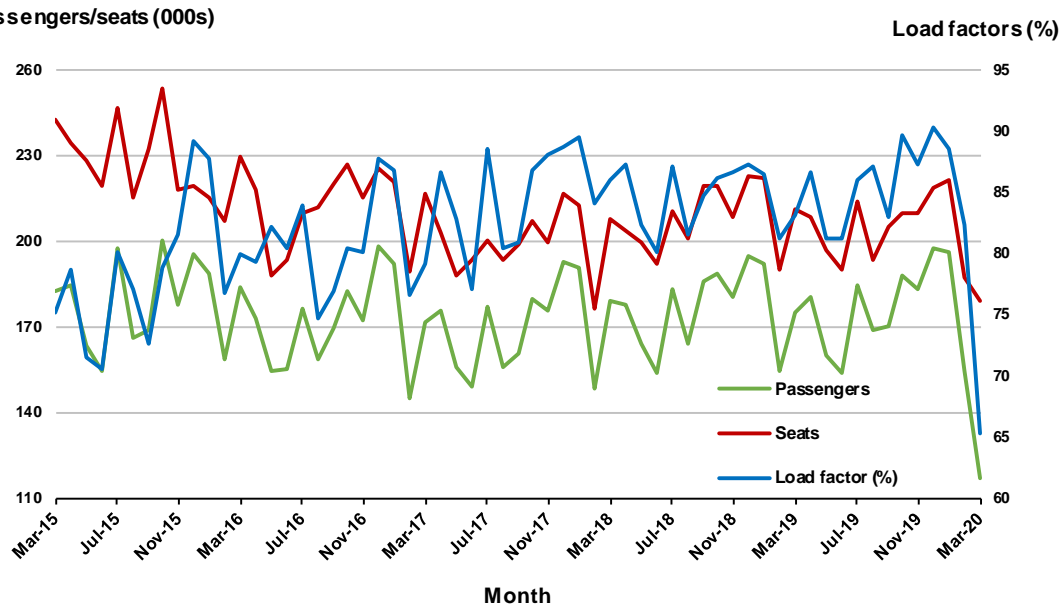
6. Melbourne - Perth

Monthly data

| | Mar 2019 | Mar 2020 | % Change |
|---------------------------|----------|----------|----------|
| Passengers carried (000s) | 175.4 | 117.2 | -33.2 |
| Seats (000s) | 211.2 | 179.5 | -15.0 |
| Load factor % | 83.1 | 65.3 | -17.8 * |
| Aircraft trips | 1 065 | 899 | -15.6 |

* percentage point difference

Passengers/seats (000s)

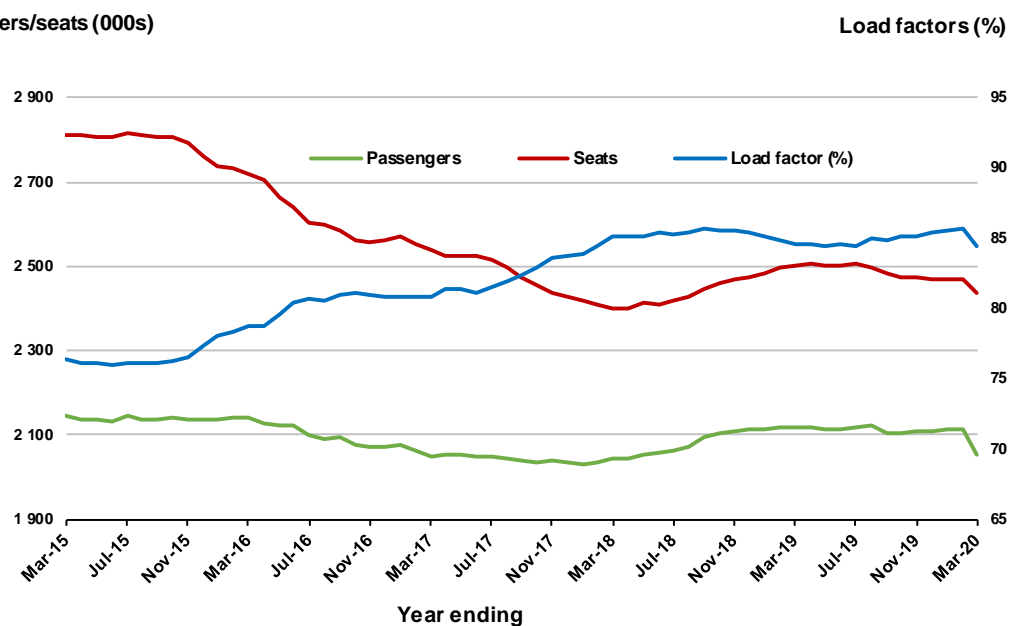


Moving annual data

| | YE Mar 2019 | YE Mar 2020 | % Change |
|---------------------------|-------------|-------------|----------|
| Passengers carried (000s) | 2 116.9 | 2 055.5 | -2.9 |
| Seats (000s) | 2 501.3 | 2 435.7 | -2.6 |
| Load factor % | 84.6 | 84.4 | -0.2 * |
| Aircraft trips | 12 077 | 12 044 | -0.3 |

* percentage point difference

Passengers/seats (000s)



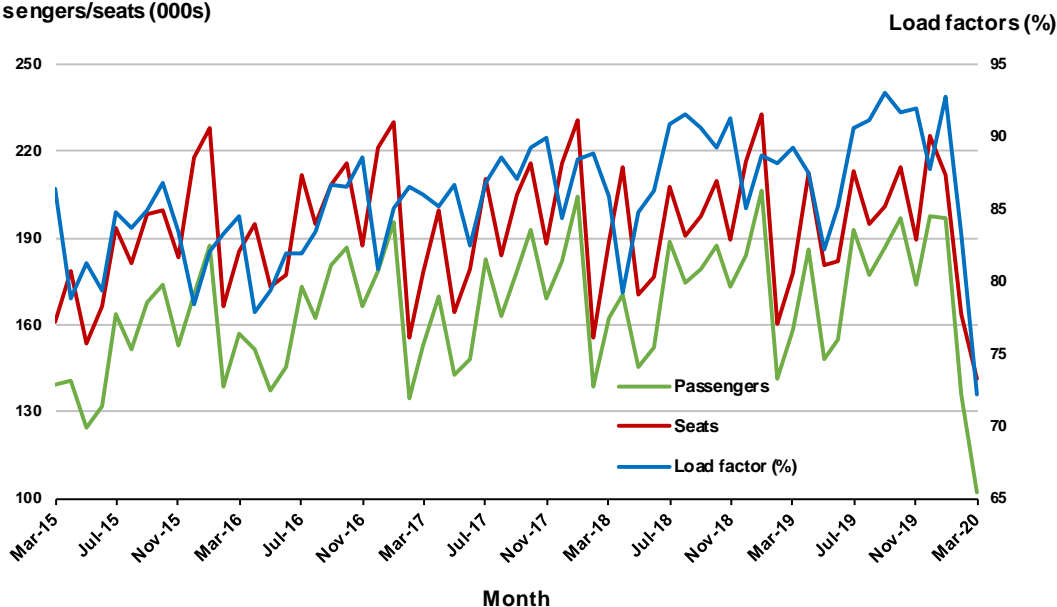
7. Gold Coast - Melbourne

Monthly data

| | Mar 2019 | Mar 2020 | % Change |
|---------------------------|----------|----------|----------|
| Passengers carried (000s) | 158.5 | 102.0 | -35.6 |
| Seats (000s) | 177.7 | 141.2 | -20.5 |
| Load factor % | 89.2 | 72.2 | -17.0 * |
| Aircraft trips | 941 | 754 | -19.9 |

* percentage point difference

Passengers/seats (000s)

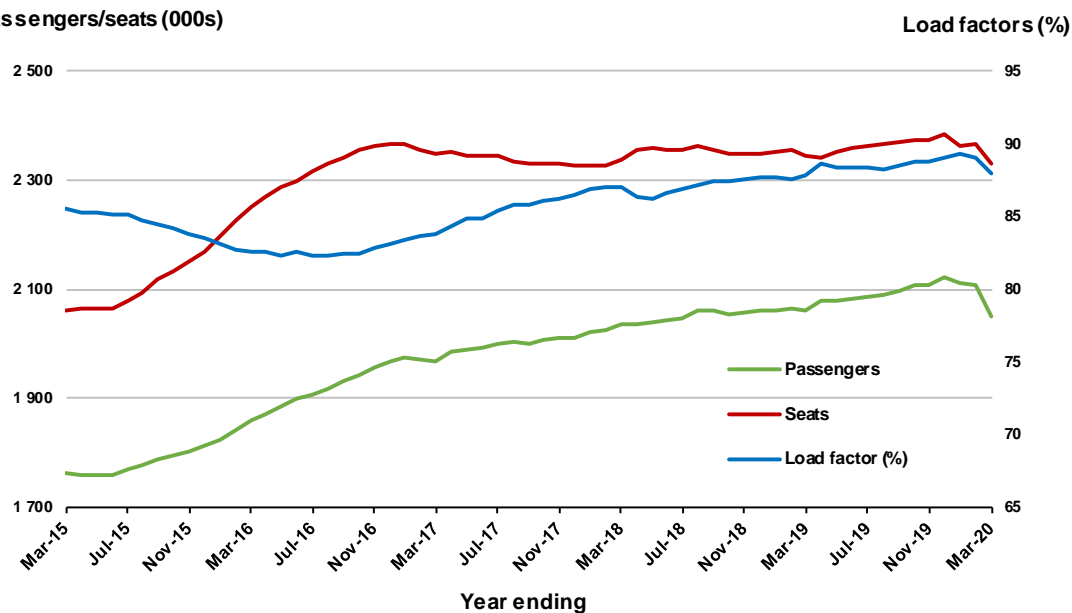


Moving annual data

| | YE Mar 2019 | YE Mar 2020 | % Change |
|---------------------------|-------------|-------------|----------|
| Passengers carried (000s) | 2 062.4 | 2 050.5 | -0.6 |
| Seats (000s) | 2 345.1 | 2 329.6 | -0.7 |
| Load factor % | 87.9 | 88.0 | 0.1 * |
| Aircraft trips | 12 384 | 12 313 | -0.6 |

* percentage point difference

Passengers/seats (000s)



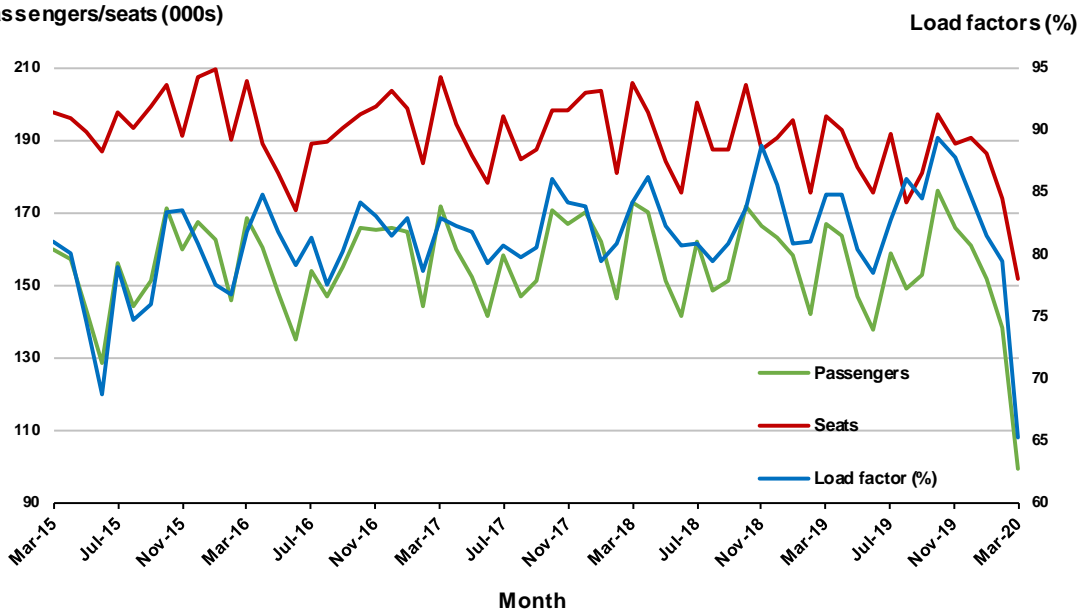
8. Adelaide - Sydney

Monthly data

| | Mar 2019 | Mar 2020 | % Change |
|---------------------------|----------|----------|----------|
| Passengers carried (000s) | 166.6 | 99.2 | -40.5 |
| Seats (000s) | 196.7 | 152.0 | -22.8 |
| Load factor % | 84.7 | 65.3 | -19.4 * |
| Aircraft trips | 1 192 | 902 | -24.3 |

* percentage point difference

Passengers/seats (000s)

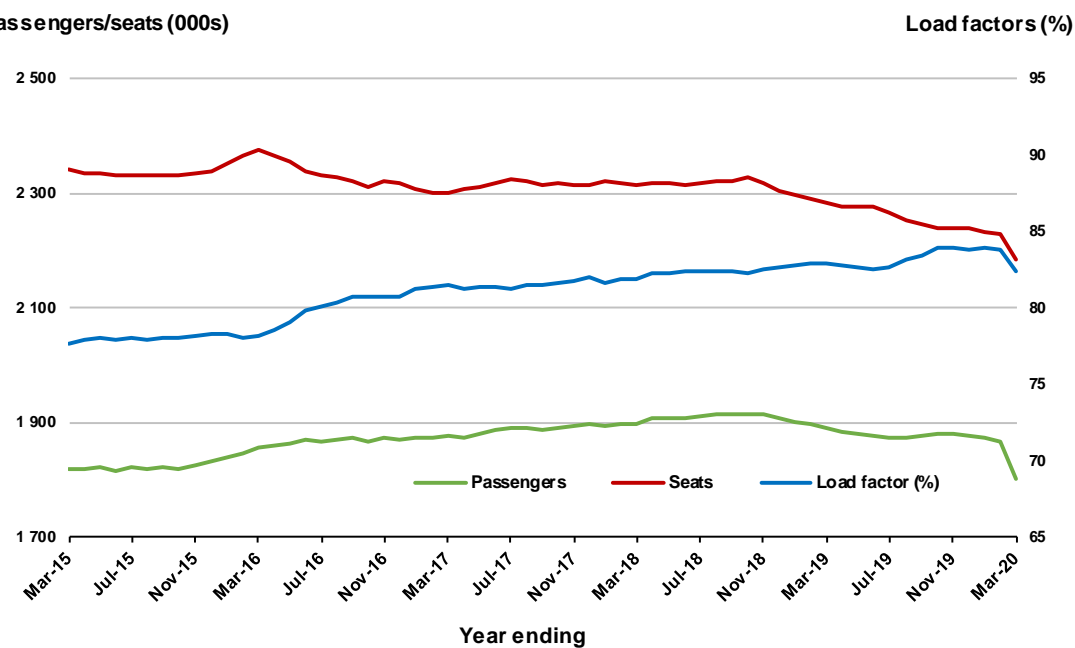


Moving annual data

| | YE Mar 2019 | YE Mar 2020 | % Change |
|---------------------------|-------------|-------------|----------|
| Passengers carried (000s) | 1 892.6 | 1 800.8 | -4.9 |
| Seats (000s) | 2 282.5 | 2 185.1 | -4.3 |
| Load factor % | 82.9 | 82.4 | -0.5 * |
| Aircraft trips | 13 767 | 12 825 | -6.8 |

* percentage point difference

Passengers/seats (000s)



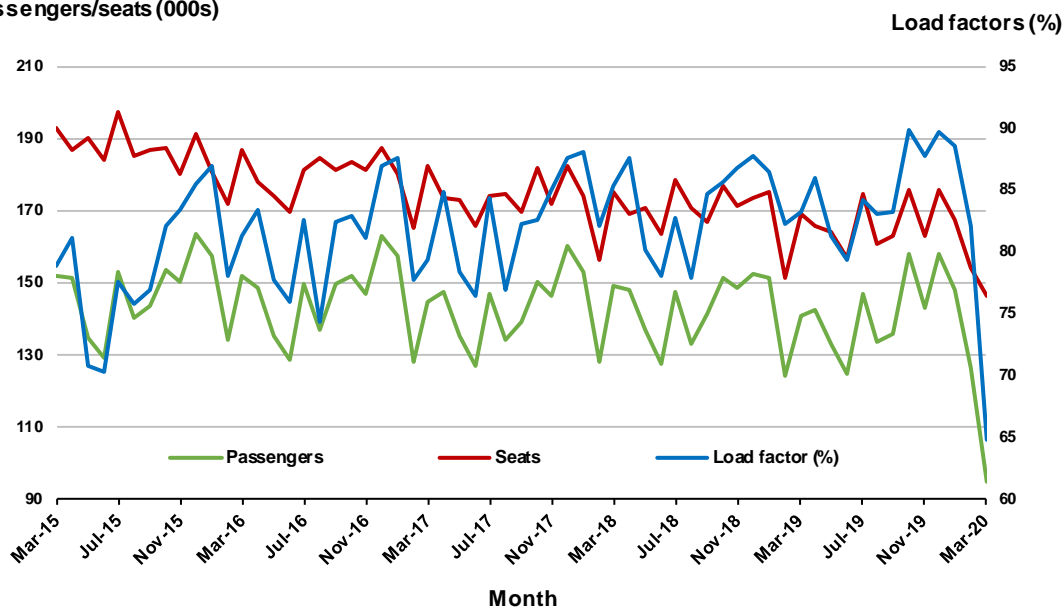
9. Perth - Sydney

Monthly data

| | Mar 2019 | Mar 2020 | % Change |
|---------------------------|----------|----------|----------|
| Passengers carried (000s) | 140.9 | 94.9 | -32.7 |
| Seats (000s) | 169.3 | 146.4 | -13.5 |
| Load factor % | 83.2 | 64.8 | -18.4 * |
| Aircraft trips | 782 | 664 | -15.1 |

* percentage point difference

Passengers/seats (000s)

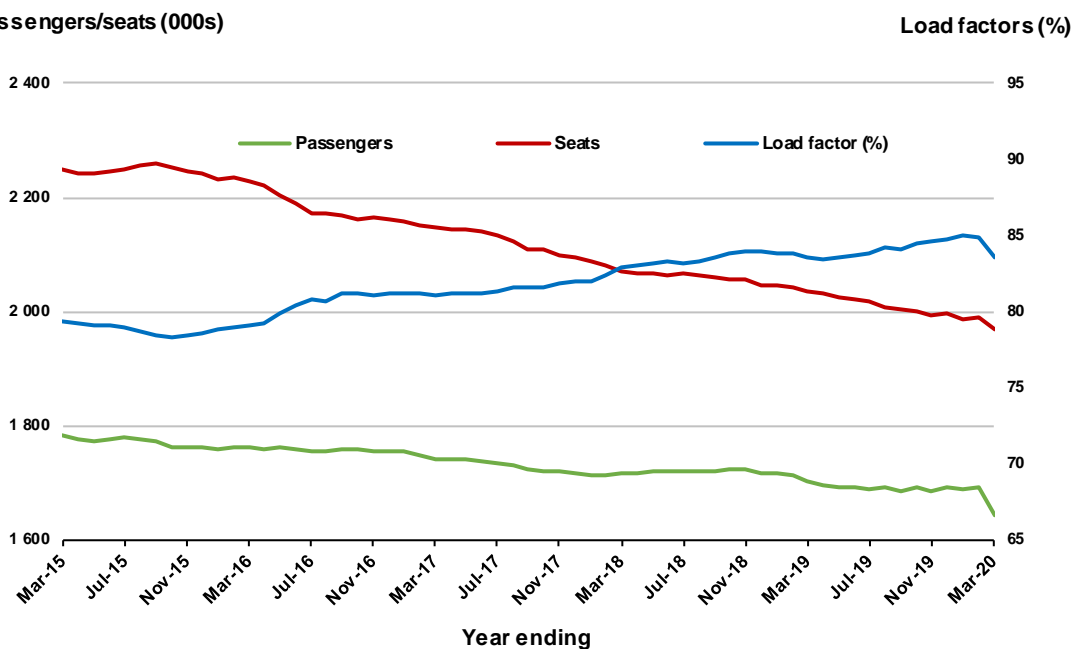


Moving annual data

| | YE Mar 2019 | YE Mar 2020 | % Change |
|---------------------------|-------------|-------------|----------|
| Passengers carried (000s) | 1 702.9 | 1 644.8 | -3.4 |
| Seats (000s) | 2 036.6 | 1 967.8 | -3.4 |
| Load factor % | 83.6 | 83.6 | 0.0 * |
| Aircraft trips | 9 131 | 8 857 | -3.0 |

* percentage point difference

Passengers/seats (000s)

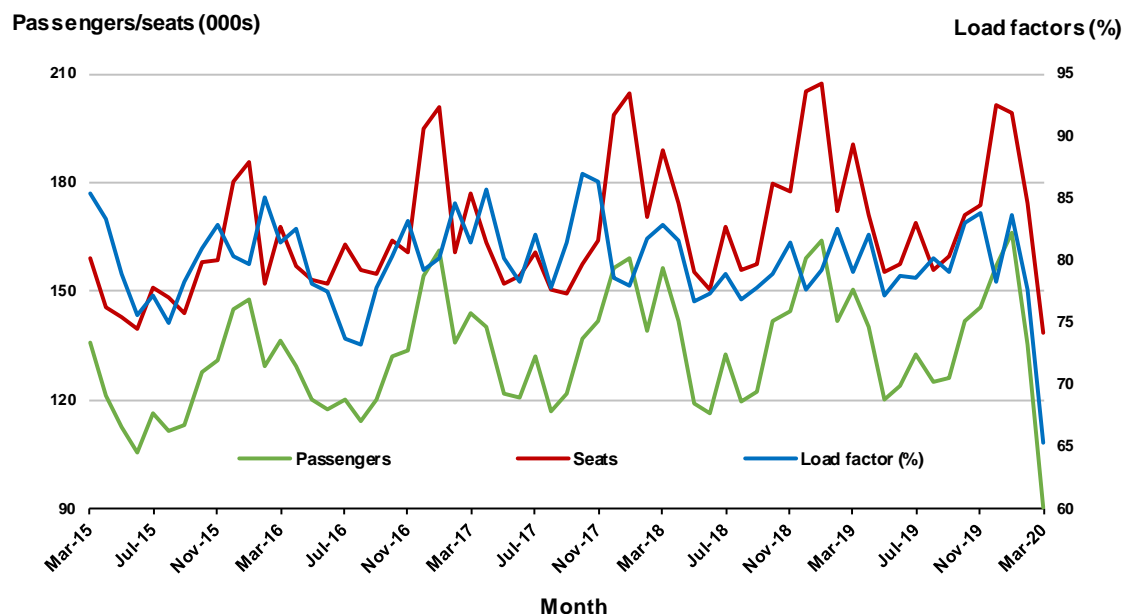


10. Hobart - Melbourne

Monthly data

| | Mar 2019 | Mar 2020 | % Change |
|---------------------------|----------|----------|----------|
| Passengers carried (000s) | 150.7 | 90.5 | -40.0 |
| Seats (000s) | 190.4 | 138.6 | -27.2 |
| Load factor % | 79.1 | 65.3 | -13.8 * |
| Aircraft trips | 1 024 | 772 | -24.6 |

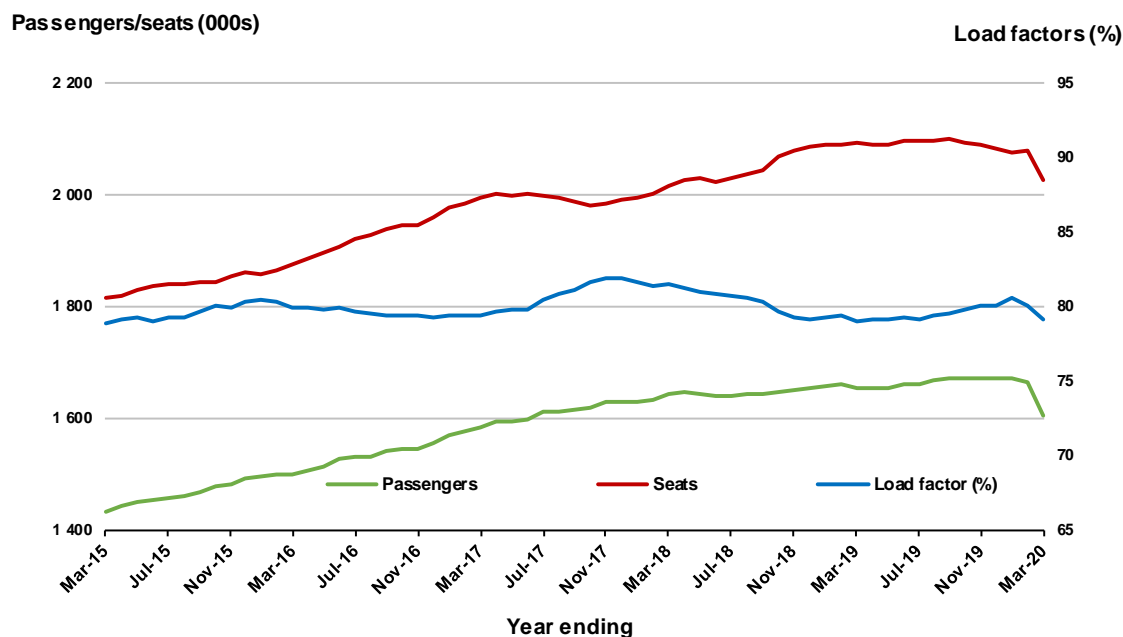
* percentage point difference



Moving annual data

| | YE Mar 2019 | YE Mar 2020 | % Change |
|---------------------------|-------------|-------------|----------|
| Passengers carried (000s) | 1 654.7 | 1 605.6 | -3.0 |
| Seats (000s) | 2 092.9 | 2 026.9 | -3.2 |
| Load factor % | 79.1 | 79.2 | 0.1 * |
| Aircraft trips | 11 491 | 11 137 | -3.1 |

* percentage point difference



TOP FIFTY REGIONAL AIRPORTS

Table 10: Top fifty regional airports (000s) — passenger movements, monthly

| | Airport | Mar 2019 | Mar 2020 | % Change |
|----|---------------------------------------|-----------------|-----------------|-----------------|
| 1 | Cairns | 300.7 | 181.8 | -39.5 |
| 2 | Hobart | 244.0 | 153.0 | -37.3 |
| 3 | Townsville | 130.4 | 87.4 | -33.0 |
| 4 | Darwin | 117.5 | 81.7 | -30.5 |
| 5 | Launceston | 126.1 | 75.9 | -39.8 |
| 6 | Newcastle | 107.3 | 61.6 | -42.5 |
| 7 | Mackay | 70.1 | 50.8 | -27.6 |
| 8 | Rockhampton | 46.6 | 31.5 | -32.4 |
| 9 | Port Hedland | 28.1 | 28.7 | 2.3 |
| 10 | Ballina | 45.2 | 28.4 | -37.2 |
| 11 | Karratha | 35.5 | 27.7 | -22.0 |
| 12 | Alice Springs | 48.5 | 24.1 | -50.2 |
| 13 | Hamilton Island | 30.3 | 22.5 | -25.6 |
| 14 | Ayers Rock | 38.0 | 21.2 | -44.4 |
| 15 | Proserpine | 32.4 | 20.6 | -36.4 |
| 16 | Newman | 27.2 | 19.5 | -28.4 |
| 17 | Coffs Harbour | 33.6 | 19.4 | -42.2 |
| 18 | Kalgoorlie | 23.9 | 17.5 | -26.8 |
| 19 | Mount Isa | 17.9 | 15.2 | -15.5 |
| 20 | Paraburdoo | 14.6 | 15.0 | 3.0 |
| 21 | Albury | 21.6 | 13.6 | -36.8 |
| 22 | Broome | 25.7 | 13.6 | -46.8 |
| 23 | Mildura | 22.6 | 13.5 | -40.3 |
| 24 | Gladstone | 20.6 | 13.3 | -35.6 |
| 25 | Emerald | 16.4 | 13.1 | -20.2 |
| 26 | Dubbo | 18.9 | 11.7 | -38.3 |
| 27 | Port Macquarie | 18.7 | 11.6 | -37.8 |
| 28 | Port Lincoln | 15.5 | 11.3 | -27.2 |
| 29 | Wagga Wagga | 18.0 | 10.7 | -40.5 |
| 30 | Tamworth | 16.3 | 9.8 | -40.3 |
| 31 | Hervey Bay | 12.8 | 8.8 | -31.1 |
| 32 | Bundaberg | 12.9 | 8.2 | -36.2 |
| 33 | Devonport | 12.6 | 8.1 | -35.7 |
| 34 | Moranbah | 9.4 | 7.7 | -18.2 |
| 35 | Toowoomba Wellcamp | 9.6 | 6.0 | -37.8 |
| 36 | Geraldton | 9.3 | 6.0 | -35.7 |
| 37 | Armidale | 11.3 | 5.9 | -47.7 |
| 38 | Roma | 8.4 | 5.8 | -30.8 |
| 39 | Kununurra | 8.1 | 5.5 | -32.4 |
| 40 | Griffith | 7.7 | 5.1 | -33.0 |
| 41 | Gove | 6.4 | 5.1 | -20.6 |
| 42 | Orange | 7.2 | 4.9 | -32.3 |
| 43 | Weipa | 5.9 | 4.8 | -17.4 |
| 44 | Mount Gambier | 7.3 | 4.7 | -35.7 |
| 45 | Thursday Island | 6.8 | 4.5 | -34.2 |
| 46 | Learmonth | 6.1 | 4.4 | -27.2 |
| 47 | Whyalla | 6.6 | 4.3 | -34.9 |
| 48 | Burnie | 6.1 | 4.2 | -30.6 |
| 49 | Olympic Dam | 6.6 | 4.0 | -39.5 |
| 50 | Merimbula | 5.9 | 3.8 | -34.7 |
| | Total top 50 regional airports | 1 879.0 | 1 217.5 | -35.2 |
| | Total regional airports | 1 999.5 | 1 301.0 | -34.9 |
| | Total domestic network | 10 125.3 | 6 142.5 | -39.3 |

Note: Airport passenger movement numbers are the sum of passenger arrivals and departures at each airport.

Regional airports are defined as airports which are, according to the Australian Bureau of Statistics

"The Australian Statistical Geography Standard (ASGS)", not based in Major Urban areas.

Table 11: Top fifty regional airports (000s) — passenger movements, annual

| Airport | YE Mar 2019 | YE Mar 2020 | % Change |
|---------------------------------------|--------------------|--------------------|-----------------|
| 1 Cairns | 4 242.7 | 3 984.6 | -6.1 |
| 2 Hobart | 2 692.7 | 2 693.9 | 0.0 |
| 3 Darwin | 1 721.5 | 1 652.3 | -4.0 |
| 4 Townsville | 1 633.2 | 1 631.8 | -0.1 |
| 5 Launceston | 1 381.5 | 1 336.4 | -3.3 |
| 6 Newcastle | 1 255.8 | 1 227.1 | -2.3 |
| 7 Mackay | 851.4 | 867.7 | 1.9 |
| 8 Rockhampton | 553.0 | 559.1 | 1.1 |
| 9 Ballina | 535.1 | 520.4 | -2.7 |
| 10 Alice Springs | 614.8 | 510.3 | -17.0 |
| 11 Ayers Rock | 423.4 | 468.3 | 10.6 |
| 12 Karratha | 444.3 | 465.4 | 4.8 |
| 13 Hamilton Island | 424.2 | 450.6 | 6.2 |
| 14 Proserpine | 429.4 | 421.6 | -1.8 |
| 15 Broome | 411.3 | 391.6 | -4.8 |
| 16 Port Hedland | 374.8 | 391.2 | 4.4 |
| 17 Coffs Harbour | 397.6 | 382.1 | -3.9 |
| 18 Newman | 313.0 | 345.2 | 10.3 |
| 19 Kalgoorlie | 294.9 | 280.1 | -5.0 |
| 20 Mildura | 266.8 | 244.5 | -8.4 |
| 21 Albury | 256.2 | 244.4 | -4.6 |
| 22 Gladstone | 248.5 | 242.0 | -2.6 |
| 23 Mount Isa | 213.7 | 228.1 | 6.7 |
| 24 Port Macquarie | 214.0 | 211.9 | -1.0 |
| 25 Dubbo | 215.8 | 204.2 | -5.4 |
| 26 Wagga Wagga | 210.6 | 202.3 | -3.9 |
| 27 Emerald | 196.2 | 200.3 | 2.1 |
| 28 Paraburdoo | 179.9 | 193.9 | 7.8 |
| 29 Tamworth | 188.0 | 184.3 | -2.0 |
| 30 Port Lincoln | 168.3 | 171.2 | 1.7 |
| 31 Hervey Bay | 160.2 | 164.0 | 2.4 |
| 32 Bundaberg | 158.6 | 149.3 | -5.9 |
| 33 Devonport | 146.0 | 145.0 | -0.7 |
| 34 Armidale | 129.3 | 126.4 | -2.2 |
| 35 Toowoomba Wellcamp | 128.8 | 117.7 | -8.6 |
| 36 Kununurra | 109.4 | 111.7 | 2.1 |
| 37 Moranbah | 106.8 | 108.7 | 1.8 |
| 38 Geraldton | 111.6 | 102.9 | -7.8 |
| 39 Thursday Island | 99.0 | 94.3 | -4.7 |
| 40 Roma | 90.0 | 94.2 | 4.7 |
| 41 Griffith | 83.1 | 92.6 | 11.5 |
| 42 Mount Gambier | 80.5 | 83.3 | 3.4 |
| 43 Learmonth | 86.1 | 82.9 | -3.7 |
| 44 Gove | 82.8 | 81.2 | -2.0 |
| 45 Orange | 78.6 | 81.1 | 3.1 |
| 46 Whyalla | 77.4 | 76.2 | -1.5 |
| 47 Burnie | 72.4 | 70.8 | -2.3 |
| 48 Weipa | 80.1 | 70.7 | -11.7 |
| 49 Olympic Dam | 76.5 | 69.3 | -9.4 |
| 50 Merimbula | 68.7 | 64.5 | -6.1 |
| Total top 50 regional airports | 23 378.4 | 22 894.0 | -2.1 |
| Total regional airports | 24 781.4 | 24 258.3 | -2.1 |
| Total domestic network | 121 751.0 | 118 512.7 | -2.7 |

Note: Airport passenger movement numbers are the sum of passenger arrivals and departures at each airport. Regional airports are defined as airports which are, according to the Australian Bureau of Statistics "The Australian Statistical Geography Standard (ASGS)", not based in Major Urban areas.

DOMESTIC CHARTER ACTIVITY

Table 12: Charter passengers carried and aircraft trips - monthly activity

| | Mar 2019 | Mar 2020 | % Change |
|---------------------------------------|----------|----------|----------|
| Total domestic charter passengers | 210 779 | 241 476 | 14.6 |
| Total domestic charter aircraft trips | 3 639 | 4 545 | 24.9 |

Note: Helicopter, joyflights and sightseeing charter flights not included.

Table 13: Charter passengers carried and aircraft trips - annual activity

| | YE Mar 2019 | YE Mar 2020 | % Change |
|---------------------------------------|-------------|-------------|----------|
| Total domestic charter passengers | 2 512 189 | 2 850 202 | 13.5 |
| Total domestic charter aircraft trips | 43 964 | 49 346 | 12.2 |

Note: Helicopter, joyflights and sightseeing charter flights not included.

Table 14: Domestic airports - charter activity - monthly

| | Mar 2019 | Mar 2020 | % Change |
|--|----------|----------|----------|
| Total domestic charter passenger movements | 421 558 | 482 952 | 14.6 |
| Total domestic charter aircraft movements | 7 278 | 9 090 | 24.9 |
| Perth airport charter passenger movements | 161 898 | 184 607 | 14.0 |
| Perth airport charter aircraft movements | 2 532 | 3 182 | 25.7 |

Note: Helicopter, joyflights and sightseeing charter flights not included.

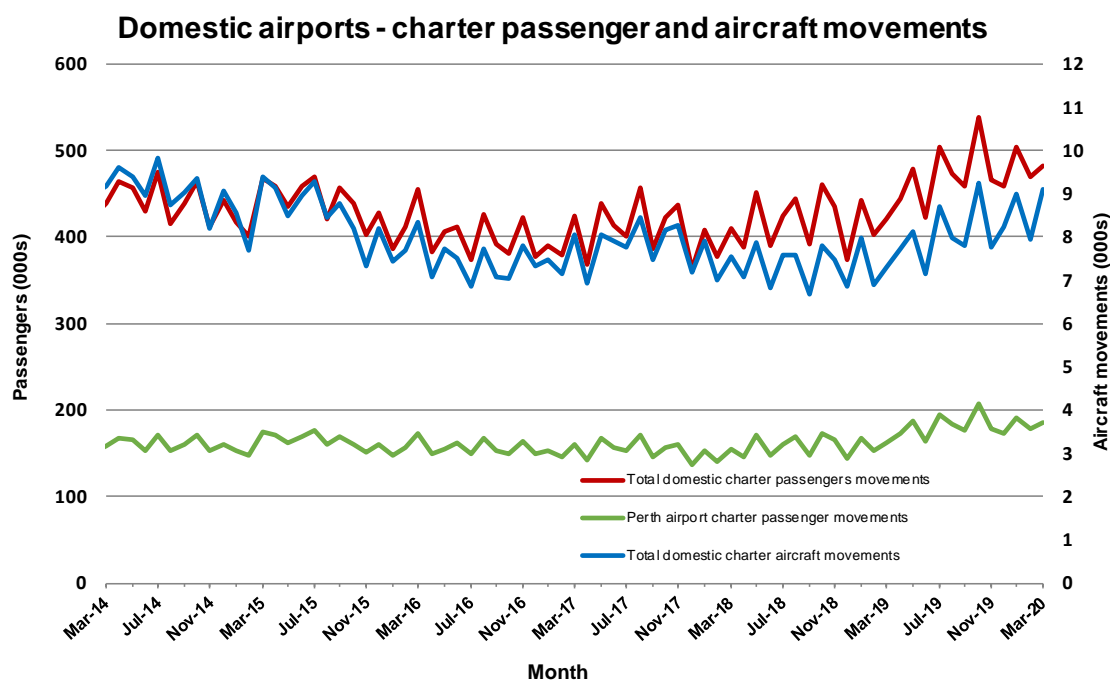
Charter passenger and aircraft movement numbers are the sum of arrivals and departures at each airport.

Table 15: Domestic airports - charter activity - annual

| | YE Mar 2019 | YE Mar 2020 | % Change |
|--|-------------|-------------|----------|
| Total domestic charter passenger movements | 5 024 378 | 5 700 404 | 13.5 |
| Total domestic charter aircraft movements | 87 928 | 98 692 | 12.2 |
| Perth airport charter passenger movements | 1 908 033 | 2 190 848 | 14.8 |
| Perth airport charter aircraft movements | 30 125 | 34 585 | 14.8 |

Note: Helicopter, joyflights and sightseeing charter flights not included.

Charter passenger and aircraft movement numbers are the sum of arrivals and departures at each airport.



DEFINITIONS

| | |
|---|---|
| Aircraft Trips | The number of flight stages. A return flight counts as two aircraft trips. |
| Airport Movements | Airport movements (passenger and cargo) are measured once on arrival and once on departure. Each domestic trip generates two movements at airports. For example, a trip from Melbourne to Sydney will be counted twice, as a passenger departure at Melbourne and as a passenger arrival at Sydney. At the national level, the sum of all domestic airport traffic will therefore be equal to twice the number of trips undertaken. |
| Available Seat Kilometres (ASKs) | Calculated by multiplying the number of seats available on each flight stage, by the distance in kilometres between the ports. The distances used are Great Circle Distances. |
| City-Pair | The ports shown make up the city-pair route. Passenger movements shown for a city pair reflect total traffic in both directions. |
| Flight Stage | The operation of an aircraft from take-off to landing. |
| Load Factor | The total revenue passenger kilometres performed as a percentage of the total available seat kilometres. |
| Passengers Carried | Revenue passengers carried. |
| Regular Public Transport Services (RPT) | All air service operations in which aircraft are available for the transport of members of the public and are conducted in accordance with fixed schedules. It does not include charter or other non-scheduled operations. |
| Revenue Passengers | All passengers paying any fare. Frequent flyer redemption travellers are regarded as revenue passengers. |
| Revenue Passenger Kilometres (RPKs) | Calculated by multiplying the number of revenue passengers travelling on each flight stage, by the distance in kilometres between the ports. The distances used are Great Circle Distances. |
| Traffic on board by stages | The total of all traffic (revenue passengers) on each flight stage between two directly connected airports. |
| .. | Data not included |
| NA | Not applicable |