



**Australian Government**

**Department of Infrastructure, Transport,  
Regional Development, Communications and the Arts**  
Bureau of Infrastructure and Transport Research Economics

## STATISTICAL REPORT



# bitre

## Aviation

**Domestic aviation activity  
March 2025**

The Department of Infrastructure, Transport, Regional Development, Communications, Sport and the Arts acknowledges the Traditional Custodians of Country of the land on which we work and live.

We recognise and respect the continuing connections to land, waters and communities.

We pay our respects to them and their cultures and to their Elders both past and present and to all Aboriginal and Torres Strait Islander people.

---

© Commonwealth of Australia 2025

ISSN: 1832 – 1968

BITRE Reference: 2025-061

### **Ownership of intellectual property rights in this publication**

Unless otherwise noted, copyright (and any other intellectual property rights, if any) in this publication is owned by the Commonwealth of Australia (referred to below as the Commonwealth).

### **Disclaimer**

The material contained in this publication is made available on the understanding that the Commonwealth is not providing professional advice, and that users exercise their own skill and care with respect to its use, and seek independent advice if necessary.

The Commonwealth makes no representations or warranties as to the contents or accuracy of the information contained in this publication. To the extent permitted by law, the Commonwealth disclaims liability to any person or organisation in respect of anything done, or omitted to be done, in reliance upon information contained in this publication.

### **Creative Commons licence**

With the exception of (a) the Coat of Arms; and (b) the Department of Infrastructure, Transport, Regional Development, Communications, Sport and the Arts' photos and graphics, copyright in this publication is licensed under a Creative Commons Attribution 3.0 Australia Licence.

Creative Commons Attribution 3.0 Australia Licence is a standard form licence agreement that allows you to copy, communicate and adapt this publication provided that you attribute the work to the Commonwealth and abide by the other licence terms. A summary of the licence terms is available from <http://creativecommons.org/licenses/by/3.0/au/deed.en>.

The full licence terms are available from <http://creativecommons.org/licenses/by/3.0/au/legalcode>.

### **Use of the Coat of Arms**

The Department of the Prime Minister and Cabinet sets the terms under which the Coat of Arms is used. Please refer to the Department's Commonwealth Coat of Arms and Government branding web page <http://www.dpmc.gov.au/guidelines/index.cfm#brand> and, in particular, the Guidelines on the use of the Commonwealth Coat of Arms publication.

An appropriate citation for this report is:

Bureau of Infrastructure and Transport Research Economics (BITRE), 2025, Domestic aviation activity, Statistical Report, BITRE, Canberra ACT.

### **Contact us**

This publication is available in PDF format. All other rights are reserved, including in relation to any Departmental logos or trademarks which may exist. For enquiries regarding the licence and any use of this publication, please contact:

Bureau of Infrastructure and Transport Research Economics (BITRE)  
Department of Infrastructure, Transport, Regional Development, Communications, Sport and the Arts  
GPO Box 501, Canberra ACT 2601, Australia

Email: [avstats@infrastructure.gov.au](mailto:avstats@infrastructure.gov.au)

Website: [www.bitre.gov.au](http://www.bitre.gov.au)

Inquiries: [Marko.Rodic2@infrastructure.gov.au](mailto:Marko.Rodic2@infrastructure.gov.au) (02) 6136 7995

## FOREWORD

This report provides an overview of domestic (including charter) commercial aviation activity in Australia for the month of March 2025.

The data covers revenue passengers carried by Australian-registered operators of scheduled Regular Public Transport (RPT) services over Australian flight stages and fixed-wing charter operators. These estimates include passengers carried between domestic airports on international flights operated by these carriers. The passengers carried refer to traffic on board by stages.

Estimates of passengers and aircraft movements for charter aviation are included in this publication, where BITRE confidentiality standards are met.

Individual routes shown are restricted to those with an average exceeding 8,000 passengers per month over the previous six months where two or more airlines operate in competition.

Information on the total network for the month of March 2025 and on the RPT network for the month of March 2025 is presented on page 2, with estimates for the year ended March 2025 presented on page 3.

Detailed information on individual routes can be found in the RPT summary pages 4-13 of this publication. For the month of March 2025, there are 62 individual routes published.

The top ten airports in terms of RPT passenger movements are shown on page 14.

Data on domestic RPT cargo movements at the top five cargo airports are provided on page 15. The table includes cargo carried on passenger flights operated by the Qantas group (including Jetstar), Virgin Australia, Air North and Skippers as well as the cargo carried by dedicated freighter aircraft operated by Qantas Freight and Team Global Express (formerly Toll).

The long-term trends for the top ten competitive RPT routes are presented graphically on pages 16-25.

Domestic RPT passenger movements at regional airports are shown on pages 26-27.

Tables providing estimates of domestic charter aviation activity are shown on page 28. BITRE confidentiality standards restrict publication of detailed estimates for individual Australian airports, with the exception of Perth Airport.

A list of definitions can be found on page 29.

This report was prepared by the Aviation Statistics Section of the Bureau of Infrastructure and Transport Research Economics with data provided by airlines.

Estimates are included where data were not available and data presented in this publication may contain revisions to previously published data.

Where figures have been rounded, discrepancies may occur between sums of component items and totals, and in percentage changes which are derived from figures prior to rounding.

# CONTENTS

<b>Highlights .....</b>	<b>1</b>
<b>Total network.....</b>	<b>2</b>
<b>RPT network .....</b>	<b>2</b>
<b>Top competitive routes.....</b>	<b>4</b>
<b>Top ten airports – passenger movements.....</b>	<b>14</b>
<b>Top five airports – cargo movements.....</b>	<b>15</b>
<b>Top ten routes .....</b>	<b>16</b>
1. Melbourne – Sydney .....	16
2. Brisbane – Sydney.....	17
3. Brisbane – Melbourne .....	18
4. Adelaide – Melbourne .....	19
5. Melbourne – Perth .....	20
6. Adelaide – Sydney.....	21
7. Gold Coast – Sydney.....	22
8. Perth – Sydney .....	23
9. Gold Coast – Melbourne .....	24
10. Hobart – Melbourne .....	25
<b>Top fifty regional airports .....</b>	<b>26</b>
<b>Domestic charter activity .....</b>	<b>28</b>
<b>Definitions .....</b>	<b>29</b>

This page is intentionally left blank.

## HIGHLIGHTS

There were 5.09 million passengers carried on Australian domestic commercial aviation (including charter operations) in March 2025, compared with 5.32 million in March 2024 (down 4.4 per cent). This is also a decrease of 3.5 per cent on pre-COVID March 2019 passenger numbers (5.27 million).

4.75 million passengers were carried on Regular Public Transport (RPT) flights in March 2025 (excluding charter operations), a decrease of 4.6 per cent compared to March 2024.

For the month of March 2025, there were 49.1 thousand RPT aircraft trips, a decrease of 5.4 per cent on March 2024.

For the year ending March 2025 there were 59.15 million RPT passengers, an increase of 1.5 per cent on the year ending March 2024.

RPT revenue passenger kilometres (RPKs) performed were 5.59 billion for the month, compared with 5.81 billion in March 2024 (down 3.8 per cent).

Capacity, measured by available seat kilometres (ASKs), decreased to 6.93 billion in March 2025 compared to 7.23 billion in March 2024 (down 4.1 per cent).

The industry wide load factor (RPKs/ASKs) increased from 80.4 per cent in March 2024 to 80.7 per cent in March 2025. The highest load factor (90.6 per cent) was recorded on the Brisbane - Hobart route while the lowest load factor (53.2 per cent) was recorded on the Geraldton - Perth route.

For the month of March 2025, Melbourne – Sydney was Australia's busiest RPT route with 723.0 thousand passengers, followed by Brisbane – Sydney with 330.5 thousand passengers and Brisbane – Melbourne with 267.4 thousand passengers.

Sydney was Australia's busiest domestic airport with 2.07 million passenger movements in March 2025, followed by Melbourne with 2.00 million passenger movements and Brisbane with 1.29 million passenger movements.

Total cargo movements at Australian airports on domestic RPT flights were 25.7 thousand tonnes in March 2025, an increase of 3.9 per cent compared with March 2024.

In March 2025, there were 1.99 million domestic passenger movements through regional airports, a decrease of 3.0 per cent from March 2024. Out of the top 50 regional airports, the strongest increase was recorded at Hervey Bay Airport (up 34.6 per cent on March 2024), while the largest decrease was recorded at Albury Airport (down 27.2 per cent on March 2024).

Fixed-wing charter operators carried 340.0 thousand passengers in March 2025, a decrease of 2.3 per cent compared with March 2024. Perth Airport accounted for 35.9 per cent of all charter passengers in Australia.

## TOTAL NETWORK

### Summary of monthly commercial aviation activity

	Mar 2024	Mar 2025	% Change
Total passengers carried (millions)	5.32	5.09	-4.4
Aircraft trips (000s)	57.8	54.8	-5.2

Note: Regular Public Transport and charter aviation activity

Helicopter, joy flights and sightseeing charter flights not included.

## RPT NETWORK

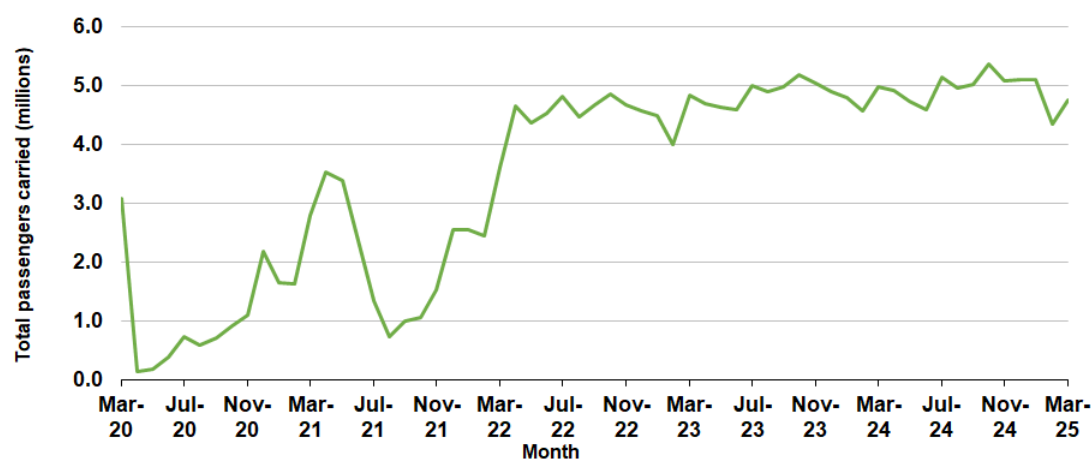
### Summary of monthly RPT activity

	Mar 2024	Mar 2025	% Change
Total passengers carried (millions)	4.98	4.75	-4.6
Revenue passenger kilometres (billions)	5.81	5.59	-3.8
Available seats (millions)	6.35	5.97	-6.0
Available seat kilometres (billions)	7.23	6.93	-4.1
Load factor %	80.4	80.7	0.3 *
Aircraft trips (000s)	52.0	49.1	-5.4

\* percentage point difference

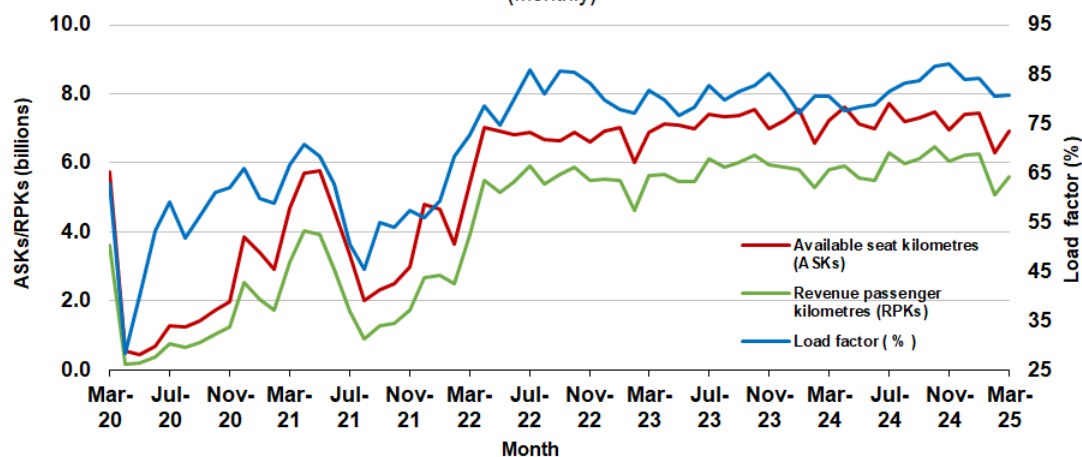
### Domestic RPT passenger traffic

(monthly)



### RPT Network utilisation

(monthly)





## TOTAL NETWORK

### Summary of annual commercial aviation activity

	YE Mar 2024	YE Mar 2025	% Change
Total passengers carried (millions)	62.44	63.41	1.6
Aircraft trips (000s)	687.3	679.2	-1.2

Note: Regular Public Transport and charter aviation activity  
Helicopter, joy flights and sightseeing charter flights not included.

## RPT NETWORK

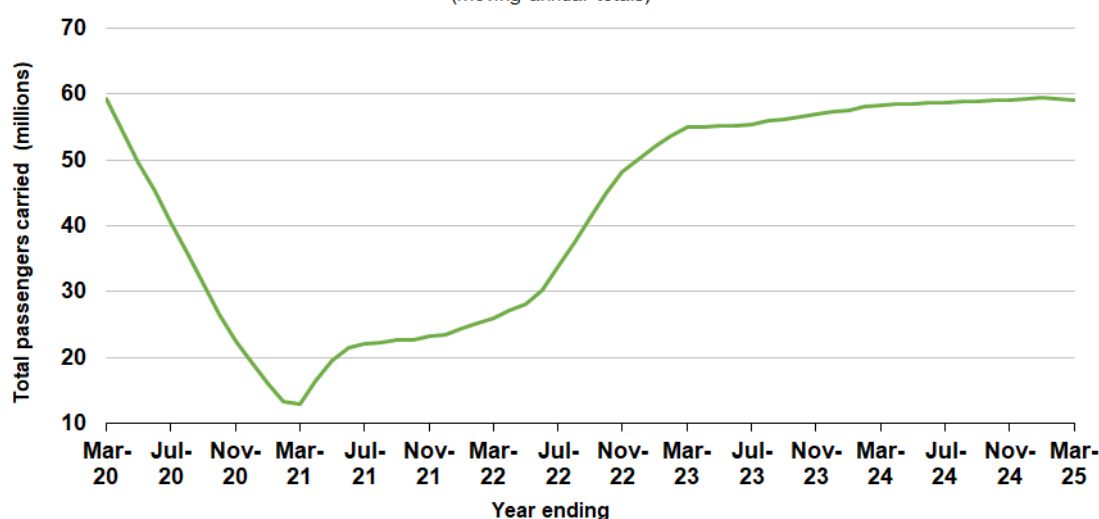
### Summary of annual RPT activity

	YE Mar 2024	YE Mar 2025	% Change
Total passengers carried (millions)	58.29	59.15	1.5
Revenue passenger kilometres (billions)	69.60	71.01	2.0
Available seats (millions)	74.32	73.63	-0.9
Available seat kilometres (billions)	86.43	86.41	0.0
Load factor %	80.5	82.2	1.6 *
Aircraft trips (000s)	616.1	606.8	-1.5

\* percentage point difference

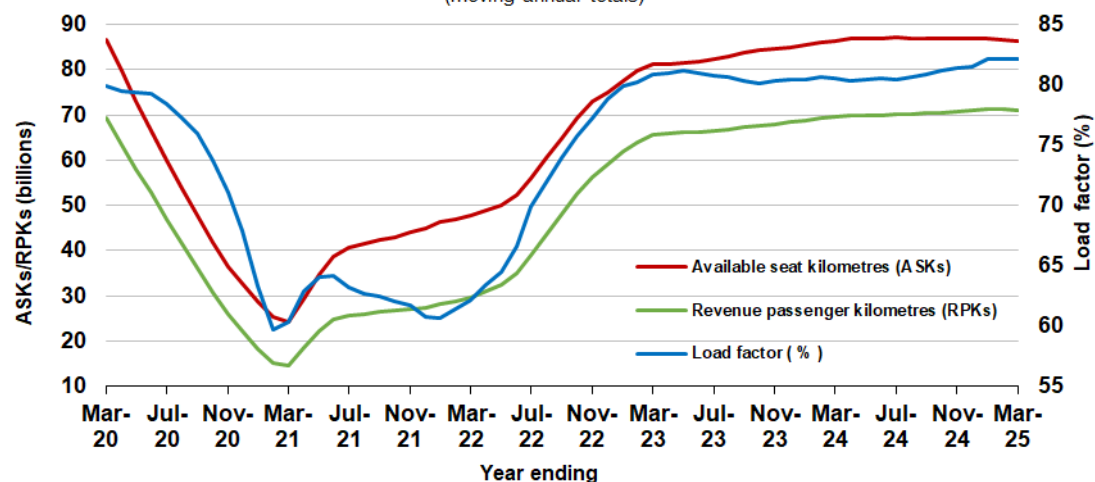
### Domestic RPT passenger traffic

(moving annual totals)



### RPT Network utilisation

(moving annual totals)



## TOP COMPETITIVE ROUTES

**Table 1: Passengers carried (000s) — annual activity**

	City-Pair	YE Mar 2024	YE Mar 2025	% Change
1	Melbourne - Sydney	7 830.5	8 017.3	2.4
2	Brisbane - Sydney	4 311.8	4 329.7	0.4
3	Brisbane - Melbourne	3 354.1	3 516.7	4.8
4	Gold Coast - Sydney	2 492.4	2 460.6	-1.3
5	Adelaide - Melbourne	2 322.6	2 327.6	0.2
6	Gold Coast - Melbourne	2 246.4	2 133.7	-5.0
7	Melbourne - Perth	1 950.9	2 039.3	4.5
8	Adelaide - Sydney	1 809.1	1 883.8	4.1
9	Perth - Sydney	1 613.7	1 665.1	3.2
10	Hobart - Melbourne	1 335.7	1 385.0	3.7
11	Brisbane - Cairns	1 248.4	1 310.3	5.0
12	Brisbane - Perth	1 021.1	1 102.1	7.9
13	Canberra - Melbourne	1 016.6	991.8	-2.4
14	Brisbane - Townsville	871.7	951.7	9.2
15	Cairns - Sydney	904.8	916.6	1.3
16	Adelaide - Brisbane	848.2	868.3	2.4
17	Launceston - Melbourne	847.2	859.6	1.5
18	Hobart - Sydney	753.3	825.9	9.6
19	Cairns - Melbourne	840.7	824.5	-1.9
20	Sunshine Coast - Sydney	769.9	773.8	0.5
21	Brisbane - Mackay	724.7	766.0	5.7
22	Melbourne - Sunshine Coast	776.6	727.8	-6.3
23	Adelaide - Perth	663.4	703.5	6.1
24	Canberra - Sydney	606.7	640.1	5.5
25	Brisbane - Canberra	632.0	637.6	0.9
26	Karratha - Perth	556.0	621.9	11.9
27	Brisbane - Rockhampton	514.6	597.7	16.1
28	Ballina - Sydney	523.5	514.7	-1.7
29	Brisbane - Newcastle	501.0	510.4	1.9
30	Perth - Port Hedland	469.5	477.4	1.7
31	Melbourne - Newcastle	430.6	462.7	7.5
32	Newman - Perth	366.8	416.0	13.4
33	Kalgoorlie - Perth	360.1	368.2	2.2
34	Broome - Perth	362.3	356.7	-1.5
35	Launceston - Sydney	335.8	343.7	2.3
36	Brisbane - Darwin	319.4	328.6	2.9
37	Brisbane - Hobart	295.0	308.9	4.7
38	Darwin - Melbourne	282.8	292.4	3.4
39	Brisbane - Proserpine	274.4	282.2	2.8
40	Adelaide - Gold Coast	269.6	277.5	2.9
41	Hamilton Island - Sydney	243.4	249.5	2.5
42	Brisbane - Gladstone	216.4	223.6	3.3
43	Coffs Harbour - Sydney	211.1	208.3	-1.4
44	Adelaide - Canberra	193.3	189.5	-2.0
45	Brisbane - Emerald	184.7	187.5	1.5
46	Darwin - Perth	170.9	185.5	8.6
47	Canberra - Gold Coast	179.3	177.7	-0.8
48	Dubbo - Sydney	178.5	172.1	-3.6
49	Adelaide - Port Lincoln	172.3	168.7	-2.1
50	Port Macquarie - Sydney	167.3	165.8	-0.9

continued

**Table 1: (continued) Passengers carried (000s) — annual activity**

	<b>City-Pair</b>	<b>YE Mar 2024</b>	<b>YE Mar 2025</b>	<b>% Change</b>
51	Sydney - Wagga Wagga	154.5	162.3	5.1
52	Brisbane - Hamilton Island	164.2	161.1	-1.9
53	Albury - Sydney	165.9	160.1	-3.5
54	Brisbane - Launceston	146.3	156.2	6.7
55	Melbourne - Mildura	174.1	154.5	-11.3
56	Brisbane - Mount Isa	141.9	150.5	6.1
57	Brisbane - Bundaberg	131.8	141.5	7.3
58	Devonport - Melbourne	120.3	129.3	7.4
59	Geraldton - Perth	99.4	116.3	17.0
60	Ayers Rock - Melbourne	..	113.0	NA
61	Brisbane - Moranbah	110.5	110.3	-0.2
62	Adelaide - Alice Springs	118.2	105.6	-10.7
<b>Total domestic network</b>		<b>58 285.8</b>	<b>59 145.6</b>	<b>1.5</b>

.. Data not available for release.

**Table 2: Passengers carried (000s) — monthly activity**

	City-Pair	Mar 2024	Mar 2025	% Change
1	Melbourne - Sydney	709.7	723.0	1.9
2	Brisbane - Sydney	366.6	330.5	-9.9
3	Brisbane - Melbourne	284.3	267.4	-5.9
4	Adelaide - Melbourne	208.2	211.8	1.7
5	Melbourne - Perth	173.6	170.8	-1.6
6	Adelaide - Sydney	161.4	166.6	3.2
7	Gold Coast - Sydney	211.3	158.6	-24.9
8	Perth - Sydney	134.0	145.8	8.8
9	Gold Coast - Melbourne	188.6	133.6	-29.2
10	Hobart - Melbourne	124.7	126.8	1.7
11	Canberra - Melbourne	94.1	88.2	-6.2
12	Brisbane - Cairns	94.8	87.3	-7.9
13	Brisbane - Perth	90.2	85.6	-5.1
14	Launceston - Melbourne	79.7	79.2	-0.6
15	Hobart - Sydney	67.6	73.9	9.4
16	Brisbane - Townsville	72.6	68.6	-5.5
17	Adelaide - Brisbane	74.7	67.8	-9.3
18	Cairns - Sydney	69.6	66.5	-4.5
19	Brisbane - Mackay	61.4	59.8	-2.7
20	Adelaide - Perth	56.5	59.6	5.6
21	Sunshine Coast - Sydney	64.9	58.2	-10.2
22	Cairns - Melbourne	58.1	57.4	-1.1
23	Canberra - Sydney	55.8	55.1	-1.2
24	Karratha - Perth	48.3	53.8	11.5
25	Melbourne - Sunshine Coast	61.8	53.0	-14.3
26	Brisbane - Canberra	50.8	47.1	-7.4
27	Brisbane - Rockhampton	44.1	45.5	3.2
28	Melbourne - Newcastle	39.3	41.0	4.4
29	Perth - Port Hedland	36.2	39.2	8.3
30	Brisbane - Newcastle	42.4	38.6	-8.8
31	Newman - Perth	29.7	37.3	25.5
32	Ballina - Sydney	44.4	34.1	-23.3
33	Launceston - Sydney	31.1	34.0	9.4
34	Kalgoorlie - Perth	29.5	30.9	4.7
35	Brisbane - Hobart	25.5	25.2	-1.3
36	Broome - Perth	24.4	24.4	-0.2
37	Brisbane - Darwin	22.0	21.9	-0.2
38	Hamilton Island - Sydney	19.6	21.2	7.9
39	Brisbane - Proserpine	20.6	19.2	-6.7
40	Adelaide - Gold Coast	23.1	18.8	-18.8
41	Darwin - Melbourne	16.8	18.3	8.8
42	Adelaide - Canberra	16.1	17.5	9.0
43	Brisbane - Gladstone	18.3	16.9	-7.9
44	Coffs Harbour - Sydney	17.9	16.2	-9.4
45	Adelaide - Port Lincoln	15.1	15.1	0.5
46	Dubbo - Sydney	15.2	14.8	-2.4
47	Brisbane - Emerald	15.6	14.8	-5.1
48	Sydney - Wagga Wagga	14.0	14.5	3.9
49	Port Macquarie - Sydney	14.8	14.3	-3.4
50	Melbourne - Mildura	16.1	14.2	-11.5

continued

**Table 2: (continued) Passengers carried (000s) — monthly activity**

	<b>City-Pair</b>	<b>Mar 2024</b>	<b>Mar 2025</b>	<b>% Change</b>
51	Albury - Sydney	14.4	13.6	-5.6
52	Darwin - Perth	12.6	13.4	6.0
53	Devonport - Melbourne	10.6	12.5	18.1
54	Canberra - Gold Coast	16.0	11.9	-26.0
55	Brisbane - Launceston	12.5	11.4	-8.7
56	Brisbane - Mount Isa	11.2	11.2	0.4
57	Brisbane - Bundaberg	11.6	10.8	-6.7
58	Brisbane - Hamilton Island	13.2	10.8	-18.4
59	Geraldton - Perth	9.2	10.5	14.1
60	Ayers Rock - Melbourne	..	9.9	NA
61	Brisbane - Moranbah	9.4	8.4	-10.6
62	Adelaide - Alice Springs	8.8	8.4	-4.9
<b>Total domestic network</b>		<b>4 975.8</b>	<b>4 747.6</b>	<b>-4.6</b>

.. Data not available for release.

**Table 3: Available seats (000s) — monthly activity**

	City-Pair	Mar 2024	Mar 2025	% Change
1	Melbourne - Sydney	861.6	817.5	-5.1
2	Brisbane - Sydney	451.2	392.8	-12.9
3	Brisbane - Melbourne	347.1	323.2	-6.9
4	Adelaide - Melbourne	250.3	241.8	-3.4
5	Melbourne - Perth	208.6	197.1	-5.5
6	Adelaide - Sydney	194.0	191.2	-1.4
7	Gold Coast - Sydney	251.5	187.5	-25.5
8	Perth - Sydney	150.5	167.7	11.4
9	Gold Coast - Melbourne	219.2	173.3	-20.9
10	Hobart - Melbourne	153.7	144.3	-6.1
11	Canberra - Melbourne	133.1	111.7	-16.1
12	Brisbane - Cairns	109.1	106.8	-2.1
13	Brisbane - Perth	106.4	105.8	-0.5
14	Launceston - Melbourne	102.8	92.5	-10.1
15	Hobart - Sydney	82.4	86.9	5.5
16	Brisbane - Townsville	97.3	91.9	-5.5
17	Adelaide - Brisbane	96.1	85.0	-11.5
18	Cairns - Sydney	80.5	75.2	-6.5
19	Brisbane - Mackay	82.9	83.4	0.6
20	Adelaide - Perth	66.8	74.9	12.1
21	Sunshine Coast - Sydney	78.9	72.9	-7.5
22	Cairns - Melbourne	71.1	77.2	8.5
23	Canberra - Sydney	82.7	82.0	-0.9
24	Karratha - Perth	71.2	77.2	8.4
25	Melbourne - Sunshine Coast	72.3	64.5	-10.8
26	Brisbane - Canberra	72.2	66.0	-8.6
27	Brisbane - Rockhampton	56.5	59.1	4.6
28	Melbourne - Newcastle	49.0	46.8	-4.4
29	Perth - Port Hedland	60.5	63.0	4.1
30	Brisbane - Newcastle	53.4	47.4	-11.2
31	Newman - Perth	53.0	55.9	5.5
32	Ballina - Sydney	52.4	40.7	-22.2
33	Launceston - Sydney	37.4	39.5	5.8
34	Kalgoorlie - Perth	52.3	55.3	5.8
35	Brisbane - Hobart	29.6	27.8	-6.1
36	Broome - Perth	32.5	36.8	13.3
37	Brisbane - Darwin	26.3	28.6	8.9
38	Hamilton Island - Sydney	28.4	28.3	-0.6
39	Brisbane - Proserpine	25.1	22.4	-10.7
40	Adelaide - Gold Coast	25.3	22.6	-10.9
41	Darwin - Melbourne	19.0	23.8	25.6
42	Adelaide - Canberra	22.3	23.8	7.1
43	Brisbane - Gladstone	26.0	27.5	5.8
44	Coffs Harbour - Sydney	22.2	24.9	12.1
45	Adelaide - Port Lincoln	22.4	23.3	3.7
46	Dubbo - Sydney	22.8	22.1	-3.3
47	Brisbane - Emerald	21.9	23.2	5.8
48	Sydney - Wagga Wagga	19.7	21.5	9.1
49	Port Macquarie - Sydney	21.5	19.3	-10.4
50	Melbourne - Mildura	20.0	18.8	-6.3

continued

**Table 3: (continued) Available seats (000s) — monthly activity**

	<b>City-Pair</b>	<b>Mar 2024</b>	<b>Mar 2025</b>	<b>% Change</b>
51	Albury - Sydney	19.0	17.8	-6.7
52	Darwin - Perth	18.5	20.2	9.5
53	Devonport - Melbourne	14.4	17.0	18.3
54	Canberra - Gold Coast	19.0	14.1	-26.1
55	Brisbane - Launceston	15.6	13.3	-15.3
56	Brisbane - Mount Isa	20.0	19.2	-4.1
57	Brisbane - Bundaberg	18.3	17.0	-7.3
58	Brisbane - Hamilton Island	19.5	14.0	-27.9
59	Geraldton - Perth	18.5	19.7	6.6
60	Ayers Rock - Melbourne	..	11.9	NA
61	Brisbane - Moranbah	15.6	14.6	-6.2
62	Adelaide - Alice Springs	13.0	11.5	-11.4
<b>Total domestic network</b>		<b>6 346.1</b>	<b>5 968.3</b>	<b>-6.0</b>

.. Data not available for release.



**Table 4: Load factors (%) — monthly activity**

	City-Pair	Mar 2024	Mar 2025	% Point diff
1	Melbourne - Sydney	82.4	88.4	6.0
2	Brisbane - Sydney	81.3	84.1	2.8
3	Brisbane - Melbourne	81.9	82.8	0.9
4	Adelaide - Melbourne	83.2	87.6	4.4
5	Melbourne - Perth	83.2	86.7	3.5
6	Adelaide - Sydney	83.2	87.1	3.9
7	Gold Coast - Sydney	84.0	84.6	0.6
8	Perth - Sydney	89.1	87.0	-2.1
9	Gold Coast - Melbourne	86.0	77.1	-8.9
10	Hobart - Melbourne	81.2	87.9	6.7
11	Canberra - Melbourne	70.7	79.0	8.3
12	Brisbane - Cairns	86.9	81.7	-5.2
13	Brisbane - Perth	84.8	80.8	-4.0
14	Launceston - Melbourne	77.5	85.7	8.2
15	Hobart - Sydney	82.0	85.1	3.1
16	Brisbane - Townsville	74.6	74.6	0.0
17	Adelaide - Brisbane	77.7	79.7	2.0
18	Cairns - Sydney	86.6	88.4	1.8
19	Brisbane - Mackay	74.1	71.6	-2.5
20	Adelaide - Perth	84.6	79.7	-4.9
21	Sunshine Coast - Sydney	82.2	79.8	-2.4
22	Cairns - Melbourne	81.6	74.4	-7.2
23	Canberra - Sydney	67.5	67.3	-0.2
24	Karratha - Perth	67.9	69.8	1.9
25	Melbourne - Sunshine Coast	85.4	82.1	-3.3
26	Brisbane - Canberra	70.4	71.3	0.9
27	Brisbane - Rockhampton	78.0	76.9	-1.1
28	Melbourne - Newcastle	80.3	87.6	7.3
29	Perth - Port Hedland	59.9	62.3	2.4
30	Brisbane - Newcastle	79.4	81.5	2.1
31	Newman - Perth	56.0	66.6	10.6
32	Ballina - Sydney	84.9	83.7	-1.2
33	Launceston - Sydney	83.1	85.9	2.8
34	Kalgoorlie - Perth	56.4	55.9	-0.5
35	Brisbane - Hobart	86.1	90.6	4.5
36	Broome - Perth	75.3	66.3	-9.0
37	Brisbane - Darwin	83.6	76.6	-7.0
38	Hamilton Island - Sydney	69.1	75.0	5.9
39	Brisbane - Proserpine	81.9	85.5	3.6
40	Adelaide - Gold Coast	91.3	83.2	-8.1
41	Darwin - Melbourne	88.6	76.7	-11.9
42	Adelaide - Canberra	72.1	73.4	1.3
43	Brisbane - Gladstone	70.4	61.3	-9.1
44	Coffs Harbour - Sydney	80.8	65.2	-15.6
45	Adelaide - Port Lincoln	67.1	65.1	-2.0
46	Dubbo - Sydney	66.7	67.2	0.5
47	Brisbane - Emerald	71.1	63.8	-7.3
48	Sydney - Wagga Wagga	70.8	67.4	-3.4
49	Port Macquarie - Sydney	68.7	74.1	5.4
50	Melbourne - Mildura	80.2	75.7	-4.5

continued



**Table 4: (continued) Load factors (%) — monthly activity**

	<b>City-Pair</b>	<b>Mar 2024</b>	<b>Mar 2025</b>	<b>% Point diff</b>
51	Albury - Sydney	75.8	76.6	0.8
52	Darwin - Perth	68.4	66.2	-2.2
53	Devonport - Melbourne	73.6	73.5	-0.1
54	Canberra - Gold Coast	84.2	84.2	0.0
55	Brisbane - Launceston	79.7	85.8	6.1
56	Brisbane - Mount Isa	55.9	58.5	2.6
57	Brisbane - Bundaberg	63.4	63.8	0.4
58	Brisbane - Hamilton Island	67.9	76.8	8.9
59	Geraldton - Perth	49.6	53.2	3.6
60	Ayers Rock - Melbourne	..	83.1	NA
61	Brisbane - Moranbah	60.5	57.7	-2.8
62	Adelaide - Alice Springs	67.7	72.7	5.0
	<b>Total domestic network</b>	<b>80.4</b>	<b>80.7</b>	<b>0.3</b>

.. Data not available for release.

**Table 5: Aircraft trips <sup>(a)</sup> — monthly activity**

	City-Pair	Mar 2024	Mar 2025	% Change
1	Melbourne - Sydney	4 980	4 696	-5.7
2	Brisbane - Sydney	2 735	2 351	-14.0
3	Brisbane - Melbourne	2 044	1 938	-5.2
4	Adelaide - Melbourne	1 496	1 428	-4.5
5	Melbourne - Perth	1 150	1 110	-3.5
6	Adelaide - Sydney	1 174	1 123	-4.3
7	Gold Coast - Sydney	1 403	1 065	-24.1
8	Perth - Sydney	776	895	15.3
9	Gold Coast - Melbourne	1 195	935	-21.8
10	Hobart - Melbourne	872	819	-6.1
11	Canberra - Melbourne	879	710	-19.2
12	Brisbane - Cairns	794	754	-5.0
13	Brisbane - Perth	626	608	-2.9
14	Launceston - Melbourne	800	623	-22.1
15	Hobart - Sydney	500	502	0.4
16	Brisbane - Townsville	703	716	1.8
17	Adelaide - Brisbane	713	628	-11.9
18	Cairns - Sydney	420	404	-3.8
19	Brisbane - Mackay	705	559	-20.7
20	Adelaide - Perth	391	409	4.6
21	Sunshine Coast - Sydney	440	403	-8.4
22	Cairns - Melbourne	370	410	10.8
23	Canberra - Sydney	1 313	1 320	0.5
24	Karratha - Perth	423	472	11.6
25	Melbourne - Sunshine Coast	386	339	-12.2
26	Brisbane - Canberra	597	533	-10.7
27	Brisbane - Rockhampton	652	635	-2.6
28	Melbourne - Newcastle	315	305	-3.2
29	Perth - Port Hedland	372	392	5.4
30	Brisbane - Newcastle	496	399	-19.6
31	Newman - Perth	321	337	5.0
32	Ballina - Sydney	360	271	-24.7
33	Launceston - Sydney	231	232	0.4
34	Kalgoorlie - Perth	327	372	13.8
35	Brisbane - Hobart	194	174	-10.3
36	Broome - Perth	222	254	14.4
37	Brisbane - Darwin	221	161	-27.1
38	Hamilton Island - Sydney	161	160	-0.6
39	Brisbane - Proserpine	168	140	-16.7
40	Adelaide - Gold Coast	126	110	-12.7
41	Darwin - Melbourne	134	136	1.5
42	Adelaide - Canberra	206	222	7.8
43	Brisbane - Gladstone	323	301	-6.8
44	Coffs Harbour - Sydney	388	287	-26.0
45	Adelaide - Port Lincoln	546	483	-11.5
46	Dubbo - Sydney	420	419	-0.2
47	Brisbane - Emerald	326	298	-8.6
48	Sydney - Wagga Wagga	344	390	13.4
49	Port Macquarie - Sydney	376	320	-14.9
50	Melbourne - Mildura	409	363	-11.2

continued

**Table 5: (continued) Aircraft trips <sup>(a)</sup> — monthly activity**

	<b>City-Pair</b>	<b>Mar 2024</b>	<b>Mar 2025</b>	<b>% Change</b>
51	Albury - Sydney	328	321	-2.1
52	Darwin - Perth	105	115	9.5
53	Devonport - Melbourne	312	289	-7.4
54	Canberra - Gold Coast	106	78	-26.4
55	Brisbane - Launceston	92	73	-20.7
56	Brisbane - Mount Isa	168	233	38.7
57	Brisbane - Bundaberg	296	276	-6.8
58	Brisbane - Hamilton Island	133	98	-26.3
59	Geraldton - Perth	203	208	2.5
60	Ayers Rock - Melbourne	..	66	NA
61	Brisbane - Moranbah	208	195	-6.3
62	Adelaide - Alice Springs	152	138	-9.2
<b>Total domestic network</b>		<b>51 952</b>	<b>49 149</b>	<b>-5.4</b>

(a) Includes RPT cargo flights.

.. Data not available for release.

## TOP TEN AIRPORTS – PASSENGER MOVEMENTS

**Table 6: Top ten airports, RPT passenger movements (000s) - monthly activity**

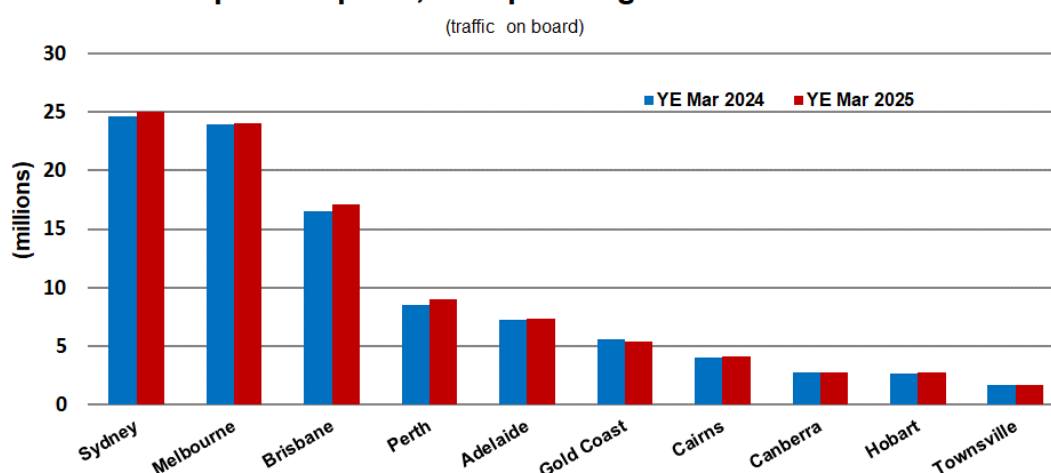
Airport	Mar 2024	Mar 2025	% Change	% of Total
1 Sydney	2 136.6	2 067.3	-3.2	21.8
2 Melbourne	2 091.5	2 001.4	-4.3	21.1
3 Brisbane	1 380.1	1 288.7	-6.6	13.6
4 Perth	713.1	747.0	4.8	7.9
5 Adelaide	632.0	636.9	0.8	6.7
6 Gold Coast	479.3	343.4	-28.3	3.6
7 Cairns	303.3	289.3	-4.6	3.0
8 Hobart	243.8	248.3	1.8	2.6
9 Canberra	244.7	232.6	-4.9	2.4
10 Launceston	135.5	134.1	-1.1	1.4
<b>Total top ten airports</b>	<b>8 359.8</b>	<b>7 989.1</b>	<b>-4.4</b>	<b>84.1</b>
<b>Total domestic network</b>	<b>9 951.7</b>	<b>9 495.2</b>	<b>-4.6</b>	<b>100.0</b>

**Table 7: Top ten airports, RPT passenger movements (000s) - annual activity**

Airport	YE Mar 2024	YE Mar 2025	% Change	% of Total
1 Sydney	24 595.8	25 065.4	1.9	21.2
2 Melbourne	23 945.7	24 007.5	0.3	20.3
3 Brisbane	16 502.0	17 156.1	4.0	14.5
4 Perth	8 492.7	9 005.3	6.0	7.6
5 Adelaide	7 252.5	7 388.5	1.9	6.2
6 Gold Coast	5 578.1	5 416.5	-2.9	4.6
7 Cairns	4 047.9	4 095.1	1.2	3.5
8 Canberra	2 784.8	2 779.5	-0.2	2.3
9 Hobart	2 641.9	2 756.2	4.3	2.3
10 Townsville	1 693.9	1 656.9	-2.2	1.4
<b>Total top ten airports</b>	<b>97 535.5</b>	<b>99 327.1</b>	<b>1.8</b>	<b>84.0</b>
<b>Total domestic network</b>	<b>116 571.7</b>	<b>118 291.2</b>	<b>1.5</b>	<b>100.0</b>

Note: Airport passenger movement numbers are the sum of passenger arrivals and departures at each airport.

### Top ten airports, RPT passenger movements



## TOP FIVE AIRPORTS – CARGO MOVEMENTS

**Table 8: Top five airports, domestic RPT cargo movements (000s tonnes) - monthly activity**

Airport	Mar 2024	Mar 2025	% Change	% of Total
1 Melbourne	6.6	7.2	9.8	28.1
2 Sydney	5.4	5.5	2.4	21.5
3 Brisbane	4.5	4.4	-2.4	16.9
4 Perth	2.9	2.8	-4.2	11.0
5 Adelaide	1.3	1.3	0.3	5.2
<b>Total top five airports</b>	<b>20.7</b>	<b>21.3</b>	<b>2.7</b>	<b>82.7</b>
<b>Total domestic network</b>	<b>24.7</b>	<b>25.7</b>	<b>3.9</b>	<b>100.0</b>

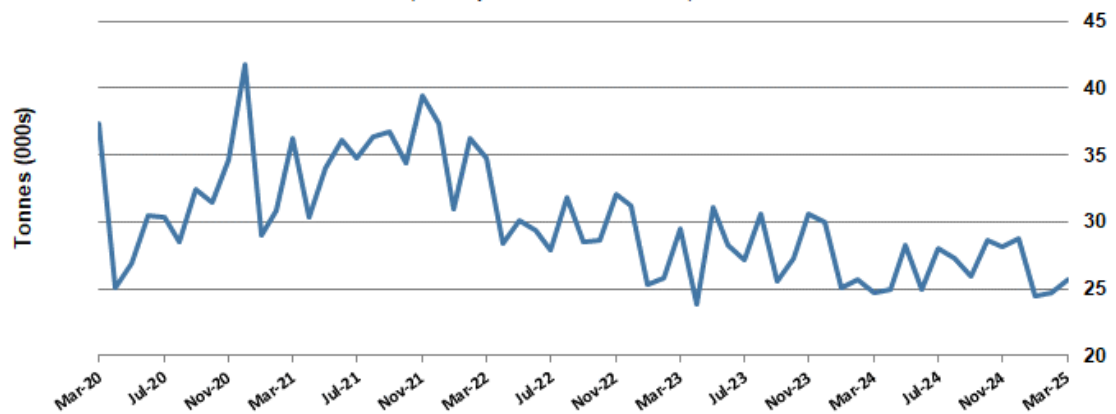
**Table 9: Top five airports, domestic RPT cargo movements (000s tonnes) - annual activity**

Airport	YE Mar 2024	YE Mar 2025	% Change	% of Total
1 Melbourne	88.9	87.8	-1.2	27.5
2 Sydney	73.9	67.5	-8.7	21.1
3 Brisbane	58.9	57.5	-2.5	18.0
4 Perth	34.8	36.2	4.1	11.3
5 Adelaide	18.6	17.5	-5.6	5.5
<b>Total top five airports</b>	<b>275.1</b>	<b>266.5</b>	<b>-3.1</b>	<b>83.4</b>
<b>Total domestic network</b>	<b>329.8</b>	<b>319.7</b>	<b>-3.1</b>	<b>100.0</b>

Note: Airport cargo tonnes are the sum of cargo tonnes on arrivals and departures at each airport.

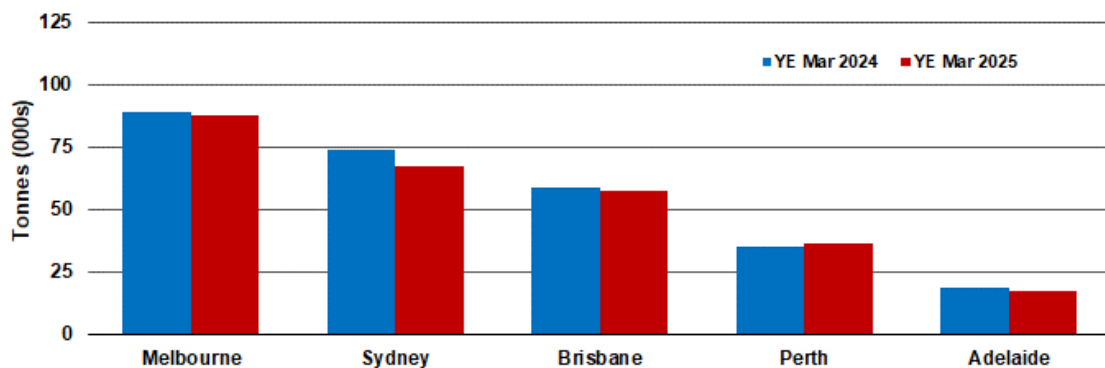
### Total domestic network - cargo movement

(monthly totals - traffic on board)



### Top five airports, cargo movements

(Domestic cargo traffic - traffic on board)



Note: Airport cargo tonnes are the sum of cargo tonnes on arrivals and departures at each airport.

## TOP TEN ROUTES

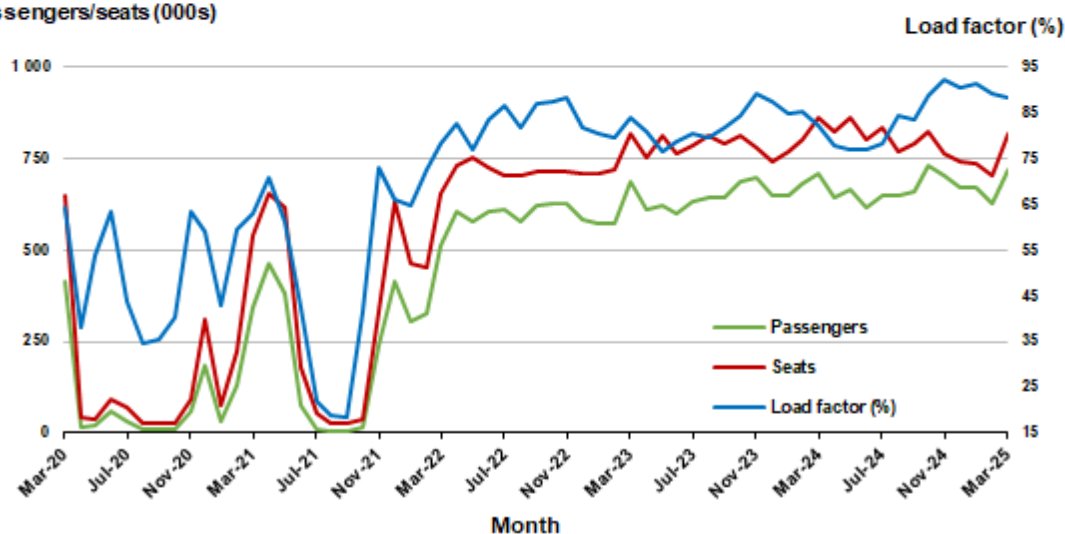
### 1. Melbourne - Sydney

#### Monthly data

	Mar 2024	Mar 2025	% Change
Passengers carried (000s)	709.7	723.0	1.9
Seats (000s)	861.6	817.5	-5.1
Load factor %	82.4	88.4	6.0 *
Aircraft trips	4 980	4 696	-5.7

\* percentage point difference

#### Passengers/seats (000s)

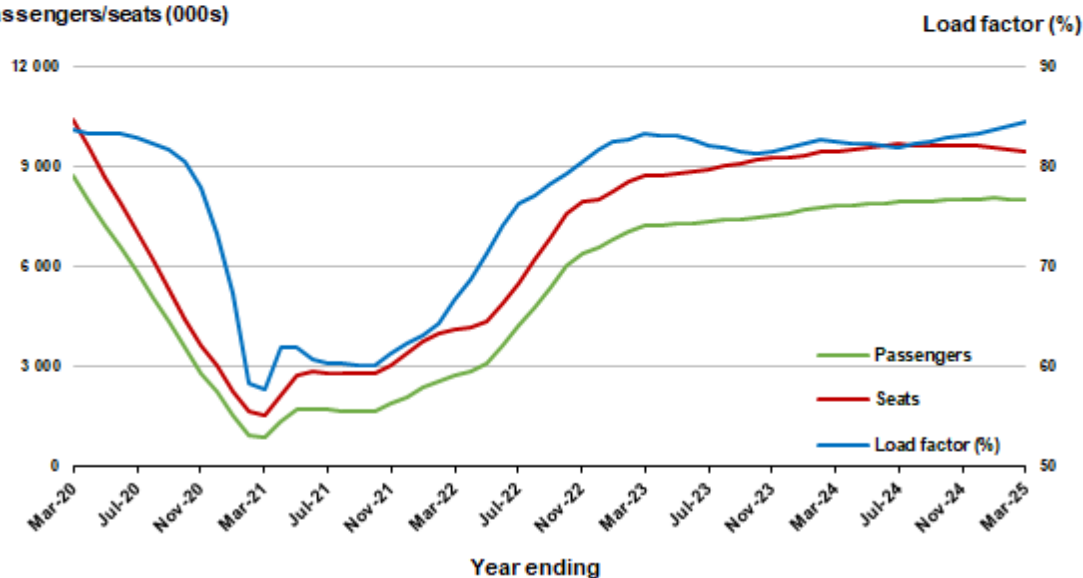


#### Moving annual data

	YE Mar 2024	YE Mar 2025	% Change
Passengers carried (000s)	7 830.5	8 017.3	2.4
Seats (000s)	9 481.7	9 474.2	-0.1
Load factor %	82.6	84.6	2.0 *
Aircraft trips	55 026	54 516	-0.9

\* percentage point difference

#### Passengers/seats (000s)

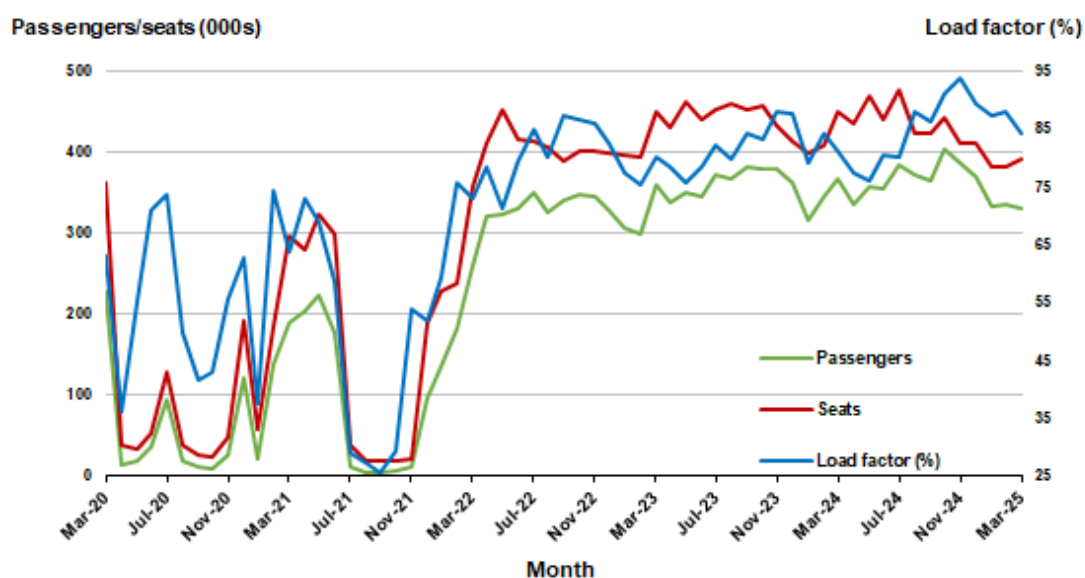


## 2. Brisbane - Sydney

### Monthly data

	Mar 2024	Mar 2025	% Change
Passengers carried (000s)	366.6	330.5	-9.9
Seats (000s)	451.2	392.8	-12.9
Load factor %	81.3	84.1	2.8 *
Aircraft trips	2 735	2 351	-14.0

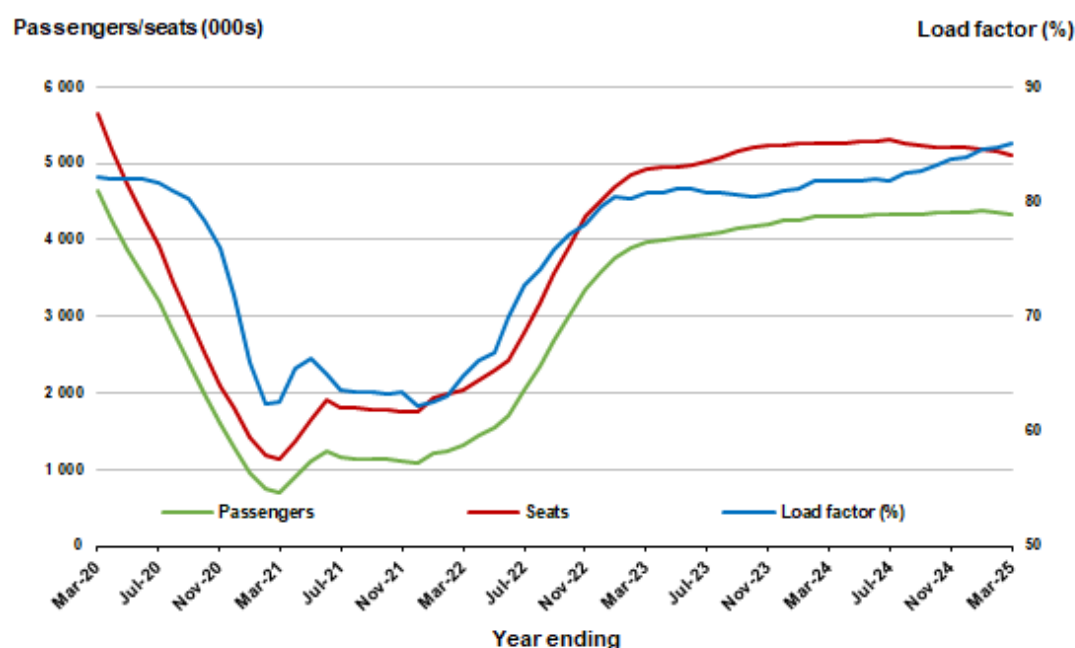
\* percentage point difference



### Moving annual data

	YE Mar 2024	YE Mar 2025	% Change
Passengers carried (000s)	4 311.8	4 329.7	0.4
Seats (000s)	5 266.2	5 093.7	-3.3
Load factor %	81.9	85.0	3.1 *
Aircraft trips	32 332	30 681	-5.1

\* percentage point difference

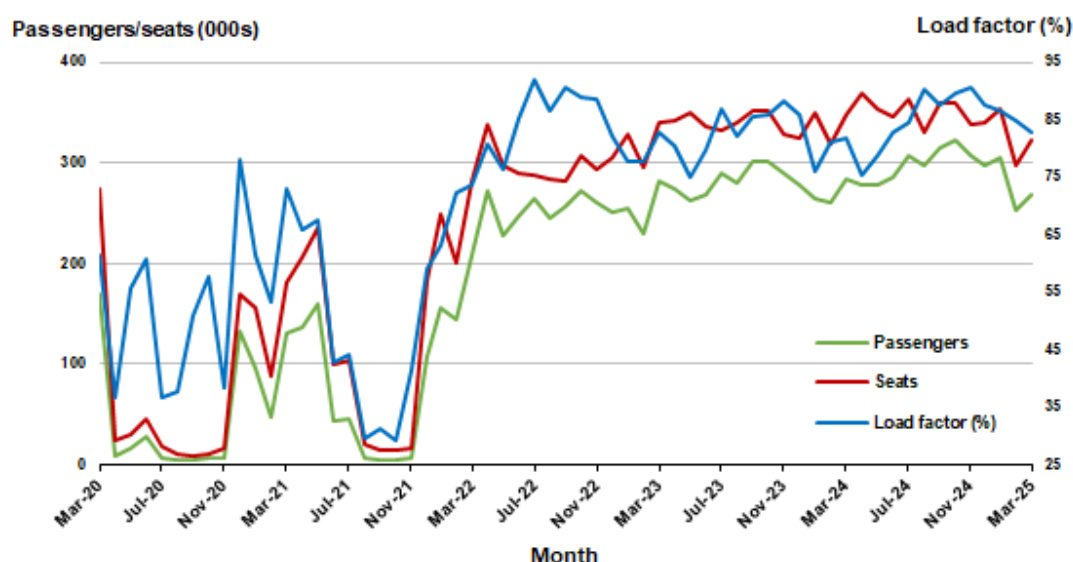


### 3. Brisbane - Melbourne

#### Monthly data

	Mar 2024	Mar 2025	% Change
Passengers carried (000s)	284.3	267.4	-5.9
Seats (000s)	347.1	323.2	- 6.9
Load factor %	81.9	82.8	0.9 *
Aircraft trips	2 044	1 938	-5.2

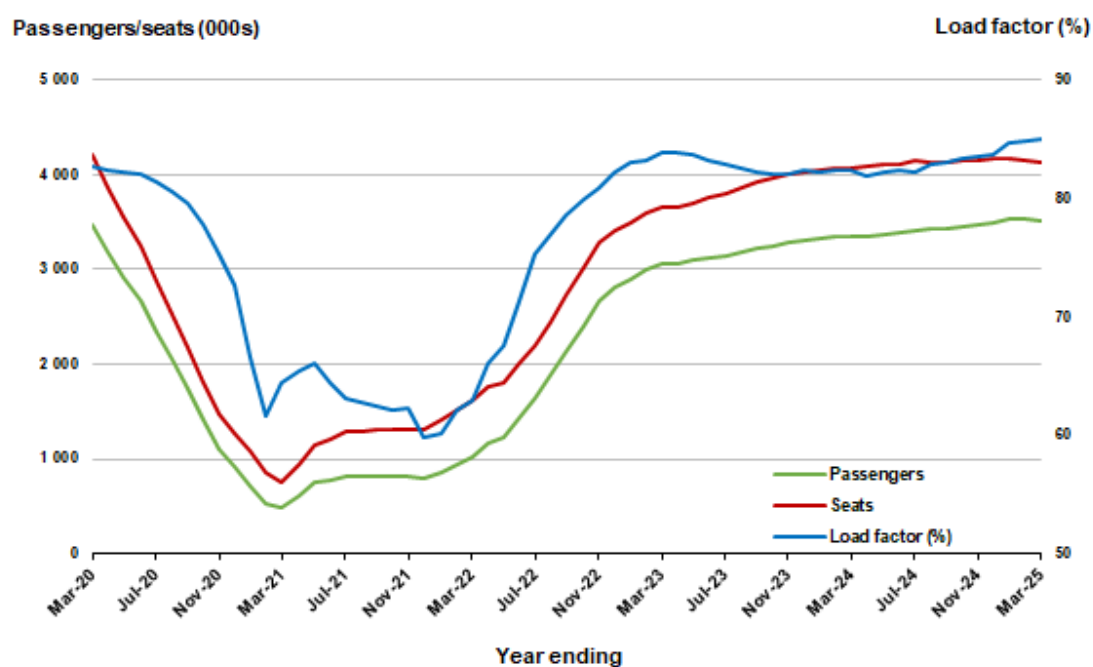
\* percentage point difference



#### Moving annual data

	YE Mar 2024	YE Mar 2025	% Change
Passengers carried (000s)	3 354.1	3 516.7	4.8
Seats (000s)	4 071.9	4 136.3	1.6
Load factor %	82.4	85.0	2.6 *
Aircraft trips	24 529	24 830	1.2

\* percentage point difference





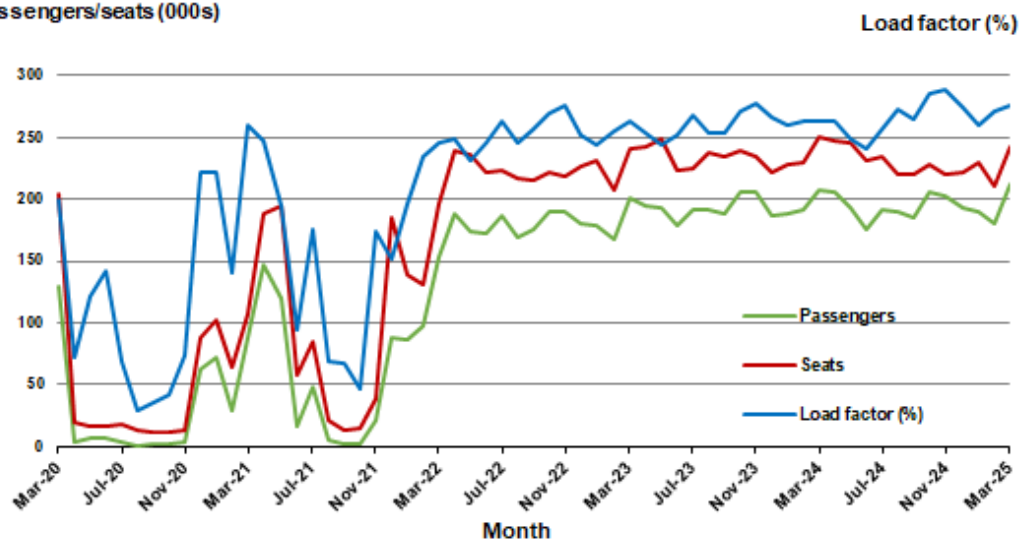
## 4. Adelaide - Melbourne

### Monthly data

	Mar 2024	Mar 2025	% Change
Passengers carried (000s)	208.2	211.8	1.7
Seats (000s)	250.3	241.8	-3.4
Load factor %	83.2	87.6	4.4 *
Aircraft trips	1 496	1 428	-4.5

\* percentage point difference

### Passengers/seats (000s)

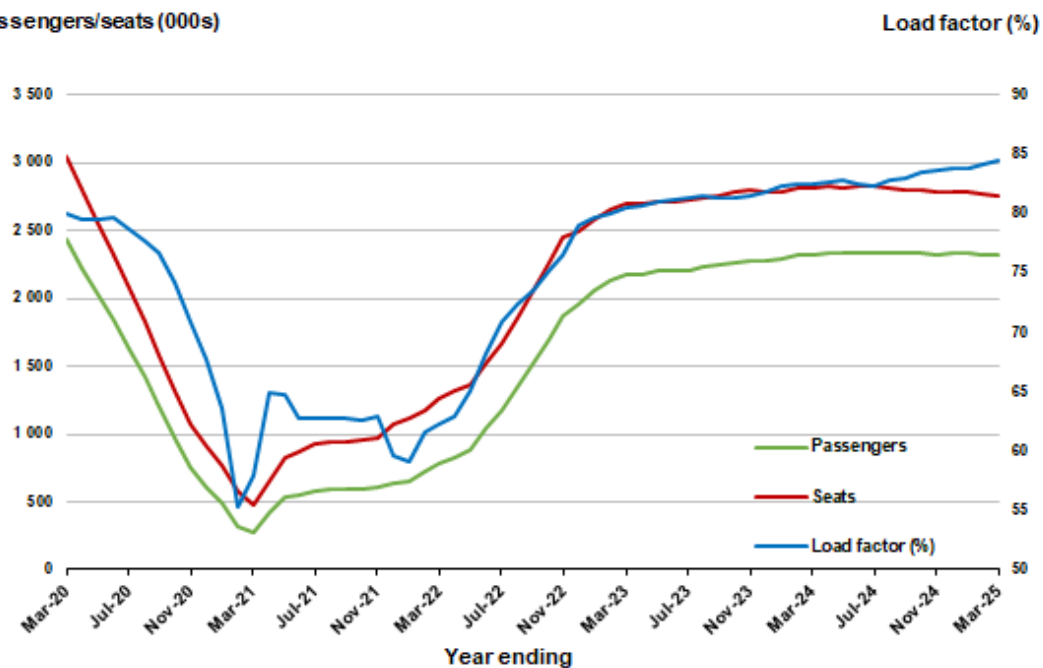


### Moving annual data

	YE Mar 2024	YE Mar 2025	% Change
Passengers carried (000s)	2 322.6	2 327.6	0.2
Seats (000s)	2 817.2	2 754.4	-2.2
Load factor %	82.4	84.5	2.1 *
Aircraft trips	17 227	16 502	-4.2

\* percentage point difference

### Passengers/seats (000s)

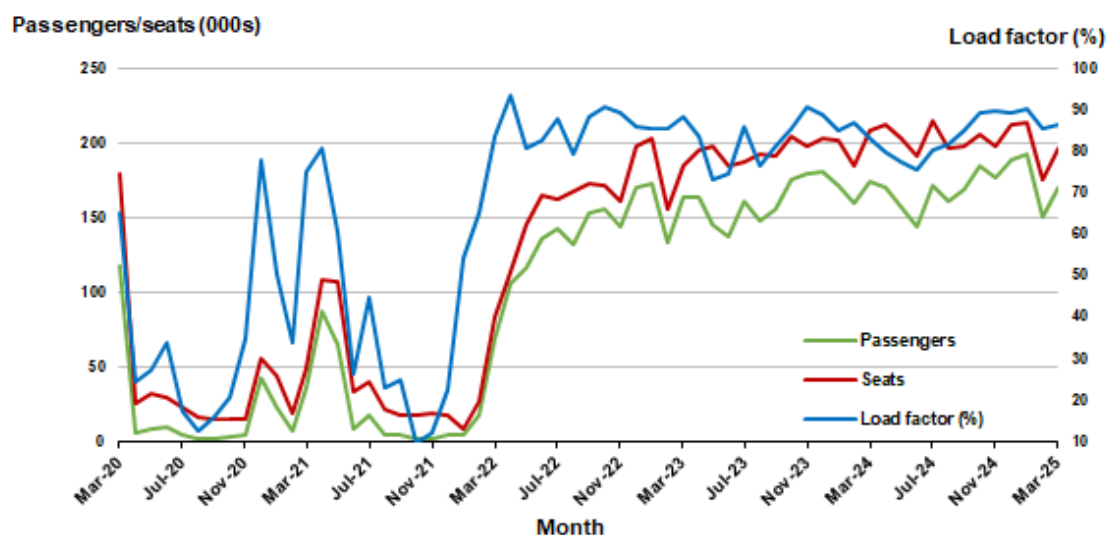


## 5. Melbourne - Perth

### Monthly data

	Mar 2024	Mar 2025	% Change
Passengers carried (000s)	173.6	170.8	-1.6
Seats (000s)	208.6	197.1	-5.5
Load factor %	83.2	86.7	3.5 *
Aircraft trips	1 150	1 110	-3.5

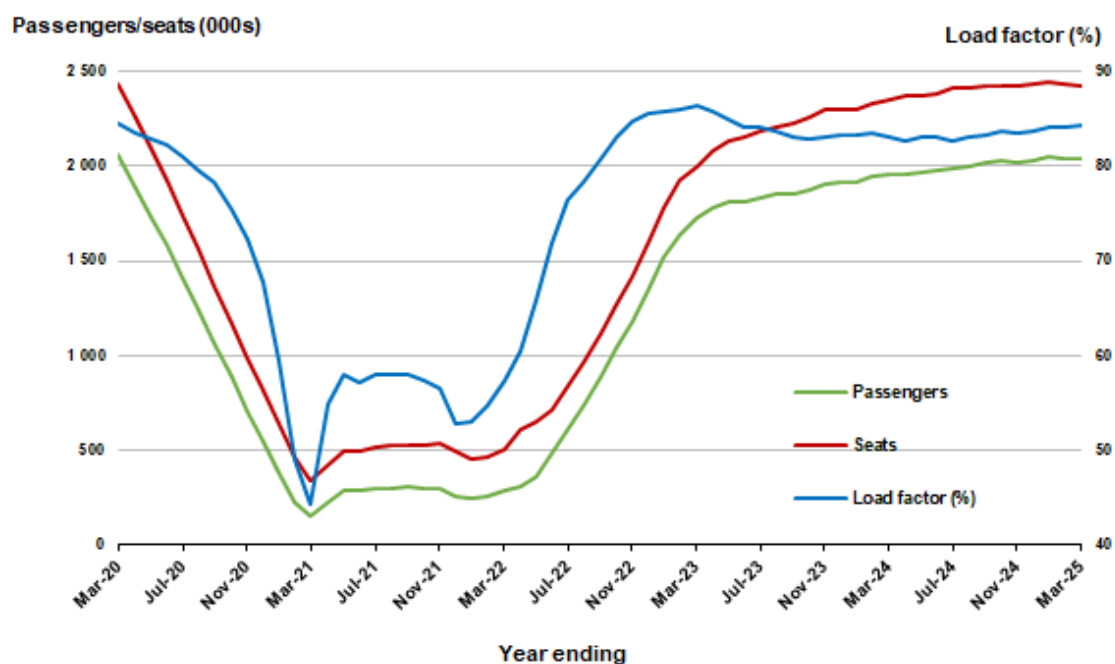
\* percentage point difference



### Moving annual data

	YE Mar 2024	YE Mar 2025	% Change
Passengers carried (000s)	1 950.9	2 039.3	4.5
Seats (000s)	2 350.7	2 420.2	3.0
Load factor %	83.0	84.3	1.3 *
Aircraft trips	13 078	13 311	1.8

\* percentage point difference



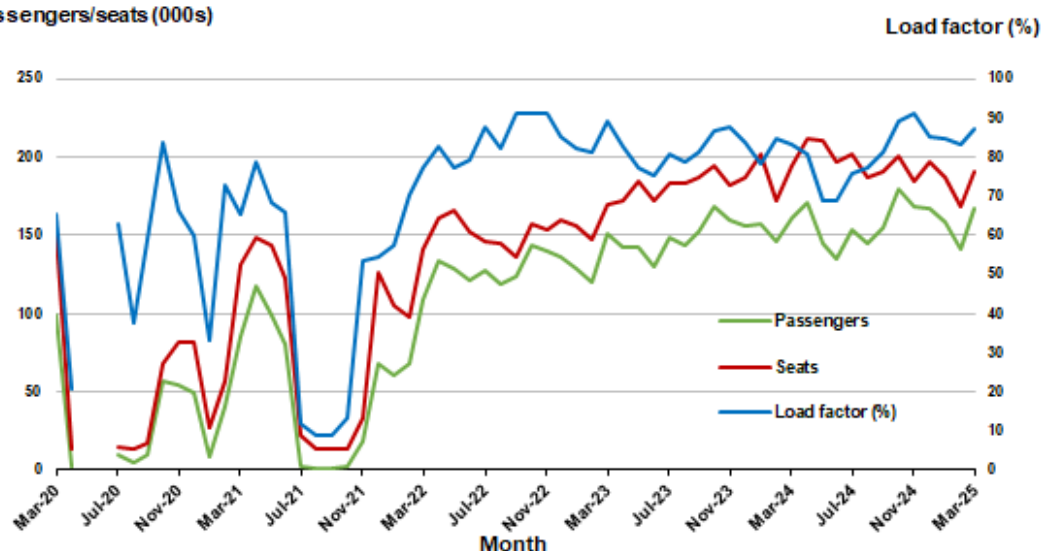
## 6. Adelaide - Sydney <sup>(a)</sup>

### Monthly data

	Mar 2024	Mar 2025	% Change
Passengers carried (000s)	161.4	166.6	3.2
Seats (000s)	194.0	191.2	-1.4
Load factor %	83.2	87.1	3.9 *
Aircraft trips	1 174	1 123	-4.3

\* percentage point difference

### Passengers/seats (000s)



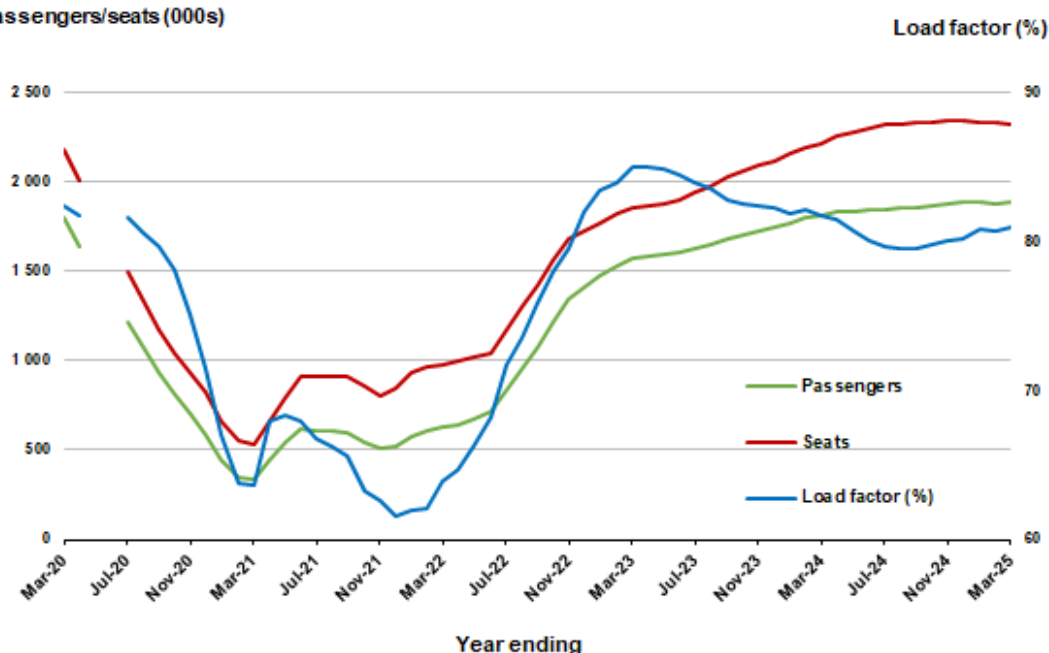
(a) May and June 2020 data not available for release.

### Moving annual data

	YE Mar 2024	YE Mar 2025	% Change
Passengers carried (000s)	1 809.1	1 883.8	4.1
Seats (000s)	2 214.0	2 326.3	5.1
Load factor %	81.7	81.0	-0.7 *
Aircraft trips	13 540	13 766	1.7

\* percentage point difference

### Passengers/seats (000s)



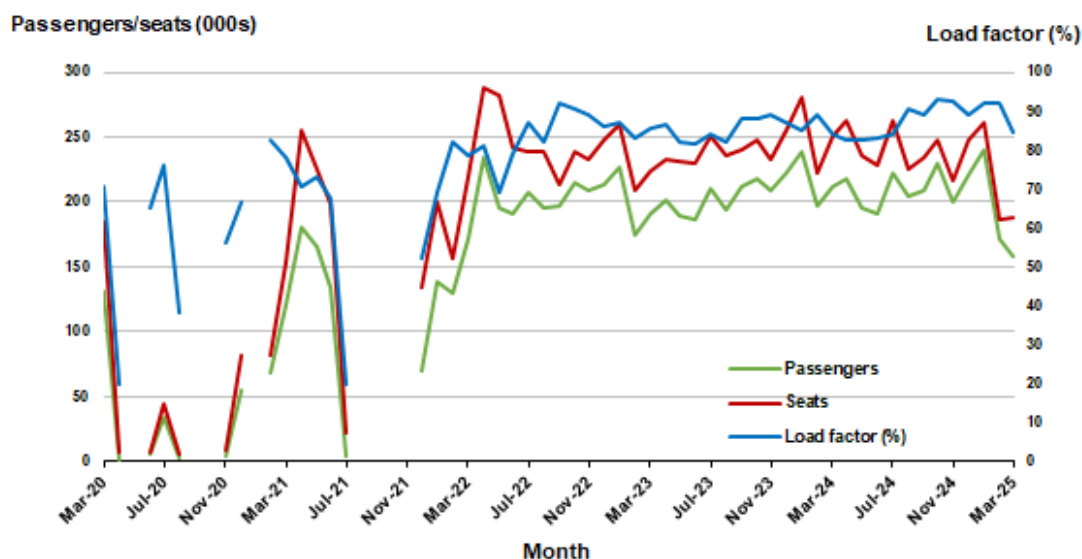
(a) May and June 2020 moving annual totals are not available for release.

## 7. Gold Coast - Sydney <sup>(a)</sup>

### Monthly data

	Mar 2024	Mar 2025	% Change
Passengers carried (000s)	211.3	158.6	-24.9
Seats (000s)	251.5	187.5	-25.5
Load factor %	84.0	84.6	0.6 *
Aircraft trips	1 403	1 065	-24.1

\* percentage point difference

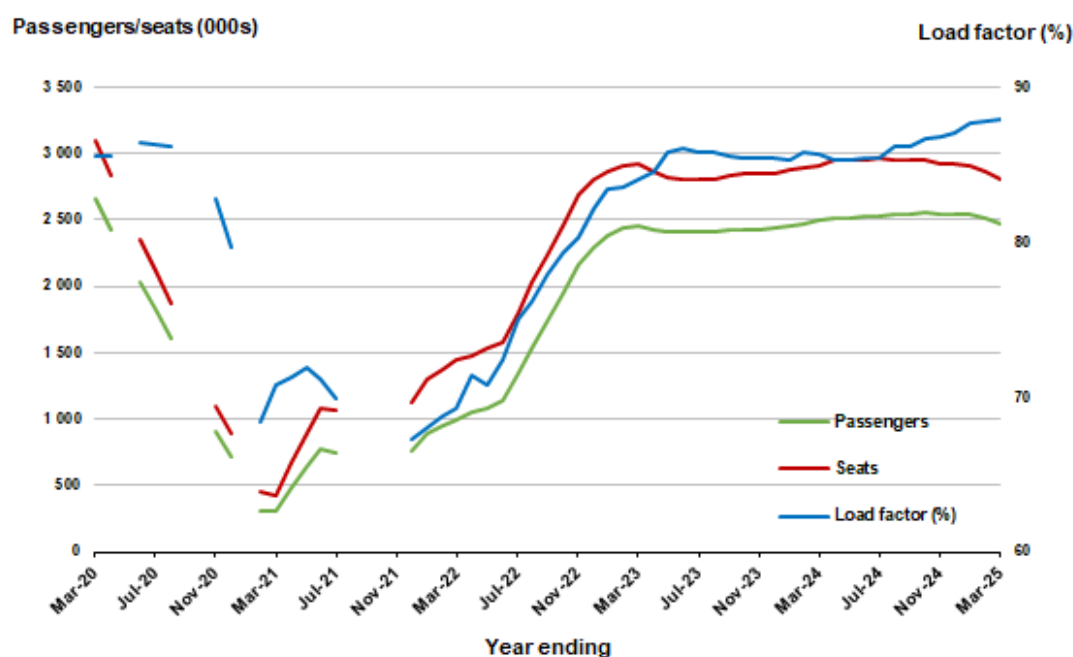


(a) May, September and October 2020 and January and August to November 2021 data not available for release.

### Moving annual data

	YE Mar 2024	YE Mar 2025	% Change
Passengers carried (000s)	2 492.4	2 460.6	-1.3
Seats (000s)	2 911.9	2 798.3	-3.9
Load factor %	85.6	87.9	2.3 *
Aircraft trips	16 575	15 841	-4.4

\* percentage point difference



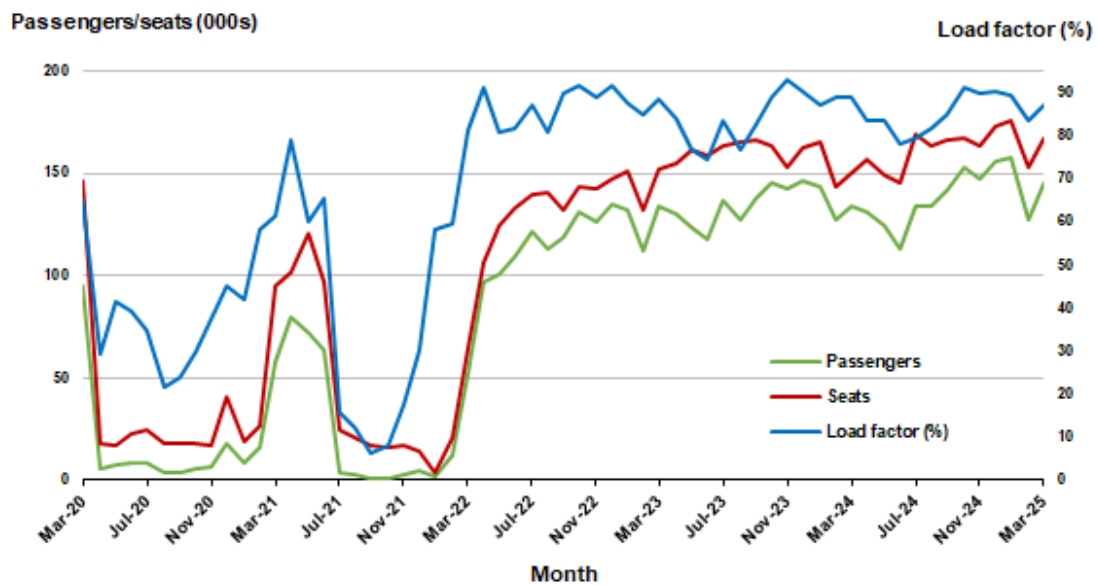
(a) May, September and October 2020 and January and August to November 2021 moving annual totals not available for release.

## 8. Perth - Sydney

### Monthly data

	Mar 2024	Mar 2025	% Change
Passengers carried (000s)	134.0	145.8	8.8
Seats (000s)	150.5	167.7	11.4
Load factor %	89.1	87.0	-2.1 *
Aircraft trips	776	895	15.3

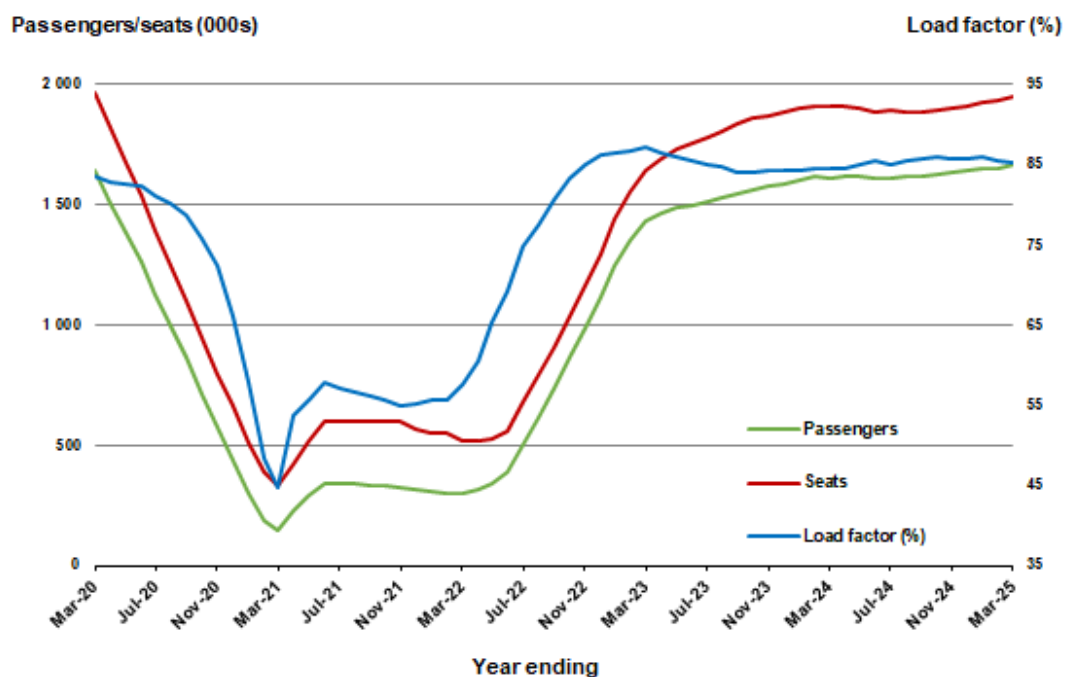
\* percentage point difference



### Moving annual data

	YE Mar 2024	YE Mar 2025	% Change
Passengers carried (000s)	1 613.7	1 665.1	3.2
Seats (000s)	1 908.0	1 950.7	2.2
Load factor %	84.6	85.4	0.8 *
Aircraft trips	9 830	10 331	5.1

\* percentage point difference



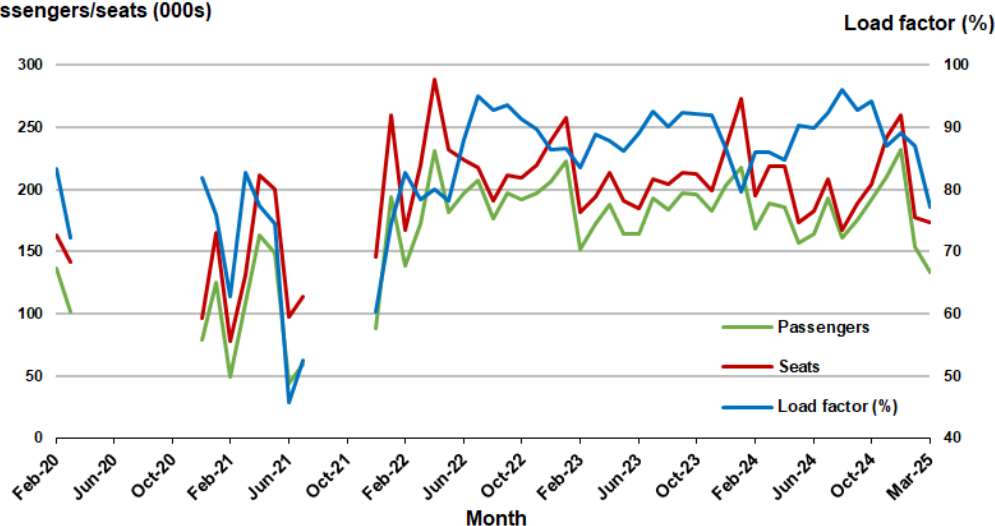
## 9. Gold Coast - Melbourne <sup>(a)</sup>

### Monthly data

	Mar 2024	Mar 2025	% Change
Passengers carried (000s)	188.6	133.6	- 29.2
Seats (000s)	219.2	173.3	-20.9
Load factor %	86.0	77.1	-8.9 *
Aircraft trips	1 195	935	- 21.8

\* percentage point difference

### Passengers/seats (000s)



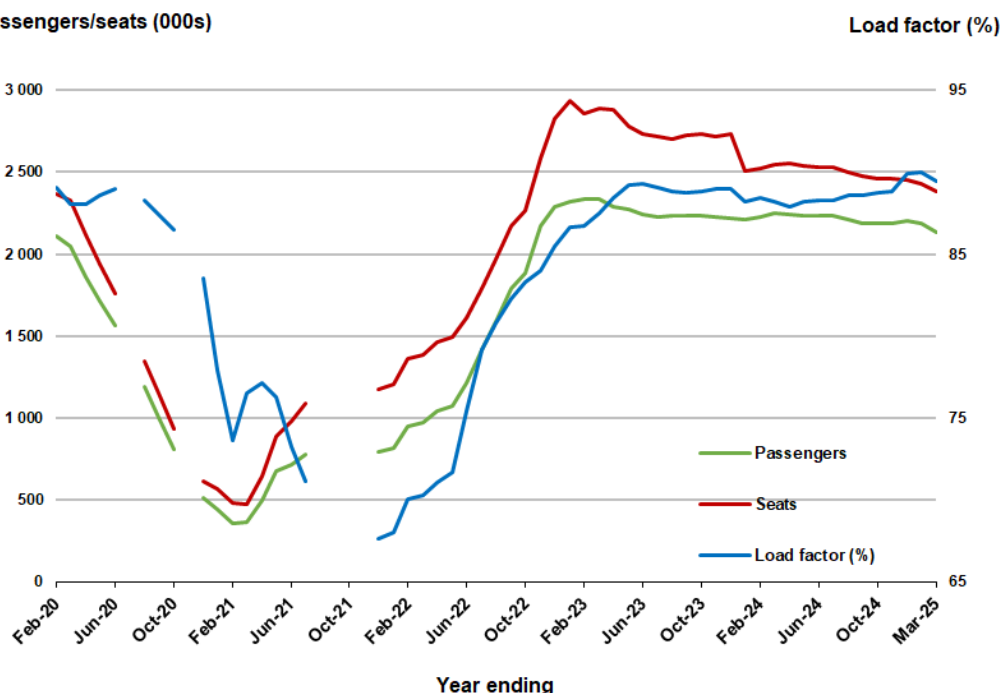
(a) April to November 2020 and August to November 2021 data not available for release.

### Moving annual data

	YE Mar 2024	YE Mar 2025	% Change
Passengers carried (000s)	2 246.4	2 133.7	-5.0
Seats (000s)	2 547.8	2 386.1	-6.3
Load factor %	88.2	89.4	1.3 *
Aircraft trips	13 851	12 931	-6.6

\* percentage point difference

### Passengers/seats (000s)



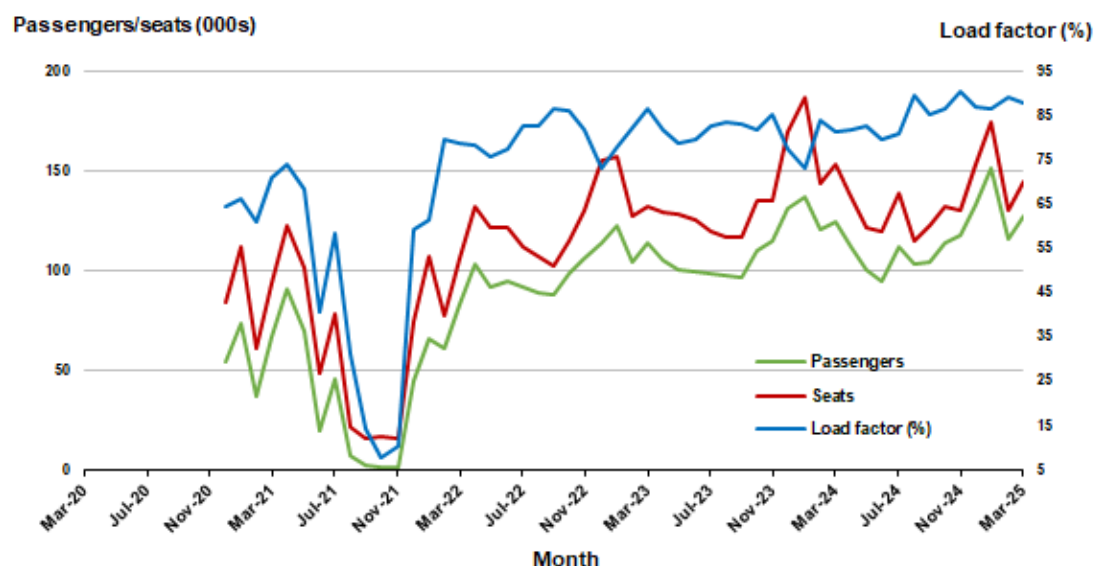
(a) July and November 2020 and August to November 2021 moving annuals are not available for release.

## 10. Hobart - Melbourne <sup>(a)</sup>

### Monthly data

	Mar 2024	Mar 2025	% Change
Passengers carried (000s)	124.7	126.8	1.7
Seats (000s)	153.7	144.3	-6.1
Load factor %	81.2	87.9	6.7 *
Aircraft trips	872	819	-6.1

\* percentage point difference

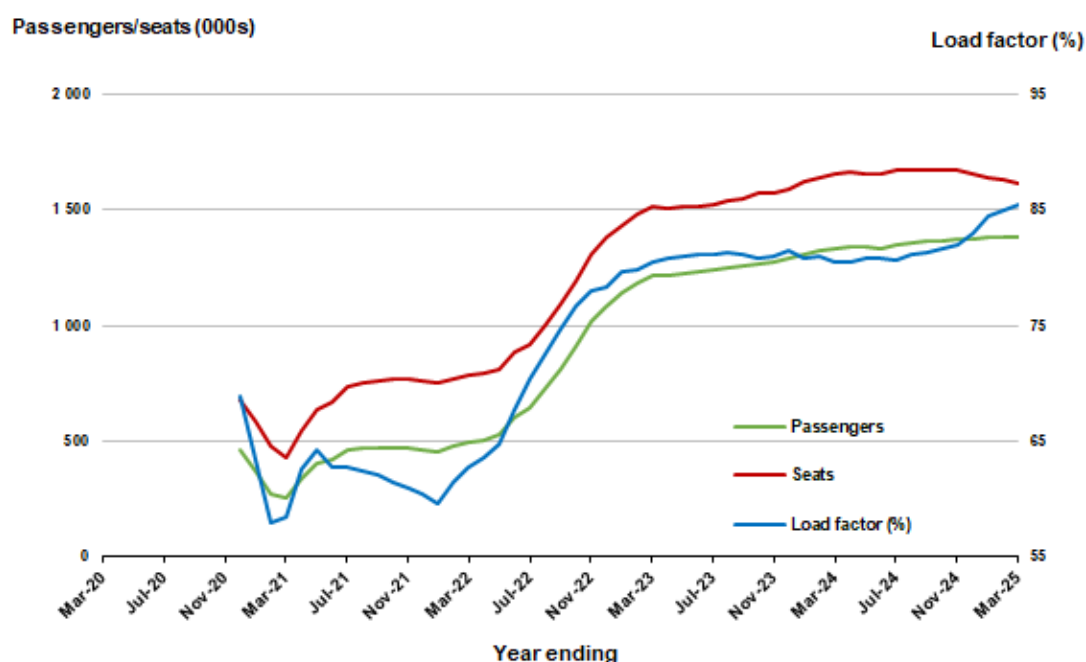


(a) April to November 2020 data not available for release.

### Moving annual data

	YE Mar 2024	YE Mar 2025	% Change
Passengers carried (000s)	1 335.7	1 385.0	3.7
Seats (000s)	1 657.8	1 619.3	-2.3
Load factor %	80.6	85.5	5.0 *
Aircraft trips	9 616	9 574	-0.4

\* percentage point difference



(a) April to November 2020 moving annual totals are not available for release.



## TOP FIFTY REGIONAL AIRPORTS

**Table 10: Top fifty regional airports (000s) — passenger movements, monthly**

Airport	Mar 2024	Mar 2025	% Change
1 Cairns	303.3	289.3	-4.6
2 Hobart	243.8	248.3	1.8
3 Launceston	135.5	134.1	-1.1
4 Townsville	135.6	125.1	-7.8
5 Darwin	110.0	111.0	0.9
6 Newcastle	103.0	93.9	-8.8
7 Mackay	76.1	69.5	-8.7
8 Karratha	49.3	55.0	11.6
9 Rockhampton	56.3	48.5	-13.7
10 Ballina	52.8	41.0	-22.4
11 Port Hedland	37.9	40.2	6.0
12 Newman	29.9	37.4	25.3
13 Hamilton Island	38.9	37.2	-4.3
14 Proserpine	38.0	34.9	-8.2
15 Kalgoorlie	29.5	30.9	4.7
16 Ayers Rock	23.1	29.6	28.3
17 Broome	28.0	28.0	-0.2
18 Alice Springs	30.9	26.5	-14.0
19 Paraburdoo	21.0	21.8	3.7
20 Coffs Harbour	22.4	21.0	-6.2
21 Albury	26.0	18.9	-27.2
22 Wagga Wagga	17.8	18.5	3.8
23 Mount Isa	19.8	18.3	-7.3
24 Dubbo	18.2	17.7	-3.2
25 Mildura	22.5	17.3	-22.9
26 Gladstone	21.0	16.9	-19.6
27 Port Macquarie	20.7	16.2	-21.4
28 Hervey Bay	12.0	16.1	34.6
29 Emerald	16.5	15.7	-4.8
30 Port Lincoln	15.1	15.1	0.5
31 Tamworth	15.4	13.6	-11.6
32 Devonport	10.6	12.6	18.6
33 Geraldton	9.7	11.0	13.0
34 Bundaberg	14.5	10.8	-25.3
35 Orange	9.9	10.2	3.1
36 Thursday Island	8.1	9.0	11.9
37 Kununurra	9.0	9.0	-0.4
38 Olympic Dam	8.3	8.8	5.5
39 Learmonth	7.9	8.6	8.1
40 Moranbah	9.4	8.4	-10.6
41 Armidale	9.1	8.4	-8.3
42 Weipa	7.2	8.0	10.9
43 Busselton	6.3	8.0	26.9
44 Burnie	6.7	7.0	4.2
45 Norfolk Island	7.1	6.8	-5.0
46 Griffith	5.8	6.6	13.1
47 Gove	7.0	6.5	-7.0
48 Mount Gambier	6.3	6.4	0.3
49 Albany	5.8	5.9	1.8
50 Merimbula	6.4	5.8	-8.5
<b>Total top 50 regional airport:</b>	<b>1 925.5</b>	<b>1 865.3</b>	<b>- 3.1</b>
<b>Total regional airports</b>	<b>2 048.5</b>	<b>1 987.4</b>	<b>- 3.0</b>
<b>Total domestic network</b>	<b>9 951.7</b>	<b>9 495.2</b>	<b>- 4.6</b>

Note: Airport passenger movement numbers are the sum of passenger arrivals and departures at each airport.

Regional airports are defined as airports which are, according to Australian Statistical Geography

Standard (ASGS), not based in Major Cities.



**Table 11: Top fifty regional airports (000s) — passenger movements, annual**

Airport	YE Mar 2024	YE Mar 2025	% Change
1 Cairns	4 047.9	4 095.1	1.2
2 Hobart	2 641.9	2 756.2	4.3
3 Townsville	1 693.9	1 656.9	-2.2
4 Darwin	1 609.9	1 608.8	-0.1
5 Launceston	1 400.1	1 427.1	1.9
6 Newcastle	1 191.9	1 185.9	-0.5
7 Mackay	911.6	892.9	-2.0
8 Rockhampton	653.7	647.4	-1.0
9 Karratha	563.4	634.6	12.6
10 Ballina	626.9	618.5	-1.3
11 Proserpine	521.2	507.1	-2.7
12 Port Hedland	479.6	489.2	2.0
13 Hamilton Island	496.1	486.5	-1.9
14 Broome	437.5	440.9	0.8
15 Newman	367.4	417.3	13.6
16 Kalgoorlie	360.5	368.8	2.3
17 Alice Springs	366.0	361.9	-1.1
18 Ayers Rock	268.7	332.8	23.9
19 Paraburdoo	251.8	281.0	11.6
20 Coffs Harbour	278.1	251.6	-9.5
21 Mount Isa	229.9	239.4	4.2
22 Albury	278.3	232.1	-16.6
23 Gladstone	236.5	226.3	-4.3
24 Wagga Wagga	199.5	210.5	5.5
25 Dubbo	213.4	206.4	-3.3
26 Emerald	195.8	198.8	1.5
27 Hervey Bay	149.5	197.1	31.9
28 Mildura	234.2	197.1	-15.8
29 Port Macquarie	231.7	194.9	-15.9
30 Port Lincoln	172.4	168.7	-2.1
31 Tamworth	174.0	163.4	-6.1
32 Bundaberg	162.7	144.3	-11.3
33 Kununurra	138.9	138.9	0.0
34 Devonport	120.6	129.5	7.4
35 Geraldton	103.2	122.6	18.8
36 Thursday Island	108.1	119.6	10.7
37 Orange	106.7	112.0	5.0
38 Moranbah	110.6	110.4	-0.2
39 Learmonth	104.5	109.5	4.8
40 Olympic Dam	103.0	101.9	-1.0
41 Armidale	109.5	101.0	-7.7
42 Weipa	88.2	94.0	6.5
43 Busselton	55.8	93.7	68.0
44 Gove	89.8	91.3	1.6
45 Burnie	81.3	78.8	-3.1
46 Griffith	71.1	72.2	1.5
47 Mount Gambier	72.1	71.3	-1.2
48 Norfolk Island	69.5	69.7	0.3
49 Albany	64.3	67.6	5.1
50 Merimbula	71.2	67.5	-5.1
<b>Total top 50 regional airport:</b>	<b>23 314.2</b>	<b>23 591.0</b>	<b>1.2</b>
<b>Total regional airports</b>	<b>24 755.8</b>	<b>25 034.0</b>	<b>1.1</b>
<b>Total domestic network</b>	<b>116 571.7</b>	<b>118 291.2</b>	<b>1.5</b>

Note: Airport passenger movement numbers are the sum of passenger arrivals and departures at each airport. Regional airports are defined as airports which are, according to Australian Statistical Geography Standard (ASGS), not based in Major Cities.

## DOMESTIC CHARTER ACTIVITY

**Table 12: Charter passengers carried and aircraft trips - monthly activity (000s)**

	Mar 2024	Mar 2025	% Change
Total domestic charter passengers	347.9	340.0	-2.3
Total domestic charter aircraft trips	5.9	5.7	-3.6

Note: Helicopter, joyflights and sightseeing charter flights not included.

**Table 13: Charter passengers carried and aircraft trips - annual activity (000s)**

	YE Mar 2024	YE Mar 2025	% Change
Total domestic charter passengers	4 150.7	4 269.1	2.9
Total domestic charter aircraft trips	71.2	72.3	1.6

Note: Helicopter, joyflights and sightseeing charter flights not included.

**Table 14: Domestic airports - charter activity - monthly (000s)**

	Mar 2024	Mar 2025	% Change
Total domestic charter passenger movements	695.7	679.9	-2.3
Total domestic charter aircraft movements	11.7	11.3	-3.6
Perth airport charter passenger movements	258.2	243.9	-5.5
Perth airport charter aircraft movements	3.9	3.5	-10.4

Note: Helicopter, joyflights and sightseeing charter flights not included.

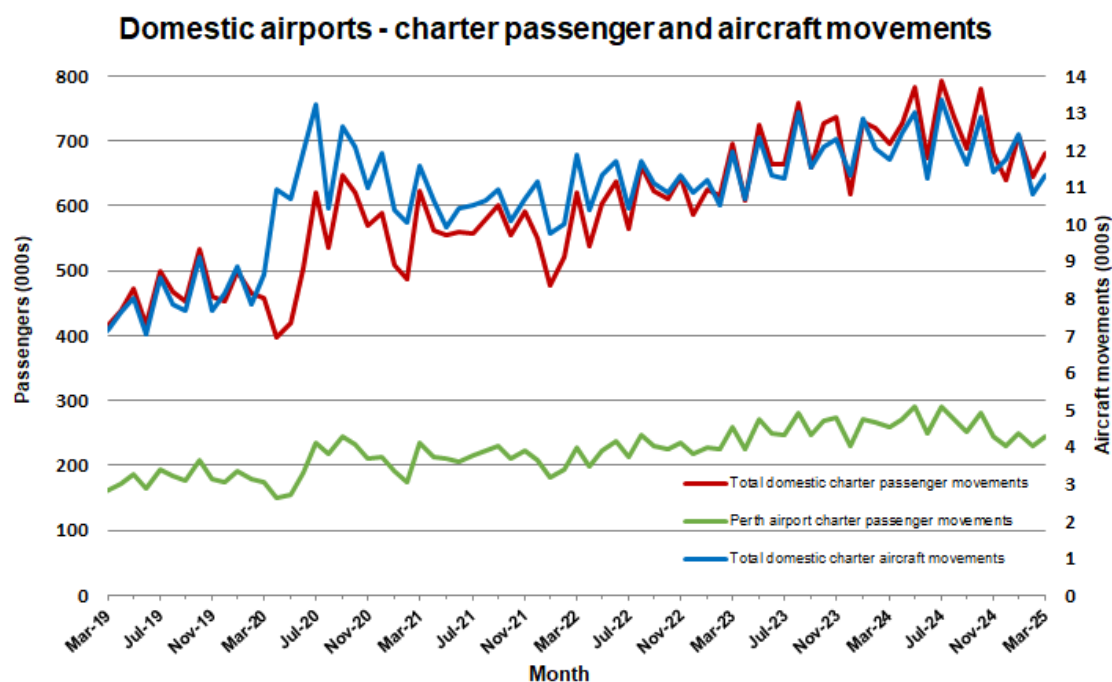
Charter passenger and aircraft movement numbers are the sum of arrivals and departures at each airport.

**Table 15: Domestic airports - charter activity - annual (000s)**

	YE Mar 2024	YE Mar 2025	% Change
Total domestic charter passenger movements	8 301.3	8 538.1	2.9
Total domestic charter aircraft movements	142.4	144.7	1.6
Perth airport charter passenger movements	3 091.8	3 105.7	0.4
Perth airport charter aircraft movements	48.0	45.9	-4.4

Note: Helicopter, joyflights and sightseeing charter flights not included.

Charter passenger and aircraft movement numbers are the sum of arrivals and departures at each airport.



## DEFINITIONS

Aircraft Trips	The number of flight stages. A return flight counts as two aircraft trips.
Airport Movements	Airport movements (passenger and cargo) are measured once on arrival and once on departure. Each domestic trip generates two movements at airports. For example, a trip from Melbourne to Sydney will be counted twice, as a departure at Melbourne and as an arrival at Sydney. At the national level, the sum of all domestic airport traffic will therefore be equal to twice the number of trips undertaken.
Available Seat Kilometres (ASKs)	Calculated by multiplying the number of seats available on each flight stage, by the distance in kilometres between the ports. The distances used are Great Circle Distances.
City-Pair	The ports shown make up the city-pair route. Passenger movements shown for a city pair reflect total traffic in both directions.
Flight Stage	The operation of an aircraft from take-off to landing.
Load Factor	The total revenue passenger kilometres performed as a percentage of the total available seat kilometres.
Passengers Carried	Revenue passengers carried.
Regular Public Transport Services (RPT)	All air service operations in which aircraft are available for the transport of members of the public and are conducted in accordance with fixed schedules. It does not include charter or other non-scheduled operations.
Revenue Passengers	All passengers paying any fare. Frequent flyer redemption travellers are regarded as revenue passengers.
Revenue Passenger Kilometres (RPKs)	Calculated by multiplying the number of revenue passengers travelling on each flight stage, by the distance in kilometres between the ports. The distances used are Great Circle Distances.
Traffic on board by stages (TOB)	The total of all traffic (revenue passengers) on each flight stage between two directly connected airports.
..	Not available for confidentiality or other reasons.
NA	Not applicable.