



Australian Government

Department of Infrastructure, Transport,  
Regional Development, Communications, Sport and the Arts

Bureau of Infrastructure and Transport Research Economics  
**STATISTICAL REPORT**



Aviation

**Domestic aviation activity**  
**June 2025**

The Department of Infrastructure, Transport, Regional Development, Communications, Sport and the Arts acknowledges the Traditional Custodians of Country of the land on which we work and live.

We recognise and respect the continuing connections to land, waters and communities.

We pay our respects to them and their cultures and to their Elders both past and present and to all Aboriginal and Torres Strait Islander people.

---

© Commonwealth of Australia 2025

ISSN: 1832 – 1968

BITRE Reference: 2025-094

### **Ownership of intellectual property rights in this publication**

Unless otherwise noted, copyright (and any other intellectual property rights, if any) in this publication is owned by the Commonwealth of Australia (referred to below as the Commonwealth).

### **Disclaimer**

The material contained in this publication is made available on the understanding that the Commonwealth is not providing professional advice, and that users exercise their own skill and care with respect to its use, and seek independent advice if necessary.

The Commonwealth makes no representations or warranties as to the contents or accuracy of the information contained in this publication. To the extent permitted by law, the Commonwealth disclaims liability to any person or organisation in respect of anything done, or omitted to be done, in reliance upon information contained in this publication.

### **Creative Commons licence**

With the exception of (a) the Coat of Arms; and (b) the Department of Infrastructure, Transport, Regional Development, Communications, Sport and the Arts' photos and graphics, copyright in this publication is licensed under a Creative Commons Attribution 3.0 Australia Licence.

Creative Commons Attribution 3.0 Australia Licence is a standard form licence agreement that allows you to copy, communicate and adapt this publication provided that you attribute the work to the Commonwealth and abide by the other licence terms. A summary of the licence terms is available from <http://creativecommons.org/licenses/by/3.0/au/deed.en>.

The full licence terms are available from <http://creativecommons.org/licenses/by/3.0/au/legalcode>.

### **Use of the Coat of Arms**

The Department of the Prime Minister and Cabinet sets the terms under which the Coat of Arms is used. Please refer to the Department's Commonwealth Coat of Arms and Government branding web page <http://www.dpmc.gov.au/guidelines/index.cfm#brand> and, in particular, the Guidelines on the use of the Commonwealth Coat of Arms publication.

An appropriate citation for this report is:

Bureau of Infrastructure and Transport Research Economics (BITRE), 2025, Domestic aviation activity, Statistical Report, BITRE, Canberra ACT.

### **Contact us**

This publication is available in PDF format. All other rights are reserved, including in relation to any Departmental logos or trademarks which may exist. For enquiries regarding the licence and any use of this publication, please contact:

Bureau of Infrastructure and Transport Research Economics (BITRE)  
Department of Infrastructure, Transport, Regional Development, Communications, Sport and the Arts  
GPO Box 501, Canberra ACT 2601, Australia

Email: [avstats@infrastructure.gov.au](mailto:avstats@infrastructure.gov.au)

Website: [www.bitre.gov.au](http://www.bitre.gov.au)

Inquiries: [Marko.Rodic2@infrastructure.gov.au](mailto:Marko.Rodic2@infrastructure.gov.au) (02) 6136 7995

## FOREWORD

This report provides an overview of domestic (including charter) commercial aviation activity in Australia for the month of June 2025.

The data covers revenue passengers carried by Australian-registered operators of scheduled Regular Public Transport (RPT) services over Australian flight stages and fixed-wing charter operators. These estimates include passengers carried between domestic airports on international flights operated by these carriers. The passengers carried refer to traffic on board by stages.

Estimates of passengers and aircraft movements for charter aviation are included in this publication, where BITRE confidentiality standards are met.

Individual routes shown are restricted to those with an average exceeding 8,000 passengers per month over the previous six months where two or more airlines operate in competition.

Information on the total network for the month of June 2025 and on the RPT network for the month of June 2025 is presented on page 2, with estimates for the year ended June 2025 presented on page 3.

Detailed information on individual routes can be found in the RPT summary pages 4-13 of this publication. For the month of June 2025, there are 62 individual routes published.

The top ten airports in terms of RPT passenger movements are shown on page 14.

Data on domestic RPT cargo movements at the top five cargo airports are provided on page 15. The table includes cargo carried on passenger flights operated by the Qantas group (including Jetstar), Virgin Australia, Air North and Skippers as well as the cargo carried by dedicated freighter aircraft operated by Qantas Freight and Team Global Express (formerly Toll).

The long-term trends for the top ten competitive RPT routes are presented graphically on pages 16-25.

Domestic RPT passenger movements at regional airports are shown on pages 26-27.

Tables providing estimates of domestic charter aviation activity are shown on page 28. BITRE confidentiality standards restrict publication of detailed estimates for individual Australian airports, with the exception of Perth Airport.

A list of definitions can be found on page 29.

This report was prepared by the Aviation Statistics Section of the Bureau of Infrastructure and Transport Research Economics with data provided by airlines.

Estimates are included where data were not available and data presented in this publication may contain revisions to previously published data.

Where figures have been rounded, discrepancies may occur between sums of component items and totals, and in percentage changes which are derived from figures prior to rounding.

# CONTENTS

<b>Highlights .....</b>	<b>1</b>
<b>Total network.....</b>	<b>2</b>
<b>RPT network .....</b>	<b>2</b>
<b>Top competitive routes.....</b>	<b>4</b>
<b>Top ten airports – passenger movements.....</b>	<b>14</b>
<b>Top five airports – cargo movements.....</b>	<b>15</b>
<b>Top ten routes .....</b>	<b>16</b>
1. Melbourne – Sydney .....	16
2. Brisbane – Sydney.....	17
3. Brisbane – Melbourne .....	18
4. Gold Coast – Sydney .....	19
5. Adelaide – Melbourne .....	20
6. Melbourne – Perth .....	21
7. Gold Coast – Melbourne .....	22
8. Adelaide – Sydney .....	23
9. Perth – Sydney .....	24
10. Brisbane – Cairns .....	25
<b>Top fifty regional airports .....</b>	<b>26</b>
<b>Domestic charter activity .....</b>	<b>28</b>
<b>Definitions .....</b>	<b>29</b>

This page is intentionally left blank.

## HIGHLIGHTS

There were 5.05 million passengers carried on Australian domestic commercial aviation (including charter operations) in June 2025, compared with 4.93 million in June 2024 (up 2.4 per cent). This is also an increase of 2.7 per cent on pre-COVID June 2019 passenger numbers (4.92 million).

4.70 million passengers were carried on Regular Public Transport (RPT) flights in June 2025 (excluding charter operations), an increase of 2.4 per cent compared to June 2024.

For the month of June 2025, there were 48.9 thousand RPT aircraft trips, a decrease of 0.9 per cent on June 2024.

For the year ending June 2025 there were 59.51 million RPT passengers, an increase of 1.5 per cent on the year ending June 2024.

RPT revenue passenger kilometres (RPKs) performed were 5.69 billion for the month, compared with 5.51 billion in June 2024 (up 3.4 per cent).

Capacity, measured by available seat kilometres (ASKs), increased to 7.10 billion in June 2025 compared to 6.98 billion in June 2024 (up 1.7 per cent).

The industry wide load factor (RPKs/ASKs) increased from 78.8 per cent in June 2024 to 80.1 per cent in June 2025. The highest load factor (90.1 per cent) was recorded on the Canberra – Gold Coast route while the lowest load factor (49.9 per cent) was recorded on the Brisbane – Moranbah route.

For the month of June 2025, Melbourne – Sydney was Australia's busiest RPT route with 615.0 thousand passengers, followed by Brisbane – Sydney with 344.1 thousand passengers and Brisbane – Melbourne with 279.1 thousand passengers.

Sydney was Australia's busiest domestic airport with 1.93 million passenger movements in June 2025, followed by Melbourne with 1.86 million passenger movements and Brisbane with 1.42 million passenger movements.

Total cargo movements at Australian airports on domestic RPT flights were 26.2 thousand tonnes in June 2025, an increase of 4.8 per cent compared with June 2024.

In June 2025, there were 2.08 million domestic passenger movements through regional airports, an increase of 4.4 per cent from June 2024. Out of the top 50 regional airports, the strongest increase was recorded at Hervey Bay Airport (up 21.8 per cent on June 2024), while the largest decrease was recorded at Moranbah Airport (down 8.9 per cent on June 2024).

Fixed-wing charter operators carried 349.2 thousand passengers in June 2025, an increase of 3.7 per cent compared with June 2024. Perth Airport accounted for 36.0 per cent of all charter passengers in Australia.

## TOTAL NETWORK

### Summary of monthly commercial aviation activity

	Jun 2024	Jun 2025	% Change
Total passengers carried (millions)	4.93	5.05	2.4
Aircraft trips (000s)	55.0	54.7	-0.5

Note: Regular Public Transport and charter aviation activity  
Helicopter, joy flights and sightseeing charter flights not included.

## RPT NETWORK

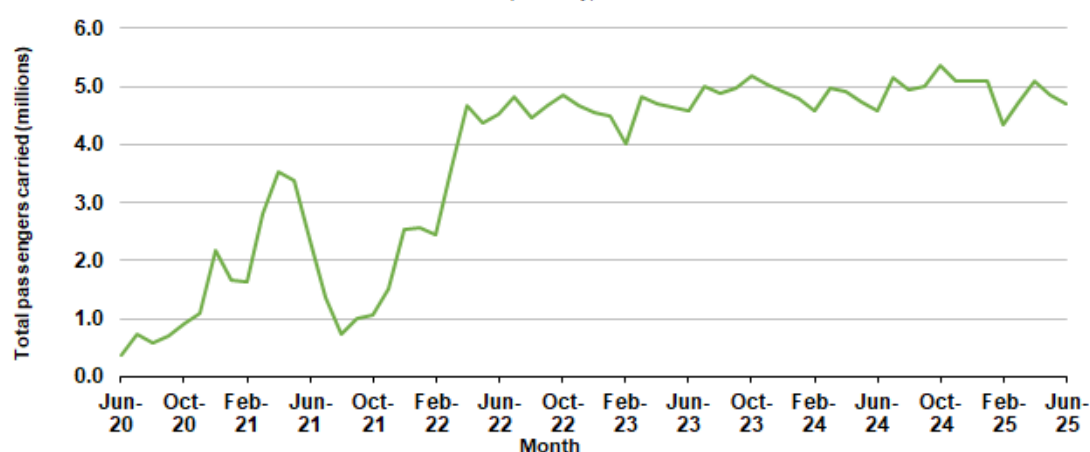
### Summary of monthly RPT activity

	Jun 2024	Jun 2025	% Change
Total passengers carried (millions)	4.60	4.70	2.4
Revenue passenger kilometres (billions)	5.51	5.69	3.4
Available seats (millions)	5.98	6.02	0.6
Available seat kilometres (billions)	6.98	7.10	1.7
Load factor %	78.8	80.1	1.3 *
Aircraft trips (000s)	49.3	48.9	-0.9

\* percentage point difference

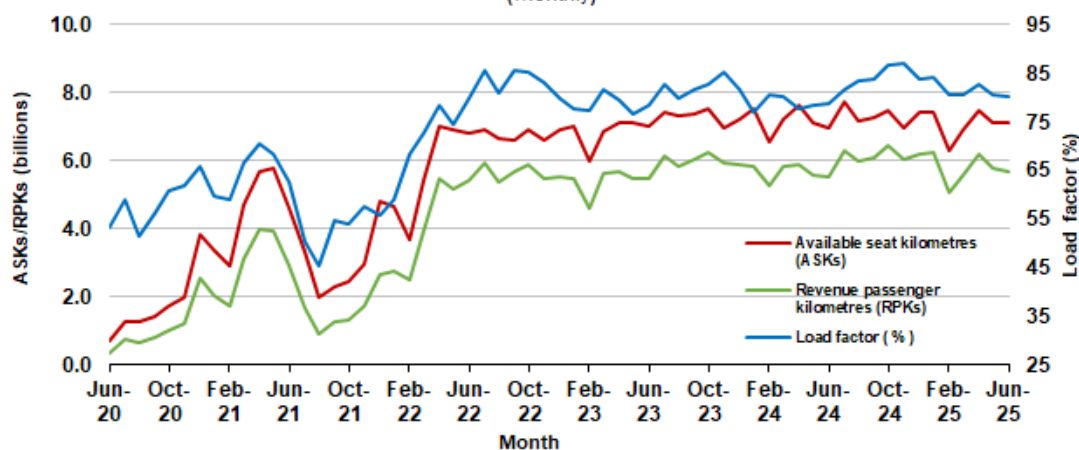
### Domestic RPT passenger traffic

(monthly)



### RPT Network utilisation

(monthly)





## TOTAL NETWORK

### Summary of annual commercial aviation activity

	YE Jun 2024	YE Jun 2025	% Change
Total passengers carried (millions)	62.87	63.77	1.4
Aircraft trips (000s)	689.8	674.9	-2.2

Note: Regular Public Transport and charter aviation activity  
Helicopter, joy flights and sightseeing charter flights not included.

## RPT NETWORK

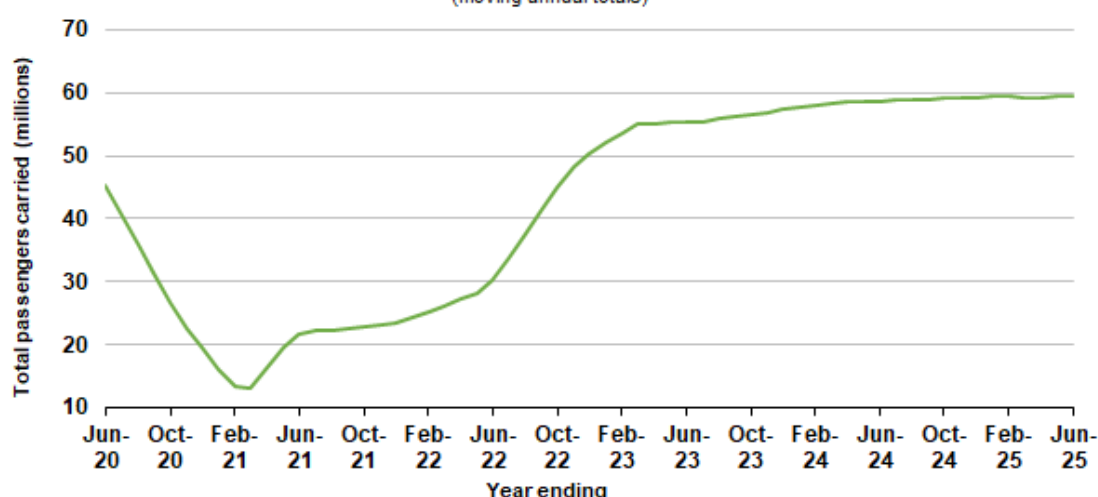
### Summary of annual RPT activity

	YE Jun 2024	YE Jun 2025	% Change
Total passengers carried (millions)	58.63	59.51	1.5
Revenue passenger kilometres (billions)	69.98	71.67	2.4
Available seats (millions)	74.73	73.41	-1.8
Available seat kilometres (billions)	86.91	86.41	-0.6
Load factor %	80.5	82.9	2.4 *
Aircraft trips (000s)	617.4	602.9	-2.3

\* percentage point difference

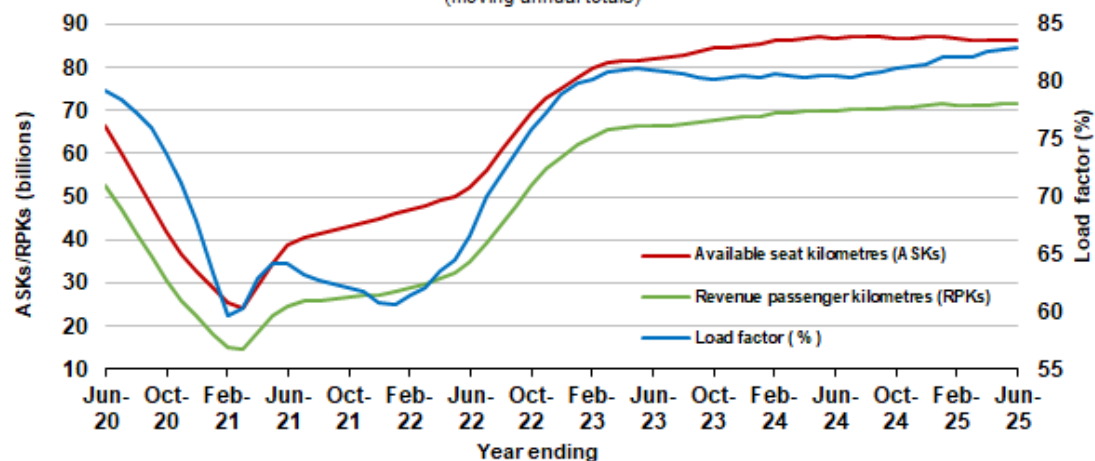
### Domestic RPT passenger traffic

(moving annual totals)



### RPT Network utilisation

(moving annual totals)



## TOP COMPETITIVE ROUTES

**Table 1: Passengers carried (000s) — annual activity**

	City-Pair	YE Jun 2024	YE Jun 2025	% Change
1	Melbourne - Sydney	7 920.0	8 053.5	1.7
2	Brisbane - Sydney	4 325.1	4 358.8	0.8
3	Brisbane - Melbourne	3 389.9	3 553.0	4.8
4	Gold Coast - Sydney	2 518.6	2 465.8	-2.1
5	Adelaide - Melbourne	2 332.0	2 323.7	-0.4
6	Gold Coast - Melbourne	2 236.2	2 106.6	-5.8
7	Melbourne - Perth	1 976.9	2 066.2	4.5
8	Adelaide - Sydney	1 844.0	1 890.1	2.5
9	Perth - Sydney	1 610.6	1 717.9	6.7
10	Hobart - Melbourne	1 337.2	1 423.3	6.4
11	Brisbane - Cairns	1 279.3	1 306.1	2.1
12	Brisbane - Perth	1 034.4	1 127.6	9.0
13	Canberra - Melbourne	1 020.1	984.7	-3.5
14	Brisbane - Townsville	888.9	964.9	8.6
15	Cairns - Sydney	910.8	917.9	0.8
16	Launceston - Melbourne	853.1	870.3	2.0
17	Adelaide - Brisbane	863.7	863.6	0.0
18	Cairns - Melbourne	821.6	856.0	4.2
19	Hobart - Sydney	765.5	830.1	8.4
20	Brisbane - Mackay	737.2	783.0	6.2
21	Sunshine Coast - Sydney	772.8	780.4	1.0
22	Melbourne - Sunshine Coast	779.3	722.3	-7.3
23	Adelaide - Perth	673.6	714.6	6.1
24	Karratha - Perth	572.9	644.3	12.5
25	Brisbane - Canberra	630.5	644.0	2.1
26	Canberra - Sydney	618.3	629.5	1.8
27	Brisbane - Rockhampton	537.2	604.5	12.5
28	Brisbane - Newcastle	499.9	517.8	3.6
29	Ballina - Sydney	517.5	505.6	-2.3
30	Perth - Port Hedland	472.6	478.6	1.3
31	Melbourne - Newcastle	440.1	466.1	5.9
32	Newman - Perth	371.6	429.1	15.5
33	Kalgoorlie - Perth	362.0	373.9	3.3
34	Broome - Perth	360.2	363.9	1.0
35	Launceston - Sydney	339.5	347.8	2.5
36	Brisbane - Darwin	315.7	345.0	9.3
37	Brisbane - Hobart	292.7	315.1	7.7
38	Darwin - Melbourne	284.7	294.5	3.5
39	Brisbane - Proserpine	270.8	288.1	6.4
40	Adelaide - Gold Coast	272.7	280.9	3.0
41	Hamilton Island - Sydney	240.9	252.4	4.8
42	Brisbane - Gladstone	219.6	221.4	0.8
43	Coffs Harbour - Sydney	208.6	205.0	-1.7
44	Adelaide - Canberra	187.4	193.0	3.0
45	Darwin - Perth	173.9	188.9	8.6
46	Brisbane - Emerald	184.5	188.7	2.3
47	Canberra - Gold Coast	185.7	172.6	-7.0
48	Dubbo - Sydney	177.9	170.6	-4.1
49	Adelaide - Port Lincoln	171.7	167.1	-2.7
50	Port Macquarie - Sydney	167.4	164.4	-1.8

continued

**Table 1: (continued) Passengers carried (000s) — annual activity**

	<b>City-Pair</b>	<b>YE Jun 2024</b>	<b>YE Jun 2025</b>	<b>% Change</b>
51	Sydney - Wagga Wagga	157.1	163.1	3.8
52	Brisbane - Hamilton Island	162.4	161.5	-0.6
53	Albury - Sydney	165.1	156.4	-5.2
54	Brisbane - Launceston	148.7	154.6	4.0
55	Brisbane - Mount Isa	143.0	152.5	6.6
56	Melbourne - Mildura	174.3	151.0	-13.4
57	Brisbane - Bundaberg	136.1	140.6	3.3
58	Devonport - Melbourne	121.5	135.8	11.7
59	Geraldton - Perth	104.7	119.5	14.2
60	Ayers Rock - Melbourne	..	116.2	NA
61	Brisbane - Moranbah	111.0	107.5	-3.2
62	Adelaide - Alice Springs	113.0	105.3	-6.8
<b>Total domestic network</b>		<b>58 628.0</b>	<b>59 510.8</b>	<b>1.5</b>

.. Data not available for release.

**Table 2: Passengers carried (000s) — monthly activity**

	City-Pair	Jun 2024	Jun 2025	% Change
1	Melbourne - Sydney	615.3	615.0	0.0
2	Brisbane - Sydney	355.1	344.1	-3.1
3	Brisbane - Melbourne	285.9	279.1	-2.4
4	Gold Coast - Sydney	190.8	191.7	0.5
5	Adelaide - Melbourne	175.8	178.3	1.4
6	Melbourne - Perth	143.8	155.2	7.9
7	Gold Coast - Melbourne	164.0	149.3	-8.9
8	Adelaide - Sydney	135.0	138.3	2.4
9	Perth - Sydney	113.1	129.6	14.6
10	Brisbane - Cairns	121.4	115.1	-5.2
11	Hobart - Melbourne	94.8	104.8	10.5
12	Brisbane - Perth	79.9	87.1	9.0
13	Brisbane - Townsville	83.3	85.6	2.8
14	Canberra - Melbourne	79.6	78.9	-0.8
15	Cairns - Melbourne	62.7	74.4	18.6
16	Cairns - Sydney	74.6	73.3	-1.7
17	Brisbane - Mackay	63.4	69.2	9.1
18	Adelaide - Brisbane	66.4	67.4	1.5
19	Launceston - Melbourne	57.3	67.2	17.2
20	Karratha - Perth	50.4	59.1	17.2
21	Sunshine Coast - Sydney	54.2	59.1	9.0
22	Hobart - Sydney	55.1	58.3	5.8
23	Melbourne - Sunshine Coast	55.1	56.5	2.6
24	Brisbane - Canberra	51.8	54.0	4.1
25	Adelaide - Perth	48.9	52.6	7.6
26	Brisbane - Rockhampton	48.7	51.6	6.0
27	Canberra - Sydney	52.9	50.1	-5.2
28	Brisbane - Newcastle	40.4	43.3	7.1
29	Perth - Port Hedland	37.8	39.6	4.9
30	Brisbane - Darwin	35.0	37.4	6.9
31	Melbourne - Newcastle	34.5	36.8	6.7
32	Newman - Perth	31.1	36.6	17.6
33	Broome - Perth	33.6	36.0	7.3
34	Ballina - Sydney	35.9	32.0	-10.7
35	Kalgoorlie - Perth	28.3	31.7	12.0
36	Darwin - Melbourne	27.4	28.7	4.8
37	Brisbane - Hobart	23.2	24.1	4.3
38	Brisbane - Proserpine	21.3	23.5	10.1
39	Launceston - Sydney	21.5	22.5	4.8
40	Adelaide - Gold Coast	19.7	21.9	11.3
41	Darwin - Perth	18.2	18.5	1.4
42	Brisbane - Gladstone	18.6	18.4	-1.4
43	Adelaide - Canberra	14.3	16.4	15.1
44	Brisbane - Emerald	15.2	16.3	7.2
45	Hamilton Island - Sydney	14.8	16.1	9.0
46	Coffs Harbour - Sydney	17.2	15.3	-10.7
47	Dubbo - Sydney	14.5	14.1	-2.8
48	Port Macquarie - Sydney	13.3	14.1	5.4
49	Canberra - Gold Coast	16.0	14.0	-12.7
50	Brisbane - Mount Isa	12.4	13.5	9.4

continued

**Table 2: (continued) Passengers carried (000s) — monthly activity**

	<b>City-Pair</b>	<b>Jun 2024</b>	<b>Jun 2025</b>	<b>% Change</b>
51	Sydney - Wagga Wagga	13.0	13.3	2.3
52	Adelaide - Port Lincoln	13.4	13.2	-1.4
53	Melbourne - Mildura	12.7	12.0	-6.1
54	Albury - Sydney	13.5	11.9	-12.3
55	Brisbane - Bundaberg	12.1	11.8	-2.2
56	Brisbane - Hamilton Island	12.5	11.8	-5.9
57	Devonport - Melbourne	9.6	11.5	19.5
58	Brisbane - Launceston	11.7	10.3	-12.3
59	Geraldton - Perth	8.8	9.9	12.5
60	Ayers Rock - Melbourne	..	9.6	NA
61	Adelaide - Alice Springs	9.3	9.4	1.4
62	Brisbane - Moranbah	9.0	8.2	-8.9
<b>Total domestic network</b>		<b>4 596.6</b>	<b>4 704.8</b>	<b>2.4</b>

.. Data not available for release.

**Table 3: Available seats (000s) — monthly activity**

	City-Pair	Jun 2024	Jun 2025	% Change
1	Melbourne - Sydney	801.7	778.5	-2.9
2	Brisbane - Sydney	440.4	421.9	-4.2
3	Brisbane - Melbourne	345.7	340.7	-1.4
4	Gold Coast - Sydney	229.1	236.9	3.4
5	Adelaide - Melbourne	231.0	223.4	-3.3
6	Melbourne - Perth	190.9	188.6	-1.2
7	Gold Coast - Melbourne	182.3	168.3	-7.7
8	Adelaide - Sydney	196.4	182.8	-6.9
9	Perth - Sydney	145.0	161.9	11.7
10	Brisbane - Cairns	136.3	132.0	-3.2
11	Hobart - Melbourne	119.3	119.6	0.3
12	Brisbane - Perth	100.1	106.4	6.3
13	Brisbane - Townsville	94.6	99.8	5.5
14	Canberra - Melbourne	112.7	109.2	-3.1
15	Cairns - Melbourne	67.7	83.6	23.5
16	Cairns - Sydney	82.5	84.2	2.0
17	Brisbane - Mackay	78.0	95.3	22.1
18	Adelaide - Brisbane	90.8	81.2	-10.6
19	Launceston - Melbourne	71.7	78.8	9.8
20	Karratha - Perth	71.9	79.4	10.5
21	Sunshine Coast - Sydney	63.8	73.0	14.3
22	Hobart - Sydney	72.9	70.8	-2.9
23	Melbourne - Sunshine Coast	61.5	64.9	5.5
24	Brisbane - Canberra	69.1	71.2	3.1
25	Adelaide - Perth	65.6	71.0	8.2
26	Brisbane - Rockhampton	61.8	62.9	1.7
27	Canberra - Sydney	86.5	73.4	-15.1
28	Brisbane - Newcastle	49.5	52.6	6.4
29	Perth - Port Hedland	59.3	61.9	4.4
30	Brisbane - Darwin	38.9	44.0	13.2
31	Melbourne - Newcastle	43.9	45.7	4.3
32	Newman - Perth	51.8	58.9	13.8
33	Broome - Perth	41.0	43.4	5.9
34	Ballina - Sydney	43.1	38.0	-11.7
35	Kalgoorlie - Perth	52.3	57.4	9.7
36	Darwin - Melbourne	30.3	35.0	15.7
37	Brisbane - Hobart	27.5	27.1	-1.6
38	Brisbane - Proserpine	24.0	26.6	10.4
39	Launceston - Sydney	27.1	25.7	-5.0
40	Adelaide - Gold Coast	23.0	24.6	6.6
41	Darwin - Perth	26.4	25.8	-2.6
42	Brisbane - Gladstone	27.4	26.7	-2.5
43	Adelaide - Canberra	20.6	22.9	11.1
44	Brisbane - Emerald	23.7	25.5	7.8
45	Hamilton Island - Sydney	21.4	21.8	2.2
46	Coffs Harbour - Sydney	22.3	20.4	-8.4
47	Dubbo - Sydney	23.4	21.5	-8.0
48	Port Macquarie - Sydney	19.0	18.6	-2.3
49	Canberra - Gold Coast	19.0	15.5	-18.1
50	Brisbane - Mount Isa	18.7	19.2	2.7

continued

**Table 3: (continued) Available seats (000s) — monthly activity**

	<b>City-Pair</b>	<b>Jun 2024</b>	<b>Jun 2025</b>	<b>% Change</b>
51	Sydney - Wagga Wagga	21.9	19.3	-11.8
52	Adelaide - Port Lincoln	22.0	22.1	0.4
53	Melbourne - Mildura	16.5	16.6	0.3
54	Albury - Sydney	19.7	16.5	-16.3
55	Brisbane - Bundaberg	18.2	18.2	0.0
56	Brisbane - Hamilton Island	16.6	16.3	-1.7
57	Devonport - Melbourne	13.7	16.8	22.3
58	Brisbane - Launceston	13.3	11.5	-13.6
59	Geraldton - Perth	18.7	16.4	-12.5
60	Ayers Rock - Melbourne	..	10.8	NA
61	Adelaide - Alice Springs	12.7	13.0	2.2
62	Brisbane - Moranbah	16.2	16.3	0.8
<b>Total domestic network</b>		<b>5 981.5</b>	<b>6 018.3</b>	<b>0.6</b>

.. Data not available for release.



**Table 4: Load factors (%) — monthly activity**

	City-Pair	Jun 2024	Jun 2025	% Point diff
1	Melbourne - Sydney	76.8	79.0	2.2
2	Brisbane - Sydney	80.6	81.6	1.0
3	Brisbane - Melbourne	82.7	81.9	-0.8
4	Gold Coast - Sydney	83.3	80.9	-2.4
5	Adelaide - Melbourne	76.1	79.8	3.7
6	Melbourne - Perth	75.4	82.3	6.9
7	Gold Coast - Melbourne	89.9	88.7	-1.2
8	Adelaide - Sydney	68.8	75.6	6.8
9	Perth - Sydney	78.0	80.0	2.0
10	Brisbane - Cairns	89.1	87.2	-1.9
11	Hobart - Melbourne	79.5	87.6	8.1
12	Brisbane - Perth	79.8	81.8	2.0
13	Brisbane - Townsville	88.1	85.8	-2.3
14	Canberra - Melbourne	70.6	72.3	1.7
15	Cairns - Melbourne	92.6	88.9	-3.7
16	Cairns - Sydney	90.4	87.1	-3.3
17	Brisbane - Mackay	81.3	72.6	-8.7
18	Adelaide - Brisbane	73.1	83.0	9.9
19	Launceston - Melbourne	79.9	85.3	5.4
20	Karratha - Perth	70.2	74.4	4.2
21	Sunshine Coast - Sydney	84.9	81.0	-3.9
22	Hobart - Sydney	75.6	82.4	6.8
23	Melbourne - Sunshine Coast	89.5	87.0	-2.5
24	Brisbane - Canberra	75.0	75.8	0.8
25	Adelaide - Perth	74.5	74.1	-0.4
26	Brisbane - Rockhampton	78.8	82.1	3.3
27	Canberra - Sydney	61.2	68.3	7.1
28	Brisbane - Newcastle	81.7	82.2	0.5
29	Perth - Port Hedland	63.8	64.1	0.3
30	Brisbane - Darwin	90.1	85.1	-5.0
31	Melbourne - Newcastle	78.7	80.5	1.8
32	Newman - Perth	60.1	62.1	2.0
33	Broome - Perth	81.9	83.0	1.1
34	Ballina - Sydney	83.2	84.2	1.0
35	Kalgoorlie - Perth	54.2	55.3	1.1
36	Darwin - Melbourne	90.3	81.8	-8.5
37	Brisbane - Hobart	84.1	89.2	5.1
38	Brisbane - Proserpine	88.6	88.4	-0.2
39	Launceston - Sydney	79.3	87.4	8.1
40	Adelaide - Gold Coast	85.3	89.1	3.8
41	Darwin - Perth	68.9	71.7	2.8
42	Brisbane - Gladstone	67.9	68.6	0.7
43	Adelaide - Canberra	69.2	71.7	2.5
44	Brisbane - Emerald	64.3	64.0	-0.3
45	Hamilton Island - Sydney	69.0	73.6	4.6
46	Coffs Harbour - Sydney	77.0	75.1	-1.9
47	Dubbo - Sydney	62.1	65.6	3.5
48	Port Macquarie - Sydney	70.1	75.6	5.5
49	Canberra - Gold Coast	84.4	90.1	5.7
50	Brisbane - Mount Isa	66.1	70.4	4.3

continued



**Table 4: (continued) Load factors (%) — monthly activity**

	<b>City-Pair</b>	<b>Jun 2024</b>	<b>Jun 2025</b>	<b>% Point diff</b>
51	Sydney - Wagga Wagga	59.3	68.8	9.5
52	Adelaide - Port Lincoln	61.0	59.9	-1.1
53	Melbourne - Mildura	77.1	72.1	-5.0
54	Albury - Sydney	68.8	72.1	3.3
55	Brisbane - Bundaberg	66.6	65.2	-1.4
56	Brisbane - Hamilton Island	75.5	72.3	-3.2
57	Devonport - Melbourne	70.0	68.4	-1.6
58	Brisbane - Launceston	87.9	89.1	1.2
59	Geraldton - Perth	46.8	60.2	13.4
60	Ayers Rock - Melbourne	..	89.0	NA
61	Adelaide - Alice Springs	73.2	72.6	-0.6
62	Brisbane - Moranbah	55.3	49.9	-5.4
	<b>Total domestic network</b>	<b>78.8</b>	<b>80.1</b>	<b>1.3</b>

.. Data not available for release.

**Table 5: Aircraft trips <sup>(a)</sup> — monthly activity**

	City-Pair	Jun 2024	Jun 2025	% Change
1	Melbourne - Sydney	4 619	4 434	-4.0
2	Brisbane - Sydney	2 633	2 495	-5.2
3	Brisbane - Melbourne	2 064	2 080	0.8
4	Gold Coast - Sydney	1 292	1 356	5.0
5	Adelaide - Melbourne	1 383	1 324	-4.3
6	Melbourne - Perth	1 028	1 071	4.2
7	Gold Coast - Melbourne	990	907	-8.4
8	Adelaide - Sydney	1 158	1 061	-8.4
9	Perth - Sydney	758	866	14.2
10	Brisbane - Cairns	929	962	3.6
11	Hobart - Melbourne	761	717	-5.8
12	Brisbane - Perth	575	599	4.2
13	Brisbane - Townsville	720	767	6.5
14	Canberra - Melbourne	778	692	-11.1
15	Cairns - Melbourne	349	437	25.2
16	Cairns - Sydney	421	445	5.7
17	Brisbane - Mackay	580	678	16.9
18	Adelaide - Brisbane	675	628	-7.0
19	Launceston - Melbourne	585	597	2.1
20	Karratha - Perth	429	480	11.9
21	Sunshine Coast - Sydney	354	404	14.1
22	Hobart - Sydney	414	427	3.1
23	Melbourne - Sunshine Coast	334	343	2.7
24	Brisbane - Canberra	553	597	8.0
25	Adelaide - Perth	366	392	7.1
26	Brisbane - Rockhampton	668	665	-0.4
27	Canberra - Sydney	1 216	1 160	-4.6
28	Brisbane - Newcastle	418	443	6.0
29	Perth - Port Hedland	373	398	6.7
30	Brisbane - Darwin	271	246	-9.2
31	Melbourne - Newcastle	288	300	4.2
32	Newman - Perth	324	351	8.3
33	Broome - Perth	260	275	5.8
34	Ballina - Sydney	301	246	-18.3
35	Kalgoorlie - Perth	356	380	6.7
36	Darwin - Melbourne	170	196	15.3
37	Brisbane - Hobart	170	162	-4.7
38	Brisbane - Proserpine	150	162	8.0
39	Launceston - Sydney	171	169	-1.2
40	Adelaide - Gold Coast	114	120	5.3
41	Darwin - Perth	147	148	0.7
42	Brisbane - Gladstone	323	312	-3.4
43	Adelaide - Canberra	188	211	12.2
44	Brisbane - Emerald	331	337	1.8
45	Hamilton Island - Sydney	121	123	1.7
46	Coffs Harbour - Sydney	399	362	-9.3
47	Dubbo - Sydney	449	425	-5.3
48	Port Macquarie - Sydney	311	331	6.4
49	Canberra - Gold Coast	106	86	-18.9
50	Brisbane - Mount Isa	159	186	17.0

continued

**Table 5: (continued) Aircraft trips <sup>(a)</sup> — monthly activity**

	<b>City-Pair</b>	<b>Jun 2024</b>	<b>Jun 2025</b>	<b>% Change</b>
51	Sydney - Wagga Wagga	394	351	-10.9
52	Adelaide - Port Lincoln	530	456	-14.0
53	Melbourne - Mildura	388	329	-15.2
54	Albury - Sydney	368	306	-16.8
55	Brisbane - Bundaberg	292	295	1.0
56	Brisbane - Hamilton Island	118	128	8.5
57	Devonport - Melbourne	297	274	-7.7
58	Brisbane - Launceston	77	66	-14.3
59	Geraldton - Perth	201	179	-10.9
60	Ayers Rock - Melbourne	..	62	NA
61	Adelaide - Alice Springs	146	151	3.4
62	Brisbane - Moranbah	216	216	0.0
<b>Total domestic network</b>		<b>49 340</b>	<b>48 876</b>	<b>-0.9</b>

.. Data not available for release.

(a) Includes RPT cargo flights.

## TOP TEN AIRPORTS – PASSENGER MOVEMENTS

**Table 6: Top ten airports, RPT passenger movements (000s) - monthly activity**

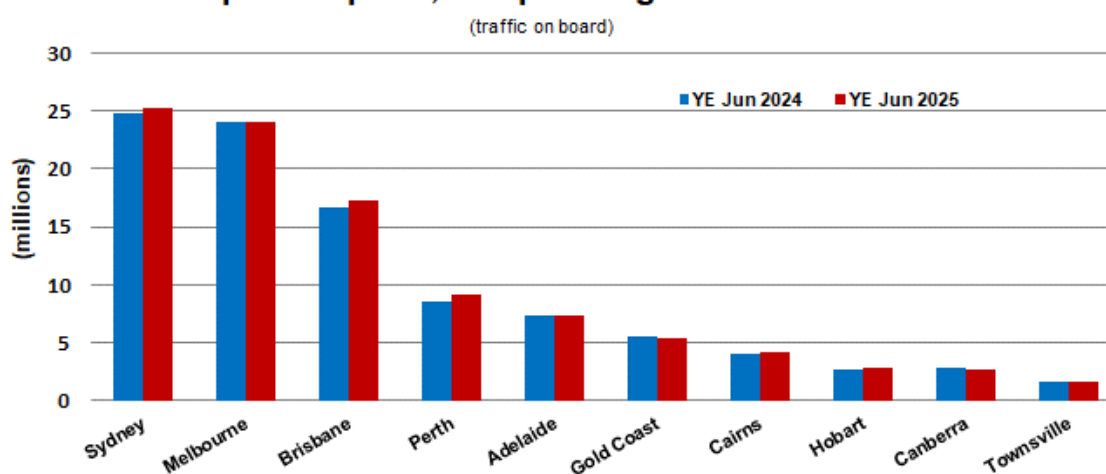
Airport	Jun 2024	Jun 2025	% Change	% of Total
1 Sydney	1 915.8	1 930.8	0.8	20.5
2 Melbourne	1 840.0	1 856.5	0.9	19.7
3 Brisbane	1 409.7	1 418.0	0.6	15.1
4 Perth	672.6	731.2	8.7	7.8
5 Adelaide	547.4	567.6	3.7	6.0
6 Gold Coast	417.5	403.7	-3.3	4.3
7 Cairns	343.7	351.4	2.2	3.7
8 Canberra	224.8	224.1	-0.3	2.4
9 Hobart	187.7	202.5	7.9	2.2
10 Darwin	152.5	158.0	3.6	1.7
<b>Total top ten airports</b>	<b>7 711.8</b>	<b>7 843.9</b>	<b>1.7</b>	<b>83.4</b>
<b>Total domestic network</b>	<b>9 193.1</b>	<b>9 409.6</b>	<b>2.4</b>	<b>100.0</b>

**Table 7: Top ten airports, RPT passenger movements (000s) - annual activity**

Airport	YE Jun 2024	YE Jun 2025	% Change	% of Total
1 Sydney	24 777.2	25 194.9	1.7	21.2
2 Melbourne	24 061.5	24 112.8	0.2	20.3
3 Brisbane	16 665.5	17 329.6	4.0	14.6
4 Perth	8 598.2	9 165.2	6.6	7.7
5 Adelaide	7 298.2	7 409.1	1.5	6.2
6 Gold Coast	5 620.4	5 374.6	-4.4	4.5
7 Cairns	4 052.6	4 127.2	1.8	3.5
8 Hobart	2 651.7	2 801.8	5.7	2.4
9 Canberra	2 795.1	2 766.5	-1.0	2.3
10 Townsville	1 671.7	1 658.3	-0.8	1.4
<b>Total top ten airports</b>	<b>98 191.9</b>	<b>99 939.9</b>	<b>1.8</b>	<b>84.0</b>
<b>Total domestic network</b>	<b>117 256.0</b>	<b>119 021.7</b>	<b>1.5</b>	<b>100.0</b>

Note: Airport passenger movement numbers are the sum of passenger arrivals and departures at each airport.

### Top ten airports, RPT passenger movements



## TOP FIVE AIRPORTS – CARGO MOVEMENTS

**Table 8: Top five airports, domestic RPT cargo movements (000s tonnes) - monthly activity**

Airport	Jun 2024	Jun 2025	% Change	% of Total
1 Melbourne	6.9	7.3	4.8	27.8
2 Sydney	5.3	5.6	6.0	21.5
3 Brisbane	4.6	4.7	2.5	18.1
4 Perth	2.8	2.9	2.2	11.0
5 Adelaide	1.4	1.3	-6.4	4.8
<b>Total top five airports</b>	<b>21.0</b>	<b>21.7</b>	<b>3.5</b>	<b>83.1</b>
<b>Total domestic network</b>	<b>25.0</b>	<b>26.2</b>	<b>4.8</b>	<b>100.0</b>

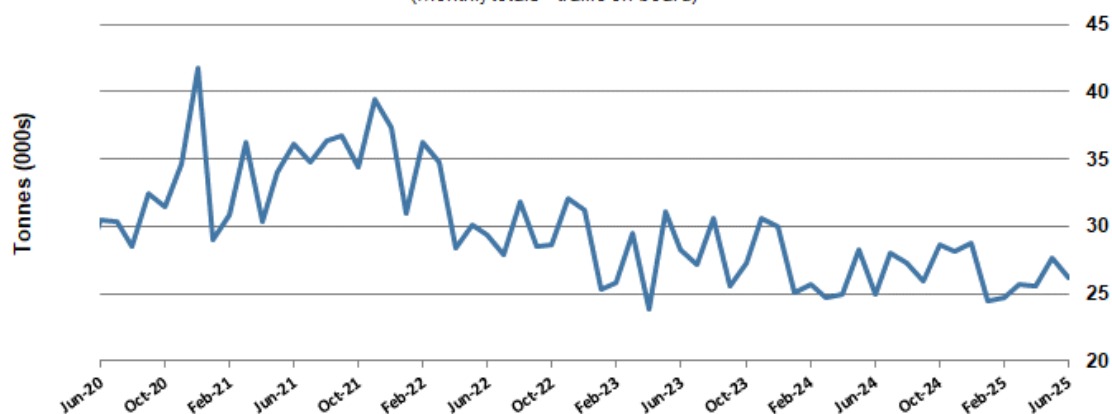
**Table 9: Top five airports, domestic RPT cargo movements (000s tonnes) - annual activity**

Airport	YE Jun 2024	YE Jun 2025	% Change	% of Total
1 Melbourne	88.0	88.1	0.1	27.5
2 Sydney	71.6	67.9	-5.1	21.2
3 Brisbane	59.1	57.0	-3.6	17.8
4 Perth	35.1	36.3	3.4	11.3
5 Adelaide	18.4	17.2	-6.1	5.4
<b>Total top five airports</b>	<b>272.1</b>	<b>266.6</b>	<b>-2.0</b>	<b>83.1</b>
<b>Total domestic network</b>	<b>324.9</b>	<b>320.9</b>	<b>-1.2</b>	<b>100.0</b>

Note: Airport cargo tonnes are the sum of cargo tonnes on arrivals and departures at each airport.

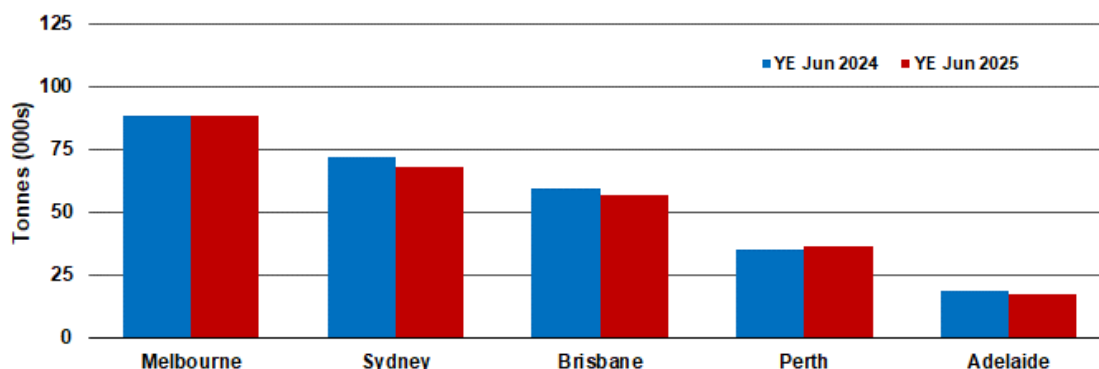
### Total domestic network - cargo movement

(monthly totals - traffic on board)



### Top five airports, cargo movements

(Domestic cargo traffic - traffic on board)



Note: Airport cargo tonnes are the sum of cargo tonnes on arrivals and departures at each airport.

## TOP TEN ROUTES

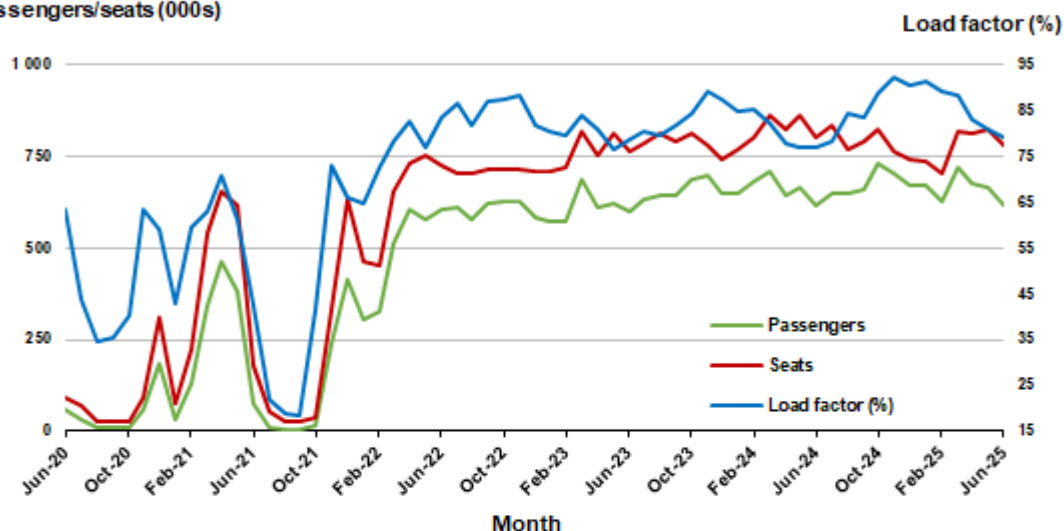
### 1. Melbourne - Sydney

#### Monthly data

	Jun 2024	Jun 2025	% Change
Passengers carried (000s)	615.3	615.0	0.0
Seats (000s)	801.7	778.5	-2.9
Load factor %	76.8	79.0	2.2 *
Aircraft trips	4 619	4 434	-4.0

\* percentage point difference

#### Passengers/seats (000s)

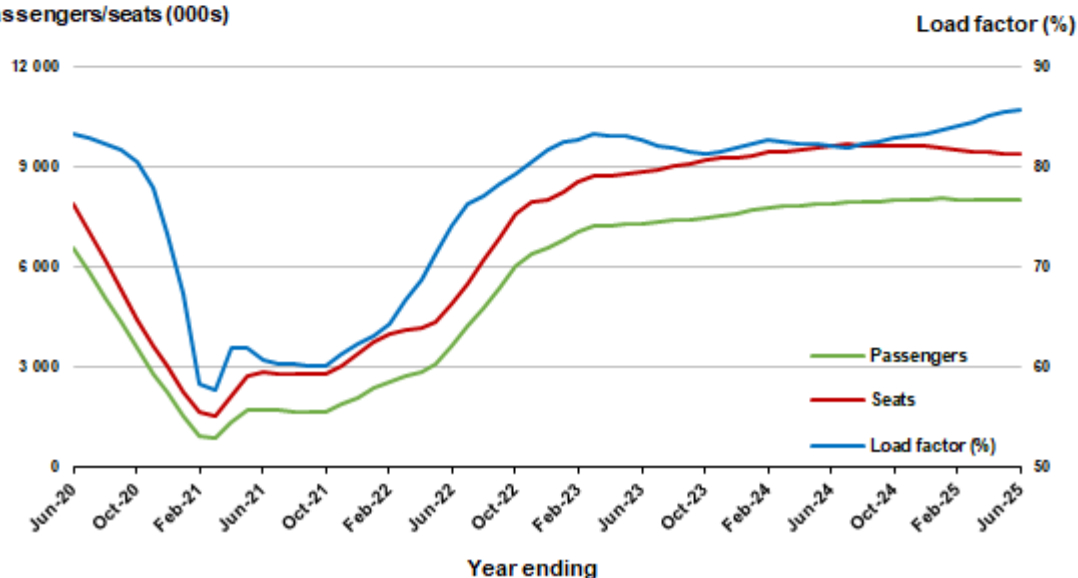


#### Moving annual data

	YE Jun 2024	YE Jun 2025	% Change
Passengers carried (000s)	7 920.0	8 053.5	1.7
Seats (000s)	9 641.6	9 400.0	-2.5
Load factor %	82.2	85.7	3.5 *
Aircraft trips	55 820	53 978	-3.3

\* percentage point difference

#### Passengers/seats (000s)

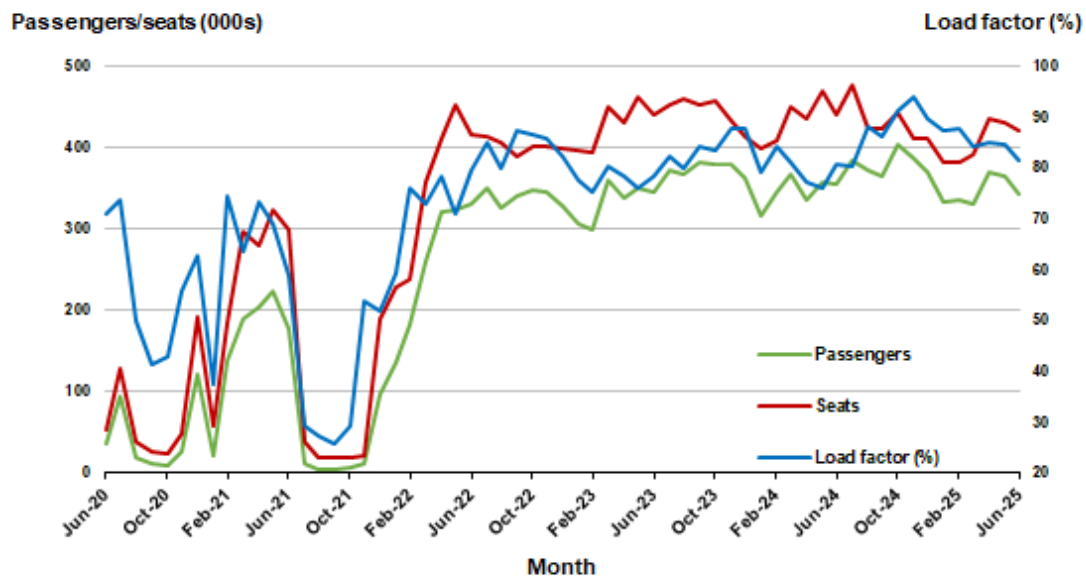


## 2. Brisbane - Sydney

### Monthly data

	Jun 2024	Jun 2025	% Change
Passengers carried (000s)	355.1	344.1	-3.1
Seats (000s)	440.4	421.9	-4.2
Load factor %	80.6	81.6	1.0 *
Aircraft trips	2 633	2 495	-5.2

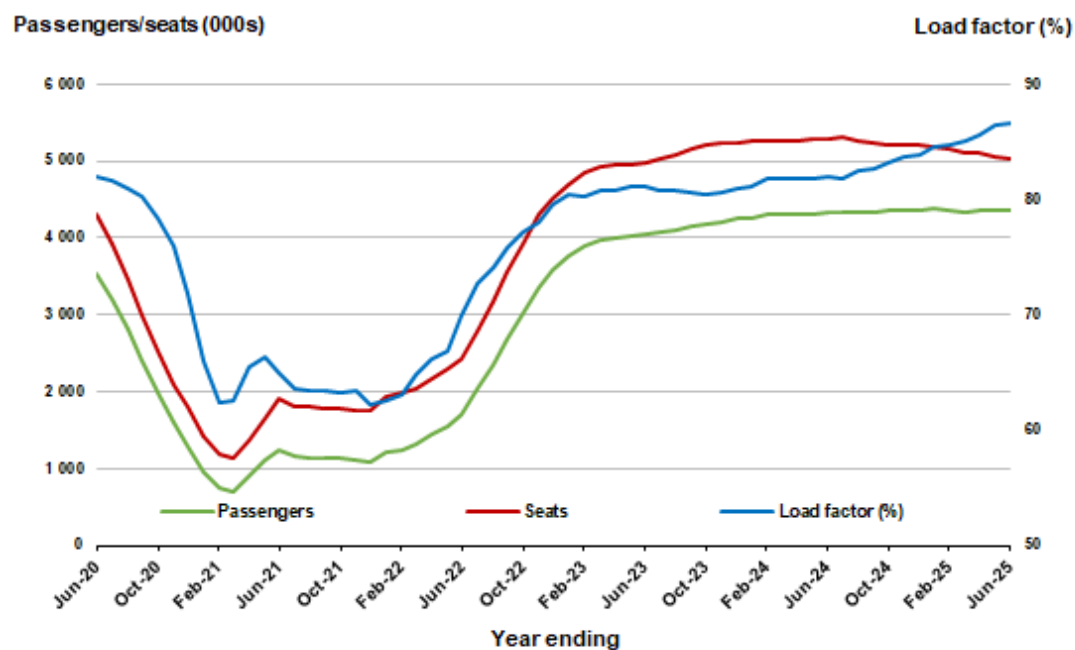
\* percentage point difference



### Moving annual data

	YE Jun 2024	YE Jun 2025	% Change
Passengers carried (000s)	4 325.1	4 358.8	0.8
Seats (000s)	5 277.3	5 035.5	-4.6
Load factor %	82.0	86.6	4.6 *
Aircraft trips	32 310	30 217	-6.5

\* percentage point difference

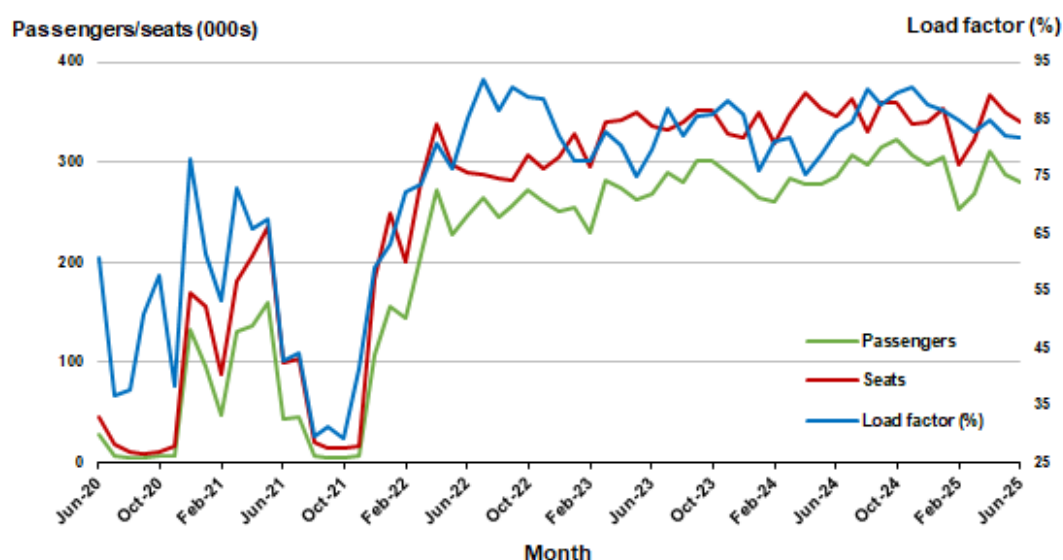


### 3. Brisbane - Melbourne

#### Monthly data

	Jun 2024	Jun 2025	% Change
Passengers carried (000s)	285.9	279.1	-2.4
Seats (000s)	345.7	340.7	-1.4
Load factor %	82.7	81.9	-0.8 *
Aircraft trips	2 064	2 080	0.8

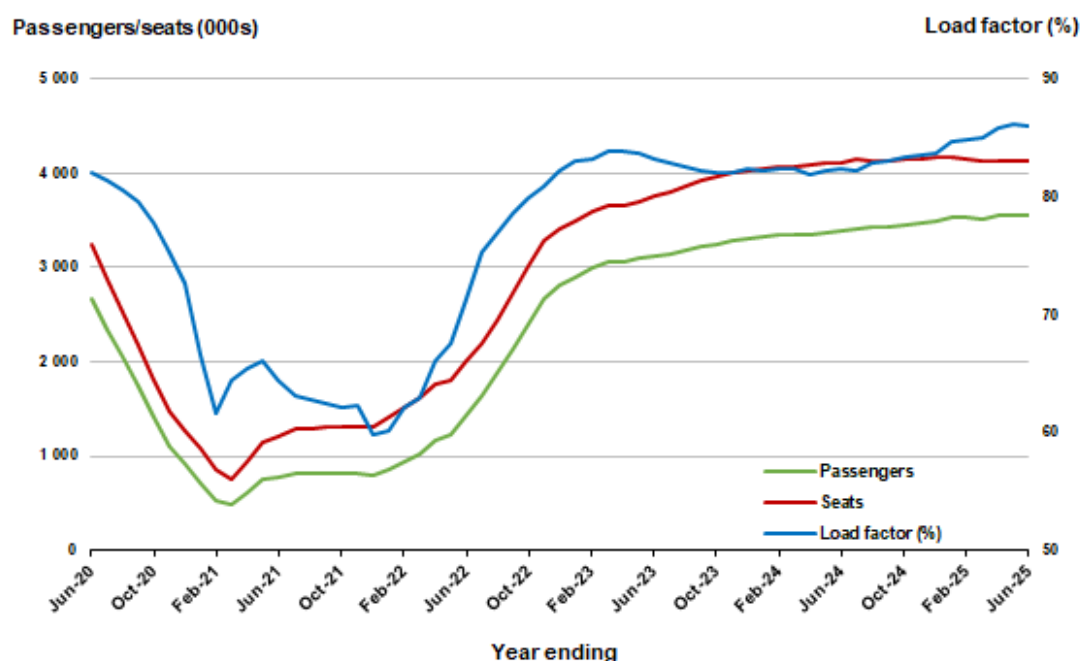
\* percentage point difference



#### Moving annual data

	YE Jun 2024	YE Jun 2025	% Change
Passengers carried (000s)	3 389.9	3 553.0	4.8
Seats (000s)	4 111.7	4 126.5	0.4
Load factor %	82.4	86.1	3.7 *
Aircraft trips	24 727	24 824	0.4

\* percentage point difference





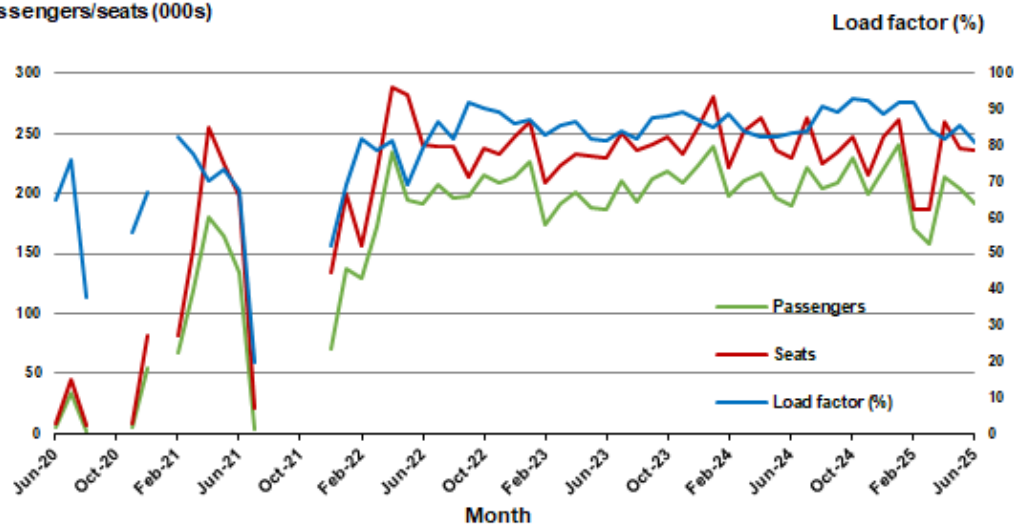
## 4. Gold Coast - Sydney <sup>(a)</sup>

### Monthly data

	Jun 2024	Jun 2025	% Change
Passengers carried (000s)	190.8	191.7	0.5
Seats (000s)	229.1	236.9	3.4
Load factor %	83.3	80.9	-2.4 *
Aircraft trips	1 292	1 356	5.0

\* percentage point difference

### Passengers/seats (000s)



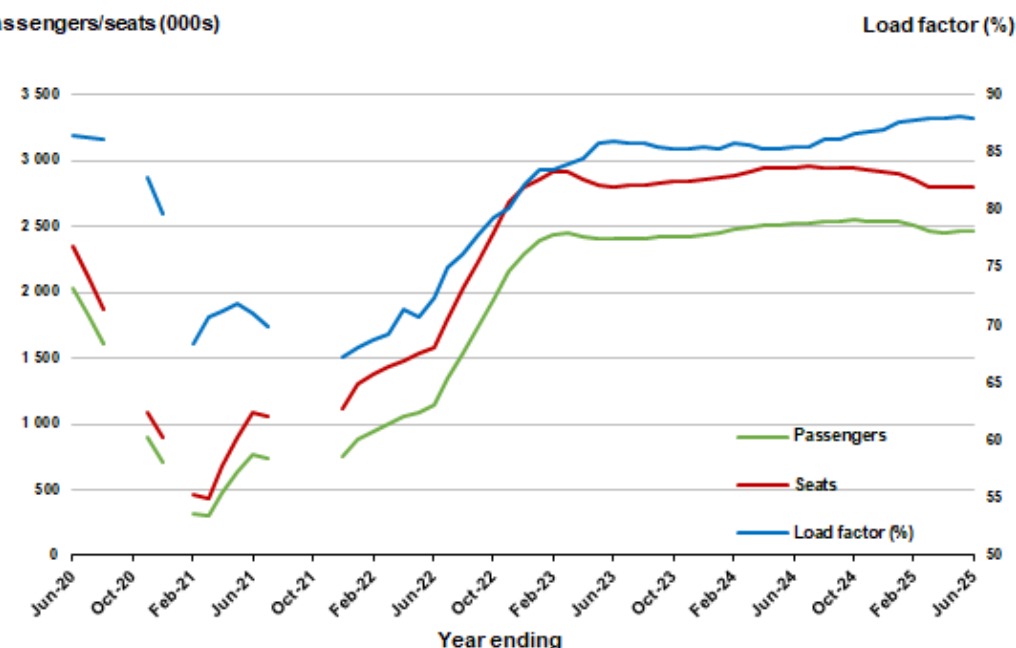
(a) September and October 2020 and January and August to November 2021 data not available for release.

### Moving annual data

	YE Jun 2024	YE Jun 2025	% Change
Passengers carried (000s)	2 518.6	2 465.8	-2.1
Seats (000s)	2 947.4	2 805.2	-4.8
Load factor %	85.5	87.9	2.4 *
Aircraft trips	16 733	15 930	-4.8

\* percentage point difference

### Passengers/seats (000s)



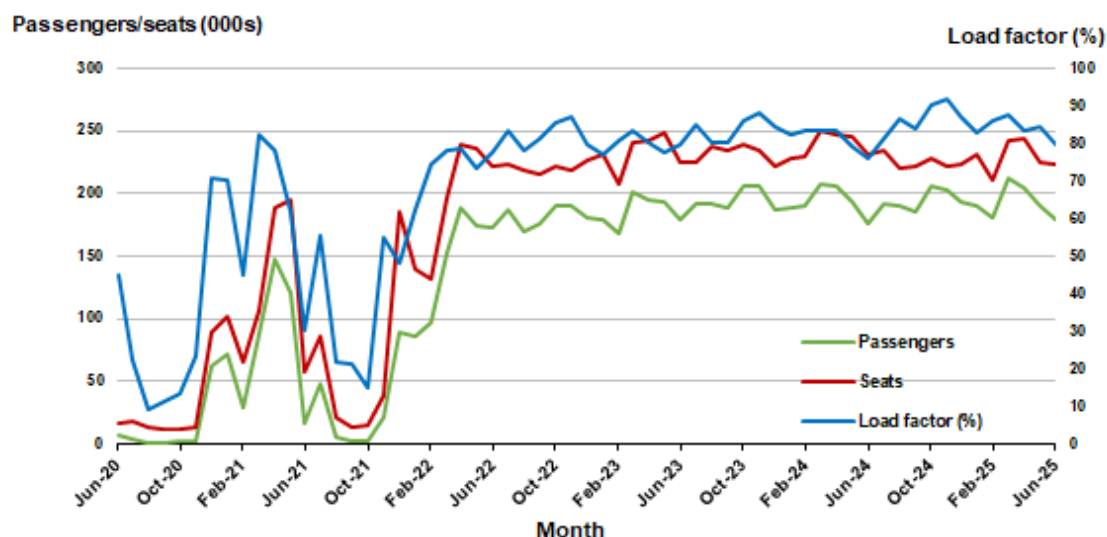
(a) September and October 2020 and January and August to November 2021 moving annual totals not available for release.

## 5. Adelaide - Melbourne

### Monthly data

	Jun 2024	Jun 2025	% Change
Passengers carried (000s)	175.8	178.3	1.4
Seats (000s)	231.0	223.4	-3.3
Load factor %	76.1	79.8	3.7 *
Aircraft trips	1 383	1 324	-4.3

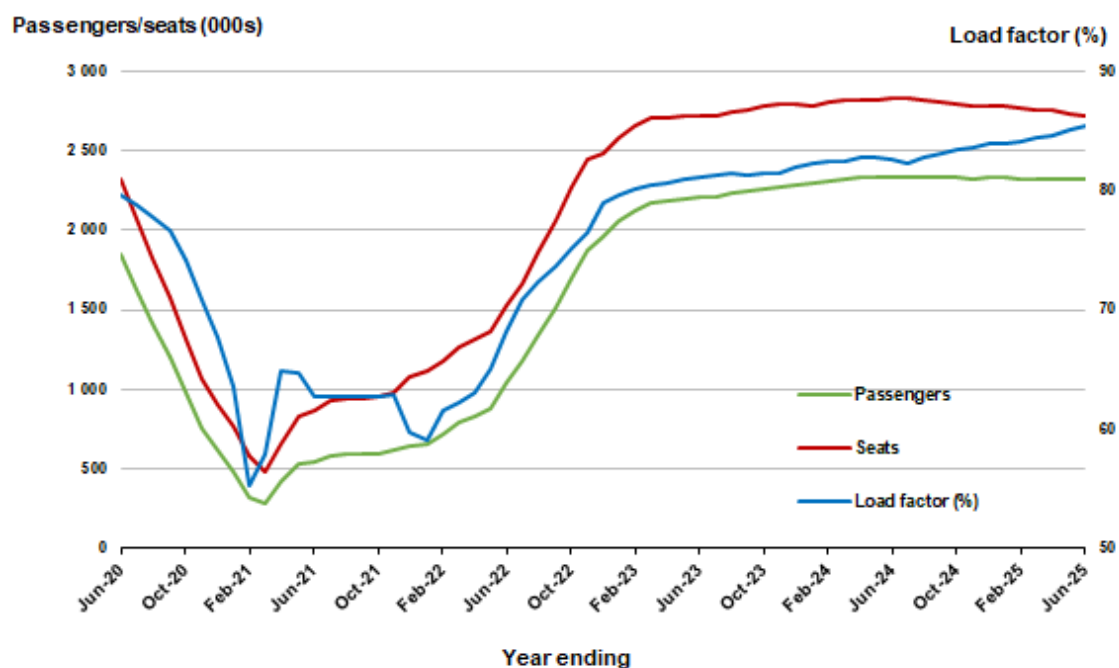
\* percentage point difference



### Moving annual data

	YE Jun 2024	YE Jun 2025	% Change
Passengers carried (000s)	2 332.0	2 323.7	-0.4
Seats (000s)	2 825.6	2 722.0	-3.7
Load factor %	82.5	85.4	2.8 *
Aircraft trips	17 232	16 235	-5.8

\* percentage point difference



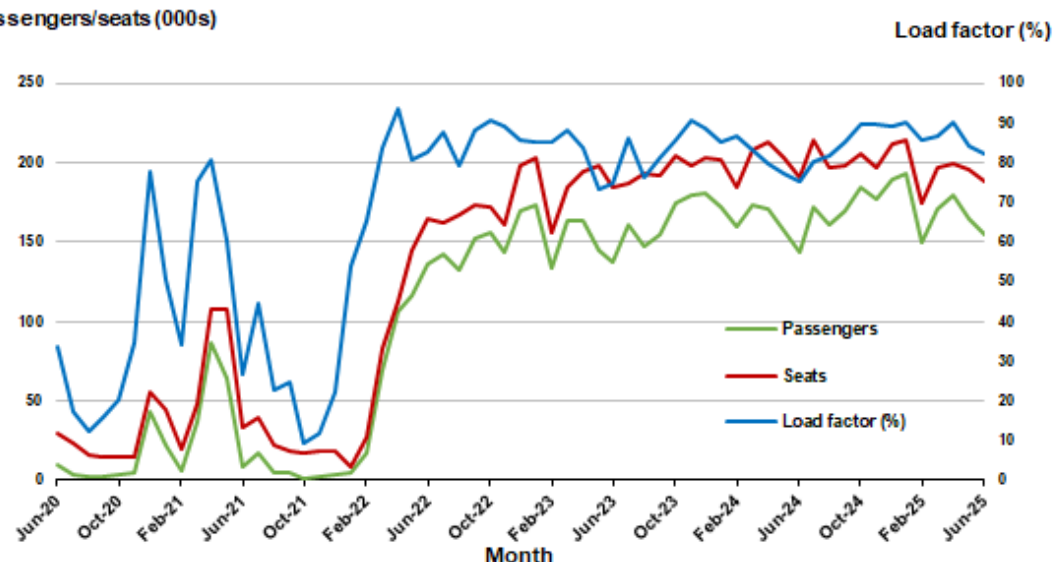
## 6. Melbourne - Perth

### Monthly data

	Jun 2024	Jun 2025	% Change
Passengers carried (000s)	143.8	155.2	7.9
Seats (000s)	190.9	188.6	-1.2
Load factor %	75.4	82.3	6.9 *
Aircraft trips	1 028	1 071	4.2

\* percentage point difference

### Passengers/seats (000s)

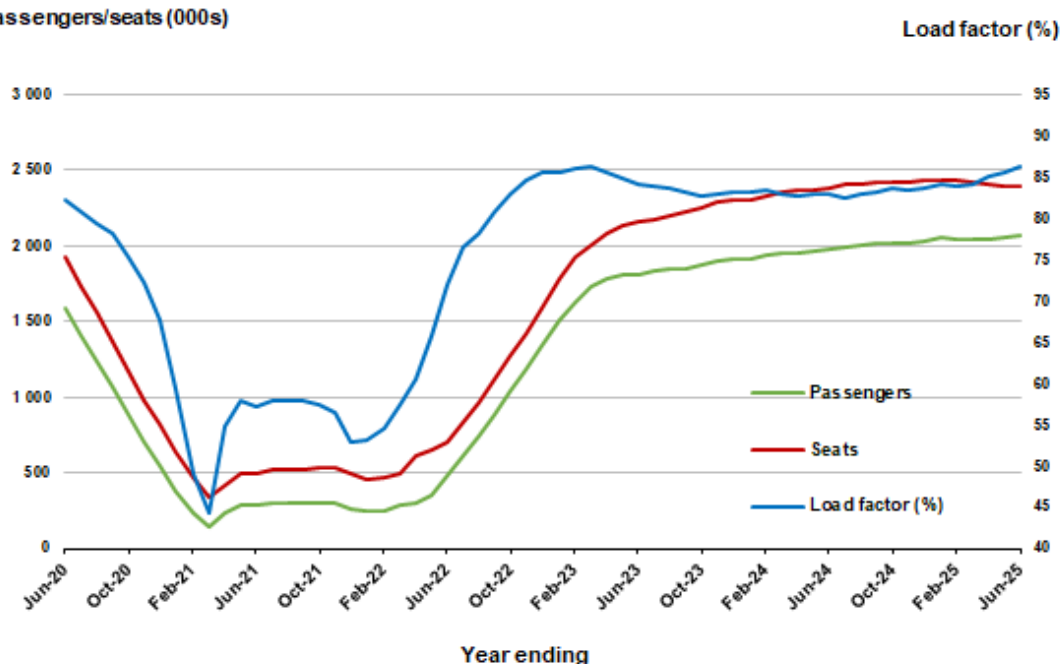


### Moving annual data

	YE Jun 2024	YE Jun 2025	% Change
Passengers carried (000s)	1 976.9	2 066.2	4.5
Seats (000s)	2 380.3	2 395.3	0.6
Load factor %	83.1	86.3	3.2 *
Aircraft trips	13 207	13 326	0.9

\* percentage point difference

### Passengers/seats (000s)

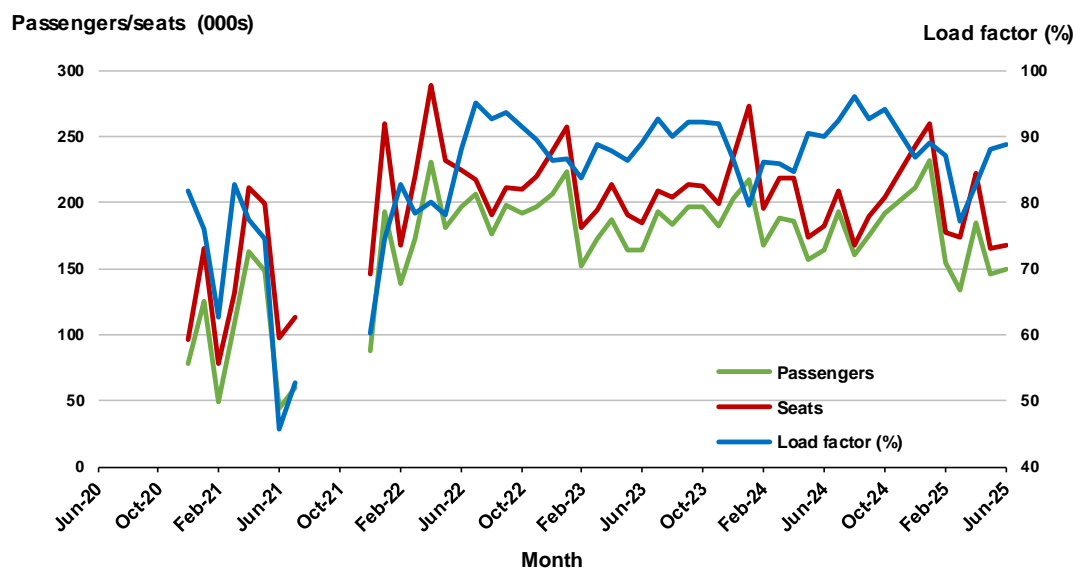


## 7. Gold Coast - Melbourne <sup>(a)</sup>

### Monthly data

	Jun 2024	Jun 2025	% Change
Passengers carried (000s)	164.0	149.3	-8.9
Seats (000s)	182.3	168.3	-7.7
Load factor %	89.9	88.7	-1.2 *
Aircraft trips	990	907	-8.4

\* percentage point difference

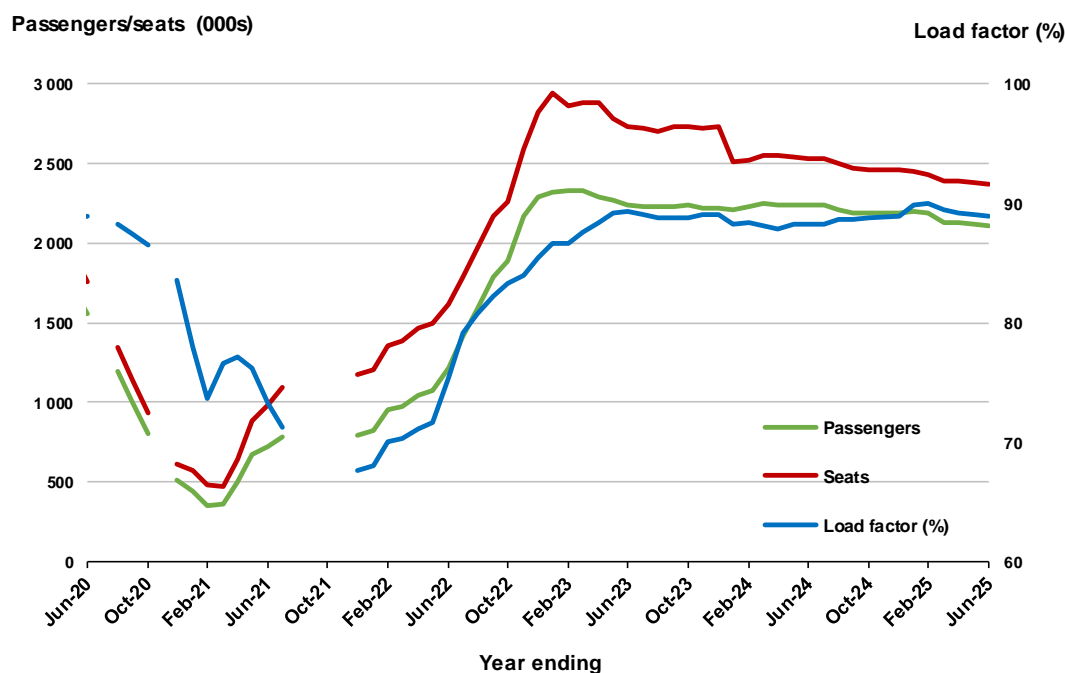


(a) June to November 2020 and August to November 2021 data not available for release.

### Moving annual data

	YE Jun 2024	YE Jun 2025	% Change
Passengers carried (000s)	2 236.2	2 106.6	-5.8
Seats (000s)	2 533.5	2 368.2	-6.5
Load factor %	88.3	89.0	0.7 *
Aircraft trips	13 810	12 794	-7.4

\* percentage point difference



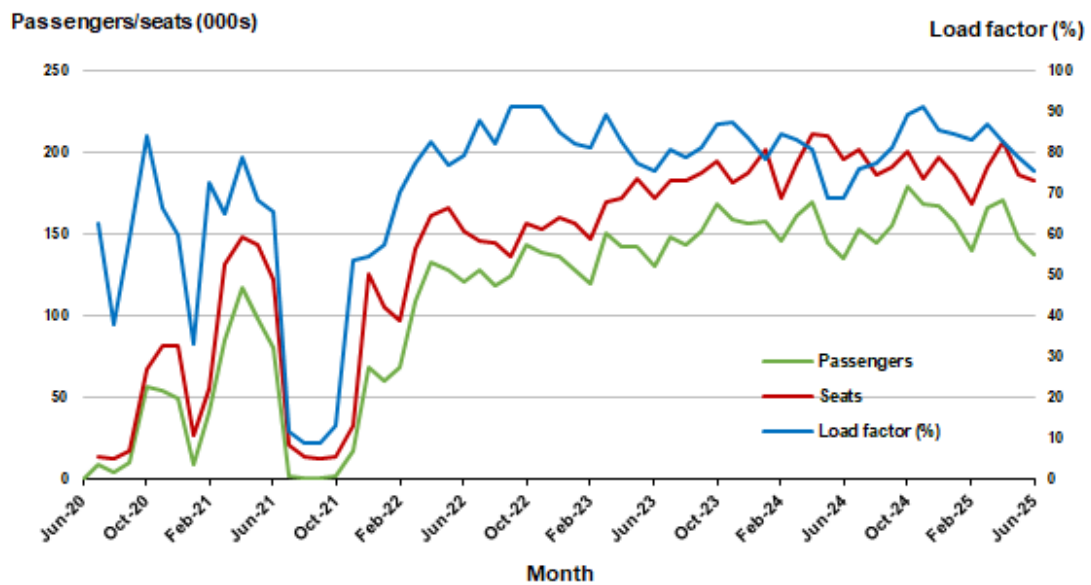
(a) July and November 2020 and August to November 2021 moving annuals are not available for release.

## 8. Adelaide - Sydney

### Monthly data

	Jun 2024	Jun 2025	% Change
Passengers carried (000s)	135.0	138.3	2.4
Seats (000s)	196.4	182.8	- 6.9
Load factor %	68.8	75.6	6.8 *
Aircraft trips	1 158	1 061	-8.4

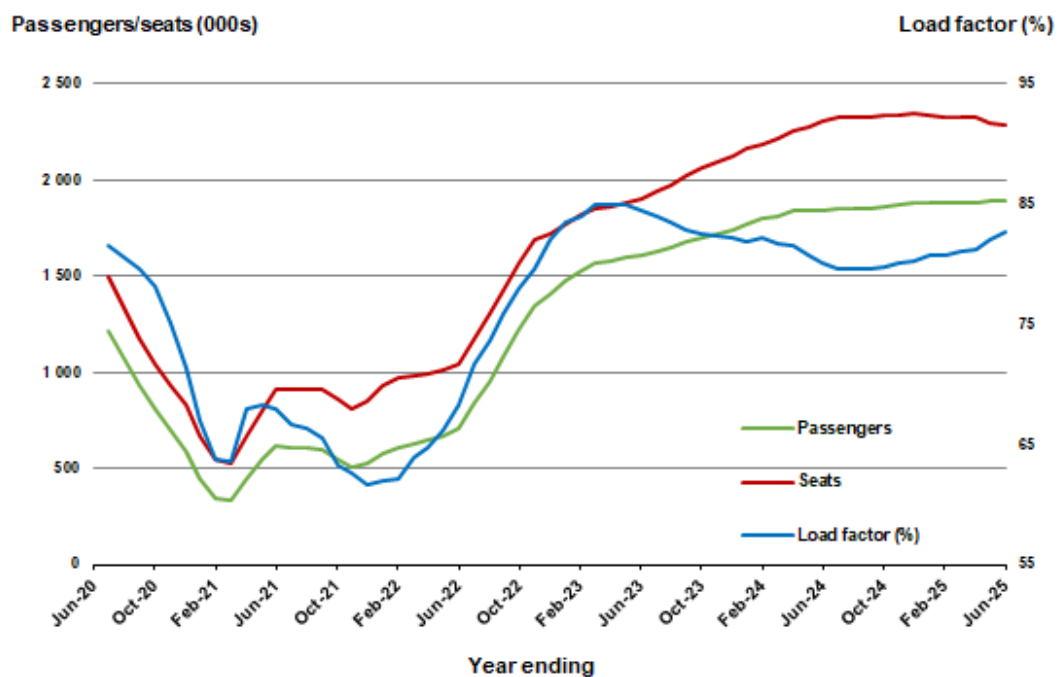
\* percentage point difference



### Moving annual data

	YE Jun 2024	YE Jun 2025	% Change
Passengers carried (000s)	1 844.0	1 890.1	2.5
Seats (000s)	2 302.4	2 284.8	-0.8
Load factor %	80.1	82.7	2.6 *
Aircraft trips	13 984	13 463	-3.7

\* percentage point difference



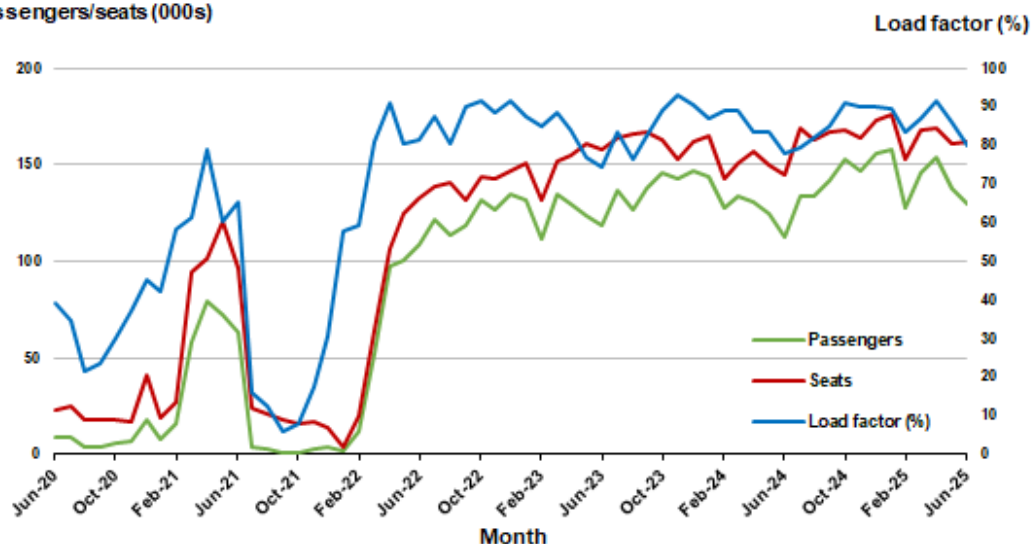
## 9. Perth - Sydney

### Monthly data

	Jun 2024	Jun 2025	% Change
Passengers carried (000s)	113.1	129.6	14.6
Seats (000s)	145.0	161.9	11.7
Load factor %	78.0	80.0	2.0 *
Aircraft trips	758	866	14.2

\* percentage point difference

### Passengers/seats (000s)

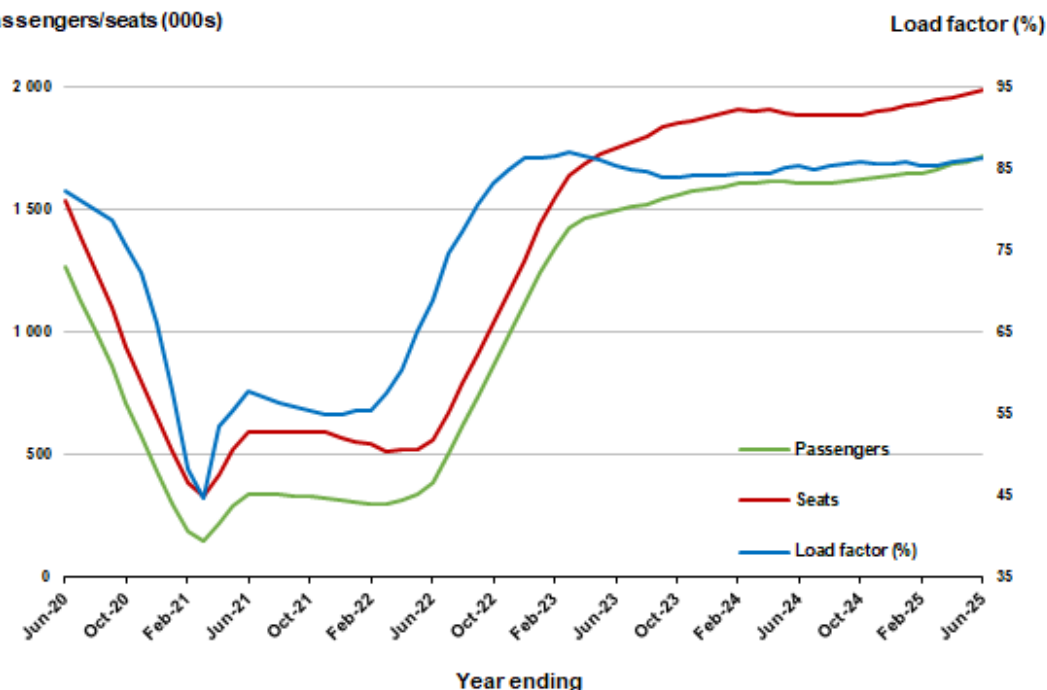


### Moving annual data

	YE Jun 2024	YE Jun 2025	% Change
Passengers carried (000s)	1 610.6	1 717.9	6.7
Seats (000s)	1 885.0	1 990.5	5.6
Load factor %	85.4	86.3	0.9 *
Aircraft trips	9 818	10 571	7.7

\* percentage point difference

### Passengers/seats (000s)

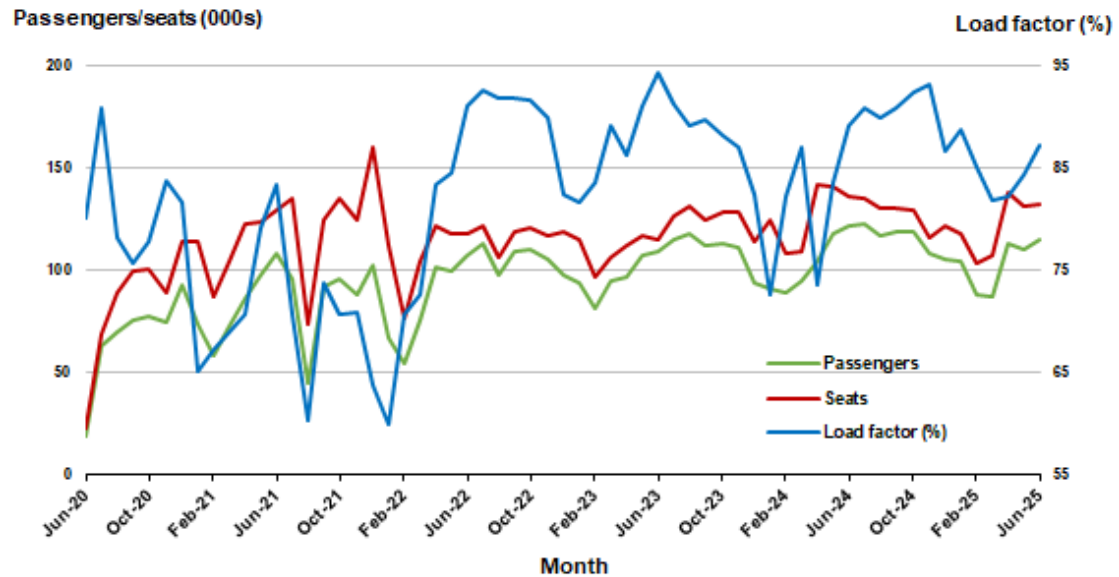


## 10. Brisbane - Cairns

### Monthly data

	Jun 2024	Jun 2025	% Change
Passengers carried (000s)	121.4	115.1	-5.2
Seats (000s)	136.3	132.0	-3.2
Load factor %	89.1	87.2	-1.9 *
Aircraft trips	929	962	3.6

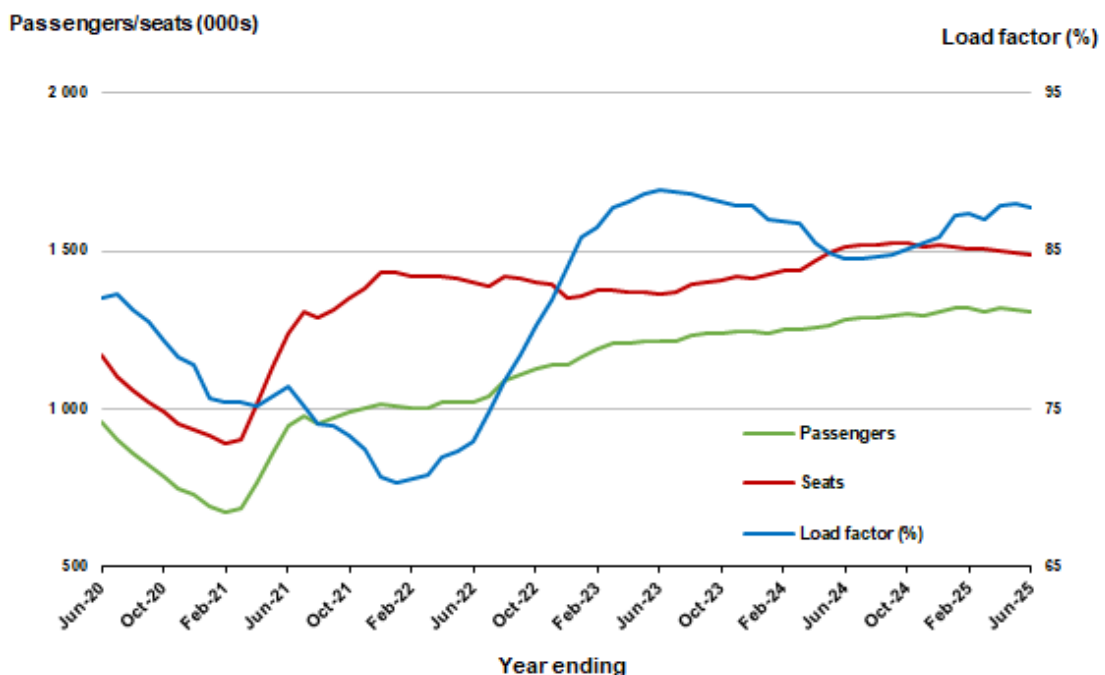
\* percentage point difference



### Moving annual data

	YE Jun 2024	YE Jun 2025	% Change
Passengers carried (000s)	1 279.3	1 306.1	2.1
Seats (000s)	1 513.0	1 487.5	-1.7
Load factor %	84.6	87.8	3.2 *
Aircraft trips	10 284	10 531	2.4

\* percentage point difference





## TOP FIFTY REGIONAL AIRPORTS

**Table 10: Top fifty regional airports (000s) — passenger movements, monthly**

Airport	Jun 2024	Jun 2025	% Change
1 Cairns	343.7	351.4	2.2
2 Hobart	187.7	202.5	7.9
3 Darwin	152.5	158.0	3.6
4 Townsville	139.2	139.3	0.1
5 Launceston	91.9	101.1	10.1
6 Newcastle	90.8	94.9	4.5
7 Mackay	73.8	78.6	6.6
8 Karratha	51.3	60.3	17.4
9 Rockhampton	52.3	54.8	4.9
10 Broome	46.0	45.4	-1.4
11 Proserpine	36.3	42.5	17.0
12 Port Hedland	38.7	40.8	5.4
13 Ballina	42.7	40.6	-4.9
14 Newman	31.2	36.7	17.6
15 Alice Springs	34.3	33.7	-1.8
16 Hamilton Island	34.1	33.4	-2.0
17 Kalgoorlie	28.3	31.7	12.0
18 Ayers Rock	28.0	29.3	4.6
19 Mount Isa	19.6	20.4	4.0
20 Paraburdoo	22.0	20.2	-7.8
21 Coffs Harbour	20.5	20.1	-1.9
22 Gladstone	18.6	18.4	-1.4
23 Albury	18.8	17.6	-6.1
24 Wagga Wagga	16.5	17.6	6.4
25 Emerald	16.1	17.4	7.6
26 Dubbo	17.2	17.1	-0.6
27 Hervey Bay	13.8	16.7	21.8
28 Port Macquarie	15.3	16.4	7.4
29 Kununurra	14.5	15.1	4.1
30 Mildura	16.0	15.0	-6.6
31 Port Lincoln	13.4	13.3	-1.2
32 Tamworth	12.5	12.9	3.1
33 Learmonth	10.7	12.1	13.5
34 Bundaberg	12.1	11.8	-2.2
35 Devonport	9.6	11.5	20.0
36 Geraldton	9.3	10.5	14.0
37 Thursday Island	10.4	9.7	-7.2
38 Orange	8.5	9.3	8.4
39 Armidale	8.2	8.8	7.8
40 Weipa	7.6	8.8	15.6
41 Olympic Dam	8.2	8.7	5.8
42 Moranbah	9.0	8.2	-8.9
43 Gove	8.2	7.6	-7.9
44 Busselton	6.9	7.0	2.3
45 Griffith	5.5	6.6	20.9
46 Burnie	5.9	6.2	6.5
47 Mount Gambier	5.8	6.0	3.1
48 Merimbula	5.3	5.9	11.0
49 Roma	5.2	5.5	4.6
50 Albany	5.4	5.5	0.4
<b>Total top 50 regional airports</b>	<b>1 879.6</b>	<b>1 963.0</b>	<b>4.4</b>
<b>Total regional airports</b>	<b>1 995.2</b>	<b>2 082.4</b>	<b>4.4</b>
<b>Total domestic network</b>	<b>9 193.1</b>	<b>9 409.6</b>	<b>2.4</b>

Note: Airport passenger movement numbers are the sum of passenger arrivals and departures at each airport. Regional airports are defined as airports which are, according to Australian Statistical Geography Standard (ASGS), not based in Major Cities.



**Table 11: Top fifty regional airports (000s) — passenger movements, annual**

Airport	YE Jun 2024	YE Jun 2025	% Change
1 Cairns	4 052.6	4 127.2	1.8
2 Hobart	2 651.7	2 801.8	5.7
3 Townsville	1 671.7	1 658.3	-0.8
4 Darwin	1 593.5	1 628.1	2.2
5 Launceston	1 413.0	1 433.6	1.5
6 Newcastle	1 201.2	1 183.7	-1.5
7 Mackay	911.7	902.5	-1.0
8 Karratha	582.6	657.7	12.9
9 Rockhampton	656.2	644.7	-1.8
10 Ballina	620.3	612.1	-1.3
11 Proserpine	506.5	520.7	2.8
12 Port Hedland	485.1	491.1	1.2
13 Hamilton Island	489.7	489.1	-0.1
14 Broome	439.4	444.3	1.1
15 Newman	372.2	430.4	15.6
16 Kalgoorlie	362.4	374.4	3.3
17 Alice Springs	367.5	358.4	-2.5
18 Ayers Rock	283.6	345.2	21.8
19 Paraburdoo	263.4	275.5	4.6
20 Coffs Harbour	266.8	252.0	-5.5
21 Mount Isa	232.3	239.5	3.1
22 Albury	276.5	223.1	-19.3
23 Gladstone	240.2	221.5	-7.8
24 Wagga Wagga	201.8	213.1	5.6
25 Hervey Bay	154.7	208.2	34.5
26 Dubbo	213.7	205.2	-4.0
27 Emerald	195.9	199.9	2.0
28 Port Macquarie	228.0	190.5	-16.4
29 Mildura	231.9	189.8	-18.1
30 Port Lincoln	171.7	167.1	-2.7
31 Tamworth	173.3	160.8	-7.2
32 Bundaberg	165.3	140.8	-14.8
33 Kununurra	139.4	140.0	0.4
34 Devonport	121.7	136.0	11.8
35 Geraldton	110.2	126.3	14.6
36 Thursday Island	110.3	120.2	9.0
37 Orange	109.3	113.4	3.7
38 Learmonth	103.1	112.3	8.9
39 Moranbah	111.1	107.6	-3.2
40 Olympic Dam	103.6	101.8	-1.7
41 Armidale	107.3	101.6	-5.3
42 Weipa	90.0	96.5	7.3
43 Busselton	65.3	94.9	45.3
44 Gove	92.4	88.8	-3.8
45 Burnie	80.7	80.3	-0.5
46 Griffith	69.3	74.7	7.8
47 Mount Gambier	72.9	71.0	-2.6
48 Norfolk Island	70.0	70.0	0.0
49 Merimbula	70.2	68.4	-2.6
50 Albany	65.1	67.5	3.6
<b>Total top 50 regional airports</b>	<b>23 368.0</b>	<b>23 761.5</b>	<b>1.7</b>
<b>Total regional airports</b>	<b>24 811.1</b>	<b>25 204.1</b>	<b>1.6</b>
<b>Total domestic network</b>	<b>117 256.0</b>	<b>119 021.7</b>	<b>1.5</b>

Note: Airport passenger movement numbers are the sum of passenger arrivals and departures at each airport. Regional airports are defined as airports which are, according to Australian Statistical Geography Standard (ASGS), not based in Major Cities.

## DOMESTIC CHARTER ACTIVITY

**Table 12: Charter passengers carried and aircraft trips - monthly activity (000s)**

	Jun 2024	Jun 2025	% Change
Total domestic charter passengers	336.6	349.2	3.7
Total domestic charter aircraft trips	5.6	5.8	3.1

Note: Helicopter, joyflights and sightseeing charter flights not included.

**Table 13: Charter passengers carried and aircraft trips - annual activity (000s)**

	YE Jun 2024	YE Jun 2025	% Change
Total domestic charter passengers	4 244.2	4 256.6	0.3
Total domestic charter aircraft trips	72.4	72.0	-0.5

Note: Helicopter, joyflights and sightseeing charter flights not included.

**Table 14: Domestic airports - charter activity - monthly (000s)**

	Jun 2024	Jun 2025	% Change
Total domestic charter passenger movements	673.2	698.4	3.7
Total domestic charter aircraft movements	11.2	11.6	3.1
Perth airport charter passenger movements	250.5	251.3	0.3
Perth airport charter aircraft movements	3.7	3.6	-2.4

Note: Helicopter, joyflights and sightseeing charter flights not included.

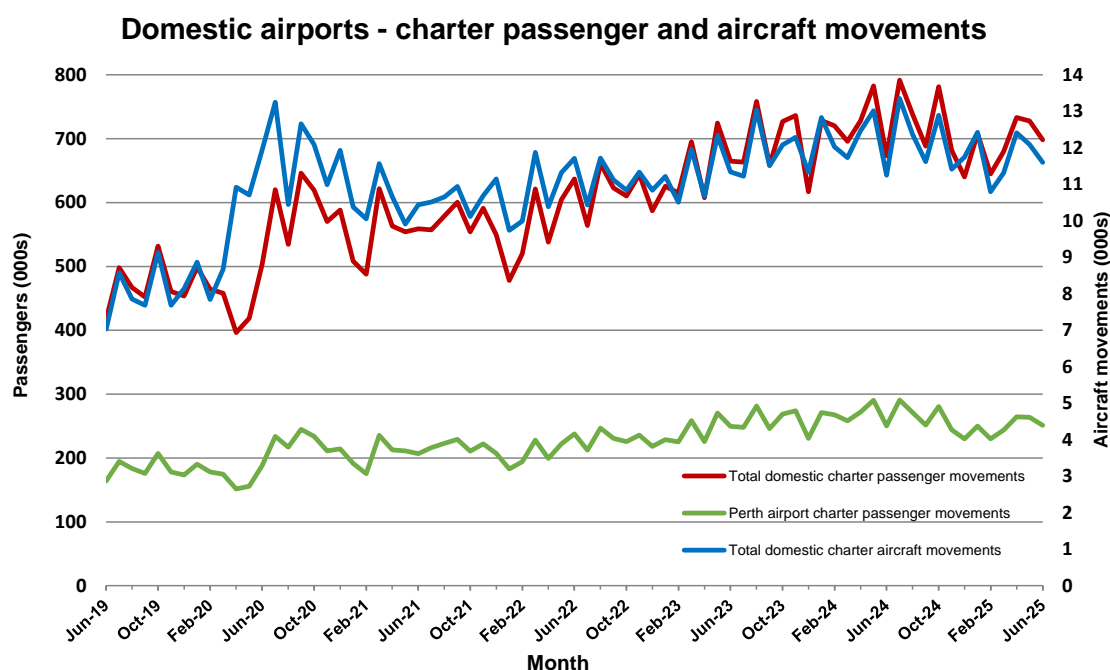
Charter passenger and aircraft movement numbers are the sum of arrivals and departures at each airport.

**Table 15: Domestic airports - charter activity - annual (000s)**

	YE Jun 2024	YE Jun 2025	% Change
Total domestic charter passenger movements	8 488.3	8 513.2	0.3
Total domestic charter aircraft movements	144.8	144.0	-0.5
Perth airport charter passenger movements	3 159.3	3 072.3	-2.8
Perth airport charter aircraft movements	48.4	45.1	-6.8

Note: Helicopter, joyflights and sightseeing charter flights not included.

Charter passenger and aircraft movement numbers are the sum of arrivals and departures at each airport.



## DEFINITIONS

Aircraft Trips	The number of flight stages. A return flight counts as two aircraft trips.
Airport Movements	Airport movements (passenger and cargo) are measured once on arrival and once on departure. Each domestic trip generates two movements at airports. For example, a trip from Melbourne to Sydney will be counted twice, as a departure at Melbourne and as an arrival at Sydney. At the national level, the sum of all domestic airport traffic will therefore be equal to twice the number of trips undertaken.
Available Seat Kilometres (ASKs)	Calculated by multiplying the number of seats available on each flight stage, by the distance in kilometres between the ports. The distances used are Great Circle Distances.
City-Pair	The ports shown make up the city-pair route. Passenger movements shown for a city pair reflect total traffic in both directions.
Flight Stage	The operation of an aircraft from take-off to landing.
Load Factor	The total revenue passenger kilometres performed as a percentage of the total available seat kilometres.
Passengers Carried	Revenue passengers carried.
Regular Public Transport Services (RPT)	All air service operations in which aircraft are available for the transport of members of the public and are conducted in accordance with fixed schedules. It does not include charter or other non-scheduled operations.
Revenue Passengers	All passengers paying any fare. Frequent flyer redemption travellers are regarded as revenue passengers.
Revenue Passenger Kilometres (RPKs)	Calculated by multiplying the number of revenue passengers travelling on each flight stage, by the distance in kilometres between the ports. The distances used are Great Circle Distances.
Traffic on board by stages (TOB)	The total of all traffic (revenue passengers) on each flight stage between two directly connected airports.
..	Not available for confidentiality or other reasons.
NA	Not applicable.