



Australian Government

**Department of Infrastructure, Transport,
Regional Development, Communications and the Arts**
Bureau of Infrastructure and Transport Research Economics

STATISTICAL REPORT



bitre

Aviation

**Domestic aviation activity
June 2023**

The Department of Infrastructure, Transport, Regional Development, Communications and the Arts acknowledges the Traditional Custodians of Country of the land on which we work and live.

We recognise and respect the continuing connections to land, waters and communities.

We pay our respects to them and their cultures and to their Elders both past and present and to all Aboriginal and Torres Strait Islander people.

© Commonwealth of Australia 2023

ISSN: 1832 - 1968

Ownership of intellectual property rights in this publication

Unless otherwise noted, copyright (and any other intellectual property rights, if any) in this publication is owned by the Commonwealth of Australia (referred to below as the Commonwealth).

Disclaimer

The material contained in this publication is made available on the understanding that the Commonwealth is not providing professional advice, and that users exercise their own skill and care with respect to its use, and seek independent advice if necessary.

The Commonwealth makes no representations or warranties as to the contents or accuracy of the information contained in this publication. To the extent permitted by law, the Commonwealth disclaims liability to any person or organisation in respect of anything done, or omitted to be done, in reliance upon information contained in this publication.

Creative Commons licence

With the exception of (a) the Coat of Arms; and (b) the Department of Infrastructure, Transport, Regional Development, Communications and the Arts' photos and graphics, copyright in this publication is licensed under a Creative Commons Attribution 3.0 Australia Licence.

Creative Commons Attribution 3.0 Australia Licence is a standard form licence agreement that allows you to copy, communicate and adapt this publication provided that you attribute the work to the Commonwealth and abide by the other licence terms. A summary of the licence terms is available from <http://creativecommons.org/licenses/by/3.0/au/deed.en>.

The full licence terms are available from <http://creativecommons.org/licenses/by/3.0/au/legalcode>.

Use of the Coat of Arms

The Department of the Prime Minister and Cabinet sets the terms under which the Coat of Arms is used. Please refer to the Department's Commonwealth Coat of Arms and Government branding web page <http://www.dpmc.gov.au/guidelines/index.cfm#brand> and, in particular, the Guidelines on the use of the Commonwealth Coat of Arms publication.

An appropriate citation for this report is:

Bureau of Infrastructure and Transport Research Economics (BITRE), 2023, Domestic aviation activity, Statistical Report, BITRE, Canberra ACT.

Contact us

This publication is available in PDF format. All other rights are reserved, including in relation to any Departmental logos or trade marks which June exist. For enquiries regarding the licence and any use of this publication, please contact:

Bureau of Infrastructure and Transport Research Economics (BITRE)
Department of Infrastructure, Transport, Regional Development, Communications and the Arts
GPO Box 501, Canberra ACT 2601, Australia
Telephone: (international) +61 2 6274 7210
Email: bitre@infrastructure.gov.au
Website: www.bitre.gov.au

Inquiries

Nebojsa.Pavlovic@infrastructure.gov.au (02) 6274 6817

FOREWORD

This report provides an overview of domestic (including charter) commercial aviation activity in Australia for the month of June 2023.

The data covers revenue passengers carried by Australian-registered operators of scheduled regular public transport services over Australian flight stages and fixed-wing charter operators. These estimates include passengers carried between domestic airports on international flights operated by these carriers. The passengers carried refer to traffic on board by stages.

Estimates of passengers and aircraft movements for charter aviation are included in this publication, where BITRE confidentiality standards are met.

Individual routes shown are restricted to those with an average exceeding 8,000 passengers per month over the previous six months where two or more airlines operate in competition. However, for the period from November 2021 through to December 2022, the major airlines (Qantas Group, Virgin Australia and Rex Airlines) agreed to publication of the top 35 routes based on pre-COVID activity (December 2019) whether or not they were meeting the above criteria. From January 2023, the passenger load and dual competition requirements were reinstated due to the continued recovery of passenger numbers.

Information on the total network for the month of June 2023 and on the Regular Public Transport (RPT) network for the month of June 2023 is presented on page 2, with estimates for the year ended June 2023 presented on page 3.

Detailed information on individual routes can be found in the RPT summary pages 4-13 of this publication.

The top ten airports in terms of RPT passenger movements are shown on page 14.

Data on domestic RPT cargo movements at the top five cargo airports are provided on page 15. The table includes cargo carried on passenger flights operated by the Qantas group (including Jetstar), Virgin Australia, Air North and Skippers as well as the cargo carried by dedicated freighter aircraft operated by Qantas Freight and Toll.

The long-term trends for the top ten competitive RPT routes are presented graphically on pages 16-25.

Domestic RPT passenger movements at regional airports are shown on pages 26-27.

Tables providing estimates of domestic charter aviation activity are shown on page 28. BITRE confidentiality standards restrict publication of detailed estimates for individual Australian airports, with the exception of Perth Airport.

A list of definitions can be found on page 29.

This report was prepared by the Aviation Statistics Section of the Bureau of Infrastructure and Transport Research Economics with data provided by airlines.

Estimates are included where data were not available and data presented in this publication may contain revisions to previously published data.

Where figures have been rounded, discrepancies may occur between sums of component items and totals, and in percentage changes which are derived from figures prior to rounding.

CONTENTS

Highlights	1
Total network.....	2
RPT network	2
Top competitive routes.....	4
Top ten airports – passenger movements.....	14
Top five airports – cargo movements.....	15
Top ten routes	16
1. Melbourne – Sydney	16
2. Brisbane – Sydney.....	17
3. Brisbane – Melbourne	18
4. Gold Coast – Sydney	19
5. Adelaide – Melbourne	20
6. Gold Coast – Melbourne	21
7. Melbourne – Perth	22
8. Adelaide – Sydney	23
9. Perth – Sydney	24
10. Brisbane – Cairns	25
Top fifty regional airports	26
Domestic charter activity.....	28
Definitions	29

This page is intentionally left blank.

HIGHLIGHTS

There were 4.92 million passengers carried on Australian domestic commercial aviation (including charter operations) in June 2023, an increase of 1.5 per cent on June 2022.

4.59 million passengers were carried on RPT flights in June 2023, an increase of 1.4 per cent compared to June 2022.

For the month of June 2023, there were 50,318 RPT aircraft trips, up 1.7 per cent compared to June 2022.

For the year ending June 2023 there were 55.28 million RPT passengers, an increase of 82.1 per cent on the year ending June 2022.

RPT revenue passenger kilometres (RPKs) performed were 5.47 billion for the month, compared with 5.45 billion in June 2022 (up 0.5 per cent).

Capacity, measured by available seat kilometres (ASKs), increased to 6.99 billion in June 2023 compared to 6.82 billion in June 2022 (up 2.6 per cent).

The industry wide load factor (RPKs/ASKs) decreased from 79.9 per cent in June 2022 to 78.3 per cent in June 2023. The highest load factor (94.3 per cent) was recorded on the Brisbane – Cairns route while the lowest load factor (55.0 per cent) was recorded on the Armidale – Sydney route.

For the month of June 2023, Melbourne – Sydney was Australia's busiest RPT route with 601,467 passengers, followed by Brisbane – Sydney with 346,867 passengers and Brisbane – Melbourne with 269,160 passengers.

Sydney was Australia's busiest domestic airport with 1.90 million passenger movements in June 2023, followed by Melbourne with 1.84 million passenger movements and Brisbane with 1.34 million passenger movements.

Total cargo movements at Australian airports on domestic RPT flights were 28,267 tonnes in June 2023, a decrease of 3.7 per cent compared with June 2022.

In June 2023, there were 2.05 million domestic passenger movements through regional airports, compared to 2.02 million in June 2022, an increase of 1.6 per cent. Out of the top 50 regional airports, the strongest increase was recorded at Devonport Airport (up 33.7 per cent on June 2022), while the largest decrease was recorded at Mount Gambier Airport (down 13.6 per cent on June 2022).

Fixed-wing charter operators carried 331,986 passengers in June 2023, an increase of 4.2 per cent compared with June 2022. Perth Airport accounted for 37.6 per cent of all charter passengers in Australia.

TOTAL NETWORK

Summary of monthly commercial aviation activity

	Jun 2022	Jun 2023	% Change
Total passengers carried (millions)	4.84	4.92	1.5
Aircraft trips (000s)	55.3	56.0	1.1

Note: Regular Public Transport and charter aviation activity
Helicopter, joy flights and sightseeing charter flights not included.

RPT NETWORK

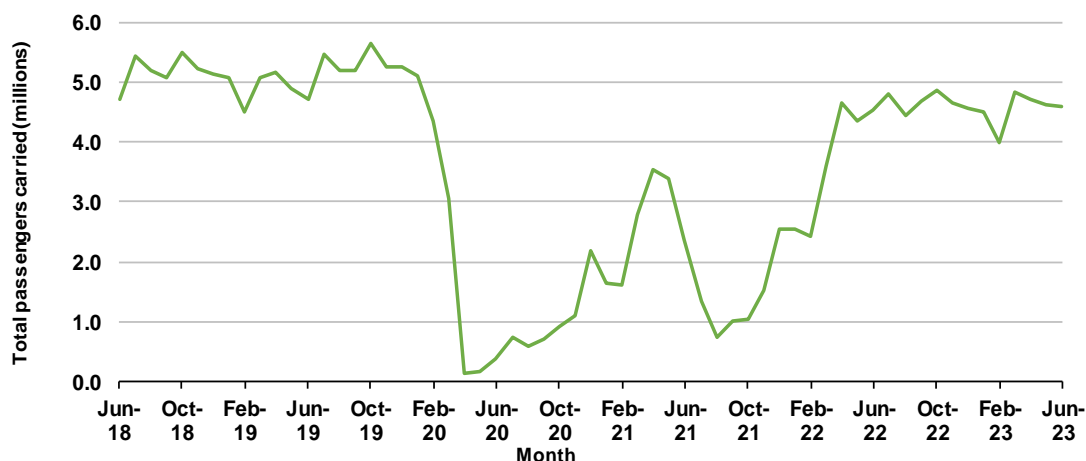
Summary of monthly RPT activity

	Jun 2022	Jun 2023	% Change
Total passengers carried (millions)	4.53	4.59	1.4
Revenue passenger kilometres (billions)	5.45	5.47	0.5
Available seats (millions)	5.83	6.02	3.2
Available seat kilometres (billions)	6.82	6.99	2.6
Load factor %	79.9	78.3	-1.6 *
Aircraft trips (000s)	49.5	50.3	1.7

* percentage point difference

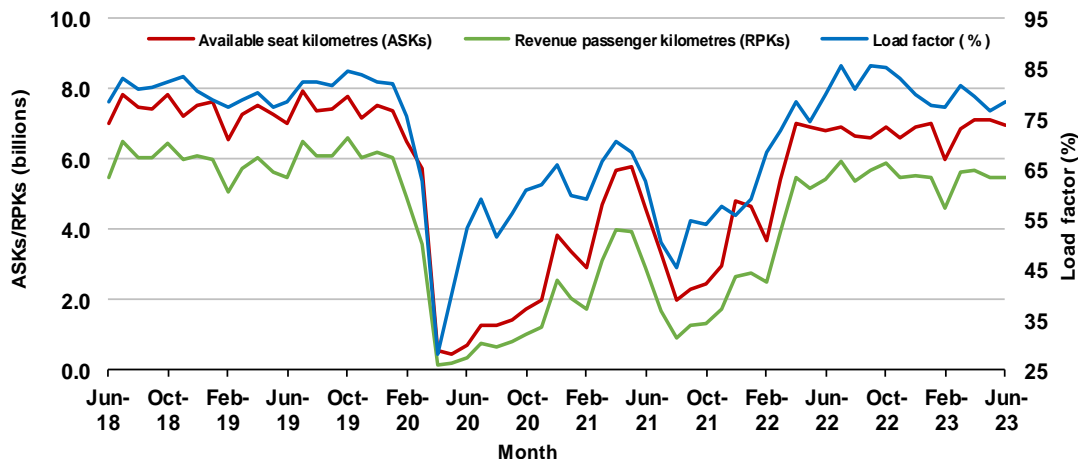
Domestic RPT passenger traffic

(monthly)



RPT Network utilisation

(monthly)



TOTAL NETWORK

Summary of annual commercial aviation activity

	YE Jun 2022	YE Jun 2023	% Change
Total passengers carried (millions)	33.77	59.09	75.0
Aircraft trips (000s)	483.6	662.2	36.9

Note: Regular Public Transport and charter aviation activity
Helicopter, joy flights and sightseeing charter flights not included.

RPT NETWORK

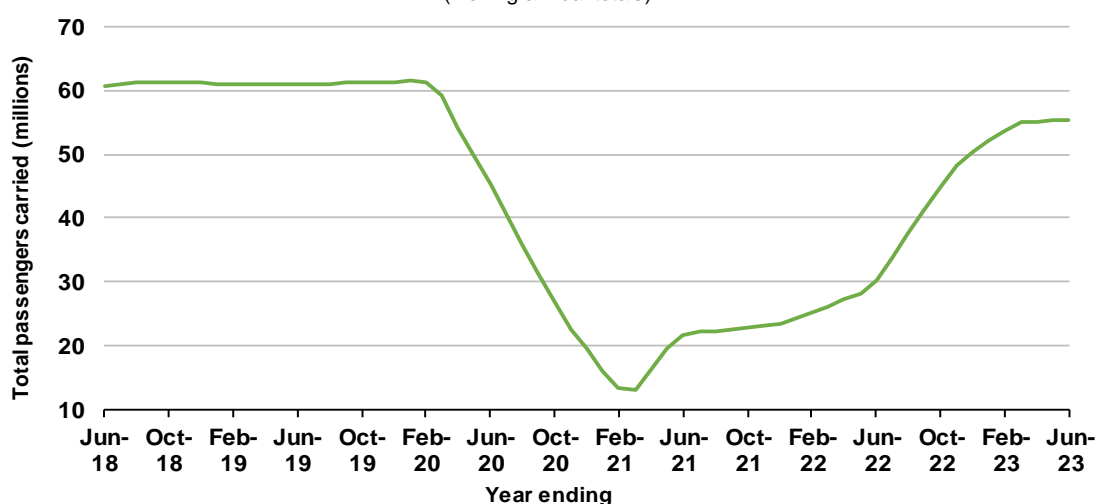
Summary of annual RPT activity

	YE Jun 2022	YE Jun 2023	% Change
Total passengers carried (millions)	30.36	55.28	82.1
Revenue passenger kilometres (billions)	34.89	66.22	89.8
Available seats (millions)	46.32	70.15	51.4
Available seat kilometres (billions)	52.38	81.74	56.0
Load factor %	66.6	81.0	14.4 *
Aircraft trips (000s)	419.1	595.0	42.0

* percentage point difference

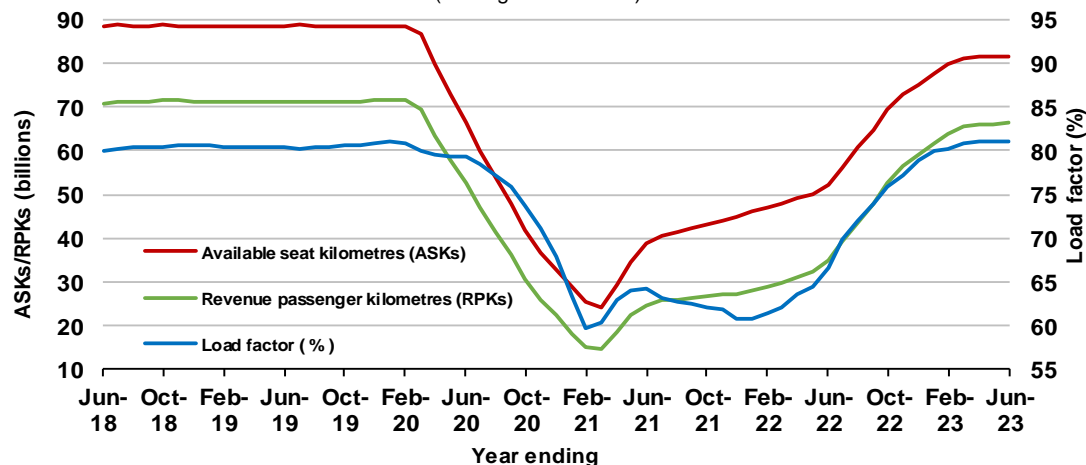
Domestic RPT passenger traffic

(moving annual totals)



RPT Network utilisation

(moving annual totals)



TOP COMPETITIVE ROUTES

Table 1: Passengers carried (000s) — annual activity

	City-Pair	YE Jun 2022	YE Jun 2023	% Change
1	Melbourne - Sydney	3,625.1	7,306.2	101.5
2	Brisbane - Sydney	1,692.3	4,043.7	138.9
3	Brisbane - Melbourne	1,429.8	3,124.3	118.5
4	Gold Coast - Sydney	1,140.8	2,405.0	110.8
5	Gold Coast - Melbourne	1,217.0	2,236.0	83.7
6	Adelaide - Melbourne	1,040.0	2,207.0	112.2
7	Melbourne - Perth	485.7	1,813.6	273.4
8	Adelaide - Sydney	713.5	1,604.8	124.9
9	Perth - Sydney	388.7	1,496.8	285.1
10	Hobart - Melbourne	601.1	1,233.6	105.2
11	Brisbane - Cairns	1,021.8	1,213.4	18.8
12	Brisbane - Perth	345.5	982.5	184.4
13	Canberra - Melbourne	451.7	968.3	114.4
14	Cairns - Sydney	361.3	884.6	144.8
15	Brisbane - Townsville	702.4	860.0	22.4
16	Cairns - Melbourne	452.8	802.8	77.3
17	Adelaide - Brisbane	469.2	795.3	69.5
18	Launceston - Melbourne	373.0	770.3	106.5
19	Brisbane - Mackay	565.8	739.2	30.6
20	Sunshine Coast - Sydney	328.6	737.1	124.3
21	Hobart - Sydney	334.6	708.7	111.8
22	Melbourne - Sunshine Coast	415.9	683.5	64.4
23	Adelaide - Perth	304.0	633.5	108.4
24	Brisbane - Canberra	320.8	630.6	96.5
25	Canberra - Sydney	266.1	594.2	123.3
26	Karratha - Perth	454.3	529.9	16.6
27	Ballina - Sydney	386.7	525.7	35.9
28	Brisbane - Newcastle	229.2	492.6	115.0
29	Brisbane - Rockhampton	372.1	481.0	29.3
30	Perth - Port Hedland	408.3	475.9	16.6
31	Melbourne - Newcastle	240.9	392.7	63.0
32	Broome - Perth	380.5	368.3	-3.2
33	Newman - Perth	325.6	364.7	12.0
34	Kalgoorlie - Perth	274.6	337.2	22.8
35	Brisbane - Darwin	280.2	323.7	15.6
36	Launceston - Sydney	146.9	303.9	106.8
37	Brisbane - Hobart	278.8	299.0	7.2
38	Darwin - Melbourne	202.9	280.4	38.2
39	Brisbane - Proserpine	275.0	280.1	1.9
40	Hamilton Island - Sydney	110.5	247.4	123.9
41	Adelaide - Gold Coast	147.7	242.6	64.3
42	Coffs Harbour - Sydney	131.3	218.2	66.2
43	Adelaide - Darwin	..	213.3	NA
44	Brisbane - Gladstone	155.2	204.8	31.9
45	Adelaide - Canberra	78.6	183.8	133.8
46	Brisbane - Emerald	135.8	179.0	31.9
47	Adelaide - Port Lincoln	148.5	178.6	20.2
48	Darwin - Perth	138.9	175.2	26.2
49	Brisbane - Hamilton Island	194.3	167.5	-13.8
50	Dubbo - Sydney	83.5	165.7	98.4

continued

Table 1: (continued) Passengers carried (000s) — annual activity

	City-Pair	YE Jun 2022	YE Jun 2023	% Change
51	Albury - Sydney	80.1	165.5	106.6
52	Canberra - Gold Coast	79.9	165.4	106.9
53	Brisbane - Launceston	162.8	163.2	0.2
54	Port Macquarie - Sydney	76.4	161.7	111.6
55	Adelaide - Cairns	..	157.5	NA
56	Melbourne - Mildura	86.2	153.4	77.9
57	Sydney - Wagga Wagga	74.3	150.3	102.2
58	Brisbane - Mount Isa	115.0	142.5	23.9
59	Brisbane - Bundaberg	..	112.7	NA
60	Adelaide - Alice Springs	75.8	111.8	47.6
61	Brisbane - Moranbah	..	106.5	NA
62	Armidale - Sydney	52.1	104.1	99.9
63	Devonport - Melbourne	..	80.7	NA
Total domestic network		30,356.2	55,283.0	82.1

.. Data not available for release.

Table 2: Passengers carried (000s) — monthly activity

	City-Pair	Jun 2022	Jun 2023	% Change
1	Melbourne - Sydney	603.9	601.5	-0.4
2	Brisbane - Sydney	330.8	346.9	4.8
3	Brisbane - Melbourne	247.3	269.2	8.8
4	Gold Coast - Sydney	191.5	186.9	-2.4
5	Adelaide - Melbourne	172.9	179.1	3.5
6	Gold Coast - Melbourne	197.4	164.3	-16.7
7	Melbourne - Perth	136.0	137.9	1.4
8	Adelaide - Sydney	120.9	130.1	7.6
9	Perth - Sydney	108.9	118.2	8.6
10	Brisbane - Cairns	107.4	108.5	1.1
11	Hobart - Melbourne	94.5	99.5	5.3
12	Canberra - Melbourne	75.5	80.8	7.0
13	Brisbane - Townsville	80.0	77.9	-2.6
14	Brisbane - Perth	71.0	74.7	5.2
15	Cairns - Melbourne	78.4	70.3	-10.4
16	Cairns - Sydney	78.7	70.2	-10.7
17	Adelaide - Brisbane	58.5	62.5	6.9
18	Brisbane - Mackay	65.5	60.1	-8.2
19	Launceston - Melbourne	56.7	58.1	2.6
20	Sunshine Coast - Sydney	56.8	56.0	-1.6
21	Melbourne - Sunshine Coast	59.3	54.4	-8.4
22	Hobart - Sydney	51.9	53.5	3.1
23	Brisbane - Canberra	52.6	52.2	-0.8
24	Canberra - Sydney	54.1	52.1	-3.7
25	Adelaide - Perth	46.0	46.3	0.6
26	Karratha - Perth	44.5	46.3	4.0
27	Brisbane - Rockhampton	41.4	43.1	4.1
28	Brisbane - Newcastle	39.0	41.2	5.8
29	Perth - Port Hedland	39.4	39.3	-0.4
30	Ballina - Sydney	40.7	38.4	-5.6
31	Broome - Perth	37.9	36.3	-4.4
32	Melbourne - Newcastle	34.0	31.4	-7.7
33	Brisbane - Darwin	36.7	31.3	-14.8
34	Kalgoorlie - Perth	26.5	30.4	14.7
35	Newman - Perth	30.1	30.0	-0.2
36	Darwin - Melbourne	32.3	27.8	-14.1
37	Brisbane - Hobart	23.1	23.3	0.8
38	Adelaide - Darwin	..	21.8	NA
39	Brisbane - Proserpine	24.8	21.7	-12.5
40	Launceston - Sydney	19.7	20.7	5.0
41	Brisbane - Gladstone	18.8	18.3	-2.4
42	Coffs Harbour - Sydney	17.4	18.3	5.2
43	Adelaide - Gold Coast	17.6	18.0	1.8
44	Hamilton Island - Sydney	17.4	16.6	-4.9
45	Adelaide - Canberra	12.3	16.2	31.6
46	Brisbane - Emerald	14.6	15.9	9.0
47	Dubbo - Sydney	13.0	15.6	19.7
48	Darwin - Perth	15.5	15.3	-1.2
49	Albury - Sydney	13.2	14.2	8.3
50	Melbourne - Mildura	12.1	13.7	13.1

continued

Table 2: (continued) Passengers carried (000s) — monthly activity

	City-Pair	Jun 2022	Jun 2023	% Change
51	Canberra - Gold Coast	10.0	13.6	36.7
52	Adelaide - Cairns	..	13.5	NA
53	Adelaide - Port Lincoln	14.2	13.4	-5.6
54	Port Macquarie - Sydney	12.4	13.3	7.6
55	Sydney - Wagga Wagga	12.1	12.9	6.7
56	Brisbane - Mount Isa	12.8	12.5	-2.2
57	Brisbane - Hamilton Island	14.2	12.3	-13.5
58	Adelaide - Alice Springs	9.5	11.9	24.6
59	Brisbane - Bundaberg	..	11.0	NA
60	Brisbane - Launceston	14.6	10.0	-31.4
61	Devonport - Melbourne	..	9.2	NA
62	Brisbane - Moranbah	..	9.2	NA
63	Armidale - Sydney	8.4	9.1	8.7
Total domestic network		4,526.1	4,587.7	1.4

.. Data not available for release.

Table 3: Available seats (000s) — monthly activity

	City-Pair	Jun 2022	Jun 2023	% Change
1	Melbourne - Sydney	724.1	764.7	5.6
2	Brisbane - Sydney	416.1	441.7	6.1
3	Brisbane - Melbourne	290.6	337.0	16.0
4	Gold Coast - Sydney	241.7	229.2	-5.1
5	Adelaide - Melbourne	222.2	224.1	0.9
6	Gold Coast - Melbourne	224.3	184.7	-17.7
7	Melbourne - Perth	164.6	184.9	12.4
8	Adelaide - Sydney	152.4	172.4	13.1
9	Perth - Sydney	133.2	158.4	18.9
10	Brisbane - Cairns	117.8	115.1	-2.3
11	Hobart - Melbourne	121.8	125.4	2.9
12	Canberra - Melbourne	108.9	119.3	9.6
13	Brisbane - Townsville	99.7	91.5	-8.2
14	Brisbane - Perth	89.9	93.9	4.5
15	Cairns - Melbourne	85.3	75.2	-11.8
16	Cairns - Sydney	91.7	75.2	-18.0
17	Adelaide - Brisbane	73.0	81.8	12.1
18	Brisbane - Mackay	87.0	75.4	-13.4
19	Launceston - Melbourne	77.1	75.8	-1.7
20	Sunshine Coast - Sydney	82.9	74.7	-9.9
21	Melbourne - Sunshine Coast	71.3	64.3	-9.9
22	Hobart - Sydney	69.9	73.8	5.6
23	Brisbane - Canberra	68.6	75.5	10.1
24	Canberra - Sydney	82.7	80.2	-3.0
25	Adelaide - Perth	60.4	57.3	-5.1
26	Karratha - Perth	60.2	65.3	8.5
27	Brisbane - Rockhampton	51.0	57.5	12.8
28	Brisbane - Newcastle	51.8	59.9	15.6
29	Perth - Port Hedland	52.1	59.4	13.8
30	Ballina - Sydney	62.0	52.6	-15.3
31	Broome - Perth	47.3	45.5	-3.6
32	Melbourne - Newcastle	43.4	40.6	-6.3
33	Brisbane - Darwin	43.7	35.3	-19.1
34	Kalgoorlie - Perth	37.6	45.1	19.9
35	Newman - Perth	52.4	51.9	-0.9
36	Darwin - Melbourne	35.3	31.8	-9.8
37	Brisbane - Hobart	28.7	29.6	3.3
38	Adelaide - Darwin	..	25.2	NA
39	Brisbane - Proserpine	29.0	25.4	-12.4
40	Launceston - Sydney	25.8	27.0	4.5
41	Brisbane - Gladstone	26.9	31.9	18.3
42	Coffs Harbour - Sydney	22.5	24.5	8.9
43	Adelaide - Gold Coast	19.3	21.3	10.4
44	Hamilton Island - Sydney	26.9	26.6	-1.1
45	Adelaide - Canberra	16.9	28.2	66.4
46	Brisbane - Emerald	21.0	21.6	3.1
47	Dubbo - Sydney	19.9	23.5	18.0
48	Darwin - Perth	20.6	19.3	-6.3
49	Albury - Sydney	20.0	21.3	6.4
50	Melbourne - Mildura	16.9	21.1	25.2

continued

Table 3: (continued) Available seats (000s) — monthly activity

	City-Pair	Jun 2022	Jun 2023	% Change
51	Canberra - Gold Coast	12.9	16.7	29.7
52	Adelaide - Cairns	..	14.6	NA
53	Adelaide - Port Lincoln	25.1	21.7	-13.4
54	Port Macquarie - Sydney	19.9	21.4	7.6
55	Sydney - Wagga Wagga	18.1	21.3	17.8
56	Brisbane - Mount Isa	18.1	19.6	8.0
57	Brisbane - Hamilton Island	22.4	18.7	-16.5
58	Adelaide - Alice Springs	13.6	14.9	10.1
59	Brisbane - Bundaberg	..	18.5	NA
60	Brisbane - Launceston	18.6	12.4	-33.5
61	Devonport - Melbourne	..	13.6	NA
62	Brisbane - Moranbah	..	15.6	NA
63	Armidale - Sydney	14.7	16.5	12.6
Total domestic network		5,828.3	6,017.2	3.2

.. Data not available for release.

Table 4: Load factors (%) — monthly activity

	City-Pair	Jun 2022	Jun 2023	% Point diff
1	Melbourne - Sydney	83.4	78.7	-4.7
2	Brisbane - Sydney	79.5	78.5	-1.0
3	Brisbane - Melbourne	85.1	79.9	-5.2
4	Gold Coast - Sydney	79.2	81.5	2.3
5	Adelaide - Melbourne	77.8	79.9	2.1
6	Gold Coast - Melbourne	88.0	89.0	1.0
7	Melbourne - Perth	82.6	74.6	-8.0
8	Adelaide - Sydney	79.4	75.5	-3.9
9	Perth - Sydney	81.7	74.6	-7.1
10	Brisbane - Cairns	91.1	94.3	3.2
11	Hobart - Melbourne	77.6	79.4	1.8
12	Canberra - Melbourne	69.3	67.7	-1.6
13	Brisbane - Townsville	80.2	85.1	4.9
14	Brisbane - Perth	78.9	79.5	0.6
15	Cairns - Melbourne	92.0	93.4	1.4
16	Cairns - Sydney	85.8	93.4	7.6
17	Adelaide - Brisbane	80.1	76.4	-3.7
18	Brisbane - Mackay	75.3	79.7	4.4
19	Launceston - Melbourne	73.5	76.7	3.2
20	Sunshine Coast - Sydney	68.6	74.9	6.3
21	Melbourne - Sunshine Coast	83.2	84.6	1.4
22	Hobart - Sydney	74.3	72.5	-1.8
23	Brisbane - Canberra	76.7	69.1	-7.6
24	Canberra - Sydney	65.4	65.0	-0.4
25	Adelaide - Perth	76.2	80.8	4.6
26	Karratha - Perth	73.9	70.8	-3.1
27	Brisbane - Rockhampton	81.1	74.9	-6.2
28	Brisbane - Newcastle	75.2	68.8	-6.4
29	Perth - Port Hedland	75.6	66.2	-9.4
30	Ballina - Sydney	65.6	73.1	7.5
31	Broome - Perth	80.2	79.6	-0.6
32	Melbourne - Newcastle	78.3	77.2	-1.1
33	Brisbane - Darwin	84.0	88.5	4.5
34	Kalgoorlie - Perth	70.4	67.3	-3.1
35	Newman - Perth	57.4	57.8	0.4
36	Darwin - Melbourne	91.7	87.3	-4.4
37	Brisbane - Hobart	80.6	78.7	-1.9
38	Adelaide - Darwin	..	86.4	NA
39	Brisbane - Proserpine	85.4	85.4	0.0
40	Launceston - Sydney	76.4	76.7	0.3
41	Brisbane - Gladstone	69.7	57.5	-12.2
42	Coffs Harbour - Sydney	77.2	74.6	-2.6
43	Adelaide - Gold Coast	91.3	84.3	-7.0
44	Hamilton Island - Sydney	64.8	62.3	-2.5
45	Adelaide - Canberra	72.6	57.4	-15.2
46	Brisbane - Emerald	69.6	73.6	4.0
47	Dubbo - Sydney	65.5	66.4	0.9
48	Darwin - Perth	75.2	79.2	4.0
49	Albury - Sydney	65.6	66.7	1.1
50	Melbourne - Mildura	71.8	64.9	-6.9

continued

Table 4: (continued) Load factors (%) — monthly activity

	City-Pair	Jun 2022	Jun 2023	% Point diff
51	Canberra - Gold Coast	77.3	81.5	4.2
52	Adelaide - Cairns	..	92.4	NA
53	Adelaide - Port Lincoln	56.6	61.6	5.0
54	Port Macquarie - Sydney	62.3	62.2	-0.1
55	Sydney - Wagga Wagga	66.9	60.6	-6.3
56	Brisbane - Mount Isa	70.8	64.1	-6.7
57	Brisbane - Hamilton Island	63.2	65.4	2.2
58	Adelaide - Alice Springs	70.3	79.6	9.3
59	Brisbane - Bundaberg	..	59.4	NA
60	Brisbane - Launceston	78.7	81.2	2.5
61	Devonport - Melbourne	..	68.1	NA
62	Brisbane - Moranbah	..	59.0	NA
63	Armidale - Sydney	57.0	55.0	-2.0
Total domestic network		79.9	78.3	-1.6

.. Data not available for release.

Table 5: Aircraft trips ^(a) — monthly activity

	City-Pair	Jun 2022	Jun 2023	% Change
1	Melbourne - Sydney	4,228	4,438	5.0
2	Brisbane - Sydney	2,571	2,705	5.2
3	Brisbane - Melbourne	1,769	2,043	15.5
4	Gold Coast - Sydney	1,418	1,304	-8.0
5	Adelaide - Melbourne	1,365	1,366	0.1
6	Gold Coast - Melbourne	1,283	998	-22.2
7	Melbourne - Perth	927	1,023	10.4
8	Adelaide - Sydney	935	1,046	11.9
9	Perth - Sydney	684	800	17.0
10	Brisbane - Cairns	777	799	2.8
11	Hobart - Melbourne	751	719	-4.3
12	Canberra - Melbourne	803	869	8.2
13	Brisbane - Townsville	679	670	-1.3
14	Brisbane - Perth	518	546	5.4
15	Cairns - Melbourne	458	389	-15.1
16	Cairns - Sydney	470	400	-14.9
17	Adelaide - Brisbane	510	695	36.3
18	Brisbane - Mackay	567	580	2.3
19	Launceston - Melbourne	676	676	0.0
20	Sunshine Coast - Sydney	452	408	-9.7
21	Melbourne - Sunshine Coast	429	337	-21.4
22	Hobart - Sydney	449	432	-3.8
23	Brisbane - Canberra	534	593	11.0
24	Canberra - Sydney	1,333	1,296	-2.8
25	Adelaide - Perth	368	329	-10.6
26	Karratha - Perth	390	387	-0.8
27	Brisbane - Rockhampton	563	655	16.3
28	Brisbane - Newcastle	459	522	13.7
29	Perth - Port Hedland	340	362	6.5
30	Ballina - Sydney	493	403	-18.3
31	Broome - Perth	298	276	-7.4
32	Melbourne - Newcastle	274	261	-4.7
33	Brisbane - Darwin	288	222	-22.9
34	Kalgoorlie - Perth	272	309	13.6
35	Newman - Perth	336	328	-2.4
36	Darwin - Melbourne	200	195	-2.5
37	Brisbane - Hobart	176	183	4.0
38	Adelaide - Darwin	..	195	NA
39	Brisbane - Proserpine	178	177	-0.6
40	Launceston - Sydney	154	174	13.0
41	Brisbane - Gladstone	338	358	5.9
42	Coffs Harbour - Sydney	437	430	-1.6
43	Adelaide - Gold Coast	108	121	12.0
44	Hamilton Island - Sydney	154	152	-1.3
45	Adelaide - Canberra	153	260	69.9
46	Brisbane - Emerald	310	328	5.8
47	Dubbo - Sydney	431	445	3.2
48	Darwin - Perth	118	112	-5.1
49	Albury - Sydney	384	408	6.3
50	Melbourne - Mildura	397	434	9.3

continued

Table 5: (continued) Aircraft trips — monthly activity

	City-Pair	Jun 2022	Jun 2023	% Change
51	Canberra - Gold Coast	83	94	13.3
52	Adelaide - Cairns	..	80	NA
53	Adelaide - Port Lincoln	620	525	-15.3
54	Port Macquarie - Sydney	402	381	-5.2
55	Sydney - Wagga Wagga	338	381	12.7
56	Brisbane - Mount Isa	174	170	-2.3
57	Brisbane - Hamilton Island	129	108	-16.3
58	Adelaide - Alice Springs	114	174	52.6
59	Brisbane - Bundaberg	..	302	NA
60	Brisbane - Launceston	104	70	-32.7
61	Devonport - Melbourne	..	298	NA
62	Brisbane - Moranbah	..	208	NA
63	Armidale - Sydney	324	296	-8.6
Total domestic network		49,477	50,318	1.7

(a) Includes RPT cargo flights.

.. Data not available for release.

TOP TEN AIRPORTS – PASSENGER MOVEMENTS

Table 6: Top ten airports, RPT passenger movements (000s) - monthly activity

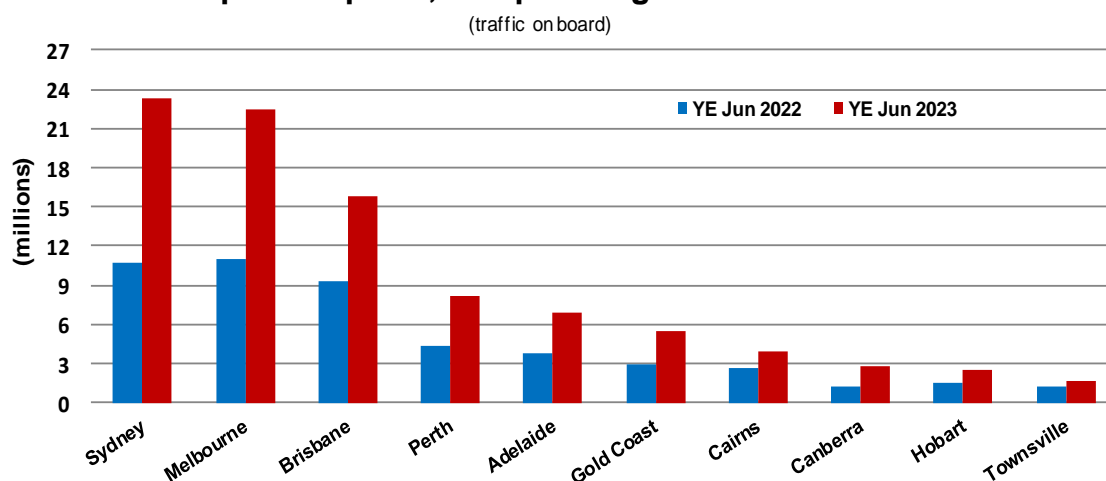
Airport	Jun 2022	Jun 2023	% Change	% of Total
1 Sydney	1,882.6	1,900.7	1.0	20.7
2 Melbourne	1,841.7	1,841.8	0.0	20.1
3 Brisbane	1,312.9	1,342.8	2.3	14.6
4 Perth	633.0	656.8	3.8	7.2
5 Adelaide	523.6	548.5	4.8	6.0
6 Gold Coast	452.3	412.4	-8.8	4.5
7 Cairns	346.1	344.0	-0.6	3.7
8 Canberra	219.0	228.4	4.3	2.5
9 Hobart	191.4	192.7	0.7	2.1
10 Darwin	174.0	159.0	-8.6	1.7
Total top ten airports	7,576.5	7,627.2	0.7	83.1
Total domestic network	9,052.2	9,175.3	1.4	100.0

Table 7: Top ten airports, RPT passenger movements (000s) - annual activity

Airport	YE Jun 2022	YE Jun 2023	% Change	% of Total
1 Sydney	10,689.6	23,327.6	118.2	21.1
2 Melbourne	10,985.5	22,494.3	104.8	20.3
3 Brisbane	9,242.3	15,814.8	71.1	14.3
4 Perth	4,289.3	8,098.9	88.8	7.3
5 Adelaide	3,700.2	6,828.6	84.5	6.2
6 Gold Coast	2,914.5	5,425.7	86.2	4.9
7 Cairns	2,605.9	3,904.8	49.8	3.5
8 Canberra	1,286.2	2,713.2	111.0	2.5
9 Hobart	1,503.8	2,499.9	66.2	2.3
10 Townsville	1,201.5	1,650.1	37.3	1.5
Total top ten airports	48,418.8	92,758.0	91.6	83.9
Total domestic network	60,712.5	110,566.0	82.1	100.0

Note: Airport passenger movement numbers are the sum of passenger arrivals and departures at each airport.

Top ten airports, RPT passenger movements



TOP FIVE AIRPORTS – CARGO MOVEMENTS

Table 8: Top five airports, domestic RPT cargo movements (000s tonnes) - monthly activity

Airport	Jun 2022	Jun 2023	% Change	% of Total
1 Melbourne	7.6	8.5	11.7	29.9
2 Sydney	6.7	7.0	4.4	24.7
3 Brisbane	5.1	5.5	7.0	19.4
4 Perth	2.7	3.1	13.1	10.9
5 Adelaide	1.8	1.6	-10.8	5.8
Total top five airports	23.9	25.6	7.1	90.7
Total domestic network	29.4	28.3	-3.7	100.0

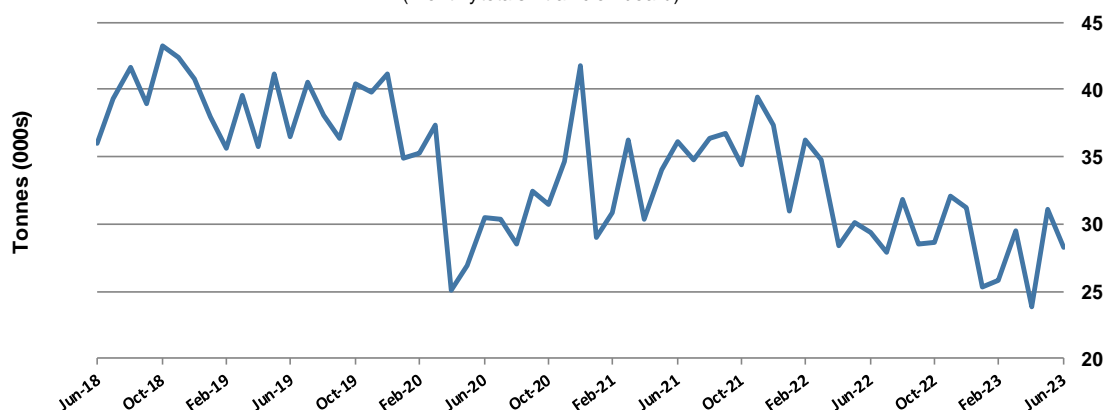
Table 9: Top five airports, domestic RPT cargo movements (000s tonnes) - annual activity

Airport	YE Jun 2022	YE Jun 2023	% Change	% of Total
1 Melbourne	106.8	92.7	-13.2	27.0
2 Sydney	96.3	76.1	-21.0	22.1
3 Brisbane	68.0	59.8	-12.1	17.4
4 Perth	37.9	35.8	-5.5	10.4
5 Adelaide	26.3	19.7	-25.3	5.7
Total top five airports	335.3	284.0	-15.3	82.6
Total domestic network	409.0	343.9	-15.9	100.0

Note: Airport cargo tonnes are the sum of cargo tonnes on arrivals and departures at each airport.

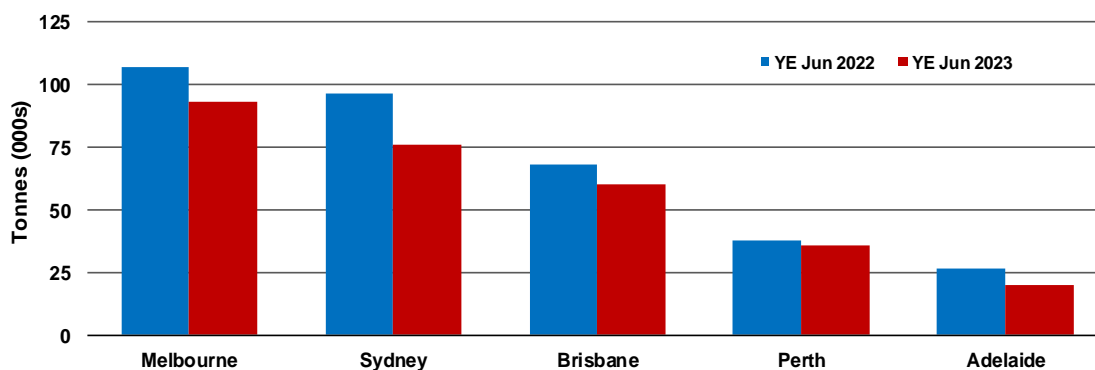
Total domestic network - cargo movement

(monthly totals - traffic on board)



Top five airports, cargo movements

(Domestic cargo traffic - traffic on board)



Note: Airport cargo tonnes are the sum of cargo tonnes on arrivals and departures at each airport.

TOP TEN ROUTES

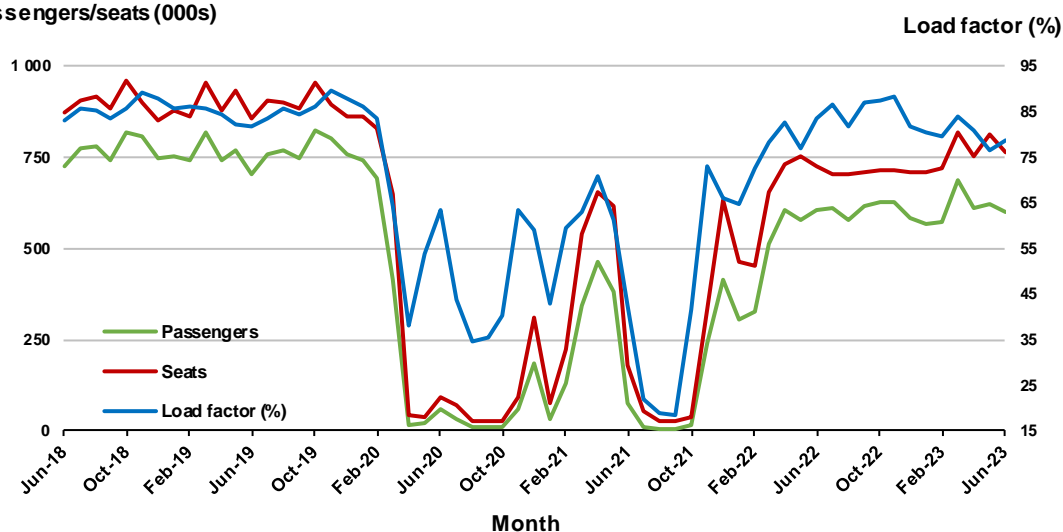
1. Melbourne - Sydney

Monthly data

	Jun 2022	Jun 2023	% Change
Passengers carried (000s)	603.9	601.5	-0.4
Seats (000s)	724.1	764.7	5.6
Load factor %	83.4	78.7	-4.7 *
Aircraft trips	4,228	4,438	5.0

* percentage point difference

Passengers/seats (000s)

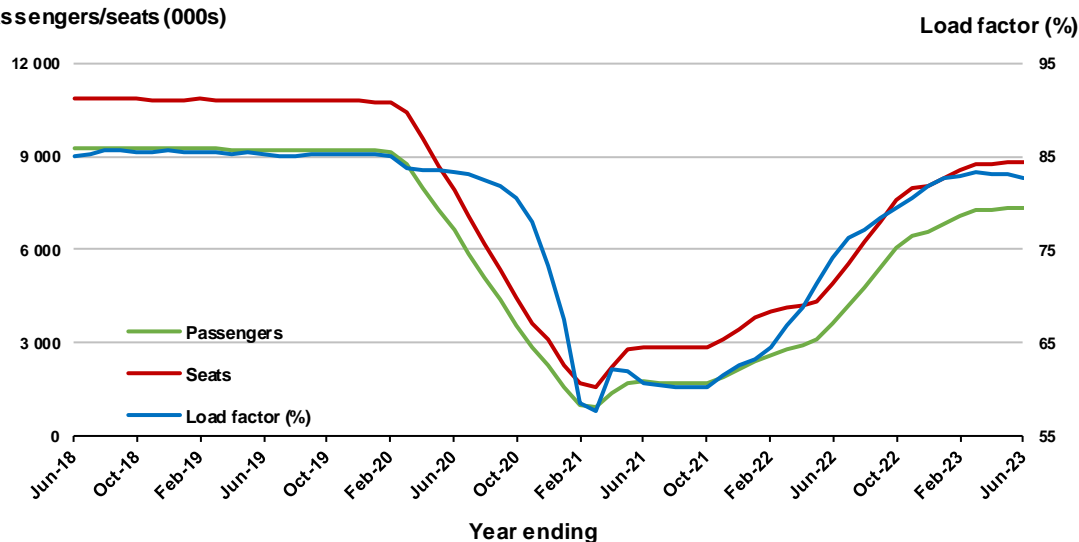


Moving annual data

	YE Jun 2022	YE Jun 2023	% Change
Passengers carried (000s)	3,625.1	7,306.2	101.5
Seats (000s)	4,890.1	8,837.5	80.7
Load factor %	74.1	82.7	8.5 *
Aircraft trips	30,055	50,883	69.3

* percentage point difference

Passengers/seats (000s)

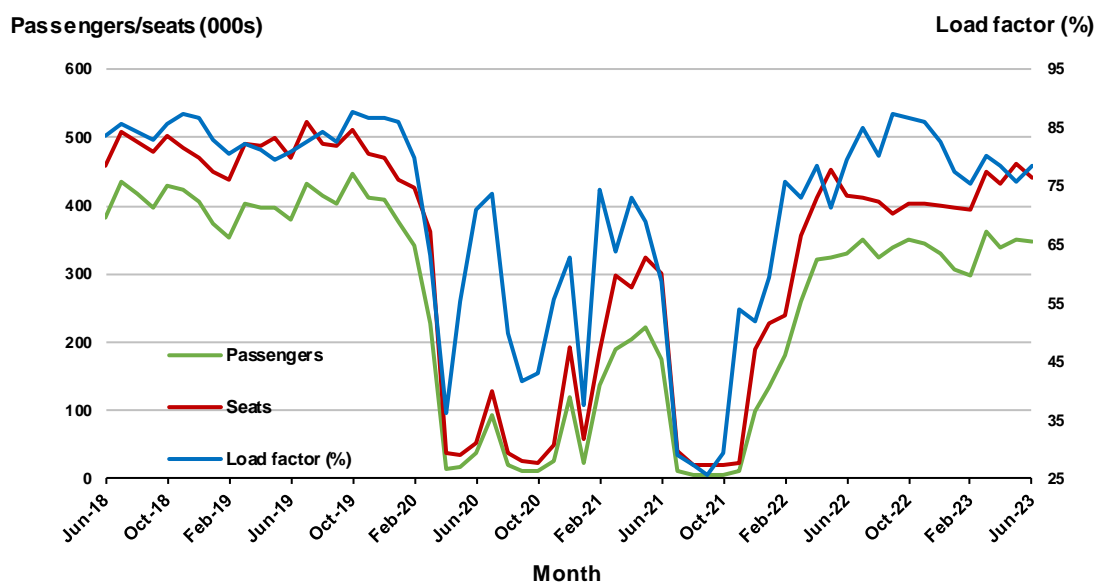


2. Brisbane - Sydney

Monthly data

	Jun 2022	Jun 2023	% Change
Passengers carried (000s)	330.8	346.9	4.8
Seats (000s)	416.1	441.7	6.1
Load factor %	79.5	78.5	-1.0 *
Aircraft trips	2,571	2,705	5.2

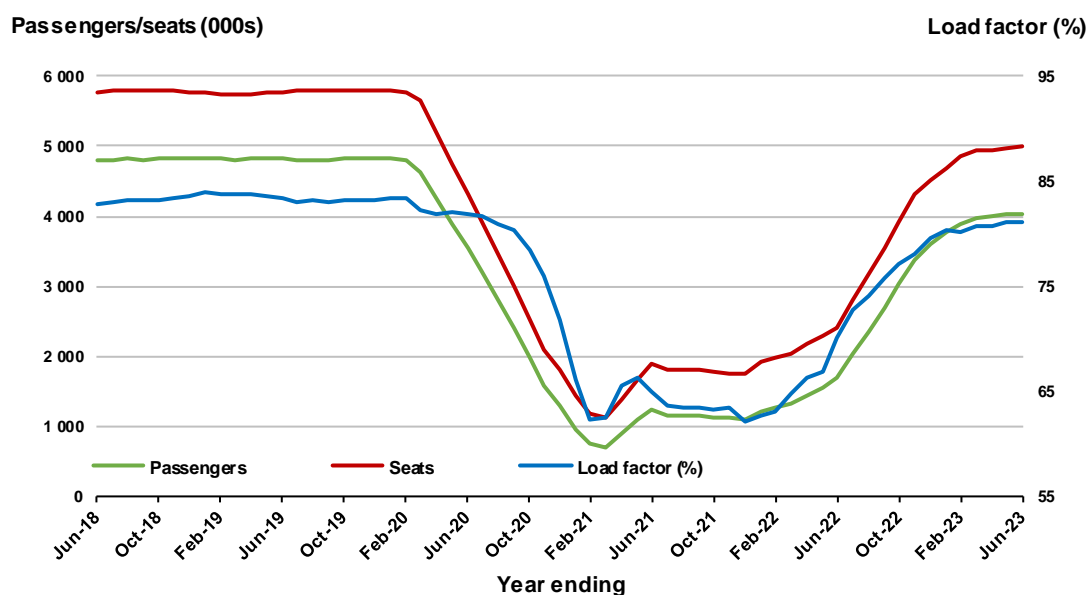
* percentage point difference



Moving annual data

	YE Jun 2022	YE Jun 2023	% Change
Passengers carried (000s)	1,692.3	4,043.7	138.9
Seats (000s)	2,418.0	4,989.6	106.4
Load factor %	70.0	81.0	11.1 *
Aircraft trips	16,063	30,647	90.8

* percentage point difference

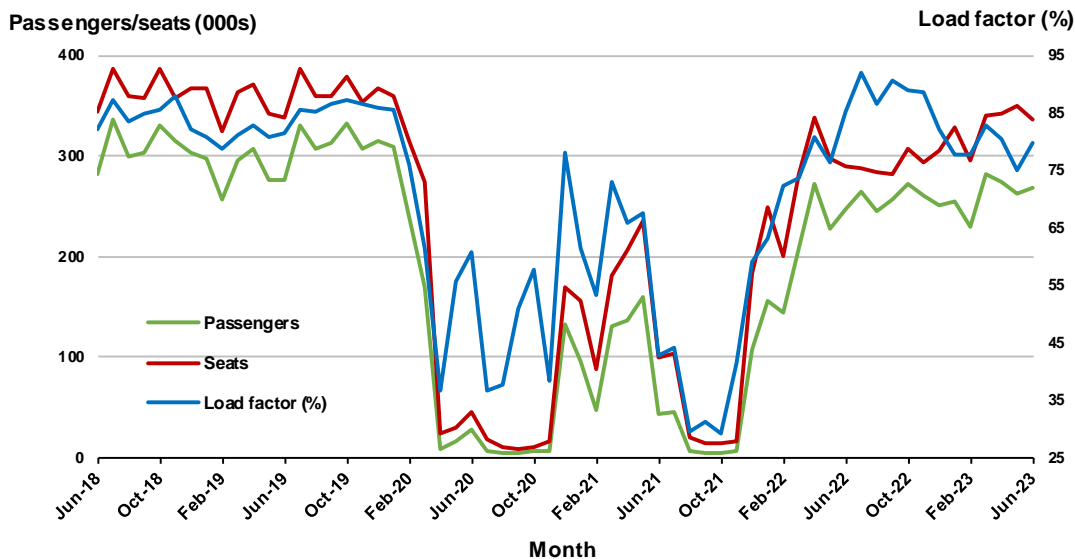


3. Brisbane - Melbourne

Monthly data

	Jun 2022	Jun 2023	% Change
Passengers carried (000s)	247.3	269.2	8.8
Seats (000s)	290.6	337.0	16.0
Load factor %	85.1	79.9	-5.2 *
Aircraft trips	1,769	2,043	15.5

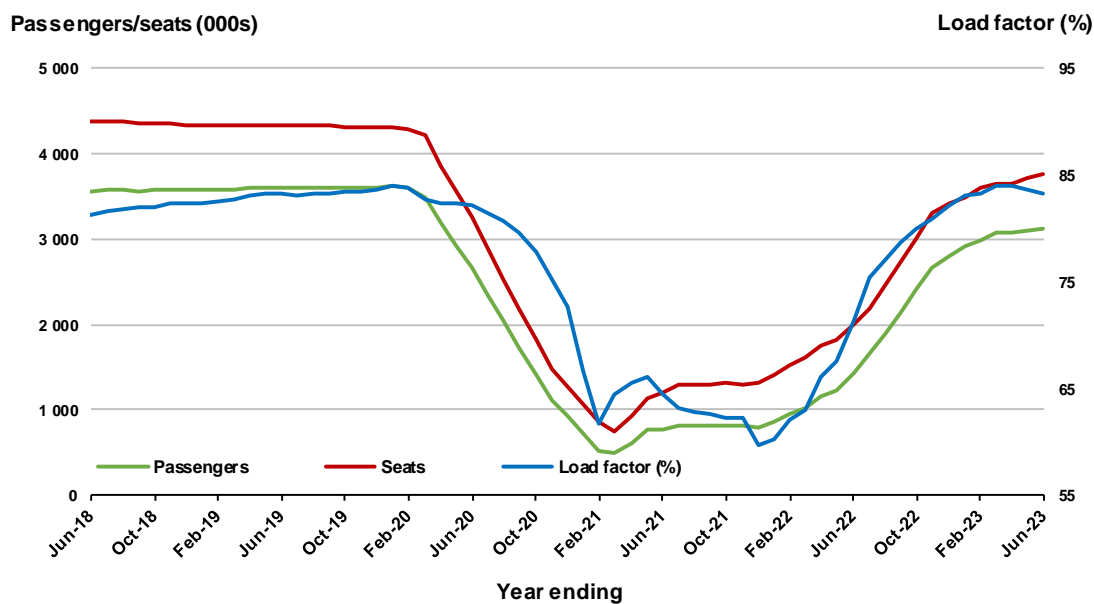
* percentage point difference



Moving annual data

	YE Jun 2022	YE Jun 2023	% Change
Passengers carried (000s)	1,429.8	3,124.3	118.5
Seats (000s)	2,004.8	3,754.1	87.3
Load factor %	71.3	83.2	11.9 *
Aircraft trips	12,926	22,864	76.9

* percentage point difference



4. Gold Coast - Sydney ^(a)

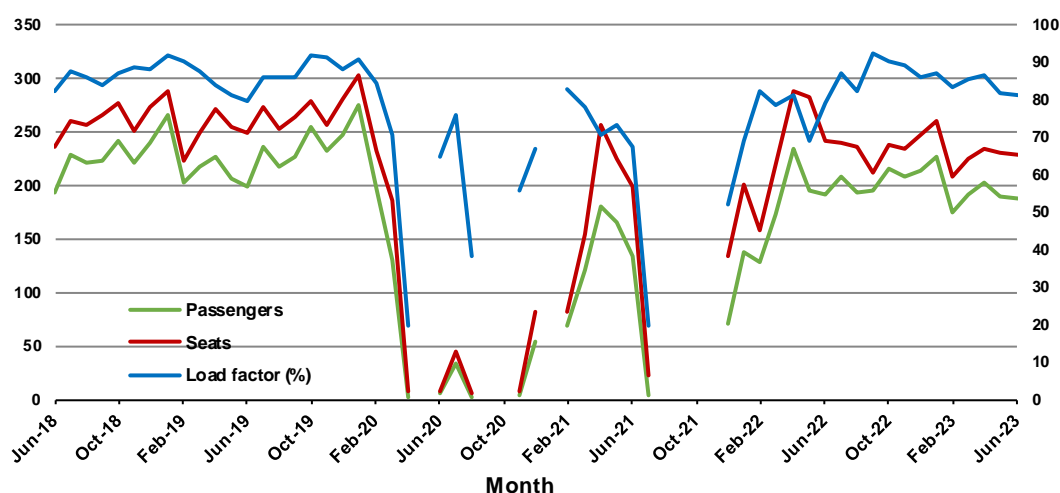
Monthly data

	Jun 2022	Jun 2023	% Change
Passengers carried (000s)	191.5	186.9	- 2.4
Seats (000s)	241.7	229.2	- 5.1
Load factor %	79.2	81.5	2.3 *
Aircraft trips	1,418	1,304	- 8.0

* percentage point difference

Passengers/seats (000s)

Load factor (%)



(a) May, September and October 2020 and January and August to November 2021 data not available for release.

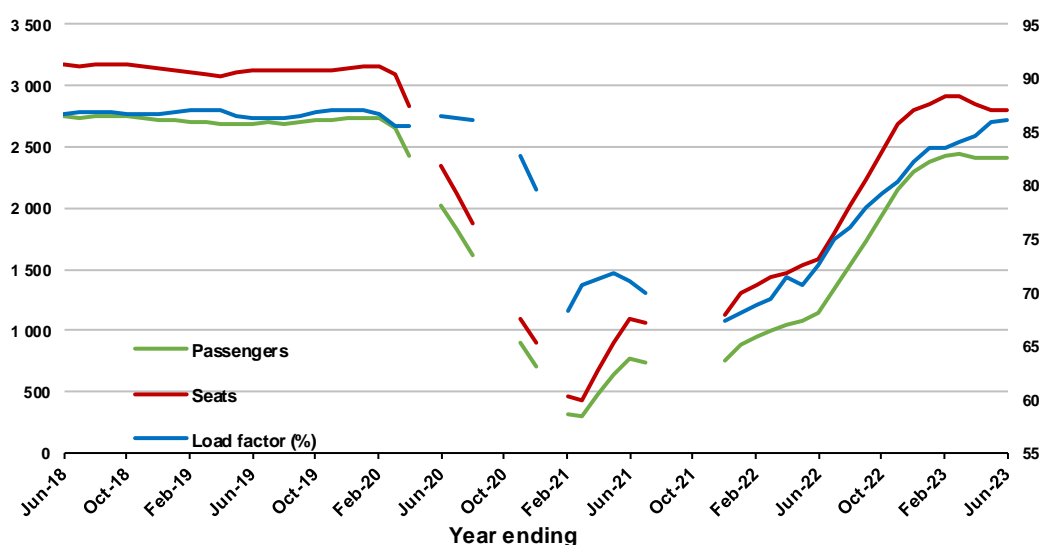
Moving annual data

	YE Jun 2022	YE Jun 2023	% Change
Passengers carried (000s)	1,140.8	2,405.0	110.8
Seats (000s)	1,574.7	2,793.5	77.4
Load factor %	72.4	86.1	13.6 *
Aircraft trips	9,221	16,162	75.3

* percentage point difference

Passengers/seats (000s)

Load factor (%)



(a) May, September and October 2020 and January and August to November 2021 moving annual totals not available for release.

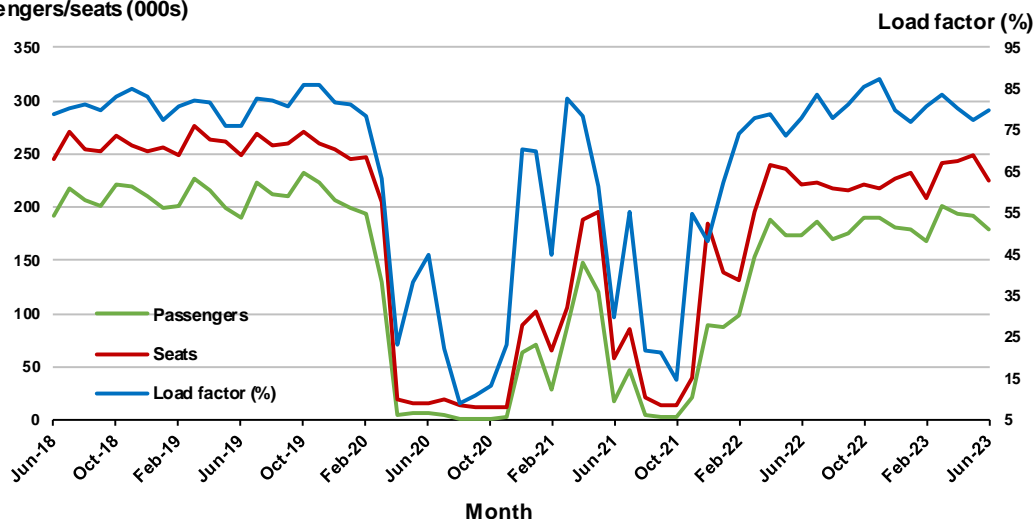
5. Adelaide - Melbourne

Monthly data

	Jun 2022	Jun 2023	% Change
Passengers carried (000s)	172.9	179.1	3.5
Seats (000s)	222.2	224.1	0.9
Load factor %	77.8	79.9	2.1 *
Aircraft trips	1,365	1,366	0.1

* percentage point difference

Passengers/seats (000s)

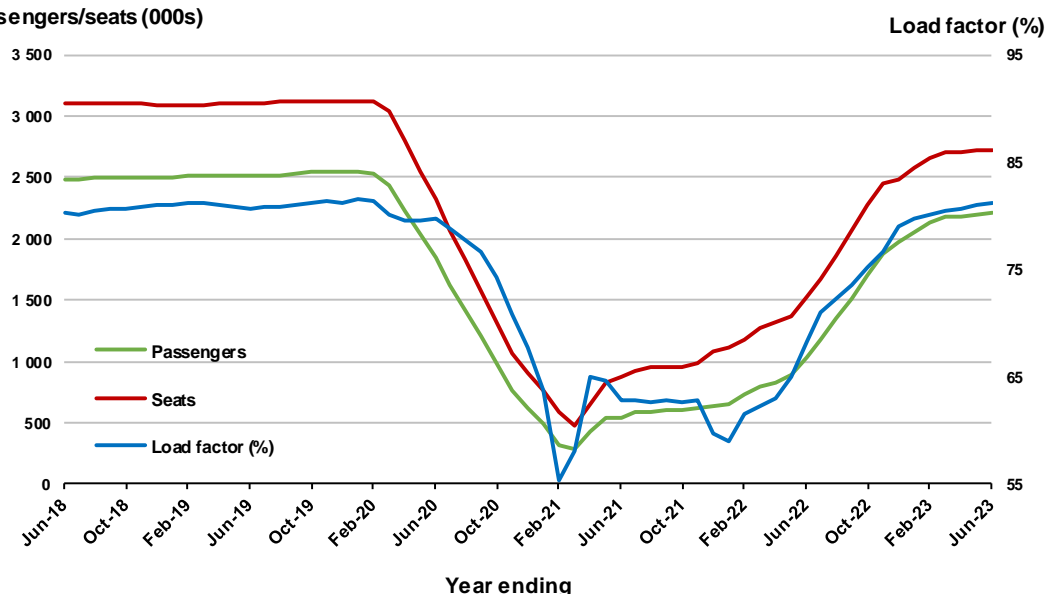


Moving annual data

	YE Jun 2022	YE Jun 2023	% Change
Passengers carried (000s)	1,040.0	2,207.0	112.2
Seats (000s)	1,525.0	2,719.3	78.3
Load factor %	68.2	81.2	13.0 *
Aircraft trips	9,739	16,686	71.3

* percentage point difference

Passengers/seats (000s)



6. Gold Coast - Melbourne ^(a)

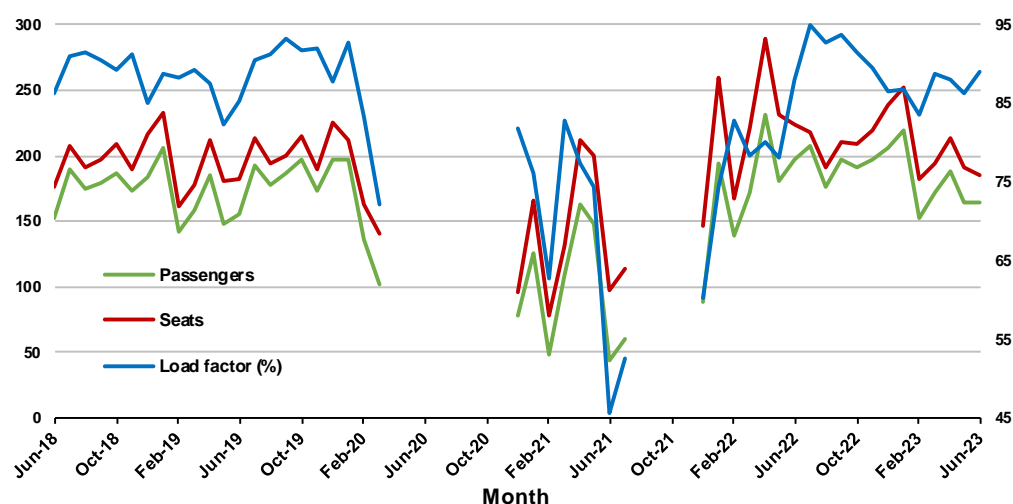
Monthly data

	Jun 2022	Jun 2023	% Change
Passengers carried (000s)	197.4	164.3	-16.7
Seats (000s)	224.3	184.7	- 17.7
Load factor %	88.0	89.0	1.0 *
Aircraft trips	1,283	998	- 22.2

* percentage point difference

Passengers/seats (000s)

Load factor (%)



(a) April to November 2020 and August to November 2021 data not available for release.

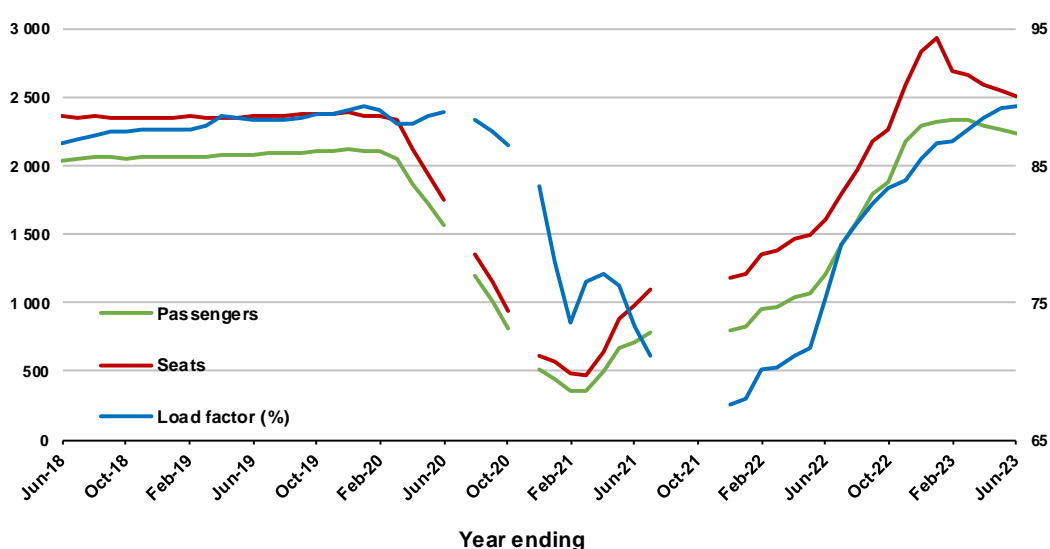
Moving annual data

	YE Jun 2022	YE Jun 2023	% Change
Passengers carried (000s)	1,217.0	2,236.0	83.7
Seats (000s)	1,614.1	2,504.0	55.1
Load factor %	75.4	89.3	13.9 *
Aircraft trips	8,707	13,791	58.4

* percentage point difference

Passengers/seats (000s)

Load factor (%)



(a) April to November 2020 and August to November 2021 moving annual totals are not available for release.

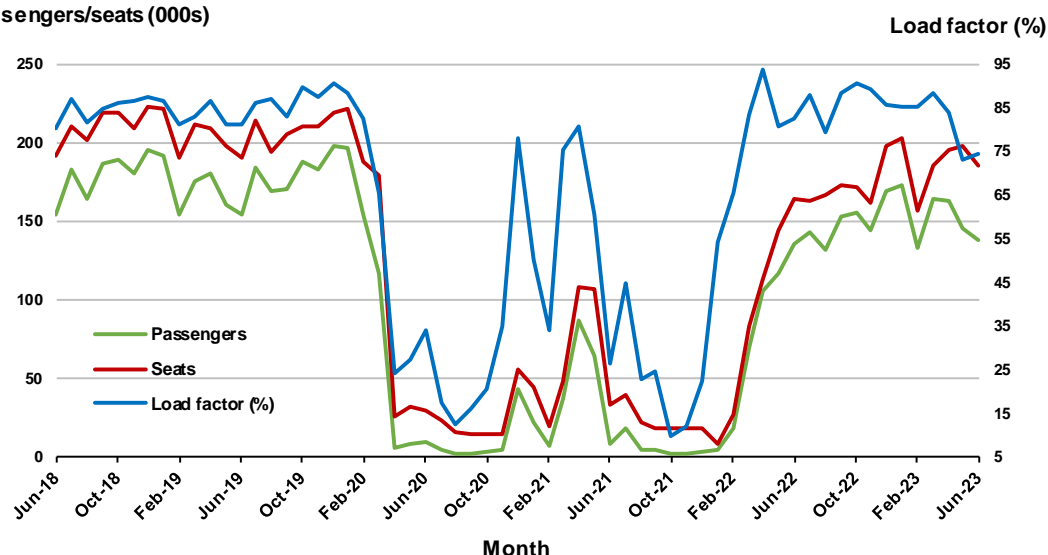
7. Melbourne - Perth

Monthly data

	Jun 2022	Jun 2023	% Change
Passengers carried (000s)	136.0	137.9	1.4
Seats (000s)	164.6	184.9	12.4
Load factor %	82.6	74.6	-8.0 *
Aircraft trips	927	1,023	10.4

* percentage point difference

Passengers/seats (000s)

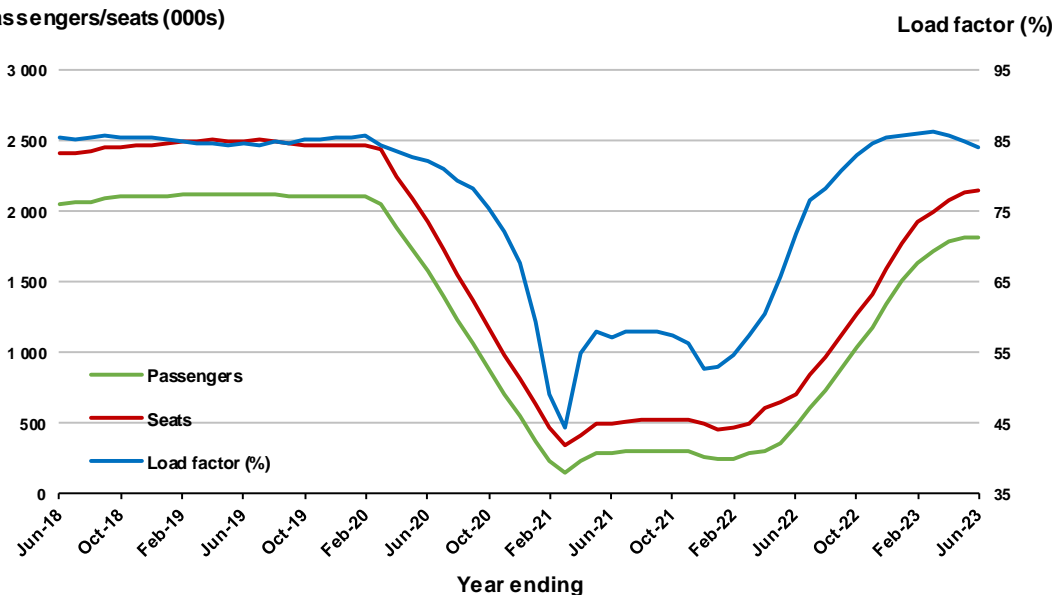


Moving annual data

	YE Jun 2022	YE Jun 2023	% Change
Passengers carried (000s)	485.7	1,813.6	273.4
Seats (000s)	708.8	2,156.1	204.2
Load factor %	71.9	84.1	12.2 *
Aircraft trips	4,624	12,027	160.1

* percentage point difference

Passengers/seats (000s)



8. Adelaide - Sydney ^(a)

Monthly data

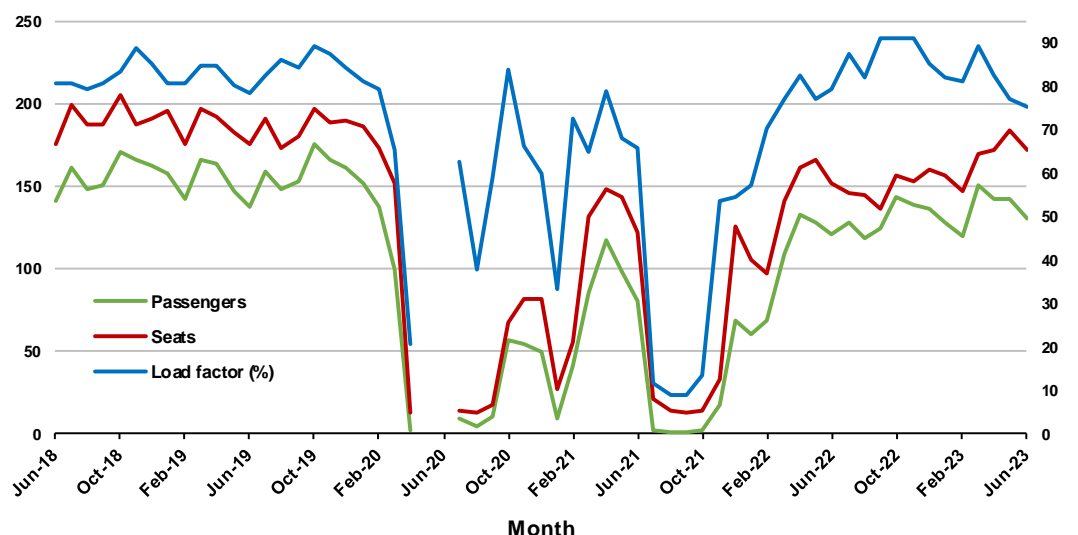
	Jun 2022	Jun 2023	% Change
Passengers carried (000s)	120.9	130.1	7.6
Seats (000s)	152.4	172.4	13.1
Load factor %	79.4	75.5	-3.9 *
Aircraft trips	935	1,046	11.9

.. Data not available for release.

* percentage point difference

Passengers/seats (000s)

Load factor (%)



(a) May and June 2020 data not available for release.

Moving annual data

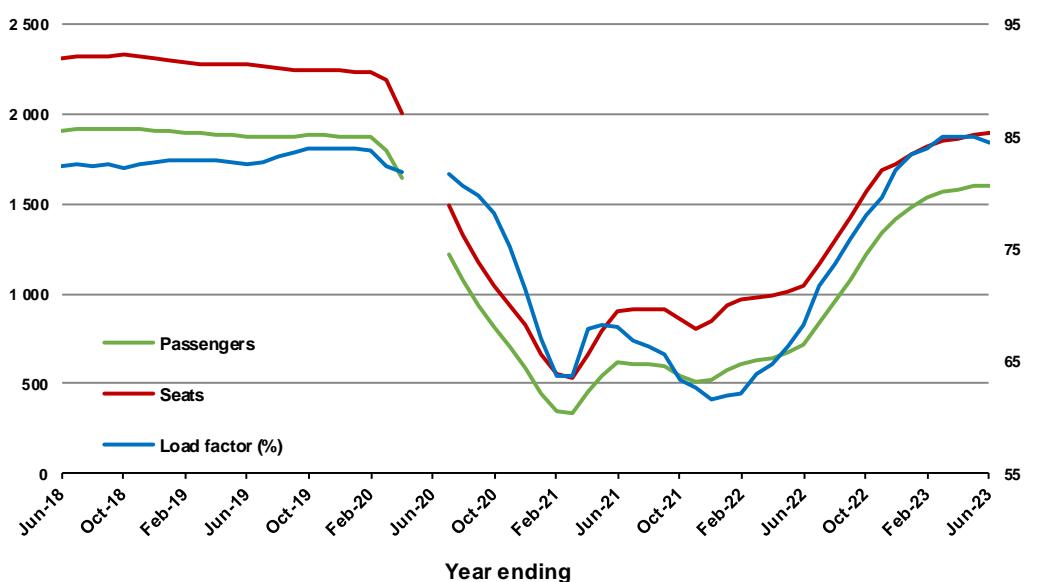
	YE Jun 2022	YE Jun 2023	% Change
Passengers carried (000s)	713.5	1,604.8	124.9
Seats (000s)	1,045.8	1,899.7	81.6
Load factor %	68.2	84.5	16.3 *
Aircraft trips	6,596	11,627	76.3

.. Data not available for release.

* percentage point difference

Passengers/seats (000s)

Load factor (%)



(a) May and June 2020 moving annual totals are not available for release.

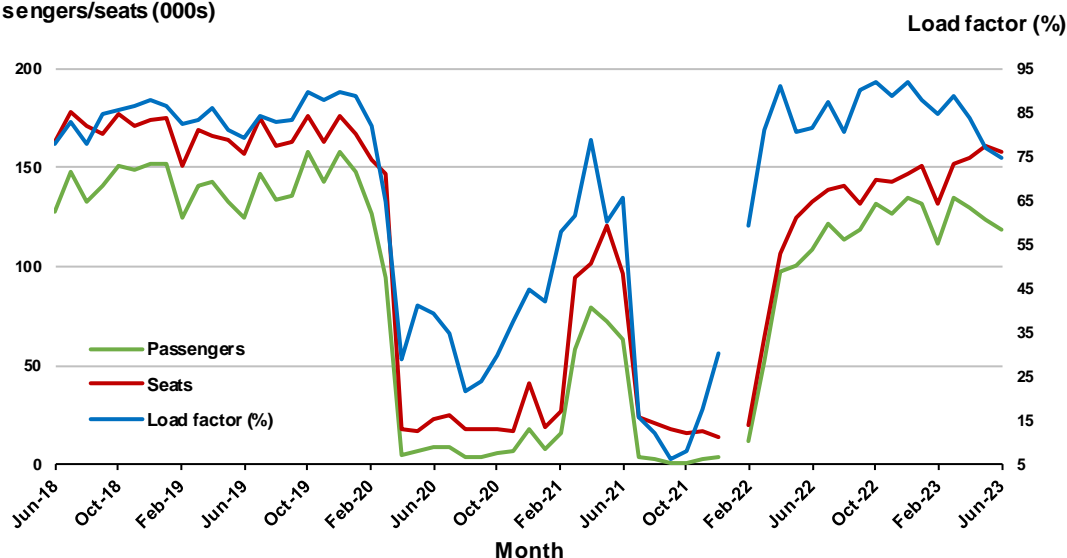
9. Perth - Sydney ^(a)

Monthly data

	Jun 2022	Jun 2023	% Change
Passengers carried (000s)	108.9	118.2	8.6
Seats (000s)	133.2	158.4	18.9
Load factor %	81.7	74.6	-7.1 *
Aircraft trips	684	800	17.0

* percentage point difference

Passengers/seats (000s)



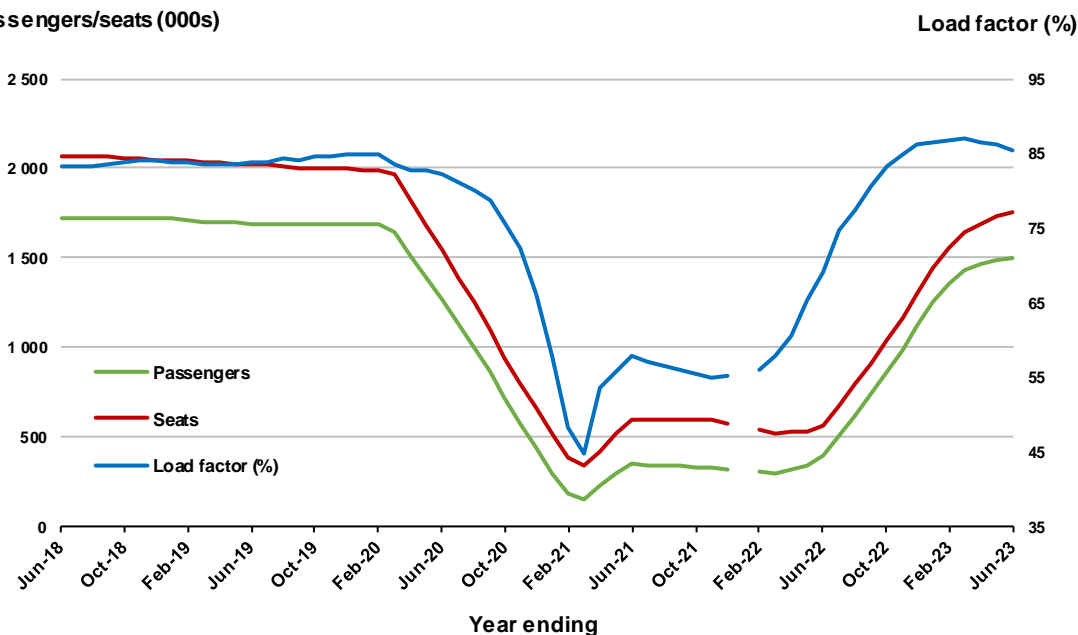
(a) January 2022 data not available for release.

Moving annual data

	YE Jun 2022	YE Jun 2023	% Change
Passengers carried (000s)	388.7	1,496.8	285.1
Seats (000s)	562.3	1,753.2	211.8
Load factor %	69.1	85.4	16.2 *
Aircraft trips	3,091	9,188	197.3

* percentage point difference

Passengers/seats (000s)



(a) January 2022 moving annual totals are not available for release.

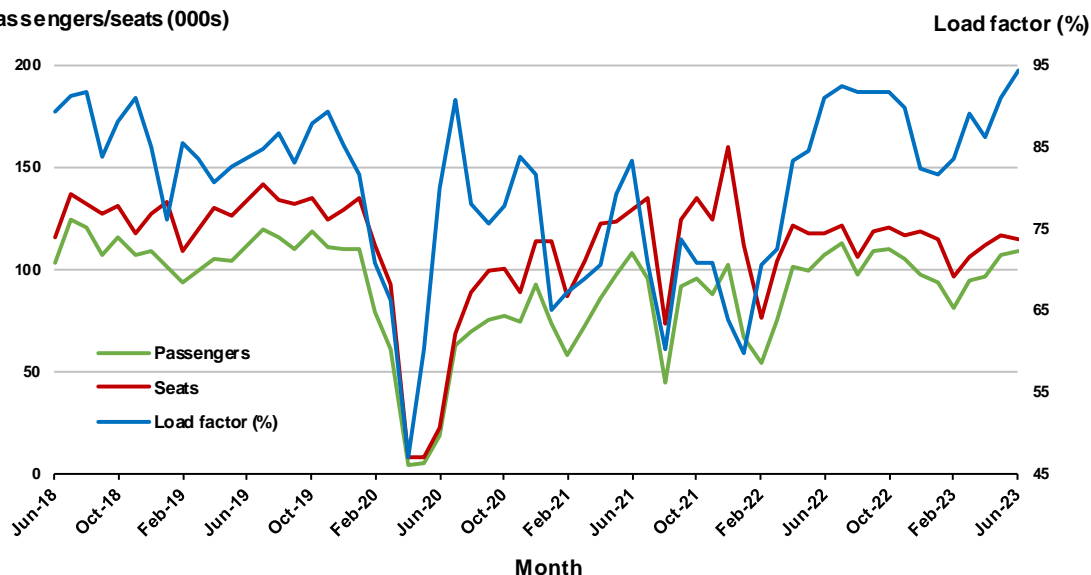
10. Brisbane - Cairns

Monthly data

	Jun 2022	Jun 2023	% Change
Passengers carried (000s)	107.4	108.5	1.1
Seats (000s)	117.8	115.1	-2.3
Load factor %	91.1	94.3	3.2 *
Aircraft trips	777	799	2.8

* percentage point difference

Passengers/seats (000s)

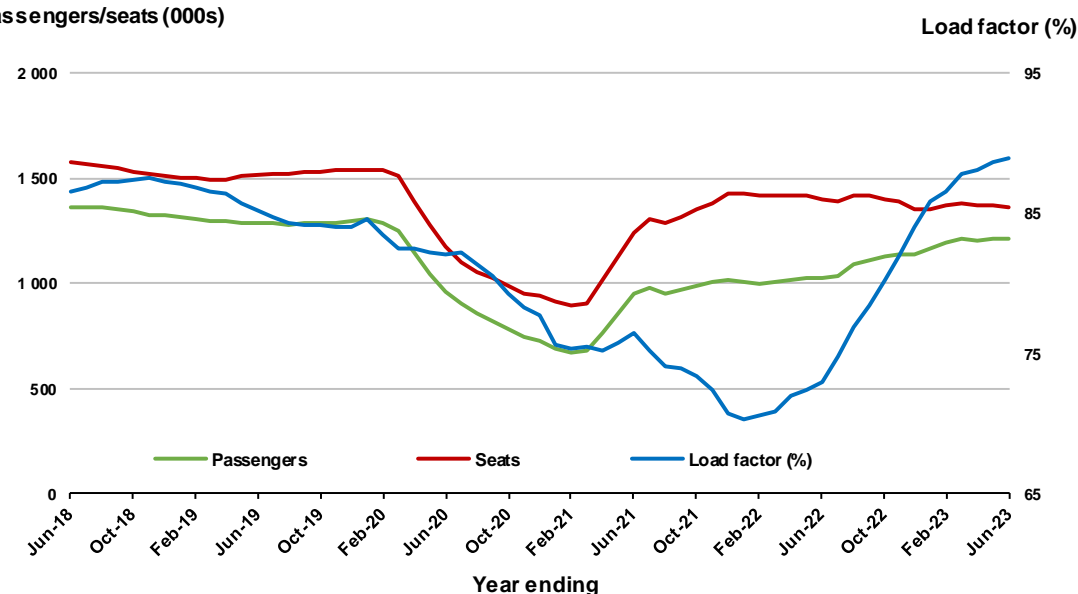


Moving annual data

	YE Jun 2022	YE Jun 2023	% Change
Passengers carried (000s)	1,021.8	1,213.4	18.8
Seats (000s)	1,402.1	1,365.0	-2.6
Load factor %	72.9	88.9	16.0 *
Aircraft trips	9,029	9,069	0.4

* percentage point difference

Passengers/seats (000s)



TOP FIFTY REGIONAL AIRPORTS

Table 10: Top fifty regional airports (000s) — passenger movements, monthly

	Airport	Jun 2022	Jun 2023	% Change
1	Cairns	346.1	344.0	-0.6
2	Hobart	191.4	192.7	0.7
3	Darwin	174.0	159.0	-8.6
4	Townsville	146.2	154.5	5.7
5	Newcastle	87.8	91.3	4.0
6	Launceston	94.7	90.4	-4.5
7	Mackay	77.6	77.1	-0.7
8	Rockhampton	45.4	56.0	23.5
9	Karratha	44.6	46.7	4.7
10	Ballina	49.6	45.6	-8.0
11	Broome	48.0	44.9	-6.5
12	Proserpine	38.2	42.1	10.3
13	Port Hedland	39.5	39.4	-0.3
14	Hamilton Island	40.7	35.8	-12.2
15	Alice Springs	35.7	34.3	-3.8
16	Kalgoorlie	26.5	30.4	14.7
17	Newman	30.6	30.0	-1.8
18	Coffs Harbour	24.5	24.8	1.1
19	Albury	17.5	22.2	27.0
20	Paraburdoo	18.6	20.9	12.5
21	Ayers Rock	19.1	20.7	8.0
22	Mount Isa	20.8	20.0	-3.7
23	Gladstone	18.8	19.4	3.2
24	Port Macquarie	14.4	18.6	28.8
25	Dubbo	15.9	18.3	15.0
26	Mildura	15.5	18.0	16.3
27	Emerald	15.4	16.7	9.0
28	Wagga Wagga	15.7	16.6	5.5
29	Tamworth	11.4	15.0	31.3
30	Kununurra	14.4	14.2	-2.0
31	Port Lincoln	14.2	13.4	-5.8
32	Bundaberg	10.3	13.0	25.7
33	Hervey Bay	10.5	12.1	15.5
34	Learmonth	11.0	11.9	8.0
35	Thursday Island	9.1	9.6	4.5
36	Armidale	8.9	9.5	7.3
37	Devonport	7.0	9.3	33.7
38	Moranbah	8.9	9.2	3.7
39	Orange	7.9	8.7	9.6
40	Olympic Dam	7.8	8.6	10.0
41	Toowoomba Wellcamp	6.3	8.1	29.2
42	Weipa	7.8	7.9	2.3
43	Gove	8.0	7.7	-3.9
44	Geraldton	7.5	7.6	0.9
45	Griffith	6.0	6.4	6.7
46	Burnie	5.8	6.2	5.8
47	Mount Gambier	7.0	6.1	-13.6
48	Merimbula	5.9	5.7	-2.8
49	Roma	4.9	5.6	14.9
50	Cloncurry	5.4	5.3	-3.1
Total top 50 regional airports		1,898.8	1,931.4	1.7
Total regional airports		2,015.5	2,048.6	1.6
Total domestic network		9,052.2	9,175.3	1.4

Note: Airport passenger movement numbers are the sum of passenger arrivals and departures at each airport.

Regional airports are defined as airports which are, according to Australian Statistical Geography Standard (ASGS), not based in Major Cities.

Table 11: Top fifty regional airports (000s) — passenger movements, annual

	Airport	YE Jun 2022	YE Jun 2023	% Change
1	Cairns	2,605.9	3,904.8	49.8
2	Hobart	1,503.8	2,499.9	66.2
3	Townsville	1,201.5	1,650.1	37.3
4	Darwin	1,248.8	1,636.3	31.0
5	Launceston	743.1	1,294.0	74.1
6	Newcastle	574.1	1,090.4	89.9
7	Mackay	682.3	890.2	30.5
8	Ballina	527.4	632.6	19.9
9	Rockhampton	411.0	557.6	35.7
10	Karratha	456.9	531.7	16.4
11	Hamilton Island	361.8	500.2	38.3
12	Proserpine	370.7	477.8	28.9
13	Port Hedland	409.7	477.0	16.4
14	Broome	424.9	440.8	3.8
15	Newman	327.0	365.8	11.9
16	Alice Springs	248.9	363.6	46.1
17	Kalgoorlie	274.8	338.9	23.3
18	Coffs Harbour	180.2	285.9	58.7
19	Ayers Rock	93.5	245.7	162.7
20	Albury	109.3	236.6	116.5
21	Mount Isa	196.0	230.7	17.7
22	Paraburdoo	198.8	226.0	13.7
23	Mildura	105.8	207.8	96.5
24	Gladstone	155.4	207.2	33.3
25	Dubbo	112.5	199.5	77.3
26	Wagga Wagga	89.5	194.7	117.5
27	Port Macquarie	88.8	193.2	117.6
28	Emerald	145.8	189.5	30.0
29	Port Lincoln	148.6	178.7	20.2
30	Tamworth	71.8	153.7	114.2
31	Hervey Bay	76.5	137.3	79.5
32	Kununurra	110.8	131.9	19.1
33	Devonport	46.5	119.6	157.0
34	Bundaberg	82.1	117.2	42.8
35	Armidale	56.5	110.7	96.0
36	Moranbah	89.2	106.6	19.5
37	Learmonth	94.4	103.5	9.7
38	Thursday Island	92.8	102.1	10.1
39	Orange	51.3	100.1	95.2
40	Olympic Dam	90.4	98.1	8.6
41	Gove	61.2	88.0	43.9
42	Weipa	78.4	84.9	8.2
43	Burnie	41.7	82.7	98.2
44	Geraldton	80.4	82.2	2.2
45	Mount Gambier	51.7	76.7	48.4
46	Griffith	38.6	76.3	97.8
47	Merimbula	35.0	75.0	114.5
48	Norfolk Island	50.5	70.2	38.9
49	Broken Hill	27.8	61.7	121.7
50	Albany	51.4	61.1	18.9
Total top 50 regional airports		15,375.4	22,287.0	45.0
Total regional airports		16,489.7	23,672.1	43.6
Total domestic network		60,712.5	110,566.0	82.1

Note: Airport passenger movement numbers are the sum of passenger arrivals and departures at each airport. Regional airports are defined as airports which are, according to Australian Statistical Geography Standard (ASGS), not based in Major Cities.

DOMESTIC CHARTER ACTIVITY

Table 12: Charter passengers carried and aircraft trips - monthly activity

	Jun 2022	Jun 2023	% Change
Total domestic charter passengers	318,544	331,986	4.2
Total domestic charter aircraft trips	5,855	5,641	-3.7

Note: Helicopter, joyflights and sightseeing charter flights not included.

Table 13: Charter passengers carried and aircraft trips - annual activity

	YE Jun 2022	YE Jun 2023	% Change
Total domestic charter passengers	3,415,373	3,810,874	11.6
Total domestic charter aircraft trips	64,538	67,133	4.0

Note: Helicopter, joyflights and sightseeing charter flights not included.

Table 14: Domestic airports - charter activity - monthly

	Jun 2022	Jun 2023	% Change
Total domestic charter passenger movements	637,088	663,972	4.2
Total domestic charter aircraft movements	11,710	11,282	-3.7
Perth airport charter passenger movements	237,858	249,535	4.9
Perth airport charter aircraft movements	3,994	3,883	-2.8

Note: Helicopter, joyflights and sightseeing charter flights not included.

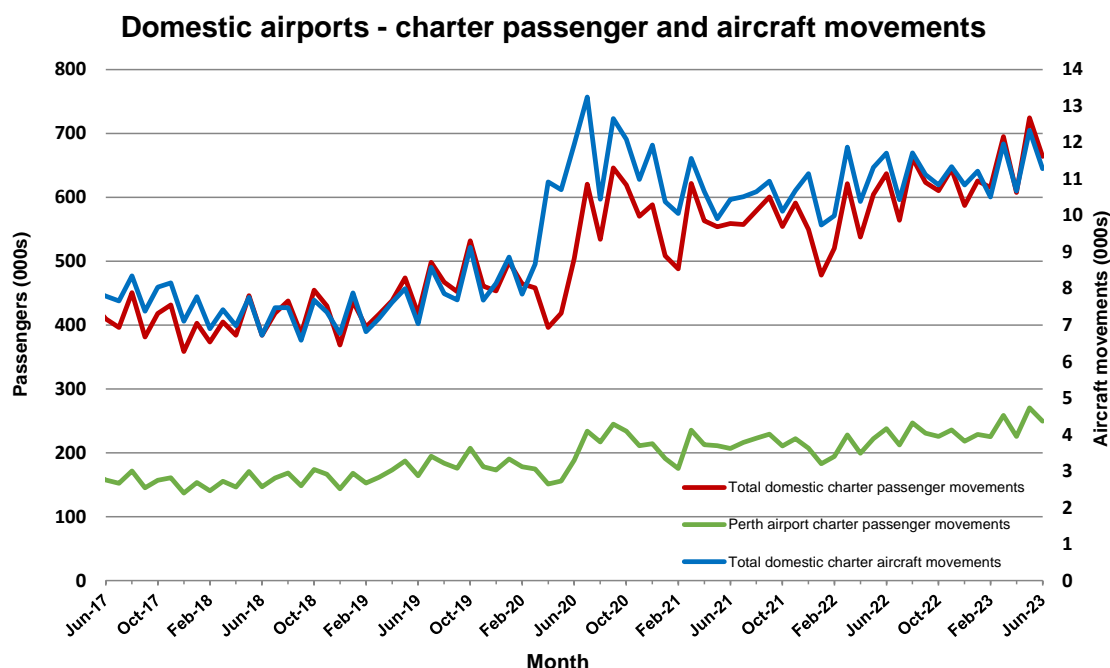
Charter passenger and aircraft movement numbers are the sum of arrivals and departures at each airport.

Table 15: Domestic airports - charter activity - annual

	YE Jun 2022	YE Jun 2023	% Change
Total domestic charter passenger movements	6,830,746	7,621,748	11.6
Total domestic charter aircraft movements	129,076	134,266	4.0
Perth airport charter passenger movements	2,573,303	2,827,932	9.9
Perth airport charter aircraft movements	44,443	45,110	1.5

Note: Helicopter, joyflights and sightseeing charter flights not included.

Charter passenger and aircraft movement numbers are the sum of arrivals and departures at each airport.



DEFINITIONS

Aircraft Trips	The number of flight stages. A return flight counts as two aircraft trips.
Airport Movements	Airport movements (passenger and cargo) are measured once on arrival and once on departure. Each domestic trip generates two movements at airports. For example, a trip from Melbourne to Sydney will be counted twice, as a departure at Melbourne and as an arrival at Sydney. At the national level, the sum of all domestic airport traffic will therefore be equal to twice the number of trips undertaken.
Available Seat Kilometres (ASKs)	Calculated by multiplying the number of seats available on each flight stage, by the distance in kilometres between the ports. The distances used are Great Circle Distances.
City-Pair	The ports shown make up the city-pair route. Passenger movements shown for a city pair reflect total traffic in both directions.
Flight Stage	The operation of an aircraft from take-off to landing.
Load Factor	The total revenue passenger kilometres performed as a percentage of the total available seat kilometres.
Passengers Carried	Revenue passengers carried.
Regular Public Transport Services (RPT)	All air service operations in which aircraft are available for the transport of members of the public and are conducted in accordance with fixed schedules. It does not include charter or other non-scheduled operations.
Revenue Passengers	All passengers paying any fare. Frequent flyer redemption travellers are regarded as revenue passengers.
Revenue Passenger Kilometres (RPKs)	Calculated by multiplying the number of revenue passengers travelling on each flight stage, by the distance in kilometres between the ports. The distances used are Great Circle Distances.
Traffic on board by stages	The total of all traffic (revenue passengers) on each flight stage between two directly connected airports.
..	Not available for confidentiality or other reasons.
NA	Not applicable.