



**Australian Government**

**Department of Infrastructure, Transport,  
Regional Development, Communications and the Arts**  
Bureau of Infrastructure and Transport Research Economics

## STATISTICAL REPORT



# Aviation

**Domestic aviation activity  
June 2022**

© Commonwealth of Australia 2022

ISSN: 1832 - 1968

### **Ownership of intellectual property rights in this publication**

Unless otherwise noted, copyright (and any other intellectual property rights, if any) in this publication is owned by the Commonwealth of Australia (referred to below as the Commonwealth).

### **Disclaimer**

The material contained in this publication is made available on the understanding that the Commonwealth is not providing professional advice, and that users exercise their own skill and care with respect to its use, and seek independent advice if necessary.

The Commonwealth makes no representations or warranties as to the contents or accuracy of the information contained in this publication. To the extent permitted by law, the Commonwealth disclaims liability to any person or organisation in respect of anything done, or omitted to be done, in reliance upon information contained in this publication.

### **Creative Commons licence**

With the exception of (a) the Coat of Arms; and (b) the Department of Infrastructure, Transport, Regional Development, Communications and the Arts' photos and graphics, copyright in this publication is licensed under a Creative Commons Attribution 3.0 Australia Licence.

Creative Commons Attribution 3.0 Australia Licence is a standard form licence agreement that allows you to copy, communicate and adapt this publication provided that you attribute the work to the Commonwealth and abide by the other licence terms. A summary of the licence terms is available from <http://creativecommons.org/licenses/by/3.0/au/deed.en>.

The full licence terms are available from <http://creativecommons.org/licenses/by/3.0/au/legalcode>.

### **Use of the Coat of Arms**

The Department of the Prime Minister and Cabinet sets the terms under which the Coat of Arms is used. Please refer to the Department's Commonwealth Coat of Arms and Government branding web page <http://www.dpmc.gov.au/guidelines/index.cfm#brand> and, in particular, the Guidelines on the use of the Commonwealth Coat of Arms publication.

An appropriate citation for this report is:

Bureau of Infrastructure and Transport Research Economics (BITRE), 2022, Domestic aviation activity, Statistical Report, BITRE, Canberra ACT.

### **Contact us**

This publication is available in PDF format. All other rights are reserved, including in relation to any Departmental logos or trade marks which may exist. For enquiries regarding the licence and any use of this publication, please contact:

Bureau of Infrastructure and Transport Research Economics (BITRE)  
Department of Infrastructure, Transport, Regional Development, Communications and the Arts  
GPO Box 501, Canberra ACT 2601, Australia  
Telephone: (international) +61 2 6274 7210  
Fax: (international) +61 2 6274 6855  
Email: [bitre@infrastructure.gov.au](mailto:bitre@infrastructure.gov.au)  
Website: [www.bitre.gov.au](http://www.bitre.gov.au)

### **Inquiries**

Should you require additional information about the statistics contained in this publication:

Marko Rodic

Telephone (02) 6274 6859 or Facsimile

Electronic mail: [AVSTATS@infrastructure.gov.au](mailto:AVSTATS@infrastructure.gov.au)

[Marko.Rodic2@infrastructure.gov.au](mailto:Marko.Rodic2@infrastructure.gov.au)

Web site: <http://www.bitre.gov.au/statistics/aviation/domestic.aspx>

## FOREWORD

This report provides an overview of domestic (including charter) commercial aviation activity in Australia for the month of June 2022.

The data cover revenue passengers carried by Australian-registered operators of scheduled regular public transport services over Australian flight stages and fixed-wing charter operators. These estimates include passengers carried between domestic airports on international flights operated by these carriers. The passengers carried refer to traffic on board by stages.

Estimates of passengers and aircraft movements for charter aviation are included in this publication, where BITRE confidentiality standards are met.

Individual routes shown are restricted to those exceeding 8 000 passengers per month where two or more airlines operate in competition. However, from November 2021 the major airlines (Qantas Group, Virgin Australia and Rex Airlines) have agreed to publication of the top 35 routes based on pre-COVID activity (December 2019) whether or not they currently meet the above criteria. With these approvals, there were 61 routes published for the month of June 2022 compared to 53 published in June 2021.

Information on the total network for the month of June 2022 and on the Regular Public Transport (RPT) network for the month of June 2022 is presented on page 2, with estimates for the year ended June 2022 presented on page 3.

Detailed information on individual routes can be found in the RPT summary pages 4-13 of this publication.

The top ten airports in terms of RPT passenger movements are shown on page 14.

Data on domestic RPT cargo movements at the top five cargo airports are provided on page 15. The table includes cargo carried on passenger flights operated by the Qantas group (including Jetstar), Virgin Australia, Air North and Skippers as well as the cargo carried by dedicated freighter aircraft operated by Qantas Freight and Toll.

The long-term trends for the top ten competitive RPT routes are presented graphically on pages 16-25.

Domestic RPT passenger movements at regional airports are presented on pages 26-27.

Tables providing estimates of domestic charter aviation activity are shown on page 28. BITRE confidentiality standards restrict publication of detailed estimates for individual Australian airports, with the exception of Perth Airport.

A list of definitions can be found on page 29.

This report was prepared by the Aviation Statistics Section of the Bureau of Infrastructure and Transport Research Economics with data provided by airlines.

Estimates are included where data were not available and data presented in this publication may contain revisions to previously published data.

Where figures have been rounded, discrepancies may occur between sums of component items and totals, and in percentage changes which are derived from figures prior to rounding.

# CONTENTS

|  |           |
|--|-----------|
| <b>Highlights .....</b>                            | <b>1</b>  |
| <b>Total network.....</b>                          | <b>2</b>  |
| <b>RPT network .....</b>                           | <b>2</b>  |
| <b>Top competitive routes.....</b>                 | <b>4</b>  |
| <b>Top ten airports – passenger movements.....</b> | <b>14</b> |
| <b>Top five airports – cargo movements.....</b>    | <b>15</b> |
| <b>Top ten routes .....</b>                        | <b>16</b> |
| 1. Melbourne – Sydney .....                        | 16        |
| 2. Brisbane – Sydney.....                          | 17        |
| 3. Brisbane – Melbourne .....                      | 18        |
| 4. Gold Coast – Melbourne .....                    | 19        |
| 5. Gold Coast – Sydney .....                       | 20        |
| 6. Adelaide – Melbourne .....                      | 21        |
| 7. Melbourne – Perth .....                         | 22        |
| 8. Adelaide – Sydney .....                         | 23        |
| 9. Perth – Sydney .....                            | 24        |
| 10. Brisbane – Cairns .....                        | 25        |
| <b>Top fifty regional airports .....</b>           | <b>26</b> |
| <b>Domestic charter activity.....</b>              | <b>28</b> |
| <b>Definitions .....</b>                           | <b>29</b> |

This page is intentionally left blank.

## HIGHLIGHTS

The domestic aviation industry continued to recover in June 2022. Revenue passenger numbers were 92.2 per cent higher than June 2021 levels but still 3.9 per cent below pre-COVID June 2019.

There were 4.84 million passengers carried on Australian domestic commercial aviation (including charter operations) in June 2022, compared to 2.63 million in June 2021 and 4.92 million in pre-COVID June 2019.

For the month of June 2022, there were 49.5 thousand aircraft trips, compared to 36.4 thousand in June 2021 and 51.0 thousand in pre-COVID June 2019.

4.53 million passengers were carried on RPT flights in June 2022, compared to 2.35 million reported in June 2021 and 4.71 million reported in pre-COVID June 2019.

For the year ending June 2022 there were 30.4 million RPT passengers, an increase of 40.8 per cent on the year ending June 2021 and a decrease of 50.2 per cent on the year ending June 2019.

RPT revenue passenger kilometres (RPKs) performed were 5.45 billion for the month, compared with 2.90 billion in June 2021.

Capacity, measured by available seat kilometres (ASKs), increased to 6.82 billion in June 2022 compared to 4.63 billion in June 2021.

The industry wide load factor (RPKs/ASKs) increased from 62.8 per cent in June 2021 to 79.9 per cent in June 2022. The highest load factor (92.0 per cent) was recorded on the Cairns – Melbourne route while the lowest load factor (56.6 per cent) was recorded on the Adelaide – Port Lincoln route.

For the month of June 2022, Melbourne – Sydney was Australia's busiest RPT route with 603.9 thousand passengers, followed by Brisbane – Sydney with 330.8 thousand passengers and Brisbane – Melbourne with 247.3 thousand passengers.

Sydney was Australia's busiest domestic airport with 1.88 million passenger movements in June 2022, followed by Melbourne with 1.84 million passenger movements and Brisbane with 1.31 million passengers.

Total cargo movements at Australian airports on domestic RPT flights were 29.4 thousand tonnes in June 2022, a decrease of 18.6 per cent compared with June 2021.

In June 2022, there were 2.02 million domestic passenger movements through regional airports, compared to 1.48 million in June 2021 and 1.98 million in pre-COVID June 2019. Most regional airports for which data is available for publishing recorded large increases in June 2022 compared to June 2021.

Fixed-wing charter operators carried 317.6 thousand passengers in June 2022, compared to 279.5 thousand in June 2021 and 208.6 in pre-COVID June 2019. Perth Airport accounted for 37.4 per cent of all charter passengers in Australia.



## TOTAL NETWORK

### Summary of monthly commercial aviation activity

|                                     | Jun 2021 | Jun 2022 | % Change |
|-------------------------------------|----------|----------|----------|
| Total passengers carried (millions) | 2.63     | 4.84     | 83.9     |
| Aircraft trips (000s)               | 41.6     | 55.3     | 33.0     |

Note: Regular Public Transport and charter aviation activity  
Helicopter, joy flights and sightseeing charter flights not included.

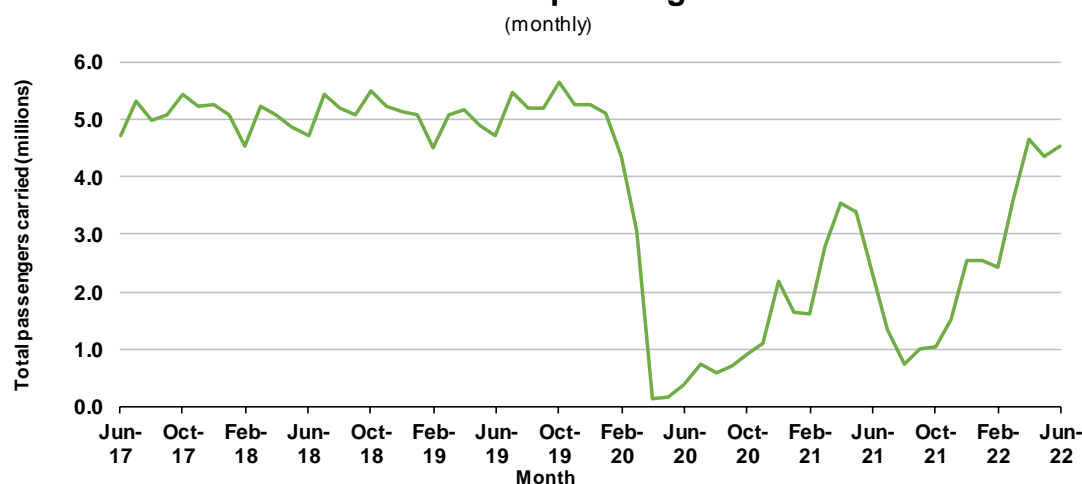
## RPT NETWORK

### Summary of monthly RPT activity

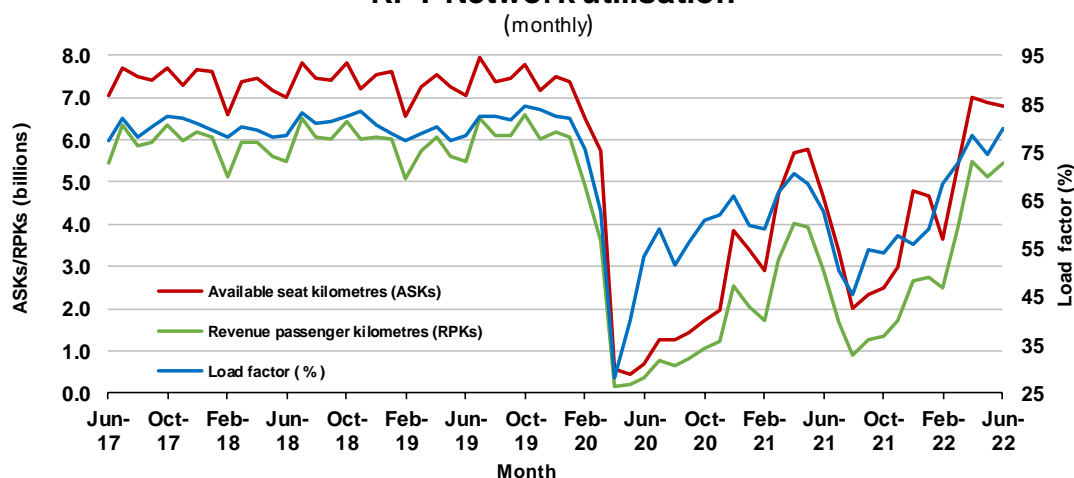
|   | Jun 2021 | Jun 2022 | % Change |
|---|----------|----------|----------|
| Total passengers carried (millions)     | 2.35     | 4.53     | 92.2     |
| Revenue passenger kilometres (billions) | 2.90     | 5.45     | 87.6     |
| Available seats (millions)              | 3.90     | 5.83     | 49.3     |
| Available seat kilometres (billions)    | 4.63     | 6.82     | 47.3     |
| Load factor %                           | 62.8     | 79.9     | 17.1 *   |
| Aircraft trips (000s)                   | 36.4     | 49.5     | 36.0     |

\* percentage point difference

### Domestic RPT passenger traffic



### RPT Network utilisation





## TOTAL NETWORK

### Summary of annual commercial aviation activity

|                                     | YE Jun 2021 | YE Jun 2022 | % Change |
|-------------------------------------|-------------|-------------|----------|
| Total passengers carried (millions) | 24.99       | 33.77       | 35.1     |
| Aircraft trips (000s)               | 393.8       | 483.6       | 22.8     |

Note: Regular Public Transport and charter aviation activity  
Helicopter, joy flights and sightseeing charter flights not included.

## RPT NETWORK

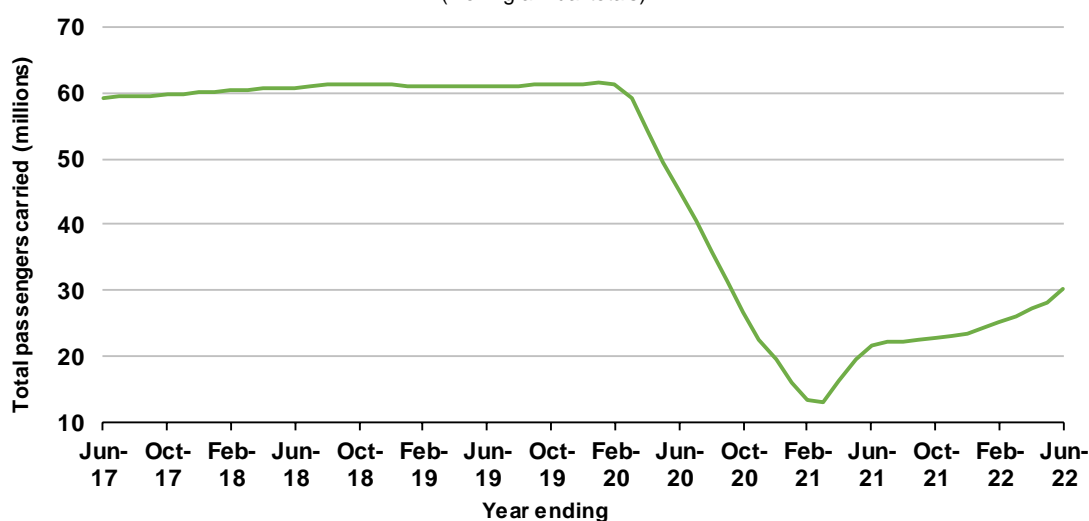
### Summary of annual RPT activity

|   | YE Jun 2021 | YE Jun 2022 | % Change |
|---|-------------|-------------|----------|
| Total passengers carried (millions)     | 21.56       | 30.36       | 40.8     |
| Revenue passenger kilometres (billions) | 24.76       | 34.89       | 40.9     |
| Available seats (millions)              | 34.19       | 46.26       | 35.3     |
| Available seat kilometres (billions)    | 38.60       | 52.38       | 35.7     |
| Load factor %                           | 64.1        | 66.6        | 2.5 *    |
| Aircraft trips (000s)                   | 326.6       | 419.1       | 28.3     |

\* percentage point difference

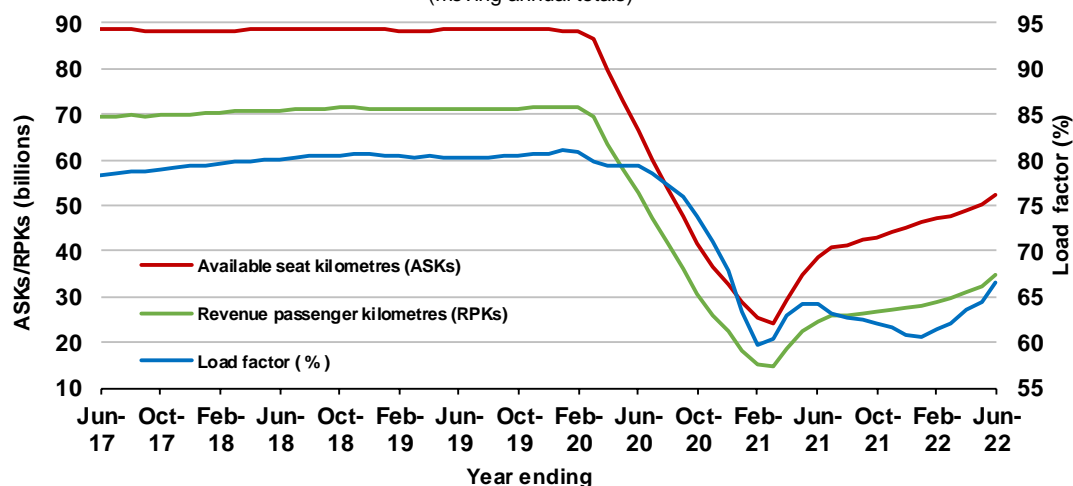
### Domestic RPT passenger traffic

(moving annual totals)



### RPT Network utilisation

(moving annual totals)



## TOP COMPETITIVE ROUTES

**Table 1: Passengers carried (000s) — annual activity**

|    | City-Pair                  | YE Jun 2021 | YE Jun 2022 | % Change |
|----|----------------------------|-------------|-------------|----------|
| 1  | Melbourne - Sydney         | 1 728.1     | 3 625.1     | 109.8    |
| 2  | Brisbane - Sydney          | 1 237.6     | 1 692.3     | 36.7     |
| 3  | Brisbane - Melbourne       | 772.6       | 1 429.8     | 85.1     |
| 4  | Gold Coast - Melbourne     | 719.2       | 1 217.0     | 69.2     |
| 5  | Gold Coast - Sydney        | 773.7       | 1 140.8     | 47.4     |
| 6  | Adelaide - Melbourne       | 547.3       | 1 040.0     | 90.0     |
| 7  | Brisbane - Cairns          | 947.2       | 1 021.8     | 7.9      |
| 8  | Adelaide - Sydney          | 616.7       | 713.5       | 15.7     |
| 9  | Brisbane - Townsville      | 644.2       | 702.4       | 9.0      |
| 10 | Hobart - Melbourne         | 420.7       | 601.1       | 42.9     |
| 11 | Brisbane - Mackay          | 484.4       | 565.8       | 16.8     |
| 12 | Melbourne - Perth          | 285.9       | 485.7       | 69.9     |
| 13 | Adelaide - Brisbane        | 458.6       | 469.2       | 2.3      |
| 14 | Karratha - Perth           | 345.9       | 454.3       | 31.4     |
| 15 | Cairns - Melbourne         | 249.1       | 452.8       | 81.8     |
| 16 | Canberra - Melbourne       | 227.0       | 451.7       | 99.0     |
| 17 | Melbourne - Sunshine Coast | 240.0       | 415.9       | 73.3     |
| 18 | Perth - Port Hedland       | 266.6       | 408.3       | 53.1     |
| 19 | Perth - Sydney             | 344.5       | 388.7       | 12.8     |
| 20 | Ballina - Sydney           | 509.6       | 386.7       | -24.1    |
| 21 | Broome - Perth             | 319.5       | 380.5       | 19.1     |
| 22 | Launceston - Melbourne     | 285.3       | 373.0       | 30.7     |
| 23 | Brisbane - Rockhampton     | 325.1       | 372.1       | 14.5     |
| 24 | Cairns - Sydney            | 267.5       | 361.3       | 35.1     |
| 25 | Brisbane - Perth           | 271.7       | 345.5       | 27.2     |
| 26 | Hobart - Sydney            | 282.6       | 334.6       | 18.4     |
| 27 | Sunshine Coast - Sydney    | 229.4       | 328.6       | 43.2     |
| 28 | Newman - Perth             | 234.0       | 325.6       | 39.2     |
| 29 | Brisbane - Canberra        | 340.9       | 320.8       | -5.9     |
| 30 | Adelaide - Perth           | 206.3       | 304.0       | 47.3     |
| 31 | Brisbane - Darwin          | 235.6       | 280.2       | 18.9     |
| 32 | Brisbane - Hobart          | 168.8       | 278.8       | 65.2     |
| 33 | Brisbane - Proserpine      | 219.5       | 275.0       | 25.3     |
| 34 | Kalgoorlie - Perth         | 206.6       | 274.6       | 32.9     |
| 35 | Canberra - Sydney          | 166.1       | 266.1       | 60.2     |
| 36 | Melbourne - Newcastle      | 134.6       | 240.9       | 79.0     |
| 37 | Brisbane - Newcastle       | 250.6       | 229.2       | -8.5     |
| 38 | Darwin - Melbourne         | ..          | 202.9       | NA       |
| 39 | Brisbane - Hamilton Island | 177.0       | 194.3       | 9.8      |
| 40 | Brisbane - Launceston      | ..          | 162.8       | NA       |
| 41 | Brisbane - Gladstone       | 126.5       | 155.2       | 22.7     |
| 42 | Adelaide - Port Lincoln    | 117.6       | 148.5       | 26.3     |
| 43 | Adelaide - Gold Coast      | 136.0       | 147.7       | 8.6      |
| 44 | Launceston - Sydney        | 138.5       | 146.9       | 6.1      |
| 45 | Darwin - Perth             | 76.2        | 138.9       | 82.3     |
| 46 | Brisbane - Emerald         | 118.6       | 135.8       | 14.4     |
| 47 | Cairns - Gold Coast        | ..          | 134.7       | NA       |
| 48 | Coffs Harbour - Sydney     | 116.9       | 131.3       | 12.3     |
| 49 | Adelaide - Hobart          | 97.8        | 123.0       | 25.7     |
| 50 | Brisbane - Mount Isa       | 104.1       | 115.0       | 10.5     |

continued

**Table 1: (continued) Passengers carried (000s) — annual activity**

|                               | <b>City-Pair</b>         | <b>YE Jun 2021</b> | <b>YE Jun 2022</b> | <b>% Change</b> |
|-------------------------------|--------------------------|--------------------|--------------------|-----------------|
| 51                            | Hamilton Island - Sydney | 87.1               | 110.5              | 26.9            |
| 52                            | Melbourne - Mildura      | ..                 | 86.2               | NA              |
| 53                            | Dubbo - Sydney           | 76.8               | 83.5               | 8.8             |
| 54                            | Albury - Sydney          | 66.5               | 80.1               | 20.6            |
| 55                            | Canberra - Gold Coast    | 99.2               | 79.9               | -19.5           |
| 56                            | Adelaide - Canberra      | 103.3              | 78.6               | -23.9           |
| 57                            | Port Macquarie - Sydney  | 51.9               | 76.4               | 47.2            |
| 58                            | Adelaide - Alice Springs | 91.9               | 75.8               | -17.5           |
| 59                            | Sydney - Wagga Wagga     | 67.1               | 74.3               | 10.7            |
| 60                            | Armidale - Sydney        | ..                 | 52.1               | NA              |
| 61                            | Darwin - Sydney          | ..                 | ..                 | NA              |
| <b>Total domestic network</b> |                          | <b>21 556.5</b>    | <b>30 356.5</b>    | <b>40.8</b>     |

.. Data not available for release.

**Table 2: Passengers carried (000s) — monthly activity**

|    | <b>City-Pair</b>           | <b>Jun 2021</b> | <b>Jun 2022</b> | <b>% Change</b> |
|----|----------------------------|-----------------|-----------------|-----------------|
| 1  | Melbourne - Sydney         | 75.8            | 603.9           | 696.7           |
| 2  | Brisbane - Sydney          | 176.4           | 330.8           | 87.5            |
| 3  | Brisbane - Melbourne       | 42.8            | 247.3           | 477.4           |
| 4  | Gold Coast - Melbourne     | 44.4            | 197.4           | 344.1           |
| 5  | Gold Coast - Sydney        | 134.0           | 191.5           | 42.9            |
| 6  | Adelaide - Melbourne       | 17.2            | 172.9           | 905.8           |
| 7  | Melbourne - Perth          | 8.7             | 136.0           | 1455.2          |
| 8  | Adelaide - Sydney          | 80.2            | 120.9           | 50.8            |
| 9  | Perth - Sydney             | 63.5            | 108.9           | 71.3            |
| 10 | Brisbane - Cairns          | 107.7           | 107.4           | -0.3            |
| 11 | Hobart - Melbourne         | 19.6            | 94.5            | 382.3           |
| 12 | Brisbane - Townsville      | 73.3            | 80.0            | 9.2             |
| 13 | Cairns - Sydney            | 56.7            | 78.7            | 38.8            |
| 14 | Cairns - Melbourne         | 22.9            | 78.4            | 242.3           |
| 15 | Canberra - Melbourne       | 16.4            | 75.5            | 361.6           |
| 16 | Brisbane - Perth           | 52.2            | 71.0            | 35.9            |
| 17 | Brisbane - Mackay          | 53.5            | 65.5            | 22.5            |
| 18 | Melbourne - Sunshine Coast | 15.4            | 59.3            | 285.2           |
| 19 | Adelaide - Brisbane        | 56.9            | 58.5            | 2.8             |
| 20 | Sunshine Coast - Sydney    | 37.7            | 56.8            | 50.8            |
| 21 | Launceston - Melbourne     | 14.3            | 56.7            | 295.9           |
| 22 | Canberra - Sydney          | 29.1            | 54.1            | 86.1            |
| 23 | Brisbane - Canberra        | 48.2            | 52.6            | 9.1             |
| 24 | Hobart - Sydney            | 46.0            | 51.9            | 13.0            |
| 25 | Adelaide - Perth           | 35.7            | 46.0            | 28.8            |
| 26 | Karratha - Perth           | 36.9            | 44.5            | 20.7            |
| 27 | Brisbane - Rockhampton     | 36.1            | 41.4            | 14.6            |
| 28 | Ballina - Sydney           | 36.4            | 40.7            | 11.8            |
| 29 | Perth - Port Hedland       | 29.6            | 39.4            | 33.0            |
| 30 | Brisbane - Newcastle       | 35.9            | 39.0            | 8.4             |
| 31 | Darwin - Sydney            | ..              | 38.4            | NA              |
| 32 | Broome - Perth             | 35.5            | 37.9            | 6.7             |
| 33 | Brisbane - Darwin          | 29.1            | 36.7            | 26.4            |
| 34 | Melbourne - Newcastle      | 8.0             | 34.0            | 326.5           |
| 35 | Darwin - Melbourne         | ..              | 32.3            | NA              |
| 36 | Newman - Perth             | 26.5            | 30.1            | 13.6            |
| 37 | Kalgoorlie - Perth         | 21.5            | 26.5            | 23.0            |
| 38 | Brisbane - Proserpine      | 18.5            | 24.8            | 34.3            |
| 39 | Brisbane - Hobart          | 21.3            | 23.1            | 8.3             |
| 40 | Launceston - Sydney        | 17.3            | 19.7            | 14.0            |
| 41 | Brisbane - Gladstone       | 14.8            | 18.8            | 27.0            |
| 42 | Adelaide - Gold Coast      | 17.0            | 17.6            | 4.1             |
| 43 | Hamilton Island - Sydney   | 16.1            | 17.4            | 8.3             |
| 44 | Coffs Harbour - Sydney     | 13.8            | 17.4            | 25.7            |
| 45 | Cairns - Gold Coast        | ..              | 16.6            | NA              |
| 46 | Darwin - Perth             | 15.6            | 15.5            | -0.5            |
| 47 | Brisbane - Launceston      | ..              | 14.6            | NA              |
| 48 | Brisbane - Emerald         | 14.1            | 14.6            | 3.8             |
| 49 | Adelaide - Port Lincoln    | 12.4            | 14.2            | 14.1            |
| 50 | Brisbane - Hamilton Island | 14.4            | 14.2            | -1.5            |

**Table 2: (continued) Passengers carried (000s) — monthly activity**

|                               | <b>City-Pair</b>         | <b>Jun 2021</b> | <b>Jun 2022</b> | <b>% Change</b> |
|-------------------------------|--------------------------|-----------------|-----------------|-----------------|
| 51                            | Albury - Sydney          | 9.7             | 13.2            | 35.2            |
| 52                            | Dubbo - Sydney           | 9.8             | 13.0            | 32.6            |
| 53                            | Brisbane - Mount Isa     | 10.8            | 12.8            | 18.9            |
| 54                            | Port Macquarie - Sydney  | 8.1             | 12.4            | 52.8            |
| 55                            | Adelaide - Canberra      | 13.3            | 12.3            | -7.5            |
| 56                            | Sydney - Wagga Wagga     | 9.7             | 12.1            | 25.2            |
| 57                            | Melbourne - Mildura      | ..              | 12.1            | NA              |
| 58                            | Canberra - Gold Coast    | 11.8            | 10.0            | -15.7           |
| 59                            | Adelaide - Alice Springs | 8.5             | 9.5             | 12.1            |
| 60                            | Adelaide - Hobart        | 15.8            | 8.7             | -45.2           |
| 61                            | Armidale - Sydney        | ..              | 8.4             | NA              |
| <b>Total domestic network</b> |                          | <b>2 354.7</b>  | <b>4 526.2</b>  | <b>92.2</b>     |

.. Data not available for release.

**Table 3: Available seats (000s) — monthly activity**

|    | City-Pair                  | Jun 2021 | Jun 2022 | % Change |
|----|----------------------------|----------|----------|----------|
| 1  | Melbourne - Sydney         | 179.1    | 724.1    | 304.2    |
| 2  | Brisbane - Sydney          | 300.1    | 416.1    | 38.7     |
| 3  | Brisbane - Melbourne       | 100.5    | 290.6    | 189.3    |
| 4  | Gold Coast - Melbourne     | 97.3     | 224.3    | 130.4    |
| 5  | Gold Coast - Sydney        | 198.4    | 241.7    | 21.8     |
| 6  | Adelaide - Melbourne       | 57.3     | 222.2    | 287.4    |
| 7  | Melbourne - Perth          | 33.1     | 164.6    | 398.0    |
| 8  | Adelaide - Sydney          | 122.1    | 152.4    | 24.8     |
| 9  | Perth - Sydney             | 96.8     | 133.2    | 37.6     |
| 10 | Brisbane - Cairns          | 129.2    | 117.8    | -8.8     |
| 11 | Hobart - Melbourne         | 48.2     | 121.8    | 152.9    |
| 12 | Brisbane - Townsville      | 95.9     | 99.7     | 3.9      |
| 13 | Cairns - Sydney            | 74.7     | 91.7     | 22.8     |
| 14 | Cairns - Melbourne         | 56.0     | 85.3     | 52.4     |
| 15 | Canberra - Melbourne       | 39.5     | 108.9    | 175.6    |
| 16 | Brisbane - Perth           | 69.9     | 89.9     | 28.6     |
| 17 | Brisbane - Mackay          | 79.7     | 87.0     | 9.1      |
| 18 | Melbourne - Sunshine Coast | 33.5     | 71.3     | 113.2    |
| 19 | Adelaide - Brisbane        | 78.1     | 73.0     | -6.5     |
| 20 | Sunshine Coast - Sydney    | 60.0     | 82.9     | 38.2     |
| 21 | Launceston - Melbourne     | 31.8     | 77.1     | 142.8    |
| 22 | Canberra - Sydney          | 58.8     | 82.7     | 40.5     |
| 23 | Brisbane - Canberra        | 71.1     | 68.6     | -3.6     |
| 24 | Hobart - Sydney            | 62.0     | 69.9     | 12.6     |
| 25 | Adelaide - Perth           | 56.0     | 60.4     | 7.9      |
| 26 | Karratha - Perth           | 60.7     | 60.2     | -0.8     |
| 27 | Brisbane - Rockhampton     | 56.2     | 51.0     | -9.3     |
| 28 | Ballina - Sydney           | 54.2     | 62.0     | 14.5     |
| 29 | Perth - Port Hedland       | 50.9     | 52.1     | 2.5      |
| 30 | Brisbane - Newcastle       | 53.6     | 51.8     | -3.3     |
| 31 | Darwin - Sydney            | ..       | 45.9     | NA       |
| 32 | Broome - Perth             | 44.2     | 47.3     | 7.0      |
| 33 | Brisbane - Darwin          | 37.2     | 43.7     | 17.4     |
| 34 | Melbourne - Newcastle      | 21.6     | 43.4     | 101.2    |
| 35 | Darwin - Melbourne         | ..       | 35.3     | NA       |
| 36 | Newman - Perth             | 57.3     | 52.4     | -8.5     |
| 37 | Kalgoorlie - Perth         | 35.6     | 37.6     | 5.7      |
| 38 | Brisbane - Proserpine      | 22.1     | 29.0     | 31.0     |
| 39 | Brisbane - Hobart          | 24.8     | 28.7     | 15.6     |
| 40 | Launceston - Sydney        | 21.4     | 25.8     | 20.4     |
| 41 | Brisbane - Gladstone       | 28.1     | 26.9     | -4.0     |
| 42 | Adelaide - Gold Coast      | 21.9     | 19.3     | -11.6    |
| 43 | Hamilton Island - Sydney   | 28.1     | 26.9     | -4.2     |
| 44 | Coffs Harbour - Sydney     | 23.0     | 22.5     | -2.0     |
| 45 | Cairns - Gold Coast        | ..       | 18.0     | NA       |
| 46 | Darwin - Perth             | 21.1     | 20.6     | -2.3     |
| 47 | Brisbane - Launceston      | ..       | 18.6     | NA       |
| 48 | Brisbane - Emerald         | 23.4     | 21.0     | -10.4    |
| 49 | Adelaide - Port Lincoln    | 22.2     | 25.1     | 13.2     |
| 50 | Brisbane - Hamilton Island | 23.4     | 22.4     | -4.3     |

continued

**Table 3: (continued) Available seats (000s) — monthly activity**

|                               | <b>City-Pair</b>         | <b>Jun 2021</b> | <b>Jun 2022</b> | <b>% Change</b> |
|-------------------------------|--------------------------|-----------------|-----------------|-----------------|
| 51                            | Albury - Sydney          | 18.3            | 20.0            | 9.8             |
| 52                            | Dubbo - Sydney           | 17.8            | 19.9            | 12.1            |
| 53                            | Brisbane - Mount Isa     | 20.4            | 18.1            | -11.2           |
| 54                            | Port Macquarie - Sydney  | 19.6            | 19.9            | 1.4             |
| 55                            | Adelaide - Canberra      | 21.6            | 16.9            | -21.6           |
| 56                            | Sydney - Wagga Wagga     | 18.1            | 18.1            | -0.1            |
| 57                            | Melbourne - Mildura      | ..              | 16.9            | NA              |
| 58                            | Canberra - Gold Coast    | 17.1            | 12.9            | -24.7           |
| 59                            | Adelaide - Alice Springs | 14.6            | 13.6            | -7.0            |
| 60                            | Adelaide - Hobart        | 26.7            | 13.1            | -50.9           |
| 61                            | Armidale - Sydney        | ..              | 14.7            | NA              |
| <b>Total domestic network</b> |                          | <b>3 903.4</b>  | <b>5 828.4</b>  | <b>49.3</b>     |

.. Data not available for release.



**Table 4: Load factors (%) — monthly activity**

|    | City-Pair                  | Jun 2021 | Jun 2022 | % Point diff |
|----|----------------------------|----------|----------|--------------|
| 1  | Melbourne - Sydney         | 42.3     | 83.4     | 41.1         |
| 2  | Brisbane - Sydney          | 58.8     | 79.5     | 20.7         |
| 3  | Brisbane - Melbourne       | 42.6     | 85.1     | 42.5         |
| 4  | Gold Coast - Melbourne     | 45.7     | 88.0     | 42.3         |
| 5  | Gold Coast - Sydney        | 67.5     | 79.2     | 11.7         |
| 6  | Adelaide - Melbourne       | 30.0     | 77.8     | 47.8         |
| 7  | Melbourne - Perth          | 26.5     | 82.6     | 56.1         |
| 8  | Adelaide - Sydney          | 65.7     | 79.4     | 13.7         |
| 9  | Perth - Sydney             | 65.6     | 81.7     | 16.1         |
| 10 | Brisbane - Cairns          | 83.4     | 91.1     | 7.7          |
| 11 | Hobart - Melbourne         | 40.7     | 77.6     | 36.9         |
| 12 | Brisbane - Townsville      | 76.4     | 80.2     | 3.8          |
| 13 | Cairns - Sydney            | 75.9     | 85.8     | 9.9          |
| 14 | Cairns - Melbourne         | 40.9     | 92.0     | 51.1         |
| 15 | Canberra - Melbourne       | 41.4     | 69.3     | 27.9         |
| 16 | Brisbane - Perth           | 74.7     | 78.9     | 4.2          |
| 17 | Brisbane - Mackay          | 67.1     | 75.3     | 8.2          |
| 18 | Melbourne - Sunshine Coast | 46.0     | 83.2     | 37.2         |
| 19 | Adelaide - Brisbane        | 72.8     | 80.1     | 7.3          |
| 20 | Sunshine Coast - Sydney    | 62.8     | 68.6     | 5.8          |
| 21 | Launceston - Melbourne     | 45.1     | 73.5     | 28.4         |
| 22 | Canberra - Sydney          | 49.4     | 65.4     | 16.0         |
| 23 | Brisbane - Canberra        | 67.8     | 76.7     | 8.9          |
| 24 | Hobart - Sydney            | 74.1     | 74.3     | 0.2          |
| 25 | Adelaide - Perth           | 63.8     | 76.2     | 12.4         |
| 26 | Karratha - Perth           | 60.7     | 73.9     | 13.2         |
| 27 | Brisbane - Rockhampton     | 64.2     | 81.1     | 16.9         |
| 28 | Ballina - Sydney           | 67.2     | 65.6     | -1.6         |
| 29 | Perth - Port Hedland       | 58.3     | 75.6     | 17.3         |
| 30 | Brisbane - Newcastle       | 67.1     | 75.2     | 8.1          |
| 31 | Darwin - Sydney            | ..       | 83.6     | NA           |
| 32 | Broome - Perth             | 80.4     | 80.2     | -0.2         |
| 33 | Brisbane - Darwin          | 78.0     | 84.0     | 6.0          |
| 34 | Melbourne - Newcastle      | 36.9     | 78.3     | 41.4         |
| 35 | Darwin - Melbourne         | ..       | 91.7     | NA           |
| 36 | Newman - Perth             | 46.2     | 57.4     | 11.2         |
| 37 | Kalgoorlie - Perth         | 60.5     | 70.4     | 9.9          |
| 38 | Brisbane - Proserpine      | 83.4     | 85.4     | 2.0          |
| 39 | Brisbane - Hobart          | 86.0     | 80.6     | -5.4         |
| 40 | Launceston - Sydney        | 80.7     | 76.4     | -4.3         |
| 41 | Brisbane - Gladstone       | 52.7     | 69.7     | 17.0         |
| 42 | Adelaide - Gold Coast      | 77.6     | 91.3     | 13.7         |
| 43 | Hamilton Island - Sydney   | 57.3     | 64.8     | 7.5          |
| 44 | Coffs Harbour - Sydney     | 60.2     | 77.2     | 17.0         |
| 45 | Cairns - Gold Coast        | ..       | 91.9     | NA           |
| 46 | Darwin - Perth             | 73.8     | 75.2     | 1.4          |
| 47 | Brisbane - Launceston      | ..       | 78.7     | NA           |
| 48 | Brisbane - Emerald         | 60.1     | 69.6     | 9.5          |
| 49 | Adelaide - Port Lincoln    | 56.1     | 56.6     | 0.5          |
| 50 | Brisbane - Hamilton Island | 61.4     | 63.2     | 1.8          |

continued

**Table 4: (continued) Load factors (%) — monthly activity**

|                               | <b>City-Pair</b>         | <b>Jun 2021</b> | <b>Jun 2022</b> | <b>% Point diff</b> |
|-------------------------------|--------------------------|-----------------|-----------------|---------------------|
| 51                            | Albury - Sydney          | 53.3            | 65.6            | 12.3                |
| 52                            | Dubbo - Sydney           | 55.4            | 65.5            | 10.1                |
| 53                            | Brisbane - Mount Isa     | 52.9            | 70.8            | 17.9                |
| 54                            | Port Macquarie - Sydney  | 41.3            | 62.3            | 21.0                |
| 55                            | Adelaide - Canberra      | 61.5            | 72.6            | 11.1                |
| 56                            | Sydney - Wagga Wagga     | 53.4            | 66.9            | 13.5                |
| 57                            | Melbourne - Mildura      | ..              | 71.8            | NA                  |
| 58                            | Canberra - Gold Coast    | 69.1            | 77.3            | 8.2                 |
| 59                            | Adelaide - Alice Springs | 58.3            | 70.3            | 12.0                |
| 60                            | Adelaide - Hobart        | 59.2            | 66.1            | 6.9                 |
| 61                            | Armidale - Sydney        | ..              | 57.0            | NA                  |
| <b>Total domestic network</b> |                          | <b>62.8</b>     | <b>79.9</b>     | <b>17.1</b>         |

.. Data not available for release.

**Table 5: Aircraft trips <sup>(a)</sup> — monthly activity**

|    | City-Pair                  | Jun 2021 | Jun 2022 | % Change |
|----|----------------------------|----------|----------|----------|
| 1  | Melbourne - Sydney         | 1 204    | 4 228    | 251.2    |
| 2  | Brisbane - Sydney          | 1 861    | 2 571    | 38.2     |
| 3  | Brisbane - Melbourne       | 698      | 1 769    | 153.4    |
| 4  | Gold Coast - Melbourne     | 519      | 1 283    | 147.2    |
| 5  | Gold Coast - Sydney        | 1 134    | 1 418    | 25.0     |
| 6  | Adelaide - Melbourne       | 412      | 1 365    | 231.3    |
| 7  | Melbourne - Perth          | 265      | 927      | 249.8    |
| 8  | Adelaide - Sydney          | 721      | 935      | 29.7     |
| 9  | Perth - Sydney             | 479      | 684      | 42.8     |
| 10 | Brisbane - Cairns          | 796      | 777      | -2.4     |
| 11 | Hobart - Melbourne         | 304      | 751      | 147.0    |
| 12 | Brisbane - Townsville      | 571      | 679      | 18.9     |
| 13 | Cairns - Sydney            | 371      | 470      | 26.7     |
| 14 | Cairns - Melbourne         | 258      | 458      | 77.5     |
| 15 | Canberra - Melbourne       | 300      | 803      | 167.7    |
| 16 | Brisbane - Perth           | 385      | 518      | 34.5     |
| 17 | Brisbane - Mackay          | 503      | 567      | 12.7     |
| 18 | Melbourne - Sunshine Coast | 199      | 429      | 115.6    |
| 19 | Adelaide - Brisbane        | 464      | 510      | 9.9      |
| 20 | Sunshine Coast - Sydney    | 361      | 452      | 25.2     |
| 21 | Launceston - Melbourne     | 314      | 676      | 115.3    |
| 22 | Canberra - Sydney          | 834      | 1 333    | 59.8     |
| 23 | Brisbane - Canberra        | 498      | 534      | 7.2      |
| 24 | Hobart - Sydney            | 351      | 449      | 27.9     |
| 25 | Adelaide - Perth           | 354      | 368      | 4.0      |
| 26 | Karratha - Perth           | 380      | 390      | 2.6      |
| 27 | Brisbane - Rockhampton     | 540      | 563      | 4.3      |
| 28 | Ballina - Sydney           | 412      | 493      | 19.7     |
| 29 | Perth - Port Hedland       | 370      | 340      | -8.1     |
| 30 | Brisbane - Newcastle       | 410      | 459      | 12.0     |
| 31 | Darwin - Sydney            | ..       | 214      | NA       |
| 32 | Broome - Perth             | 269      | 298      | 10.8     |
| 33 | Brisbane - Darwin          | 208      | 288      | 38.5     |
| 34 | Melbourne - Newcastle      | 133      | 274      | 106.0    |
| 35 | Darwin - Melbourne         | ..       | 200      | NA       |
| 36 | Newman - Perth             | 345      | 336      | -2.6     |
| 37 | Kalgoorlie - Perth         | 268      | 272      | 1.5      |
| 38 | Brisbane - Proserpine      | 124      | 178      | 43.5     |
| 39 | Brisbane - Hobart          | 148      | 176      | 18.9     |
| 40 | Launceston - Sydney        | 130      | 154      | 18.5     |
| 41 | Brisbane - Gladstone       | 371      | 338      | -8.9     |
| 42 | Adelaide - Gold Coast      | 128      | 108      | -15.6    |
| 43 | Hamilton Island - Sydney   | 159      | 154      | -3.1     |
| 44 | Coffs Harbour - Sydney     | 416      | 437      | 5.0      |
| 45 | Cairns - Gold Coast        | ..       | 100      | NA       |
| 46 | Darwin - Perth             | 135      | 118      | -12.6    |
| 47 | Brisbane - Launceston      | ..       | 104      | NA       |
| 48 | Brisbane - Emerald         | 343      | 310      | -9.6     |
| 49 | Adelaide - Port Lincoln    | 552      | 620      | 12.3     |
| 50 | Brisbane - Hamilton Island | 134      | 129      | -3.7     |

continued

**Table 5: (continued) Aircraft trips <sup>(a)</sup> — monthly activity**

|                               | <b>City-Pair</b>         | <b>Jun 2021</b> | <b>Jun 2022</b> | <b>% Change</b> |
|-------------------------------|--------------------------|-----------------|-----------------|-----------------|
| 51                            | Albury - Sydney          | 308             | 384             | 24.7            |
| 52                            | Dubbo - Sydney           | 366             | 431             | 17.8            |
| 53                            | Brisbane - Mount Isa     | 178             | 174             | -2.2            |
| 54                            | Port Macquarie - Sydney  | 391             | 402             | 2.8             |
| 55                            | Adelaide - Canberra      | 124             | 153             | 23.4            |
| 56                            | Sydney - Wagga Wagga     | 307             | 338             | 10.1            |
| 57                            | Melbourne - Mildura      | ..              | 397             | NA              |
| 58                            | Canberra - Gold Coast    | 119             | 83              | -30.3           |
| 59                            | Adelaide - Alice Springs | 174             | 114             | -34.5           |
| 60                            | Adelaide - Hobart        | 183             | 88              | -51.9           |
| 61                            | Armidale - Sydney        | ..              | 324             | NA              |
| <b>Total domestic network</b> |                          | <b>36 378</b>   | <b>49 478</b>   | <b>36.0</b>     |

.. Data not available for release.

(a) Includes RPT cargo flights

## TOP TEN AIRPORTS – PASSENGER MOVEMENTS

**Table 6: Top ten airports, RPT passenger movements (000s) - monthly activity**

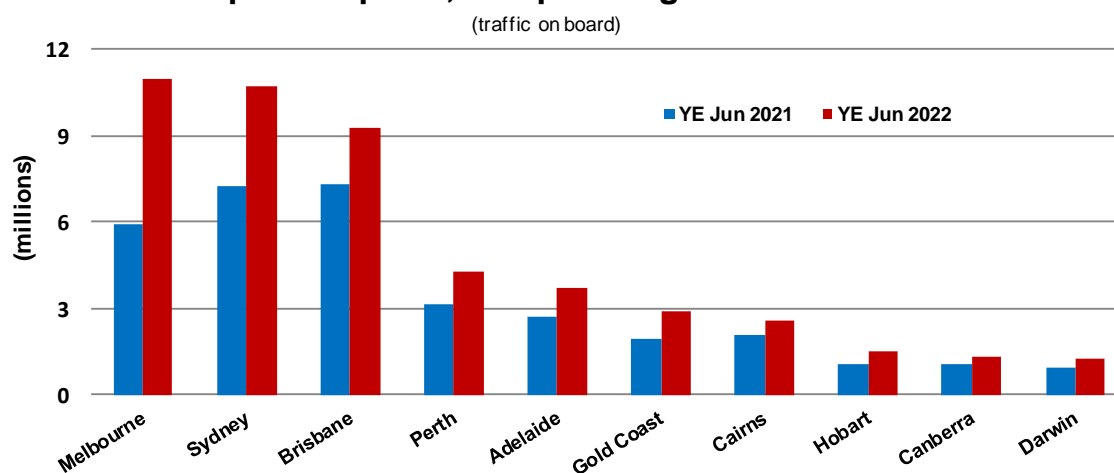
| Airport                       | Jun 2021       | Jun 2022       | % Change     | % of Total   |
|-------------------------------|----------------|----------------|--------------|--------------|
| 1 Sydney                      | 905.5          | 1 882.6        | 107.9        | 20.8         |
| 2 Melbourne                   | 321.1          | 1 841.7        | 473.5        | 20.3         |
| 3 Brisbane                    | 863.2          | 1 312.9        | 52.1         | 14.5         |
| 4 Perth                       | 404.0          | 633.1          | 56.7         | 7.0          |
| 5 Adelaide                    | 298.2          | 523.6          | 75.6         | 5.8          |
| 6 Gold Coast                  | 236.6          | 452.3          | 91.1         | 5.0          |
| 7 Cairns                      | 261.0          | 346.1          | 32.6         | 3.8          |
| 8 Canberra                    | 136.4          | 219.0          | 60.5         | 2.4          |
| 9 Hobart                      | 108.8          | 191.4          | 75.9         | 2.1          |
| 10 Darwin                     | 119.7          | 174.0          | 45.3         | 1.9          |
| <b>Total top ten airports</b> | <b>3 654.5</b> | <b>7 576.6</b> | <b>107.3</b> | <b>83.7</b>  |
| <b>Total domestic network</b> | <b>4 709.3</b> | <b>9 052.4</b> | <b>92.2</b>  | <b>100.0</b> |

**Table 7: Top ten airports, RPT passenger movements (000s) - annual activity**

| Airport                       | YE Jun 2021     | YE Jun 2022     | % Change    | % of Total   |
|-------------------------------|-----------------|-----------------|-------------|--------------|
| 1 Melbourne                   | 5 889.6         | 10 985.5        | 86.5        | 18.1         |
| 2 Sydney                      | 7 269.6         | 10 689.6        | 47.0        | 17.6         |
| 3 Brisbane                    | 7 320.5         | 9 242.3         | 26.3        | 15.2         |
| 4 Perth                       | 3 174.5         | 4 289.5         | 35.1        | 7.1          |
| 5 Adelaide                    | 2 723.2         | 3 700.2         | 35.9        | 6.1          |
| 6 Gold Coast                  | 1 967.0         | 2 914.5         | 48.2        | 4.8          |
| 7 Cairns                      | 2 079.7         | 2 605.9         | 25.3        | 4.3          |
| 8 Hobart                      | 1 037.3         | 1 503.8         | 45.0        | 2.5          |
| 9 Canberra                    | 1 044.6         | 1 286.2         | 23.1        | 2.1          |
| 10 Darwin                     | 908.9           | 1 248.8         | 37.4        | 2.1          |
| <b>Total top ten airports</b> | <b>33 415.0</b> | <b>48 466.4</b> | <b>45.0</b> | <b>79.8</b>  |
| <b>Total domestic network</b> | <b>43 113.0</b> | <b>60 713.1</b> | <b>40.8</b> | <b>100.0</b> |

Note: Airport passenger movement numbers are the sum of passenger arrivals and departures at each airport.

### Top ten airports, RPT passenger movements



## TOP FIVE AIRPORTS – CARGO MOVEMENTS

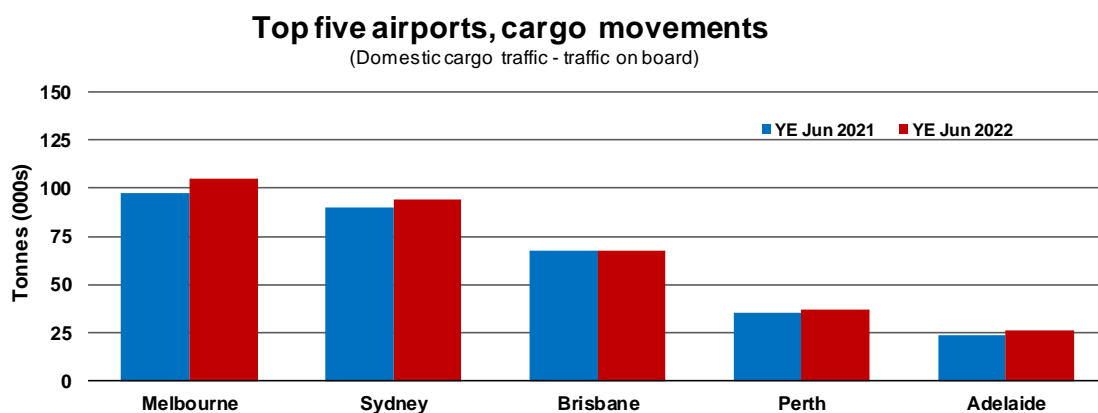
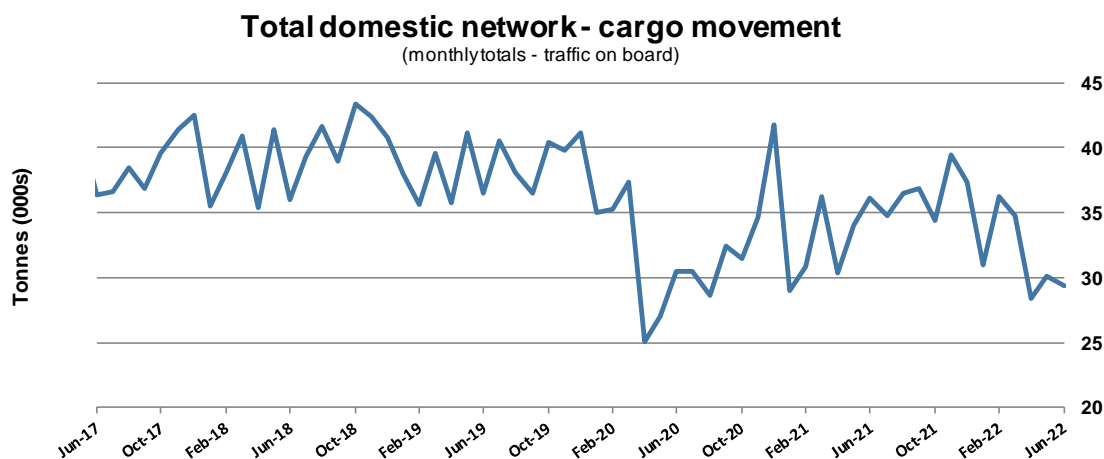
**Table 8: Top five airports, domestic RPT cargo movements (000s tonnes) - monthly activity**

| Airport                        | Jun 2021    | Jun 2022    | % Change     | % of Total   |
|--------------------------------|-------------|-------------|--------------|--------------|
| 1 Melbourne                    | 9.2         | 7.6         | -18.1        | 25.7         |
| 2 Sydney                       | 8.1         | 6.0         | -25.7        | 20.5         |
| 3 Brisbane                     | 5.8         | 5.3         | -9.0         | 18.1         |
| 4 Perth                        | 3.7         | 2.9         | -22.9        | 9.8          |
| 5 Adelaide                     | 2.0         | 1.8         | -10.5        | 6.1          |
| <b>Total top five airports</b> | <b>28.9</b> | <b>23.6</b> | <b>-18.5</b> | <b>80.2</b>  |
| <b>Total domestic network</b>  | <b>36.1</b> | <b>29.4</b> | <b>-18.6</b> | <b>100.0</b> |

**Table 9: Top five airports, domestic RPT cargo movements (000s tonnes) - annual activity**

| Airport                        | YE Jun 2021  | YE Jun 2022  | % Change   | % of Total   |
|--------------------------------|--------------|--------------|------------|--------------|
| 1 Melbourne                    | 97.7         | 105.1        | 7.6        | 25.7         |
| 2 Sydney                       | 90.3         | 94.2         | 4.4        | 23.0         |
| 3 Brisbane                     | 67.9         | 67.5         | -0.7       | 16.5         |
| 4 Perth                        | 34.8         | 37.0         | 6.2        | 9.0          |
| 5 Adelaide                     | 23.9         | 26.1         | 9.2        | 6.4          |
| <b>Total top five airports</b> | <b>314.7</b> | <b>329.9</b> | <b>4.9</b> | <b>80.7</b>  |
| <b>Total domestic network</b>  | <b>395.7</b> | <b>409.0</b> | <b>3.4</b> | <b>100.0</b> |

Note: Airport cargo tonnes are the sum of cargo tonnes on arrivals and departures at each airport.



## TOP TEN ROUTES

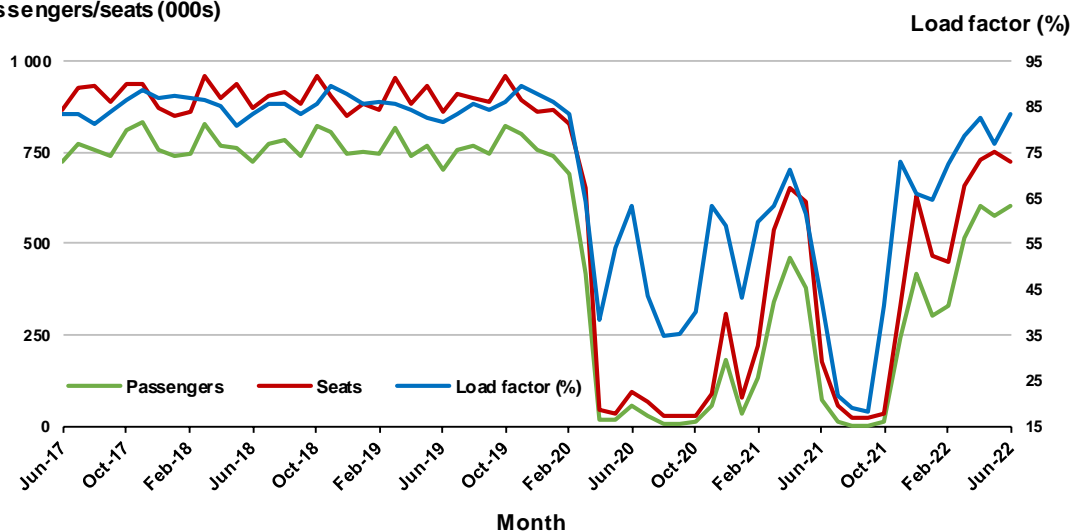
### 1. Melbourne - Sydney

#### Monthly data

|                           | Jun 2021 | Jun 2022 | % Change |
|---------------------------|----------|----------|----------|
| Passengers carried (000s) | 75.8     | 603.9    | 696.7    |
| Seats (000s)              | 179.1    | 724.1    | 304.2    |
| Load factor %             | 42.3     | 83.4     | 41.1 *   |
| Aircraft trips            | 1 204    | 4 228    | 251.2    |

\* percentage point difference

#### Passengers/seats (000s)

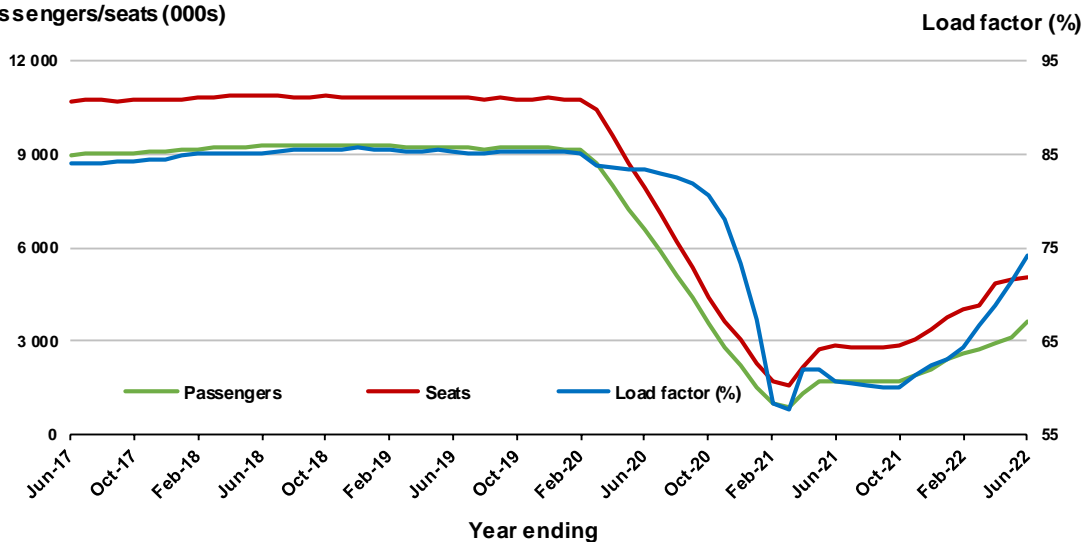


#### Moving annual data

|                           | YE Jun 2021 | YE Jun 2022 | % Change |
|---------------------------|-------------|-------------|----------|
| Passengers carried (000s) | 1 728.1     | 3 625.1     | 109.8    |
| Seats (000s)              | 2 845.1     | 5 069.3     | 78.2     |
| Load factor %             | 60.7        | 74.1        | 13.4 *   |
| Aircraft trips            | 18 198      | 30 055      | 65.2     |

\* percentage point difference

#### Passengers/seats (000s)



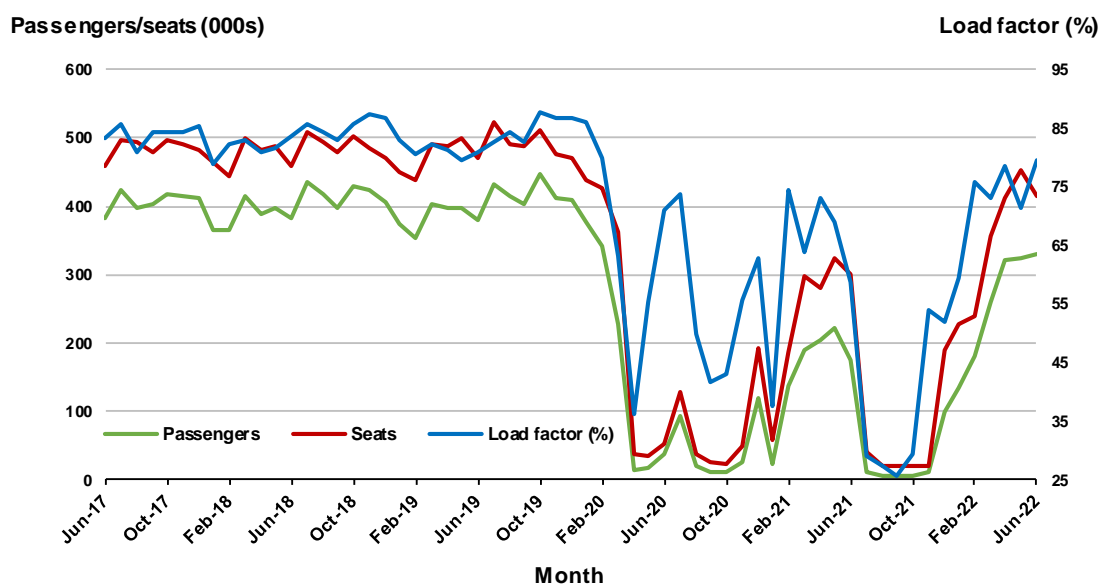


## 2. Brisbane - Sydney

### Monthly data

|                           | Jun 2021 | Jun 2022 | % Change |
|---------------------------|----------|----------|----------|
| Passengers carried (000s) | 176.4    | 330.8    | 87.5     |
| Seats (000s)              | 300.1    | 416.1    | 38.7     |
| Load factor %             | 58.8     | 79.5     | 20.7 *   |
| Aircraft trips            | 1 861    | 2 571    | 38.2     |

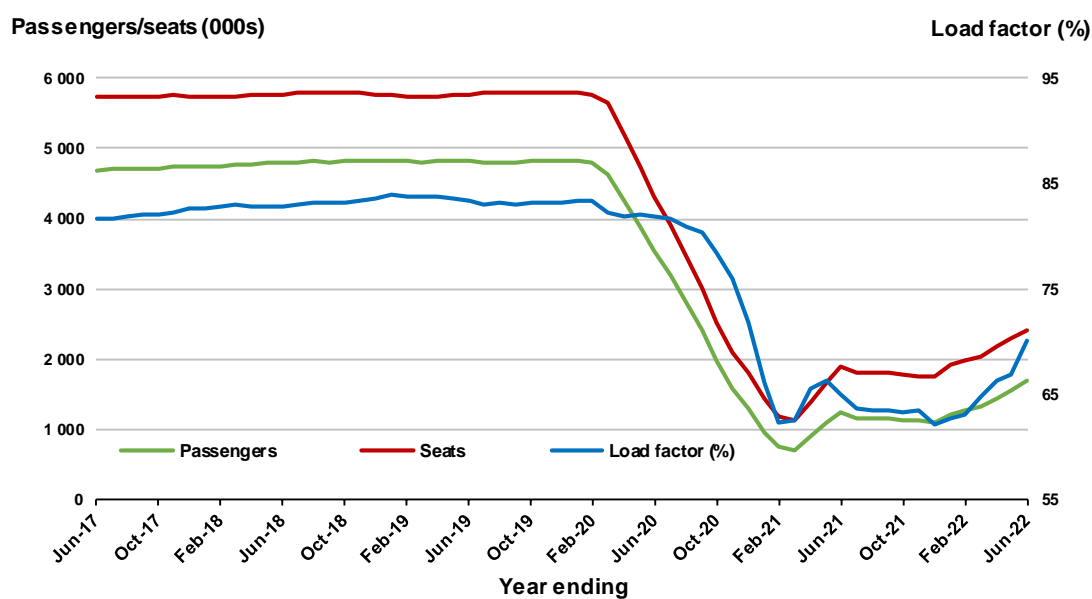
\* percentage point difference



### Moving annual data

|                           | YE Jun 2021 | YE Jun 2022 | % Change |
|---------------------------|-------------|-------------|----------|
| Passengers carried (000s) | 1 237.6     | 1 692.3     | 36.7     |
| Seats (000s)              | 1 903.5     | 2 417.9     | 27.0     |
| Load factor %             | 65.0        | 70.0        | 5.0 *    |
| Aircraft trips            | 13 034      | 16 063      | 23.2     |

\* percentage point difference

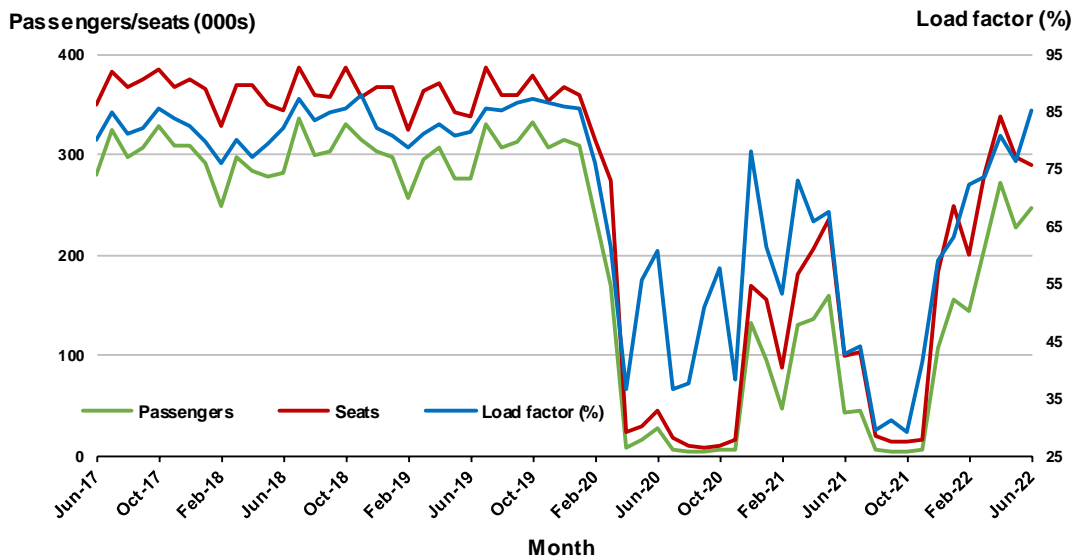


### 3. Brisbane - Melbourne

#### Monthly data

|                           | Jun 2021 | Jun 2022 | % Change |
|---------------------------|----------|----------|----------|
| Passengers carried (000s) | 42.8     | 247.3    | 477.4    |
| Seats (000s)              | 100.5    | 290.6    | 189.3    |
| Load factor %             | 42.6     | 85.1     | 42.5 *   |
| Aircraft trips            | 698      | 1 769    | 153.4    |

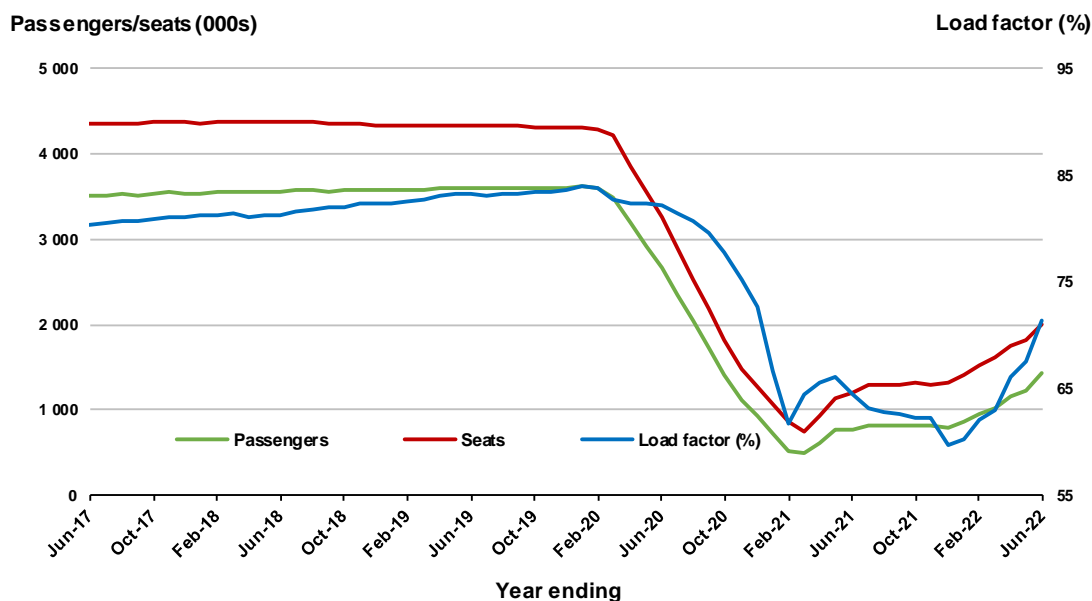
\* percentage point difference



#### Moving annual data

|                           | YE Jun 2021 | YE Jun 2022 | % Change |
|---------------------------|-------------|-------------|----------|
| Passengers carried (000s) | 772.6       | 1 429.8     | 85.1     |
| Seats (000s)              | 1 200.4     | 2 004.8     | 67.0     |
| Load factor %             | 64.4        | 71.3        | 7.0 *    |
| Aircraft trips            | 8 196       | 12 926      | 57.7     |

\* percentage point difference



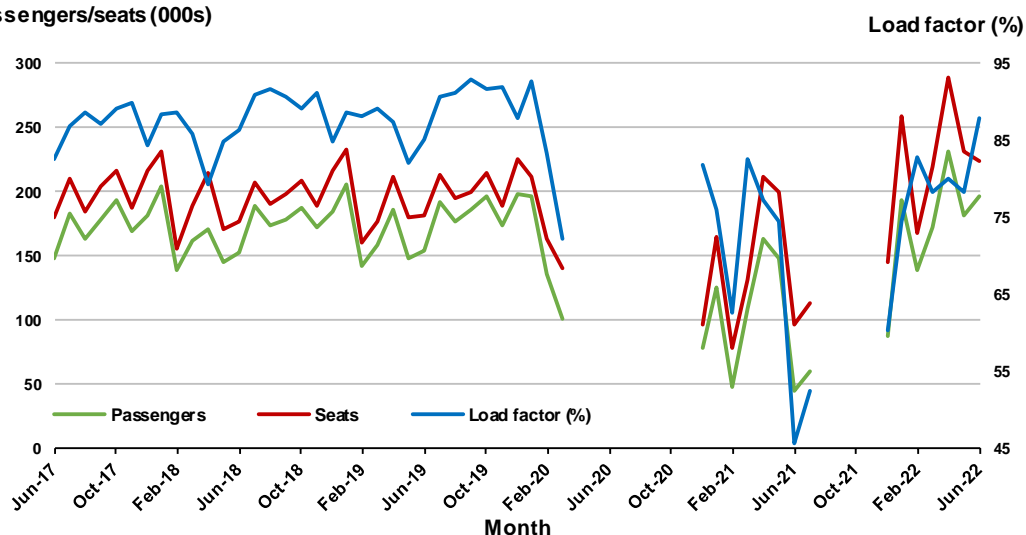
## 4. Gold Coast - Melbourne <sup>(a)</sup>

### Monthly data

|                           | Jun 2021 | Jun 2022 | % Change |
|---------------------------|----------|----------|----------|
| Passengers carried (000s) | 44.4     | 197.4    | 344.1    |
| Seats (000s)              | 97.3     | 224.3    | 130.4    |
| Load factor %             | 45.7     | 88.0     | 42.3 *   |
| Aircraft trips            | 519      | 1 283    | 147.2    |

\* percentage point difference

### Passengers/seats (000s)



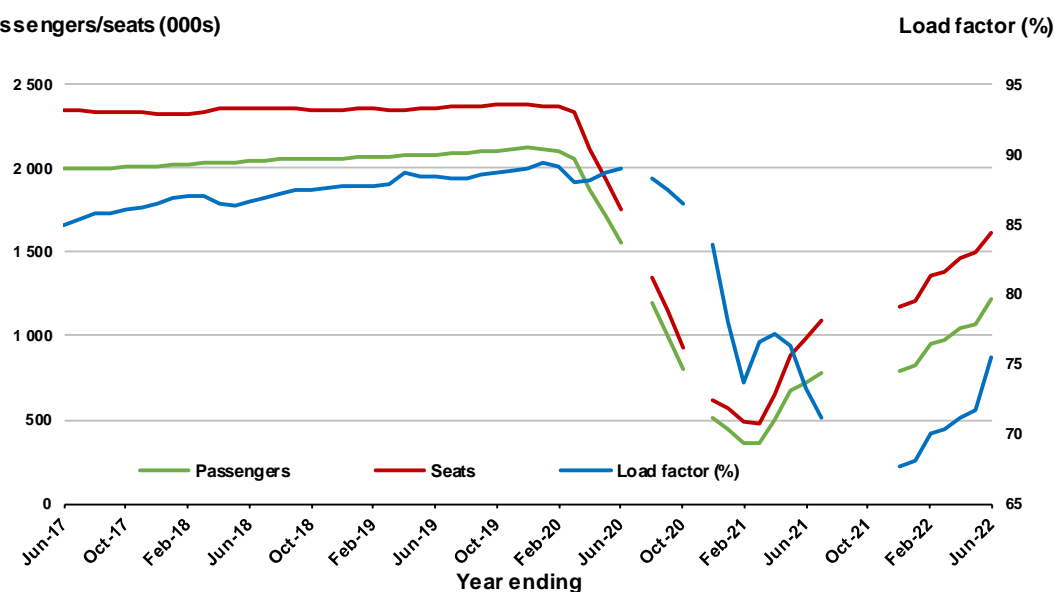
(a) April to November 2020 and August to November 2021 data not available for release.

### Moving annual data

|                           | YE Jun 2021 | YE Jun 2022 | % Change |
|---------------------------|-------------|-------------|----------|
| Passengers carried (000s) | 719.2       | 1 217.0     | 69.2     |
| Seats (000s)              | 982.2       | 1 614.1     | 64.3     |
| Load factor %             | 73.2        | 75.4        | 2.2 *    |
| Aircraft trips            | 5 244       | 8 707       | 66.0     |

\* percentage point difference

### Passengers/seats (000s)



(a) April to November 2020 and August to November 2021 moving annuals are not available for release.

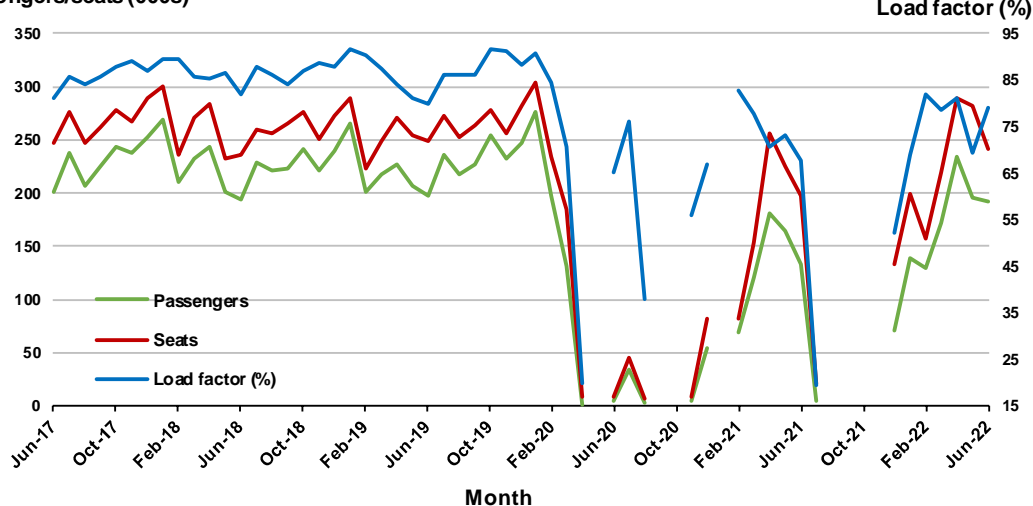
## 5. Gold Coast - Sydney<sup>(a)</sup>

### Monthly data

|                           | Jun 2021 | Jun 2022 | % Change |
|---------------------------|----------|----------|----------|
| Passengers carried (000s) | 134.0    | 191.5    | 42.9     |
| Seats (000s)              | 198.4    | 241.7    | 21.8     |
| Load factor %             | 67.5     | 79.2     | 11.7 *   |
| Aircraft trips            | 1 134    | 1 418    | 25.0     |

\* percentage point difference

### Passengers/seats (000s)



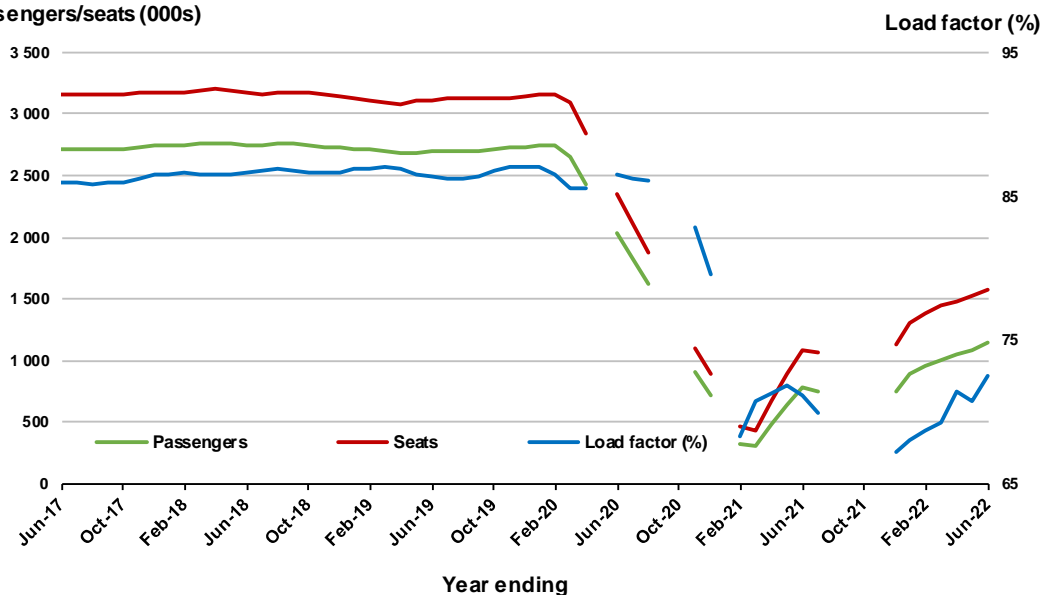
(a) May, September and October 2020 and January and August to November 2021 data not available for release

### Moving annual data

|                           | YE Jun 2021 | YE Jun 2022 | % Change |
|---------------------------|-------------|-------------|----------|
| Passengers carried (000s) | 773.7       | 1 140.8     | 47.4     |
| Seats (000s)              | 1 087.8     | 1 574.7     | 44.8     |
| Load factor %             | 71.1        | 72.4        | 1.3 *    |
| Aircraft trips            | 6 280       | 9 221       | 46.8     |

\* percentage point difference

### Passengers/seats (000s)



(a) May, September and October 2020 and January and August to November 2021 moving annual totals not available for release

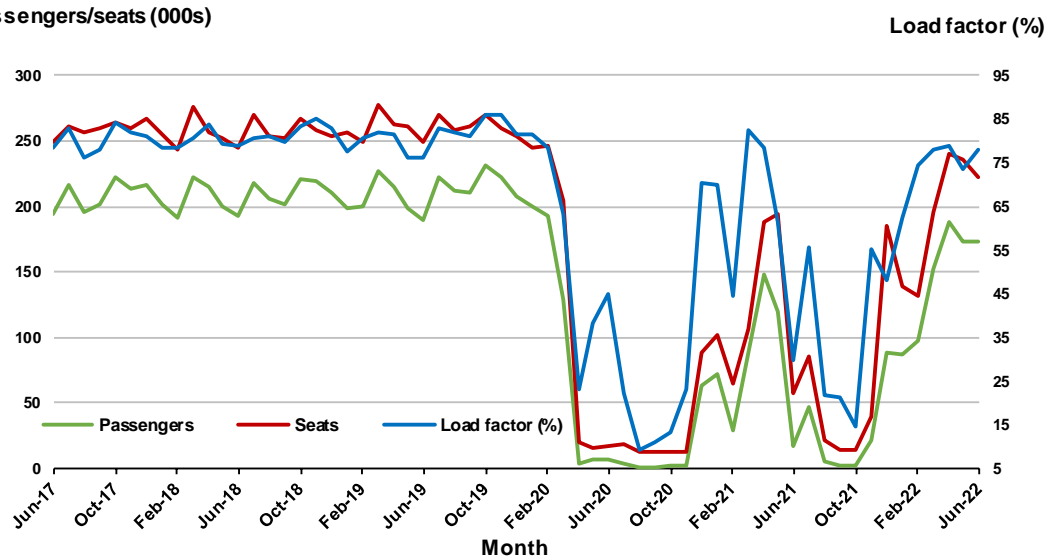
## 6. Adelaide - Melbourne

### Monthly data

|                           | Jun 2021 | Jun 2022 | % Change |
|---------------------------|----------|----------|----------|
| Passengers carried (000s) | 17.2     | 172.9    | 905.8    |
| Seats (000s)              | 57.3     | 222.2    | 287.4    |
| Load factor %             | 30.0     | 77.8     | 47.8 *   |
| Aircraft trips            | 412      | 1 365    | 231.3    |

\* percentage point difference

### Passengers/seats (000s)

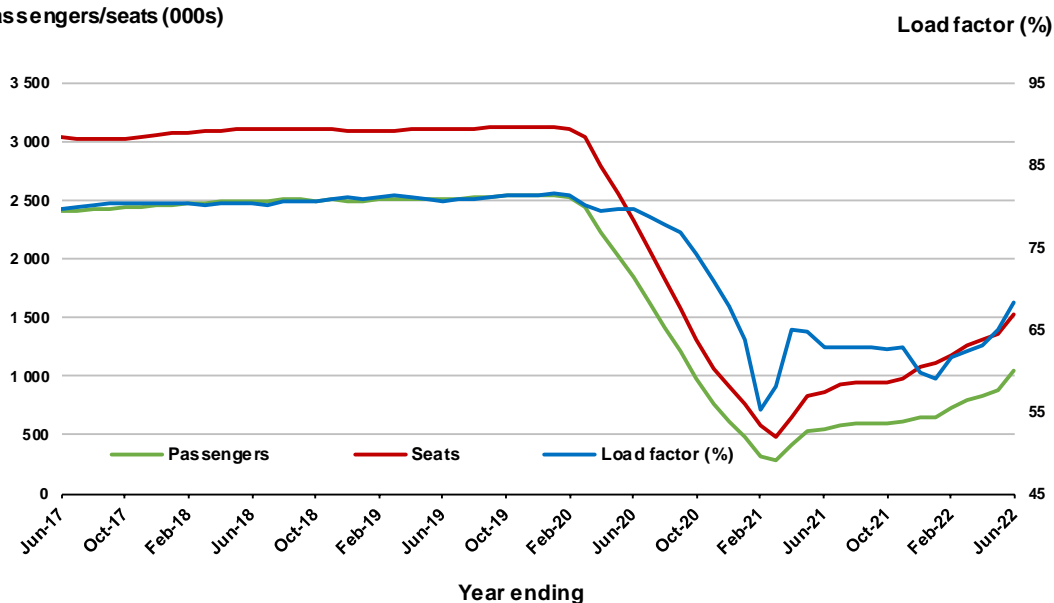


### Moving annual data

|                           | YE Jun 2021 | YE Jun 2022 | % Change |
|---------------------------|-------------|-------------|----------|
| Passengers carried (000s) | 547.3       | 1 040.0     | 90.0     |
| Seats (000s)              | 872.2       | 1 525.0     | 74.8     |
| Load factor %             | 62.8        | 68.2        | 5.4 *    |
| Aircraft trips            | 6 041       | 9 739       | 61.2     |

\* percentage point difference

### Passengers/seats (000s)



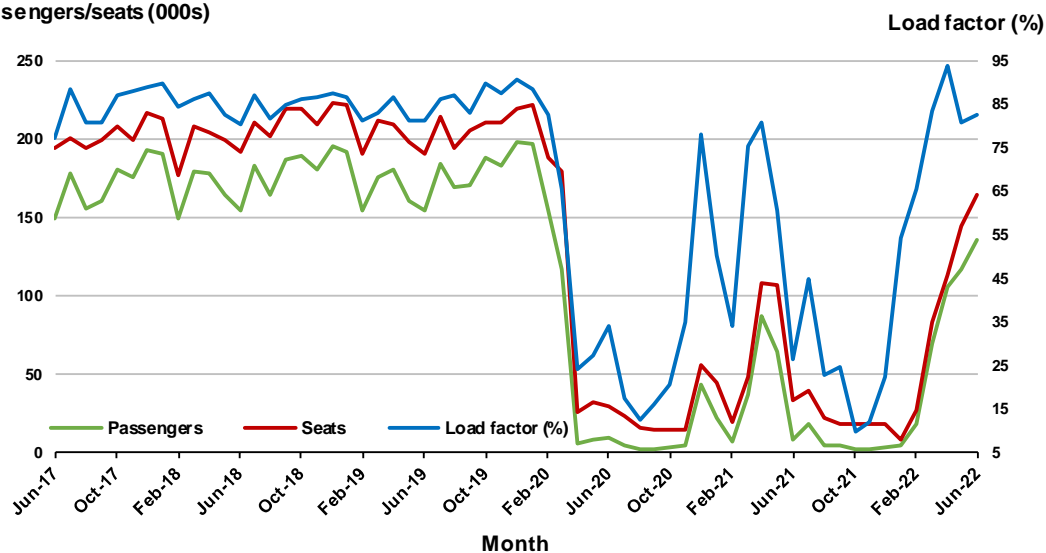
## 7. Melbourne - Perth

### Monthly data

|                           | Jun 2021 | Jun 2022 | % Change |
|---------------------------|----------|----------|----------|
| Passengers carried (000s) | 8.7      | 136.0    | 1455.2   |
| Seats (000s)              | 33.1     | 164.6    | 398.0    |
| Load factor %             | 26.5     | 82.6     | 56.1 *   |
| Aircraft trips            | 265      | 927      | 249.8    |

\* percentage point difference

### Passengers/seats (000s)

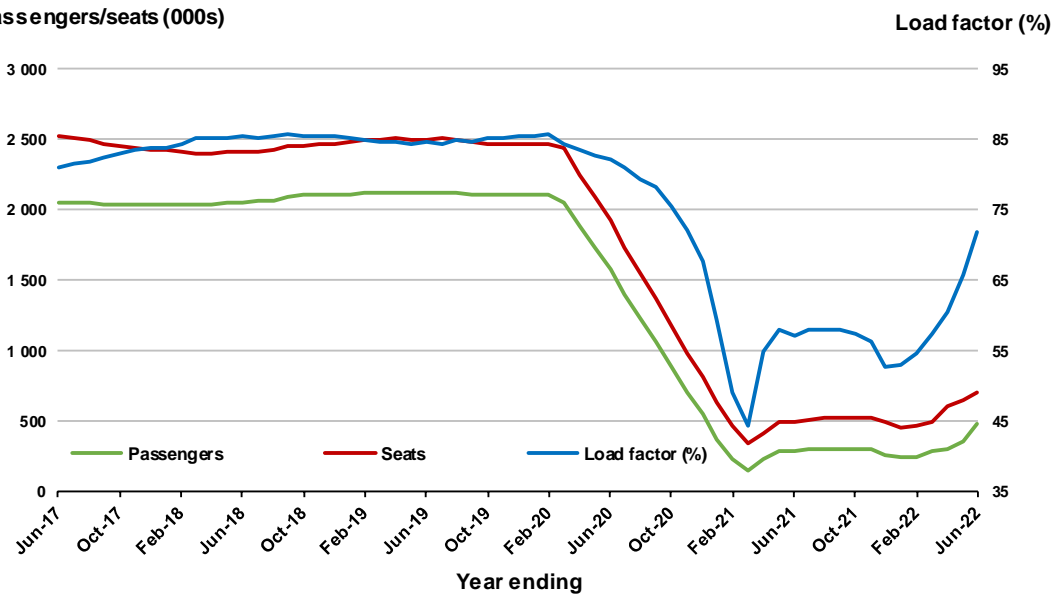


### Moving annual data

|                           | YE Jun 2021 | YE Jun 2022 | % Change |
|---------------------------|-------------|-------------|----------|
| Passengers carried (000s) | 285.9       | 485.7       | 69.9     |
| Seats (000s)              | 499.6       | 708.8       | 41.9     |
| Load factor %             | 57.2        | 71.9        | 14.7 *   |
| Aircraft trips            | 3 562       | 4 624       | 29.8     |

\* percentage point difference

### Passengers/seats (000s)



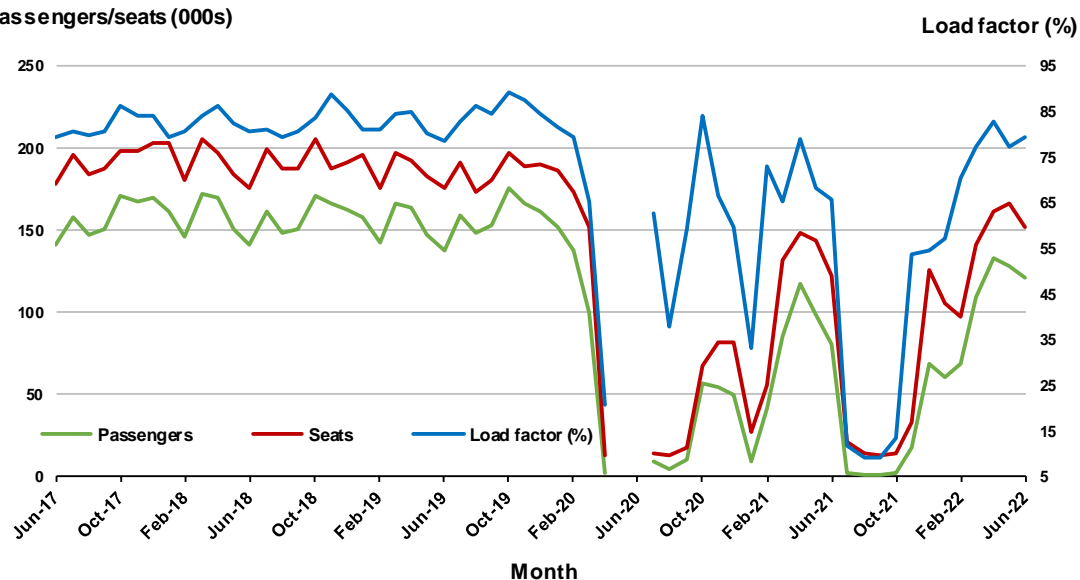
## 8. Adelaide - Sydney <sup>(a)</sup>

### Monthly data

|                           | Jun 2021 | Jun 2022 | % Change |
|---------------------------|----------|----------|----------|
| Passengers carried (000s) | 80.2     | 120.9    | 50.8     |
| Seats (000s)              | 122.1    | 152.4    | 24.8     |
| Load factor %             | 65.7     | 79.4     | 13.7 *   |
| Aircraft trips            | 721      | 935      | 29.7     |

\* percentage point difference

### Passengers/seats (000s)



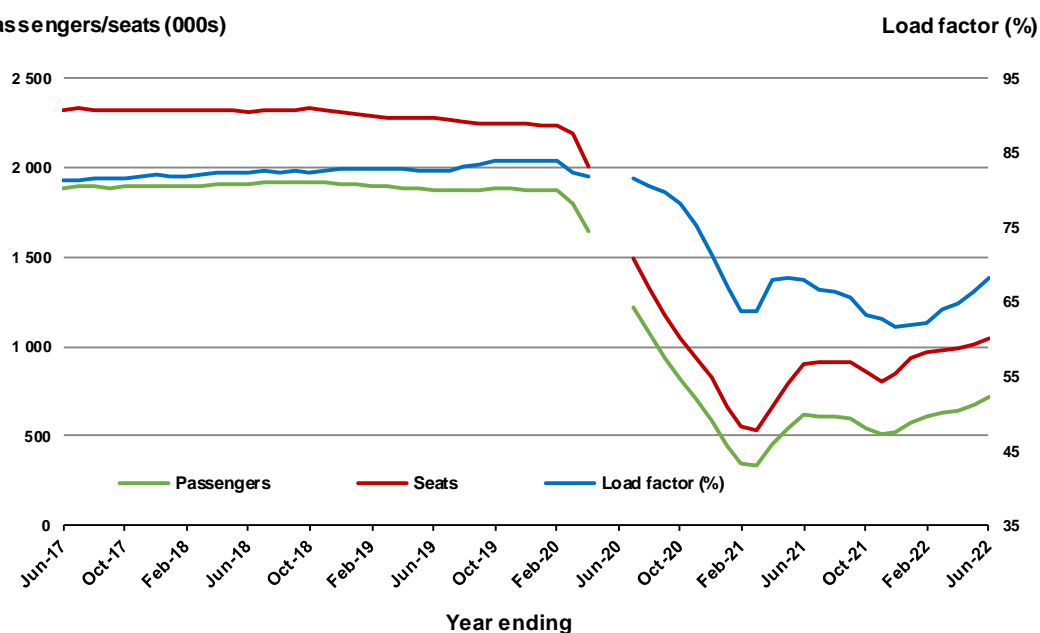
(a) May and June 2020 data not available for release.

### Moving annual data

|                           | YE Jun 2021 | YE Jun 2022 | % Change |
|---------------------------|-------------|-------------|----------|
| Passengers carried (000s) | 616.7       | 713.5       | 15.7     |
| Seats (000s)              | 907.1       | 1 045.8     | 15.3     |
| Load factor %             | 68.0        | 68.2        | 0.2 *    |
| Aircraft trips            | 5 661       | 6 540       | 15.5     |

\* percentage point difference

### Passengers/seats (000s)



(a) May and June 2020 moving annual totals are not available for release.



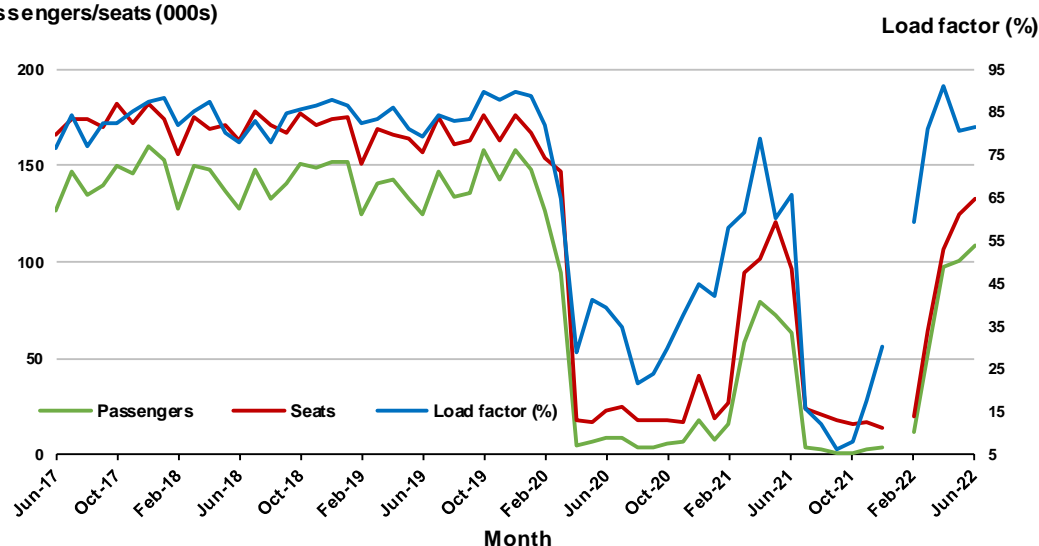
## 9. Perth - Sydney <sup>(a)</sup>

### Monthly data

|                           | Jun 2021 | Jun 2022 | % Change |
|---------------------------|----------|----------|----------|
| Passengers carried (000s) | 63.5     | 108.9    | 71.3     |
| Seats (000s)              | 96.8     | 133.2    | 37.6     |
| Load factor %             | 65.6     | 81.7     | 16.1 *   |
| Aircraft trips            | 479      | 684      | 42.8     |

\* percentage point difference

### Passengers/seats (000s)



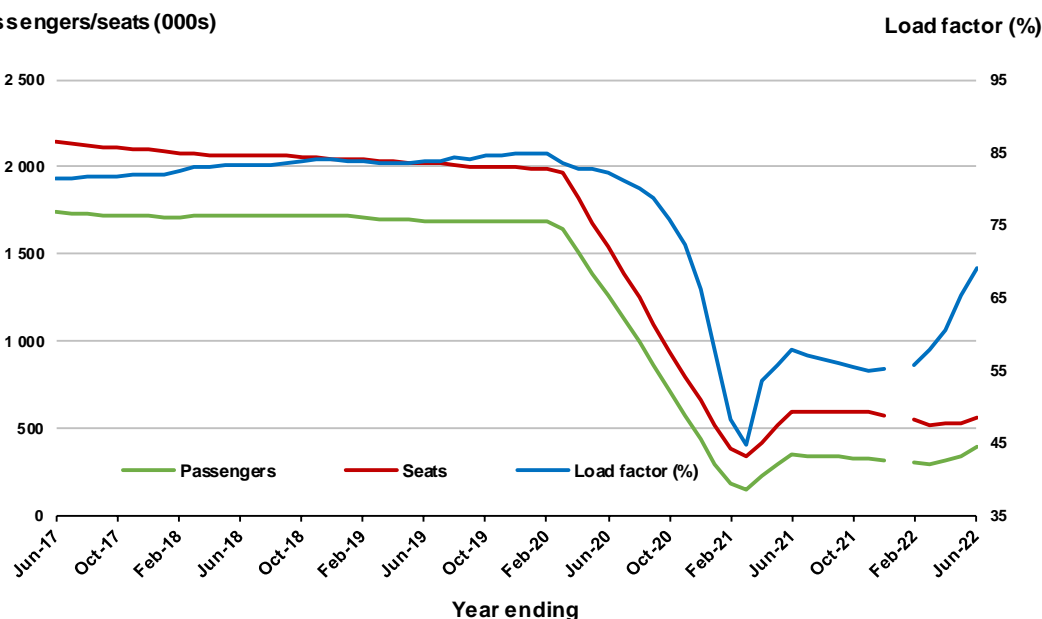
(a) January 2022 data not available for release.

### Moving annual data

|                           | YE Jun 2021 | YE Jun 2022 | % Change |
|---------------------------|-------------|-------------|----------|
| Passengers carried (000s) | 344.5       | 388.7       | 12.8     |
| Seats (000s)              | 595.9       | 562.3       | -5.6     |
| Load factor %             | 57.8        | 69.1        | 11.3 *   |
| Aircraft trips            | 3 081       | 3 091       | 0.3      |

\* percentage point difference

### Passengers/seats (000s)



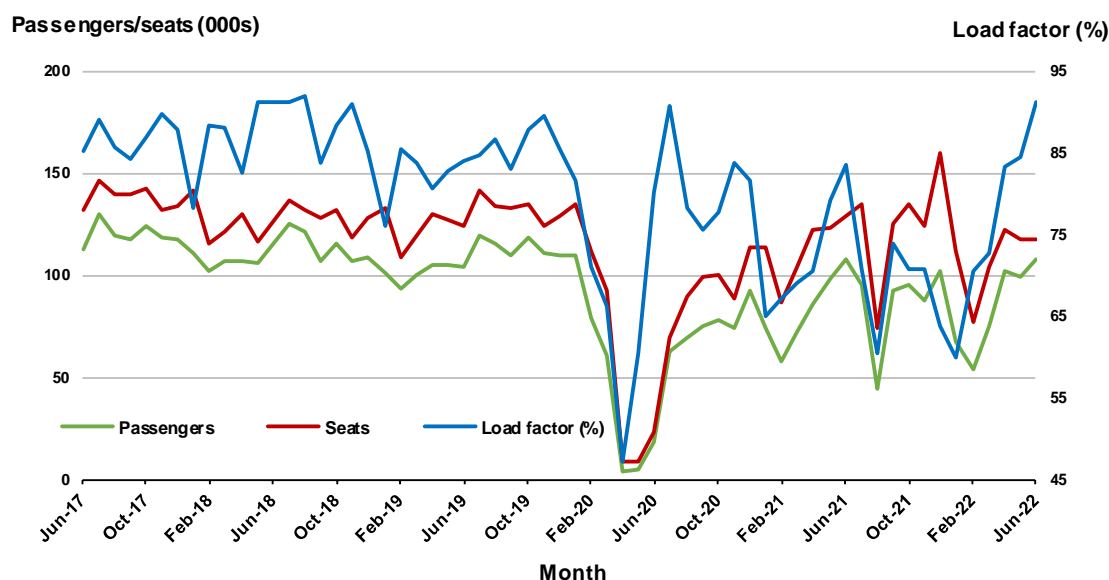
(a) January 2022 moving annual totals are not available for release.

## 10. Brisbane - Cairns

### Monthly data

|                           | Jun 2021 | Jun 2022 | % Change |
|---------------------------|----------|----------|----------|
| Passengers carried (000s) | 107.7    | 107.4    | -0.3     |
| Seats (000s)              | 129.2    | 117.8    | -8.8     |
| Load factor %             | 83.4     | 91.1     | 7.7 *    |
| Aircraft trips            | 796      | 777      | -2.4     |

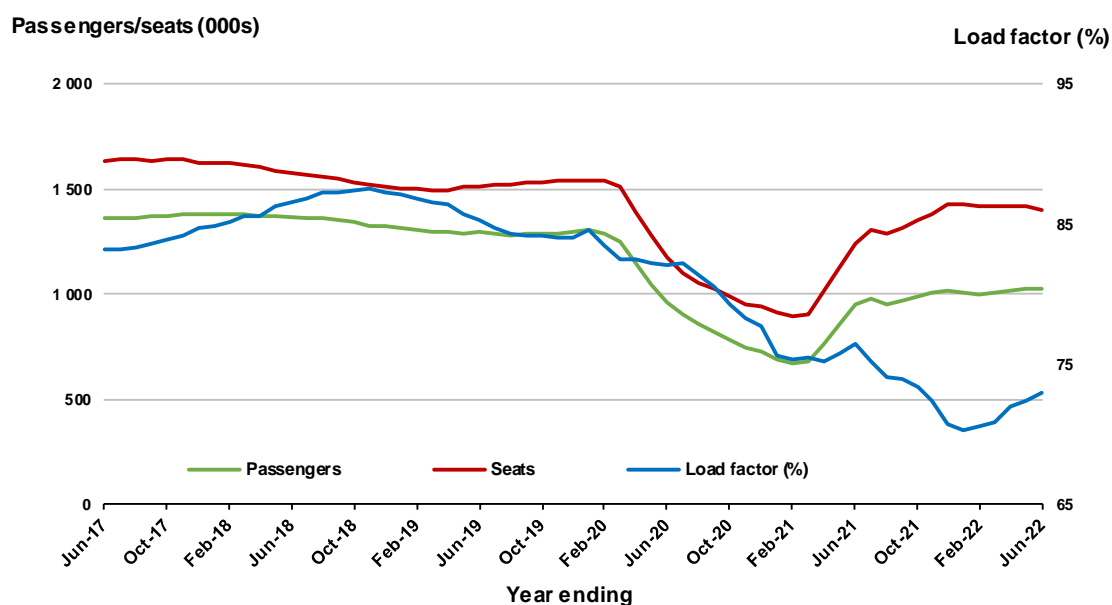
\* percentage point difference



### Moving annual data

|                           | YE Jun 2021 | YE Jun 2022 | % Change |
|---------------------------|-------------|-------------|----------|
| Passengers carried (000s) | 947.2       | 1 021.8     | 7.9      |
| Seats (000s)              | 1 238.6     | 1 402.1     | 13.2     |
| Load factor %             | 76.5        | 72.9        | -3.6 *   |
| Aircraft trips            | 8 187       | 9 029       | 10.3     |

\* percentage point difference



## TOP FIFTY REGIONAL AIRPORTS

**Table 10: Top fifty regional airports (000s) — passenger movements, monthly**

| Airport                               | Jun 2021       | Jun 2022       | % Change    |
|---------------------------------------|----------------|----------------|-------------|
| 1 Cairns                              | 261.0          | 346.1          | 32.6        |
| 2 Hobart                              | 108.8          | 191.4          | 75.9        |
| 3 Darwin                              | 119.7          | 174.0          | 45.3        |
| 4 Townsville                          | 112.7          | 146.2          | 29.8        |
| 5 Launceston                          | 42.7           | 94.7           | 121.7       |
| 6 Newcastle                           | 56.9           | 87.8           | 54.3        |
| 7 Mackay                              | 63.2           | 77.6           | 22.9        |
| 8 Ballina                             | 43.6           | 49.6           | 13.7        |
| 9 Broome                              | 40.7           | 48.0           | 17.9        |
| 10 Rockhampton                        | 39.6           | 45.4           | 14.7        |
| 11 Karratha                           | 37.2           | 44.6           | 19.9        |
| 12 Hamilton Island                    | 33.5           | 40.7           | 21.5        |
| 13 Port Hedland                       | 29.8           | 39.5           | 32.6        |
| 14 Proserpine                         | 24.2           | 38.2           | 57.6        |
| 15 Alice Springs                      | 28.9           | 35.7           | 23.6        |
| 16 Newman                             | 26.6           | 30.6           | 15.2        |
| 17 Kalgoorlie                         | 21.7           | 26.5           | 21.8        |
| 18 Coffs Harbour                      | 16.2           | 24.5           | 51.3        |
| 19 Mount Isa                          | 17.6           | 20.8           | 17.9        |
| 20 Ayers Rock                         | 9.6            | 19.1           | 100.1       |
| 21 Gladstone                          | 15.0           | 18.8           | 25.5        |
| 22 Paraburdoo                         | 16.4           | 18.6           | 13.2        |
| 23 Albury                             | 10.3           | 17.5           | 69.1        |
| 24 Dubbo                              | 13.4           | 15.9           | 18.6        |
| 25 Wagga Wagga                        | 10.0           | 15.7           | 56.3        |
| 26 Mildura                            | 6.5            | 15.5           | 139.3       |
| 27 Emerald                            | 15.0           | 15.4           | 2.5         |
| 28 Kununurra                          | 12.2           | 14.4           | 18.2        |
| 29 Port Macquarie                     | 9.8            | 14.4           | 47.3        |
| 30 Port Lincoln                       | 12.4           | 14.2           | 14.4        |
| 31 Tamworth                           | 8.1            | 11.4           | 40.5        |
| 32 Learmonth                          | 10.1           | 11.0           | 8.5         |
| 33 Hervey Bay                         | 7.8            | 10.5           | 35.1        |
| 34 Bundaberg                          | 7.9            | 10.3           | 31.1        |
| 35 Thursday Island                    | 8.7            | 9.1            | 5.2         |
| 36 Moranbah                           | 7.9            | 8.9            | 12.8        |
| 37 Armidale                           | 5.7            | 8.9            | 54.8        |
| 38 Gove                               | 5.8            | 8.0            | 38.7        |
| 39 Orange                             | 5.9            | 7.9            | 34.2        |
| 40 Olympic Dam                        | 8.9            | 7.8            | - 11.8      |
| 41 Weipa                              | 7.0            | 7.8            | 11.3        |
| 42 Geraldton                          | 6.8            | 7.5            | 10.0        |
| 43 Mount Gambier                      | 4.4            | 7.0            | 59.0        |
| 44 Devonport                          | 3.2            | 7.0            | 118.0       |
| 45 Toowoomba Wellcamp                 | 2.6            | 6.3            | 143.4       |
| 46 Griffith                           | 4.6            | 6.0            | 31.9        |
| 47 Merimbula                          | 4.1            | 5.9            | 44.8        |
| 48 Burnie                             | 2.2            | 5.8            | 160.1       |
| 49 Narrandera                         | 4.5            | 5.6            | 23.8        |
| 50 Cloncurry                          | 4.9            | 5.4            | 11.0        |
| <b>Total top 50 regional airports</b> | <b>1 376.2</b> | <b>1 899.5</b> | <b>38.0</b> |
| <b>Total regional airports</b>        | <b>1 475.4</b> | <b>2 015.1</b> | <b>36.6</b> |
| <b>Total domestic network</b>         | <b>4 709.3</b> | <b>9 052.4</b> | <b>92.2</b> |

Note: Airport passenger movement numbers are the sum of passenger arrivals and departures at each airport.

Regional airports are defined as airports which are, according to Australian Statistical Geography

Standard (ASGS), not based in Major Cities.

**Table 11: Top fifty regional airports (000s) — passenger movements, annual**

|                                       | <b>Airport</b>  | <b>YE Jun 2021</b> | <b>YE Jun 2022</b> | <b>% Change</b> |
|---------------------------------------|-----------------|--------------------|--------------------|-----------------|
| 1                                     | Cairns          | 2 079.7            | 2 605.9            | 25.3            |
| 2                                     | Hobart          | 1 037.3            | 1 503.8            | 45.0            |
| 3                                     | Darwin          | 908.9              | 1 248.8            | 37.4            |
| 4                                     | Townsville      | 982.1              | 1 201.5            | 22.3            |
| 5                                     | Launceston      | 539.8              | 743.1              | 37.7            |
| 6                                     | Mackay          | 571.3              | 682.3              | 19.4            |
| 7                                     | Newcastle       | 480.1              | 574.1              | 19.6            |
| 8                                     | Ballina         | 588.7              | 527.4              | -10.4           |
| 9                                     | Karratha        | 347.0              | 456.9              | 31.7            |
| 10                                    | Broome          | 346.3              | 424.9              | 22.7            |
| 11                                    | Rockhampton     | 355.3              | 411.0              | 15.7            |
| 12                                    | Port Hedland    | 267.3              | 409.7              | 53.2            |
| 13                                    | Proserpine      | 273.2              | 370.7              | 35.7            |
| 14                                    | Hamilton Island | 285.6              | 361.8              | 26.7            |
| 15                                    | Newman          | 234.8              | 327.0              | 39.2            |
| 16                                    | Kalgoorlie      | 206.8              | 274.8              | 32.9            |
| 17                                    | Alice Springs   | 271.3              | 248.9              | -8.2            |
| 18                                    | Paraburdoo      | 151.9              | 198.8              | 30.8            |
| 19                                    | Mount Isa       | 173.4              | 196.0              | 13.0            |
| 20                                    | Coffs Harbour   | 132.7              | 180.2              | 35.7            |
| 21                                    | Gladstone       | 129.0              | 155.4              | 20.5            |
| 22                                    | Port Lincoln    | 117.6              | 148.6              | 26.3            |
| 23                                    | Emerald         | 121.8              | 145.8              | 19.7            |
| 24                                    | Dubbo           | 109.0              | 112.5              | 3.2             |
| 25                                    | Kununurra       | 82.4               | 110.8              | 34.4            |
| 26                                    | Albury          | 74.4               | 109.3              | 46.9            |
| 27                                    | Mildura         | 60.9               | 105.8              | 73.6            |
| 28                                    | Learmonth       | 82.2               | 94.4               | 14.9            |
| 29                                    | Ayers Rock      | 68.4               | 93.5               | 36.7            |
| 30                                    | Thursday Island | 82.2               | 92.8               | 12.9            |
| 31                                    | Olympic Dam     | 58.6               | 90.4               | 54.1            |
| 32                                    | Wagga Wagga     | 72.0               | 89.5               | 24.4            |
| 33                                    | Moranbah        | 53.3               | 89.2               | 67.3            |
| 34                                    | Port Macquarie  | 64.4               | 88.8               | 37.9            |
| 35                                    | Bundaberg       | 61.8               | 82.1               | 32.8            |
| 36                                    | Geraldton       | 52.6               | 80.4               | 52.8            |
| 37                                    | Weipa           | 61.8               | 78.4               | 26.8            |
| 38                                    | Hervey Bay      | 40.5               | 76.5               | 88.9            |
| 39                                    | Tamworth        | 58.4               | 71.8               | 22.9            |
| 40                                    | Gove            | 58.5               | 61.2               | 4.6             |
| 41                                    | Cloncurry       | 36.1               | 58.6               | 62.0            |
| 42                                    | Armidale        | 41.1               | 56.5               | 37.4            |
| 43                                    | Mount Gambier   | 26.7               | 51.7               | 93.4            |
| 44                                    | Albany          | 40.2               | 51.4               | 27.8            |
| 45                                    | Orange          | 39.0               | 51.3               | 31.6            |
| 46                                    | Norfolk Island  | 43.5               | 50.5               | 16.0            |
| 47                                    | Esperance       | 37.8               | 49.6               | 31.2            |
| 48                                    | Roma            | 41.3               | 49.1               | 18.8            |
| 49                                    | Whyalla         | 37.1               | 47.1               | 26.8            |
| 50                                    | Groote Eylandt  | 28.0               | 46.6               | 66.2            |
| <b>Total top 50 regional airports</b> |                 | <b>12 114.6</b>    | <b>15 436.8</b>    | <b>27.4</b>     |
| <b>Total regional airports</b>        |                 | <b>13 004.5</b>    | <b>16 485.2</b>    | <b>26.8</b>     |
| <b>Total domestic network</b>         |                 | <b>43 113.0</b>    | <b>60 713.1</b>    | <b>40.8</b>     |

Note: Airport passenger movement numbers are the sum of passenger arrivals and departures at each airport. Regional airports are defined as airports which are, according to Australian Statistical Geography Standard (ASGS), not based in Major Cities.

## DOMESTIC CHARTER ACTIVITY

**Table 12: Charter passengers carried and aircraft trips - monthly activity**

|                                       | Jun 2021 | Jun 2022 | % Change |
|---------------------------------------|----------|----------|----------|
| Total domestic charter passengers     | 279 450  | 317 628  | 13.7     |
| Total domestic charter aircraft trips | 5 219    | 5 862    | 12.3     |

Note: Helicopter, joyflights and sightseeing charter flights not included.

**Table 13: Charter passengers carried and aircraft trips - annual activity**

|                                       | YE Jun 2021 | YE Jun 2022 | % Change |
|---------------------------------------|-------------|-------------|----------|
| Total domestic charter passengers     | 3 436 255   | 3 413 949   | -0.6     |
| Total domestic charter aircraft trips | 67 178      | 64 534      | -3.9     |

Note: Helicopter, joyflights and sightseeing charter flights not included.

**Table 14: Domestic airports - charter activity - monthly**

|  | Jun 2021 | Jun 2022 | % Change |
|--|----------|----------|----------|
| Total domestic charter passenger movements | 558 900  | 635 256  | 13.7     |
| Total domestic charter aircraft movements  | 10 438   | 11 724   | 12.3     |
| Perth airport charter passenger movements  | 206 960  | 237 752  | 14.9     |
| Perth airport charter aircraft movements   | 3 525    | 3 993    | 13.3     |

Note: Helicopter, joyflights and sightseeing charter flights not included.

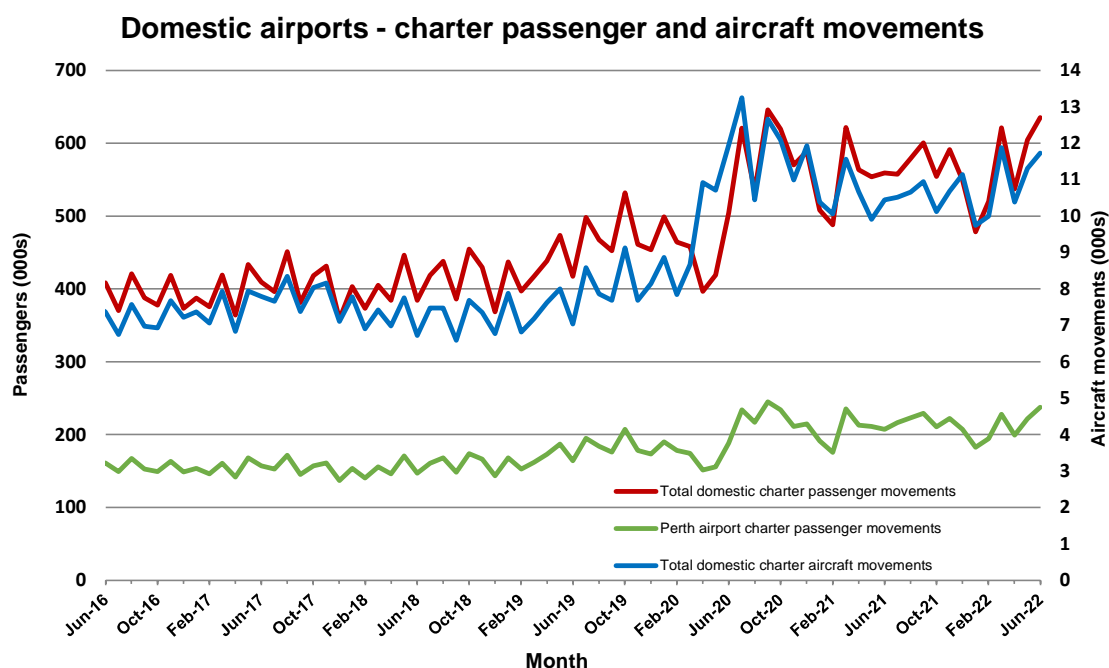
Charter passenger and aircraft movement numbers are the sum of arrivals and departures at each airport.

**Table 15: Domestic airports - charter activity - annual**

|  | YE Jun 2021 | YE Jun 2022 | % Change |
|--|-------------|-------------|----------|
| Total domestic charter passenger movements | 6 872 510   | 6 827 898   | -0.6     |
| Total domestic charter aircraft movements  | 134 356     | 129 068     | -3.9     |
| Perth airport charter passenger movements  | 2 588 368   | 2 573 057   | -0.6     |
| Perth airport charter aircraft movements   | 44 285      | 44 436      | 0.3      |

Note: Helicopter, joyflights and sightseeing charter flights not included.

Charter passenger and aircraft movement numbers are the sum of arrivals and departures at each airport.



## DEFINITIONS

|   |  |
|---|--|
| Aircraft Trips                          | The number of flight stages. A return flight counts as two aircraft trips.   |
| Airport Movements                       | Airport movements (passenger and cargo) are measured once on arrival and once on departure. Each domestic trip generates two movements at airports. For example, a trip from Melbourne to Sydney will be counted twice, as a departure at Melbourne and as an arrival at Sydney. At the national level, the sum of all domestic airport traffic will therefore be equal to twice the number of trips undertaken. |
| Available Seat Kilometres (ASKs)        | Calculated by multiplying the number of seats available on each flight stage, by the distance in kilometres between the ports. The distances used are Great Circle Distances.  |
| City-Pair                               | The ports shown make up the city-pair route. Passenger movements shown for a city pair reflect total traffic in both directions.   |
| Flight Stage                            | The operation of an aircraft from take-off to landing.   |
| Load Factor                             | The total revenue passenger kilometres performed as a percentage of the total available seat kilometres.   |
| Passengers Carried                      | Revenue passengers carried.  |
| Regular Public Transport Services (RPT) | All air service operations in which aircraft are available for the transport of members of the public and are conducted in accordance with fixed schedules. It does not include charter or other non-scheduled operations.   |
| Revenue Passengers                      | All passengers paying any fare. Frequent flyer redemption travellers are regarded as revenue passengers.   |
| Revenue Passenger Kilometres (RPKs)     | Calculated by multiplying the number of revenue passengers travelling on each flight stage, by the distance in kilometres between the ports. The distances used are Great Circle Distances.  |
| Traffic on board by stages              | The total of all traffic (revenue passengers) on each flight stage between two directly connected airports.  |
| ..                                      | Not available for confidentiality or other reasons.  |
| NA                                      | Not applicable.  |