



Australian Government

Department of Infrastructure, Transport,
Regional Development, Communications, Sport and the Arts

Bureau of Infrastructure and Transport Research Economics
STATISTICAL REPORT



Aviation

Domestic aviation activity
July 2025

The Department of Infrastructure, Transport, Regional Development, Communications, Sport and the Arts acknowledges the Traditional Custodians of Country of the land on which we work and live.

We recognise and respect the continuing connections to land, waters and communities.

We pay our respects to them and their cultures and to their Elders both past and present and to all Aboriginal and Torres Strait Islander people.

© Commonwealth of Australia 2025

ISSN: 1832 – 1968

BITRE Reference: 2025-107

Ownership of intellectual property rights in this publication

Unless otherwise noted, copyright (and any other intellectual property rights, if any) in this publication is owned by the Commonwealth of Australia (referred to below as the Commonwealth).

Disclaimer

The material contained in this publication is made available on the understanding that the Commonwealth is not providing professional advice, and that users exercise their own skill and care with respect to its use, and seek independent advice if necessary.

The Commonwealth makes no representations or warranties as to the contents or accuracy of the information contained in this publication. To the extent permitted by law, the Commonwealth disclaims liability to any person or organisation in respect of anything done, or omitted to be done, in reliance upon information contained in this publication.

Creative Commons licence

With the exception of (a) the Coat of Arms; and (b) the Department of Infrastructure, Transport, Regional Development, Communications, Sport and the Arts' photos and graphics, copyright in this publication is licensed under a Creative Commons Attribution 3.0 Australia Licence.

Creative Commons Attribution 3.0 Australia Licence is a standard form licence agreement that allows you to copy, communicate and adapt this publication provided that you attribute the work to the Commonwealth and abide by the other licence terms. A summary of the licence terms is available from <http://creativecommons.org/licenses/by/3.0/au/deed.en>.

The full licence terms are available from <http://creativecommons.org/licenses/by/3.0/au/legalcode>.

Use of the Coat of Arms

The Department of the Prime Minister and Cabinet sets the terms under which the Coat of Arms is used. Please refer to the Department's Commonwealth Coat of Arms and Government branding web page <http://www.dpmc.gov.au/guidelines/index.cfm#brand> and, in particular, the Guidelines on the use of the Commonwealth Coat of Arms publication.

An appropriate citation for this report is:

Bureau of Infrastructure and Transport Research Economics (BITRE), 2025, Domestic aviation activity, Statistical Report, BITRE, Canberra ACT.

Contact us

This publication is available in PDF format. All other rights are reserved, including in relation to any Departmental logos or trademarks which may exist. For enquiries regarding the licence and any use of this publication, please contact:

Bureau of Infrastructure and Transport Research Economics (BITRE)
Department of Infrastructure, Transport, Regional Development, Communications, Sport and the Arts
GPO Box 501, Canberra ACT 2601, Australia

Email: avstats@infrastructure.gov.au

Website: www.bitre.gov.au

Inquiries: Marko.Rodic2@infrastructure.gov.au (02) 6136 7995

FOREWORD

This report provides an overview of domestic (including charter) commercial aviation activity in Australia for the month of July 2025.

The data covers revenue passengers carried by Australian-registered operators of scheduled Regular Public Transport (RPT) services over Australian flight stages and fixed-wing charter operators. These estimates include passengers carried between domestic airports on international flights operated by these carriers. The passengers carried refer to traffic on board by stages.

Estimates of passengers and aircraft movements for charter aviation are included in this publication, where BITRE confidentiality standards are met.

Individual routes shown are restricted to those with an average exceeding 8,000 passengers per month over the previous six months where two or more airlines operate in competition.

Information on the total network for the month of July 2025 and on the RPT network for the month of July 2025 is presented on page 2, with estimates for the year ended July 2025 presented on page 3.

Detailed information on individual routes can be found in the RPT summary pages 4-13 of this publication. For the month of July 2025, there are 62 individual routes published.

The top ten airports in terms of RPT passenger movements are shown on page 14.

Data on domestic RPT cargo movements at the top five cargo airports are provided on page 15. The table includes cargo carried on passenger flights operated by the Qantas group (including Jetstar), Virgin Australia, Air North and Skippers as well as the cargo carried by dedicated freighter aircraft operated by Qantas Freight and Team Global Express (formerly Toll).

The long-term trends for the top ten competitive RPT routes are presented graphically on pages 16-25.

Domestic RPT passenger movements at regional airports are shown on pages 26-27.

Tables providing estimates of domestic charter aviation activity are shown on page 28. BITRE confidentiality standards restrict publication of detailed estimates for individual Australian airports, with the exception of Perth Airport.

A list of definitions can be found on page 29.

This report was prepared by the Aviation Statistics Section of the Bureau of Infrastructure and Transport Research Economics with data provided by airlines.

Estimates are included where data were not available and data presented in this publication may contain revisions to previously published data.

Where figures have been rounded, discrepancies may occur between sums of component items and totals, and in percentage changes which are derived from figures prior to rounding.

CONTENTS

Highlights	1
Total network.....	2
RPT network	2
Top competitive routes.....	4
Top ten airports – passenger movements.....	14
Top five airports – cargo movements.....	15
Top ten routes	16
1. Melbourne – Sydney	16
2. Brisbane – Sydney.....	17
3. Brisbane – Melbourne	18
4. Gold Coast – Sydney	19
5. Adelaide – Melbourne	20
6. Gold Coast – Melbourne	21
7. Melbourne – Perth	22
8. Adelaide – Sydney.....	23
9. Perth – Sydney	24
10. Brisbane – Cairns	25
Top fifty regional airports	26
Domestic charter activity	28
Definitions	29

This page is intentionally left blank.

HIGHLIGHTS

There were 5.77 million passengers carried on Australian domestic commercial aviation (including charter operations) in July 2025, compared with 5.55 million in July 2024 (up 3.9%). This is also an increase of 1.1% on pre-COVID July 2019 passenger numbers (5.70 million).

5.36 million passengers were carried on Regular Public Transport (RPT) flights in July 2025 (excluding charter operations), an increase of 4.0% compared to July 2024.

For the month of July 2025, there were 53.1 thousand RPT aircraft trips, a decrease of 1.9% on July 2024.

For the year ending July 2025 there were 59.71 million RPT passengers, an increase of 1.6% on the year ending July 2024.

RPT revenue passenger kilometres (RPKs) performed were 6.61 billion for the month, compared with 6.29 billion in July 2024 (up 5.2%).

Capacity, measured by available seat kilometres (ASKs), increased to 7.93 billion in July 2025 compared to 7.72 billion in July 2024 (up 2.7%).

The industry wide load factor (RPKs/ASKs) increased from 81.5% in July 2024 to 83.4% in July 2025. The highest load factor (94.1%) was recorded on the Canberra – Gold Coast route while the lowest load factor (50.3%) was recorded on the Brisbane – Moranbah route.

For the month of July 2025, Melbourne – Sydney was Australia's busiest RPT route with 683.9 thousand passengers, followed by Brisbane – Sydney with 388.8 thousand passengers and Brisbane – Melbourne with 326.6 thousand passengers.

Sydney was Australia's busiest domestic airport with 2.20 million passenger movements in July 2025, followed by Melbourne with 2.14 million passenger movements and Brisbane with 1.58 million passenger movements.

Total cargo movements at Australian airports on domestic RPT flights were 25.3 thousand tonnes in July 2025, a decrease of 10.0% compared with July 2024.

In July 2025, there were 2.36 million domestic passenger movements through regional airports, an increase of 3.5% from July 2024. Out of the top 50 regional airports, the strongest increase was recorded at Devonport Airport (up 19.8% on July 2024), while the largest decrease was recorded at Paraburdoo Airport (down 15.7% on July 2024).

Fixed-wing charter operators carried 408.1 thousand passengers in July 2025, an increase of 3.1 % compared with July 2024. Perth Airport accounted for 35.4% of all charter passengers in Australia.

TOTAL NETWORK

Summary of monthly commercial aviation activity

	Jul 2024	Jul 2025	% Change
Total passengers carried (millions)	5.55	5.77	3.9
Aircraft trips (000s)	60.8	60.0	-1.4

Note: Regular Public Transport and charter aviation activity
Helicopter, joy flights and sightseeing charter flights not included.

RPT NETWORK

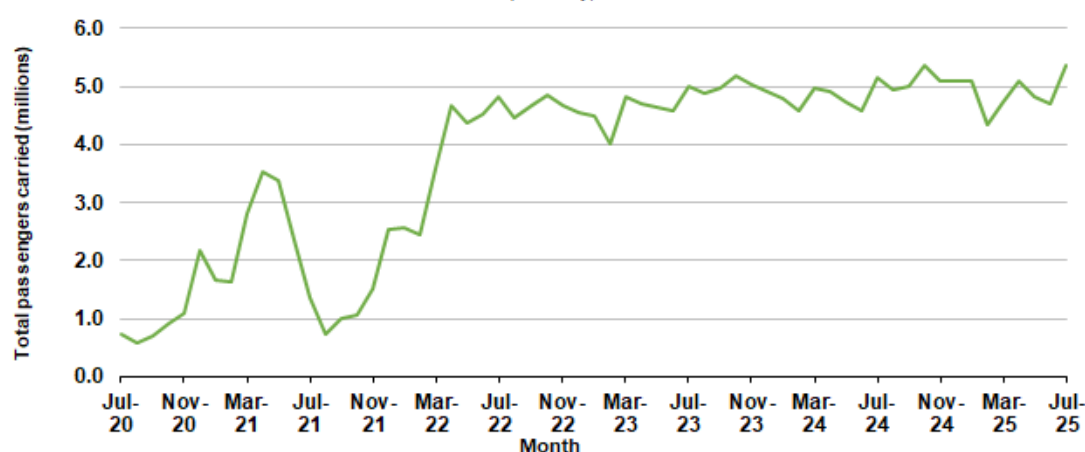
Summary of monthly RPT activity

	Jul 2024	Jul 2025	% Change
Total passengers carried (millions)	5.15	5.36	4.0
Revenue passenger kilometres (billions)	6.29	6.61	5.2
Available seats (millions)	6.53	6.59	0.9
Available seat kilometres (billions)	7.72	7.93	2.7
Load factor %	81.5	83.4	1.9 *
Aircraft trips (000s)	54.1	53.1	-1.9

* percentage point difference

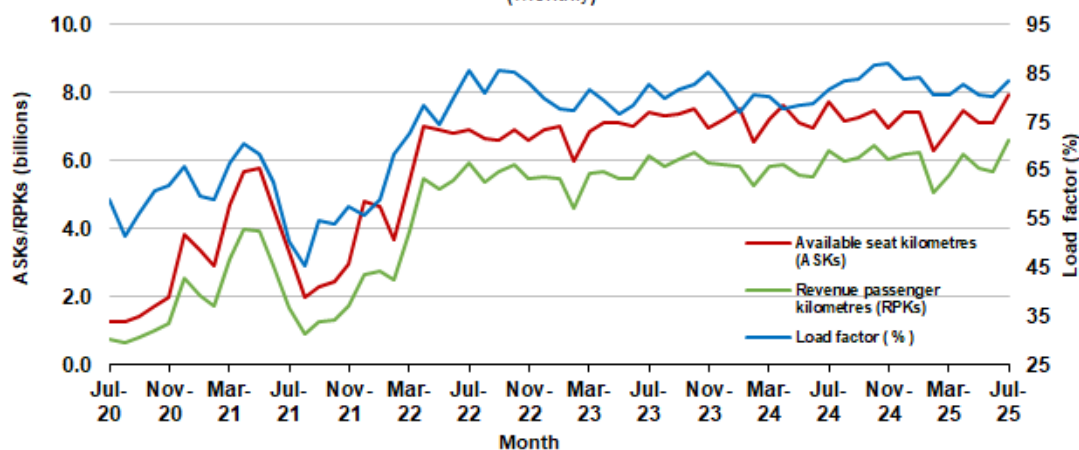
Domestic RPT passenger traffic

(monthly)



RPT Network utilisation

(monthly)



TOTAL NETWORK

Summary of annual commercial aviation activity

	YE Jul 2024	YE Jul 2025	% Change
Total passengers carried (millions)	63.08	63.99	1.4
Aircraft trips (000s)	692.9	673.8	-2.7

Note: Regular Public Transport and charter aviation activity
Helicopter, joy flights and sightseeing charter flights not included.

RPT NETWORK

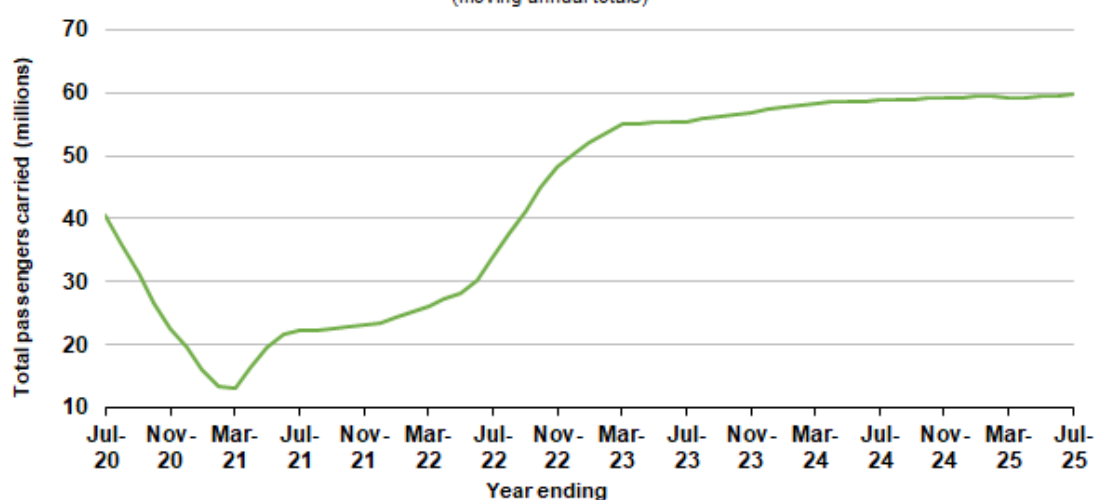
Summary of annual RPT activity

	YE Jul 2024	YE Jul 2025	% Change
Total passengers carried (millions)	58.77	59.71	1.6
Revenue passenger kilometres (billions)	70.13	71.99	2.6
Available seats (millions)	74.97	73.46	-2.0
Available seat kilometres (billions)	87.23	86.62	-0.7
Load factor %	80.4	83.1	2.7 *
Aircraft trips (000s)	619.4	600.6	-3.0

* percentage point difference

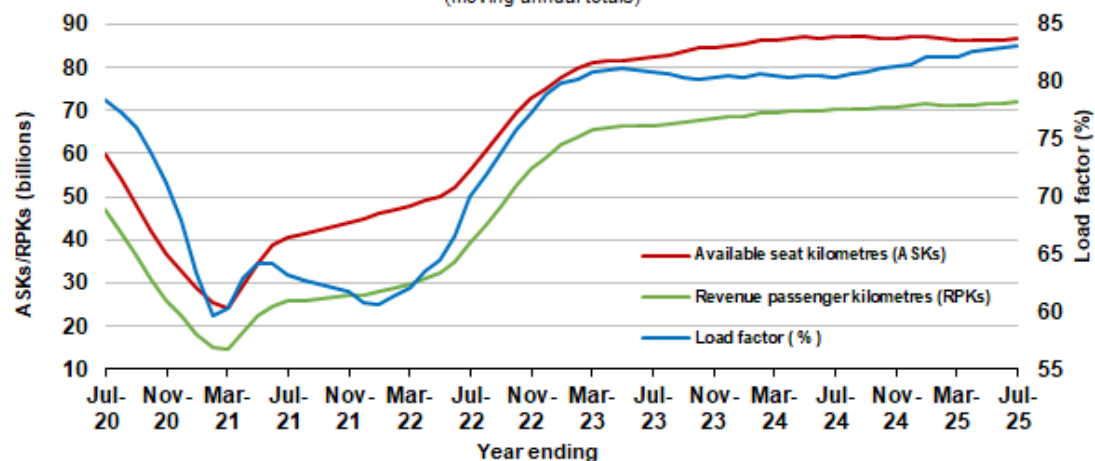
Domestic RPT passenger traffic

(moving annual totals)



RPT Network utilisation

(moving annual totals)



TOP COMPETITIVE ROUTES

	City-Pair	YE Jul 2024	YE Jul 2025	% Change
1	Melbourne - Sydney	7 938.0	8 085.6	1.9
2	Brisbane - Sydney	4 335.4	4 363.7	0.7
3	Brisbane - Melbourne	3 408.4	3 571.8	4.8
4	Gold Coast - Sydney	2 529.8	2 472.0	-2.3
5	Adelaide - Melbourne	2 332.3	2 331.1	-0.1
6	Gold Coast - Melbourne	2 236.0	2 106.8	-5.8
7	Melbourne - Perth	1 988.0	2 078.3	4.5
8	Adelaide - Sydney	1 849.5	1 895.8	2.5
9	Perth - Sydney	1 607.6	1 727.3	7.5
10	Hobart - Melbourne	1 350.9	1 428.5	5.7
11	Brisbane - Cairns	1 286.5	1 307.8	1.7
12	Brisbane - Perth	1 041.3	1 136.3	9.1
13	Canberra - Melbourne	1 019.6	983.7	-3.5
14	Brisbane - Townsville	896.3	966.7	7.9
15	Cairns - Sydney	913.5	920.4	0.8
16	Launceston - Melbourne	857.1	876.8	2.3
17	Adelaide - Brisbane	868.7	863.9	-0.5
18	Cairns - Melbourne	822.7	862.8	4.9
19	Hobart - Sydney	771.9	830.1	7.5
20	Sunshine Coast - Sydney	769.5	787.8	2.4
21	Brisbane - Mackay	747.3	785.2	5.1
22	Melbourne - Sunshine Coast	773.6	729.8	-5.7
23	Adelaide - Perth	679.9	715.3	5.2
24	Karratha - Perth	583.1	651.2	11.7
25	Brisbane - Canberra	628.6	647.3	3.0
26	Canberra - Sydney	622.5	627.1	0.7
27	Brisbane - Rockhampton	544.4	608.2	11.7
28	Brisbane - Newcastle	502.2	520.2	3.6
29	Ballina - Sydney	517.0	501.4	-3.0
30	Perth - Port Hedland	475.7	480.6	1.0
31	Melbourne - Newcastle	443.0	468.2	5.7
32	Newman - Perth	380.1	431.4	13.5
33	Kalgoorlie - Perth	365.1	376.4	3.1
34	Broome - Perth	360.0	365.9	1.6
35	Launceston - Sydney	339.2	350.3	3.3
36	Brisbane - Darwin	318.9	349.5	9.6
37	Brisbane - Hobart	292.9	316.9	8.2
38	Darwin - Melbourne	280.2	300.1	7.1
39	Brisbane - Proserpine	271.2	289.3	6.7
40	Adelaide - Gold Coast	271.4	281.0	3.6
41	Hamilton Island - Sydney	242.1	251.7	4.0
42	Brisbane - Gladstone	222.0	220.4	-0.7
43	Coffs Harbour - Sydney	210.2	202.3	-3.8
44	Adelaide - Canberra	185.9	194.1	4.4
45	Darwin - Perth	176.2	191.0	8.4
46	Brisbane - Emerald	185.8	188.8	1.6
47	Canberra - Gold Coast	185.4	173.5	-6.4
48	Dubbo - Sydney	177.0	170.8	-3.5
49	Adelaide - Port Lincoln	171.7	166.6	-3.0
50	Port Macquarie - Sydney	167.2	164.4	-1.7

Table 1: (continued) Passengers carried (000s) — annual activity

	City-Pair	YE Jul 2024	YE Jul 2025	% Change
51	Sydney - Wagga Wagga	158.2	163.6	3.5
52	Brisbane - Hamilton Island	162.4	163.2	0.5
53	Albury - Sydney	165.7	154.9	-6.5
54	Brisbane - Launceston	148.8	153.7	3.3
55	Brisbane - Mount Isa	144.4	152.8	5.8
56	Melbourne - Mildura	172.4	150.4	-12.7
57	Brisbane - Bundaberg	137.7	140.5	2.0
58	Devonport - Melbourne	122.0	137.9	13.1
59	Geraldton - Perth	106.5	119.9	12.5
60	Ayers Rock - Melbourne	..	115.2	NA
61	Brisbane - Moranbah	112.2	106.1	-5.4
62	Adelaide - Alice Springs	111.6	104.9	-6.0
Total domestic network		58 770.6	59 710.5	1.6

.. Data not available for release.

Table 2: Passengers carried (000s) — monthly activity

	City-Pair	Jul 2024	Jul 2025	% Change
1	Melbourne - Sydney	651.9	683.9	4.9
2	Brisbane - Sydney	383.9	388.8	1.3
3	Brisbane - Melbourne	307.7	326.6	6.1
4	Gold Coast - Sydney	222.3	228.4	2.8
5	Adelaide - Melbourne	191.3	198.7	3.9
6	Gold Coast - Melbourne	192.9	193.0	0.1
7	Melbourne - Perth	172.2	184.3	7.0
8	Adelaide - Sydney	153.4	159.2	3.8
9	Perth - Sydney	134.2	143.7	7.1
10	Brisbane - Cairns	122.4	124.1	1.4
11	Hobart - Melbourne	112.4	117.6	4.6
12	Brisbane - Perth	89.1	97.7	9.7
13	Cairns - Sydney	93.9	96.5	2.7
14	Cairns - Melbourne	86.4	93.2	7.9
15	Brisbane - Townsville	90.8	92.7	2.0
16	Canberra - Melbourne	80.9	79.8	-1.3
17	Adelaide - Brisbane	75.5	75.9	0.5
18	Launceston - Melbourne	66.5	73.1	9.9
19	Brisbane - Mackay	70.4	72.5	3.0
20	Sunshine Coast - Sydney	64.8	72.3	11.5
21	Melbourne - Sunshine Coast	61.4	68.9	12.2
22	Hobart - Sydney	64.8	64.8	-0.1
23	Karratha - Perth	57.7	64.6	12.0
24	Brisbane - Canberra	56.9	60.2	5.7
25	Adelaide - Perth	57.8	58.5	1.4
26	Brisbane - Rockhampton	51.9	55.7	7.2
27	Canberra - Sydney	54.9	52.5	-4.3
28	Brisbane - Newcastle	44.7	47.0	5.3
29	Perth - Port Hedland	44.1	46.0	4.4
30	Brisbane - Darwin	37.4	42.0	12.2
31	Newman - Perth	38.1	40.4	5.9
32	Broome - Perth	38.4	40.4	5.2
33	Melbourne - Newcastle	38.2	40.2	5.4
34	Ballina - Sydney	43.5	39.4	-9.5
35	Darwin - Melbourne	30.2	35.8	18.5
36	Kalgoorlie - Perth	31.7	34.2	8.1
37	Launceston - Sydney	27.7	30.1	8.7
38	Brisbane - Proserpine	25.0	26.2	4.8
39	Brisbane - Hobart	23.5	25.4	7.7
40	Adelaide - Gold Coast	23.5	23.6	0.6
41	Hamilton Island - Sydney	23.6	22.9	-3.0
42	Darwin - Perth	20.0	22.0	10.3
43	Brisbane - Gladstone	20.1	19.1	-5.0
44	Brisbane - Emerald	16.8	16.9	0.5
45	Canberra - Gold Coast	15.4	16.3	5.8
46	Adelaide - Canberra	14.7	15.8	7.8
47	Coffs Harbour - Sydney	18.5	15.7	-14.8
48	Dubbo - Sydney	14.5	14.6	1.2
49	Brisbane - Hamilton Island	12.8	14.5	13.5
50	Sydney - Wagga Wagga	13.9	14.3	3.5

continued

Table 2: (continued) Passengers carried (000s) — monthly activity

	City-Pair	Jul 2024	Jul 2025	% Change
51	Brisbane - Mount Isa	13.5	13.8	2.2
52	Port Macquarie - Sydney	13.5	13.5	0.0
53	Albury - Sydney	15.0	13.5	-10.0
54	Devonport - Melbourne	11.0	13.1	19.7
55	Adelaide - Port Lincoln	13.4	12.9	-3.8
56	Melbourne - Mildura	13.2	12.6	-4.5
57	Brisbane - Bundaberg	12.6	12.5	-0.7
58	Brisbane - Launceston	12.2	11.3	-7.3
59	Ayers Rock - Melbourne	..	10.4	NA
60	Adelaide - Alice Springs	10.8	10.3	-4.0
61	Geraldton - Perth	9.6	9.9	3.5
62	Brisbane - Moranbah	10.1	8.8	-13.4
Total domestic network		5 151.3	5 357.7	4.0

.. Data not available for release.

Table 3: Available seats (000s) — monthly activity

	City-Pair	Jul 2024	Jul 2025	% Change
1	Melbourne - Sydney	832.9	820.2	-1.5
2	Brisbane - Sydney	478.2	444.1	-7.1
3	Brisbane - Melbourne	364.1	382.1	4.9
4	Gold Coast - Sydney	263.6	262.7	-0.4
5	Adelaide - Melbourne	234.8	241.3	2.8
6	Gold Coast - Melbourne	208.7	214.0	2.5
7	Melbourne - Perth	214.8	213.6	-0.6
8	Adelaide - Sydney	202.4	203.6	0.6
9	Perth - Sydney	169.1	176.3	4.3
10	Brisbane - Cairns	134.7	137.6	2.1
11	Hobart - Melbourne	139.2	137.7	-1.1
12	Brisbane - Perth	109.3	116.5	6.5
13	Cairns - Sydney	106.9	105.9	-1.0
14	Cairns - Melbourne	93.0	102.3	10.0
15	Brisbane - Townsville	101.6	104.6	3.0
16	Canberra - Melbourne	115.0	106.3	-7.5
17	Adelaide - Brisbane	92.5	87.3	-5.5
18	Launceston - Melbourne	80.3	84.1	4.7
19	Brisbane - Mackay	86.9	96.2	10.7
20	Sunshine Coast - Sydney	76.7	84.3	9.9
21	Melbourne - Sunshine Coast	65.5	75.6	15.4
22	Hobart - Sydney	83.0	74.5	-10.2
23	Karratha - Perth	79.3	86.9	9.6
24	Brisbane - Canberra	72.1	72.8	0.9
25	Adelaide - Perth	73.9	71.3	-3.5
26	Brisbane - Rockhampton	68.1	64.9	-4.7
27	Canberra - Sydney	92.0	79.9	-13.1
28	Brisbane - Newcastle	54.2	56.7	4.7
29	Perth - Port Hedland	64.5	66.1	2.4
30	Brisbane - Darwin	39.8	48.8	22.7
31	Newman - Perth	58.5	63.9	9.3
32	Broome - Perth	45.2	46.6	3.0
33	Melbourne - Newcastle	47.9	47.6	-0.6
34	Ballina - Sydney	54.6	45.8	-16.0
35	Darwin - Melbourne	32.5	42.4	30.3
36	Kalgoorlie - Perth	57.8	60.1	4.0
37	Launceston - Sydney	32.7	33.9	3.5
38	Brisbane - Proserpine	26.8	28.3	5.3
39	Brisbane - Hobart	26.4	27.6	4.4
40	Adelaide - Gold Coast	26.5	25.3	-4.7
41	Hamilton Island - Sydney	28.9	26.8	-7.2
42	Darwin - Perth	25.0	29.9	19.7
43	Brisbane - Gladstone	29.9	27.9	-6.7
44	Brisbane - Emerald	27.7	25.7	-6.9
45	Canberra - Gold Coast	17.2	17.3	0.7
46	Adelaide - Canberra	21.7	22.9	5.3
47	Coffs Harbour - Sydney	23.5	20.9	-11.3
48	Dubbo - Sydney	24.6	23.0	-6.5
49	Brisbane - Hamilton Island	16.2	17.7	9.3
50	Sydney - Wagga Wagga	22.5	21.3	-5.7

continued

Table 3: (continued) Available seats (000s) — monthly activity

	City-Pair	Jul 2024	Jul 2025	% Change
51	Brisbane - Mount Isa	20.7	21.3	2.7
52	Port Macquarie - Sydney	19.9	19.2	-3.6
53	Albury - Sydney	20.8	18.1	-13.0
54	Devonport - Melbourne	15.1	18.3	21.2
55	Adelaide - Port Lincoln	23.9	23.7	-0.7
56	Melbourne - Mildura	17.7	18.7	5.7
57	Brisbane - Bundaberg	19.3	19.0	-1.5
58	Brisbane - Launceston	13.7	12.5	-8.9
59	Ayers Rock - Melbourne	..	11.9	NA
60	Adelaide - Alice Springs	15.4	13.7	-11.2
61	Geraldton - Perth	19.5	18.9	-3.2
62	Brisbane - Moranbah	17.7	17.4	-1.6
Total domestic network		6 528.3	6 589.1	0.9

.. Data not available for release.

Table 4: Load factors (%) — monthly activity

	City-Pair	Jul 2024	Jul 2025	% Point diff
1	Melbourne - Sydney	78.3	83.4	5.1
2	Brisbane - Sydney	80.3	87.6	7.3
3	Brisbane - Melbourne	84.5	85.5	1.0
4	Gold Coast - Sydney	84.3	87.0	2.7
5	Adelaide - Melbourne	81.5	82.3	0.8
6	Gold Coast - Melbourne	92.4	90.2	-2.2
7	Melbourne - Perth	80.2	86.3	6.1
8	Adelaide - Sydney	75.8	78.2	2.4
9	Perth - Sydney	79.4	81.5	2.1
10	Brisbane - Cairns	90.8	90.2	-0.6
11	Hobart - Melbourne	80.7	85.4	4.7
12	Brisbane - Perth	81.5	83.9	2.4
13	Cairns - Sydney	87.8	91.2	3.4
14	Cairns - Melbourne	92.9	91.1	-1.8
15	Brisbane - Townsville	89.4	88.6	-0.8
16	Canberra - Melbourne	70.3	75.1	4.8
17	Adelaide - Brisbane	81.7	86.9	5.2
18	Launceston - Melbourne	82.9	86.9	4.0
19	Brisbane - Mackay	81.0	75.4	-5.6
20	Sunshine Coast - Sydney	84.5	85.7	1.2
21	Melbourne - Sunshine Coast	93.8	91.2	-2.6
22	Hobart - Sydney	78.1	86.9	8.8
23	Karratha - Perth	72.7	74.3	1.6
24	Brisbane - Canberra	78.9	82.7	3.8
25	Adelaide - Perth	78.2	82.2	4.0
26	Brisbane - Rockhampton	76.3	85.8	9.5
27	Canberra - Sydney	59.7	65.7	6.0
28	Brisbane - Newcastle	82.4	82.9	0.5
29	Perth - Port Hedland	68.3	69.6	1.3
30	Brisbane - Darwin	94.0	86.0	-8.0
31	Newman - Perth	65.2	63.2	-2.0
32	Broome - Perth	84.8	86.6	1.8
33	Melbourne - Newcastle	79.6	84.5	4.9
34	Ballina - Sydney	79.7	85.9	6.2
35	Darwin - Melbourne	92.9	84.5	-8.4
36	Kalgoorlie - Perth	54.8	56.9	2.1
37	Launceston - Sydney	84.5	88.8	4.3
38	Brisbane - Proserpine	93.2	92.7	-0.5
39	Brisbane - Hobart	89.1	91.9	2.8
40	Adelaide - Gold Coast	88.6	93.5	4.9
41	Hamilton Island - Sydney	81.7	85.4	3.7
42	Darwin - Perth	79.8	73.6	-6.2
43	Brisbane - Gladstone	67.4	68.6	1.2
44	Brisbane - Emerald	60.8	65.6	4.8
45	Canberra - Gold Coast	89.6	94.1	4.5
46	Adelaide - Canberra	67.6	69.2	1.6
47	Coffs Harbour - Sydney	78.5	75.4	-3.1
48	Dubbo - Sydney	58.8	63.6	4.8
49	Brisbane - Hamilton Island	79.1	82.1	3.0
50	Sydney - Wagga Wagga	61.5	67.5	6.0

continued

Table 4: (continued) Load factors (%) — monthly activity

	City-Pair	Jul 2024	Jul 2025	% Point diff
51	Brisbane - Mount Isa	65.2	64.9	-0.3
52	Port Macquarie - Sydney	67.8	70.3	2.5
53	Albury - Sydney	72.1	74.5	2.4
54	Devonport - Melbourne	72.8	71.9	-0.9
55	Adelaide - Port Lincoln	56.2	54.4	-1.8
56	Melbourne - Mildura	74.5	67.3	-7.2
57	Brisbane - Bundaberg	65.5	66.1	0.6
58	Brisbane - Launceston	88.9	90.4	1.5
59	Ayers Rock - Melbourne	..	87.3	NA
60	Adelaide - Alice Springs	69.9	75.6	5.7
61	Geraldton - Perth	49.1	52.5	3.4
62	Brisbane - Moranbah	57.1	50.3	-6.8
	Total domestic network	81.5	83.4	1.9

.. Data not available for release.

Table 5: Aircraft trips ^(a) — monthly activity

	City-Pair	Jul 2024	Jul 2025	% Change
1	Melbourne - Sydney	4 831	4 696	-2.8
2	Brisbane - Sydney	2 894	2 642	-8.7
3	Brisbane - Melbourne	2 191	2 344	7.0
4	Gold Coast - Sydney	1 485	1 486	0.1
5	Adelaide - Melbourne	1 437	1 433	-0.3
6	Gold Coast - Melbourne	1 132	1 158	2.3
7	Melbourne - Perth	1 176	1 197	1.8
8	Adelaide - Sydney	1 207	1 185	-1.8
9	Perth - Sydney	885	953	7.7
10	Brisbane - Cairns	960	1 005	4.7
11	Hobart - Melbourne	858	812	-5.4
12	Brisbane - Perth	629	654	4.0
13	Cairns - Sydney	561	562	0.2
14	Cairns - Melbourne	475	534	12.4
15	Brisbane - Townsville	802	805	0.4
16	Canberra - Melbourne	746	686	-8.0
17	Adelaide - Brisbane	709	670	-5.5
18	Launceston - Melbourne	667	645	-3.3
19	Brisbane - Mackay	640	703	9.8
20	Sunshine Coast - Sydney	426	467	9.6
21	Melbourne - Sunshine Coast	358	400	11.7
22	Hobart - Sydney	471	445	-5.5
23	Karratha - Perth	476	524	10.1
24	Brisbane - Canberra	592	612	3.4
25	Adelaide - Perth	429	395	-7.9
26	Brisbane - Rockhampton	734	689	-6.1
27	Canberra - Sydney	1 296	1 257	-3.0
28	Brisbane - Newcastle	455	466	2.4
29	Perth - Port Hedland	403	434	7.7
30	Brisbane - Darwin	285	274	-3.9
31	Newman - Perth	367	387	5.4
32	Broome - Perth	286	294	2.8
33	Melbourne - Newcastle	315	315	0.0
34	Ballina - Sydney	368	294	-20.1
35	Darwin - Melbourne	182	231	26.9
36	Kalgoorlie - Perth	402	406	1.0
37	Launceston - Sydney	199	213	7.0
38	Brisbane - Proserpine	166	172	3.6
39	Brisbane - Hobart	163	164	0.6
40	Adelaide - Gold Coast	140	123	-12.1
41	Hamilton Island - Sydney	164	151	-7.9
42	Darwin - Perth	142	171	20.4
43	Brisbane - Gladstone	346	319	-7.8
44	Brisbane - Emerald	368	344	-6.5
45	Canberra - Gold Coast	96	96	0.0
46	Adelaide - Canberra	199	210	5.5
47	Coffs Harbour - Sydney	417	370	-11.3
48	Dubbo - Sydney	471	454	-3.6
49	Brisbane - Hamilton Island	116	137	18.1
50	Sydney - Wagga Wagga	404	384	-5.0

continued

Table 5: (continued) Aircraft trips ^(a) — monthly activity

	City-Pair	Jul 2024	Jul 2025	% Change
51	Brisbane - Mount Isa	183	201	9.8
52	Port Macquarie - Sydney	324	346	6.8
53	Albury - Sydney	390	336	-13.8
54	Devonport - Melbourne	332	304	-8.4
55	Adelaide - Port Lincoln	580	489	-15.7
56	Melbourne - Mildura	420	369	-12.1
57	Brisbane - Bundaberg	318	310	-2.5
58	Brisbane - Launceston	82	70	-14.6
59	Ayers Rock - Melbourne	..	67	NA
60	Adelaide - Alice Springs	180	162	-10.0
61	Geraldton - Perth	210	206	-1.9
62	Brisbane - Moranbah	236	230	-2.5
Total domestic network		54 135	53 125	-1.9

(a) Includes RPT cargo flights.

.. Data not available for release.

TOP TEN AIRPORTS – PASSENGER MOVEMENTS

Table 6: Top ten airports, RPT passenger movements (000s) - monthly activity

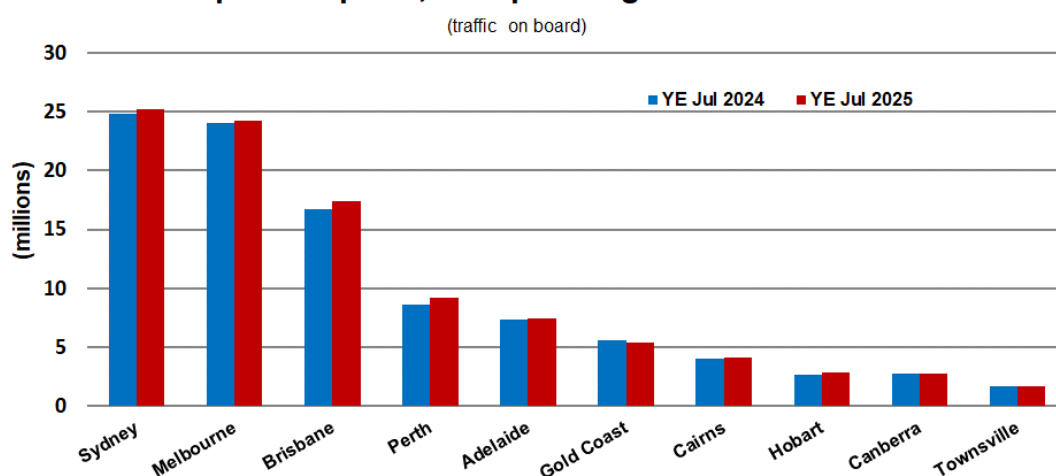
Airport	Jul 2024	Jul 2025	% Change	% of Total
1 Sydney	2 140.4	2 203.0	2.9	20.6
2 Melbourne	2 034.7	2 143.6	5.4	20.0
3 Brisbane	1 525.1	1 581.6	3.7	14.8
4 Perth	780.0	825.8	5.9	7.7
5 Adelaide	620.9	640.5	3.2	6.0
6 Gold Coast	487.9	502.6	3.0	4.7
7 Cairns	406.9	423.8	4.1	4.0
8 Canberra	234.2	237.4	1.4	2.2
9 Hobart	215.5	224.4	4.1	2.1
10 Darwin	177.7	192.2	8.2	1.8
Total top ten airports	8 623.3	8 974.8	4.1	83.8
Total domestic network	10 302.6	10 715.3	4.0	100.0

Table 7: Top ten airports, RPT passenger movements (000s) - annual activity

Airport	YE Jul 2024	YE Jul 2025	% Change	% of Total
1 Sydney	24 838.3	25 257.4	1.7	21.1
2 Melbourne	24 090.7	24 221.7	0.5	20.3
3 Brisbane	16 751.8	17 386.1	3.8	14.6
4 Perth	8 659.1	9 210.9	6.4	7.7
5 Adelaide	7 312.2	7 428.8	1.6	6.2
6 Gold Coast	5 627.6	5 389.3	-4.2	4.5
7 Cairns	4 058.2	4 137.9	2.0	3.5
8 Hobart	2 669.0	2 810.6	5.3	2.4
9 Canberra	2 792.0	2 769.7	-0.8	2.3
10 Townsville	1 667.2	1 658.4	-0.5	1.4
Total top ten airports	98 466.2	100 270.7	1.8	84.0
Total domestic network	117 541.3	119 421.0	1.6	100.0

Note: Airport passenger movement numbers are the sum of passenger arrivals and departures at each airport.

Top ten airports, RPT passenger movements



TOP FIVE AIRPORTS – CARGO MOVEMENTS

Table 8: Top five airports, domestic RPT cargo movements (000s tonnes) - monthly activity

Airport	Jul 2024	Jul 2025	% Change	% of Total
1 Melbourne	7.8	7.1	-8.2	28.3
2 Sydney	6.0	5.3	-10.8	21.2
3 Brisbane	5.2	4.6	-11.6	18.2
4 Perth	3.1	2.9	-5.3	11.5
5 Adelaide	1.5	1.2	-21.8	4.7
Total top five airports	23.5	21.2	-10.1	83.7
Total domestic network	28.1	25.3	-10.0	100.0

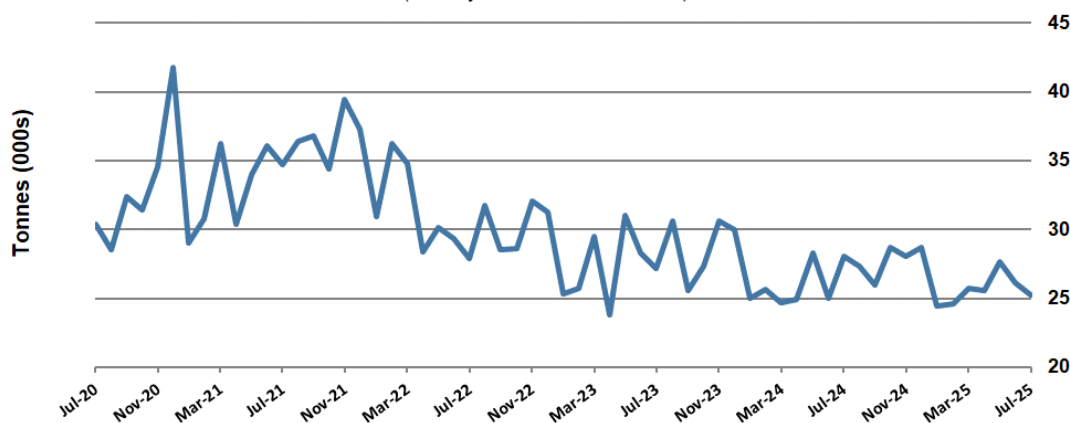
Table 9: Top five airports, domestic RPT cargo movements (000s tonnes) - annual activity

Airport	YE Jul 2024	YE Jul 2025	% Change	% of Total
1 Melbourne	88.6	87.5	-1.2	27.5
2 Sydney	71.2	67.3	-5.5	21.2
3 Brisbane	59.4	56.4	-5.2	17.7
4 Perth	35.4	36.1	2.1	11.4
5 Adelaide	18.5	16.9	-8.6	5.3
Total top five airports	273.1	264.2	-3.3	83.1
Total domestic network	325.8	318.1	-2.4	100.0

Note: Airport cargo tonnes are the sum of cargo tonnes on arrivals and departures at each airport.

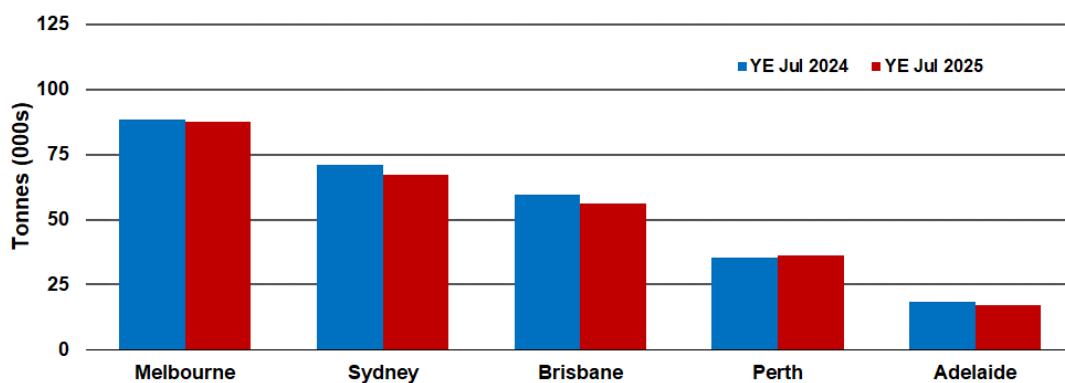
Total domestic network - cargo movement

(monthly totals - traffic on board)



Top five airports, cargo movements

(Domestic cargo traffic - traffic on board)



Note: Airport cargo tonnes are the sum of cargo tonnes on arrivals and departures at each airport.

TOP TEN ROUTES

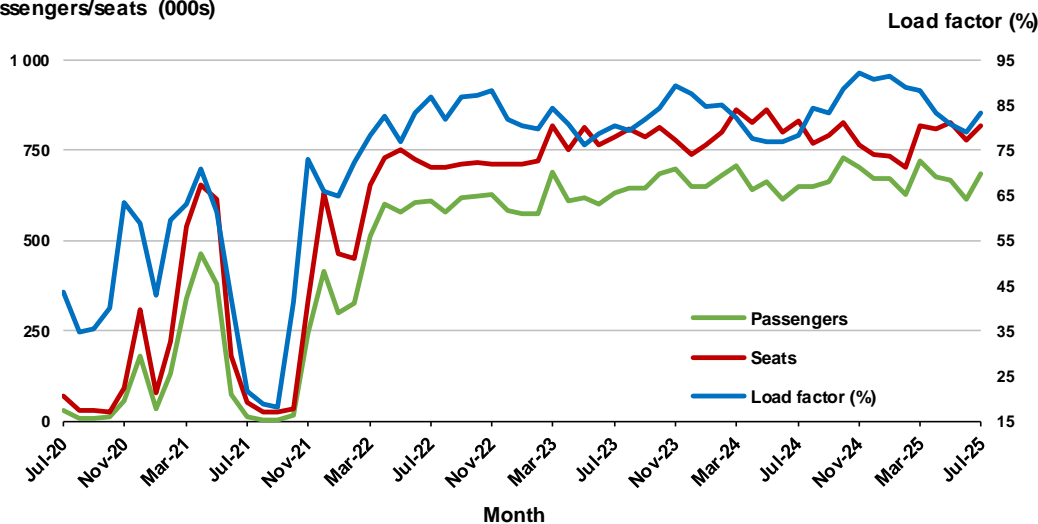
1. Melbourne - Sydney

Monthly data

	Jul 2024	Jul 2025	% Change
Passengers carried (000s)	651.9	683.9	4.9
Seats (000s)	832.9	820.2	-1.5
Load factor %	78.3	83.4	5.1 *
Aircraft trips	4 831	4 696	-2.8

* percentage point difference

Passengers/seats (000s)

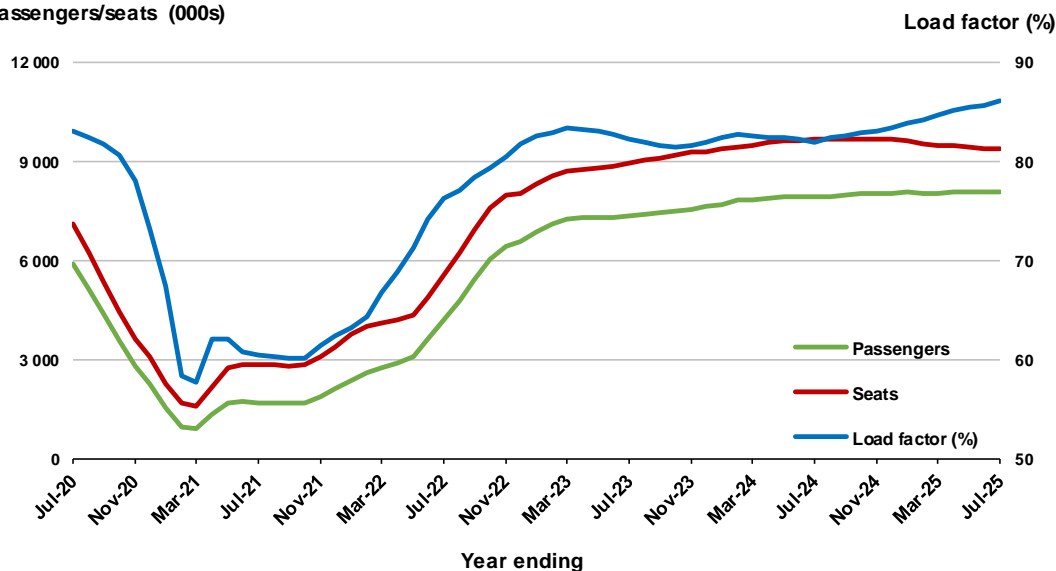


Moving annual data

	YE Jul 2024	YE Jul 2025	% Change
Passengers carried (000s)	7 938.0	8 085.6	1.9
Seats (000s)	9 686.7	9 387.3	-3.1
Load factor %	82.0	86.1	4.2 *
Aircraft trips	56 058	53 843	-4.0

* percentage point difference

Passengers/seats (000s)

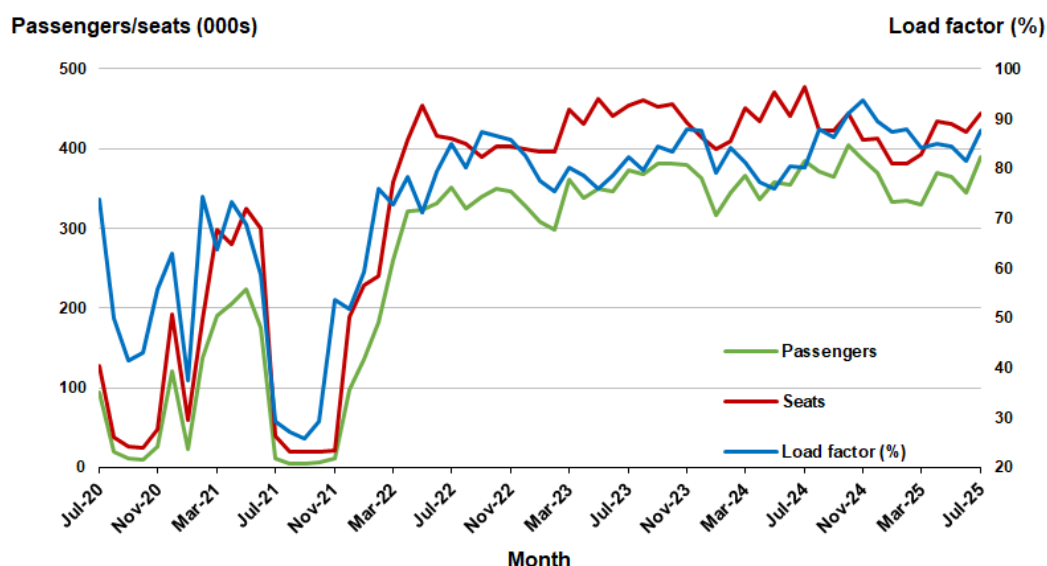


2. Brisbane - Sydney

Monthly data

	Jul 2024	Jul 2025	% Change
Passengers carried (000s)	383.9	388.8	1.3
Seats (000s)	478.2	444.1	-7.1
Load factor %	80.3	87.6	7.3 *
Aircraft trips	2 894	2 642	-8.7

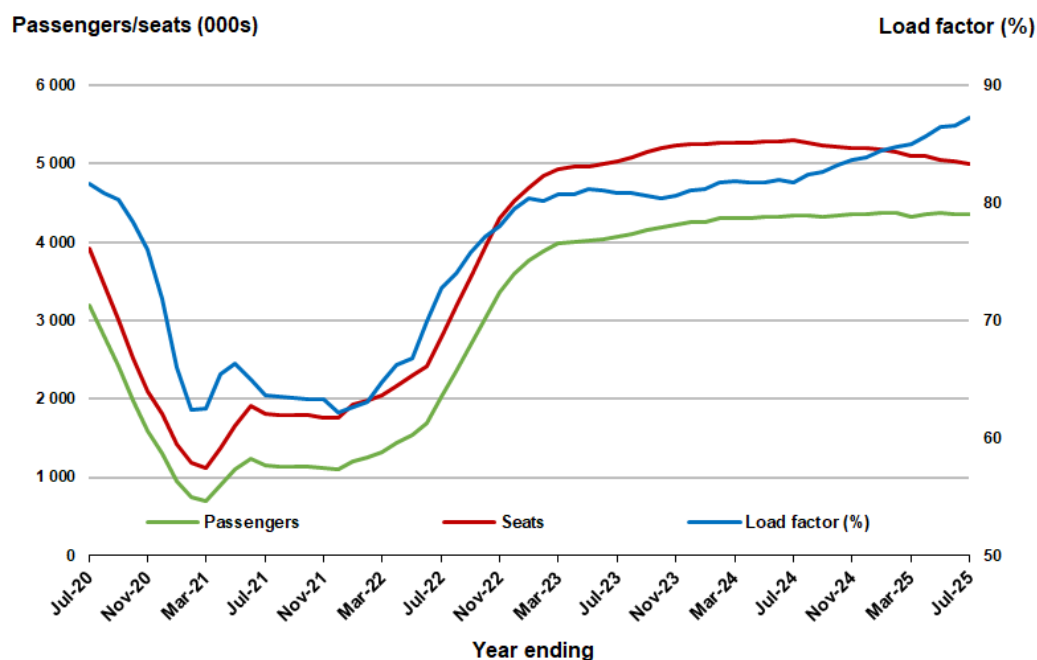
* percentage point difference



Moving annual data

	YE Jul 2024	YE Jul 2025	% Change
Passengers carried (000s)	4 335.4	4 363.7	0.7
Seats (000s)	5 301.9	5 001.4	-5.7
Load factor %	81.8	87.2	5.5 *
Aircraft trips	32 425	29 965	-7.6

* percentage point difference

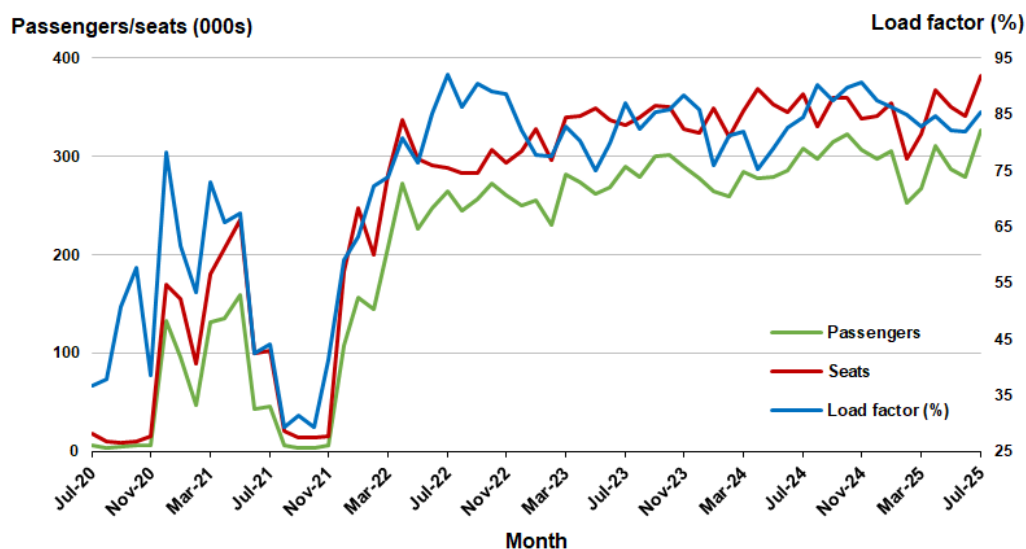


3. Brisbane - Melbourne

Monthly data

	Jul 2024	Jul 2025	% Change
Passengers carried (000s)	307.7	326.6	6.1
Seats (000s)	364.1	382.1	4.9
Load factor %	84.5	85.5	1.0 *
Aircraft trips	2 191	2 344	7.0

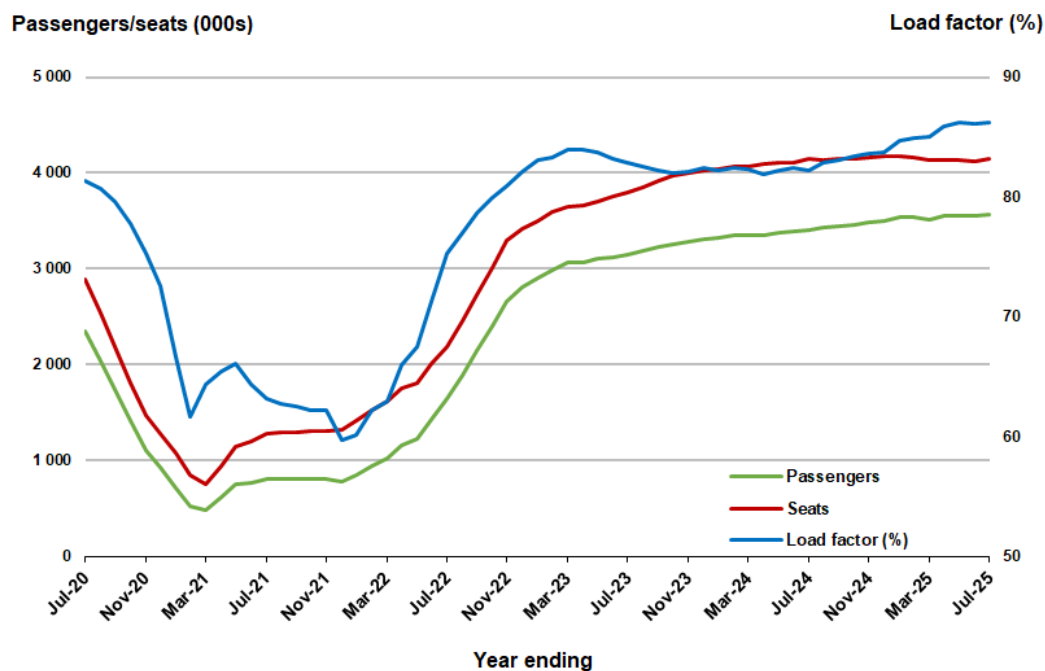
* percentage point difference



Moving annual data

	YE Jul 2024	YE Jul 2025	% Change
Passengers carried (000s)	3 408.4	3 571.8	4.8
Seats (000s)	4 143.3	4 144.5	0.0
Load factor %	82.3	86.2	3.9 *
Aircraft trips	24 893	24 977	0.3

* percentage point difference



4. Gold Coast - Sydney ^(a)

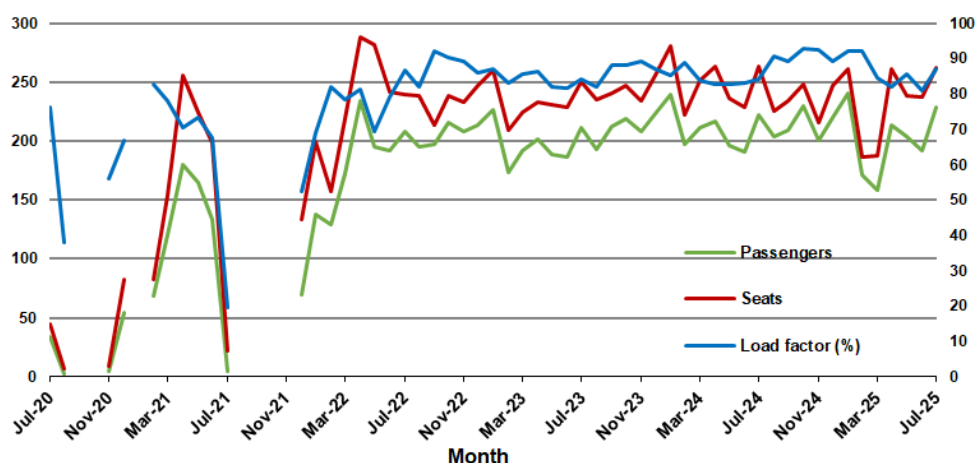
Monthly data

	Jul 2024	Jul 2025	% Change
Passengers carried (000s)	222.3	228.4	2.8
Seats (000s)	263.6	262.7	-0.4
Load factor %	84.3	87.0	2.7 *
Aircraft trips	1 485	1 486	0.1

* percentage point difference

Passengers/seats (000s)

Load factor (%)



(a) September and October 2020 and January and August to November 2021 data not available for release.

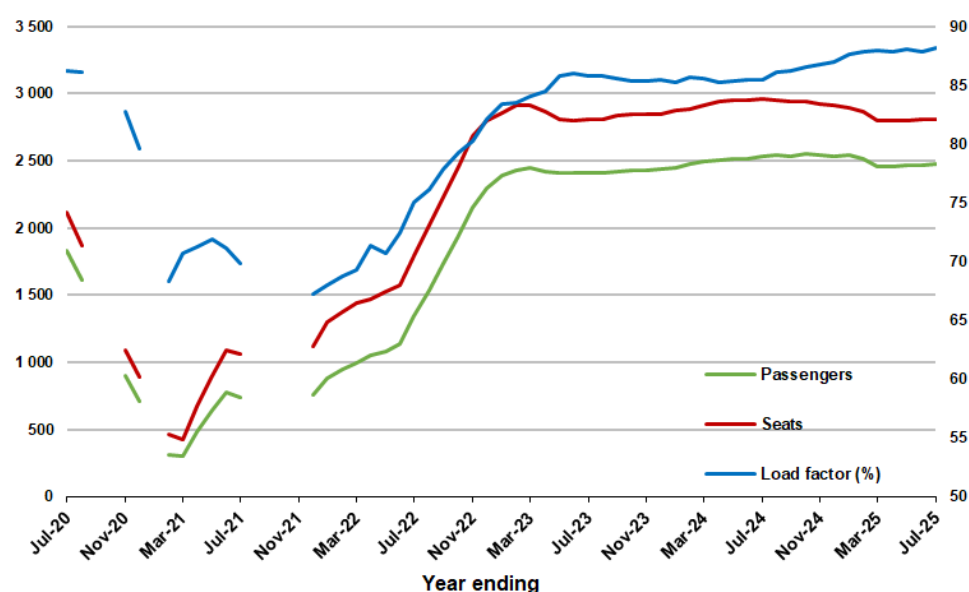
Moving annual data

	YE Jul 2024	YE Jul 2025	% Change
Passengers carried (000s)	2 529.8	2 472.0	-2.3
Seats (000s)	2 960.4	2 804.3	-5.3
Load factor %	85.5	88.1	2.7 *
Aircraft trips	16 790	15 931	-5.1

* percentage point difference

Passengers/seats (000s)

Load factor (%)



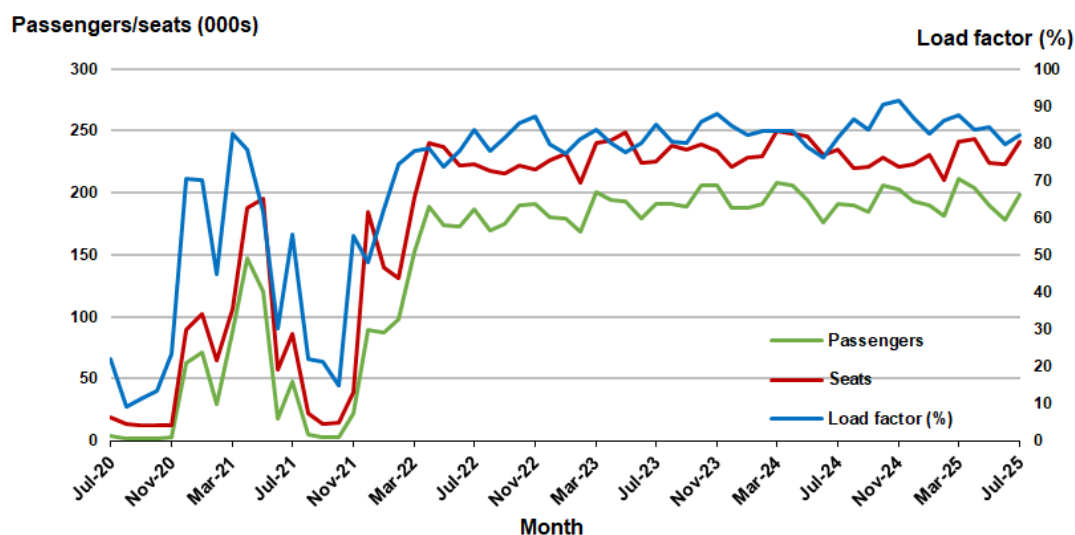
(a) September and October 2020 and January and August to November 2021 moving annual totals not available for release.

5. Adelaide - Melbourne

Monthly data

	Jul 2024	Jul 2025	% Change
Passengers carried (000s)	191.3	198.7	3.9
Seats (000s)	234.8	241.3	2.8
Load factor %	81.5	82.3	0.8 *
Aircraft trips	1 437	1 433	-0.3

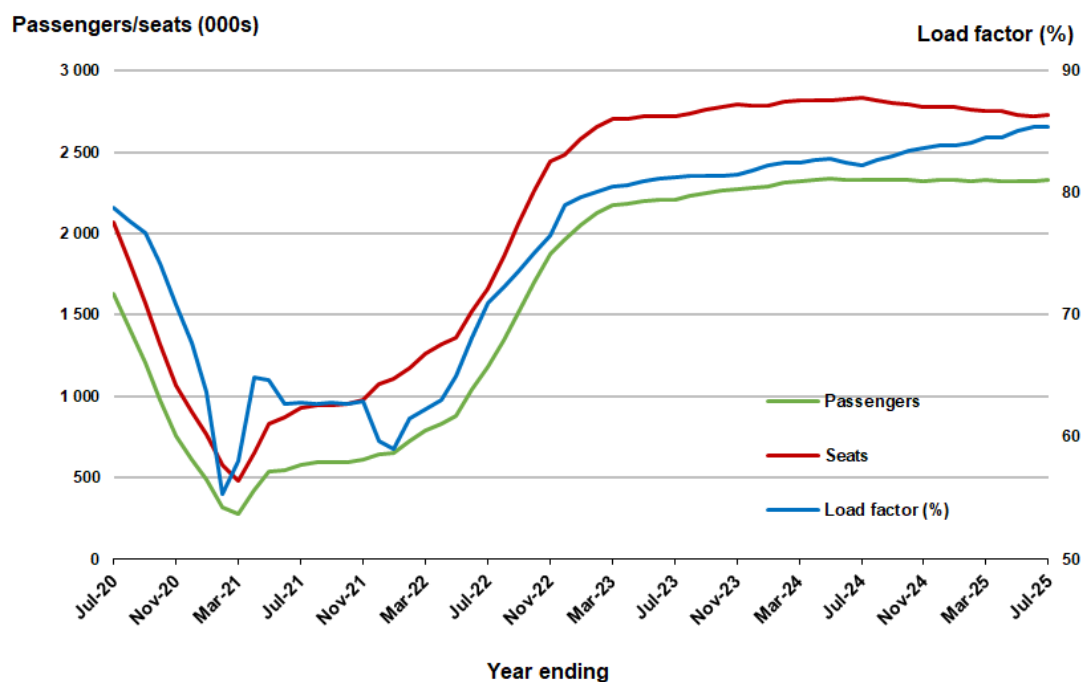
* percentage point difference



Moving annual data

	YE Jul 2024	YE Jul 2025	% Change
Passengers carried (000s)	2 332.3	2 331.1	-0.1
Seats (000s)	2 835.3	2 728.5	-3.8
Load factor %	82.3	85.4	3.2 *
Aircraft trips	17 290	16 231	-6.1

* percentage point difference



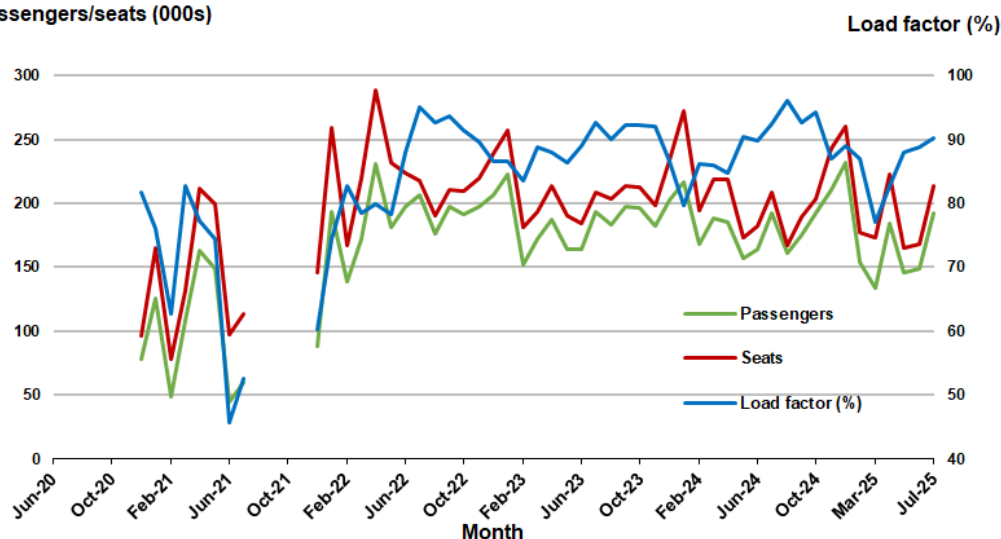
6. Gold Coast - Melbourne ^(a)

Monthly data

	Jul 2024	Jul 2025	% Change
Passengers carried (000s)	192.9	193.0	0.1
Seats (000s)	208.7	214.0	2.5
Load factor %	92.4	90.2	-2.2 *
Aircraft trips	1 132	1 158	2.3

* percentage point difference

Passengers/seats (000s)



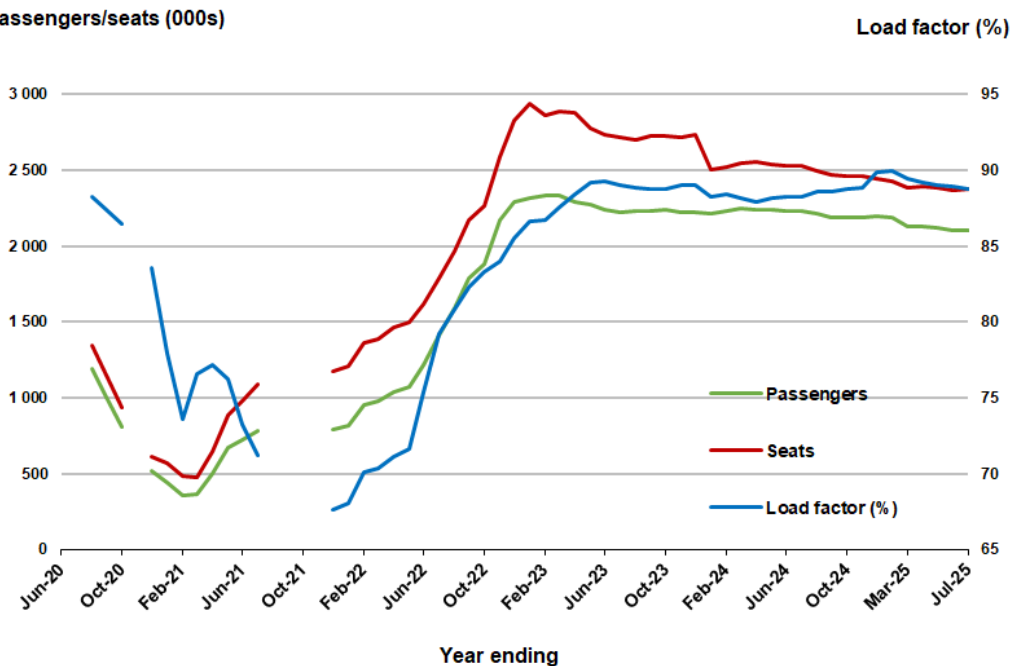
(a) June to November 2020 and August to November 2021 data not available for release.

Moving annual data

	YE Jul 2024	YE Jul 2025	% Change
Passengers carried (000s)	2 236.0	2 106.8	-5.8
Seats (000s)	2 533.8	2 373.5	-6.3
Load factor %	88.2	88.8	0.5 *
Aircraft trips	13 821	12 820	-7.2

* percentage point difference

Passengers/seats (000s)



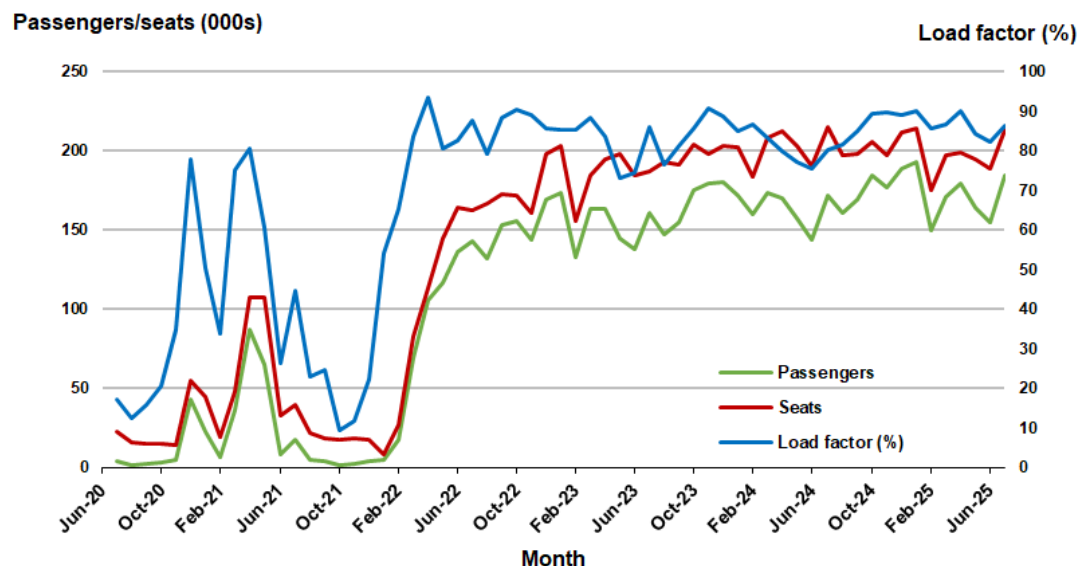
(a) July and November 2020 and August to November 2021 moving annuals are not available for release.

7. Melbourne - Perth

Monthly data

	Jul 2024	Jul 2025	% Change
Passengers carried (000s)	172.2	184.3	7.0
Seats (000s)	214.8	213.6	-0.6
Load factor %	80.2	86.3	6.1 *
Aircraft trips	1 176	1 197	1.8

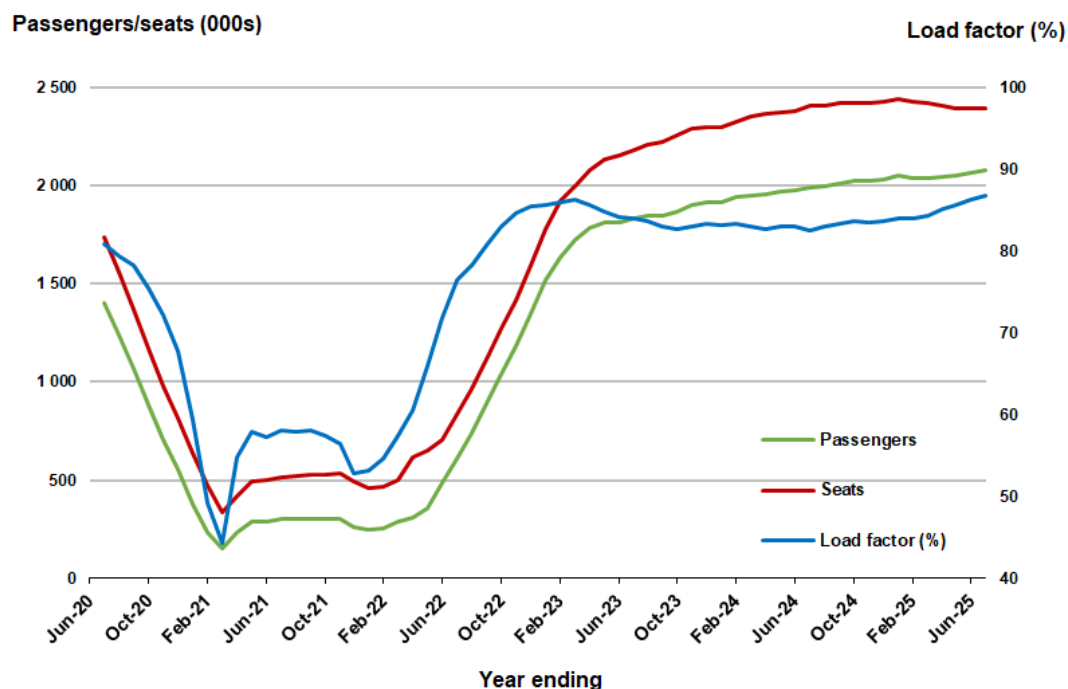
* percentage point difference



Moving annual data

	YE Jul 2024	YE Jul 2025	% Change
Passengers carried (000s)	1 988.0	2 078.3	4.5
Seats (000s)	2 407.8	2 394.1	-0.6
Load factor %	82.6	86.8	4.2 *
Aircraft trips	13 349	13 347	0.0

* percentage point difference



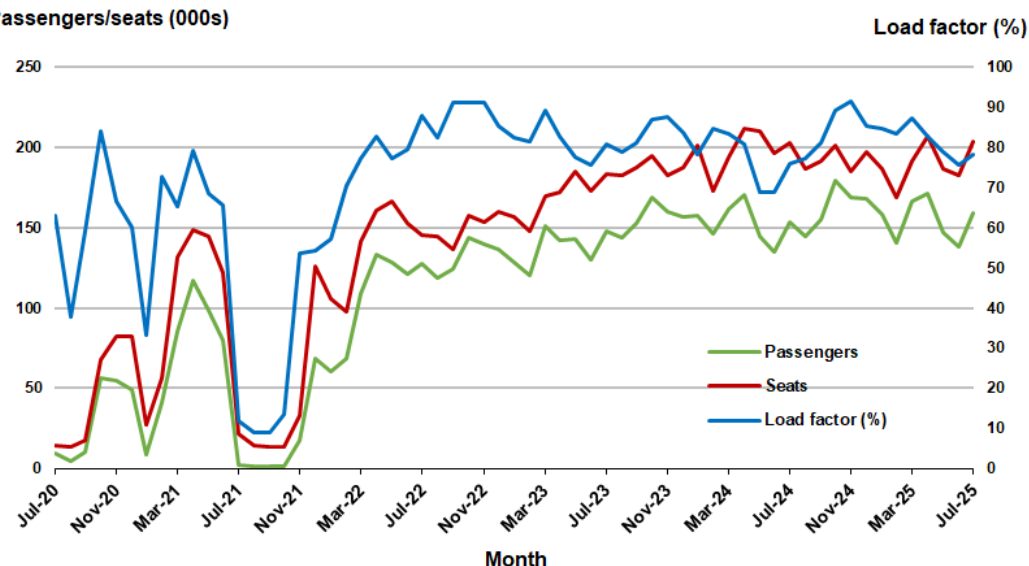
8. Adelaide - Sydney

Monthly data

	Jul 2024	Jul 2025	% Change
Passengers carried (000s)	153.4	159.2	3.8
Seats (000s)	202.4	203.6	0.6
Load factor %	75.8	78.2	2.4 *
Aircraft trips	1 207	1 185	-1.8

* percentage point difference

Passengers/seats (000s)

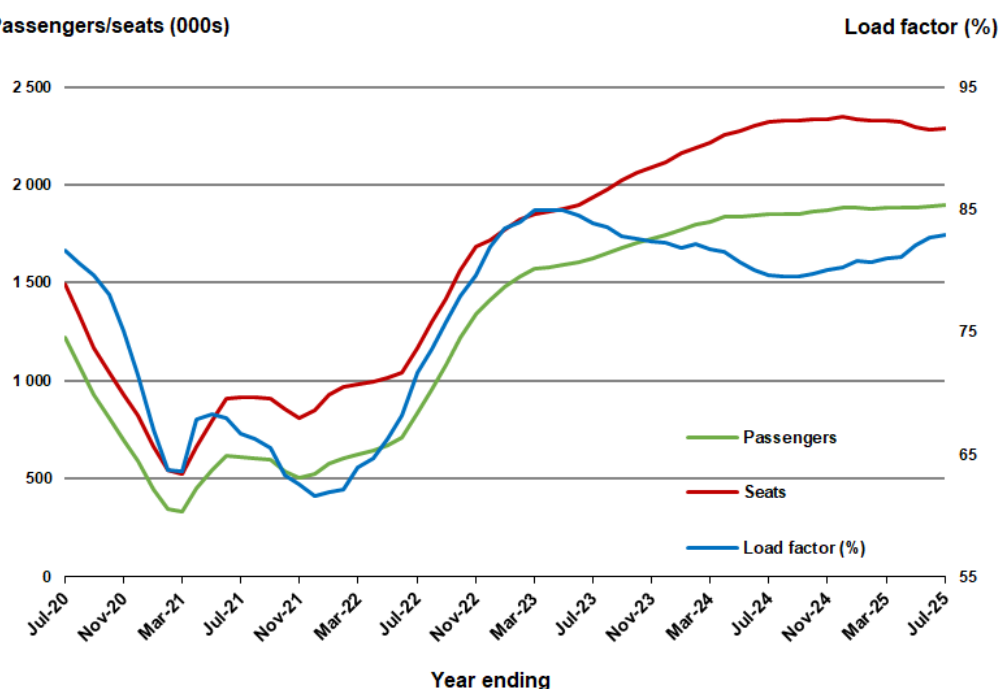


Moving annual data

	YE Jul 2024	YE Jul 2025	% Change
Passengers carried (000s)	1 849.5	1 895.8	2.5
Seats (000s)	2 321.8	2 286.0	-1.5
Load factor %	79.7	82.9	3.3 *
Aircraft trips	14 087	13 441	-4.6

* percentage point difference

Passengers/seats (000s)



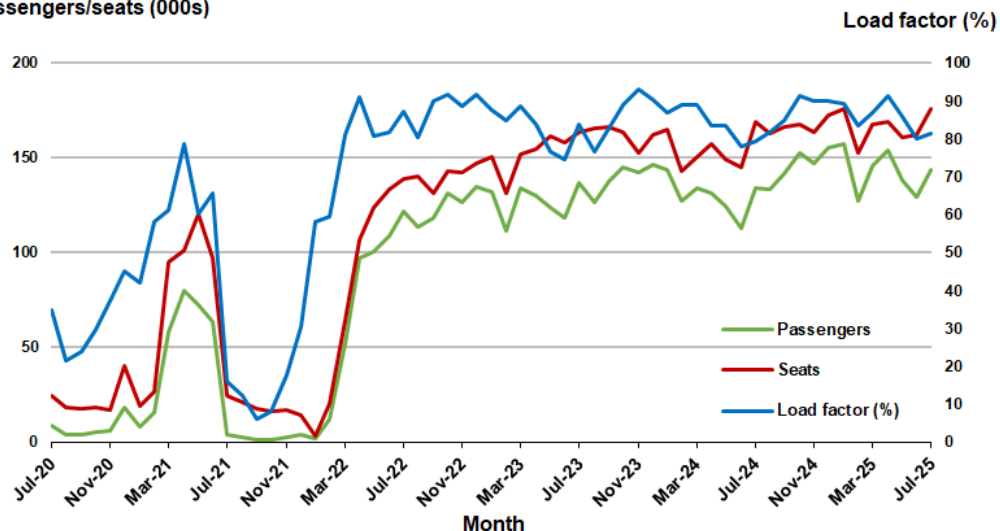
9. Perth - Sydney

Monthly data

	Jul 2024	Jul 2025	% Change
Passengers carried (000s)	134.2	143.7	7.1
Seats (000s)	169.1	176.3	4.3
Load factor %	79.4	81.5	2.1 *
Aircraft trips	885	953	7.7

* percentage point difference

Passengers/seats (000s)

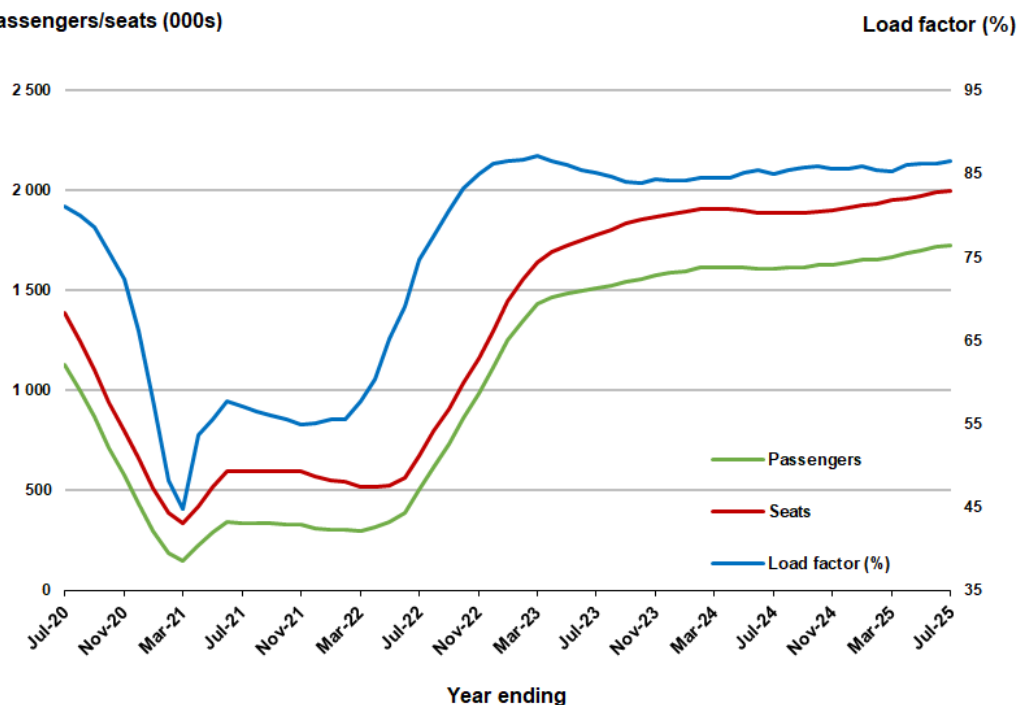


Moving annual data

	YE Jul 2024	YE Jul 2025	% Change
Passengers carried (000s)	1 607.6	1 727.3	7.5
Seats (000s)	1 890.1	1 997.7	5.7
Load factor %	85.0	86.5	1.4 *
Aircraft trips	9 872	10 639	7.8

* percentage point difference

Passengers/seats (000s)

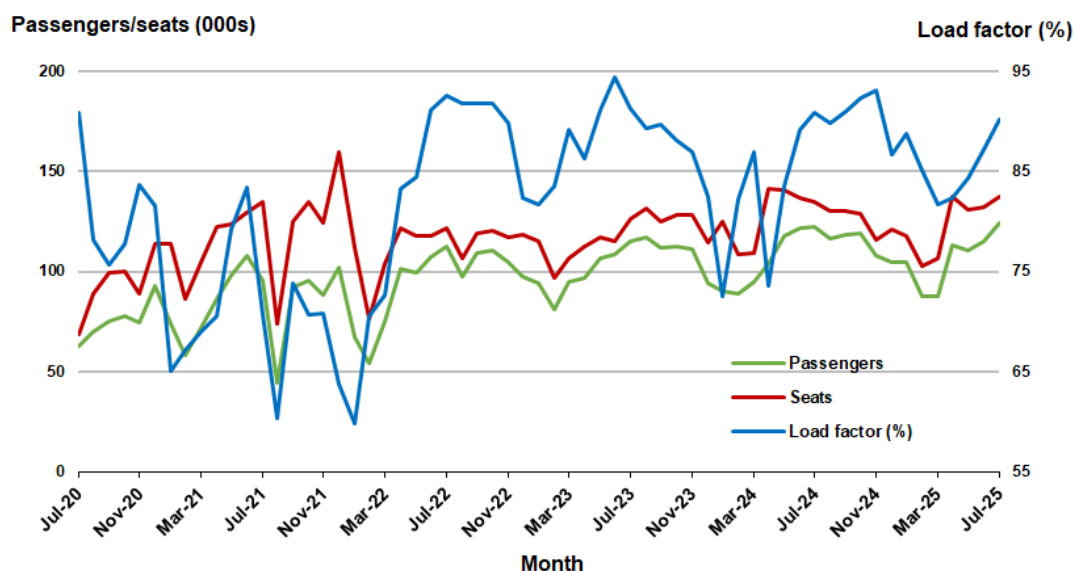


10. Brisbane - Cairns

Monthly data

	Jul 2024	Jul 2025	% Change
Passengers carried (000s)	122.4	124.1	1.4
Seats (000s)	134.7	137.6	2.1
Load factor %	90.8	90.2	-0.6 *
Aircraft trips	960	1 005	4.7

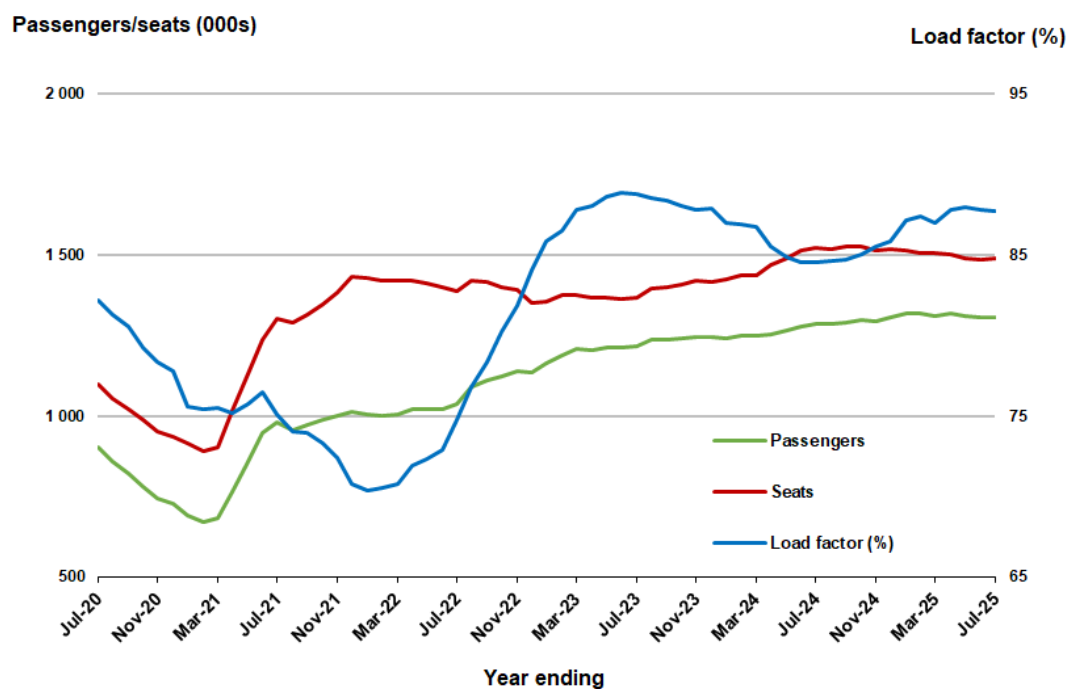
* percentage point difference



Moving annual data

	YE Jul 2024	YE Jul 2025	% Change
Passengers carried (000s)	1 286.5	1 307.8	1.7
Seats (000s)	1 521.5	1 490.4	-2.0
Load factor %	84.6	87.7	3.2 *
Aircraft trips	10 404	10 576	1.7

* percentage point difference



TOP FIFTY REGIONAL AIRPORTS

Table 10: Top fifty regional airports (000s) — passenger movements, monthly

Airport	Jul 2024	Jul 2025	% Change
1 Cairns	406.9	423.8	4.1
2 Hobart	215.5	224.4	4.1
3 Darwin	177.7	192.2	8.2
4 Townsville	157.9	158.1	0.1
5 Launceston	107.7	115.7	7.4
6 Newcastle	102.1	107.5	5.3
7 Mackay	81.7	83.6	2.3
8 Karratha	58.9	66.4	12.7
9 Rockhampton	55.7	59.6	7.0
10 Broome	53.2	54.6	2.8
11 Proserpine	44.3	50.6	14.4
12 Ballina	52.7	49.7	-5.7
13 Port Hedland	45.4	47.4	4.6
14 Hamilton Island	43.2	44.6	3.1
15 Newman	38.3	40.5	5.8
16 Alice Springs	37.0	37.8	2.2
17 Kalgoorlie	31.9	34.2	7.2
18 Ayers Rock	32.9	34.0	3.4
19 Paraburdoo	25.9	21.8	-15.7
20 Mount Isa	21.9	21.0	-3.8
21 Coffs Harbour	20.1	20.9	3.9
22 Albury	21.1	19.7	-6.4
23 Gladstone	20.1	19.1	-5.0
24 Wagga Wagga	17.9	19.0	5.9
25 Hervey Bay	17.2	18.9	10.2
26 Dubbo	17.3	18.0	4.1
27 Emerald	17.9	17.8	-0.5
28 Kununurra	16.3	16.7	2.4
29 Port Macquarie	15.8	16.0	1.4
30 Mildura	16.9	15.7	-7.3
31 Devonport	11.0	13.1	19.8
32 Port Lincoln	13.4	12.9	-3.6
33 Tamworth	13.5	12.9	-4.4
34 Learmonth	11.2	12.5	11.9
35 Bundaberg	12.6	12.5	-0.5
36 Geraldton	10.1	10.6	5.1
37 Thursday Island	11.7	10.6	-10.0
38 Orange	9.6	9.9	3.2
39 Olympic Dam	9.4	9.3	-2.0
40 Armidale	8.3	8.9	6.9
41 Moranbah	10.1	8.8	-13.4
42 Weipa	8.2	8.7	6.3
43 Busselton	7.4	8.7	17.1
44 Gove	9.2	8.6	-7.4
45 Burnie	6.3	6.8	8.2
46 Griffith	5.7	6.6	15.4
47 Mount Gambier	6.1	6.0	-1.3
48 Cloncurry	5.5	5.9	7.0
49 Merimbula	5.6	5.8	2.1
50 Roma	5.7	5.5	-3.4
Total top 50 regional airport	2 152.0	2 234.0	3.8
Total regional airports	2 275.9	2 355.7	3.5
Total domestic network	10 302.6	10 715.3	4.0

Note: Airport passenger movement numbers are the sum of passenger arrivals and departures at each airport.

Regional airports are defined as airports which are, according to Australian Statistical Geography Standard (ASGS), not based in Major Cities.

Table 11: Top fifty regional airports (000s) — passenger movements, annual

Airport	YE Jul 2024	YE Jul 2025	% Change
1 Cairns	4 058.2	4 137.9	2.0
2 Hobart	2 669.0	2 810.6	5.3
3 Townsville	1 667.2	1 658.4	-0.5
4 Darwin	1 593.2	1 642.5	3.1
5 Launceston	1 416.6	1 441.7	1.8
6 Newcastle	1 199.3	1 189.1	-0.9
7 Mackay	914.2	904.4	-1.1
8 Karratha	593.5	665.1	12.1
9 Rockhampton	652.1	648.6	-0.5
10 Ballina	620.2	609.1	-1.8
11 Proserpine	502.4	527.1	4.9
12 Port Hedland	489.0	493.2	0.9
13 Hamilton Island	489.5	490.4	0.2
14 Broome	441.1	445.8	1.1
15 Newman	380.7	432.6	13.6
16 Kalgoorlie	365.8	376.7	3.0
17 Alice Springs	368.5	359.2	-2.5
18 Ayers Rock	288.5	346.4	20.1
19 Paraburdoo	268.5	271.4	1.1
20 Coffs Harbour	263.6	252.8	-4.1
21 Mount Isa	235.0	238.6	1.5
22 Albury	274.0	221.8	-19.0
23 Gladstone	240.7	220.5	-8.4
24 Wagga Wagga	203.0	214.1	5.5
25 Hervey Bay	159.6	209.9	31.5
26 Dubbo	212.7	205.9	-3.2
27 Emerald	197.4	199.8	1.2
28 Port Macquarie	224.0	190.8	-14.9
29 Mildura	228.3	188.5	-17.4
30 Port Lincoln	171.8	166.6	-3.0
31 Tamworth	171.2	160.2	-6.4
32 Bundaberg	163.7	140.7	-14.1
33 Kununurra	140.5	140.4	-0.1
34 Devonport	122.2	138.2	13.1
35 Geraldton	112.3	126.8	12.9
36 Thursday Island	111.6	119.0	6.6
37 Orange	110.1	113.7	3.2
38 Learmonth	102.7	113.6	10.6
39 Moranbah	112.3	106.2	-5.4
40 Armidale	106.3	102.2	-3.9
41 Olympic Dam	104.1	101.6	-2.4
42 Weipa	90.2	97.0	7.6
43 Busselton	68.7	96.1	39.9
44 Gove	93.4	88.2	-5.6
45 Burnie	79.9	80.8	1.1
46 Griffith	68.7	75.5	10.0
47 Mount Gambier	72.7	70.9	-2.4
48 Norfolk Island	69.9	70.6	1.0
49 Merimbula	70.4	68.5	-2.7
50 Albany	65.7	66.8	3.6
Total top 50 regional airports	23 424.5	23 836.7	1.8
Total regional airports	24 873.4	25 270.6	1.6
Total domestic network	117 541.3	119 421.0	1.6

Note: Airport passenger movement numbers are the sum of passenger arrivals and departures at each airport. Regional airports are defined as airports which are, according to Australian Statistical Geography Standard (ASGS), not based in Major Cities.

DOMESTIC CHARTER ACTIVITY

Table 12: Charter passengers carried and aircraft trips - monthly activity (000s)

	Jul 2024	Jul 2025	% Change
Total domestic charter passengers	395.8	408.1	3.1
Total domestic charter aircraft trips	6.7	6.8	2.3

Note: Helicopter, joyflights and sightseeing charter flights not included.

Table 13: Charter passengers carried and aircraft trips - annual activity (000s)

	YE Jul 2024	YE Jul 2025	% Change
Total domestic charter passengers	4 308.3	4 275.7	-0.8
Total domestic charter aircraft trips	73.5	73.3	-0.3

Note: Helicopter, joyflights and sightseeing charter flights not included.

Table 14: Domestic airports - charter activity - monthly (000s)

	Jul 2024	Jul 2025	% Change
Total domestic charter passenger movement:	791.6	816.3	3.1
Total domestic charter aircraft movements	13.4	13.7	2.3
Perth airport charter passenger movements	291.0	289.2	-0.6
Perth airport charter aircraft movements	4.3	4.2	-3.9

Note: Helicopter, joyflights and sightseeing charter flights not included.

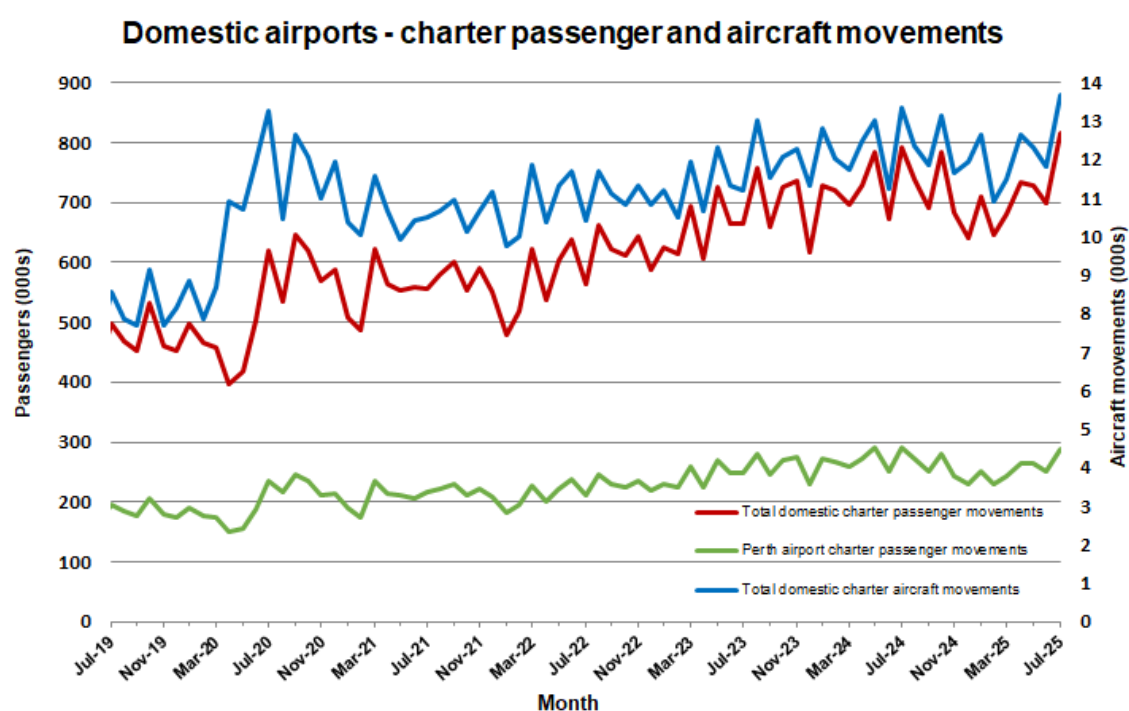
Charter passenger and aircraft movement numbers are the sum of arrivals and departures at each airport.

Table 15: Domestic airports - charter activity - annual (000s)

	YE Jul 2024	YE Jul 2025	% Change
Total domestic charter passenger movements:	8 616.7	8 551.4	-0.8
Total domestic charter aircraft movements	146.9	146.5	-0.3
Perth airport charter passenger movements	3 202.3	3 070.6	-4.1
Perth airport charter aircraft movements	48.9	45.0	-8.0

Note: Helicopter, joyflights and sightseeing charter flights not included.

Charter passenger and aircraft movement numbers are the sum of arrivals and departures at each airport.



DEFINITIONS

Aircraft Trips	The number of flight stages. A return flight counts as two aircraft trips.
Airport Movements	Airport movements (passenger and cargo) are measured once on arrival and once on departure. Each domestic trip generates two movements at airports. For example, a trip from Melbourne to Sydney will be counted twice, as a departure at Melbourne and as an arrival at Sydney. At the national level, the sum of all domestic airport traffic will therefore be equal to twice the number of trips undertaken.
Available Seat Kilometres (ASKs)	Calculated by multiplying the number of seats available on each flight stage, by the distance in kilometres between the ports. The distances used are Great Circle Distances.
City-Pair	The ports shown make up the city-pair route. Passenger movements shown for a city pair reflect total traffic in both directions.
Flight Stage	The operation of an aircraft from take-off to landing.
Load Factor	The total revenue passenger kilometres performed as a percentage of the total available seat kilometres.
Passengers Carried	Revenue passengers carried.
Regular Public Transport Services (RPT)	All air service operations in which aircraft are available for the transport of members of the public and are conducted in accordance with fixed schedules. It does not include charter or other non-scheduled operations.
Revenue Passengers	All passengers paying any fare. Frequent flyer redemption travellers are regarded as revenue passengers.
Revenue Passenger Kilometres (RPKs)	Calculated by multiplying the number of revenue passengers travelling on each flight stage, by the distance in kilometres between the ports. The distances used are Great Circle Distances.
Traffic on board by stages (TOB)	The total of all traffic (revenue passengers) on each flight stage between two directly connected airports.
..	Not available for confidentiality or other reasons.
NA	Not applicable.