



Australian Government

**Department of Infrastructure, Transport,
Regional Development, Communications and the Arts**
Bureau of Infrastructure and Transport Research Economics

STATISTICAL REPORT



bitre

Aviation

**Domestic aviation activity
July 2023**

The Department of Infrastructure, Transport, Regional Development, Communications and the Arts acknowledges the Traditional Custodians of Country of the land on which we work and live.

We recognise and respect the continuing connections to land, waters and communities.

We pay our respects to them and their cultures and to their Elders both past and present and to all Aboriginal and Torres Strait Islander people.

© Commonwealth of Australia 2023

ISSN: 1832 - 1968

Ownership of intellectual property rights in this publication

Unless otherwise noted, copyright (and any other intellectual property rights, if any) in this publication is owned by the Commonwealth of Australia (referred to below as the Commonwealth).

Disclaimer

The material contained in this publication is made available on the understanding that the Commonwealth is not providing professional advice, and that users exercise their own skill and care with respect to its use, and seek independent advice if necessary.

The Commonwealth makes no representations or warranties as to the contents or accuracy of the information contained in this publication. To the extent permitted by law, the Commonwealth disclaims liability to any person or organisation in respect of anything done, or omitted to be done, in reliance upon information contained in this publication.

Creative Commons licence

With the exception of (a) the Coat of Arms; and (b) the Department of Infrastructure, Transport, Regional Development, Communications and the Arts' photos and graphics, copyright in this publication is licensed under a Creative Commons Attribution 3.0 Australia Licence.

Creative Commons Attribution 3.0 Australia Licence is a standard form licence agreement that allows you to copy, communicate and adapt this publication provided that you attribute the work to the Commonwealth and abide by the other licence terms. A summary of the licence terms is available from <http://creativecommons.org/licenses/by/3.0/au/deed.en>.

The full licence terms are available from <http://creativecommons.org/licenses/by/3.0/au/legalcode>.

Use of the Coat of Arms

The Department of the Prime Minister and Cabinet sets the terms under which the Coat of Arms is used. Please refer to the Department's Commonwealth Coat of Arms and Government branding web page <http://www.dpmc.gov.au/guidelines/index.cfm#brand> and, in particular, the Guidelines on the use of the Commonwealth Coat of Arms publication.

An appropriate citation for this report is:

Bureau of Infrastructure and Transport Research Economics (BITRE), 2023, Domestic aviation activity, Statistical Report, BITRE, Canberra ACT.

Contact us

This publication is available in PDF format. All other rights are reserved, including in relation to any Departmental logos or trade marks which may exist. For enquiries regarding the licence and any use of this publication, please contact:

Bureau of Infrastructure and Transport Research Economics (BITRE)
Department of Infrastructure, Transport, Regional Development, Communications and the Arts
GPO Box 501, Canberra ACT 2601, Australia
Telephone: (international) +61 2 6274 7210
Email: bitre@infrastructure.gov.au
Website: www.bitre.gov.au

Inquiries

Nebojsa.Pavlovic@infrastructure.gov.au (02) 6274 6817

FOREWORD

This report provides an overview of domestic (including charter) commercial aviation activity in Australia for the month of July 2023.

The data covers revenue passengers carried by Australian-registered operators of scheduled regular public transport services over Australian flight stages and fixed-wing charter operators. These estimates include passengers carried between domestic airports on international flights operated by these carriers. The passengers carried refer to traffic on board by stages.

Estimates of passengers and aircraft movements for charter aviation are included in this publication, where BITRE confidentiality standards are met.

Individual routes shown are restricted to those with an average exceeding 8,000 passengers per month over the previous six months where two or more airlines operate in competition. However, for the period from November 2021 through to December 2022, the major airlines (Qantas Group, Virgin Australia and Rex Airlines) agreed to publication of the top 35 routes based on pre-COVID activity (December 2019) whether or not they were meeting the above criteria. From January 2023, the passenger load and dual competition requirements were reinstated due to the continued recovery of passenger numbers.

Information on the total network for the month of July 2023 and on the Regular Public Transport (RPT) network for the month of July 2023 is presented on page 2, with estimates for the year ended July 2023 presented on page 3.

Detailed information on individual routes can be found in the RPT summary pages 4-13 of this publication.

The top ten airports in terms of RPT passenger movements are shown on page 14.

Data on domestic RPT cargo movements at the top five cargo airports are provided on page 15. The table includes cargo carried on passenger flights operated by the Qantas group (including Jetstar), Virgin Australia, Air North and Skippers as well as the cargo carried by dedicated freighter aircraft operated by Qantas Freight and Toll.

The long-term trends for the top ten competitive RPT routes are presented graphically on pages 16-25.

Domestic RPT passenger movements at regional airports are shown on pages 26-27.

Tables providing estimates of domestic charter aviation activity are shown on page 28. BITRE confidentiality standards restrict publication of detailed estimates for individual Australian airports, with the exception of Perth Airport.

A list of definitions can be found on page 29.

This report was prepared by the Aviation Statistics Section of the Bureau of Infrastructure and Transport Research Economics with data provided by airlines.

Estimates are included where data were not available and data presented in this publication may contain revisions to previously published data.

Where figures have been rounded, discrepancies may occur between sums of component items and totals, and in percentage changes which are derived from figures prior to rounding.

CONTENTS

Highlights	1
Total network.....	2
RPT network	2
Top competitive routes.....	4
Top ten airports – passenger movements.....	14
Top five airports – cargo movements.....	15
Top ten routes	16
1. Melbourne – Sydney	16
2. Brisbane – Sydney.....	17
3. Brisbane – Melbourne	18
4. Gold Coast – Sydney	19
5. Gold Coast - Melbourne	20
6. Adelaide – Melbourne	21
7. Melbourne – Perth	22
8. Adelaide – Sydney	23
9. Perth – Sydney	24
10. Brisbane – Cairns	25
Top fifty regional airports	26
Domestic charter activity.....	28
Definitions	29

This page is intentionally left blank.

HIGHLIGHTS

There were 5.34 million passengers carried on Australian domestic commercial aviation (including charter operations) in July 2023, an increase of 4.7 per cent on July 2022.

5.01 million passengers were carried on RPT flights in July 2023, an increase of 4.0 per cent compared to July 2022.

For the month of July 2023, there were 52,108 RPT aircraft trips, up 5.7 per cent compared to July 2022.

For the year ending July 2023 there were 55.49 million RPT passengers, an increase of 64.0 per cent on the year ending July 2022.

RPT revenue passenger kilometres (RPKs) performed were 6.13 billion for the month, compared with 5.92 billion in July 2022 (up 3.6 per cent).

Capacity, measured by available seat kilometres (ASKs), increased to 7.40 billion in July 2023 compared to 6.90 billion in July 2022 (up 7.3 per cent).

The industry wide load factor (RPKs/ASKs) decreased from 85.8 per cent in July 2022 to 82.8 per cent in July 2023. The highest load factor (93.4 per cent) was recorded on the Cairns - Melbourne route while the lowest load factor (51.4 per cent) was recorded on the Armidale – Sydney route.

For the month of July 2023, Melbourne – Sydney was Australia's busiest RPT route with 633,803 passengers, followed by Brisbane – Sydney with 373,540 passengers and Brisbane – Melbourne with 289,189 passengers.

Sydney was Australia's busiest domestic airport with 2.08 million passenger movements in July 2023, followed by Melbourne with 2.01 million passenger movements and Brisbane with 1.44 million passenger movements.

Total cargo movements at Australian airports on domestic RPT flights were 27,142 tonnes in July 2023, a decrease of 2.8 per cent compared with July 2022.

In July 2023, there were 2.21 million domestic passenger movements through regional airports, compared to 2.14 million in July 2022, an increase of 3.4 per cent. Out of the top 50 regional airports, the strongest increase was recorded at Bundaberg Airport (up 53.7 per cent on July 2022), while the largest decrease was recorded at Mount Gambier Airport (down 14.3 per cent on July 2022).

Fixed-wing charter operators carried 332,714 passengers in July 2023, an increase of 18.0 per cent compared with July 2022. Perth Airport accounted for 37.3 per cent of all charter passengers in Australia.

TOTAL NETWORK

Summary of monthly commercial aviation activity

	Jul 2022	Jul 2023	% Change
Total passengers carried (millions)	5.10	5.34	4.7
Aircraft trips (000s)	54.5	57.8	6.0

Note: Regular Public Transport and charter aviation activity
Helicopter, joy flights and sightseeing charter flights not included.

RPT NETWORK

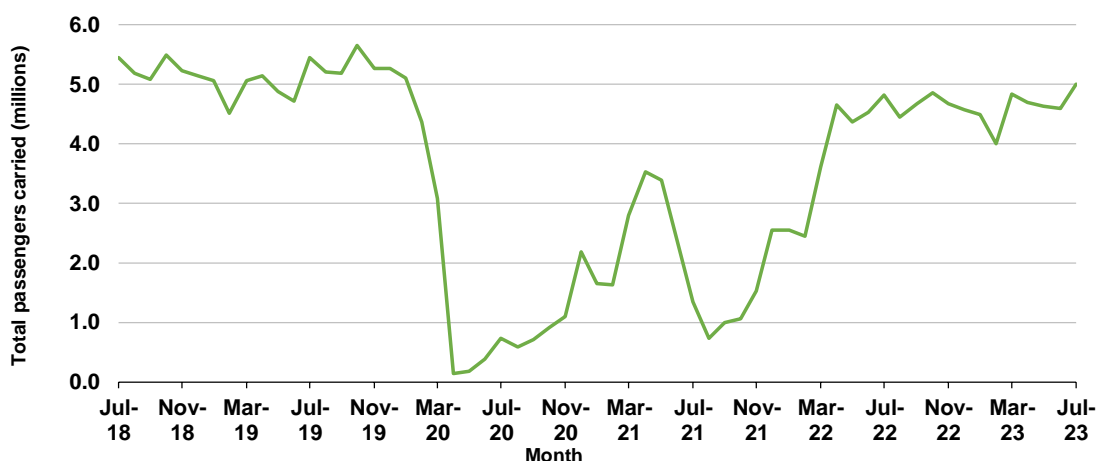
Summary of monthly RPT activity

	Jul 2022	Jul 2023	% Change
Total passengers carried (millions)	4.82	5.01	4.0
Revenue passenger kilometres (billions)	5.92	6.13	3.6
Available seats (millions)	5.82	6.28	7.9
Available seat kilometres (billions)	6.90	7.40	7.3
Load factor %	85.8	82.8	-3.0
Aircraft trips (000s)	49.3	52.1	5.7

* percentage point difference

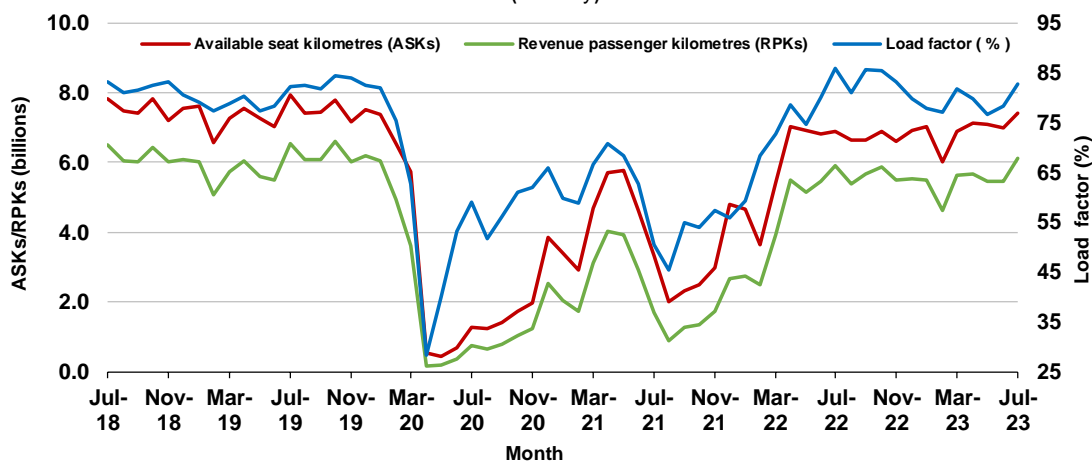
Domestic RPT passenger traffic

(monthly)



RPT Network utilisation

(monthly)



TOTAL NETWORK

Summary of annual commercial aviation activity

	YE Jul 2022	YE Jul 2023	% Change
Total passengers carried (millions)	37.24	59.35	59.4
Aircraft trips (000s)	505.5	665.5	31.7

Note: Regular Public Transport and charter aviation activity
Helicopter, joy flights and sightseeing charter flights not included.

RPT NETWORK

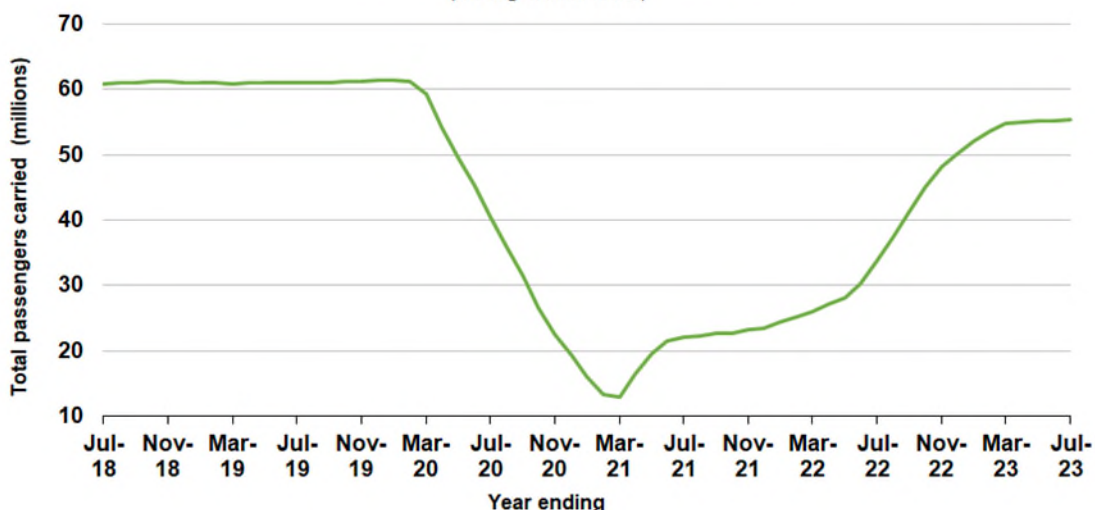
Summary of annual RPT activity

	YE Jul 2022	YE Jul 2023	% Change
Total passengers carried (millions)	33.82	55.49	64.0
Revenue passenger kilometres (billions)	39.11	66.44	69.9
Available seats (millions)	49.42	70.74	43.1
Available seat kilometres (billions)	55.93	82.26	47.1
Load factor %	69.9	80.8	10.8 *
Aircraft trips (000s)	441.0	597.9	35.6

* percentage point difference

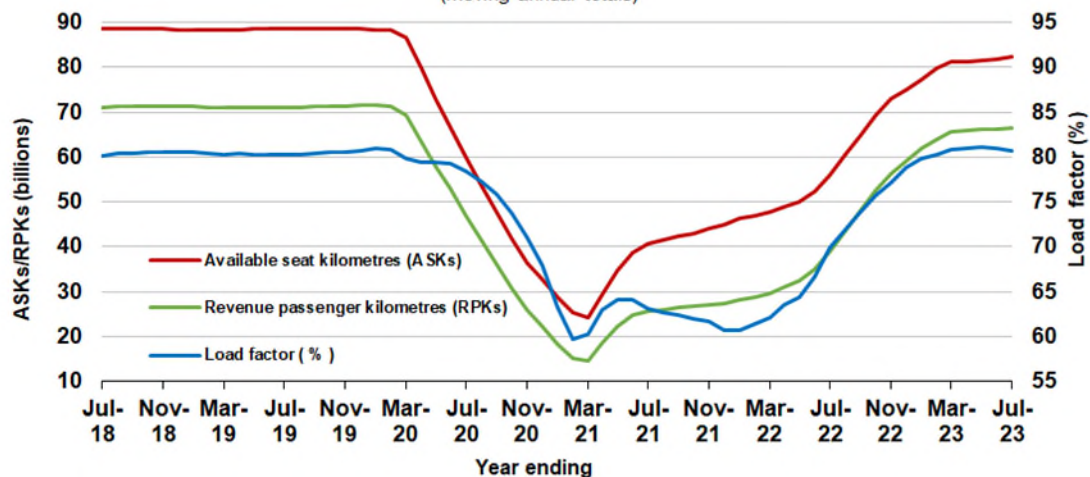
Domestic RPT passenger traffic

(moving annual totals)



RPT Network utilisation

(moving annual totals)



TOP COMPETITIVE ROUTES

Table 1: Passengers carried (000s) — annual activity

	City-Pair	YE Jul 2022	YE Jul 2023	% Change
1	Melbourne - Sydney	4 223.5	7 329.6	73.5
2	Brisbane - Sydney	2 031.5	4 066.5	100.2
3	Brisbane - Melbourne	1 649.6	3 148.4	90.9
4	Gold Coast - Sydney	1 344.4	2 408.3	79.1
5	Gold Coast - Melbourne	1 416.8	2 222.0	56.8
6	Adelaide - Melbourne	1 178.9	2 211.5	87.6
7	Melbourne - Perth	610.9	1 831.8	199.9
8	Adelaide - Sydney	838.6	1 625.1	93.8
9	Perth - Sydney	506.3	1 512.5	198.8
10	Hobart - Melbourne	647.4	1 240.2	91.6
11	Brisbane - Cairns	1 039.0	1 216.0	17.0
12	Brisbane - Perth	414.9	984.1	137.2
13	Canberra - Melbourne	522.1	967.5	85.3
14	Cairns - Sydney	447.0	885.2	98.0
15	Brisbane - Townsville	722.4	864.7	19.7
16	Cairns - Melbourne	477.7	806.4	68.8
17	Adelaide - Brisbane	526.2	796.9	51.4
18	Launceston - Melbourne	407.7	772.2	89.4
19	Sunshine Coast - Sydney	390.1	742.4	90.3
20	Brisbane - Mackay	587.7	734.0	24.9
21	Hobart - Sydney	390.8	708.6	81.3
22	Melbourne - Sunshine Coast	461.1	679.6	47.4
23	Adelaide - Perth	341.0	633.3	85.7
24	Brisbane - Canberra	348.2	631.6	81.4
25	Canberra - Sydney	317.7	590.8	85.9
26	Karratha - Perth	462.0	532.6	15.3
27	Ballina - Sydney	424.4	528.8	24.6
28	Brisbane - Newcastle	259.8	492.2	89.5
29	Brisbane - Rockhampton	385.0	484.2	25.8
30	Perth - Port Hedland	418.1	478.0	14.3
31	Melbourne - Newcastle	267.5	397.5	48.6
32	Newman - Perth	328.3	366.7	11.7
33	Broome - Perth	383.2	366.5	-4.3
34	Kalgoorlie - Perth	282.0	339.3	20.3
35	Brisbane - Darwin	294.5	322.0	9.3
36	Launceston - Sydney	168.9	308.4	82.6
37	Brisbane - Hobart	287.7	297.6	3.5
38	Brisbane - Proserpine	282.7	279.9	-1.0
39	Darwin - Melbourne	221.2	278.9	26.1
40	Hamilton Island - Sydney	130.4	248.9	90.8
41	Adelaide - Gold Coast	166.3	246.8	48.4
42	Coffs Harbour - Sydney	147.8	217.3	47.1
43	Adelaide - Darwin	..	216.3	NA
44	Brisbane - Gladstone	161.4	204.9	26.9
45	Adelaide - Canberra	90.6	186.7	106.0
46	Brisbane - Emerald	139.5	179.7	28.8
47	Adelaide - Port Lincoln	154.2	177.3	15.0
48	Darwin - Perth	146.0	173.2	18.7
49	Dubbo - Sydney	95.0	168.1	77.0
50	Canberra - Gold Coast	83.7	167.9	100.6

continued

Table 1: (continued) Passengers carried (000s) — annual activity

	City-Pair	YE Jul 2022	YE Jul 2023	% Change
51	Albury - Sydney	93.8	165.0	75.9
52	Brisbane - Hamilton Island	195.4	164.8	-15.7
53	Port Macquarie - Sydney	88.5	162.5	83.5
54	Brisbane - Launceston	169.7	159.8	-5.8
55	Adelaide - Cairns	..	158.1	NA
56	Melbourne - Mildura	93.3	156.2	67.5
57	Sydney - Wagga Wagga	85.6	150.2	75.4
58	Brisbane - Mount Isa	118.4	142.7	20.5
59	Devonport - Melbourne	..	121.5	NA
60	Brisbane - Bundaberg	..	114.4	NA
61	Adelaide - Alice Springs	82.8	112.9	36.5
62	Brisbane - Moranbah	..	107.6	NA
63	Armidale - Sydney	59.9	104.4	74.4
	Total domestic network	33 823.1	55 485.6	64.0

Table 2: Passengers carried (000s) — monthly activity

	City-Pair	Jul 2022	Jul 2023	% Change
1	Melbourne - Sydney	610.4	633.8	3.8
2	Brisbane - Sydney	350.7	373.5	6.5
3	Brisbane - Melbourne	265.1	289.2	9.1
4	Gold Coast - Sydney	207.9	211.2	1.6
5	Gold Coast - Melbourne	207.1	193.1	-6.8
6	Adelaide - Melbourne	186.5	191.0	2.4
7	Melbourne - Perth	142.9	161.1	12.7
8	Adelaide - Sydney	127.7	148.0	15.9
9	Perth - Sydney	121.5	137.2	12.9
10	Brisbane - Cairns	112.6	115.2	2.3
11	Hobart - Melbourne	92.1	98.7	7.1
12	Cairns - Sydney	90.6	91.3	0.7
13	Cairns - Melbourne	81.8	85.3	4.4
14	Brisbane - Townsville	78.6	83.3	6.0
15	Brisbane - Perth	80.7	82.3	2.0
16	Canberra - Melbourne	82.2	81.4	-1.0
17	Adelaide - Brisbane	69.0	70.6	2.3
18	Sunshine Coast - Sydney	62.8	68.1	8.5
19	Launceston - Melbourne	60.7	62.6	3.0
20	Melbourne - Sunshine Coast	66.4	62.5	-5.8
21	Brisbane - Mackay	65.4	60.3	-7.9
22	Brisbane - Canberra	57.9	58.9	1.8
23	Hobart - Sydney	58.6	58.4	-0.3
24	Adelaide - Perth	51.6	51.4	-0.4
25	Canberra - Sydney	54.1	50.7	-6.3
26	Karratha - Perth	44.8	47.4	6.0
27	Brisbane - Rockhampton	41.6	44.8	7.7
28	Ballina - Sydney	40.9	44.0	7.8
29	Brisbane - Newcastle	42.8	42.4	-0.9
30	Perth - Port Hedland	38.9	41.0	5.4
31	Broome - Perth	40.2	38.5	-4.4
32	Melbourne - Newcastle	30.5	35.3	15.7
33	Darwin - Melbourne	36.3	34.7	-4.3
34	Brisbane - Darwin	36.0	34.3	-4.9
35	Newman - Perth	27.6	29.7	7.3
36	Kalgoorlie - Perth	26.5	28.6	7.8
37	Launceston - Sydney	23.5	28.0	19.4
38	Adelaide - Gold Coast	20.6	24.8	20.5
39	Adelaide - Darwin	..	24.7	NA
40	Brisbane - Proserpine	24.9	24.6	-1.0
41	Brisbane - Hobart	24.7	23.4	-5.5
42	Hamilton Island - Sydney	21.0	22.5	6.8
43	Brisbane - Gladstone	17.5	17.7	1.0
44	Darwin - Perth	19.7	17.7	-10.2
45	Adelaide - Cairns	16.7	17.3	3.7
46	Coffs Harbour - Sydney	17.7	16.9	-4.8
47	Adelaide - Canberra	13.3	16.1	21.6
48	Canberra - Gold Coast	13.2	15.7	19.0
49	Brisbane - Emerald	14.9	15.6	4.3
50	Dubbo - Sydney	12.9	15.4	18.8

continued

Table 2: (continued) Passengers carried (000s) — monthly activity

	City-Pair	Jul 2022	Jul 2023	% Change
51	Melbourne - Mildura	12.3	15.1	23.0
52	Albury - Sydney	14.8	14.3	-3.5
53	Port Macquarie - Sydney	12.9	13.8	6.2
54	Adelaide - Port Lincoln	14.6	13.4	-8.4
55	Sydney - Wagga Wagga	12.9	12.9	-0.1
56	Brisbane - Hamilton Island	15.5	12.8	-17.5
57	Adelaide - Alice Springs	11.0	12.1	10.0
58	Brisbane - Mount Isa	12.0	12.1	1.1
59	Brisbane - Launceston	15.4	12.0	-22.1
60	Brisbane - Bundaberg	..	11.0	NA
61	Devonport - Melbourne	..	10.5	NA
62	Brisbane - Moranbah	..	8.9	NA
63	Armidale - Sydney	8.4	8.7	3.6
	Total domestic network	4 816.5	5 007.7	4.0

Table 3: Available seats (000s) — monthly activity

	City-Pair	Jul 2022	Jul 2023	% Change
1	Melbourne - Sydney	703.1	787.8	12.1
2	Brisbane - Sydney	413.2	453.6	9.8
3	Brisbane - Melbourne	288.3	332.6	15.4
4	Gold Coast - Sydney	239.3	250.6	4.7
5	Gold Coast - Melbourne	218.0	208.4	-4.4
6	Adelaide - Melbourne	223.1	225.0	0.9
7	Melbourne - Perth	162.6	187.2	15.2
8	Adelaide - Sydney	145.6	182.9	25.7
9	Perth - Sydney	139.2	163.9	17.7
10	Brisbane - Cairns	121.7	126.3	3.7
11	Hobart - Melbourne	111.5	119.3	7.0
12	Cairns - Sydney	96.5	98.8	2.4
13	Cairns - Melbourne	85.9	91.4	6.4
14	Brisbane - Townsville	87.0	94.9	9.1
15	Brisbane - Perth	94.3	94.2	0.0
16	Canberra - Melbourne	110.4	117.0	6.0
17	Adelaide - Brisbane	80.3	84.6	5.4
18	Sunshine Coast - Sydney	76.1	85.1	11.8
19	Launceston - Melbourne	77.6	82.3	6.0
20	Melbourne - Sunshine Coast	70.6	67.5	-4.5
21	Brisbane - Mackay	80.9	77.3	-4.4
22	Brisbane - Canberra	71.1	76.1	7.1
23	Hobart - Sydney	72.4	78.5	8.4
24	Adelaide - Perth	59.6	61.1	2.5
25	Canberra - Sydney	81.6	80.4	-1.4
26	Karratha - Perth	56.9	63.4	11.4
27	Brisbane - Rockhampton	49.0	56.3	14.8
28	Ballina - Sydney	51.2	59.4	16.0
29	Brisbane - Newcastle	55.1	58.2	5.5
30	Perth - Port Hedland	48.2	59.8	24.1
31	Broome - Perth	48.8	45.3	-7.1
32	Melbourne - Newcastle	36.1	45.7	26.7
33	Darwin - Melbourne	38.5	38.8	0.8
34	Brisbane - Darwin	38.5	39.1	1.5
35	Newman - Perth	46.5	50.5	8.6
36	Kalgoorlie - Perth	37.6	42.9	14.0
37	Launceston - Sydney	28.1	37.8	34.6
38	Adelaide - Gold Coast	21.8	27.9	27.9
39	Adelaide - Darwin	..	28.0	NA
40	Brisbane - Proserpine	29.6	29.0	-2.0
41	Brisbane - Hobart	28.2	27.8	-1.7
42	Hamilton Island - Sydney	29.2	31.6	8.4
43	Brisbane - Gladstone	27.0	30.4	12.4
44	Darwin - Perth	21.4	21.4	-0.1
45	Adelaide - Cairns	18.1	19.6	8.3
46	Coffs Harbour - Sydney	24.7	23.2	-6.1
47	Adelaide - Canberra	16.9	26.8	58.9
48	Canberra - Gold Coast	14.7	17.5	18.8
49	Brisbane - Emerald	21.0	22.6	7.6
50	Dubbo - Sydney	23.6	24.3	2.6

continued

Table 3: (continued) Available seats (000s) — monthly activity

	City-Pair	Jul 2022	Jul 2023	% Change
51	Melbourne - Mildura	18.0	24.5	36.0
52	Albury - Sydney	22.2	21.3	-4.1
53	Port Macquarie - Sydney	22.6	22.0	-2.8
54	Adelaide - Port Lincoln	24.2	22.3	-8.1
55	Sydney - Wagga Wagga	20.3	21.9	7.9
56	Brisbane - Hamilton Island	23.1	20.2	-12.2
57	Adelaide - Alice Springs	13.7	15.5	13.2
58	Brisbane - Mount Isa	17.3	19.4	11.9
59	Brisbane - Launceston	17.5	14.3	-18.5
60	Brisbane - Bundaberg	..	18.6	NA
61	Devonport - Melbourne	..	15.0	NA
62	Brisbane - Moranbah	..	16.1	NA
63	Armidale - Sydney	14.1	16.9	19.6
	Total domestic network	5 824.0	6 285.0	7.9

Table 4: Load factors (%) — monthly activity

	City-Pair	Jul 2022	Jul 2023	% Point diff
1	Melbourne - Sydney	86.8	80.5	-6.3
2	Brisbane - Sydney	84.9	82.4	-2.5
3	Brisbane - Melbourne	92.0	87.0	-5.0
4	Gold Coast - Sydney	86.9	84.3	-2.6
5	Gold Coast - Melbourne	95.0	92.6	-2.4
6	Adelaide - Melbourne	83.6	84.9	1.3
7	Melbourne - Perth	87.9	86.0	-1.9
8	Adelaide - Sydney	87.7	80.9	-6.8
9	Perth - Sydney	87.3	83.7	-3.6
10	Brisbane - Cairns	92.5	91.2	-1.3
11	Hobart - Melbourne	82.6	82.7	0.1
12	Cairns - Sydney	93.9	92.3	-1.6
13	Cairns - Melbourne	95.2	93.4	-1.8
14	Brisbane - Townsville	90.3	87.8	-2.5
15	Brisbane - Perth	85.6	87.3	1.7
16	Canberra - Melbourne	74.5	69.6	-4.9
17	Adelaide - Brisbane	86.0	83.5	-2.5
18	Sunshine Coast - Sydney	82.5	80.0	-2.5
19	Launceston - Melbourne	78.2	76.0	-2.2
20	Melbourne - Sunshine Coast	94.0	92.7	-1.3
21	Brisbane - Mackay	80.9	78.0	-2.9
22	Brisbane - Canberra	81.3	77.3	-4.0
23	Hobart - Sydney	80.9	74.4	-6.5
24	Adelaide - Perth	86.7	84.2	-2.5
25	Canberra - Sydney	66.3	63.0	-3.3
26	Karratha - Perth	78.7	74.9	-3.8
27	Brisbane - Rockhampton	84.8	79.6	-5.2
28	Ballina - Sydney	79.8	74.2	-5.6
29	Brisbane - Newcastle	77.6	72.9	-4.7
30	Perth - Port Hedland	80.8	68.6	-12.2
31	Broome - Perth	82.5	84.9	2.4
32	Melbourne - Newcastle	84.4	77.1	-7.3
33	Darwin - Melbourne	94.2	89.4	-4.8
34	Brisbane - Darwin	93.7	87.7	-6.0
35	Newman - Perth	59.5	58.8	-0.7
36	Kalgoorlie - Perth	70.4	66.6	-3.8
37	Launceston - Sydney	83.5	74.1	-9.4
38	Adelaide - Gold Coast	94.6	89.1	-5.5
39	Adelaide - Darwin	..	88.1	NA
40	Brisbane - Proserpine	84.0	84.8	0.8
41	Brisbane - Hobart	87.6	84.1	-3.5
42	Hamilton Island - Sydney	72.1	71.0	-1.1
43	Brisbane - Gladstone	64.8	58.2	-6.6
44	Darwin - Perth	91.7	82.5	-9.2
45	Adelaide - Cairns	92.2	88.3	-3.9
46	Coffs Harbour - Sydney	71.7	72.7	1.0
47	Adelaide - Canberra	78.7	60.2	-18.5
48	Canberra - Gold Coast	89.7	89.8	0.1
49	Brisbane - Emerald	71.1	68.9	-2.2
50	Dubbo - Sydney	54.8	63.4	8.6

continued

Table 4: (continued) Load factors (%) — monthly activity

	City-Pair	Jul 2022	Jul 2023	% Point diff
51	Melbourne - Mildura	68.2	61.7	-6.5
52	Albury - Sydney	66.9	67.3	0.4
53	Port Macquarie - Sydney	57.2	62.5	5.3
54	Adelaide - Port Lincoln	60.3	60.0	-0.3
55	Sydney - Wagga Wagga	63.4	58.7	-4.7
56	Brisbane - Hamilton Island	67.3	63.2	-4.1
57	Adelaide - Alice Springs	80.4	78.1	-2.3
58	Brisbane - Mount Isa	69.2	62.5	-6.7
59	Brisbane - Launceston	88.1	84.1	-4.0
60	Brisbane - Bundaberg	..	59.0	NA
61	Devonport - Melbourne	..	70.0	NA
62	Brisbane - Moranbah	..	55.5	NA
63	Armidale - Sydney	59.3	51.4	-7.9
	Total domestic network	85.8	82.8	-3.0

Table 5: Aircraft trips ^(a) — monthly activity

	City-Pair	Jul 2022	Jul 2023	% Change
1	Melbourne - Sydney	4 012	4 593	14.5
2	Brisbane - Sydney	2 521	2 779	10.2
3	Brisbane - Melbourne	1 719	2 025	17.8
4	Gold Coast - Sydney	1 405	1 428	1.6
5	Gold Coast - Melbourne	1 234	1 121	-9.2
6	Adelaide - Melbourne	1 362	1 379	1.2
7	Melbourne - Perth	900	1 034	14.9
8	Adelaide - Sydney	896	1 104	23.2
9	Perth - Sydney	723	831	14.9
10	Brisbane - Cairns	787	840	6.7
11	Hobart - Melbourne	689	694	0.7
12	Cairns - Sydney	503	509	1.2
13	Cairns - Melbourne	447	479	7.2
14	Brisbane - Townsville	619	694	12.1
15	Brisbane - Perth	533	549	3.0
16	Canberra - Melbourne	786	853	8.5
17	Adelaide - Brisbane	474	725	53.0
18	Sunshine Coast - Sydney	413	467	13.1
19	Launceston - Melbourne	619	712	15.0
20	Melbourne - Sunshine Coast	416	354	-14.9
21	Brisbane - Mackay	534	591	10.7
22	Brisbane - Canberra	540	597	10.6
23	Hobart - Sydney	439	468	6.6
24	Adelaide - Perth	348	344	-1.1
25	Canberra - Sydney	1 324	1 307	-1.3
26	Karratha - Perth	375	384	2.4
27	Brisbane - Rockhampton	550	655	19.1
28	Ballina - Sydney	396	444	12.1
29	Brisbane - Newcastle	490	520	6.1
30	Perth - Port Hedland	328	375	14.3
31	Broome - Perth	322	284	-11.8
32	Melbourne - Newcastle	234	291	24.4
33	Darwin - Melbourne	218	243	11.5
34	Brisbane - Darwin	256	249	-2.7
35	Newman - Perth	303	323	6.6
36	Kalgoorlie - Perth	272	291	7.0
37	Launceston - Sydney	169	232	37.3
38	Adelaide - Gold Coast	122	156	27.9
39	Adelaide - Darwin	..	213	NA
40	Brisbane - Proserpine	187	204	9.1
41	Brisbane - Hobart	173	176	1.7
42	Hamilton Island - Sydney	165	179	8.5
43	Brisbane - Gladstone	335	368	9.9
44	Darwin - Perth	122	123	0.8
45	Adelaide - Cairns	100	116	16.0
46	Coffs Harbour - Sydney	501	407	-18.8
47	Adelaide - Canberra	156	254	62.8
48	Canberra - Gold Coast	99	98	-1.0
49	Brisbane - Emerald	308	338	9.7
50	Dubbo - Sydney	487	451	-7.4

continued

Table 5: (continued) Aircraft trips — monthly activity

	City-Pair	Jul 2022	Jul 2023	% Change
51	Melbourne - Mildura	430	490	14.0
52	Albury - Sydney	430	402	-6.5
53	Port Macquarie - Sydney	461	381	-17.4
54	Adelaide - Port Lincoln	603	540	-10.4
55	Sydney - Wagga Wagga	415	393	-5.3
56	Brisbane - Hamilton Island	136	118	-13.2
57	Adelaide - Alice Springs	128	176	37.5
58	Brisbane - Mount Isa	172	170	-1.2
59	Brisbane - Launceston	98	82	-16.3
60	Brisbane - Bundaberg	..	301	NA
61	Devonport - Melbourne	..	332	NA
62	Brisbane - Moranbah	..	214	NA
63	Armidale - Sydney	308	304	-1.3
	Total domestic network	49 279	52 108	5.7

TOP TEN AIRPORTS – PASSENGER MOVEMENTS

Table 6: Top ten airports, RPT passenger movements (000s) - monthly activity

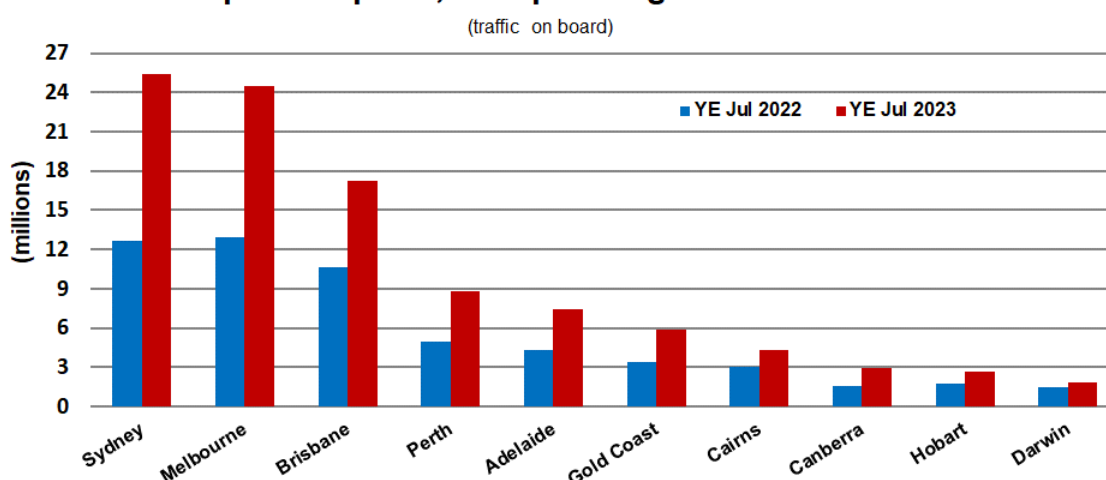
Airport	Jul 2022	Jul 2023	% Change	% of Total
1 SYDNEY	1,995.9	2,079.3	4.2	20.8
2 MELBOURNE	1,932.6	2,005.4	3.8	20.0
3 BRISBANE	1,386.9	1,438.8	3.7	14.4
4 PERTH	680.5	718.6	5.6	7.2
5 ADELAIDE	580.7	606.8	4.5	6.1
6 GOLD COAST	489.8	480.8	-1.9	4.8
7 CAIRNS	385.2	401.2	4.2	4.0
8 CANBERRA	240.3	237.2	-1.3	2.4
9 HOBART	203.1	198.2	-2.4	2.0
10 SUNSHINE COAST	138.7	178.3	28.5	1.8
Total top ten airports	8,033.7	8,344.5	3.9	83.3
Total domestic network	9,633.0	10,015.3	4.0	100.0

Table 7: Top ten airports, RPT passenger movements (000s) - annual activity

Airport	YE Jul 2022	YE Jul 2023	% Change	% of Total
1 Sydney	12,685.5	25,406.9	100.3	22.9
2 Melbourne	12,918.1	24,499.7	89.7	22.1
3 Brisbane	10,629.2	17,253.6	62.3	15.5
4 Perth	4,969.8	8,817.6	77.4	7.9
5 Adelaide	4,281.0	7,435.4	73.7	6.7
6 Gold Coast	3,404.4	5,906.4	73.5	5.3
7 Cairns	2,991.1	4,306.0	44.0	3.9
8 Canberra	1,526.4	2,950.4	93.3	2.7
9 Hobart	1,706.9	2,698.1	58.1	2.4
10 Darwin	1,440.0	1,814.4	26.0	1.6
Total top ten airports	56,552.4	101,088.6	78.8	91.1
Total domestic network	67,646.2	110,971.2	64.0	100.0

Note: Airport passenger movement numbers are the sum of passenger arrivals and departures at each airport.

Top ten airports, RPT passenger movements



TOP FIVE AIRPORTS – CARGO MOVEMENTS

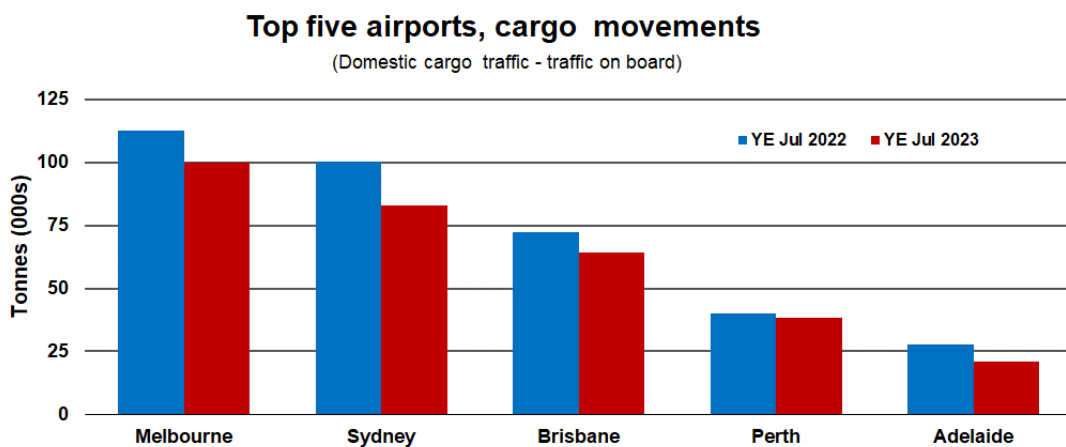
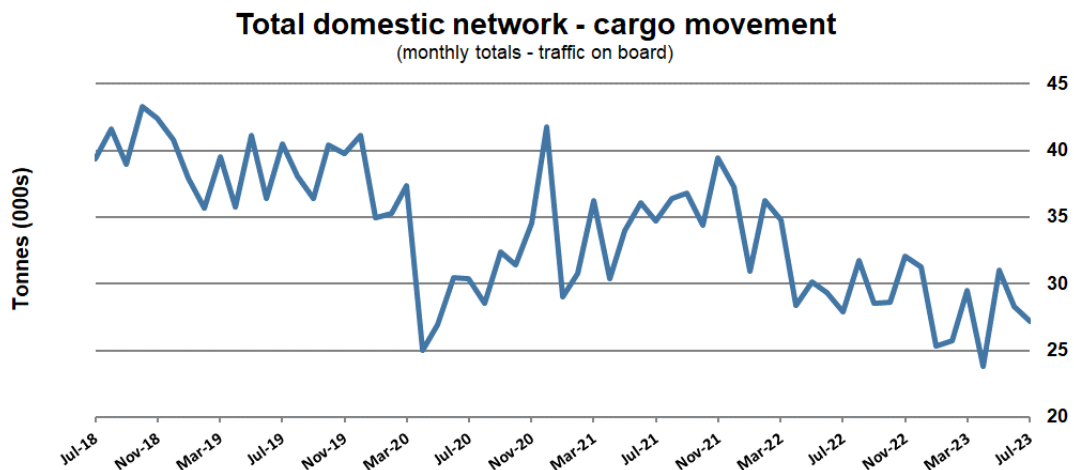
Table 8: Top five airports, domestic RPT cargo movements (000s tonnes) - monthly activity

Airport	Jul 2022	Jul 2023	% Change	% of Total
1 Melbourne	7.5	7.3	-3.2	26.7
2 Sydney	6.1	6.3	3.3	23.3
3 Brisbane	4.7	4.8	2.2	17.8
4 Perth	3.0	2.8	-7.3	10.2
5 Adelaide	1.6	1.4	-13.3	5.0
Total top five airports	22.9	22.5	-1.6	83.1
Total domestic network	27.9	27.1	-2.8	100.0

Table 9: Top five airports, domestic RPT cargo movements (000s tonnes) - annual activity

Airport	YE Jul 2022	YE Jul 2023	% Change	% of Total
1 Melbourne	112.6	100.1	-11.1	29.2
2 Sydney	100.4	82.8	-17.5	24.1
3 Brisbane	72.2	64.3	-11.0	18.7
4 Perth	40.0	38.5	-3.6	11.2
5 Adelaide	27.7	20.7	-25.1	6.0
Total top five airports	352.9	306.5	-13.1	89.3
Total domestic network	402.2	343.1	-14.7	100.0

Note: Airport cargo tonnes are the sum of cargo tonnes on arrivals and departures at each airport.



Note: Airport cargo tonnes are the sum of cargo tonnes on arrivals and departures at each airport.

TOP TEN ROUTES

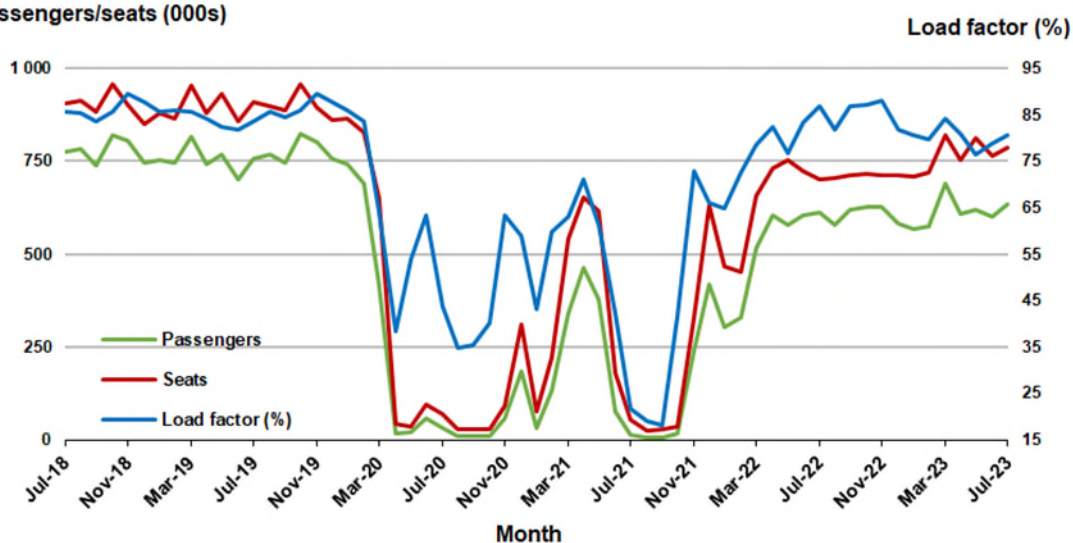
1. Melbourne - Sydney

Monthly data

	Jul 2022	Jul 2023	% Change
Passengers carried (000s)	610.4	633.8	3.8
Seats (000s)	703.1	787.8	12.1
Load factor %	86.8	80.5	-6.3 *
Aircraft trips	4,012	4,593	14.5

* percentage point difference

Passengers/seats (000s)

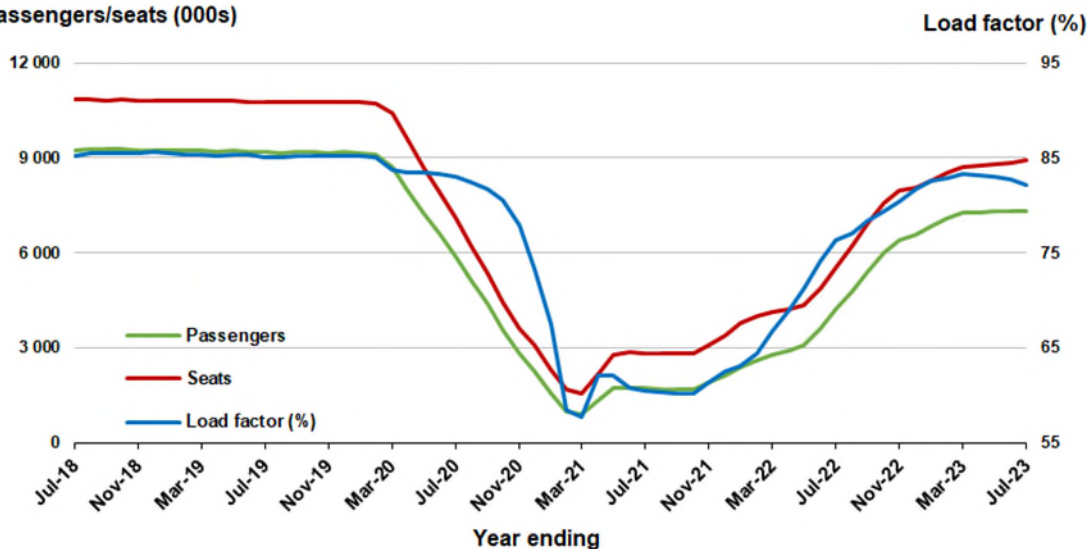


Moving annual data

	YE Jul 2022	YE Jul 2023	% Change
Passengers carried (000s)	4,223.5	7,329.6	73.5
Seats (000s)	5,538.3	8,922.2	61.1
Load factor %	76.3	82.2	5.9 *
Aircraft trips	33,538	51,464	53.4

* percentage point difference

Passengers/seats (000s)

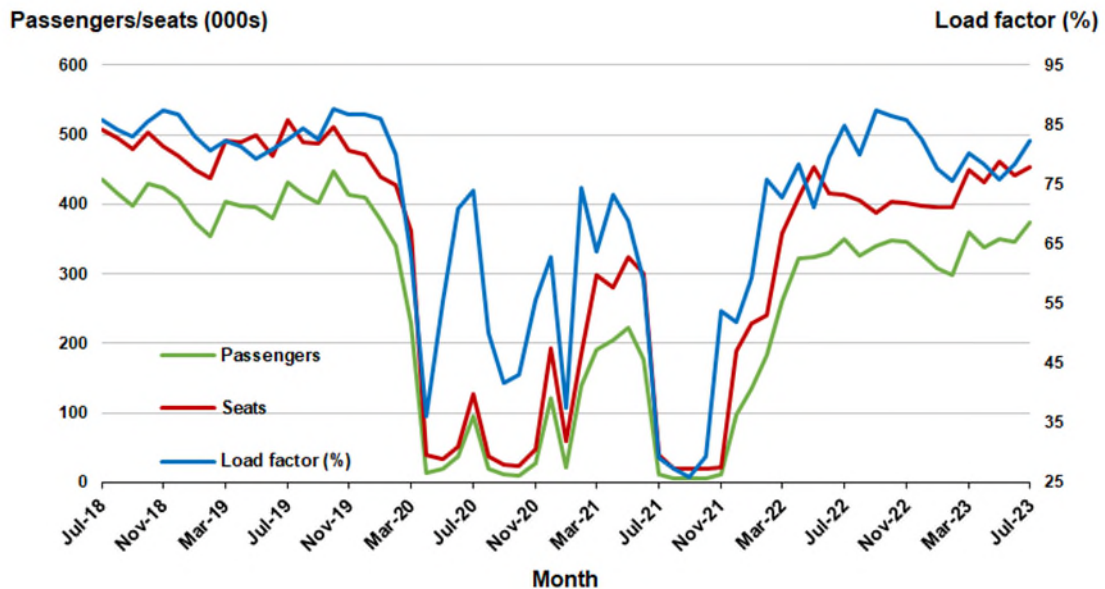


2. Brisbane - Sydney

Monthly data

	Jul 2022	Jul 2023	% Change
Passengers carried (000s)	350.7	373.5	6.5
Seats (000s)	413.2	453.6	9.8
Load factor %	84.9	82.4	-2.5 *
Aircraft trips	2,521	2,779	10.2

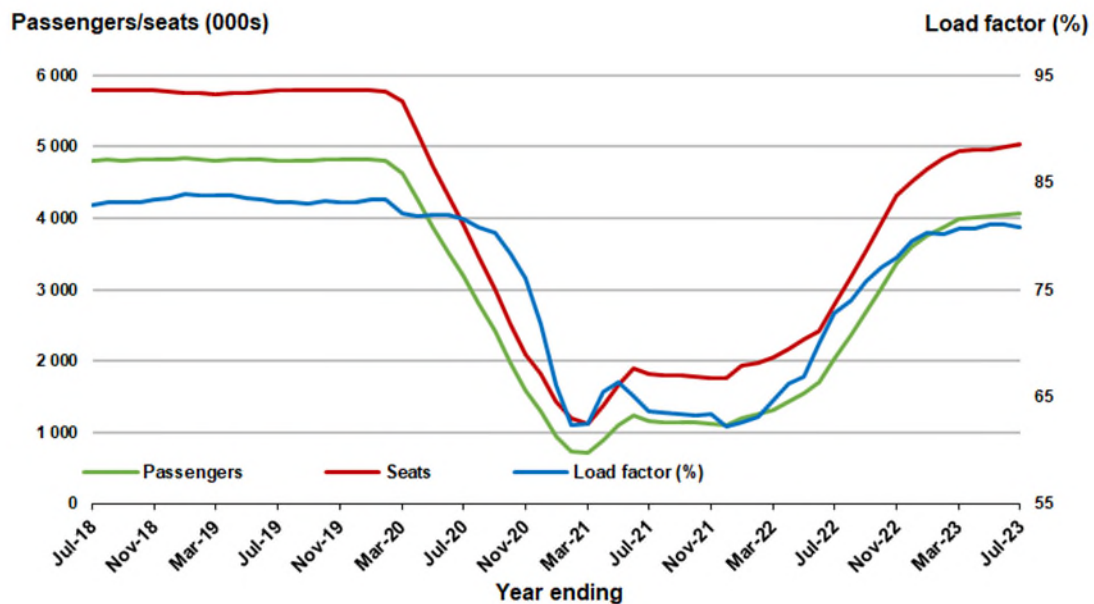
* percentage point difference



Moving annual data

	YE Jul 2022	YE Jul 2023	% Change
Passengers carried (000s)	2,031.5	4,066.5	100.2
Seats (000s)	2,791.8	5,029.9	80.2
Load factor %	72.8	80.8	8.1 *
Aircraft trips	18,188	30,905	69.9

* percentage point difference

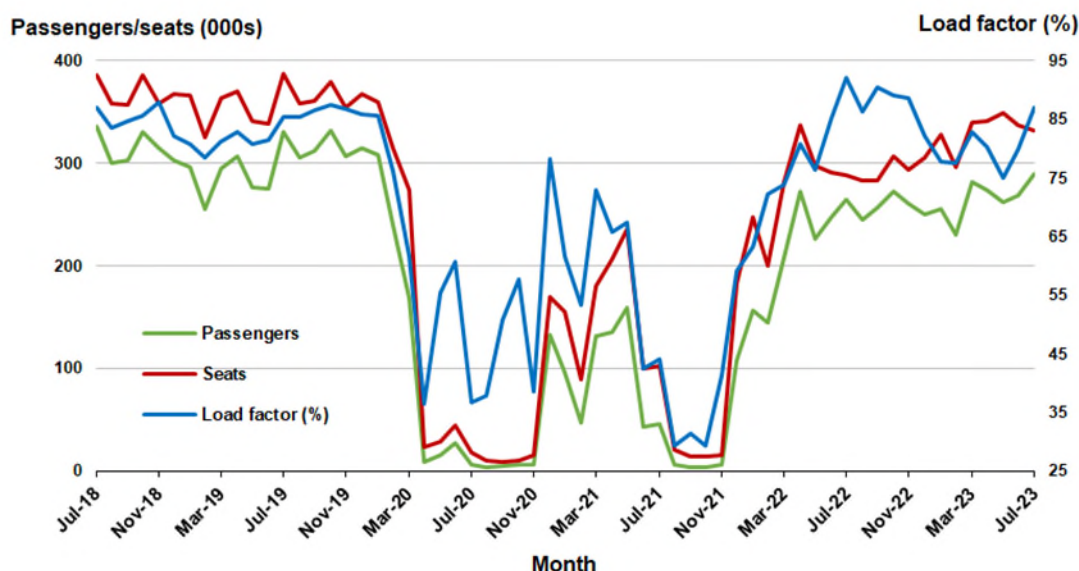


3. Brisbane - Melbourne

Monthly data

	Jul 2022	Jul 2023	% Change
Passengers carried (000s)	265.1	289.2	9.1
Seats (000s)	288.3	332.6	15.4
Load factor %	92.0	87.0	-5.0 *
Aircraft trips	1,719	2,025	17.8

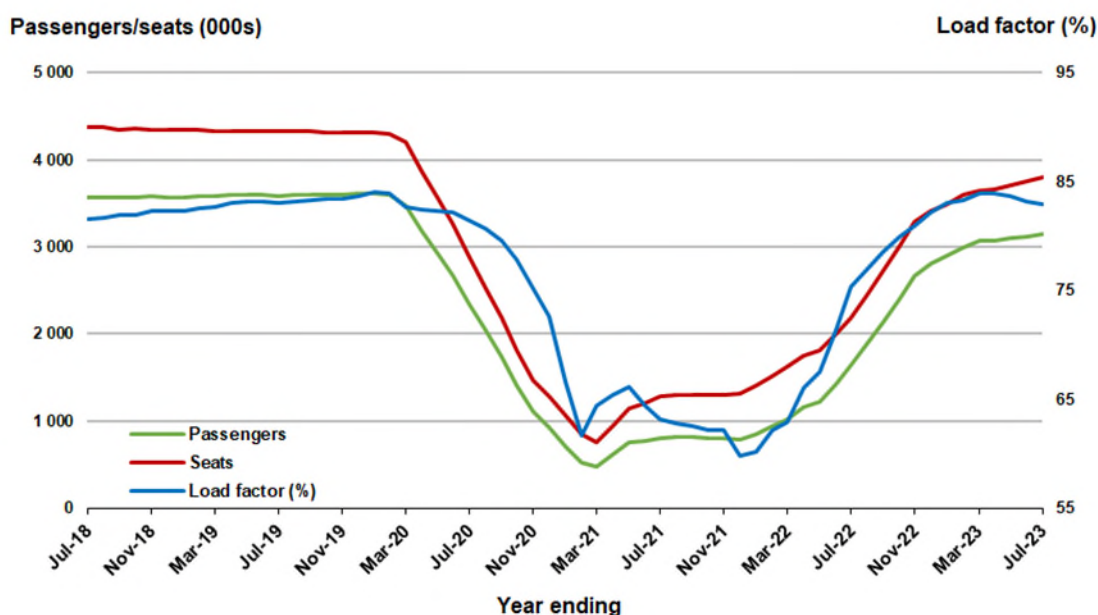
* percentage point difference



Moving annual data

	YE Jul 2022	YE Jul 2023	% Change
Passengers carried (000s)	1,649.6	3,148.4	90.9
Seats (000s)	2,190.3	3,798.4	73.4
Load factor %	75.3	82.9	7.6 *
Aircraft trips	13,933	23,170	66.3

* percentage point difference



4. Gold Coast - Sydney ^(a)

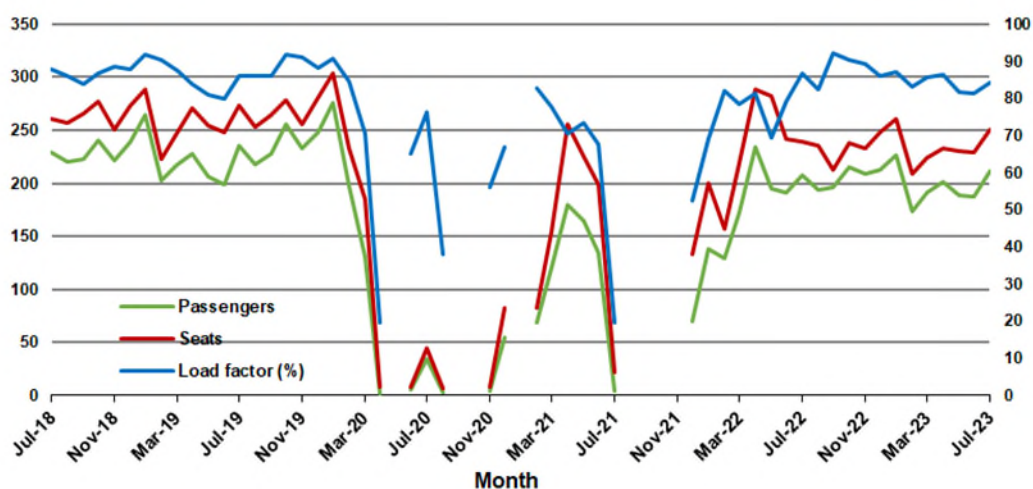
Monthly data

	Jul 2022	Jul 2023	% Change
Passengers carried (000s)	207.9	211.2	1.6
Seats (000s)	239.3	250.6	4.7
Load factor %	86.9	84.3	-2.6 *
Aircraft trips	1,405	1,428	1.6

* percentage point difference

Passengers/seats (000s)

Load factor (%)



(a) May, September and October 2020 and January and August to November 2021 data not available for release.

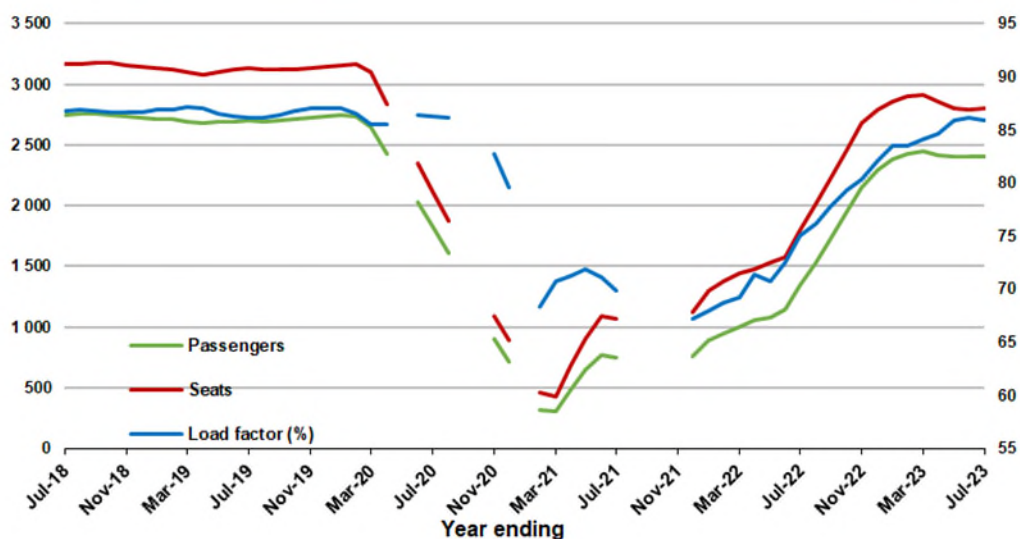
Moving annual data

	YE Jul 2022	YE Jul 2023	% Change
Passengers carried (000s)	1,344.4	2,408.3	79.1
Seats (000s)	1,792.2	2,804.8	56.5
Load factor %	75.0	85.9	10.8 *
Aircraft trips	10,471	16,185	54.6

* percentage point difference

Passengers/seats (000s)

Load factor (%)



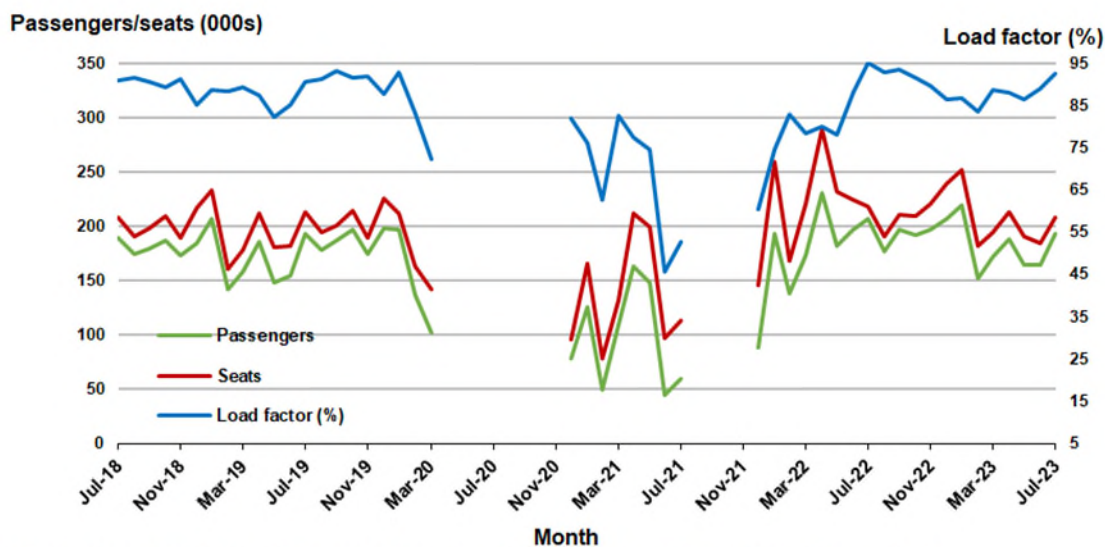
(a) May, September and October 2020 and January and August to November 2021 moving annual totals not available for release.

5. Gold Coast - Melbourne

Monthly data

	Jul 2022	Jul 2023	% Change
Passengers carried (000s)	207.1	193.1	- 6.8
Seats (000s)	218.0	208.4	-4.4
Load factor %	95.0	92.6	-2.4 *
Aircraft trips	1,234	1,121	-9.2

* percentage point difference

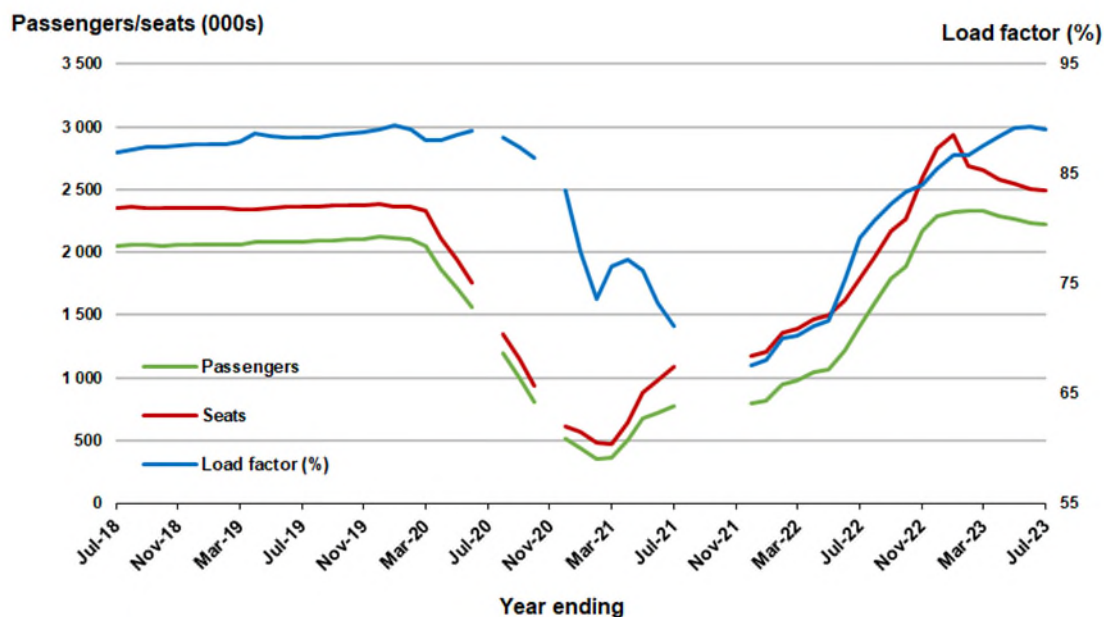


(a) April to November 2020 and August to November 2021 moving annuals are not available for release.

Moving annual data

	YE Jul 2022	YE Jul 2023	% Change
Passengers carried (000s)	1,416.8	2,222.0	56.8
Seats (000s)	1,788.7	2,494.5	39.5
Load factor %	79.2	89.1	9.9 *
Aircraft trips	9,723	13,678	40.7

* percentage point difference



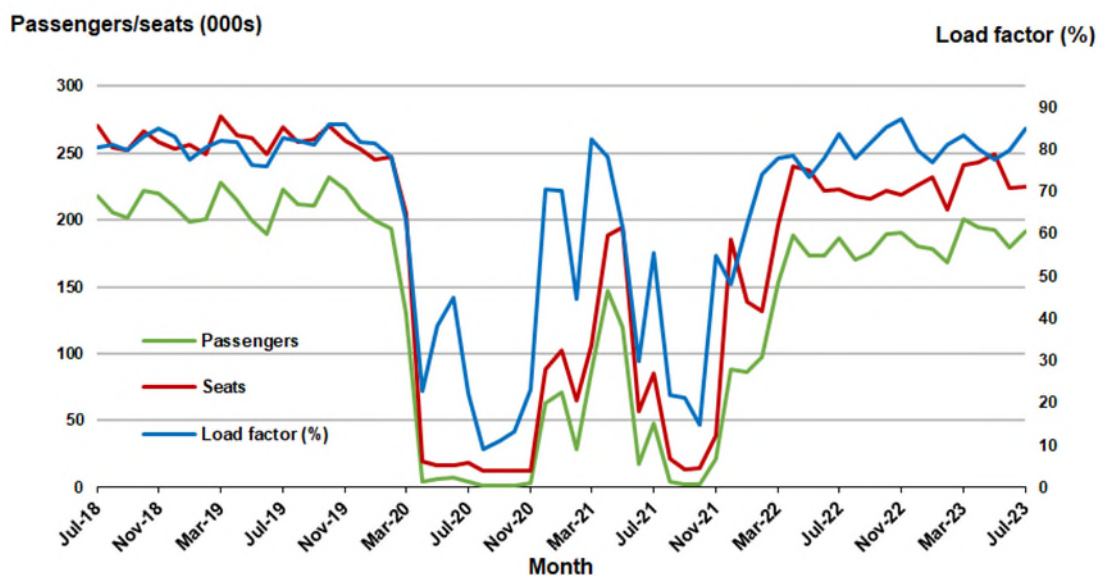
(a) July and November 2020 and August to November 2021 moving annuals are not available for release.

6. Adelaide - Melbourne

Monthly data

	Jul 2022	Jul 2023	% Change
Passengers carried (000s)	186.5	191.0	2.4
Seats (000s)	223.1	225.0	.9
Load factor %	83.6	84.9	1.3 *
Aircraft trips	1,362	1,379	1.2

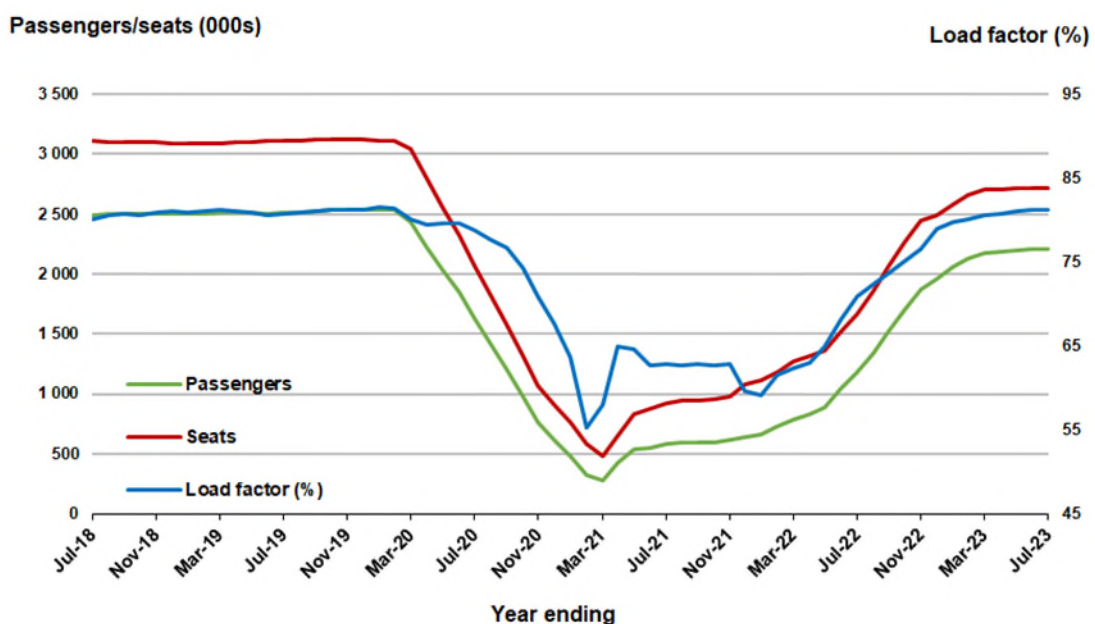
* percentage point difference



Moving annual data

	YE Jul 2022	YE Jul 2023	% Change
Passengers carried (000s)	1,178.9	2,211.5	87.6
Seats (000s)	1,662.4	2,721.2	63.7
Load factor %	70.9	81.3	10.3 *
Aircraft trips	10,519	16,703	58.8

* percentage point difference



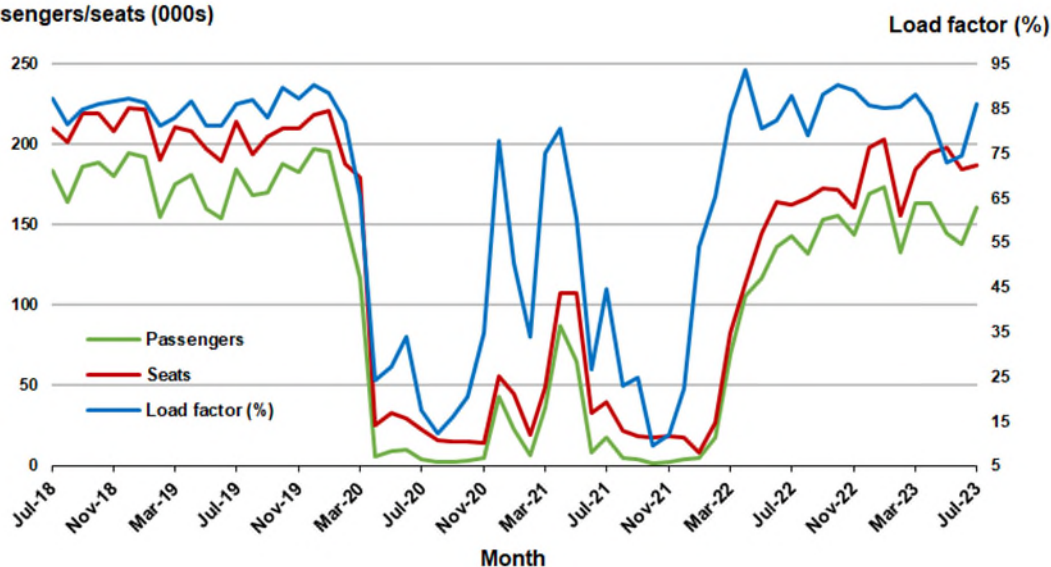
7. Melbourne - Perth

Monthly data

	Jul 2022	Jul 2023	% Change
Passengers carried (000s)	142.9	161.1	12.7
Seats (000s)	162.6	187.2	15.2
Load factor %	87.9	86.0	-1.9 *
Aircraft trips	900	1,034	14.9

* percentage point difference

Passengers/seats (000s)

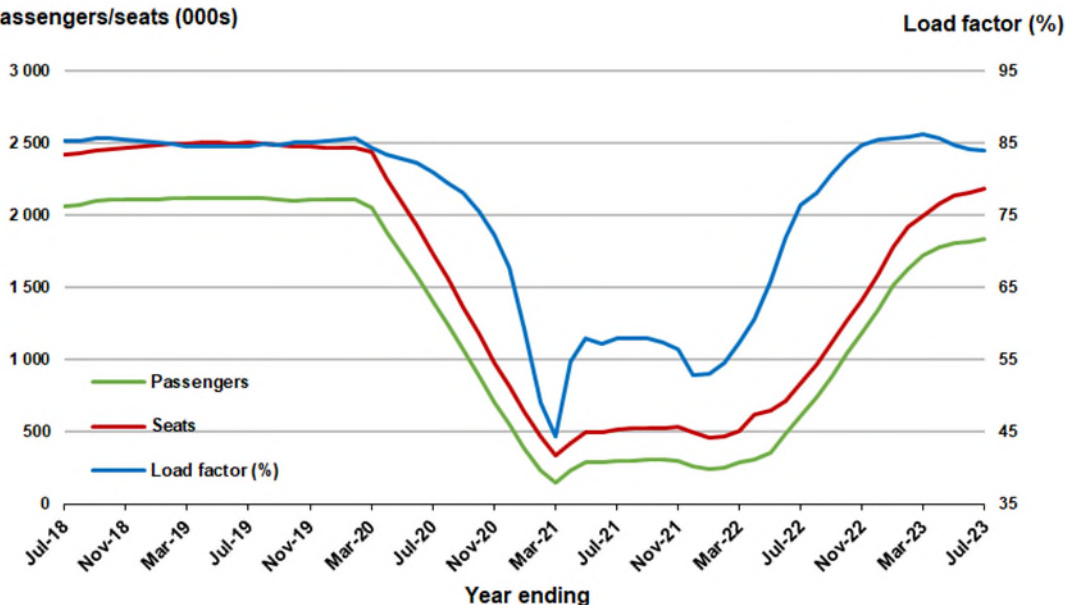


Moving annual data

	YE Jul 2022	YE Jul 2023	% Change
Passengers carried (000s)	610.9	1,831.8	199.9
Seats (000s)	838.3	2,180.8	160.1
Load factor %	76.5	84.0	7.5 *
Aircraft trips	5,215	12,161	133.2

* percentage point difference

Passengers/seats (000s)



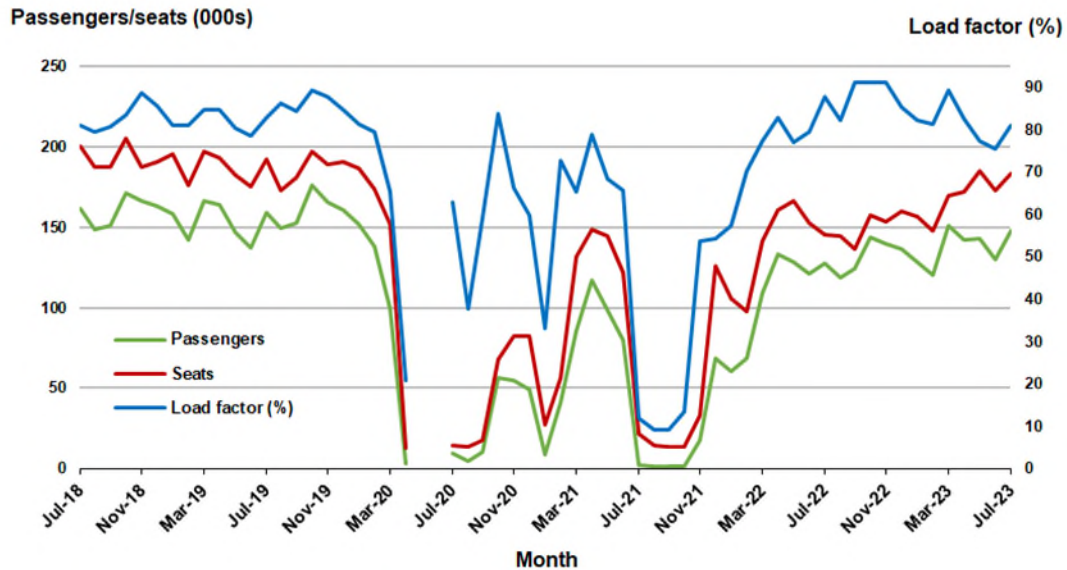
8. Adelaide - Sydney ^(a)

Monthly data

	Jul 2022	Jul 2023	% Change
Passengers carried (000s)	127.7	148.0	15.9
Seats (000s)	145.6	182.9	25.7
Load factor %	87.7	80.9	-6.8 *
Aircraft trips	896	1,104	23.2

.. Data not available for release.

* percentage point difference



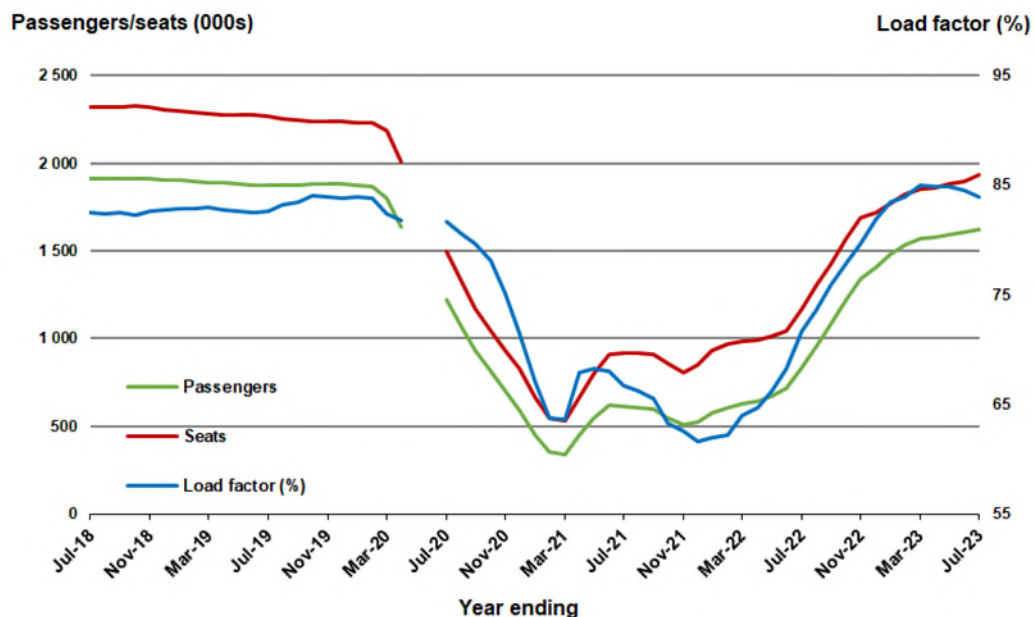
(a) May and June 2020 data not available for release.

Moving annual data

	YE Jul 2022	YE Jul 2023	% Change
Passengers carried (000s)	838.6	1,625.1	93.8
Seats (000s)	1,169.5	1,937.0	65.6
Load factor %	71.7	83.9	12.2 *
Aircraft trips	7,320	11,835	61.7

.. Data not available for release.

* percentage point difference



(a) May and June 2020 moving annual totals are not available for release.

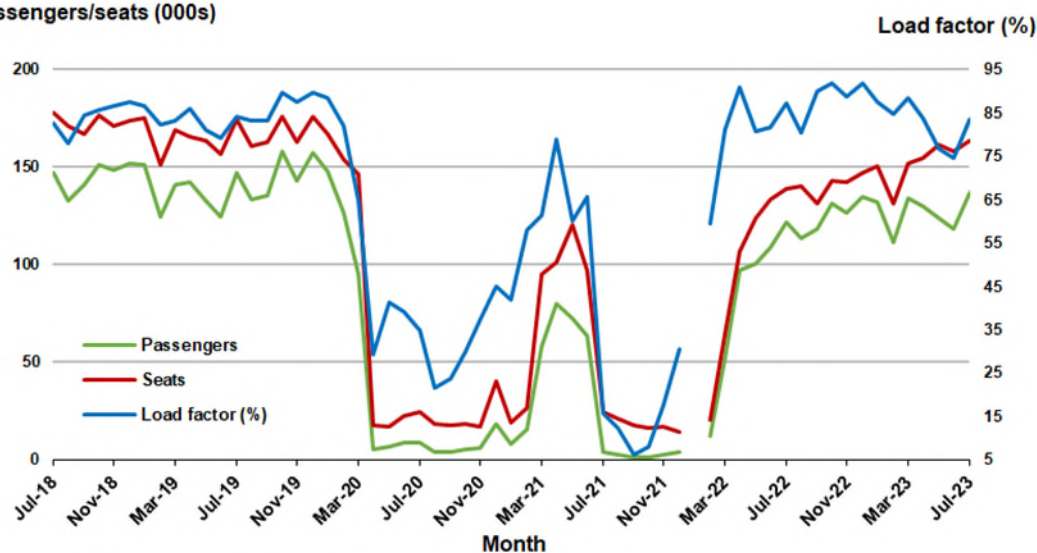
9. Perth - Sydney ^(a)

Monthly data

	Jul 2022	Jul 2023	% Change
Passengers carried (000s)	121.5	137.2	12.9
Seats (000s)	139.2	163.9	17.7
Load factor %	87.3	83.7	-3.6 *
Aircraft trips	723	831	14.9

* percentage point difference

Passengers/seats (000s)



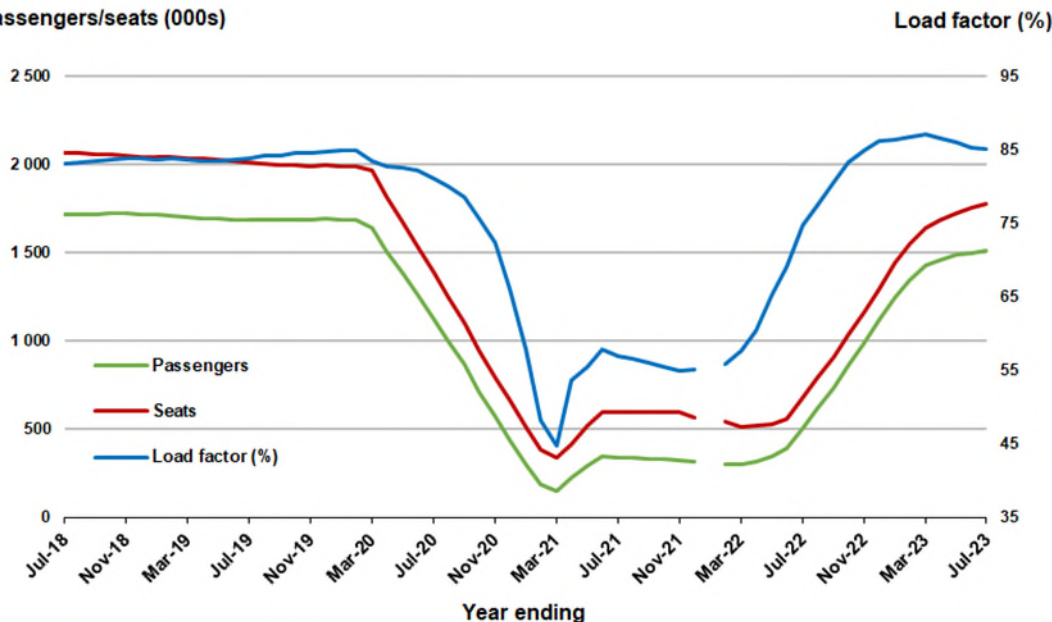
(a) January 2022 data not available for release.

Moving annual data

	YE Jul 2022	YE Jul 2023	% Change
Passengers carried (000s)	506.3	1,512.5	198.8
Seats (000s)	677.1	1,777.9	162.6
Load factor %	74.8	85.1	10.3 *
Aircraft trips	3,662	9,296	153.9

* percentage point difference

Passengers/seats (000s)



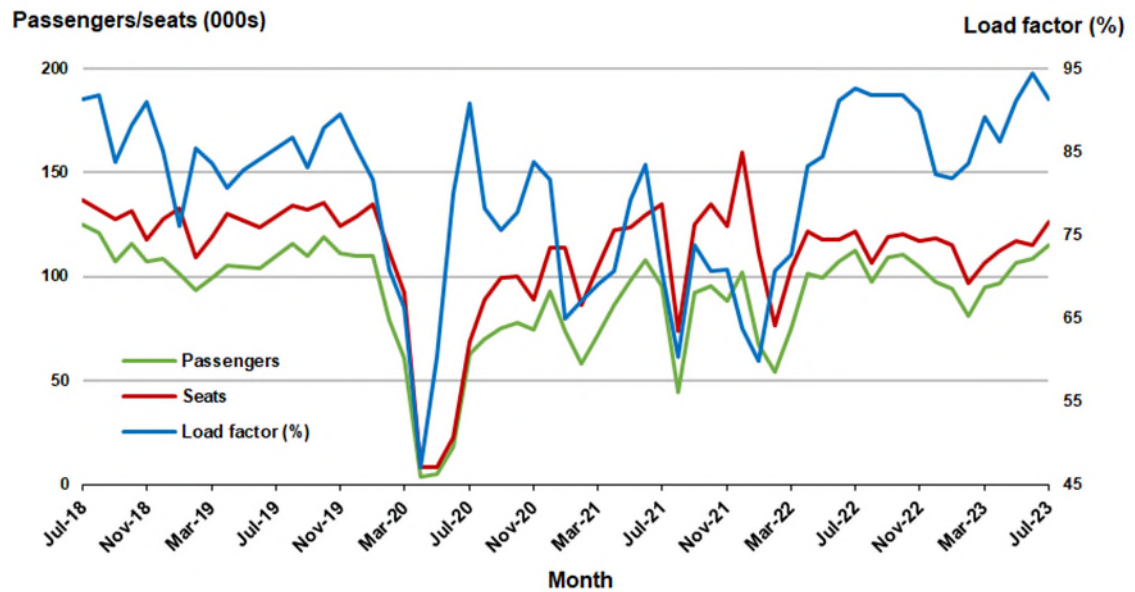
(a) January 2022 moving annual totals are not available for release.

10. Brisbane - Cairns

Monthly data

	Jul 2022	Jul 2023	% Change
Passengers carried (000s)	112.6	115.2	2.3
Seats (000s)	121.7	126.3	3.7
Load factor %	92.5	91.2	-1.3 *
Aircraft trips	787	840	6.7

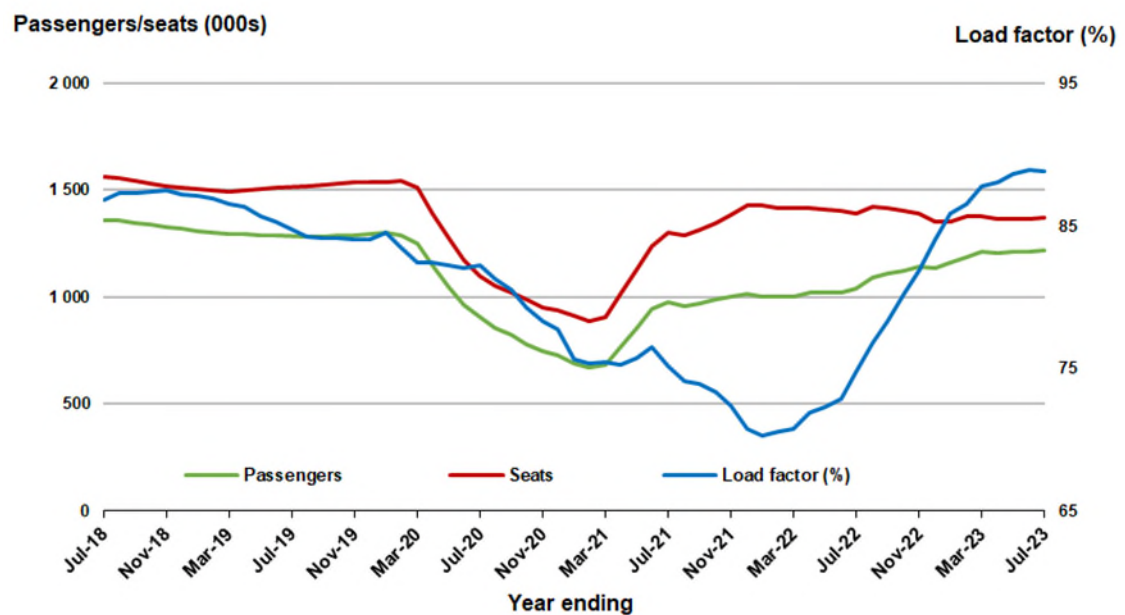
* percentage point difference



Moving annual data

	YE Jul 2022	YE Jul 2023	% Change
Passengers carried (000s)	1,039.0	1,216.0	17.0
Seats (000s)	1,388.9	1,369.6	-1.4
Load factor %	74.8	88.8	14.0 *
Aircraft trips	8,982	9,122	1.6

* percentage point difference



TOP FIFTY REGIONAL AIRPORTS

Table 10: Top fifty regional airports (000s) — passenger movements, monthly

Airport	Jul 2022	Jul 2023	% Change
1 Cairns	385.2	401.2	4.2
2 Hobart	203.1	198.2	-2.4
3 Darwin	191.2	178.1	-6.9
4 Townsville	153.8	162.4	5.6
5 Launceston	103.1	104.1	0.9
6 Newcastle	92.1	103.9	12.8
7 Mackay	78.3	79.3	1.3
8 Rockhampton	45.7	59.9	31.1
9 Ballina	51.3	52.7	2.7
10 Broome	54.8	51.2	-6.5
11 Proserpine	42.3	48.2	13.8
12 Karratha	44.9	47.4	5.8
13 Hamilton Island	46.6	43.5	-6.7
14 Port Hedland	39.1	41.0	5.0
15 Alice Springs	41.7	36.0	-13.8
16 Newman	27.8	29.7	6.8
17 Kalgoorlie	27.9	28.6	2.2
18 Ayers Rock	23.4	28.0	19.8
19 Albury	21.1	23.6	11.8
20 Coffs Harbour	24.5	23.4	-4.7
21 Paraburdoo	18.0	20.8	15.3
22 Mildura	16.0	20.5	27.8
23 Port Macquarie	15.4	19.7	28.0
24 Gladstone	17.5	19.6	12.1
25 Mount Isa	19.8	19.1	-3.5
26 Dubbo	15.7	18.3	17.2
27 Wagga Wagga	16.8	16.6	-0.9
28 Emerald	15.6	16.5	5.4
29 Tamworth	13.2	15.6	18.5
30 Kununurra	16.2	14.9	-8.0
31 Bundaberg	9.2	14.2	53.7
32 Port Lincoln	14.6	13.4	-8.4
33 Hervey Bay	11.4	12.3	8.4
34 Learmonth	11.7	11.6	-0.9
35 Devonport	8.4	10.5	25.6
36 Thursday Island	10.0	10.2	2.4
37 Armidale	8.9	9.3	3.9
38 Moranbah	7.9	8.9	13.8
39 Olympic Dam	7.1	8.9	25.9
40 Orange	8.0	8.8	9.7
41 Gove	9.4	8.2	-12.7
42 Toowoomba Wellcamp	5.4	8.1	49.7
43 Weipa	7.7	8.0	4.7
44 Geraldton	6.7	7.3	8.8
45 Burnie	6.7	7.0	4.6
46 Mount Gambier	7.3	6.3	-14.3
47 Griffith	6.4	6.3	-1.3
48 Merimbula	6.3	5.4	-13.6
49 Roma	4.7	5.4	16.0
50 Albany	4.5	5.2	14.6
Total top 50 regional airport	2,024.3	2,097.2	3.6
Total regional airports	2,139.4	2,212.0	3.4
Total domestic network	9,633.0	10,015.3	4.0

Note: Airport passenger movement numbers are the sum of passenger arrivals and departures at each airport.

Regional airports are defined as airports which are, according to Australian Statistical Geography Standard (ASGS), not based in Major Cities.

Table 11: Top fifty regional airports (000s) — passenger movements, annual

Airport	YE Jul 2022	YE Jul 2023	% Change
1 Cairns	2,763.9	3,920.9	41.9
2 Hobart	1,624.4	2,495.0	53.6
3 Townsville	1,263.5	1,658.7	31.3
4 Darwin	1,348.6	1,623.2	20.4
5 Launceston	808.5	1,294.9	60.2
6 Newcastle	641.0	1,102.2	71.9
7 Mackay	707.7	891.2	25.9
8 Ballina	570.2	634.0	11.2
9 Rockhampton	424.8	571.8	34.6
10 Karratha	464.4	534.3	15.1
11 Hamilton Island	383.7	497.1	29.5
12 Proserpine	390.4	483.7	23.9
13 Port Hedland	419.5	479.0	14.2
14 Broome	437.8	437.2	-0.1
15 Newman	329.7	367.7	11.5
16 Alice Springs	272.3	357.9	31.5
17 Kalgoorlie	283.4	339.5	19.8
18 Coffs Harbour	201.0	284.7	41.6
19 Ayers Rock	112.2	250.4	123.2
20 Albury	127.7	239.1	87.3
21 Mount Isa	200.7	230.0	14.6
22 Paraburdoo	200.7	228.8	14.0
23 Mildura	115.7	212.3	83.4
24 Gladstone	161.7	209.4	29.5
25 Dubbo	124.3	202.1	62.6
26 Port Macquarie	102.3	197.5	93.2
27 Wagga Wagga	104.5	194.5	86.2
28 Emerald	149.4	190.3	27.4
29 Port Lincoln	154.3	177.4	15.0
30 Tamworth	83.2	156.1	87.7
31 Hervey Bay	84.0	138.2	64.6
32 Kununurra	116.4	130.6	12.2
33 Bundaberg	86.1	122.2	42.0
34 Devonport	51.3	121.7	137.1
35 Armidale	64.4	111.1	72.3
36 Moranbah	90.3	107.7	19.3
37 Learmonth	95.5	103.4	8.3
38 Thursday Island	93.7	102.4	9.2
39 Orange	57.7	100.9	74.9
40 Olympic Dam	90.3	100.0	10.7
41 Gove	65.9	86.8	31.7
42 Weipa	79.4	85.3	7.4
43 Burnie	46.2	83.0	79.6
44 Geraldton	81.5	82.8	1.6
45 Griffith	44.3	76.2	71.8
46 Mount Gambier	56.2	75.6	34.5
47 Merimbula	40.3	74.1	83.9
48 Norfolk Island	52.4	69.7	33.0
49 Broken Hill	31.6	62.0	96.1
50 Albany	52.2	61.7	18.2
Total top 50 regional airport	16,350.9	22,356.3	36.7
Total regional airports	17,501.1	23,744.7	35.7
Total domestic network	67,646.2	110,971.2	64.0

Note: Airport passenger movement numbers are the sum of passenger arrivals and departures at each airport. Regional airports are defined as airports which are, according to Australian Statistical Geography Standard (ASGS), not based in Major Cities.

DOMESTIC CHARTER ACTIVITY

Table 12: Charter passengers carried and aircraft trips - monthly activity

	Jul 2022	Jul 2023	% Change
Total domestic charter passengers	282,020	332,714	18.0
Total domestic charter aircraft trips	5,217	5,676	8.8

Note: Helicopter, joyflights and sightseeing charter flights not included.

Table 13: Charter passengers carried and aircraft trips - annual activity

	YE Jul 2022	YE Jul 2023	% Change
Total domestic charter passengers	3,418,804	3,861,568	13.0
Total domestic charter aircraft trips	64,498	67,592	4.8

Note: Helicopter, joyflights and sightseeing charter flights not included.

Table 14: Domestic airports - charter activity - monthly

	Jul 2022	Jul 2023	% Change
Total domestic charter passenger movements	564,040	665,428	18.0
Total domestic charter aircraft movements	10,434	11,352	8.8
Perth airport charter passenger movements	212,322	248,051	16.8
Perth airport charter aircraft movements	3,575	3,877	8.4

Note: Helicopter, joyflights and sightseeing charter flights not included.

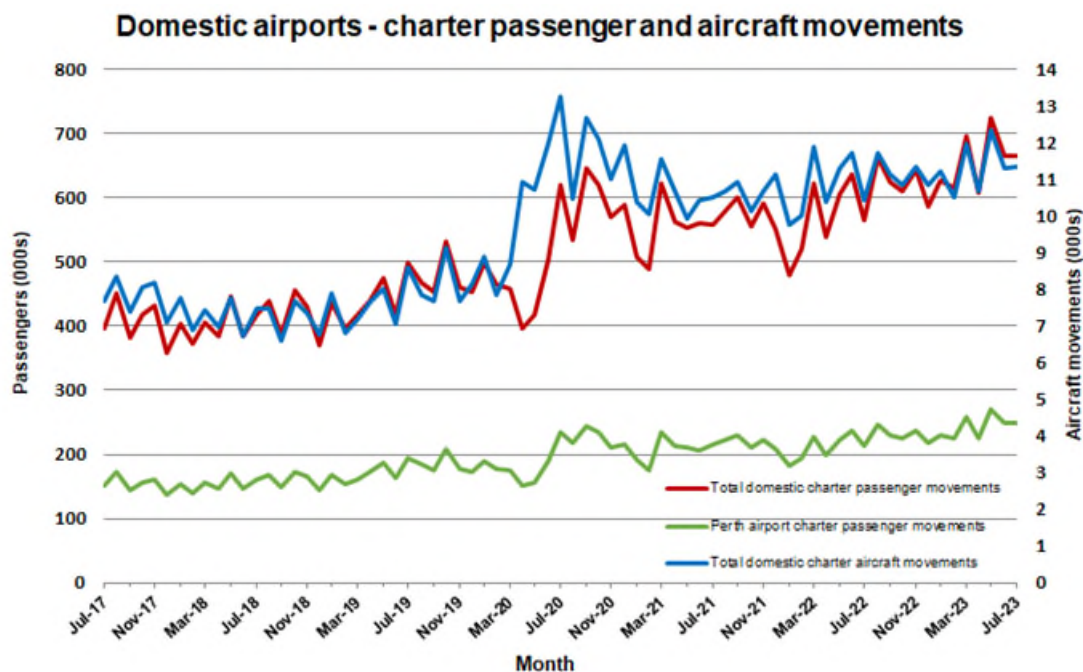
Charter passenger and aircraft movement numbers are the sum of arrivals and departures at each airport.

Table 15: Domestic airports - charter activity - annual

	YE Jul 2022	YE Jul 2023	% Change
Total domestic charter passenger movements	6,837,608	7,723,136	13.0
Total domestic charter aircraft movements	128,996	135,184	4.8
Perth airport charter passenger movements	2,569,246	2,863,661	11.5
Perth airport charter aircraft movements	44,295	45,412	2.5

Note: Helicopter, joyflights and sightseeing charter flights not included.

Charter passenger and aircraft movement numbers are the sum of arrivals and departures at each airport.



DEFINITIONS

Aircraft Trips	The number of flight stages. A return flight counts as two aircraft trips.
Airport Movements	Airport movements (passenger and cargo) are measured once on arrival and once on departure. Each domestic trip generates two movements at airports. For example, a trip from Melbourne to Sydney will be counted twice, as a departure at Melbourne and as an arrival at Sydney. At the national level, the sum of all domestic airport traffic will therefore be equal to twice the number of trips undertaken.
Available Seat Kilometres (ASKs)	Calculated by multiplying the number of seats available on each flight stage, by the distance in kilometres between the ports. The distances used are Great Circle Distances.
City-Pair	The ports shown make up the city-pair route. Passenger movements shown for a city pair reflect total traffic in both directions.
Flight Stage	The operation of an aircraft from take-off to landing.
Load Factor	The total revenue passenger kilometres performed as a percentage of the total available seat kilometres.
Passengers Carried	Revenue passengers carried.
Regular Public Transport Services (RPT)	All air service operations in which aircraft are available for the transport of members of the public and are conducted in accordance with fixed schedules. It does not include charter or other non-scheduled operations.
Revenue Passengers	All passengers paying any fare. Frequent flyer redemption travellers are regarded as revenue passengers.
Revenue Passenger Kilometres (RPKs)	Calculated by multiplying the number of revenue passengers travelling on each flight stage, by the distance in kilometres between the ports. The distances used are Great Circle Distances.
Traffic on board by stages	The total of all traffic (revenue passengers) on each flight stage between two directly connected airports.
..	Not available for confidentiality or other reasons.
NA	Not applicable.