



Australian Government

**Department of Infrastructure, Transport,
Regional Development, Communications and the Arts**
Bureau of Infrastructure and Transport Research Economics

STATISTICAL REPORT



bitre

Aviation

**Domestic aviation activity
July 2022**

© Commonwealth of Australia 2022

ISSN: 1832 - 1968

Ownership of intellectual property rights in this publication

Unless otherwise noted, copyright (and any other intellectual property rights, if any) in this publication is owned by the Commonwealth of Australia (referred to below as the Commonwealth).

Disclaimer

The material contained in this publication is made available on the understanding that the Commonwealth is not providing professional advice, and that users exercise their own skill and care with respect to its use, and seek independent advice if necessary.

The Commonwealth makes no representations or warranties as to the contents or accuracy of the information contained in this publication. To the extent permitted by law, the Commonwealth disclaims liability to any person or organisation in respect of anything done, or omitted to be done, in reliance upon information contained in this publication.

Creative Commons licence

With the exception of (a) the Coat of Arms; and (b) the Department of Infrastructure, Transport, Regional Development, Communications and the Arts' photos and graphics, copyright in this publication is licensed under a Creative Commons Attribution 3.0 Australia Licence.

Creative Commons Attribution 3.0 Australia Licence is a standard form licence agreement that allows you to copy, communicate and adapt this publication provided that you attribute the work to the Commonwealth and abide by the other licence terms. A summary of the licence terms is available from <http://creativecommons.org/licenses/by/3.0/au/deed.en>.

The full licence terms are available from <http://creativecommons.org/licenses/by/3.0/au/legalcode>.

Use of the Coat of Arms

The Department of the Prime Minister and Cabinet sets the terms under which the Coat of Arms is used. Please refer to the Department's Commonwealth Coat of Arms and Government branding web page <http://www.dpmc.gov.au/guidelines/index.cfm#brand> and, in particular, the Guidelines on the use of the Commonwealth Coat of Arms publication.

An appropriate citation for this report is:

Bureau of Infrastructure and Transport Research Economics (BITRE), 2022, Domestic aviation activity, Statistical Report, BITRE, Canberra ACT.

Contact us

This publication is available in PDF format. All other rights are reserved, including in relation to any Departmental logos or trade marks which may exist. For enquiries regarding the licence and any use of this publication, please contact:

Bureau of Infrastructure and Transport Research Economics (BITRE)
Department of Infrastructure, Transport, Regional Development, Communications and the Arts
GPO Box 501, Canberra ACT 2601, Australia
Telephone: (international) +61 2 6274 7210
Fax: (international) +61 2 6274 6855
Email: bitre@infrastructure.gov.au
Website: www.bitre.gov.au

Inquiries

Should you require additional information about the statistics contained in this publication:

Marko Rodic

Telephone (02) 6274 6859 or Facsimile

Electronic mail: AVSTATS@infrastructure.gov.au

Marko.Rodic2@infrastructure.gov.au

Web site: <http://www.bitre.gov.au/statistics/aviation/domestic.aspx>

FOREWORD

This report provides an overview of domestic (including charter) commercial aviation activity in Australia for the month of July 2022.

The data cover revenue passengers carried by Australian-registered operators of scheduled regular public transport services over Australian flight stages and fixed-wing charter operators. These estimates include passengers carried between domestic airports on international flights operated by these carriers. The passengers carried refer to traffic on board by stages.

Estimates of passengers and aircraft movements for charter aviation are included in this publication, where BITRE confidentiality standards are met.

Individual routes shown are restricted to those exceeding 8 000 passengers per month where two or more airlines operate in competition. However, from November 2021 the major airlines (Qantas Group, Virgin Australia and Rex Airlines) have agreed to publication of the top 35 routes based on pre-COVID activity (December 2019) whether or not they currently meet the above criteria. With these approvals, there were 61 routes published for the month of July 2022 compared to 53 published in July 2021.

Information on the total network for the month of July 2022 and on the Regular Public Transport (RPT) network for the month of July 2022 is presented on page 2, with estimates for the year ended July 2022 presented on page 3.

Detailed information on individual routes can be found in the RPT summary pages 4-13 of this publication.

The top ten airports in terms of RPT passenger movements are shown on page 14.

Data on domestic RPT cargo movements at the top five cargo airports are provided on page 15. The table includes cargo carried on passenger flights operated by the Qantas group (including Jetstar), Virgin Australia, Air North and Skippers as well as the cargo carried by dedicated freighter aircraft operated by Qantas Freight and Toll.

The long-term trends for the top ten competitive RPT routes are presented graphically on pages 16-25.

Domestic RPT passenger movements at regional airports are presented on pages 26-27.

Tables providing estimates of domestic charter aviation activity are shown on page 28. BITRE confidentiality standards restrict publication of detailed estimates for individual Australian airports, with the exception of Perth Airport.

A list of definitions can be found on page 29.

This report was prepared by the Aviation Statistics Section of the Bureau of Infrastructure and Transport Research Economics with data provided by airlines.

Estimates are included where data were not available and data presented in this publication may contain revisions to previously published data.

Where figures have been rounded, discrepancies may occur between sums of component items and totals, and in percentage changes which are derived from figures prior to rounding.

CONTENTS

Highlights	1
Total network.....	2
RPT network	2
Top competitive routes.....	4
Top ten airports – passenger movements.....	14
Top five airports – cargo movements.....	15
Top ten routes	16
1. Melbourne – Sydney	16
2. Brisbane – Sydney.....	17
3. Brisbane – Melbourne	18
4. Gold Coast – Sydney	19
5. Gold Coast – Melbourne	20
6. Adelaide – Melbourne	21
7. Melbourne – Perth	22
8. Adelaide – Sydney	23
9. Perth – Sydney	24
10. Brisbane – Cairns	25
Top fifty regional airports	26
Domestic charter activity.....	28
Definitions	29

This page is intentionally left blank.

HIGHLIGHTS

The domestic aviation industry continued to recover in July 2022. Revenue passenger numbers were 256.6 per cent higher than July 2021 levels but still 11.8 per cent below pre-COVID July 2019.

There were 5.10 million passengers carried on Australian domestic commercial aviation (including charter operations) in July 2022, compared to 1.63 million in July 2021 and 5.70 million in pre-COVID July 2019.

For the month of July 2022, there were 49.2 thousand aircraft trips, compared to 27.4 thousand in July 2021 and 55.9 thousand in pre-COVID July 2019.

4.81 million passengers were carried on RPT flights in July 2022, compared to 1.34 million reported in July 2021 and 5.45 million reported in pre-COVID July 2019.

For the year ending July 2022 there were 33.8 million RPT passengers, an increase of 52.5 per cent on the year ending July 2021 and a decrease of 44.6 per cent on the year ending July 2019.

RPT revenue passenger kilometres (RPKs) performed were 5.91 billion for the month, compared with 1.69 billion in July 2021.

Capacity, measured by available seat kilometres (ASKs), increased to 6.89 billion in July 2022 compared to 3.35 billion in July 2021.

The industry wide load factor (RPKs/ASKs) increased from 50.6 per cent in July 2021 to 85.8 per cent in July 2022. The highest load factor (95.2 per cent) was recorded on the Cairns – Melbourne route while the lowest load factor (54.8 per cent) was recorded on the Dubbo – Sydney route.

For the month of July 2022, Melbourne – Sydney was Australia's busiest RPT route with 610.4 thousand passengers, followed by Brisbane – Sydney with 350.7 thousand passengers and Brisbane – Melbourne with 265.1 thousand passengers.

Sydney was Australia's busiest domestic airport with 1.99 million passenger movements in July 2022, followed by Melbourne with 1.93 million passenger movements and Brisbane with 1.38 million passengers.

Total cargo movements at Australian airports on domestic RPT flights were 25.8 thousand tonnes in July 2022, a decrease of 25.8 per cent compared with July 2021.

In July 2022, there were 2.14 million domestic passenger movements through regional airports, compared to 1.13 million in July 2021 and 2.29 million in pre-COVID July 2019. Most regional airports for which data is available for publishing recorded large increases in July 2022 compared to July 2021.

Fixed-wing charter operators carried 288.0 thousand passengers in July 2022, compared to 278.6 thousand in July 2021 and 248.9 in pre-COVID July 2019. Perth Airport accounted for 36.9 per cent of all charter passengers in Australia.

TOTAL NETWORK

Summary of monthly commercial aviation activity

	Jul 2021	Jul 2022	% Change
Total passengers carried (millions)	1.63	5.10	213.2
Aircraft trips (000s)	32.6	54.5	67.2

Note: Regular Public Transport and charter aviation activity
Helicopter, joy flights and sightseeing charter flights not included.

RPT NETWORK

Summary of monthly RPT activity

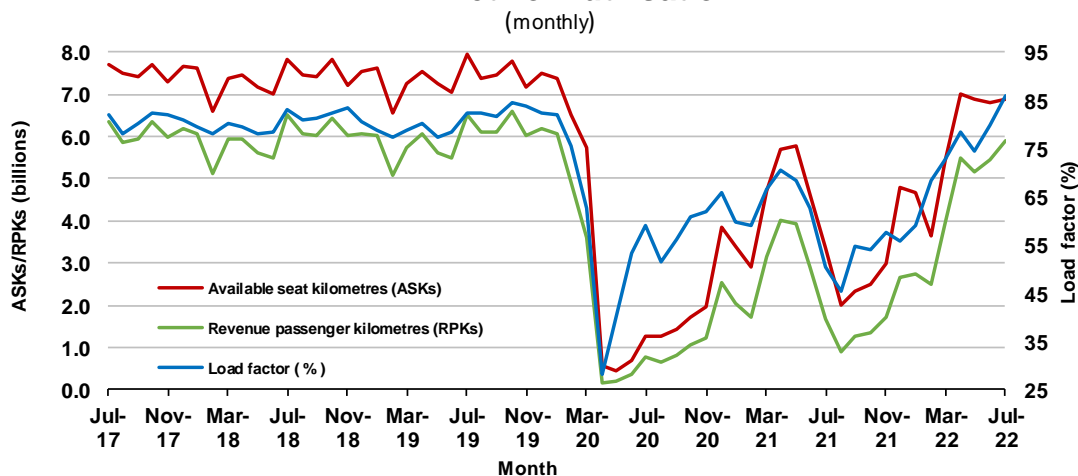
	Jul 2021	Jul 2022	% Change
Total passengers carried (millions)	1.35	4.81	256.6
Revenue passenger kilometres (billions)	1.69	5.91	248.8
Available seats (millions)	2.72	5.82	114.1
Available seat kilometres (billions)	3.35	6.89	105.7
Load factor %	50.6	85.8	35.2 *
Aircraft trips (000s)	27.4	49.2	80.0

* percentage point difference

Domestic RPT passenger traffic



RPT Network utilisation



TOTAL NETWORK

Summary of annual commercial aviation activity

	YE Jul 2021	YE Jul 2022	% Change
Total passengers carried (millions)	25.58	37.24	45.6
Aircraft trips (000s)	404.9	505.5	24.9

Note: Regular Public Transport and charter aviation activity
Helicopter, joy flights and sightseeing charter flights not included.

RPT NETWORK

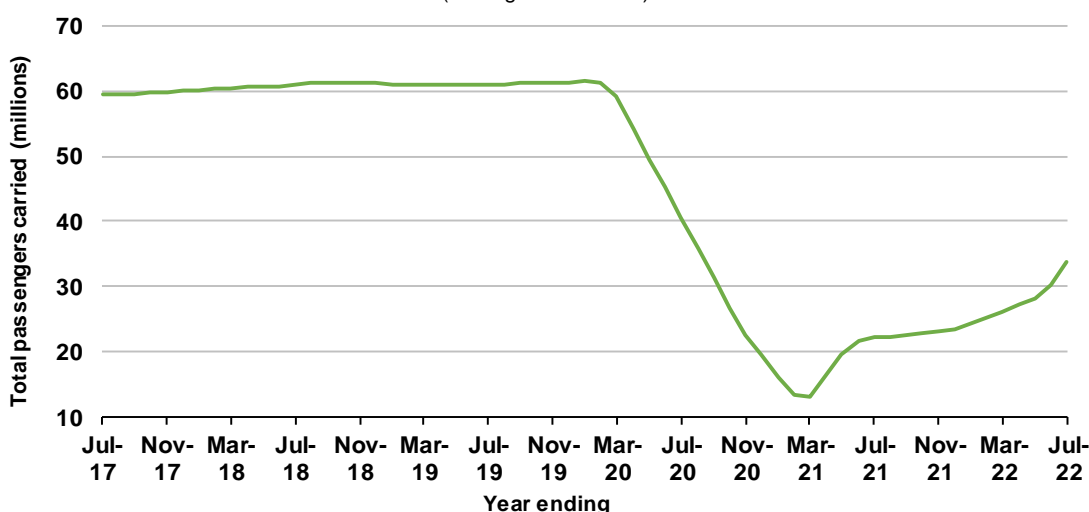
Summary of annual RPT activity

	YE Jul 2021	YE Jul 2022	% Change
Total passengers carried (millions)	22.17	33.82	52.5
Revenue passenger kilometres (billions)	25.70	39.10	52.2
Available seats (millions)	35.71	49.36	38.2
Available seat kilometres (billions)	40.67	55.92	37.5
Load factor %	63.2	69.9	6.7 *
Aircraft trips (000s)	339.1	441.0	30.1

* percentage point difference

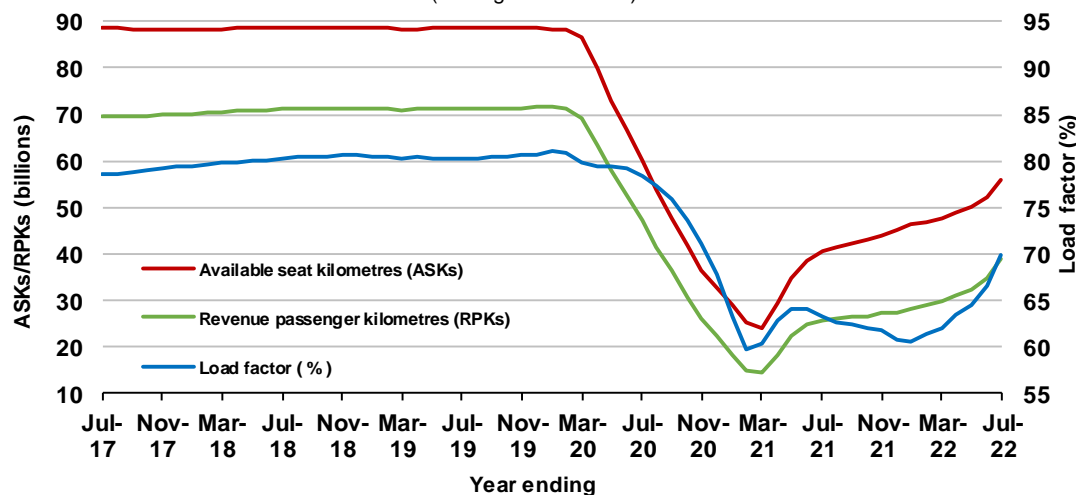
Domestic RPT passenger traffic

(moving annual totals)



RPT Network utilisation

(moving annual totals)



TOP COMPETITIVE ROUTES

Table 1: Passengers carried (000s) — annual activity

	City-Pair	YE Jul 2021	YE Jul 2022	%Change
1	Melbourne - Sydney	1 709.1	4 223.5	147.1
2	Brisbane - Sydney	1 154.6	2 031.5	76.0
3	Brisbane - Melbourne	811.3	1 649.6	103.3
4	Gold Coast - Melbourne	778.4	1 416.8	82.0
5	Gold Coast - Sydney	743.7	1 344.4	80.8
6	Adelaide - Melbourne	581.7	1 178.9	102.7
7	Brisbane - Cairns	980.1	1 039.0	6.0
8	Adelaide - Sydney	610.1	838.6	37.5
9	Brisbane - Townsville	662.3	722.4	9.1
10	Hobart - Melbourne	463.5	647.4	39.7
11	Melbourne - Perth	299.7	610.9	103.8
12	Brisbane - Mackay	500.0	587.7	17.5
13	Adelaide - Brisbane	452.3	526.2	16.3
14	Canberra - Melbourne	236.7	522.0	120.6
15	Perth - Sydney	339.8	506.3	49.0
16	Cairns - Melbourne	305.5	477.7	56.4
17	Karratha - Perth	367.0	462.1	25.9
18	Melbourne - Sunshine Coast	261.2	461.1	76.5
19	Cairns - Sydney	248.2	447.0	80.1
20	Ballina - Sydney	485.9	424.4	-12.7
21	Perth - Port Hedland	282.8	418.0	47.8
22	Brisbane - Perth	275.6	414.9	50.6
23	Launceston - Melbourne	309.9	407.7	31.5
24	Hobart - Sydney	283.2	390.8	38.0
25	Sunshine Coast - Sydney	..	390.1	NA
26	Brisbane - Rockhampton	337.9	385.0	13.9
27	Broome - Perth	337.9	383.2	13.4
28	Brisbane - Canberra	359.9	348.2	-3.3
29	Adelaide - Perth	217.7	341.0	56.6
30	Newman - Perth	252.5	328.3	30.0
31	Canberra - Sydney	..	317.7	NA
32	Brisbane - Darwin	249.3	294.5	18.1
33	Brisbane - Hobart	183.5	287.7	56.8
34	Kalgoorlie - Perth	216.6	283.0	30.6
35	Brisbane - Proserpine	222.6	282.7	27.0
36	Melbourne - Newcastle	136.6	267.5	95.8
37	Brisbane - Newcastle	253.3	259.8	2.5
38	Darwin - Melbourne	105.7	221.2	109.3
39	Brisbane - Hamilton Island	191.2	195.4	2.2
40	Brisbane - Launceston	99.4	169.7	70.7
41	Launceston - Sydney	..	168.9	NA
42	Adelaide - Gold Coast	126.0	166.3	32.0
43	Brisbane - Gladstone	131.7	161.4	22.6
44	Adelaide - Port Lincoln	120.8	154.2	27.7
45	Coffs Harbour - Sydney	0.0	147.8	NA
46	Darwin - Perth	87.7	146.0	66.4
47	Cairns - Gold Coast	..	141.2	NA
48	Brisbane - Emerald	123.4	139.5	13.1
49	Hamilton Island - Sydney	..	130.4	NA
50	Adelaide - Hobart	..	128.0	NA

continued

Table 1: (continued) Passengers carried (000s) — annual activity

	City-Pair	YE Jul 2021	YE Jul 2022	% Change
51	Brisbane - Mount Isa	105.2	118.4	12.5
52	Dubbo - Sydney	..	95.0	NA
53	Albury - Sydney	..	93.8	NA
54	Melbourne - Mildura	..	93.3	NA
55	Adelaide - Canberra	..	90.6	NA
56	Port Macquarie - Sydney	..	88.5	NA
57	Sydney - Wagga Wagga	..	85.6	NA
58	Canberra - Gold Coast	106.8	83.7	-21.6
59	Adelaide - Alice Springs	..	82.8	NA
60	Armidale - Sydney	..	59.9	NA
61	Darwin - Sydney	..	0.0	NA
	Total domestic network	22 173.2	33 819.2	52.5

.. Data not available for release.

Table 2: Passengers carried (000s) — monthly activity

	City-Pair	Jul 2021	Jul 2022	% Change
1	Melbourne - Sydney	12.0	610.4	4995.6
2	Brisbane - Sydney	11.5	350.7	2942.7
3	Brisbane - Melbourne	45.3	265.1	485.4
4	Gold Coast - Sydney	4.3	207.9	4768.9
5	Gold Coast - Melbourne	59.6	207.1	247.3
6	Adelaide - Melbourne	47.5	186.5	292.4
7	Melbourne - Perth	17.8	142.9	703.4
8	Adelaide - Sydney	2.6	127.7	4803.8
9	Perth - Sydney	3.9	121.5	3025.9
10	Brisbane - Cairns	95.4	112.6	18.0
11	Hobart - Melbourne	45.8	92.1	101.1
12	Cairns - Sydney	4.9	90.6	1751.5
13	Canberra - Melbourne	11.9	82.1	592.1
14	Cairns - Melbourne	56.8	81.8	43.9
15	Brisbane - Perth	11.3	80.7	614.8
16	Brisbane - Townsville	58.6	78.6	34.1
17	Adelaide - Brisbane	12.0	69.0	476.3
18	Melbourne - Sunshine Coast	21.2	66.4	213.1
19	Brisbane - Mackay	43.6	65.4	50.2
20	Sunshine Coast - Sydney	1.2	62.8	4997.8
21	Launceston - Melbourne	26.0	60.7	133.6
22	Hobart - Sydney	2.4	58.6	2335.1
23	Brisbane - Canberra	30.5	57.9	89.9
24	Canberra - Sydney	..	54.1	NA
25	Adelaide - Perth	14.6	51.6	253.9
26	Karratha - Perth	37.1	44.9	21.0
27	Brisbane - Newcastle	12.2	42.8	251.3
28	Brisbane - Rockhampton	28.7	41.6	44.7
29	Ballina - Sydney	3.2	40.9	1190.4
30	Broome - Perth	37.5	40.2	7.2
31	Darwin - Sydney	..	40.0	NA
32	Perth - Port Hedland	29.1	38.8	33.4
33	Darwin - Melbourne	18.0	36.3	101.8
34	Brisbane - Darwin	21.8	36.0	65.7
35	Melbourne - Newcastle	3.8	30.5	694.6
36	Newman - Perth	25.0	27.6	10.5
37	Kalgoorlie - Perth	19.1	27.5	43.8
38	Brisbane - Proserpine	17.2	24.9	44.9
39	Brisbane - Hobart	15.9	24.7	55.4
40	Launceston - Sydney	..	23.5	NA
41	Hamilton Island - Sydney	..	21.0	NA
42	Adelaide - Gold Coast	2.0	20.6	948.1
43	Darwin - Perth	12.6	19.7	56.4
44	Cairns - Gold Coast	..	18.8	NA
45	Coffs Harbour - Sydney	..	17.7	NA
46	Brisbane - Gladstone	11.3	17.5	55.5
47	Brisbane - Hamilton Island	14.5	15.5	7.3
48	Brisbane - Launceston	8.6	15.4	79.6
49	Brisbane - Emerald	11.2	14.9	33.4
50	Albury - Sydney	..	14.8	NA

continued

Table 2: (continued) Passengers carried (000s) — monthly activity

	City-Pair	Jul 2021	Jul 2022	% Change
51	Adelaide - Port Lincoln	8.9	14.6	64.3
52	Adelaide - Canberra	..	13.3	NA
53	Canberra - Gold Coast	9.4	13.2	40.1
54	Dubbo - Sydney	..	12.9	NA
55	Port Macquarie - Sydney	..	12.9	NA
56	Sydney - Wagga Wagga	..	12.9	NA
57	Melbourne - Mildura	..	12.3	NA
58	Brisbane - Mount Isa	8.6	12.0	38.8
59	Adelaide - Hobart	..	11.2	NA
60	Adelaide - Alice Springs	..	11.0	NA
61	Armidale - Sydney	..	8.4	NA
	Total domestic network	1 349.7	4 812.3	256.6

.. Data not available for release.

Table 3: Available seats (000s) — monthly activity

	City-Pair	Jul 2021	Jul 2022	% Change
1	Melbourne - Sydney	54.9	703.1	1179.6
2	Brisbane - Sydney	39.5	413.2	947.5
3	Brisbane - Melbourne	102.7	288.3	180.6
4	Gold Coast - Sydney	21.7	239.3	1001.1
5	Gold Coast - Melbourne	113.5	218.0	92.1
6	Adelaide - Melbourne	85.6	223.1	160.5
7	Melbourne - Perth	39.8	162.6	308.9
8	Adelaide - Sydney	21.8	145.6	566.6
9	Perth - Sydney	24.5	139.2	468.4
10	Brisbane - Cairns	134.9	121.7	-9.8
11	Hobart - Melbourne	78.3	111.5	42.4
12	Cairns - Sydney	17.9	96.5	440.8
13	Canberra - Melbourne	34.4	110.3	220.7
14	Cairns - Melbourne	77.6	85.9	10.7
15	Brisbane - Perth	34.4	94.3	174.2
16	Brisbane - Townsville	94.7	87.0	-8.2
17	Adelaide - Brisbane	37.3	80.3	115.4
18	Melbourne - Sunshine Coast	48.1	70.6	46.9
19	Brisbane - Mackay	79.5	80.9	1.8
20	Sunshine Coast - Sydney	10.7	76.1	609.4
21	Launceston - Melbourne	47.5	77.6	63.4
22	Hobart - Sydney	13.1	72.4	452.8
23	Brisbane - Canberra	57.0	71.1	24.9
24	Canberra - Sydney	..	81.6	NA
25	Adelaide - Perth	31.2	59.6	91.2
26	Karratha - Perth	61.0	57.0	-6.7
27	Brisbane - Newcastle	25.4	55.1	116.7
28	Brisbane - Rockhampton	55.2	49.0	-11.3
29	Ballina - Sydney	13.1	51.2	291.1
30	Broome - Perth	48.1	48.8	1.4
31	Darwin - Sydney	..	43.5	NA
32	Perth - Port Hedland	50.9	48.0	-5.8
33	Darwin - Melbourne	32.9	38.5	17.1
34	Brisbane - Darwin	39.4	38.5	-2.2
35	Melbourne - Newcastle	14.4	36.1	151.2
36	Newman - Perth	54.5	46.5	-14.8
37	Kalgoorlie - Perth	34.8	39.6	13.7
38	Brisbane - Proserpine	26.1	29.6	13.6
39	Brisbane - Hobart	25.3	28.2	11.8
40	Launceston - Sydney	..	28.1	NA
41	Hamilton Island - Sydney	..	29.2	NA
42	Adelaide - Gold Coast	11.3	21.8	92.6
43	Darwin - Perth	23.0	21.4	-6.9
44	Cairns - Gold Coast	..	20.3	NA
45	Coffs Harbour - Sydney	..	24.7	NA
46	Brisbane - Gladstone	22.8	27.0	18.3
47	Brisbane - Hamilton Island	23.1	23.1	-0.1
48	Brisbane - Launceston	14.3	17.5	22.9
49	Brisbane - Emerald	22.0	21.0	-4.4
50	Albury - Sydney	..	22.2	NA

continued

Table 3: (continued) Available seats (000s) — monthly activity

	City-Pair	Jul 2021	Jul 2022	% Change
51	Adelaide - Port Lincoln	16.6	24.2	46.2
52	Adelaide - Canberra	..	16.9	NA
53	Canberra - Gold Coast	17.8	14.7	-17.1
54	Dubbo - Sydney	..	23.6	NA
55	Port Macquarie - Sydney	..	22.6	NA
56	Sydney - Wagga Wagga	..	20.3	NA
57	Melbourne - Mildura	..	18.0	NA
58	Brisbane - Mount Isa	19.3	17.3	-10.1
59	Adelaide - Hobart	..	13.6	NA
60	Adelaide - Alice Springs	..	13.7	NA
61	Armidale - Sydney	..	14.1	NA
	Total domestic network	2 716.9	5 817.0	114.1

.. Data not available for release.

Table 4: Load factors (%) — monthly activity

	City-Pair	Jul 2021	Jul 2022	% Point diff
1	Melbourne - Sydney	21.8	86.8	65.0
2	Brisbane - Sydney	29.2	84.9	55.7
3	Brisbane - Melbourne	44.1	92.0	47.9
4	Gold Coast - Sydney	19.6	86.9	67.3
5	Gold Coast - Melbourne	52.6	95.0	42.4
6	Adelaide - Melbourne	55.5	83.6	28.1
7	Melbourne - Perth	44.7	87.9	43.2
8	Adelaide - Sydney	11.9	87.7	75.8
9	Perth - Sydney	15.9	87.3	71.4
10	Brisbane - Cairns	70.7	92.5	21.8
11	Hobart - Melbourne	58.5	82.6	24.1
12	Cairns - Sydney	27.4	93.9	66.5
13	Canberra - Melbourne	34.5	74.5	40.0
14	Cairns - Melbourne	73.2	95.2	22.0
15	Brisbane - Perth	32.8	85.6	52.8
16	Brisbane - Townsville	61.9	90.3	28.4
17	Adelaide - Brisbane	32.1	86.0	53.9
18	Melbourne - Sunshine Coast	44.1	94.0	49.9
19	Brisbane - Mackay	54.8	80.9	26.1
20	Sunshine Coast - Sydney	..	82.5	NA
21	Launceston - Melbourne	54.7	78.2	23.5
22	Hobart - Sydney	18.4	80.9	62.5
23	Brisbane - Canberra	53.5	81.3	27.8
24	Canberra - Sydney	..	66.3	NA
25	Adelaide - Perth	46.8	86.7	39.9
26	Karratha - Perth	60.7	78.7	18.0
27	Brisbane - Newcastle	47.9	77.6	29.7
28	Brisbane - Rockhampton	52.0	84.8	32.8
29	Ballina - Sydney	24.2	79.8	55.6
30	Broome - Perth	78.0	82.5	4.5
31	Darwin - Sydney	..	92.0	NA
32	Perth - Port Hedland	57.1	80.8	23.7
33	Darwin - Melbourne	54.7	94.2	39.5
34	Brisbane - Darwin	55.3	93.7	38.4
35	Melbourne - Newcastle	26.7	84.4	57.7
36	Newman - Perth	45.9	59.5	13.6
37	Kalgoorlie - Perth	55.0	69.6	14.6
38	Brisbane - Proserpine	65.9	84.0	18.1
39	Brisbane - Hobart	63.0	87.6	24.6
40	Launceston - Sydney	..	83.5	NA
41	Hamilton Island - Sydney	..	72.1	NA
42	Adelaide - Gold Coast	17.4	94.6	77.2
43	Darwin - Perth	54.5	91.7	37.2
44	Cairns - Gold Coast	..	92.8	NA
45	Coffs Harbour - Sydney	..	71.7	NA
46	Brisbane - Gladstone	49.3	64.8	15.5
47	Brisbane - Hamilton Island	62.7	67.3	4.6
48	Brisbane - Launceston	60.3	88.1	27.8
49	Brisbane - Emerald	51.0	71.1	20.1
50	Albury - Sydney	..	66.9	NA

continued

Table 4: (continued) Load factors (%) — monthly activity

	City-Pair	Jul 2021	Jul 2022	% Point diff
51	Adelaide - Port Lincoln	53.6	60.3	6.7
52	Adelaide - Canberra	..	78.7	NA
53	Canberra - Gold Coast	53.0	89.7	36.7
54	Dubbo - Sydney	..	54.8	NA
55	Port Macquarie - Sydney	..	57.2	NA
56	Sydney - Wagga Wagga	..	63.4	NA
57	Melbourne - Mildura	..	68.2	NA
58	Brisbane - Mount Isa	44.8	69.2	24.4
59	Adelaide - Hobart	..	82.1	NA
60	Adelaide - Alice Springs	..	80.4	NA
61	Armidale - Sydney	..	59.3	NA
	Total domestic network	50.6	85.8	35.2

.. Data not available for release.

Table 5: Aircraft trips ^(a) — monthly activity

	City-Pair	Jul 2021	Jul 2022	% Change
1	Melbourne - Sydney	529	4 012	658.4
2	Brisbane - Sydney	396	2 521	536.6
3	Brisbane - Melbourne	712	1 719	141.4
4	Gold Coast - Sydney	155	1 405	806.5
5	Gold Coast - Melbourne	599	1 234	106.0
6	Adelaide - Melbourne	582	1 362	134.0
7	Melbourne - Perth	309	900	191.3
8	Adelaide - Sydney	172	896	420.9
9	Perth - Sydney	152	723	375.7
10	Brisbane - Cairns	834	787	-5.6
11	Hobart - Melbourne	501	689	37.5
12	Cairns - Sydney	91	503	452.7
13	Canberra - Melbourne	252	785	211.5
14	Cairns - Melbourne	358	447	24.9
15	Brisbane - Perth	169	533	215.4
16	Brisbane - Townsville	563	619	9.9
17	Adelaide - Brisbane	230	474	106.1
18	Melbourne - Sunshine Coast	278	416	49.6
19	Brisbane - Mackay	499	534	7.0
20	Sunshine Coast - Sydney	66	413	525.8
21	Launceston - Melbourne	419	619	47.7
22	Hobart - Sydney	75	439	485.3
23	Brisbane - Canberra	384	540	40.6
24	Canberra - Sydney	..	1 324	NA
25	Adelaide - Perth	214	348	62.6
26	Karratha - Perth	379	376	-0.8
27	Brisbane - Newcastle	202	490	142.6
28	Brisbane - Rockhampton	549	550	0.2
29	Ballina - Sydney	120	396	230.0
30	Broome - Perth	282	322	14.2
31	Darwin - Sydney	..	214	NA
32	Perth - Port Hedland	367	327	-10.9
33	Darwin - Melbourne	170	218	28.2
34	Brisbane - Darwin	210	256	21.9
35	Melbourne - Newcastle	84	234	178.6
36	Newman - Perth	334	303	-9.3
37	Kalgoorlie - Perth	261	276	5.7
38	Brisbane - Proserpine	145	187	29.0
39	Brisbane - Hobart	145	173	19.3
40	Launceston - Sydney	..	169	NA
41	Hamilton Island - Sydney	..	165	NA
42	Adelaide - Gold Coast	70	122	74.3
43	Darwin - Perth	148	122	-17.6
44	Cairns - Gold Coast	..	112	NA
45	Coffs Harbour - Sydney	..	501	NA
46	Brisbane - Gladstone	300	335	11.7
47	Brisbane - Hamilton Island	132	136	3.0
48	Brisbane - Launceston	80	98	22.5
49	Brisbane - Emerald	323	308	-4.6
50	Albury - Sydney	..	430	NA

continued

Table 5: (continued) Aircraft trips — monthly activity

	City-Pair	Jul 2021	Jul 2022	% Change
51	Adelaide - Port Lincoln	415	603	45.3
52	Adelaide - Canberra	..	156	NA
53	Canberra - Gold Coast	122	99	-18.9
54	Dubbo - Sydney	..	487	NA
55	Port Macquarie - Sydney	..	461	NA
56	Sydney - Wagga Wagga	..	415	NA
57	Melbourne - Mildura	..	430	NA
58	Brisbane - Mount Isa	179	172	-3.9
59	Adelaide - Hobart	..	90	NA
60	Adelaide - Alice Springs	..	128	NA
61	Armidale - Sydney	..	308	NA
	Total domestic network	27 353	49 247	80.0

.. Data not available for release.

TOP TEN AIRPORTS – PASSENGER MOVEMENTS

Table 6: Top ten airports, RPT passenger movements (000s) - monthly activity

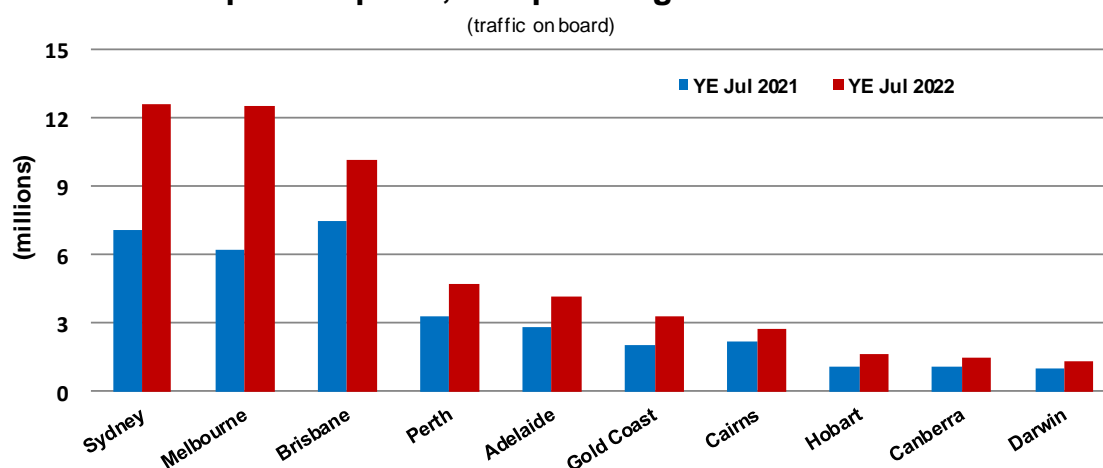
Airport	Jul 2021	Jul 2022	% Change	% of Total
1 Sydney	67.7	1 993.7	2846.4	20.7
2 Melbourne	409.6	1 932.6	371.8	20.1
3 Brisbane	494.8	1 384.6	179.8	14.4
4 Perth	271.5	680.7	150.7	7.1
5 Adelaide	131.4	580.7	341.9	6.0
6 Gold Coast	95.4	489.8	413.2	5.1
7 Cairns	227.2	385.2	69.5	4.0
8 Canberra	68.8	240.2	249.1	2.5
9 Hobart	82.5	203.1	146.1	2.1
10 Darwin	91.4	191.2	109.2	2.0
Total top ten airports	1 940.4	8 081.7	316.5	84.0
Total domestic network	2 699.3	9 624.6	256.6	100.0

Table 7: Top ten airports, RPT passenger movements (000s) - annual activity

Airport	YE Jul 2021	YE Jul 2022	% Change	% of Total
1 Sydney	7 062.6	12 615.6	78.6	18.7
2 Melbourne	6 238.1	12 508.4	100.5	18.5
3 Brisbane	7 463.9	10 132.1	35.7	15.0
4 Perth	3 337.3	4 698.7	40.8	6.9
5 Adelaide	2 801.4	4 149.5	48.1	6.1
6 Gold Coast	2 020.8	3 308.9	63.7	4.9
7 Cairns	2 202.4	2 763.9	25.5	4.1
8 Hobart	1 113.3	1 624.4	45.9	2.4
9 Canberra	1 090.8	1 457.6	33.6	2.2
10 Darwin	973.9	1 348.6	38.5	2.0
Total top ten airports	34 304.5	54 607.7	59.2	80.7
Total domestic network	44 346.3	67 638.4	52.5	100.0

Note: Airport passenger movement numbers are the sum of passenger arrivals and departures at each airport.

Top ten airports, RPT passenger movements



TOP FIVE AIRPORTS – CARGO MOVEMENTS

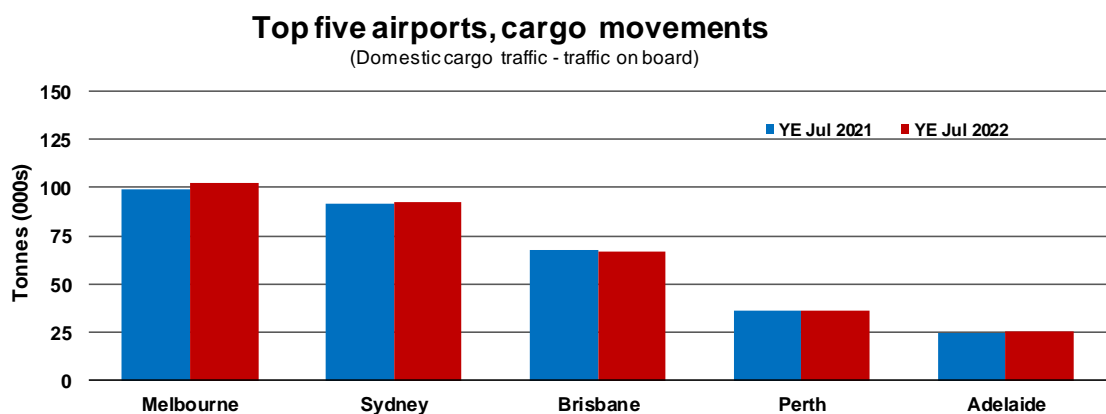
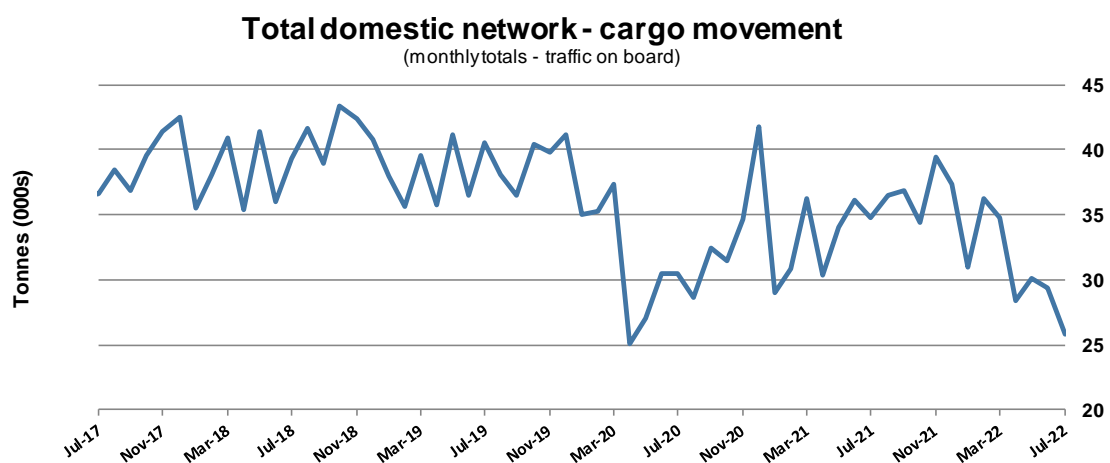
Table 8: Top five airports, domestic RPT cargo movements (000s tonnes) - monthly activity

Airport	Jul 2021	Jul 2022	% Change	% of Total
1 Melbourne	9.5	6.8	-27.8	26.6
2 Sydney	7.5	5.7	-24.3	22.0
3 Brisbane	5.6	4.4	-20.8	17.1
4 Perth	3.8	2.8	-26.5	11.0
5 Adelaide	2.0	1.4	-28.8	5.6
Total top five airports	28.4	21.2	-25.4	82.3
Total domestic network	34.7	25.8	-25.8	100.0

Table 9: Top five airports, domestic RPT cargo movements (000s tonnes) - annual activity

Airport	YE Jul 2021	YE Jul 2022	% Change	% of Total
1 Melbourne	99.2	102.5	3.3	25.6
2 Sydney	91.3	92.4	1.2	23.1
3 Brisbane	67.7	66.3	-2.0	16.6
4 Perth	36.1	36.0	-0.2	9.0
5 Adelaide	24.1	25.5	5.7	6.4
Total top five airports	318.4	322.7	1.3	80.7
Total domestic network	400.0	400.1	0.0	100.0

Note: Airport cargo tonnes are the sum of cargo tonnes on arrivals and departures at each airport.



TOP TEN ROUTES

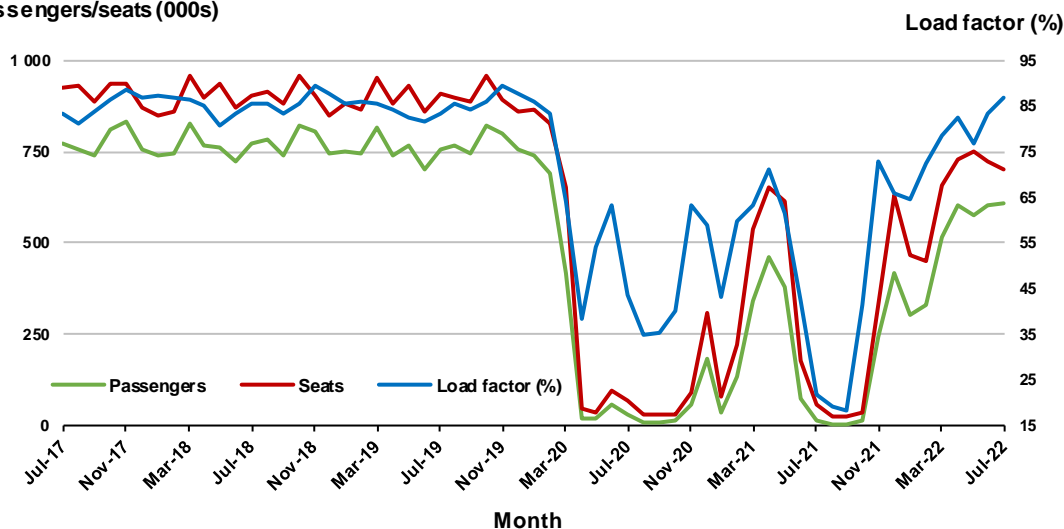
1. Melbourne - Sydney

Monthly data

	Jul 2021	Jul 2022	% Change
Passengers carried (000s)	12.0	610.4	4 995.6
Seats (000s)	54.9	703.1	1 179.6
Load factor %	21.8	86.8	65.0 *
Aircraft trips	529	4 012	658.4

* percentage point difference

Passengers/seats (000s)

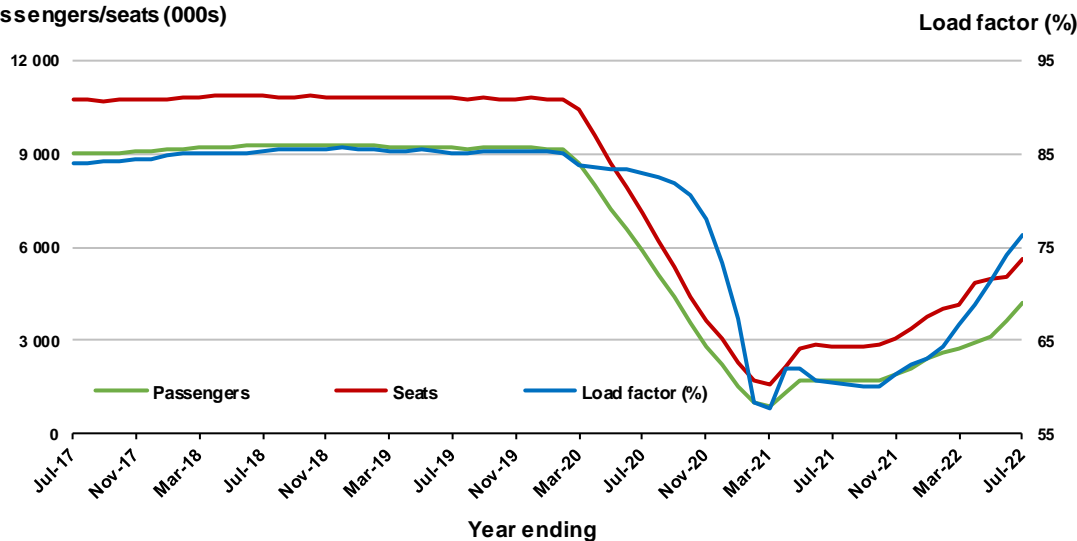


Moving annual data

	YE Jul 2021	YE Jul 2022	% Change
Passengers carried (000s)	1 709.1	4 223.5	147.1
Seats (000s)	2 829.5	5 593.2	97.7
Load factor %	60.4	76.3	15.9 *
Aircraft trips	18 131	33 538	85.0

* percentage point difference

Passengers/seats (000s)

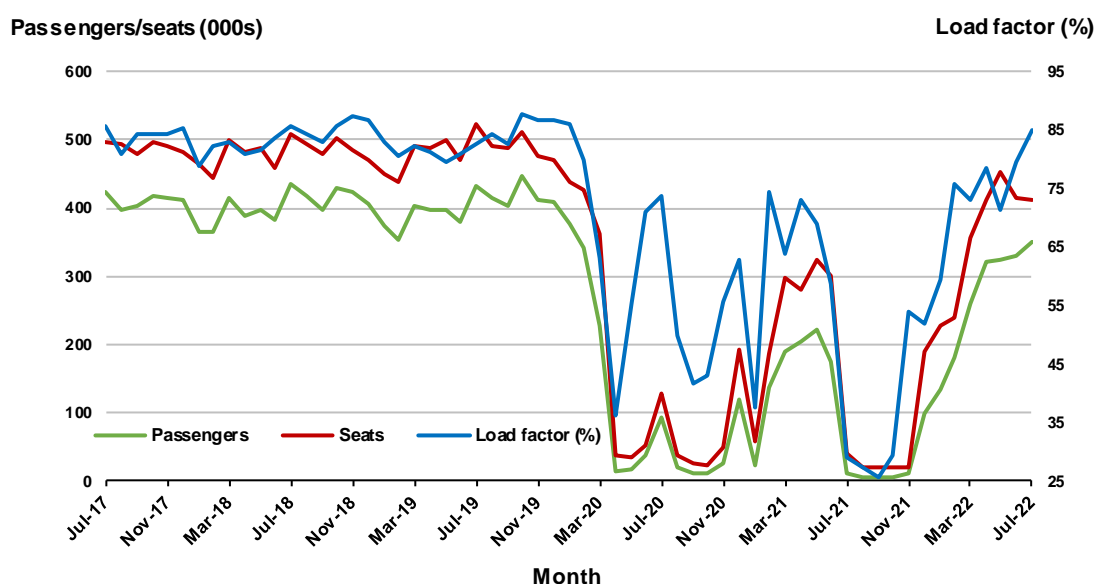


2. Brisbane - Sydney

Monthly data

	Jul 2021	Jul 2022	% Change
Passengers carried (000s)	11.5	350.7	2 942.7
Seats (000s)	39.5	413.2	947.5
Load factor %	29.2	84.9	55.7 *
Aircraft trips	396	2 521	536.6

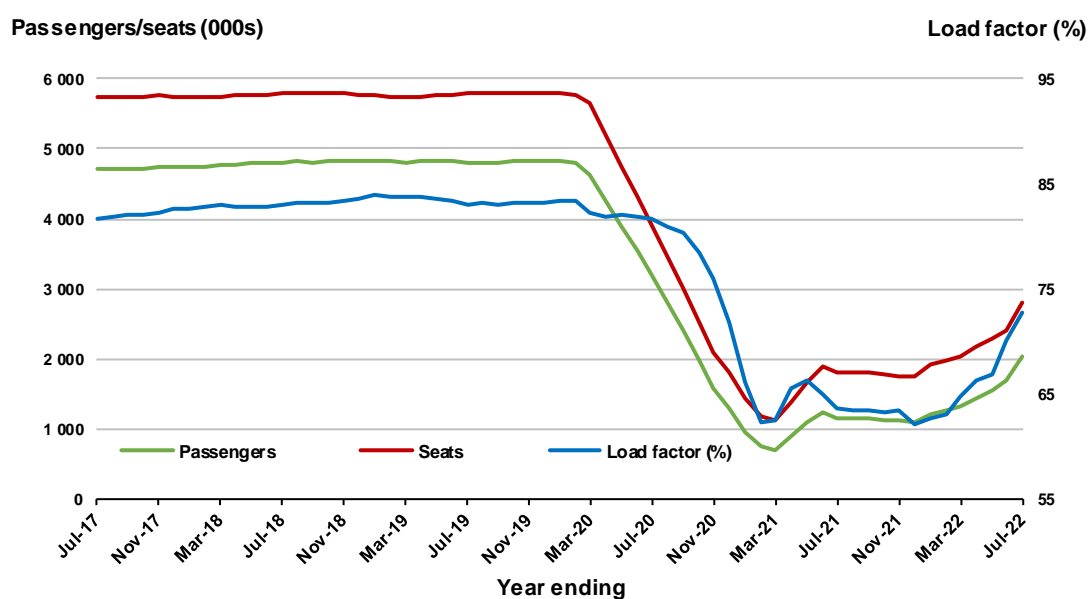
* percentage point difference



Moving annual data

	YE Jul 2021	YE Jul 2022	% Change
Passengers carried (000s)	1 154.6	2 031.5	76.0
Seats (000s)	1 815.0	2 791.7	53.8
Load factor %	63.6	72.8	9.2 *
Aircraft trips	12 491	18 188	45.6

* percentage point difference

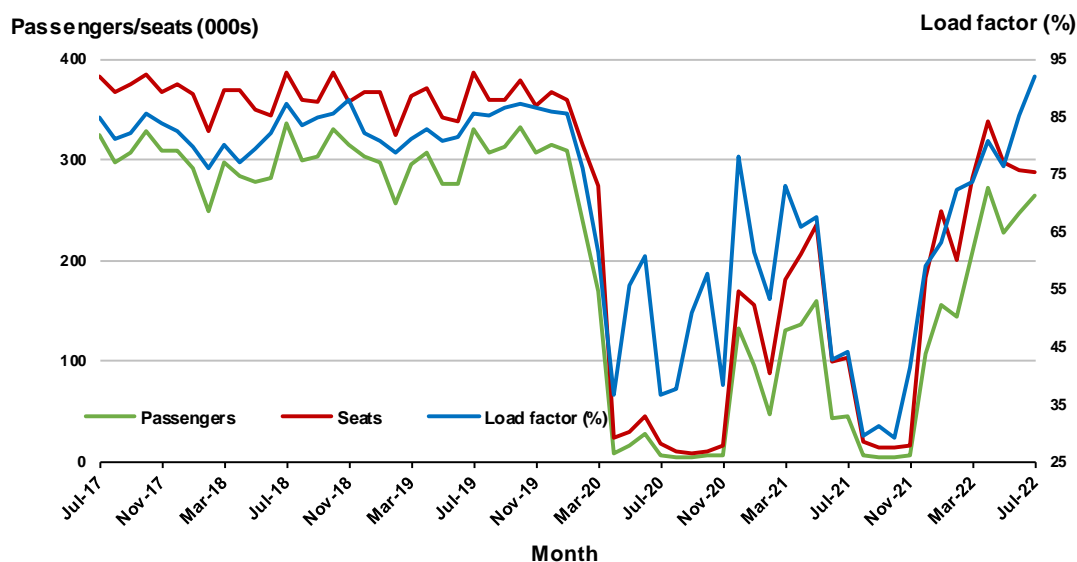


3. Brisbane - Melbourne

Monthly data

	Jul 2021	Jul 2022	% Change
Passengers carried (000s)	45.3	265.1	485.4
Seats (000s)	102.7	288.3	180.6
Load factor %	44.1	92.0	47.9 *
Aircraft trips	712	1 719	141.4

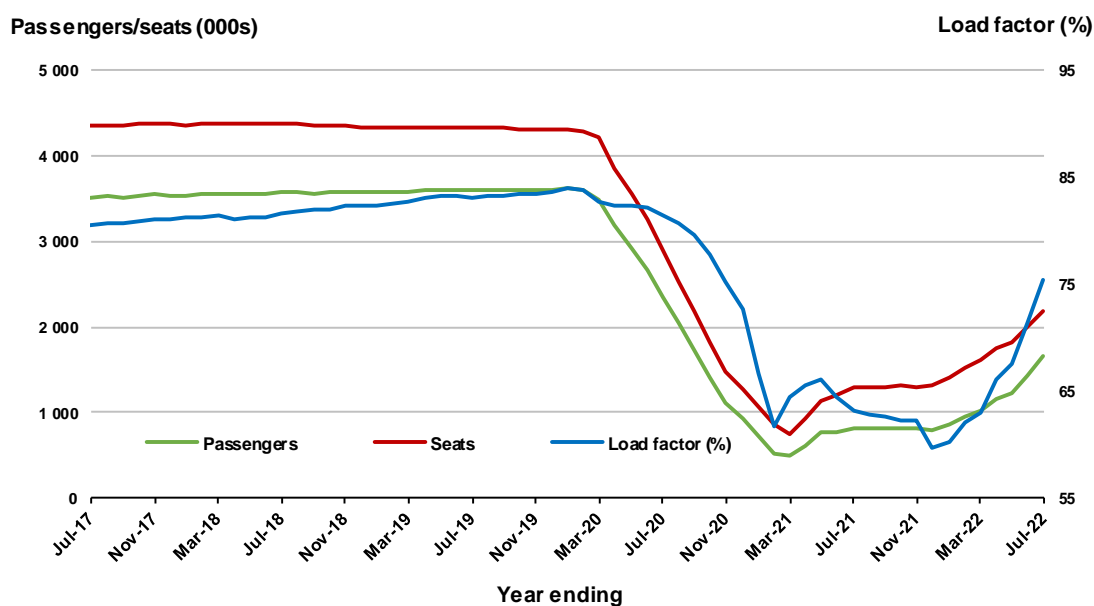
* percentage point difference



Moving annual data

	YE Jul 2021	YE Jul 2022	% Change
Passengers carried (000s)	811.3	1 649.6	103.3
Seats (000s)	1 285.2	2 190.3	70.4
Load factor %	63.1	75.3	12.2 *
Aircraft trips	8 676	13 933	60.6

* percentage point difference



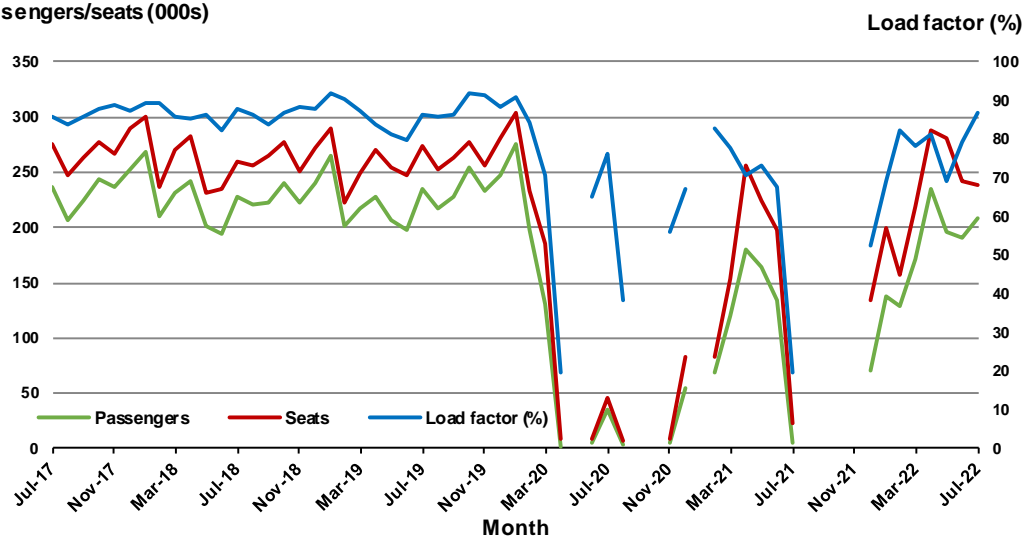
4. Gold Coast - Sydney

Monthly data

	Jul 2021	Jul 2022	% Change
Passengers carried (000s)	4.3	207.9	4 768.9
Seats (000s)	21.7	239.3	1 001.1
Load factor %	19.6	86.9	67.3 *
Aircraft trips	155	1 405	806.5

* percentage point difference

Passengers/seats (000s)



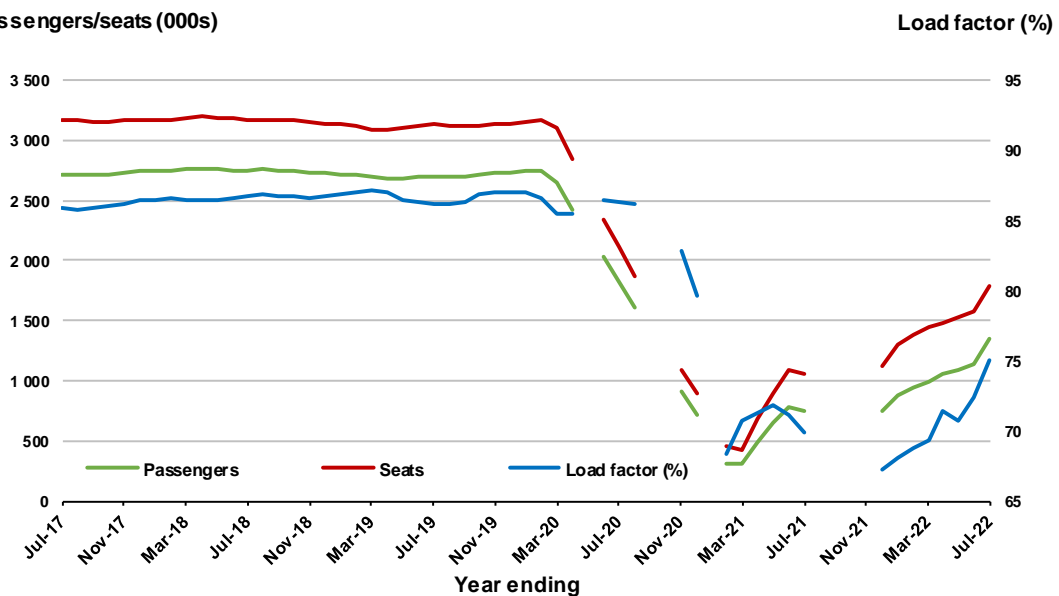
(a) May, September and October 2020 and January and August to November 2021 data not available for release

Moving annual data

	YE Jul 2021	YE Jul 2022	% Change
Passengers carried (000s)	743.7	1 344.4	80.8
Seats (000s)	1 064.5	1 792.2	68.4
Load factor %	69.9	75.0	5.2 *
Aircraft trips	6 187	10 471	69.2

* percentage point difference

Passengers/seats (000s)



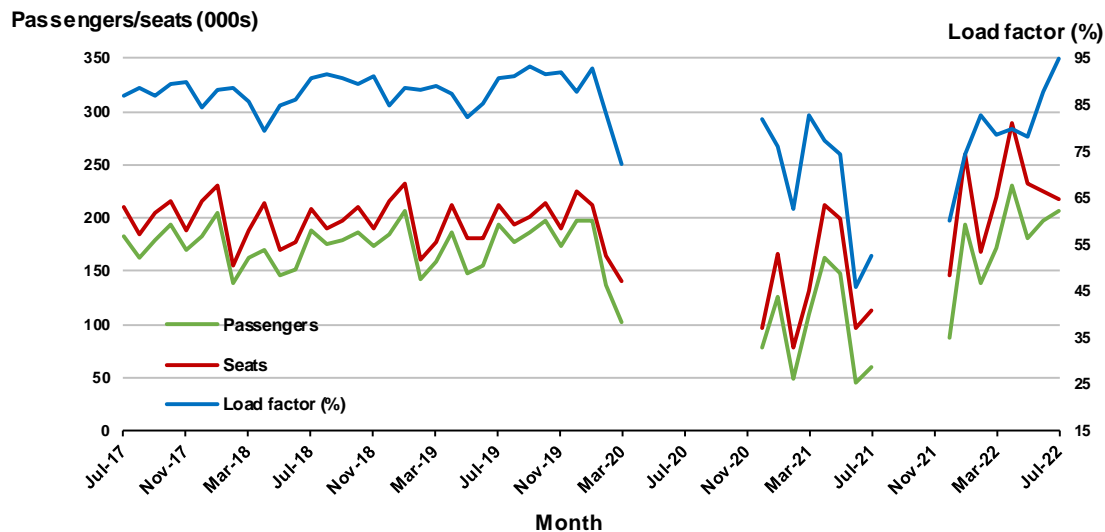
(a) May, September and October 2020 and January and August to November 2021 moving annual totals

5. Gold Coast - Melbourne

Monthly data

	Jul 2021	Jul 2022	% Change
Passengers carried (000s)	59.6	207.1	247.3
Seats (000s)	113.5	218.0	92.1
Load factor %	52.6	95.0	42.4 *
Aircraft trips	599	1 234	106.0

* percentage point difference

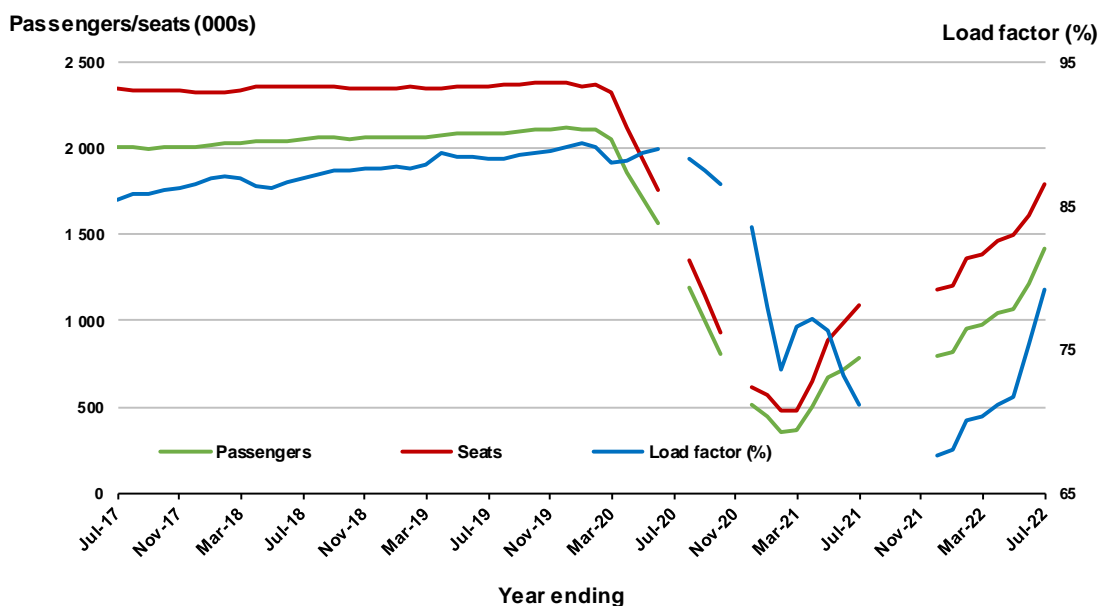


(a) April to November 2020 and August to November 2021 data not available for release.

Moving annual data

	YE Jul 2021	YE Jul 2022	% Change
Passengers carried (000s)	778.4	1 416.8	82.0
Seats (000s)	1 093.4	1 788.7	63.6
Load factor %	71.2	79.2	8.0 *
Aircraft trips	5 831	9 723	66.7

* percentage point difference



(a) July and November 2020 and August to November 2021 moving annual totals not available for release

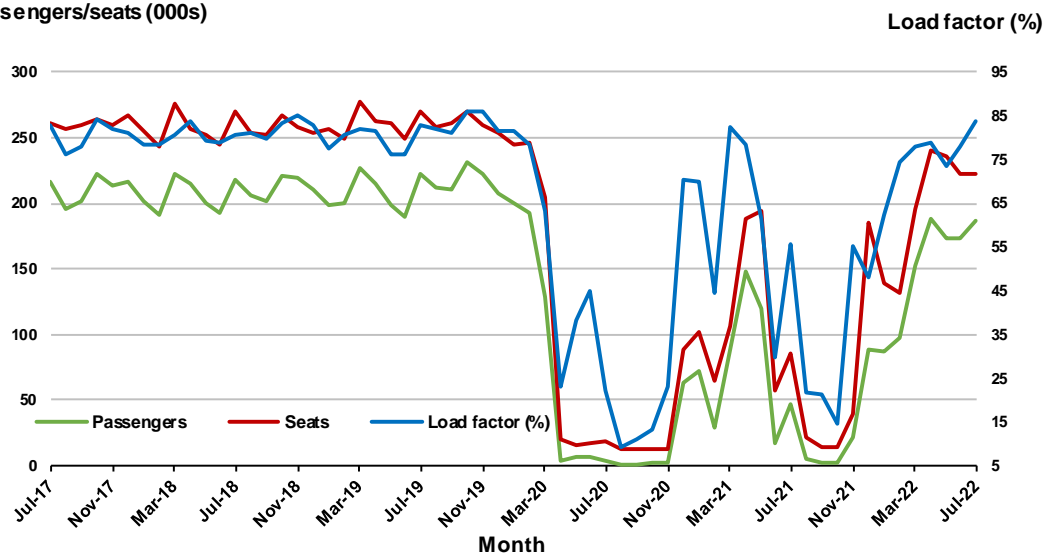
6. Adelaide - Melbourne

Monthly data

	Jul 2021	Jul 2022	% Change
Passengers carried (000s)	47.5	186.5	292.4
Seats (000s)	85.6	223.1	160.5
Load factor %	55.5	83.6	28.1 *
Aircraft trips	582	1 362	134.0

* percentage point difference

Passengers/seats (000s)

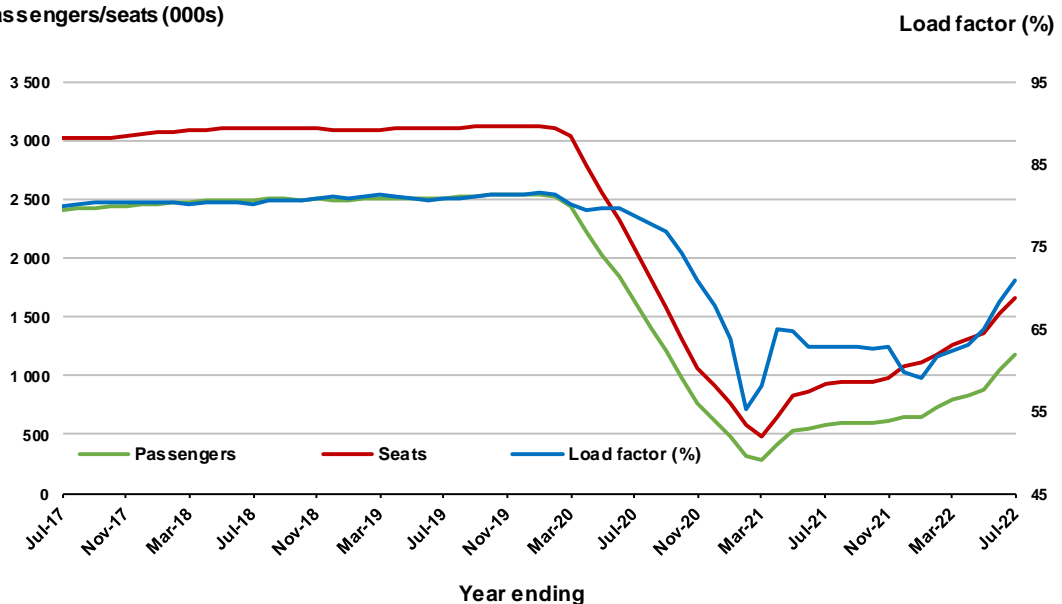


Moving annual data

	YE Jul 2021	YE Jul 2022	% Change
Passengers carried (000s)	581.7	1 178.9	102.7
Seats (000s)	926.5	1 662.4	79.4
Load factor %	62.8	70.9	8.1 *
Aircraft trips	6 340	10 519	65.9

* percentage point difference

Passengers/seats (000s)



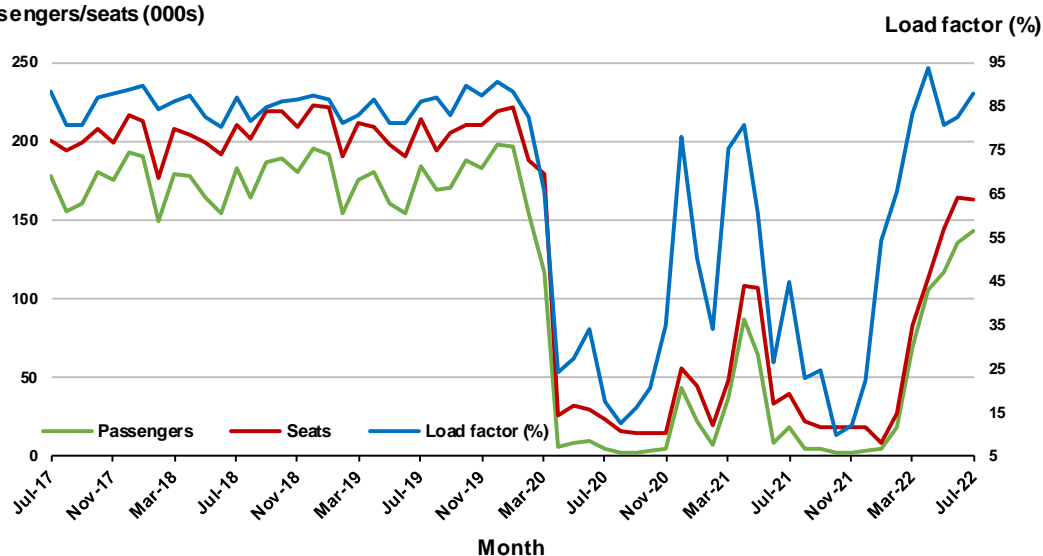
7. Melbourne - Perth

Monthly data

	Jul 2021	Jul 2022	% Change
Passengers carried (000s)	17.8	142.9	703.4
Seats (000s)	39.8	162.6	308.9
Load factor %	44.7	87.9	43.2 *
Aircraft trips	309	900	191.3

* percentage point difference

Passengers/seats (000s)

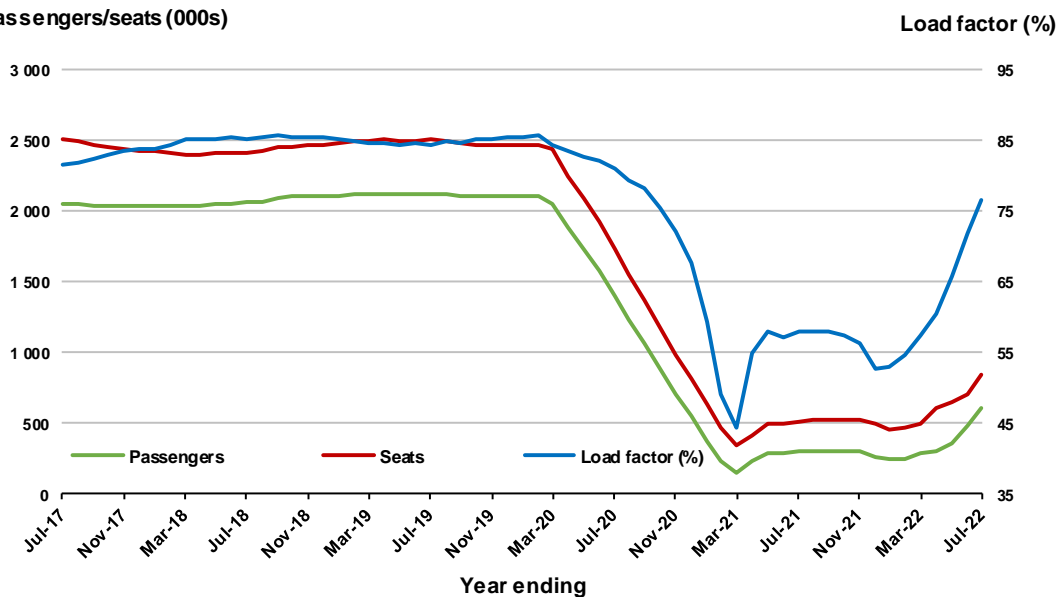


Moving annual data

	YE Jul 2021	YE Jul 2022	% Change
Passengers carried (000s)	299.7	610.9	103.8
Seats (000s)	516.4	838.3	62.3
Load factor %	58.0	76.5	18.5 *
Aircraft trips	3 708	5 215	40.6

* percentage point difference

Passengers/seats (000s)

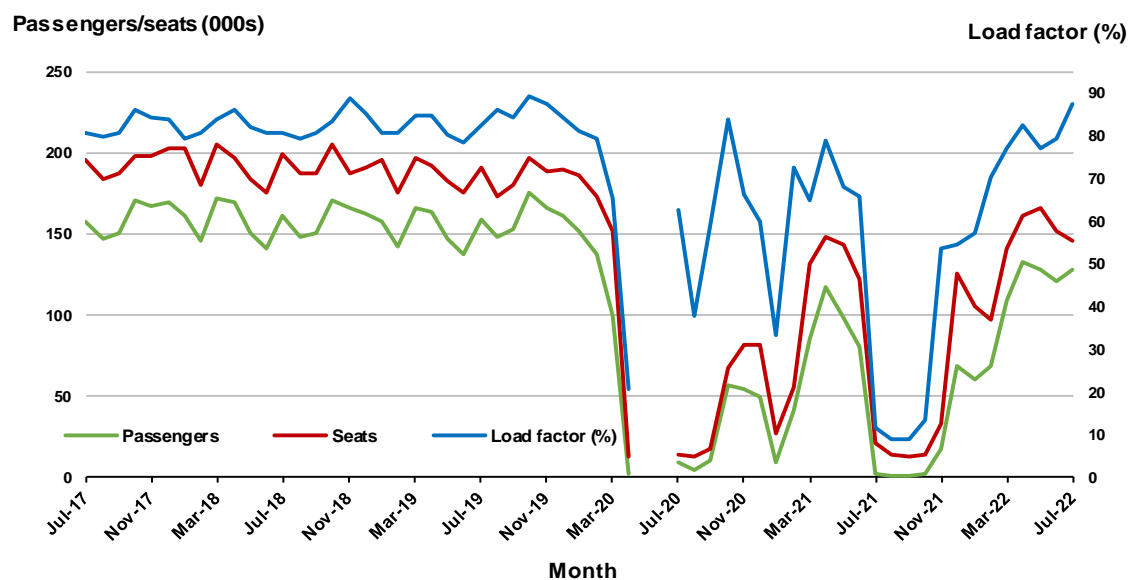


8. Adelaide - Sydney

Monthly data

	Jul 2021	Jul 2022	% Change
Passengers carried (000s)	2.6	127.7	4803.8
Seats (000s)	21.8	145.6	566.6
Load factor %	11.9	87.7	75.8 *
Aircraft trips	172	896	420.9

* percentage point difference

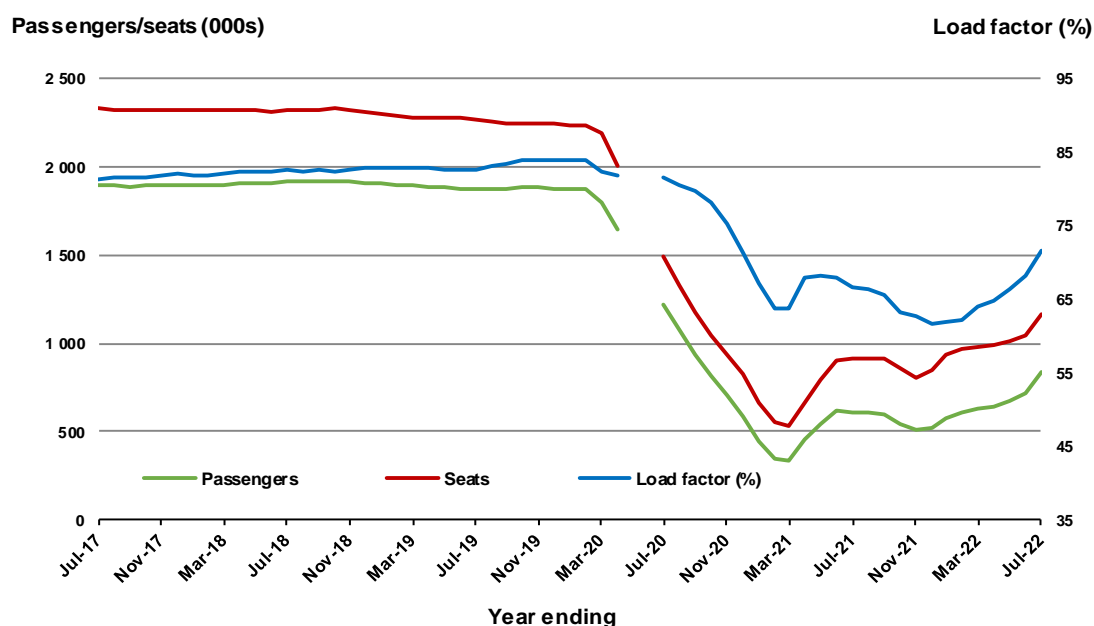


(a) May and June 2020 data not available for release.

Moving annual data

	YE Jul 2021	YE Jul 2022	% Change
Passengers carried (000s)	610.1	838.6	37.5
Seats (000s)	914.2	1 169.5	27.9
Load factor %	66.7	71.7	5.0 *
Aircraft trips	5 699	7 264	27.5

* percentage point difference



(a) May and June 2020 moving annual totals are not available for release.

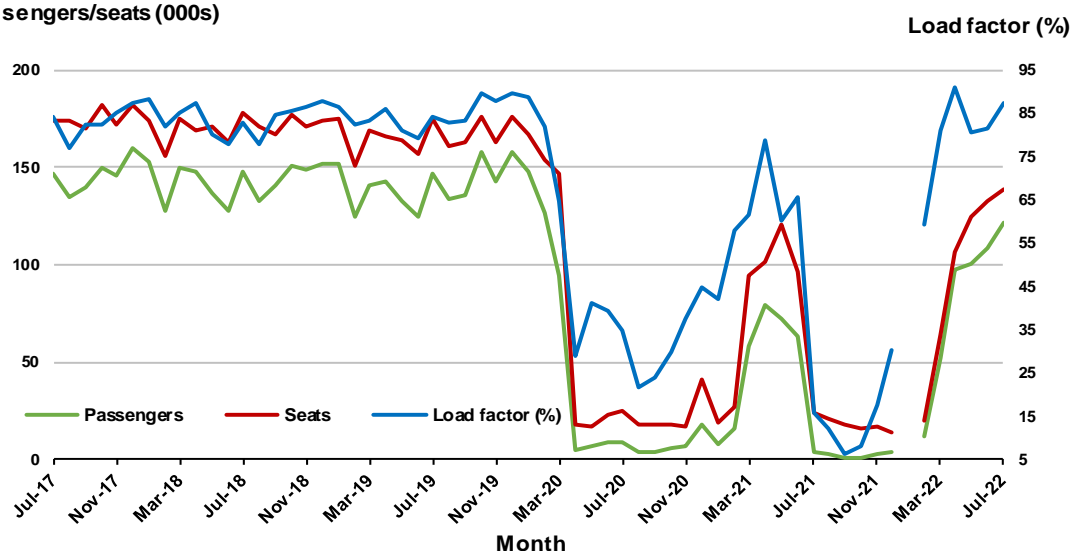
9. Perth - Sydney ^(a)

Monthly data

	Jul 2021	Jul 2022	% Change
Passengers carried (000s)	3.9	121.5	3025.9
Seats (000s)	24.5	139.2	468.4
Load factor %	15.9	87.3	71.4 *
Aircraft trips	152	723	375.7

* percentage point difference

Passengers/seats (000s)



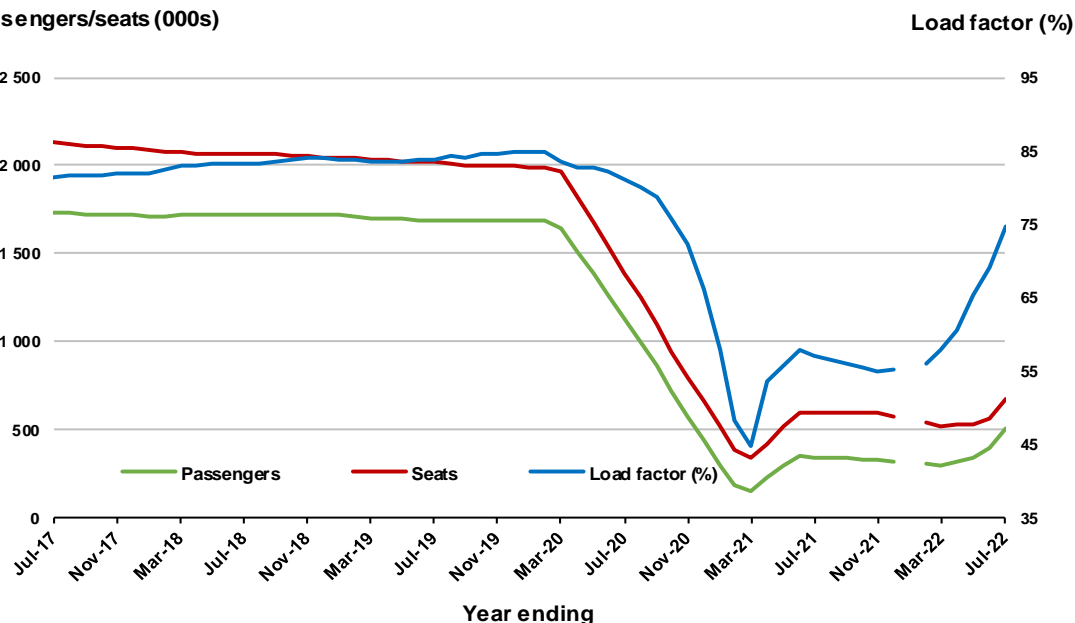
(a) January 2022 data not available for release.

Moving annual data

	YE Jul 2021	YE Jul 2022	% Change
Passengers carried (000s)	339.8	506.3	49.0
Seats (000s)	595.7	677.1	13.7
Load factor %	57.0	74.8	17.7 *
Aircraft trips	3 107	3 662	17.9

* percentage point difference

Passengers/seats (000s)



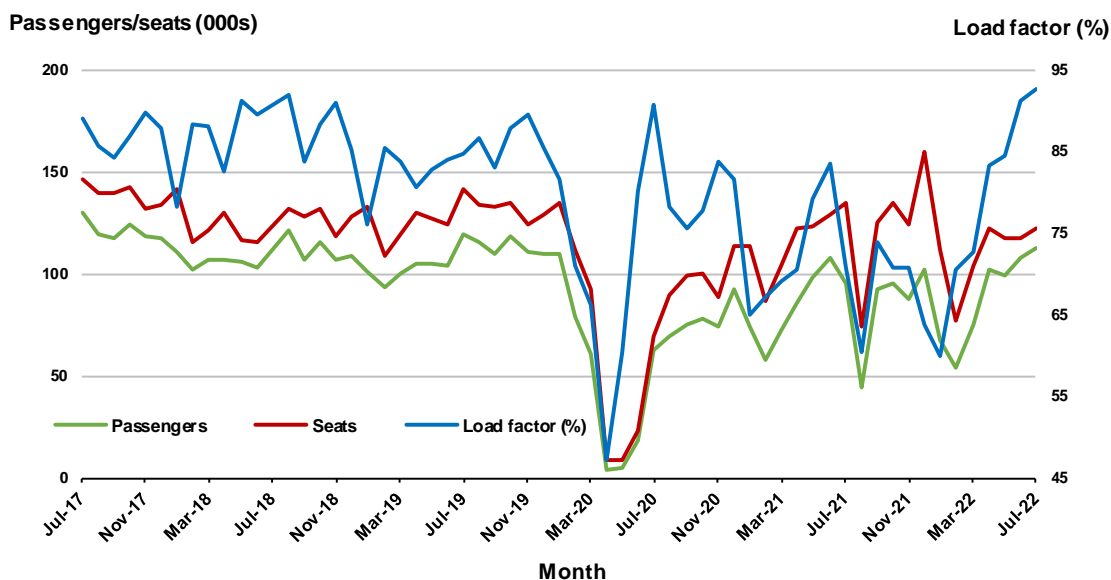
(a) January 2022 moving annual totals are not available for release.

10. Brisbane - Cairns

Monthly data

	Jul 2021	Jul 2022	% Change
Passengers carried (000s)	95.4	112.6	18.0
Seats (000s)	134.9	121.7	-9.8
Load factor %	70.7	92.5	21.8 *
Aircraft trips	834	787	-5.6

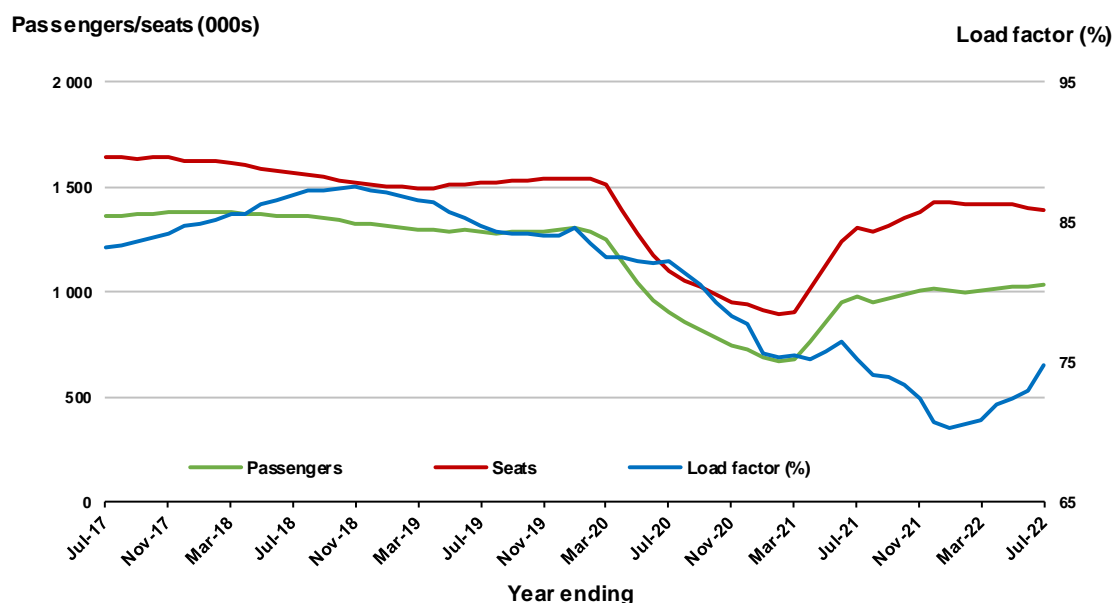
* percentage point difference



Moving annual data

	YE Jul 2021	YE Jul 2022	% Change
Passengers carried (000s)	980.1	1 039.0	6.0
Seats (000s)	1 304.6	1 388.9	6.5
Load factor %	75.1	74.8	-0.3 *
Aircraft trips	8 554	8 982	5.0

* percentage point difference



TOP FIFTY REGIONAL AIRPORTS

Table 10: Top fifty regional airports (000s) — passenger movements, monthly

Airport	Jul 2021	Jul 2022	% Change
1 Cairns	227.2	385.2	69.5
2 Hobart	82.5	203.1	146.1
3 Darwin	91.4	191.2	109.2
4 Townsville	91.8	153.8	67.5
5 Launceston	37.7	103.1	173.3
6 Newcastle	25.2	92.4	267.1
7 Mackay	52.9	78.3	48.0
8 Broome	41.8	54.8	30.9
9 Ballina	8.6	51.4	500.6
10 Hamilton Island	24.7	46.6	88.9
11 Rockhampton	31.9	45.7	43.1
12 Karratha	37.3	44.9	20.2
13 Proserpine	22.7	42.3	86.3
14 Alice Springs	18.4	41.7	127.1
15 Port Hedland	29.2	38.9	33.0
16 Kalgoorlie	19.3	27.9	44.4
17 Newman	25.1	27.8	10.8
18 Coffs Harbour	3.7	24.5	569.2
19 Ayers Rock	4.7	23.4	395.3
20 Albury	2.7	21.1	668.4
21 Mount Isa	15.2	19.8	30.6
22 Paraburdoo	16.1	17.9	11.1
23 Gladstone	11.3	17.5	55.4
24 Wagga Wagga	1.8	16.8	815.1
25 Kununurra	10.6	16.2	53.7
26 Mildura	6.0	16.0	165.2
27 Dubbo	3.8	15.8	314.0
28 Emerald	12.0	15.6	30.4
29 Port Macquarie	1.9	15.4	691.6
30 Port Lincoln	8.9	14.6	64.3
31 Tamworth	1.8	13.2	644.0
32 Learmonth	10.6	11.7	10.0
33 Hervey Bay	3.9	11.4	193.6
34 Thursday Island	9.0	10.0	10.3
35 Gove	4.7	9.4	101.6
36 Bundaberg	5.3	9.2	75.0
37 Armidale	1.0	8.9	817.8
38 Devonport	3.6	8.4	134.0
39 Orange	1.6	8.0	402.9
40 Moranbah	6.8	7.9	15.3
41 Weipa	6.7	7.7	13.6
42 Mount Gambier	2.8	7.3	165.7
43 Olympic Dam	7.1	7.1	- 0.4
44 Geraldton	5.6	7.0	25.3
45 Burnie	2.2	6.7	201.9
46 Griffith	0.6	6.4	947.0
47 Merimbula	0.9	6.3	585.3
48 Toowoomba Wellcamp	2.8	5.4	89.5
49 Whyalla	3.0	5.2	72.6
50 Cloncurry	4.5	5.1	12.0
Total top 50 regional airports	1 051.1	2 025.9	92.7
Total regional airports	1 128.0	2 135.3	89.3
Total domestic network	2 699.3	9 624.6	256.6

Note: Airport passenger movement numbers are the sum of passenger arrivals and departures at each airport. Regional airports are defined as airports which are, according to Australian Statistical Geography Standard (ASGS), not based in Major Cities.

Table 11: Top fifty regional airports (000s) — passenger movements, annual

Airport	YE Jul 2021	YE Jul 2022	% Change
1 Cairns	2 202.4	2 763.9	25.5
2 Hobart	1 113.3	1 624.4	45.9
3 Darwin	973.9	1 348.6	38.5
4 Townsville	1 017.5	1 263.5	24.2
5 Launceston	572.9	808.5	41.1
6 Mackay	592.2	707.7	19.5
7 Newcastle	489.5	641.3	31.0
8 Ballina	566.1	570.3	0.7
9 Karratha	368.3	464.4	26.1
10 Broome	367.9	437.8	19.0
11 Rockhampton	370.0	424.8	14.8
12 Port Hedland	283.7	419.3	47.8
13 Proserpine	279.7	390.4	39.6
14 Hamilton Island	309.9	383.7	23.8
15 Newman	253.4	329.7	30.1
16 Kalgoorlie	217.0	283.4	30.6
17 Alice Springs	278.1	272.3	-2.1
18 Coffs Harbour	131.4	201.0	53.0
19 Mount Isa	176.8	200.7	13.5
20 Paraburdoo	165.4	200.6	21.2
21 Gladstone	133.1	161.7	21.4
22 Port Lincoln	120.8	154.3	27.7
23 Emerald	127.3	149.4	17.3
24 Albury	74.8	127.7	70.7
25 Dubbo	108.4	124.5	14.9
26 Kununurra	88.7	116.4	31.3
27 Mildura	65.8	115.7	76.0
28 Ayers Rock	73.2	112.2	53.4
29 Wagga Wagga	71.0	104.5	47.1
30 Port Macquarie	65.2	102.2	56.7
31 Learmonth	86.5	95.5	10.4
32 Thursday Island	86.7	93.7	8.1
33 Olympic Dam	62.3	90.3	44.9
34 Moranbah	58.0	90.3	55.6
35 Bundaberg	63.5	86.1	35.6
36 Hervey Bay	43.3	84.0	93.9
37 Tamworth	58.1	83.2	43.1
38 Geraldton	56.3	81.8	45.4
39 Weipa	65.6	79.4	20.9
40 Gove	58.3	65.9	13.1
41 Armidale	40.9	64.4	57.4
42 Cloncurry	37.1	59.1	59.5
43 Orange	39.7	57.7	45.5
44 Mount Gambier	28.8	56.2	95.2
45 Albany	41.8	52.2	25.0
46 Devonport	39.6	51.3	29.8
47 Esperance	39.4	50.5	28.1
48 Roma	43.1	49.7	15.4
49 Whyalla	38.6	49.3	27.5
50 Norfolk Island	45.5	48.0	5.6
Total top 50 regional airports	12 690.6	16 393.2	29.2
Total regional airports	13 590.8	17 497.4	28.7
Total domestic network	44 346.3	67 638.4	52.5

Note: Airport passenger movement numbers are the sum of passenger arrivals and departures at each airport. Regional airports are defined as airports which are, according to Australian Statistical Geography Standard (ASGS), not based in Major Cities.

DOMESTIC CHARTER ACTIVITY

Table 12: Charter passengers carried and aircraft trips - monthly activity

	Jul 2021	Jul 2022	% Change
Total domestic charter passengers	278 589	288 019	3.4
Total domestic charter aircraft trips	5 257	5 283	0.5

Note: Helicopter, joyflights and sightseeing charter flights not included.

Table 13: Charter passengers carried and aircraft trips - annual activity

	YE Jul 2021	YE Jul 2022	% Change
Total domestic charter passengers	3 404 687	3 425 231	0.6
Total domestic charter aircraft trips	65 811	64 563	-1.9

Note: Helicopter, joyflights and sightseeing charter flights not included.

Table 14: Domestic airports - charter activity - monthly

	Jul 2021	Jul 2022	% Change
Total domestic charter passenger movements	557 178	576 038	3.4
Total domestic charter aircraft movements	10 514	10 566	0.5
Perth airport charter passenger movements	216 379	212 482	-1.8
Perth airport charter aircraft movements	3 723	3 578	-3.9

Note: Helicopter, joyflights and sightseeing charter flights not included.

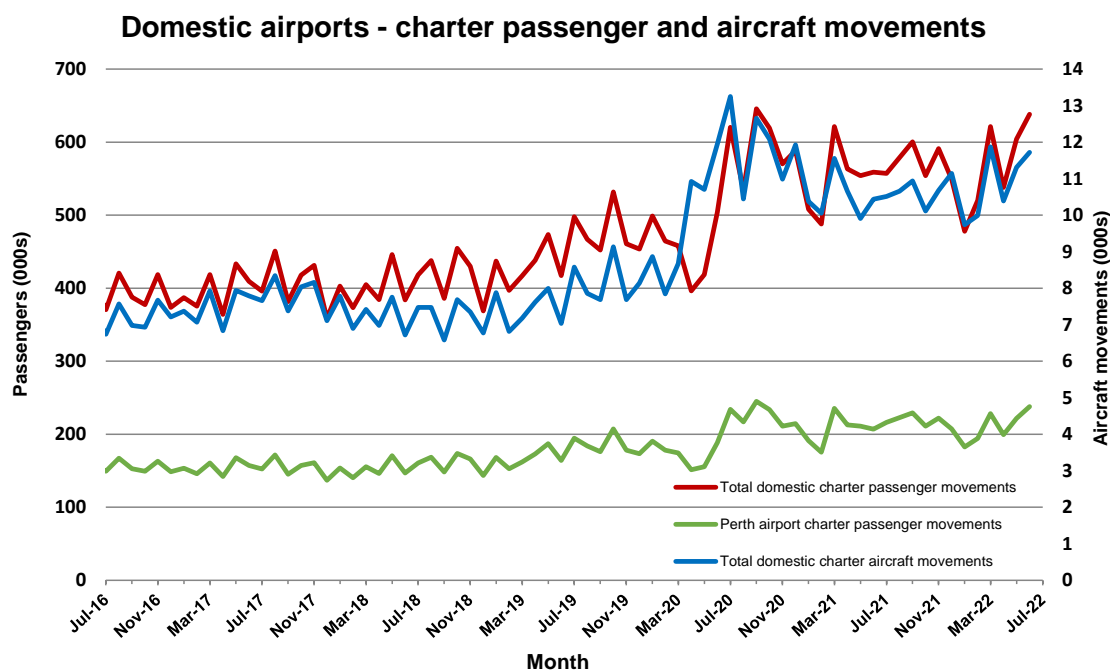
Charter passenger and aircraft movement numbers are the sum of arrivals and departures at each airport.

Table 15: Domestic airports - charter activity - annual

	YE Jul 2021	YE Jul 2022	% Change
Total domestic charter passenger movements	6 809 374	6 850 462	0.6
Total domestic charter aircraft movements	131 622	129 126	-1.9
Perth airport charter passenger movements	2 570 773	2 569 160	-0.1
Perth airport charter aircraft movements	43 690	44 291	1.4

Note: Helicopter, joyflights and sightseeing charter flights not included.

Charter passenger and aircraft movement numbers are the sum of arrivals and departures at each airport.



DEFINITIONS

Aircraft Trips	The number of flight stages. A return flight counts as two aircraft trips.
Airport Movements	Airport movements (passenger and cargo) are measured once on arrival and once on departure. Each domestic trip generates two movements at airports. For example, a trip from Melbourne to Sydney will be counted twice, as a departure at Melbourne and as an arrival at Sydney. At the national level, the sum of all domestic airport traffic will therefore be equal to twice the number of trips undertaken.
Available Seat Kilometres (ASKs)	Calculated by multiplying the number of seats available on each flight stage, by the distance in kilometres between the ports. The distances used are Great Circle Distances.
City-Pair	The ports shown make up the city-pair route. Passenger movements shown for a city pair reflect total traffic in both directions.
Flight Stage	The operation of an aircraft from take-off to landing.
Load Factor	The total revenue passenger kilometres performed as a percentage of the total available seat kilometres.
Passengers Carried	Revenue passengers carried.
Regular Public Transport Services (RPT)	All air service operations in which aircraft are available for the transport of members of the public and are conducted in accordance with fixed schedules. It does not include charter or other non-scheduled operations.
Revenue Passengers	All passengers paying any fare. Frequent flyer redemption travellers are regarded as revenue passengers.
Revenue Passenger Kilometres (RPKs)	Calculated by multiplying the number of revenue passengers travelling on each flight stage, by the distance in kilometres between the ports. The distances used are Great Circle Distances.
Traffic on board by stages	The total of all traffic (revenue passengers) on each flight stage between two directly connected airports.
..	Not available for confidentiality or other reasons.
NA	Not applicable.