



Australian Government

**Department of Infrastructure, Transport,
Regional Development, Communications and the Arts**
Bureau of Infrastructure and Transport Research Economics

STATISTICAL REPORT



bitre

Aviation

**Domestic aviation activity
January 2023**

© Commonwealth of Australia 2023

ISSN: 1832 - 1968

Ownership of intellectual property rights in this publication

Unless otherwise noted, copyright (and any other intellectual property rights, if any) in this publication is owned by the Commonwealth of Australia (referred to below as the Commonwealth).

Disclaimer

The material contained in this publication is made available on the understanding that the Commonwealth is not providing professional advice, and that users exercise their own skill and care with respect to its use, and seek independent advice if necessary.

The Commonwealth makes no representations or warranties as to the contents or accuracy of the information contained in this publication. To the extent permitted by law, the Commonwealth disclaims liability to any person or organisation in respect of anything done, or omitted to be done, in reliance upon information contained in this publication.

Creative Commons licence

With the exception of (a) the Coat of Arms; and (b) the Department of Infrastructure, Transport, Regional Development, Communications and the Arts' photos and graphics, copyright in this publication is licensed under a Creative Commons Attribution 3.0 Australia Licence.

Creative Commons Attribution 3.0 Australia Licence is a standard form licence agreement that allows you to copy, communicate and adapt this publication provided that you attribute the work to the Commonwealth and abide by the other licence terms. A summary of the licence terms is available from <http://creativecommons.org/licenses/by/3.0/au/deed.en>.

The full licence terms are available from <http://creativecommons.org/licenses/by/3.0/au/legalcode>.

Use of the Coat of Arms

The Department of the Prime Minister and Cabinet sets the terms under which the Coat of Arms is used. Please refer to the Department's Commonwealth Coat of Arms and Government branding web page <http://www.dpmc.gov.au/guidelines/index.cfm#brand> and, in particular, the Guidelines on the use of the Commonwealth Coat of Arms publication.

An appropriate citation for this report is:

Bureau of Infrastructure and Transport Research Economics (BITRE), 2023, Domestic aviation activity, Statistical Report, BITRE, Canberra ACT.

Contact us

This publication is available in PDF format. All other rights are reserved, including in relation to any Departmental logos or trade marks which may exist. For enquiries regarding the licence and any use of this publication, please contact:

Bureau of Infrastructure and Transport Research Economics (BITRE)
Department of Infrastructure, Transport, Regional Development, Communications and the Arts
GPO Box 501, Canberra ACT 2601, Australia
Telephone: (international) +61 2 6274 7210
Fax: (international) +61 2 6274 6855
Email: bitre@infrastructure.gov.au
Website: www.bitre.gov.au

Inquiries

Should you require additional information about the statistics contained in this publication:

Nebojsa Pavlovic

Telephone (02) 6274 6817

Electronic mail: AVSTATS@infrastructure.gov.au

Nebojsa.Pavlovic@infrastructure.gov.au

Web site: <http://www.bitre.gov.au/statistics/aviation/domestic.aspx>

FOREWORD

This report provides an overview of domestic (including charter) commercial aviation activity in Australia for the month of January 2023.

The data covers revenue passengers carried by Australian-registered operators of scheduled regular public transport services over Australian flight stages and fixed-wing charter operators. These estimates include passengers carried between domestic airports on international flights operated by these carriers. The passengers carried refer to traffic on board by stages.

Estimates of passengers and aircraft movements for charter aviation are included in this publication, where BITRE confidentiality standards are met.

Individual routes shown are restricted to those exceeding 8,000 passengers per month where two or more airlines operate in competition. However, for the period from November 2021 through to December 2022, the major airlines (Qantas Group, Virgin Australia and Rex Airlines) agreed to publication of the top 35 routes based on pre-COVID activity (December 2019) whether or not they were meeting the above criteria. From January 2023, the passenger load and dual competition requirements were reinstated due to the continued recovery of passenger numbers.

Information on the total network for the month of January 2023 and on the Regular Public Transport (RPT) network for the month of January 2023 is presented on page 2, with estimates for the year ended January 2023 presented on page 3.

Detailed information on individual routes can be found in the RPT summary pages 4-13 of this publication.

The top ten airports in terms of RPT passenger movements are shown on page 14.

Data on domestic RPT cargo movements at the top five cargo airports are provided on page 15. The table includes cargo carried on passenger flights operated by the Qantas group (including Jetstar), Virgin Australia, Air North and Skippers as well as the cargo carried by dedicated freighter aircraft operated by Qantas Freight and Toll.

The long-term trends for the top ten competitive RPT routes are presented graphically on pages 16-25.

Domestic RPT passenger movements at regional airports are shown on pages 26-27.

Tables providing estimates of domestic charter aviation activity are shown on page 28. BITRE confidentiality standards restrict publication of detailed estimates for individual Australian airports, with the exception of Perth Airport.

A list of definitions can be found on page 29.

This report was prepared by the Aviation Statistics Section of the Bureau of Infrastructure and Transport Research Economics with data provided by airlines.

Estimates are included where data were not available and data presented in this publication may contain revisions to previously published data.

Where figures have been rounded, discrepancies may occur between sums of component items and totals, and in percentage changes which are derived from figures prior to rounding.

CONTENTS

Highlights	1
Total network.....	2
RPT network	2
Top competitive routes.....	4
Top ten airports – passenger movements.....	14
Top five airports – cargo movements.....	15
Top ten routes	16
1. Melbourne – Sydney	16
2. Brisbane – Sydney.....	17
3. Brisbane – Melbourne	18
4. Gold Coast – Sydney	19
5. Gold Coast – Melbourne	20
6. Adelaide – Melbourne	21
7. Melbourne – Perth	22
8. Perth – Sydney	23
9. Adelaide – Sydney	24
10. Hobart – Melbourne	25
Top fifty regional airports	26
Domestic charter activity.....	28
Definitions	29

This page is intentionally left blank.

HIGHLIGHTS

The domestic aviation industry continued to recover in January 2023. Revenue passenger numbers were 75.5 per cent higher than January 2022 levels but still 11.9 per cent below pre-COVID January 2020.

There were 4.81 million passengers carried on Australian domestic commercial aviation (including charter operations) in January 2023, compared to 2.80 million in January 2022 and 5.35 million in pre-COVID January 2020.

For the month of January 2023, there were 49,009 aircraft trips, compared to 36,866 in January 2022 and 50,230 in pre-COVID January 2020.

4.49 million passengers were carried on RPT flights in January 2023, compared to 2.56 million reported in January 2022 and 5.10 million reported in pre-COVID January 2020.

For the year ending January 2023 there were 52.12 million RPT passengers, an increase of 113.1 per cent on the year ending January 2022 and a decrease of 15.1 per cent on the year ending January 2020.

RPT revenue passenger kilometres (RPKs) performed were 5.47 billion for the month, compared with 2.75 billion in January 2022.

Capacity, measured by available seat kilometres (ASKs), increased to 7.03 billion in January 2023 compared to 4.65 billion in January 2022.

The industry wide load factor (RPKs/ASKs) increased from 59.2 per cent in January 2022 to 77.8 per cent in January 2023. The highest load factor (87.7 per cent) was recorded on the Perth - Sydney route while the lowest load factor (46.2 per cent) was recorded on the Brisbane - Moranbah route.

For the month of January 2023, Melbourne – Sydney was Australia’s busiest RPT route with 568,744 passengers, followed by Brisbane – Sydney with 307,720 passengers and Brisbane – Melbourne with 255,557 passengers.

Sydney was Australia’s busiest domestic airport with 1.89 million passenger movements in January 2023, followed by Melbourne with 1.88 million passenger movements and Brisbane with 1.24 million passenger movements.

Total cargo movements at Australian airports on domestic RPT flights were 25,345 tonnes in January 2023, a decrease of 18.1 per cent compared with January 2022.

In January 2023, there were 1.85 million domestic passenger movements through regional airports, compared to 1.30 million in January 2022 and 2.05 million in pre-COVID January 2020. Most regional airports for which data is available for publishing recorded large increases in January 2023 compared to January 2022.

Fixed-wing charter operators carried 319,758 passengers in January 2023, compared to 239,044 in January 2022 and 249,430 in pre-COVID January 2020. Perth Airport accounted for 35.8 per cent of all charter passengers in Australia.

TOTAL NETWORK

Summary of monthly commercial aviation activity

	Jan 2022	Jan 2023	% Change
Total passengers carried (millions)	2.80	4.81	71.9
Aircraft trips (000s)	41.7	54.7	31.1

Note: Regular Public Transport and charter aviation activity
Helicopter, joy flights and sightseeing charter flights not included.

RPT NETWORK

Summary of monthly RPT activity

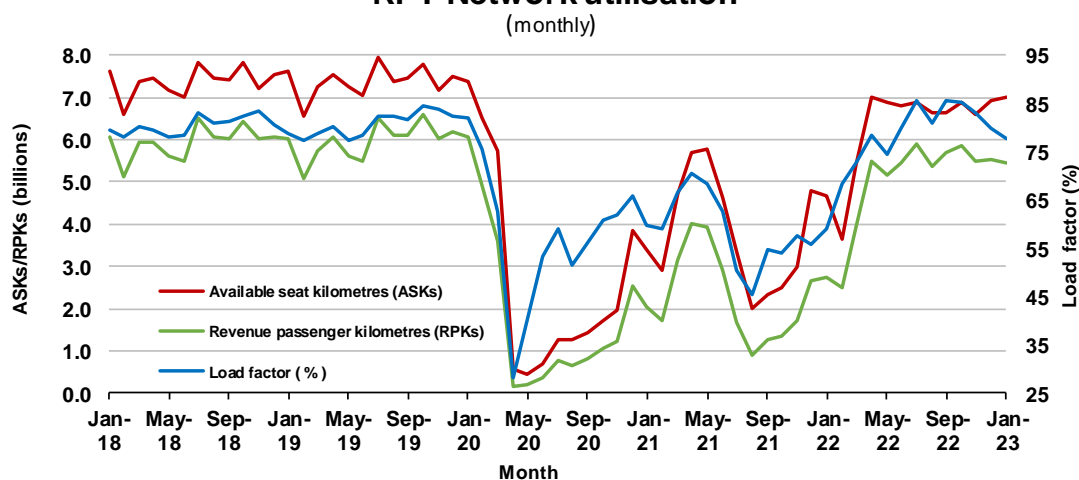
	Jan 2022	Jan 2023	% Change
Total passengers carried (millions)	2.56	4.49	75.5
Revenue passenger kilometres (billions)	2.75	5.47	98.6
Available seats (millions)	4.41	5.97	35.3
Available seat kilometres (billions)	4.65	7.03	51.1
Load factor %	59.2	77.8	18.6 *
Aircraft trips (000s)	36.9	49.0	32.9

* percentage point difference

Domestic RPT passenger traffic



RPT Network utilisation



TOTAL NETWORK

Summary of annual commercial aviation activity

	YE Jan 2022	YE Jan 2023	% Change
Total passengers carried (millions)	27.81	55.79	100.6
Aircraft trips (000s)	441.8	637.2	44.2

Note: Regular Public Transport and charter aviation activity
Helicopter, joy flights and sightseeing charter flights not included.

RPT NETWORK

Summary of annual RPT activity

	YE Jan 2022	YE Jan 2023	% Change
Total passengers carried (millions)	24.46	52.12	113.1
Revenue passenger kilometres (billions)	28.07	61.87	120.4
Available seats (millions)	40.79	67.18	64.7
Available seat kilometres (billions)	46.28	77.42	67.3
Load factor %	60.7	79.9	19.3 *
Aircraft trips (000s)	378.6	570.3	50.6

* percentage point difference

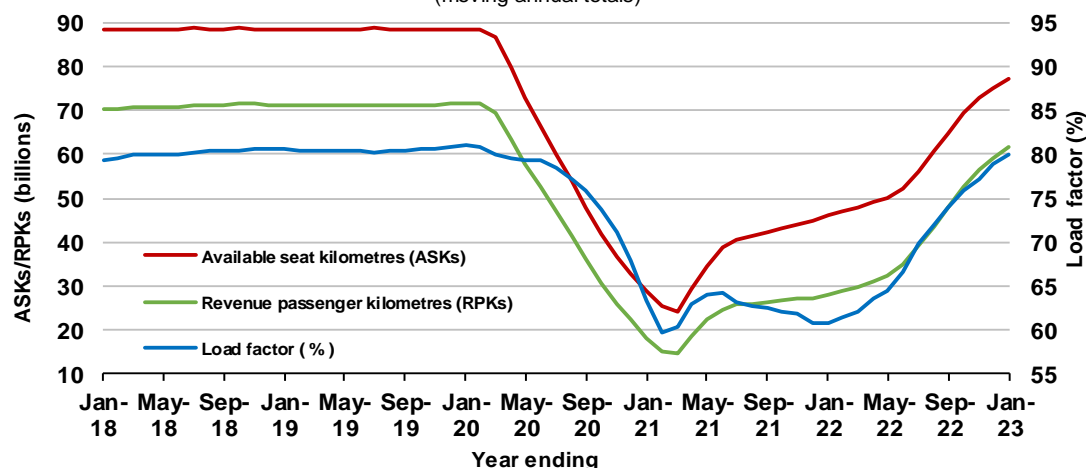
Domestic RPT passenger traffic

(moving annual totals)



RPT Network utilisation

(moving annual totals)



TOP COMPETITIVE ROUTES

Table 1: Passengers carried (000s) — annual activity

	City-Pair	YE Jan 2022	YE Jan 2023	% Change
1	Melbourne - Sydney	2,388.6	7,141.4	199.0
2	Brisbane - Sydney	1,206.6	3,766.3	212.2
3	Brisbane - Melbourne	848.2	2,905.3	242.5
4	Gold Coast - Sydney	886.0	2,522.1	184.7
5	Gold Coast - Melbourne	820.5	2,316.5	182.3
6	Adelaide - Melbourne	656.0	2,143.6	226.8
7	Melbourne - Perth	243.7	1,516.6	522.3
8	Adelaide - Sydney	576.0	1,478.7	156.7
9	Perth - Sydney	..	1,249.0	NA
10	Hobart - Melbourne	451.0	1,208.6	168.0
11	Brisbane - Cairns	1,005.6	1,163.5	15.7
12	Cairns - Sydney	292.6	896.9	206.5
13	Canberra - Melbourne	292.5	882.4	201.7
14	Brisbane - Townsville	686.4	835.8	21.8
15	Brisbane - Perth	265.4	824.3	210.6
16	Cairns - Melbourne	335.5	811.8	141.9
17	Adelaide - Brisbane	446.9	741.6	66.0
18	Melbourne - Sunshine Coast	286.4	727.6	154.1
19	Brisbane - Mackay	536.7	719.2	34.0
20	Launceston - Melbourne	298.2	715.0	139.7
21	Sunshine Coast - Sydney	264.7	714.0	169.8
22	Hobart - Sydney	293.8	674.4	129.5
23	Brisbane - Canberra	290.9	608.4	109.2
24	Canberra - Sydney	172.8	558.7	223.2
25	Adelaide - Perth	..	540.2	NA
26	Ballina - Sydney	402.6	507.6	26.1
27	Karratha - Perth	425.9	498.9	17.1
28	Brisbane - Newcastle	212.4	467.3	120.0
29	Perth - Port Hedland	366.0	456.6	24.8
30	Brisbane - Rockhampton	362.2	455.1	25.7
31	Melbourne - Newcastle	174.2	393.8	126.0
32	Broome - Perth	378.0	388.9	2.9
33	Darwin - Sydney	..	349.2	NA
34	Newman - Perth	317.9	347.2	9.2
35	Brisbane - Darwin	258.9	333.6	28.9
36	Darwin - Melbourne	..	307.2	NA
37	Kalgoorlie - Perth	258.1	306.4	18.7
38	Brisbane - Hobart	259.6	295.1	13.7
39	Brisbane - Proserpine	250.3	292.5	16.9
40	Launceston - Sydney	140.3	290.1	106.8
41	Hamilton Island - Sydney	101.1	244.7	142.0
42	Adelaide - Gold Coast	140.3	232.3	65.6
43	Coffs Harbour - Sydney	119.2	210.4	76.4
44	Brisbane - Gladstone	141.1	199.1	41.1
45	Adelaide - Darwin	..	192.9	NA
46	Brisbane - Hamilton Island	197.9	175.8	-11.1
47	Adelaide - Port Lincoln	141.2	175.4	24.2
48	Brisbane - Launceston	145.5	171.6	18.0
49	Brisbane - Emerald	..	164.3	NA
50	Darwin - Perth	..	160.5	NA

continued

Table 1: (continued) Passengers carried (000s) — annual activity

	City-Pair	YE Jan 2022	YE Jan 2023	%Change
51	Adelaide - Canberra	..	158.6	NA
52	Albury - Sydney	..	155.3	NA
53	Dubbo - Sydney	..	151.9	NA
54	Canberra - Gold Coast	82.3	149.2	81.3
55	Port Macquarie - Sydney	..	147.4	NA
56	Melbourne - Mildura	..	142.5	NA
57	Sydney - Wagga Wagga	..	140.5	NA
58	Brisbane - Mount Isa	..	138.5	NA
59	Devonport - Melbourne	..	102.9	NA
60	Brisbane - Moranbah	..	100.3	NA
Total domestic network		24,459.7	52,118.0	113.1

.. Data not available for release.

Table 2: Passengers carried (000s) — monthly activity

	City-Pair	Jan 2022	Jan 2023	% Change
1	Melbourne - Sydney	302.3	568.7	88.2
2	Brisbane - Sydney	135.7	307.7	126.8
3	Brisbane - Melbourne	156.8	255.6	63.0
4	Gold Coast - Sydney	138.1	226.5	64.1
5	Gold Coast - Melbourne	193.5	219.0	13.1
6	Adelaide - Melbourne	86.7	178.8	106.3
7	Melbourne - Perth	4.7	173.4	>999.9
8	Perth - Sydney	..	132.1	NA
9	Adelaide - Sydney	60.4	128.5	112.8
10	Hobart - Melbourne	65.6	122.2	86.2
11	Brisbane - Cairns	67.0	93.9	40.2
12	Brisbane - Perth	3.1	90.1	>999.9
13	Launceston - Melbourne	40.6	76.4	88.1
14	Cairns - Sydney	42.8	74.6	74.2
15	Hobart - Sydney	44.7	69.4	55.1
16	Sunshine Coast - Sydney	40.1	69.2	72.9
17	Canberra - Melbourne	35.9	68.2	90.2
18	Melbourne - Sunshine Coast	61.6	64.9	5.4
19	Brisbane - Townsville	45.4	62.9	38.5
20	Adelaide - Brisbane	33.1	61.5	85.6
21	Cairns - Melbourne	60.5	57.8	-4.6
22	Brisbane - Mackay	34.8	55.6	59.8
23	Adelaide - Perth	..	55.4	NA
24	Ballina - Sydney	48.1	51.2	6.6
25	Brisbane - Canberra	29.7	44.7	50.6
26	Karratha - Perth	31.9	39.0	22.3
27	Brisbane - Newcastle	20.0	37.1	85.5
28	Perth - Port Hedland	28.4	36.7	29.2
29	Launceston - Sydney	21.1	36.4	72.3
30	Melbourne - Newcastle	23.6	35.4	49.8
31	Brisbane - Rockhampton	23.2	35.2	51.8
32	Canberra - Sydney	9.9	32.1	222.5
33	Newman - Perth	23.8	29.2	22.7
34	Brisbane - Hobart	24.5	28.4	16.1
35	Hamilton Island - Sydney	13.3	24.6	85.0
36	Brisbane - Darwin	19.4	24.2	24.9
37	Kalgoorlie - Perth	18.6	24.1	30.0
38	Adelaide - Gold Coast	14.8	23.8	61.2
39	Brisbane - Proserpine	23.8	22.9	-3.9
40	Broome - Perth	23.6	22.7	-3.8
41	Darwin - Melbourne	..	18.9	NA
42	Darwin - Sydney	..	16.9	NA
43	Adelaide - Darwin	..	16.3	NA
44	Canberra - Gold Coast	11.3	16.2	43.1
45	Brisbane - Launceston	13.9	16.1	16.0
46	Coffs Harbour - Sydney	13.7	15.3	11.7
47	Brisbane - Gladstone	8.9	14.9	67.7
48	Adelaide - Port Lincoln	9.3	14.4	55.9
49	Brisbane - Hamilton Island	12.5	13.3	6.7
50	Brisbane - Emerald	..	13.2	NA

continued

Table 2: (continued) Passengers carried (000s) — monthly activity

	City-Pair	Jan 2022	Jan 2023	% Change
51	Darwin - Perth	..	12.4	NA
52	Port Macquarie - Sydney	..	11.0	NA
53	Albury - Sydney	..	10.5	NA
54	Dubbo - Sydney	..	10.2	NA
55	Adelaide - Canberra	..	10.2	NA
56	Brisbane - Mount Isa	..	9.9	NA
57	Devonport - Melbourne	..	9.8	NA
58	Melbourne - Mildura	..	9.4	NA
59	Sydney - Wagga Wagga	..	9.1	NA
60	Brisbane - Moranbah	..	8.3	NA
Total domestic network		2,558.4	4,490.1	75.5

.. Data not available for release.

Table 3: Available seats (000s) — monthly activity

	City-Pair	Jan 2022	Jan 2023	% Change
1	Melbourne - Sydney	466.1	706.9	51.6
2	Brisbane - Sydney	229.0	396.4	73.2
3	Brisbane - Melbourne	248.2	328.4	32.3
4	Gold Coast - Sydney	200.0	260.4	30.2
5	Gold Coast - Melbourne	259.6	252.2	-2.8
6	Adelaide - Melbourne	139.3	231.9	66.5
7	Melbourne - Perth	8.6	203.2	>999.9
8	Perth - Sydney	..	150.7	NA
9	Adelaide - Sydney	105.4	156.4	48.4
10	Hobart - Melbourne	107.1	156.7	46.3
11	Brisbane - Cairns	112.1	114.9	2.5
12	Brisbane - Perth	5.4	111.3	>999.9
13	Launceston - Melbourne	73.4	104.4	42.3
14	Cairns - Sydney	69.7	89.6	28.6
15	Hobart - Sydney	76.5	83.7	9.5
16	Sunshine Coast - Sydney	69.9	92.7	32.6
17	Canberra - Melbourne	68.5	99.4	45.1
18	Melbourne - Sunshine Coast	93.8	84.1	-10.4
19	Brisbane - Townsville	78.8	90.7	15.0
20	Adelaide - Brisbane	58.8	79.4	35.0
21	Cairns - Melbourne	85.5	69.1	-19.1
22	Brisbane - Mackay	62.2	81.8	31.5
23	Adelaide - Perth	..	70.3	NA
24	Ballina - Sydney	77.8	64.7	-16.9
25	Brisbane - Canberra	55.9	73.4	31.4
26	Karratha - Perth	63.5	61.1	-3.8
27	Brisbane - Newcastle	38.6	55.4	43.6
28	Perth - Port Hedland	54.1	51.5	-4.8
29	Launceston - Sydney	40.6	44.1	8.7
30	Melbourne - Newcastle	38.1	44.9	17.8
31	Brisbane - Rockhampton	46.4	55.9	20.4
32	Canberra - Sydney	23.5	53.0	125.8
33	Newman - Perth	51.3	49.6	-3.4
34	Brisbane - Hobart	41.4	38.7	-6.5
35	Hamilton Island - Sydney	25.9	30.9	19.2
36	Brisbane - Darwin	33.2	31.1	-6.2
37	Kalgoorlie - Perth	38.4	41.6	8.2
38	Adelaide - Gold Coast	27.9	27.6	-1.2
39	Brisbane - Proserpine	37.7	29.5	-21.8
40	Broome - Perth	38.7	31.5	-18.6
41	Darwin - Melbourne	..	24.7	NA
42	Darwin - Sydney	..	22.2	NA
43	Adelaide - Darwin	..	27.9	NA
44	Canberra - Gold Coast	18.6	22.0	18.1
45	Brisbane - Launceston	26.2	22.9	-12.7
46	Coffs Harbour - Sydney	29.4	23.0	-21.8
47	Brisbane - Gladstone	20.7	27.2	31.3
48	Adelaide - Port Lincoln	17.0	23.0	35.0
49	Brisbane - Hamilton Island	26.9	21.2	-21.4
50	Brisbane - Emerald	..	21.6	NA

continued

Table 3: (continued) Available seats (000s) — monthly activity

	City-Pair	Jan 2022	Jan 2023	% Change
51	Darwin - Perth	..	18.4	NA
52	Port Macquarie - Sydney	..	21.0	NA
53	Albury - Sydney	..	18.8	NA
54	Dubbo - Sydney	..	20.7	NA
55	Adelaide - Canberra	..	17.5	NA
56	Brisbane - Mount Isa	..	17.1	NA
57	Devonport - Melbourne	..	16.0	NA
58	Melbourne - Mildura	..	13.3	NA
59	Sydney - Wagga Wagga	..	19.2	NA
60	Brisbane - Moranbah	..	17.9	NA
Total domestic network		4,407.5	5,965.2	35.3

.. Data not available for release.

Table 4: Load factors (%) — monthly activity

	City-Pair	Jan 2022	Jan 2023	% Point diff
1	Melbourne - Sydney	64.8	80.5	15.7
2	Brisbane - Sydney	59.3	77.6	18.3
3	Brisbane - Melbourne	63.2	77.8	14.6
4	Gold Coast - Sydney	69.0	87.0	18.0
5	Gold Coast - Melbourne	74.5	86.8	12.3
6	Adelaide - Melbourne	62.2	77.1	14.9
7	Melbourne - Perth	54.1	85.3	31.2
8	Perth - Sydney	..	87.7	NA
9	Adelaide - Sydney	57.3	82.2	24.9
10	Hobart - Melbourne	61.3	78.0	16.7
11	Brisbane - Cairns	59.8	81.7	21.9
12	Brisbane - Perth	56.9	81.0	24.1
13	Launceston - Melbourne	55.3	73.1	17.8
14	Cairns - Sydney	61.4	83.2	21.8
15	Hobart - Sydney	58.5	82.9	24.4
16	Sunshine Coast - Sydney	57.3	74.7	17.4
17	Canberra - Melbourne	52.3	68.6	16.3
18	Melbourne - Sunshine Coast	65.7	77.2	11.5
19	Brisbane - Townsville	57.6	69.4	11.8
20	Adelaide - Brisbane	56.3	77.5	21.2
21	Cairns - Melbourne	70.8	83.6	12.8
22	Brisbane - Mackay	55.9	67.9	12.0
23	Adelaide - Perth	..	78.9	NA
24	Ballina - Sydney	61.8	79.2	17.4
25	Brisbane - Canberra	53.1	60.9	7.8
26	Karratha - Perth	50.2	63.9	13.7
27	Brisbane - Newcastle	51.8	67.0	15.2
28	Perth - Port Hedland	52.5	71.3	18.8
29	Launceston - Sydney	52.1	82.5	30.4
30	Melbourne - Newcastle	62.0	78.8	16.8
31	Brisbane - Rockhampton	49.9	62.9	13.0
32	Canberra - Sydney	42.4	60.5	18.1
33	Newman - Perth	46.4	59.0	12.6
34	Brisbane - Hobart	59.1	73.4	14.3
35	Hamilton Island - Sydney	51.2	79.4	28.2
36	Brisbane - Darwin	58.4	77.7	19.3
37	Kalgoorlie - Perth	48.3	58.0	9.7
38	Adelaide - Gold Coast	52.9	86.3	33.4
39	Brisbane - Proserpine	63.2	77.6	14.4
40	Broome - Perth	61.1	72.2	11.1
41	Darwin - Melbourne	..	76.4	NA
42	Darwin - Sydney	..	76.4	NA
43	Adelaide - Darwin	..	58.3	NA
44	Canberra - Gold Coast	61.0	73.9	12.9
45	Brisbane - Launceston	53.0	70.4	17.4
46	Coffs Harbour - Sydney	46.5	66.5	20.0
47	Brisbane - Gladstone	43.1	55.0	11.9
48	Adelaide - Port Lincoln	54.3	62.8	8.5
49	Brisbane - Hamilton Island	46.5	63.0	16.5
50	Brisbane - Emerald	..	61.2	NA

continued

Table 4: (continued) Load factors (%) — monthly activity

	City-Pair	Jan 2022	Jan 2023	% Point diff
51	Darwin - Perth	..	67.5	NA
52	Port Macquarie - Sydney	..	52.4	NA
53	Albury - Sydney	..	55.8	NA
54	Dubbo - Sydney	..	49.4	NA
55	Adelaide - Canberra	..	58.2	NA
56	Brisbane - Mount Isa	..	58.0	NA
57	Devonport - Melbourne	..	61.0	NA
58	Melbourne - Mildura	..	70.7	NA
59	Sydney - Wagga Wagga	..	47.7	NA
60	Brisbane - Moranbah	..	46.2	NA
Total domestic network		59.2	77.8	18.6

.. Data not available for release.

Table 5: Aircraft trips ^(a) — monthly activity

	City-Pair	Jan 2022	Jan 2023	% Change
1	Melbourne - Sydney	2,834	4,068	43.5
2	Brisbane - Sydney	1,471	2,407	63.6
3	Brisbane - Melbourne	1,495	1,977	32.2
4	Gold Coast - Sydney	1,118	1,514	35.4
5	Gold Coast - Melbourne	1,350	1,374	1.8
6	Adelaide - Melbourne	860	1,416	64.7
7	Melbourne - Perth	130	1,126	766.2
8	Perth - Sydney	..	805	NA
9	Adelaide - Sydney	630	948	50.5
10	Hobart - Melbourne	640	906	41.6
11	Brisbane - Cairns	704	747	6.1
12	Brisbane - Perth	32	646	>999.9
13	Launceston - Melbourne	580	816	40.7
14	Cairns - Sydney	360	462	28.3
15	Hobart - Sydney	433	506	16.9
16	Sunshine Coast - Sydney	392	568	44.9
17	Canberra - Melbourne	483	705	46.0
18	Melbourne - Sunshine Coast	531	481	-9.4
19	Brisbane - Townsville	504	613	21.6
20	Adelaide - Brisbane	361	680	88.4
21	Cairns - Melbourne	433	367	-15.2
22	Brisbane - Mackay	427	605	41.7
23	Adelaide - Perth	..	407	NA
24	Ballina - Sydney	517	468	-9.5
25	Brisbane - Canberra	356	527	48.0
26	Karratha - Perth	395	383	-3.0
27	Brisbane - Newcastle	305	491	61.0
28	Perth - Port Hedland	355	343	-3.4
29	Launceston - Sydney	234	267	14.1
30	Melbourne - Newcastle	230	287	24.8
31	Brisbane - Rockhampton	432	627	45.1
32	Canberra - Sydney	420	965	129.8
33	Newman - Perth	324	321	-0.9
34	Brisbane - Hobart	255	238	-6.7
35	Hamilton Island - Sydney	146	176	20.5
36	Brisbane - Darwin	214	250	16.8
37	Kalgoorlie - Perth	270	290	7.4
38	Adelaide - Gold Coast	167	162	-3.0
39	Brisbane - Proserpine	247	196	-20.6
40	Broome - Perth	255	232	-9.0
41	Darwin - Melbourne	..	139	NA
42	Darwin - Sydney	..	142	NA
43	Adelaide - Darwin	..	207	NA
44	Canberra - Gold Coast	126	124	-1.6
45	Brisbane - Launceston	154	136	-11.7
46	Coffs Harbour - Sydney	394	409	3.8
47	Brisbane - Gladstone	238	350	47.1
48	Adelaide - Port Lincoln	431	559	29.7
49	Brisbane - Hamilton Island	154	125	-18.8
50	Brisbane - Emerald	..	323	NA

continued

Table 5: (continued) Aircraft trips ^(a) — monthly activity

	City-Pair	Jan 2022	Jan 2023	% Change
51	Darwin - Perth	..	106	NA
52	Port Macquarie - Sydney	..	362	NA
53	Albury - Sydney	..	342	NA
54	Dubbo - Sydney	..	370	NA
55	Adelaide - Canberra	..	151	NA
56	Brisbane - Mount Isa	..	164	NA
57	Devonport - Melbourne	..	360	NA
58	Melbourne - Mildura	..	303	NA
59	Sydney - Wagga Wagga	..	344	NA
60	Brisbane - Moranbah	..	238	NA
Total domestic network		36,866	49,009	32.9

(a) Includes RPT cargo flights.

.. Data not available for release.

TOP TEN AIRPORTS – PASSENGER MOVEMENTS

Table 6: Top ten airports, RPT passenger movements (000s) - monthly activity

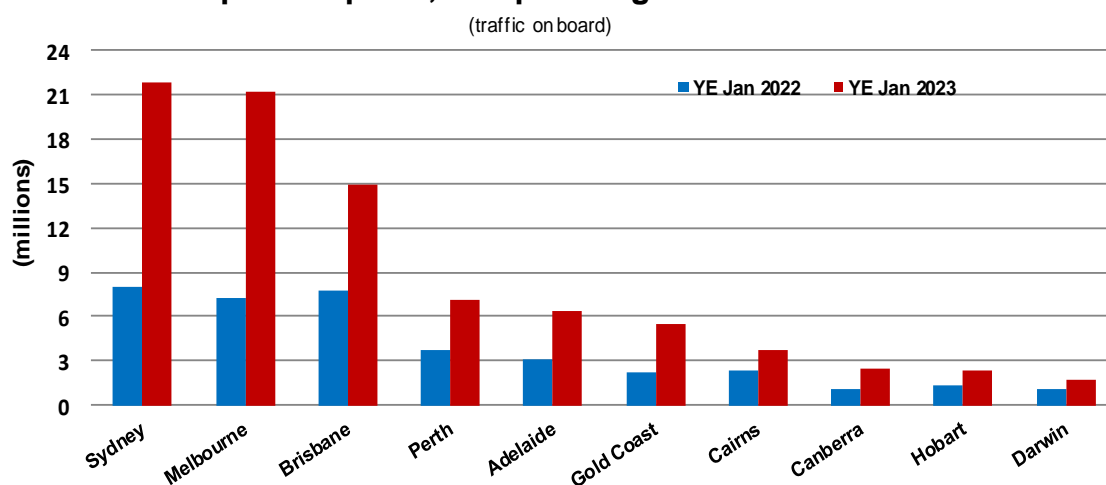
Airport	Jan 2022	Jan 2023	% Change	% of Total
1 Sydney	962.2	1,889.2	96.3	21.0
2 Melbourne	1,094.6	1,881.4	71.9	21.0
3 Brisbane	699.4	1,238.7	77.1	13.8
4 Perth	182.0	680.7	274.0	7.6
5 Adelaide	261.7	554.4	111.9	6.2
6 Gold Coast	385.5	510.9	32.5	5.7
7 Cairns	221.2	298.9	35.1	3.3
8 Hobart	156.3	248.5	58.9	2.8
9 Canberra	99.7	185.5	86.0	2.1
10 Sunshine Coast	108.5	140.3	29.4	1.6
Total top ten airports	4,171.3	7,628.4	82.9	84.9
Total domestic network	5,116.8	8,980.1	75.5	100.0

Table 7: Top ten airports, RPT passenger movements (000s) - annual activity

Airport	YE Jan 2022	YE Jan 2023	% Change	% of Total
1 Sydney	7,952.7	21,899.7	175.4	21.0
2 Melbourne	7,238.1	21,239.7	193.4	20.4
3 Brisbane	7,806.3	14,920.2	91.1	14.3
4 Perth	3,781.5	7,125.5	88.4	6.8
5 Adelaide	3,062.6	6,322.3	106.4	6.1
6 Gold Coast	2,231.3	5,455.1	144.5	5.2
7 Cairns	2,357.4	3,759.8	59.5	3.6
8 Canberra	1,026.9	2,523.7	145.8	2.4
9 Hobart	1,287.4	2,381.1	85.0	2.3
10 Darwin	1,086.8	1,667.2	53.4	1.6
Total top ten airports	37,831.1	87,294.3	130.7	83.7
Total domestic network	48,919.4	104,236.0	113.1	100.0

Note: Airport passenger movement numbers are the sum of passenger arrivals and departures at each airport.

Top ten airports, RPT passenger movements



TOP FIVE AIRPORTS – CARGO MOVEMENTS

Table 8: Top five airports, domestic RPT cargo movements (000s tonnes) - monthly activity

Airport	Jan 2022	Jan 2023	% Change	% of Total
1 Melbourne	8.3	6.7	-19.9	26.3
2 Sydney	7.5	5.4	-27.4	21.4
3 Brisbane	4.5	4.4	-3.1	17.3
4 Perth	2.0	2.7	35.1	10.8
5 Adelaide	2.0	1.4	-27.3	5.7
Total top five airports	24.3	20.6	-15.1	81.5
Total domestic network	30.9	25.3	-18.1	100.0

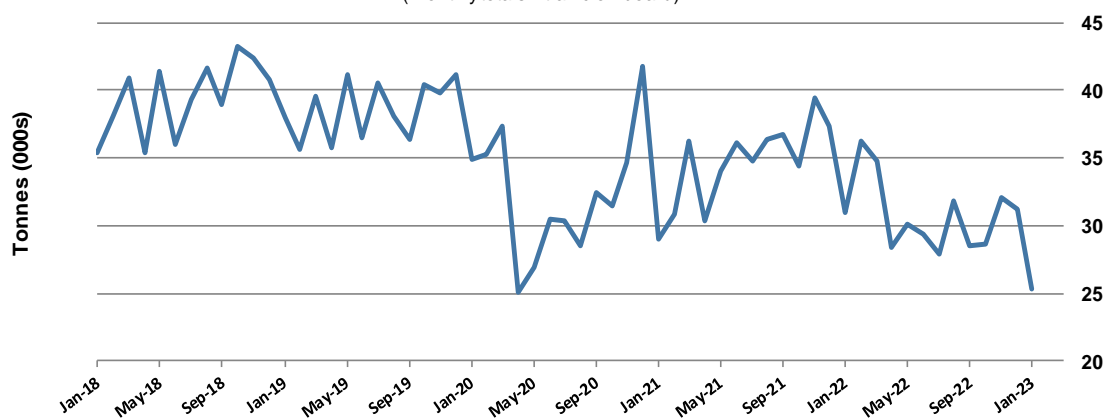
Table 9: Top five airports, domestic RPT cargo movements (000s tonnes) - annual activity

Airport	YE Jan 2022	YE Jan 2023	% Change	% of Total
1 Melbourne	105.5	96.8	-8.2	26.6
2 Sydney	96.9	82.9	-14.5	22.7
3 Brisbane	68.2	62.4	-8.6	17.1
4 Perth	38.8	35.2	-9.3	9.7
5 Adelaide	25.9	22.5	-13.3	6.2
Total top five airports	335.3	299.7	-10.6	82.2
Total domestic network	417.6	364.4	-12.7	100.0

Note: Airport cargo tonnes are the sum of cargo tonnes on arrivals and departures at each airport.

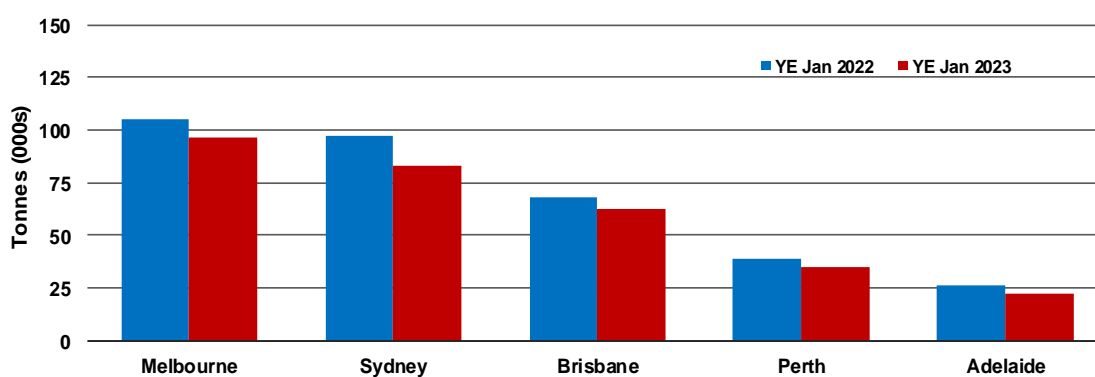
Total domestic network - cargo movement

(monthly totals - traffic on board)



Top five airports, cargo movements

(Domestic cargo traffic - traffic on board)



TOP TEN ROUTES

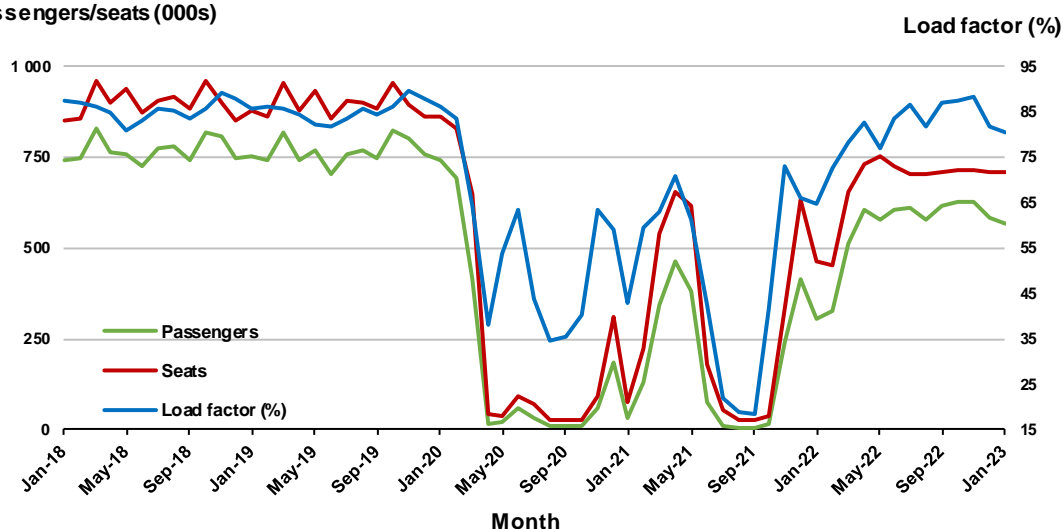
1. Melbourne - Sydney

Monthly data

	Jan 2022	Jan 2023	% Change
Passengers carried (000s)	302.3	568.7	88.2
Seats (000s)	466.1	706.9	51.6
Load factor %	64.8	80.5	15.7 *
Aircraft trips	2,834	4,068	43.5

* percentage point difference

Passengers/seats (000s)

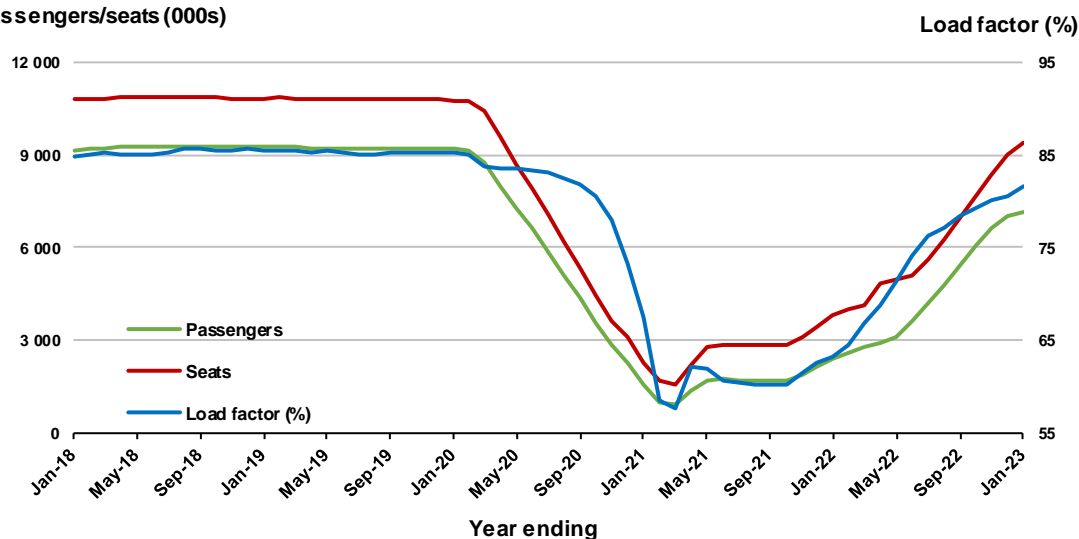


Moving annual data

	YE Jan 2022	YE Jan 2023	% Change
Passengers carried (000s)	2,388.6	7,141.4	199.0
Seats (000s)	3,782.6	9,383.1	148.1
Load factor %	63.1	81.6	18.5 *
Aircraft trips	23,790	50,921	114.0

* percentage point difference

Passengers/seats (000s)

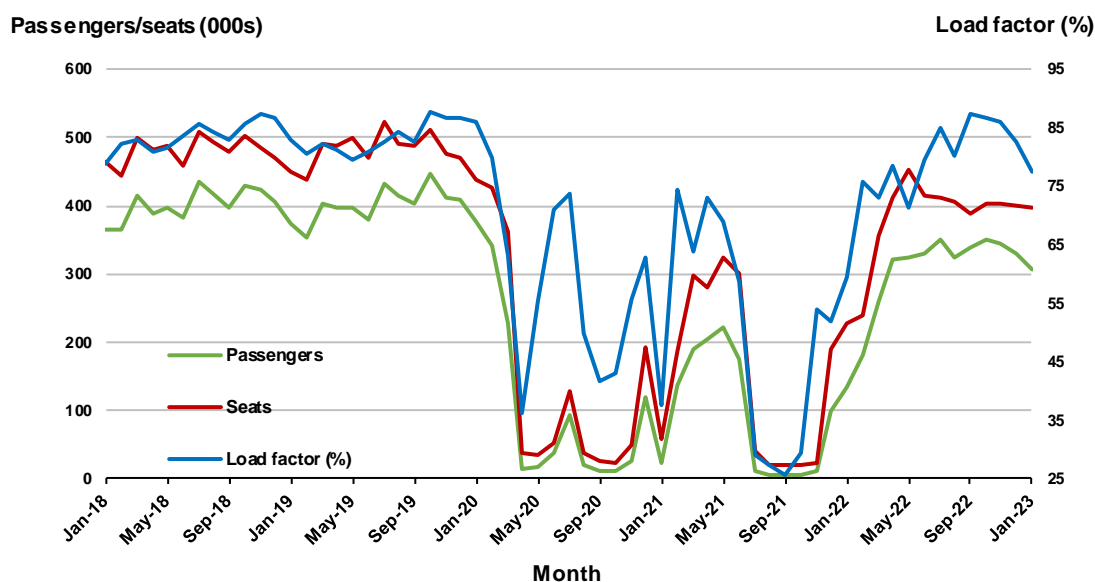


2. Brisbane - Sydney

Monthly data

	Jan 2022	Jan 2023	% Change
Passengers carried (000s)	135.7	307.7	126.8
Seats (000s)	229.0	396.4	73.2
Load factor %	59.3	77.6	18.3 *
Aircraft trips	1,471	2,407	63.6

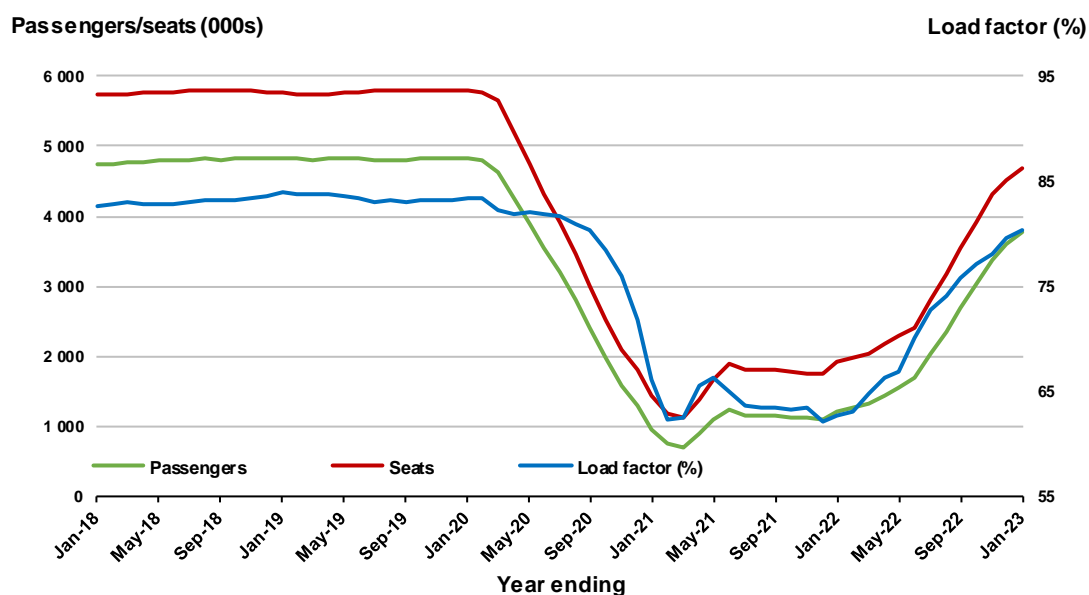
* percentage point difference



Moving annual data

	YE Jan 2022	YE Jan 2023	% Change
Passengers carried (000s)	1,206.6	3,766.3	212.2
Seats (000s)	1,927.9	4,687.5	143.1
Load factor %	62.6	80.3	17.8 *
Aircraft trips	13,239	28,863	118.0

* percentage point difference

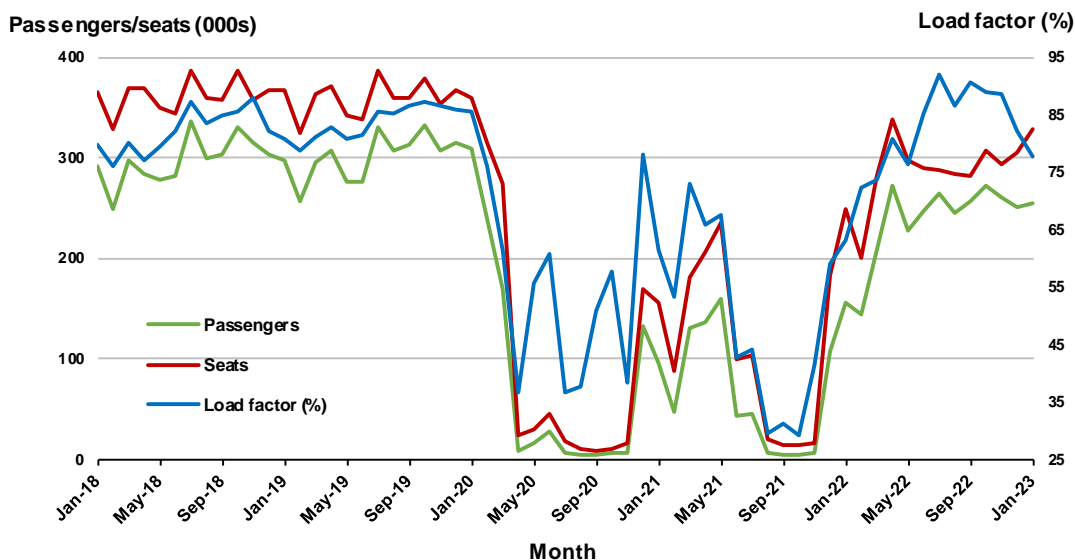


3. Brisbane - Melbourne

Monthly data

	Jan 2022	Jan 2023	% Change
Passengers carried (000s)	156.8	255.6	63.0
Seats (000s)	248.2	328.4	32.3
Load factor %	63.2	77.8	14.6 *
Aircraft trips	1,495	1,977	32.2

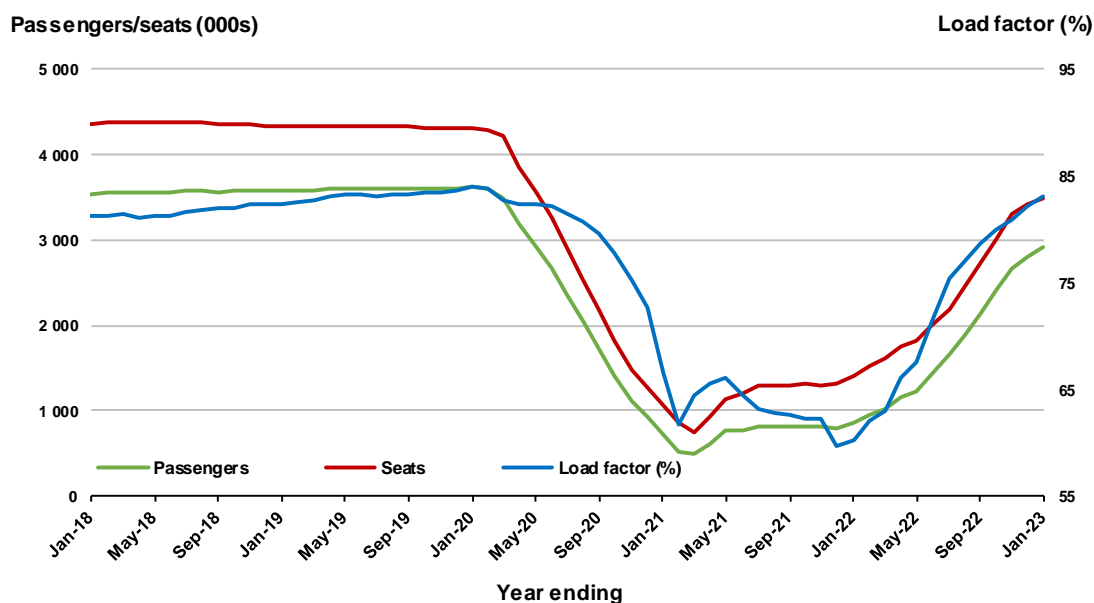
* percentage point difference



Moving annual data

	YE Jan 2022	YE Jan 2023	% Change
Passengers carried (000s)	848.2	2,905.3	242.5
Seats (000s)	1,410.1	3,496.3	148.0
Load factor %	60.2	83.1	22.9 *
Aircraft trips	9,498	21,364	124.9

* percentage point difference



4. Gold Coast - Sydney ^(a)

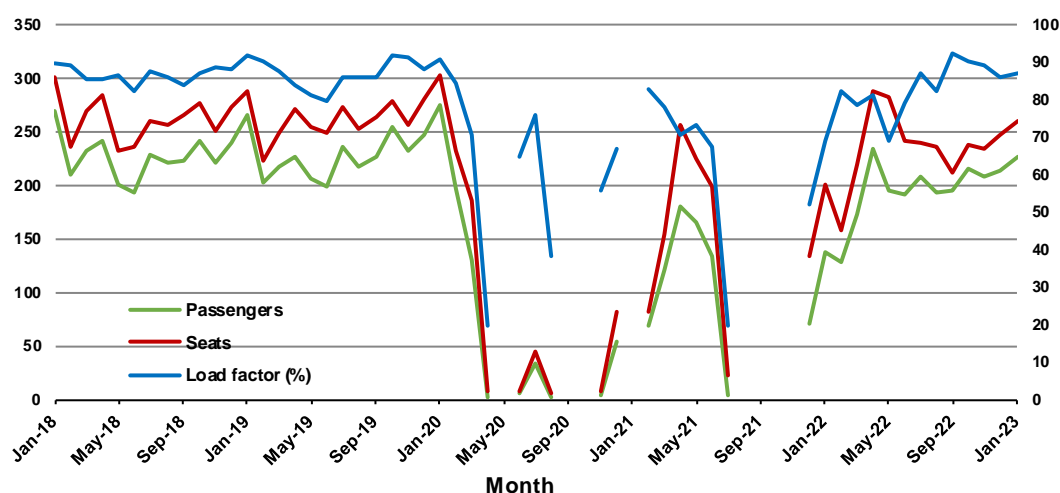
Monthly data

	Jan 2022	Jan 2023	% Change
Passengers carried (000s)	138.1	226.5	64.1
Seats (000s)	200.0	260.4	30.2
Load factor %	69.0	87.0	18.0 *
Aircraft trips	1,118	1,514	35.4

* percentage point difference

Passengers/seats (000s)

Load factor (%)



(a) May, September and October 2020 and January and August to November 2021 data not available for release.

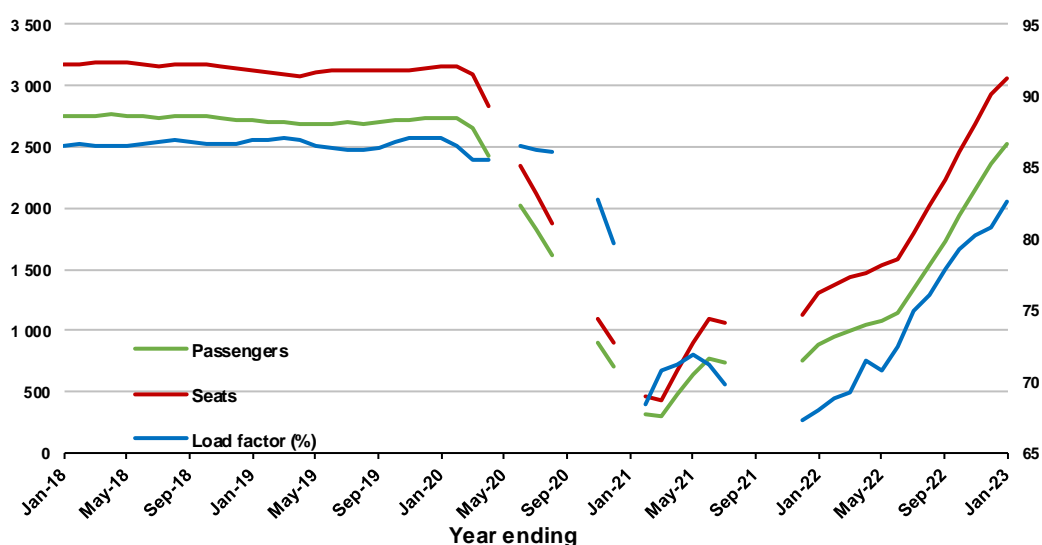
Moving annual data

	YE Jan 2022	YE Jan 2023	% Change
Passengers carried (000s)	886.0	2,522.1	184.7
Seats (000s)	1,302.5	3,055.2	134.6
Load factor %	68.0	82.6	14.5 *
Aircraft trips	7,563	17,689	133.9

* percentage point difference

Passengers/seats (000s)

Load factor (%)



(a) May, September and October 2020 and January and August to November 2021 moving annual totals not available for release.

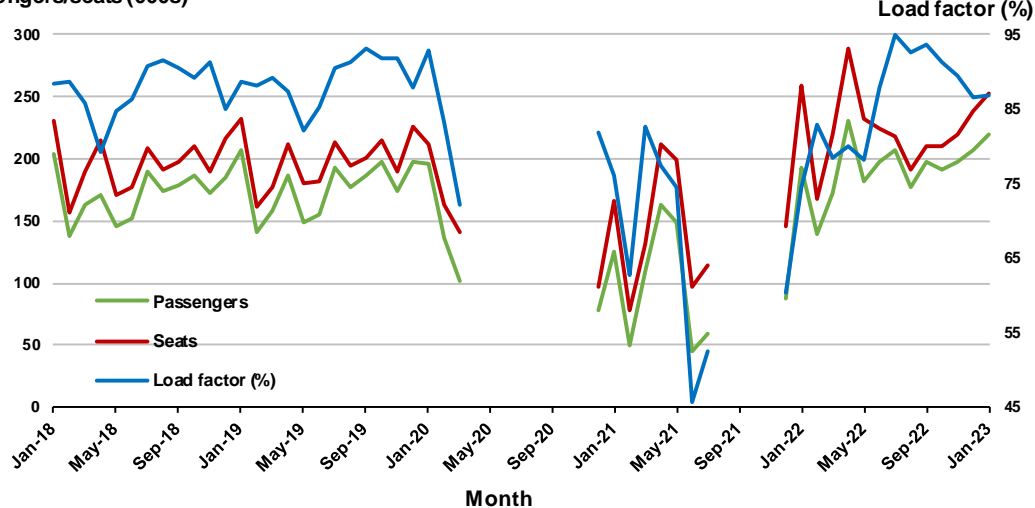
5. Gold Coast - Melbourne ^(a)

Monthly data

	Jan 2022	Jan 2023	% Change
Passengers carried (000s)	193.5	219.0	13.1
Seats (000s)	259.6	252.2	- 2.8
Load factor %	74.5	86.8	12.3 *
Aircraft trips	1,350	1,374	1.8

* percentage point difference

Passengers/seats (000s)



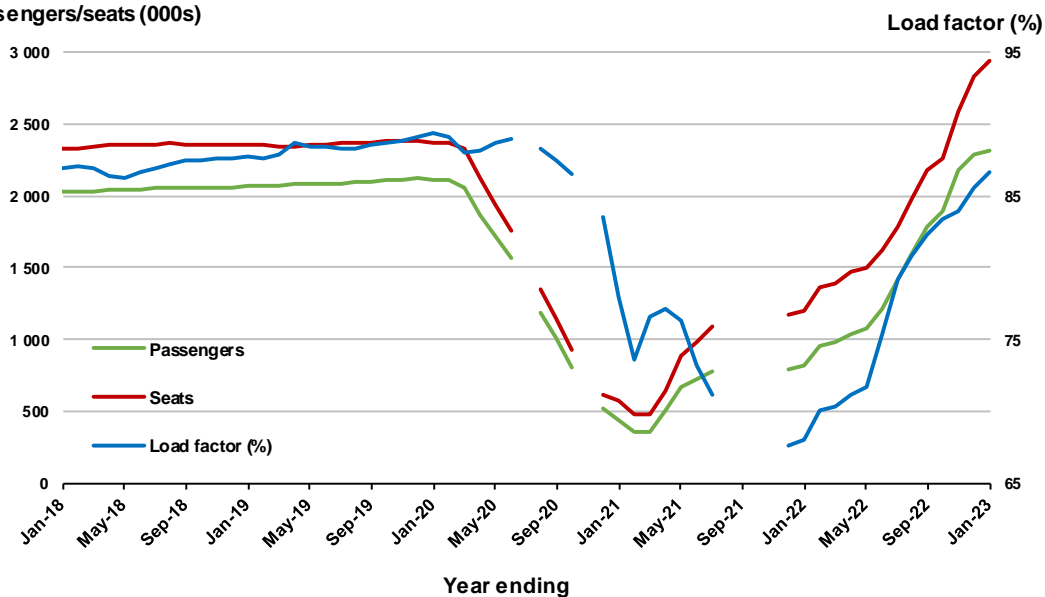
(a) April to November 2020 and August to November 2021 data not available for release.

Moving annual data

	YE Jan 2022	YE Jan 2023	% Change
Passengers carried (000s)	820.5	2,316.5	182.3
Seats (000s)	1,205.5	2,932.0	143.2
Load factor %	68.1	86.7	18.6 *
Aircraft trips	6,406	14,762	130.4

* percentage point difference

Passengers/seats (000s)



(a) July and November 2020 and August to November 2021 moving annuals are not available for release.

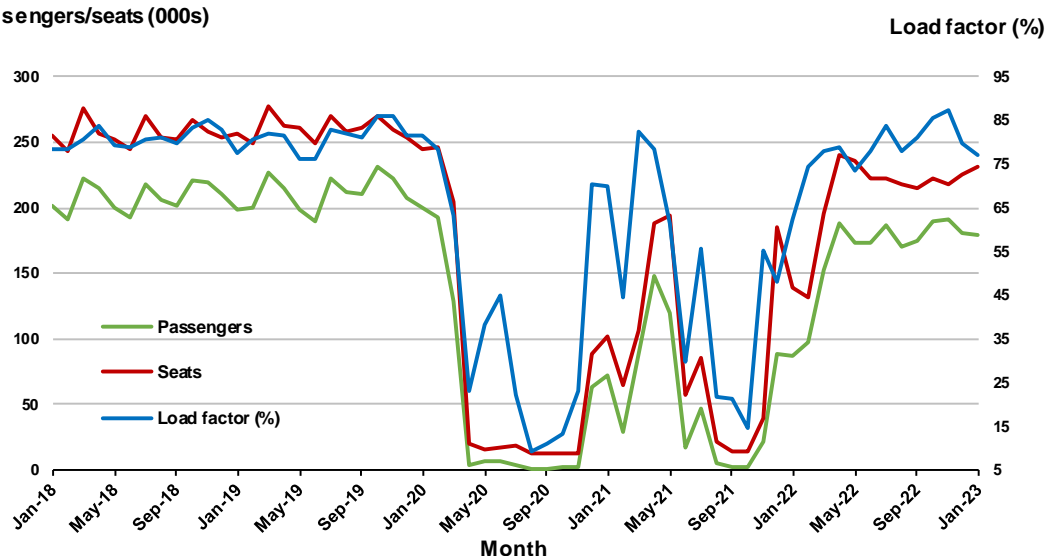
6. Adelaide - Melbourne

Monthly data

	Jan 2022	Jan 2023	% Change
Passengers carried (000s)	86.7	178.8	106.3
Seats (000s)	139.3	231.9	66.5
Load factor %	62.2	77.1	14.9 *
Aircraft trips	860	1,416	64.7

* percentage point difference

Passengers/seats (000s)

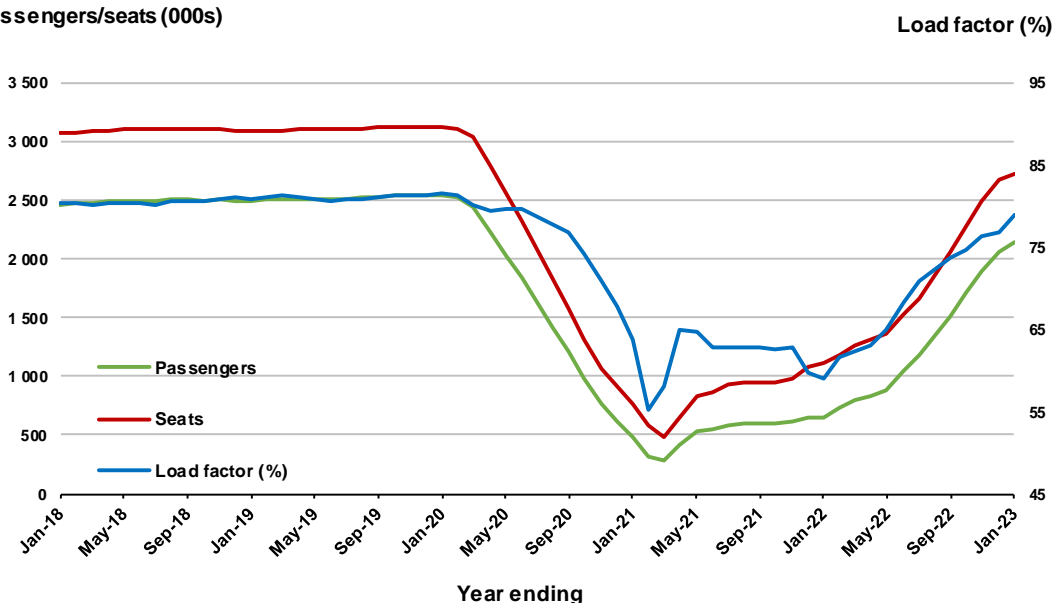


Moving annual data

	YE Jan 2022	YE Jan 2023	% Change
Passengers carried (000s)	656.0	2,143.6	226.8
Seats (000s)	1,110.9	2,720.2	144.9
Load factor %	59.0	78.8	19.8 *
Aircraft trips	7,400	16,655	125.1

* percentage point difference

Passengers/seats (000s)



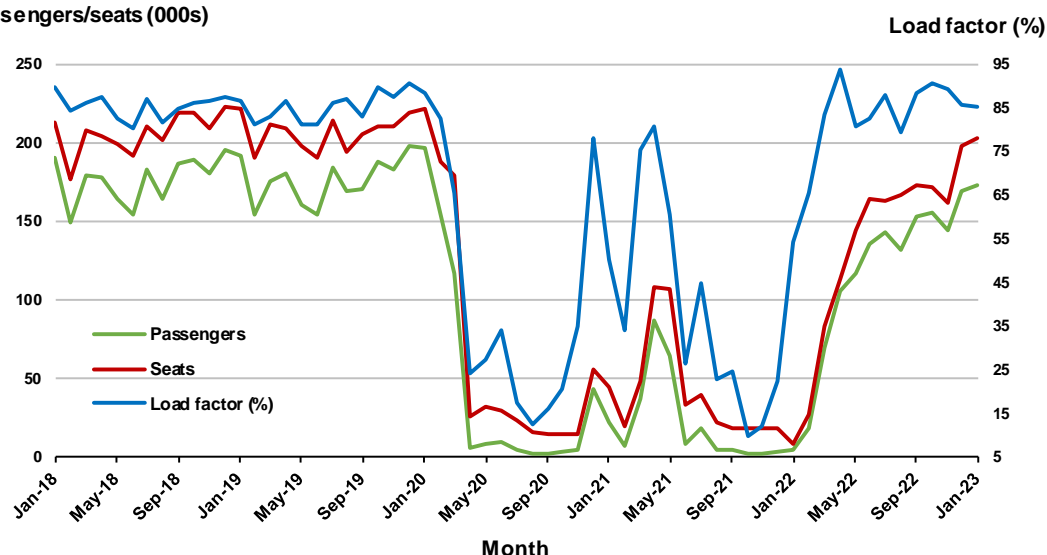
7. Melbourne - Perth

Monthly data

	Jan 2022	Jan 2023	% Change
Passengers carried (000s)	4.7	173.4	>999.9
Seats (000s)	8.6	203.2	>999.9
Load factor %	54.1	85.3	31.2 *
Aircraft trips	130	1,126	766

* percentage point difference

Passengers/seats (000s)

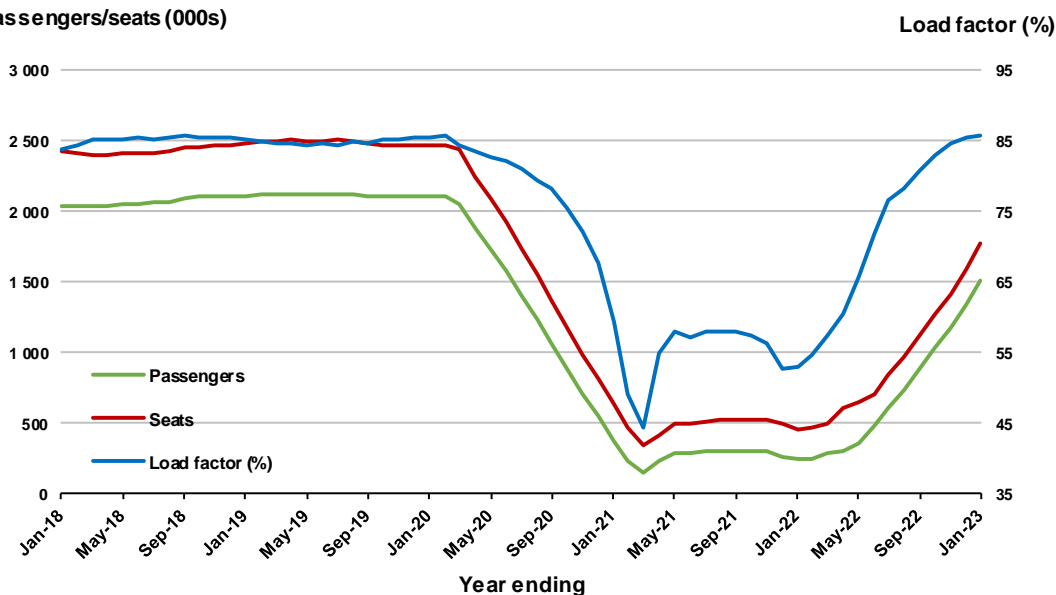


Moving annual data

	YE Jan 2022	YE Jan 2023	% Change
Passengers carried (000s)	243.7	1,516.6	522.3
Seats (000s)	459.1	1,778.3	287.3
Load factor %	53.1	85.7	32.6 *
Aircraft trips	3,588	10,041	179.8

* percentage point difference

Passengers/seats (000s)



8. Perth - Sydney ^(a)

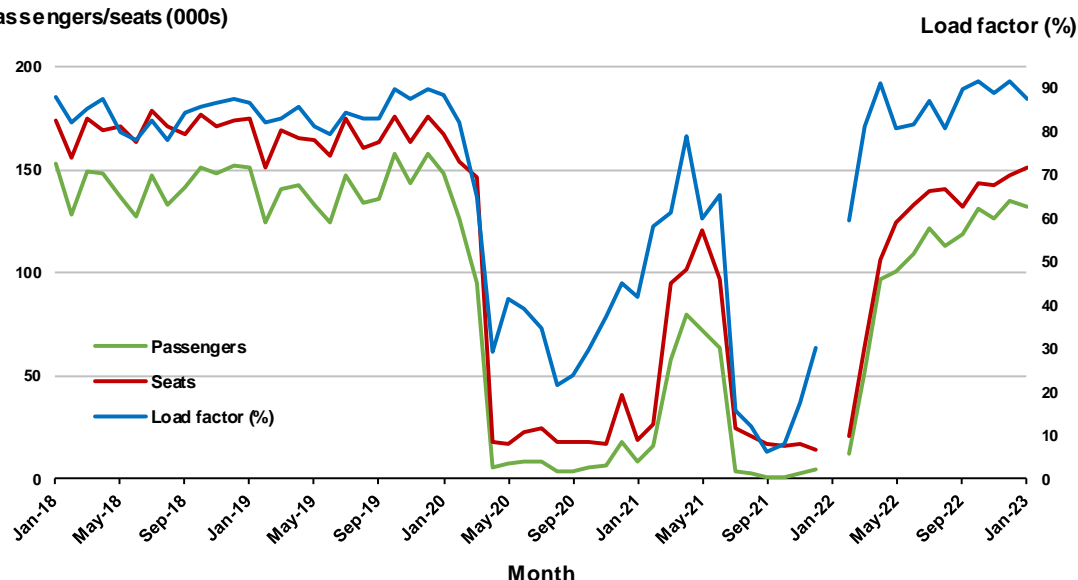
Monthly data

	Jan 2022	Jan 2023	% Change
Passengers carried (000s)	..	132.1	NA
Seats (000s)	..	150.7	NA
Load factor %	..	87.7	NA *
Aircraft trips	..	805	NA

.. Data not available for release.

* percentage point difference

Passengers/seats (000s)



(a) January 2022 data not available for release.

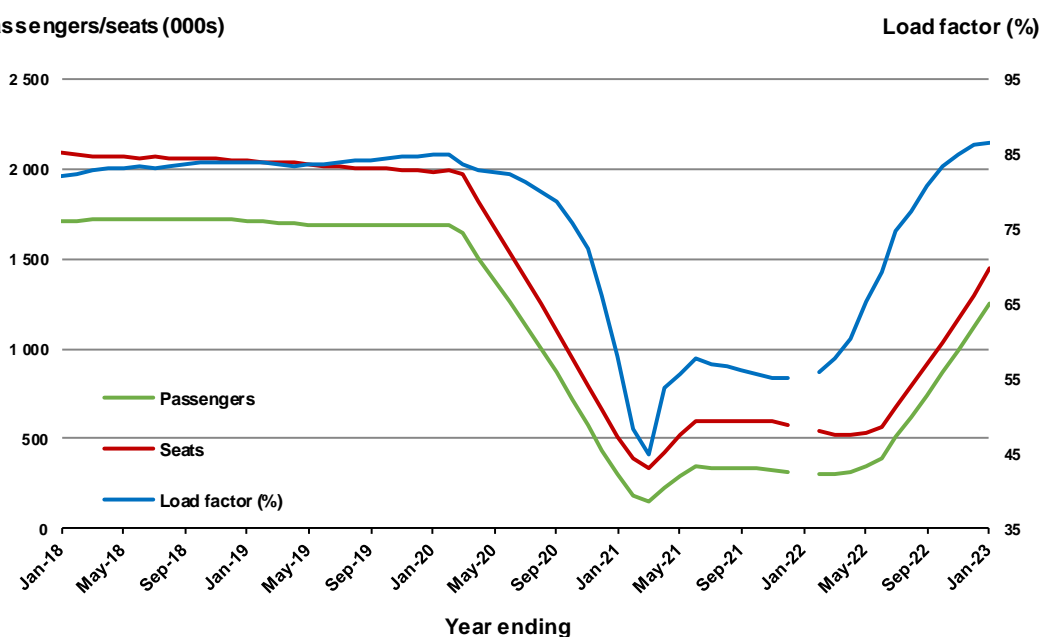
Moving annual data

	YE Jan 2022	YE Jan 2023	% Change
Passengers carried (000s)	..	1,249.0	NA
Seats (000s)	..	1,443.9	NA
Load factor %	..	86.5	NA *
Aircraft trips	..	7,568	NA

.. Data not available for release.

* percentage point difference

Passengers/seats (000s)



(a) January 2022 moving annual totals are not available for release.

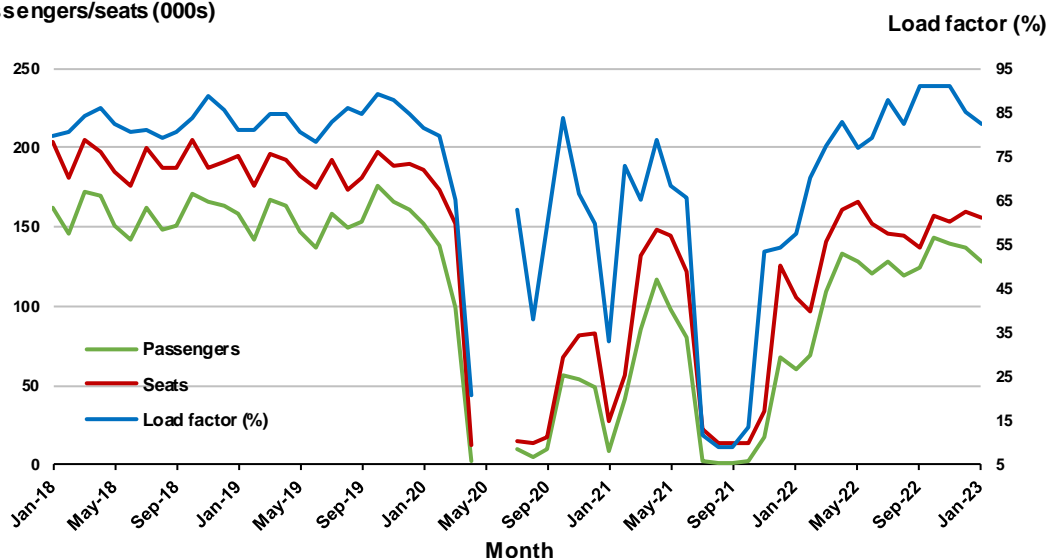
9. Adelaide - Sydney ^(a)

Monthly data

	Jan 2022	Jan 2023	% Change
Passengers carried (000s)	60.4	128.5	112.8
Seats (000s)	105.4	156.4	48.4
Load factor %	57.3	82.2	24.9 *
Aircraft trips	630	948	50.5

* percentage point difference

Passengers/seats (000s)



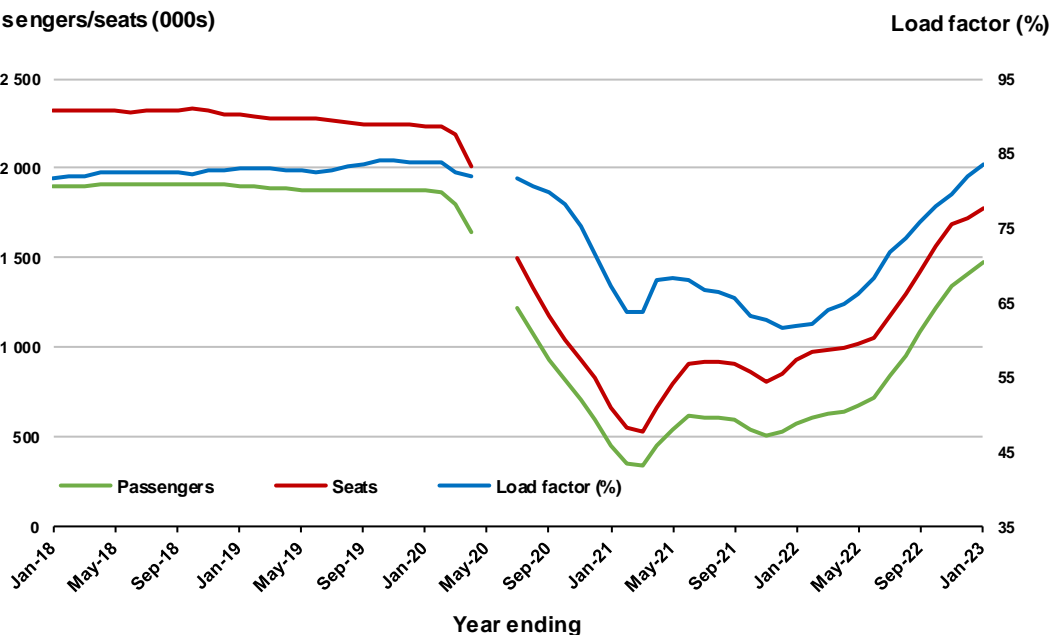
(a) May and June 2020 data not available for release.

Moving annual data

	YE Jan 2022	YE Jan 2023	% Change
Passengers carried (000s)	576.0	1,478.7	156.7
Seats (000s)	929.9	1,772.1	90.6
Load factor %	61.9	83.4	21.5 *
Aircraft trips	5,832	10,846	86.0

* percentage point difference

Passengers/seats (000s)



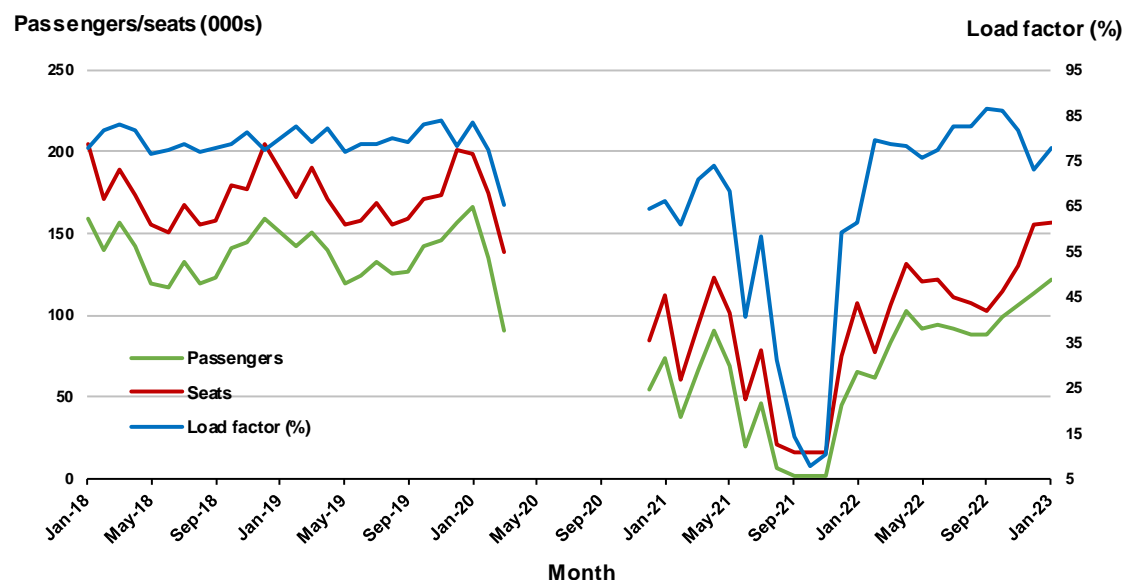
(a) May and June 2020 moving annual totals are not available for release.

10. Hobart - Melbourne ^(a)

Monthly data

	Jan 2022	Jan 2023	% Change
Passengers carried (000s)	65.6	122.2	86.2
Seats (000s)	107.1	156.7	46.3
Load factor %	61.3	78.0	16.7 *
Aircraft trips	640	906	41.6

* percentage point difference

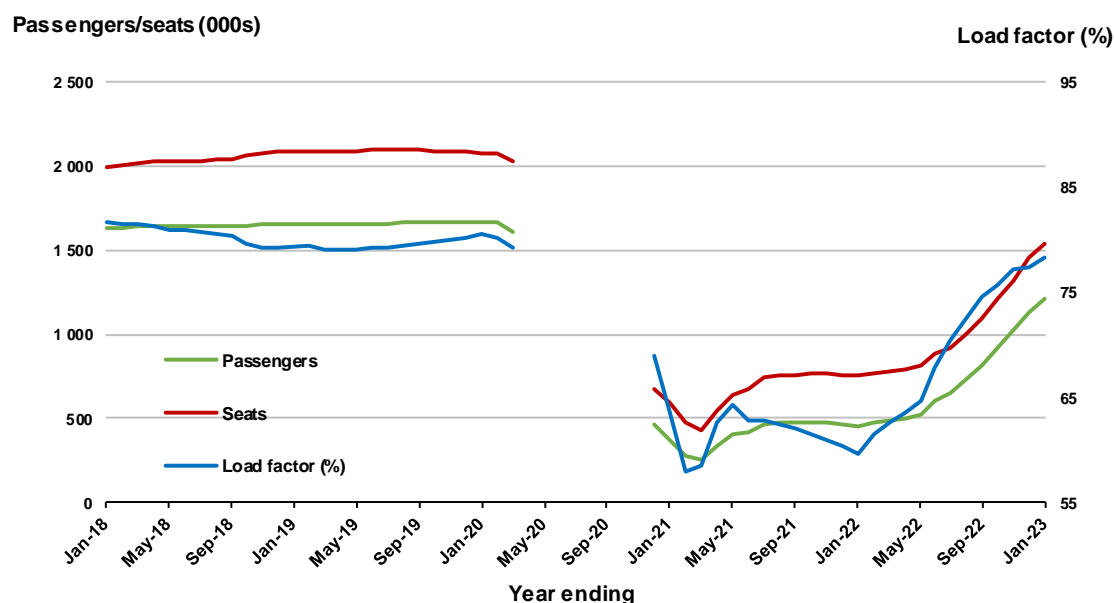


(a) April to November 2020 data are not available for release.

Moving annual data

	YE Jan 2022	YE Jan 2023	% Change
Passengers carried (000s)	451.0	1,208.6	168.0
Seats (000s)	756.4	1,542.6	103.9
Load factor %	59.6	78.4	18.7 *
Aircraft trips	4,731	9,397	98.6

* percentage point difference



(a) April to November 2020 moving annual totals are not available for release.

TOP FIFTY REGIONAL AIRPORTS

Table 10: Top fifty regional airports (000s) — passenger movements, monthly

Airport	Jan 2022	Jan 2023	% Change
1 Cairns	221.2	298.9	35.1
2 Hobart	156.3	248.5	58.9
3 Launceston	79.8	137.2	71.9
4 Townsville	81.0	118.6	46.4
5 Darwin	76.8	107.6	40.1
6 Newcastle	54.1	85.9	58.8
7 Mackay	41.8	64.8	55.1
8 Ballina	72.7	61.6	-15.2
9 Hamilton Island	30.8	47.5	54.3
10 Karratha	32.3	39.4	22.1
11 Rockhampton	25.0	38.0	51.9
12 Proserpine	39.7	37.0	-6.6
13 Port Hedland	28.4	37.0	30.3
14 Newman	24.0	29.3	21.9
15 Broome	24.6	25.2	2.4
16 Kalgoorlie	18.6	24.1	30.0
17 Coffs Harbour	18.4	22.1	20.3
18 Alice Springs	12.0	20.4	69.4
19 Ayers Rock	3.8	16.6	342.7
20 Paraburdoo	14.5	16.3	13.0
21 Mount Isa	12.1	16.2	34.0
22 Albury	8.6	15.3	78.4
23 Gladstone	8.9	14.9	67.7
24 Port Lincoln	9.3	14.4	55.3
25 Emerald	8.6	14.1	64.1
26 Mildura	8.2	13.7	68.5
27 Dubbo	8.7	13.2	52.0
28 Port Macquarie	7.6	13.1	72.0
29 Hervey Bay	7.7	11.8	51.9
30 Wagga Wagga	5.6	11.7	109.8
31 Tamworth	5.2	10.3	98.7
32 Devonport	4.5	9.8	117.2
33 Olympic Dam	5.6	8.3	49.7
34 Moranbah	5.9	8.3	40.9
35 Bundaberg	5.7	8.2	45.1
36 Thursday Island	4.7	7.4	57.2
37 Kununurra	4.7	7.2	51.8
38 Armidale	3.9	7.0	77.8
39 Merimbula	5.3	6.7	28.2
40 Burnie	3.4	6.7	98.8
41 Weipa	4.3	6.6	53.8
42 Norfolk Island	2.8	6.5	128.8
43 Orange	3.7	6.1	65.0
44 King Island	3.9	5.7	44.3
45 Gove	3.8	5.7	50.6
46 Griffith	3.0	5.2	75.3
47 Learmonth	4.6	5.2	13.7
48 Geraldton	5.0	5.2	4.1
49 Cloncurry	3.7	4.9	30.7
50 Esperance	3.5	4.6	31.8
Total top 50 regional airports	1,228.0	1,750.1	42.5
Total regional airports	1,295.6	1,846.5	42.5
Total domestic network	5,116.8	8,980.1	75.5

Note: Airport passenger movement numbers are the sum of passenger arrivals and departures at each airport.

Regional airports are defined as airports which are, according to Australian Statistical Geography

Standard (ASGS), not based in Major Cities.

Table 11: Top fifty regional airports (000s) — passenger movements, annual

Airport		YE Jan 2022	YE Jan 2023	% Change
1	Cairns	2,357.4	3,759.8	59.5
2	Hobart	1,287.4	2,381.1	85.0
3	Darwin	1,086.8	1,667.2	53.4
4	Townsville	1,105.0	1,565.0	41.6
5	Launceston	635.8	1,223.2	92.4
6	Newcastle	477.8	1,055.1	120.8
7	Mackay	648.2	847.7	30.8
8	Ballina	537.8	628.2	16.8
9	Hamilton Island	335.3	516.8	54.1
10	Karratha	428.0	501.1	17.1
11	Rockhampton	400.4	497.7	24.3
12	Proserpine	321.1	461.9	43.9
13	Port Hedland	367.3	458.1	24.7
14	Broome	414.8	437.1	5.4
15	Alice Springs	249.6	352.5	41.3
16	Newman	318.9	348.9	9.4
17	Kalgoorlie	258.5	307.9	19.1
18	Coffs Harbour	151.0	280.0	85.4
19	Mount Isa	186.5	225.3	20.8
20	Ayers Rock	70.5	220.7	213.2
21	Albury	81.8	215.6	163.7
22	Paraburdoo	193.2	212.6	10.1
23	Gladstone	141.5	199.5	41.0
24	Dubbo	103.0	188.4	83.0
25	Mildura	80.6	185.9	130.6
26	Wagga Wagga	70.5	179.5	154.5
27	Port Lincoln	141.3	175.6	24.2
28	Emerald	146.0	174.4	19.5
29	Port Macquarie	70.6	170.3	141.2
30	Tamworth	61.0	138.8	127.5
31	Hervey Bay	56.3	129.0	129.3
32	Kununurra	106.1	124.4	17.2
33	Bundaberg	73.5	105.6	43.6
34	Devonport	39.9	103.0	158.0
35	Armidale	44.4	102.6	131.1
36	Moranbah	83.2	100.4	20.7
37	Thursday Island	91.0	98.6	8.4
38	Learmonth	93.5	97.6	4.4
39	Orange	42.2	93.8	122.2
40	Olympic Dam	87.9	92.0	4.7
41	Weipa	75.2	85.4	13.6
42	Gove	54.5	84.9	55.8
43	Geraldton	76.6	80.4	5.0
44	Burnie	26.6	77.1	189.3
45	Mount Gambier	40.8	75.6	85.3
46	Griffith	29.8	72.0	142.0
47	Norfolk Island	50.3	70.7	40.4
48	Merimbula	37.6	64.2	71.0
49	Cloncurry	52.5	59.8	13.9
50	King Island	43.4	58.8	35.5
Total top 50 regional airports		13,932.9	21,352.0	53.2
Total regional airports		14,953.7	22,682.2	51.7
Total domestic network		48,919.4	104,236.0	113.1

Note: Airport passenger movement numbers are the sum of passenger arrivals and departures at each airport. Regional airports are defined as airports which are, according to Australian Statistical Geography Standard (ASGS), not based in Major Cities.

DOMESTIC CHARTER ACTIVITY

Table 12: Charter passengers carried and aircraft trips - monthly activity

	Jan 2022	Jan 2023	% Change
Total domestic charter passengers	239,044	319,758	33.8
Total domestic charter aircraft trips	4,870	5,690	16.8

Note: Helicopter, joyflights and sightseeing charter flights not included.

Table 13: Charter passengers carried and aircraft trips - annual activity

	YE Jan 2022	YE Jan 2023	% Change
Total domestic charter passengers	3,347,906	3,667,127	9.5
Total domestic charter aircraft trips	63,212	66,967	5.9

Note: Helicopter, joyflights and sightseeing charter flights not included.

Table 14: Domestic airports - charter activity - monthly

	Jan 2022	Jan 2023	% Change
Total domestic charter passenger movements	478,088	639,516	33.8
Total domestic charter aircraft movements	9,740	11,380	16.8
Perth airport charter passenger movements	182,757	228,684	25.1
Perth airport charter aircraft movements	3,336	3,759	12.7

Note: Helicopter, joyflights and sightseeing charter flights not included.

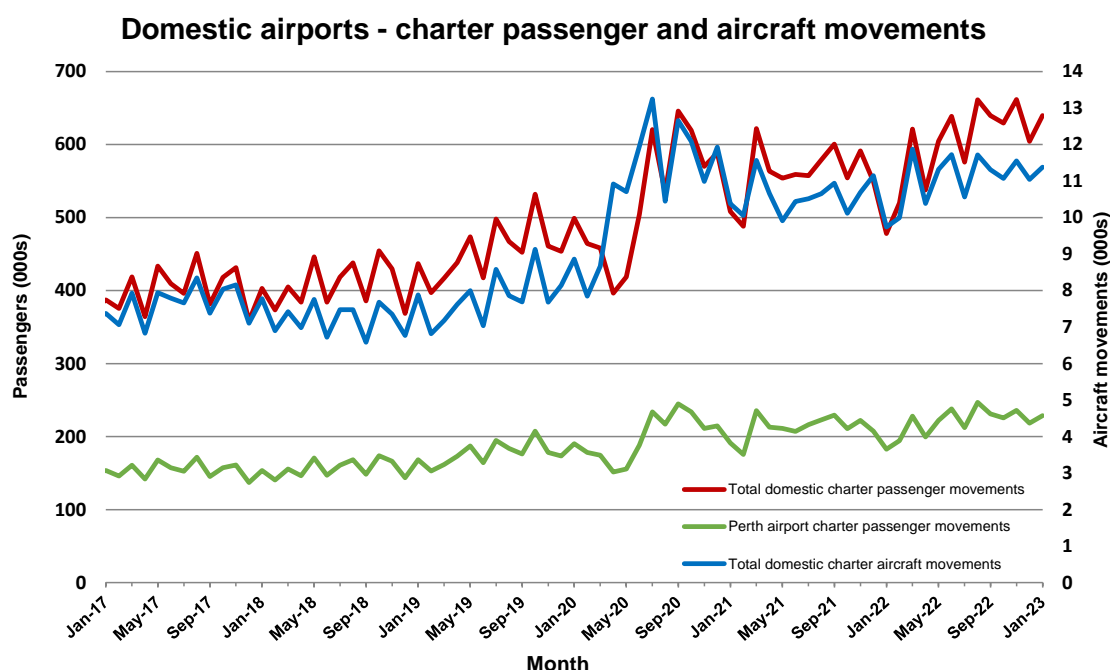
Charter passenger and aircraft movement numbers are the sum of arrivals and departures at each airport.

Table 15: Domestic airports - charter activity - annual

	YE Jan 2022	YE Jan 2023	% Change
Total domestic charter passenger movements	6,695,812	7,334,254	9.5
Total domestic charter aircraft movements	126,424	133,934	5.9
Perth airport charter passenger movements	2,533,488	2,680,432	5.8
Perth airport charter aircraft movements	43,259	44,803	3.6

Note: Helicopter, joyflights and sightseeing charter flights not included.

Charter passenger and aircraft movement numbers are the sum of arrivals and departures at each airport.



DEFINITIONS

Aircraft Trips	The number of flight stages. A return flight counts as two aircraft trips.
Airport Movements	Airport movements (passenger and cargo) are measured once on arrival and once on departure. Each domestic trip generates two movements at airports. For example, a trip from Melbourne to Sydney will be counted twice, as a departure at Melbourne and as an arrival at Sydney. At the national level, the sum of all domestic airport traffic will therefore be equal to twice the number of trips undertaken.
Available Seat Kilometres (ASKs)	Calculated by multiplying the number of seats available on each flight stage, by the distance in kilometres between the ports. The distances used are Great Circle Distances.
City-Pair	The ports shown make up the city-pair route. Passenger movements shown for a city pair reflect total traffic in both directions.
Flight Stage	The operation of an aircraft from take-off to landing.
Load Factor	The total revenue passenger kilometres performed as a percentage of the total available seat kilometres.
Passengers Carried	Revenue passengers carried.
Regular Public Transport Services (RPT)	All air service operations in which aircraft are available for the transport of members of the public and are conducted in accordance with fixed schedules. It does not include charter or other non-scheduled operations.
Revenue Passengers	All passengers paying any fare. Frequent flyer redemption travellers are regarded as revenue passengers.
Revenue Passenger Kilometres (RPKs)	Calculated by multiplying the number of revenue passengers travelling on each flight stage, by the distance in kilometres between the ports. The distances used are Great Circle Distances.
Traffic on board by stages	The total of all traffic (revenue passengers) on each flight stage between two directly connected airports.
..	Not available for confidentiality or other reasons.
NA	Not applicable.