



**Australian Government**

**Department of Infrastructure, Transport,  
Regional Development, Communications, Sport and the Arts**

Bureau of Infrastructure and Transport Research Economics  
**STATISTICAL REPORT**



# Aviation

**Domestic aviation activity  
February 2026**

The Department of Infrastructure, Transport, Regional Development, Communications, Sport and the Arts acknowledges the Traditional Custodians of country throughout Australia and their connections to land, sea and community.

We pay our respects to the Elders past and present and extend that respect to the Aboriginal and Torres Strait Islander people.

---

© Commonwealth of Australia 2026

ISSN: 1832 – 1968

BITRE Reference: 2026-041

### **Ownership of intellectual property rights in this publication**

Unless otherwise noted, copyright (and any other intellectual property rights, if any) in this publication is owned by the Commonwealth of Australia (referred to below as the Commonwealth).

### **Disclaimer**

The material contained in this publication is made available on the understanding that the Commonwealth is not providing professional advice, and that users exercise their own skill and care with respect to its use, and seek independent advice if necessary.

The Commonwealth makes no representations or warranties as to the contents or accuracy of the information contained in this publication. To the extent permitted by law, the Commonwealth disclaims liability to any person or organisation in respect of anything done, or omitted to be done, in reliance upon information contained in this publication.

### **Creative Commons licence**

With the exception of (a) the Coat of Arms; and (b) the Department of Infrastructure, Transport, Regional Development, Communications, Sport and the Arts' photos and graphics, copyright in this publication is licensed under a Creative Commons Attribution 4.0 Australia Licence.

Creative Commons Attribution 4.0 Australia Licence is a standard form licence agreement that allows you to copy, communicate and adapt this publication provided that you attribute the work to the Commonwealth and abide by the other licence terms. A summary of the licence terms is available from <http://creativecommons.org/licenses/by/4.0/au/deed.en>.

The full licence terms are available from <http://creativecommons.org/licenses/by/4.0/au/legalcode.en>.

### **Use of the Coat of Arms**

The Department of the Prime Minister and Cabinet sets the terms under which the Coat of Arms is used. Please refer to the Department's Commonwealth Coat of Arms and Government branding web page <http://www.dpmc.gov.au/guidelines/index.cfm#brand> and, in particular, the Guidelines on the use of the Commonwealth Coat of Arms publication.

An appropriate citation for this report is:

Bureau of Infrastructure and Transport Research Economics (BITRE), 2025, Domestic aviation activity, Statistical Report, BITRE, Canberra ACT.

### **Contact us**

This publication is available in PDF format. All other rights are reserved, including in relation to any Departmental logos or trademarks which may exist. For enquiries regarding the licence and any use of this publication, please contact:

Bureau of Infrastructure and Transport Research Economics (BITRE)  
Department of Infrastructure, Transport, Regional Development, Communications, Sport and the Arts  
GPO Box 501, Canberra ACT 2601, Australia

Email: [avstats@infrastructure.gov.au](mailto:avstats@infrastructure.gov.au)

Website: [www.bitre.gov.au](http://www.bitre.gov.au)

Inquiries: [Marko.Rodic2@infrastructure.gov.au](mailto:Marko.Rodic2@infrastructure.gov.au) (02) 6136 7995

## FOREWORD

This report provides an overview of domestic (including charter) commercial aviation activity in Australia for the month of February 2026.

The data covers revenue passengers carried by Australian-registered operators of scheduled Regular Public Transport (RPT) services over Australian flight stages and fixed-wing charter operators. These estimates include passengers carried between domestic airports on international flights operated by these carriers. The passengers carried refer to traffic on board by stages.

Estimates of passengers and aircraft movements for charter aviation are included in this publication, where BITRE confidentiality standards are met.

Individual routes shown are restricted to those with an average exceeding 8,000 passengers per month over the previous six months where two or more airlines operate in competition.

Information on the total network for the month of February 2026 and on the RPT network for the month of February 2026 is presented on page 2, with estimates for the year ended February 2026 presented on page 3.

Detailed information on individual routes can be found in the RPT summary pages 4-13 of this publication. For the month of February 2026, there are 62 individual routes published.

The top ten airports in terms of RPT passenger movements are shown on page 14.

Data on domestic RPT cargo movements at the top five cargo airports are provided on page 15. The table includes cargo carried on passenger flights operated by the Qantas group (including Jetstar), Virgin Australia, Airnorth and Skippers as well as the cargo carried by dedicated freighter aircraft operated by Qantas Freight and Team Global Express (formerly Toll).

The long-term trends for the top ten competitive RPT routes are presented graphically on pages 16-25.

Domestic RPT passenger movements at regional airports are shown on pages 26-27.

Tables providing estimates of domestic charter aviation activity are shown on page 28. BITRE confidentiality standards restrict publication of detailed estimates for individual Australian airports, with the exception of Perth Airport.

A list of definitions can be found on page 29.

This report was prepared by the Aviation Statistics Section of the Bureau of Infrastructure and Transport Research Economics with data provided by airlines.

Estimates are included where data were not available and data presented in this publication may contain revisions to previously published data.

Where figures have been rounded, discrepancies may occur between sums of component items and totals, and in percentage changes which are derived from figures prior to rounding.

# CONTENTS

<b>Highlights</b> .....	<b>1</b>
<b>Total network</b> .....	<b>2</b>
<b>RPT network</b> .....	<b>3</b>
<b>Top competitive routes</b> .....	<b>4</b>
<b>Top ten airports – passenger movements</b> .....	<b>14</b>
<b>Top five airports – cargo movements</b> .....	<b>15</b>
<b>Top ten routes</b> .....	<b>16</b>
1. Melbourne – Sydney .....	16
2. Brisbane – Sydney.....	17
3. Brisbane – Melbourne .....	18
4. Gold Coast – Sydney .....	19
5. Adelaide – Melbourne .....	20
6. Gold Coast – Melbourne .....	21
7. Melbourne – Perth .....	22
8. Adelaide – Sydney .....	23
9. Perth – Sydney .....	24
10. Hobart – Melbourne .....	25
<b>Top fifty regional airports</b> .....	<b>26</b>
<b>Domestic charter activity</b> .....	<b>28</b>
<b>Definitions</b> .....	<b>29</b>

This page is intentionally left blank.

## HIGHLIGHTS

There were 4.77 million passengers carried on Australian domestic commercial aviation (including charter operations) in February 2026, compared with 4.67 million in February 2025 (up 2.1%). This is also an increase of 3.8% on pre-COVID February 2020 passenger numbers (4.60 million).

4.41 million passengers were carried on Regular Public Transport (RPT) flights in February 2026 (excluding charter operations), an increase of 1.4% compared to February 2025.

For the month of February 2026, there were 45.8 thousand RPT aircraft trips, an increase of 1.4% on February 2025.

For the year ending February 2026, there were 60.46 million RPT passengers, an increase of 1.8% on the year ending February 2025.

RPT revenue passenger kilometres (RPKs) performed were 5.14 billion for the month, compared with 5.07 billion in February 2025 (up 1.3%).

Capacity, measured by available seat kilometres (ASKs), increased to 5.62 billion in February 2026 compared to 5.45 billion in February 2025 (up 3.2%).

The industry wide load factor (RPKs/ASKs) decreased from 80.5% in February 2025 to 79.3% in February 2026. The highest load factor (91.3%) was recorded on the Adelaide – Gold Coast route while the lowest load factor (45.1%) was recorded on the Brisbane – Moranbah route.

For the month of February 2026, Melbourne – Sydney was Australia's busiest RPT route with 639.8 thousand passengers, followed by Brisbane – Sydney with 323.8 thousand passengers and Brisbane – Melbourne with 254.4 thousand passengers.

Sydney was Australia's busiest domestic airport with 1.89 million passenger movements in February 2026, followed by Melbourne with 1.82 million passenger movements and Brisbane with 1.26 million passenger movements.

Total cargo movements at Australian airports on domestic RPT flights were 24.8 thousand tonnes in February 2026, an increase of 0.5% compared with February 2025.

In February 2026, there were 1.83 million domestic passenger movements through regional airports, an increase of 2.7% from February 2025. Out of the top 50 regional airports, the strongest increase was recorded at Armidale Airport (up 120.7% on February 2025), while the largest decrease was recorded at Moranbah Airport (down 22.8% on February 2025). It should be noted that Armidale Airports runway was temporarily closed for a large portion February 2025, which has driven the substantial percentage change compared to the current month.

Fixed-wing charter operators carried 359.8 thousand passengers in February 2026, an increase of 11.5% compared with February 2025. Perth Airport accounted for 35.1% of all charter passengers in Australia.

## TOTAL NETWORK

### Summary of monthly commercial aviation activity

	Feb 2025	Feb 2026	% Change
Total passengers carried (millions)	4.67	4.77	2.1
Aircraft trips (000s)	50.6	51.8	2.2

Note: Regular Public Transport and charter aviation activity  
Helicopter, joy flights and sightseeing charter flights not included.

## RPT NETWORK

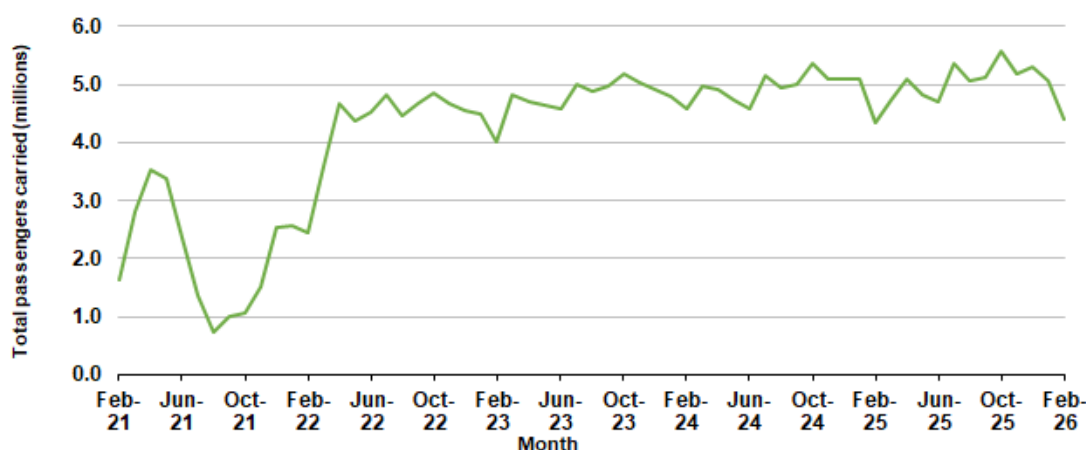
### Summary of monthly RPT activity

	Feb 2025	Feb 2026	% Change
Total passengers carried (millions)	4.35	4.41	1.4
Revenue passenger kilometres (billions)	5.07	5.14	1.3
Available seats (millions)	5.45	5.62	3.2
Available seat kilometres (billions)	6.30	6.48	2.9
Load factor %	80.5	79.3	-1.2 *
Aircraft trips (000s)	45.2	45.8	1.4

\* percentage point difference

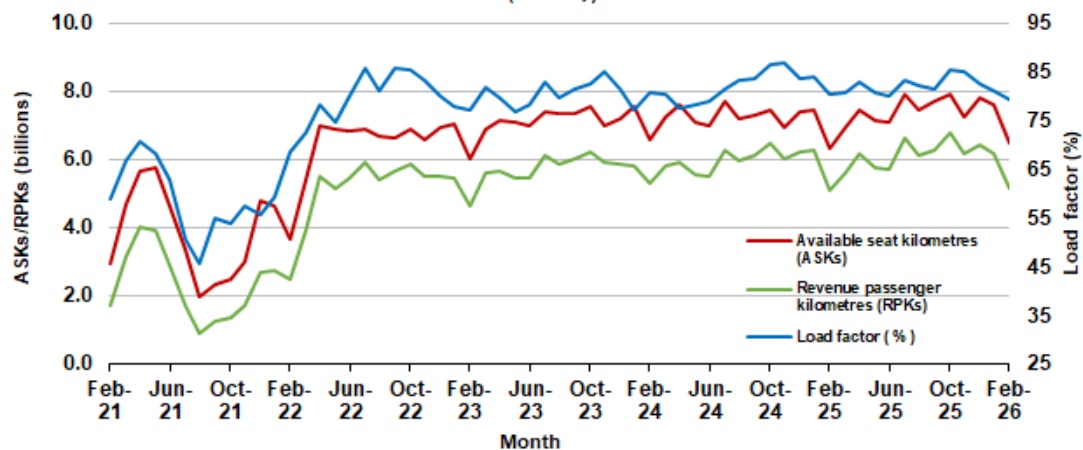
### Domestic RPT passenger traffic

(monthly)



### RPT Network utilisation

(monthly)



## TOTAL NETWORK

### Summary of annual commercial aviation activity

	YE Feb 2025	YE Feb 2026	% Change
Total passengers carried (millions)	63.65	64.84	1.9
Aircraft trips (000s)	682.2	678.5	-0.5

Note: Regular Public Transport and charter aviation activity  
Helicopter, joy flights and sightseeing charter flights not included.

## RPT NETWORK

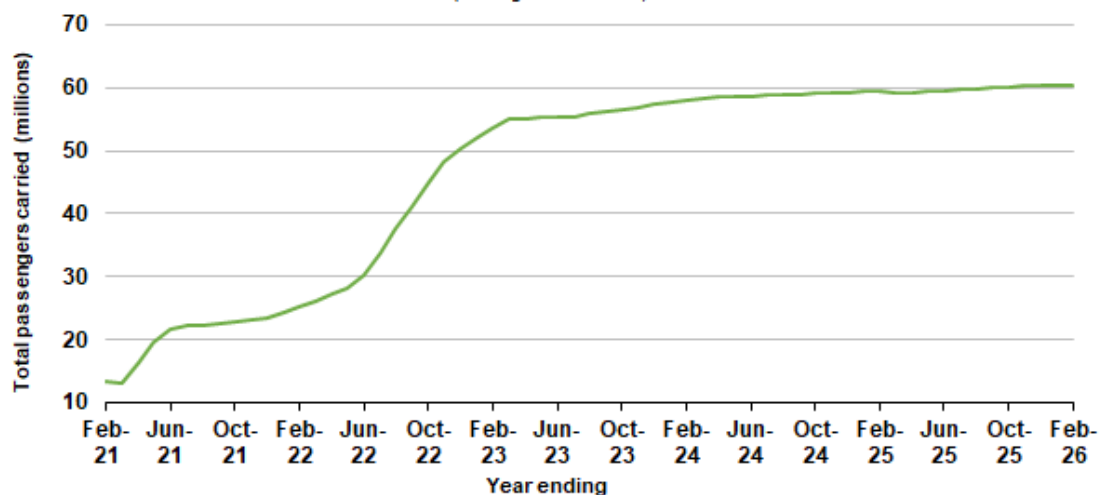
### Summary of annual RPT activity

	YE Feb 2025	YE Feb 2026	% Change
Total passengers carried (millions)	59.37	60.46	1.8
Revenue passenger kilometres (billions)	71.23	72.97	2.4
Available seats (millions)	74.00	75.12	1.5
Available seat kilometres (billions)	86.71	88.82	2.4
Load factor %	82.1	82.2	0.0 *
Aircraft trips (000s)	609.1	603.9	-0.8

\* percentage point difference

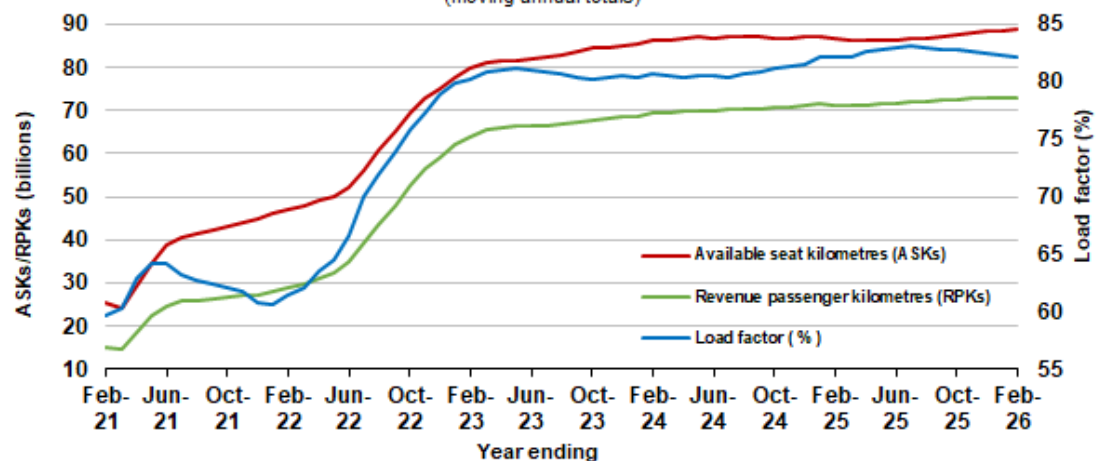
### Domestic RPT passenger traffic

(moving annual totals)



### RPT Network utilisation

(moving annual totals)



## TOP COMPETITIVE ROUTES

**Table 1: Passengers carried (000s) — annual activity**

	City-Pair	YE Feb 2025	YE Feb 2026	% Change
1	Melbourne - Sydney	8 006.3	8 733.0	9.1
2	Brisbane - Sydney	4 365.8	4 376.3	0.2
3	Brisbane - Melbourne	3 533.6	3 658.0	3.5
4	Gold Coast - Sydney	2 513.3	2 720.1	8.2
5	Adelaide - Melbourne	2 324.0	2 579.8	11.0
6	Gold Coast - Melbourne	2 188.7	2 153.3	-1.6
7	Melbourne - Perth	2 042.2	2 099.9	2.8
8	Adelaide - Sydney	1 878.6	1 901.9	1.2
9	Perth - Sydney	1 653.3	1 743.3	5.4
10	Hobart - Melbourne	1 382.9	1 459.2	5.5
11	Brisbane - Cairns	1 317.8	1 305.6	-0.9
12	Brisbane - Perth	1 106.7	1 136.6	2.7
13	Brisbane - Townsville	955.7	996.4	4.3
14	Cairns - Sydney	919.7	975.6	6.1
15	Canberra - Melbourne	997.7	973.3	-2.4
16	Launceston - Melbourne	860.0	895.3	4.1
17	Adelaide - Brisbane	875.2	878.0	0.3
18	Cairns - Melbourne	825.1	868.5	5.3
19	Hobart - Sydney	819.6	841.1	2.6
20	Brisbane - Mackay	767.7	828.1	7.9
21	Sunshine Coast - Sydney	780.5	803.3	2.9
22	Melbourne - Sunshine Coast	736.6	759.6	3.1
23	Adelaide - Perth	700.4	724.1	3.4
24	Karratha - Perth	616.4	701.0	13.7
25	Brisbane - Canberra	641.3	652.1	1.7
26	Canberra - Sydney	640.8	606.2	-5.4
27	Brisbane - Rockhampton	596.3	601.9	0.9
28	Brisbane - Newcastle	514.2	526.1	2.3
29	Perth - Port Hedland	474.4	493.5	4.0
30	Melbourne - Newcastle	461.0	470.2	2.0
31	Ballina - Sydney	525.1	462.0	-12.0
32	Newman - Perth	408.4	444.7	8.9
33	Kalgoorlie - Perth	366.8	410.6	11.9
34	Broome - Perth	356.8	375.4	5.2
35	Brisbane - Darwin	328.6	360.2	9.6
36	Launceston - Sydney	340.8	359.5	5.5
37	Brisbane - Hobart	309.3	325.8	5.3
38	Brisbane - Proserpine	283.5	293.5	3.5
39	Darwin - Melbourne	290.9	291.6	0.2
40	Adelaide - Gold Coast	281.8	278.2	-1.3
41	Hamilton Island - Sydney	247.9	261.9	5.6
42	Brisbane - Gladstone	225.1	216.2	-3.9
43	Coffs Harbour - Sydney	210.0	199.1	-5.2
44	Adelaide - Canberra	188.1	194.6	3.5
45	Darwin - Perth	184.7	189.4	2.5
46	Brisbane - Emerald	188.3	188.3	0.0
47	Dubbo - Sydney	172.5	188.3	9.1
48	Sydney - Wagga Wagga	161.7	181.8	12.4
49	Port Macquarie - Sydney	166.3	180.4	8.5
50	Canberra - Gold Coast	181.9	178.0	-2.1

continued

**Table 1: (continued) Passengers carried (000s) — annual activity**

	<b>City-Pair</b>	<b>YE Feb 2025</b>	<b>YE Feb 2026</b>	<b>% Change</b>
51	Brisbane - Hamilton Island	163.5	173.2	5.9
52	Adelaide - Port Lincoln	168.6	167.9	-0.4
53	Albury - Sydney	160.9	157.0	-2.4
54	Brisbane - Launceston	157.3	153.0	-2.7
55	Melbourne - Mildura	156.3	152.2	-2.7
56	Brisbane - Mount Isa	150.5	150.7	0.1
57	Brisbane - Bundaberg	142.3	150.2	5.6
58	Devonport - Melbourne	127.3	150.1	17.9
59	Geraldton - Perth	115.0	131.7	14.5
60	Ayers Rock - Melbourne	110.1	122.8	11.5
61	Adelaide - Alice Springs	106.0	103.6	-2.3
62	Brisbane - Moranbah	111.3	95.9	-13.8
	<b>Total domestic network</b>	<b>59 369.7</b>	<b>60 458.8</b>	<b>1.8</b>

**Table 2: Passengers carried (000s) — monthly activity**

	City-Pair	Feb 2025	Feb 2026	% Change
1	Melbourne - Sydney	627.9	639.8	1.9
2	Brisbane - Sydney	335.2	323.8	-3.4
3	Brisbane - Melbourne	253.1	254.4	0.5
4	Gold Coast - Sydney	171.2	185.1	8.1
5	Adelaide - Melbourne	181.2	183.1	1.0
6	Gold Coast - Melbourne	154.4	162.0	4.9
7	Melbourne - Perth	150.0	147.2	-1.8
8	Adelaide - Sydney	140.7	138.0	-2.0
9	Perth - Sydney	127.6	124.1	-2.8
10	Hobart - Melbourne	116.0	119.5	3.0
11	Brisbane - Cairns	87.4	89.3	2.1
12	Brisbane - Perth	81.8	81.4	-0.5
13	Canberra - Melbourne	74.9	72.7	-2.9
14	Launceston - Melbourne	72.7	71.9	-1.0
15	Brisbane - Townsville	64.4	70.4	9.2
16	Hobart - Sydney	68.5	69.8	1.9
17	Adelaide - Brisbane	65.2	66.2	1.5
18	Brisbane - Mackay	55.5	59.0	6.4
19	Karratha - Perth	48.4	55.8	15.2
20	Sunshine Coast - Sydney	56.0	55.7	-0.5
21	Cairns - Sydney	52.7	55.6	5.6
22	Adelaide - Perth	52.6	55.0	4.5
23	Melbourne - Sunshine Coast	49.8	49.9	0.3
24	Brisbane - Canberra	46.6	46.4	-0.5
25	Cairns - Melbourne	43.9	45.8	4.5
26	Canberra - Sydney	49.9	45.2	-9.3
27	Brisbane - Rockhampton	44.6	43.8	-1.8
28	Brisbane - Newcastle	37.8	39.2	3.8
29	Perth - Port Hedland	33.7	39.2	16.2
30	Ballina - Sydney	39.2	36.6	-6.5
31	Kalgoorlie - Perth	27.8	35.4	27.3
32	Newman - Perth	33.1	34.5	4.3
33	Melbourne - Newcastle	36.0	34.4	-4.5
34	Launceston - Sydney	26.4	27.5	4.5
35	Brisbane - Hobart	23.7	26.2	10.4
36	Adelaide - Gold Coast	20.4	21.4	4.9
37	Brisbane - Proserpine	19.0	20.7	9.3
38	Brisbane - Darwin	19.5	19.7	1.0
39	Broome - Perth	18.5	19.5	5.0
40	Brisbane - Gladstone	16.9	16.1	-4.6
41	Coffs Harbour - Sydney	16.4	15.3	-7.0
42	Adelaide - Canberra	15.6	14.7	-5.7
43	Darwin - Melbourne	15.4	14.6	-5.5
44	Brisbane - Emerald	14.7	14.5	-1.3
45	Dubbo - Sydney	12.8	14.3	11.7
46	Adelaide - Port Lincoln	13.8	14.0	1.3
47	Hamilton Island - Sydney	16.6	13.4	-19.0
48	Port Macquarie - Sydney	12.4	13.2	6.4
49	Canberra - Gold Coast	12.5	13.0	3.5
50	Sydney - Wagga Wagga	12.6	12.9	2.7

continued

**Table 2: (continued) Passengers carried (000s) — monthly activity**

	<b>City-Pair</b>	<b>Feb 2025</b>	<b>Feb 2026</b>	<b>% Change</b>
51	Brisbane - Launceston	11.6	12.5	7.8
52	Albury - Sydney	11.9	12.4	4.6
53	Brisbane - Hamilton Island	10.0	12.2	22.7
54	Melbourne - Mildura	12.4	11.4	-8.4
55	Devonport - Melbourne	11.0	11.2	2.3
56	Brisbane - Bundaberg	10.7	10.5	-2.0
57	Darwin - Perth	11.4	10.3	-9.6
58	Brisbane - Mount Isa	10.9	10.3	-5.5
59	Geraldton - Perth	9.3	9.5	2.1
60	Ayers Rock - Melbourne	6.9	8.9	29.2
61	Brisbane - Moranbah	9.1	7.0	-23.0
62	Adelaide - Alice Springs	6.9	6.9	0.1
	<b>Total domestic network</b>	<b>4 351.1</b>	<b>4 411.1</b>	<b>1.4</b>

**Table 3: Available seats (000s) — monthly activity**

	City-Pair	Feb 2025	Feb 2026	% Change
1	Melbourne - Sydney	705.1	737.4	4.6
2	Brisbane - Sydney	381.6	383.1	0.4
3	Brisbane - Melbourne	298.1	318.6	6.9
4	Gold Coast - Sydney	186.1	203.7	9.4
5	Adelaide - Melbourne	210.4	223.3	6.1
6	Gold Coast - Melbourne	177.6	182.9	2.9
7	Melbourne - Perth	175.2	182.4	4.1
8	Adelaide - Sydney	169.0	172.6	2.1
9	Perth - Sydney	152.6	155.1	1.7
10	Hobart - Melbourne	130.4	137.0	5.0
11	Brisbane - Cairns	102.8	104.3	1.5
12	Brisbane - Perth	103.4	104.3	0.8
13	Canberra - Melbourne	98.0	101.5	3.6
14	Launceston - Melbourne	82.6	84.5	2.3
15	Brisbane - Townsville	83.8	100.7	20.2
16	Hobart - Sydney	79.8	80.6	1.1
17	Adelaide - Brisbane	81.7	80.9	-1.0
18	Brisbane - Mackay	72.4	82.5	14.0
19	Karratha - Perth	72.9	80.9	11.0
20	Sunshine Coast - Sydney	69.3	65.0	-6.2
21	Cairns - Sydney	61.4	63.3	3.0
22	Adelaide - Perth	66.9	71.2	6.5
23	Melbourne - Sunshine Coast	60.0	57.9	-3.6
24	Brisbane - Canberra	66.0	71.9	8.9
25	Cairns - Melbourne	59.7	54.6	-8.4
26	Canberra - Sydney	78.2	71.1	-9.1
27	Brisbane - Rockhampton	57.0	56.0	-1.8
28	Brisbane - Newcastle	46.7	48.9	4.6
29	Perth - Port Hedland	54.6	64.2	17.6
30	Ballina - Sydney	43.7	41.9	-4.2
31	Kalgoorlie - Perth	51.3	54.1	5.6
32	Newman - Perth	51.9	57.9	11.6
33	Melbourne - Newcastle	42.5	41.9	-1.4
34	Launceston - Sydney	28.6	32.1	12.3
35	Brisbane - Hobart	25.8	29.2	13.3
36	Adelaide - Gold Coast	22.9	23.4	2.5
37	Brisbane - Proserpine	22.9	23.5	2.8
38	Brisbane - Darwin	25.7	25.4	-0.8
39	Broome - Perth	32.6	35.7	9.5
40	Brisbane - Gladstone	27.2	26.3	-3.3
41	Coffs Harbour - Sydney	24.8	22.7	-8.3
42	Adelaide - Canberra	21.7	23.5	8.0
43	Darwin - Melbourne	20.9	18.4	-12.1
44	Brisbane - Emerald	23.9	23.5	-1.7
45	Dubbo - Sydney	20.2	22.0	9.2
46	Adelaide - Port Lincoln	20.0	22.1	10.4
47	Hamilton Island - Sydney	24.9	16.3	-34.5
48	Port Macquarie - Sydney	16.5	19.7	19.6
49	Canberra - Gold Coast	14.3	14.7	2.9
50	Sydney - Wagga Wagga	19.1	20.7	8.4

continued

**Table 3: (continued) Available seats (000s) — monthly activity**

	<b>City-Pair</b>	<b>Feb 2025</b>	<b>Feb 2026</b>	<b>% Change</b>
51	Brisbane - Launceston	13.3	13.7	3.2
52	Albury - Sydney	16.6	18.1	8.7
53	Brisbane - Hamilton Island	13.7	15.8	15.5
54	Melbourne - Mildura	17.0	18.0	5.5
55	Devonport - Melbourne	15.1	16.3	7.9
56	Brisbane - Bundaberg	17.3	16.5	-4.7
57	Darwin - Perth	15.5	15.9	2.6
58	Brisbane - Mount Isa	18.6	20.1	7.6
59	Geraldton - Perth	17.3	18.5	6.9
60	Ayers Rock - Melbourne	10.4	10.2	-1.8
61	Brisbane - Moranbah	15.9	15.6	-2.1
62	Adelaide - Alice Springs	10.4	9.6	-7.9
	<b>Total domestic network</b>	<b>5 449.6</b>	<b>5 624.7</b>	<b>3.2</b>

**Table 4: Load factors (%) — monthly activity**

	City-Pair	Feb 2025	Feb 2026	% Point diff
1	Melbourne - Sydney	89.1	86.8	-2.3
2	Brisbane - Sydney	87.9	84.5	-3.4
3	Brisbane - Melbourne	84.9	79.9	-5.0
4	Gold Coast - Sydney	92.0	90.9	-1.1
5	Adelaide - Melbourne	86.1	82.0	-4.1
6	Gold Coast - Melbourne	87.0	88.6	1.6
7	Melbourne - Perth	85.6	80.7	-4.9
8	Adelaide - Sydney	83.3	79.9	-3.4
9	Perth - Sydney	83.6	80.0	-3.6
10	Hobart - Melbourne	88.9	87.2	-1.7
11	Brisbane - Cairns	85.1	85.6	0.5
12	Brisbane - Perth	79.0	78.0	-1.0
13	Canberra - Melbourne	76.4	71.6	-4.8
14	Launceston - Melbourne	87.9	85.1	-2.8
15	Brisbane - Townsville	76.9	69.9	-7.0
16	Hobart - Sydney	85.8	86.6	0.8
17	Adelaide - Brisbane	79.8	81.8	2.0
18	Brisbane - Mackay	76.6	71.5	-5.1
19	Karratha - Perth	66.4	68.9	2.5
20	Sunshine Coast - Sydney	80.8	85.7	4.9
21	Cairns - Sydney	85.8	87.9	2.1
22	Adelaide - Perth	78.6	77.2	-1.4
23	Melbourne - Sunshine Coast	83.0	86.3	3.3
24	Brisbane - Canberra	70.6	64.5	-6.1
25	Cairns - Melbourne	73.5	83.9	10.4
26	Canberra - Sydney	63.8	63.6	-0.2
27	Brisbane - Rockhampton	78.2	78.2	0.0
28	Brisbane - Newcastle	80.9	80.3	-0.6
29	Perth - Port Hedland	61.8	61.1	-0.7
30	Ballina - Sydney	89.6	87.5	-2.1
31	Kalgoorlie - Perth	54.3	65.5	11.2
32	Newman - Perth	63.7	59.6	-4.1
33	Melbourne - Newcastle	84.6	81.9	-2.7
34	Launceston - Sydney	92.2	85.8	-6.4
35	Brisbane - Hobart	91.8	89.4	-2.4
36	Adelaide - Gold Coast	89.1	91.3	2.2
37	Brisbane - Proserpine	82.9	88.1	5.2
38	Brisbane - Darwin	76.1	77.5	1.4
39	Broome - Perth	56.9	54.6	-2.3
40	Brisbane - Gladstone	62.0	61.1	-0.9
41	Coffs Harbour - Sydney	66.2	67.2	1.0
42	Adelaide - Canberra	71.6	62.5	-9.1
43	Darwin - Melbourne	73.9	79.4	5.5
44	Brisbane - Emerald	61.3	61.6	0.3
45	Dubbo - Sydney	63.4	64.9	1.5
46	Adelaide - Port Lincoln	69.0	63.3	-5.7
47	Hamilton Island - Sydney	66.6	82.5	15.9
48	Port Macquarie - Sydney	75.2	66.9	-8.3
49	Canberra - Gold Coast	87.8	88.3	0.5
50	Sydney - Wagga Wagga	65.9	62.5	-3.4

continued

**Table 4: (continued) Load factors (%) — monthly activity**

	<b>City-Pair</b>	<b>Feb 2025</b>	<b>Feb 2026</b>	<b>% Point diff</b>
51	Brisbane - Launceston	87.4	91.3	3.9
52	Albury - Sydney	71.5	68.8	-2.7
53	Brisbane - Hamilton Island	72.8	77.3	4.5
54	Melbourne - Mildura	72.9	63.3	-9.6
55	Devonport - Melbourne	72.6	68.8	-3.8
56	Brisbane - Bundaberg	62.0	63.8	1.8
57	Darwin - Perth	73.6	64.8	-8.8
58	Brisbane - Mount Isa	58.4	51.3	-7.1
59	Geraldton - Perth	53.8	51.4	-2.4
60	Ayers Rock - Melbourne	66.4	87.3	20.9
61	Brisbane - Moranbah	57.4	45.1	-12.3
62	Adelaide - Alice Springs	65.9	71.5	5.6
	<b>Total domestic network</b>	<b>80.5</b>	<b>79.3</b>	<b>-1.2</b>

**Table 5: Aircraft trips <sup>(a)</sup> — monthly activity**

	City-Pair	Feb 2025	Feb 2026	% Change
1	Melbourne - Sydney	4 102	4 225	3.0
2	Brisbane - Sydney	2 309	2 301	-0.3
3	Brisbane - Melbourne	1 818	1 931	6.2
4	Gold Coast - Sydney	1 064	1 170	10.0
5	Adelaide - Melbourne	1 252	1 367	9.2
6	Gold Coast - Melbourne	965	1 010	4.7
7	Melbourne - Perth	993	1 028	3.5
8	Adelaide - Sydney	1 001	1 005	0.4
9	Perth - Sydney	813	852	4.8
10	Hobart - Melbourne	740	760	2.7
11	Brisbane - Cairns	727	736	1.2
12	Brisbane - Perth	596	606	1.7
13	Canberra - Melbourne	631	691	9.5
14	Launceston - Melbourne	567	636	12.2
15	Brisbane - Townsville	670	700	4.5
16	Hobart - Sydney	448	451	0.7
17	Adelaide - Brisbane	623	597	-4.2
18	Brisbane - Mackay	532	668	25.6
19	Karratha - Perth	440	482	9.5
20	Sunshine Coast - Sydney	386	374	-3.1
21	Cairns - Sydney	332	356	7.2
22	Adelaide - Perth	368	412	12.0
23	Melbourne - Sunshine Coast	319	323	1.3
24	Brisbane - Canberra	520	558	7.3
25	Cairns - Melbourne	312	288	-7.7
26	Canberra - Sydney	1 206	1 135	-5.9
27	Brisbane - Rockhampton	626	625	-0.2
28	Brisbane - Newcastle	394	409	3.8
29	Perth - Port Hedland	334	384	15.0
30	Ballina - Sydney	288	290	0.7
31	Kalgoorlie - Perth	346	370	6.9
32	Newman - Perth	316	350	10.8
33	Melbourne - Newcastle	280	275	-1.8
34	Launceston - Sydney	167	190	13.8
35	Brisbane - Hobart	160	184	15.0
36	Adelaide - Gold Coast	112	128	14.3
37	Brisbane - Proserpine	141	130	-7.8
38	Brisbane - Darwin	144	145	0.7
39	Broome - Perth	228	234	2.6
40	Brisbane - Gladstone	300	306	2.0
41	Coffs Harbour - Sydney	287	339	18.1
42	Adelaide - Canberra	200	225	12.5
43	Darwin - Melbourne	118	104	-11.9
44	Brisbane - Emerald	302	315	4.3
45	Dubbo - Sydney	369	401	8.7
46	Adelaide - Port Lincoln	462	440	-4.8
47	Hamilton Island - Sydney	141	94	-33.3
48	Port Macquarie - Sydney	272	332	22.1
49	Canberra - Gold Coast	80	81	1.3
50	Sydney - Wagga Wagga	341	363	6.5

continued

**Table 5: (continued) Aircraft trips <sup>(a)</sup> — monthly activity**

	<b>City-Pair</b>	<b>Feb 2025</b>	<b>Feb 2026</b>	<b>% Change</b>
51	Brisbane - Launceston	73	72	-1.4
52	Albury - Sydney	295	322	9.2
53	Brisbane - Hamilton Island	96	106	10.4
54	Melbourne - Mildura	337	342	1.5
55	Devonport - Melbourne	253	270	6.7
56	Brisbane - Bundaberg	283	272	-3.9
57	Darwin - Perth	88	95	8.0
58	Brisbane - Mount Isa	238	167	-29.8
59	Geraldton - Perth	192	192	0.0
60	Ayers Rock - Melbourne	58	56	-3.4
61	Brisbane - Moranbah	212	206	-2.8
62	Adelaide - Alice Springs	128	118	-7.8
	<b>Total domestic network</b>	<b>45 177</b>	<b>45 788</b>	<b>1.4</b>

(a) Includes RPT cargo flights.

## TOP TEN AIRPORTS – PASSENGER MOVEMENTS

**Table 6: Top ten airports, RPT passenger movements (000s) - monthly activity**

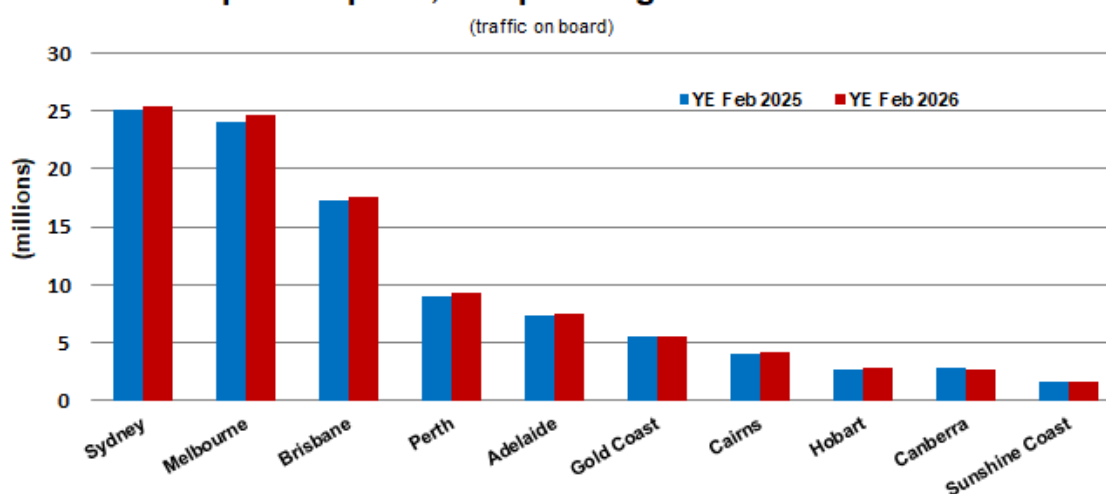
Airport	Feb 2025	Feb 2026	% Change	% of Total
1 Sydney	1 882.1	1 894.4	0.7	21.5
2 Melbourne	1 794.0	1 819.6	1.4	20.6
3 Brisbane	1 253.5	1 256.5	0.2	14.2
4 Perth	658.8	676.1	2.6	7.7
5 Adelaide	558.7	561.5	0.5	6.4
6 Gold Coast	380.4	403.4	6.0	4.6
7 Cairns	252.8	256.9	1.6	2.9
8 Hobart	228.1	240.7	5.5	2.7
9 Canberra	210.9	203.0	-3.7	2.3
10 Launceston	118.7	120.4	1.5	1.4
<b>Total top ten airports</b>	<b>7 337.8</b>	<b>7 432.5</b>	<b>1.3</b>	<b>84.2</b>
<b>Total domestic network</b>	<b>8 702.3</b>	<b>8 822.3</b>	<b>1.4</b>	<b>100.0</b>

**Table 7: Top ten airports, RPT passenger movements (000s) - annual activity**

Airport	YE Feb 2025	YE Feb 2026	% Change	% of Total
1 Sydney	25 134.7	25 406.5	1.1	21.0
2 Melbourne	24 097.5	24 571.4	2.0	20.3
3 Brisbane	17 247.5	17 589.4	2.0	14.5
4 Perth	8 971.4	9 372.7	4.5	7.8
5 Adelaide	7 383.7	7 542.4	2.1	6.2
6 Gold Coast	5 552.4	5 528.0	-0.4	4.6
7 Cairns	4 105.2	4 159.4	1.3	3.4
8 Hobart	2 751.7	2 885.3	4.9	2.4
9 Canberra	2 791.6	2 751.5	-1.4	2.3
10 Sunshine Coast	1 653.2	1 689.0	2.2	1.4
<b>Total top ten airports</b>	<b>99 688.7</b>	<b>101 495.5</b>	<b>1.8</b>	<b>83.9</b>
<b>Total domestic network</b>	<b>118 739.3</b>	<b>120 917.7</b>	<b>1.8</b>	<b>100.0</b>

Note: Airport passenger movement numbers are the sum of passenger arrivals and departures at each airport.

### Top ten airports, RPT passenger movements



## TOP FIVE AIRPORTS – CARGO MOVEMENTS

**Table 8: Top five airports, domestic RPT cargo movements (000s tonnes) - monthly activity**

Airport	Feb 2025	Feb 2026	% Change	% of Total
1 Melbourne	6.7	6.9	3.1	28.0
2 Sydney	5.0	5.1	2.8	20.8
3 Brisbane	4.5	4.5	-0.1	18.2
4 Perth	2.7	2.7	-1.1	10.9
5 Adelaide	1.3	1.4	11.6	5.8
<b>Total top five airports</b>	<b>20.3</b>	<b>20.7</b>	<b>2.3</b>	<b>83.6</b>
<b>Total domestic network</b>	<b>24.7</b>	<b>24.8</b>	<b>0.5</b>	<b>100.0</b>

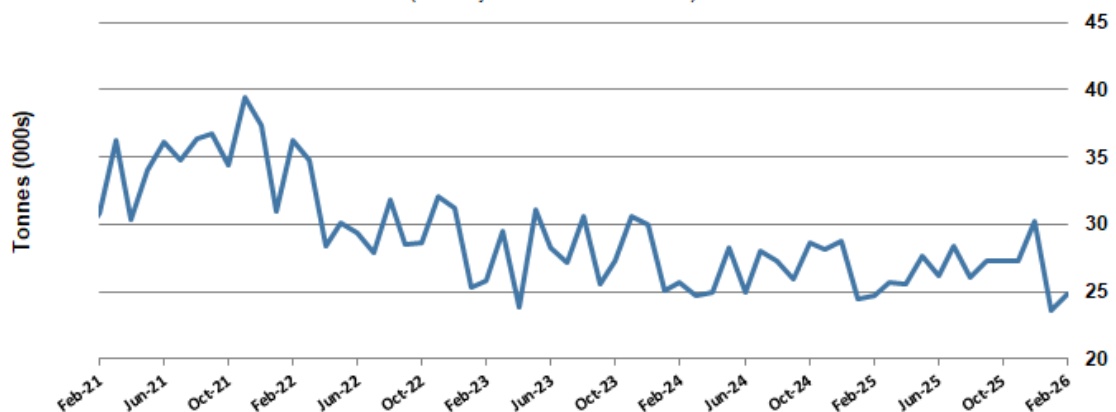
**Table 9: Top five airports, domestic RPT cargo movements (000s tonnes) - annual activity**

Airport	YE Feb 2025	YE Feb 2026	% Change	% of Total
1 Melbourne	87.2	89.0	2.2	27.8
2 Sydney	67.3	67.4	0.1	21.1
3 Brisbane	57.6	57.3	-0.5	17.9
4 Perth	36.4	36.0	-1.1	11.2
5 Adelaide	17.5	16.6	-5.2	5.2
<b>Total top five airports</b>	<b>266.0</b>	<b>266.3</b>	<b>0.1</b>	<b>83.2</b>
<b>Total domestic network</b>	<b>318.8</b>	<b>320.1</b>	<b>0.4</b>	<b>100.0</b>

Note: Airport cargo tonnes are the sum of cargo tonnes on arrivals and departures at each airport.

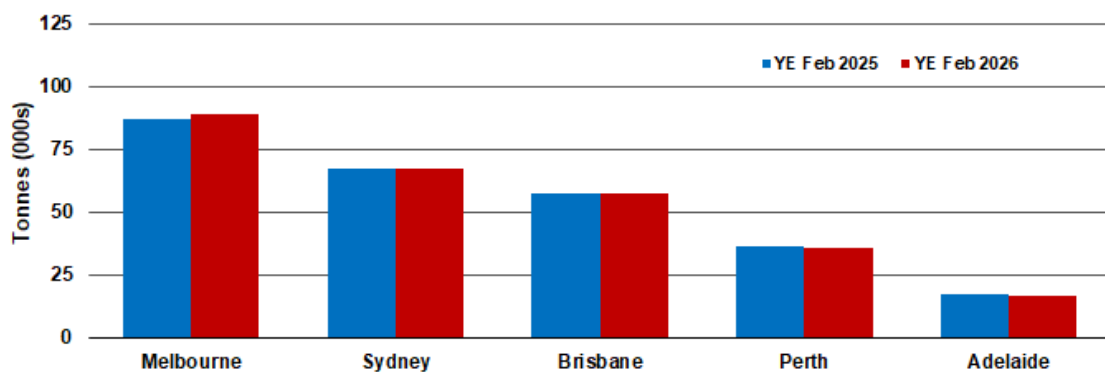
### Total domestic network - cargo movement

(monthly totals - traffic on board)



### Top five airports, cargo movements

(Domestic cargo traffic - traffic on board)



Note: Airport cargo tonnes are the sum of cargo tonnes on arrivals and departures at each airport.

## TOP TEN ROUTES

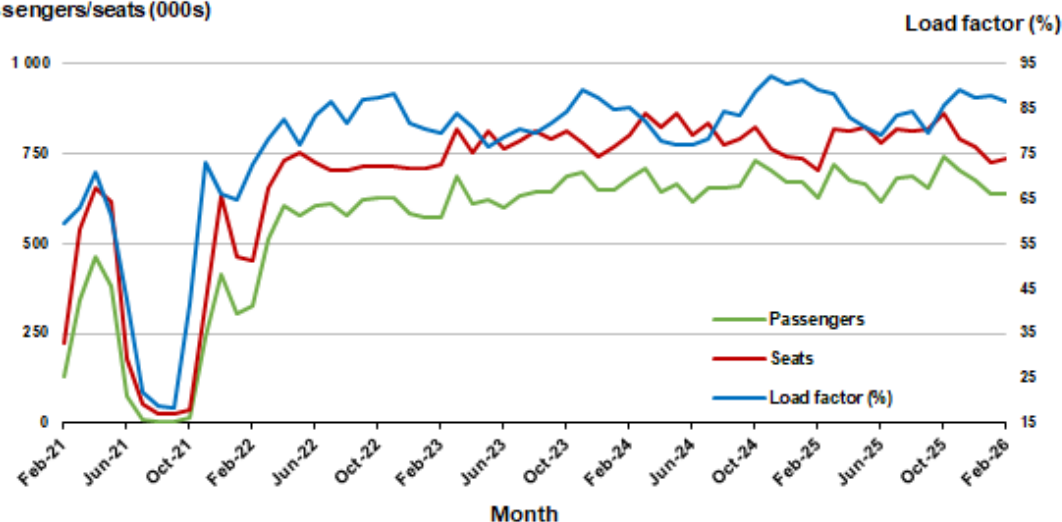
### 1. Melbourne - Sydney

#### Monthly data

	Feb 2025	Feb 2026	% Change
Passengers carried (000s)	627.9	639.8	1.9
Seats (000s)	705.1	737.4	4.6
Load factor %	89.1	86.8	-2.3 *
Aircraft trips	4 102	4 225	3.0

\* percentage point difference

#### Passengers/seats (000s)

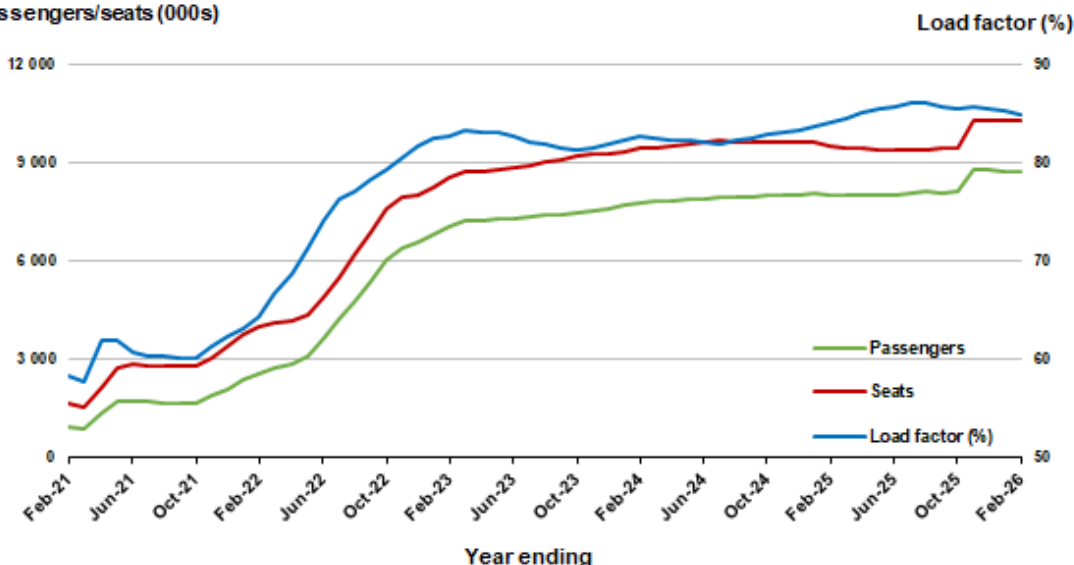


#### Moving annual data

	YE Feb 2025	YE Feb 2026	% Change
Passengers carried (000s)	8 006.3	8 733.0	9.1
Seats (000s)	9 521.3	10 281.2	8.0
Load factor %	84.1	85.0	0.9 *
Aircraft trips	54 809	58 749	7.2

\* percentage point difference

#### Passengers/seats (000s)

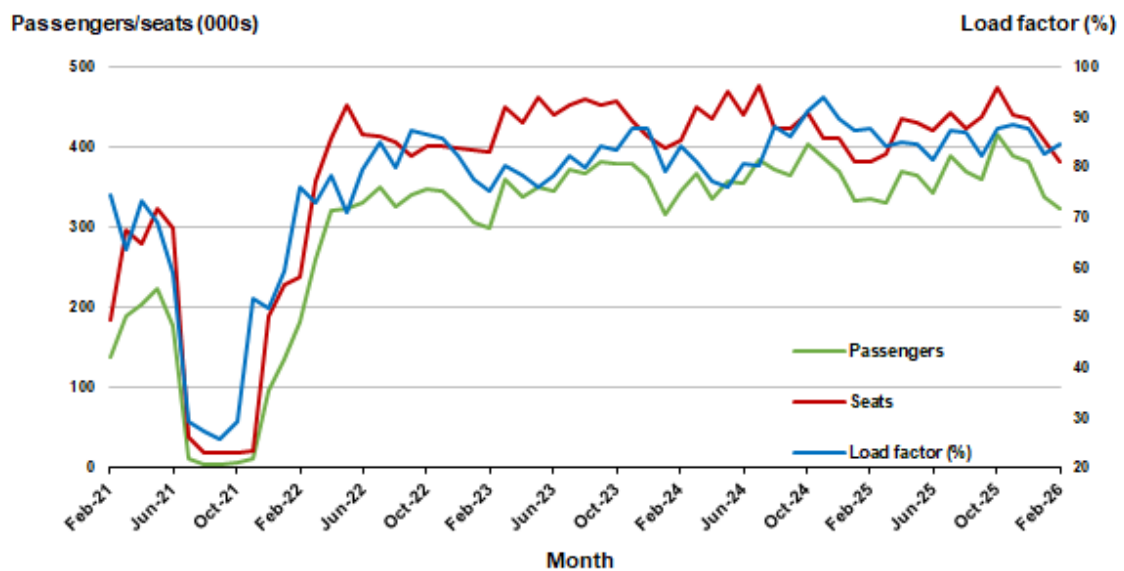


## 2. Brisbane - Sydney

### Monthly data

	Feb 2025	Feb 2026	% Change
Passengers carried (000s)	335.2	323.8	-3.4
Seats (000s)	381.6	383.1	0.4
Load factor %	87.9	84.5	-3.4 *
Aircraft trips	2 309	2 301	-0.3

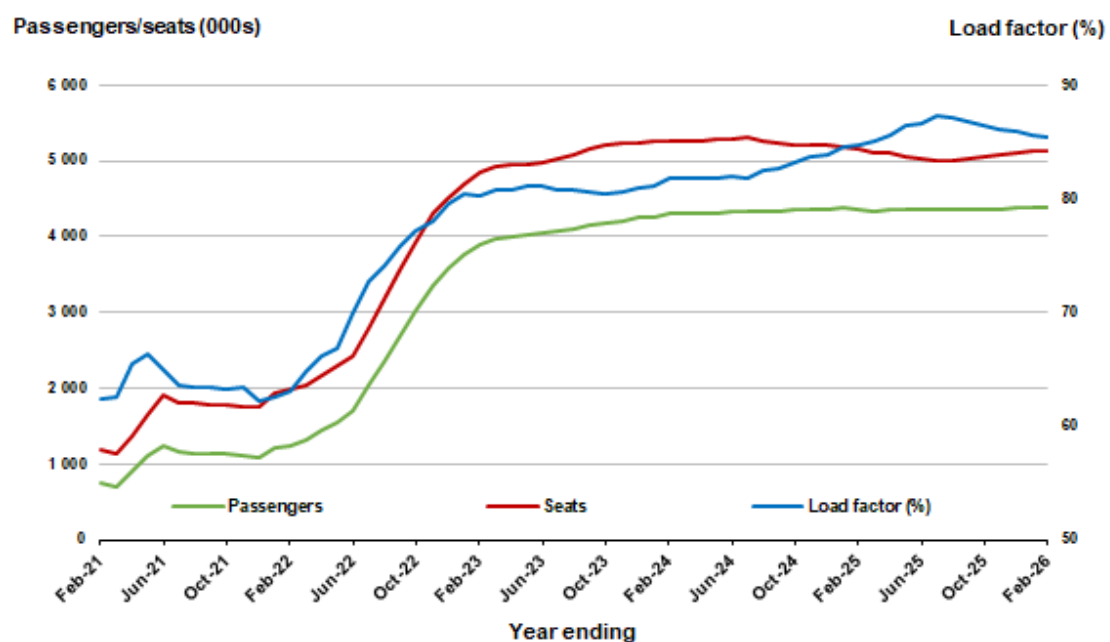
\* percentage point difference



### Moving annual data

	YE Feb 2025	YE Feb 2026	% Change
Passengers carried (000s)	4 365.8	4 376.3	0.2
Seats (000s)	5 152.1	5 128.4	-0.5
Load factor %	84.7	85.3	0.6 *
Aircraft trips	31 065	30 489	-1.9

\* percentage point difference

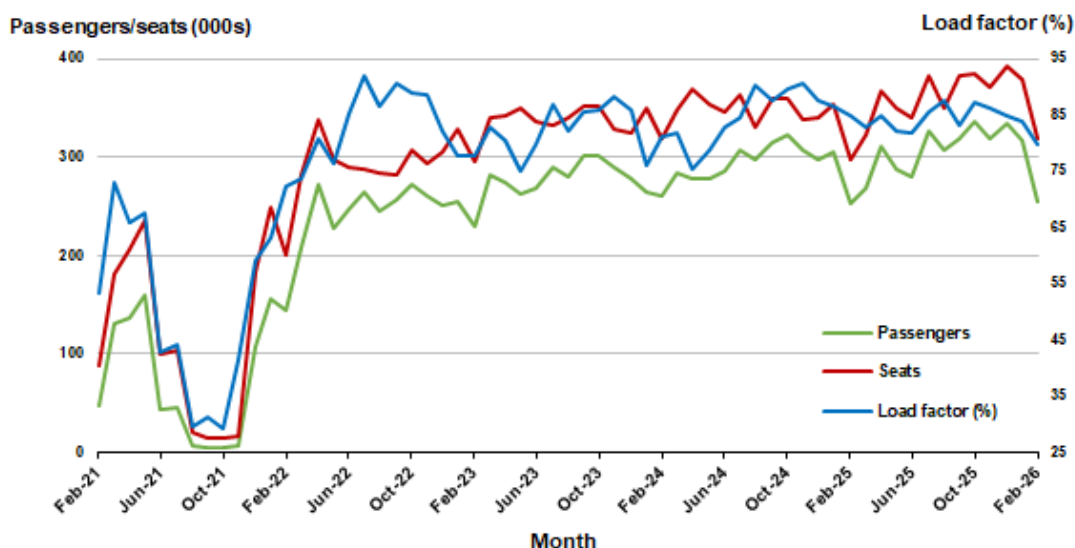


### 3. Brisbane - Melbourne

#### Monthly data

	Feb 2025	Feb 2026	% Change
Passengers carried (000s)	253.1	254.4	0.5
Seats (000s)	298.1	318.6	6.9
Load factor %	84.9	79.9	-5.0 *
Aircraft trips	1 818	1 931	6.2

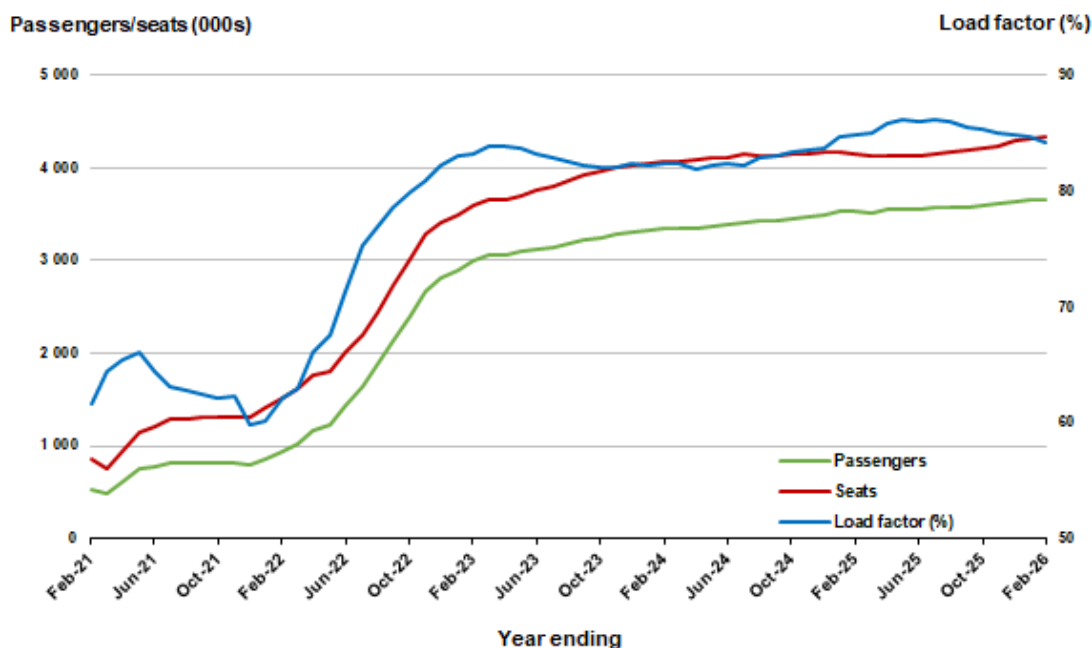
\* percentage point difference



#### Moving annual data

	YE Feb 2025	YE Feb 2026	% Change
Passengers carried (000s)	3 533.6	3 658.0	3.5
Seats (000s)	4 160.2	4 341.7	4.4
Load factor %	84.9	84.3	-0.7 *
Aircraft trips	24 936	26 311	5.5

\* percentage point difference



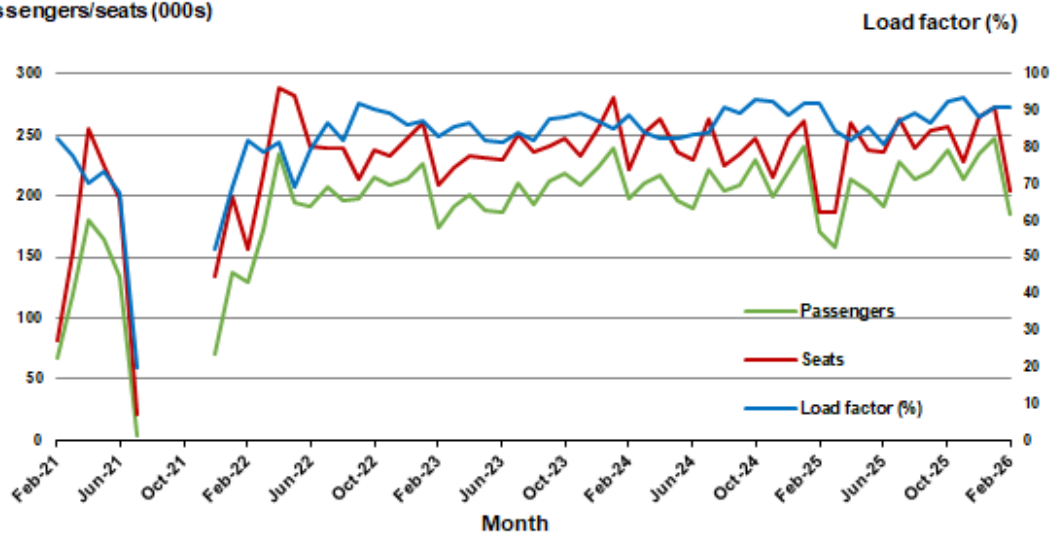
## 4. Gold Coast - Sydney <sup>(a)</sup>

### Monthly data

	Feb 2025	Feb 2026	% Change
Passengers carried (000s)	171.2	185.1	8.1
Seats (000s)	186.1	203.7	9.4
Load factor %	92.0	90.9	-1.1 *
Aircraft trips	1 064	1 170	10.0

\* percentage point difference

### Passengers/seats (000s)



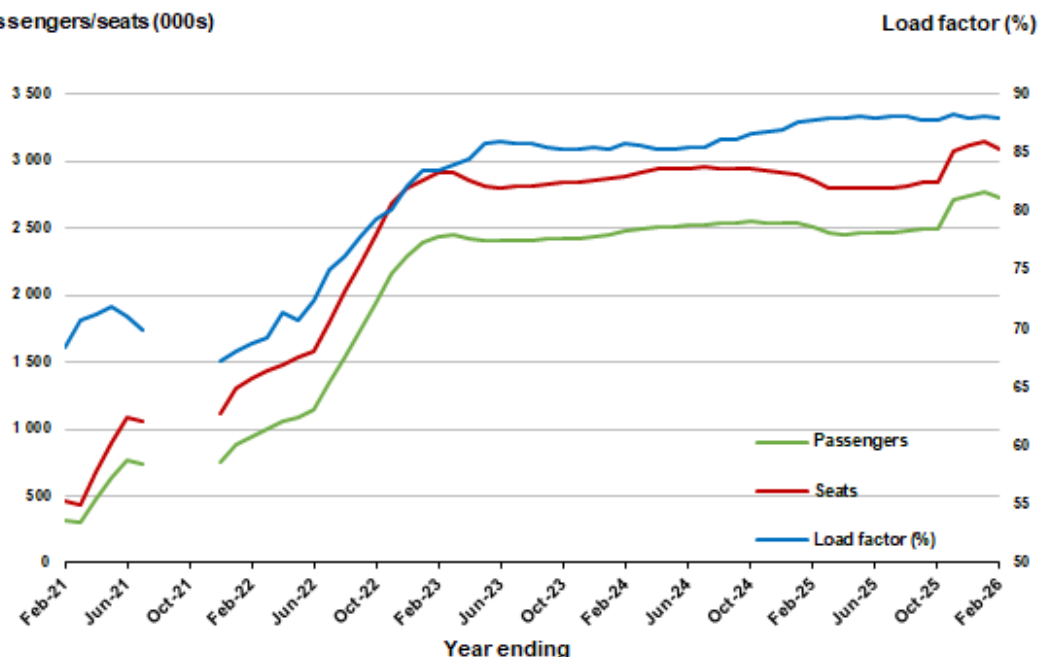
(a) August to November 2021 data not available for release.

### Moving annual data

	YE Feb 2025	YE Feb 2026	% Change
Passengers carried (000s)	2 513.3	2 720.1	8.2
Seats (000s)	2 862.3	3 091.9	8.0
Load factor %	87.8	88.0	0.2 *
Aircraft trips	16 179	17 540	8.4

\* percentage point difference

### Passengers/seats (000s)



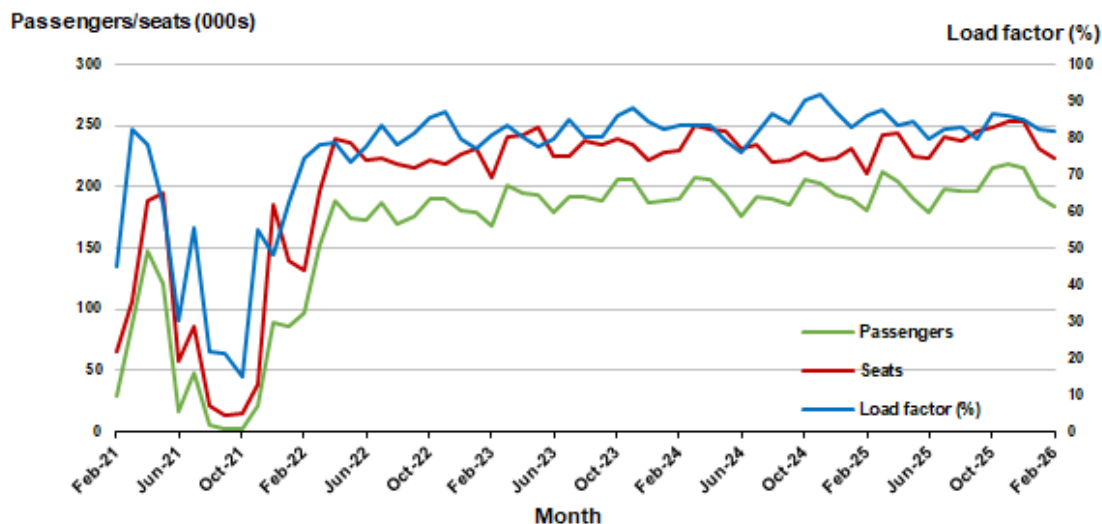
(a) August to November 2021 moving annual totals not available for release.

## 5. Adelaide - Melbourne

### Monthly data

	Feb 2025	Feb 2026	% Change
Passengers carried (000s)	181.2	183.1	1.0
Seats (000s)	210.4	223.3	6.1
Load factor %	86.1	82.0	-4.1 *
Aircraft trips	1 252	1 367	9.2

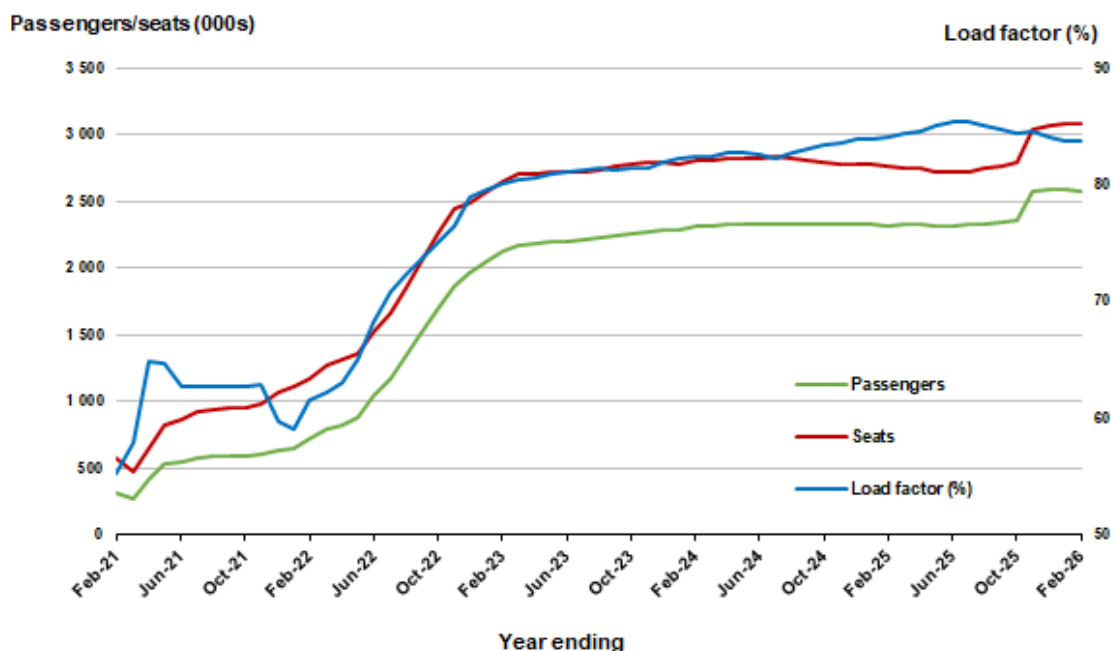
\* percentage point difference



### Moving annual data

	YE Feb 2025	YE Feb 2026	% Change
Passengers carried (000s)	2 324.0	2 579.8	11.0
Seats (000s)	2 762.9	3 079.7	11.5
Load factor %	84.1	83.8	-0.3 *
Aircraft trips	16 570	18 351	10.7

\* percentage point difference

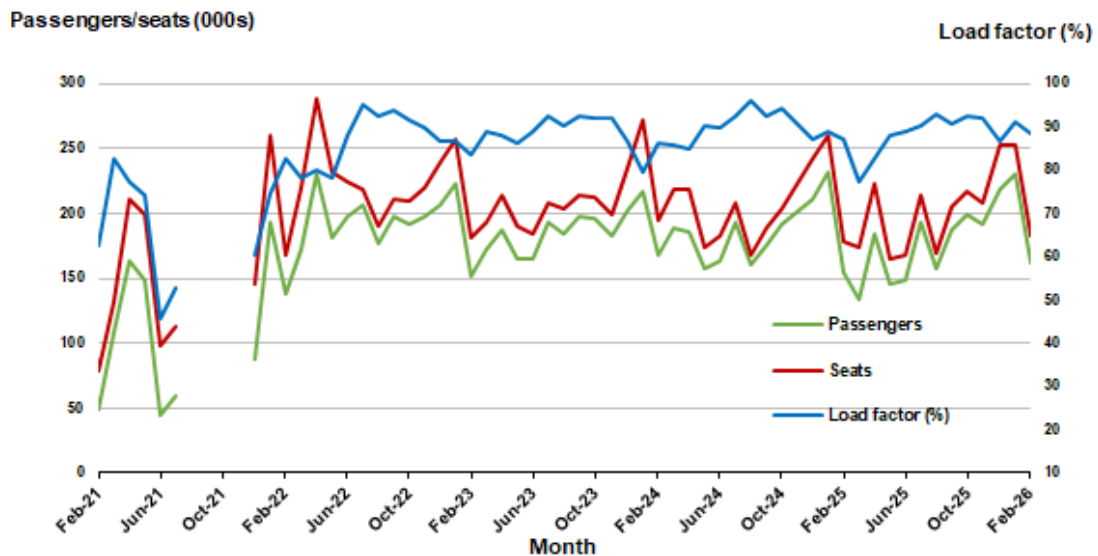


## 6. Gold Coast - Melbourne <sup>(a)</sup>

### Monthly data

	Feb 2025	Feb 2026	% Change
Passengers carried (000s)	154.4	162.0	4.9
Seats (000s)	177.6	182.9	2.9
Load factor %	87.0	88.6	1.6 *
Aircraft trips	965	1 010	4.7

\* percentage point difference

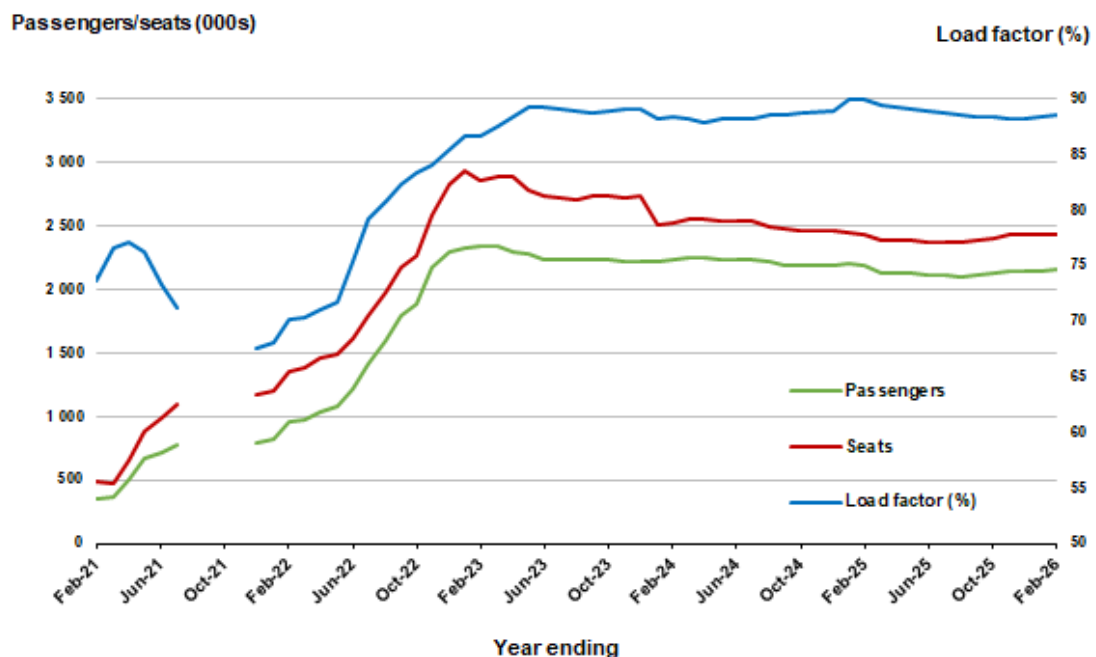


(a) August to November 2021 data not available for release.

### Moving annual data

	YE Feb 2025	YE Feb 2026	% Change
Passengers carried (000s)	2 188.7	2 153.3	-1.6
Seats (000s)	2 432.0	2 432.5	0.0
Load factor %	90.0	88.5	-1.5 *
Aircraft trips	13 191	13 136	-0.4

\* percentage point difference



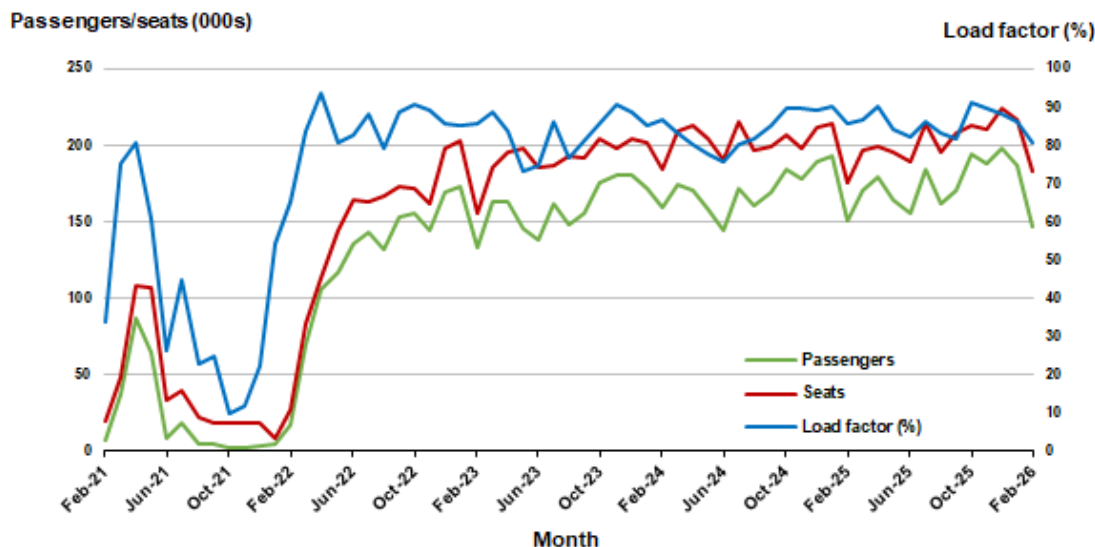
(a) August to November 2021 moving annual totals are not available for release.

## 7. Melbourne - Perth

### Monthly data

	Feb 2025	Feb 2026	% Change
Passengers carried (000s)	150.0	147.2	-1.8
Seats (000s)	175.2	182.4	4.1
Load factor %	85.6	80.7	-4.9 *
Aircraft trips	993	1 028	3.5

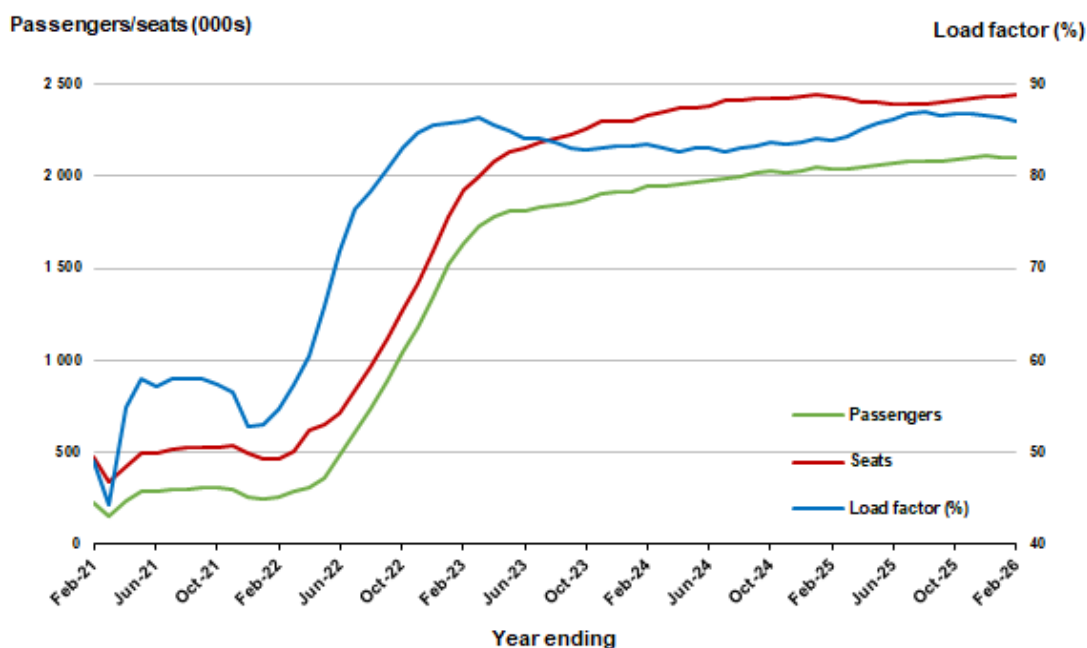
\* percentage point difference



### Moving annual data

	YE Feb 2025	YE Feb 2026	% Change
Passengers carried (000s)	2 042.2	2 099.9	2.8
Seats (000s)	2 431.7	2 443.0	0.5
Load factor %	84.0	86.0	2.0 *
Aircraft trips	13 351	13 679	2.5

\* percentage point difference

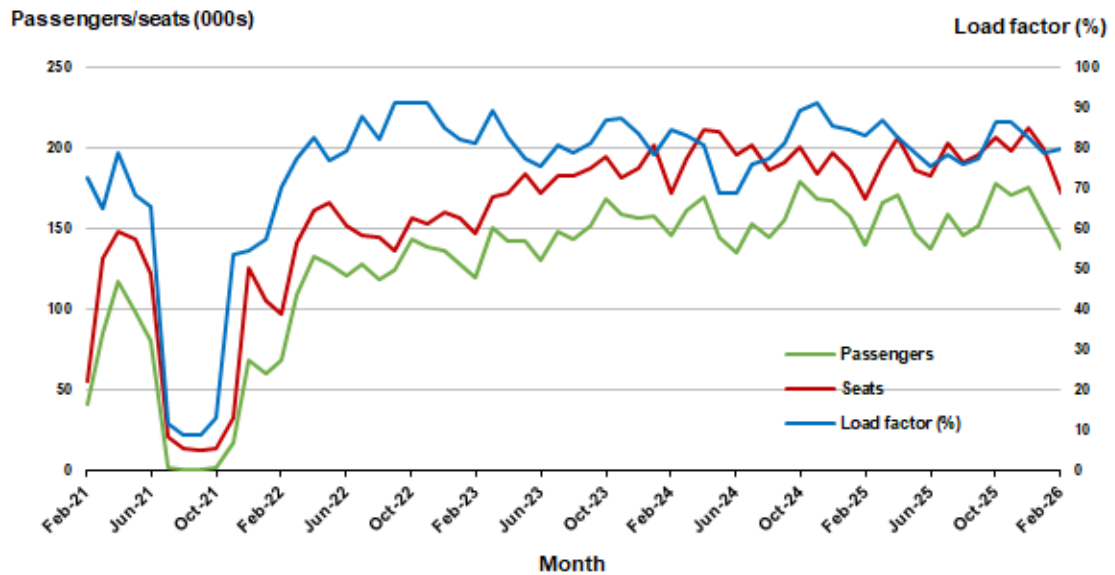


## 8. Adelaide - Sydney

### Monthly data

	Feb 2025	Feb 2026	% Change
Passengers carried (000s)	140.7	138.0	-2.0
Seats (000s)	169.0	172.6	2.1
Load factor %	83.3	79.9	-3.4 *
Aircraft trips	1 001	1 005	0.4

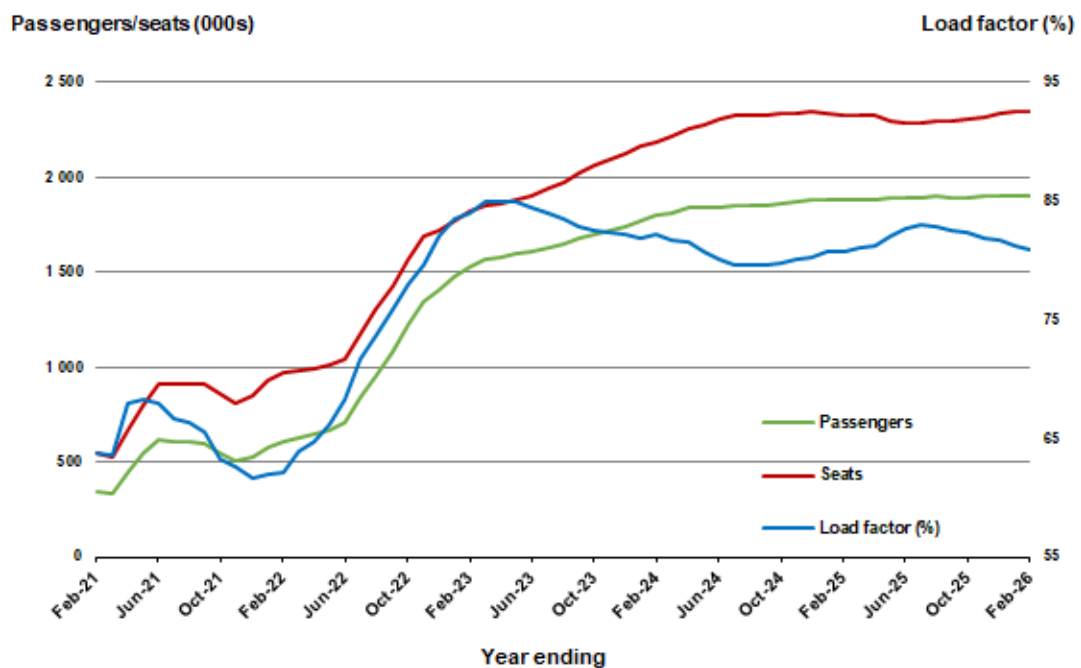
\* percentage point difference



### Moving annual data

	YE Feb 2025	YE Feb 2026	% Change
Passengers carried (000s)	1 878.6	1 901.9	1.2
Seats (000s)	2 329.0	2 348.9	0.9
Load factor %	80.7	81.0	0.3 *
Aircraft trips	13 817	13 669	-1.1

\* percentage point difference



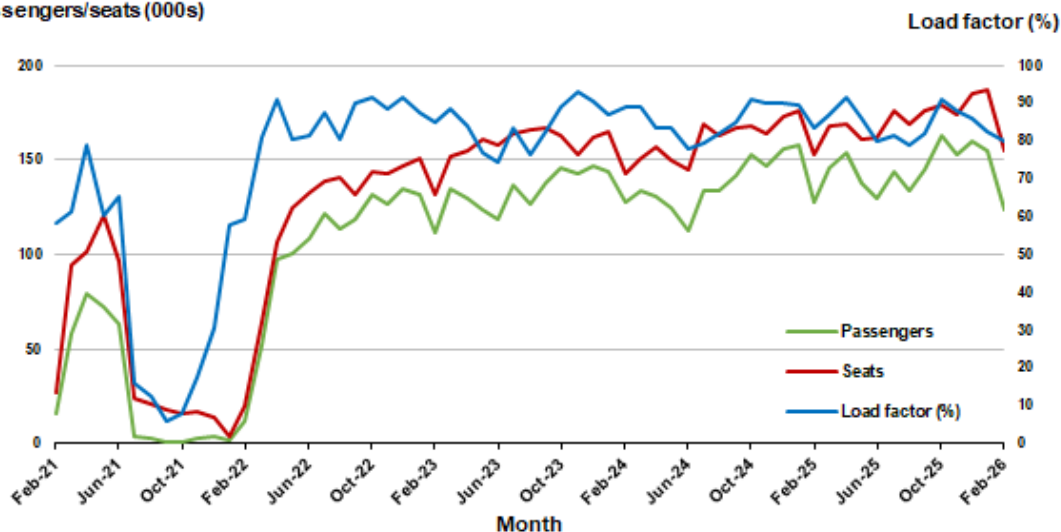
## 9. Perth - Sydney

### Monthly data

	Feb 2025	Feb 2026	% Change
Passengers carried (000s)	127.6	124.1	- 2.8
Seats (000s)	152.6	155.1	1.7
Load factor %	83.6	80.0	-3.6 *
Aircraft trips	813	852	4.8

\* percentage point difference

### Passengers/seats (000s)

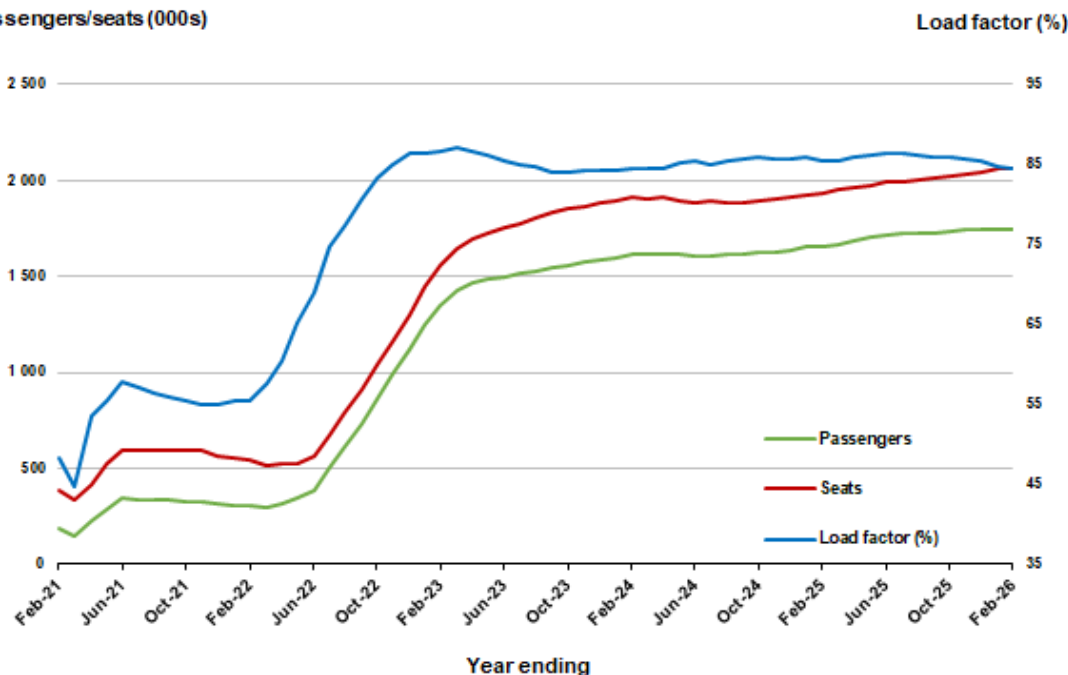


### Moving annual data

	YE Feb 2025	YE Feb 2026	% Change
Passengers carried (000s)	1 653.3	1 743.3	5.4
Seats (000s)	1 933.5	2 061.5	6.6
Load factor %	85.5	84.6	-0.9 *
Aircraft trips	10 212	11 021	7.9

\* percentage point difference

### Passengers/seats (000s)

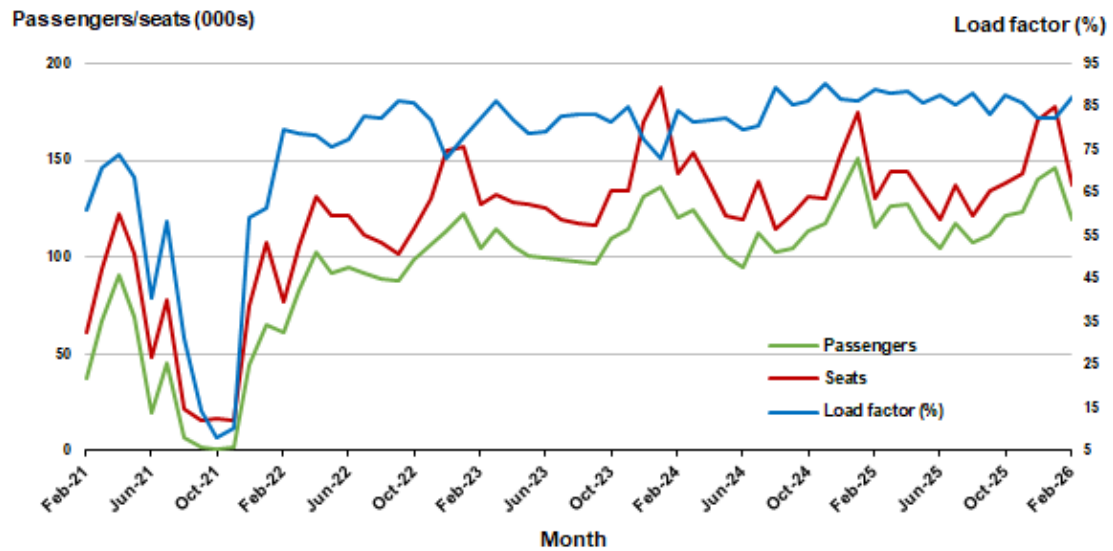


## 10. Hobart - Melbourne

### Monthly data

	Feb 2025	Feb 2026	% Change
Passengers carried (000s)	116.0	119.5	3.0
Seats (000s)	130.4	137.0	5.0
Load factor %	88.9	87.2	-1.7 *
Aircraft trips	740	760	2.7

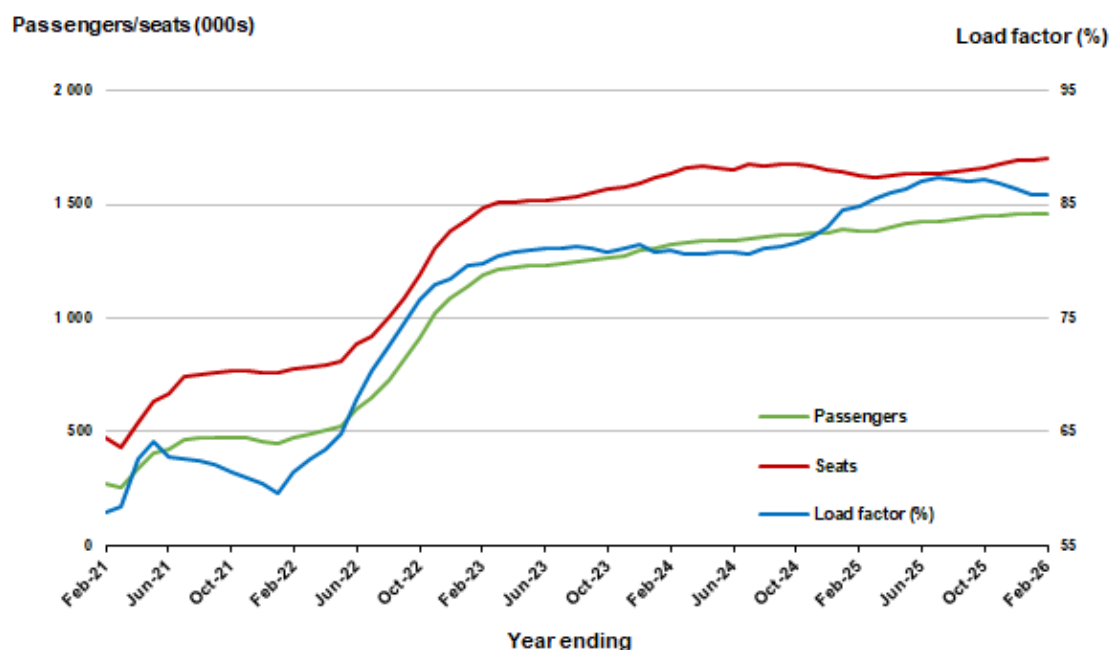
\* percentage point difference



### Moving annual data

	YE Feb 2025	YE Feb 2026	% Change
Passengers carried (000s)	1 382.9	1 459.2	5.5
Seats (000s)	1 628.7	1 700.5	4.4
Load factor %	84.9	85.8	0.9 *
Aircraft trips	9 627	9 758	1.4

\* percentage point difference



## TOP FIFTY REGIONAL AIRPORTS

**Table 10: Top fifty regional airports (000s) — passenger movements, monthly**

Airport	Feb 2025	Feb 2026	% Change
1 Cairns	252.8	256.9	1.6
2 Hobart	228.1	240.7	5.5
3 Launceston	118.7	120.4	1.5
4 Townsville	113.3	113.6	0.3
5 Newcastle	88.0	93.8	6.6
6 Darwin	93.9	91.0	-3.1
7 Mackay	64.4	66.9	3.9
8 Karratha	49.3	56.8	15.2
9 Rockhampton	47.2	46.8	-0.9
10 Ballina	47.2	44.6	-5.6
11 Proserpine	31.9	40.2	26.2
12 Port Hedland	34.8	40.1	15.2
13 Kalgoorlie	27.8	35.4	27.3
14 Newman	33.2	34.5	3.8
15 Hamilton Island	30.9	29.1	-5.9
16 Alice Springs	22.0	22.7	3.0
17 Broome	21.6	22.5	4.1
18 Ayers Rock	21.8	22.2	2.0
19 Coffs Harbour	20.7	19.9	-3.9
20 Paraburdoo	21.0	17.4	-17.1
21 Dubbo	15.3	17.1	12.2
22 Albury	15.3	17.0	11.0
23 Wagga Wagga	16.0	16.9	5.3
24 Hervey Bay	14.8	16.7	12.6
25 Mount Isa	17.5	16.5	-5.8
26 Gladstone	16.9	16.1	-4.6
27 Port Macquarie	14.3	15.3	6.7
28 Emerald	15.5	14.5	-6.8
29 Port Lincoln	13.8	14.0	1.3
30 Mildura	14.9	13.9	-7.0
31 Tamworth	14.6	12.1	-17.5
32 Devonport	11.0	11.2	2.3
33 Bundaberg	10.7	10.5	-2.0
34 Orange	8.8	10.4	18.4
35 Geraldton	9.7	10.1	3.6
36 Armidale	3.9	8.6	120.7
37 Olympic Dam	8.0	8.1	1.5
38 Busselton	7.5	7.5	-0.3
39 Kununurra	7.3	7.3	0.4
40 Thursday Island	7.1	7.3	1.9
41 Moranbah	9.1	7.1	-22.8
42 Weipa	6.8	7.0	3.1
43 Burnie	6.5	6.5	1.0
44 Merimbula	5.1	5.8	15.2
45 Mount Gambier	5.7	5.6	-1.1
46 Griffith	5.7	5.4	-5.2
47 Gove	5.2	5.4	3.1
48 Albany	5.5	5.4	-1.5
49 Learmonth	5.5	5.1	-6.3
50 Roma	4.7	4.8	2.8
<b>Total top 50 regional airports</b>	<b>1 671.6</b>	<b>1 724.7</b>	<b>3.2</b>
<b>Total regional airports</b>	<b>1 781.0</b>	<b>1 828.4</b>	<b>2.7</b>
<b>Total domestic network</b>	<b>8 702.3</b>	<b>8 822.3</b>	<b>1.4</b>

Note: Airport passenger movement numbers are the sum of passenger arrivals and departures at each airport.

Regional airports are defined as airports which are, according to Australian Statistical Geography Standard (ASGS), not based in Major Cities.

**Table 11: Top fifty regional airports (000s) — passenger movements, annual**

Airport	Feb 2025	Feb 2026	% Change
1 Cairns	4 105.2	4 159.4	1.3
2 Hobart	2 751.7	2 885.3	4.9
3 Townsville	1 667.5	1 659.7	-0.5
4 Darwin	1 607.7	1 654.0	2.9
5 Launceston	1 428.5	1 468.0	2.8
6 Newcastle	1 194.9	1 228.9	2.8
7 Mackay	899.6	936.6	4.1
8 Karratha	628.9	716.7	14.0
9 Rockhampton	655.1	639.6	-2.4
10 Ballina	630.4	573.9	-9.0
11 Proserpine	510.2	558.1	9.4
12 Port Hedland	486.9	507.3	4.2
13 Hamilton Island	488.2	490.5	0.5
14 Broome	441.0	456.4	3.5
15 Newman	409.7	445.3	8.7
16 Kalgoorlie	367.4	411.2	11.9
17 Alice Springs	366.2	365.7	-0.1
18 Ayers Rock	326.3	351.5	7.7
19 Paraburdoo	253.0	262.3	3.7
20 Coffs Harbour	280.2	241.1	-13.9
21 Mount Isa	240.9	232.7	-3.4
22 Albury	239.1	226.5	-5.3
23 Gladstone	209.8	223.3	6.4
24 Wagga Wagga	193.0	221.9	15.0
25 Hervey Bay	230.5	216.3	-6.2
26 Dubbo	207.0	211.0	1.9
27 Emerald	199.6	198.5	-0.5
28 Port Macquarie	199.3	195.2	-2.1
29 Mildura	202.2	187.0	-7.5
30 Port Lincoln	168.6	168.0	-0.4
31 Tamworth	165.2	156.4	-5.4
32 Bundaberg	127.5	150.4	17.9
33 Kununurra	147.9	139.6	-5.6
34 Devonport	138.9	138.6	-0.2
35 Geraldton	121.3	130.0	7.2
36 Thursday Island	111.7	123.7	10.7
37 Orange	118.6	116.6	-1.7
38 Learmonth	101.8	108.6	6.7
39 Moranbah	108.8	108.5	-0.3
40 Armidale	101.5	103.5	2.0
41 Olympic Dam	93.2	100.5	7.8
42 Weipa	92.0	98.3	6.9
43 Busselton	111.4	96.1	-13.7
44 Gove	91.7	85.5	-6.8
45 Burnie	78.5	82.4	4.9
46 Griffith	71.5	76.6	7.2
47 Mount Gambier	68.1	73.3	7.7
48 Norfolk Island	71.2	72.8	2.2
49 Merimbula	70.1	67.6	-3.5
50 Albany	67.5	66.0	3.6
<b>Total top 50 regional airports</b>	<b>23 647.2</b>	<b>24 186.7</b>	<b>2.3</b>
<b>Total regional airports</b>	<b>25 086.8</b>	<b>25 612.3</b>	<b>2.1</b>
<b>Total domestic network</b>	<b>118 739.3</b>	<b>120 917.7</b>	<b>1.8</b>

Note: Airport passenger movement numbers are the sum of passenger arrivals and departures at each airport. Regional airports are defined as airports which are, according to Australian Statistical Geography Standard (ASGS), not based in Major Cities.

## DOMESTIC CHARTER ACTIVITY

**Table 12: Charter passengers carried and aircraft trips - monthly activity (000s)**

	Feb 2025	Feb 2026	% Change
Total domestic charter passengers	322.7	359.8	11.5
Total domestic charter aircraft trips	5.5	6.0	9.6

Note: Helicopter, joyflights and sightseeing charter flights not included.

**Table 13: Charter passengers carried and aircraft trips - annual activity (000s)**

	YE Feb 2025	YE Feb 2026	% Change
Total domestic charter passengers	4 281.1	4 381.1	2.3
Total domestic charter aircraft trips	73.2	74.6	2.0

Note: Helicopter, joyflights and sightseeing charter flights not included.

**Table 14: Domestic airports - charter activity - monthly (000s)**

	Feb 2025	Feb 2026	% Change
Total domestic charter passenger movements	645.3	719.6	11.5
Total domestic charter aircraft movements	10.9	12.0	9.6
Perth airport charter passenger movements	230.2	252.5	9.7
Perth airport charter aircraft movements	3.4	3.6	8.4

Note: Helicopter, joyflights and sightseeing charter flights not included.

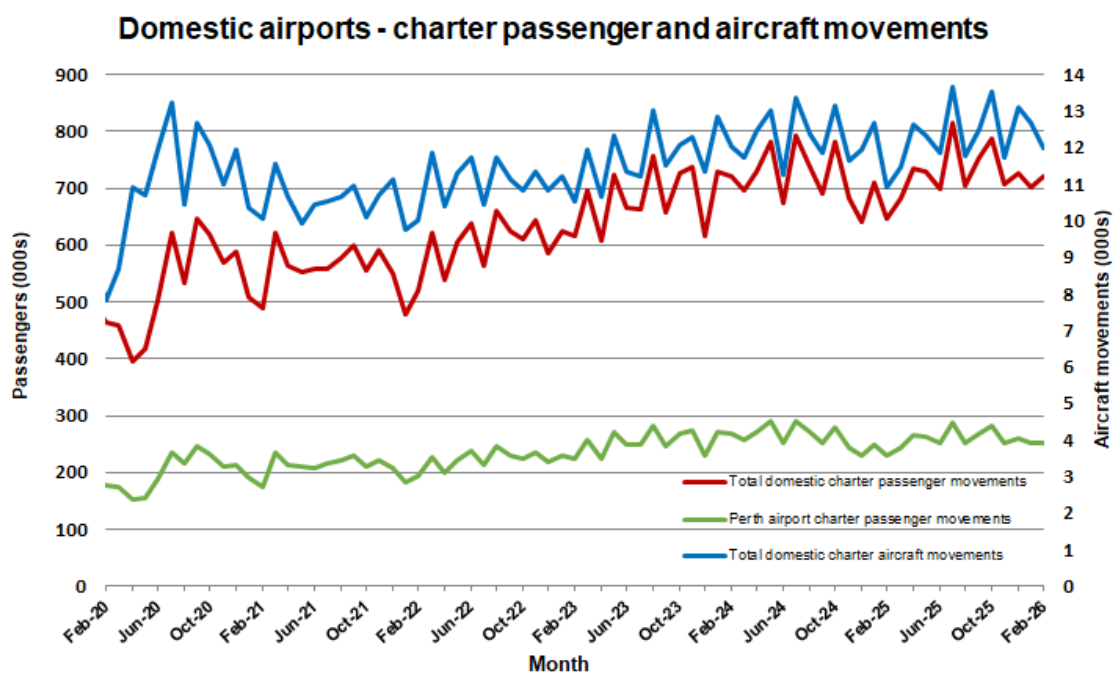
Charter passenger and aircraft movement numbers are the sum of arrivals and departures at each airport.

**Table 15: Domestic airports - charter activity - annual (000s)**

	YE Feb 2025	YE Feb 2026	% Change
Total domestic charter passenger movements	8 562.2	8 762.3	2.3
Total domestic charter aircraft movements	146.4	149.2	2.0
Perth airport charter passenger movements	3 120.0	3 131.3	0.4
Perth airport charter aircraft movements	46.3	45.3	-2.2

Note: Helicopter, joyflights and sightseeing charter flights not included.

Charter passenger and aircraft movement numbers are the sum of arrivals and departures at each airport.



## DEFINITIONS

Aircraft Trips	The number of flight stages. A return flight counts as two aircraft trips.
Airport Movements	Airport movements (passenger and cargo) are measured once on arrival and once on departure. Each domestic trip generates two movements at airports. For example, a trip from Melbourne to Sydney will be counted twice, as a departure at Melbourne and as an arrival at Sydney. At the national level, the sum of all domestic airport traffic will therefore be equal to twice the number of trips undertaken.
Available Seat Kilometres (ASKs)	Calculated by multiplying the number of seats available on each flight stage, by the distance in kilometres between the ports. The distances used are Great Circle Distances.
City-Pair	The ports shown make up the city-pair route. Passenger movements shown for a city pair reflect total traffic in both directions.
Flight Stage	The operation of an aircraft from take-off to landing.
Load Factor	The total revenue passenger kilometres performed as a percentage of the total available seat kilometres.
Passengers Carried	Revenue passengers carried.
Regular Public Transport Services (RPT)	All air service operations in which aircraft are available for the transport of members of the public and are conducted in accordance with fixed schedules. It does not include charter or other non-scheduled operations.
Revenue Passengers	All passengers paying any fare. Frequent flyer redemption travellers are regarded as revenue passengers.
Revenue Passenger Kilometres (RPKs)	Calculated by multiplying the number of revenue passengers travelling on each flight stage, by the distance in kilometres between the ports. The distances used are Great Circle Distances.
Traffic on board by stages (TOB)	The total of all traffic (revenue passengers) on each flight stage between two directly connected airports.
..	Not available for confidentiality or other reasons.
NA	Not applicable.