



Australian Government

Department of Infrastructure, Transport, Regional Development and Communications

Bureau of Infrastructure, Transport and Regional Economics

STATISTICAL REPORT



Aviation

Domestic aviation activity
February 2020

© Commonwealth of Australia 2020

ISSN: 1832 - 1968

Ownership of intellectual property rights in this publication

Unless otherwise noted, copyright (and any other intellectual property rights, if any) in this publication is owned by the Commonwealth of Australia (referred to below as the Commonwealth).

Disclaimer

The material contained in this publication is made available on the understanding that the Commonwealth is not providing professional advice, and that users exercise their own skill and care with respect to its use, and seek independent advice if necessary.

The Commonwealth makes no representations or warranties as to the contents or accuracy of the information contained in this publication. To the extent permitted by law, the Commonwealth disclaims liability to any person or organisation in respect of anything done, or omitted to be done, in reliance upon information contained in this publication.

Creative Commons licence

With the exception of (a) the Coat of Arms; and (b) the Department of Infrastructure, Transport, Regional Development and Communications' photos and graphics, copyright in this publication is licensed under a Creative Commons Attribution 3.0 Australia Licence.

Creative Commons Attribution 3.0 Australia Licence is a standard form licence agreement that allows you to copy, communicate and adapt this publication provided that you attribute the work to the Commonwealth and abide by the other licence terms. A summary of the licence terms is available from <http://creativecommons.org/licenses/by/3.0/au/deed.en>.

The full licence terms are available from <http://creativecommons.org/licenses/by/3.0/au/legalcode>.

Use of the Coat of Arms

The Department of the Prime Minister and Cabinet sets the terms under which the Coat of Arms is used. Please refer to the Department's Commonwealth Coat of Arms and Government branding web page <http://www.dpmc.gov.au/guidelines/index.cfm#brand> and, in particular, the Guidelines on the use of the Commonwealth Coat of Arms publication.

An appropriate citation for this report is:

Bureau of Infrastructure, Transport and Regional Economics (BITRE), 2020, Domestic aviation activity, Statistical Report, BITRE, Canberra ACT.

Contact us

This publication is available in PDF format. All other rights are reserved, including in relation to any Departmental logos or trade marks which may exist. For enquiries regarding the licence and any use of this publication, please contact:

Bureau of Infrastructure, Transport and Regional Economics (BITRE)
Department of Infrastructure, Transport, Regional Development and Communications
GPO Box 501, Canberra ACT 2601, Australia
Telephone: (international) +61 2 6274 7210
Fax: (international) +61 2 6274 6855
Email: bitre@infrastructure.gov.au
Website: www.bitre.gov.au

Inquiries

Should you require additional information about the statistics contained in this publication:

Nebojsa Pavlovic

Telephone (02) 6274 6817 or Facsimile (02) 6274 7727

Electronic mail: AVSTATS@infrastructure.gov.au

Nebojsa.Pavlovic@infrastructure.gov.au

Web site: <http://www.bitre.gov.au/statistics/aviation/domestic.aspx>

FOREWORD

This report provides an overview of domestic (including charter) commercial aviation activity in Australia for the month of February 2020.

The data cover revenue passengers carried by Australian-registered operators of scheduled regular public transport services over Australian flight stages and fixed-wing charter operators. These estimates include passengers carried between domestic airports on international flights operated by these carriers. The passengers carried refer to traffic on board by stages.

Estimates of passengers and aircraft movements for charter aviation are included in this publication, where BITRE confidentiality standards are met.

Individual routes shown are restricted to those with an average exceeding 8 000 passengers per month over the previous six months where two or more airlines operate in competition. For the month of February 2020, there were 63 such routes.

Information on the total network for the month of February 2020 and on the Regular Public Transport (RPT) network for the month of February 2020 is presented on page 2, with estimates for the year ended February 2020 presented on page 3.

Detailed information on the 63 individual routes can be found in the RPT summary pages 4-13 of this publication.

The top ten airports in terms of RPT passenger movements are shown on page 14.

Data on domestic RPT cargo movements at the top five cargo airports are provided on page 15. The table includes cargo carried on passenger flights operated by the Qantas group (including Jetstar), Virgin Australia, Air North and Skippers as well as the cargo carried by dedicated freighter aircraft operated by Qantas Freight, Toll Aviation and Virgin Australia Cargo.

The long-term trends for the top ten competitive RPT routes are presented graphically on pages 16-25.

Domestic RPT passenger movements at the top 50 regional airports are presented on pages 26-27.

Tables providing estimates of domestic charter aviation activity are shown on page 28. BITRE confidentiality standards restrict publication of detailed estimates for individual Australian airports, with the exception of Perth Airport.

A list of definitions can be found on page 29.

This report was prepared by the Aviation Statistics Section of the Bureau of Infrastructure, Transport and Regional Economics with data provided by airlines.

Estimates are included where data were not available and data presented in this publication may contain revisions to previously published data.

Where figures have been rounded, discrepancies may occur between sums of component items and totals, and in percentage changes which are derived from figures prior to rounding.

CONTENTS

Highlights	1
Total network	2
RPT network	2
Top competitive routes	4
Top ten airports – passenger movements	14
Top five airports – cargo movements	15
Top ten routes	16
1. Melbourne – Sydney	16
2. Brisbane – Sydney.....	17
3. Brisbane – Melbourne	18
4. Gold Coast – Sydney	19
5. Adelaide – Melbourne	20
6. Melbourne – Perth	21
7. Adelaide – Sydney	22
8. Gold Coast – Melbourne	23
9. Hobart – Melbourne	24
10. Perth – Sydney	25
Top fifty regional airports	26
Domestic charter activity	28
Definitions	29

This page is intentionally left blank.

HIGHLIGHTS

There were 4.60 million passengers carried on Australian domestic commercial aviation (including charter operations) in February 2020, a decrease of 2.2 per cent on February 2019. For the month of February 2020 there were 52.2 thousand aircraft trips, an increase of 0.1 per cent compared to February 2019.

4.36 million passengers were carried on RPT flights in February 2020, a decrease of 3.0 per cent on February 2019.

For the year ending February 2020 there were 61.25 million RPT passengers, an increase of 0.3 per cent on the year ending February 2019.

RPT revenue passenger kilometres (RPKs) performed were 4.92 billion for the month, down 2.9 per cent compared with February 2019. Capacity, measured by available seat kilometres (ASKs), decreased by 0.6 per cent compared with February 2019 to a total of 6.52 billion.

The industry wide load factor (RPKs/ASKs) decreased from 77.3 per cent in February 2019 to 75.5 per cent in February 2020. Load factors on individual routes increased on 36 of the 62 RPT routes for which data is available for publishing in both years.

For the month of February 2020, Melbourne – Sydney remained Australia's busiest RPT route with 691.9 thousand passengers, a decrease of 7.0 per cent compared with February 2019. It was followed by Brisbane – Sydney with 341.0 thousand passengers (down 3.5 per cent) and Brisbane – Melbourne with 239.7 thousand passengers (down 6.4 per cent).

The greatest percentage decrease in RPT passenger numbers, compared to February 2019, was on the Cairns – Sydney route (down 25.3 per cent). There were large decreases on a number of other routes, including Ayers Rock – Sydney (down 23.2 per cent), Cairns – Melbourne (down 21.9 per cent) and Brisbane – Cairns (down 15.1 per cent).

Routes with traffic increases in February 2020 compared with February 2019 included Adelaide – Port Lincoln (up 14.6 per cent), Newman – Perth (up 12.2 per cent), Adelaide – Gold Coast (up 11.5 per cent) and Perth – Port Hedland (up 11.2 per cent).

In February 2020, Sydney remained Australia's busiest domestic airport with 1.99 million passenger movements, followed by Melbourne with 1.87 million passenger movements and Brisbane with 1.22 million passenger movements.

Total cargo movements at Australian airports on domestic RPT flights were 35.5 thousand tonnes in February 2020, a decrease of 0.3 per cent compared with February 2019.

In February 2020, there were 1.72 million domestic passenger movements through regional airports, 3.3 per cent less than in February 2019. Out of the top 50 regional airports, the largest decrease was at Alice Springs airport (down 26.7 per cent on February 2019), while the strongest increase was recorded at Norfolk Island airport (up 16.5 per cent on February 2019).

Fixed-wing charter operators carried 234.7 thousand passengers in February 2020, an increase of 16.8 per cent on February 2019. Perth Airport accounted for 38.0 per cent of all charter passengers in Australia.

TOTAL NETWORK

Summary of monthly commercial aviation activity

	Feb 2019	Feb 2020	% Change
Total passengers carried (millions)	4.70	4.60	-2.2
Aircraft trips (000s)	52.1	52.2	0.1

Note: Regular Public Transport and charter aviation activity
Helicopter, joyflights and sightseeing charter flights not included.

RPT NETWORK

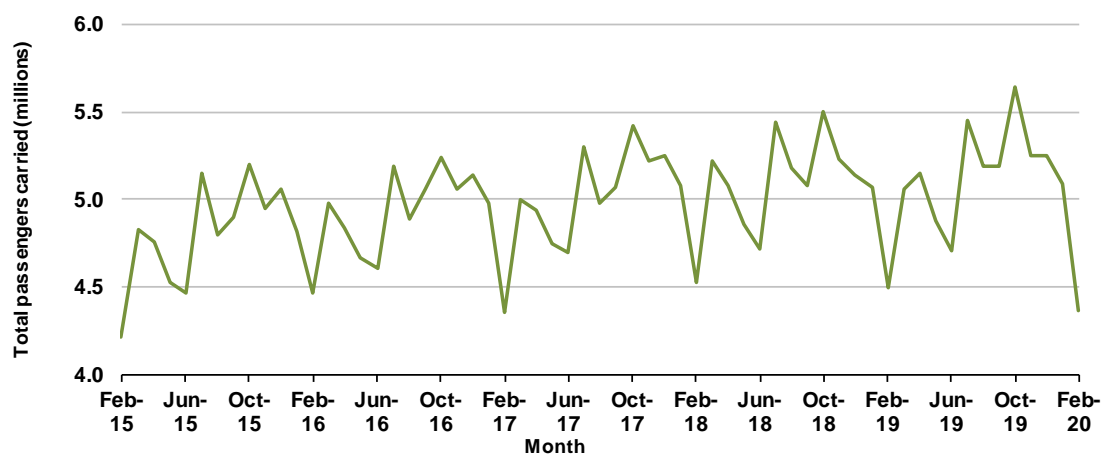
Summary of monthly RPT activity

	Feb 2019	Feb 2020	% Change
Total passengers carried (millions)	4.50	4.36	-3.0
Revenue passenger kilometres (billions)	5.07	4.92	-2.9
Available seats (millions)	5.87	5.84	-0.4
Available seat kilometres (billions)	6.56	6.52	-0.6
Load factor %	77.3	75.5	-1.8 *
Aircraft trips (000s)	48.7	48.2	-0.9

* percentage point difference

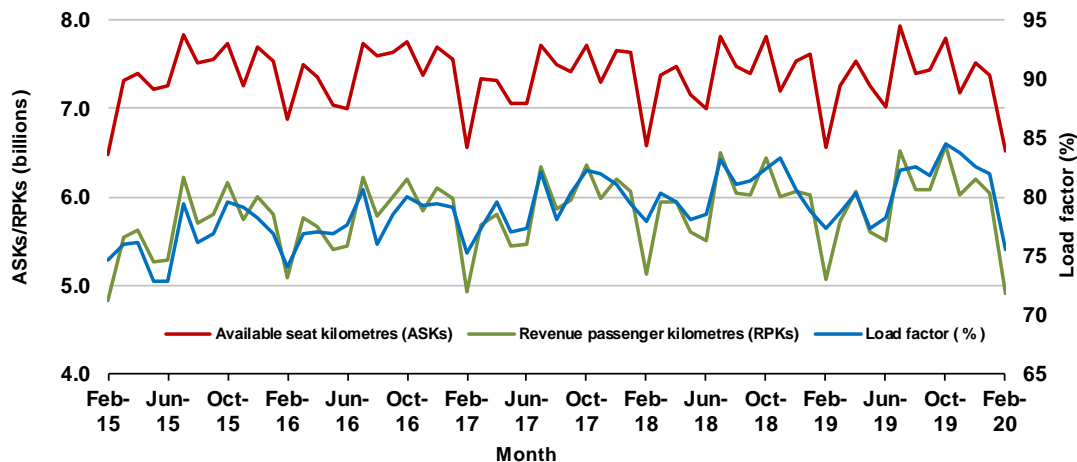
Domestic RPT passenger traffic

(monthly)



RPT Network utilisation

(monthly)



TOTAL NETWORK

Summary of annual commercial aviation activity

	YE Feb 2019	YE Feb 2020	% Change
Total passengers carried (millions)	63.54	64.07	0.8
Aircraft trips (000s)	673.6	682.7	1.3

Note: Regular Public Transport and charter aviation activity
Helicopter, joyflights and sightseeing charter flights not included.

RPT NETWORK

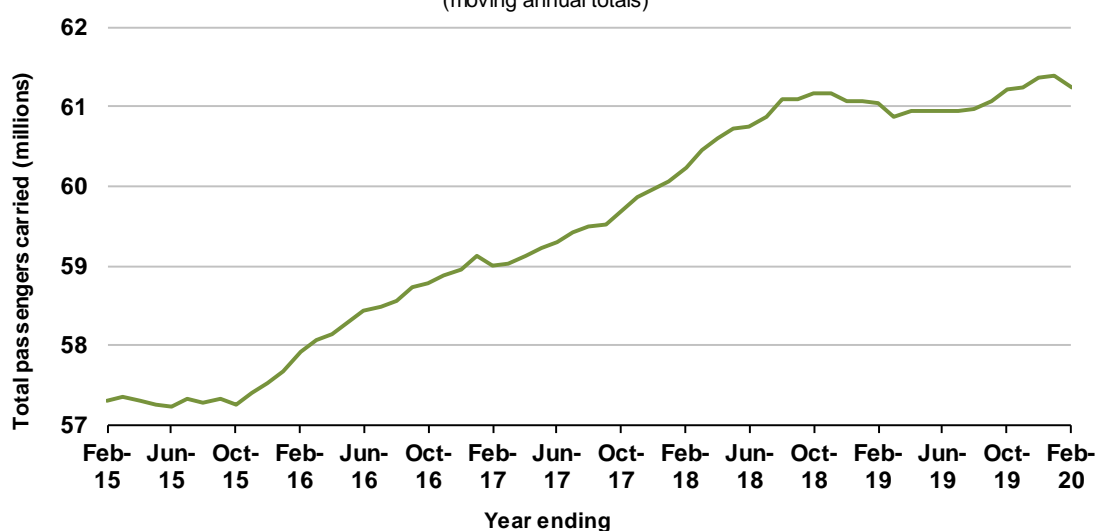
Summary of annual RPT activity

	YE Feb 2019	YE Feb 2020	% Change
Total passengers carried (millions)	61.04	61.25	0.3
Revenue passenger kilometres (billions)	71.15	71.36	0.3
Available seats (millions)	77.30	77.47	0.2
Available seat kilometres (billions)	88.42	88.22	-0.2
Load factor %	80.5	80.9	0.4 *
Aircraft trips (000s)	629.5	634.2	0.7

* percentage point difference

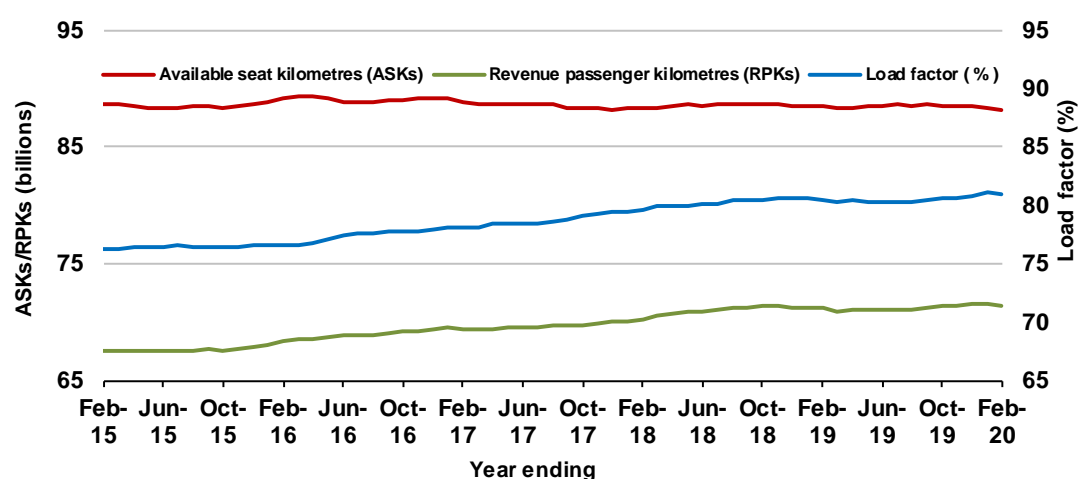
Domestic RPT passenger traffic

(moving annual totals)



RPT Network utilisation

(moving annual totals)



TOP COMPETITIVE ROUTES

Table 1: Passengers carried (000s) — annual activity

	City-Pair	YE Feb 2019	YE Feb 2020	% Change
1	Melbourne - Sydney	9 247.1	9 119.2	-1.4
2	Brisbane - Sydney	4 822.5	4 812.8	-0.2
3	Brisbane - Melbourne	3 581.2	3 604.4	0.6
4	Gold Coast - Sydney	2 710.2	2 739.1	1.1
5	Adelaide - Melbourne	2 505.7	2 531.2	1.0
6	Melbourne - Perth	2 120.6	2 113.7	-0.3
7	Gold Coast - Melbourne	2 066.2	2 107.0	2.0
8	Adelaide - Sydney	1 898.8	1 868.1	-1.6
9	Perth - Sydney	1 711.4	1 690.8	-1.2
10	Hobart - Melbourne	1 660.4	1 665.8	0.3
11	Brisbane - Cairns	1 301.5	1 287.2	-1.1
12	Canberra - Melbourne	1 184.9	1 177.4	-0.6
13	Cairns - Sydney	1 116.9	1 062.2	-4.9
14	Brisbane - Townsville	995.5	1 027.1	3.2
15	Brisbane - Perth	945.5	970.9	2.7
16	Launceston - Melbourne	962.0	957.4	-0.5
17	Canberra - Sydney	950.7	933.3	-1.8
18	Adelaide - Brisbane	843.0	882.0	4.6
19	Cairns - Melbourne	856.6	832.6	-2.8
20	Brisbane - Mackay	747.6	783.9	4.9
21	Hobart - Sydney	707.3	730.8	3.3
22	Brisbane - Canberra	644.2	666.7	3.5
23	Adelaide - Perth	632.1	661.7	4.7
24	Sunshine Coast - Sydney	628.9	654.0	4.0
25	Brisbane - Newcastle	584.0	608.9	4.3
26	Melbourne - Sunshine Coast	541.4	557.0	2.9
27	Brisbane - Rockhampton	518.2	541.8	4.6
28	Melbourne - Newcastle	490.8	479.2	-2.4
29	Karratha - Perth	443.7	471.7	6.3
30	Ballina - Sydney	433.1	436.7	0.8
31	Perth - Port Hedland	368.4	381.4	3.5
32	Brisbane - Darwin	370.7	354.6	-4.3
33	Newman - Perth	310.7	351.7	13.2
34	Broome - Perth	336.1	328.3	-2.3
35	Coffs Harbour - Sydney	337.9	326.4	-3.4
36	Darwin - Melbourne	306.4	311.8	1.8
37	Darwin - Sydney	309.2	307.4	-0.6
38	Launceston - Sydney	287.5	286.9	-0.2
39	Kalgoorlie - Perth	283.6	274.4	-3.2
40	Brisbane - Proserpine	242.3	260.6	7.6
41	Brisbane - Gladstone	250.6	249.2	-0.6
42	Brisbane - Hobart	233.6	243.3	4.2
43	Melbourne - Mildura	227.2	231.3	1.8
44	Albury - Sydney	227.0	227.0	0.0
45	Hamilton Island - Sydney	203.4	217.1	6.8
46	Adelaide - Gold Coast	219.0	215.2	-1.7
47	Brisbane - Emerald	197.2	203.5	3.2
48	Adelaide - Canberra	194.5	196.2	0.9
49	Ayers Rock - Sydney	191.8	191.5	-0.1
50	Port Macquarie - Sydney	186.4	191.1	2.5

continued

Table 1: (continued) Passengers carried (000s) — annual activity

	City-Pair	YE Feb 2019	YE Feb 2020	%Change
51	Dubbo - Sydney	188.0	182.2	-3.1
52	Sydney - Wagga Wagga	180.9	182.0	0.6
53	Sydney - Tamworth	173.9	175.6	1.0
54	Adelaide - Port Lincoln	168.4	175.3	4.1
55	Darwin - Perth	189.6	173.3	-8.6
56	Sydney - Townsville	170.0	172.3	1.3
57	Brisbane - Bundaberg	160.2	153.9	-3.9
58	Brisbane - Mount Isa	131.3	144.0	9.7
59	Adelaide - Alice Springs	130.9	142.0	8.5
60	Cairns - Townsville	149.1	141.9	-4.8
61	Brisbane - Hamilton Island	123.6	133.8	8.3
62	Armidale - Sydney	121.8	124.2	2.0
63	Hamilton Island - Melbourne	..	30.2	NA (a)
	Total domestic network	61 037.2	61 247.9	0.3

(a) Hamilton Island - Melbourne route included from November 2019, prior data not shown.

Table 2: Passengers carried (000s) — monthly activity

	City-Pair	Feb 2019	Feb 2020	% Change
1	Melbourne - Sydney	744.4	691.9	-7.0
2	Brisbane - Sydney	353.3	341.0	-3.5
3	Brisbane - Melbourne	256.0	239.7	-6.4
4	Gold Coast - Sydney	202.0	197.1	-2.4
5	Adelaide - Melbourne	200.5	193.1	-3.7
6	Melbourne - Perth	154.8	154.4	-0.3
7	Adelaide - Sydney	142.3	138.0	-3.0
8	Gold Coast - Melbourne	141.7	136.3	-3.8
9	Hobart - Melbourne	142.1	135.5	-4.7
10	Perth - Sydney	124.4	126.6	1.8
11	Canberra - Melbourne	95.9	93.4	-2.6
12	Brisbane - Cairns	93.2	79.1	-15.1
13	Launceston - Melbourne	81.3	76.7	-5.7
14	Canberra - Sydney	73.2	73.2	0.1
15	Brisbane - Perth	65.5	70.7	7.9
16	Brisbane - Townsville	66.1	70.3	6.4
17	Hobart - Sydney	60.8	60.9	0.3
18	Adelaide - Brisbane	58.0	60.7	4.7
19	Brisbane - Mackay	54.4	58.2	7.0
20	Cairns - Sydney	77.4	57.8	-25.3
21	Adelaide - Perth	47.3	48.8	3.1
22	Brisbane - Canberra	43.2	45.6	5.6
23	Brisbane - Newcastle	42.7	44.0	3.1
24	Sunshine Coast - Sydney	43.2	43.1	0.0
25	Cairns - Melbourne	51.6	40.3	-21.9
26	Brisbane - Rockhampton	38.3	39.0	1.8
27	Karratha - Perth	33.5	35.5	6.2
28	Melbourne - Sunshine Coast	32.5	35.4	8.8
29	Melbourne - Newcastle	34.7	35.0	1.0
30	Ballina - Sydney	30.4	32.6	7.3
31	Perth - Port Hedland	27.8	30.9	11.2
32	Newman - Perth	25.9	29.0	12.2
33	Launceston - Sydney	25.1	24.3	-2.8
34	Coffs Harbour - Sydney	24.1	23.9	-1.1
35	Kalgoorlie - Perth	22.1	20.8	-5.8
36	Brisbane - Darwin	20.5	19.9	-3.2
37	Brisbane - Hobart	18.9	19.5	3.0
38	Broome - Perth	18.0	18.3	1.5
39	Brisbane - Gladstone	17.9	18.3	2.0
40	Darwin - Melbourne	16.9	18.1	7.1
41	Brisbane - Proserpine	17.4	17.5	0.4
42	Melbourne - Mildura	17.1	16.7	-2.5
43	Adelaide - Gold Coast	14.5	16.2	11.5
44	Albury - Sydney	15.7	15.5	-0.9
45	Brisbane - Emerald	14.9	15.5	4.2
46	Adelaide - Port Lincoln	12.8	14.7	14.6
47	Adelaide - Canberra	14.3	14.6	2.5
48	Hamilton Island - Sydney	14.6	14.5	-0.2
49	Darwin - Sydney	15.5	14.1	-8.9
50	Port Macquarie - Sydney	14.2	14.0	-1.4

continued

Table 2: (continued) Passengers carried (000s) — monthly activity

	City-Pair	Feb 2019	Feb 2020	% Change
51	Dubbo - Sydney	13.9	13.9	0.4
52	Sydney - Wagga Wagga	12.6	13.6	7.9
53	Sydney - Tamworth	12.2	13.2	8.7
54	Brisbane - Bundaberg	11.2	11.5	2.4
55	Darwin - Perth	11.3	11.0	-2.9
56	Brisbane - Mount Isa	9.7	10.6	10.0
57	Cairns - Townsville	10.5	10.0	-4.9
58	Ayers Rock - Sydney	12.5	9.6	-23.2
59	Brisbane - Hamilton Island	10.0	8.9	-11.1
60	Armidale - Sydney	9.3	8.8	-5.2
61	Adelaide - Alice Springs	9.5	8.5	-10.1
62	Sydney - Townsville	8.5	8.1	-4.9
63	Hamilton Island - Melbourne	..	4.5	NA (a)
	Total domestic network	4 499.3	4 363.3	-3.0

(a) Hamilton Island - Melbourne route included from November 2019, prior data not shown.

Table 3: Available seats (000s) — monthly activity

	City-Pair	Feb 2019	Feb 2020	% Change
1	Melbourne - Sydney	864.6	827.8	-4.3
2	Brisbane - Sydney	437.8	426.8	-2.5
3	Brisbane - Melbourne	325.5	315.1	-3.2
4	Gold Coast - Sydney	223.4	233.3	4.5
5	Adelaide - Melbourne	248.8	246.6	-0.9
6	Melbourne - Perth	190.3	187.7	-1.4
7	Adelaide - Sydney	175.6	173.7	-1.1
8	Gold Coast - Melbourne	160.7	163.6	1.8
9	Hobart - Melbourne	172.1	174.5	1.4
10	Perth - Sydney	151.1	154.1	2.0
11	Canberra - Melbourne	139.3	143.2	2.8
12	Brisbane - Cairns	109.1	111.5	2.2
13	Launceston - Melbourne	97.6	100.7	3.1
14	Canberra - Sydney	103.4	99.7	-3.5
15	Brisbane - Perth	86.7	88.7	2.4
16	Brisbane - Townsville	89.3	98.0	9.8
17	Hobart - Sydney	71.6	77.0	7.5
18	Adelaide - Brisbane	80.0	86.3	8.0
19	Brisbane - Mackay	74.9	78.4	4.6
20	Cairns - Sydney	99.1	87.7	-11.5
21	Adelaide - Perth	62.9	65.0	3.4
22	Brisbane - Canberra	63.9	66.4	4.0
23	Brisbane - Newcastle	61.5	61.5	0.0
24	Sunshine Coast - Sydney	53.9	51.6	-4.2
25	Cairns - Melbourne	67.7	58.7	-13.3
26	Brisbane - Rockhampton	50.9	55.0	8.0
27	Karratha - Perth	53.7	62.0	15.5
28	Melbourne - Sunshine Coast	40.4	42.2	4.4
29	Melbourne - Newcastle	40.5	41.5	2.3
30	Ballina - Sydney	35.6	38.9	9.5
31	Perth - Port Hedland	44.3	47.8	7.9
32	Newman - Perth	41.6	49.2	18.3
33	Launceston - Sydney	28.9	29.1	0.6
34	Coffs Harbour - Sydney	35.0	32.1	-8.4
35	Kalgoorlie - Perth	39.3	36.4	-7.3
36	Brisbane - Darwin	29.3	26.5	-9.6
37	Brisbane - Hobart	23.9	23.2	-2.9
38	Broome - Perth	29.1	31.5	8.3
39	Brisbane - Gladstone	29.1	30.2	3.5
40	Darwin - Melbourne	24.0	24.6	2.4
41	Brisbane - Proserpine	22.6	22.0	-2.9
42	Melbourne - Mildura	27.2	27.5	1.0
43	Adelaide - Gold Coast	18.5	19.4	4.7
44	Albury - Sydney	24.7	24.2	-2.0
45	Brisbane - Emerald	23.8	23.6	-0.8
46	Adelaide - Port Lincoln	22.8	21.5	-5.7
47	Adelaide - Canberra	22.7	22.9	1.0
48	Hamilton Island - Sydney	19.1	21.0	9.7
49	Darwin - Sydney	22.9	20.4	-11.1
50	Port Macquarie - Sydney	20.1	18.8	-6.2

continued

Table 3: (continued) Available seats (000s) — monthly activity

	City-Pair	Feb 2019	Feb 2020	% Change
51	Dubbo - Sydney	21.1	22.1	4.8
52	Sydney - Wagga Wagga	20.1	21.1	5.1
53	Sydney - Tamworth	20.5	21.6	5.4
54	Brisbane - Bundaberg	17.8	16.8	-5.6
55	Darwin - Perth	19.2	20.0	4.3
56	Brisbane - Mount Isa	14.3	15.9	11.2
57	Cairns - Townsville	18.5	19.5	5.8
58	Ayers Rock - Sydney	18.0	18.2	1.1
59	Brisbane - Hamilton Island	13.9	14.3	2.4
60	Armidale - Sydney	14.2	13.9	-2.1
61	Adelaide - Alice Springs	14.3	14.9	4.1
62	Sydney - Townsville	12.8	10.9	-14.8
63	Hamilton Island - Melbourne	..	8.6	NA (a)
	Total domestic network	5 866.4	5 842.5	-0.4

(a) Hamilton Island - Melbourne route included from November 2019, prior data not shown.

Table 4: Load factors (%) — monthly activity

	City-Pair	Feb 2019	Feb 2020	% Point diff
1	Melbourne - Sydney	86.1	83.6	-2.5
2	Brisbane - Sydney	80.7	79.9	-0.8
3	Brisbane - Melbourne	78.6	76.1	-2.5
4	Gold Coast - Sydney	90.5	84.5	-6.0
5	Adelaide - Melbourne	80.6	78.3	-2.3
6	Melbourne - Perth	81.3	82.3	1.0
7	Adelaide - Sydney	81.0	79.5	-1.5
8	Gold Coast - Melbourne	88.2	83.3	-4.9
9	Hobart - Melbourne	82.5	77.6	-4.9
10	Perth - Sydney	82.3	82.1	-0.2
11	Canberra - Melbourne	68.8	65.2	-3.6
12	Brisbane - Cairns	85.4	70.9	-14.5
13	Launceston - Melbourne	83.3	76.2	-7.1
14	Canberra - Sydney	70.7	73.4	2.7
15	Brisbane - Perth	75.5	79.7	4.2
16	Brisbane - Townsville	74.0	71.7	-2.3
17	Hobart - Sydney	84.9	79.2	-5.7
18	Adelaide - Brisbane	72.5	70.3	-2.2
19	Brisbane - Mackay	72.6	74.3	1.7
20	Cairns - Sydney	78.1	65.9	-12.2
21	Adelaide - Perth	75.3	75.1	-0.2
22	Brisbane - Canberra	67.7	68.7	1.0
23	Brisbane - Newcastle	69.5	71.6	2.1
24	Sunshine Coast - Sydney	80.1	83.6	3.5
25	Cairns - Melbourne	76.2	68.6	-7.6
26	Brisbane - Rockhampton	75.2	70.8	-4.4
27	Karratha - Perth	62.4	57.4	-5.0
28	Melbourne - Sunshine Coast	80.5	83.8	3.3
29	Melbourne - Newcastle	85.5	84.4	-1.1
30	Ballina - Sydney	85.5	83.8	-1.7
31	Perth - Port Hedland	62.7	64.7	2.0
32	Newman - Perth	62.2	59.0	-3.2
33	Launceston - Sydney	86.7	83.7	-3.0
34	Coffs Harbour - Sydney	68.9	74.4	5.5
35	Kalgoorlie - Perth	56.1	57.0	0.9
36	Brisbane - Darwin	70.0	74.9	4.9
37	Brisbane - Hobart	79.3	84.1	4.8
38	Broome - Perth	62.0	58.1	-3.9
39	Brisbane - Gladstone	61.5	60.6	-0.9
40	Darwin - Melbourne	70.5	73.7	3.2
41	Brisbane - Proserpine	76.8	79.4	2.6
42	Melbourne - Mildura	62.9	60.7	-2.2
43	Adelaide - Gold Coast	78.3	83.4	5.1
44	Albury - Sydney	63.4	64.1	0.7
45	Brisbane - Emerald	62.7	65.8	3.1
46	Adelaide - Port Lincoln	56.4	68.5	12.1
47	Adelaide - Canberra	62.8	63.8	1.0
48	Hamilton Island - Sydney	76.1	69.2	-6.9
49	Darwin - Sydney	67.5	69.1	1.6
50	Port Macquarie - Sydney	70.7	74.3	3.6

continued

Table 4: (continued) Load factors (%) — monthly activity

	City-Pair	Feb 2019	Feb 2020	% Point diff
51	Dubbo - Sydney	65.6	62.9	-2.7
52	Sydney - Wagga Wagga	62.8	64.5	1.7
53	Sydney - Tamworth	59.3	61.2	1.9
54	Brisbane - Bundaberg	62.9	68.2	5.3
55	Darwin - Perth	59.1	55.0	-4.1
56	Brisbane - Mount Isa	67.6	66.8	-0.8
57	Cairns - Townsville	57.0	51.2	-5.8
58	Ayers Rock - Sydney	69.4	52.7	-16.7
59	Brisbane - Hamilton Island	71.7	62.3	-9.4
60	Armidale - Sydney	65.4	63.4	-2.0
61	Adelaide - Alice Springs	66.1	57.1	-9.0
62	Sydney - Townsville	66.3	74.0	7.7
63	Hamilton Island - Melbourne	..	52.0	NA (a)
	Total domestic network	77.3	75.5	-1.8

(a) Hamilton Island - Melbourne route included from November 2019, prior data not shown.

Table 5: Aircraft trips ^(a) — monthly activity

	City-Pair	Feb 2019	Feb 2020	% Change
1	Melbourne - Sydney	4 850	4 677	-3.6
2	Brisbane - Sydney	2 717	2 596	-4.5
3	Brisbane - Melbourne	1 956	1 891	-3.3
4	Gold Coast - Sydney	1 262	1 329	5.3
5	Adelaide - Melbourne	1 513	1 497	-1.1
6	Melbourne - Perth	960	927	-3.4
7	Adelaide - Sydney	1 057	1 022	-3.3
8	Gold Coast - Melbourne	846	862	1.9
9	Hobart - Melbourne	927	948	2.3
10	Perth - Sydney	699	703	0.6
11	Canberra - Melbourne	877	900	2.6
12	Brisbane - Cairns	738	785	6.4
13	Launceston - Melbourne	728	741	1.8
14	Canberra - Sydney	1 345	1 298	-3.5
15	Brisbane - Perth	471	484	2.8
16	Brisbane - Townsville	611	666	9.0
17	Hobart - Sydney	422	470	11.4
18	Adelaide - Brisbane	489	496	1.4
19	Brisbane - Mackay	571	616	7.9
20	Cairns - Sydney	515	453	-12.0
21	Adelaide - Perth	423	425	0.5
22	Brisbane - Canberra	476	492	3.4
23	Brisbane - Newcastle	460	453	-1.5
24	Sunshine Coast - Sydney	322	331	2.8
25	Cairns - Melbourne	340	305	-10.3
26	Brisbane - Rockhampton	620	622	0.3
27	Karratha - Perth	468	440	-6.0
28	Melbourne - Sunshine Coast	226	236	4.4
29	Melbourne - Newcastle	224	228	1.8
30	Ballina - Sydney	233	248	6.4
31	Perth - Port Hedland	339	358	5.6
32	Newman - Perth	319	334	4.7
33	Launceston - Sydney	160	161	0.6
34	Coffs Harbour - Sydney	370	373	0.8
35	Kalgoorlie - Perth	308	305	-1.0
36	Brisbane - Darwin	187	169	-9.6
37	Brisbane - Hobart	134	131	-2.2
38	Broome - Perth	254	268	5.5
39	Brisbane - Gladstone	384	400	4.2
40	Darwin - Melbourne	135	140	3.7
41	Brisbane - Proserpine	128	123	-3.9
42	Melbourne - Mildura	368	369	0.3
43	Adelaide - Gold Coast	104	109	4.8
44	Albury - Sydney	449	459	2.2
45	Brisbane - Emerald	350	347	-0.9
46	Adelaide - Port Lincoln	588	555	-5.6
47	Adelaide - Canberra	136	138	1.5
48	Hamilton Island - Sydney	118	134	13.6
49	Darwin - Sydney	133	117	-12.0
50	Port Macquarie - Sydney	300	296	-1.3

continued

Table 5: (continued) Aircraft trips ^(a) — monthly activity

	City-Pair	Feb 2019	Feb 2020	% Change
51	Dubbo - Sydney	456	473	3.7
52	Sydney - Wagga Wagga	390	427	9.5
53	Sydney - Tamworth	320	353	10.3
54	Brisbane - Bundaberg	278	272	-2.2
55	Darwin - Perth	111	116	4.5
56	Brisbane - Mount Isa	135	134	-0.7
57	Cairns - Townsville	293	311	6.1
58	Ayers Rock - Sydney	104	104	0.0
59	Brisbane - Hamilton Island	111	114	2.7
60	Armidale - Sydney	340	335	-1.5
61	Adelaide - Alice Springs	104	114	9.6
62	Sydney - Townsville	74	64	-13.5
63	Hamilton Island - Melbourne	..	50	NA (b)
	Total domestic network	48 661	48 220	-0.9

(a) Includes RPT Cargo flights.

(b) Hamilton Island - Melbourne route included from November 2019, prior data not shown.

TOP TEN AIRPORTS – PASSENGER MOVEMENTS

Table 6: Top ten airports, RPT passenger movements (000s) - monthly activity

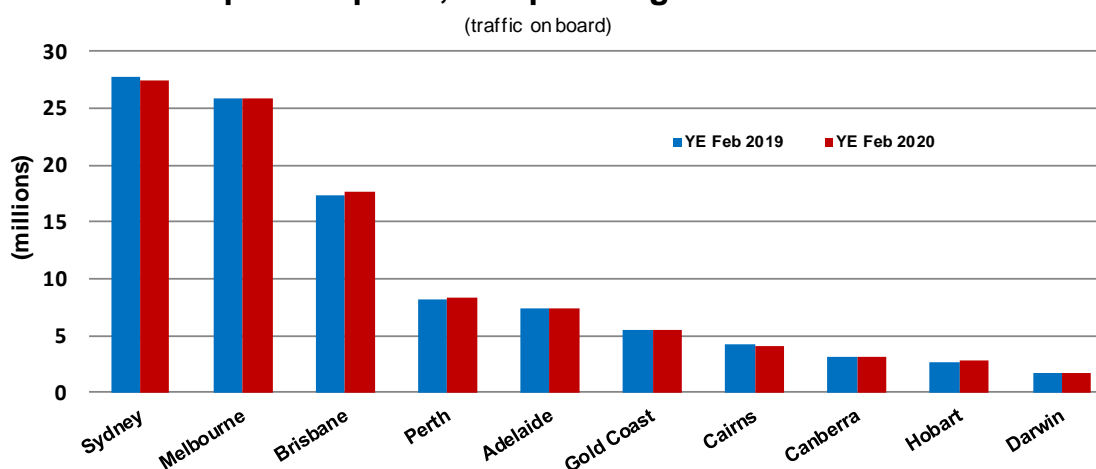
Airport	Feb 2019	Feb 2020	% Change	% of Total
1 Sydney	2 086.7	1 993.7	-4.5	22.8
2 Melbourne	1 968.3	1 867.8	-5.1	21.4
3 Brisbane	1 239.1	1 219.7	-1.6	14.0
4 Perth	593.3	608.1	2.5	7.0
5 Adelaide	551.4	542.1	-1.7	6.2
6 Gold Coast	390.1	380.7	-2.4	4.4
7 Canberra	239.0	239.8	0.3	2.7
8 Cairns	283.5	233.4	-17.7	2.7
9 Hobart	231.9	228.2	-1.6	2.6
10 Launceston	117.3	112.3	-4.3	1.3
Total top ten airports	7 700.6	7 425.8	-3.6	85.1
Total domestic network	8 998.6	8 726.5	-3.0	100.0

Table 7: Top ten airports, RPT passenger movements (000s) - annual activity

Airport	YE Feb 2019	YE Feb 2020	% Change	% of Total
1 Sydney	27 705.8	27 468.1	-0.9	22.4
2 Melbourne	25 896.5	25 876.8	-0.1	21.1
3 Brisbane	17 356.1	17 632.4	1.6	14.4
4 Perth	8 228.4	8 309.5	1.0	6.8
5 Adelaide	7 309.0	7 378.6	1.0	6.0
6 Gold Coast	5 487.8	5 564.0	1.4	4.5
7 Cairns	4 291.8	4 103.5	-4.4	3.3
8 Canberra	3 156.2	3 159.0	0.1	2.6
9 Hobart	2 688.3	2 785.0	3.6	2.3
10 Darwin	1 733.3	1 691.8	-2.4	1.4
Total top ten airports	103 853.2	103 968.8	0.1	84.9
Total domestic network	122 074.4	122 495.9	0.3	100.0

Note: Airport passenger movement numbers are the sum of passenger arrivals and departures at each airport.

Top ten airports, RPT passenger movements



TOP FIVE AIRPORTS – CARGO MOVEMENTS

Table 8: Top five airports, domestic RPT cargo movements (000s tonnes) - monthly activity

Airport	Feb 2019	Feb 2020	% Change	% of Total
1 Melbourne	9.3	9.2	-1.9	25.8
2 Sydney	7.7	7.8	0.6	21.8
3 Brisbane	5.3	5.9	11.7	16.5
4 Perth	4.8	4.6	-5.4	12.8
5 Adelaide	2.3	2.3	-1.2	6.4
Total top five airports	29.4	29.6	0.7	83.3
Total domestic network	35.6	35.5	-0.3	100.0

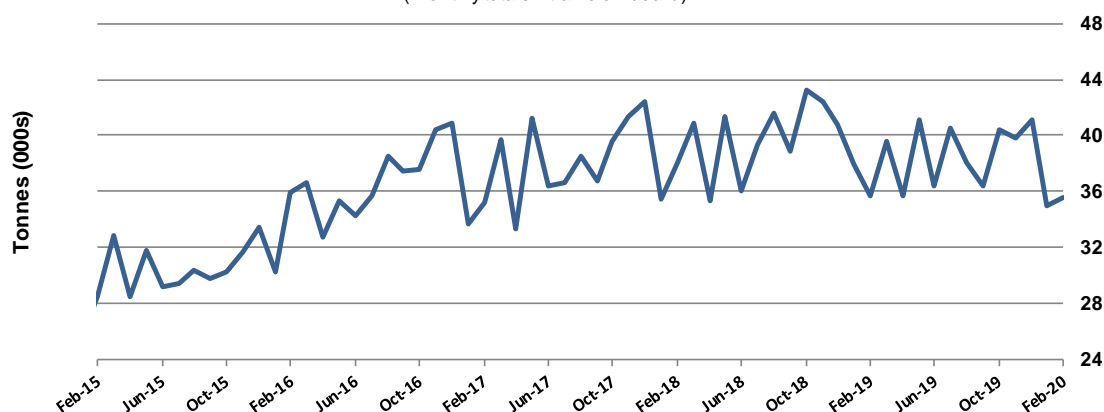
Table 9: Top five airports, domestic RPT cargo movements (000s tonnes) - annual activity

Airport	YE Feb 2019	YE Feb 2020	% Change	% of Total
1 Melbourne	131.7	120.6	-8.5	26.2
2 Sydney	106.4	99.5	-6.4	21.7
3 Brisbane	73.1	73.5	0.6	16.0
4 Perth	66.8	60.8	-8.9	13.2
5 Adelaide	28.8	28.3	-1.6	6.2
Total top five airports	406.8	382.8	-5.9	83.3
Total domestic network	473.6	459.6	-3.0	100.0

Note: Airport cargo tonnes are the sum of cargo tonnes on arrivals and departures at each airport.
Toll Air Freight data for January and February months have been estimated.

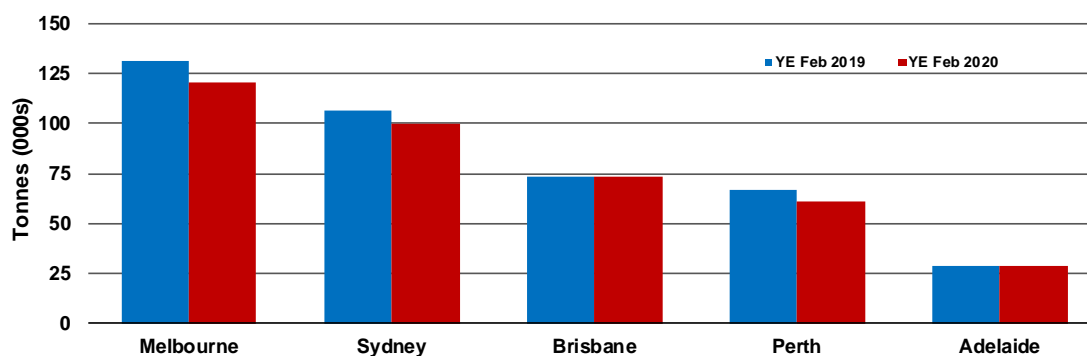
Total domestic network - cargo movement

(monthly totals - traffic on board)



Top five airports, cargo movements

(Domestic cargo traffic - traffic on board)



TOP TEN ROUTES

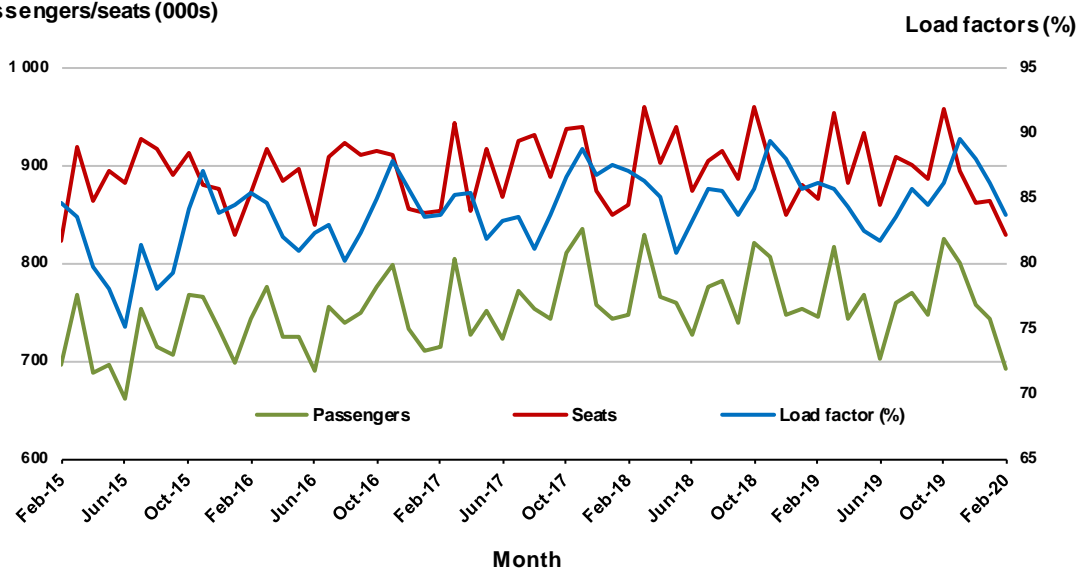
1. Melbourne - Sydney

Monthly data

	Feb 2019	Feb 2020	% Change
Passengers carried (000s)	744.4	691.9	-7.0
Seats (000s)	864.6	827.8	-4.3
Load factor %	86.1	83.6	-2.5 *
Aircraft trips	4 850	4 677	-3.6

* percentage point difference

Passengers/seats (000s)

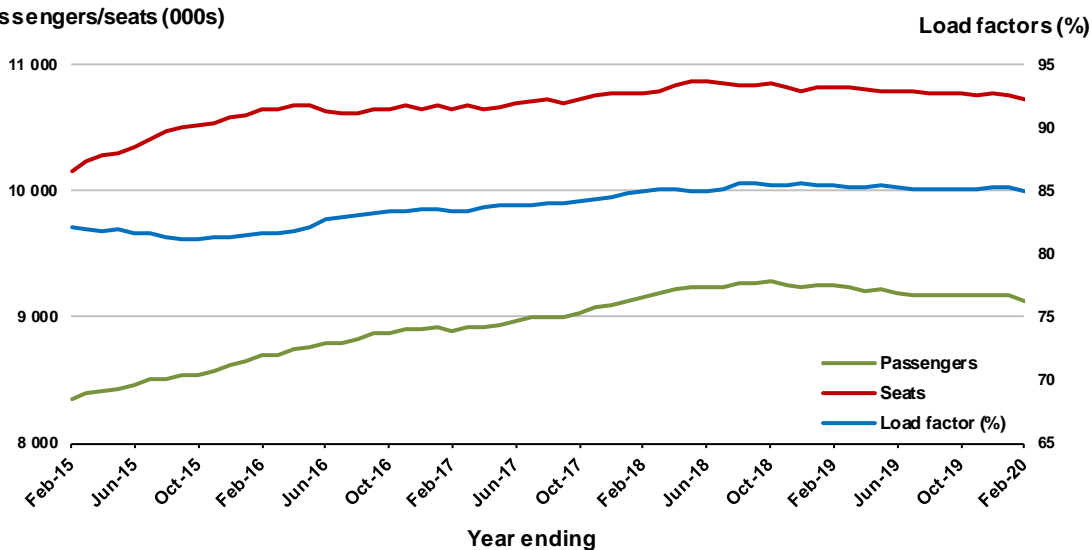


Moving annual data

	YE Feb 2019	YE Feb 2020	% Change
Passengers carried (000s)	9 247.1	9 119.2	-1.4
Seats (000s)	10 830.1	10 722.3	-1.0
Load factor %	85.4	85.1	-0.3 *
Aircraft trips	60 099	60 228	0.2

* percentage point difference

Passengers/seats (000s)

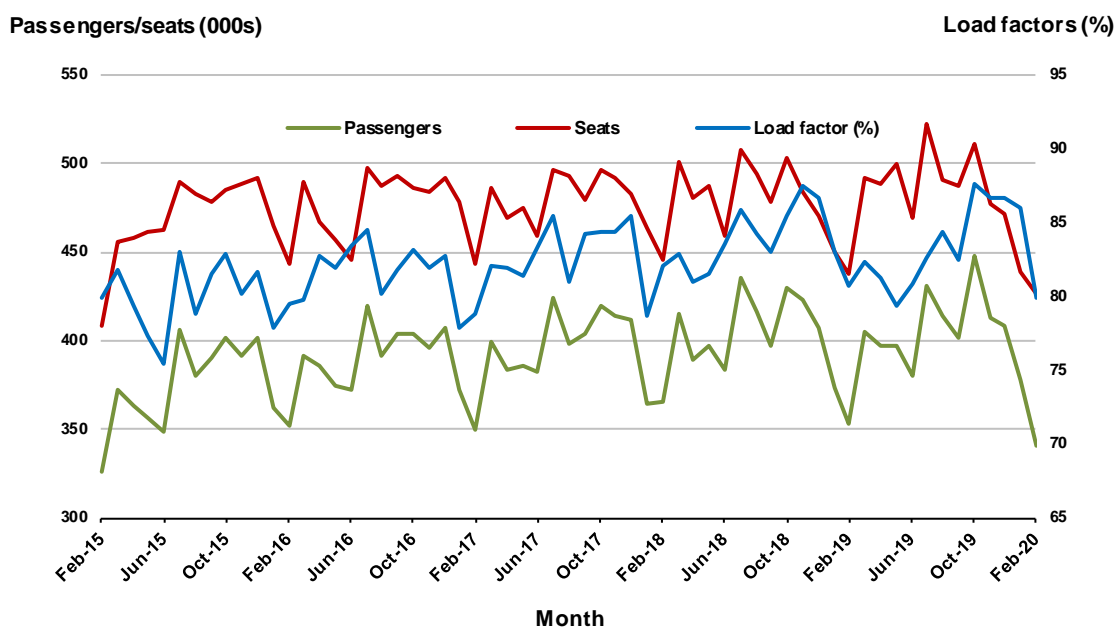


2. Brisbane - Sydney

Monthly data

	Feb 2019	Feb 2020	% Change
Passengers carried (000s)	353.3	341.0	-3.5
Seats (000s)	437.8	426.8	-2.5
Load factor %	80.7	79.9	-0.8 *
Aircraft trips	2 717	2 596	-4.5

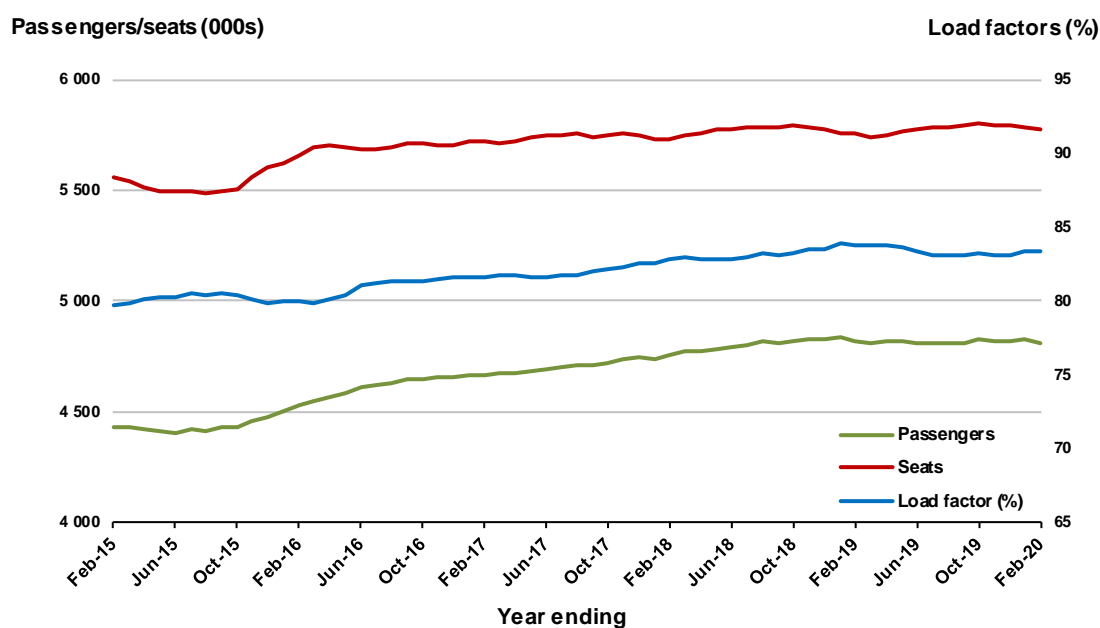
* percentage point difference



Moving annual data

	YE Feb 2019	YE Feb 2020	% Change
Passengers carried (000s)	4 822.5	4 812.8	-0.2
Seats (000s)	5 753.8	5 773.5	0.3
Load factor %	83.8	83.4	-0.5 *
Aircraft trips	34 972	35 166	0.6

* percentage point difference

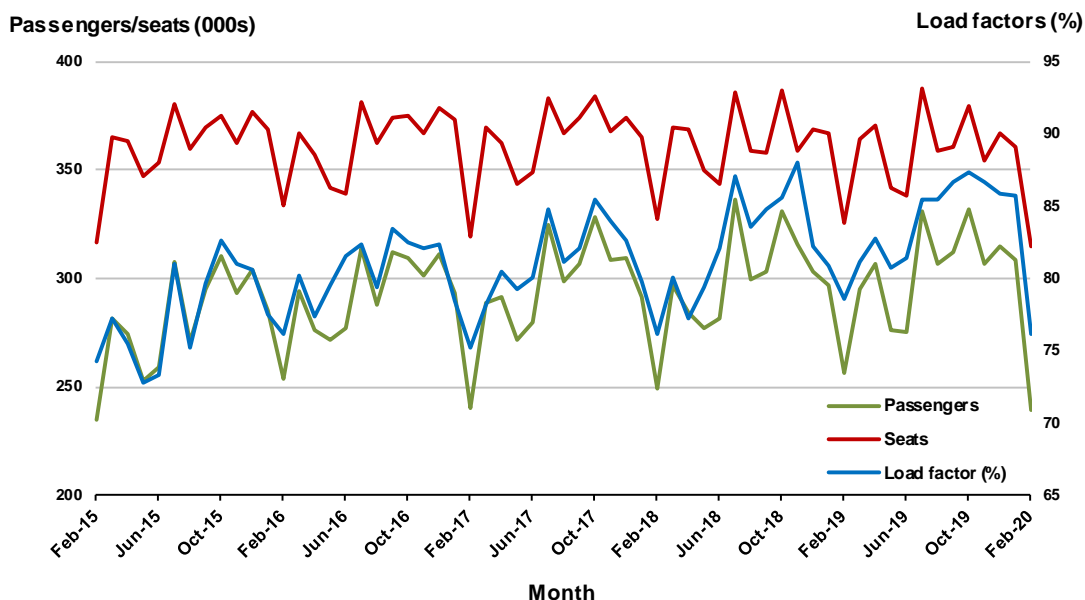


3. Brisbane - Melbourne

Monthly data

	Feb 2019	Feb 2020	% Change
Passengers carried (000s)	256.0	239.7	-6.4
Seats (000s)	325.5	315.1	-3.2
Load factor %	78.6	76.1	-2.5 *
Aircraft trips	1 956	1 891	-3.3

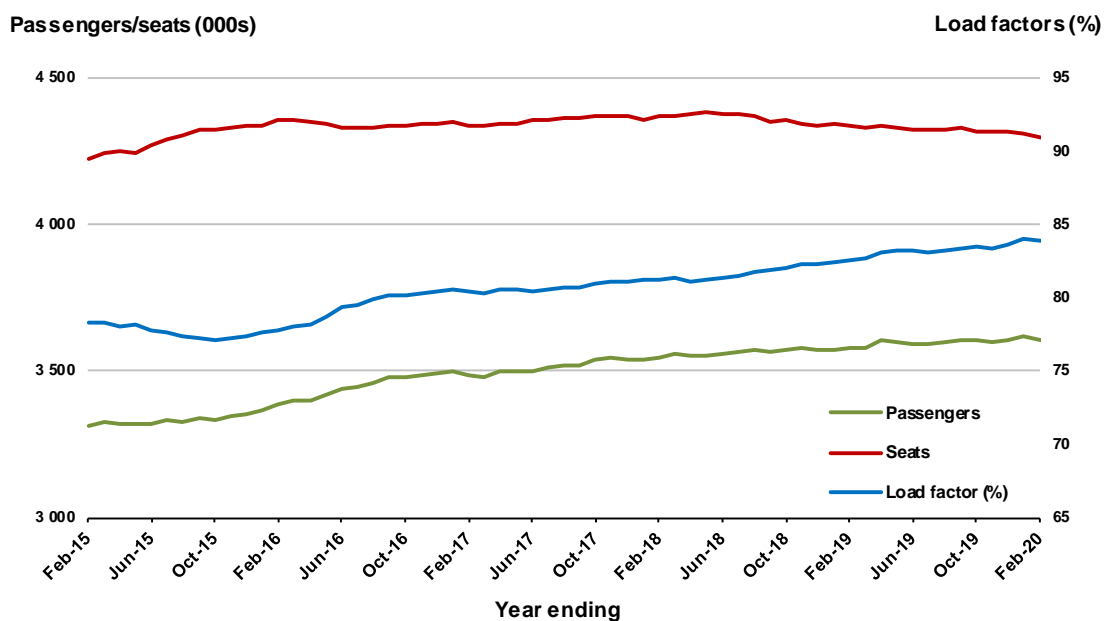
* percentage point difference



Moving annual data

	YE Feb 2019	YE Feb 2020	% Change
Passengers carried (000s)	3 581.2	3 604.4	0.6
Seats (000s)	4 338.5	4 296.3	-1.0
Load factor %	82.5	83.9	1.3 *
Aircraft trips	25 582	25 271	-1.2

* percentage point difference



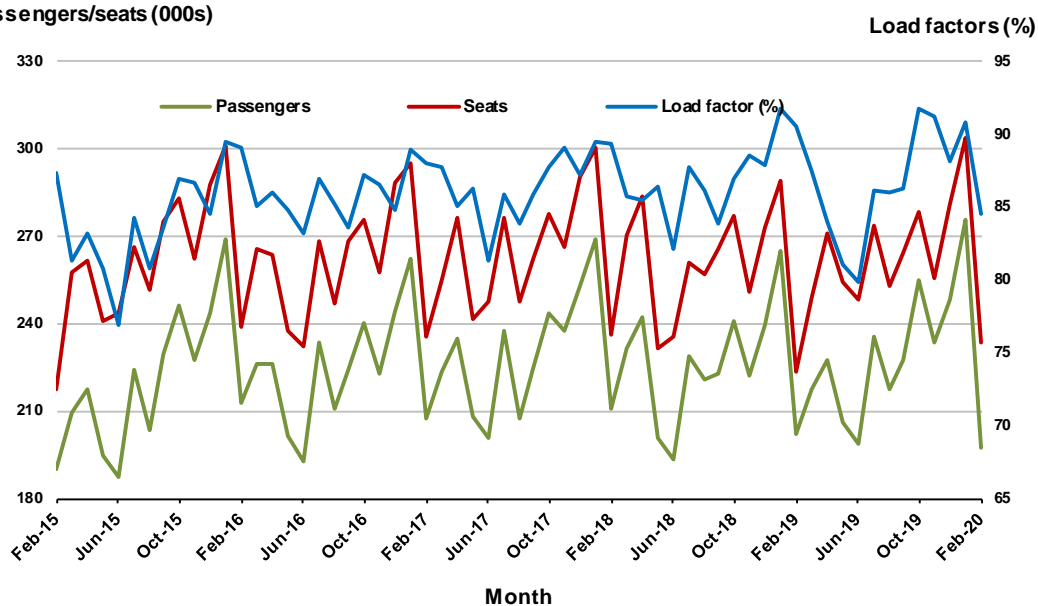
4. Gold Coast - Sydney

Monthly data

	Feb 2019	Feb 2020	% Change
Passengers carried (000s)	202.0	197.1	-2.4
Seats (000s)	223.4	233.3	4.5
Load factor %	90.5	84.5	-6.0 *
Aircraft trips	1 262	1 329	5.3

* percentage point difference

Passengers/seats (000s)

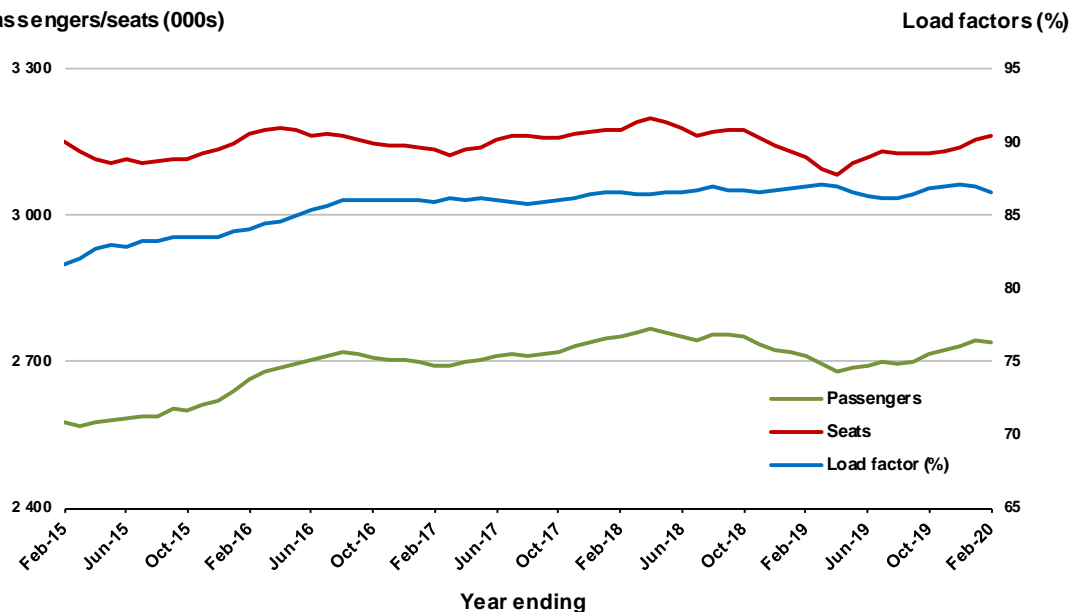


Moving annual data

	YE Feb 2019	YE Feb 2020	% Change
Passengers carried (000s)	2 710.2	2 739.1	1.1
Seats (000s)	3 117.2	3 164.3	1.5
Load factor %	86.9	86.6	-0.4 *
Aircraft trips	17 703	18 126	2.4

* percentage point difference

Passengers/seats (000s)



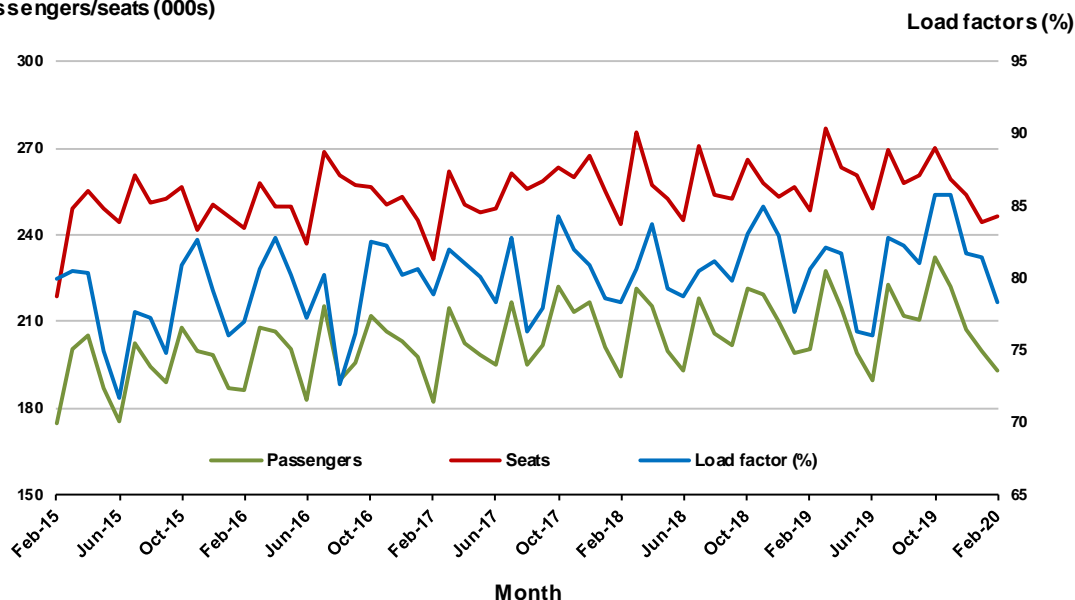
5. Adelaide - Melbourne

Monthly data

	Feb 2019	Feb 2020	% Change
Passengers carried (000s)	200.5	193.1	-3.7
Seats (000s)	248.8	246.6	-0.9
Load factor %	80.6	78.3	-2.3 *
Aircraft trips	1 513	1 497	-1.1

* percentage point difference

Passengers/seats (000s)

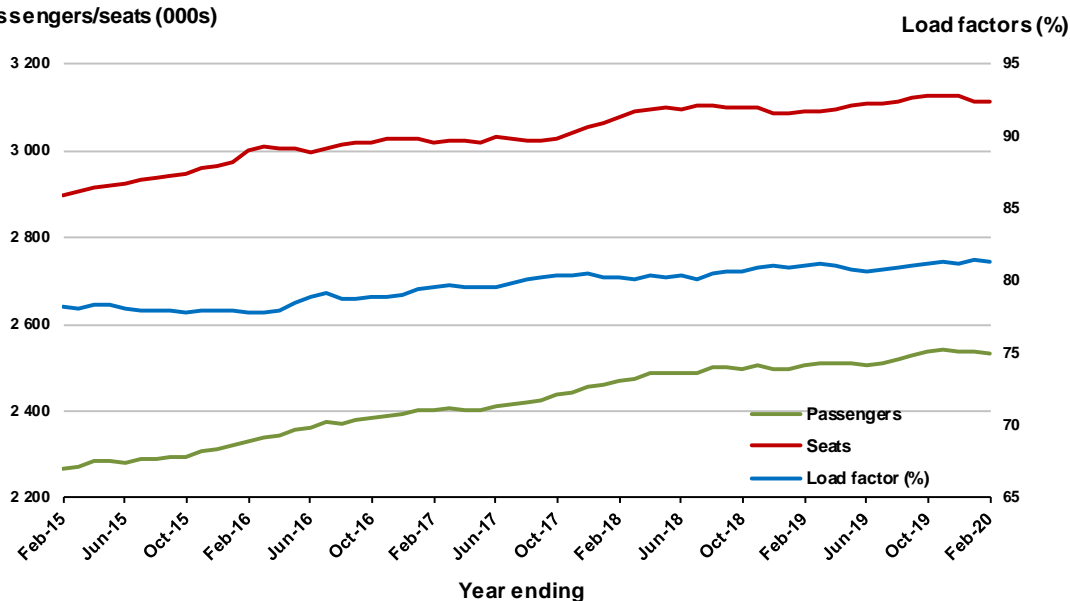


Moving annual data

	YE Feb 2019	YE Feb 2020	% Change
Passengers carried (000s)	2 505.7	2 531.2	1.0
Seats (000s)	3 089.4	3 112.2	0.7
Load factor %	81.1	81.3	0.2 *
Aircraft trips	18 997	18 940	-0.3

* percentage point difference

Passengers/seats (000s)



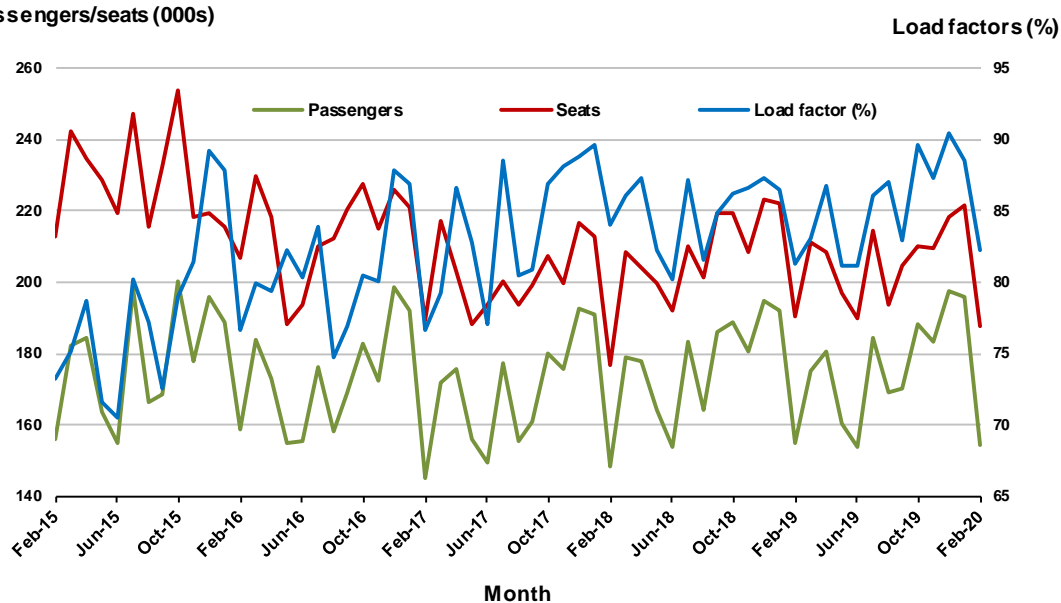
6. Melbourne - Perth

Monthly data

	Feb 2019	Feb 2020	% Change
Passengers carried (000s)	154.8	154.4	-0.3
Seats (000s)	190.3	187.7	-1.4
Load factor %	81.3	82.3	1.0 *
Aircraft trips	960	927	-3.4

* percentage point difference

Passengers/seats (000s)

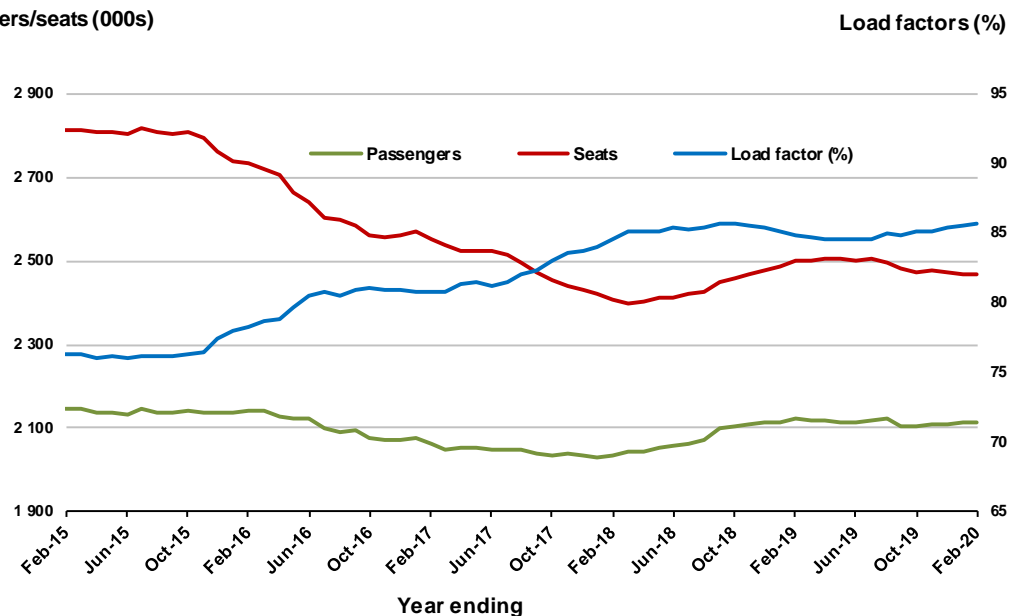


Moving annual data

	YE Feb 2019	YE Feb 2020	% Change
Passengers carried (000s)	2 120.6	2 113.7	-0.3
Seats (000s)	2 498.3	2 467.3	-1.2
Load factor %	84.9	85.7	0.8 *
Aircraft trips	11 978	12 210	1.9

* percentage point difference

Passengers/seats (000s)



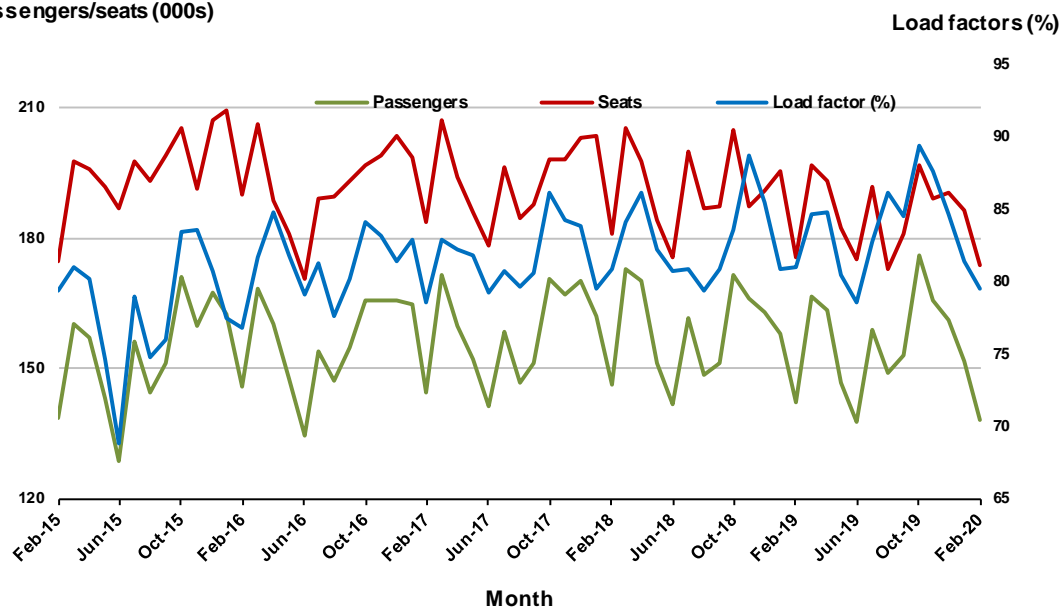
7. Adelaide - Sydney

Monthly data

	Feb 2019	Feb 2020	% Change
Passengers carried (000s)	142.3	138.0	-3.0
Seats (000s)	175.6	173.7	-1.1
Load factor %	81.0	79.5	-1.5 *
Aircraft trips	1 057	1 022	-3.3

* percentage point difference

Passengers/seats (000s)

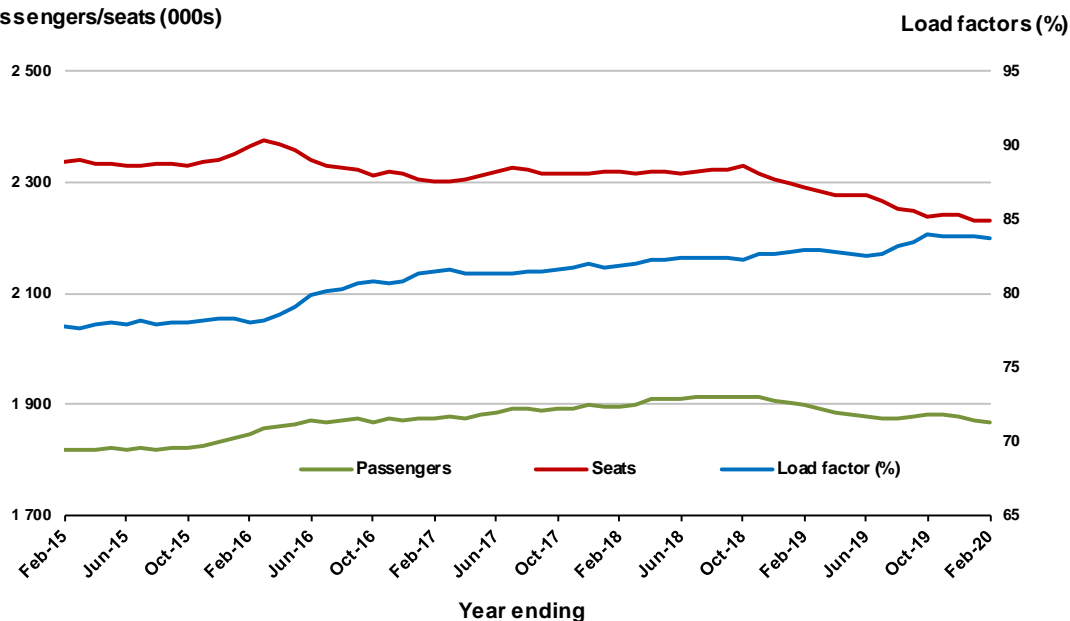


Moving annual data

	YE Feb 2019	YE Feb 2020	% Change
Passengers carried (000s)	1 898.8	1 868.1	-1.6
Seats (000s)	2 291.3	2 229.8	-2.7
Load factor %	82.9	83.8	0.9 *
Aircraft trips	13 799	13 115	-5.0

* percentage point difference

Passengers/seats (000s)



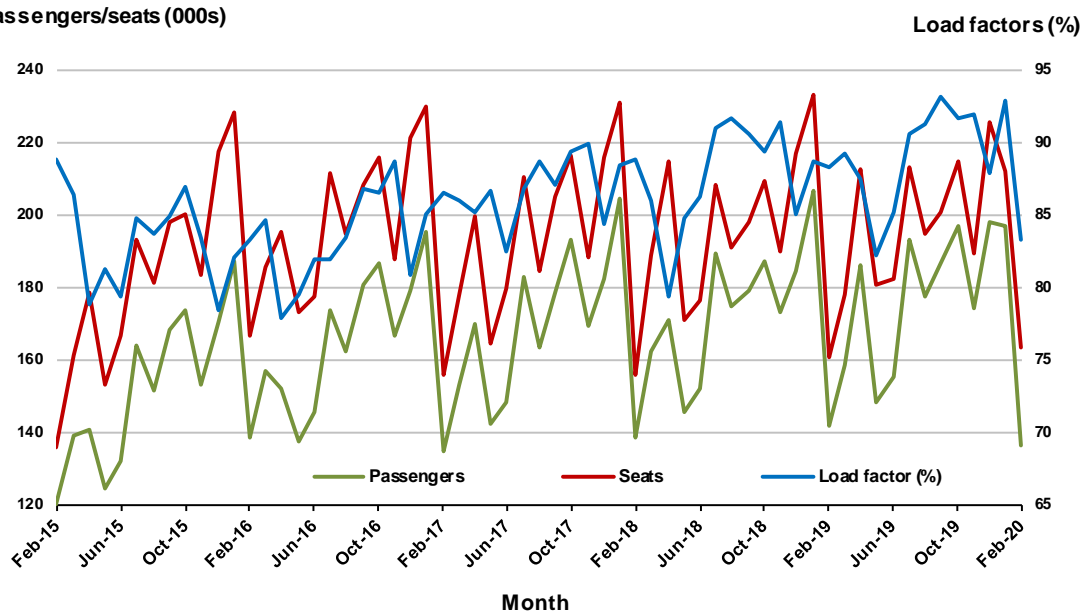
8. Gold Coast - Melbourne

Monthly data

	Feb 2019	Feb 2020	% Change
Passengers carried (000s)	141.7	136.3	-3.8
Seats (000s)	160.7	163.6	1.8
Load factor %	88.2	83.3	-4.9 *
Aircraft trips	846	862	1.9

* percentage point difference

Passengers/seats (000s)

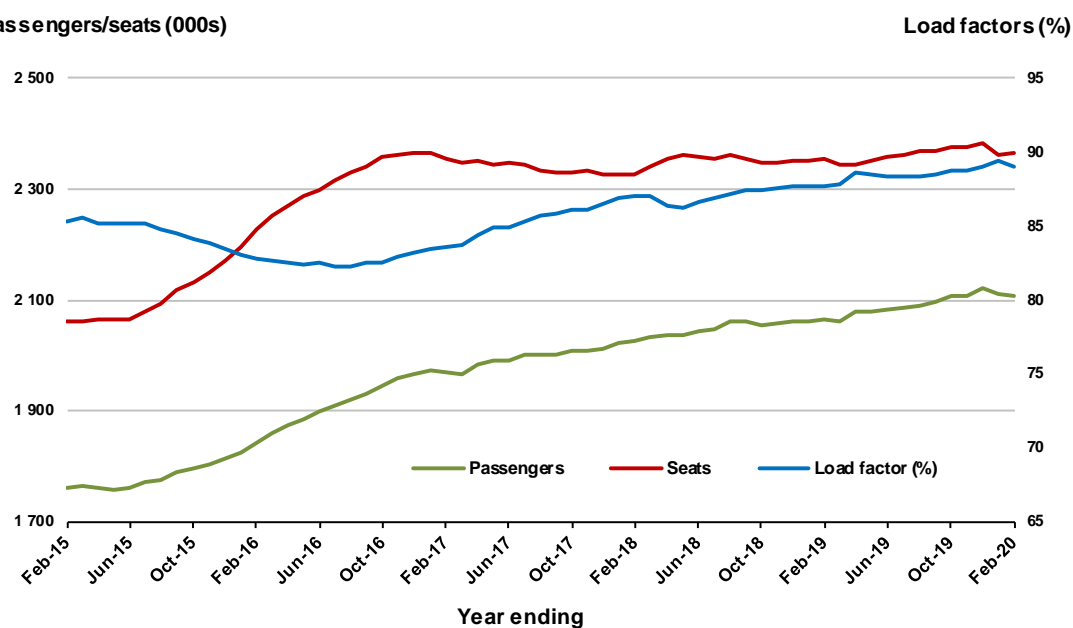


Moving annual data

	YE Feb 2019	YE Feb 2020	% Change
Passengers carried (000s)	2 066.2	2 107.0	2.0
Seats (000s)	2 356.3	2 366.1	0.4
Load factor %	87.6	89.1	1.4 *
Aircraft trips	12 448	12 500	0.4

* percentage point difference

Passengers/seats (000s)



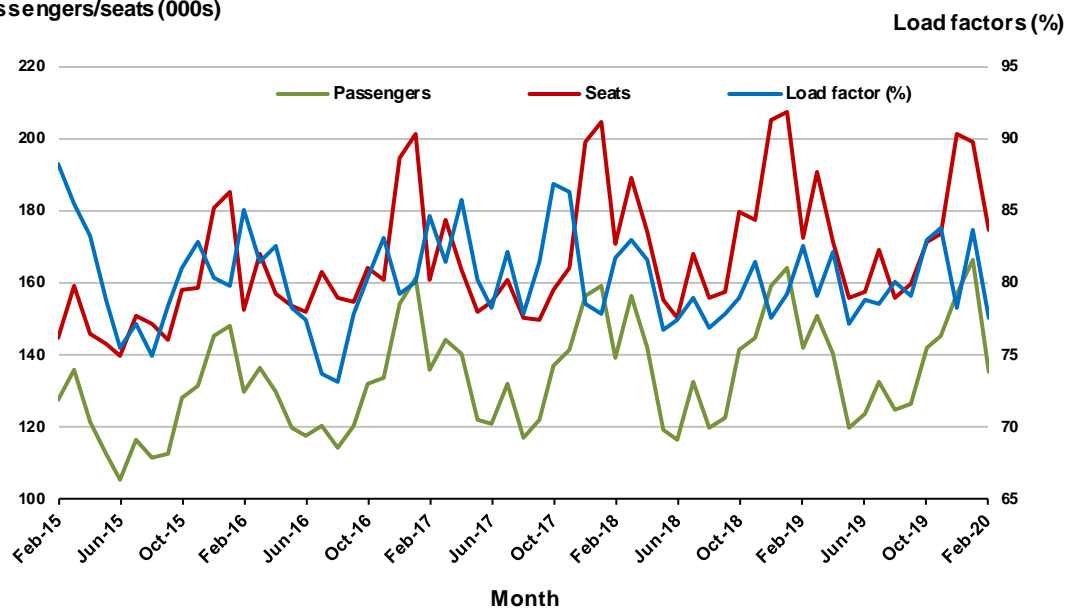
9. Hobart - Melbourne

Monthly data

	Feb 2019	Feb 2020	% Change
Passengers carried (000s)	142.1	135.5	-4.7
Seats (000s)	172.1	174.5	1.4
Load factor %	82.5	77.6	-4.9 *
Aircraft trips	927	948	2.3

* percentage point difference

Passengers/seats (000s)

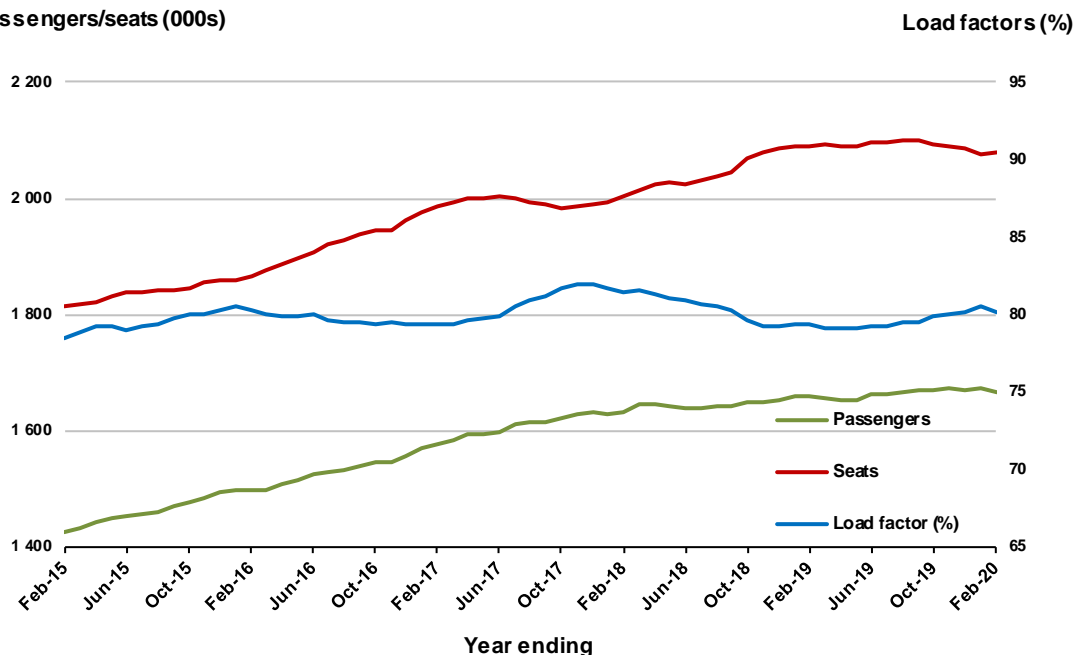


Moving annual data

	YE Feb 2019	YE Feb 2020	% Change
Passengers carried (000s)	1 660.4	1 665.8	0.3
Seats (000s)	2 091.2	2 078.8	-0.6
Load factor %	79.4	80.1	0.7 *
Aircraft trips	11 549	11 389	-1.4

* percentage point difference

Passengers/seats (000s)



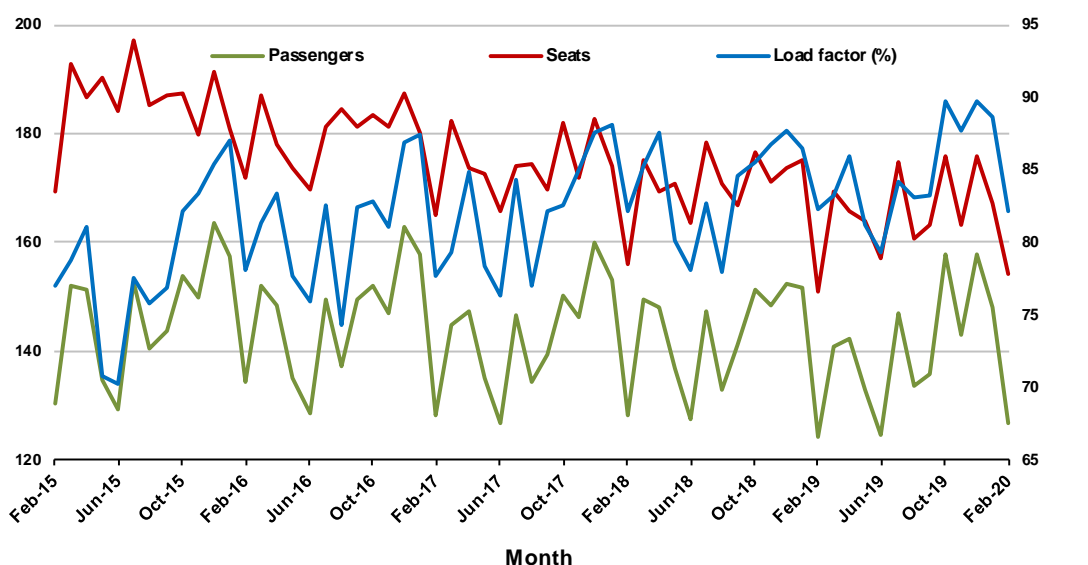
10. Perth - Sydney

Monthly data

	Feb 2019	Feb 2020	% Change
Passengers carried (000s)	124.4	126.6	1.8
Seats (000s)	151.1	154.1	2.0
Load factor %	82.3	82.1	-0.2 *
Aircraft trips	699	703	0.6

* percentage point difference

Passengers/seats (000s)

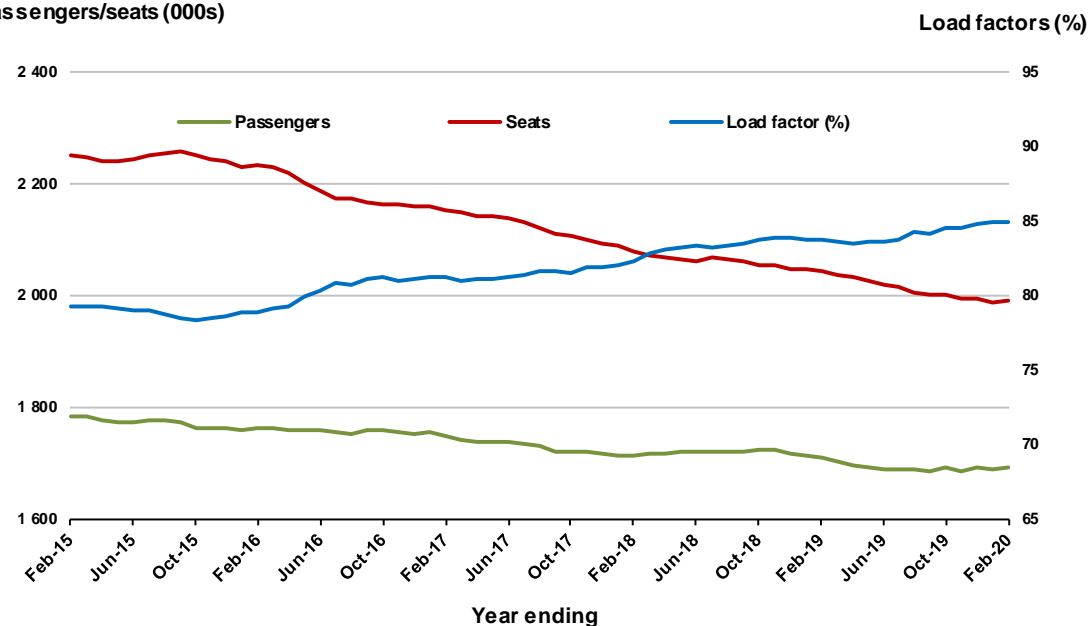


Moving annual data

	YE Feb 2019	YE Feb 2020	% Change
Passengers carried (000s)	1 711.4	1 690.8	-1.2
Seats (000s)	2 042.3	1 990.7	-2.5
Load factor %	83.8	84.9	1.1 *
Aircraft trips	9 123	8 975	-1.6

* percentage point difference

Passengers/seats (000s)



TOP FIFTY REGIONAL AIRPORTS

Table 10: Top fifty regional airports (000s) — passenger movements, monthly

	Airport	Feb 2019	Feb 2020	% Change
1	Cairns	283.5	233.4	-17.7
2	Hobart	231.9	228.2	-1.6
3	Launceston	117.3	112.3	-4.3
4	Townsville	103.8	108.4	4.4
5	Darwin	101.3	93.1	-8.1
6	Newcastle	92.1	92.5	0.5
7	Mackay	62.0	65.9	6.2
8	Rockhampton	40.5	41.4	2.3
9	Ballina	38.2	41.0	7.4
10	Karratha	33.8	35.7	5.7
11	Port Hedland	28.5	31.6	10.8
12	Newman	26.0	29.1	12.0
13	Hamilton Island	31.2	28.7	-7.9
14	Alice Springs	39.1	28.7	-26.7
15	Coffs Harbour	28.5	28.0	-2.0
16	Ayers Rock	29.6	26.6	-10.2
17	Proserpine	29.3	26.0	-11.1
18	Kalgoorlie	22.7	21.7	-4.3
19	Broome	20.6	21.2	3.0
20	Mildura	19.1	18.5	-3.5
21	Gladstone	17.9	18.3	2.1
22	Mount Isa	16.1	17.6	9.7
23	Albury	17.4	17.4	-0.2
24	Dubbo	16.1	16.1	0.2
25	Port Macquarie	16.0	15.9	-0.2
26	Wagga Wagga	14.8	15.7	6.3
27	Emerald	14.9	15.6	4.4
28	Paraburdoo	14.2	15.3	7.8
29	Port Lincoln	12.8	14.7	14.6
30	Tamworth	13.3	14.4	8.0
31	Bundaberg	11.2	11.5	2.6
32	Hervey Bay	10.7	11.4	6.8
33	Devonport	11.2	11.1	-0.9
34	Armidale	10.0	9.2	-7.6
35	Moranbah	8.5	8.8	4.6
36	Geraldton	8.4	8.2	-2.4
37	Toowoomba Wellcamp	7.9	8.2	3.8
38	Griffith	6.6	7.2	9.5
39	Roma	7.1	6.9	-2.6
40	Mount Gambier	6.5	6.7	3.4
41	Orange	6.4	6.6	3.5
42	Kununurra	6.1	6.5	6.1
43	Gove	5.4	6.0	11.2
44	Whyalla	6.2	5.9	-5.5
45	Burnie	5.8	5.8	-0.7
46	Merimbula	5.4	5.6	2.8
47	Thursday Island	5.7	5.5	-3.3
48	Norfolk Island	4.7	5.5	16.5
49	Albany	5.1	5.3	5.2
50	Weipa	4.9	5.2	6.4
Total top 50 regional airports		1 676.2	1 620.3	-3.3
Total regional airports		1 781.2	1 723.1	-3.3
Total domestic network		8 998.6	8 726.5	-3.0

Note: Airport passenger movement numbers are the sum of passenger arrivals and departures at each airport.

Regional airports are defined as airports which are, according to the Australian Bureau of Statistics

"The Australian Statistical Geography Standard (ASGS)", not based in Major Urban areas.

Table 11: Top fifty regional airports (000s) — passenger movements, annual

Airport	YE Feb 2019	YE Feb 2020	% Change
1 Cairns	4 271.0	4 103.5	-3.9
2 Hobart	2 697.1	2 785.0	3.3
3 Darwin	1 731.3	1 685.8	-2.6
4 Townsville	1 642.6	1 674.8	2.0
5 Launceston	1 387.8	1 386.6	-0.1
6 Newcastle	1 255.7	1 272.8	1.4
7 Mackay	852.2	887.0	4.1
8 Rockhampton	554.0	574.2	3.7
9 Ballina	534.6	537.2	0.5
10 Alice Springs	617.4	534.7	-13.4
11 Ayers Rock	419.9	485.2	15.6
12 Karratha	445.3	473.2	6.3
13 Hamilton Island	426.3	458.4	7.5
14 Proserpine	434.0	433.4	-0.1
15 Broome	414.8	403.6	-2.7
16 Coffs Harbour	401.0	396.3	-1.2
17 Port Hedland	377.7	390.5	3.4
18 Newman	311.3	352.9	13.4
19 Kalgoorlie	294.1	286.5	-2.6
20 Mildura	268.7	253.7	-5.6
21 Albury	257.8	252.4	-2.1
22 Gladstone	250.8	249.3	-0.6
23 Mount Isa	214.0	230.9	7.9
24 Port Macquarie	213.8	219.0	2.4
25 Dubbo	217.0	211.4	-2.6
26 Wagga Wagga	213.3	209.6	-1.7
27 Emerald	197.3	203.7	3.2
28 Paraburdoo	180.5	193.4	7.1
29 Tamworth	188.1	190.8	1.5
30 Port Lincoln	168.7	175.4	4.0
31 Hervey Bay	161.4	168.0	4.1
32 Bundaberg	160.3	154.0	-3.9
33 Devonport	147.1	149.4	1.6
34 Armidale	129.0	131.8	2.2
35 Toowoomba Wellcamp	131.7	121.4	-7.8
36 Kununurra	108.3	114.3	5.5
37 Moranbah	105.7	110.4	4.4
38 Geraldton	112.0	106.2	-5.2
39 Roma	89.0	96.9	8.8
40 Thursday Island	100.3	96.7	-3.6
41 Griffith	82.3	95.1	15.6
42 Mount Gambier	80.5	85.9	6.7
43 Learmonth	87.9	84.6	-3.8
44 Orange	78.4	83.4	6.4
45 Gove	83.2	82.5	-0.9
46 Whyalla	77.0	78.5	2.0
47 Burnie	73.0	72.6	-0.5
48 Olympic Dam	76.0	71.9	-5.3
49 Weipa	80.8	71.7	-11.2
50 Merimbula	69.2	66.6	-3.7
Total top 50 regional airports	23 471.0	23 553.2	0.4
Total regional airports	24 879.1	24 951.3	0.3
Total domestic network	122 074.4	122 495.9	0.3

Note: Airport passenger movement numbers are the sum of passenger arrivals and departures at each airport. Regional airports are defined as airports which are, according to the Australian Bureau of Statistics "The Australian Statistical Geography Standard (ASGS)", not based in Major Urban areas.

DOMESTIC CHARTER ACTIVITY

Table 12: Charter passengers carried and aircraft trips - monthly activity

	Feb 2019	Feb 2020	% Change
Total domestic charter passengers	200 980	234 693	16.8
Total domestic charter aircraft trips	3 456	3 971	14.9

Note: Helicopter, joyflights and sightseeing charter flights not included.

Table 13: Charter passengers carried and aircraft trips - annual activity

	YE Feb 2019	YE Feb 2020	% Change
Total domestic charter passengers	2 506 332	2 819 505	12.5
Total domestic charter aircraft trips	44 090	48 440	9.9

Note: Helicopter, joyflights and sightseeing charter flights not included.

Table 14: Domestic airports - charter activity - monthly

	Feb 2019	Feb 2020	% Change
Total domestic charter passenger movements	401 960	469 386	16.8
Total domestic charter aircraft movements	6 912	7 942	14.9
Perth airport charter passenger movements	152 922	178 217	16.5
Perth airport charter aircraft movements	2 379	2 777	16.7

Note: Helicopter, joyflights and sightseeing charter flights not included.

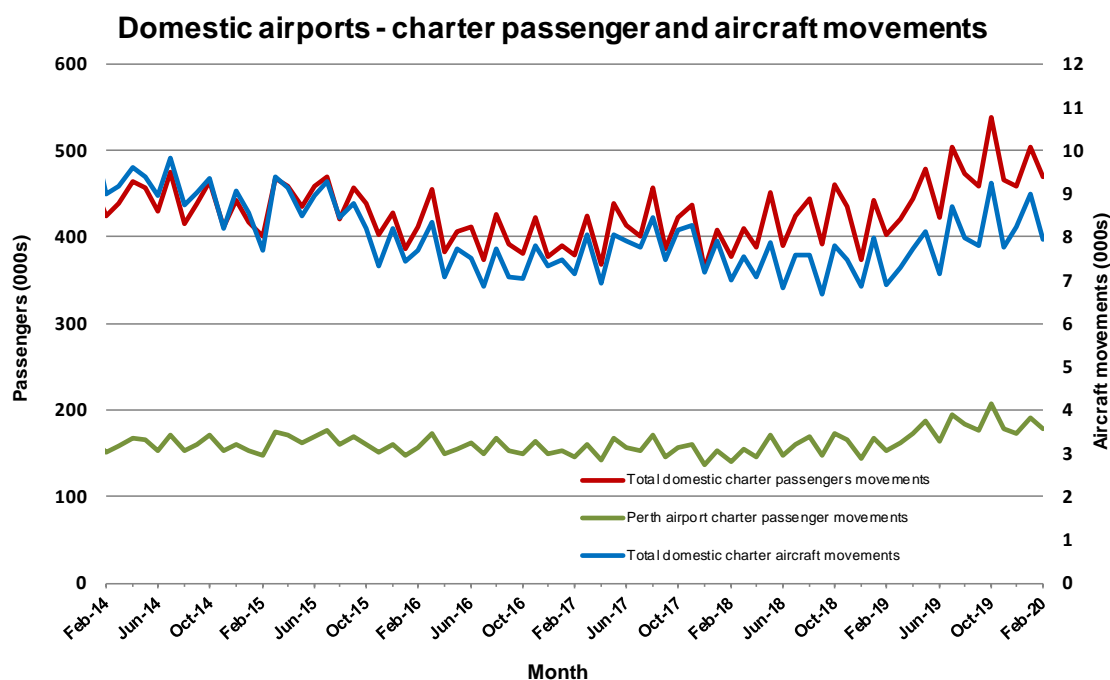
Charter passenger and aircraft movement numbers are the sum of arrivals and departures at each airport.

Table 15: Domestic airports - charter activity - annual

	YE Feb 2019	YE Feb 2020	% Change
Total domestic charter passenger movements	5 012 664	5 639 010	12.5
Total domestic charter aircraft movements	88 180	96 880	9.9
Perth airport charter passenger movements	1 901 653	2 168 139	14.0
Perth airport charter aircraft movements	30 128	33 935	12.6

Note: Helicopter, joyflights and sightseeing charter flights not included.

Charter passenger and aircraft movement numbers are the sum of arrivals and departures at each airport.



DEFINITIONS

Aircraft Trips	The number of flight stages. A return flight counts as two aircraft trips.
Airport Movements	Airport movements (passenger and cargo) are measured once on arrival and once on departure. Each domestic trip generates two movements at airports. For example, a trip from Melbourne to Sydney will be counted twice, as a passenger departure at Melbourne and as a passenger arrival at Sydney. At the national level, the sum of all domestic airport traffic will therefore be equal to twice the number of trips undertaken.
Available Seat Kilometres (ASKs)	Calculated by multiplying the number of seats available on each flight stage, by the distance in kilometres between the ports. The distances used are Great Circle Distances.
City-Pair	The ports shown make up the city-pair route. Passenger movements shown for a city pair reflect total traffic in both directions.
Flight Stage	The operation of an aircraft from take-off to landing.
Load Factor	The total revenue passenger kilometres performed as a percentage of the total available seat kilometres.
Passengers Carried	Revenue passengers carried.
Regular Public Transport Services (RPT)	All air service operations in which aircraft are available for the transport of members of the public and are conducted in accordance with fixed schedules. It does not include charter or other non-scheduled operations.
Revenue Passengers	All passengers paying any fare. Frequent flyer redemption travellers are regarded as revenue passengers.
Revenue Passenger Kilometres (RPKs)	Calculated by multiplying the number of revenue passengers travelling on each flight stage, by the distance in kilometres between the ports. The distances used are Great Circle Distances.
Traffic on board by stages	The total of all traffic (revenue passengers) on each flight stage between two directly connected airports.
..	Data not included
NA	Not applicable