



Australian Government

**Department of Infrastructure, Transport,
Regional Development, Communications and the Arts**
Bureau of Infrastructure and Transport Research Economics

STATISTICAL REPORT



bitre

Aviation

**Domestic aviation activity
August 2024**

The Department of Infrastructure, Transport, Regional Development, Communications and the Arts acknowledges the Traditional Custodians of Country of the land on which we work and live.

We recognise and respect the continuing connections to land, waters and communities.

We pay our respects to them and their cultures and to their Elders both past and present and to all Aboriginal and Torres Strait Islander people.

© Commonwealth of Australia 2024

ISSN: 1832 – 1968

BITRE Reference: 2024-1201

Ownership of intellectual property rights in this publication

Unless otherwise noted, copyright (and any other intellectual property rights, if any) in this publication is owned by the Commonwealth of Australia (referred to below as the Commonwealth).

Disclaimer

The material contained in this publication is made available on the understanding that the Commonwealth is not providing professional advice, and that users exercise their own skill and care with respect to its use, and seek independent advice if necessary.

The Commonwealth makes no representations or warranties as to the contents or accuracy of the information contained in this publication. To the extent permitted by law, the Commonwealth disclaims liability to any person or organisation in respect of anything done, or omitted to be done, in reliance upon information contained in this publication.

Creative Commons licence

With the exception of (a) the Coat of Arms; and (b) the Department of Infrastructure, Transport, Regional Development, Communications and the Arts' photos and graphics, copyright in this publication is licensed under a Creative Commons Attribution 3.0 Australia Licence.

Creative Commons Attribution 3.0 Australia Licence is a standard form licence agreement that allows you to copy, communicate and adapt this publication provided that you attribute the work to the Commonwealth and abide by the other licence terms. A summary of the licence terms is available from <http://creativecommons.org/licenses/by/3.0/au/deed.en>.

The full licence terms are available from <http://creativecommons.org/licenses/by/3.0/au/legalcode>.

Use of the Coat of Arms

The Department of the Prime Minister and Cabinet sets the terms under which the Coat of Arms is used. Please refer to the Department's Commonwealth Coat of Arms and Government branding web page <http://www.dpmc.gov.au/guidelines/index.cfm#brand> and, in particular, the Guidelines on the use of the Commonwealth Coat of Arms publication.

An appropriate citation for this report is:

Bureau of Infrastructure and Transport Research Economics (BITRE), 2024, Domestic aviation activity, Statistical Report, BITRE, Canberra ACT.

Contact us

This publication is available in PDF format. All other rights are reserved, including in relation to any Departmental logos or trade marks which may exist. For enquiries regarding the licence and any use of this publication, please contact:

Bureau of Infrastructure and Transport Research Economics (BITRE)
Department of Infrastructure, Transport, Regional Development, Communications and the Arts
GPO Box 501, Canberra ACT 2601, Australia

Email: bitre@infrastructure.gov.au

Website: www.bitre.gov.au

Inquiries: Nebojsa.Pavlovic@infrastructure.gov.au (02) 6136 8282

FOREWORD

This report provides an overview of domestic (including charter) commercial aviation activity in Australia for the month of August 2024.

The data covers revenue passengers carried by Australian-registered operators of scheduled regular public transport services over Australian flight stages and fixed-wing charter operators. These estimates include passengers carried between domestic airports on international flights operated by these carriers. The passengers carried refer to traffic on board by stages.

Estimates of passengers and aircraft movements for charter aviation are included in this publication, where BITRE confidentiality standards are met.

Individual routes shown are restricted to those with an average exceeding 8,000 passengers per month over the previous six months where two or more airlines operate in competition. However, for the period from December 2021 through to December 2022, the major airlines (Qantas Group, Virgin Australia and Rex Airlines) agreed to publication of the top 35 routes based on pre-COVID activity (December 2019) whether or not they were meeting the above criteria. From January 2023, the passenger load and dual competition requirements were reinstated due to the continued recovery of passenger numbers.

Information on the total network for the month of August 2024 and on the Regular Public Transport (RPT) network for the month of August 2024 is presented on page 2, with estimates for the year ended August 2024 presented on page 3.

Detailed information on individual routes can be found in the RPT summary pages 4-13 of this publication. For the month of August 2024, there are 61 individual routes published.

The top ten airports in terms of RPT passenger movements are shown on page 14.

Data on domestic RPT cargo movements at the top five cargo airports are provided on page 15. The table includes cargo carried on passenger flights operated by the Qantas group (including Jetstar), Virgin Australia, Air North and Skippers as well as the cargo carried by dedicated freighter aircraft operated by Qantas Freight and Team Global Express (formerly Toll).

The long-term trends for the top ten competitive RPT routes are presented graphically on pages 16-25.

Domestic RPT passenger movements at regional airports are shown on pages 26-27.

Tables providing estimates of domestic charter aviation activity are shown on page 28. BITRE confidentiality standards restrict publication of detailed estimates for individual Australian airports, with the exception of Perth Airport.

A list of definitions can be found on page 29.

This report was prepared by the Aviation Statistics Section of the Bureau of Infrastructure and Transport Research Economics with data provided by airlines.

Estimates are included where data were not available and data presented in this publication may contain revisions to previously published data.

Where figures have been rounded, discrepancies may occur between sums of component items and totals, and in percentage changes which are derived from figures prior to rounding.

CONTENTS

Highlights	1
Total network.....	2
RPT network	2
Top competitive routes.....	4
Top ten airports – passenger movements.....	14
Top five airports – cargo movements.....	15
Top ten routes	16
1. Melbourne – Sydney	16
2. Brisbane – Sydney.....	17
3. Brisbane – Melbourne	18
4. Gold Coast – Sydney	19
5. Adelaide – Melbourne	20
6. Gold Coast – Melbourne	21
7. Melbourne – Perth	22
8. Adelaide – Sydney	23
9. Perth – Sydney	24
10. Brisbane - Cairns	25
Top fifty regional airports	26
Domestic charter activity.....	28
Definitions	29

This page is intentionally left blank.

HIGHLIGHTS

There were 5.32 million passengers carried on Australian domestic commercial aviation (including charter operations) in August 2024, compared with 5.27 million in August 2023 (up 1.0 per cent). This is also a decrease of 1.7 per cent on pre-COVID August 2019 passenger numbers (5.41 million).

4.95 million passengers were carried on RPT flights in August 2024, an increase of 1.2 per cent compared to August 2023.

For the month of August 2024, there were 51.0 thousand RPT aircraft trips, a decrease of 4.1 per cent change on August 2023.

For the year ending August 2024 there were 58.83 million RPT passengers, an increase of 5.2 per cent on the year ending August 2023.

RPT revenue passenger kilometres (RPKs) performed were 5.99 billion for the month, compared with 5.86 billion in August 2023 (up 2.1 per cent).

Capacity, measured by available seat kilometres (ASKs), decreased to 7.19 billion in August 2024 compared to 7.35 billion in August 2023 (down 2.2 per cent).

The industry wide load factor (RPKs/ASKs) increased from 79.8 per cent in August 2023 to 83.3 per cent in August 2024. The highest load factor (96.1 per cent) was recorded on the Gold Coast – Melbourne route while the lowest load factor (53.4 per cent) was recorded on the Geraldton – Perth route.

For the month of August 2024, Melbourne – Sydney was Australia's busiest RPT route with 651.9 thousand passengers, followed by Brisbane – Sydney with 372.1 thousand passengers and Brisbane – Melbourne with 296.5 thousand passengers.

Sydney was Australia's busiest domestic airport with 2.08 million passenger movements in August 2024, followed by Melbourne with 1.95 million passenger movements and Brisbane with 1.47 million passenger movements.

Total cargo movements at Australian airports on domestic RPT flights were 27.3 thousand tonnes in August 2024, a decrease of 10.9 per cent compared with August 2023.

In August 2024, there were 2.18 million domestic passenger movements through regional airports, no significant change from August 2023. Out of the top 50 regional airports, the strongest increase was recorded at Busselton Airport (up 102.8 per cent on August 2023), while the largest decrease was recorded at Coffs Harbour Airport (down 18.2 per cent on August 2023).

Fixed-wing charter operators carried 369.0 thousand passengers in August 2024, a decrease of 2.7 per cent compared with August 2023. Perth Airport accounted for 36.8 per cent of all charter passengers in Australia.

TOTAL NETWORK

Summary of monthly commercial aviation activity

	Aug 2023	Aug 2024	% Change
Total passengers carried (millions)	5.27	5.32	1.0
Aircraft trips (000s)	59.7	57.2	-4.2

Note: Regular Public Transport and charter aviation activity
Helicopter, joy flights and sightseeing charter flights not included.

RPT NETWORK

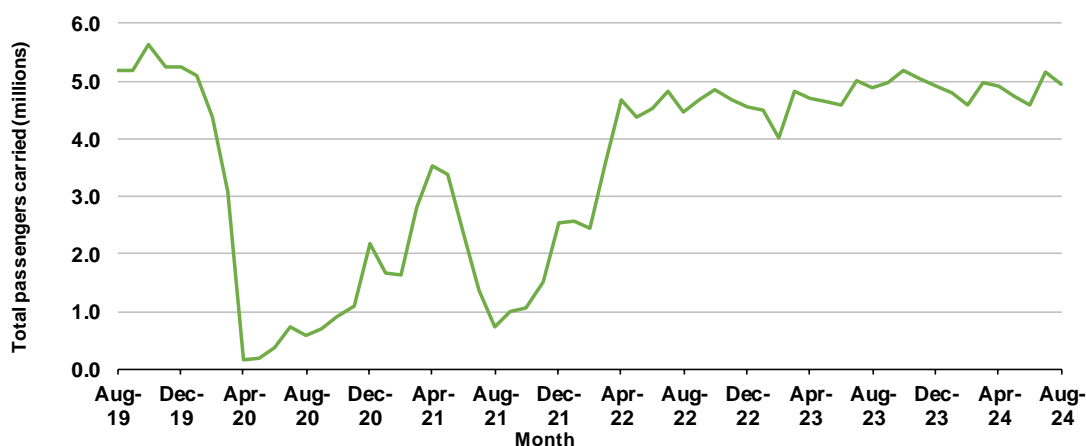
Summary of monthly RPT activity

	Aug 2023	Aug 2024	% Change
Total passengers carried (millions)	4.89	4.95	1.2
Revenue passenger kilometres (billions)	5.86	5.99	2.1
Available seats (millions)	6.30	6.09	-3.3
Available seat kilometres (billions)	7.35	7.19	-2.2
Load factor %	79.8	83.3	3.5 *
Aircraft trips (000s)	53.2	51.0	-4.1

* percentage point difference

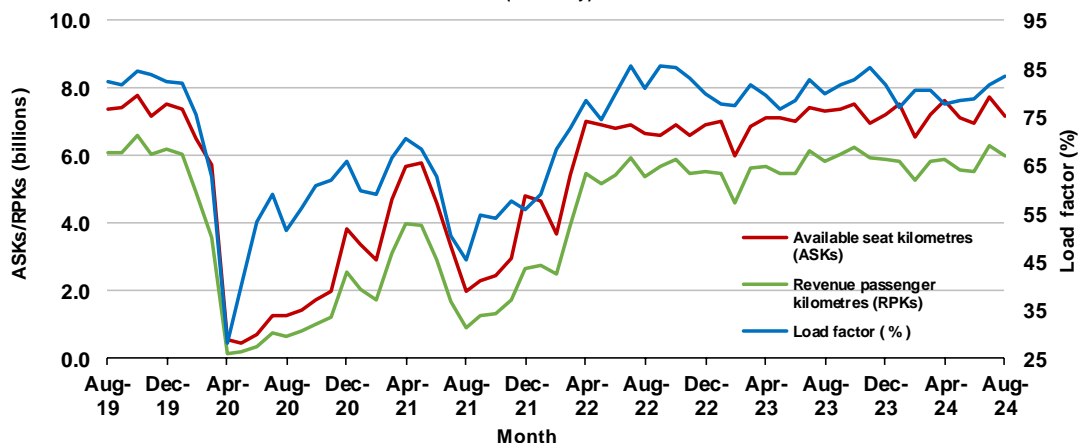
Domestic RPT passenger traffic

(monthly)



RPT Network utilisation

(monthly)



TOTAL NETWORK

Summary of annual commercial aviation activity

	YE Aug 2023	YE Aug 2024	% Change
Total passengers carried (millions)	59.83	63.13	5.5
Aircraft trips (000s)	670.1	690.5	3.0

Note: Regular Public Transport and charter aviation activity
Helicopter, joy flights and sightseeing charter flights not included.

RPT NETWORK

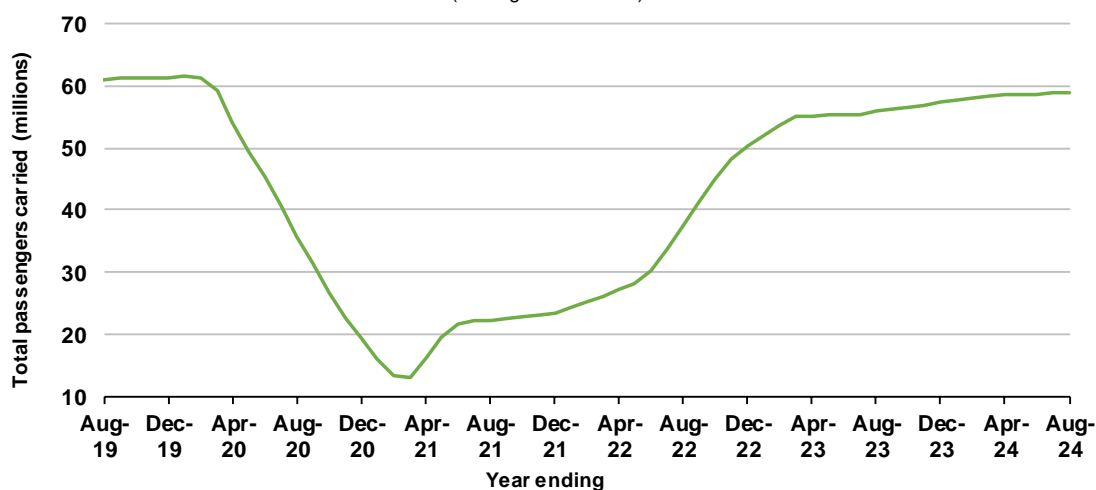
Summary of annual RPT activity

	YE Aug 2023	YE Aug 2024	% Change
Total passengers carried (millions)	55.92	58.83	5.2
Revenue passenger kilometres (billions)	66.91	70.26	5.0
Available seats (millions)	71.35	74.76	4.8
Available seat kilometres (billions)	82.95	87.06	5.0
Load factor %	80.7	80.7	0.0 *
Aircraft trips (000s)	601.9	617.3	2.6

* percentage point difference

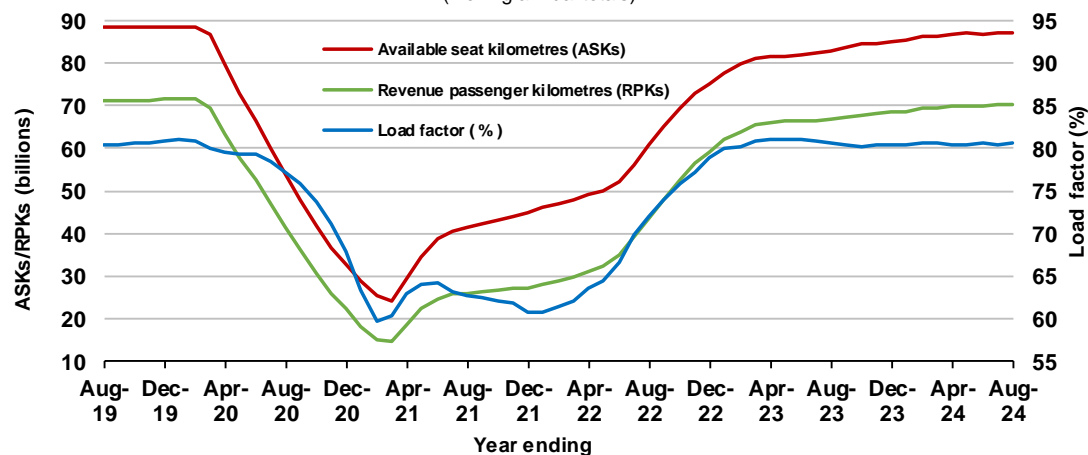
Domestic RPT passenger traffic

(moving annual totals)



RPT Network utilisation

(moving annual totals)



TOP COMPETITIVE ROUTES

Table 1: Passengers carried (000s) — annual activity

	City-Pair	YE Aug 2023	YE Aug 2024	% Change
1	Melbourne - Sydney	7 403.4	7 945.5	7.3
2	Brisbane - Sydney	4 108.5	4 339.9	5.6
3	Brisbane - Melbourne	3 183.0	3 425.3	7.6
4	Gold Coast - Sydney	2 408.8	2 540.7	5.5
5	Adelaide - Melbourne	2 232.6	2 331.4	4.4
6	Gold Coast - Melbourne	2 233.6	2 213.3	-0.9
7	Melbourne - Perth	1 847.1	2 001.3	8.3
8	Adelaide - Sydney	1 649.9	1 850.1	12.1
9	Perth - Sydney	1 526.1	1 614.3	5.8
10	Hobart - Melbourne	1 249.3	1 356.1	8.5
11	Brisbane - Cairns	1 235.7	1 285.9	4.1
12	Brisbane - Perth	992.5	1 049.4	5.7
13	Canberra - Melbourne	975.5	1 020.2	4.6
14	Cairns - Sydney	888.9	914.4	2.9
15	Brisbane - Townsville	870.1	905.2	4.0
16	Adelaide - Brisbane	800.2	869.6	8.7
17	Launceston - Melbourne	787.0	860.8	9.4
18	Cairns - Melbourne	802.9	820.0	2.1
19	Hobart - Sydney	716.4	778.6	8.7
20	Sunshine Coast - Sydney	742.1	774.9	4.4
21	Melbourne - Sunshine Coast	715.4	762.6	6.6
22	Brisbane - Mackay	732.6	752.3	2.7
23	Adelaide - Perth	636.5	685.0	7.6
24	Brisbane - Canberra	633.1	628.9	-0.7
25	Canberra - Sydney	591.3	627.7	6.2
26	Karratha - Perth	533.8	588.0	10.2
27	Brisbane - Rockhampton	489.4	549.8	12.3
28	Ballina - Sydney	534.4	516.1	-3.4
29	Brisbane - Newcastle	493.8	505.4	2.4
30	Perth - Port Hedland	479.7	472.9	-1.4
31	Melbourne - Newcastle	404.0	447.7	10.8
32	Newman - Perth	370.4	379.4	2.4
33	Kalgoorlie - Perth	343.3	364.5	6.2
34	Broome - Perth	366.3	359.1	-2.0
35	Launceston - Sydney	309.7	340.8	10.0
36	Brisbane - Darwin	324.2	321.7	-0.8
37	Brisbane - Hobart	297.2	294.7	-0.8
38	Darwin - Melbourne	281.7	280.2	-0.5
39	Adelaide - Gold Coast	248.6	275.0	10.6
40	Brisbane - Proserpine	277.5	273.0	-1.6
41	Hamilton Island - Sydney	248.8	242.7	-2.4
42	Brisbane - Gladstone	206.4	222.7	7.9
43	Coffs Harbour - Sydney	217.1	209.0	-3.7
44	Canberra - Gold Coast	171.9	185.4	7.9
45	Brisbane - Emerald	180.9	185.2	2.4
46	Adelaide - Canberra	189.9	184.5	-2.9
47	Darwin - Perth	172.1	178.5	3.7
48	Dubbo - Sydney	170.7	176.2	3.2
49	Adelaide - Port Lincoln	176.6	171.6	-2.8
50	Melbourne - Mildura	158.9	169.6	6.7

continued

Table 1: (continued) Passengers carried (000s) — annual activity

	City-Pair	YE Aug 2023	YE Aug 2024	% Change
51	Port Macquarie - Sydney	164.2	166.9	1.6
52	Albury - Sydney	165.4	164.4	-0.6
53	Brisbane - Hamilton Island	163.5	162.0	-0.9
54	Sydney - Wagga Wagga	151.9	157.9	4.0
55	Brisbane - Launceston	158.5	148.4	-6.4
56	Brisbane - Mount Isa	143.5	144.6	0.8
57	Brisbane - Bundaberg	117.9	138.2	17.2
58	Devonport - Melbourne	122.3	122.8	0.4
59	Brisbane - Moranbah	99.6	111.2	11.6
60	Adelaide - Alice Springs	113.4	110.3	-2.7
61	Geraldton - Perth	..	104.7	NA
	Total domestic network	55 916.5	58 829.8	5.2

.. Data not available for release.

Table 2: Passengers carried (000s) — monthly activity

	City-Pair	Aug 2023	Aug 2024	% Change
1	Melbourne - Sydney	644.4	651.9	1.2
2	Brisbane - Sydney	367.6	372.1	1.2
3	Brisbane - Melbourne	279.6	296.5	6.0
4	Gold Coast - Sydney	193.3	204.2	5.6
5	Adelaide - Melbourne	191.3	190.4	-0.5
6	Gold Coast - Melbourne	183.7	161.0	-12.4
7	Melbourne - Perth	147.6	160.9	9.0
8	Adelaide - Sydney	143.8	144.4	0.4
9	Perth - Sydney	126.9	133.7	5.3
10	Brisbane - Cairns	117.2	116.6	-0.5
11	Hobart - Melbourne	97.6	102.8	5.3
12	Brisbane - Perth	79.8	87.9	10.1
13	Brisbane - Townsville	78.8	87.6	11.2
14	Cairns - Sydney	84.1	84.9	1.0
15	Canberra - Melbourne	83.9	84.5	0.7
16	Cairns - Melbourne	82.3	79.6	-3.3
17	Adelaide - Brisbane	69.7	70.6	1.3
18	Launceston - Melbourne	64.2	67.9	5.9
19	Brisbane - Mackay	62.8	67.8	7.9
20	Sunshine Coast - Sydney	58.1	63.4	9.2
21	Hobart - Sydney	51.7	58.4	13.0
22	Canberra - Sydney	53.0	58.2	9.7
23	Brisbane - Canberra	57.5	57.9	0.6
24	Adelaide - Perth	51.9	57.1	9.9
25	Karratha - Perth	49.6	54.5	9.9
26	Melbourne - Sunshine Coast	64.1	53.2	-17.1
27	Brisbane - Rockhampton	46.7	52.1	11.6
28	Brisbane - Newcastle	40.6	43.9	7.9
29	Ballina - Sydney	43.4	42.5	-2.0
30	Perth - Port Hedland	44.2	41.4	-6.3
31	Melbourne - Newcastle	33.0	37.6	14.1
32	Broome - Perth	38.5	37.6	-2.4
33	Newman - Perth	35.8	35.2	-1.8
34	Kalgoorlie - Perth	34.3	34.4	0.2
35	Brisbane - Darwin	30.5	33.3	9.3
36	Darwin - Melbourne	29.0	29.1	0.2
37	Launceston - Sydney	22.9	24.5	7.0
38	Brisbane - Proserpine	22.3	24.1	8.1
39	Adelaide - Gold Coast	19.7	23.4	18.6
40	Brisbane - Hobart	20.4	22.2	8.8
41	Hamilton Island - Sydney	19.2	19.9	3.3
42	Brisbane - Gladstone	19.1	19.8	3.7
43	Darwin - Perth	16.8	19.1	13.3
44	Coffs Harbour - Sydney	18.5	17.3	-6.5
45	Brisbane - Emerald	16.8	16.3	-3.1
46	Dubbo - Sydney	16.4	15.7	-4.7
47	Adelaide - Canberra	16.7	15.3	-8.7
48	Albury - Sydney	15.9	14.6	-8.1
49	Canberra - Gold Coast	14.6	14.6	0.1
50	Brisbane - Mount Isa	14.2	14.5	1.7

continued

Table 2: (continued) Passengers carried (000s) — monthly activity

	City-Pair	Aug 2023	Aug 2024	% Change
51	Sydney - Wagga Wagga	14.6	14.4	-1.6
52	Port Macquarie - Sydney	14.4	14.1	-2.1
53	Adelaide - Port Lincoln	13.8	13.6	-0.9
54	Melbourne - Mildura	15.5	12.7	-18.0
55	Brisbane - Bundaberg	12.0	12.5	4.2
56	Brisbane - Hamilton Island	13.0	12.5	-3.5
57	Devonport - Melbourne	10.1	10.9	8.2
58	Geraldton - Perth	..	10.2	NA
59	Brisbane - Launceston	10.5	10.1	-3.7
60	Adelaide - Alice Springs	10.9	9.6	-11.7
61	Brisbane - Moranbah	10.1	9.2	-9.8
	Total domestic network	4 891.3	4 952.1	1.2

.. Data not available for release.

Table 3: Available seats (000s) — monthly activity

	City-Pair	Aug 2023	Aug 2024	% Change
1	Melbourne - Sydney	810.8	771.6	-4.8
2	Brisbane - Sydney	460.5	422.7	-8.2
3	Brisbane - Melbourne	339.7	328.7	-3.2
4	Gold Coast - Sydney	235.5	225.2	-4.4
5	Adelaide - Melbourne	238.3	220.4	-7.5
6	Gold Coast - Melbourne	204.0	167.4	-17.9
7	Melbourne - Perth	193.2	197.0	2.0
8	Adelaide - Sydney	182.8	186.7	2.1
9	Perth - Sydney	165.7	163.2	-1.5
10	Brisbane - Cairns	131.5	129.9	-1.2
11	Hobart - Melbourne	117.0	114.8	-1.9
12	Brisbane - Perth	99.3	104.9	5.6
13	Brisbane - Townsville	89.9	100.2	11.4
14	Cairns - Sydney	90.8	93.5	2.9
15	Canberra - Melbourne	126.0	111.5	-11.5
16	Cairns - Melbourne	89.1	85.3	-4.3
17	Adelaide - Brisbane	85.1	81.1	-4.7
18	Launceston - Melbourne	80.7	79.6	-1.3
19	Brisbane - Mackay	80.8	82.0	1.5
20	Sunshine Coast - Sydney	71.8	73.7	2.6
21	Hobart - Sydney	68.9	76.7	11.3
22	Canberra - Sydney	82.1	94.9	15.6
23	Brisbane - Canberra	78.5	70.6	-10.0
24	Adelaide - Perth	65.4	70.0	7.0
25	Karratha - Perth	69.8	78.5	12.5
26	Melbourne - Sunshine Coast	71.4	55.7	-22.1
27	Brisbane - Rockhampton	57.2	65.8	15.2
28	Brisbane - Newcastle	57.0	52.3	-8.2
29	Ballina - Sydney	59.6	51.5	-13.6
30	Perth - Port Hedland	64.1	63.2	-1.5
31	Melbourne - Newcastle	41.7	46.8	12.4
32	Broome - Perth	46.4	45.6	-1.7
33	Newman - Perth	57.7	55.0	-4.6
34	Kalgoorlie - Perth	54.6	61.0	11.7
35	Brisbane - Darwin	34.6	36.1	4.2
36	Darwin - Melbourne	33.0	33.3	0.8
37	Launceston - Sydney	29.8	29.2	-2.0
38	Brisbane - Proserpine	25.1	25.8	2.8
39	Adelaide - Gold Coast	21.9	25.2	15.3
40	Brisbane - Hobart	24.5	24.5	-0.1
41	Hamilton Island - Sydney	29.3	26.3	-10.1
42	Brisbane - Gladstone	30.6	29.7	-2.9
43	Darwin - Perth	22.1	24.8	12.3
44	Coffs Harbour - Sydney	25.1	22.7	-9.7
45	Brisbane - Emerald	23.2	26.9	16.0
46	Dubbo - Sydney	25.1	25.0	-0.1
47	Adelaide - Canberra	27.8	22.6	-18.7
48	Albury - Sydney	23.0	20.7	-9.9
49	Canberra - Gold Coast	16.9	15.7	-6.7
50	Brisbane - Mount Isa	20.4	20.5	0.7

continued

Table 3: (continued) Available seats (000s) — monthly activity

	City-Pair	Aug 2023	Aug 2024	% Change
51	Sydney - Wagga Wagga	22.3	22.7	1.8
52	Port Macquarie - Sydney	21.7	20.2	-7.1
53	Adelaide - Port Lincoln	22.8	23.0	0.9
54	Melbourne - Mildura	23.2	18.2	-21.8
55	Brisbane - Bundaberg	18.7	19.1	2.3
56	Brisbane - Hamilton Island	18.3	16.3	-10.9
57	Devonport - Melbourne	14.6	15.1	3.0
58	Geraldton - Perth	..	19.2	NA
59	Brisbane - Launceston	12.7	11.2	-11.5
60	Adelaide - Alice Springs	14.6	14.5	-0.2
61	Brisbane - Moranbah	17.2	16.8	-2.7
	Total domestic network	6 298.8	6 088.3	-3.3

.. Data not available for release.

Table 4: Load factors (%) — monthly activity

	City-Pair	Aug 2023	Aug 2024	% Point diff
1	Melbourne - Sydney	79.5	84.5	5.0
2	Brisbane - Sydney	79.8	88.0	8.2
3	Brisbane - Melbourne	82.3	90.2	7.9
4	Gold Coast - Sydney	82.1	90.7	8.6
5	Adelaide - Melbourne	80.3	86.4	6.1
6	Gold Coast - Melbourne	90.1	96.1	6.0
7	Melbourne - Perth	76.4	81.7	5.3
8	Adelaide - Sydney	78.7	77.3	-1.4
9	Perth - Sydney	76.6	81.9	5.3
10	Brisbane - Cairns	89.2	89.8	0.6
11	Hobart - Melbourne	83.4	89.5	6.1
12	Brisbane - Perth	80.3	83.8	3.5
13	Brisbane - Townsville	87.6	87.4	-0.2
14	Cairns - Sydney	92.5	90.8	-1.7
15	Canberra - Melbourne	66.6	75.8	9.2
16	Cairns - Melbourne	92.3	93.3	1.0
17	Adelaide - Brisbane	81.9	87.1	5.2
18	Launceston - Melbourne	79.5	85.3	5.8
19	Brisbane - Mackay	77.8	82.7	4.9
20	Sunshine Coast - Sydney	80.9	86.1	5.2
21	Hobart - Sydney	75.0	76.1	1.1
22	Canberra - Sydney	64.6	61.3	-3.3
23	Brisbane - Canberra	73.3	82.0	8.7
24	Adelaide - Perth	79.4	81.6	2.2
25	Karratha - Perth	71.0	69.4	-1.6
26	Melbourne - Sunshine Coast	90.1	95.5	5.4
27	Brisbane - Rockhampton	81.6	79.1	-2.5
28	Brisbane - Newcastle	71.3	83.8	12.5
29	Ballina - Sydney	72.9	82.6	9.7
30	Perth - Port Hedland	69.0	65.6	-3.4
31	Melbourne - Newcastle	79.1	80.3	1.2
32	Broome - Perth	82.9	82.3	-0.6
33	Newman - Perth	62.1	63.9	1.8
34	Kalgoorlie - Perth	62.8	56.4	-6.4
35	Brisbane - Darwin	88.0	92.3	4.3
36	Darwin - Melbourne	87.9	87.3	-0.6
37	Launceston - Sydney	76.9	84.1	7.2
38	Brisbane - Proserpine	88.6	93.2	4.6
39	Adelaide - Gold Coast	90.3	92.9	2.6
40	Brisbane - Hobart	83.1	90.5	7.4
41	Hamilton Island - Sydney	65.8	75.5	9.7
42	Brisbane - Gladstone	62.3	66.5	4.2
43	Darwin - Perth	76.1	76.8	0.7
44	Coffs Harbour - Sydney	73.9	76.4	2.5
45	Brisbane - Emerald	72.5	60.6	-11.9
46	Dubbo - Sydney	65.6	62.6	-3.0
47	Adelaide - Canberra	60.1	67.6	7.5
48	Albury - Sydney	69.2	70.5	1.3
49	Canberra - Gold Coast	86.4	92.8	6.4
50	Brisbane - Mount Isa	69.7	70.4	0.7

continued

Table 4: (continued) Load factors (%) — monthly activity

	City-Pair	Aug 2023	Aug 2024	% Point diff
51	Sydney - Wagga Wagga	65.6	63.4	-2.2
52	Port Macquarie - Sydney	66.2	69.8	3.6
53	Adelaide - Port Lincoln	60.4	59.3	-1.1
54	Melbourne - Mildura	66.6	69.8	3.2
55	Brisbane - Bundaberg	64.5	65.7	1.2
56	Brisbane - Hamilton Island	70.8	76.7	5.9
57	Devonport - Melbourne	69.2	72.7	3.5
58	Geraldton - Perth	..	53.4	NA
59	Brisbane - Launceston	82.6	89.9	7.3
60	Adelaide - Alice Springs	75.0	66.3	-8.7
61	Brisbane - Moranbah	58.8	54.6	-4.2
	Total domestic network	79.8	83.3	3.5

.. Data not available for release.

Table 5: Aircraft trips ^(a) — monthly activity

	City-Pair	Aug 2023	Aug 2024	% Change
1	Melbourne - Sydney	4 710	4 450	-5.5
2	Brisbane - Sydney	2 838	2 546	-10.3
3	Brisbane - Melbourne	2 082	1 962	-5.8
4	Gold Coast - Sydney	1 365	1 279	-6.3
5	Adelaide - Melbourne	1 459	1 336	-8.4
6	Gold Coast - Melbourne	1 100	881	-19.9
7	Melbourne - Perth	1 076	1 080	0.4
8	Adelaide - Sydney	1 113	1 116	0.3
9	Perth - Sydney	836	863	3.2
10	Brisbane - Cairns	885	908	2.6
11	Hobart - Melbourne	696	725	4.2
12	Brisbane - Perth	583	606	3.9
13	Brisbane - Townsville	675	792	17.3
14	Cairns - Sydney	452	508	12.4
15	Canberra - Melbourne	918	734	-20.0
16	Cairns - Melbourne	447	438	-2.0
17	Adelaide - Brisbane	727	648	-10.9
18	Launceston - Melbourne	739	647	-12.4
19	Brisbane - Mackay	624	610	-2.2
20	Sunshine Coast - Sydney	404	411	1.7
21	Hobart - Sydney	441	435	-1.4
22	Canberra - Sydney	1 335	1 290	-3.4
23	Brisbane - Canberra	629	573	-8.9
24	Adelaide - Perth	362	402	11.0
25	Karratha - Perth	412	468	13.6
26	Melbourne - Sunshine Coast	382	311	-18.6
27	Brisbane - Rockhampton	684	713	4.2
28	Brisbane - Newcastle	522	443	-15.1
29	Ballina - Sydney	442	350	-20.8
30	Perth - Port Hedland	394	394	0.0
31	Melbourne - Newcastle	276	308	11.6
32	Broome - Perth	292	285	-2.4
33	Newman - Perth	361	345	-4.4
34	Kalgoorlie - Perth	356	422	18.5
35	Brisbane - Darwin	214	246	15.0
36	Darwin - Melbourne	205	186	-9.3
37	Launceston - Sydney	190	186	-2.1
38	Brisbane - Proserpine	185	160	-13.5
39	Adelaide - Gold Coast	110	124	12.7
40	Brisbane - Hobart	163	154	-5.5
41	Hamilton Island - Sydney	167	150	-10.2
42	Brisbane - Gladstone	379	348	-8.2
43	Darwin - Perth	125	143	14.4
44	Coffs Harbour - Sydney	449	406	-9.6
45	Brisbane - Emerald	350	357	2.0
46	Dubbo - Sydney	482	477	-1.0
47	Adelaide - Canberra	260	209	-19.6
48	Albury - Sydney	447	386	-13.6
49	Canberra - Gold Coast	95	88	-7.4
50	Brisbane - Mount Isa	182	179	-1.6

continued

Table 5: (continued) Aircraft trips — monthly activity

	City-Pair	Aug 2023	Aug 2024	% Change
51	Sydney - Wagga Wagga	405	406	0.2
52	Port Macquarie - Sydney	381	329	-13.6
53	Adelaide - Port Lincoln	552	559	1.3
54	Melbourne - Mildura	495	431	-12.9
55	Brisbane - Bundaberg	305	311	2.0
56	Brisbane - Hamilton Island	106	119	12.3
57	Devonport - Melbourne	323	333	3.1
58	Geraldton - Perth	..	211	NA
59	Brisbane - Launceston	72	64	-11.1
60	Adelaide - Alice Springs	174	173	-0.6
61	Brisbane - Moranbah	229	224	-2.2
	Total domestic network	53 181	51 022	-4.1

.. Data not available for release.

(a) Includes RPT cargo flights.

TOP TEN AIRPORTS – PASSENGER MOVEMENTS

Table 6: Top ten airports, RPT passenger movements (000s) - monthly activity

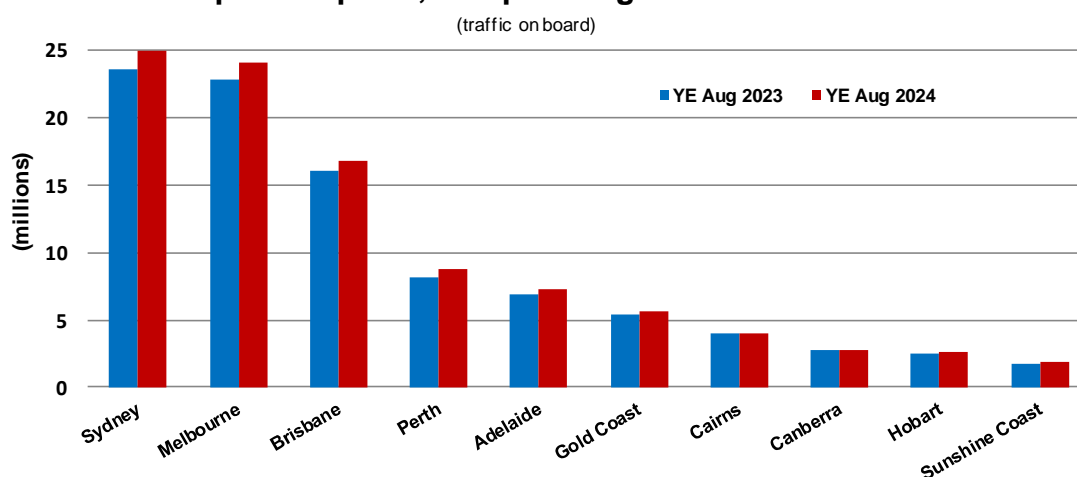
Airport	Aug 2023	Aug 2024	% Change	% of Total
1 Sydney	2 024.8	2 077.6	2.6	21.0
2 Melbourne	1 967.9	1 951.5	-0.8	19.7
3 Brisbane	1 416.1	1 474.2	4.1	14.9
4 Perth	707.2	752.3	6.4	7.6
5 Adelaide	594.0	599.0	0.8	6.0
6 Gold Coast	441.4	432.1	-2.1	4.4
7 Cairns	381.7	380.4	-0.3	3.8
8 Canberra	239.3	241.5	0.9	2.4
9 Hobart	184.2	197.9	7.4	2.0
10 Darwin	165.0	164.6	-0.3	1.7
Total top ten airports	8 121.6	8 271.1	1.8	83.5
Total domestic network	9 782.7	9 904.1	1.2	100.0

Table 7: Top ten airports, RPT passenger movements (000s) - annual activity

Airport	YE Aug 2023	YE Aug 2024	% Change	% of Total
1 Sydney	23 567.0	24 889.7	5.6	21.2
2 Melbourne	22 766.5	24 072.9	5.7	20.5
3 Brisbane	15 998.0	16 809.9	5.1	14.3
4 Perth	8 190.6	8 704.2	6.3	7.4
5 Adelaide	6 916.5	7 317.2	5.8	6.2
6 Gold Coast	5 419.4	5 618.4	3.7	4.8
7 Cairns	3 947.8	4 056.8	2.8	3.4
8 Canberra	2 728.0	2 794.2	2.4	2.4
9 Hobart	2 509.6	2 682.7	6.9	2.3
10 Sunshine Coast	1 700.1	1 818.2	6.9	1.5
Total top ten airports	93 743.6	98 764.3	5.4	83.9
Total domestic network	111 833.0	117 659.7	5.2	100.0

Note: Airport passenger movement numbers are the sum of passenger arrivals and departures at each airport.

Top ten airports, RPT passenger movements



In tables 6 and 7, airport passenger movement numbers are the sum of passenger arrivals and departures at each airport for Regular Public Transport operations only. Each domestic passenger generates two passenger movements (a departure and an arrival). For example, a passenger flying from Melbourne to Sydney will be counted twice, as a passenger departure at Melbourne and a passenger arrival at Sydney.

TOP FIVE AIRPORTS – CARGO MOVEMENTS

Table 8: Top five airports, domestic RPT cargo movements (000s tonnes) - monthly activity

Airport	Aug 2023	Aug 2024	% Change	% of Total
1 Melbourne	8.4	7.4	-11.6	27.1
2 Sydney	7.0	6.0	-14.5	21.9
3 Brisbane	5.4	4.8	-10.4	17.7
4 Perth	3.2	3.2	-0.1	11.5
5 Adelaide	1.6	1.5	-6.7	5.4
Total top five airports	25.5	22.8	-10.4	83.6
Total domestic network	30.6	27.3	-10.9	100.0

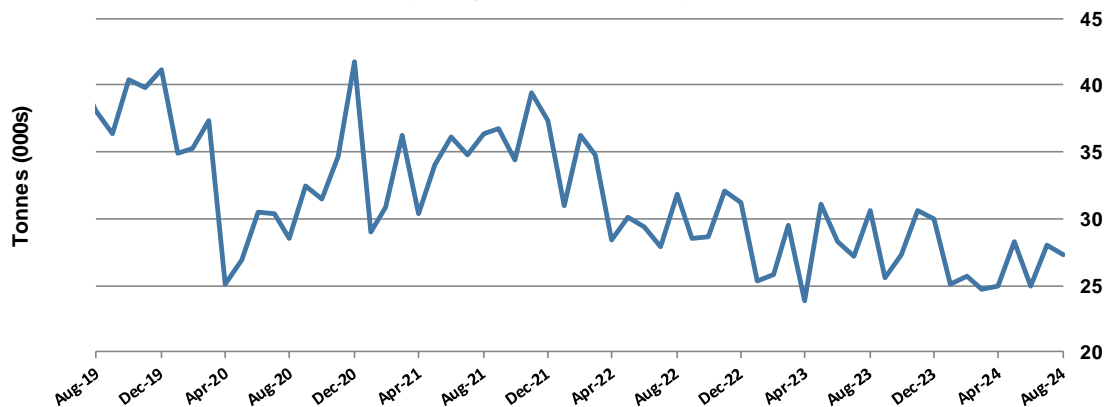
Table 9: Top five airports, domestic RPT cargo movements (000s tonnes) - annual activity

Airport	YE Aug 2023	YE Aug 2024	% Change	% of Total
1 Melbourne	92.2	87.6	-5.0	27.2
2 Sydney	76.6	70.2	-8.3	21.8
3 Brisbane	59.6	58.9	-1.3	18.3
4 Perth	35.5	35.4	-0.4	11.0
5 Adelaide	19.0	18.4	-3.0	5.7
Total top five airports	282.9	270.5	-4.4	83.9
Total domestic network	342.0	322.5	-5.7	100.0

Note: Airport cargo tonnes are the sum of cargo tonnes on arrivals and departures at each airport.

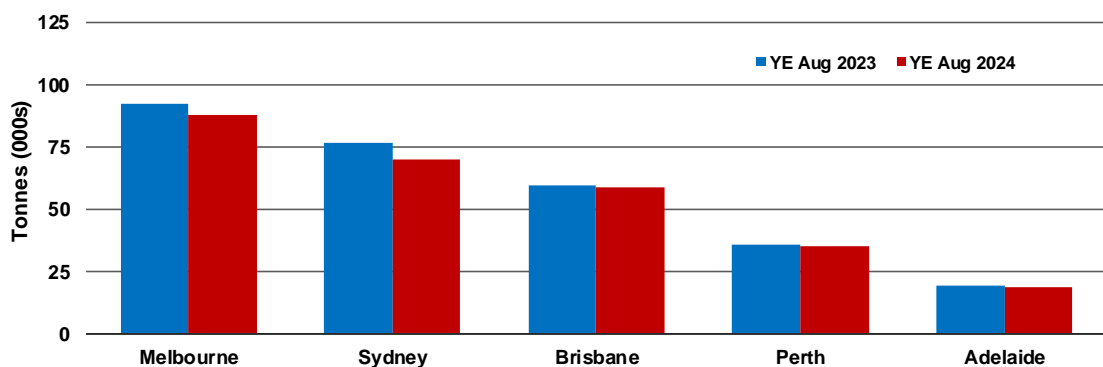
Total domestic network - cargo movement

(monthly totals - traffic on board)



Top five airports, cargo movements

(Domestic cargo traffic - traffic on board)



Note: Airport cargo tonnes are the sum of cargo tonnes on arrivals and departures at each airport.

TOP TEN ROUTES

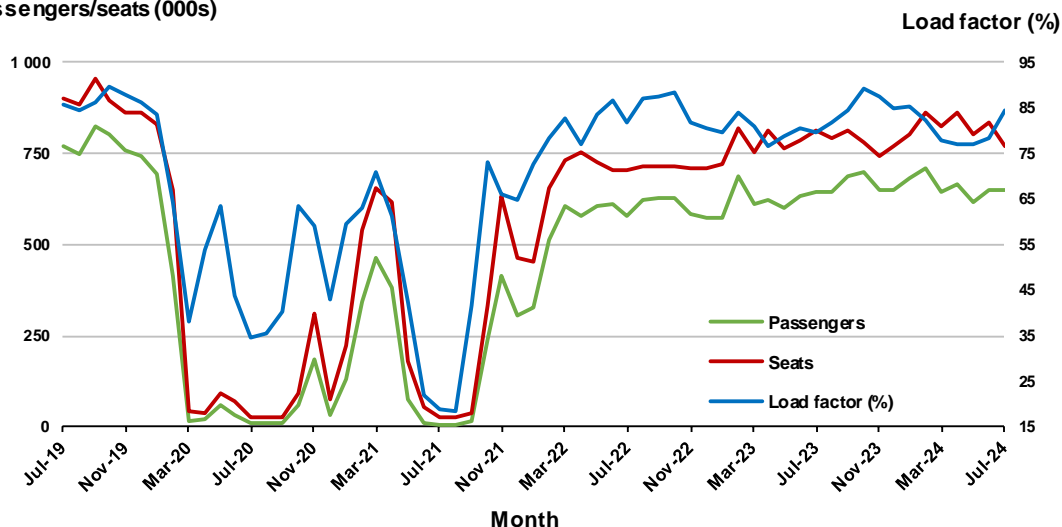
1. Melbourne - Sydney

Monthly data

	Aug 2023	Aug 2024	% Change
Passengers carried (000s)	644.4	651.9	1.2
Seats (000s)	810.8	771.6	- 4.8
Load factor %	79.5	84.5	5.0 *
Aircraft trips	4 710	4 450	-5.5

* percentage point difference

Passengers/seats (000s)

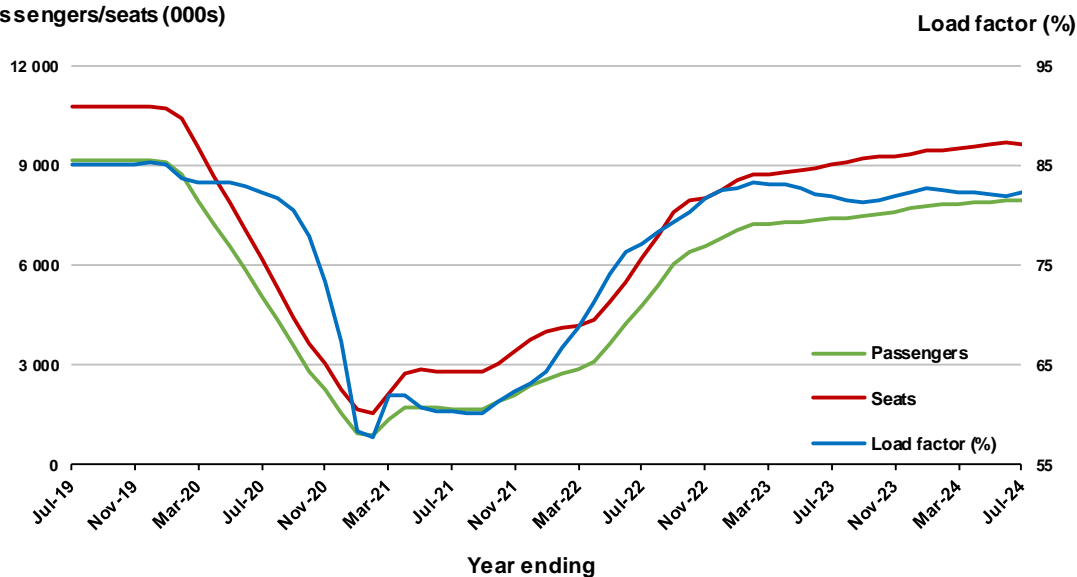


Moving annual data

	YE Aug 2023	YE Aug 2024	% Change
Passengers carried (000s)	7 403.4	7 945.5	7.3
Seats (000s)	9 035.5	9 647.5	6.8
Load factor %	82.0	82.4	0.4 *
Aircraft trips	52 128	55 798	7.0

* percentage point difference

Passengers/seats (000s)

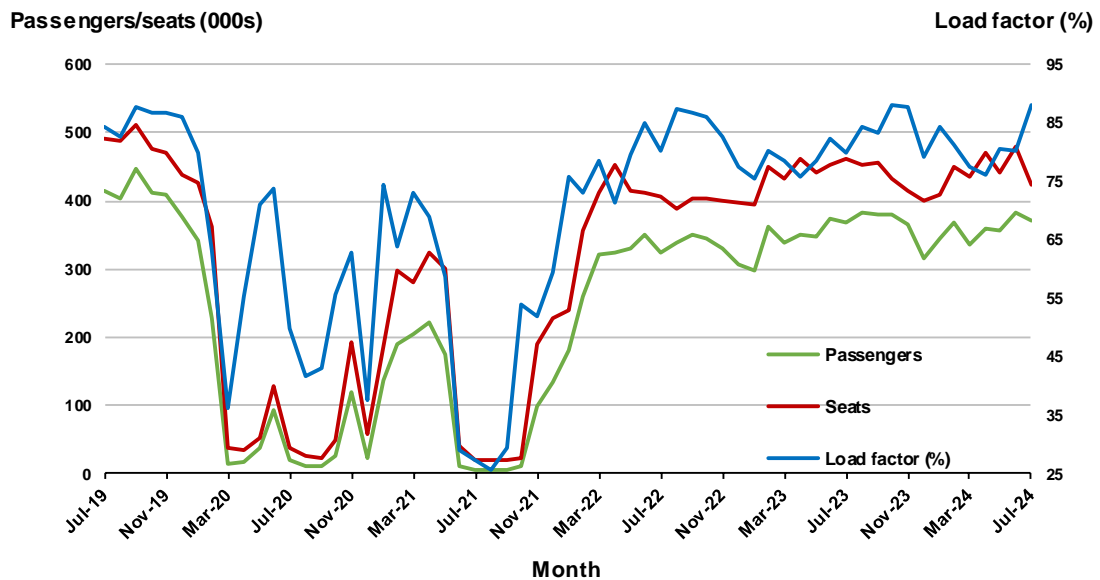


2. Brisbane - Sydney

Monthly data

	Aug 2023	Aug 2024	% Change
Passengers carried (000s)	367.6	372.1	1.2
Seats (000s)	460.5	422.7	-8.2
Load factor %	79.8	88.0	8.2 *
Aircraft trips	2 838	2 546	-10.3

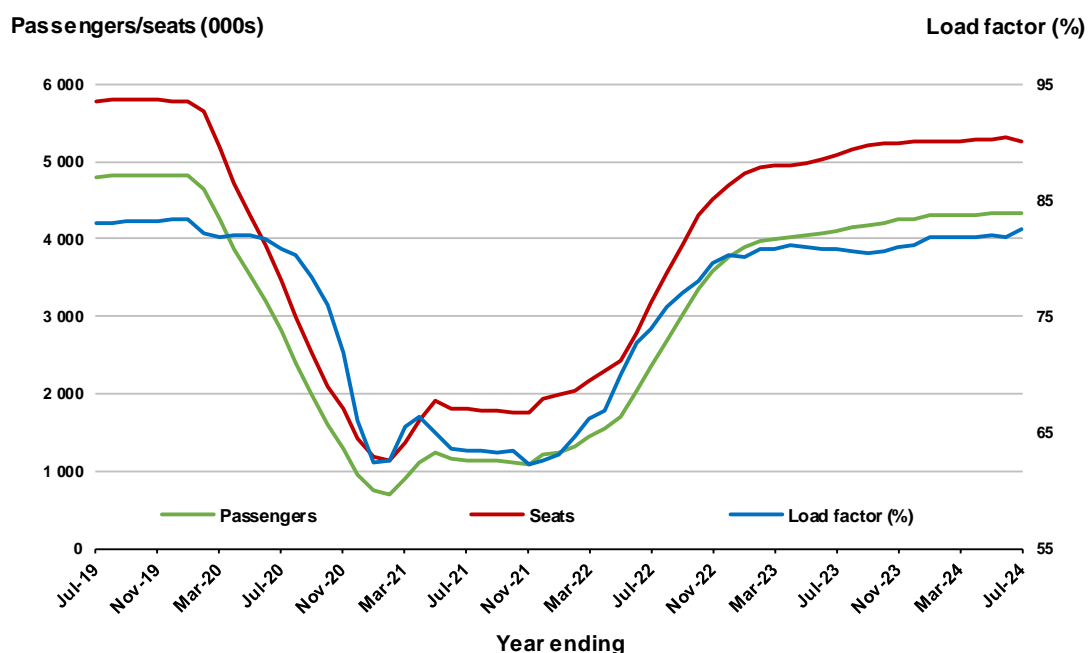
* percentage point difference



Moving annual data

	YE Aug 2023	YE Aug 2024	% Change
Passengers carried (000s)	4 108.5	4 339.9	5.6
Seats (000s)	5 083.8	5 264.1	3.5
Load factor %	80.8	82.4	1.6 *
Aircraft trips	31 231	32 133	2.9

* percentage point difference

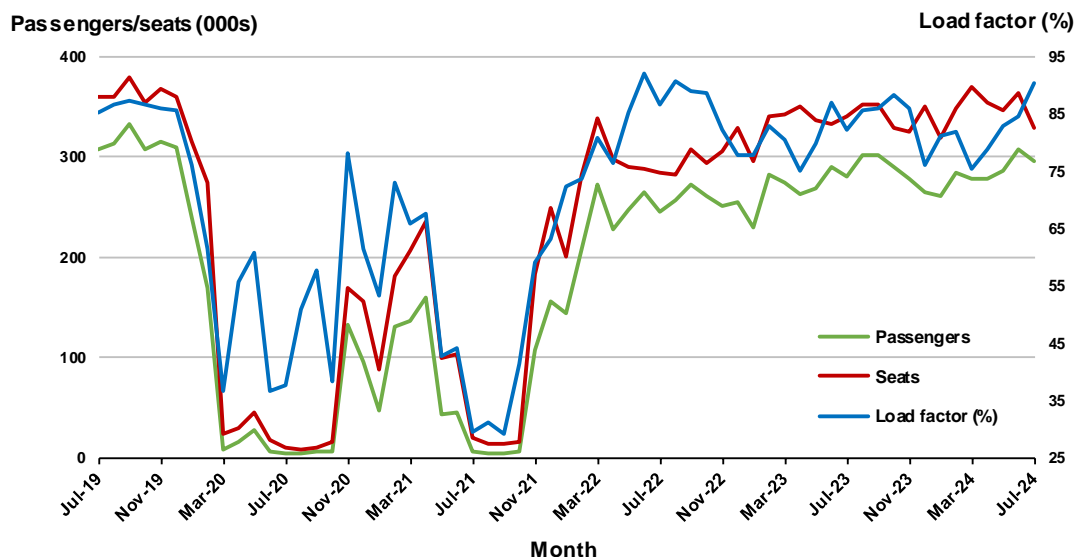


3. Brisbane - Melbourne

Monthly data

	Aug 2023	Aug 2024	% Change
Passengers carried (000s)	279.6	296.5	6.0
Seats (000s)	339.7	328.7	- 3.2
Load factor %	82.3	90.2	7.9 *
Aircraft trips	2 082	1 962	-5.8

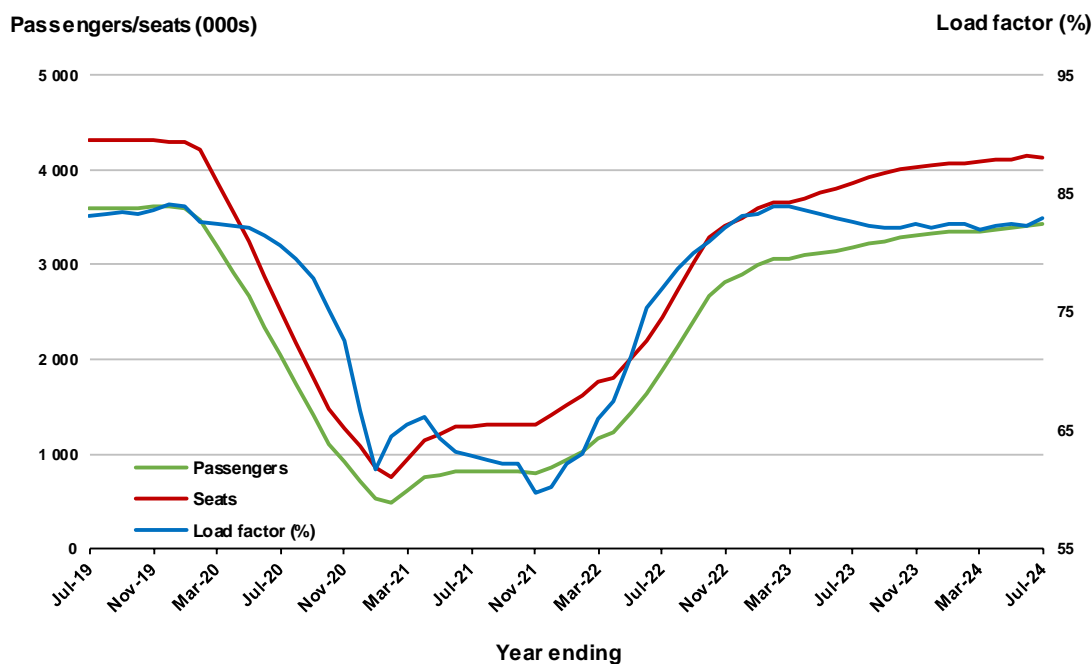
* percentage point difference



Moving annual data

	YE Aug 2023	YE Aug 2024	% Change
Passengers carried (000s)	3 183.0	3 425.3	7.6
Seats (000s)	3 854.7	4 132.3	7.2
Load factor %	82.6	82.9	0.3 *
Aircraft trips	23 495	24 773	5.4

* percentage point difference



4. Gold Coast - Sydney ^(a)

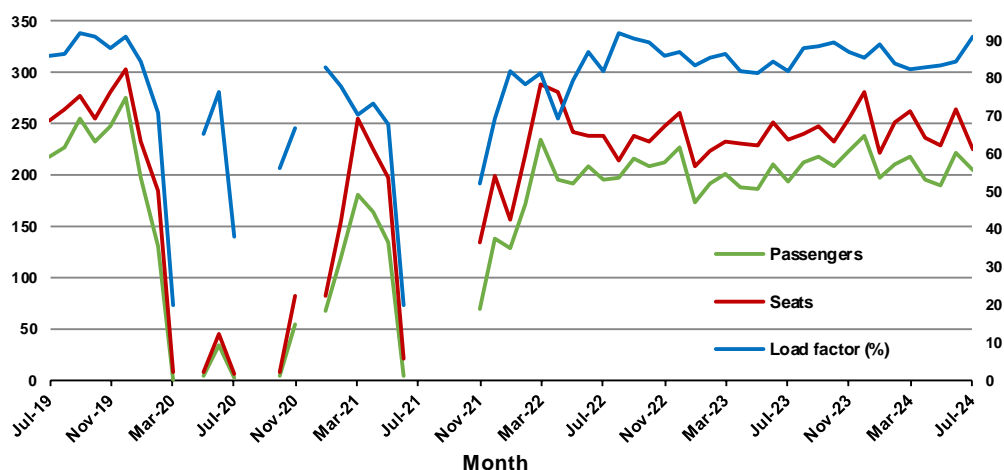
Monthly data

	Aug 2023	Aug 2024	% Change
Passengers carried (000s)	193.3	204.2	5.6
Seats (000s)	235.5	225.2	-4.4
Load factor %	82.1	90.7	8.6 *
Aircraft trips	1 365	1 279	-6.3

* percentage point difference

Passengers/seats (000s)

Load factor (%)



(a) May, September and October 2020 and January and August to November 2021 data not available for release.

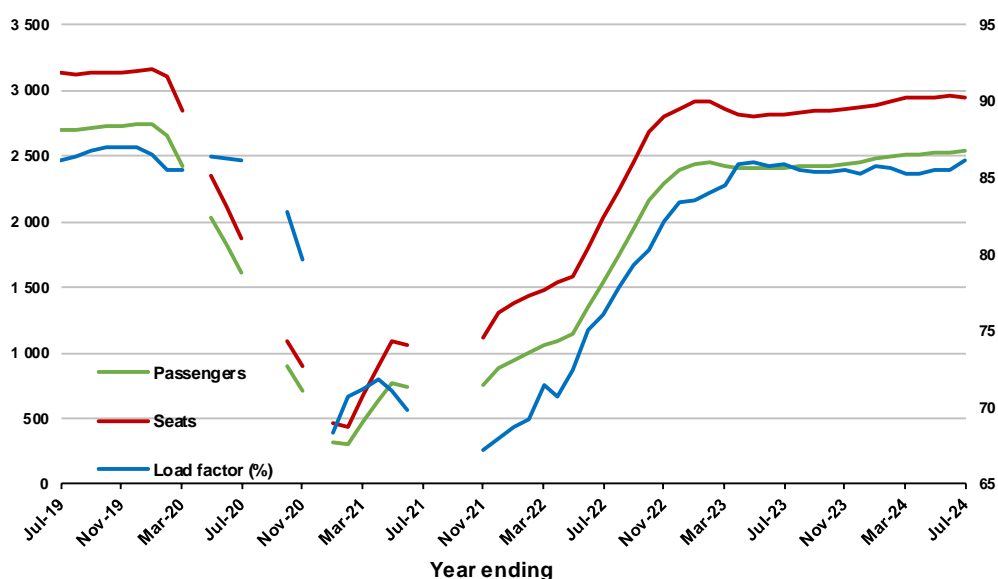
Moving annual data

	YE Aug 2023	YE Aug 2024	% Change
Passengers carried (000s)	2 408.8	2 540.7	5.5
Seats (000s)	2 806.6	2 950.2	5.1
Load factor %	85.8	86.1	0.3 *
Aircraft trips	16 187	16 704	3.2

* percentage point difference

Passengers/seats (000s)

Load factor (%)



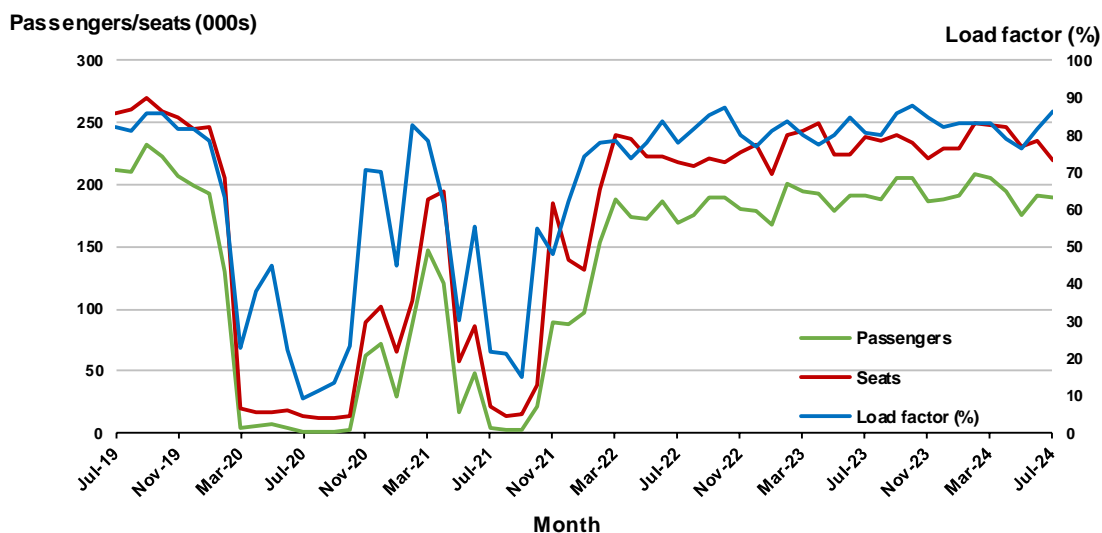
(a) May, September and October 2020 and January and August to November 2021 moving annual totals not available for release.

5. Adelaide - Melbourne

Monthly data

	Aug 2023	Aug 2024	% Change
Passengers carried (000s)	191.3	190.4	-0.5
Seats (000s)	238.3	220.4	-7.5
Load factor %	80.3	86.4	6.1 *
Aircraft trips	1 459	1 336	-8.4

* percentage point difference

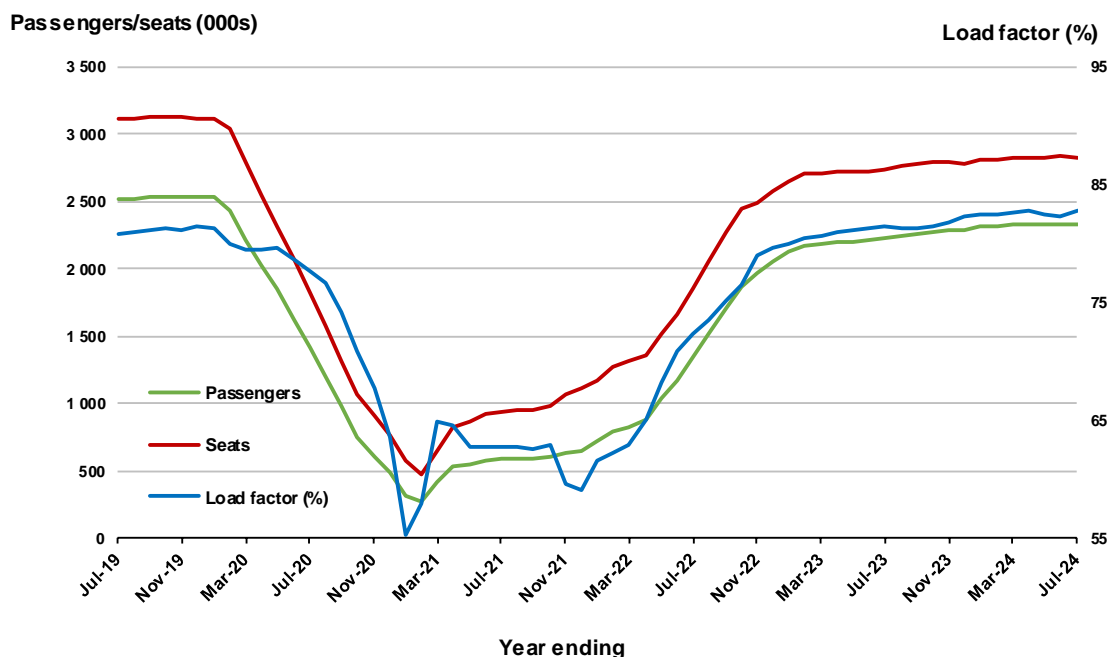


(a) April to November 2020 and August to November 2021 data not available for release.

Moving annual data

	YE Aug 2023	YE Aug 2024	% Change
Passengers carried (000s)	2 232.6	2 331.4	4.4
Seats (000s)	2 741.4	2 817.4	2.8
Load factor %	81.4	82.7	1.3 *
Aircraft trips	16 813	17 167	2.1

* percentage point difference

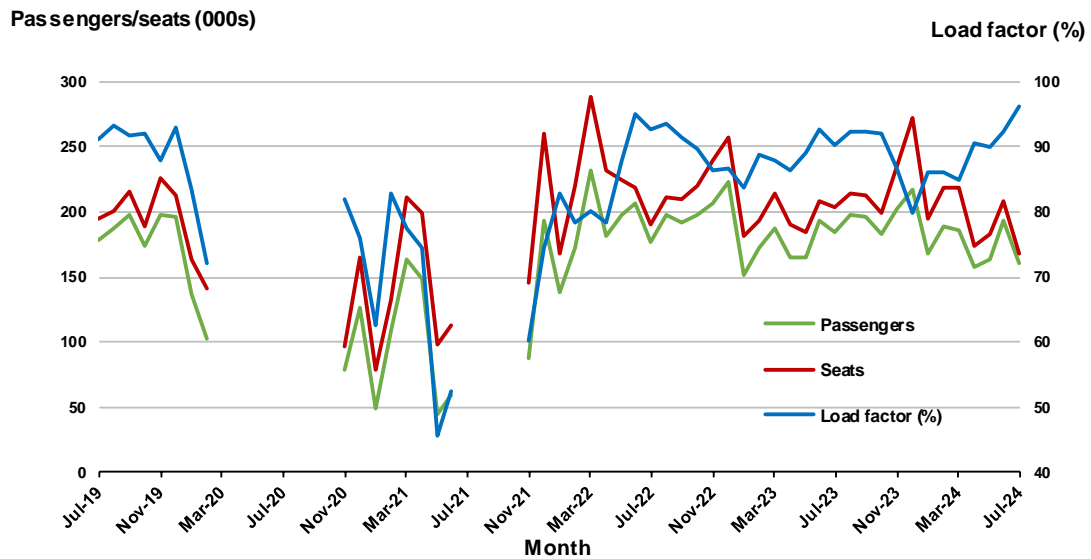


6. Gold Coast - Melbourne ^(a)

Monthly data

	Aug 2023	Aug 2024	% Change
Passengers carried (000s)	183.7	161.0	-12.4
Seats (000s)	204.0	167.4	-17.9
Load factor %	90.1	96.1	6.0 *
Aircraft trips	1 100	881	-19.9

* percentage point difference

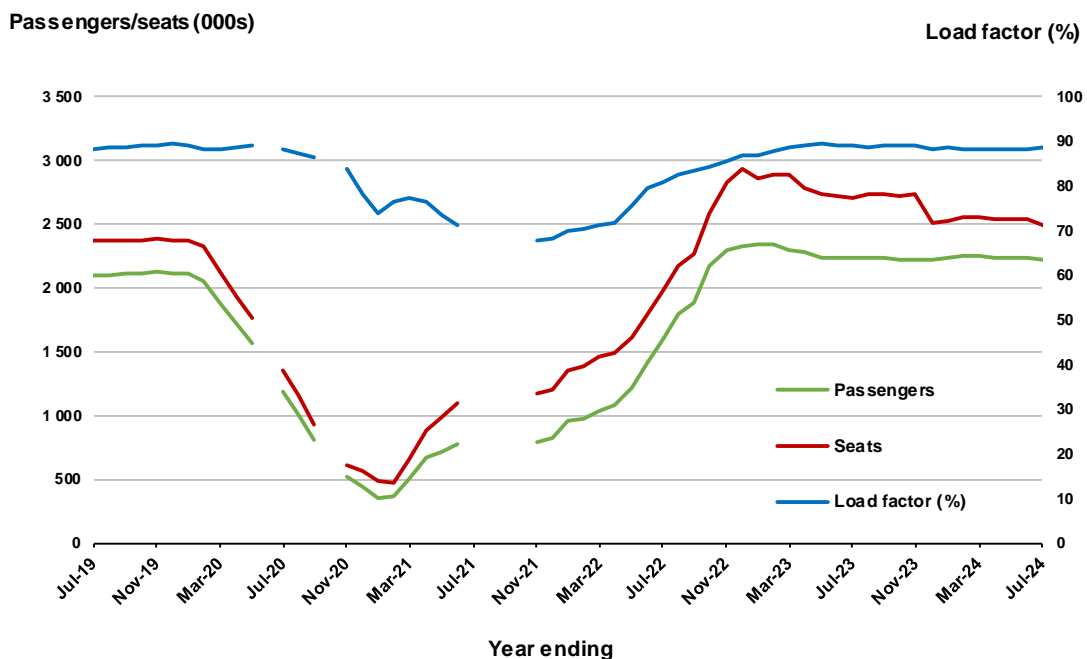


(a) February to November 2020 and June to November 2021 data not available for release

Moving annual data

	YE Aug 2023	YE Aug 2024	% Change
Passengers carried (000s)	2 233.6	2 213.3	-0.9
Seats (000s)	2 704.5	2 497.3	-7.7
Load factor %	88.9	88.6	-0.2 *
Aircraft trips	13 717	13 602	-0.8

* percentage point difference



(a) June 2020, October 2020 and June to October 2022 moving annual totals are not available for release

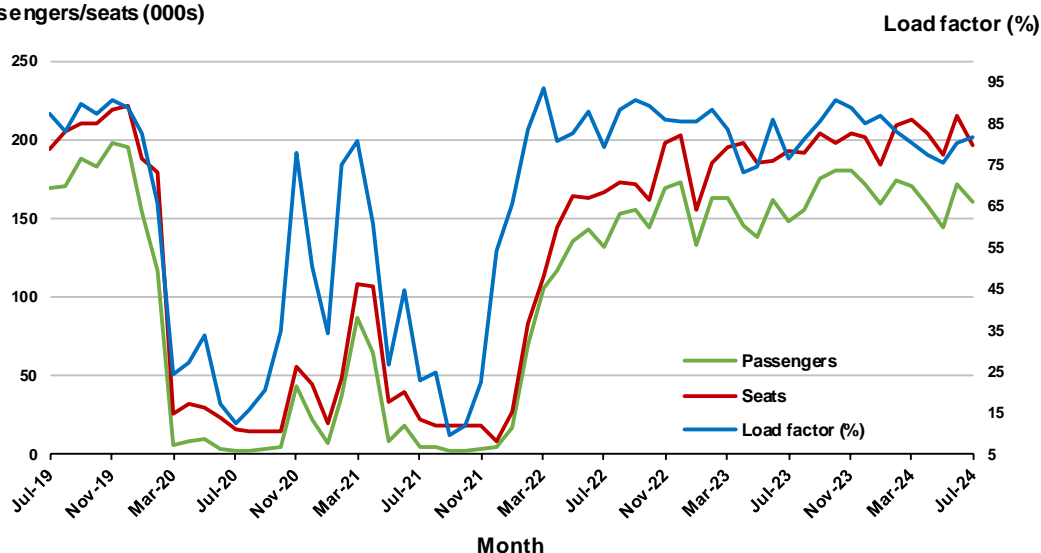
7. Melbourne - Perth

Monthly data

	Aug 2023	Aug 2024	% Change
Passengers carried (000s)	147.6	160.9	9.0
Seats (000s)	193.2	197.0	2.0
Load factor %	76.4	81.7	5.3 *
Aircraft trips	1 076	1 080	0.4

* percentage point difference

Passengers/seats (000s)

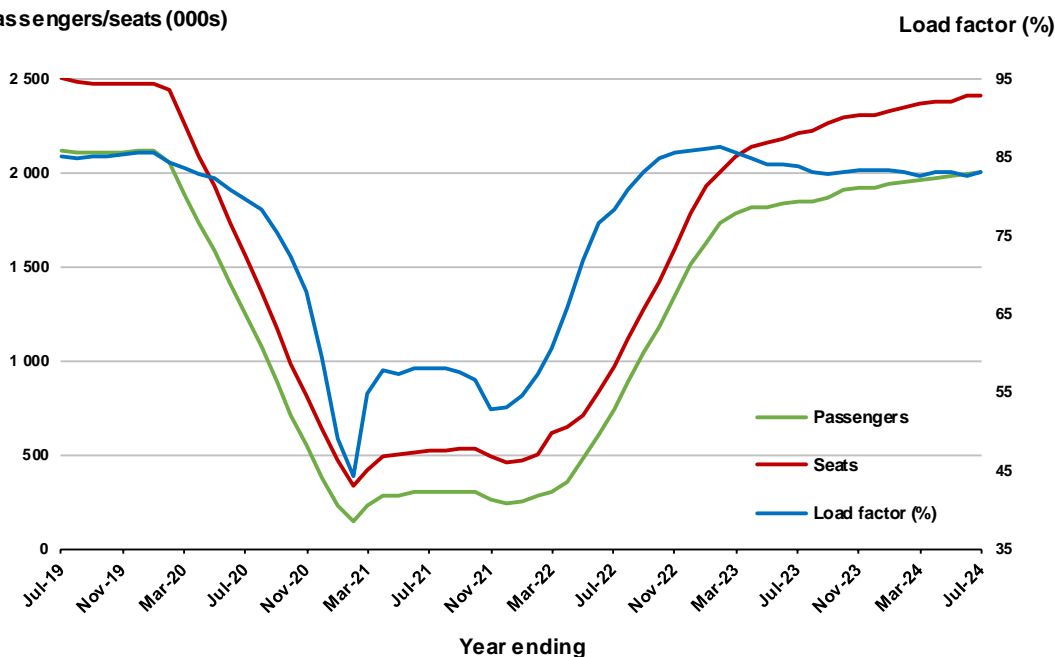


Moving annual data

	YE Aug 2023	YE Aug 2024	% Change
Passengers carried (000s)	1 847.1	2 001.3	8.3
Seats (000s)	2 207.0	2 411.6	9.3
Load factor %	83.7	83.0	-0.7 *
Aircraft trips	12 310	13 353	8.5

* percentage point difference

Passengers/seats (000s)

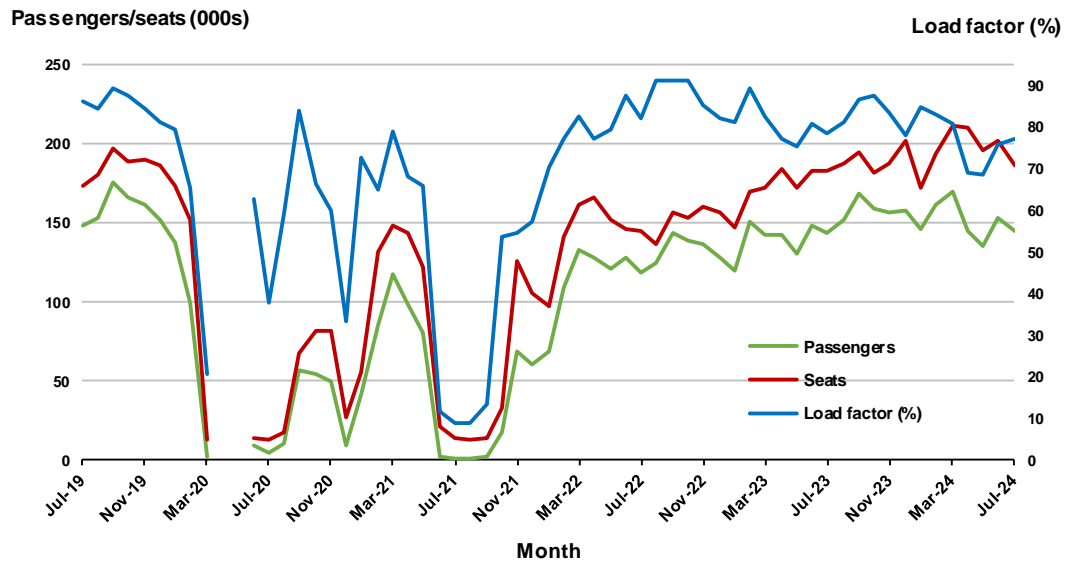


8. Adelaide - Sydney ^(a)

Monthly data

	Aug 2023	Aug 2024	% Change
Passengers carried (000s)	143.8	144.4	.4
Seats (000s)	182.8	186.7	2.1
Load factor %	78.7	77.3	-1.4 *
Aircraft trips	1 113	1 116	.3

* percentage point difference

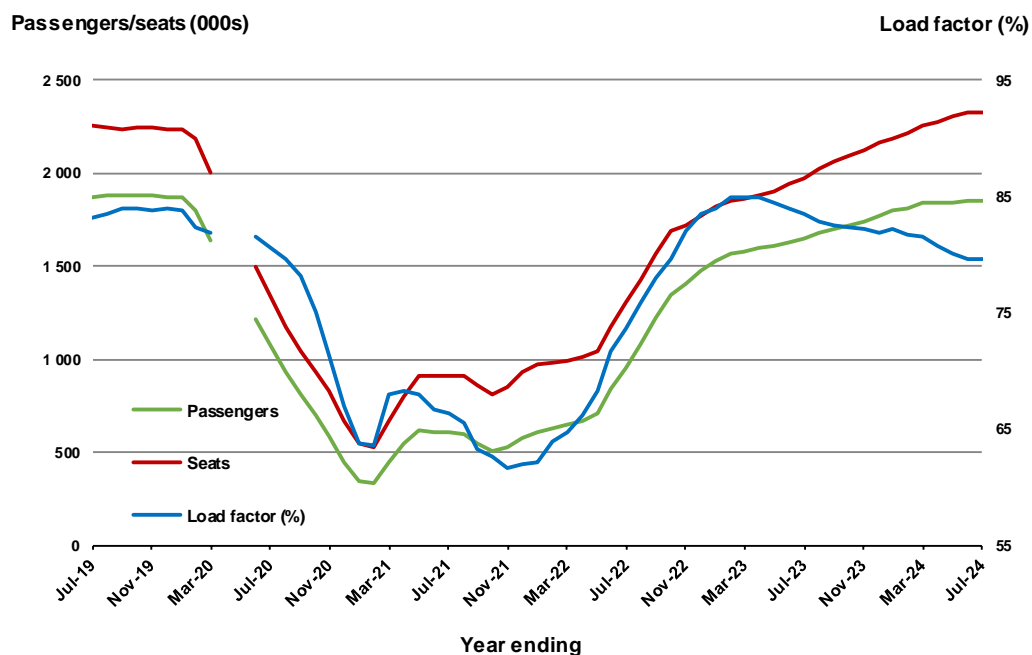


(a) April and May 2020 data not available for release.

Moving annual data

	YE Aug 2023	YE Aug 2024	% Change
Passengers carried (000s)	1 649.9	1 850.1	12.1
Seats (000s)	1 975.1	2 325.8	17.8
Load factor %	83.5	79.5	-4.0 *
Aircraft trips	12 049	14 090	16.9

* percentage point difference



(a) April and May 2020 moving annual totals are not available for release.

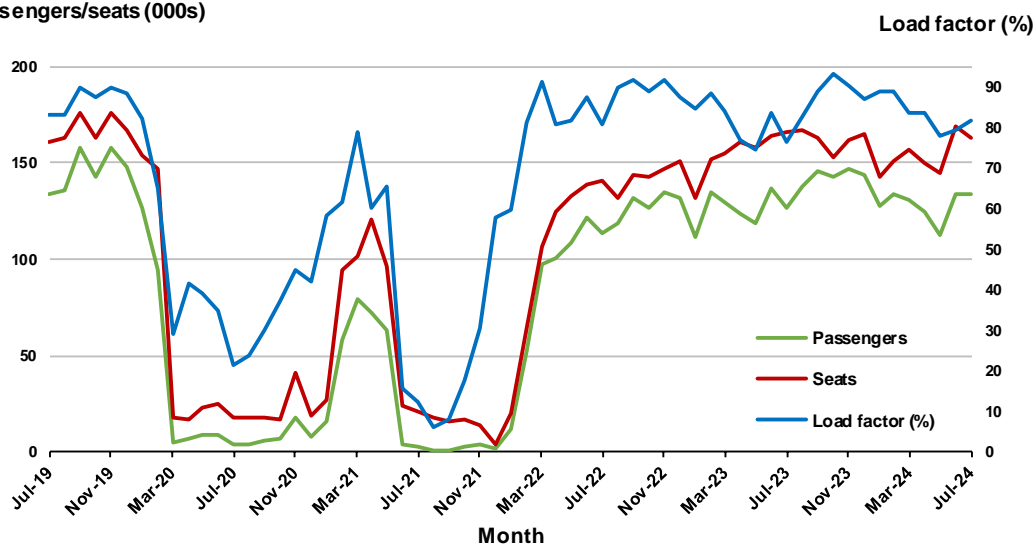
9. Perth - Sydney

Monthly data

	Aug 2023	Aug 2024	% Change
Passengers carried (000s)	126.9	133.7	5.3
Seats (000s)	165.7	163.2	- 1.5
Load factor %	76.6	81.9	5.3 *
Aircraft trips	836	863	3.2

* percentage point difference

Passengers/seats (000s)

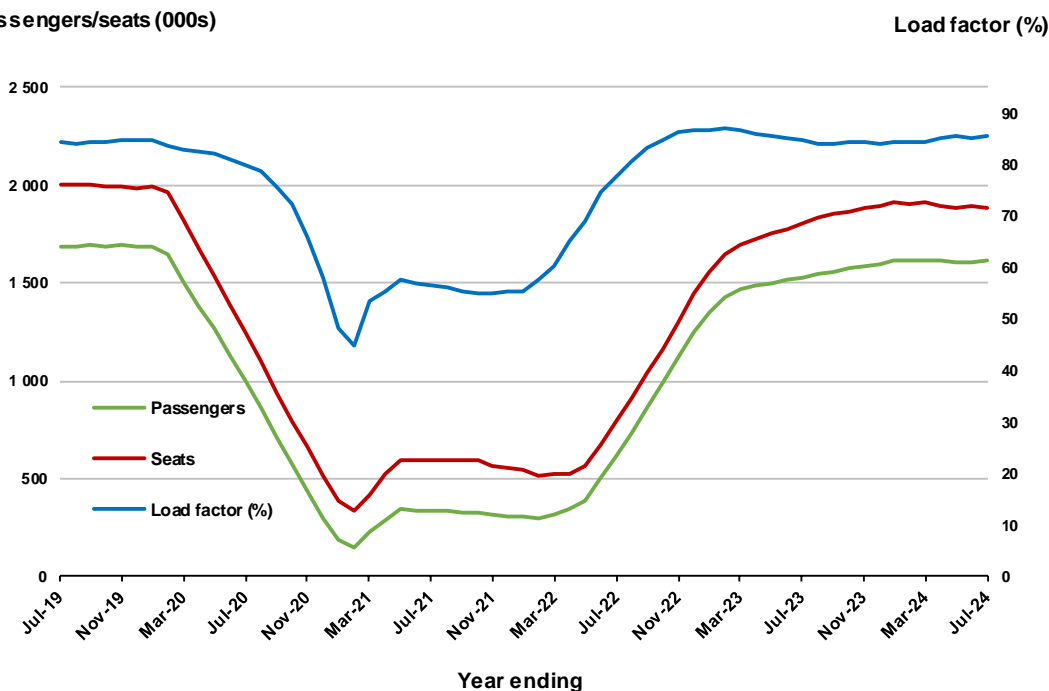


Moving annual data

	YE Aug 2023	YE Aug 2024	% Change
Passengers carried (000s)	1 526.1	1 614.3	5.8
Seats (000s)	1 803.0	1 887.7	4.7
Load factor %	84.6	85.5	0.9 *
Aircraft trips	9 389	9 899	5.4

* percentage point difference

Passengers/seats (000s)

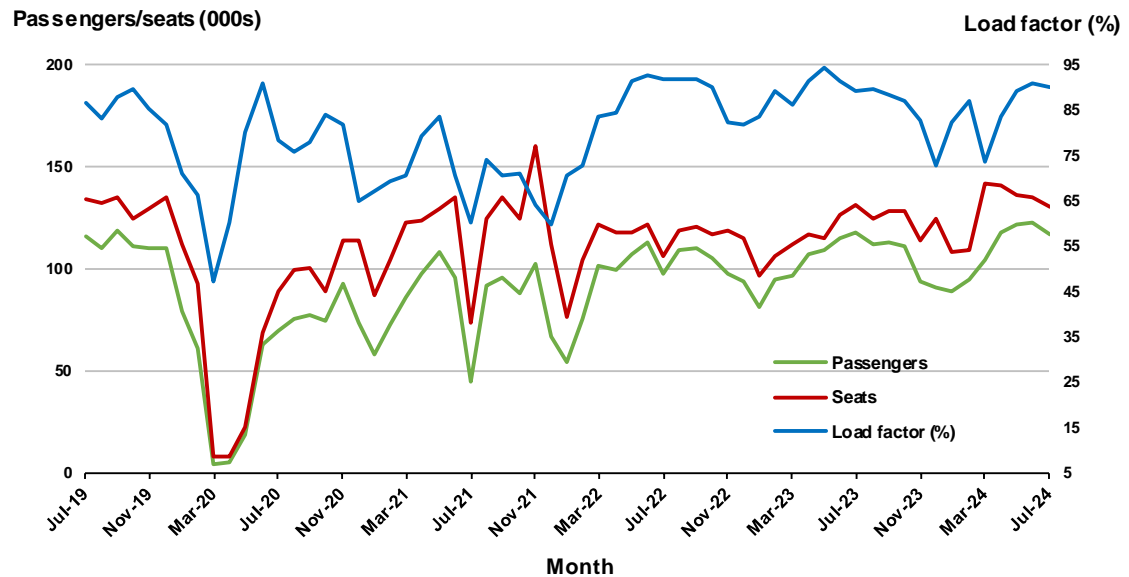


10. Brisbane - Cairns

Monthly data

	Aug 2023	Aug 2024	% Change
Passengers carried (000s)	117.2	116.6	-0.5
Seats (000s)	131.5	129.9	-1.2
Load factor %	89.2	89.8	0.6 *
Aircraft trips	885	908	2.6

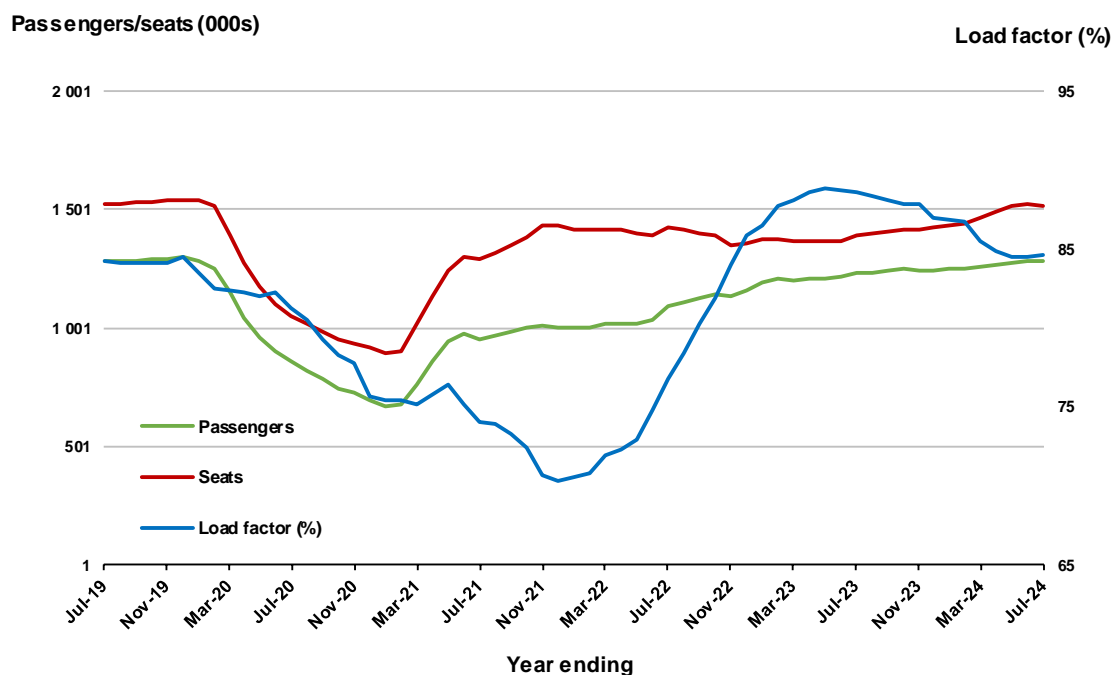
* percentage point difference



Moving annual data

	YE Aug 2023	YE Aug 2024	% Change
Passengers carried (000s)	1 235.7	1 285.9	4.1
Seats (000s)	1 394.7	1 519.9	9.0
Load factor %	88.6	84.6	-4.0 *
Aircraft trips	9 310	10 427	12.0

* percentage point difference



TOP FIFTY REGIONAL AIRPORTS

Table 10: Top fifty regional airports (000s) — passenger movements, monthly

Airport	Aug 2023	Aug 2024	% Change
1 Cairns	381.7	380.4	-0.3
2 Hobart	184.2	197.9	7.4
3 Darwin	165.0	164.6	-0.3
4 Townsville	155.6	151.8	-2.4
5 Launceston	99.0	103.9	5.0
6 Newcastle	97.8	101.9	4.2
7 Mackay	79.7	78.6	-1.4
8 Rockhampton	58.0	55.7	-4.1
9 Karratha	50.4	55.6	10.3
10 Broome	50.3	51.2	1.8
11 Ballina	50.6	50.0	-1.1
12 Port Hedland	45.0	42.7	-4.9
13 Proserpine	43.7	42.4	-3.2
14 Hamilton Island	40.3	39.4	-2.2
15 Alice Springs	34.5	35.5	2.7
16 Newman	35.8	35.3	-1.3
17 Kalgoorlie	34.4	34.6	0.3
18 Ayers Rock	28.0	33.3	18.9
19 Paraburdoo	24.2	24.6	1.5
20 Mount Isa	22.7	22.2	-2.4
21 Albury	24.5	20.6	-16.0
22 Gladstone	20.6	19.8	-3.9
23 Coffs Harbour	23.9	19.6	-18.2
24 Wagga Wagga	18.0	18.5	3.2
25 Dubbo	19.6	18.4	-5.9
26 Hervey Bay	12.2	18.2	49.6
27 Emerald	17.7	17.2	-3.2
28 Mildura	19.8	16.5	-16.4
29 Port Macquarie	19.4	16.3	-16.3
30 Kununurra	14.9	15.1	1.7
31 Tamworth	15.8	14.1	-11.0
32 Port Lincoln	13.8	13.6	-0.9
33 Bundaberg	15.1	12.5	-17.1
34 Learmonth	10.7	11.1	3.2
35 Devonport	10.1	10.9	7.9
36 Geraldton	9.2	10.9	18.1
37 Thursday Island	9.5	10.7	12.5
38 Gove	9.9	9.9	-0.1
39 Orange	9.6	9.6	0.1
40 Armidale	10.4	9.2	-11.4
41 Moranbah	10.1	9.2	-9.8
42 Olympic Dam	9.6	8.8	-8.9
43 Weipa	8.1	8.5	4.8
44 Busselton	3.7	7.5	102.8
45 Griffith	7.0	6.3	-10.1
46 Mount Gambier	6.5	6.2	-5.1
47 Burnie	7.0	6.0	-14.6
48 Albany	5.6	5.7	2.0
49 Broken Hill	5.3	5.3	0.8
50 Merimbula	5.8	5.3	-8.7
Total top 50 regional airports	2 054.3	2 062.7	0.4
Total regional airports	2 180.9	2 180.2	0.0
Total domestic network	9 782.7	9 904.1	1.2

Note: Airport passenger movement numbers are the sum of passenger arrivals and departures at each airport. Regional airports are defined as airports which are, according to Australian Statistical Geography Standard (ASGS), not based in Major Cities.

Table 11: Top fifty regional airports (000s) — passenger movements, annual

Airport	YE Aug 2023	YE Aug 2024	% Change
1 Cairns	3 947.8	4 056.8	2.8
2 Hobart	2 509.6	2 682.7	6.9
3 Townsville	1 671.8	1 663.3	-0.5
4 Darwin	1 627.1	1 592.8	-2.1
5 Launceston	1 309.8	1 421.6	8.5
6 Newcastle	1 115.1	1 203.5	7.9
7 Mackay	894.7	913.1	2.1
8 Rockhampton	584.4	649.7	11.2
9 Ballina	639.0	619.7	-3.0
10 Karratha	536.4	598.7	11.6
11 Proserpine	487.6	501.1	2.8
12 Hamilton Island	497.3	488.6	-1.8
13 Port Hedland	481.5	486.8	1.1
14 Broome	437.2	442.0	1.1
15 Newman	371.0	380.3	2.5
16 Alice Springs	356.3	369.5	3.7
17 Kalgoorlie	343.7	365.4	6.3
18 Ayers Rock	256.1	293.7	14.7
19 Albury	243.0	270.1	11.1
20 Paraburdoo	233.0	268.8	15.4
21 Coffs Harbour	285.7	259.2	-9.3
22 Gladstone	212.2	239.9	13.0
23 Mount Isa	231.2	234.5	1.4
24 Mildura	215.4	225.0	4.5
25 Port Macquarie	202.5	220.9	9.0
26 Dubbo	205.4	211.5	3.0
27 Wagga Wagga	196.1	203.6	3.8
28 Emerald	191.4	196.8	2.8
29 Port Lincoln	176.7	171.6	-2.9
30 Tamworth	159.5	169.4	6.2
31 Hervey Bay	138.9	165.6	19.2
32 Bundaberg	128.7	161.1	25.2
33 Kununurra	132.1	140.8	6.6
34 Devonport	122.5	123.0	0.4
35 Geraldton	85.2	113.8	33.6
36 Thursday Island	104.3	112.8	8.2
37 Moranbah	108.8	111.3	2.3
38 Orange	102.5	110.1	7.4
39 Armidale	111.9	105.1	-6.1
40 Olympic Dam	101.4	103.2	1.8
41 Learmonth	104.2	103.1	-1.1
42 Gove	88.0	93.4	6.2
43 Weipa	85.3	90.6	6.2
44 Burnie	83.5	78.9	-5.5
45 Toowoomba Wellcamp	57.9	77.4	33.7
46 Busselton	49.9	72.5	45.2
47 Mount Gambier	75.2	72.4	-3.8
48 Norfolk Island	69.5	70.3	1.1
49 Merimbula	74.1	69.9	-5.6
50 Griffith	76.2	68.0	-10.7
Total top 50 regional airports	22 518.7	23 443.7	4.1
Total regional airports	23 932.7	24 872.5	3.9
Total domestic network	111 833.0	117 659.7	5.2

Note: Airport passenger movement numbers are the sum of passenger arrivals and departures at each airport. Regional airports are defined as airports which are, according to Australian Statistical Geography Standard (ASGS), not based in Major Cities.

DOMESTIC CHARTER ACTIVITY

Table 12: Charter passengers carried and aircraft trips - monthly activity (000s)

	Aug 2023	Aug 2024	% Change
Total domestic charter passengers	379.1	369.0	-2.7
Total domestic charter aircraft trips	6.5	6.2	-5.2

Note: Helicopter, joyflights and sightseeing charter flights not included.

Table 13: Charter passengers carried and aircraft trips - annual activity (000s)

	YE Aug 2023	YE Aug 2024	% Change
Total domestic charter passengers	3 909.4	4 295.2	9.9
Total domestic charter aircraft trips	68.2	73.2	7.3

Note: Helicopter, joyflights and sightseeing charter flights not included.

Table 14: Domestic airports - charter activity - monthly (000s)

	Aug 2023	Aug 2024	% Change
Total domestic charter passenger movements	758.2	738.0	-2.7
Total domestic charter aircraft movements	13.0	12.4	-5.2
Perth airport charter passenger movements	281.5	271.3	-3.6
Perth airport charter aircraft movements	4.4	4.0	-8.8

Note: Helicopter, joyflights and sightseeing charter flights not included.

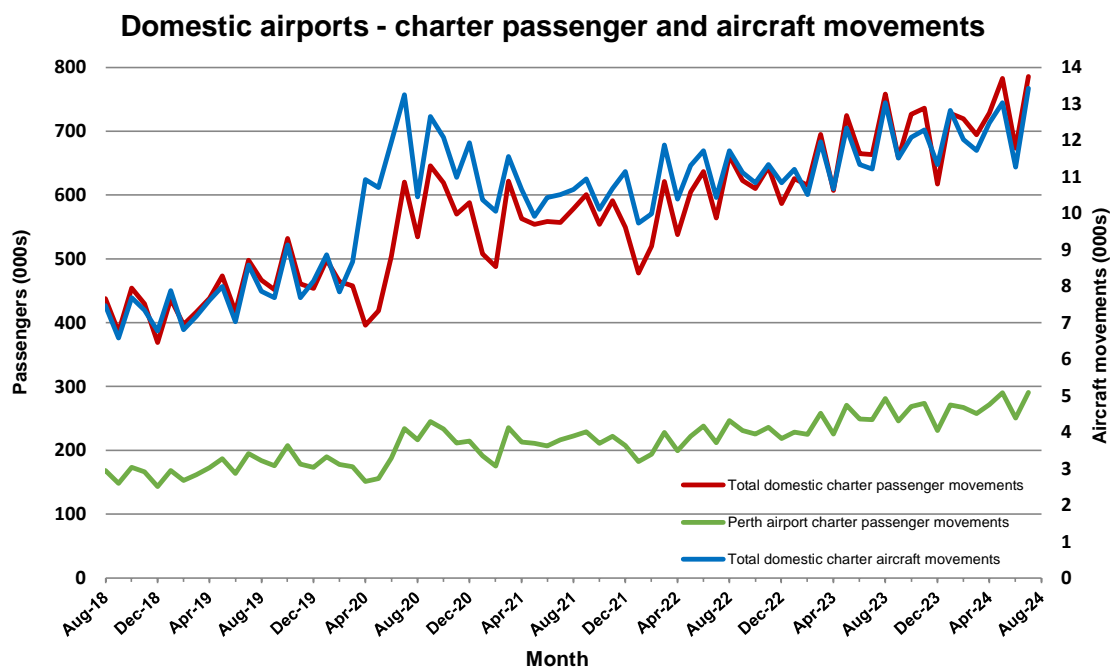
Charter passenger and aircraft movement numbers are the sum of arrivals and departures at each airport.

Table 15: Domestic airports - charter activity - annual (000s)

	YE Aug 2023	YE Aug 2024	% Change
Total domestic charter passenger movements	7 818.8	8 590.4	9.9
Total domestic charter aircraft movements	136.4	146.4	7.3
Perth airport charter passenger movements	2 898.4	3 191.4	10.1
Perth airport charter aircraft movements	45.9	48.5	5.6

Note: Helicopter, joyflights and sightseeing charter flights not included.

Charter passenger and aircraft movement numbers are the sum of arrivals and departures at each airport.



DEFINITIONS

Aircraft Trips	The number of flight stages. A return flight counts as two aircraft trips.
Airport Movements	Airport movements (passenger and cargo) are measured once on arrival and once on departure. Each domestic trip generates two movements at airports. For example, a trip from Melbourne to Sydney will be counted twice, as a departure at Melbourne and as an arrival at Sydney. At the national level, the sum of all domestic airport traffic will therefore be equal to twice the number of trips undertaken.
Available Seat Kilometres (ASKs)	Calculated by multiplying the number of seats available on each flight stage, by the distance in kilometres between the ports. The distances used are Great Circle Distances.
City-Pair	The ports shown make up the city-pair route. Passenger movements shown for a city pair reflect total traffic in both directions.
Flight Stage	The operation of an aircraft from take-off to landing.
Load Factor	The total revenue passenger kilometres performed as a percentage of the total available seat kilometres.
Passengers Carried	Revenue passengers carried.
Regular Public Transport Services (RPT)	All air service operations in which aircraft are available for the transport of members of the public and are conducted in accordance with fixed schedules. It does not include charter or other non-scheduled operations.
Revenue Passengers	All passengers paying any fare. Frequent flyer redemption travellers are regarded as revenue passengers.
Revenue Passenger Kilometres (RPKs)	Calculated by multiplying the number of revenue passengers travelling on each flight stage, by the distance in kilometres between the ports. The distances used are Great Circle Distances.
Traffic on board by stages (TOB)	The total of all traffic (revenue passengers) on each flight stage between two directly connected airports.
..	Not available for confidentiality or other reasons.
NA	Not applicable.