



**Australian Government**

**Department of Infrastructure, Transport,  
Regional Development, Communications and the Arts**  
Bureau of Infrastructure and Transport Research Economics

## STATISTICAL REPORT



# Aviation

**Domestic aviation activity  
August 2023**

The Department of Infrastructure, Transport, Regional Development, Communications and the Arts acknowledges the Traditional Custodians of Country of the land on which we work and live.

We recognise and respect the continuing connections to land, waters and communities.

We pay our respects to them and their cultures and to their Elders both past and present and to all Aboriginal and Torres Strait Islander people.

---

© Commonwealth of Australia 2023

ISSN: 1832 - 1968

### **Ownership of intellectual property rights in this publication**

Unless otherwise noted, copyright (and any other intellectual property rights, if any) in this publication is owned by the Commonwealth of Australia (referred to below as the Commonwealth).

### **Disclaimer**

The material contained in this publication is made available on the understanding that the Commonwealth is not providing professional advice, and that users exercise their own skill and care with respect to its use, and seek independent advice if necessary.

The Commonwealth makes no representations or warranties as to the contents or accuracy of the information contained in this publication. To the extent permitted by law, the Commonwealth disclaims liability to any person or organisation in respect of anything done, or omitted to be done, in reliance upon information contained in this publication.

### **Creative Commons licence**

With the exception of (a) the Coat of Arms; and (b) the Department of Infrastructure, Transport, Regional Development, Communications and the Arts' photos and graphics, copyright in this publication is licensed under a Creative Commons Attribution 3.0 Australia Licence.

Creative Commons Attribution 3.0 Australia Licence is a standard form licence agreement that allows you to copy, communicate and adapt this publication provided that you attribute the work to the Commonwealth and abide by the other licence terms. A summary of the licence terms is available from <http://creativecommons.org/licenses/by/3.0/au/deed.en>.

The full licence terms are available from <http://creativecommons.org/licenses/by/3.0/au/legalcode>.

### **Use of the Coat of Arms**

The Department of the Prime Minister and Cabinet sets the terms under which the Coat of Arms is used. Please refer to the Department's Commonwealth Coat of Arms and Government branding web page <http://www.dpmc.gov.au/guidelines/index.cfm#brand> and, in particular, the Guidelines on the use of the Commonwealth Coat of Arms publication.

An appropriate citation for this report is:

Bureau of Infrastructure and Transport Research Economics (BITRE), 2023, Domestic aviation activity, Statistical Report, BITRE, Canberra ACT.

### **Contact us**

This publication is available in PDF format. All other rights are reserved, including in relation to any Departmental logos or trade marks which may exist. For enquiries regarding the licence and any use of this publication, please contact:

Bureau of Infrastructure and Transport Research Economics (BITRE)  
Department of Infrastructure, Transport, Regional Development, Communications and the Arts  
GPO Box 501, Canberra ACT 2601, Australia  
Telephone: (international) +61 2 6274 7210  
Email: [bitre@infrastructure.gov.au](mailto:bitre@infrastructure.gov.au)  
Website: [www.bitre.gov.au](http://www.bitre.gov.au)

### **Inquiries**

[Nebojsa.Pavlovic@infrastructure.gov.au](mailto:Nebojsa.Pavlovic@infrastructure.gov.au) (02) 6274 6817

## FOREWORD

This report provides an overview of domestic (including charter) commercial aviation activity in Australia for the month of August 2023.

The data covers revenue passengers carried by Australian-registered operators of scheduled regular public transport services over Australian flight stages and fixed-wing charter operators. These estimates include passengers carried between domestic airports on international flights operated by these carriers. The passengers carried refer to traffic on board by stages.

Estimates of passengers and aircraft movements for charter aviation are included in this publication, where BITRE confidentiality standards are met.

Individual routes shown are restricted to those with an average exceeding 8,000 passengers per month over the previous six months where two or more airlines operate in competition. However, for the period from November 2021 through to December 2022, the major airlines (Qantas Group, Virgin Australia and Rex Airlines) agreed to publication of the top 35 routes based on pre-COVID activity (December 2019) whether or not they were meeting the above criteria. From January 2023, the passenger load and dual competition requirements were reinstated due to the continued recovery of passenger numbers.

Bonza Aviation has been reporting monthly data since May 2023.

Information on the total network for the month of August 2023 and on the Regular Public Transport (RPT) network for the month of August 2023 is presented on page 2, with estimates for the year ended August 2023 presented on page 3.

Detailed information on individual routes can be found in the RPT summary pages 4-13 of this publication.

The top ten airports in terms of RPT passenger movements are shown on page 14.

Data on domestic RPT cargo movements at the top five cargo airports are provided on page 15. The table includes cargo carried on passenger flights operated by the Qantas group (including Jetstar), Virgin Australia, Air North and Skippers as well as the cargo carried by dedicated freighter aircraft operated by Qantas Freight and Toll.

The long-term trends for the top ten competitive RPT routes are presented graphically on pages 16-25.

Domestic RPT passenger movements at regional airports are shown on pages 26-27.

Tables providing estimates of domestic charter aviation activity are shown on page 28. BITRE confidentiality standards restrict publication of detailed estimates for individual Australian airports, with the exception of Perth Airport.

A list of definitions can be found on page 29.

This report was prepared by the Aviation Statistics Section of the Bureau of Infrastructure and Transport Research Economics with data provided by airlines.

Estimates are included where data were not available and data presented in this publication may contain revisions to previously published data.

Where figures have been rounded, discrepancies may occur between sums of component items and totals, and in percentage changes which are derived from figures prior to rounding.

# CONTENTS

<b>Highlights .....</b>	<b>1</b>
<b>Total network.....</b>	<b>2</b>
<b>RPT network .....</b>	<b>2</b>
<b>Top competitive routes.....</b>	<b>4</b>
<b>Top ten airports – passenger movements.....</b>	<b>14</b>
<b>Top five airports – cargo movements.....</b>	<b>15</b>
<b>Top ten routes .....</b>	<b>16</b>
1. Melbourne – Sydney .....	16
2. Brisbane – Sydney.....	17
3. Brisbane – Melbourne .....	18
4. Gold Coast – Sydney .....	19
5. Adelaide – Melbourne .....	20
6. Gold Coast - Melbourne .....	21
7. Melbourne – Perth .....	22
8. Adelaide – Sydney .....	23
9. Perth – Sydney .....	24
10. Brisbane – Cairns .....	25
<b>Top fifty regional airports .....</b>	<b>26</b>
<b>Domestic charter activity.....</b>	<b>28</b>
<b>Definitions .....</b>	<b>29</b>

This page is intentionally left blank.

## HIGHLIGHTS

There were 5.27 million passengers carried on Australian domestic commercial aviation (including charter operations) in August 2023, an increase of 10.0 per cent on August 2022.

4.89 million passengers were carried on RPT flights in August 2023, an increase of 9.5 per cent compared to August 2022.

For the month of August 2023, there were 52,971 RPT aircraft trips, up 7.3 per cent compared to August 2022.

For the year ending August 2023 there were 55.91 million RPT passengers, an increase of 48.9 per cent on the year ending August 2022.

RPT revenue passenger kilometres (RPKs) performed were 5.86 billion for the month, compared with 5.39 billion in August 2022 (up 8.6 per cent).

Capacity, measured by available seat kilometres (ASKs), increased to 7.34 billion in August 2023 compared to 6.66 billion in August 2022 (up 10.2 per cent).

The industry wide load factor (RPKs/ASKs) decreased from 81.0 per cent in August 2022 to 79.8 per cent in August 2023. The highest load factor (93.9 per cent) was recorded on the Adelaide - Cairns route while the lowest load factor (56.0 per cent) was recorded on the Armidale – Sydney route.

For the month of August 2023, Melbourne – Sydney was Australia's busiest RPT route with 644,390 passengers, followed by Brisbane – Sydney with 367,592 passengers and Brisbane – Melbourne with 279,572 passengers.

Sydney was Australia's busiest domestic airport with 2.03 million passenger movements in August 2023, followed by Melbourne with 1.97 million passenger movements and Brisbane with 1.42 million passenger movements.

Total cargo movements at Australian airports on domestic RPT flights were 30,240 tonnes in August 2023, a decrease of 4.8 per cent compared with August 2022.

In August 2023, there were 2.17 million domestic passenger movements through regional airports, compared to 2.00 million in August 2022, an increase of 8.9 per cent. Out of the top 50 regional airports, the strongest increase was recorded at Bundaberg Airport (up 75.8 per cent on August 2022), while the largest decrease was recorded at Mount Gambier Airport (down 5.7 per cent on August 2022).

Fixed-wing charter operators carried 382,681 passengers in August 2023, an increase of 15.7 per cent compared with August 2022. Perth Airport accounted for 36.8 per cent of all charter passengers in Australia.



## TOTAL NETWORK

### Summary of monthly commercial aviation activity

	Aug 2022	Aug 2023	% Change
Total passengers carried (millions)	4.79	5.27	10.0
Aircraft trips (000s)	55.2	59.5	7.7

Note: Regular Public Transport and charter aviation activity  
Helicopter, joy flights and sightseeing charter flights not included.

## RPT NETWORK

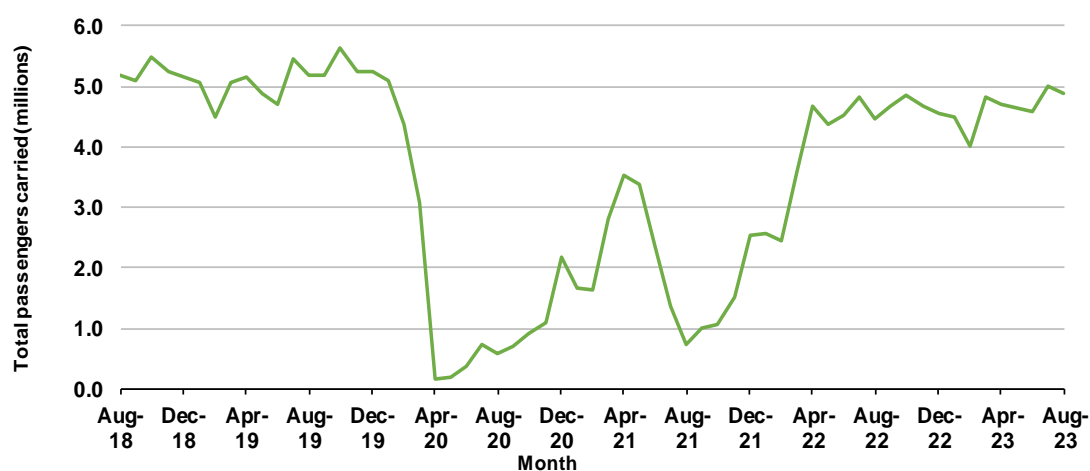
### Summary of monthly RPT activity

	Aug 2022	Aug 2023	% Change
Total passengers carried (millions)	4.46	4.89	9.5
Revenue passenger kilometres (billions)	5.39	5.86	8.6
Available seats (millions)	5.70	6.28	10.2
Available seat kilometres (billions)	6.66	7.34	10.2
Load factor %	81.0	79.8	-1.2 *
Aircraft trips (000s)	49.4	53.0	7.3

\* percentage point difference

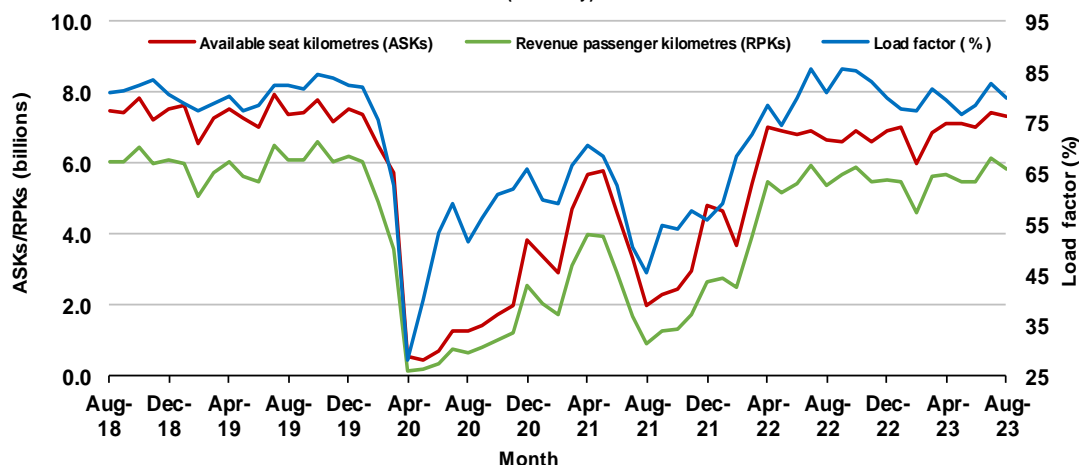
### Domestic RPT passenger traffic

(monthly)



### RPT Network utilisation

(monthly)





## TOTAL NETWORK

### Summary of annual commercial aviation activity

	YE Aug 2022	YE Aug 2023	% Change
Total passengers carried (millions)	40.68	59.82	47.0
Aircraft trips (000s)	536.0	669.7	24.9

Note: Regular Public Transport and charter aviation activity  
Helicopter, joy flights and sightseeing charter flights not included.

## RPT NETWORK

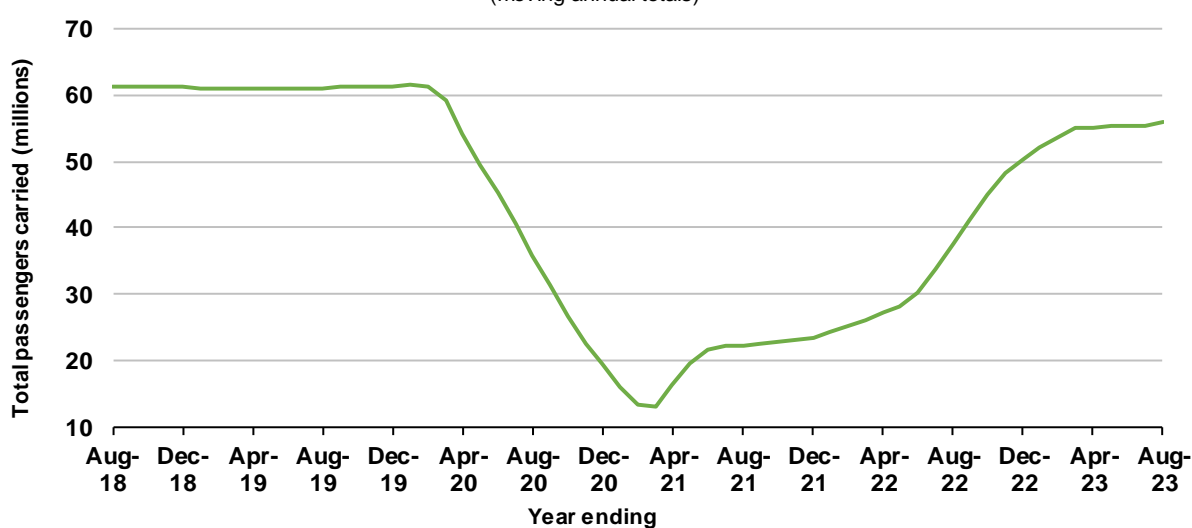
### Summary of annual RPT activity

	YE Aug 2022	YE Aug 2023	% Change
Total passengers carried (millions)	37.55	55.91	48.9
Revenue passenger kilometres (billions)	43.60	66.91	53.5
Available seats (millions)	53.51	71.33	33.3
Available seat kilometres (billions)	60.60	82.94	36.9
Load factor %	71.9	80.7	8.7 *
Aircraft trips (000s)	471.0	601.5	27.7

\* percentage point difference

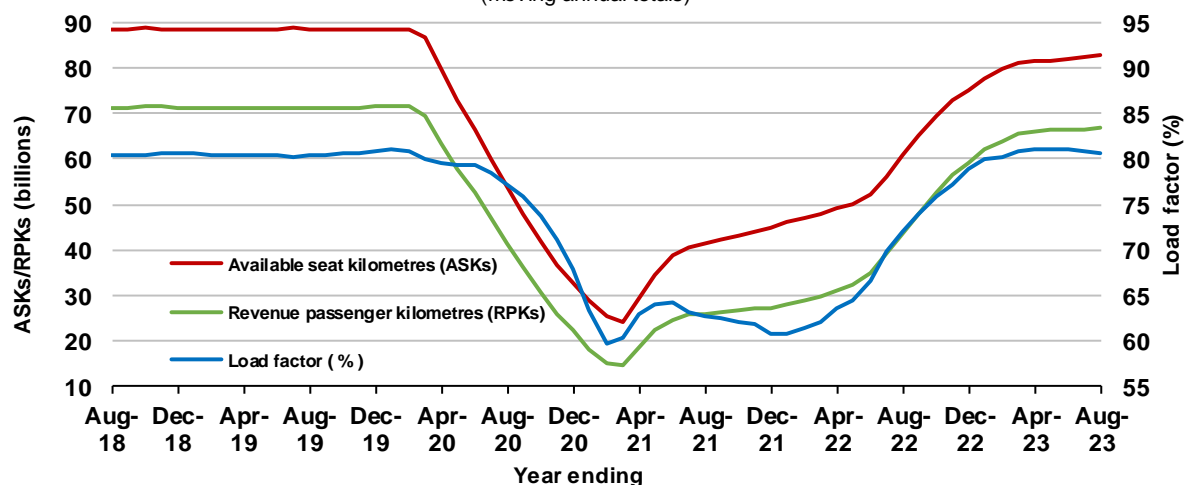
### Domestic RPT passenger traffic

(moving annual totals)



### RPT Network utilisation

(moving annual totals)



## TOP COMPETITIVE ROUTES

**Table 1: Passengers carried (000s) — annual activity**

	City-Pair	YE Aug 2022	YE Aug 2023	% Change
1	Melbourne - Sydney	4,796.4	7,396.4	54.2
2	Brisbane - Sydney	2,351.5	4,108.5	74.7
3	Brisbane - Melbourne	1,888.5	3,183.0	68.6
4	Gold Coast - Sydney	1,537.5	2,407.4	56.6
5	Adelaide - Melbourne	1,344.3	2,232.7	66.1
6	Gold Coast - Melbourne	1,591.2	2,228.9	40.1
7	Melbourne - Perth	738.2	1,847.1	150.2
8	Adelaide - Sydney	956.3	1,649.9	72.5
9	Perth - Sydney	616.9	1,526.1	147.4
10	Hobart - Melbourne	729.3	1,249.3	71.3
11	Brisbane - Cairns	1,092.1	1,235.7	13.1
12	Brisbane - Perth	481.1	992.5	106.3
13	Canberra - Melbourne	596.7	975.5	63.5
14	Cairns - Sydney	526.7	888.9	68.8
15	Brisbane - Townsville	763.8	870.1	13.9
16	Cairns - Melbourne	561.4	802.9	43.0
17	Adelaide - Brisbane	585.9	800.2	36.6
18	Launceston - Melbourne	453.8	787.0	73.4
19	Sunshine Coast - Sydney	448.3	742.1	65.6
20	Brisbane - Mackay	625.0	732.6	17.2
21	Hobart - Sydney	434.2	716.4	65.0
22	Melbourne - Sunshine Coast	513.1	686.1	33.7
23	Adelaide - Perth	383.4	636.5	66.0
24	Brisbane - Canberra	399.6	633.1	58.4
25	Canberra - Sydney	369.7	591.3	59.9
26	Ballina - Sydney	460.6	534.4	16.0
27	Karratha - Perth	471.6	533.8	13.2
28	Brisbane - Newcastle	297.9	493.8	65.8
29	Brisbane - Rockhampton	409.6	489.4	19.5
30	Perth - Port Hedland	428.1	479.7	12.1
31	Melbourne - Newcastle	293.5	404.0	37.6
32	Newman - Perth	331.4	370.4	11.8
33	Broome - Perth	382.8	366.3	-4.3
34	Kalgoorlie - Perth	287.6	343.3	19.4
35	Brisbane - Darwin	309.6	324.2	4.7
36	Launceston - Sydney	190.1	309.7	63.0
37	Brisbane - Hobart	298.5	297.2	-0.4
38	Darwin - Melbourne	233.9	281.7	20.4
39	Brisbane - Proserpine	295.7	277.5	-6.1
40	Hamilton Island - Sydney	149.7	248.8	66.2
41	Adelaide - Gold Coast	183.1	248.6	35.8
42	Adelaide - Darwin	..	220.1	NA
43	Coffs Harbour - Sydney	166.1	217.1	30.7
44	Brisbane - Gladstone	172.5	206.4	19.6
45	Adelaide - Canberra	103.3	189.9	83.7
46	Brisbane - Emerald	146.4	180.9	23.5
47	Adelaide - Port Lincoln	158.8	176.6	11.2
48	Darwin - Perth	145.2	172.1	18.6
49	Canberra - Gold Coast	93.4	171.9	84.0
50	Dubbo - Sydney	108.2	170.7	57.7

continued

**Table 1: (continued) Passengers carried (000s) — annual activity**

	<b>City-Pair</b>	<b>YE Aug 2022</b>	<b>YE Aug 2023</b>	<b>% Change</b>
51	Albury - Sydney	109.0	165.4	51.8
52	Port Macquarie - Sydney	100.9	164.2	62.7
53	Brisbane - Hamilton Island	200.6	163.5	-18.5
54	Adelaide - Cairns	..	159.1	NA
55	Melbourne - Mildura	103.9	158.9	53.0
56	Brisbane - Launceston	175.8	158.5	-9.8
57	Sydney - Wagga Wagga	98.3	151.9	54.6
58	Brisbane - Mount Isa	125.0	143.5	14.8
59	Adelaide - Alice Springs	87.7	113.4	29.4
60	Armidale - Sydney	68.7	105.1	53.0
61	Devonport - Melbourne	..	101.3	NA
62	Brisbane - Moranbah	..	99.6	NA
63	Brisbane - Bundaberg	..	75.6	NA
<b>Total domestic network</b>		<b>37,554.9</b>	<b>55,911.1</b>	<b>48.9</b>

.. Data not available for release.

**Table 2: Passengers carried (000s) — monthly activity**

	City-Pair	Aug 2022	Aug 2023	% Change
1	Melbourne - Sydney	577.6	644.4	11.6
2	Brisbane - Sydney	325.6	367.6	12.9
3	Brisbane - Melbourne	244.9	279.6	14.1
4	Gold Coast - Sydney	194.2	193.3	-0.5
5	Adelaide - Melbourne	170.0	191.3	12.5
6	Gold Coast - Melbourne	176.8	183.7	3.9
7	Melbourne - Perth	132.4	147.6	11.5
8	Adelaide - Sydney	119.0	143.8	20.9
9	Perth - Sydney	113.3	126.9	12.0
10	Brisbane - Cairns	97.6	117.2	20.1
11	Hobart - Melbourne	88.5	97.6	10.3
12	Cairns - Sydney	80.4	84.1	4.6
13	Canberra - Melbourne	75.9	83.9	10.5
14	Cairns - Melbourne	85.8	82.3	-4.1
15	Brisbane - Perth	71.4	79.8	11.8
16	Brisbane - Townsville	73.4	78.8	7.4
17	Adelaide - Brisbane	66.3	69.7	5.0
18	Launceston - Melbourne	49.3	64.2	30.0
19	Brisbane - Mackay	64.2	62.8	-2.2
20	Melbourne - Sunshine Coast	53.2	59.7	12.2
21	Sunshine Coast - Sydney	58.4	58.1	-0.5
22	Brisbane - Canberra	56.1	57.5	2.7
23	Canberra - Sydney	52.5	53.0	0.9
24	Adelaide - Perth	48.8	51.9	6.4
25	Hobart - Sydney	43.8	51.7	17.9
26	Karratha - Perth	48.3	49.6	2.5
27	Brisbane - Rockhampton	41.5	46.7	12.5
28	Perth - Port Hedland	42.5	44.2	4.0
29	Ballina - Sydney	37.8	43.4	14.8
30	Brisbane - Newcastle	39.0	40.6	4.1
31	Broome - Perth	38.7	38.5	-0.7
32	Newman - Perth	32.1	35.8	11.5
33	Kalgoorlie - Perth	30.3	34.3	13.2
34	Melbourne - Newcastle	26.5	33.0	24.5
35	Brisbane - Darwin	28.2	30.5	8.0
36	Darwin - Melbourne	26.2	29.0	10.9
37	Launceston - Sydney	21.6	22.9	6.2
38	Adelaide - Darwin	..	22.3	NA
39	Brisbane - Proserpine	24.6	22.3	-9.6
40	Brisbane - Hobart	20.8	20.4	-2.1
41	Adelaide - Gold Coast	17.9	19.7	10.2
42	Hamilton Island - Sydney	19.3	19.2	-0.3
43	Brisbane - Gladstone	17.6	19.1	8.3
44	Coffs Harbour - Sydney	18.8	18.5	-1.2
45	Darwin - Perth	17.9	16.8	-6.0
46	Brisbane - Emerald	15.6	16.8	7.8
47	Adelaide - Canberra	13.5	16.7	23.6
48	Dubbo - Sydney	13.9	16.4	18.6
49	Albury - Sydney	15.5	15.9	2.6
50	Melbourne - Mildura	12.8	15.5	21.2

continued

**Table 2: (continued) Passengers carried (000s) — monthly activity**

	<b>City-Pair</b>	<b>Aug 2022</b>	<b>Aug 2023</b>	<b>% Change</b>
51	Adelaide - Cairns	14.3	15.3	7.3
52	Sydney - Wagga Wagga	13.0	14.6	12.7
53	Canberra - Gold Coast	10.6	14.6	37.6
54	Port Macquarie - Sydney	12.6	14.4	14.0
55	Brisbane - Mount Isa	13.4	14.2	6.4
56	Adelaide - Port Lincoln	14.4	13.8	-4.7
57	Brisbane - Hamilton Island	14.2	13.0	-8.7
58	Brisbane - Bundaberg	..	12.0	NA
59	Adelaide - Alice Springs	10.4	10.9	4.7
60	Brisbane - Launceston	11.8	10.5	-11.2
61	Brisbane - Moranbah	..	10.1	NA
62	Devonport - Melbourne	..	10.1	NA
63	Armidale - Sydney	9.1	9.8	8.0
<b>Total domestic network</b>		<b>4,462.8</b>	<b>4,888.0</b>	<b>9.5</b>

.. Data not available for release.

**Table 3: Available seats (000s) — monthly activity**

	City-Pair	Aug 2022	Aug 2023	% Change
1	Melbourne - Sydney	705.6	810.8	14.9
2	Brisbane - Sydney	406.6	460.5	13.2
3	Brisbane - Melbourne	283.4	339.7	19.9
4	Gold Coast - Sydney	235.4	235.5	0.0
5	Adelaide - Melbourne	217.9	238.3	9.4
6	Gold Coast - Melbourne	190.7	204.0	7.0
7	Melbourne - Perth	167.1	193.2	15.7
8	Adelaide - Sydney	144.8	182.8	26.3
9	Perth - Sydney	140.5	165.7	17.9
10	Brisbane - Cairns	106.3	131.5	23.7
11	Hobart - Melbourne	107.3	117.0	9.1
12	Cairns - Sydney	87.9	90.8	3.3
13	Canberra - Melbourne	111.9	126.0	12.6
14	Cairns - Melbourne	93.5	89.1	-4.7
15	Brisbane - Perth	89.3	99.3	11.2
16	Brisbane - Townsville	92.8	89.9	-3.1
17	Adelaide - Brisbane	80.6	85.1	5.7
18	Launceston - Melbourne	57.6	80.7	40.1
19	Brisbane - Mackay	84.9	80.8	-4.9
20	Melbourne - Sunshine Coast	57.7	66.2	14.9
21	Sunshine Coast - Sydney	76.7	71.8	-6.3
22	Brisbane - Canberra	78.2	78.5	0.4
23	Canberra - Sydney	82.7	82.1	-0.7
24	Adelaide - Perth	60.2	65.4	8.7
25	Hobart - Sydney	58.9	68.9	17.0
26	Karratha - Perth	63.2	69.8	10.4
27	Brisbane - Rockhampton	48.3	57.2	18.5
28	Perth - Port Hedland	56.3	64.1	13.9
29	Ballina - Sydney	52.5	59.6	13.6
30	Brisbane - Newcastle	53.7	57.0	6.0
31	Broome - Perth	48.9	46.4	-5.1
32	Newman - Perth	54.0	57.7	6.7
33	Kalgoorlie - Perth	44.7	54.6	22.3
34	Melbourne - Newcastle	31.8	41.7	31.1
35	Brisbane - Darwin	30.7	34.6	12.7
36	Darwin - Melbourne	29.9	33.0	10.5
37	Launceston - Sydney	24.4	29.8	21.9
38	Adelaide - Darwin	..	26.2	NA
39	Brisbane - Proserpine	28.0	25.1	-10.2
40	Brisbane - Hobart	23.7	24.5	3.6
41	Adelaide - Gold Coast	18.9	21.9	15.5
42	Hamilton Island - Sydney	28.0	29.3	4.5
43	Brisbane - Gladstone	26.6	30.6	14.8
44	Coffs Harbour - Sydney	26.1	25.1	-3.9
45	Darwin - Perth	22.3	22.1	-0.7
46	Brisbane - Emerald	23.4	23.2	-1.0
47	Adelaide - Canberra	19.2	27.8	44.6
48	Dubbo - Sydney	25.7	25.1	-2.6
49	Albury - Sydney	24.5	23.0	-6.0
50	Melbourne - Mildura	19.1	23.2	21.3

continued

**Table 3: (continued) Available seats (000s) — monthly activity**

	<b>City-Pair</b>	<b>Aug 2022</b>	<b>Aug 2023</b>	<b>% Change</b>
51	Adelaide - Cairns	15.2	16.3	7.3
52	Sydney - Wagga Wagga	21.4	22.3	4.3
53	Canberra - Gold Coast	13.3	16.9	26.8
54	Port Macquarie - Sydney	22.2	21.7	-2.3
55	Brisbane - Mount Isa	19.0	20.4	7.6
56	Adelaide - Port Lincoln	25.3	22.8	-10.0
57	Brisbane - Hamilton Island	20.3	18.3	-10.1
58	Brisbane - Bundaberg	..	18.7	NA
59	Adelaide - Alice Springs	13.2	14.6	10.7
60	Brisbane - Launceston	14.1	12.7	-10.0
61	Brisbane - Moranbah	..	17.2	NA
62	Devonport - Melbourne	..	14.6	NA
63	Armidale - Sydney	17.2	17.5	1.5
<b>Total domestic network</b>		<b>5,700.5</b>	<b>6,281.4</b>	<b>10.2</b>

.. Data not available for release.



**Table 4: Load factors (%) — monthly activity**

	City-Pair	Aug 2022	Aug 2023	% Point diff
1	Melbourne - Sydney	81.9	79.5	-2.4
2	Brisbane - Sydney	80.1	79.8	-0.3
3	Brisbane - Melbourne	86.4	82.3	-4.1
4	Gold Coast - Sydney	82.5	82.1	-0.4
5	Adelaide - Melbourne	78.0	80.3	2.3
6	Gold Coast - Melbourne	92.7	90.1	-2.6
7	Melbourne - Perth	79.2	76.4	-2.8
8	Adelaide - Sydney	82.2	78.7	-3.5
9	Perth - Sydney	80.6	76.6	-4.0
10	Brisbane - Cairns	91.8	89.2	-2.6
11	Hobart - Melbourne	82.5	83.4	0.9
12	Cairns - Sydney	91.4	92.5	1.1
13	Canberra - Melbourne	67.9	66.6	-1.3
14	Cairns - Melbourne	91.7	92.3	0.6
15	Brisbane - Perth	79.9	80.3	0.4
16	Brisbane - Townsville	79.0	87.6	8.6
17	Adelaide - Brisbane	82.4	81.9	-0.5
18	Launceston - Melbourne	85.7	79.5	-6.2
19	Brisbane - Mackay	75.6	77.8	2.2
20	Melbourne - Sunshine Coast	92.2	90.1	-2.1
21	Sunshine Coast - Sydney	76.2	80.9	4.7
22	Brisbane - Canberra	71.7	73.3	1.6
23	Canberra - Sydney	63.6	64.6	1.0
24	Adelaide - Perth	81.1	79.4	-1.7
25	Hobart - Sydney	74.4	75.0	0.6
26	Karratha - Perth	76.5	71.0	-5.5
27	Brisbane - Rockhampton	86.0	81.6	-4.4
28	Perth - Port Hedland	75.6	69.0	-6.6
29	Ballina - Sydney	72.1	72.9	0.8
30	Brisbane - Newcastle	72.6	71.3	-1.3
31	Broome - Perth	79.2	82.9	3.7
32	Newman - Perth	59.4	62.1	2.7
33	Kalgoorlie - Perth	67.9	62.8	-5.1
34	Melbourne - Newcastle	83.3	79.1	-4.2
35	Brisbane - Darwin	91.8	88.0	-3.8
36	Darwin - Melbourne	87.6	87.9	0.3
37	Launceston - Sydney	88.3	76.9	-11.4
38	Adelaide - Darwin	..	85.1	NA
39	Brisbane - Proserpine	88.0	88.6	0.6
40	Brisbane - Hobart	88.0	83.1	-4.9
41	Adelaide - Gold Coast	94.7	90.3	-4.4
42	Hamilton Island - Sydney	68.9	65.8	-3.1
43	Brisbane - Gladstone	66.1	62.3	-3.8
44	Coffs Harbour - Sydney	71.8	73.9	2.1
45	Darwin - Perth	80.4	76.1	-4.3
46	Brisbane - Emerald	66.6	72.5	5.9
47	Adelaide - Canberra	70.3	60.1	-10.2
48	Dubbo - Sydney	53.9	65.6	11.7
49	Albury - Sydney	63.3	69.2	5.9
50	Melbourne - Mildura	66.7	66.6	-0.1

continued

**Table 4: (continued) Load factors (%) — monthly activity**

	<b>City-Pair</b>	<b>Aug 2022</b>	<b>Aug 2023</b>	<b>% Point diff</b>
51	Adelaide - Cairns	93.9	93.9	0.0
52	Sydney - Wagga Wagga	60.7	65.6	4.9
53	Canberra - Gold Coast	79.6	86.4	6.8
54	Port Macquarie - Sydney	56.8	66.2	9.4
55	Brisbane - Mount Isa	70.5	69.7	-0.8
56	Adelaide - Port Lincoln	57.1	60.4	3.3
57	Brisbane - Hamilton Island	69.8	70.8	1.0
58	Brisbane - Bundaberg	..	64.5	NA
59	Adelaide - Alice Springs	79.2	75.0	-4.2
60	Brisbane - Launceston	83.7	82.6	-1.1
61	Brisbane - Moranbah	..	58.8	NA
62	Devonport - Melbourne	..	69.2	NA
63	Armidale - Sydney	52.7	56.0	3.3
<b>Total domestic network</b>		<b>81.0</b>	<b>79.8</b>	<b>-1.2</b>

.. Data not available for release.

**Table 5: Aircraft trips <sup>(a)</sup> — monthly activity**

	<b>City-Pair</b>	<b>Aug 2022</b>	<b>Aug 2023</b>	<b>% Change</b>
1	Melbourne - Sydney	4,071	4,710	15.7
2	Brisbane - Sydney	2,512	2,838	13.0
3	Brisbane - Melbourne	1,757	2,082	18.5
4	Gold Coast - Sydney	1,368	1,365	-0.2
5	Adelaide - Melbourne	1,349	1,459	8.2
6	Gold Coast - Melbourne	1,079	1,100	1.9
7	Melbourne - Perth	927	1,076	16.1
8	Adelaide - Sydney	899	1,113	23.8
9	Perth - Sydney	743	836	12.5
10	Brisbane - Cairns	697	885	27.0
11	Hobart - Melbourne	659	696	5.6
12	Cairns - Sydney	469	452	-3.6
13	Canberra - Melbourne	816	918	12.5
14	Cairns - Melbourne	490	447	-8.8
15	Brisbane - Perth	516	583	13.0
16	Brisbane - Townsville	625	675	8.0
17	Adelaide - Brisbane	478	727	52.1
18	Launceston - Melbourne	518	739	42.7
19	Brisbane - Mackay	563	624	10.8
20	Melbourne - Sunshine Coast	336	354	5.4
21	Sunshine Coast - Sydney	418	404	-3.3
22	Brisbane - Canberra	549	629	14.6
23	Canberra - Sydney	1,318	1,335	1.3
24	Adelaide - Perth	350	362	3.4
25	Hobart - Sydney	371	441	18.9
26	Karratha - Perth	393	412	4.8
27	Brisbane - Rockhampton	531	684	28.8
28	Perth - Port Hedland	364	394	8.2
29	Ballina - Sydney	396	442	11.6
30	Brisbane - Newcastle	489	522	6.7
31	Broome - Perth	314	292	-7.0
32	Newman - Perth	337	361	7.1
33	Kalgoorlie - Perth	305	356	16.7
34	Melbourne - Newcastle	213	276	29.6
35	Brisbane - Darwin	206	214	3.9
36	Darwin - Melbourne	169	205	21.3
37	Launceston - Sydney	146	190	30.1
38	Adelaide - Darwin	..	203	NA
39	Brisbane - Proserpine	174	185	6.3
40	Brisbane - Hobart	140	163	16.4
41	Adelaide - Gold Coast	106	110	3.8
42	Hamilton Island - Sydney	159	167	5.0
43	Brisbane - Gladstone	327	379	15.9
44	Coffs Harbour - Sydney	500	449	-10.2
45	Darwin - Perth	128	125	-2.3
46	Brisbane - Emerald	344	350	1.7
47	Adelaide - Canberra	174	260	49.4
48	Dubbo - Sydney	495	482	-2.6
49	Albury - Sydney	471	447	-5.1
50	Melbourne - Mildura	454	495	9.0

continued

**Table 5: (continued) Aircraft trips <sup>(a)</sup> — monthly activity**

	<b>City-Pair</b>	<b>Aug 2022</b>	<b>Aug 2023</b>	<b>% Change</b>
51	Adelaide - Cairns	84	90	7.1
52	Sydney - Wagga Wagga	443	405	-8.6
53	Canberra - Gold Coast	84	95	13.1
54	Port Macquarie - Sydney	416	381	-8.4
55	Brisbane - Mount Isa	183	182	-0.5
56	Adelaide - Port Lincoln	628	552	-12.1
57	Brisbane - Hamilton Island	117	106	-9.4
58	Brisbane - Bundaberg	..	305	NA
59	Adelaide - Alice Springs	160	174	8.8
60	Brisbane - Launceston	79	72	-8.9
61	Brisbane - Moranbah	..	229	NA
62	Devonport - Melbourne	..	323	NA
63	Armidale - Sydney	354	312	-11.9
<b>Total domestic network</b>		<b>49,366</b>	<b>52,971</b>	<b>7.3</b>

(a) Includes RPT cargo flights.

.. Data not available for release.

## TOP TEN AIRPORTS – PASSENGER MOVEMENTS

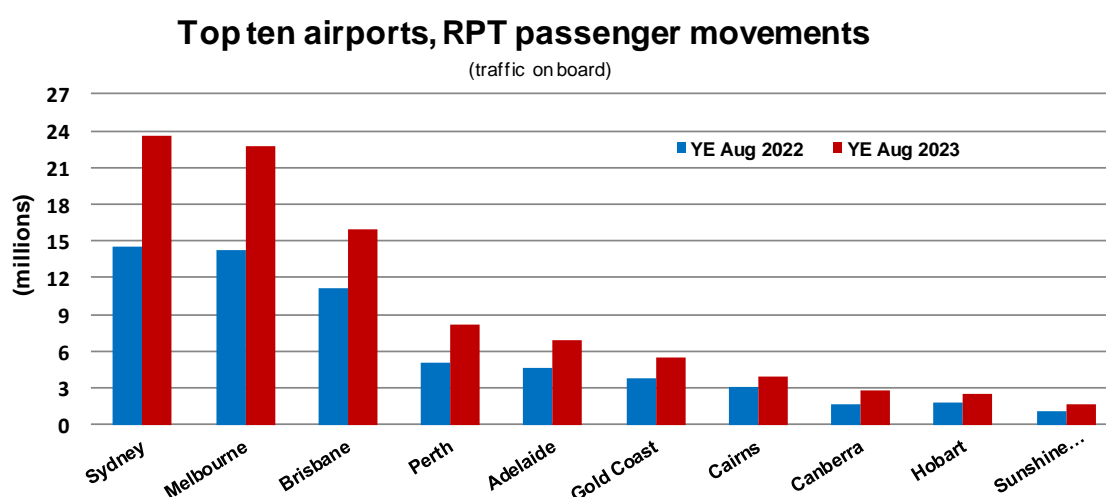
**Table 6: Top ten airports, RPT passenger movements (000s) - monthly activity**

Airport	Aug 2022	Aug 2023	% Change	% of Total
1 Sydney	1,868.8	2,025.1	8.4	20.7
2 Melbourne	1,768.5	1,967.9	11.3	20.1
3 Brisbane	1,284.8	1,416.1	10.2	14.5
4 Perth	654.1	706.2	8.0	7.2
5 Adelaide	532.1	594.0	11.6	6.1
6 Gold Coast	438.5	441.4	0.6	4.5
7 Cairns	355.5	381.7	7.4	3.9
8 Canberra	221.5	239.5	8.1	2.4
9 Hobart	169.6	184.2	8.6	1.9
10 Darwin	161.0	164.1	1.9	1.7
<b>Total top ten airports</b>	<b>7,454.4</b>	<b>8,120.2</b>	<b>8.9</b>	<b>83.1</b>
<b>Total domestic network</b>	<b>8,925.7</b>	<b>9,776.0</b>	<b>9.5</b>	<b>100.0</b>

**Table 7: Top ten airports, RPT passenger movements (000s) - annual activity**

Airport	YE Aug 2022	YE Aug 2023	% Change	% of Total
1 Sydney	14,461.9	23,567.2	63.0	21.1
2 Melbourne	14,218.3	22,766.5	60.1	20.4
3 Brisbane	11,175.7	15,998.0	43.1	14.3
4 Perth	5,083.1	8,189.2	61.1	7.3
5 Adelaide	4,602.6	6,916.5	50.3	6.2
6 Gold Coast	3,735.0	5,419.4	45.1	4.8
7 Cairns	3,030.2	3,947.6	30.3	3.5
8 Canberra	1,666.3	2,728.2	63.7	2.4
9 Hobart	1,758.5	2,509.6	42.7	2.2
10 Sunshine Coast	1,050.2	1,700.1	61.9	1.5
<b>Total top ten airports</b>	<b>60,781.8</b>	<b>93,742.3</b>	<b>54.2</b>	<b>83.8</b>
<b>Total domestic network</b>	<b>75,109.7</b>	<b>111,822.3</b>	<b>48.9</b>	<b>100.0</b>

Note: Airport passenger movement numbers are the sum of passenger arrivals and departures at each airport.



## TOP FIVE AIRPORTS – CARGO MOVEMENTS

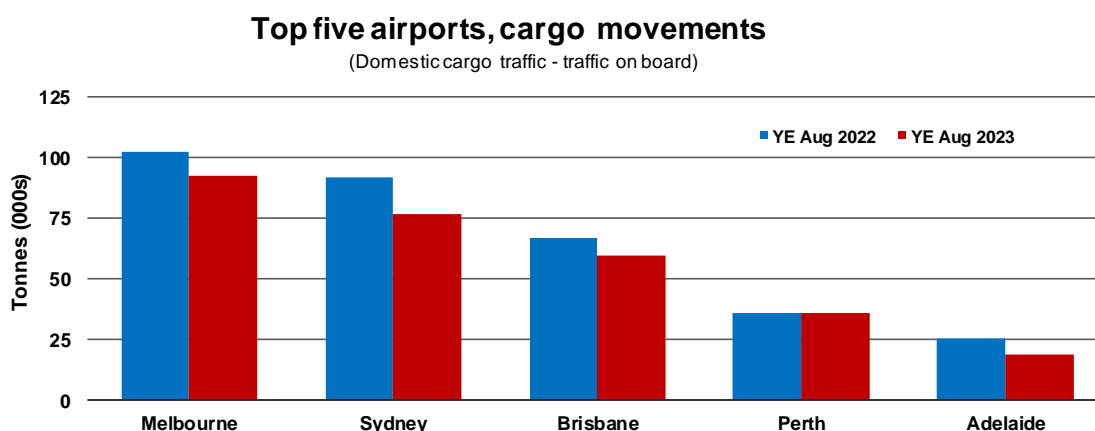
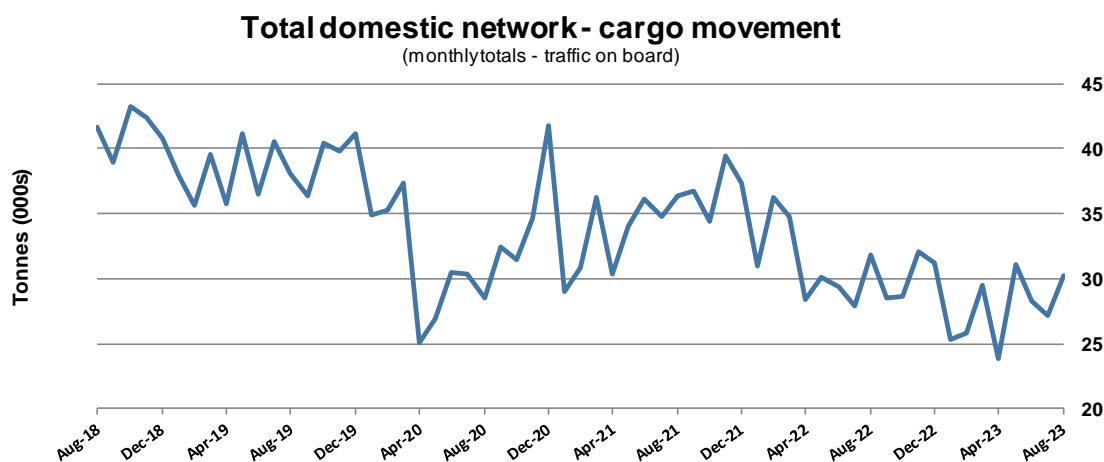
**Table 8: Top five airports, domestic RPT cargo movements (000s tonnes) - monthly activity**

Airport	Aug 2022	Aug 2023	% Change	% of Total
1 Melbourne	8.8	8.3	-5.5	27.4
2 Sydney	7.1	6.8	-4.2	22.4
3 Brisbane	5.3	5.3	-0.6	17.6
4 Perth	3.2	3.2	-1.9	10.4
5 Adelaide	1.8	1.6	-11.4	5.2
<b>Total top five airports</b>	<b>26.1</b>	<b>25.1</b>	<b>-4.1</b>	<b>82.9</b>
<b>Total domestic network</b>	<b>31.8</b>	<b>30.2</b>	<b>-4.8</b>	<b>100.0</b>

**Table 9: Top five airports, domestic RPT cargo movements (000s tonnes) - annual activity**

Airport	YE Aug 2022	YE Aug 2023	% Change	% of Total
1 Melbourne	102.2	92.1	-9.9	27.0
2 Sydney	91.5	76.4	-16.5	22.4
3 Brisbane	66.6	59.5	-10.6	17.4
4 Perth	35.7	35.5	-0.6	10.4
5 Adelaide	25.3	18.9	-25.1	5.5
<b>Total top five airports</b>	<b>321.4</b>	<b>282.5</b>	<b>-12.1</b>	<b>82.7</b>
<b>Total domestic network</b>	<b>397.6</b>	<b>341.6</b>	<b>-14.1</b>	<b>100.0</b>

Note: Airport cargo tonnes are the sum of cargo tonnes on arrivals and departures at each airport.



Note: Airport cargo tonnes are the sum of cargo tonnes on arrivals and departures at each airport.

## TOP TEN ROUTES

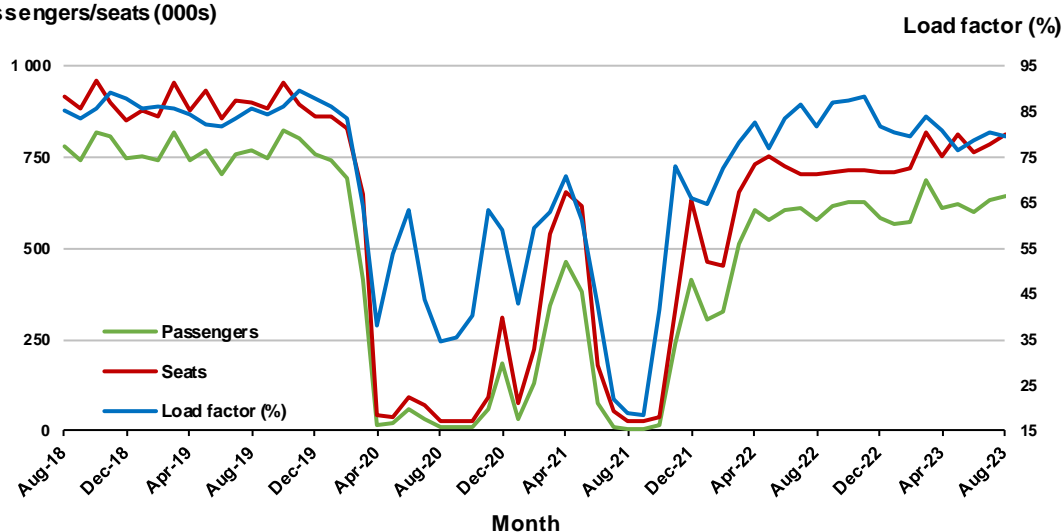
### 1. Melbourne - Sydney

#### Monthly data

	Aug 2022	Aug 2023	% Change
Passengers carried (000s)	577.6	644.4	11.6
Seats (000s)	705.6	810.8	14.9
Load factor %	81.9	79.5	-2.4 *
Aircraft trips	4,071	4,710	15.7

\* percentage point difference

#### Passengers/seats (000s)

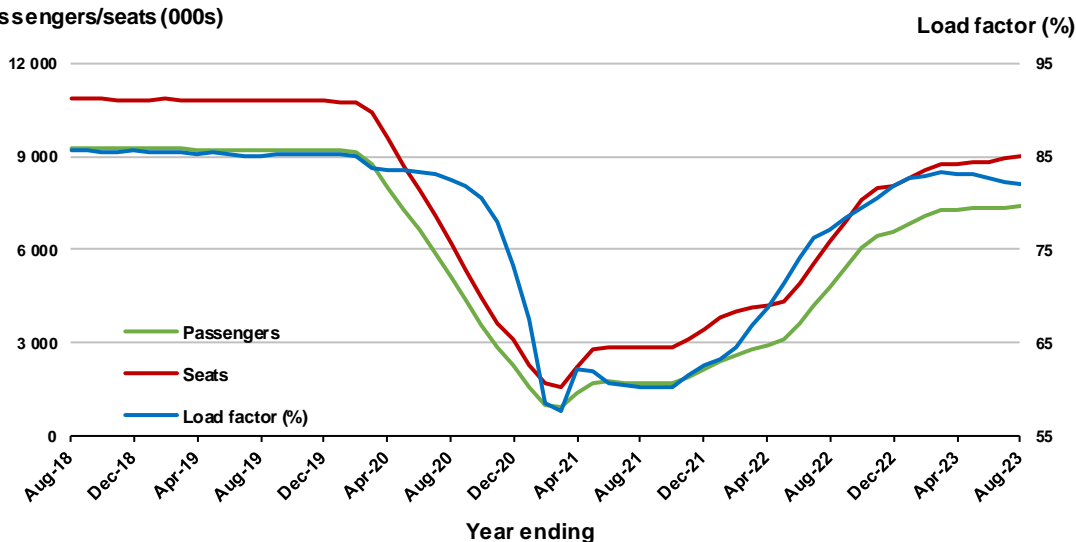


#### Moving annual data

	YE Aug 2022	YE Aug 2023	% Change
Passengers carried (000s)	4,796.4	7,396.4	54.2
Seats (000s)	6,219.2	9,027.4	45.2
Load factor %	77.1	82.0	4.8 *
Aircraft trips	37,215	52,103	40.0

\* percentage point difference

#### Passengers/seats (000s)



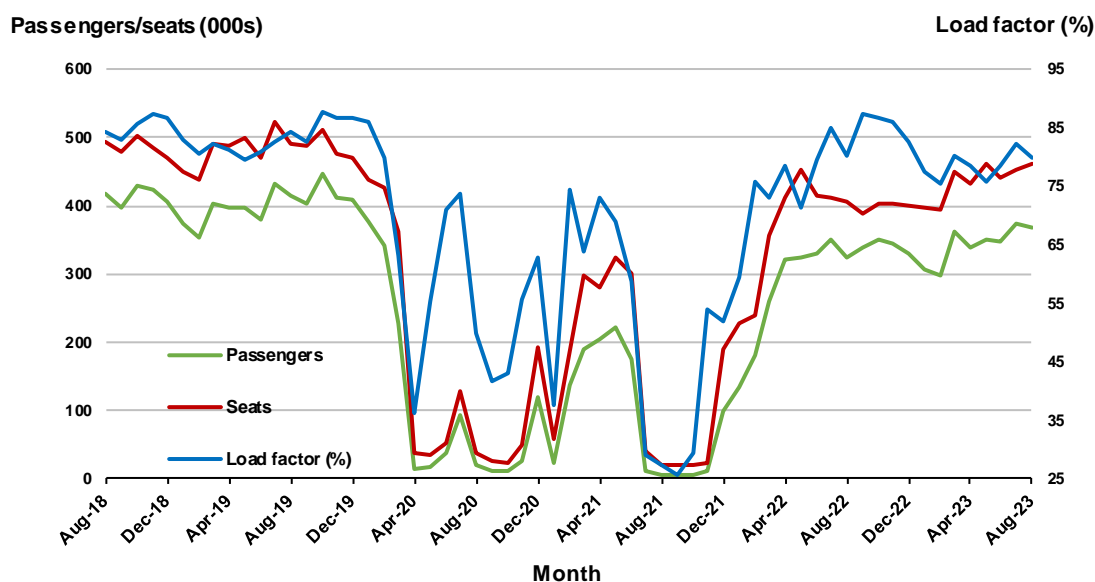


## 2. Brisbane - Sydney

### Monthly data

	Aug 2022	Aug 2023	% Change
Passengers carried (000s)	325.6	367.6	12.9
Seats (000s)	406.6	460.5	13.2
Load factor %	80.1	79.8	-0.3 *
Aircraft trips	2,512	2,838	13.0

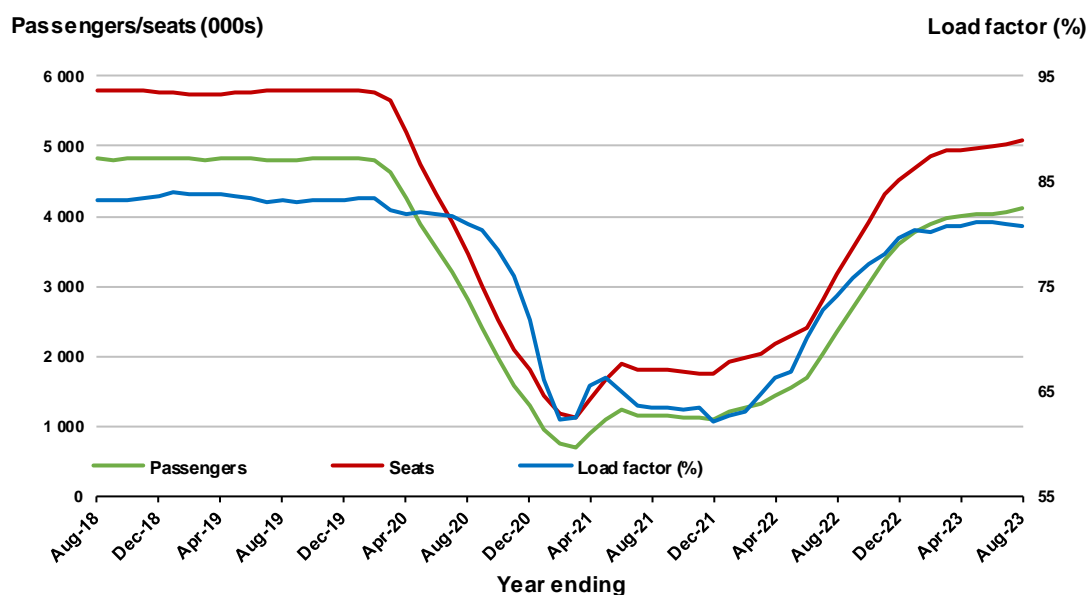
\* percentage point difference



### Moving annual data

	YE Aug 2022	YE Aug 2023	% Change
Passengers carried (000s)	2,351.5	4,108.5	74.7
Seats (000s)	3,177.9	5,083.8	60.0
Load factor %	74.0	80.8	6.8 *
Aircraft trips	20,383	31,231	53.2

\* percentage point difference

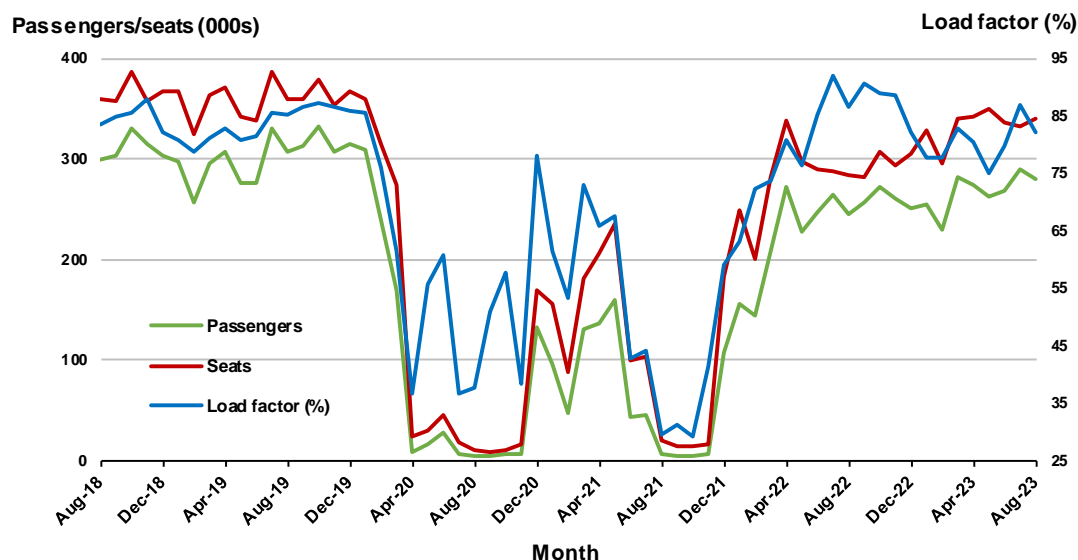


### 3. Brisbane - Melbourne

#### Monthly data

	Aug 2022	Aug 2023	% Change
Passengers carried (000s)	244.9	279.6	14.1
Seats (000s)	283.4	339.7	19.9
Load factor %	86.4	82.3	-4.1 *
Aircraft trips	1,757	2,082	18.5

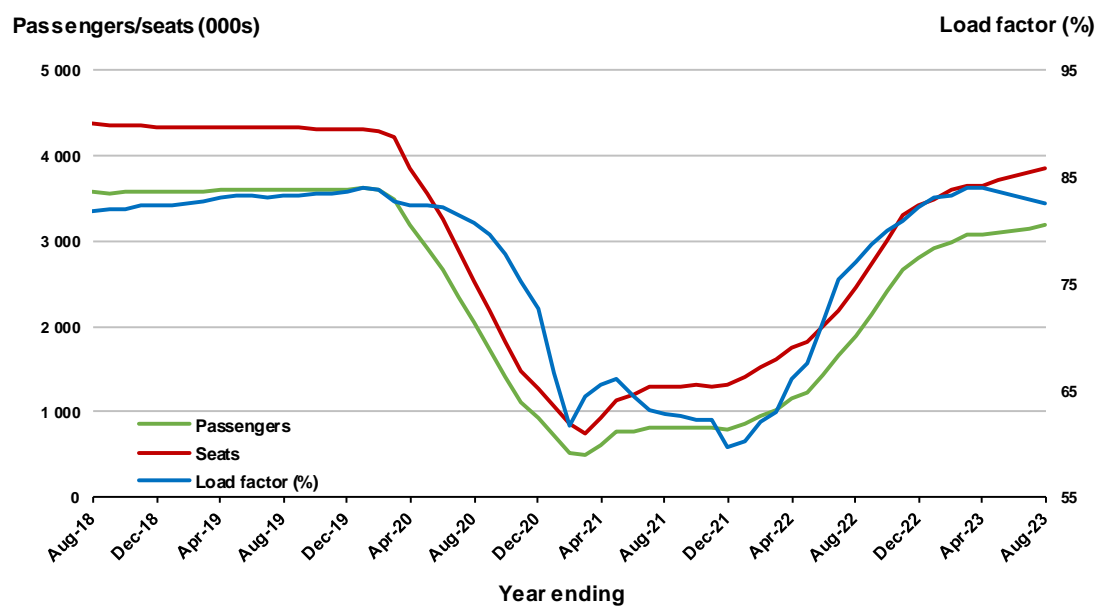
\* percentage point difference



#### Moving annual data

	YE Aug 2022	YE Aug 2023	% Change
Passengers carried (000s)	1,888.5	3,183.0	68.6
Seats (000s)	2,453.0	3,854.7	57.1
Load factor %	77.0	82.6	5.6 *
Aircraft trips	15,439	23,495	52.2

\* percentage point difference



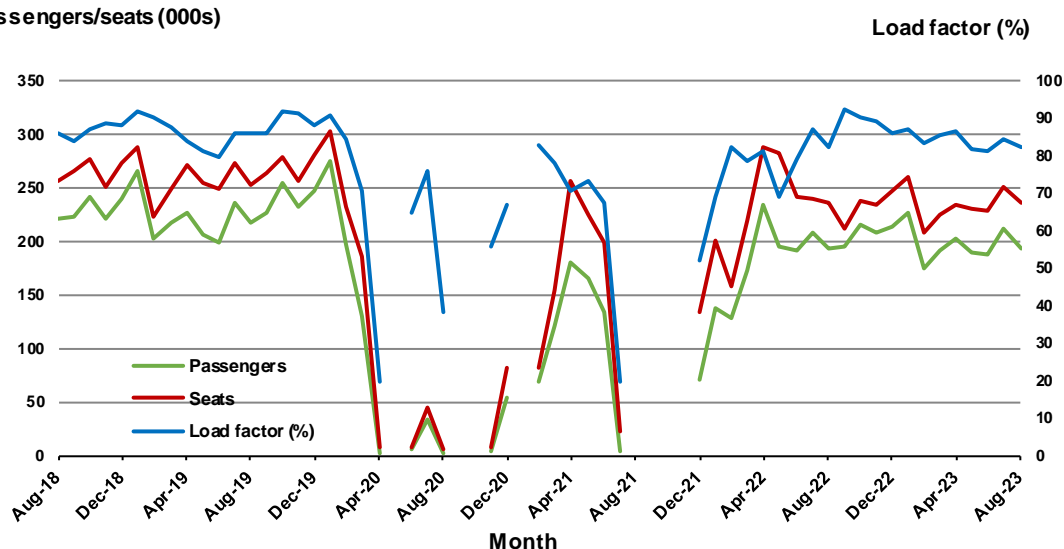
## 4. Gold Coast - Sydney <sup>(a)</sup>

### Monthly data

	Aug 2022	Aug 2023	% Change
Passengers carried (000s)	194.2	193.3	- .5
Seats (000s)	235.4	235.5	.0
Load factor %	82.5	82.1	-0.4 *
Aircraft trips	1,368	1,365	- .2

\* percentage point difference

### Passengers/seats (000s)



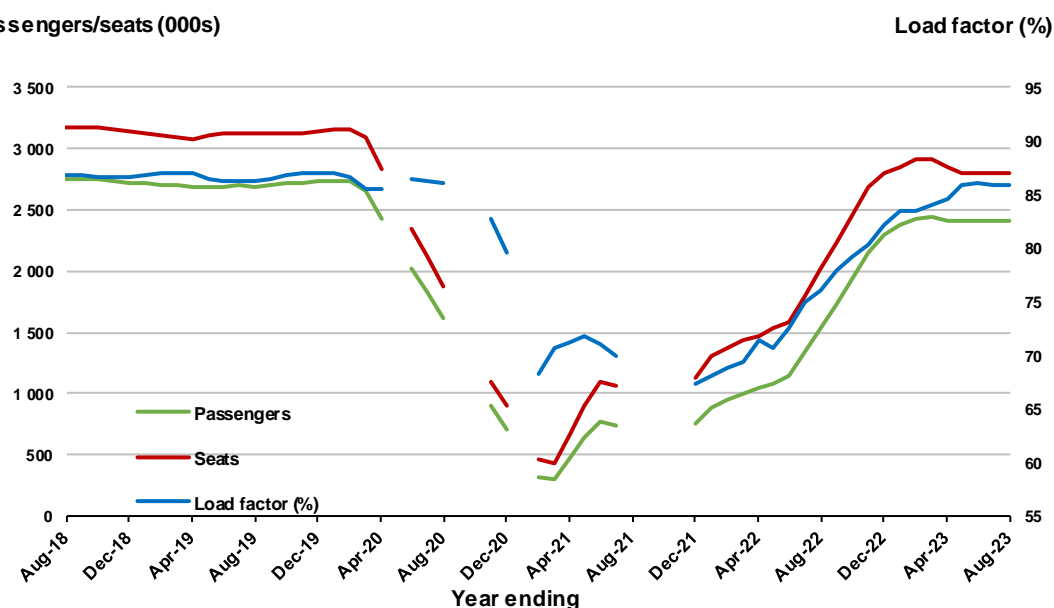
(a) May, September and October 2020 and January and August to November 2021 data not available for release.

### Moving annual data

	YE Aug 2022	YE Aug 2023	% Change
Passengers carried (000s)	1,537.5	2,407.4	56.6
Seats (000s)	2,020.0	2,804.9	38.9
Load factor %	76.1	85.8	9.7 *
Aircraft trips	11,763	16,182	37.6

\* percentage point difference

### Passengers/seats (000s)



(a) May, September and October 2020 and January and August to November 2021 moving annual totals not available for release.

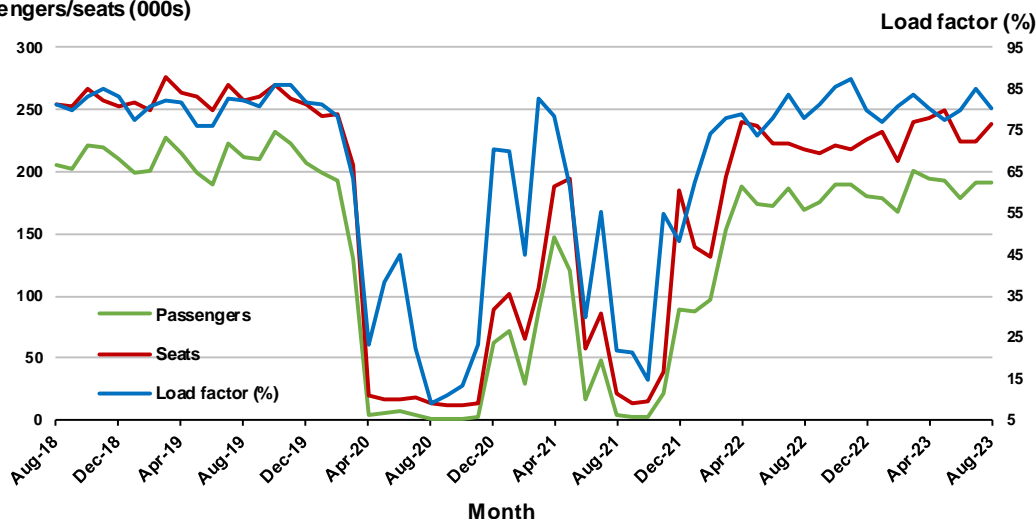
## 5. Adelaide - Melbourne

### Monthly data

	Aug 2022	Aug 2023	% Change
Passengers carried (000s)	170.0	191.3	12.5
Seats (000s)	217.9	238.3	9.4
Load factor %	78.0	80.3	2.3 *
Aircraft trips	1,349	1,459	8.2

\* percentage point difference

### Passengers/seats (000s)

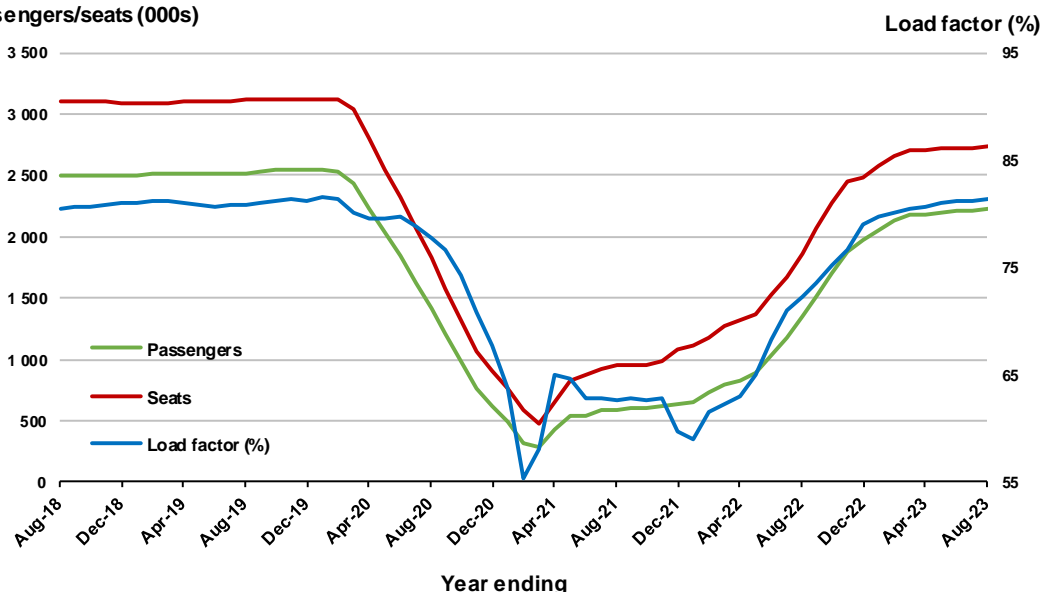


### Moving annual data

	YE Aug 2022	YE Aug 2023	% Change
Passengers carried (000s)	1,344.3	2,232.7	66.1
Seats (000s)	1,858.7	2,741.6	47.5
Load factor %	72.3	81.4	9.1 *
Aircraft trips	11,639	16,813	44.5

\* percentage point difference

### Passengers/seats (000s)



## 6. Gold Coast - Melbourne <sup>(a)</sup>

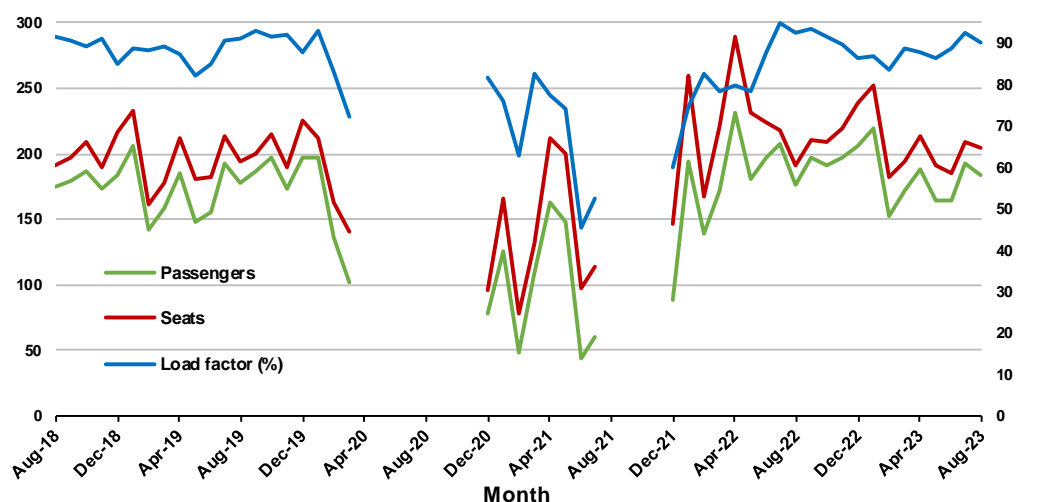
### Monthly data

	Aug 2022	Aug 2023	% Change
Passengers carried (000s)	176.8	183.7	3.9
Seats (000s)	190.7	204.0	7.0
Load factor %	92.7	90.1	-2.6 *
Aircraft trips	1,079	1,100	1.9

\* percentage point difference

### Passengers/seats (000s)

### Load factor (%)



(a) April to November 2020 and August to November 2021 moving annuals are not available for release.

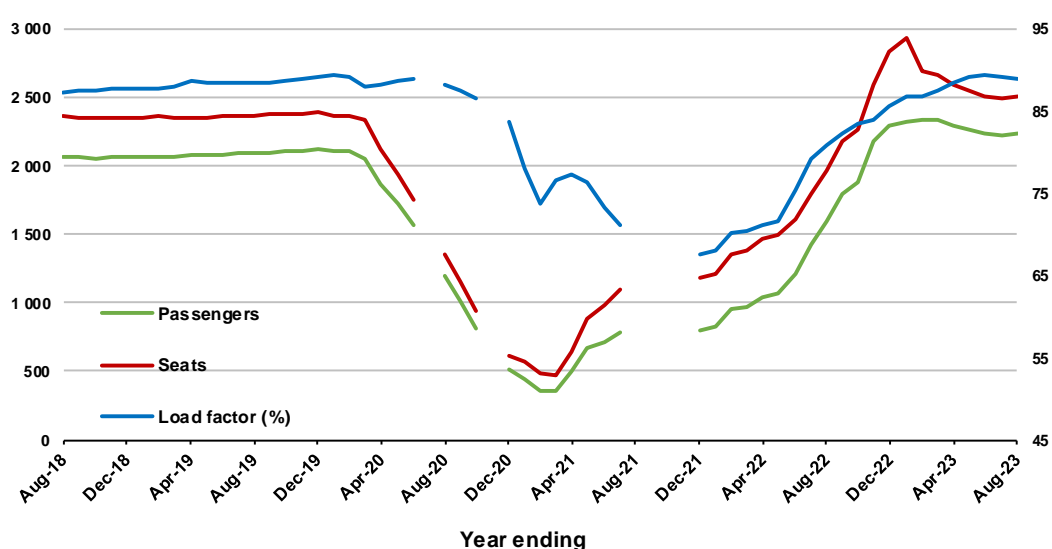
### Moving annual data

	YE Aug 2022	YE Aug 2023	% Change
Passengers carried (000s)	1,591.2	2,228.9	40.1
Seats (000s)	1,969.1	2,507.8	27.4
Load factor %	80.8	88.9	8.1 *
Aircraft trips	10,742	13,699	27.5

\* percentage point difference

### Passengers/seats (000s)

### Load factor (%)



(a) July and November 2020 and August to November 2021 moving annuals are not available for release.

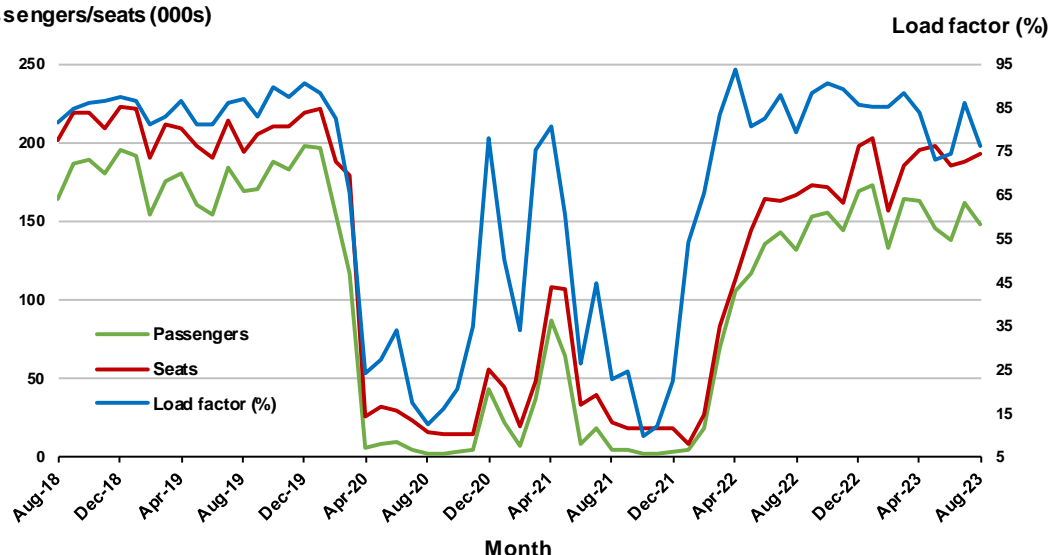
## 7. Melbourne - Perth

### Monthly data

	Aug 2022	Aug 2023	% Change
Passengers carried (000s)	132.4	147.6	11.5
Seats (000s)	167.1	193.2	15.7
Load factor %	79.2	76.4	-2.8 *
Aircraft trips	927	1,076	16.1

\* percentage point difference

### Passengers/seats (000s)

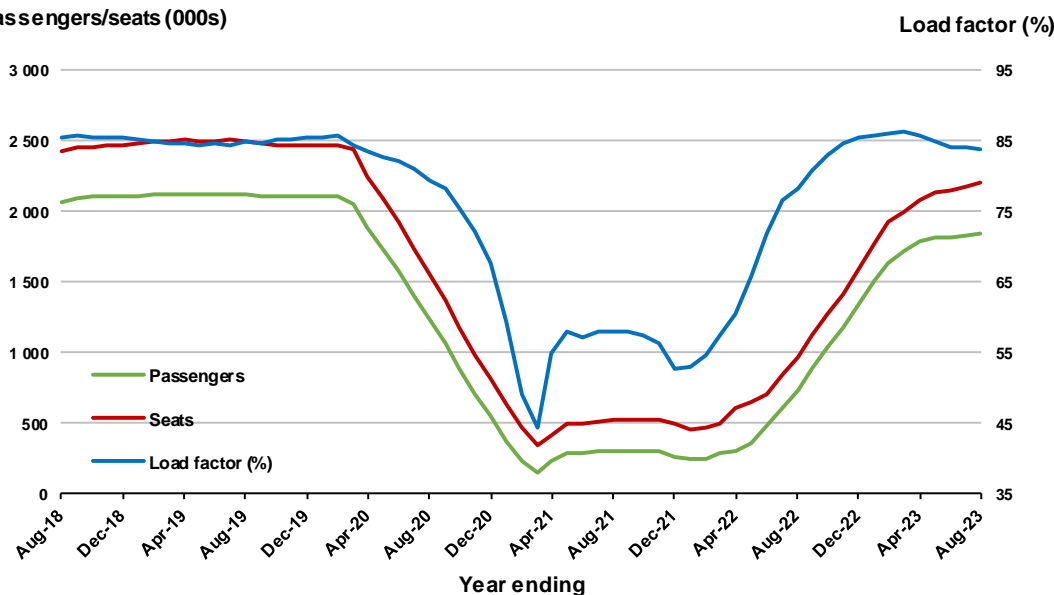


### Moving annual data

	YE Aug 2022	YE Aug 2023	% Change
Passengers carried (000s)	738.2	1,847.1	150.2
Seats (000s)	965.6	2,207.0	128.6
Load factor %	78.2	83.7	5.5 *
Aircraft trips	5,917	12,310	108.0

\* percentage point difference

### Passengers/seats (000s)



## 8. Adelaide - Sydney <sup>(a)</sup>

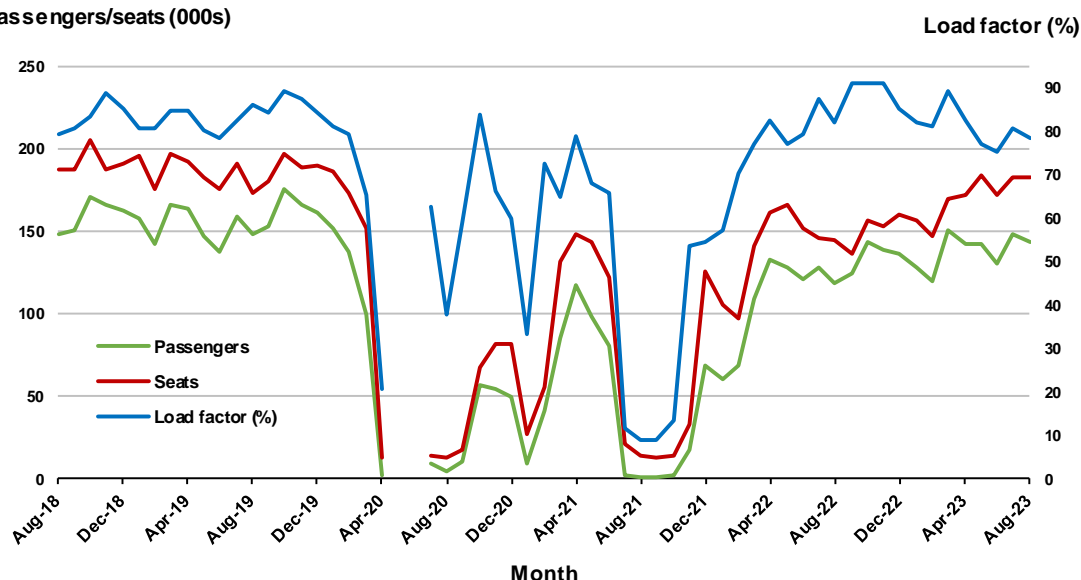
### Monthly data

	Aug 2022	Aug 2023	% Change
Passengers carried (000s)	119.0	143.8	20.9
Seats (000s)	144.8	182.8	26.3
Load factor %	82.2	78.7	-3.5 *
Aircraft trips	899	1,113	23.8

.. Data not available for release.

\* percentage point difference

### Passengers/seats (000s)



(a) May and June 2020 data not available for release.

### Moving annual data

	YE Aug 2022	YE Aug 2023	% Change
Passengers carried (000s)	956.3	1,649.9	72.5
Seats (000s)	1,300.3	1,975.1	51.9
Load factor %	73.5	83.5	10.0 *
Aircraft trips	8,085	12,049	49.0

.. Data not available for release.

\* percentage point difference

### Passengers/seats (000s)



(a) May and June 2020 moving annual totals are not available for release.



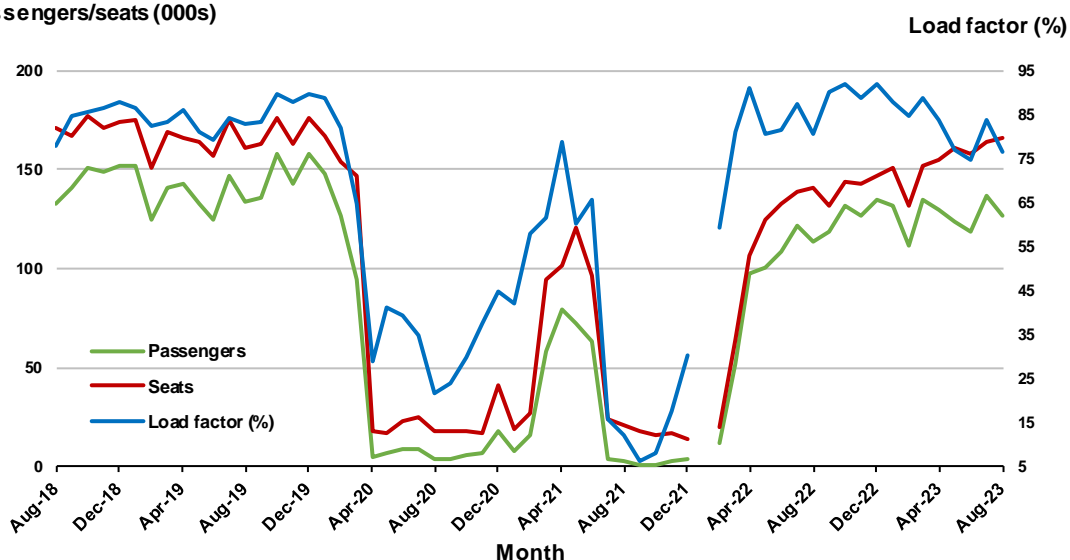
## 9. Perth - Sydney <sup>(a)</sup>

### Monthly data

	Aug 2022	Aug 2023	% Change
Passengers carried (000s)	113.3	126.9	12.0
Seats (000s)	140.5	165.7	17.9
Load factor %	80.6	76.6	-4.0 *
Aircraft trips	743	836	12.5

\* percentage point difference

### Passengers/seats (000s)



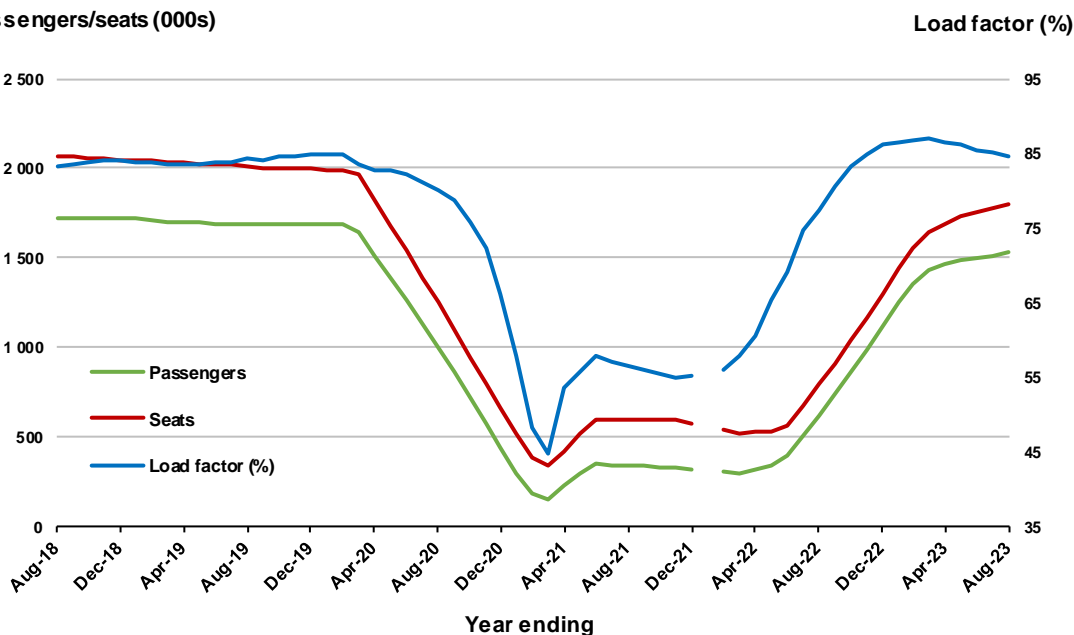
(a) January 2022 data not available for release.

### Moving annual data

	YE Aug 2022	YE Aug 2023	% Change
Passengers carried (000s)	616.9	1,526.1	147.4
Seats (000s)	796.3	1,803.0	126.4
Load factor %	77.5	84.6	7.2 *
Aircraft trips	4,261	9,389	120.3

\* percentage point difference

### Passengers/seats (000s)



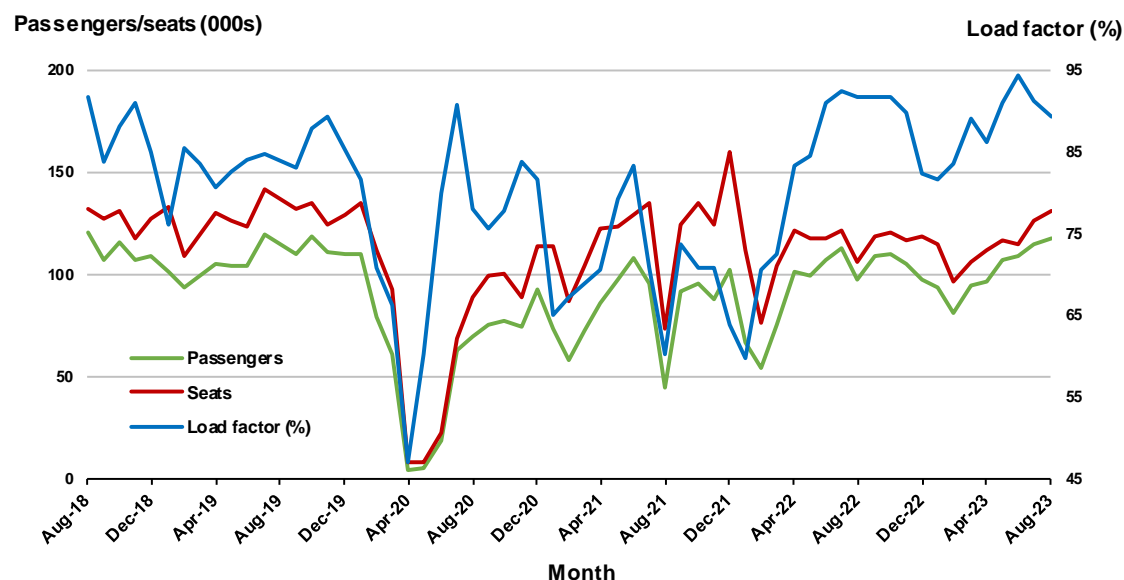
(a) January 2022 moving annual totals are not available for release.

## 10. Brisbane - Cairns

### Monthly data

	Aug 2022	Aug 2023	% Change
Passengers carried (000s)	97.6	117.2	20.1
Seats (000s)	106.3	131.5	23.7
Load factor %	91.8	89.2	-2.6 *
Aircraft trips	697	885	27.0

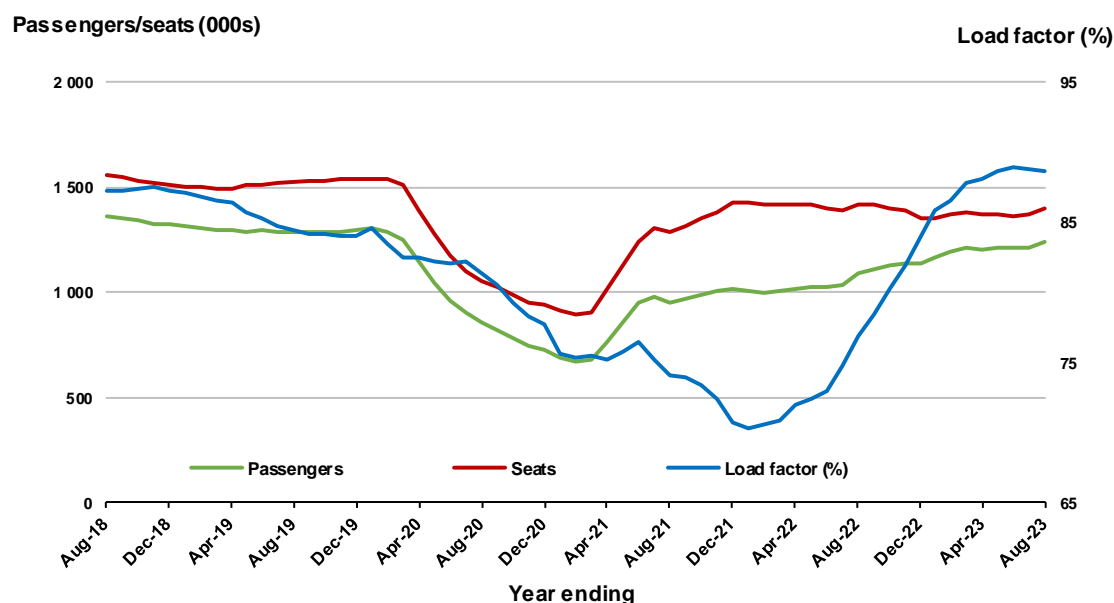
\* percentage point difference



### Moving annual data

	YE Aug 2022	YE Aug 2023	% Change
Passengers carried (000s)	1,092.1	1,235.7	13.1
Seats (000s)	1,421.5	1,394.7	-1.9
Load factor %	76.8	88.6	11.8 *
Aircraft trips	9,183	9,310	1.4

\* percentage point difference



## TOP FIFTY REGIONAL AIRPORTS

**Table 10: Top fifty regional airports (000s) — passenger movements, monthly**

	<b>Airport</b>	<b>Aug 2022</b>	<b>Aug 2023</b>	<b>% Change</b>
1	Cairns	355.5	381.7	7.4
2	Hobart	169.6	184.2	8.6
3	Darwin	161.0	164.1	1.9
4	Townsville	142.6	155.6	9.2
5	Launceston	84.1	99.0	17.7
6	Newcastle	84.8	97.9	15.4
7	Mackay	76.2	79.7	4.6
8	Rockhampton	45.4	58.0	27.7
9	Ballina	45.5	50.7	11.2
10	Karratha	48.8	49.6	1.7
11	Broome	50.6	49.1	-3.0
12	Port Hedland	42.9	44.2	3.2
13	Proserpine	39.9	43.7	9.6
14	Hamilton Island	40.0	40.3	0.7
15	Newman	32.5	35.8	10.2
16	Alice Springs	36.2	34.5	-4.5
17	Kalgoorlie	30.3	34.4	13.6
18	Ayers Rock	22.3	28.0	25.7
19	Albury	20.6	24.5	18.6
20	Paraburdoo	20.0	24.2	21.1
21	Coffs Harbour	22.9	23.9	4.4
22	Mount Isa	21.5	22.7	5.5
23	Gladstone	17.7	20.6	16.2
24	Mildura	16.7	19.8	18.3
25	Dubbo	16.3	19.6	19.9
26	Port Macquarie	14.4	19.4	34.8
27	Wagga Wagga	16.4	18.0	9.6
28	Emerald	16.7	17.7	6.4
29	Tamworth	12.4	15.8	27.2
30	Bundaberg	8.6	15.1	75.8
31	Port Lincoln	14.4	13.8	-4.8
32	Kununurra	13.6	13.1	-3.4
33	Hervey Bay	11.5	12.2	6.3
34	Learmonth	9.9	10.7	7.9
35	Armidale	9.6	10.4	8.8
36	Devonport	9.4	10.1	7.9
37	Moranbah	9.1	10.1	11.7
38	Gove	8.7	9.9	13.7
39	Olympic Dam	8.2	9.6	17.7
40	Orange	8.0	9.6	20.1
41	Thursday Island	8.4	9.5	13.8
42	Weipa	7.9	8.1	2.2
43	Geraldton	7.5	7.9	5.3
44	Toowoomba Wellcamp	4.1	7.2	75.5
45	Burnie	6.5	7.0	7.8
46	Griffith	7.0	7.0	-0.4
47	Mount Gambier	6.9	6.5	-5.7
48	Cloncurry	5.3	5.9	11.1
49	Roma	5.0	5.9	16.5
50	Merimbula	5.9	5.8	-1.2
<b>Total top 50 regional airports</b>		<b>1,879.3</b>	<b>2,052.4</b>	<b>9.2</b>
<b>Total regional airports</b>		<b>1,997.6</b>	<b>2,174.8</b>	<b>8.9</b>
<b>Total domestic network</b>		<b>8,925.7</b>	<b>9,776.0</b>	<b>9.5</b>

Note: Airport passenger movement numbers are the sum of passenger arrivals and departures at each airport.

Regional airports are defined as airports which are, according to Australian Statistical Geography Standard (ASGS), not based in Major Cities.

**Table 11: Top fifty regional airports (000s) — passenger movements, annual**

	<b>Airport</b>	<b>YE Aug 2022</b>	<b>YE Aug 2023</b>	<b>% Change</b>
1	Cairns	3,030.2	3,947.6	30.3
2	Hobart	1,758.5	2,509.6	42.7
3	Townsville	1,346.4	1,671.8	24.2
4	Darwin	1,425.0	1,626.1	14.1
5	Launceston	881.6	1,309.8	48.6
6	Newcastle	723.6	1,115.3	54.1
7	Mackay	747.5	894.7	19.7
8	Ballina	613.5	639.1	4.2
9	Rockhampton	450.1	584.4	29.8
10	Karratha	474.2	535.2	12.8
11	Hamilton Island	414.7	497.3	19.9
12	Proserpine	418.2	487.6	16.6
13	Port Hedland	429.6	480.4	11.8
14	Broome	446.0	435.7	-2.3
15	Newman	333.2	371.0	11.3
16	Alice Springs	291.5	356.3	22.2
17	Kalgoorlie	289.1	343.7	18.9
18	Coffs Harbour	223.3	285.7	28.0
19	Ayers Rock	132.3	256.1	93.5
20	Albury	147.9	243.0	64.2
21	Paraburdoo	203.3	233.0	14.6
22	Mount Isa	208.5	231.2	10.8
23	Mildura	130.0	215.4	65.6
24	Gladstone	172.8	212.2	22.8
25	Dubbo	139.3	205.4	47.5
26	Port Macquarie	116.4	202.5	74.1
27	Wagga Wagga	120.4	196.1	62.8
28	Emerald	156.4	191.4	22.4
29	Port Lincoln	158.9	176.7	11.2
30	Tamworth	95.3	159.5	67.4
31	Hervey Bay	94.0	138.9	47.9
32	Kununurra	119.1	130.1	9.3
33	Bundaberg	91.9	128.7	40.1
34	Devonport	59.6	122.5	105.4
35	Armidale	73.5	111.9	52.2
36	Moranbah	93.0	108.8	17.0
37	Learmonth	96.5	104.2	8.0
38	Thursday Island	96.0	104.1	8.4
39	Orange	65.3	102.5	56.9
40	Olympic Dam	90.3	101.4	12.3
41	Gove	71.2	88.0	23.5
42	Weipa	82.0	85.3	4.0
43	Burnie	51.6	83.5	61.7
44	Geraldton	82.0	83.2	1.4
45	Griffith	51.1	76.2	49.1
46	Mount Gambier	60.5	75.2	24.4
47	Merimbula	46.0	74.1	61.1
48	Norfolk Island	55.6	69.5	24.9
49	Albany	52.7	62.5	18.7
50	Roma	51.9	61.9	19.3
<b>Total top 50 regional airports</b>		<b>17,561.5</b>	<b>22,526.2</b>	<b>28.3</b>
<b>Total regional airports</b>		<b>18,742.3</b>	<b>23,922.7</b>	<b>27.6</b>
<b>Total domestic network</b>		<b>75,109.7</b>	<b>111,822.3</b>	<b>48.9</b>

Note: Airport passenger movement numbers are the sum of passenger arrivals and departures at each airport. Regional airports are defined as airports which are, according to Australian Statistical Geography

## DOMESTIC CHARTER ACTIVITY

**Table 12: Charter passengers carried and aircraft trips - monthly activity**

	Aug 2022	Aug 2023	% Change
Total domestic charter passengers	330,719	382,681	15.7
Total domestic charter aircraft trips	5,859	6,499	10.9

Note: Helicopter, joyflights and sightseeing charter flights not included.

**Table 13: Charter passengers carried and aircraft trips - annual activity**

	YE Aug 2022	YE Aug 2023	% Change
Total domestic charter passengers	3,129,392	3,911,744	25.0
Total domestic charter aircraft trips	65,029	68,143	4.8

Note: Helicopter, joyflights and sightseeing charter flights not included.

**Table 14: Domestic airports - charter activity - monthly**

	Aug 2022	Aug 2023	% Change
Total domestic charter passenger movements	661,438	765,362	15.7
Total domestic charter aircraft movements	11,718	12,998	10.9
Perth airport charter passenger movements	246,777	281,498	14.1
Perth airport charter aircraft movements	3,907	4,393	12.4

Note: Helicopter, joyflights and sightseeing charter flights not included.

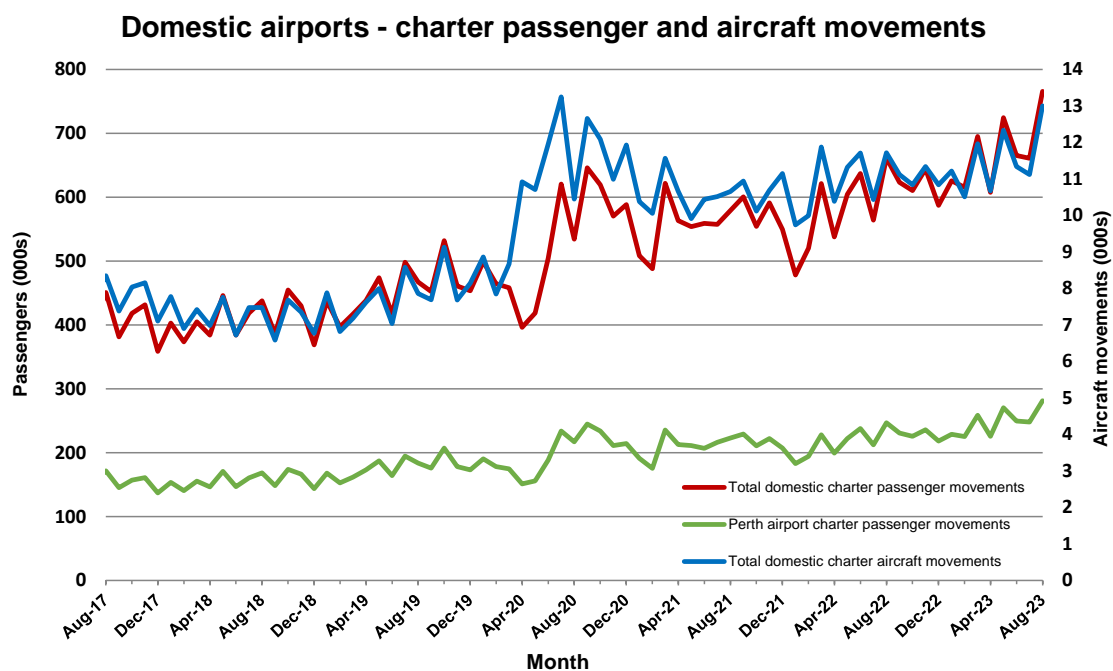
Charter passenger and aircraft movement numbers are the sum of arrivals and departures at each airport.

**Table 15: Domestic airports - charter activity - annual**

	YE Aug 2022	YE Aug 2023	% Change
Total domestic charter passenger movements	6,258,784	7,823,488	25.0
Total domestic charter aircraft movements	130,058	136,286	4.8
Perth airport charter passenger movements	2,593,242	2,898,382	11.8
Perth airport charter aircraft movements	44,485	45,898	3.2

Note: Helicopter, joyflights and sightseeing charter flights not included.

Charter passenger and aircraft movement numbers are the sum of arrivals and departures at each airport.



## DEFINITIONS

Aircraft Trips	The number of flight stages. A return flight counts as two aircraft trips.
Airport Movements	Airport movements (passenger and cargo) are measured once on arrival and once on departure. Each domestic trip generates two movements at airports. For example, a trip from Melbourne to Sydney will be counted twice, as a departure at Melbourne and as an arrival at Sydney. At the national level, the sum of all domestic airport traffic will therefore be equal to twice the number of trips undertaken.
Available Seat Kilometres (ASKs)	Calculated by multiplying the number of seats available on each flight stage, by the distance in kilometres between the ports. The distances used are Great Circle Distances.
City-Pair	The ports shown make up the city-pair route. Passenger movements shown for a city pair reflect total traffic in both directions.
Flight Stage	The operation of an aircraft from take-off to landing.
Load Factor	The total revenue passenger kilometres performed as a percentage of the total available seat kilometres.
Passengers Carried	Revenue passengers carried.
Regular Public Transport Services (RPT)	All air service operations in which aircraft are available for the transport of members of the public and are conducted in accordance with fixed schedules. It does not include charter or other non-scheduled operations.
Revenue Passengers	All passengers paying any fare. Frequent flyer redemption travellers are regarded as revenue passengers.
Revenue Passenger Kilometres (RPKs)	Calculated by multiplying the number of revenue passengers travelling on each flight stage, by the distance in kilometres between the ports. The distances used are Great Circle Distances.
Traffic on board by stages	The total of all traffic (revenue passengers) on each flight stage between two directly connected airports.
..	Not available for confidentiality or other reasons.
NA	Not applicable.