



Australian Government

Department of Infrastructure, Transport, Regional Development and Communications

Bureau of Infrastructure and Transport Research Economics

STATISTICAL REPORT



Aviation

Domestic aviation activity
April 2022

© Commonwealth of Australia 2022

ISSN: 1832 - 1968

Ownership of intellectual property rights in this publication

Unless otherwise noted, copyright (and any other intellectual property rights, if any) in this publication is owned by the Commonwealth of Australia (referred to below as the Commonwealth).

Disclaimer

The material contained in this publication is made available on the understanding that the Commonwealth is not providing professional advice, and that users exercise their own skill and care with respect to its use, and seek independent advice if necessary.

The Commonwealth makes no representations or warranties as to the contents or accuracy of the information contained in this publication. To the extent permitted by law, the Commonwealth disclaims liability to any person or organisation in respect of anything done, or omitted to be done, in reliance upon information contained in this publication.

Creative Commons licence

With the exception of (a) the Coat of Arms; and (b) the Department of Infrastructure, Transport, Regional Development and Communications' photos and graphics, copyright in this publication is licensed under a Creative Commons Attribution 3.0 Australia Licence.

Creative Commons Attribution 3.0 Australia Licence is a standard form licence agreement that allows you to copy, communicate and adapt this publication provided that you attribute the work to the Commonwealth and abide by the other licence terms. A summary of the licence terms is available from <http://creativecommons.org/licenses/by/3.0/au/deed.en>.

The full licence terms are available from <http://creativecommons.org/licenses/by/3.0/au/legalcode>.

Use of the Coat of Arms

The Department of the Prime Minister and Cabinet sets the terms under which the Coat of Arms is used. Please refer to the Department's Commonwealth Coat of Arms and Government branding web page <http://www.dpmc.gov.au/guidelines/index.cfm#brand> and, in particular, the Guidelines on the use of the Commonwealth Coat of Arms publication.

An appropriate citation for this report is:

Bureau of Infrastructure and Transport Research Economics (BITRE), 2022, Domestic aviation activity, Statistical Report, BITRE, Canberra ACT.

Contact us

This publication is available in PDF format. All other rights are reserved, including in relation to any Departmental logos or trade marks which may exist. For enquiries regarding the licence and any use of this publication, please contact:

Bureau of Infrastructure and Transport Research Economics (BITRE)
Department of Infrastructure, Transport, Regional Development and Communications
GPO Box 501, Canberra ACT 2601, Australia
Telephone: (international) +61 2 6274 7210
Fax: (international) +61 2 6274 6855
Email: bitre@infrastructure.gov.au
Website: www.bitre.gov.au

Inquiries

Should you require additional information about the statistics contained in this publication:

Nebojsa Pavlovic

Telephone (02) 6274 6817 or Facsimile (02) 6274 7727

Electronic mail: AVSTATS@infrastructure.gov.au

Nebojsa.Pavlovic@infrastructure.gov.au

Web site: <http://www.bitre.gov.au/statistics/aviation/domestic.aspx>

FOREWORD

This report provides an overview of domestic (including charter) commercial aviation activity in Australia for the month of April 2022.

The data cover revenue passengers carried by Australian-registered operators of scheduled regular public transport services over Australian flight stages and fixed-wing charter operators. These estimates include passengers carried between domestic airports on international flights operated by these carriers. The passengers carried refer to traffic on board by stages.

Estimates of passengers and aircraft movements for charter aviation are included in this publication, where BITRE confidentiality standards are met.

Individual routes shown are restricted to those exceeding 8 000 passengers per month where two or more airlines operate in competition. However, from November 2021 the major airlines (Qantas Group, Virgin Australia and Rex Airlines) have agreed to publication of the top 35 routes based on pre-COVID activity (December 2019) whether or not they currently meet the above criteria. With these approvals, there were 57 routes published for the month of April 2022 compared to 56 published in April 2021.

Information on the total network for the month of April 2022 and on the Regular Public Transport (RPT) network for the month of April 2022 is presented on page 2, with estimates for the year ended April 2022 presented on page 3.

Detailed information on individual routes can be found in the RPT summary pages 4-13 of this publication.

The top ten airports in terms of RPT passenger movements are shown on page 14.

Data on domestic RPT cargo movements at the top five cargo airports are provided on page 15. The table includes cargo carried on passenger flights operated by the Qantas group (including Jetstar), Virgin Australia, Air North and Skippers as well as the cargo carried by dedicated freighter aircraft operated by Qantas Freight and Toll.

The long-term trends for the top ten competitive RPT routes are presented graphically on pages 16-25.

Domestic RPT passenger movements at regional airports are presented on pages 26-27.

Tables providing estimates of domestic charter aviation activity are shown on page 28. BITRE confidentiality standards restrict publication of detailed estimates for individual Australian airports, with the exception of Perth Airport.

A list of definitions can be found on page 29.

This report was prepared by the Aviation Statistics Section of the Bureau of Infrastructure and Transport Research Economics with data provided by airlines.

Estimates are included where data were not available and data presented in this publication may contain revisions to previously published data.

Where figures have been rounded, discrepancies may occur between sums of component items and totals, and in percentage changes which are derived from figures prior to rounding.

CONTENTS

Highlights	1
Total network.....	2
RPT network.....	2
Top competitive routes.....	4
Top ten airports – passenger movements.....	14
Top five airports – cargo movements.....	15
Top ten routes	16
1. Melbourne – Sydney	16
2. Brisbane – Sydney.....	17
3. Brisbane – Melbourne	18
4. Gold Coast – Sydney	19
5. Gold Coast – Melbourne	20
6. Adelaide – Melbourne	21
7. Adelaide – Sydney	22
8. Melbourne – Perth	23
9. Hobart – Melbourne	24
10. Brisbane – Cairns	25
Top fifty regional airports	26
Domestic charter activity.....	28
Definitions	29

This page is intentionally left blank.

HIGHLIGHTS

The domestic aviation industry continued to recover in April 2022. Revenue passenger numbers were 31.9 per cent higher than April 2021 levels but still 9.6 per cent below pre-COVID April 2019.

There were 4.92 million passengers carried on Australian domestic commercial aviation (including charter operations) in April 2022, compared to 3.81 million in April 2021 and 5.37 million in pre-COVID April 2019.

For the month of April 2022, there were 55.2 thousand aircraft trips, compared to 48.2 thousand in April 2021 and 57.3 thousand in pre-COVID April 2019.

4.66 million passengers were carried on RPT flights in April 2022, compared to 3.53 million reported in April 2021 and 5.15 million reported in pre-COVID April 2019.

For the year ending April 2022 there were 27.16 million RPT passengers, an increase of 65.9 per cent on the year ending April 2021 and a decrease of 55.5 per cent on the year ending April 2019.

RPT revenue passenger kilometres (RPKs) performed were 5.49 billion for the month, compared with 4.02 billion in April 2021.

Capacity, measured by available seat kilometres (ASKs), increased to 6.99 billion in April 2022 compared to 5.68 billion in April 2021.

The industry wide load factor (RPKs/ASKs) increased from 70.7 per cent in April 2021 to 78.4 per cent in April 2022. The highest load factor (93.6 per cent) was recorded on the Melbourne – Perth route while the lowest load factor (46.3 per cent) was recorded on the Brisbane – Hamilton Island route.

For the month of April 2022, Melbourne – Sydney was Australia's busiest RPT route with 603.3 thousand passengers, followed by Brisbane – Sydney with 321.9 thousand passengers and Brisbane – Melbourne with 272.2 thousand passengers.

Sydney and Melbourne were Australia's busiest domestic airports, both with 1.94 million passenger movements in April 2022, followed by Brisbane with 1.31 million passenger movements.

Total cargo movements at Australian airports on domestic RPT flights were 28.3 thousand tonnes in April 2022, a decrease of 6.8 per cent compared with April 2021.

In April 2022, there were 2.03 million domestic passenger movements through regional airports, compared to 1.69 million in April 2021 and 2.11 million in pre-COVID April 2019. Most regional airports for which data is available for publishing recorded large increases in April 2022 compared to April 2021.

Fixed-wing charter operators carried 268.6 thousand passengers in April 2022, compared to 281.7 thousand in April 2021 and 219.2 in pre-COVID April 2019. Perth Airport accounted for 37.1 per cent of all charter passengers in Australia.

TOTAL NETWORK

Summary of monthly commercial aviation activity

	Apr 2021	Apr 2022	% Change
Total passengers carried (millions)	3.81	4.92	29.2
Aircraft trips (000s)	48.2	55.2	14.6

Note: Regular Public Transport and charter aviation activity
Helicopter, joy flights and sightseeing charter flights not included.

RPT NETWORK

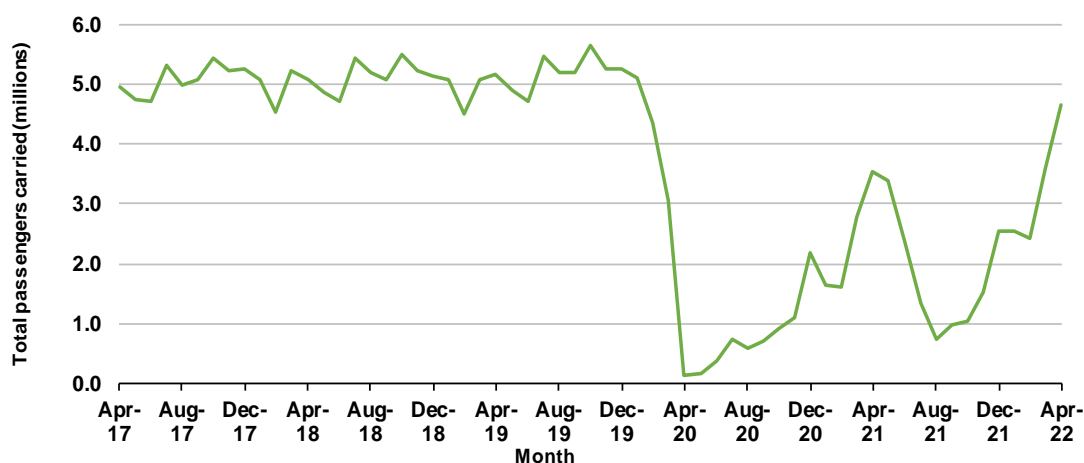
Summary of monthly RPT activity

	Apr 2021	Apr 2022	% Change
Total passengers carried (millions)	3.53	4.66	31.9
Revenue passenger kilometres (billions)	4.02	5.49	36.6
Available seats (millions)	5.10	6.13	20.1
Available seat kilometres (billions)	5.68	6.99	23.0
Load factor %	70.7	78.4	7.7 *
Aircraft trips (000s)	42.9	50.0	16.8

* percentage point difference

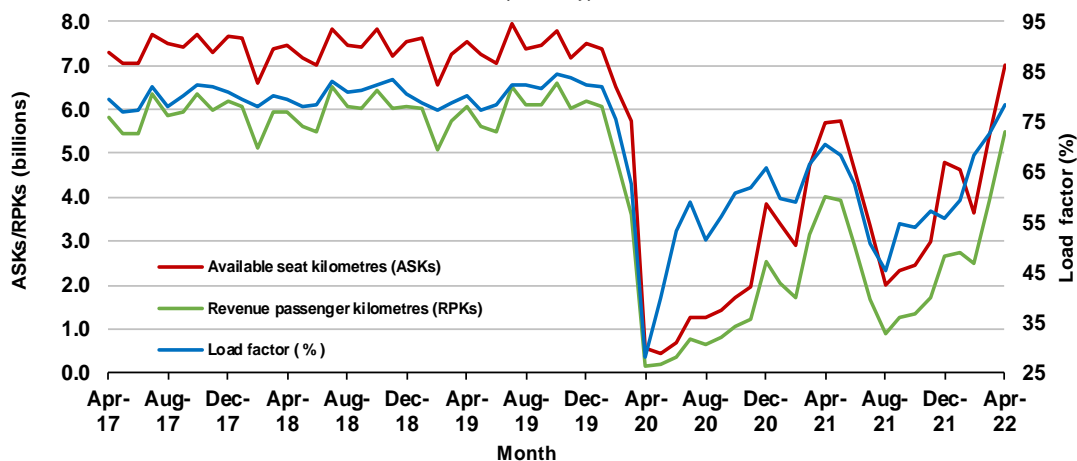
Domestic RPT passenger traffic

(monthly)



RPT Network utilisation

(monthly)



TOTAL NETWORK

Summary of annual commercial aviation activity

	YE Apr 2021	YE Apr 2022	% Change
Total passengers carried (millions)	19.71	30.51	54.8
Aircraft trips (000s)	333.0	461.4	38.5

Note: Regular Public Transport and charter aviation activity
Helicopter, joy flights and sightseeing charter flights not included.

RPT NETWORK

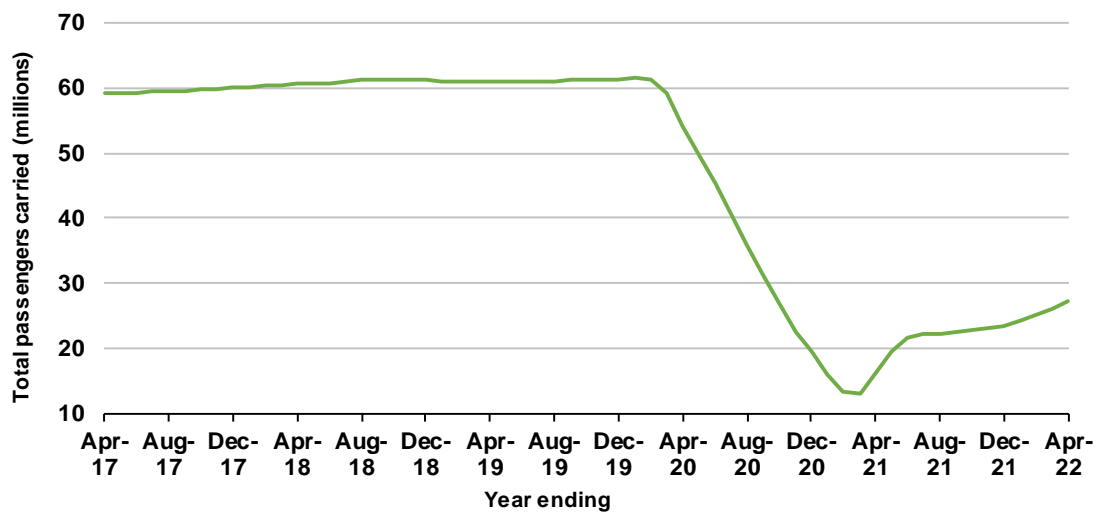
Summary of annual RPT activity

	YE Apr 2021	YE Apr 2022	% Change
Total passengers carried (millions)	16.37	27.16	65.9
Revenue passenger kilometres (billions)	18.47	31.06	68.2
Available seats (millions)	26.30	43.38	64.9
Available seat kilometres (billions)	29.36	48.92	66.7
Load factor %	62.9	63.5	0.6 *
Aircraft trips (000s)	264.7	398.2	50.4

* percentage point difference

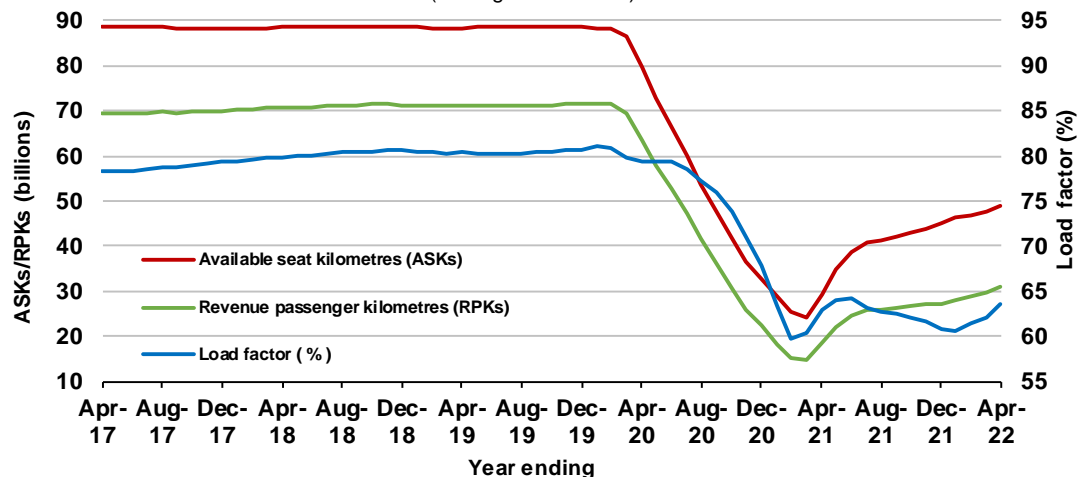
Domestic RPT passenger traffic

(moving annual totals)



RPT Network utilisation

(moving annual totals)



TOP COMPETITIVE ROUTES

Table 1: Passengers carried (000s) — annual activity

	City-Pair	YE Apr 2021	YE Apr 2022	% Change
1	Melbourne - Sydney	1 351.8	2 897.0	114.3
2	Brisbane - Sydney	893.5	1 438.0	60.9
3	Brisbane - Melbourne	613.4	1 158.1	88.8
4	Gold Coast - Sydney	482.2	1 052.8	118.3
5	Gold Coast - Melbourne	499.8	1 041.2	108.3
6	Brisbane - Cairns	765.0	1 020.5	33.4
7	Adelaide - Melbourne	423.6	830.6	96.1
8	Brisbane - Townsville	520.5	692.0	32.9
9	Adelaide - Sydney	450.7	643.0	42.7
10	Brisbane - Mackay	394.2	548.9	39.2
11	Hobart - Melbourne	340.4	503.8	48.0
12	Adelaide - Brisbane	345.5	465.4	34.7
13	Karratha - Perth	282.2	442.3	56.7
14	Perth - Port Hedland	216.6	388.9	79.5
15	Cairns - Melbourne	170.6	385.3	125.9
16	Ballina - Sydney	438.1	380.7	-13.1
17	Broome - Perth	258.1	379.2	46.9
18	Brisbane - Rockhampton	260.4	366.1	40.6
19	Canberra - Melbourne	174.5	365.9	109.7
20	Melbourne - Sunshine Coast	184.3	353.8	92.0
21	Cairns - Sydney	157.9	329.3	108.6
22	Launceston - Melbourne	224.6	323.7	44.1
23	Hobart - Sydney	191.3	321.3	68.0
24	Newman - Perth	187.7	319.6	70.3
25	Perth - Sydney	224.7	315.4	40.4
26	Brisbane - Canberra	253.1	310.7	22.7
27	Melbourne - Perth	230.9	306.7	32.8
28	Brisbane - Perth	178.0	302.5	69.9
29	Sunshine Coast - Sydney	146.0	299.0	104.9
30	Adelaide - Perth	138.5	282.6	104.1
31	Brisbane - Hobart	127.4	273.9	114.9
32	Brisbane - Darwin	181.1	268.4	48.2
33	Kalgoorlie - Perth	169.7	266.5	57.1
34	Brisbane - Proserpine	183.1	263.5	43.9
35	Brisbane - Newcastle	176.2	221.5	25.7
36	Canberra - Sydney	109.1	218.8	100.5
37	Melbourne - Newcastle	102.3	205.4	100.8
38	Brisbane - Hamilton Island	146.2	196.0	34.1
39	Darwin - Melbourne	..	164.8	NA
40	Brisbane - Launceston	74.7	151.1	102.4
41	Brisbane - Gladstone	99.7	148.3	48.7
42	Adelaide - Port Lincoln	95.1	145.2	52.7
43	Adelaide - Gold Coast	102.0	145.1	42.3
44	Launceston - Sydney	103.2	142.3	37.9
45	Darwin - Perth	47.9	137.9	187.6
46	Brisbane - Emerald	94.3	134.9	43.0
47	Ballina - Melbourne	11.9	130.3	998.4
48	Coffs Harbour - Sydney	89.2	126.2	41.5
49	Adelaide - Hobart	..	115.7	NA
50	Hamilton Island - Sydney	51.3	109.6	113.5

continued

Table 1: (continued) Passengers carried (000s) — annual activity

	City-Pair	YE Apr 2021	YE Apr 2022	% Change
51	Canberra - Gold Coast	75.7	83.4	10.2
52	Adelaide - Canberra	75.5	80.8	7.0
53	Dubbo - Sydney	57.2	79.3	38.5
54	Melbourne - Mildura	38.3	75.5	97.2
55	Albury - Sydney	46.7	75.3	61.0
56	Sydney - Wagga Wagga	48.1	70.5	46.4
57	Port Macquarie - Sydney	34.8	69.4	99.6
58	Brisbane - Mount Isa	89.2	..	NA (a)
59	Adelaide - Alice Springs	74.2	..	NA (a)
	Total domestic network	16 367.0	27 160.0	65.9

.. Data not available for release.

(a) City pairs published in April 2021, data not available for release in April 2022.

Table 2: Passengers carried (000s) — monthly activity

	City-Pair	Apr 2021	Apr 2022	% Change
1	Melbourne - Sydney	463.3	603.3	30.2
2	Brisbane - Sydney	204.9	321.9	57.1
3	Brisbane - Melbourne	136.1	272.2	100.1
4	Gold Coast - Sydney	180.4	234.3	29.8
5	Gold Coast - Melbourne	163.4	231.1	41.4
6	Adelaide - Melbourne	147.5	188.6	27.8
7	Adelaide - Sydney	117.1	133.3	13.9
8	Melbourne - Perth	87.0	105.9	21.7
9	Hobart - Melbourne	90.8	102.8	13.2
10	Brisbane - Cairns	86.1	101.6	18.0
11	Perth - Sydney	79.8	97.3	21.9
12	Cairns - Melbourne	63.4	80.4	26.8
13	Cairns - Sydney	64.1	79.7	24.3
14	Melbourne - Sunshine Coast	55.9	76.5	37.0
15	Brisbane - Townsville	64.5	74.5	15.5
16	Canberra - Melbourne	46.5	72.2	55.4
17	Sunshine Coast - Sydney	56.7	67.5	19.2
18	Hobart - Sydney	58.3	67.1	15.3
19	Launceston - Melbourne	66.2	66.8	0.9
20	Adelaide - Brisbane	42.9	62.1	44.7
21	Brisbane - Mackay	49.7	61.3	23.4
22	Brisbane - Perth	12.8	59.0	359.5
23	Brisbane - Canberra	36.1	50.8	40.8
24	Adelaide - Perth	39.4	48.3	22.6
25	Canberra - Sydney	23.6	47.1	99.6
26	Ballina - Sydney	46.1	45.0	-2.3
27	Melbourne - Newcastle	33.4	44.1	32.2
28	Brisbane - Newcastle	33.7	43.5	29.3
29	Brisbane - Rockhampton	33.6	38.5	14.4
30	Karratha - Perth	32.6	37.7	15.9
31	Perth - Port Hedland	28.6	35.0	22.7
32	Darwin - Melbourne	..	34.3	NA
33	Brisbane - Darwin	24.6	33.6	36.6
34	Broome - Perth	31.1	31.4	0.8
35	Brisbane - Proserpine	21.9	31.2	42.8
36	Brisbane - Hobart	18.2	30.8	69.4
37	Launceston - Sydney	27.8	29.5	6.2
38	Newman - Perth	26.3	24.9	-5.4
39	Kalgoorlie - Perth	20.2	23.0	14.0
40	Adelaide - Gold Coast	16.3	22.6	38.1
41	Hamilton Island - Sydney	20.5	20.4	-0.5
42	Brisbane - Launceston	10.7	19.3	79.6
43	Brisbane - Gladstone	13.4	18.0	34.8
44	Coffs Harbour - Sydney	16.0	17.1	7.1
45	Adelaide - Port Lincoln	14.0	15.1	7.6
46	Ballina - Melbourne	11.9	14.8	24.6
47	Adelaide - Hobart	..	14.6	NA
48	Brisbane - Hamilton Island	13.3	14.4	7.9
49	Darwin - Perth	11.4	13.2	16.5
50	Adelaide - Canberra	12.9	12.7	-1.3

continued

Table 2: (continued) Passengers carried (000s) — monthly activity

	City-Pair	Apr 2021	Apr 2022	% Change
51	Albury - Sydney	10.6	12.7	19.0
52	Brisbane - Emerald	12.5	12.1	-3.3
53	Dubbo - Sydney	10.6	12.1	14.1
54	Port Macquarie - Sydney	9.5	12.0	26.6
55	Canberra - Gold Coast	11.8	11.8	0.4
56	Melbourne - Mildura	9.8	11.4	17.0
57	Sydney - Wagga Wagga	9.8	11.3	15.8
58	Brisbane - Mount Isa	9.6	..	NA (a)
59	Adelaide - Alice Springs	9.5	..	NA (a)
	Total domestic network	3 529.4	4 655.3	31.9

.. Data not available for release.

(a) Citypairs published in April 2021, data not available for release in April 2022.

Table 3: Available seats (000s) — monthly activity

	City-Pair	Apr 2021	Apr 2022	% Change
1	Melbourne - Sydney	652.9	731.4	12.0
2	Brisbane - Sydney	279.9	410.7	46.7
3	Brisbane - Melbourne	206.4	337.4	63.5
4	Gold Coast - Sydney	255.8	288.4	12.7
5	Gold Coast - Melbourne	211.3	288.9	36.7
6	Adelaide - Melbourne	188.3	239.7	27.3
7	Adelaide - Sydney	148.2	161.0	8.6
8	Melbourne - Perth	107.9	113.1	4.8
9	Hobart - Melbourne	122.8	131.6	7.1
10	Brisbane - Cairns	122.1	121.9	-0.2
11	Perth - Sydney	101.2	106.8	5.5
12	Cairns - Melbourne	86.9	106.1	22.1
13	Cairns - Sydney	96.8	109.3	12.9
14	Melbourne - Sunshine Coast	70.8	104.6	47.7
15	Brisbane - Townsville	85.5	91.4	7.0
16	Canberra - Melbourne	65.9	104.0	57.8
17	Sunshine Coast - Sydney	70.6	101.1	43.2
18	Hobart - Sydney	78.1	87.8	12.4
19	Launceston - Melbourne	96.7	86.9	-10.1
20	Adelaide - Brisbane	66.9	72.2	8.0
21	Brisbane - Mackay	69.4	82.9	19.6
22	Brisbane - Perth	23.4	65.2	178.0
23	Brisbane - Canberra	54.5	68.6	25.9
24	Adelaide - Perth	54.1	55.7	3.0
25	Canberra - Sydney	39.4	90.4	129.7
26	Ballina - Sydney	71.8	67.9	-5.4
27	Melbourne - Newcastle	49.7	55.4	11.6
28	Brisbane - Newcastle	51.2	58.9	15.1
29	Brisbane - Rockhampton	46.4	46.6	0.4
30	Karratha - Perth	59.9	59.4	-0.8
31	Perth - Port Hedland	49.0	50.2	2.4
32	Darwin - Melbourne	..	43.3	NA
33	Brisbane - Darwin	32.3	44.5	37.9
34	Broome - Perth	44.8	45.1	0.6
35	Brisbane - Proserpine	28.2	40.7	44.3
36	Brisbane - Hobart	27.2	39.8	46.2
37	Launceston - Sydney	34.2	38.4	12.3
38	Newman - Perth	56.3	47.8	-15.1
39	Kalgoorlie - Perth	32.5	37.3	14.9
40	Adelaide - Gold Coast	22.2	25.0	12.5
41	Hamilton Island - Sydney	32.4	34.4	6.1
42	Brisbane - Launceston	15.3	25.0	63.3
43	Brisbane - Gladstone	25.4	24.5	-3.4
44	Coffs Harbour - Sydney	26.6	24.5	-7.9
45	Adelaide - Port Lincoln	21.6	24.1	11.4
46	Ballina - Melbourne	18.5	21.7	17.3
47	Adelaide - Hobart	..	21.7	NA
48	Brisbane - Hamilton Island	24.5	31.0	26.9
49	Darwin - Perth	17.2	17.4	1.6
50	Adelaide - Canberra	17.1	16.3	-4.4

continued

Table 3: (continued) Available seats (000s) — monthly activity

	City-Pair	Apr 2021	Apr 2022	% Change
51	Albury - Sydney	19.3	19.4	0.3
52	Brisbane - Emerald	20.8	18.9	-9.1
53	Dubbo - Sydney	17.4	19.9	14.4
54	Port Macquarie - Sydney	21.0	19.6	-6.3
55	Canberra - Gold Coast	17.8	13.9	-22.1
56	Melbourne - Mildura	16.2	14.9	-8.3
57	Sydney - Wagga Wagga	19.1	17.2	-9.5
58	Brisbane - Mount Isa	19.4	..	NA (a)
59	Adelaide - Alice Springs	14.9	..	NA (a)
	Total domestic network	5 102.5	6 128.7	20.1

.. Data not available for release.

(a) Citypairs published in April 2021, data not available for release in April 2022.

Table 4: Load factors (%) — monthly activity

	City-Pair	Apr 2021	Apr 2022	% Point diff
1	Melbourne - Sydney	71.0	82.5	11.5
2	Brisbane - Sydney	73.2	78.4	5.2
3	Brisbane - Melbourne	65.9	80.7	14.8
4	Gold Coast - Sydney	70.5	81.2	10.7
5	Gold Coast - Melbourne	77.3	80.0	2.7
6	Adelaide - Melbourne	78.3	78.7	0.4
7	Adelaide - Sydney	79.0	82.8	3.8
8	Melbourne - Perth	80.7	93.6	12.9
9	Hobart - Melbourne	73.9	78.1	4.2
10	Brisbane - Cairns	70.6	83.3	12.7
11	Perth - Sydney	78.8	91.1	12.3
12	Cairns - Melbourne	72.9	75.7	2.8
13	Cairns - Sydney	66.2	72.9	6.7
14	Melbourne - Sunshine Coast	78.9	73.2	-5.7
15	Brisbane - Townsville	75.5	81.5	6.0
16	Canberra - Melbourne	70.6	69.5	-1.1
17	Sunshine Coast - Sydney	80.2	66.8	-13.4
18	Hobart - Sydney	74.6	76.4	1.8
19	Launceston - Melbourne	68.4	76.8	8.4
20	Adelaide - Brisbane	64.2	86.0	21.8
21	Brisbane - Mackay	71.7	74.0	2.3
22	Brisbane - Perth	54.8	90.5	35.7
23	Brisbane - Canberra	66.2	74.0	7.8
24	Adelaide - Perth	72.8	86.7	13.9
25	Canberra - Sydney	59.9	52.1	-7.8
26	Ballina - Sydney	64.1	66.2	2.1
27	Melbourne - Newcastle	67.2	79.6	12.4
28	Brisbane - Newcastle	65.8	73.9	8.1
29	Brisbane - Rockhampton	72.4	82.6	10.2
30	Karratha - Perth	54.4	63.5	9.1
31	Perth - Port Hedland	58.8	69.8	11.0
32	Darwin - Melbourne	..	79.2	NA
33	Brisbane - Darwin	76.1	75.4	-0.7
34	Broome - Perth	69.6	69.6	0.0
35	Brisbane - Proserpine	76.6	76.7	0.1
36	Brisbane - Hobart	66.8	77.4	10.6
37	Launceston - Sydney	81.1	76.7	-4.4
38	Newman - Perth	46.9	52.1	5.2
39	Kalgoorlie - Perth	62.2	61.5	-0.7
40	Adelaide - Gold Coast	73.6	90.3	16.7
41	Hamilton Island - Sydney	63.2	59.3	-3.9
42	Brisbane - Launceston	70.2	77.3	7.1
43	Brisbane - Gladstone	54.2	73.6	19.4
44	Coffs Harbour - Sydney	60.1	69.9	9.8
45	Adelaide - Port Lincoln	64.8	62.7	-2.1
46	Ballina - Melbourne	64.1	68.1	4.0
47	Adelaide - Hobart	..	67.3	NA
48	Brisbane - Hamilton Island	54.5	46.3	-8.2
49	Darwin - Perth	66.2	75.9	9.7
50	Adelaide - Canberra	75.4	77.9	2.5

continued

Table 4: (continued) Load factors (%) — monthly activity

	City-Pair	Apr 2021	Apr 2022	% Point diff
51	Albury - Sydney	55.1	65.4	10.3
52	Brisbane - Emerald	60.3	64.1	3.8
53	Dubbo - Sydney	60.8	60.6	-0.2
54	Port Macquarie - Sydney	45.2	61.0	15.8
55	Canberra - Gold Coast	66.3	85.5	19.2
56	Melbourne - Mildura	60.3	77.0	16.7
57	Sydney - Wagga Wagga	51.3	65.6	14.3
58	Brisbane - Mount Isa	49.4	..	NA (a)
59	Adelaide - Alice Springs	63.5	..	NA (a)
	Total domestic network	70.7	78.4	7.7

.. Data not available for release.

(a) City pairs published in April 2021, data not available for release in April 2022.

Table 5: Aircraft trips ^(a) — monthly activity

	City-Pair	Apr 2021	Apr 2022	% Change
1	Melbourne - Sydney	3 777	4 228	11.9
2	Brisbane - Sydney	1 729	2 468	42.7
3	Brisbane - Melbourne	1 268	2 026	59.8
4	Gold Coast - Sydney	1 446	1 658	14.7
5	Gold Coast - Melbourne	1 146	1 545	34.8
6	Adelaide - Melbourne	1 140	1 419	24.5
7	Adelaide - Sydney	851	949	11.5
8	Melbourne - Perth	649	648	-0.2
9	Hobart - Melbourne	771	810	5.1
10	Brisbane - Cairns	741	797	7.6
11	Perth - Sydney	525	540	2.9
12	Cairns - Melbourne	437	539	23.3
13	Cairns - Sydney	494	570	15.4
14	Melbourne - Sunshine Coast	428	581	35.7
15	Brisbane - Townsville	506	598	18.2
16	Canberra - Melbourne	495	781	57.8
17	Sunshine Coast - Sydney	424	555	30.9
18	Hobart - Sydney	444	525	18.2
19	Launceston - Melbourne	696	714	2.6
20	Adelaide - Brisbane	398	489	22.9
21	Brisbane - Mackay	479	527	10.0
22	Brisbane - Perth	126	369	192.9
23	Brisbane - Canberra	410	466	13.7
24	Adelaide - Perth	338	354	4.7
25	Canberra - Sydney	544	1 500	175.7
26	Ballina - Sydney	525	525	0.0
27	Melbourne - Newcastle	304	335	10.2
28	Brisbane - Newcastle	377	516	36.9
29	Brisbane - Rockhampton	492	449	-8.7
30	Karratha - Perth	364	366	0.5
31	Perth - Port Hedland	360	322	-10.6
32	Darwin - Melbourne	..	222	NA
33	Brisbane - Darwin	199	271	36.2
34	Broome - Perth	276	283	2.5
35	Brisbane - Proserpine	165	247	49.7
36	Brisbane - Hobart	164	241	47.0
37	Launceston - Sydney	204	235	15.2
38	Newman - Perth	337	301	-10.7
39	Kalgoorlie - Perth	257	260	1.2
40	Adelaide - Gold Coast	124	152	22.6
41	Hamilton Island - Sydney	183	194	6.0
42	Brisbane - Launceston	84	149	77.4
43	Brisbane - Gladstone	334	295	-11.7
44	Coffs Harbour - Sydney	430	422	-1.9
45	Adelaide - Port Lincoln	538	592	10.0
46	Ballina - Melbourne	102	122	19.6
47	Adelaide - Hobart	..	142	NA
48	Brisbane - Hamilton Island	140	179	27.9
49	Darwin - Perth	110	103	-6.4
50	Adelaide - Canberra	98	148	51.0

continued

Table 5: (continued) Aircraft trips ^(a) — monthly activity

	City-Pair	Apr 2021	Apr 2022	% Change
51	Albury - Sydney	315	374	18.7
52	Brisbane - Emerald	315	274	-13.0
53	Dubbo - Sydney	354	420	18.6
54	Port Macquarie - Sydney	406	390	-3.9
55	Canberra - Gold Coast	124	91	-26.6
56	Melbourne - Mildura	373	350	-6.2
57	Sydney - Wagga Wagga	315	326	3.5
58	Brisbane - Mount Isa	163	..	NA (b)
59	Adelaide - Alice Springs	124	..	NA (b)
	Total domestic network	42 850	50 036	16.8

.. Data not available for release.

(a) Includes RPT cargo flights

(b) City pairs published in April 2021, data not available for release in April 2022.

TOP TEN AIRPORTS – PASSENGER MOVEMENTS

Table 6: Top ten airports, RPT passenger movements (000s) - monthly activity

Airport	Apr 2021	Apr 2022	% Change	% of Total
1 Sydney	1 489.3	1 944.5	30.6	20.9
2 Melbourne	1 394.1	1 936.0	38.9	20.8
3 Brisbane	866.8	1 310.3	51.2	14.1
4 Adelaide	458.0	569.3	24.3	6.1
5 Perth	437.6	554.2	26.7	6.0
6 Gold Coast	397.5	539.9	35.8	5.8
7 Cairns	276.8	347.7	25.6	3.7
8 Hobart	190.2	232.4	22.2	2.5
9 Canberra	147.6	211.0	42.9	2.3
10 Darwin	116.0	156.8	35.2	1.7
Total top ten airports	5 773.9	7 802.1	35.1	83.8
Total domestic network	7 058.8	9 310.7	31.9	100.0

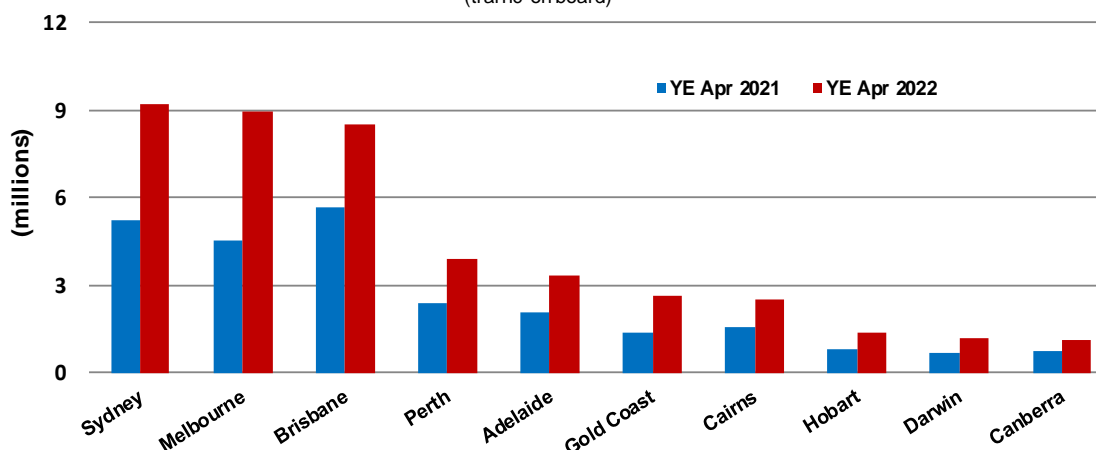
Table 7: Top ten airports, RPT passenger movements (000s) - annual activity

Airport	YE Apr 2021	YE Apr 2022	% Change	% of Total
1 Sydney	5 219.2	9 198.8	76.2	16.9
2 Melbourne	4 547.9	8 925.7	96.3	16.4
3 Brisbane	5 655.5	8 511.7	50.5	15.7
4 Perth	2 413.1	3 927.9	62.8	7.2
5 Adelaide	2 045.5	3 359.9	64.3	6.2
6 Gold Coast	1 366.1	2 632.0	92.7	4.8
7 Cairns	1 578.8	2 491.1	57.8	4.6
8 Hobart	783.6	1 384.2	76.7	2.5
9 Darwin	680.8	1 160.1	70.4	2.1
10 Canberra	763.7	1 155.4	51.3	2.1
Total top ten airports	25 054.3	42 746.9	70.6	78.7
Total domestic network	32 734.0	54 320.1	65.9	100.0

Note: Airport passenger movement numbers are the sum of passenger arrivals and departures at each airport.

Top ten airports, RPT passenger movements

(traffic on board)



TOP FIVE AIRPORTS – CARGO MOVEMENTS

Table 8: Top five airports, domestic RPT cargo movements (000s tonnes) - monthly activity

Airport	Apr 2021	Apr 2022	% Change	% of Total
1 Melbourne	7.3	6.9	-6.2	24.2
2 Sydney	7.2	6.3	-13.3	22.1
3 Brisbane	4.7	4.9	4.2	17.2
4 Perth	2.9	2.7	-7.4	9.4
5 Adelaide	1.8	1.6	-14.3	5.5
Total top five airports	23.9	22.2	-7.1	78.4
Total domestic network	30.4	28.3	-6.8	100.0

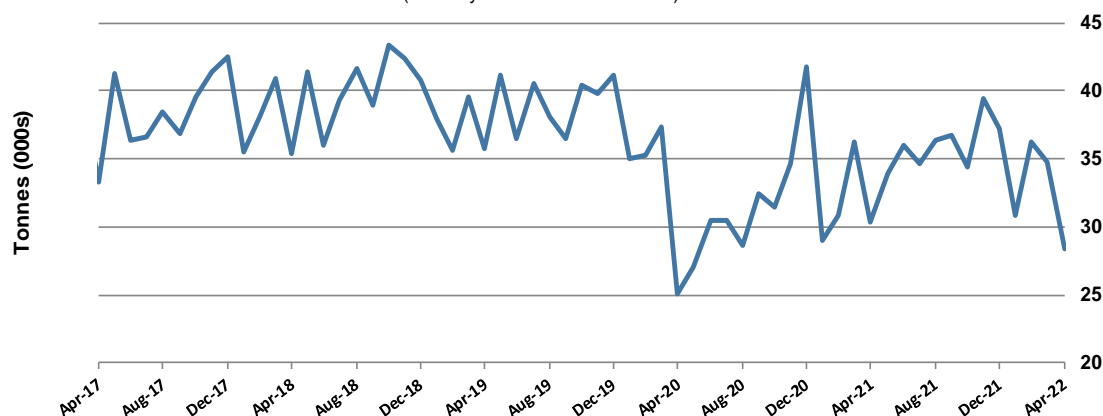
Table 9: Top five airports, domestic RPT cargo movements (000s tonnes) - annual activity

Airport	YE Apr 2021	YE Apr 2022	% Change	% of Total
1 Melbourne	96.5	107.3	11.3	25.6
2 Sydney	86.0	97.4	13.2	23.2
3 Brisbane	67.4	68.2	1.2	16.3
4 Perth	32.8	38.5	17.3	9.2
5 Adelaide	23.2	26.5	14.2	6.3
Total top five airports	305.9	337.9	10.5	80.6
Total domestic network	383.0	419.1	9.4	100.0

Note: Airport cargo tonnes are the sum of cargo tonnes on arrivals and departures at each airport.

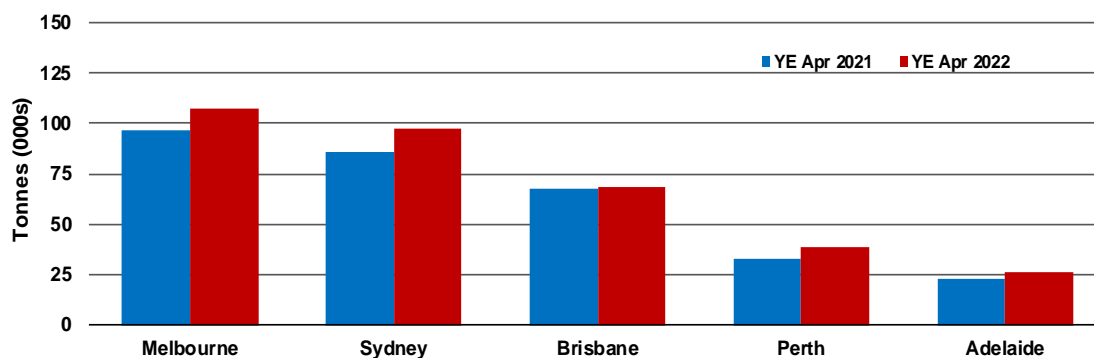
Total domestic network - cargo movement

(monthly totals - traffic on board)



Top five airports, cargo movements

(Domestic cargo traffic - traffic on board)



TOP TEN ROUTES

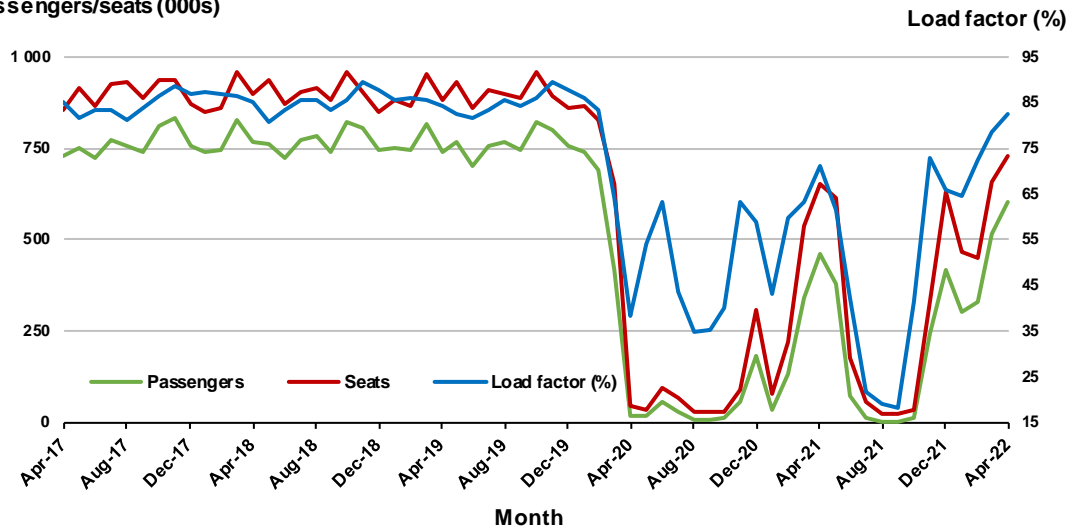
1. Melbourne - Sydney

Monthly data

	Apr 2021	Apr 2022	% Change
Passengers carried (000s)	463.3	603.3	30.2
Seats (000s)	652.9	731.4	12.0
Load factor %	71.0	82.5	11.5 *
Aircraft trips	3 777	4 228	11.9

* percentage point difference

Passengers/seats (000s)

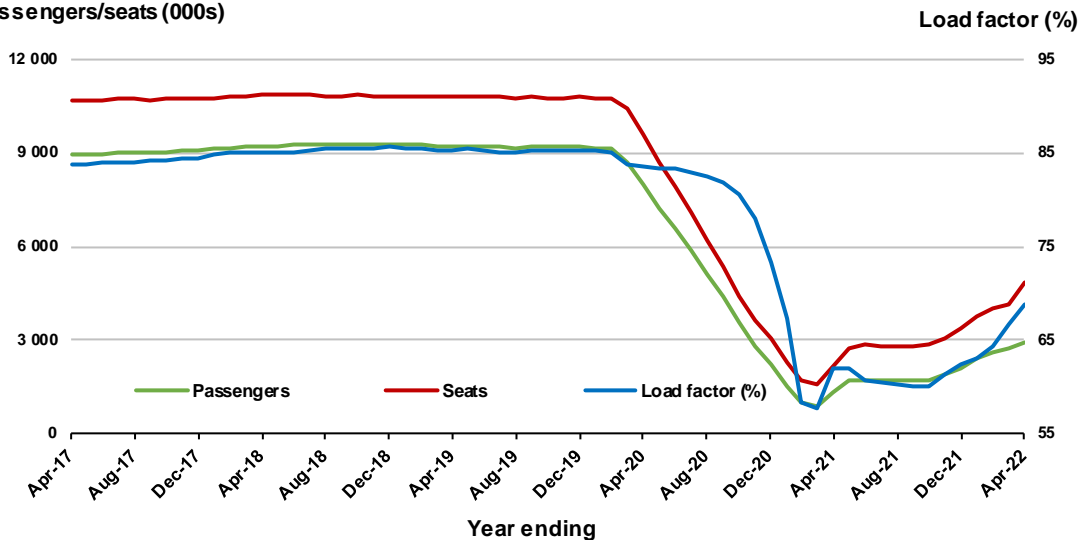


Moving annual data

	YE Apr 2021	YE Apr 2022	% Change
Passengers carried (000s)	1 351.8	2 897.0	114.3
Seats (000s)	2 177.6	4 861.6	123.3
Load factor %	62.1	68.8	6.8 *
Aircraft trips	14 463	26 222	81.3

* percentage point difference

Passengers/seats (000s)

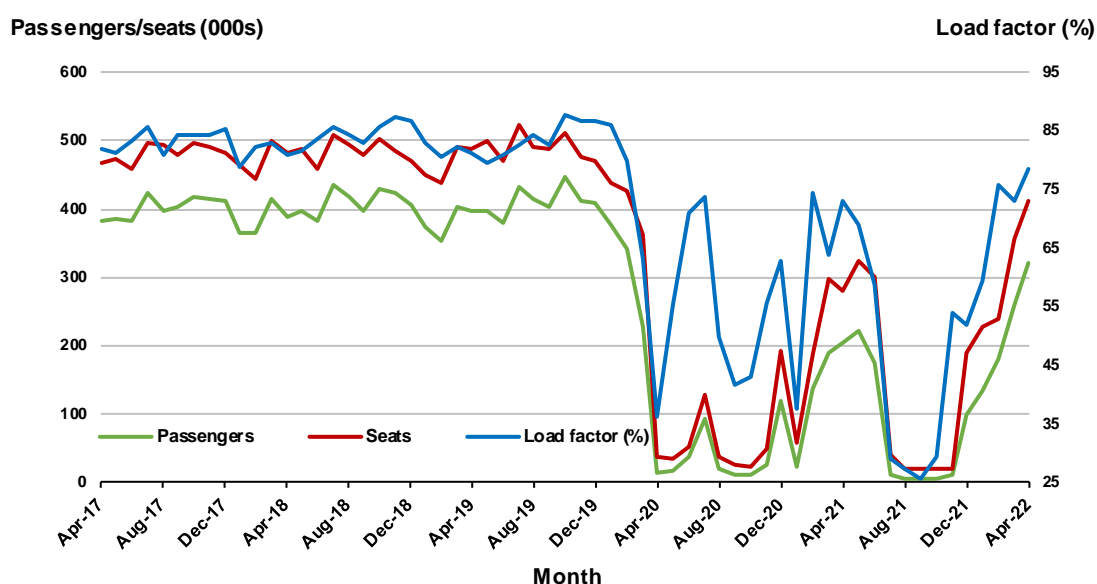


2. Brisbane - Sydney

Monthly data

	Apr 2021	Apr 2022	% Change
Passengers carried (000s)	204.9	321.9	57.1
Seats (000s)	279.9	410.7	46.7
Load factor %	73.2	78.4	5.2 *
Aircraft trips	1 729	2 468	42.7

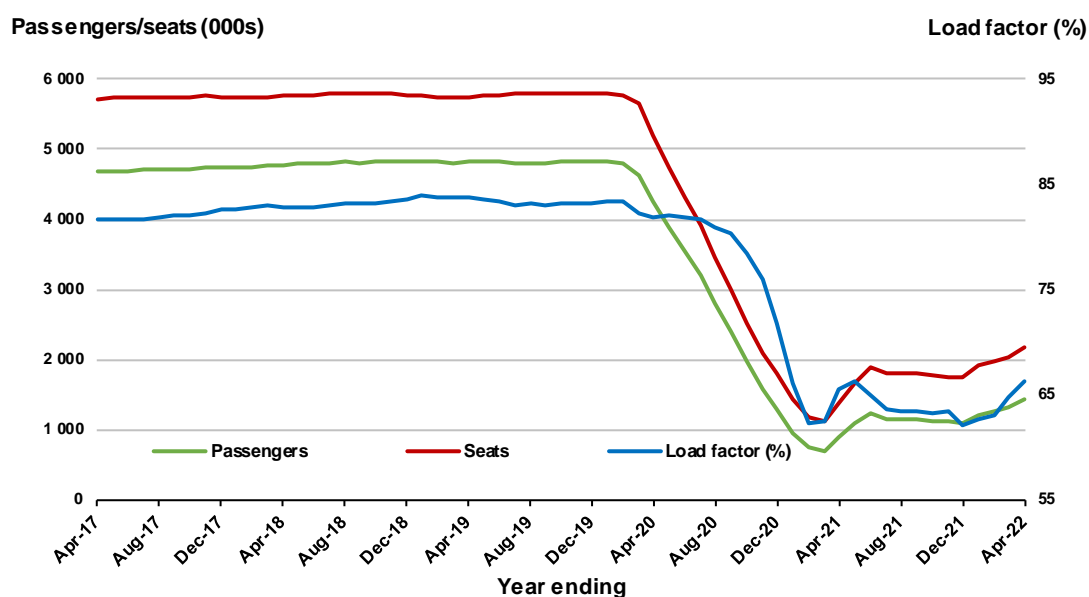
* percentage point difference



Moving annual data

	YE Apr 2021	YE Apr 2022	% Change
Passengers carried (000s)	893.5	1 438.0	60.9
Seats (000s)	1 365.3	2 172.0	59.1
Load factor %	65.4	66.2	0.8 *
Aircraft trips	10 011	14 578	45.6

* percentage point difference

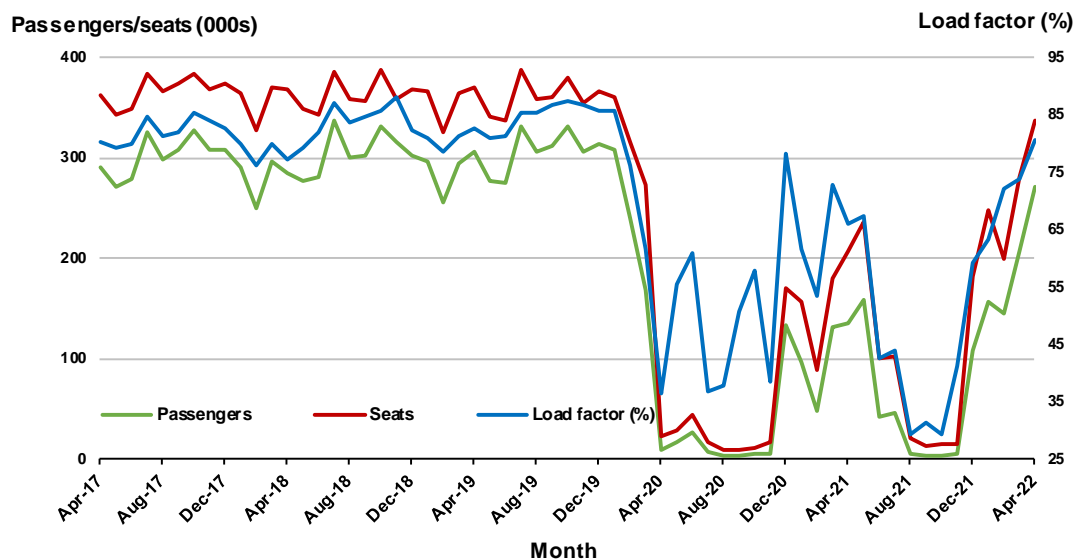


3. Brisbane - Melbourne

Monthly data

	Apr 2021	Apr 2022	% Change
Passengers carried (000s)	136.1	272.2	100.1
Seats (000s)	206.4	337.4	63.5
Load factor %	65.9	80.7	14.8 *
Aircraft trips	1 268	2 026	59.8

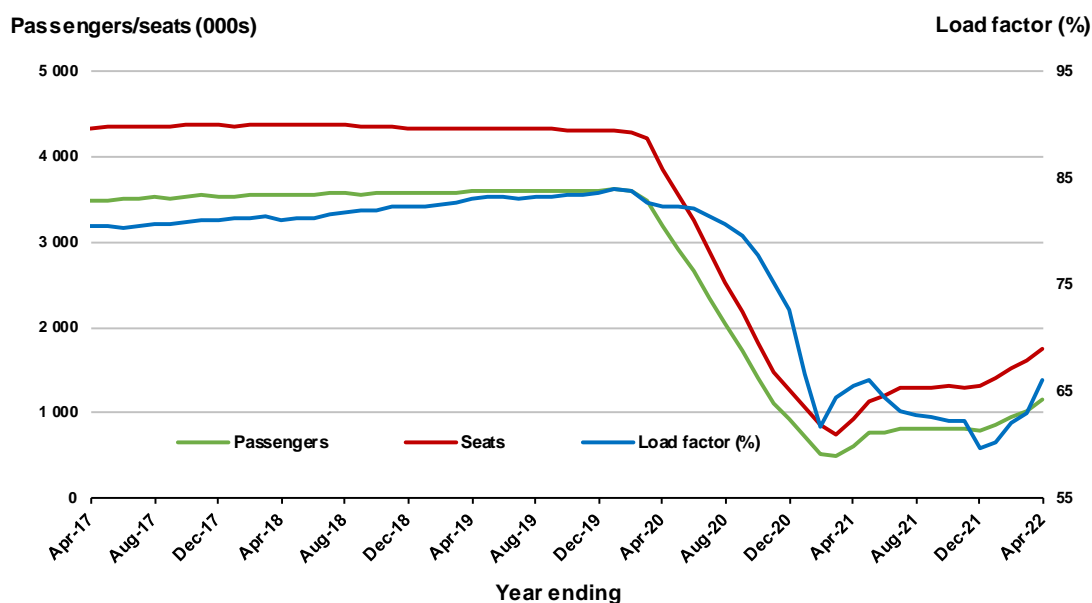
* percentage point difference



Moving annual data

	YE Apr 2021	YE Apr 2022	% Change
Passengers carried (000s)	613.4	1 158.1	88.8
Seats (000s)	937.2	1 753.7	87.1
Load factor %	65.4	66.0	0.6 *
Aircraft trips	6 664	11 470	72.1

* percentage point difference

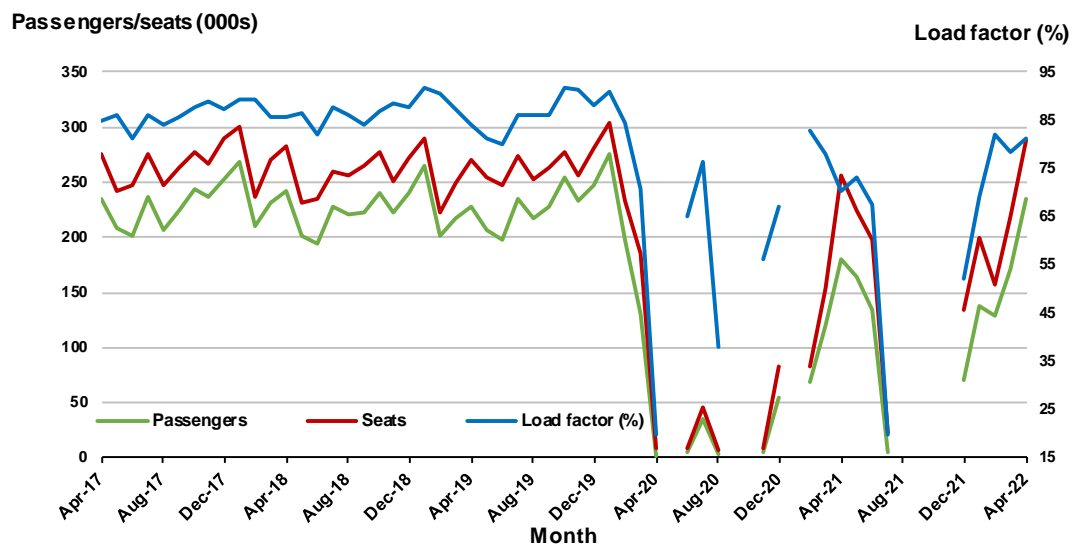


4. Gold Coast - Sydney ^(a)

Monthly data

	Apr 2021	Apr 2022	% Change
Passengers carried (000s)	180.4	234.3	29.8
Seats (000s)	255.8	288.4	12.7
Load factor %	70.5	81.2	10.7 *
Aircraft trips	1 446	1 658	14.7

* percentage point difference

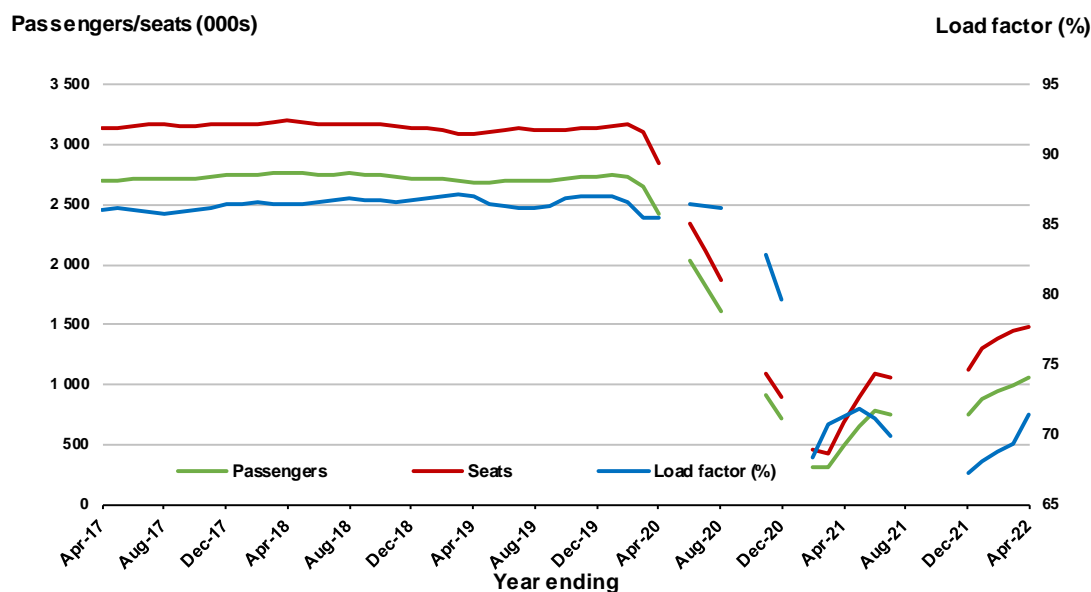


(a) May, September and October 2020 and January and August to November 2021 data not available for release.

Moving annual data

	YE Apr 2021	YE Apr 2022	% Change
Passengers carried (000s)	482.2	1 052.8	118.3
Seats (000s)	677.0	1 474.4	117.8
Load factor %	71.2	71.4	0.2 *
Aircraft trips	3 950	8 588	117.4

* percentage point difference



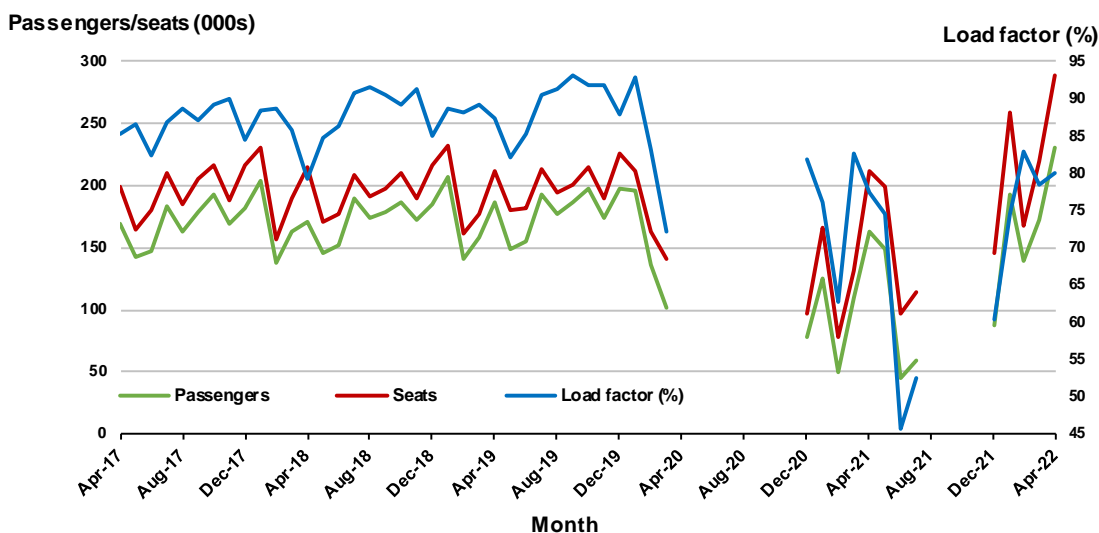
(a) May, September and October 2020 and January and August to November 2021 moving annual totals are not available for release.

5. Gold Coast - Melbourne ^(a)

Monthly data

	Apr 2021	Apr 2022	% Change
Passengers carried (000s)	163.4	231.1	41.4
Seats (000s)	211.3	288.9	36.7
Load factor %	77.3	80.0	2.7 *
Aircraft trips	1 146	1 545	34.8

* percentage point difference

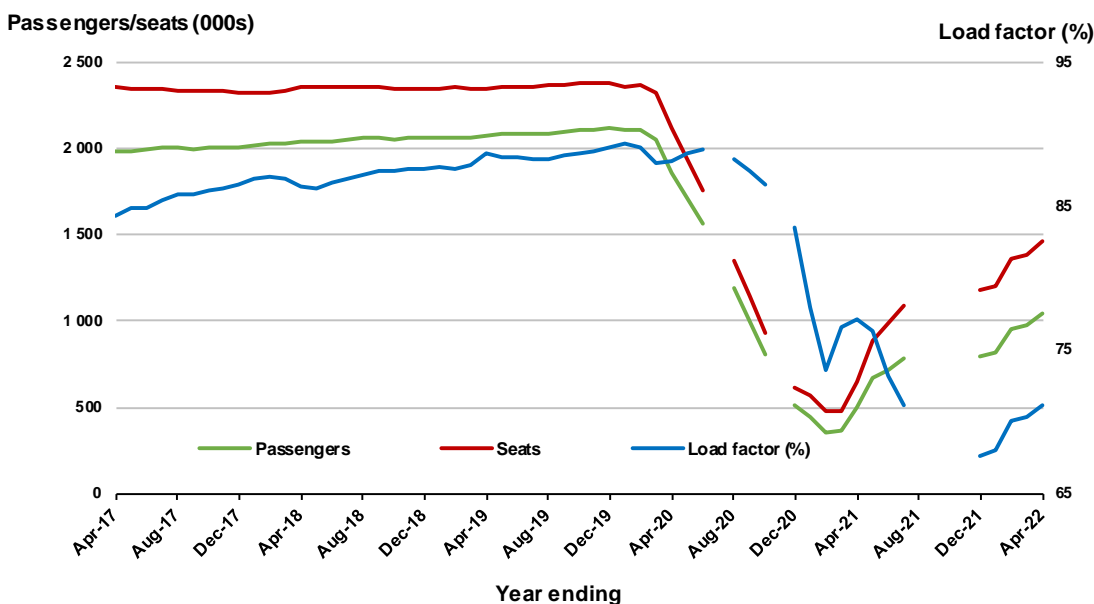


(a) April to November 2020 and August to November 2021 data not available for release.

Moving annual data

	YE Apr 2021	YE Apr 2022	% Change
Passengers carried (000s)	499.8	1 041.2	108.3
Seats (000s)	647.8	1 464.7	126.1
Load factor %	77.2	71.1	-6.1 *
Aircraft trips	3 430	7 795	127.3

* percentage point difference



(a) April to November 2020 and August to November 2021 moving annuals are not available for release.

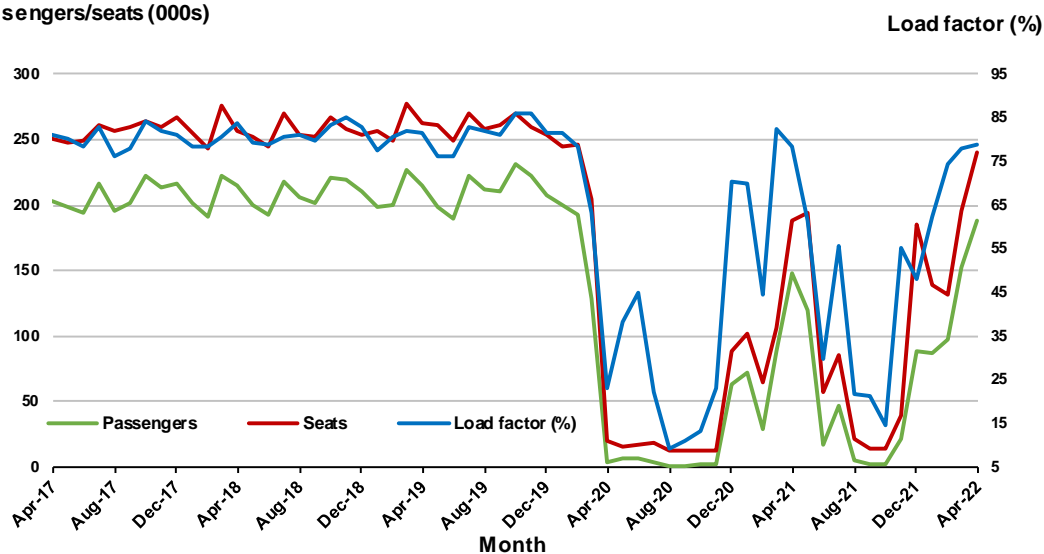
6. Adelaide - Melbourne

Monthly data

	Apr 2021	Apr 2022	% Change
Passengers carried (000s)	147.5	188.6	27.8
Seats (000s)	188.3	239.7	27.3
Load factor %	78.3	78.7	0.4 *
Aircraft trips	1 140	1 419	24.5

* percentage point difference

Passengers/seats (000s)

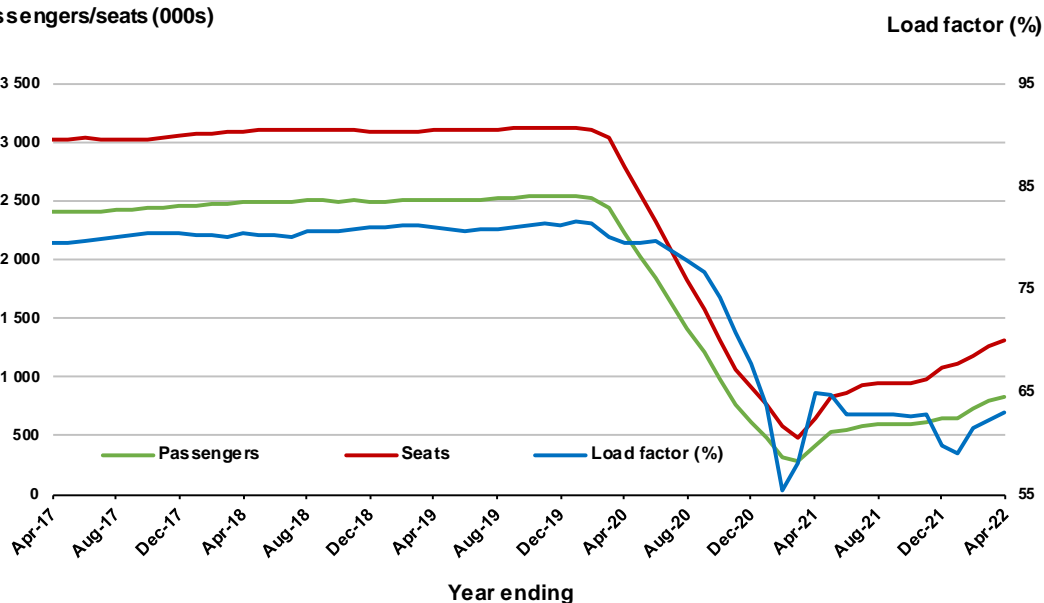


Moving annual data

	YE Apr 2021	YE Apr 2022	% Change
Passengers carried (000s)	423.6	830.6	96.1
Seats (000s)	652.5	1 318.6	102.1
Load factor %	64.9	63.0	-1.9 *
Aircraft trips	4 835	8 537	76.6

* percentage point difference

Passengers/seats (000s)

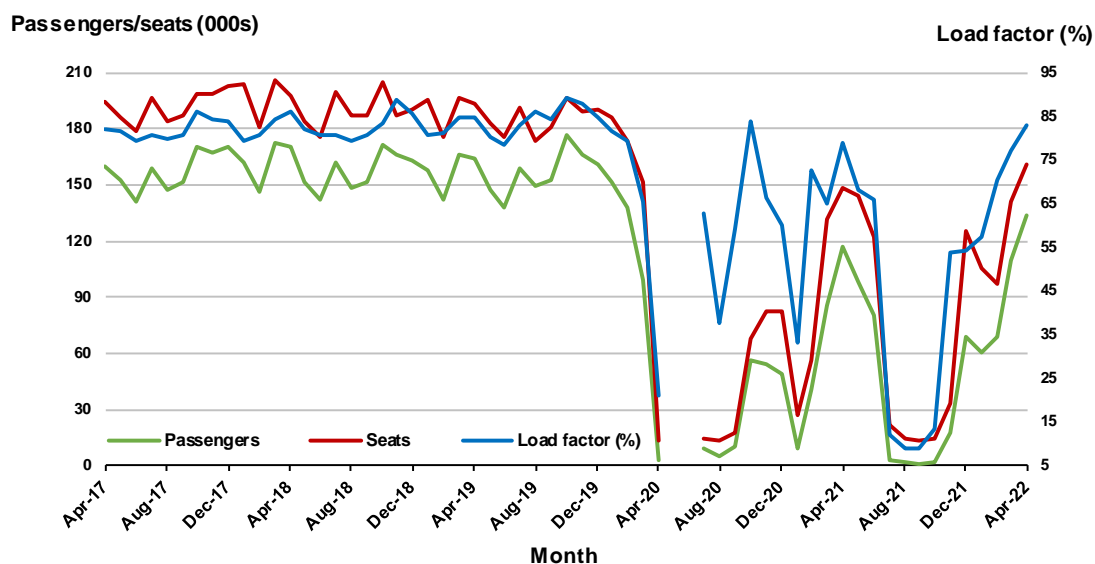


7. Adelaide - Sydney ^(a)

Monthly data

	Apr 2021	Apr 2022	% Change
Passengers carried (000s)	117.1	133.3	13.9
Seats (000s)	148.2	161.0	8.6
Load factor %	79.0	82.8	3.8 *
Aircraft trips	851	949	11.5

* percentage point difference

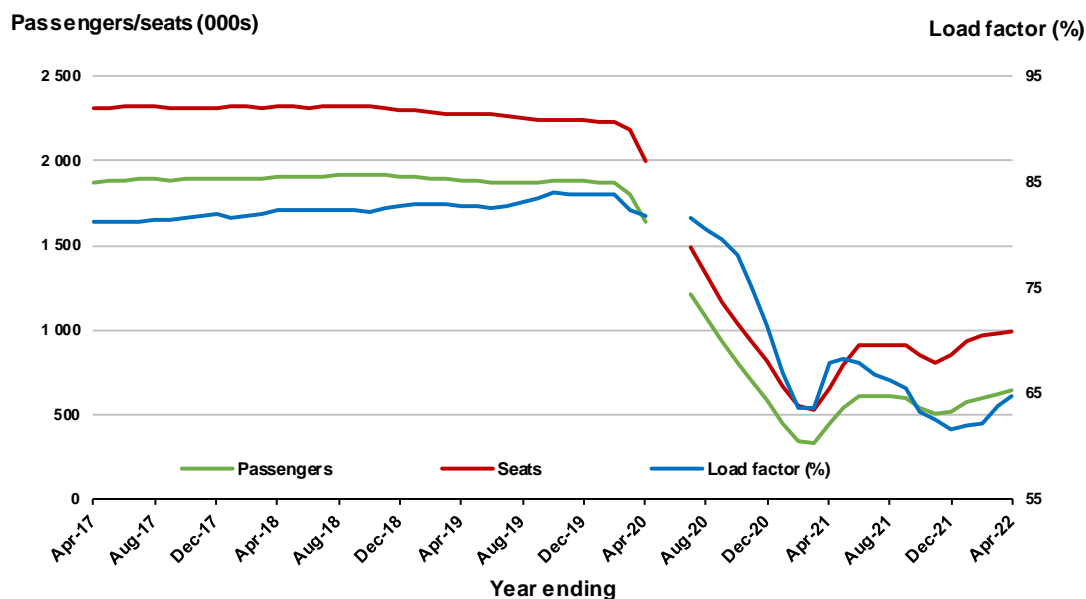


(a) May and June 2020 data not available for release.

Moving annual data

	YE Apr 2021	YE Apr 2022	% Change
Passengers carried (000s)	450.7	643.0	42.7
Seats (000s)	663.7	993.3	49.7
Load factor %	67.9	64.7	-3.2 *
Aircraft trips	4 318	6 156	42.6

* percentage point difference



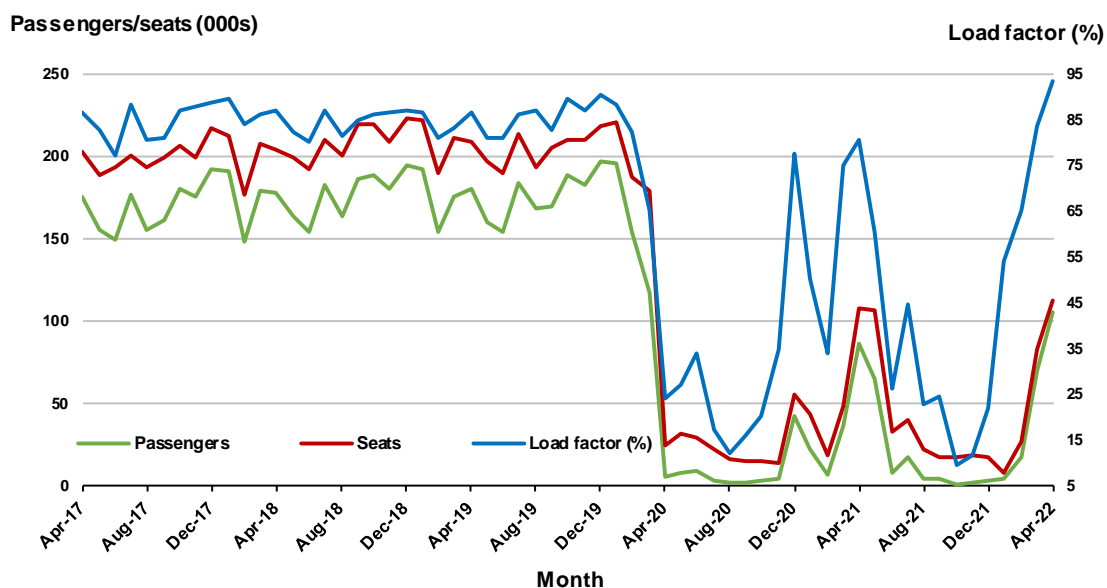
(a) May and June 2020 moving annual totals are not available for release.

8. Melbourne - Perth

Monthly data

	Apr 2021	Apr 2022	% Change
Passengers carried (000s)	87.0	105.9	21.7
Seats (000s)	107.9	113.1	4.8
Load factor %	80.7	93.6	12.9 *
Aircraft trips	649	648	-0.2

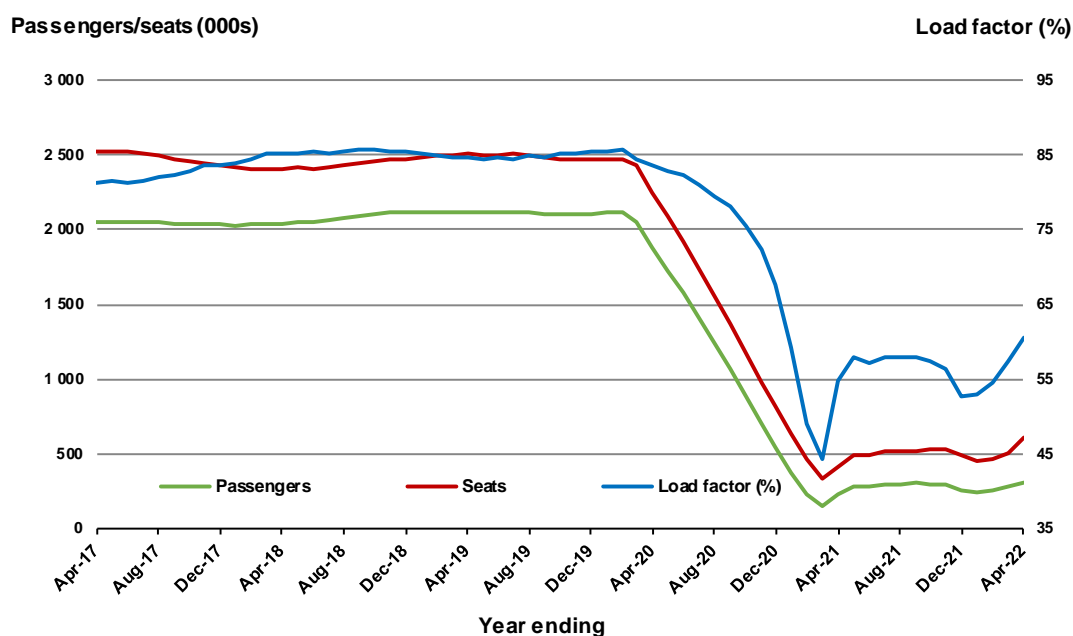
* percentage point difference



Moving annual data

	YE Apr 2021	YE Apr 2022	% Change
Passengers carried (000s)	230.9	306.7	32.8
Seats (000s)	421.2	614.4	45.9
Load factor %	54.8	60.5	5.7 *
Aircraft trips	3 078	3 788	23.1

* percentage point difference



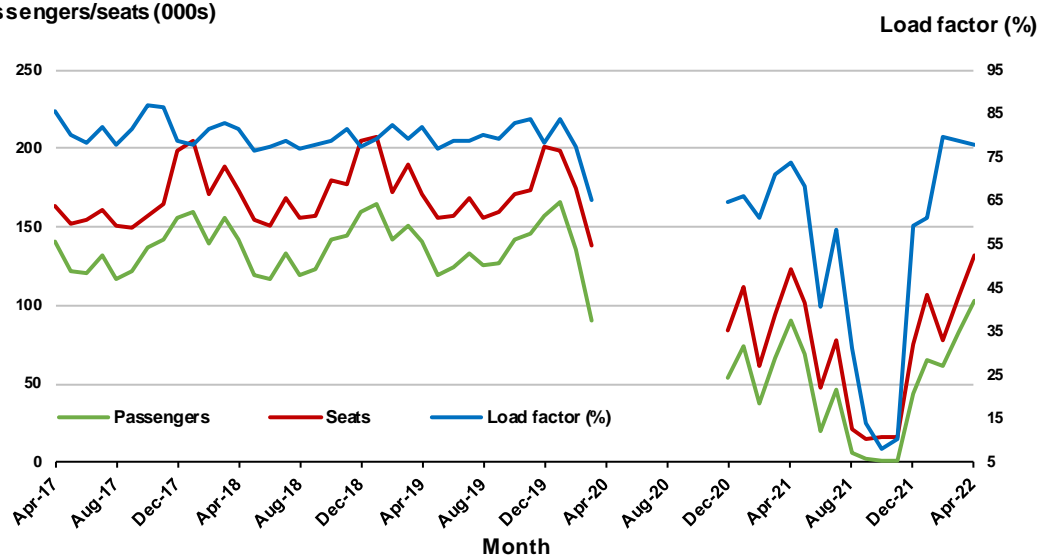
9. Hobart - Melbourne ^(a)

Monthly data

	Apr 2021	Apr 2022	% Change
Passengers carried (000s)	90.8	102.8	13.2
Seats (000s)	122.8	131.6	7.1
Load factor %	73.9	78.1	4.2 *
Aircraft trips	771	810	5.1

* percentage point difference

Passengers/seats (000s)



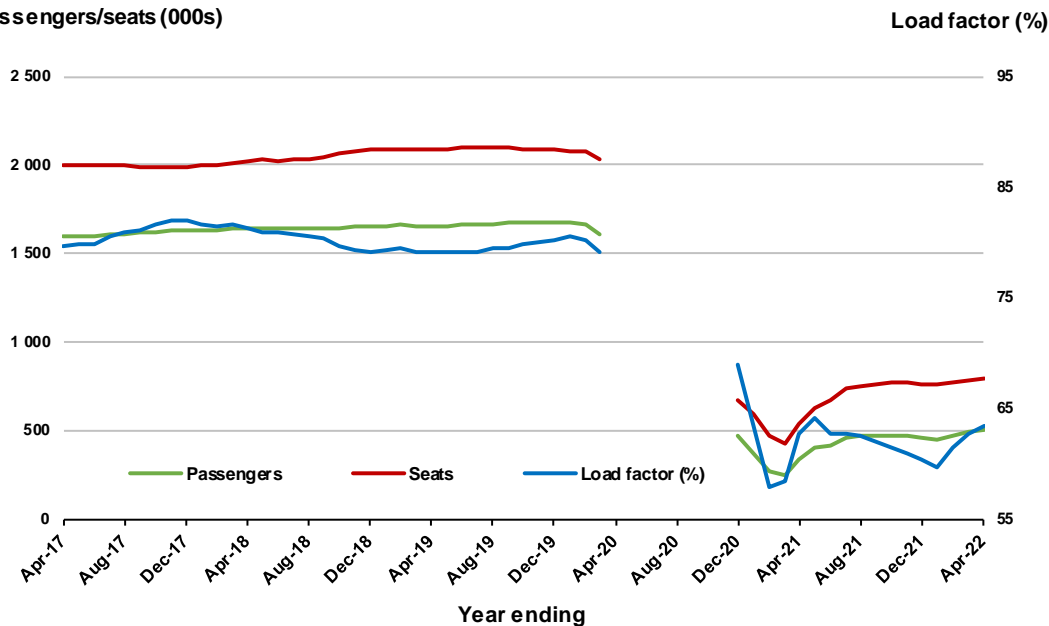
(a) April to November 2020 data not available for release.

Moving annual data

	YE Apr 2021	YE Apr 2022	% Change
Passengers carried (000s)	340.4	503.8	48.0
Seats (000s)	543.3	793.3	46.0
Load factor %	62.6	63.5	0.9 *
Aircraft trips	3 428	4 951	44.4

* percentage point difference

Passengers/seats (000s)



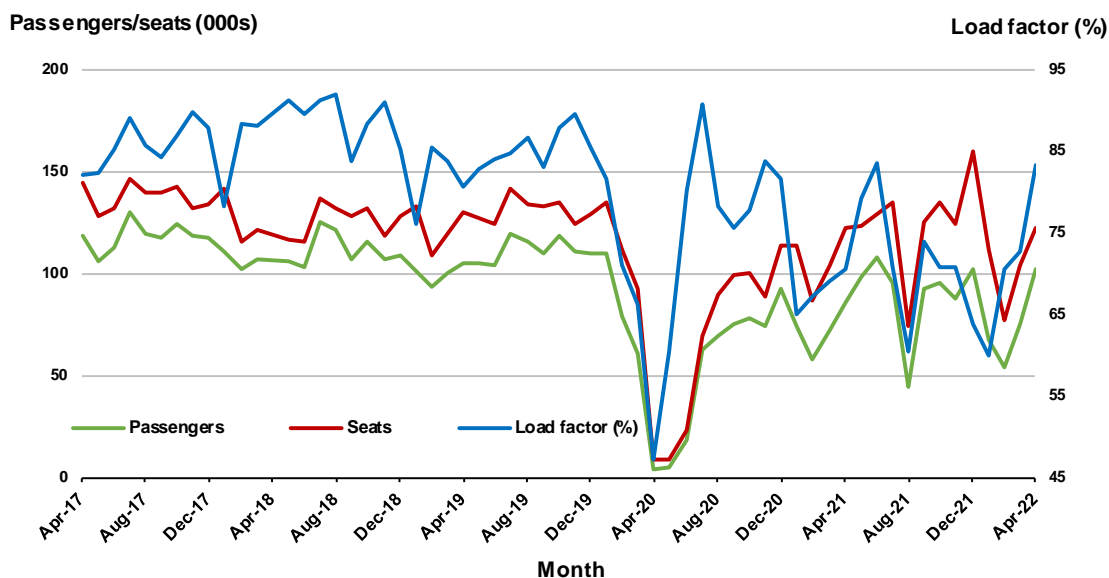
(a) April to November 2020 moving annual totals are not available for release.

10. Brisbane - Cairns

Monthly data

	Apr 2021	Apr 2022	% Change
Passengers carried (000s)	86.1	101.6	18.0
Seats (000s)	122.1	121.9	-0.2
Load factor %	70.6	83.3	12.7 *
Aircraft trips	741	797	7.6

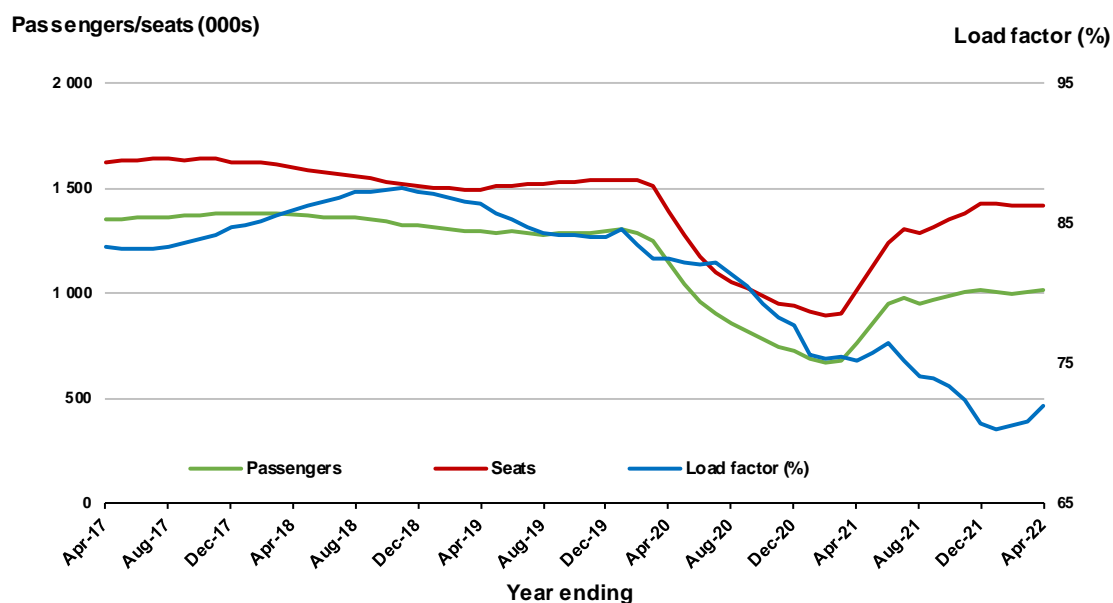
* percentage point difference



Moving annual data

	YE Apr 2021	YE Apr 2022	% Change
Passengers carried (000s)	765.0	1 020.5	33.4
Seats (000s)	1 016.9	1 419.2	39.6
Load factor %	75.2	71.9	-3.3 *
Aircraft trips	6 952	9 041	30.0

* percentage point difference



TOP FIFTY REGIONAL AIRPORTS

Table 10: Top fifty regional airports (000s) — passenger movements, monthly

Airport	Apr 2021	Apr 2022	% Change
1 Cairns	276.8	347.7	25.6
2 Hobart	190.2	232.4	22.2
3 Darwin	116.0	156.8	35.2
4 Townsville	109.6	135.2	23.4
5 Launceston	106.8	120.4	12.8
6 Newcastle	79.2	106.8	34.8
7 Mackay	58.9	72.0	22.2
8 Ballina	59.1	60.5	2.3
9 Proserpine	32.4	47.3	45.9
10 Hamilton Island	41.2	45.5	10.3
11 Rockhampton	36.9	42.0	13.8
12 Karratha	32.7	38.0	16.2
13 Broome	35.3	37.3	5.5
14 Port Hedland	29.0	35.2	21.4
15 Alice Springs	31.8	33.5	5.5
16 Coffs Harbour	21.4	26.6	24.6
17 Newman	26.5	25.0	- 5.6
18 Kalgoorlie	20.2	23.0	14.0
19 Ayers Rock	12.8	19.7	53.7
20 Albury	13.0	18.3	40.8
21 Mount Isa	16.1	18.1	12.5
22 Gladstone	13.8	18.0	30.5
23 Paraburdoo	16.3	16.6	2.0
24 Port Lincoln	14.0	15.1	7.6
25 Dubbo	14.5	15.1	4.1
26 Wagga Wagga	11.3	14.9	32.3
27 Mildura	12.4	14.6	17.8
28 Port Macquarie	11.2	14.1	25.8
29 Emerald	12.9	12.8	- 1.1
30 Tamworth	9.6	11.7	22.0
31 Hervey Bay	6.3	11.3	80.2
32 Kununurra	9.9	11.0	10.9
33 Learmonth	8.5	10.3	20.8
34 Bundaberg	7.8	9.7	23.9
35 Armidale	6.7	9.2	37.8
36 Thursday Island	8.0	8.4	5.3
37 Weipa	6.9	7.9	13.9
38 Moranbah	6.2	7.6	23.9
39 Orange	6.1	7.4	20.1
40 Devonport	7.5	7.1	- 5.0
41 Burnie	3.5	6.9	97.3
42 Geraldton	6.1	6.9	11.7
43 Olympic Dam	6.4	6.7	3.8
44 Toowoomba Wellcamp	2.6	6.5	149.0
45 Mount Gambier	4.8	6.3	31.8
46 Gove	5.2	6.3	21.5
47 Griffith	4.4	6.3	43.2
48 Merimbula	6.0	6.3	4.2
49 Narrandera	4.9	6.1	25.0
50 King Island	5.8	5.4	- 7.8
Total top 50 regional airports	1 585.9	1 928.0	21.6
Total regional airports	1 687.3	2 034.6	20.6
Total domestic network	7 058.8	9 310.7	31.9

Note: Airport passenger movement numbers are the sum of passenger arrivals and departures at each airport. Regional airports are defined as airports which are, according to Australian Statistical Geography Standard (ASGS), not based in Major Cities.

Table 11: Top fifty regional airports (000s) — passenger movements, annual

Airport	YE Apr 2021	YE Apr 2022	% Change
1 Cairns	1 578.8	2 491.1	57.8
2 Hobart	783.6	1 384.2	76.7
3 Darwin	680.8	1 160.1	70.4
4 Townsville	787.9	1 146.4	45.5
5 Launceston	423.6	673.1	58.9
6 Mackay	465.8	661.3	42.0
7 Newcastle	348.7	527.3	51.2
8 Ballina	504.5	518.8	2.8
9 Karratha	283.4	444.8	56.9
10 Broome	275.5	417.4	51.5
11 Rockhampton	285.6	404.0	41.5
12 Port Hedland	218.5	390.2	78.6
13 Hamilton Island	211.0	353.4	67.5
14 Proserpine	222.5	348.0	56.4
15 Newman	188.3	320.4	70.2
16 Kalgoorlie	169.7	266.9	57.3
17 Alice Springs	218.9	241.5	10.3
18 Paraburdoo	122.2	196.1	60.5
19 Mount Isa	150.4	190.0	26.3
20 Coffs Harbour	98.1	168.0	71.2
21 Gladstone	104.0	148.6	42.9
22 Port Lincoln	95.1	145.3	52.7
23 Emerald	95.6	145.0	51.6
24 Dubbo	83.2	110.1	32.3
25 Kununurra	63.1	107.5	70.5
26 Albury	53.2	96.9	82.1
27 Learmonth	66.4	93.9	41.4
28 Mildura	44.7	93.2	108.7
29 Olympic Dam	45.6	92.3	102.3
30 Thursday Island	68.8	91.8	33.4
31 Moranbah	40.1	87.8	118.8
32 Port Macquarie	44.3	80.9	82.8
33 Wagga Wagga	51.2	80.6	57.4
34 Geraldton	39.9	79.3	98.6
35 Ayers Rock	45.2	78.5	73.7
36 Bundaberg	49.1	77.8	58.4
37 Weipa	48.7	76.7	57.4
38 Hervey Bay	25.6	69.9	172.9
39 Tamworth	41.4	66.9	61.4
40 Gove	50.0	57.2	14.3
41 Cloncurry	30.3	56.6	86.9
42 Armidale	29.4	51.3	74.3
43 Albany	32.7	51.0	55.7
44 Roma	33.9	49.1	44.6
45 Esperance	31.6	49.0	54.9
46 Orange	26.4	47.9	81.1
47 Mount Gambier	17.6	47.8	171.6
48 Whyalla	28.4	46.6	63.9
49 Groote Eylandt	21.0	46.4	120.9
50 King Island	35.1	44.2	25.9
Total top 50 regional airports	9 459.7	14 673.0	55.1
Total regional airports	10 207.0	15 626.9	53.1
Total domestic network	32 734.0	54 320.1	65.9

Note: Airport passenger movement numbers are the sum of passenger arrivals and departures at each airport. Regional airports are defined as airports which are, according to Australian Statistical Geography Standard (ASGS), not based in Major Cities.

DOMESTIC CHARTER ACTIVITY

Table 12: Charter passengers carried and aircraft trips - monthly activity

	Apr 2021	Apr 2022	% Change
Total domestic charter passengers	281 698	268 586	-4.7
Total domestic charter aircraft trips	5 329	5 194	-2.5

Note: Helicopter, joyflights and sightseeing charter flights not included.

Table 13: Charter passengers carried and aircraft trips - annual activity

	YE Apr 2021	YE Apr 2022	% Change
Total domestic charter passengers	3 341 141	3 350 577	0.3
Total domestic charter aircraft trips	68 331	63 194	-7.5

Note: Helicopter, joyflights and sightseeing charter flights not included.

Table 14: Domestic airports - charter activity - monthly

	Apr 2021	Apr 2022	% Change
Total domestic charter passenger movements	563 396	537 172	-4.7
Total domestic charter aircraft movements	10 658	10 388	-2.5
Perth airport charter passenger movements	212 770	199 475	-6.2
Perth airport charter aircraft movements	3 592	3 542	-1.4

Note: Helicopter, joyflights and sightseeing charter flights not included.

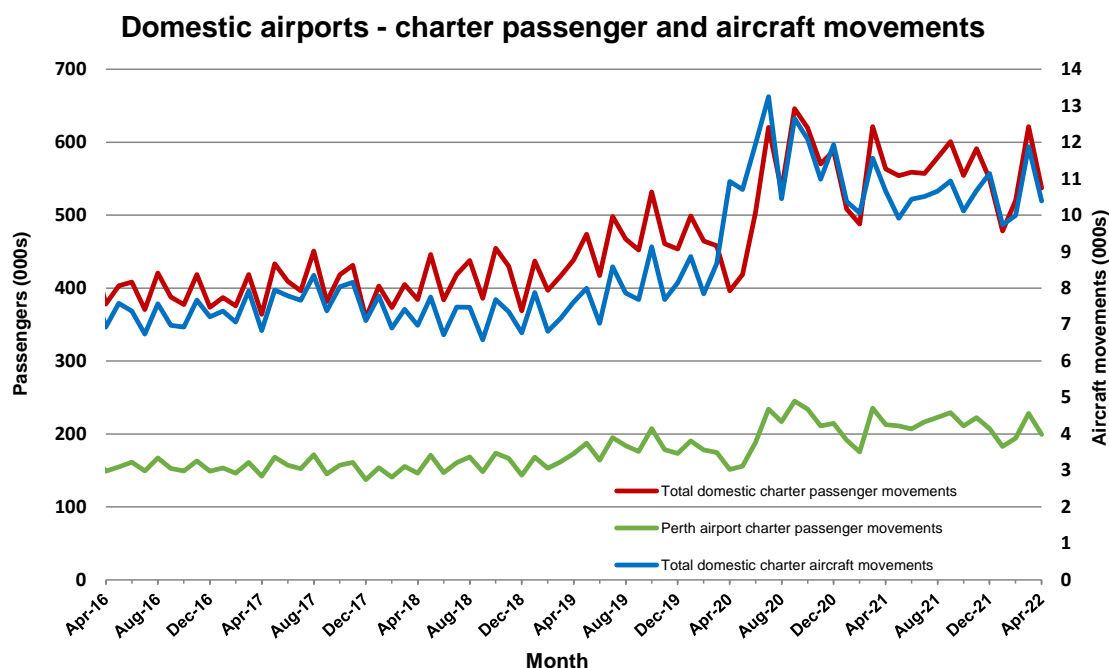
Charter passenger and aircraft movement numbers are the sum of arrivals and departures at each airport.

Table 15: Domestic airports - charter activity - annual

	YE Apr 2021	YE Apr 2022	% Change
Total domestic charter passenger movements	6 682 282	6 701 154	0.3
Total domestic charter aircraft movements	136 662	126 388	-7.5
Perth airport charter passenger movements	2 514 285	2 531 533	0.7
Perth airport charter aircraft movements	44 932	43 580	-3.0

Note: Helicopter, joyflights and sightseeing charter flights not included.

Charter passenger and aircraft movement numbers are the sum of arrivals and departures at each airport.



DEFINITIONS

Aircraft Trips	The number of flight stages. A return flight counts as two aircraft trips.
Airport Movements	Airport movements (passenger and cargo) are measured once on arrival and once on departure. Each domestic trip generates two movements at airports. For example, a trip from Melbourne to Sydney will be counted twice, as a departure at Melbourne and as an arrival at Sydney. At the national level, the sum of all domestic airport traffic will therefore be equal to twice the number of trips undertaken.
Available Seat Kilometres (ASKs)	Calculated by multiplying the number of seats available on each flight stage, by the distance in kilometres between the ports. The distances used are Great Circle Distances.
City-Pair	The ports shown make up the city-pair route. Passenger movements shown for a city pair reflect total traffic in both directions.
Flight Stage	The operation of an aircraft from take-off to landing.
Load Factor	The total revenue passenger kilometres performed as a percentage of the total available seat kilometres.
Passengers Carried	Revenue passengers carried.
Regular Public Transport Services (RPT)	All air service operations in which aircraft are available for the transport of members of the public and are conducted in accordance with fixed schedules. It does not include charter or other non-scheduled operations.
Revenue Passengers	All passengers paying any fare. Frequent flyer redemption travellers are regarded as revenue passengers.
Revenue Passenger Kilometres (RPKs)	Calculated by multiplying the number of revenue passengers travelling on each flight stage, by the distance in kilometres between the ports. The distances used are Great Circle Distances.
Traffic on board by stages	The total of all traffic (revenue passengers) on each flight stage between two directly connected airports.
..	Not available for confidentiality or other reasons.
NA	Not applicable.