



**Australian Government**

**Department of Infrastructure, Transport, Regional Development and Communications**

Bureau of Infrastructure, Transport and Regional Economics

STATISTICAL REPORT



# Aviation

Domestic aviation activity  
April 2020

© Commonwealth of Australia 2020

ISSN: 1832 - 1968

### **Ownership of intellectual property rights in this publication**

Unless otherwise noted, copyright (and any other intellectual property rights, if any) in this publication is owned by the Commonwealth of Australia (referred to below as the Commonwealth).

### **Disclaimer**

The material contained in this publication is made available on the understanding that the Commonwealth is not providing professional advice, and that users exercise their own skill and care with respect to its use, and seek independent advice if necessary.

The Commonwealth makes no representations or warranties as to the contents or accuracy of the information contained in this publication. To the extent permitted by law, the Commonwealth disclaims liability to any person or organisation in respect of anything done, or omitted to be done, in reliance upon information contained in this publication.

### **Creative Commons licence**

With the exception of (a) the Coat of Arms; and (b) the Department of Infrastructure, Transport, Regional Development and Communications' photos and graphics, copyright in this publication is licensed under a Creative Commons Attribution 3.0 Australia Licence.

Creative Commons Attribution 3.0 Australia Licence is a standard form licence agreement that allows you to copy, communicate and adapt this publication provided that you attribute the work to the Commonwealth and abide by the other licence terms. A summary of the licence terms is available from <http://creativecommons.org/licenses/by/3.0/au/deed.en>.

The full licence terms are available from <http://creativecommons.org/licenses/by/3.0/au/legalcode>.

### **Use of the Coat of Arms**

The Department of the Prime Minister and Cabinet sets the terms under which the Coat of Arms is used. Please refer to the Department's Commonwealth Coat of Arms and Government branding web page <http://www.dpmc.gov.au/guidelines/index.cfm#brand> and, in particular, the Guidelines on the use of the Commonwealth Coat of Arms publication.

An appropriate citation for this report is:

Bureau of Infrastructure, Transport and Regional Economics (BITRE), 2020, Domestic aviation activity, Statistical Report, BITRE, Canberra ACT.

### **Contact us**

This publication is available in PDF format. All other rights are reserved, including in relation to any Departmental logos or trade marks which may exist. For enquiries regarding the licence and any use of this publication, please contact:

Bureau of Infrastructure, Transport and Regional Economics (BITRE)  
Department of Infrastructure, Transport, Regional Development and Communications  
GPO Box 501, Canberra ACT 2601, Australia  
Telephone: (international) +61 2 6274 7210  
Fax: (international) +61 2 6274 6855  
Email: [bitre@infrastructure.gov.au](mailto:bitre@infrastructure.gov.au)  
Website: [www.bitre.gov.au](http://www.bitre.gov.au)

### **Inquiries**

Should you require additional information about the statistics contained in this publication:

Nebojsa Pavlovic

Telephone (02) 6274 6817 or Facsimile (02) 6274 7727

Electronic mail: [AVSTATS@infrastructure.gov.au](mailto:AVSTATS@infrastructure.gov.au)

[Nebojsa.Pavlovic@infrastructure.gov.au](mailto:Nebojsa.Pavlovic@infrastructure.gov.au)

Web site: <http://www.bitre.gov.au/statistics/aviation/domestic.aspx>

## FOREWORD

This report provides an overview of domestic (including charter) commercial aviation activity in Australia for the month of April 2020.

The data cover revenue passengers carried by Australian-registered operators of scheduled regular public transport services over Australian flight stages and fixed-wing charter operators. These estimates include passengers carried between domestic airports on international flights operated by these carriers. The passengers carried refer to traffic on board by stages.

Estimates of passengers and aircraft movements for charter aviation are included in this publication, where BITRE confidentiality standards are met.

Individual routes shown are restricted to those with an average exceeding 8 000 passengers per month over the previous six months where two or more airlines operate in competition. For the month of April 2020, there were 26 such routes compared to 65 routes published in April 2019.

Information on the total network for the month of April 2020 and on the Regular Public Transport (RPT) network for the month of April 2020 is presented on page 2, with estimates for the year ended April 2020 presented on page 3.

Detailed information on individual routes can be found in the RPT summary pages 4-13 of this publication.

The top ten airports in terms of RPT passenger movements are shown on page 14.

Data on domestic RPT cargo movements at the top five cargo airports are provided on page 15. The table includes cargo carried on passenger flights operated by the Qantas group (including Jetstar), Virgin Australia, Air North and Skippers as well as the cargo carried by dedicated freighter aircraft operated by Qantas Freight, Toll Aviation and Virgin Australia Cargo.

The long-term trends for the top ten competitive RPT routes are presented graphically on pages 16-25.

Domestic RPT passenger movements at regional airports are presented on pages 26-27.

Tables providing estimates of domestic charter aviation activity are shown on page 28. BITRE confidentiality standards restrict publication of detailed estimates for individual Australian airports, with the exception of Perth Airport.

A list of definitions can be found on page 29.

This report was prepared by the Aviation Statistics Section of the Bureau of Infrastructure, Transport and Regional Economics with data provided by airlines.

Estimates are included where data were not available and data presented in this publication may contain revisions to previously published data.

Where figures have been rounded, discrepancies may occur between sums of component items and totals, and in percentage changes which are derived from figures prior to rounding.

# CONTENTS

|  |           |
|--|-----------|
| <b>Highlights .....</b>                            | <b>1</b>  |
| <b>Total network.....</b>                          | <b>2</b>  |
| <b>RPT network.....</b>                            | <b>2</b>  |
| <b>Top competitive routes.....</b>                 | <b>4</b>  |
| <b>Top ten airports – passenger movements.....</b> | <b>14</b> |
| <b>Top five airports – cargo movements.....</b>    | <b>15</b> |
| <b>Top ten routes .....</b>                        | <b>16</b> |
| 1. Melbourne – Sydney .....                        | 16        |
| 2. Brisbane – Sydney.....                          | 17        |
| 3. Brisbane – Melbourne.....                       | 18        |
| 4. Melbourne – Perth.....                          | 19        |
| 5. Brisbane – Mackay .....                         | 20        |
| 6. Perth – Port Hedland.....                       | 21        |
| 7. Adelaide – Melbourne .....                      | 22        |
| 8. Brisbane – Townsville .....                     | 23        |
| 9. Newman – Perth .....                            | 24        |
| 10. Brisbane – Cairns .....                        | 25        |
| <b>Top fifty regional airports .....</b>           | <b>26</b> |
| <b>Domestic charter activity.....</b>              | <b>28</b> |
| <b>Definitions .....</b>                           | <b>29</b> |

This page is intentionally left blank.

## HIGHLIGHTS

Travel restrictions due to the COVID-19 outbreak resulted in severe disruptions to domestic air travel this month.

There were 344.1 thousand passengers carried on Australian domestic commercial aviation (including charter operations) in April 2020, a decrease of 93.6 per cent on April 2019. For the month of April 2020, there were 13.4 thousand aircraft trips, a decrease of 76.5 per cent compared to April 2019.

143.7 thousand passengers were carried on RPT flights in April 2020, a decrease of 97.2 per cent on April 2019.

For the year ending April 2020 there were 54.25 million RPT passengers, a decrease of 11.0 per cent on the year ending April 2019.

RPT revenue passenger kilometres (RPKs) performed were 156.0 million for the month, down 97.4 per cent compared with April 2019. Capacity, measured by available seat kilometres (ASKs), decreased by 92.6 per cent compared with April 2019 to a total of 554.6 million.

The industry wide load factor (RPKs/ASKs) decreased from 80.3 per cent in April 2019 to 28.1 per cent in April 2020. Load factors decreased on all 26 individual RPT routes for which data is available for publishing in both years.

In April 2020, all published routes recorded significant decreases in the number of passengers carried compared with April 2019.

For the month of April 2020, Melbourne – Sydney remained Australia's busiest RPT route with 17.1 thousand passengers, a decrease of 97.7 per cent compared with April 2019. It was followed by Brisbane – Sydney with 14.2 thousand passengers (down 96.4 per cent) and Brisbane – Melbourne with 8.6 thousand passengers (down 97.2 per cent).

Brisbane was Australia's busiest domestic airport with 54.9 thousand passenger movements in April 2020 (down 96.2 per cent), followed by Sydney with 48.2 thousand passenger movements (down 97.9 per cent) and Melbourne with 42.2 thousand passenger movements (down 98.1 per cent).

Total cargo movements at Australian airports on domestic RPT flights were 25.5 thousand tonnes in April 2020, a decrease of 28.6 per cent compared with April 2019.

In April 2020, there were 89.2 thousand domestic passenger movements through regional airports, 95.8 per cent less than in April 2019. All 28 published regional airports recorded significant decreases in April 2019.

Fixed-wing charter operators carried 200.4 thousand passengers in April 2020, a decrease of 9.6 per cent on April 2019. Perth Airport accounted for 37.8 per cent of all charter passengers in Australia.

## TOTAL NETWORK

### Summary of monthly commercial aviation activity

|                                     | Apr 2019 | Apr 2020 | % Change |
|-------------------------------------|----------|----------|----------|
| Total passengers carried (millions) | 5.37     | 0.34     | -93.6    |
| Aircraft trips (000s)               | 57.3     | 13.4     | -76.5    |

Note: Regular Public Transport and charter aviation activity  
Helicopter, joyflights and sightseeing charter flights not included.

## RPT NETWORK

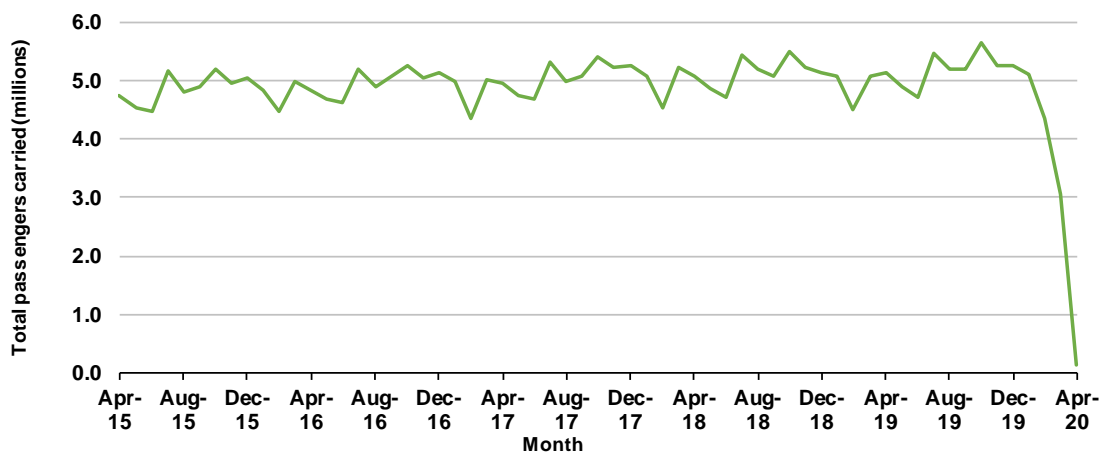
### Summary of monthly RPT activity

|   | Apr 2019 | Apr 2020 | % Change |
|---|----------|----------|----------|
| Total passengers carried (millions)     | 5.15     | 0.14     | -97.2    |
| Revenue passenger kilometres (billions) | 6.06     | 0.16     | -97.4    |
| Available seats (millions)              | 6.58     | 0.52     | -92.1    |
| Available seat kilometres (billions)    | 7.54     | 0.55     | -92.6    |
| Load factor %                           | 80.3     | 28.1     | -52.2 *  |
| Aircraft trips (000s)                   | 53.4     | 7.9      | -85.2    |

\* percentage point difference

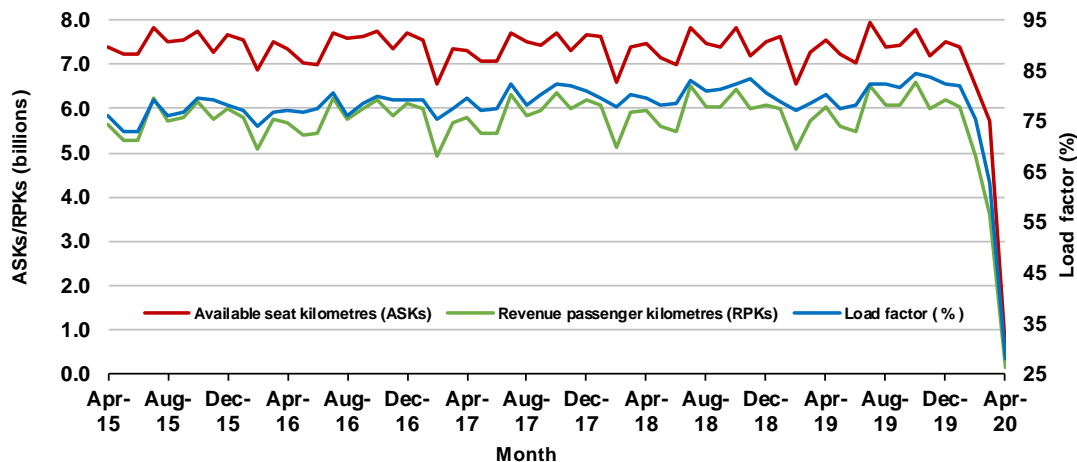
### Domestic RPT passenger traffic

(monthly)



### RPT Network utilisation

(monthly)





## TOTAL NETWORK

### Summary of annual commercial aviation activity

|                                     | YE Apr 2019 | YE Apr 2020 | % Change |
|-------------------------------------|-------------|-------------|----------|
| Total passengers carried (millions) | 63.48       | 57.08       | -10.1    |
| Aircraft trips (000s)               | 675.0       | 629.3       | -6.8     |

Note: Regular Public Transport and charter aviation activity  
Helicopter, joyflights and sightseeing charter flights not included.

## RPT NETWORK

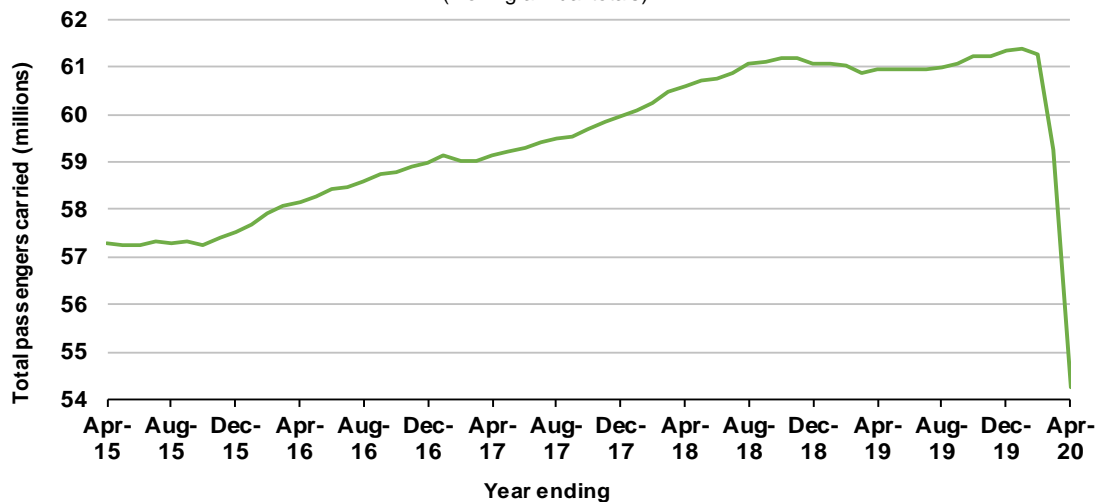
### Summary of annual RPT activity

|   | YE Apr 2019 | YE Apr 2020 | % Change |
|---|-------------|-------------|----------|
| Total passengers carried (millions)     | 60.94       | 54.25       | -11.0    |
| Revenue passenger kilometres (billions) | 71.05       | 63.34       | -10.9    |
| Available seats (millions)              | 77.28       | 69.95       | -9.5     |
| Available seat kilometres (billions)    | 88.38       | 79.70       | -9.8     |
| Load factor %                           | 80.4        | 79.5        | -0.9 *   |
| Aircraft trips (000s)                   | 630.7       | 578.3       | -8.3     |

\* percentage point difference

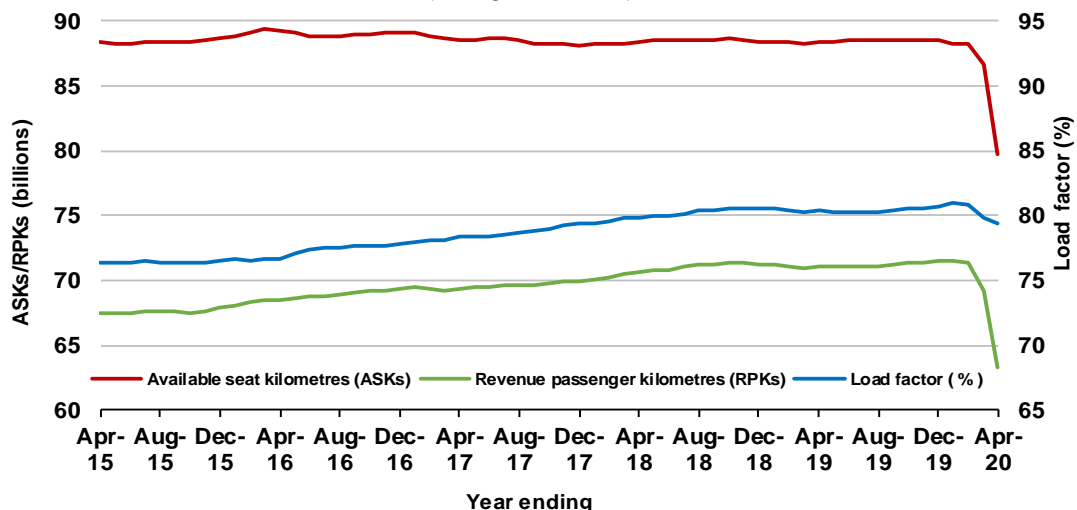
### Domestic RPT passenger traffic

(moving annual totals)



### RPT Network utilisation

(moving annual totals)



## TOP COMPETITIVE ROUTES

**Table 1: Passengers carried (000s) — annual activity**

|    | <b>City-Pair</b>           | <b>YE Apr 2019</b> | <b>YE Apr 2020</b> | <b>%Change</b> |
|----|----------------------------|--------------------|--------------------|----------------|
| 1  | Melbourne - Sydney         | 9 212.0            | 7 994.2            | -13.2          |
| 2  | Brisbane - Sydney          | 4 819.1            | 4 253.9            | -11.7          |
| 3  | Brisbane - Melbourne       | 3 602.4            | 3 179.6            | -11.7          |
| 4  | Gold Coast - Sydney        | 2 681.4            | 2 426.3            | -9.5           |
| 5  | Adelaide - Melbourne       | 2 511.0            | 2 222.6            | -11.5          |
| 6  | Melbourne - Perth          | 2 119.6            | 1 880.8            | -11.3          |
| 7  | Gold Coast - Melbourne     | 2 077.5            | 1 864.7            | -10.2          |
| 8  | Adelaide - Sydney          | 1 885.9            | 1 639.8            | -13.1          |
| 9  | Perth - Sydney             | 1 697.0            | 1 502.4            | -11.5          |
| 10 | Hobart - Melbourne         | 1 653.0            | 1 467.3            | -11.2          |
| 11 | Brisbane - Cairns          | 1 292.9            | 1 147.5            | -11.2          |
| 12 | Canberra - Melbourne       | 1 182.6            | 1 034.2            | -12.6          |
| 13 | Cairns - Sydney            | 1 111.2            | 932.8              | -16.1          |
| 14 | Brisbane - Townsville      | 999.3              | 920.6              | -7.9           |
| 15 | Brisbane - Perth           | 939.0              | 873.2              | -7.0           |
| 16 | Launceston - Melbourne     | 959.8              | 834.9              | -13.0          |
| 17 | Canberra - Sydney          | 939.6              | 823.6              | -12.3          |
| 18 | Adelaide - Brisbane        | 845.7              | 784.1              | -7.3           |
| 19 | Cairns - Melbourne         | 859.8              | 739.4              | -14.0          |
| 20 | Brisbane - Mackay          | 750.7              | 712.6              | -5.1           |
| 21 | Hobart - Sydney            | 706.4              | 647.3              | -8.4           |
| 22 | Brisbane - Canberra        | 645.1              | 593.2              | -8.0           |
| 23 | Adelaide - Perth           | 632.0              | 588.8              | -6.8           |
| 24 | Sunshine Coast - Sydney    | 635.9              | 573.1              | -9.9           |
| 25 | Brisbane - Newcastle       | 585.1              | 540.3              | -7.7           |
| 26 | Melbourne - Sunshine Coast | 547.6              | 493.8              | -9.8           |
| 27 | Brisbane - Rockhampton     | 521.5              | 486.6              | -6.7           |
| 28 | Karratha - Perth           | 445.6              | 428.1              | -3.9           |
| 29 | Melbourne - Newcastle      | 489.6              | 418.2              | -14.6          |
| 30 | Ballina - Sydney           | 433.8              | 384.3              | -11.4          |
| 31 | Perth - Port Hedland       | 365.7              | 356.2              | -2.6           |
| 32 | Newman - Perth             | 317.3              | 318.8              | 0.5            |
| 33 | Brisbane - Darwin          | 365.9              | 318.0              | -13.1          |
| 34 | Broome - Perth             | 331.6              | 290.7              | -12.3          |
| 35 | Coffs Harbour - Sydney     | 334.3              | 288.1              | -13.8          |
| 36 | Darwin - Sydney            | 307.6              | 278.3              | -9.5           |
| 37 | Darwin - Melbourne         | 308.5              | 277.6              | -10.0          |
| 38 | Kalgoorlie - Perth         | 284.8              | 250.0              | -12.2          |
| 39 | Launceston - Sydney        | 288.3              | 249.9              | -13.3          |
| 40 | Brisbane - Proserpine      | 244.1              | 232.4              | -4.8           |
| 41 | Brisbane - Gladstone       | 248.2              | 222.4              | -10.4          |
| 42 | Brisbane - Hobart          | 236.9              | 216.6              | -8.6           |
| 43 | Melbourne - Mildura        | 227.4              | 205.0              | -9.9           |
| 44 | Albury - Sydney            | 228.2              | 201.1              | -11.9          |
| 45 | Hamilton Island - Sydney   | 203.1              | 197.5              | -2.8           |
| 46 | Adelaide - Gold Coast      | 217.0              | 191.7              | -11.7          |
| 47 | Brisbane - Emerald         | 195.9              | 187.5              | -4.3           |
| 48 | Adelaide - Canberra        | 195.5              | 171.6              | -12.2          |
| 49 | Port Macquarie - Sydney    | 186.6              | 169.7              | -9.1           |
| 50 | Ayers Rock - Sydney        | 191.0              | 166.2              | -13.0          |

continued

**Table 1: (continued) Passengers carried (000s) — annual activity**

|    | <b>City-Pair</b>              | <b>YE Apr 2019</b> | <b>YE Apr 2020</b> | <b>%Change</b> |
|----|-------------------------------|--------------------|--------------------|----------------|
| 51 | Dubbo - Sydney                | 186.6              | 162.0              | -13.2          |
| 52 | Sydney - Wagga Wagga          | 180.0              | 161.8              | -10.1          |
| 53 | Adelaide - Port Lincoln       | 168.1              | 157.1              | -6.5           |
| 54 | Sydney - Tamworth             | 173.2              | 155.5              | -10.2          |
| 55 | Darwin - Perth                | 186.2              | 154.6              | -17.0          |
| 56 | Sydney - Townsville           | 172.8              | 152.3              | -11.9          |
| 57 | Brisbane - Bundaberg          | 157.9              | 137.1              | -13.2          |
| 58 | Brisbane - Mount Isa          | 132.0              | 133.3              | 1.0            |
| 59 | Cairns - Townsville           | 145.5              | 127.4              | -12.5          |
| 60 | Adelaide - Alice Springs      | 134.4              | 124.5              | -7.4           |
| 61 | Brisbane - Hamilton Island    | 124.2              | 119.8              | -3.5           |
| 62 | Armidale - Sydney             | 121.6              | 108.4              | -10.8          |
|    | <b>Total domestic network</b> | <b>60 942.2</b>    | <b>54 251.0</b>    | <b>-11.0</b>   |

**Table 2: Passengers carried (000s) — monthly activity**

|    | <b>City-Pair</b>           | <b>Apr 2019</b> | <b>Apr 2020</b> | <b>% Change</b> |
|----|----------------------------|-----------------|-----------------|-----------------|
| 1  | Melbourne - Sydney         | 741.9           | 17.1            | -97.7           |
| 2  | Brisbane - Sydney          | 397.0           | 14.2            | -96.4           |
| 3  | Brisbane - Melbourne       | 307.0           | 8.6             | -97.2           |
| 4  | Melbourne - Perth          | 180.9           | 6.1             | -96.6           |
| 5  | Brisbane - Mackay          | 61.1            | 6.1             | -90.0           |
| 6  | Perth - Port Hedland       | 30.7            | 5.0             | -83.6           |
| 7  | Adelaide - Melbourne       | 215.0           | 4.5             | -97.9           |
| 8  | Brisbane - Townsville      | 82.7            | 4.2             | -94.9           |
| 9  | Newman - Perth             | 29.3            | 3.9             | -86.5           |
| 10 | Brisbane - Cairns          | 105.1           | 3.9             | -96.3           |
| 11 | Karratha - Perth           | 39.2            | 3.2             | -91.8           |
| 12 | Kalgoorlie - Perth         | 21.4            | 3.1             | -85.4           |
| 13 | Brisbane - Mount Isa       | 11.3            | 2.2             | -80.2           |
| 14 | Brisbane - Rockhampton     | 43.1            | 2.2             | -94.9           |
| 15 | Brisbane - Perth           | 80.8            | 2.1             | -97.4           |
| 16 | Canberra - Melbourne       | 96.5            | 1.9             | -98.0           |
| 17 | Gold Coast - Sydney        | 227.6           | 1.5             | -99.3           |
| 18 | Cairns - Townsville        | 11.7            | 1.3             | -88.9           |
| 19 | Broome - Perth             | 27.7            | 1.1             | -95.9           |
| 20 | Brisbane - Gladstone       | 20.5            | 1.0             | -95.0           |
| 21 | Adelaide - Port Lincoln    | 14.5            | 0.6             | -96.1           |
| 22 | Dubbo - Sydney             | 14.3            | 0.5             | -96.5           |
| 23 | Melbourne - Mildura        | 18.5            | 0.5             | -97.3           |
| 24 | Brisbane - Bundaberg       | 12.6            | 0.4             | -96.6           |
| 25 | Albury - Sydney            | 19.0            | 0.3             | -98.3           |
| 26 | Sydney - Wagga Wagga       | 14.4            | 0.3             | -98.1           |
| 27 | Adelaide - Sydney          | 163.6           | NA              | ..              |
| 28 | Hobart - Melbourne         | 140.4           | NA              | ..              |
| 29 | Launceston - Melbourne     | 87.7            | NA              | ..              |
| 30 | Adelaide - Brisbane        | 74.8            | NA              | ..              |
| 31 | Adelaide - Perth           | 55.9            | NA              | ..              |
| 32 | Brisbane - Darwin          | 29.0            | NA              | ..              |
| 33 | Coffs Harbour - Sydney     | 27.2            | NA              | ..              |
| 34 | Brisbane - Emerald         | 15.6            | NA              | ..              |
| 35 | Darwin - Perth             | 14.9            | NA              | ..              |
| 36 | Adelaide - Alice Springs   | 14.1            | NA              | ..              |
| 37 | Gold Coast - Melbourne     | 185.8           | 0.0             | -100.0          |
| 38 | Perth - Sydney             | 142.4           | 0.0             | -100.0          |
| 39 | Cairns - Sydney            | 91.9            | 0.0             | -100.0          |
| 40 | Cairns - Melbourne         | 74.9            | 0.0             | -100.0          |
| 41 | Canberra - Sydney          | 71.1            | 0.0             | -100.0          |
| 42 | Hobart - Sydney            | 60.8            | 0.0             | -100.0          |
| 43 | Sunshine Coast - Sydney    | 60.6            | 0.0             | -100.0          |
| 44 | Brisbane - Canberra        | 54.6            | 0.0             | -100.0          |
| 45 | Melbourne - Sunshine Coast | 51.3            | 0.0             | -100.0          |
| 46 | Brisbane - Newcastle       | 47.6            | 0.0             | -100.0          |
| 47 | Melbourne - Newcastle      | 43.6            | 0.0             | -100.0          |
| 48 | Ballina - Sydney           | 39.2            | 0.0             | -100.0          |
| 49 | Darwin - Melbourne         | 27.6            | 0.0             | -100.0          |
| 50 | Launceston - Sydney        | 26.7            | 0.0             | -100.0          |

continued

**Table 2: (continued) Passengers carried (000s) — monthly activity**

|    | <b>City-Pair</b>              | <b>Apr 2019</b> | <b>Apr 2020</b> | <b>% Change</b> |
|----|-------------------------------|-----------------|-----------------|-----------------|
| 51 | Darwin - Sydney               | 26.2            | 0.0             | -100.0          |
| 52 | Brisbane - Proserpine         | 23.1            | 0.0             | -100.0          |
| 53 | Brisbane - Hobart             | 21.0            | 0.0             | -100.0          |
| 54 | Adelaide - Gold Coast         | 18.1            | 0.0             | -100.0          |
| 55 | Hamilton Island - Sydney      | 17.2            | 0.0             | -100.0          |
| 56 | Ayers Rock - Sydney           | 17.1            | 0.0             | -100.0          |
| 57 | Adelaide - Canberra           | 16.9            | 0.0             | -100.0          |
| 58 | Port Macquarie - Sydney       | 15.4            | 0.0             | -100.0          |
| 59 | Sydney - Townsville           | 15.2            | 0.0             | -100.0          |
| 60 | Sydney - Tamworth             | 14.1            | 0.0             | -100.0          |
| 61 | Brisbane - Hamilton Island    | 10.8            | 0.0             | -100.0          |
| 62 | Armidale - Sydney             | 10.7            | 0.0             | -100.0          |
|    | <b>Total domestic network</b> | <b>5 149.0</b>  | <b>143.7</b>    | <b>-97.2</b>    |

(NA) Data not included, route was not competitive in April 2020.

**Table 3: Available seats (000s) — monthly activity**

|    | City-Pair                  | Apr 2019 | Apr 2020 | % Change |
|----|----------------------------|----------|----------|----------|
| 1  | Melbourne - Sydney         | 880.8    | 44.6     | -94.9    |
| 2  | Brisbane - Sydney          | 488.5    | 39.2     | -92.0    |
| 3  | Brisbane - Melbourne       | 370.8    | 23.6     | -93.6    |
| 4  | Melbourne - Perth          | 208.6    | 25.2     | -87.9    |
| 5  | Brisbane - Mackay          | 83.2     | 14.4     | -82.7    |
| 6  | Perth - Port Hedland       | 51.6     | 15.8     | -69.4    |
| 7  | Adelaide - Melbourne       | 263.1    | 19.5     | -92.6    |
| 8  | Brisbane - Townsville      | 109.9    | 9.3      | -91.5    |
| 9  | Newman - Perth             | 50.6     | 13.5     | -73.3    |
| 10 | Brisbane - Cairns          | 130.2    | 8.3      | -93.6    |
| 11 | Karratha - Perth           | 60.1     | 12.4     | -79.3    |
| 12 | Kalgoorlie - Perth         | 42.7     | 10.1     | -76.4    |
| 13 | Brisbane - Mount Isa       | 16.5     | 5.7      | -65.5    |
| 14 | Brisbane - Rockhampton     | 54.4     | 9.6      | -82.4    |
| 15 | Brisbane - Perth           | 94.2     | 8.4      | -91.1    |
| 16 | Canberra - Melbourne       | 140.7    | 9.6      | -93.2    |
| 17 | Gold Coast - Sydney        | 270.9    | 7.7      | -97.2    |
| 18 | Cairns - Townsville        | 20.0     | 5.1      | -74.7    |
| 19 | Broome - Perth             | 37.2     | 6.2      | -83.4    |
| 20 | Brisbane - Gladstone       | 30.8     | 8.3      | -73.0    |
| 21 | Adelaide - Port Lincoln    | 23.4     | 2.1      | -91.2    |
| 22 | Dubbo - Sydney             | 21.0     | 2.7      | -87.1    |
| 23 | Melbourne - Mildura        | 28.7     | 2.4      | -91.7    |
| 24 | Brisbane - Bundaberg       | 18.6     | 3.7      | -79.8    |
| 25 | Albury - Sydney            | 27.2     | 1.9      | -92.9    |
| 26 | Sydney - Wagga Wagga       | 21.6     | 2.3      | -89.4    |
| 27 | Adelaide - Sydney          | 193.0    | NA       | ..       |
| 28 | Hobart - Melbourne         | 171.1    | NA       | ..       |
| 29 | Launceston - Melbourne     | 110.4    | NA       | ..       |
| 30 | Adelaide - Brisbane        | 93.1     | NA       | ..       |
| 31 | Adelaide - Perth           | 72.5     | NA       | ..       |
| 32 | Brisbane - Darwin          | 34.8     | NA       | ..       |
| 33 | Coffs Harbour - Sydney     | 36.9     | NA       | ..       |
| 34 | Brisbane - Emerald         | 23.3     | NA       | ..       |
| 35 | Darwin - Perth             | 20.7     | NA       | ..       |
| 36 | Adelaide - Alice Springs   | 18.0     | NA       | ..       |
| 37 | Gold Coast - Melbourne     | 212.3    | 0.0      | -100.0   |
| 38 | Perth - Sydney             | 165.6    | 0.0      | -100.0   |
| 39 | Cairns - Sydney            | 115.8    | 0.0      | -100.0   |
| 40 | Cairns - Melbourne         | 92.2     | 0.0      | -100.0   |
| 41 | Canberra - Sydney          | 100.6    | 0.0      | -100.0   |
| 42 | Hobart - Sydney            | 73.5     | 0.0      | -100.0   |
| 43 | Sunshine Coast - Sydney    | 77.8     | 0.0      | -100.0   |
| 44 | Brisbane - Canberra        | 73.0     | 0.0      | -100.0   |
| 45 | Melbourne - Sunshine Coast | 60.4     | 0.0      | -100.0   |
| 46 | Brisbane - Newcastle       | 63.7     | 0.0      | -100.0   |
| 47 | Melbourne - Newcastle      | 53.4     | 0.0      | -100.0   |
| 48 | Ballina - Sydney           | 48.3     | 0.0      | -100.0   |
| 49 | Darwin - Melbourne         | 33.4     | 0.0      | -100.0   |
| 50 | Launceston - Sydney        | 32.1     | 0.0      | -100.0   |

continued

**Table 3: (continued) Available seats (000s) — monthly activity**

|    | <b>City-Pair</b>              | <b>Apr 2019</b> | <b>Apr 2020</b> | <b>% Change</b> |
|----|-------------------------------|-----------------|-----------------|-----------------|
| 51 | Darwin - Sydney               | 33.1            | 0.0             | -100.0          |
| 52 | Brisbane - Proserpine         | 30.1            | 0.0             | -100.0          |
| 53 | Brisbane - Hobart             | 24.8            | 0.0             | -100.0          |
| 54 | Adelaide - Gold Coast         | 22.0            | 0.0             | -100.0          |
| 55 | Hamilton Island - Sydney      | 24.6            | 0.0             | -100.0          |
| 56 | Ayers Rock - Sydney           | 21.4            | 0.0             | -100.0          |
| 57 | Adelaide - Canberra           | 25.3            | 0.0             | -100.0          |
| 58 | Port Macquarie - Sydney       | 21.8            | 0.0             | -100.0          |
| 59 | Sydney - Townsville           | 18.6            | 0.0             | -100.0          |
| 60 | Sydney - Tamworth             | 21.8            | 0.0             | -100.0          |
| 61 | Brisbane - Hamilton Island    | 15.3            | 0.0             | -100.0          |
| 62 | Armidale - Sydney             | 15.2            | 0.0             | -100.0          |
|    | <b>Total domestic network</b> | <b>6 578.9</b>  | <b>522.8</b>    | <b>-92.1</b>    |

(NA) Data not included, route was not competitive in April 2020.

**Table 4: Load factors (%) — monthly activity**

|    | <b>City-Pair</b>           | <b>Apr 2019</b> | <b>Apr 2020</b> | <b>% Point diff</b> |
|----|----------------------------|-----------------|-----------------|---------------------|
| 1  | Melbourne - Sydney         | 84.3            | 38.3            | -46.0               |
| 2  | Brisbane - Sydney          | 81.3            | 36.1            | -45.2               |
| 3  | Brisbane - Melbourne       | 82.8            | 36.5            | -46.3               |
| 4  | Melbourne - Perth          | 86.7            | 24.3            | -62.4               |
| 5  | Brisbane - Mackay          | 73.4            | 42.5            | -30.9               |
| 6  | Perth - Port Hedland       | 59.5            | 31.9            | -27.6               |
| 7  | Adelaide - Melbourne       | 81.7            | 23.0            | -58.7               |
| 8  | Brisbane - Townsville      | 75.2            | 44.9            | -30.3               |
| 9  | Newman - Perth             | 57.9            | 29.3            | -28.6               |
| 10 | Brisbane - Cairns          | 80.7            | 47.1            | -33.6               |
| 11 | Karratha - Perth           | 65.2            | 25.9            | -39.3               |
| 12 | Kalgoorlie - Perth         | 50.1            | 31.0            | -19.1               |
| 13 | Brisbane - Mount Isa       | 68.4            | 39.3            | -29.1               |
| 14 | Brisbane - Rockhampton     | 79.2            | 22.8            | -56.4               |
| 15 | Brisbane - Perth           | 85.7            | 25.3            | -60.4               |
| 16 | Canberra - Melbourne       | 68.6            | 20.3            | -48.3               |
| 17 | Gold Coast - Sydney        | 84.0            | 19.7            | -64.3               |
| 18 | Cairns - Townsville        | 58.5            | 25.8            | -32.7               |
| 19 | Broome - Perth             | 74.6            | 18.3            | -56.3               |
| 20 | Brisbane - Gladstone       | 66.5            | 12.2            | -54.3               |
| 21 | Adelaide - Port Lincoln    | 62.2            | 27.4            | -34.8               |
| 22 | Dubbo - Sydney             | 68.2            | 18.5            | -49.7               |
| 23 | Melbourne - Mildura        | 64.3            | 20.8            | -43.5               |
| 24 | Brisbane - Bundaberg       | 67.6            | 11.3            | -56.3               |
| 25 | Albury - Sydney            | 69.9            | 16.2            | -53.7               |
| 26 | Sydney - Wagga Wagga       | 66.8            | 11.8            | -55.0               |
| 27 | Adelaide - Sydney          | 84.8            | NA              | ..                  |
| 28 | Hobart - Melbourne         | 82.1            | NA              | ..                  |
| 29 | Launceston - Melbourne     | 79.5            | NA              | ..                  |
| 30 | Adelaide - Brisbane        | 80.4            | NA              | ..                  |
| 31 | Adelaide - Perth           | 77.1            | NA              | ..                  |
| 32 | Brisbane - Darwin          | 83.3            | NA              | ..                  |
| 33 | Coffs Harbour - Sydney     | 73.8            | NA              | ..                  |
| 34 | Brisbane - Emerald         | 66.8            | NA              | ..                  |
| 35 | Darwin - Perth             | 72.0            | NA              | ..                  |
| 36 | Adelaide - Alice Springs   | 78.1            | NA              | ..                  |
| 37 | Gold Coast - Melbourne     | 87.5            | 0.0             | -100.0              |
| 38 | Perth - Sydney             | 85.9            | 0.0             | -100.0              |
| 39 | Cairns - Sydney            | 79.4            | 0.0             | -100.0              |
| 40 | Cairns - Melbourne         | 81.2            | 0.0             | -100.0              |
| 41 | Canberra - Sydney          | 70.7            | 0.0             | -100.0              |
| 42 | Hobart - Sydney            | 82.8            | 0.0             | -100.0              |
| 43 | Sunshine Coast - Sydney    | 77.9            | 0.0             | -100.0              |
| 44 | Brisbane - Canberra        | 74.7            | 0.0             | -100.0              |
| 45 | Melbourne - Sunshine Coast | 85.0            | 0.0             | -100.0              |
| 46 | Brisbane - Newcastle       | 74.7            | 0.0             | -100.0              |
| 47 | Melbourne - Newcastle      | 81.6            | 0.0             | -100.0              |
| 48 | Ballina - Sydney           | 81.2            | 0.0             | -100.0              |
| 49 | Darwin - Melbourne         | 82.5            | 0.0             | -100.0              |
| 50 | Launceston - Sydney        | 83.2            | 0.0             | -100.0              |

continued



**Table 4: (continued) Load factors (%) — monthly activity**

|    | <b>City-Pair</b>              | <b>Apr 2019</b> | <b>Apr 2020</b> | <b>% Point diff</b> |
|----|-------------------------------|-----------------|-----------------|---------------------|
| 51 | Darwin - Sydney               | 79.4            | 0.0             | -100.0              |
| 52 | Brisbane - Proserpine         | 76.8            | 0.0             | -100.0              |
| 53 | Brisbane - Hobart             | 84.6            | 0.0             | -100.0              |
| 54 | Adelaide - Gold Coast         | 81.9            | 0.0             | -100.0              |
| 55 | Hamilton Island - Sydney      | 70.0            | 0.0             | -100.0              |
| 56 | Ayers Rock - Sydney           | 79.7            | 0.0             | -100.0              |
| 57 | Adelaide - Canberra           | 66.8            | 0.0             | -100.0              |
| 58 | Port Macquarie - Sydney       | 70.8            | 0.0             | -100.0              |
| 59 | Sydney - Townsville           | 82.0            | 0.0             | -100.0              |
| 60 | Sydney - Tamworth             | 64.8            | 0.0             | -100.0              |
| 61 | Brisbane - Hamilton Island    | 70.9            | 0.0             | -100.0              |
| 62 | Armidale - Sydney             | 70.8            | 0.0             | -100.0              |
|    | <b>Total domestic network</b> | <b>80.3</b>     | <b>28.1</b>     | <b>-52.2</b>        |

(NA) Data not included, route was not competitive in April 2020.

**Table 5: Aircraft trips <sup>(a)</sup> — monthly activity**

|    | <b>City-Pair</b>           | <b>Apr 2019</b> | <b>Apr 2020</b> | <b>% Change</b> |
|----|----------------------------|-----------------|-----------------|-----------------|
| 1  | Melbourne - Sydney         | 4 938           | 439             | -91.1           |
| 2  | Brisbane - Sydney          | 2 965           | 424             | -85.7           |
| 3  | Brisbane - Melbourne       | 2 137           | 257             | -88.0           |
| 4  | Melbourne - Perth          | 1 013           | 216             | -78.7           |
| 5  | Brisbane - Mackay          | 633             | 186             | -70.6           |
| 6  | Perth - Port Hedland       | 394             | 112             | -71.6           |
| 7  | Adelaide - Melbourne       | 1 588           | 225             | -85.8           |
| 8  | Brisbane - Townsville      | 728             | 91              | -87.5           |
| 9  | Newman - Perth             | 364             | 102             | -72.0           |
| 10 | Brisbane - Cairns          | 896             | 122             | -86.4           |
| 11 | Karratha - Perth           | 491             | 93              | -81.1           |
| 12 | Kalgoorlie - Perth         | 342             | 82              | -76.0           |
| 13 | Brisbane - Mount Isa       | 141             | 36              | -74.5           |
| 14 | Brisbane - Rockhampton     | 652             | 128             | -80.4           |
| 15 | Brisbane - Perth           | 504             | 48              | -90.5           |
| 16 | Canberra - Melbourne       | 909             | 98              | -89.2           |
| 17 | Gold Coast - Sydney        | 1 578           | 44              | -97.2           |
| 18 | Cairns - Townsville        | 307             | 98              | -68.1           |
| 19 | Broome - Perth             | 317             | 55              | -82.6           |
| 20 | Brisbane - Gladstone       | 407             | 110             | -73.0           |
| 21 | Adelaide - Port Lincoln    | 605             | 52              | -91.4           |
| 22 | Dubbo - Sydney             | 448             | 70              | -84.4           |
| 23 | Melbourne - Mildura        | 392             | 41              | -89.5           |
| 24 | Brisbane - Bundaberg       | 296             | 50              | -83.1           |
| 25 | Albury - Sydney            | 497             | 41              | -91.8           |
| 26 | Sydney - Wagga Wagga       | 425             | 48              | -88.7           |
| 27 | Adelaide - Sydney          | 1 119           | NA              | ..              |
| 28 | Hobart - Melbourne         | 937             | NA              | ..              |
| 29 | Launceston - Melbourne     | 793             | NA              | ..              |
| 30 | Adelaide - Brisbane        | 534             | NA              | ..              |
| 31 | Adelaide - Perth           | 480             | NA              | ..              |
| 32 | Brisbane - Darwin          | 214             | NA              | ..              |
| 33 | Coffs Harbour - Sydney     | 389             | NA              | ..              |
| 34 | Brisbane - Emerald         | 345             | NA              | ..              |
| 35 | Darwin - Perth             | 120             | NA              | ..              |
| 36 | Adelaide - Alice Springs   | 124             | NA              | ..              |
| 37 | Gold Coast - Melbourne     | 1 125           | 0               | -100.0          |
| 38 | Perth - Sydney             | 745             | 0               | -100.0          |
| 39 | Cairns - Sydney            | 590             | 0               | -100.0          |
| 40 | Cairns - Melbourne         | 468             | 0               | -100.0          |
| 41 | Canberra - Sydney          | 1 335           | 0               | -100.0          |
| 42 | Hobart - Sydney            | 464             | 0               | -100.0          |
| 43 | Sunshine Coast - Sydney    | 475             | 0               | -100.0          |
| 44 | Brisbane - Canberra        | 534             | 0               | -100.0          |
| 45 | Melbourne - Sunshine Coast | 336             | 0               | -100.0          |
| 46 | Brisbane - Newcastle       | 467             | 0               | -100.0          |
| 47 | Melbourne - Newcastle      | 294             | 0               | -100.0          |
| 48 | Ballina - Sydney           | 305             | 0               | -100.0          |
| 49 | Darwin - Melbourne         | 175             | 0               | -100.0          |
| 50 | Launceston - Sydney        | 179             | 0               | -100.0          |

continued

**Table 5: (continued) Aircraft trips <sup>(a)</sup> — monthly activity**

|    | <b>City-Pair</b>              | <b>Apr 2019</b> | <b>Apr 2020</b> | <b>% Change</b> |
|----|-------------------------------|-----------------|-----------------|-----------------|
| 51 | Darwin - Sydney               | 188             | 0               | -100.0          |
| 52 | Brisbane - Proserpine         | 169             | 0               | -100.0          |
| 53 | Brisbane - Hobart             | 140             | 0               | -100.0          |
| 54 | Adelaide - Gold Coast         | 123             | 0               | -100.0          |
| 55 | Hamilton Island - Sydney      | 154             | 0               | -100.0          |
| 56 | Ayers Rock - Sydney           | 120             | 0               | -100.0          |
| 57 | Adelaide - Canberra           | 150             | 0               | -100.0          |
| 58 | Port Macquarie - Sydney       | 318             | 0               | -100.0          |
| 59 | Sydney - Townsville           | 106             | 0               | -100.0          |
| 60 | Sydney - Tamworth             | 340             | 0               | -100.0          |
| 61 | Brisbane - Hamilton Island    | 118             | 0               | -100.0          |
| 62 | Armidale - Sydney             | 358             | 0               | -100.0          |
|    | <b>Total domestic network</b> | <b>53 410</b>   | <b>7 929</b>    | <b>-85.2</b>    |

(a) Includes RPT Cargo flights.

(NA) Data not included, route was not competitive in April 2020.

## TOP TEN AIRPORTS – PASSENGER MOVEMENTS

**Table 6: Top ten airports, RPT passenger movements (000s) - monthly activity**

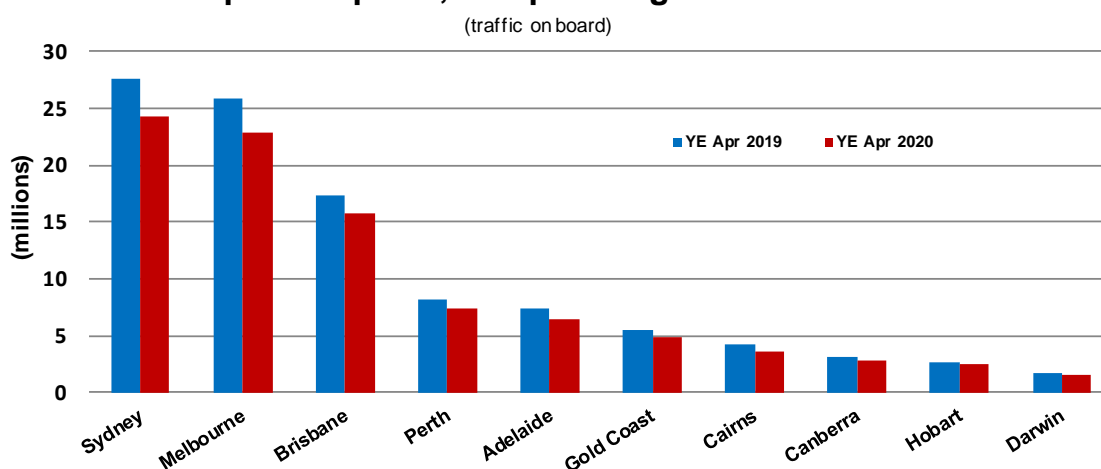
| Airport                       | Apr 2019        | Apr 2020     | % Change     | % of Total   |
|-------------------------------|-----------------|--------------|--------------|--------------|
| 1 Brisbane                    | 1 459.1         | 54.9         | -96.2        | 19.1         |
| 2 Sydney                      | 2 285.1         | 48.2         | -97.9        | 16.8         |
| 3 Melbourne                   | 2 189.5         | 42.2         | -98.1        | 14.7         |
| 4 Perth                       | 702.9           | 35.2         | -95.0        | 12.2         |
| 5 Adelaide                    | 630.8           | 11.8         | -98.1        | 4.1          |
| 6 Townsville                  | 138.6           | 7.9          | -94.3        | 2.7          |
| 7 Cairns                      | 351.6           | 7.4          | -97.9        | 2.6          |
| 8 Mackay                      | 69.3            | 7.2          | -89.6        | 2.5          |
| 9 Port Hedland                | 31.7            | 5.1          | -84.0        | 1.8          |
| 10 Darwin                     | 141.5           | 4.5          | -96.8        | 1.6          |
| <b>Total top ten airports</b> | <b>8 000.1</b>  | <b>224.3</b> | <b>-97.2</b> | <b>78.1</b>  |
| <b>Total domestic network</b> | <b>10 298.0</b> | <b>287.4</b> | <b>-97.2</b> | <b>100.0</b> |

**Table 7: Top ten airports, RPT passenger movements (000s) - annual activity**

| Airport                       | YE Apr 2019      | YE Apr 2020      | % Change     | % of Total   |
|-------------------------------|------------------|------------------|--------------|--------------|
| 1 Sydney                      | 27 533.3         | 24 218.9         | -12.0        | 22.3         |
| 2 Melbourne                   | 25 919.7         | 22 788.3         | -12.1        | 21.0         |
| 3 Brisbane                    | 17 358.6         | 15 688.6         | -9.6         | 14.5         |
| 4 Perth                       | 8 214.0          | 7 445.6          | -9.4         | 6.9          |
| 5 Adelaide                    | 7 309.5          | 6 513.7          | -10.9        | 6.0          |
| 6 Gold Coast                  | 5 452.1          | 4 923.9          | -9.7         | 4.5          |
| 7 Cairns                      | 4 246.9          | 3 640.4          | -14.3        | 3.4          |
| 8 Canberra                    | 3 147.0          | 2 789.1          | -11.4        | 2.6          |
| 9 Hobart                      | 2 697.2          | 2 461.6          | -8.7         | 2.3          |
| 10 Darwin                     | 1 722.8          | 1 515.3          | -12.0        | 1.4          |
| <b>Total top ten airports</b> | <b>103 601.1</b> | <b>91 985.4</b>  | <b>-11.2</b> | <b>84.8</b>  |
| <b>Total domestic network</b> | <b>121 884.4</b> | <b>108 502.1</b> | <b>-11.0</b> | <b>100.0</b> |

Note: Airport passenger movement numbers are the sum of passenger arrivals and departures at each airport.

### Top ten airports, RPT passenger movements



## TOP FIVE AIRPORTS – CARGO MOVEMENTS

Table 8: Top five airports, domestic RPT cargo movements (000s tonnes) - monthly activity

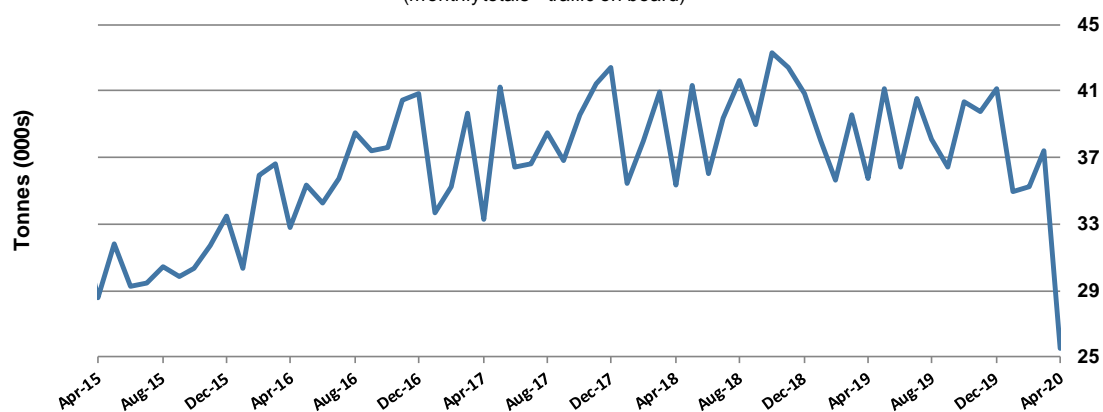
| Airport                        | Apr 2019    | Apr 2020    | % Change     | % of Total   |
|--------------------------------|-------------|-------------|--------------|--------------|
| 1 Melbourne                    | 9.4         | 7.5         | -20.8        | 29.3         |
| 2 Sydney                       | 7.6         | 5.0         | -34.4        | 19.5         |
| 3 Brisbane                     | 5.7         | 4.5         | -21.3        | 17.5         |
| 4 Perth                        | 4.8         | 2.3         | -52.4        | 9.0          |
| 5 Adelaide                     | 2.1         | 1.7         | -21.5        | 6.6          |
| <b>Total top five airports</b> | <b>29.7</b> | <b>20.9</b> | <b>-29.6</b> | <b>82.0</b>  |
| <b>Total domestic network</b>  | <b>35.7</b> | <b>25.5</b> | <b>-28.6</b> | <b>100.0</b> |

Table 9: Top five airports, domestic RPT cargo movements (000s tonnes) - annual activity

| Airport                        | YE Apr 2019  | YE Apr 2020  | % Change    | % of Total   |
|--------------------------------|--------------|--------------|-------------|--------------|
| 1 Melbourne                    | 129.8        | 120.0        | -7.6        | 26.8         |
| 2 Sydney                       | 104.9        | 99.1         | -5.6        | 22.2         |
| 3 Brisbane                     | 73.7         | 73.3         | -0.6        | 16.4         |
| 4 Perth                        | 65.8         | 60.2         | -8.5        | 13.5         |
| 5 Adelaide                     | 28.7         | 28.3         | -1.4        | 6.3          |
| <b>Total top five airports</b> | <b>402.9</b> | <b>380.8</b> | <b>-5.5</b> | <b>85.2</b>  |
| <b>Total domestic network</b>  | <b>472.6</b> | <b>447.0</b> | <b>-5.4</b> | <b>100.0</b> |

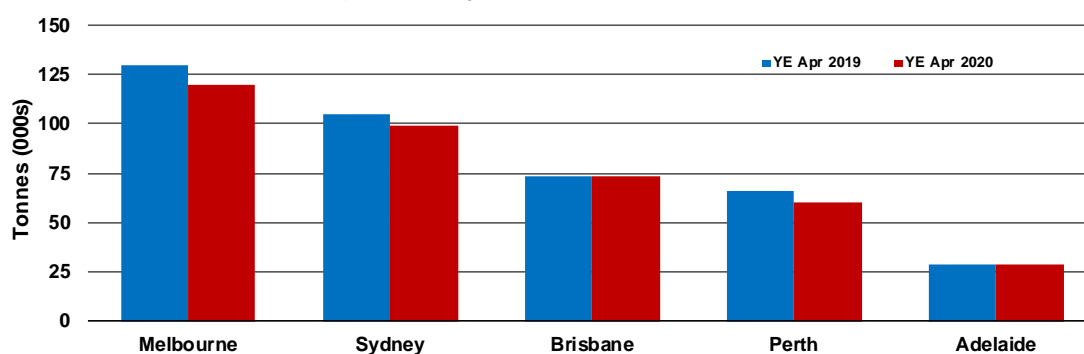
Note: Airport cargo tonnes are the sum of cargo tonnes on arrivals and departures at each airport.

### Total domestic network - cargo movement (monthly totals - traffic on board)



### Top five airports, cargo movements

(Domestic cargo traffic - traffic on board)



## TOP TEN ROUTES

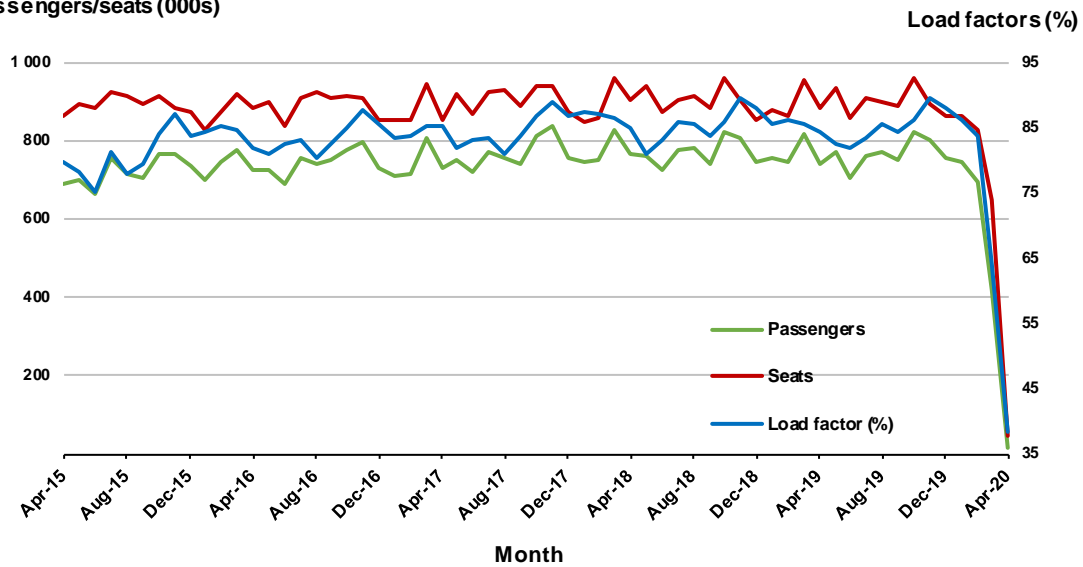
### 1. Melbourne - Sydney

#### Monthly data

|                           | Apr 2019 | Apr 2020 | % Change |
|---------------------------|----------|----------|----------|
| Passengers carried (000s) | 741.9    | 17.1     | -97.7    |
| Seats (000s)              | 880.8    | 44.6     | -94.9    |
| Load factor %             | 84.3     | 38.3     | -46.0 *  |
| Aircraft trips            | 4 938    | 439      | -91.1    |

\* percentage point difference

#### Passengers/seats (000s)

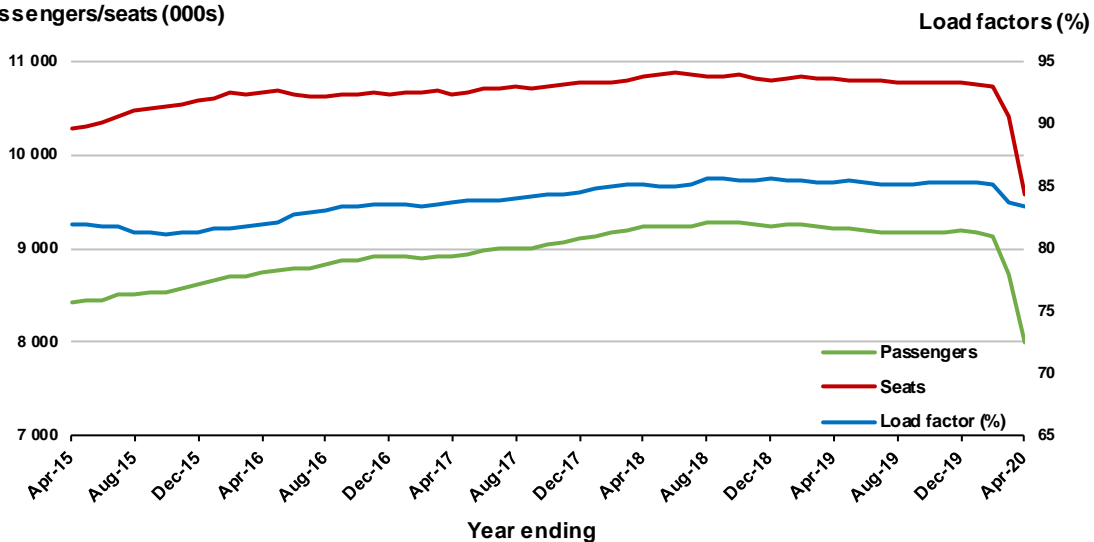


#### Moving annual data

|                           | YE Apr 2019 | YE Apr 2020 | % Change |
|---------------------------|-------------|-------------|----------|
| Passengers carried (000s) | 9 212.0     | 7 994.2     | -13.2    |
| Seats (000s)              | 10 804.7    | 9 582.3     | -11.3    |
| Load factor %             | 85.3        | 83.4        | -1.8 *   |
| Aircraft trips            | 60 090      | 54 159      | -9.9     |

\* percentage point difference

#### Passengers/seats (000s)

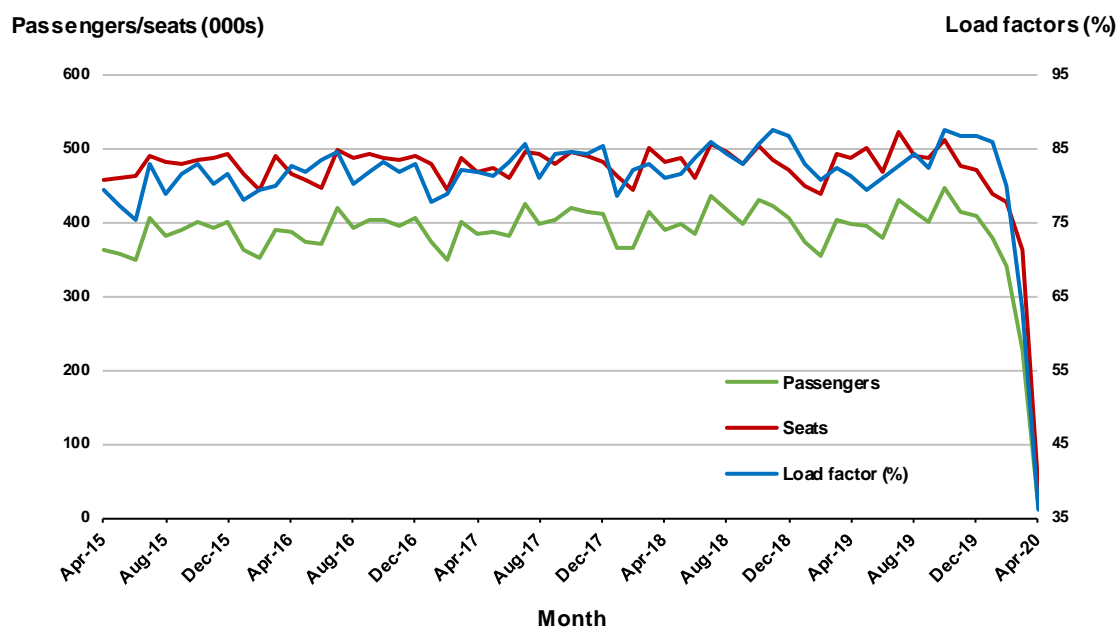


## 2. Brisbane - Sydney

### Monthly data

|                           | Apr 2019 | Apr 2020 | % Change |
|---------------------------|----------|----------|----------|
| Passengers carried (000s) | 397.0    | 14.2     | -96.4    |
| Seats (000s)              | 488.5    | 39.2     | -92.0    |
| Load factor %             | 81.3     | 36.1     | -45.2 *  |
| Aircraft trips            | 2 965    | 424      | -85.7    |

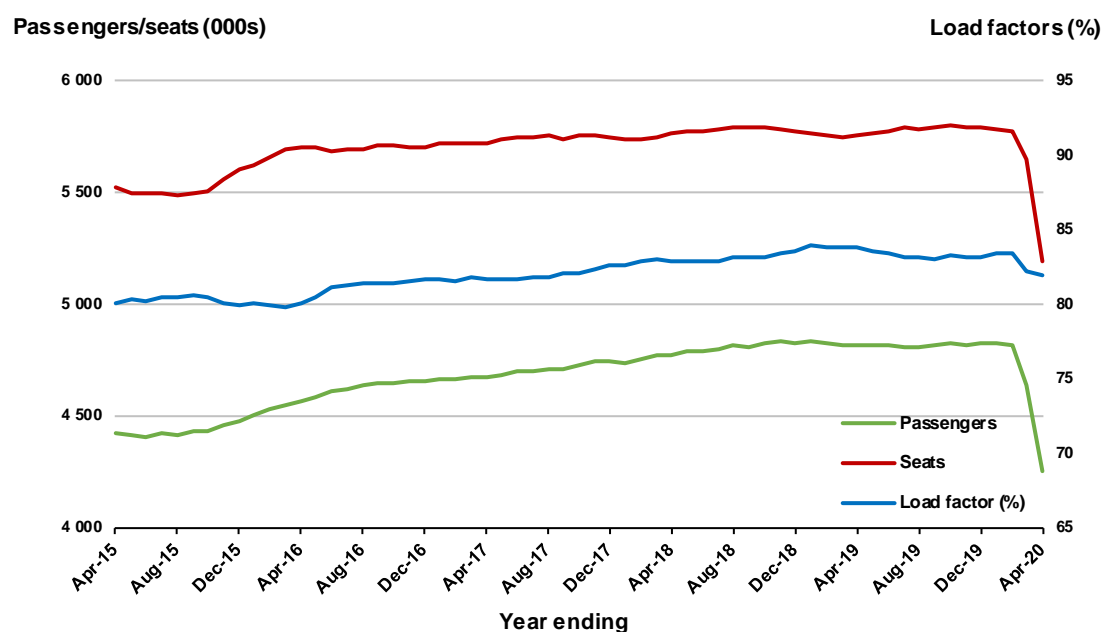
\* percentage point difference



### Moving annual data

|                           | YE Apr 2019 | YE Apr 2020 | % Change |
|---------------------------|-------------|-------------|----------|
| Passengers carried (000s) | 4 819.1     | 4 253.9     | -11.7    |
| Seats (000s)              | 5 752.0     | 5 194.6     | -9.7     |
| Load factor %             | 83.8        | 81.9        | -1.9 *   |
| Aircraft trips            | 35 035      | 31 869      | -9.0     |

\* percentage point difference

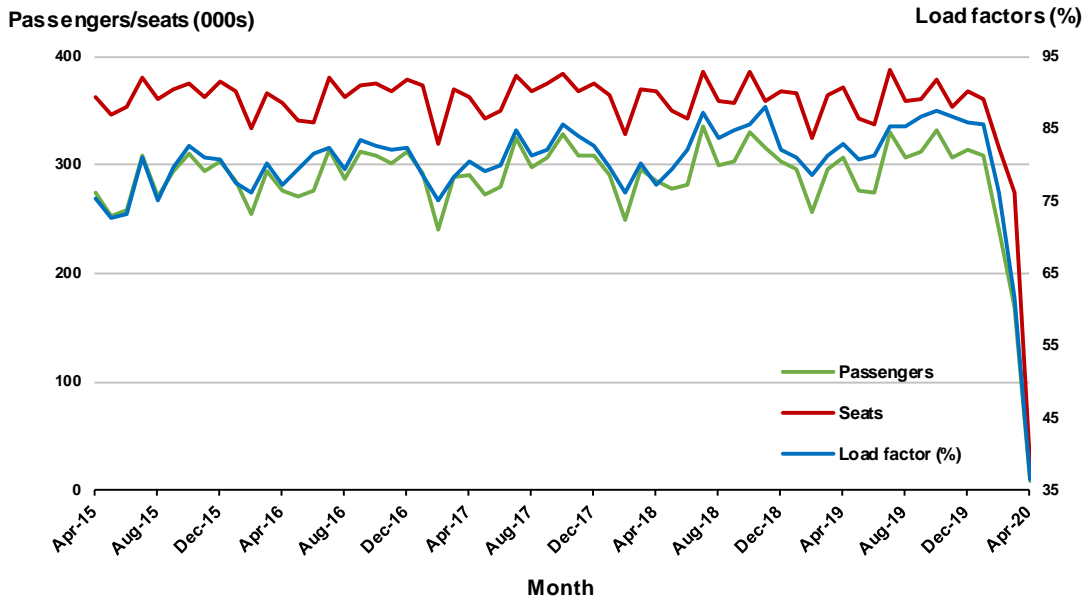


### 3. Brisbane - Melbourne

#### Monthly data

|                           | Apr 2019 | Apr 2020 | % Change |
|---------------------------|----------|----------|----------|
| Passengers carried (000s) | 307.0    | 8.6      | -97.2    |
| Seats (000s)              | 370.8    | 23.6     | -93.6    |
| Load factor %             | 82.8     | 36.5     | -46.3 *  |
| Aircraft trips            | 2 137    | 257      | -88.0    |

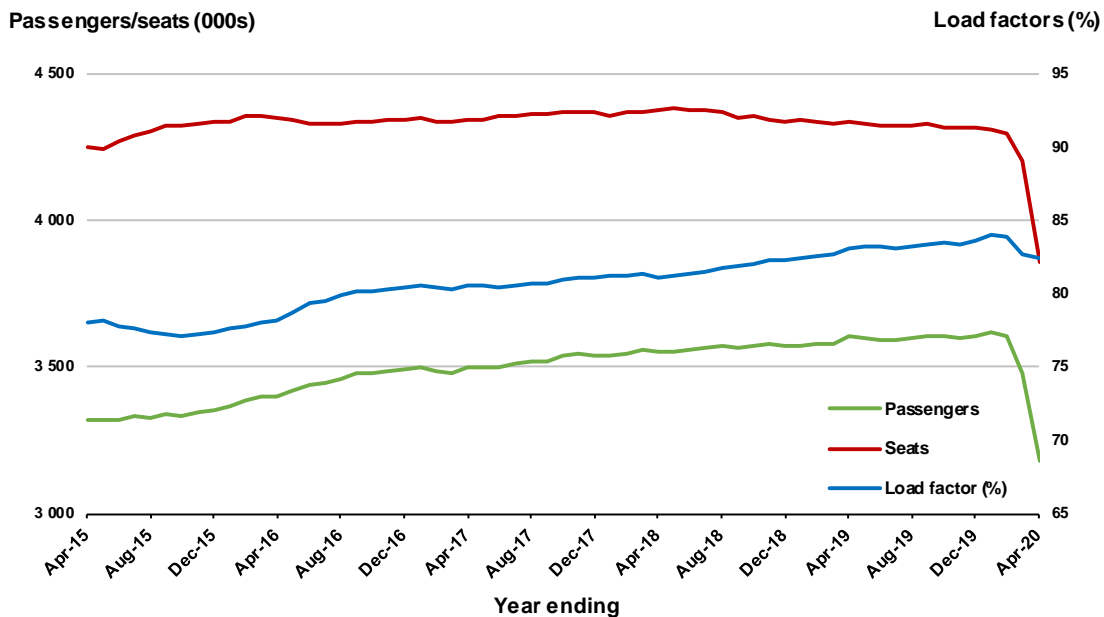
\* percentage point difference



#### Moving annual data

|                           | YE Apr 2019 | YE Apr 2020 | % Change |
|---------------------------|-------------|-------------|----------|
| Passengers carried (000s) | 3 602.4     | 3 179.6     | -11.7    |
| Seats (000s)              | 4 334.7     | 3 859.4     | -11.0    |
| Load factor %             | 83.1        | 82.4        | -0.7 *   |
| Aircraft trips            | 25 541      | 22 921      | -10.3    |

\* percentage point difference





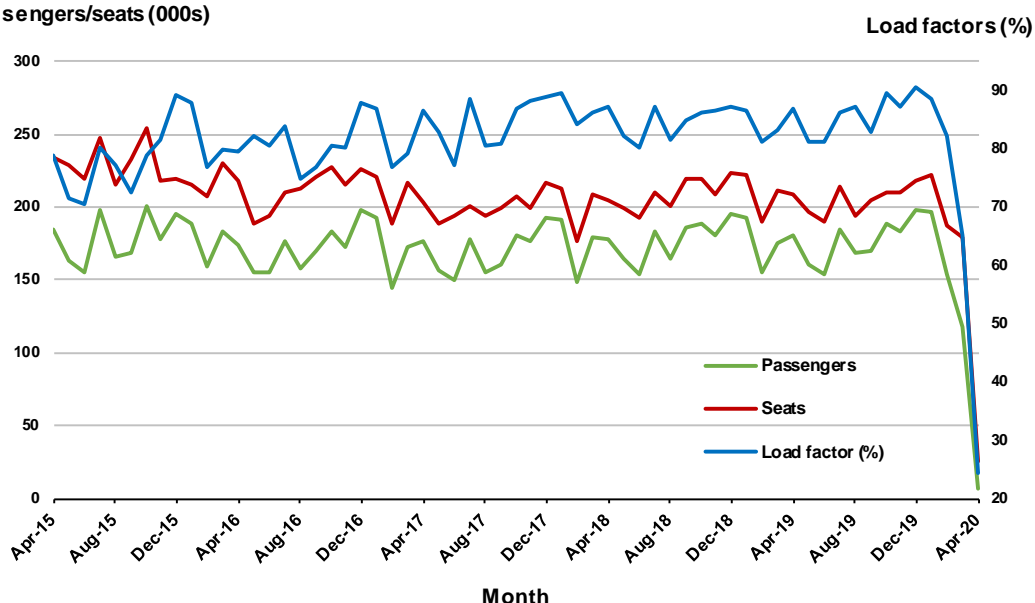
## 4. Melbourne - Perth

### Monthly data

|                           | Apr 2019 | Apr 2020 | % Change |
|---------------------------|----------|----------|----------|
| Passengers carried (000s) | 180.9    | 6.1      | -96.6    |
| Seats (000s)              | 208.6    | 25.2     | -87.9    |
| Load factor %             | 86.7     | 24.3     | -62.4 *  |
| Aircraft trips            | 1 013    | 216      | -78.7    |

\* percentage point difference

### Passengers/seats (000s)

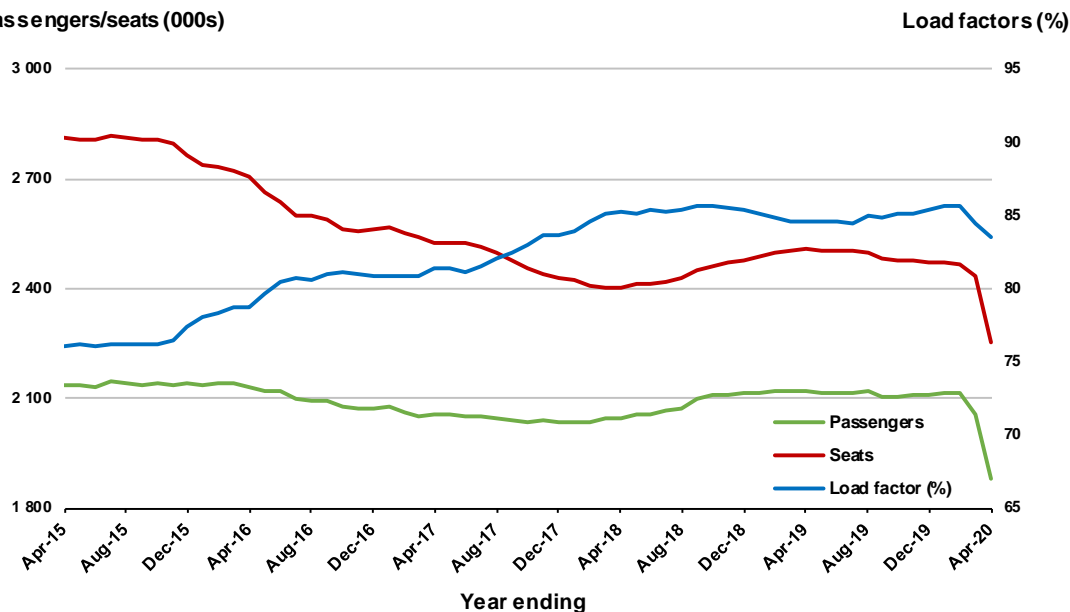


### Moving annual data

|                           | YE Apr 2019 | YE Apr 2020 | % Change |
|---------------------------|-------------|-------------|----------|
| Passengers carried (000s) | 2 119.6     | 1 880.8     | -11.3    |
| Seats (000s)              | 2 505.8     | 2 252.3     | -10.1    |
| Load factor %             | 84.6        | 83.5        | -1.1 *   |
| Aircraft trips            | 12 152      | 11 247      | -7.4     |

\* percentage point difference

### Passengers/seats (000s)



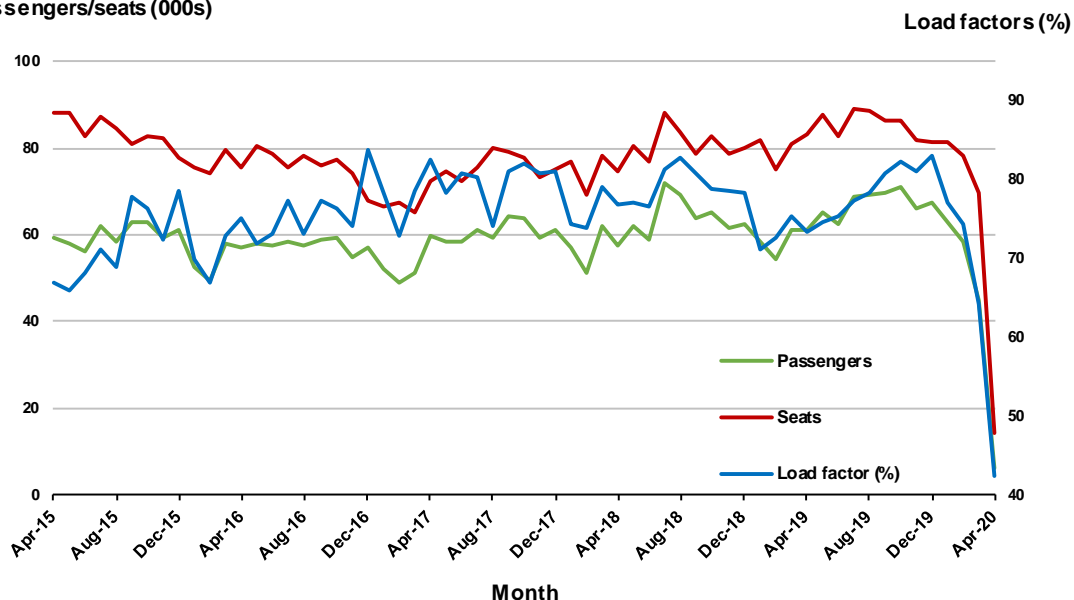
## 5. Brisbane - Mackay

### Monthly data

|                           | Apr 2019 | Apr 2020 | % Change |
|---------------------------|----------|----------|----------|
| Passengers carried (000s) | 61.1     | 6.1      | -90.0    |
| Seats (000s)              | 83.2     | 14.4     | -82.7    |
| Load factor %             | 73.4     | 42.5     | -30.9 *  |
| Aircraft trips            | 633      | 186      | -70.6    |

\* percentage point difference

### Passengers/seats (000s)

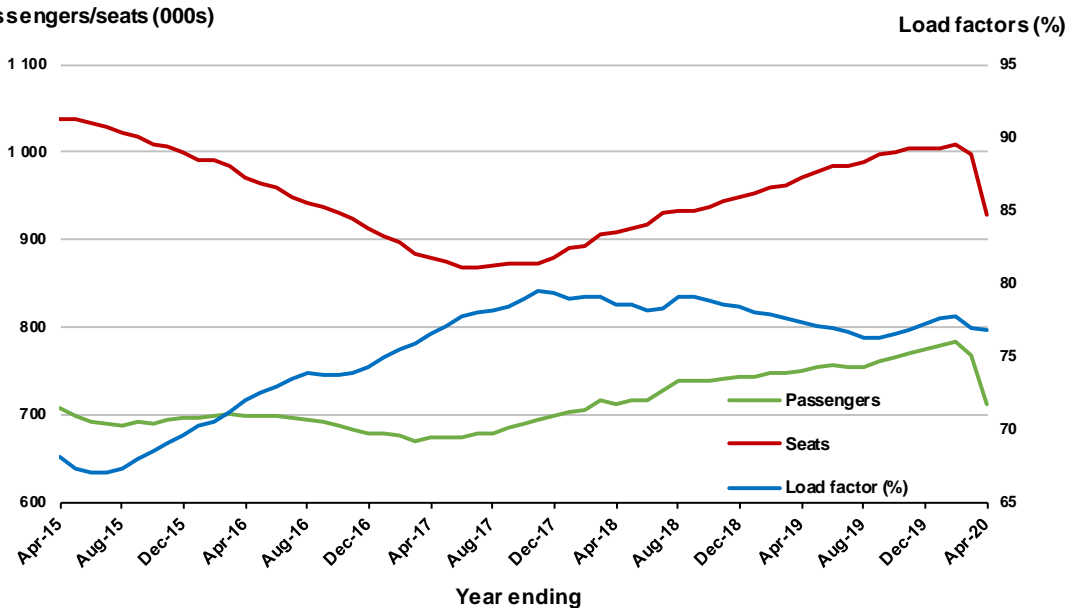


### Moving annual data

|                           | YE Apr 2019 | YE Apr 2020 | % Change |
|---------------------------|-------------|-------------|----------|
| Passengers carried (000s) | 750.7       | 712.6       | -5.1     |
| Seats (000s)              | 970.4       | 927.9       | -4.4     |
| Load factor %             | 77.4        | 76.8        | -0.6 *   |
| Aircraft trips            | 7 396       | 7 326       | -0.9     |

\* percentage point difference

### Passengers/seats (000s)



## 6. Perth - Port Hedland

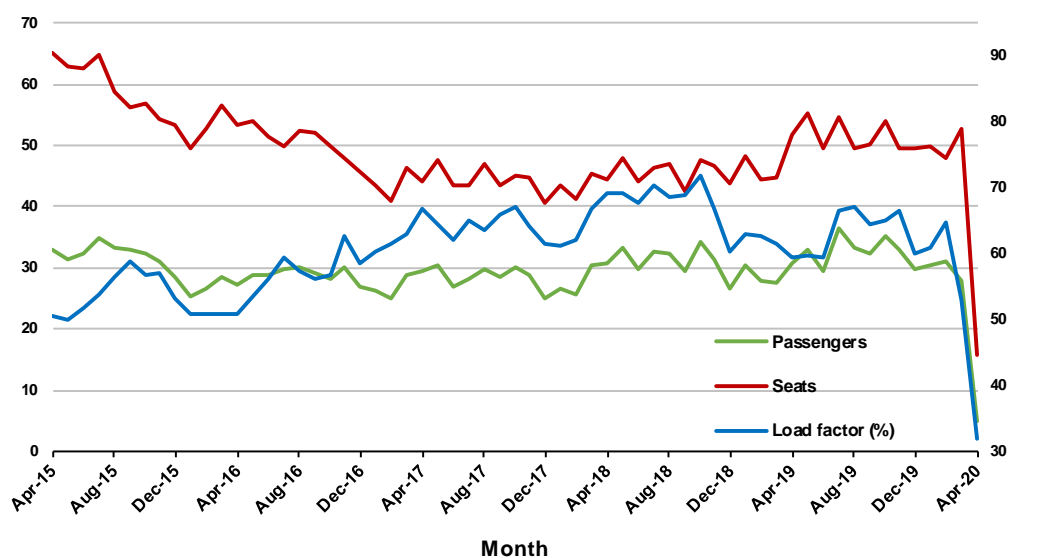
### Monthly data

|                           | Apr 2019 | Apr 2020 | % Change |
|---------------------------|----------|----------|----------|
| Passengers carried (000s) | 30.7     | 5.0      | -83.6    |
| Seats (000s)              | 51.6     | 15.8     | -69.4    |
| Load factor %             | 59.5     | 31.9     | -27.6 *  |
| Aircraft trips            | 394      | 112      | -71.6    |

\* percentage point difference

### Passengers/seats (000s)

### Load factors (%)



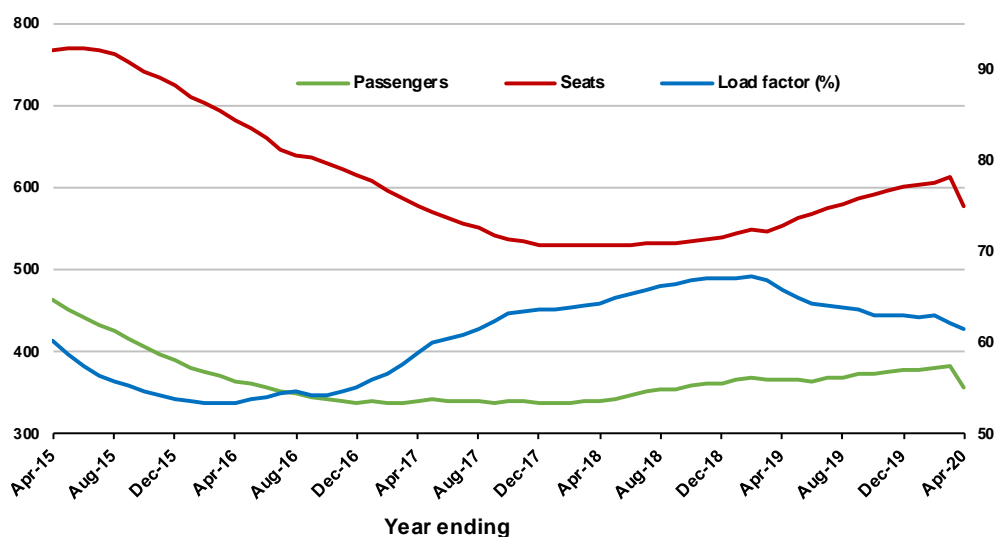
### Moving annual data

|                           | YE Apr 2019 | YE Apr 2020 | % Change |
|---------------------------|-------------|-------------|----------|
| Passengers carried (000s) | 365.7       | 356.2       | -2.6     |
| Seats (000s)              | 554.9       | 578.4       | 4.2      |
| Load factor %             | 65.9        | 61.6        | -4.3 *   |
| Aircraft trips            | 4 418       | 4 424       | 0.1      |

\* percentage point difference

### Passengers/seats (000s)

### Load factors (%)



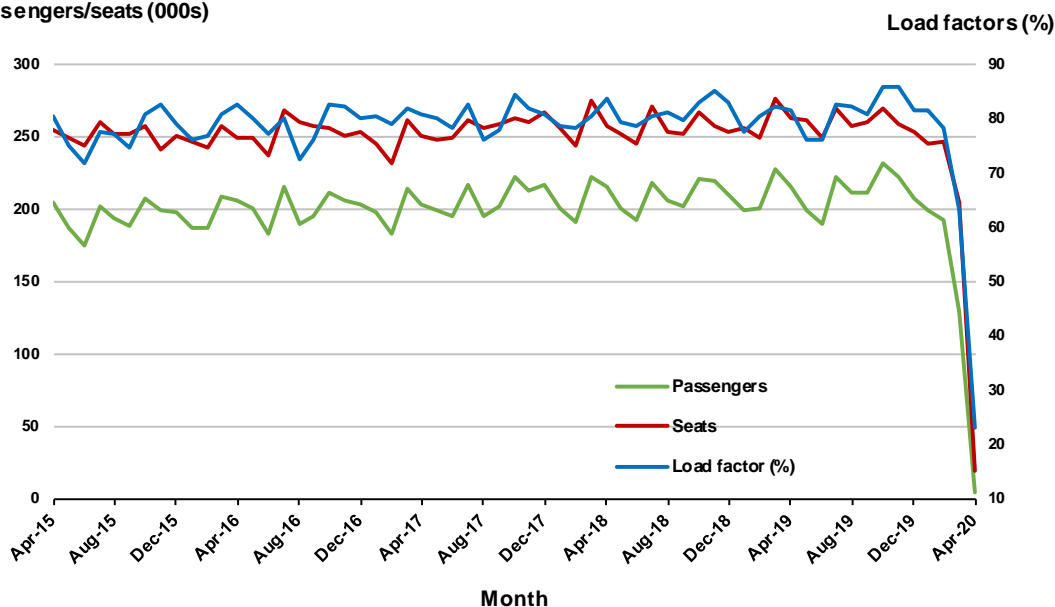
## 7. Adelaide - Melbourne

### Monthly data

|                           | Apr 2019 | Apr 2020 | % Change |
|---------------------------|----------|----------|----------|
| Passengers carried (000s) | 215.0    | 4.5      | -97.9    |
| Seats (000s)              | 263.1    | 19.5     | -92.6    |
| Load factor %             | 81.7     | 23.0     | -58.7 *  |
| Aircraft trips            | 1 588    | 225      | -85.8    |

\* percentage point difference

### Passengers/seats (000s)

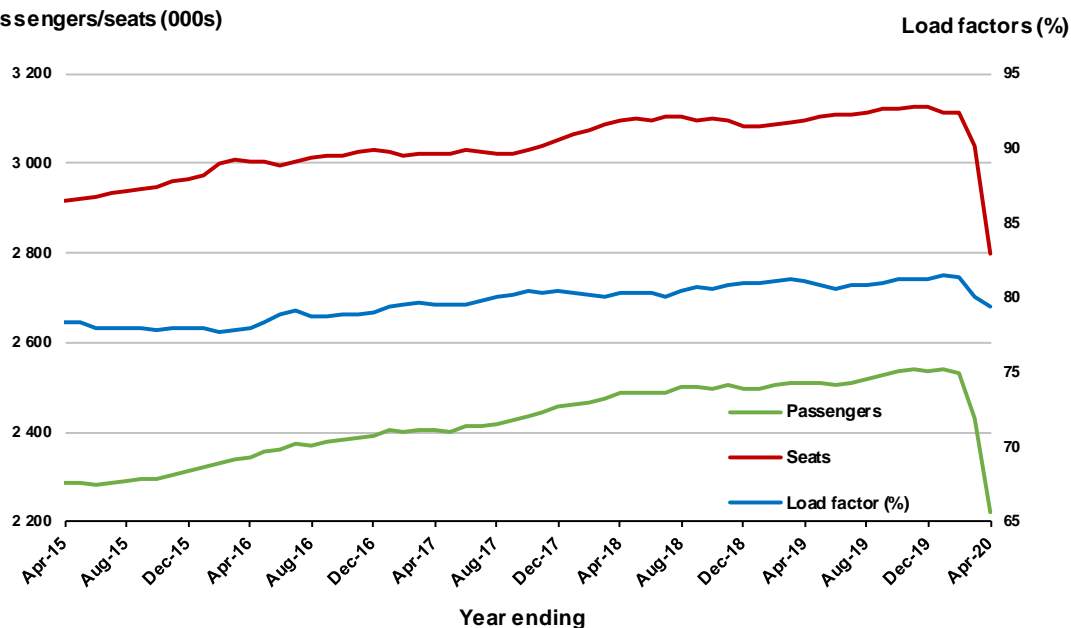


### Moving annual data

|                           | YE Apr 2019 | YE Apr 2020 | % Change |
|---------------------------|-------------|-------------|----------|
| Passengers carried (000s) | 2 511.0     | 2 222.6     | -11.5    |
| Seats (000s)              | 3 097.0     | 2 796.7     | -9.7     |
| Load factor %             | 81.1        | 79.5        | -1.6 *   |
| Aircraft trips            | 18 992      | 17 190      | -9.5     |

\* percentage point difference

### Passengers/seats (000s)



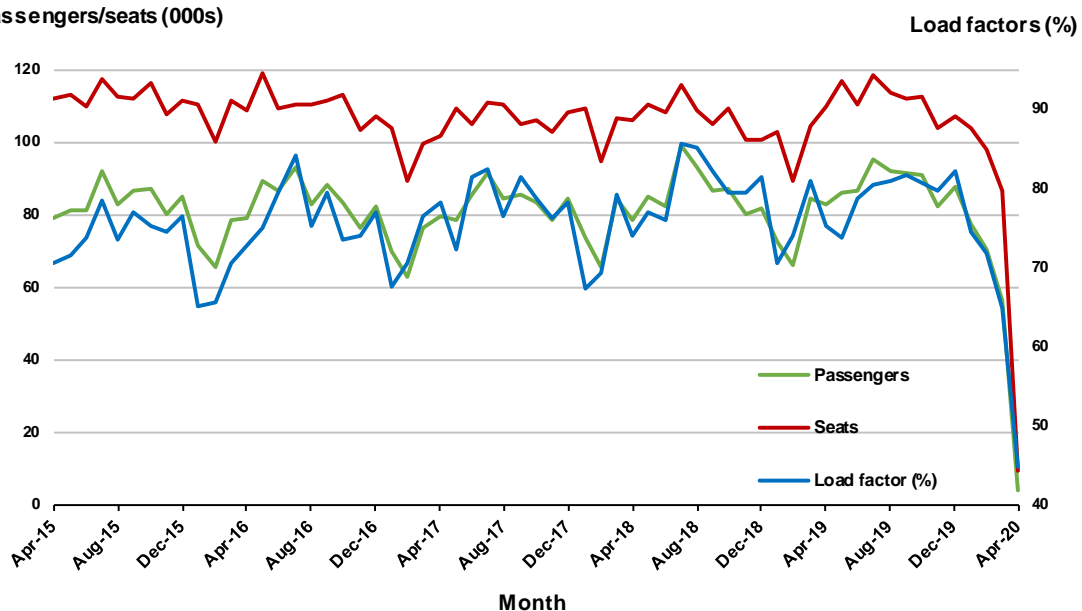
## 8. Brisbane - Townsville

### Monthly data

|                           | Apr 2019 | Apr 2020 | % Change |
|---------------------------|----------|----------|----------|
| Passengers carried (000s) | 82.7     | 4.2      | -94.9    |
| Seats (000s)              | 109.9    | 9.3      | -91.5    |
| Load factor %             | 75.2     | 44.9     | -30.3 *  |
| Aircraft trips            | 728      | 91       | -87.5    |

\* percentage point difference

### Passengers/seats (000s)

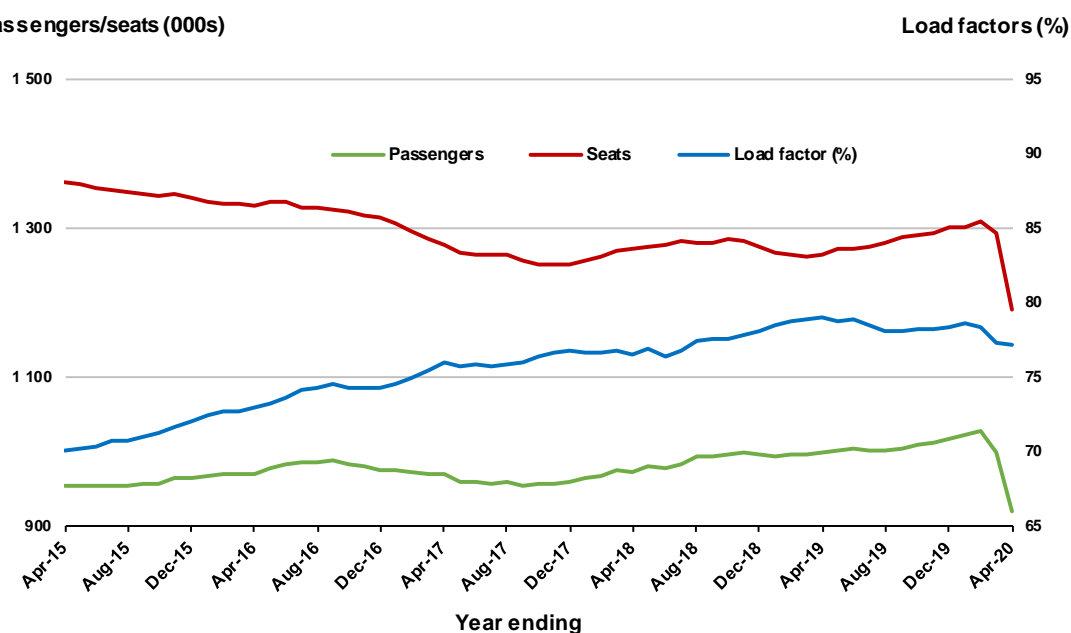


### Moving annual data

|                           | YE Apr 2019 | YE Apr 2020 | % Change |
|---------------------------|-------------|-------------|----------|
| Passengers carried (000s) | 999.3       | 920.6       | -7.9     |
| Seats (000s)              | 1 264.6     | 1 192.0     | -5.7     |
| Load factor %             | 79.0        | 77.2        | -1.8 *   |
| Aircraft trips            | 8 625       | 8 057       | -6.6     |

\* percentage point difference

### Passengers/seats (000s)



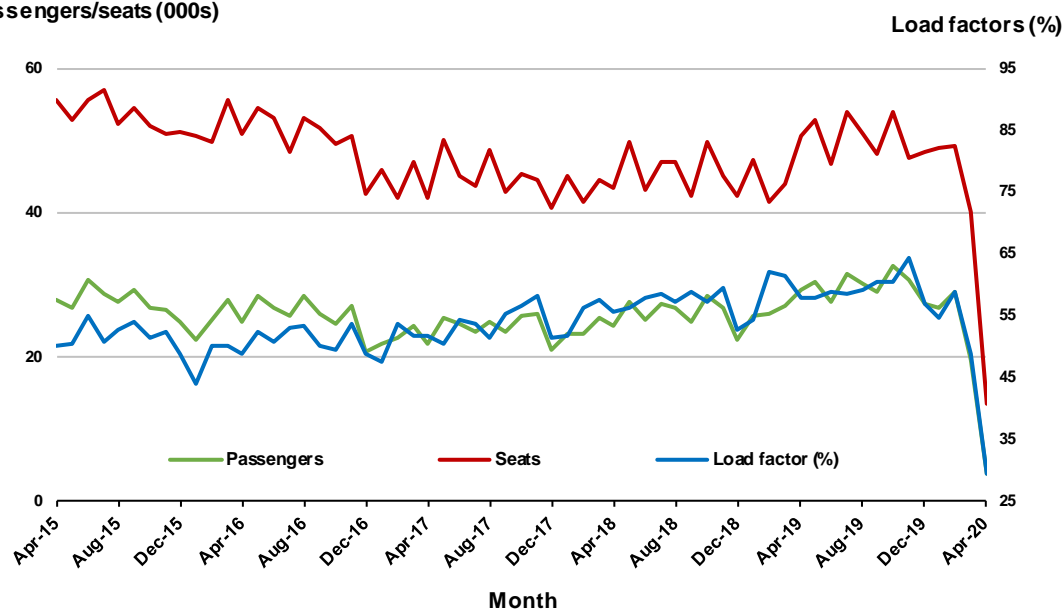
## 9. Newman - Perth

### Monthly data

|                           | Apr 2019 | Apr 2020 | % Change |
|---------------------------|----------|----------|----------|
| Passengers carried (000s) | 29.3     | 3.9      | -86.5    |
| Seats (000s)              | 50.6     | 13.5     | -73.3    |
| Load factor %             | 57.9     | 29.3     | -28.6 *  |
| Aircraft trips            | 364      | 102      | -72.0    |

\* percentage point difference

### Passengers/seats (000s)

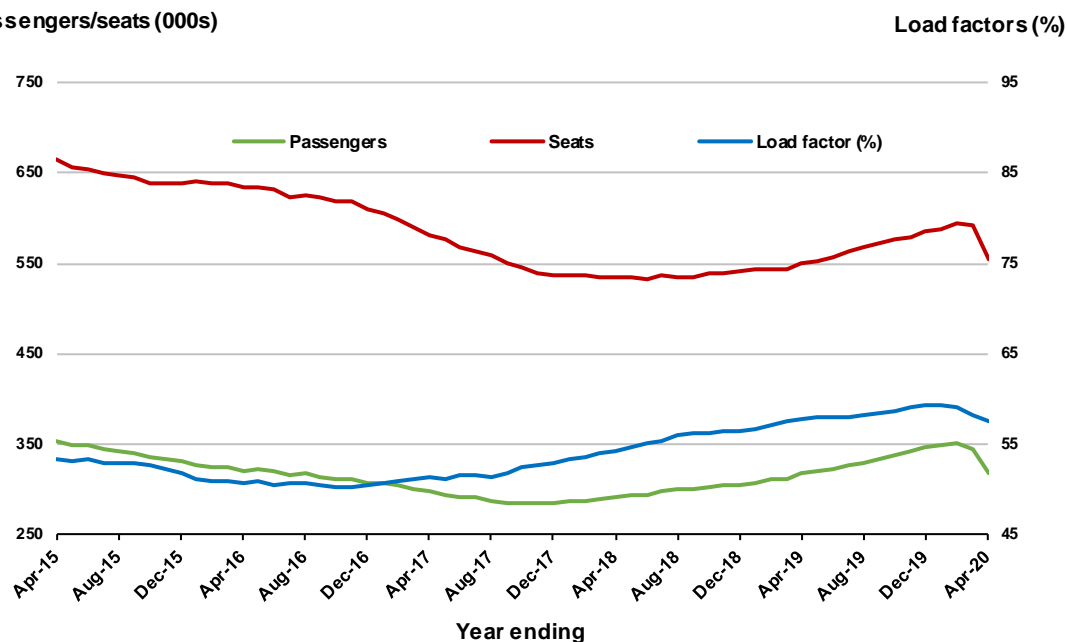


### Moving annual data

|                           | YE Apr 2019 | YE Apr 2020 | % Change |
|---------------------------|-------------|-------------|----------|
| Passengers carried (000s) | 317.3       | 318.8       | 0.5      |
| Seats (000s)              | 550.0       | 554.0       | 0.7      |
| Load factor %             | 57.7        | 57.5        | -0.1 *   |
| Aircraft trips            | 4 064       | 3 901       | -4.0     |

\* percentage point difference

### Passengers/seats (000s)

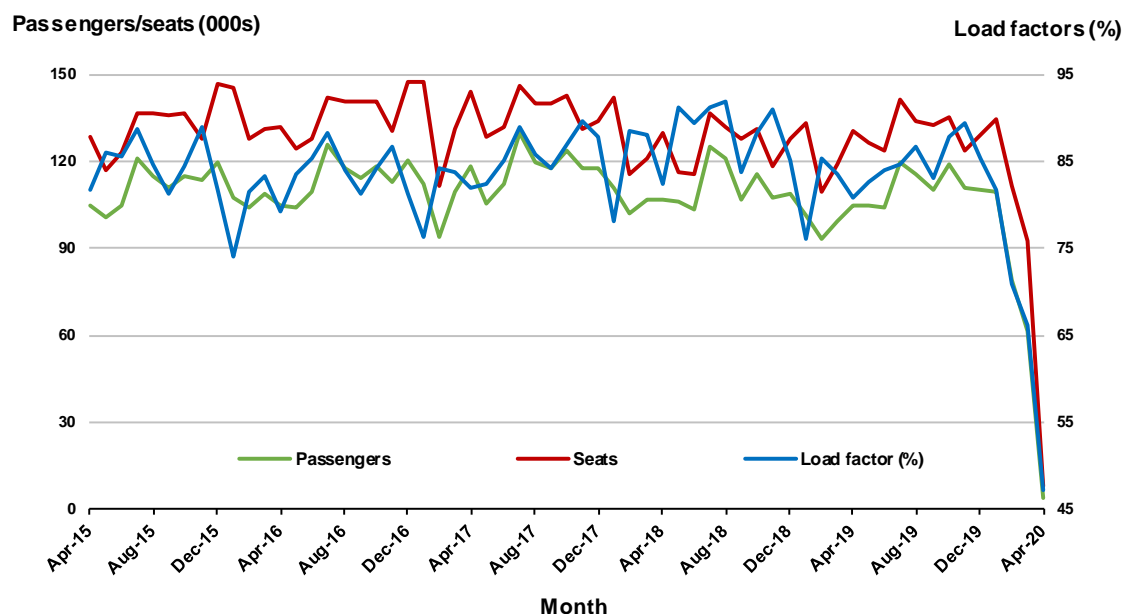


## 10. Brisbane - Cairns

### Monthly data

|                           | Apr 2019 | Apr 2020 | % Change |
|---------------------------|----------|----------|----------|
| Passengers carried (000s) | 105.1    | 3.9      | -96.3    |
| Seats (000s)              | 130.2    | 8.3      | -93.6    |
| Load factor %             | 80.7     | 47.1     | -33.6 *  |
| Aircraft trips            | 896      | 122      | -86.4    |

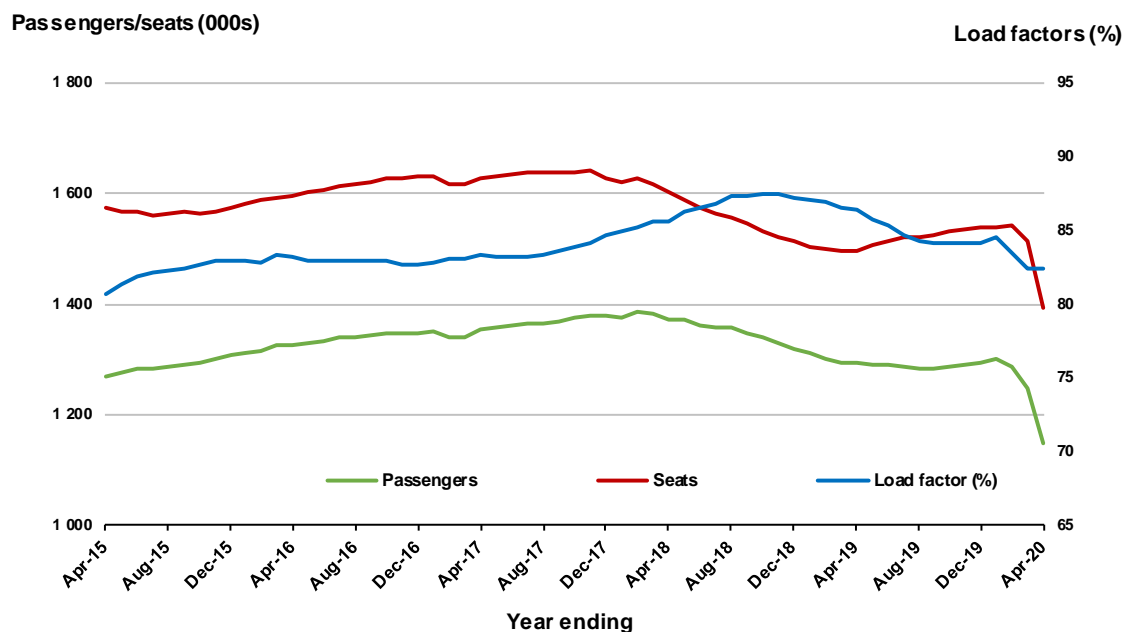
\* percentage point difference



### Moving annual data

|                           | YE Apr 2019 | YE Apr 2020 | % Change |
|---------------------------|-------------|-------------|----------|
| Passengers carried (000s) | 1 292.9     | 1 147.5     | -11.2    |
| Seats (000s)              | 1 496.7     | 1 392.4     | -7.0     |
| Load factor %             | 86.4        | 82.4        | -4.0 *   |
| Aircraft trips            | 9 972       | 9 794       | -1.8     |

\* percentage point difference



## TOP FIFTY REGIONAL AIRPORTS

**Table 10: Top fifty regional airports (000s) — passenger movements, monthly**

| Airport                               | Apr 2019        | Apr 2020     | % Change     |
|---------------------------------------|-----------------|--------------|--------------|
| 1 Townsville                          | 138.6           | 7.9          | -94.3        |
| 2 Cairns                              | 351.6           | 7.4          | -97.9        |
| 3 Mackay                              | 69.3            | 7.2          | -89.6        |
| 4 Port Hedland                        | 31.7            | 5.1          | -84.0        |
| 5 Darwin                              | 141.5           | 4.5          | -96.8        |
| 6 Newman                              | 29.3            | 3.9          | -86.5        |
| 7 Mount Isa                           | 17.8            | 3.8          | -78.8        |
| 8 Karratha                            | 39.6            | 3.3          | -91.7        |
| 9 Kalgoorlie                          | 22.3            | 3.1          | -86.0        |
| 10 Alice Springs                      | 47.3            | 3.0          | -93.6        |
| 11 Rockhampton                        | 45.7            | 2.5          | -94.5        |
| 12 Broome                             | 32.8            | 1.6          | -95.2        |
| 13 Gladstone                          | 20.5            | 1.2          | -94.3        |
| 14 Kununurra                          | 8.9             | 1.2          | -87.0        |
| 15 Launceston                         | 129.0           | 0.8          | -99.4        |
| 16 Dubbo                              | 16.9            | 0.7          | -95.8        |
| 17 Port Lincoln                       | 14.5            | 0.6          | -95.9        |
| 18 Bundaberg                          | 12.6            | 0.6          | -95.5        |
| 19 Mildura                            | 20.5            | 0.5          | -97.5        |
| 20 Thursday Island                    | 8.7             | 0.5          | -94.8        |
| 21 Albury                             | 21.1            | 0.4          | -97.9        |
| 22 Newcastle                          | 107.7           | 0.4          | -99.6        |
| 23 Ballina                            | 48.0            | 0.4          | -99.2        |
| 24 Longreach                          | 3.7             | 0.4          | -90.1        |
| 25 Weipa                              | 6.6             | 0.4          | -94.5        |
| 26 Wagga Wagga                        | 16.6            | 0.4          | -97.9        |
| 27 King Island                        | 4.4             | 0.3          | -93.2        |
| 28 Charleville                        | 1.7             | 0.3          | -82.9        |
| 29 Hobart                             | 234.5           | NA           | ..           |
| 30 Coffs Harbour                      | 33.9            | NA           | ..           |
| 31 Port Macquarie                     | 17.9            | NA           | ..           |
| 32 Emerald                            | 15.6            | NA           | ..           |
| 33 Paraburdoo                         | 15.3            | NA           | ..           |
| 34 Devonport                          | 12.5            | NA           | ..           |
| 35 Toowoomba Wellcamp                 | 10.1            | NA           | ..           |
| 36 Geraldton                          | 9.2             | NA           | ..           |
| 37 Learmonth                          | 9.0             | NA           | ..           |
| 38 Moranbah                           | 8.8             | NA           | ..           |
| 39 Roma                               | 7.9             | NA           | ..           |
| 40 Olympic Dam                        | 6.4             | NA           | ..           |
| 41 Gove                               | 6.2             | NA           | ..           |
| 42 Albany                             | 5.2             | NA           | ..           |
| 43 Esperance                          | 4.2             | NA           | ..           |
| 44 Cloncurry                          | 3.4             | NA           | ..           |
| 45 Palm Island                        | 2.3             | NA           | ..           |
| 46 Monkey Mia                         | 1.8             | NA           | ..           |
| 47 Mornington Island                  | 1.5             | NA           | ..           |
| 48 Doomadgee                          | 1.4             | NA           | ..           |
| 49 Leonora                            | 0.8             | NA           | ..           |
| 50 Laverton                           | 0.8             | NA           | ..           |
| <b>Total top 50 regional airports</b> | <b>1 817.6</b>  | <b>81.3</b>  | <b>-95.5</b> |
| <b>Total regional airports</b>        | <b>2 105.3</b>  | <b>89.2</b>  | <b>-95.8</b> |
| <b>Total domestic network</b>         | <b>10 298.0</b> | <b>287.4</b> | <b>-97.2</b> |

Note: Airport passenger movement numbers are the sum of passenger arrivals and departures at each airport.

Regional airports are defined as airports which are, according to the Australian Bureau of Statistics

"The Australian Statistical Geography Standard (ASGS)", not based in Major Urban areas.

(NA) Data not available, only one operator was providing RPT service or there was no RPT service reported at airport.



**Table 11: Top fifty regional airports (000s) — passenger movements, annual**

| <b>Airport</b>                        | <b>YE Apr 2019</b> | <b>YE Apr 2020</b> | <b>% Change</b> |
|---------------------------------------|--------------------|--------------------|-----------------|
| 1 Cairns                              | 4 246.9            | 3 640.4            | -14.3           |
| 2 Hobart                              | 2 697.2            | 2 461.6            | -8.7            |
| 3 Darwin                              | 1 722.8            | 1 515.3            | -12.0           |
| 4 Townsville                          | 1 640.3            | 1 501.1            | -8.5            |
| 5 Launceston                          | 1 387.5            | 1 208.2            | -12.9           |
| 6 Newcastle                           | 1 257.9            | 1 119.9            | -11.0           |
| 7 Mackay                              | 855.7              | 805.6              | -5.9            |
| 8 Rockhampton                         | 555.4              | 516.0              | -7.1            |
| 9 Ballina                             | 535.7              | 472.8              | -11.7           |
| 10 Alice Springs                      | 613.3              | 466.1              | -24.0           |
| 11 Karratha                           | 447.7              | 429.1              | -4.1            |
| 12 Ayers Rock                         | 433.5              | 424.2              | -2.1            |
| 13 Hamilton Island                    | 428.1              | 414.0              | -3.3            |
| 14 Proserpine                         | 431.0              | 383.9              | -10.9           |
| 15 Port Hedland                       | 375.3              | 364.5              | -2.9            |
| 16 Broome                             | 410.7              | 360.3              | -12.3           |
| 17 Coffs Harbour                      | 398.3              | 348.9              | -12.4           |
| 18 Newman                             | 318.1              | 319.9              | 0.6             |
| 19 Kalgoorlie                         | 295.0              | 261.0              | -11.5           |
| 20 Mildura                            | 264.9              | 224.5              | -15.2           |
| 21 Albury                             | 255.1              | 223.8              | -12.3           |
| 22 Gladstone                          | 248.3              | 222.7              | -10.3           |
| 23 Mount Isa                          | 214.2              | 214.0              | -0.1            |
| 24 Port Macquarie                     | 214.1              | 194.4              | -9.2            |
| 25 Dubbo                              | 214.5              | 188.0              | -12.4           |
| 26 Emerald                            | 196.0              | 187.6              | -4.3            |
| 27 Wagga Wagga                        | 210.0              | 186.0              | -11.4           |
| 28 Paraburdoo                         | 180.5              | 180.2              | -0.2            |
| 29 Tamworth                           | 187.2              | 169.3              | -9.6            |
| 30 Port Lincoln                       | 168.3              | 157.2              | -6.5            |
| 31 Hervey Bay                         | 160.8              | 150.1              | -6.6            |
| 32 Bundaberg                          | 157.9              | 137.3              | -13.0           |
| 33 Devonport                          | 146.8              | 132.8              | -9.6            |
| 34 Armidale                           | 129.1              | 115.2              | -10.8           |
| 35 Toowoomba Wellcamp                 | 126.7              | 108.0              | -14.8           |
| 36 Kununurra                          | 109.6              | 103.9              | -5.1            |
| 37 Moranbah                           | 108.0              | 102.9              | -4.7            |
| 38 Geraldton                          | 111.5              | 94.2               | -15.5           |
| 39 Roma                               | 90.9               | 87.3               | -4.0            |
| 40 Thursday Island                    | 100.1              | 86.1               | -14.0           |
| 41 Griffith                           | 83.9               | 85.5               | 2.0             |
| 42 Mount Gambier                      | 81.0               | 76.8               | -5.2            |
| 43 Gove                               | 82.2               | 75.6               | -8.0            |
| 44 Orange                             | 79.1               | 74.8               | -5.4            |
| 45 Learmonth                          | 86.1               | 74.3               | -13.7           |
| 46 Whyalla                            | 77.5               | 70.5               | -9.1            |
| 47 Burnie                             | 72.4               | 64.9               | -10.4           |
| 48 Olympic Dam                        | 76.9               | 64.6               | -16.0           |
| 49 Weipa                              | 79.6               | 64.5               | -18.9           |
| 50 Merimbula                          | 69.0               | 58.8               | -14.8           |
| <b>Total top 50 regional airports</b> | <b>23 432.5</b>    | <b>20 988.6</b>    | <b>-10.4</b>    |
| <b>Total regional airports</b>        | <b>24 840.3</b>    | <b>22 242.2</b>    | <b>-10.5</b>    |
| <b>Total domestic network</b>         | <b>121 884.4</b>   | <b>108 502.1</b>   | <b>-11.0</b>    |

Note: Airport passenger movement numbers are the sum of passenger arrivals and departures at each airport.

Regional airports are defined as airports which are, according to the Australian Bureau of Statistics

"The Australian Statistical Geography Standard (ASGS)", not based in Major Urban areas.

## DOMESTIC CHARTER ACTIVITY

**Table 12: Charter passengers carried and aircraft trips - monthly activity**

|                                       | Apr 2019 | Apr 2020 | % Change |
|---------------------------------------|----------|----------|----------|
| Total domestic charter passengers     | 221 676  | 200 369  | -9.6     |
| Total domestic charter aircraft trips | 3 861    | 5 519    | 42.9     |

Note: Helicopter, joyflights and sightseeing charter flights not included.

**Table 13: Charter passengers carried and aircraft trips - annual activity**

|                                       | YE Apr 2019 | YE Apr 2020 | % Change |
|---------------------------------------|-------------|-------------|----------|
| Total domestic charter passengers     | 2 539 404   | 2 828 895   | 11.4     |
| Total domestic charter aircraft trips | 44 284      | 51 004      | 15.2     |

Note: Helicopter, joyflights and sightseeing charter flights not included.

**Table 14: Domestic airports - charter activity - monthly**

|  | Apr 2019 | Apr 2020 | % Change |
|--|----------|----------|----------|
| Total domestic charter passenger movements | 443 352  | 400 738  | -9.6     |
| Total domestic charter aircraft movements  | 7 722    | 11 038   | 42.9     |
| Perth airport charter passenger movements  | 173 034  | 151 312  | -12.6    |
| Perth airport charter aircraft movements   | 2 719    | 3 781    | 39.1     |

Note: Helicopter, joyflights and sightseeing charter flights not included.

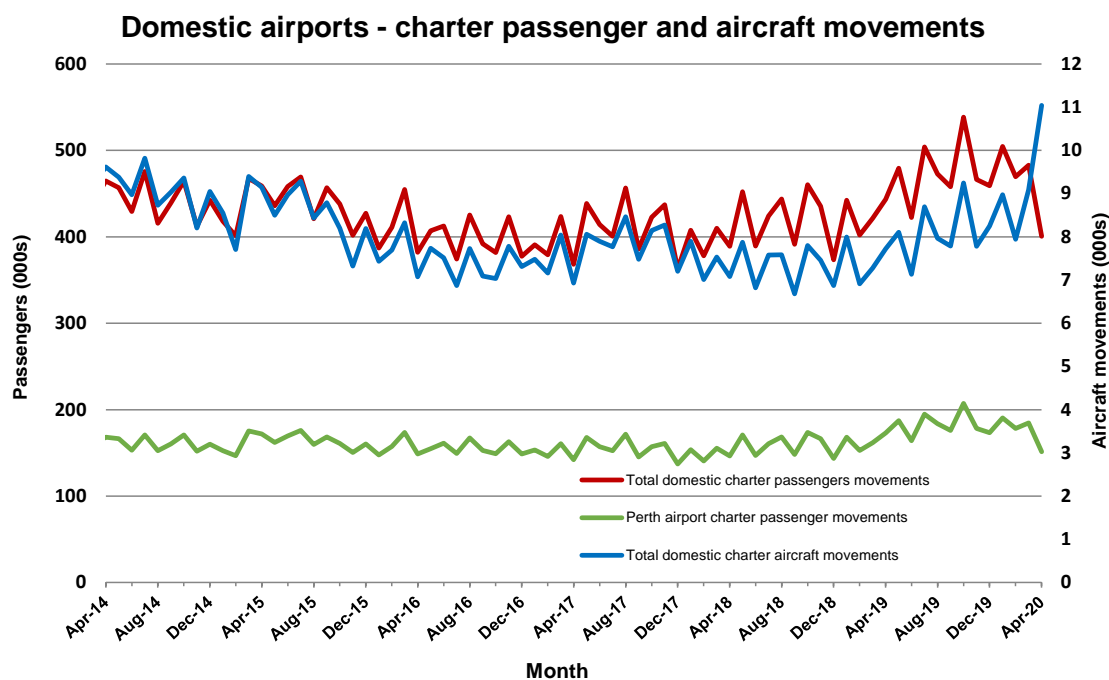
Charter passenger and aircraft movement numbers are the sum of arrivals and departures at each airport.

**Table 15: Domestic airports - charter activity - annual**

|  | YE Apr 2019 | YE Apr 2020 | % Change |
|--|-------------|-------------|----------|
| Total domestic charter passenger movements | 5 078 808   | 5 657 790   | 11.4     |
| Total domestic charter aircraft movements  | 88 568      | 102 008     | 15.2     |
| Perth airport charter passenger movements  | 1 934 746   | 2 169 126   | 12.1     |
| Perth airport charter aircraft movements   | 30 474      | 35 647      | 17.0     |

Note: Helicopter, joyflights and sightseeing charter flights not included.

Charter passenger and aircraft movement numbers are the sum of arrivals and departures at each airport.



## DEFINITIONS

|   |   |
|---|---|
| Aircraft Trips                          | The number of flight stages. A return flight counts as two aircraft trips.  |
| Airport Movements                       | Airport movements (passenger and cargo) are measured once on arrival and once on departure. Each domestic trip generates two movements at airports. For example, a trip from Melbourne to Sydney will be counted twice, as a passenger departure at Melbourne and as a passenger arrival at Sydney. At the national level, the sum of all domestic airport traffic will therefore be equal to twice the number of trips undertaken. |
| Available Seat Kilometres (ASKs)        | Calculated by multiplying the number of seats available on each flight stage, by the distance in kilometres between the ports. The distances used are Great Circle Distances.   |
| City-Pair                               | The ports shown make up the city-pair route. Passenger movements shown for a city pair reflect total traffic in both directions.  |
| Flight Stage                            | The operation of an aircraft from take-off to landing.  |
| Load Factor                             | The total revenue passenger kilometres performed as a percentage of the total available seat kilometres.  |
| Passengers Carried                      | Revenue passengers carried.   |
| Regular Public Transport Services (RPT) | All air service operations in which aircraft are available for the transport of members of the public and are conducted in accordance with fixed schedules. It does not include charter or other non-scheduled operations.  |
| Revenue Passengers                      | All passengers paying any fare. Frequent flyer redemption travellers are regarded as revenue passengers.  |
| Revenue Passenger Kilometres (RPKs)     | Calculated by multiplying the number of revenue passengers travelling on each flight stage, by the distance in kilometres between the ports. The distances used are Great Circle Distances.   |
| Traffic on board by stages              | The total of all traffic (revenue passengers) on each flight stage between two directly connected airports.   |
| ..                                      | Data not included   |
| NA                                      | Not applicable  |