



Australian Government

Department of Infrastructure, Transport,
Regional Development, Communications, Sport and the Arts

Bureau of Infrastructure and Transport Research Economics
STATISTICAL REPORT



Aviation

Domestic aviation activity
April 2025

The Department of Infrastructure, Transport, Regional Development, Communications, Sport and the Arts acknowledges the Traditional Custodians of Country of the land on which we work and live.

We recognise and respect the continuing connections to land, waters and communities.

We pay our respects to them and their cultures and to their Elders both past and present and to all Aboriginal and Torres Strait Islander people.

© Commonwealth of Australia 2025

ISSN: 1832 – 1968

BITRE Reference: 2025-070

Ownership of intellectual property rights in this publication

Unless otherwise noted, copyright (and any other intellectual property rights, if any) in this publication is owned by the Commonwealth of Australia (referred to below as the Commonwealth).

Disclaimer

The material contained in this publication is made available on the understanding that the Commonwealth is not providing professional advice, and that users exercise their own skill and care with respect to its use, and seek independent advice if necessary.

The Commonwealth makes no representations or warranties as to the contents or accuracy of the information contained in this publication. To the extent permitted by law, the Commonwealth disclaims liability to any person or organisation in respect of anything done, or omitted to be done, in reliance upon information contained in this publication.

Creative Commons licence

With the exception of (a) the Coat of Arms; and (b) the Department of Infrastructure, Transport, Regional Development, Communications, Sport and the Arts' photos and graphics, copyright in this publication is licensed under a Creative Commons Attribution 3.0 Australia Licence.

Creative Commons Attribution 3.0 Australia Licence is a standard form licence agreement that allows you to copy, communicate and adapt this publication provided that you attribute the work to the Commonwealth and abide by the other licence terms. A summary of the licence terms is available from <http://creativecommons.org/licenses/by/3.0/au/deed.en>.

The full licence terms are available from <http://creativecommons.org/licenses/by/3.0/au/legalcode>.

Use of the Coat of Arms

The Department of the Prime Minister and Cabinet sets the terms under which the Coat of Arms is used. Please refer to the Department's Commonwealth Coat of Arms and Government branding web page <http://www.dpmc.gov.au/guidelines/index.cfm#brand> and, in particular, the Guidelines on the use of the Commonwealth Coat of Arms publication.

An appropriate citation for this report is:

Bureau of Infrastructure and Transport Research Economics (BITRE), 2025, Domestic aviation activity, Statistical Report, BITRE, Canberra ACT.

Contact us

This publication is available in PDF format. All other rights are reserved, including in relation to any Departmental logos or trademarks which may exist. For enquiries regarding the licence and any use of this publication, please contact:

Bureau of Infrastructure and Transport Research Economics (BITRE)
Department of Infrastructure, Transport, Regional Development, Communications, Sport and the Arts
GPO Box 501, Canberra ACT 2601, Australia

Email: avstats@infrastructure.gov.au

Website: www.bitre.gov.au

Inquiries: Marko.Rodic2@infrastructure.gov.au (02) 6136 7995

FOREWORD

This report provides an overview of domestic (including charter) commercial aviation activity in Australia for the month of April 2025.

The data covers revenue passengers carried by Australian-registered operators of scheduled Regular Public Transport (RPT) services over Australian flight stages and fixed-wing charter operators. These estimates include passengers carried between domestic airports on international flights operated by these carriers. The passengers carried refer to traffic on board by stages.

Estimates of passengers and aircraft movements for charter aviation are included in this publication, where BITRE confidentiality standards are met.

Individual routes shown are restricted to those with an average exceeding 8,000 passengers per month over the previous six months where two or more airlines operate in competition.

Information on the total network for the month of April 2025 and on the RPT network for the month of April 2025 is presented on page 2, with estimates for the year ended April 2025 presented on page 3.

Detailed information on individual routes can be found in the RPT summary pages 4-13 of this publication. For the month of April 2025, there are 62 individual routes published.

The top ten airports in terms of RPT passenger movements are shown on page 14.

Data on domestic RPT cargo movements at the top five cargo airports are provided on page 15. The table includes cargo carried on passenger flights operated by the Qantas group (including Jetstar), Virgin Australia, Air North and Skippers as well as the cargo carried by dedicated freighter aircraft operated by Qantas Freight and Team Global Express (formerly Toll).

The long-term trends for the top ten competitive RPT routes are presented graphically on pages 16-25.

Domestic RPT passenger movements at regional airports are shown on pages 26-27.

Tables providing estimates of domestic charter aviation activity are shown on page 28. BITRE confidentiality standards restrict publication of detailed estimates for individual Australian airports, with the exception of Perth Airport.

A list of definitions can be found on page 29.

This report was prepared by the Aviation Statistics Section of the Bureau of Infrastructure and Transport Research Economics with data provided by airlines.

Estimates are included where data were not available and data presented in this publication may contain revisions to previously published data.

Where figures have been rounded, discrepancies may occur between sums of component items and totals, and in percentage changes which are derived from figures prior to rounding.

CONTENTS

Highlights	1
Total network.....	2
RPT network	2
Top competitive routes.....	4
Top ten airports – passenger movements.....	14
Top five airports – cargo movements.....	15
Top ten routes	16
1. Melbourne – Sydney	16
2. Brisbane – Sydney.....	17
3. Brisbane – Melbourne	18
4. Gold Coast – Sydney	19
5. Adelaide – Melbourne	20
6. Gold Coast – Melbourne	21
7. Melbourne – Perth	22
8. Adelaide – Sydney	23
9. Perth – Sydney	24
10. Hobart – Melbourne	25
Top fifty regional airports	26
Domestic charter activity	28
Definitions	29

This page is intentionally left blank.

HIGHLIGHTS

There were 5.45 million passengers carried on Australian domestic commercial aviation (including charter operations) in April 2025, compared with 5.29 million in April 2024 (up 3.1 per cent). This is also an increase of 1.5 per cent on pre-COVID April 2019 passenger numbers (5.37 million).

5.09 million passengers were carried on Regular Public Transport (RPT) flights in April 2025 (excluding charter operations), an increase of 3.2 per cent compared to April 2024.

For the month of April 2025, there were 50.9 thousand RPT aircraft trips, a decrease of 3.3 per cent on April 2024.

For the year ending April 2025 there were 59.31 million RPT passengers, an increase of 1.4 per cent on the year ending April 2024.

RPT revenue passenger kilometres (RPKs) performed were 6.18 billion for the month, compared with 5.90 billion in April 2024 (up 4.7 per cent).

Capacity, measured by available seat kilometres (ASKs), decreased to 6.33 billion in April 2025 compared to 6.50 billion in April 2024 (down 2.6 per cent).

The industry wide load factor (RPKs/ASKs) increased from 77.6 per cent in April 2024 to 82.8 per cent in April 2025. The highest load factor (94.5 per cent) was recorded on the Brisbane - Hobart route while the lowest load factor (53.7 per cent) was recorded on the Kalgoorlie - Perth route.

For the month of April 2025, Melbourne – Sydney was Australia’s busiest RPT route with 675.1 thousand passengers, followed by Brisbane – Sydney with 370.4 thousand passengers and Brisbane – Melbourne with 311.5 thousand passengers.

Sydney was Australia’s busiest domestic airport with 2.14 million passenger movements in April 2025, followed by Melbourne with 2.07 million passenger movements and Brisbane with 1.48 million passenger movements.

Total cargo movements at Australian airports on domestic RPT flights were 25.6 thousand tonnes in April 2025, an increase of 2.5 per cent compared with April 2024.

In April 2025, there were 2.14 million domestic passenger movements through regional airports, an increase of 1.5 per cent from April 2024. Out of the top 50 regional airports, the strongest increase was recorded at Hervey Bay Airport (up 24.6 per cent on April 2024), while the largest decrease was recorded at Albury Airport (down 25.4 per cent on April 2024).

Fixed-wing charter operators carried 367.3 thousand passengers in April 2025, an increase of 0.9 per cent compared with April 2024. Perth Airport accounted for 36.1 per cent of all charter passengers in Australia.

TOTAL NETWORK

Summary of monthly commercial aviation activity

	Apr 2024	Apr 2025	% Change
Total passengers carried (millions)	5.29	5.45	3.1
Aircraft trips (000s)	58.8	57.1	-3.0

Note: Regular Public Transport and charter aviation activity
Helicopter, joy flights and sightseeing charter flights not included.

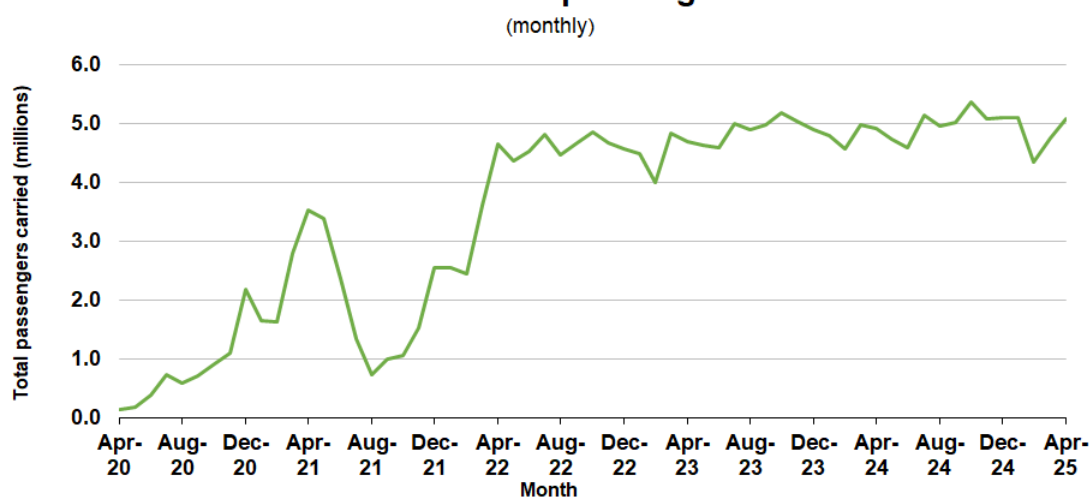
RPT NETWORK

Summary of monthly RPT activity

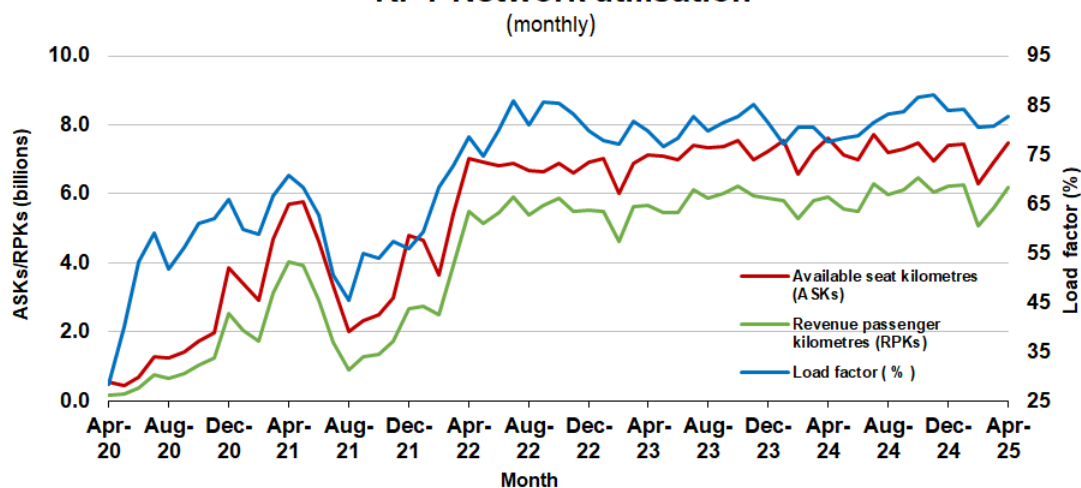
	Apr 2024	Apr 2025	% Change
Total passengers carried (millions)	4.93	5.09	3.2
Revenue passenger kilometres (billions)	5.90	6.18	4.7
Available seats (millions)	6.50	6.33	-2.6
Available seat kilometres (billions)	7.61	7.47	-1.8
Load factor %	77.6	82.8	5.2 *
Aircraft trips (000s)	52.6	50.9	-3.3

* percentage point difference

Domestic RPT passenger traffic



RPT Network utilisation



TOTAL NETWORK

Summary of annual commercial aviation activity

	YE Apr 2024	YE Apr 2025	% Change
Total passengers carried (millions)	62.72	63.58	1.4
Aircraft trips (000s)	690.7	677.4	-1.9

Note: Regular Public Transport and charter aviation activity
Helicopter, joy flights and sightseeing charter flights not included.

RPT NETWORK

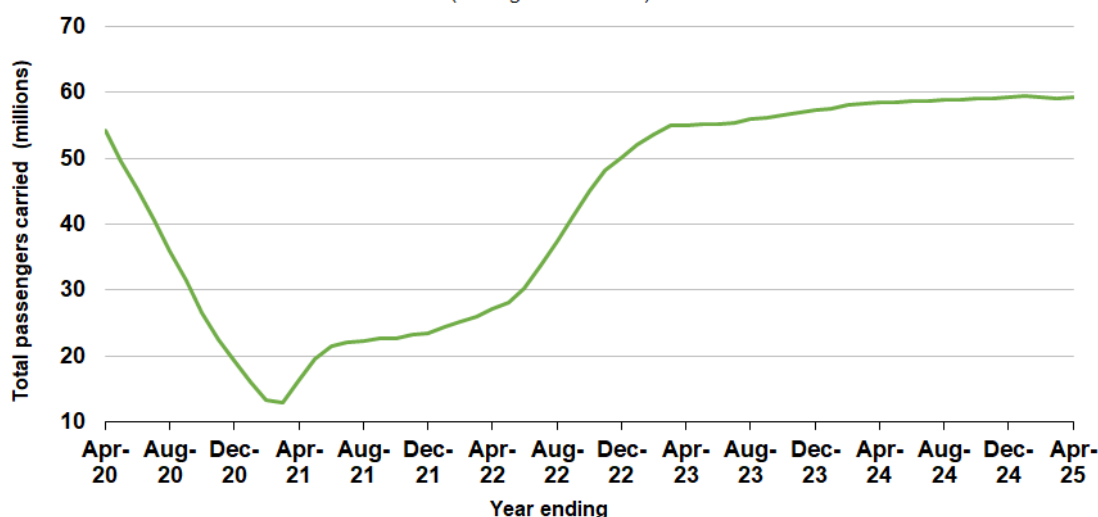
Summary of annual RPT activity

	YE Apr 2024	YE Apr 2025	% Change
Total passengers carried (millions)	58.51	59.31	1.4
Revenue passenger kilometres (billions)	69.83	71.29	2.1
Available seats (millions)	74.74	73.46	-1.7
Available seat kilometres (billions)	86.91	86.27	-0.7
Load factor %	80.3	82.6	2.3 *
Aircraft trips (000s)	618.6	605.1	-2.2

* percentage point difference

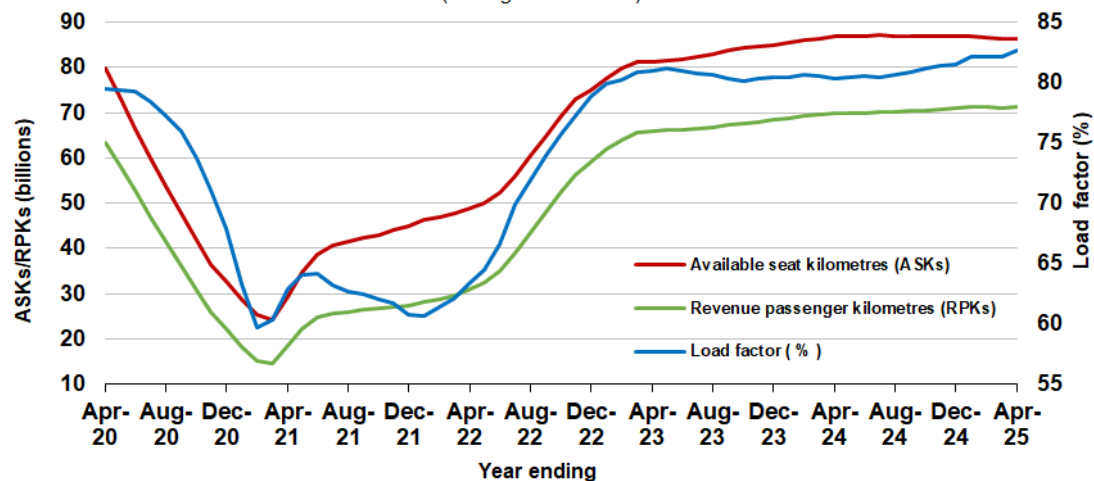
Domestic RPT passenger traffic

(moving annual totals)



RPT Network utilisation

(moving annual totals)



TOP COMPETITIVE ROUTES

Table 1: Passengers carried (000s) — annual activity

	City-Pair	YE Apr 2024	YE Apr 2025	% Change
1	Melbourne - Sydney	7 862.1	8 051.0	2.4
2	Brisbane - Sydney	4 309.4	4 363.6	1.3
3	Brisbane - Melbourne	3 356.8	3 550.9	5.8
4	Gold Coast - Sydney	2 507.9	2 456.8	-2.0
5	Adelaide - Melbourne	2 334.1	2 325.4	-0.4
6	Gold Coast - Melbourne	2 244.4	2 132.3	-5.0
7	Melbourne - Perth	1 958.2	2 048.2	4.6
8	Adelaide - Sydney	1 837.3	1 884.2	2.6
9	Perth - Sydney	1 614.6	1 688.3	4.6
10	Hobart - Melbourne	1 342.2	1 400.4	4.3
11	Brisbane - Cairns	1 255.7	1 319.5	5.1
12	Brisbane - Perth	1 024.5	1 114.0	8.7
13	Canberra - Melbourne	1 020.9	988.4	-3.2
14	Brisbane - Townsville	875.5	958.4	9.5
15	Cairns - Sydney	901.1	918.1	1.9
16	Adelaide - Brisbane	858.3	861.7	0.4
17	Launceston - Melbourne	851.7	857.8	0.7
18	Cairns - Melbourne	834.5	834.5	0.0
19	Hobart - Sydney	759.8	825.7	8.7
20	Brisbane - Mackay	727.5	774.1	6.4
21	Sunshine Coast - Sydney	770.0	773.6	0.5
22	Melbourne - Sunshine Coast	782.0	719.7	-8.0
23	Adelaide - Perth	668.4	708.2	6.0
24	Brisbane - Canberra	629.7	640.1	1.6
25	Canberra - Sydney	613.0	636.9	3.9
26	Karratha - Perth	563.4	630.2	11.8
27	Brisbane - Rockhampton	521.3	601.5	15.4
28	Brisbane - Newcastle	502.0	513.2	2.2
29	Ballina - Sydney	523.2	512.9	-2.0
30	Perth - Port Hedland	474.3	478.7	0.9
31	Melbourne - Newcastle	434.6	464.3	6.8
32	Newman - Perth	370.9	420.0	13.2
33	Kalgoorlie - Perth	362.7	370.0	2.0
34	Broome - Perth	362.5	360.2	-0.6
35	Launceston - Sydney	336.8	344.8	2.4
36	Brisbane - Darwin	313.3	337.4	7.7
37	Brisbane - Hobart	292.0	312.3	7.0
38	Darwin - Melbourne	283.3	292.8	3.4
39	Brisbane - Proserpine	271.9	283.0	4.1
40	Adelaide - Gold Coast	268.9	276.0	2.6
41	Hamilton Island - Sydney	243.1	250.2	2.9
42	Brisbane - Gladstone	218.0	222.3	1.9
43	Coffs Harbour - Sydney	210.9	207.2	-1.7
44	Adelaide - Canberra	191.8	189.9	-1.0
45	Brisbane - Emerald	185.4	187.9	1.3
46	Darwin - Perth	170.6	187.2	9.7
47	Canberra - Gold Coast	181.9	175.5	-3.5
48	Dubbo - Sydney	179.5	171.8	-4.3
49	Adelaide - Port Lincoln	172.5	167.4	-2.9
50	Port Macquarie - Sydney	167.5	165.8	-1.0

continued

Table 1: (continued) Passengers carried (000s) — annual activity

	City-Pair	YE Apr 2024	YE Apr 2025	% Change
51	Sydney - Wagga Wagga	156.3	162.5	4.0
52	Brisbane - Hamilton Island	163.8	162.3	-0.9
53	Albury - Sydney	164.7	160.0	-2.8
54	Brisbane - Launceston	146.7	155.3	5.8
55	Melbourne - Mildura	176.9	152.2	-14.0
56	Brisbane - Mount Isa	142.4	151.2	6.2
57	Brisbane - Bundaberg	133.2	141.2	6.0
58	Devonport - Melbourne	120.6	131.7	9.2
59	Geraldton - Perth	101.6	117.5	15.6
60	Ayers Rock - Melbourne	..	115.4	NA
61	Brisbane - Moranbah	111.4	109.6	-1.6
62	Adelaide - Alice Springs	117.4	105.9	-9.8
Total domestic network		58 511.0	59 305.4	1.4

.. Data not available for release.

Table 2: Passengers carried (000s) — monthly activity

	City-Pair	Apr 2024	Apr 2025	% Change
1	Melbourne - Sydney	641.5	675.1	5.2
2	Brisbane - Sydney	336.5	370.4	10.1
3	Brisbane - Melbourne	277.3	311.5	12.3
4	Gold Coast - Sydney	217.4	213.5	-1.8
5	Adelaide - Melbourne	206.0	203.9	-1.1
6	Gold Coast - Melbourne	185.6	184.2	-0.8
7	Melbourne - Perth	170.5	179.4	5.2
8	Adelaide - Sydney	170.4	170.9	0.3
9	Perth - Sydney	131.1	154.3	17.7
10	Hobart - Melbourne	111.9	127.3	13.7
11	Brisbane - Cairns	104.0	113.2	8.9
12	Brisbane - Perth	88.0	99.9	13.5
13	Canberra - Melbourne	85.2	81.8	-3.9
14	Brisbane - Townsville	72.9	79.7	9.3
15	Cairns - Sydney	74.9	76.4	2.0
16	Cairns - Melbourne	66.1	76.1	15.1
17	Launceston - Melbourne	75.4	73.7	-2.3
18	Adelaide - Brisbane	76.9	70.3	-8.6
19	Brisbane - Mackay	59.7	67.8	13.6
20	Hobart - Sydney	67.2	67.0	-0.4
21	Adelaide - Perth	61.7	66.3	7.6
22	Sunshine Coast - Sydney	63.7	63.4	-0.4
23	Melbourne - Sunshine Coast	67.7	59.6	-11.9
24	Karratha - Perth	49.3	57.5	16.7
25	Brisbane - Canberra	49.1	51.6	5.1
26	Brisbane - Rockhampton	45.6	49.4	8.3
27	Canberra - Sydney	49.2	46.0	-6.5
28	Brisbane - Newcastle	41.7	44.5	6.7
29	Ballina - Sydney	43.2	41.4	-4.2
30	Perth - Port Hedland	40.0	41.3	3.2
31	Melbourne - Newcastle	38.9	40.5	4.3
32	Newman - Perth	34.0	38.0	11.9
33	Broome - Perth	28.3	31.8	12.3
34	Kalgoorlie - Perth	29.6	31.4	6.2
35	Launceston - Sydney	29.6	30.7	3.7
36	Brisbane - Darwin	20.8	29.7	42.7
37	Brisbane - Hobart	23.9	27.3	14.0
38	Darwin - Melbourne	24.3	24.7	1.6
39	Brisbane - Proserpine	23.2	24.0	3.6
40	Hamilton Island - Sydney	21.3	22.1	3.5
41	Adelaide - Gold Coast	23.0	21.5	-6.4
42	Brisbane - Gladstone	18.3	17.0	-7.4
43	Coffs Harbour - Sydney	16.9	15.8	-6.3
44	Adelaide - Canberra	15.2	15.6	2.1
45	Brisbane - Emerald	15.1	15.5	2.5
46	Darwin - Perth	13.3	15.0	12.7
47	Canberra - Gold Coast	17.0	14.8	-13.1
48	Brisbane - Hamilton Island	13.0	14.3	9.6
49	Sydney - Wagga Wagga	13.7	13.9	1.7
50	Adelaide - Port Lincoln	15.0	13.7	-8.5

continued

Table 2: (continued) Passengers carried (000s) — monthly activity

	City-Pair	Apr 2024	Apr 2025	% Change
51	Dubbo - Sydney	13.9	13.6	-2.2
52	Port Macquarie - Sydney	13.4	13.4	-0.1
53	Devonport - Melbourne	10.6	13.0	22.9
54	Melbourne - Mildura	14.9	12.6	-15.3
55	Albury - Sydney	12.5	12.4	-0.8
56	Brisbane - Launceston	13.0	12.1	-7.0
57	Brisbane - Mount Isa	11.4	12.1	6.2
58	Brisbane - Bundaberg	11.3	10.9	-3.1
59	Geraldton - Perth	8.9	10.1	13.1
60	Adelaide - Alice Springs	9.3	9.6	3.2
61	Ayers Rock - Melbourne	..	9.2	NA
62	Brisbane - Moranbah	9.0	8.4	-7.1
Total domestic network		4 926.3	5 086.1	3.2

.. Data not available for release.

Table 3: Available seats (000s) — monthly activity

	City-Pair	Apr 2024	Apr 2025	% Change
1	Melbourne - Sydney	825.3	811.4	-1.7
2	Brisbane - Sydney	434.9	435.2	0.1
3	Brisbane - Melbourne	368.9	367.5	-0.4
4	Gold Coast - Sydney	263.2	260.8	-0.9
5	Adelaide - Melbourne	247.4	243.9	-1.4
6	Gold Coast - Melbourne	218.7	222.8	1.9
7	Melbourne - Perth	213.0	199.0	-6.6
8	Adelaide - Sydney	211.2	206.6	-2.1
9	Perth - Sydney	157.1	168.7	7.4
10	Hobart - Melbourne	136.9	143.8	5.1
11	Brisbane - Cairns	141.3	137.6	-2.6
12	Brisbane - Perth	107.0	111.8	4.4
13	Canberra - Melbourne	117.1	110.5	-5.7
14	Brisbane - Townsville	97.6	96.6	-1.0
15	Cairns - Sydney	97.1	91.5	-5.8
16	Cairns - Melbourne	83.6	93.1	11.3
17	Launceston - Melbourne	93.9	82.2	-12.5
18	Adelaide - Brisbane	97.3	80.1	-17.7
19	Brisbane - Mackay	78.8	87.9	11.6
20	Hobart - Sydney	84.8	76.2	-10.1
21	Adelaide - Perth	73.9	76.5	3.6
22	Sunshine Coast - Sydney	76.2	75.3	-1.3
23	Melbourne - Sunshine Coast	82.6	69.3	-16.1
24	Karratha - Perth	72.9	81.2	11.3
25	Brisbane - Canberra	70.0	67.6	-3.4
26	Brisbane - Rockhampton	61.2	59.1	-3.5
27	Canberra - Sydney	88.4	75.0	-15.2
28	Brisbane - Newcastle	52.6	54.4	3.3
29	Ballina - Sydney	52.1	48.7	-6.6
30	Perth - Port Hedland	63.9	64.2	0.5
31	Melbourne - Newcastle	47.1	46.7	-0.8
32	Newman - Perth	55.6	61.5	10.5
33	Broome - Perth	43.7	42.1	-3.7
34	Kalgoorlie - Perth	56.0	58.5	4.4
35	Launceston - Sydney	35.9	34.2	-4.9
36	Brisbane - Darwin	24.2	36.0	48.8
37	Brisbane - Hobart	29.7	28.9	-2.6
38	Darwin - Melbourne	31.4	31.5	0.4
39	Brisbane - Proserpine	27.7	27.1	-2.1
40	Hamilton Island - Sydney	28.0	26.7	-4.5
41	Adelaide - Gold Coast	25.8	24.5	-4.9
42	Brisbane - Gladstone	27.8	25.7	-7.7
43	Coffs Harbour - Sydney	22.4	20.1	-10.3
44	Adelaide - Canberra	21.0	21.7	3.6
45	Brisbane - Emerald	22.7	22.8	0.6
46	Darwin - Perth	18.1	20.3	12.4
47	Canberra - Gold Coast	19.7	17.0	-13.7
48	Brisbane - Hamilton Island	17.0	18.3	7.8
49	Sydney - Wagga Wagga	21.6	18.8	-12.8
50	Adelaide - Port Lincoln	23.4	21.3	-8.9

continued

Table 3: (continued) Available seats (000s) — monthly activity

	City-Pair	Apr 2024	Apr 2025	% Change
51	Dubbo - Sydney	24.0	20.8	-13.3
52	Port Macquarie - Sydney	19.9	18.1	-8.7
53	Devonport - Melbourne	14.3	17.8	24.2
54	Melbourne - Mildura	20.2	17.2	-14.8
55	Albury - Sydney	19.0	16.4	-14.1
56	Brisbane - Launceston	15.8	12.9	-18.1
57	Brisbane - Mount Isa	19.6	20.7	5.7
58	Brisbane - Bundaberg	18.5	16.5	-10.8
59	Geraldton - Perth	18.8	17.4	-7.3
60	Adelaide - Alice Springs	14.5	12.9	-11.1
61	Ayers Rock - Melbourne	..	10.1	NA
62	Brisbane - Moranbah	16.8	15.1	-10.1
Total domestic network		6 496.1	6 328.1	-2.6

.. Data not available for release.

Table 4: Load factors (%) — monthly activity

	City-Pair	Apr 2024	Apr 2025	% Point diff
1	Melbourne - Sydney	77.8	83.2	5.4
2	Brisbane - Sydney	77.4	85.1	7.7
3	Brisbane - Melbourne	75.2	84.8	9.6
4	Gold Coast - Sydney	82.6	81.9	-0.7
5	Adelaide - Melbourne	83.3	83.6	0.3
6	Gold Coast - Melbourne	84.8	82.7	-2.1
7	Melbourne - Perth	80.0	90.1	10.1
8	Adelaide - Sydney	80.7	82.7	2.0
9	Perth - Sydney	83.4	91.4	8.0
10	Hobart - Melbourne	81.8	88.5	6.7
11	Brisbane - Cairns	73.6	82.3	8.7
12	Brisbane - Perth	82.3	89.4	7.1
13	Canberra - Melbourne	72.7	74.1	1.4
14	Brisbane - Townsville	74.6	82.4	7.8
15	Cairns - Sydney	77.1	83.4	6.3
16	Cairns - Melbourne	79.1	81.8	2.7
17	Launceston - Melbourne	80.3	89.7	9.4
18	Adelaide - Brisbane	79.0	87.7	8.7
19	Brisbane - Mackay	75.7	77.1	1.4
20	Hobart - Sydney	79.3	87.9	8.6
21	Adelaide - Perth	83.5	86.7	3.2
22	Sunshine Coast - Sydney	83.5	84.2	0.7
23	Melbourne - Sunshine Coast	82.0	86.1	4.1
24	Karratha - Perth	67.5	70.8	3.3
25	Brisbane - Canberra	70.2	76.3	6.1
26	Brisbane - Rockhampton	74.4	83.5	9.1
27	Canberra - Sydney	55.6	61.4	5.8
28	Brisbane - Newcastle	79.3	81.9	2.6
29	Ballina - Sydney	82.9	85.1	2.2
30	Perth - Port Hedland	62.6	64.3	1.7
31	Melbourne - Newcastle	82.5	86.7	4.2
32	Newman - Perth	61.1	61.9	0.8
33	Broome - Perth	64.6	75.4	10.8
34	Kalgoorlie - Perth	52.8	53.7	0.9
35	Launceston - Sydney	82.4	89.8	7.4
36	Brisbane - Darwin	85.8	82.3	-3.5
37	Brisbane - Hobart	80.7	94.5	13.8
38	Darwin - Melbourne	77.4	78.3	0.9
39	Brisbane - Proserpine	83.7	88.6	4.9
40	Hamilton Island - Sydney	76.2	82.6	6.4
41	Adelaide - Gold Coast	89.2	87.8	-1.4
42	Brisbane - Gladstone	65.8	66.0	0.2
43	Coffs Harbour - Sydney	75.4	78.8	3.4
44	Adelaide - Canberra	72.7	71.7	-1.0
45	Brisbane - Emerald	66.5	67.8	1.3
46	Darwin - Perth	73.7	74.0	0.3
47	Canberra - Gold Coast	86.4	87.1	0.7
48	Brisbane - Hamilton Island	76.8	78.0	1.2
49	Sydney - Wagga Wagga	63.5	74.0	10.5
50	Adelaide - Port Lincoln	63.9	64.3	0.4

continued

Table 4: (continued) Load factors (%) — monthly activity

	City-Pair	Apr 2024	Apr 2025	% Point diff
51	Dubbo - Sydney	58.2	65.6	7.4
52	Port Macquarie - Sydney	67.5	73.8	6.3
53	Devonport - Melbourne	74.1	73.4	-0.7
54	Melbourne - Mildura	73.8	73.4	-0.4
55	Albury - Sydney	65.8	76.0	10.2
56	Brisbane - Launceston	82.5	93.7	11.2
57	Brisbane - Mount Isa	58.3	58.5	0.2
58	Brisbane - Bundaberg	60.9	66.2	5.3
59	Geraldton - Perth	47.3	57.8	10.5
60	Adelaide - Alice Springs	64.1	74.5	10.4
61	Ayers Rock - Melbourne	..	91.1	NA
62	Brisbane - Moranbah	53.7	55.5	1.8
	Total domestic network	77.6	82.8	5.2

.. Data not available for release.

Table 5: Aircraft trips ^(a) — monthly activity

	City-Pair	Apr 2024	Apr 2025	% Change
1	Melbourne - Sydney	4 719	4 615	-2.2
2	Brisbane - Sydney	2 620	2 557	-2.4
3	Brisbane - Melbourne	2 205	2 196	-0.4
4	Gold Coast - Sydney	1 468	1 465	-0.2
5	Adelaide - Melbourne	1 493	1 435	-3.9
6	Gold Coast - Melbourne	1 204	1 198	-0.5
7	Melbourne - Perth	1 144	1 124	-1.7
8	Adelaide - Sydney	1 234	1 184	-4.1
9	Perth - Sydney	840	905	7.7
10	Hobart - Melbourne	857	837	-2.3
11	Brisbane - Cairns	943	979	3.8
12	Brisbane - Perth	619	633	2.3
13	Canberra - Melbourne	799	701	-12.3
14	Brisbane - Townsville	705	771	9.4
15	Cairns - Sydney	508	492	-3.1
16	Cairns - Melbourne	439	486	10.7
17	Launceston - Melbourne	698	627	-10.2
18	Adelaide - Brisbane	734	621	-15.4
19	Brisbane - Mackay	573	586	2.3
20	Hobart - Sydney	480	460	-4.2
21	Adelaide - Perth	407	415	2.0
22	Sunshine Coast - Sydney	425	420	-1.2
23	Melbourne - Sunshine Coast	444	362	-18.5
24	Karratha - Perth	443	492	11.1
25	Brisbane - Canberra	563	569	1.1
26	Brisbane - Rockhampton	683	613	-10.2
27	Canberra - Sydney	1 235	1 231	-0.3
28	Brisbane - Newcastle	438	448	2.3
29	Ballina - Sydney	354	312	-11.9
30	Perth - Port Hedland	396	394	-0.5
31	Melbourne - Newcastle	308	305	-1.0
32	Newman - Perth	344	367	6.7
33	Broome - Perth	274	271	-1.1
34	Kalgoorlie - Perth	377	393	4.2
35	Launceston - Sydney	222	216	-2.7
36	Brisbane - Darwin	205	207	1.0
37	Brisbane - Hobart	182	176	-3.3
38	Darwin - Melbourne	178	176	-1.1
39	Brisbane - Proserpine	172	166	-3.5
40	Hamilton Island - Sydney	158	151	-4.4
41	Adelaide - Gold Coast	138	120	-13.0
42	Brisbane - Gladstone	332	292	-12.0
43	Coffs Harbour - Sydney	400	361	-9.8
44	Adelaide - Canberra	193	204	5.7
45	Brisbane - Emerald	342	298	-12.9
46	Darwin - Perth	102	118	15.7
47	Canberra - Gold Coast	110	94	-14.5
48	Brisbane - Hamilton Island	120	138	15.0
49	Sydney - Wagga Wagga	392	332	-15.3
50	Adelaide - Port Lincoln	567	439	-22.6

continued

Table 5: (continued) Aircraft trips ^(a) — monthly activity

	City-Pair	Apr 2024	Apr 2025	% Change
51	Dubbo - Sydney	453	399	-11.9
52	Port Macquarie - Sydney	324	322	-0.6
53	Devonport - Melbourne	312	293	-6.1
54	Melbourne - Mildura	414	330	-20.3
55	Albury - Sydney	362	296	-18.2
56	Brisbane - Launceston	92	74	-19.6
57	Brisbane - Mount Isa	169	189	11.8
58	Brisbane - Bundaberg	300	273	-9.0
59	Geraldton - Perth	206	202	-1.9
60	Adelaide - Alice Springs	168	150	-10.7
61	Ayers Rock - Melbourne	..	58	NA
62	Brisbane - Moranbah	224	200	-10.7
Total domestic network		52 585	50 856	-3.3

(a) Includes RPT cargo flights.

.. Data not available for release.

TOP TEN AIRPORTS – PASSENGER MOVEMENTS

Table 6: Top ten airports, RPT passenger movements (000s) - monthly activity

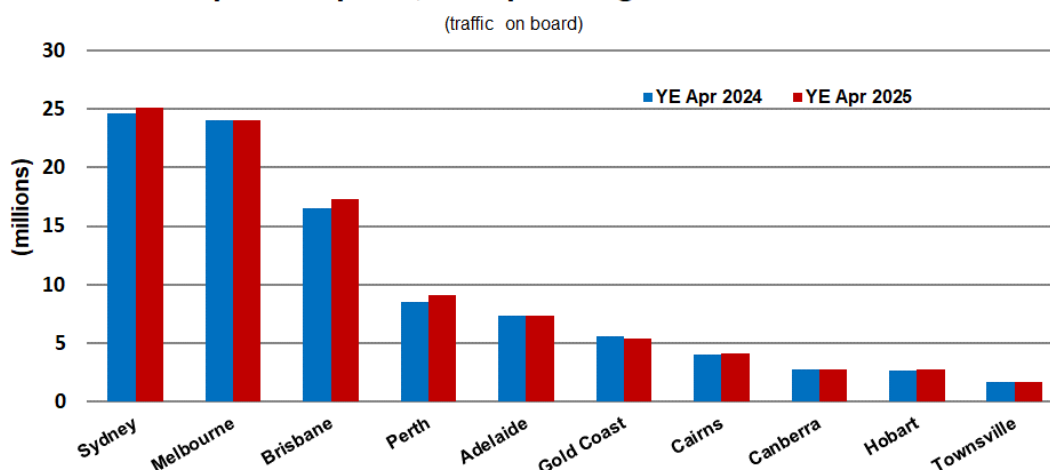
Airport	Apr 2024	Apr 2025	% Change	% of Total
1 Sydney	2 052.7	2 137.1	4.1	21.0
2 Melbourne	2 006.2	2 074.9	3.4	20.4
3 Brisbane	1 350.9	1 476.2	9.3	14.5
4 Perth	739.5	806.6	9.1	7.9
5 Adelaide	651.9	644.9	-1.1	6.3
6 Gold Coast	491.1	468.5	-4.6	4.6
7 Cairns	336.8	354.4	5.2	3.5
8 Hobart	228.7	242.8	6.2	2.4
9 Canberra	228.0	221.5	-2.9	2.2
10 Townsville	136.9	136.0	-0.7	1.3
Total top ten airports	8 222.7	8 562.8	4.1	84.2
Total domestic network	9 852.6	10 172.2	3.2	100.0

Table 7: Top ten airports, RPT passenger movements (000s) - annual activity

Airport	YE Apr 2024	YE Apr 2025	% Change	% of Total
1 Sydney	24 685.5	25 149.8	1.9	21.2
2 Melbourne	24 017.3	24 076.1	0.2	20.3
3 Brisbane	16 530.4	17 281.5	4.5	14.6
4 Perth	8 543.0	9 072.4	6.2	7.6
5 Adelaide	7 303.9	7 381.6	1.1	6.2
6 Gold Coast	5 610.9	5 393.9	-3.9	4.5
7 Cairns	4 050.2	4 112.8	1.5	3.5
8 Canberra	2 793.8	2 773.0	-0.7	2.3
9 Hobart	2 654.9	2 770.3	4.3	2.3
10 Townsville	1 695.2	1 655.9	-2.3	1.4
Total top ten airports	97 885.3	99 667.2	1.8	84.0
Total domestic network	117 022.1	118 610.8	1.4	100.0

Note: Airport passenger movement numbers are the sum of passenger arrivals and departures at each airport.

Top ten airports, RPT passenger movements



TOP FIVE AIRPORTS – CARGO MOVEMENTS

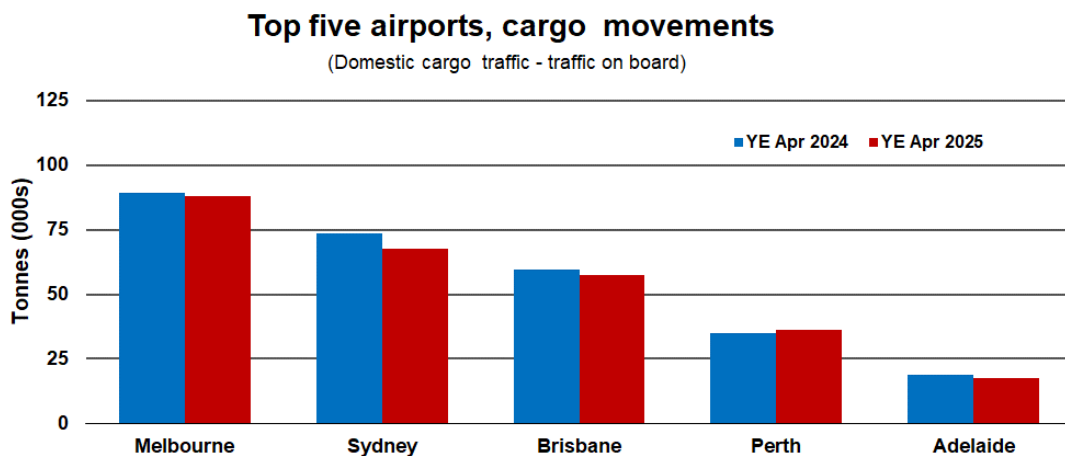
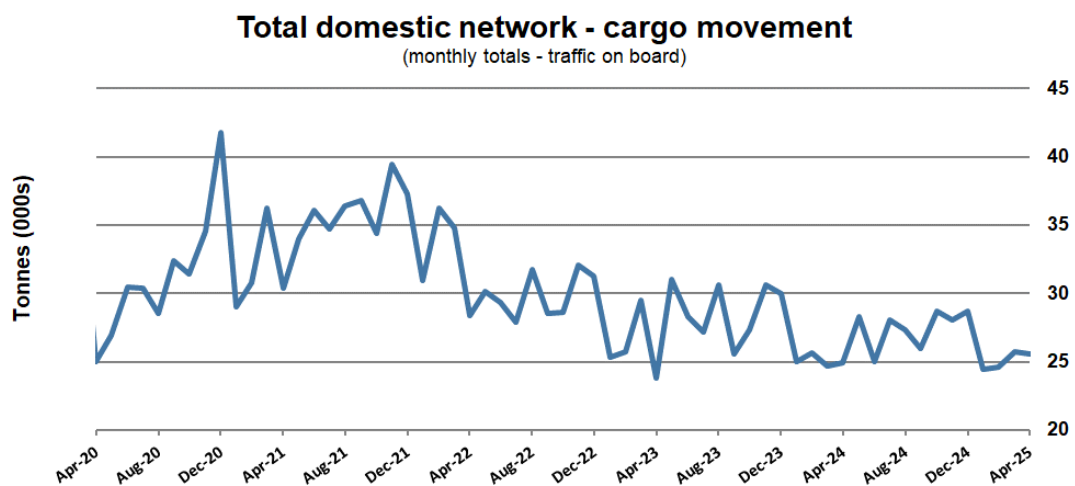
Table 8: Top five airports, domestic RPT cargo movements (000s tonnes) - monthly activity

Airport	Apr 2024	Apr 2025	% Change	% of Total
1 Melbourne	6.8	7.0	2.6	27.4
2 Sydney	5.1	5.4	6.1	21.2
3 Brisbane	4.7	4.5	-3.7	17.7
4 Perth	2.9	2.9	0.2	11.3
5 Adelaide	1.4	1.3	-4.9	5.2
Total top five airports	20.9	21.2	1.2	82.7
Total domestic network	24.9	25.6	2.5	100.0

Table 9: Top five airports, domestic RPT cargo movements (000s tonnes) - annual activity

Airport	YE Apr 2024	YE Apr 2025	% Change	% of Total
1 Melbourne	89.5	88.0	-1.7	27.5
2 Sydney	73.7	67.8	-8.1	21.2
3 Brisbane	59.5	57.3	-3.8	17.9
4 Perth	35.2	36.2	3.1	11.3
5 Adelaide	18.6	17.5	-6.3	5.5
Total top five airports	276.5	266.8	-3.5	83.3
Total domestic network	331.0	320.4	-3.2	100.0

Note: Airport cargo tonnes are the sum of cargo tonnes on arrivals and departures at each airport.



Note: Airport cargo tonnes are the sum of cargo tonnes on arrivals and departures at each airport.

TOP TEN ROUTES

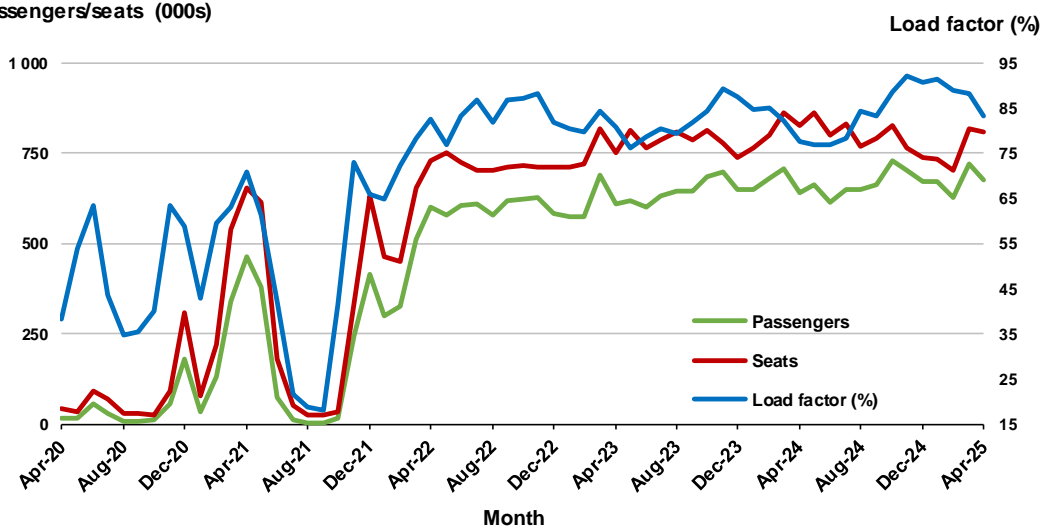
1. Melbourne - Sydney

Monthly data

	Apr 2024	Apr 2025	% Change
Passengers carried (000s)	641.5	675.1	5.2
Seats (000s)	825.3	811.4	-1.7
Load factor %	77.8	83.2	5.4 *
Aircraft trips	4 719	4 615	-2.2

* percentage point difference

Passengers/seats (000s)

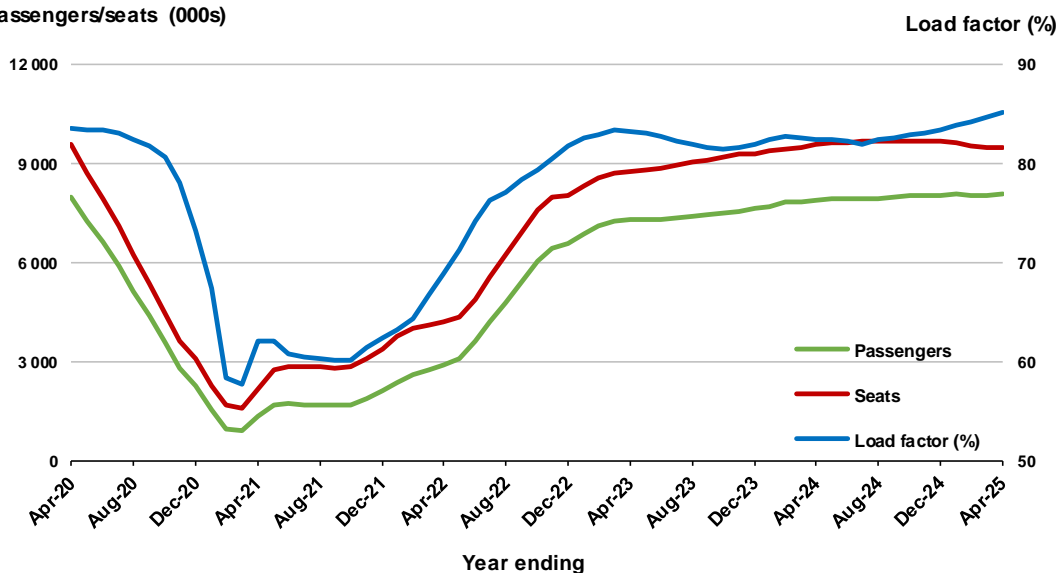


Moving annual data

	YE Apr 2024	YE Apr 2025	% Change
Passengers carried (000s)	7 862.1	8 051.0	2.4
Seats (000s)	9 554.2	9 460.3	-1.0
Load factor %	82.3	85.1	2.8 *
Aircraft trips	55 414	54 412	-1.8

* percentage point difference

Passengers/seats (000s)

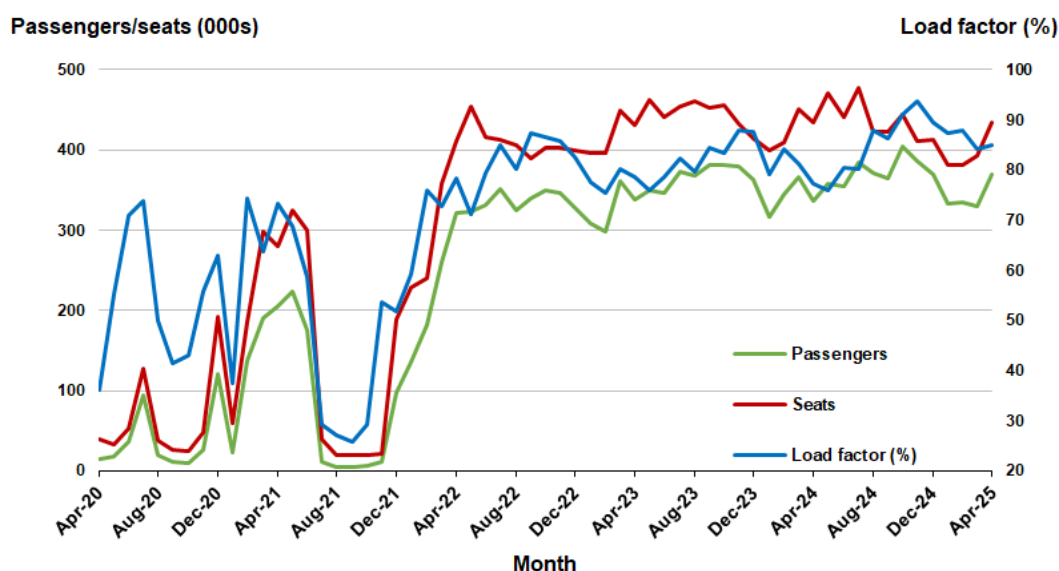


2. Brisbane - Sydney

Monthly data

	Apr 2024	Apr 2025	% Change
Passengers carried (000s)	336.5	370.4	10.1
Seats (000s)	434.9	435.2	0.1
Load factor %	77.4	85.1	7.7 *
Aircraft trips	2 620	2 557	-2.4

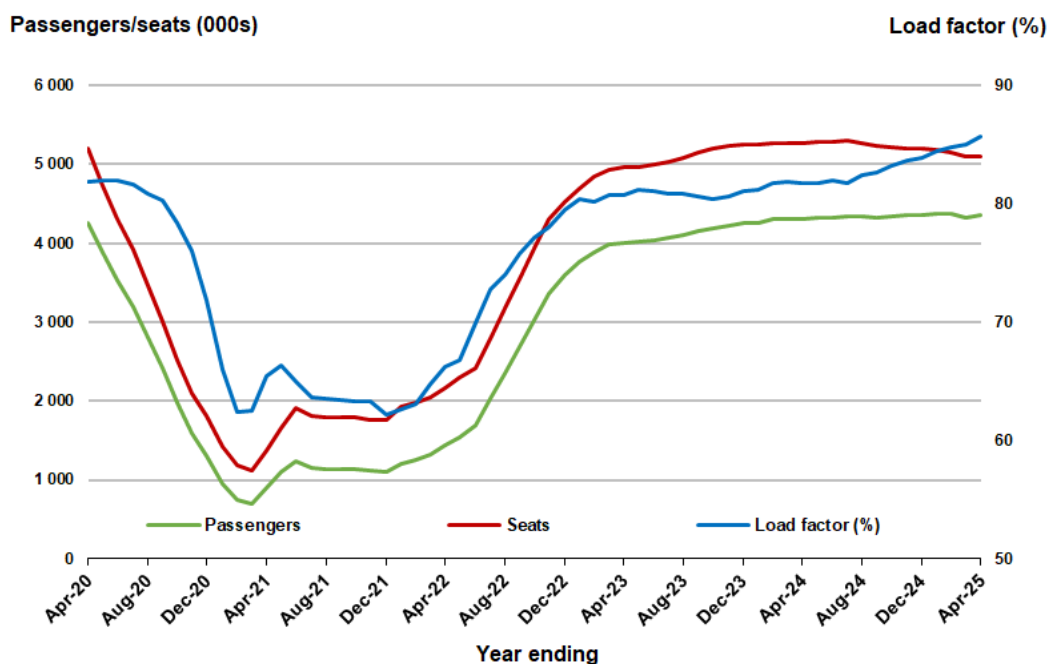
* percentage point difference



Moving annual data

	YE Apr 2024	YE Apr 2025	% Change
Passengers carried (000s)	4 309.4	4 363.6	1.3
Seats (000s)	5 269.6	5 094.0	-3.3
Load factor %	81.8	85.7	3.9 *
Aircraft trips	32 353	30 618	-5.4

* percentage point difference

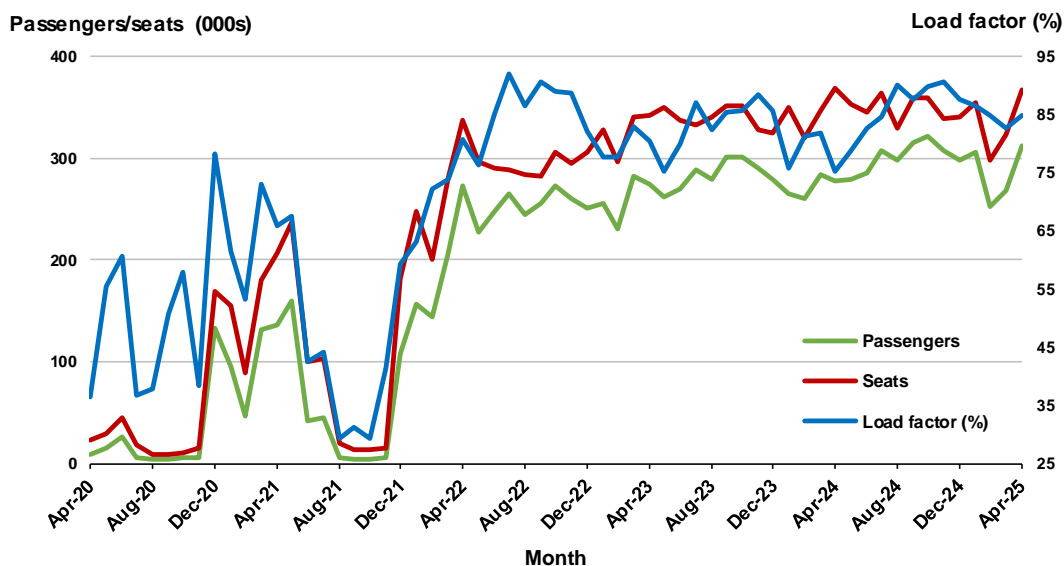


3. Brisbane - Melbourne

Monthly data

	Apr 2024	Apr 2025	% Change
Passengers carried (000s)	277.3	311.5	12.3
Seats (000s)	368.9	367.5	-0.4
Load factor %	75.2	84.8	9.6 *
Aircraft trips	2 205	2 196	-0.4

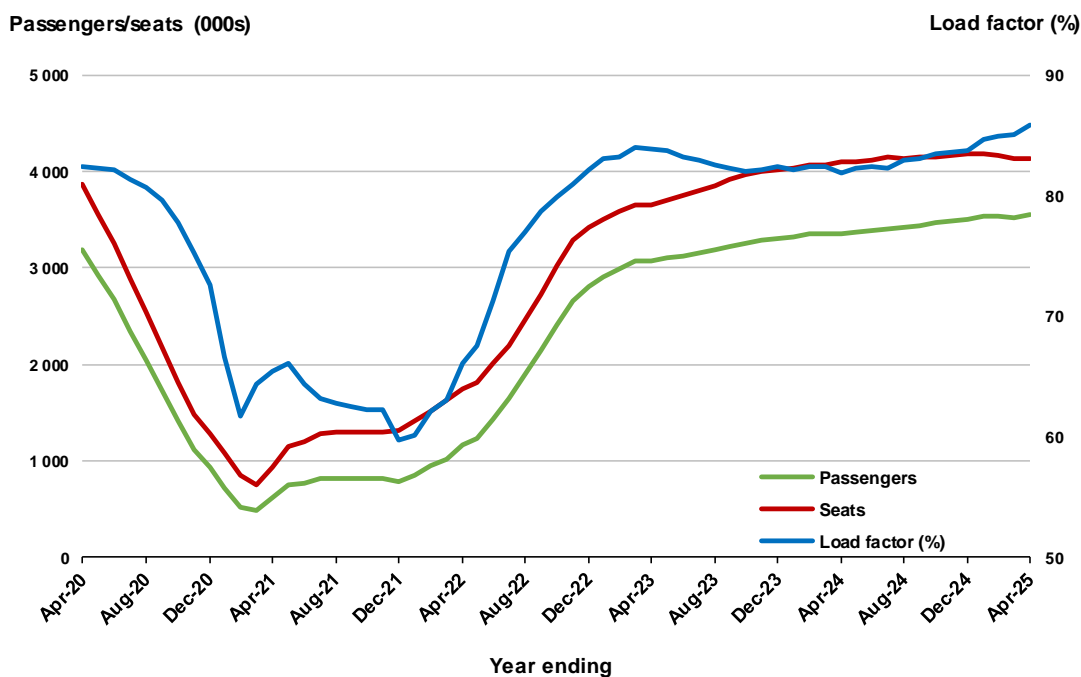
* percentage point difference



Moving annual data

	YE Apr 2024	YE Apr 2025	% Change
Passengers carried (000s)	3 356.8	3 550.9	5.8
Seats (000s)	4 099.1	4 134.9	0.9
Load factor %	81.9	85.9	4.0 *
Aircraft trips	24 690	24 821	0.5

* percentage point difference



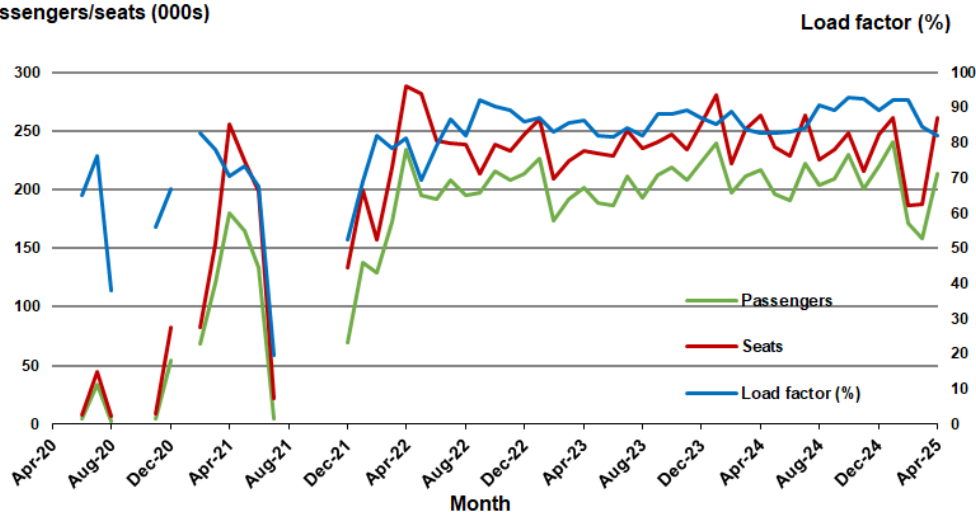
4. Gold Coast - Sydney ^(a)

Monthly data

	Apr 2024	Apr 2025	% Change
Passengers carried (000s)	217.4	213.5	-1.8
Seats (000s)	263.2	260.8	-0.9
Load factor %	82.6	81.9	-0.7 *
Aircraft trips	1 468	1 465	-0.2

* percentage point difference

Passengers/seats (000s)



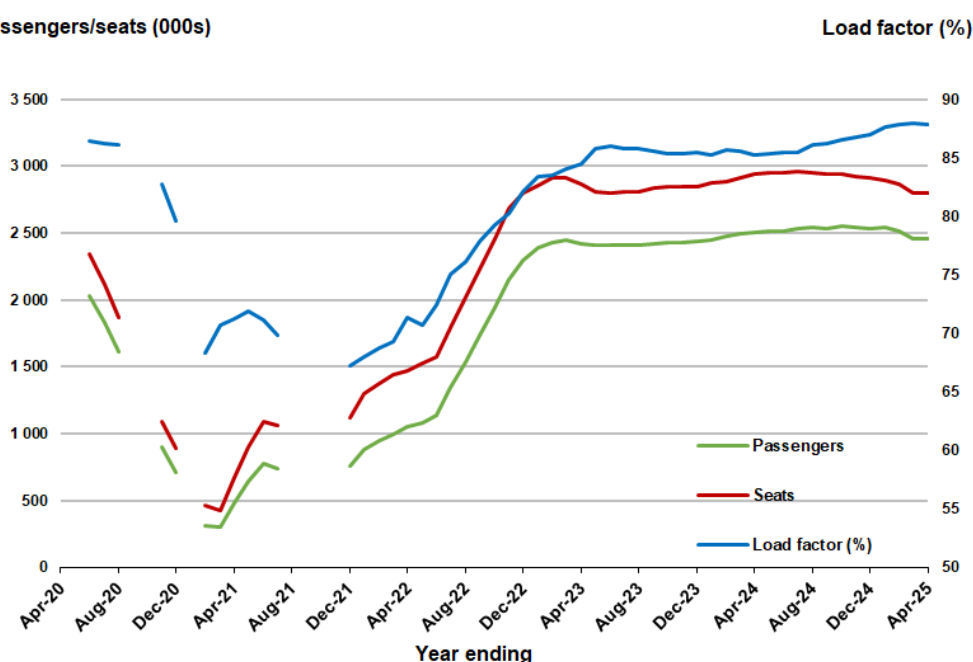
(a) May, September and October 2020 and January and August to November 2021 data not available for release.

Moving annual data

	YE Apr 2024	YE Apr 2025	% Change
Passengers carried (000s)	2 507.9	2 456.8	-2.0
Seats (000s)	2 941.6	2 795.8	-5.0
Load factor %	85.3	87.9	2.6 *
Aircraft trips	16 718	15 838	-5.3

* percentage point difference

Passengers/seats (000s)



(a) May, September and October 2020 and January and August to November 2021 moving annual totals not available for release.

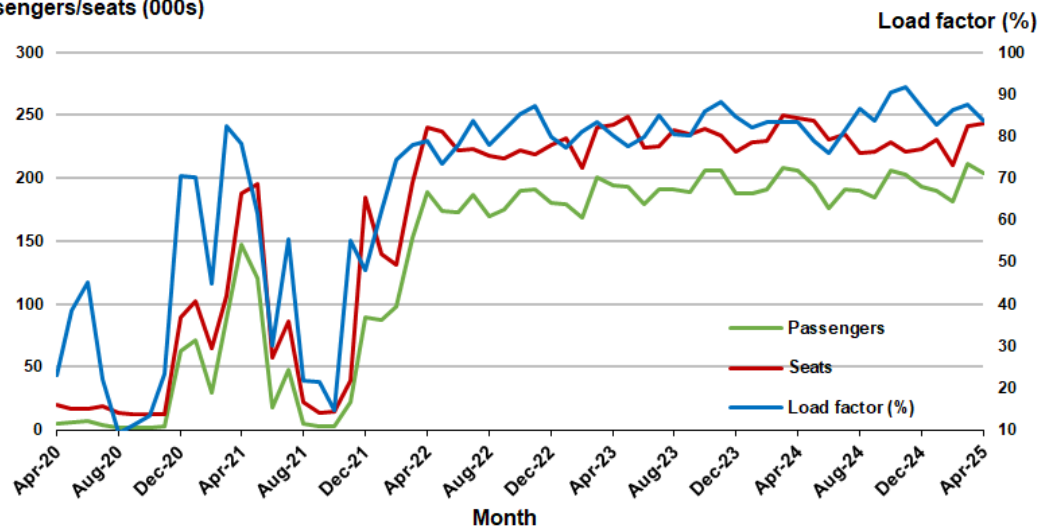
5. Adelaide - Melbourne

Monthly data

	Apr 2024	Apr 2025	% Change
Passengers carried (000s)	206.0	203.9	-1.1
Seats (000s)	247.4	243.9	-1.4
Load factor %	83.3	83.6	0.3 *
Aircraft trips	1 493	1 435	-3.9

* percentage point difference

Passengers/seats (000s)

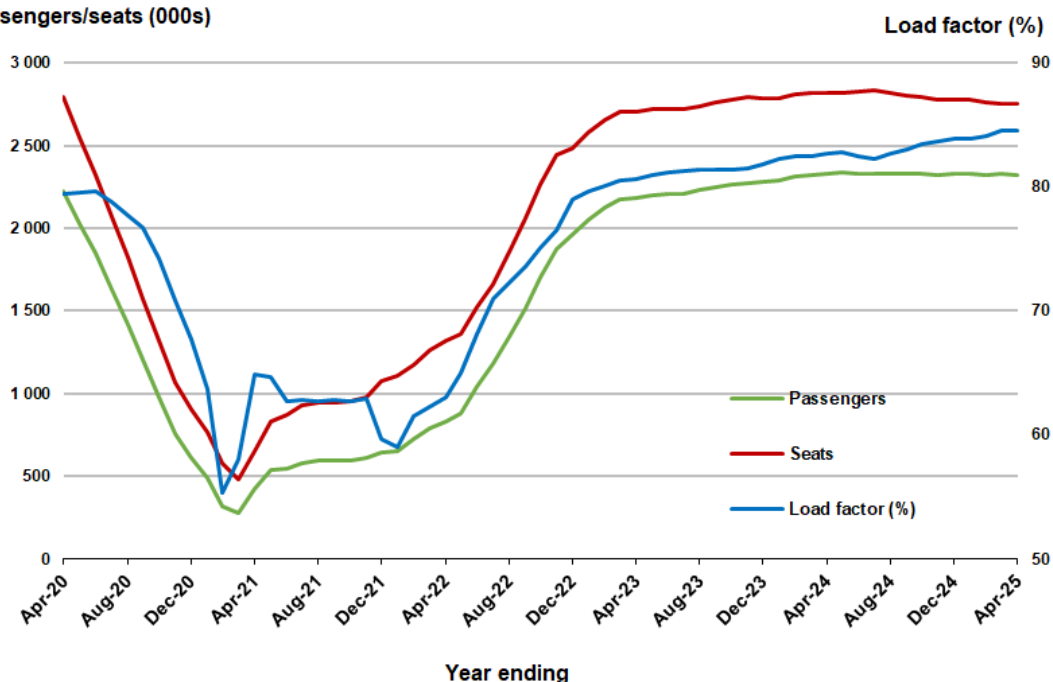


Moving annual data

	YE Apr 2024	YE Apr 2025	% Change
Passengers carried (000s)	2 334.1	2 325.4	-0.4
Seats (000s)	2 821.8	2 750.9	-2.5
Load factor %	82.7	84.5	1.8 *
Aircraft trips	17 248	16 444	-4.7

* percentage point difference

Passengers/seats (000s)



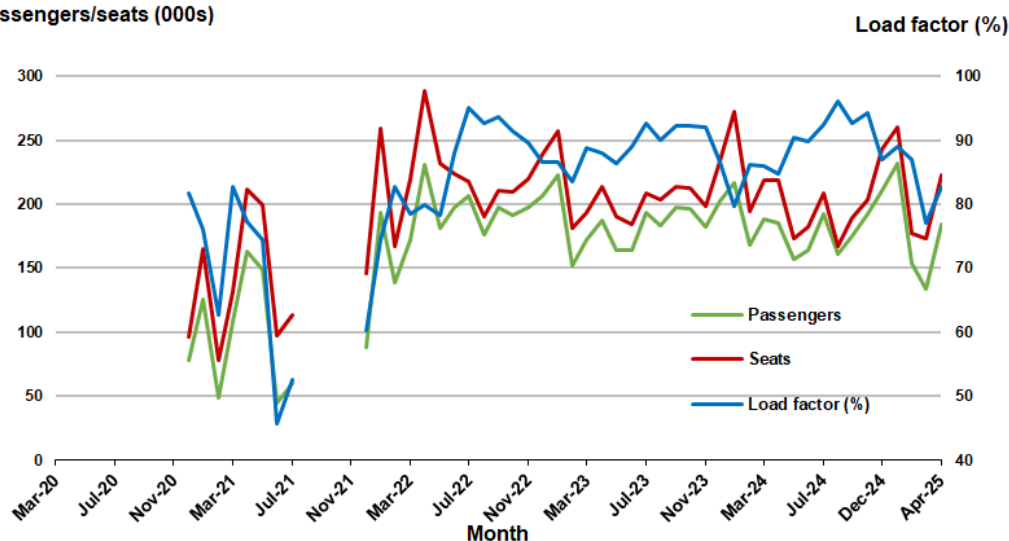
6. Gold Coast - Melbourne ^(a)

Monthly data

	Apr 2024	Apr 2025	% Change
Passengers carried (000s)	185.6	184.2	-0.8
Seats (000s)	218.7	222.8	1.9
Load factor %	84.8	82.7	-2.1 *
Aircraft trips	1 204	1 198	-0.5

* percentage point difference

Passengers/seats (000s)



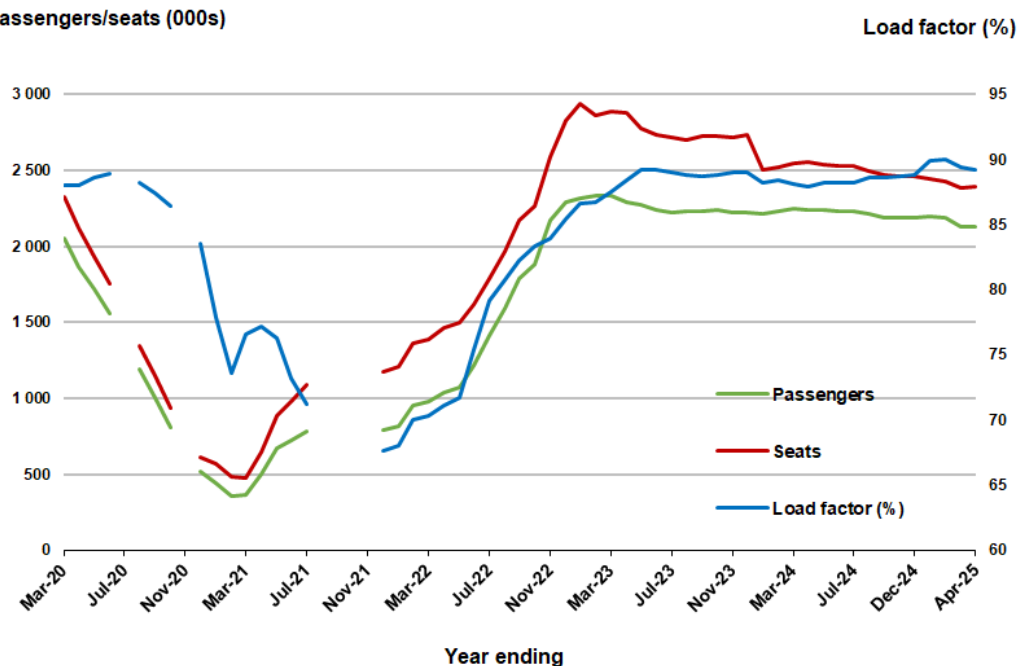
(a) April to November 2020 and August to November 2021 data not available for release

Moving annual data

	YE Apr 2024	YE Apr 2025	% Change
Passengers carried (000s)	2 244.4	2 132.3	-5.0
Seats (000s)	2 553.0	2 390.2	-6.4
Load factor %	87.9	89.2	1.3 *
Aircraft trips	13 899	12 925	-7.0

* percentage point difference

Passengers/seats (000s)



(a) April to November 2020 and August to November 2021 moving annual totals are not available for release

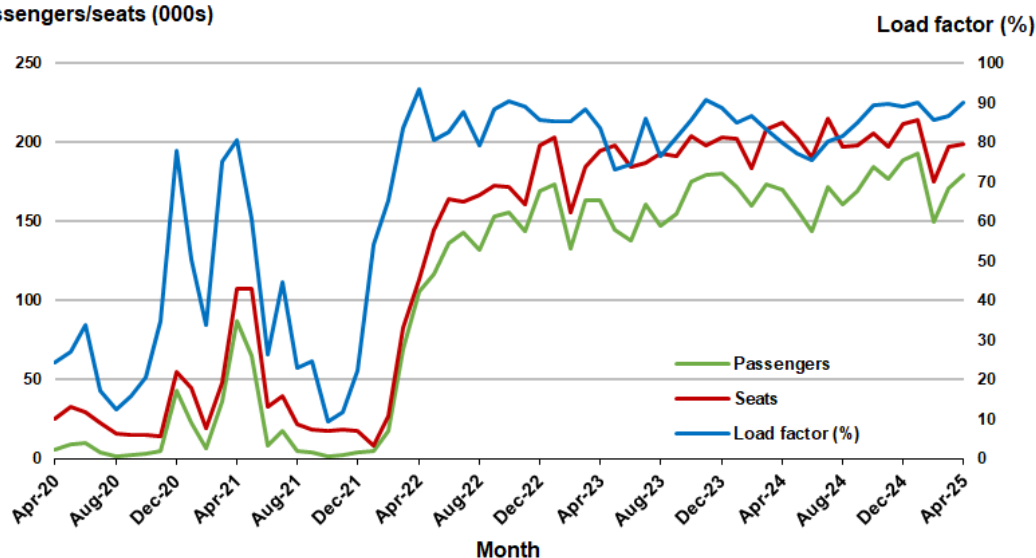
7. Melbourne - Perth

Monthly data

	Apr 2024	Apr 2025	% Change
Passengers carried (000s)	170.5	179.4	5.2
Seats (000s)	213.0	199.0	-6.6
Load factor %	80.0	90.1	10.1 *
Aircraft trips	1 144	1 124	-1.7

* percentage point difference

Passengers/seats (000s)

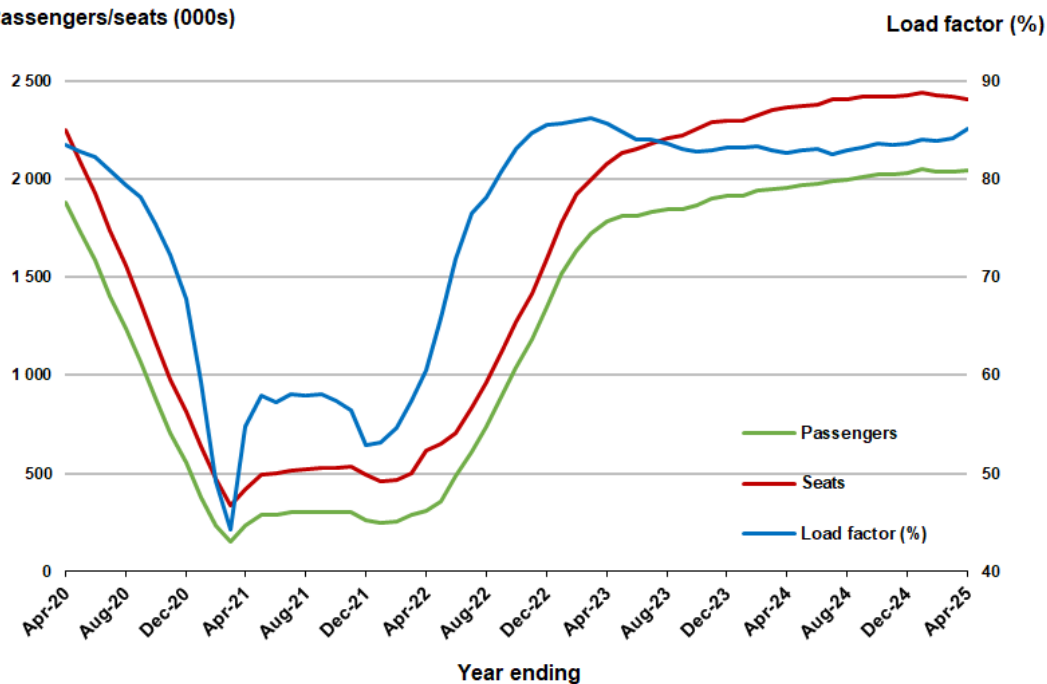


Moving annual data

	YE Apr 2024	YE Apr 2025	% Change
Passengers carried (000s)	1 958.2	2 048.2	4.6
Seats (000s)	2 368.9	2 406.2	1.6
Load factor %	82.7	85.1	2.5 *
Aircraft trips	13 171	13 291	0.9

* percentage point difference

Passengers/seats (000s)

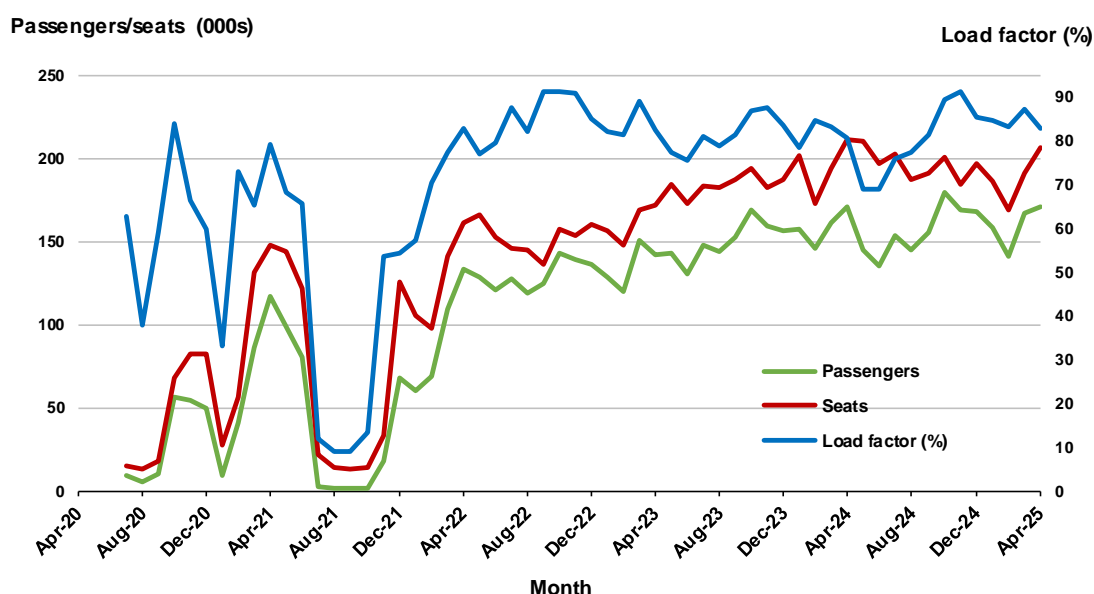


8. Adelaide - Sydney ^(a)

Monthly data

	Apr 2024	Apr 2025	% Change
Passengers carried (000s)	170.4	170.9	0.3
Seats (000s)	211.2	206.6	- 2.1
Load factor %	80.7	82.7	2.0 *
Aircraft trips	1 234	1 184	-4.1

* percentage point difference

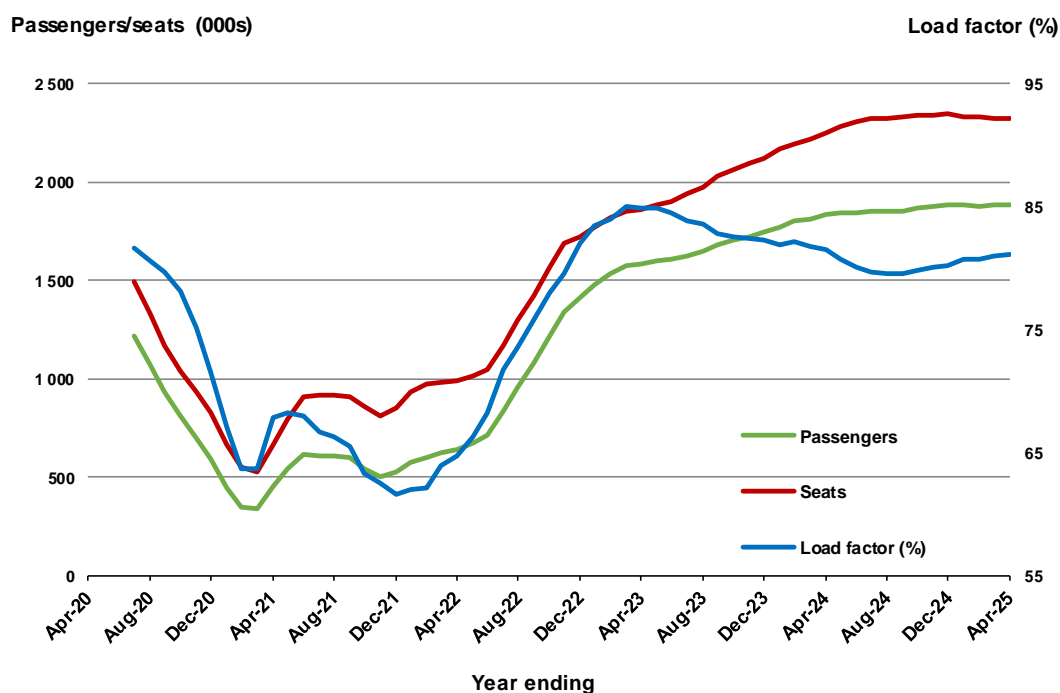


(a) May and June 2020 data not available for release.

Moving annual data

	YE Apr 2024	YE Apr 2025	% Change
Passengers carried (000s)	1 837.3	1 884.2	2.6
Seats (000s)	2 253.1	2 321.7	3.0
Load factor %	81.5	81.2	-0.4 *
Aircraft trips	13 745	13 716	-0.2

* percentage point difference



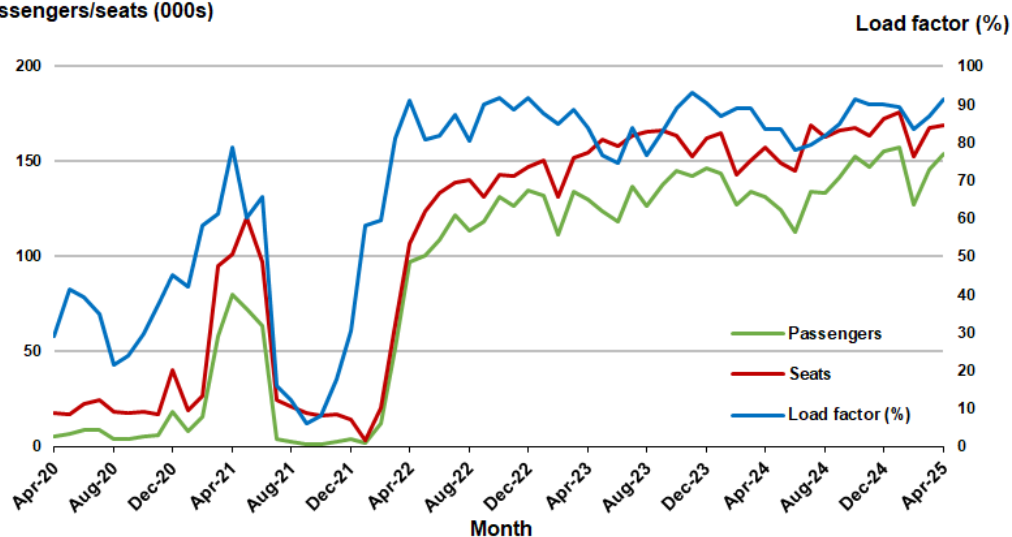
9. Perth - Sydney

Monthly data

	Apr 2024	Apr 2025	% Change
Passengers carried (000s)	131.1	154.3	17.7
Seats (000s)	157.1	168.7	7.4
Load factor %	83.4	91.4	8.0 *
Aircraft trips	840	905	7.7

* percentage point difference

Passengers/seats (000s)

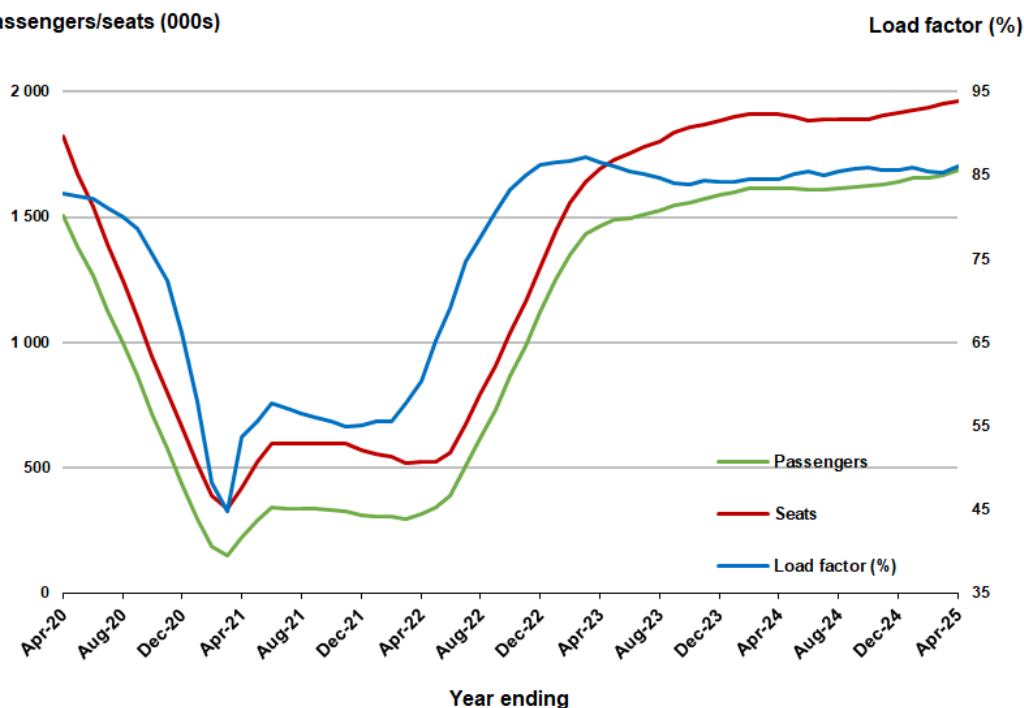


Moving annual data

	YE Apr 2024	YE Apr 2025	% Change
Passengers carried (000s)	1 614.6	1 688.3	4.6
Seats (000s)	1 910.1	1 962.3	2.7
Load factor %	84.5	86.0	1.5 *
Aircraft trips	9 879	10 396	5.2

* percentage point difference

Passengers/seats (000s)

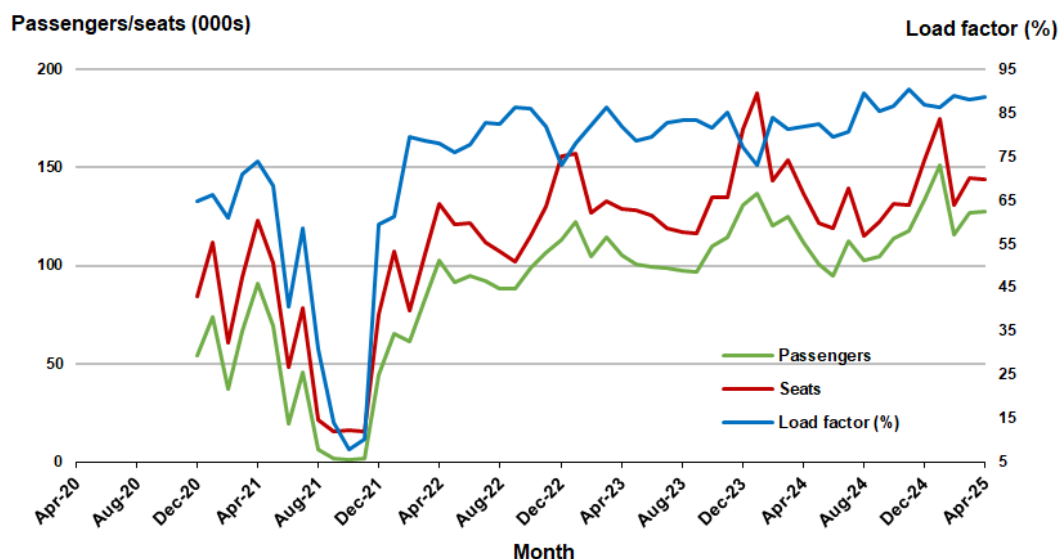


10. Hobart - Melbourne ^(a)

Monthly data

	Apr 2024	Apr 2025	% Change
Passengers carried (000s)	111.9	127.3	13.7
Seats (000s)	136.9	143.8	5.1
Load factor %	81.8	88.5	6.7 *
Aircraft trips	857	837	-2.3

* percentage point difference

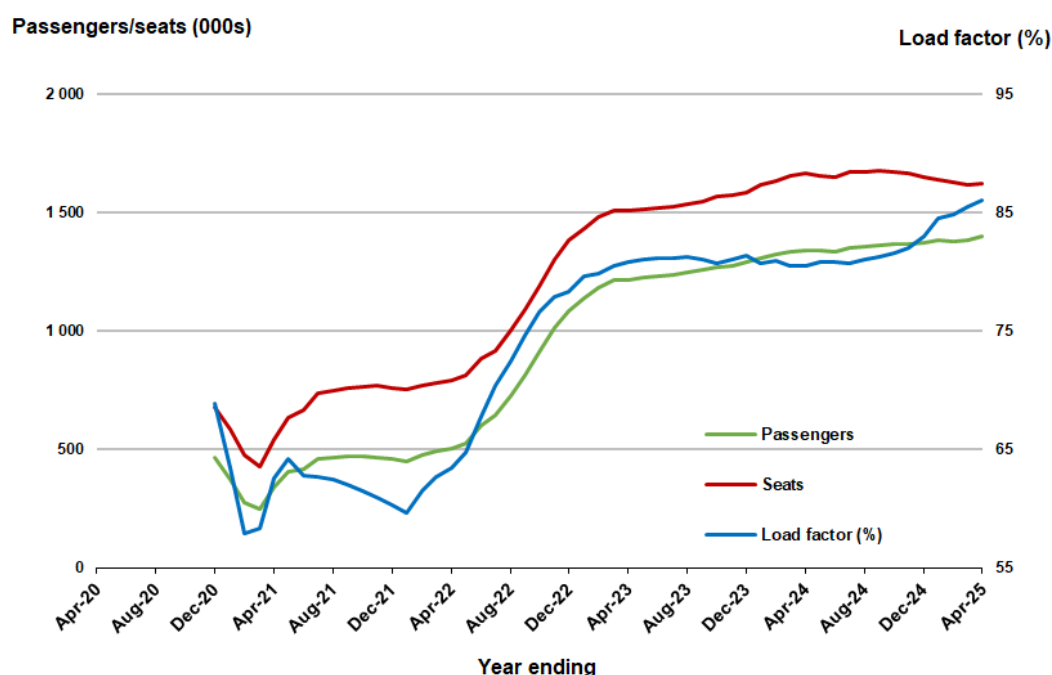


(a) April to November 2020 data not available for release.

Moving annual data

	YE Apr 2024	YE Apr 2025	% Change
Passengers carried (000s)	1 342.2	1 400.4	4.3
Seats (000s)	1 665.9	1 626.3	-2.4
Load factor %	80.6	86.1	5.5 *
Aircraft trips	9 729	9 554	-1.8

* percentage point difference



(a) April to November 2020 moving annual totals are not available for release.

TOP FIFTY REGIONAL AIRPORTS

Table 10: Top fifty regional airports (000s) — passenger movements, monthly

Airport	Apr 2024	Apr 2025	% Change
1 Cairns	336.8	354.4	5.2
2 Hobart	228.7	242.8	6.2
3 Townsville	136.9	136.0	-0.7
4 Darwin	127.8	135.2	5.7
5 Launceston	127.2	119.3	-6.3
6 Newcastle	104.1	100.4	-3.6
7 Mackay	73.8	76.7	4.0
8 Karratha	50.1	58.5	16.8
9 Rockhampton	57.0	52.3	-8.3
10 Ballina	52.4	50.7	-3.2
11 Proserpine	45.0	45.2	0.4
12 Hamilton Island	40.0	43.0	7.7
13 Port Hedland	40.9	42.2	3.3
14 Newman	34.0	38.0	11.8
15 Broome	33.4	36.5	9.2
16 Alice Springs	33.2	32.2	-3.0
17 Kalgoorlie	29.6	31.6	6.7
18 Ayers Rock	24.2	29.9	23.7
19 Paraburdoo	23.7	22.7	-4.2
20 Coffs Harbour	20.7	20.9	0.9
21 Mount Isa	19.5	19.3	-1.4
22 Albury	24.8	18.5	-25.4
23 Wagga Wagga	17.6	18.1	2.8
24 Hervey Bay	14.1	17.6	24.6
25 Gladstone	21.0	17.0	-19.2
26 Dubbo	17.0	16.6	-2.7
27 Emerald	16.2	16.4	1.0
28 Mildura	21.0	15.8	-24.7
29 Port Macquarie	18.9	15.6	-17.4
30 Port Lincoln	15.0	13.7	-8.5
31 Devonport	10.6	13.0	22.6
32 Tamworth	14.9	12.4	-17.0
33 Kununurra	11.6	11.4	-1.7
34 Learmonth	10.2	11.1	8.6
35 Bundaberg	13.9	10.9	-21.2
36 Geraldton	9.3	10.6	13.8
37 Thursday Island	9.4	10.4	11.4
38 Orange	9.5	9.7	2.2
39 Armidale	9.1	9.1	0.0
40 Olympic Dam	8.9	8.5	-4.4
41 Weipa	8.0	8.4	4.6
42 Moranbah	9.0	8.4	-7.1
43 Busselton	7.6	8.0	4.2
44 Burnie	6.7	7.6	13.4
45 Norfolk Island	6.4	6.8	5.3
46 Gove	7.4	6.6	-10.9
47 Griffith	5.8	6.2	8.2
48 Mount Gambier	6.1	5.8	-5.4
49 Merimbula	5.6	5.8	2.4
50 Cloncurry	5.1	5.4	6.7
Total top 50 regional airport	1 979.8	2 013.1	1.7
Total regional airports	2 107.1	2 138.5	1.5
Total domestic network	9 852.6	10 172.2	3.2

Note: Airport passenger movement numbers are the sum of passenger arrivals and departures at each airport.

Regional airports are defined as airports which are, according to Australian Statistical Geography

Standard (ASGS), not based in Major Cities.

Table 11: Top fifty regional airports (000s) — passenger movements, annual

Airport	YE Apr 2024	YE Apr 2025	% Change
1 Cairns	4 050.2	4 112.8	1.5
2 Hobart	2 654.9	2 770.3	4.3
3 Townsville	1 695.2	1 655.9	-2.3
4 Darwin	1 605.9	1 616.1	0.6
5 Launceston	1 407.1	1 419.1	0.9
6 Newcastle	1 199.4	1 182.2	-1.4
7 Mackay	913.9	895.9	-2.0
8 Karratha	571.7	643.0	12.5
9 Rockhampton	658.8	642.7	-2.5
10 Ballina	626.9	616.8	-1.6
11 Proserpine	517.1	507.3	-1.9
12 Port Hedland	485.1	490.5	1.1
13 Hamilton Island	493.1	489.6	-0.7
14 Broome	436.4	444.0	1.7
15 Newman	371.6	421.3	13.4
16 Kalgoorlie	363.0	370.8	2.1
17 Alice Springs	367.5	360.9	-1.8
18 Ayers Rock	272.0	338.6	24.5
19 Paraburdoo	257.5	280.0	8.7
20 Coffs Harbour	274.7	251.8	-8.3
21 Mount Isa	231.8	239.2	3.2
22 Albury	281.4	225.8	-19.8
23 Gladstone	240.8	222.3	-7.7
24 Wagga Wagga	201.1	211.0	4.9
25 Dubbo	215.1	206.0	-4.3
26 Hervey Bay	152.4	200.6	31.6
27 Emerald	196.9	199.0	1.1
28 Mildura	236.3	191.9	-18.8
29 Port Macquarie	234.7	191.6	-18.4
30 Port Lincoln	172.5	167.4	-3.0
31 Tamworth	177.3	160.9	-9.3
32 Bundaberg	166.6	141.3	-15.2
33 Kununurra	138.6	138.7	0.1
34 Devonport	120.8	131.9	9.1
35 Geraldton	105.9	123.9	17.0
36 Thursday Island	109.1	120.7	10.6
37 Orange	108.2	112.2	3.8
38 Learmonth	104.4	110.4	5.7
39 Moranbah	111.5	109.7	-1.6
40 Olympic Dam	104.2	101.5	-2.6
41 Armidale	108.6	101.0	-7.0
42 Weipa	89.6	94.4	5.3
43 Busselton	58.5	94.0	60.8
44 Gove	90.8	90.5	-0.4
45 Burnie	81.0	79.7	-1.6
46 Griffith	71.0	72.7	2.4
47 Mount Gambier	72.8	70.9	-2.6
48 Norfolk Island	69.8	70.1	0.4
49 Merimbula	70.7	67.7	-4.2
50 Albany	64.6	67.3	4.2
Total top 50 regional airport:	23 409.1	23 623.7	0.9
Total regional airports	24 864.3	25 065.4	0.8
Total domestic network	117 022.1	118 610.8	1.4

Note: Airport passenger movement numbers are the sum of passenger arrivals and departures at each airport. Regional airports are defined as airports which are, according to Australian Statistical Geography Standard (ASGS), not based in Major Cities.

DOMESTIC CHARTER ACTIVITY

Table 12: Charter passengers carried and aircraft trips - monthly activity (000s)

	Apr 2024	Apr 2025	% Change
Total domestic charter passengers	364.1	367.3	0.9
Total domestic charter aircraft trips	6.2	6.2	-0.3

Note: Helicopter, joyflights and sightseeing charter flights not included.

Table 13: Charter passengers carried and aircraft trips - annual activity (000s)

	YE Apr 2024	YE Apr 2025	% Change
Total domestic charter passengers	4 211.0	4 272.3	1.5
Total domestic charter aircraft trips	72.1	72.3	0.3

Note: Helicopter, joyflights and sightseeing charter flights not included.

Table 14: Domestic airports - charter activity - monthly (000s)

	Apr 2024	Apr 2025	% Change
Total domestic charter passenger movements	728.1	734.5	0.9
Total domestic charter aircraft movements	12.5	12.4	-0.3
Perth airport charter passenger movements	271.9	264.9	-2.6
Perth airport charter aircraft movements	4.1	3.8	-6.6

Note: Helicopter, joyflights and sightseeing charter flights not included.

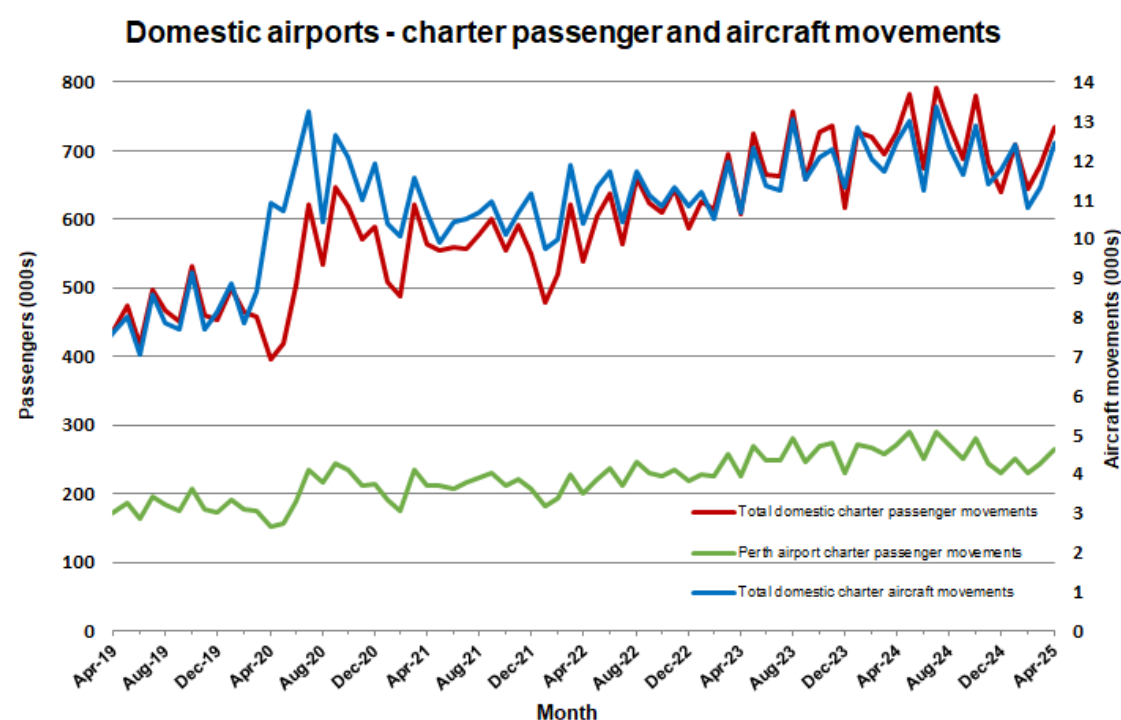
Charter passenger and aircraft movement numbers are the sum of arrivals and departures at each airport.

Table 15: Domestic airports - charter activity - annual (000s)

	YE Apr 2024	YE Apr 2025	% Change
Total domestic charter passenger movements	8 422.0	8 544.5	1.5
Total domestic charter aircraft movements	144.2	144.6	0.3
Perth airport charter passenger movements	3 138.2	3 098.7	-1.3
Perth airport charter aircraft movements	48.6	45.7	-6.0

Note: Helicopter, joyflights and sightseeing charter flights not included.

Charter passenger and aircraft movement numbers are the sum of arrivals and departures at each airport.



DEFINITIONS

Aircraft Trips	The number of flight stages. A return flight counts as two aircraft trips.
Airport Movements	Airport movements (passenger and cargo) are measured once on arrival and once on departure. Each domestic trip generates two movements at airports. For example, a trip from Melbourne to Sydney will be counted twice, as a departure at Melbourne and as an arrival at Sydney. At the national level, the sum of all domestic airport traffic will therefore be equal to twice the number of trips undertaken.
Available Seat Kilometres (ASKs)	Calculated by multiplying the number of seats available on each flight stage, by the distance in kilometres between the ports. The distances used are Great Circle Distances.
City-Pair	The ports shown make up the city-pair route. Passenger movements shown for a city pair reflect total traffic in both directions.
Flight Stage	The operation of an aircraft from take-off to landing.
Load Factor	The total revenue passenger kilometres performed as a percentage of the total available seat kilometres.
Passengers Carried	Revenue passengers carried.
Regular Public Transport Services (RPT)	All air service operations in which aircraft are available for the transport of members of the public and are conducted in accordance with fixed schedules. It does not include charter or other non-scheduled operations.
Revenue Passengers	All passengers paying any fare. Frequent flyer redemption travellers are regarded as revenue passengers.
Revenue Passenger Kilometres (RPKs)	Calculated by multiplying the number of revenue passengers travelling on each flight stage, by the distance in kilometres between the ports. The distances used are Great Circle Distances.
Traffic on board by stages (TOB)	The total of all traffic (revenue passengers) on each flight stage between two directly connected airports.
..	Not available for confidentiality or other reasons.
NA	Not applicable.