



Australian Government

Department of Infrastructure, Transport, Regional Development and Communications

Bureau of Infrastructure and Transport Research Economics

STATISTICAL REPORT



Aviation

Domestic aviation activity
January 2021

© Commonwealth of Australia 2021

ISSN: 1832 - 1968

Ownership of intellectual property rights in this publication

Unless otherwise noted, copyright (and any other intellectual property rights, if any) in this publication is owned by the Commonwealth of Australia (referred to below as the Commonwealth).

Disclaimer

The material contained in this publication is made available on the understanding that the Commonwealth is not providing professional advice, and that users exercise their own skill and care with respect to its use, and seek independent advice if necessary.

The Commonwealth makes no representations or warranties as to the contents or accuracy of the information contained in this publication. To the extent permitted by law, the Commonwealth disclaims liability to any person or organisation in respect of anything done, or omitted to be done, in reliance upon information contained in this publication.

Creative Commons licence

With the exception of (a) the Coat of Arms; and (b) the Department of Infrastructure, Transport, Regional Development and Communications' photos and graphics, copyright in this publication is licensed under a Creative Commons Attribution 3.0 Australia Licence.

Creative Commons Attribution 3.0 Australia Licence is a standard form licence agreement that allows you to copy, communicate and adapt this publication provided that you attribute the work to the Commonwealth and abide by the other licence terms. A summary of the licence terms is available from <http://creativecommons.org/licenses/by/3.0/au/deed.en>.

The full licence terms are available from <http://creativecommons.org/licenses/by/3.0/au/legalcode>.

Use of the Coat of Arms

The Department of the Prime Minister and Cabinet sets the terms under which the Coat of Arms is used. Please refer to the Department's Commonwealth Coat of Arms and Government branding web page <http://www.dpmc.gov.au/guidelines/index.cfm#brand> and, in particular, the Guidelines on the use of the Commonwealth Coat of Arms publication.

An appropriate citation for this report is:

Bureau of Infrastructure and Transport Research Economics (BITRE), 2021, Domestic aviation activity, Statistical Report, BITRE, Canberra ACT.

Contact us

This publication is available in PDF format. All other rights are reserved, including in relation to any Departmental logos or trade marks which may exist. For enquiries regarding the licence and any use of this publication, please contact:

Bureau of Infrastructure and Transport Research Economics (BITRE)
Department of Infrastructure, Transport, Regional Development and Communications
GPO Box 501, Canberra ACT 2601, Australia
Telephone: (international) +61 2 6274 7210
Fax: (international) +61 2 6274 6855
Email: bitre@infrastructure.gov.au
Website: www.bitre.gov.au

Inquiries

Should you require additional information about the statistics contained in this publication:

Nebojsa Pavlovic

Telephone (02) 6274 6817 or Facsimile (02) 6274 7727

Electronic mail: AVSTATS@infrastructure.gov.au

Nebojsa.Pavlovic@infrastructure.gov.au

Web site: <http://www.bitre.gov.au/statistics/aviation/domestic.aspx>

FOREWORD

This report provides an overview of domestic (including charter) commercial aviation activity in Australia for the month of January 2021.

The data cover revenue passengers carried by Australian-registered operators of scheduled regular public transport services over Australian flight stages and fixed-wing charter operators. These estimates include passengers carried between domestic airports on international flights operated by these carriers. The passengers carried refer to traffic on board by stages.

Estimates of passengers and aircraft movements for charter aviation are included in this publication, where BITRE confidentiality standards are met.

Individual routes shown are restricted to those exceeding 8 000 passengers per month where two or more airlines operate in competition. For the month of January 2021, there were 38 such routes.

Information on the total network for the month of January 2021 and on the Regular Public Transport (RPT) network for the month of January 2021 is presented on page 2, with estimates for the year ended January 2021 presented on page 3.

Detailed information on individual routes can be found in the RPT summary pages 4-13 of this publication.

The top ten airports in terms of RPT passenger movements are shown on page 14.

Data on domestic RPT cargo movements at the top five cargo airports are provided on page 15. The table includes cargo carried on passenger flights operated by the Qantas group (including Jetstar), Virgin Australia, Air North and Skippers as well as the cargo carried by dedicated freighter aircraft operated by Qantas Freight and Toll Aviation.

The long-term trends for the top ten competitive RPT routes are presented graphically on pages 16-25.

Domestic RPT passenger movements at regional airports are presented on pages 26-27.

Tables providing estimates of domestic charter aviation activity are shown on page 28. BITRE confidentiality standards restrict publication of detailed estimates for individual Australian airports, with the exception of Perth Airport.

A list of definitions can be found on page 29.

This report was prepared by the Aviation Statistics Section of the Bureau of Infrastructure Transport Research Economics with data provided by airlines.

Estimates are included where data were not available and data presented in this publication may contain revisions to previously published data.

Where figures have been rounded, discrepancies may occur between sums of component items and totals, and in percentage changes which are derived from figures prior to rounding.

CONTENTS

Highlights	1
Total network.....	2
RPT network.....	2
Top competitive routes.....	4
Top ten airports – passenger movements.....	14
Top five airports – cargo movements.....	15
Top ten routes	16
1. Gold Coast – Melbourne	16
2. Brisbane – Melbourne	17
3. Brisbane – Cairns	18
4. Hobart – Melbourne.....	19
5. Adelaide – Melbourne	20
6. Ballina – Sydney	21
7. Brisbane – Townsville	22
8. Launceston – Melbourne.....	23
9. Melbourne – Sunshine Coast.....	24
10. Cairns – Melbourne.....	25
Top fifty regional airports	26
Domestic charter activity.....	28
Definitions	29

This page is intentionally left blank.

HIGHLIGHTS

Travel restrictions due to the COVID-19 outbreak have resulted in severe disruptions to domestic air travel since April 2020.

There were 1.9 million passengers carried on Australian domestic commercial aviation (including charter operations) in January 2021, a decrease of 64.4 per cent on January 2020. For the month of January 2021, there were 31.1 thousand aircraft trips, a decrease of 43.2 per cent compared to January 2020.

1.6 million passengers were carried on RPT flights in January 2021, a decrease of 67.6 per cent on January 2020.

For the year ending January 2021 there were 16.0 million RPT passengers, a decrease of 74.0 per cent on the year ending January 2020.

RPT revenue passenger kilometres (RPKs) performed were 2.03 billion for the month, down 66.5 per cent compared with January 2020. Capacity, measured by available seat kilometres (ASKs), decreased by 54.1 per cent compared with January 2020 to a total of 3.38 billion.

The industry wide load factor (RPKs/ASKs) decreased from 82.0 per cent in January 2020 to 59.9 per cent in January 2021. Load factors decreased on 36 individual RPT routes of the 38 RPT routes for which data is available for publishing in both years. Adelaide – Port Lincoln and Darwin – Perth were the only routes to show increased load factors in January 2021.

In January 2021, most published routes recorded significant decreases in the number of passengers carried compared with January 2020.

For the month of January 2021, Gold Coast – Melbourne was Australia's busiest RPT route with 125.7 thousand passengers, a decrease of 36.1 per cent compared with January 2020. It was followed by Brisbane – Melbourne with 96.0 thousand passengers (down 68.9 per cent) and Brisbane – Cairns with 73.9 thousand passengers (down 32.7 per cent).

Melbourne was Australia's busiest domestic airport with 625.0 thousand passenger movements in January 2021 (down 71.4 per cent), followed by Brisbane with 551.6 thousand passenger movements (down 61.8 per cent) and Perth with 254.6 thousand passenger movements (down 64.0 per cent).

Total cargo movements at Australian airports on domestic RPT flights were 29.0 thousand tonnes in January 2021, a decrease of 16.9 per cent compared with January 2020.

In January 2021, there were 1.1 million domestic passenger movements through regional airports, 47.4 per cent less than in January 2020. Most published regional airports recorded large decreases compared with January 2020.

Fixed-wing charter operators carried 254.2 thousand passengers in January 2021, an increase of 1.9 per cent on January 2020. Perth Airport accounted for 37.6 per cent of all charter passengers in Australia.

TOTAL NETWORK

Summary of monthly commercial aviation activity

	Jan 2020	Jan 2021	% Change
Total passengers carried (millions)	5.35	1.90	-64.4
Aircraft trips (000s)	54.7	31.1	-43.2

Note: Regular Public Transport and charter aviation activity
Helicopter, joyflights and sightseeing charter flights not included.

RPT NETWORK

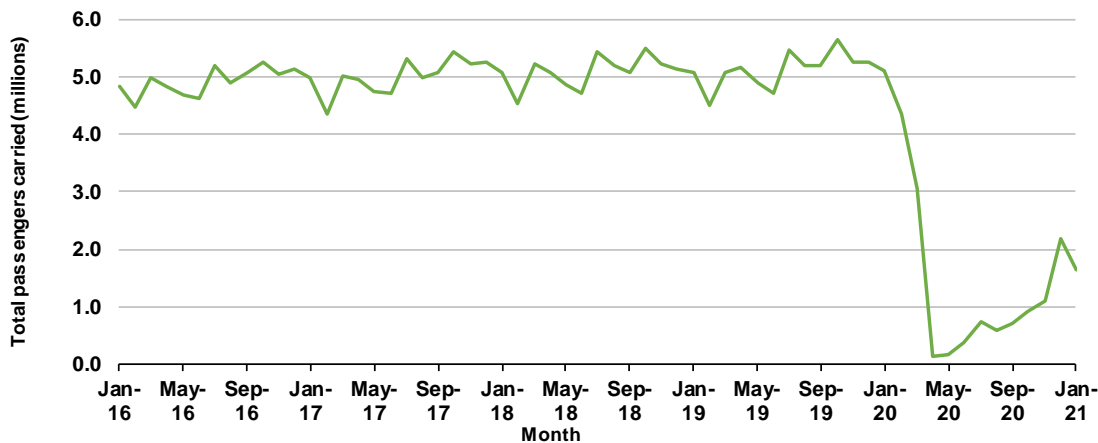
Summary of monthly RPT activity

	Jan 2020	Jan 2021	% Change
Total passengers carried (millions)	5.10	1.65	-67.6
Revenue passenger kilometres (billions)	6.05	2.03	-66.5
Available seats (millions)	6.36	2.84	-55.3
Available seat kilometres (billions)	7.37	3.38	-54.1
Load factor %	82.0	59.9	-22.1 *
Aircraft trips (000s)	50.2	25.9	-48.5

* percentage point difference

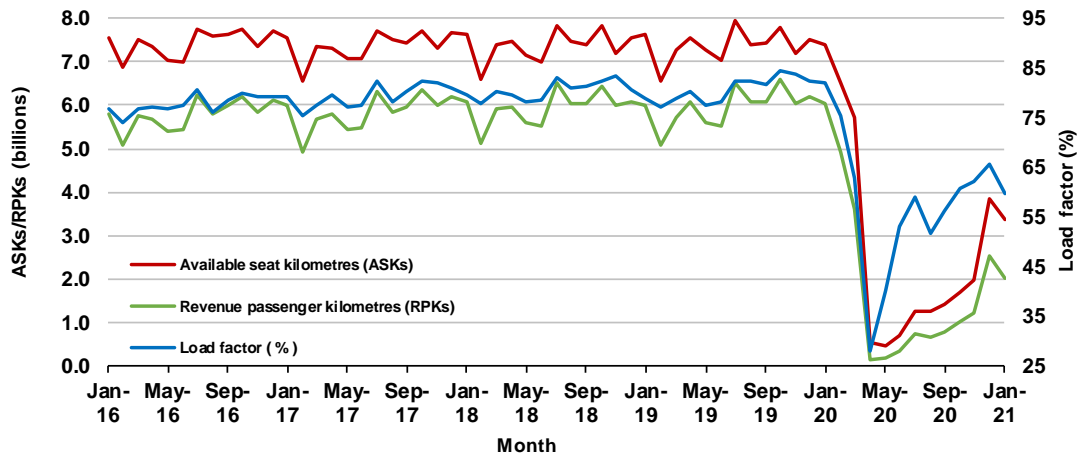
Domestic RPT passenger traffic

(monthly)



RPT Network utilisation

(monthly)



TOTAL NETWORK

Summary of annual commercial aviation activity

	YE Jan 2020	YE Jan 2021	% Change
Total passengers carried (millions)	64.17	19.16	-70.1
Aircraft trips (000s)	682.6	324.1	-52.5

Note: Regular Public Transport and charter aviation activity
Helicopter, joyflights and sightseeing charter flights not included.

RPT NETWORK

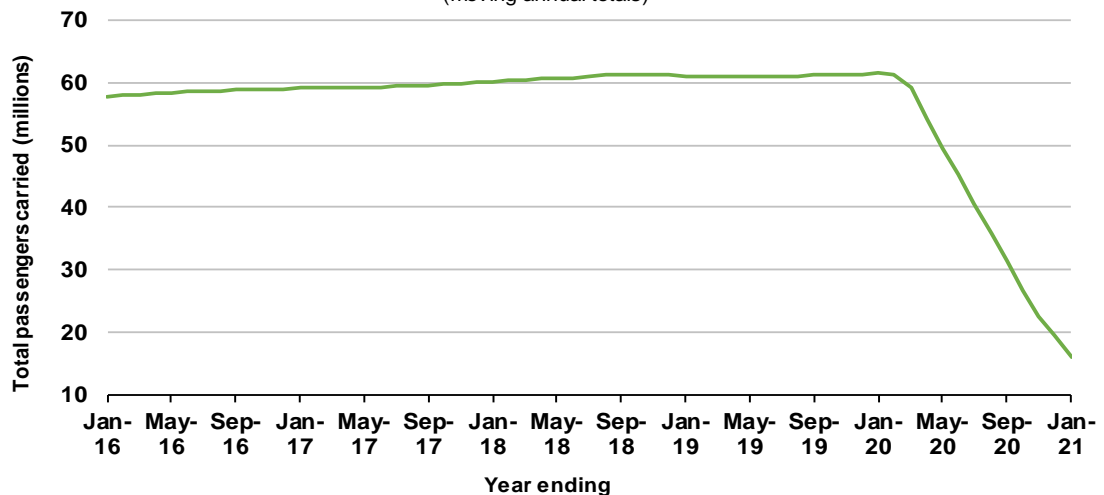
Summary of annual RPT activity

	YE Jan 2020	YE Jan 2021	% Change
Total passengers carried (millions)	61.42	16.00	-74.0
Revenue passenger kilometres (billions)	71.54	18.28	-74.5
Available seats (millions)	77.54	25.62	-67.0
Available seat kilometres (billions)	88.30	28.87	-67.3
Load factor %	81.0	63.3	-17.7 *
Aircraft trips (000s)	635.3	258.2	-59.4

* percentage point difference

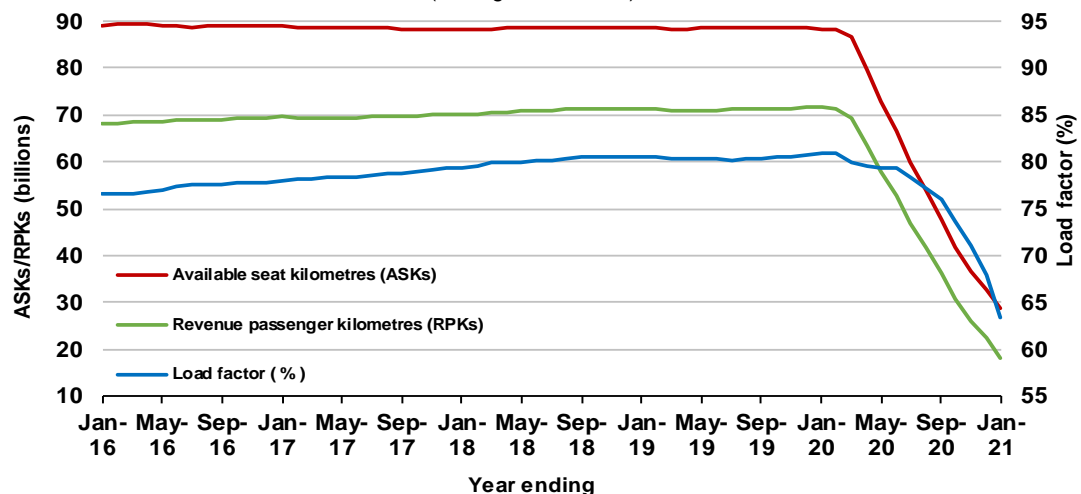
Domestic RPT passenger traffic

(moving annual totals)



RPT Network utilisation

(moving annual totals)



TOP COMPETITIVE ROUTES

Table 1: Passengers carried (000s) — annual activity

	City-Pair	YE Jan 2020	YE Jan 2021	% Change
1	Melbourne - Sydney	9 171.6	1 540.4	-83.2
2	Brisbane - Sydney	4 825.5	944.1	-80.4
3	Brisbane - Melbourne	3 620.9	715.9	-80.2
4	Brisbane - Cairns	1 301.3	692.9	-46.8
5	Adelaide - Melbourne	2 538.6	486.2	-80.8
6	Brisbane - Townsville	1 022.9	480.3	-53.0
7	Adelaide - Sydney	1 872.4	446.7	-76.1
8	Gold Coast - Melbourne	2 112.4	443.2	-79.0
9	Melbourne - Perth	2 114.1	378.6	-82.1
10	Hobart - Melbourne	1 672.4	373.9	-77.6
11	Brisbane - Mackay	780.1	367.2	-52.9
12	Ballina - Sydney	434.4	361.7	-16.7
13	Adelaide - Brisbane	879.3	324.9	-63.0
14	Perth - Sydney	1 688.6	297.7	-82.4
15	Karratha - Perth	469.6	260.4	-44.5
16	Brisbane - Perth	965.7	242.0	-74.9
17	Brisbane - Rockhampton	541.2	236.9	-56.2
18	Brisbane - Canberra	664.3	225.8	-66.0
19	Canberra - Melbourne	1 179.9	224.7	-81.0
20	Broome - Perth	328.0	224.1	-31.7
21	Launceston - Melbourne	962.0	220.4	-77.1
22	Perth - Port Hedland	378.3	202.1	-46.6
23	Newman - Perth	348.6	164.0	-52.9
24	Brisbane - Newcastle	607.6	160.3	-73.6
25	Brisbane - Proserpine	260.6	157.3	-39.6
26	Brisbane - Darwin	355.2	156.9	-55.8
27	Kalgoorlie - Perth	275.7	153.0	-44.5
28	Adelaide - Perth	660.3	137.6	-79.2
29	Cairns - Melbourne	843.9	137.0	-83.8
30	Melbourne - Sunshine Coast	554.1	134.6	-75.7
31	Brisbane - Hamilton Island	134.9	118.1	-12.4
32	Brisbane - Hobart	242.7	103.3	-57.4
33	Brisbane - Gladstone	248.9	95.1	-61.8
34	Adelaide - Gold Coast	213.6	84.2	-60.6
35	Adelaide - Port Lincoln	173.5	84.2	-51.5
36	Adelaide - Canberra	195.9	66.0	-66.3
37	Adelaide - Alice Springs	143.0	64.3	-55.0
38	Darwin - Perth	173.7	43.5	-74.9
39	Gold Coast - Sydney	2 743.7	..	NA
40	Cairns - Sydney	1 081.8	..	NA
41	Canberra - Sydney	933.3	..	NA
42	Hobart - Sydney	730.7	..	NA
43	Sunshine Coast - Sydney	654.0	..	NA
44	Melbourne - Newcastle	478.9	..	NA
45	Darwin - Melbourne	310.6	..	NA
46	Darwin - Sydney	308.8	..	NA
47	Melbourne - Mildura	231.8	..	NA
48	Albury - Sydney	227.2	..	NA
49	Hamilton Island - Sydney	217.2	..	NA
50	Brisbane - Emerald	202.9	..	NA

continued

Table 1: (continued) Passengers carried (000s) — annual activity

	City-Pair	YE Jan 2020	YE Jan 2021	% Change
51	Ayers Rock - Sydney	194.4	..	NA
52	Port Macquarie - Sydney	191.3	..	NA
53	Dubbo - Sydney	182.1	..	NA
54	Sydney - Wagga Wagga	181.0	..	NA
55	Sydney - Tamworth	174.5	..	NA
56	Sydney - Townsville	172.7	..	NA
57	Brisbane - Bundaberg	153.7	..	NA
58	Brisbane - Mount Isa	143.1	..	NA
59	Cairns - Townsville	142.4	..	NA
60	Armidale - Sydney	124.7	..	NA
61	Proserpine - Sydney	112.7	..	NA
62	Alice Springs - Darwin	109.3	..	NA
63	Hamilton Island - Melbourne	25.7	..	NA
	Total domestic network	61 416.0	15 997.4	-74.0

.. Data not available for release.

Table 2: Passengers carried (000s) — monthly activity

	City-Pair	Jan 2020	Jan 2021	% Change
1	Gold Coast - Melbourne	196.7	125.7	-36.1
2	Brisbane - Melbourne	308.8	96.0	-68.9
3	Brisbane - Cairns	109.7	73.9	-32.7
4	Hobart - Melbourne	166.4	73.9	-55.6
5	Adelaide - Melbourne	199.5	71.6	-64.1
6	Ballina - Sydney	47.0	54.2	15.4
7	Brisbane - Townsville	77.3	48.1	-37.8
8	Launceston - Melbourne	100.6	47.3	-53.0
9	Melbourne - Sunshine Coast	45.5	45.8	0.6
10	Cairns - Melbourne	62.5	37.7	-39.7
11	Adelaide - Brisbane	75.2	37.7	-49.9
12	Brisbane - Mackay	62.9	34.6	-44.9
13	Melbourne - Sydney	742.8	33.4	-95.5
14	Brisbane - Canberra	52.6	31.5	-40.2
15	Karratha - Perth	38.8	26.8	-30.7
16	Adelaide - Perth	56.5	26.6	-52.9
17	Brisbane - Perth	84.4	24.8	-70.6
18	Canberra - Melbourne	74.7	24.1	-67.7
19	Newman - Perth	26.7	24.0	-10.2
20	Perth - Port Hedland	30.3	22.6	-25.2
21	Brisbane - Rockhampton	40.9	22.4	-45.2
22	Brisbane - Hobart	27.0	22.4	-17.1
23	Melbourne - Perth	196.0	22.4	-88.6
24	Brisbane - Sydney	378.0	22.3	-94.1
25	Broome - Perth	21.7	21.3	-2.0
26	Brisbane - Darwin	28.2	21.0	-25.8
27	Brisbane - Newcastle	49.2	19.9	-59.5
28	Brisbane - Hamilton Island	11.7	19.8	69.7
29	Brisbane - Proserpine	25.7	17.7	-31.0
30	Adelaide - Gold Coast	19.7	17.7	-10.4
31	Kalgoorlie - Perth	19.5	15.1	-22.6
32	Adelaide - Port Lincoln	14.9	9.9	-33.6
33	Adelaide - Canberra	12.3	9.5	-22.8
34	Adelaide - Sydney	151.8	9.1	-94.0
35	Adelaide - Alice Springs	8.6	8.6	0.0
36	Brisbane - Gladstone	19.0	8.3	-56.4
37	Darwin - Perth	12.8	8.1	-36.5
38	Perth - Sydney	148.0	8.1	-94.5
39	Gold Coast - Sydney	275.6	..	NA
40	Cairns - Sydney	99.4	..	NA
41	Hobart - Sydney	76.8	..	NA
42	Sunshine Coast - Sydney	53.2	..	NA
43	Canberra - Sydney	49.3	..	NA
44	Melbourne - Newcastle	41.1	..	NA
45	Hamilton Island - Sydney	25.3	..	NA
46	Darwin - Melbourne	22.4	..	NA
47	Darwin - Sydney	20.1	..	NA
48	Melbourne - Mildura	16.3	..	NA
49	Brisbane - Emerald	15.8	..	NA
50	Port Macquarie - Sydney	14.8	..	NA

continued

Table 2: (continued) Passengers carried (000s) — monthly activity

	City-Pair	Jan 2020	Jan 2021	% Change
51	Sydney - Townsville	14.4	..	NA
52	Sydney - Tamworth	13.4	..	NA
53	Albury - Sydney	12.7	..	NA
54	Dubbo - Sydney	11.7	..	NA
55	Ayers Rock - Sydney	11.5	..	NA
56	Brisbane - Mount Isa	11.2	..	NA
57	Sydney - Wagga Wagga	11.2	..	NA
58	Brisbane - Bundaberg	11.1	..	NA
59	Proserpine - Sydney	10.1	..	NA
60	Hamilton Island - Melbourne	9.4	..	NA
61	Cairns - Townsville	8.8	..	NA
62	Armidale - Sydney	8.1	..	NA
63	Alice Springs - Darwin	4.7	..	NA
	Total domestic network	5 096.8	1 649.3	-67.6

.. Data not available for release.

Table 3: Available seats (000s) — monthly activity

	City-Pair	Jan 2020	Jan 2021	% Change
1	Gold Coast - Melbourne	212.0	165.4	-22.0
2	Brisbane - Melbourne	360.3	155.8	-56.7
3	Brisbane - Cairns	134.5	113.6	-15.6
4	Hobart - Melbourne	199.1	111.7	-43.9
5	Adelaide - Melbourne	244.8	102.2	-58.2
6	Ballina - Sydney	55.4	74.7	34.9
7	Brisbane - Townsville	103.9	81.1	-22.0
8	Launceston - Melbourne	119.6	79.2	-33.8
9	Melbourne - Sunshine Coast	50.0	59.1	18.2
10	Cairns - Melbourne	68.5	50.9	-25.7
11	Adelaide - Brisbane	95.4	64.4	-32.4
12	Brisbane - Mackay	81.5	63.4	-22.2
13	Melbourne - Sydney	863.4	77.6	-91.0
14	Brisbane - Canberra	72.7	52.5	-27.8
15	Karratha - Perth	66.9	57.8	-13.7
16	Adelaide - Perth	66.7	38.8	-41.8
17	Brisbane - Perth	95.3	42.4	-55.5
18	Canberra - Melbourne	106.8	45.0	-57.9
19	Newman - Perth	49.0	53.9	10.1
20	Perth - Port Hedland	49.8	48.0	-3.7
21	Brisbane - Rockhampton	55.7	43.2	-22.5
22	Brisbane - Hobart	31.1	36.1	16.2
23	Melbourne - Perth	221.3	44.4	-79.9
24	Brisbane - Sydney	439.2	59.4	-86.5
25	Broome - Perth	33.1	33.8	2.2
26	Brisbane - Darwin	37.7	31.6	-16.3
27	Brisbane - Newcastle	67.5	39.6	-41.4
28	Brisbane - Hamilton Island	15.6	35.5	127.7
29	Brisbane - Proserpine	31.0	25.7	-17.1
30	Adelaide - Gold Coast	22.8	23.7	3.9
31	Kalgoorlie - Perth	37.0	31.5	-14.8
32	Adelaide - Port Lincoln	22.0	13.3	-39.4
33	Adelaide - Canberra	19.9	19.4	-2.4
34	Adelaide - Sydney	186.4	27.3	-85.4
35	Adelaide - Alice Springs	13.9	15.3	9.8
36	Brisbane - Gladstone	30.3	19.9	-34.4
37	Darwin - Perth	21.4	11.9	-44.5
38	Perth - Sydney	167.1	19.2	-88.5
39	Gold Coast - Sydney	303.5	..	NA
40	Cairns - Sydney	111.9	..	NA
41	Hobart - Sydney	87.5	..	NA
42	Sunshine Coast - Sydney	57.9	..	NA
43	Canberra - Sydney	66.8	..	NA
44	Melbourne - Newcastle	46.9	..	NA
45	Hamilton Island - Sydney	30.2	..	NA
46	Darwin - Melbourne	29.5	..	NA
47	Darwin - Sydney	27.8	..	NA
48	Melbourne - Mildura	25.1	..	NA
49	Brisbane - Emerald	23.6	..	NA
50	Port Macquarie - Sydney	19.2	..	NA

continued

Table 3: (continued) Available seats (000s) — monthly activity

	City-Pair	Jan 2020	Jan 2021	% Change
51	Sydney - Townsville	18.0	..	NA
52	Sydney - Tamworth	21.6	..	NA
53	Albury - Sydney	18.5	..	NA
54	Dubbo - Sydney	17.6	..	NA
55	Ayers Rock - Sydney	20.2	..	NA
56	Brisbane - Mount Isa	15.8	..	NA
57	Sydney - Wagga Wagga	15.9	..	NA
58	Brisbane - Bundaberg	16.6	..	NA
59	Proserpine - Sydney	11.7	..	NA
60	Hamilton Island - Melbourne	13.1	..	NA
61	Cairns - Townsville	21.1	..	NA
62	Armidale - Sydney	12.3	..	NA
63	Alice Springs - Darwin	8.5	..	NA
	Total domestic network	6 362.1	2 844.9	-55.3

.. Data not available for release.

Table 4: Load factors (%) — monthly activity

	City-Pair	Jan 2020	Jan 2021	% Point diff
1	Gold Coast - Melbourne	92.8	76.0	-16.8
2	Brisbane - Melbourne	85.7	61.6	-24.1
3	Brisbane - Cairns	81.6	65.0	-16.6
4	Hobart - Melbourne	83.6	66.2	-17.4
5	Adelaide - Melbourne	81.5	70.1	-11.4
6	Ballina - Sydney	84.9	72.6	-12.3
7	Brisbane - Townsville	74.4	59.3	-15.1
8	Launceston - Melbourne	84.1	59.7	-24.4
9	Melbourne - Sunshine Coast	91.0	77.4	-13.6
10	Cairns - Melbourne	91.3	74.2	-17.1
11	Adelaide - Brisbane	78.8	58.5	-20.3
12	Brisbane - Mackay	77.1	54.6	-22.5
13	Melbourne - Sydney	86.1	43.1	-43.0
14	Brisbane - Canberra	72.3	59.9	-12.4
15	Karratha - Perth	57.9	46.4	-11.5
16	Adelaide - Perth	84.7	68.6	-16.1
17	Brisbane - Perth	88.6	58.5	-30.1
18	Canberra - Melbourne	69.9	53.5	-16.4
19	Newman - Perth	54.6	44.5	-10.1
20	Perth - Port Hedland	60.8	47.2	-13.6
21	Brisbane - Rockhampton	73.3	51.9	-21.4
22	Brisbane - Hobart	86.8	61.9	-24.9
23	Melbourne - Perth	88.5	50.4	-38.1
24	Brisbane - Sydney	86.0	37.6	-48.4
25	Broome - Perth	65.6	62.9	-2.7
26	Brisbane - Darwin	74.9	66.3	-8.6
27	Brisbane - Newcastle	72.8	50.3	-22.5
28	Brisbane - Hamilton Island	74.9	55.8	-19.1
29	Brisbane - Proserpine	82.9	68.9	-14.0
30	Adelaide - Gold Coast	86.3	74.4	-11.9
31	Kalgoorlie - Perth	52.7	47.9	-4.8
32	Adelaide - Port Lincoln	67.8	74.3	6.5
33	Adelaide - Canberra	61.8	48.9	-12.9
34	Adelaide - Sydney	81.4	33.2	-48.2
35	Adelaide - Alice Springs	61.9	56.3	-5.6
36	Brisbane - Gladstone	62.7	41.7	-21.0
37	Darwin - Perth	60.0	68.7	8.7
38	Perth - Sydney	88.6	42.1	-46.5
39	Gold Coast - Sydney	90.8	..	NA
40	Cairns - Sydney	88.8	..	NA
41	Hobart - Sydney	87.8	..	NA
42	Sunshine Coast - Sydney	91.9	..	NA
43	Canberra - Sydney	73.9	..	NA
44	Melbourne - Newcastle	87.6	..	NA
45	Hamilton Island - Sydney	83.6	..	NA
46	Darwin - Melbourne	75.7	..	NA
47	Darwin - Sydney	72.3	..	NA
48	Melbourne - Mildura	64.9	..	NA
49	Brisbane - Emerald	67.0	..	NA
50	Port Macquarie - Sydney	76.8	..	NA

continued

Table 4: (continued) Load factors (%) — monthly activity

	City-Pair	Jan 2020	Jan 2021	% Point diff
51	Sydney - Townsville	79.8	..	NA
52	Sydney - Tamworth	62.0	..	NA
53	Albury - Sydney	68.4	..	NA
54	Dubbo - Sydney	66.3	..	NA
55	Ayers Rock - Sydney	56.7	..	NA
56	Brisbane - Mount Isa	70.7	..	NA
57	Sydney - Wagga Wagga	70.5	..	NA
58	Brisbane - Bundaberg	67.0	..	NA
59	Proserpine - Sydney	86.6	..	NA
60	Hamilton Island - Melbourne	71.5	..	NA
61	Cairns - Townsville	41.6	..	NA
62	Armidale - Sydney	65.6	..	NA
63	Alice Springs - Darwin	55.5	..	NA
	Total domestic network	82.0	59.9	-22.1

.. Data not available for release.

Table 5: Aircraft trips ^(a) — monthly activity

	City-Pair	Jan 2020	Jan 2021	% Change
1	Gold Coast - Melbourne	1 123	865	-23.0
2	Brisbane - Melbourne	2 132	972	-54.4
3	Brisbane - Cairns	933	707	-24.2
4	Hobart - Melbourne	1 095	673	-38.5
5	Adelaide - Melbourne	1 483	658	-55.6
6	Ballina - Sydney	311	468	50.5
7	Brisbane - Townsville	705	483	-31.5
8	Launceston - Melbourne	861	573	-33.4
9	Melbourne - Sunshine Coast	282	352	24.8
10	Cairns - Melbourne	366	269	-26.5
11	Adelaide - Brisbane	545	391	-28.3
12	Brisbane - Mackay	627	442	-29.5
13	Melbourne - Sydney	4 869	633	-87.0
14	Brisbane - Canberra	530	384	-27.5
15	Karratha - Perth	510	365	-28.4
16	Adelaide - Perth	434	248	-42.9
17	Brisbane - Perth	513	256	-50.1
18	Canberra - Melbourne	699	345	-50.6
19	Newman - Perth	340	332	-2.4
20	Perth - Port Hedland	378	339	-10.3
21	Brisbane - Rockhampton	648	427	-34.1
22	Brisbane - Hobart	174	222	27.6
23	Melbourne - Perth	1 072	265	-75.3
24	Brisbane - Sydney	2 689	496	-81.6
25	Broome - Perth	278	245	-11.9
26	Brisbane - Darwin	230	191	-17.0
27	Brisbane - Newcastle	474	253	-46.6
28	Brisbane - Hamilton Island	123	220	78.9
29	Brisbane - Proserpine	174	146	-16.1
30	Adelaide - Gold Coast	128	132	3.1
31	Kalgoorlie - Perth	311	248	-20.3
32	Adelaide - Port Lincoln	559	330	-41.0
33	Adelaide - Canberra	120	120	0.0
34	Adelaide - Sydney	1 096	196	-82.1
35	Adelaide - Alice Springs	113	126	11.5
36	Brisbane - Gladstone	401	260	-35.2
37	Darwin - Perth	124	76	-38.7
38	Perth - Sydney	755	101	-86.6
39	Gold Coast - Sydney	1 696	..	NA
40	Cairns - Sydney	585	..	NA
41	Hobart - Sydney	539	..	NA
42	Sunshine Coast - Sydney	372	..	NA
43	Canberra - Sydney	914	..	NA
44	Melbourne - Newcastle	257	..	NA
45	Hamilton Island - Sydney	184	..	NA
46	Darwin - Melbourne	166	..	NA
47	Darwin - Sydney	161	..	NA
48	Melbourne - Mildura	299	..	NA
49	Brisbane - Emerald	350	..	NA
50	Port Macquarie - Sydney	299	..	NA

continued

Table 5: (continued) Aircraft trips ^(a) — monthly activity

	City-Pair	Jan 2020	Jan 2021	% Change
51	Sydney - Townsville	104	..	NA
52	Sydney - Tamworth	349	..	NA
53	Albury - Sydney	323	..	NA
54	Dubbo - Sydney	370	..	NA
55	Ayers Rock - Sydney	114	..	NA
56	Brisbane - Mount Isa	148	..	NA
57	Sydney - Wagga Wagga	290	..	NA
58	Brisbane - Bundaberg	271	..	NA
59	Proserpine - Sydney	64	..	NA
60	Hamilton Island - Melbourne	76	..	NA
61	Cairns - Townsville	330	..	NA
62	Armidale - Sydney	285	..	NA
63	Alice Springs - Darwin	88	..	NA
	Total domestic network	50 230	25 885	-48.5

(a) Includes RPT cargo flights

.. Data not available for release.

TOP TEN AIRPORTS – PASSENGER MOVEMENTS

Table 6: Top ten airports, RPT passenger movements (000s) - monthly activity

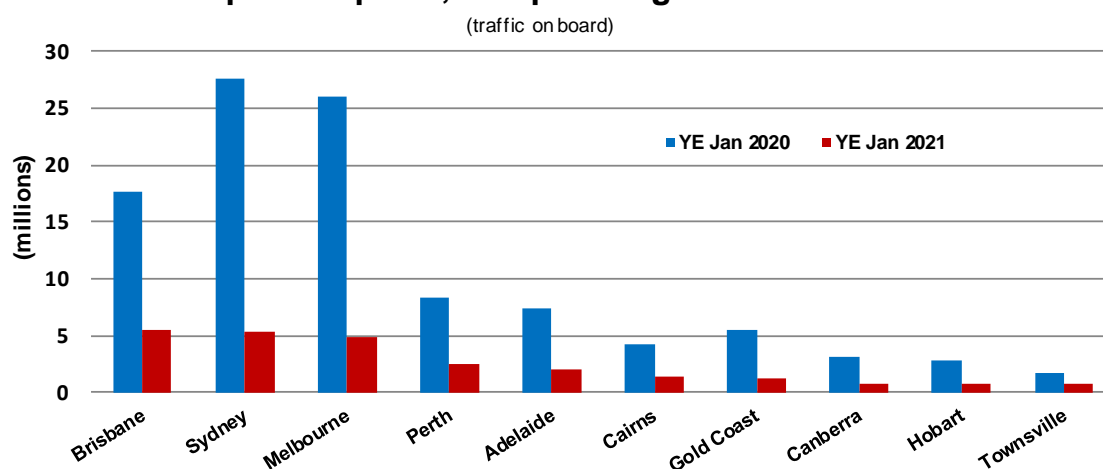
Airport	Jan 2020	Jan 2021	% Change	% of Total
1 Melbourne	2 186.7	625.0	-71.4	18.9
2 Brisbane	1 442.9	551.6	-61.8	16.7
3 Perth	708.2	254.6	-64.0	7.7
4 Adelaide	593.1	233.5	-60.6	7.1
5 Sydney	2 280.6	196.6	-91.4	6.0
6 Gold Coast	546.6	193.0	-64.7	5.9
7 Cairns	348.5	176.3	-49.4	5.3
8 Hobart	285.1	130.2	-54.3	3.9
9 Canberra	205.5	96.7	-53.0	2.9
10 Darwin	121.3	76.8	-36.7	2.3
Total top ten airports	8 718.5	2 534.4	-70.9	76.8
Total domestic network	10 193.6	3 298.6	-67.6	100.0

Table 7: Top ten airports, RPT passenger movements (000s) - annual activity

Airport	YE Jan 2020	YE Jan 2021	% Change	% of Total
1 Brisbane	17 651.6	5 496.4	-68.9	17.2
2 Sydney	27 561.0	5 378.5	-80.5	16.8
3 Melbourne	25 977.3	4 939.8	-81.0	15.4
4 Perth	8 294.8	2 523.9	-69.6	7.9
5 Adelaide	7 387.9	1 989.0	-73.1	6.2
6 Cairns	4 153.6	1 416.6	-65.9	4.4
7 Gold Coast	5 572.0	1 175.8	-78.9	3.7
8 Canberra	3 158.2	787.4	-75.1	2.5
9 Hobart	2 788.7	724.8	-74.0	2.3
10 Townsville	1 670.2	715.0	-57.2	2.2
Total top ten airports	104 215.2	25 147.2	-75.9	78.6
Total domestic network	122 832.1	31 994.7	-74.0	100.0

Note: Airport passenger movement numbers are the sum of passenger arrivals and departures at each airport.

Top ten airports, RPT passenger movements



TOP FIVE AIRPORTS – CARGO MOVEMENTS

Table 8: Top five airports, domestic RPT cargo movements (000s tonnes) - monthly activity

Airport	Jan 2020	Jan 2021	% Change	% of Total
1 Melbourne	9.0	7.3	-19.6	25.0
2 Sydney	7.4	6.5	-11.7	22.5
3 Brisbane	5.5	4.7	-14.7	16.2
4 Perth	4.8	2.4	-49.1	8.4
5 Adelaide	2.2	1.8	-19.1	6.2
Total top five airports	29.0	22.8	-21.5	78.3
Total domestic network	34.9	29.0	-16.9	100.0

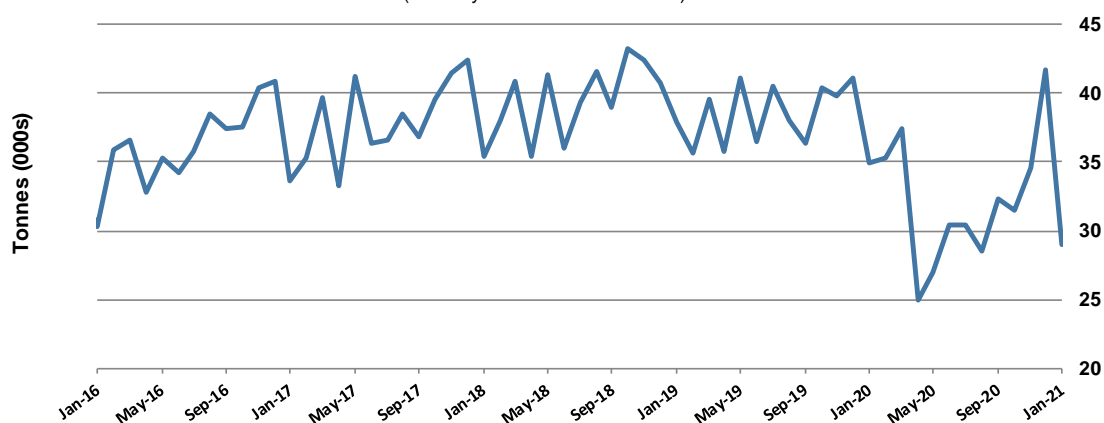
Table 9: Top five airports, domestic RPT cargo movements (000s tonnes) - annual activity

Airport	YE Jan 2020	YE Jan 2021	% Change	% of Total
1 Melbourne	120.8	99.4	-17.7	25.9
2 Sydney	99.5	83.6	-16.0	21.8
3 Brisbane	72.9	67.5	-7.5	17.6
4 Perth	61.1	35.7	-41.6	9.3
5 Adelaide	28.3	23.4	-17.5	6.1
Total top five airports	382.6	309.5	-19.1	80.7
Total domestic network	459.8	383.3	-16.6	100.0

Note: Airport cargo tonnes are the sum of cargo tonnes on arrivals and departures at each airport.

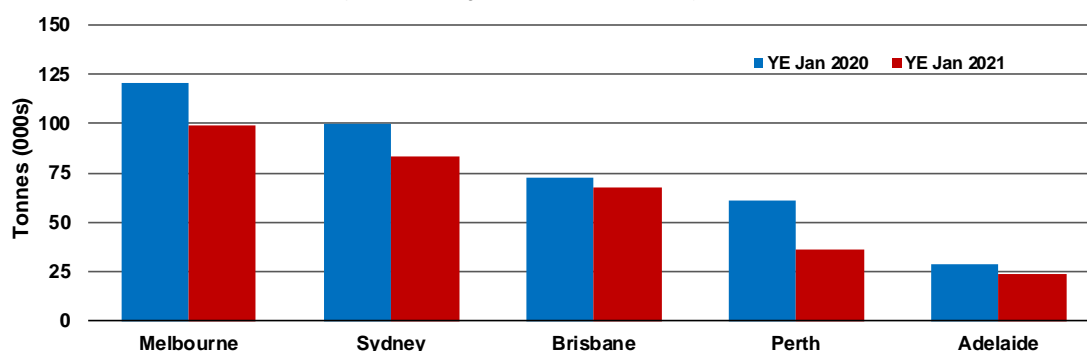
Total domestic network - cargo movement

(monthly totals - traffic on board)



Top five airports, cargo movements

(Domestic cargo traffic - traffic on board)



TOP TEN ROUTES

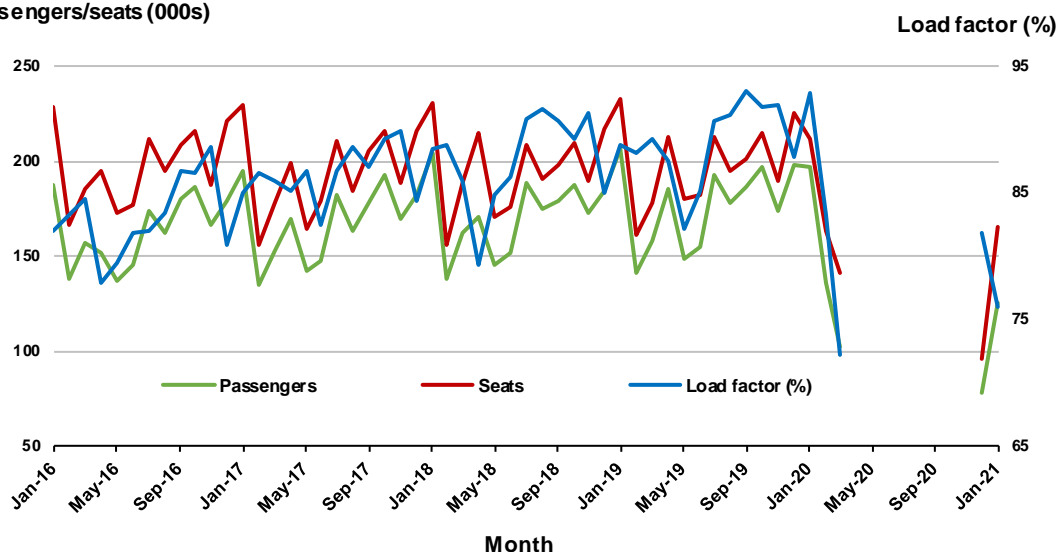
1. Gold Coast - Melbourne ^(a)

Monthly data

	Jan 2020	Jan 2021	% Change
Passengers carried (000s)	196.7	125.7	-36.1
Seats (000s)	212.0	165.4	-22.0
Load factor %	92.8	76.0	-16.8 *
Aircraft trips	1 123	865	-23.0

* percentage point difference

Passengers/seats (000s)



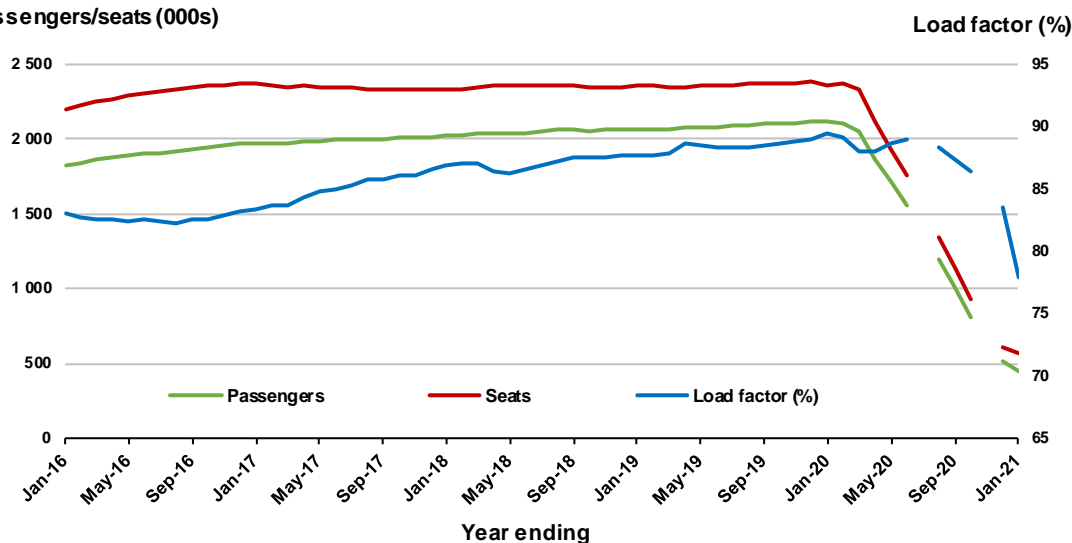
(a) April to November 2020 data not available for release

Moving annual data

	YE Jan 2020	YE Jan 2021	% Change
Passengers carried (000s)	2 112.4	443.2	-79.0
Seats (000s)	2 363.3	568.9	-75.9
Load factor %	89.4	77.9	-11.5 *
Aircraft trips	12 484	3 002	-76.0

* percentage point difference

Passengers/seats (000s)

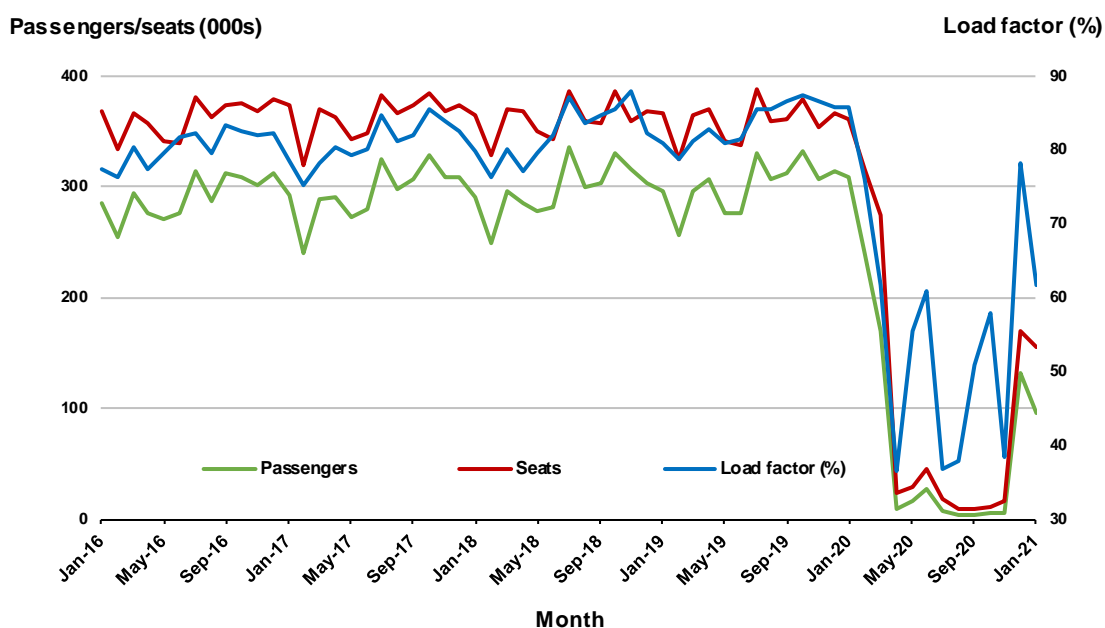


2. Brisbane - Melbourne

Monthly data

	Jan 2020	Jan 2021	% Change
Passengers carried (000s)	308.8	96.0	-68.9
Seats (000s)	360.3	155.8	-56.7
Load factor %	85.7	61.6	-24.1 *
Aircraft trips	2 132	972	-54.4

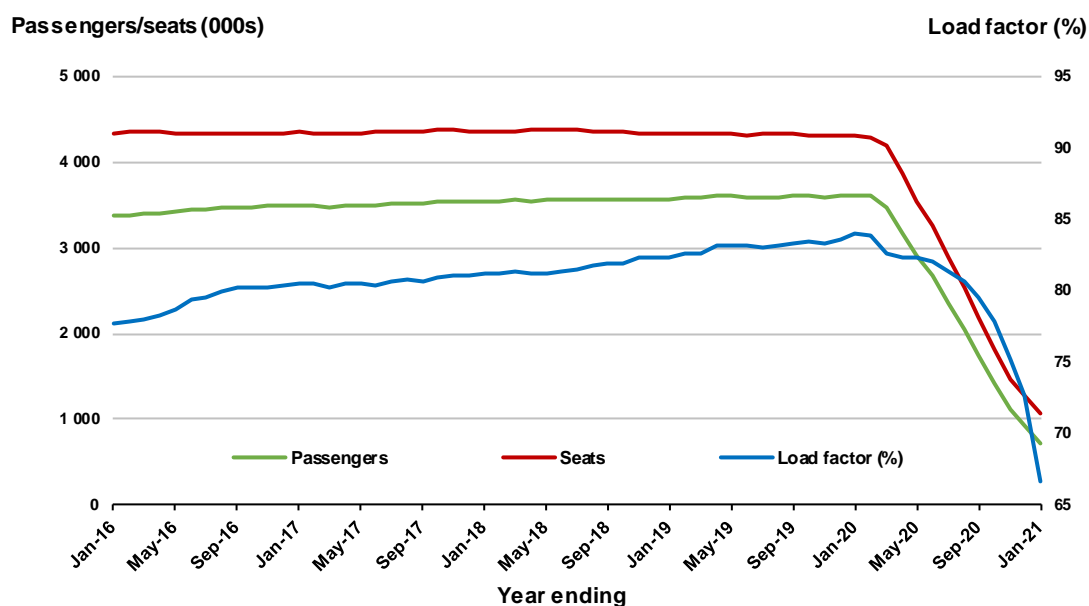
* percentage point difference



Moving annual data

	YE Jan 2020	YE Jan 2021	% Change
Passengers carried (000s)	3 620.9	715.9	-80.2
Seats (000s)	4 306.9	1 074.7	-75.0
Load factor %	84.1	66.6	-17.5 *
Aircraft trips	25 337	7 489	-70.4

* percentage point difference

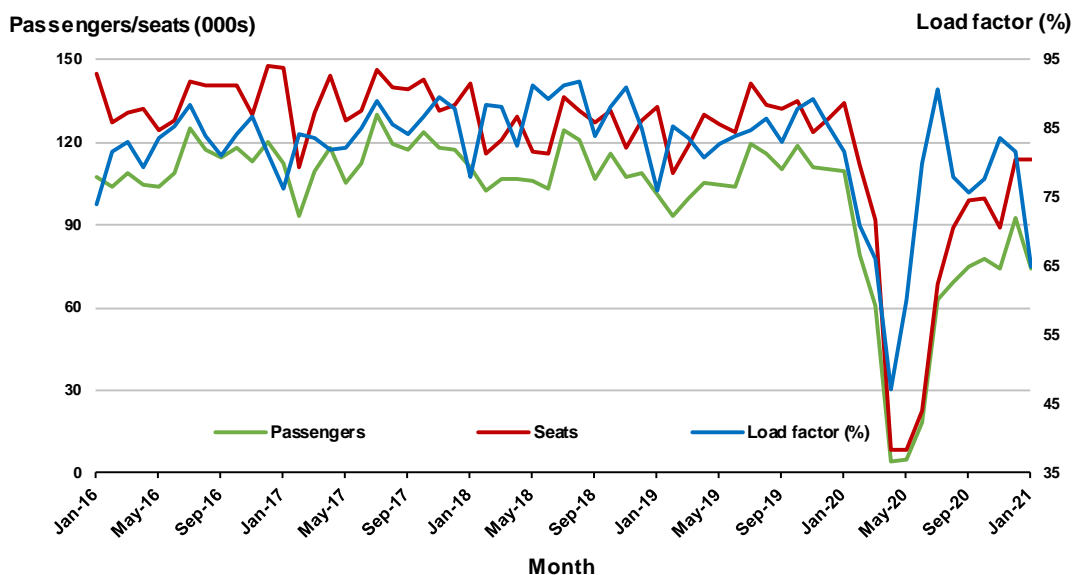


3. Brisbane - Cairns

Monthly data

	Jan 2020	Jan 2021	% Change
Passengers carried (000s)	109.7	73.9	-32.7
Seats (000s)	134.5	113.6	-15.6
Load factor %	81.6	65.0	-16.6 *
Aircraft trips	933	707	-24.2

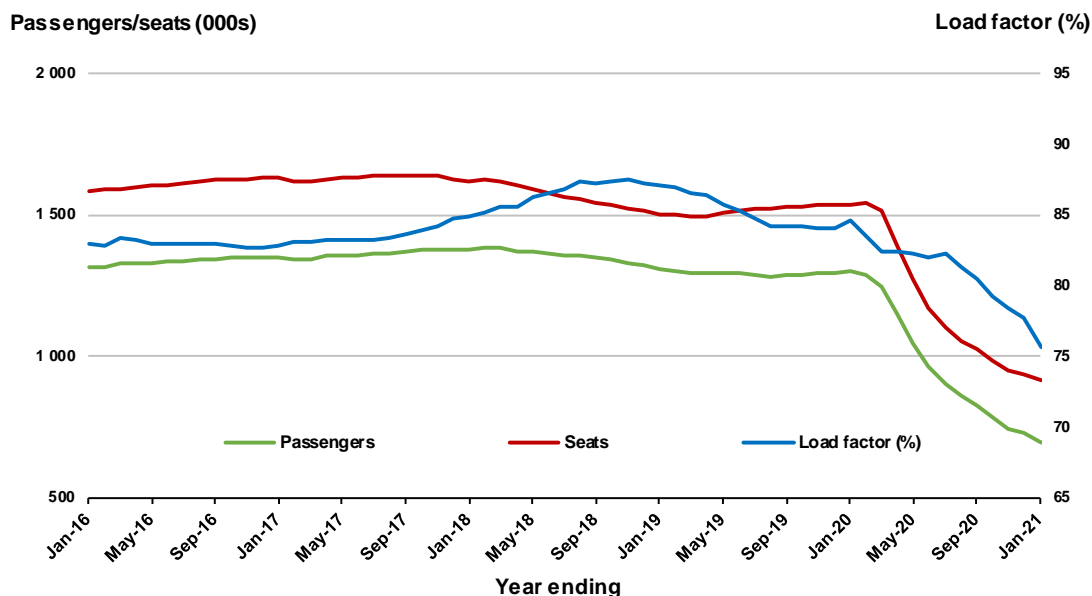
* percentage point difference



Moving annual data

	YE Jan 2020	YE Jan 2021	% Change
Passengers carried (000s)	1 301.3	692.9	-46.8
Seats (000s)	1 538.8	916.1	-40.5
Load factor %	84.6	75.6	-8.9 *
Aircraft trips	10 641	6 565	-38.3

* percentage point difference

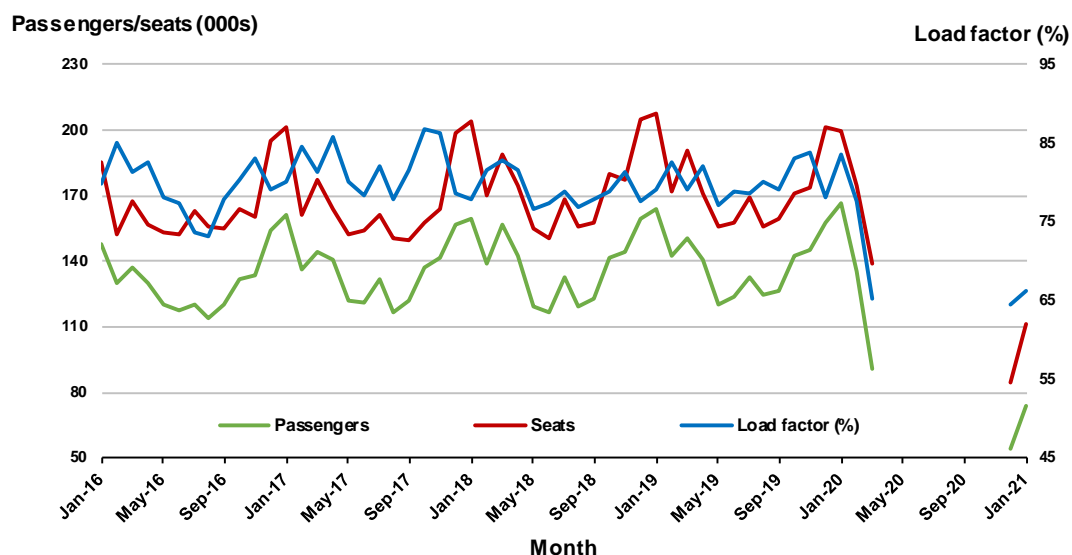


4. Hobart - Melbourne ^(a)

Monthly data

	Jan 2020	Jan 2021	% Change
Passengers carried (000s)	166.4	73.9	-55.6
Seats (000s)	199.1	111.7	-43.9
Load factor %	83.6	66.2	-17.4 *
Aircraft trips	1 095	673	-38.5

* percentage point difference

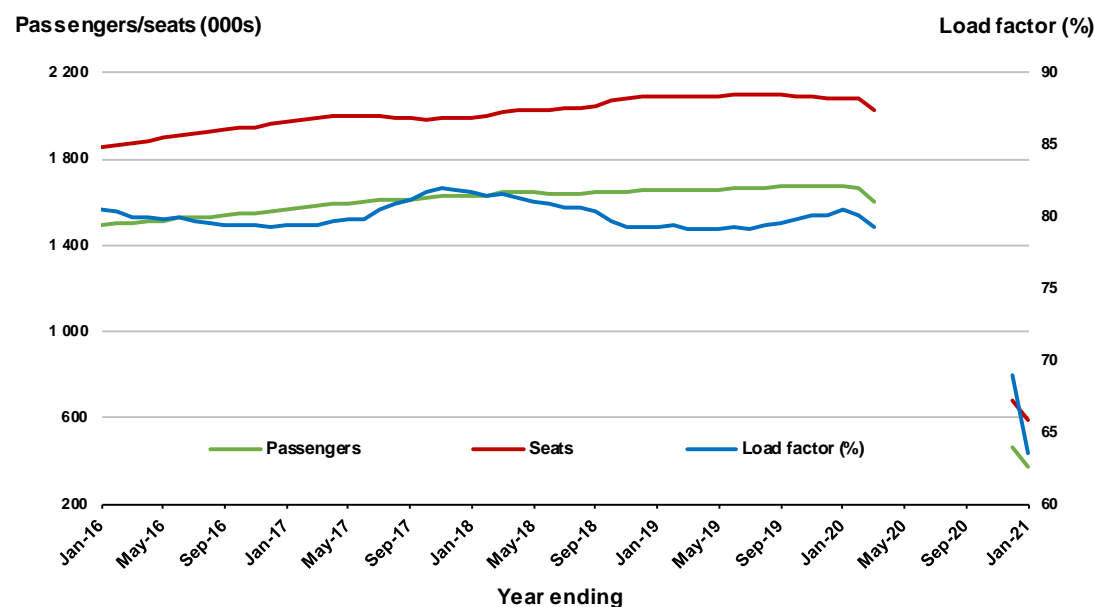


(a) April to November 2020 data not available for release

Moving annual data

	YE Jan 2020	YE Jan 2021	% Change
Passengers carried (000s)	1 672.4	373.9	-77.6
Seats (000s)	2 076.4	589.0	-71.6
Load factor %	80.5	63.5	-17.1 *
Aircraft trips	11 368	3 478	-69.4

* percentage point difference



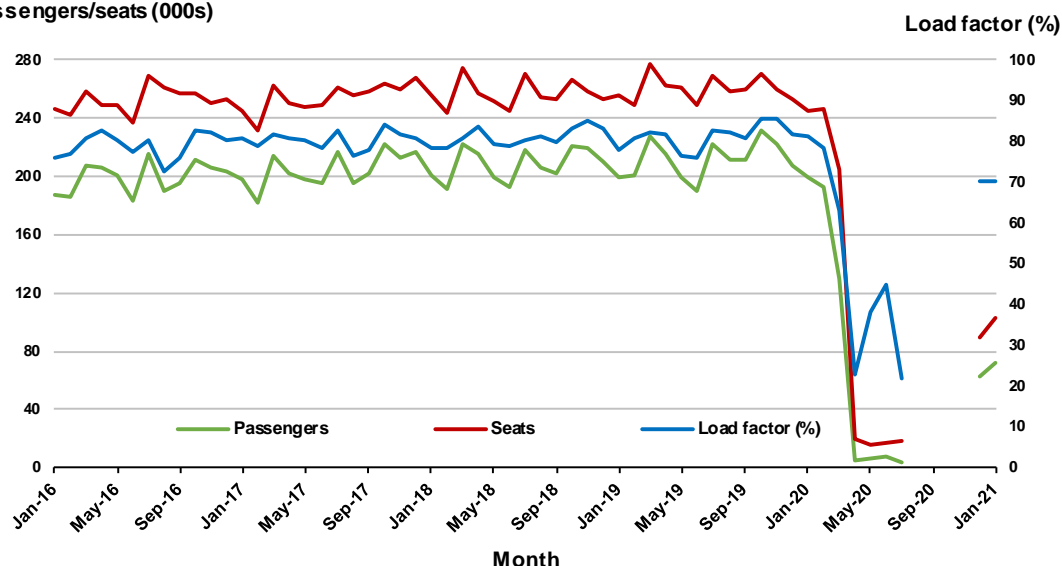
5. Adelaide - Melbourne ^(a)

Monthly data

	Jan 2020	Jan 2021	% Change
Passengers carried (000s)	199.5	71.6	-64.1
Seats (000s)	244.8	102.2	-58.2
Load factor %	81.5	70.1	-11.4 *
Aircraft trips	1 483	658	-55.6

* percentage point difference

Passengers/seats (000s)



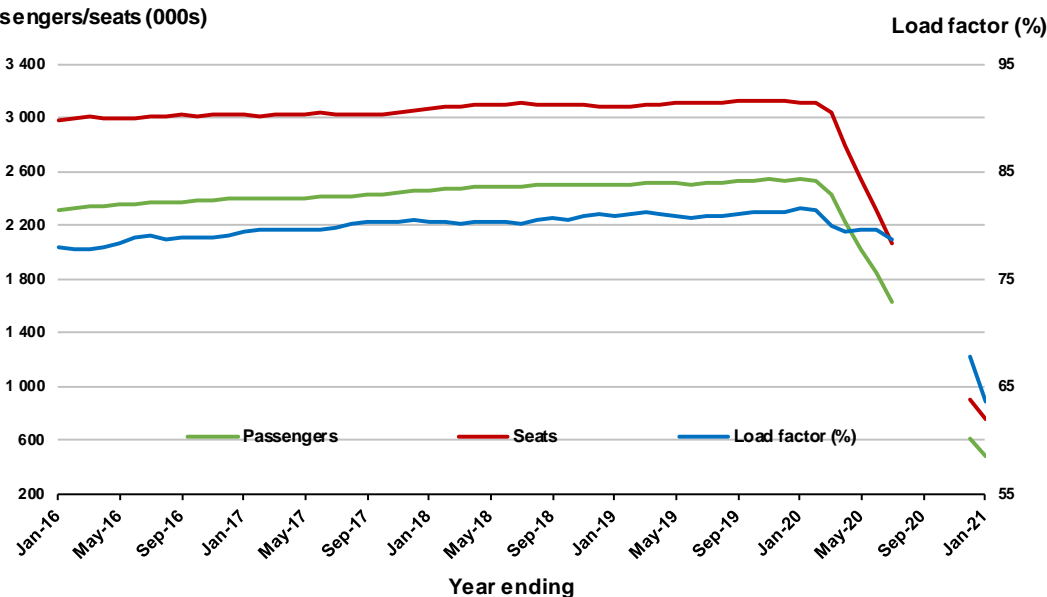
(a) October and November 2020 data not available for release

Moving annual data

	YE Jan 2020	YE Jan 2021	% Change
Passengers carried (000s)	2 538.6	486.2	-80.8
Seats (000s)	3 114.3	763.9	-75.5
Load factor %	81.5	63.6	-17.9 *
Aircraft trips	18 956	5 531	-70.8

* percentage point difference

Passengers/seats (000s)



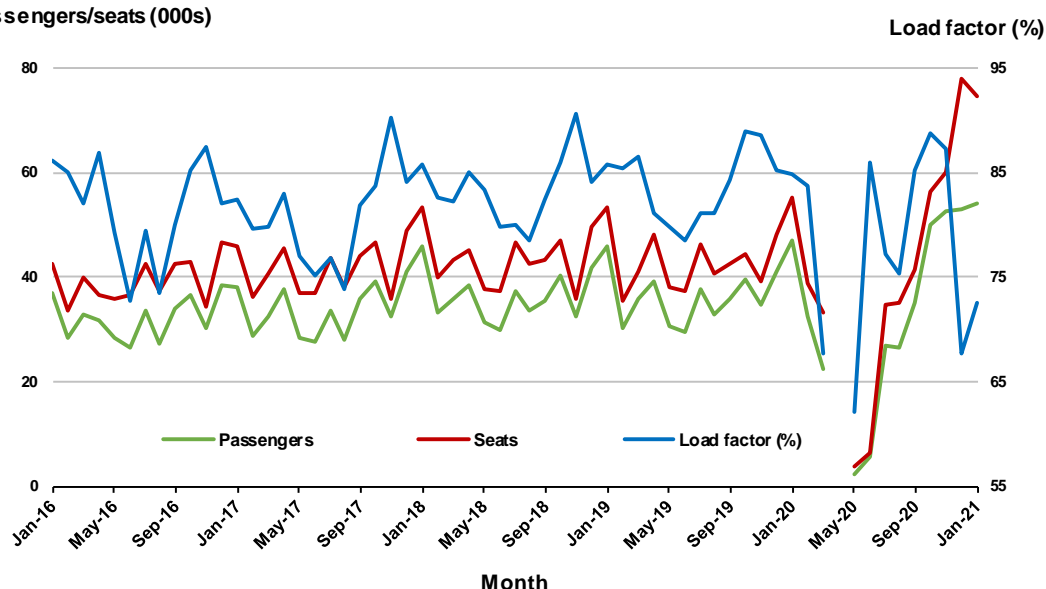
6. Ballina - Sydney ^(a)

Monthly data

	Jan 2020	Jan 2021	% Change
Passengers carried (000s)	47.0	54.2	15.4
Seats (000s)	55.4	74.7	34.9
Load factor %	84.9	72.6	-12.3 *
Aircraft trips	311	468	50.5

* percentage point difference

Passengers/seats (000s)



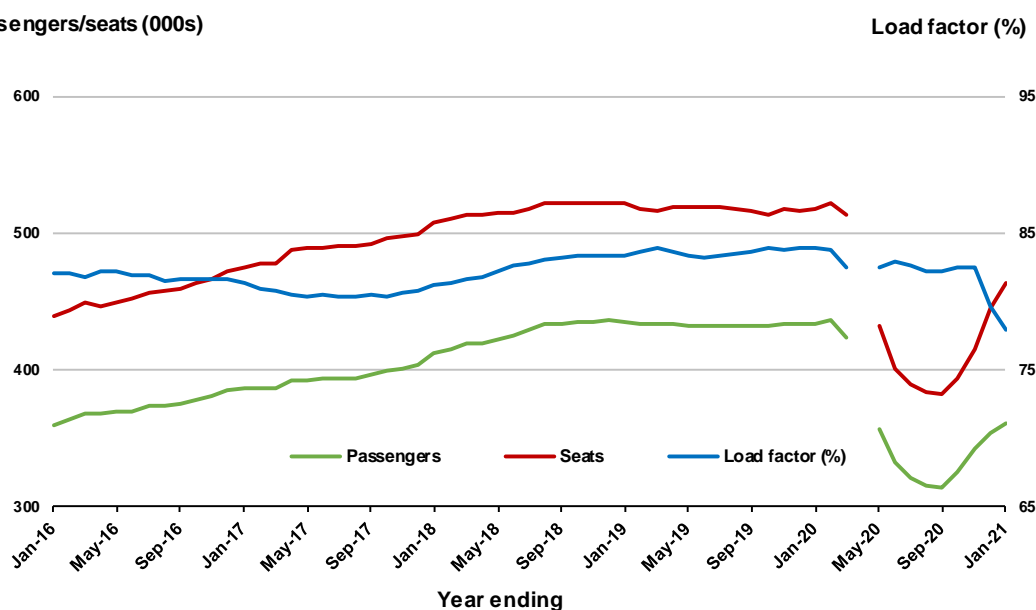
(a) April 2020 data not available for release

Moving annual data

	YE Jan 2020	YE Jan 2021	% Change
Passengers carried (000s)	434.4	361.7	-16.7
Seats (000s)	518.0	464.2	-10.4
Load factor %	83.9	77.9	-5.9 *
Aircraft trips	3 299	3 255	-1.3

* percentage point difference

Passengers/seats (000s)

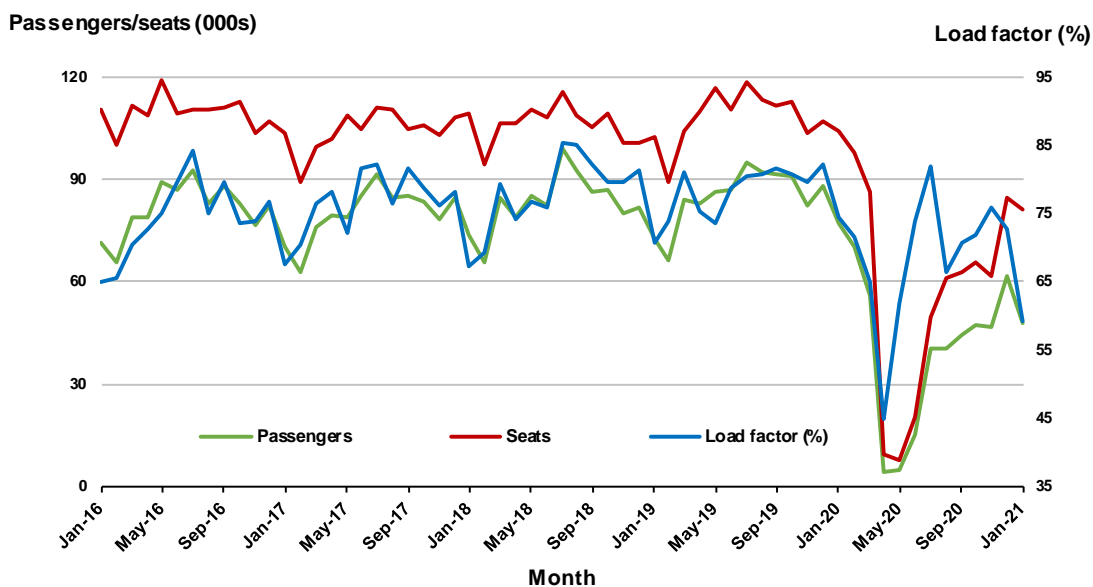


7. Brisbane - Townsville

Monthly data

	Jan 2020	Jan 2021	% Change
Passengers carried (000s)	77.3	48.1	-37.8
Seats (000s)	103.9	81.1	-22.0
Load factor %	74.4	59.3	-15.1 *
Aircraft trips	705	483	-31.5

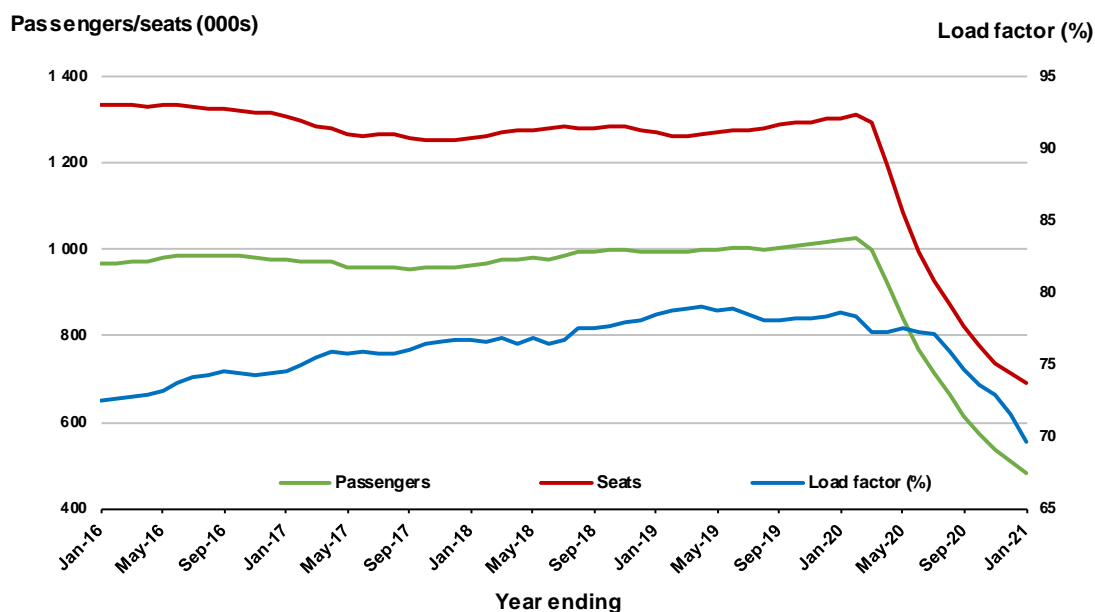
* percentage point difference



Moving annual data

	YE Jan 2020	YE Jan 2021	% Change
Passengers carried (000s)	1 022.9	480.3	-53.0
Seats (000s)	1 301.5	689.4	-47.0
Load factor %	78.6	69.7	-8.9 *
Aircraft trips	8 737	4 534	-48.1

* percentage point difference



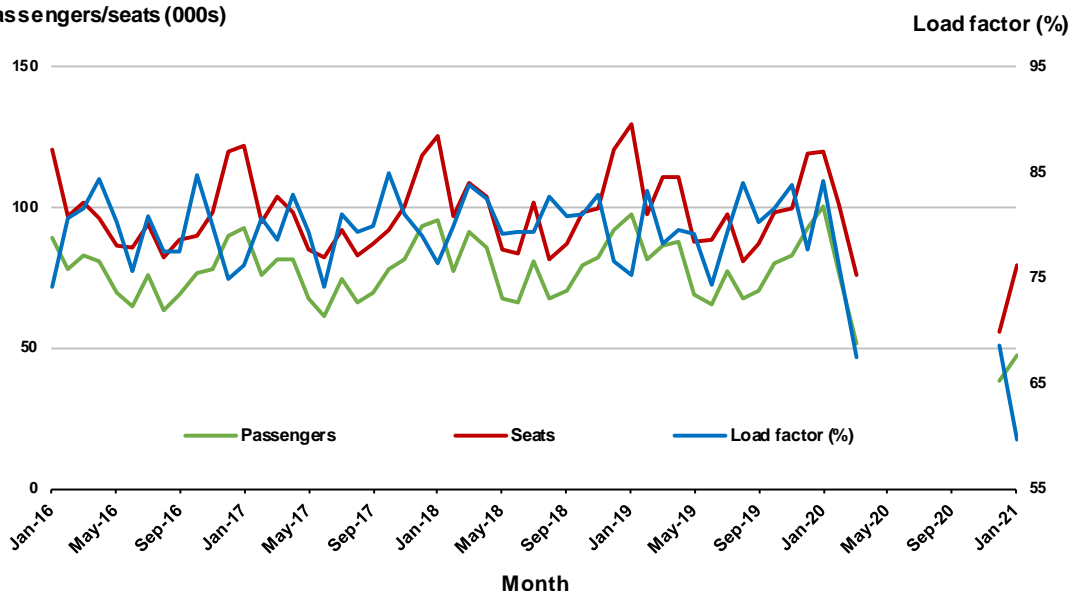
8. Launceston - Melbourne ^(a)

Monthly data

	Jan 2020	Jan 2021	% Change
Passengers carried (000s)	100.6	47.3	-53.0
Seats (000s)	119.6	79.2	-33.8
Load factor %	84.1	59.7	-24.4 *
Aircraft trips	861	573	-33.4

* percentage point difference

Passengers/seats (000s)



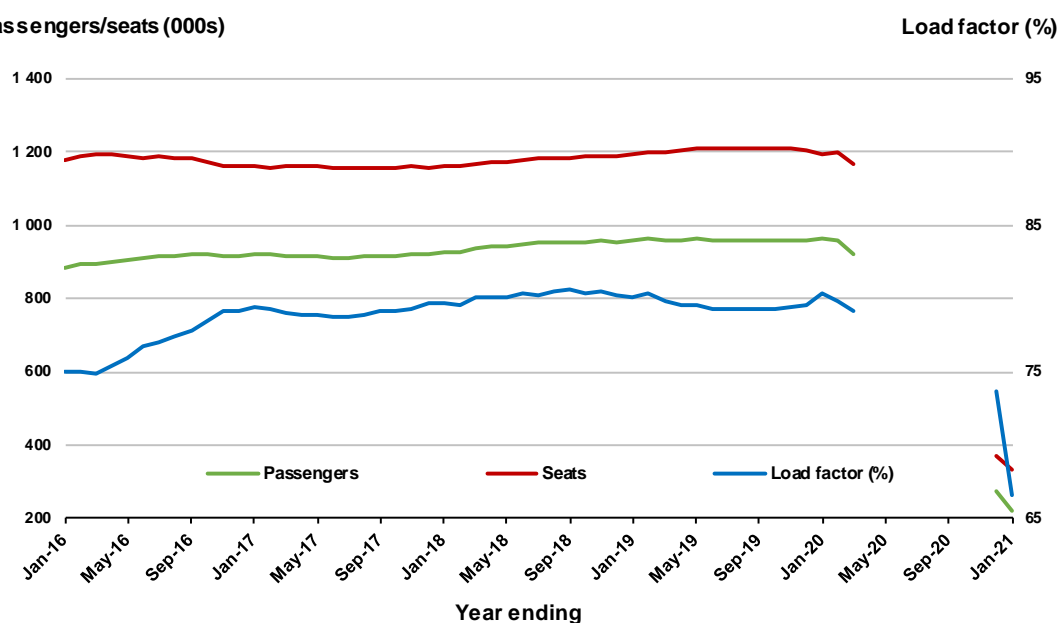
(a) April to November 2020 data not available for release

Moving annual data

	YE Jan 2020	YE Jan 2021	% Change
Passengers carried (000s)	962.0	220.4	-77.1
Seats (000s)	1 196.4	330.9	-72.3
Load factor %	80.4	66.6	-13.8 *
Aircraft trips	8 976	3 318	-63.0

* percentage point difference

Passengers/seats (000s)



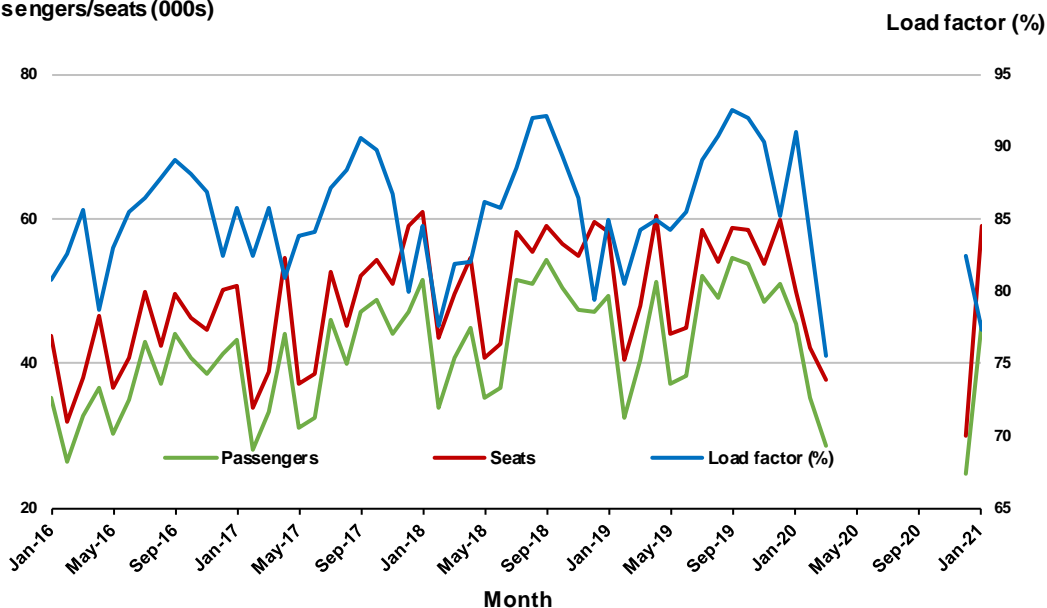
9. Melbourne - Sunshine Coast ^(a)

Monthly data

	Jan 2020	Jan 2021	% Change
Passengers carried (000s)	45.5	45.8	0.6
Seats (000s)	50.0	59.1	18.2
Load factor %	91.0	77.4	-13.6 *
Aircraft trips	282	352	24.8

* percentage point difference

Passengers/seats (000s)



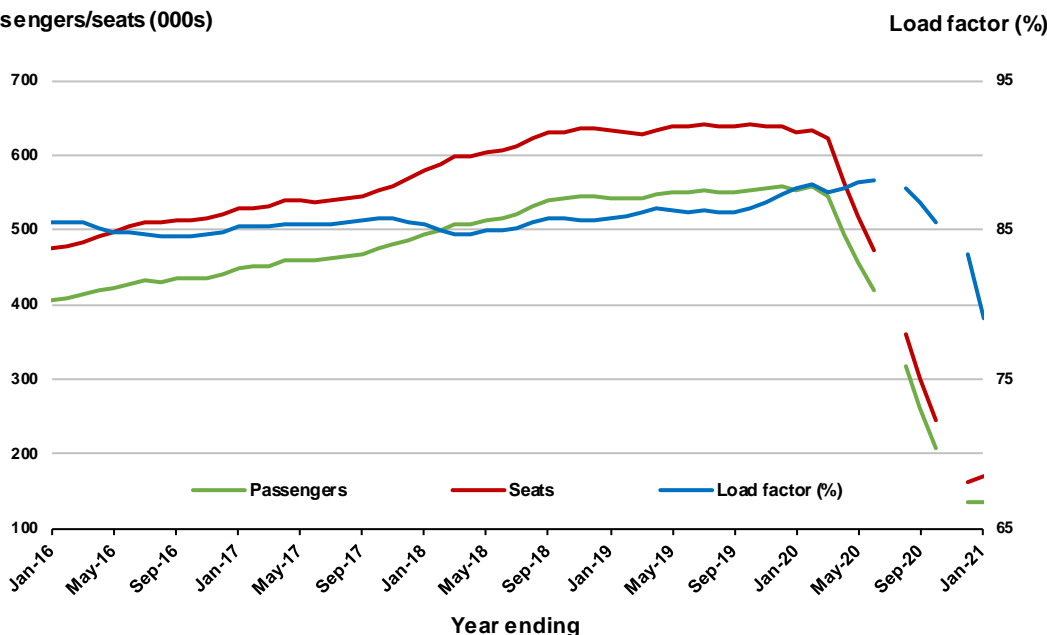
(a) April to November 2020 data not available for release

Moving annual data

	YE Jan 2020	YE Jan 2021	% Change
Passengers carried (000s)	554.1	134.6	-75.7
Seats (000s)	631.0	170.3	-73.0
Load factor %	87.8	79.1	-8.8 *
Aircraft trips	3 521	982	-72.1

* percentage point difference

Passengers/seats (000s)

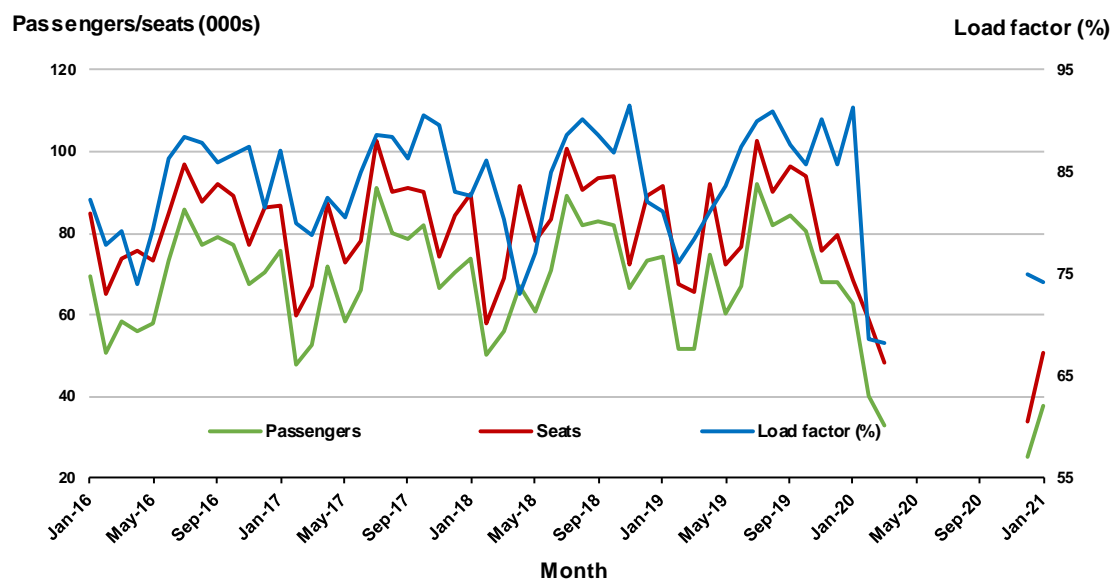


10. Cairns - Melbourne ^(a)

Monthly data

	Jan 2020	Jan 2021	% Change
Passengers carried (000s)	62.5	37.7	-39.7
Seats (000s)	68.5	50.9	-25.7
Load factor %	91.3	74.2	-17.1 *
Aircraft trips	366	269	-26.5

* percentage point difference

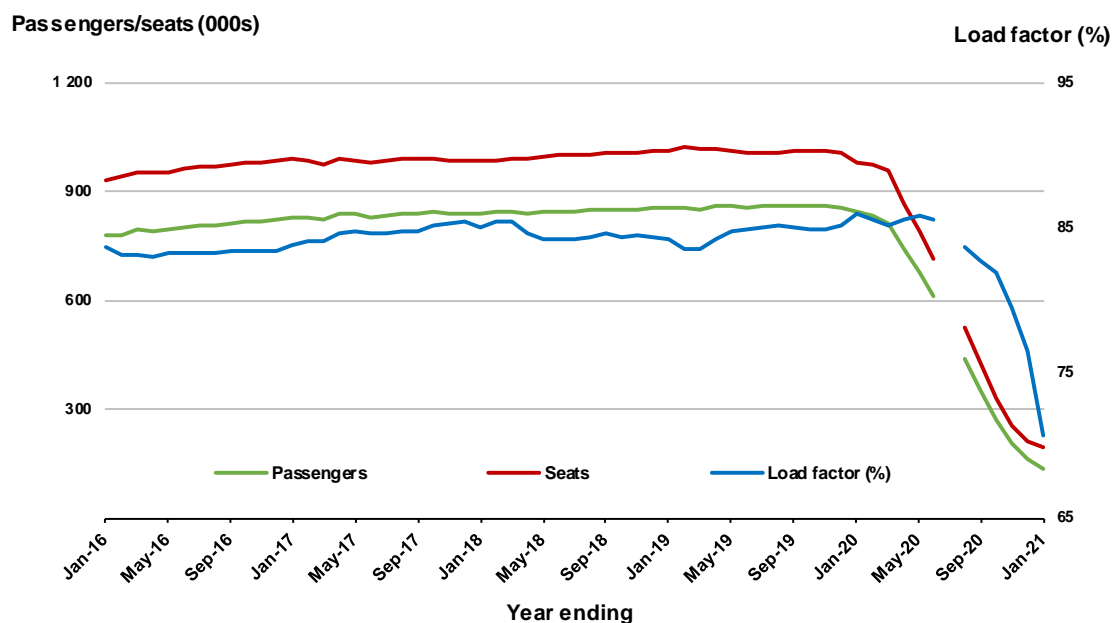


(a) April to November 2020 data not available for release

Moving annual data

	YE Jan 2020	YE Jan 2021	% Change
Passengers carried (000s)	843.9	137.0	-83.8
Seats (000s)	981.8	194.0	-80.2
Load factor %	86.0	70.7	-15.3 *
Aircraft trips	5 018	1 009	-79.9

* percentage point difference



TOP FIFTY REGIONAL AIRPORTS

Table 10: Top fifty regional airports (000s) — passenger movements, monthly

Airport	Jan 2020	Jan 2021	% Change
1 Cairns	348.5	176.3	-49.4
2 Hobart	285.1	130.2	-54.3
3 Darwin	121.3	76.8	-36.7
4 Townsville	125.8	73.8	-41.3
5 Launceston	146.1	66.5	-54.5
6 Ballina	57.6	59.6	3.5
7 Mackay	68.8	41.1	-40.2
8 Newcastle	105.3	36.6	-65.3
9 Karratha	38.8	27.2	-29.9
10 Rockhampton	42.6	24.6	-42.1
11 Newman	26.9	24.1	-10.6
12 Proserpine	41.5	23.6	-43.2
13 Port Hedland	31.2	22.7	-27.1
14 Broome	24.6	22.7	-7.8
15 Hamilton Island	48.2	22.6	-53.1
16 Alice Springs	30.8	22.0	-28.6
17 Kalgoorlie	20.7	15.1	-26.9
18 Paraburdoo	15.7	13.6	-12.9
19 Mount Isa	17.9	12.4	-31.0
20 Port Lincoln	14.9	9.9	-33.6
21 Gladstone	19.0	8.3	-56.4
22 Coffs Harbour	33.5	7.8	-76.7
23 Emerald	15.8	7.7	-51.5
24 Thursday Island	6.9	7.0	0.6
25 Dubbo	13.4	5.9	-55.9
26 Kununurra	6.2	5.1	-18.9
27 Weipa	5.8	5.0	-13.5
28 Learmonth	5.1	4.9	-4.4
29 Mildura	18.0	4.7	-73.9
30 Gove	6.1	4.6	-25.7
31 Olympic Dam	3.9	4.3	12.0
32 Port Macquarie	17.1	4.1	-76.0
33 Bundaberg	11.1	4.1	-63.2
34 King Island	4.4	3.9	-11.0
35 Devonport	13.0	3.9	-70.4
36 Lord Howe Island	3.8	3.7	-4.3
37 Ayers Rock	29.9	3.5	-88.4
38 Geraldton	7.3	3.5	-52.3
39 Wagga Wagga	12.7	3.4	-73.5
40 Albury	14.1	3.2	-77.1
41 Moranbah	8.9	3.1	-64.7
42 Flinders Island	2.6	2.8	7.7
43 Norfolk Island	5.6	2.8	-50.1
44 Roma	6.5	2.7	-58.9
45 Albany	4.6	2.6	-44.0
46 Hervey Bay	13.8	2.6	-81.2
47 Whyalla	4.5	2.5	-43.5
48 Esperance	4.4	2.4	-45.5
49 Groote Eylandt	2.0	2.3	17.6
50 Toowoomba Wellcamp	9.3	2.3	-75.5
Total top 50 regional airports	1 921.6	1 026.0	-46.6
Total regional airports	2 048.6	1 077.1	-47.4
Total domestic network	10 193.6	3 298.6	-67.6

Note: Airport passenger movement numbers are the sum of passenger arrivals and departures at each airport.

Regional airports are defined as airports which are, according to Australian Statistical Geography Standard (ASGS), not based in Major Cities.

Table 11: Top fifty regional airports (000s) — passenger movements, annual

Airport	YE Jan 2020	YE Jan 2021	% Change
1 Cairns	4 153.6	1 416.6	-65.9
2 Hobart	2 788.7	724.8	-74.0
3 Townsville	1 670.2	715.0	-57.2
4 Darwin	1 726.9	612.3	-64.5
5 Mackay	883.2	427.9	-51.6
6 Ballina	534.4	409.3	-23.4
7 Launceston	1 391.6	372.9	-73.2
8 Newcastle	1 272.3	312.7	-75.4
9 Karratha	471.3	261.8	-44.5
10 Rockhampton	573.3	258.0	-55.0
11 Broome	403.0	240.1	-40.4
12 Port Hedland	387.4	205.1	-47.1
13 Alice Springs	545.1	200.4	-63.2
14 Proserpine	436.6	187.7	-57.0
15 Newman	349.8	164.4	-53.0
16 Hamilton Island	460.8	163.2	-64.6
17 Kalgoorlie	287.5	154.5	-46.3
18 Mount Isa	229.3	141.3	-38.4
19 Paraburdoo	192.3	108.6	-43.5
20 Gladstone	249.0	99.5	-60.0
21 Coffs Harbour	396.9	98.4	-75.2
22 Emerald	203.0	90.7	-55.3
23 Port Lincoln	173.5	84.3	-51.4
24 Dubbo	211.4	75.1	-64.5
25 Ayers Rock	488.2	66.0	-86.5
26 Thursday Island	96.9	59.9	-38.2
27 Learmonth	84.5	57.1	-32.4
28 Kununurra	113.9	55.7	-51.1
29 Albany	252.4	55.1	-78.2
30 Wagga Wagga	208.6	52.0	-75.1
31 Mildura	254.3	51.1	-79.9
32 Bundaberg	153.7	49.4	-67.9
33 Gove	81.9	48.8	-40.4
34 Port Macquarie	219.0	48.7	-77.8
35 Tamworth	189.8	42.9	-77.4
36 Moranbah	110.0	41.8	-62.0
37 Weipa	71.4	41.4	-42.0
38 Olympic Dam	73.8	38.8	-47.3
39 Geraldton	106.4	38.5	-63.8
40 Roma	97.0	35.6	-63.3
41 Albany	62.6	31.4	-49.8
42 Hervey Bay	167.3	31.3	-81.3
43 Toowoomba Wellcamp	121.1	30.2	-75.0
44 Esperance	51.5	29.9	-42.0
45 Armidale	132.6	29.6	-77.7
46 King Island	46.2	28.7	-37.9
47 Devonport	149.5	28.6	-80.9
48 Cloncurry	45.4	27.2	-40.0
49 Whyalla	78.9	26.3	-66.6
50 Norfolk Island	60.4	24.6	-59.2
Total top 50 regional airports	23 508.6	8 595.2	-63.4
Total regional airports	25 079.4	9 283.4	-63.0
Total domestic network	122 832.1	31 994.7	-74.0

Note: Airport passenger movement numbers are the sum of passenger arrivals and departures at each airport. Regional airports are defined as airports which are, according to Australian Statistical Geography Standard (ASGS), not based in Major Cities.

DOMESTIC CHARTER ACTIVITY

Table 12: Charter passengers carried and aircraft trips - monthly activity

	Jan 2020	Jan 2021	% Change
Total domestic charter passengers	249 430	254 156	1.9
Total domestic charter aircraft trips	4 432	5 189	17.1

Note: Helicopter, joyflights and sightseeing charter flights not included.

Table 13: Charter passengers carried and aircraft trips - annual activity

	YE Jan 2020	YE Jan 2021	% Change
Total domestic charter passengers	2 752 869	3 164 053	14.9
Total domestic charter aircraft trips	47 298	65 913	39.4

Note: Helicopter, joyflights and sightseeing charter flights not included.

Table 14: Domestic airports - charter activity - monthly

	Jan 2020	Jan 2021	% Change
Total domestic charter passenger movements	498 860	508 312	1.9
Total domestic charter aircraft movements	8 864	10 378	17.1
Perth airport charter passenger movements	190 332	191 333	0.5
Perth airport charter aircraft movements	3 105	3 449	11.1

Note: Helicopter, joyflights and sightseeing charter flights not included.

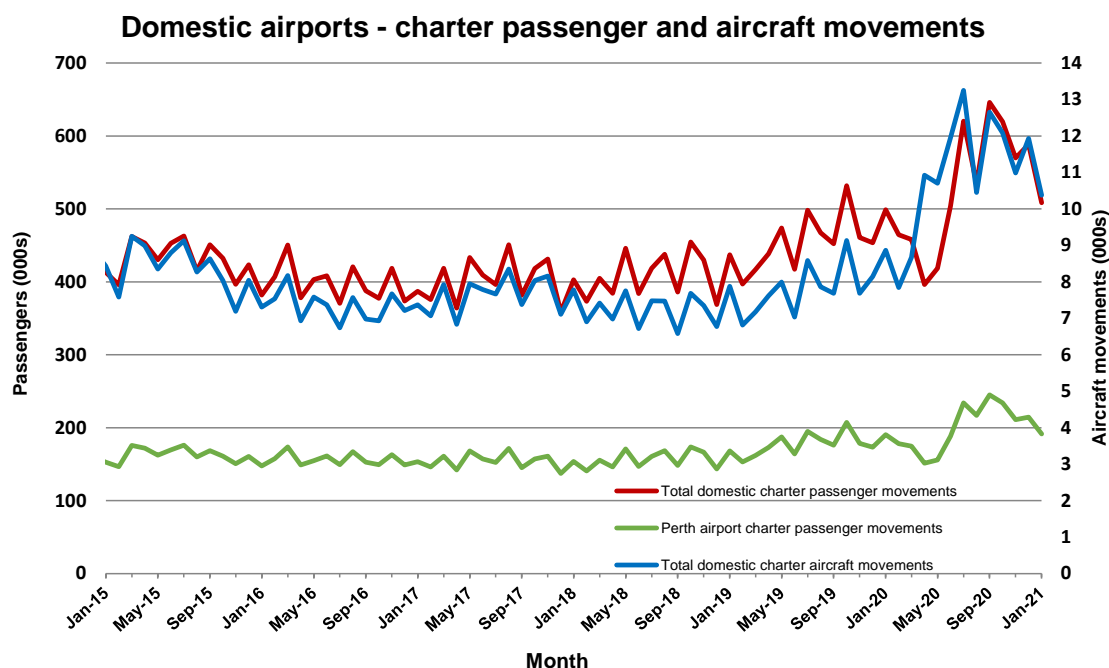
Charter passenger and aircraft movement numbers are the sum of arrivals and departures at each airport.

Table 15: Domestic airports - charter activity - annual

	YE Jan 2020	YE Jan 2021	% Change
Total domestic charter passenger movements	5 505 738	6 328 106	14.9
Total domestic charter aircraft movements	94 596	131 826	39.4
Perth airport charter passenger movements	2 142 844	2 394 700	11.8
Perth airport charter aircraft movements	33 537	43 773	30.5

Note: Helicopter, joyflights and sightseeing charter flights not included.

Charter passenger and aircraft movement numbers are the sum of arrivals and departures at each airport.



DEFINITIONS

Aircraft Trips	The number of flight stages. A return flight counts as two aircraft trips.
Airport Movements	Airport movements (passenger and cargo) are measured once on arrival and once on departure. Each domestic trip generates two movements at airports. For example, a trip from Melbourne to Sydney will be counted twice, as a departure at Melbourne and as an arrival at Sydney. At the national level, the sum of all domestic airport traffic will therefore be equal to twice the number of trips undertaken.
Available Seat Kilometres (ASKs)	Calculated by multiplying the number of seats available on each flight stage, by the distance in kilometres between the ports. The distances used are Great Circle Distances.
City-Pair	The ports shown make up the city-pair route. Passenger movements shown for a city pair reflect total traffic in both directions.
Flight Stage	The operation of an aircraft from take-off to landing.
Load Factor	The total revenue passenger kilometres performed as a percentage of the total available seat kilometres.
Passengers Carried	Revenue passengers carried.
Regular Public Transport Services (RPT)	All air service operations in which aircraft are available for the transport of members of the public and are conducted in accordance with fixed schedules. It does not include charter or other non-scheduled operations.
Revenue Passengers	All passengers paying any fare. Frequent flyer redemption travellers are regarded as revenue passengers.
Revenue Passenger Kilometres (RPKs)	Calculated by multiplying the number of revenue passengers travelling on each flight stage, by the distance in kilometres between the ports. The distances used are Great Circle Distances.
Traffic on board by stages	The total of all traffic (revenue passengers) on each flight stage between two directly connected airports.
..	Not available for confidentiality or other reasons.
NA	Not applicable.