



Australian Government

Department of Infrastructure, Transport,
Regional Development, Communications, Sport and the Arts

Bureau of Infrastructure and Transport Research Economics
STATISTICAL REPORT



Aviation

**Domestic airline on time performance
May 2026**

The Department of Infrastructure, Transport, Regional Development, Communications, Sport and the Arts acknowledges the Traditional Custodians of country throughout Australia and their connections to land, sea and community.

We pay our respect to their Elders past and present and extend that respect to all Aboriginal and Torres Strait Islander people.

© Commonwealth of Australia 2026

ISSN: 1832-0759

BITRE reference: 2026-061

Ownership of intellectual property rights in this publication

Unless otherwise noted, copyright (and any other intellectual property rights, if any) in this publication is owned by the Commonwealth of Australia (referred to below as the Commonwealth).

Disclaimer

The material contained in this publication is made available on the understanding that the Commonwealth is not providing professional advice, and that users exercise their own skill and care with respect to its use, and seek independent advice if necessary.

The Commonwealth makes no representations or warranties as to the contents or accuracy of the information contained in this publication. To the extent permitted by law, the Commonwealth disclaims liability to any person or organisation in respect of anything done, or omitted to be done, in reliance upon information contained in this publication.

Creative Commons licence

With the exception of (a) the Coat of Arms; and (b) the Department of Infrastructure, Transport, Regional Development, Communications, Sport and the Arts' photos and graphics, copyright in this publication is licensed under a Creative Commons Attribution 4.0 Australia Licence.

Creative Commons Attribution 4.0 Australia Licence is a standard form licence agreement that allows you to copy, communicate and adapt this publication provided that you attribute the work to the Commonwealth and abide by the other licence terms. A summary of the licence terms is available from <https://creativecommons.org/licenses/by/4.0/>. The full licence terms are available from <https://creativecommons.org/licenses/by/4.0/legalcode.en>.

Use of the Coat of Arms

The Department of the Prime Minister and Cabinet sets the terms under which the Coat of Arms is used. Please refer to the Department's Commonwealth Coat of Arms and Government branding web page <http://www.dpmc.gov.au/guidelines/index.cfm#brand> and, in particular, the Guidelines on the use of the Commonwealth Coat of Arms publication.

An appropriate citation for this report is:

Bureau of Infrastructure and Transport Research Economics (BITRE), 2026, Domestic airline on time performance, Statistical Report, BITRE, Canberra ACT.

Contact us

All other rights are reserved, including in relation to any departmental logos or trade marks which may exist. For enquiries regarding the licence and any use of this publication, please contact:

Bureau of Infrastructure and Transport Research Economics (BITRE)
Department of Infrastructure, Transport, Regional Development, Communications, Sport and the Arts
GPO Box 501, Canberra ACT 2601, Australia
Telephone: (international) +61 2 6136 8687
Email: bitre@infrastructure.gov.au
Website: www.bitre.gov.au

Inquiries

Should you require additional information about the statistics contained in this publication:

Telephone: (02) 6136 7250

Email: AVSTATS@infrastructure.gov.au

Website: <http://www.bitre.gov.au/statistics/aviation/otphome.aspx>

Foreword

The Bureau of Infrastructure and Transport Research Economics (BITRE) monitors the punctuality and reliability of major domestic airlines operating between Australian airports. The purpose of this is to allow for evaluation of overall industry and individual airline performance, so that consumers of air travel can make informed decisions.

The following domestic airlines currently report this information monthly to the BITRE: Hinterland, Jetstar, Qantas, QantasLink, Rex Airlines, Skytrans Australia (formerly SmartLynx Australia), Virgin Australia and Virgin Australia Regional Airlines.

Information presented in this report is for Australian domestic routes for which the passenger load averaged 8,000 or more passengers per month over the previous six months and where two or more airlines operated in competition on those routes. Data are presented for 59 routes in May 2026. Over time, routes which meet these criteria change as airline networks and traffic levels vary. Participating airlines report their overall monthly network performance where this is possible.

Total industry figures encompass all services operated by reporting airlines only. These airlines collectively carried over 98% of total domestic passengers (regular public transport only) in 2025.

The method of capturing on time performance varies between airlines utilising different recording systems. Jetstar and Qantas jet aircraft use Aircraft Communication Addressing and Reporting System (ACARS) to electronically measure on time performance. Rex Airlines, Virgin Australia, Virgin Australia Regional Airlines and the Qantas non-jet fleet record on time performance manually using records from pilots, gate agents and/or ground crews.

After initial data is collected, aggregate reports are reviewed by participating airlines prior to publication.

Reports and detailed time series data in Microsoft Excel spreadsheet format are available from the BITRE website at: <http://www.bitre.gov.au/statistics/aviation/otphome.aspx>

Contents

	Page
Industry performance	1
Individual routes	10
Airports.....	22
Definitions	28
Airlines and Reporting	29

Industry performance

For May 2026, on time performance over all routes operated by participating airlines (Hinterland, Jetstar, Qantas, QantasLink, Rex Airlines, Skytrans Australia (formerly SmartLynx Australia), Virgin Australia and Virgin Australia Regional Airlines) averaged 82.1% for on time arrivals and 82.8% for on time departures. The cancellation rate for the month was 1.5%. The equivalent figures for May 2025 were 82.2% for on time arrivals, 83.4% for on time departures and 2.1% for cancellations.

This month's on time arrivals figure was higher than the long term average (average over the period of OTP reporting starting in November 2003) performance for all routes (80.5%) and the on time departures figure was also higher than the long term average (81.6%). The rate of cancellations was lower than the long term average of 2.2%.

On time arrivals

The Qantas network (Qantas and QantasLink combined operations) recorded 84.4% for on time arrivals while the Virgin Australia network (Virgin Australia and Virgin Australia Regional Airlines combined operations) recorded 82.7%. Hinterland achieved the highest on time arrivals at 93.3%, followed by Qantas at 84.5%, QantasLink at 84.4%, Virgin Australia at 82.8%, Skytrans Australia at 79.5%, Virgin Australia Regional Airlines at 79.0%, Jetstar at 78.8% and Rex Airlines at 71.2%.

On time departures

The Qantas network recorded 85.3% for on time departures while the Virgin Australia network recorded 84.1%. Hinterland achieved the highest level of on time departures for May 2026 at 96.7%, followed by Qantas at 87.8%, Virgin Australia at 84.1%, QantasLink at 83.9%, Virgin Australia Regional Airlines at 82.6%, Skytrans Australia at 80.1%, Jetstar at 76.2% and Rex Airlines at 73.7%.

Cancellations

QantasLink recorded the highest percentage of cancellations at 2.3% during the month. The second highest cancellation rate was from Rex Airlines at 2.2%, Skytrans Australia at 2.0%, Virgin Australia Regional Airlines at 1.4%, Qantas at 1.4%, Jetstar at 1.0%, Virgin Australia at 0.8% and Hinterland at 0.1%.

Routes

Airlines' on time performance varies across the routes they serve. Individual route data by specific airline for 59 routes (118 sectors when counting both directions of flights) are shown on pages 10-21.

Of the 59 routes which met the criteria¹ for on time performance reporting in May 2026, the Perth-Newman sector had the highest percentage of on time arrivals (95.2%), while the Darwin-Perth sector had the highest percentage of on time departures (96.8%). The Perth-Sydney sector had the lowest percentage of on time arrivals (63.9%), while the Gold Coast-Adelaide sector had the lowest percentage of on time departures (62.5%).

Cancellations were highest on the Port Macquarie-Sydney sector at 6.7%, followed by the Canberra-Sydney sector at 5.9%, the Sydney-Port Macquarie sector at 5.6%, the Sydney-Canberra sector at 4.9%, the Launceston-Melbourne sector at 4.8%, the Canberra-Melbourne sector at 4.5%, the Melbourne-Launceston sector at 4.4%, and the Mildura-Melbourne sector at 4.2%.

For the month of May 2026 there were 35 out of the 118 route sectors (from the 59 routes) that had zero cancellations: Adelaide-Alice Springs, Adelaide-Gold Coast, Alice Springs-Adelaide, Brisbane-Darwin, Brisbane-Hamilton Island, Brisbane-Hobart, Brisbane-Launceston, Brisbane-Mount Isa, Brisbane-Proserpine, Cairns-Sydney, Canberra-Gold Coast, Darwin-Brisbane, Darwin-Perth, Gold Coast-Adelaide, Gold Coast-Canberra, Hamilton Island-Brisbane, Hamilton Island-Sydney, Hobart-Brisbane, Hobart-Melbourne, Launceston-Brisbane, Melbourne-Darwin, Melbourne-Hobart, Melbourne-Sunshine Coast, Mount Isa-Brisbane, Perth-Broome, Perth-Darwin, Perth-Newman, Perth-Port Hedland, Proserpine-Brisbane, Sunshine Coast-Melbourne, Sydney-Cairns, Sydney-Hamilton Island, Sydney-Launceston, Ayers Rock-Melbourne, Melbourne-Ayers Rock.

Airports

Newman Airport recorded the highest percentage of on time arrivals (95.2%) and the highest percentage of on time departures (93.5%). Port Macquarie Airport recorded the lowest percentage of on time arrivals (66.7%) while Alice Springs Airport had the lowest percentage of on time departures (63.6%). These figures only refer to reported routes and do not cover all flights at these airports.

1. Australian domestic routes for which the passenger load averaged 8,000 or more passengers per month over the previous six months and where two or more airlines operated in competition on those routes.

Table 1 On time performance for May 2026 – Total Industry

	<i>Sectors</i>		<i>Arrivals On Time</i>		<i>Departures On Time</i>		<i>Cancellations</i>	
	<i>Scheduled</i>	<i>Flown</i>	<i>No.</i>	<i>%</i>	<i>No.</i>	<i>%</i>	<i>No.</i>	<i>%</i>
Hinterland	1,561	1,559	1,455	93.3	1,507	96.7	2	0.1
Jetstar	7,062	6,991	5,506	78.8	5,324	76.2	71	1.0
Qantas - all QF designated services	19,355	18,979	16,022	84.4	16,197	85.3	376	1.9
Rex Airlines	4,197	4,104	2,921	71.2	3,025	73.7	93	2.2
Skytrans Australia	353	346	275	79.5	277	80.1	7	2.0
Virgin Australia - all VA designated services	11,424	11,329	9,371	82.7	9,530	84.1	95	0.8
All Airlines	43,952	43,308	35,550	82.1	35,860	82.8	644	1.5
Individual operating entities								
Qantas	7,000	6,904	5,831	84.5	6,065	87.8	96	1.4
QantasLink	12,355	12,075	10,191	84.4	10,132	83.9	280	2.3
Virgin Australia	11,284	11,191	9,262	82.8	9,416	84.1	93	0.8
Virgin Australia Regional Airlines	140	138	109	79.0	114	82.6	2	1.4

Total airline network data (including routes not shown in this report).

Airlines’ on time performance varies across the routes they serve. Individual route data by specific airline are shown on page 10 and onwards.

Table 2 Top ten routes for on time performance for May 2026 (participating airlines only)

<i>Arrivals</i>		<i>Departures</i>	
<i>Route</i>	<i>On Time (%)</i>	<i>Route</i>	<i>On Time (%)</i>
Perth-Newman	95.2	Darwin-Perth	96.8
Perth-Port Hedland	94.1	Perth-Newman	95.7
Ayers Rock-Melbourne	93.3	Perth-Kalgoorlie	95.2
Melbourne-Ayers Rock	93.3	Brisbane-Mount Isa	94.2
Perth-Karratha	93.3	Perth-Port Hedland	93.6
Gold Coast-Canberra	93.2	Newman-Perth	93.5
Adelaide-Perth	92.6	Emerald-Brisbane	92.6
Emerald-Brisbane	92.6	Perth-Adelaide	92.6
Perth-Broome	92.0	Perth-Karratha	92.6
Mackay-Brisbane	90.8	Adelaide-Canberra	92.4

Table 3 Top ten airports for on time performance for May 2026 (participating airlines and reported routes only)

<i>Arrivals</i>		<i>Departures</i>	
<i>Airport</i>	<i>On Time (%)</i>	<i>Airport</i>	<i>On Time (%)</i>
Newman	95.2	Newman	93.5
Port Hedland	94.1	Emerald	92.6
Ayers Rock	93.3	Port Hedland	91.5
Karratha	93.3	Broome	90.6
Broome	92.0	Perth	89.1
Emerald	89.7	Mackay	88.1
Kalgoorlie	88.7	Gladstone	88.0
Canberra	87.8	Ayers Rock	86.7
Mount Isa	87.0	Adelaide	85.6
Gladstone	86.3	Karratha	85.1

Total industry on time performance

Figure 1 On time performance (by month from May 2023)—Total Industry

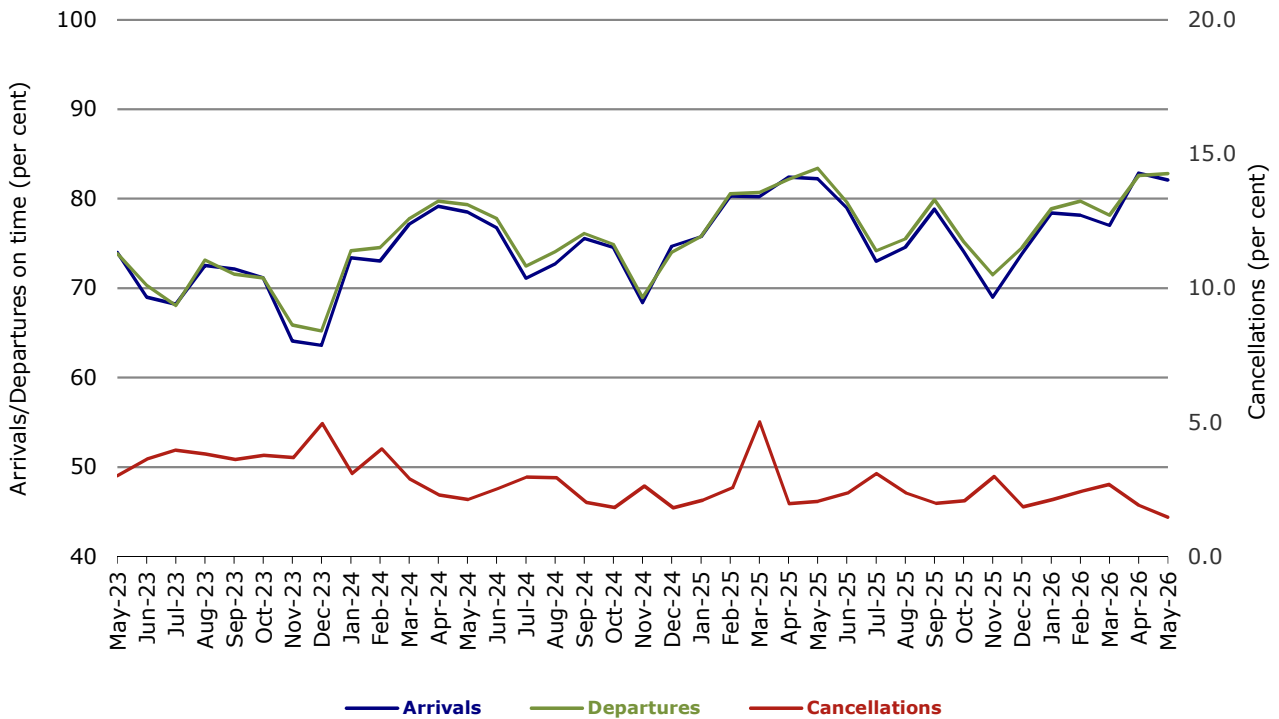


Figure 2 Arrivals on time (by month from May 2025)

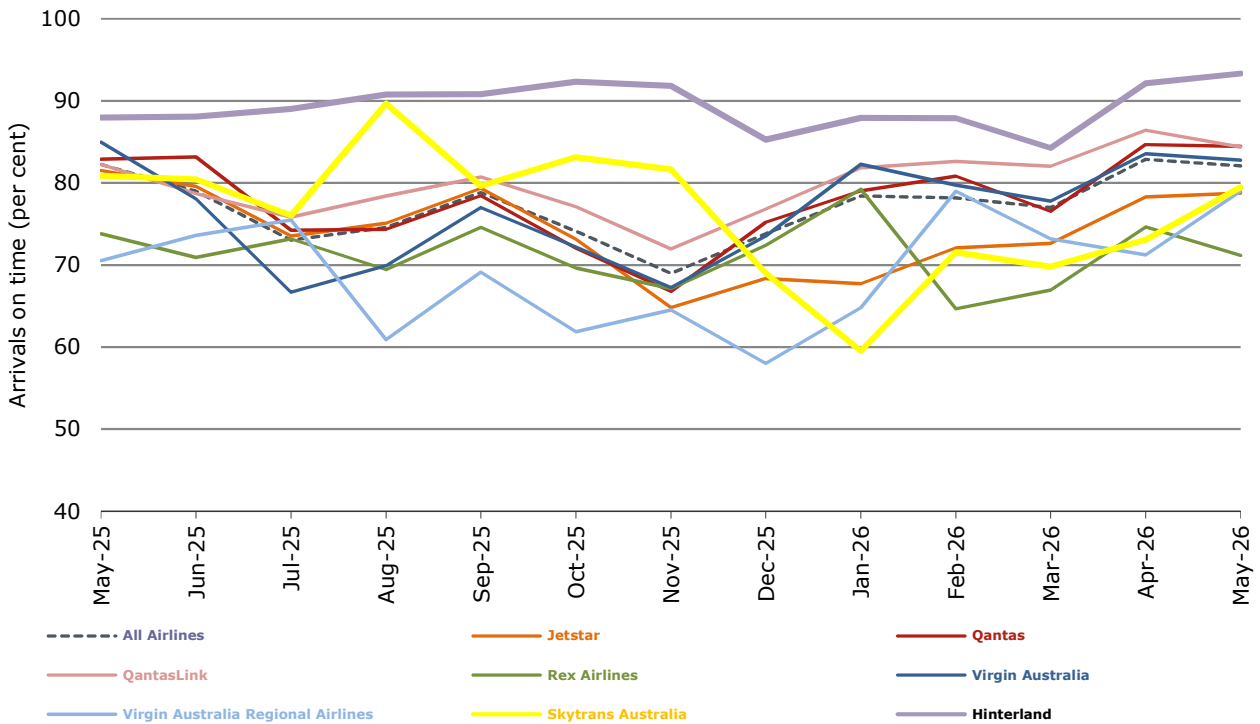


Figure 3 Departures on time (by month from May 2025)

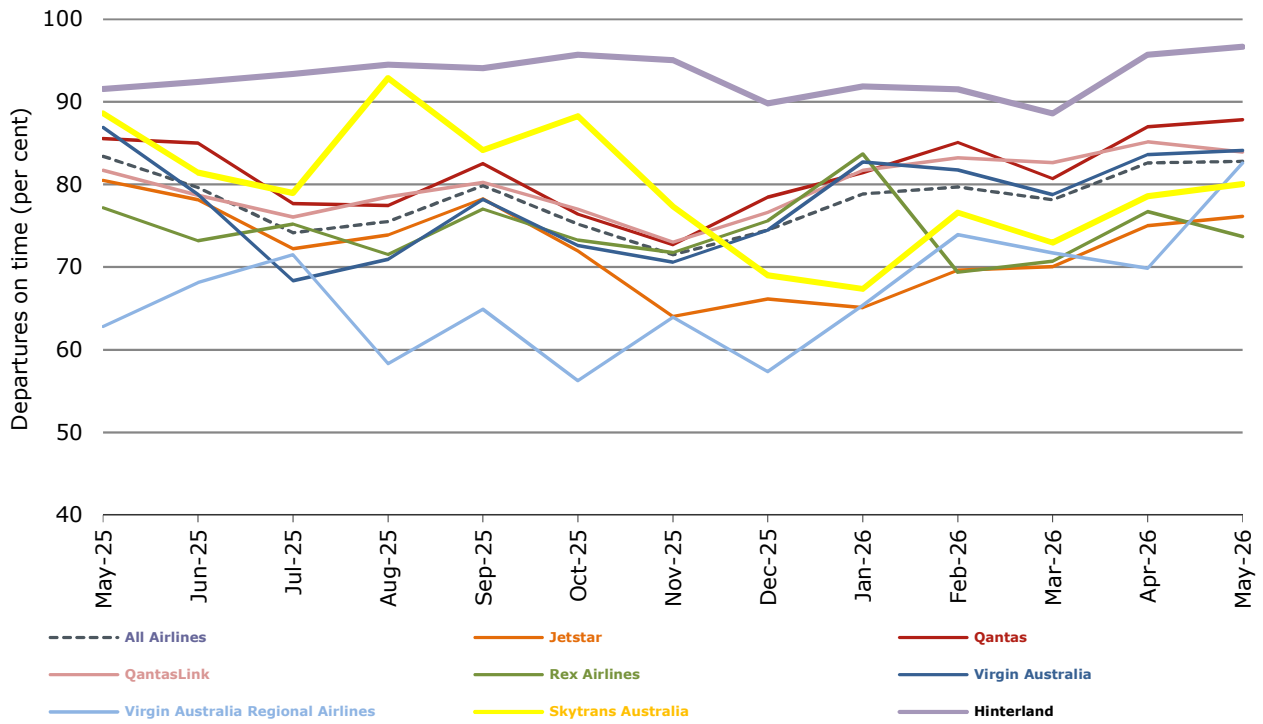
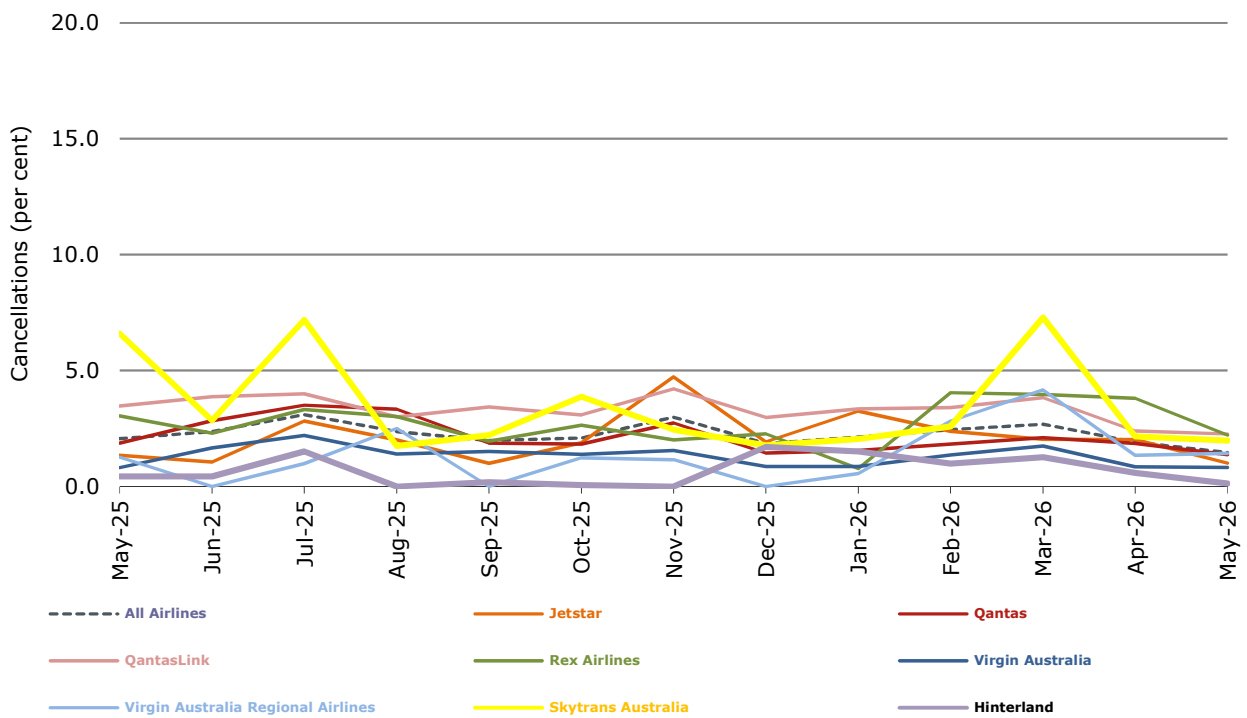


Figure 4 Cancellations (by month from May 2025)



Airlines on time performance

Figure 5 On time performance (by month from May 2023)—Jetstar

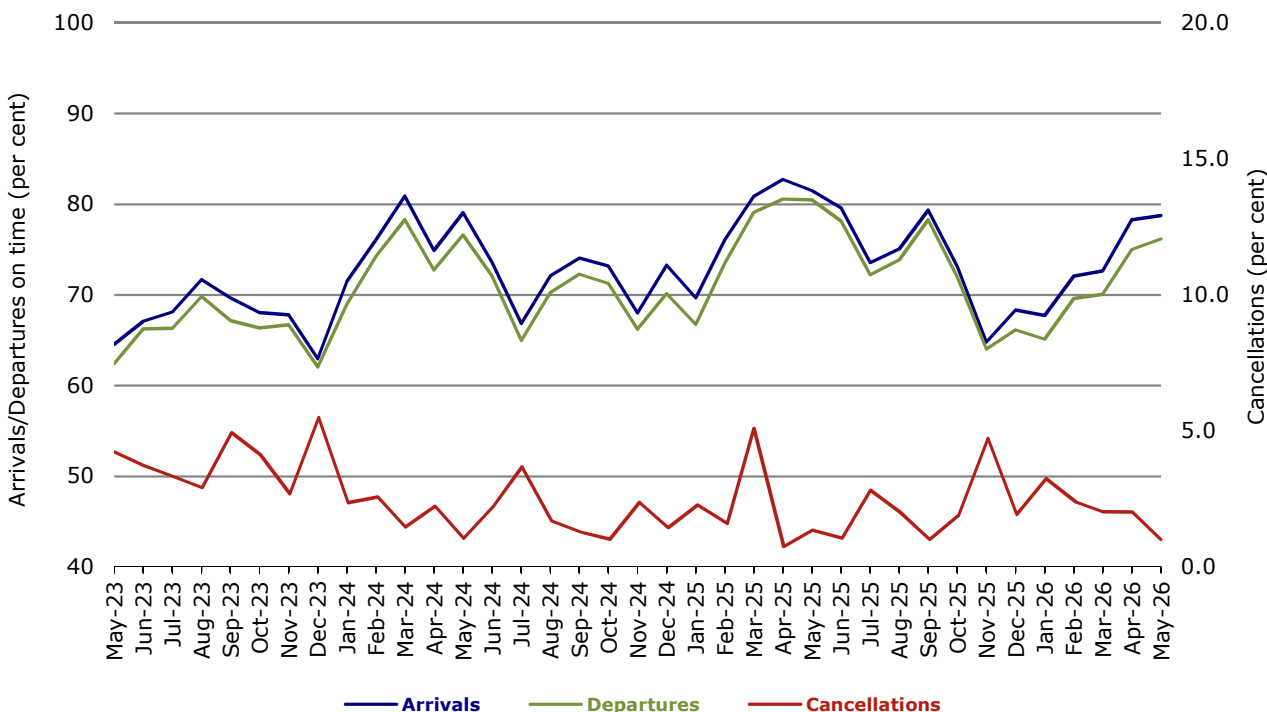


Figure 6 On time performance (by month from May 2023)—Qantas

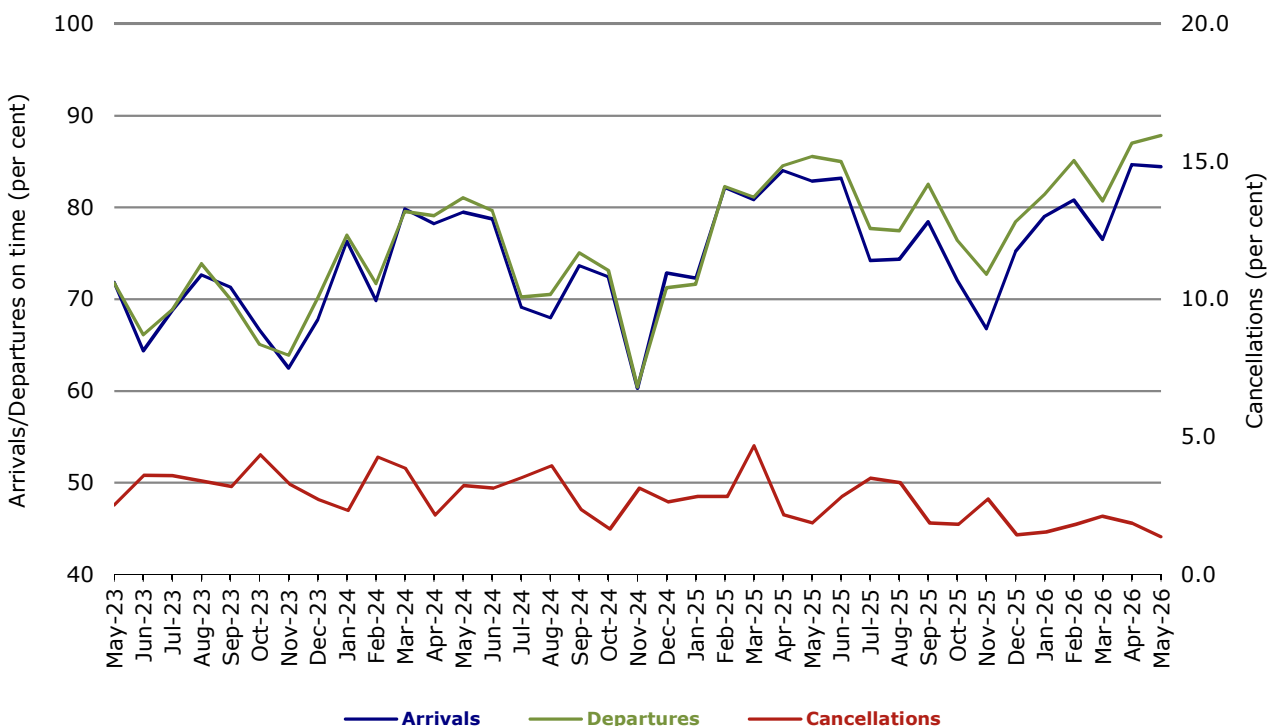


Figure 7 On time performance (by month from May 2023)—Virgin Australia

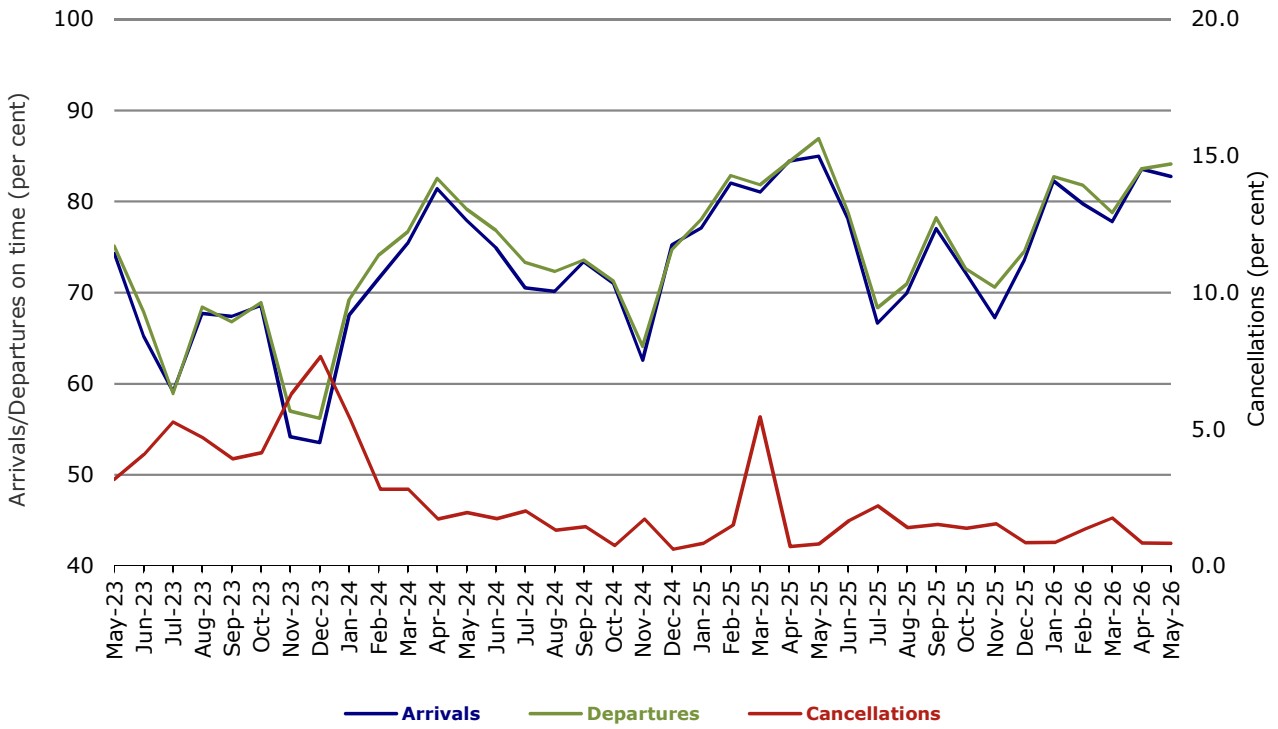


Figure 8 On time performance (by month from May 2023)—QantasLink

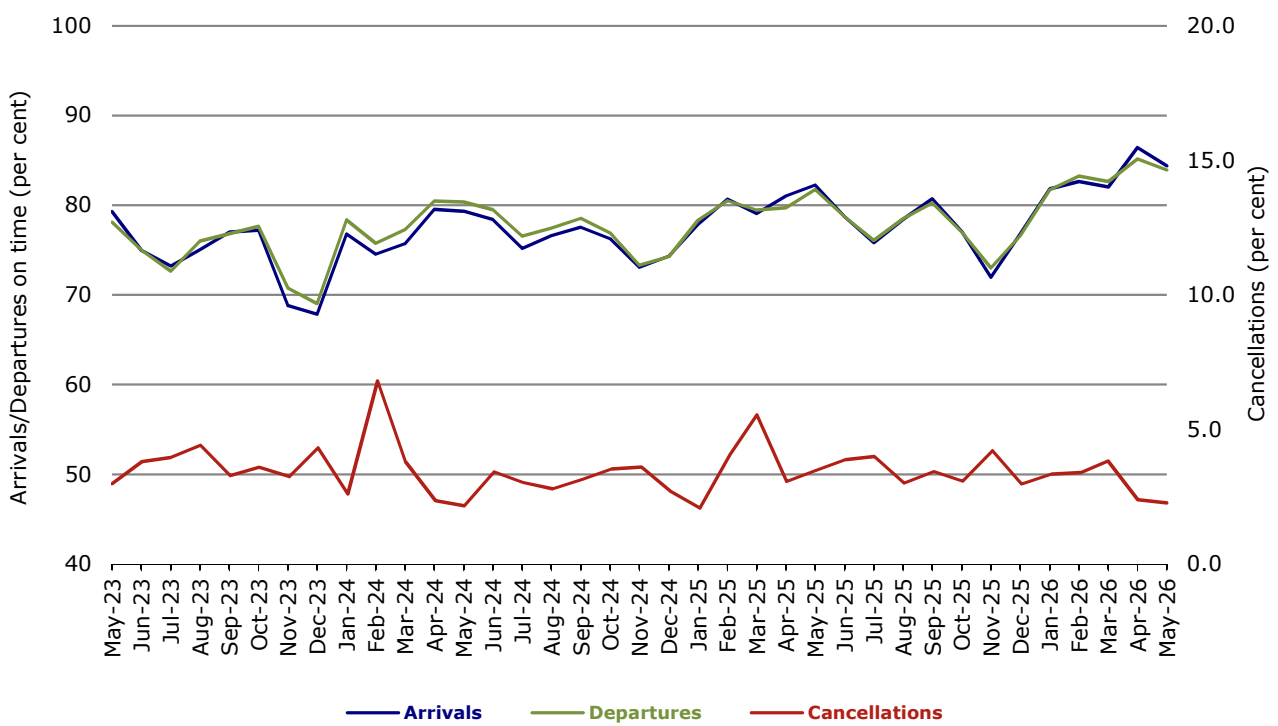


Figure 9 On time performance (by month from May 2023)—Rex Airlines

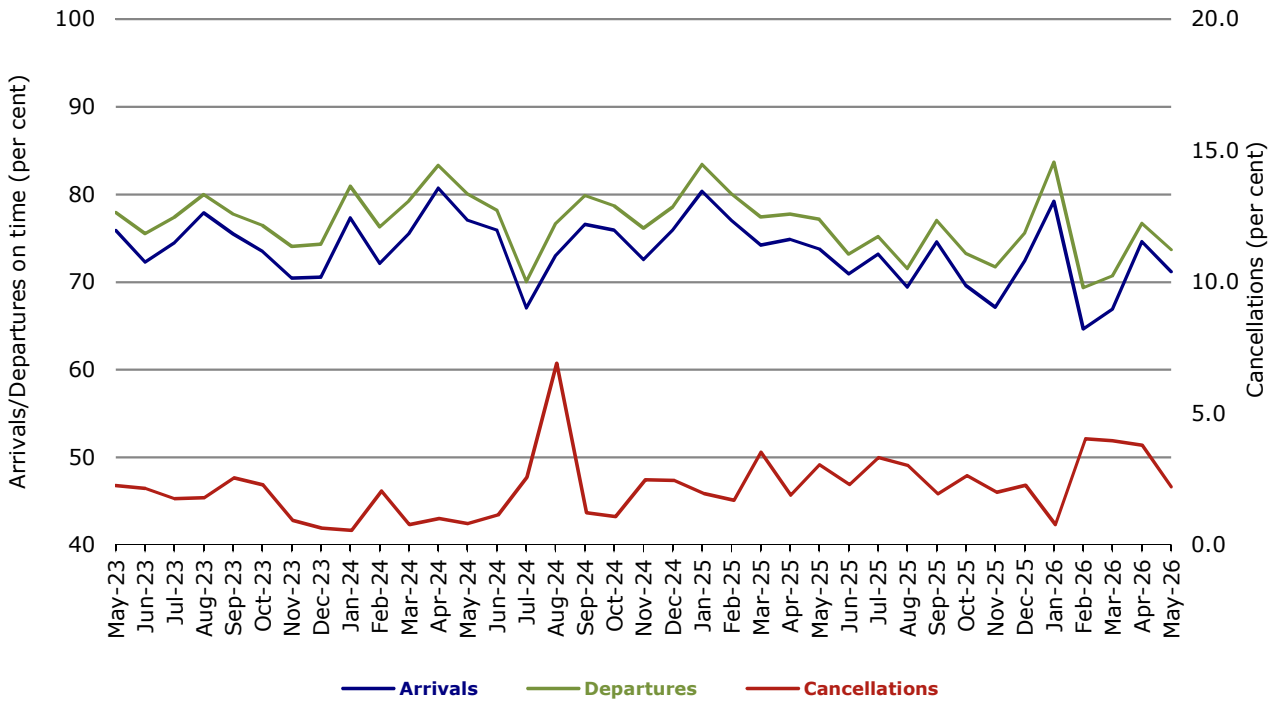


Figure 10 On time performance (by month from May 2023)—Virgin Australia Regional Airlines

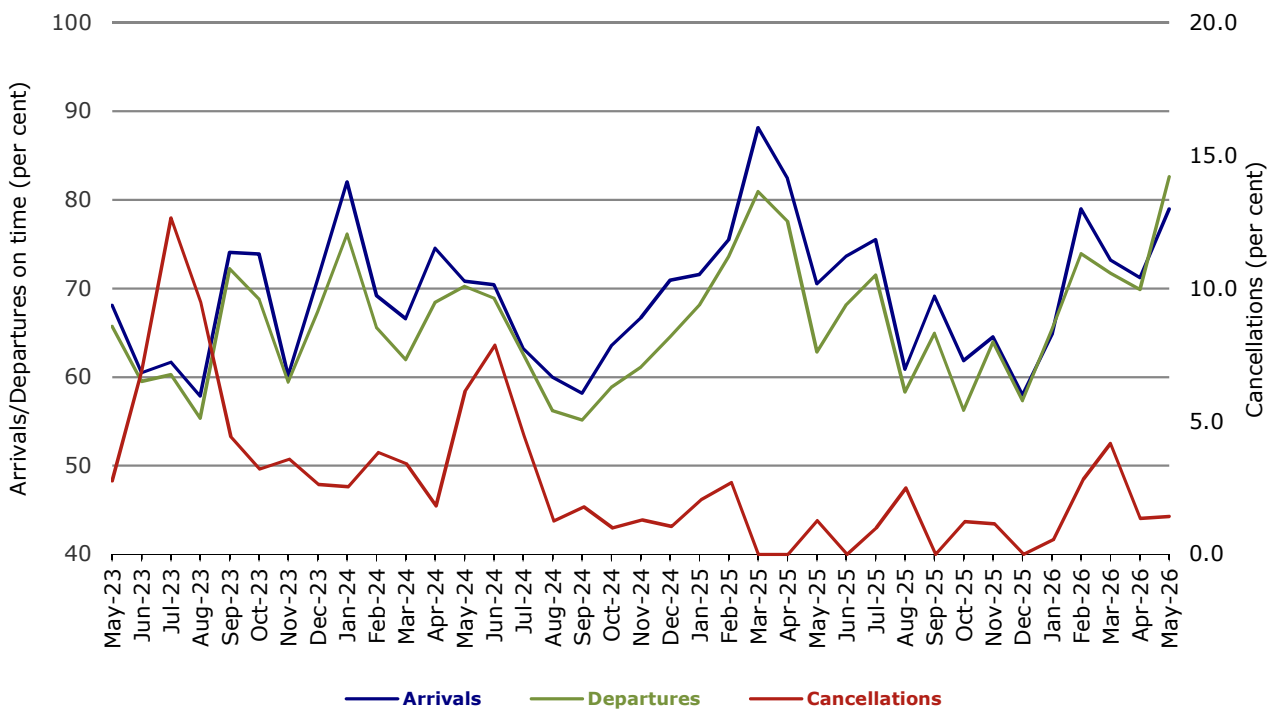
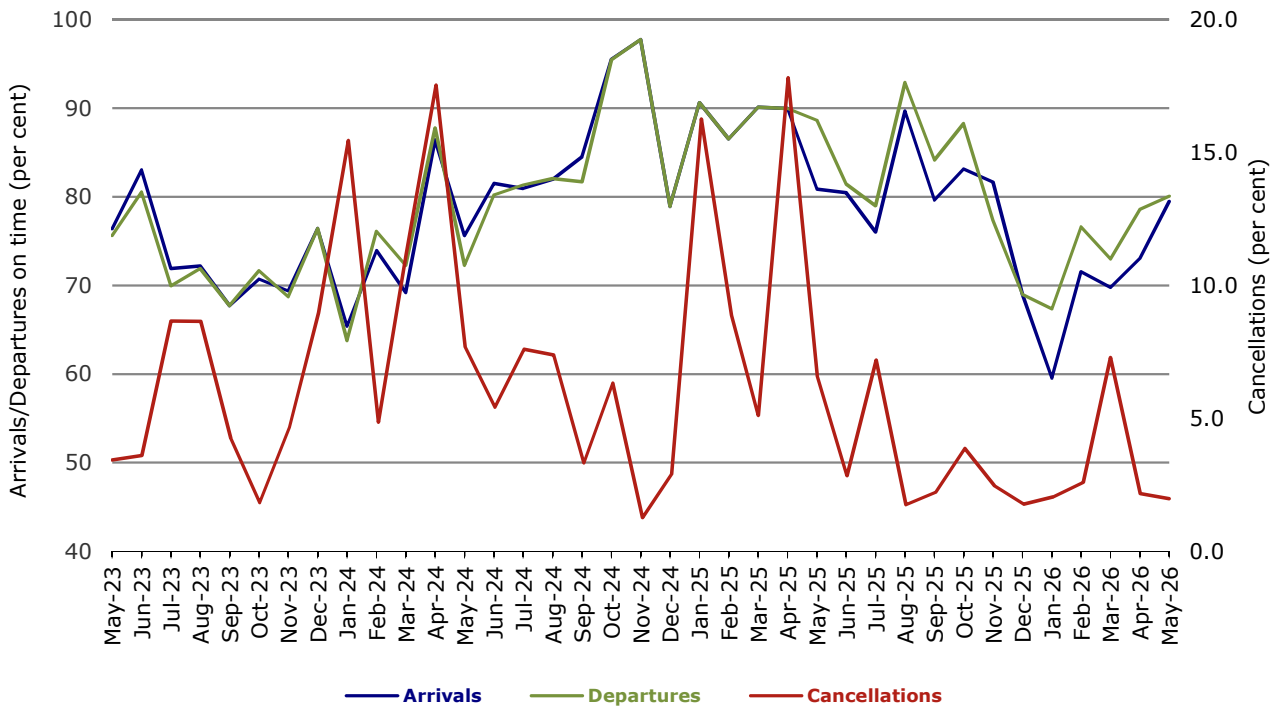
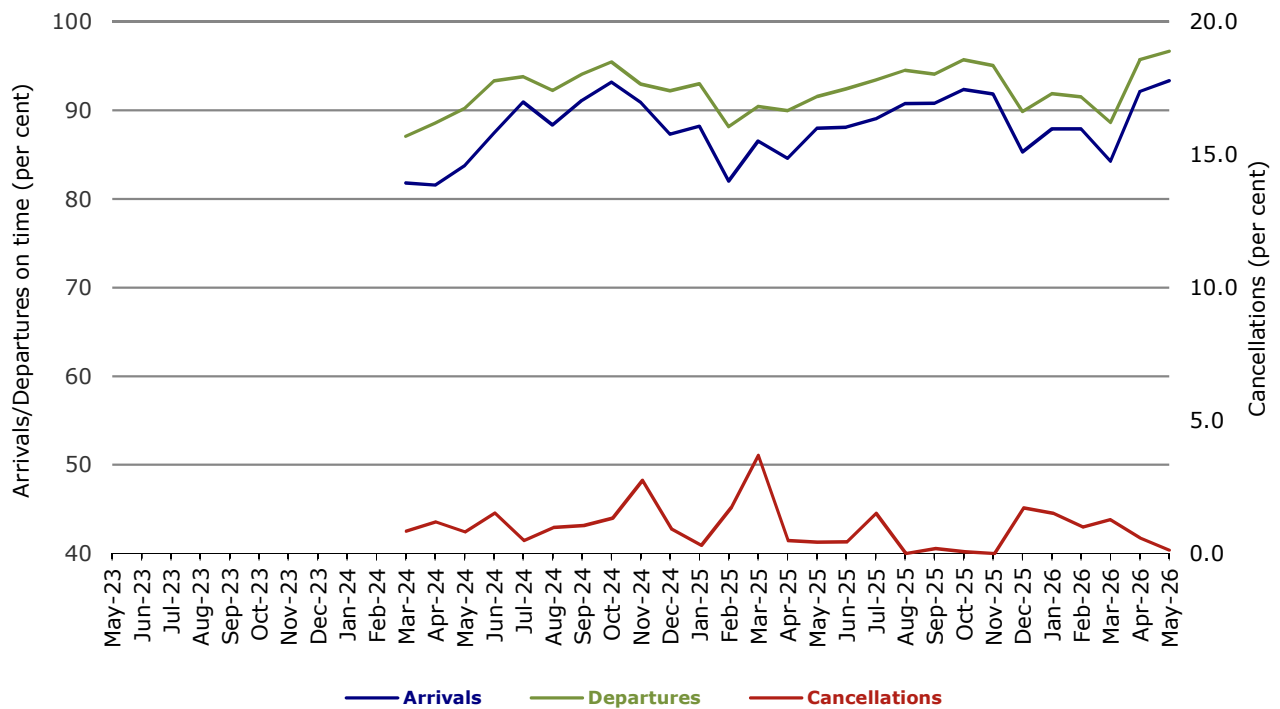


Figure 11 On time performance (by month from May 2023)—Skytrans Australia



Note: Skytrans Australia data included from May 2023

Figure 12 On time performance (by month from May 2023)—Hinterland



Note: Hinterland data included from March 2024

Individual routes

On time performance is reported for all routes where the passenger load averages over 8,000 passengers per month over the previous six months, and where two or more airlines operate in competition on those routes. There are now 59 routes for which data are presented.

	Sectors		Arrivals On Time		Departures On Time		Cancellations	
	Sched.	Flown	No.	%	No.	%	No.	%
Adelaide-Alice Springs								
QantasLink	31	31	28	90.3	29	93.5	0	0.0
Virgin Australia	13	13	6	46.2	5	38.5	0	0.0
All Airlines	44	44	34	77.3	34	77.3	0	0.0
Adelaide-Brisbane								
Jetstar	46	46	42	91.3	44	95.7	0	0.0
Qantas	5	5	5	100.0	5	100.0	0	0.0
QantasLink	156	153	124	81.0	125	81.7	3	1.9
Virgin Australia	105	104	93	89.4	94	90.4	1	1.0
All Airlines	312	308	264	85.7	268	87.0	4	1.3
Adelaide-Canberra								
QantasLink	102	101	93	92.1	94	93.1	1	1.0
Virgin Australia	18	18	15	83.3	16	88.9	0	0.0
All Airlines	120	119	108	90.8	110	92.4	1	0.8
Adelaide-Gold Coast								
Jetstar	42	42	35	83.3	37	88.1	0	0.0
Virgin Australia	31	31	21	67.7	23	74.2	0	0.0
All Airlines	73	73	56	76.7	60	82.2	0	0.0
Adelaide-Melbourne								
Jetstar	138	138	111	80.4	107	77.5	0	0.0
Qantas	235	232	213	91.8	216	93.1	3	1.3
QantasLink	21	20	17	85.0	18	90.0	1	4.8
Virgin Australia	226	226	186	82.3	192	85.0	0	0.0
All Airlines	620	616	527	85.6	533	86.5	4	0.6
Adelaide-Perth								
Jetstar	31	30	26	86.7	23	76.7	1	3.2
Qantas	98	98	92	93.9	91	92.9	0	0.0
Virgin Australia	76	76	71	93.4	56	73.7	0	0.0
All Airlines	205	204	189	92.6	170	83.3	1	0.5
Adelaide-Port Lincoln								
QantasLink	99	99	95	96.0	94	94.9	0	0.0
Rex Airlines	153	144	100	69.4	103	71.5	9	5.9
All Airlines	252	243	195	80.2	197	81.1	9	3.6
Adelaide-Sydney								
Jetstar	110	109	89	81.7	91	83.5	1	0.9
Qantas	229	224	189	84.4	194	86.6	5	2.2
QantasLink	26	26	21	80.8	23	88.5	0	0.0
Virgin Australia	175	174	125	71.8	151	86.8	1	0.6
All Airlines	540	533	424	79.5	459	86.1	7	1.3
Albury-Sydney								
QantasLink	102	100	75	75.0	74	74.0	2	2.0
Rex Airlines	60	59	41	69.5	44	74.6	1	1.7
All Airlines	162	159	116	73.0	118	74.2	3	1.9

	Sectors		Arrivals On Time		Departures On Time		Cancellations	
	Sched.	Flown	No.	%	No.	%	No.	%
Alice Springs-Adelaide								
QantasLink	31	31	25	80.6	24	77.4	0	0.0
Virgin Australia	13	13	6	46.2	4	30.8	0	0.0
All Airlines	44	44	31	70.5	28	63.6	0	0.0
Ayers Rock-Melbourne								
Jetstar	18	18	16	88.9	16	88.9	0	0.0
Virgin Australia	12	12	12	100.0	10	83.3	0	0.0
All Airlines	30	30	28	93.3	26	86.7	0	0.0
Ballina-Sydney								
Jetstar	62	62	49	79.0	48	77.4	0	0.0
QantasLink	57	56	45	80.4	44	78.6	1	1.8
Virgin Australia	32	31	27	87.1	27	87.1	1	3.1
All Airlines	151	149	121	81.2	119	79.9	2	1.3
Brisbane-Adelaide								
Jetstar	46	46	43	93.5	37	80.4	0	0.0
Qantas	5	5	5	100.0	4	80.0	0	0.0
QantasLink	156	154	130	84.4	123	79.9	2	1.3
Virgin Australia	104	103	96	93.2	87	84.5	1	1.0
All Airlines	311	308	274	89.0	251	81.5	3	1.0
Brisbane-Cairns								
Jetstar	86	86	69	80.2	67	77.9	0	0.0
Qantas	70	70	60	85.7	60	85.7	0	0.0
QantasLink	102	102	76	74.5	82	80.4	0	0.0
Virgin Australia	134	133	98	73.7	111	83.5	1	0.7
All Airlines	392	391	303	77.5	320	81.8	1	0.3
Brisbane-Canberra								
Jetstar	31	31	23	74.2	22	71.0	0	0.0
QantasLink	155	154	137	89.0	135	87.7	1	0.6
Virgin Australia	97	97	86	88.7	80	82.5	0	0.0
All Airlines	283	282	246	87.2	237	84.0	1	0.4
Brisbane-Darwin								
Jetstar	25	25	19	76.0	22	88.0	0	0.0
Qantas	35	35	28	80.0	33	94.3	0	0.0
Virgin Australia	32	32	18	56.3	21	65.6	0	0.0
All Airlines	92	92	65	70.7	76	82.6	0	0.0
Brisbane-Emerald								
QantasLink	115	110	98	89.1	98	89.1	5	4.3
Virgin Australia	26	26	24	92.3	24	92.3	0	0.0
All Airlines	141	136	122	89.7	122	89.7	5	3.5
Brisbane-Gladstone								
QantasLink	128	125	105	84.0	108	86.4	3	2.3
Virgin Australia	35	35	33	94.3	32	91.4	0	0.0
All Airlines	163	160	138	86.3	140	87.5	3	1.8
Brisbane-Hamilton Island								
Qantas	5	5	4	80.0	5	100.0	0	0.0
QantasLink	26	26	15	57.7	17	65.4	0	0.0
Virgin Australia	31	31	29	93.5	28	90.3	0	0.0
All Airlines	62	62	48	77.4	50	80.6	0	0.0

	Sectors		Arrivals On Time		Departures On Time		Cancellations	
	Sched.	Flown	No.	%	No.	%	No.	%
Brisbane-Hobart								
Jetstar	23	23	22	95.7	20	87.0	0	0.0
QantasLink	19	19	17	89.5	15	78.9	0	0.0
Virgin Australia	43	43	38	88.4	35	81.4	0	0.0
All Airlines	85	85	77	90.6	70	82.4	0	0.0
Brisbane-Launceston								
Jetstar	23	23	19	82.6	17	73.9	0	0.0
Virgin Australia	12	12	12	100.0	12	100.0	0	0.0
All Airlines	35	35	31	88.6	29	82.9	0	0.0
Brisbane-Mackay								
Jetstar	22	22	15	68.2	15	68.2	0	0.0
Qantas	4	4	4	100.0	4	100.0	0	0.0
QantasLink	176	173	149	86.1	143	82.7	3	1.7
Virgin Australia	136	136	111	81.6	120	88.2	0	0.0
All Airlines	338	335	279	83.3	282	84.2	3	0.9
Brisbane-Melbourne								
Jetstar	149	147	103	70.1	90	61.2	2	1.3
Qantas	332	330	313	94.8	305	92.4	2	0.6
QantasLink	42	42	39	92.9	38	90.5	0	0.0
Virgin Australia	378	375	315	84.0	317	84.5	3	0.8
All Airlines	901	894	770	86.1	750	83.9	7	0.8
Brisbane-Mount Isa								
Qantas	42	42	37	88.1	40	95.2	0	0.0
QantasLink	14	14	11	78.6	12	85.7	0	0.0
Virgin Australia	13	13	12	92.3	13	100.0	0	0.0
All Airlines	69	69	60	87.0	65	94.2	0	0.0
Brisbane-Newcastle								
Jetstar	45	45	41	91.1	39	86.7	0	0.0
QantasLink	95	94	78	83.0	75	79.8	1	1.1
Virgin Australia	83	82	63	76.8	60	73.2	1	1.2
All Airlines	223	221	182	82.4	174	78.7	2	0.9
Brisbane-Perth								
Jetstar	30	30	21	70.0	18	60.0	0	0.0
Qantas	165	164	149	90.9	147	89.6	1	0.6
Virgin Australia	116	115	102	88.7	98	85.2	1	0.9
All Airlines	311	309	272	88.0	263	85.1	2	0.6
Brisbane-Proserpine								
Jetstar	35	35	26	74.3	27	77.1	0	0.0
Virgin Australia	31	31	23	74.2	25	80.6	0	0.0
All Airlines	66	66	49	74.2	52	78.8	0	0.0
Brisbane-Rockhampton								
QantasLink	196	192	164	85.4	165	85.9	4	2.0
Virgin Australia	161	161	140	87.0	135	83.9	0	0.0
All Airlines	357	353	304	86.1	300	85.0	4	1.1
Brisbane-Sydney								
Jetstar	186	185	143	77.3	124	67.0	1	0.5
Qantas	498	490	402	82.0	415	84.7	8	1.6
Virgin Australia	447	445	353	79.3	362	81.3	2	0.4
All Airlines	1 131	1 120	898	80.2	901	80.4	11	1.0

	Sectors		Arrivals On Time		Departures On Time		Cancellations	
	Sched.	Flown	No.	%	No.	%	No.	%
Brisbane-Townsville								
Jetstar	67	66	50	75.8	52	78.8	1	1.5
Qantas	44	44	40	90.9	42	95.5	0	0.0
QantasLink	108	105	73	69.5	80	76.2	3	2.8
Virgin Australia	130	130	112	86.2	118	90.8	0	0.0
All Airlines	349	345	275	79.7	292	84.6	4	1.1
Broome-Perth								
QantasLink	84	83	72	86.7	75	90.4	1	1.2
Virgin Australia	62	61	51	83.6	58	95.1	1	1.6
Virgin Australia Regional Airlines	16	16	10	62.5	12	75.0	0	0.0
All Airlines	162	160	133	83.1	145	90.6	2	1.2
Cairns-Brisbane								
Jetstar	86	86	80	93.0	73	84.9	0	0.0
Qantas	70	70	63	90.0	63	90.0	0	0.0
QantasLink	102	102	92	90.2	85	83.3	0	0.0
Virgin Australia	134	133	112	84.2	94	70.7	1	0.7
All Airlines	392	391	347	88.7	315	80.6	1	0.3
Cairns-Melbourne								
Jetstar	59	57	47	82.5	47	82.5	2	3.4
Qantas	31	31	26	83.9	24	77.4	0	0.0
Virgin Australia	62	62	51	82.3	33	53.2	0	0.0
All Airlines	152	150	124	82.7	104	69.3	2	1.3
Cairns-Sydney								
Jetstar	89	89	81	91.0	78	87.6	0	0.0
Qantas	35	35	27	77.1	24	68.6	0	0.0
Virgin Australia	68	68	52	76.5	50	73.5	0	0.0
All Airlines	192	192	160	83.3	152	79.2	0	0.0
Canberra-Adelaide								
QantasLink	102	101	88	87.1	85	84.2	1	1.0
Virgin Australia	18	18	16	88.9	17	94.4	0	0.0
All Airlines	120	119	104	87.4	102	85.7	1	0.8
Canberra-Brisbane								
Jetstar	31	31	21	67.7	23	74.2	0	0.0
QantasLink	155	153	127	83.0	131	85.6	2	1.3
Virgin Australia	97	97	85	87.6	91	93.8	0	0.0
All Airlines	283	281	233	82.9	245	87.2	2	0.7
Canberra-Gold Coast								
Jetstar	13	13	12	92.3	12	92.3	0	0.0
Virgin Australia	31	31	27	87.1	26	83.9	0	0.0
All Airlines	44	44	39	88.6	38	86.4	0	0.0
Canberra-Melbourne								
Jetstar	30	30	20	66.7	19	63.3	0	0.0
Qantas	4	4	4	100.0	4	100.0	0	0.0
QantasLink	224	207	177	85.5	177	85.5	17	7.6
Virgin Australia	123	123	105	85.4	101	82.1	0	0.0
All Airlines	381	364	306	84.1	301	82.7	17	4.5
Canberra-Sydney								
QantasLink	346	319	260	81.5	254	79.6	27	7.8
Virgin Australia	250	242	216	89.3	223	92.1	8	3.2
All Airlines	596	561	476	84.8	477	85.0	35	5.9

	Sectors		Arrivals On Time		Departures On Time		Cancellations	
	Sched.	Flown	No.	%	No.	%	No.	%
Coffs Harbour-Sydney								
QantasLink	114	111	96	86.5	85	76.6	3	2.6
Rex Airlines	80	79	47	59.5	51	64.6	1	1.3
All Airlines	194	190	143	75.3	136	71.6	4	2.1
Darwin-Brisbane								
Jetstar	25	25	19	76.0	17	68.0	0	0.0
Qantas	36	36	32	88.9	33	91.7	0	0.0
Virgin Australia	31	31	25	80.6	18	58.1	0	0.0
All Airlines	92	92	76	82.6	68	73.9	0	0.0
Darwin-Melbourne								
Jetstar	27	27	19	70.4	18	66.7	0	0.0
Qantas	35	35	32	91.4	32	91.4	0	0.0
Virgin Australia	32	31	24	77.4	20	64.5	1	3.1
All Airlines	94	93	75	80.6	70	75.3	1	1.1
Darwin-Perth								
Qantas	12	12	11	91.7	12	100.0	0	0.0
QantasLink	28	28	22	78.6	26	92.9	0	0.0
Virgin Australia	17	17	16	94.1	17	100.0	0	0.0
Virgin Australia Regional Airlines	6	6	6	100.0	6	100.0	0	0.0
All Airlines	63	63	55	87.3	61	96.8	0	0.0
Devonport-Melbourne								
QantasLink	96	94	74	78.7	78	83.0	2	2.1
Rex Airlines	30	28	22	78.6	22	78.6	2	6.7
All Airlines	126	122	96	78.7	100	82.0	4	3.2
Dubbo-Sydney								
QantasLink	112	112	85	75.9	86	76.8	0	0.0
Rex Airlines	73	71	48	67.6	53	74.6	2	2.7
All Airlines	185	183	133	72.7	139	76.0	2	1.1
Emerald-Brisbane								
QantasLink	115	110	102	92.7	101	91.8	5	4.3
Virgin Australia	26	26	24	92.3	25	96.2	0	0.0
All Airlines	141	136	126	92.6	126	92.6	5	3.5
Gladstone-Brisbane								
QantasLink	128	123	109	88.6	106	86.2	5	3.9
Virgin Australia	35	35	33	94.3	33	94.3	0	0.0
All Airlines	163	158	142	89.9	139	88.0	5	3.1
Gold Coast-Adelaide								
Jetstar	41	41	34	82.9	31	75.6	0	0.0
Virgin Australia	31	31	24	77.4	14	45.2	0	0.0
All Airlines	72	72	58	80.6	45	62.5	0	0.0
Gold Coast-Canberra								
Jetstar	13	13	13	100.0	13	100.0	0	0.0
Virgin Australia	31	31	28	90.3	25	80.6	0	0.0
All Airlines	44	44	41	93.2	38	86.4	0	0.0

	Sectors		Arrivals On Time		Departures On Time		Cancellations	
	Sched.	Flown	No.	%	No.	%	No.	%
Gold Coast-Melbourne								
Jetstar	143	141	105	74.5	98	69.5	2	1.4
Qantas	1	1	1	100.0	0	0.0	0	0.0
QantasLink	74	73	56	76.7	44	60.3	1	1.4
Virgin Australia	184	183	154	84.2	115	62.8	1	0.5
All Airlines	402	398	316	79.4	257	64.6	4	1.0
Gold Coast-Sydney								
Jetstar	234	231	191	82.7	180	77.9	3	1.3
Qantas	137	137	122	89.1	118	86.1	0	0.0
Virgin Australia	290	288	227	78.8	217	75.3	2	0.7
All Airlines	661	656	540	82.3	515	78.5	5	0.8
Hamilton Island-Brisbane								
Qantas	5	5	5	100.0	4	80.0	0	0.0
QantasLink	26	26	16	61.5	15	57.7	0	0.0
Virgin Australia	31	31	26	83.9	26	83.9	0	0.0
All Airlines	62	62	47	75.8	45	72.6	0	0.0
Hamilton Island-Sydney								
Qantas	31	31	28	90.3	24	77.4	0	0.0
Virgin Australia	22	22	15	68.2	15	68.2	0	0.0
All Airlines	53	53	43	81.1	39	73.6	0	0.0
Hobart-Brisbane								
Jetstar	23	23	21	91.3	20	87.0	0	0.0
QantasLink	19	19	15	78.9	16	84.2	0	0.0
Virgin Australia	43	43	32	74.4	34	79.1	0	0.0
All Airlines	85	85	68	80.0	70	82.4	0	0.0
Hobart-Melbourne								
Jetstar	143	143	97	67.8	96	67.1	0	0.0
Qantas	24	24	23	95.8	23	95.8	0	0.0
QantasLink	87	87	72	82.8	71	81.6	0	0.0
Virgin Australia	119	119	100	84.0	97	81.5	0	0.0
All Airlines	373	373	292	78.3	287	76.9	0	0.0
Hobart-Sydney								
Jetstar	62	62	53	85.5	55	88.7	0	0.0
QantasLink	84	82	64	78.0	66	80.5	2	2.4
Virgin Australia	64	62	50	80.6	53	85.5	2	3.1
All Airlines	210	206	167	81.1	174	84.5	4	1.9
Kalgoorlie-Perth								
Qantas	9	9	7	77.8	7	77.8	0	0.0
QantasLink	73	71	60	84.5	61	85.9	2	2.7
Virgin Australia	90	88	71	80.7	70	79.5	2	2.2
Virgin Australia Regional Airlines	16	15	12	80.0	12	80.0	1	6.3
All Airlines	188	183	150	82.0	150	82.0	5	2.7
Karratha-Perth								
Qantas	10	10	5	50.0	6	60.0	0	0.0
QantasLink	175	174	142	81.6	145	83.3	1	0.6
Virgin Australia	85	84	72	85.7	77	91.7	1	1.2
All Airlines	270	268	219	81.7	228	85.1	2	0.7
Launceston-Brisbane								
Jetstar	23	23	17	73.9	17	73.9	0	0.0
Virgin Australia	12	12	11	91.7	11	91.7	0	0.0
All Airlines	35	35	28	80.0	28	80.0	0	0.0

	Sectors		Arrivals On Time		Departures On Time		Cancellations	
	Sched.	Flown	No.	%	No.	%	No.	%
Launceston-Melbourne								
Jetstar	86	83	58	69.9	56	67.5	3	3.5
QantasLink	114	103	77	74.8	77	74.8	11	9.6
Virgin Australia	93	93	57	61.3	57	61.3	0	0.0
All Airlines	293	279	192	68.8	190	68.1	14	4.8
Launceston-Sydney								
Jetstar	31	31	20	64.5	20	64.5	0	0.0
QantasLink	29	29	22	75.9	25	86.2	0	0.0
Virgin Australia	31	30	22	73.3	26	86.7	1	3.2
All Airlines	91	90	64	71.1	71	78.9	1	1.1
Mackay-Brisbane								
Jetstar	22	20	13	65.0	13	65.0	2	9.1
Qantas	4	4	4	100.0	4	100.0	0	0.0
QantasLink	180	176	164	93.2	159	90.3	4	2.2
Virgin Australia	136	136	124	91.2	120	88.2	0	0.0
All Airlines	342	336	305	90.8	296	88.1	6	1.8
Melbourne-Adelaide								
Jetstar	138	138	106	76.8	96	69.6	0	0.0
Qantas	235	233	208	89.3	208	89.3	2	0.9
QantasLink	21	20	11	55.0	14	70.0	1	4.8
Virgin Australia	225	225	201	89.3	197	87.6	0	0.0
All Airlines	619	616	526	85.4	515	83.6	3	0.5
Melbourne-Ayers Rock								
Jetstar	18	18	16	88.9	15	83.3	0	0.0
Virgin Australia	12	12	12	100.0	11	91.7	0	0.0
All Airlines	30	30	28	93.3	26	86.7	0	0.0
Melbourne-Brisbane								
Jetstar	149	147	101	68.7	102	69.4	2	1.3
Qantas	338	334	310	92.8	311	93.1	4	1.2
QantasLink	42	42	35	83.3	36	85.7	0	0.0
Virgin Australia	383	381	271	71.1	315	82.7	2	0.5
All Airlines	912	904	717	79.3	764	84.5	8	0.9
Melbourne-Cairns								
Jetstar	59	57	41	71.9	40	70.2	2	3.4
Qantas	31	31	23	74.2	26	83.9	0	0.0
Virgin Australia	62	62	50	80.6	58	93.5	0	0.0
All Airlines	152	150	114	76.0	124	82.7	2	1.3
Melbourne-Canberra								
Jetstar	30	30	20	66.7	20	66.7	0	0.0
Qantas	4	4	4	100.0	4	100.0	0	0.0
QantasLink	224	211	187	88.6	183	86.7	13	5.8
Virgin Australia	123	123	106	86.2	109	88.6	0	0.0
All Airlines	381	368	317	86.1	316	85.9	13	3.4
Melbourne-Darwin								
Jetstar	27	27	18	66.7	17	63.0	0	0.0
Qantas	35	35	28	80.0	29	82.9	0	0.0
Virgin Australia	31	31	25	80.6	26	83.9	0	0.0
All Airlines	93	93	71	76.3	72	77.4	0	0.0
Melbourne-Devonport								
QantasLink	96	94	75	79.8	73	77.7	2	2.1
Rex Airlines	31	29	23	79.3	24	82.8	2	6.5
All Airlines	127	123	98	79.7	97	78.9	4	3.1

	Sectors		Arrivals On Time		Departures On Time		Cancellations	
	Sched.	Flown	No.	%	No.	%	No.	%
Melbourne-Gold Coast								
Jetstar	143	141	110	78.0	109	77.3	2	1.4
Qantas	1	1	0	0.0	0	0.0	0	0.0
QantasLink	73	72	56	77.8	61	84.7	1	1.4
Virgin Australia	184	184	141	76.6	157	85.3	0	0.0
All Airlines	401	398	307	77.1	327	82.2	3	0.7
Melbourne-Hobart								
Jetstar	143	143	101	70.6	95	66.4	0	0.0
Qantas	24	24	21	87.5	23	95.8	0	0.0
QantasLink	87	87	70	80.5	71	81.6	0	0.0
Virgin Australia	119	119	106	89.1	105	88.2	0	0.0
All Airlines	373	373	298	79.9	294	78.8	0	0.0
Melbourne-Launceston								
Jetstar	86	83	55	66.3	58	69.9	3	3.5
QantasLink	114	105	73	69.5	71	67.6	9	7.9
Virgin Australia	95	94	69	73.4	69	73.4	1	1.1
All Airlines	295	282	197	69.9	198	70.2	13	4.4
Melbourne-Mildura								
QantasLink	93	90	75	83.3	58	64.4	3	3.2
Rex Airlines	97	95	73	76.8	71	74.7	2	2.1
All Airlines	190	185	148	80.0	129	69.7	5	2.6
Melbourne-Newcastle								
Jetstar	52	52	46	88.5	44	84.6	0	0.0
QantasLink	55	54	42	77.8	43	79.6	1	1.8
Virgin Australia	40	40	31	77.5	33	82.5	0	0.0
All Airlines	147	146	119	81.5	120	82.2	1	0.7
Melbourne-Perth								
Jetstar	81	80	67	83.8	56	70.0	1	1.2
Qantas	215	214	184	86.0	184	86.0	1	0.5
Virgin Australia	205	205	178	86.8	165	80.5	0	0.0
All Airlines	501	499	429	86.0	405	81.2	2	0.4
Melbourne-Sunshine Coast								
Jetstar	66	66	54	81.8	54	81.8	0	0.0
Qantas	29	29	26	89.7	27	93.1	0	0.0
Virgin Australia	58	58	49	84.5	49	84.5	0	0.0
All Airlines	153	153	129	84.3	130	85.0	0	0.0
Melbourne-Sydney								
Jetstar	450	436	325	74.5	326	74.8	14	3.1
Qantas	831	804	678	84.3	720	89.6	27	3.2
QantasLink	26	26	20	76.9	22	84.6	0	0.0
Virgin Australia	736	719	577	80.3	644	89.6	17	2.3
All Airlines	2 043	1 985	1 600	80.6	1 712	86.2	58	2.8
Mildura-Melbourne								
QantasLink	93	90	74	82.2	75	83.3	3	3.2
Rex Airlines	97	92	64	69.6	66	71.7	5	5.2
All Airlines	190	182	138	75.8	141	77.5	8	4.2

	Sectors		Arrivals On Time		Departures On Time		Cancellations	
	Sched.	Flown	No.	%	No.	%	No.	%
Mount Isa-Brisbane								
Qantas	42	42	34	81.0	34	81.0	0	0.0
QantasLink	14	14	11	78.6	11	78.6	0	0.0
Virgin Australia	13	13	13	100.0	13	100.0	0	0.0
All Airlines	69	69	58	84.1	58	84.1	0	0.0
Newcastle-Brisbane								
Jetstar	47	47	39	83.0	39	83.0	0	0.0
QantasLink	95	95	78	82.1	80	84.2	0	0.0
Virgin Australia	83	82	62	75.6	65	79.3	1	1.2
All Airlines	225	224	179	79.9	184	82.1	1	0.4
Newcastle-Melbourne								
Jetstar	52	52	46	88.5	41	78.8	0	0.0
QantasLink	55	54	45	83.3	43	79.6	1	1.8
Virgin Australia	40	40	31	77.5	28	70.0	0	0.0
All Airlines	147	146	122	83.6	112	76.7	1	0.7
Newman-Perth								
Qantas	4	4	4	100.0	4	100.0	0	0.0
QantasLink	127	126	111	88.1	119	94.4	1	0.8
Virgin Australia	51	51	41	80.4	46	90.2	0	0.0
Virgin Australia Regional Airlines	4	4	3	75.0	4	100.0	0	0.0
All Airlines	186	185	159	85.9	173	93.5	1	0.5
Perth-Adelaide								
Jetstar	31	30	24	80.0	27	90.0	1	3.2
Qantas	98	96	80	83.3	89	92.7	2	2.0
Virgin Australia	76	76	59	77.6	71	93.4	0	0.0
All Airlines	205	202	163	80.7	187	92.6	3	1.5
Perth-Brisbane								
Jetstar	30	29	20	69.0	19	65.5	1	3.3
Qantas	165	165	121	73.3	148	89.7	0	0.0
Virgin Australia	114	114	83	72.8	100	87.7	0	0.0
All Airlines	309	308	224	72.7	267	86.7	1	0.3
Perth-Broome								
QantasLink	85	85	76	89.4	77	90.6	0	0.0
Virgin Australia	62	62	60	96.8	59	95.2	0	0.0
Virgin Australia Regional Airlines	16	16	14	87.5	13	81.3	0	0.0
All Airlines	163	163	150	92.0	149	91.4	0	0.0
Perth-Darwin								
Qantas	12	12	11	91.7	10	83.3	0	0.0
QantasLink	28	28	25	89.3	24	85.7	0	0.0
Virgin Australia	17	17	15	88.2	13	76.5	0	0.0
Virgin Australia Regional Airlines	6	6	6	100.0	6	100.0	0	0.0
All Airlines	63	63	57	90.5	53	84.1	0	0.0
Perth-Kalgoorlie								
Qantas	9	9	7	77.8	8	88.9	0	0.0
QantasLink	73	73	63	86.3	69	94.5	0	0.0
Virgin Australia	90	89	80	89.9	85	95.5	1	1.1
Virgin Australia Regional Airlines	16	15	15	100.0	15	100.0	1	6.3
All Airlines	188	186	165	88.7	177	95.2	2	1.1

	Sectors		Arrivals On Time		Departures On Time		Cancellations	
	Sched.	Flown	No.	%	No.	%	No.	%
Perth-Karratha								
Qantas	10	10	10	100.0	10	100.0	0	0.0
QantasLink	176	175	164	93.7	158	90.3	1	0.6
Virgin Australia	84	84	77	91.7	81	96.4	0	0.0
All Airlines	270	269	251	93.3	249	92.6	1	0.4
Perth-Melbourne								
Jetstar	81	80	56	70.0	64	80.0	1	1.2
Qantas	215	215	142	66.0	191	88.8	0	0.0
Virgin Australia	222	222	159	71.6	195	87.8	0	0.0
All Airlines	518	517	357	69.1	450	87.0	1	0.2
Perth-Newman								
Qantas	4	4	4	100.0	4	100.0	0	0.0
QantasLink	127	127	119	93.7	120	94.5	0	0.0
Virgin Australia	51	51	50	98.0	50	98.0	0	0.0
Virgin Australia Regional Airlines	4	4	4	100.0	4	100.0	0	0.0
All Airlines	186	186	177	95.2	178	95.7	0	0.0
Perth-Port Hedland								
Qantas	4	4	4	100.0	4	100.0	0	0.0
QantasLink	139	139	129	92.8	126	90.6	0	0.0
Virgin Australia	53	53	52	98.1	53	100.0	0	0.0
Virgin Australia Regional Airlines	6	6	5	83.3	6	100.0	0	0.0
All Airlines	202	202	190	94.1	189	93.6	0	0.0
Perth-Sydney								
Jetstar	58	57	44	77.2	47	82.5	1	1.7
Qantas	196	194	87	44.8	149	76.8	2	1.0
Virgin Australia	156	153	127	83.0	133	86.9	3	1.9
All Airlines	410	404	258	63.9	329	81.4	6	1.5
Port Hedland-Perth								
Qantas	4	4	4	100.0	4	100.0	0	0.0
QantasLink	139	137	127	92.7	127	92.7	2	1.4
Virgin Australia	53	53	43	81.1	47	88.7	0	0.0
Virgin Australia Regional Airlines	6	6	3	50.0	5	83.3	0	0.0
All Airlines	202	200	177	88.5	183	91.5	2	1.0
Port Lincoln-Adelaide								
QantasLink	99	99	94	94.9	96	97.0	0	0.0
Rex Airlines	152	143	98	68.5	104	72.7	9	5.9
All Airlines	251	242	192	79.3	200	82.6	9	3.6
Port Macquarie-Sydney								
QantasLink	111	106	87	82.1	80	75.5	5	4.5
Rex Airlines	52	46	21	45.7	22	47.8	6	11.5
All Airlines	163	152	108	71.1	102	67.1	11	6.7
Proserpine-Brisbane								
Jetstar	35	35	26	74.3	27	77.1	0	0.0
Virgin Australia	31	31	23	74.2	22	71.0	0	0.0
All Airlines	66	66	49	74.2	49	74.2	0	0.0
Rockhampton-Brisbane								
QantasLink	196	189	165	87.3	161	85.2	7	3.6
Virgin Australia	161	161	136	84.5	135	83.9	0	0.0
All Airlines	357	350	301	86.0	296	84.6	7	2.0

	Sectors		Arrivals On Time		Departures On Time		Cancellations	
	Sched.	Flown	No.	%	No.	%	No.	%
Sunshine Coast-Melbourne								
Jetstar	66	66	58	87.9	54	81.8	0	0.0
Qantas	29	29	21	72.4	19	65.5	0	0.0
Virgin Australia	58	58	51	87.9	47	81.0	0	0.0
All Airlines	153	153	130	85.0	120	78.4	0	0.0
Sunshine Coast-Sydney								
Jetstar	75	75	69	92.0	69	92.0	0	0.0
QantasLink	83	82	67	81.7	57	69.5	1	1.2
Virgin Australia	67	66	53	80.3	54	81.8	1	1.5
All Airlines	225	223	189	84.8	180	80.7	2	0.9
Sydney-Adelaide								
Jetstar	110	109	90	82.6	78	71.6	1	0.9
Qantas	228	225	203	90.2	204	90.7	3	1.3
QantasLink	26	25	14	56.0	21	84.0	1	3.8
Virgin Australia	176	175	150	85.7	148	84.6	1	0.6
All Airlines	540	534	457	85.6	451	84.5	6	1.1
Sydney-Albury								
QantasLink	102	100	81	81.0	72	72.0	2	2.0
Rex Airlines	59	58	39	67.2	36	62.1	1	1.7
All Airlines	161	158	120	75.9	108	68.4	3	1.9
Sydney-Ballina								
Jetstar	62	62	52	83.9	55	88.7	0	0.0
QantasLink	57	56	40	71.4	39	69.6	1	1.8
Virgin Australia	32	31	26	83.9	28	90.3	1	3.1
All Airlines	151	149	118	79.2	122	81.9	2	1.3
Sydney-Brisbane								
Jetstar	183	183	131	71.6	136	74.3	0	0.0
Qantas	490	483	395	81.8	412	85.3	7	1.4
Virgin Australia	443	441	359	81.4	383	86.8	2	0.5
All Airlines	1 116	1 107	885	79.9	931	84.1	9	0.8
Sydney-Cairns								
Jetstar	89	89	72	80.9	76	85.4	0	0.0
Qantas	35	35	25	71.4	29	82.9	0	0.0
Virgin Australia	68	68	57	83.8	60	88.2	0	0.0
All Airlines	192	192	154	80.2	165	85.9	0	0.0
Sydney-Canberra								
QantasLink	346	325	279	85.8	273	84.0	21	6.1
Virgin Australia	250	242	221	91.3	216	89.3	8	3.2
All Airlines	596	567	500	88.2	489	86.2	29	4.9
Sydney-Coffs Harbour								
QantasLink	114	112	85	75.9	89	79.5	2	1.8
Rex Airlines	80	79	45	57.0	47	59.5	1	1.3
All Airlines	194	191	130	68.1	136	71.2	3	1.5
Sydney-Dubbo								
QantasLink	112	112	84	75.0	80	71.4	0	0.0
Rex Airlines	72	70	42	60.0	43	61.4	2	2.8
All Airlines	184	182	126	69.2	123	67.6	2	1.1
Sydney-Gold Coast								
Jetstar	234	232	190	81.9	192	82.8	2	0.9
Qantas	137	137	119	86.9	121	88.3	0	0.0
Virgin Australia	290	288	224	77.8	244	84.7	2	0.7
All Airlines	661	657	533	81.1	557	84.8	4	0.6

	Sectors		Arrivals On Time		Departures On Time		Cancellations	
	Sched.	Flown	No.	%	No.	%	No.	%
Sydney-Hamilton Island								
Qantas	31	31	25	80.6	29	93.5	0	0.0
Virgin Australia	22	22	17	77.3	19	86.4	0	0.0
All Airlines	53	53	42	79.2	48	90.6	0	0.0
Sydney-Hobart								
Jetstar	64	64	55	85.9	54	84.4	0	0.0
QantasLink	84	82	65	79.3	66	80.5	2	2.4
Virgin Australia	63	62	55	88.7	55	88.7	1	1.6
All Airlines	211	208	175	84.1	175	84.1	3	1.4
Sydney-Launceston								
Jetstar	29	29	21	72.4	20	69.0	0	0.0
QantasLink	29	29	25	86.2	25	86.2	0	0.0
Virgin Australia	29	29	27	93.1	21	72.4	0	0.0
All Airlines	87	87	73	83.9	66	75.9	0	0.0
Sydney-Melbourne								
Jetstar	450	436	344	78.9	312	71.6	14	3.1
Qantas	838	812	701	86.3	710	87.4	26	3.1
QantasLink	26	25	16	64.0	13	52.0	1	3.8
Virgin Australia	725	709	601	84.8	592	83.5	16	2.2
All Airlines	2 039	1 982	1 662	83.9	1 627	82.1	57	2.8
Sydney-Perth								
Jetstar	58	58	49	84.5	42	72.4	0	0.0
Qantas	196	195	166	85.1	152	77.9	1	0.5
Virgin Australia	169	166	146	88.0	138	83.1	3	1.8
All Airlines	423	419	361	86.2	332	79.2	4	0.9
Sydney-Port Macquarie								
QantasLink	111	106	80	75.5	79	74.5	5	4.5
Rex Airlines	51	47	22	46.8	18	38.3	4	7.8
All Airlines	162	153	102	66.7	97	63.4	9	5.6
Sydney-Sunshine Coast								
Jetstar	75	75	71	94.7	72	96.0	0	0.0
QantasLink	83	82	53	64.6	62	75.6	1	1.2
Virgin Australia	67	67	59	88.1	61	91.0	0	0.0
All Airlines	225	224	183	81.7	195	87.1	1	0.4
Sydney-Wagga Wagga								
QantasLink	109	107	92	86.0	82	76.6	2	1.8
Rex Airlines	81	78	58	74.4	57	73.1	3	3.7
All Airlines	190	185	150	81.1	139	75.1	5	2.6
Townsville-Brisbane								
Jetstar	67	65	46	70.8	48	73.8	2	3.0
Qantas	44	44	42	95.5	42	95.5	0	0.0
QantasLink	108	104	85	81.7	81	77.9	4	3.7
Virgin Australia	130	130	119	91.5	110	84.6	0	0.0
All Airlines	349	343	292	85.1	281	81.9	6	1.7
Wagga Wagga-Sydney								
QantasLink	109	107	91	85.0	89	83.2	2	1.8
Rex Airlines	80	78	53	67.9	62	79.5	2	2.5
All Airlines	189	185	144	77.8	151	81.6	4	2.1

Airports

The following data reports by airport against flights operated on published routes only. This month, 8 major city airports and 29 regional city airports are covered.

Airport	Arrivals			Departures		
	Sectors	On Time		Sectors	On Time	
	Flown	No.	%	Flown	No.	%
Adelaide						
Jetstar	364	297	81.6	365	302	82.7
Qantas	559	496	88.7	559	506	90.5
QantasLink	430	362	84.2	430	383	89.1
Rex Airlines	143	98	68.5	144	103	71.5
Virgin Australia	641	552	86.1	642	537	83.6
All Airlines	2,137	1,805	84.5	2,140	1,831	85.6

Relates to services to and from Alice Springs, Brisbane, Canberra, Gold Coast, Melbourne, Perth, Port Lincoln and Sydney only.

Albury

QantasLink	100	81	81.0	100	74	74.0
Rex Airlines	58	39	67.2	59	44	74.6
All Airlines	158	120	75.9	159	118	74.2

Relates to services to and from Sydney only.

Alice Springs

QantasLink	31	28	90.3	31	24	77.4
Virgin Australia	13	6	46.2	13	4	30.8
All Airlines	44	34	77.3	44	28	63.6

Relates to services to and from Adelaide only.

Ayers Rock

Jetstar	18	16	88.9	18	16	88.9
Virgin Australia	12	12	100.0	12	10	83.3
All Airlines	30	28	93.3	30	26	86.7

Relates to services to and from Melbourne only.

Ballina

Jetstar	62	52	83.9	62	48	77.4
QantasLink	56	40	71.4	56	44	78.6
Virgin Australia	31	26	83.9	31	27	87.1
All Airlines	149	118	79.2	149	119	79.9

Relates to services to and from Sydney only.

Brisbane

Jetstar	760	576	75.8	764	550	72.0
Qantas	1,188	1,011	85.1	1,189	1,055	88.7
QantasLink	1,306	1,123	86.0	1,310	1,091	83.3
Virgin Australia	2,001	1,631	81.5	2,000	1,678	83.9
All Airlines	5,255	4,341	82.6	5,263	4,374	83.1

Relates to services to and from Adelaide, Cairns, Canberra, Darwin, Emerald, Gladstone, Hamilton Island, Hobart, Launceston, Mackay, Melbourne, Mount Isa, Newcastle, Perth, Proserpine, Rockhampton, Sydney and Townsville only.

Airport	Arrivals			Departures		
	Sectors Flown	On Time		Sectors Flown	On Time	
		No.	%		No.	%
Broome						
QantasLink	85	76	89.4	83	75	90.4
Virgin Australia	62	60	96.8	61	58	95.1
Virgin Australia Regional Airlines	16	14	87.5	16	12	75.0
All Airlines	163	150	92.0	160	145	90.6
Relates to services to and from Perth only.						
Cairns						
Jetstar	232	182	78.4	232	198	85.3
Qantas	136	108	79.4	136	111	81.6
QantasLink	102	76	74.5	102	85	83.3
Virgin Australia	263	205	77.9	263	177	67.3
All Airlines	733	571	77.9	733	571	77.9
Relates to services to and from Brisbane, Melbourne and Sydney only.						
Canberra						
Jetstar	74	56	75.7	74	54	73.0
Qantas	4	4	100.0	4	4	100.0
QantasLink	791	696	88.0	780	647	82.9
Virgin Australia	511	456	89.2	511	458	89.6
All Airlines	1,380	1,212	87.8	1,369	1,163	85.0
Relates to services to and from Adelaide, Brisbane, Gold Coast, Melbourne and Sydney only.						
Coffs Harbour						
QantasLink	112	85	75.9	111	85	76.6
Rex Airlines	79	45	57.0	79	51	64.6
All Airlines	191	130	68.1	190	136	71.6
Relates to services to and from Sydney only.						
Darwin						
Jetstar	52	37	71.2	52	35	67.3
Qantas	82	67	81.7	83	77	92.8
QantasLink	28	25	89.3	28	26	92.9
Virgin Australia	80	58	72.5	79	55	69.6
Virgin Australia Regional Airlines	6	6	100.0	6	6	100.0
All Airlines	248	193	77.8	248	199	80.2
Relates to services to and from Brisbane, Melbourne and Perth only.						
Devonport						
QantasLink	94	75	79.8	94	78	83.0
Rex Airlines	29	23	79.3	28	22	78.6
All Airlines	123	98	79.7	122	100	82.0
Relates to services to and from Melbourne only.						
Dubbo						
QantasLink	112	84	75.0	112	86	76.8
Rex Airlines	70	42	60.0	71	53	74.6
All Airlines	182	126	69.2	183	139	76.0
Relates to services to and from Sydney only.						
Emerald						
QantasLink	110	98	89.1	110	101	91.8
Virgin Australia	26	24	92.3	26	25	96.2
All Airlines	136	122	89.7	136	126	92.6
Relates to services to and from Brisbane only.						

Airport	Arrivals			Departures		
	Sectors	On Time		Sectors	On Time	
	Flown	No.	%	Flown	No.	%
Gladstone						
QantasLink	125	105	84.0	123	106	86.2
Virgin Australia	35	33	94.3	35	33	94.3
All Airlines	160	138	86.3	158	139	88.0
Relates to services to and from Brisbane only.						
Gold Coast						
Jetstar	428	347	81.1	426	322	75.6
Qantas	138	119	86.2	138	118	85.5
QantasLink	72	56	77.8	73	44	60.3
Virgin Australia	534	413	77.3	533	371	69.6
All Airlines	1,172	935	79.8	1,170	855	73.1
Relates to services to and from Adelaide, Canberra, Melbourne and Sydney only.						
Hamilton Island						
Qantas	36	29	80.6	36	28	77.8
QantasLink	26	15	57.7	26	15	57.7
Virgin Australia	53	46	86.8	53	41	77.4
All Airlines	115	90	78.3	115	84	73.0
Relates to services to and from Brisbane and Sydney only.						
Hobart						
Jetstar	230	178	77.4	228	171	75.0
Qantas	24	21	87.5	24	23	95.8
QantasLink	188	152	80.9	188	153	81.4
Virgin Australia	224	199	88.8	224	184	82.1
All Airlines	666	550	82.6	664	531	80.0
Relates to services to and from Brisbane, Melbourne and Sydney only.						
Kalgoorlie						
Qantas	9	7	77.8	9	7	77.8
QantasLink	73	63	86.3	71	61	85.9
Virgin Australia	89	80	89.9	88	70	79.5
Virgin Australia Regional Airlines	15	15	100.0	15	12	80.0
All Airlines	186	165	88.7	183	150	82.0
Relates to services to and from Perth only.						
Karratha						
Qantas	10	10	100.0	10	6	60.0
QantasLink	175	164	93.7	174	145	83.3
Virgin Australia	84	77	91.7	84	77	91.7
All Airlines	269	251	93.3	268	228	85.1
Relates to services to and from Perth only.						
Launceston						
Jetstar	135	95	70.4	137	93	67.9
QantasLink	134	98	73.1	132	102	77.3
Virgin Australia	135	108	80.0	135	94	69.6
All Airlines	404	301	74.5	404	289	71.5
Relates to services to and from Brisbane, Melbourne and Sydney only.						

Airport	Arrivals			Departures		
	Sectors	On Time		Sectors	On Time	
	Flown	No.	%	Flown	No.	%
Mackay						
Jetstar	22	15	68.2	20	13	65.0
Qantas	4	4	100.0	4	4	100.0
QantasLink	173	149	86.1	176	159	90.3
Virgin Australia	136	111	81.6	136	120	88.2
All Airlines	335	279	83.3	336	296	88.1

Relates to services to and from Brisbane only.

Melbourne

Jetstar	1,418	1,080	76.2	1,418	1,032	72.8
Qantas	1,713	1,476	86.2	1,709	1,532	89.6
QantasLink	795	647	81.4	801	632	78.9
Rex Airlines	120	86	71.7	124	95	76.6
Virgin Australia	2,253	1,846	81.9	2,253	1,938	86.0
All Airlines	6,299	5,135	81.5	6,305	5,229	82.9

Relates to services to and from Adelaide, Ayers Rock, Brisbane, Cairns, Canberra, Darwin, Devonport, Gold Coast, Hobart, Launceston, Mildura, Newcastle, Perth, Sunshine Coast and Sydney only.

Mildura

QantasLink	90	75	83.3	90	75	83.3
Rex Airlines	95	73	76.8	92	66	71.7
All Airlines	185	148	80.0	182	141	77.5

Relates to services to and from Melbourne only.

Mount Isa

Qantas	42	37	88.1	42	34	81.0
QantasLink	14	11	78.6	14	11	78.6
Virgin Australia	13	12	92.3	13	13	100.0
All Airlines	69	60	87.0	69	58	84.1

Relates to services to and from Brisbane only.

Newcastle

Jetstar	97	87	89.7	99	80	80.8
QantasLink	148	120	81.1	149	123	82.6
Virgin Australia	122	94	77.0	122	93	76.2
All Airlines	367	301	82.0	370	296	80.0

Relates to services to and from Brisbane and Melbourne only.

Newman

Qantas	4	4	100.0	4	4	100.0
QantasLink	127	119	93.7	126	119	94.4
Virgin Australia	51	50	98.0	51	46	90.2
Virgin Australia Regional Airlines	4	4	100.0	4	4	100.0
All Airlines	186	177	95.2	185	173	93.5

Relates to services to and from Perth only.

Airport	Arrivals			Departures		
	Sectors	On Time		Sectors	On Time	
	Flown	No.	%	Flown	No.	%
Perth						
Jetstar	198	163	82.3	196	157	80.1
Qantas	710	622	87.6	709	613	86.5
QantasLink	619	534	86.3	627	574	91.5
Virgin Australia	916	791	86.4	921	840	91.2
Virgin Australia Regional Airlines	47	34	72.3	47	44	93.6
All Airlines	2,490	2,144	86.1	2,500	2,228	89.1
Relates to services to and from Adelaide, Brisbane, Broome, Darwin, Kalgoorlie, Karratha, Melbourne, Newman, Port Hedland and Sydney only.						
Port Hedland						
Qantas	4	4	100.0	4	4	100.0
QantasLink	139	129	92.8	137	127	92.7
Virgin Australia	53	52	98.1	53	47	88.7
Virgin Australia Regional Airlines	6	5	83.3	6	5	83.3
All Airlines	202	190	94.1	200	183	91.5
Relates to services to and from Perth only.						
Port Lincoln						
QantasLink	99	95	96.0	99	96	97.0
Rex Airlines	144	100	69.4	143	104	72.7
All Airlines	243	195	80.2	242	200	82.6
Relates to services to and from Adelaide only.						
Port Macquarie						
QantasLink	106	80	75.5	106	80	75.5
Rex Airlines	47	22	46.8	46	22	47.8
All Airlines	153	102	66.7	152	102	67.1
Relates to services to and from Sydney only.						
Proserpine						
Jetstar	35	26	74.3	35	27	77.1
Virgin Australia	31	23	74.2	31	22	71.0
All Airlines	66	49	74.2	66	49	74.2
Relates to services to and from Brisbane only.						
Rockhampton						
QantasLink	192	164	85.4	189	161	85.2
Virgin Australia	161	140	87.0	161	135	83.9
All Airlines	353	304	86.1	350	296	84.6
Relates to services to and from Brisbane only.						
Sunshine Coast						
Jetstar	141	125	88.7	141	123	87.2
Qantas	29	26	89.7	29	19	65.5
QantasLink	82	53	64.6	82	57	69.5
Virgin Australia	125	108	86.4	124	101	81.5
All Airlines	377	312	82.8	376	300	79.8
Relates to services to and from Melbourne and Sydney only.						

Airport	Arrivals			Departures		
	Sectors	On Time		Sectors	On Time	
	Flown	No.	%	Flown	No.	%
Sydney						
Jetstar	1,337	1,064	79.6	1,337	1,037	77.6
Qantas	1,915	1,533	80.1	1,918	1,657	86.4
QantasLink	1,156	933	80.7	1,161	901	77.6
Rex Airlines	333	210	63.1	332	201	60.5
Virgin Australia	2,300	1,844	80.2	2,300	1,965	85.4
All Airlines	7,041	5,584	79.3	7,048	5,761	81.7

Relates to services to and from Adelaide, Albury, Ballina, Brisbane, Cairns, Canberra, Coffs Harbour, Dubbo, Gold Coast, Hamilton Island, Hobart, Launceston, Melbourne, Perth, Port Macquarie, Sunshine Coast and Wagga Wagga only.

Townsville

Jetstar	66	50	75.8	65	48	73.8
Qantas	44	40	90.9	44	42	95.5
QantasLink	105	73	69.5	104	81	77.9
Virgin Australia	130	112	86.2	130	110	84.6
All Airlines	345	275	79.7	343	281	81.9

Relates to services to and from Brisbane only.

Wagga Wagga

QantasLink	107	92	86.0	107	89	83.2
Rex Airlines	78	58	74.4	78	62	79.5
All Airlines	185	150	81.1	185	151	81.6

Relates to services to and from Sydney only.

Definitions

On time arrival	A flight arrival is counted as "on time" if it arrived at the gate before 15 minutes after the scheduled arrival time shown in the carriers' schedule. Neither diverted nor cancelled flights count as on time.
On time departure	A flight departure is counted as "on time" if it departs the gate before 15 minutes after the scheduled departure time shown in the carriers' schedule.
Cancellation	A flight removed from service within 7 days of scheduled departure is regarded as a cancellation.
On time departure percentage	The percentage of on time departures is measured against the number of departures <i>operated</i> on any particular sector.
On time arrival percentage	The percentage of on time arrivals is measured against the number of arrivals <i>operated</i> on any particular sector.
Cancellation percentage	The percentage of cancellations is measured against the number of services <i>scheduled</i> on any particular sector.

Airlines and Reporting

Data has been gathered since November 2003, although some airlines commenced reporting at a later date, including Jetstar which first reported in May 2004, Tigerair Australia in April 2008, Virgin Australia Regional Airlines in May 2013, Skytrans Australia in May 2023, Bonza in November 2023 and Hinterland in March 2024. Tigerair Australia ceased operations in March 2020 and data was not received for that month. Bonza ceased operations at the end of April 2024 and data was not received for that month.

Virgin Blue was rebranded as Virgin Australia in May 2011 and Tiger Airways was rebranded as Tigerair Australia in August 2013. Skytrans was rebranded as SmartLynx Australia in July 2025 and then rebranded as Skytrans Australia in February 2026. Time series data in Microsoft Excel spreadsheet format on the BITRE website have been revised to reflect these changes. With effect from August 2021, Regional Express is reported as Rex Airlines. Rex Airlines commenced jet services between selected major cities in March 2021. These domestic jet services ceased in July 2024.

Services operated by Skywest on behalf of Virgin Australia using ATR/F100 aircraft commenced in November 2011 and were shown separately as Virgin Australia – ATR/F100 Operations. Virgin Australia Regional Airlines commenced operations in May 2013. It was formed after the acquisition of Skywest by Virgin Australia and represented a combination of operations previously reported under Skywest and Virgin Australia – ATR/F100 Operations. In February 2016, Virgin Australia transferred their ATR fleet from Virgin Australia Regional Airlines to Virgin Australia.