



**Australian Government**

**Department of Infrastructure, Transport, Regional Development and Communications**

Bureau of Infrastructure and Transport Research Economics

STATISTICAL REPORT



# Aviation

Domestic airline on time performance  
March 2021

© Commonwealth of Australia 2021

ISSN: 1832-0759

### **Ownership of intellectual property rights in this publication**

Unless otherwise noted, copyright (and any other intellectual property rights, if any) in this publication is owned by the Commonwealth of Australia (referred to below as the Commonwealth).

### **Disclaimer**

The material contained in this publication is made available on the understanding that the Commonwealth is not providing professional advice, and that users exercise their own skill and care with respect to its use, and seek independent advice if necessary.

The Commonwealth makes no representations or warranties as to the contents or accuracy of the information contained in this publication. To the extent permitted by law, the Commonwealth disclaims liability to any person or organisation in respect of anything done, or omitted to be done, in reliance upon information contained in this publication.

### **Creative Commons licence**

With the exception of (a) the Coat of Arms; and (b) the Department of Infrastructure, Transport, Regional Development and Communications' photos and graphics, copyright in this publication is licensed under a Creative Commons Attribution 3.0 Australia Licence.

Creative Commons Attribution 3.0 Australia Licence is a standard form licence agreement that allows you to copy, communicate and adapt this publication provided that you attribute the work to the Commonwealth and abide by the other licence terms. A summary of the licence terms is available from <http://creativecommons.org/licenses/by/3.0/au/deed.en>. The full licence terms are available from <http://creativecommons.org/licenses/by/3.0/au/legalcode>.

### **Use of the Coat of Arms**

The Department of the Prime Minister and Cabinet sets the terms under which the Coat of Arms is used. Please refer to the Department's Commonwealth Coat of Arms and Government branding web page <http://www.dpmc.gov.au/guidelines/index.cfm#brand> and, in particular, the Guidelines on the use of the Commonwealth Coat of Arms publication.

An appropriate citation for this report is:

Bureau of Infrastructure and Transport Research Economics (BITRE), 2021, Domestic airline on time performance, Statistical Report, BITRE, Canberra ACT.

### **Contact us**

This publication is available in PDF format. All other rights are reserved, including in relation to any Departmental logos or trade marks which may exist. For enquiries regarding the licence and any use of this publication, please contact:

Bureau of Infrastructure and Transport Research Economics (BITRE)  
Department of Infrastructure, Transport, Regional Development and Communications  
GPO Box 501, Canberra ACT 2601, Australia  
Telephone: (international) +61 2 6274 7210  
Fax: (international) +61 2 6274 6855  
Email: [bitre@infrastructure.gov.au](mailto:bitre@infrastructure.gov.au)  
Website: [www.bitre.gov.au](http://www.bitre.gov.au)

### **Inquiries**

Should you require additional information about the statistics contained in this publication:

Telephone (02) 6274 7790 or Facsimile (02) 6274 7727

Electronic mail: [AVSTATS@infrastructure.gov.au](mailto:AVSTATS@infrastructure.gov.au)

Web site: <http://www.bitre.gov.au/statistics/aviation/otphome.aspx>

# Foreword

The Bureau of Infrastructure and Transport Research Economics (BITRE) monitors the punctuality and reliability of major domestic airlines operating between Australian airports. The purpose of this is to allow for evaluation of overall industry and individual airline performance, so that consumers of air travel can make informed decisions.

The following domestic airlines currently report this information monthly to the BITRE: Jetstar, Qantas, QantasLink, Regional Express, Virgin Australia and Virgin Australia Regional Airlines. Data has been gathered since November 2003, although some airlines commenced reporting at a later date, including Jetstar which first reported in May 2004, MacAir in July 2005, Tigerair Australia in April 2008 and Virgin Australia Regional Airlines in May 2013. MacAir ceased operations in February 2009 and data was not received for December 2008 onwards. Virgin Blue was rebranded as Virgin Australia in May 2011 and Tiger Airways was rebranded as Tigerair Australia in July 2013 and time series data in Microsoft Excel spreadsheet format on the BITRE website have been revised to reflect these changes. Services operated by Skywest on behalf of Virgin Australia using ATR/F100 aircraft commenced in November 2011 and were shown separately as Virgin Australia – ATR/F100 Operations. Virgin Australia Regional Airlines commenced operations in May 2013. It was formed after the acquisition of Skywest by Virgin Australia and represented a combination of operations previously reported under Skywest and Virgin Australia – ATR/F100 Operations. In January 2016, Virgin Australia transferred their ATR fleet from Virgin Australia Regional Airlines to Virgin Australia. Tigerair Australia ceased operations in March 2020 and data was not received for that month.

Information presented in this report is for Australian domestic routes for which the passenger load averaged 8 000 or more passengers per month over the previous six months and where two or more airlines operated in competition on those routes. There were 55 routes that met this definition in March 2021. Over time, routes which meet these criteria change as airline networks and traffic levels vary.

Participating airlines report their overall monthly network performance where this is possible.

Total industry figures encompass all services operated by reporting airlines only. These airlines collectively carried over 95 per cent of total domestic passengers (regular public transport only) in 2019.

The method of capturing on time performance varies between airlines utilising different recording systems. Jetstar and Qantas jet aircraft use Aircraft Communication Addressing and Reporting System (ACARS) to electronically measure on time performance. Regional Express, Tigerair Australia, Virgin Australia, Virgin Australia Regional Airlines and the Qantas non-jet fleet record on time performance manually using records from pilots, gate agents and/or ground crews.

After initial data is collected, aggregate reports are audited internally by participating airlines prior to publication.

Reports and detailed time series data in Microsoft Excel spreadsheet format are available from the BITRE website at: <http://www.bitre.gov.au/statistics/aviation/otphome.aspx>.



# Contents

	Page
Industry performance .....	1
Individual routes .....	9
Airports.....	21
Definitions .....	26



# Industry performance

For March 2021, on time performance over all routes operated by participating airlines (Jetstar, Qantas, QantasLink, Regional Express, Virgin Australia and Virgin Australia Regional Airlines) averaged 84.9 per cent for on time arrivals and 85.0 per cent for on time departures. The cancellation rate for the month was 2.4 per cent. The equivalent figures for March 2020 were 84.2 per cent for on time arrivals, 85.4 per cent for on time departures and 17.3 per cent for cancellations.

This month's on time arrivals figure was higher than the long term average performance for all routes (82.2 per cent) and the on time departures figure was also higher than the long term average (83.6 per cent). The rate of cancellations was higher than the long term average of 1.7 per cent.

The Virgin Australia network (Virgin Australia and Virgin Australia Regional Airlines combined operations) recorded 85.4 per cent for on time arrivals while the Qantas network (Qantas and QantasLink combined operations) recorded 83.2 per cent. Jetstar achieved the highest on time arrivals among the major domestic airlines at 86.9 per cent followed by Virgin Australia at 85.6 per cent and Qantas at 84.9 per cent. Of the regional airlines, Regional Express recorded 87.9 per cent for on time arrivals, followed by QantasLink at 81.9 per cent and Virgin Australia Regional Airlines at 80.9 per cent.

The Qantas network recorded 84.9 per cent for on time departures while the Virgin Australia network recorded 83.2 per cent. Qantas achieved the highest level of on time departures among the major domestic airlines for March 2021 at 87.5 per cent, followed by Jetstar at 85.1 per cent and Virgin Australia at 83.3 per cent. Of the regional airlines, Regional Express recorded 89.3 per cent for on time departures, followed by QantasLink at 83.0 per cent and Virgin Australia Regional Airlines at 80.5 per cent.

Virgin Australia Regional Airlines recorded the highest percentage of cancellations (at 3.6 per cent) during the month, followed by Jetstar (at 3.0 per cent), QantasLink (at 2.6 per cent), Qantas (at 2.3 per cent), Virgin Australia (at 2.0 per cent) and Regional Express (at 1.5 per cent).

Airlines' on time performance varies across the routes they serve. Individual route data by specific airline for 55 routes are shown on pages 9-19.

Of the 55 routes which met the criteria for on time performance reporting in March 2021, the Emerald-Brisbane route had the highest percentage of on time arrivals (97.3 per cent) and the highest percentage of on time departures (96.7 per cent). The Port Hedland-Perth route had the lowest percentage of on time arrivals (57.1 per cent) and the Darwin-Brisbane route had the lowest percentage of on time departures (62.3 per cent).

Cancellations were highest on the Sydney-Port Macquarie route at 16.3 per cent, followed by the Port Macquarie-Sydney route at 15.5 per cent, the Melbourne-Newcastle route at 13.7 per cent, the Newcastle-Brisbane route at 13.2 per cent and the Newcastle-Melbourne route at 12.2 per cent.

Emerald Airport recorded the highest percentage of on time arrivals (95.3 per cent) and the highest percentage of on time departures (96.7 per cent). Broome Airport recorded the lowest percentage of on time arrivals (68.9 per cent) and Darwin Airport recorded the lowest percentage of on time departures (65.0 per cent). These figures only refer to reported routes and do not cover all flights at these airports.



Table 1 On time performance for March 2021 — Total Industry

	Sectors		Arrivals On Time		Departures On Time		Cancellations	
	Scheduled	Flown	No.	%	No.	%	No.	%
Jetstar	5 726	5 556	4 829	86.9	4 727	85.1	170	3.0
Qantas - all QF designated services	14 609	14 246	11 852	83.2	12 096	84.9	363	2.5
Regional Express	3 298	3 247	2 855	87.9	2 901	89.3	51	1.5
Virgin Australia - all VA designated services	6 626	6 486	5 536	85.4	5 394	83.2	140	2.1
All Airlines	30 259	29 535	25 072	84.9	25 118	85.0	724	2.4
Individual operating entities								
Qantas	6 178	6 035	5 126	84.9	5 280	87.5	143	2.3
QantasLink	8 431	8 211	6 726	81.9	6 816	83.0	220	2.6
Virgin Australia	6 322	6 193	5 299	85.6	5 158	83.3	129	2.0
Virgin Australia Regional Airlines	304	293	237	80.9	236	80.5	11	3.6

Total airline network data (including routes not shown in this report).

Airlines' on time performance varies across the routes they serve. Individual route data by specific airline for 55 routes are shown on pages 9-20.

Table 2 Top ten routes for on time performance for March 2021 (participating airlines only)

Arrivals		Departures	
Route	On Time (%)	Route	On Time (%)
Emerald-Brisbane	97.3	Emerald-Brisbane	96.7
Brisbane-Emerald	95.3	Brisbane-Emerald	94.7
Launceston-Melbourne	94.7	Launceston-Melbourne	93.7
Adelaide-Perth	92.9	Brisbane-Gladstone	93.0
Melbourne-Cairns	92.7	Adelaide-Gold Coast	93.0
Port Macquarie-Sydney	92.0	Melbourne-Sydney	92.0
Canberra-Brisbane	91.9	Port Macquarie-Sydney	92.0
Melbourne-Launceston	91.9	Gladstone-Brisbane	91.5
Cairns-Melbourne	91.7	Newcastle-Brisbane	91.5
Brisbane-Gladstone	91.6	Adelaide-Sydney	91.4

Table 3 Top ten airports for on time performance for March 2021 (participating airlines and reported routes only)

Arrivals		Departures	
Airport	On Time (%)	Airport	On Time (%)
Emerald	95.3	Emerald	96.7
Gladstone	91.6	Port Macquarie	92.0
Port Macquarie	89.7	Gladstone	91.5
Launceston	89.6	Mackay	89.6
Hamilton Island	88.4	Mount Isa	89.6
Mount Isa	88.2	Launceston	89.5
Port Lincoln	88.1	Newcastle	89.0
Dubbo	87.9	Dubbo	89.0
Adelaide	87.7	Wagga Wagga	88.8
Canberra	87.0	Melbourne	87.9

## Total industry on time performance

Figure 1 On time performance (by month from March 2018)—Total Industry

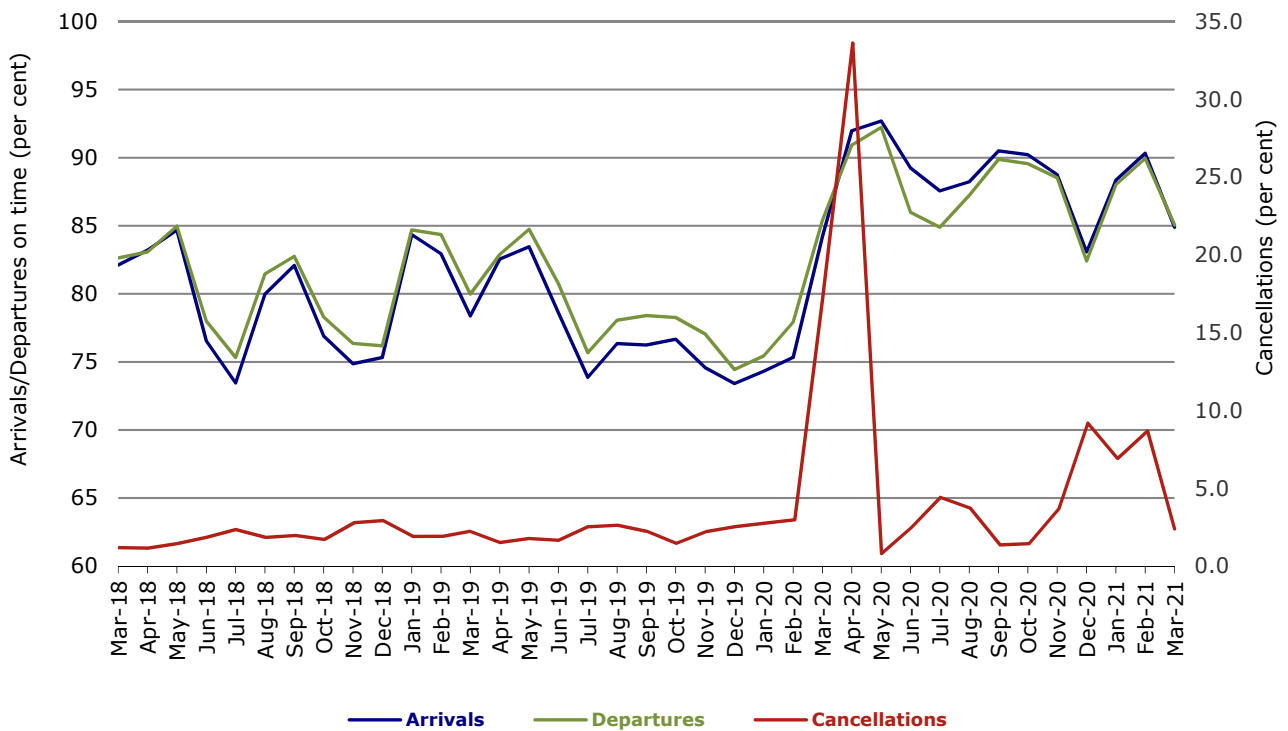


Figure 2 Arrivals on time (by month from March 2020)

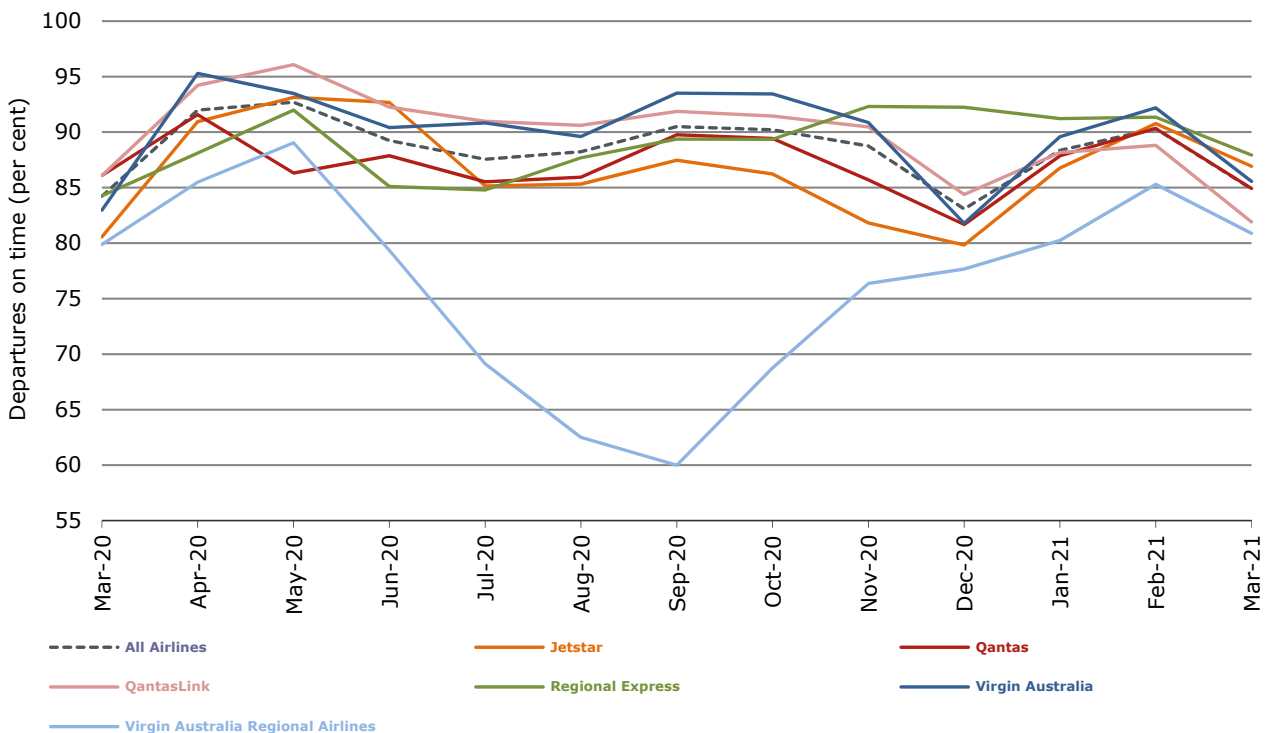


Figure 3 Departures on time (by month from March 2020)

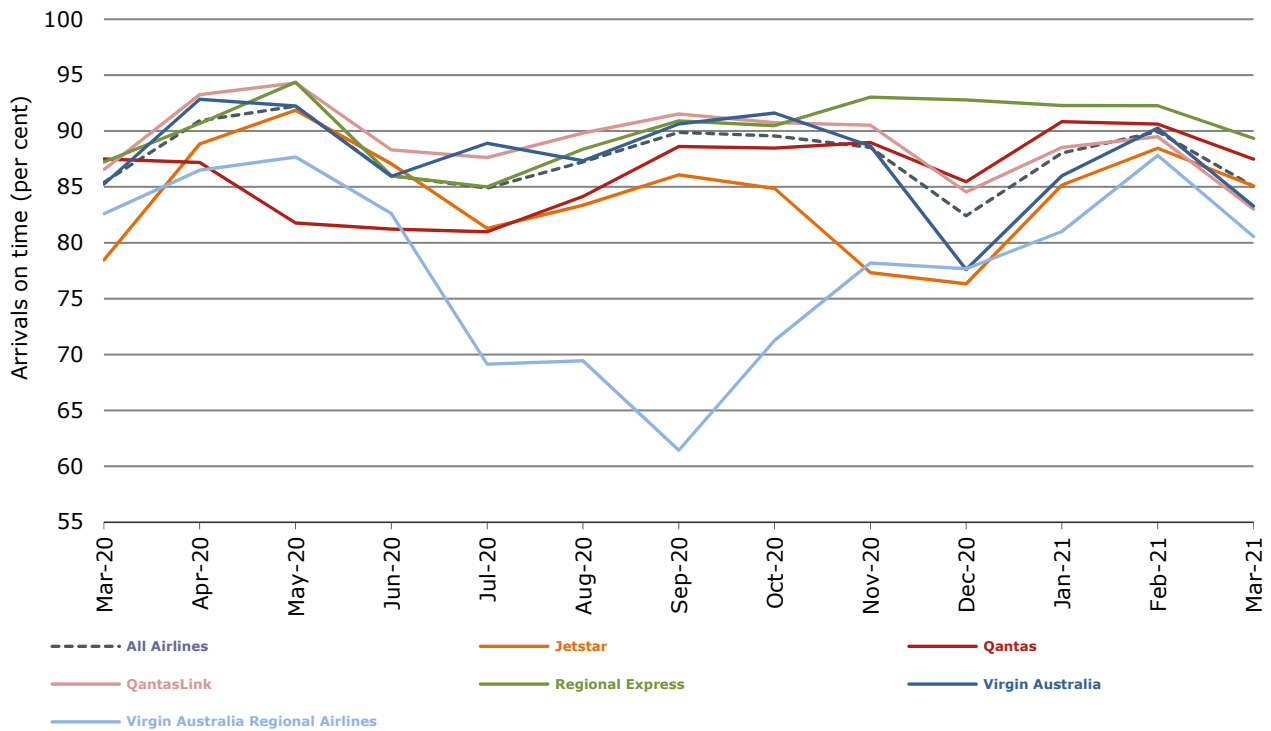
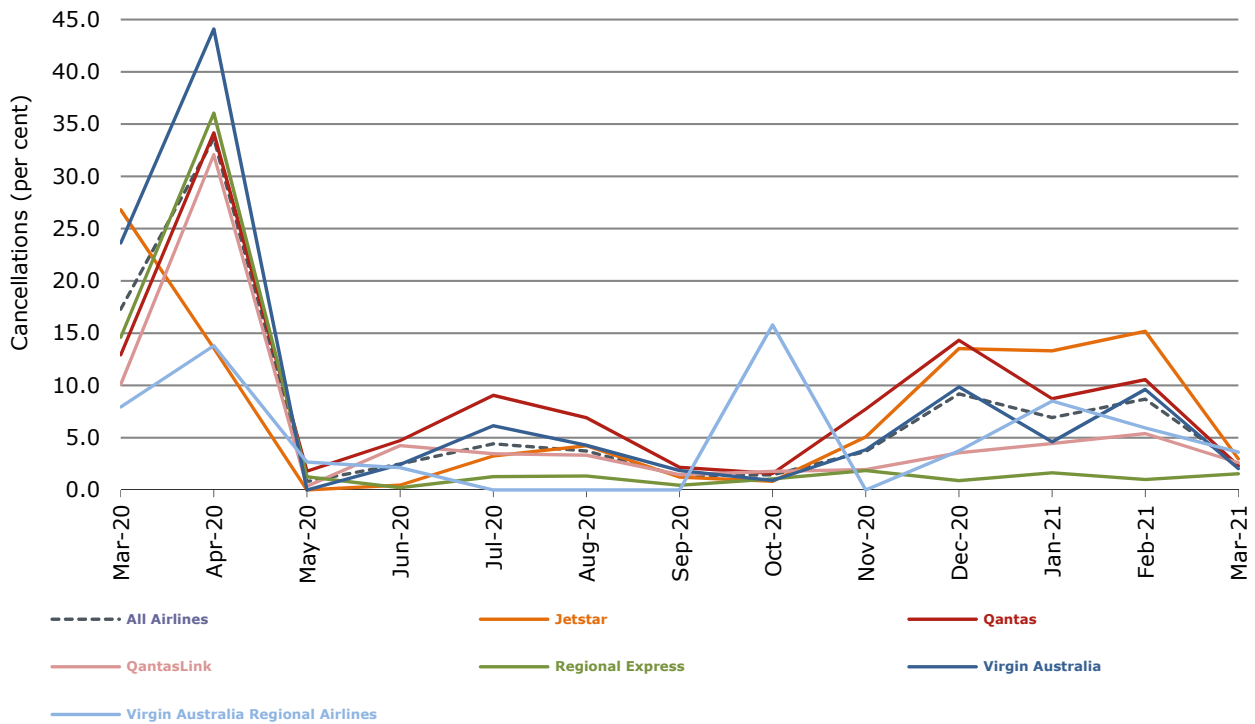


Figure 4 Cancellations (by month from March 2020)



## Major domestic airlines on time performance

Figure 5 On time performance (by month from March 2018)—Jetstar

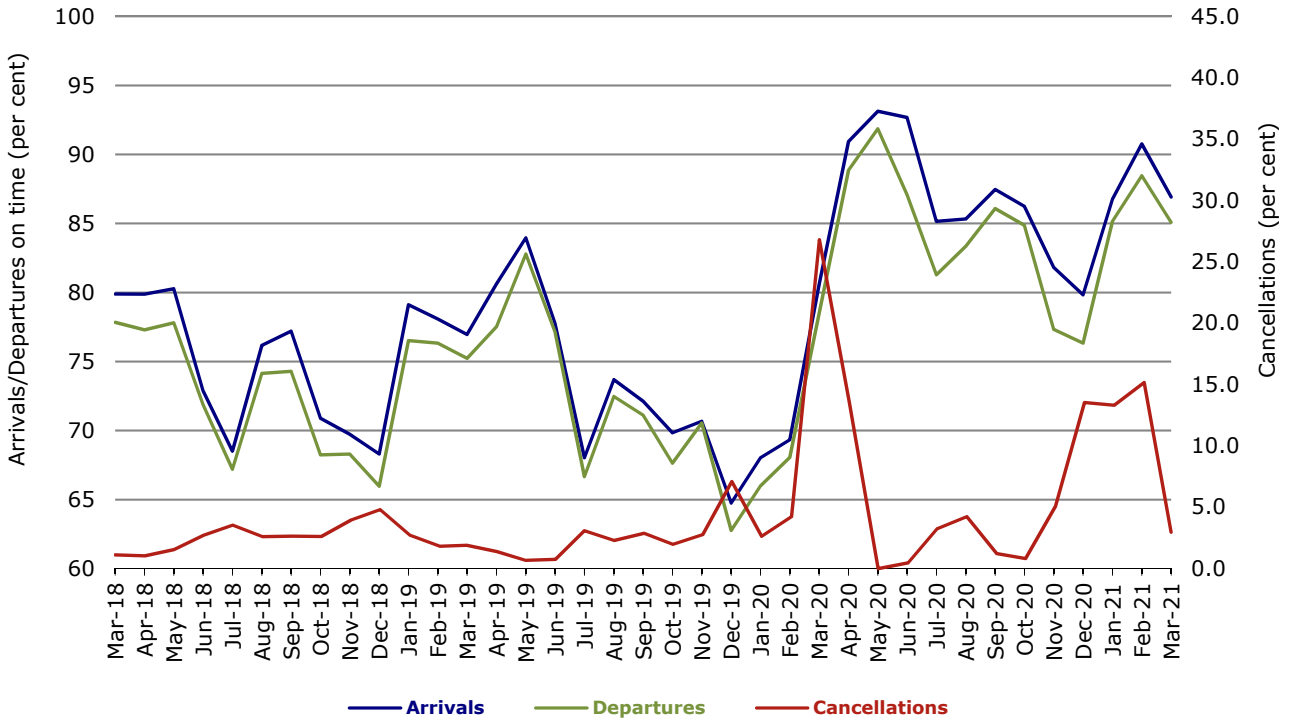


Figure 6 On time performance (by month from March 2018)—Qantas

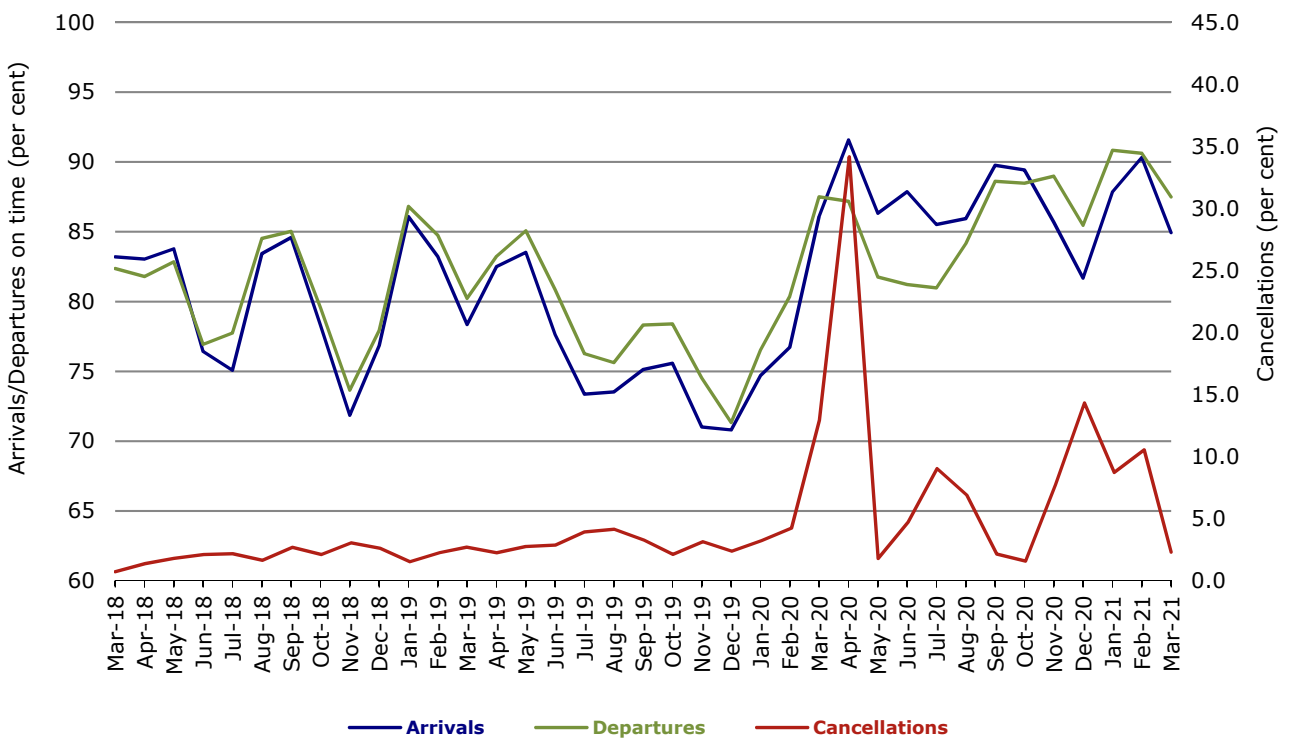
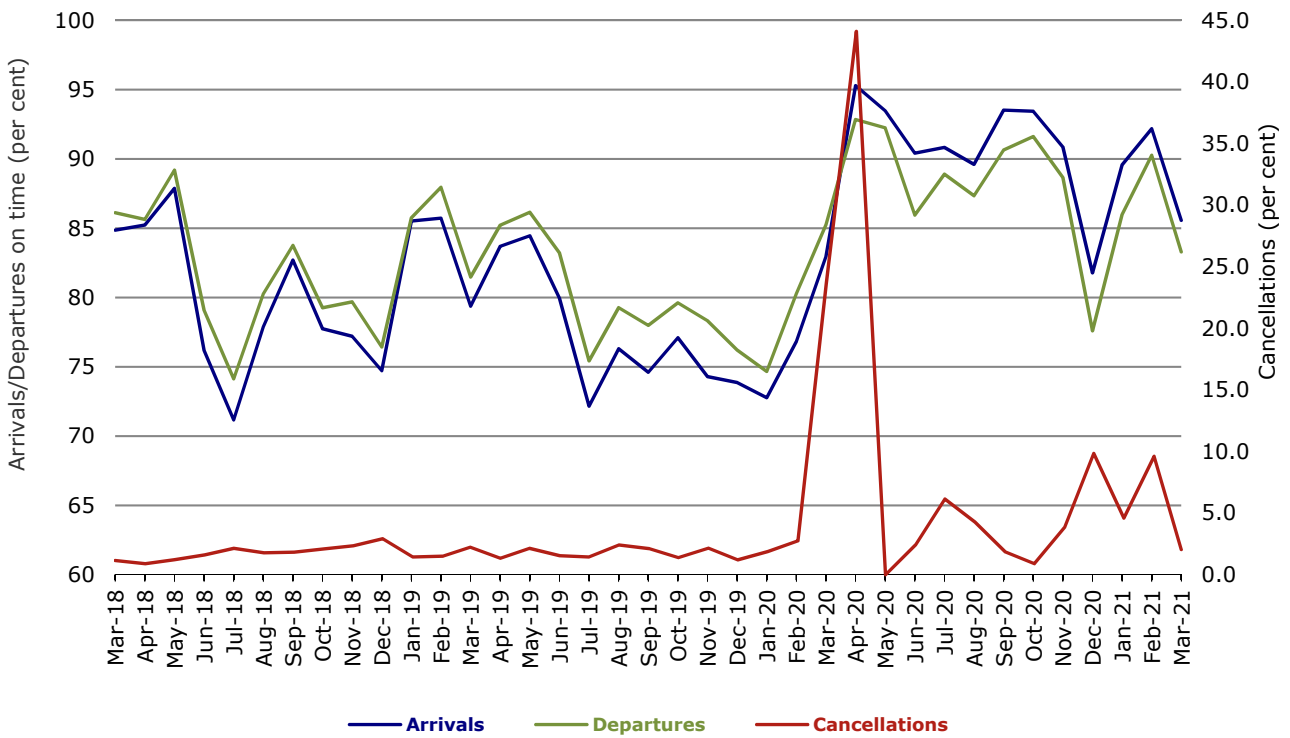


Figure 7 On time performance (by month from March 2018)—Virgin Australia



## Major regional airlines on time performance

Figure 8 On time performance (by month from March 2018)—QantasLink

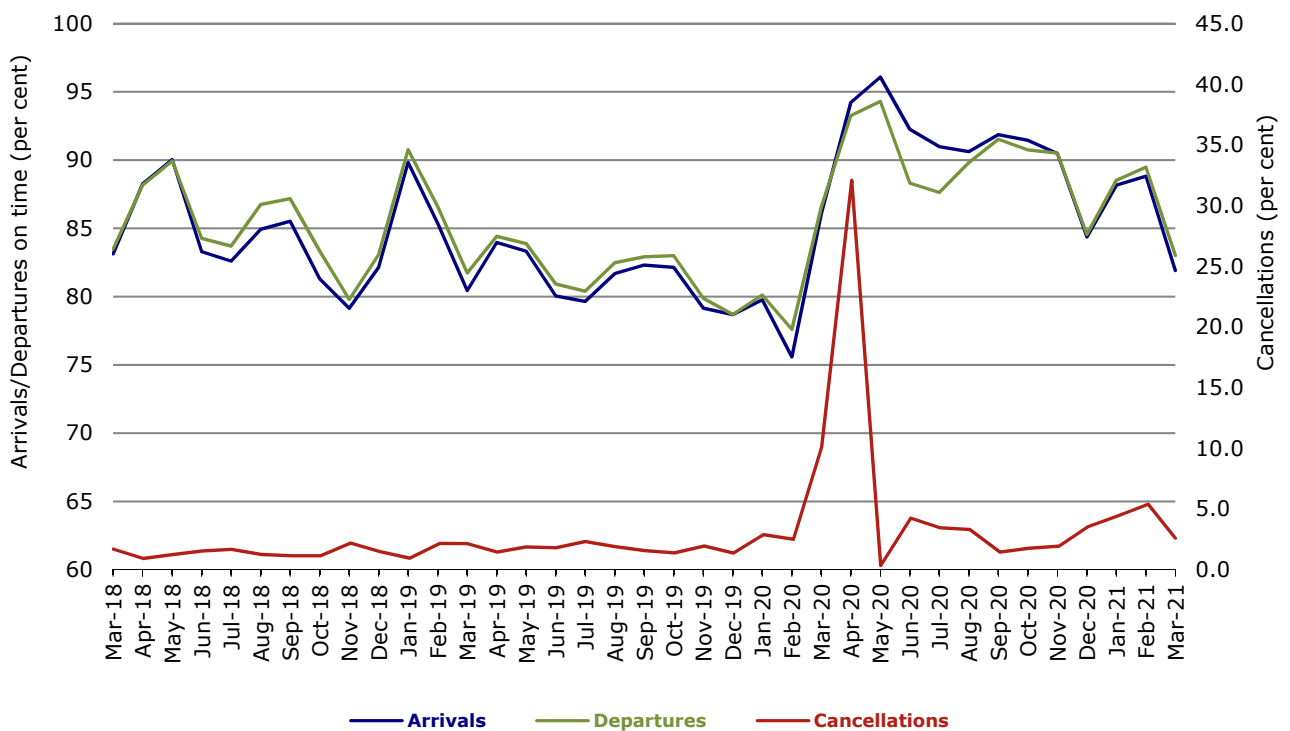


Figure 9 On time performance (by month from March 2018)—Regional Express

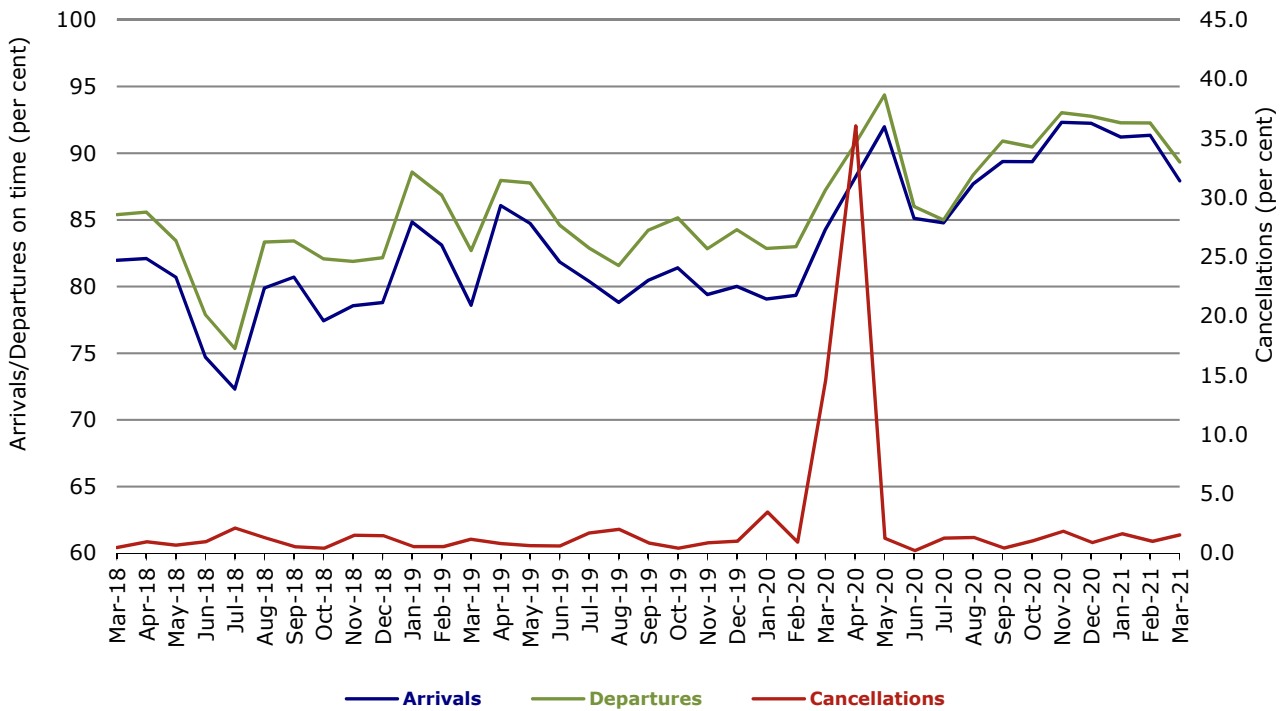
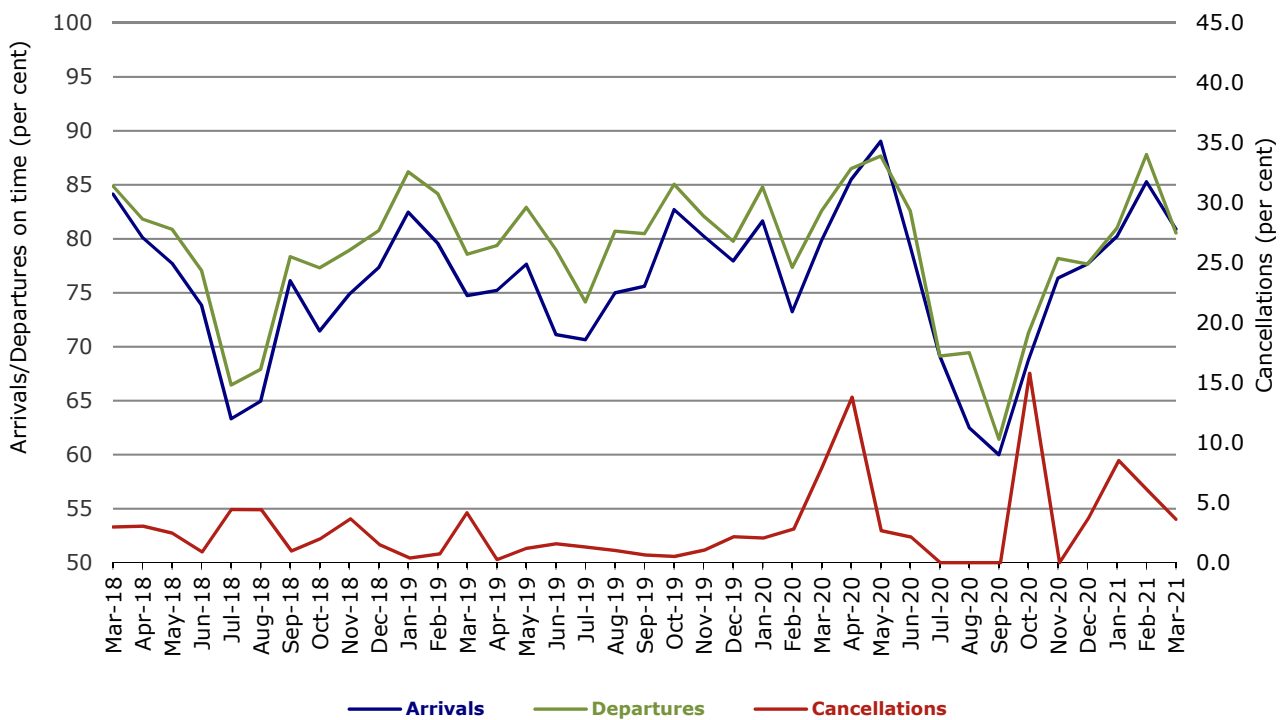


Figure 10 On time performance (by month from March 2018) Virgin Australia Regional Airlines



## Individual routes

On time performance is reported for all routes where the passenger load averages over 8000 passengers per month over the previous six months, and where two or more airlines operate in competition on those routes. There are now 55 routes which meet this definition. Over time, however, routes which meet this definition may change as airline networks and traffic levels vary.

	Sectors		Arrivals On Time		Departures On Time		Cancellations	
	Sched.	Flown	No.	%	No.	%	No.	%
<b>Adelaide-Alice Springs</b>								
Qantas	31	31	25	80.6	26	83.9	0	0.0
Virgin Australia	17	17	11	64.7	12	70.6	0	0.0
All Airlines	48	48	36	75.0	38	79.2	0	0.0
<b>Adelaide-Brisbane</b>								
Jetstar	29	29	28	96.6	27	93.1	0	0.0
Qantas	99	98	86	87.8	89	90.8	1	1.0
Virgin Australia	95	92	82	89.1	75	81.5	3	3.2
All Airlines	223	219	196	89.5	191	87.2	4	1.8
<b>Adelaide-Canberra</b>								
Qantas	27	27	24	88.9	23	85.2	0	0.0
QantasLink	4	4	2	50.0	2	50.0	0	0.0
Virgin Australia	25	25	24	96.0	24	96.0	0	0.0
All Airlines	56	56	50	89.3	49	87.5	0	0.0
<b>Adelaide-Gold Coast</b>								
Jetstar	26	26	21	80.8	22	84.6	0	0.0
Virgin Australia	31	31	31	100.0	31	100.0	0	0.0
All Airlines	57	57	52	91.2	53	93.0	0	0.0
<b>Adelaide-Melbourne</b>								
Jetstar	93	93	81	87.1	79	84.9	0	0.0
Qantas	115	114	101	88.6	97	85.1	1	0.9
Regional Express	1	1	1	100.0	1	100.0	0	0.0
Virgin Australia	90	90	75	83.3	69	76.7	0	0.0
All Airlines	299	298	258	86.6	246	82.6	1	0.3
<b>Adelaide-Perth</b>								
Jetstar	23	23	23	100.0	23	100.0	0	0.0
Qantas	78	78	75	96.2	66	84.6	0	0.0
Virgin Australia	40	39	32	82.1	31	79.5	1	2.5
All Airlines	141	140	130	92.9	120	85.7	1	0.7
<b>Adelaide-Port Lincoln</b>								
QantasLink	102	99	87	87.9	86	86.9	3	2.9
Regional Express	128	128	113	88.3	113	88.3	0	0.0
All Airlines	230	227	200	88.1	199	87.7	3	1.3
<b>Adelaide-Sydney</b>								
Jetstar	92	90	78	86.7	82	91.1	2	2.2
Qantas	178	177	154	87.0	164	92.7	1	0.6
Virgin Australia	105	105	95	90.5	94	89.5	0	0.0
All Airlines	375	372	327	87.9	340	91.4	3	0.8
<b>Albury-Sydney</b>								
QantasLink	112	112	88	78.6	87	77.7	0	0.0
Regional Express	33	33	30	90.9	31	93.9	0	0.0
All Airlines	145	145	118	81.4	118	81.4	0	0.0

	Sectors		Arrivals On Time		Departures On Time		Cancellations	
	Sched.	Flown	No.	%	No.	%	No.	%
<b>Alice Springs-Adelaide</b>								
Qantas	31	31	26	83.9	25	80.6	0	0.0
Virgin Australia	17	17	16	94.1	13	76.5	0	0.0
All Airlines	48	48	42	87.5	38	79.2	0	0.0
<b>Armidale-Sydney</b>								
QantasLink	60	59	44	74.6	46	78.0	1	1.7
Regional Express	15	15	12	80.0	11	73.3	0	0.0
All Airlines	75	74	56	75.7	57	77.0	1	1.3
<b>Ballina-Sydney</b>								
Jetstar	87	87	66	75.9	65	74.7	0	0.0
Qantas	16	15	10	66.7	9	60.0	1	6.3
QantasLink	96	91	61	67.0	69	75.8	5	5.2
Regional Express	9	9	5	55.6	5	55.6	0	0.0
Virgin Australia	36	36	29	80.6	28	77.8	0	0.0
All Airlines	244	238	171	71.8	176	73.9	6	2.5
<b>Brisbane-Adelaide</b>								
Jetstar	29	29	28	96.6	25	86.2	0	0.0
Qantas	99	98	92	93.9	92	93.9	1	1.0
Virgin Australia	95	92	79	85.9	76	82.6	3	3.2
All Airlines	223	219	199	90.9	193	88.1	4	1.8
<b>Brisbane-Cairns</b>								
Jetstar	88	85	67	78.8	65	76.5	3	3.4
Qantas	114	112	102	91.1	104	92.9	2	1.8
QantasLink	9	9	9	100.0	9	100.0	0	0.0
Virgin Australia	95	92	62	67.4	60	65.2	3	3.2
All Airlines	306	298	240	80.5	238	79.9	8	2.6
<b>Brisbane-Canberra</b>								
Qantas	57	55	52	94.5	50	90.9	2	3.5
QantasLink	101	98	90	91.8	88	89.8	3	3.0
Virgin Australia	88	84	73	86.9	62	73.8	4	4.5
All Airlines	246	237	215	90.7	200	84.4	9	3.7
<b>Brisbane-Darwin</b>								
Jetstar	17	17	12	70.6	12	70.6	0	0.0
Qantas	31	31	25	80.6	27	87.1	0	0.0
Virgin Australia	31	31	27	87.1	28	90.3	0	0.0
All Airlines	79	79	64	81.0	67	84.8	0	0.0
<b>Brisbane-Emerald</b>								
QantasLink	129	127	121	95.3	120	94.5	2	1.6
Virgin Australia	24	23	22	95.7	22	95.7	1	4.2
All Airlines	153	150	143	95.3	142	94.7	3	2.0
<b>Brisbane-Gladstone</b>								
QantasLink	95	91	85	93.4	84	92.3	4	4.2
Virgin Australia	54	52	46	88.5	49	94.2	2	3.7
All Airlines	149	143	131	91.6	133	93.0	6	4.0
<b>Brisbane-Hamilton Island</b>								
Qantas	31	31	30	96.8	30	96.8	0	0.0
QantasLink	10	10	9	90.0	9	90.0	0	0.0
Virgin Australia	38	37	30	81.1	30	81.1	1	2.6
All Airlines	79	78	69	88.5	69	88.5	1	1.3



	<i>Sectors</i>		<i>Arrivals On Time</i>		<i>Departures On Time</i>		<i>Cancellations</i>	
	<i>Sched.</i>	<i>Flown</i>	<i>No.</i>	<i>%</i>	<i>No.</i>	<i>%</i>	<i>No.</i>	<i>%</i>
<b>Brisbane-Hobart</b>								
Jetstar	32	32	28	87.5	28	87.5	0	0.0
QantasLink	21	21	17	81.0	17	81.0	0	0.0
Virgin Australia	31	31	28	90.3	27	87.1	0	0.0
All Airlines	84	84	73	86.9	72	85.7	0	0.0
<b>Brisbane-Mackay</b>								
Jetstar	31	30	28	93.3	29	96.7	1	3.2
Qantas	81	81	70	86.4	73	90.1	0	0.0
QantasLink	35	35	32	91.4	32	91.4	0	0.0
Virgin Australia	96	95	74	77.9	69	72.6	1	1.0
All Airlines	243	241	204	84.6	203	84.2	2	0.8
<b>Brisbane-Melbourne</b>								
Jetstar	145	137	127	92.7	125	91.2	8	5.5
Qantas	203	194	152	78.4	173	89.2	9	4.4
Virgin Australia	158	150	121	80.7	112	74.7	8	5.1
All Airlines	506	481	400	83.2	410	85.2	25	4.9
<b>Brisbane-Mount Isa</b>								
Qantas	34	34	30	88.2	32	94.1	0	0.0
QantasLink	20	19	16	84.2	16	84.2	1	5.0
Virgin Australia	16	15	14	93.3	14	93.3	1	6.3
All Airlines	70	68	60	88.2	62	91.2	2	2.9
<b>Brisbane-Newcastle</b>								
Jetstar	63	55	48	87.3	49	89.1	8	12.7
QantasLink	83	76	64	84.2	66	86.8	7	8.4
Virgin Australia	43	36	35	97.2	33	91.7	7	16.3
All Airlines	189	167	147	88.0	148	88.6	22	11.6
<b>Brisbane-Perth</b>								
Qantas	97	93	64	68.8	69	74.2	4	4.1
Virgin Australia	57	53	39	73.6	34	64.2	4	7.0
All Airlines	154	146	103	70.5	103	70.5	8	5.2
<b>Brisbane-Proserpine</b>								
Jetstar	39	39	31	79.5	33	84.6	0	0.0
Virgin Australia	33	33	24	72.7	27	81.8	0	0.0
All Airlines	72	72	55	76.4	60	83.3	0	0.0
<b>Brisbane-Rockhampton</b>								
QantasLink	144	139	124	89.2	129	92.8	5	3.5
Virgin Australia	86	86	58	67.4	63	73.3	0	0.0
All Airlines	230	225	182	80.9	192	85.3	5	2.2
<b>Brisbane-Sydney</b>								
Jetstar	131	121	107	88.4	98	81.0	10	7.6
Qantas	462	438	391	89.3	398	90.9	24	5.2
Virgin Australia	303	287	257	89.5	245	85.4	16	5.3
All Airlines	896	846	755	89.2	741	87.6	50	5.6
<b>Brisbane-Townsville</b>								
Jetstar	47	47	37	78.7	40	85.1	0	0.0
Qantas	112	111	100	90.1	97	87.4	1	0.9
QantasLink	2	2	2	100.0	2	100.0	0	0.0
Virgin Australia	96	94	74	78.7	72	76.6	2	2.1
All Airlines	257	254	213	83.9	211	83.1	3	1.2

	<i>Sectors</i>		<i>Arrivals On Time</i>		<i>Departures On Time</i>		<i>Cancellations</i>	
	<i>Sched.</i>	<i>Flown</i>	<i>No.</i>	<i>%</i>	<i>No.</i>	<i>%</i>	<i>No.</i>	<i>%</i>
<b>Broome-Perth</b>								
QantasLink	89	88	66	75.0	73	83.0	1	1.1
Virgin Australia	30	30	27	90.0	27	90.0	0	0.0
Virgin Australia Regional Airlines	1	1	1	100.0	1	100.0	0	0.0
All Airlines	120	119	94	79.0	101	84.9	1	0.8
<b>Cairns-Brisbane</b>								
Jetstar	90	86	74	86.0	74	86.0	4	4.4
Qantas	114	112	105	93.8	104	92.9	2	1.8
QantasLink	9	9	9	100.0	9	100.0	0	0.0
Virgin Australia	95	92	81	88.0	77	83.7	3	3.2
All Airlines	308	299	269	90.0	264	88.3	9	2.9
<b>Cairns-Melbourne</b>								
Jetstar	68	64	59	92.2	56	87.5	4	5.9
Qantas	18	18	14	77.8	17	94.4	0	0.0
Virgin Australia	26	26	26	100.0	25	96.2	0	0.0
All Airlines	112	108	99	91.7	98	90.7	4	3.6
<b>Cairns-Sydney</b>								
Jetstar	33	33	28	84.8	29	87.9	0	0.0
Qantas	32	32	24	75.0	21	65.6	0	0.0
Virgin Australia	41	40	35	87.5	35	87.5	1	2.4
All Airlines	106	105	87	82.9	85	81.0	1	0.9
<b>Cairns-Townsville</b>								
QantasLink	100	100	89	89.0	89	89.0	0	0.0
Regional Express	9	9	8	88.9	8	88.9	0	0.0
All Airlines	109	109	97	89.0	97	89.0	0	0.0
<b>Canberra-Adelaide</b>								
Qantas	27	27	23	85.2	23	85.2	0	0.0
QantasLink	4	4	4	100.0	3	75.0	0	0.0
Virgin Australia	25	25	23	92.0	23	92.0	0	0.0
All Airlines	56	56	50	89.3	49	87.5	0	0.0
<b>Canberra-Brisbane</b>								
Qantas	57	55	53	96.4	53	96.4	2	3.5
QantasLink	100	96	89	92.7	88	91.7	4	4.0
Virgin Australia	88	84	74	88.1	72	85.7	4	4.5
All Airlines	245	235	216	91.9	213	90.6	10	4.1
<b>Canberra-Melbourne</b>								
Qantas	9	9	8	88.9	8	88.9	0	0.0
QantasLink	127	124	91	73.4	91	73.4	3	2.4
Virgin Australia	60	60	57	95.0	56	93.3	0	0.0
All Airlines	196	193	156	80.8	155	80.3	3	1.5
<b>Coffs Harbour-Sydney</b>								
QantasLink	118	117	98	83.8	96	82.1	1	0.8
Regional Express	9	9	9	100.0	9	100.0	0	0.0
Virgin Australia	24	24	20	83.3	18	75.0	0	0.0
All Airlines	151	150	127	84.7	123	82.0	1	0.7
<b>Darwin-Brisbane</b>								
Jetstar	17	17	10	58.8	8	47.1	0	0.0
Qantas	30	29	20	69.0	18	62.1	1	3.3
Virgin Australia	31	31	25	80.6	22	71.0	0	0.0
All Airlines	78	77	55	71.4	48	62.3	1	1.3

	<i>Sectors</i>		<i>Arrivals On Time</i>		<i>Departures On Time</i>		<i>Cancellations</i>	
	<i>Sched.</i>	<i>Flown</i>	<i>No.</i>	<i>%</i>	<i>No.</i>	<i>%</i>	<i>No.</i>	<i>%</i>
<b>Darwin-Perth</b>								
Qantas	31	31	23	74.2	23	74.2	0	0.0
Virgin Australia	15	15	7	46.7	9	60.0	0	0.0
All Airlines	46	46	30	65.2	32	69.6	0	0.0
<b>Dubbo-Sydney</b>								
QantasLink	93	91	82	90.1	83	91.2	2	2.2
Regional Express	63	63	51	81.0	54	85.7	0	0.0
All Airlines	156	154	133	86.4	137	89.0	2	1.3
<b>Emerald-Brisbane</b>								
QantasLink	129	127	123	96.9	122	96.1	2	1.6
Virgin Australia	24	23	23	100.0	23	100.0	1	4.2
All Airlines	153	150	146	97.3	145	96.7	3	2.0
<b>Gladstone-Brisbane</b>								
QantasLink	94	90	80	88.9	82	91.1	4	4.3
Virgin Australia	54	52	45	86.5	48	92.3	2	3.7
All Airlines	148	142	125	88.0	130	91.5	6	4.1
<b>Gold Coast-Adelaide</b>								
Jetstar	26	26	22	84.6	21	80.8	0	0.0
Virgin Australia	31	31	29	93.5	28	90.3	0	0.0
All Airlines	57	57	51	89.5	49	86.0	0	0.0
<b>Gold Coast-Melbourne</b>								
Jetstar	165	165	151	91.5	147	89.1	0	0.0
Qantas	41	40	35	87.5	35	87.5	1	2.4
Regional Express	4	4	1	25.0	1	25.0	0	0.0
Virgin Australia	102	102	85	83.3	76	74.5	0	0.0
All Airlines	312	311	272	87.5	259	83.3	1	0.3
<b>Gold Coast-Sydney</b>								
Jetstar	168	168	159	94.6	157	93.5	0	0.0
Qantas	80	80	70	87.5	72	90.0	0	0.0
Virgin Australia	174	172	151	87.8	138	80.2	2	1.1
All Airlines	422	420	380	90.5	367	87.4	2	0.5
<b>Hamilton Island-Brisbane</b>								
Qantas	31	31	29	93.5	29	93.5	0	0.0
QantasLink	10	10	9	90.0	9	90.0	0	0.0
Virgin Australia	38	37	29	78.4	28	75.7	1	2.6
All Airlines	79	78	67	85.9	66	84.6	1	1.3
<b>Hamilton Island-Sydney</b>								
Jetstar	19	19	15	78.9	15	78.9	0	0.0
Qantas	20	20	17	85.0	18	90.0	0	0.0
Virgin Australia	31	31	28	90.3	27	87.1	0	0.0
All Airlines	70	70	60	85.7	60	85.7	0	0.0
<b>Hobart-Brisbane</b>								
Jetstar	32	32	28	87.5	27	84.4	0	0.0
QantasLink	21	21	16	76.2	15	71.4	0	0.0
Virgin Australia	31	31	27	87.1	27	87.1	0	0.0
All Airlines	84	84	71	84.5	69	82.1	0	0.0

	<i>Sectors</i>		<i>Arrivals On Time</i>		<i>Departures On Time</i>		<i>Cancellations</i>	
	<i>Sched.</i>	<i>Flown</i>	<i>No.</i>	<i>%</i>	<i>No.</i>	<i>%</i>	<i>No.</i>	<i>%</i>
<b>Hobart-Melbourne</b>								
Jetstar	138	137	115	83.9	111	81.0	1	0.7
Qantas	4	4	4	100.0	4	100.0	0	0.0
QantasLink	70	70	55	78.6	56	80.0	0	0.0
Virgin Australia	72	72	65	90.3	64	88.9	0	0.0
All Airlines	284	283	239	84.5	235	83.0	1	0.4
<b>Hobart-Sydney</b>								
Jetstar	81	80	76	95.0	76	95.0	1	1.2
Qantas	4	4	3	75.0	3	75.0	0	0.0
QantasLink	56	55	48	87.3	45	81.8	1	1.8
Virgin Australia	54	53	42	79.2	42	79.2	1	1.9
All Airlines	195	192	169	88.0	166	86.5	3	1.5
<b>Kalgoorlie-Perth</b>								
Qantas	6	6	4	66.7	4	66.7	0	0.0
QantasLink	69	69	47	68.1	47	68.1	0	0.0
Virgin Australia	23	23	11	47.8	9	39.1	0	0.0
Virgin Australia Regional Airlines	36	36	31	86.1	32	88.9	0	0.0
All Airlines	134	134	93	69.4	92	68.7	0	0.0
<b>Karratha-Perth</b>								
Qantas	16	15	11	73.3	11	73.3	1	6.3
QantasLink	129	122	88	72.1	91	74.6	7	5.4
Virgin Australia	46	46	39	84.8	37	80.4	0	0.0
Virgin Australia Regional Airlines	8	8	8	100.0	8	100.0	0	0.0
All Airlines	199	191	146	76.4	147	77.0	8	4.0
<b>Launceston-Melbourne</b>								
Jetstar	87	87	83	95.4	81	93.1	0	0.0
QantasLink	65	65	58	89.2	58	89.2	0	0.0
Virgin Australia	55	55	55	100.0	55	100.0	0	0.0
All Airlines	207	207	196	94.7	194	93.7	0	0.0
<b>Launceston-Sydney</b>								
Jetstar	47	47	39	83.0	36	76.6	0	0.0
QantasLink	21	21	15	71.4	17	81.0	0	0.0
Virgin Australia	31	31	27	87.1	27	87.1	0	0.0
All Airlines	99	99	81	81.8	80	80.8	0	0.0
<b>Mackay-Brisbane</b>								
Jetstar	31	30	28	93.3	28	93.3	1	3.2
Qantas	81	81	74	91.4	74	91.4	0	0.0
QantasLink	35	35	34	97.1	33	94.3	0	0.0
Virgin Australia	96	94	83	88.3	80	85.1	2	2.1
All Airlines	243	240	219	91.3	215	89.6	3	1.2
<b>Melbourne-Adelaide</b>								
Jetstar	93	93	83	89.2	76	81.7	0	0.0
Qantas	115	115	106	92.2	106	92.2	0	0.0
Regional Express	1	1	1	100.0	1	100.0	0	0.0
Virgin Australia	90	90	78	86.7	78	86.7	0	0.0
All Airlines	299	299	268	89.6	261	87.3	0	0.0
<b>Melbourne-Brisbane</b>								
Jetstar	145	138	126	91.3	123	89.1	7	4.8
Qantas	200	191	131	68.6	157	82.2	9	4.5
Virgin Australia	157	150	130	86.7	126	84.0	7	4.5
All Airlines	502	479	387	80.8	406	84.8	23	4.6

	<i>Sectors</i>		<i>Arrivals On Time</i>		<i>Departures On Time</i>		<i>Cancellations</i>	
	<i>Sched.</i>	<i>Flown</i>	<i>No.</i>	<i>%</i>	<i>No.</i>	<i>%</i>	<i>No.</i>	<i>%</i>
<b>Melbourne-Cairns</b>								
Jetstar	68	66	59	89.4	53	80.3	2	2.9
Qantas	18	18	17	94.4	18	100.0	0	0.0
Virgin Australia	26	26	26	100.0	24	92.3	0	0.0
All Airlines	112	110	102	92.7	95	86.4	2	1.8
<b>Melbourne-Canberra</b>								
Qantas	10	10	8	80.0	9	90.0	0	0.0
QantasLink	124	123	91	74.0	99	80.5	1	0.8
Virgin Australia	60	60	59	98.3	58	96.7	0	0.0
All Airlines	194	193	158	81.9	166	86.0	1	0.5
<b>Melbourne-Gold Coast</b>								
Jetstar	165	165	144	87.3	144	87.3	0	0.0
Qantas	42	41	34	82.9	35	85.4	1	2.4
Regional Express	4	4	3	75.0	4	100.0	0	0.0
Virgin Australia	103	103	86	83.5	82	79.6	0	0.0
All Airlines	314	313	267	85.3	265	84.7	1	0.3
<b>Melbourne-Hobart</b>								
Jetstar	138	138	119	86.2	115	83.3	0	0.0
Qantas	4	4	4	100.0	4	100.0	0	0.0
QantasLink	71	71	52	73.2	54	76.1	0	0.0
Virgin Australia	73	73	66	90.4	67	91.8	0	0.0
All Airlines	286	286	241	84.3	240	83.9	0	0.0
<b>Melbourne-Launceston</b>								
Jetstar	87	87	82	94.3	82	94.3	0	0.0
QantasLink	66	66	57	86.4	54	81.8	0	0.0
Virgin Australia	56	56	53	94.6	53	94.6	0	0.0
All Airlines	209	209	192	91.9	189	90.4	0	0.0
<b>Melbourne-Mildura</b>								
QantasLink	85	85	72	84.7	69	81.2	0	0.0
Regional Express	34	34	30	88.2	30	88.2	0	0.0
All Airlines	119	119	102	85.7	99	83.2	0	0.0
<b>Melbourne-Newcastle</b>								
Jetstar	71	63	56	88.9	54	85.7	8	11.3
QantasLink	30	23	16	69.6	18	78.3	7	23.3
Virgin Australia	23	21	19	90.5	20	95.2	2	8.7
All Airlines	124	107	91	85.0	92	86.0	17	13.7
<b>Melbourne-Perth</b>								
Jetstar	28	23	21	91.3	18	78.3	5	17.9
Qantas	53	53	39	73.6	34	64.2	0	0.0
Virgin Australia	46	46	44	95.7	40	87.0	0	0.0
All Airlines	127	122	104	85.2	92	75.4	5	3.9
<b>Melbourne-Sunshine Coast</b>								
Jetstar	70	70	59	84.3	62	88.6	0	0.0
QantasLink	48	48	36	75.0	40	83.3	0	0.0
Virgin Australia	42	42	41	97.6	41	97.6	0	0.0
All Airlines	160	160	136	85.0	143	89.4	0	0.0
<b>Melbourne-Sydney</b>								
Jetstar	314	288	262	91.0	260	90.3	26	8.3
Qantas	598	581	528	90.9	539	92.8	17	2.8
Regional Express	180	157	145	92.4	144	91.7	23	12.8
Virgin Australia	371	367	329	89.6	339	92.4	4	1.1
All Airlines	1 463	1 393	1 264	90.7	1 282	92.0	70	4.8

	<i>Sectors</i>		<i>Arrivals On Time</i>		<i>Departures On Time</i>		<i>Cancellations</i>	
	<i>Sched.</i>	<i>Flown</i>	<i>No.</i>	<i>%</i>	<i>No.</i>	<i>%</i>	<i>No.</i>	<i>%</i>
<b>Mildura-Melbourne</b>								
QantasLink	85	85	65	76.5	67	78.8	0	0.0
Regional Express	34	34	31	91.2	31	91.2	0	0.0
All Airlines	119	119	96	80.7	98	82.4	0	0.0
<b>Mount Isa-Brisbane</b>								
Qantas	34	33	30	90.9	30	90.9	1	2.9
QantasLink	20	19	17	89.5	17	89.5	1	5.0
Virgin Australia	16	15	12	80.0	13	86.7	1	6.3
All Airlines	70	67	59	88.1	60	89.6	3	4.3
<b>Newcastle-Brisbane</b>								
Jetstar	64	54	44	81.5	47	87.0	10	15.6
QantasLink	82	74	68	91.9	68	91.9	8	9.8
Virgin Australia	43	36	35	97.2	35	97.2	7	16.3
All Airlines	189	164	147	89.6	150	91.5	25	13.2
<b>Newcastle-Melbourne</b>								
Jetstar	71	63	57	90.5	55	87.3	8	11.3
QantasLink	29	24	21	87.5	20	83.3	5	17.2
Virgin Australia	23	21	18	85.7	17	81.0	2	8.7
All Airlines	123	108	96	88.9	92	85.2	15	12.2
<b>Newman-Perth</b>								
Qantas	24	23	13	56.5	10	43.5	1	4.2
QantasLink	106	101	72	71.3	75	74.3	5	4.7
Virgin Australia	39	39	26	66.7	28	71.8	0	0.0
Virgin Australia Regional Airlines	21	21	17	81.0	16	76.2	0	0.0
All Airlines	190	184	128	69.6	129	70.1	6	3.2
<b>Perth-Adelaide</b>								
Jetstar	23	23	21	91.3	20	87.0	0	0.0
Qantas	77	77	51	66.2	63	81.8	0	0.0
Virgin Australia	41	40	34	85.0	36	90.0	1	2.4
All Airlines	141	140	106	75.7	119	85.0	1	0.7
<b>Perth-Brisbane</b>								
Qantas	98	92	66	71.7	74	80.4	6	6.1
Virgin Australia	57	53	35	66.0	30	56.6	4	7.0
All Airlines	155	145	101	69.7	104	71.7	10	6.5
<b>Perth-Broome</b>								
QantasLink	89	88	53	60.2	70	79.5	1	1.1
Virgin Australia	30	30	28	93.3	25	83.3	0	0.0
Virgin Australia Regional Airlines	1	1	1	100.0	1	100.0	0	0.0
All Airlines	120	119	82	68.9	96	80.7	1	0.8
<b>Perth-Darwin</b>								
Qantas	31	31	23	74.2	26	83.9	0	0.0
Virgin Australia	15	15	13	86.7	13	86.7	0	0.0
All Airlines	46	46	36	78.3	39	84.8	0	0.0
<b>Perth-Kalgoorlie</b>								
Qantas	6	6	5	83.3	5	83.3	0	0.0
QantasLink	69	69	50	72.5	52	75.4	0	0.0
Virgin Australia	23	23	22	95.7	21	91.3	0	0.0
Virgin Australia Regional Airlines	36	36	32	88.9	33	91.7	0	0.0
All Airlines	134	134	109	81.3	111	82.8	0	0.0

	<i>Sectors</i>		<i>Arrivals On Time</i>		<i>Departures On Time</i>		<i>Cancellations</i>	
	<i>Sched.</i>	<i>Flown</i>	<i>No.</i>	<i>%</i>	<i>No.</i>	<i>%</i>	<i>No.</i>	<i>%</i>
<b>Perth-Karratha</b>								
Qantas	16	15	13	86.7	13	86.7	1	6.3
QantasLink	130	124	78	62.9	94	75.8	6	4.6
Virgin Australia	46	46	42	91.3	43	93.5	0	0.0
Virgin Australia Regional Airlines	8	8	8	100.0	8	100.0	0	0.0
All Airlines	200	193	141	73.1	158	81.9	7	3.5
<b>Perth-Melbourne</b>								
Jetstar	28	22	12	54.5	16	72.7	6	21.4
Qantas	54	54	24	44.4	40	74.1	0	0.0
Virgin Australia	46	46	37	80.4	39	84.8	0	0.0
All Airlines	128	122	73	59.8	95	77.9	6	4.7
<b>Perth-Newman</b>								
Qantas	24	24	18	75.0	21	87.5	0	0.0
QantasLink	107	102	85	83.3	89	87.3	5	4.7
Virgin Australia	39	39	34	87.2	37	94.9	0	0.0
Virgin Australia Regional Airlines	21	21	19	90.5	20	95.2	0	0.0
All Airlines	191	186	156	83.9	167	89.8	5	2.6
<b>Perth-Port Hedland</b>								
Qantas	36	36	32	88.9	33	91.7	0	0.0
QantasLink	91	89	62	69.7	73	82.0	2	2.2
Virgin Australia	1	1	1	100.0	1	100.0	0	0.0
Virgin Australia Regional Airlines	53	53	49	92.5	50	94.3	0	0.0
All Airlines	181	179	144	80.4	157	87.7	2	1.1
<b>Perth-Sydney</b>								
Jetstar	31	30	19	63.3	16	53.3	1	3.2
Qantas	147	144	96	66.7	116	80.6	3	2.0
Virgin Australia	56	56	45	80.4	47	83.9	0	0.0
All Airlines	234	230	160	69.6	179	77.8	4	1.7
<b>Port Hedland-Perth</b>								
Qantas	36	35	21	60.0	26	74.3	1	2.8
QantasLink	91	88	36	40.9	58	65.9	3	3.3
Virgin Australia	1	1	0	0.0	1	100.0	0	0.0
Virgin Australia Regional Airlines	53	53	44	83.0	45	84.9	0	0.0
All Airlines	181	177	101	57.1	130	73.4	4	2.2
<b>Port Lincoln-Adelaide</b>								
QantasLink	102	99	86	86.9	85	85.9	3	2.9
Regional Express	128	128	108	84.4	109	85.2	0	0.0
All Airlines	230	227	194	85.5	194	85.5	3	1.3
<b>Port Macquarie-Sydney</b>								
QantasLink	94	78	71	91.0	71	91.0	16	17.0
Regional Express	9	9	9	100.0	9	100.0	0	0.0
All Airlines	103	87	80	92.0	80	92.0	16	15.5
<b>Proserpine-Brisbane</b>								
Jetstar	39	39	32	82.1	32	82.1	0	0.0
Virgin Australia	33	33	28	84.8	27	81.8	0	0.0
All Airlines	72	72	60	83.3	59	81.9	0	0.0
<b>Rockhampton-Brisbane</b>								
QantasLink	144	139	117	84.2	121	87.1	5	3.5
Virgin Australia	86	86	73	84.9	68	79.1	0	0.0
All Airlines	230	225	190	84.4	189	84.0	5	2.2

	<i>Sectors</i>		<i>Arrivals On Time</i>		<i>Departures On Time</i>		<i>Cancellations</i>	
	<i>Sched.</i>	<i>Flown</i>	<i>No.</i>	<i>%</i>	<i>No.</i>	<i>%</i>	<i>No.</i>	<i>%</i>
<b>Sunshine Coast-Melbourne</b>								
Jetstar	70	70	60	85.7	56	80.0	0	0.0
QantasLink	48	48	42	87.5	41	85.4	0	0.0
Virgin Australia	42	42	32	76.2	33	78.6	0	0.0
All Airlines	160	160	134	83.8	130	81.3	0	0.0
<b>Sunshine Coast-Sydney</b>								
Jetstar	63	62	49	79.0	53	85.5	1	1.6
QantasLink	64	62	52	83.9	52	83.9	2	3.1
Virgin Australia	39	39	24	61.5	28	71.8	0	0.0
All Airlines	166	163	125	76.7	133	81.6	3	1.8
<b>Sydney-Adelaide</b>								
Jetstar	92	90	81	90.0	80	88.9	2	2.2
Qantas	179	177	167	94.4	155	87.6	2	1.1
Virgin Australia	105	105	86	81.9	83	79.0	0	0.0
All Airlines	376	372	334	89.8	318	85.5	4	1.1
<b>Sydney-Albury</b>								
QantasLink	112	112	93	83.0	88	78.6	0	0.0
Regional Express	34	34	33	97.1	33	97.1	0	0.0
All Airlines	146	146	126	86.3	121	82.9	0	0.0
<b>Sydney-Armidale</b>								
QantasLink	61	60	46	76.7	51	85.0	1	1.6
Regional Express	15	15	11	73.3	11	73.3	0	0.0
All Airlines	76	75	57	76.0	62	82.7	1	1.3
<b>Sydney-Ballina</b>								
Jetstar	87	87	72	82.8	75	86.2	0	0.0
Qantas	16	15	10	66.7	12	80.0	1	6.3
QantasLink	97	95	66	69.5	79	83.2	2	2.1
Regional Express	9	9	7	77.8	7	77.8	0	0.0
Virgin Australia	36	36	30	83.3	34	94.4	0	0.0
All Airlines	245	242	185	76.4	207	85.5	3	1.2
<b>Sydney-Brisbane</b>								
Jetstar	131	121	101	83.5	99	81.8	10	7.6
Qantas	463	440	381	86.6	406	92.3	23	5.0
Virgin Australia	304	287	244	85.0	235	81.9	17	5.6
All Airlines	898	848	726	85.6	740	87.3	50	5.6
<b>Sydney-Cairns</b>								
Jetstar	34	34	26	76.5	22	64.7	0	0.0
Qantas	32	32	21	65.6	22	68.8	0	0.0
Virgin Australia	41	40	35	87.5	35	87.5	1	2.4
All Airlines	107	106	82	77.4	79	74.5	1	0.9
<b>Sydney-Coffs Harbour</b>								
QantasLink	118	118	98	83.1	99	83.9	0	0.0
Regional Express	10	10	9	90.0	9	90.0	0	0.0
Virgin Australia	24	24	18	75.0	18	75.0	0	0.0
All Airlines	152	152	125	82.2	126	82.9	0	0.0
<b>Sydney-Dubbo</b>								
QantasLink	93	93	81	87.1	81	87.1	0	0.0
Regional Express	64	64	57	89.1	59	92.2	0	0.0
All Airlines	157	157	138	87.9	140	89.2	0	0.0



	<i>Sectors</i>		<i>Arrivals On Time</i>		<i>Departures On Time</i>		<i>Cancellations</i>	
	<i>Sched.</i>	<i>Flown</i>	<i>No.</i>	<i>%</i>	<i>No.</i>	<i>%</i>	<i>No.</i>	<i>%</i>
<b>Sydney-Gold Coast</b>								
Jetstar	168	168	155	92.3	160	95.2	0	0.0
Qantas	82	82	71	86.6	73	89.0	0	0.0
Virgin Australia	174	173	139	80.3	143	82.7	1	0.6
All Airlines	424	423	365	86.3	376	88.9	1	0.2
<b>Sydney-Hamilton Island</b>								
Jetstar	19	19	15	78.9	14	73.7	0	0.0
Qantas	19	19	19	100.0	18	94.7	0	0.0
Virgin Australia	31	31	27	87.1	28	90.3	0	0.0
All Airlines	69	69	61	88.4	60	87.0	0	0.0
<b>Sydney-Hobart</b>								
Jetstar	81	80	73	91.3	71	88.8	1	1.2
Qantas	4	4	4	100.0	4	100.0	0	0.0
QantasLink	57	57	45	78.9	45	78.9	0	0.0
Virgin Australia	54	53	46	86.8	45	84.9	1	1.9
All Airlines	196	194	168	86.6	165	85.1	2	1.0
<b>Sydney-Launceston</b>								
Jetstar	47	47	38	80.9	38	80.9	0	0.0
QantasLink	21	21	19	90.5	19	90.5	0	0.0
Virgin Australia	31	31	27	87.1	28	90.3	0	0.0
All Airlines	99	99	84	84.8	85	85.9	0	0.0
<b>Sydney-Melbourne</b>								
Jetstar	314	286	254	88.8	236	82.5	28	8.9
Qantas	598	581	531	91.4	532	91.6	17	2.8
Regional Express	180	158	143	90.5	143	90.5	22	12.2
Virgin Australia	371	368	327	88.9	295	80.2	3	0.8
All Airlines	1 463	1 393	1 255	90.1	1 206	86.6	70	4.8
<b>Sydney-Perth</b>								
Jetstar	30	30	22	73.3	14	46.7	0	0.0
Qantas	147	146	110	75.3	112	76.7	1	0.7
Virgin Australia	56	56	47	83.9	44	78.6	0	0.0
All Airlines	233	232	179	77.2	170	73.3	1	0.4
<b>Sydney-Port Macquarie</b>								
QantasLink	94	77	68	88.3	67	87.0	17	18.1
Regional Express	10	10	10	100.0	10	100.0	0	0.0
All Airlines	104	87	78	89.7	77	88.5	17	16.3
<b>Sydney-Sunshine Coast</b>								
Jetstar	63	63	52	82.5	54	85.7	0	0.0
QantasLink	65	63	50	79.4	50	79.4	2	3.1
Virgin Australia	39	39	28	71.8	31	79.5	0	0.0
All Airlines	167	165	130	78.8	135	81.8	2	1.2
<b>Sydney-Wagga Wagga</b>								
QantasLink	100	100	85	85.0	85	85.0	0	0.0
Regional Express	34	34	30	88.2	29	85.3	0	0.0
All Airlines	134	134	115	85.8	114	85.1	0	0.0
<b>Townsville-Brisbane</b>								
Jetstar	46	46	37	80.4	36	78.3	0	0.0
Qantas	111	110	98	89.1	98	89.1	1	0.9
QantasLink	2	2	0	0.0	2	100.0	0	0.0
Virgin Australia	96	94	83	88.3	79	84.0	2	2.1
All Airlines	255	252	218	86.5	215	85.3	3	1.2

	<i>Sectors</i>		<i>Arrivals On Time</i>		<i>Departures On Time</i>		<i>Cancellations</i>	
	<i>Sched.</i>	<i>Flown</i>	<i>No.</i>	<i>%</i>	<i>No.</i>	<i>%</i>	<i>No.</i>	<i>%</i>
<b>Townsville-Cairns</b>								
QantasLink	99	99	88	88.9	81	81.8	0	0.0
Regional Express	9	9	9	100.0	9	100.0	0	0.0
All Airlines	108	108	97	89.8	90	83.3	0	0.0
<b>Wagga Wagga-Sydney</b>								
QantasLink	100	99	89	89.9	87	87.9	1	1.0
Regional Express	35	35	30	85.7	32	91.4	0	0.0
All Airlines	135	134	119	88.8	119	88.8	1	0.7

## Airports

On time performance is reported for all routes where the passenger load averages over 8000 passengers per month, and where two or more airlines operate in competition. The following data reports by airport against flights operated on those routes only. This month, 8 major city airports and 28 regional city airports are covered.

Airport	Arrivals			Departures		
	Sectors Flown	On Time No.	%	Sectors Flown	On Time No.	%
<b>Adelaide</b>						
Jetstar	261	235	90.0	261	233	89.3
Qantas	525	465	88.6	525	465	88.6
QantasLink	103	90	87.4	103	88	85.4
Regional Express	129	109	84.5	129	114	88.4
Virgin Australia	400	345	86.3	399	336	84.2
All Airlines	1 418	1 244	87.7	1 417	1 236	87.2
Relates to services to and from Alice Springs, Brisbane, Canberra, Gold Coast, Melbourne, Perth, Port Lincoln and Sydney.						
<b>Albury</b>						
QantasLink	112	93	83.0	112	87	77.7
Regional Express	34	33	97.1	33	31	93.9
All Airlines	146	126	86.3	145	118	81.4
Relates to services to and from Sydney only.						
<b>Alice Springs</b>						
Qantas	31	25	80.6	31	25	80.6
Virgin Australia	17	11	64.7	17	13	76.5
All Airlines	48	36	75.0	48	38	79.2
Relates to services to and from Adelaide only.						
<b>Armidale</b>						
QantasLink	60	46	76.7	59	46	78.0
Regional Express	15	11	73.3	15	11	73.3
All Airlines	75	57	76.0	74	57	77.0
Relates to services to and from Sydney only.						
<b>Ballina</b>						
Jetstar	87	72	82.8	87	65	74.7
Qantas	15	10	66.7	15	9	60.0
QantasLink	95	66	69.5	91	69	75.8
Regional Express	9	7	77.8	9	5	55.6
Virgin Australia	36	30	83.3	36	28	77.8
All Airlines	242	185	76.4	238	176	73.9
Relates to services to and from Sydney only.						
<b>Brisbane</b>						
Jetstar	592	508	85.8	592	504	85.1
Qantas	1 272	1 073	84.4	1 278	1 145	89.6
QantasLink	622	562	90.4	627	572	91.2
Virgin Australia	1 290	1 109	86.0	1 291	1 023	79.2
All Airlines	3 776	3 252	86.1	3 788	3 244	85.6
Relates to services to and from Adelaide, Cairns, Canberra, Darwin, Emerald, Gladstone, Hamilton Island, Hobart, Mackay, Melbourne, Mount Isa, Newcastle, Perth, Proserpine, Rockhampton, Sydney and Townsville.						

Airport	Arrivals			Departures		
	Sectors Flown	On Time		Sectors Flown	On Time	
		No.	%		No.	%
<b>Broome</b>						
QantasLink	88	53	60.2	88	73	83.0
Virgin Australia	30	28	93.3	30	27	90.0
Virgin Australia Regional Airlines	1	1	100.0	1	1	100.0
All Airlines	119	82	68.9	119	101	84.9
Relates to services to and from Perth only.						
<b>Cairns</b>						
Jetstar	185	152	82.2	183	159	86.9
Qantas	162	140	86.4	162	142	87.7
QantasLink	108	97	89.8	109	98	89.9
Regional Express	9	9	100.0	9	8	88.9
Virgin Australia	158	123	77.8	158	137	86.7
All Airlines	622	521	83.8	621	544	87.6
Relates to services to and from Brisbane, Melbourne, Sydney and Townsville.						
<b>Canberra</b>						
Qantas	92	84	91.3	91	84	92.3
QantasLink	225	183	81.3	224	182	81.3
Virgin Australia	169	156	92.3	169	151	89.3
All Airlines	486	423	87.0	484	417	86.2
Relates to services to and from Adelaide, Brisbane and Melbourne.						
<b>Coffs Harbour</b>						
QantasLink	118	98	83.1	117	96	82.1
Regional Express	10	9	90.0	9	9	100.0
Virgin Australia	24	18	75.0	24	18	75.0
All Airlines	152	125	82.2	150	123	82.0
Relates to services to and from Sydney only.						
<b>Darwin</b>						
Jetstar	17	12	70.6	17	8	47.1
Qantas	62	48	77.4	60	41	68.3
Virgin Australia	46	40	87.0	46	31	67.4
All Airlines	125	100	80.0	123	80	65.0
Relates to services to and from Brisbane and Perth.						
<b>Dubbo</b>						
QantasLink	93	81	87.1	91	83	91.2
Regional Express	64	57	89.1	63	54	85.7
All Airlines	157	138	87.9	154	137	89.0
Relates to services to and from Sydney only.						
<b>Emerald</b>						
QantasLink	127	121	95.3	127	122	96.1
Virgin Australia	23	22	95.7	23	23	100.0
All Airlines	150	143	95.3	150	145	96.7
Relates to services to and from Brisbane only.						
<b>Gladstone</b>						
QantasLink	91	85	93.4	90	82	91.1
Virgin Australia	52	46	88.5	52	48	92.3
All Airlines	143	131	91.6	142	130	91.5
Relates to services to and from Brisbane only.						

Airport	Arrivals			Departures		
	Sectors Flown	On Time		Sectors Flown	On Time	
		No.	%		No.	%
<b>Gold Coast</b>						
Jetstar	359	320	89.1	359	325	90.5
Qantas	123	105	85.4	120	107	89.2
Regional Express	4	3	75.0	4	1	25.0
Virgin Australia	307	256	83.4	305	242	79.3
All Airlines	793	684	86.3	788	675	85.7
Relates to services to and from Adelaide, Melbourne and Sydney.						
<b>Hamilton Island</b>						
Jetstar	19	15	78.9	19	15	78.9
Qantas	50	49	98.0	51	47	92.2
QantasLink	10	9	90.0	10	9	90.0
Virgin Australia	68	57	83.8	68	55	80.9
All Airlines	147	130	88.4	148	126	85.1
Relates to services to and from Brisbane and Sydney.						
<b>Hobart</b>						
Jetstar	250	220	88.0	249	214	85.9
Qantas	8	8	100.0	8	7	87.5
QantasLink	149	114	76.5	146	116	79.5
Virgin Australia	157	140	89.2	156	133	85.3
All Airlines	564	482	85.5	559	470	84.1
Relates to services to and from Brisbane, Melbourne and Sydney.						
<b>Kalgoorlie</b>						
Qantas	6	5	83.3	6	4	66.7
QantasLink	69	50	72.5	69	47	68.1
Virgin Australia	23	22	95.7	23	9	39.1
Virgin Australia Regional Airlines	36	32	88.9	36	32	88.9
All Airlines	134	109	81.3	134	92	68.7
Relates to services to and from Perth only.						
<b>Karratha</b>						
Qantas	15	13	86.7	15	11	73.3
QantasLink	124	78	62.9	122	91	74.6
Virgin Australia	46	42	91.3	46	37	80.4
Virgin Australia Regional Airlines	8	8	100.0	8	8	100.0
All Airlines	193	141	73.1	191	147	77.0
Relates to services to and from Perth only.						
<b>Launceston</b>						
Jetstar	134	120	89.6	134	117	87.3
QantasLink	87	76	87.4	86	75	87.2
Virgin Australia	87	80	92.0	86	82	95.3
All Airlines	308	276	89.6	306	274	89.5
Relates to services to and from Melbourne and Sydney.						
<b>Mackay</b>						
Jetstar	30	28	93.3	30	28	93.3
Qantas	81	70	86.4	81	74	91.4
QantasLink	35	32	91.4	35	33	94.3
Virgin Australia	95	74	77.9	94	80	85.1
All Airlines	241	204	84.6	240	215	89.6
Relates to services to and from Brisbane only.						

Airport	Arrivals			Departures		
	Sectors	On Time		Sectors	On Time	
	Flown	No.	%	Flown	No.	%
<b>Melbourne</b>						
Jetstar	1 124	999	88.9	1 131	987	87.3
Qantas	1 014	869	85.7	1 013	902	89.0
QantasLink	416	332	79.8	416	334	80.3
Regional Express	197	176	89.3	196	179	91.3
Virgin Australia	1 032	898	87.0	1 034	928	89.7
All Airlines	3 783	3 274	86.5	3 790	3 330	87.9
Relates to services to and from Adelaide, Brisbane, Cairns, Canberra, Gold Coast, Hobart, Launceston, Mildura, Newcastle, Perth, Sunshine Coast and Sydney.						
<b>Mildura</b>						
QantasLink	85	72	84.7	85	67	78.8
Regional Express	34	30	88.2	34	31	91.2
All Airlines	119	102	85.7	119	98	82.4
Relates to services to and from Melbourne only.						
<b>Mount Isa</b>						
Qantas	34	30	88.2	33	30	90.9
QantasLink	19	16	84.2	19	17	89.5
Virgin Australia	15	14	93.3	15	13	86.7
All Airlines	68	60	88.2	67	60	89.6
Relates to services to and from Brisbane only.						
<b>Newcastle</b>						
Jetstar	118	104	88.1	117	102	87.2
QantasLink	99	80	80.8	98	88	89.8
Virgin Australia	57	54	94.7	57	52	91.2
All Airlines	274	238	86.9	272	242	89.0
Relates to services to and from Brisbane and Melbourne.						
<b>Newman</b>						
Qantas	24	18	75.0	23	10	43.5
QantasLink	102	85	83.3	101	75	74.3
Virgin Australia	39	34	87.2	39	28	71.8
Virgin Australia Regional Airlines	21	19	90.5	21	16	76.2
All Airlines	186	156	83.9	184	129	70.1
Relates to services to and from Perth only.						
<b>Perth</b>						
Jetstar	76	66	86.8	75	52	69.3
Qantas	480	360	75.0	479	391	81.6
QantasLink	468	309	66.0	472	378	80.1
Virgin Australia	348	272	78.2	349	292	83.7
Virgin Australia Regional Airlines	119	101	84.9	119	112	94.1
All Airlines	1 491	1 108	74.3	1 494	1 225	82.0
Relates to services to and from Adelaide, Brisbane, Broome, Darwin, Kalgoorlie, Karratha, Melbourne, Newman, Port Hedland and Sydney.						
<b>Port Hedland</b>						
Qantas	36	32	88.9	35	26	74.3
QantasLink	89	62	69.7	88	58	65.9
Virgin Australia	1	1	100.0	1	1	100.0
Virgin Australia Regional Airlines	53	49	92.5	53	45	84.9
All Airlines	179	144	80.4	177	130	73.4
Relates to services to and from Perth only.						

Airport	Arrivals			Departures		
	Sectors Flown	On Time		Sectors Flown	On Time	
		No.	%		No.	%
<b>Port Lincoln</b>						
QantasLink	99	87	87.9	99	85	85.9
Regional Express	128	113	88.3	128	109	85.2
All Airlines	227	200	88.1	227	194	85.5
Relates to services to and from Adelaide only.						
<b>Port Macquarie</b>						
QantasLink	77	68	88.3	78	71	91.0
Regional Express	10	10	100.0	9	9	100.0
All Airlines	87	78	89.7	87	80	92.0
Relates to services to and from Sydney only.						
<b>Proserpine</b>						
Jetstar	39	31	79.5	39	32	82.1
Virgin Australia	33	24	72.7	33	27	81.8
All Airlines	72	55	76.4	72	59	81.9
Relates to services to and from Brisbane only.						
<b>Rockhampton</b>						
QantasLink	139	124	89.2	139	121	87.1
Virgin Australia	86	58	67.4	86	68	79.1
All Airlines	225	182	80.9	225	189	84.0
Relates to services to and from Brisbane only.						
<b>Sunshine Coast</b>						
Jetstar	133	111	83.5	132	109	82.6
QantasLink	111	86	77.5	110	93	84.5
Virgin Australia	81	69	85.2	81	61	75.3
All Airlines	325	266	81.8	323	263	81.4
Relates to services to and from Melbourne and Sydney.						
<b>Sydney</b>						
Jetstar	1 025	898	87.6	1 025	863	84.2
Qantas	1 491	1 293	86.7	1 496	1 334	89.2
QantasLink	785	648	82.5	796	664	83.4
Regional Express	330	291	88.2	334	301	90.1
Virgin Australia	1 241	1 082	87.2	1 243	1 019	82.0
All Airlines	4 872	4 212	86.5	4 894	4 181	85.4
Relates to services to and from Adelaide, Albury, Armidale, Ballina, Brisbane, Cairns, Coffs Harbour, Dubbo, Gold Coast, Hamilton Island, Hobart, Launceston, Melbourne, Perth, Port Macquarie, Sunshine Coast and Wagga Wagga.						
<b>Townsville</b>						
Jetstar	47	37	78.7	46	36	78.3
Qantas	111	100	90.1	110	98	89.1
QantasLink	102	91	89.2	101	83	82.2
Regional Express	9	8	88.9	9	9	100.0
Virgin Australia	94	74	78.7	94	79	84.0
All Airlines	363	310	85.4	360	305	84.7
Relates to services to and from Brisbane and Cairns.						
<b>Wagga Wagga</b>						
QantasLink	100	85	85.0	99	87	87.9
Regional Express	34	30	88.2	35	32	91.4
All Airlines	134	115	85.8	134	119	88.8
Relates to services to and from Sydney only.						

## Definitions

---

On time arrival	A flight arrival is counted as "on time" if it arrived at the gate before 15 minutes after the scheduled arrival time shown in the carriers' schedule. Neither diverted nor cancelled flights count as on time.
On time departure	A flight departure is counted as "on time" if it departs the gate before 15 minutes after the scheduled departure time shown in the carriers' schedule.
Cancellation	A flight removed from service within 7 days of scheduled departure is regarded as a cancellation.
On time departure percentage	The percentage of on time departures is measured against the number of departures <i>operated</i> on any particular sector.
On time arrival percentage	The percentage of on time arrivals is measured against the number of arrivals <i>operated</i> on any particular sector.
Cancellation percentage	The percentage of cancellations is measured against the number of services <i>scheduled</i> on any particular sector.

---