



Australian Government

Department of Infrastructure, Transport, Regional Development and Communications

Bureau of Infrastructure, Transport and Regional Economics

STATISTICAL REPORT



Aviation

Domestic airline on time performance
March 2020

© Commonwealth of Australia 2020

ISSN: 1832-0759

Ownership of intellectual property rights in this publication

Unless otherwise noted, copyright (and any other intellectual property rights, if any) in this publication is owned by the Commonwealth of Australia (referred to below as the Commonwealth).

Disclaimer

The material contained in this publication is made available on the understanding that the Commonwealth is not providing professional advice, and that users exercise their own skill and care with respect to its use, and seek independent advice if necessary.

The Commonwealth makes no representations or warranties as to the contents or accuracy of the information contained in this publication. To the extent permitted by law, the Commonwealth disclaims liability to any person or organisation in respect of anything done, or omitted to be done, in reliance upon information contained in this publication.

Creative Commons licence

With the exception of (a) the Coat of Arms; and (b) the Department of Infrastructure, Transport, Regional Development and Communications' photos and graphics, copyright in this publication is licensed under a Creative Commons Attribution 3.0 Australia Licence.

Creative Commons Attribution 3.0 Australia Licence is a standard form licence agreement that allows you to copy, communicate and adapt this publication provided that you attribute the work to the Commonwealth and abide by the other licence terms. A summary of the licence terms is available from <http://creativecommons.org/licenses/by/3.0/au/deed.en>. The full licence terms are available from <http://creativecommons.org/licenses/by/3.0/au/legalcode>.

Use of the Coat of Arms

The Department of the Prime Minister and Cabinet sets the terms under which the Coat of Arms is used. Please refer to the Department's Commonwealth Coat of Arms and Government branding web page <http://www.dpmc.gov.au/guidelines/index.cfm#brand> and, in particular, the Guidelines on the use of the Commonwealth Coat of Arms publication.

An appropriate citation for this report is:

Bureau of Infrastructure, Transport and Regional Economics (BITRE), 2020, Domestic airline on time performance, Statistical Report, BITRE, Canberra ACT.

Contact us

This publication is available in PDF format. All other rights are reserved, including in relation to any Departmental logos or trade marks which may exist. For enquiries regarding the licence and any use of this publication, please contact:

Bureau of Infrastructure, Transport and Regional Economics (BITRE)
Department of Infrastructure, Transport, Regional Development and Communications
GPO Box 501, Canberra ACT 2601, Australia
Telephone: (international) +61 2 6274 7210
Fax: (international) +61 2 6274 6855
Email: bitre@infrastructure.gov.au
Website: www.bitre.gov.au

Inquiries

Should you require additional information about the statistics contained in this publication:

Telephone (02) 6274 7790 or Facsimile (02) 6274 7727

Electronic mail: AVSTATS@infrastructure.gov.au

Web site: <http://www.bitre.gov.au/statistics/aviation/otphome.aspx>

Foreword

The Bureau of Infrastructure, Transport and Regional Economics (BITRE) monitors the punctuality and reliability of major domestic airlines operating between Australian airports. The purpose of this is to allow for evaluation of overall industry and individual airline performance, so that consumers of air travel can make informed decisions.

The following domestic airlines currently report this information monthly to the BITRE: Jetstar, Qantas, QantasLink, Regional Express, Virgin Australia and Virgin Australia Regional Airlines. Data has been gathered since November 2003, although some airlines commenced reporting at a later date, including Jetstar which first reported in May 2004, MacAir in July 2005, Tigerair Australia in April 2008 and Virgin Australia Regional Airlines in May 2013. MacAir ceased operations in February 2009 and data was not received for December 2008 onwards. Virgin Blue was rebranded as Virgin Australia in May 2011 and Tiger Airways was rebranded as Tigerair Australia in July 2013 and time series data in Microsoft Excel spreadsheet format on the BITRE website have been revised to reflect these changes. Services operated by Skywest on behalf of Virgin Australia using ATR/F100 aircraft commenced in November 2011 and were shown separately as Virgin Australia – ATR/F100 Operations. Virgin Australia Regional Airlines commenced operations in May 2013. It was formed after the acquisition of Skywest by Virgin Australia and represented a combination of operations previously reported under Skywest and Virgin Australia – ATR/F100 Operations. In January 2016, Virgin Australia transferred their ATR fleet from Virgin Australia Regional Airlines to Virgin Australia.

Information presented in this report is for Australian domestic routes for which the passenger load averaged 8 000 or more passengers per month over the previous six months and where two or more airlines operated in competition on those routes. There were 62 routes that met this definition in March 2020. Over time, routes which meet these criteria change as airline networks and traffic levels vary.

Participating airlines report their overall monthly network performance where this is possible.

Total industry figures encompass all services operated by reporting airlines only. These airlines collectively carried over 95 per cent of total domestic passengers (regular public transport only) in 2019.

The method of capturing on time performance varies between airlines utilising different recording systems. Jetstar and Qantas jet aircraft use Aircraft Communication Addressing and Reporting System (ACARS) to electronically measure on time performance. Regional Express, Tigerair Australia, Virgin Australia, Virgin Australia Regional Airlines and the Qantas non-jet fleet record on time performance manually using records from pilots, gate agents and/or ground crews.

After initial data is collected, aggregate reports are audited internally by participating airlines prior to publication.

Reports and detailed time series data in Microsoft Excel spreadsheet format are available from the BITRE website at: <http://www.bitre.gov.au/statistics/aviation/otphome.aspx>.

Contents

	Page
Industry performance	1
Individual routes	10
Airports.....	23
Definitions	29

Industry performance

For March 2020, on time performance over all routes operated by participating airlines (Jetstar, Qantas, QantasLink, Regional Express, Virgin Australia and Virgin Australia Regional Airlines) averaged 84.2 per cent for on time arrivals and 85.4 per cent for on time departures. Travel restrictions due to the COVID-19 pandemic resulted in the highest cancellation rate (17.3 per cent) recorded since OTP reporting commenced in November 2003. Reporting airlines cancelled nearly 7,500 flights during the month. The equivalent figures for March 2019 were 78.4 per cent for on time arrivals, 80.0 per cent for on time departures and 2.2 per cent for cancellations.

This month's on time arrivals figure was higher than the long term average performance for all routes (82.1 per cent) and the on time departures figure was also higher than the long term average (83.5 per cent). The rate of cancellations was significantly higher than the long term average of 1.6 per cent.

The Qantas network (Qantas and QantasLink combined operations) recorded 86.1 per cent for on time arrivals while the Virgin Australia network (Virgin Australia and Virgin Australia Regional Airlines combined operations) recorded 82.8 per cent. Qantas achieved the highest on time arrivals among the major domestic airlines at 86.1 per cent followed by Virgin Australia at 83.0 per cent and Jetstar at 80.6 per cent. Of the regional airlines, QantasLink recorded 86.1 per cent for on time arrivals, followed by Regional Express at 84.3 per cent and Virgin Australia Regional Airlines at 79.9 per cent.

The Qantas network recorded 87.0 per cent for on time departures while the Virgin Australia network recorded 85.1 per cent. Qantas achieved the highest level of on time departures among the major domestic airlines for March 2020 at 87.5 per cent, followed by Virgin Australia at 85.3 per cent and Jetstar at 78.5 per cent. Of the regional airlines, Regional Express recorded 87.2 per cent for on time departures, followed by QantasLink at 86.6 per cent and Virgin Australia Regional Airlines at 82.6 per cent.

Jetstar recorded the highest percentage of cancellations (at 26.8 per cent) during the month, followed by Virgin Australia (at 23.6 per cent), Regional Express (at 14.6 per cent), Qantas (at 12.9 per cent), QantasLink (at 10.1 per cent) and Virgin Australia Regional Airlines (at 7.9 per cent).

Airlines' on time performance varies across the routes they serve. Individual route data by specific airline for 62 routes are shown on pages 10-22.

Of the 62 routes which met the criteria for on time performance reporting in March 2020, the Adelaide-Port Lincoln route had the highest percentage of on time arrivals (95.6 per cent) and the Karratha-Perth route had the highest percentage of on time departures (95.9 per cent). The Sunshine Coast-Sydney route had the lowest percentage of on time arrivals (69.1 per cent) and the Sunshine Coast-Sydney and Sunshine Coast-Melbourne routes had the lowest percentage of on time departures (69.8 per cent).

Cancellations were highest on the Melbourne-Sydney route at 29.4 per cent, followed by the Sydney-Melbourne route at 29.2 per cent, the Launceston-Sydney route at 26.7 per cent, the Newcastle-Melbourne route at 26.6 per cent and the Sydney-Launceston route at 25.9 per cent.

Port Lincoln Airport recorded the highest percentage of on time arrivals (95.6 per cent) and Karratha Airport recorded the highest percentage of on time departures (95.9 per cent). Armidale Airport recorded the lowest percentage of on time arrivals (76.4 per cent) and Sunshine Coast Airport recorded the lowest percentage of on time departures (69.8 per cent). These figures only refer to reported routes and do not cover all flights at these airports.

Table 1 On time performance for March 2020 — Total Industry

	<i>Sectors</i>		<i>Arrivals On Time</i>		<i>Departures On Time</i>		<i>Cancellations</i>	
	<i>Scheduled</i>	<i>Flown</i>	<i>No.</i>	<i>%</i>	<i>No.</i>	<i>%</i>	<i>No.</i>	<i>%</i>
Jetstar	6 451	4 722	3 804	80.6	3 705	78.5	1 729	26.8
Qantas - all QF designated services	18 613	16 491	14 197	86.1	14 345	87.0	2 122	11.4
Regional Express	6 255	5 341	4 501	84.3	4 659	87.2	914	14.6
Virgin Australia - all VA designated services	11 976	9 258	7 661	82.8	7 875	85.1	2 718	22.7
All Airlines	43 295	35 812	30 163	84.2	30 584	85.4	7 483	17.3
Individual operating entities								
Qantas	8 575	7 466	6 428	86.1	6 533	87.5	1 109	12.9
QantasLink	10 038	9 025	7 769	86.1	7 812	86.6	1 013	10.1
Virgin Australia	11 258	8 597	7 133	83.0	7 329	85.3	2 661	23.6
Virgin Australia Regional Airlines	718	661	528	79.9	546	82.6	57	7.9

Total airline network data (including routes not shown in this report).

Airlines' on time performance varies across the routes they serve. Individual route data by specific airline for 63 routes are shown on pages 10-22.

Table 2 Top ten routes for on time performance for March 2020 (participating airlines only)

<i>Arrivals</i>		<i>Departures</i>	
<i>Route</i>	<i>On Time (%)</i>	<i>Route</i>	<i>On Time (%)</i>
Adelaide-Port Lincoln	95.6	Karratha-Perth	95.9
Port Lincoln-Adelaide	95.2	Port Lincoln-Adelaide	95.6
Brisbane-Proserpine	94.9	Brisbane-Proserpine	94.9
Cairns-Townsville	94.2	Adelaide-Port Lincoln	94.4
Sydney-Launceston	93.7	Brisbane-Emerald	94.2
Perth-Karratha	93.5	Canberra-Adelaide	93.5
Adelaide-Canberra	93.4	Perth-Karratha	93.5
Adelaide-Brisbane	93.2	Adelaide-Canberra	93.4
Karratha-Perth	93.0	Cairns-Townsville	93.4
Brisbane-Emerald	92.9	Brisbane-Hobart	92.6

Table 3 Top ten airports for on time performance for March 2020 (participating airlines and reported routes only)

<i>Arrivals</i>		<i>Departures</i>	
<i>Airport</i>	<i>On Time (%)</i>	<i>Airport</i>	<i>On Time (%)</i>
Port Lincoln	95.6	Karratha	95.9
Proserpine	94.9	Port Lincoln	95.6
Karratha	93.5	Emerald	91.6
Emerald	92.9	Gladstone	89.8
Gladstone	90.3	Dubbo	89.8
Newman	89.8	Canberra	89.5
Port Hedland	89.3	Port Hedland	89.2
Kalgoorlie	88.8	Kalgoorlie	88.8
Albury	88.5	Perth	88.5
Townsville	88.1	Coffs Harbour	88.1

Total industry on time performance

Figure 1 On time performance (by month from March 2017)—Total Industry

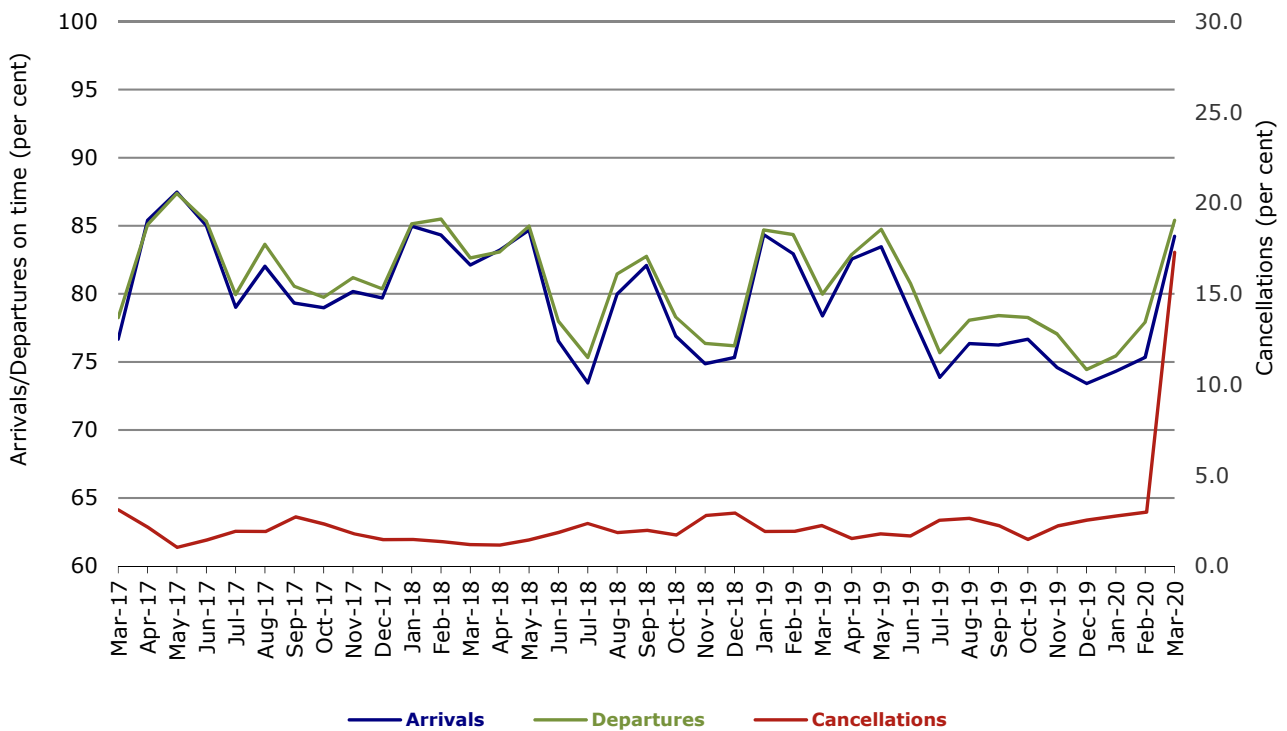
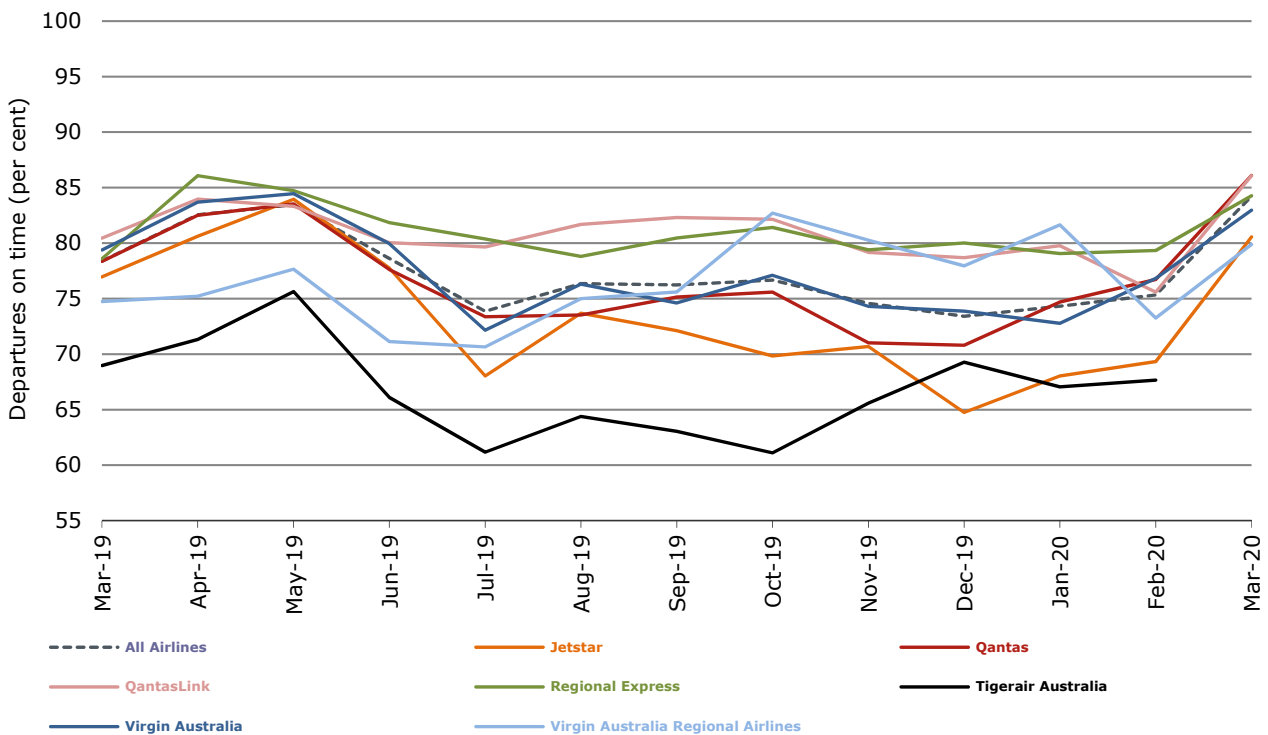
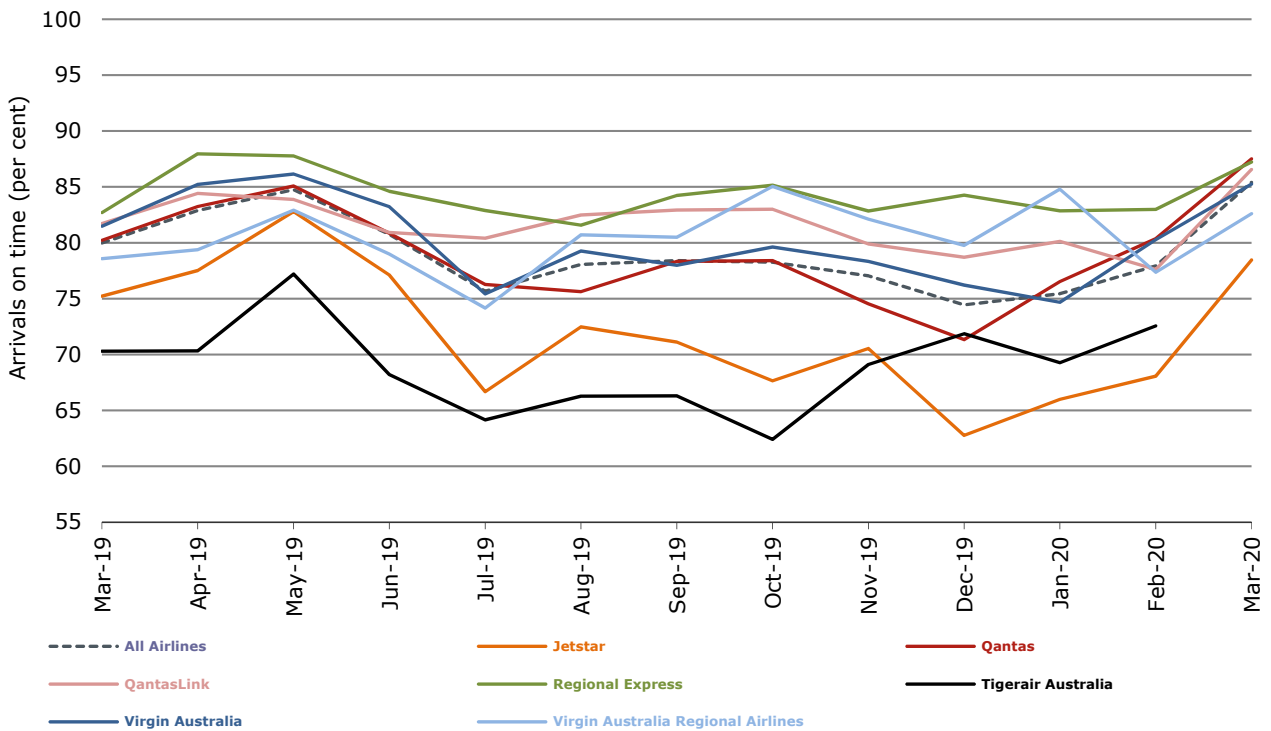


Figure 2 Arrivals on time (by month from March 2019)



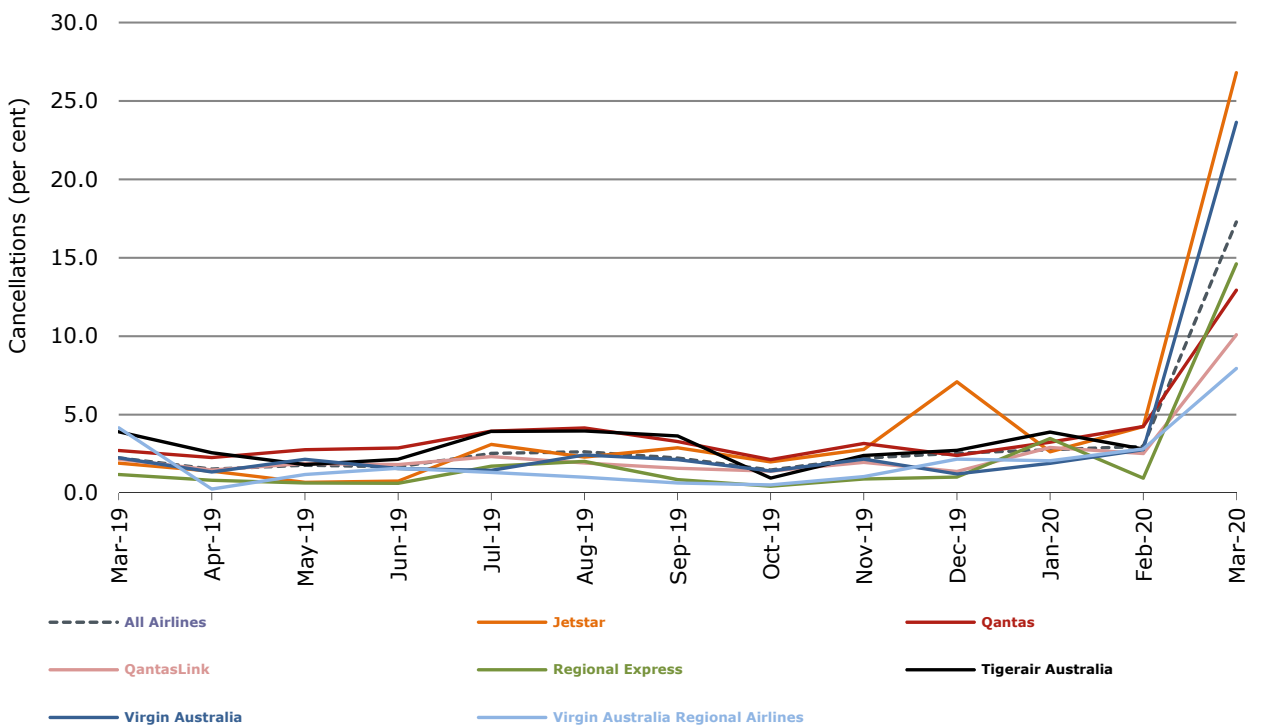
No data received for Tigerair Australia for March 2020.

Figure 3 Departures on time (by month from March 2019)



No data received for Tigerair Australia for March 2020.

Figure 4 Cancellations (by month from March 2019)



No data received for Tigerair Australia for March 2020.

Major domestic airlines on time performance

Figure 5 On time performance (by month from March 2017)—Jetstar

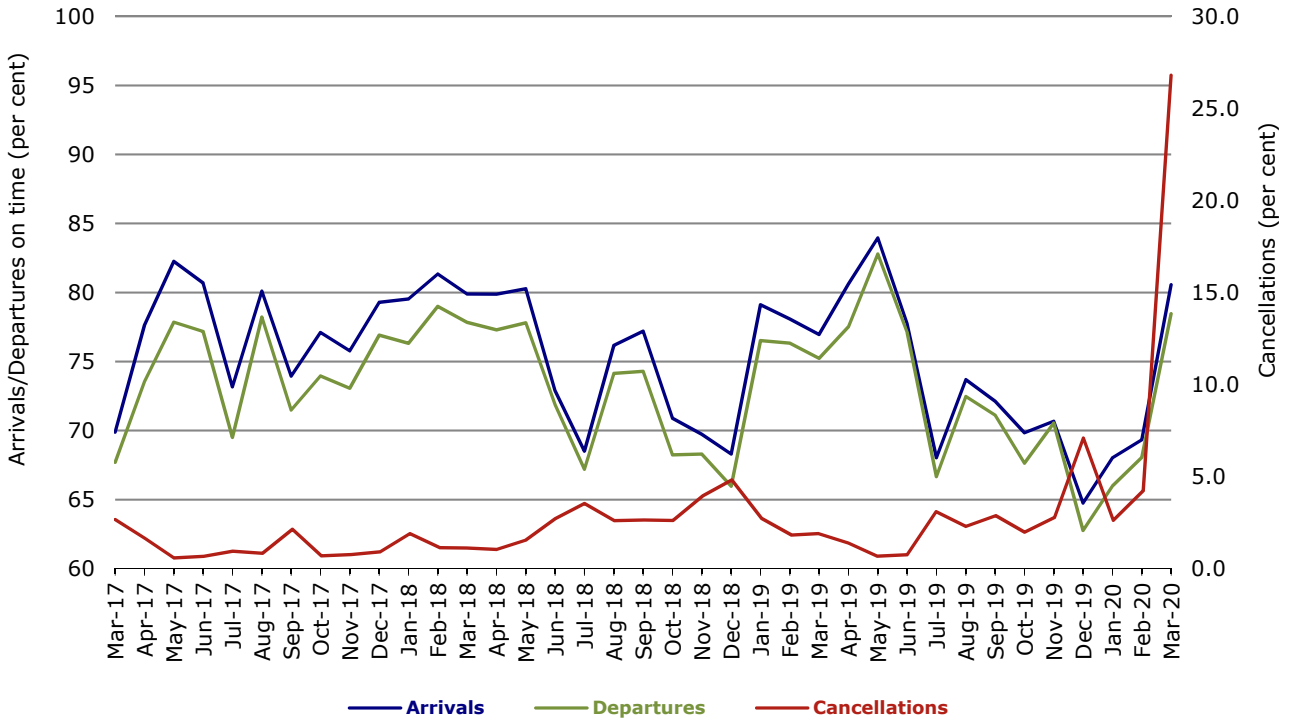


Figure 6 On time performance (by month from March 2017)—Qantas

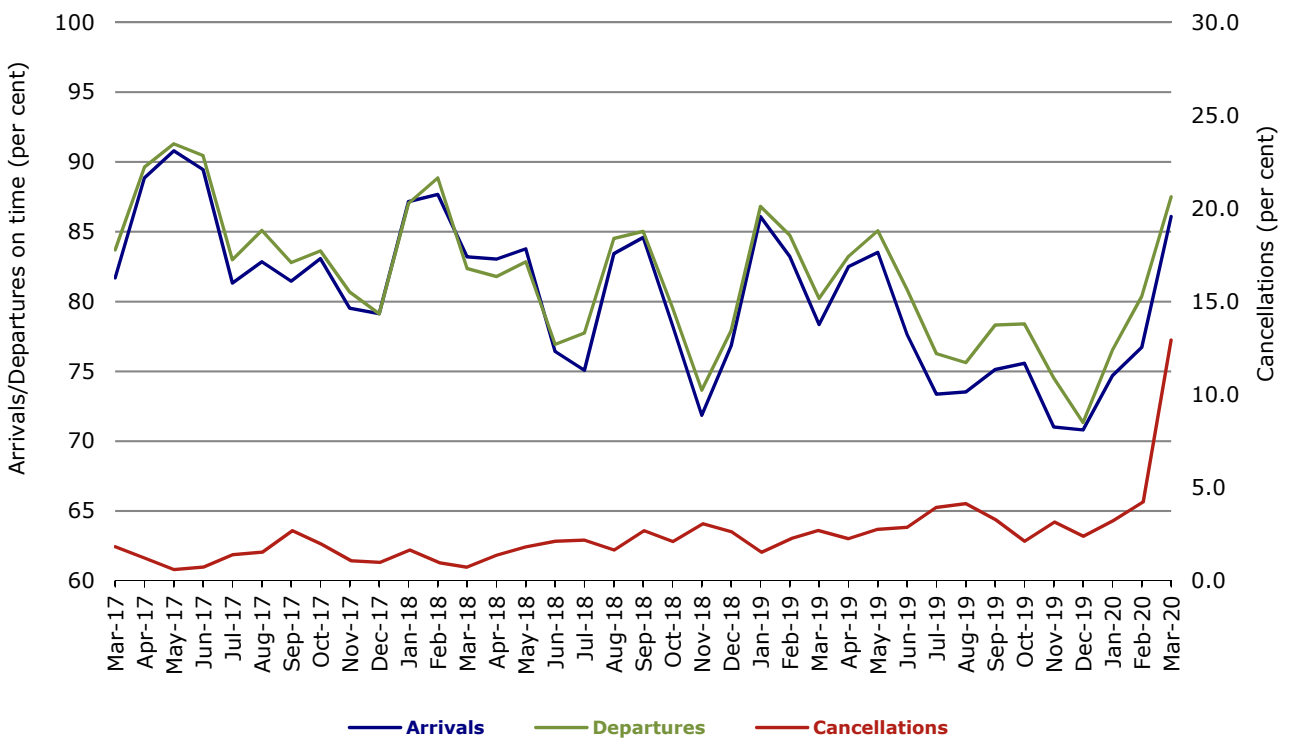
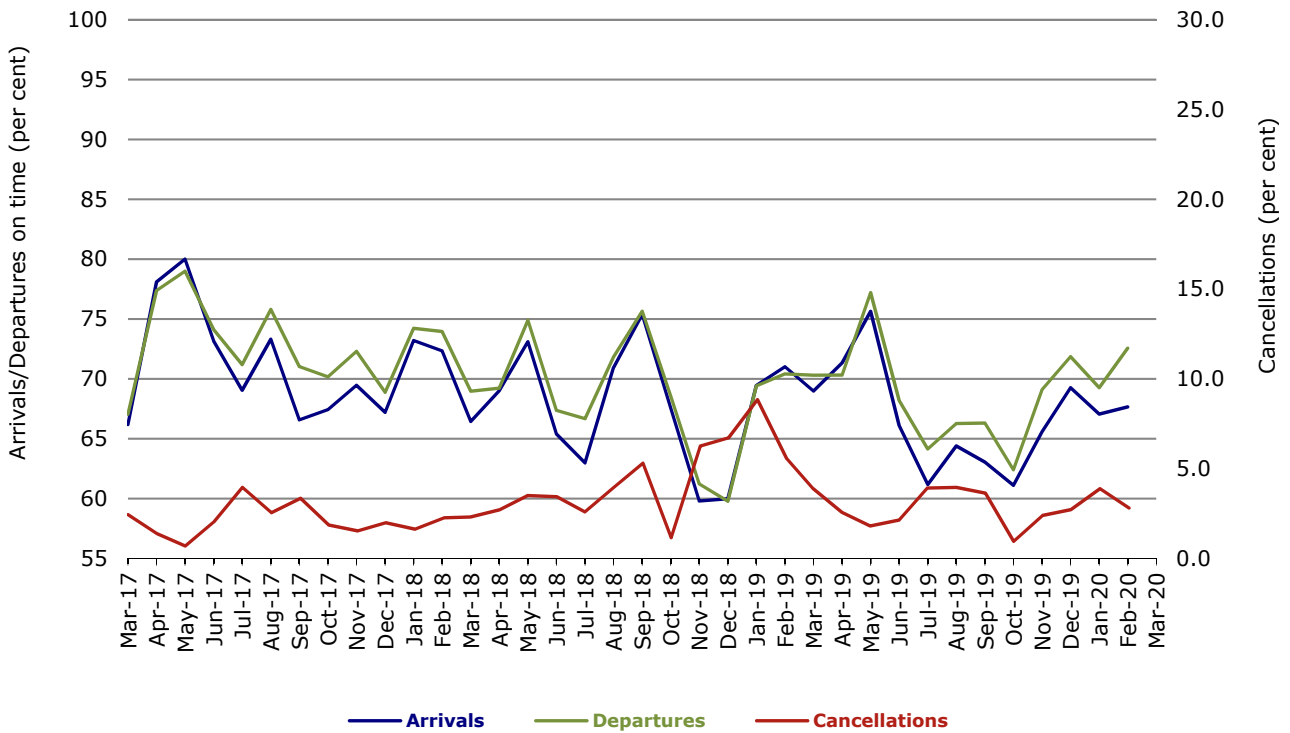
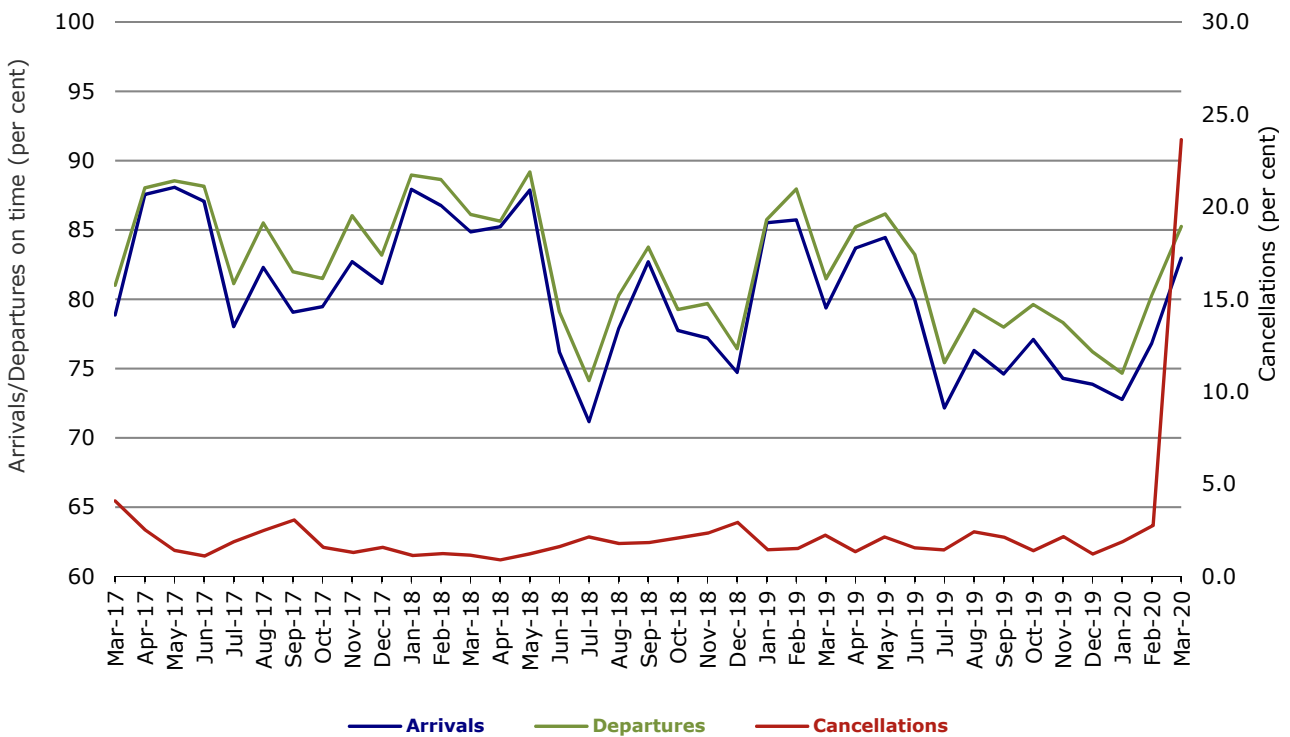


Figure 7 On time performance (by month from March 2017)—Tigerair Australia



No data received for Tigerair Australia for March 2020.

Figure 8 On time performance (by month from March 2017)—Virgin Australia



Major regional airlines on time performance

Figure 9 On time performance (by month from March 2017)—QantasLink

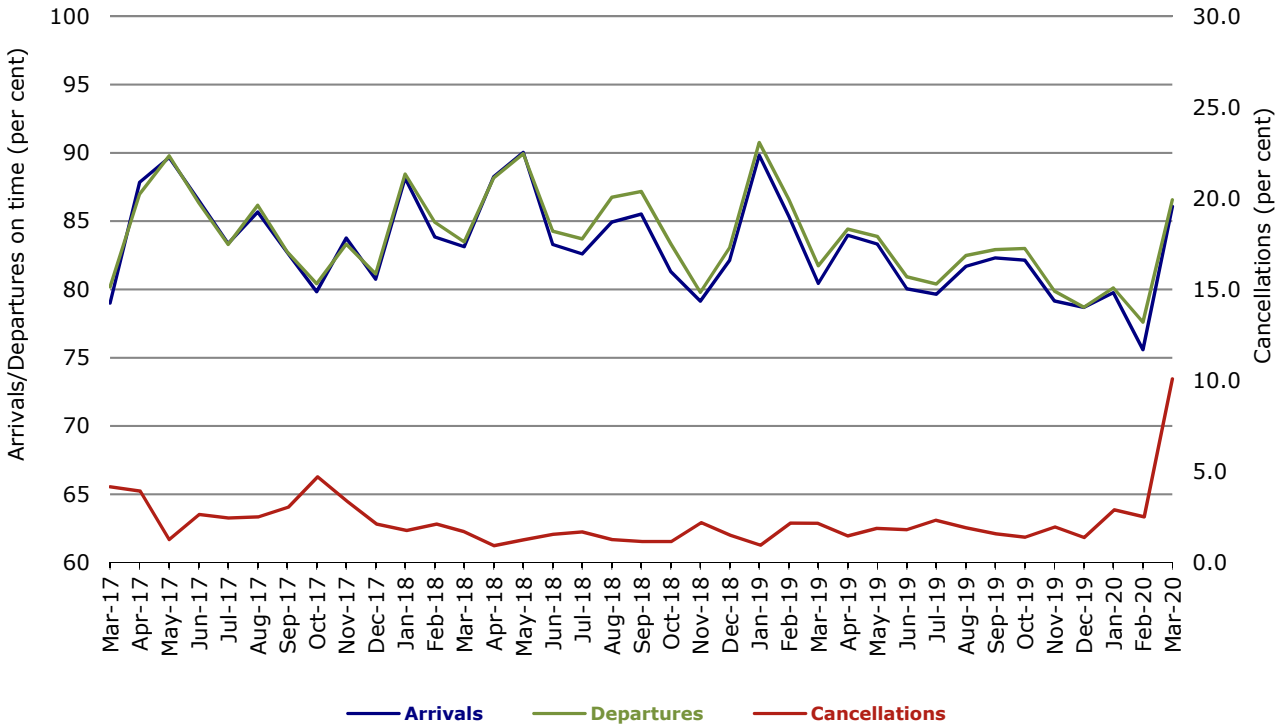


Figure 10 On time performance (by month from March 2017)—Regional Express

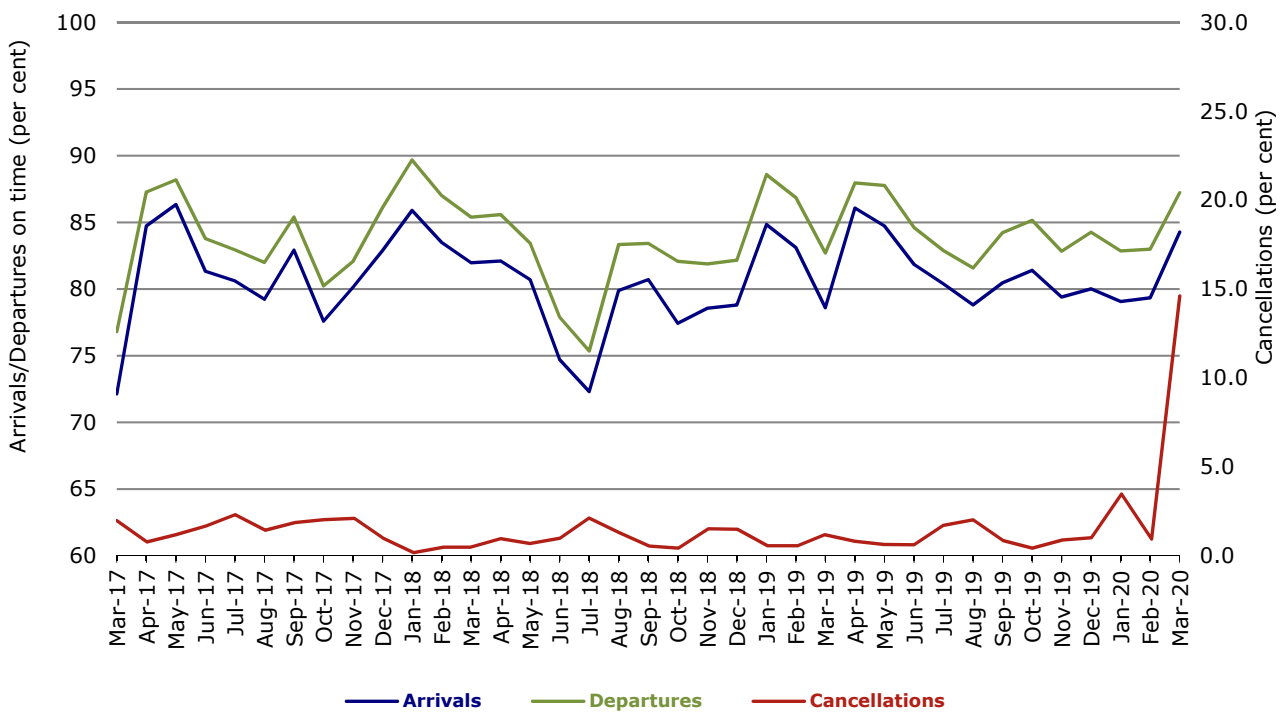
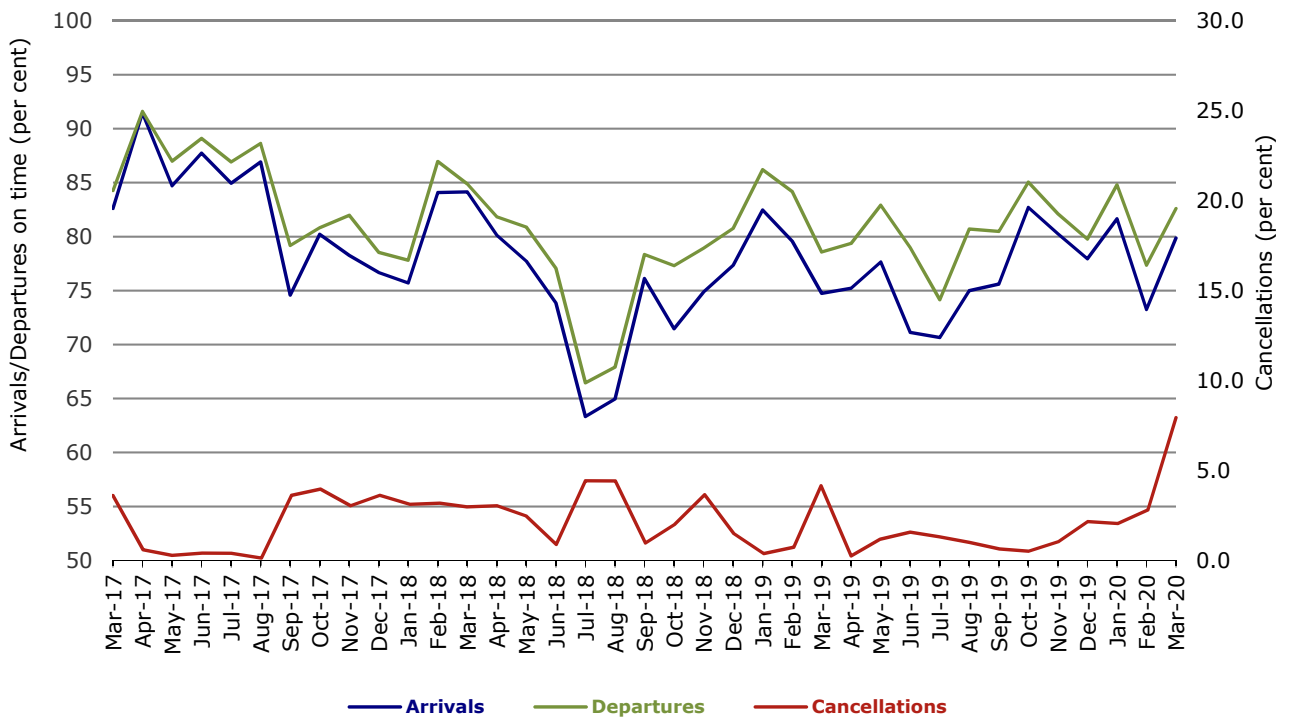


Figure 11 On time performance (by month from March 2017)
Virgin Australia Regional Airlines



Individual routes

On time performance is reported for all routes where the passenger load averages over 8000 passengers per month over the previous six months, and where two or more airlines operate in competition on those routes. There are now 62 routes which meet this definition. Over time, however, routes which meet this definition may change as airline networks and traffic levels vary.

	Sectors		Arrivals On Time		Departures On Time		Cancellations	
	Sched.	Flown	No.	%	No.	%	No.	%
Adelaide-Alice Springs								
Qantas	31	31	28	90.3	29	93.5	0	0.0
Virgin Australia	9	8	5	62.5	5	62.5	1	11.1
Virgin Australia Regional Airlines	12	10	5	50.0	6	60.0	2	16.7
All Airlines	52	49	38	77.6	40	81.6	3	5.8
Adelaide-Brisbane								
Jetstar	22	16	15	93.8	14	87.5	6	27.3
Qantas	102	93	88	94.6	88	94.6	9	8.8
Virgin Australia	105	81	74	91.4	70	86.4	24	22.9
All Airlines	229	190	177	93.2	172	90.5	39	17.0
Adelaide-Canberra								
Qantas	42	38	37	97.4	37	97.4	4	9.5
QantasLink	4	4	4	100.0	4	100.0	0	0.0
Virgin Australia	22	19	16	84.2	16	84.2	3	13.6
All Airlines	68	61	57	93.4	57	93.4	7	10.3
Adelaide-Gold Coast								
Jetstar	24	21	14	66.7	13	61.9	3	12.5
Virgin Australia	29	24	22	91.7	23	95.8	5	17.2
All Airlines	53	45	36	80.0	36	80.0	8	15.1
Adelaide-Melbourne								
Jetstar	107	68	55	80.9	50	73.5	39	36.4
Qantas	281	252	219	86.9	214	84.9	29	10.3
Virgin Australia	262	190	159	83.7	156	82.1	72	27.5
Virgin Australia Regional Airlines	6	5	3	60.0	3	60.0	1	16.7
All Airlines	656	515	436	84.7	423	82.1	141	21.5
Adelaide-Perth								
Jetstar	23	17	17	100.0	16	94.1	6	26.1
Qantas	111	102	89	87.3	90	88.2	9	8.1
Virgin Australia	39	31	25	80.6	28	90.3	8	20.5
Virgin Australia Regional Airlines	26	21	6	28.6	12	57.1	5	19.2
All Airlines	199	171	137	80.1	146	85.4	28	14.1
Adelaide-Port Lincoln								
QantasLink	92	81	78	96.3	76	93.8	11	12.0
Regional Express	206	168	160	95.2	159	94.6	38	18.4
All Airlines	298	249	238	95.6	235	94.4	49	16.4
Adelaide-Sydney								
Jetstar	114	82	69	84.1	66	80.5	32	28.1
Qantas	230	213	181	85.0	184	86.4	17	7.4
Virgin Australia	150	117	103	88.0	108	92.3	33	22.0
All Airlines	494	412	353	85.7	358	86.9	82	16.6

	<i>Sectors</i>		<i>Arrivals On Time</i>		<i>Departures On Time</i>		<i>Cancellations</i>	
	<i>Sched.</i>	<i>Flown</i>	<i>No.</i>	<i>%</i>	<i>No.</i>	<i>%</i>	<i>No.</i>	<i>%</i>
Albury-Sydney								
QantasLink	103	97	83	85.6	86	88.7	6	5.8
Regional Express	93	78	63	80.8	63	80.8	15	16.1
Virgin Australia	48	42	37	88.1	39	92.9	6	12.5
All Airlines	244	217	183	84.3	188	86.6	27	11.1
Alice Springs-Adelaide								
Qantas	31	31	26	83.9	26	83.9	0	0.0
Virgin Australia	9	8	7	87.5	7	87.5	1	11.1
Virgin Australia Regional Airlines	12	10	6	60.0	5	50.0	2	16.7
All Airlines	52	49	39	79.6	38	77.6	3	5.8
Armidale-Sydney								
QantasLink	111	95	76	80.0	78	82.1	16	14.4
Regional Express	70	54	37	68.5	41	75.9	16	22.9
All Airlines	181	149	113	75.8	119	79.9	32	17.7
Ayers Rock-Sydney								
Jetstar	28	22	17	77.3	14	63.6	6	21.4
Virgin Australia	31	24	22	91.7	20	83.3	7	22.6
All Airlines	59	46	39	84.8	34	73.9	13	22.0
Ballina-Sydney								
Jetstar	79	61	51	83.6	48	78.7	18	22.8
Regional Express	24	21	17	81.0	17	81.0	3	12.5
Virgin Australia	31	26	24	92.3	24	92.3	5	16.1
All Airlines	134	108	92	85.2	89	82.4	26	19.4
Brisbane-Adelaide								
Jetstar	22	17	17	100.0	16	94.1	5	22.7
Qantas	105	92	81	88.0	80	87.0	13	12.4
Virgin Australia	106	81	73	90.1	72	88.9	25	23.6
All Airlines	233	190	171	90.0	168	88.4	43	18.5
Brisbane-Bundaberg								
QantasLink	106	96	85	88.5	85	88.5	10	9.4
Virgin Australia	31	30	26	86.7	27	90.0	1	3.2
All Airlines	137	126	111	88.1	112	88.9	11	8.0
Brisbane-Cairns								
Jetstar	74	59	48	81.4	48	81.4	15	20.3
Qantas	33	25	24	96.0	25	100.0	8	24.2
QantasLink	118	111	86	77.5	93	83.8	7	5.9
Virgin Australia	115	89	74	83.1	74	83.1	26	22.6
All Airlines	340	284	232	81.7	240	84.5	56	16.5
Brisbane-Canberra								
QantasLink	139	117	99	84.6	95	81.2	22	15.8
Virgin Australia	91	71	61	85.9	59	83.1	20	22.0
All Airlines	230	188	160	85.1	154	81.9	42	18.3
Brisbane-Darwin								
Jetstar	13	10	10	100.0	10	100.0	3	23.1
Qantas	29	29	23	79.3	21	72.4	0	0.0
Virgin Australia	31	27	22	81.5	24	88.9	4	12.9
All Airlines	73	66	55	83.3	55	83.3	7	9.6
Brisbane-Emerald								
QantasLink	127	117	107	91.5	109	93.2	10	7.9
Virgin Australia	47	38	37	97.4	37	97.4	9	19.1
All Airlines	174	155	144	92.9	146	94.2	19	10.9

	<i>Sectors</i>		<i>Arrivals On Time</i>		<i>Departures On Time</i>		<i>Cancellations</i>	
	<i>Sched.</i>	<i>Flown</i>	<i>No.</i>	<i>%</i>	<i>No.</i>	<i>%</i>	<i>No.</i>	<i>%</i>
Brisbane-Gladstone								
QantasLink	138	119	104	87.4	106	89.1	19	13.8
Virgin Australia	74	66	63	95.5	63	95.5	8	10.8
All Airlines	212	185	167	90.3	169	91.4	27	12.7
Brisbane-Hamilton Island								
QantasLink	30	24	18	75.0	18	75.0	6	20.0
Virgin Australia	30	24	19	79.2	20	83.3	6	20.0
All Airlines	60	48	37	77.1	38	79.2	12	20.0
Brisbane-Hobart								
Jetstar	29	23	21	91.3	22	95.7	6	20.7
Virgin Australia	36	31	28	90.3	28	90.3	5	13.9
All Airlines	65	54	49	90.7	50	92.6	11	16.9
Brisbane-Mackay								
Jetstar	30	27	24	88.9	26	96.3	3	10.0
QantasLink	138	129	113	87.6	113	87.6	9	6.5
Virgin Australia	144	109	96	88.1	97	89.0	35	24.3
All Airlines	312	265	233	87.9	236	89.1	47	15.1
Brisbane-Melbourne								
Jetstar	119	85	66	77.6	62	72.9	34	28.6
Qantas	378	331	275	83.1	282	85.2	47	12.4
Virgin Australia	372	272	208	76.5	237	87.1	100	26.9
All Airlines	869	688	549	79.8	581	84.4	181	20.8
Brisbane-Mount Isa								
QantasLink	50	46	33	71.7	34	73.9	4	8.0
Virgin Australia	18	14	14	100.0	14	100.0	4	22.2
All Airlines	68	60	47	78.3	48	80.0	8	11.8
Brisbane-Newcastle								
Jetstar	68	50	38	76.0	37	74.0	18	26.5
QantasLink	85	75	65	86.7	68	90.7	10	11.8
Virgin Australia	87	63	56	88.9	56	88.9	24	27.6
All Airlines	240	188	159	84.6	161	85.6	52	21.7
Brisbane-Perth								
Qantas	142	139	114	82.0	111	79.9	3	2.1
Virgin Australia	109	93	70	75.3	74	79.6	16	14.7
All Airlines	251	232	184	79.3	185	79.7	19	7.6
Brisbane-Proserpine								
Jetstar	30	25	24	96.0	24	96.0	5	16.7
Virgin Australia	38	34	32	94.1	32	94.1	4	10.5
All Airlines	68	59	56	94.9	56	94.9	9	13.2
Brisbane-Rockhampton								
QantasLink	182	153	132	86.3	131	85.6	29	15.9
Virgin Australia	140	106	84	79.2	90	84.9	34	24.3
All Airlines	322	259	216	83.4	221	85.3	63	19.6
Brisbane-Sydney								
Jetstar	136	93	76	81.7	78	83.9	43	31.6
Qantas	574	483	440	91.1	450	93.2	91	15.9
QantasLink	3	3	3	100.0	3	100.0	0	0.0
Virgin Australia	513	362	303	83.7	312	86.2	151	29.4
All Airlines	1 226	941	822	87.4	843	89.6	285	23.2

	<i>Sectors</i>		<i>Arrivals On Time</i>		<i>Departures On Time</i>		<i>Cancellations</i>	
	<i>Sched.</i>	<i>Flown</i>	<i>No.</i>	<i>%</i>	<i>No.</i>	<i>%</i>	<i>No.</i>	<i>%</i>
Brisbane-Townsville								
Jetstar	42	35	29	82.9	31	88.6	7	16.7
Qantas	42	37	34	91.9	33	89.2	5	11.9
QantasLink	112	101	83	82.2	81	80.2	11	9.8
Virgin Australia	148	108	96	88.9	94	87.0	40	27.0
All Airlines	344	281	242	86.1	239	85.1	63	18.3
Broome-Perth								
QantasLink	87	84	73	86.9	72	85.7	3	3.4
Virgin Australia	7	7	7	100.0	7	100.0	0	0.0
Virgin Australia Regional Airlines	51	48	35	72.9	34	70.8	3	5.9
All Airlines	145	139	115	82.7	113	81.3	6	4.1
Bundaberg-Brisbane								
QantasLink	106	97	84	86.6	81	83.5	9	8.5
Virgin Australia	31	30	28	93.3	26	86.7	1	3.2
All Airlines	137	127	112	88.2	107	84.3	10	7.3
Cairns-Brisbane								
Jetstar	76	61	55	90.2	53	86.9	15	19.7
Qantas	32	25	25	100.0	24	96.0	7	21.9
QantasLink	118	110	90	81.8	94	85.5	8	6.8
Virgin Australia	113	89	77	86.5	75	84.3	24	21.2
All Airlines	339	285	247	86.7	246	86.3	54	15.9
Cairns-Melbourne								
Jetstar	60	48	42	87.5	39	81.3	12	20.0
Qantas	33	32	28	87.5	28	87.5	1	3.0
Virgin Australia	28	21	13	61.9	16	76.2	7	25.0
All Airlines	121	101	83	82.2	83	82.2	20	16.5
Cairns-Sydney								
Jetstar	71	53	50	94.3	46	86.8	18	25.4
Qantas	54	54	47	87.0	47	87.0	0	0.0
Virgin Australia	71	56	51	91.1	48	85.7	15	21.1
All Airlines	196	163	148	90.8	141	86.5	33	16.8
Cairns-Townsville								
QantasLink	128	124	118	95.2	118	95.2	4	3.1
Regional Express	13	13	11	84.6	10	76.9	0	0.0
All Airlines	141	137	129	94.2	128	93.4	4	2.8
Canberra-Adelaide								
Qantas	42	39	38	97.4	39	100.0	3	7.1
QantasLink	4	4	4	100.0	3	75.0	0	0.0
Virgin Australia	22	19	15	78.9	16	84.2	3	13.6
All Airlines	68	62	57	91.9	58	93.5	6	8.8
Canberra-Brisbane								
QantasLink	137	117	105	89.7	106	90.6	20	14.6
Virgin Australia	91	73	65	89.0	66	90.4	18	19.8
All Airlines	228	190	170	89.5	172	90.5	38	16.7
Canberra-Melbourne								
Qantas	228	182	162	89.0	171	94.0	46	20.2
QantasLink	50	41	36	87.8	36	87.8	9	18.0
Virgin Australia	160	125	106	84.8	109	87.2	35	21.9
All Airlines	438	348	304	87.4	316	90.8	90	20.5

	<i>Sectors</i>		<i>Arrivals On Time</i>		<i>Departures On Time</i>		<i>Cancellations</i>	
	<i>Sched.</i>	<i>Flown</i>	<i>No.</i>	<i>%</i>	<i>No.</i>	<i>%</i>	<i>No.</i>	<i>%</i>
Canberra-Sydney								
QantasLink	458	359	302	84.1	309	86.1	99	21.6
Virgin Australia	233	173	155	89.6	158	91.3	60	25.8
All Airlines	691	532	457	85.9	467	87.8	159	23.0
Coffs Harbour-Sydney								
QantasLink	135	124	104	83.9	111	89.5	11	8.1
Virgin Australia	31	27	22	81.5	22	81.5	4	12.9
All Airlines	166	151	126	83.4	133	88.1	15	9.0
Darwin-Brisbane								
Jetstar	13	10	9	90.0	8	80.0	3	23.1
Qantas	29	28	22	78.6	21	75.0	1	3.4
Virgin Australia	31	27	25	92.6	26	96.3	4	12.9
All Airlines	73	65	56	86.2	55	84.6	8	11.0
Darwin-Melbourne								
Jetstar	16	12	8	66.7	7	58.3	4	25.0
Qantas	28	27	23	85.2	21	77.8	1	3.6
Virgin Australia	29	24	21	87.5	17	70.8	5	17.2
All Airlines	73	63	52	82.5	45	71.4	10	13.7
Darwin-Perth								
Qantas	30	30	25	83.3	25	83.3	0	0.0
Virgin Australia	12	10	8	80.0	8	80.0	2	16.7
Virgin Australia Regional Airlines	17	14	14	100.0	14	100.0	3	17.6
All Airlines	59	54	47	87.0	47	87.0	5	8.5
Darwin-Sydney								
Jetstar	19	15	10	66.7	12	80.0	4	21.1
Qantas	32	32	26	81.3	25	78.1	0	0.0
Virgin Australia	26	22	18	81.8	18	81.8	4	15.4
All Airlines	77	69	54	78.3	55	79.7	8	10.4
Dubbo-Sydney								
QantasLink	112	99	84	84.8	87	87.9	13	11.6
Regional Express	129	106	88	83.0	97	91.5	23	17.8
All Airlines	241	205	172	83.9	184	89.8	36	14.9
Emerald-Brisbane								
QantasLink	127	116	103	88.8	106	91.4	11	8.7
Virgin Australia	46	38	35	92.1	35	92.1	8	17.4
All Airlines	173	154	138	89.6	141	91.6	19	11.0
Gladstone-Brisbane								
QantasLink	139	121	105	86.8	105	86.8	18	12.9
Virgin Australia	74	66	60	90.9	63	95.5	8	10.8
All Airlines	213	187	165	88.2	168	89.8	26	12.2
Gold Coast-Adelaide								
Jetstar	24	21	18	85.7	17	81.0	3	12.5
Virgin Australia	30	25	22	88.0	19	76.0	5	16.7
All Airlines	54	46	40	87.0	36	78.3	8	14.8
Gold Coast-Melbourne								
Jetstar	132	101	79	78.2	71	70.3	31	23.5
Qantas	29	27	23	85.2	22	81.5	2	6.9
Virgin Australia	204	154	125	81.2	117	76.0	50	24.5
All Airlines	365	282	227	80.5	210	74.5	83	22.7

	<i>Sectors</i>		<i>Arrivals On Time</i>		<i>Departures On Time</i>		<i>Cancellations</i>	
	<i>Sched.</i>	<i>Flown</i>	<i>No.</i>	<i>%</i>	<i>No.</i>	<i>%</i>	<i>No.</i>	<i>%</i>
Gold Coast-Sydney								
Jetstar	252	177	143	80.8	136	76.8	75	29.8
Qantas	56	52	45	86.5	44	84.6	4	7.1
QantasLink	65	54	42	77.8	42	77.8	11	16.9
Virgin Australia	252	188	152	80.9	141	75.0	64	25.4
All Airlines	625	471	382	81.1	363	77.1	154	24.6
Hamilton Island-Brisbane								
QantasLink	31	24	18	75.0	17	70.8	7	22.6
Virgin Australia	31	25	20	80.0	20	80.0	6	19.4
All Airlines	62	49	38	77.6	37	75.5	13	21.0
Hamilton Island-Sydney								
Jetstar	18	14	13	92.9	12	85.7	4	22.2
Qantas	7	7	7	100.0	6	85.7	0	0.0
QantasLink	20	18	18	100.0	17	94.4	2	10.0
Virgin Australia	29	24	15	62.5	13	54.2	5	17.2
All Airlines	74	63	53	84.1	48	76.2	11	14.9
Hobart-Brisbane								
Jetstar	29	23	20	87.0	21	91.3	6	20.7
Virgin Australia	36	31	27	87.1	26	83.9	5	13.9
All Airlines	65	54	47	87.0	47	87.0	11	16.9
Hobart-Melbourne								
Jetstar	193	136	92	67.6	85	62.5	57	29.5
Qantas	105	100	87	87.0	88	88.0	5	4.8
Virgin Australia	137	108	80	74.1	91	84.3	29	21.2
All Airlines	435	344	259	75.3	264	76.7	91	20.9
Hobart-Sydney								
Jetstar	101	74	48	64.9	63	85.1	27	26.7
QantasLink	70	53	44	83.0	47	88.7	17	24.3
Virgin Australia	63	51	40	78.4	46	90.2	12	19.0
All Airlines	234	178	132	74.2	156	87.6	56	23.9
Kalgoorlie-Perth								
Qantas	13	12	11	91.7	11	91.7	1	7.7
QantasLink	67	63	60	95.2	58	92.1	4	6.0
Virgin Australia	15	14	13	92.9	14	100.0	1	6.7
Virgin Australia Regional Airlines	70	63	53	84.1	52	82.5	7	10.0
All Airlines	165	152	137	90.1	135	88.8	13	7.9
Karratha-Perth								
Qantas	65	63	62	98.4	63	100.0	2	3.1
QantasLink	123	116	110	94.8	112	96.6	7	5.7
Virgin Australia	13	12	11	91.7	11	91.7	1	7.7
Virgin Australia Regional Airlines	57	51	42	82.4	46	90.2	6	10.5
All Airlines	258	242	225	93.0	232	95.9	16	6.2
Launceston-Melbourne								
Jetstar	129	91	64	70.3	68	74.7	38	29.5
QantasLink	111	103	85	82.5	86	83.5	8	7.2
Virgin Australia	93	77	56	72.7	59	76.6	16	17.2
All Airlines	333	271	205	75.6	213	78.6	62	18.6
Launceston-Sydney								
Jetstar	58	41	30	73.2	26	63.4	17	29.3
Virgin Australia	28	22	20	90.9	19	86.4	6	21.4
All Airlines	86	63	50	79.4	45	71.4	23	26.7

	<i>Sectors</i>		<i>Arrivals On Time</i>		<i>Departures On Time</i>		<i>Cancellations</i>	
	<i>Sched.</i>	<i>Flown</i>	<i>No.</i>	<i>%</i>	<i>No.</i>	<i>%</i>	<i>No.</i>	<i>%</i>
Mackay-Brisbane								
Jetstar	31	28	21	75.0	20	71.4	3	9.7
QantasLink	132	121	106	87.6	106	87.6	11	8.3
Virgin Australia	141	110	98	89.1	95	86.4	31	22.0
All Airlines	304	259	225	86.9	221	85.3	45	14.8
Melbourne-Adelaide								
Jetstar	110	69	50	72.5	47	68.1	41	37.3
Qantas	281	251	198	78.9	215	85.7	30	10.7
Virgin Australia	260	190	147	77.4	161	84.7	70	26.9
Virgin Australia Regional Airlines	6	5	2	40.0	3	60.0	1	16.7
All Airlines	657	515	397	77.1	426	82.7	142	21.6
Melbourne-Brisbane								
Jetstar	117	87	70	80.5	65	74.7	30	25.6
Qantas	379	329	286	86.9	298	90.6	50	13.2
Virgin Australia	373	267	217	81.3	235	88.0	106	28.4
All Airlines	869	683	573	83.9	598	87.6	186	21.4
Melbourne-Cairns								
Jetstar	54	48	42	87.5	44	91.7	6	11.1
Qantas	33	32	30	93.8	30	93.8	1	3.0
Virgin Australia	28	21	18	85.7	19	90.5	7	25.0
All Airlines	115	101	90	89.1	93	92.1	14	12.2
Melbourne-Canberra								
Qantas	229	183	163	89.1	166	90.7	46	20.1
QantasLink	51	41	36	87.8	38	92.7	10	19.6
Virgin Australia	161	124	109	87.9	110	88.7	37	23.0
All Airlines	441	348	308	88.5	314	90.2	93	21.1
Melbourne-Darwin								
Jetstar	16	12	8	66.7	8	66.7	4	25.0
Qantas	28	27	25	92.6	25	92.6	1	3.6
Virgin Australia	29	24	18	75.0	18	75.0	5	17.2
All Airlines	73	63	51	81.0	51	81.0	10	13.7
Melbourne-Gold Coast								
Jetstar	133	101	79	78.2	78	77.2	32	24.1
Qantas	29	27	25	92.6	25	92.6	2	6.9
Virgin Australia	204	154	124	80.5	128	83.1	50	24.5
All Airlines	366	282	228	80.9	231	81.9	84	23.0
Melbourne-Hobart								
Jetstar	193	136	98	72.1	103	75.7	57	29.5
Qantas	104	99	88	88.9	89	89.9	5	4.8
Virgin Australia	137	107	86	80.4	92	86.0	30	21.9
All Airlines	434	342	272	79.5	284	83.0	92	21.2
Melbourne-Launceston								
Jetstar	128	90	68	75.6	68	75.6	38	29.7
QantasLink	111	104	86	82.7	86	82.7	7	6.3
Virgin Australia	92	76	53	69.7	62	81.6	16	17.4
All Airlines	331	270	207	76.7	216	80.0	61	18.4
Melbourne-Mildura								
QantasLink	86	79	63	79.7	66	83.5	7	8.1
Regional Express	73	66	50	75.8	54	81.8	7	9.6
Virgin Australia	31	25	22	88.0	23	92.0	6	19.4
All Airlines	190	170	135	79.4	143	84.1	20	10.5

	<i>Sectors</i>		<i>Arrivals On Time</i>		<i>Departures On Time</i>		<i>Cancellations</i>	
	<i>Sched.</i>	<i>Flown</i>	<i>No.</i>	<i>%</i>	<i>No.</i>	<i>%</i>	<i>No.</i>	<i>%</i>
Melbourne-Newcastle								
Jetstar	93	67	54	80.6	54	80.6	26	28.0
Virgin Australia	31	25	22	88.0	24	96.0	6	19.4
All Airlines	124	92	76	82.6	78	84.8	32	25.8
Melbourne-Perth								
Jetstar	54	42	40	95.2	38	90.5	12	22.2
Qantas	193	187	142	75.9	157	84.0	6	3.1
Virgin Australia	150	123	86	69.9	95	77.2	27	18.0
All Airlines	397	352	268	76.1	290	82.4	45	11.3
Melbourne-Sunshine Coast								
Jetstar	60	48	40	83.3	38	79.2	12	20.0
Virgin Australia	73	58	50	86.2	55	94.8	15	20.5
All Airlines	133	106	90	84.9	93	87.7	27	20.3
Melbourne-Sydney								
Jetstar	425	279	211	75.6	216	77.4	146	34.4
Qantas	995	749	603	80.5	667	89.1	246	24.7
Virgin Australia	715	480	373	77.7	425	88.5	235	32.9
All Airlines	2 135	1 508	1 187	78.7	1 308	86.7	627	29.4
Mildura-Melbourne								
QantasLink	86	79	58	73.4	65	82.3	7	8.1
Regional Express	71	65	47	72.3	49	75.4	6	8.5
Virgin Australia	31	25	22	88.0	22	88.0	6	19.4
All Airlines	188	169	127	75.1	136	80.5	19	10.1
Mount Isa-Brisbane								
QantasLink	50	45	32	71.1	31	68.9	5	10.0
Virgin Australia	11	9	7	77.8	8	88.9	2	18.2
All Airlines	61	54	39	72.2	39	72.2	7	11.5
Newcastle-Brisbane								
Jetstar	68	49	36	73.5	40	81.6	19	27.9
QantasLink	85	75	65	86.7	64	85.3	10	11.8
Virgin Australia	87	63	57	90.5	55	87.3	24	27.6
All Airlines	240	187	158	84.5	159	85.0	53	22.1
Newcastle-Melbourne								
Jetstar	93	66	54	81.8	53	80.3	27	29.0
Virgin Australia	31	25	20	80.0	21	84.0	6	19.4
All Airlines	124	91	74	81.3	74	81.3	33	26.6
Newman-Perth								
Qantas	52	50	50	100.0	50	100.0	2	3.8
QantasLink	98	97	88	90.7	83	85.6	1	1.0
Virgin Australia	14	14	12	85.7	12	85.7	0	0.0
Virgin Australia Regional Airlines	26	26	20	76.9	19	73.1	0	0.0
All Airlines	190	187	170	90.9	164	87.7	3	1.6
Perth-Adelaide								
Jetstar	23	17	15	88.2	15	88.2	6	26.1
Qantas	111	101	93	92.1	90	89.1	10	9.0
Virgin Australia	39	31	28	90.3	28	90.3	8	20.5
Virgin Australia Regional Airlines	26	21	16	76.2	19	90.5	5	19.2
All Airlines	199	170	152	89.4	152	89.4	29	14.6

	Sectors		Arrivals On Time		Departures On Time		Cancellations	
	Sched.	Flown	No.	%	No.	%	No.	%
Perth-Brisbane								
Qantas	142	140	124	88.6	114	81.4	2	1.4
Virgin Australia	110	92	78	84.8	74	80.4	18	16.4
All Airlines	252	232	202	87.1	188	81.0	20	7.9
Perth-Broome								
QantasLink	86	83	77	92.8	76	91.6	3	3.5
Virgin Australia	7	7	7	100.0	7	100.0	0	0.0
Virgin Australia Regional Airlines	50	48	37	77.1	37	77.1	2	4.0
All Airlines	143	138	121	87.7	120	87.0	5	3.5
Perth-Darwin								
Qantas	30	30	26	86.7	26	86.7	0	0.0
Virgin Australia	12	10	9	90.0	9	90.0	2	16.7
Virgin Australia Regional Airlines	17	14	14	100.0	14	100.0	3	17.6
All Airlines	59	54	49	90.7	49	90.7	5	8.5
Perth-Kalgoorlie								
Qantas	13	12	11	91.7	11	91.7	1	7.7
QantasLink	67	63	56	88.9	58	92.1	4	6.0
Virgin Australia	15	14	14	100.0	14	100.0	1	6.7
Virgin Australia Regional Airlines	69	63	54	85.7	56	88.9	6	8.7
All Airlines	164	152	135	88.8	139	91.4	12	7.3
Perth-Karratha								
Qantas	65	63	59	93.7	59	93.7	2	3.1
QantasLink	126	119	112	94.1	111	93.3	7	5.6
Virgin Australia	13	12	12	100.0	12	100.0	1	7.7
Virgin Australia Regional Airlines	57	51	46	90.2	47	92.2	6	10.5
All Airlines	261	245	229	93.5	229	93.5	16	6.1
Perth-Melbourne								
Jetstar	49	40	36	90.0	36	90.0	9	18.4
Qantas	195	189	169	89.4	168	88.9	6	3.1
Virgin Australia	151	122	104	85.2	109	89.3	29	19.2
All Airlines	395	351	309	88.0	313	89.2	44	11.1
Perth-Newman								
Qantas	52	50	50	100.0	50	100.0	2	3.8
QantasLink	98	97	83	85.6	85	87.6	1	1.0
Virgin Australia	14	14	14	100.0	14	100.0	0	0.0
Virgin Australia Regional Airlines	26	26	21	80.8	23	88.5	0	0.0
All Airlines	190	187	168	89.8	172	92.0	3	1.6
Perth-Port Hedland								
Qantas	37	36	34	94.4	33	91.7	1	2.7
QantasLink	117	107	94	87.9	99	92.5	10	8.5
Virgin Australia	17	17	16	94.1	17	100.0	0	0.0
Virgin Australia Regional Airlines	36	36	31	86.1	31	86.1	0	0.0
All Airlines	207	196	175	89.3	180	91.8	11	5.3
Perth-Sydney								
Jetstar	27	23	22	95.7	19	82.6	4	14.8
Qantas	199	192	163	84.9	159	82.8	7	3.5
Virgin Australia	120	94	79	84.0	80	85.1	26	21.7
All Airlines	346	309	264	85.4	258	83.5	37	10.7

	Sectors		Arrivals On Time		Departures On Time		Cancellations	
	Sched.	Flown	No.	%	No.	%	No.	%
Port Hedland-Perth								
Qantas	37	36	34	94.4	32	88.9	1	2.7
QantasLink	116	105	90	85.7	96	91.4	11	9.5
Virgin Australia	17	17	14	82.4	15	88.2	0	0.0
Virgin Australia Regional Airlines	36	36	32	88.9	30	83.3	0	0.0
All Airlines	206	194	170	87.6	173	89.2	12	5.8
Port Lincoln-Adelaide								
QantasLink	92	81	78	96.3	78	96.3	11	12.0
Regional Express	204	167	158	94.6	159	95.2	37	18.1
All Airlines	296	248	236	95.2	237	95.6	48	16.2
Port Macquarie-Sydney								
QantasLink	107	97	82	84.5	87	89.7	10	9.3
Virgin Australia	50	42	35	83.3	35	83.3	8	16.0
All Airlines	157	139	117	84.2	122	87.8	18	11.5
Proserpine-Brisbane								
Jetstar	30	25	20	80.0	20	80.0	5	16.7
Virgin Australia	38	34	30	88.2	30	88.2	4	10.5
All Airlines	68	59	50	84.7	50	84.7	9	13.2
Rockhampton-Brisbane								
QantasLink	185	157	139	88.5	139	88.5	28	15.1
Virgin Australia	139	105	93	88.6	90	85.7	34	24.5
All Airlines	324	262	232	88.5	229	87.4	62	19.1
Sunshine Coast-Melbourne								
Jetstar	61	48	36	75.0	31	64.6	13	21.3
Virgin Australia	73	58	41	70.7	43	74.1	15	20.5
All Airlines	134	106	77	72.6	74	69.8	28	20.9
Sunshine Coast-Sydney								
Jetstar	66	52	33	63.5	31	59.6	14	21.2
QantasLink	52	52	43	82.7	40	76.9	0	0.0
Virgin Australia	57	45	27	60.0	33	73.3	12	21.1
All Airlines	175	149	103	69.1	104	69.8	26	14.9
Sydney-Adelaide								
Jetstar	115	80	64	80.0	64	80.0	35	30.4
Qantas	230	212	182	85.8	181	85.4	18	7.8
Virgin Australia	150	116	100	86.2	96	82.8	34	22.7
All Airlines	495	408	346	84.8	341	83.6	87	17.6
Sydney-Albury								
QantasLink	103	96	82	85.4	82	85.4	7	6.8
Regional Express	92	79	72	91.1	71	89.9	13	14.1
Virgin Australia	49	42	38	90.5	38	90.5	7	14.3
All Airlines	244	217	192	88.5	191	88.0	27	11.1
Sydney-Armidale								
QantasLink	110	96	72	75.0	75	78.1	14	12.7
Regional Express	70	52	41	78.8	41	78.8	18	25.7
All Airlines	180	148	113	76.4	116	78.4	32	17.8
Sydney-Ayers Rock								
Jetstar	26	21	17	81.0	18	85.7	5	19.2
Virgin Australia	31	24	22	91.7	22	91.7	7	22.6
All Airlines	57	45	39	86.7	40	88.9	12	21.1

	<i>Sectors</i>		<i>Arrivals On Time</i>		<i>Departures On Time</i>		<i>Cancellations</i>	
	<i>Sched.</i>	<i>Flown</i>	<i>No.</i>	<i>%</i>	<i>No.</i>	<i>%</i>	<i>No.</i>	<i>%</i>
Sydney-Ballina								
Jetstar	78	60	52	86.7	53	88.3	18	23.1
Regional Express	23	21	17	81.0	17	81.0	2	8.7
Virgin Australia	31	26	24	92.3	25	96.2	5	16.1
All Airlines	132	107	93	86.9	95	88.8	25	18.9
Sydney-Brisbane								
Jetstar	135	93	71	76.3	67	72.0	42	31.1
Qantas	573	489	422	86.3	427	87.3	84	14.7
QantasLink	4	4	3	75.0	4	100.0	0	0.0
Virgin Australia	514	370	295	79.7	301	81.4	144	28.0
All Airlines	1 226	956	791	82.7	799	83.6	270	22.0
Sydney-Cairns								
Jetstar	72	54	50	92.6	43	79.6	18	25.0
Qantas	54	54	46	85.2	43	79.6	0	0.0
Virgin Australia	72	55	44	80.0	46	83.6	17	23.6
All Airlines	198	163	140	85.9	132	81.0	35	17.7
Sydney-Canberra								
QantasLink	462	363	302	83.2	298	82.1	99	21.4
Virgin Australia	233	174	158	90.8	147	84.5	59	25.3
All Airlines	695	537	460	85.7	445	82.9	158	22.7
Sydney-Coffs Harbour								
QantasLink	135	125	108	86.4	105	84.0	10	7.4
Virgin Australia	31	27	24	88.9	25	92.6	4	12.9
All Airlines	166	152	132	86.8	130	85.5	14	8.4
Sydney-Darwin								
Jetstar	19	15	12	80.0	11	73.3	4	21.1
Qantas	32	32	25	78.1	20	62.5	0	0.0
Virgin Australia	26	22	18	81.8	21	95.5	4	15.4
All Airlines	77	69	55	79.7	52	75.4	8	10.4
Sydney-Dubbo								
QantasLink	112	100	84	84.0	84	84.0	12	10.7
Regional Express	122	102	86	84.3	90	88.2	20	16.4
All Airlines	234	202	170	84.2	174	86.1	32	13.7
Sydney-Gold Coast								
Jetstar	249	177	154	87.0	158	89.3	72	28.9
Qantas	56	52	41	78.8	40	76.9	4	7.1
QantasLink	66	53	41	77.4	44	83.0	13	19.7
Virgin Australia	250	187	147	78.6	154	82.4	63	25.2
All Airlines	621	469	383	81.7	396	84.4	152	24.5
Sydney-Hamilton Island								
Jetstar	18	12	12	100.0	10	83.3	6	33.3
Qantas	7	7	7	100.0	7	100.0	0	0.0
QantasLink	20	18	14	77.8	16	88.9	2	10.0
Virgin Australia	27	22	16	72.7	18	81.8	5	18.5
All Airlines	72	59	49	83.1	51	86.4	13	18.1
Sydney-Hobart								
Jetstar	100	73	67	91.8	62	84.9	27	27.0
QantasLink	70	53	40	75.5	39	73.6	17	24.3
Virgin Australia	63	51	48	94.1	46	90.2	12	19.0
All Airlines	233	177	155	87.6	147	83.1	56	24.0

	<i>Sectors</i>		<i>Arrivals On Time</i>		<i>Departures On Time</i>		<i>Cancellations</i>	
	<i>Sched.</i>	<i>Flown</i>	<i>No.</i>	<i>%</i>	<i>No.</i>	<i>%</i>	<i>No.</i>	<i>%</i>
Sydney-Launceston								
Jetstar	57	41	39	95.1	38	92.7	16	28.1
Virgin Australia	28	22	20	90.9	19	86.4	6	21.4
All Airlines	85	63	59	93.7	57	90.5	22	25.9
Sydney-Melbourne								
Jetstar	425	279	217	77.8	216	77.4	146	34.4
Qantas	997	751	633	84.3	652	86.8	246	24.7
Virgin Australia	714	483	379	78.5	387	80.1	231	32.4
All Airlines	2 136	1 513	1 229	81.2	1 255	82.9	623	29.2
Sydney-Perth								
Jetstar	27	23	23	100.0	17	73.9	4	14.8
Qantas	199	193	148	76.7	145	75.1	6	3.0
Virgin Australia	123	96	72	75.0	69	71.9	27	22.0
All Airlines	349	312	243	77.9	231	74.0	37	10.6
Sydney-Port Macquarie								
QantasLink	107	96	84	87.5	84	87.5	11	10.3
Virgin Australia	48	42	37	88.1	37	88.1	6	12.5
All Airlines	155	138	121	87.7	121	87.7	17	11.0
Sydney-Sunshine Coast								
Jetstar	65	51	38	74.5	39	76.5	14	21.5
QantasLink	51	51	39	76.5	39	76.5	0	0.0
Virgin Australia	57	45	32	71.1	31	68.9	12	21.1
All Airlines	173	147	109	74.1	109	74.1	26	15.0
Sydney-Tamworth								
QantasLink	133	116	90	77.6	83	71.6	17	12.8
Virgin Australia	48	42	33	78.6	34	81.0	6	12.5
All Airlines	181	158	123	77.8	117	74.1	23	12.7
Sydney-Townsville								
Jetstar	18	16	14	87.5	14	87.5	2	11.1
Virgin Australia	15	13	9	69.2	11	84.6	2	13.3
All Airlines	33	29	23	79.3	25	86.2	4	12.1
Sydney-Wagga Wagga								
QantasLink	96	88	76	86.4	76	86.4	8	8.3
Regional Express	126	103	89	86.4	91	88.3	23	18.3
All Airlines	222	191	165	86.4	167	87.4	31	14.0
Tamworth-Sydney								
QantasLink	132	113	91	80.5	92	81.4	19	14.4
Virgin Australia	49	42	36	85.7	36	85.7	7	14.3
All Airlines	181	155	127	81.9	128	82.6	26	14.4
Townsville-Brisbane								
Jetstar	42	35	31	88.6	27	77.1	7	16.7
Qantas	41	37	36	97.3	36	97.3	4	9.8
QantasLink	112	102	86	84.3	85	83.3	10	8.9
Virgin Australia	148	109	97	89.0	101	92.7	39	26.4
All Airlines	343	283	250	88.3	249	88.0	60	17.5
Townsville-Cairns								
QantasLink	127	121	112	92.6	106	87.6	6	4.7
Regional Express	13	13	12	92.3	12	92.3	0	0.0
All Airlines	140	134	124	92.5	118	88.1	6	4.3

	<i>Sectors</i>		<i>Arrivals On Time</i>		<i>Departures On Time</i>		<i>Cancellations</i>	
	<i>Sched.</i>	<i>Flown</i>	<i>No.</i>	<i>%</i>	<i>No.</i>	<i>%</i>	<i>No.</i>	<i>%</i>
Townsville-Sydney								
Jetstar	18	16	15	93.8	12	75.0	2	11.1
Virgin Australia	15	13	10	76.9	10	76.9	2	13.3
All Airlines	33	29	25	86.2	22	75.9	4	12.1
Wagga Wagga-Sydney								
QantasLink	96	88	74	84.1	79	89.8	8	8.3
Regional Express	127	105	82	78.1	88	83.8	22	17.3
All Airlines	223	193	156	80.8	167	86.5	30	13.5

Airports

On time performance is reported for all routes where the passenger load averages over 8000 passengers per month, and where two or more airlines operate in competition. The following data reports by airport against flights operated on those routes only. This month, 8 major city airports and 31 regional city airports are covered.

Airport	Arrivals			Departures		
	Sectors Flown	On Time No.	%	Sectors Flown	On Time No.	%
Adelaide						
Jetstar	204	164	80.4	204	159	77.9
Qantas	726	618	85.1	729	642	88.1
QantasLink	85	82	96.5	85	80	94.1
Regional Express	167	158	94.6	168	159	94.6
Virgin Australia	470	392	83.4	470	406	86.4
Virgin Australia Regional Airlines	36	24	66.7	36	21	58.3
All Airlines	1 688	1 438	85.2	1 692	1 467	86.7
Relates to services to and from Alice Springs, Brisbane, Canberra, Gold Coast, Melbourne, Perth, Port Lincoln and Sydney.						
Albury						
QantasLink	96	82	85.4	97	86	88.7
Regional Express	79	72	91.1	78	63	80.8
Virgin Australia	42	38	90.5	42	39	92.9
All Airlines	217	192	88.5	217	188	86.6
Relates to services to and from Sydney only.						
Alice Springs						
Qantas	31	28	90.3	31	26	83.9
Virgin Australia	8	5	62.5	8	7	87.5
Virgin Australia Regional Airlines	10	5	50.0	10	5	50.0
All Airlines	49	38	77.6	49	38	77.6
Relates to services to and from Adelaide only.						
Armidale						
QantasLink	96	72	75.0	95	78	82.1
Regional Express	52	41	78.8	54	41	75.9
All Airlines	148	113	76.4	149	119	79.9
Relates to services to and from Sydney only.						
Ayers Rock						
Jetstar	21	17	81.0	22	14	63.6
Virgin Australia	24	22	91.7	24	20	83.3
All Airlines	45	39	86.7	46	34	73.9
Relates to services to and from Sydney only.						
Ballina						
Jetstar	60	52	86.7	61	48	78.7
Regional Express	21	17	81.0	21	17	81.0
Virgin Australia	26	24	92.3	26	24	92.3
All Airlines	107	93	86.9	108	89	82.4
Relates to services to and from Sydney only.						

Airport	Arrivals			Departures		
	Sectors Flown	On Time		Sectors Flown	On Time	
		No.	%		No.	%
Brisbane						
Jetstar	427	348	81.5	424	354	83.5
Qantas	1 141	1 003	87.9	1 136	1 002	88.2
QantasLink	1 089	936	86.0	1 091	936	85.8
Virgin Australia	1 619	1 383	85.4	1 618	1 410	87.1
All Airlines	4 276	3 670	85.8	4 269	3 702	86.7

Relates to services to and from Adelaide, Bundaberg, Cairns, Canberra, Darwin, Emerald, Gladstone, Hamilton Island, Hobart, Mackay, Melbourne, Mount Isa, Newcastle, Perth, Proserpine, Rockhampton, Sydney and Townsville.

Broome

QantasLink	83	77	92.8	84	72	85.7
Virgin Australia	7	7	100.0	7	7	100.0
Virgin Australia Regional Airlines	48	37	77.1	48	34	70.8
All Airlines	138	121	87.7	139	113	81.3

Relates to services to and from Perth only.

Bundaberg

QantasLink	96	85	88.5	97	81	83.5
Virgin Australia	30	26	86.7	30	26	86.7
All Airlines	126	111	88.1	127	107	84.3

Relates to services to and from Brisbane only.

Cairns

Jetstar	161	140	87.0	162	138	85.2
Qantas	111	100	90.1	111	99	89.2
QantasLink	232	198	85.3	234	212	90.6
Regional Express	13	12	92.3	13	10	76.9
Virgin Australia	165	136	82.4	166	139	83.7
All Airlines	682	586	85.9	686	598	87.2

Relates to services to and from Brisbane, Melbourne, Sydney and Townsville.

Canberra

Qantas	221	200	90.5	221	210	95.0
QantasLink	525	441	84.0	521	454	87.1
Virgin Australia	388	344	88.7	390	349	89.5
All Airlines	1 134	985	86.9	1 132	1 013	89.5

Relates to services to and from Adelaide, Brisbane, Melbourne and Sydney.

Coffs Harbour

QantasLink	125	108	86.4	124	111	89.5
Virgin Australia	27	24	88.9	27	22	81.5
All Airlines	152	132	86.8	151	133	88.1

Relates to services to and from Sydney only.

Darwin

Jetstar	37	30	81.1	37	27	73.0
Qantas	118	99	83.9	117	92	78.6
Virgin Australia	83	67	80.7	83	69	83.1
Virgin Australia Regional Airlines	14	14	100.0	14	14	100.0
All Airlines	252	210	83.3	251	202	80.5

Relates to services to and from Brisbane, Melbourne, Perth and Sydney.

Airport	Arrivals			Departures		
	Sectors Flown	On Time		Sectors Flown	On Time	
		No.	%		No.	%
Dubbo						
QantasLink	100	84	84.0	99	87	87.9
Regional Express	102	86	84.3	106	97	91.5
All Airlines	202	170	84.2	205	184	89.8
Relates to services to and from Sydney only.						
Emerald						
QantasLink	117	107	91.5	116	106	91.4
Virgin Australia	38	37	97.4	38	35	92.1
All Airlines	155	144	92.9	154	141	91.6
Relates to services to and from Brisbane only.						
Gladstone						
QantasLink	119	104	87.4	121	105	86.8
Virgin Australia	66	63	95.5	66	63	95.5
All Airlines	185	167	90.3	187	168	89.8
Relates to services to and from Brisbane only.						
Gold Coast						
Jetstar	299	247	82.6	299	224	74.9
Qantas	79	66	83.5	79	66	83.5
QantasLink	53	41	77.4	54	42	77.8
Virgin Australia	365	293	80.3	367	277	75.5
All Airlines	796	647	81.3	799	609	76.2
Relates to services to and from Adelaide, Melbourne and Sydney.						
Hamilton Island						
Jetstar	12	12	100.0	14	12	85.7
Qantas	7	7	100.0	7	6	85.7
QantasLink	42	32	76.2	42	34	81.0
Virgin Australia	46	35	76.1	49	33	67.3
All Airlines	107	86	80.4	112	85	75.9
Relates to services to and from Brisbane and Sydney.						
Hobart						
Jetstar	232	186	80.2	233	169	72.5
Qantas	99	88	88.9	100	88	88.0
QantasLink	53	40	75.5	53	47	88.7
Virgin Australia	189	162	85.7	190	163	85.8
All Airlines	573	476	83.1	576	467	81.1
Relates to services to and from Brisbane, Melbourne and Sydney.						
Kalgoorlie						
Qantas	12	11	91.7	12	11	91.7
QantasLink	63	56	88.9	63	58	92.1
Virgin Australia	14	14	100.0	14	14	100.0
Virgin Australia Regional Airlines	63	54	85.7	63	52	82.5
All Airlines	152	135	88.8	152	135	88.8
Relates to services to and from Perth only.						

Airport	Arrivals			Departures		
	Sectors	On Time		Sectors	On Time	
	Flown	No.	%	Flown	No.	%
Karratha						
Qantas	63	59	93.7	63	63	100.0
QantasLink	119	112	94.1	116	112	96.6
Virgin Australia	12	12	100.0	12	11	91.7
Virgin Australia Regional Airlines	51	46	90.2	51	46	90.2
All Airlines	245	229	93.5	242	232	95.9
Relates to services to and from Perth only.						
Launceston						
Jetstar	131	107	81.7	132	94	71.2
QantasLink	104	86	82.7	103	86	83.5
Virgin Australia	98	73	74.5	99	78	78.8
All Airlines	333	266	79.9	334	258	77.2
Relates to services to and from Melbourne and Sydney.						
Mackay						
Jetstar	27	24	88.9	28	20	71.4
QantasLink	129	113	87.6	121	106	87.6
Virgin Australia	109	96	88.1	110	95	86.4
All Airlines	265	233	87.9	259	221	85.3
Relates to services to and from Brisbane only.						
Melbourne						
Jetstar	974	749	76.9	979	759	77.5
Qantas	1 891	1 619	85.6	1 884	1 672	88.7
QantasLink	223	179	80.3	224	190	84.8
Regional Express	65	47	72.3	66	54	81.8
Virgin Australia	1 684	1 334	79.2	1 674	1 447	86.4
Virgin Australia Regional Airlines	5	3	60.0	5	3	60.0
All Airlines	4 842	3 931	81.2	4 832	4 125	85.4
Relates to services to and from Adelaide, Brisbane, Cairns, Canberra, Darwin, Gold Coast, Hobart, Launceston, Mildura, Newcastle, Perth, Sunshine Coast and Sydney.						
Mildura						
QantasLink	79	63	79.7	79	65	82.3
Regional Express	66	50	75.8	65	49	75.4
Virgin Australia	25	22	88.0	25	22	88.0
All Airlines	170	135	79.4	169	136	80.5
Relates to services to and from Melbourne only.						
Mount Isa						
QantasLink	46	33	71.7	45	31	68.9
Virgin Australia	14	14	100.0	9	8	88.9
All Airlines	60	47	78.3	54	39	72.2
Relates to services to and from Brisbane only.						
Newcastle						
Jetstar	117	92	78.6	115	93	80.9
QantasLink	75	65	86.7	75	64	85.3
Virgin Australia	88	78	88.6	88	76	86.4
All Airlines	280	235	83.9	278	233	83.8
Relates to services to and from Brisbane and Melbourne.						

Airport	Arrivals			Departures		
	Sectors	On Time		Sectors	On Time	
	Flown	No.	%	Flown	No.	%
Newman						
Qantas	50	50	100.0	50	50	100.0
QantasLink	97	83	85.6	97	83	85.6
Virgin Australia	14	14	100.0	14	12	85.7
Virgin Australia Regional Airlines	26	21	80.8	26	19	73.1
All Airlines	187	168	89.8	187	164	87.7
Relates to services to and from Perth only.						
Perth						
Jetstar	82	80	97.6	80	70	87.5
Qantas	812	675	83.1	813	710	87.3
QantasLink	465	421	90.5	469	429	91.5
Virgin Australia	417	318	76.3	413	364	88.1
Virgin Australia Regional Airlines	259	202	78.0	259	227	87.6
All Airlines	2 035	1 696	83.3	2 034	1 800	88.5
Relates to services to and from Adelaide, Brisbane, Broome, Darwin, Kalgoorlie, Karratha, Melbourne, Newman, Port Hedland and Sydney.						
Port Hedland						
Qantas	36	34	94.4	36	32	88.9
QantasLink	107	94	87.9	105	96	91.4
Virgin Australia	17	16	94.1	17	15	88.2
Virgin Australia Regional Airlines	36	31	86.1	36	30	83.3
All Airlines	196	175	89.3	194	173	89.2
Relates to services to and from Perth only.						
Port Lincoln						
QantasLink	81	78	96.3	81	78	96.3
Regional Express	168	160	95.2	167	159	95.2
All Airlines	249	238	95.6	248	237	95.6
Relates to services to and from Adelaide only.						
Port Macquarie						
QantasLink	96	84	87.5	97	87	89.7
Virgin Australia	42	37	88.1	42	35	83.3
All Airlines	138	121	87.7	139	122	87.8
Relates to services to and from Sydney only.						
Proserpine						
Jetstar	25	24	96.0	25	20	80.0
Virgin Australia	34	32	94.1	34	30	88.2
All Airlines	59	56	94.9	59	50	84.7
Relates to services to and from Brisbane only.						
Rockhampton						
QantasLink	153	132	86.3	157	139	88.5
Virgin Australia	106	84	79.2	105	90	85.7
All Airlines	259	216	83.4	262	229	87.4
Relates to services to and from Brisbane only.						

Airport	Arrivals			Departures		
	Sectors Flown	On Time		Sectors Flown	On Time	
		No.	%		No.	%
Sunshine Coast						
Jetstar	99	78	78.8	100	62	62.0
QantasLink	51	39	76.5	52	40	76.9
Virgin Australia	103	82	79.6	103	76	73.8
All Airlines	253	199	78.7	255	178	69.8

Relates to services to and from Melbourne and Sydney.

Sydney

Jetstar	1 002	788	78.6	995	810	81.4
Qantas	1 782	1 512	84.8	1 790	1 515	84.6
QantasLink	1 252	1 046	83.5	1 259	1 029	81.7
Regional Express	364	287	78.8	357	310	86.8
Virgin Australia	1 850	1 522	82.3	1 859	1 527	82.1
All Airlines	6 250	5 155	82.5	6 260	5 191	82.9

Relates to services to and from Adelaide, Albury, Armidale, Ayers Rock, Ballina, Brisbane, Cairns, Canberra, Coffs Harbour, Darwin, Dubbo, Gold Coast, Hamilton Island, Hobart, Launceston, Melbourne, Perth, Port Macquarie, Sunshine Coast, Tamworth, Townsville and Wagga Wagga.

Tamworth

QantasLink	116	90	77.6	113	92	81.4
Virgin Australia	42	33	78.6	42	36	85.7
All Airlines	158	123	77.8	155	128	82.6

Relates to services to and from Sydney only.

Townsville

Jetstar	51	43	84.3	51	39	76.5
Qantas	37	34	91.9	37	36	97.3
QantasLink	225	201	89.3	223	191	85.7
Regional Express	13	11	84.6	13	12	92.3
Virgin Australia	121	105	86.8	122	111	91.0
All Airlines	447	394	88.1	446	389	87.2

Relates to services to and from Brisbane, Cairns and Sydney.

Wagga Wagga

QantasLink	88	76	86.4	88	79	89.8
Regional Express	103	89	86.4	105	88	83.8
All Airlines	191	165	86.4	193	167	86.5

Relates to services to and from Sydney only.

Definitions

On time arrival	A flight arrival is counted as "on time" if it arrived at the gate before 15 minutes after the scheduled arrival time shown in the carriers' schedule. Neither diverted nor cancelled flights count as on time.
On time departure	A flight departure is counted as "on time" if it departs the gate before 15 minutes after the scheduled departure time shown in the carriers' schedule.
Cancellation	A flight removed from service within 7 days of scheduled departure is regarded as a cancellation.
On time departure percentage	The percentage of on time departures is measured against the number of departures <i>operated</i> on any particular sector.
On time arrival percentage	The percentage of on time arrivals is measured against the number of arrivals <i>operated</i> on any particular sector.
Cancellation percentage	The percentage of cancellations is measured against the number of services <i>scheduled</i> on any particular sector.
