



Australian Government

**Department of Infrastructure, Transport,
Regional Development, Communications and the Arts**
Bureau of Infrastructure and Transport Research Economics

STATISTICAL REPORT



Aviation

**Domestic airline on time performance
June 2022**

© Commonwealth of Australia 2022

ISSN: 1832-0759

Ownership of intellectual property rights in this publication

Unless otherwise noted, copyright (and any other intellectual property rights, if any) in this publication is owned by the Commonwealth of Australia (referred to below as the Commonwealth).

Disclaimer

The material contained in this publication is made available on the understanding that the Commonwealth is not providing professional advice, and that users exercise their own skill and care with respect to its use, and seek independent advice if necessary.

The Commonwealth makes no representations or warranties as to the contents or accuracy of the information contained in this publication. To the extent permitted by law, the Commonwealth disclaims liability to any person or organisation in respect of anything done, or omitted to be done, in reliance upon information contained in this publication.

Creative Commons licence

With the exception of (a) the Coat of Arms; and (b) the Department of Infrastructure, Transport, Regional Development, Communications and the Arts' photos and graphics, copyright in this publication is licensed under a Creative Commons Attribution 3.0 Australia Licence.

Creative Commons Attribution 3.0 Australia Licence is a standard form licence agreement that allows you to copy, communicate and adapt this publication provided that you attribute the work to the Commonwealth and abide by the other licence terms. A summary of the licence terms is available from <http://creativecommons.org/licenses/by/3.0/au/deed.en>. The full licence terms are available from <http://creativecommons.org/licenses/by/3.0/au/legalcode>.

Use of the Coat of Arms

The Department of the Prime Minister and Cabinet sets the terms under which the Coat of Arms is used. Please refer to the Department's Commonwealth Coat of Arms and Government branding web page <http://www.dpmc.gov.au/guidelines/index.cfm#brand> and, in particular, the Guidelines on the use of the Commonwealth Coat of Arms publication.

An appropriate citation for this report is:

Bureau of Infrastructure and Transport Research Economics (BITRE), 2022, Domestic airline on time performance, Statistical Report, BITRE, Canberra ACT.

Contact us

This publication is available in PDF format. All other rights are reserved, including in relation to any Departmental logos or trade marks which may exist. For enquiries regarding the licence and any use of this publication, please contact:

Bureau of Infrastructure and Transport Research Economics (BITRE)
Department of Infrastructure, Transport, Regional Development, Communications and the Arts
GPO Box 501, Canberra ACT 2601, Australia
Telephone: (international) +61 2 6274 7210
Fax: (international) +61 2 6274 6855
Email: bitre@infrastructure.gov.au
Website: www.bitre.gov.au

Inquiries

Should you require additional information about the statistics contained in this publication:

Telephone (02) 6274 7790 or Facsimile (02) 6274 7727

Electronic mail: AVSTATS@infrastructure.gov.au

Web site: <http://www.bitre.gov.au/statistics/aviation/otphome.aspx>

Foreword

The Bureau of Infrastructure and Transport Research Economics (BITRE) monitors the punctuality and reliability of major domestic airlines operating between Australian airports. The purpose of this is to allow for evaluation of overall industry and individual airline performance, so that consumers of air travel can make informed decisions.

The following domestic airlines currently report this information monthly to the BITRE: Jetstar, Qantas, QantasLink, Rex Airlines, Virgin Australia and Virgin Australia Regional Airlines.

Data has been gathered since November 2003, although some airlines commenced reporting at a later date, including Jetstar which first reported in May 2004, MacAir in July 2005, Tigerair Australia in April 2008 and Virgin Australia Regional Airlines in May 2013. MacAir ceased operations in February 2009 and data was not received for December 2008 onwards. Tigerair Australia ceased operations in March 2020 and data was not received for that month.

Virgin Blue was rebranded as Virgin Australia in May 2011 and Tiger Airways was rebranded as Tigerair Australia in July 2013 and time series data in Microsoft Excel spread sheet format on the BITRE website have been revised to reflect these changes. With effect from July 2021, Regional Express is reported as Rex Airlines.

Services operated by Skywest on behalf of Virgin Australia using ATR/F100 aircraft commenced in November 2011 and were shown separately as Virgin Australia – ATR/F100 Operations. Virgin Australia Regional Airlines commenced operations in May 2013. It was formed after the acquisition of Skywest by Virgin Australia and represented a combination of operations previously reported under Skywest and Virgin Australia – ATR/F100 Operations. In January 2016, Virgin Australia transferred their ATR fleet from Virgin Australia Regional Airlines to Virgin Australia.

Information presented in this report is for Australian domestic routes for which the passenger load averaged 8 000 or more passengers per month over the previous six months and where two or more airlines operated in competition on those routes. In order to present data for more routes during the period impacted by COVID-19, the passenger load restriction is not being applied. Data are presented for 58 routes in June 2022. Over time, routes which meet these criteria change as airline networks and traffic levels vary.

Participating airlines report their overall monthly network performance where this is possible.

Total industry figures encompass all services operated by reporting airlines only. These airlines collectively carried over 95 per cent of total domestic passengers (regular public transport only) in 2019.

The method of capturing on time performance varies between airlines utilising different recording systems. Jetstar and Qantas jet aircraft use Aircraft Communication Addressing and Reporting System (ACARS) to electronically measure on time performance. Rex Airlines, Virgin Australia, Virgin Australia Regional Airlines and the Qantas non-jet fleet record on time performance manually using records from pilots, gate agents and/or ground crews.

After initial data is collected, aggregate reports are reviewed by participating airlines prior to publication.

Reports and detailed time series data in Microsoft Excel spreadsheet format are available from the BITRE website at: <http://www.bitre.gov.au/statistics/aviation/otphome.aspx>

Contents

	Page
Industry performance	1
Individual routes	9
Airports.....	22
Definitions	28

Industry performance

For June 2022, on time performance over all routes operated by participating airlines (Jetstar, Qantas, QantasLink, Rex Airlines, Virgin Australia and Virgin Australia Regional Airlines) averaged 63.0 per cent for on time arrivals and 61.9 per cent for on time departures. The cancellation rate for the month was 5.8 per cent. These are the worst On Time Performance figures recorded since recording commenced in November 2003. April 2022 and May 2022 had the second worst and third worst On Time Performance figures. This month's figures were impacted by weather related events, congestion (Sectors Flown approaching levels recorded prior to COVID-19) and other COVID-19 related issues.

The equivalent figures for June 2021 were 84.0 per cent for on time arrivals and for on time departures and 24.5 per cent for cancellations.

This month's on time arrivals figure was significantly lower than the long term average performance for all routes (82.1 per cent) and the on time departures figure was also significantly lower than the long term average (83.3 per cent). The rate of cancellations was higher than the long term average of 2.1 per cent.

The Virgin Australia network (Virgin Australia and Virgin Australia Regional Airlines combined operations) recorded 61.8 per cent for on time arrivals while the Qantas network (Qantas and QantasLink combined operations) recorded 59.4 per cent. Virgin Australia achieved the highest on time arrivals among the major domestic airlines at 62.4 per cent followed by Jetstar at 59.5 per cent and Qantas at 59.1 per cent. Of the regional airlines, Rex Airlines recorded 80.0 per cent for on time arrivals, followed by QantasLink at 59.6 per cent and Virgin Australia Regional Airlines at 51.3 per cent.

The Virgin Australia network recorded 59.8 per cent for on time departures while the Qantas network recorded 58.7 per cent. Virgin Australia achieved the highest level of on time departures among the major domestic airlines for June 2022 at 60.4 per cent, followed by Qantas at 58.4 per cent and Jetstar at 55.7 per cent. Of the regional airlines, Rex Airlines recorded 82.7 per cent for on time departures, followed by QantasLink at 58.8 per cent and Virgin Australia Regional Airlines at 49.6 per cent.

Qantas recorded the highest percentage of cancellations (at 8.1 per cent) during the month, followed by QantasLink (at 7.0 per cent), Virgin Australia (at 5.8 per cent), Jetstar (at 5.5 per cent), Virgin Australia Regional Airlines (at 5.3 per cent) and Rex Airlines (at 0.7 per cent).

Airlines' on time performance varies across the routes they serve. Individual route data by specific airline for 58 routes are shown on pages 9-21.

Of the 58 routes which met the criteria for on time performance reporting in June 2022, the Adelaide-Alice Springs route had the highest percentage of on time arrivals (87.2 per cent) and the Adelaide-Canberra route had the highest percentage of on time departures (85.7 per cent). The Darwin-Melbourne route had the lowest percentage of on time arrivals (24.2 per cent) and the lowest percentage of on time departures (23.2 per cent).

Cancellations were highest on the Sydney-Melbourne route at 15.3 per cent, followed by the Melbourne-Sydney route at 14.9 per cent, the Sydney-Canberra route at 11.1 per cent, the Canberra-Sydney route at 10.7 per cent and the Canberra-Melbourne route at 10.5 per cent.

Alice Springs Airport recorded the highest percentage of on time arrivals (87.2 per cent) and Armidale Airport recorded the highest percentage of on time departures (81.5 per cent). Mildura Airport recorded the lowest percentage of on time arrivals (47.2 per cent) and Broome Airport recorded the lowest percentage of on time departures (30.1 per cent). These figures only refer to reported routes and do not cover all flights at these airports.

Table 1 On time performance for June 2022 — Total Industry

	<i>Sectors</i>		<i>Arrivals On Time</i>		<i>Departures On Time</i>		<i>Cancellations</i>	
	<i>Scheduled</i>	<i>Flown</i>	<i>No.</i>	<i>%</i>	<i>No.</i>	<i>%</i>	<i>No.</i>	<i>%</i>
Jetstar	6 779	6 407	3 815	59.5	3 570	55.7	372	5.5
Qantas - all QF designated services	19 909	18 422	10 945	59.4	10 806	58.7	1 487	7.5
Rex Airlines	5 971	5 931	4 743	80.0	4 902	82.7	40	0.7
Virgin Australia - all VA designated services	11 984	11 293	6 977	61.8	6 757	59.8	691	5.8
All Airlines	44 643	42 053	26 480	63.0	26 035	61.9	2 590	5.8
Individual operating entities								
Qantas	8 210	7 547	4 461	59.1	4 407	58.4	663	8.1
QantasLink	11 699	10 875	6 484	59.6	6 399	58.8	824	7.0
Virgin Australia	11 366	10 708	6 677	62.4	6 467	60.4	658	5.8
Virgin Australia Regional Airlines	618	585	300	51.3	290	49.6	33	5.3

Total airline network data (including routes not shown in this report).

Airlines' on time performance varies across the routes they serve. Individual route data by specific airline are shown on page 9 and onwards.

Table 2 Top ten routes for on time performance for June 2022 (participating airlines only)

<i>Arrivals</i>		<i>Departures</i>	
<i>Route</i>	<i>On Time (%)</i>	<i>Route</i>	<i>On Time (%)</i>
Adelaide-Alice Springs	87.2	Adelaide-Canberra	85.7
Cairns-Townsville	84.2	Cairns-Townsville	84.9
Brisbane-Hamilton Island	80.0	Adelaide-Alice Springs	84.6
Sydney-Coffs Harbour	79.9	Adelaide-Port Lincoln	81.6
Port Lincoln-Adelaide	79.7	Armidale-Sydney	81.5
Sydney-Armidale	79.0	Port Lincoln-Adelaide	80.3
Adelaide-Canberra	77.9	Brisbane-Hamilton Island	80.0
Adelaide-Gold Coast	77.8	Brisbane-Emerald	78.9
Townsville-Cairns	77.8	Port Macquarie-Sydney	78.2
Newcastle-Brisbane	77.2	Adelaide-Gold Coast	77.8

Table 3 Top ten airports for on time performance for June 2022 (participating airlines and reported routes only)

<i>Arrivals</i>		<i>Departures</i>	
<i>Airport</i>	<i>On Time (%)</i>	<i>Airport</i>	<i>On Time (%)</i>
Alice Springs	87.2	Armidale	81.5
Coffs Harbour	79.9	Port Lincoln	80.3
Armidale	79.0	Port Macquarie	78.2
Port Lincoln	77.1	Coffs Harbour	75.6
Emerald	76.7	Gladstone	71.4
Albury	76.4	Albury	71.2
Port Macquarie	74.3	Dubbo	71.2
Newman	74.1	Wagga Wagga	70.4
Hamilton Island	72.5	Emerald	69.9
Townsville	69.6	Townsville	69.2

Total industry on time performance

Figure 1 On time performance (by month from June 2019)—Total Industry

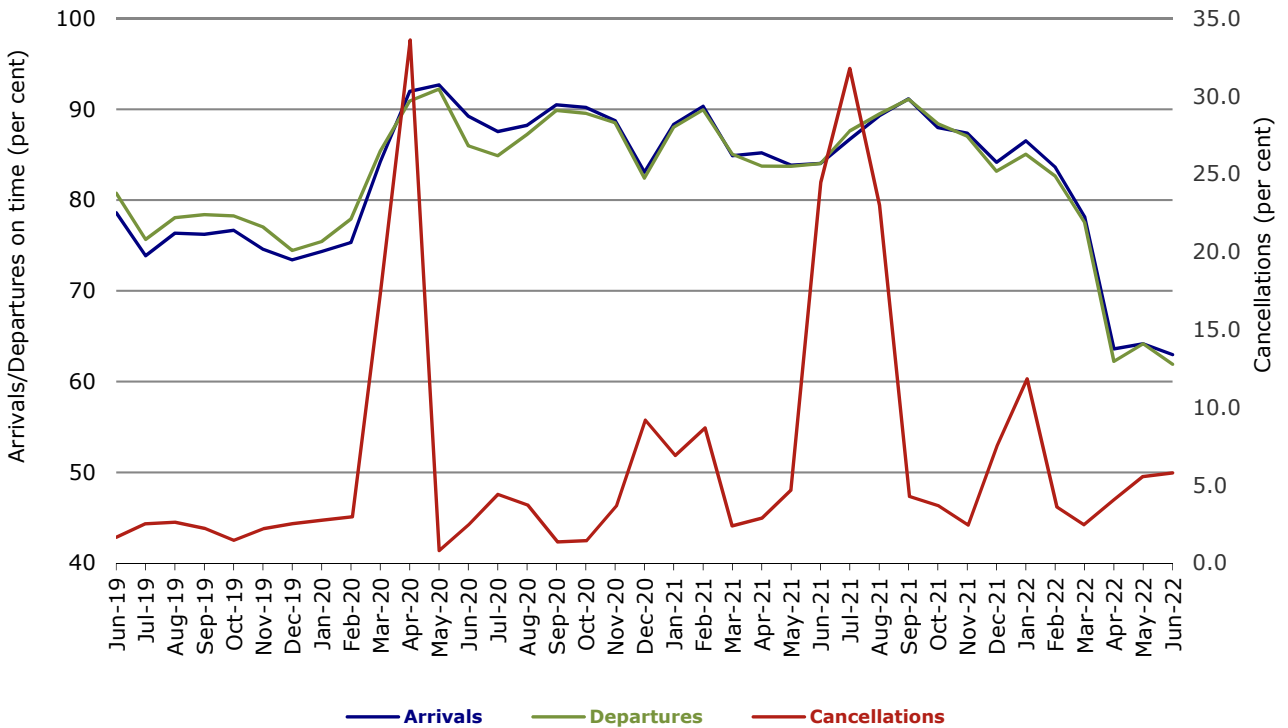
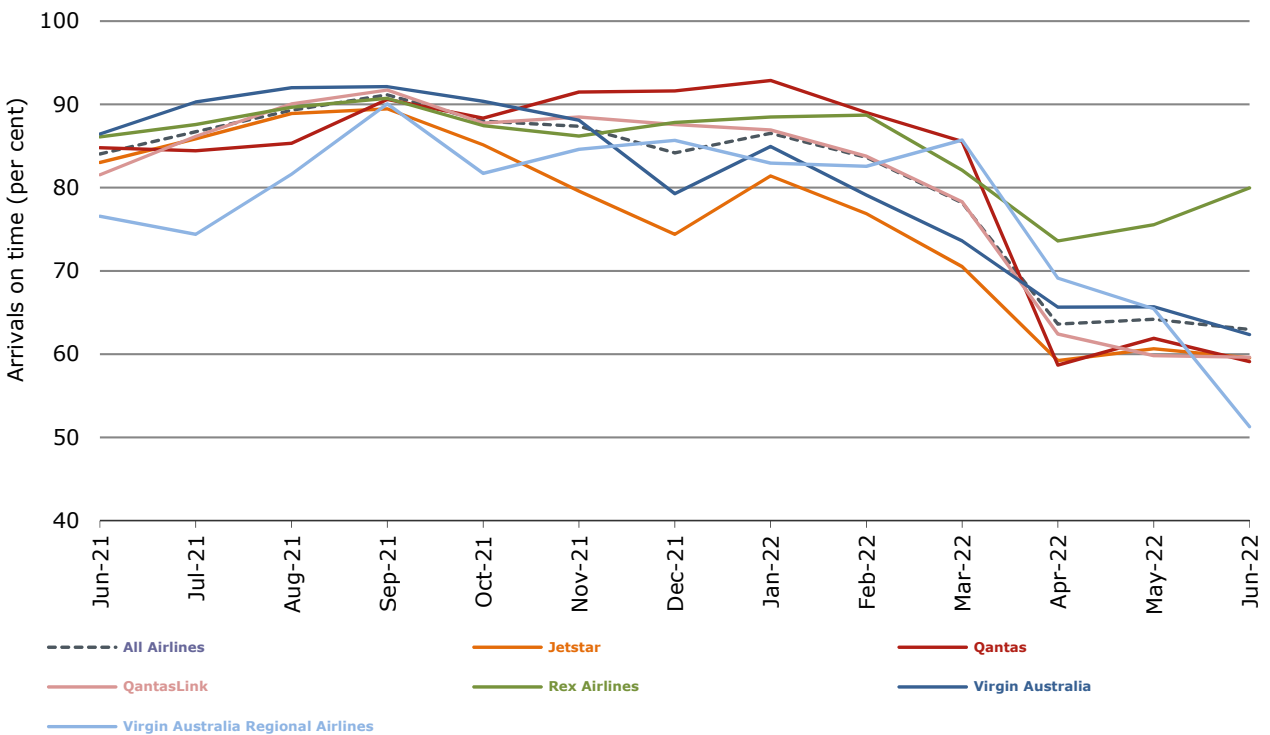
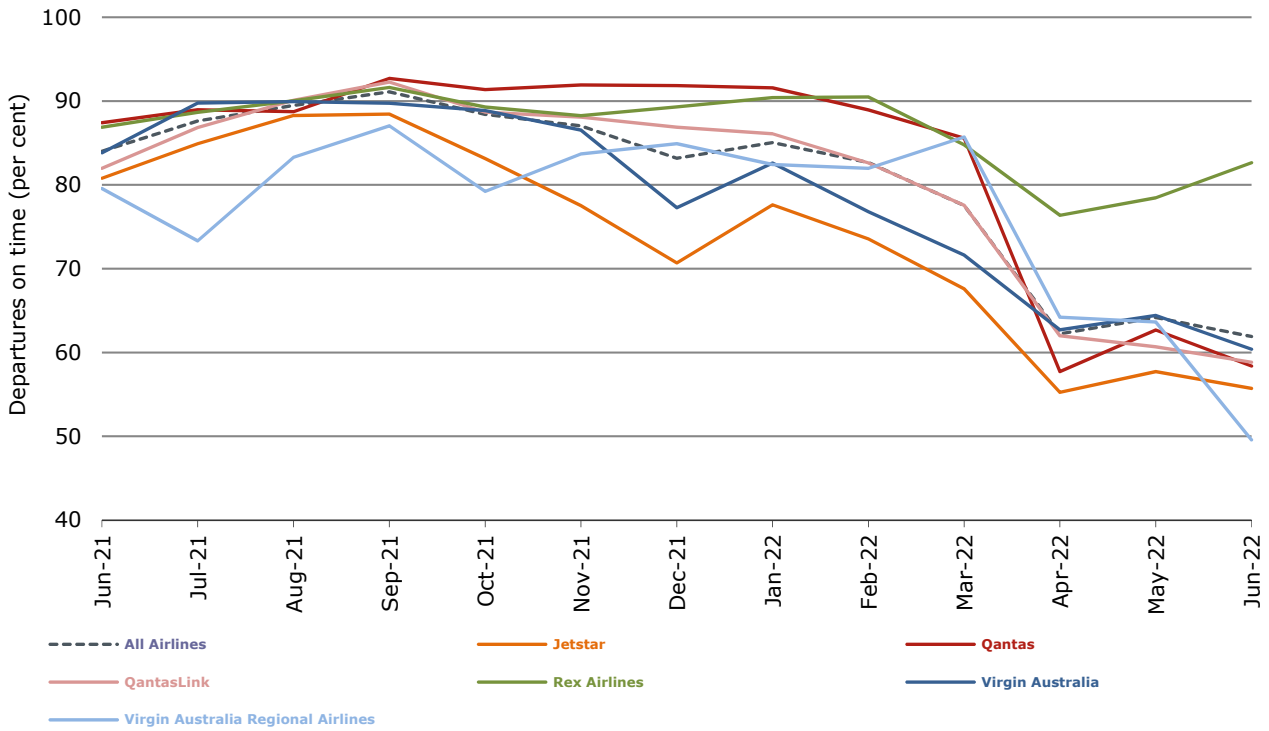


Figure 2 Arrivals on time (by month from June 2021)



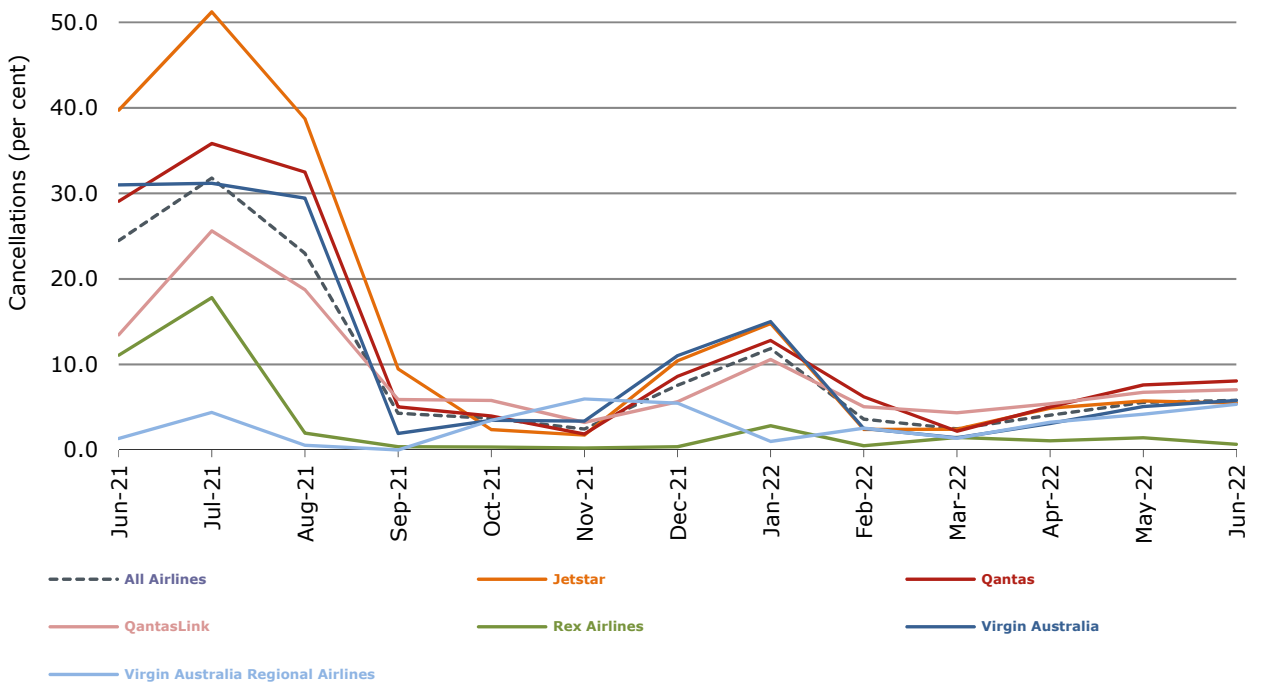
With effect from July 2021, Regional Express is reported as Rex Airlines

Figure 3 Departures on time (by month from June 2021)



With effect from July 2021, Regional Express is reported as Rex Airlines

Figure 4 Cancellations (by month from June 2021)



With effect from July 2021, Regional Express is reported as Rex Airlines

Major domestic airlines on time performance

Figure 5 On time performance (by month from June 2019)—Jetstar

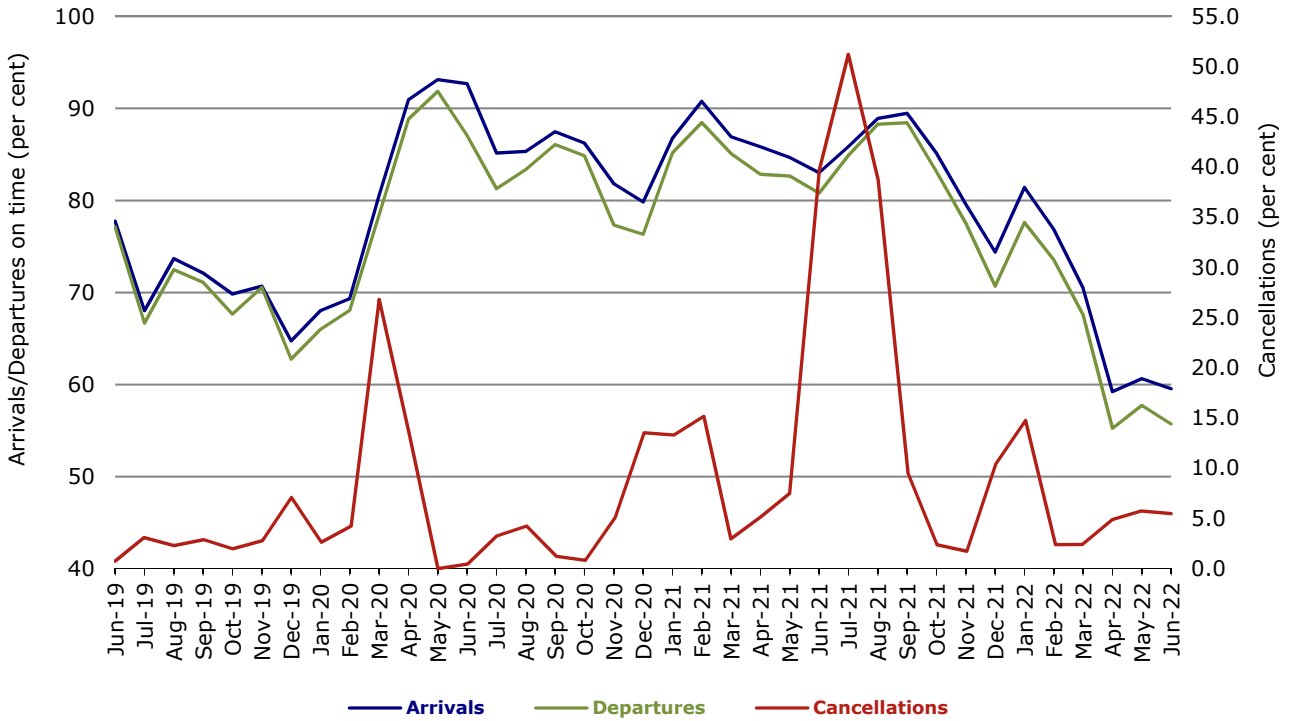


Figure 6 On time performance (by month from June 2019)—Qantas

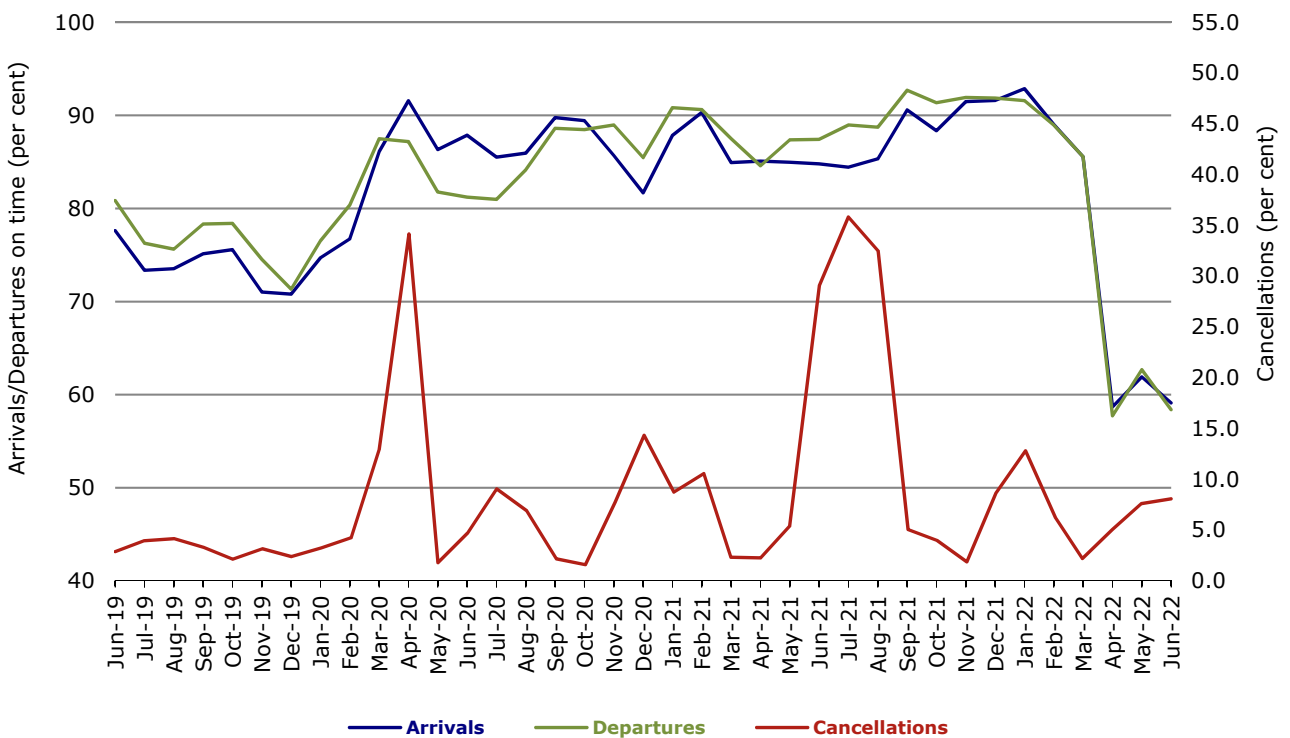
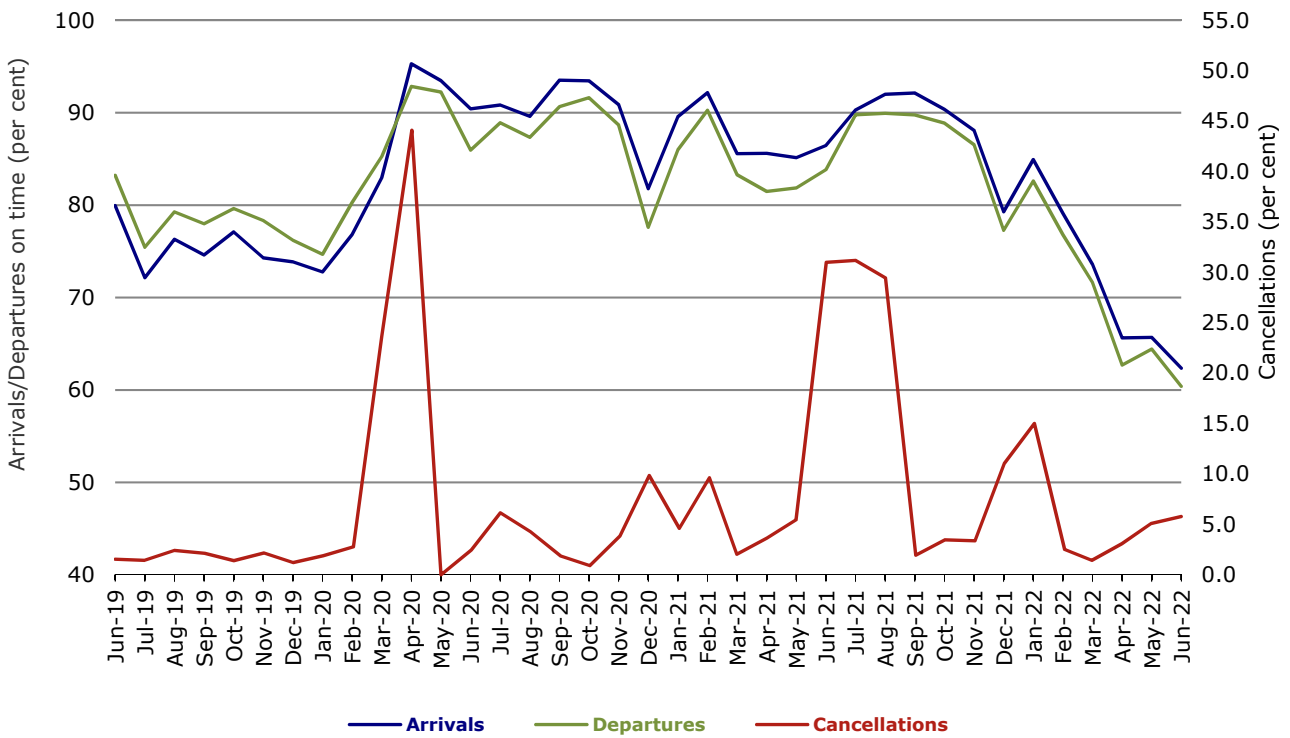


Figure 7 On time performance (by month from June 2019)—Virgin Australia



Major regional airlines on time performance

Figure 8 On time performance (by month from June 2019)—QantasLink

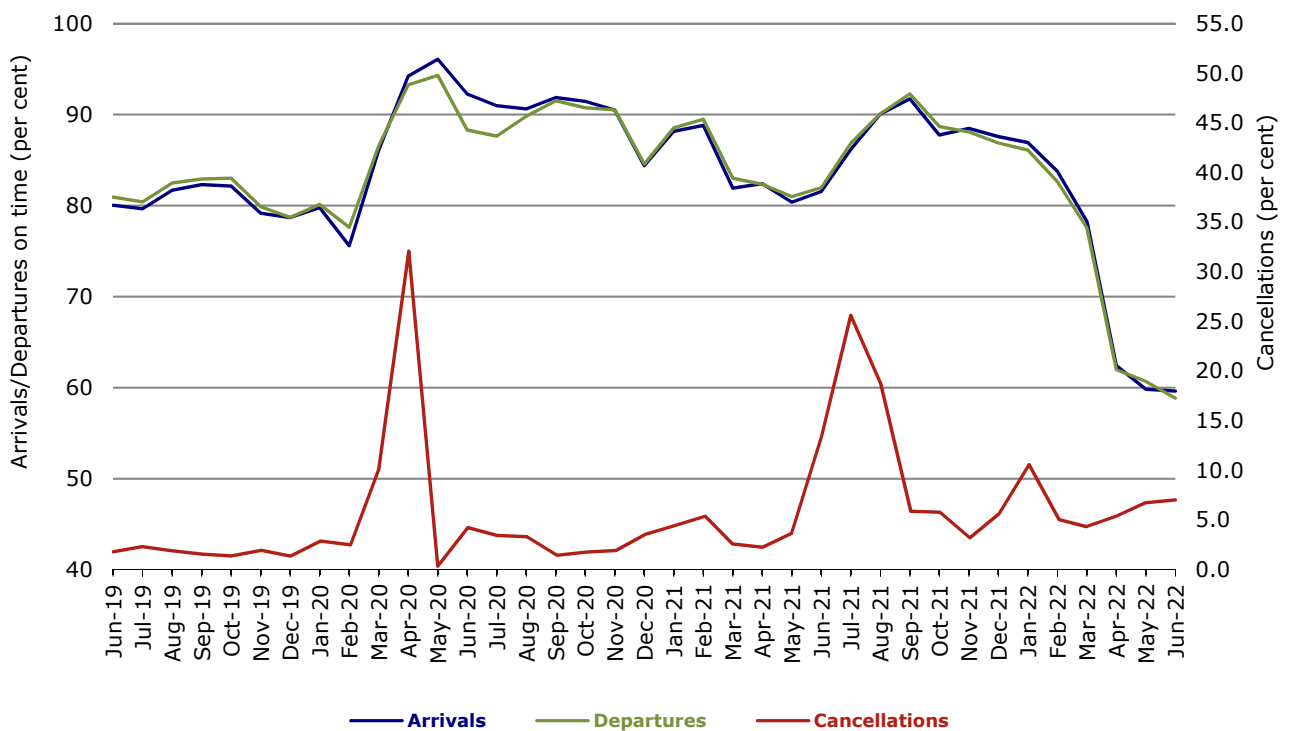
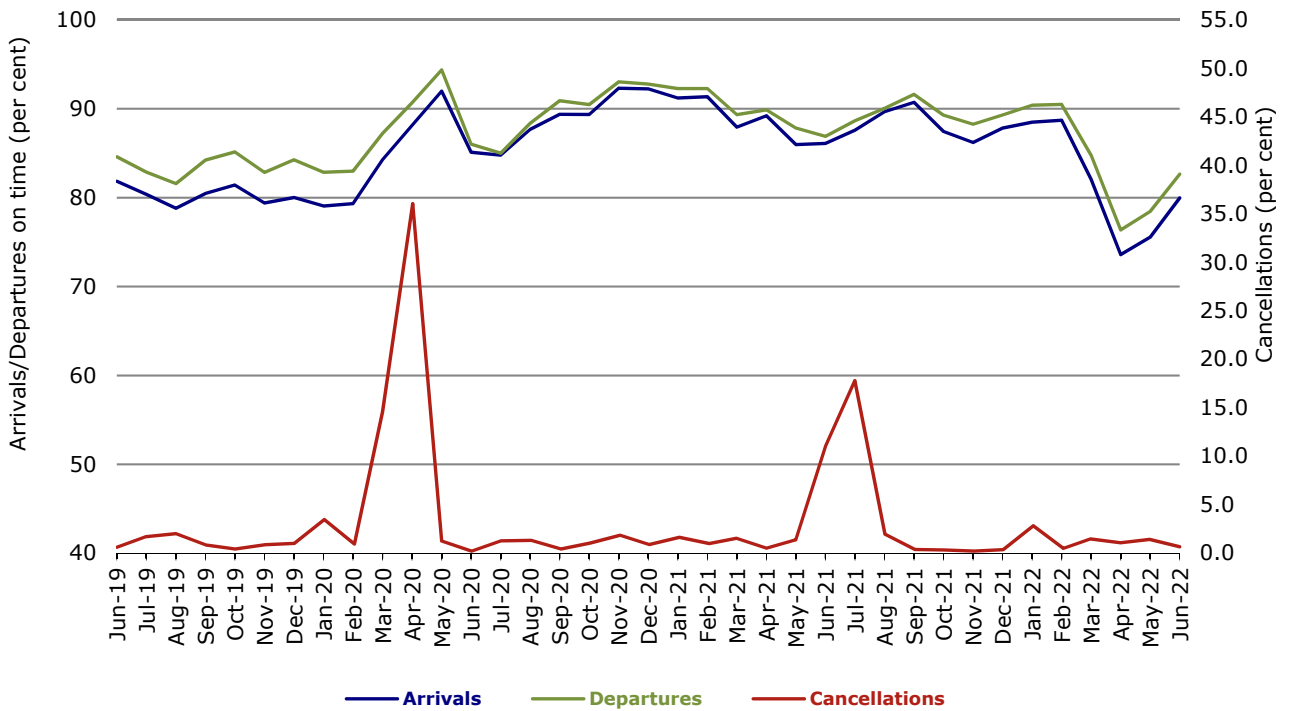
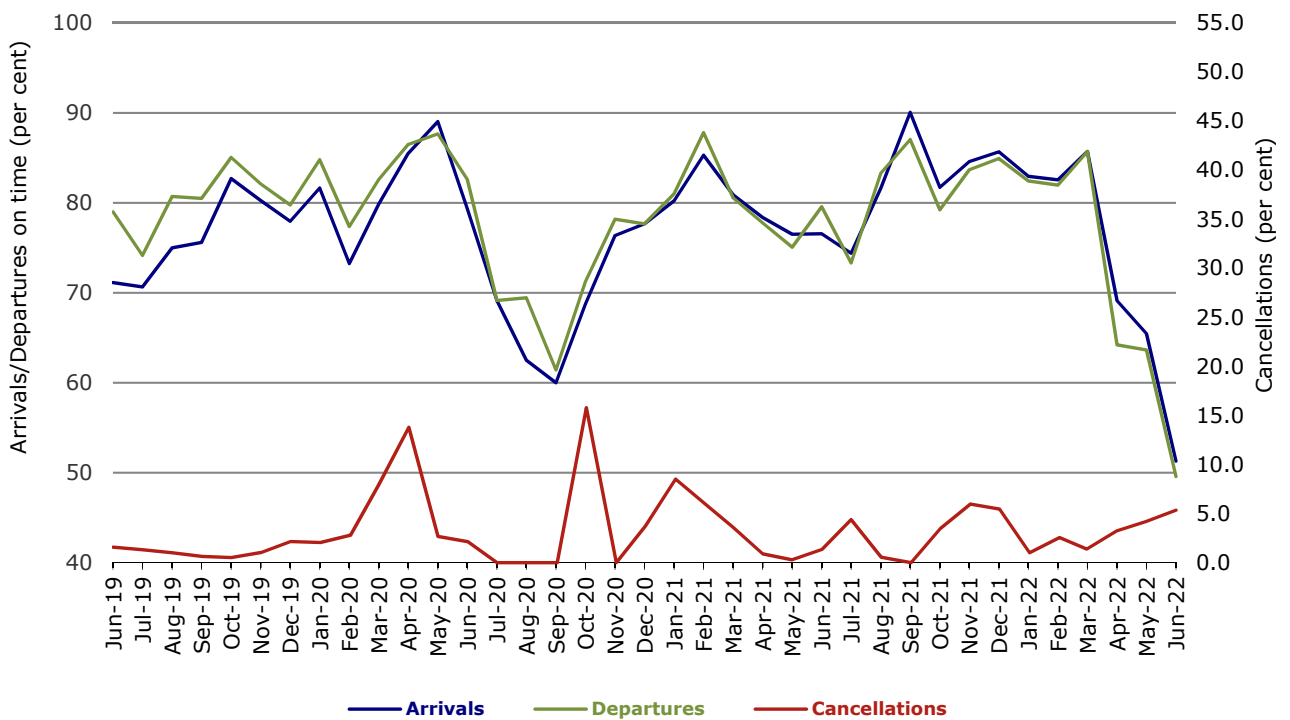


Figure 9 On time performance (by month from June 2019)—Rex Airlines



With effect from July 2021, Regional Express is reported as Rex Airlines

Figure 10 On time performance (by month from June 2019) Virgin Australia Regional Airlines



Individual routes

On time performance is reported for all routes where the passenger load averages over 8000 passengers per month over the previous six months, and where two or more airlines operate in competition on those routes. In order to present data for more routes during the period impacted by COVID-19, the passenger load restriction is not being applied. There are now 58 routes for which data are presented.

	<i>Sectors</i>		<i>Arrivals On Time</i>		<i>Departures On Time</i>		<i>Cancellations</i>	
	<i>Sched.</i>	<i>Flown</i>	<i>No.</i>	<i>%</i>	<i>No.</i>	<i>%</i>	<i>No.</i>	<i>%</i>
Adelaide-Alice Springs								
Qantas	27	26	24	92.3	23	88.5	1	3.7
Virgin Australia	13	13	10	76.9	10	76.9	0	0.0
All Airlines	40	39	34	87.2	33	84.6	1	2.5
Adelaide-Brisbane								
Jetstar	30	30	23	76.7	21	70.0	0	0.0
Qantas	50	50	35	70.0	35	70.0	0	0.0
QantasLink	71	71	32	45.1	32	45.1	0	0.0
Virgin Australia	100	96	86	89.6	78	81.3	4	4.0
All Airlines	251	247	176	71.3	166	67.2	4	1.6
Adelaide-Canberra								
QantasLink	62	61	46	75.4	53	86.9	1	1.6
Virgin Australia	16	16	14	87.5	13	81.3	0	0.0
All Airlines	78	77	60	77.9	66	85.7	1	1.3
Adelaide-Gold Coast								
Jetstar	25	25	18	72.0	18	72.0	0	0.0
Virgin Australia	30	29	24	82.8	24	82.8	1	3.3
All Airlines	55	54	42	77.8	42	77.8	1	1.8
Adelaide-Melbourne								
Jetstar	104	97	77	79.4	73	75.3	7	6.7
Qantas	239	220	159	72.3	154	70.0	19	7.9
QantasLink	13	13	7	53.8	7	53.8	0	0.0
Rex Airlines	39	39	37	94.9	37	94.9	0	0.0
Virgin Australia	275	260	134	51.5	125	48.1	15	5.5
All Airlines	670	629	414	65.8	396	63.0	41	6.1
Adelaide-Perth								
Jetstar	27	26	17	65.4	20	76.9	1	3.7
Qantas	96	95	64	67.4	76	80.0	1	1.0
Virgin Australia	1	0	0	na	0	na	1	100.0
Virgin Australia Regional Airlines	55	51	24	47.1	19	37.3	4	7.3
All Airlines	179	172	105	61.0	115	66.9	7	3.9
Adelaide-Port Lincoln								
QantasLink	138	136	106	77.9	108	79.4	2	1.4
Rex Airlines	174	174	133	76.4	145	83.3	0	0.0
All Airlines	312	310	239	77.1	253	81.6	2	0.6
Adelaide-Sydney								
Jetstar	95	90	55	61.1	51	56.7	5	5.3
Qantas	227	216	123	56.9	127	58.8	11	4.8
Virgin Australia	131	126	80	63.5	77	61.1	5	3.8
All Airlines	453	432	258	59.7	255	59.0	21	4.6

	<i>Sectors</i>		<i>Arrivals On Time</i>		<i>Departures On Time</i>		<i>Cancellations</i>	
	<i>Sched.</i>	<i>Flown</i>	<i>No.</i>	<i>%</i>	<i>No.</i>	<i>%</i>	<i>No.</i>	<i>%</i>
Albury-Sydney								
QantasLink	94	87	45	51.7	42	48.3	7	7.4
Rex Airlines	104	104	93	89.4	94	90.4	0	0.0
All Airlines	198	191	138	72.3	136	71.2	7	3.5
Alice Springs-Adelaide								
Qantas	27	26	18	69.2	20	76.9	1	3.7
Virgin Australia	13	13	3	23.1	3	23.1	0	0.0
All Airlines	40	39	21	53.8	23	59.0	1	2.5
Armidale-Sydney								
QantasLink	90	85	67	78.8	69	81.2	5	5.6
Rex Airlines	77	77	54	70.1	63	81.8	0	0.0
All Airlines	167	162	121	74.7	132	81.5	5	3.0
Ballina-Sydney								
Jetstar	73	69	48	69.6	48	69.6	4	5.5
QantasLink	105	89	35	39.3	44	49.4	16	15.2
Rex Airlines	26	26	18	69.2	21	80.8	0	0.0
Virgin Australia	69	61	39	63.9	42	68.9	8	11.6
All Airlines	273	245	140	57.1	155	63.3	28	10.3
Brisbane-Adelaide								
Jetstar	30	30	19	63.3	12	40.0	0	0.0
Qantas	50	50	37	74.0	34	68.0	0	0.0
QantasLink	71	70	33	47.1	37	52.9	1	1.4
Virgin Australia	100	96	83	86.5	74	77.1	4	4.0
All Airlines	251	246	172	69.9	157	63.8	5	2.0
Brisbane-Cairns								
Jetstar	80	74	31	41.9	36	48.6	6	7.5
Qantas	100	100	56	56.0	59	59.0	0	0.0
QantasLink	31	30	9	30.0	17	56.7	1	3.2
Virgin Australia	139	138	69	50.0	73	52.9	1	0.7
All Airlines	350	342	165	48.2	185	54.1	8	2.3
Brisbane-Canberra								
Jetstar	21	20	15	75.0	11	55.0	1	4.8
Qantas	4	4	4	100.0	4	100.0	0	0.0
QantasLink	163	153	89	58.2	83	54.2	10	6.1
Virgin Australia	93	90	67	74.4	62	68.9	3	3.2
All Airlines	281	267	175	65.5	160	59.9	14	5.0
Brisbane-Darwin								
Jetstar	25	24	18	75.0	16	66.7	1	4.0
Qantas	63	62	38	61.3	36	58.1	1	1.6
Virgin Australia	40	40	28	70.0	32	80.0	0	0.0
All Airlines	128	126	84	66.7	84	66.7	2	1.6
Brisbane-Emerald								
QantasLink	109	107	81	75.7	85	79.4	2	1.8
Virgin Australia	26	26	21	80.8	20	76.9	0	0.0
All Airlines	135	133	102	76.7	105	78.9	2	1.5
Brisbane-Gladstone								
QantasLink	130	122	74	60.7	64	52.5	8	6.2
Virgin Australia	52	47	38	80.9	41	87.2	5	9.6
All Airlines	182	169	112	66.3	105	62.1	13	7.1

	Sectors		Arrivals On Time		Departures On Time		Cancellations	
	Sched.	Flown	No.	%	No.	%	No.	%
Brisbane-Hamilton Island								
Qantas	31	30	25	83.3	25	83.3	1	3.2
Virgin Australia	37	35	27	77.1	27	77.1	2	5.4
All Airlines	68	65	52	80.0	52	80.0	3	4.4
Brisbane-Hobart								
Jetstar	25	24	16	66.7	17	70.8	1	4.0
QantasLink	22	22	7	31.8	9	40.9	0	0.0
Virgin Australia	47	42	26	61.9	25	59.5	5	10.6
All Airlines	94	88	49	55.7	51	58.0	6	6.4
Brisbane-Mackay								
Jetstar	31	28	8	28.6	10	35.7	3	9.7
Qantas	104	101	80	79.2	81	80.2	3	2.9
QantasLink	9	8	5	62.5	6	75.0	1	11.1
Virgin Australia	128	126	90	71.4	85	67.5	2	1.6
All Airlines	272	263	183	69.6	182	69.2	9	3.3
Brisbane-Melbourne								
Jetstar	124	114	57	50.0	52	45.6	10	8.1
Qantas	369	341	222	65.1	216	63.3	28	7.6
Rex Airlines	43	42	33	78.6	37	88.1	1	2.3
Virgin Australia	331	311	136	43.7	136	43.7	20	6.0
All Airlines	867	808	448	55.4	441	54.6	59	6.8
Brisbane-Mount Isa								
Qantas	31	31	27	87.1	28	90.3	0	0.0
QantasLink	20	20	6	30.0	7	35.0	0	0.0
Virgin Australia	13	13	8	61.5	11	84.6	0	0.0
All Airlines	64	64	41	64.1	46	71.9	0	0.0
Brisbane-Newcastle								
Jetstar	52	48	40	83.3	39	81.3	4	7.7
QantasLink	109	101	63	62.4	63	62.4	8	7.3
Virgin Australia	82	81	56	69.1	67	82.7	1	1.2
All Airlines	243	230	159	69.1	169	73.5	13	5.3
Brisbane-Perth								
Jetstar	23	22	8	36.4	8	36.4	1	4.3
Qantas	154	150	98	65.3	104	69.3	4	2.6
Virgin Australia	91	89	67	75.3	53	59.6	2	2.2
All Airlines	268	261	173	66.3	165	63.2	7	2.6
Brisbane-Proserpine								
Jetstar	31	31	18	58.1	21	67.7	0	0.0
QantasLink	23	22	5	22.7	12	54.5	1	4.3
Virgin Australia	36	36	28	77.8	26	72.2	0	0.0
All Airlines	90	89	51	57.3	59	66.3	1	1.1
Brisbane-Rockhampton								
QantasLink	163	155	100	64.5	107	69.0	8	4.9
Virgin Australia	108	108	56	51.9	77	71.3	0	0.0
All Airlines	271	263	156	59.3	184	70.0	8	3.0
Brisbane-Sydney								
Jetstar	151	134	79	59.0	73	54.5	17	11.3
Qantas	574	518	350	67.6	354	68.3	56	9.8
Rex Airlines	69	69	62	89.9	67	97.1	0	0.0
Virgin Australia	508	457	276	60.4	252	55.1	51	10.0
All Airlines	1 302	1 178	767	65.1	746	63.3	124	9.5

	<i>Sectors</i>		<i>Arrivals On Time</i>		<i>Departures On Time</i>		<i>Cancellations</i>	
	<i>Sched.</i>	<i>Flown</i>	<i>No.</i>	<i>%</i>	<i>No.</i>	<i>%</i>	<i>No.</i>	<i>%</i>
Brisbane-Townsville								
Jetstar	60	60	36	60.0	43	71.7	0	0.0
Qantas	104	104	65	62.5	69	66.3	0	0.0
QantasLink	22	21	6	28.6	9	42.9	1	4.5
Virgin Australia	127	123	86	69.9	87	70.7	4	3.1
All Airlines	313	308	193	62.7	208	67.5	5	1.6
Broome-Perth								
Qantas	9	9	2	22.2	2	22.2	0	0.0
QantasLink	83	73	28	38.4	23	31.5	10	12.0
Virgin Australia	14	14	1	7.1	0	0.0	0	0.0
Virgin Australia Regional Airlines	51	50	23	46.0	19	38.0	1	2.0
All Airlines	157	146	54	37.0	44	30.1	11	7.0
Cairns-Brisbane								
Jetstar	77	75	38	50.7	37	49.3	2	2.6
Qantas	100	100	73	73.0	68	68.0	0	0.0
QantasLink	31	30	7	23.3	6	20.0	1	3.2
Virgin Australia	139	138	88	63.8	73	52.9	1	0.7
All Airlines	347	343	206	60.1	184	53.6	4	1.2
Cairns-Melbourne								
Jetstar	96	92	50	54.3	47	51.1	4	4.2
Qantas	50	50	13	26.0	26	52.0	0	0.0
Virgin Australia	78	75	12	16.0	22	29.3	3	3.8
All Airlines	224	217	75	34.6	95	43.8	7	3.1
Cairns-Sydney								
Jetstar	89	87	56	64.4	53	60.9	2	2.2
Qantas	75	75	32	42.7	36	48.0	0	0.0
Virgin Australia	75	72	36	50.0	39	54.2	3	4.0
All Airlines	239	234	124	53.0	128	54.7	5	2.1
Cairns-Townsville								
QantasLink	138	133	111	83.5	112	84.2	5	3.6
Rex Airlines	13	13	12	92.3	12	92.3	0	0.0
All Airlines	151	146	123	84.2	124	84.9	5	3.3
Canberra-Adelaide								
QantasLink	62	60	42	70.0	39	65.0	2	3.2
Virgin Australia	16	16	13	81.3	12	75.0	0	0.0
All Airlines	78	76	55	72.4	51	67.1	2	2.6
Canberra-Brisbane								
Jetstar	21	20	10	50.0	10	50.0	1	4.8
Qantas	4	4	2	50.0	1	25.0	0	0.0
QantasLink	162	152	85	55.9	86	56.6	10	6.2
Virgin Australia	93	90	68	75.6	65	72.2	3	3.2
All Airlines	280	266	165	62.0	162	60.9	14	5.0
Canberra-Melbourne								
QantasLink	283	241	104	43.2	108	44.8	42	14.8
Rex Airlines	30	30	26	86.7	28	93.3	0	0.0
Virgin Australia	133	128	70	54.7	74	57.8	5	3.8
All Airlines	446	399	200	50.1	210	52.6	47	10.5
Canberra-Sydney								
QantasLink	495	418	279	66.7	277	66.3	77	15.6
Virgin Australia	251	248	214	86.3	207	83.5	3	1.2
All Airlines	746	666	493	74.0	484	72.7	80	10.7

	<i>Sectors</i>		<i>Arrivals On Time</i>		<i>Departures On Time</i>		<i>Cancellations</i>	
	<i>Sched.</i>	<i>Flown</i>	<i>No.</i>	<i>%</i>	<i>No.</i>	<i>%</i>	<i>No.</i>	<i>%</i>
Coffs Harbour-Sydney								
QantasLink	112	107	75	70.1	73	68.2	5	4.5
Rex Airlines	86	86	65	75.6	73	84.9	0	0.0
All Airlines	198	193	140	72.5	146	75.6	5	2.5
Darwin-Brisbane								
Jetstar	24	22	12	54.5	12	54.5	2	8.3
Qantas	63	62	29	46.8	21	33.9	1	1.6
Virgin Australia	40	40	24	60.0	18	45.0	0	0.0
All Airlines	127	124	65	52.4	51	41.1	3	2.4
Darwin-Melbourne								
Jetstar	24	23	2	8.7	3	13.0	1	4.2
Qantas	39	39	14	35.9	13	33.3	0	0.0
Virgin Australia	38	37	8	21.6	7	18.9	1	2.6
All Airlines	101	99	24	24.2	23	23.2	2	2.0
Darwin-Perth								
Qantas	6	6	2	33.3	6	100.0	0	0.0
QantasLink	31	31	9	29.0	7	22.6	0	0.0
Virgin Australia Regional Airlines	25	21	6	28.6	4	19.0	4	16.0
All Airlines	62	58	17	29.3	17	29.3	4	6.5
Darwin-Sydney								
Jetstar	26	26	16	61.5	5	19.2	0	0.0
Qantas	38	38	6	15.8	1	2.6	0	0.0
Virgin Australia	25	24	23	95.8	18	75.0	1	4.0
All Airlines	89	88	45	51.1	24	27.3	1	1.1
Dubbo-Sydney								
QantasLink	86	85	58	68.2	56	65.9	1	1.2
Rex Airlines	107	106	74	69.8	80	75.5	1	0.9
All Airlines	193	191	132	69.1	136	71.2	2	1.0
Emerald-Brisbane								
QantasLink	109	107	78	72.9	76	71.0	2	1.8
Virgin Australia	26	26	19	73.1	17	65.4	0	0.0
All Airlines	135	133	97	72.9	93	69.9	2	1.5
Gladstone-Brisbane								
QantasLink	129	121	82	67.8	84	69.4	8	6.2
Virgin Australia	52	47	29	61.7	36	76.6	5	9.6
All Airlines	181	168	111	66.1	120	71.4	13	7.2
Gold Coast-Adelaide								
Jetstar	25	25	18	72.0	16	64.0	0	0.0
Virgin Australia	30	29	16	55.2	19	65.5	1	3.3
All Airlines	55	54	34	63.0	35	64.8	1	1.8
Gold Coast-Melbourne								
Jetstar	219	209	119	56.9	110	52.6	10	4.6
Qantas	13	13	3	23.1	2	15.4	0	0.0
QantasLink	69	60	27	45.0	21	35.0	9	13.0
Rex Airlines	45	43	22	51.2	32	74.4	2	4.4
Virgin Australia	299	285	175	61.4	162	56.8	14	4.7
All Airlines	645	610	346	56.7	327	53.6	35	5.4

	<i>Sectors</i>		<i>Arrivals On Time</i>		<i>Departures On Time</i>		<i>Cancellations</i>	
	<i>Sched.</i>	<i>Flown</i>	<i>No.</i>	<i>%</i>	<i>No.</i>	<i>%</i>	<i>No.</i>	<i>%</i>
Gold Coast-Sydney								
Jetstar	266	235	167	71.1	163	69.4	31	11.7
Qantas	53	53	34	64.2	36	67.9	0	0.0
QantasLink	53	46	24	52.2	25	54.3	7	13.2
Rex Airlines	38	37	31	83.8	30	81.1	1	2.6
Virgin Australia	349	321	216	67.3	214	66.7	28	8.0
All Airlines	759	692	472	68.2	468	67.6	67	8.8
Hamilton Island-Brisbane								
Qantas	31	29	17	58.6	17	58.6	2	6.5
Virgin Australia	37	35	24	68.6	19	54.3	2	5.4
All Airlines	68	64	41	64.1	36	56.3	4	5.9
Hamilton Island-Sydney								
Jetstar	20	20	11	55.0	7	35.0	0	0.0
Qantas	29	29	15	51.7	15	51.7	0	0.0
Virgin Australia	30	28	16	57.1	14	50.0	2	6.7
All Airlines	79	77	42	54.5	36	46.8	2	2.5
Hobart-Brisbane								
Jetstar	26	24	9	37.5	9	37.5	2	7.7
QantasLink	22	22	11	50.0	6	27.3	0	0.0
Virgin Australia	47	42	19	45.2	19	45.2	5	10.6
All Airlines	95	88	39	44.3	34	38.6	7	7.4
Hobart-Melbourne								
Jetstar	128	124	70	56.5	66	53.2	4	3.1
Qantas	13	13	7	53.8	7	53.8	0	0.0
QantasLink	104	95	50	52.6	46	48.4	9	8.7
Virgin Australia	138	137	64	46.7	73	53.3	1	0.7
All Airlines	383	369	191	51.8	192	52.0	14	3.7
Hobart-Sydney								
Jetstar	73	71	37	52.1	38	53.5	2	2.7
Qantas	4	4	2	50.0	2	50.0	0	0.0
QantasLink	80	76	34	44.7	43	56.6	4	5.0
Virgin Australia	80	72	48	66.7	50	69.4	8	10.0
All Airlines	237	223	121	54.3	133	59.6	14	5.9
Kalgoorlie-Perth								
Qantas	9	9	4	44.4	1	11.1	0	0.0
QantasLink	65	60	27	45.0	23	38.3	5	7.7
Virgin Australia	27	27	11	40.7	7	25.9	0	0.0
Virgin Australia Regional Airlines	37	35	18	51.4	14	40.0	2	5.4
All Airlines	138	131	60	45.8	45	34.4	7	5.1
Karratha-Perth								
Qantas	16	15	11	73.3	9	60.0	1	6.3
QantasLink	132	127	77	60.6	69	54.3	5	3.8
Virgin Australia	18	18	6	33.3	4	22.2	0	0.0
Virgin Australia Regional Airlines	34	34	12	35.3	17	50.0	0	0.0
All Airlines	200	194	106	54.6	99	51.0	6	3.0
Launceston-Melbourne								
Jetstar	87	83	37	44.6	35	42.2	4	4.6
QantasLink	111	100	29	29.0	34	34.0	11	9.9
Virgin Australia	100	98	72	73.5	80	81.6	2	2.0
All Airlines	298	281	138	49.1	149	53.0	17	5.7

	<i>Sectors</i>		<i>Arrivals On Time</i>		<i>Departures On Time</i>		<i>Cancellations</i>	
	<i>Sched.</i>	<i>Flown</i>	<i>No.</i>	<i>%</i>	<i>No.</i>	<i>%</i>	<i>No.</i>	<i>%</i>
Launceston-Sydney								
Jetstar	34	34	17	50.0	17	50.0	0	0.0
QantasLink	15	14	6	42.9	6	42.9	1	6.7
Virgin Australia	30	29	19	65.5	22	75.9	1	3.3
All Airlines	79	77	42	54.5	45	58.4	2	2.5
Mackay-Brisbane								
Jetstar	31	28	4	14.3	5	17.9	3	9.7
Qantas	104	103	69	67.0	74	71.8	1	1.0
QantasLink	14	10	9	90.0	9	90.0	4	28.6
Virgin Australia	128	125	101	80.8	83	66.4	3	2.3
All Airlines	277	266	183	68.8	171	64.3	11	4.0
Melbourne-Adelaide								
Jetstar	104	98	76	77.6	68	69.4	6	5.8
Qantas	238	220	118	53.6	118	53.6	18	7.6
QantasLink	13	12	0	0.0	0	0.0	1	7.7
Rex Airlines	40	40	34	85.0	37	92.5	0	0.0
Virgin Australia	275	261	144	55.2	132	50.6	14	5.1
All Airlines	670	631	372	59.0	355	56.3	39	5.8
Melbourne-Brisbane								
Jetstar	125	115	51	44.3	49	42.6	10	8.0
Qantas	374	350	200	57.1	170	48.6	24	6.4
Rex Airlines	43	42	38	90.5	40	95.2	1	2.3
Virgin Australia	334	311	165	53.1	146	46.9	23	6.9
All Airlines	876	818	454	55.5	405	49.5	58	6.6
Melbourne-Cairns								
Jetstar	99	95	44	46.3	45	47.4	4	4.0
Qantas	50	50	28	56.0	22	44.0	0	0.0
Virgin Australia	77	75	36	48.0	33	44.0	2	2.6
All Airlines	226	220	108	49.1	100	45.5	6	2.7
Melbourne-Canberra								
QantasLink	284	242	105	43.4	93	38.4	42	14.8
Rex Airlines	30	30	27	90.0	27	90.0	0	0.0
Virgin Australia	133	129	81	62.8	76	58.9	4	3.0
All Airlines	447	401	213	53.1	196	48.9	46	10.3
Melbourne-Darwin								
Jetstar	24	23	8	34.8	13	56.5	1	4.2
Qantas	40	40	16	40.0	12	30.0	0	0.0
Virgin Australia	38	38	17	44.7	18	47.4	0	0.0
All Airlines	102	101	41	40.6	43	42.6	1	1.0
Melbourne-Gold Coast								
Jetstar	218	208	118	56.7	94	45.2	10	4.6
Qantas	13	13	5	38.5	3	23.1	0	0.0
QantasLink	69	61	30	49.2	30	49.2	8	11.6
Rex Airlines	45	43	33	76.7	33	76.7	2	4.4
Virgin Australia	299	285	182	63.9	161	56.5	14	4.7
All Airlines	644	610	368	60.3	321	52.6	34	5.3
Melbourne-Hobart								
Jetstar	127	123	72	58.5	67	54.5	4	3.1
Qantas	13	13	9	69.2	6	46.2	0	0.0
QantasLink	103	97	27	27.8	31	32.0	6	5.8
Virgin Australia	138	137	62	45.3	74	54.0	1	0.7
All Airlines	381	370	170	45.9	178	48.1	11	2.9

	Sectors		Arrivals On Time		Departures On Time		Cancellations	
	Sched.	Flown	No.	%	No.	%	No.	%
Melbourne-Launceston								
Jetstar	87	83	41	49.4	38	45.8	4	4.6
QantasLink	111	101	29	28.7	36	35.6	10	9.0
Virgin Australia	100	99	51	51.5	60	60.6	1	1.0
All Airlines	298	283	121	42.8	134	47.3	15	5.0
Melbourne-Mildura								
QantasLink	112	104	26	25.0	26	25.0	8	7.1
Rex Airlines	93	93	67	72.0	70	75.3	0	0.0
All Airlines	205	197	93	47.2	96	48.7	8	3.9
Melbourne-Newcastle								
Jetstar	60	57	35	61.4	32	56.1	3	5.0
QantasLink	52	47	21	44.7	20	42.6	5	9.6
Virgin Australia	30	30	18	60.0	16	53.3	0	0.0
All Airlines	142	134	74	55.2	68	50.7	8	5.6
Melbourne-Perth								
Jetstar	77	70	45	64.3	36	51.4	7	9.1
Qantas	178	177	71	40.1	64	36.2	1	0.6
Virgin Australia	131	128	79	61.7	63	49.2	3	2.3
All Airlines	386	375	195	52.0	163	43.5	11	2.8
Melbourne-Sunshine Coast								
Jetstar	67	67	47	70.1	39	58.2	0	0.0
QantasLink	59	55	16	29.1	19	34.5	4	6.8
Virgin Australia	101	92	64	69.6	57	62.0	9	8.9
All Airlines	227	214	127	59.3	115	53.7	13	5.7
Melbourne-Sydney								
Jetstar	372	341	196	57.5	174	51.0	31	8.3
Qantas	891	702	403	57.4	395	56.3	189	21.2
QantasLink	60	33	14	42.4	15	45.5	27	45.0
Rex Airlines	112	110	96	87.3	96	87.3	2	1.8
Virgin Australia	813	726	452	62.3	435	59.9	87	10.7
All Airlines	2 248	1 912	1 161	60.7	1 115	58.3	336	14.9
Mildura-Melbourne								
QantasLink	112	104	29	27.9	30	28.8	8	7.1
Rex Airlines	93	93	72	77.4	78	83.9	0	0.0
All Airlines	205	197	101	51.3	108	54.8	8	3.9
Mount Isa-Brisbane								
Qantas	31	31	26	83.9	24	77.4	0	0.0
QantasLink	20	20	11	55.0	7	35.0	0	0.0
Virgin Australia	13	13	8	61.5	7	53.8	0	0.0
All Airlines	64	64	45	70.3	38	59.4	0	0.0
Newcastle-Brisbane								
Jetstar	52	48	35	72.9	32	66.7	4	7.7
QantasLink	108	99	73	73.7	69	69.7	9	8.3
Virgin Australia	82	81	68	84.0	70	86.4	1	1.2
All Airlines	242	228	176	77.2	171	75.0	14	5.8
Newcastle-Melbourne								
Jetstar	60	57	32	56.1	28	49.1	3	5.0
QantasLink	52	49	26	53.1	29	59.2	3	5.8
Virgin Australia	30	30	15	50.0	17	56.7	0	0.0
All Airlines	142	136	73	53.7	74	54.4	6	4.2

	Sectors		Arrivals On Time		Departures On Time		Cancellations	
	Sched.	Flown	No.	%	No.	%	No.	%
Newman-Perth								
Qantas	40	37	28	75.7	29	78.4	3	7.5
QantasLink	79	75	41	54.7	49	65.3	4	5.1
Virgin Australia	19	19	11	57.9	13	68.4	0	0.0
Virgin Australia Regional Airlines	38	34	15	44.1	17	50.0	4	10.5
All Airlines	176	165	95	57.6	108	65.5	11	6.3
Perth-Adelaide								
Jetstar	28	26	9	34.6	5	19.2	2	7.1
Qantas	96	94	65	69.1	67	71.3	2	2.1
Virgin Australia	2	1	1	100.0	1	100.0	1	50.0
Virgin Australia Regional Airlines	55	51	31	60.8	30	58.8	4	7.3
All Airlines	181	172	106	61.6	103	59.9	9	5.0
Perth-Brisbane								
Jetstar	23	21	3	14.3	0	0.0	2	8.7
Qantas	151	147	110	74.8	99	67.3	4	2.6
Virgin Australia	91	90	65	72.2	47	52.2	1	1.1
All Airlines	265	258	178	69.0	146	56.6	7	2.6
Perth-Broome								
Qantas	9	9	8	88.9	6	66.7	0	0.0
QantasLink	83	75	53	70.7	40	53.3	8	9.6
Virgin Australia	14	14	4	28.6	1	7.1	0	0.0
Virgin Australia Regional Airlines	51	51	29	56.9	26	51.0	0	0.0
All Airlines	157	149	94	63.1	73	49.0	8	5.1
Perth-Darwin								
Qantas	6	6	6	100.0	4	66.7	0	0.0
QantasLink	31	31	14	45.2	14	45.2	0	0.0
Virgin Australia Regional Airlines	25	21	8	38.1	9	42.9	4	16.0
All Airlines	62	58	28	48.3	27	46.6	4	6.5
Perth-Kalgoorlie								
Qantas	9	9	6	66.7	7	77.8	0	0.0
QantasLink	64	59	27	45.8	33	55.9	5	7.8
Virgin Australia	27	27	19	70.4	18	66.7	0	0.0
Virgin Australia Regional Airlines	37	35	23	65.7	24	68.6	2	5.4
All Airlines	137	130	75	57.7	82	63.1	7	5.1
Perth-Karratha								
Qantas	16	15	14	93.3	11	73.3	1	6.3
QantasLink	131	127	74	58.3	84	66.1	4	3.1
Virgin Australia	18	18	11	61.1	12	66.7	0	0.0
Virgin Australia Regional Airlines	34	34	20	58.8	18	52.9	0	0.0
All Airlines	199	194	119	61.3	125	64.4	5	2.5
Perth-Melbourne								
Jetstar	77	68	24	35.3	21	30.9	9	11.7
Qantas	180	178	123	69.1	130	73.0	2	1.1
Virgin Australia	133	130	68	52.3	59	45.4	3	2.3
All Airlines	390	376	215	57.2	210	55.9	14	3.6
Perth-Newman								
Qantas	40	37	31	83.8	26	70.3	3	7.5
QantasLink	77	73	53	72.6	49	67.1	4	5.2
Virgin Australia	19	19	16	84.2	13	68.4	0	0.0
Virgin Australia Regional Airlines	37	33	20	60.6	21	63.6	4	10.8
All Airlines	173	162	120	74.1	109	67.3	11	6.4

	Sectors		Arrivals On Time		Departures On Time		Cancellations	
	Sched.	Flown	No.	%	No.	%	No.	%
Perth-Port Hedland								
Qantas	35	34	29	85.3	29	85.3	1	2.9
QantasLink	85	81	51	63.0	48	59.3	4	4.7
Virgin Australia	11	11	8	72.7	8	72.7	0	0.0
Virgin Australia Regional Airlines	41	39	23	59.0	23	59.0	2	4.9
All Airlines	172	165	111	67.3	108	65.5	7	4.1
Perth-Sydney								
Jetstar	55	49	18	36.7	9	18.4	6	10.9
Qantas	175	174	124	71.3	116	66.7	1	0.6
Virgin Australia	116	109	69	63.3	37	33.9	7	6.0
All Airlines	346	332	211	63.6	162	48.8	14	4.0
Port Hedland-Perth								
Qantas	35	34	20	58.8	19	55.9	1	2.9
QantasLink	90	85	39	45.9	38	44.7	5	5.6
Virgin Australia	11	11	4	36.4	4	36.4	0	0.0
Virgin Australia Regional Airlines	41	39	13	33.3	17	43.6	2	4.9
All Airlines	177	169	76	45.0	78	46.2	8	4.5
Port Lincoln-Adelaide								
QantasLink	138	135	114	84.4	110	81.5	3	2.2
Rex Airlines	175	175	133	76.0	139	79.4	0	0.0
All Airlines	313	310	247	79.7	249	80.3	3	1.0
Port Macquarie-Sydney								
QantasLink	100	98	72	73.5	72	73.5	2	2.0
Rex Airlines	81	81	53	65.4	68	84.0	0	0.0
All Airlines	181	179	125	69.8	140	78.2	2	1.1
Proserpine-Brisbane								
Jetstar	32	31	14	45.2	10	32.3	1	3.1
QantasLink	23	22	6	27.3	5	22.7	1	4.3
Virgin Australia	36	36	24	66.7	19	52.8	0	0.0
All Airlines	91	89	44	49.4	34	38.2	2	2.2
Rockhampton-Brisbane								
QantasLink	161	149	87	58.4	83	55.7	12	7.5
Virgin Australia	107	107	80	74.8	78	72.9	0	0.0
All Airlines	268	256	167	65.2	161	62.9	12	4.5
Sunshine Coast-Melbourne								
Jetstar	67	67	34	50.7	45	67.2	0	0.0
QantasLink	58	53	11	20.8	15	28.3	5	8.6
Virgin Australia	101	92	37	40.2	50	54.3	9	8.9
All Airlines	226	212	82	38.7	110	51.9	14	6.2
Sunshine Coast-Sydney								
Jetstar	94	83	54	65.1	59	71.1	11	11.7
Qantas	60	60	40	66.7	35	58.3	0	0.0
Virgin Australia	98	83	31	37.3	50	60.2	15	15.3
All Airlines	252	226	125	55.3	144	63.7	26	10.3
Sydney-Adelaide								
Jetstar	95	90	47	52.2	39	43.3	5	5.3
Qantas	227	217	120	55.3	134	61.8	10	4.4
Virgin Australia	131	126	73	57.9	85	67.5	5	3.8
All Airlines	453	433	240	55.4	258	59.6	20	4.4

	<i>Sectors</i>		<i>Arrivals On Time</i>		<i>Departures On Time</i>		<i>Cancellations</i>	
	<i>Sched.</i>	<i>Flown</i>	<i>No.</i>	<i>%</i>	<i>No.</i>	<i>%</i>	<i>No.</i>	<i>%</i>
Sydney-Albury								
QantasLink	94	87	57	65.5	55	63.2	7	7.4
Rex Airlines	104	104	89	85.6	88	84.6	0	0.0
All Airlines	198	191	146	76.4	143	74.9	7	3.5
Sydney-Armidale								
QantasLink	90	85	62	72.9	55	64.7	5	5.6
Rex Airlines	77	77	66	85.7	68	88.3	0	0.0
All Airlines	167	162	128	79.0	123	75.9	5	3.0
Sydney-Ballina								
Jetstar	74	70	57	81.4	55	78.6	4	5.4
QantasLink	105	89	41	46.1	49	55.1	16	15.2
Rex Airlines	26	26	21	80.8	21	80.8	0	0.0
Virgin Australia	69	62	41	66.1	45	72.6	7	10.1
All Airlines	274	247	160	64.8	170	68.8	27	9.9
Sydney-Brisbane								
Jetstar	152	135	70	51.9	66	48.9	17	11.2
Qantas	574	508	245	48.2	244	48.0	66	11.5
Rex Airlines	69	69	58	84.1	58	84.1	0	0.0
Virgin Australia	506	458	315	68.8	319	69.7	48	9.5
All Airlines	1 301	1 170	688	58.8	687	58.7	131	10.1
Sydney-Cairns								
Jetstar	89	89	61	68.5	57	64.0	0	0.0
Qantas	75	75	37	49.3	30	40.0	0	0.0
Virgin Australia	75	72	53	73.6	45	62.5	3	4.0
All Airlines	239	236	151	64.0	132	55.9	3	1.3
Sydney-Canberra								
QantasLink	496	416	248	59.6	259	62.3	80	16.1
Virgin Australia	251	248	195	78.6	182	73.4	3	1.2
All Airlines	747	664	443	66.7	441	66.4	83	11.1
Sydney-Coffs Harbour								
QantasLink	112	107	75	70.1	57	53.3	5	4.5
Rex Airlines	87	87	80	92.0	74	85.1	0	0.0
All Airlines	199	194	155	79.9	131	67.5	5	2.5
Sydney-Darwin								
Jetstar	26	26	14	53.8	14	53.8	0	0.0
Qantas	39	39	13	33.3	15	38.5	0	0.0
Virgin Australia	24	24	17	70.8	17	70.8	0	0.0
All Airlines	89	89	44	49.4	46	51.7	0	0.0
Sydney-Dubbo								
QantasLink	86	85	47	55.3	46	54.1	1	1.2
Rex Airlines	111	111	85	76.6	83	74.8	0	0.0
All Airlines	197	196	132	67.3	129	65.8	1	0.5
Sydney-Gold Coast								
Jetstar	266	238	172	72.3	167	70.2	28	10.5
Qantas	53	53	29	54.7	21	39.6	0	0.0
QantasLink	53	46	28	60.9	28	60.9	7	13.2
Rex Airlines	38	37	30	81.1	31	83.8	1	2.6
Virgin Australia	349	320	191	59.7	199	62.2	29	8.3
All Airlines	759	694	450	64.8	446	64.3	65	8.6

	Sectors		Arrivals On Time		Departures On Time		Cancellations	
	Sched.	Flown	No.	%	No.	%	No.	%
Sydney-Hamilton Island								
Jetstar	20	20	15	75.0	14	70.0	0	0.0
Qantas	29	29	18	62.1	14	48.3	0	0.0
Virgin Australia	30	28	18	64.3	17	60.7	2	6.7
All Airlines	79	77	51	66.2	45	58.4	2	2.5
Sydney-Hobart								
Jetstar	74	73	50	68.5	47	64.4	1	1.4
Qantas	4	4	2	50.0	2	50.0	0	0.0
QantasLink	81	77	31	40.3	25	32.5	4	4.9
Virgin Australia	81	73	59	80.8	59	80.8	8	9.9
All Airlines	240	227	142	62.6	133	58.6	13	5.4
Sydney-Launceston								
Jetstar	33	33	20	60.6	18	54.5	0	0.0
QantasLink	15	14	6	42.9	6	42.9	1	6.7
Virgin Australia	30	29	23	79.3	19	65.5	1	3.3
All Airlines	78	76	49	64.5	43	56.6	2	2.6
Sydney-Melbourne								
Jetstar	374	342	214	62.6	190	55.6	32	8.6
Qantas	896	698	389	55.7	391	56.0	198	22.1
QantasLink	60	35	8	22.9	8	22.9	25	41.7
Rex Airlines	112	110	98	89.1	100	90.9	2	1.8
Virgin Australia	813	724	394	54.4	394	54.4	89	10.9
All Airlines	2 255	1 909	1 103	57.8	1 083	56.7	346	15.3
Sydney-Perth								
Jetstar	50	50	30	60.0	29	58.0	0	0.0
Qantas	174	172	58	33.7	68	39.5	2	1.1
Virgin Australia	116	108	66	61.1	65	60.2	8	6.9
All Airlines	340	330	154	46.7	162	49.1	10	2.9
Sydney-Port Macquarie								
QantasLink	100	98	67	68.4	52	53.1	2	2.0
Rex Airlines	81	81	66	81.5	64	79.0	0	0.0
All Airlines	181	179	133	74.3	116	64.8	2	1.1
Sydney-Sunshine Coast								
Jetstar	93	84	64	76.2	62	73.8	9	9.7
Qantas	60	59	31	52.5	37	62.7	1	1.7
Virgin Australia	98	83	58	69.9	58	69.9	15	15.3
All Airlines	251	226	153	67.7	157	69.5	25	10.0
Sydney-Wagga Wagga								
QantasLink	85	84	43	51.2	44	52.4	1	1.2
Rex Airlines	85	85	59	69.4	63	74.1	0	0.0
All Airlines	170	169	102	60.4	107	63.3	1	0.6
Townsville-Brisbane								
Jetstar	60	60	36	60.0	30	50.0	0	0.0
Qantas	104	104	72	69.2	71	68.3	0	0.0
QantasLink	22	21	5	23.8	4	19.0	1	4.5
Virgin Australia	127	123	109	88.6	100	81.3	4	3.1
All Airlines	313	308	222	72.1	205	66.6	5	1.6
Townsville-Cairns								
QantasLink	138	131	100	76.3	96	73.3	7	5.1
Rex Airlines	13	13	12	92.3	12	92.3	0	0.0
All Airlines	151	144	112	77.8	108	75.0	7	4.6

	<i>Sectors</i>		<i>Arrivals On Time</i>		<i>Departures On Time</i>		<i>Cancellations</i>	
	<i>Sched.</i>	<i>Flown</i>	<i>No.</i>	<i>%</i>	<i>No.</i>	<i>%</i>	<i>No.</i>	<i>%</i>
Wagga Wagga-Sydney								
QantasLink	85	84	56	66.7	51	60.7	1	1.2
Rex Airlines	85	85	62	72.9	68	80.0	0	0.0
All Airlines	170	169	118	69.8	119	70.4	1	0.6

Airports

The following data reports by airport against flights operated on published routes only. This month, 8 major city airports and 28 regional city airports are covered.

Airport	Arrivals			Departures		
	Sectors	On Time		Sectors	On Time	
	Flown	No.	%	Flown	No.	%
Adelaide						
Jetstar	269	169	62.8	268	183	68.3
Qantas	607	358	59.0	607	415	68.4
QantasLink	277	189	68.2	281	200	71.2
Rex Airlines	215	167	77.7	213	182	85.4
Virgin Australia	542	333	61.4	540	327	60.6
Virgin Australia Regional Airlines	51	31	60.8	51	19	37.3
All Airlines	1 961	1 247	63.6	1 960	1 326	67.7

Relates to services to and from Alice Springs, Brisbane, Canberra, Gold Coast, Melbourne, Perth, Port Lincoln and Sydney only.

Albury						
QantasLink	87	57	65.5	87	42	48.3
Rex Airlines	104	89	85.6	104	94	90.4
All Airlines	191	146	76.4	191	136	71.2

Relates to services to and from Sydney only.

Alice Springs						
Qantas	26	24	92.3	26	20	76.9
Virgin Australia	13	10	76.9	13	3	23.1
All Airlines	39	34	87.2	39	23	59.0

Relates to services to and from Adelaide only.

Armidale						
QantasLink	85	62	72.9	85	69	81.2
Rex Airlines	77	66	85.7	77	63	81.8
All Airlines	162	128	79.0	162	132	81.5

Relates to services to and from Sydney only.

Ballina						
Jetstar	70	57	81.4	69	48	69.6
QantasLink	89	41	46.1	89	44	49.4
Rex Airlines	26	21	80.8	26	21	80.8
Virgin Australia	62	41	66.1	61	42	68.9
All Airlines	247	160	64.8	245	155	63.3

Relates to services to and from Sydney only.

Brisbane						
Jetstar	609	305	50.1	609	338	55.5
Qantas	1 488	878	59.0	1 491	1 010	67.7
QantasLink	824	486	59.0	831	499	60.0
Rex Airlines	111	96	86.5	111	104	93.7
Virgin Australia	1 858	1 292	69.5	1 858	1 148	61.8
All Airlines	4 890	3 057	62.5	4 900	3 099	63.2

Relates to services to and from Adelaide, Cairns, Canberra, Darwin, Emerald, Gladstone, Hamilton Island, Hobart, Mackay, Melbourne, Mount Isa, Newcastle, Perth, Proserpine, Rockhampton, Sydney and Townsville only.

Airport	Arrivals			Departures		
	Sectors Flown	On Time		Sectors Flown	On Time	
		No.	%		No.	%
Broome						
Qantas	9	8	88.9	9	2	22.2
QantasLink	75	53	70.7	73	23	31.5
Virgin Australia	14	4	28.6	14	0	0.0
Virgin Australia Regional Airlines	51	29	56.9	50	19	38.0
All Airlines	149	94	63.1	146	44	30.1
Relates to services to and from Perth only.						
Cairns						
Jetstar	258	136	52.7	254	137	53.9
Qantas	225	121	53.8	225	130	57.8
QantasLink	161	109	67.7	163	118	72.4
Rex Airlines	13	12	92.3	13	12	92.3
Virgin Australia	285	158	55.4	285	134	47.0
All Airlines	942	536	56.9	940	531	56.5
Relates to services to and from Brisbane, Melbourne, Sydney and Townsville only.						
Canberra						
Jetstar	20	15	75.0	20	10	50.0
Qantas	4	4	100.0	4	1	25.0
QantasLink	872	488	56.0	871	510	58.6
Rex Airlines	30	27	90.0	30	28	93.3
Virgin Australia	483	357	73.9	482	358	74.3
All Airlines	1 409	891	63.2	1 407	907	64.5
Relates to services to and from Adelaide, Brisbane, Melbourne and Sydney only.						
Coffs Harbour						
QantasLink	107	75	70.1	107	73	68.2
Rex Airlines	87	80	92.0	86	73	84.9
All Airlines	194	155	79.9	193	146	75.6
Relates to services to and from Sydney only.						
Darwin						
Jetstar	73	40	54.8	71	20	28.2
Qantas	147	73	49.7	145	41	28.3
QantasLink	31	14	45.2	31	7	22.6
Virgin Australia	102	62	60.8	101	43	42.6
Virgin Australia Regional Airlines	21	8	38.1	21	4	19.0
All Airlines	374	197	52.7	369	115	31.2
Relates to services to and from Brisbane, Melbourne, Perth and Sydney only.						
Dubbo						
QantasLink	85	47	55.3	85	56	65.9
Rex Airlines	111	85	76.6	106	80	75.5
All Airlines	196	132	67.3	191	136	71.2
Relates to services to and from Sydney only.						
Emerald						
QantasLink	107	81	75.7	107	76	71.0
Virgin Australia	26	21	80.8	26	17	65.4
All Airlines	133	102	76.7	133	93	69.9
Relates to services to and from Brisbane only.						

Airport	Arrivals			Departures		
	Sectors Flown	On Time		Sectors Flown	On Time	
		No.	%		No.	%
Gladstone						
QantasLink	122	74	60.7	121	84	69.4
Virgin Australia	47	38	80.9	47	36	76.6
All Airlines	169	112	66.3	168	120	71.4
Relates to services to and from Brisbane only.						
Gold Coast						
Jetstar	471	308	65.4	469	289	61.6
Qantas	66	34	51.5	66	38	57.6
QantasLink	107	58	54.2	106	46	43.4
Rex Airlines	80	63	78.8	80	62	77.5
Virgin Australia	634	397	62.6	635	395	62.2
All Airlines	1 358	860	63.3	1 356	830	61.2
Relates to services to and from Adelaide, Melbourne and Sydney only.						
Hamilton Island						
Jetstar	20	15	75.0	20	7	35.0
Qantas	59	43	72.9	58	32	55.2
Virgin Australia	63	45	71.4	63	33	52.4
All Airlines	142	103	72.5	141	72	51.1
Relates to services to and from Brisbane and Sydney only.						
Hobart						
Jetstar	220	138	62.7	219	113	51.6
Qantas	17	11	64.7	17	9	52.9
QantasLink	196	65	33.2	193	95	49.2
Virgin Australia	252	147	58.3	251	142	56.6
All Airlines	685	361	52.7	680	359	52.8
Relates to services to and from Brisbane, Melbourne and Sydney only.						
Kalgoorlie						
Qantas	9	6	66.7	9	1	11.1
QantasLink	59	27	45.8	60	23	38.3
Virgin Australia	27	19	70.4	27	7	25.9
Virgin Australia Regional Airlines	35	23	65.7	35	14	40.0
All Airlines	130	75	57.7	131	45	34.4
Relates to services to and from Perth only.						
Karratha						
Qantas	15	14	93.3	15	9	60.0
QantasLink	127	74	58.3	127	69	54.3
Virgin Australia	18	11	61.1	18	4	22.2
Virgin Australia Regional Airlines	34	20	58.8	34	17	50.0
All Airlines	194	119	61.3	194	99	51.0
Relates to services to and from Perth only.						
Launceston						
Jetstar	116	61	52.6	117	52	44.4
QantasLink	115	35	30.4	114	40	35.1
Virgin Australia	128	74	57.8	127	102	80.3
All Airlines	359	170	47.4	358	194	54.2
Relates to services to and from Melbourne and Sydney only.						

Airport	Arrivals			Departures		
	Sectors Flown	On Time		Sectors Flown	On Time	
		No.	%		No.	%
Mackay						
Jetstar	28	8	28.6	28	5	17.9
Qantas	101	80	79.2	103	74	71.8
QantasLink	8	5	62.5	10	9	90.0
Virgin Australia	126	90	71.4	125	83	66.4
All Airlines	263	183	69.6	266	171	64.3

Relates to services to and from Brisbane only.

Melbourne

Jetstar	1 276	716	56.1	1 280	655	51.2
Qantas	1 552	930	59.9	1 565	790	50.5
QantasLink	750	291	38.8	752	270	35.9
Rex Airlines	357	288	80.7	358	303	84.6
Virgin Australia	2 307	1 185	51.4	2 311	1 271	55.0
All Airlines	6 242	3 410	54.6	6 266	3 289	52.5

Relates to services to and from Adelaide, Brisbane, Cairns, Canberra, Darwin, Gold Coast, Hobart, Launceston, Mildura, Newcastle, Perth, Sunshine Coast and Sydney only.

Mildura

QantasLink	104	26	25.0	104	30	28.8
Rex Airlines	93	67	72.0	93	78	83.9
All Airlines	197	93	47.2	197	108	54.8

Relates to services to and from Melbourne only.

Mount Isa

Qantas	31	27	87.1	31	24	77.4
QantasLink	20	6	30.0	20	7	35.0
Virgin Australia	13	8	61.5	13	7	53.8
All Airlines	64	41	64.1	64	38	59.4

Relates to services to and from Brisbane only.

Newcastle

Jetstar	105	75	71.4	105	60	57.1
QantasLink	148	84	56.8	148	98	66.2
Virgin Australia	111	74	66.7	111	87	78.4
All Airlines	364	233	64.0	364	245	67.3

Relates to services to and from Brisbane and Melbourne only.

Newman

Qantas	37	31	83.8	37	29	78.4
QantasLink	73	53	72.6	75	49	65.3
Virgin Australia	19	16	84.2	19	13	68.4
Virgin Australia Regional Airlines	33	20	60.6	34	17	50.0
All Airlines	162	120	74.1	165	108	65.5

Relates to services to and from Perth only.

Perth

Jetstar	168	100	59.5	164	35	21.3
Qantas	704	358	50.9	703	495	70.4
QantasLink	451	221	49.0	446	268	60.1
Virgin Australia	414	245	59.2	419	196	46.8
Virgin Australia Regional Airlines	264	111	42.0	264	151	57.2
All Airlines	2 001	1 035	51.7	1 996	1 145	57.4

Relates to services to and from Adelaide, Brisbane, Broome, Darwin, Kalgoorlie, Karratha, Melbourne, Newman, Port Hedland and Sydney only.

Airport	Arrivals			Departures		
	Sectors Flown	On Time		Sectors Flown	On Time	
		No.	%		No.	%
Port Hedland						
Qantas	34	29	85.3	34	19	55.9
QantasLink	81	51	63.0	85	38	44.7
Virgin Australia	11	8	72.7	11	4	36.4
Virgin Australia Regional Airlines	39	23	59.0	39	17	43.6
All Airlines	165	111	67.3	169	78	46.2
Relates to services to and from Perth only.						
Port Lincoln						
QantasLink	136	106	77.9	135	110	81.5
Rex Airlines	174	133	76.4	175	139	79.4
All Airlines	310	239	77.1	310	249	80.3
Relates to services to and from Adelaide only.						
Port Macquarie						
QantasLink	98	67	68.4	98	72	73.5
Rex Airlines	81	66	81.5	81	68	84.0
All Airlines	179	133	74.3	179	140	78.2
Relates to services to and from Sydney only.						
Proserpine						
Jetstar	31	18	58.1	31	10	32.3
QantasLink	22	5	22.7	22	5	22.7
Virgin Australia	36	28	77.8	36	19	52.8
All Airlines	89	51	57.3	89	34	38.2
Relates to services to and from Brisbane only.						
Rockhampton						
QantasLink	155	100	64.5	149	83	55.7
Virgin Australia	108	56	51.9	107	78	72.9
All Airlines	263	156	59.3	256	161	62.9
Relates to services to and from Brisbane only.						
Sunshine Coast						
Jetstar	151	111	73.5	150	104	69.3
Qantas	59	31	52.5	60	35	58.3
QantasLink	55	16	29.1	53	15	28.3
Virgin Australia	175	122	69.7	175	100	57.1
All Airlines	440	280	63.6	438	254	58.0
Relates to services to and from Melbourne and Sydney only.						
Sydney						
Jetstar	1 239	754	60.9	1 250	758	60.6
Qantas	1 869	1 129	60.4	1 854	956	51.6
QantasLink	1 222	765	62.6	1 223	684	55.9
Rex Airlines	781	608	77.8	787	650	82.6
Virgin Australia	2 356	1 519	64.5	2 355	1 504	63.9
All Airlines	7 467	4 775	63.9	7 469	4 552	60.9

Relates to services to and from Adelaide, Albury, Armidale, Ballina, Brisbane, Cairns, Canberra, Coffs Harbour, Darwin, Dubbo, Gold Coast, Hamilton Island, Hobart, Launceston, Melbourne, Perth, Port Macquarie, Sunshine Coast and Wagga Wagga only.

<i>Airport</i>	<i>Arrivals</i>			<i>Departures</i>		
	<i>Sectors Flown</i>	<i>On Time</i>		<i>Sectors Flown</i>	<i>On Time</i>	
		<i>No.</i>	<i>%</i>		<i>No.</i>	<i>%</i>
Townsville						
Jetstar	60	36	60.0	60	30	50.0
Qantas	104	65	62.5	104	71	68.3
QantasLink	154	117	76.0	152	100	65.8
Rex Airlines	13	12	92.3	13	12	92.3
Virgin Australia	123	86	69.9	123	100	81.3
All Airlines	454	316	69.6	452	313	69.2

Relates to services to and from Brisbane and Cairns only.

Wagga Wagga

QantasLink	84	43	51.2	84	51	60.7
Rex Airlines	85	59	69.4	85	68	80.0
All Airlines	169	102	60.4	169	119	70.4

Relates to services to and from Sydney only.

Definitions

On time arrival	A flight arrival is counted as "on time" if it arrived at the gate before 15 minutes after the scheduled arrival time shown in the carriers' schedule. Neither diverted nor cancelled flights count as on time.
On time departure	A flight departure is counted as "on time" if it departs the gate before 15 minutes after the scheduled departure time shown in the carriers' schedule.
Cancellation	A flight removed from service within 7 days of scheduled departure is regarded as a cancellation.
On time departure percentage	The percentage of on time departures is measured against the number of departures <i>operated</i> on any particular sector.
On time arrival percentage	The percentage of on time arrivals is measured against the number of arrivals <i>operated</i> on any particular sector.
Cancellation percentage	The percentage of cancellations is measured against the number of services <i>scheduled</i> on any particular sector.
