



Australian Government

Department of Infrastructure, Transport, Regional Development and Communications

Bureau of Infrastructure and Transport Research Economics

STATISTICAL REPORT



Aviation

Domestic airline on time performance
June 2021

© Commonwealth of Australia 2021

ISSN: 1832-0759

Ownership of intellectual property rights in this publication

Unless otherwise noted, copyright (and any other intellectual property rights, if any) in this publication is owned by the Commonwealth of Australia (referred to below as the Commonwealth).

Disclaimer

The material contained in this publication is made available on the understanding that the Commonwealth is not providing professional advice, and that users exercise their own skill and care with respect to its use, and seek independent advice if necessary.

The Commonwealth makes no representations or warranties as to the contents or accuracy of the information contained in this publication. To the extent permitted by law, the Commonwealth disclaims liability to any person or organisation in respect of anything done, or omitted to be done, in reliance upon information contained in this publication.

Creative Commons licence

With the exception of (a) the Coat of Arms; and (b) the Department of Infrastructure, Transport, Regional Development and Communications' photos and graphics, copyright in this publication is licensed under a Creative Commons Attribution 3.0 Australia Licence.

Creative Commons Attribution 3.0 Australia Licence is a standard form licence agreement that allows you to copy, communicate and adapt this publication provided that you attribute the work to the Commonwealth and abide by the other licence terms. A summary of the licence terms is available from <http://creativecommons.org/licenses/by/3.0/au/deed.en>. The full licence terms are available from <http://creativecommons.org/licenses/by/3.0/au/legalcode>.

Use of the Coat of Arms

The Department of the Prime Minister and Cabinet sets the terms under which the Coat of Arms is used. Please refer to the Department's Commonwealth Coat of Arms and Government branding web page <http://www.dpmc.gov.au/guidelines/index.cfm#brand> and, in particular, the Guidelines on the use of the Commonwealth Coat of Arms publication.

An appropriate citation for this report is:

Bureau of Infrastructure and Transport Research Economics (BITRE), 2021, Domestic airline on time performance, Statistical Report, BITRE, Canberra ACT.

Contact us

This publication is available in PDF format. All other rights are reserved, including in relation to any Departmental logos or trade marks which may exist. For enquiries regarding the licence and any use of this publication, please contact:

Bureau of Infrastructure and Transport Research Economics (BITRE)
Department of Infrastructure, Transport, Regional Development and Communications
GPO Box 501, Canberra ACT 2601, Australia
Telephone: (international) +61 2 6274 7210
Fax: (international) +61 2 6274 6855
Email: bitre@infrastructure.gov.au
Website: www.bitre.gov.au

Inquiries

Should you require additional information about the statistics contained in this publication:

Telephone (02) 6274 7790 or Facsimile (02) 6274 7727

Electronic mail: AVSTATS@infrastructure.gov.au

Web site: <http://www.bitre.gov.au/statistics/aviation/otphome.aspx>

Foreword

The Bureau of Infrastructure and Transport Research Economics (BITRE) monitors the punctuality and reliability of major domestic airlines operating between Australian airports. The purpose of this is to allow for evaluation of overall industry and individual airline performance, so that consumers of air travel can make informed decisions.

The following domestic airlines currently report this information monthly to the BITRE: Jetstar, Qantas, QantasLink, Regional Express, Virgin Australia and Virgin Australia Regional Airlines. Data has been gathered since November 2003, although some airlines commenced reporting at a later date, including Jetstar which first reported in May 2004, MacAir in July 2005, Tigerair Australia in April 2008 and Virgin Australia Regional Airlines in May 2013. MacAir ceased operations in February 2009 and data was not received for December 2008 onwards. Virgin Blue was rebranded as Virgin Australia in May 2011 and Tiger Airways was rebranded as Tigerair Australia in July 2013 and time series data in Microsoft Excel spreadsheet format on the BITRE website have been revised to reflect these changes. Services operated by Skywest on behalf of Virgin Australia using ATR/F100 aircraft commenced in November 2011 and were shown separately as Virgin Australia – ATR/F100 Operations. Virgin Australia Regional Airlines commenced operations in May 2013. It was formed after the acquisition of Skywest by Virgin Australia and represented a combination of operations previously reported under Skywest and Virgin Australia – ATR/F100 Operations. In January 2016, Virgin Australia transferred their ATR fleet from Virgin Australia Regional Airlines to Virgin Australia. Tigerair Australia ceased operations in March 2020 and data was not received for that month.

Information presented in this report is for Australian domestic routes for which the passenger load averaged 8 000 or more passengers per month over the previous six months and where two or more airlines operated in competition on those routes. There were 58 routes that met this definition in June 2021. Over time, routes which meet these criteria change as airline networks and traffic levels vary.

Participating airlines report their overall monthly network performance where this is possible.

Total industry figures encompass all services operated by reporting airlines only. These airlines collectively carried over 95 per cent of total domestic passengers (regular public transport only) in 2019.

The method of capturing on time performance varies between airlines utilising different recording systems. Jetstar and Qantas jet aircraft use Aircraft Communication Addressing and Reporting System (ACARS) to electronically measure on time performance. Regional Express, Tigerair Australia, Virgin Australia, Virgin Australia Regional Airlines and the Qantas non-jet fleet record on time performance manually using records from pilots, gate agents and/or ground crews.

After initial data is collected, aggregate reports are audited internally by participating airlines prior to publication.

Reports and detailed time series data in Microsoft Excel spreadsheet format are available from the BITRE website at: <http://www.bitre.gov.au/statistics/aviation/otphome.aspx>.

Contents

	Page
Industry performance	1
Individual routes	9
Airports.....	21
Definitions	26

Industry performance

For June 2021, on time performance over all routes operated by participating airlines (Jetstar, Qantas, QantasLink, Regional Express, Virgin Australia and Virgin Australia Regional Airlines) averaged 84.0 per cent for on time arrivals and for on time departures. The cancellation rate for the month was 24.5 per cent. Travel restrictions due to the COVID-19 pandemic resulted in the highest number of cancelled flights (9 406) recorded since OTP reporting commenced in November 2003. The equivalent figures for June 2020 were 89.2 per cent for on time arrivals, 86.0 per cent for on time departures and 2.5 per cent for cancellations.

This month's on time arrivals figure was higher than the long term average performance for all routes (82.3 per cent) and the on time departures figure was also higher than the long term average (83.6 per cent). The rate of cancellations was significantly higher than the long term average of 1.8 per cent.

The Virgin Australia network (Virgin Australia and Virgin Australia Regional Airlines combined operations) recorded 85.9 per cent for on time arrivals while the Qantas network (Qantas and QantasLink combined operations) recorded 82.8 per cent. Virgin Australia achieved the highest on time arrivals among the major domestic airlines at 86.4 per cent followed by Qantas at 84.8 per cent and Jetstar at 83.0 per cent. Of the regional airlines, Regional Express recorded 86.1 per cent for on time arrivals, followed by QantasLink at 81.5 per cent and Virgin Australia Regional Airlines at 76.6 per cent.

The Qantas network recorded 84.1 per cent for on time departures while the Virgin Australia network recorded 83.6 per cent. Qantas achieved the highest level of on time departures among the major domestic airlines for June 2021 at 87.4 per cent, followed by Virgin Australia at 83.8 per cent and Jetstar at 80.8 per cent. Of the regional airlines, Regional Express recorded 86.9 per cent for on time departures, followed by QantasLink at 82.0 per cent and Virgin Australia Regional Airlines at 79.6 per cent.

Jetstar recorded the highest percentage of cancellations (at 39.7 per cent) during the month, followed by Virgin Australia (at 31.0 per cent), Qantas (at 29.1 per cent), QantasLink (at 13.5 per cent), Regional Express (at 11.1 per cent) and Virgin Australia Regional Airlines (at 1.3 per cent).

Airlines' on time performance varies across the routes they serve. Individual route data by specific airline for 58 routes are shown on pages 9-20.

Of the 58 routes which met the criteria for on time performance reporting in June 2021, the Melbourne-Sydney route had the highest percentage of on time arrivals (94.1 per cent) and the Brisbane-Mount Isa route had the highest percentage of on time departures (100.0 per cent). The Darwin-Perth route had the lowest percentage of on time arrivals (38.9 per cent) and the Darwin-Brisbane route had the lowest percentage of on time departures (34.4 per cent).

Cancellations were highest on the Melbourne-Perth route at 72.6 per cent, followed by the Melbourne-Sydney and Perth-Melbourne routes at 71.7 per cent, the Sydney-Melbourne route

at 71.5 per cent, the Melbourne-Adelaide route at 70.2 per cent and the Adelaide-Melbourne route at 69.9 per cent.

Newman Airport recorded the highest percentage of on time arrivals (93.4 per cent) and Newcastle Airport recorded the highest percentage of on time departures (89.2 per cent). Alice Springs Airport recorded the lowest percentage of on time arrivals (57.6 per cent) and Darwin Airport recorded the lowest percentage of on time departures (49.5 per cent). These figures only refer to reported routes and do not cover all flights at these airports.

Table 1 On time performance for June 2021 — Total Industry

	<i>Sectors</i>		<i>Arrivals On Time</i>		<i>Departures On Time</i>		<i>Cancellations</i>	
	<i>Scheduled</i>	<i>Flown</i>	<i>No.</i>	<i>%</i>	<i>No.</i>	<i>%</i>	<i>No.</i>	<i>%</i>
Jetstar	6 479	3 905	3 242	83.0	3 155	80.8	2 574	39.7
Qantas - all QF designated services	17 711	14 099	11 678	82.8	11 861	84.1	3 612	20.4
Regional Express	5 444	4 841	4 168	86.1	4 206	86.9	603	11.1
Virgin Australia - all VA designated services	8 799	6 182	5 308	85.9	5 167	83.6	2 617	29.7
All Airlines	38 433	29 027	24 396	84.0	24 389	84.0	9 406	24.5
Individual operating entities								
Qantas	7 862	5 575	4 727	84.8	4 874	87.4	2 287	29.1
QantasLink	9 849	8 524	6 951	81.5	6 987	82.0	1 325	13.5
Virgin Australia	8 427	5 815	5 027	86.4	4 875	83.8	2 612	31.0
Virgin Australia Regional Airlines	372	367	281	76.6	292	79.6	5	1.3

Total airline network data (including routes not shown in this report).

Airlines' on time performance varies across the routes they serve. Individual route data by specific airline for 56 routes are shown on pages 9-20.

Table 2 Top ten routes for on time performance for June 2021 (participating airlines only)

<i>Arrivals</i>		<i>Departures</i>	
<i>Route</i>	<i>On Time (%)</i>	<i>Route</i>	<i>On Time (%)</i>
Melbourne-Sydney	94.1	Brisbane-Mount Isa	100.0
Perth-Newman	93.4	Brisbane-Hamilton Island	94.0
Melbourne-Adelaide	93.3	Melbourne-Sydney	92.6
Melbourne-Perth	93.2	Brisbane-Gladstone	92.5
Adelaide-Perth	93.1	Perth-Adelaide	92.5
Mount Isa-Brisbane	92.6	Perth-Port Hedland	92.3
Perth-Broome	92.5	Sydney-Brisbane	92.1
Sydney-Melbourne	92.3	Melbourne-Perth	91.8
Cairns-Melbourne	92.2	Perth-Newman	91.6
Brisbane-Perth	92.1	Perth-Kalgoorlie	91.5

Table 3 Top ten airports for on time performance for June 2021 (participating airlines and reported routes only)

<i>Arrivals</i>		<i>Departures</i>	
<i>Airport</i>	<i>On Time (%)</i>	<i>Airport</i>	<i>On Time (%)</i>
Newman	93.4	Newcastle	89.2
Broome	92.5	Melbourne	88.5
Proserpine	90.2	Port Lincoln	88.4
Albury	88.9	Wagga Wagga	88.3
Melbourne	88.9	Gladstone	87.1
Port Hedland	88.7	Adelaide	86.8
Kalgoorlie	88.4	Sydney	86.3
Gold Coast	87.7	Coffs Harbour	86.2
Port Lincoln	87.7	Perth	86.0
Hobart	86.9	Brisbane	85.9

Total industry on time performance

Figure 1 On time performance (by month from June 2018)—Total Industry

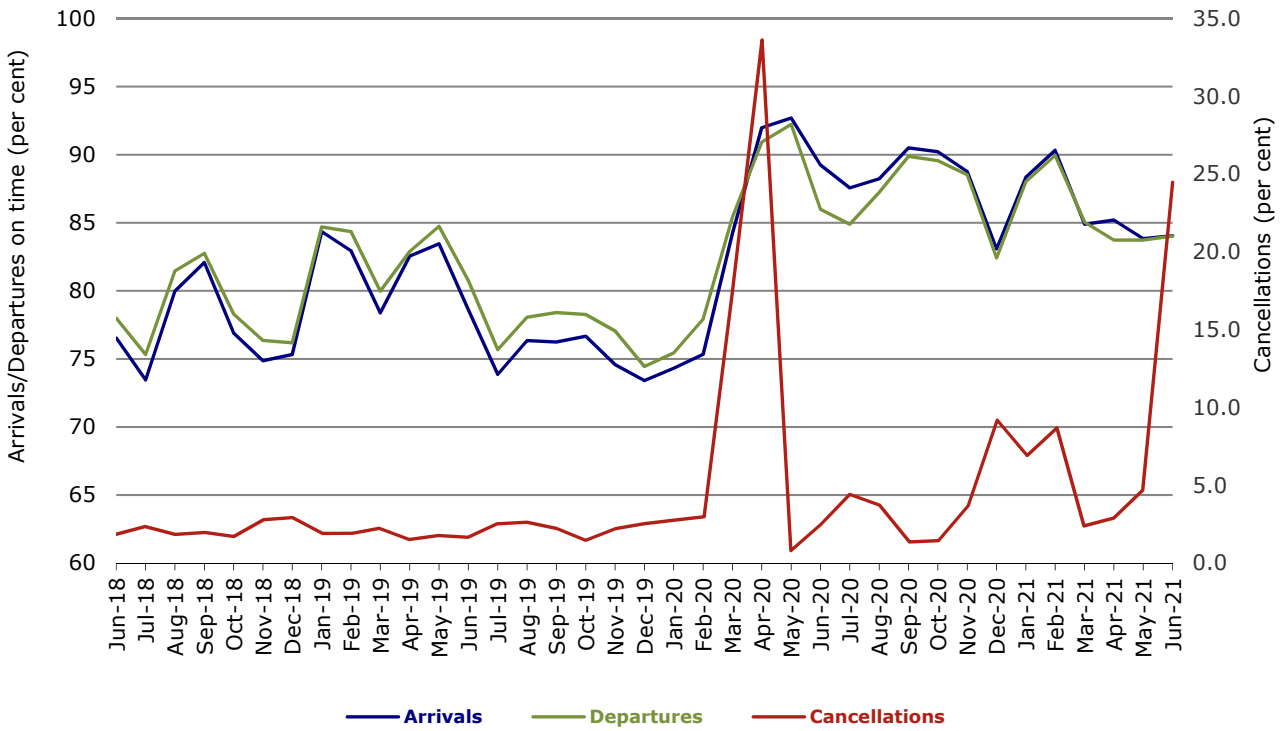


Figure 2 Arrivals on time (by month from June 2020)

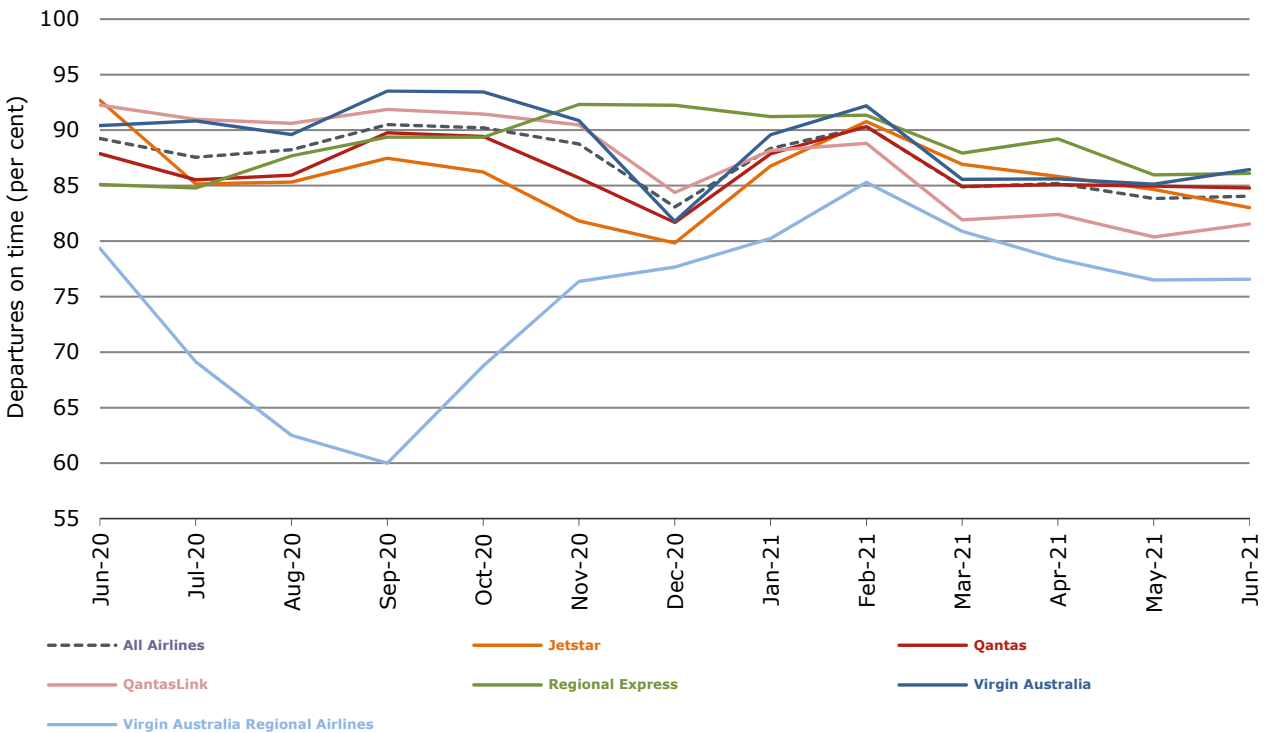


Figure 3 Departures on time (by month from June 2020)

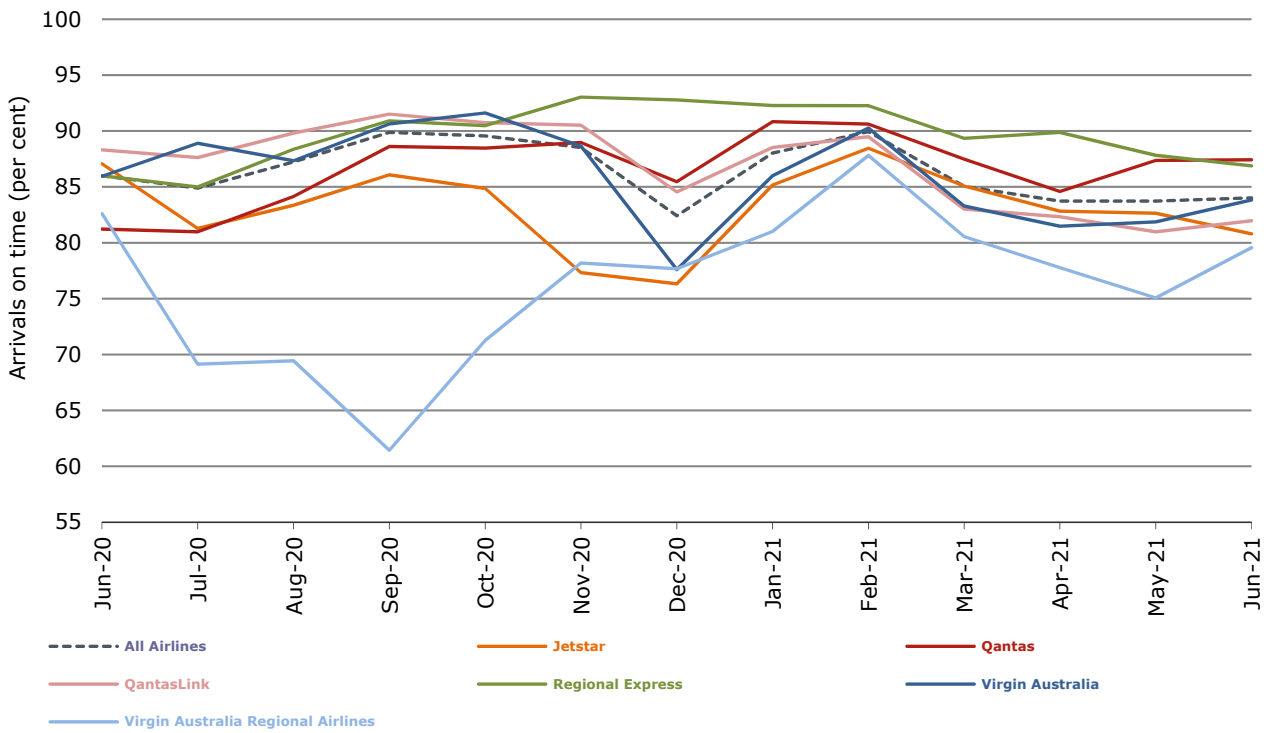
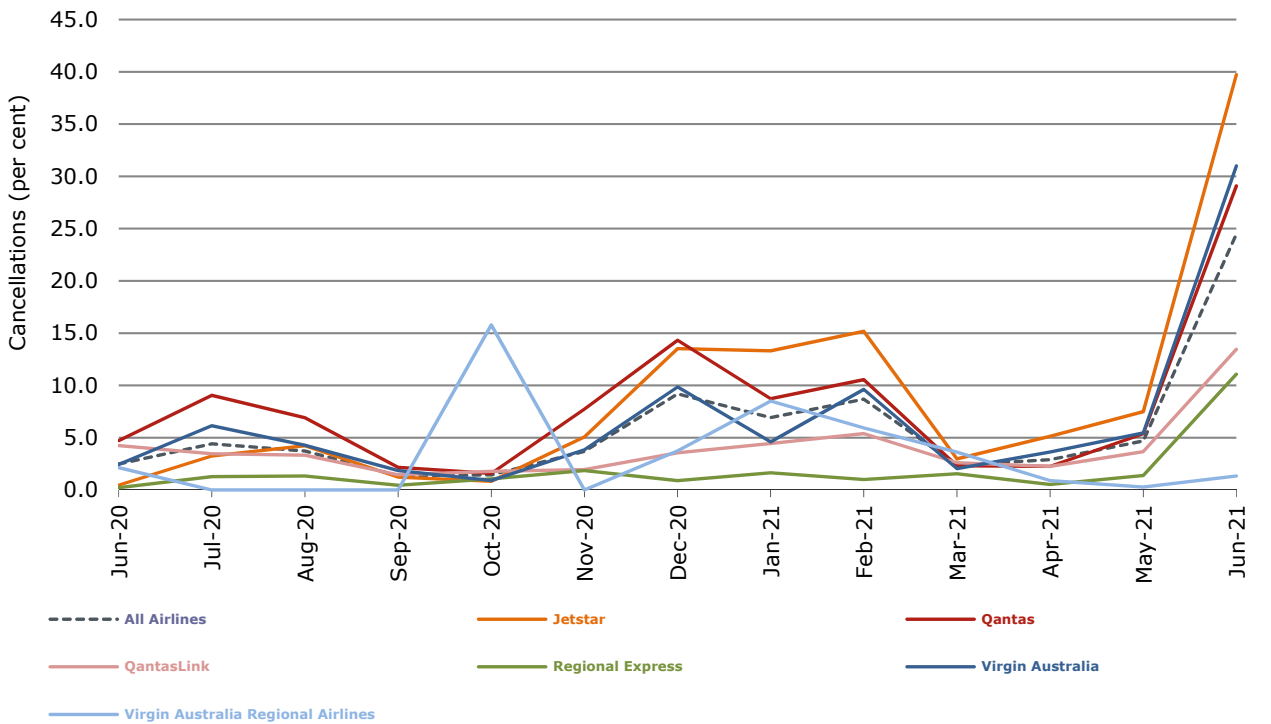


Figure 4 Cancellations (by month from June 2020)



Major domestic airlines on time performance

Figure 5 On time performance (by month from June 2018)—Jetstar

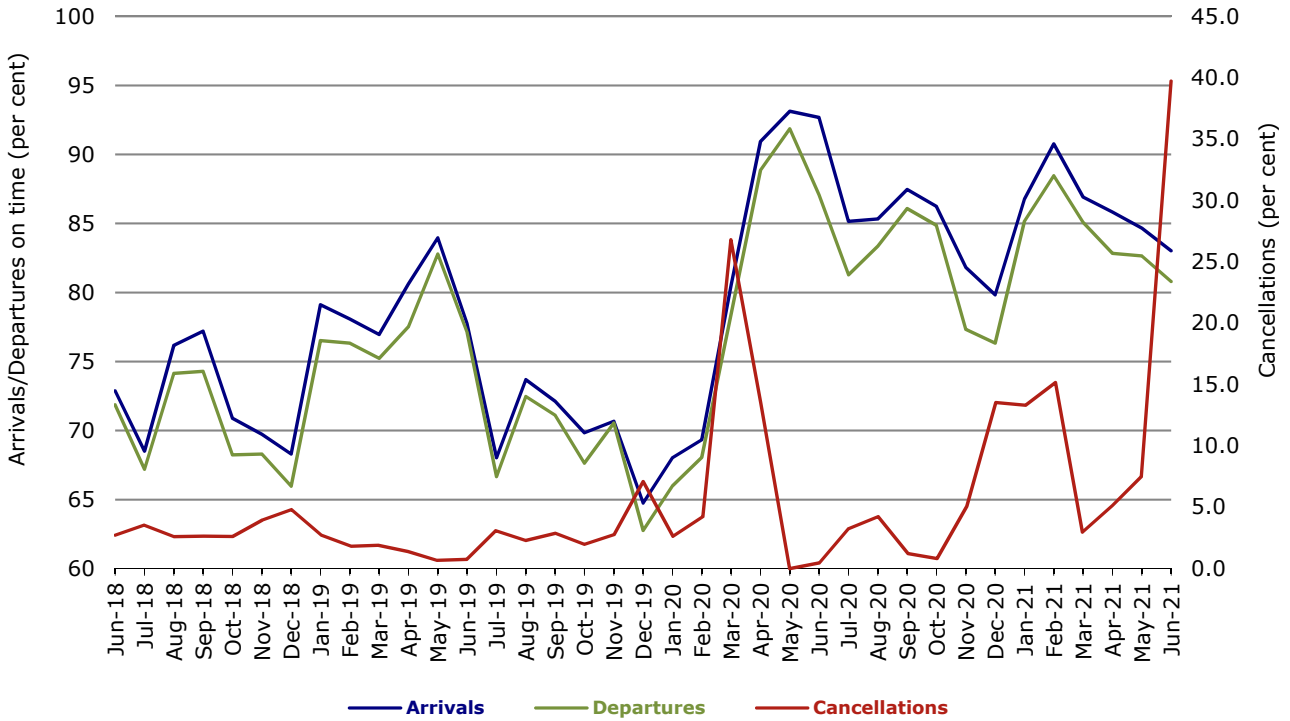


Figure 6 On time performance (by month from June 2018)—Qantas

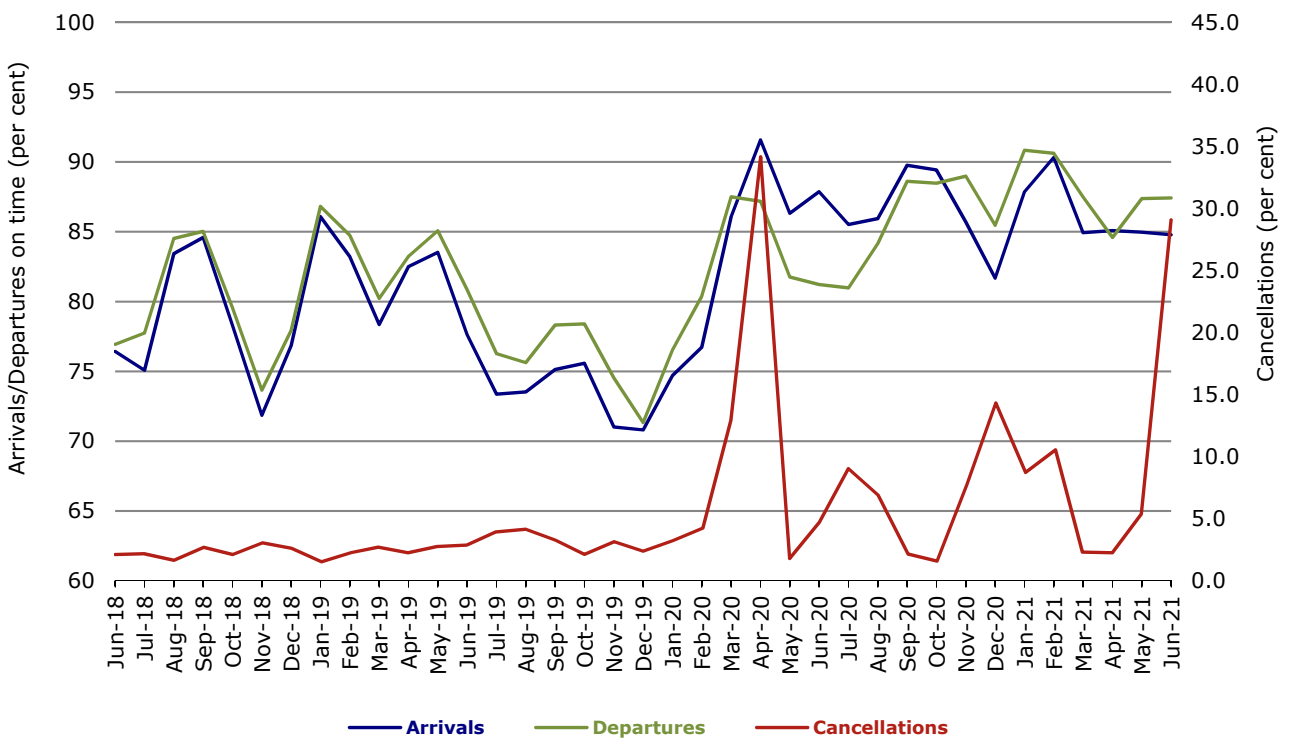
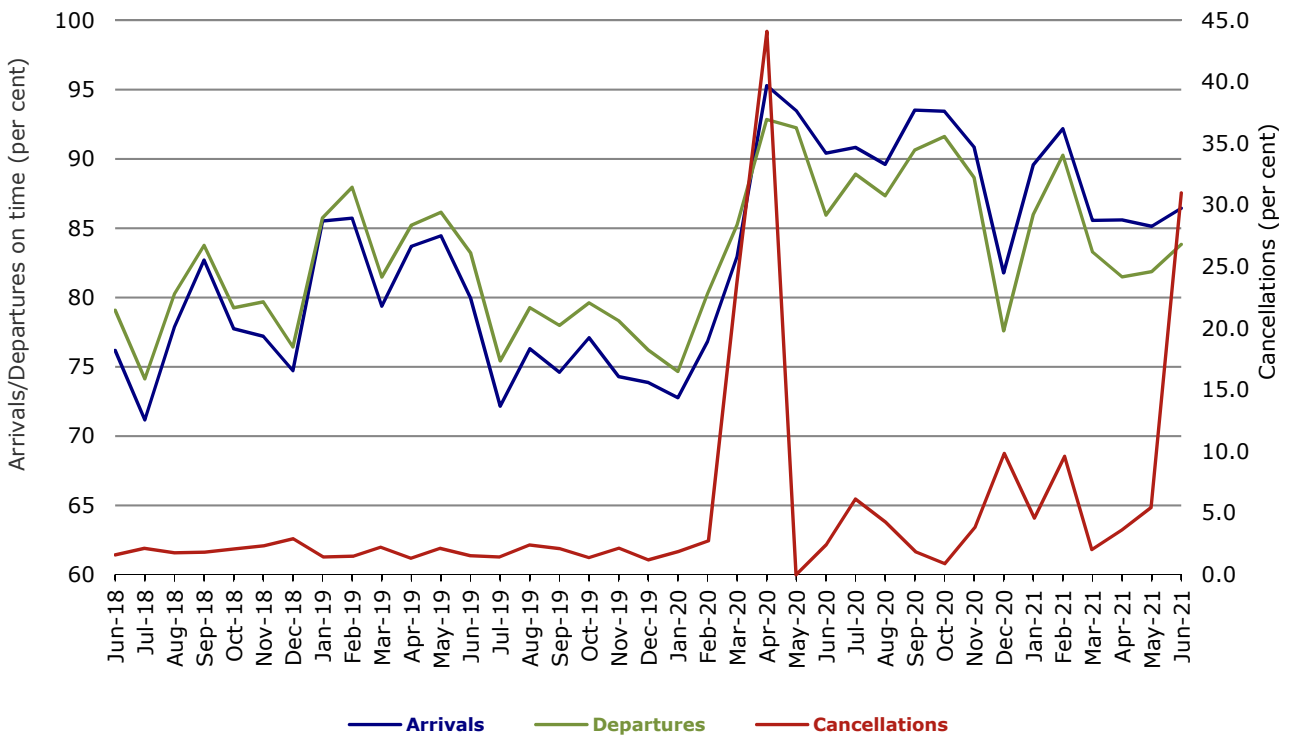


Figure 7 On time performance (by month from June 2018)—Virgin Australia



Major regional airlines on time performance

Figure 8 On time performance (by month from June 2018)—QantasLink

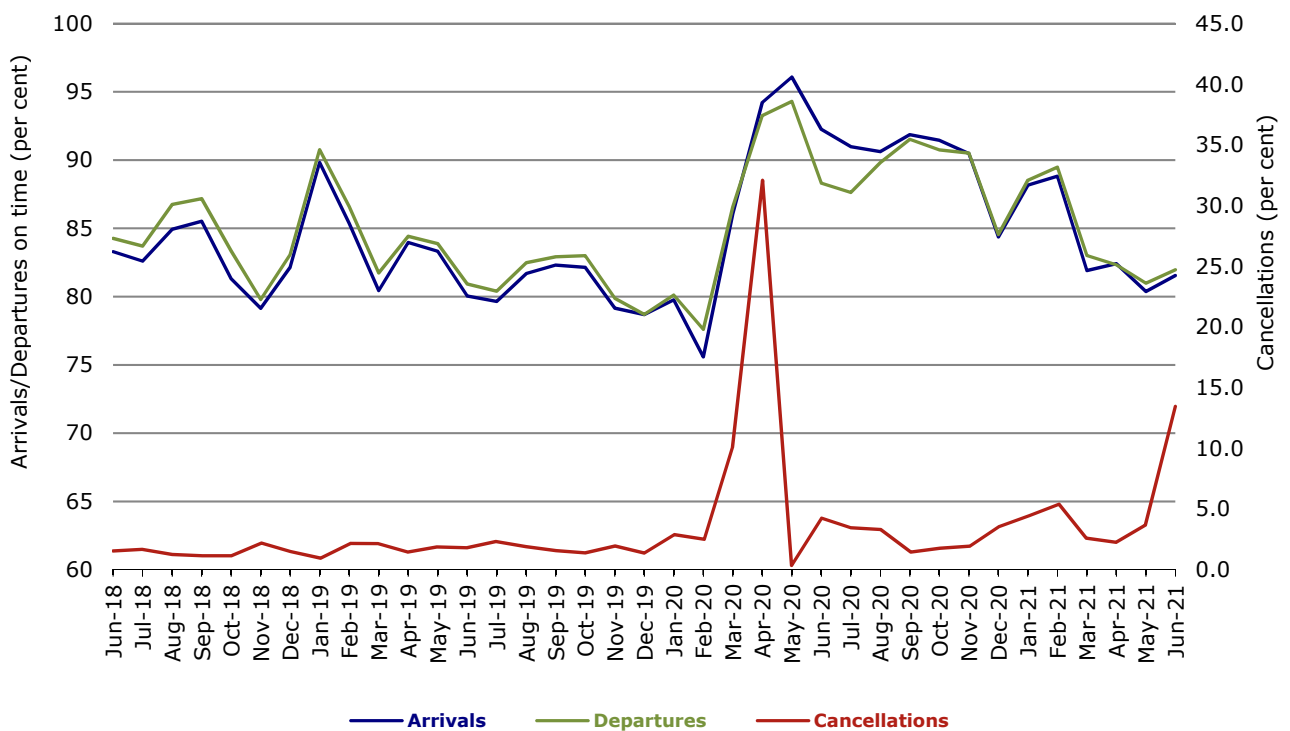


Figure 9 On time performance (by month from June 2018)—Regional Express

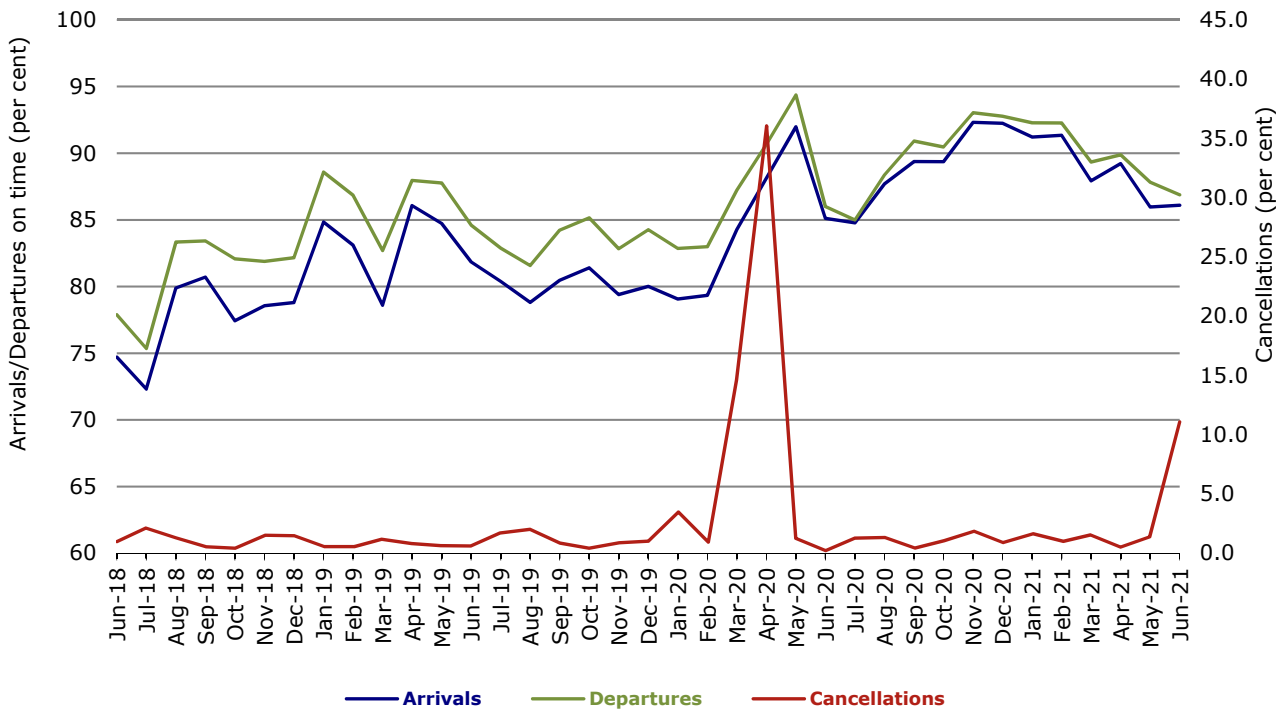
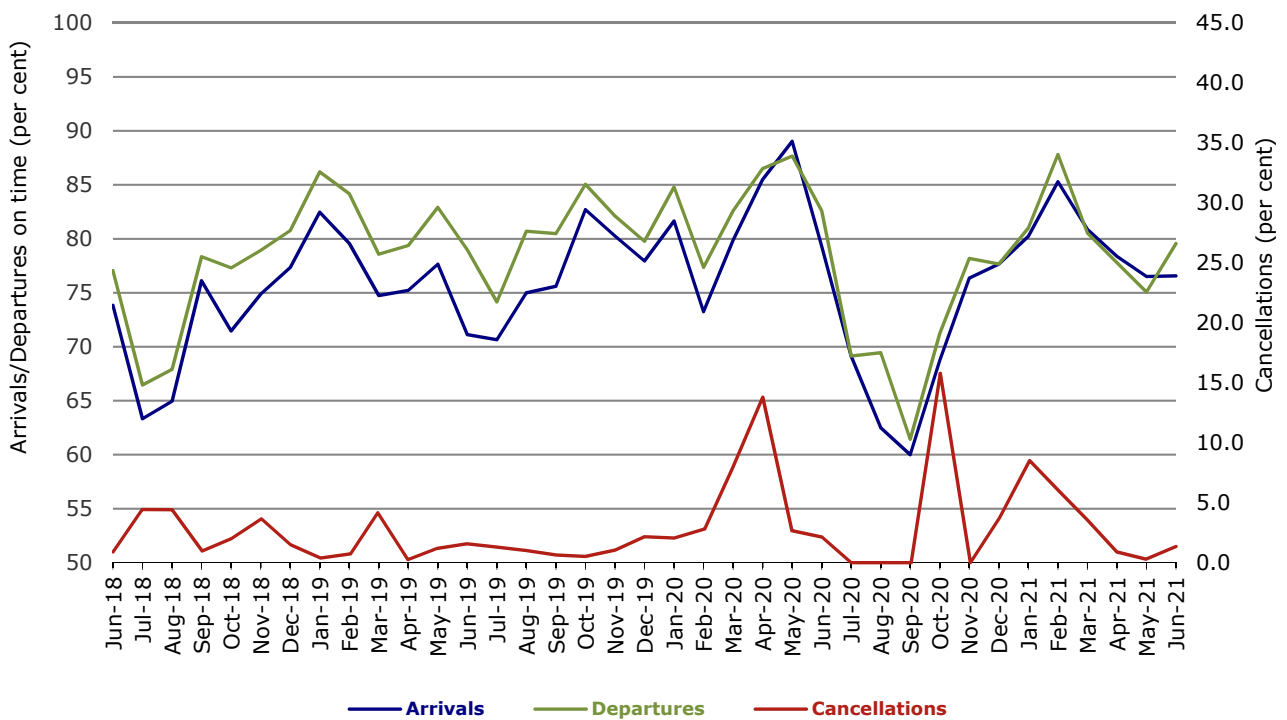


Figure 10 On time performance (by month from June 2018) Virgin Australia Regional Airlines



Individual routes

On time performance is reported for all routes where the passenger load averages over 8000 passengers per month over the previous six months, and where two or more airlines operate in competition on those routes. There are now 58 routes which meet this definition. Over time, however, routes which meet this definition may change as airline networks and traffic levels vary.

	<i>Sectors</i>		<i>Arrivals On Time</i>		<i>Departures On Time</i>		<i>Cancellations</i>	
	<i>Sched.</i>	<i>Flown</i>	<i>No.</i>	<i>%</i>	<i>No.</i>	<i>%</i>	<i>No.</i>	<i>%</i>
Adelaide-Alice Springs								
QantasLink	52	52	28	53.8	31	59.6	0	0.0
Virgin Australia	14	14	10	71.4	11	78.6	0	0.0
All Airlines	66	66	38	57.6	42	63.6	0	0.0
Adelaide-Brisbane								
Jetstar	27	25	18	72.0	19	76.0	2	7.4
Qantas	95	95	84	88.4	80	84.2	0	0.0
Virgin Australia	108	104	90	86.5	91	87.5	4	3.7
All Airlines	230	224	192	85.7	190	84.8	6	2.6
Adelaide-Canberra								
Qantas	38	37	34	91.9	34	91.9	1	2.6
Virgin Australia	25	25	21	84.0	21	84.0	0	0.0
All Airlines	63	62	55	88.7	55	88.7	1	1.6
Adelaide-Gold Coast								
Jetstar	26	26	23	88.5	22	84.6	0	0.0
QantasLink	6	6	6	100.0	6	100.0	0	0.0
Virgin Australia	33	32	29	90.6	29	90.6	1	3.0
All Airlines	65	64	58	90.6	57	89.1	1	1.5
Adelaide-Melbourne								
Jetstar	103	27	27	100.0	27	100.0	76	73.8
Qantas	191	66	62	93.9	60	90.9	125	65.4
Regional Express	50	17	17	100.0	17	100.0	33	66.0
Virgin Australia	194	52	43	82.7	39	75.0	142	73.2
All Airlines	538	162	149	92.0	143	88.3	376	69.9
Adelaide-Perth								
Jetstar	27	25	21	84.0	24	96.0	2	7.4
Qantas	86	86	82	95.3	75	87.2	0	0.0
Virgin Australia	42	41	38	92.7	36	87.8	1	2.4
Virgin Australia Regional Airlines	8	8	8	100.0	6	75.0	0	0.0
All Airlines	163	160	149	93.1	141	88.1	3	1.8
Adelaide-Port Lincoln								
QantasLink	120	116	95	81.9	94	81.0	4	3.3
Regional Express	161	160	147	91.9	150	93.8	1	0.6
All Airlines	281	276	242	87.7	244	88.4	5	1.8
Adelaide-Sydney								
Jetstar	105	74	69	93.2	68	91.9	31	29.5
Qantas	201	168	136	81.0	150	89.3	33	16.4
Virgin Australia	127	102	86	84.3	89	87.3	25	19.7
All Airlines	433	344	291	84.6	307	89.2	89	20.6
Albury-Sydney								
QantasLink	108	97	82	84.5	76	78.4	11	10.2
Regional Express	56	56	51	91.1	52	92.9	0	0.0
All Airlines	164	153	133	86.9	128	83.7	11	6.7

	<i>Sectors</i>		<i>Arrivals On Time</i>		<i>Departures On Time</i>		<i>Cancellations</i>	
	<i>Sched.</i>	<i>Flown</i>	<i>No.</i>	<i>%</i>	<i>No.</i>	<i>%</i>	<i>No.</i>	<i>%</i>
Alice Springs-Adelaide								
QantasLink	52	52	31	59.6	27	51.9	0	0.0
Virgin Australia	14	14	9	64.3	10	71.4	0	0.0
All Airlines	66	66	40	60.6	37	56.1	0	0.0
Armidale-Sydney								
QantasLink	82	71	61	85.9	60	84.5	11	13.4
Regional Express	50	48	38	79.2	38	79.2	2	4.0
All Airlines	132	119	99	83.2	98	82.4	13	9.8
Ballina-Sydney								
Jetstar	76	66	51	77.3	51	77.3	10	13.2
QantasLink	94	85	57	67.1	59	69.4	9	9.6
Regional Express	8	8	4	50.0	4	50.0	0	0.0
Virgin Australia	57	48	44	91.7	45	93.8	9	15.8
All Airlines	235	207	156	75.4	159	76.8	28	11.9
Brisbane-Adelaide								
Jetstar	27	25	19	76.0	16	64.0	2	7.4
Qantas	95	95	78	82.1	82	86.3	0	0.0
Virgin Australia	108	103	95	92.2	85	82.5	5	4.6
All Airlines	230	223	192	86.1	183	82.1	7	3.0
Brisbane-Cairns								
Jetstar	85	85	58	68.2	65	76.5	0	0.0
Qantas	140	140	97	69.3	125	89.3	0	0.0
QantasLink	6	6	5	83.3	4	66.7	0	0.0
Virgin Australia	136	136	102	75.0	104	76.5	0	0.0
All Airlines	367	367	262	71.4	298	81.2	0	0.0
Brisbane-Canberra								
Qantas	62	62	60	96.8	57	91.9	0	0.0
QantasLink	114	110	95	86.4	93	84.5	4	3.5
Virgin Australia	78	76	68	89.5	62	81.6	2	2.6
All Airlines	254	248	223	89.9	212	85.5	6	2.4
Brisbane-Darwin								
Jetstar	19	18	9	50.0	17	94.4	1	5.3
Qantas	43	43	20	46.5	38	88.4	0	0.0
Virgin Australia	35	35	25	71.4	30	85.7	0	0.0
All Airlines	97	96	54	56.3	85	88.5	1	1.0
Brisbane-Emerald								
QantasLink	125	124	103	83.1	107	86.3	1	0.8
Virgin Australia	26	26	19	73.1	19	73.1	0	0.0
All Airlines	151	150	122	81.3	126	84.0	1	0.7
Brisbane-Gladstone								
QantasLink	139	134	115	85.8	121	90.3	5	3.6
Virgin Australia	52	52	45	86.5	51	98.1	0	0.0
All Airlines	191	186	160	86.0	172	92.5	5	2.6
Brisbane-Hamilton Island								
Qantas	37	36	23	63.9	36	100.0	1	2.7
Virgin Australia	31	31	27	87.1	27	87.1	0	0.0
All Airlines	68	67	50	74.6	63	94.0	1	1.5

	<i>Sectors</i>		<i>Arrivals On Time</i>		<i>Departures On Time</i>		<i>Cancellations</i>	
	<i>Sched.</i>	<i>Flown</i>	<i>No.</i>	<i>%</i>	<i>No.</i>	<i>%</i>	<i>No.</i>	<i>%</i>
Brisbane-Hobart								
Jetstar	19	19	19	100.0	18	94.7	0	0.0
Qantas	4	4	4	100.0	4	100.0	0	0.0
QantasLink	15	15	11	73.3	11	73.3	0	0.0
Virgin Australia	36	36	31	86.1	28	77.8	0	0.0
All Airlines	74	74	65	87.8	61	82.4	0	0.0
Brisbane-Mackay								
Jetstar	27	27	25	92.6	26	96.3	0	0.0
Qantas	108	108	81	75.0	92	85.2	0	0.0
QantasLink	3	3	0	0.0	3	100.0	0	0.0
Virgin Australia	93	93	78	83.9	79	84.9	0	0.0
All Airlines	231	231	184	79.7	200	86.6	0	0.0
Brisbane-Melbourne								
Jetstar	183	56	50	89.3	45	80.4	127	69.4
Qantas	287	123	122	99.2	113	91.9	164	57.1
Virgin Australia	260	103	84	81.6	81	78.6	157	60.4
All Airlines	730	282	256	90.8	239	84.8	448	61.4
Brisbane-Mount Isa								
Qantas	45	45	37	82.2	45	100.0	0	0.0
QantasLink	7	7	6	85.7	7	100.0	0	0.0
Virgin Australia	16	16	12	75.0	16	100.0	0	0.0
All Airlines	68	68	55	80.9	68	100.0	0	0.0
Brisbane-Newcastle								
Jetstar	61	59	54	91.5	56	94.9	2	3.3
QantasLink	93	90	72	80.0	76	84.4	3	3.2
Virgin Australia	55	54	47	87.0	46	85.2	1	1.8
All Airlines	209	203	173	85.2	178	87.7	6	2.9
Brisbane-Perth								
Qantas	123	121	109	90.1	111	91.7	2	1.6
Virgin Australia	72	70	67	95.7	49	70.0	2	2.8
All Airlines	195	191	176	92.1	160	83.8	4	2.1
Brisbane-Proserpine								
Jetstar	26	26	22	84.6	22	84.6	0	0.0
Virgin Australia	35	35	33	94.3	33	94.3	0	0.0
All Airlines	61	61	55	90.2	55	90.2	0	0.0
Brisbane-Rockhampton								
QantasLink	167	162	137	84.6	138	85.2	5	3.0
Virgin Australia	89	89	60	67.4	68	76.4	0	0.0
All Airlines	256	251	197	78.5	206	82.1	5	2.0
Brisbane-Sydney								
Jetstar	176	126	111	88.1	102	81.0	50	28.4
Qantas	530	441	418	94.8	407	92.3	89	16.8
Virgin Australia	359	284	252	88.7	241	84.9	75	20.9
All Airlines	1 065	851	781	91.8	750	88.1	214	20.1
Brisbane-Townsville								
Jetstar	61	61	49	80.3	48	78.7	0	0.0
Qantas	114	114	78	68.4	96	84.2	0	0.0
Virgin Australia	103	102	88	86.3	87	85.3	1	1.0
All Airlines	278	277	215	77.6	231	83.4	1	0.4

	<i>Sectors</i>		<i>Arrivals On Time</i>		<i>Departures On Time</i>		<i>Cancellations</i>	
	<i>Sched.</i>	<i>Flown</i>	<i>No.</i>	<i>%</i>	<i>No.</i>	<i>%</i>	<i>No.</i>	<i>%</i>
Broome-Perth								
Qantas	17	17	15	88.2	15	88.2	0	0.0
QantasLink	81	77	60	77.9	63	81.8	4	4.9
Virgin Australia	25	25	17	68.0	13	52.0	0	0.0
Virgin Australia Regional Airlines	13	13	10	76.9	6	46.2	0	0.0
All Airlines	136	132	102	77.3	97	73.5	4	2.9
Cairns-Brisbane								
Jetstar	85	85	69	81.2	61	71.8	0	0.0
Qantas	140	140	101	72.1	103	73.6	0	0.0
QantasLink	6	6	4	66.7	4	66.7	0	0.0
Virgin Australia	137	136	122	89.7	108	79.4	1	0.7
All Airlines	368	367	296	80.7	276	75.2	1	0.3
Cairns-Melbourne								
Jetstar	122	52	46	88.5	43	82.7	70	57.4
Qantas	67	51	49	96.1	48	94.1	16	23.9
Virgin Australia	37	26	24	92.3	23	88.5	11	29.7
All Airlines	226	129	119	92.2	114	88.4	97	42.9
Cairns-Sydney								
Jetstar	87	70	59	84.3	48	68.6	17	19.5
Qantas	68	63	54	85.7	58	92.1	5	7.4
Virgin Australia	55	51	50	98.0	46	90.2	4	7.3
All Airlines	210	184	163	88.6	152	82.6	26	12.4
Cairns-Townsville								
QantasLink	111	110	86	78.2	85	77.3	1	0.9
Regional Express	18	18	16	88.9	16	88.9	0	0.0
All Airlines	129	128	102	79.7	101	78.9	1	0.8
Canberra-Adelaide								
Qantas	38	37	34	91.9	34	91.9	1	2.6
Virgin Australia	25	25	20	80.0	21	84.0	0	0.0
All Airlines	63	62	54	87.1	55	88.7	1	1.6
Canberra-Brisbane								
Qantas	62	62	55	88.7	57	91.9	0	0.0
QantasLink	113	110	94	85.5	97	88.2	3	2.7
Virgin Australia	80	76	59	77.6	59	77.6	4	5.0
All Airlines	255	248	208	83.9	213	85.9	7	2.7
Canberra-Melbourne								
Qantas	29	4	3	75.0	2	50.0	25	86.2
QantasLink	187	102	93	91.2	90	88.2	85	45.5
Virgin Australia	77	34	27	79.4	26	76.5	43	55.8
All Airlines	293	140	123	87.9	118	84.3	153	52.2
Canberra-Sydney								
Qantas	17	11	11	100.0	11	100.0	6	35.3
QantasLink	309	247	205	83.0	202	81.8	62	20.1
Regional Express	179	156	123	78.8	129	82.7	23	12.8
All Airlines	505	414	339	81.9	342	82.6	91	18.0
Coffs Harbour-Sydney								
QantasLink	112	102	87	85.3	87	85.3	10	8.9
Regional Express	86	86	73	84.9	75	87.2	0	0.0
All Airlines	198	188	160	85.1	162	86.2	10	5.1

	<i>Sectors</i>		<i>Arrivals On Time</i>		<i>Departures On Time</i>		<i>Cancellations</i>	
	<i>Sched.</i>	<i>Flown</i>	<i>No.</i>	<i>%</i>	<i>No.</i>	<i>%</i>	<i>No.</i>	<i>%</i>
Darwin-Brisbane								
Jetstar	18	18	7	38.9	5	27.8	0	0.0
Qantas	40	40	15	37.5	14	35.0	0	0.0
Virgin Australia	35	35	24	68.6	13	37.1	0	0.0
All Airlines	93	93	46	49.5	32	34.4	0	0.0
Darwin-Melbourne								
Jetstar	24	15	9	60.0	8	53.3	9	37.5
Qantas	56	42	31	73.8	27	64.3	14	25.0
Virgin Australia	17	10	9	90.0	6	60.0	7	41.2
All Airlines	97	67	49	73.1	41	61.2	30	30.9
Darwin-Perth								
Qantas	36	35	13	37.1	23	65.7	1	2.8
Virgin Australia	4	4	3	75.0	3	75.0	0	0.0
Virgin Australia Regional Airlines	15	15	5	33.3	7	46.7	0	0.0
All Airlines	55	54	21	38.9	33	61.1	1	1.8
Dubbo-Sydney								
QantasLink	99	85	77	90.6	78	91.8	14	14.1
Regional Express	79	76	57	75.0	57	75.0	3	3.8
All Airlines	178	161	134	83.2	135	83.9	17	9.6
Emerald-Brisbane								
QantasLink	126	125	106	84.8	102	81.6	1	0.8
Virgin Australia	26	26	20	76.9	20	76.9	0	0.0
All Airlines	152	151	126	83.4	122	80.8	1	0.7
Gladstone-Brisbane								
QantasLink	138	134	116	86.6	113	84.3	4	2.9
Virgin Australia	52	52	45	86.5	49	94.2	0	0.0
All Airlines	190	186	161	86.6	162	87.1	4	2.1
Gold Coast-Adelaide								
Jetstar	26	26	22	84.6	21	80.8	0	0.0
QantasLink	6	6	6	100.0	6	100.0	0	0.0
Virgin Australia	33	32	29	90.6	29	90.6	1	3.0
All Airlines	65	64	57	89.1	56	87.5	1	1.5
Gold Coast-Melbourne								
Jetstar	181	68	60	88.2	60	88.2	113	62.4
Qantas	52	33	30	90.9	29	87.9	19	36.5
Regional Express	58	34	29	85.3	32	94.1	24	41.4
Virgin Australia	278	114	100	87.7	91	79.8	164	59.0
All Airlines	569	249	219	88.0	212	85.1	320	56.2
Gold Coast-Sydney								
Jetstar	237	172	152	88.4	155	90.1	65	27.4
Qantas	90	83	69	83.1	67	80.7	7	7.8
Regional Express	61	50	48	96.0	46	92.0	11	18.0
Virgin Australia	293	246	214	87.0	205	83.3	47	16.0
All Airlines	681	551	483	87.7	473	85.8	130	19.1
Hamilton Island-Brisbane								
Qantas	37	36	30	83.3	29	80.6	1	2.7
Virgin Australia	31	31	27	87.1	26	83.9	0	0.0
All Airlines	68	67	57	85.1	55	82.1	1	1.5

	Sectors		Arrivals On Time		Departures On Time		Cancellations	
	Sched.	Flown	No.	%	No.	%	No.	%
Hamilton Island-Sydney								
Jetstar	18	13	10	76.9	9	69.2	5	27.8
Qantas	45	39	33	84.6	33	84.6	6	13.3
Virgin Australia	30	28	26	92.9	26	92.9	2	6.7
All Airlines	93	80	69	86.3	68	85.0	13	14.0
Hobart-Brisbane								
Jetstar	19	19	12	63.2	12	63.2	0	0.0
Qantas	4	4	2	50.0	2	50.0	0	0.0
QantasLink	15	15	10	66.7	11	73.3	0	0.0
Virgin Australia	36	36	25	69.4	25	69.4	0	0.0
All Airlines	74	74	49	66.2	50	67.6	0	0.0
Hobart-Melbourne								
Jetstar	134	58	54	93.1	53	91.4	76	56.7
Qantas	12	7	7	100.0	7	100.0	5	41.7
QantasLink	93	45	38	84.4	39	86.7	48	51.6
Virgin Australia	81	36	32	88.9	33	91.7	45	55.6
All Airlines	320	146	131	89.7	132	90.4	174	54.4
Hobart-Sydney								
Jetstar	70	60	42	70.0	47	78.3	10	14.3
Qantas	23	23	20	87.0	20	87.0	0	0.0
QantasLink	46	43	28	65.1	31	72.1	3	6.5
Virgin Australia	54	50	42	84.0	42	84.0	4	7.4
All Airlines	193	176	132	75.0	140	79.5	17	8.8
Kalgoorlie-Perth								
Qantas	16	16	16	100.0	14	87.5	0	0.0
QantasLink	58	57	50	87.7	47	82.5	1	1.7
Virgin Australia	23	23	18	78.3	17	73.9	0	0.0
Virgin Australia Regional Airlines	34	33	26	78.8	24	72.7	1	2.9
All Airlines	131	129	110	85.3	102	79.1	2	1.5
Karratha-Perth								
Qantas	30	28	26	92.9	28	100.0	2	6.7
QantasLink	111	107	82	76.6	82	76.6	4	3.6
Virgin Australia	32	32	26	81.3	24	75.0	0	0.0
Virgin Australia Regional Airlines	23	23	17	73.9	19	82.6	0	0.0
All Airlines	196	190	151	79.5	153	80.5	6	3.1
Launceston-Melbourne								
Jetstar	90	33	28	84.8	27	81.8	57	63.3
QantasLink	76	36	33	91.7	33	91.7	40	52.6
Virgin Australia	56	29	26	89.7	26	89.7	27	48.2
All Airlines	222	98	87	88.8	86	87.8	124	55.9
Launceston-Sydney								
Jetstar	33	27	17	63.0	16	59.3	6	18.2
QantasLink	16	15	5	33.3	10	66.7	1	6.3
Virgin Australia	26	23	18	78.3	19	82.6	3	11.5
All Airlines	75	65	40	61.5	45	69.2	10	13.3
Mackay-Brisbane								
Jetstar	27	27	27	100.0	25	92.6	0	0.0
Qantas	108	108	86	79.6	84	77.8	0	0.0
QantasLink	5	5	4	80.0	5	100.0	0	0.0
Virgin Australia	93	93	86	92.5	83	89.2	0	0.0
All Airlines	233	233	203	87.1	197	84.5	0	0.0

	<i>Sectors</i>		<i>Arrivals On Time</i>		<i>Departures On Time</i>		<i>Cancellations</i>	
	<i>Sched.</i>	<i>Flown</i>	<i>No.</i>	<i>%</i>	<i>No.</i>	<i>%</i>	<i>No.</i>	<i>%</i>
Melbourne-Adelaide								
Jetstar	103	28	28	100.0	26	92.9	75	72.8
Qantas	193	66	62	93.9	62	93.9	127	65.8
Regional Express	53	17	17	100.0	16	94.1	36	67.9
Virgin Australia	198	52	45	86.5	43	82.7	146	73.7
All Airlines	547	163	152	93.3	147	90.2	384	70.2
Melbourne-Brisbane								
Jetstar	183	56	44	78.6	43	76.8	127	69.4
Qantas	285	123	119	96.7	119	96.7	162	56.8
Virgin Australia	255	102	90	88.2	92	90.2	153	60.0
All Airlines	723	281	253	90.0	254	90.4	442	61.1
Melbourne-Cairns								
Jetstar	122	52	40	76.9	38	73.1	70	57.4
Qantas	69	51	44	86.3	47	92.2	18	26.1
Virgin Australia	35	26	25	96.2	23	88.5	9	25.7
All Airlines	226	129	109	84.5	108	83.7	97	42.9
Melbourne-Canberra								
Qantas	29	4	4	100.0	3	75.0	25	86.2
QantasLink	187	103	94	91.3	91	88.3	84	44.9
Virgin Australia	81	35	31	88.6	29	82.9	46	56.8
All Airlines	297	142	129	90.8	123	86.6	155	52.2
Melbourne-Darwin								
Jetstar	24	16	11	68.8	14	87.5	8	33.3
Qantas	59	42	37	88.1	38	90.5	17	28.8
Virgin Australia	20	11	8	72.7	9	81.8	9	45.0
All Airlines	103	69	56	81.2	61	88.4	34	33.0
Melbourne-Gold Coast								
Jetstar	181	68	57	83.8	56	82.4	113	62.4
Qantas	55	34	31	91.2	34	100.0	21	38.2
Regional Express	58	34	31	91.2	32	94.1	24	41.4
Virgin Australia	285	115	97	84.3	94	81.7	170	59.6
All Airlines	579	251	216	86.1	216	86.1	328	56.6
Melbourne-Hobart								
Jetstar	134	58	48	82.8	50	86.2	76	56.7
Qantas	12	7	7	100.0	7	100.0	5	41.7
QantasLink	100	46	36	78.3	38	82.6	54	54.0
Virgin Australia	84	37	34	91.9	34	91.9	47	56.0
All Airlines	330	148	125	84.5	129	87.2	182	55.2
Melbourne-Launceston								
Jetstar	90	33	24	72.7	24	72.7	57	63.3
QantasLink	83	37	33	89.2	34	91.9	46	55.4
Virgin Australia	60	30	28	93.3	27	90.0	30	50.0
All Airlines	233	100	85	85.0	85	85.0	133	57.1
Melbourne-Mildura								
QantasLink	115	77	65	84.4	63	81.8	38	33.0
Regional Express	72	57	50	87.7	52	91.2	15	20.8
All Airlines	187	134	115	85.8	115	85.8	53	28.3
Melbourne-Newcastle								
Jetstar	61	26	21	80.8	20	76.9	35	57.4
QantasLink	47	23	21	91.3	21	91.3	24	51.1
Virgin Australia	24	18	17	94.4	17	94.4	6	25.0
All Airlines	132	67	59	88.1	58	86.6	65	49.2

	Sectors		Arrivals On Time		Departures On Time		Cancellations	
	Sched.	Flown	No.	%	No.	%	No.	%
Melbourne-Perth								
Jetstar	73	0	0	na	0	na	73	100.0
Qantas	118	46	43	93.5	42	91.3	72	61.0
Virgin Australia	75	27	25	92.6	25	92.6	48	64.0
All Airlines	266	73	68	93.2	67	91.8	193	72.6
Melbourne-Sunshine Coast								
Jetstar	66	40	31	77.5	35	87.5	26	39.4
QantasLink	43	20	17	85.0	17	85.0	23	53.5
Virgin Australia	78	37	31	83.8	30	81.1	41	52.6
All Airlines	187	97	79	81.4	82	84.5	90	48.1
Melbourne-Sydney								
Jetstar	300	61	54	88.5	50	82.0	239	79.7
Qantas	678	184	174	94.6	174	94.6	494	72.9
Regional Express	148	54	52	96.3	52	96.3	94	63.5
Virgin Australia	555	176	167	94.9	164	93.2	379	68.3
All Airlines	1 681	475	447	94.1	440	92.6	1 206	71.7
Mildura-Melbourne								
QantasLink	114	77	65	84.4	65	84.4	37	32.5
Regional Express	71	59	53	89.8	51	86.4	12	16.9
All Airlines	185	136	118	86.8	116	85.3	49	26.5
Mount Isa-Brisbane								
Qantas	45	45	42	93.3	35	77.8	0	0.0
QantasLink	7	7	7	100.0	7	100.0	0	0.0
Virgin Australia	16	16	14	87.5	11	68.8	0	0.0
All Airlines	68	68	63	92.6	53	77.9	0	0.0
Newcastle-Brisbane								
Jetstar	61	59	56	94.9	55	93.2	2	3.3
QantasLink	93	89	81	91.0	78	87.6	4	4.3
Virgin Australia	55	55	48	87.3	49	89.1	0	0.0
All Airlines	209	203	185	91.1	182	89.7	6	2.9
Newcastle-Melbourne								
Jetstar	61	26	23	88.5	21	80.8	35	57.4
QantasLink	46	22	19	86.4	20	90.9	24	52.2
Virgin Australia	24	18	16	88.9	17	94.4	6	25.0
All Airlines	131	66	58	87.9	58	87.9	65	49.6
Newman-Perth								
Qantas	32	27	22	81.5	23	85.2	5	15.6
QantasLink	88	84	74	88.1	74	88.1	4	4.5
Virgin Australia	45	42	33	78.6	33	78.6	3	6.7
Virgin Australia Regional Airlines	13	13	11	84.6	11	84.6	0	0.0
All Airlines	178	166	140	84.3	141	84.9	12	6.7
Perth-Adelaide								
Jetstar	26	24	20	83.3	18	75.0	2	7.7
Qantas	86	86	75	87.2	83	96.5	0	0.0
Virgin Australia	42	41	35	85.4	38	92.7	1	2.4
Virgin Australia Regional Airlines	8	8	7	87.5	8	100.0	0	0.0
All Airlines	162	159	137	86.2	147	92.5	3	1.9
Perth-Brisbane								
Qantas	124	122	90	73.8	102	83.6	2	1.6
Virgin Australia	74	71	66	93.0	62	87.3	3	4.1
All Airlines	198	193	156	80.8	164	85.0	5	2.5

	Sectors		Arrivals On Time		Departures On Time		Cancellations	
	Sched.	Flown	No.	%	No.	%	No.	%
Perth-Broome								
Qantas	17	17	17	100.0	14	82.4	0	0.0
QantasLink	81	78	73	93.6	67	85.9	3	3.7
Virgin Australia	25	25	21	84.0	18	72.0	0	0.0
Virgin Australia Regional Airlines	13	13	12	92.3	12	92.3	0	0.0
All Airlines	136	133	123	92.5	111	83.5	3	2.2
Perth-Darwin								
Qantas	36	35	29	82.9	30	85.7	1	2.8
Virgin Australia	4	4	4	100.0	4	100.0	0	0.0
Virgin Australia Regional Airlines	15	15	11	73.3	12	80.0	0	0.0
All Airlines	55	54	44	81.5	46	85.2	1	1.8
Perth-Kalgoorlie								
Qantas	16	16	15	93.8	16	100.0	0	0.0
QantasLink	58	57	47	82.5	49	86.0	1	1.7
Virgin Australia	23	23	22	95.7	22	95.7	0	0.0
Virgin Australia Regional Airlines	34	33	30	90.9	31	93.9	1	2.9
All Airlines	131	129	114	88.4	118	91.5	2	1.5
Perth-Karratha								
Qantas	30	29	29	100.0	28	96.6	1	3.3
QantasLink	108	105	76	72.4	81	77.1	3	2.8
Virgin Australia	32	32	28	87.5	28	87.5	0	0.0
Virgin Australia Regional Airlines	23	23	21	91.3	23	100.0	0	0.0
All Airlines	193	189	154	81.5	160	84.7	4	2.1
Perth-Melbourne								
Jetstar	74	0	0	na	0	na	74	100.0
Qantas	119	48	35	72.9	38	79.2	71	59.7
Virgin Australia	79	29	23	79.3	22	75.9	50	63.3
All Airlines	272	77	58	75.3	60	77.9	195	71.7
Perth-Newman								
Qantas	32	28	26	92.9	26	92.9	4	12.5
QantasLink	88	84	78	92.9	76	90.5	4	4.5
Virgin Australia	45	42	41	97.6	40	95.2	3	6.7
Virgin Australia Regional Airlines	13	13	11	84.6	11	84.6	0	0.0
All Airlines	178	167	156	93.4	153	91.6	11	6.2
Perth-Port Hedland								
Qantas	47	46	45	97.8	45	97.8	1	2.1
QantasLink	75	70	57	81.4	64	91.4	5	6.7
Virgin Australia	1	1	1	100.0	1	100.0	0	0.0
Virgin Australia Regional Airlines	51	51	46	90.2	45	88.2	0	0.0
All Airlines	174	168	149	88.7	155	92.3	6	3.4
Perth-Sydney								
Jetstar	50	32	23	71.9	18	56.3	18	36.0
Qantas	147	128	101	78.9	101	78.9	19	12.9
Virgin Australia	89	70	65	92.9	56	80.0	19	21.3
All Airlines	286	230	189	82.2	175	76.1	56	19.6
Port Hedland-Perth								
Qantas	47	46	43	93.5	44	95.7	1	2.1
QantasLink	75	70	45	64.3	60	85.7	5	6.7
Virgin Australia	1	1	0	0.0	0	0.0	0	0.0
Virgin Australia Regional Airlines	51	51	33	64.7	38	74.5	0	0.0
All Airlines	174	168	121	72.0	142	84.5	6	3.4

	<i>Sectors</i>		<i>Arrivals On Time</i>		<i>Departures On Time</i>		<i>Cancellations</i>	
	<i>Sched.</i>	<i>Flown</i>	<i>No.</i>	<i>%</i>	<i>No.</i>	<i>%</i>	<i>No.</i>	<i>%</i>
Port Lincoln-Adelaide								
QantasLink	120	116	95	81.9	99	85.3	4	3.3
Regional Express	161	160	140	87.5	145	90.6	1	0.6
All Airlines	281	276	235	85.1	244	88.4	5	1.8
Port Macquarie-Sydney								
QantasLink	108	97	80	82.5	81	83.5	11	10.2
Regional Express	76	74	59	79.7	65	87.8	2	2.6
All Airlines	184	171	139	81.3	146	85.4	13	7.1
Proserpine-Brisbane								
Jetstar	28	27	21	77.8	20	74.1	1	3.6
Virgin Australia	35	35	33	94.3	28	80.0	0	0.0
All Airlines	63	62	54	87.1	48	77.4	1	1.6
Rockhampton-Brisbane								
QantasLink	167	158	122	77.2	122	77.2	9	5.4
Virgin Australia	89	89	73	82.0	66	74.2	0	0.0
All Airlines	256	247	195	78.9	188	76.1	9	3.5
Sunshine Coast-Melbourne								
Jetstar	66	40	34	85.0	31	77.5	26	39.4
QantasLink	44	20	17	85.0	17	85.0	24	54.5
Virgin Australia	78	37	31	83.8	30	81.1	41	52.6
All Airlines	188	97	82	84.5	78	80.4	91	48.4
Sunshine Coast-Sydney								
Jetstar	83	68	62	91.2	61	89.7	15	18.1
QantasLink	56	50	41	82.0	38	76.0	6	10.7
Virgin Australia	73	62	48	77.4	51	82.3	11	15.1
All Airlines	212	180	151	83.9	150	83.3	32	15.1
Sydney-Adelaide								
Jetstar	105	74	66	89.2	65	87.8	31	29.5
Qantas	201	166	146	88.0	152	91.6	35	17.4
Virgin Australia	127	101	91	90.1	88	87.1	26	20.5
All Airlines	433	341	303	88.9	305	89.4	92	21.2
Sydney-Albury								
QantasLink	107	97	86	88.7	87	89.7	10	9.3
Regional Express	56	56	50	89.3	48	85.7	0	0.0
All Airlines	163	153	136	88.9	135	88.2	10	6.1
Sydney-Armidale								
QantasLink	82	72	60	83.3	59	81.9	10	12.2
Regional Express	51	49	37	75.5	37	75.5	2	3.9
All Airlines	133	121	97	80.2	96	79.3	12	9.0
Sydney-Ballina								
Jetstar	76	66	58	87.9	57	86.4	10	13.2
QantasLink	94	83	49	59.0	67	80.7	11	11.7
Regional Express	8	8	5	62.5	5	62.5	0	0.0
Virgin Australia	57	48	43	89.6	43	89.6	9	15.8
All Airlines	235	205	155	75.6	172	83.9	30	12.8
Sydney-Brisbane								
Jetstar	177	127	109	85.8	107	84.3	50	28.2
Qantas	538	444	409	92.1	426	95.9	94	17.5
Virgin Australia	359	281	249	88.6	252	89.7	78	21.7
All Airlines	1 074	852	767	90.0	785	92.1	222	20.7

	<i>Sectors</i>		<i>Arrivals On Time</i>		<i>Departures On Time</i>		<i>Cancellations</i>	
	<i>Sched.</i>	<i>Flown</i>	<i>No.</i>	<i>%</i>	<i>No.</i>	<i>%</i>	<i>No.</i>	<i>%</i>
Sydney-Cairns								
Jetstar	87	71	59	83.1	62	87.3	16	18.4
Qantas	67	63	52	82.5	58	92.1	4	6.0
Virgin Australia	55	51	49	96.1	49	96.1	4	7.3
All Airlines	209	185	160	86.5	169	91.4	24	11.5
Sydney-Canberra								
Qantas	17	11	11	100.0	11	100.0	6	35.3
QantasLink	310	249	200	80.3	204	81.9	61	19.7
Regional Express	179	156	118	75.6	127	81.4	23	12.8
All Airlines	506	416	329	79.1	342	82.2	90	17.8
Sydney-Coffs Harbour								
QantasLink	112	101	80	79.2	81	80.2	11	9.8
Regional Express	85	85	75	88.2	73	85.9	0	0.0
All Airlines	197	186	155	83.3	154	82.8	11	5.6
Sydney-Dubbo								
QantasLink	99	84	75	89.3	75	89.3	15	15.2
Regional Express	77	75	62	82.7	60	80.0	2	2.6
All Airlines	176	159	137	86.2	135	84.9	17	9.7
Sydney-Gold Coast								
Jetstar	237	172	156	90.7	156	90.7	65	27.4
Qantas	90	83	75	90.4	74	89.2	7	7.8
Regional Express	61	50	44	88.0	45	90.0	11	18.0
Virgin Australia	293	244	209	85.7	215	88.1	49	16.7
All Airlines	681	549	484	88.2	490	89.3	132	19.4
Sydney-Hamilton Island								
Jetstar	18	12	9	75.0	8	66.7	6	33.3
Qantas	46	39	34	87.2	33	84.6	7	15.2
Virgin Australia	30	28	27	96.4	28	100.0	2	6.7
All Airlines	94	79	70	88.6	69	87.3	15	16.0
Sydney-Hobart								
Jetstar	70	60	52	86.7	48	80.0	10	14.3
Qantas	23	23	23	100.0	23	100.0	0	0.0
QantasLink	46	42	34	81.0	29	69.0	4	8.7
Virgin Australia	54	50	46	92.0	43	86.0	4	7.4
All Airlines	193	175	155	88.6	143	81.7	18	9.3
Sydney-Launceston								
Jetstar	33	27	23	85.2	18	66.7	6	18.2
QantasLink	16	15	12	80.0	8	53.3	1	6.3
Virgin Australia	26	23	20	87.0	18	78.3	3	11.5
All Airlines	75	65	55	84.6	44	67.7	10	13.3
Sydney-Melbourne								
Jetstar	300	62	56	90.3	49	79.0	238	79.3
Qantas	675	181	174	96.1	167	92.3	494	73.2
Regional Express	147	54	52	96.3	51	94.4	93	63.3
Virgin Australia	558	182	160	87.9	144	79.1	376	67.4
All Airlines	1 680	479	442	92.3	411	85.8	1 201	71.5
Sydney-Perth								
Jetstar	48	32	29	90.6	27	84.4	16	33.3
Qantas	146	127	109	85.8	103	81.1	19	13.0
Virgin Australia	88	72	65	90.3	52	72.2	16	18.2
All Airlines	282	231	203	87.9	182	78.8	51	18.1

	<i>Sectors</i>		<i>Arrivals On Time</i>		<i>Departures On Time</i>		<i>Cancellations</i>	
	<i>Sched.</i>	<i>Flown</i>	<i>No.</i>	<i>%</i>	<i>No.</i>	<i>%</i>	<i>No.</i>	<i>%</i>
Sydney-Port Macquarie								
QantasLink	108	97	77	79.4	75	77.3	11	10.2
Regional Express	76	74	66	89.2	64	86.5	2	2.6
All Airlines	184	171	143	83.6	139	81.3	13	7.1
Sydney-Sunshine Coast								
Jetstar	83	68	61	89.7	61	89.7	15	18.1
QantasLink	56	50	32	64.0	41	82.0	6	10.7
Virgin Australia	73	63	52	82.5	55	87.3	10	13.7
All Airlines	212	181	145	80.1	157	86.7	31	14.6
Sydney-Townsville								
Jetstar	27	19	16	84.2	15	78.9	8	29.6
Virgin Australia	4	4	3	75.0	4	100.0	0	0.0
All Airlines	31	23	19	82.6	19	82.6	8	25.8
Sydney-Wagga Wagga								
QantasLink	108	96	85	88.5	82	85.4	12	11.1
Regional Express	57	57	46	80.7	46	80.7	0	0.0
All Airlines	165	153	131	85.6	128	83.7	12	7.3
Townsville-Brisbane								
Jetstar	60	60	46	76.7	43	71.7	0	0.0
Qantas	114	114	77	67.5	82	71.9	0	0.0
Virgin Australia	103	103	98	95.1	91	88.3	0	0.0
All Airlines	277	277	221	79.8	216	78.0	0	0.0
Townsville-Cairns								
QantasLink	111	110	95	86.4	91	82.7	1	0.9
Regional Express	18	18	17	94.4	17	94.4	0	0.0
All Airlines	129	128	112	87.5	108	84.4	1	0.8
Townsville-Sydney								
Jetstar	27	24	21	87.5	20	83.3	3	11.1
Virgin Australia	4	4	3	75.0	4	100.0	0	0.0
All Airlines	31	28	24	85.7	24	85.7	3	9.7
Wagga Wagga-Sydney								
QantasLink	108	97	88	90.7	85	87.6	11	10.2
Regional Express	57	57	49	86.0	51	89.5	0	0.0
All Airlines	165	154	137	89.0	136	88.3	11	6.7

Airports

On time performance is reported for all routes where the passenger load averages over 8000 passengers per month, and where two or more airlines operate in competition. The following data reports by airport against flights operated on those routes only. This month, 8 major city airports and 28 regional city airports are covered.

Airport	Arrivals			Departures		
	Sectors Flown	On Time No.	%	Sectors Flown	On Time No.	%
Adelaide						
Jetstar	177	155	87.6	177	160	90.4
Qantas	450	395	87.8	452	399	88.3
QantasLink	174	132	75.9	174	131	75.3
Regional Express	177	157	88.7	177	167	94.4
Virgin Australia	368	324	88.0	370	316	85.4
Virgin Australia Regional Airlines	8	7	87.5	8	6	75.0
All Airlines	1 354	1 170	86.4	1 358	1 179	86.8
Relates to services to and from Alice Springs, Brisbane, Canberra, Gold Coast, Melbourne, Perth, Port Lincoln and Sydney.						
Albury						
QantasLink	97	86	88.7	97	76	78.4
Regional Express	56	50	89.3	56	52	92.9
All Airlines	153	136	88.9	153	128	83.7
Relates to services to and from Sydney only.						
Alice Springs						
QantasLink	52	28	53.8	52	27	51.9
Virgin Australia	14	10	71.4	14	10	71.4
All Airlines	66	38	57.6	66	37	56.1
Relates to services to and from Adelaide only.						
Armidale						
QantasLink	72	60	83.3	71	60	84.5
Regional Express	49	37	75.5	48	38	79.2
All Airlines	121	97	80.2	119	98	82.4
Relates to services to and from Sydney only.						
Ballina						
Jetstar	66	58	87.9	66	51	77.3
QantasLink	83	49	59.0	85	59	69.4
Regional Express	8	5	62.5	8	4	50.0
Virgin Australia	48	43	89.6	48	45	93.8
All Airlines	205	155	75.6	207	159	76.8
Relates to services to and from Sydney only.						
Brisbane						
Jetstar	503	409	81.3	502	415	82.7
Qantas	1 333	1 110	83.3	1 332	1 206	90.5
QantasLink	649	544	83.8	651	560	86.0
Virgin Australia	1 341	1 169	87.2	1 341	1 106	82.5
All Airlines	3 826	3 232	84.5	3 826	3 287	85.9
Relates to services to and from Adelaide, Cairns, Canberra, Darwin, Emerald, Gladstone, Hamilton Island, Hobart, Mackay, Melbourne, Mount Isa, Newcastle, Perth, Proserpine, Rockhampton, Sydney and Townsville.						

Airport	Arrivals			Departures		
	Sectors Flown	On Time		Sectors Flown	On Time	
		No.	%		No.	%
Broome						
Qantas	17	17	100.0	17	15	88.2
QantasLink	78	73	93.6	77	63	81.8
Virgin Australia	25	21	84.0	25	13	52.0
Virgin Australia Regional Airlines	13	12	92.3	13	6	46.2
All Airlines	133	123	92.5	132	97	73.5
Relates to services to and from Perth only.						
Cairns						
Jetstar	208	157	75.5	207	152	73.4
Qantas	254	193	76.0	254	209	82.3
QantasLink	116	100	86.2	116	89	76.7
Regional Express	18	17	94.4	18	16	88.9
Virgin Australia	213	176	82.6	213	177	83.1
All Airlines	809	643	79.5	808	643	79.6
Relates to services to and from Brisbane, Melbourne, Sydney and Townsville.						
Canberra						
Qantas	114	109	95.6	114	104	91.2
QantasLink	462	389	84.2	459	389	84.7
Regional Express	156	118	75.6	156	129	82.7
Virgin Australia	136	120	88.2	135	106	78.5
All Airlines	868	736	84.8	864	728	84.3
Relates to services to and from Adelaide, Brisbane, Melbourne and Sydney.						
Coffs Harbour						
QantasLink	101	80	79.2	102	87	85.3
Regional Express	85	75	88.2	86	75	87.2
All Airlines	186	155	83.3	188	162	86.2
Relates to services to and from Sydney only.						
Darwin						
Jetstar	34	20	58.8	33	13	39.4
Qantas	120	86	71.7	117	64	54.7
Virgin Australia	50	37	74.0	49	22	44.9
Virgin Australia Regional Airlines	15	11	73.3	15	7	46.7
All Airlines	219	154	70.3	214	106	49.5
Relates to services to and from Brisbane and Perth.						
Dubbo						
QantasLink	84	75	89.3	85	78	91.8
Regional Express	75	62	82.7	76	57	75.0
All Airlines	159	137	86.2	161	135	83.9
Relates to services to and from Sydney only.						
Emerald						
QantasLink	124	103	83.1	125	102	81.6
Virgin Australia	26	19	73.1	26	20	76.9
All Airlines	150	122	81.3	151	122	80.8
Relates to services to and from Brisbane only.						
Gladstone						
QantasLink	134	115	85.8	134	113	84.3
Virgin Australia	52	45	86.5	52	49	94.2
All Airlines	186	160	86.0	186	162	87.1
Relates to services to and from Brisbane only.						

Airport	Arrivals			Departures		
	Sectors Flown	On Time		Sectors Flown	On Time	
		No.	%		No.	%
Gold Coast						
Jetstar	266	236	88.7	266	236	88.7
Qantas	117	106	90.6	116	96	82.8
QantasLink	6	6	100.0	6	6	100.0
Regional Express	84	75	89.3	84	78	92.9
Virgin Australia	391	335	85.7	392	325	82.9
All Airlines	864	758	87.7	864	741	85.8
Relates to services to and from Adelaide, Melbourne and Sydney.						
Hamilton Island						
Jetstar	12	9	75.0	13	9	69.2
Qantas	75	57	76.0	75	62	82.7
Virgin Australia	59	54	91.5	59	52	88.1
All Airlines	146	120	82.2	147	123	83.7
Relates to services to and from Brisbane and Sydney.						
Hobart						
Jetstar	137	119	86.9	137	112	81.8
Qantas	34	34	100.0	34	29	85.3
QantasLink	103	81	78.6	103	81	78.6
Virgin Australia	123	111	90.2	122	100	82.0
All Airlines	397	345	86.9	396	322	81.3
Relates to services to and from Brisbane, Melbourne and Sydney.						
Kalgoorlie						
Qantas	16	15	93.8	16	14	87.5
QantasLink	57	47	82.5	57	47	82.5
Virgin Australia	23	22	95.7	23	17	73.9
Virgin Australia Regional Airlines	33	30	90.9	33	24	72.7
All Airlines	129	114	88.4	129	102	79.1
Relates to services to and from Perth only.						
Karratha						
Qantas	29	29	100.0	28	28	100.0
QantasLink	105	76	72.4	107	82	76.6
Virgin Australia	32	28	87.5	32	24	75.0
Virgin Australia Regional Airlines	23	21	91.3	23	19	82.6
All Airlines	189	154	81.5	190	153	80.5
Relates to services to and from Perth only.						
Launceston						
Jetstar	60	47	78.3	60	43	71.7
QantasLink	52	45	86.5	51	43	84.3
Virgin Australia	53	48	90.6	52	45	86.5
All Airlines	165	140	84.8	163	131	80.4
Relates to services to and from Melbourne and Sydney.						
Mackay						
Jetstar	27	25	92.6	27	25	92.6
Qantas	108	81	75.0	108	84	77.8
QantasLink	3	0	0.0	5	5	100.0
Virgin Australia	93	78	83.9	93	83	89.2
All Airlines	231	184	79.7	233	197	84.5
Relates to services to and from Brisbane only.						

Airport	Arrivals			Departures		
	Sectors Flown	On Time		Sectors Flown	On Time	
		No.	%		No.	%
Melbourne						
Jetstar	437	387	88.6	438	356	81.3
Qantas	555	513	92.4	557	526	94.4
QantasLink	302	265	87.7	306	264	86.3
Regional Express	164	151	92.1	162	152	93.8
Virgin Australia	670	575	85.8	666	587	88.1
All Airlines	2 128	1 891	88.9	2 129	1 885	88.5
Relates to services to and from Adelaide, Brisbane, Cairns, Canberra, Gold Coast, Hobart, Launceston, Mildura, Newcastle, Perth, Sunshine Coast and Sydney.						
Mildura						
QantasLink	77	65	84.4	77	65	84.4
Regional Express	57	50	87.7	59	51	86.4
All Airlines	134	115	85.8	136	116	85.3
Relates to services to and from Melbourne only.						
Mount Isa						
Qantas	45	37	82.2	45	35	77.8
QantasLink	7	6	85.7	7	7	100.0
Virgin Australia	16	12	75.0	16	11	68.8
All Airlines	68	55	80.9	68	53	77.9
Relates to services to and from Brisbane only.						
Newcastle						
Jetstar	85	75	88.2	85	76	89.4
QantasLink	113	93	82.3	111	98	88.3
Virgin Australia	72	64	88.9	73	66	90.4
All Airlines	270	232	85.9	269	240	89.2
Relates to services to and from Brisbane and Melbourne.						
Newman						
Qantas	28	26	92.9	27	23	85.2
QantasLink	84	78	92.9	84	74	88.1
Virgin Australia	42	41	97.6	42	33	78.6
Virgin Australia Regional Airlines	13	11	84.6	13	11	84.6
All Airlines	167	156	93.4	166	141	84.9
Relates to services to and from Perth only.						
Perth						
Jetstar	57	50	87.7	56	36	64.3
Qantas	549	478	87.1	555	483	87.0
QantasLink	395	311	78.7	394	337	85.5
Virgin Australia	337	292	86.6	338	291	86.1
Virgin Australia Regional Airlines	156	110	70.5	156	142	91.0
All Airlines	1 494	1 241	83.1	1 499	1 289	86.0
Relates to services to and from Adelaide, Brisbane, Broome, Darwin, Kalgoorlie, Karratha, Melbourne, Newman, Port Hedland and Sydney.						
Port Hedland						
Qantas	46	45	97.8	46	44	95.7
QantasLink	70	57	81.4	70	60	85.7
Virgin Australia	1	1	100.0	1	0	0.0
Virgin Australia Regional Airlines	51	46	90.2	51	38	74.5
All Airlines	168	149	88.7	168	142	84.5
Relates to services to and from Perth only.						

Airport	Arrivals			Departures		
	Sectors Flown	On Time		Sectors Flown	On Time	
		No.	%		No.	%
Port Lincoln						
QantasLink	116	95	81.9	116	99	85.3
Regional Express	160	147	91.9	160	145	90.6
All Airlines	276	242	87.7	276	244	88.4
Relates to services to and from Adelaide only.						
Port Macquarie						
QantasLink	97	77	79.4	97	81	83.5
Regional Express	74	66	89.2	74	65	87.8
All Airlines	171	143	83.6	171	146	85.4
Relates to services to and from Sydney only.						
Proserpine						
Jetstar	26	22	84.6	27	20	74.1
Virgin Australia	35	33	94.3	35	28	80.0
All Airlines	61	55	90.2	62	48	77.4
Relates to services to and from Brisbane only.						
Rockhampton						
QantasLink	162	137	84.6	158	122	77.2
Virgin Australia	89	60	67.4	89	66	74.2
All Airlines	251	197	78.5	247	188	76.1
Relates to services to and from Brisbane only.						
Sunshine Coast						
Jetstar	108	92	85.2	108	92	85.2
QantasLink	70	49	70.0	70	55	78.6
Virgin Australia	100	83	83.0	99	81	81.8
All Airlines	278	224	80.6	277	228	82.3
Relates to services to and from Melbourne and Sydney.						
Sydney						
Jetstar	793	671	84.6	790	673	85.2
Qantas	1 140	1 016	89.1	1 137	1 047	92.1
QantasLink	989	811	82.0	986	808	81.9
Regional Express	665	554	83.3	664	556	83.7
Virgin Australia	1 144	1 015	88.7	1 147	991	86.4
All Airlines	4 731	4 067	86.0	4 724	4 075	86.3
Relates to services to and from Adelaide, Albury, Armidale, Ballina, Brisbane, Cairns, Canberra, Coffs Harbour, Dubbo, Gold Coast, Hamilton Island, Hobart, Launceston, Melbourne, Perth, Port Macquarie, Sunshine Coast and Wagga Wagga.						
Townsville						
Jetstar	80	65	81.3	84	63	75.0
Qantas	114	78	68.4	114	82	71.9
QantasLink	110	86	78.2	110	91	82.7
Regional Express	18	16	88.9	18	17	94.4
Virgin Australia	106	91	85.8	107	95	88.8
All Airlines	428	336	78.5	433	348	80.4
Relates to services to and from Brisbane and Cairns.						
Wagga Wagga						
QantasLink	96	85	88.5	97	85	87.6
Regional Express	57	46	80.7	57	51	89.5
All Airlines	153	131	85.6	154	136	88.3
Relates to services to and from Sydney only.						

Definitions

On time arrival	A flight arrival is counted as "on time" if it arrived at the gate before 15 minutes after the scheduled arrival time shown in the carriers' schedule. Neither diverted nor cancelled flights count as on time.
On time departure	A flight departure is counted as "on time" if it departs the gate before 15 minutes after the scheduled departure time shown in the carriers' schedule.
Cancellation	A flight removed from service within 7 days of scheduled departure is regarded as a cancellation.
On time departure percentage	The percentage of on time departures is measured against the number of departures <i>operated</i> on any particular sector.
On time arrival percentage	The percentage of on time arrivals is measured against the number of arrivals <i>operated</i> on any particular sector.
Cancellation percentage	The percentage of cancellations is measured against the number of services <i>scheduled</i> on any particular sector.
