



**Australian Government**

**Department of Infrastructure, Transport, Regional Development and Communications**

Bureau of Infrastructure and Transport Research Economics

STATISTICAL REPORT



# Aviation

Domestic airline on time performance  
January 2022

© Commonwealth of Australia 2022

ISSN: 1832-0759

### **Ownership of intellectual property rights in this publication**

Unless otherwise noted, copyright (and any other intellectual property rights, if any) in this publication is owned by the Commonwealth of Australia (referred to below as the Commonwealth).

### **Disclaimer**

The material contained in this publication is made available on the understanding that the Commonwealth is not providing professional advice, and that users exercise their own skill and care with respect to its use, and seek independent advice if necessary.

The Commonwealth makes no representations or warranties as to the contents or accuracy of the information contained in this publication. To the extent permitted by law, the Commonwealth disclaims liability to any person or organisation in respect of anything done, or omitted to be done, in reliance upon information contained in this publication.

### **Creative Commons licence**

With the exception of (a) the Coat of Arms; and (b) the Department of Infrastructure, Transport, Regional Development and Communications' photos and graphics, copyright in this publication is licensed under a Creative Commons Attribution 3.0 Australia Licence.

Creative Commons Attribution 3.0 Australia Licence is a standard form licence agreement that allows you to copy, communicate and adapt this publication provided that you attribute the work to the Commonwealth and abide by the other licence terms. A summary of the licence terms is available from <http://creativecommons.org/licenses/by/3.0/au/deed.en>. The full licence terms are available from <http://creativecommons.org/licenses/by/3.0/au/legalcode>.

### **Use of the Coat of Arms**

The Department of the Prime Minister and Cabinet sets the terms under which the Coat of Arms is used. Please refer to the Department's Commonwealth Coat of Arms and Government branding web page <http://www.dpmc.gov.au/guidelines/index.cfm#brand> and, in particular, the Guidelines on the use of the Commonwealth Coat of Arms publication.

An appropriate citation for this report is:

Bureau of Infrastructure and Transport Research Economics (BITRE), 2022, Domestic airline on time performance, Statistical Report, BITRE, Canberra ACT.

### **Contact us**

This publication is available in PDF format. All other rights are reserved, including in relation to any Departmental logos or trade marks which may exist. For enquiries regarding the licence and any use of this publication, please contact:

Bureau of Infrastructure and Transport Research Economics (BITRE)  
Department of Infrastructure, Transport, Regional Development and Communications  
GPO Box 501, Canberra ACT 2601, Australia  
Telephone: (international) +61 2 6274 7210  
Fax: (international) +61 2 6274 6855  
Email: [bitre@infrastructure.gov.au](mailto:bitre@infrastructure.gov.au)  
Website: [www.bitre.gov.au](http://www.bitre.gov.au)

### **Inquiries**

Should you require additional information about the statistics contained in this publication:

Telephone (02) 6274 7790 or Facsimile (02) 6274 7727

Electronic mail: [AVSTATS@infrastructure.gov.au](mailto:AVSTATS@infrastructure.gov.au)

Web site: <http://www.bitre.gov.au/statistics/aviation/otphome.aspx>

# Foreword

The Bureau of Infrastructure and Transport Research Economics (BITRE) monitors the punctuality and reliability of major domestic airlines operating between Australian airports. The purpose of this is to allow for evaluation of overall industry and individual airline performance, so that consumers of air travel can make informed decisions.

The following domestic airlines currently report this information monthly to the BITRE: Jetstar, Qantas, QantasLink, Rex Airlines, Virgin Australia and Virgin Australia Regional Airlines.

Data has been gathered since November 2003, although some airlines commenced reporting at a later date, including Jetstar which first reported in May 2004, MacAir in July 2005, Tigerair Australia in April 2008 and Virgin Australia Regional Airlines in May 2013. MacAir ceased operations in February 2009 and data was not received for December 2008 onwards. Tigerair Australia ceased operations in March 2020 and data was not received for that month.

Virgin Blue was rebranded as Virgin Australia in May 2011 and Tiger Airways was rebranded as Tigerair Australia in July 2013 and time series data in Microsoft Excel spread sheet format on the BITRE website have been revised to reflect these changes. With effect from July 2021, Regional Express is reported as Rex Airlines.

Services operated by Skywest on behalf of Virgin Australia using ATR/F100 aircraft commenced in November 2011 and were shown separately as Virgin Australia – ATR/F100 Operations. Virgin Australia Regional Airlines commenced operations in May 2013. It was formed after the acquisition of Skywest by Virgin Australia and represented a combination of operations previously reported under Skywest and Virgin Australia – ATR/F100 Operations. In January 2016, Virgin Australia transferred their ATR fleet from Virgin Australia Regional Airlines to Virgin Australia.

Information presented in this report is for Australian domestic routes for which the passenger load averaged 8 000 or more passengers per month over the previous six months and where two or more airlines operated in competition on those routes. In order to present data for more routes during the period impacted by COVID-19, the passenger load restriction is not being applied. Data are presented for 54 routes in January 2022. Over time, routes which meet these criteria change as airline networks and traffic levels vary.

Participating airlines report their overall monthly network performance where this is possible.

Total industry figures encompass all services operated by reporting airlines only. These airlines collectively carried over 95 per cent of total domestic passengers (regular public transport only) in 2019.

The method of capturing on time performance varies between airlines utilising different recording systems. Jetstar and Qantas jet aircraft use Aircraft Communication Addressing and Reporting System (ACARS) to electronically measure on time performance. Rex Airlines, Virgin Australia, Virgin Australia Regional Airlines and the Qantas non-jet fleet record on time performance manually using records from pilots, gate agents and/or ground crews.

After initial data is collected, aggregate reports are reviewed by participating airlines prior to publication.

Reports and detailed time series data in Microsoft Excel spreadsheet format are available from the BITRE website at: <http://www.bitre.gov.au/statistics/aviation/otphome.aspx>



# Contents

	Page
Industry performance .....	1
Individual routes .....	9
Airports.....	20
Definitions .....	26



# Industry performance

For January 2022, on time performance over all routes operated by participating airlines (Jetstar, Qantas, QantasLink, Rex Airlines, Virgin Australia and Virgin Australia Regional Airlines) averaged 86.5 per cent for on time arrivals and 85.0 per cent for on time departures. The cancellation rate for the month was 11.8 per cent. The equivalent figures for December 2020 were 88.3 per cent for on time arrivals, 88.0 per cent for on time departures and 6.9 per cent for cancellations.

This month's on time arrivals figure was higher than the long term average performance for all routes (82.3 per cent) and the on time departures figure was also higher than the long term average (83.6 per cent). The rate of cancellations was higher than the long term average of 2.0 per cent.

The Qantas network (Qantas and QantasLink combined operations) recorded 89.4 per cent for on time arrivals while the Virgin Australia network (Virgin Australia and Virgin Australia Regional Airlines combined operations) recorded 84.8 per cent. Qantas achieved the highest on time arrivals among the major domestic airlines at 92.9 per cent followed by Virgin Australia at 84.9 per cent and Jetstar at 81.4 per cent. Of the regional airlines, Rex Airlines recorded 88.5 per cent for on time arrivals, followed by QantasLink at 86.9 per cent and Virgin Australia Regional Airlines at 83.0 per cent.

The Qantas network recorded 88.3 per cent for on time departures while the Virgin Australia network recorded 82.6 per cent. Qantas achieved the highest level of on time departures among the major domestic airlines for January 2022 at 91.6 per cent, followed by Virgin Australia at 82.6 per cent and Jetstar at 77.6 per cent. Of the regional airlines, Rex Airlines recorded 90.4 per cent for on time departures, followed by QantasLink at 86.1 per cent and Virgin Australia Regional Airlines at 82.4 per cent.

Virgin Australia recorded the highest percentage of cancellations (at 15.0 per cent) during the month, followed by Jetstar (at 14.8 per cent), Qantas (at 12.8 per cent), QantasLink (at 10.6 per cent), Rex Airlines (at 2.8 per cent) and Virgin Australia Regional Airlines (at 1.0 per cent).

Airlines' on time performance varies across the routes they serve. Individual route data by specific airline for 54 routes are shown on pages 9-19.

Of the 54 routes which met the criteria for on time performance reporting in January 2022, the Brisbane-Perth and Perth-Brisbane routes had the highest percentage of on time arrivals (100.0 per cent) and the Brisbane-Perth route also had the highest percentage of on time departures (100.0 per cent). The Perth-Melbourne route had the lowest percentage of on time arrivals (31.8 per cent) and the lowest percentage of on time departures (27.3 per cent).

Cancellations were highest on the Sydney-Melbourne route at 24.5 per cent, followed by the Melbourne-Sydney route at 24.4 per cent, the Brisbane-Sydney route at 23.7 per cent, the Sydney-Brisbane route at 23.4 per cent and the Canberra-Sydney route at 20.1 per cent. COVID-19 related requirements continue to impact the cancellation rate.

Hamilton Island Airport recorded the highest percentage of on time arrivals (96.7 per cent) and Gladstone Airport recorded the highest percentage of on time departures (94.9 per cent). Alice Springs Airport recorded the lowest percentage of on time arrivals (68.6 per cent) and the lowest percentage of on time departures (67.6 per cent). These figures only refer to reported routes and do not cover all flights at these airports.



Table 1 On time performance for January 2022 — Total Industry

	<i>Sectors</i>		<i>Arrivals On Time</i>		<i>Departures On Time</i>		<i>Cancellations</i>	
	<i>Scheduled</i>	<i>Flown</i>	<i>No.</i>	<i>%</i>	<i>No.</i>	<i>%</i>	<i>No.</i>	<i>%</i>
Jetstar	7 248	6 178	5 030	81.4	4 795	77.6	1 070	14.8
Qantas - all QF designated services	14 419	12 760	11 402	89.4	11 273	88.3	1 659	11.5
Rex Airlines	4 346	4 223	3 737	88.5	3 818	90.4	123	2.8
Virgin Australia - all VA designated services	9 020	7 722	6 551	84.8	6 378	82.6	1 298	14.4
All Airlines	35 033	30 883	26 720	86.5	26 264	85.0	4 150	11.8
Individual operating entities								
Qantas	5 983	5 217	4 845	92.9	4 778	91.6	766	12.8
QantasLink	8 436	7 543	6 557	86.9	6 495	86.1	893	10.6
Virgin Australia	8 623	7 329	6 225	84.9	6 054	82.6	1 294	15.0
Virgin Australia Regional Airlines	397	393	326	83.0	324	82.4	4	1.0

Total airline network data (including routes not shown in this report).

Airlines' on time performance varies across the routes they serve. Individual route data by specific airline for 54 routes are shown on pages 9-19.

Table 2 Top ten routes for on time performance for January 2022 (participating airlines only)

<i>Arrivals</i>		<i>Departures</i>	
<i>Route</i>	<i>On Time (%)</i>	<i>Route</i>	<i>On Time (%)</i>
Brisbane-Perth	100.0	Brisbane-Perth	100.0
Perth-Brisbane	100.0	Brisbane-Hamilton Island	98.7
Brisbane-Hamilton Island	98.7	Adelaide-Gold Coast	97.6
Brisbane-Darwin	96.8	Townsville-Cairns	96.0
Albury-Sydney	96.8	Sydney-Albury	95.2
Adelaide-Gold Coast	96.4	Gladstone-Brisbane	94.9
Townsville-Cairns	96.0	Hamilton Island-Brisbane	94.8
Cairns-Townsville	95.2	Sydney-Hamilton Island	94.5
Gladstone-Brisbane	94.9	Cairns-Townsville	94.4
Sydney-Hamilton Island	94.5	Karratha-Perth	94.2

Table 3 Top ten airports for on time performance for January 2022 (participating airlines and reported routes only)

<i>Arrivals</i>		<i>Departures</i>	
<i>Airport</i>	<i>On Time (%)</i>	<i>Airport</i>	<i>On Time (%)</i>
Hamilton Island	96.7	Gladstone	94.9
Albury	94.4	Karratha	94.2
Darwin	94.3	Wagga Wagga	94.0
Coffs Harbour	92.7	Emerald	93.9
Karratha	92.0	Dubbo	92.7
Dubbo	92.0	Port Macquarie	92.7
Mount Isa	91.8	Coffs Harbour	92.6
Wagga Wagga	91.5	Albury	91.9
Port Hedland	91.3	Rockhampton	90.6
Broome	91.3	Perth	89.3

## Total industry on time performance

Figure 1 On time performance (by month from January 2019)—Total Industry

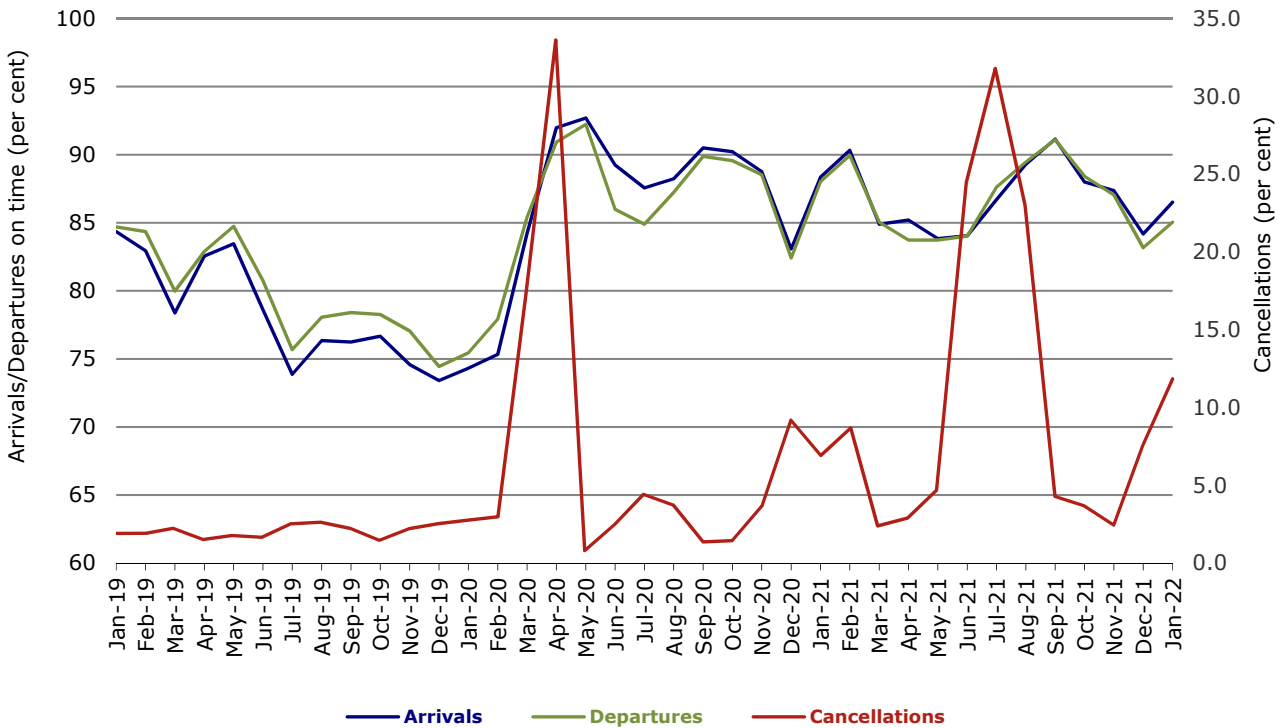
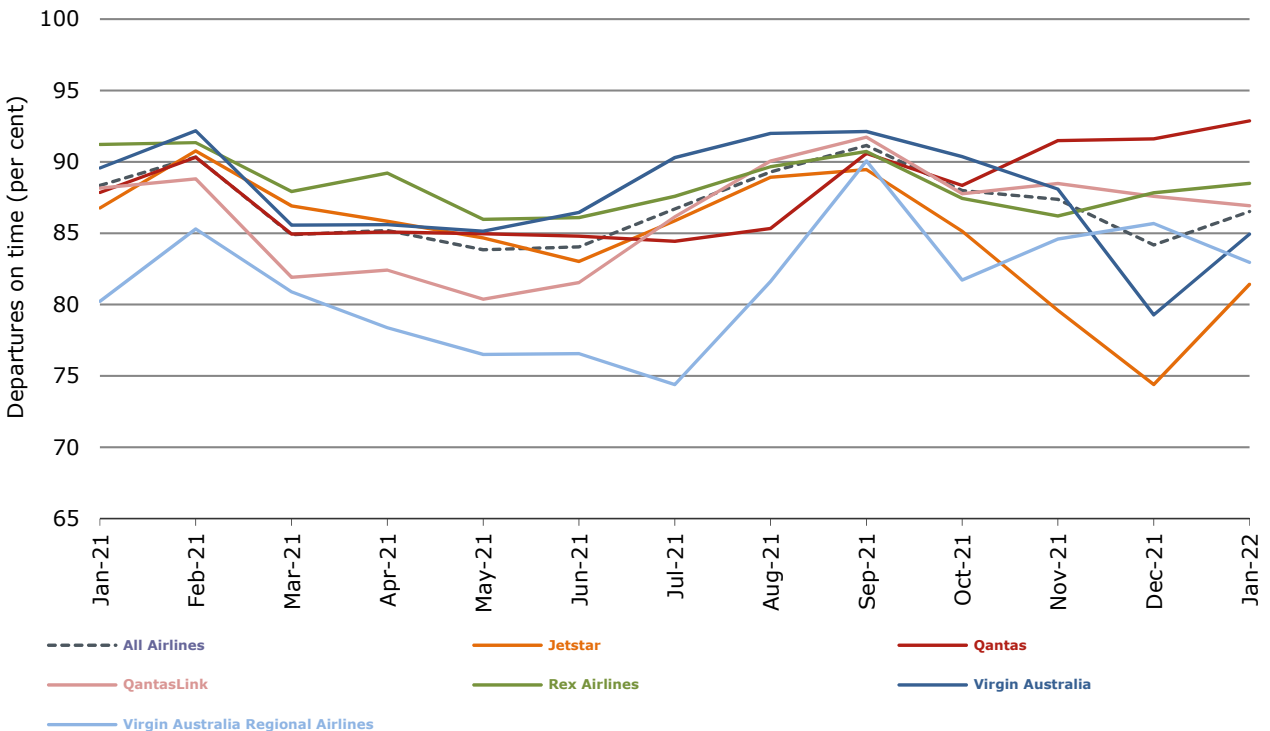
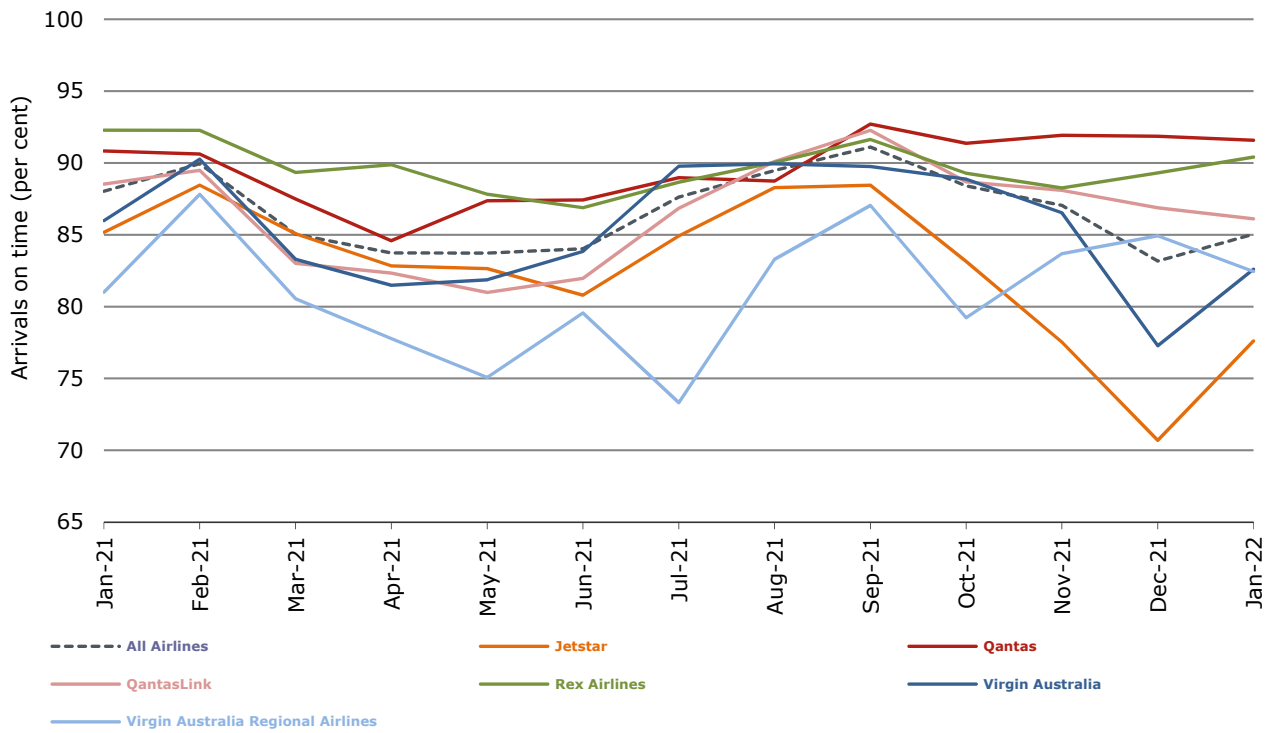


Figure 2 Arrivals on time (by month from January 2021)



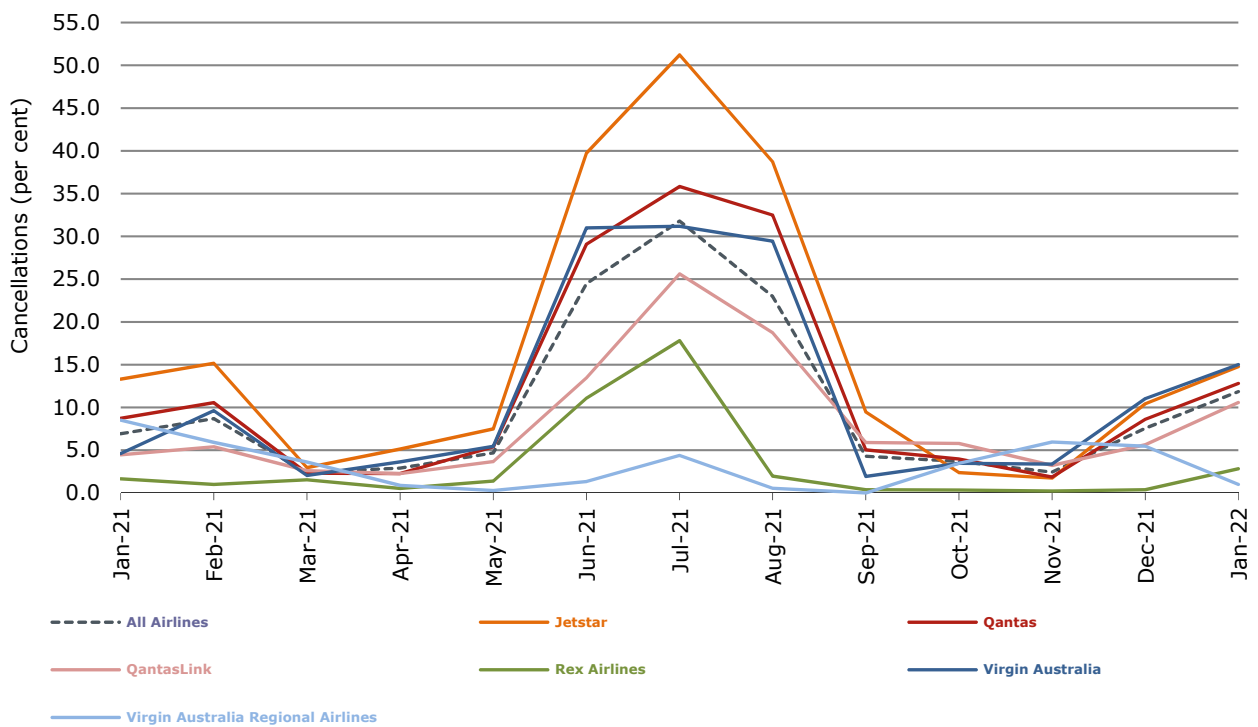
With effect from July 2021, Regional Express is reported as Rex Airlines

Figure 3 Departures on time (by month from January 2021)



With effect from July 2021, Regional Express is reported as Rex Airlines

Figure 4 Cancellations (by month from January 2021)



With effect from July 2021, Regional Express is reported as Rex Airlines

## Major domestic airlines on time performance

Figure 5 On time performance (by month from January 2019)—Jetstar

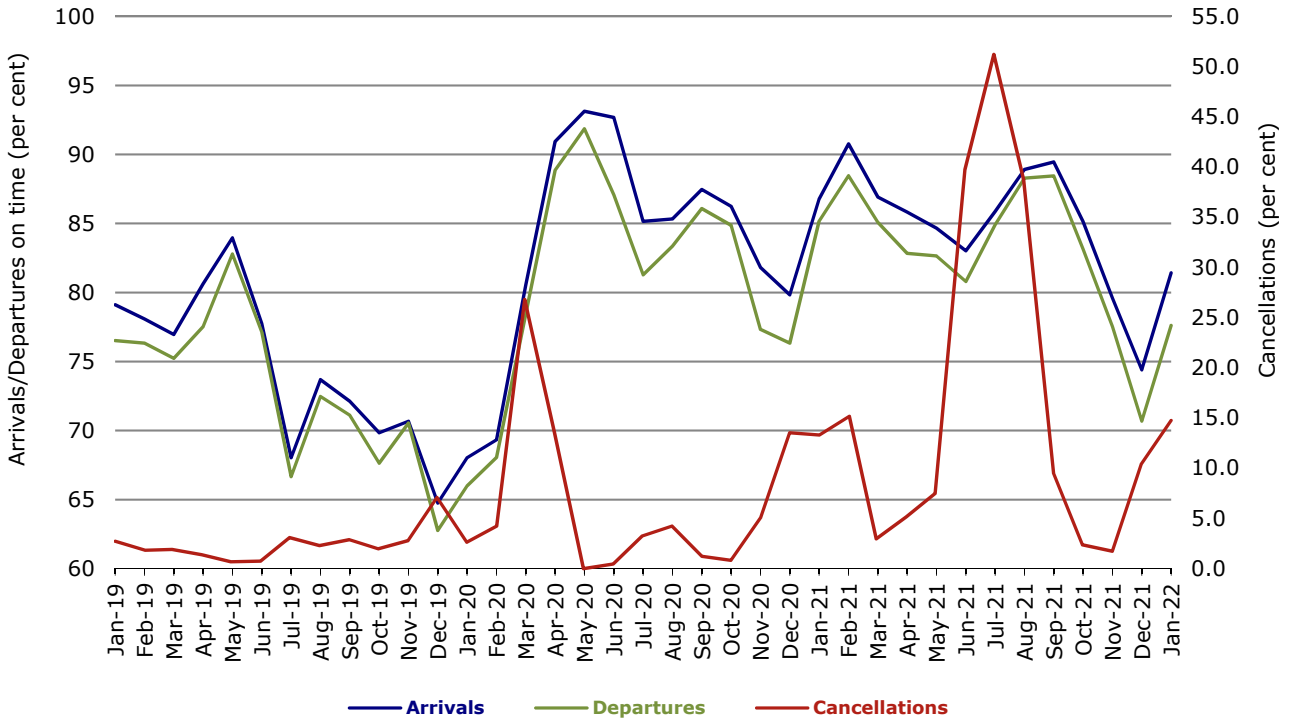


Figure 6 On time performance (by month from January 2019)—Qantas

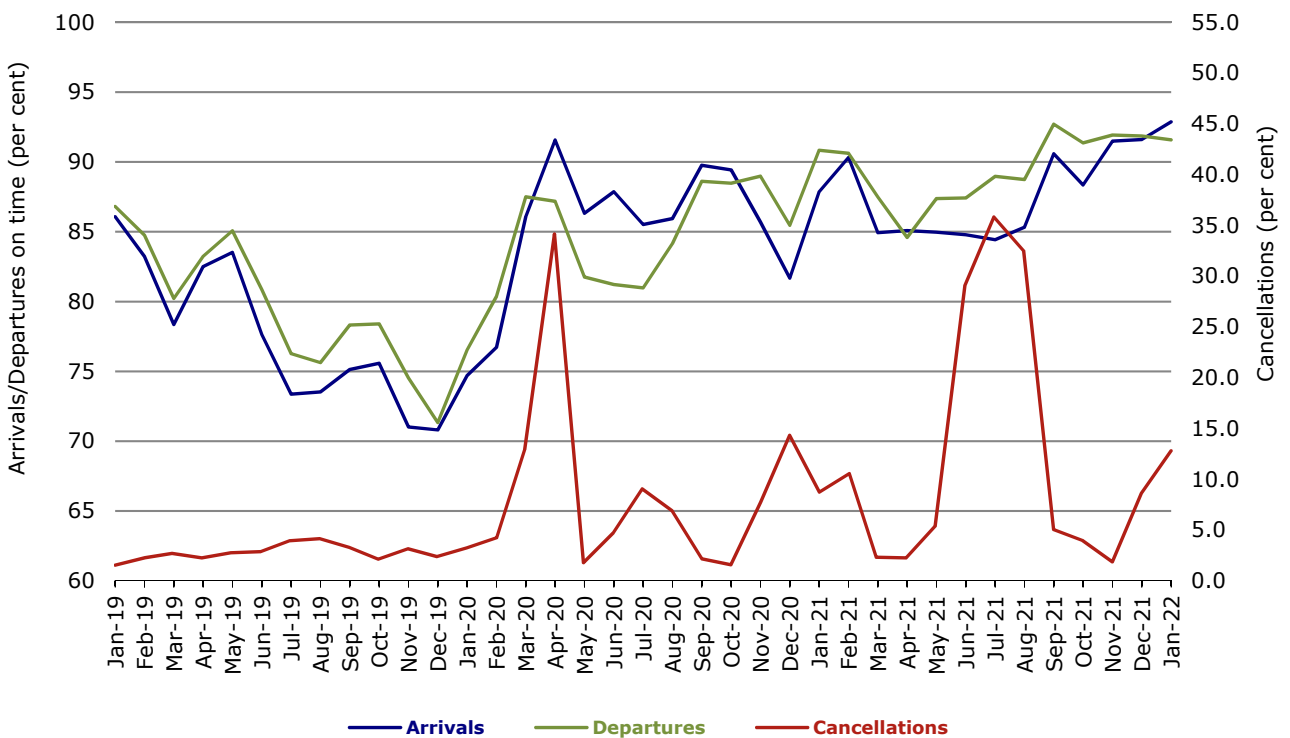
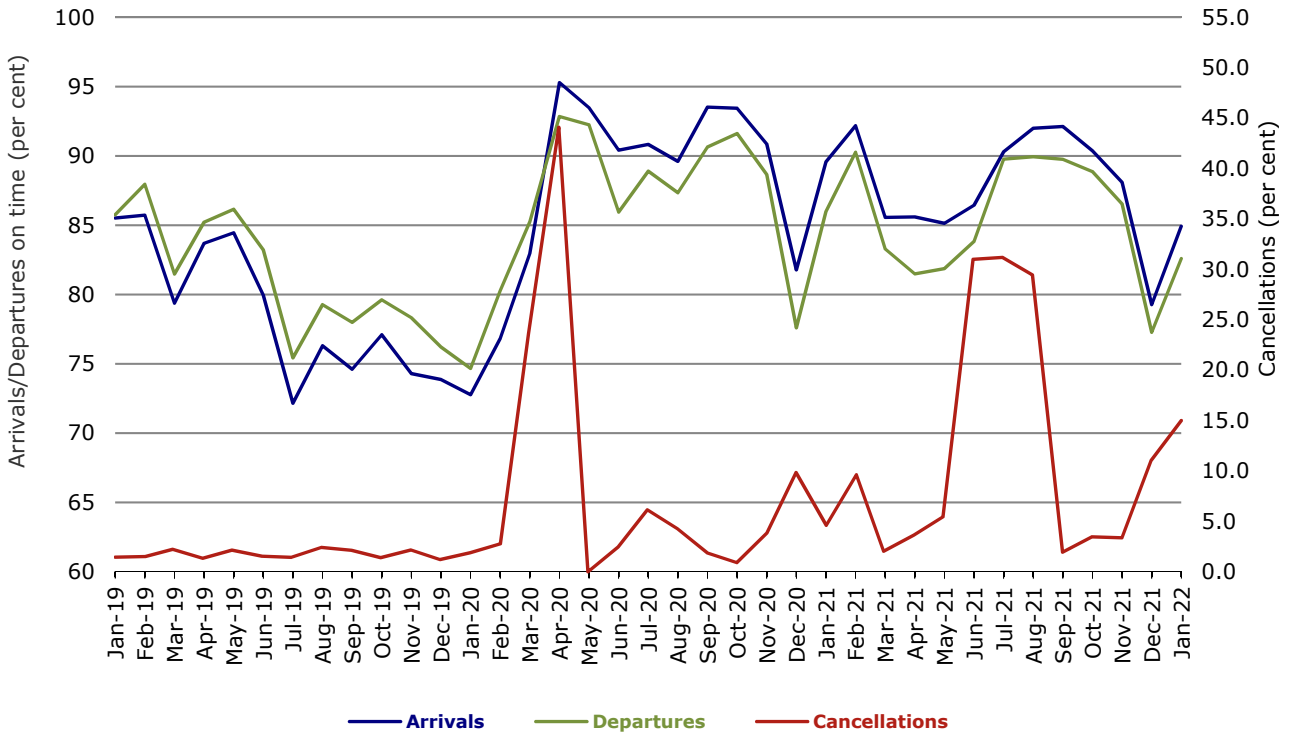


Figure 7 On time performance (by month from January 2019)—Virgin Australia



## Major regional airlines on time performance

Figure 8 On time performance (by month from January 2019)—QantasLink

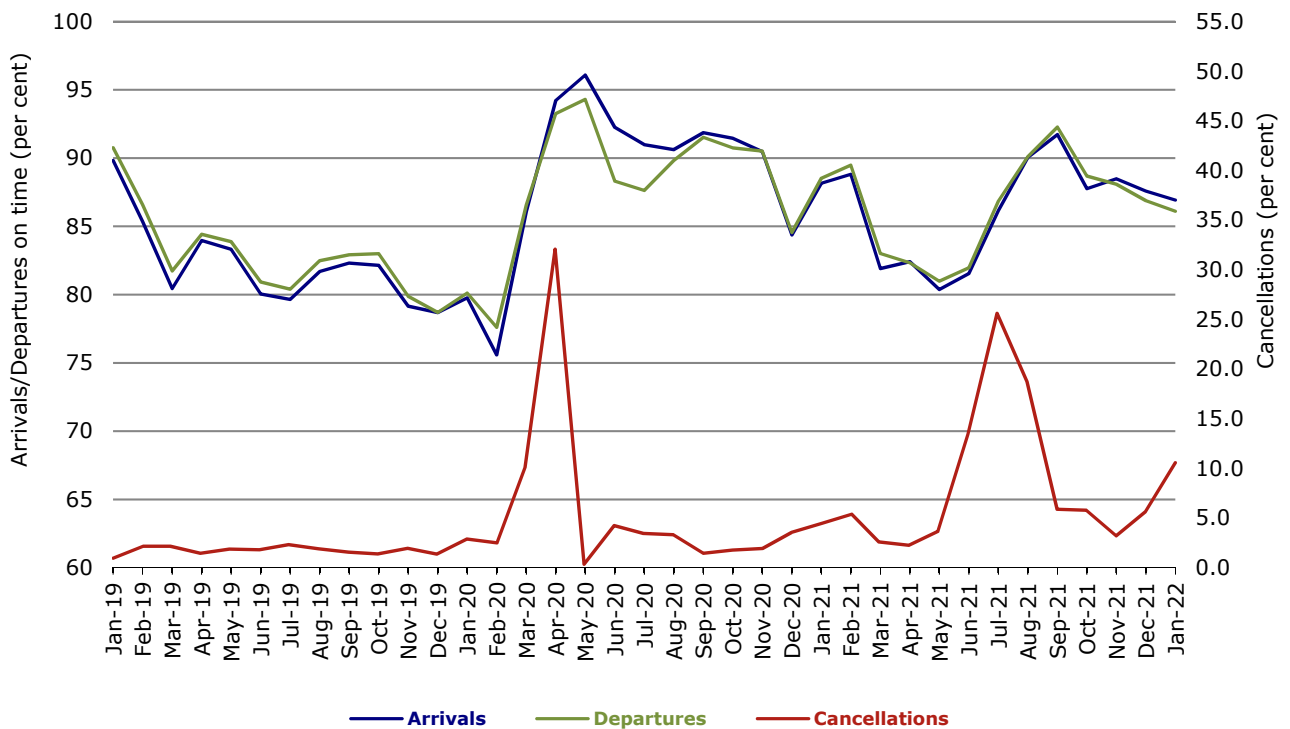
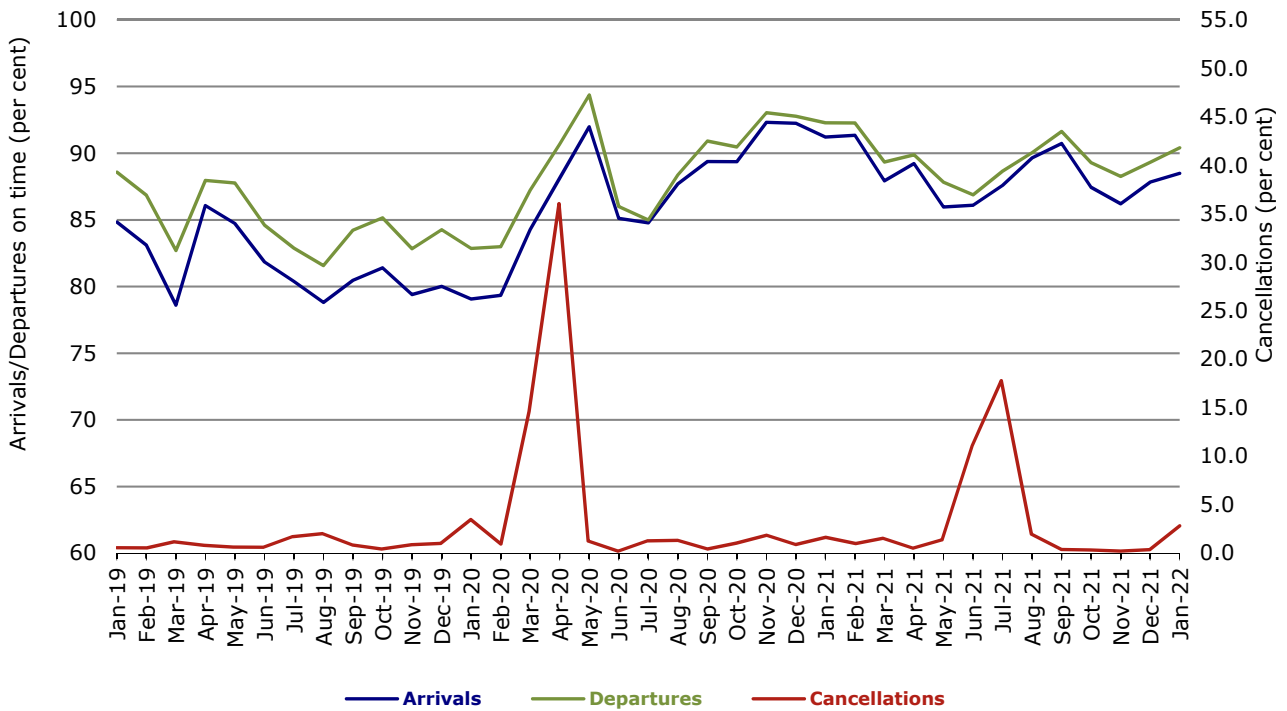
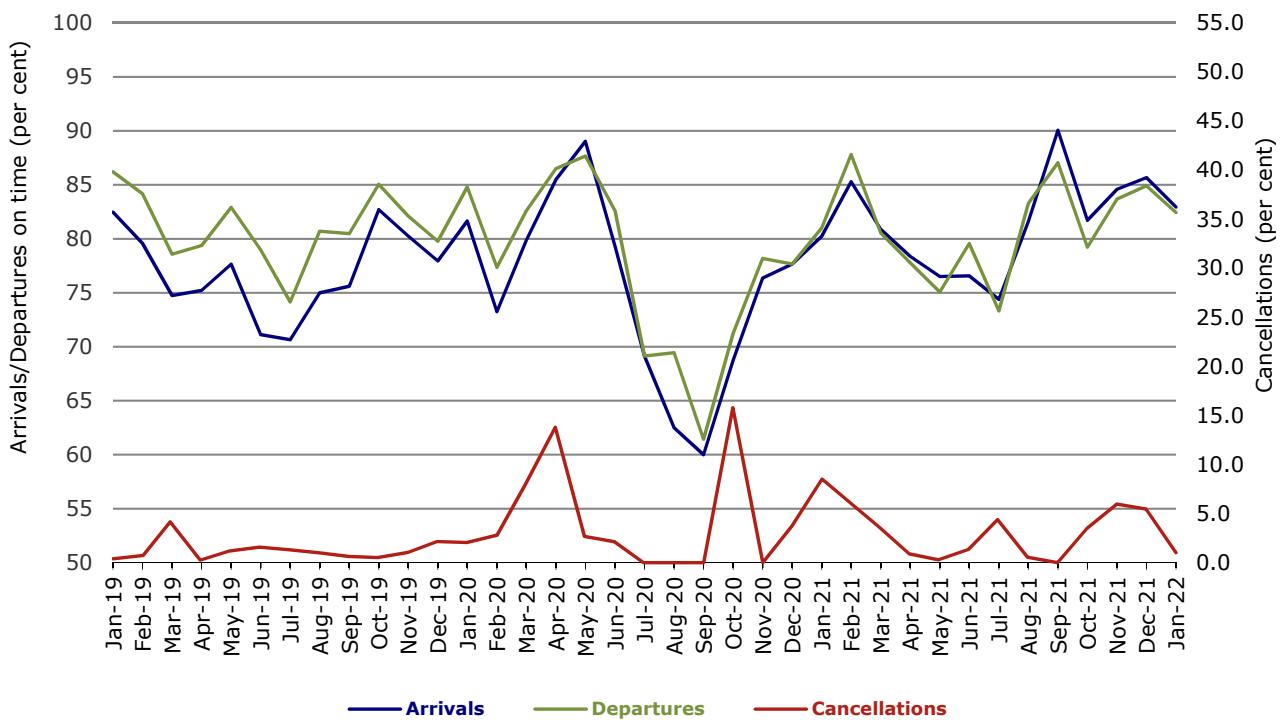


Figure 9 On time performance (by month from January 2019)—Rex Airlines



With effect from July 2021, Regional Express is reported as Rex Airlines

Figure 10 On time performance (by month from January 2019) Virgin Australia Regional Airlines



## Individual routes

On time performance is reported for all routes where the passenger load averages over 8000 passengers per month over the previous six months, and where two or more airlines operate in competition on those routes. In order to present data for more routes during the period impacted by COVID-19, the passenger load restriction is not being applied. There are now 54 routes for which data are presented.

	<i>Sectors</i>		<i>Arrivals On Time</i>		<i>Departures On Time</i>		<i>Cancellations</i>	
	<i>Sched.</i>	<i>Flown</i>	<i>No.</i>	<i>%</i>	<i>No.</i>	<i>%</i>	<i>No.</i>	<i>%</i>
<b>Adelaide-Alice Springs</b>								
Qantas	1	1	0	0.0	0	0.0	0	0.0
QantasLink	26	24	15	62.5	19	79.2	2	7.7
Virgin Australia	11	10	9	90.0	9	90.0	1	9.1
All Airlines	38	35	24	68.6	28	80.0	3	7.9
<b>Adelaide-Brisbane</b>								
Jetstar	39	36	30	83.3	28	77.8	3	7.7
Qantas	84	74	70	94.6	67	90.5	10	11.9
Virgin Australia	66	64	63	98.4	59	92.2	2	3.0
All Airlines	189	174	163	93.7	154	88.5	15	7.9
<b>Adelaide-Canberra</b>								
Qantas	1	1	0	0.0	0	0.0	0	0.0
QantasLink	35	34	28	82.4	29	85.3	1	2.9
Virgin Australia	17	17	16	94.1	17	100.0	0	0.0
All Airlines	53	52	44	84.6	46	88.5	1	1.9
<b>Adelaide-Gold Coast</b>								
Jetstar	41	38	38	100.0	38	100.0	3	7.3
QantasLink	15	12	10	83.3	11	91.7	3	20.0
Virgin Australia	40	33	32	97.0	32	97.0	7	17.5
All Airlines	96	83	80	96.4	81	97.6	13	13.5
<b>Adelaide-Melbourne</b>								
Jetstar	81	66	52	78.8	48	72.7	15	18.5
Qantas	156	126	115	91.3	116	92.1	30	19.2
Rex Airlines	36	34	30	88.2	30	88.2	2	5.6
Virgin Australia	195	156	131	84.0	120	76.9	39	20.0
All Airlines	468	382	328	85.9	314	82.2	86	18.4
<b>Adelaide-Port Lincoln</b>								
QantasLink	98	82	71	86.6	71	86.6	16	16.3
Rex Airlines	143	132	115	87.1	120	90.9	11	7.7
All Airlines	241	214	186	86.9	191	89.3	27	11.2
<b>Adelaide-Sydney</b>								
Jetstar	105	83	74	89.2	71	85.5	22	21.0
Qantas	132	121	113	93.4	106	87.6	11	8.3
Virgin Australia	94	80	77	96.3	77	96.3	14	14.9
All Airlines	331	284	264	93.0	254	89.4	47	14.2
<b>Albury-Sydney</b>								
QantasLink	75	68	65	95.6	61	89.7	7	9.3
Rex Airlines	56	56	55	98.2	53	94.6	0	0.0
All Airlines	131	124	120	96.8	114	91.9	7	5.3
<b>Alice Springs-Adelaide</b>								
Qantas	1	1	0	0.0	0	0.0	0	0.0
QantasLink	26	23	16	69.6	14	60.9	3	11.5
Virgin Australia	11	10	9	90.0	9	90.0	1	9.1
All Airlines	38	34	25	73.5	23	67.6	4	10.5

	Sectors		Arrivals On Time		Departures On Time		Cancellations	
	Sched.	Flown	No.	%	No.	%	No.	%
<b>Armidale-Sydney</b>								
QantasLink	80	66	57	86.4	55	83.3	14	17.5
Rex Airlines	36	32	22	68.8	24	75.0	4	11.1
All Airlines	116	98	79	80.6	79	80.6	18	15.5
<b>Ballina-Sydney</b>								
Jetstar	96	88	54	61.4	49	55.7	8	8.3
Qantas	32	32	26	81.3	25	78.1	0	0.0
QantasLink	38	33	32	97.0	32	97.0	5	13.2
Rex Airlines	28	27	25	92.6	23	85.2	1	3.6
Virgin Australia	85	79	75	94.9	73	92.4	6	7.1
All Airlines	279	259	212	81.9	202	78.0	20	7.2
<b>Brisbane-Adelaide</b>								
Jetstar	39	36	28	77.8	25	69.4	3	7.7
Qantas	85	75	74	98.7	72	96.0	10	11.8
Virgin Australia	66	63	55	87.3	54	85.7	3	4.5
All Airlines	190	174	157	90.2	151	86.8	16	8.4
<b>Brisbane-Cairns</b>								
Jetstar	104	90	72	80.0	66	73.3	14	13.5
Qantas	127	107	105	98.1	105	98.1	20	15.7
Virgin Australia	143	122	110	90.2	106	86.9	21	14.7
All Airlines	374	319	287	90.0	277	86.8	55	14.7
<b>Brisbane-Canberra</b>								
Qantas	40	34	34	100.0	34	100.0	6	15.0
QantasLink	70	62	52	83.9	52	83.9	8	11.4
Virgin Australia	63	59	55	93.2	52	88.1	4	6.3
All Airlines	173	155	141	91.0	138	89.0	18	10.4
<b>Brisbane-Darwin</b>								
Jetstar	30	29	27	93.1	24	82.8	1	3.3
Qantas	31	31	30	96.8	29	93.5	0	0.0
Virgin Australia	35	34	34	100.0	32	94.1	1	2.9
All Airlines	96	94	91	96.8	85	90.4	2	2.1
<b>Brisbane-Emerald</b>								
QantasLink	83	73	68	93.2	69	94.5	10	12.0
Virgin Australia	26	26	22	84.6	19	73.1	0	0.0
All Airlines	109	99	90	90.9	88	88.9	10	9.2
<b>Brisbane-Gladstone</b>								
QantasLink	102	81	73	90.1	72	88.9	21	20.6
Virgin Australia	39	38	35	92.1	36	94.7	1	2.6
All Airlines	141	119	108	90.8	108	90.8	22	15.6
<b>Brisbane-Hamilton Island</b>								
Qantas	31	27	26	96.3	26	96.3	4	12.9
Virgin Australia	60	50	50	100.0	50	100.0	10	16.7
All Airlines	91	77	76	98.7	76	98.7	14	15.4
<b>Brisbane-Hobart</b>								
Jetstar	42	38	35	92.1	30	78.9	4	9.5
QantasLink	41	37	33	89.2	34	91.9	4	9.8
Virgin Australia	54	52	48	92.3	48	92.3	2	3.7
All Airlines	137	127	116	91.3	112	88.2	10	7.3



	<i>Sectors</i>		<i>Arrivals On Time</i>		<i>Departures On Time</i>		<i>Cancellations</i>	
	<i>Sched.</i>	<i>Flown</i>	<i>No.</i>	<i>%</i>	<i>No.</i>	<i>%</i>	<i>No.</i>	<i>%</i>
<b>Brisbane-Mackay</b>								
Jetstar	42	41	34	82.9	28	68.3	1	2.4
Qantas	69	56	55	98.2	55	98.2	13	18.8
QantasLink	23	22	21	95.5	21	95.5	1	4.3
Virgin Australia	87	83	68	81.9	66	79.5	4	4.6
All Airlines	221	202	178	88.1	170	84.2	19	8.6
<b>Brisbane-Melbourne</b>								
Jetstar	178	130	104	80.0	96	73.8	48	27.0
Qantas	310	277	258	93.1	253	91.3	33	10.6
Virgin Australia	322	261	182	69.7	169	64.8	61	18.9
All Airlines	810	668	544	81.4	518	77.5	142	17.5
<b>Brisbane-Mount Isa</b>								
Qantas	27	27	27	100.0	27	100.0	0	0.0
QantasLink	22	21	17	81.0	15	71.4	1	4.5
Virgin Australia	15	13	12	92.3	12	92.3	2	13.3
All Airlines	64	61	56	91.8	54	88.5	3	4.7
<b>Brisbane-Newcastle</b>								
Jetstar	56	52	41	78.8	36	69.2	4	7.1
QantasLink	47	39	37	94.9	36	92.3	8	17.0
Virgin Australia	71	62	56	90.3	57	91.9	9	12.7
All Airlines	174	153	134	87.6	129	84.3	21	12.1
<b>Brisbane-Perth</b>								
Qantas	11	11	11	100.0	11	100.0	0	0.0
Virgin Australia	4	4	4	100.0	4	100.0	0	0.0
All Airlines	15	15	15	100.0	15	100.0	0	0.0
<b>Brisbane-Proserpine</b>								
Jetstar	46	46	38	82.6	38	82.6	0	0.0
QantasLink	36	31	28	90.3	29	93.5	5	13.9
Virgin Australia	50	46	45	97.8	45	97.8	4	8.0
All Airlines	132	123	111	90.2	112	91.1	9	6.8
<b>Brisbane-Rockhampton</b>								
QantasLink	127	110	104	94.5	103	93.6	17	13.4
Virgin Australia	100	94	77	81.9	80	85.1	6	6.0
All Airlines	227	204	181	88.7	183	89.7	23	10.1
<b>Brisbane-Sydney</b>								
Jetstar	128	87	74	85.1	68	78.2	41	32.0
Qantas	360	291	280	96.2	266	91.4	69	19.2
Virgin Australia	318	237	195	82.3	183	77.2	81	25.5
All Airlines	806	615	549	89.3	517	84.1	191	23.7
<b>Brisbane-Townsville</b>								
Jetstar	58	56	45	80.4	43	76.8	2	3.4
Qantas	95	90	87	96.7	85	94.4	5	5.3
QantasLink	12	11	9	81.8	9	81.8	1	8.3
Virgin Australia	88	85	70	82.4	69	81.2	3	3.4
All Airlines	253	242	211	87.2	206	85.1	11	4.3
<b>Broome-Perth</b>								
Qantas	46	42	38	90.5	38	90.5	4	8.7
QantasLink	38	32	29	90.6	29	90.6	6	15.8
Virgin Australia	15	14	12	85.7	12	85.7	1	6.7
Virgin Australia Regional Airlines	39	39	27	69.2	24	61.5	0	0.0
All Airlines	138	127	106	83.5	103	81.1	11	8.0

	<i>Sectors</i>		<i>Arrivals On Time</i>		<i>Departures On Time</i>		<i>Cancellations</i>	
	<i>Sched.</i>	<i>Flown</i>	<i>No.</i>	<i>%</i>	<i>No.</i>	<i>%</i>	<i>No.</i>	<i>%</i>
<b>Cairns-Brisbane</b>								
Jetstar	105	88	63	71.6	68	77.3	17	16.2
Qantas	125	106	100	94.3	98	92.5	19	15.2
Virgin Australia	141	122	112	91.8	106	86.9	19	13.5
All Airlines	371	316	275	87.0	272	86.1	55	14.8
<b>Cairns-Melbourne</b>								
Jetstar	93	91	62	68.1	58	63.7	2	2.2
Qantas	40	40	35	87.5	30	75.0	0	0.0
Virgin Australia	73	66	50	75.8	45	68.2	7	9.6
All Airlines	206	197	147	74.6	133	67.5	9	4.4
<b>Cairns-Sydney</b>								
Jetstar	91	72	58	80.6	58	80.6	19	20.9
Qantas	42	41	36	87.8	37	90.2	1	2.4
Virgin Australia	80	68	61	89.7	61	89.7	12	15.0
All Airlines	213	181	155	85.6	156	86.2	32	15.0
<b>Cairns-Townsville</b>								
QantasLink	122	111	105	94.6	104	93.7	11	9.0
Rex Airlines	14	14	14	100.0	14	100.0	0	0.0
All Airlines	136	125	119	95.2	118	94.4	11	8.1
<b>Canberra-Adelaide</b>								
Qantas	2	2	2	100.0	2	100.0	0	0.0
QantasLink	35	34	28	82.4	29	85.3	1	2.9
Virgin Australia	17	17	16	94.1	16	94.1	0	0.0
All Airlines	54	53	46	86.8	47	88.7	1	1.9
<b>Canberra-Brisbane</b>								
Qantas	40	33	32	97.0	32	97.0	7	17.5
QantasLink	70	64	56	87.5	55	85.9	6	8.6
Virgin Australia	61	58	52	89.7	53	91.4	3	4.9
All Airlines	171	155	140	90.3	140	90.3	16	9.4
<b>Canberra-Melbourne</b>								
QantasLink	145	121	103	85.1	105	86.8	24	16.6
Virgin Australia	106	94	77	81.9	75	79.8	12	11.3
All Airlines	251	215	180	83.7	180	83.7	36	14.3
<b>Canberra-Sydney</b>								
QantasLink	207	160	135	84.4	138	86.3	47	22.7
Rex Airlines	52	47	47	100.0	47	100.0	5	9.6
All Airlines	259	207	182	87.9	185	89.4	52	20.1
<b>Coffs Harbour-Sydney</b>								
QantasLink	96	89	80	89.9	80	89.9	7	7.3
Rex Airlines	58	56	53	94.6	54	96.4	2	3.4
Virgin Australia	31	31	29	93.5	29	93.5	0	0.0
All Airlines	185	176	162	92.0	163	92.6	9	4.9
<b>Darwin-Brisbane</b>								
Jetstar	31	30	16	53.3	20	66.7	1	3.2
Qantas	31	30	28	93.3	28	93.3	1	3.2
Virgin Australia	35	34	31	91.2	30	88.2	1	2.9
All Airlines	97	94	75	79.8	78	83.0	3	3.1

	Sectors		Arrivals On Time		Departures On Time		Cancellations	
	Sched.	Flown	No.	%	No.	%	No.	%
<b>Darwin-Perth</b>								
Qantas	10	10	8	80.0	8	80.0	0	0.0
Virgin Australia Regional Airlines	2	2	1	50.0	1	50.0	0	0.0
All Airlines	12	12	9	75.0	9	75.0	0	0.0
<b>Dubbo-Sydney</b>								
QantasLink	64	61	59	96.7	58	95.1	3	4.7
Rex Airlines	49	49	43	87.8	44	89.8	0	0.0
All Airlines	113	110	102	92.7	102	92.7	3	2.7
<b>Emerald-Brisbane</b>								
QantasLink	82	72	69	95.8	69	95.8	10	12.2
Virgin Australia	26	26	23	88.5	23	88.5	0	0.0
All Airlines	108	98	92	93.9	92	93.9	10	9.3
<b>Gladstone-Brisbane</b>								
QantasLink	101	80	77	96.3	76	95.0	21	20.8
Virgin Australia	39	37	34	91.9	35	94.6	2	5.1
All Airlines	140	117	111	94.9	111	94.9	23	16.4
<b>Gold Coast-Adelaide</b>								
Jetstar	41	38	36	94.7	35	92.1	3	7.3
QantasLink	15	12	9	75.0	9	75.0	3	20.0
Virgin Australia	40	34	31	91.2	30	88.2	6	15.0
All Airlines	96	84	76	90.5	74	88.1	12	12.5
<b>Gold Coast-Melbourne</b>								
Jetstar	271	235	183	77.9	166	70.6	36	13.3
Qantas	100	89	67	75.3	69	77.5	11	11.0
Rex Airlines	56	55	45	81.8	47	85.5	1	1.8
Virgin Australia	300	265	211	79.6	180	67.9	35	11.7
All Airlines	727	644	506	78.6	462	71.7	83	11.4
<b>Gold Coast-Sydney</b>								
Jetstar	278	218	183	83.9	174	79.8	60	21.6
Qantas	90	86	70	81.4	70	81.4	4	4.4
Rex Airlines	37	34	32	94.1	32	94.1	3	8.1
Virgin Australia	272	214	196	91.6	185	86.4	58	21.3
All Airlines	677	552	481	87.1	461	83.5	125	18.5
<b>Hamilton Island-Brisbane</b>								
Qantas	31	27	25	92.6	25	92.6	4	12.9
Virgin Australia	60	50	47	94.0	48	96.0	10	16.7
All Airlines	91	77	72	93.5	73	94.8	14	15.4
<b>Hamilton Island-Sydney</b>								
Jetstar	30	28	19	67.9	18	64.3	2	6.7
Qantas	31	28	28	100.0	28	100.0	3	9.7
Virgin Australia	18	17	14	82.4	14	82.4	1	5.6
All Airlines	79	73	61	83.6	60	82.2	6	7.6
<b>Hobart-Brisbane</b>								
Jetstar	42	38	32	84.2	33	86.8	4	9.5
QantasLink	41	38	32	84.2	30	78.9	3	7.3
Virgin Australia	54	52	44	84.6	45	86.5	2	3.7
All Airlines	137	128	108	84.4	108	84.4	9	6.6

	<i>Sectors</i>		<i>Arrivals On Time</i>		<i>Departures On Time</i>		<i>Cancellations</i>	
	<i>Sched.</i>	<i>Flown</i>	<i>No.</i>	<i>%</i>	<i>No.</i>	<i>%</i>	<i>No.</i>	<i>%</i>
<b>Hobart-Melbourne</b>								
Jetstar	188	151	121	80.1	116	76.8	37	19.7
QantasLink	90	86	75	87.2	76	88.4	4	4.4
Virgin Australia	93	78	58	74.4	59	75.6	15	16.1
All Airlines	371	315	254	80.6	251	79.7	56	15.1
<b>Hobart-Sydney</b>								
Jetstar	111	92	70	76.1	71	77.2	19	17.1
Qantas	57	52	46	88.5	47	90.4	5	8.8
QantasLink	21	21	16	76.2	17	81.0	0	0.0
Virgin Australia	59	52	49	94.2	48	92.3	7	11.9
All Airlines	248	217	181	83.4	183	84.3	31	12.5
<b>Kalgoorlie-Perth</b>								
Qantas	29	29	28	96.6	26	89.7	0	0.0
QantasLink	44	42	38	90.5	38	90.5	2	4.5
Virgin Australia	28	28	25	89.3	24	85.7	0	0.0
Virgin Australia Regional Airlines	32	32	24	75.0	25	78.1	0	0.0
All Airlines	133	131	115	87.8	113	86.3	2	1.5
<b>Karratha-Perth</b>								
Qantas	54	52	51	98.1	51	98.1	2	3.7
QantasLink	92	87	80	92.0	80	92.0	5	5.4
Virgin Australia	25	25	24	96.0	24	96.0	0	0.0
Virgin Australia Regional Airlines	27	27	25	92.6	25	92.6	0	0.0
All Airlines	198	191	180	94.2	180	94.2	7	3.5
<b>Launceston-Melbourne</b>								
Jetstar	119	109	87	79.8	83	76.1	10	8.4
QantasLink	83	71	50	70.4	49	69.0	12	14.5
Virgin Australia	76	64	57	89.1	54	84.4	12	15.8
All Airlines	278	244	194	79.5	186	76.2	34	12.2
<b>Launceston-Sydney</b>								
Jetstar	68	60	46	76.7	40	66.7	8	11.8
QantasLink	27	27	22	81.5	21	77.8	0	0.0
Virgin Australia	31	30	29	96.7	29	96.7	1	3.2
All Airlines	126	117	97	82.9	90	76.9	9	7.1
<b>Mackay-Brisbane</b>								
Jetstar	42	40	30	75.0	27	67.5	2	4.8
Qantas	69	56	55	98.2	54	96.4	13	18.8
QantasLink	25	24	21	87.5	20	83.3	1	4.0
Virgin Australia	87	83	74	89.2	71	85.5	4	4.6
All Airlines	223	203	180	88.7	172	84.7	20	9.0
<b>Melbourne-Adelaide</b>								
Jetstar	81	66	48	72.7	43	65.2	15	18.5
Qantas	157	126	114	90.5	113	89.7	31	19.7
Rex Airlines	36	34	29	85.3	30	88.2	2	5.6
Virgin Australia	195	157	110	70.1	117	74.5	38	19.5
All Airlines	469	383	301	78.6	303	79.1	86	18.3
<b>Melbourne-Brisbane</b>								
Jetstar	178	129	95	73.6	91	70.5	49	27.5
Qantas	308	276	247	89.5	253	91.7	32	10.4
Virgin Australia	320	260	196	75.4	196	75.4	60	18.8
All Airlines	806	665	538	80.9	540	81.2	141	17.5

	<i>Sectors</i>		<i>Arrivals On Time</i>		<i>Departures On Time</i>		<i>Cancellations</i>	
	<i>Sched.</i>	<i>Flown</i>	<i>No.</i>	<i>%</i>	<i>No.</i>	<i>%</i>	<i>No.</i>	<i>%</i>
<b>Melbourne-Cairns</b>								
Jetstar	94	92	67	72.8	51	55.4	2	2.1
Qantas	40	40	36	90.0	34	85.0	0	0.0
Virgin Australia	73	66	58	87.9	55	83.3	7	9.6
All Airlines	207	198	161	81.3	140	70.7	9	4.3
<b>Melbourne-Canberra</b>								
QantasLink	145	120	96	80.0	98	81.7	25	17.2
Virgin Australia	106	94	73	77.7	74	78.7	12	11.3
All Airlines	251	214	169	79.0	172	80.4	37	14.7
<b>Melbourne-Gold Coast</b>								
Jetstar	271	235	166	70.6	152	64.7	36	13.3
Qantas	100	90	86	95.6	85	94.4	10	10.0
Rex Airlines	56	55	51	92.7	53	96.4	1	1.8
Virgin Australia	301	265	209	78.9	205	77.4	36	12.0
All Airlines	728	645	512	79.4	495	76.7	83	11.4
<b>Melbourne-Hobart</b>								
Jetstar	188	151	126	83.4	117	77.5	37	19.7
QantasLink	94	89	82	92.1	79	88.8	5	5.3
Virgin Australia	93	79	72	91.1	70	88.6	14	15.1
All Airlines	375	319	280	87.8	266	83.4	56	14.9
<b>Melbourne-Launceston</b>								
Jetstar	119	109	88	80.7	85	78.0	10	8.4
QantasLink	85	72	56	77.8	60	83.3	13	15.3
Virgin Australia	76	64	54	84.4	52	81.3	12	15.8
All Airlines	280	245	198	80.8	197	80.4	35	12.5
<b>Melbourne-Mildura</b>								
QantasLink	115	109	87	79.8	84	77.1	6	5.2
Rex Airlines	32	32	24	75.0	26	81.3	0	0.0
All Airlines	147	141	111	78.7	110	78.0	6	4.1
<b>Melbourne-Newcastle</b>								
Jetstar	63	60	39	65.0	42	70.0	3	4.8
QantasLink	31	25	21	84.0	21	84.0	6	19.4
Virgin Australia	33	30	26	86.7	25	83.3	3	9.1
All Airlines	127	115	86	74.8	88	76.5	12	9.4
<b>Melbourne-Perth</b>								
Qantas	10	10	9	90.0	8	80.0	0	0.0
Virgin Australia	12	11	6	54.5	6	54.5	1	8.3
All Airlines	22	21	15	71.4	14	66.7	1	4.5
<b>Melbourne-Sunshine Coast</b>								
Jetstar	86	80	65	81.3	63	78.8	6	7.0
Qantas	60	60	57	95.0	57	95.0	0	0.0
QantasLink	23	23	23	100.0	22	95.7	0	0.0
Virgin Australia	123	103	90	87.4	91	88.3	20	16.3
All Airlines	292	266	235	88.3	233	87.6	26	8.9
<b>Melbourne-Sydney</b>								
Jetstar	362	240	199	82.9	194	80.8	122	33.7
Qantas	630	500	467	93.4	457	91.4	130	20.6
Rex Airlines	61	51	49	96.1	48	94.1	10	16.4
Virgin Australia	577	441	356	80.7	343	77.8	136	23.6
All Airlines	1 630	1 232	1 071	86.9	1 042	84.6	398	24.4

	<i>Sectors</i>		<i>Arrivals On Time</i>		<i>Departures On Time</i>		<i>Cancellations</i>	
	<i>Sched.</i>	<i>Flown</i>	<i>No.</i>	<i>%</i>	<i>No.</i>	<i>%</i>	<i>No.</i>	<i>%</i>
<b>Mildura-Melbourne</b>								
QantasLink	114	107	82	76.6	81	75.7	7	6.1
Rex Airlines	32	32	27	84.4	27	84.4	0	0.0
All Airlines	146	139	109	78.4	108	77.7	7	4.8
<b>Mount Isa-Brisbane</b>								
Qantas	27	27	27	100.0	26	96.3	0	0.0
QantasLink	22	21	16	76.2	17	81.0	1	4.5
Virgin Australia	15	13	9	69.2	11	84.6	2	13.3
All Airlines	64	61	52	85.2	54	88.5	3	4.7
<b>Newcastle-Brisbane</b>								
Jetstar	56	52	43	82.7	43	82.7	4	7.1
QantasLink	46	39	37	94.9	37	94.9	7	15.2
Virgin Australia	69	61	58	95.1	59	96.7	8	11.6
All Airlines	171	152	138	90.8	139	91.4	19	11.1
<b>Newcastle-Melbourne</b>								
Jetstar	63	60	47	78.3	43	71.7	3	4.8
QantasLink	30	25	21	84.0	21	84.0	5	16.7
Virgin Australia	33	30	23	76.7	26	86.7	3	9.1
All Airlines	126	115	91	79.1	90	78.3	11	8.7
<b>Newman-Perth</b>								
Qantas	15	13	11	84.6	10	76.9	2	13.3
QantasLink	98	94	75	79.8	75	79.8	4	4.1
Virgin Australia	23	23	21	91.3	21	91.3	0	0.0
Virgin Australia Regional Airlines	30	30	24	80.0	24	80.0	0	0.0
All Airlines	166	160	131	81.9	130	81.3	6	3.6
<b>Perth-Brisbane</b>								
Qantas	11	11	11	100.0	10	90.9	0	0.0
Virgin Australia	5	5	5	100.0	0	0.0	0	0.0
All Airlines	16	16	16	100.0	10	62.5	0	0.0
<b>Perth-Broome</b>								
Qantas	43	41	40	97.6	41	100.0	2	4.7
QantasLink	37	32	30	93.8	29	90.6	5	13.5
Virgin Australia	16	14	12	85.7	13	92.9	2	12.5
Virgin Australia Regional Airlines	39	39	33	84.6	33	84.6	0	0.0
All Airlines	135	126	115	91.3	116	92.1	9	6.7
<b>Perth-Darwin</b>								
Qantas	10	10	8	80.0	9	90.0	0	0.0
Virgin Australia Regional Airlines	2	2	1	50.0	2	100.0	0	0.0
All Airlines	12	12	9	75.0	11	91.7	0	0.0
<b>Perth-Kalgoorlie</b>								
Qantas	29	29	28	96.6	28	96.6	0	0.0
QantasLink	44	42	38	90.5	38	90.5	2	4.5
Virgin Australia	28	28	27	96.4	27	96.4	0	0.0
Virgin Australia Regional Airlines	32	32	26	81.3	26	81.3	0	0.0
All Airlines	133	131	119	90.8	119	90.8	2	1.5
<b>Perth-Karratha</b>								
Qantas	57	55	52	94.5	53	96.4	2	3.5
QantasLink	97	94	83	88.3	87	92.6	3	3.1
Virgin Australia	25	25	24	96.0	24	96.0	0	0.0
Virgin Australia Regional Airlines	27	27	26	96.3	25	92.6	0	0.0
All Airlines	206	201	185	92.0	189	94.0	5	2.4

	Sectors		Arrivals On Time		Departures On Time		Cancellations	
	Sched.	Flown	No.	%	No.	%	No.	%
<b>Perth-Melbourne</b>								
Qantas	11	10	4	40.0	4	40.0	1	9.1
Virgin Australia	12	12	3	25.0	2	16.7	0	0.0
All Airlines	23	22	7	31.8	6	27.3	1	4.3
<b>Perth-Newman</b>								
Qantas	15	13	12	92.3	12	92.3	2	13.3
QantasLink	96	92	83	90.2	81	88.0	4	4.2
Virgin Australia	23	23	22	95.7	23	100.0	0	0.0
Virgin Australia Regional Airlines	30	30	27	90.0	28	93.3	0	0.0
All Airlines	164	158	144	91.1	144	91.1	6	3.7
<b>Perth-Port Hedland</b>								
Qantas	50	50	48	96.0	47	94.0	0	0.0
QantasLink	77	71	62	87.3	62	87.3	6	7.8
Virgin Australia	15	15	13	86.7	13	86.7	0	0.0
Virgin Australia Regional Airlines	37	37	35	94.6	32	86.5	0	0.0
All Airlines	179	173	158	91.3	154	89.0	6	3.4
<b>Port Hedland-Perth</b>								
Qantas	50	47	44	93.6	43	91.5	3	6.0
QantasLink	77	71	64	90.1	63	88.7	6	7.8
Virgin Australia	15	15	13	86.7	13	86.7	0	0.0
Virgin Australia Regional Airlines	37	37	29	78.4	30	81.1	0	0.0
All Airlines	179	170	150	88.2	149	87.6	9	5.0
<b>Port Lincoln-Adelaide</b>								
QantasLink	96	82	69	84.1	69	84.1	14	14.6
Rex Airlines	142	131	108	82.4	111	84.7	11	7.7
All Airlines	238	213	177	83.1	180	84.5	25	10.5
<b>Port Macquarie-Sydney</b>								
QantasLink	85	77	66	85.7	68	88.3	8	9.4
Rex Airlines	61	60	53	88.3	59	98.3	1	1.6
All Airlines	146	137	119	86.9	127	92.7	9	6.2
<b>Proserpine-Brisbane</b>								
Jetstar	47	46	33	71.7	32	69.6	1	2.1
QantasLink	36	31	28	90.3	27	87.1	5	13.9
Virgin Australia	50	46	39	84.8	40	87.0	4	8.0
All Airlines	133	123	100	81.3	99	80.5	10	7.5
<b>Rockhampton-Brisbane</b>								
QantasLink	127	108	101	93.5	101	93.5	19	15.0
Virgin Australia	100	95	83	87.4	83	87.4	5	5.0
All Airlines	227	203	184	90.6	184	90.6	24	10.6
<b>Sunshine Coast-Melbourne</b>								
Jetstar	86	80	66	82.5	62	77.5	6	7.0
Qantas	60	60	56	93.3	54	90.0	0	0.0
QantasLink	23	22	22	100.0	22	100.0	1	4.3
Virgin Australia	122	103	62	60.2	68	66.0	19	15.6
All Airlines	291	265	206	77.7	206	77.7	26	8.9
<b>Sunshine Coast-Sydney</b>								
Jetstar	85	72	58	80.6	59	81.9	13	15.3
Qantas	55	51	49	96.1	48	94.1	4	7.3
Virgin Australia	92	73	51	69.9	57	78.1	19	20.7
All Airlines	232	196	158	80.6	164	83.7	36	15.5

	<i>Sectors</i>		<i>Arrivals On Time</i>		<i>Departures On Time</i>		<i>Cancellations</i>	
	<i>Sched.</i>	<i>Flown</i>	<i>No.</i>	<i>%</i>	<i>No.</i>	<i>%</i>	<i>No.</i>	<i>%</i>
<b>Sydney-Adelaide</b>								
Jetstar	105	83	75	90.4	65	78.3	22	21.0
Qantas	132	120	114	95.0	114	95.0	12	9.1
Virgin Australia	94	81	76	93.8	75	92.6	13	13.8
All Airlines	331	284	265	93.3	254	89.4	47	14.2
<b>Sydney-Albury</b>								
QantasLink	75	68	64	94.1	63	92.6	7	9.3
Rex Airlines	56	56	53	94.6	55	98.2	0	0.0
All Airlines	131	124	117	94.4	118	95.2	7	5.3
<b>Sydney-Armidale</b>								
QantasLink	81	67	55	82.1	53	79.1	14	17.3
Rex Airlines	37	33	24	72.7	23	69.7	4	10.8
All Airlines	118	100	79	79.0	76	76.0	18	15.3
<b>Sydney-Ballina</b>								
Jetstar	96	88	66	75.0	68	77.3	8	8.3
Qantas	32	32	29	90.6	29	90.6	0	0.0
QantasLink	37	31	29	93.5	29	93.5	6	16.2
Rex Airlines	29	28	26	92.9	26	92.9	1	3.4
Virgin Australia	85	79	69	87.3	73	92.4	6	7.1
All Airlines	279	258	219	84.9	225	87.2	21	7.5
<b>Sydney-Brisbane</b>								
Jetstar	128	90	71	78.9	67	74.4	38	29.7
Qantas	361	290	275	94.8	270	93.1	71	19.7
Virgin Australia	317	237	207	87.3	198	83.5	80	25.2
All Airlines	806	617	553	89.6	535	86.7	189	23.4
<b>Sydney-Cairns</b>								
Jetstar	91	69	54	78.3	52	75.4	22	24.2
Qantas	42	41	38	92.7	38	92.7	1	2.4
Virgin Australia	80	68	64	94.1	63	92.6	12	15.0
All Airlines	213	178	156	87.6	153	86.0	35	16.4
<b>Sydney-Canberra</b>								
QantasLink	208	162	124	76.5	123	75.9	46	22.1
Rex Airlines	52	47	43	91.5	47	100.0	5	9.6
All Airlines	260	209	167	79.9	170	81.3	51	19.6
<b>Sydney-Coffs Harbour</b>								
QantasLink	97	89	78	87.6	78	87.6	8	8.2
Rex Airlines	59	57	56	98.2	55	96.5	2	3.4
Virgin Australia	31	31	30	96.8	30	96.8	0	0.0
All Airlines	187	177	164	92.7	163	92.1	10	5.3
<b>Sydney-Dubbo</b>								
QantasLink	69	63	57	90.5	55	87.3	6	8.7
Rex Airlines	50	50	47	94.0	47	94.0	0	0.0
All Airlines	119	113	104	92.0	102	90.3	6	5.0
<b>Sydney-Gold Coast</b>								
Jetstar	278	218	195	89.4	191	87.6	60	21.6
Qantas	91	86	79	91.9	81	94.2	5	5.5
Rex Airlines	37	33	31	93.9	32	97.0	4	10.8
Virgin Australia	274	213	185	86.9	186	87.3	61	22.3
All Airlines	680	550	490	89.1	490	89.1	130	19.1



	<i>Sectors</i>		<i>Arrivals On Time</i>		<i>Departures On Time</i>		<i>Cancellations</i>	
	<i>Sched.</i>	<i>Flown</i>	<i>No.</i>	<i>%</i>	<i>No.</i>	<i>%</i>	<i>No.</i>	<i>%</i>
<b>Sydney-Hamilton Island</b>								
Jetstar	30	28	25	89.3	24	85.7	2	6.7
Qantas	30	28	28	100.0	28	100.0	2	6.7
Virgin Australia	18	17	16	94.1	17	100.0	1	5.6
All Airlines	78	73	69	94.5	69	94.5	5	6.4
<b>Sydney-Hobart</b>								
Jetstar	111	92	75	81.5	70	76.1	19	17.1
Qantas	62	50	47	94.0	47	94.0	12	19.4
QantasLink	21	20	13	65.0	13	65.0	1	4.8
Virgin Australia	59	52	48	92.3	47	90.4	7	11.9
All Airlines	253	214	183	85.5	177	82.7	39	15.4
<b>Sydney-Launceston</b>								
Jetstar	68	60	44	73.3	46	76.7	8	11.8
QantasLink	27	27	21	77.8	20	74.1	0	0.0
Virgin Australia	31	30	30	100.0	29	96.7	1	3.2
All Airlines	126	117	95	81.2	95	81.2	9	7.1
<b>Sydney-Melbourne</b>								
Jetstar	364	243	208	85.6	187	77.0	121	33.2
Qantas	616	488	467	95.7	455	93.2	128	20.8
Rex Airlines	61	50	46	92.0	45	90.0	11	18.0
Virgin Australia	576	440	374	85.0	346	78.6	136	23.6
All Airlines	1 617	1 221	1 095	89.7	1 033	84.6	396	24.5
<b>Sydney-Port Macquarie</b>								
QantasLink	86	78	64	82.1	64	82.1	8	9.3
Rex Airlines	62	61	59	96.7	60	98.4	1	1.6
All Airlines	148	139	123	88.5	124	89.2	9	6.1
<b>Sydney-Sunshine Coast</b>								
Jetstar	85	72	59	81.9	60	83.3	13	15.3
Qantas	55	51	48	94.1	49	96.1	4	7.3
Virgin Australia	92	73	66	90.4	67	91.8	19	20.7
All Airlines	232	196	173	88.3	176	89.8	36	15.5
<b>Sydney-Wagga Wagga</b>								
QantasLink	72	68	62	91.2	54	79.4	4	5.6
Rex Airlines	49	49	45	91.8	45	91.8	0	0.0
All Airlines	121	117	107	91.5	99	84.6	4	3.3
<b>Townsville-Brisbane</b>								
Jetstar	58	55	41	74.5	43	78.2	3	5.2
Qantas	93	89	84	94.4	84	94.4	4	4.3
QantasLink	12	11	9	81.8	8	72.7	1	8.3
Virgin Australia	88	85	71	83.5	60	70.6	3	3.4
All Airlines	251	240	205	85.4	195	81.3	11	4.4
<b>Townsville-Cairns</b>								
QantasLink	122	112	107	95.5	107	95.5	10	8.2
Rex Airlines	14	14	14	100.0	14	100.0	0	0.0
All Airlines	136	126	121	96.0	121	96.0	10	7.4
<b>Wagga Wagga-Sydney</b>								
QantasLink	72	67	64	95.5	63	94.0	5	6.9
Rex Airlines	49	49	45	91.8	46	93.9	0	0.0
All Airlines	121	116	109	94.0	109	94.0	5	4.1

## Airports

The following data reports by airport against flights operated on published routes only. This month, 8 major city airports and 28 regional city airports are covered.

Airport	Arrivals			Departures		
	Sectors Flown	On Time No.	%	Sectors Flown	On Time No.	%
<b>Adelaide</b>						
Jetstar	223	187	83.9	223	185	83.0
Qantas	324	304	93.8	323	289	89.5
QantasLink	151	122	80.8	152	130	85.5
Rex Airlines	165	137	83.0	166	150	90.4
Virgin Australia	362	297	82.0	360	314	87.2
All Airlines	1 225	1 047	85.5	1 224	1 068	87.3
Relates to services to and from Alice Springs, Brisbane, Canberra, Gold Coast, Melbourne, Port Lincoln and Sydney only.						
<b>Albury</b>						
QantasLink	68	64	94.1	68	61	89.7
Rex Airlines	56	53	94.6	56	53	94.6
All Airlines	124	117	94.4	124	114	91.9
Relates to services to and from Sydney only.						
<b>Alice Springs</b>						
Qantas	1	0	0.0	1	0	0.0
QantasLink	24	15	62.5	23	14	60.9
Virgin Australia	10	9	90.0	10	9	90.0
All Airlines	35	24	68.6	34	23	67.6
Relates to services to and from Adelaide only.						
<b>Armidale</b>						
QantasLink	67	55	82.1	66	55	83.3
Rex Airlines	33	24	72.7	32	24	75.0
All Airlines	100	79	79.0	98	79	80.6
Relates to services to and from Sydney only.						
<b>Ballina</b>						
Jetstar	88	66	75.0	88	49	55.7
Qantas	32	29	90.6	32	25	78.1
QantasLink	31	29	93.5	33	32	97.0
Rex Airlines	28	26	92.9	27	23	85.2
Virgin Australia	79	69	87.3	79	73	92.4
All Airlines	258	219	84.9	259	202	78.0
Relates to services to and from Sydney only.						
<b>Brisbane</b>						
Jetstar	604	454	75.2	605	454	75.0
Qantas	1 019	954	93.6	1 026	963	93.9
QantasLink	488	446	91.4	487	440	90.3
Virgin Australia	1 328	1 148	86.4	1 329	1 082	81.4
All Airlines	3 439	3 002	87.3	3 447	2 939	85.3
Relates to services to and from Adelaide, Cairns, Canberra, Darwin, Emerald, Gladstone, Hamilton Island, Hobart, Mackay, Melbourne, Mount Isa, Newcastle, Perth, Proserpine, Rockhampton, Sydney and Townsville only.						

Airport	Arrivals			Departures		
	Sectors	On Time		Sectors	On Time	
	Flown	No.	%	Flown	No.	%
<b>Broome</b>						
Qantas	41	40	97.6	42	38	90.5
QantasLink	32	30	93.8	32	29	90.6
Virgin Australia	14	12	85.7	14	12	85.7
Virgin Australia Regional Airlines	39	33	84.6	39	24	61.5
All Airlines	126	115	91.3	127	103	81.1
Relates to services to and from Perth only.						
<b>Cairns</b>						
Jetstar	251	193	76.9	251	184	73.3
Qantas	188	179	95.2	187	165	88.2
QantasLink	112	107	95.5	111	104	93.7
Rex Airlines	14	14	100.0	14	14	100.0
Virgin Australia	256	232	90.6	256	212	82.8
All Airlines	821	725	88.3	819	679	82.9
Relates to services to and from Brisbane, Melbourne, Sydney and Townsville only.						
<b>Canberra</b>						
Qantas	35	34	97.1	35	34	97.1
QantasLink	378	300	79.4	379	327	86.3
Rex Airlines	47	43	91.5	47	47	100.0
Virgin Australia	170	144	84.7	169	144	85.2
All Airlines	630	521	82.7	630	552	87.6
Relates to services to and from Adelaide, Brisbane, Melbourne and Sydney only.						
<b>Coffs Harbour</b>						
QantasLink	89	78	87.6	89	80	89.9
Rex Airlines	57	56	98.2	56	54	96.4
Virgin Australia	31	30	96.8	31	29	93.5
All Airlines	177	164	92.7	176	163	92.6
Relates to services to and from Sydney only.						
<b>Darwin</b>						
Jetstar	29	27	93.1	30	20	66.7
Qantas	41	38	92.7	40	36	90.0
Virgin Australia	34	34	100.0	34	30	88.2
Virgin Australia Regional Airlines	2	1	50.0	2	1	50.0
All Airlines	106	100	94.3	106	87	82.1
Relates to services to and from Brisbane, Melbourne and Perth only.						
<b>Dubbo</b>						
QantasLink	63	57	90.5	61	58	95.1
Rex Airlines	50	47	94.0	49	44	89.8
All Airlines	113	104	92.0	110	102	92.7
Relates to services to and from Sydney only.						
<b>Emerald</b>						
QantasLink	73	68	93.2	72	69	95.8
Virgin Australia	26	22	84.6	26	23	88.5
All Airlines	99	90	90.9	98	92	93.9
Relates to services to and from Brisbane only.						

Airport	Arrivals			Departures		
	Sectors Flown	On Time		Sectors Flown	On Time	
		No.	%		No.	%
<b>Gladstone</b>						
QantasLink	81	73	90.1	80	76	95.0
Virgin Australia	38	35	92.1	37	35	94.6
All Airlines	119	108	90.8	117	111	94.9
Relates to services to and from Brisbane only.						
<b>Gold Coast</b>						
Jetstar	491	399	81.3	491	375	76.4
Qantas	176	165	93.8	175	139	79.4
QantasLink	12	10	83.3	12	9	75.0
Rex Airlines	88	82	93.2	89	79	88.8
Virgin Australia	511	426	83.4	513	395	77.0
All Airlines	1 278	1 082	84.7	1 280	997	77.9
Relates to services to and from Adelaide, Melbourne and Sydney only.						
<b>Hamilton Island</b>						
Jetstar	28	25	89.3	28	18	64.3
Qantas	55	54	98.2	55	53	96.4
Virgin Australia	67	66	98.5	67	62	92.5
All Airlines	150	145	96.7	150	133	88.7
Relates to services to and from Brisbane and Sydney only.						
<b>Hobart</b>						
Jetstar	281	236	84.0	281	220	78.3
Qantas	50	47	94.0	52	47	90.4
QantasLink	146	128	87.7	145	123	84.8
Virgin Australia	183	168	91.8	182	152	83.5
All Airlines	660	579	87.7	660	542	82.1
Relates to services to and from Brisbane, Melbourne and Sydney only.						
<b>Kalgoorlie</b>						
Qantas	29	28	96.6	29	26	89.7
QantasLink	42	38	90.5	42	38	90.5
Virgin Australia	28	27	96.4	28	24	85.7
Virgin Australia Regional Airlines	32	26	81.3	32	25	78.1
All Airlines	131	119	90.8	131	113	86.3
Relates to services to and from Perth only.						
<b>Karratha</b>						
Qantas	55	52	94.5	52	51	98.1
QantasLink	94	83	88.3	87	80	92.0
Virgin Australia	25	24	96.0	25	24	96.0
Virgin Australia Regional Airlines	27	26	96.3	27	25	92.6
All Airlines	201	185	92.0	191	180	94.2
Relates to services to and from Perth only.						
<b>Launceston</b>						
Jetstar	169	132	78.1	169	123	72.8
QantasLink	99	77	77.8	98	70	71.4
Virgin Australia	94	84	89.4	94	83	88.3
All Airlines	362	293	80.9	361	276	76.5
Relates to services to and from Melbourne and Sydney only.						

Airport	Arrivals			Departures		
	Sectors	On Time		Sectors	On Time	
	Flown	No.	%	Flown	No.	%
<b>Mackay</b>						
Jetstar	41	34	82.9	40	27	67.5
Qantas	56	55	98.2	56	54	96.4
QantasLink	22	21	95.5	24	20	83.3
Virgin Australia	83	68	81.9	83	71	85.5
All Airlines	202	178	88.1	203	172	84.7

Relates to services to and from Brisbane only.

### Melbourne

Jetstar	1 165	930	79.8	1 162	838	72.1
Qantas	1 090	1 002	91.9	1 102	1 007	91.4
QantasLink	432	353	81.7	438	364	83.1
Rex Airlines	171	148	86.5	172	157	91.3
Virgin Australia	1 569	1 228	78.3	1 570	1 234	78.6
All Airlines	4 427	3 661	82.7	4 444	3 600	81.0

Relates to services to and from Adelaide, Brisbane, Cairns, Canberra, Gold Coast, Hobart, Launceston, Mildura, Newcastle, Perth, Sunshine Coast and Sydney only.

### Mildura

QantasLink	109	87	79.8	107	81	75.7
Rex Airlines	32	24	75.0	32	27	84.4
All Airlines	141	111	78.7	139	108	77.7

Relates to services to and from Melbourne only.

### Mount Isa

Qantas	27	27	100.0	27	26	96.3
QantasLink	21	17	81.0	21	17	81.0
Virgin Australia	13	12	92.3	13	11	84.6
All Airlines	61	56	91.8	61	54	88.5

Relates to services to and from Brisbane only.

### Newcastle

Jetstar	112	80	71.4	112	86	76.8
QantasLink	64	58	90.6	64	58	90.6
Virgin Australia	92	82	89.1	91	85	93.4
All Airlines	268	220	82.1	267	229	85.8

Relates to services to and from Brisbane and Melbourne only.

### Newman

Qantas	13	12	92.3	13	10	76.9
QantasLink	92	83	90.2	94	75	79.8
Virgin Australia	23	22	95.7	23	21	91.3
Virgin Australia Regional Airlines	30	27	90.0	30	24	80.0
All Airlines	158	144	91.1	160	130	81.3

Relates to services to and from Perth only.

### Perth

Qantas	214	200	93.5	219	204	93.2
QantasLink	326	286	87.7	331	297	89.7
Virgin Australia	120	105	87.5	122	102	83.6
Virgin Australia Regional Airlines	167	130	77.8	167	146	87.4
All Airlines	827	721	87.2	839	749	89.3

Relates to services to and from Adelaide, Brisbane, Broome, Darwin, Kalgoorlie, Karratha, Melbourne, Newman and Port Hedland only.

Airport	Arrivals			Departures		
	Sectors Flown	On Time		Sectors Flown	On Time	
		No.	%		No.	%
<b>Port Hedland</b>						
Qantas	50	48	96.0	47	43	91.5
QantasLink	71	62	87.3	71	63	88.7
Virgin Australia	15	13	86.7	15	13	86.7
Virgin Australia Regional Airlines	37	35	94.6	37	30	81.1
All Airlines	173	158	91.3	170	149	87.6
Relates to services to and from Perth only.						
<b>Port Lincoln</b>						
QantasLink	82	71	86.6	82	69	84.1
Rex Airlines	132	115	87.1	131	111	84.7
All Airlines	214	186	86.9	213	180	84.5
Relates to services to and from Adelaide only.						
<b>Port Macquarie</b>						
QantasLink	78	64	82.1	77	68	88.3
Rex Airlines	61	59	96.7	60	59	98.3
All Airlines	139	123	88.5	137	127	92.7
Relates to services to and from Sydney only.						
<b>Proserpine</b>						
Jetstar	46	38	82.6	46	32	69.6
QantasLink	31	28	90.3	31	27	87.1
Virgin Australia	46	45	97.8	46	40	87.0
All Airlines	123	111	90.2	123	99	80.5
Relates to services to and from Brisbane only.						
<b>Rockhampton</b>						
QantasLink	110	104	94.5	108	101	93.5
Virgin Australia	94	77	81.9	95	83	87.4
All Airlines	204	181	88.7	203	184	90.6
Relates to services to and from Brisbane only.						
<b>Sunshine Coast</b>						
Jetstar	152	124	81.6	152	121	79.6
Qantas	111	105	94.6	111	102	91.9
QantasLink	23	23	100.0	22	22	100.0
Virgin Australia	176	156	88.6	176	125	71.0
All Airlines	462	408	88.3	461	370	80.3
Relates to services to and from Melbourne and Sydney only.						
<b>Sydney</b>						
Jetstar	1 040	835	80.3	1 043	830	79.6
Qantas	1 202	1 115	92.8	1 186	1 111	93.7
QantasLink	669	596	89.1	673	552	82.0
Rex Airlines	461	424	92.0	464	435	93.8
Virgin Australia	1 322	1 132	85.6	1 321	1 131	85.6
All Airlines	4 694	4 102	87.4	4 687	4 059	86.6

Relates to services to and from Adelaide, Albury, Armidale, Ballina, Brisbane, Cairns, Canberra, Coffs Harbour, Dubbo, Gold Coast, Hamilton Island, Hobart, Launceston, Melbourne, Port Macquarie, Sunshine Coast and Wagga Wagga only.

<i>Airport</i>	<i>Arrivals</i>			<i>Departures</i>		
	<i>Sectors</i>	<i>On Time</i>		<i>Sectors</i>	<i>On Time</i>	
	<i>Flown</i>	<i>No.</i>	<i>%</i>	<i>Flown</i>	<i>No.</i>	<i>%</i>
<b>Townsville</b>						
Jetstar	56	45	80.4	55	43	78.2
Qantas	90	87	96.7	89	84	94.4
QantasLink	122	114	93.4	123	115	93.5
Rex Airlines	14	14	100.0	14	14	100.0
Virgin Australia	85	70	82.4	85	60	70.6
All Airlines	367	330	89.9	366	316	86.3

Relates to services to and from Brisbane and Cairns only.

**Wagga Wagga**

QantasLink	68	62	91.2	67	63	94.0
Rex Airlines	49	45	91.8	49	46	93.9
All Airlines	117	107	91.5	116	109	94.0

Relates to services to and from Sydney only.

## Definitions

---

On time arrival	A flight arrival is counted as "on time" if it arrived at the gate before 15 minutes after the scheduled arrival time shown in the carriers' schedule. Neither diverted nor cancelled flights count as on time.
On time departure	A flight departure is counted as "on time" if it departs the gate before 15 minutes after the scheduled departure time shown in the carriers' schedule.
Cancellation	A flight removed from service within 7 days of scheduled departure is regarded as a cancellation.
On time departure percentage	The percentage of on time departures is measured against the number of departures <i>operated</i> on any particular sector.
On time arrival percentage	The percentage of on time arrivals is measured against the number of arrivals <i>operated</i> on any particular sector.
Cancellation percentage	The percentage of cancellations is measured against the number of services <i>scheduled</i> on any particular sector.

---