



**Australian Government**

**Department of Infrastructure, Transport, Regional Development and Communications**

Bureau of Infrastructure and Transport Research Economics

STATISTICAL REPORT



# Aviation

Domestic airline on time performance  
January 2021

© Commonwealth of Australia 2021

ISSN: 1832-0759

### **Ownership of intellectual property rights in this publication**

Unless otherwise noted, copyright (and any other intellectual property rights, if any) in this publication is owned by the Commonwealth of Australia (referred to below as the Commonwealth).

### **Disclaimer**

The material contained in this publication is made available on the understanding that the Commonwealth is not providing professional advice, and that users exercise their own skill and care with respect to its use, and seek independent advice if necessary.

The Commonwealth makes no representations or warranties as to the contents or accuracy of the information contained in this publication. To the extent permitted by law, the Commonwealth disclaims liability to any person or organisation in respect of anything done, or omitted to be done, in reliance upon information contained in this publication.

### **Creative Commons licence**

With the exception of (a) the Coat of Arms; and (b) the Department of Infrastructure, Transport, Regional Development and Communications' photos and graphics, copyright in this publication is licensed under a Creative Commons Attribution 3.0 Australia Licence.

Creative Commons Attribution 3.0 Australia Licence is a standard form licence agreement that allows you to copy, communicate and adapt this publication provided that you attribute the work to the Commonwealth and abide by the other licence terms. A summary of the licence terms is available from <http://creativecommons.org/licenses/by/3.0/au/deed.en>. The full licence terms are available from <http://creativecommons.org/licenses/by/3.0/au/legalcode>.

### **Use of the Coat of Arms**

The Department of the Prime Minister and Cabinet sets the terms under which the Coat of Arms is used. Please refer to the Department's Commonwealth Coat of Arms and Government branding web page <http://www.dpmc.gov.au/guidelines/index.cfm#brand> and, in particular, the Guidelines on the use of the Commonwealth Coat of Arms publication.

An appropriate citation for this report is:

Bureau of Infrastructure and Transport Research Economics (BITRE), 2021, Domestic airline on time performance, Statistical Report, BITRE, Canberra ACT.

### **Contact us**

This publication is available in PDF format. All other rights are reserved, including in relation to any Departmental logos or trade marks which may exist. For enquiries regarding the licence and any use of this publication, please contact:

Bureau of Infrastructure and Transport Research Economics (BITRE)  
Department of Infrastructure, Transport, Regional Development and Communications  
GPO Box 501, Canberra ACT 2601, Australia  
Telephone: (international) +61 2 6274 7210  
Fax: (international) +61 2 6274 6855  
Email: [bitre@infrastructure.gov.au](mailto:bitre@infrastructure.gov.au)  
Website: [www.bitre.gov.au](http://www.bitre.gov.au)

### **Inquiries**

Should you require additional information about the statistics contained in this publication:

Telephone (02) 6274 7790 or Facsimile (02) 6274 7727

Electronic mail: [AVSTATS@infrastructure.gov.au](mailto:AVSTATS@infrastructure.gov.au)

Web site: <http://www.bitre.gov.au/statistics/aviation/otphome.aspx>

# Foreword

The Bureau of Infrastructure and Transport Research Economics (BITRE) monitors the punctuality and reliability of major domestic airlines operating between Australian airports. The purpose of this is to allow for evaluation of overall industry and individual airline performance, so that consumers of air travel can make informed decisions.

The following domestic airlines currently report this information monthly to the BITRE: Jetstar, Qantas, QantasLink, Regional Express, Virgin Australia and Virgin Australia Regional Airlines. Data has been gathered since November 2003, although some airlines commenced reporting at a later date, including Jetstar which first reported in May 2004, MacAir in July 2005, Tigerair Australia in April 2008 and Virgin Australia Regional Airlines in May 2013. MacAir ceased operations in February 2009 and data was not received for December 2008 onwards. Virgin Blue was rebranded as Virgin Australia in May 2011 and Tiger Airways was rebranded as Tigerair Australia in July 2013 and time series data in Microsoft Excel spreadsheet format on the BITRE website have been revised to reflect these changes. Services operated by Skywest on behalf of Virgin Australia using ATR/F100 aircraft commenced in November 2011 and were shown separately as Virgin Australia – ATR/F100 Operations. Virgin Australia Regional Airlines commenced operations in May 2013. It was formed after the acquisition of Skywest by Virgin Australia and represented a combination of operations previously reported under Skywest and Virgin Australia – ATR/F100 Operations. In January 2016, Virgin Australia transferred their ATR fleet from Virgin Australia Regional Airlines to Virgin Australia. Tigerair Australia ceased operations in March 2020 and data was not received for that month.

Information presented in this report is for Australian domestic routes for which the passenger load averaged 8 000 or more passengers per month over the previous six months and where two or more airlines operated in competition on those routes. There were 62 routes that met this definition in January 2021. Over time, routes which meet these criteria change as airline networks and traffic levels vary.

Participating airlines report their overall monthly network performance where this is possible.

Total industry figures encompass all services operated by reporting airlines only. These airlines collectively carried over 95 per cent of total domestic passengers (regular public transport only) in 2019.

The method of capturing on time performance varies between airlines utilising different recording systems. Jetstar and Qantas jet aircraft use Aircraft Communication Addressing and Reporting System (ACARS) to electronically measure on time performance. Regional Express, Tigerair Australia, Virgin Australia, Virgin Australia Regional Airlines and the Qantas non-jet fleet record on time performance manually using records from pilots, gate agents and/or ground crews.

After initial data is collected, aggregate reports are audited internally by participating airlines prior to publication.

Reports and detailed time series data in Microsoft Excel spreadsheet format are available from the BITRE website at: <http://www.bitre.gov.au/statistics/aviation/otphome.aspx>.



# Contents

	Page
Industry performance .....	1
Individual routes .....	9
Airports.....	20
Definitions .....	25



# Industry performance

For January 2021, on time performance over all routes operated by participating airlines (Jetstar, Qantas, QantasLink, Regional Express, Virgin Australia and Virgin Australia Regional Airlines) averaged 88.3 per cent for on time arrivals and 88.0 per cent for on time departures. The cancellation rate for the month was 6.9 per cent. The equivalent figures for January 2020 were 74.3 per cent for on time arrivals, 75.4 per cent for on time departures and 2.8 per cent for cancellations.

This month's on time arrivals figure was higher than the long term average performance for all routes (82.2 per cent) and the on time departures figure was also higher than the long term average (83.5 per cent). The rate of cancellations was higher than the long term average of 1.7 per cent.

The Virgin Australia network (Virgin Australia and Virgin Australia Regional Airlines combined operations) recorded 89.1 per cent for on time arrivals while the Qantas network (Qantas and QantasLink combined operations) recorded 88.0 per cent. Virgin Australia achieved the highest on time arrivals among the major domestic airlines at 89.6 per cent followed by Qantas at 87.9 per cent and Jetstar at 86.8 per cent. Of the regional airlines, Regional Express recorded 91.2 per cent for on time arrivals, followed by QantasLink at 88.2 per cent and Virgin Australia Regional Airlines at 80.2 per cent.

The Qantas network recorded 89.4 per cent for on time departures while the Virgin Australia network recorded 85.7 per cent. Qantas achieved the highest level of on time departures among the major domestic airlines for January 2021 at 90.8 per cent, followed by Virgin Australia at 86.0 per cent and Jetstar at 85.2 per cent. Of the regional airlines, Regional Express recorded 92.3 per cent for on time departures, followed by QantasLink at 88.5 per cent and Virgin Australia Regional Airlines at 81.0 per cent.

Jetstar recorded the highest percentage of cancellations (at 13.3 per cent) during the month, followed by Qantas (at 8.7 per cent), Virgin Australia Regional Airlines (at 8.5 per cent), Virgin Australia (at 4.6 per cent), QantasLink (at 4.5 per cent) and Regional Express (at 1.6 per cent).

Airlines' on time performance varies across the routes they serve. Individual route data by specific airline for 52 routes are shown on pages 9-19.

Of the 54 routes which met the criteria for on time performance reporting in January 2021, the Brisbane-Emerald route had the highest percentage of on time arrivals (99.2 per cent) and the Sydney-Hamilton Island route had the highest percentage of on time departures (100.0 per cent). The Perth-Melbourne route had the lowest percentage of on time arrivals (42.0 per cent) and the Perth-Sydney route had the lowest percentage of on time departures (48.8 per cent).

Cancellations were highest on the Hobart-Sydney and Sydney-Hobart routes at 37.2 per cent, followed by the Hamilton Island-Sydney and Sydney-Hamilton Island routes at 30.8 per cent, the Sydney-Launceston route at 28.3 per cent, the Melbourne-Perth route at 28.1 per cent and the Newcastle-Melbourne route at 27.9 per cent.

Emerald Airport recorded the highest percentage of on time arrivals (99.2 per cent) and Emerald and Mount Isa airports recorded the highest percentage of on time departures (98.3 per cent). Broome Airport recorded the lowest percentage of on time arrivals (73.8 per cent) and Darwin Airport recorded the lowest percentage of on time departures (76.7 per cent). These figures only refer to reported routes and do not cover all flights at these airports.



Table 1 On time performance for January 2021 — Total Industry

	<i>Sectors</i>		<i>Arrivals On Time</i>		<i>Departures On Time</i>		<i>Cancellations</i>	
	<i>Scheduled</i>	<i>Flown</i>	<i>No.</i>	<i>%</i>	<i>No.</i>	<i>%</i>	<i>No.</i>	<i>%</i>
Jetstar	4 418	3 830	3 323	86.8	3 262	85.2	588	13.3
Qantas - all QF designated services	10 051	9 429	8 301	88.0	8 433	89.4	622	6.2
Regional Express	2 002	1 969	1 796	91.2	1 817	92.3	33	1.6
Virgin Australia - all VA designated services	4 907	4 670	4 159	89.1	4 003	85.7	237	4.8
All Airlines	21 378	19 898	17 579	88.3	17 515	88.0	1 480	6.9
Individual operating entities								
Qantas	4 077	3 721	3 269	87.9	3 380	90.8	356	8.7
QantasLink	5 974	5 708	5 032	88.2	5 053	88.5	266	4.5
Virgin Australia	4 625	4 412	3 952	89.6	3 794	86.0	213	4.6
Virgin Australia Regional Airlines	282	258	207	80.2	209	81.0	24	8.5

Total airline network data (including routes not shown in this report).

Airlines' on time performance varies across the routes they serve. Individual route data by specific airline for 54 routes are shown on pages 9-19.

Table 2 Top ten routes for on time performance for January 2021 (participating airlines only)

<i>Arrivals</i>		<i>Departures</i>	
<i>Route</i>	<i>On Time (%)</i>	<i>Route</i>	<i>On Time (%)</i>
Brisbane-Emerald	99.2	Sydney-Hamilton Island	100.0
Emerald-Brisbane	98.3	Brisbane-Emerald	99.2
Hobart-Sydney	98.0	Emerald-Brisbane	98.3
Cairns-Sydney	97.7	Mount Isa-Brisbane	98.3
Wagga Wagga-Sydney	97.4	Wagga Wagga-Sydney	97.4
Sydney-Wagga Wagga	97.4	Sydney-Wagga Wagga	97.4
Brisbane-Gladstone	96.9	Brisbane-Gladstone	96.9
Sydney-Gold Coast	96.7	Sydney-Gold Coast	96.7
Sydney-Sunshine Coast	96.7	Sydney-Sunshine Coast	96.7
Brisbane-Mount Isa	96.7	Cairns-Sydney	95.5

Table 3 Top ten airports for on time performance for January 2021 (participating airlines and reported routes only)

<i>Arrivals</i>		<i>Departures</i>	
<i>Airport</i>	<i>On Time (%)</i>	<i>Airport</i>	<i>On Time (%)</i>
Emerald	99.2	Emerald	98.3
Wagga Wagga	97.4	Mount Isa	98.3
Gladstone	96.9	Wagga Wagga	97.4
Mount Isa	96.7	Mackay	94.2
Newman	95.1	Albury	93.3
Ballina	94.9	Armidale	93.1
Coffs Harbour	93.3	Gladstone	93.1
Armidale	93.1	Sydney	91.7
Port Lincoln	92.7	Coffs Harbour	91.0
Gold Coast	92.6	Ballina	90.2

## Total industry on time performance

Figure 1 On time performance (by month from January 2018)—Total Industry

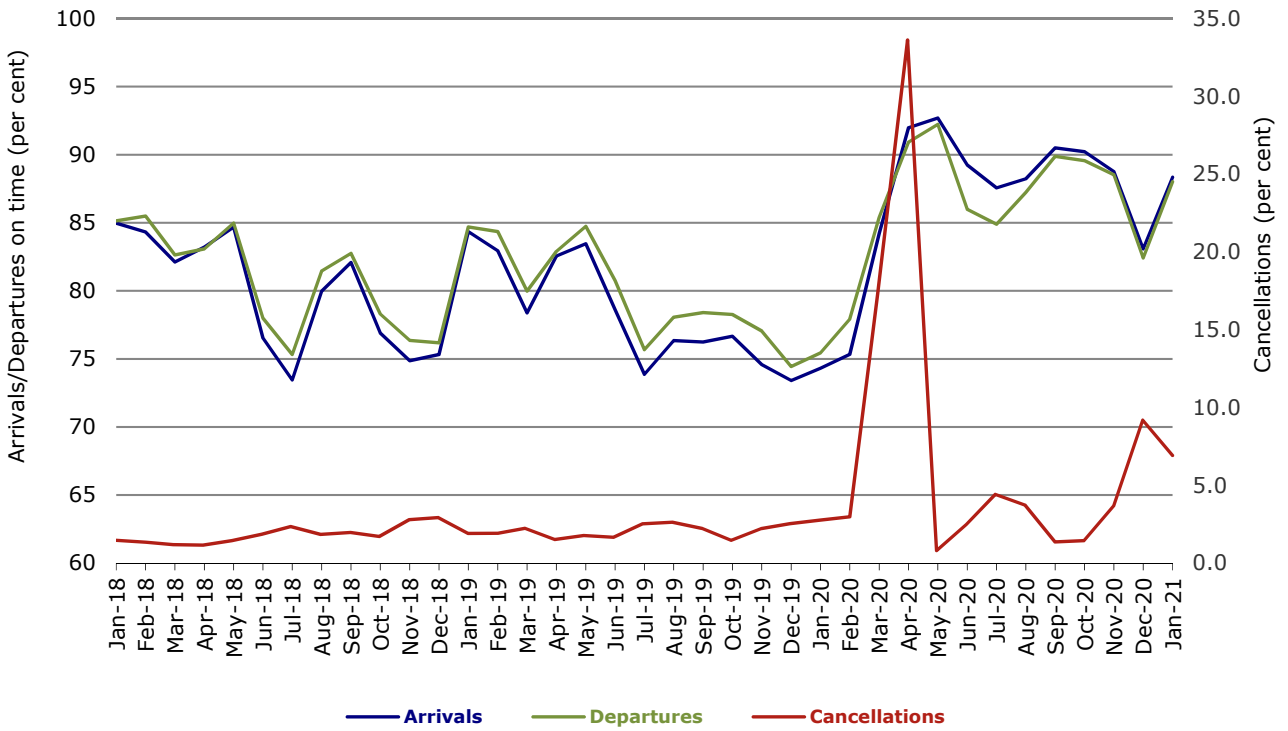


Figure 2 Arrivals on time (by month from January 2020)

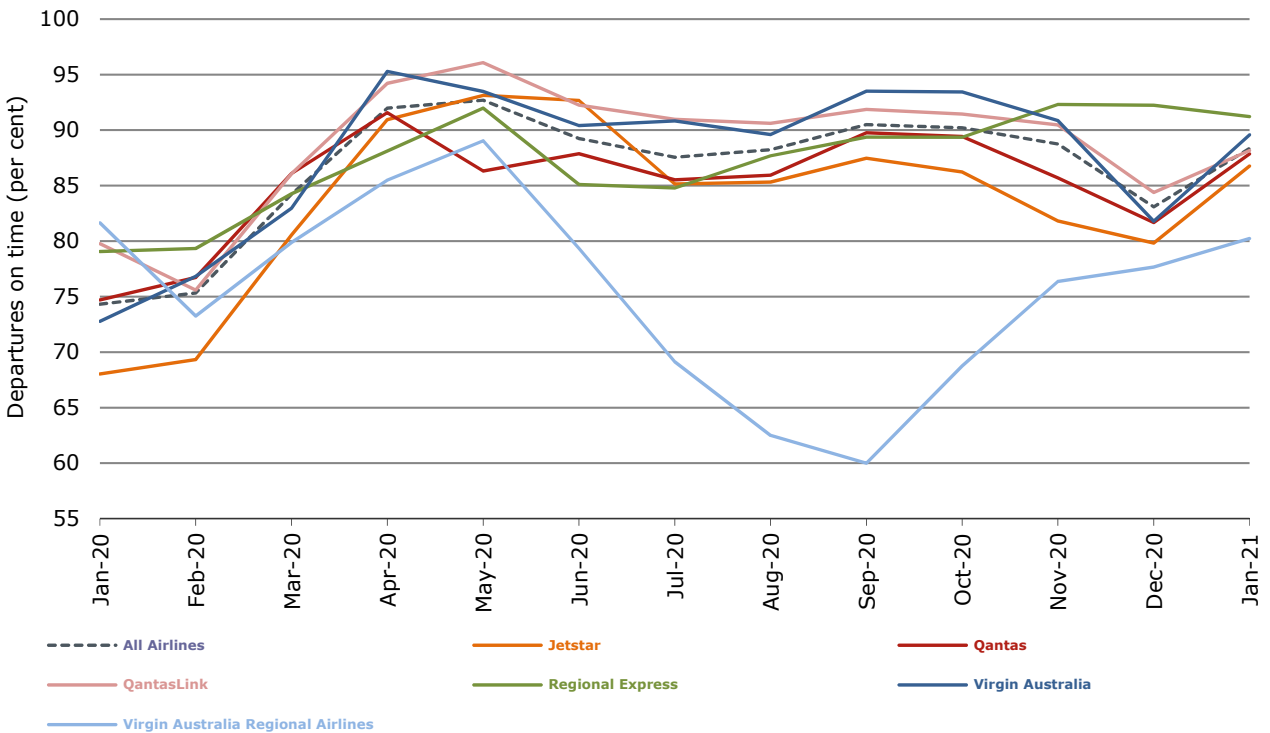


Figure 3 Departures on time (by month from January 2020)

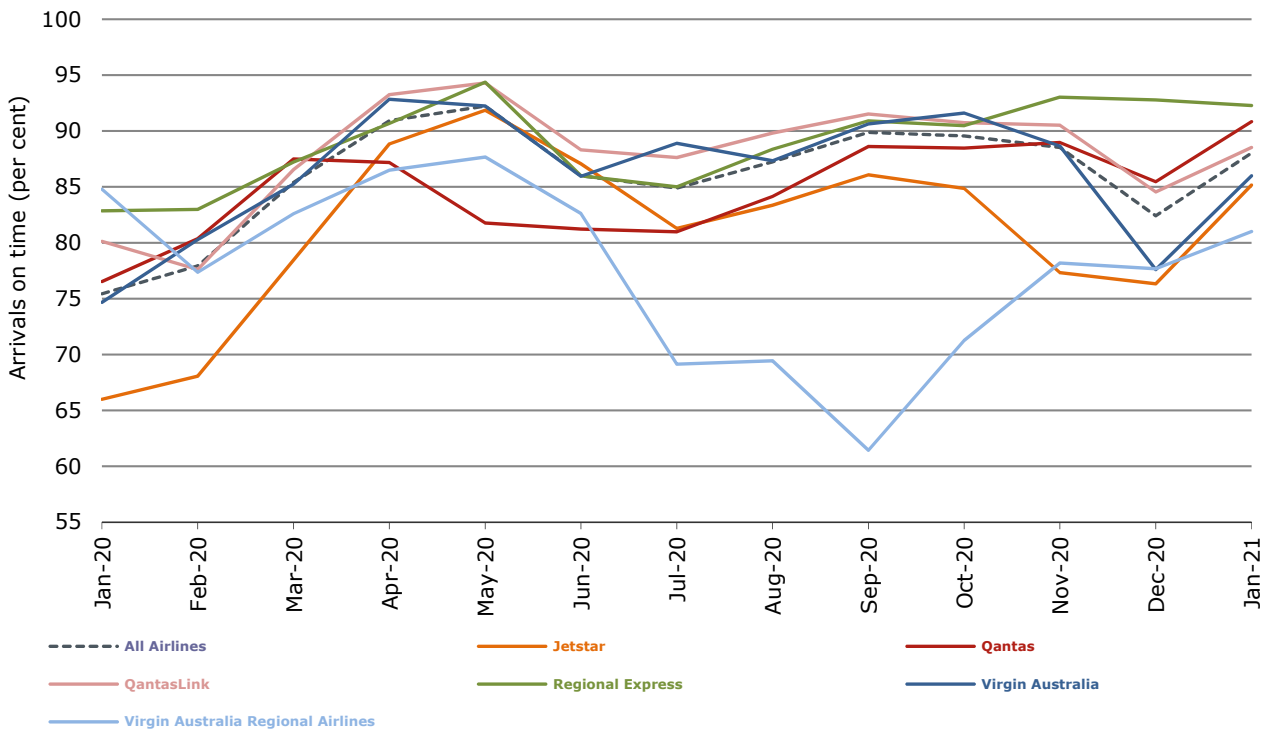
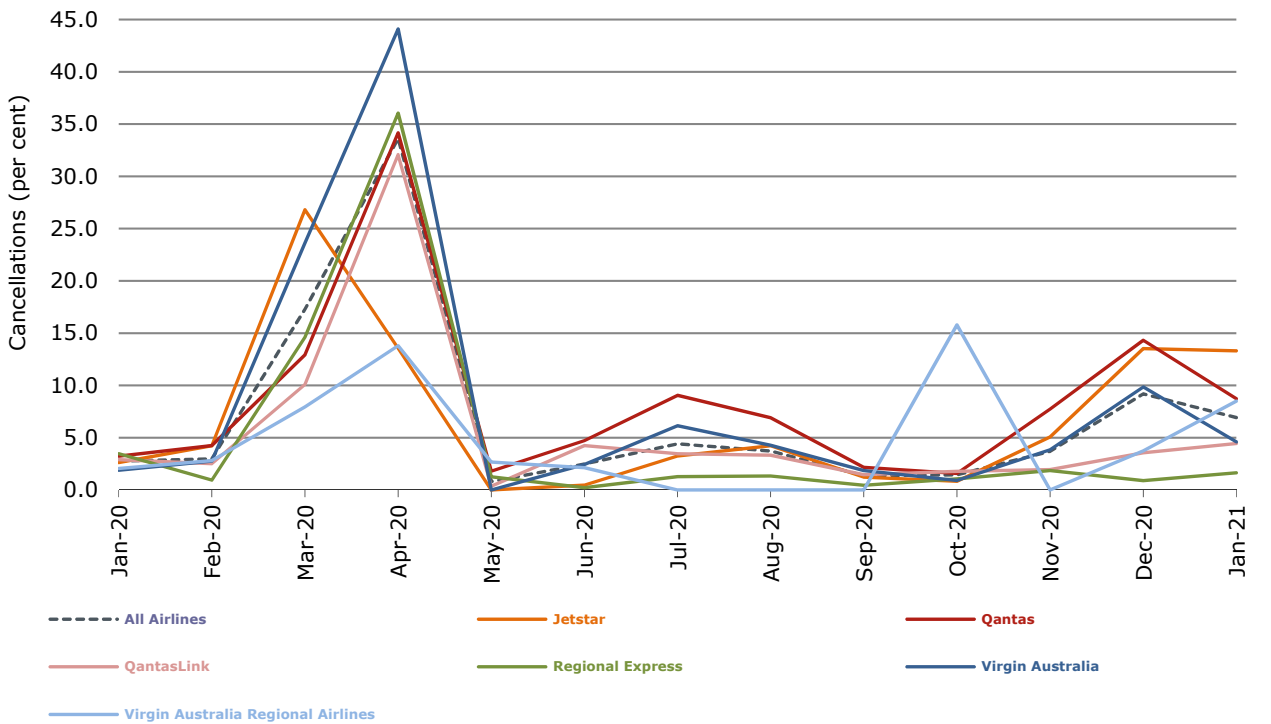


Figure 4 Cancellations (by month from January 2020)



## Major domestic airlines on time performance

Figure 5 On time performance (by month from January 2018)—Jetstar

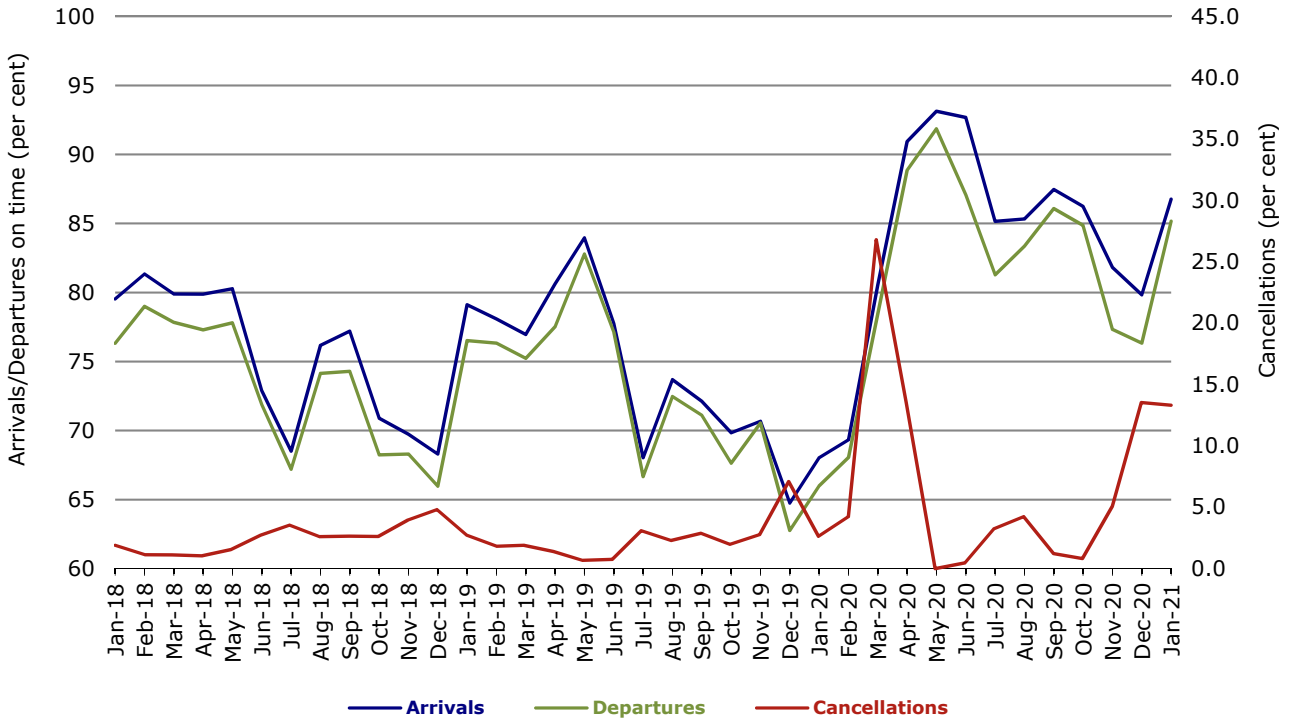


Figure 6 On time performance (by month from January 2018)—Qantas

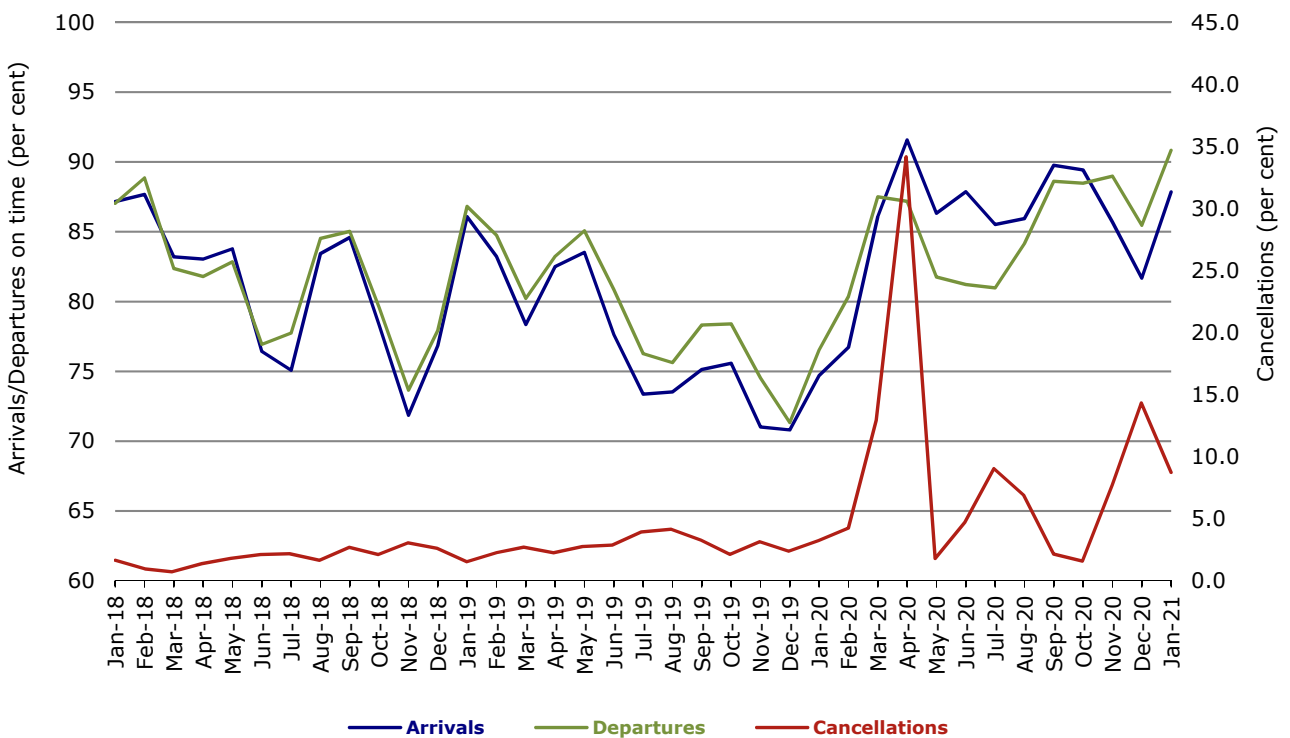
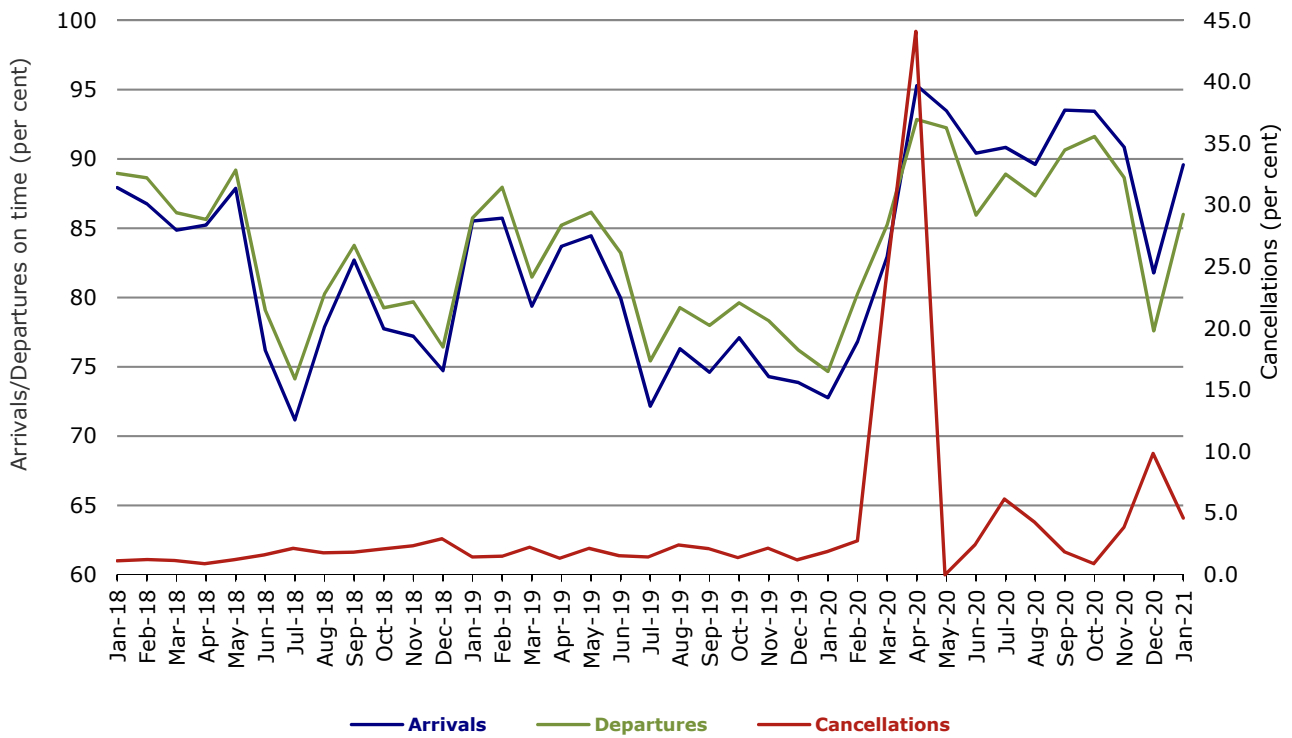


Figure 7 On time performance (by month from January 2018)—Virgin Australia



## Major regional airlines on time performance

Figure 8 On time performance (by month from January 2018)—QantasLink

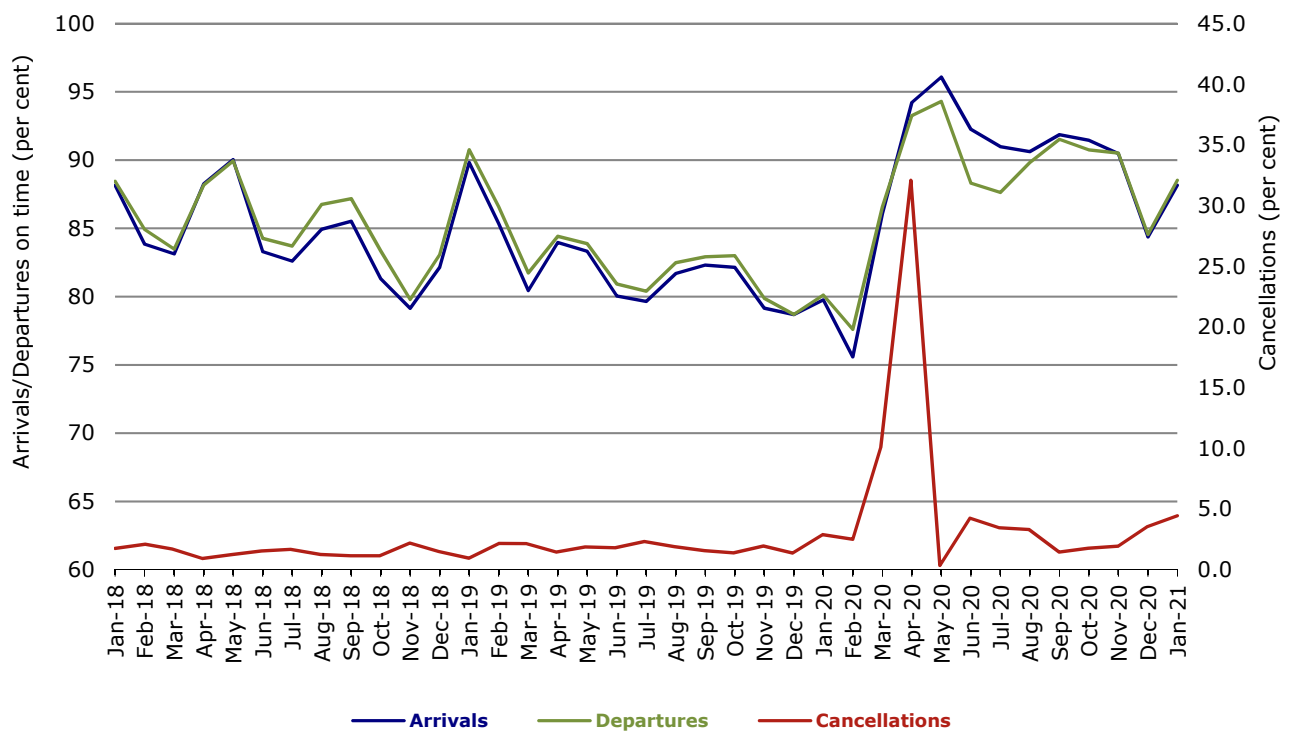


Figure 9 On time performance (by month from January 2018)—Regional Express

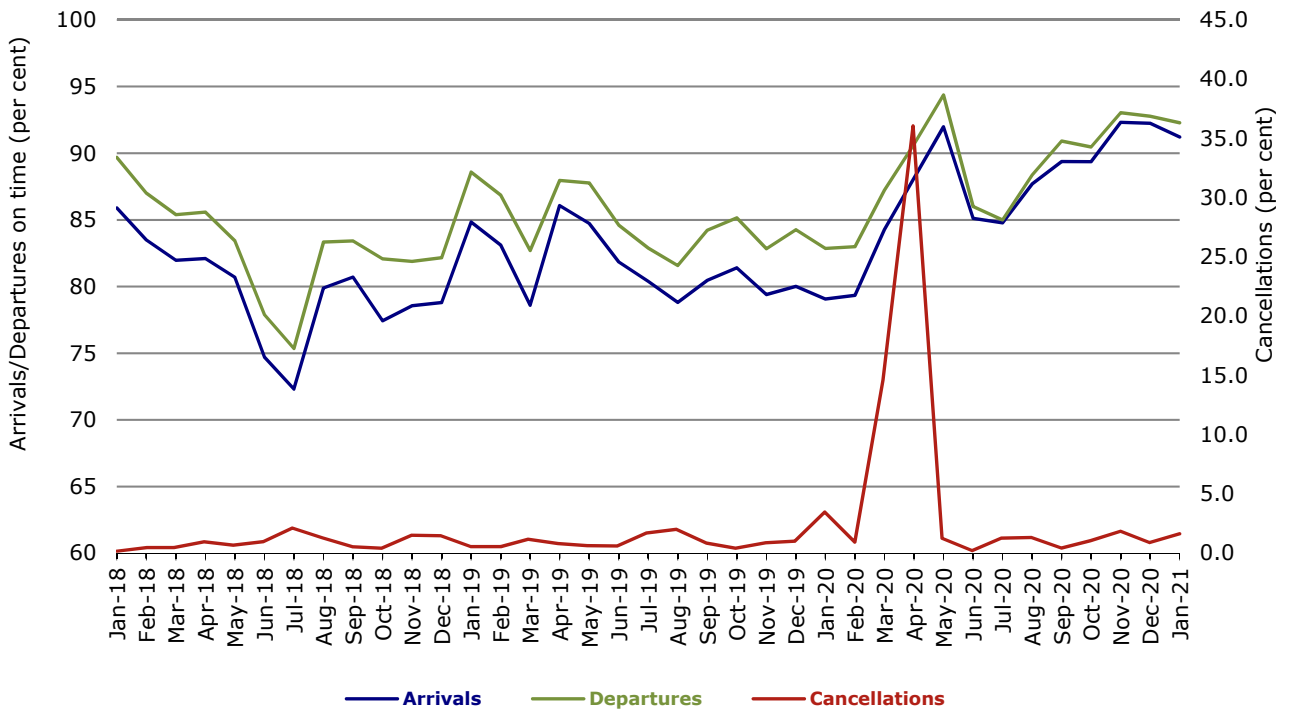
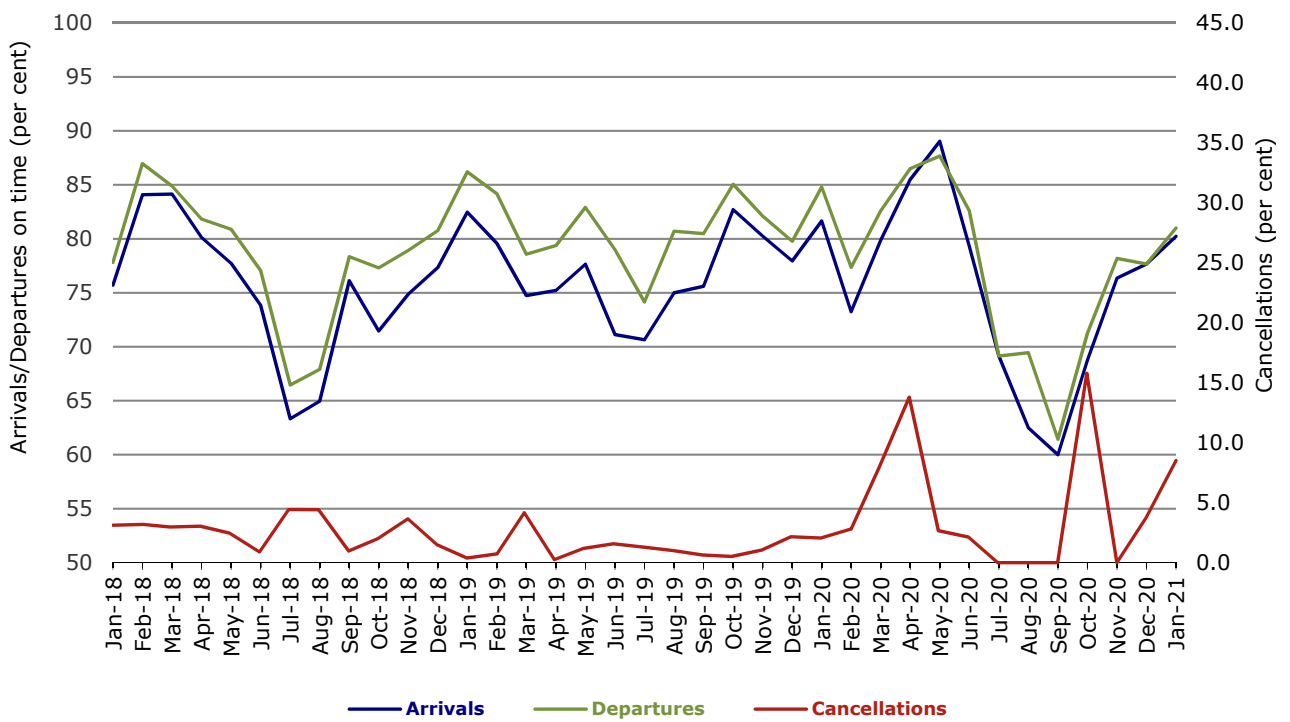


Figure 10 On time performance (by month from January 2018) Virgin Australia Regional Airlines



## Individual routes

On time performance is reported for all routes where the passenger load averages over 8000 passengers per month over the previous six months, and where two or more airlines operate in competition on those routes. There are now 54 routes which meet this definition. Over time, however, routes which meet this definition may change as airline networks and traffic levels vary.

	Sectors		Arrivals On Time		Departures On Time		Cancellations	
	Sched.	Flown	No.	%	No.	%	No.	%
<b>Adelaide-Alice Springs</b>								
Qantas	31	31	26	83.9	27	87.1	0	0.0
Virgin Australia	13	13	9	69.2	8	61.5	0	0.0
All Airlines	44	44	35	79.5	35	79.5	0	0.0
<b>Adelaide-Brisbane</b>								
Jetstar	30	30	29	96.7	28	93.3	0	0.0
Qantas	100	93	84	90.3	85	91.4	7	7.0
Virgin Australia	74	66	61	92.4	55	83.3	8	10.8
All Airlines	204	189	174	92.1	168	88.9	15	7.4
<b>Adelaide-Canberra</b>								
Qantas	37	37	33	89.2	34	91.9	0	0.0
QantasLink	6	6	5	83.3	6	100.0	0	0.0
Virgin Australia	17	16	15	93.8	14	87.5	1	5.9
All Airlines	60	59	53	89.8	54	91.5	1	1.7
<b>Adelaide-Gold Coast</b>								
Jetstar	31	31	28	90.3	29	93.5	0	0.0
Virgin Australia	35	35	32	91.4	31	88.6	0	0.0
All Airlines	66	66	60	90.9	60	90.9	0	0.0
<b>Adelaide-Melbourne</b>								
Jetstar	84	83	76	91.6	72	86.7	1	1.2
Qantas	99	99	95	96.0	95	96.0	0	0.0
Virgin Australia	106	105	99	94.3	94	89.5	1	0.9
All Airlines	289	287	270	94.1	261	90.9	2	0.7
<b>Adelaide-Perth</b>								
Jetstar	22	22	21	95.5	20	90.9	0	0.0
Qantas	57	57	45	78.9	42	73.7	0	0.0
Virgin Australia	31	31	27	87.1	24	77.4	0	0.0
All Airlines	110	110	93	84.5	86	78.2	0	0.0
<b>Adelaide-Port Lincoln</b>								
QantasLink	72	71	64	90.1	63	88.7	1	1.4
Regional Express	94	94	89	94.7	92	97.9	0	0.0
All Airlines	166	165	153	92.7	155	93.9	1	0.6
<b>Adelaide-Sydney</b>								
Jetstar	40	21	20	95.2	19	90.5	19	47.5
Qantas	47	42	39	92.9	38	90.5	5	10.6
Virgin Australia	18	15	15	100.0	15	100.0	3	16.7
All Airlines	105	78	74	94.9	72	92.3	27	25.7
<b>Albury-Sydney</b>								
QantasLink	44	43	41	95.3	40	93.0	1	2.3
Regional Express	18	17	16	94.1	16	94.1	1	5.6
All Airlines	62	60	57	95.0	56	93.3	2	3.2

	<i>Sectors</i>		<i>Arrivals On Time</i>		<i>Departures On Time</i>		<i>Cancellations</i>	
	<i>Sched.</i>	<i>Flown</i>	<i>No.</i>	<i>%</i>	<i>No.</i>	<i>%</i>	<i>No.</i>	<i>%</i>
<b>Alice Springs-Adelaide</b>								
Qantas	31	31	29	93.5	29	93.5	0	0.0
Virgin Australia	13	13	10	76.9	10	76.9	0	0.0
All Airlines	44	44	39	88.6	39	88.6	0	0.0
<b>Armidale-Sydney</b>								
QantasLink	21	21	21	100.0	21	100.0	0	0.0
Regional Express	8	8	6	75.0	6	75.0	0	0.0
All Airlines	29	29	27	93.1	27	93.1	0	0.0
<b>Ballina-Sydney</b>								
Jetstar	101	100	97	97.0	96	96.0	1	1.0
Qantas	42	42	41	97.6	40	95.2	0	0.0
QantasLink	34	32	26	81.3	25	78.1	2	5.9
Regional Express	8	8	7	87.5	7	87.5	0	0.0
Virgin Australia	52	52	52	100.0	43	82.7	0	0.0
All Airlines	237	234	223	95.3	211	90.2	3	1.3
<b>Brisbane-Adelaide</b>								
Jetstar	30	30	27	90.0	26	86.7	0	0.0
Qantas	100	93	86	92.5	83	89.2	7	7.0
Virgin Australia	72	65	64	98.5	56	86.2	7	9.7
All Airlines	202	188	177	94.1	165	87.8	14	6.9
<b>Brisbane-Cairns</b>								
Jetstar	103	94	73	77.7	72	76.6	9	8.7
Qantas	120	117	107	91.5	110	94.0	3	2.5
QantasLink	5	5	4	80.0	5	100.0	0	0.0
Virgin Australia	110	105	80	76.2	81	77.1	5	4.5
All Airlines	338	321	264	82.2	268	83.5	17	5.0
<b>Brisbane-Canberra</b>								
Qantas	18	17	17	100.0	17	100.0	1	5.6
QantasLink	114	110	106	96.4	102	92.7	4	3.5
Virgin Australia	71	65	60	92.3	58	89.2	6	8.5
All Airlines	203	192	183	95.3	177	92.2	11	5.4
<b>Brisbane-Darwin</b>								
Jetstar	25	25	22	88.0	22	88.0	0	0.0
Qantas	33	33	28	84.8	33	100.0	0	0.0
Virgin Australia	31	31	27	87.1	25	80.6	0	0.0
All Airlines	89	89	77	86.5	80	89.9	0	0.0
<b>Brisbane-Emerald</b>								
QantasLink	110	101	101	100.0	101	100.0	9	8.2
Virgin Australia	21	21	20	95.2	20	95.2	0	0.0
All Airlines	131	122	121	99.2	121	99.2	9	6.9
<b>Brisbane-Gladstone</b>								
QantasLink	86	79	75	94.9	75	94.9	7	8.1
Virgin Australia	51	51	51	100.0	51	100.0	0	0.0
All Airlines	137	130	126	96.9	126	96.9	7	5.1
<b>Brisbane-Hamilton Island</b>								
Qantas	38	37	29	78.4	33	89.2	1	2.6
QantasLink	15	15	14	93.3	14	93.3	0	0.0
Virgin Australia	59	57	50	87.7	53	93.0	2	3.4
All Airlines	112	109	93	85.3	100	91.7	3	2.7



	<i>Sectors</i>		<i>Arrivals On Time</i>		<i>Departures On Time</i>		<i>Cancellations</i>	
	<i>Sched.</i>	<i>Flown</i>	<i>No.</i>	<i>%</i>	<i>No.</i>	<i>%</i>	<i>No.</i>	<i>%</i>
<b>Brisbane-Hobart</b>								
Jetstar	46	46	44	95.7	44	95.7	0	0.0
QantasLink	30	28	24	85.7	24	85.7	2	6.7
Virgin Australia	40	37	33	89.2	26	70.3	3	7.5
All Airlines	116	111	101	91.0	94	84.7	5	4.3
<b>Brisbane-Mackay</b>								
Jetstar	31	31	26	83.9	24	77.4	0	0.0
Qantas	68	65	63	96.9	64	98.5	3	4.4
QantasLink	34	32	29	90.6	30	93.8	2	5.9
Virgin Australia	81	80	73	91.3	73	91.3	1	1.2
All Airlines	214	208	191	91.8	191	91.8	6	2.8
<b>Brisbane-Melbourne</b>								
Jetstar	146	93	77	82.8	70	75.3	53	36.3
Qantas	266	215	196	91.2	203	94.4	51	19.2
Virgin Australia	159	132	118	89.4	98	74.2	27	17.0
All Airlines	571	440	391	88.9	371	84.3	131	22.9
<b>Brisbane-Mount Isa</b>								
Qantas	29	29	29	100.0	29	100.0	0	0.0
QantasLink	18	18	16	88.9	15	83.3	0	0.0
Virgin Australia	13	13	13	100.0	13	100.0	0	0.0
All Airlines	60	60	58	96.7	57	95.0	0	0.0
<b>Brisbane-Newcastle</b>								
Jetstar	64	55	44	80.0	45	81.8	9	14.1
QantasLink	42	34	32	94.1	31	91.2	8	19.0
Virgin Australia	42	36	36	100.0	35	97.2	6	14.3
All Airlines	148	125	112	89.6	111	88.8	23	15.5
<b>Brisbane-Perth</b>								
Qantas	83	74	61	82.4	69	93.2	9	10.8
Virgin Australia	55	49	40	81.6	30	61.2	6	10.9
All Airlines	138	123	101	82.1	99	80.5	15	10.9
<b>Brisbane-Proserpine</b>								
Jetstar	42	41	33	80.5	37	90.2	1	2.4
Virgin Australia	31	29	22	75.9	24	82.8	2	6.5
All Airlines	73	70	55	78.6	61	87.1	3	4.1
<b>Brisbane-Rockhampton</b>								
QantasLink	132	121	113	93.4	115	95.0	11	8.3
Virgin Australia	79	76	68	89.5	67	88.2	3	3.8
All Airlines	211	197	181	91.9	182	92.4	14	6.6
<b>Brisbane-Sydney</b>								
Jetstar	53	21	18	85.7	13	61.9	32	60.4
Qantas	106	89	77	86.5	79	88.8	17	16.0
Virgin Australia	61	60	57	95.0	55	91.7	1	1.6
All Airlines	220	170	152	89.4	147	86.5	50	22.7
<b>Brisbane-Townsville</b>								
Jetstar	60	60	51	85.0	53	88.3	0	0.0
Qantas	108	93	84	90.3	90	96.8	15	13.9
Virgin Australia	80	76	66	86.8	66	86.8	4	5.0
All Airlines	248	229	201	87.8	209	91.3	19	7.7

	Sectors		Arrivals On Time		Departures On Time		Cancellations	
	Sched.	Flown	No.	%	No.	%	No.	%
<b>Broome-Perth</b>								
Qantas	8	7	6	85.7	6	85.7	1	12.5
QantasLink	82	81	61	75.3	65	80.2	1	1.2
Virgin Australia	35	34	28	82.4	28	82.4	1	2.9
Virgin Australia Regional Airlines	1	1	0	0.0	0	0.0	0	0.0
All Airlines	126	123	95	77.2	99	80.5	3	2.4
<b>Cairns-Brisbane</b>								
Jetstar	104	95	77	81.1	80	84.2	9	8.7
Qantas	120	117	102	87.2	106	90.6	3	2.5
QantasLink	5	5	5	100.0	5	100.0	0	0.0
Virgin Australia	109	104	93	89.4	85	81.7	5	4.6
All Airlines	338	321	277	86.3	276	86.0	17	5.0
<b>Cairns-Melbourne</b>								
Jetstar	61	61	50	82.0	49	80.3	0	0.0
Qantas	30	30	27	90.0	22	73.3	0	0.0
Virgin Australia	43	43	39	90.7	36	83.7	0	0.0
All Airlines	134	134	116	86.6	107	79.9	0	0.0
<b>Cairns-Sydney</b>								
Jetstar	19	12	11	91.7	10	83.3	7	36.8
Qantas	24	19	19	100.0	19	100.0	5	20.8
Virgin Australia	13	13	13	100.0	13	100.0	0	0.0
All Airlines	56	44	43	97.7	42	95.5	12	21.4
<b>Cairns-Townsville</b>								
QantasLink	91	90	80	88.9	80	88.9	1	1.1
Regional Express	9	8	8	100.0	8	100.0	1	11.1
All Airlines	100	98	88	89.8	88	89.8	2	2.0
<b>Canberra-Adelaide</b>								
Qantas	37	37	31	83.8	31	83.8	0	0.0
QantasLink	6	6	4	66.7	3	50.0	0	0.0
Virgin Australia	17	16	14	87.5	13	81.3	1	5.9
All Airlines	60	59	49	83.1	47	79.7	1	1.7
<b>Canberra-Brisbane</b>								
Qantas	18	17	17	100.0	17	100.0	1	5.6
QantasLink	113	108	103	95.4	102	94.4	5	4.4
Virgin Australia	71	65	53	81.5	50	76.9	6	8.5
All Airlines	202	190	173	91.1	169	88.9	12	5.9
<b>Canberra-Melbourne</b>								
Qantas	4	3	3	100.0	3	100.0	1	25.0
QantasLink	112	112	106	94.6	106	94.6	0	0.0
Virgin Australia	57	57	49	86.0	44	77.2	0	0.0
All Airlines	173	172	158	91.9	153	89.0	1	0.6
<b>Coffs Harbour-Sydney</b>								
QantasLink	76	76	72	94.7	69	90.8	0	0.0
Virgin Australia	13	13	13	100.0	12	92.3	0	0.0
All Airlines	89	89	85	95.5	81	91.0	0	0.0
<b>Darwin-Brisbane</b>								
Jetstar	25	25	14	56.0	18	72.0	0	0.0
Qantas	33	33	29	87.9	30	90.9	0	0.0
Virgin Australia	31	31	26	83.9	19	61.3	0	0.0
All Airlines	89	89	69	77.5	67	75.3	0	0.0

	Sectors		Arrivals On Time		Departures On Time		Cancellations	
	Sched.	Flown	No.	%	No.	%	No.	%
<b>Darwin-Perth</b>								
Qantas	21	21	19	90.5	20	95.2	0	0.0
Virgin Australia	10	10	7	70.0	5	50.0	0	0.0
All Airlines	31	31	26	83.9	25	80.6	0	0.0
<b>Dubbo-Sydney</b>								
QantasLink	42	41	39	95.1	34	82.9	1	2.4
Regional Express	29	29	27	93.1	27	93.1	0	0.0
All Airlines	71	70	66	94.3	61	87.1	1	1.4
<b>Emerald-Brisbane</b>								
QantasLink	110	100	99	99.0	99	99.0	10	9.1
Virgin Australia	21	21	20	95.2	20	95.2	0	0.0
All Airlines	131	121	119	98.3	119	98.3	10	7.6
<b>Gladstone-Brisbane</b>								
QantasLink	86	79	75	94.9	72	91.1	7	8.1
Virgin Australia	51	51	49	96.1	49	96.1	0	0.0
All Airlines	137	130	124	95.4	121	93.1	7	5.1
<b>Gold Coast-Adelaide</b>								
Jetstar	31	31	30	96.8	29	93.5	0	0.0
Virgin Australia	35	35	32	91.4	31	88.6	0	0.0
All Airlines	66	66	62	93.9	60	90.9	0	0.0
<b>Gold Coast-Melbourne</b>								
Jetstar	182	182	163	89.6	158	86.8	0	0.0
Qantas	73	73	63	86.3	64	87.7	0	0.0
Virgin Australia	161	161	149	92.5	144	89.4	0	0.0
All Airlines	416	416	375	90.1	366	88.0	0	0.0
<b>Gold Coast-Sydney</b>								
Jetstar	23	6	6	100.0	6	100.0	17	73.9
Qantas	29	26	24	92.3	24	92.3	3	10.3
Virgin Australia	31	28	26	92.9	26	92.9	3	9.7
All Airlines	83	60	56	93.3	56	93.3	23	27.7
<b>Hamilton Island-Brisbane</b>								
Qantas	39	38	31	81.6	32	84.2	1	2.6
QantasLink	15	15	14	93.3	13	86.7	0	0.0
Virgin Australia	59	57	49	86.0	47	82.5	2	3.4
All Airlines	113	110	94	85.5	92	83.6	3	2.7
<b>Hamilton Island-Sydney</b>								
Qantas	13	5	5	100.0	5	100.0	8	61.5
Virgin Australia	13	13	12	92.3	11	84.6	0	0.0
All Airlines	26	18	17	94.4	16	88.9	8	30.8
<b>Hobart-Brisbane</b>								
Jetstar	45	45	41	91.1	42	93.3	0	0.0
QantasLink	30	28	23	82.1	24	85.7	2	6.7
Virgin Australia	40	37	24	64.9	23	62.2	3	7.5
All Airlines	115	110	88	80.0	89	80.9	5	4.3
<b>Hobart-Melbourne</b>								
Jetstar	196	179	162	90.5	156	87.2	17	8.7
QantasLink	75	74	61	82.4	60	81.1	1	1.3
Virgin Australia	75	73	64	87.7	66	90.4	2	2.7
All Airlines	346	326	287	88.0	282	86.5	20	5.8

	<i>Sectors</i>		<i>Arrivals On Time</i>		<i>Departures On Time</i>		<i>Cancellations</i>	
	<i>Sched.</i>	<i>Flown</i>	<i>No.</i>	<i>%</i>	<i>No.</i>	<i>%</i>	<i>No.</i>	<i>%</i>
<b>Hobart-Sydney</b>								
Jetstar	31	13	13	100.0	11	84.6	18	58.1
Qantas	5	4	4	100.0	4	100.0	1	20.0
QantasLink	24	15	15	100.0	15	100.0	9	37.5
Virgin Australia	18	17	16	94.1	16	94.1	1	5.6
All Airlines	78	49	48	98.0	46	93.9	29	37.2
<b>Kalgoorlie-Perth</b>								
Qantas	7	7	7	100.0	7	100.0	0	0.0
QantasLink	64	62	52	83.9	51	82.3	2	3.1
Virgin Australia	21	21	18	85.7	19	90.5	0	0.0
Virgin Australia Regional Airlines	34	33	31	93.9	31	93.9	1	2.9
All Airlines	126	123	108	87.8	108	87.8	3	2.4
<b>Karratha-Perth</b>								
Qantas	30	28	26	92.9	26	92.9	2	6.7
QantasLink	113	96	81	84.4	84	87.5	17	15.0
Virgin Australia	39	39	35	89.7	35	89.7	0	0.0
Virgin Australia Regional Airlines	13	13	9	69.2	8	61.5	0	0.0
All Airlines	195	176	151	85.8	153	86.9	19	9.7
<b>Launceston-Melbourne</b>								
Jetstar	139	122	109	89.3	105	86.1	17	12.2
QantasLink	59	49	43	87.8	43	87.8	10	16.9
Virgin Australia	72	70	69	98.6	69	98.6	2	2.8
All Airlines	270	241	221	91.7	217	90.0	29	10.7
<b>Launceston-Sydney</b>								
Jetstar	16	13	12	92.3	11	84.6	3	18.8
QantasLink	7	4	4	100.0	4	100.0	3	42.9
Virgin Australia	16	16	15	93.8	15	93.8	0	0.0
All Airlines	39	33	31	93.9	30	90.9	6	15.4
<b>Mackay-Brisbane</b>								
Jetstar	31	31	28	90.3	27	87.1	0	0.0
Qantas	68	64	62	96.9	62	96.9	4	5.9
QantasLink	33	31	30	96.8	30	96.8	2	6.1
Virgin Australia	81	80	77	96.3	75	93.8	1	1.2
All Airlines	213	206	197	95.6	194	94.2	7	3.3
<b>Melbourne-Adelaide</b>								
Jetstar	85	84	77	91.7	74	88.1	1	1.2
Qantas	101	101	88	87.1	91	90.1	0	0.0
Virgin Australia	106	105	98	93.3	97	92.4	1	0.9
All Airlines	292	290	263	90.7	262	90.3	2	0.7
<b>Melbourne-Brisbane</b>								
Jetstar	144	91	76	83.5	74	81.3	53	36.8
Qantas	262	209	181	86.6	195	93.3	53	20.2
Virgin Australia	155	133	117	88.0	114	85.7	22	14.2
All Airlines	561	433	374	86.4	383	88.5	128	22.8
<b>Melbourne-Cairns</b>								
Jetstar	61	61	51	83.6	53	86.9	0	0.0
Qantas	30	30	26	86.7	29	96.7	0	0.0
Virgin Australia	43	43	38	88.4	39	90.7	0	0.0
All Airlines	134	134	115	85.8	121	90.3	0	0.0

	Sectors		Arrivals On Time		Departures On Time		Cancellations	
	Sched.	Flown	No.	%	No.	%	No.	%
<b>Melbourne-Canberra</b>								
Qantas	4	3	3	100.0	3	100.0	1	25.0
QantasLink	112	111	91	82.0	97	87.4	1	0.9
Virgin Australia	57	57	48	84.2	48	84.2	0	0.0
All Airlines	173	171	142	83.0	148	86.5	2	1.2
<b>Melbourne-Gold Coast</b>								
Jetstar	183	183	161	88.0	160	87.4	0	0.0
Qantas	72	72	68	94.4	69	95.8	0	0.0
Virgin Australia	162	162	156	96.3	153	94.4	0	0.0
All Airlines	417	417	385	92.3	382	91.6	0	0.0
<b>Melbourne-Hobart</b>								
Jetstar	194	177	161	91.0	160	90.4	17	8.8
QantasLink	77	74	59	79.7	59	79.7	3	3.9
Virgin Australia	76	74	67	90.5	67	90.5	2	2.6
All Airlines	347	325	287	88.3	286	88.0	22	6.3
<b>Melbourne-Launceston</b>								
Jetstar	137	121	108	89.3	108	89.3	16	11.7
QantasLink	59	50	48	96.0	47	94.0	9	15.3
Virgin Australia	72	70	65	92.9	65	92.9	2	2.8
All Airlines	268	241	221	91.7	220	91.3	27	10.1
<b>Melbourne-Mildura</b>								
QantasLink	56	56	49	87.5	49	87.5	0	0.0
Regional Express	23	23	18	78.3	20	87.0	0	0.0
All Airlines	79	79	67	84.8	69	87.3	0	0.0
<b>Melbourne-Newcastle</b>								
Jetstar	44	28	25	89.3	25	89.3	16	36.4
Virgin Australia	18	18	17	94.4	17	94.4	0	0.0
All Airlines	62	46	42	91.3	42	91.3	16	25.8
<b>Melbourne-Perth</b>								
Jetstar	19	4	4	100.0	3	75.0	15	78.9
Qantas	73	60	45	75.0	51	85.0	13	17.8
Virgin Australia	43	33	23	69.7	23	69.7	10	23.3
All Airlines	135	97	72	74.2	77	79.4	38	28.1
<b>Melbourne-Sunshine Coast</b>								
Jetstar	83	83	70	84.3	72	86.7	0	0.0
QantasLink	31	31	20	64.5	23	74.2	0	0.0
Virgin Australia	62	62	61	98.4	62	100.0	0	0.0
All Airlines	176	176	151	85.8	157	89.2	0	0.0
<b>Melbourne-Sydney</b>								
Jetstar	61	39	34	87.2	32	82.1	22	36.1
Qantas	128	104	87	83.7	85	81.7	24	18.8
Virgin Australia	68	61	55	90.2	55	90.2	7	10.3
All Airlines	257	204	176	86.3	172	84.3	53	20.6
<b>Mildura-Melbourne</b>								
QantasLink	56	56	48	85.7	49	87.5	0	0.0
Regional Express	23	23	18	78.3	20	87.0	0	0.0
All Airlines	79	79	66	83.5	69	87.3	0	0.0

	<i>Sectors</i>		<i>Arrivals On Time</i>		<i>Departures On Time</i>		<i>Cancellations</i>	
	<i>Sched.</i>	<i>Flown</i>	<i>No.</i>	<i>%</i>	<i>No.</i>	<i>%</i>	<i>No.</i>	<i>%</i>
<b>Mount Isa-Brisbane</b>								
Qantas	29	29	29	100.0	29	100.0	0	0.0
QantasLink	18	18	16	88.9	17	94.4	0	0.0
Virgin Australia	13	13	13	100.0	13	100.0	0	0.0
All Airlines	60	60	58	96.7	59	98.3	0	0.0
<b>Newcastle-Brisbane</b>								
Jetstar	64	55	42	76.4	43	78.2	9	14.1
QantasLink	38	34	31	91.2	29	85.3	4	10.5
Virgin Australia	41	36	36	100.0	36	100.0	5	12.2
All Airlines	143	125	109	87.2	108	86.4	18	12.6
<b>Newcastle-Melbourne</b>								
Jetstar	43	26	22	84.6	21	80.8	17	39.5
Virgin Australia	18	18	17	94.4	17	94.4	0	0.0
All Airlines	61	44	39	88.6	38	86.4	17	27.9
<b>Newman-Perth</b>								
Qantas	41	37	33	89.2	32	86.5	4	9.8
QantasLink	71	71	62	87.3	61	85.9	0	0.0
Virgin Australia	40	40	33	82.5	30	75.0	0	0.0
Virgin Australia Regional Airlines	15	15	13	86.7	12	80.0	0	0.0
All Airlines	167	163	141	86.5	135	82.8	4	2.4
<b>Perth-Adelaide</b>								
Jetstar	22	22	17	77.3	17	77.3	0	0.0
Qantas	57	57	44	77.2	51	89.5	0	0.0
Virgin Australia	31	31	19	61.3	26	83.9	0	0.0
All Airlines	110	110	80	72.7	94	85.5	0	0.0
<b>Perth-Brisbane</b>								
Qantas	82	72	56	77.8	64	88.9	10	12.2
Virgin Australia	56	49	32	65.3	23	46.9	7	12.5
All Airlines	138	121	88	72.7	87	71.9	17	12.3
<b>Perth-Broome</b>								
Qantas	8	7	6	85.7	6	85.7	1	12.5
QantasLink	81	80	53	66.3	68	85.0	1	1.2
Virgin Australia	35	34	31	91.2	28	82.4	1	2.9
Virgin Australia Regional Airlines	1	1	0	0.0	0	0.0	0	0.0
All Airlines	125	122	90	73.8	102	83.6	3	2.4
<b>Perth-Darwin</b>								
Qantas	21	21	18	85.7	19	90.5	0	0.0
Virgin Australia	10	10	7	70.0	8	80.0	0	0.0
All Airlines	31	31	25	80.6	27	87.1	0	0.0
<b>Perth-Kalgoorlie</b>								
Qantas	7	7	7	100.0	7	100.0	0	0.0
QantasLink	64	62	51	82.3	51	82.3	2	3.1
Virgin Australia	21	21	20	95.2	21	100.0	0	0.0
Virgin Australia Regional Airlines	34	33	32	97.0	32	97.0	1	2.9
All Airlines	126	123	110	89.4	111	90.2	3	2.4
<b>Perth-Karratha</b>								
Qantas	30	28	27	96.4	27	96.4	2	6.7
QantasLink	116	103	82	79.6	93	90.3	13	11.2
Virgin Australia	39	39	37	94.9	37	94.9	0	0.0
Virgin Australia Regional Airlines	13	13	9	69.2	9	69.2	0	0.0
All Airlines	198	183	155	84.7	166	90.7	15	7.6

	<i>Sectors</i>		<i>Arrivals On Time</i>		<i>Departures On Time</i>		<i>Cancellations</i>	
	<i>Sched.</i>	<i>Flown</i>	<i>No.</i>	<i>%</i>	<i>No.</i>	<i>%</i>	<i>No.</i>	<i>%</i>
<b>Perth-Melbourne</b>								
Jetstar	20	5	2	40.0	2	40.0	15	75.0
Qantas	73	61	29	47.5	41	67.2	12	16.4
Virgin Australia	44	34	11	32.4	11	32.4	10	22.7
All Airlines	137	100	42	42.0	54	54.0	37	27.0
<b>Perth-Newman</b>								
Qantas	41	37	36	97.3	36	97.3	4	9.8
QantasLink	71	71	68	95.8	68	95.8	0	0.0
Virgin Australia	40	40	37	92.5	37	92.5	0	0.0
Virgin Australia Regional Airlines	15	15	14	93.3	14	93.3	0	0.0
All Airlines	167	163	155	95.1	155	95.1	4	2.4
<b>Perth-Port Hedland</b>								
Qantas	52	51	50	98.0	49	96.1	1	1.9
QantasLink	69	61	45	73.8	53	86.9	8	11.6
Virgin Australia	13	13	12	92.3	12	92.3	0	0.0
Virgin Australia Regional Airlines	38	37	34	91.9	33	89.2	1	2.6
All Airlines	172	162	141	87.0	147	90.7	10	5.8
<b>Perth-Sydney</b>								
Qantas	25	25	16	64.0	17	68.0	0	0.0
Virgin Australia	18	18	8	44.4	4	22.2	0	0.0
All Airlines	43	43	24	55.8	21	48.8	0	0.0
<b>Port Hedland-Perth</b>								
Qantas	52	50	34	68.0	43	86.0	2	3.8
QantasLink	71	61	37	60.7	50	82.0	10	14.1
Virgin Australia	13	12	9	75.0	7	58.3	1	7.7
Virgin Australia Regional Airlines	38	37	29	78.4	30	81.1	1	2.6
All Airlines	174	160	109	68.1	130	81.3	14	8.0
<b>Port Lincoln-Adelaide</b>								
QantasLink	72	71	63	88.7	63	88.7	1	1.4
Regional Express	94	94	84	89.4	85	90.4	0	0.0
All Airlines	166	165	147	89.1	148	89.7	1	0.6
<b>Proserpine-Brisbane</b>								
Jetstar	42	41	34	82.9	35	85.4	1	2.4
Virgin Australia	31	29	25	86.2	23	79.3	2	6.5
All Airlines	73	70	59	84.3	58	82.9	3	4.1
<b>Rockhampton-Brisbane</b>								
QantasLink	133	120	108	90.0	105	87.5	13	9.8
Virgin Australia	79	76	73	96.1	67	88.2	3	3.8
All Airlines	212	196	181	92.3	172	87.8	16	7.5
<b>Sunshine Coast-Melbourne</b>								
Jetstar	84	82	67	81.7	64	78.0	2	2.4
QantasLink	31	31	27	87.1	23	74.2	0	0.0
Virgin Australia	62	62	54	87.1	54	87.1	0	0.0
All Airlines	177	175	148	84.6	141	80.6	2	1.1
<b>Sunshine Coast-Sydney</b>								
QantasLink	16	10	9	90.0	8	80.0	6	37.5
Virgin Australia	19	19	18	94.7	18	94.7	0	0.0
All Airlines	35	29	27	93.1	26	89.7	6	17.1

	<i>Sectors</i>		<i>Arrivals On Time</i>		<i>Departures On Time</i>		<i>Cancellations</i>	
	<i>Sched.</i>	<i>Flown</i>	<i>No.</i>	<i>%</i>	<i>No.</i>	<i>%</i>	<i>No.</i>	<i>%</i>
<b>Sydney-Adelaide</b>								
Jetstar	40	21	19	90.5	17	81.0	19	47.5
Qantas	47	42	41	97.6	41	97.6	5	10.6
Virgin Australia	19	15	15	100.0	14	93.3	4	21.1
All Airlines	106	78	75	96.2	72	92.3	28	26.4
<b>Sydney-Albury</b>								
QantasLink	45	44	41	93.2	40	90.9	1	2.2
Regional Express	20	19	17	89.5	16	84.2	1	5.0
All Airlines	65	63	58	92.1	56	88.9	2	3.1
<b>Sydney-Armidale</b>								
QantasLink	21	21	21	100.0	19	90.5	0	0.0
Regional Express	8	8	6	75.0	6	75.0	0	0.0
All Airlines	29	29	27	93.1	25	86.2	0	0.0
<b>Sydney-Ballina</b>								
Jetstar	101	100	97	97.0	96	96.0	1	1.0
Qantas	42	42	40	95.2	39	92.9	0	0.0
QantasLink	34	32	27	84.4	28	87.5	2	5.9
Regional Express	8	8	8	100.0	8	100.0	0	0.0
Virgin Australia	52	52	50	96.2	51	98.1	0	0.0
All Airlines	237	234	222	94.9	222	94.9	3	1.3
<b>Sydney-Brisbane</b>								
Jetstar	53	21	17	81.0	16	76.2	32	60.4
Qantas	106	89	81	91.0	84	94.4	17	16.0
Virgin Australia	64	60	59	98.3	59	98.3	4	6.3
All Airlines	223	170	157	92.4	159	93.5	53	23.8
<b>Sydney-Cairns</b>								
Jetstar	19	13	11	84.6	10	76.9	6	31.6
Qantas	24	19	18	94.7	18	94.7	5	20.8
Virgin Australia	13	13	12	92.3	12	92.3	0	0.0
All Airlines	56	45	41	91.1	40	88.9	11	19.6
<b>Sydney-Coffs Harbour</b>								
QantasLink	76	76	70	92.1	71	93.4	0	0.0
Virgin Australia	13	13	13	100.0	13	100.0	0	0.0
All Airlines	89	89	83	93.3	84	94.4	0	0.0
<b>Sydney-Dubbo</b>								
QantasLink	42	42	39	92.9	37	88.1	0	0.0
Regional Express	32	30	26	86.7	27	90.0	2	6.3
All Airlines	74	72	65	90.3	64	88.9	2	2.7
<b>Sydney-Gold Coast</b>								
Jetstar	23	6	6	100.0	6	100.0	17	73.9
Qantas	29	26	25	96.2	25	96.2	3	10.3
Virgin Australia	31	28	27	96.4	27	96.4	3	9.7
All Airlines	83	60	58	96.7	58	96.7	23	27.7
<b>Sydney-Hamilton Island</b>								
Qantas	13	5	5	100.0	5	100.0	8	61.5
Virgin Australia	13	13	11	84.6	13	100.0	0	0.0
All Airlines	26	18	16	88.9	18	100.0	8	30.8



	<i>Sectors</i>		<i>Arrivals On Time</i>		<i>Departures On Time</i>		<i>Cancellations</i>	
	<i>Sched.</i>	<i>Flown</i>	<i>No.</i>	<i>%</i>	<i>No.</i>	<i>%</i>	<i>No.</i>	<i>%</i>
<b>Sydney-Hobart</b>								
Jetstar	31	13	12	92.3	12	92.3	18	58.1
Qantas	5	4	4	100.0	4	100.0	1	20.0
QantasLink	24	15	14	93.3	13	86.7	9	37.5
Virgin Australia	18	17	16	94.1	16	94.1	1	5.6
All Airlines	78	49	46	93.9	45	91.8	29	37.2
<b>Sydney-Launceston</b>								
Jetstar	23	13	11	84.6	12	92.3	10	43.5
QantasLink	7	4	4	100.0	4	100.0	3	42.9
Virgin Australia	16	16	15	93.8	15	93.8	0	0.0
All Airlines	46	33	30	90.9	31	93.9	13	28.3
<b>Sydney-Melbourne</b>								
Jetstar	60	39	30	76.9	25	64.1	21	35.0
Qantas	130	106	89	84.0	93	87.7	24	18.5
Virgin Australia	67	61	57	93.4	54	88.5	6	9.0
All Airlines	257	206	176	85.4	172	83.5	51	19.8
<b>Sydney-Perth</b>								
Qantas	26	26	19	73.1	23	88.5	0	0.0
Virgin Australia	18	18	17	94.4	17	94.4	0	0.0
All Airlines	44	44	36	81.8	40	90.9	0	0.0
<b>Sydney-Sunshine Coast</b>								
QantasLink	17	11	10	90.9	10	90.9	6	35.3
Virgin Australia	19	19	19	100.0	19	100.0	0	0.0
All Airlines	36	30	29	96.7	29	96.7	6	16.7
<b>Sydney-Wagga Wagga</b>								
QantasLink	48	48	46	95.8	46	95.8	0	0.0
Regional Express	28	28	28	100.0	28	100.0	0	0.0
All Airlines	76	76	74	97.4	74	97.4	0	0.0
<b>Townsville-Brisbane</b>								
Jetstar	60	60	49	81.7	50	83.3	0	0.0
Qantas	107	92	84	91.3	83	90.2	15	14.0
Virgin Australia	80	75	72	96.0	62	82.7	5	6.3
All Airlines	247	227	205	90.3	195	85.9	20	8.1
<b>Townsville-Cairns</b>								
QantasLink	91	90	78	86.7	79	87.8	1	1.1
Regional Express	9	8	8	100.0	8	100.0	1	11.1
All Airlines	100	98	86	87.8	87	88.8	2	2.0
<b>Wagga Wagga-Sydney</b>								
QantasLink	48	48	47	97.9	47	97.9	0	0.0
Regional Express	29	29	28	96.6	28	96.6	0	0.0
All Airlines	77	77	75	97.4	75	97.4	0	0.0

## Airports

On time performance is reported for all routes where the passenger load averages over 8000 passengers per month, and where two or more airlines operate in competition. The following data reports by airport against flights operated on those routes only. This month, 8 major city airports and 27 regional city airports are covered.

Airport	Arrivals			Departures		
	Sectors Flown	On Time No.	%	Sectors Flown	On Time No.	%
<b>Adelaide</b>						
Jetstar	188	170	90.4	187	168	89.8
Qantas	361	319	88.4	359	321	89.4
QantasLink	77	67	87.0	77	69	89.6
Regional Express	94	84	89.4	94	92	97.9
Virgin Australia	280	252	90.0	281	241	85.8
All Airlines	1 000	892	89.2	998	891	89.3
Relates to services to and from Alice Springs, Brisbane, Canberra, Gold Coast, Melbourne, Perth, Port Lincoln and Sydney.						
<b>Albury</b>						
QantasLink	44	41	93.2	43	40	93.0
Regional Express	19	17	89.5	17	16	94.1
All Airlines	63	58	92.1	60	56	93.3
Relates to services to and from Sydney only.						
<b>Alice Springs</b>						
Qantas	31	26	83.9	31	29	93.5
Virgin Australia	13	9	69.2	13	10	76.9
All Airlines	44	35	79.5	44	39	88.6
Relates to services to and from Adelaide only.						
<b>Armidale</b>						
QantasLink	21	21	100.0	21	21	100.0
Regional Express	8	6	75.0	8	6	75.0
All Airlines	29	27	93.1	29	27	93.1
Relates to services to and from Sydney only.						
<b>Ballina</b>						
Jetstar	100	97	97.0	100	96	96.0
Qantas	42	40	95.2	42	40	95.2
QantasLink	32	27	84.4	32	25	78.1
Regional Express	8	8	100.0	8	7	87.5
Virgin Australia	52	50	96.2	52	43	82.7
All Airlines	234	222	94.9	234	211	90.2
Relates to services to and from Sydney only.						
<b>Brisbane</b>						
Jetstar	494	407	82.4	496	406	81.9
Qantas	853	756	88.6	862	810	94.0
QantasLink	538	504	93.7	543	512	94.3
Virgin Australia	983	879	89.4	983	831	84.5
All Airlines	2 868	2 546	88.8	2 884	2 559	88.7
Relates to services to and from Adelaide, Cairns, Canberra, Darwin, Emerald, Gladstone, Hamilton Island, Hobart, Mackay, Melbourne, Mount Isa, Newcastle, Perth, Proserpine, Rockhampton, Sydney and Townsville.						

Airport	Arrivals			Departures		
	Sectors Flown	On Time		Sectors Flown	On Time	
		No.	%		No.	%
<b>Broome</b>						
Qantas	7	6	85.7	7	6	85.7
QantasLink	80	53	66.3	81	65	80.2
Virgin Australia	34	31	91.2	34	28	82.4
Virgin Australia Regional Airlines	1	0	0.0	1	0	0.0
All Airlines	122	90	73.8	123	99	80.5
Relates to services to and from Perth only.						
<b>Cairns</b>						
Jetstar	168	135	80.4	168	139	82.7
Qantas	166	151	91.0	166	147	88.6
QantasLink	95	82	86.3	95	85	89.5
Regional Express	8	8	100.0	8	8	100.0
Virgin Australia	161	130	80.7	160	134	83.8
All Airlines	598	506	84.6	597	513	85.9
Relates to services to and from Brisbane, Melbourne, Sydney and Townsville.						
<b>Canberra</b>						
Qantas	57	53	93.0	57	51	89.5
QantasLink	227	202	89.0	226	211	93.4
Virgin Australia	138	123	89.1	138	107	77.5
All Airlines	422	378	89.6	421	369	87.6
Relates to services to and from Adelaide, Brisbane and Melbourne.						
<b>Coffs Harbour</b>						
QantasLink	76	70	92.1	76	69	90.8
Virgin Australia	13	13	100.0	13	12	92.3
All Airlines	89	83	93.3	89	81	91.0
Relates to services to and from Sydney only.						
<b>Darwin</b>						
Jetstar	25	22	88.0	25	18	72.0
Qantas	54	46	85.2	54	50	92.6
Virgin Australia	41	34	82.9	41	24	58.5
All Airlines	120	102	85.0	120	92	76.7
Relates to services to and from Brisbane and Perth.						
<b>Dubbo</b>						
QantasLink	42	39	92.9	41	34	82.9
Regional Express	30	26	86.7	29	27	93.1
All Airlines	72	65	90.3	70	61	87.1
Relates to services to and from Sydney only.						
<b>Emerald</b>						
QantasLink	101	101	100.0	100	99	99.0
Virgin Australia	21	20	95.2	21	20	95.2
All Airlines	122	121	99.2	121	119	98.3
Relates to services to and from Brisbane only.						
<b>Gladstone</b>						
QantasLink	79	75	94.9	79	72	91.1
Virgin Australia	51	51	100.0	51	49	96.1
All Airlines	130	126	96.9	130	121	93.1
Relates to services to and from Brisbane only.						

Airport	Arrivals			Departures		
	Sectors Flown	On Time		Sectors Flown	On Time	
		No.	%		No.	%
<b>Gold Coast</b>						
Jetstar	220	195	88.6	219	193	88.1
Qantas	98	93	94.9	99	88	88.9
Virgin Australia	225	215	95.6	224	201	89.7
All Airlines	543	503	92.6	542	482	88.9
Relates to services to and from Adelaide, Melbourne and Sydney.						
<b>Hamilton Island</b>						
Qantas	42	34	81.0	43	37	86.0
QantasLink	15	14	93.3	15	13	86.7
Virgin Australia	70	61	87.1	70	58	82.9
All Airlines	127	109	85.8	128	108	84.4
Relates to services to and from Brisbane and Sydney.						
<b>Hobart</b>						
Jetstar	236	217	91.9	237	209	88.2
Qantas	4	4	100.0	4	4	100.0
QantasLink	117	97	82.9	117	99	84.6
Virgin Australia	128	116	90.6	127	105	82.7
All Airlines	485	434	89.5	485	417	86.0
Relates to services to and from Brisbane, Melbourne and Sydney.						
<b>Kalgoorlie</b>						
Qantas	7	7	100.0	7	7	100.0
QantasLink	62	51	82.3	62	51	82.3
Virgin Australia	21	20	95.2	21	19	90.5
Virgin Australia Regional Airlines	33	32	97.0	33	31	93.9
All Airlines	123	110	89.4	123	108	87.8
Relates to services to and from Perth only.						
<b>Karratha</b>						
Qantas	28	27	96.4	28	26	92.9
QantasLink	103	82	79.6	96	84	87.5
Virgin Australia	39	37	94.9	39	35	89.7
Virgin Australia Regional Airlines	13	9	69.2	13	8	61.5
All Airlines	183	155	84.7	176	153	86.9
Relates to services to and from Perth only.						
<b>Launceston</b>						
Jetstar	134	119	88.8	135	116	85.9
QantasLink	54	52	96.3	53	47	88.7
Virgin Australia	86	80	93.0	86	84	97.7
All Airlines	274	251	91.6	274	247	90.1
Relates to services to and from Melbourne and Sydney.						
<b>Mackay</b>						
Jetstar	31	26	83.9	31	27	87.1
Qantas	65	63	96.9	64	62	96.9
QantasLink	32	29	90.6	31	30	96.8
Virgin Australia	80	73	91.3	80	75	93.8
All Airlines	208	191	91.8	206	194	94.2
Relates to services to and from Brisbane only.						

Airport	Arrivals			Departures		
	Sectors Flown	On Time		Sectors Flown	On Time	
		No.	%		No.	%
<b>Melbourne</b>						
Jetstar	872	758	86.9	871	761	87.4
Qantas	587	502	85.5	579	523	90.3
QantasLink	322	285	88.5	322	275	85.4
Regional Express	23	18	78.3	23	20	87.0
Virgin Australia	816	726	89.0	818	740	90.5
All Airlines	2 620	2 289	87.4	2 613	2 319	88.7
Relates to services to and from Adelaide, Brisbane, Cairns, Canberra, Hobart, Launceston, Mildura, Newcastle, Perth, Sunshine Coast and Sydney.						
<b>Mildura</b>						
QantasLink	56	49	87.5	56	49	87.5
Regional Express	23	18	78.3	23	20	87.0
All Airlines	79	67	84.8	79	69	87.3
Relates to services to and from Melbourne only.						
<b>Mount Isa</b>						
Qantas	29	29	100.0	29	29	100.0
QantasLink	18	16	88.9	18	17	94.4
Virgin Australia	13	13	100.0	13	13	100.0
All Airlines	60	58	96.7	60	59	98.3
Relates to services to and from Brisbane only.						
<b>Newcastle</b>						
Jetstar	83	69	83.1	81	64	79.0
QantasLink	34	32	94.1	34	29	85.3
Virgin Australia	54	53	98.1	54	53	98.1
All Airlines	171	154	90.1	169	146	86.4
Relates to services to and from Brisbane and Melbourne.						
<b>Newman</b>						
Qantas	37	36	97.3	37	32	86.5
QantasLink	71	68	95.8	71	61	85.9
Virgin Australia	40	37	92.5	40	30	75.0
Virgin Australia Regional Airlines	15	14	93.3	15	12	80.0
All Airlines	163	155	95.1	163	135	82.8
Relates to services to and from Perth only.						
<b>Perth</b>						
Jetstar	26	25	96.2	27	19	70.4
Qantas	367	295	80.4	366	317	86.6
QantasLink	371	293	79.0	377	333	88.3
Virgin Australia	287	237	82.6	289	207	71.6
Virgin Australia Regional Airlines	99	82	82.8	99	88	88.9
All Airlines	1 150	932	81.0	1 158	964	83.2
Relates to services to and from Adelaide, Brisbane, Broome, Darwin, Kalgoorlie, Karratha, Melbourne, Newman, Port Hedland and Sydney.						
<b>Port Hedland</b>						
Qantas	51	50	98.0	50	43	86.0
QantasLink	61	45	73.8	61	50	82.0
Virgin Australia	13	12	92.3	12	7	58.3
Virgin Australia Regional Airlines	37	34	91.9	37	30	81.1
All Airlines	162	141	87.0	160	130	81.3
Relates to services to and from Perth only.						

Airport	Arrivals			Departures		
	Sectors Flown	On Time		Sectors Flown	On Time	
		No.	%		No.	%
<b>Port Lincoln</b>						
QantasLink	71	64	90.1	71	63	88.7
Regional Express	94	89	94.7	94	85	90.4
All Airlines	165	153	92.7	165	148	89.7
Relates to services to and from Adelaide only.						
<b>Proserpine</b>						
Jetstar	41	33	80.5	41	35	85.4
Virgin Australia	29	22	75.9	29	23	79.3
All Airlines	70	55	78.6	70	58	82.9
Relates to services to and from Brisbane only.						
<b>Rockhampton</b>						
QantasLink	121	113	93.4	120	105	87.5
Virgin Australia	76	68	89.5	76	67	88.2
All Airlines	197	181	91.9	196	172	87.8
Relates to services to and from Brisbane only.						
<b>Sunshine Coast</b>						
Jetstar	83	70	84.3	82	64	78.0
QantasLink	42	30	71.4	41	31	75.6
Virgin Australia	81	80	98.8	81	72	88.9
All Airlines	206	180	87.4	204	167	81.9
Relates to services to and from Melbourne and Sydney.						
<b>Sydney</b>						
Jetstar	225	211	93.8	226	194	85.8
Qantas	356	312	87.6	359	332	92.5
QantasLink	290	274	94.5	293	268	91.5
Regional Express	91	84	92.3	93	85	91.4
Virgin Australia	325	300	92.3	325	310	95.4
All Airlines	1 287	1 181	91.8	1 296	1 189	91.7
Relates to services to and from Adelaide, Albury, Armidale, Ballina, Brisbane, Cairns, Coffs Harbour, Dubbo, Gold Coast, Hamilton Island, Hobart, Launceston, Melbourne, Perth, Sunshine Coast and Wagga Wagga.						
<b>Townsville</b>						
Jetstar	60	51	85.0	60	50	83.3
Qantas	93	84	90.3	92	83	90.2
QantasLink	90	80	88.9	90	79	87.8
Regional Express	8	8	100.0	8	8	100.0
Virgin Australia	76	66	86.8	75	62	82.7
All Airlines	327	289	88.4	325	282	86.8
Relates to services to and from Brisbane only.						
<b>Wagga Wagga</b>						
QantasLink	48	46	95.8	48	47	97.9
Regional Express	28	28	100.0	29	28	96.6
All Airlines	76	74	97.4	77	75	97.4
Relates to services to and from Sydney only.						

## Definitions

---

On time arrival	A flight arrival is counted as "on time" if it arrived at the gate before 15 minutes after the scheduled arrival time shown in the carriers' schedule. Neither diverted nor cancelled flights count as on time.
On time departure	A flight departure is counted as "on time" if it departs the gate before 15 minutes after the scheduled departure time shown in the carriers' schedule.
Cancellation	A flight removed from service within 7 days of scheduled departure is regarded as a cancellation.
On time departure percentage	The percentage of on time departures is measured against the number of departures <i>operated</i> on any particular sector.
On time arrival percentage	The percentage of on time arrivals is measured against the number of arrivals <i>operated</i> on any particular sector.
Cancellation percentage	The percentage of cancellations is measured against the number of services <i>scheduled</i> on any particular sector.

---