



**Australian Government**

**Department of Infrastructure, Transport, Regional Development and Communications**

Bureau of Infrastructure and Transport Research Economics

STATISTICAL REPORT



# Aviation

Domestic airline on time performance  
August 2021

© Commonwealth of Australia 2021

ISSN: 1832-0759

### **Ownership of intellectual property rights in this publication**

Unless otherwise noted, copyright (and any other intellectual property rights, if any) in this publication is owned by the Commonwealth of Australia (referred to below as the Commonwealth).

### **Disclaimer**

The material contained in this publication is made available on the understanding that the Commonwealth is not providing professional advice, and that users exercise their own skill and care with respect to its use, and seek independent advice if necessary.

The Commonwealth makes no representations or warranties as to the contents or accuracy of the information contained in this publication. To the extent permitted by law, the Commonwealth disclaims liability to any person or organisation in respect of anything done, or omitted to be done, in reliance upon information contained in this publication.

### **Creative Commons licence**

With the exception of (a) the Coat of Arms; and (b) the Department of Infrastructure, Transport, Regional Development and Communications' photos and graphics, copyright in this publication is licensed under a Creative Commons Attribution 3.0 Australia Licence.

Creative Commons Attribution 3.0 Australia Licence is a standard form licence agreement that allows you to copy, communicate and adapt this publication provided that you attribute the work to the Commonwealth and abide by the other licence terms. A summary of the licence terms is available from <http://creativecommons.org/licenses/by/3.0/au/deed.en>. The full licence terms are available from <http://creativecommons.org/licenses/by/3.0/au/legalcode>.

### **Use of the Coat of Arms**

The Department of the Prime Minister and Cabinet sets the terms under which the Coat of Arms is used. Please refer to the Department's Commonwealth Coat of Arms and Government branding web page <http://www.dpmc.gov.au/guidelines/index.cfm#brand> and, in particular, the Guidelines on the use of the Commonwealth Coat of Arms publication.

An appropriate citation for this report is:

Bureau of Infrastructure and Transport Research Economics (BITRE), 2021, Domestic airline on time performance, Statistical Report, BITRE, Canberra ACT.

### **Contact us**

This publication is available in PDF format. All other rights are reserved, including in relation to any Departmental logos or trade marks which may exist. For enquiries regarding the licence and any use of this publication, please contact:

Bureau of Infrastructure and Transport Research Economics (BITRE)  
Department of Infrastructure, Transport, Regional Development and Communications  
GPO Box 501, Canberra ACT 2601, Australia  
Telephone: (international) +61 2 6274 7210  
Fax: (international) +61 2 6274 6855  
Email: [bitre@infrastructure.gov.au](mailto:bitre@infrastructure.gov.au)  
Website: [www.bitre.gov.au](http://www.bitre.gov.au)

### **Inquiries**

Should you require additional information about the statistics contained in this publication:

Telephone (02) 6274 7790 or Facsimile (02) 6274 7727

Electronic mail: [AVSTATS@infrastructure.gov.au](mailto:AVSTATS@infrastructure.gov.au)

Web site: <http://www.bitre.gov.au/statistics/aviation/otphome.aspx>

# Foreword

The Bureau of Infrastructure and Transport Research Economics (BITRE) monitors the punctuality and reliability of major domestic airlines operating between Australian airports. The purpose of this is to allow for evaluation of overall industry and individual airline performance, so that consumers of air travel can make informed decisions.

The following domestic airlines currently report this information monthly to the BITRE: Jetstar, Qantas, QantasLink, Rex Airlines, Virgin Australia and Virgin Australia Regional Airlines.

Data has been gathered since November 2003, although some airlines commenced reporting at a later date, including Jetstar which first reported in May 2004, MacAir in July 2005, Tigerair Australia in April 2008 and Virgin Australia Regional Airlines in May 2013. MacAir ceased operations in February 2009 and data was not received for December 2008 onwards. Tigerair Australia ceased operations in March 2020 and data was not received for that month.

Virgin Blue was rebranded as Virgin Australia in May 2011 and Tiger Airways was rebranded as Tigerair Australia in July 2013 and time series data in Microsoft Excel spreadsheet format on the BITRE website have been revised to reflect these changes. With effect from July 2021, Regional Express is reported as Rex Airlines.

Services operated by Skywest on behalf of Virgin Australia using ATR/F100 aircraft commenced in November 2011 and were shown separately as Virgin Australia – ATR/F100 Operations. Virgin Australia Regional Airlines commenced operations in May 2013. It was formed after the acquisition of Skywest by Virgin Australia and represented a combination of operations previously reported under Skywest and Virgin Australia – ATR/F100 Operations. In January 2016, Virgin Australia transferred their ATR fleet from Virgin Australia Regional Airlines to Virgin Australia.

Information presented in this report is for Australian domestic routes for which the passenger load averaged 8 000 or more passengers per month over the previous six months and where two or more airlines operated in competition on those routes. There were 52 routes that met this definition in August 2021. Over time, routes which meet these criteria change as airline networks and traffic levels vary.

Participating airlines report their overall monthly network performance where this is possible.

Total industry figures encompass all services operated by reporting airlines only. These airlines collectively carried over 95 per cent of total domestic passengers (regular public transport only) in 2019.

The method of capturing on time performance varies between airlines utilising different recording systems. Jetstar and Qantas jet aircraft use Aircraft Communication Addressing and Reporting System (ACARS) to electronically measure on time performance. Rex Airlines, Virgin Australia, Virgin Australia Regional Airlines and the Qantas non-jet fleet record on time performance manually using records from pilots, gate agents and/or ground crews.

After initial data is collected, aggregate reports are reviewed by participating airlines prior to publication.

Reports and detailed time series data in Microsoft Excel spreadsheet format are available from the BITRE website at: <http://www.bitre.gov.au/statistics/aviation/otphome.aspx>



# Contents

	Page
Industry performance .....	1
Individual routes .....	9
Airports.....	20
Definitions .....	25



# Industry performance

For August 2021, on time performance over all routes operated by participating airlines (Jetstar, Qantas, QantasLink, REX Airlines, Virgin Australia and Virgin Australia Regional Airlines) averaged 89.3 per cent for on time arrivals and 89.5 percent for on time departures. The cancellation rate for the month was 23.0 per cent. Travel restrictions due to the COVID-19 pandemic continue to impact flight cancellations. The equivalent figures for August 2020 were 88.2 per cent for on time arrivals, 87.2 per cent for on time departures and 3.7 per cent for cancellations.

This month's on time arrivals figure was higher than the long term average performance for all routes (82.3 per cent) and the on time departures figure was also higher than the long term average (83.6 per cent). The rate of cancellations was significantly higher than the long term average of 1.9 per cent.

The Virgin Australia network (Virgin Australia and Virgin Australia Regional Airlines combined operations) recorded 90.6 per cent for on time arrivals while the Qantas network (Qantas and QantasLink combined operations) recorded 88.6 per cent. Virgin Australia achieved the highest on time arrivals among the major domestic airlines at 92.0 per cent followed by Jetstar at 88.9 per cent and Qantas at 85.3 per cent. Of the regional airlines, QantasLink recorded 90.1 per cent for on time arrivals, followed by REX Airlines at 89.7 per cent and Virgin Australia Regional Airlines at 81.6 per cent.

The Qantas network recorded 89.7 per cent for on time departures while the Virgin Australia network recorded 89.1 per cent. Virgin Australia achieved the highest level of on time departures among the major domestic airlines for August 2021 at 89.9 per cent, followed by Qantas at 88.7 per cent and Jetstar at 88.3 per cent. Of the regional airlines, QantasLink recorded 90.1 per cent for on time departures, followed by REX Airlines at 90.0 per cent and Virgin Australia Regional Airlines at 83.3 per cent.

Jetstar recorded the highest percentage of cancellations (at 38.7 per cent) during the month, followed by Qantas (at 32.5 per cent), Virgin Australia (at 29.4 per cent), QantasLink (at 18.7 per cent), REX Airlines (at 2.0 per cent) and Virgin Australia Regional Airlines (at 0.6 per cent).

Airlines' on time performance varies across the routes they serve. Individual route data by specific airline for 52 routes are shown on pages 9-19.

Of the 52 routes which met the criteria for on time performance reporting in August 2021, the Melbourne-Cairns, Launceston-Sydney, Gold Coast-Melbourne, Hobart-Sydney, Wagga Wagga-Sydney, Melbourne-Sunshine Coast, Sunshine Coast-Melbourne, Hamilton Island-Sydney and Sydney-Hamilton Island routes had the highest percentage of on time arrivals (100.0 per cent). The Hobart-Sydney, Wagga Wagga-Sydney, Sunshine Coast-Melbourne, Hamilton Island-Sydney and Sydney-Hamilton Island routes had the highest percentage of on time departures (100.0 per cent). The Sydney-Perth route had the lowest percentage of on time arrivals (64.0 per cent) and the Perth-Brisbane route had the lowest percentage of on time departures (62.2 per cent).

Cancellations were highest on the Melbourne-Gold Coast route at 79.7 per cent, followed by the Gold Coast-Melbourne route at 79.6 per cent, the Melbourne-Brisbane route at 70.3 per cent, the Brisbane-Melbourne route at 69.8 per cent and the Melbourne-Sunshine Coast route at 69.7 per cent.

Sunshine Coast Airport recorded the highest percentage of on time arrivals (100.0 per cent) and Sunshine Coast Airport and Wagga Wagga Airport recorded the highest percentage of on time departures (100.0 per cent). Perth Airport recorded the lowest percentage of on time arrivals (79.5 per cent) and Kalgoorlie Airport recorded the lowest percentage of on time departures (69.8 per cent). These figures only refer to reported routes and do not cover all flights at these airports.



Table 1 On time performance for August 2021 — Total Industry

	<i>Sectors</i>		<i>Arrivals On Time</i>		<i>Departures On Time</i>		<i>Cancellations</i>	
	<i>Scheduled</i>	<i>Flown</i>	<i>No.</i>	<i>%</i>	<i>No.</i>	<i>%</i>	<i>No.</i>	<i>%</i>
Jetstar	2 061	1 263	1 123	88.9	1 115	88.3	798	38.7
Qantas - all QF designated services	7 882	6 029	5 342	88.6	5 407	89.7	1 853	23.5
REX Airlines	2 387	2 340	2 098	89.7	2 107	90.0	47	2.0
Virgin Australia - all VA designated services	3 741	2 744	2 487	90.6	2 444	89.1	997	26.7
All Airlines	16 071	12 376	11 050	89.3	11 073	89.5	3 695	23.0
Individual operating entities								
Qantas	2 736	1 847	1 576	85.3	1 639	88.7	889	32.5
QantasLink	5 146	4 182	3 766	90.1	3 768	90.1	964	18.7
Virgin Australia	3 380	2 385	2 194	92.0	2 145	89.9	995	29.4
Virgin Australia Regional Airlines	361	359	293	81.6	299	83.3	2	0.6

Total airline network data (including routes not shown in this report).

Airlines' on time performance varies across the routes they serve. Individual route data by specific airline for 52 routes are shown on pages 9-19.

Table 2 Top ten routes for on time performance for August 2021 (participating airlines only)

<i>Arrivals</i>		<i>Departures</i>	
<i>Route</i>	<i>On Time (%)</i>	<i>Route</i>	<i>On Time (%)</i>
Gold Coast-Melbourne	100.0	Hamilton Island-Sydney	100.0
Hamilton Island-Sydney	100.0	Hobart-Sydney	100.0
Hobart-Sydney	100.0	Sunshine Coast-Melbourne	100.0
Launceston-Sydney	100.0	Sydney-Hamilton Island	100.0
Melbourne-Cairns	100.0	Wagga Wagga-Sydney	100.0
Melbourne-Sunshine Coast	100.0	Brisbane-Hamilton Island	98.1
Sunshine Coast-Melbourne	100.0	Brisbane-Mount Isa	98.1
Sydney-Hamilton Island	100.0	Canberra-Melbourne	97.7
Wagga Wagga-Sydney	100.0	Adelaide-Sydney	97.4
Mackay-Brisbane	97.8	Melbourne-Darwin	97.3

Table 3 Top ten airports for on time performance for August 2021 (participating airlines and reported routes only)

<i>Arrivals</i>		<i>Departures</i>	
<i>Airport</i>	<i>On Time (%)</i>	<i>Airport</i>	<i>On Time (%)</i>
Sunshine Coast	100.0	Sunshine Coast	100.0
Mackay	96.9	Wagga Wagga	100.0
Newcastle	96.5	Gold Coast	96.7
Rockhampton	95.4	Mackay	96.3
Gold Coast	95.1	Albury	96.2
Ballina	94.3	Canberra	95.5
Hamilton Island	93.8	Hamilton Island	95.4
Broome	93.4	Emerald	94.7
Hobart	93.2	Launceston	93.1
Canberra	93.2	Rockhampton	92.8

## Total industry on time performance

Figure 1 On time performance (by month from August 2018)—Total Industry

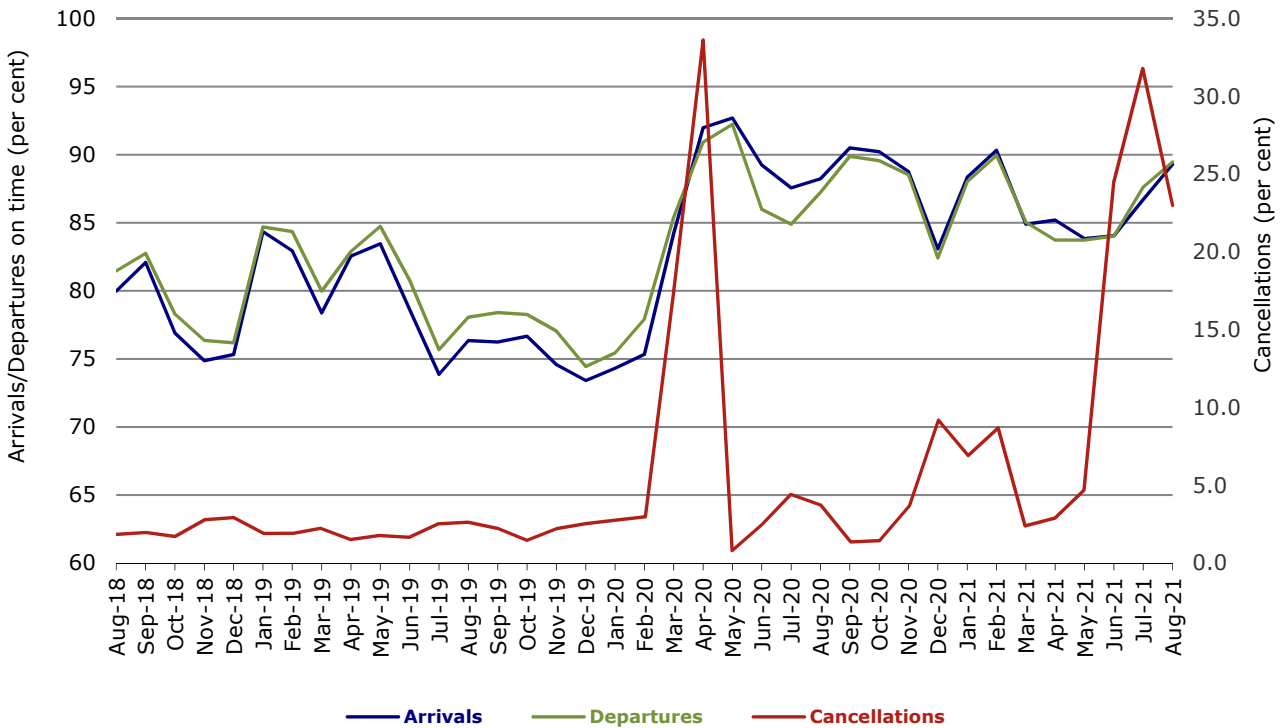
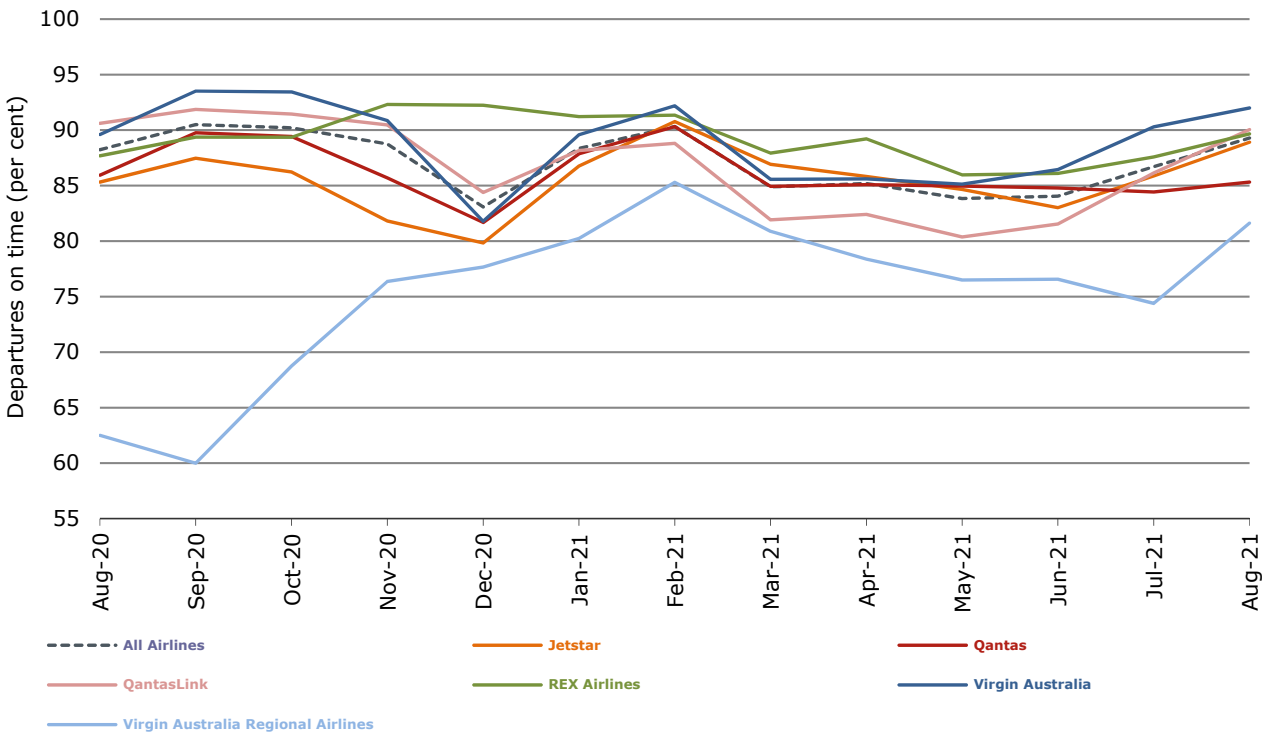
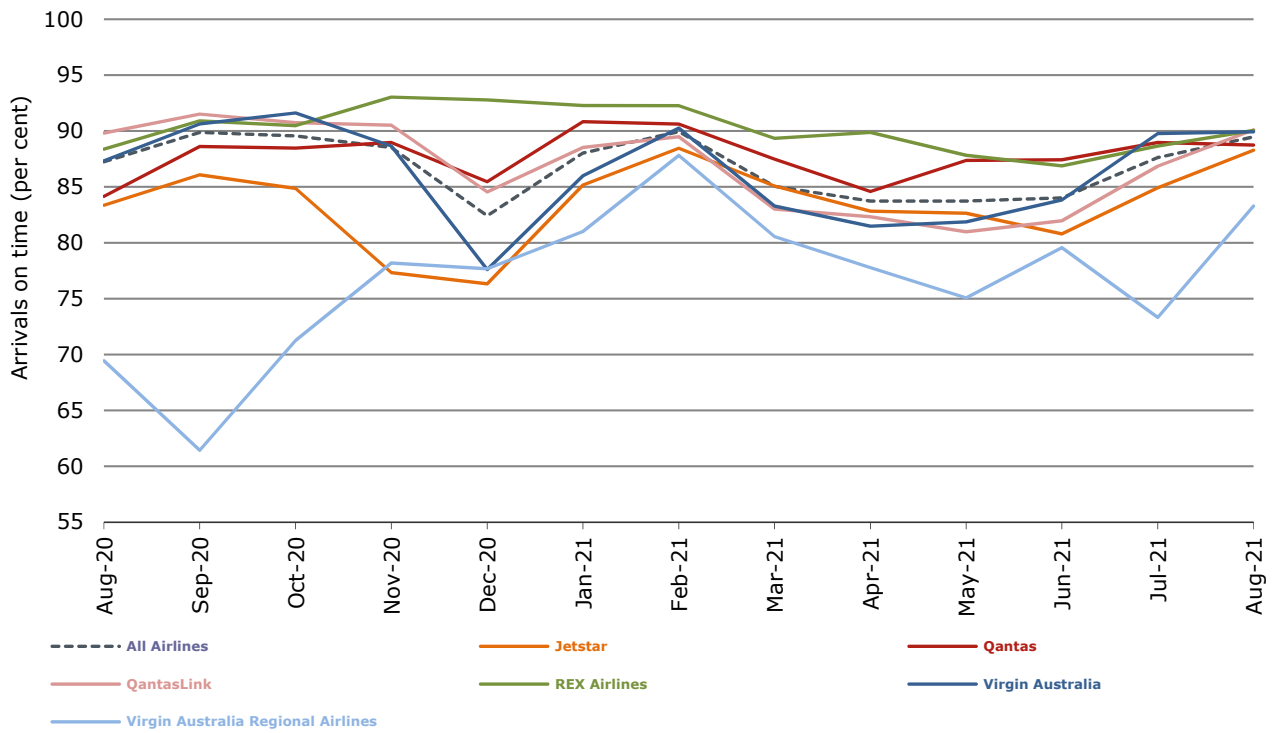


Figure 2 Arrivals on time (by month from August 2020)



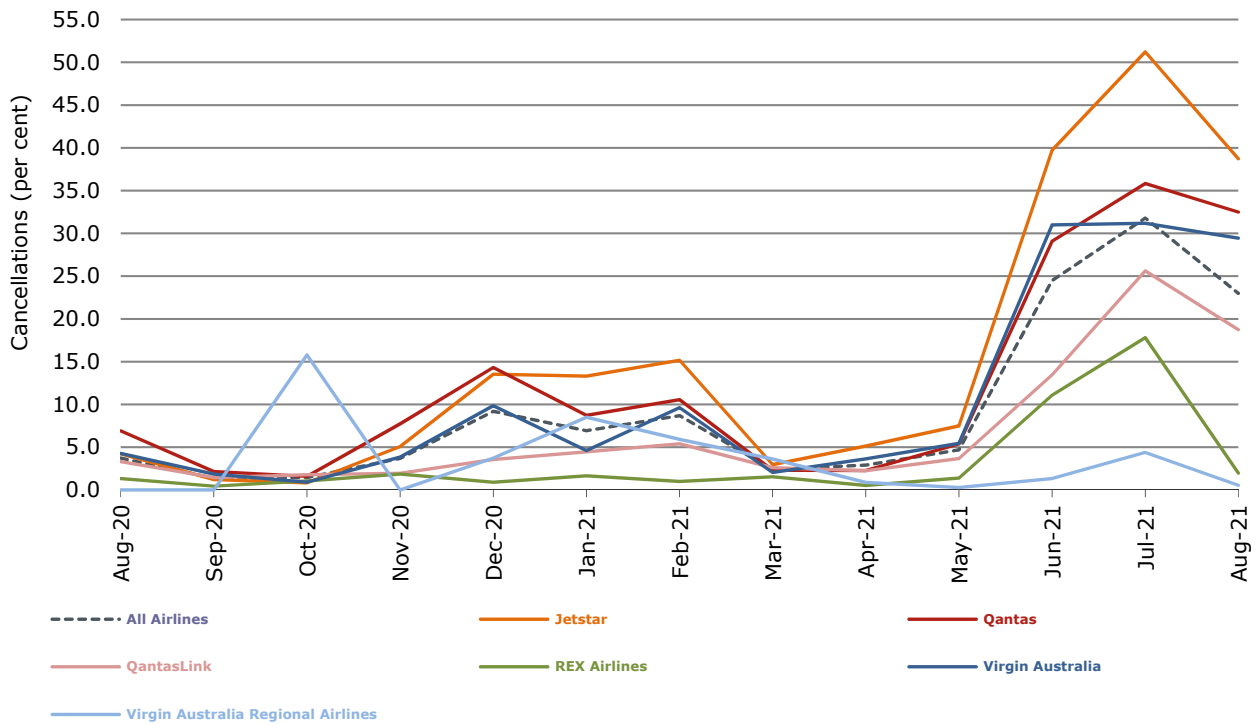
With effect from July 2021, Regional Express is reported as Rex Airlines

Figure 3 Departures on time (by month from August 2020)



With effect from July 2021, Regional Express is reported as Rex Airlines

Figure 4 Cancellations (by month from August 2020)



With effect from July 2021, Regional Express is reported as Rex Airlines

## Major domestic airlines on time performance

Figure 5 On time performance (by month from August 2018)—Jetstar

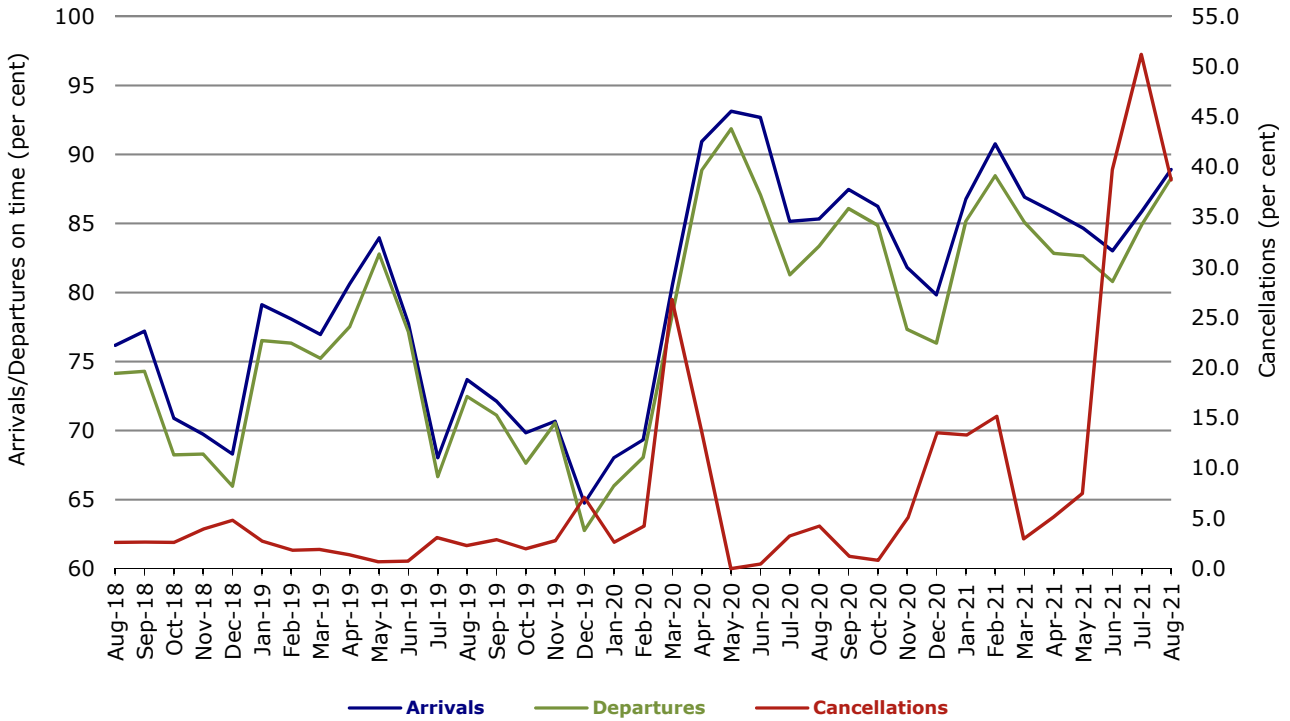


Figure 6 On time performance (by month from August 2018)—Qantas

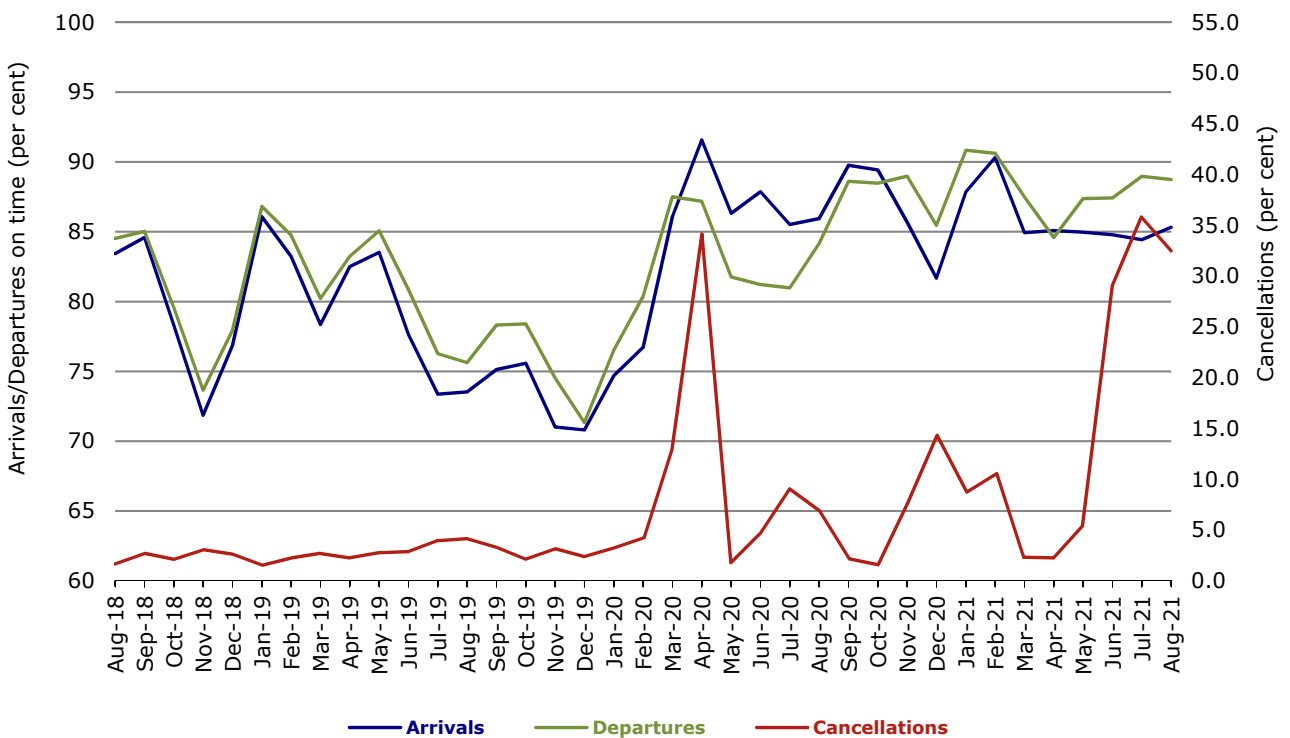
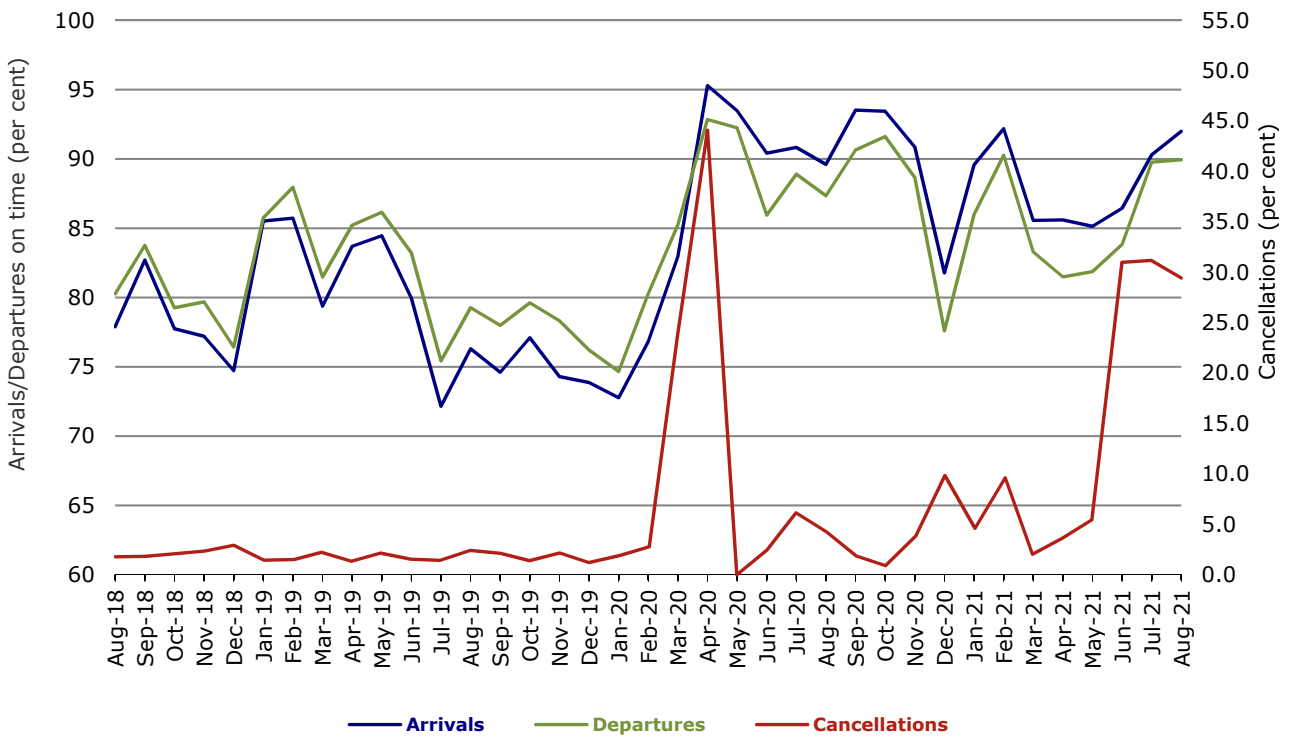


Figure 7 On time performance (by month from August 2018)—Virgin Australia



## Major regional airlines on time performance

Figure 8 On time performance (by month from August 2018)—QantasLink

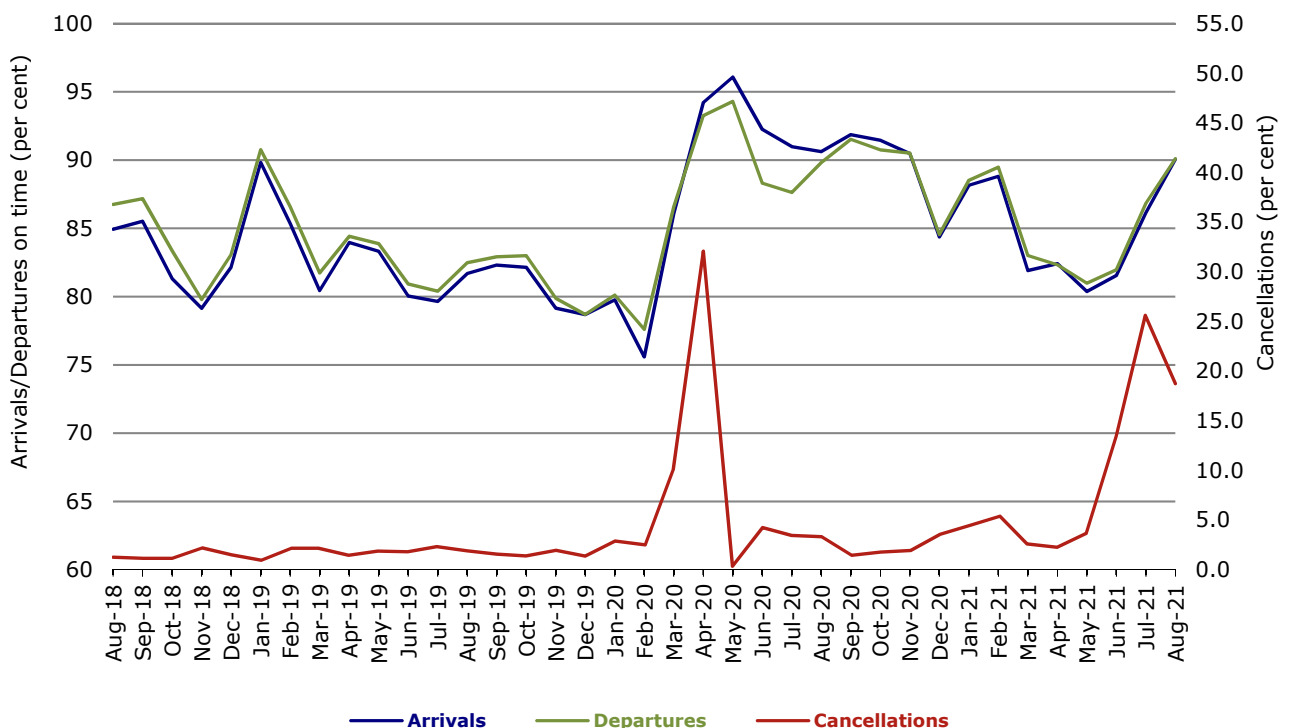
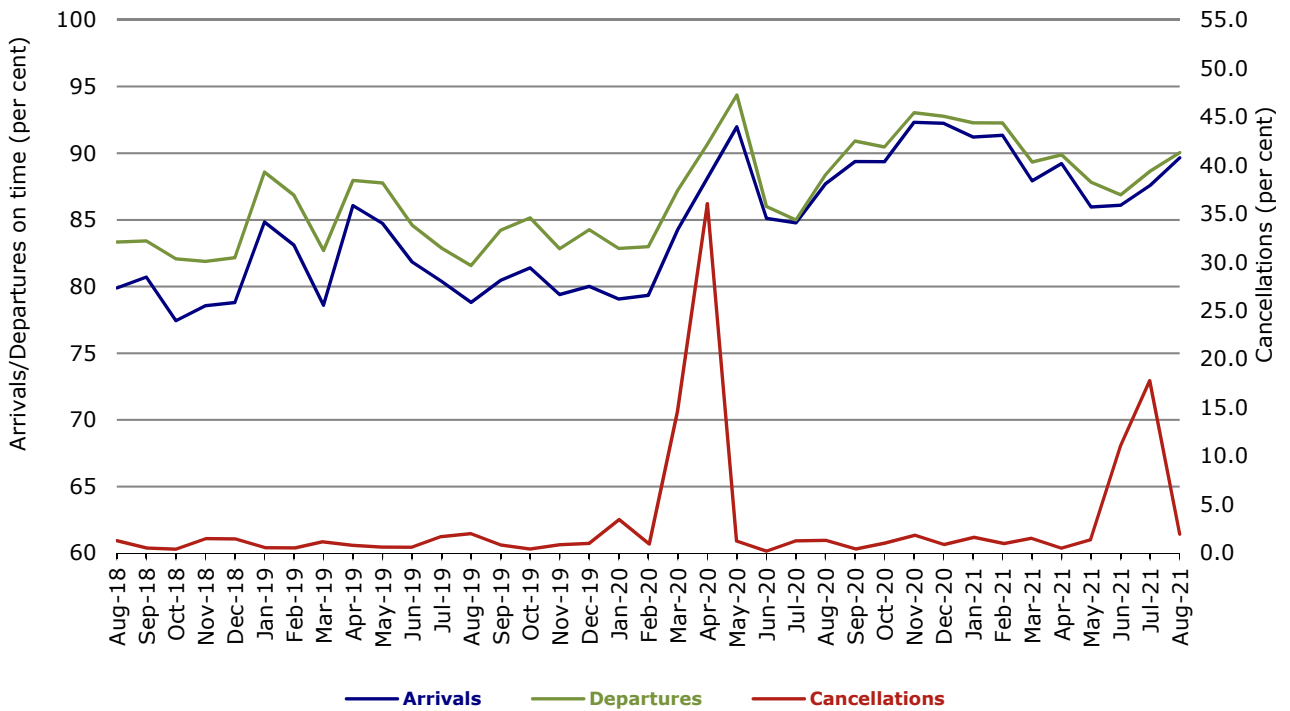
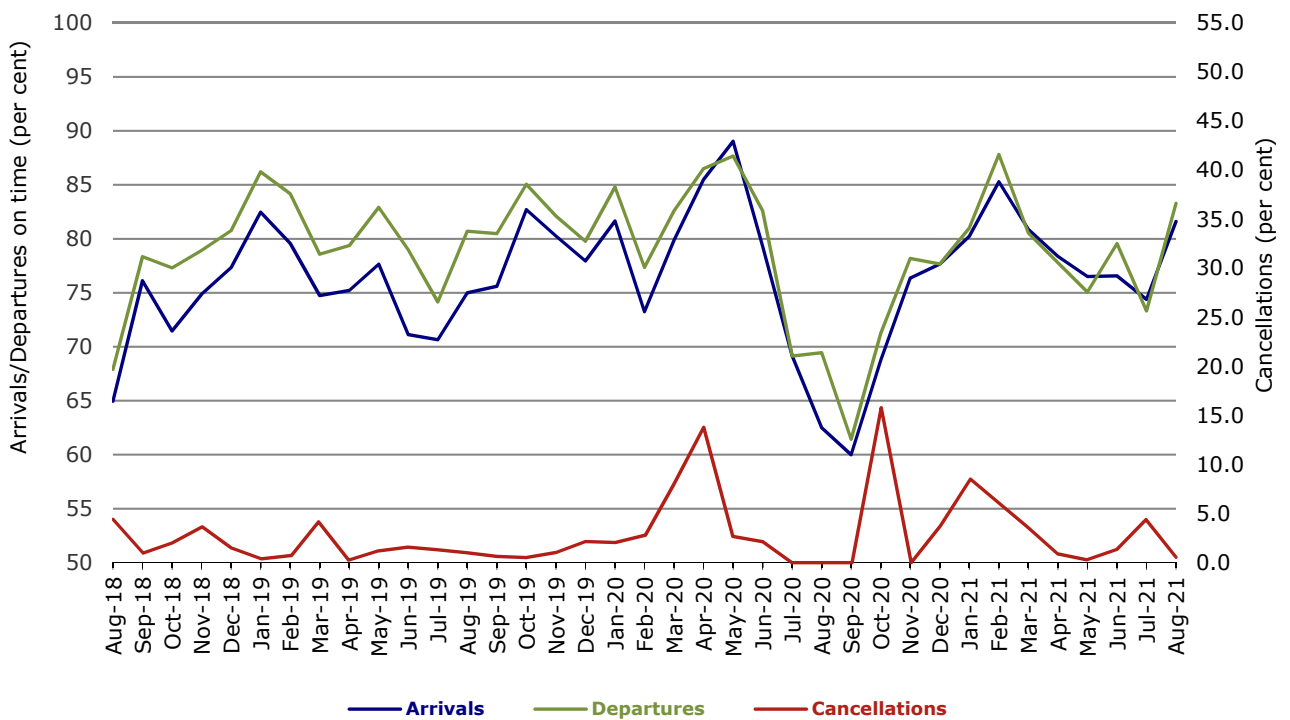


Figure 9 On time performance (by month from August 2018)—Rex Airlines



With effect from July 2021, Regional Express is reported as Rex Airlines

Figure 10 On time performance (by month from August 2018) Virgin Australia Regional Airlines



## Individual routes

On time performance is reported for all routes where the passenger load averages over 8000 passengers per month over the previous six months, and where two or more airlines operate in competition on those routes. There are now 52 routes which meet this definition. Over time, however, routes which meet this definition may change as airline networks and traffic levels vary.

	Sectors		Arrivals On Time		Departures On Time		Cancellations	
	Sched.	Flown	No.	%	No.	%	No.	%
<b>Adelaide-Alice Springs</b>								
Qantas	16	15	13	86.7	14	93.3	1	6.3
QantasLink	25	22	15	68.2	20	90.9	3	12.0
Virgin Australia	13	13	12	92.3	12	92.3	0	0.0
All Airlines	54	50	40	80.0	46	92.0	4	7.4
<b>Adelaide-Brisbane</b>								
Jetstar	26	14	14	100.0	13	92.9	12	46.2
Qantas	35	15	14	93.3	15	100.0	20	57.1
Virgin Australia	40	22	20	90.9	20	90.9	18	45.0
All Airlines	101	51	48	94.1	48	94.1	50	49.5
<b>Adelaide-Canberra</b>								
Qantas	22	12	12	100.0	12	100.0	10	45.5
Virgin Australia	15	14	13	92.9	13	92.9	1	6.7
All Airlines	37	26	25	96.2	25	96.2	11	29.7
<b>Adelaide-Gold Coast</b>								
Jetstar	21	18	16	88.9	16	88.9	3	14.3
Virgin Australia	16	14	14	100.0	14	100.0	2	12.5
All Airlines	37	32	30	93.8	30	93.8	5	13.5
<b>Adelaide-Melbourne</b>								
Jetstar	25	14	12	85.7	11	78.6	11	44.0
Qantas	54	24	24	100.0	24	100.0	30	55.6
Virgin Australia	49	23	22	95.7	20	87.0	26	53.1
All Airlines	128	61	58	95.1	55	90.2	67	52.3
<b>Adelaide-Perth</b>								
Jetstar	12	2	2	100.0	2	100.0	10	83.3
Qantas	47	25	22	88.0	24	96.0	22	46.8
Virgin Australia	17	14	11	78.6	12	85.7	3	17.6
Virgin Australia Regional Airlines	8	8	8	100.0	8	100.0	0	0.0
All Airlines	84	49	43	87.8	46	93.9	35	41.7
<b>Adelaide-Port Lincoln</b>								
QantasLink	28	23	22	95.7	21	91.3	5	17.9
REX Airlines	149	147	129	87.8	133	90.5	2	1.3
All Airlines	177	170	151	88.8	154	90.6	7	4.0
<b>Adelaide-Sydney</b>								
Jetstar	17	17	17	100.0	17	100.0	0	0.0
Virgin Australia	22	21	20	95.2	20	95.2	1	4.5
All Airlines	39	38	37	97.4	37	97.4	1	2.6
<b>Albury-Sydney</b>								
QantasLink	20	13	12	92.3	12	92.3	7	35.0
REX Airlines	14	13	13	100.0	13	100.0	1	7.1
All Airlines	34	26	25	96.2	25	96.2	8	23.5

	<i>Sectors</i>		<i>Arrivals On Time</i>		<i>Departures On Time</i>		<i>Cancellations</i>	
	<i>Sched.</i>	<i>Flown</i>	<i>No.</i>	<i>%</i>	<i>No.</i>	<i>%</i>	<i>No.</i>	<i>%</i>
<b>Alice Springs-Adelaide</b>								
Qantas	16	15	13	86.7	12	80.0	1	6.3
QantasLink	25	22	16	72.7	13	59.1	3	12.0
Virgin Australia	13	13	12	92.3	12	92.3	0	0.0
All Airlines	54	50	41	82.0	37	74.0	4	7.4
<b>Armidale-Sydney</b>								
QantasLink	14	10	9	90.0	9	90.0	4	28.6
REX Airlines	9	9	8	88.9	8	88.9	0	0.0
All Airlines	23	19	17	89.5	17	89.5	4	17.4
<b>Ballina-Sydney</b>								
QantasLink	13	8	7	87.5	7	87.5	5	38.5
REX Airlines	9	9	7	77.8	7	77.8	0	0.0
Virgin Australia	18	18	18	100.0	18	100.0	0	0.0
All Airlines	40	35	32	91.4	32	91.4	5	12.5
<b>Brisbane-Adelaide</b>								
Jetstar	26	14	11	78.6	11	78.6	12	46.2
Qantas	36	14	14	100.0	14	100.0	22	61.1
Virgin Australia	40	22	21	95.5	20	90.9	18	45.0
All Airlines	102	50	46	92.0	45	90.0	52	51.0
<b>Brisbane-Cairns</b>								
Jetstar	89	62	52	83.9	54	87.1	27	30.3
Qantas	122	85	73	85.9	81	95.3	37	30.3
QantasLink	3	2	1	50.0	2	100.0	1	33.3
Virgin Australia	110	59	52	88.1	54	91.5	51	46.4
All Airlines	324	208	178	85.6	191	91.8	116	35.8
<b>Brisbane-Canberra</b>								
Qantas	19	4	4	100.0	4	100.0	15	78.9
QantasLink	66	35	33	94.3	33	94.3	31	47.0
Virgin Australia	45	22	19	86.4	19	86.4	23	51.1
All Airlines	130	61	56	91.8	56	91.8	69	53.1
<b>Brisbane-Darwin</b>								
Jetstar	27	11	7	63.6	10	90.9	16	59.3
Qantas	50	38	25	65.8	35	92.1	12	24.0
Virgin Australia	41	29	27	93.1	27	93.1	12	29.3
All Airlines	118	78	59	75.6	72	92.3	40	33.9
<b>Brisbane-Emerald</b>								
QantasLink	123	89	81	91.0	80	89.9	34	27.6
Virgin Australia	26	24	24	100.0	24	100.0	2	7.7
All Airlines	149	113	105	92.9	104	92.0	36	24.2
<b>Brisbane-Gladstone</b>								
QantasLink	99	66	62	93.9	62	93.9	33	33.3
Virgin Australia	52	32	29	90.6	30	93.8	20	38.5
All Airlines	151	98	91	92.9	92	93.9	53	35.1
<b>Brisbane-Hamilton Island</b>								
Qantas	33	26	22	84.6	26	100.0	7	21.2
Virgin Australia	31	27	27	100.0	26	96.3	4	12.9
All Airlines	64	53	49	92.5	52	98.1	11	17.2



	Sectors		Arrivals On Time		Departures On Time		Cancellations	
	Sched.	Flown	No.	%	No.	%	No.	%
<b>Brisbane-Hobart</b>								
Jetstar	22	17	14	82.4	14	82.4	5	22.7
Qantas	9	2	2	100.0	2	100.0	7	77.8
QantasLink	4	3	2	66.7	2	66.7	1	25.0
Virgin Australia	42	28	27	96.4	26	92.9	14	33.3
All Airlines	77	50	45	90.0	44	88.0	27	35.1
<b>Brisbane-Mackay</b>								
Jetstar	31	26	24	92.3	24	92.3	5	16.1
Qantas	76	41	40	97.6	41	100.0	35	46.1
QantasLink	15	11	10	90.9	10	90.9	4	26.7
Virgin Australia	82	53	53	100.0	52	98.1	29	35.4
All Airlines	204	131	127	96.9	127	96.9	73	35.8
<b>Brisbane-Melbourne</b>								
Jetstar	29	11	8	72.7	8	72.7	18	62.1
Qantas	73	21	19	90.5	19	90.5	52	71.2
Virgin Australia	90	26	19	73.1	17	65.4	64	71.1
All Airlines	192	58	46	79.3	44	75.9	134	69.8
<b>Brisbane-Mount Isa</b>								
Qantas	46	35	32	91.4	35	100.0	11	23.9
QantasLink	3	3	2	66.7	2	66.7	0	0.0
Virgin Australia	16	14	12	85.7	14	100.0	2	12.5
All Airlines	65	52	46	88.5	51	98.1	13	20.0
<b>Brisbane-Newcastle</b>								
Jetstar	9	9	8	88.9	8	88.9	0	0.0
QantasLink	6	0	0	na	0	na	6	100.0
Virgin Australia	13	13	13	100.0	13	100.0	0	0.0
All Airlines	28	22	21	95.5	21	95.5	6	21.4
<b>Brisbane-Perth</b>								
Qantas	70	23	16	69.6	19	82.6	47	67.1
Virgin Australia	29	22	18	81.8	20	90.9	7	24.1
All Airlines	99	45	34	75.6	39	86.7	54	54.5
<b>Brisbane-Proserpine</b>								
Jetstar	31	30	25	83.3	28	93.3	1	3.2
Virgin Australia	42	30	26	86.7	26	86.7	12	28.6
All Airlines	73	60	51	85.0	54	90.0	13	17.8
<b>Brisbane-Rockhampton</b>								
QantasLink	136	102	97	95.1	99	97.1	34	25.0
Virgin Australia	80	49	47	95.9	47	95.9	31	38.8
All Airlines	216	151	144	95.4	146	96.7	65	30.1
<b>Brisbane-Sydney</b>								
Jetstar	11	0	0	na	0	na	11	100.0
Qantas	43	33	28	84.8	27	81.8	10	23.3
Virgin Australia	22	22	16	72.7	11	50.0	0	0.0
All Airlines	76	55	44	80.0	38	69.1	21	27.6
<b>Brisbane-Townsville</b>								
Jetstar	55	45	39	86.7	40	88.9	10	18.2
Qantas	93	60	48	80.0	55	91.7	33	35.5
Virgin Australia	81	47	42	89.4	45	95.7	34	42.0
All Airlines	229	152	129	84.9	140	92.1	77	33.6

	Sectors		Arrivals On Time		Departures On Time		Cancellations	
	Sched.	Flown	No.	%	No.	%	No.	%
<b>Broome-Perth</b>								
Qantas	62	61	54	88.5	54	88.5	1	1.6
QantasLink	41	38	35	92.1	35	92.1	3	7.3
Virgin Australia	39	38	34	89.5	29	76.3	1	2.6
Virgin Australia Regional Airlines	14	14	11	78.6	11	78.6	0	0.0
All Airlines	156	151	134	88.7	129	85.4	5	3.2
<b>Cairns-Brisbane</b>								
Jetstar	89	62	59	95.2	57	91.9	27	30.3
Qantas	118	84	77	91.7	76	90.5	34	28.8
QantasLink	3	2	1	50.0	1	50.0	1	33.3
Virgin Australia	110	60	58	96.7	49	81.7	50	45.5
All Airlines	320	208	195	93.8	183	88.0	112	35.0
<b>Cairns-Melbourne</b>								
Jetstar	39	17	17	100.0	17	100.0	22	56.4
Qantas	10	0	0	na	0	na	10	100.0
Virgin Australia	29	18	17	94.4	16	88.9	11	37.9
All Airlines	78	35	34	97.1	33	94.3	43	55.1
<b>Cairns-Sydney</b>								
Jetstar	13	13	12	92.3	11	84.6	0	0.0
Virgin Australia	18	18	18	100.0	17	94.4	0	0.0
All Airlines	31	31	30	96.8	28	90.3	0	0.0
<b>Cairns-Townsville</b>								
QantasLink	120	120	112	93.3	109	90.8	0	0.0
REX Airlines	22	19	18	94.7	18	94.7	3	13.6
All Airlines	142	139	130	93.5	127	91.4	3	2.1
<b>Canberra-Adelaide</b>								
Qantas	22	12	12	100.0	12	100.0	10	45.5
Virgin Australia	15	14	13	92.9	13	92.9	1	6.7
All Airlines	37	26	25	96.2	25	96.2	11	29.7
<b>Canberra-Brisbane</b>								
Qantas	17	4	4	100.0	4	100.0	13	76.5
QantasLink	65	37	36	97.3	36	97.3	28	43.1
Virgin Australia	48	23	21	91.3	20	87.0	25	52.1
All Airlines	130	64	61	95.3	60	93.8	66	50.8
<b>Canberra-Melbourne</b>								
QantasLink	48	26	25	96.2	25	96.2	22	45.8
Virgin Australia	20	18	18	100.0	18	100.0	2	10.0
All Airlines	68	44	43	97.7	43	97.7	24	35.3
<b>Darwin-Brisbane</b>								
Jetstar	28	12	11	91.7	6	50.0	16	57.1
Qantas	45	35	22	62.9	22	62.9	10	22.2
Virgin Australia	41	29	28	96.6	25	86.2	12	29.3
All Airlines	114	76	61	80.3	53	69.7	38	33.3
<b>Darwin-Melbourne</b>								
Jetstar	16	5	3	60.0	3	60.0	11	68.8
Qantas	53	43	37	86.0	40	93.0	10	18.9
Virgin Australia	32	25	22	88.0	20	80.0	7	21.9
All Airlines	101	73	62	84.9	63	86.3	28	27.7

	Sectors		Arrivals On Time		Departures On Time		Cancellations	
	Sched.	Flown	No.	%	No.	%	No.	%
<b>Darwin-Perth</b>								
Qantas	45	42	30	71.4	37	88.1	3	6.7
QantasLink	6	5	4	80.0	3	60.0	1	16.7
Virgin Australia	2	2	0	0.0	0	0.0	0	0.0
Virgin Australia Regional Airlines	22	22	13	59.1	13	59.1	0	0.0
All Airlines	75	71	47	66.2	53	74.6	4	5.3
<b>Dubbo-Sydney</b>								
QantasLink	16	10	8	80.0	8	80.0	6	37.5
REX Airlines	13	13	12	92.3	11	84.6	0	0.0
All Airlines	29	23	20	87.0	19	82.6	6	20.7
<b>Emerald-Brisbane</b>								
QantasLink	123	89	86	96.6	84	94.4	34	27.6
Virgin Australia	26	24	24	100.0	23	95.8	2	7.7
All Airlines	149	113	110	97.3	107	94.7	36	24.2
<b>Gladstone-Brisbane</b>								
QantasLink	98	67	61	91.0	61	91.0	31	31.6
Virgin Australia	52	32	27	84.4	30	93.8	20	38.5
All Airlines	150	99	88	88.9	91	91.9	51	34.0
<b>Gold Coast-Adelaide</b>								
Jetstar	21	18	16	88.9	17	94.4	3	14.3
Virgin Australia	16	14	12	85.7	14	100.0	2	12.5
All Airlines	37	32	28	87.5	31	96.9	5	13.5
<b>Gold Coast-Melbourne</b>								
Jetstar	55	5	5	100.0	5	100.0	50	90.9
Qantas	11	0	0	na	0	na	11	100.0
Virgin Australia	76	24	24	100.0	23	95.8	52	68.4
All Airlines	142	29	29	100.0	28	96.6	113	79.6
<b>Hamilton Island-Brisbane</b>								
Qantas	33	26	23	88.5	23	88.5	7	21.2
Virgin Australia	31	27	27	100.0	27	100.0	4	12.9
All Airlines	64	53	50	94.3	50	94.3	11	17.2
<b>Hamilton Island-Sydney</b>								
Jetstar	7	3	3	100.0	3	100.0	4	57.1
Qantas	6	1	1	100.0	1	100.0	5	83.3
Virgin Australia	12	8	8	100.0	8	100.0	4	33.3
All Airlines	25	12	12	100.0	12	100.0	13	52.0
<b>Hobart-Brisbane</b>								
Jetstar	22	17	13	76.5	13	76.5	5	22.7
Qantas	9	2	1	50.0	1	50.0	7	77.8
QantasLink	4	3	2	66.7	2	66.7	1	25.0
Virgin Australia	43	28	25	89.3	26	92.9	15	34.9
All Airlines	78	50	41	82.0	42	84.0	28	35.9
<b>Hobart-Melbourne</b>								
Jetstar	42	20	19	95.0	18	90.0	22	52.4
QantasLink	47	24	20	83.3	20	83.3	23	48.9
Virgin Australia	34	23	22	95.7	21	91.3	11	32.4
All Airlines	123	67	61	91.0	59	88.1	56	45.5
<b>Hobart-Sydney</b>								
Jetstar	15	11	11	100.0	11	100.0	4	26.7
Virgin Australia	18	18	18	100.0	18	100.0	0	0.0
All Airlines	33	29	29	100.0	29	100.0	4	12.1

	Sectors		Arrivals On Time		Departures On Time		Cancellations	
	Sched.	Flown	No.	%	No.	%	No.	%
<b>Kalgoorlie-Perth</b>								
Qantas	20	20	15	75.0	14	70.0	0	0.0
QantasLink	62	57	47	82.5	46	80.7	5	8.1
Virgin Australia	30	30	15	50.0	16	53.3	0	0.0
Virgin Australia Regional Airlines	33	32	23	71.9	21	65.6	1	3.0
All Airlines	145	139	100	71.9	97	69.8	6	4.1
<b>Karratha-Perth</b>								
Qantas	32	30	29	96.7	29	96.7	2	6.3
QantasLink	110	105	91	86.7	89	84.8	5	4.5
Virgin Australia	37	37	33	89.2	32	86.5	0	0.0
Virgin Australia Regional Airlines	17	17	12	70.6	13	76.5	0	0.0
All Airlines	196	189	165	87.3	163	86.2	7	3.6
<b>Launceston-Melbourne</b>								
Jetstar	27	3	3	100.0	3	100.0	24	88.9
QantasLink	35	19	17	89.5	16	84.2	16	45.7
Virgin Australia	24	18	17	94.4	18	100.0	6	25.0
All Airlines	86	40	37	92.5	37	92.5	46	53.5
<b>Launceston-Sydney</b>								
Jetstar	14	14	14	100.0	13	92.9	0	0.0
Virgin Australia	18	18	18	100.0	17	94.4	0	0.0
All Airlines	32	32	32	100.0	30	93.8	0	0.0
<b>Mackay-Brisbane</b>								
Jetstar	31	26	25	96.2	24	92.3	5	16.1
Qantas	75	41	40	97.6	40	97.6	34	45.3
QantasLink	18	14	13	92.9	13	92.9	4	22.2
Virgin Australia	83	54	54	100.0	53	98.1	29	34.9
All Airlines	207	135	132	97.8	130	96.3	72	34.8
<b>Melbourne-Adelaide</b>								
Jetstar	25	14	11	78.6	12	85.7	11	44.0
Qantas	54	24	24	100.0	24	100.0	30	55.6
Virgin Australia	50	23	22	95.7	21	91.3	27	54.0
All Airlines	129	61	57	93.4	57	93.4	68	52.7
<b>Melbourne-Brisbane</b>								
Jetstar	29	11	9	81.8	9	81.8	18	62.1
Qantas	73	21	19	90.5	19	90.5	52	71.2
Virgin Australia	93	26	25	96.2	24	92.3	67	72.0
All Airlines	195	58	53	91.4	52	89.7	137	70.3
<b>Melbourne-Cairns</b>								
Jetstar	39	17	17	100.0	16	94.1	22	56.4
Qantas	10	0	0	na	0	na	10	100.0
Virgin Australia	30	18	18	100.0	18	100.0	12	40.0
All Airlines	79	35	35	100.0	34	97.1	44	55.7
<b>Melbourne-Canberra</b>								
QantasLink	49	27	24	88.9	25	92.6	22	44.9
Virgin Australia	18	18	18	100.0	18	100.0	0	0.0
All Airlines	67	45	42	93.3	43	95.6	22	32.8
<b>Melbourne-Darwin</b>								
Jetstar	16	5	3	60.0	3	60.0	11	68.8
Qantas	54	43	39	90.7	43	100.0	11	20.4
Virgin Australia	32	25	23	92.0	25	100.0	7	21.9
All Airlines	102	73	65	89.0	71	97.3	29	28.4

	<i>Sectors</i>		<i>Arrivals On Time</i>		<i>Departures On Time</i>		<i>Cancellations</i>	
	<i>Sched.</i>	<i>Flown</i>	<i>No.</i>	<i>%</i>	<i>No.</i>	<i>%</i>	<i>No.</i>	<i>%</i>
<b>Melbourne-Gold Coast</b>								
Jetstar	55	5	4	80.0	4	80.0	50	90.9
Qantas	11	0	0	na	0	na	11	100.0
Virgin Australia	77	24	24	100.0	24	100.0	53	68.8
All Airlines	143	29	28	96.6	28	96.6	114	79.7
<b>Melbourne-Hobart</b>								
Jetstar	42	20	20	100.0	19	95.0	22	52.4
QantasLink	51	26	23	88.5	22	84.6	25	49.0
Virgin Australia	34	23	22	95.7	22	95.7	11	32.4
All Airlines	127	69	65	94.2	63	91.3	58	45.7
<b>Melbourne-Launceston</b>								
Jetstar	27	3	3	100.0	3	100.0	24	88.9
QantasLink	35	21	17	81.0	18	85.7	14	40.0
Virgin Australia	24	18	18	100.0	18	100.0	6	25.0
All Airlines	86	42	38	90.5	39	92.9	44	51.2
<b>Melbourne-Mildura</b>								
QantasLink	52	39	36	92.3	36	92.3	13	25.0
REX Airlines	21	19	17	89.5	16	84.2	2	9.5
All Airlines	73	58	53	91.4	52	89.7	15	20.5
<b>Melbourne-Newcastle</b>								
Jetstar	18	17	16	94.1	16	94.1	1	5.6
Virgin Australia	23	18	18	100.0	18	100.0	5	21.7
All Airlines	41	35	34	97.1	34	97.1	6	14.6
<b>Melbourne-Perth</b>								
Jetstar	3	0	0	na	0	na	3	100.0
Qantas	44	30	23	76.7	23	76.7	14	31.8
Virgin Australia	25	22	18	81.8	19	86.4	3	12.0
All Airlines	72	52	41	78.8	42	80.8	20	27.8
<b>Melbourne-Sunshine Coast</b>								
Jetstar	27	3	3	100.0	3	100.0	24	88.9
QantasLink	1	0	0	na	0	na	1	100.0
Virgin Australia	38	17	17	100.0	16	94.1	21	55.3
All Airlines	66	20	20	100.0	19	95.0	46	69.7
<b>Melbourne-Sydney</b>								
Jetstar	18	1	1	100.0	1	100.0	17	94.4
Qantas	56	46	39	84.8	35	76.1	10	17.9
Virgin Australia	21	21	21	100.0	21	100.0	0	0.0
All Airlines	95	68	61	89.7	57	83.8	27	28.4
<b>Mildura-Melbourne</b>								
QantasLink	51	39	35	89.7	34	87.2	12	23.5
REX Airlines	21	19	15	78.9	16	84.2	2	9.5
All Airlines	72	58	50	86.2	50	86.2	14	19.4
<b>Mount Isa-Brisbane</b>								
Qantas	46	35	34	97.1	33	94.3	11	23.9
QantasLink	3	3	3	100.0	3	100.0	0	0.0
Virgin Australia	16	14	13	92.9	12	85.7	2	12.5
All Airlines	65	52	50	96.2	48	92.3	13	20.0

	Sectors		Arrivals On Time		Departures On Time		Cancellations	
	Sched.	Flown	No.	%	No.	%	No.	%
<b>Newcastle-Brisbane</b>								
Jetstar	9	9	8	88.9	8	88.9	0	0.0
QantasLink	5	0	0	na	0	na	5	100.0
Virgin Australia	13	13	13	100.0	13	100.0	0	0.0
All Airlines	27	22	21	95.5	21	95.5	5	18.5
<b>Newcastle-Melbourne</b>								
Jetstar	18	17	16	94.1	16	94.1	1	5.6
Virgin Australia	18	18	13	72.2	13	72.2	0	0.0
All Airlines	36	35	29	82.9	29	82.9	1	2.8
<b>Newman-Perth</b>								
Qantas	13	13	11	84.6	11	84.6	0	0.0
QantasLink	104	95	75	78.9	76	80.0	9	8.7
Virgin Australia	42	42	35	83.3	36	85.7	0	0.0
Virgin Australia Regional Airlines	17	17	16	94.1	17	100.0	0	0.0
All Airlines	176	167	137	82.0	140	83.8	9	5.1
<b>Perth-Adelaide</b>								
Jetstar	12	2	2	100.0	1	50.0	10	83.3
Qantas	48	26	25	96.2	24	92.3	22	45.8
Virgin Australia	17	14	13	92.9	13	92.9	3	17.6
Virgin Australia Regional Airlines	8	8	8	100.0	8	100.0	0	0.0
All Airlines	85	50	48	96.0	46	92.0	35	41.2
<b>Perth-Brisbane</b>								
Qantas	66	23	13	56.5	14	60.9	43	65.2
Virgin Australia	27	22	19	86.4	14	63.6	5	18.5
All Airlines	93	45	32	71.1	28	62.2	48	51.6
<b>Perth-Broome</b>								
Qantas	62	61	58	95.1	57	93.4	1	1.6
QantasLink	41	39	36	92.3	35	89.7	2	4.9
Virgin Australia	38	38	34	89.5	32	84.2	0	0.0
Virgin Australia Regional Airlines	14	14	14	100.0	13	92.9	0	0.0
All Airlines	155	152	142	93.4	137	90.1	3	1.9
<b>Perth-Darwin</b>								
Qantas	45	42	38	90.5	38	90.5	3	6.7
QantasLink	6	5	5	100.0	5	100.0	1	16.7
Virgin Australia	2	2	0	0.0	0	0.0	0	0.0
Virgin Australia Regional Airlines	22	22	19	86.4	19	86.4	0	0.0
All Airlines	75	71	62	87.3	62	87.3	4	5.3
<b>Perth-Kalgoorlie</b>								
Qantas	20	20	18	90.0	19	95.0	0	0.0
QantasLink	62	57	47	82.5	49	86.0	5	8.1
Virgin Australia	30	30	29	96.7	29	96.7	0	0.0
Virgin Australia Regional Airlines	33	32	25	78.1	25	78.1	1	3.0
All Airlines	145	139	119	85.6	122	87.8	6	4.1
<b>Perth-Karratha</b>								
Qantas	33	31	28	90.3	30	96.8	2	6.1
QantasLink	105	101	90	89.1	90	89.1	4	3.8
Virgin Australia	37	37	36	97.3	36	97.3	0	0.0
Virgin Australia Regional Airlines	17	17	12	70.6	15	88.2	0	0.0
All Airlines	192	186	166	89.2	171	91.9	6	3.1

	<i>Sectors</i>		<i>Arrivals On Time</i>		<i>Departures On Time</i>		<i>Cancellations</i>	
	<i>Sched.</i>	<i>Flown</i>	<i>No.</i>	<i>%</i>	<i>No.</i>	<i>%</i>	<i>No.</i>	<i>%</i>
<b>Perth-Melbourne</b>								
Jetstar	3	0	0	na	0	na	3	100.0
Qantas	43	29	27	93.1	25	86.2	14	32.6
Virgin Australia	24	23	17	73.9	9	39.1	1	4.2
All Airlines	70	52	44	84.6	34	65.4	18	25.7
<b>Perth-Newman</b>								
Qantas	13	13	11	84.6	11	84.6	0	0.0
QantasLink	104	96	85	88.5	84	87.5	8	7.7
Virgin Australia	42	42	38	90.5	39	92.9	0	0.0
Virgin Australia Regional Airlines	17	17	16	94.1	15	88.2	0	0.0
All Airlines	176	168	150	89.3	149	88.7	8	4.5
<b>Perth-Port Hedland</b>								
Qantas	43	42	37	88.1	41	97.6	1	2.3
QantasLink	80	75	69	92.0	71	94.7	5	6.3
Virgin Australia	12	12	9	75.0	10	83.3	0	0.0
Virgin Australia Regional Airlines	41	41	36	87.8	39	95.1	0	0.0
All Airlines	176	170	151	88.8	161	94.7	6	3.4
<b>Perth-Sydney</b>								
Qantas	27	26	21	80.8	19	73.1	1	3.7
Virgin Australia	23	23	20	87.0	14	60.9	0	0.0
All Airlines	50	49	41	83.7	33	67.3	1	2.0
<b>Port Hedland-Perth</b>								
Qantas	44	43	32	74.4	34	79.1	1	2.3
QantasLink	80	74	57	77.0	63	85.1	6	7.5
Virgin Australia	12	12	7	58.3	5	41.7	0	0.0
Virgin Australia Regional Airlines	41	41	32	78.0	33	80.5	0	0.0
All Airlines	177	170	128	75.3	135	79.4	7	4.0
<b>Port Lincoln-Adelaide</b>								
QantasLink	28	23	22	95.7	21	91.3	5	17.9
REX Airlines	149	147	123	83.7	122	83.0	2	1.3
All Airlines	177	170	145	85.3	143	84.1	7	4.0
<b>Proserpine-Brisbane</b>								
Jetstar	31	30	24	80.0	24	80.0	1	3.2
Virgin Australia	47	30	28	93.3	27	90.0	17	36.2
All Airlines	78	60	52	86.7	51	85.0	18	23.1
<b>Rockhampton-Brisbane</b>								
QantasLink	134	102	93	91.2	93	91.2	32	23.9
Virgin Australia	81	50	49	98.0	48	96.0	31	38.3
All Airlines	215	152	142	93.4	141	92.8	63	29.3
<b>Sunshine Coast-Melbourne</b>								
Jetstar	27	3	3	100.0	3	100.0	24	88.9
QantasLink	1	0	0	na	0	na	1	100.0
Virgin Australia	37	17	17	100.0	17	100.0	20	54.1
All Airlines	65	20	20	100.0	20	100.0	45	69.2
<b>Sydney-Adelaide</b>								
Jetstar	17	17	17	100.0	16	94.1	0	0.0
Virgin Australia	22	22	19	86.4	20	90.9	0	0.0
All Airlines	39	39	36	92.3	36	92.3	0	0.0

	Sectors		Arrivals On Time		Departures On Time		Cancellations	
	Sched.	Flown	No.	%	No.	%	No.	%
<b>Sydney-Albury</b>								
QantasLink	20	13	12	92.3	12	92.3	7	35.0
REX Airlines	14	13	12	92.3	12	92.3	1	7.1
All Airlines	34	26	24	92.3	24	92.3	8	23.5
<b>Sydney-Armidale</b>								
QantasLink	14	10	9	90.0	9	90.0	4	28.6
REX Airlines	9	9	8	88.9	8	88.9	0	0.0
All Airlines	23	19	17	89.5	17	89.5	4	17.4
<b>Sydney-Ballina</b>								
QantasLink	13	8	7	87.5	7	87.5	5	38.5
REX Airlines	9	9	8	88.9	7	77.8	0	0.0
Virgin Australia	18	18	18	100.0	18	100.0	0	0.0
All Airlines	40	35	33	94.3	32	91.4	5	12.5
<b>Sydney-Brisbane</b>								
Jetstar	10	0	0	na	0	na	10	100.0
Qantas	45	34	28	82.4	27	79.4	11	24.4
Virgin Australia	22	22	21	95.5	22	100.0	0	0.0
All Airlines	77	56	49	87.5	49	87.5	21	27.3
<b>Sydney-Cairns</b>								
Jetstar	13	13	12	92.3	12	92.3	0	0.0
Virgin Australia	18	18	18	100.0	17	94.4	0	0.0
All Airlines	31	31	30	96.8	29	93.5	0	0.0
<b>Sydney-Dubbo</b>								
QantasLink	16	10	8	80.0	8	80.0	6	37.5
REX Airlines	13	13	11	84.6	11	84.6	0	0.0
All Airlines	29	23	19	82.6	19	82.6	6	20.7
<b>Sydney-Hamilton Island</b>								
Jetstar	7	3	3	100.0	3	100.0	4	57.1
Qantas	6	1	1	100.0	1	100.0	5	83.3
Virgin Australia	12	8	8	100.0	8	100.0	4	33.3
All Airlines	25	12	12	100.0	12	100.0	13	52.0
<b>Sydney-Hobart</b>								
Jetstar	15	11	11	100.0	11	100.0	4	26.7
Virgin Australia	18	18	17	94.4	17	94.4	0	0.0
All Airlines	33	29	28	96.6	28	96.6	4	12.1
<b>Sydney-Launceston</b>								
Jetstar	14	14	13	92.9	13	92.9	0	0.0
Virgin Australia	18	18	16	88.9	15	83.3	0	0.0
All Airlines	32	32	29	90.6	28	87.5	0	0.0
<b>Sydney-Melbourne</b>								
Jetstar	18	1	1	100.0	1	100.0	17	94.4
Qantas	46	36	30	83.3	27	75.0	10	21.7
Virgin Australia	22	22	22	100.0	22	100.0	0	0.0
All Airlines	86	59	53	89.8	50	84.7	27	31.4
<b>Sydney-Perth</b>								
Qantas	27	26	14	53.8	18	69.2	1	3.7
Virgin Australia	24	24	18	75.0	23	95.8	0	0.0
All Airlines	51	50	32	64.0	41	82.0	1	2.0



	<i>Sectors</i>		<i>Arrivals On Time</i>		<i>Departures On Time</i>		<i>Cancellations</i>	
	<i>Sched.</i>	<i>Flown</i>	<i>No.</i>	<i>%</i>	<i>No.</i>	<i>%</i>	<i>No.</i>	<i>%</i>
<b>Sydney-Wagga Wagga</b>								
QantasLink	17	11	11	100.0	10	90.9	6	35.3
REX Airlines	13	12	10	83.3	11	91.7	1	7.7
All Airlines	30	23	21	91.3	21	91.3	7	23.3
<b>Townsville-Brisbane</b>								
Jetstar	55	45	38	84.4	36	80.0	10	18.2
Qantas	89	59	50	84.7	52	88.1	30	33.7
Virgin Australia	82	48	48	100.0	44	91.7	34	41.5
All Airlines	226	152	136	89.5	132	86.8	74	32.7
<b>Townsville-Cairns</b>								
QantasLink	119	117	111	94.9	111	94.9	2	1.7
REX Airlines	22	19	19	100.0	19	100.0	3	13.6
All Airlines	141	136	130	95.6	130	95.6	5	3.5
<b>Wagga Wagga-Sydney</b>								
QantasLink	17	11	11	100.0	11	100.0	6	35.3
REX Airlines	13	12	12	100.0	12	100.0	1	7.7
All Airlines	30	23	23	100.0	23	100.0	7	23.3

## Airports

On time performance is reported for all routes where the passenger load averages over 8000 passengers per month, and where two or more airlines operate in competition. The following data reports by airport against flights operated on those routes only. This month, 8 major city airports and 26 regional city airports are covered.

Airport	Arrivals			Departures		
	Sectors	On Time		Sectors	On Time	
	Flown	No.	%	Flown	No.	%
<b>Adelaide</b>						
Jetstar	65	57	87.7	65	59	90.8
Qantas	91	88	96.7	91	89	97.8
QantasLink	45	38	84.4	45	41	91.1
REX Airlines	147	123	83.7	147	133	90.5
Virgin Australia	122	112	91.8	121	111	91.7
Virgin Australia Regional Airlines	8	8	100.0	8	8	100.0
All Airlines	478	426	89.1	477	441	92.5
Relates to services to and from Alice Springs, Brisbane, Canberra, Gold Coast, Melbourne, Perth, Port Lincoln and Sydney.						
<b>Albury</b>						
QantasLink	13	12	92.3	13	12	92.3
REX Airlines	13	12	92.3	13	13	100.0
All Airlines	26	24	92.3	26	25	96.2
Relates to services to and from Sydney only.						
<b>Alice Springs</b>						
Qantas	15	13	86.7	15	12	80.0
QantasLink	22	15	68.2	22	13	59.1
Virgin Australia	13	12	92.3	13	12	92.3
All Airlines	50	40	80.0	50	37	74.0
Relates to services to and from Adelaide only.						
<b>Armidale</b>						
QantasLink	10	9	90.0	10	9	90.0
REX Airlines	9	8	88.9	9	8	88.9
All Airlines	19	17	89.5	19	17	89.5
Relates to services to and from Sydney only.						
<b>Ballina</b>						
QantasLink	8	7	87.5	8	7	87.5
REX Airlines	9	8	88.9	9	7	77.8
Virgin Australia	18	18	100.0	18	18	100.0
All Airlines	35	33	94.3	35	32	91.4
Relates to services to and from Sydney only.						
<b>Brisbane</b>						
Jetstar	226	201	88.9	225	197	87.6
Qantas	379	325	85.8	382	358	93.7
QantasLink	317	295	93.1	311	290	93.2
Virgin Australia	524	500	95.4	519	471	90.8
All Airlines	1 446	1 321	91.4	1 437	1 316	91.6
Relates to services to and from Adelaide, Cairns, Canberra, Darwin, Emerald, Gladstone, Hamilton Island, Hobart, Mackay, Melbourne, Mount Isa, Newcastle, Perth, Proserpine, Rockhampton, Sydney and Townsville.						

Airport	Arrivals			Departures		
	Sectors	On Time		Sectors	On Time	
	Flown	No.	%	Flown	No.	%
<b>Broome</b>						
Qantas	61	58	95.1	61	54	88.5
QantasLink	39	36	92.3	38	35	92.1
Virgin Australia	38	34	89.5	38	29	76.3
Virgin Australia Regional Airlines	14	14	100.0	14	11	78.6
All Airlines	152	142	93.4	151	129	85.4
Relates to services to and from Perth only.						
<b>Cairns</b>						
Jetstar	92	81	88.0	92	85	92.4
Qantas	85	73	85.9	84	76	90.5
QantasLink	119	112	94.1	122	110	90.2
REX Airlines	19	19	100.0	19	18	94.7
Virgin Australia	95	88	92.6	96	82	85.4
All Airlines	410	373	91.0	413	371	89.8
Relates to services to and from Brisbane, Melbourne, Sydney and Townsville.						
<b>Canberra</b>						
Qantas	16	16	100.0	16	16	100.0
QantasLink	62	57	91.9	63	61	96.8
Virgin Australia	54	50	92.6	55	51	92.7
All Airlines	132	123	93.2	134	128	95.5
Relates to services to and from Adelaide, Brisbane and Melbourne only.						
<b>Darwin</b>						
Jetstar	16	10	62.5	17	9	52.9
Qantas	123	102	82.9	120	99	82.5
QantasLink	5	5	100.0	5	3	60.0
Virgin Australia	56	50	89.3	56	45	80.4
Virgin Australia Regional Airlines	22	19	86.4	22	13	59.1
All Airlines	222	186	83.8	220	169	76.8
Relates to services to and from Brisbane, Melbourne and Perth.						
<b>Dubbo</b>						
QantasLink	10	8	80.0	10	8	80.0
REX Airlines	13	11	84.6	13	11	84.6
All Airlines	23	19	82.6	23	19	82.6
Relates to services to and from Sydney only.						
<b>Emerald</b>						
QantasLink	89	81	91.0	89	84	94.4
Virgin Australia	24	24	100.0	24	23	95.8
All Airlines	113	105	92.9	113	107	94.7
Relates to services to and from Brisbane only.						
<b>Gladstone</b>						
QantasLink	66	62	93.9	67	61	91.0
Virgin Australia	32	29	90.6	32	30	93.8
All Airlines	98	91	92.9	99	91	91.9
Relates to services to and from Brisbane only.						

Airport	Arrivals			Departures		
	Sectors Flown	On Time		Sectors Flown	On Time	
		No.	%		No.	%
<b>Gold Coast</b>						
Jetstar	23	20	87.0	23	22	95.7
Qantas	0	0	na	0	0	na
Virgin Australia	38	38	100.0	38	37	97.4
All Airlines	61	58	95.1	61	59	96.7
Relates to services to and from Adelaide and Melbourne only.						
<b>Hamilton Island</b>						
Jetstar	3	3	100.0	3	3	100.0
Qantas	27	23	85.2	27	24	88.9
Virgin Australia	35	35	100.0	35	35	100.0
All Airlines	65	61	93.8	65	62	95.4
Relates to services to and from Brisbane and Sydney.						
<b>Hobart</b>						
Jetstar	48	45	93.8	48	42	87.5
Qantas	2	2	100.0	2	1	50.0
QantasLink	29	25	86.2	27	22	81.5
Virgin Australia	69	66	95.7	69	65	94.2
All Airlines	148	138	93.2	146	130	89.0
Relates to services to and from Brisbane, Melbourne and Sydney.						
<b>Kalgoorlie</b>						
Qantas	20	18	90.0	20	14	70.0
QantasLink	57	47	82.5	57	46	80.7
Virgin Australia	30	29	96.7	30	16	53.3
Virgin Australia Regional Airlines	32	25	78.1	32	21	65.6
All Airlines	139	119	85.6	139	97	69.8
Relates to services to and from Perth only.						
<b>Karratha</b>						
Qantas	31	28	90.3	30	29	96.7
QantasLink	101	90	89.1	105	89	84.8
Virgin Australia	37	36	97.3	37	32	86.5
Virgin Australia Regional Airlines	17	12	70.6	17	13	76.5
All Airlines	186	166	89.2	189	163	86.2
Relates to services to and from Perth only.						
<b>Launceston</b>						
Jetstar	17	16	94.1	17	16	94.1
QantasLink	21	17	81.0	19	16	84.2
Virgin Australia	36	34	94.4	36	35	97.2
All Airlines	74	67	90.5	72	67	93.1
Relates to services to and from Melbourne and Sydney.						
<b>Mackay</b>						
Jetstar	26	24	92.3	26	24	92.3
Qantas	41	40	97.6	41	40	97.6
QantasLink	11	10	90.9	14	13	92.9
Virgin Australia	53	53	100.0	54	53	98.1
All Airlines	131	127	96.9	135	130	96.3
Relates to services to and from Brisbane only.						

Airport	Arrivals			Departures		
	Sectors Flown	On Time		Sectors Flown	On Time	
		No.	%		No.	%
<b>Melbourne</b>						
Jetstar	96	87	90.6	96	86	89.6
Qantas	153	137	89.5	164	144	87.8
QantasLink	108	97	89.8	113	101	89.4
REX Airlines	19	15	78.9	19	16	84.2
Virgin Australia	255	230	90.2	253	244	96.4
All Airlines	631	566	89.7	645	591	91.6
Relates to services to and from Adelaide, Brisbane, Cairns, Canberra, Darwin, Gold Coast, Hobart, Launceston, Mildura, Newcastle, Perth, Sunshine Coast and Sydney.						
<b>Mildura</b>						
QantasLink	39	36	92.3	39	34	87.2
REX Airlines	19	17	89.5	19	16	84.2
All Airlines	58	53	91.4	58	50	86.2
Relates to services to and from Melbourne only.						
<b>Mount Isa</b>						
Qantas	35	32	91.4	35	33	94.3
QantasLink	3	2	66.7	3	3	100.0
Virgin Australia	14	12	85.7	14	12	85.7
All Airlines	52	46	88.5	52	48	92.3
Relates to services to and from Brisbane only.						
<b>Newcastle</b>						
Jetstar	26	24	92.3	26	24	92.3
QantasLink	0	0	na	0	0	na
Virgin Australia	31	31	100.0	31	26	83.9
All Airlines	57	55	96.5	57	50	87.7
Relates to services to and from Brisbane and Melbourne.						
<b>Newman</b>						
Qantas	13	11	84.6	13	11	84.6
QantasLink	96	85	88.5	95	76	80.0
Virgin Australia	42	38	90.5	42	36	85.7
Virgin Australia Regional Airlines	17	16	94.1	17	17	100.0
All Airlines	168	150	89.3	167	140	83.8
Relates to services to and from Perth only.						
<b>Perth</b>						
Jetstar	2	2	100.0	2	1	50.0
Qantas	313	246	78.6	313	278	88.8
QantasLink	374	309	82.6	373	334	89.5
Virgin Australia	243	189	77.8	243	196	80.7
Virgin Australia Regional Airlines	151	115	76.2	151	134	88.7
All Airlines	1 083	861	79.5	1 082	943	87.2
Relates to services to and from Adelaide, Brisbane, Broome, Darwin, Kalgoorlie, Karratha, Melbourne, Newman, Port Hedland and Sydney.						
<b>Port Hedland</b>						
Qantas	42	37	88.1	43	34	79.1
QantasLink	75	69	92.0	74	63	85.1
Virgin Australia	12	9	75.0	12	5	41.7
Virgin Australia Regional Airlines	41	36	87.8	41	33	80.5
All Airlines	170	151	88.8	170	135	79.4
Relates to services to and from Perth only.						

Airport	Arrivals			Departures		
	Sectors Flown	On Time		Sectors Flown	On Time	
		No.	%		No.	%
<b>Port Lincoln</b>						
QantasLink	23	22	95.7	23	21	91.3
REX Airlines	147	129	87.8	147	122	83.0
All Airlines	170	151	88.8	170	143	84.1
Relates to services to and from Adelaide only.						
<b>Proserpine</b>						
Jetstar	30	25	83.3	30	24	80.0
Virgin Australia	30	26	86.7	30	27	90.0
All Airlines	60	51	85.0	60	51	85.0
Relates to services to and from Brisbane only.						
<b>Rockhampton</b>						
QantasLink	102	97	95.1	102	93	91.2
Virgin Australia	49	47	95.9	50	48	96.0
All Airlines	151	144	95.4	152	141	92.8
Relates to services to and from Brisbane only.						
<b>Sunshine Coast</b>						
Jetstar	3	3	100.0	3	3	100.0
QantasLink	0	0	na	0	0	na
Virgin Australia	17	17	100.0	17	17	100.0
All Airlines	20	20	100.0	20	20	100.0
Relates to services to and from Melbourne only.						
<b>Sydney</b>						
Jetstar	59	58	98.3	59	56	94.9
Qantas	106	89	84.0	97	73	75.3
QantasLink	52	47	90.4	52	46	88.5
REX Airlines	56	52	92.9	56	49	87.5
Virgin Australia	167	157	94.0	170	162	95.3
All Airlines	440	403	91.6	434	386	88.9
Relates to services to and from Adelaide, Albury, Armidale, Ballina, Brisbane, Cairns, Dubbo, Hamilton Island, Hobart, Launceston, Melbourne, Perth, and Wagga Wagga.						
<b>Townsville</b>						
Jetstar	45	39	86.7	45	36	80.0
Qantas	60	48	80.0	59	52	88.1
QantasLink	120	112	93.3	117	111	94.9
REX Airlines	19	18	94.7	19	19	100.0
Virgin Australia	47	42	89.4	48	44	91.7
All Airlines	291	259	89.0	288	262	91.0
Relates to services to and from Brisbane and Cairns.						
<b>Wagga Wagga</b>						
QantasLink	11	11	100.0	11	11	100.0
REX Airlines	12	10	83.3	12	12	100.0
All Airlines	23	21	91.3	23	23	100.0
Relates to services to and from Sydney only.						

## Definitions

---

On time arrival	A flight arrival is counted as "on time" if it arrived at the gate before 15 minutes after the scheduled arrival time shown in the carriers' schedule. Neither diverted nor cancelled flights count as on time.
On time departure	A flight departure is counted as "on time" if it departs the gate before 15 minutes after the scheduled departure time shown in the carriers' schedule.
Cancellation	A flight removed from service within 7 days of scheduled departure is regarded as a cancellation.
On time departure percentage	The percentage of on time departures is measured against the number of departures <i>operated</i> on any particular sector.
On time arrival percentage	The percentage of on time arrivals is measured against the number of arrivals <i>operated</i> on any particular sector.
Cancellation percentage	The percentage of cancellations is measured against the number of services <i>scheduled</i> on any particular sector.

---