



Australian Government

Department of Infrastructure, Transport, Regional Development and Communications

Bureau of Infrastructure and Transport Research Economics

STATISTICAL REPORT



Aviation

Domestic airline on time performance
April 2021

© Commonwealth of Australia 2021

ISSN: 1832-0759

Ownership of intellectual property rights in this publication

Unless otherwise noted, copyright (and any other intellectual property rights, if any) in this publication is owned by the Commonwealth of Australia (referred to below as the Commonwealth).

Disclaimer

The material contained in this publication is made available on the understanding that the Commonwealth is not providing professional advice, and that users exercise their own skill and care with respect to its use, and seek independent advice if necessary.

The Commonwealth makes no representations or warranties as to the contents or accuracy of the information contained in this publication. To the extent permitted by law, the Commonwealth disclaims liability to any person or organisation in respect of anything done, or omitted to be done, in reliance upon information contained in this publication.

Creative Commons licence

With the exception of (a) the Coat of Arms; and (b) the Department of Infrastructure, Transport, Regional Development and Communications' photos and graphics, copyright in this publication is licensed under a Creative Commons Attribution 3.0 Australia Licence.

Creative Commons Attribution 3.0 Australia Licence is a standard form licence agreement that allows you to copy, communicate and adapt this publication provided that you attribute the work to the Commonwealth and abide by the other licence terms. A summary of the licence terms is available from <http://creativecommons.org/licenses/by/3.0/au/deed.en>. The full licence terms are available from <http://creativecommons.org/licenses/by/3.0/au/legalcode>.

Use of the Coat of Arms

The Department of the Prime Minister and Cabinet sets the terms under which the Coat of Arms is used. Please refer to the Department's Commonwealth Coat of Arms and Government branding web page <http://www.dpmc.gov.au/guidelines/index.cfm#brand> and, in particular, the Guidelines on the use of the Commonwealth Coat of Arms publication.

An appropriate citation for this report is:

Bureau of Infrastructure and Transport Research Economics (BITRE), 2021, Domestic airline on time performance, Statistical Report, BITRE, Canberra ACT.

Contact us

This publication is available in PDF format. All other rights are reserved, including in relation to any Departmental logos or trade marks which may exist. For enquiries regarding the licence and any use of this publication, please contact:

Bureau of Infrastructure and Transport Research Economics (BITRE)
Department of Infrastructure, Transport, Regional Development and Communications
GPO Box 501, Canberra ACT 2601, Australia
Telephone: (international) +61 2 6274 7210
Fax: (international) +61 2 6274 6855
Email: bitre@infrastructure.gov.au
Website: www.bitre.gov.au

Inquiries

Should you require additional information about the statistics contained in this publication:

Telephone (02) 6274 7790 or Facsimile (02) 6274 7727

Electronic mail: AVSTATS@infrastructure.gov.au

Web site: <http://www.bitre.gov.au/statistics/aviation/otphome.aspx>

Foreword

The Bureau of Infrastructure and Transport Research Economics (BITRE) monitors the punctuality and reliability of major domestic airlines operating between Australian airports. The purpose of this is to allow for evaluation of overall industry and individual airline performance, so that consumers of air travel can make informed decisions.

The following domestic airlines currently report this information monthly to the BITRE: Jetstar, Qantas, QantasLink, Regional Express, Virgin Australia and Virgin Australia Regional Airlines. Data has been gathered since November 2003, although some airlines commenced reporting at a later date, including Jetstar which first reported in May 2004, MacAir in July 2005, Tigerair Australia in April 2008 and Virgin Australia Regional Airlines in May 2013. MacAir ceased operations in February 2009 and data was not received for December 2008 onwards. Virgin Blue was rebranded as Virgin Australia in May 2011 and Tiger Airways was rebranded as Tigerair Australia in July 2013 and time series data in Microsoft Excel spreadsheet format on the BITRE website have been revised to reflect these changes. Services operated by Skywest on behalf of Virgin Australia using ATR/F100 aircraft commenced in November 2011 and were shown separately as Virgin Australia – ATR/F100 Operations. Virgin Australia Regional Airlines commenced operations in May 2013. It was formed after the acquisition of Skywest by Virgin Australia and represented a combination of operations previously reported under Skywest and Virgin Australia – ATR/F100 Operations. In January 2016, Virgin Australia transferred their ATR fleet from Virgin Australia Regional Airlines to Virgin Australia. Tigerair Australia ceased operations in March 2020 and data was not received for that month.

Information presented in this report is for Australian domestic routes for which the passenger load averaged 8 000 or more passengers per month over the previous six months and where two or more airlines operated in competition on those routes. There were 56 routes that met this definition in April 2021. Over time, routes which meet these criteria change as airline networks and traffic levels vary.

Participating airlines report their overall monthly network performance where this is possible.

Total industry figures encompass all services operated by reporting airlines only. These airlines collectively carried over 95 per cent of total domestic passengers (regular public transport only) in 2019.

The method of capturing on time performance varies between airlines utilising different recording systems. Jetstar and Qantas jet aircraft use Aircraft Communication Addressing and Reporting System (ACARS) to electronically measure on time performance. Regional Express, Tigerair Australia, Virgin Australia, Virgin Australia Regional Airlines and the Qantas non-jet fleet record on time performance manually using records from pilots, gate agents and/or ground crews.

After initial data is collected, aggregate reports are audited internally by participating airlines prior to publication.

Reports and detailed time series data in Microsoft Excel spreadsheet format are available from the BITRE website at: <http://www.bitre.gov.au/statistics/aviation/otphome.aspx>.

Contents

	Page
Industry performance	1
Individual routes	9
Airports.....	21
Definitions	26

Industry performance

For April 2021, on time performance over all routes operated by participating airlines (Jetstar, Qantas, QantasLink, Regional Express, Virgin Australia and Virgin Australia Regional Airlines) averaged 85.2 per cent for on time arrivals and 83.7 per cent for on time departures. The cancellation rate for the month was 2.9 per cent. The equivalent figures for April 2020 were 92.0 per cent for on time arrivals, 90.9 per cent for on time departures and 33.6 per cent for cancellations.

This month's on time arrivals figure was higher than the long term average performance for all routes (82.3 per cent) and the on time departures figure was slightly higher than the long term average (83.6 per cent). The rate of cancellations was higher than the long term average of 1.7 per cent.

The Virgin Australia network (Virgin Australia and Virgin Australia Regional Airlines combined operations) recorded 85.3 per cent for on time arrivals while the Qantas network (Qantas and QantasLink combined operations) recorded 83.6 per cent. Jetstar achieved the highest on time arrivals among the major domestic airlines at 85.8 per cent followed by Virgin Australia at 85.6 per cent and Qantas at 85.1 per cent. Of the regional airlines, Regional Express recorded 89.2 per cent for on time arrivals, followed by QantasLink at 82.4 per cent and Virgin Australia Regional Airlines at 78.4 per cent.

The Qantas network recorded 83.3 per cent for on time departures while the Virgin Australia network recorded 81.3 per cent. Qantas achieved the highest level of on time departures among the major domestic airlines for April 2021 at 84.6 per cent, followed by Jetstar at 82.8 per cent and Virgin Australia at 81.5 per cent. Of the regional airlines, Regional Express recorded 89.9 per cent for on time departures, followed by QantasLink at 82.3 per cent and Virgin Australia Regional Airlines at 77.8 per cent.

Jetstar recorded the highest percentage of cancellations (at 5.1 per cent) during the month, followed by Virgin Australia (at 3.6 per cent), Qantas and QantasLink (at 2.3 per cent), Virgin Australia Regional Airlines (at 0.9 per cent) and Regional Express (at 0.5 per cent).

Airlines' on time performance varies across the routes they serve. Individual route data by specific airline for 56 routes are shown on pages 9-20.

Of the 56 routes which met the criteria for on time performance reporting in April 2021, the Albury-Sydney route had the highest percentage of on time arrivals (98.1 per cent) and the highest percentage of on time departures (96.2 per cent). The Perth-Brisbane route had the lowest percentage of on time arrivals (51.6 per cent) and the Alice Springs-Adelaide route had the lowest percentage of on time departures (60.5 per cent).

Cancellations were highest on the Perth-Brisbane route at 31.2 per cent, followed by the Brisbane-Perth route at 28.7 per cent, the Brisbane-Melbourne route at 12.9 per cent, the Melbourne-Brisbane route at 12.7 per cent and the Brisbane-Mount Isa route at 8.7 per cent.

Emerald Airport recorded the highest percentage of on time arrivals (96.4 per cent) and Albury Airport recorded the highest percentage of on time departures (96.2 per cent). Mildura Airport recorded the lowest percentage of on time arrivals (74.9 per cent) and Alice Springs Airport recorded the lowest percentage of on time departures (60.5 per cent). These figures only refer to reported routes and do not cover all flights at these airports.

Table 1 On time performance for April 2021 — Total Industry

	<i>Sectors</i>		<i>Arrivals On Time</i>		<i>Departures On Time</i>		<i>Cancellations</i>	
	<i>Scheduled</i>	<i>Flown</i>	<i>No.</i>	<i>%</i>	<i>No.</i>	<i>%</i>	<i>No.</i>	<i>%</i>
Jetstar	7 954	7 545	6 476	85.8	6 250	82.8	409	5.1
Qantas - all QF designated services	16 233	15 866	13 258	83.6	13 217	83.3	367	2.3
Regional Express	5 146	5 119	4 567	89.2	4 601	89.9	27	0.5
Virgin Australia - all VA designated services	7 674	7 404	6 314	85.3	6 021	81.3	270	3.5
All Airlines	37 007	35 934	30 615	85.2	30 089	83.7	1 073	2.9
Individual operating entities								
Qantas	6 984	6 826	5 808	85.1	5 774	84.6	158	2.3
QantasLink	9 249	9 040	7 450	82.4	7 443	82.3	209	2.3
Virgin Australia	7 338	7 071	6 053	85.6	5 762	81.5	267	3.6
Virgin Australia Regional Airlines	336	333	261	78.4	259	77.8	3	0.9

Total airline network data (including routes not shown in this report).

Airlines' on time performance varies across the routes they serve. Individual route data by specific airline for 56 routes are shown on pages 9-20.

Table 2 Top ten routes for on time performance for April 2021 (participating airlines only)

<i>Arrivals</i>		<i>Departures</i>	
<i>Route</i>	<i>On Time (%)</i>	<i>Route</i>	<i>On Time (%)</i>
Albury-Sydney	98.1	Albury-Sydney	96.2
Brisbane-Emerald	96.4	Brisbane-Emerald	95.0
Emerald-Brisbane	95.7	Wagga Wagga-Sydney	94.9
Brisbane-Canberra	95.1	Brisbane-Gladstone	94.6
Brisbane-Gladstone	94.6	Emerald-Brisbane	94.2
Sydney-Dubbo	94.2	Port Macquarie-Sydney	93.9
Gold Coast-Adelaide	93.5	Brisbane-Canberra	93.7
Brisbane-Proserpine	93.3	Brisbane-Mount Isa	93.7
Perth-Newman	93.2	Adelaide-Gold Coast	93.5
Sydney-Albury	93.0	Brisbane-Proserpine	93.3

Table 3 Top ten airports for on time performance for April 2021 (participating airlines and reported routes only)

<i>Arrivals</i>		<i>Departures</i>	
<i>Airport</i>	<i>On Time (%)</i>	<i>Airport</i>	<i>On Time (%)</i>
Emerald	96.4	Albury	96.2
Gladstone	94.6	Wagga Wagga	94.9
Dubbo	94.2	Emerald	94.2
Proserpine	93.3	Port Macquarie	93.9
Newman	93.2	Gladstone	93.3
Albury	93.0	Coffs Harbour	91.8
Wagga Wagga	93.0	Dubbo	91.0
Port Macquarie	92.3	Mount Isa	88.7
Rockhampton	91.7	Rockhampton	88.3
Coffs Harbour	90.2	Brisbane	87.8

Total industry on time performance

Figure 1 On time performance (by month from April 2018)—Total Industry

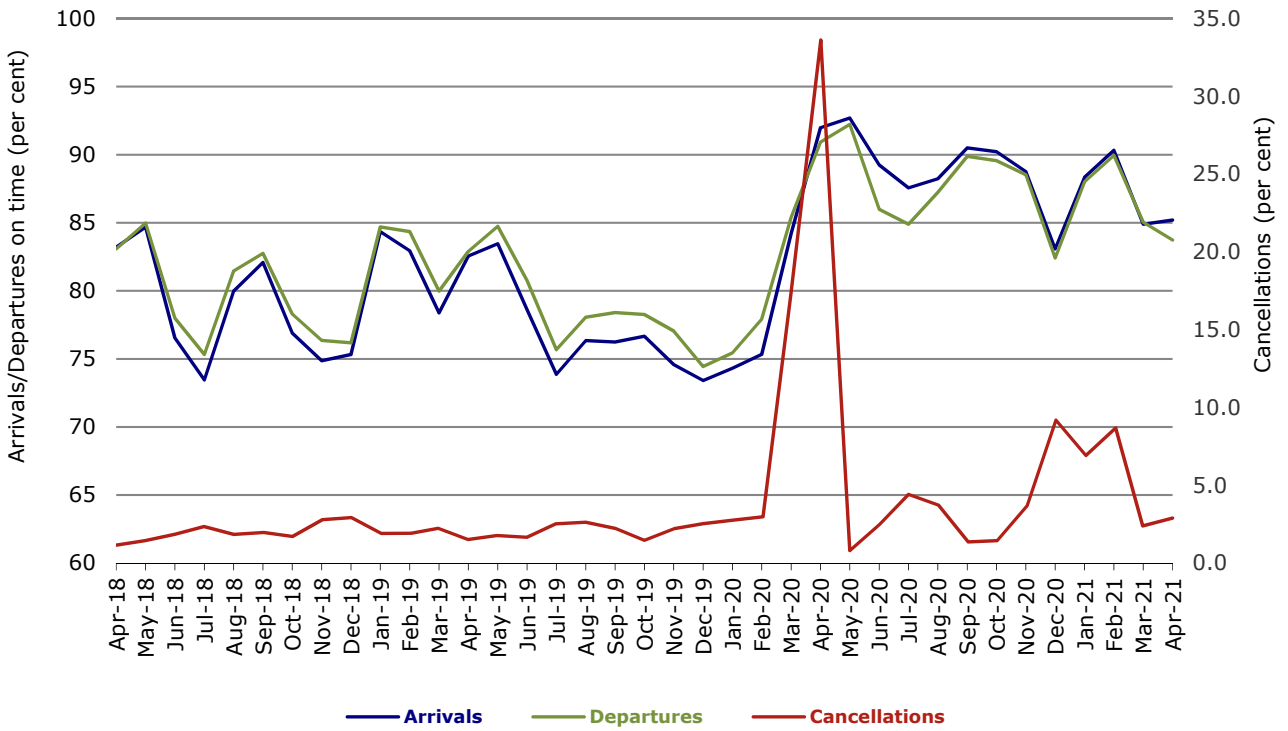


Figure 2 Arrivals on time (by month from April 2020)

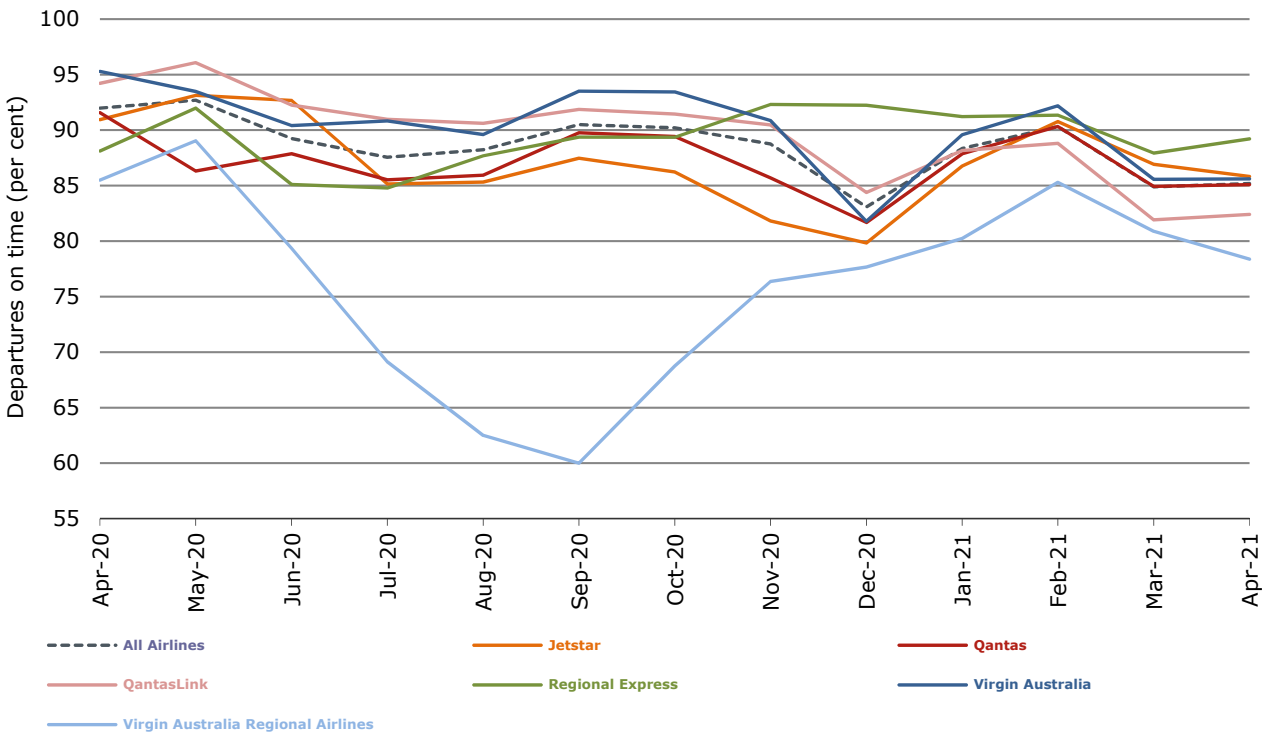


Figure 3 Departures on time (by month from April 2020)

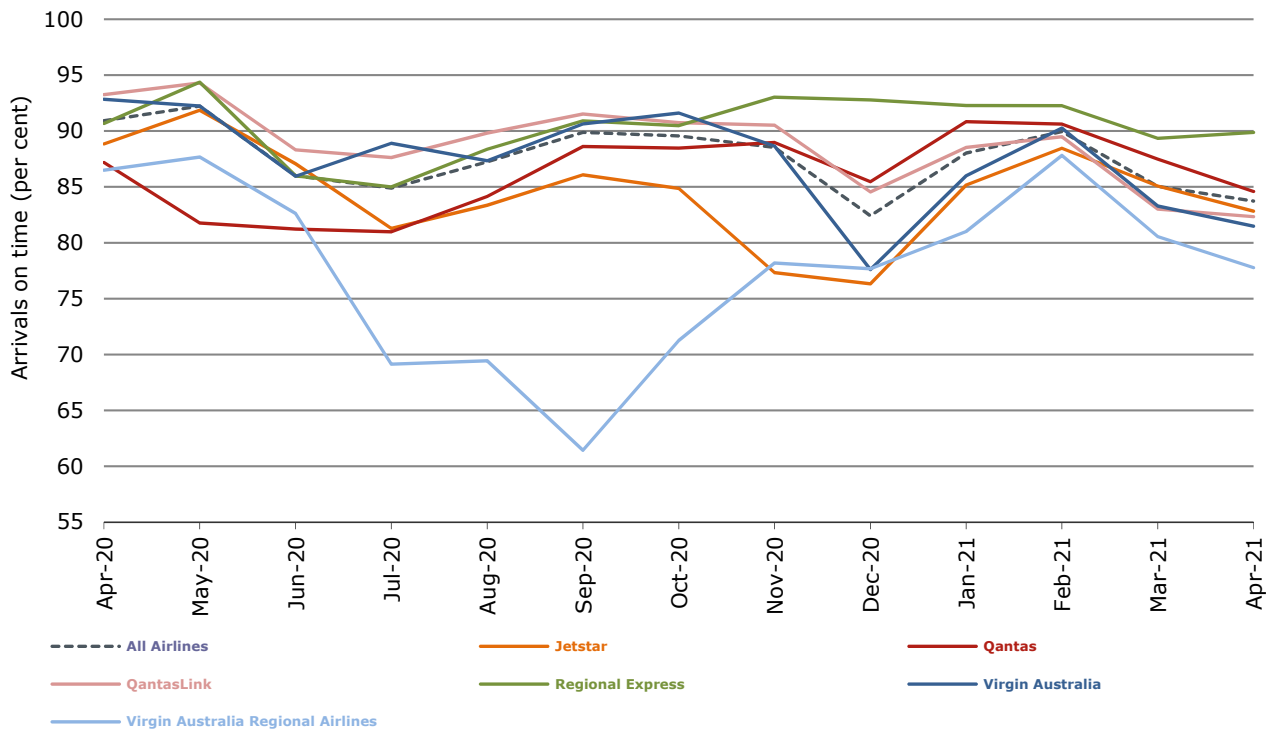
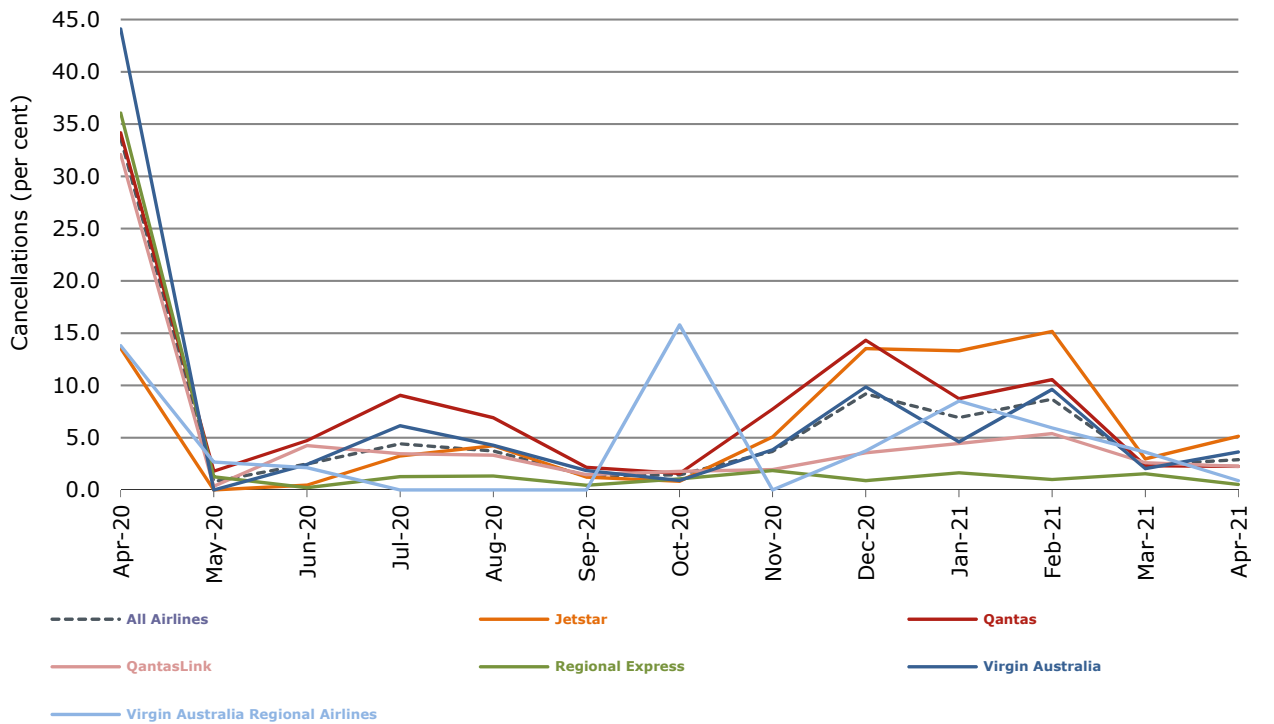


Figure 4 Cancellations (by month from April 2020)



Major domestic airlines on time performance

Figure 5 On time performance (by month from April 2018)—Jetstar

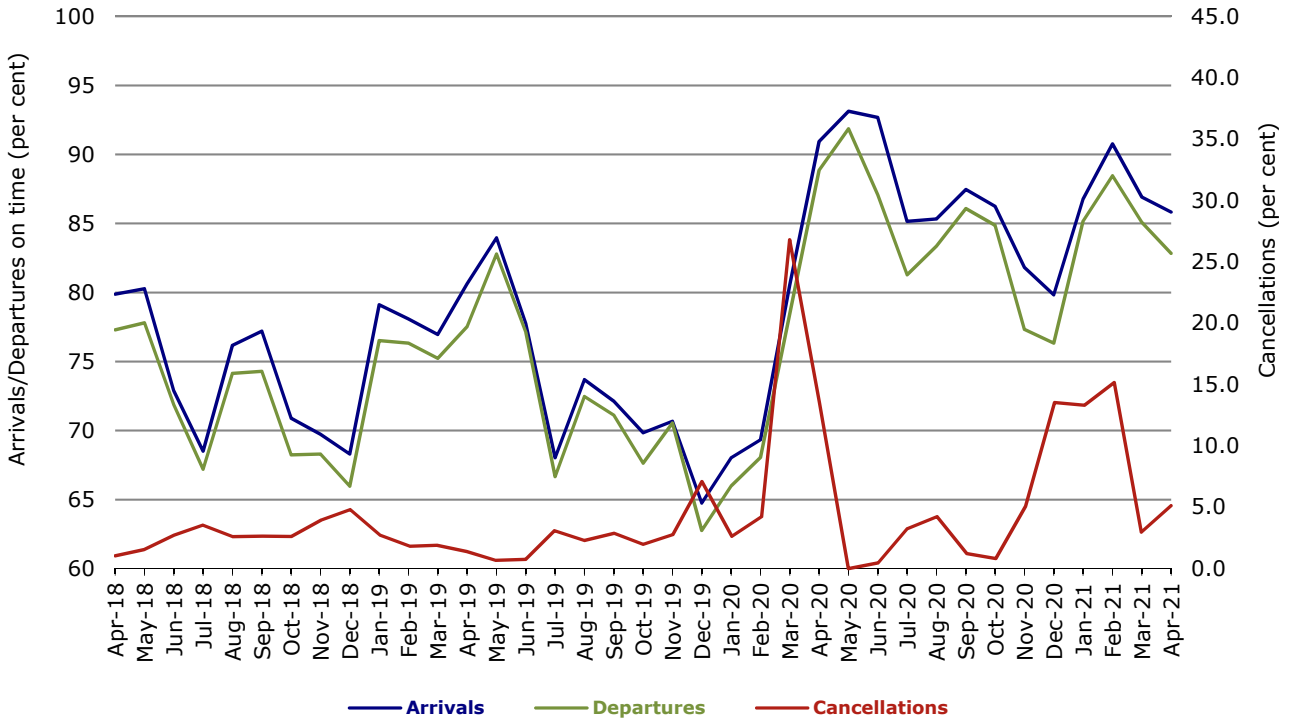


Figure 6 On time performance (by month from April 2018)—Qantas

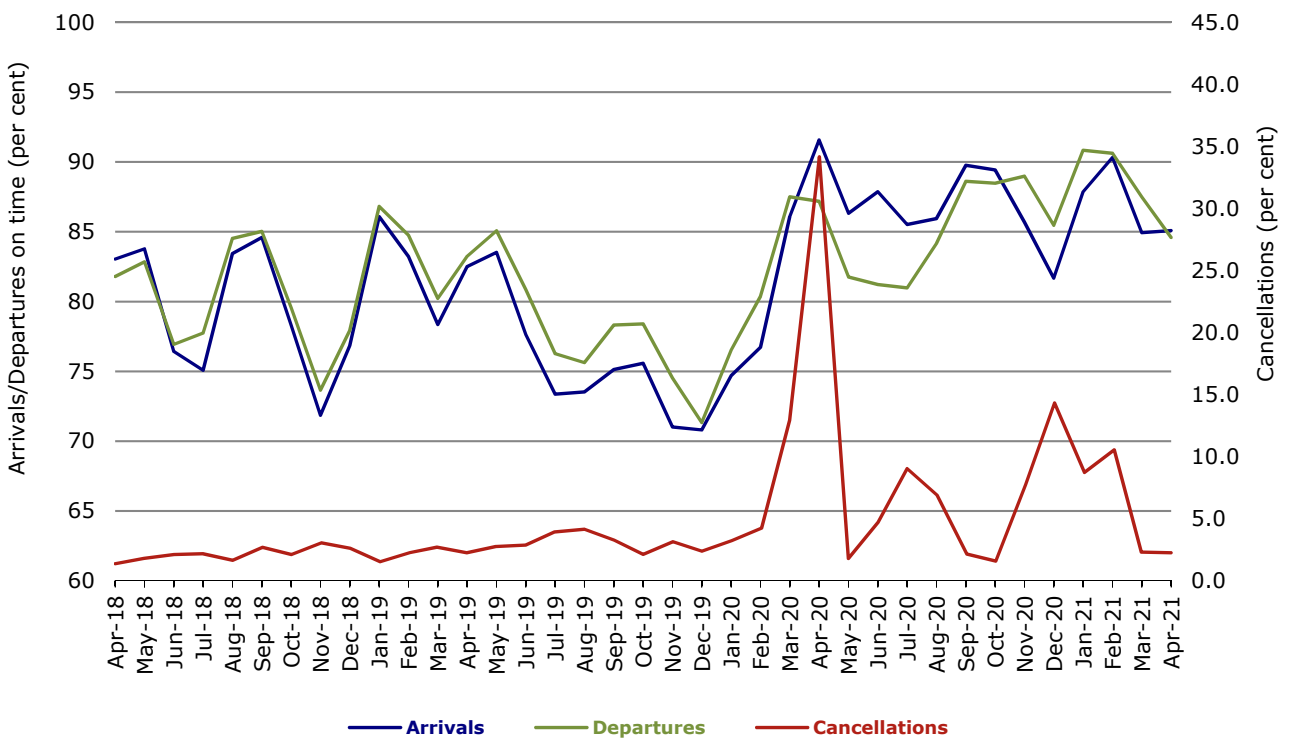
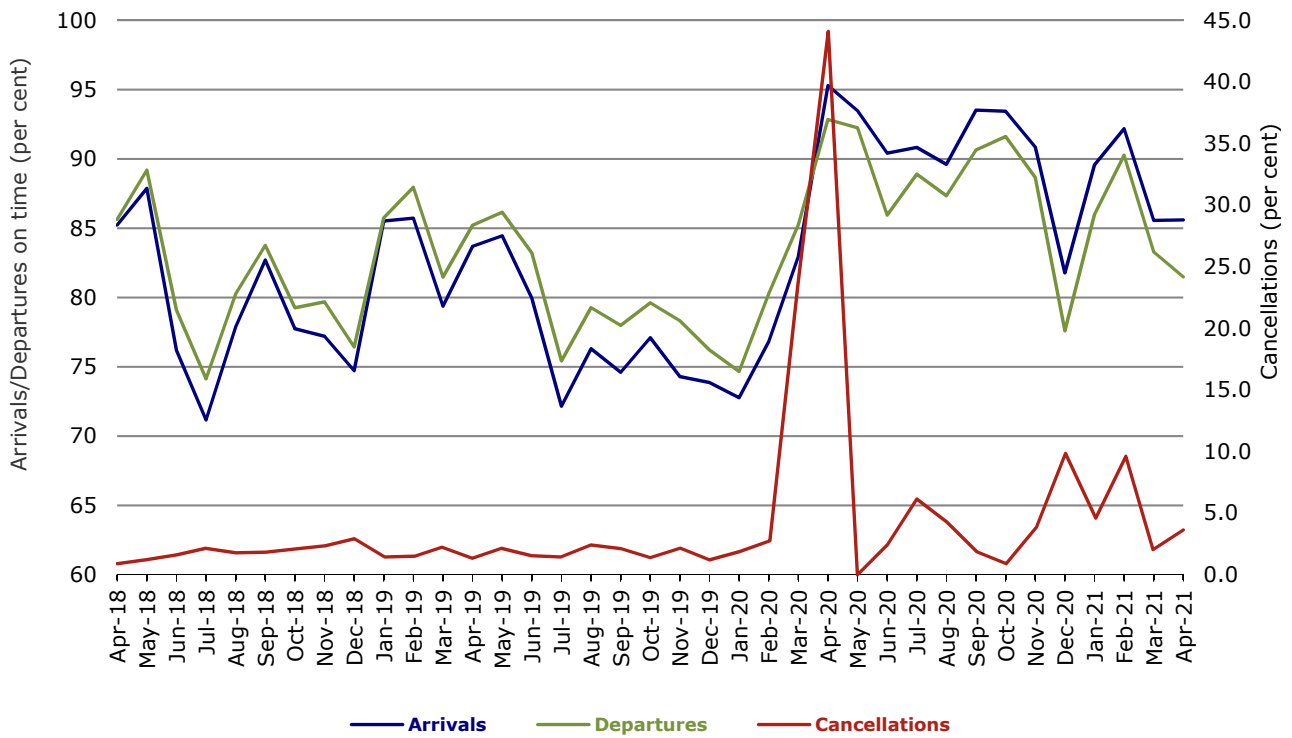


Figure 7 On time performance (by month from April 2018)—Virgin Australia



Major regional airlines on time performance

Figure 8 On time performance (by month from April 2018)—QantasLink

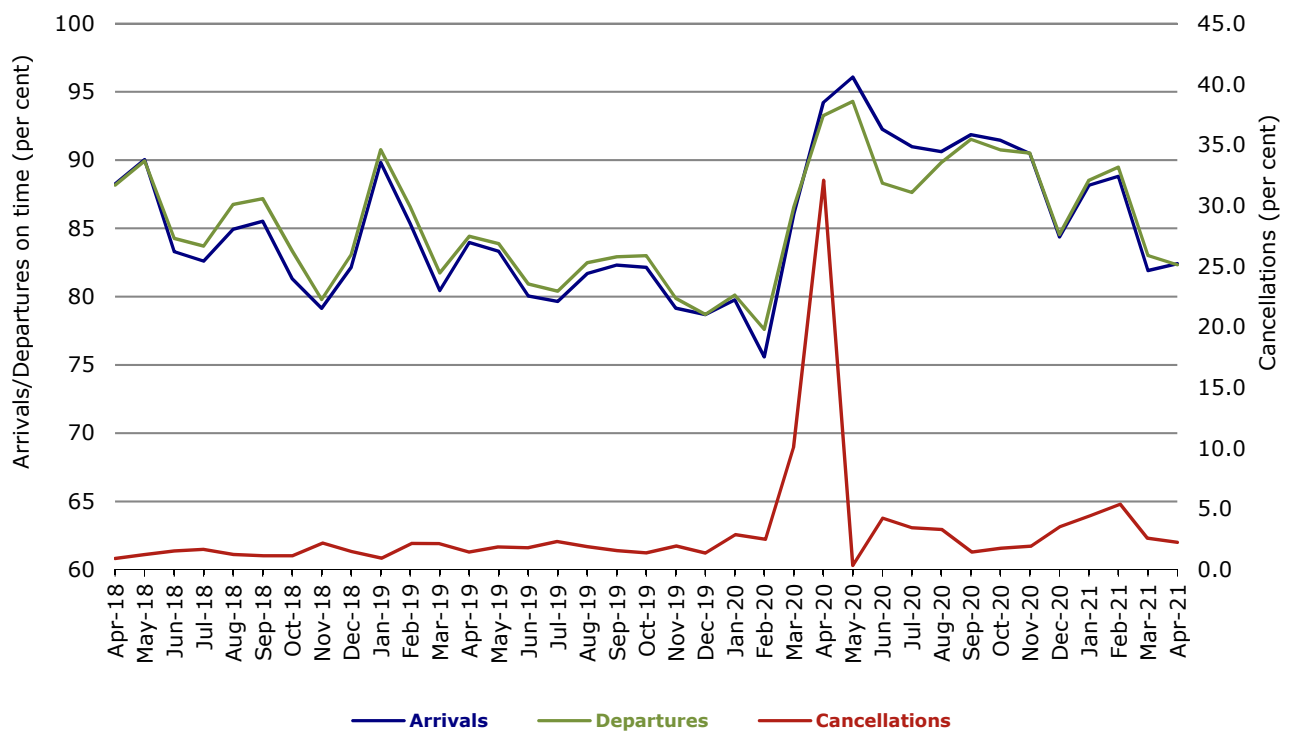


Figure 9 On time performance (by month from April 2018)—Regional Express

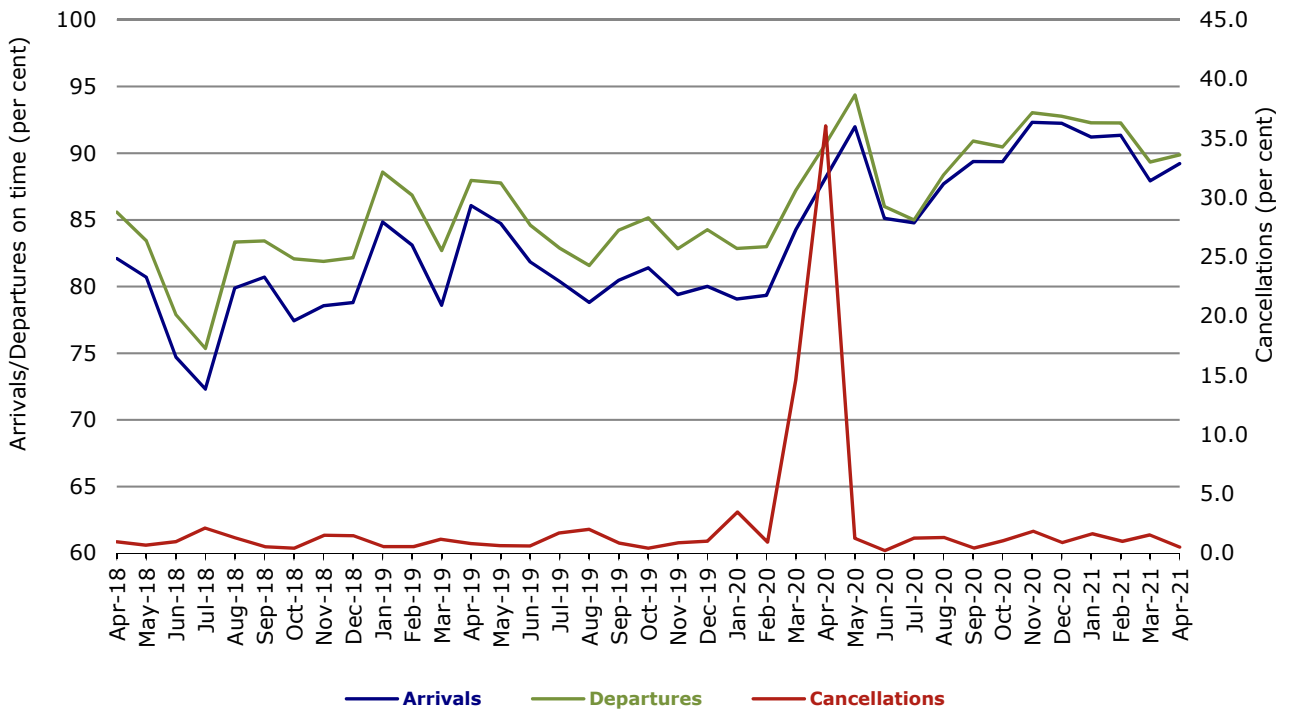
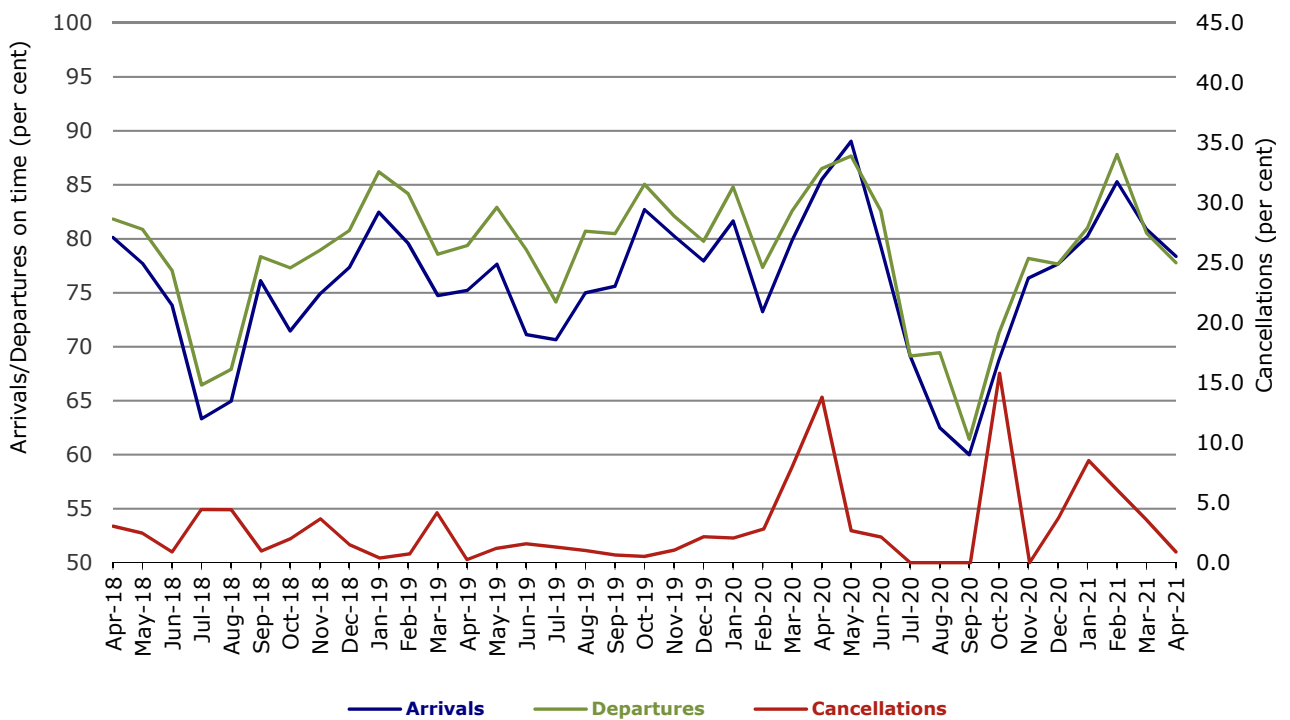


Figure 10 On time performance (by month from April 2018) Virgin Australia Regional Airlines



Individual routes

On time performance is reported for all routes where the passenger load averages over 8000 passengers per month over the previous six months, and where two or more airlines operate in competition on those routes. There are now 56 routes which meet this definition. Over time, however, routes which meet this definition may change as airline networks and traffic levels vary.

	Sectors		Arrivals On Time		Departures On Time		Cancellations	
	Sched.	Flown	No.	%	No.	%	No.	%
Adelaide-Alice Springs								
Qantas	30	30	23	76.7	24	80.0	0	0.0
Virgin Australia	13	13	11	84.6	13	100.0	0	0.0
All Airlines	43	43	34	79.1	37	86.0	0	0.0
Adelaide-Brisbane								
Jetstar	32	31	25	80.6	24	77.4	1	3.1
Qantas	88	87	78	89.7	76	87.4	1	1.1
Virgin Australia	84	73	64	87.7	62	84.9	11	13.1
All Airlines	204	191	167	87.4	162	84.8	13	6.4
Adelaide-Canberra								
Qantas	33	33	22	66.7	19	57.6	0	0.0
Virgin Australia	16	16	15	93.8	13	81.3	0	0.0
All Airlines	49	49	37	75.5	32	65.3	0	0.0
Adelaide-Gold Coast								
Jetstar	29	25	23	92.0	23	92.0	4	13.8
Virgin Australia	38	37	33	89.2	35	94.6	1	2.6
All Airlines	67	62	56	90.3	58	93.5	5	7.5
Adelaide-Melbourne								
Jetstar	118	117	103	88.0	100	85.5	1	0.8
Qantas	186	183	163	89.1	156	85.2	3	1.6
Regional Express	59	59	49	83.1	50	84.7	0	0.0
Virgin Australia	156	155	139	89.7	135	87.1	1	0.6
All Airlines	519	514	454	88.3	441	85.8	5	1.0
Adelaide-Perth								
Jetstar	26	26	21	80.8	19	73.1	0	0.0
Qantas	87	86	69	80.2	67	77.9	1	1.1
Virgin Australia	42	42	39	92.9	36	85.7	0	0.0
All Airlines	155	154	129	83.8	122	79.2	1	0.6
Adelaide-Port Lincoln								
QantasLink	114	113	95	84.1	94	83.2	1	0.9
Regional Express	156	156	125	80.1	125	80.1	0	0.0
All Airlines	270	269	220	81.8	219	81.4	1	0.4
Adelaide-Sydney								
Jetstar	130	129	118	91.5	118	91.5	1	0.8
Qantas	178	177	142	80.2	156	88.1	1	0.6
Virgin Australia	106	105	91	86.7	87	82.9	1	0.9
All Airlines	414	411	351	85.4	361	87.8	3	0.7
Albury-Sydney								
QantasLink	108	107	104	97.2	101	94.4	1	0.9
Regional Express	50	50	50	100.0	50	100.0	0	0.0
All Airlines	158	157	154	98.1	151	96.2	1	0.6

	<i>Sectors</i>		<i>Arrivals On Time</i>		<i>Departures On Time</i>		<i>Cancellations</i>	
	<i>Sched.</i>	<i>Flown</i>	<i>No.</i>	<i>%</i>	<i>No.</i>	<i>%</i>	<i>No.</i>	<i>%</i>
Alice Springs-Adelaide								
Qantas	30	30	16	53.3	15	50.0	0	0.0
Virgin Australia	13	13	13	100.0	11	84.6	0	0.0
All Airlines	43	43	29	67.4	26	60.5	0	0.0
Armidale-Sydney								
QantasLink	80	77	64	83.1	63	81.8	3	3.8
Regional Express	44	44	38	86.4	39	88.6	0	0.0
All Airlines	124	121	102	84.3	102	84.3	3	2.4
Ballina-Sydney								
Jetstar	98	98	78	79.6	71	72.4	0	0.0
Qantas	4	4	4	100.0	4	100.0	0	0.0
QantasLink	97	92	65	70.7	71	77.2	5	5.2
Regional Express	11	11	11	100.0	11	100.0	0	0.0
Virgin Australia	59	57	49	86.0	47	82.5	2	3.4
All Airlines	269	262	207	79.0	204	77.9	7	2.6
Brisbane-Adelaide								
Jetstar	32	31	24	77.4	20	64.5	1	3.1
Qantas	88	87	77	88.5	75	86.2	1	1.1
Virgin Australia	85	74	68	91.9	63	85.1	11	12.9
All Airlines	205	192	169	88.0	158	82.3	13	6.3
Brisbane-Cairns								
Jetstar	106	103	82	79.6	83	80.6	3	2.8
Qantas	119	119	107	89.9	110	92.4	0	0.0
QantasLink	1	1	1	100.0	1	100.0	0	0.0
Virgin Australia	126	121	104	86.0	105	86.8	5	4.0
All Airlines	352	344	294	85.5	299	86.9	8	2.3
Brisbane-Canberra								
Qantas	30	30	28	93.3	28	93.3	0	0.0
QantasLink	123	119	112	94.1	111	93.3	4	3.3
Virgin Australia	63	56	55	98.2	53	94.6	7	11.1
All Airlines	216	205	195	95.1	192	93.7	11	5.1
Brisbane-Darwin								
Jetstar	27	27	26	96.3	24	88.9	0	0.0
Qantas	31	31	24	77.4	25	80.6	0	0.0
Virgin Australia	34	34	33	97.1	32	94.1	0	0.0
All Airlines	92	92	83	90.2	81	88.0	0	0.0
Brisbane-Emerald								
QantasLink	120	117	112	95.7	110	94.0	3	2.5
Virgin Australia	22	22	22	100.0	22	100.0	0	0.0
All Airlines	142	139	134	96.4	132	95.0	3	2.1
Brisbane-Gladstone								
QantasLink	117	115	108	93.9	108	93.9	2	1.7
Virgin Australia	52	51	49	96.1	49	96.1	1	1.9
All Airlines	169	166	157	94.6	157	94.6	3	1.8
Brisbane-Hamilton Island								
Qantas	37	37	28	75.7	35	94.6	0	0.0
Virgin Australia	34	33	32	97.0	29	87.9	1	2.9
All Airlines	71	70	60	85.7	64	91.4	1	1.4

	<i>Sectors</i>		<i>Arrivals On Time</i>		<i>Departures On Time</i>		<i>Cancellations</i>	
	<i>Sched.</i>	<i>Flown</i>	<i>No.</i>	<i>%</i>	<i>No.</i>	<i>%</i>	<i>No.</i>	<i>%</i>
Brisbane-Hobart								
Jetstar	28	28	22	78.6	23	82.1	0	0.0
QantasLink	23	20	17	85.0	17	85.0	3	13.0
Virgin Australia	37	34	30	88.2	27	79.4	3	8.1
All Airlines	88	82	69	84.1	67	81.7	6	6.8
Brisbane-Mackay								
Jetstar	30	30	26	86.7	26	86.7	0	0.0
Qantas	75	74	60	81.1	68	91.9	1	1.3
QantasLink	32	32	29	90.6	29	90.6	0	0.0
Virgin Australia	85	85	77	90.6	74	87.1	0	0.0
All Airlines	222	221	192	86.9	197	89.1	1	0.5
Brisbane-Melbourne								
Jetstar	202	147	133	90.5	121	82.3	55	27.2
Qantas	269	265	255	96.2	246	92.8	4	1.5
Virgin Australia	195	168	136	81.0	121	72.0	27	13.8
All Airlines	666	580	524	90.3	488	84.1	86	12.9
Brisbane-Mount Isa								
Qantas	35	35	33	94.3	33	94.3	0	0.0
QantasLink	22	16	15	93.8	15	93.8	6	27.3
Virgin Australia	12	12	8	66.7	11	91.7	0	0.0
All Airlines	69	63	56	88.9	59	93.7	6	8.7
Brisbane-Newcastle								
Jetstar	73	69	55	79.7	57	82.6	4	5.5
QantasLink	77	77	69	89.6	69	89.6	0	0.0
Virgin Australia	45	43	40	93.0	37	86.0	2	4.4
All Airlines	195	189	164	86.8	163	86.2	6	3.1
Brisbane-Perth								
Qantas	51	37	31	83.8	29	78.4	14	27.5
Virgin Australia	36	25	24	96.0	21	84.0	11	30.6
All Airlines	87	62	55	88.7	50	80.6	25	28.7
Brisbane-Proserpine								
Jetstar	37	37	33	89.2	34	91.9	0	0.0
Virgin Australia	38	38	37	97.4	36	94.7	0	0.0
All Airlines	75	75	70	93.3	70	93.3	0	0.0
Brisbane-Rockhampton								
QantasLink	152	149	140	94.0	141	94.6	3	2.0
Virgin Australia	80	80	70	87.5	70	87.5	0	0.0
All Airlines	232	229	210	91.7	211	92.1	3	1.3
Brisbane-Sydney								
Jetstar	203	182	167	91.8	161	88.5	21	10.3
Qantas	384	375	341	90.9	331	88.3	9	2.3
Virgin Australia	251	233	207	88.8	195	83.7	18	7.2
All Airlines	838	790	715	90.5	687	87.0	48	5.7
Brisbane-Townsville								
Jetstar	60	60	55	91.7	52	86.7	0	0.0
Qantas	101	100	84	84.0	87	87.0	1	1.0
QantasLink	10	7	7	100.0	7	100.0	3	30.0
Virgin Australia	80	78	67	85.9	65	83.3	2	2.5
All Airlines	251	245	213	86.9	211	86.1	6	2.4

	<i>Sectors</i>		<i>Arrivals On Time</i>		<i>Departures On Time</i>		<i>Cancellations</i>	
	<i>Sched.</i>	<i>Flown</i>	<i>No.</i>	<i>%</i>	<i>No.</i>	<i>%</i>	<i>No.</i>	<i>%</i>
Broome-Perth								
QantasLink	95	93	76	81.7	72	77.4	2	2.1
Virgin Australia	40	39	35	89.7	27	69.2	1	2.5
Virgin Australia Regional Airlines	5	5	2	40.0	2	40.0	0	0.0
All Airlines	140	137	113	82.5	101	73.7	3	2.1
Cairns-Brisbane								
Jetstar	106	103	80	77.7	74	71.8	3	2.8
Qantas	120	119	101	84.9	105	88.2	1	0.8
QantasLink	1	1	1	100.0	1	100.0	0	0.0
Virgin Australia	126	121	112	92.6	103	85.1	5	4.0
All Airlines	353	344	294	85.5	283	82.3	9	2.5
Cairns-Melbourne								
Jetstar	140	138	119	86.2	114	82.6	2	1.4
Qantas	41	41	35	85.4	38	92.7	0	0.0
Virgin Australia	41	39	37	94.9	34	87.2	2	4.9
All Airlines	222	218	191	87.6	186	85.3	4	1.8
Cairns-Sydney								
Jetstar	114	108	92	85.2	88	81.5	6	5.3
Qantas	80	80	69	86.3	76	95.0	0	0.0
Virgin Australia	59	55	51	92.7	51	92.7	4	6.8
All Airlines	253	243	212	87.2	215	88.5	10	4.0
Cairns-Townsville								
QantasLink	108	108	91	84.3	89	82.4	0	0.0
Regional Express	14	14	14	100.0	14	100.0	0	0.0
All Airlines	122	122	105	86.1	103	84.4	0	0.0
Canberra-Adelaide								
Qantas	33	33	24	72.7	19	57.6	0	0.0
Virgin Australia	16	16	16	100.0	15	93.8	0	0.0
All Airlines	49	49	40	81.6	34	69.4	0	0.0
Canberra-Brisbane								
Qantas	30	30	28	93.3	28	93.3	0	0.0
QantasLink	124	119	100	84.0	97	81.5	5	4.0
Virgin Australia	63	56	52	92.9	52	92.9	7	11.1
All Airlines	217	205	180	87.8	177	86.3	12	5.5
Canberra-Melbourne								
Qantas	18	18	15	83.3	16	88.9	0	0.0
QantasLink	166	161	118	73.3	118	73.3	5	3.0
Virgin Australia	69	69	60	87.0	57	82.6	0	0.0
All Airlines	253	248	193	77.8	191	77.0	5	2.0
Canberra-Sydney								
Qantas	2	2	2	100.0	2	100.0	0	0.0
QantasLink	208	196	152	77.6	156	79.6	12	5.8
Regional Express	69	69	65	94.2	65	94.2	0	0.0
All Airlines	279	267	219	82.0	223	83.5	12	4.3
Coffs Harbour-Sydney								
QantasLink	113	111	100	90.1	101	91.0	2	1.8
Regional Express	75	75	70	93.3	72	96.0	0	0.0
Virgin Australia	8	8	6	75.0	5	62.5	0	0.0
All Airlines	196	194	176	90.7	178	91.8	2	1.0

	Sectors		Arrivals On Time		Departures On Time		Cancellations	
	Sched.	Flown	No.	%	No.	%	No.	%
Darwin-Brisbane								
Jetstar	27	27	16	59.3	22	81.5	0	0.0
Qantas	29	29	13	44.8	18	62.1	0	0.0
Virgin Australia	33	33	30	90.9	24	72.7	0	0.0
All Airlines	89	89	59	66.3	64	71.9	0	0.0
Darwin-Perth								
Qantas	30	30	26	86.7	21	70.0	0	0.0
Virgin Australia	14	14	10	71.4	8	57.1	0	0.0
All Airlines	44	44	36	81.8	29	65.9	0	0.0
Dubbo-Sydney								
QantasLink	84	84	75	89.3	75	89.3	0	0.0
Regional Express	73	72	67	93.1	67	93.1	1	1.4
All Airlines	157	156	142	91.0	142	91.0	1	0.6
Emerald-Brisbane								
QantasLink	119	116	111	95.7	110	94.8	3	2.5
Virgin Australia	22	22	21	95.5	20	90.9	0	0.0
All Airlines	141	138	132	95.7	130	94.2	3	2.1
Gladstone-Brisbane								
QantasLink	117	114	107	93.9	105	92.1	3	2.6
Virgin Australia	52	51	44	86.3	49	96.1	1	1.9
All Airlines	169	165	151	91.5	154	93.3	4	2.4
Gold Coast-Adelaide								
Jetstar	29	25	24	96.0	22	88.0	4	13.8
Virgin Australia	38	37	34	91.9	32	86.5	1	2.6
All Airlines	67	62	58	93.5	54	87.1	5	7.5
Gold Coast-Melbourne								
Jetstar	209	201	176	87.6	165	82.1	8	3.8
Qantas	75	75	66	88.0	64	85.3	0	0.0
QantasLink	3	3	0	0.0	0	0.0	0	0.0
Regional Express	60	60	28	46.7	31	51.7	0	0.0
Virgin Australia	208	204	181	88.7	146	71.6	4	1.9
All Airlines	555	543	451	83.1	406	74.8	12	2.2
Gold Coast-Sydney								
Jetstar	333	319	283	88.7	278	87.1	14	4.2
Qantas	108	108	98	90.7	90	83.3	0	0.0
Regional Express	59	59	52	88.1	51	86.4	0	0.0
Virgin Australia	229	222	173	77.9	157	70.7	7	3.1
All Airlines	729	708	606	85.6	576	81.4	21	2.9
Hamilton Island-Brisbane								
Qantas	37	36	28	77.8	27	75.0	1	2.7
Virgin Australia	34	33	30	90.9	27	81.8	1	2.9
All Airlines	71	69	58	84.1	54	78.3	2	2.8
Hamilton Island-Sydney								
Jetstar	27	23	18	78.3	19	82.6	4	14.8
Qantas	39	38	28	73.7	28	73.7	1	2.6
Virgin Australia	30	30	25	83.3	24	80.0	0	0.0
All Airlines	96	91	71	78.0	71	78.0	5	5.2

	Sectors		Arrivals On Time		Departures On Time		Cancellations	
	Sched.	Flown	No.	%	No.	%	No.	%
Hobart-Brisbane								
Jetstar	28	28	22	78.6	22	78.6	0	0.0
QantasLink	23	20	18	90.0	18	90.0	3	13.0
Virgin Australia	37	34	30	88.2	28	82.4	3	8.1
All Airlines	88	82	70	85.4	68	82.9	6	6.8
Hobart-Melbourne								
Jetstar	166	164	131	79.9	130	79.3	2	1.2
QantasLink	119	115	78	67.8	84	73.0	4	3.4
Virgin Australia	95	95	79	83.2	79	83.2	0	0.0
All Airlines	380	374	288	77.0	293	78.3	6	1.6
Hobart-Sydney								
Jetstar	90	90	73	81.1	73	81.1	0	0.0
Qantas	22	22	16	72.7	17	77.3	0	0.0
QantasLink	52	52	45	86.5	47	90.4	0	0.0
Virgin Australia	60	58	55	94.8	56	96.6	2	3.3
All Airlines	224	222	189	85.1	193	86.9	2	0.9
Kalgoorlie-Perth								
Qantas	15	15	12	80.0	12	80.0	0	0.0
QantasLink	60	56	49	87.5	46	82.1	4	6.7
Virgin Australia	16	15	11	73.3	9	60.0	1	6.3
Virgin Australia Regional Airlines	40	40	37	92.5	37	92.5	0	0.0
All Airlines	131	126	109	86.5	104	82.5	5	3.8
Karratha-Perth								
Qantas	40	38	34	89.5	36	94.7	2	5.0
QantasLink	92	89	69	77.5	67	75.3	3	3.3
Virgin Australia	31	31	29	93.5	25	80.6	0	0.0
Virgin Australia Regional Airlines	23	23	17	73.9	15	65.2	0	0.0
All Airlines	186	181	149	82.3	143	79.0	5	2.7
Launceston-Melbourne								
Jetstar	130	129	112	86.8	113	87.6	1	0.8
QantasLink	86	82	50	61.0	47	57.3	4	4.7
Virgin Australia	85	85	68	80.0	70	82.4	0	0.0
All Airlines	301	296	230	77.7	230	77.7	5	1.7
Launceston-Sydney								
Jetstar	52	52	43	82.7	41	78.8	0	0.0
QantasLink	20	20	7	35.0	15	75.0	0	0.0
Virgin Australia	30	30	25	83.3	25	83.3	0	0.0
All Airlines	102	102	75	73.5	81	79.4	0	0.0
Mackay-Brisbane								
Jetstar	30	30	26	86.7	25	83.3	0	0.0
Qantas	75	74	57	77.0	61	82.4	1	1.3
QantasLink	37	37	36	97.3	36	97.3	0	0.0
Virgin Australia	85	85	79	92.9	76	89.4	0	0.0
All Airlines	227	226	198	87.6	198	87.6	1	0.4
Melbourne-Adelaide								
Jetstar	118	117	108	92.3	102	87.2	1	0.8
Qantas	186	185	168	90.8	165	89.2	1	0.5
Regional Express	60	60	40	66.7	38	63.3	0	0.0
Virgin Australia	155	155	132	85.2	126	81.3	0	0.0
All Airlines	519	517	448	86.7	431	83.4	2	0.4

	Sectors		Arrivals On Time		Departures On Time		Cancellations	
	Sched.	Flown	No.	%	No.	%	No.	%
Melbourne-Brisbane								
Jetstar	203	151	125	82.8	123	81.5	52	25.6
Qantas	270	266	249	93.6	242	91.0	4	1.5
Virgin Australia	197	168	131	78.0	129	76.8	29	14.7
All Airlines	670	585	505	86.3	494	84.4	85	12.7
Melbourne-Cairns								
Jetstar	139	138	115	83.3	105	76.1	1	0.7
Qantas	41	41	40	97.6	37	90.2	0	0.0
Virgin Australia	41	39	34	87.2	35	89.7	2	4.9
All Airlines	221	218	189	86.7	177	81.2	3	1.4
Melbourne-Canberra								
Qantas	18	18	17	94.4	17	94.4	0	0.0
QantasLink	166	160	106	66.3	104	65.0	6	3.6
Virgin Australia	69	69	58	84.1	55	79.7	0	0.0
All Airlines	253	247	181	73.3	176	71.3	6	2.4
Melbourne-Gold Coast								
Jetstar	209	201	160	79.6	161	80.1	8	3.8
Qantas	75	75	64	85.3	63	84.0	0	0.0
QantasLink	3	3	0	0.0	0	0.0	0	0.0
Regional Express	60	60	31	51.7	29	48.3	0	0.0
Virgin Australia	208	204	169	82.8	157	77.0	4	1.9
All Airlines	555	543	424	78.1	410	75.5	12	2.2
Melbourne-Hobart								
Jetstar	166	165	140	84.8	132	80.0	1	0.6
QantasLink	119	115	69	60.0	74	64.3	4	3.4
Virgin Australia	95	95	72	75.8	75	78.9	0	0.0
All Airlines	380	375	281	74.9	281	74.9	5	1.3
Melbourne-Launceston								
Jetstar	130	129	113	87.6	110	85.3	1	0.8
QantasLink	86	85	51	60.0	57	67.1	1	1.2
Virgin Australia	85	84	61	72.6	63	75.0	1	1.2
All Airlines	301	298	225	75.5	230	77.2	3	1.0
Melbourne-Mildura								
QantasLink	111	110	68	61.8	60	54.5	1	0.9
Regional Express	77	77	72	93.5	69	89.6	0	0.0
All Airlines	188	187	140	74.9	129	69.0	1	0.5
Melbourne-Newcastle								
Jetstar	77	76	66	86.8	66	86.8	1	1.3
QantasLink	50	49	28	57.1	31	63.3	1	2.0
Virgin Australia	27	27	19	70.4	20	74.1	0	0.0
All Airlines	154	152	113	74.3	117	77.0	2	1.3
Melbourne-Perth								
Jetstar	60	58	52	89.7	49	84.5	2	3.3
Qantas	114	114	78	68.4	78	68.4	0	0.0
Virgin Australia	110	109	93	85.3	79	72.5	1	0.9
All Airlines	284	281	223	79.4	206	73.3	3	1.1
Melbourne-Sunshine Coast								
Jetstar	86	86	67	77.9	77	89.5	0	0.0
QantasLink	56	56	38	67.9	45	80.4	0	0.0
Virgin Australia	75	73	68	93.2	69	94.5	2	2.7
All Airlines	217	215	173	80.5	191	88.8	2	0.9

	<i>Sectors</i>		<i>Arrivals On Time</i>		<i>Departures On Time</i>		<i>Cancellations</i>	
	<i>Sched.</i>	<i>Flown</i>	<i>No.</i>	<i>%</i>	<i>No.</i>	<i>%</i>	<i>No.</i>	<i>%</i>
Melbourne-Sydney								
Jetstar	447	396	353	89.1	334	84.3	51	11.4
Qantas	652	620	570	91.9	556	89.7	32	4.9
Regional Express	185	175	164	93.7	162	92.6	10	5.4
Virgin Australia	457	448	370	82.6	358	79.9	9	2.0
All Airlines	1 741	1 639	1 457	88.9	1 410	86.0	102	5.9
Mildura-Melbourne								
QantasLink	110	109	54	49.5	66	60.6	1	0.9
Regional Express	76	76	74	97.4	76	100.0	0	0.0
All Airlines	186	185	128	69.2	142	76.8	1	0.5
Mount Isa-Brisbane								
Qantas	35	35	30	85.7	30	85.7	0	0.0
QantasLink	20	15	15	100.0	15	100.0	5	25.0
Virgin Australia	12	12	12	100.0	10	83.3	0	0.0
All Airlines	67	62	57	91.9	55	88.7	5	7.5
Newcastle-Brisbane								
Jetstar	73	69	59	85.5	58	84.1	4	5.5
QantasLink	77	76	65	85.5	62	81.6	1	1.3
Virgin Australia	46	43	42	97.7	41	95.3	3	6.5
All Airlines	196	188	166	88.3	161	85.6	8	4.1
Newcastle-Melbourne								
Jetstar	77	76	64	84.2	63	82.9	1	1.3
QantasLink	50	49	46	93.9	46	93.9	1	2.0
Virgin Australia	27	27	21	77.8	19	70.4	0	0.0
All Airlines	154	152	131	86.2	128	84.2	2	1.3
Newman-Perth								
Qantas	29	29	15	51.7	14	48.3	0	0.0
QantasLink	80	75	46	61.3	39	52.0	5	6.3
Virgin Australia	36	36	30	83.3	29	80.6	0	0.0
Virgin Australia Regional Airlines	20	20	18	90.0	16	80.0	0	0.0
All Airlines	165	160	109	68.1	98	61.3	5	3.0
Perth-Adelaide								
Jetstar	26	26	20	76.9	18	69.2	0	0.0
Qantas	87	85	72	84.7	74	87.1	2	2.3
Virgin Australia	42	42	37	88.1	39	92.9	0	0.0
All Airlines	155	153	129	84.3	131	85.6	2	1.3
Perth-Brisbane								
Qantas	51	38	12	31.6	32	84.2	13	25.5
Virgin Australia	42	26	21	80.8	22	84.6	16	38.1
All Airlines	93	64	33	51.6	54	84.4	29	31.2
Perth-Broome								
QantasLink	96	95	81	85.3	73	76.8	1	1.0
Virgin Australia	39	39	35	89.7	28	71.8	0	0.0
Virgin Australia Regional Airlines	5	5	4	80.0	3	60.0	0	0.0
All Airlines	140	139	120	86.3	104	74.8	1	0.7
Perth-Darwin								
Qantas	30	30	23	76.7	24	80.0	0	0.0
Virgin Australia	14	14	11	78.6	11	78.6	0	0.0
All Airlines	44	44	34	77.3	35	79.5	0	0.0

	Sectors		Arrivals On Time		Departures On Time		Cancellations	
	Sched.	Flown	No.	%	No.	%	No.	%
Perth-Kalgoorlie								
Qantas	15	15	14	93.3	14	93.3	0	0.0
QantasLink	60	57	48	84.2	49	86.0	3	5.0
Virgin Australia	16	15	15	100.0	15	100.0	1	6.3
Virgin Australia Regional Airlines	40	40	35	87.5	35	87.5	0	0.0
All Airlines	131	127	112	88.2	113	89.0	4	3.1
Perth-Karratha								
Qantas	40	38	35	92.1	36	94.7	2	5.0
QantasLink	89	87	64	73.6	69	79.3	2	2.2
Virgin Australia	31	31	28	90.3	29	93.5	0	0.0
Virgin Australia Regional Airlines	23	23	17	73.9	18	78.3	0	0.0
All Airlines	183	179	144	80.4	152	84.9	4	2.2
Perth-Melbourne								
Jetstar	59	57	45	78.9	36	63.2	2	3.4
Qantas	114	113	80	70.8	83	73.5	1	0.9
Virgin Australia	111	109	89	81.7	84	77.1	2	1.8
All Airlines	284	279	214	76.7	203	72.8	5	1.8
Perth-Newman								
Qantas	28	28	25	89.3	25	89.3	0	0.0
QantasLink	79	77	71	92.2	69	89.6	2	2.5
Virgin Australia	36	36	35	97.2	36	100.0	0	0.0
Virgin Australia Regional Airlines	20	20	19	95.0	19	95.0	0	0.0
All Airlines	163	161	150	93.2	149	92.5	2	1.2
Perth-Port Hedland								
Qantas	44	43	37	86.0	38	88.4	1	2.3
QantasLink	77	73	57	78.1	66	90.4	4	5.2
Virgin Australia Regional Airlines	52	52	48	92.3	48	92.3	0	0.0
All Airlines	173	168	142	84.5	152	90.5	5	2.9
Perth-Sydney								
Jetstar	30	30	24	80.0	17	56.7	0	0.0
Qantas	154	152	108	71.1	116	76.3	2	1.3
Virgin Australia	71	71	66	93.0	58	81.7	0	0.0
All Airlines	255	253	198	78.3	191	75.5	2	0.8
Port Hedland-Perth								
Qantas	42	41	35	85.4	33	80.5	1	2.4
QantasLink	76	71	54	76.1	55	77.5	5	6.6
Virgin Australia Regional Airlines	52	52	41	78.8	39	75.0	0	0.0
All Airlines	170	164	130	79.3	127	77.4	6	3.5
Port Lincoln-Adelaide								
QantasLink	114	113	94	83.2	95	84.1	1	0.9
Regional Express	156	156	119	76.3	119	76.3	0	0.0
All Airlines	270	269	213	79.2	214	79.6	1	0.4
Port Macquarie-Sydney								
QantasLink	107	107	101	94.4	101	94.4	0	0.0
Regional Express	74	74	65	87.8	69	93.2	0	0.0
All Airlines	181	181	166	91.7	170	93.9	0	0.0
Proserpine-Brisbane								
Jetstar	38	38	33	86.8	32	84.2	0	0.0
Virgin Australia	38	38	35	92.1	28	73.7	0	0.0
All Airlines	76	76	68	89.5	60	78.9	0	0.0

	<i>Sectors</i>		<i>Arrivals On Time</i>		<i>Departures On Time</i>		<i>Cancellations</i>	
	<i>Sched.</i>	<i>Flown</i>	<i>No.</i>	<i>%</i>	<i>No.</i>	<i>%</i>	<i>No.</i>	<i>%</i>
Rockhampton-Brisbane								
QantasLink	153	150	129	86.0	135	90.0	3	2.0
Virgin Australia	80	80	72	90.0	68	85.0	0	0.0
All Airlines	233	230	201	87.4	203	88.3	3	1.3
Sunshine Coast-Melbourne								
Jetstar	86	86	67	77.9	60	69.8	0	0.0
QantasLink	57	54	36	66.7	36	66.7	3	5.3
Virgin Australia	75	73	61	83.6	64	87.7	2	2.7
All Airlines	218	213	164	77.0	160	75.1	5	2.3
Sunshine Coast-Sydney								
Jetstar	94	91	82	90.1	79	86.8	3	3.2
QantasLink	62	61	47	77.0	45	73.8	1	1.6
Virgin Australia	60	59	39	66.1	46	78.0	1	1.7
All Airlines	216	211	168	79.6	170	80.6	5	2.3
Sydney-Adelaide								
Jetstar	130	129	114	88.4	105	81.4	1	0.8
Qantas	178	176	152	86.4	149	84.7	2	1.1
Virgin Australia	106	105	85	81.0	80	76.2	1	0.9
All Airlines	414	410	351	85.6	334	81.5	4	1.0
Sydney-Albury								
QantasLink	108	108	99	91.7	91	84.3	0	0.0
Regional Express	50	50	48	96.0	48	96.0	0	0.0
All Airlines	158	158	147	93.0	139	88.0	0	0.0
Sydney-Armidale								
QantasLink	79	77	63	81.8	63	81.8	2	2.5
Regional Express	44	44	39	88.6	38	86.4	0	0.0
All Airlines	123	121	102	84.3	101	83.5	2	1.6
Sydney-Ballina								
Jetstar	97	97	78	80.4	82	84.5	0	0.0
Qantas	4	4	4	100.0	4	100.0	0	0.0
QantasLink	97	93	64	68.8	78	83.9	4	4.1
Regional Express	11	11	11	100.0	11	100.0	0	0.0
Virgin Australia	59	57	47	82.5	47	82.5	2	3.4
All Airlines	268	262	204	77.9	222	84.7	6	2.2
Sydney-Brisbane								
Jetstar	205	183	162	88.5	157	85.8	22	10.7
Qantas	390	378	324	85.7	314	83.1	12	3.1
Virgin Australia	249	231	193	83.5	195	84.4	18	7.2
All Airlines	844	792	679	85.7	666	84.1	52	6.2
Sydney-Cairns								
Jetstar	114	109	99	90.8	87	79.8	5	4.4
Qantas	80	80	69	86.3	63	78.8	0	0.0
Virgin Australia	59	55	52	94.5	49	89.1	4	6.8
All Airlines	253	244	220	90.2	199	81.6	9	3.6
Sydney-Canberra								
Qantas	2	2	2	100.0	2	100.0	0	0.0
QantasLink	208	198	161	81.3	159	80.3	10	4.8
Regional Express	70	70	59	84.3	64	91.4	0	0.0
All Airlines	280	270	222	82.2	225	83.3	10	3.6

	<i>Sectors</i>		<i>Arrivals On Time</i>		<i>Departures On Time</i>		<i>Cancellations</i>	
	<i>Sched.</i>	<i>Flown</i>	<i>No.</i>	<i>%</i>	<i>No.</i>	<i>%</i>	<i>No.</i>	<i>%</i>
Sydney-Coffs Harbour								
QantasLink	113	111	98	88.3	98	88.3	2	1.8
Regional Express	75	75	71	94.7	71	94.7	0	0.0
Virgin Australia	8	8	6	75.0	7	87.5	0	0.0
All Airlines	196	194	175	90.2	176	90.7	2	1.0
Sydney-Dubbo								
QantasLink	84	84	79	94.0	76	90.5	0	0.0
Regional Express	72	72	68	94.4	67	93.1	0	0.0
All Airlines	156	156	147	94.2	143	91.7	0	0.0
Sydney-Gold Coast								
Jetstar	333	319	287	90.0	284	89.0	14	4.2
Qantas	108	108	92	85.2	88	81.5	0	0.0
Regional Express	59	59	55	93.2	56	94.9	0	0.0
Virgin Australia	229	222	165	74.3	171	77.0	7	3.1
All Airlines	729	708	599	84.6	599	84.6	21	2.9
Sydney-Hamilton Island								
Jetstar	27	24	22	91.7	22	91.7	3	11.1
Qantas	38	38	32	84.2	33	86.8	0	0.0
Virgin Australia	30	30	29	96.7	27	90.0	0	0.0
All Airlines	95	92	83	90.2	82	89.1	3	3.2
Sydney-Hobart								
Jetstar	90	90	77	85.6	74	82.2	0	0.0
Qantas	22	22	22	100.0	22	100.0	0	0.0
QantasLink	52	52	48	92.3	45	86.5	0	0.0
Virgin Australia	60	58	56	96.6	56	96.6	2	3.3
All Airlines	224	222	203	91.4	197	88.7	2	0.9
Sydney-Launceston								
Jetstar	52	52	44	84.6	44	84.6	0	0.0
QantasLink	20	20	16	80.0	15	75.0	0	0.0
Virgin Australia	30	30	25	83.3	24	80.0	0	0.0
All Airlines	102	102	85	83.3	83	81.4	0	0.0
Sydney-Melbourne								
Jetstar	447	395	353	89.4	333	84.3	52	11.6
Qantas	650	617	570	92.4	540	87.5	33	5.1
Regional Express	185	176	159	90.3	162	92.0	9	4.9
Virgin Australia	457	448	374	83.5	332	74.1	9	2.0
All Airlines	1 739	1 636	1 456	89.0	1 367	83.6	103	5.9
Sydney-Perth								
Jetstar	30	30	26	86.7	24	80.0	0	0.0
Qantas	151	149	100	67.1	96	64.4	2	1.3
Virgin Australia	71	71	58	81.7	41	57.7	0	0.0
All Airlines	252	250	184	73.6	161	64.4	2	0.8
Sydney-Port Macquarie								
QantasLink	107	107	98	91.6	94	87.9	0	0.0
Regional Express	74	74	69	93.2	66	89.2	0	0.0
All Airlines	181	181	167	92.3	160	88.4	0	0.0
Sydney-Sunshine Coast								
Jetstar	93	93	82	88.2	81	87.1	0	0.0
QantasLink	61	61	41	67.2	44	72.1	0	0.0
Virgin Australia	60	60	46	76.7	50	83.3	0	0.0
All Airlines	214	214	169	79.0	175	81.8	0	0.0

	<i>Sectors</i>		<i>Arrivals On Time</i>		<i>Departures On Time</i>		<i>Cancellations</i>	
	<i>Sched.</i>	<i>Flown</i>	<i>No.</i>	<i>%</i>	<i>No.</i>	<i>%</i>	<i>No.</i>	<i>%</i>
Sydney-Wagga Wagga								
QantasLink	106	106	98	92.5	92	86.8	0	0.0
Regional Express	51	51	48	94.1	47	92.2	0	0.0
All Airlines	157	157	146	93.0	139	88.5	0	0.0
Townsville-Brisbane								
Jetstar	60	60	53	88.3	53	88.3	0	0.0
Qantas	100	99	82	82.8	89	89.9	1	1.0
QantasLink	10	7	5	71.4	7	100.0	3	30.0
Virgin Australia	80	78	72	92.3	65	83.3	2	2.5
All Airlines	250	244	212	86.9	214	87.7	6	2.4
Townsville-Cairns								
QantasLink	108	108	97	89.8	92	85.2	0	0.0
Regional Express	14	14	14	100.0	14	100.0	0	0.0
All Airlines	122	122	111	91.0	106	86.9	0	0.0
Wagga Wagga-Sydney								
QantasLink	105	105	99	94.3	100	95.2	0	0.0
Regional Express	53	53	47	88.7	50	94.3	0	0.0
All Airlines	158	158	146	92.4	150	94.9	0	0.0

Airports

On time performance is reported for all routes where the passenger load averages over 8000 passengers per month, and where two or more airlines operate in competition. The following data reports by airport against flights operated on those routes only. This month, 8 major city airports and 28 regional city airports are covered.

Airport	Arrivals			Departures		
	Sectors Flown	On Time No.	%	Sectors Flown	On Time No.	%
Adelaide						
Jetstar	328	290	88.4	328	284	86.6
Qantas	596	509	85.4	596	498	83.6
QantasLink	113	94	83.2	113	94	83.2
Regional Express	216	159	73.6	215	175	81.4
Virgin Australia	442	385	87.1	441	381	86.4
All Airlines	1 695	1 437	84.8	1 693	1 432	84.6
Relates to services to and from Alice Springs, Brisbane, Canberra, Gold Coast, Melbourne, Perth, Port Lincoln and Sydney.						
Albury						
QantasLink	108	99	91.7	107	101	94.4
Regional Express	50	48	96.0	50	50	100.0
All Airlines	158	147	93.0	157	151	96.2
Relates to services to and from Sydney only.						
Alice Springs						
Qantas	30	23	76.7	30	15	50.0
Virgin Australia	13	11	84.6	13	11	84.6
All Airlines	43	34	79.1	43	26	60.5
Relates to services to and from Adelaide only.						
Armidale						
QantasLink	77	63	81.8	77	63	81.8
Regional Express	44	39	88.6	44	39	88.6
All Airlines	121	102	84.3	121	102	84.3
Relates to services to and from Sydney only.						
Ballina						
Jetstar	97	78	80.4	98	71	72.4
Qantas	4	4	100.0	4	4	100.0
QantasLink	93	64	68.8	92	71	77.2
Regional Express	11	11	100.0	11	11	100.0
Virgin Australia	57	47	82.5	57	47	82.5
All Airlines	262	204	77.9	262	204	77.9
Relates to services to and from Sydney only.						
Brisbane						
Jetstar	720	601	83.5	714	601	84.2
Qantas	1 191	1 002	84.1	1 190	1 067	89.7
QantasLink	655	587	89.6	653	608	93.1
Virgin Australia	1 184	1 040	87.8	1 187	1 010	85.1
All Airlines	3 750	3 230	86.1	3 744	3 286	87.8
Relates to services to and from Adelaide, Cairns, Canberra, Darwin, Emerald, Gladstone, Hamilton Island, Hobart, Mackay, Melbourne, Mount Isa, Newcastle, Perth, Proserpine, Rockhampton, Sydney and Townsville.						

Airport	Arrivals			Departures		
	Sectors Flown	On Time		Sectors Flown	On Time	
		No.	%		No.	%
Broome						
QantasLink	95	81	85.3	93	72	77.4
Virgin Australia	39	35	89.7	39	27	69.2
Virgin Australia Regional Airlines	5	4	80.0	5	2	40.0
All Airlines	139	120	86.3	137	101	73.7
Relates to services to and from Perth only.						
Cairns						
Jetstar	350	296	84.6	349	276	79.1
Qantas	240	216	90.0	240	219	91.3
QantasLink	109	98	89.9	109	90	82.6
Regional Express	14	14	100.0	14	14	100.0
Virgin Australia	215	190	88.4	215	188	87.4
All Airlines	928	814	87.7	927	787	84.9
Relates to services to and from Brisbane, Melbourne, Sydney and Townsville.						
Canberra						
Qantas	83	69	83.1	83	65	78.3
QantasLink	477	379	79.5	476	371	77.9
Regional Express	70	59	84.3	69	65	94.2
Virgin Australia	141	128	90.8	141	124	87.9
All Airlines	771	635	82.4	769	625	81.3
Relates to services to and from Adelaide, Brisbane, Melbourne and Sydney.						
Coffs Harbour						
QantasLink	111	98	88.3	111	101	91.0
Regional Express	75	71	94.7	75	72	96.0
Virgin Australia	8	6	75.0	8	5	62.5
All Airlines	194	175	90.2	194	178	91.8
Relates to services to and from Sydney only.						
Darwin						
Jetstar	27	26	96.3	27	22	81.5
Qantas	61	47	77.0	59	39	66.1
Virgin Australia	48	44	91.7	47	32	68.1
All Airlines	136	117	86.0	133	93	69.9
Relates to services to and from Brisbane and Perth.						
Dubbo						
QantasLink	84	79	94.0	84	75	89.3
Regional Express	72	68	94.4	72	67	93.1
All Airlines	156	147	94.2	156	142	91.0
Relates to services to and from Sydney only.						
Emerald						
QantasLink	117	112	95.7	116	110	94.8
Virgin Australia	22	22	100.0	22	20	90.9
All Airlines	139	134	96.4	138	130	94.2
Relates to services to and from Brisbane only.						
Gladstone						
QantasLink	115	108	93.9	114	105	92.1
Virgin Australia	51	49	96.1	51	49	96.1
All Airlines	166	157	94.6	165	154	93.3
Relates to services to and from Brisbane only.						

Airport	Arrivals			Departures		
	Sectors Flown	On Time		Sectors Flown	On Time	
		No.	%		No.	%
Gold Coast						
Jetstar	545	470	86.2	545	465	85.3
Qantas	183	156	85.2	183	154	84.2
QantasLink	3	0	0.0	3	0	0.0
Regional Express	119	86	72.3	119	82	68.9
Virgin Australia	463	367	79.3	463	335	72.4
All Airlines	1 313	1 079	82.2	1 313	1 036	78.9
Relates to services to and from Adelaide, Melbourne and Sydney.						
Hamilton Island						
Jetstar	24	22	91.7	23	19	82.6
Qantas	75	60	80.0	74	55	74.3
Virgin Australia	63	61	96.8	63	51	81.0
All Airlines	162	143	88.3	160	125	78.1
Relates to services to and from Brisbane and Sydney.						
Hobart						
Jetstar	283	239	84.5	282	225	79.8
Qantas	22	22	100.0	22	17	77.3
QantasLink	187	134	71.7	187	149	79.7
Virgin Australia	187	158	84.5	187	163	87.2
All Airlines	679	553	81.4	678	554	81.7
Relates to services to and from Brisbane, Melbourne and Sydney.						
Kalgoorlie						
Qantas	15	14	93.3	15	12	80.0
QantasLink	57	48	84.2	56	46	82.1
Virgin Australia	15	15	100.0	15	9	60.0
Virgin Australia Regional Airlines	40	35	87.5	40	37	92.5
All Airlines	127	112	88.2	126	104	82.5
Relates to services to and from Perth only.						
Karratha						
Qantas	38	35	92.1	38	36	94.7
QantasLink	87	64	73.6	89	67	75.3
Virgin Australia	31	28	90.3	31	25	80.6
Virgin Australia Regional Airlines	23	17	73.9	23	15	65.2
All Airlines	179	144	80.4	181	143	79.0
Relates to services to and from Perth only.						
Launceston						
Jetstar	181	157	86.7	181	154	85.1
QantasLink	105	67	63.8	102	62	60.8
Virgin Australia	114	86	75.4	115	95	82.6
All Airlines	400	310	77.5	398	311	78.1
Relates to services to and from Melbourne and Sydney.						
Mackay						
Jetstar	30	26	86.7	30	25	83.3
Qantas	74	60	81.1	74	61	82.4
QantasLink	32	29	90.6	37	36	97.3
Virgin Australia	85	77	90.6	85	76	89.4
All Airlines	221	192	86.9	226	198	87.6
Relates to services to and from Brisbane only.						

Airport	Arrivals			Departures		
	Sectors	On Time		Sectors	On Time	
	Flown	No.	%	Flown	No.	%
Melbourne						
Jetstar	1 510	1 303	86.3	1 517	1 259	83.0
Qantas	1 312	1 184	90.2	1 319	1 158	87.8
QantasLink	573	382	66.7	578	371	64.2
Regional Express	371	310	83.6	372	298	80.1
Virgin Australia	1 472	1 245	84.6	1 471	1 166	79.3
All Airlines	5 238	4 424	84.5	5 257	4 252	80.9
Relates to services to and from Adelaide, Brisbane, Cairns, Canberra, Gold Coast, Hobart, Launceston, Mildura, Newcastle, Perth, Sunshine Coast and Sydney.						
Mildura						
QantasLink	110	68	61.8	109	66	60.6
Regional Express	77	72	93.5	76	76	100.0
All Airlines	187	140	74.9	185	142	76.8
Relates to services to and from Melbourne only.						
Mount Isa						
Qantas	35	33	94.3	35	30	85.7
QantasLink	16	15	93.8	15	15	100.0
Virgin Australia	12	8	66.7	12	10	83.3
All Airlines	63	56	88.9	62	55	88.7
Relates to services to and from Brisbane only.						
Newcastle						
Jetstar	145	121	83.4	145	121	83.4
QantasLink	126	97	77.0	125	108	86.4
Virgin Australia	70	59	84.3	70	60	85.7
All Airlines	341	277	81.2	340	289	85.0
Relates to services to and from Brisbane and Melbourne.						
Newman						
Qantas	28	25	89.3	29	14	48.3
QantasLink	77	71	92.2	75	39	52.0
Virgin Australia	36	35	97.2	36	29	80.6
Virgin Australia Regional Airlines	20	19	95.0	20	16	80.0
All Airlines	161	150	93.2	160	98	61.3
Relates to services to and from Perth only.						
Perth						
Jetstar	114	99	86.8	113	71	62.8
Qantas	539	400	74.2	542	442	81.5
QantasLink	384	294	76.6	389	326	83.8
Virgin Australia	382	329	86.1	383	322	84.1
Virgin Australia Regional Airlines	140	115	82.1	140	123	87.9
All Airlines	1 559	1 237	79.3	1 567	1 284	81.9
Relates to services to and from Adelaide, Brisbane, Broome, Darwin, Kalgoorlie, Karratha, Melbourne, Newman, Port Hedland and Sydney.						
Port Hedland						
Qantas	43	37	86.0	41	33	80.5
QantasLink	73	57	78.1	71	55	77.5
Virgin Australia Regional Airlines	52	48	92.3	52	39	75.0
All Airlines	168	142	84.5	164	127	77.4
Relates to services to and from Perth only.						

Airport	Arrivals			Departures		
	Sectors Flown	On Time		Sectors Flown	On Time	
		No.	%		No.	%
Port Lincoln						
QantasLink	113	95	84.1	113	95	84.1
Regional Express	156	125	80.1	156	119	76.3
All Airlines	269	220	81.8	269	214	79.6
Relates to services to and from Adelaide only.						
Port Macquarie						
QantasLink	107	98	91.6	107	101	94.4
Regional Express	74	69	93.2	74	69	93.2
All Airlines	181	167	92.3	181	170	93.9
Relates to services to and from Sydney only.						
Proserpine						
Jetstar	37	33	89.2	38	32	84.2
Virgin Australia	38	37	97.4	38	28	73.7
All Airlines	75	70	93.3	76	60	78.9
Relates to services to and from Brisbane only.						
Rockhampton						
QantasLink	149	140	94.0	150	135	90.0
Virgin Australia	80	70	87.5	80	68	85.0
All Airlines	229	210	91.7	230	203	88.3
Relates to services to and from Brisbane only.						
Sunshine Coast						
Jetstar	179	149	83.2	177	139	78.5
QantasLink	117	79	67.5	115	81	70.4
Virgin Australia	133	114	85.7	132	110	83.3
All Airlines	429	342	79.7	424	330	77.8
Relates to services to and from Melbourne and Sydney.						
Sydney						
Jetstar	1 518	1 331	87.7	1 521	1 293	85.0
Qantas	1 578	1 378	87.3	1 574	1 311	83.3
QantasLink	1 012	859	84.9	1 017	855	84.1
Regional Express	682	629	92.2	682	630	92.4
Virgin Australia	1 376	1 157	84.1	1 375	1 079	78.5
All Airlines	6 166	5 354	86.8	6 169	5 168	83.8
Relates to services to and from Adelaide, Albury, Armidale, Ballina, Brisbane, Cairns, Canberra, Coffs Harbour, Dubbo, Gold Coast, Hamilton Island, Hobart, Launceston, Melbourne, Perth, Port Macquarie, Sunshine Coast and Wagga Wagga.						
Townsville						
Jetstar	60	55	91.7	60	53	88.3
Qantas	100	84	84.0	99	89	89.9
QantasLink	115	98	85.2	115	99	86.1
Regional Express	14	14	100.0	14	14	100.0
Virgin Australia	78	67	85.9	78	65	83.3
All Airlines	367	318	86.6	366	320	87.4
Relates to services to and from Brisbane and Cairns.						
Wagga Wagga						
QantasLink	106	98	92.5	105	100	95.2
Regional Express	51	48	94.1	53	50	94.3
All Airlines	157	146	93.0	158	150	94.9
Relates to services to and from Sydney only.						

Definitions

On time arrival	A flight arrival is counted as "on time" if it arrived at the gate before 15 minutes after the scheduled arrival time shown in the carriers' schedule. Neither diverted nor cancelled flights count as on time.
On time departure	A flight departure is counted as "on time" if it departs the gate before 15 minutes after the scheduled departure time shown in the carriers' schedule.
Cancellation	A flight removed from service within 7 days of scheduled departure is regarded as a cancellation.
On time departure percentage	The percentage of on time departures is measured against the number of departures <i>operated</i> on any particular sector.
On time arrival percentage	The percentage of on time arrivals is measured against the number of arrivals <i>operated</i> on any particular sector.
Cancellation percentage	The percentage of cancellations is measured against the number of services <i>scheduled</i> on any particular sector.
