



Australian Government

Department of Infrastructure, Transport, Regional Development and Communications

Bureau of Infrastructure, Transport and Regional Economics

STATISTICAL REPORT



Aviation

Domestic airline on time performance 2019

© Commonwealth of Australia 2020

ISSN: 1832-0759

Ownership of intellectual property rights in this publication

Unless otherwise noted, copyright (and any other intellectual property rights, if any) in this publication is owned by the Commonwealth of Australia (referred to below as the Commonwealth).

Disclaimer

The material contained in this publication is made available on the understanding that the Commonwealth is not providing professional advice, and that users exercise their own skill and care with respect to its use, and seek independent advice if necessary.

The Commonwealth makes no representations or warranties as to the contents or accuracy of the information contained in this publication. To the extent permitted by law, the Commonwealth disclaims liability to any person or organisation in respect of anything done, or omitted to be done, in reliance upon information contained in this publication.

Creative Commons licence

With the exception of (a) the Coat of Arms; and (b) the Department of Infrastructure, Transport, Regional Development and Communications' photos and graphics, copyright in this publication is licensed under a Creative Commons Attribution 3.0 Australia Licence.

Creative Commons Attribution 3.0 Australia Licence is a standard form licence agreement that allows you to copy, communicate and adapt this publication provided that you attribute the work to the Commonwealth and abide by the other licence terms. A summary of the licence terms is available from <http://creativecommons.org/licenses/by/3.0/au/deed.en>. The full licence terms are available from <http://creativecommons.org/licenses/by/3.0/au/legalcode>.

Use of the Coat of Arms

The Department of the Prime Minister and Cabinet sets the terms under which the Coat of Arms is used. Please refer to the Department's Commonwealth Coat of Arms and Government branding web page <http://www.dpmmc.gov.au/guidelines/index.cfm#brand> and, in particular, the Guidelines on the use of the Commonwealth Coat of Arms publication.

An appropriate citation for this report is:

Bureau of Infrastructure, Transport and Regional Economics (BITRE), 2020, Domestic airline on time performance, Statistical Report, BITRE, Canberra ACT.

Contact us

This publication is available in PDF format. All other rights are reserved, including in relation to any Departmental logos or trade marks which may exist. For enquiries regarding the licence and any use of this publication, please contact:

Bureau of Infrastructure, Transport and Regional Economics (BITRE)
Department of Infrastructure, Transport, Regional Development and Communications
GPO Box 501, Canberra ACT 2601, Australia
Telephone: (international) +61 2 6274 7210
Fax: (international) +61 2 6274 6855
Email: bitre@infrastructure.gov.au
Website: www.bitre.gov.au

Inquiries

Should you require additional information about the statistics contained in this publication:

Telephone (02) 6274 7790 or Facsimile (02) 6274 7727

Electronic mail: AVSTATS@infrastructure.gov.au

Web site: <http://www.bitre.gov.au/statistics/aviation/otphome.aspx>

Foreword

The Bureau of Infrastructure, Transport and Regional Economics (BITRE) monitors the punctuality and reliability of major domestic airlines operating between Australian airports. The purpose of this is to allow for evaluation of overall industry and individual airline performance, so that consumers of air travel can make informed decisions.

The following domestic airlines currently report this information monthly to the BITRE: Jetstar, Qantas, QantasLink, Regional Express, Tigerair Australia, Virgin Australia and Virgin Australia Regional Airlines. Data has been gathered since November 2003, although some airlines commenced reporting at a later date, including Jetstar which first reported in May 2004, MacAir in July 2005, Tigerair Australia in April 2008 and Virgin Australia Regional Airlines in May 2013. MacAir ceased operations in February 2009 and data was not received for December 2008 onwards. Virgin Blue was rebranded as Virgin Australia in May 2011 and Tiger Airways was rebranded as Tigerair Australia in July 2013 and time series data in Microsoft Excel spreadsheet format on the BITRE website have been revised to reflect these changes. Services operated by Skywest on behalf of Virgin Australia using ATR/F100 aircraft commenced in November 2011 and were shown separately as Virgin Australia – ATR/F100 Operations. Virgin Australia Regional Airlines commenced operations in May 2013. It was formed after the acquisition of Skywest by Virgin Australia and represented a combination of operations previously reported under Skywest and Virgin Australia – ATR/F100 Operations. In January 2016, Virgin Australia transferred their ATR fleet from Virgin Australia Regional Airlines to Virgin Australia.

Information presented in this report is for Australian domestic routes for which the passenger load averaged 8 000 or more passengers per month over the previous six months and where two or more airlines operated in competition on those routes. There were 64 routes that met these criteria for all twelve months in 2019. Over time, routes which meet these criteria change as airline networks and traffic levels vary.

Participating airlines report their overall monthly network performance where this is possible.

Total industry figures encompass all services operated by reporting airlines only. These airlines collectively carried over 95 per cent of total domestic passengers (regular public transport only) in 2018.

The method of capturing on time performance varies between airlines utilising different recording systems. Jetstar and Qantas jet aircraft use Aircraft Communication Addressing and Reporting System (ACARS) to electronically measure on time performance. Regional Express, Tigerair Australia, Virgin Australia, Virgin Australia Regional Airlines and the Qantas non-jet fleet record on time performance manually using records from pilots, gate agents and/or ground crews.

After initial data is collected, aggregate reports are audited internally by participating airlines prior to publication.

Reports and detailed time series data in Microsoft Excel spreadsheet format are available from the BITRE website at: <http://www.bitre.gov.au/statistics/aviation/otphome.aspx>

Contents

	Page
Industry performance	1
Individual routes	9
Airports	23
Definitions	29

Industry performance

For the year ended December 2019, on time performance over all routes operated by participating airlines (Jetstar, Qantas, QantasLink, Regional Express, Tigerair Australia, Virgin Australia and Virgin Australia Regional Airlines) averaged 78.4 per cent for on time arrivals and 79.9 per cent for on time departures. Cancellations represented 2.1 per cent of all scheduled flights. The equivalent figures for 2018 were 79.8 per cent for arrivals, 80.8 per cent for departures and 1.8 per cent for cancellations.

The 2019 on time arrivals figure was below the long term average performance for all routes of 82.2 per cent and the on time departures figure was also below the long term average of 83.5 per cent. The rate of cancellations was higher than the long term average of 1.5 per cent.

The Qantas network (Qantas and QantasLink combined operations) recorded 80.0 per cent for on time arrivals while the Virgin Australia network (Virgin Australia and Virgin Australia Regional Airlines combined operations) recorded 78.7 per cent. Virgin Australia achieved the highest on time arrivals among the major domestic airlines at 78.9 per cent, followed by Qantas at 77.4 per cent, Jetstar at 74.5 per cent and Tigerair Australia at 67.2 per cent. QantasLink was the best performing regional airline for on time arrivals at 82.2 per cent, followed by Regional Express at 81.5 per cent and Virgin Australia Regional Airlines at 76.8 per cent.

The Qantas network recorded 81.3 per cent for on time departures and the Virgin Australia network also recorded 81.3 per cent. Virgin Australia achieved the highest level of on time departures for 2019 at 81.3 per cent, followed by Qantas at 79.5 per cent, Jetstar at 72.9 per cent and Tigerair Australia at 68.8 per cent. The regional airlines were led by Regional Express at 84.8 per cent, followed by QantasLink at 82.9 per cent and Virgin Australia Regional Airlines at 81.0 per cent.

Tigerair Australia had the highest percentage of cancellations at 3.6 per cent during 2019, followed by Qantas at 2.8 per cent, Jetstar at 2.5 per cent, QantasLink and Virgin Australia both at 1.8 per cent, Virgin Australia Regional Airlines at 1.3 per cent and Regional Express at 1.0 per cent.

Airlines' on time performance varies across the routes they serve. Individual route data by specific airline for 65 routes are shown on pages 9-22.

Of the 64 routes which met the criteria for on time performance reporting for all 12 months in 2019, the Cairns-Townsville route had the highest percentage of on time arrivals at 91.8 per cent and the Adelaide-Port Lincoln route had the highest percentage of on time departures at 92.7 per cent. The Hobart-Melbourne route had the lowest percentage of on time arrivals at 63.1 per cent and the Townsville-Sydney route had the lowest percentage of on time departures at 60.0 per cent.

Cancellations were highest on the Melbourne-Sydney and Sydney-Melbourne routes at 6.8 per cent, followed by the Brisbane-Sydney route at 3.6 per cent, the Sydney-Brisbane route at 3.5 per cent, the Canberra-Sydney route at 3.4 per cent and the Karratha-Perth route at 3.2 per cent.

Port Lincoln Airport recorded the highest percentage of on time arrivals at 91.0 per cent and the highest percentage of on time departures at 90.8 per cent. Melbourne Airport recorded the lowest percentage of on time arrivals at 72.0 per cent and Ayers Rock Airport recorded the lowest percentage of on time departures at 61.7 per cent. These figures only refer to reported routes and do not cover all flights at these airports.

Table 1 On time performance for the year ended December 2019 – Total Industry

	<i>Sectors</i>		<i>Arrivals On Time</i>		<i>Departures On Time</i>		<i>Cancellations</i>	
	<i>Scheduled</i>	<i>Flown</i>	<i>No.</i>	<i>%</i>	<i>No.</i>	<i>%</i>	<i>No.</i>	<i>%</i>
Jetstar	86 489	84 296	62 809	74.5	61 434	72.9	2 193	2.5
Qantas - all QF designated services	230 754	225 558	180 344	80.0	183 447	81.3	5 196	2.3
Regional Express	72 575	71 878	58 616	81.5	60 981	84.8	697	1.0
Tigerair Australia	28 172	27 166	18 248	67.2	18 680	68.8	1 006	3.6
Virgin Australia - all VA designated services	148 899	146 335	115 226	78.7	118 981	81.3	2 564	1.7
All Airlines	566 889	555 233	435 243	78.4	443 523	79.9	11 656	2.1
<i>Individual operating entities</i>								
Qantas	108 313	105 265	81 516	77.4	83 709	79.5	3 048	2.8
QantasLink	122 441	120 293	98 828	82.2	99 738	82.9	2 148	1.8
Virgin Australia	139 407	136 963	108 027	78.9	111 393	81.3	2 444	1.8
Virgin Australia Regional Airlines	9 492	9 372	7 199	76.8	7 588	81.0	120	1.3

Total airline network data (including routes not shown in this report).

Airlines' on time performance varies across the routes they serve. Individual route data by specific airline for 64 routes are shown on pages 9-22.

Table 2 Top ten routes for on time performance for the year ended December 2019 (routes for participating airlines only and with published data for the 12 month period)

<i>Arrivals</i>		<i>Departures</i>	
<i>Route</i>	<i>On Time (%)</i>	<i>Route</i>	<i>On Time (%)</i>
Cairns-Townsville	91.8	Adelaide-Port Lincoln	92.7
Adelaide-Port Lincoln	91.0	Perth-Newman	92.1
Adelaide-Gold Coast	90.7	Cairns-Townsville	92.0
Perth-Newman	90.4	Perth-Kalgoorlie	91.5
Port Lincoln-Adelaide	90.1	Port Lincoln-Adelaide	90.8
Townsville-Cairns	90.0	Perth-Karratha	90.5
Bundaberg-Brisbane	89.1	Perth-Port Hedland	90.1
Kalgoorlie-Perth	89.0	Bundaberg-Brisbane	90.0
Brisbane-Emerald	88.7	Brisbane-Emerald	90.0
Perth-Darwin	88.7	Darwin-Alice Springs	90.0

Table 3 Top ten airports for on time performance for the year ended December 2019 (airports for participating airlines and reported routes only and with published data for the 12 month period)

<i>Arrivals</i>		<i>Departures</i>	
<i>Airport</i>	<i>On Time (%)</i>	<i>Airport</i>	<i>On Time (%)</i>
Port Lincoln	91.0	Port Lincoln	90.8
Newman	90.4	Bundaberg	90.0
Emerald	88.7	Newman	89.2
Kalgoorlie	88.4	Kalgoorlie	88.3
Bundaberg	88.3	Karratha	87.0
Gladstone	87.9	Gladstone	86.2
Port Hedland	86.5	Port Hedland	85.9
Karratha	86.4	Alice Springs	85.6
Mount Isa	85.3	Emerald	85.4
Proserpine	84.2	Mount Isa	85.2

Total industry on time performance

Figure 1 On time performance (by month from December 2014)—Total Industry

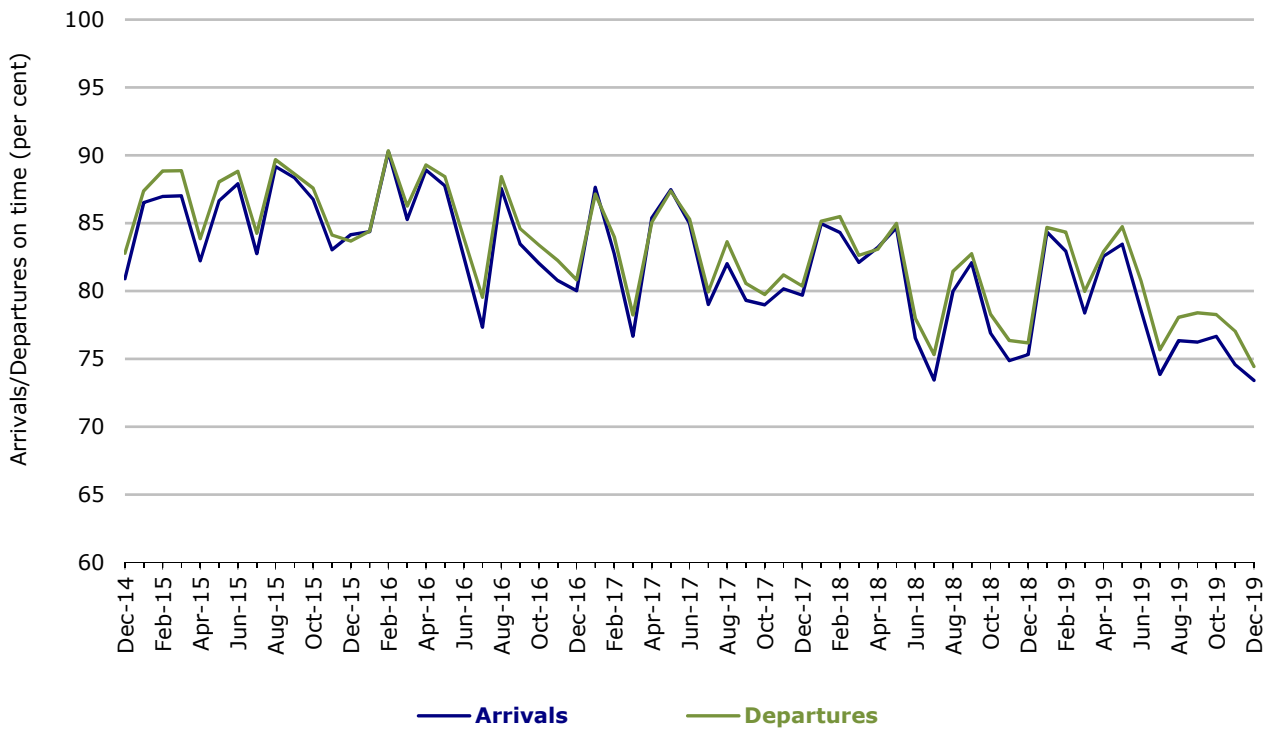
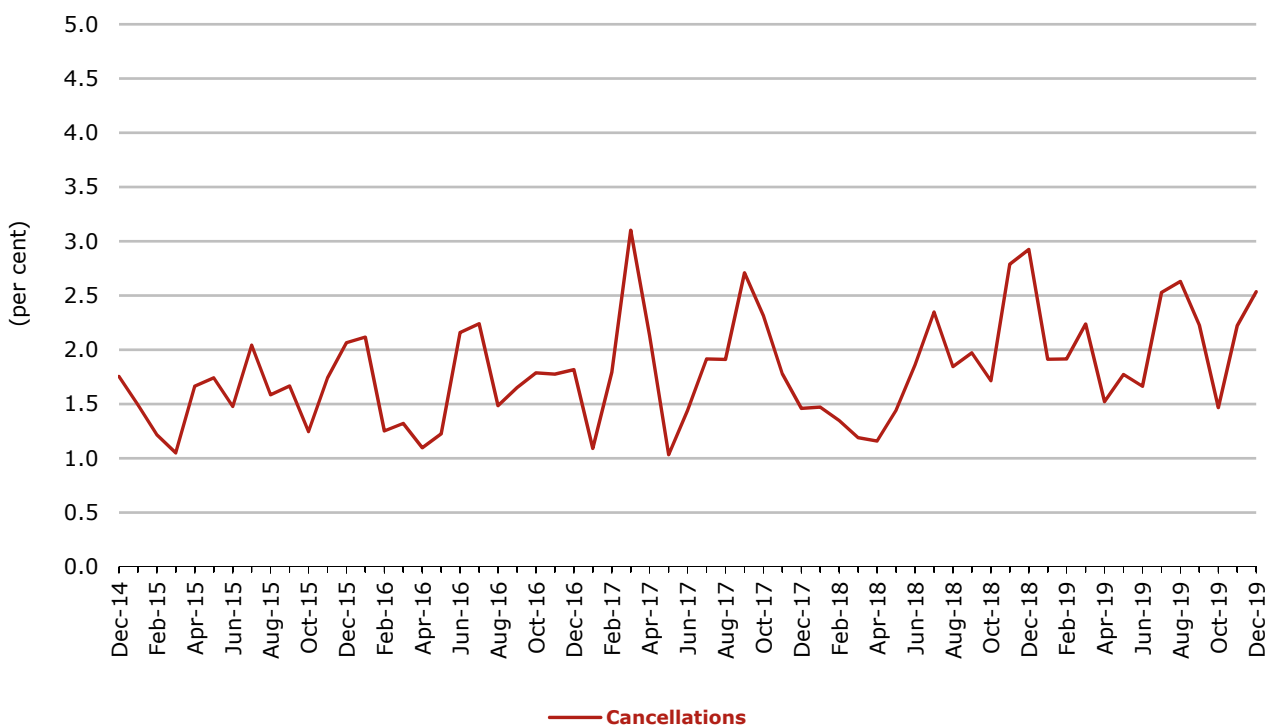


Figure 2 Cancellations (by month from December 2014)—Total Industry



Major domestic airlines on time performance

Figure 3 On time performance (by month from December 2014)—Jetstar

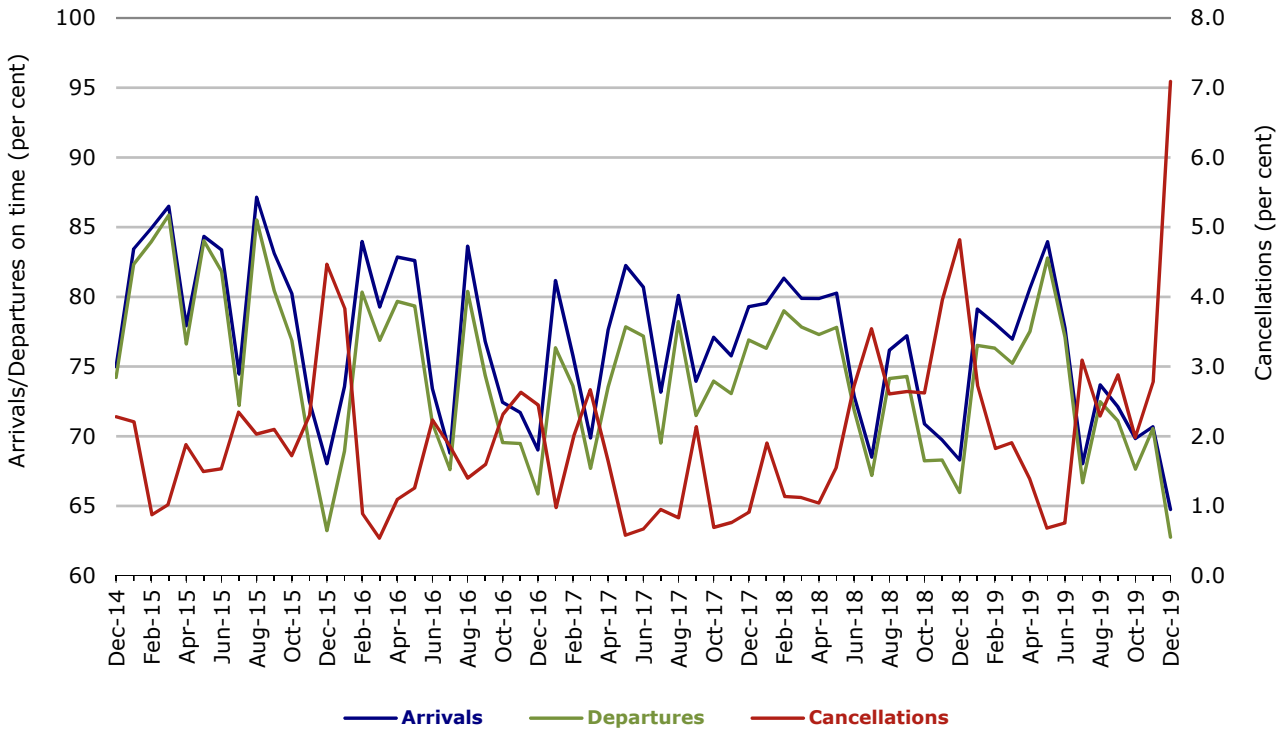


Figure 4 On time performance (by month from December 2014)—Qantas

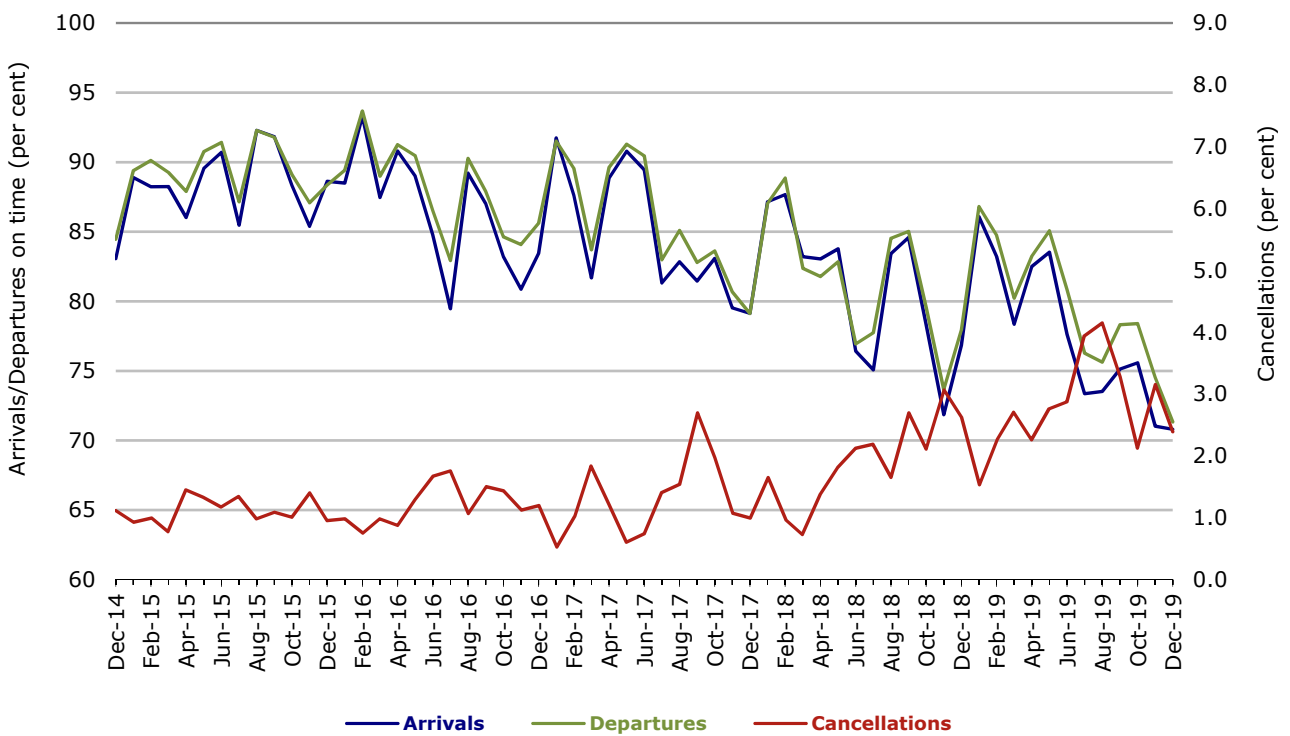


Figure 5 On time performance (by month from December 2014)—Tigerair Australia

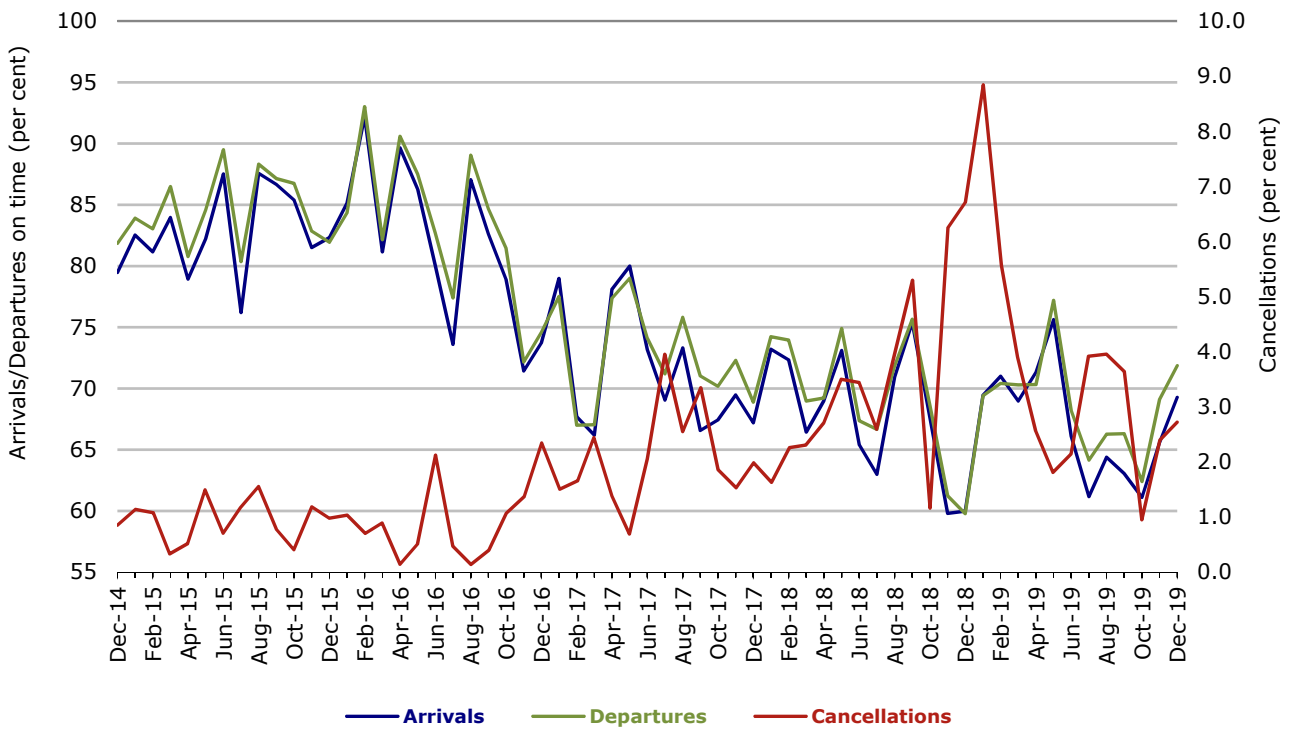
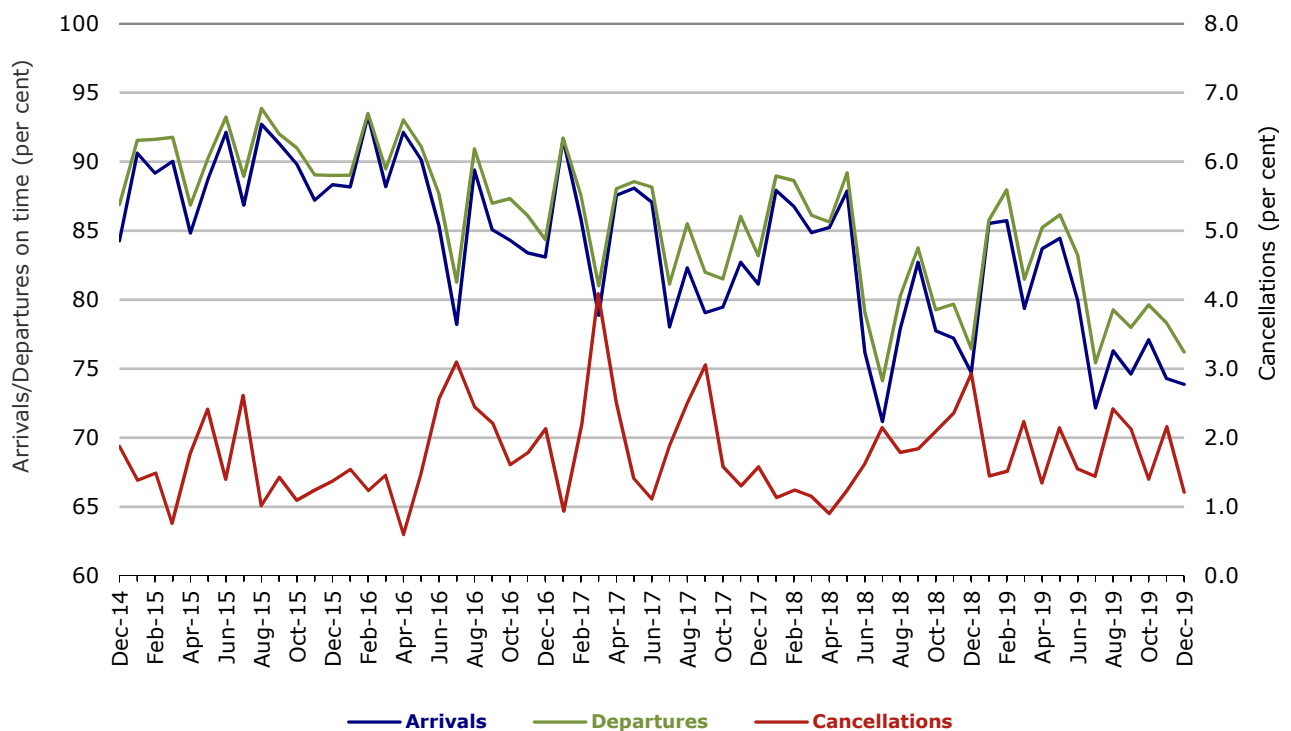


Figure 6 On time performance (by month from December 2014)—Virgin Australia



In January 2016, Virgin Australia transferred their ATR fleet from Virgin Australia Regional Airlines to Virgin Australia.

Major regional airlines on time performance

Figure 7 On time performance (by month from December 2014)—QantasLink

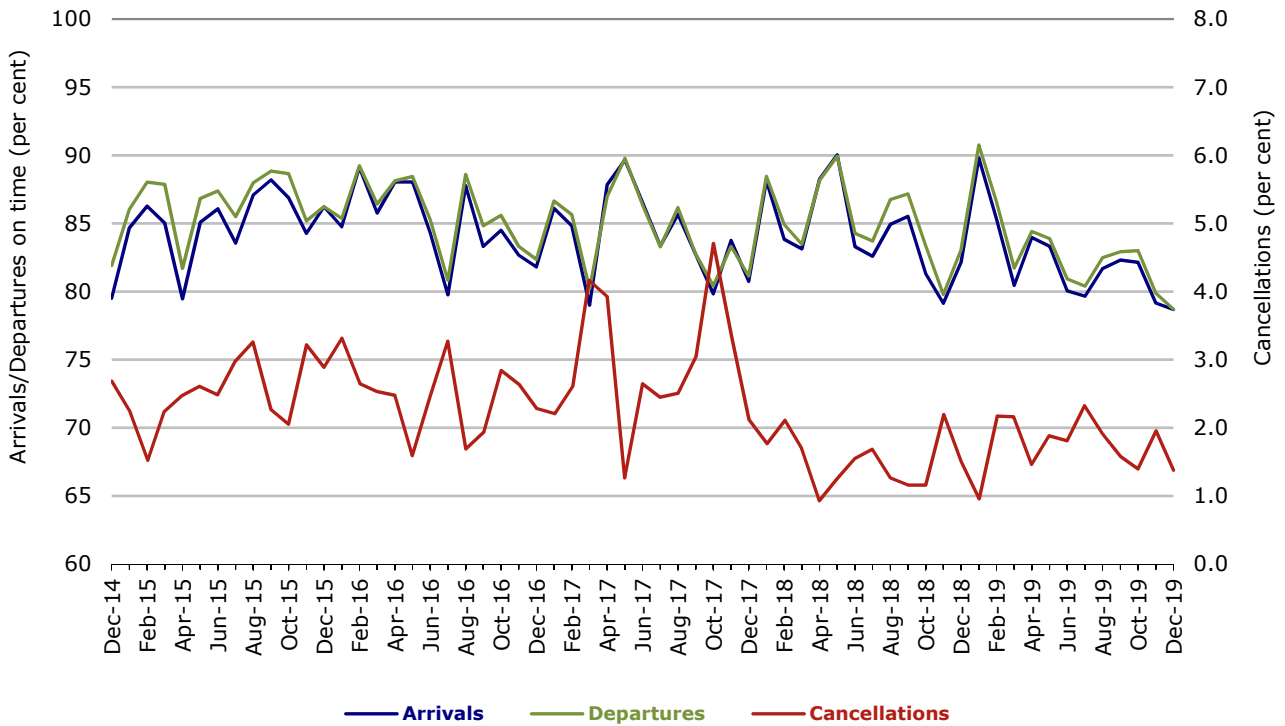


Figure 8 On time performance (by month from December 2014)—Regional Express

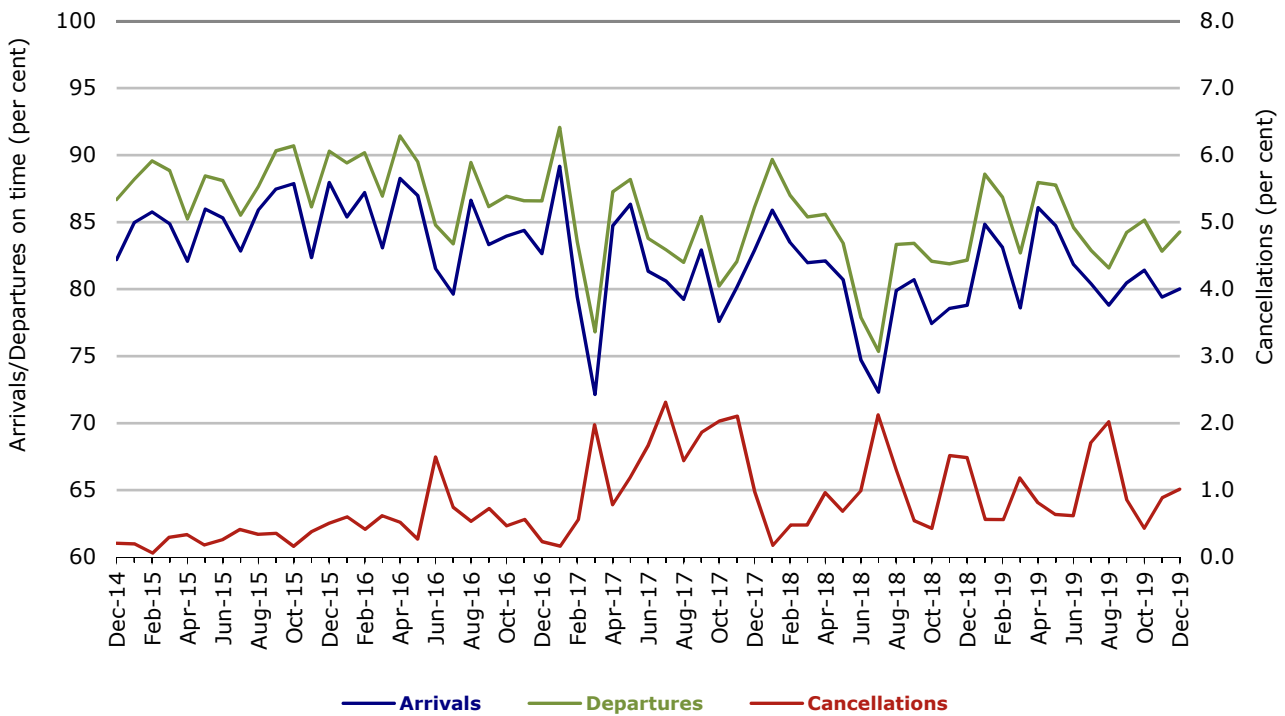
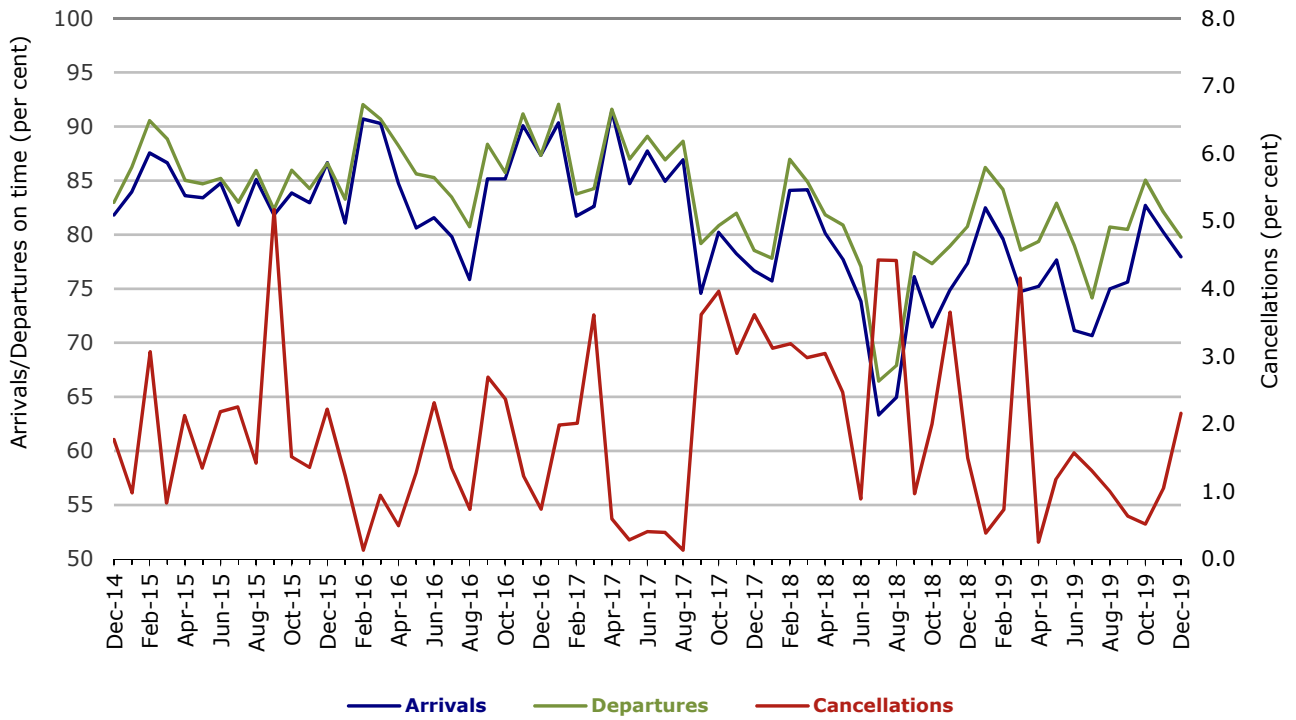


Figure 9 On time performance (by month from December 2014)
Virgin Australia Regional Airlines



In January 2016, Virgin Australia transferred their ATR fleet from Virgin Australia Regional Airlines to Virgin Australia.

Individual routes

On time performance is reported for all routes where the passenger load averages over 8000 passengers per month over the previous six months, and where two or more airlines operate in competition on those routes. There are now 64 routes which meet this definition. Over time, however, routes which meet this definition may change as airline networks and traffic levels vary.

	Sectors		Arrivals On Time		Departures On Time		Cancellations	
	Sched.	Flown	No.	%	No.	%	No.	%
Adelaide-Alice Springs								
Qantas	365	365	304	83.3	310	84.9	0	0.0
Virgin Australia	151	151	131	86.8	137	90.7	0	0.0
Virgin Australia Regional Airlines	114	111	66	59.5	74	66.7	3	2.6
All Airlines	630	627	501	79.9	521	83.1	3	0.5
Adelaide-Brisbane								
Jetstar	305	301	259	86.0	242	80.4	4	1.3
Qantas	1 145	1 143	1 000	87.5	992	86.8	2	0.2
QantasLink	149	145	128	88.3	130	89.7	4	2.7
Tigerair Australia	350	345	243	70.4	238	69.0	5	1.4
Virgin Australia	1 320	1 317	1 181	89.7	1 150	87.3	3	0.2
All Airlines	3 269	3 251	2 811	86.5	2 752	84.7	18	0.6
Adelaide-Canberra								
Qantas	525	520	448	86.2	432	83.1	5	1.0
QantasLink	51	51	37	72.5	42	82.4	0	0.0
Virgin Australia	310	310	271	87.4	275	88.7	0	0.0
All Airlines	886	881	756	85.8	749	85.0	5	0.6
Adelaide-Gold Coast								
Jetstar	343	340	302	88.8	286	84.1	3	0.9
Virgin Australia	379	379	350	92.3	354	93.4	0	0.0
All Airlines	722	719	652	90.7	640	89.0	3	0.4
Adelaide-Melbourne								
Jetstar	1 269	1 214	866	71.3	825	68.0	55	4.3
Qantas	3 415	3 362	2 726	81.1	2 756	82.0	53	1.6
Tigerair Australia	911	888	541	60.9	551	62.0	23	2.5
Virgin Australia	3 161	3 104	2 495	80.4	2 568	82.7	57	1.8
Virgin Australia Regional Airlines	116	112	82	73.2	85	75.9	4	3.4
All Airlines	8 872	8 680	6 710	77.3	6 785	78.2	192	2.2
Adelaide-Perth								
Jetstar	308	302	256	84.8	233	77.2	6	1.9
Qantas	1 368	1 366	1 200	87.8	1 161	85.0	2	0.1
QantasLink	4	4	4	100.0	4	100.0	0	0.0
Virgin Australia	426	426	374	87.8	373	87.6	0	0.0
Virgin Australia Regional Airlines	512	499	300	60.1	328	65.7	13	2.5
All Airlines	2 618	2 597	2 134	82.2	2 099	80.8	21	0.8
Adelaide-Port Lincoln								
QantasLink	1 222	1 205	1 073	89.0	1 076	89.3	17	1.4
Regional Express	2 519	2 503	2 300	91.9	2 362	94.4	16	0.6
All Airlines	3 741	3 708	3 373	91.0	3 438	92.7	33	0.9

	<i>Sectors</i>		<i>Arrivals On Time</i>		<i>Departures On Time</i>		<i>Cancellations</i>	
	<i>Sched.</i>	<i>Flown</i>	<i>No.</i>	<i>%</i>	<i>No.</i>	<i>%</i>	<i>No.</i>	<i>%</i>
Adelaide-Sydney								
Jetstar	1 321	1 259	959	76.2	965	76.6	62	4.7
Qantas	2 769	2 755	2 040	74.0	2 184	79.3	14	0.5
QantasLink	105	102	84	82.4	85	83.3	3	2.9
Tigerair Australia	356	350	189	54.0	204	58.3	6	1.7
Virgin Australia	1 933	1 920	1 516	79.0	1 618	84.3	13	0.7
All Airlines	6 484	6 386	4 788	75.0	5 056	79.2	98	1.5
Albury-Sydney								
QantasLink	1 206	1 184	830	70.1	870	73.5	22	1.8
Regional Express	1 155	1 140	927	81.3	977	85.7	15	1.3
Virgin Australia	674	669	481	71.9	492	73.5	5	0.7
All Airlines	3 035	2 993	2 238	74.8	2 339	78.1	42	1.4
Alice Springs-Adelaide								
Qantas	364	364	293	80.5	281	77.2	0	0.0
Virgin Australia	151	150	140	93.3	141	94.0	1	0.7
Virgin Australia Regional Airlines	113	110	71	64.5	78	70.9	3	2.7
All Airlines	628	624	504	80.8	500	80.1	4	0.6
Alice Springs-Darwin								
Qantas	413	401	379	94.5	380	94.8	12	2.9
QantasLink	213	203	172	84.7	188	92.6	10	4.7
Virgin Australia	147	147	134	91.2	132	89.8	0	0.0
Virgin Australia Regional Airlines	104	101	66	65.3	64	63.4	3	2.9
All Airlines	877	852	751	88.1	764	89.7	25	2.9
Armidale-Sydney								
QantasLink	1 396	1 366	910	66.6	950	69.5	30	2.1
Regional Express	809	796	544	68.3	607	76.3	13	1.6
All Airlines	2 205	2 162	1 454	67.3	1 557	72.0	43	2.0
Ayers Rock-Sydney								
Jetstar	344	341	194	56.9	185	54.3	3	0.9
Virgin Australia	365	364	270	74.2	250	68.7	1	0.3
All Airlines	709	705	464	65.8	435	61.7	4	0.6
Ballina-Sydney								
Jetstar	980	961	678	70.6	648	67.4	19	1.9
Regional Express	259	256	169	66.0	192	75.0	3	1.2
Virgin Australia	425	420	332	79.0	318	75.7	5	1.2
All Airlines	1 664	1 637	1 179	72.0	1 158	70.7	27	1.6
Brisbane-Adelaide								
Jetstar	305	301	260	86.4	256	85.0	4	1.3
Qantas	1 129	1 128	996	88.3	960	85.1	1	0.1
QantasLink	149	147	120	81.6	123	83.7	2	1.3
Tigerair Australia	350	345	250	72.5	265	76.8	5	1.4
Virgin Australia	1 283	1 281	1 093	85.3	1 098	85.7	2	0.2
All Airlines	3 216	3 202	2 719	84.9	2 702	84.4	14	0.4
Brisbane-Bundaberg								
QantasLink	1 431	1 422	1 247	87.7	1 260	88.6	9	0.6
Virgin Australia	365	365	331	90.7	326	89.3	0	0.0
All Airlines	1 796	1 787	1 578	88.3	1 586	88.8	9	0.5

	<i>Sectors</i>		<i>Arrivals On Time</i>		<i>Departures On Time</i>		<i>Cancellations</i>	
	<i>Sched.</i>	<i>Flown</i>	<i>No.</i>	<i>%</i>	<i>No.</i>	<i>%</i>	<i>No.</i>	<i>%</i>
Brisbane-Cairns								
Jetstar	1 154	1 126	961	85.3	923	82.0	28	2.4
Qantas	386	386	361	93.5	354	91.7	0	0.0
QantasLink	1 497	1 470	1 175	79.9	1 209	82.2	27	1.8
Tigerair Australia	364	363	254	70.0	250	68.9	1	0.3
Virgin Australia	1 559	1 555	1 304	83.9	1 292	83.1	4	0.3
All Airlines	4 960	4 900	4 055	82.8	4 028	82.2	60	1.2
Brisbane-Canberra								
Qantas	45	45	39	86.7	41	91.1	0	0.0
QantasLink	1 771	1 753	1 434	81.8	1 432	81.7	18	1.0
Tigerair Australia	292	292	223	76.4	228	78.1	0	0.0
Virgin Australia	1 161	1 159	979	84.5	979	84.5	2	0.2
All Airlines	3 269	3 249	2 675	82.3	2 680	82.5	20	0.6
Brisbane-Darwin								
Jetstar	272	266	247	92.9	241	90.6	6	2.2
Qantas	439	439	367	83.6	350	79.7	0	0.0
Tigerair Australia	191	188	161	85.6	151	80.3	3	1.6
Virgin Australia	372	372	265	71.2	304	81.7	0	0.0
All Airlines	1 274	1 265	1 040	82.2	1 046	82.7	9	0.7
Brisbane-Emerald								
QantasLink	1 429	1 418	1 242	87.6	1 255	88.5	11	0.8
Virgin Australia	607	607	555	91.4	568	93.6	0	0.0
All Airlines	2 036	2 025	1 797	88.7	1 823	90.0	11	0.5
Brisbane-Gladstone								
QantasLink	1 637	1 622	1 384	85.3	1 414	87.2	15	0.9
Virgin Australia	848	847	786	92.8	798	94.2	1	0.1
All Airlines	2 485	2 469	2 170	87.9	2 212	89.6	16	0.6
Brisbane-Hamilton Island								
QantasLink	361	349	276	79.1	253	72.5	12	3.3
Virgin Australia	363	360	303	84.2	307	85.3	3	0.8
All Airlines	724	709	579	81.7	560	79.0	15	2.1
Brisbane-Hobart								
Jetstar	336	333	306	91.9	312	93.7	3	0.9
Qantas	2	2	1	50.0	2	100.0	0	0.0
Virgin Australia	483	483	413	85.5	418	86.5	0	0.0
All Airlines	821	818	720	88.0	732	89.5	3	0.4
Brisbane-Mackay								
Jetstar	385	382	287	75.1	291	76.2	3	0.8
QantasLink	1 634	1 598	1 368	85.6	1 350	84.5	36	2.2
Virgin Australia	1 702	1 700	1 431	84.2	1 457	85.7	2	0.1
All Airlines	3 721	3 680	3 086	83.9	3 098	84.2	41	1.1
Brisbane-Melbourne								
Jetstar	1 697	1 658	1 236	74.5	1 129	68.1	39	2.3
Qantas	4 885	4 838	3 646	75.4	3 902	80.7	47	1.0
QantasLink	29	29	25	86.2	26	89.7	0	0.0
Tigerair Australia	1 348	1 291	832	64.4	868	67.2	57	4.2
Virgin Australia	4 550	4 401	3 270	74.3	3 648	82.9	149	3.3
All Airlines	12 509	12 217	9 009	73.7	9 573	78.4	292	2.3

	<i>Sectors</i>		<i>Arrivals On Time</i>		<i>Departures On Time</i>		<i>Cancellations</i>	
	<i>Sched.</i>	<i>Flown</i>	<i>No.</i>	<i>%</i>	<i>No.</i>	<i>%</i>	<i>No.</i>	<i>%</i>
Brisbane-Mount Isa								
Qantas	92	92	85	92.4	79	85.9	0	0.0
QantasLink	510	507	414	81.7	443	87.4	3	0.6
Virgin Australia	210	210	191	91.0	194	92.4	0	0.0
All Airlines	812	809	690	85.3	716	88.5	3	0.4
Brisbane-Newcastle								
Jetstar	911	901	714	79.2	696	77.2	10	1.1
QantasLink	1 054	1 030	874	84.9	879	85.3	24	2.3
Virgin Australia	1 001	996	848	85.1	883	88.7	5	0.5
All Airlines	2 966	2 927	2 436	83.2	2 458	84.0	39	1.3
Brisbane-Perth								
Qantas	1 776	1 769	1 503	85.0	1 444	81.6	7	0.4
Virgin Australia	1 295	1 294	1 022	79.0	944	73.0	1	0.1
All Airlines	3 071	3 063	2 525	82.4	2 388	78.0	8	0.3
Brisbane-Proserpine								
Jetstar	404	400	355	88.8	350	87.5	4	1.0
Virgin Australia	502	495	404	81.6	437	88.3	7	1.4
All Airlines	906	895	759	84.8	787	87.9	11	1.2
Brisbane-Rockhampton								
QantasLink	2 131	2 115	1 784	84.3	1 794	84.8	16	0.8
Virgin Australia	1 648	1 647	1 324	80.4	1 374	83.4	1	0.1
All Airlines	3 779	3 762	3 108	82.6	3 168	84.2	17	0.4
Brisbane-Sydney								
Jetstar	2 078	1 957	1 409	72.0	1 406	71.8	121	5.8
Qantas	7 205	6 984	5 594	80.1	5 894	84.4	221	3.1
QantasLink	98	94	63	67.0	68	72.3	4	4.1
Tigerair Australia	1 521	1 456	951	65.3	1 006	69.1	65	4.3
Virgin Australia	6 285	6 085	4 724	77.6	5 029	82.6	200	3.2
All Airlines	17 187	16 576	12 741	76.9	13 403	80.9	611	3.6
Brisbane-Townsville								
Jetstar	663	659	580	88.0	589	89.4	4	0.6
Qantas	545	541	472	87.2	476	88.0	4	0.7
QantasLink	1 286	1 255	937	74.7	985	78.5	31	2.4
Virgin Australia	1 719	1 703	1 430	84.0	1 413	83.0	16	0.9
All Airlines	4 213	4 158	3 419	82.2	3 463	83.3	55	1.3
Broome-Perth								
Qantas	47	46	33	71.7	24	52.2	1	2.1
QantasLink	1 028	1 016	850	83.7	824	81.1	12	1.2
Virgin Australia	27	27	24	88.9	20	74.1	0	0.0
Virgin Australia Regional Airlines	756	753	607	80.6	574	76.2	3	0.4
All Airlines	1 858	1 842	1 514	82.2	1 442	78.3	16	0.9
Bundaberg-Brisbane								
QantasLink	1 433	1 420	1 257	88.5	1 266	89.2	13	0.9
Virgin Australia	365	365	334	91.5	341	93.4	0	0.0
All Airlines	1 798	1 785	1 591	89.1	1 607	90.0	13	0.7
Cairns-Brisbane								
Jetstar	1 151	1 127	990	87.8	931	82.6	24	2.1
Qantas	387	387	354	91.5	341	88.1	0	0.0
QantasLink	1 496	1 453	1 173	80.7	1 197	82.4	43	2.9
Tigerair Australia	364	363	271	74.7	241	66.4	1	0.3
Virgin Australia	1 559	1 555	1 395	89.7	1 332	85.7	4	0.3
All Airlines	4 957	4 885	4 183	85.6	4 042	82.7	72	1.5

	<i>Sectors</i>		<i>Arrivals On Time</i>		<i>Departures On Time</i>		<i>Cancellations</i>	
	<i>Sched.</i>	<i>Flown</i>	<i>No.</i>	<i>%</i>	<i>No.</i>	<i>%</i>	<i>No.</i>	<i>%</i>
Cairns-Melbourne								
Jetstar	1 214	1 185	925	78.1	904	76.3	29	2.4
Qantas	435	434	296	68.2	274	63.1	1	0.2
Tigerair Australia	471	466	332	71.2	316	67.8	5	1.1
Virgin Australia	415	413	274	66.3	298	72.2	2	0.5
All Airlines	2 535	2 498	1 827	73.1	1 792	71.7	37	1.5
Cairns-Sydney								
Jetstar	1 120	1 090	904	82.9	906	83.1	30	2.7
Qantas	742	740	544	73.5	527	71.2	2	0.3
Tigerair Australia	402	396	329	83.1	304	76.8	6	1.5
Virgin Australia	1 064	1 062	869	81.8	838	78.9	2	0.2
All Airlines	3 328	3 288	2 646	80.5	2 575	78.3	40	1.2
Cairns-Townsville								
QantasLink	1 607	1 587	1 464	92.2	1 466	92.4	20	1.2
Regional Express	146	146	127	87.0	129	88.4	0	0.0
All Airlines	1 753	1 733	1 591	91.8	1 595	92.0	20	1.1
Canberra-Adelaide								
Qantas	522	522	461	88.3	448	85.8	0	0.0
QantasLink	51	51	32	62.7	29	56.9	0	0.0
Virgin Australia	310	310	262	84.5	268	86.5	0	0.0
All Airlines	883	883	755	85.5	745	84.4	0	0.0
Canberra-Brisbane								
Qantas	42	42	38	90.5	37	88.1	0	0.0
QantasLink	1 770	1 735	1 424	82.1	1 443	83.2	35	2.0
Tigerair Australia	292	291	215	73.9	209	71.8	1	0.3
Virgin Australia	1 162	1 159	1 009	87.1	1 018	87.8	3	0.3
All Airlines	3 266	3 227	2 686	83.2	2 707	83.9	39	1.2
Canberra-Melbourne								
Qantas	2 791	2 739	2 256	82.4	2 332	85.1	52	1.9
QantasLink	499	486	353	72.6	376	77.4	13	2.6
Tigerair Australia	445	434	287	66.1	291	67.1	11	2.5
Virgin Australia	1 898	1 863	1 412	75.8	1 548	83.1	35	1.8
All Airlines	5 633	5 522	4 308	78.0	4 547	82.3	111	2.0
Canberra-Sydney								
Qantas	18	18	12	66.7	15	83.3	0	0.0
QantasLink	5 457	5 266	4 062	77.1	4 227	80.3	191	3.5
Virgin Australia	2 865	2 773	2 258	81.4	2 331	84.1	92	3.2
All Airlines	8 340	8 057	6 332	78.6	6 573	81.6	283	3.4
Coffs Harbour-Sydney								
QantasLink	1 616	1 585	1 221	77.0	1 258	79.4	31	1.9
Tigerair Australia	282	275	214	77.8	222	80.7	7	2.5
Virgin Australia	365	362	275	76.0	281	77.6	3	0.8
All Airlines	2 263	2 222	1 710	77.0	1 761	79.3	41	1.8
Darwin-Alice Springs								
Qantas	414	405	377	93.1	383	94.6	9	2.2
QantasLink	215	207	160	77.3	174	84.1	8	3.7
Virgin Australia	148	147	137	93.2	142	96.6	1	0.7
Virgin Australia Regional Airlines	104	100	69	69.0	74	74.0	4	3.8
All Airlines	881	859	743	86.5	773	90.0	22	2.5

	<i>Sectors</i>		<i>Arrivals On Time</i>		<i>Departures On Time</i>		<i>Cancellations</i>	
	<i>Sched.</i>	<i>Flown</i>	<i>No.</i>	<i>%</i>	<i>No.</i>	<i>%</i>	<i>No.</i>	<i>%</i>
Darwin-Brisbane								
Jetstar	272	266	246	92.5	232	87.2	6	2.2
Qantas	440	440	369	83.9	326	74.1	0	0.0
Tigerair Australia	192	187	152	81.3	135	72.2	5	2.6
Virgin Australia	371	371	278	74.9	279	75.2	0	0.0
All Airlines	1 275	1 264	1 045	82.7	972	76.9	11	0.9
Darwin-Melbourne								
Jetstar	292	287	207	72.1	178	62.0	5	1.7
Qantas	373	372	280	75.3	253	68.0	1	0.3
Virgin Australia	376	375	313	83.5	312	83.2	1	0.3
All Airlines	1 041	1 034	800	77.4	743	71.9	7	0.7
Darwin-Perth								
Qantas	365	364	325	89.3	328	90.1	1	0.3
Virgin Australia	257	257	203	79.0	204	79.4	0	0.0
Virgin Australia Regional Airlines	109	108	79	73.1	71	65.7	1	0.9
All Airlines	731	729	607	83.3	603	82.7	2	0.3
Darwin-Sydney								
Jetstar	262	258	205	79.5	206	79.8	4	1.5
Qantas	542	540	343	63.5	322	59.6	2	0.4
Virgin Australia	342	341	195	57.2	199	58.4	1	0.3
All Airlines	1 146	1 139	743	65.2	727	63.8	7	0.6
Dubbo-Sydney								
QantasLink	1 379	1 356	1 033	76.2	1 053	77.7	23	1.7
Regional Express	1 455	1 439	1 031	71.6	1 153	80.1	16	1.1
All Airlines	2 834	2 795	2 064	73.8	2 206	78.9	39	1.4
Emerald-Brisbane								
QantasLink	1 429	1 413	1 174	83.1	1 159	82.0	16	1.1
Virgin Australia	608	608	581	95.6	566	93.1	0	0.0
All Airlines	2 037	2 021	1 755	86.8	1 725	85.4	16	0.8
Geraldton-Perth								
			(To July 2019 only)					
QantasLink	340	339	304	89.7	305	90.0	1	0.3
Virgin Australia Regional Airlines	217	213	171	80.3	168	78.9	4	1.8
All Airlines	557	552	475	86.1	473	85.7	5	0.9
Gladstone-Brisbane								
QantasLink	1 636	1 618	1 366	84.4	1 339	82.8	18	1.1
Virgin Australia	848	847	764	90.2	785	92.7	1	0.1
All Airlines	2 484	2 465	2 130	86.4	2 124	86.2	19	0.8
Gold Coast-Adelaide								
Jetstar	343	340	292	85.9	301	88.5	3	0.9
Virgin Australia	379	379	308	81.3	302	79.7	0	0.0
All Airlines	722	719	600	83.4	603	83.9	3	0.4
Gold Coast-Melbourne								
Jetstar	2 305	2 270	1 698	74.8	1 588	70.0	35	1.5
Qantas	402	402	235	58.5	209	52.0	0	0.0
Tigerair Australia	980	965	589	61.0	559	57.9	15	1.5
Virgin Australia	2 286	2 275	1 663	73.1	1 542	67.8	11	0.5
All Airlines	5 973	5 912	4 185	70.8	3 898	65.9	61	1.0

	Sectors		Arrivals On Time		Departures On Time		Cancellations	
	Sched.	Flown	No.	%	No.	%	No.	%
Gold Coast-Sydney								
Jetstar	3 514	3 388	2 610	77.0	2 535	74.8	126	3.6
Qantas	914	900	640	71.1	620	68.9	14	1.5
QantasLink	609	594	426	71.7	459	77.3	15	2.5
Tigerair Australia	1 093	1 054	678	64.3	662	62.8	39	3.6
Virgin Australia	3 050	2 998	2 219	74.0	2 163	72.1	52	1.7
All Airlines	9 180	8 934	6 573	73.6	6 439	72.1	246	2.7
Hamilton Island-Brisbane								
QantasLink	361	349	241	69.1	248	71.1	12	3.3
Virgin Australia	365	360	316	87.8	306	85.0	5	1.4
All Airlines	726	709	557	78.6	554	78.1	17	2.3
Hamilton Island-Sydney								
Jetstar	264	259	187	72.2	176	68.0	5	1.9
Qantas	114	114	98	86.0	99	86.8	0	0.0
QantasLink	224	217	167	77.0	165	76.0	7	3.1
Virgin Australia	305	303	233	76.9	224	73.9	2	0.7
All Airlines	907	893	685	76.7	664	74.4	14	1.5
Hobart-Brisbane								
Jetstar	336	333	299	89.8	295	88.6	3	0.9
Qantas	2	2	2	100.0	2	100.0	0	0.0
Virgin Australia	482	482	341	70.7	368	76.3	0	0.0
All Airlines	820	817	642	78.6	665	81.4	3	0.4
Hobart-Melbourne								
Jetstar	2 104	2 064	1 217	59.0	1 232	59.7	40	1.9
Qantas	1 362	1 352	902	66.7	1 000	74.0	10	0.7
Tigerair Australia	513	508	292	57.5	314	61.8	5	1.0
Virgin Australia	1 719	1 712	1 144	66.8	1 316	76.9	7	0.4
All Airlines	5 698	5 636	3 555	63.1	3 862	68.5	62	1.1
Hobart-Sydney								
Jetstar	1 045	1 026	671	65.4	705	68.7	19	1.8
Qantas	33	33	23	69.7	23	69.7	0	0.0
QantasLink	828	814	575	70.6	622	76.4	14	1.7
Virgin Australia	884	874	644	73.7	688	78.7	10	1.1
All Airlines	2 790	2 747	1 913	69.6	2 038	74.2	43	1.5
Kalgoorlie-Perth								
Qantas	98	97	92	94.8	90	92.8	1	1.0
QantasLink	897	886	793	89.5	788	88.9	11	1.2
Virgin Australia	355	346	316	91.3	312	90.2	9	2.5
Virgin Australia Regional Airlines	577	556	476	85.6	475	85.4	21	3.6
All Airlines	1 927	1 885	1 677	89.0	1 665	88.3	42	2.2
Karratha-Perth								
Qantas	439	418	391	93.5	379	90.7	21	4.8
QantasLink	1 771	1 708	1 507	88.2	1 526	89.3	63	3.6
Virgin Australia	25	25	17	68.0	14	56.0	0	0.0
Virgin Australia Regional Airlines	776	764	594	77.7	618	80.9	12	1.5
All Airlines	3 011	2 915	2 509	86.1	2 537	87.0	96	3.2
Launceston-Melbourne								
Jetstar	1 545	1 530	1 022	66.8	1 026	67.1	15	1.0
QantasLink	1 405	1 366	1 124	82.3	1 142	83.6	39	2.8
Virgin Australia	1 210	1 207	933	77.3	1 034	85.7	3	0.2
All Airlines	4 160	4 103	3 079	75.0	3 202	78.0	57	1.4

	Sectors		Arrivals On Time		Departures On Time		Cancellations	
	Sched.	Flown	No.	%	No.	%	No.	%
Launceston-Sydney								
Jetstar	594	582	363	62.4	358	61.5	12	2.0
Virgin Australia	375	373	306	82.0	300	80.4	2	0.5
All Airlines	969	955	669	70.1	658	68.9	14	1.4
Mackay-Brisbane								
Jetstar	388	380	285	75.0	235	61.8	8	2.1
QantasLink	1 577	1 536	1 332	86.7	1 339	87.2	41	2.6
Virgin Australia	1 703	1 700	1 535	90.3	1 507	88.6	3	0.2
All Airlines	3 668	3 616	3 152	87.2	3 081	85.2	52	1.4
Melbourne-Adelaide								
Jetstar	1 273	1 217	828	68.0	856	70.3	56	4.4
Qantas	3 415	3 378	2 695	79.8	2 799	82.9	37	1.1
Tigerair Australia	909	888	589	66.3	637	71.7	21	2.3
Virgin Australia	3 157	3 106	2 444	78.7	2 582	83.1	51	1.6
Virgin Australia Regional Airlines	116	114	75	65.8	75	65.8	2	1.7
All Airlines	8 870	8 703	6 631	76.2	6 949	79.8	167	1.9
Melbourne-Brisbane								
Jetstar	1 696	1 659	1 140	68.7	1 089	65.6	37	2.2
Qantas	4 887	4 847	3 772	77.8	3 817	78.7	40	0.8
QantasLink	29	29	20	69.0	26	89.7	0	0.0
Tigerair Australia	1 349	1 293	949	73.4	980	75.8	56	4.2
Virgin Australia	4 549	4 407	3 613	82.0	3 734	84.7	142	3.1
All Airlines	12 510	12 235	9 494	77.6	9 646	78.8	275	2.2
Melbourne-Cairns								
Jetstar	1 213	1 187	874	73.6	878	74.0	26	2.1
Qantas	434	434	344	79.3	348	80.2	0	0.0
Tigerair Australia	471	468	362	77.4	394	84.2	3	0.6
Virgin Australia	417	414	338	81.6	376	90.8	3	0.7
All Airlines	2 535	2 503	1 918	76.6	1 996	79.7	32	1.3
Melbourne-Canberra								
Qantas	2 795	2 751	2 250	81.8	2 260	82.2	44	1.6
QantasLink	501	484	385	79.5	383	79.1	17	3.4
Tigerair Australia	445	434	307	70.7	304	70.0	11	2.5
Virgin Australia	1 900	1 863	1 481	79.5	1 527	82.0	37	1.9
All Airlines	5 641	5 532	4 423	80.0	4 474	80.9	109	1.9
Melbourne-Darwin								
Jetstar	291	288	181	62.8	191	66.3	3	1.0
Qantas	372	372	299	80.4	313	84.1	0	0.0
Virgin Australia	376	376	248	66.0	256	68.1	0	0.0
All Airlines	1 039	1 036	728	70.3	760	73.4	3	0.3
Melbourne-Gold Coast								
Jetstar	2 302	2 272	1 626	71.6	1 646	72.4	30	1.3
Qantas	403	403	314	77.9	326	80.9	0	0.0
Tigerair Australia	980	965	653	67.7	704	73.0	15	1.5
Virgin Australia	2 287	2 278	1 826	80.2	1 889	82.9	9	0.4
All Airlines	5 972	5 918	4 419	74.7	4 565	77.1	54	0.9
Melbourne-Hobart								
Jetstar	2 104	2 070	1 468	70.9	1 487	71.8	34	1.6
Qantas	1 363	1 363	1 011	74.2	1 053	77.3	0	0.0
QantasLink	1	1	0	0.0	1	100.0	0	0.0
Tigerair Australia	513	509	390	76.6	421	82.7	4	0.8
Virgin Australia	1 717	1 712	1 277	74.6	1 381	80.7	5	0.3
All Airlines	5 698	5 655	4 146	73.3	4 343	76.8	43	0.8

	Sectors		Arrivals On Time		Departures On Time		Cancellations	
	Sched.	Flown	No.	%	No.	%	No.	%
Melbourne-Launceston								
Jetstar	1 545	1 532	1 102	71.9	1 103	72.0	13	0.8
QantasLink	1 403	1 373	1 137	82.8	1 123	81.8	30	2.1
Virgin Australia	1 209	1 207	926	76.7	990	82.0	2	0.2
All Airlines	4 157	4 112	3 165	77.0	3 216	78.2	45	1.1
Melbourne-Mildura								
QantasLink	1 121	1 094	902	82.4	912	83.4	27	2.4
Regional Express	936	934	741	79.3	772	82.7	2	0.2
Virgin Australia	365	365	300	82.2	331	90.7	0	0.0
All Airlines	2 422	2 393	1 943	81.2	2 015	84.2	29	1.2
Melbourne-Newcastle								
Jetstar	1 220	1 207	817	67.7	755	62.6	13	1.1
Virgin Australia	384	384	297	77.3	317	82.6	0	0.0
All Airlines	1 604	1 591	1 114	70.0	1 072	67.4	13	0.8
Melbourne-Perth								
Jetstar	593	575	510	88.7	490	85.2	18	3.0
Qantas	2 414	2 400	1 725	71.9	1 675	69.8	14	0.6
Tigerair Australia	637	625	436	69.8	450	72.0	12	1.9
Virgin Australia	1 734	1 728	1 305	75.5	1 230	71.2	6	0.3
All Airlines	5 378	5 328	3 976	74.6	3 845	72.2	50	0.9
Melbourne-Sunshine Coast								
Jetstar	968	962	783	81.4	776	80.7	6	0.6
Virgin Australia	822	822	688	83.7	682	83.0	0	0.0
All Airlines	1 790	1 784	1 471	82.5	1 458	81.7	6	0.3
Melbourne-Sydney								
Jetstar	4 811	4 554	2 947	64.7	3 128	68.7	257	5.3
Qantas	12 615	11 586	8 348	72.1	9 176	79.2	1 029	8.2
Tigerair Australia	2 995	2 766	1 709	61.8	1 838	66.4	229	7.6
Virgin Australia	8 796	8 316	6 223	74.8	6 919	83.2	480	5.5
All Airlines	29 217	27 222	19 227	70.6	21 061	77.4	1 995	6.8
Mildura-Melbourne								
QantasLink	1 121	1 090	822	75.4	865	79.4	31	2.8
Regional Express	937	932	666	71.5	735	78.9	5	0.5
Virgin Australia	365	365	289	79.2	315	86.3	0	0.0
All Airlines	2 423	2 387	1 777	74.4	1 915	80.2	36	1.5
Mount Isa-Brisbane								
Qantas	91	91	83	91.2	71	78.0	0	0.0
QantasLink	512	504	438	86.9	427	84.7	8	1.6
Virgin Australia	172	171	140	81.9	155	90.6	1	0.6
All Airlines	775	766	661	86.3	653	85.2	9	1.2
Newcastle-Brisbane								
Jetstar	910	899	742	82.5	761	84.6	11	1.2
QantasLink	1 053	1 028	899	87.5	874	85.0	25	2.4
Virgin Australia	1 001	996	875	87.9	882	88.6	5	0.5
All Airlines	2 964	2 923	2 516	86.1	2 517	86.1	41	1.4
Newcastle-Melbourne								
Jetstar	1 217	1 206	870	72.1	896	74.3	11	0.9
Virgin Australia	384	384	252	65.6	290	75.5	0	0.0
All Airlines	1 601	1 590	1 122	70.6	1 186	74.6	11	0.7

	<i>Sectors</i>		<i>Arrivals On Time</i>		<i>Departures On Time</i>		<i>Cancellations</i>	
	<i>Sched.</i>	<i>Flown</i>	<i>No.</i>	<i>%</i>	<i>No.</i>	<i>%</i>	<i>No.</i>	<i>%</i>
Newman-Perth								
Qantas	360	349	331	94.8	330	94.6	11	3.1
QantasLink	1 305	1 265	1 102	87.1	1 125	88.9	40	3.1
Virgin Australia	179	179	157	87.7	157	87.7	0	0.0
Virgin Australia Regional Airlines	294	292	246	84.2	248	84.9	2	0.7
All Airlines	2 138	2 085	1 836	88.1	1 860	89.2	53	2.5
Perth-Adelaide								
Jetstar	310	298	235	78.9	229	76.8	12	3.9
Qantas	1 383	1 381	1 197	86.7	1 211	87.7	2	0.1
QantasLink	3	3	1	33.3	1	33.3	0	0.0
Virgin Australia	435	435	384	88.3	390	89.7	0	0.0
Virgin Australia Regional Airlines	513	512	314	61.3	448	87.5	1	0.2
All Airlines	2 644	2 629	2 131	81.1	2 279	86.7	15	0.6
Perth-Brisbane								
Qantas	1 757	1 753	1 408	80.3	1 474	84.1	4	0.2
Virgin Australia	1 301	1 300	1 058	81.4	1 102	84.8	1	0.1
All Airlines	3 058	3 053	2 466	80.8	2 576	84.4	5	0.2
Perth-Broome								
Qantas	47	46	35	76.1	38	82.6	1	2.1
QantasLink	1 027	1 022	870	85.1	886	86.7	5	0.5
Virgin Australia	27	27	24	88.9	23	85.2	0	0.0
Virgin Australia Regional Airlines	755	755	581	77.0	611	80.9	0	0.0
All Airlines	1 856	1 850	1 510	81.6	1 558	84.2	6	0.3
Perth-Darwin								
Qantas	363	363	327	90.1	332	91.5	0	0.0
Virgin Australia	257	257	223	86.8	225	87.5	0	0.0
Virgin Australia Regional Airlines	108	108	96	88.9	97	89.8	0	0.0
All Airlines	728	728	646	88.7	654	89.8	0	0.0
Perth-Geraldton								
			(To July 2019 only)					
QantasLink	340	340	302	88.8	299	87.9	0	0.0
Virgin Australia Regional Airlines	217	214	174	81.3	171	79.9	3	1.4
All Airlines	557	554	476	85.9	470	84.8	3	0.5
Perth-Kalgoorlie								
Qantas	98	97	89	91.8	91	93.8	1	1.0
QantasLink	899	888	779	87.7	801	90.2	11	1.2
Virgin Australia	355	350	326	93.1	333	95.1	5	1.4
Virgin Australia Regional Airlines	575	565	486	86.0	514	91.0	10	1.7
All Airlines	1 927	1 900	1 680	88.4	1 739	91.5	27	1.4
Perth-Karratha								
Qantas	439	420	393	93.6	392	93.3	19	4.3
QantasLink	1 778	1 736	1 515	87.3	1 561	89.9	42	2.4
Virgin Australia	25	25	19	76.0	21	84.0	0	0.0
Virgin Australia Regional Airlines	776	765	617	80.7	691	90.3	11	1.4
All Airlines	3 018	2 946	2 544	86.4	2 665	90.5	72	2.4
Perth-Melbourne								
Jetstar	593	566	464	82.0	426	75.3	27	4.6
Qantas	2 422	2 400	1 811	75.5	1 866	77.8	22	0.9
Tigerair Australia	639	625	425	68.0	387	61.9	14	2.2
Virgin Australia	1 723	1 718	1 351	78.6	1 438	83.7	5	0.3
All Airlines	5 377	5 309	4 051	76.3	4 117	77.5	68	1.3

	<i>Sectors</i>		<i>Arrivals On Time</i>		<i>Departures On Time</i>		<i>Cancellations</i>	
	<i>Sched.</i>	<i>Flown</i>	<i>No.</i>	<i>%</i>	<i>No.</i>	<i>%</i>	<i>No.</i>	<i>%</i>
Perth-Newman								
Qantas	361	352	334	94.9	338	96.0	9	2.5
QantasLink	1 306	1 282	1 141	89.0	1 159	90.4	24	1.8
Virgin Australia	180	180	167	92.8	173	96.1	0	0.0
Virgin Australia Regional Airlines	294	293	262	89.4	270	92.2	1	0.3
All Airlines	2 141	2 107	1 904	90.4	1 940	92.1	34	1.6
Perth-Port Hedland								
Qantas	406	394	366	92.9	366	92.9	12	3.0
QantasLink	1 321	1 288	1 075	83.5	1 147	89.1	33	2.5
Virgin Australia	212	212	201	94.8	202	95.3	0	0.0
Virgin Australia Regional Airlines	414	410	350	85.4	362	88.3	4	1.0
All Airlines	2 353	2 304	1 992	86.5	2 077	90.1	49	2.1
Perth-Sydney								
Jetstar	308	302	240	79.5	214	70.9	6	1.9
Qantas	2 457	2 432	1 803	74.1	1 848	76.0	25	1.0
Tigerair Australia	327	316	222	70.3	190	60.1	11	3.4
Virgin Australia	1 442	1 441	1 248	86.6	1 257	87.2	1	0.1
All Airlines	4 534	4 491	3 513	78.2	3 509	78.1	43	0.9
Port Hedland-Perth								
Qantas	406	391	364	93.1	355	90.8	15	3.7
QantasLink	1 318	1 273	1 075	84.4	1 117	87.7	45	3.4
Virgin Australia	212	212	178	84.0	174	82.1	0	0.0
Virgin Australia Regional Airlines	415	410	321	78.3	317	77.3	5	1.2
All Airlines	2 351	2 286	1 938	84.8	1 963	85.9	65	2.8
Port Lincoln-Adelaide								
QantasLink	1 223	1 203	1 067	88.7	1 056	87.8	20	1.6
Regional Express	2 520	2 500	2 270	90.8	2 308	92.3	20	0.8
All Airlines	3 743	3 703	3 337	90.1	3 364	90.8	40	1.1
Port Macquarie-Sydney								
QantasLink	1 363	1 329	1 011	76.1	1 045	78.6	34	2.5
Virgin Australia	672	657	429	65.3	438	66.7	15	2.2
All Airlines	2 035	1 986	1 440	72.5	1 483	74.7	49	2.4
Proserpine-Brisbane								
Jetstar	404	399	332	83.2	327	82.0	5	1.2
Virgin Australia	502	493	408	82.8	378	76.7	9	1.8
All Airlines	906	892	740	83.0	705	79.0	14	1.5
Proserpine-Sydney								
Jetstar	160	157	123	78.3	114	72.6	3	1.9
Tigerair Australia	229	224	158	70.5	162	72.3	5	2.2
All Airlines	389	381	281	73.8	276	72.4	8	2.1
Rockhampton-Brisbane								
QantasLink	2 185	2 166	1 773	81.9	1 810	83.6	19	0.9
Virgin Australia	1 648	1 646	1 444	87.7	1 409	85.6	2	0.1
All Airlines	3 833	3 812	3 217	84.4	3 219	84.4	21	0.5
Sunshine Coast-Melbourne								
Jetstar	969	961	650	67.6	664	69.1	8	0.8
Virgin Australia	822	820	485	59.1	502	61.2	2	0.2
All Airlines	1 791	1 781	1 135	63.7	1 166	65.5	10	0.6

	<i>Sectors</i>		<i>Arrivals On Time</i>		<i>Departures On Time</i>		<i>Cancellations</i>	
	<i>Sched.</i>	<i>Flown</i>	<i>No.</i>	<i>%</i>	<i>No.</i>	<i>%</i>	<i>No.</i>	<i>%</i>
Sunshine Coast-Sydney								
Jetstar	1 247	1 208	756	62.6	748	61.9	39	3.1
QantasLink	614	606	429	70.8	420	69.3	8	1.3
Virgin Australia	652	648	407	62.8	454	70.1	4	0.6
All Airlines	2 513	2 462	1 592	64.7	1 622	65.9	51	2.0
Sydney-Adelaide								
Jetstar	1 316	1 266	943	74.5	915	72.3	50	3.8
Qantas	2 775	2 753	2 097	76.2	2 089	75.9	22	0.8
QantasLink	106	101	85	84.2	87	86.1	5	4.7
Tigerair Australia	357	351	229	65.2	224	63.8	6	1.7
Virgin Australia	1 961	1 945	1 549	79.6	1 562	80.3	16	0.8
All Airlines	6 515	6 416	4 903	76.4	4 877	76.0	99	1.5
Sydney-Albury								
QantasLink	1 202	1 186	877	73.9	851	71.8	16	1.3
Regional Express	1 145	1 131	920	81.3	930	82.2	14	1.2
Virgin Australia	674	671	495	73.8	493	73.5	3	0.4
All Airlines	3 021	2 988	2 292	76.7	2 274	76.1	33	1.1
Sydney-Armidale								
QantasLink	1 390	1 371	972	70.9	962	70.2	19	1.4
Regional Express	800	791	640	80.9	637	80.5	9	1.1
All Airlines	2 190	2 162	1 612	74.6	1 599	74.0	28	1.3
Sydney-Ayers Rock								
Jetstar	343	343	259	75.5	275	80.2	0	0.0
Virgin Australia	365	365	302	82.7	307	84.1	0	0.0
All Airlines	708	708	561	79.2	582	82.2	0	0.0
Sydney-Ballina								
Jetstar	979	968	741	76.5	755	78.0	11	1.1
Regional Express	265	264	206	78.0	209	79.2	1	0.4
Virgin Australia	425	421	338	80.3	355	84.3	4	0.9
All Airlines	1 669	1 653	1 285	77.7	1 319	79.8	16	1.0
Sydney-Brisbane								
Jetstar	2 077	1 960	1 436	73.3	1 351	68.9	117	5.6
Qantas	7 200	7 003	5 441	77.7	5 559	79.4	197	2.7
QantasLink	99	97	64	66.0	69	71.1	2	2.0
Tigerair Australia	1 521	1 454	1 023	70.4	1 038	71.4	67	4.4
Virgin Australia	6 246	6 029	4 560	75.6	4 642	77.0	217	3.5
All Airlines	17 143	16 543	12 524	75.7	12 659	76.5	600	3.5
Sydney-Cairns								
Jetstar	1 118	1 091	924	84.7	865	79.3	27	2.4
Qantas	738	738	556	75.3	549	74.4	0	0.0
Tigerair Australia	401	398	331	83.2	341	85.7	3	0.7
Virgin Australia	1 063	1 063	770	72.4	760	71.5	0	0.0
All Airlines	3 320	3 290	2 581	78.4	2 515	76.4	30	0.9
Sydney-Canberra								
Qantas	18	18	15	83.3	16	88.9	0	0.0
QantasLink	5 454	5 304	4 053	76.4	4 165	78.5	150	2.8
Virgin Australia	2 864	2 781	2 223	79.9	2 187	78.6	83	2.9
All Airlines	8 336	8 103	6 291	77.6	6 368	78.6	233	2.8

	Sectors		Arrivals On Time		Departures On Time		Cancellations	
	Sched.	Flown	No.	%	No.	%	No.	%
Sydney-Coffs Harbour								
QantasLink	1 619	1 590	1 281	80.6	1 199	75.4	29	1.8
Tigerair Australia	282	276	186	67.4	200	72.5	6	2.1
Virgin Australia	365	362	309	85.4	306	84.5	3	0.8
All Airlines	2 266	2 228	1 776	79.7	1 705	76.5	38	1.7
Sydney-Darwin								
Jetstar	262	260	200	76.9	198	76.2	2	0.8
Qantas	544	544	371	68.2	312	57.4	0	0.0
Virgin Australia	343	342	247	72.2	265	77.5	1	0.3
All Airlines	1 149	1 146	818	71.4	775	67.6	3	0.3
Sydney-Dubbo								
QantasLink	1 380	1 360	1 024	75.3	1 024	75.3	20	1.4
Regional Express	1 497	1 489	1 210	81.3	1 191	80.0	8	0.5
All Airlines	2 877	2 849	2 234	78.4	2 215	77.7	28	1.0
Sydney-Gold Coast								
Jetstar	3 508	3 391	2 679	79.0	2 616	77.1	117	3.3
Qantas	917	902	683	75.7	643	71.3	15	1.6
QantasLink	610	596	431	72.3	426	71.5	14	2.3
Tigerair Australia	1 091	1 058	741	70.0	779	73.6	33	3.0
Virgin Australia	3 054	3 008	2 205	73.3	2 294	76.3	46	1.5
All Airlines	9 180	8 955	6 739	75.3	6 758	75.5	225	2.5
Sydney-Hamilton Island								
Jetstar	262	261	208	79.7	197	75.5	1	0.4
Qantas	114	113	94	83.2	94	83.2	1	0.9
QantasLink	222	217	158	72.8	171	78.8	5	2.3
Virgin Australia	305	303	248	81.8	256	84.5	2	0.7
All Airlines	903	894	708	79.2	718	80.3	9	1.0
Sydney-Hobart								
Jetstar	1 043	1 029	813	79.0	780	75.8	14	1.3
Qantas	33	33	25	75.8	25	75.8	0	0.0
QantasLink	830	820	569	69.4	560	68.3	10	1.2
Virgin Australia	884	877	717	81.8	729	83.1	7	0.8
All Airlines	2 790	2 759	2 124	77.0	2 094	75.9	31	1.1
Sydney-Launceston								
Jetstar	586	581	459	79.0	440	75.7	5	0.9
Virgin Australia	376	374	300	80.2	292	78.1	2	0.5
All Airlines	962	955	759	79.5	732	76.6	7	0.7
Sydney-Melbourne								
Jetstar	4 813	4 543	3 105	68.3	3 074	67.7	270	5.6
Qantas	12 620	11 609	8 112	69.9	8 861	76.3	1 011	8.0
Tigerair Australia	2 993	2 766	1 639	59.3	1 733	62.7	227	7.6
Virgin Australia	8 797	8 325	6 023	72.3	6 560	78.8	472	5.4
All Airlines	29 223	27 243	18 879	69.3	20 228	74.3	1 980	6.8
Sydney-Perth								
Jetstar	308	305	229	75.1	165	54.1	3	1.0
Qantas	2 456	2 433	1 790	73.6	1 576	64.8	23	0.9
Tigerair Australia	329	320	225	70.3	195	60.9	9	2.7
Virgin Australia	1 447	1 445	1 033	71.5	911	63.0	2	0.1
All Airlines	4 540	4 503	3 277	72.8	2 847	63.2	37	0.8

	<i>Sectors</i>		<i>Arrivals On Time</i>		<i>Departures On Time</i>		<i>Cancellations</i>	
	<i>Sched.</i>	<i>Flown</i>	<i>No.</i>	<i>%</i>	<i>No.</i>	<i>%</i>	<i>No.</i>	<i>%</i>
Sydney-Port Macquarie								
QantasLink	1 363	1 330	1 021	76.8	1 008	75.8	33	2.4
Virgin Australia	672	657	505	76.9	501	76.3	15	2.2
All Airlines	2 035	1 987	1 526	76.8	1 509	75.9	48	2.4
Sydney-Proserpine								
Jetstar	157	156	133	85.3	131	84.0	1	0.6
Tigerair Australia	229	225	182	80.9	173	76.9	4	1.7
All Airlines	386	381	315	82.7	304	79.8	5	1.3
Sydney-Sunshine Coast								
Jetstar	1 245	1 214	885	72.9	832	68.5	31	2.5
QantasLink	613	606	405	66.8	426	70.3	7	1.1
Virgin Australia	653	648	456	70.4	451	69.6	5	0.8
All Airlines	2 511	2 468	1 746	70.7	1 709	69.2	43	1.7
Sydney-Tamworth								
QantasLink	1 520	1 499	1 144	76.3	1 106	73.8	21	1.4
Virgin Australia	617	611	462	75.6	476	77.9	6	1.0
All Airlines	2 137	2 110	1 606	76.1	1 582	75.0	27	1.3
Sydney-Townsville								
Jetstar	307	306	206	67.3	193	63.1	1	0.3
Virgin Australia	304	301	218	72.4	235	78.1	3	1.0
All Airlines	611	607	424	69.9	428	70.5	4	0.7
Sydney-Wagga Wagga								
QantasLink	1 247	1 242	992	79.9	982	79.1	5	0.4
Regional Express	1 450	1 432	1 215	84.8	1 232	86.0	18	1.2
All Airlines	2 697	2 674	2 207	82.5	2 214	82.8	23	0.9
Tamworth-Sydney								
QantasLink	1 503	1 477	1 108	75.0	1 151	77.9	26	1.7
Virgin Australia	617	611	501	82.0	529	86.6	6	1.0
All Airlines	2 120	2 088	1 609	77.1	1 680	80.5	32	1.5
Townsville-Brisbane								
Jetstar	665	658	547	83.1	526	79.9	7	1.1
Qantas	546	542	491	90.6	459	84.7	4	0.7
QantasLink	1 284	1 250	1 002	80.2	1 019	81.5	34	2.6
Virgin Australia	1 720	1 704	1 569	92.1	1 522	89.3	16	0.9
All Airlines	4 215	4 154	3 609	86.9	3 526	84.9	61	1.4
Townsville-Cairns								
QantasLink	1 607	1 587	1 433	90.3	1 414	89.1	20	1.2
Regional Express	146	145	125	86.2	124	85.5	1	0.7
All Airlines	1 753	1 732	1 558	90.0	1 538	88.8	21	1.2
Townsville-Sydney								
Jetstar	307	306	202	66.0	162	52.9	1	0.3
Virgin Australia	304	301	207	68.8	202	67.1	3	1.0
All Airlines	611	607	409	67.4	364	60.0	4	0.7
Wagga Wagga-Sydney								
QantasLink	1 247	1 241	969	78.1	983	79.2	6	0.5
Regional Express	1 440	1 418	1 089	76.8	1 215	85.7	22	1.5
All Airlines	2 687	2 659	2 058	77.4	2 198	82.7	28	1.0

Airports

On time performance is reported for all routes where the passenger load averages over 8000 passengers per month, and where two or more airlines operate in competition. The following data reports by airport against flights operated on those routes only. This year, 8 major city airports and 32 regional city airports are covered.

Airport	Arrivals			Departures		
	Sectors	On Time		Sectors	On Time	
	Flown	No.	%	Flown	No.	%
Adelaide						
Jetstar	3 422	2 558	74.8	3 416	2 551	74.7
Qantas	9 526	7 739	81.2	9 511	7 835	82.4
QantasLink	1 505	1 305	86.7	1 507	1 337	88.7
Regional Express	2 500	2 270	90.8	2 503	2 362	94.4
Tigerair Australia	1 584	1 068	67.4	1 583	993	62.7
Virgin Australia	7 606	6 180	81.3	7 607	6 475	85.1
Virgin Australia Regional Airlines	736	460	62.5	722	487	67.5
All Airlines	26 879	21 580	80.3	26 849	22 040	82.1

Relates to services to and from Alice Springs, Brisbane, Canberra, Gold Coast, Melbourne, Perth, Port Lincoln and Sydney.

Albury

QantasLink	1 186	877	73.9	1 184	870	73.5
Regional Express	1 131	920	81.3	1 140	977	85.7
Virgin Australia	671	495	73.8	669	492	73.5
All Airlines	2 988	2 292	76.7	2 993	2 339	78.1

Relates to services to and from Sydney only.

Alice Springs

Qantas	770	681	88.4	765	661	86.4
QantasLink	207	160	77.3	203	188	92.6
Virgin Australia	298	268	89.9	297	273	91.9
Virgin Australia Regional Airlines	211	135	64.0	211	142	67.3
All Airlines	1 486	1 244	83.7	1 476	1 264	85.6

Relates to services to and from Adelaide and Darwin.

Armidale

QantasLink	1 371	972	70.9	1 366	950	69.5
Regional Express	791	640	80.9	796	607	76.3
All Airlines	2 162	1 612	74.6	2 162	1 557	72.0

Relates to services to and from Sydney only.

Ayers Rock

Jetstar	343	259	75.5	341	185	54.3
Virgin Australia	365	302	82.7	364	250	68.7
All Airlines	708	561	79.2	705	435	61.7

Relates to services to and from Sydney only.

Ballina

Jetstar	968	741	76.5	961	648	67.4
Regional Express	264	206	78.0	256	192	75.0
Virgin Australia	421	338	80.3	420	318	75.7
All Airlines	1 653	1 285	77.7	1 637	1 158	70.7

Relates to services to and from Sydney only.

Airport	Arrivals			Departures		
	Sectors	On Time		Sectors	On Time	
	Flown	No.	%	Flown	No.	%
Brisbane						
Jetstar	7 982	6 276	78.6	7 983	6 193	77.6
Qantas	16 250	12 958	79.7	16 224	13 502	83.2
QantasLink	14 743	12 291	83.4	14 809	12 491	84.3
Tigerair Australia	3 933	2 853	72.5	3 935	2 768	70.3
Virgin Australia	25 510	21 401	83.9	25 560	21 469	84.0
All Airlines	68 418	55 779	81.5	68 511	56 423	82.4

Relates to services to and from Adelaide, Bundaberg, Cairns, Canberra, Darwin, Emerald, Gladstone, Hamilton Island, Hobart, Mackay, Melbourne, Mount Isa, Newcastle, Perth, Proserpine, Rockhampton, Sydney and Townsville.

Broome

Qantas	46	35	76.1	46	24	52.2
QantasLink	1 022	870	85.1	1 016	824	81.1
Virgin Australia	27	24	88.9	27	20	74.1
Virgin Australia Regional Airlines	755	581	77.0	753	574	76.2
All Airlines	1 850	1 510	81.6	1 842	1 442	78.3

Relates to services to and from Perth only.

Bundaberg

QantasLink	1 422	1 247	87.7	1 420	1 266	89.2
Virgin Australia	365	331	90.7	365	341	93.4
All Airlines	1 787	1 578	88.3	1 785	1 607	90.0

Relates to services to and from Brisbane only.

Cairns

Jetstar	3 404	2 759	81.1	3 402	2 741	80.6
Qantas	1 558	1 261	80.9	1 561	1 142	73.2
QantasLink	3 057	2 608	85.3	3 040	2 663	87.6
Regional Express	145	125	86.2	146	129	88.4
Tigerair Australia	1 229	947	77.1	1 225	861	70.3
Virgin Australia	3 032	2 412	79.6	3 030	2 468	81.5
All Airlines	12 425	10 112	81.4	12 404	10 004	80.7

Relates to services to and from Brisbane, Melbourne, Sydney and Townsville.

Canberra

Qantas	3 334	2 752	82.5	3 321	2 832	85.3
QantasLink	7 592	5 909	77.8	7 538	6 075	80.6
Tigerair Australia	726	530	73.0	725	500	69.0
Virgin Australia	6 113	4 954	81.0	6 105	5 165	84.6
All Airlines	17 765	14 145	79.6	17 689	14 572	82.4

Relates to services to and from Adelaide, Brisbane, Melbourne and Sydney.

Coffs Harbour

QantasLink	1 590	1 281	80.6	1 585	1 258	79.4
Tigerair Australia	276	186	67.4	275	222	80.7
Virgin Australia	362	309	85.4	362	281	77.6
All Airlines	2 228	1 776	79.7	2 222	1 761	79.3

Relates to services to and from Sydney only.

Airport	Arrivals			Departures		
	Sectors Flown	On Time		Sectors Flown	On Time	
		No.	%		No.	%
Darwin						
Jetstar	814	628	77.1	811	616	76.0
Qantas	2 119	1 743	82.3	2 121	1 612	76.0
QantasLink	203	172	84.7	207	174	84.1
Tigerair Australia	188	161	85.6	187	135	72.2
Virgin Australia	1 494	1 117	74.8	1 491	1 136	76.2
Virgin Australia Regional Airlines	209	162	77.5	208	145	69.7
All Airlines	5 027	3 983	79.2	5 025	3 818	76.0
Relates to services to and from Alice Springs, Brisbane, Melbourne, Perth and Sydney.						
Dubbo						
QantasLink	1 360	1 024	75.3	1 356	1 053	77.7
Regional Express	1 489	1 210	81.3	1 439	1 153	80.1
All Airlines	2 849	2 234	78.4	2 795	2 206	78.9
Relates to services to and from Sydney only.						
Emerald						
QantasLink	1 418	1 242	87.6	1 413	1 159	82.0
Virgin Australia	607	555	91.4	608	566	93.1
All Airlines	2 025	1 797	88.7	2 021	1 725	85.4
Relates to services to and from Brisbane only.						
Geraldton						
			(To July 2019 only)			
QantasLink	340	302	88.8	339	305	90.0
Virgin Australia Regional Airlines	214	174	81.3	213	168	78.9
All Airlines	554	476	85.9	552	473	85.7
Relates to services to and from Perth only.						
Gladstone						
QantasLink	1 622	1 384	85.3	1 618	1 339	82.8
Virgin Australia	847	786	92.8	847	785	92.7
All Airlines	2 469	2 170	87.9	2 465	2 124	86.2
Relates to services to and from Brisbane only.						
Gold Coast						
Jetstar	6 003	4 607	76.7	5 998	4 424	73.8
Qantas	1 305	997	76.4	1 302	829	63.7
QantasLink	596	431	72.3	594	459	77.3
Tigerair Australia	2 023	1 394	68.9	2 019	1 221	60.5
Virgin Australia	5 665	4 381	77.3	5 652	4 007	70.9
All Airlines	15 592	11 810	75.7	15 565	10 940	70.3
Relates to services to and from Adelaide, Melbourne and Sydney.						
Hamilton Island						
Jetstar	261	208	79.7	259	176	68.0
Qantas	113	94	83.2	114	99	86.8
QantasLink	566	434	76.7	566	413	73.0
Virgin Australia	663	551	83.1	663	530	79.9
All Airlines	1 603	1 287	80.3	1 602	1 218	76.0
Relates to services to and from Brisbane and Sydney.						

Airport	Arrivals			Departures		
	Sectors Flown	On Time		Sectors Flown	On Time	
		No.	%		No.	%
Hobart						
Jetstar	3 432	2 587	75.4	3 423	2 232	65.2
Qantas	1 398	1 037	74.2	1 387	1 025	73.9
QantasLink	821	569	69.3	814	622	76.4
Tigerair Australia	509	390	76.6	508	314	61.8
Virgin Australia	3 072	2 407	78.4	3 068	2 372	77.3
All Airlines	9 232	6 990	75.7	9 200	6 565	71.4
Relates to services to and from Brisbane, Melbourne and Sydney.						
Kalgoorlie						
Qantas	97	89	91.8	97	90	92.8
QantasLink	888	779	87.7	886	788	88.9
Virgin Australia	350	326	93.1	346	312	90.2
Virgin Australia Regional Airlines	565	486	86.0	556	475	85.4
All Airlines	1 900	1 680	88.4	1 885	1 665	88.3
Relates to services to and from Perth only.						
Karratha						
Qantas	420	393	93.6	418	379	90.7
QantasLink	1 736	1 515	87.3	1 708	1 526	89.3
Virgin Australia	25	19	76.0	25	14	56.0
Virgin Australia Regional Airlines	765	617	80.7	764	618	80.9
All Airlines	2 946	2 544	86.4	2 915	2 537	87.0
Relates to services to and from Perth only.						
Launceston						
Jetstar	2 113	1 561	73.9	2 112	1 384	65.5
QantasLink	1 373	1 137	82.8	1 366	1 142	83.6
Virgin Australia	1 581	1 226	77.5	1 580	1 334	84.4
All Airlines	5 067	3 924	77.4	5 058	3 860	76.3
Relates to services to and from Melbourne and Sydney.						
Mackay						
Jetstar	382	287	75.1	380	235	61.8
QantasLink	1 598	1 368	85.6	1 536	1 339	87.2
Virgin Australia	1 700	1 431	84.2	1 700	1 507	88.6
All Airlines	3 680	3 086	83.9	3 616	3 081	85.2
Relates to services to and from Brisbane only.						
Melbourne						
Jetstar	17 484	12 260	70.1	17 523	12 399	70.8
Qantas	27 508	20 264	73.7	27 534	21 767	79.1
QantasLink	2 971	2 324	78.2	2 981	2 445	82.0
Regional Express	932	666	71.5	934	772	82.7
Tigerair Australia	7 943	4 937	62.2	7 948	5 728	72.1
Virgin Australia	26 962	19 904	73.8	26 978	22 214	82.3
Virgin Australia Regional Airlines	112	82	73.2	114	75	65.8
All Airlines	83 912	60 437	72.0	84 012	65 400	77.8
Relates to services to and from Adelaide, Brisbane, Cairns, Canberra, Darwin, Gold Coast, Hobart, Launceston, Mildura, Newcastle, Perth, Sunshine Coast and Sydney.						
Mildura						
QantasLink	1 094	902	82.4	1 090	865	79.4
Regional Express	934	741	79.3	932	735	78.9
Virgin Australia	365	300	82.2	365	315	86.3
All Airlines	2 393	1 943	81.2	2 387	1 915	80.2
Relates to services to and from Melbourne only.						

Airport	Arrivals			Departures		
	Sectors Flown	On Time		Sectors Flown	On Time	
		No.	%		No.	%
Mount Isa						
Qantas	92	85	92.4	91	71	78.0
QantasLink	507	414	81.7	504	427	84.7
Virgin Australia	210	191	91.0	171	155	90.6
All Airlines	809	690	85.3	766	653	85.2
Relates to services to and from Brisbane only.						
Newcastle						
Jetstar	2 108	1 531	72.6	2 105	1 657	78.7
QantasLink	1 030	874	84.9	1 028	874	85.0
Virgin Australia	1 380	1 145	83.0	1 380	1 172	84.9
All Airlines	4 518	3 550	78.6	4 513	3 703	82.1
Relates to services to and from Brisbane and Melbourne.						
Newman						
Qantas	352	334	94.9	349	330	94.6
QantasLink	1 282	1 141	89.0	1 265	1 125	88.9
Virgin Australia	180	167	92.8	179	157	87.7
Virgin Australia Regional Airlines	293	262	89.4	292	248	84.9
All Airlines	2 107	1 904	90.4	2 085	1 860	89.2
Relates to services to and from Perth only.						
Perth						
Jetstar	1 182	995	84.2	1 166	869	74.5
Qantas	9 633	7 754	80.5	9 638	7 956	82.5
QantasLink	6 491	5 635	86.8	6 559	5 854	89.3
Tigerair Australia	945	661	69.9	941	577	61.3
Virgin Australia	5 939	4 629	77.9	5 945	5 164	86.9
Virgin Australia Regional Airlines	3 595	2 794	77.7	3 622	3 164	87.4
All Airlines	27 785	22 468	80.9	27 871	23 584	84.6
Relates to services to and from Adelaide, Brisbane, Broome, Darwin, Geraldton (to July 2019), Kalgoorlie, Karratha, Melbourne, Newman, Port Hedland and Sydney.						
Port Hedland						
Qantas	394	366	92.9	391	355	90.8
QantasLink	1 288	1 075	83.5	1 273	1 117	87.7
Virgin Australia	212	201	94.8	212	174	82.1
Virgin Australia Regional Airlines	410	350	85.4	410	317	77.3
All Airlines	2 304	1 992	86.5	2 286	1 963	85.9
Relates to services to and from Perth only.						
Port Lincoln						
QantasLink	1 205	1 073	89.0	1 203	1 056	87.8
Regional Express	2 503	2 300	91.9	2 500	2 308	92.3
All Airlines	3 708	3 373	91.0	3 703	3 364	90.8
Relates to services to and from Adelaide only.						
Port Macquarie						
QantasLink	1 330	1 021	76.8	1 329	1 045	78.6
Virgin Australia	657	505	76.9	657	438	66.7
All Airlines	1 987	1 526	76.8	1 986	1 483	74.7
Relates to services to and from Sydney only.						

Airport	Arrivals			Departures		
	Sectors Flown	On Time		Sectors Flown	On Time	
		No.	%		No.	%
Proserpine						
Jetstar	556	488	87.8	556	441	79.3
Tigerair Australia	225	182	80.9	224	162	72.3
Virgin Australia	495	404	81.6	493	378	76.7
All Airlines	1 276	1 074	84.2	1 273	981	77.1
Relates to services to and from Brisbane and Sydney.						
Rockhampton						
QantasLink	2 115	1 784	84.3	2 166	1 810	83.6
Virgin Australia	1 647	1 324	80.4	1 646	1 409	85.6
All Airlines	3 762	3 108	82.6	3 812	3 219	84.4
Relates to services to and from Brisbane only.						
Sunshine Coast						
Jetstar	2 176	1 668	76.7	2 169	1 412	65.1
QantasLink	606	405	66.8	606	420	69.3
Virgin Australia	1 470	1 144	77.8	1 468	956	65.1
All Airlines	4 252	3 217	75.7	4 243	2 788	65.7
Relates to services to and from Melbourne and Sydney.						
Sydney						
Jetstar	17 648	12 448	70.5	17 674	12 787	72.3
Qantas	26 102	19 445	74.5	26 146	19 724	75.4
QantasLink	17 231	12 888	74.8	17 319	13 036	75.3
Regional Express	5 049	3 760	74.5	5 107	4 199	82.2
Tigerair Australia	6 837	4 450	65.1	6 848	4 683	68.4
Virgin Australia	30 518	23 337	76.5	30 528	23 582	77.2
All Airlines	103 385	76 328	73.8	103 622	78 011	75.3
Relates to services to and from Adelaide, Albury, Armidale, Ayers Rock, Ballina, Brisbane, Cairns, Canberra, Coffs Harbour, Darwin, Dubbo, Gold Coast, Hamilton Island, Hobart, Launceston, Melbourne, Perth, Port Macquarie, Proserpine, Sunshine Coast, Tamworth, Townsville and Wagga Wagga.						
Tamworth						
QantasLink	1 499	1 144	76.3	1 477	1 151	77.9
Virgin Australia	611	462	75.6	611	529	86.6
All Airlines	2 110	1 606	76.1	2 088	1 680	80.5
Relates to services to and from Sydney only.						
Townsville						
Jetstar	965	786	81.5	964	688	71.4
Qantas	541	472	87.2	542	459	84.7
QantasLink	2 842	2 401	84.5	2 837	2 433	85.8
Regional Express	146	127	87.0	145	124	85.5
Virgin Australia	2 004	1 648	82.2	2 005	1 724	86.0
All Airlines	6 498	5 434	83.6	6 493	5 428	83.6
Relates to services to and from Brisbane, Cairns and Sydney.						
Wagga Wagga						
QantasLink	1 242	992	79.9	1 241	983	79.2
Regional Express	1 432	1 215	84.8	1 418	1 215	85.7
All Airlines	2 674	2 207	82.5	2 659	2 198	82.7
Relates to services to and from Sydney only.						

Definitions

On time arrival	A flight arrival is counted as "on time" if it arrived at the gate before 15 minutes after the scheduled arrival time shown in the carriers' schedule. Neither diverted nor cancelled flights count as on time.
On time departure	A flight departure is counted as "on time" if it departs the gate before 15 minutes after the scheduled departure time shown in the carriers' schedule.
Cancellation	A flight removed from service within 7 days of scheduled departure is regarded as a cancellation.
On time departure percentage	The percentage of on time departures is measured against the number of departures <i>operated</i> on any particular sector.
On time arrival percentage	The percentage of on time arrivals is measured against the number of arrivals <i>operated</i> on any particular sector.
Cancellation percentage	The percentage of cancellations is measured against the number of services <i>scheduled</i> on any particular sector.
