



Australian Government

Department of Infrastructure, Transport, Cities and Regional Development

Bureau of Infrastructure, Transport and Regional Economics

STATISTICAL REPORT



Aviation

Domestic aviation activity
October 2019

© Commonwealth of Australia 2019

ISSN: 1832 - 1968

Ownership of intellectual property rights in this publication

Unless otherwise noted, copyright (and any other intellectual property rights, if any) in this publication is owned by the Commonwealth of Australia (referred to below as the Commonwealth).

Disclaimer

The material contained in this publication is made available on the understanding that the Commonwealth is not providing professional advice, and that users exercise their own skill and care with respect to its use, and seek independent advice if necessary.

The Commonwealth makes no representations or warranties as to the contents or accuracy of the information contained in this publication. To the extent permitted by law, the Commonwealth disclaims liability to any person or organisation in respect of anything done, or omitted to be done, in reliance upon information contained in this publication.

Creative Commons licence

With the exception of (a) the Coat of Arms; and (b) the Department of Infrastructure, Transport, Cities and Regional Developments' photos and graphics, copyright in this publication is licensed under a Creative Commons Attribution 3.0 Australia Licence.

Creative Commons Attribution 3.0 Australia Licence is a standard form licence agreement that allows you to copy, communicate and adapt this publication provided that you attribute the work to the Commonwealth and abide by the other licence terms. A summary of the licence terms is available from <http://creativecommons.org/licenses/by/3.0/au/deed.en>.

The full licence terms are available from <http://creativecommons.org/licenses/by/3.0/au/legalcode>.

Use of the Coat of Arms

The Department of the Prime Minister and Cabinet sets the terms under which the Coat of Arms is used. Please refer to the Department's Commonwealth Coat of Arms and Government branding web page <http://www.dpmc.gov.au/guidelines/index.cfm#brand> and, in particular, the Guidelines on the use of the Commonwealth Coat of Arms publication.

An appropriate citation for this report is:

Bureau of Infrastructure, Transport and Regional Economics (BITRE), 2019, Domestic aviation activity, Statistical Report, BITRE, Canberra ACT.

Contact us

This publication is available in PDF format. All other rights are reserved, including in relation to any Departmental logos or trade marks which may exist. For enquiries regarding the licence and any use of this publication, please contact:

Bureau of Infrastructure, Transport and Regional Economics (BITRE)
Department of Infrastructure, Transport, Cities and Regional Development
GPO Box 501, Canberra ACT 2601, Australia
Telephone: (international) +61 2 6274 7210
Fax: (international) +61 2 6274 6855
Email: bitre@infrastructure.gov.au
Website: www.bitre.gov.au

Inquiries

Should you require additional information about the statistics contained in this publication:

Nebojsa Pavlovic

Telephone (02) 6274 6817 or Facsimile (02) 6274 7727

Electronic mail: AVSTATS@infrastructure.gov.au

Nebojsa.Pavlovic@infrastructure.gov.au

Web site: <http://www.bitre.gov.au/statistics/aviation/domestic.aspx>

FOREWORD

This report provides an overview of domestic (including charter) commercial aviation activity in Australia for the month of October 2019.

The data cover revenue passengers carried by Australian-registered operators of scheduled regular public transport services over Australian flight stages and fixed-wing charter operators. These estimates include passengers carried between domestic airports on international flights operated by these carriers. The passengers carried refer to traffic on board by stages.

Estimates of passengers and aircraft movements for charter aviation are included in this publication, where BITRE confidentiality standards are met.

Individual routes shown are restricted to those with an average exceeding 8 000 passengers per month over the previous six months where two or more airlines operate in competition. For the month of October 2019, there were 64 such routes.

Information on the total network for the month of October 2019 and on the Regular Public Transport (RPT) network for the month of October 2019 is presented on page 2, with estimates for the year ended October 2019 presented on page 3.

Detailed information on the 64 individual routes can be found in the RPT summary pages 4-13 of this publication.

The top ten airports in terms of RPT passenger movements are shown on page 14.

Data on domestic RPT cargo movements at the top five cargo airports are provided on page 15. The table includes cargo carried on passenger flights operated by the Qantas group (including Jetstar), Virgin Australia, Air North and Skippers as well as the cargo carried by dedicated freighter aircraft operated by Qantas Freight, Toll Aviation and Virgin Australia Cargo.

The long-term trends for the top ten competitive RPT routes are presented graphically on pages 16-25.

Domestic RPT passenger movements at the top 50 regional airports are presented on pages 26-27.

Tables providing estimates of domestic charter aviation activity are shown on page 28. BITRE confidentiality standards restrict publication of detailed estimates for individual Australian airports, with the exception of Perth Airport.

A list of definitions can be found on page 29.

This report was prepared by the Aviation Statistics Section of the Bureau of Infrastructure, Transport and Regional Economics with data provided by airlines.

Estimates are included where data were not available and data presented in this publication may contain revisions to previously published data.

Where figures have been rounded, discrepancies may occur between sums of component items and totals, and in percentage changes which are derived from figures prior to rounding.

CONTENTS

Highlights	1
Total network.....	2
RPT network.....	2
Top competitive routes.....	4
Top ten airports – passenger movements.....	14
Top five airports – cargo movements.....	15
Top ten routes	16
1. Melbourne – Sydney	16
2. Brisbane – Sydney.....	17
3. Brisbane – Melbourne	18
4. Gold Coast – Sydney	19
5. Adelaide – Melbourne	20
6. Gold Coast – Melbourne	21
7. Melbourne – Perth	22
8. Adelaide – Sydney	23
9. Perth – Sydney	24
10. Hobart – Melbourne	25
Top fifty regional airports	26
Domestic charter activity.....	28
Definitions	29

This page is intentionally left blank.

HIGHLIGHTS

There were 5.91 million passengers carried on Australian domestic commercial aviation (including charter operations) in October 2019, an increase of 3.2 per cent on October 2018. For the month of October 2019 there were 60.7 thousand aircraft trips, an increase of 2.1 per cent compared to October 2018.

5.64 million passengers were carried on RPT flights in October 2019, an increase of 2.6 per cent on October 2018.

For the year ending October 2019 there were 61.22 million RPT passengers, an increase of 0.1 per cent on the year ending October 2018.

RPT revenue passenger kilometres (RPKs) performed were 6.59 billion for the month, up 2.4 per cent compared with October 2018. Capacity, measured by available seat kilometres (ASKs), decreased by 0.1 per cent compared with October 2018 to a total of 7.80 billion.

The industry wide load factor (RPKs/ASKs) increased from 82.4 per cent in October 2018 to 84.5 per cent in October 2019. Load factors on individual routes increased on 47 of the 64 published RPT routes.

For the month of October 2019, Melbourne – Sydney remained Australia's busiest RPT route with 824.0 thousand passengers, an increase of 0.3 per cent compared with October 2018. It was followed by Brisbane – Sydney with 447.6 thousand passengers (up 4.1 per cent) and Brisbane – Melbourne with 331.5 thousand passengers (up 0.1 per cent).

The greatest percentage increase in RPT passenger numbers, compared to October 2018, was on the Brisbane – Hamilton Island route (up 22.7 per cent). There were large increases on a number of other routes, including Newman – Perth (up 15.1 per cent), Hamilton Island – Sydney (up 14.6 per cent) and Brisbane – Mount Isa (up 12.5 per cent).

Routes with traffic decreases in October 2019 compared with October 2018 included Proserpine – Sydney (down 11.1 per cent), Brisbane – Darwin (down 7.1 per cent) and Cairns – Sydney (down 5.0 per cent).

In October 2019, Sydney remained Australia's busiest domestic airport with 2.54 million passenger movements, followed by Melbourne with 2.36 million passenger movements and Brisbane with 1.62 million passenger movements.

Total cargo movements at Australian airports on domestic RPT flights were 40.4 thousand tonnes in October 2019, a decrease of 6.7 per cent compared with October 2018.

In October 2019, there were 2.28 million domestic passenger movements through regional airports, 1.6 per cent higher than in October 2018. Out of the top 50 regional airports, the strongest increase was at Griffith airport (up 26.1 per cent on October 2018), while the largest decrease was recorded at Weipa airport (down 19.3 per cent on October 2018).

Fixed-wing charter operators carried 269.2 thousand passengers in October 2019, an increase of 17.0 per cent on October 2018. Perth Airport accounted for 38.5 per cent of all charter passengers in Australia.

TOTAL NETWORK

Summary of monthly commercial aviation activity

	Oct 2018	Oct 2019	% Change
Total passengers carried (millions)	5.73	5.91	3.2
Aircraft trips (000s)	59.4	60.7	2.1

Note: Regular Public Transport and charter aviation activity
Helicopter, joyflights and sightseeing charter flights not included.

RPT NETWORK

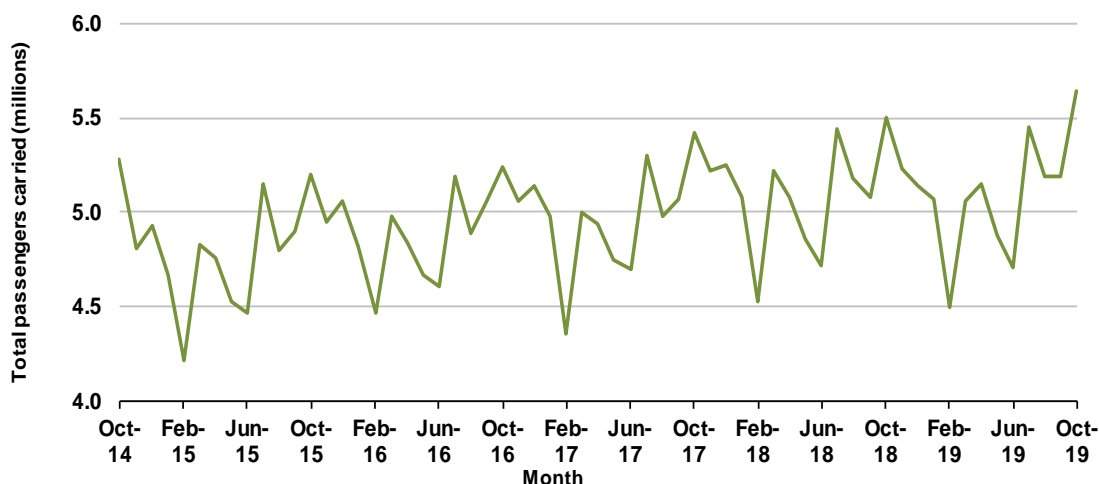
Summary of monthly RPT activity

	Oct 2018	Oct 2019	% Change
Total passengers carried (millions)	5.50	5.64	2.6
Revenue passenger kilometres (billions)	6.44	6.59	2.4
Available seats (millions)	6.82	6.84	0.3
Available seat kilometres (billions)	7.81	7.80	-0.1
Load factor %	82.4	84.5	2.1 *
Aircraft trips (000s)	55.5	56.1	0.9

* percentage point difference

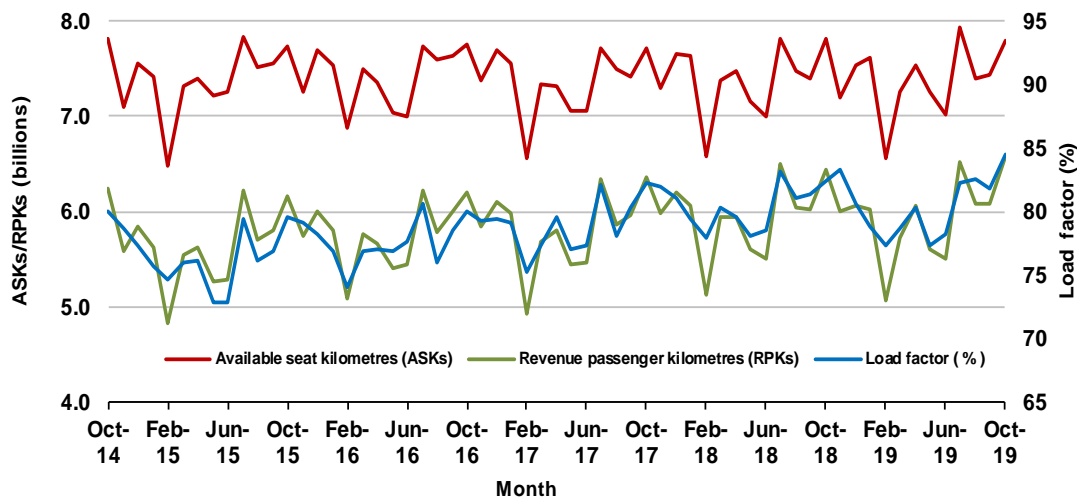
Domestic RPT passenger traffic

(monthly)



RPT Network utilisation

(monthly)



TOTAL NETWORK

Summary of annual commercial aviation activity

	YE Oct 2018	YE Oct 2019	% Change
Total passengers carried (millions)	63.65	63.92	0.4
Aircraft trips (000s)	675.9	683.0	1.1

Note: Regular Public Transport and charter aviation activity
Helicopter, joyflights and sightseeing charter flights not included.

RPT NETWORK

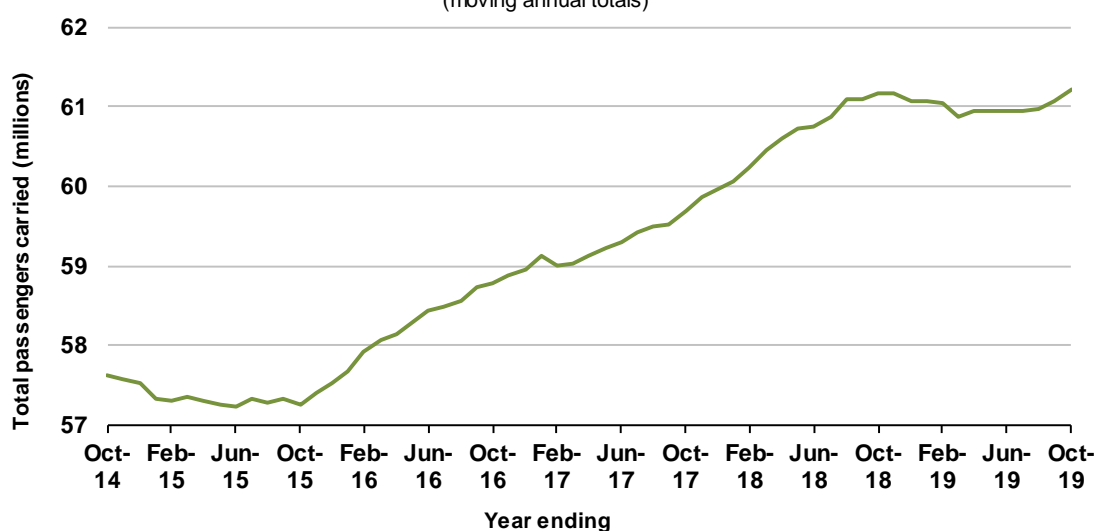
Summary of annual RPT activity

	YE Oct 2018	YE Oct 2019	% Change
Total passengers carried (millions)	61.18	61.22	0.1
Revenue passenger kilometres (billions)	71.37	71.34	0.0
Available seats (millions)	77.57	77.67	0.1
Available seat kilometres (billions)	88.66	88.56	-0.1
Load factor %	80.5	80.6	0.1 *
Aircraft trips (000s)	631.2	636.4	0.8

* percentage point difference

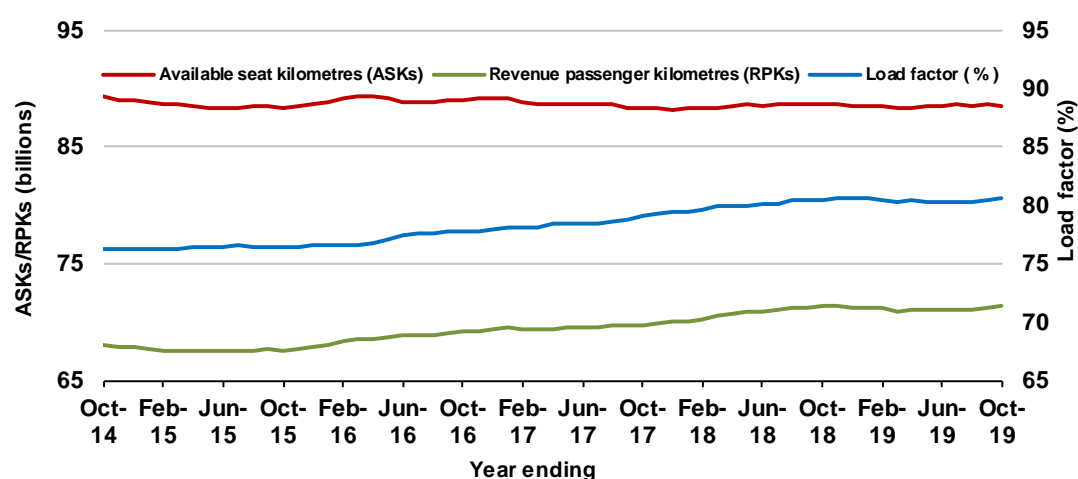
Domestic RPT passenger traffic

(moving annual totals)



RPT Network utilisation

(moving annual totals)



TOP COMPETITIVE ROUTES

Table 1: Passengers carried (000s) — annual activity

	City-Pair	YE Oct 2018	YE Oct 2019	%Change
1	Melbourne - Sydney	9 279.4	9 177.7	-1.1
2	Brisbane - Sydney	4 820.8	4 829.4	0.2
3	Brisbane - Melbourne	3 568.9	3 605.0	1.0
4	Gold Coast - Sydney	2 751.4	2 714.1	-1.4
5	Adelaide - Melbourne	2 498.7	2 537.6	1.6
6	Gold Coast - Melbourne	2 054.7	2 107.7	2.6
7	Melbourne - Perth	2 106.3	2 104.9	-0.1
8	Adelaide - Sydney	1 914.8	1 881.1	-1.8
9	Perth - Sydney	1 722.3	1 691.8	-1.8
10	Hobart - Melbourne	1 647.2	1 671.1	1.4
11	Brisbane - Cairns	1 339.8	1 287.6	-3.9
12	Canberra - Melbourne	1 170.8	1 184.6	1.2
13	Cairns - Sydney	1 136.4	1 083.1	-4.7
14	Brisbane - Townsville	997.2	1 009.6	1.2
15	Launceston - Melbourne	955.7	958.0	0.2
16	Brisbane - Perth	967.1	952.0	-1.6
17	Canberra - Sydney	958.7	926.0	-3.4
18	Adelaide - Brisbane	852.7	869.9	2.0
19	Cairns - Melbourne	851.6	859.3	0.9
20	Brisbane - Mackay	739.2	766.4	3.7
21	Hobart - Sydney	700.3	719.1	2.7
22	Sunshine Coast - Sydney	623.9	663.6	6.4
23	Brisbane - Canberra	640.4	655.3	2.3
24	Adelaide - Perth	634.8	651.4	2.6
25	Brisbane - Newcastle	583.7	601.4	3.0
26	Melbourne - Sunshine Coast	541.6	553.4	2.2
27	Brisbane - Rockhampton	512.7	534.6	4.3
28	Melbourne - Newcastle	492.5	483.4	-1.8
29	Karratha - Perth	441.0	458.0	3.9
30	Ballina - Sydney	435.1	431.7	-0.8
31	Perth - Port Hedland	358.2	373.6	4.3
32	Brisbane - Darwin	384.3	355.0	-7.6
33	Newman - Perth	303.4	338.7	11.6
34	Broome - Perth	340.2	331.1	-2.7
35	Coffs Harbour - Sydney	342.4	330.2	-3.5
36	Darwin - Sydney	314.1	312.0	-0.7
37	Darwin - Melbourne	307.6	309.6	0.6
38	Launceston - Sydney	289.9	292.5	0.9
39	Kalgoorlie - Perth	271.0	281.7	3.9
40	Brisbane - Proserpine	258.3	253.6	-1.8
41	Brisbane - Gladstone	254.7	247.5	-2.8
42	Brisbane - Hobart	224.4	240.2	7.1
43	Melbourne - Mildura	224.2	230.4	2.8
44	Albury - Sydney	225.2	229.3	1.8
45	Adelaide - Gold Coast	222.4	215.2	-3.2
46	Hamilton Island - Sydney	205.7	209.3	1.7
47	Brisbane - Emerald	195.6	199.5	2.0
48	Ayers Rock - Sydney	196.2	198.8	1.3
49	Adelaide - Canberra	196.0	193.7	-1.2
50	Port Macquarie - Sydney	188.1	190.6	1.3

continued

Table 1: (continued) Passengers carried (000s) — annual activity

	City-Pair	YE Oct 2018	YE Oct 2019	% Change
51	Dubbo - Sydney	190.0	181.9	-4.3
52	Sydney - Wagga Wagga	181.8	180.0	-1.0
53	Darwin - Perth	198.8	175.6	-11.7
54	Sydney - Townsville	166.6	174.3	4.6
55	Sydney - Tamworth	175.7	172.5	-1.8
56	Adelaide - Port Lincoln	169.9	170.0	0.1
57	Brisbane - Bundaberg	164.4	154.4	-6.1
58	Adelaide - Alice Springs	129.4	145.6	12.5
59	Cairns - Townsville	148.9	143.0	-4.0
60	Brisbane - Mount Isa	129.6	137.5	6.2
61	Brisbane - Hamilton Island	123.3	131.6	6.7
62	Armidale - Sydney	123.0	123.9	0.7
63	Proserpine - Sydney	139.4	113.2	-18.8
64	Alice Springs - Darwin	111.7	111.0	-0.6
	Total domestic network	61 175.1	61 224.1	0.1

Table 2: Passengers carried (000s) — monthly activity

	City-Pair	Oct 2018	Oct 2019	% Change
1	Melbourne - Sydney	821.3	824.0	0.3
2	Brisbane - Sydney	430.1	447.6	4.1
3	Brisbane - Melbourne	331.0	331.5	0.1
4	Gold Coast - Sydney	240.8	255.2	6.0
5	Adelaide - Melbourne	221.3	232.0	4.8
6	Gold Coast - Melbourne	187.1	196.9	5.2
7	Melbourne - Perth	188.9	188.4	-0.3
8	Adelaide - Sydney	171.5	176.1	2.7
9	Perth - Sydney	151.3	158.0	4.4
10	Hobart - Melbourne	141.6	142.1	0.4
11	Brisbane - Cairns	115.9	118.7	2.4
12	Canberra - Melbourne	108.7	111.1	2.2
13	Cairns - Sydney	105.7	100.4	-5.0
14	Brisbane - Townsville	86.9	91.0	4.7
15	Canberra - Sydney	86.6	89.7	3.6
16	Brisbane - Perth	86.3	89.7	3.9
17	Adelaide - Brisbane	78.5	86.0	9.5
18	Cairns - Melbourne	81.9	80.6	-1.6
19	Launceston - Melbourne	79.7	80.3	0.8
20	Brisbane - Mackay	65.1	71.2	9.4
21	Hobart - Sydney	64.3	64.4	0.1
22	Sunshine Coast - Sydney	60.1	64.0	6.5
23	Adelaide - Perth	56.6	62.1	9.8
24	Brisbane - Canberra	60.2	61.4	2.0
25	Brisbane - Newcastle	52.0	56.9	9.4
26	Melbourne - Sunshine Coast	50.5	53.7	6.3
27	Brisbane - Rockhampton	46.2	49.6	7.4
28	Melbourne - Newcastle	44.7	44.5	-0.5
29	Karratha - Perth	39.6	43.2	9.2
30	Ballina - Sydney	40.4	39.7	-1.9
31	Perth - Port Hedland	34.2	35.2	2.9
32	Newman - Perth	28.4	32.7	15.1
33	Broome - Perth	31.9	31.5	-1.5
34	Coffs Harbour - Sydney	30.6	31.2	2.0
35	Brisbane - Darwin	31.8	29.6	-7.1
36	Darwin - Sydney	27.9	28.7	3.2
37	Darwin - Melbourne	26.7	27.1	1.3
38	Kalgoorlie - Perth	26.5	26.5	0.3
39	Brisbane - Proserpine	23.0	24.8	7.9
40	Launceston - Sydney	23.3	24.5	5.0
41	Hamilton Island - Sydney	20.9	23.9	14.6
42	Brisbane - Gladstone	21.8	22.7	3.9
43	Albury - Sydney	21.3	21.5	1.0
44	Melbourne - Mildura	20.3	21.1	4.0
45	Brisbane - Hobart	21.3	21.0	-1.5
46	Adelaide - Gold Coast	19.5	20.8	6.8
47	Brisbane - Emerald	17.4	18.9	8.5
48	Adelaide - Canberra	18.4	18.8	1.9
49	Ayers Rock - Sydney	16.9	18.6	10.0
50	Port Macquarie - Sydney	16.4	17.7	7.9

continued

Table 2: (continued) Passengers carried (000s) — monthly activity

	City-Pair	Oct 2018	Oct 2019	% Change
51	Sydney - Wagga Wagga	16.2	17.1	5.6
52	Dubbo - Sydney	17.2	17.0	-1.1
53	Sydney - Townsville	16.5	16.5	0.2
54	Adelaide - Port Lincoln	15.0	15.9	6.1
55	Sydney - Tamworth	15.5	15.8	1.4
56	Darwin - Perth	16.4	15.7	-4.0
57	Brisbane - Bundaberg	14.5	14.2	-2.2
58	Adelaide - Alice Springs	12.5	13.4	6.8
59	Cairns - Townsville	13.4	13.2	-1.3
60	Brisbane - Mount Isa	11.7	13.1	12.5
61	Brisbane - Hamilton Island	10.2	12.5	22.7
62	Armidale - Sydney	11.0	11.9	8.0
63	Proserpine - Sydney	12.8	11.4	-11.1
64	Alice Springs - Darwin	10.0	10.7	6.6
	Total domestic network	5 498.1	5 641.6	2.6

Table 3: Available seats (000s) — monthly activity

	City-Pair	Oct 2018	Oct 2019	% Change
1	Melbourne - Sydney	958.9	957.0	-0.2
2	Brisbane - Sydney	503.1	511.1	1.6
3	Brisbane - Melbourne	386.7	379.1	-2.0
4	Gold Coast - Sydney	277.0	278.1	0.4
5	Adelaide - Melbourne	266.4	270.3	1.5
6	Gold Coast - Melbourne	209.5	214.8	2.5
7	Melbourne - Perth	219.2	209.9	-4.2
8	Adelaide - Sydney	205.0	196.9	-3.9
9	Perth - Sydney	176.7	175.9	-0.5
10	Hobart - Melbourne	179.5	171.3	-4.6
11	Brisbane - Cairns	131.4	135.1	2.8
12	Canberra - Melbourne	156.5	155.1	-0.9
13	Cairns - Sydney	124.3	115.5	-7.1
14	Brisbane - Townsville	109.2	112.7	3.2
15	Canberra - Sydney	112.0	115.7	3.3
16	Brisbane - Perth	98.1	98.2	0.1
17	Adelaide - Brisbane	94.9	99.8	5.1
18	Cairns - Melbourne	94.2	94.1	-0.2
19	Launceston - Melbourne	98.3	98.4	0.1
20	Brisbane - Mackay	82.6	86.5	4.8
21	Hobart - Sydney	75.7	75.8	0.1
22	Sunshine Coast - Sydney	71.5	72.2	1.0
23	Adelaide - Perth	70.4	76.4	8.5
24	Brisbane - Canberra	76.8	80.6	5.0
25	Brisbane - Newcastle	67.2	69.0	2.7
26	Melbourne - Sunshine Coast	56.5	58.4	3.2
27	Brisbane - Rockhampton	56.2	58.3	3.8
28	Melbourne - Newcastle	53.4	51.3	-3.9
29	Karratha - Perth	58.5	64.8	10.7
30	Ballina - Sydney	47.0	44.6	-5.2
31	Perth - Port Hedland	47.5	54.1	13.8
32	Newman - Perth	49.7	54.0	8.6
33	Broome - Perth	40.7	38.8	-4.7
34	Coffs Harbour - Sydney	41.1	39.0	-5.3
35	Brisbane - Darwin	40.3	38.3	-4.8
36	Darwin - Sydney	38.3	37.8	-1.2
37	Darwin - Melbourne	33.5	33.8	1.1
38	Kalgoorlie - Perth	43.9	42.5	-3.1
39	Brisbane - Proserpine	29.0	27.5	-5.2
40	Launceston - Sydney	26.8	27.0	0.6
41	Hamilton Island - Sydney	28.7	28.4	-1.0
42	Brisbane - Gladstone	30.7	33.1	7.8
43	Albury - Sydney	29.3	29.0	-1.0
44	Melbourne - Mildura	31.2	30.8	-1.4
45	Brisbane - Hobart	23.7	23.4	-1.3
46	Adelaide - Gold Coast	22.8	22.7	-0.7
47	Brisbane - Emerald	23.5	26.3	11.6
48	Adelaide - Canberra	26.8	26.8	0.0
49	Ayers Rock - Sydney	22.2	22.1	-0.2
50	Port Macquarie - Sydney	20.4	23.5	15.1

continued

Table 3: (continued) Available seats (000s) — monthly activity

	City-Pair	Oct 2018	Oct 2019	% Change
51	Sydney - Wagga Wagga	23.6	25.0	5.8
52	Dubbo - Sydney	23.0	24.7	7.4
53	Sydney - Townsville	20.4	19.3	-5.6
54	Adelaide - Port Lincoln	25.5	24.4	-4.2
55	Sydney - Tamworth	23.9	23.4	-1.8
56	Darwin - Perth	23.6	21.2	-10.3
57	Brisbane - Bundaberg	19.4	19.4	-0.1
58	Adelaide - Alice Springs	15.7	16.9	8.1
59	Cairns - Townsville	21.0	21.2	1.1
60	Brisbane - Mount Isa	15.1	16.9	12.1
61	Brisbane - Hamilton Island	14.2	15.6	9.4
62	Armidale - Sydney	16.2	16.6	2.3
63	Proserpine - Sydney	14.8	12.7	-14.0
64	Alice Springs - Darwin	19.7	26.1	32.6
	Total domestic network	6 816.6	6 839.9	0.3

Table 4: Load factors (%) — monthly activity

	City-Pair	Oct 2018	Oct 2019	% Point diff
1	Melbourne - Sydney	85.7	86.1	0.4
2	Brisbane - Sydney	85.5	87.6	2.1
3	Brisbane - Melbourne	85.6	87.4	1.8
4	Gold Coast - Sydney	86.9	91.8	4.9
5	Adelaide - Melbourne	83.1	85.8	2.7
6	Gold Coast - Melbourne	89.3	91.7	2.4
7	Melbourne - Perth	86.2	89.7	3.5
8	Adelaide - Sydney	83.6	89.4	5.8
9	Perth - Sydney	85.6	89.8	4.2
10	Hobart - Melbourne	78.9	83.0	4.1
11	Brisbane - Cairns	88.2	87.8	-0.4
12	Canberra - Melbourne	69.4	71.6	2.2
13	Cairns - Sydney	85.0	86.9	1.9
14	Brisbane - Townsville	79.5	80.7	1.2
15	Canberra - Sydney	77.4	77.6	0.2
16	Brisbane - Perth	88.0	91.3	3.3
17	Adelaide - Brisbane	82.7	86.2	3.5
18	Cairns - Melbourne	86.9	85.7	-1.2
19	Launceston - Melbourne	81.0	81.6	0.6
20	Brisbane - Mackay	78.8	82.3	3.5
21	Hobart - Sydney	84.9	84.9	0.0
22	Sunshine Coast - Sydney	84.1	88.6	4.5
23	Adelaide - Perth	80.4	81.4	1.0
24	Brisbane - Canberra	78.5	76.2	-2.3
25	Brisbane - Newcastle	77.5	82.5	5.0
26	Melbourne - Sunshine Coast	89.4	92.0	2.6
27	Brisbane - Rockhampton	82.2	85.1	2.9
28	Melbourne - Newcastle	83.8	86.8	3.0
29	Karratha - Perth	67.7	66.8	-0.9
30	Ballina - Sydney	86.0	89.0	3.0
31	Perth - Port Hedland	71.9	65.0	-6.9
32	Newman - Perth	57.2	60.5	3.3
33	Broome - Perth	78.5	81.2	2.7
34	Coffs Harbour - Sydney	74.3	80.0	5.7
35	Brisbane - Darwin	79.1	77.2	-1.9
36	Darwin - Sydney	72.7	76.0	3.3
37	Darwin - Melbourne	79.9	80.0	0.1
38	Kalgoorlie - Perth	60.3	62.4	2.1
39	Brisbane - Proserpine	79.1	90.0	10.9
40	Launceston - Sydney	86.8	90.7	3.9
41	Hamilton Island - Sydney	72.8	84.3	11.5
42	Brisbane - Gladstone	71.2	68.6	-2.6
43	Albury - Sydney	72.5	74.0	1.5
44	Melbourne - Mildura	64.9	68.5	3.6
45	Brisbane - Hobart	89.7	89.5	-0.2
46	Adelaide - Gold Coast	85.1	91.6	6.5
47	Brisbane - Emerald	73.8	71.8	-2.0
48	Adelaide - Canberra	68.8	70.1	1.3
49	Ayers Rock - Sydney	76.3	84.1	7.8
50	Port Macquarie - Sydney	80.6	75.5	-5.1

continued

Table 4: (continued) Load factors (%) — monthly activity

	City-Pair	Oct 2018	Oct 2019	% Point diff
51	Sydney - Wagga Wagga	68.7	68.5	-0.2
52	Dubbo - Sydney	74.6	68.8	-5.8
53	Sydney - Townsville	80.8	85.7	4.9
54	Adelaide - Port Lincoln	59.0	65.3	6.3
55	Sydney - Tamworth	65.1	67.2	2.1
56	Darwin - Perth	69.3	74.2	4.9
57	Brisbane - Bundaberg	74.8	73.2	-1.6
58	Adelaide - Alice Springs	79.9	78.9	-1.0
59	Cairns - Townsville	63.5	62.1	-1.4
60	Brisbane - Mount Isa	77.5	77.8	0.3
61	Brisbane - Hamilton Island	71.7	80.5	8.8
62	Armidale - Sydney	67.9	71.7	3.8
63	Proserpine - Sydney	86.5	89.4	2.9
64	Alice Springs - Darwin	50.9	41.0	-9.9
	Total domestic network	82.4	84.5	2.1

Table 5: Aircraft trips ^(a) — monthly activity

	City-Pair	Oct 2018	Oct 2019	% Change
1	Melbourne - Sydney	5 364	5 397	0.6
2	Brisbane - Sydney	3 028	3 107	2.6
3	Brisbane - Melbourne	2 289	2 211	-3.4
4	Gold Coast - Sydney	1 587	1 591	0.3
5	Adelaide - Melbourne	1 650	1 659	0.5
6	Gold Coast - Melbourne	1 108	1 131	2.1
7	Melbourne - Perth	1 029	1 027	-0.2
8	Adelaide - Sydney	1 265	1 156	-8.6
9	Perth - Sydney	777	770	-0.9
10	Hobart - Melbourne	980	939	-4.2
11	Brisbane - Cairns	900	938	4.2
12	Canberra - Melbourne	987	977	-1.0
13	Cairns - Sydney	670	590	-11.9
14	Brisbane - Townsville	757	749	-1.1
15	Canberra - Sydney	1 448	1 493	3.1
16	Brisbane - Perth	527	527	0.0
17	Adelaide - Brisbane	599	575	-4.0
18	Cairns - Melbourne	478	479	0.2
19	Launceston - Melbourne	750	756	0.8
20	Brisbane - Mackay	625	684	9.4
21	Hobart - Sydney	476	479	0.6
22	Sunshine Coast - Sydney	424	444	4.7
23	Adelaide - Perth	481	500	4.0
24	Brisbane - Canberra	551	575	4.4
25	Brisbane - Newcastle	440	504	14.5
26	Melbourne - Sunshine Coast	316	324	2.5
27	Brisbane - Rockhampton	734	696	-5.2
28	Melbourne - Newcastle	294	283	-3.7
29	Karratha - Perth	519	518	-0.2
30	Ballina - Sydney	303	288	-5.0
31	Perth - Port Hedland	383	414	8.1
32	Newman - Perth	362	386	6.6
33	Broome - Perth	337	337	0.0
34	Coffs Harbour - Sydney	395	426	7.8
35	Brisbane - Darwin	246	237	-3.7
36	Darwin - Sydney	226	215	-4.9
37	Darwin - Melbourne	181	182	0.6
38	Kalgoorlie - Perth	336	331	-1.5
39	Brisbane - Proserpine	164	154	-6.1
40	Launceston - Sydney	166	150	-9.6
41	Hamilton Island - Sydney	178	172	-3.4
42	Brisbane - Gladstone	402	438	9.0
43	Albury - Sydney	537	534	-0.6
44	Melbourne - Mildura	434	429	-1.2
45	Brisbane - Hobart	138	132	-4.3
46	Adelaide - Gold Coast	128	127	-0.8
47	Brisbane - Emerald	315	392	24.4
48	Adelaide - Canberra	160	160	0.0
49	Ayers Rock - Sydney	124	123	-0.8
50	Port Macquarie - Sydney	317	365	15.1

continued

Table 5: (continued) Aircraft trips ^(a) — monthly activity

	City-Pair	Oct 2018	Oct 2019	% Change
51	Sydney - Wagga Wagga	474	503	6.1
52	Dubbo - Sydney	478	531	11.1
53	Sydney - Townsville	116	108	-6.9
54	Adelaide - Port Lincoln	660	635	-3.8
55	Sydney - Tamworth	353	370	4.8
56	Darwin - Perth	140	123	-12.1
57	Brisbane - Bundaberg	279	308	10.4
58	Adelaide - Alice Springs	114	123	7.9
59	Cairns - Townsville	333	338	1.5
60	Brisbane - Mount Isa	177	147	-16.9
61	Brisbane - Hamilton Island	106	124	17.0
62	Armidale - Sydney	390	392	0.5
63	Proserpine - Sydney	82	70	-14.6
64	Alice Springs - Darwin	166	168	1.2
	Total domestic network	55 534	56 055	0.9

(a) Includes RPT Cargo flights.

TOP TEN AIRPORTS – PASSENGER MOVEMENTS

Table 6: Top ten airports, RPT passenger movements (000s) - monthly activity

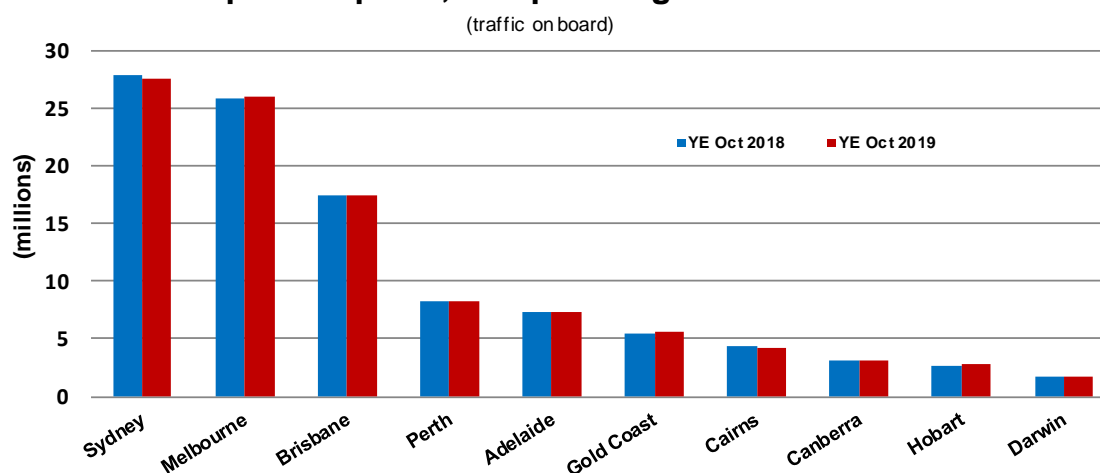
Airport	Oct 2018	Oct 2019	% Change	% of Total
1 Sydney	2 484.9	2 543.9	2.4	22.5
2 Melbourne	2 325.7	2 358.8	1.4	20.9
3 Brisbane	1 564.6	1 624.6	3.8	14.4
4 Perth	743.7	766.1	3.0	6.8
5 Adelaide	657.5	689.0	4.8	6.1
6 Gold Coast	490.6	520.8	6.2	4.6
7 Cairns	397.3	384.8	-3.2	3.4
8 Canberra	292.1	298.1	2.1	2.6
9 Hobart	235.8	241.7	2.5	2.1
10 Townsville	145.1	151.3	4.2	1.3
Total top ten airports	9 337.2	9 579.2	2.6	84.9
Total domestic network	10 996.3	11 283.2	2.6	100.0

Table 7: Top ten airports, RPT passenger movements (000s) - annual activity

Airport	YE Oct 2018	YE Oct 2019	% Change	% of Total
1 Sydney	27 801.2	27 543.8	-0.9	22.5
2 Melbourne	25 888.1	25 960.2	0.3	21.2
3 Brisbane	17 403.7	17 523.4	0.7	14.3
4 Perth	8 207.8	8 257.6	0.6	6.7
5 Adelaide	7 336.6	7 375.9	0.5	6.0
6 Gold Coast	5 509.4	5 540.5	0.6	4.5
7 Cairns	4 327.5	4 169.3	-3.7	3.4
8 Canberra	3 150.5	3 140.7	-0.3	2.6
9 Hobart	2 648.9	2 767.6	4.5	2.3
10 Darwin	1 765.8	1 699.0	-3.8	1.4
Total top ten airports	104 039.6	103 977.9	-0.1	84.9
Total domestic network	122 350.2	122 448.2	0.1	100.0

Note: Airport passenger movement numbers are the sum of passenger arrivals and departures at each airport.

Top ten airports, RPT passenger movements



TOP FIVE AIRPORTS – CARGO MOVEMENTS

Table 8: Top five airports, domestic RPT cargo movements (000s tonnes) - monthly activity

Airport	Oct 2018	Oct 2019	% Change	% of Total
1 Melbourne	11.7	10.7	-9.0	26.4
2 Sydney	10.0	8.7	-13.2	21.5
3 Brisbane	6.9	6.4	-7.1	16.0
4 Perth	6.4	5.2	-18.3	13.0
5 Adelaide	2.6	2.5	-2.0	6.3
Total top five airports	37.7	33.6	-10.9	83.1
Total domestic network	43.3	40.4	-6.7	100.0

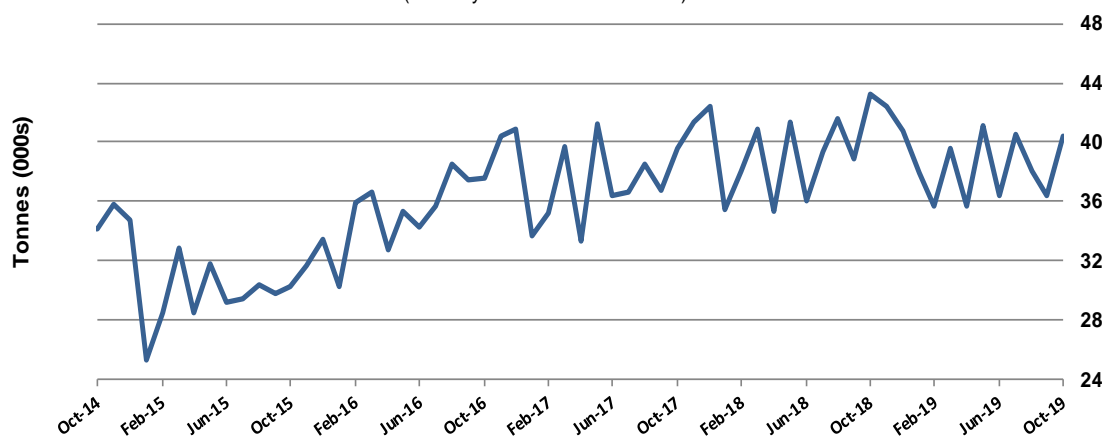
Table 9: Top five airports, domestic RPT cargo movements (000s tonnes) - annual activity

Airport	YE Oct 2018	YE Oct 2019	% Change	% of Total
1 Melbourne	135.6	123.3	-9.1	26.5
2 Sydney	109.2	100.3	-8.1	21.6
3 Brisbane	72.5	72.9	0.5	15.7
4 Perth	67.0	62.4	-7.0	13.4
5 Adelaide	28.3	28.7	1.4	6.2
Total top five airports	412.6	387.6	-6.1	83.4
Total domestic network	474.1	465.0	-1.9	100.0

Note: Airport cargo tonnes are the sum of cargo tonnes on arrivals and departures at each airport.

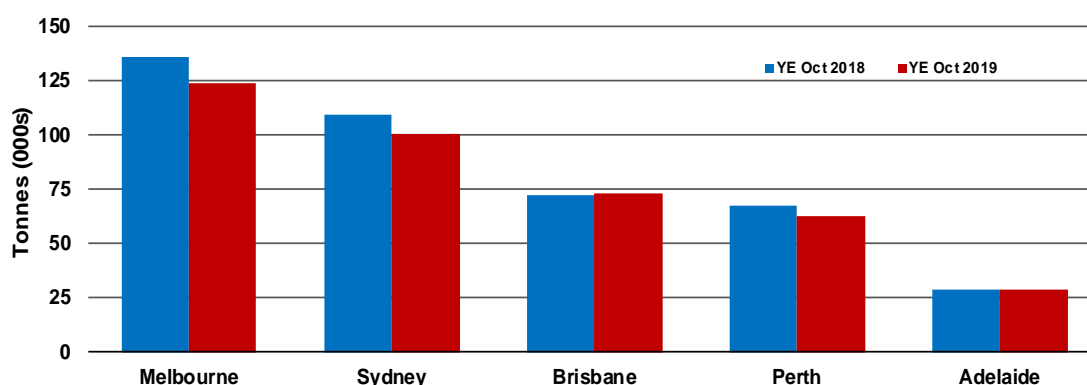
Total domestic network - cargo movement

(monthly totals - traffic on board)



Top five airports, cargo movements

(Domestic cargo traffic - traffic on board)



TOP TEN ROUTES

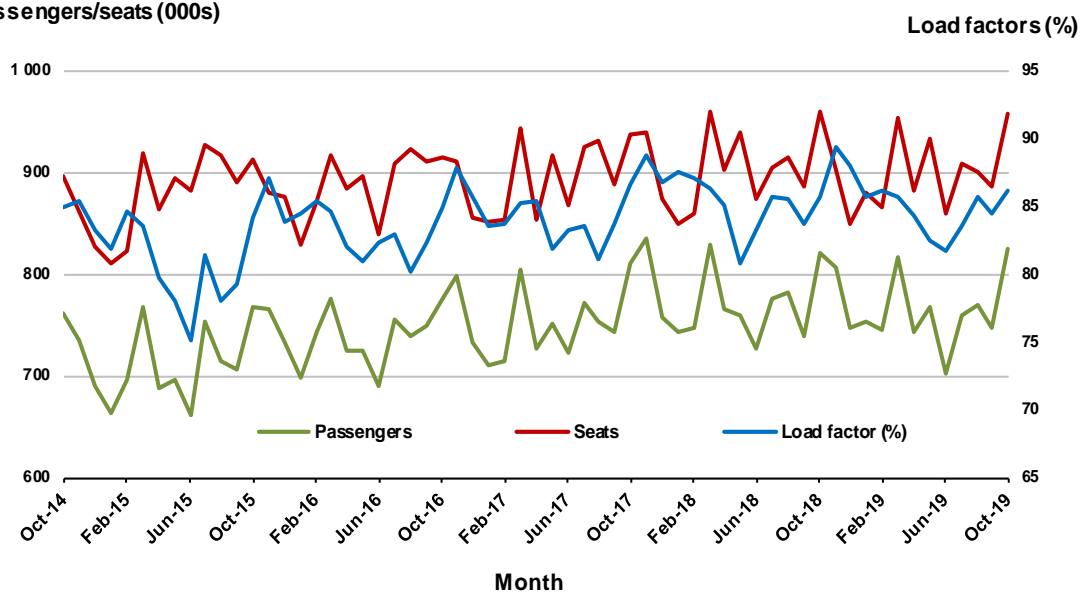
1. Melbourne - Sydney

Monthly data

	Oct 2018	Oct 2019	% Change
Passengers carried (000s)	821.3	824.0	0.3
Seats (000s)	958.9	957.0	-0.2
Load factor %	85.7	86.1	0.4 *
Aircraft trips	5 364	5 397	0.6

* percentage point difference

Passengers/seats (000s)

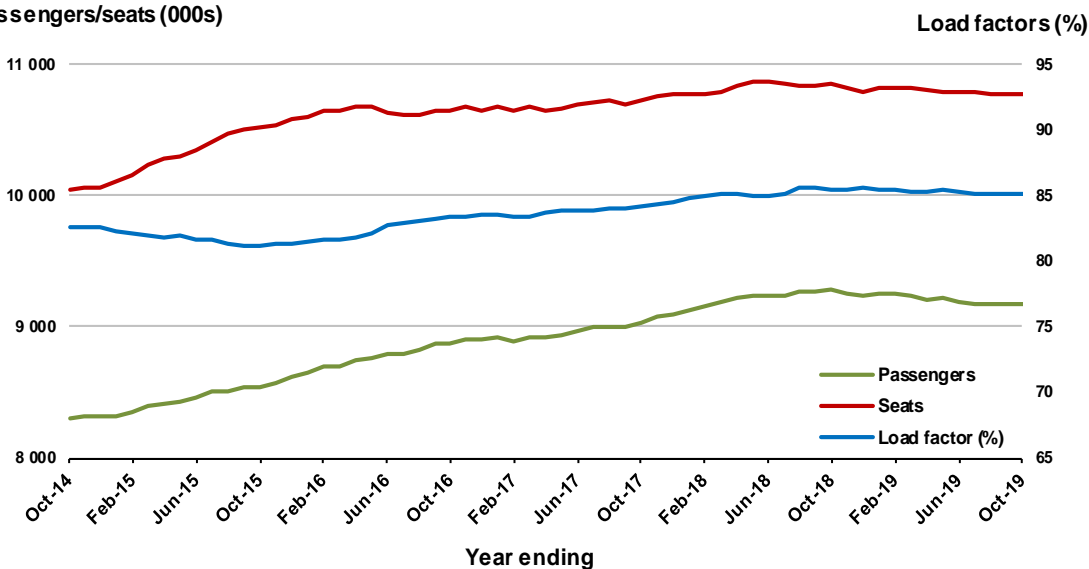


Moving annual data

	YE Oct 2018	YE Oct 2019	% Change
Passengers carried (000s)	9 279.4	9 177.7	-1.1
Seats (000s)	10 855.6	10 772.0	-0.8
Load factor %	85.5	85.2	-0.3 *
Aircraft trips	60 182	60 385	0.3

* percentage point difference

Passengers/seats (000s)

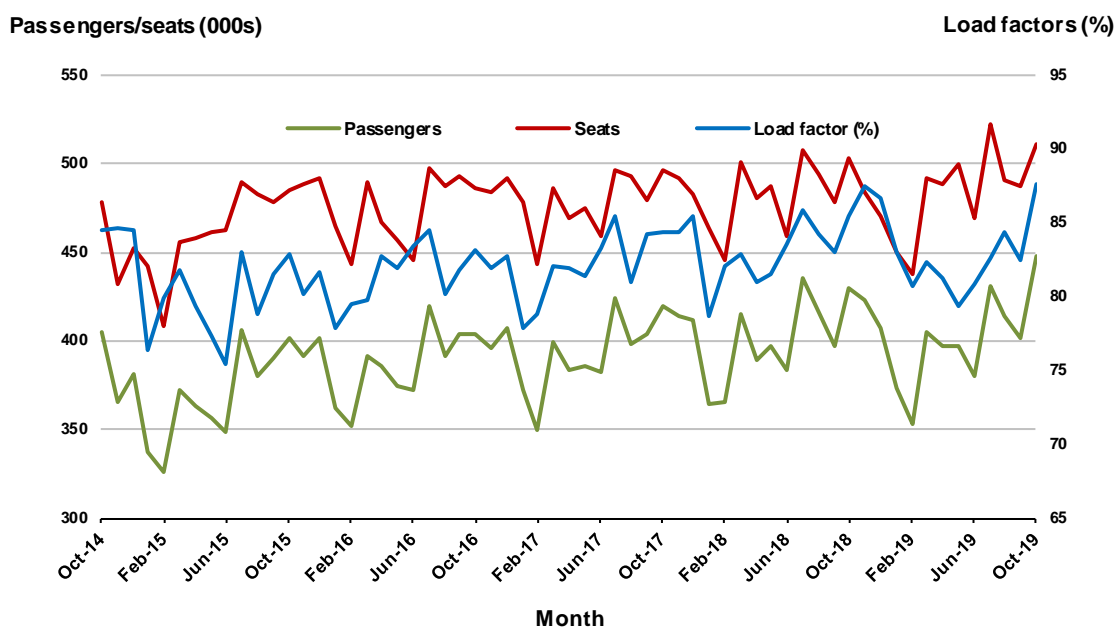


2. Brisbane - Sydney

Monthly data

	Oct 2018	Oct 2019	% Change
Passengers carried (000s)	430.1	447.6	4.1
Seats (000s)	503.1	511.1	1.6
Load factor %	85.5	87.6	2.1 *
Aircraft trips	3 028	3 107	2.6

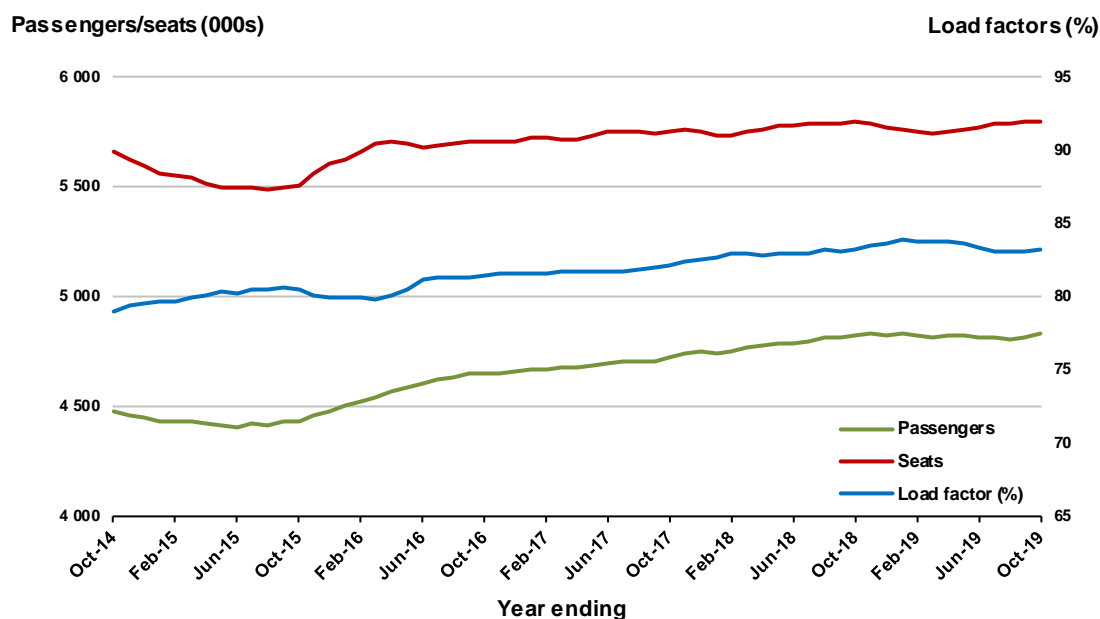
* percentage point difference



Moving annual data

	YE Oct 2018	YE Oct 2019	% Change
Passengers carried (000s)	4 820.8	4 829.4	0.2
Seats (000s)	5 793.9	5 801.2	0.1
Load factor %	83.2	83.2	0.0 *
Aircraft trips	35 113	35 443	0.9

* percentage point difference

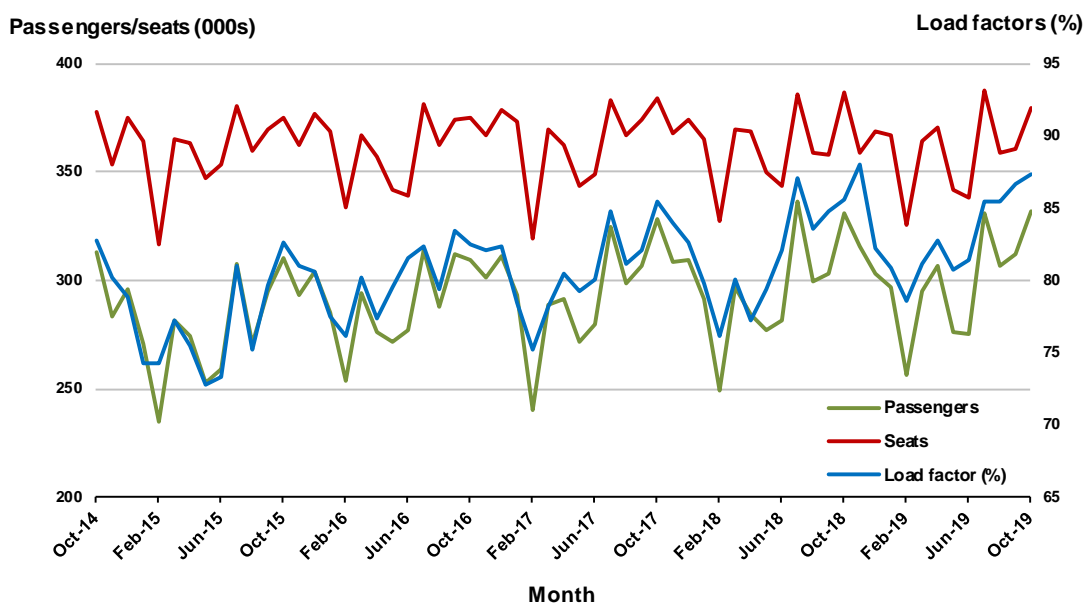


3. Brisbane - Melbourne

Monthly data

	Oct 2018	Oct 2019	% Change
Passengers carried (000s)	331.0	331.5	0.1
Seats (000s)	386.7	379.1	-2.0
Load factor %	85.6	87.4	1.8 *
Aircraft trips	2 289	2 211	-3.4

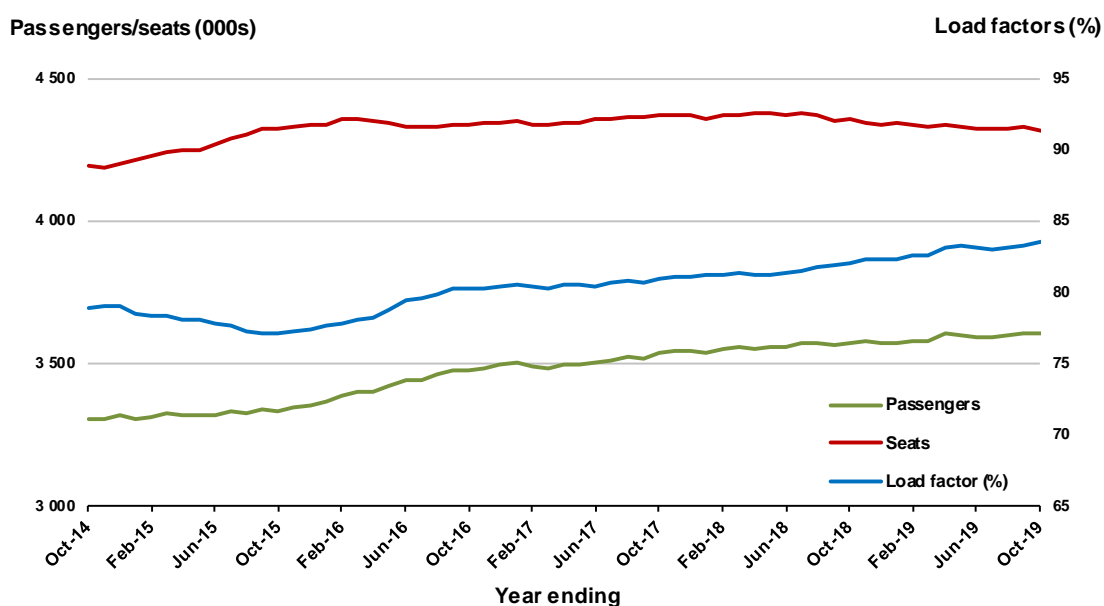
* percentage point difference



Moving annual data

	YE Oct 2018	YE Oct 2019	% Change
Passengers carried (000s)	3 568.9	3 605.0	1.0
Seats (000s)	4 353.9	4 319.0	-0.8
Load factor %	82.0	83.5	1.5 *
Aircraft trips	25 578	25 465	-0.4

* percentage point difference



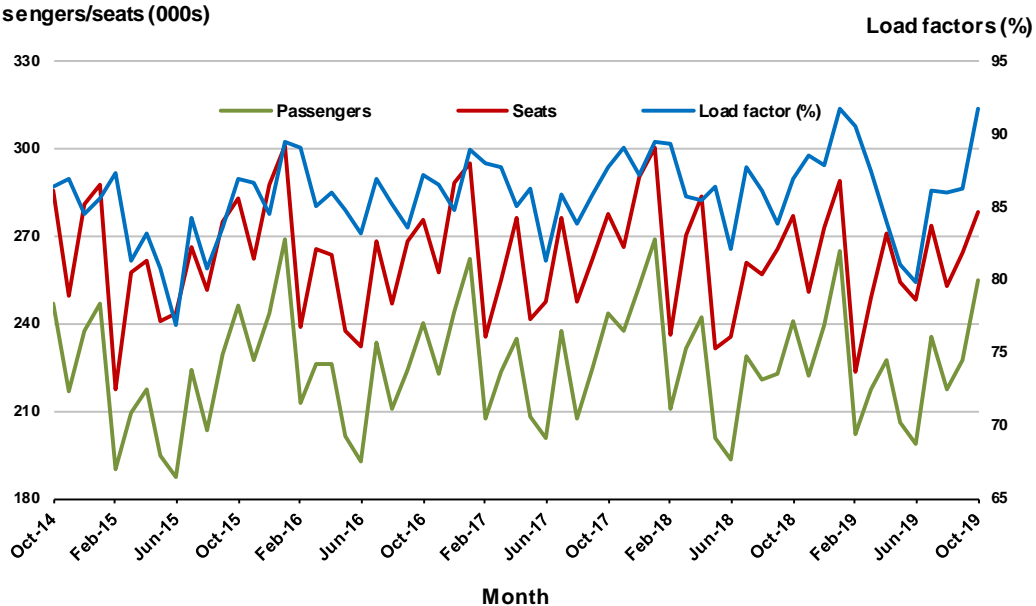
4. Gold Coast - Sydney

Monthly data

	Oct 2018	Oct 2019	% Change
Passengers carried (000s)	240.8	255.2	6.0
Seats (000s)	277.0	278.1	0.4
Load factor %	86.9	91.8	4.9 *
Aircraft trips	1 587	1 591	0.3

* percentage point difference

Passengers/seats (000s)

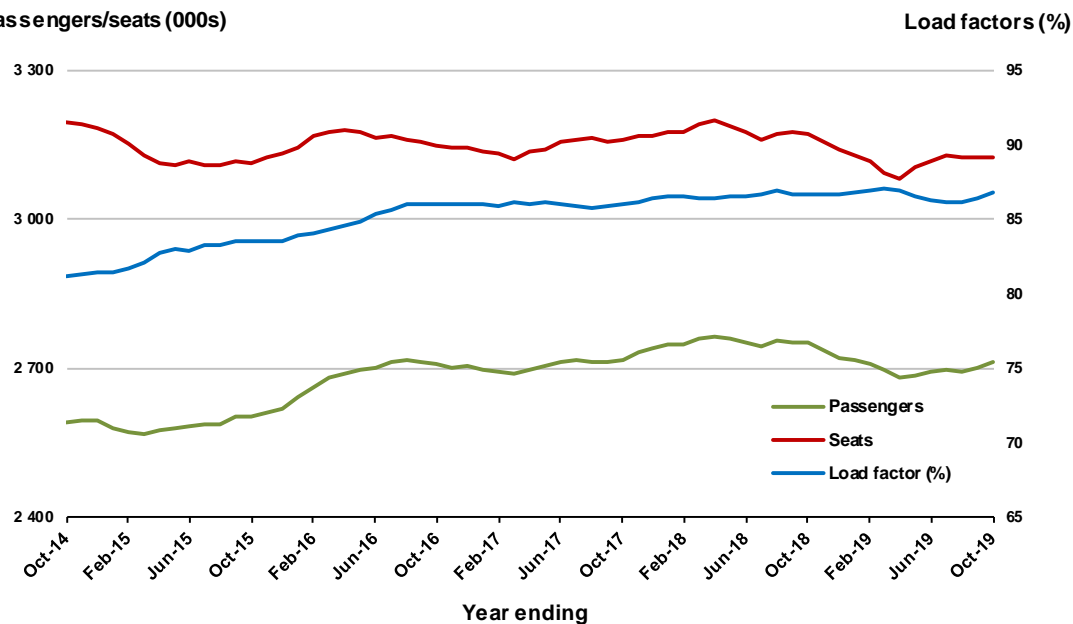


Moving annual data

	YE Oct 2018	YE Oct 2019	% Change
Passengers carried (000s)	2 751.4	2 714.1	-1.4
Seats (000s)	3 173.9	3 126.6	-1.5
Load factor %	86.7	86.8	0.1 *
Aircraft trips	18 012	17 897	-0.6

* percentage point difference

Passengers/seats (000s)



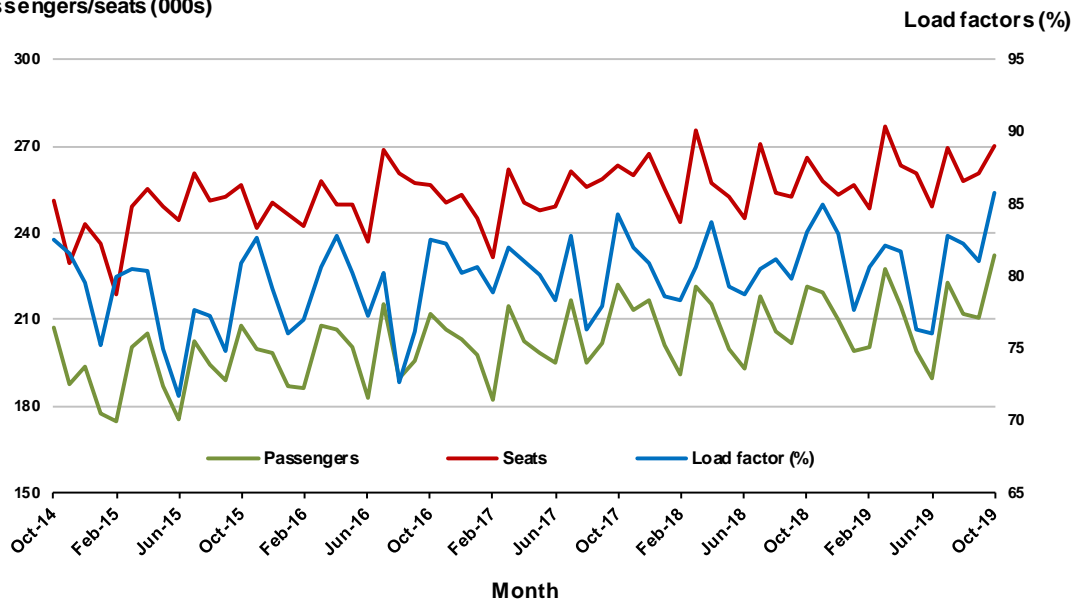
5. Adelaide - Melbourne

Monthly data

	Oct 2018	Oct 2019	% Change
Passengers carried (000s)	221.3	232.0	4.8
Seats (000s)	266.4	270.3	1.5
Load factor %	83.1	85.8	2.7 *
Aircraft trips	1 650	1 659	0.5

* percentage point difference

Passengers/seats (000s)

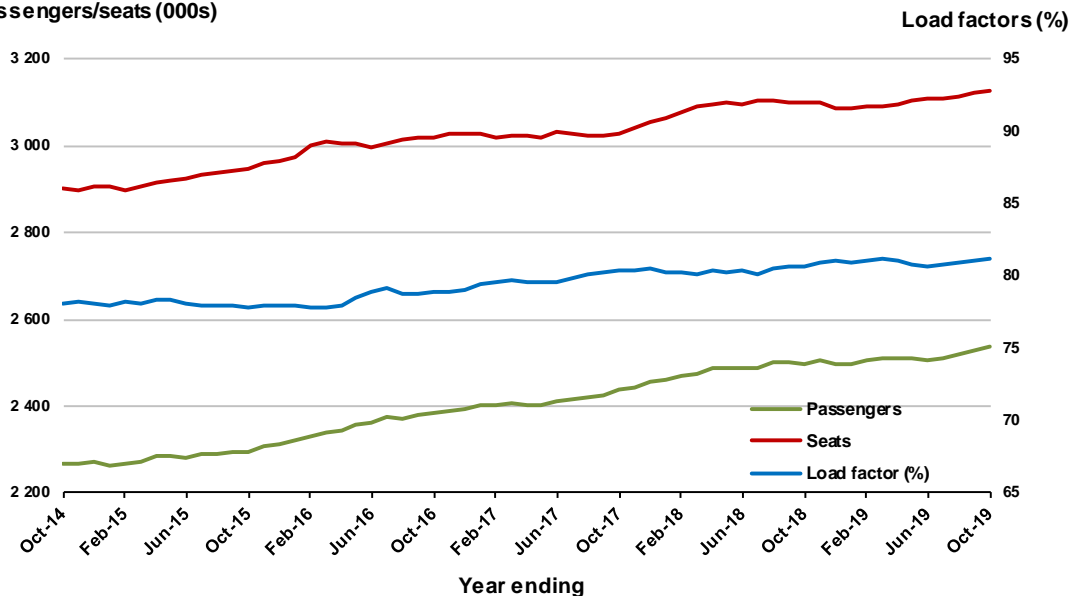


Moving annual data

	YE Oct 2018	YE Oct 2019	% Change
Passengers carried (000s)	2 498.7	2 537.6	1.6
Seats (000s)	3 100.2	3 124.1	0.8
Load factor %	80.6	81.2	0.6 *
Aircraft trips	19 217	19 014	-1.1

* percentage point difference

Passengers/seats (000s)



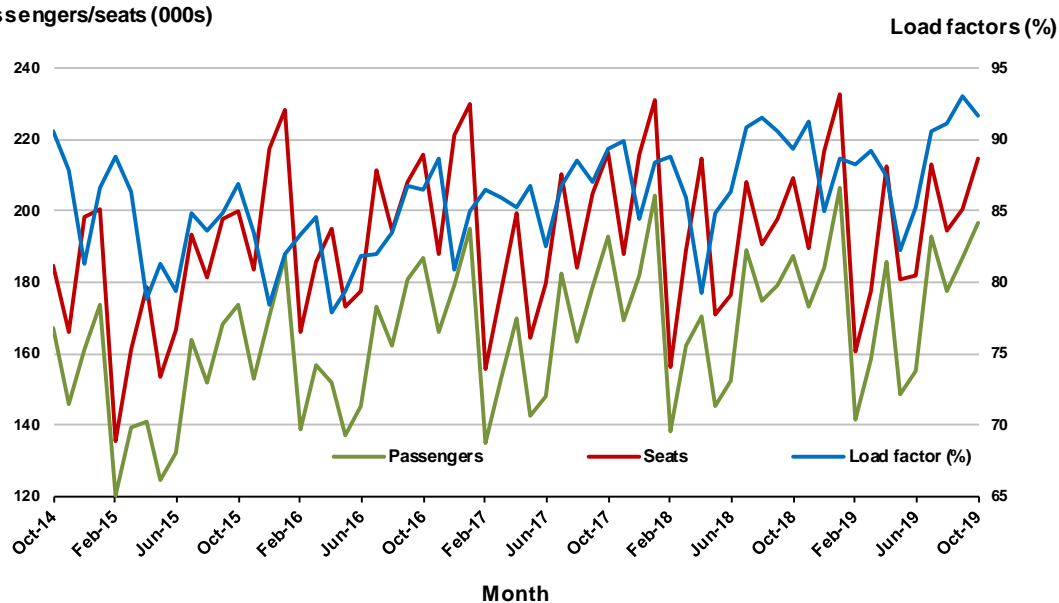
6. Gold Coast - Melbourne

Monthly data

	Oct 2018	Oct 2019	% Change
Passengers carried (000s)	187.1	196.9	5.2
Seats (000s)	209.5	214.8	2.5
Load factor %	89.3	91.7	2.4 *
Aircraft trips	1 108	1 131	2.1

* percentage point difference

Passengers/seats (000s)

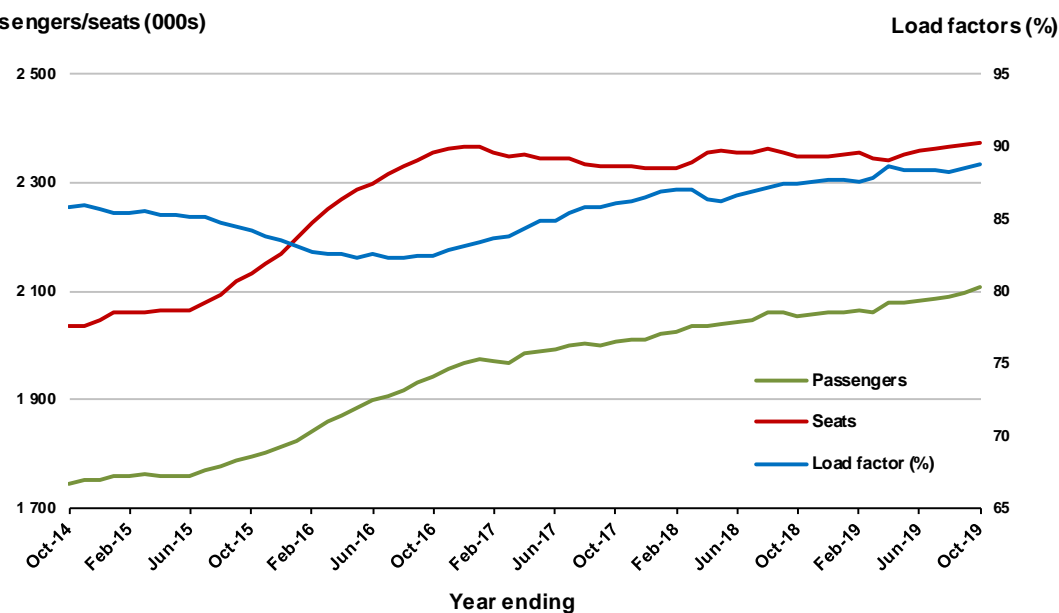


Moving annual data

	YE Oct 2018	YE Oct 2019	% Change
Passengers carried (000s)	2 054.7	2 107.7	2.6
Seats (000s)	2 347.7	2 375.6	1.2
Load factor %	87.5	88.7	1.3 *
Aircraft trips	12 452	12 537	0.7

* percentage point difference

Passengers/seats (000s)



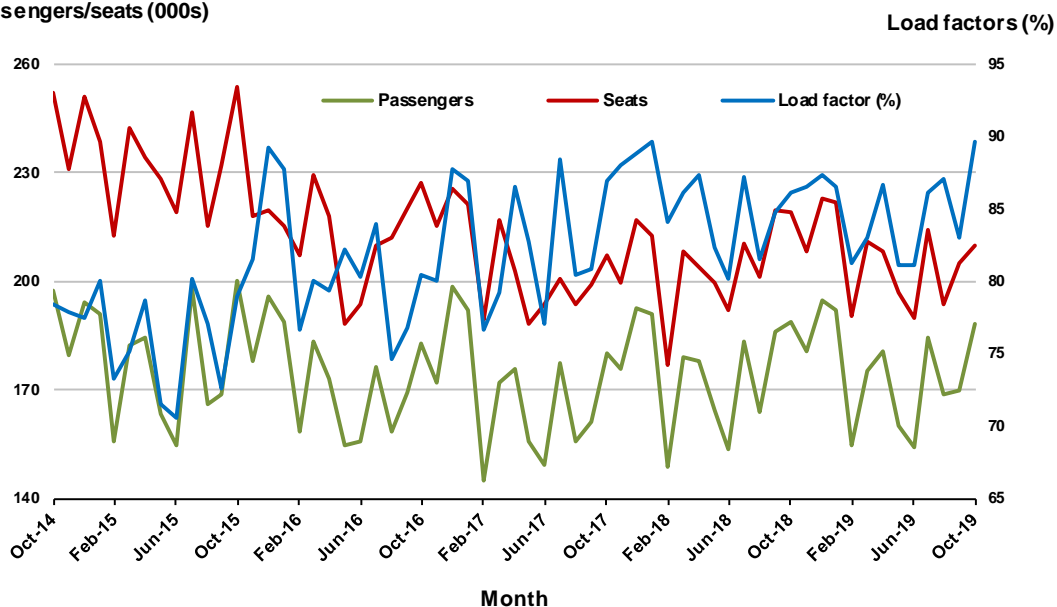
7. Melbourne - Perth

Monthly data

	Oct 2018	Oct 2019	% Change
Passengers carried (000s)	188.9	188.4	-0.3
Seats (000s)	219.2	209.9	-4.2
Load factor %	86.2	89.7	3.5 *
Aircraft trips	1 029	1 027	-0.2

* percentage point difference

Passengers/seats (000s)

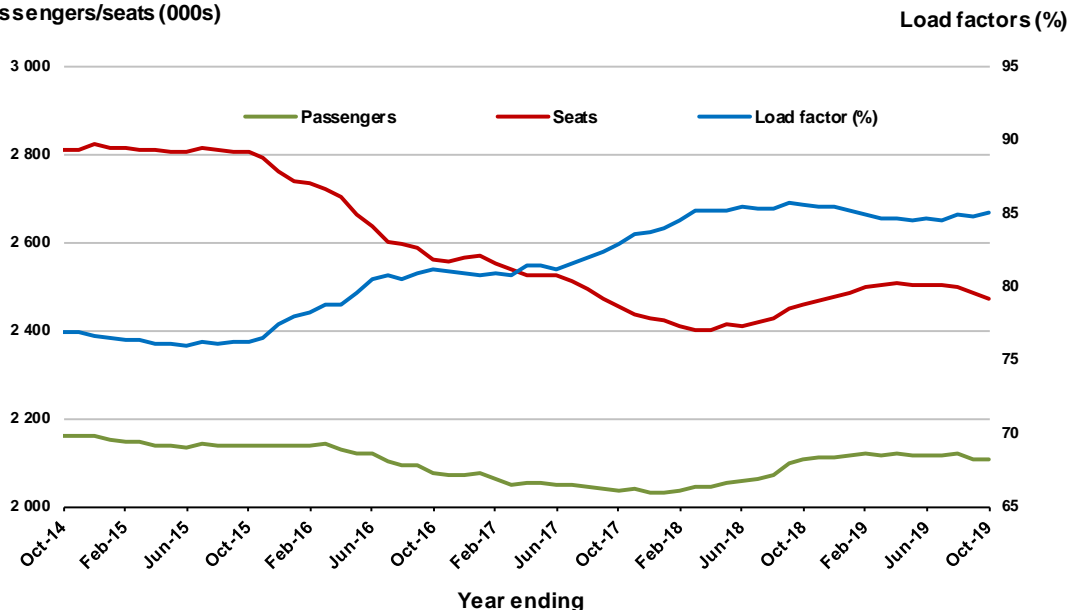


Moving annual data

	YE Oct 2018	YE Oct 2019	% Change
Passengers carried (000s)	2 106.3	2 104.9	-0.1
Seats (000s)	2 460.4	2 473.9	0.6
Load factor %	85.6	85.1	-0.5 *
Aircraft trips	11 538	12 337	6.9

* percentage point difference

Passengers/seats (000s)



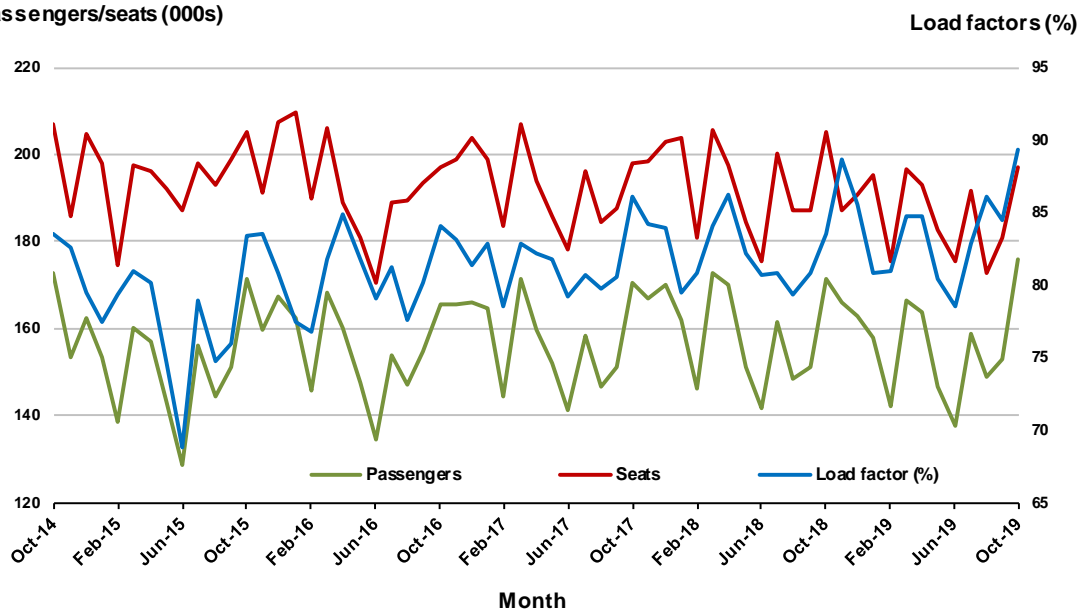
8. Adelaide - Sydney

Monthly data

	Oct 2018	Oct 2019	% Change
Passengers carried (000s)	171.5	176.1	2.7
Seats (000s)	205.0	196.9	-3.9
Load factor %	83.6	89.4	5.8 *
Aircraft trips	1 265	1 156	-8.6

* percentage point difference

Passengers/seats (000s)

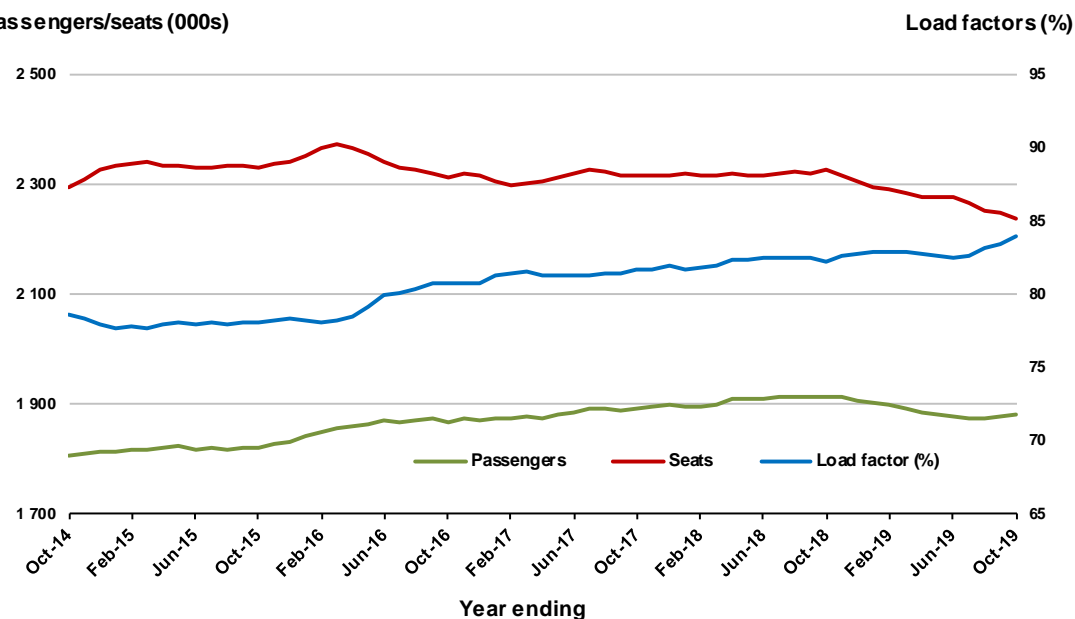


Moving annual data

	YE Oct 2018	YE Oct 2019	% Change
Passengers carried (000s)	1 914.8	1 881.1	-1.8
Seats (000s)	2 328.1	2 239.3	-3.8
Load factor %	82.2	84.0	1.8 *
Aircraft trips	13 974	13 295	-4.9

* percentage point difference

Passengers/seats (000s)



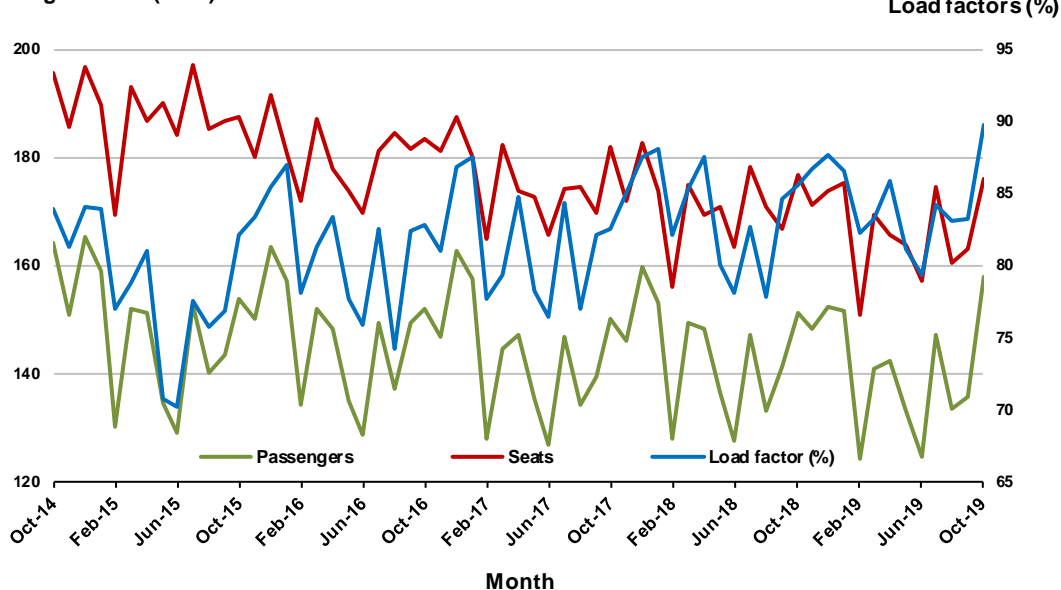
9. Perth - Sydney

Monthly data

	Oct 2018	Oct 2019	% Change
Passengers carried (000s)	151.3	158.0	4.4
Seats (000s)	176.7	175.9	-0.5
Load factor %	85.6	89.8	4.2 *
Aircraft trips	777	770	-0.9

* percentage point difference

Passengers/seats (000s)

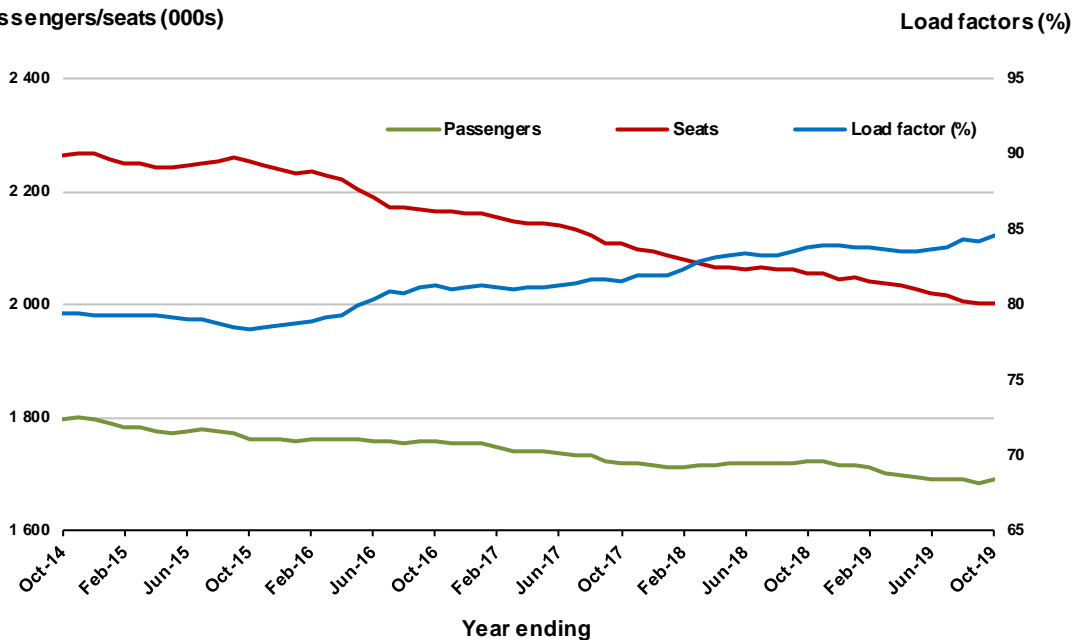


Moving annual data

	YE Oct 2018	YE Oct 2019	% Change
Passengers carried (000s)	1 722.3	1 691.8	-1.8
Seats (000s)	2 055.7	2 001.5	-2.6
Load factor %	83.8	84.5	0.7 *
Aircraft trips	9 029	9 073	0.5

* percentage point difference

Passengers/seats (000s)



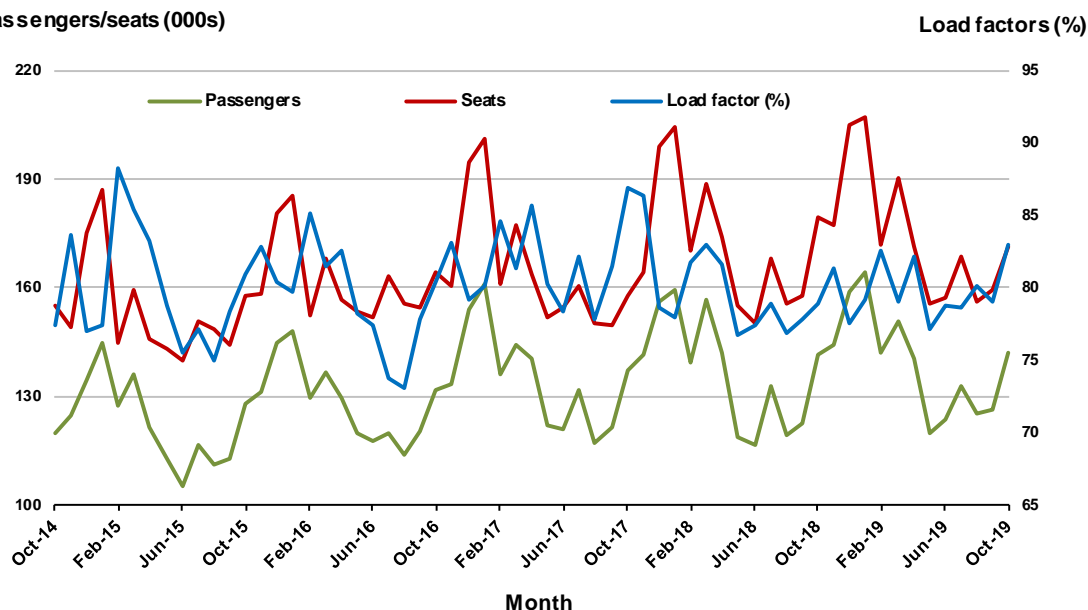
10. Hobart - Melbourne

Monthly data

	Oct 2018	Oct 2019	% Change
Passengers carried (000s)	141.6	142.1	0.4
Seats (000s)	179.5	171.3	-4.6
Load factor %	78.9	83.0	4.1 *
Aircraft trips	980	939	-4.2

* percentage point difference

Passengers/seats (000s)

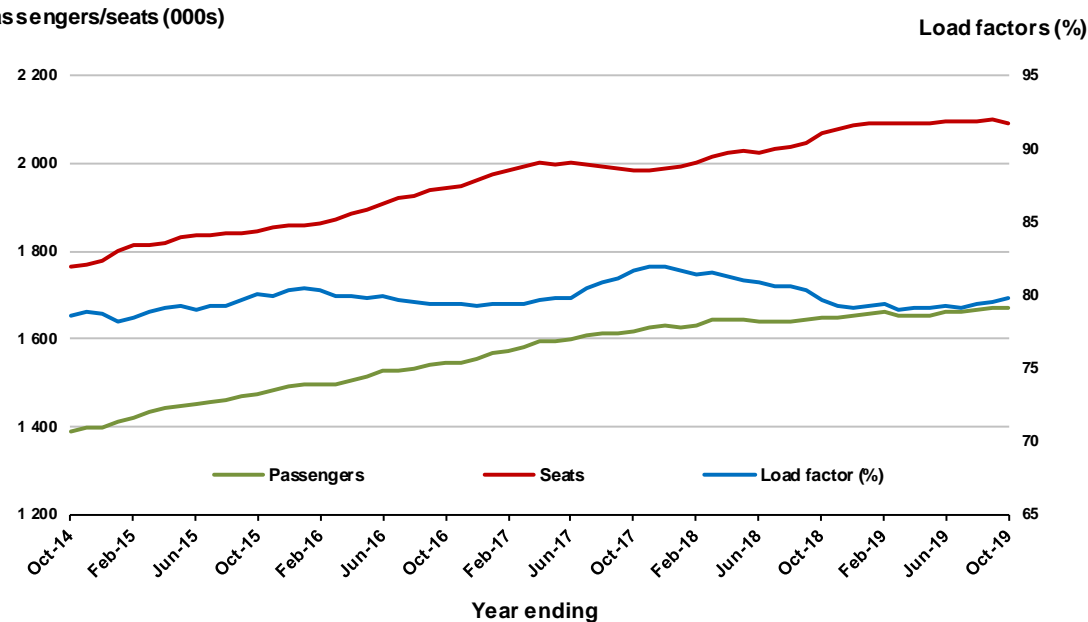


Moving annual data

	YE Oct 2018	YE Oct 2019	% Change
Passengers carried (000s)	1 647.2	1 671.1	1.4
Seats (000s)	2 067.4	2 092.2	1.2
Load factor %	79.7	79.9	0.2 *
Aircraft trips	11 739	11 436	-2.6

* percentage point difference

Passengers/seats (000s)



TOP FIFTY REGIONAL AIRPORTS

Table 10: Top fifty regional airports (000s) — passenger movements, monthly

	Airport	Oct 2018	Oct 2019	% Change
1	Cairns	397.3	384.8	-3.2
2	Hobart	235.8	241.7	2.5
3	Townsville	145.1	151.3	4.2
4	Darwin	152.3	150.9	-0.9
5	Newcastle	112.2	118.7	5.9
6	Launceston	115.1	116.5	1.3
7	Mackay	74.7	80.7	8.0
8	Rockhampton	49.3	52.6	6.8
9	Alice Springs	58.2	51.4	-11.7
10	Ballina	50.9	48.4	-5.0
11	Ayers Rock	41.2	48.3	17.1
12	Hamilton Island	42.1	47.1	11.8
13	Karratha	39.6	43.4	9.6
14	Proserpine	41.9	41.9	0.1
15	Coffs Harbour	36.0	37.4	3.9
16	Broome	37.9	36.7	-3.2
17	Port Hedland	35.1	36.1	3.0
18	Newman	28.4	32.8	15.3
19	Kalgoorlie	27.3	27.6	1.3
20	Albury	23.5	23.8	1.4
21	Mildura	24.5	23.0	-6.2
22	Gladstone	22.0	22.7	3.3
23	Mount Isa	19.1	21.0	10.1
24	Port Macquarie	18.9	20.1	6.7
25	Wagga Wagga	19.0	19.8	4.2
26	Dubbo	19.8	19.6	-1.0
27	Emerald	17.4	18.9	8.5
28	Paraburdoo	16.3	18.3	12.4
29	Tamworth	16.9	17.2	1.8
30	Hervey Bay	15.2	16.3	7.3
31	Port Lincoln	15.0	15.9	6.1
32	Bundaberg	14.6	14.2	-2.7
33	Devonport	13.2	13.8	4.3
34	Armidale	11.7	12.6	7.9
35	Toowoomba Wellcamp	12.3	11.5	-6.7
36	Kununurra	10.0	10.3	2.4
37	Moranbah	10.1	10.1	0.2
38	Geraldton	10.4	9.7	-6.9
39	Griffith	7.1	9.0	26.1
40	Roma	8.3	8.9	6.8
41	Thursday Island	9.6	8.8	-8.8
42	Orange	7.5	8.1	7.6
43	Mount Gambier	7.4	7.9	6.8
44	Learmonth	7.6	7.2	-5.1
45	Gove	7.6	7.1	-5.7
46	Whyalla	7.2	7.0	-2.3
47	Burnie	6.6	6.7	1.7
48	Olympic Dam	7.0	6.5	-7.1
49	Merimbula	5.8	6.0	4.6
50	Weipa	7.3	5.9	-19.3
Total top 50 regional airports		2 118.9	2 155.9	1.7
Total regional airports		2 248.0	2 283.4	1.6
Total domestic network		10 996.3	11 283.2	2.6

Note: Airport passenger movement numbers are the sum of passenger arrivals and departures at each airport.

Regional airports are defined as airports which are, according to the Australian Bureau of Statistics

"The Australian Statistical Geography Standard (ASGS)", not based in Major Urban areas.

Table 11: Top fifty regional airports (000s) — passenger movements, annual

Airport	YE Oct 2018	YE Oct 2019	% Change
1 Cairns	4 327.5	4 169.3	-3.7
2 Hobart	2 648.9	2 767.6	4.5
3 Darwin	1 765.8	1 699.0	-3.8
4 Townsville	1 654.7	1 657.1	0.1
5 Launceston	1 383.6	1 391.9	0.6
6 Newcastle	1 264.6	1 274.4	0.8
7 Mackay	842.2	869.5	3.2
8 Alice Springs	623.9	577.0	-7.5
9 Rockhampton	553.4	566.4	2.3
10 Ballina	538.1	531.4	-1.2
11 Ayers Rock	409.9	489.7	19.5
12 Karratha	442.3	460.3	4.1
13 Hamilton Island	424.8	446.1	5.0
14 Proserpine	461.9	429.8	-7.0
15 Broome	417.6	405.5	-2.9
16 Coffs Harbour	406.4	399.0	-1.8
17 Port Hedland	367.6	382.6	4.1
18 Newman	303.9	339.9	11.8
19 Kalgoorlie	281.7	292.4	3.8
20 Albury	263.0	254.7	-3.2
21 Mildura	271.9	254.3	-6.5
22 Gladstone	255.1	247.6	-2.9
23 Mount Isa	210.6	221.9	5.4
24 Port Macquarie	217.1	218.3	0.5
25 Dubbo	223.4	211.4	-5.3
26 Wagga Wagga	221.4	207.4	-6.3
27 Emerald	195.8	199.5	1.9
28 Paraburdoo	176.9	187.6	6.1
29 Tamworth	190.5	187.2	-1.7
30 Port Lincoln	170.2	170.1	-0.1
31 Hervey Bay	165.6	165.4	-0.2
32 Bundaberg	164.4	154.5	-6.1
33 Devonport	147.4	147.7	0.2
34 Armidale	130.5	131.6	0.8
35 Toowoomba Wellcamp	141.1	119.0	-15.6
36 Kununurra	105.4	114.2	8.4
37 Moranbah	102.5	109.3	6.7
38 Geraldton	112.6	107.9	-4.2
39 Thursday Island	100.9	97.6	-3.3
40 Roma	86.9	96.3	10.9
41 Griffith	76.7	93.2	21.6
42 Learmonth	86.4	86.8	0.4
43 Mount Gambier	80.5	84.6	5.1
44 Orange	75.5	81.4	7.9
45 Gove	84.8	81.2	-4.2
46 Whyalla	74.8	78.9	5.4
47 Olympic Dam	76.6	76.8	0.2
48 Weipa	80.7	72.7	-9.9
49 Burnie	69.4	72.2	4.1
50 Merimbula	68.3	67.8	-0.8
Total top 50 regional airports	23 545.7	23 548.0	0.0
Total regional airports	24 947.9	24 950.7	0.0
Total domestic network	122 350.2	122 448.2	0.1

Note: Airport passenger movement numbers are the sum of passenger arrivals and departures at each airport.

Regional airports are defined as airports which are, according to the Australian Bureau of Statistics

"The Australian Statistical Geography Standard (ASGS)", not based in Major Urban areas.

DOMESTIC CHARTER ACTIVITY

Table 12: Charter passengers carried and aircraft trips - monthly activity

	Oct 2018	Oct 2019	% Change
Total domestic charter passengers	230 109	269 187	17.0
Total domestic charter aircraft trips	3 898	4 624	18.6

Note: Helicopter, joyflights and sightseeing charter flights not included.

Table 13: Charter passengers carried and aircraft trips - annual activity

	YE Oct 2018	YE Oct 2019	% Change
Total domestic charter passengers	2 472 169	2 696 603	9.1
Total domestic charter aircraft trips	44 662	46 584	4.3

Note: Helicopter, joyflights and sightseeing charter flights not included.

Table 14: Domestic airports - charter activity - monthly

	Oct 2018	Oct 2019	% Change
Total domestic charter passenger movements	460 218	538 374	17.0
Total domestic charter aircraft movements	7 796	9 248	18.6
Perth airport charter passenger movements	173 734	207 301	19.3
Perth airport charter aircraft movements	2 684	3 232	20.4

Note: Helicopter, joyflights and sightseeing charter flights not included.

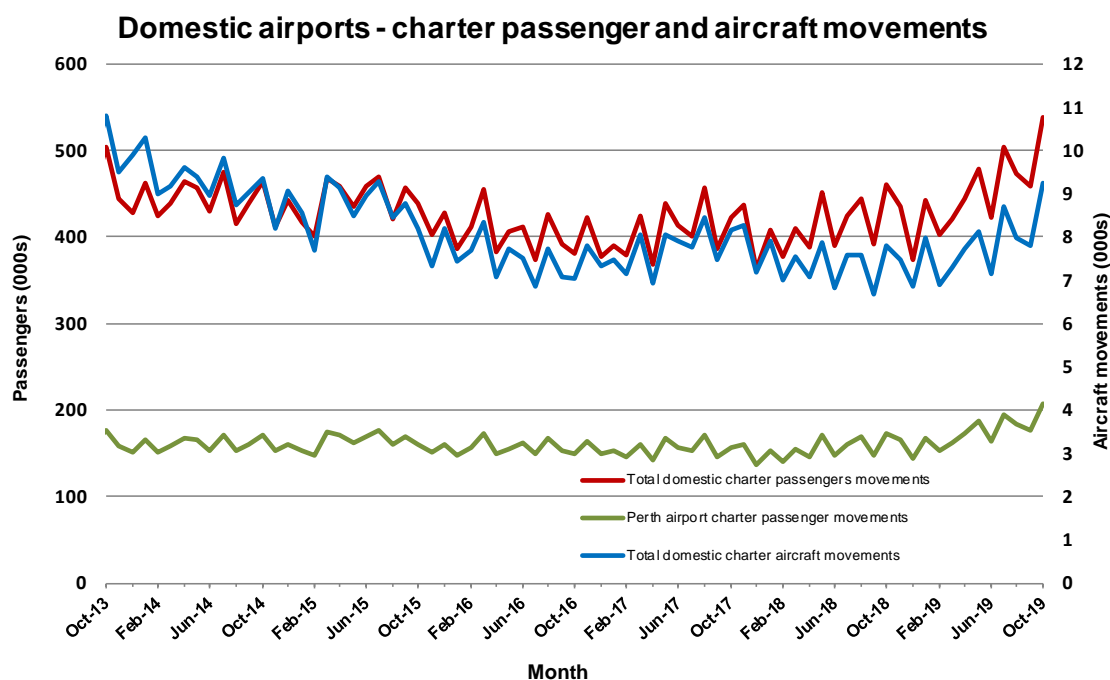
Charter passenger and aircraft movement numbers are the sum of arrivals and departures at each airport.

Table 15: Domestic airports - charter activity - annual

	YE Oct 2018	YE Oct 2019	% Change
Total domestic charter passenger movements	4 944 338	5 393 206	9.1
Total domestic charter aircraft movements	89 324	93 168	4.3
Perth airport charter passenger movements	1 863 142	2 078 978	11.6
Perth airport charter aircraft movements	30 240	32 534	7.6

Note: Helicopter, joyflights and sightseeing charter flights not included.

Charter passenger and aircraft movement numbers are the sum of arrivals and departures at each airport.



DEFINITIONS

Aircraft Trips	The number of flight stages. A return flight counts as two aircraft trips.
Airport Movements	Airport movements (passenger and cargo) are measured once on arrival and once on departure. Each domestic trip generates two movements at airports. For example, a trip from Melbourne to Sydney will be counted twice, as a passenger departure at Melbourne and as a passenger arrival at Sydney. At the national level, the sum of all domestic airport traffic will therefore be equal to twice the number of trips undertaken.
Available Seat Kilometres (ASKs)	Calculated by multiplying the number of seats available on each flight stage, by the distance in kilometres between the ports. The distances used are Great Circle Distances.
City-Pair	The ports shown make up the city-pair route. Passenger movements shown for a city pair reflect total traffic in both directions.
Flight Stage	The operation of an aircraft from take-off to landing.
Load Factor	The total revenue passenger kilometres performed as a percentage of the total available seat kilometres.
Passengers Carried	Revenue passengers carried.
Regular Public Transport Services (RPT)	All air service operations in which aircraft are available for the transport of members of the public and are conducted in accordance with fixed schedules. It does not include charter or other non-scheduled operations.
Revenue Passengers	All passengers paying any fare. Frequent flyer redemption travellers are regarded as revenue passengers.
Revenue Passenger Kilometres (RPKs)	Calculated by multiplying the number of revenue passengers travelling on each flight stage, by the distance in kilometres between the ports. The distances used are Great Circle Distances.
Traffic on board by stages	The total of all traffic (revenue passengers) on each flight stage between two directly connected airports.
..	Data not included
NA	Not applicable